

H 22  
NEW YORK STATE  
COLLEGE OF AGRICULTURE,  
DEPARTMENT OF HORTICULTURE,  
CORNELL UNIVERSITY,  
ITHACA, N. Y.

*The Largest Collection of Hardy Native American Plants in Existence grown at my Highlands Nursery, 3,800 ft. Elevation in the Carolina Mountains and Boxford Nursery, Boxford, Mass.*

---

---

15  
Catalog of  
**BOXFORD NURSERY**  
BOXFORD, MASS.

Harlan P. Kelsey, *Owner*  
*Office, 287 Essex Street, Salem, Mass.*

---

---

*Hardy Stock Only*

Rhododendrons—Kalmias—Andromedas—Azaleas  
and other Ericaceæ—Specimen Evergreens—Trees  
—Shrubs—Vines—Ferns—Herbaceous Perennials

# **BOXFORD NURSERY**

**THIS IS A PRICED CATALOG** of my **Boxford Nursery**, located at Boxford, Mass. Here may be seen growing the choicest collection of Specimen Nursery Stock, selected for the most discriminating buyers. Special attention is given to Hardy Native Material, which **must always be the basis of successful permanent plantings.**

**SPECIMEN STOCK.** There is a growing demand for fine specimen stock in Conifers, Rhododendrons, Kalmias, Andromedas, and other evergreens, and my Boxford Nursery is established to supply just this need which has been felt so long.

**PRICES** are made to fit the quality of stock sent out. Few realize that the real value of nursery stock is largely **underground.** Frequent transplanting, and handling specimens with adequate burlapped balls, means success and quick results. It costs more, but it is the fixed policy of my Boxford Nursery; and "cheap" stock will not be handled or sent out. **The Best is always the Cheapest.**

**PACKING CHARGES FREE** for shipment by Freight or Express. Team and auto delivery to North Shore or Boston points at **net cost.**

At my **HIGHLANDS NURSERY**, Pineola (Saginaw P. O.), North Carolina, 3800 ft. elevation, on the crest of the Alleghany Mountains, one may see Rhododendrons, Azaleas, Leucothoes, Kalmias and Andromedas growing in all sizes by tens of thousands in single species, and nowhere else can be found such a collection of Rare American Plants of unquestionable hardiness—**the best for American Gardens.**

**THE CAROLINA MOUNTAINS** is the native home of the most beautiful Broad-leaved Evergreens and Ericaceous Shrubs. Highlands Nursery not only ships direct to customers, but is a great propagating plant, supplying material for my Boxford Nursery. A catalog of Highlands Nursery is sent on request.

**VISITORS ARE ALWAYS WELCOME** at both Nurseries or at my Salem office. Many customers take the trip to my Highlands Nursery in the Carolina Mountains during the blooming season of Rhododendrons and Azaleas. No such show can be seen elsewhere, and it is an outing worth while; I am glad to give details.

---

**HARLAN P. KELSEY, Owner**

**Office, 287 Essex St.  
Telephone Connection.**

**SALEM, MASS.**



## EVERGREEN TREES AND SHRUBS

	Each	Per 10	Per 100
<b>ABIES CONCOLOR, White Fir.</b>			
1 to 1½ ft. ....	.50	\$4.00	\$30.00
1½ to 2 ft. ....	1.50	12.50	
2 to 3 ft. ....	2.50	20.00	
4 to 5 ft. ....	6.00		
6 to 10 ft. extra specimens	\$20. to \$30. each.		
<b>DOUGLASII.</b> See Pseudotsuga.			
<b>FRASERI, Fraser's Fir.</b>			
6 to 12 in. ....	.20	1.25	10.00
1 to 1½ ft. ....	.30	2.00	12.50
1½ to 2 ft. ....	.60	4.00	37.50
2 to 3 ft. ....	1.50	10.00	
3 to 4 ft. ....	2.50	20.00	
6 to 8 ft. specimens	\$6 to \$8. each.		
These are very fine perfect specimens for immediate effect.			
<b>NORDMANNIANA, Nordmann's Fir.</b>			
2 to 3 ft. ....	3.00	25.00	
3 to 4 ft. ....	4.00	35.00	
<b>ANDROMEDA (PIERIS) FLORIBUNDA, Mountain Fetter Bush.</b>			
One of my specialties. Strictly American grown stock, all offered are a mass of buds.			
6 to 12 in. ....	1.50	12.50	100.00
1 to 1½ ft. ....	2.00	17.50	150.00
<b>JAPONICA, Japanese Fetter Bush.</b>			
12 to 15 in. ....	1.00	8.50	
<b>BUXUS ARBORESCENS, Tree Box.</b>			
8 to 12 in. 3 yr. trans. ....	.10	.50	4.00
4 yr. trans. ....	.15	.75	6.00
<b>PYRAMIDALIS, Pyramidal Box.</b>			
2 to 3 ft. ....	2.00	17.50	
3 to 4 ft. ....	4.00	37.50	
<b>SEMPERVIRENS, Box, Bush Form.</b>			
1 to 1½ ft. ....	1.50	12.50	100.00
1½ to 2 ft. ....	2.00	17.50	
<b>STANDARD AND HALF STANDARD.</b>			
1½ to 4 ft. ....	\$.2. to \$4. each		
<b>SUFFRUTICOSA, Dwarf Box.</b>			
3 yr. trans. ....	.15	.75	6.00
<b>CEDRUS ATLANTICA GLAUCA, Mt. Atlas Silver Cedar.</b>			
Transplanted from pots, ....	.50	4.00	
1½ to 2 ft. transplanted, ....	1.25	10.00	
2 to 2½ ft. transplanted, ....	1.75		
<b>CHAMAECYPARIS SPHAEROIDEA, White Cedar.</b>			
2 to 4 ft. ....	1.00	8.50	
<b>CHAMAEDAPHNE CALYCVLATA, Leather-Leaf.</b>			
Collected Clumps 1 to 2 ft. ....	.60	5.00	40.00
Collected Plants 9 to 18 in. ....	.15	1.00	8.50
<b>DENDRUM PROSTRATUM, Mountain Heath.</b>			
6 to 12 in. ....	.40	3.50	30.00
<b>HYPERICUM DENSIFLORUM, St. John's Wort.</b>			
2 to 3 ft. ....	.25	1.75	15.00
<b>ILEX CRENATA, Japanese Holly.</b>			
6 to 8 in. ....	.40	3.50	
1 to 1½ ft. ....	.75		
<b>ILEX OPACA, American Holly.</b>			
1 to 1½ ft. ....	.60	5.00	40.00
1½ to 2 ft. ....	.80	7.00	60.00
2 to 3 ft. ....	1.50	12.50	
<b>VOMITORIA, Cassena Holly.</b>			
15 to 18 in. pot grown, ....	.50	4.00	30.00
<b>JUNIPERUS CHINENSIS PROCUMBENS.</b>			
6 to 8 in. trans. ....	.35	3.00	25.00
<b>COMMUNIS, Common Prostrate Juniper.</b>			
This is the best prostrate type of Juniper for ground cover.			
Hundreds of fine transplanted specimens with balls.			
6 to 12 in. ....	.50	4.00	30.00
1 to 1½ ft. ....	1.25	10.00	90.00
1½ to 2 ft. ....	1.75	15.00	
Specimens ....	\$.2.50 to \$10. each.		
<b>AUREA, Golden Juniper.</b>			
6 to 12 in. ....	.60	5.00	40.00

## 2 Harlan P. Kelsey, Owner, Salem, Mass.

### Evergreen Trees and Shrubs, continued.

	Each	Per 10	Per 100
<b>SABINA</b> , Savin Juniper.			
8 to 10 in. ....	.60	5.00	40.00
1 to 1½ ft. trans. with balls, ..	.90	7.50	65.00
1½ to 2 ft. trans. with balls, ..	1.25	9.00	80.00
<b>SCOPULORUM</b> , Rocky Mountain Cedar.			
12 to 18 in. ....	.75	6.00	
<b>TAMARISCIFOLIA</b> , Gray Carpet Juniper.			
8 to 10 in. trans. ....	.35	3.00	25.00
1½ to 2 ft. ....	1.25	10.00	
<b>VIRGINIANA</b> , Red Cedar.			
1 to 2 ft. ....	.75	6.00	50.00
2 to 3 ft. ....	1.50	12.50	
5 to 6 ft. ....	3.00	27.50	225.00
Specimens 5 to 10 ft. high, \$3. to \$15 each			
— <b>GLAUCA</b> , Blue Virginia Cedar.			
1 to 2 ft. ....	1.00	8.50	
— <b>PFITZERIANA</b> .			
1½ to 2 ft. ....	1.50	12.50	100.00
— <b>SCHOTTII</b> .			
1½ to 2 ft. ....	1.25	10.00	90.00
<b>KALMIA ANGUSTIFOLIA</b> , Narrow-Leaved Laurel.			
1 to 2 ft. clumps ....	.75	6.00	
Collected Clumps, ....	.65	5.00	40.00
<b>LATIFOLIA</b> , Mountain Laurel.			
One of the grandest of our native, broad-leaved evergreen shrubs, attaining tree-like proportions in our southern mountains. In cultivation it is a broad, thick shrub, and when in full bloom, of surpassing beauty. The wheel-shaped flowers in close terminal corymbs, pure white to pink, appear in May or June in such profusion as almost to smother the foliage. Its thick, shining leaves, conspicuous the year round, make it a shrub of greatest value for massing. The hardiness of <i>Kalmia latifolia</i> is beyond doubt, it being found sparingly in Nova Scotia and increasingly in abundance through New England and the Middle Atlantic States (particularly in the higher altitudes), till the crest of the Southern Alleghenies is reached.			
9 to 12 in. ....	.40	3.50	30.00
1 to 1½ ft. ....	.60	5.00	40.00
1½ to 2 ft. ....	.80	7.00	60.00
1 to 1½ ft. clumps, ....	1.25	10.00	90.00
1½ to 2 ft. clumps, ....	2.00	17.50	150.00
2 to 3 ft. clumps, ....	3.50	32.50	
<b>LEDUM LATIFOLIUM</b> , Labrador Tea.			
Collected clumps, 9 to 18 in. ....	.60	5.00	40.00
Collected Plants, 9 to 18 in. ....	.15	1.00	8.50
<b>LEUCOTHOE CATESBAEI</b> , Catesby's Leucothoë.			
3 to 8 feet. Few shrub evergreens of the broad-leaved sort have the grace of this one. Has thick, shining green leaves, evenly disposed on long, recurved branches, and dense racemes of beautiful white, bell-shaped flowers. As an undershrub or for banks and the borders of streams it is without a rival. The sprays make beautiful winter decorations indoors, turning a rich bronze in the fall where exposed to the sun. Over 40,000 plants in my Nurseries.			
6 to 12 in. clumps, ....	.60	5.00	40.00
1 to 1½ ft. clumps, ....	1.00	8.50	75.00
1½ to 2 ft. clumps, ....	1.75	15.00	125.00
<b>LINNAEA BOREALIS</b> , Twin-Flower.			
Collected clumps, ....	.20	1.75	15.00
<b>MAHONIA JAPONICA</b> .			
1 to 1½ ft. ....	.60	5.00	
<b>PACHYSANDRA TERMINALIS</b> .			
Strong Plants, ....	.50	4.00	30.00
One of the finest ground cover plants of low habit.			
<b>PICEA ALBA</b> , White Spruce.			
2 to 3 ft. ....	1.50	12.50	100.00
3 to 3½ ft. ....	2.00	17.50	150.00
3½ to 4 ft. ....	3.00	25.00	
4 to 5 ft. ....	4.00	35.00	
6 to 8 ft. ....	6.00	50.00	
<b>ALCOCKIANA</b> .			
2 ft. ....	1.50	12.50	
<b>CONCOLOR</b> . See <i>Abies</i> .			
<b>ENGELMANII</b> , Engelman's Spruce.			
6 to 12 in. ....	.30	2.50	22.50



	Each	Per 10	Per 100
<b>EXCELSA.</b> Norway Spruce.			
3 to 4 ft. ....	1.25	10.00	90.00
4 to 5 ft. ....	1.75	15.00	
<b>MARIANA.</b> Black Spruce.			
2 to 3 ft. ....	1.50	12.50	
3 to 4 ft. ....	2.00	17.50	
4 to 5 ft. ....	3.00	27.50	
<b>PUNGENS.</b> Colorado Spruce.			
3 to 4 ft. ....	2.50	22.50	
4 to 5 ft. ....	3.50	32.50	
— <b>GLAUCA PENDULA.</b> Specimens.			
3 to 5 ft. ....\$4. to \$6. each.			
— <b>KOSTERI.</b> Koster's Blue Spruce.			
1 to 1½ ft. ....	2.50	22.50	200.00
1½ to 2 ft. ....	3.50	32.50	300.00
2 to 3 ft. ....	4.50	40.00	
3 to 4 ft. ....	6.00	50.00	
<b>PINUS ARISTATA.</b>			
12 to 15 in. ....	.50	4.00	
<b>AUSTRIACA.</b> Austrian Pine.			
3 to 4 ft. ....	1.75	15.00	
<b>CEMBRA.</b> Swiss Stone Pine.			
1 to 1½ ft. ....	1.50	12.50	
Specimens, 4 to 5 ft. ....	7.00	60.00	
<b>DIVARICATA.</b> (banksiana). Jack Pine.			
1 to 2 ft. ....	.65	5.00	40.00
2 to 3 ft. ....	.80	7.00	60.00
3 to 4 ft. ....	1.00	8.50	
7 to 8 ft. ....	2.50	22.50	
<b>FLEXILIS.</b> Limber Pine.			
1 to 2 ft. ....	.65	5.00	40.00
<b>MONTANA.</b> Swiss Mountain Pine.			
2 ft. specimens, ....	2.00	17.50	
<b>MUGHUS.</b> Dwarf Pine.			
1 to 2 ft. with balls, ....	1.50	12.50	100.00
<b>MURRAYANA.</b> Lodge-Pole Pine.			
2 to 3 ft. ....	.80	7.00	
<b>PARVIFLORA.</b> Japanese Short-Leaved P.			
2½ to 3 ft. ....	3.00		
<b>PONDEROSA.</b> Bull Pine.			
6 to 12 in. ....	.25	2.00	
1 to 2 ft. ....	.50	4.00	
<b>PUNGENS.</b> Table Mountain Pine.			
2 to 3 ft. ....	.60	5.00	
3 to 4 ft. ....	1.00	8.50	75.00
4 to 6 ft. ....	1.50	12.50	
<b>RIGIDA.</b> Pitch Pine.			
2 to 3 ft. ....	.50	4.00	35.00
3 to 4 ft. ....	1.00	8.50	
<b>RESINOSA.</b> Red Pine.			
8 to 10 in. transplanted, ....	.20	1.50	10.00
2½ to 3 ft. ....	1.75	15.00	
3 to 4 ft. ....	2.50	22.50	
<b>STROBUS.</b> White Pine.			
6 to 12 in. ....	.20	1.50	10.00
1 to 2 ft. ....	.35	3.00	25.00
2 to 3 ft. ....	.60	5.00	45.00
5 to 6 ft. ....	3.50	30.00	
6 to 8 ft. ....	4.50	40.00	
<b>SYLVESTRIS.</b> Scotch Pine.			
6 to 12 in. ....	.20	1.50	10.00
1 to 1½ ft. ....	.35	3.00	25.00
3 to 4 ft. ....	1.50	12.50	
<b>WATERIANA.</b>			
8 to 12 in. ....	1.00	8.50	
<b>POTENTILLA TRIDENTATA.</b>			
Evergreen Cinquefoil, ....	1.00	8.00	
<b>PSEUDOTSUGA TAXIFOLIA.</b> Douglas Spruce.			
6 to 12 in. ....	.50	4.00	30.00
1 to 2 ft. ....	1.00	8.50	75.00
2 to 3 ft. ....	2.00	17.50	150.00
3 to 4 ft. ....	3.00	25.00	225.00
<b>GLAUCA.</b> Blue Douglas Spruce.			
3 to 4 ft. ....	4.00		

## 4 Harlan P. Kelsey, Owner, Salem, Mass.

	Each	Per 10	Per 100
<b>RETINOSPORA OBTUSA GRACILIS.</b> Japanese Cypress.			
18 to 24 in. ....	.75	6.00	
— <b>NANA.</b> Dwarf Japanese Cypress.			
8 in. ....	1.00	8.50	
12 to 15 in. ....	1.50	12.50	
<b>PYGMAEA.</b>			
8 in. ....	1.00	8.50	

## RHODODENDRONS

**RHODODENDRON ARBUTIFOLIUM.** Dwarf Rhododendron.

8 to 10 in. ....	.75	6.00
------------------	-----	------

**CAROLINIANUM (PUNCTATUM),** Small or Early Flowering Rhododendron.

The smallest Alleghanian species, though it often attains a height of 15 feet and is wide spreading. A very graceful shrub, with totally different aspect from the two species preceding. Leaves dark green, usually blunt and narrow, covered with rusty dots below, much smaller than either **maximum** or **catawbiense**. Flower-clusters appear in greatest profusion in June, covering the plant with a rose-colored mantle. Fine for rocky slopes or hillsides, standing exposure unusually well, and invaluable as a single specimen or for massing with the other species.

Until this year we have been sending this beautiful and rare species out under the name of **punctatum**. Prof. Sargent has recently called attention to the fact that it is a distinct species from the **punctatum**, differing in time of bloom, with more showy and profuse flowers, and making a much larger and finer plant than the **punctatum**.

It is now known as **Rhododendron carolinianum**, being described and named by Alfred Rehder, Arnold Arboretum, Jamaica Plain, Mass.

9 to 12 in. ....	.75	6.00	50.00
9 to 12 in. clumps, ....	1.50	12.50	100.00
1 to 1½ ft. clumps, ....	2.00	17.50	150.00
1½ to 2 ft. clumps, ....	3.50	32.50	
2 to 3 ft. clumps, ....	6.00	50.00	

**CATAWBIENSE, OF THE CAROLINA MOUNTAINS.**

It is this magnificent Rhododendron that over a hundred years ago was introduced into Europe, supplying, together with **Rhododendron maximum** and **R. punctatum**, color and hardy blood to the cultivated "hybrids," but with a consequent loss of hardiness; and so today, for American gardens where iron-clad hardiness is essential, we must turn to the true original species, found on the loftiest, coldest peaks of the Southern Alleghanies, where it attains a height of 20 to 30 feet.

Considering the extreme hardiness, color of flower, compact growth and remarkable texture of foliage, which is a deep, shining green, and far superior to the better-known **Rhododendron maximum**, we can recommend the true native **catawbiense** as the finest for general use, withstanding exposure and extremes of temperature where other Rhododendrons fail.

Do not confuse this true species, which is absolutely hardy, with the common so-called **catawbiense** hybrid seedling so freely imported from Europe, which is at best half-hardy, and even when branched above is a single stem, showing bareness underneath for years.

Unlike **Rhododendron maximum**, it is a very free bloomer, with foliage of a dark, rich, lasting green, which never rusts. The trusses are a bright red-purple (in marked contrast to the muddy purple of the semi-hardy half-breed imported variety noted above), and as sent out by Highlands Nursery are always on their own roots.

For massing to produce a broad-leaved evergreen landscape effect, there is no plant equal to it in the latitude of the Northern United States and Canada, where strictly hardy plants must be employed. As a rich, finished border to plantations of the commoner **Rhododendron maximum** and **Kalmia latifolia**, the value of **Rhododendron catawbiense** cannot be overestimated.



Do not compare our many-stemmed clumps with the single-stemmed, "bushy" half-hardy Rhododendrons offered by importers. There is no comparison.

	Each	Per 10	Per 100
6 to 9 in. ....	.30	2.50	22.50
1 to 1½ ft. clumps, ....	1.75	17.00	125.00
1½ to 2 ft. clumps, ....	2.50	22.50	200.00
2 to 3 ft. clumps, ....	3.50	32.50	
3 to 4 ft. clumps, ....	6.00	50.00	
4 to 5 ft. clumps, ....	8.00		
3 to 6 ft. extra specimens	\$8. to \$15.	each.	

<b>RHODODENDRON FERRUGINEUM.</b> 10 in. . .	.50	4.00
<b>ALBUM.</b> 8 in. ....	.75	6.00
<b>HIRSUTUM.</b> 8 to 10 in. ....	.40	3.50

**RHODODENDRON MAXIMUM.** The great American Rosebay. Perfectly hardy in the latitude of Quebec.

Rhododendron maximum is without doubt the noblest of American broad-leaved shrubs. It is found growing sparingly in New England and New York, more abundantly in the Pennsylvania mountains, but reaching perfection only in the Southern Alleghany mountains where it grows in such luxuriance as to form a striking feature in the mountain landscape. Its large, waxy white or delicately pink flowers appear in large trusses in July, the latest of all the Rhododendrons, greatly enhancing its ornamental value as a broad-leaved evergreen for finished landscape effect.

Not even in Asia do Rhododendrons grow more luxuriantly than in our Southern Alleghany Mountains, where they attain a height of 30 feet or more. They must be seen in their native lavishness of growth and bloom, on the mountain-sides or hanging over the dashing ice-cold streams and water-falls, to be properly appreciated, and a trip to the high Carolina mountains in spring and early summer is a never-to-be-forgotten series of joys to the lover of nature.

In our northern gardens Rhododendron maximum (and other species to a small extent) is subject to damaging attacks from the lace-wing fly, particularly in sunny locations. It is easily kept in control with an emulsion of five to ten pounds of whale-oil soap and one to two quarts of kerosene to 100 gallons of water, used with a spray pump having a fine nozzle.

9 to 12 in. ....	.25	2.00	17.50
1 to 1½ ft. ....	.40	3.00	25.00
1½ to 2 ft. ....	.75	6.00	50.00
1 to 1½ ft. clumps, ....	1.00	9.00	80.00
1½ to 2 ft. clumps, ....	1.75	15.00	125.00
2 to 3 ft. clumps, ....	2.50	22.50	
3 to 4 ft. clumps, ....	4.00	37.50	
4 to 6 ft. specimens, \$5. to \$10. each.			

**MYRTIFOLIUM.** Myrtle-Leaved Rhododendron. .50 4.00

**WILSONI.** Dwarf Rhododendron. 30 to 40 in. .... 1.00 8.50

**RHODODENDRON HYBRIDS.** Hardest varieties, including the following: Abraham Lincoln, album elegans, grandiflorum, caractacus, catawbiense alba, everestinaum, General Grant, Mrs. Milner and others according to size and selection, \$1.50 to \$4.00 each.

### Rhododendrons and Kalmias by the Car Load.

Rhododendrons and kalmias delivered at your station by the carload. To be shipped from point determined by r.c.

For the area covered and effect produced, a "carload" of Rhododendrons or Kalmias is the cheapest landscape proposition offered. I ship an unusual grade of splendid clumps, each plant a specimen and burlapped separately. Don't accept cheap stock, thrown into cars without burlapping and with the fine, hair-like rootlets inevitably exposed. You will be disappointed and find it expensive in the end.

#### RHODODENDRON CATAWBIENSE.

Each plant collected from the open and burlapped. Prices f. o. b. your station, if east of the Mississippi River.

Car containing 200 clumps, 1½ to 3½ ft. for .....	\$230.00
Car containing 300 clumps, 1½ to 3½ ft. for .....	330.00
Car containing 400 clumps, 1½ to 3½ ft. for .....	480.00
Car containing 600 clumps, 1½ to 3½ ft. for .....	600.00
Other combinations and sizes quoted on request.	

**RHODODENDRON MAXIMUM.**

Prices in carload lots, delivered f. o. b. your station, if east of the Mississippi River, "collected" from open ground, and each specimen burlapped separately.

Car containing 300 clumps, 1½ to 4 ft. for .....\$300.00  
 Car containing 400 clumps, 1½ to 4 ft. for ..... 375.00  
 Car containing 600 clumps, 1½ to 4 ft. for ..... 500.00

Other sizes or combinations will be made up to suit customers. It is far cheaper to buy my kind at slightly increased price and have plants that will grow.

**RHODODENDRON MAXIMUM. Extra specimens.**

For those wishing perfect specimens I can supply a few cars of "collected", extremely heavy plants. Price on request.

**RHODODENDRON MAXIMUM AND R. CATAWBIENSE.**

In mixed car, delivered free at any station east of Mississippi River.

Car containing 150 maximum and 150 catabiense, "collected" as above, 1½ to 4 ft. clumps—a total of 300—for \$400. Car containing 250 maximum and 250 catabiense, 1½ to 4 ft. clumps—a total of 500—for \$550.00

**Kalmia latifolia by carload.**

Each specimen burlapped, and highest-class clumps collected" from open, delivered free at your station, if east of Mississippi River.

Car containing 400 clumps, 1 to 3½ ft. for \$375. *Kalmia* may be added to help fill any *Rhododendron* car at \$1.00 per clump.

**Best plants for the Rhododendron beds and for ground-cover, grown at my Nurseries.**

Some of the most successful are *Andromeda polifolia*, *Chamaedaphne calyculata*, *Dendrium buxifolium*, *D. prostratum*, *Ilex glabra*, *Gaultheria procumbens*, *Leucothoë catesbaei*, *Pieris floribunda*, *Taxus minor*, *Galax aphylla*, *Houstonia serpyllifolia*, *Mitchella repens*, *Shortia galacifolia*, *Vinca minor*, *V. minor alba*, *Xanthorrhiza apifolia*, *Lilies*, *Trilliums*, *Erythroniums*, *Ferns*, *Dicentra eximia*, *Iris*, etc.

	Each	Per 10	Per 100
<b>TAXUS CANADENSIS. Canadian Yew.</b>			
6 to 8 in. ....	.50	4.00	30.00
8 to 10 in. ....	.75	6.00	50.00
10 to 12 in. ....	1.00	8.50	75.00
<b>CUSPIDATA BREVIFOLIA. Japanese Yew.</b>			
6 to 8 in. ....	.75	6.00	
24 to 30 in. ....	1.75	15.00	
<b>THUYA GEORGE PEABODY.</b>			
12 in. ....	.40	3.00	
<b>GLOBOSA. Globose Arborvitae.</b>			
2 to 3 ft. ....	1.50	12.50	
<b>HOVEYII. 15 to 18 in. ....</b>	.45	3.50	
<b>OCCIDENTALIS VERVAENEANA, ...</b>	.50	4.00	
<b>—PYRAMIDALIS. Pyramidal Arbor-vitae.</b>			
2 to 3 ft. ....	2.00	17.50	150.00
3 to 4 ft. ....	3.00	27.50	225.00
4 to 5 ft. ....	5.00	40.00	300.00
<b>—SIBERICA. SIBERIAN ARBORVITAE.</b>			
9 to 12 in. ....	.40	3.00	25.00
1 to 1½ ft. ....	.65	4.00	
<b>TSUGA CANADENSIS. Common Hemlock.</b>			
1 to 1½ ft. ....	.30	2.00	17.50
1½ to 2 ft. ....	.50	4.00	30.00
3 to 4 ft. ....	1.75	15.00	125.00
4 to 5 ft. ....	3.00	25.00	
5 to 6 ft. ....	4.00	35.00	
<b>CAROLINIANA. Carolina Hemlock.</b>			
40 to 80 ft. This grand new Hemlock introduced by me possesses a distinct pyramidal growth and attains a height of 40 to 80 feet. Its dense, dark foliage and graceful habit are approached only by the finer Japanese Hemlocks. Some fine specimens are to be seen in the Arnold Arboretum, and are the first plants of this Hemlock ever sent out, being supplied by me to Prof. C. S. Sargent, in 1884.			
3 to 6 ft. ....	\$3 to \$15. each.		
<b>VACCINIUM MACROCARPON. American Cranberry.</b>			
Collected clumps, ....	.30	2.00	15.00



**DECIDIOUS TREES AND SHRUBS**

	Each	Per 10	Per 100
<b>ACER GINNALE.</b> Siberian Maple, 4 to 5 ft. . .	.35	3.00	25.00
<b>PLATANOIDES.</b> Norway Maple.			
6 to 8 ft. ....	1.50	10.00	90.00
8 to 10 ft. ....	1.75	15.00	125.00
10 to 12 ft. ....	2.00	17.50	150.00
12 to 14 ft. ....	2.50	22.50	200.00
— <b>SCHWEDLERI.</b> Purple-Leaved Norway Maple.			
6 to 8 ft. ....	1.50	10.00	90.00
<b>POLYMORPHUM.</b> Japanese Maple, assorted.			
1 to 1½ ft. ....	1.25	10.00	
<b>SACCHARUM.</b> Sugar Maple.			
2 to 3 ft. ....	.15	1.00	8.50
6 to 8 ft. ....	1.00	8.50	75.00
8 to 10 ft. ....	1.50	10.00	90.00
10 to 12 ft. ....	1.75	15.00	125.00
12 to 14 ft. ....	2.50	20.00	
<b>SPICATUM.</b> Mountain Maple. 1 to 2 ft. . .	.25	1.50	12.50
<b>AMELANCHIER BOTRYAPIUM.</b> Shad Bush.			
2 to 3 ft. ....	.40	3.50	
5 to 7 ft. ....	1.00	8.50	
<b>ARALIA PENTAPHYLLA.</b>			
2 to 3 ft. ....	.50	4.00	30.00
3 to 4 ft. ....	.75	6.00	50.00
<b>ARONIA ARBUTIFOLIA.</b> Red chokeberry.			
The scarlet berries of this species hang on until late in the spring. One of the most ornamental of our berry-bearing shrubs.			
6 to 12 in. ....	.30	2.00	17.50
1 to 1½ ft. ....	.50	4.00	30.00
3 to 4 ft. ....	1.00	8.50	75.00
<b>ERYTHROCARPA.</b> Dwarf Form.			
1 to 2 ft. ....	.35	3.00	25.00
Tall Form. 1 to 2 ft. ....	.50	4.00	30.00
<b>MELANOCARPA.</b> 6 to 12 in. ....	.35	3.00	
<b>NIGRA.</b> Black Chokeberry. 1 to 2 ft. . .	.40	3.75	35.00
<b>AZALEA ARBORESCENS.</b> Fragrant White Azalea.			
In June the delightfully spicy fragrant white flowers, with ping stamens, appear in profusion, lasting for weeks. Becomes a spreading clump 3 to 6 feet broad in cultivation; easy culture. The foliage often colors striking shades of red in late summer.			
1 to 1½ ft. ....	.60	5.00	45.00
1½ to 2 ft. ....	1.00	8.50	75.00
6 to 12 in. clumps. Buds . . .	1.25	10.00	
1 to 1½ ft. clumps. Buds . . .	1.50	12.50	100.00
1½ to 2 ft. clumps. Buds . . .	2.50	22.50	200.00
3 to 4 ft. clumps. Very heavy and a mass of buds . . .	6.00	50.00	
<b>GANDAVENSIS.</b> Ghent Azalea.			
1 to 1½ ft. ....	1.25	10.00	
<b>INDICA.</b> Indian Azalea. Hardest named varieties, well budded.			
6 to 8 in. pots. ....	.50	4.00	
— <b>ALBA.</b> White Indian Azalea. Hardest type known, well budded, 6 to 8 in. pots. ....	.60	5.00	
<b>AZALEA LUTEA.</b> Flame Azalea,			
6 to 12 in. ....	.25	2.00	17.50
1 to 1½ ft. ....	.50	4.00	35.00
1 to 1½ ft. clumps. Buds . . .	.80	7.00	60.00
2 to 3 ft. clumps. Buds . . .	1.50	12.50	100.00
3 to 4 ft. clumps. Buds . . .	4.00	35.00	
<b>MOLLIS.</b> Japanese Azalea. Bushy Plants,	.30	2.50	20.00
1 to 1½ ft. Buds . . .	1.00	8.50	
<b>NUDIFLORA.</b> Pinxter Flower.			
6 to 12 in. ....	.30	2.50	20.00
1 to 1½ ft. ....	.60	5.00	40.00
1 to 1½ ft. clumps. Buds . . .	.80	7.00	60.00
<b>PONTICA.</b> Named Varieties.			
Strong Plants with Buds, . . . . .	.75	6.00	
<b>VASEYI.</b> Southern Azalea.			
April and May. This showy Azalea was discovered in 1873, and introduced by Highlands Nursery very soon after. The			

8 Harlan P. Kelsey, Owner, Salem, Mass.

most profuse bloomer of all the native species. Flowers pink or deep rose-colored. Foliage deep crimson in autumn.			
	Each	Per 10	Per 100
6 to 12 in. ....	.50	4.00	35.00
1 to 1½ ft. ....	.75	6.00	50.00
1½ to 2 ft. ....	1.00	8.50	75.00
6 to 12 in. clumps. Buds ....	1.00	8.50	75.00
1½ to 2 ft. clumps. Buds ....	1.75	15.00	
<b>VISCOSA.</b> Early White Azalea.			
1 to 1½ ft. ....	.50	4.00	30.00
1 to 1½ ft. clumps ....	1.00	8.50	
Collected clumps with heavy balls and many stems 4 to 6 ft. \$1.00 to \$5.00 each.			
<b>BERBERIS THUNBERGII.</b> Japanese Barberry.			
6 to 12 in. ....	.20	1.75	15.00
1 to 1½ ft. ....	.35	3.00	27.50
1½ to 2 ft. ....	.50	4.50	40.00
<b>VULGARIS.</b> Common Barberry. 1 to 2 ft. ....	.30	2.50	22.50
<b>—PURPUREA.</b> Purple-Leaved B.			
3 to 4 ft. ....	.50	4.00	35.00
<b>BETULA LUTEA.</b> Yellow Birch, 6 to 8 ft. ....	1.00	8.50	
<b>POPULIFOLIA.</b> American White B.			
1 to 2 ft. ....	.30	2.00	
<b>BUTNERIA FLORIDA.</b> Strawberry Shrub.			
2 to 3 ft. ....	.40	3.00	
<b>CARAGANA ARBORESCENS.</b> Siberian Pea Shrub.			
4 to 6 ft. ....	1.25	10.00	
<b>CARPINUS CAROLINIANA.</b> Water Beech.			
3 to 4 ft. ....	.40	3.50	30.00
4 to 6 ft. ....	.60	5.00	40.00
6 to 8 ft. ....	1.00	8.50	75.00
<b>CASTANEA PUMILA.</b> Chinkapin. 1 to 2 ft. ....	.35	3.00	25.00
<b>CERCIDIPHYLLUM JAPONICUM.</b> Kadsura Tree.			
3 to 3½ ft. ....	1.00	8.50	
<b>CHIONANTHUS VIRGINICA.</b> White Fringe.			
1 to 2 ft. ....	.30	2.50	22.50
2 to 3 ft. ....	.50	4.00	
4 to 6 ft. ....	1.50	12.50	
<b>CLETHRA ACUMINATA.</b> Mountain Pepper Bush.			
4 to 5 ft. ....	1.00	8.50	
<b>ALNIFOLIA.</b> Sweet Pepper Bush			
9 to 12 in. ....	.25	1.50	12.50
1 to 2 ft. ....	.35	3.00	25.00
<b>CORNUS FLORIDA RUBRA.</b> Red-Flowering Dogwood.			
3 to 4 ft. ....	2.50	22.50	
6 to 7 ft. ....	4.00		
<b>MAS.</b> Cornelian Cherry. 2 to 3 ft. ....	.50	4.00	30.00
<b>SIBERICA.</b> Siberian Red Osier.			
2 to 3 ft. ....	.35	3.00	25.00
3 to 4 ft. ....	.50	4.00	30.00
<b>STOLONIFERA.</b> Red Osier Cornel.			
2 to 3 ft. ....	.35	3.00	25.00
3 to 4 ft. ....	.50	4.00	30.00
<b>CORYLUS AMERICANA.</b> Hazelnut.			
1 to 2 ft. collected ....	.20	1.50	10.00
<b>ROSTRATA.</b> Beaked Hazelnut. 1 to 2 ft. ....	.25	1.75	15.00
<b>CRATAEGUS COCCINEA.</b> Scarlet Thorn.			
1 to 2 ft. ....	.25	1.75	
<b>CRUS-GALLI.</b> Cock-Spur Thorn.			
1 to 2 ft. ....	.30	2.50	22.50
2 to 3 ft. ....	.40	3.50	
<b>OXYACANTHA.</b> English Thorn.			
—Double White, 2 to 3 ft. ....	1.00	8.50	
3 to 4 ft. ....	1.50	12.50	
—Paul's Scarlet. 2 to 3 ft. ....	1.00	8.50	
3 to 4 ft. ....	1.50	12.50	
<b>PUNCTATA.</b> Large-Fruited Thorn.			
3 to 4 ft. ....	.60	5.00	40.00
4 to 5 ft. ....	1.00	8.50	
<b>CYTISUS SCOPARIUS.</b> Scotch Broom.			
6 to 12 in. ....	.15	1.00	8.50
<b>DESMODIUM PEDULIFLORUM.</b> Bush Clover. ....	.25	1.50	
<b>DEUTZIA CRENATA.</b> 2 to 3 ft. ....	.40	3.50	
<b>LEMOINEI.</b> 2 to 3 ft. ....	.50	4.00	



	Each	Per 10	Per 100
<b>DIERVILLA SESSILIFOLIA.</b> Bush Honeysuckle.			
1 to 2 ft. ....	.40	3.50	
<b>EUONYMUS ALATUS.</b> Winged Burning Bush.			
1 to 2 ft. ....	.75	6.00	
2½ to 3 ft. ....	1.25	10.00	
<b>AMERICANUS.</b> Strawberry Bush.			
2 to 3 ft. ....	.40	3.50	
<b>EUROPEA LATIFOLIA,</b> 2½ to 3 ft. ....	1.25	10.00	
<b>OBOVATUS.</b> Dwarf Species. Strong ..	.25	1.75	15.00
<b>SEIBOLDIANUS.</b> 18 to 24 in. ....	1.00	8.50	75.00
<b>FAGUS AMERICANA.</b> American Beech.			
3 to 4 ft. ....	.35	3.00	25.00
<b>FORSYTHIA FORTUNEI.</b> Golden Bell.			
2 to 3 ft. ....	.40	3.50	25.00
3 to 4 ft. ....	.60	5.00	40.00
<b>INTERMEDIA.</b> Hybrid Golden Bell.			
2 to 3 ft. ....	.40	3.50	25.00
3 to 4 ft. ....	.60	5.00	40.00
<b>SUSPENSALIS.</b> Drooping Golden Bell.			
2 to 3 ft. ....	.40	3.50	25.00
<b>VRIDISSIMA.</b> Dark Green Forsythia.			
2 to 3 ft. ....	.40	3.50	25.00
3 to 4 ft. ....	.60	5.00	40.00
<b>FRAXINUS LANCEOLATA.</b> Green Ash.			
6 to 8 ft. ....	1.00	8.50	
<b>GAYLUSSACIA RESINOSA.</b>			
Collected plants, 9 to 18 in. ....	.15	1.00	8.50
Collected clumps, 1 to 2 ft. ....	.60	5.00	40.00
<b>GLEDITSCHIA TRIACANTHOS.</b> Honey Locust.			
5 to 7 ft. ....	2.00	17.50	
<b>HALESIA DIPTERA.</b> Snowdrop Tree. 3 to 4 ft. .	.75	6.00	
<b>TETRAPTERA.</b> Silver Bell. 3 to 4 ft. ..	.75	6.00	
4 to 5 ft. ....	1.25	10.00	
<b>HAMAMELIS VIRGINICA.</b> Witch Hazel.			
4 to 5 ft. ....	.75	6.00	
<b>HYDRANGEA ARBORESCENS.</b> Wild Hydrangea.			
1 to 2 ft. ....	.30	2.50	22.50
2 to 3 ft. ....	.40	3.50	30.00
<b>GRANDIFLORA.</b>			
1 to 2 ft. ....	.40	3.50	
2 to 3 ft. ....	.60	5.00	
<b>PANICULATA.</b> 2 to 3 ft. ....	.60	5.00	40.00
<b>GRANDIFLORA.</b> Large-Flowered Hydrangea.			
2 to 3 ft. ....	.60	5.00	40.00
3 to 4 ft. ....	1.00	8.50	
<b>ILEX MONTICOLA.</b> Deciduous Holly 1 to 2 ft. .25	1.75	15.00	
<b>VERTICILLATA.</b> Black Alder, 2 to 3 ft. .60	5.00		
Collected Clumps, 3 to 5 ft. \$1 to \$2 each.			
<b>KERRIA JAPONICA.</b> Japanese Rose. 2 to 3 ft. .40	3.00	27.50	
<b>LARIX AMERICANA.</b> Larch.			
6 to 8 ft. ....	1.00	8.50	
8 to 10 ft. ....	1.50	12.50	
<b>EUROPEA.</b> European Larch.			
2 to 3 ft. ....	.90	7.50	65.00
<b>LEUCOTHOE RECURVA.</b> Mountain Leucothoe.			
6 to 12 in. ....	.25	1.75	15.00
1 to 2 ft. ....	.35	3.00	25.00
<b>LIGUSTRUM IBOTA.</b> Ibota Privet. 1 to 2 ft. .35	3.00	25.00	
<b>MEDIA.</b> 6 to 12 in. ....	.20	1.50	10.00
<b>REGELIANUM.</b> Regel's Privet.			
6 to 12 in. ....	.20	1.50	10.00
1 to 2 ft. ....	.35	3.00	25.00
<b>LONICERA MORROWII.</b> Japanese Bush Honeysuckle.			
3 to 4 ft. ....	.75	6.00	
<b>TARTARICA.</b> Tartarian Honeysuckle.			
3 to 4 ft. ....	.75	6.00	
<b>MAGNOLIA FRASERI.</b> 4 to 6 ft. ....	.75	6.00	
<b>TRIPETALA.</b> 4 to 6 ft. ....	.75	6.00	

10 Harlan P. Kelsey, Owner, Salem, Mass.

	Each	Per 10	Per 100
<b>MALUS (PYRUS) CORONARIA.</b> Wild Crab Apple.			
6 to 12 in. ....	.25	2.00	15.00
1 to 2 ft. ....	.35	3.00	
2 to 3 ft. ....	.40	3.50	
<b>FLORIBUNDA.</b> Flowering Crab.			
4 to 5 ft. ....	.40	3.50	
— <b>ATROSANGUINEA.</b> 4 to 5 ft. ....	.40	3.50	
— <b>PARKMANI.</b> 2 to 3 ft. ....	.40	3.50	
— <b>SCHEIDECKERI.</b> 5 to 6 ft. ....	.50	4.00	
<b>NIEDZWETZKYANA.</b> Red Flowering Crab.			
4 to 5 ft. ....	.40	3.50	
<b>SPECTABILIS.</b> Chinese Flowering Crab.			
2 to 3 ft. ....	.40	3.50	
<b>MENZIESIA PILOSA.</b> ....	.35	3.00	25.00
<b>MYRICA GALE.</b> Sweet Gale.			
Collected Clumps, 9 to 18 in. ....	.60	5.00	40.00
Collected Plants, 9 to 18 in. ....	.15	1.00	8.50
<b>NYSSA MULTIFLORA.</b> Black Gum.			
1 to 2 ft. ....	.50	4.00	35.00
<b>OSTRYA VIRGINICA.</b> Ironwood.			
3 to 4 ft. ....	.50	4.00	
4 to 6 ft. ....	.75	6.00	
<b>OXYDENDRUM ARBOREUM.</b> Tree Andromeda.			
1 to 2 ft. ....	.50	4.00	
2 to 3 ft. ....	.75	6.00	
<b>POPULUS FASTIGIATA.</b> Lombardy Poplar.			
3 to 4 ft. ....	.20	1.50	10.00
6 to 8 ft. ....	.75	6.00	50.00
<b>PRUNUS ALLEGHANENSIS.</b> 1 to 1½ ft. ..	.50	4.00	35.00
<b>MARITIMA.</b> Beach Plum.			
6 to 12 in. ....	.30	2.50	22.50
1 to 2 ft. ....	.40	3.50	30.00
<b>NIGRA.</b> 1½ to 2 ft. ....	.40	3.50	30.00
<b>PUMILA.</b> Sand Cherry.			
1 to 2 ft. ....	.40	3.50	30.00
2 to 3 ft. ....	.60	5.00	
<b>TRILOBA.</b> 1½ to 2 ft. ....	.30	2.50	22.50
<b>QUERCUS COCCINEA.</b> Scarlet Oak.			
2 to 3 ft. ....	.50	4.00	
3 to 4 ft. ....	.75	6.00	
<b>MACROCARPA.</b> Mossy-Cup Oak.			
3 to 4 ft. ....	1.00	8.50	
4 to 6 ft. ....	1.50	12.50	
<b>PALUSTRIS.</b> Pin Oak.			
6 to 8 ft. ....	1.00	8.50	75.00
8 to 10 ft. ....	1.75	15.00	
<b>PRINUS.</b> Chestnut Oak.			
3 to 4 ft. ....	.50	4.00	
4 to 6 ft. ....	.75	6.00	
<b>RUBRA.</b> Red Oak.			
3 to 4 ft. ....	.50	4.00	
4 to 6 ft. ....	.75	6.00	
<b>RHODOTYPUS KERRIOIDES.</b> White Kerria.			
1 to 2 ft. ....	.35	3.00	
<b>RHUS AROMATICA.</b> Sweet Scented Sumac.			
Small plants ....	.25	1.75	15.00
<b>COPALLINA.</b> Upland Sumac, 1 to 2 ft. ..	.25	1.75	15.00
2 to 3 ft. ....	.35	3.00	25.00
<b>COTINOIDES.</b> Chittamwood, 6 to 8 ft. \$3. to \$6. each.			
<b>RIBES AUREUM.</b> Flowering Currant, 2 to 3 ft. .40		3.00	27.50
<b>ROBINIA PSEUDACACIA.</b> Black Locust.			
1 to 2 ft. ....	.20	1.50	10.00
<b>VISCOSA.</b> Clammy Locust, 4 to 6 ft. .	.60	5.00	
<b>ROSA BLANDA.</b> Meadow Rose, 1 to 2 ft. ....	.35	3.00	25.00
<b>ROSA HUMILIS.</b> Pasture Rose, 1 to 2 ft. ....	.30	2.50	
<b>LUCIDA.</b> Glossy Rose.			
6 to 12 in. ....	.20	1.50	12.50
1 to 2 ft. ....	.25	2.00	17.50
2 to 3 ft. ....	.35	3.00	25.00
<b>NITIDA,</b> 6 to 12 in. ....	.25	1.50	12.50
<b>RUBIGINOSA.</b> Sweet Briar, 1 yr. ....	.10	.35	3.00



	Each	Per 10	Per 100
<b>RUGOSA</b> , Japanese Rose.			
1 to 1½ ft. ....	.40	3.50	30.00
1½ to 2 ft. ....	.60	5.00	45.00
—ALBA, Japanese White Rose.			
1 to 1½ ft. ....	.50	4.00	35.00
<b>SPINOSISSIMA</b> , Scotch Rose, 12 in. ..	.25	2.00	17.50
<b>RUBUS DELICIOSUS</b> , Rocky Mt. Flowering Raspberry.			
1 to 2 ft. ....	.60	5.00	
<b>ODORATUS</b> , Flowering Raspberry.			
6 to 12 in. ....	.20	1.50	12.50
<b>ST. REGIS</b> , Everbearing. ....	.50	4.00	
<b>SALIX HUMILIS</b> , Prairie Willow, 1 to 2 ft. .25		2.00	
<b>ELEGANTISSIMA</b> , Thurlow's Weeping Willow.			
5 to 6 ft. ....	.40	3.00	
<b>SAMBUCUS CANADENSIS</b> , American Elder.			
6 to 12 in. ....	.15	1.00	8.50
<b>PUBENS</b> , Red-berried Elder, 6 to 12 in. .20		1.75	15.00
<b>SASSAFRAS OFFICINALE</b> , 2 to 3 ft. ....	.75	6.00	
<b>SORBUS AMERICANA</b> , American Mountain Ash.			
3 to 4 ft. ....	.40	3.00	25.00
4 to 6 ft. ....	.60	5.00	
<b>SPARTIUM JUNCEUM</b> , Spanish Broom, ....	.15	1.00	8.50
<b>SPIRAEA ANTHONY WATERER</b> .			
1 to 1½ ft. ....	.35	3.00	25.00
1½ to 2 ft. ....	.60	5.00	40.00
<b>SALICIFOLIA</b> , 1 to 2 ft. Collected clumps. .60		5.00	40.00
<b>TOMENTOSUM</b> , Steeple Bush.			
1 to 2 ft. collected clumps, ....	.60	5.00	40.00
<b>THUNBERGII</b> , Snow Garland, 2 to 3 ft. .50		4.00	30.00
<b>VAN HOUTTEI</b> , Bridal Wreath.			
2 to 3 ft. ....	.50	4.00	30.00
3 to 4 ft. ....	.75	6.00	50.00
<b>STEPHANANDRA FLEXUOSA</b> , 2 to 3 ft. ....	.75	6.00	
<b>STUARTIA PENTAGYNA</b> , Alleghany Stuartia.			
6 to 15 ft. This, the so-called "American Camellia," is one of the most rare and beautiful of all North American shrubs. Erect, well-folliaged and with large, axillary flowers, 3 to 4 inches across, with white, creamy petals, deeply crenulated in the margins.			
1 to 2 ft. ....	1.00	8.00	
2 to 3 ft. ....	1.50	12.50	
<b>STYRAX JAPONICA</b> , Japanese Storax.			
4 to 6 ft. ....	.75	6.00	
6 to 8 ft. ....	1.25	10.00	
<b>SYMPHORICARPOS PAUCIFLORA</b> .			
12 to 18 in. ....	.40	3.00	
<b>RACEMOSUS</b> , Snowberry 3 to 4 ft. ....	.75	6.00	50.00
<b>VULGARIS</b> , Coral-Berry, 2 to 3 ft. ....	.50	4.00	30.00
<b>SYRINGA VULGARIS</b> , Common Lilac.			
1 to 2 ft. clumps, ....	.40	3.00	25.00
3 to 4 ft. clumps, ....	.75	6.00	50.00
—ALBA.			
1½ to 2 ft. clumps ....	.40	3.00	25.00
2 to 3 ft. clumps ....	1.00	8.50	75.00
3 to 4 ft. ....	1.50	12.50	100.00
<b>NAMED VARIETIES</b> , 1 to 3 ft. 75 cents to \$2.00 each.			
<b>TILIA AMERICANA</b> , American Linden.			
5 to 7 ft. ....	.45	3.50	
<b>HETEROPHYLLA</b> , White Basswood.			
4 to 6 ft. ....	.75	6.00	
6 to 8 ft. ....	1.00	8.50	
<b>ULMUS AMERICANA</b> , American Elm.			
8 to 10 ft. ....	.75	6.00	50.00
10 to 12 ft. ....	1.25	10.00	90.00
<b>CAMPESTRIS</b> , English Elm, 8 to 12 ft. 2.50		22.50	
<b>VACCINIUM CORYMBOSUM</b> , High-bush Blueberry.			
The most brilliantly colored autumn shrub we have. Thrives in low ground and also suitable for upland planting if supplied with plenty of humus.			
1 to 2 ft. collected clumps ....	.75	6.00	50.00
2 to 3 ft. collected clumps, ....	1.50	12.50	100.00
3 to 4 ft. collected clumps, ....	3.50	30.00	250.00
4 to 6 ft. collected clumps ....	5.00	45.00	

12 Harlan P. Kelsey, Owner, Salem, Mass.

	Each	Per 10	Per 100
ERYTHROCARPUM. 1 to 2 ft. ....	.45	3.50	
HIRSUTUM. Hairy Huckleberry, .....	.60	5.00	
PALLIDUM. Mountain Blueberry. One of the best species to grow for fruit.			
1 to 2 ft. ....	.40	3.00	27.50
PENNSYLVANICUM. Dwarf Blueberry. Fine ground cover growing only few inches high			
Collected clumps, .....	.40	3.00	27.50
STAMINEUM. Deerberry .....	.40	3.00	27.50
VIBURNUM ACERIFOLIUM. Maple-Leaved Viburnum.			
1 to 1½ ft. ....	.40	3.00	
ALNIFOLIUM, Hobble-Bush. 2 to 3 ft. . .	.75	6.00	50.00
CASSINOIDES. Withe-rod.			
6 to 12 in. ....	.30	2.00	15.00
1 to 2 ft. ....	.40	3.00	27.50
2 to 3 ft. ....	.50	4.00	
3 to 4 ft. ....	1.00	8.50	
4 to 6 ft. ....	2.00	18.00	
DENTATUM. Arrow-wood.			
1 to 2 ft. ....	.20	1.50	12.50
2 to 3 ft. ....	.40	3.00	25.00
Heavy Clumps, 4 to 6 ft. ....	2.50	20.00	
VIBURNUM DILATATUM. Japanese Bush Cranberry.			
1½ to 2 ft. ....	.60	5.00	
LANTANA. Wayfaring Tree.			
1 to 2 ft. ....	.40	3.00	
2 to 3 ft. ....	.60	5.00	40.00
MOLLE. Soft-Leaved Arrow-wood.			
1½ to 2 ft. ....	.50	4.00	
OPULUS. 2 to 3 ft. ....	.50	4.00	
OXYCOCCUS. High Bush Cranberry.			
1½ to 2 ft. ....	.40	3.00	
—NANUS. Dwarf Cranberry Bush. Perhaps the best deciduous edging plant we have.			
8 to 12 in. ....	.40	3.00	27.50
PLICATUM, 2 to 3 ft. ....	.60	5.00	40.00
PRUNIFOLIUM, Black Haw. 1 to 3 ft. . .	.60	5.00	
3 to 4 ft. ....	.75	6.00	
TOMENTOSUM. 2 to 3 ft. ....	.50	4.00	30.00
3 to 4 ft. ....	.75	6.00	50.00
WEIGELIA, in variety, 2 to 3 ft. ....	.65	4.00	
XANTHORRHIZA APIIFOLIA. Yellow-Root.			
6 to 12 in. clumps, .....	.60	5.00	40.00
XOLISMA LIGUSTRINA. Privet Andromeda.			
1 to 2 ft. ....	.30	2.00	

VINES AND CLIMBING PLANTS

	Each	Per 10	Per 100
ACTINIDIA ARGUTA. Silver Vine, 2 to 3 ft. . .	.50	4.00	
AKEBIA QUINATA, 3 years, .....	.50	4.00	
AMPELOPSIS ENGELMANII. Scarlet Virginia Creeper, strong, 2 years, .....	.40	3.50	30.00
HETEROPHYLLA. Asiatic Creeper, 2 years.			
QUINQUEFOLIUM. Virginia Creeper, strong.	.50	4.00	
VEITCHII. Boston Ivy, heavy, .....	.50	4.00	35.00
ARISTOLOCHIA SIPHO. Dutchman's Pipe.			
6 to 12 in. ....	.25	1.50	12.50
1 to 2 ft. ....	.30	2.00	17.50
2 to 3 ft. ....	.50	4.00	
4 to 6 ft. ....	1.50	12.50	
BIGNONIA CRUCIGERA, Cross Vine, 1 ft. . .	.30	2.00	
GRANDIFLORA. Trumpet Vine, 2 years, . .	.40	3.50	
RADICANS, .....	.20	1.75	
CELASTRUS PUNCTATA. 2 to 3 ft. ....	.30	2.00	17.50
SCANDENS. Bittersweet, 6 to 12 in. . .	1.25	10.00	
CLEMATIS APIIFOLIA. Parsley-leaved Clematis, heavy, .....	.40	3.50	30.00



	Each	Per 10	Per 100
COCCINEA, Scarlet Clematis .....	.40	3.50	30.00
CRISPA., Purple Clematis, strong, .....	.40	3.50	30.00
PANICULATA, Japanese Clematis.			
2 years, .....	.40	3.50	30.00
3 years, .....	.60	5.00	45.00
VIRGINIANA, Virgin's Bower. 3 to 4 ft. .	.50	4.00	35.00
EUONYMUS RADICANS, Climbing Euonymus,			
Strong, 2 years, .....	.40	3.50	30.00
HEDERA HELIX, English Ivy, 2 years. ....	.50	4.00	
HUMULUS LUPULUS, Hop Vine .....	.15	1.00	8.00
LONICERA BELGICA, 1 to 2 ft. ....	.40	3.50	
JAPONICA VAR. HALLIANA, Hall's Honeysuckle,			
1 to 2 ft., heavy .....	.35	3.00	25.00
SEMPERVIRENS, Coral Honeysuckle.			
2 to 3 ft. ....	.40	3.50	
LYCIUM EUROPEUS, Matrimony Vine, 3 years	.20	1.75	15.00
SINENSIS, 3 years .....	.20	1.75	15.00
PERIPLUCA GRAECA, Silk Vine, 3 years ..	.35	3.00	25.00
ROSA DOROTHY PERKINS, Well branched	.25	1.75	15.00
FARQUHAR, Well branched .....	.25	1.75	15.00
LADY GAY, Well branched .....	.25	1.75	15.00
M. C. EGAN, Well branched .....	.25	1.75	
MULTIFLORA, Japanese Climbing Rose,			
1 year, .....	.10	.35	3.00
1 to 2 ft. ....	.25	1.75	
WICHURIANA, Memorial Rose .....	.35	3.00	25.00
RUBUS LACINIATUS, Cut-leaved Blackberry.			
1 to 2 ft. ....	.45	3.50	
VINCA MAJOR, Larger Periwinkle .....	.20	1.25	10.00
Perhaps the best of all evergreen ground covers for shady places.			
MINOR, Periwinkle .....	.20	1.25	10.00
ALBA, White Periwinkle, .....	.35	2.00	17.50
VITIS CONCORD, Concord Grape. Very heavy	.75	6.00	50.00
WISTERIA MULTIJUGA, Japanese Wisteria,			
3 years .....	.75	6.00	
—ALBA, 3 years .....	.75	6.00	
—SINENSIS .....	.75	6.00	
Some extra heavy Wisterias, .....	2.00		

### HARDY HERBACEOUS PLANTS

We are prepared to supply any Hardy Herbaceous Perennials at reasonable prices which fit the quality of stock desired. Weak plants are cheaper but strong clumpy stock is always recommended. Special attention is called to my list of Hardy Ferns.

	Each	Per 10	Per 100	Per 1000
ACTAEA RUBRA, Red Baneberry .....	\$.40	2.50	20.00	
ASTERS, in variety .....		1.25	10.00	
BAPTISIA TINCTORIA, Yellow Indigo.				
Heavy clumps .....	.30	2.50	15.00	
BICUCULLA (DICENTRA) EXIMIA, Wild				
Bleeding Heart .....	.20	1.50	12.00	
SPECTABILE, Bleeding Heart ..	.35	3.00		
BRODIAEAS should be ordered in summer and in no event later than October 1st. for the current season's shipment.				
CALIFORNICA .....	.60	4.00	35.00	
CAPITA, Blue .....	.30	2.00	15.00	
COCCINEA, 5-8 to 1 in. diameter	.60	4.00	35.00	
GRANDIFLORA, Blue .....	.30	2.00	15.00	
IXIOIDES SPLENDENS, Very fine				
yellow .....	.40	2.50	22.00	
LAXA, Fine; blue in umbels.....	.30	2.00	15.00	
PEDUNCULARIS, White, Fine for wet places .....	.40	2.50	22.00	
VOLUBILIS, Twining hyacinth 5 to 8 in. diameter, .....	.60	4.00	35.00	

14 Harlan P. Kelsey, Owner, Salem, Mass.

	Each	Per 10	Per 100	Per 1000
CALOCHORTUS. Should be ordered in summer not later than October 1st. for Fall shipment				
ALBUS. Globe Tulips. Pearly White	.30	2.00	15.00	
BENTHAMII. Star Tulips. A charming yellow cup .....	.30	2.00	15.00	
CATALINAE. Lilac; fine eye ....	1.50	8.00		
GUNNISSONII. Superb; white, hardy	1.25	6.00		
LEICHTINII. Smoky white, Alpine	1.00	4.00	35.00	
LILACINUS. Star Tulips. Satiny lilac .....	.30	2.00	15.00	
LUTEUS. Light yellow; no eye....	.30	2.00	15.00	
MACROCARPUS .....	1.25	6.00		
MAWEANUS ROSEUS. Star Tulips Rose tinted .....	.40	3.00		
NITIDUS. Very fine. Lilac, purple blotched; hardy .....	.40	3.00	25.00	
PLUMMERAE. Superb. Fine lilac ..	1.50	8.00		
SPLENDENS TYPE. Fine lilac ....	1.00	4.00	35.00	
VENUSTUS CITRINUS. Butterfly Tulips. Deep yellow .....	.30	2.00	15.00	
—OCULATUS. Butterfly Tulips. White or tinted lilac .....	.30	2.00	15.00	
—PURPURASCENS. Butterfly Tulips. Purple .....	1.00	4.00	35.00	
—ROSEUS. Butterfly Tulips.				
VESTA. Finest Mariposa Tulips. Very fine bulbs .....	1.25	6.00	45.00	
CALTHA PALUSTRIS. Marsh Marigold	1.25	10.00		
CAREX FRASERI. Evergreen Sedge ..	.20	1.75	15.00	
CASTALIA. See Nymphaea.				
CHELONE GLABRA. Turtle Head ....	.20	1.50	12.50	
LYONII .....	.20	1.50	12.50	
CIMICIFUGA AMERICANA. American Bug Bane, .....	.25	1.75	15.00	
RACEMOSA. Black Snake-root ..	.20	1.50	12.50	
CORNUS CANADENSIS. "Collected clumps, .....	.20	1.25	10.00	
CONVALLARIA MAJALIS. Lily-of-the-Valley .....	.15	1.00	8.00	
CYPRIPEDIUM ACAULE. Moccasin Flower .....	.15	1.25	10.00	
REGINAE. Showy Lady's Slipper				
1 to 2 crowns .....	.30	2.50	22.50	
3 to 4 crowns .....	.75	6.00	50.00	
5 to 6 crowns .....	1.25	10.00	90.00	
7 to 8 crowns .....	1.75	15.00	125.00	
DROSERA ROTUNDIFOLIA .....	1.00	8.00		
ERYTHRONIUMS. To be sure of getting these order not later than June 1st for early Fall delivery.				
ALBIDUM. White Adder's Tongue	1.50			
AMERICANUM. Yellow Adder's Tongue .....	.50	2.00	16.00	
GRANDIFLORUM. Bright Yellow..	1.00	4.00	35.00	
CITRINUM. Light Yellow, deep orange center .....	1.00	4.00	35.00	
CALIFORNICUM. The standard cream sort .....	.50	2.00	16.00	
GIGANTEUM. True. Pure white.	1.00	4.00	35.00	
HARTWEGGII. Cream, yellow at center .....	.50	2.00	16.00	
HENDERSONII. Splendid lilac, maroon center .....	1.00	4.00	35.00	
REVOLUTUM. White changing to purple .....	1.00	4.00	35.00	
PURPURASCENS. Handsome variety from high mountains, where it endures great cold. Bright yellow turning to purple.				
6 to 12 in high .....	1.00	4.00	35.00	



	Each	Per 10	Per 100	Per 1000
<b>EUPATORIUM AGERATOIDES.</b> White Snake-root .....	.15	1.25	10.00	
<b>PURPUREUM.</b> Trumpet Weed ....	.20	1.75	15.00	
<b>FRITILLARIA BIFLORA.</b> Nearly black. Low, bell-shaped .....		1.25	6.00	
<b>PLURIFLORA.</b> Very fine. Nearly purple red .....		1.25	6.00	
<b>COCCINEA.</b> Deep crimson .....		1.00	4.00	35.00
<b>LANCEOLATA GRACILIS.</b> Nearly black-purple .....		1.25	6.00	
<b>RECURVA.</b> Orange-scarlet, $\frac{3}{4}$ to 1 in diameter .....			3.00	25.00
1 to $1\frac{1}{4}$ in diameter .....		1.00	4.00	35.00
Order Fritillarias before October 1st if possible.				
<b>GALAX APHYLLA.</b> Galax or Coltsfoot..	.35	2.25	18.00	
<b>HABENARIA CILIARIS.</b> Yellow Orchis .	.15	1.00	8.00	
<b>HELENIUM AUTUMNALE</b> .....	.15	1.00	8.00	
<b>HELONIAS BULLATA.</b> Swamp Pink...	.20	1.25	10.00	
<b>HEUCHERA SANGUINEA.</b> Coral Bells .	.20	1.25	10.00	
<b>HERACLEUM JAPONICUM</b> .....	.75	6.00		
<b>HYDRASTIS CANADENSIS.</b> Golden Seal .	.15	1.00	8.00	
<b>IRIS CRISTATA.</b> Crested Dwarf Iris... .	.20	1.50	10.00	
<b>MISSOURIENSIS.</b> Western Blue Flag .	.20	1.50	12.00	
<b>PSEUDACORUS.</b> Bright Yellow ..	.20	1.50	12.50	
<b>VERNA.</b> American Dwarf Iris ....	.20	1.50	10.00	
<b>VERSCOLOR.</b> Blue Flag .....	.15	1.00	8.00	
<b>LACINARIA PUMILA.</b> Button Snake-root .	.20	1.50	12.50	
<b>PYCNOSTACHYA</b> .....	.20	1.50	12.50	
<b>SCARIOSA</b> .....	.15	1.25	10.00	
<b>SPICATA</b> .....	.15	1.25	10.00	
<b>LILIUM CANADENSE.</b> Wild Yellow Lily 1st size .....	.15	1.00	8.00	
2nd size .....	.10	.65	5.00	
— <b>RUBRUM</b> .....	.30	2.00	15.00	
<b>CAROLINIANUM.</b> Carolina Lily..	.20	1.50	12.00	
<b>CATESBAEI</b> .....	.20	1.50	12.50	
<b>COLUMBIANUM</b> .....	.40	3.00	20.00	
<b>GRAYI.</b> Asa Gray's Lily. 1st size...	.20	1.50	12.00	
<b>HUMBOLDTII.</b>				
7 to 8 in. circumference ....	.40	3.00	20.00	160.00
8 to 9 in. circumference ....	.50	3.50	25.00	180.00
9 in circumference and over. .	.75	6.50	45.00	
<b>KELLOGII</b> .....	.75	6.50	45.00	
<b>PARDALINUM.</b> One eye .....	.20	1.50	12.50	70.00
Heavier .....	.30	2.00	18.00	
<b>PARRYII.</b> Yellow Lily. Medium ..	.75	6.50	45.00	
Large .....	1.25	10.00	75.00	
<b>PARVUM.</b> Good .....	.50	4.00	30.00	
Large .....	.85	7.00	45.00	
<b>PHILADELPHICUM.</b> Red Spotted Lily .....	.15	1.00	8.50	
<b>RUBESCENS</b> .....	.75	6.50	45.00	
<b>SPECIOSUM</b> .....	.30	2.00	12.00	
<b>SUPERBUM.</b> Turk'scap Lily. 1st size .	.15	1.00	8.00	
<b>WASHINGTONIANUM. VAR PURPUREUM.</b>				
7 to 8 in. circumference ....	.35	2.50	20.00	
8 to 9 in. circumference ....	.50	4.00	30.00	
9 to 12 in. circumference ....	.75	6.50	48.00	
<b>LIMODORUM (CALOPOGON) PULCHELLUS.</b>	.20	1.50	12.00	
<b>LYCOPodium,</b> in variety .....	.15	1.00	8.00	
<b>MONARDA,</b> in variety .....	.20	1.25	10.00	
<b>NYMPHAEA ADVENA</b> .....	.20	1.25	10.00	
<b>ODORATA ROSEA.</b> Cape Cod Pink Pond Lily .....	1.25	10.00	75.00	
<b>ORONTIUM AQUATICUM.</b> Golden Club .	.15	1.00	8.00	
<b>PAEONIES,</b> in variety. Strong clumps..	.75	6.00	50.00	
Strong plants with 2 to 3 eyes .	.25	1.75	15.00	
<b>PARNASSIA CAROLINIANA</b> .....	.20	1.25	10.00	

16 Harlan P. Kelsey, Owner, Salem, Mass.

	Each	Per 10	Per 100	Per 1000
PHLOX DECUSSATA, in variety .....	.30	2.00	18.00	
SUBULATA, Moss Pink .....	.15	1.00	8.00	
—ALBA, White Phlox .....	.15	1.00	8.00	
POLYGONATUM COMMUTATUM, Solomon's Seal .....	.20	1.50	12.00	
PONTEDERIA CORDATA, Pickeral Weed .....	.15	1.00	8.00	
PORTERANTHUS (GILLENIA) STIPULATUS, .....	.15	1.00	8.00	
RHEXIA VIRGINICA, Meadow Beauty ..	.15	1.00	8.00	
SARRACENIA PURPUREA, Northern Pitcher Plant .....	.20	1.25	10.00	
SEDUM (STONECROP) in variety .....	.15	1.00	8.00	
TELEPHIUM HYBRIDUM .....	.25	1.50	12.50	
LYDIUM .....	.20	1.50	12.50	
SEMPERVIVUM, House Leek, An invaluable family of plants for rock work.				
ACUMINATUM, single .....	.20	1.25	10.00	
ARACHNOIDEUM, single .....	.20	1.25	10.00	
ARENARIUM, single .....	.20	1.25	10.00	
CORNUTUM, single .....	.20	1.25	10.00	
FIMBRIATUM, single .....	.20	1.25	10.00	
MITTENIANUM NANUM, single ..	.20	1.25	10.00	
SOBOLIFERUM (GLOBIFERUM) single .....	.20	1.25	10.00	
TECTORUM, single .....	.20	1.25	10.00	
VIOLACEUM, single .....	.20	1.25	10.00	
SHORTIA GALACIFOLIA, 1st size.....	.75	6.00	50.00	
2nd size .....	.40	3.00	25.00	
SOLIDAGO, in variety .....	.15	1.25	10.00	90.00
SPIGELIA MARYLANDICA .....	.50	4.00	30.00	
STENANTHIUM ROBUSTUM, Mountain Feather Fleece, 1st size .....	.40	3.00	26.00	
2nd size .....	.20	1.50	12.50	
TRILLIUM CERNUUM .....	.15	1.00	8.00	
ERECTUM, Purple Wake Robin 1st size .....	.10	.75	5.00	30.00
2nd size .....	.05	.40	3.00	18.00
—ALBUM .....	.20	1.25	10.00	
GRANDIFLORUM, 1st size .....	.10	.60	3.50	20.00
2nd size .....	.05	.30	1.50	12.00
NIVALE .....	.20	1.25	10.00	
RECURVATUM .....	.20	1.25	10.00	
SESSILE, VAR. CALIFORNICUM, —Snow Queen .....	.15	1.00	7.50	55.00
—Snow Queen .....	.15	1.00	7.50	55.00
STYLOSUM, Wake Robin, 1st size	.15	1.00	8.00	60.00
2nd size .....	.10	.60	4.00	
UNDULATUM, Painted Wake Robin, 1st size .....	.10	.75	6.00	40.00
2nd size .....	.10	.60	4.00	30.00
THALICTRUM CORNUTI .....	.15	1.00	8.00	
TYPHA LATIFOLIA, Cat Tail .....	.15	1.00	8.00	
VIOLA CORNUTA .....	.15	1.00	8.00	60.00
PEDATA .....	.15	1.00	8.00	
—BICOLOR .....	.25	1.75	14.00	
YUCCA FLACCCIDA, Clumps .....	.50	4.00	30.00	
GLAUCA, Adam's Needle (green)..	.30	2.50		
WHIPPLEYI .....	.30	2.50		

LANDSCAPE DEPARTMENT

VISITS ARE MADE for consultation and advice, to make surveys, designing and planting plans. Entire construction, planting and carrying out of landscape work of all kinds undertaken, and charges will be found reasonable and consistent with good workmanship and permanent results.

THE WILD GARDEN. The basis of all the best landscape work of a permanent nature must be Native Plants and particularly where naturalistic effects are desired. If this fact is ignored tame and fleeting results will follow. I make a specialty of WILD GARDENING and my long experience is here of greatest value. Every garden or estate has its own peculiar problems and a discussion of details may prove helpful in unexpected ways.



# A Splendid American Conifer

*Abies fraseri* (*Fraser's Fir*)



Specimen Fraser's Fir on Grounds of Highlands Nursery

# *Abies fraseri*

## THE TRUE FRASER'S FIR

---

---

THE northern species, *Abies balsamea*, is almost worthless in any but the latitude of middle and northern Maine, as it becomes "leggy," thin, and is short-lived.

Fraser's Fir, however, is a distinct species from the highest peaks of the Carolina Mountains, and makes a perfect specimen lawn and screen tree, with dark-green, thick-set foliage (*blue underneath*) and compact, pyramidal habit. It is one of the choicest of all American conifers of the Fir section.

### ABIES FRASERI (Fraser's Fir)

	Each	Per 10	Per 100
6 to 12 in. . . . .	\$0 20	\$1 25	\$10 00
1 to 1½ ft. . . . .	30	2 00	12 50
1½ to 2 ft. . . . .	60	4 00	37 50
2 to 3 ft. . . . .	1 50	10 00	90 00
3 to 4 ft. . . . .	2 50	20 00	

I offer extra specimens, with ball, and of perfect shape, 6 to 8 feet, at \$6 to \$8 each; larger size, \$10 to \$15 each.

---

---

### ADDRESS

**HARLAN P. KELSEY, Owner**

*Highlands Nursery*  
*Boxford Nursery*

SALEM, MASS.









From \_\_\_\_\_

\_\_\_\_\_

**MR. HARLAN P. KELSEY,**

**Hardy American Plants,**

**Salem, Mass., U. S. A.**

Owner { Highlands Nursery  
          { Boxford Nursery





### A SUCCESSFUL RHODODENDRON BED

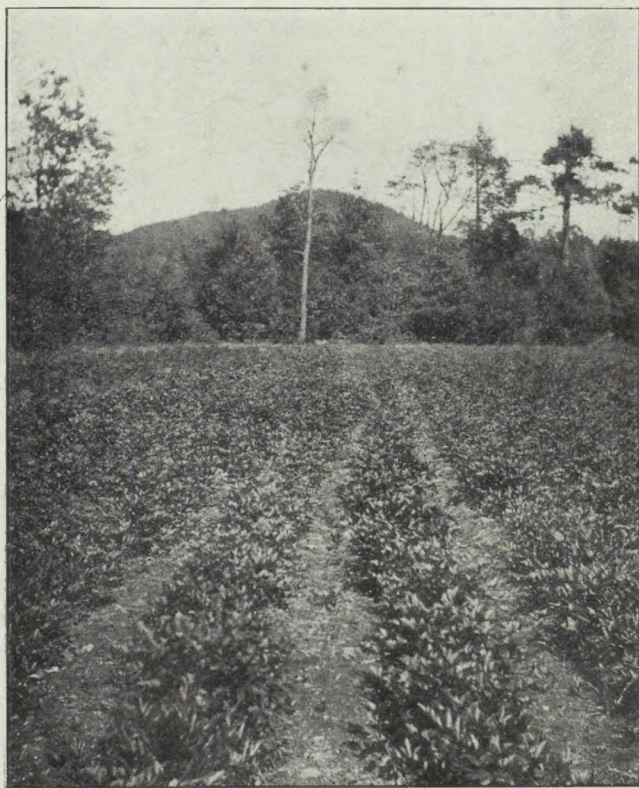
The first season, Garden of George W. Mieth, Hubbard Woods, Ill.,  
planted Spring 1912 with small size material at total cost of \$65.90.

### EXACT LIST OF MATERIAL USED

The planting was made from suggestions and stock furnished by me and the edging of violets, was supplied from Mr. Mieth's own grounds. The planting is a successful typical grouping of Broad-Leaved Evergreens and "Filler Plants."

- 1 Rhododendron maximum, 2 to 3 ft. clumps.
- 3 " " 1½ to 2 ft.
- 10 " " 1 to 1½ ft. clumps.
- 1 " punctatum, 1 to 1½ ft. clumps.
- 2 " catawbiense, 2 to 3 ft. clumps.
- 10 " " 9 to 18 in. clumps.
- 5 Kalmia latifolia, 1 to 1½ ft. clumps.
- 10 " " 6 to 9 in. clumps.
- 10 Leucothoe catesbaei, 6 to 12 in. clumps.
- 10 Aronia arbutifolia, 2 to 3 ft.
- 30 Xanthorrhiza apiifolia, 6 to 12 in. clumps.
- 5 Eonymus radicans.
- 1 Ampelopsis englemanni.
- 25 Dryopteris, in var.
- 10 Eupatorium ageratoides.
- 3 Azalea aborescens, 1 to 1½ ft. clumps.
- 10 " nudiflora, 6 to 12 in. clumps.
- 5 " vaseyi, 6 to 12 in. clumps.
- 2 Andromeda floribunda, 6 to 12 in. clumps.
- 10 Aronia nigra, 1 to 2 ft.
- 5 Clethra alnifolia, 1 to 2 ft.
- 1 Chionanthus virginica, 3 to 4 ft.
- 5 Azalea viscosa, 1½ to 2 ft.
- 20 Lilium superbum, 1st size.
- 20 " canadense, 1st size.





**Rhododendron catawbiense (true species) growing by thousands  
at Highlands Nursery, 3800 ft. elevation in the  
Carolina Mountains.**