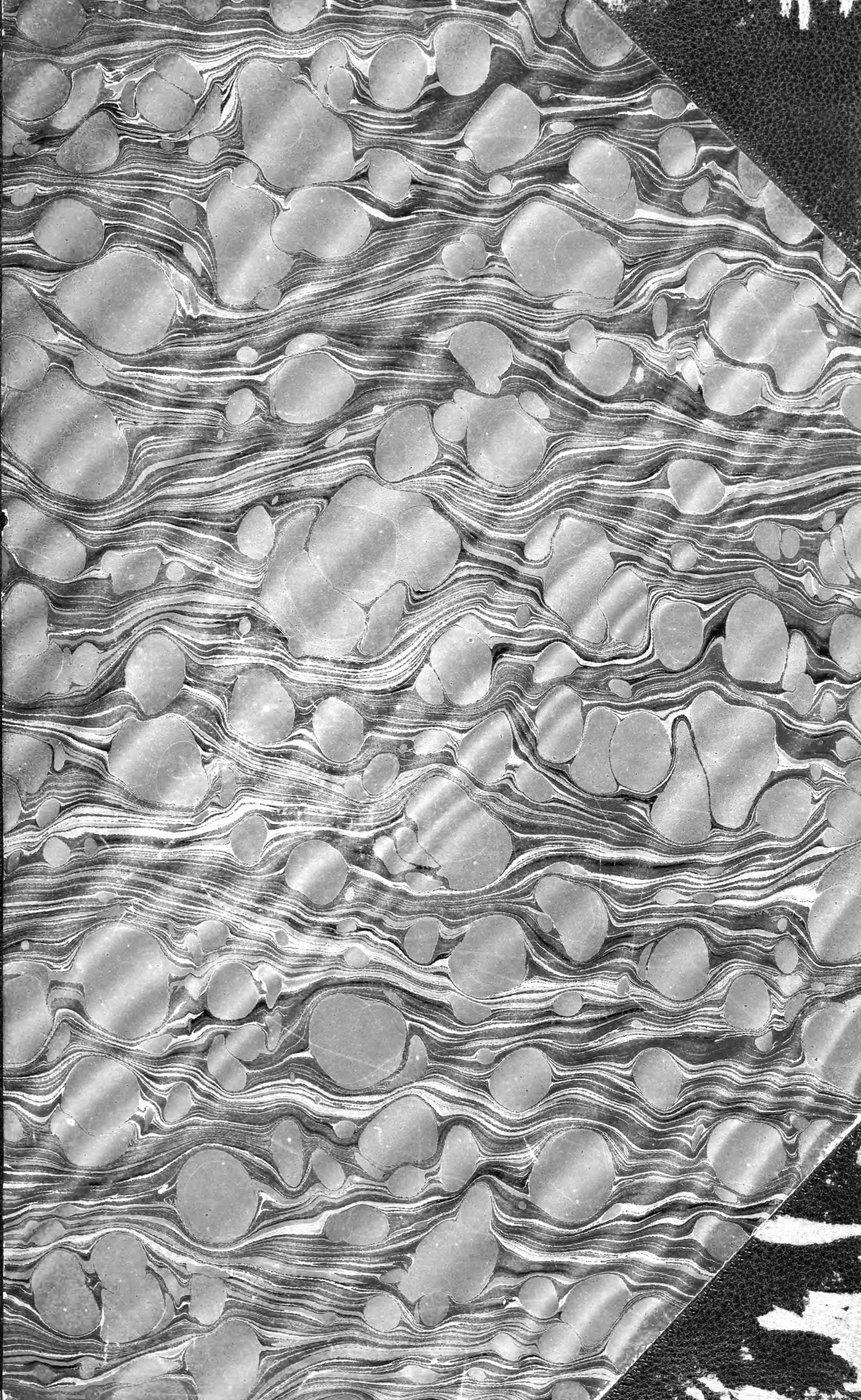


F11
200
ms. 22
atlas
17
18



Gwen
~~200~~



COLLECTION
OF
WILLIAM SCHAUS
©
PRESENTED
TO THE
NATIONAL MUSEUM
MCMV

FQH
109
C9512
Atlas (pl. 1-20)
ENT.
C. 2

HISTOIRE

PHYSIQUE, POLITIQUE ET NATURELLE

DE

L'ILE DE CUBA

PAR

M. RAMON DE LA SAGRA,

DIRECTEUR DU JARDIN BOTANIQUE DE LA HAVANE, CORRESPONDANT DE L'INSTITUT ROYAL DE FRANCE, ETC. ;

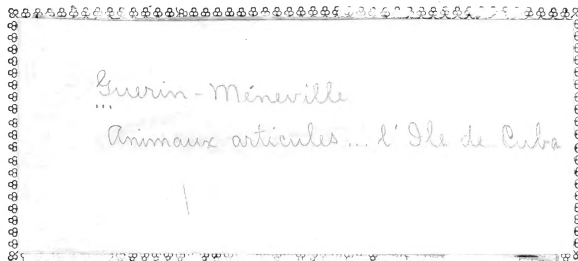
MM. ALCIDE D'ORBIGNY, COCTEAU,

G. BIBRON, A. LEFEBVRE, F.-E. GUÉRIN-MÉNEVILLE, MARTIN SAINT-ANGE, MONTAGNE ;

ET

M. SABIN BERTHELOT,

POUR LA TRADUCTION DE L'HISTOIRE PHYSIQUE ET POLITIQUE.



2 insectes

PARIS,

ARTHUS BERTRAND, LIBRAIRE-ÉDITEUR,

LIBRAIRE DE LA SOCIÉTÉ DE GÉOGRAPHIE,

RUE HAUTEFEUILLE, 23.

MADRID,

EN LA LIBRERIA DE D. TOMAS JORDAN,
CALLE DE LA CONCEPCION-GERONIMA.

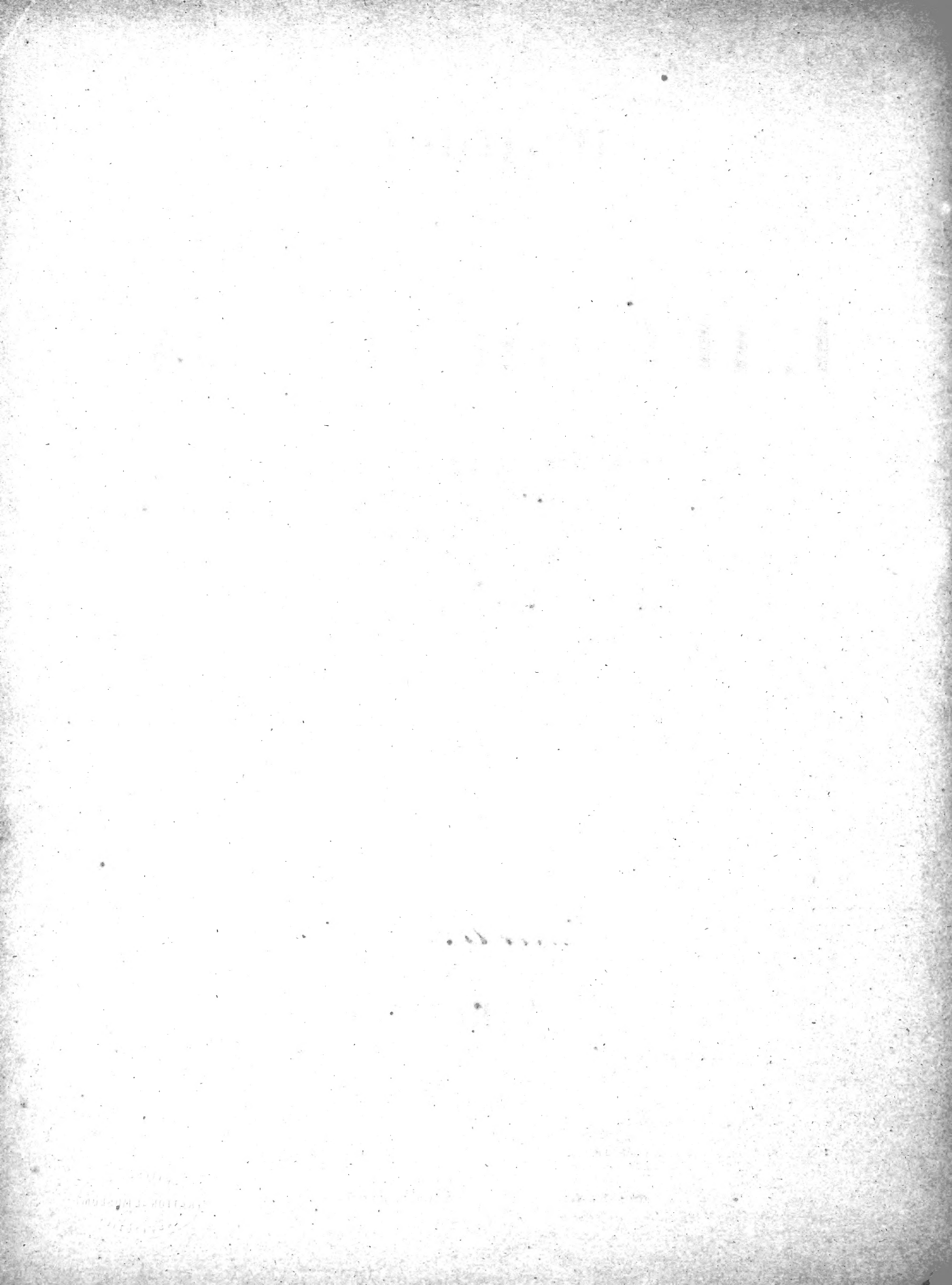
HABANA,

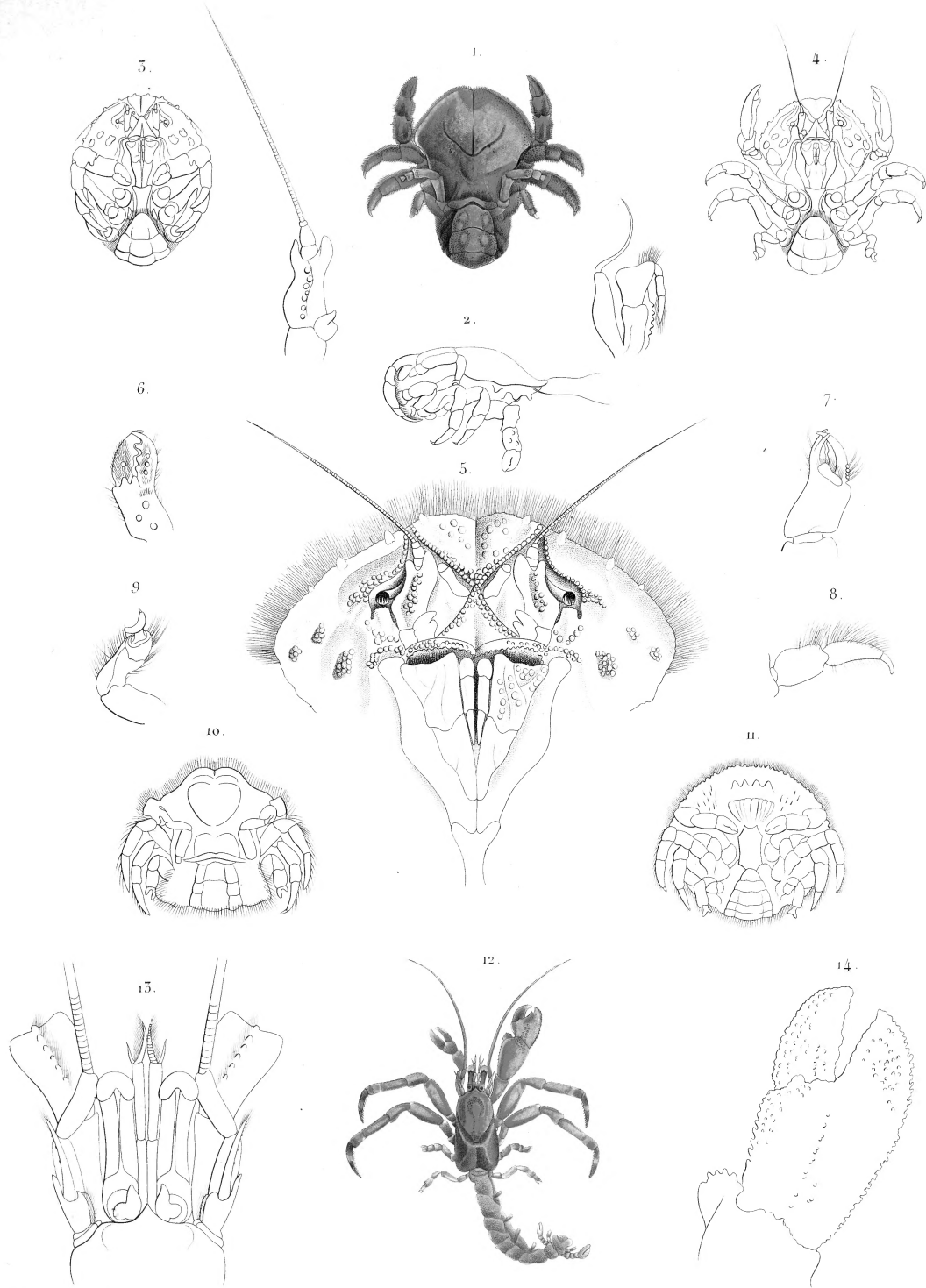
EN LA LIBRERIA DE D. NICOLAS RAMOS
ESQUINA DEL BOQUETA.

PARIS.—IMPRIMERIE DE M^{me} V^e BOUCHARD-HUZARD, 7, RUE DE L'ÉPERON.



c
199667

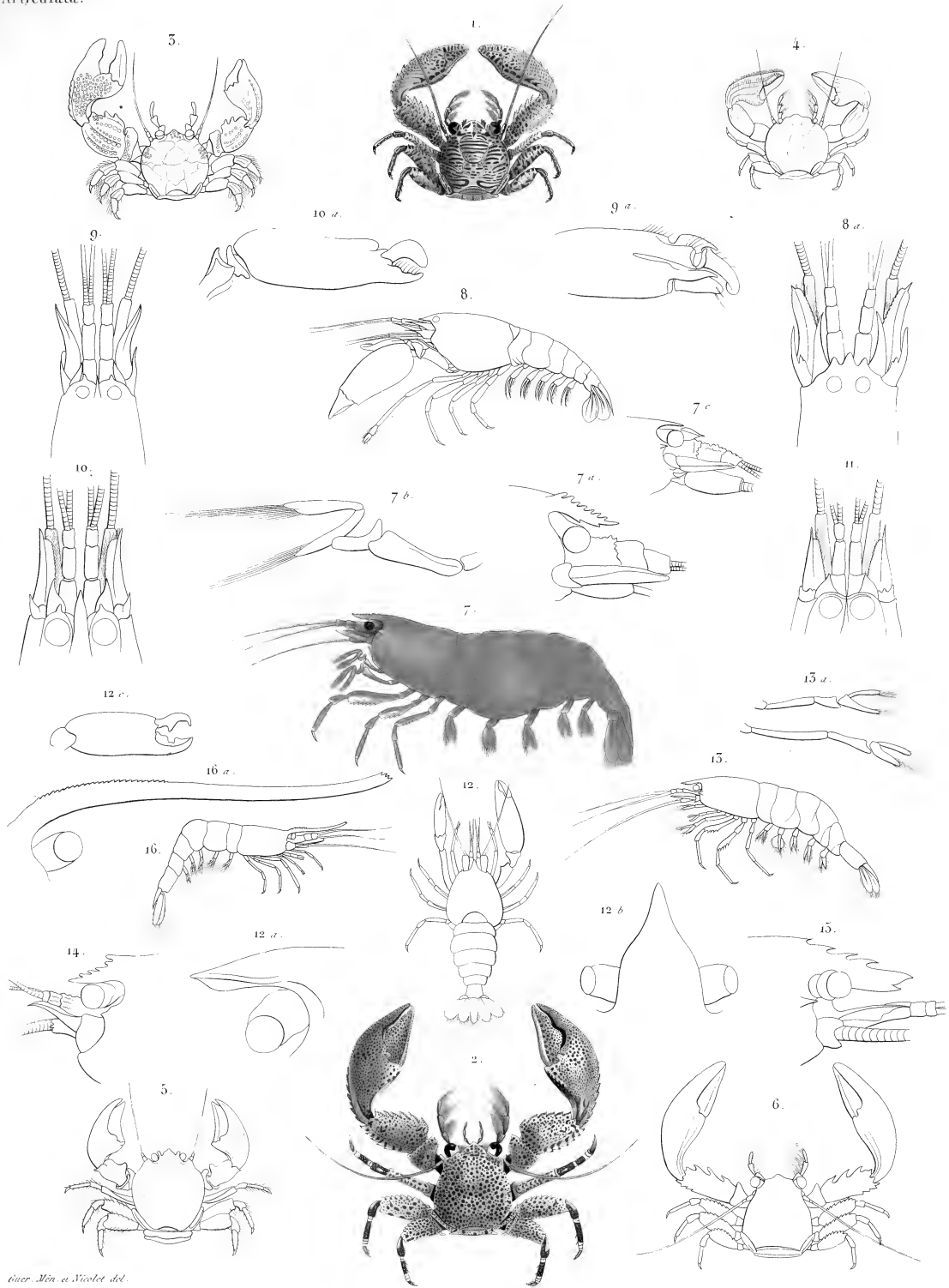




Guer. Mém. et Nicotet. del.

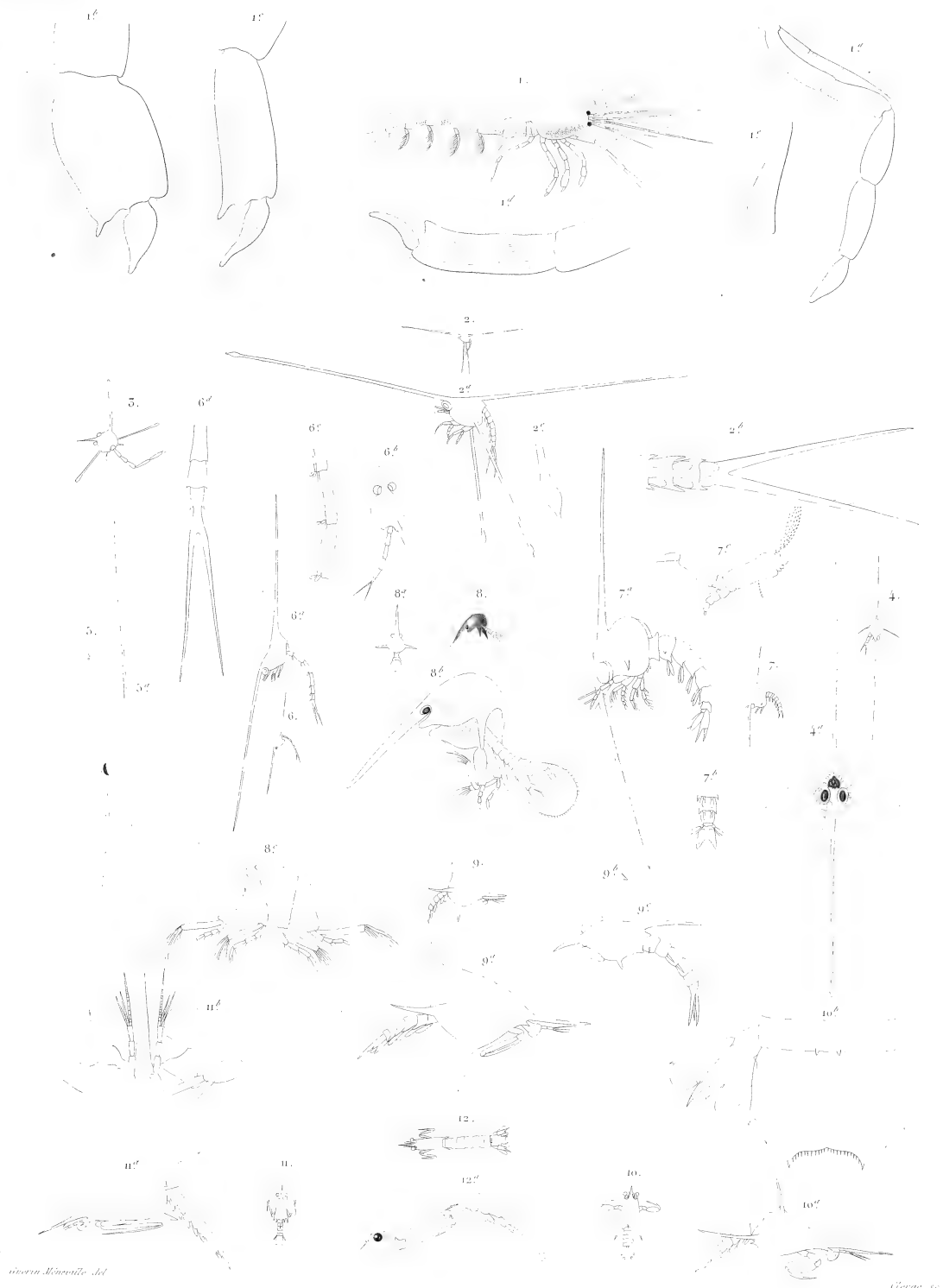
1 à 11. *Hypocercus sabulosus*. Guer. Mém.

12 à 14. *Pagurus cinctipes*. Guer. Mém.



Guer. Mén. et Nicolet del.

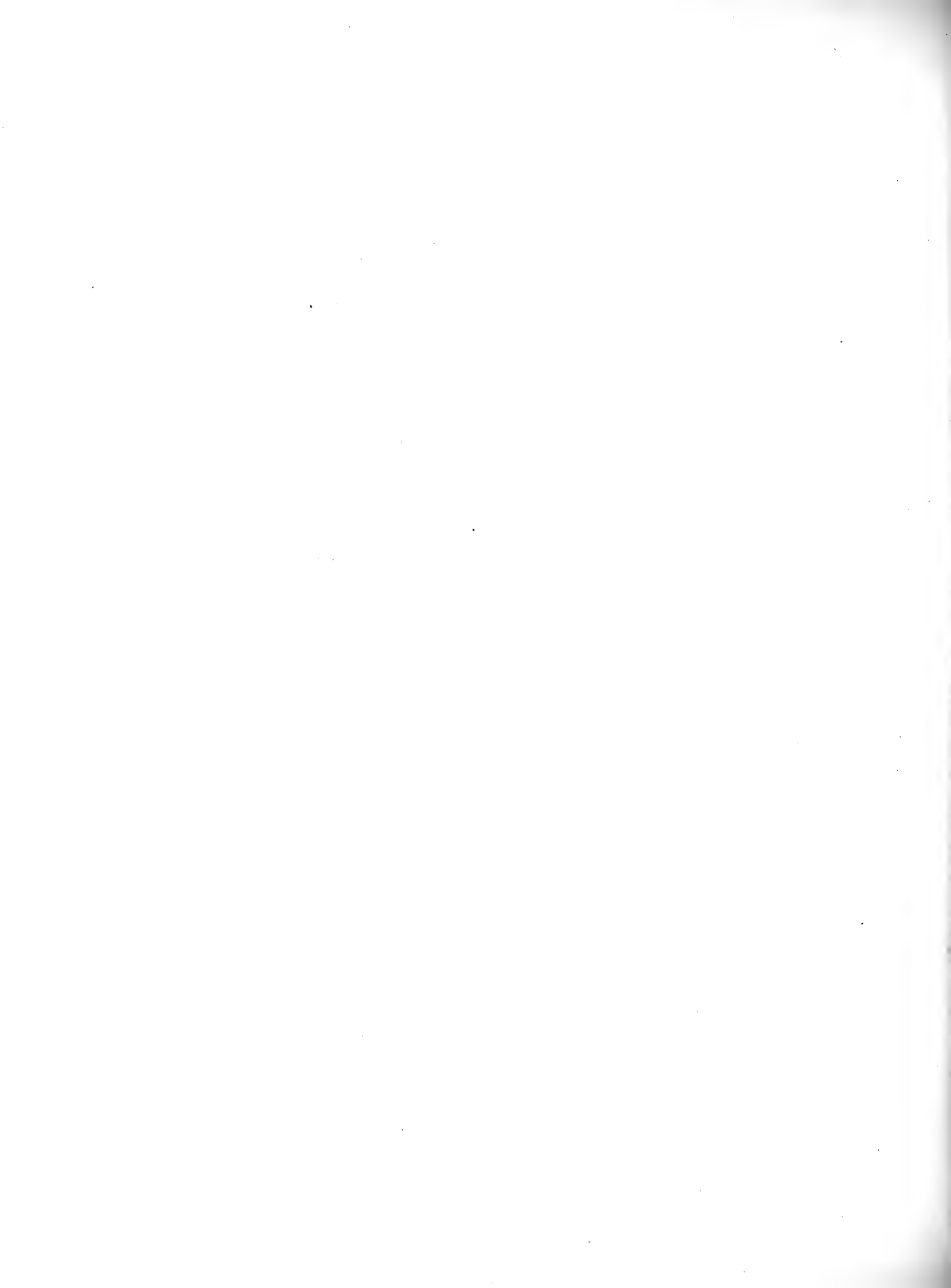
1 *Porcellana egregia*. 2 *P. Anwana*. 3 *P. Porrai*. 4 *P. Pocyi*. 5 *P. Sagrai*.
 6 *P. Gandlachi*. Guer. Mén. 7 *Atya Pocyi*. Guer. Mén. 8 *Alpheus Sautoyi*. 9 *A. Candii*. 10 *A. Pocyi*.
 11 *A. Sima*. Guer. Mén. 12 *Penaeus mexicanus*. Guer. Mén. 13 *Caridina americana*. Guer. Mén. 14 *Quadruplex americana*. Guer. Mén.
 15 *Sp. elegans*. Risso. 16 *Hippolyte elongatus*. Guer. Mén.

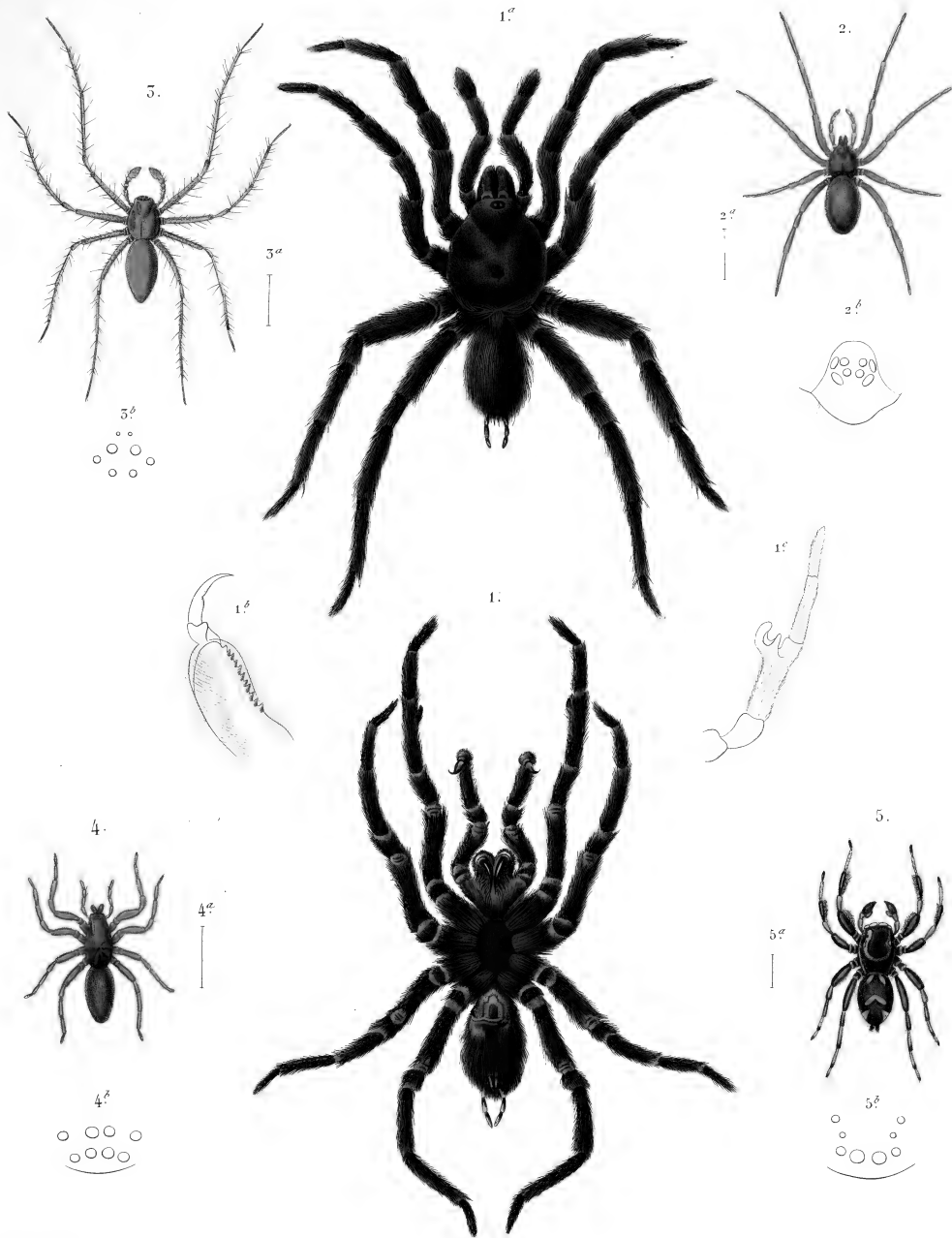


Guérin Mémoires del

George sc

- | | | | |
|--|-----------------------------------|--|---|
| 1 <i>Catantopidea elongata</i> , Guér. | 2 <i>Vespa Leachii</i> , Guér. | 3 <i>Vespa crassula</i> , Leach | 4 <i>Vespa Solignoti</i> , Guér. |
| 5 <i>Vespa Bossii</i> , Guér. | 6 <i>Vespa Westwoodii</i> , Guér. | 7 <i>Vespa quatuor</i> , Westw. | 8 <i>Proceres Guérinoti</i> , Guér. |
| 9 <i>Acanthus spiniventris</i> , Guér. | 10 <i>Amelas Virgatus</i> , Guér. | 11 <i>Melanomictes Solignoti</i> , Guér. | 12 <i>Ammercathus cylindricus</i> , Guér. |

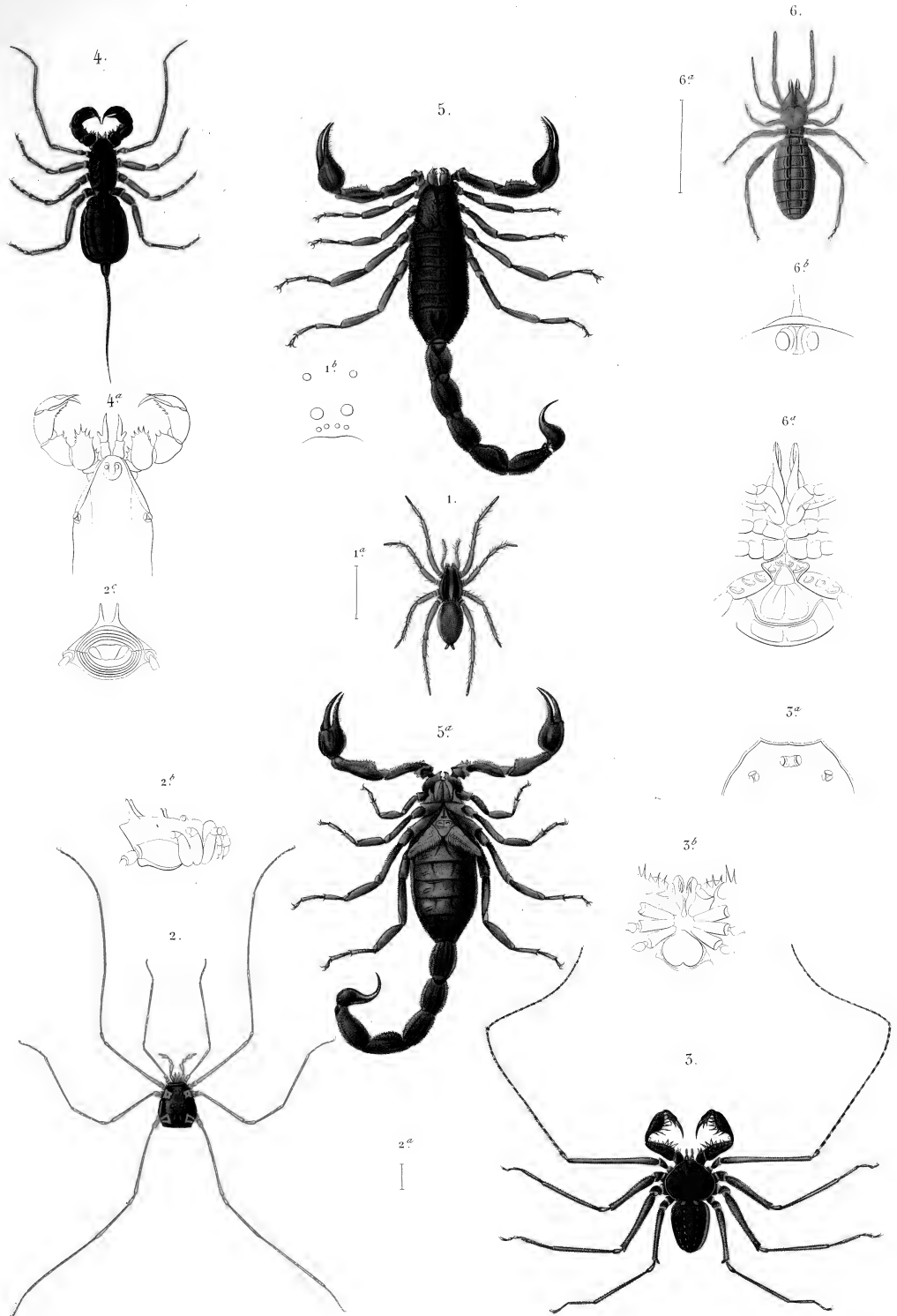




Nicolot pinx.

Clergé sc.

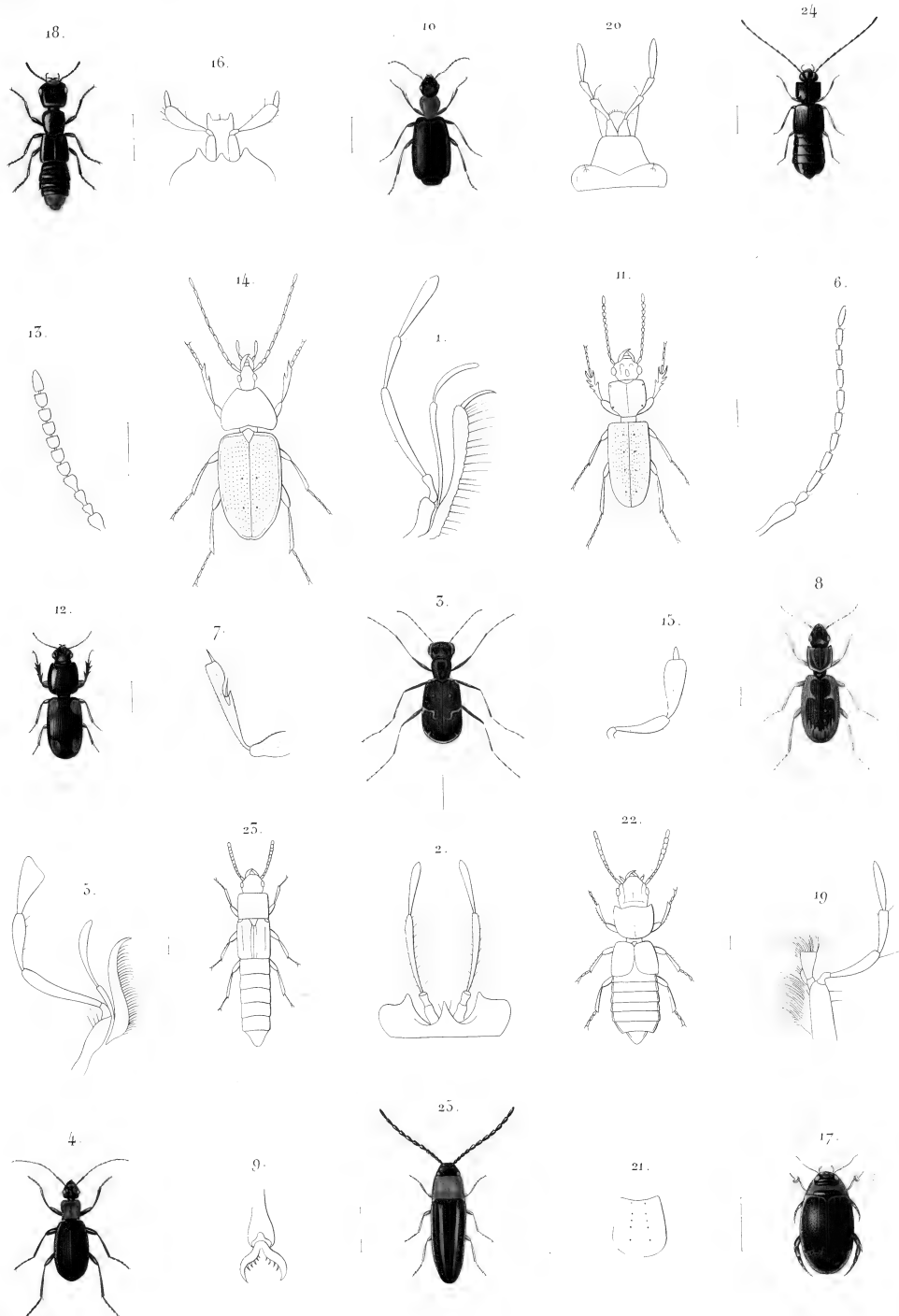
1 ♂ 1 ♀, *Megala spinivrus*, Latr. 2 *Filistata umbecola*, Lucas. 3 *Sphasus Poyei*, Lucas.
 4 *Drapus insularis*, Lucas. 5 *Salticus lugens*, Lucas.



Nicolet pinx.

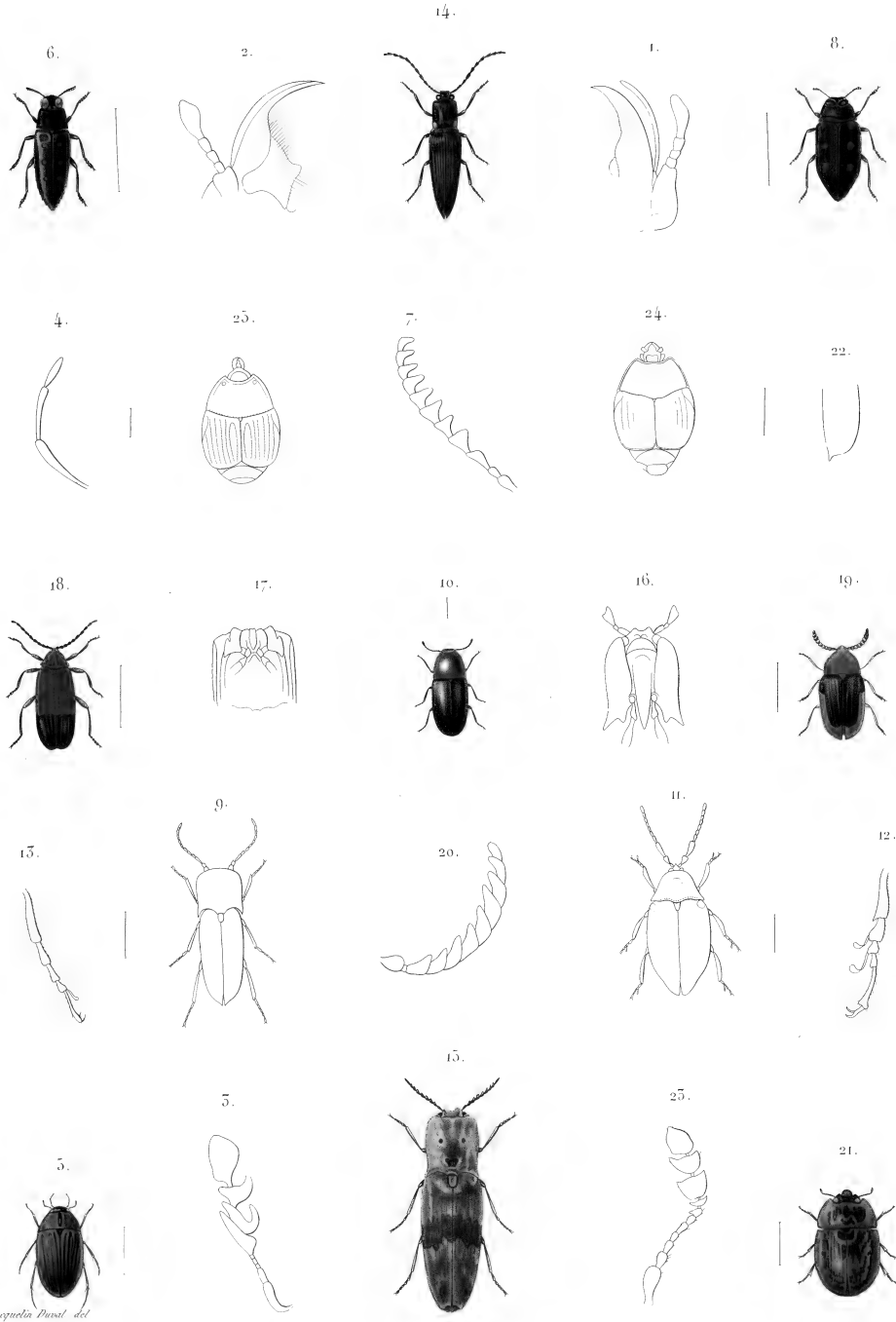
Cleegé sc.

- 1 *Lycosa insularis*, Lucas. 2 *Cosmetus quadrimaculatus*, Gerv. 3 *Phisgus palmetus*, Herbst.
 4 *Chillyphonus antillanus*, Lucas. 5 *Scorpio Hemprichii*, Gerv. 6 *Galodes cubae*, Lucas.



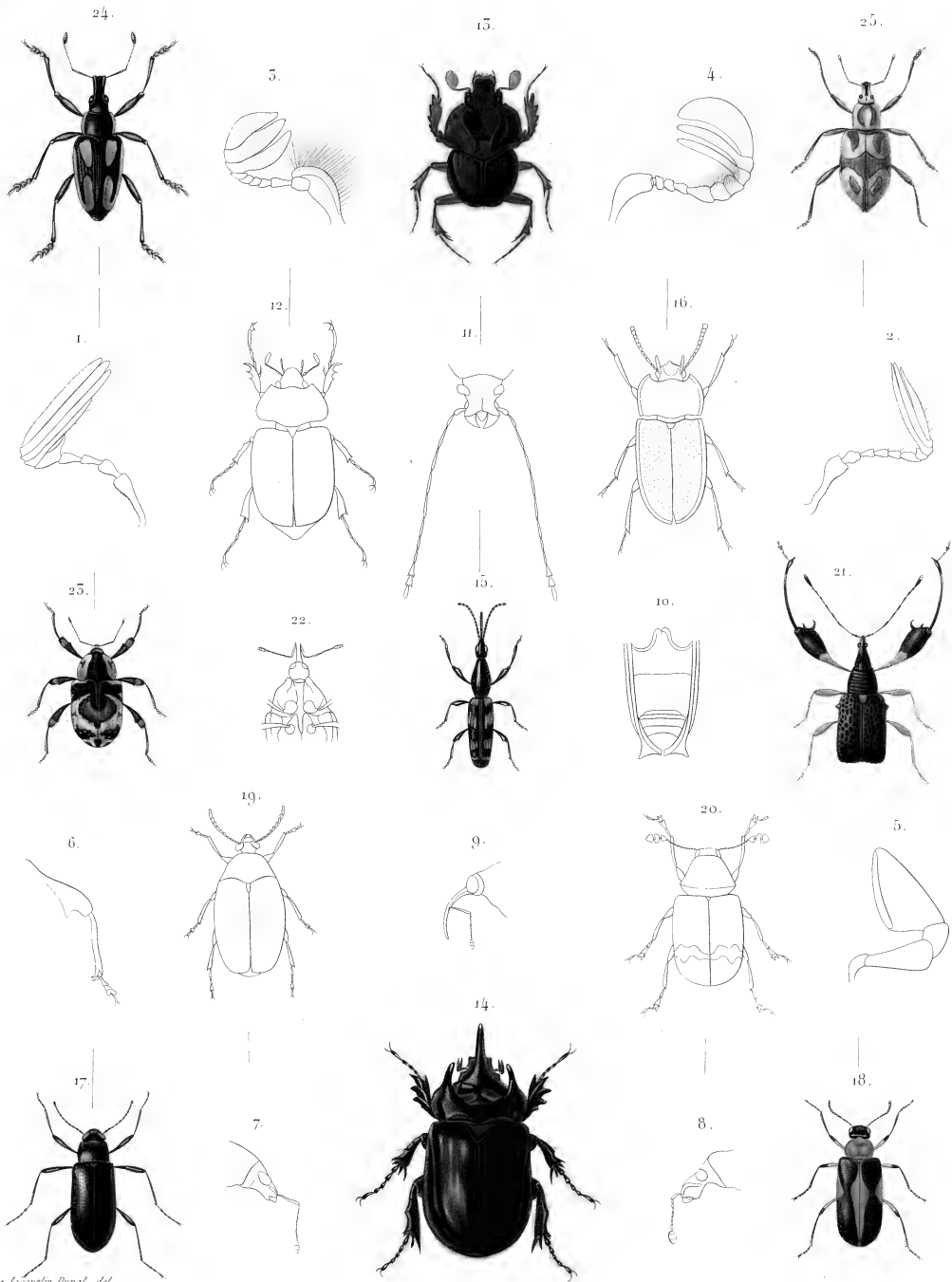
Magnan et Jacquetin Du Val, del.

- 1 2 *Cicindela tortuosa* (Détails), 3 *Cre. viridicollis*, 4 5 6 7 *Galerita erythroleuca*, 8 9 *Cymindis sulcicollis*
 10 *Colletes subsericeus*, 11 *Carina limbipennis*, 12 *C. bipustulata*, 13 *Meris montivivens* Antenne, 14 *Colas insularis*,
 15 16 *Dembolien apicalis* (Détails), 17 *Actias circumscripta*, 18 19 20 *Plectroctonus agilis*, 21 *Plectroctonus varians* Eusson,
 22 *Plectroctonus virgatus*, 23 *Leipinus sticticus*, 24 *Plectus erythropus*, 25 *Chiropterus Sagranianus*.



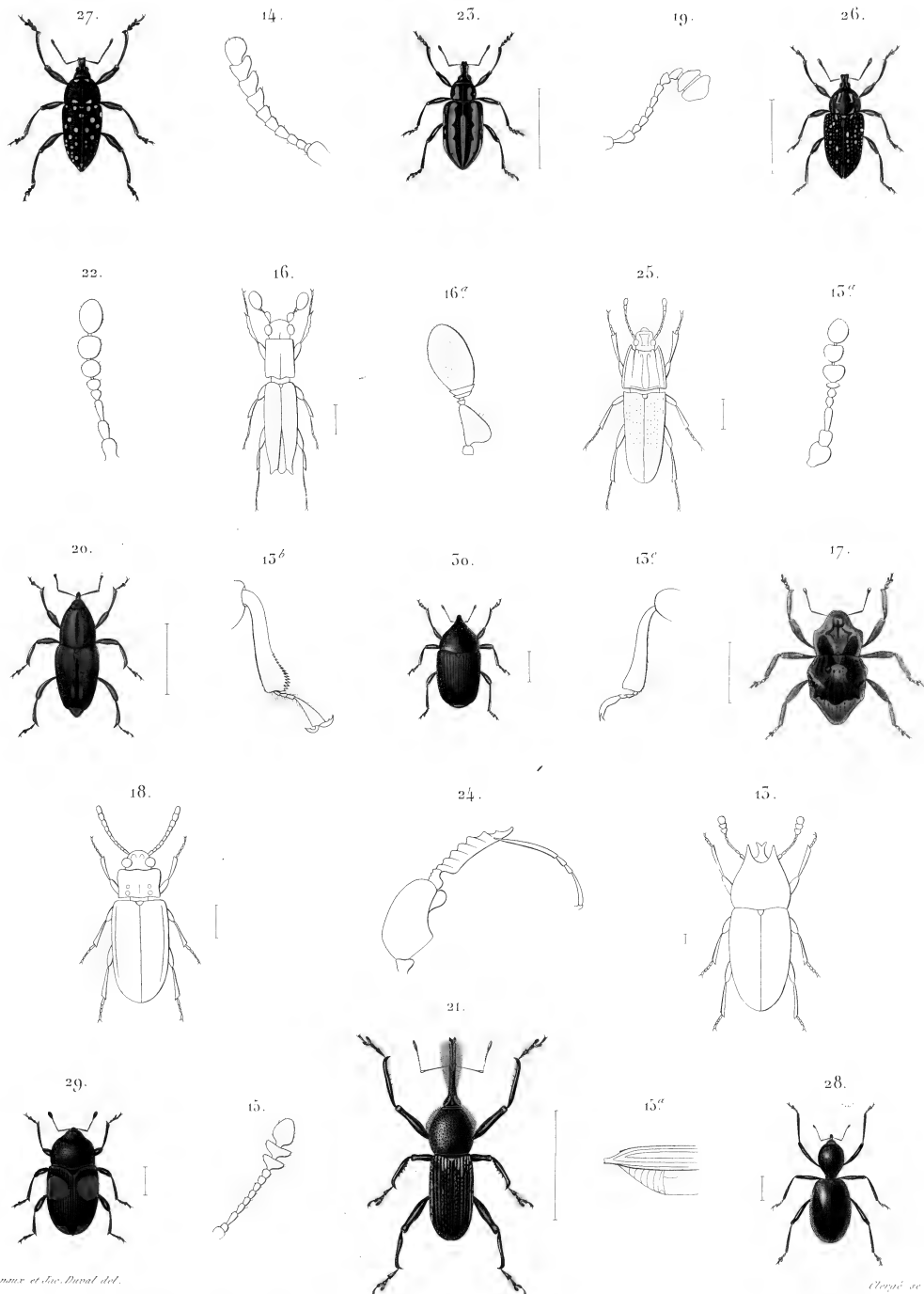
Mégnane et Jacquelin Paris del.

1 *Gyrinus minutus* (Détail) 2 *Virentes longimanus* (Détail) 3 4 *Hydrophilus intermedius* (Détail) 5 *Crepisternus cellaris*.
 6 7 *Agrostis Samieri* 8 *Chrysobothris aeneolata* 9 *Hippodamia Samieri* 10 *Drapetes cyanipennis*.
 11 *Cholevarium punctatum*. 12 *Dicserpides ramicornis* (Détail) 13 *Monocrepidius lobatus* (Détail) 14 *Prophorus harrisiensis*.
 15 16 17 *Alnus patricius*. 18 *Colopterus alicum* 19 20 *Sticten discoidatus*. 21 *Dobsonia decemgona*.
 22 23 *Dermostes valpicus* (Détail) 24 *Ematodes ruficornis* 25 *Halter confinis*.



Magnon et Scipelia Paris del.

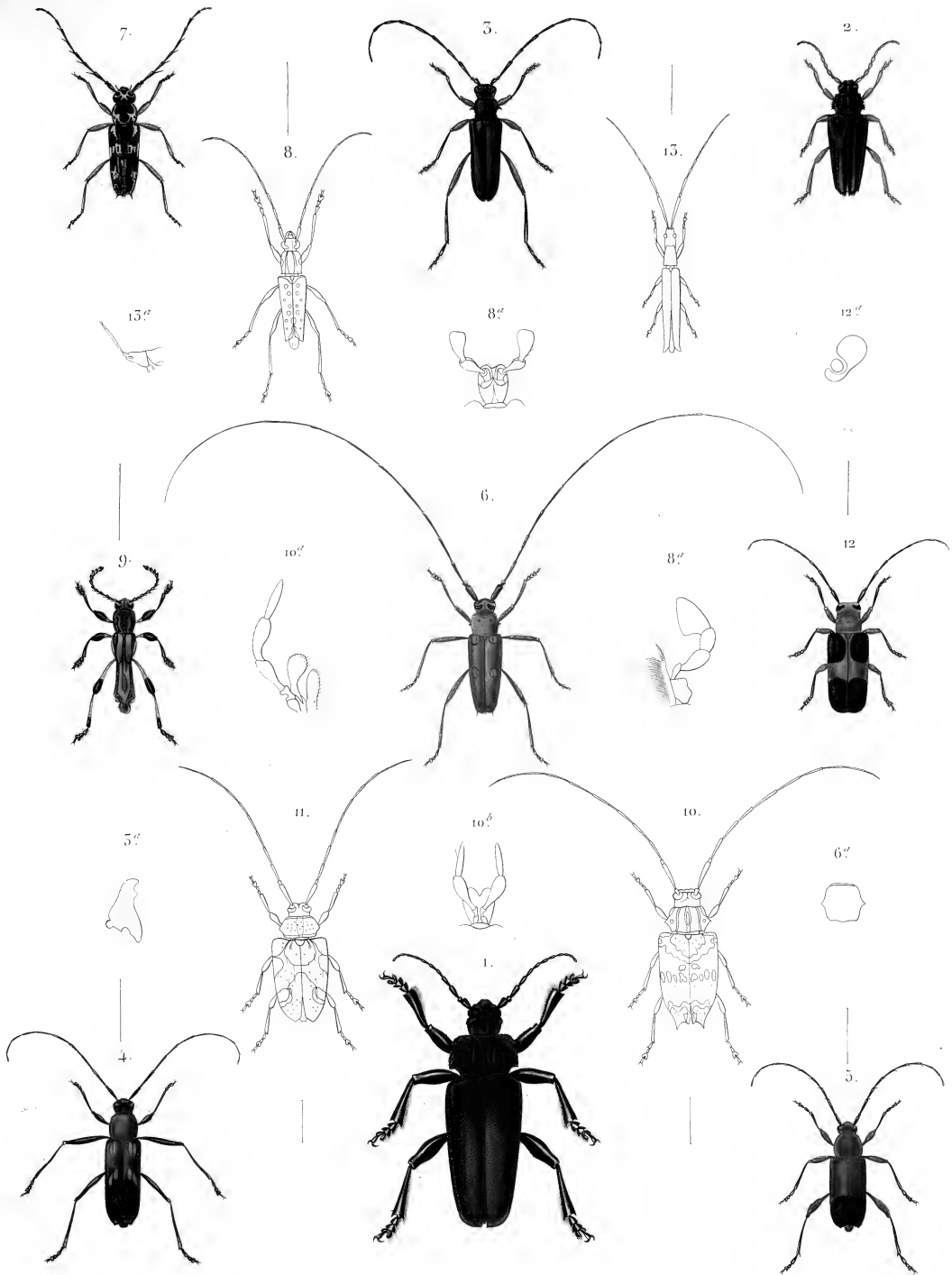
- | | | | |
|---|--|--|--|
| 1. <i>Acylonychia confusa</i> (Detail) | 2. <i>Cyclocephala signata</i> (Detail) | 3. <i>Urox panatulus</i> (Detail) | 4. <i>Papalius interstitialis</i> (Detail) |
| 5. <i>Cyrtinus anthracinus</i> (Detail) | 6. <i>Cryptorhynchus diffusus</i> (Detail) | 7. <i>Lucinopus sublineatus</i> (Detail) | 8. <i>Propeplus spectabilis</i> (Detail) |
| 9. <i>Mucromerus clavipes</i> (Detail) | 10. <i>Delophorus militaris</i> (Detail) | 11. <i>Anthrenus fascicularis</i> (Detail) | 12. <i>Cyclocephala signata</i> |
| 15. <i>Atyreas castaneus</i> | 14. <i>Stalagus Anachrota</i> | 15. <i>Arctonodes foveipennis</i> | 16. <i>Myopogon lividus</i> |
| 17. <i>Uroschisma amethystina</i> | 18. <i>Monocnathus cubivola</i> | 19. <i>Permophasys var. castor</i> | 20. <i>Crepulus basicalis</i> |
| 21. <i>Atalabus scutellatus</i> | 22. <i>Mucromerus clavipes</i> | 23. <i>Pendulatus signatus</i> | 24. <i>Crepulus pictus</i> |
| | | | 25. <i>Propeplus clavipes</i> |



Magnan et Jac. Duvol del.

(Goyé sc)

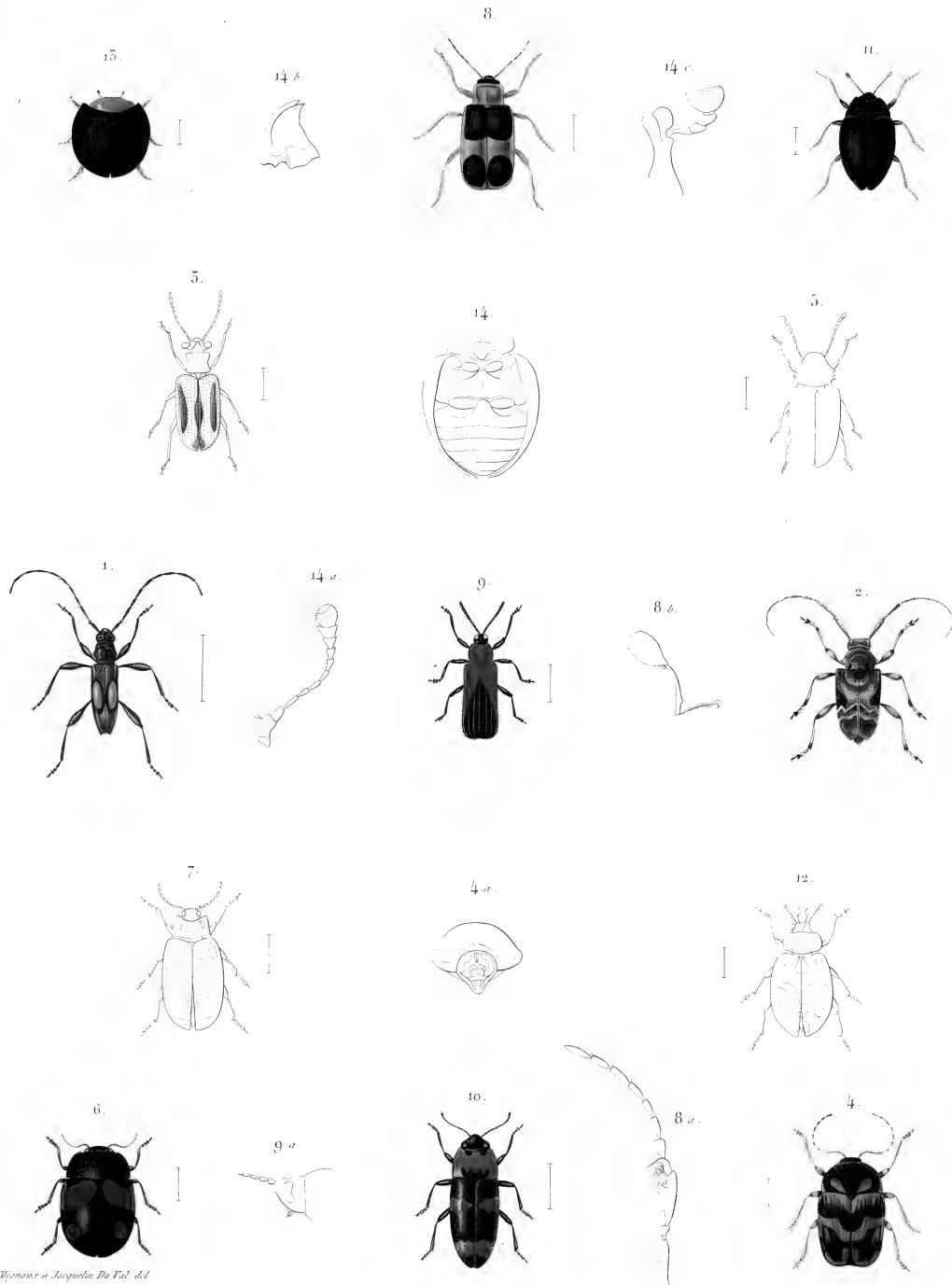
- | | | | | | |
|----|---------------------------------------|----|-----------------------------------|----|---------------------------------|
| 15 | <i>Encarthron tauratus</i> | 19 | <i>Colletes rugosulus</i> | 25 | <i>Adelium bilobatum</i> |
| 14 | <i>Oregonia transversicollis</i> ant. | 20 | <i>Apinophorus sericeus</i> | 26 | <i>Lechinopus Guerinii</i> |
| 13 | <i>Romalidium costipennis</i> ant. | 21 | <i>Alcina oblita</i> | 27 | <i>Lechinopus argus</i> |
| 16 | <i>Platypus subcostatus</i> | 22 | <i>Cremus castaneipennis</i> ant. | 28 | <i>Chiloecephalus</i> Goy. |
| 17 | <i>Isotiles apicalis</i> | 25 | <i>Exophtalmus sommieri</i> | 29 | <i>Ravilius quadrimaculatus</i> |
| 18 | <i>Adelina plana</i> | 24 | <i>Platypus Doyei</i> pater | 30 | <i>Pteridius azureus</i> |



Münster et Sav. Dessin del.

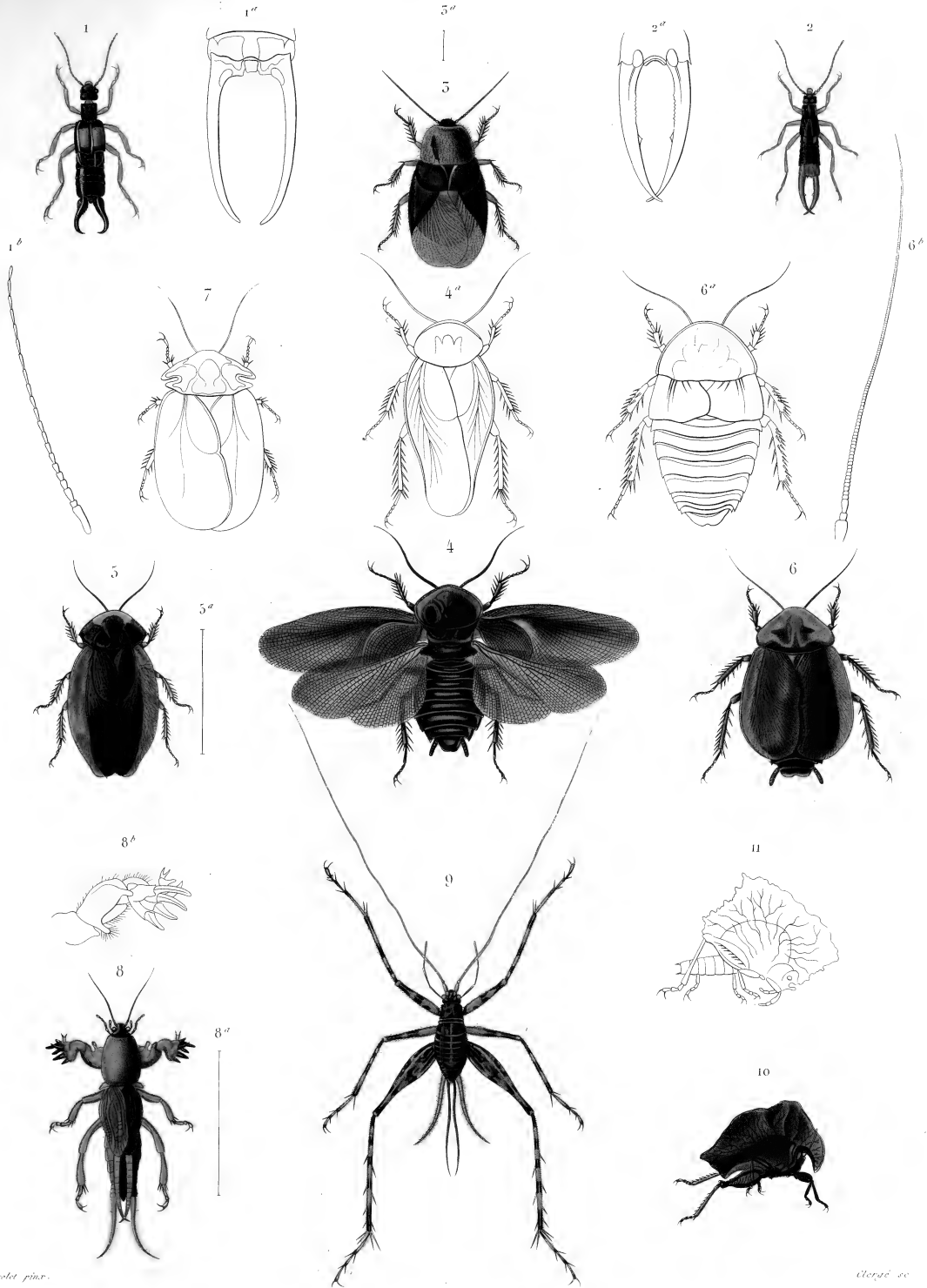
Geogr. 40.

1 *Stenomacrus pennsylvanicus*. 2 *Stenomacrus lineata*. 3 *Calliobroma columbina*. 4 *Cephus hawaiiensis*. 5 *C. dimidiatipes*.
 6 *C. consuetorina*. 7 *Cephus longipennis*. 8 *Psectodermus leptocercus*. 9 *Alouatta brachyptera*.
 10 *Proctosus ambrosiacus*. 11 *Amnicerus declivatus*. 12 *Stenomacrus robustus*. 13 *Enthuus filum*.



Momms et Scaquetin De Vill. del.

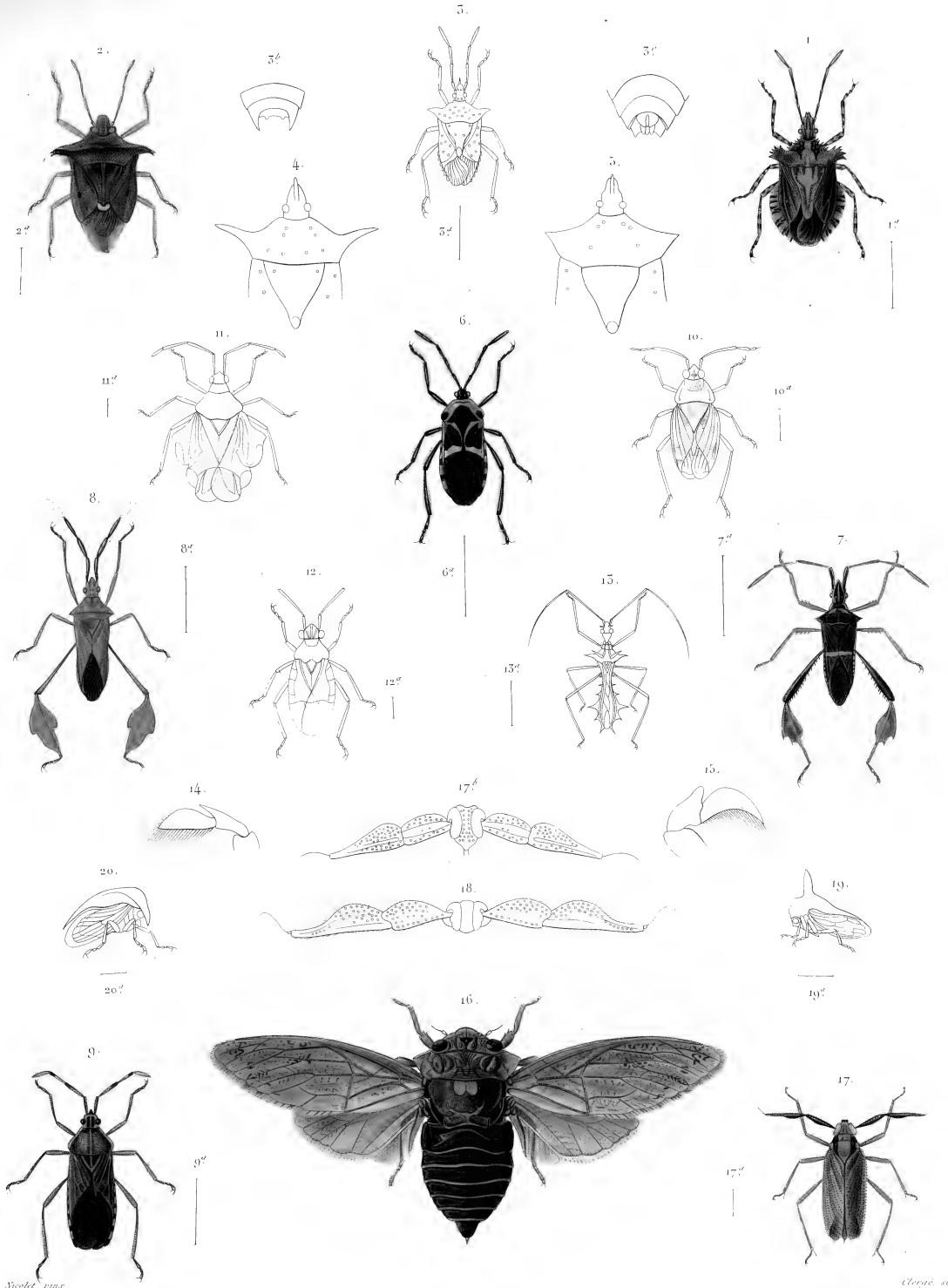
1 *Euphonia* *Boeyi*. 2 *Scaetholera* *aranciformis*. 3 *Loma* *confusa*. 4 *Cryptosphaera* *marginicollis*.
 5 *Megasternus* *italicus*. 6 *Chrysomela* *Boeyi*. 7 *Lina* *orientipennis*. 8 *Phyllotreta* *pulchella*.
 8a *Vermetus* *denticornis* (Antenne) 8b *Calonychia* *fasciata* (Plate post.) 9 *Calatula* *arillaris*. 10 *Ischnus* *flavicornis*.
 11 *Coccyzus* *violaceus*. 12 *Megilla* *maculata*. 13 *Equus* *platycarpus*. 14 *Eptachium* *bovialis*. (Details)



Viola pin.

Uteré sc

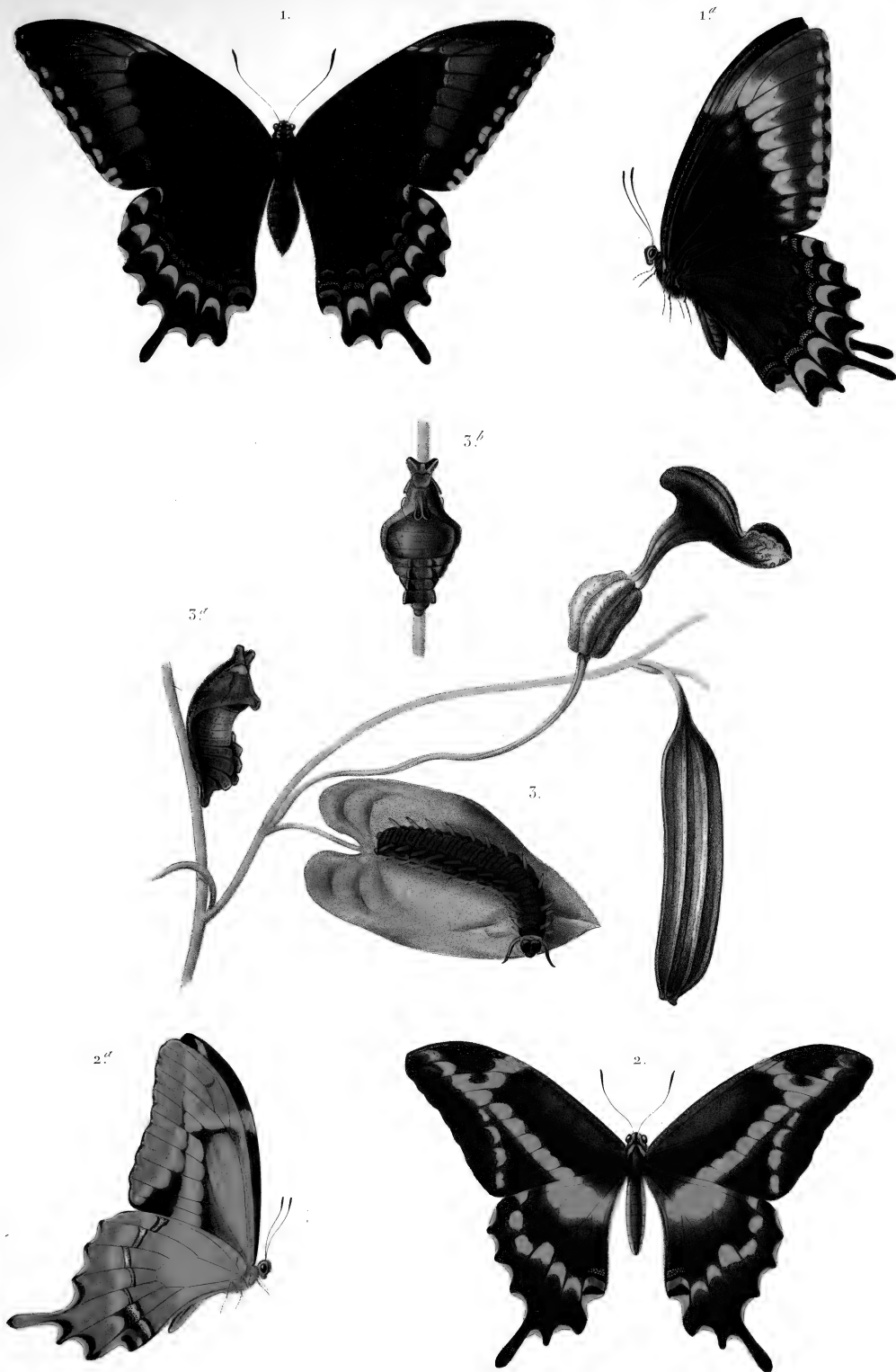
1. *Forficula distincta*, Guér. 2. *Forficula affinis*, Guér. 3. *Blatta cellaris*, Burm. 4. *Blatta foveolata*, Guér.
 5. *Blatta orientalis*, Burm. 6. *Blatta thalassina*, Guér. 7. *Blatta foveolata*, Serv. 8. *Gryllotalpa hirsuticornis*, Serv.
 9. *Phyllotrupes annulipes*, Serv. 10. *Agrenotus laevis*, Serv. 11. *Agrenotus rhombica*, Felton.



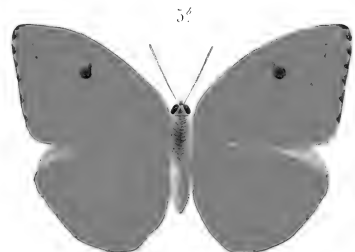
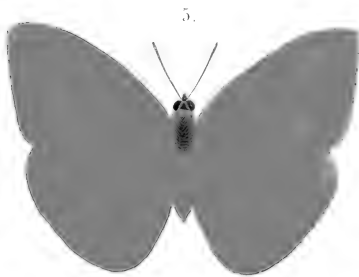
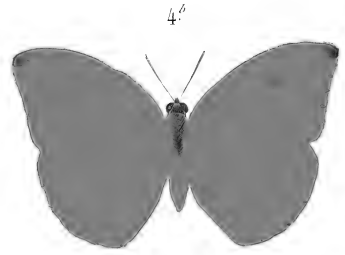
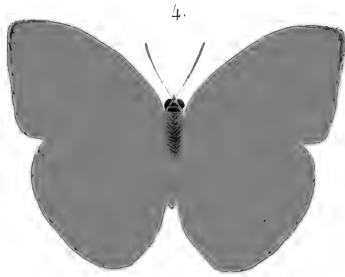
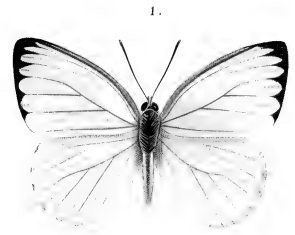
Nicotia glauca

Claviger

- | | | | |
|---|---|--|---|
| 1 <i>Pentatomus Aegypti</i> , Guér. | 2 <i>Pentatomus Gynandricus</i> , Guér. | 3 <i>Pentatomus punctulatus</i> , Eschsch. | 4 <i>Pentatomus</i> , Victor. |
| 5 <i>Pentatomus diversipennis</i> , Guér. | 6 <i>Coris Gynandricus</i> , Guér. | 7 <i>Anisostictis thersites</i> , Guér. | 8 <i>Pentatomus unicolor</i> , Guér. |
| 9 <i>Coris Androssii</i> , Guér. | 10 <i>Salda signoretii</i> , Guér. | 11 <i>Heterosictis dilatata</i> , Guér. | 12 <i>Pyrenostictis quadrinaculatus</i> , Guér. |
| 13 <i>Nictus divinator</i> , Guér. | 14 <i>Salda da Coris beltrami</i> , Guér. | 15 <i>Salda da Coris cabre</i> , Guér. | 16 <i>Coris Aegypti</i> , Guér. |
| 17 <i>Helotus thersites</i> , Guér. | 18 <i>Helotus obscurus</i> , Guér. | 19 <i>Helophorus turcomani</i> , Guér. | 20 <i>Coris uniformis</i> , Fairm. |



1. *Papilio PIRITHOUS* (femelle) 1'' *id.* en dessous.
2. *Papilio ARISTODEMUS* (mâle) 2'' *id.* en dessous.
3. Chenille et Chrysalides du *Papilio NEODAMAS*.



1. 1^o Pieris Vallei, Boisdu. 2. 2^o Pieris Joppe, Boisdu. 3. 3^o Pieris Elodia, Hübner
4. 4^o ♂ 4^o ♀ Callidryas agarithe, Boisdu 5. 5^o ♂ 5^o ♀ Callidryas Neleis, Boisdu



1.1[♂] *Terias stygmula*, Boisid.

2. 2[♂] *Terias Westwoodii*, Boisid.

5. 5[♂] *Terias Gnathene*, Boisid.

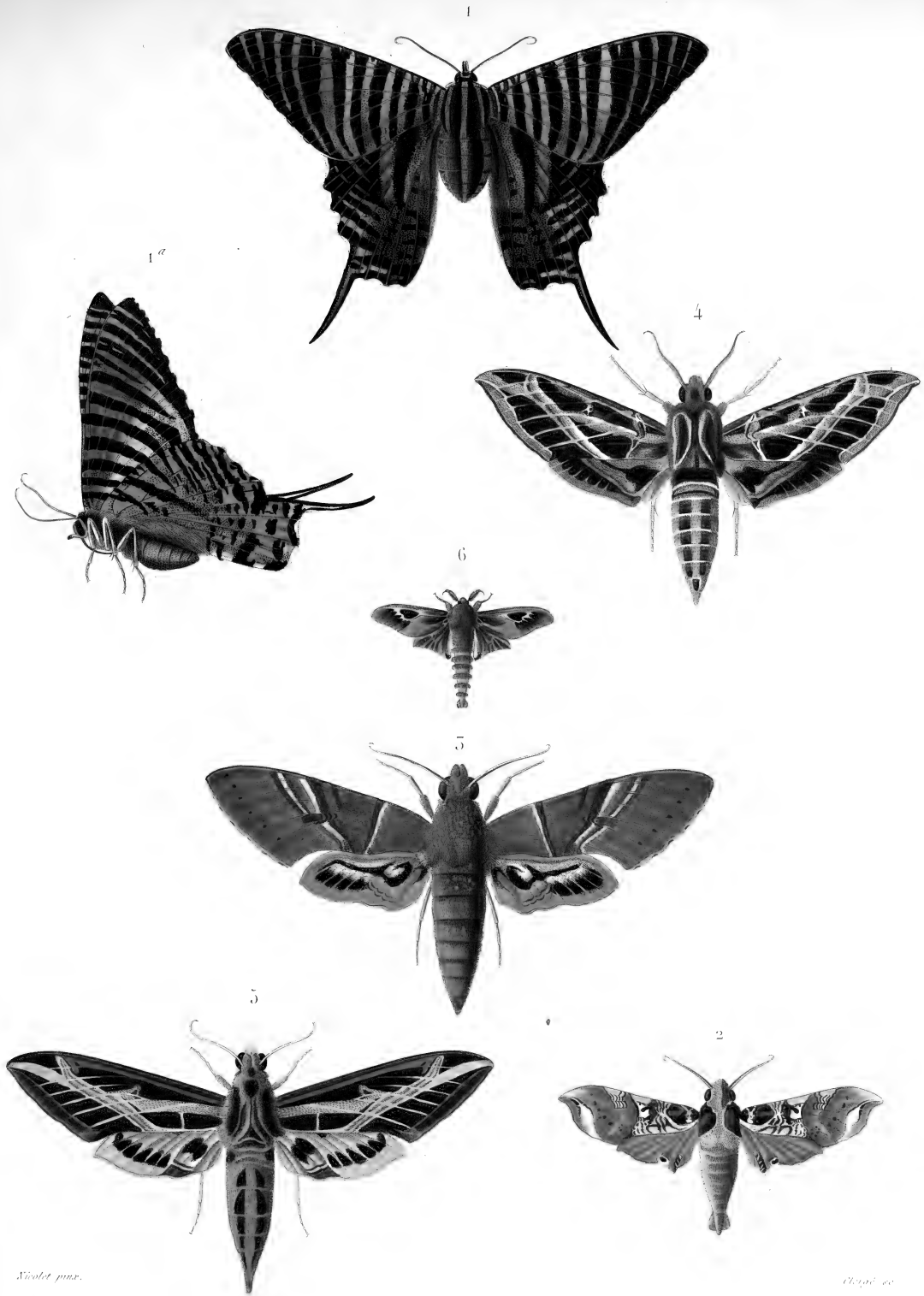
5. 5[♀] *Terias Arabella*, Lefebv.

4. 4[♂] *Apatura Theodora*, Lefebv.

6. 6. 6[♀] *Thecla Aon*, Lefebv.

7. 7. 7[♀] *Lycæna Ammon*, Lefebv.

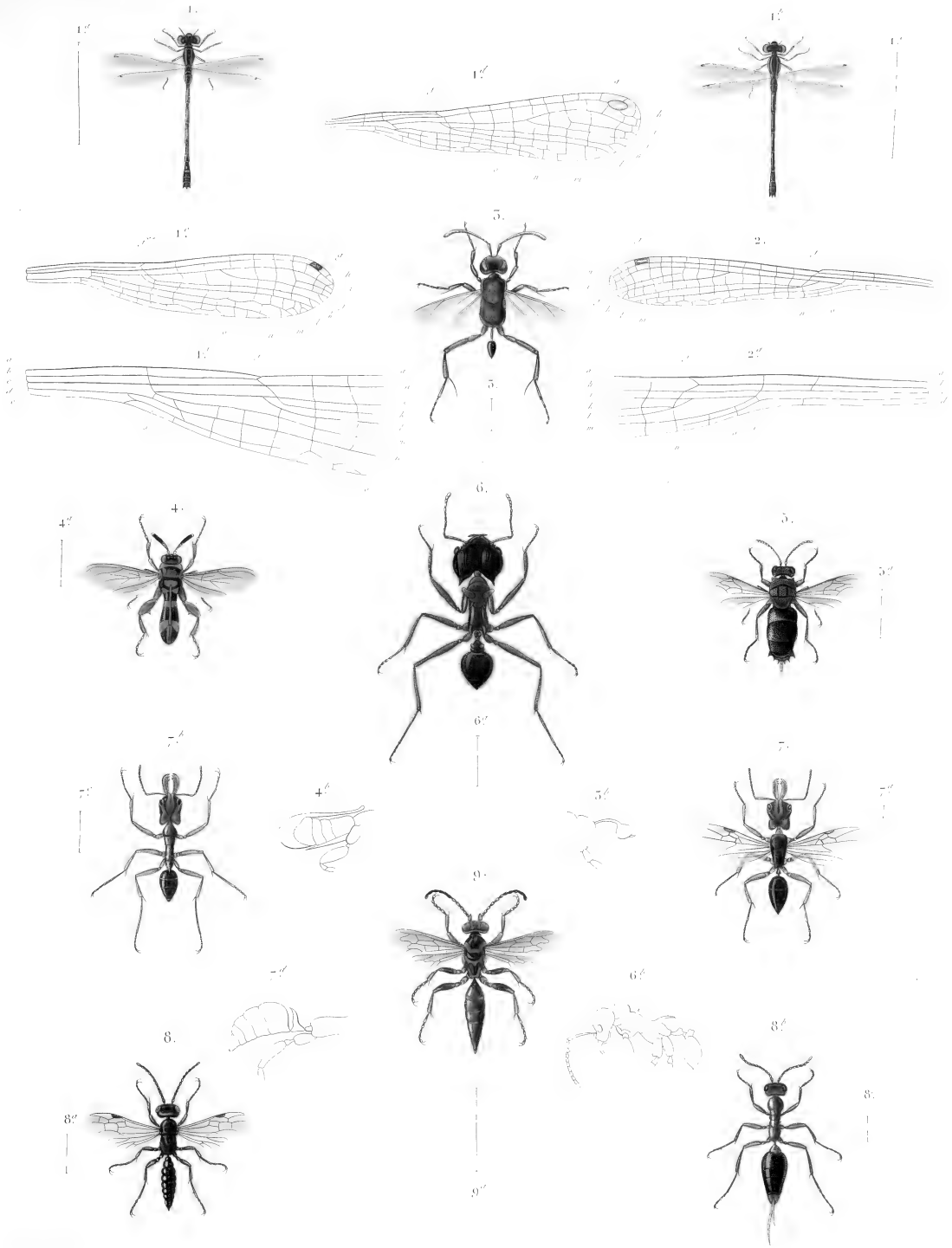
8. 8. 8[♀] *Lycæna Theonus*, Lefebv.



Nicot glauca.

Chrysi.

1, 1^a *Cydimon Boisduvalii*, Guér. 2 *Callionime Parea*, Fabr. 3 *Philampelus Labruscæ*, Linn.
 4 *Philampelus vitis*, Cram. 5 *Philampelus fasciatus*, Walk. 6 *Oiketicus Poeyi*, Luc.



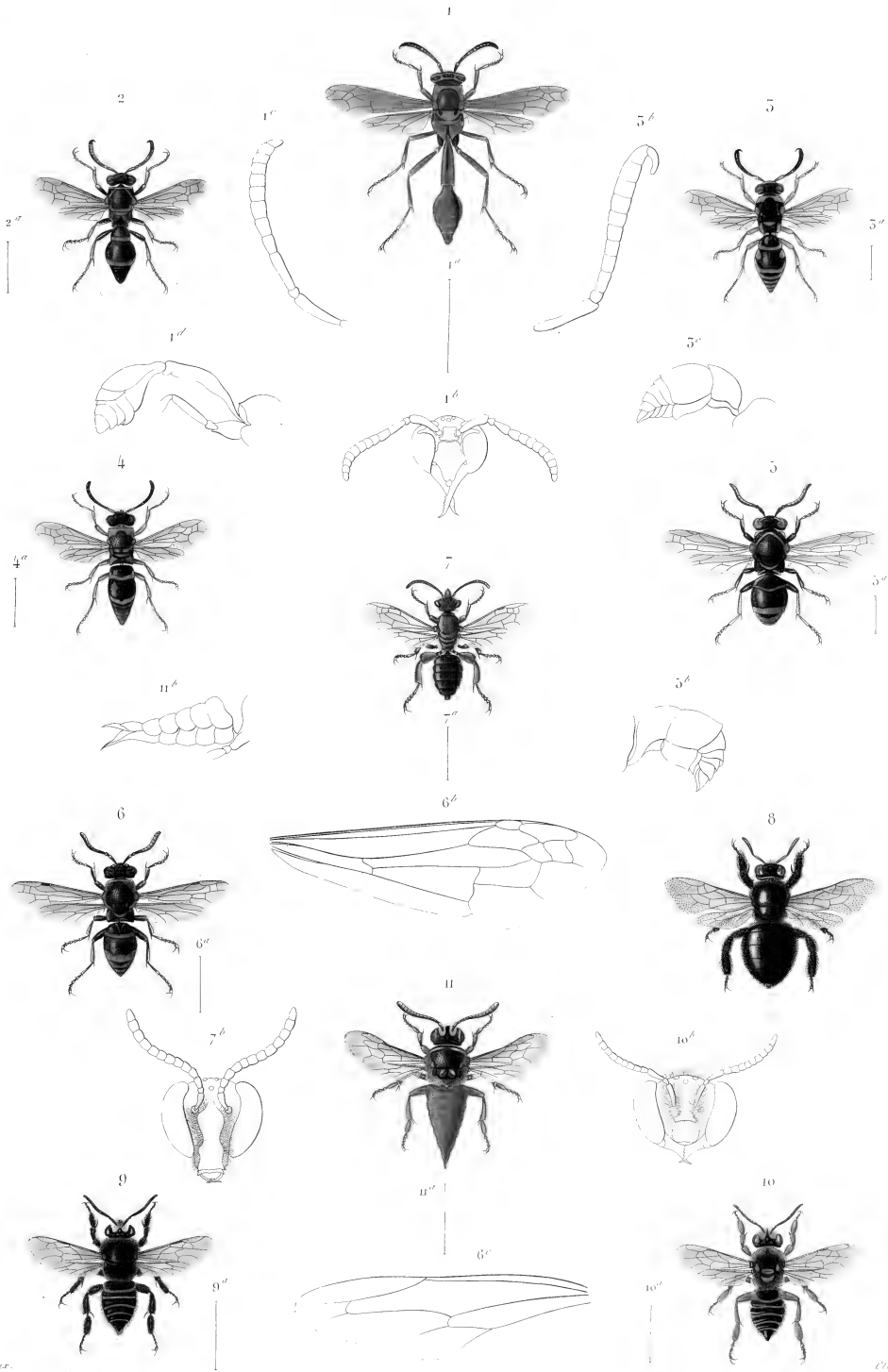
locust pins

Clasp ss

1 ♂ 1' ♀ *Agrion hastatum*, Say. 2, 2' *Ptilis graminea*, *Potamocera capillaris*, Ramb. 3 *Cremna Poggi*, Guér.

4 *Leucospis Poggi*, Guér. 5 *Chrysis insularis*, Guér. 6 *Alta insularis*, Guér. 7, 7' *Alent. mutans insularis*, Guér.

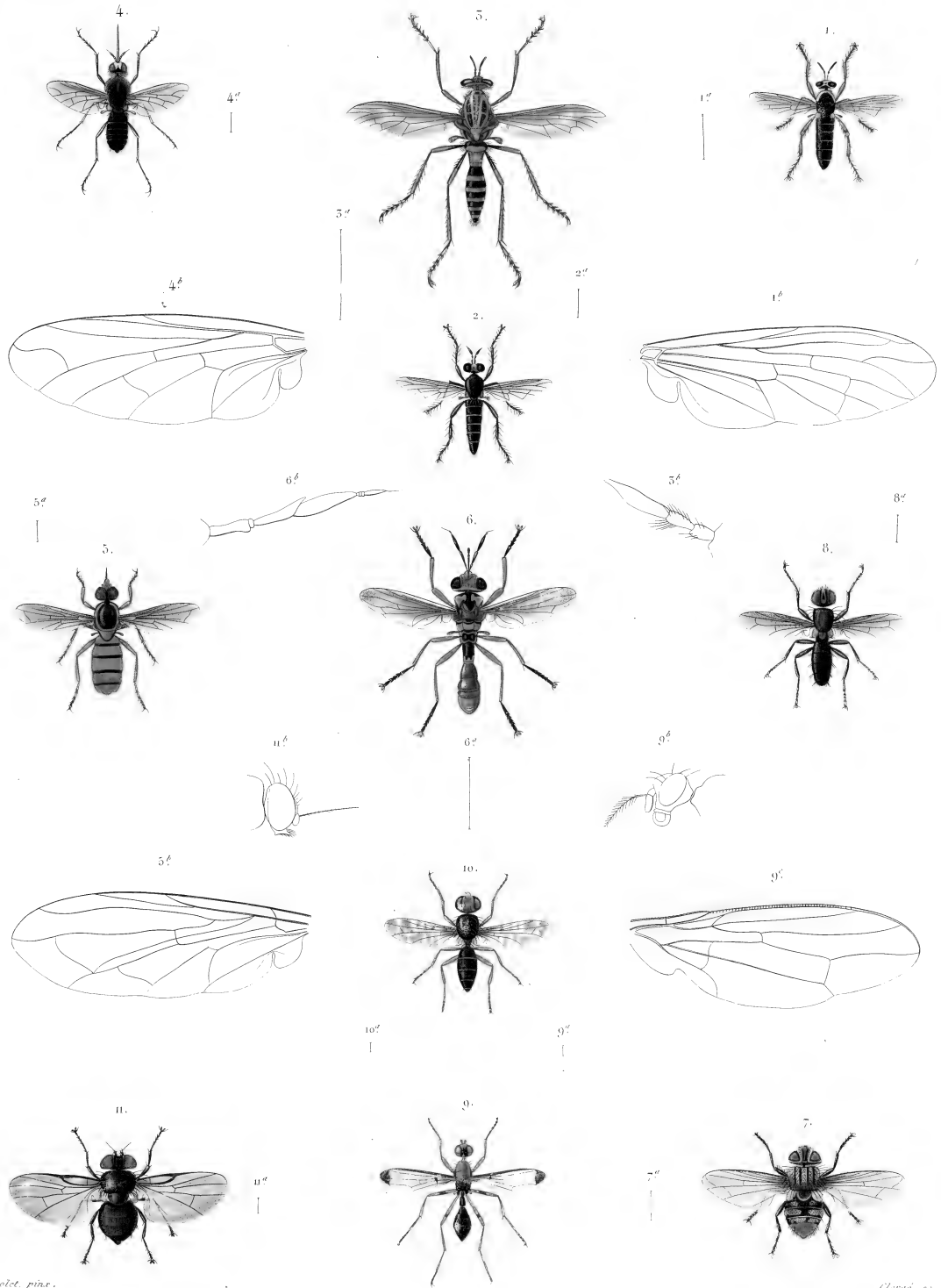
8, 8' *Helictes Poggi*, Guér. 9 *Clypeus pubescens*, Guér.



Nicotet pin.

Clayton

1 *Camponotus colinus*, de Sauss. 2 *Collyerius incommodus*, de Sauss. 3 *Collyerius bicolor*, de Sauss. 4 *Collyerius cubanicus*, de Sauss.
 5 *Collyerius simplicicornis*, de Sauss. 6 *Collyerius brachygaster*, de Sauss. 7 *Andrena fuscicornis*, Guér. 8 *Andrena cubana*, Lucif.
 9 *Agachilis punctata* ♀, Guér. 10 *Agachilis Leveqi* ♀, Guér. 11 *Colletes abdominalis* ♀, Guér.



Nicotet. pine.

Chapt. sc.

- | | | | |
|------------------------------------|-------------------------------------|--|--------------------------------------|
| 1 <i>Stomoxys similes</i> , Bigot. | 2 <i>Lasiopepon parvum</i> , Bigot. | 3 <i>Siphon quadrifasciatus</i> , Bigot. | 4 <i>Stomoxys insularis</i> , Bigot. |
| 5 <i>Siphon</i> , Bigot. | 6 <i>Conops Stenonoti</i> , Bigot. | 7 <i>Tachina elegans</i> , Bigot. | 8 <i>Scopelia nigra</i> , Bigot. |
| 9 <i>Sopus Guerinii</i> , Bigot. | 10 <i>Stimia piceola</i> , Bigot. | 11 <i>Miltia metallica</i> , Bigot. | |



AUTHOR. *Guérin-Meneville.*

TITLE. *Articulata de L'île de Cuba*

SMITHSONIAN INSTITUTION LIBRARIES
3 9088 00073 1141

