

Tafeln  
III  
Räderthiere

P R - E  
X - E 33F

**BIBLIOTHÈQUE**  
DE  
**LOUIS AGASSIZ.**

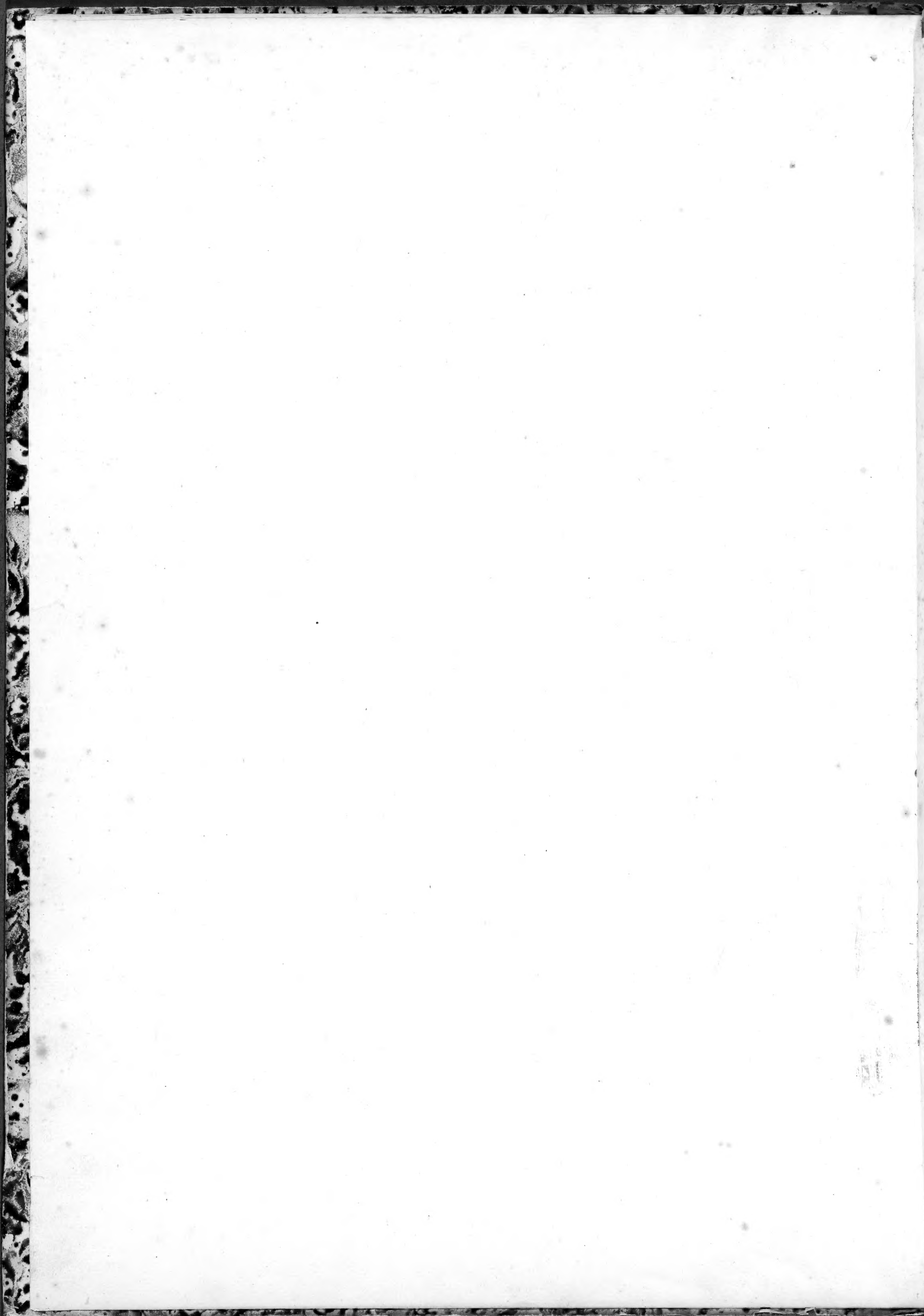
~~Alex. Agassiz~~  
Library of the Museum  
OF  
**COMPARATIVE ZOOLOGY,**  
AT HARVARD COLLEGE, CAMBRIDGE, MASS.  
Founded by private subscription, in 1861.  
~~~~~  
Deposited by Alex. Agassiz  
from the Library of LOUIS AGASSIZ.  
No. 14875.  
May 9 1901.

Notatoria

Inhalt

|       |     |                                                                                                              |   |   |
|-------|-----|--------------------------------------------------------------------------------------------------------------|---|---|
| Tafel | 43. | <i>Ptygura, Ichthyoderm, Chaetonotus, Glenophora, Cicistes, Conochilus.</i><br>387. 388. 389. 391. 392. 393. |   |   |
|       | 44. | <i>Minodon, Lyphonantes, Megalotrocha, Lacinularia.</i><br>395. 395. 396. 403.                               |   |   |
|       | 45. | <i>Tubicularia, Aphanoceros.</i><br>399. 400.                                                                |   |   |
|       | 46. | <i>Stoicalaria, Melicerta, Limnias.</i><br>407. 404. 401.                                                    |   |   |
|       | 47. | <i>Enteroplea, Hydratina, Neurotrocha.</i><br>411. 412. 415.                                                 |   |   |
|       | 48. | <i>Neurotrocha, Turcularia, Monocerca.</i><br>414. 419. 420.                                                 |   |   |
|       | 49. | }                                                                                                            |   |   |
|       | 50. |                                                                                                              | } |   |
|       | 51. |                                                                                                              |   | } |
|       | 52. |                                                                                                              |   |   |
|       | 53. | <i>Notommata, Synchaeta.</i><br>424. 436.                                                                    |   |   |
|       | 54. | <i>Stardium, Polyanthra, Siglena.</i><br>439. 440. 441.                                                      |   |   |
|       | 55. | <i>Siglena, Tricarthra.</i><br>441. 446.                                                                     |   |   |
|       | 56. | <i>Nattulus, Sistemma, Trophthalmus, Eophora, Cycloglena, Theorus.</i><br>448. 449. 450. 451. 452. 454.      |   |   |
|       | 57. | <i>Lepadella, Monostyla, Mastigocerca, Euchlanis.</i><br>457. 459. 460. 461.                                 |   |   |
|       | 58. | <i>Euchlanis, Salpina.</i><br>461. 469.                                                                      |   |   |
|       | 59. | <i>Dinocharis, Monara, Calanus, Metopidia, Stephanops, Squamella.</i><br>471. 474. 475. 477. 478. 479.       |   |   |
|       | 60. | <i>Callidina, Hydria, Typhlina, Rotifer.</i><br>482. 483. 483. 484.                                          |   |   |
|       | 61. | <i>Actinurus, Monolabis, Philodina.</i><br>496. 497. 498.                                                    |   |   |
|       | 62. | <i>Notus, Anuraea.</i><br>502. 503.                                                                          |   |   |
|       | 63. | <i>Brachionus</i><br>509.                                                                                    |   |   |
|       | 64. | <i>Brachionus, Renodina.</i><br>509. 516.                                                                    |   |   |







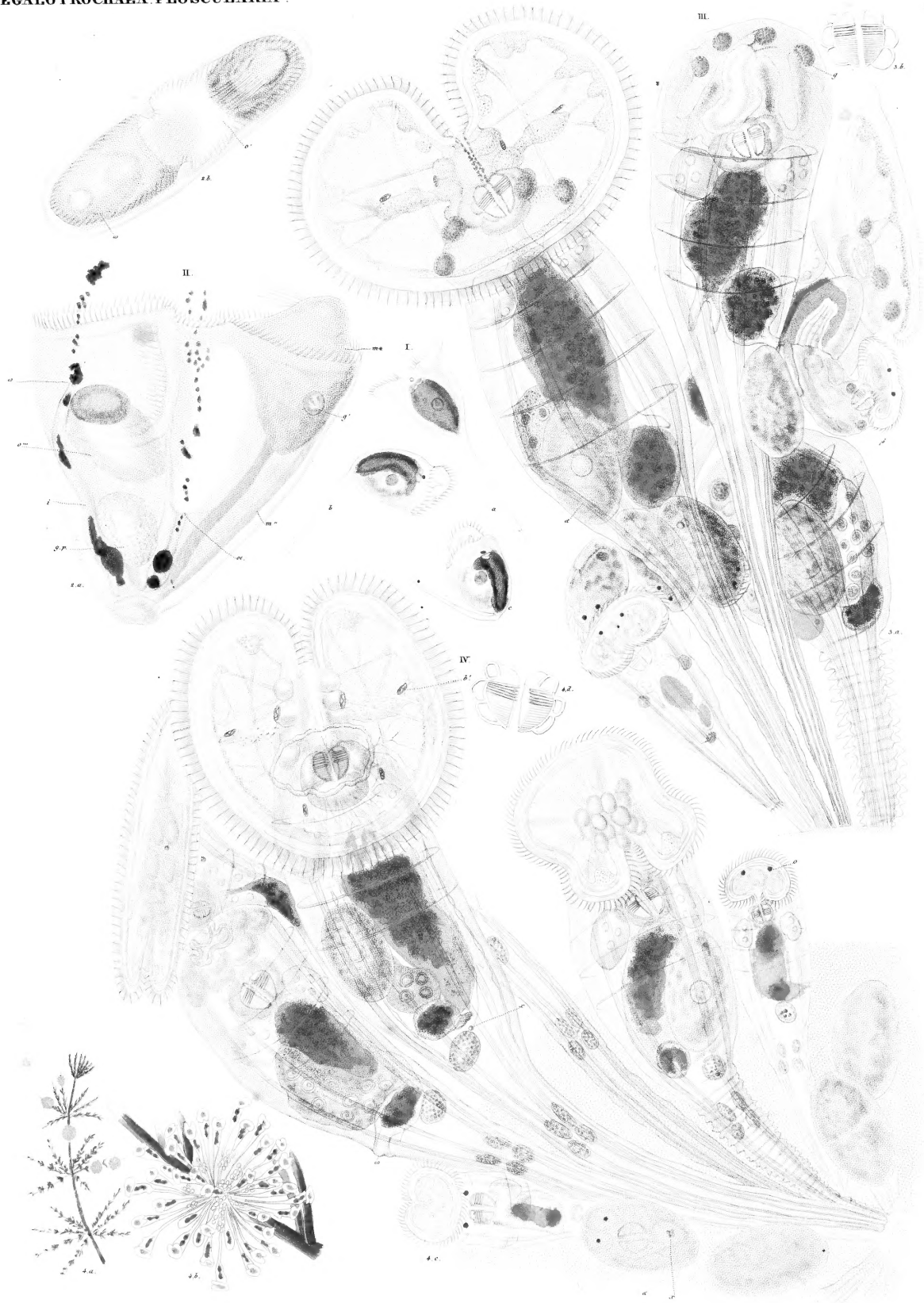
I. PTYGURA. II. ICTHYDIUM. III. V. CHAETONOTUS. VI. GLENOPHORA.  
 VII. OECISTES. VIII. CONOCHILUS.

I. PT. *Melicerta*. 1/12". II. I. *Podura*. 1/12". III. CH. *maximus*. 1/10". IV. CH. *Larus*. 1/18". V. CH. *brevis*. 1/16". VI. G. *Trechus*. 1/48". VII. O. *hyalinus*. 1/12". VIII. C. *Volvox*. 1/8".

gez. v. Ehrenberg

gez. v. C. Haas

**BLANK  
PAGE**



I. MICROCODON. II. CYPHONAUTES. III. MEGALOTROCHA. IV. LACIXULARIA.

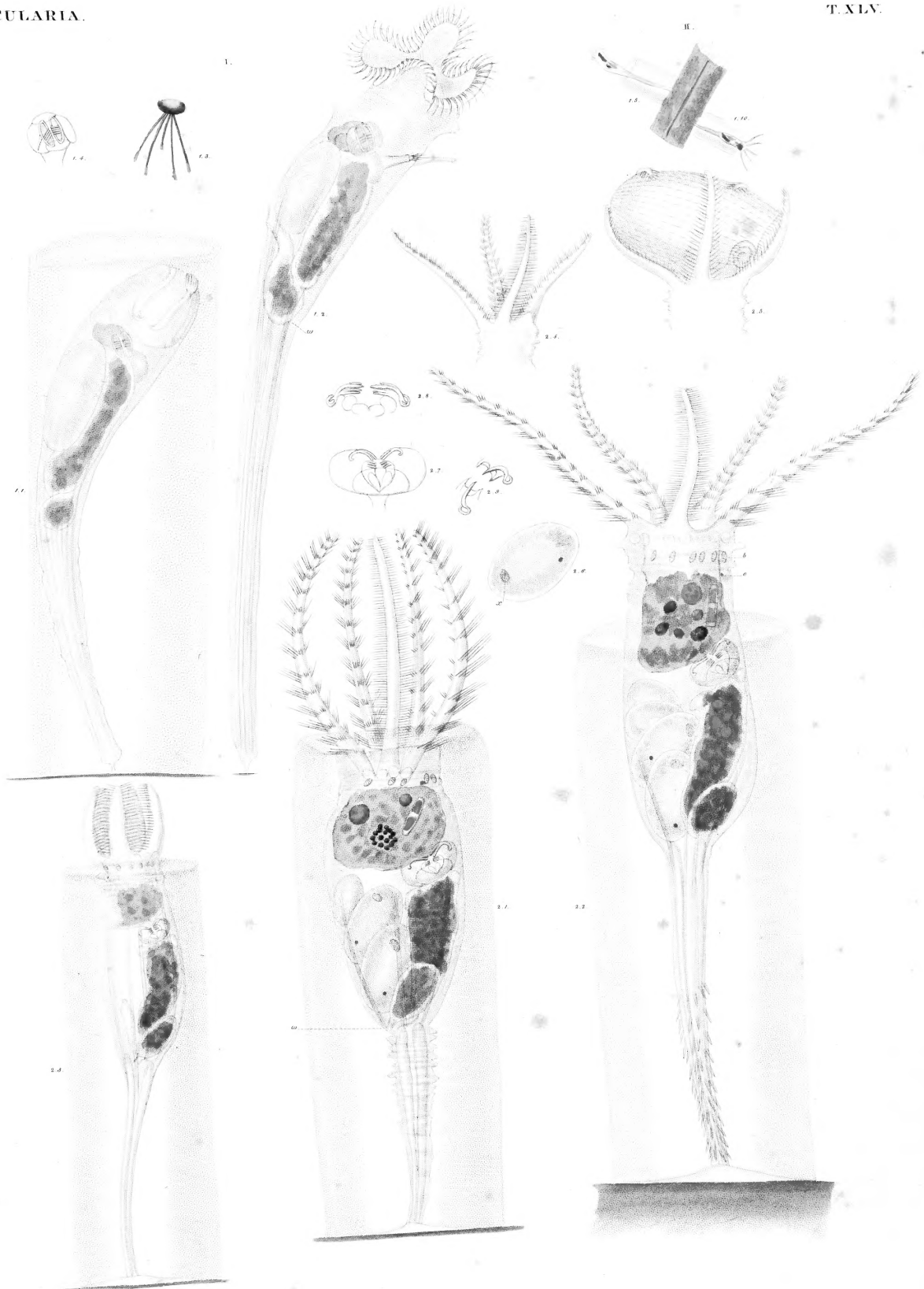
I. *M. Clavus* 56. II. *C. compressus* 56. III. *M. flavicans* 56. IV. *L. socialis* 56.

gez. v. Ehrenberg.

gez. v. Weber.

**BLANK  
PAGE**

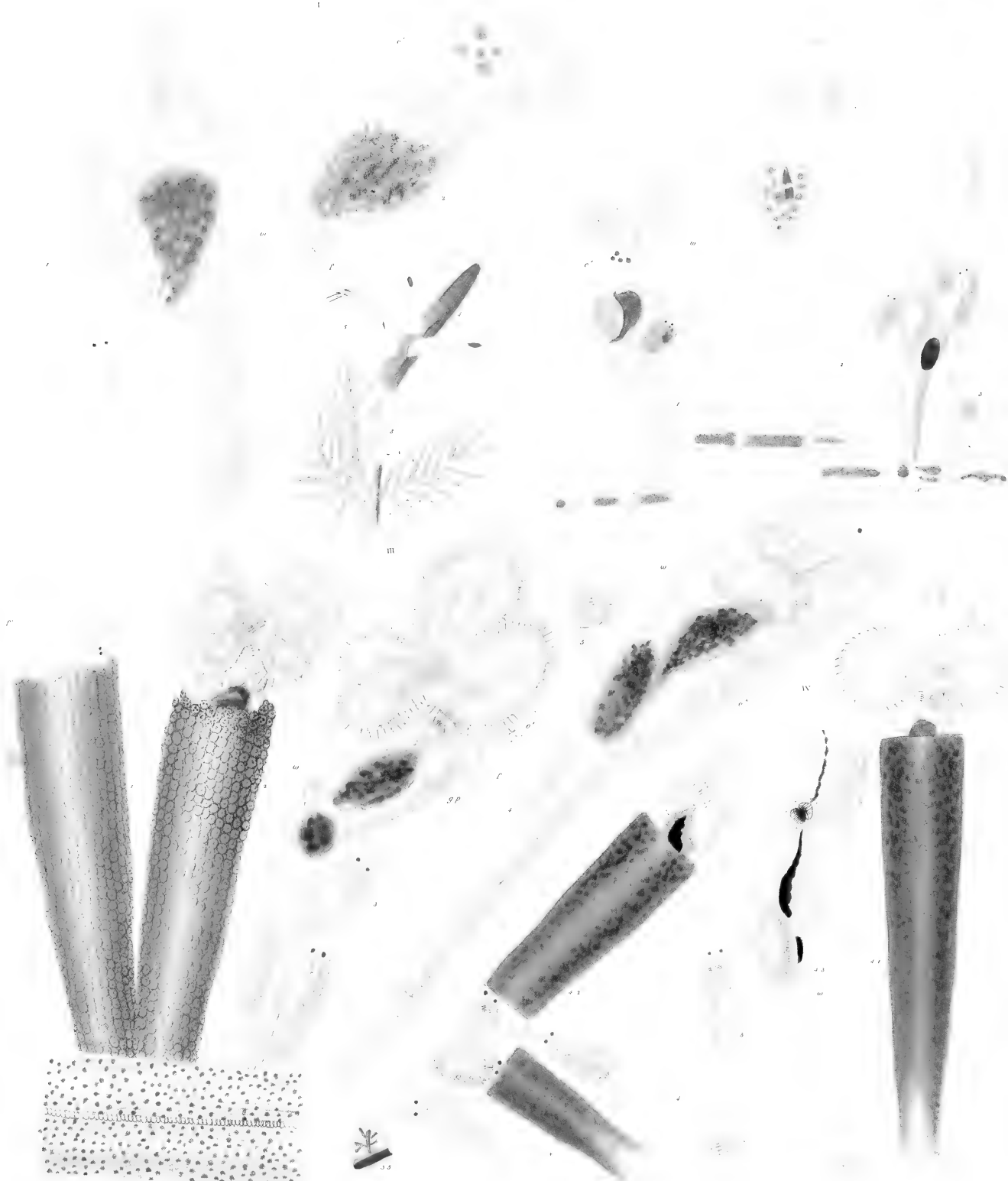




I. TUBICOLARIA. II. STEPHANOCEROS.

(I. *Najas*. 1a. II. *ST. Eichhornii*. 1a.

**BLANK  
PAGE**



I. II. FLOSCULARIA. III. MELICERTA. IV. LIMNIAS.

I. *F. proboscidea*. - 3/4. II. *F. emata*. - 1/3. III. *M. ringens*. - 1/3. IV. *L. ceratophylli*. - 1/3.

mez. e. Ehrenberg

gest. e. C. Weider

**BLANK  
PAGE**



I. ENTEROPLEA. II. HYDATINA. III. PLEUROTROCHA.

I. E. *Hydatina* - 1/200 II. H. *lenta* - 1/200 III. H. *brachyactyla* - 1/200 IV. P. *gibba* - 1/200

**BLANK  
PAGE**

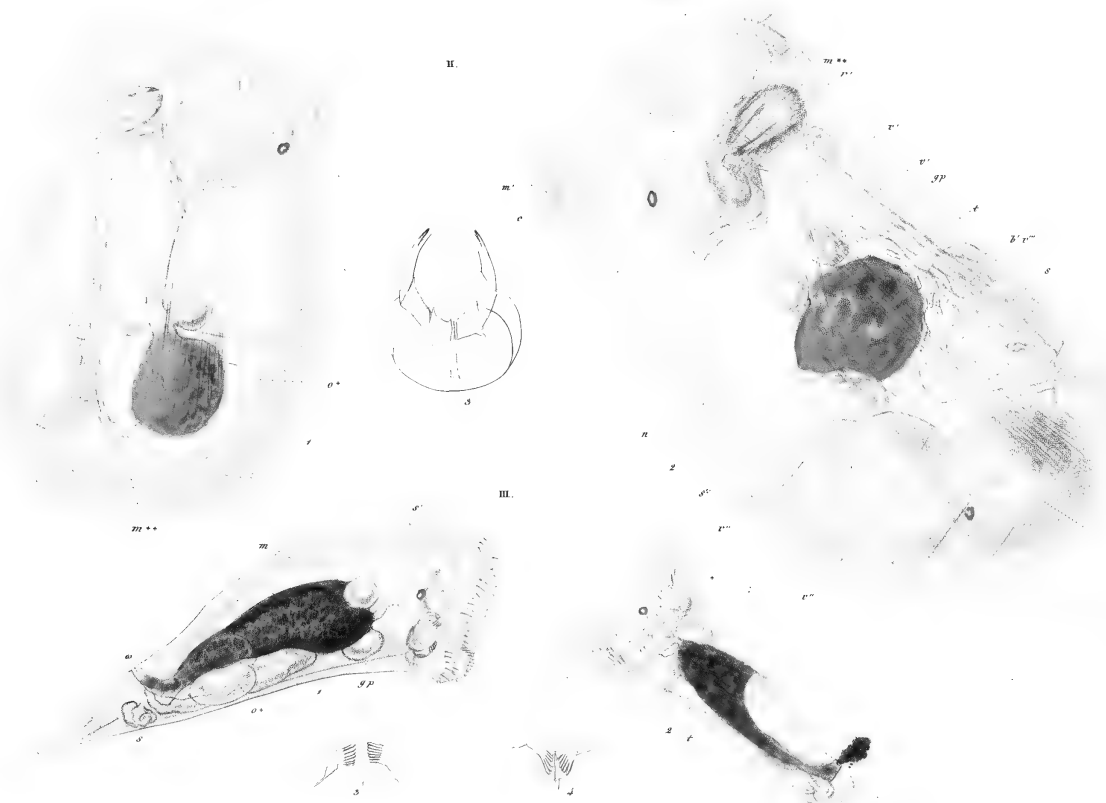
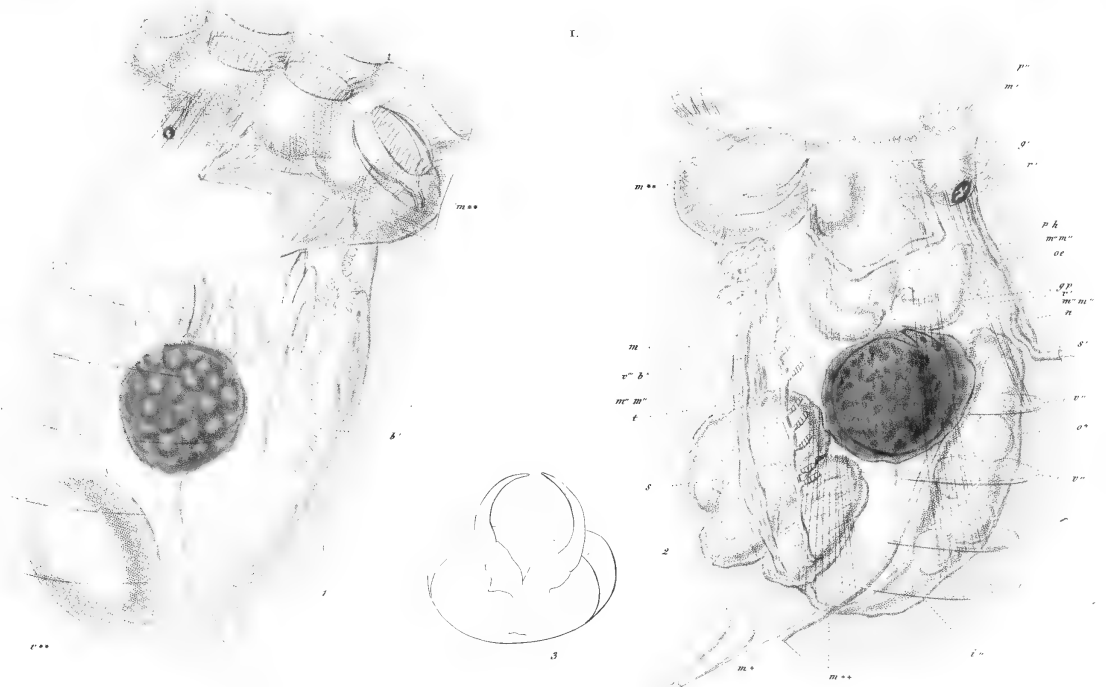


I. II. PLEUROTROCHA III VI. FURCULARIA VII. IX. MONOCERCA.

I. *P. constricta* 1/2 II. *P. leptura* 1/2 III. *F. gibba* 1/2 IV. *F. Reinhardtii* 1/2 V. *F. forficula* 1/2 VI. *F. gracilis* 1/2 VII. *M. Rattus* 1/2 VIII. *M. bicornis* 1/2 IX. *M. calya* 1/2

**BLANK  
PAGE**

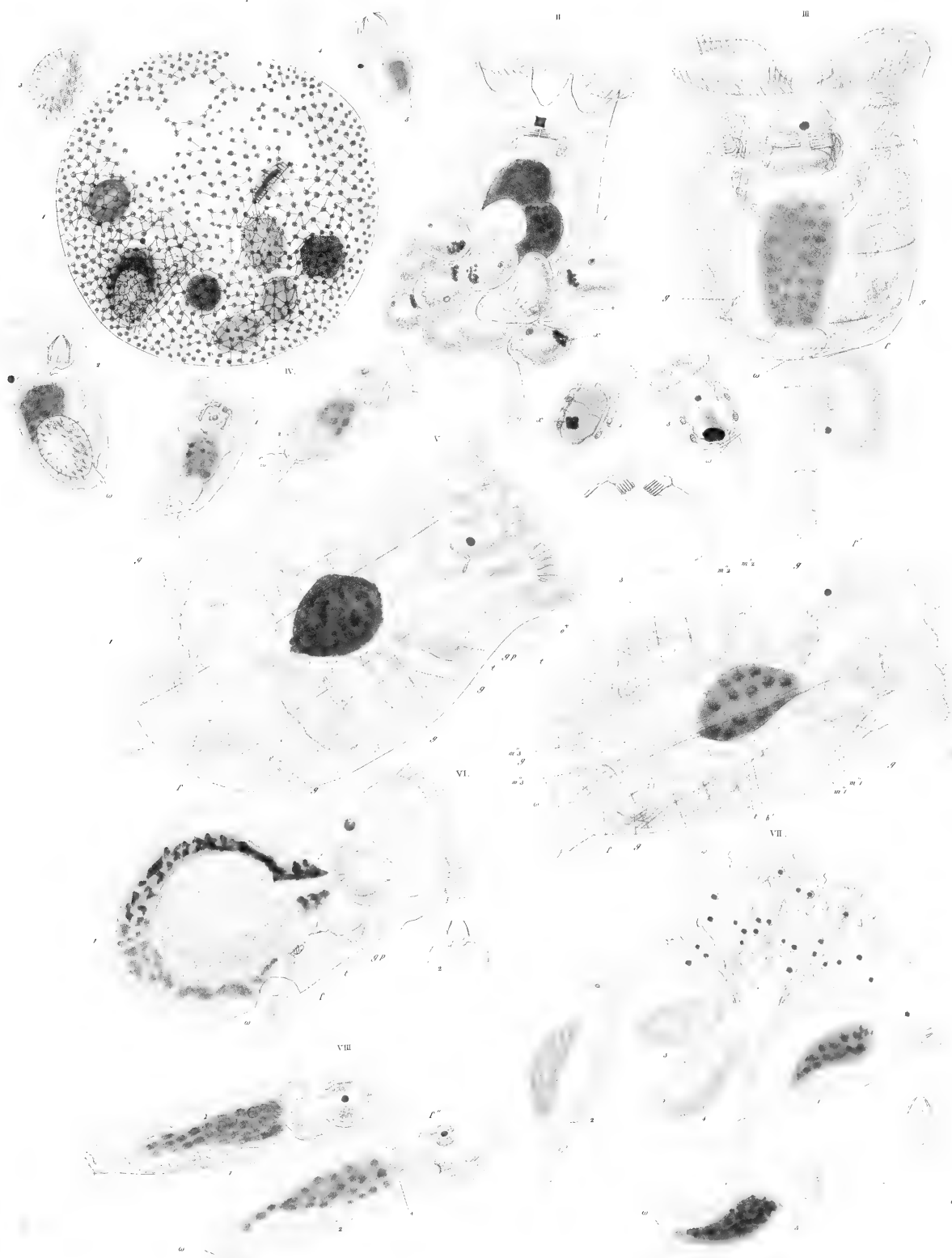




NOTOMMATA.

I. N. Myrmeleo 4°. II. N. Spruce 18°. III. N. Tibu 4°.

**BLANK  
PAGE**



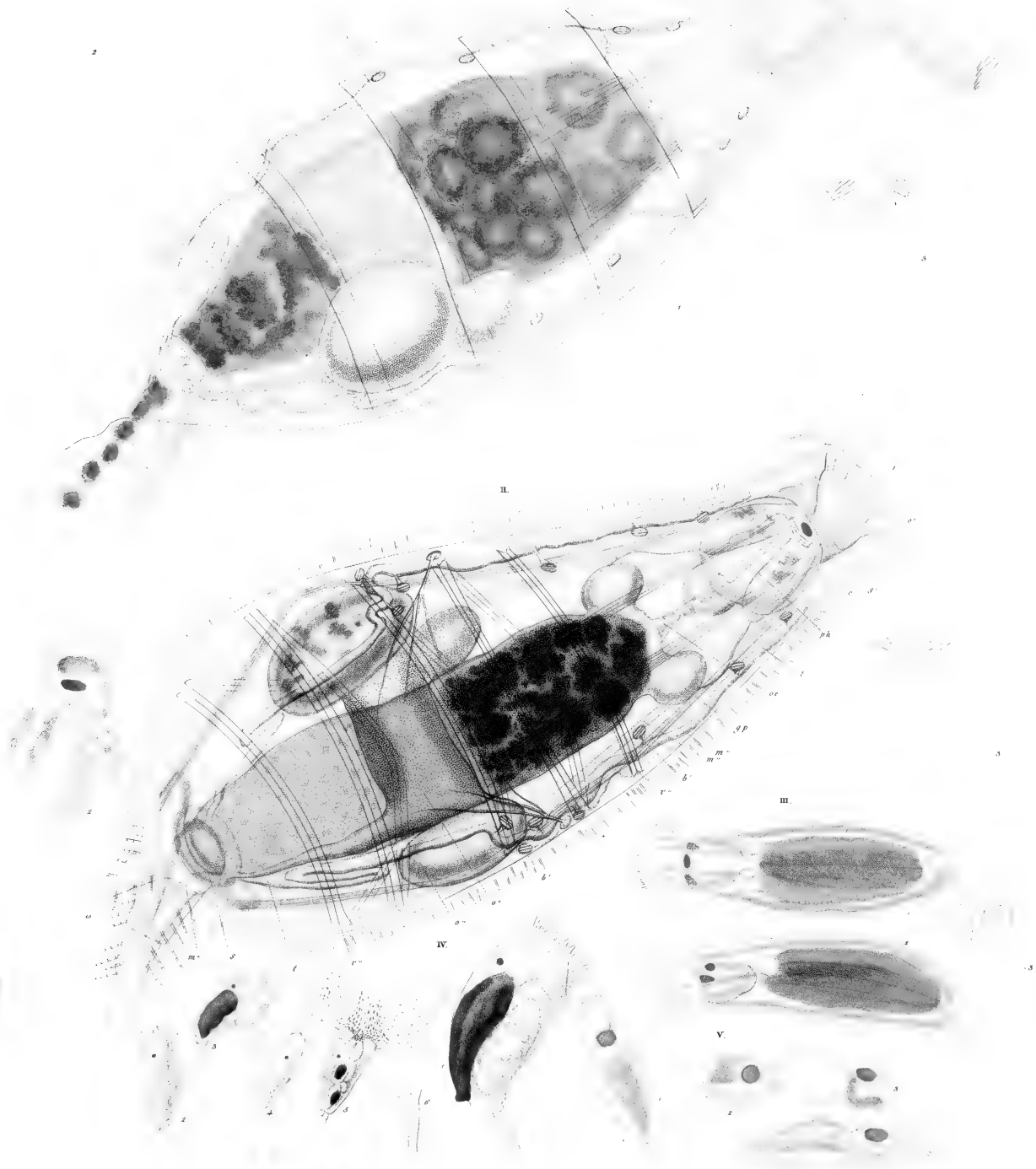
NOTOMMATA.

I. *N. Parafita*  $\frac{1}{2}$  II. *N. granularis*  $\frac{1}{2}$  III. *N. Brachionus*  $\frac{1}{2}$  IV. *N. Tripus*  $\frac{1}{2}$  V. *N. claustrata*  $\frac{1}{2}$  VI. *N. hyptopus*  $\frac{1}{2}$  VII. *N. Petromyzon*  $\frac{1}{2}$  VIII. *N. fuscigeru*  $\frac{1}{2}$

von Zinnberg

gest. v. C. F. Weiser

**BLANK  
PAGE**



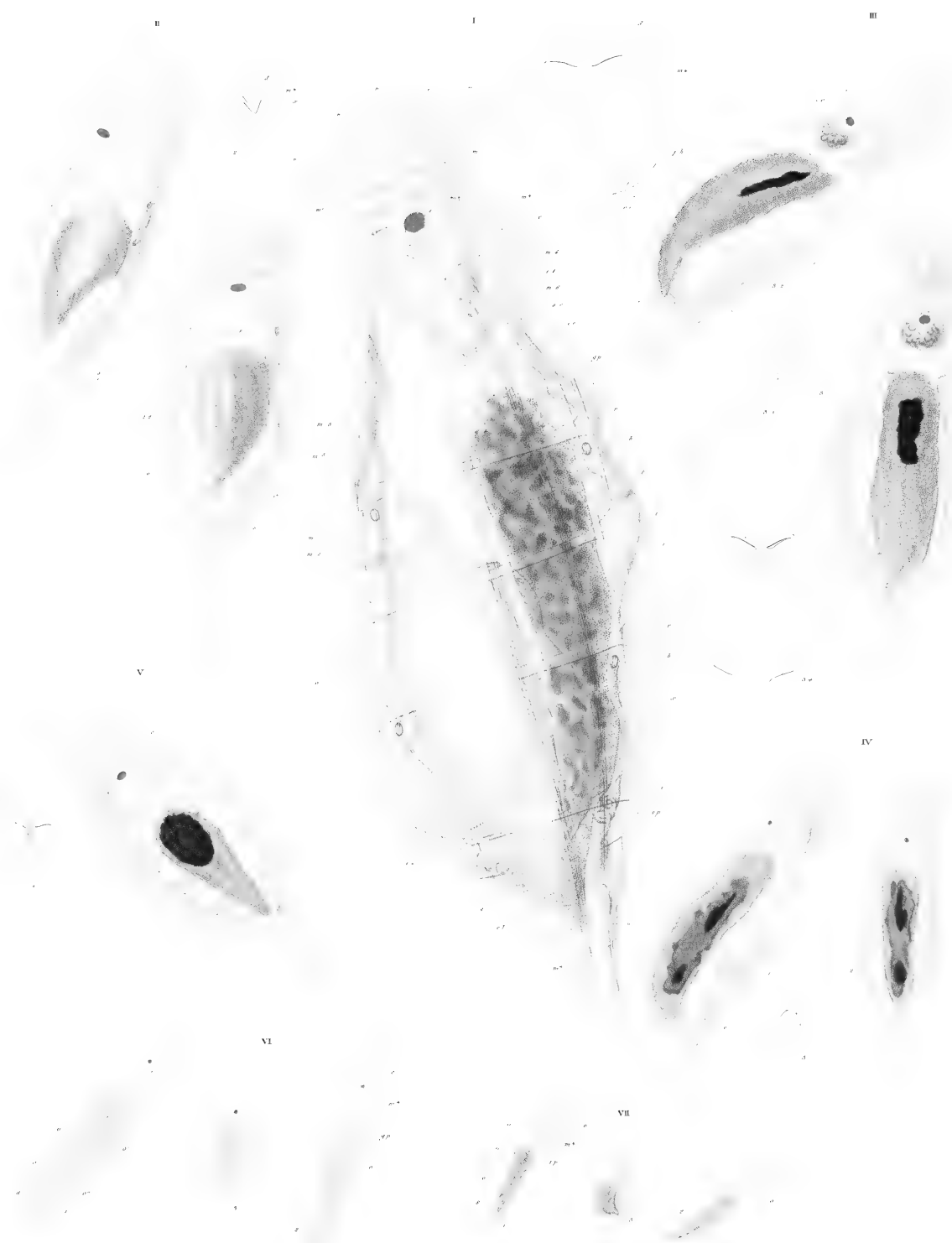
NOTOMMATA.

I. *N. (Copeus) 1/3*; II. *N. centrura*, 1/3; III. *N. brachyota*, 1/6; IV. *N. lacunculata*, 1/2; V. *N. forcipata*, 1/2.

ges. v. Ehrenberg.

gest. v. C. E. Weiser.

**BLANK  
PAGE**

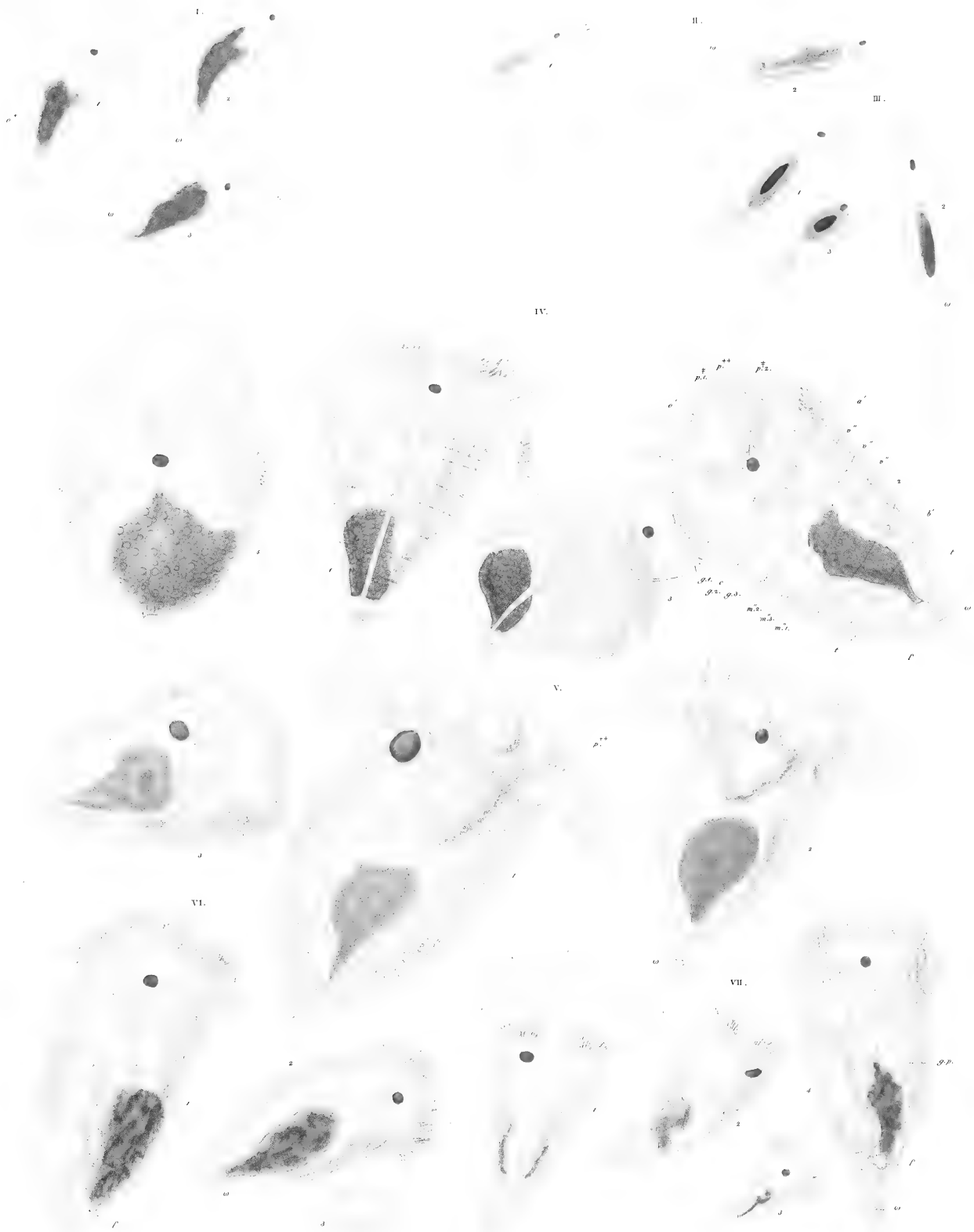


NOTOMMATA.

i *N. collaris*. ii *N. Nojas*. iii *N. aurita*. iv *N. gibba*. v *N. insula*. vi *N. decipiens*. vii *N. Felis*. etc.

**BLANK  
PAGE**

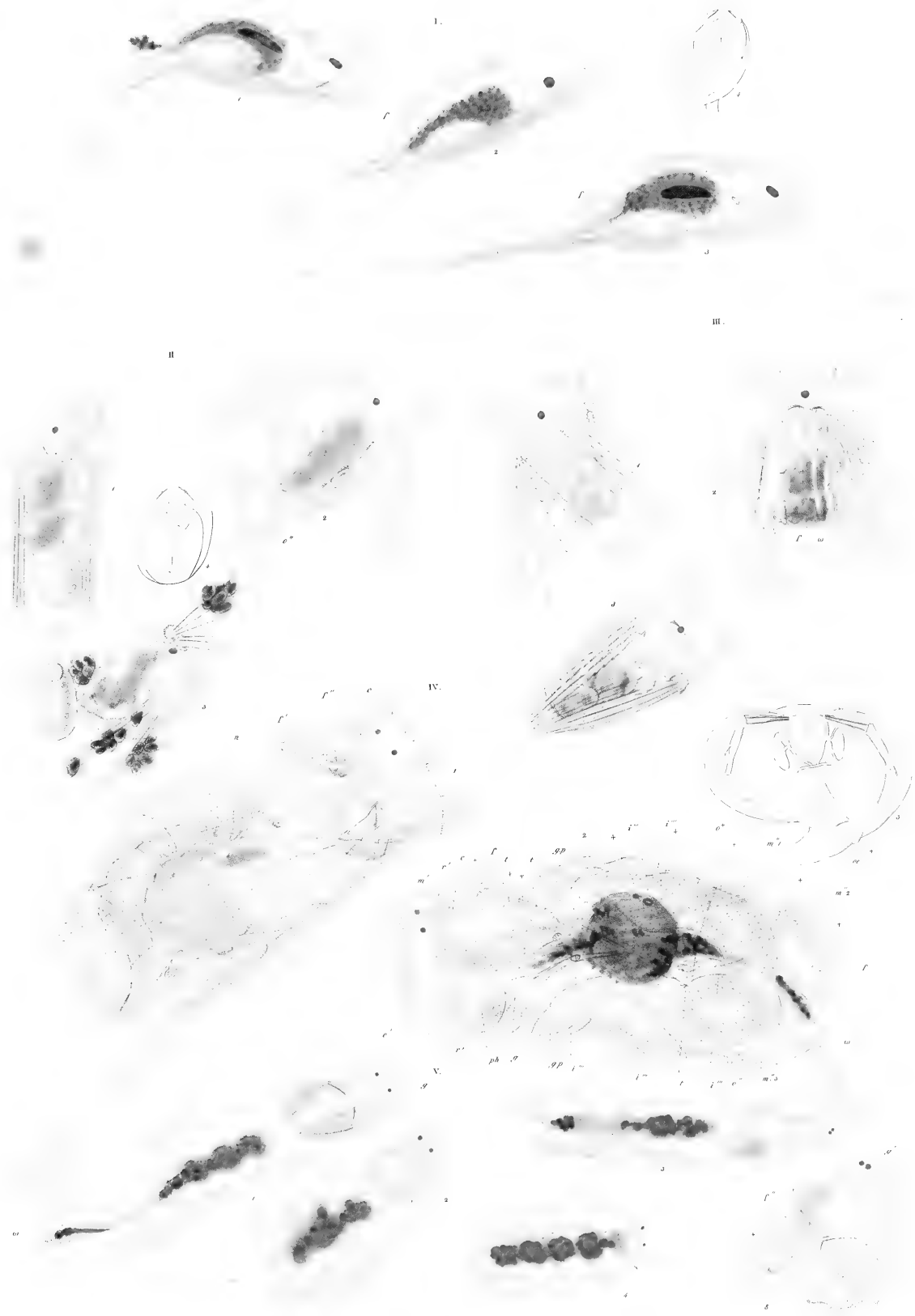




I-III. NOTOMMATA IV-VII. SYNCHAETA.

I. *N. Tigris* - 1/6" II. *N. longifolia* - 1/8" III. *N. aequalis* - 1/6" IV. *S. pectinata* - 1/10" V. *S. balli* - 1/10" VI. *S. oblonga* - 1/8" VII. *S. tremula* - 1/6"

**BLANK  
PAGE**



I. SCARIDIUM. II - III. POLYARTHRA. IV - V. DIGLENA.

I. *S. longicaudum* - 167. II. *P. Trigla* - 167. III. *P. platyptera* - 167. IV. *D. lucultris* - 167. V. *D. grandis* - 167.

gr. n. Ehrenberg.

gest. v. C. E. V. K.

**BLANK  
PAGE**



I. VI. DIGLENA. VII. VIII. TRIARTHRA.

I. *D. forcipata* - 1/8" II. *D. aurita* - 1/12" III. *D. cutellina* - 1/16" IV. *D. conura* - 1/12" V. *D. capitata* - 1/8"  
 VI. *D. caudata* - 1/16" VII. *T. longilata* - 1/12" VIII. *T. mylacinia* - 1/12"

**BLANK  
PAGE**



I. RATTULUS. II. V. DISTEMMA. VI. TRIOPHTHALMUS. VII. IX. EOSPHORA.  
 X. XI. CYCLOGLENA. XII. XIII. THEORUS.

I. R. *lunaris* - 1/32" II. D. *Forficula* - 1/16" III. D. *Setigerum* - 1/16" IV. D. *marinum* - 1/16" V. D. *forcipatum* - 1/32"  
 VI. T. *strobilatis* - 1/32" VII. E. *Vajus* - 1/32" VIII. E. *digitata* - 1/32" IX. E. *elongata* - 1/32" X. C. *Lupus* - 1/32"  
 XI. C? *elegans* - 1/16" XII. TH. *vernalis* - 1/16" XIII. TH. *uncinatus* - 1/32"

**BLANK  
PAGE**





I. III. LEPADELLA. IV. VI. MONOSTYLA. VII. MASTIGOCERCA. VIII. X. EUCHLANIS.

I. L. ovalis 150 μ. I. marginata 140 μ. I. Salpina 50 μ. M. cornuta 160 μ. M. quadridentata 160 μ. M. linearis 50 μ. VII. M. curvata 50 μ.

VIII. E. triquetra 140 μ. IX. E. Hornemannii 130 μ. X. E. Luna 50 μ.

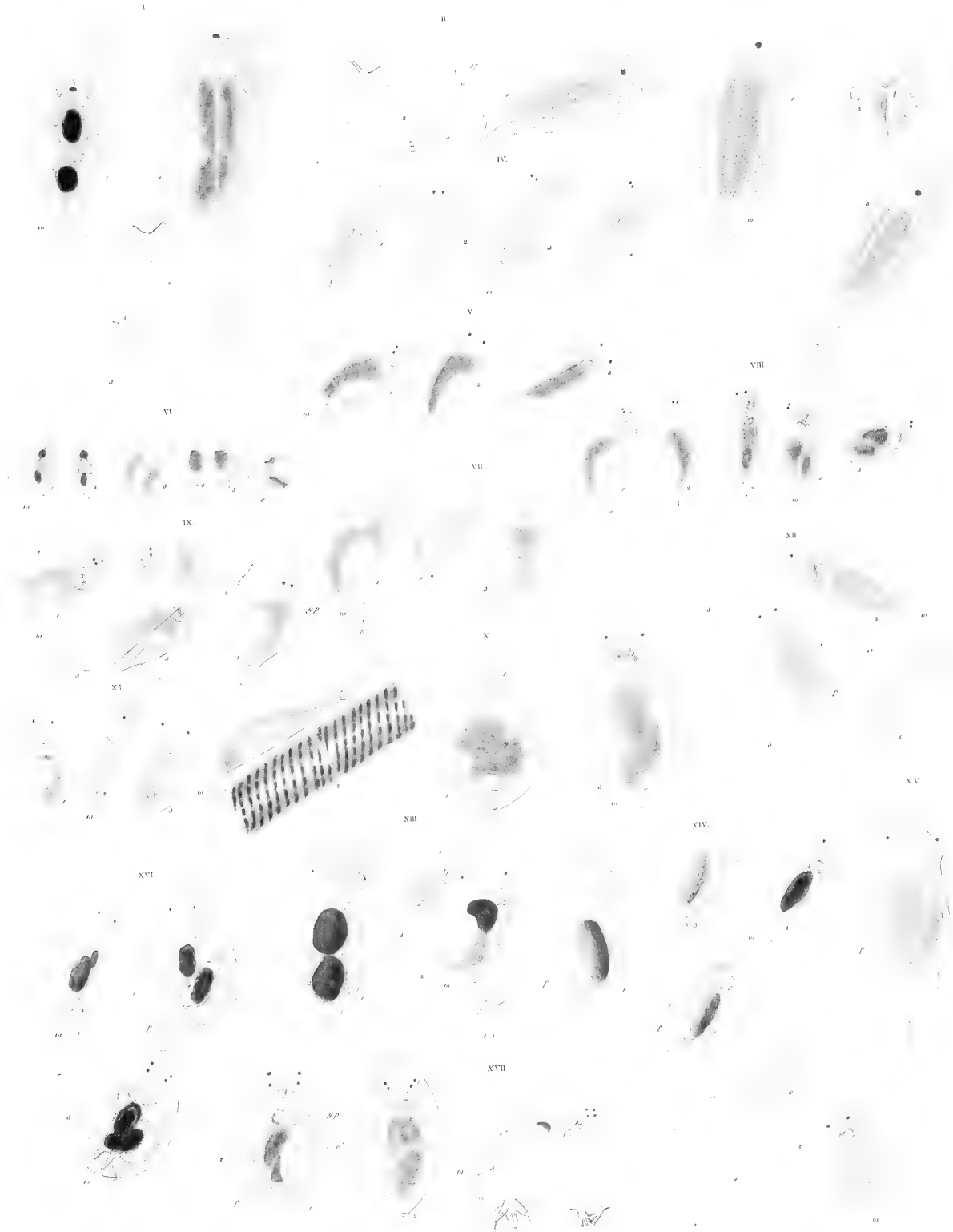
**BLANK  
PAGE**



I-III. EUCHLANIS. IV-IX. SALPINA.

I. *E. macrura* (12) II. *E. dilatata* (13) III. *E. lycopus* (14) IV. *S. macronata* (15) V. *S. spinigera* (16)  
 VI. *S. ventralis* (17) VII. *S. redana* (18) VIII. *S. brevifurca* (19) IX. *S. bicarinata* (20)

**BLANK  
PAGE**



I, III. DINOCHARIS. IV, V. MONURA. VI, IX. COLURUS. X, XII. METOPIDIA. XIII, XV. STEPHANOPS. XVI, XVII. SQUAMELLA.

I. *D. Pocillum* - 1/60. II. *D. tetractis* - 1/60. III. *D. paupera* - 1/60. IV. *M. Colurus* - 1/30. V. *M. dulcis* - 1/30. VI. *C. uncinatus* - 1/60. VII. *C. biculpidatus* - 1/30. VIII. *C. caudatus* - 1/30. IX. *C. dellexus* - 1/30. X. *M. Lepadella* - 1/30. XI. *M. acuminata* - 1/30. XII. *M. triptera* - 1/30. XIII. *ST. lamellaris* - 1/30. XIV. *ST. muticus* - 1/30. XV. *ST. cirratus* - 1/30. XVI. *SQ. Bractea* - 1/30. XVII. *SQ. oblonga* - 1/30.

gez. v. Ehrenberg

gest. v. C.F. Weber

**BLANK  
PAGE**



I. CALLIDINA II. HYDRIAS III. TYPHLINA IV-VIII. ROTIFER.

I. *C. degans* 1/6. II. *H. cornigera* 1/6. III. *T. viridis* 1/6. IV. *R. vulgaris* 1/2. V. *R. citrinus* 1/2. VI. *R. erythraeus* 1/6.  
 VII. *R. macrurus* 1/6. VIII. *R. tardus* 1/6.

**BLANK  
PAGE**





I. ACTINURUS. II. MONOLABIS. III. PHILODINA.

*Actinurus* 1. *M. conica* 2. *M. gracilis* 3. *PH. cythrophthalma* 4. *PH. refoeta*  
*PH. retorta* 5. *PH. macrotyle* 6. *PH. externa* 7. *PH. aculeata* 8. *PH.*  
*megastrotcha* 9.

gest. v. Cuvand

**BLANK  
PAGE**



NOTEUS. II. ANURAEA.

I. *N. quadricornis*, 1860. II. *N. quadridentata*, 1860. III. *N. Squamula*, 1860. IV. *N. falcata*, 1860. V. *N. curvicornis*, 1860. VI. *N. biformis*, 1860. VII. *N. biformis*, 1860. VIII. *N. biformis*, 1860. IX. *N. biformis*, 1860. X. *N. biformis*, 1860. XI. *N. biformis*, 1860. XII. *N. biformis*, 1860. XIII. *N. biformis*, 1860. XIV. *N. biformis*, 1860. XV. *N. biformis*, 1860.

des. & lith. by

des. & lith. by

**BLANK  
PAGE**



BRACHIONUS.

1. *B. Pala* - 157. 2. *B. amphicros* - 167. 3. *B. arccolaris* - 167. 4. *B. rubens* - 167. 5. *B. Mülleri* - 167. 6. *B. brevilpinus* - 167.

**BLANK  
PAGE**



I. III. BRACHIONUS. IV. VI. PTERODINA.

I. *B. Bakeri* 1867. II. *B. polyacanthus* 1867. III. *B. militaris* 1867. IV. *PT. Pulana* 1867. V. *PT. elliptica* 1867. VI. *PT. clypeata* 1867.

in a. Edwards

from C. P. Baker

**BLANK  
PAGE**



