

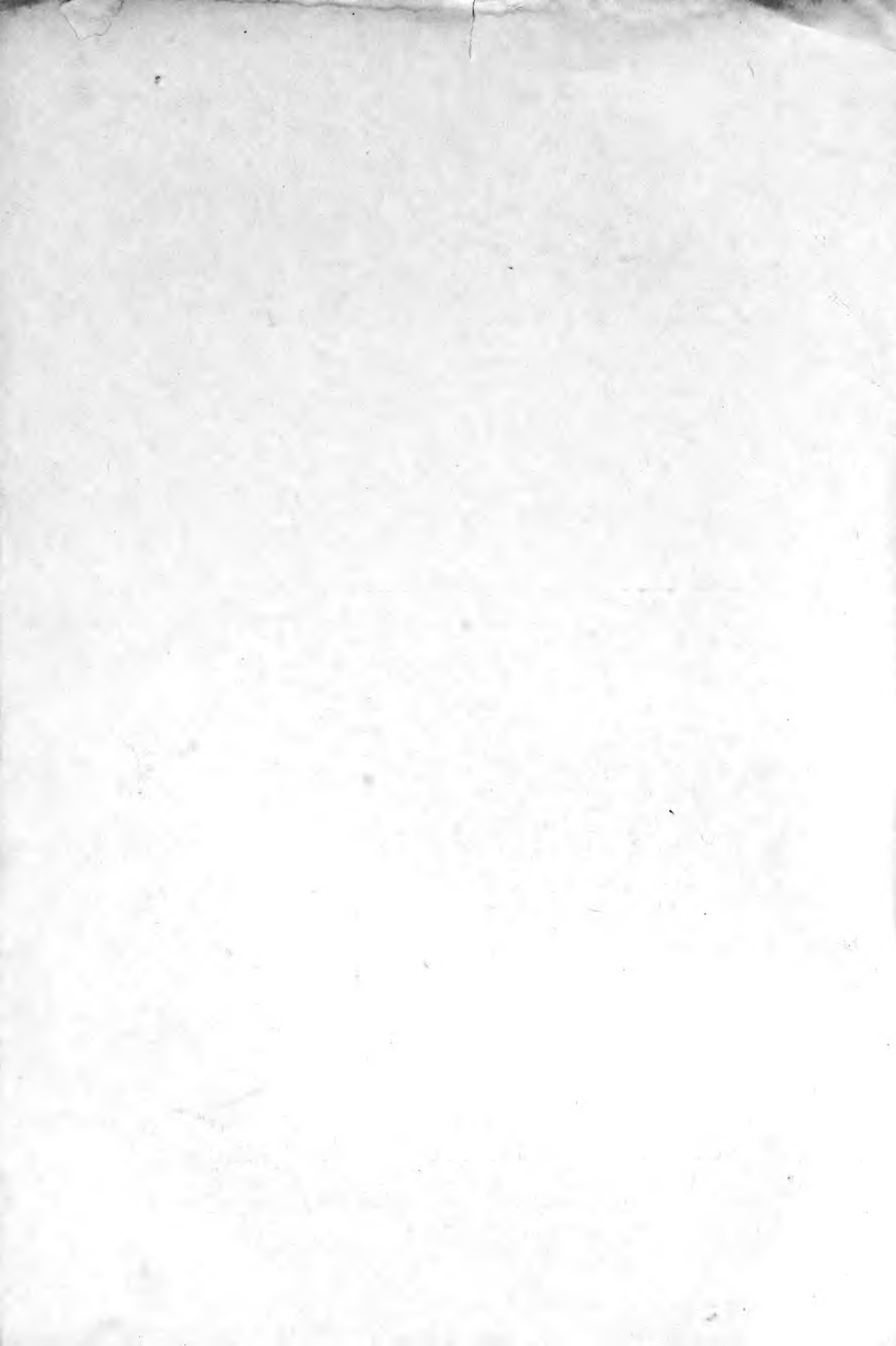


EVERGREENS

for

Spring and Fall
Planting

J. W. Adams Nursery Company
Springfield, Massachusetts





Evergreen Planting

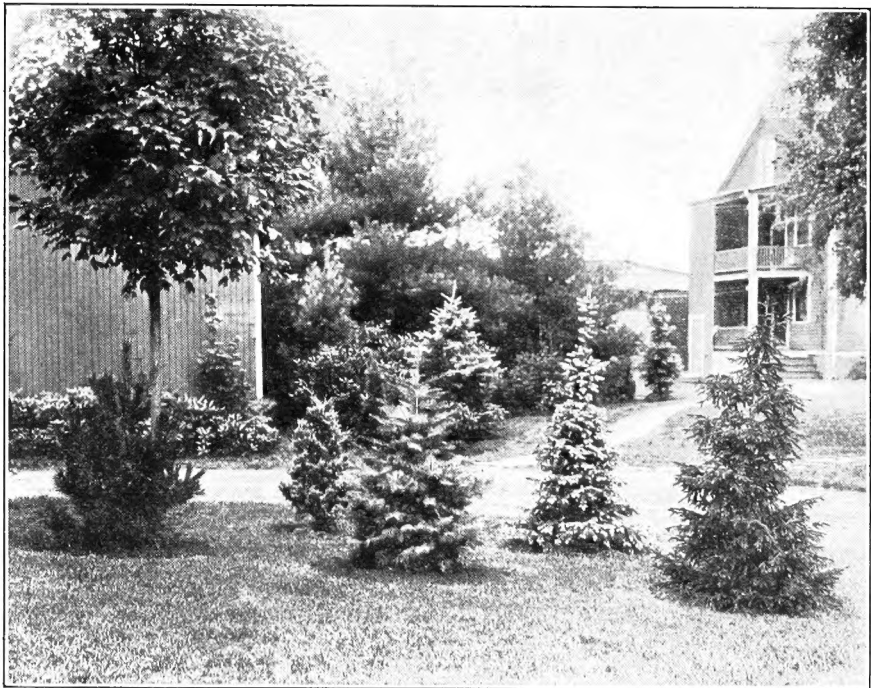


IN a comparatively few years the value of evergreens for landscape planting has been so effectively demonstrated that no planting today seems complete without their use. So many new varieties have come into notice which have proved desirable that their use has been greatly broadened.

The effect of many shades of green on the landscape during the winter months has added much to their popularity.

They need not be used alone, as they combine well with many flowering shrubs, especially those producing berries for winter effect, which mingle well with the evergreens.

Their use is so effective for foundation or individual planting on the lawn that no home seems complete without them.





Pyramid Arborvitæ. Daphne Cneorum Border

ABIES. See FIR.

Arborvitæ — Thuya

AN exceptionally valuable group of evergreens for formal decorating, comprising a large variety of various types of growth and range of coloring in foliage. Adaptable for light soils as well as heavy.

AMERICAN ARBORVITÆ. *Thuya occidentalis.* Upright growing; loosely pyramidal.

DOUGLAS' PYRAMIDAL ARBORVITÆ. *Thuya occidentalis douglasi pyramidalis.* Pyramidal variety with slender branches.

GEORGE PEABODY ARBORVITÆ. *Thuya occidentalis lutea.* A golden leaved variety of American Arborvitæ.

GLOBE SHAPED ARBORVITÆ. *Thuya occidentalis globosa.* Dwarf globe shaped tree of extremely dwarf habit.

GOLD TIPPED ARBORVITÆ. *Thuya occidentalis elegantissima.* Erect growing tree of medium height with the ends of each branch tipped with yellow.

PYRAMIDAL ARBORVITÆ. *Thuya occidentalis pyramidalis.* Very erect and compact columnar growth, similar to that of the Red Cedar. Invaluable in foundation and mass planting.

Chamæcyparis. See Relmopora

RIVERS' ARBORVITÆ. *Thuya occidentalis riversi.* A broad, slightly pointed tree with dense foliage of deep green.

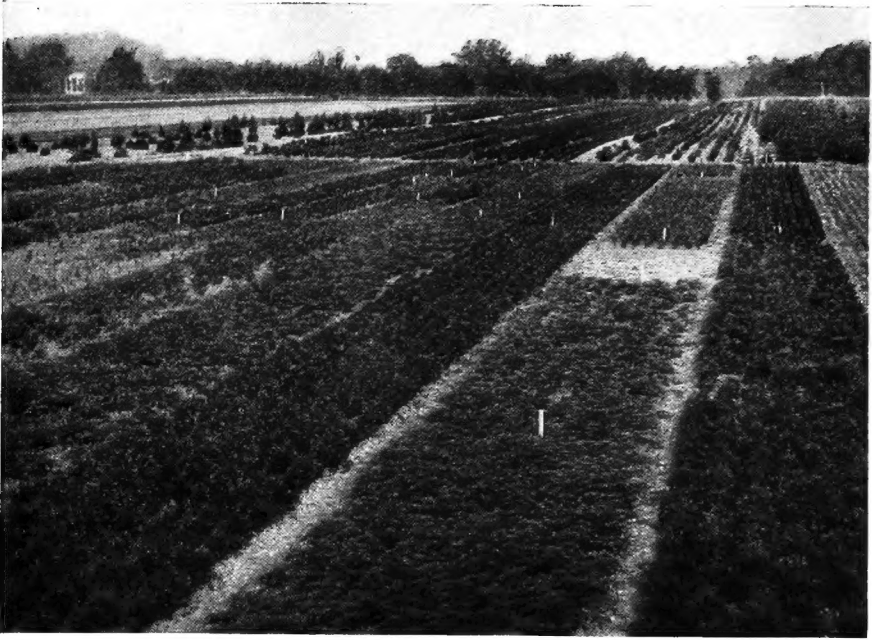
ROSENTHAL ARBORVITÆ. *Thuya occidentalis rosenthali.* Very erect pyramidal habit; medium in height and deep green color.

SIBERIAN ARBORVITÆ. *Thuya occidentalis wareana.* A very hardy sort with heavy deep green foliage and erect growth.

SPIRE-LIKE ARBORVITÆ. *Thuya occidentalis spirelis.* Spirelike in growth; of attractive green color.

VERVÆNE'S ARBORVITÆ. *Thuya occidentalis vervæneana.* A broad conical tree; extremely hardy. The foliage varies from light gray green to slightly yellowish green.

WOODWARD'S GLOBE ARBORVITÆ. *Thuya occidentalis woodwardi.* Strong growing, globular shaped dwarf evergreen with bright green foliage.



Field of Small Evergreens

Firs — Abies

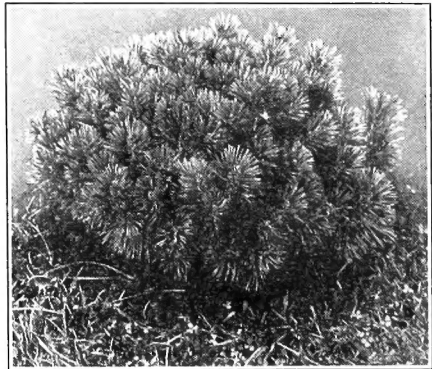


Concolor Fir

CONCOLOR FIR. *Abies concolor*. A rapid growing tree of majestic proportions when mature. The color varies from light green to almost blue. One of our finest specimen trees.

NIKKO OR JAPANESE FIR. *Abies homolepis (brachyphylla)*. A rapid growing tree with more open growth than Concolor. Needles of dark green, silvery underneath.

DOUGLAS FIR. *Pseudotsuga douglasi (taxifolia)*. Large, rapid growing tree forming a dense pyramid. Foliage soft reegn, almost bluish.



Dwarf Mountain Pine



Hemlock in the Nursery

Hemlock — *Tsuga*

Considered by many to be our most graceful evergreen. Extremely popular for hedges and screens, also for specimen planting it has few equals.

COMMON HEMLOCK. *Tsuga canadensis*. Grows to large size or can be trimmed into a low formal tree. It does well in partial shade, but when grown

in full sunlight it produces its finest effects.

CAROLINA HEMLOCK. *Tsuga caroliniana*. Graceful, deep green tree.

Juniper — *Juniperus*

Many valuable aids to landscaping are found among the Junipers with their varied forms and colors. Among them will be found the severely erect and formal as well as spreading and creeping types, and between these extremes the gracefully upright forms with drooping or fountain like branches. Their use in all kinds of planting is almost indispensable.

CHINESE JUNIPER. *Juniperus chinensis*. Erect columnar tree with gray green foliage.

SILVER TIPPED JUNIPER. *Juniperus chinensis argentea*. A compact growing Chinese Juniper with deep green foliage, occasionally tipped with silver.

GOLDEN PROSTRATE JUNIPER. *Juniperus prostrata aurea douglasi*. A slow spreading variety with distinct golden yellow foliage.

GREEK JUNIPER. *Juniperus excelsa stricta*. Very compact, conical plant giving the appearance of having been trimmed. The foliage is gray green, almost blue, which turns to steel blue color in the winter. Very valuable for box work.

IRISH JUNIPER. *Juniperus communis hibernica*. Very slender growing tree of medium height. Color light bluish green.

PFITZER'S JUNIPER. *Juniperus chinensis pfitzeriana*. A graceful, broad, upright cedar of bluish green color.

PROSTRATE JUNIPER. *Juniperus canadensis*. Very low spreading variety of rapid growth, of a bluish green color. Excellent for border planting.

RED CEDAR. *Juniperus virginiana*. Native pyramid or columnar Juniper. Valuable in plantings where height is needed to produce effect.

SCHOTT'S RED CEDAR. *Juniperus virginiana schottii*. Similar to the above but of a deeper green color.

SAVIN JUNIPER. *Juniperus sabina*. Vase-like in growth, of deep green color; good for borders and rock gardens.

SWEDISH JUNIPER. *Juniperus communis suecica*. A compact, upright variety similar to the Irish Juniper in style, but somewhat broader and of a lighter color.

TAMERISK JUNIPER. *Juniperus tamariscifolia*. A very prostrate variety of a beautiful green color and handsome foliage.



Pachysandra used as a Border for Evergreen Planting

PICEA. See **SPRUCE**

Pine — Pinus

Vigorous growing evergreens, best adapted for mass grouping and for screens.

Some varieties adapt themselves to specimen planting and others for low spreading effects.

AUSTRIAN PINE. *Pinus nigra*. Extremely massive in habit of growth. Useful for crowded localities.

DWARF MOUNTAIN PINE. *Pinus montanamughus*. Very compact, regular, spreading tree, making a very formal plant.

JACK PINE. *Pinus banksiana*. Rapid grower with open habits. Desirable for poor soil and natural effects.

JAPANESE RED PINE. *Pinus densiflora*. Rapid growing tree of light green color from Japan, producing along its branches "candles" of pinkish white in the spring.

RED PINE. *Pinus resinosa*. Extremely fast growing variety of open habits and erect growth. Long deep green needles.

SCOTCH PINE. *Pinus sylvestris*. Somewhat like Austrian Pine with shorter needles of silvery green.

SWISS MOUNTAIN PINE. *Pinus montana*. Low spreading tree of dense habits of growth.

WHITE PINE. *Pinus strobus*. Common pine of New England, especially desirable for mass planting and forestry work.



Evergreen Balled for Shipping

Retinospora — Chamæcyparis

Japanese evergreen resembling *Arborvitæ*. Many interesting varieties are included, with broad range of colors. Some varieties require protected locations to prevent winter injury.

MOSS OR SILVER RETINOSPORA.

Chamæcyparis pisifera squarrosa. Foliage soft and feathery; of silver or steel gray color.

PEA-FRUITED RETINOSPORA.

Chamæcyparis pisifera. Branches are slender and drooping. Foliage light green. Requires shearing where compact plants are desired.

GOLDEN PEA-FRUITED RETINOSPORA.

Chamæcyparis pisifera aurea. Habits the same as above except in color, which is yellow or golden.

PLUME-LIKE RETINOSPORA.

Chamæcyparis pisifera plumosa. Very light, graceful foliage of somewhat more dense growth than *pisifera*. Makes a very symmetrical pyramidal tree.

GOLDEN PLUME-LIKE RETINOSPORA.

Chamæcyparis pisifera plumosa aurea. Yellow in color but otherwise the same as *plumosa*.

THREAD-BRANCHED RETINOSPORA.

Chamæcyparis pisifera filifera. Broad, conical tree with graceful thread-like branches which give the plant a fountain-like appearance.

Spruce — Picea

One of the best known group of evergreens. Used extensively for specimens and for screens and windbrakes. Most of the varieties are extremely rapid in growth and very formal in appearance.



Arborvitæ used in Tubs

ALBERTA SPRUCE.

Picea Canadensis Albertiana. A very compact, conical shaped tree of extremely slow growth. Color gray green.

COLORADO SPRUCE.

Picea pungens. Native of the Rocky Mountains. Very symmetrical in shape with color varying from light green to blue.

COLORADO BLUE SPRUCE.

Picea pungens glauca. Selected trees of the above with foliage of varying shades of blue.

ENGLEMANN SPRUCE.

Picea engelmanni. Similar to Colorado Spruce but with shorter needles.

KOSTER BLUE SPRUCE.

Picea pungens kosteri. Grafted form of Colorado Spruce, of extremely blue color. In great demand for specimens.

NORWAY SPRUCE.

Picea excelsa. Our common spruce; best known as the "Christmas Tree".

PYGMY SPRUCE.

Picea excelsa pygmaea. An exceedingly dwarf variety of Norway Spruce, which forms a beautiful pyramidal tree of extremely compact growth.

WHITE SPRUCE.

Picea canadensis. A tall growing variety with shorter needles than Norway Spruce and of light gray green color. Valuable for veranda box planting.



Japanese Yews

Yews — Taxus

No class of evergreens are more effective in a planting than the yews, with their rich and luxuriant foliage. Of extreme hardiness they adapt themselves to many unfavorable situations. Rather slow in growth, withstanding shearing. Excellent for specimen group or hedge planting.

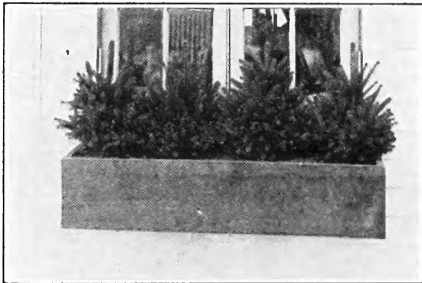
CANADIAN YEWS. *Taxus canadensis.* Native spreading variety, deep green turning to bronze in winter. Does best in partial shade.

JAPANESE YEWS. *Taxus cuspidata.* Medium erect growing variety with spreading habits. Foliage deep green.

DWARF JAPANESE YEWS. *Taxus cuspidata nana (Brevifolia).* Dwarf variety of irregular spreading habits. Very dark green and rich in color.

COMPACT JAPANESE YEWS. *Taxus cuspidata nana compacta.* Similar to the above but more compact and regular in shape.

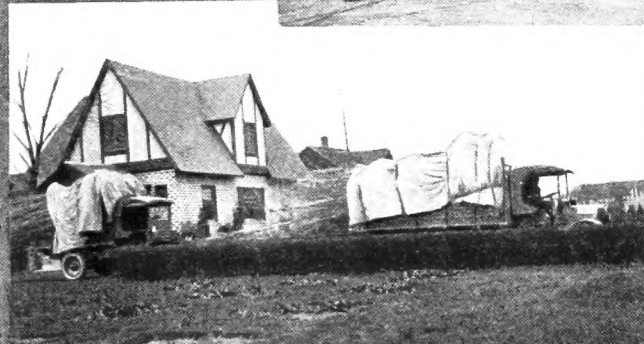
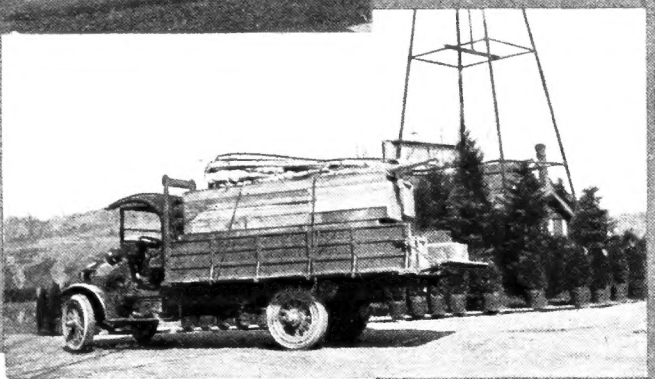
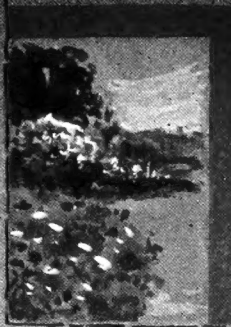
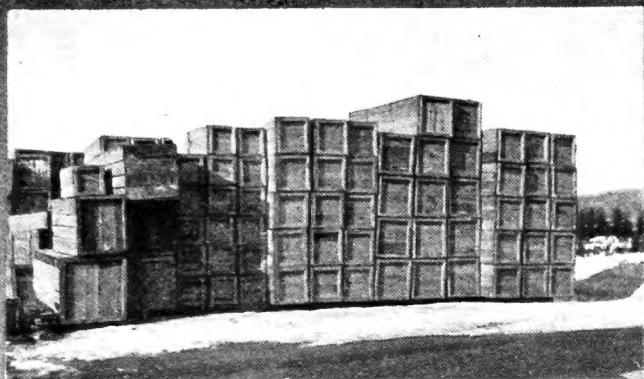
ERECT JAPANESE YEW. *Taxus cuspidata erecta.* Erect growing trees forming beautiful pyramidal specimens of warm green color.



Evergreens for Boxes

As much pleasure can be secured from evergreens planted in boxes during the winter months as from flowering plants in the summer time.

Many varieties adapt themselves to this sort of planting, giving cheer and beauty at a time when most appreciated.



Shipping Equipment



