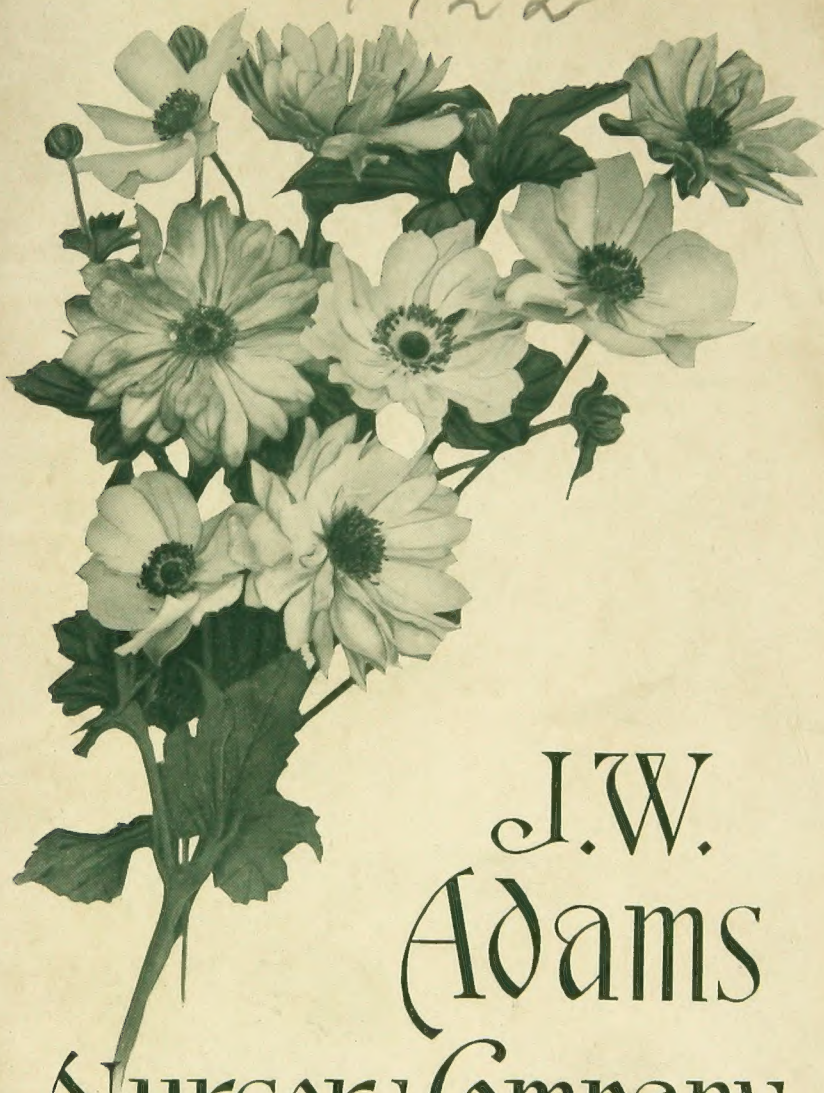


1922

X



J.W.
Adams
Nursery Company
Springfield, Mass.
ESTABLISHED 1849

Announcement

AFTER MARCH 15th our office will be located at our Nurseries on East Main street, Westfield, where we have erected modern storage and packing houses to handle our ever increasing business.

Customers can reach us by phone on either Springfield or Westfield exchanges.

Visitors are always welcome.

Information

Purchasers should plainly state by what route their goods are to be conveyed. Otherwise we will forward them by the best in our opinion; but we will not be responsible in any way for delays or damage in transit, or loss in after-cultivation.

Automobile Delivery:—Orders of considerable size we can deliver by automobile trucks within a radius of fifty miles. Stock so shipped will arrive quickly and in as perfect condition as when it leaves the nursery. **Cartage charges** will depend on the size of the load and distance to be hauled.

Any errors committed by us will be cheerfully rectified if notice is given immediately.

Prices:—The articles on the following list will be furnished at the annexed price only when the quantity specified shall be taken. **Fifty** at the **hundred** rate and **five** at the **ten** rate.

Guarantee. We give no warranty, express or implied, as to quality, description, productiveness, or any other matter of any nursery stock that we sell.

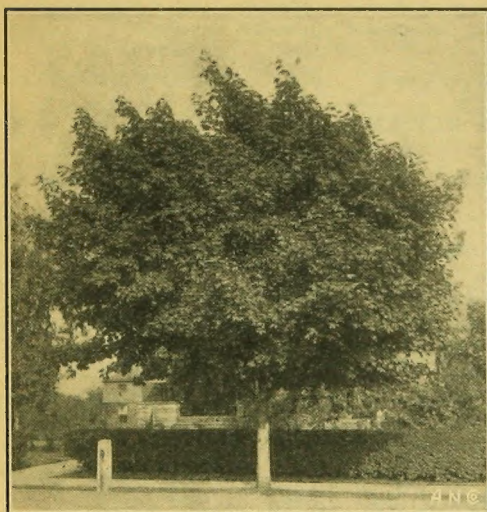
No complaints will be considered that are not made within ten days after receipt of stock.

Address All Correspondence to

J. W. ADAMS NURSERY COMPANY
SPRINGFIELD, MASS.

ORNAMENTAL DEPARTMENT

SHADE AND ORNAMENTAL TREES



Norway Maple

IN this section are included all upright and drooping trees. Trees useful for street and avenue planting, where shade is the main requirement, consist of a large variety, but not all shade trees are desirable for this purpose even when they attain large size and, in some instances, such drooping trees as Weeping Willow, Cut-leaved Maple and Birches are debarred by some City Foresters, except in wide tree belts or on

terraces where pendent branches do not interfere with travel.

The most desirable list of trees for this purpose would include American Elm, Horse Chestnut, Linden, Norway, Rock and Silver Maples; Pin, Red and Scarlet Oaks; Salisburia and the Tulip Tree. Where an immediate effect is desired, Carolina Poplar may be used alternately with some of the long lived trees, but for permanence this tree is not desirable.

For Parks, Cemeteries and Large Estates the list is larger, and all varieties listed below should be useful for shade and decorative effects. For purposes of screening, the Poplars, Willows and Lindens find a most useful purpose and readily adapt themselves.

Trees mainly desirable for Flowering Effect include Catalpa Speciosa, Flowering Crabs, Dogwoods, Hawthorns, Pink and White Horse Chestnuts, Judas Tree, Kolreuteria, Magnolis, Tulip Tree and White Fringe.

In many of the varieties of trees given below, we can furnish larger sizes than are noted.

DECIDUOUS TREES

ACER PLATANOIDES

Norway Maple

Round headed tree with dark green foliage. Largely used for street and shade.

	Each	Per 10	Per 100
8 to 10 ft.	\$1.75	\$15.00	\$140.00
10 to 12 ft.	2.00	18.00	165.00
12 to 14 ft.	2.50	22.50	210.00
14 to 16 ft.	3.50	30.00	

A. PLATANOIDES SCHWEDLERI Schwedler's Purple Maple

Purple or red leaved Norway Maple. The foliage darkens to bronze green as the season advances.

6 to 8 ft.	2.00	18.00	
8 to 10 ft.	2.50	22.50	
10 to 12 ft.	3.50		

A. PLATANOIDES REITENBACHI Reitenbach's Maple

A similar variety to the above but with darker foliage.

8 to 10 ft.	2.00		
10 to 12 ft.	3.00		

A. PALMATUM

Japanese Maple

A dwarf bushy tree with delicately cut foliage.

2 to 3 ft.	1.50		
------------	------	--	--

A. PALMATUM VAR ATROPURPUREUM

Blood-leaved Japan Maple

12 to 18 inches	1.50		
18 to 24 inches	2.50		

A. PSEUDOPLATANUS

Sycamore Maple

A medium sized tree with deep green foliage.

12 to 14 ft.	2.50		
--------------	------	--	--

A. RUBRUM

Red or Scarlet Maple

8 to 10 ft.	2.25		
10 to 12 ft.	3.00		

A. SACCHARINUM (DASYCARPUM)

Silver Maple

A very rapid growing maple of spreading habits. Excellent for sandy soil. Foliage silvery on under side.

8 to 10 ft.	1.25	12.00	100.00
10 to 12 ft.	1.60	13.50	125.00
12 to 14 ft.	2.00	16.50	135.00
14 to 16 ft.	3.00	25.00	
16 to 20 ft.	4.00 to 5.00		

A. SACCHARINUM VAR. WEIRI Weir's Cut-leaved Maple

A drooping tree with finely cut foliage. One of the finest lawn trees

8 to 10 ft.	1.50	13.50	120.00
10 to 12 ft.	2.00	18.00	150.00
12 to 14 ft.	3.00	25.00	200.00
14 to 16 ft.	4.50	40.00	
16 to 18 ft.	6.00	50.00	
18 to 20 ft.	7.50	65.00	

Extra large trees 4 to 6 inches in diameter \$10.00 to \$25.00 each.

A. SACCHARUM**Sugar or Rock Maple**

Considered by many the most stately of all shade trees.
Planted extensively on the road sides.

	Each	Per 10	Per 100
6 to 8 ft.	1.25	10.00	90.00
8 to 10 ft.	1.50	13.50	120.00
10 to 12 ft.	2.00	18.00	150.00
12 to 14 ft.	2.50	22.50	200.00
14 to 16 ft.	3.00	27.00	

AESCULUS HIPPOCASTANUM**Common Horse Chestnut**

One of the largest flowering trees. Desirable for moist soils.

4 to 6 ft.	1.50	15.00	
6 to 8 ft.	2.00	18.00	
8 to 10 ft.	2.25	20.00	
12 to 14 ft.	3.00 to 5.00		

A. CARNEA (RUBICUNDA)**Red-Flowered Horse Chestnut**

Attractive light red or pink flowers. Medium size.

4 to 5 ft.	2.50		
5 to 6 ft.	3.00		

A. MACROSTACHYA (PAVIA)**Dwarf Horse Chestnut**

A shrubby tree with white flowers.

3 to 4 ft.	2.00		
------------	------	--	--

ASH See Fraxinus**BETULA ALBA****White Birch**

Fine for planting among evergreens.

6 to 8 ft.	1.00		
8 to 10 ft.	1.25		
10 to 12 ft.	2.00		

B. ALBA LACINIATA**Cut-leaved Weeping Birch**

A graceful drooping tree with finely cut foliage and white bark.

6 to 8 ft.	1.75		
8 to 10 ft.	2.50		
10 to 12 ft.	3.00		

B. ALBA PYRAMIDALIS**Columnar Birch**

A white birch with close clinging branches, giving a column-like effect.

6 to 8 ft.	2.00		
8 to 10 ft.	2.50		

B. NIGRA (RUBRA)**Red Birch**

A tall growing tree suitable for moist places.

8 to 10 ft.	2.00		
10 to 12 ft.	2.50		

B. PAPYRIFERA**Canoe or Paper Birch**

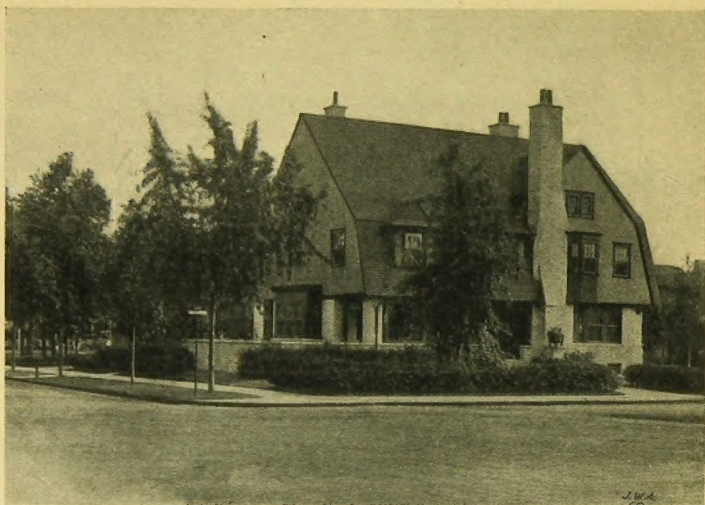
A vigorous tree with glistening white bark.

4 to 6 ft.	1.50	12.50	
6 to 8 ft.	1.75	15.00	

CARPINUS BETULA PYRAMIDALIS**Pyramid Hornbeam**

A close growing tree after the style of the Lombardy Poplar.

4 to 5 ft.	2.00		
------------	------	--	--



Cut-leaf Maple and Iboia Privet Hedge

CATALPA BUNGEII

Umbrella Catalpa

Dense round-headed tree on stems 5 to 6 feet high.

	Each	Per 10	Per 100
2 year heads	2.50		

C. SPECIOSA

Hardy, quick-growing tree with large leaves. In June the branches are covered with racemes of sweet-scented white flowers.

6 to 8 ft.	1.25
8 to 10 ft.	1.50
10 to 12 ft.	2.00

CERCIDIPHYLLUM JAPONICUM

Medium sized lawn tree with beautifully tinted foliage changing as the season advances.

4 to 5 ft.	1.75	15.00
5 to 6 ft.	2.50	21.00
6 to 7 ft.	3.00	

CLADRISTIS LUTEA (TINCTORIA)

Yellow Wood

Medium to large tree, producing abundance of white flowers in late spring.

6 to 7 ft.	2.50
------------	------

CORNUS FLORIDA

White Flowered Dogwood

Dwarf bushy tree. Large white flowers in early spring.

2 to 3 ft.	.60	5.00
3 to 4 ft.	.75	7.00
4 to 5 ft.	1.25	

C. FLORIDA RUBRA	Pink Flowered Dogwood		
Like the above, but flowers are pink.		Each	Per 10 Per 100
2 to 3 ft.		1.00	
3 to 4 ft.		1.50	
C. OXYCANTHA PINK	Pink Hawthorn		
A pink flowering sort.			
4 to 5 ft.		1.50	13.50
5 to 6 ft.		1.75	15.00
CRATAEGUS OXYCANTHA WHITE	White Hawthorn		
Covered with clusters of small double white flowers in June.			
A dwarf tree.			
4 to 5 ft.		1.50	13.50
5 to 6 ft.		1.75	15.00
CRAB, FLOWERING	See Malus		
DIRCA PALUSTRIS	Leatherwood or Moosewood		
An interesting dwarf tree. Blossoms of bright yellow along branches before leaves appear.			
4 to 5 ft.		1.50	12.00
DOGWOOD	See Cornus Florida		
FAGUS SYLVATICA	European Beech		
Compact growing tree of fine shape and holding the leaves until late winter.			
4 to 5 ft.		2.00	
F. SYLVATICA VAR. PURPUREA	Purple-Leaved Beech		
Of similar habits of the above, but with foliage of rich purplish color.			
3 to 4 ft.		2.00	18.00
4 to 5 ft.		2.50	21.00
5 to 6 ft.		4.00	35.00
FRAXINUS AMERICANA	American White Ash		
A quick growing street tree of large size. Foliage turning beautifully in the fall.			
8 to 10 ft.		1.50	12.00
10 to 12 ft.		2.00	15.00
GINKGO BILOBA OR SALISBURIA	Maiden Hair Tree		
Foliage resembling maiden hair fern. Growth rather slender but more spreading with age. A fine avenue tree.			
8 to 10 ft.		2.00	
10 to 12 ft.		3.00	
KOELRUTERIA PANICULATA	Varnish Tree		
Chinese tree bearing yellow flowers in July, followed by seed pods.			
4 to 5 ft.		1.00	9.00
5 to 6 ft.		1.25	10.00
6 to 7 ft.		1.50	12.00
LINDEN	See Tilia		
LIRIODENDRON TULIPIFERA	Tulip Tree		
Very rapid growing tree bearing yellowish green flowers similar to the Magnolia.			
5 to 6 ft.		1.00	
6 to 8 ft.		1.50	
7 to 9 ft.		2.00	

MAGNOLIA SOULANGEANA		Chinese Magnolia	
A shrubby dwarf tree covered with white, shading to purplish flowers before the leaves appear.			
	Each	Per 10	Per 100
2 to 3 ft.	6.00		
3 to 4 ft.	7.50		
M. STELLATA OR HALLEANA		Star Magnolia	
Low spreading tree with fragrant double star-like blossoms in April.			
2 to 3 ft.	7.50		
MALUS IOENSIS		Bechtel's Crab	
Fragrant large double flowers of a delicate pink color. Very ornamental.			
2 to 3 ft.	1.00	9.50	
3 to 4 ft.	1.25	11.00	
4 to 5 ft.	2.00		
5 to 6 ft.	3.50		
MAIDENHAIR TREE	See Ginkgo		
MAPLE	See Acer		
MOUNTAIN ASH	See Sorbus		
MORUS ALBA		White Mulberry	
Rapid of growth. Planted largely for birds.			
4 to 6 ft.	1.00		
6 to 8 ft.	1.75		
M. TARTARICA VAR. PENDULA		Tea's Weeping Mulberry	
Commonly called the umbrella shaped mulberry.			
One year heads	2.00		
Two year heads	3.00		
Three year heads	3.50		
OAK	See Quercus		
POPLAR ALBA		White Poplar	
Quick growing spreading tree with silvery white foliage.			
6 to 8 ft.	.75	6.00	
8 to 10 ft.	1.25	10.00	
10 to 12 ft.	2.00		
P. ALBA PYRAMIDALIS		Bolleana Poplar	
Columnar in shape with silvery foliage.			
8 to 10 ft.	1.50	12.00	
10 to 12 ft.	2.00		
P. DELTOIDES MONILIFERA		Carolina Poplar	
Tall spreading tree. Invaluable for quick shade or screen.			
8 to 10 ft.	1.00	8.00	60.00
10 to 12 ft.	1.35	10.00	75.00
12 to 14 ft.	1.75	13.50	100.00
14 to 16 ft.	2.00	15.00	
P. NIGRA ITALICA		Lombardy Poplar	
Erect columnar growth, used extensively for screens and breaks. Can be trimmed as a formal tall hedge.			
6 to 8 ft.	.75	6.00	36.00
8 to 10 ft.	1.00	8.00	60.00
10 to 12 ft.	1.25	10.00	75.00
12 to 14 ft.	1.75	15.00	

PRUNUS PISSARDI

Reddish purple foliage.

Purple leaved Plum

4 to 5 ft.

Each
1.00

Per 10 . Per 100

QUERCUS COCCINEA

Symmetrical tree with gorgeous coloring in fall.

Scarlet Oak

8 to 10 ft.

3.00

10 to 12 ft.

4.00



Pin Oak

Q. PALUSTRIS

Pin Oak

Stately spreading tree of graceful pyramidal habits. The leaves are deeply cut and beautifully tinted in the fall, which remain late into winter.

6 to 8 ft.

2.00

16.50

150.00

8 to 10 ft.

2.50

21.00

180.00

10 to 12 ft.

3.00

27.00

225.00

12 to 14 ft.

4.00

36.00

14 to 18 ft.

5.00 to 10.00

Q. RUBRA

Red Oak

A spreading symmetrical tree with deep green leaves turning to red in fall.

8 to 10 ft.

3.00

24.00

10 to 12 ft.

3.50

30.00

12 to 14 ft.

4.00

36.00

SALISBURIA See Ginkgo**SALIX BLANDA****Wisconsin Weeping Willow**

Hardy drooping or weeping willow.

	Each	Per 10	Per 100
6 to 8 ft.	.75	5.00	
8 to 10 ft.	1.00	7.50	

S. ELEGANTISSIMA**Thurlow's Willow**

Erect tree with graceful pendant branches.

6 to 8 ft.	.75	6.00	
8 to 10 ft.	1.00	7.50	
10 to 12 ft.	1.25	10.00	
12 to 14 ft.	1.50	12.50	

S. PENTANDRA**Laurel-leaved Willow**

Broad shiny green leaves. Tree erect and somewhat spreading.

6 to 8 ft.	.75	6.00	50.00
8 to 10 ft.	1.00	7.50	60.00
10 to 12 ft.	1.25	10.00	

S. VITELLINA AUREA**Golden Bark Willow**

The bark is bright yellow in winter, giving a pleasing effect in masses.

5 to 6 ft.	.75	6.00	
------------	-----	------	--

SORBUS AUCUPARIA**Mountain Ash**

Bunches of beautiful berries in fall and early winter.

8 to 10 ft.	1.50		
10 to 12 ft.	2.00		
12 to 14 ft.	2.50		
14 to 16 ft.	3.50		

TILIA PLATYPHYLLOS**Broad-leaf Linden**

Rapid growing tree with large leaves.

10 to 12 ft.	2.50	21.00	
12 to 14 ft.	3.00	24.00	
14 to 16 ft.	4.00	36.00	
16 to 18 ft.	5.00		

T. VULGARIS**European Linden**

Valuable street tree of symmetrical rapid growth.

8 to 10 ft.	1.50	12.00	
10 to 12 ft.	2.00	16.50	
12 to 14 ft.	2.50		
14 to 16 ft.	3.50		

TULIP TREE See Liriodendron**ULMUS AMERICANA****American Elm**

Among the best of our shade trees, especially for streets and avenues.

8 to 10 ft.	1.50	12.00	100.00
10 to 12 ft.	2.25	21.00	150.00
12 to 14 ft.	3.00	24.00	

WILLOW See Salix



Evergreens Properly Arrangea to Give a Pleasing Effect

EVERGREEN TREES

In ornamental planting, Evergreen trees excel all others for beautifying new grounds, because the effect is immediate and continuous throughout the year. For hedges and screens, and protection from harsh winds, there are none to question their value. Judiciously planted, using those of the lighter shade in the foreground, with groups and masses of dark foliated varieties in the background, a cheerful, life-like home in winter can be produced from what may have been a bleak, dreary waste.

Evergreens, if properly grown for the purpose, may be transplanted in the spring and in August and September without difficulty; and at other seasons by skillful gardeners. They will grow in a great variety of soils and require less care and culture than deciduous trees. Frequent transplanting in our nurseries produces a vast quantity of roots.

ABIES BRACHYPHYLLA

Nikko or Japanese Fir

Beautiful glossy green foliage silvery underneath. A rapid grower.

	Each	Per 10	Per 100
1½ to 2 ft.	2.00	18.00	
2 to 3 ft.	3.00	24.00	
3 to 4 ft.	4.00	33.00	
4 to 5 ft.	6.00	50.00	
5 to 6 ft.	7.50		

A. CONCOLOR		Silver or White Fir	
	Silvery foliage tree of rapid symmetrical growth. A magnificent tree.		
		Each	Per 10 Per 100
	1½ to 2 ft.	2.00	18.00
	2 to 2½ ft.	3.00	27.00
	2½ to 3 ft.	4.00	36.00
	3 to 4 ft.	5.00	45.00 375.00
	4 to 5 ft.	6.00	50.00 450.00
	5 to 6 ft.	7.00	60.00
	6 to 7 ft.	8.50	
	7 to 8 ft.	10.00	
A. VETCHEII			Vetch's Silver Fir
	Dark green foliage, silver under side.		
	3 to 4 ft.	4.00	36.00
	4 to 5 ft.	5.50	45.00
	5 to 6 ft.	7.00	
ARBOR VITAE	See Thuya		
FIR	See Abies		
HEMLOCK	See Tsuga		
JUNIPER CHINENSIS			Chinese Juniper
	Pyramidal growing evergreen.		
	2 to 3 ft.	2.50	
	3 to 4 ft.	3.50	
J. CHINENSIS VAR. PFITZERIANA			Pfitzer's Juniper
	Spreading tree with graceful pendant branches and pleasing gray green foliage.		
	1½ to 2 ft.	2.50	
	2 to 3 ft.	3.50	
	4 to 5 ft.	7.50	
J. COMMUNIS			Prostrate Juniper
	A low spreading or trailing native variety fine for bordering evergreen groups.		
	12 to 15 in.	1.50	13.50
	15 to 18 in.	1.75	
	1½ to 2 ft.	2.50	
J. COMMUNIS VAR. AUREA			Golden Prostrate Juniper
	A golden variety like the above in habits.		
	12 to 15 in.	1.25	10.00
	15 to 18 in.	1.50	12.00
	1½ to 2 ft.	2.00	18.00
	2 to 3 ft.	2.50	20.00
J. COMMUNIS VAR. SUECICA			Swedish Juniper
	Erect column like tree, very formal in effect.		
	12 to 18 in.	1.00	7.50
	1½ to 2 ft.	1.50	12.00
J. EXCELSA VAR. STRICTA			Greek Juniper
	Compact conical shape shrub. Gray green in summer, turning to steel blue in winter. Fine for boxes.		
	10 to 12 in.	.75	7.00

J. SABINA

Savin Juniper

Low fan-like spreading evergreen.

	Each	Per 10	Per 100
12 to 18 in.	1.50	12.50	
1½ to 2 ft.	2.50		

J. SABINA VAR. TAMERICIFOLIA

12 to 18 in.	1.50
1½ to 2 ft.	2.25

J. VIRGINALIS VAR. GLOBOSA

Globe Juniper

A Japanese variety of low, compact, rounded growth of beautiful green color.

15 to 18 in.	4.00	36.00
1½ to 2 ft.	5.00	



Effective Evergreen Planting

J. VIRGINIANA		Red Cedar	
Tall slender tree indispensable in evergreen plantings.			
		Each	Per 10
			Per 100
	2 to 3 ft.	1.50	12.00
	3 to 4 ft.	3.50	24.00
	4 to 5 ft.	4.00	36.00
	5 to 6 ft.	5.00	48.00
	6 to 7 ft.	6.00	
J. VIRGINIANA VAR. CANNARTI		Tufted Cedar	
Dark green variety.			
	3 to 4 ft.	4.00	
	4 to 5 ft.	5.00	
	5 to 6 ft.	6.00	
J. VIRGINIANA VAR. GLAUCA		Blue Cedar	
A deep silver or blue type.			
	3 to 4 ft.	5.00	
	4 to 5 ft.	6.00	
J. VIRGINIANA VAR. SCHOTTI			
Very light green in color.			
	3 to 4 ft.	4.00	
	4 to 5 ft.	5.00	
	5 to 6 ft.	6.00	
PICEA ALBA		White Spruce	
Compact growing spruce of large size. Color bluish green.			
	1½ to 2 ft.	1.00	
	2 to 3 ft.	1.25	
	3 to 4 ft.	2.25	
	4 to 5 ft.	3.50	
	5 to 6 ft.	4.50	
	6 to 7 ft.	6.00	
P. EXCELSA		Norway Spruce	
Common Spruce.			
	1½ to 2 ft.	.60	5.00
	2 to 3 ft.	1.00	8.50
	3 to 4 ft.	1.50	13.50
	4 to 5 ft.	2.00	18.00
	5 to 6 ft.	2.50	20.00
P. ORIENTALIS		Oriental Spruce	
Dark green pyramidal tree.			
	2 to 3 ft.	1.50	12.00
P. POLITA		Tiger tail Spruce	
Spiky foliage of light green.			
	1½ to 2 ft.	1.50	
P. PUNGENS		Colorado Spruce	
Beautiful green spruce from the Rocky Mountains.			
	1½ to 2 ft.	2.00	
	2 to 3 ft.	3.00	
	3 to 4 ft.	4.00	



Koster's Blue Spruce

P. PUNGENS GLAUCA **Colorado Blue Spruce**
 Foliage of a beautiful silver blue color.

	Each	Per 10	Per 100
1½ to 2 ft.	1.75		
2 to 2½ ft.	2.50		
2½ to 3 ft.	4.00		
3 to 3½ ft.	5.00		
3½ to 4 ft.	6.00		
5 to 6 ft.	11.00		
6 to 7 ft.	13.00		
7 to 8 ft.	15.00		

P. PUNGENS VAR. KOSTERIANA **Koster's Blue Spruce**
 A grafted variety, but more distinct and constant in color.

1½ to 2 ft.	4.00
2½ ft.	6.00
3 ft.	7.50
3½ ft.	8.50
4 ft.	10.00
4½ ft.	11.50
5 ft.	13.50
6 ft.	16.00
7 ft.	18.00

PSEUDOTSUGA DOUGLASII**Douglas Spruce**

Very hardy evergreen with soft velvety foliage. A fast grower and excellent for screens.

	Each	Per 10	Per 100
2 to 3 ft.	2.00		
3 to 4 ft.	3.00	27.00	
4 to 5 ft.	4.50	36.00	
5 to 6 ft.	6.00	54.00	
6 to 7 ft.	7.00		

SPRUCE DOUGLAS

See Pseudotsuga

PINUS AUSTRIACA**Austrian Pine**

A rapid grower with long coarse needles of a beautiful green.

2 to 3 ft.	2.50	21.00	
3 to 4 ft.	3.00	25.00	
4 to 5 ft.	4.00		
5 to 6 ft.	5.00		
6 to 7 ft.	6.00		

P. CEMBRA**Swiss Stone Pine**

Slow growing conical shaped tree.

2 to 2½ ft.	3.50		
-------------	------	--	--

P. MONTANA VAR. MUGHO Mugho or Dwarf Mountain Pine

Slow growing spreading evergreen. Valuable for bordering.

12 to 15 in. spread	1.50	12.00	
15 to 18 in. spread	2.00	18.00	
1½ to 2 ft. spread	2.50	21.00	
2 to 2½ ft. spread	3.00	27.00	
2½ to 3 ft. spread	3.50		

P. RESINOSA**Red Pine**

Extremely rapid growing tree of deep green color. Extensively used for breaks or forestry work.

3 to 4 ft.	2.25	21.00	180.00
4 to 5 ft.	3.00	27.00	250.00
5 to 6 ft.	4.50	40.00	300.00
6 to 7 ft.	5.00	45.00	

P. STROBUS**White Pine**

The best known of all the pines. A quick grower for screens.

2 to 3 ft.		7.00	65.00
3 to 4 ft.	1.50	12.00	100.00
4 to 5 ft.	2.00	18.00	150.00
5 to 6 ft.	2.50	21.00	180.00
6 to 7 ft.	4.00	30.00	250.00
7 to 8 ft.	5.00	40.00	

P. SYLVESTRIS**Scotch Pine**

Rapid grower with coarse foliage of silvery green.

2 to 3 ft.	1.50		
3 to 4 ft.	2.00		
4 to 5 ft.	3.00		

RETINOSPORA FILIFERA**Thread-like Cypress**

Thread like leaves on drooping branches giving a fountain-like effect.

12 to 18 in.	2.00		
1½ to 2 ft.	3.50		

R. PISIFERA		Pea-fruited Cypress	
Broad flat deep green foliage.			
	Each	Per 10	Per 100
1½ to 2 ft.	2.00		
R. PISIFERA VAR. AUBEA		Golden Pea-fruited Cypress	
A golden form of the above.			
1½ to 2 ft.	2.00		
2 to 2½ ft.	2.50		
R. PLUMOSA		Plume-like Cypress	
Valuable for sheared specimen.			
1½ to 2 ft.	1.50		
R. PLUMOSA VAR. AUREA		Golden Plume Cypress	
1½ to 2 ft.	1.50		
TAXUS CANADENSIS		Canadian Yew	
Low spreading border evergreen of dark green color. Very hardy.			
12 to 15 in.	1.50	12.00	
15 to 18 in.	2.00	18.00	150.00
18 to 24 in.	2.50	21.00	
T. CUSPIDATA		Japanese Yew	
A dense erect grower with rich green foliage.			
12 to 18 in.	1.50	13.50	
1½ to 2 ft.	2.50	21.00	
2 to 2½ ft.	3.50	30.00	
2½ to 3 ft.	4.50	40.00	
T. CUSPIDATA VAR. BREVIFOLIA		Spreading Japanese Yew	
A spreading tree of slow growth. Very hardy and effective.			
12 to 15 in.	2.00		
15 to 18 in.	3.50		
THUYA OCCIDENTALIS		American Arbor Vitae	
Valuable for a hedge or individual planting.			
1½ to 2 ft.	.60	5.00	45.00
2 to 3 ft.	1.00	9.00	75.00
3 to 4 ft.	2.00	18.00	
4 to 5 ft.	3.00		
5 to 6 ft.	4.00		
T. OCCIDENTALIS VAR. AUREA		Geo. Peabody Arbor Vitae	
Bright golden form.			
15 to 18 in.	1.50	12.00	
1½ to 2 ft.	2.00	18.00	
2 to 3 ft.	3.00		
T. OCCIDENTALIS VAR. COMPACTA			
Compact slow growing tree of spreading nature.			
1½ to 2 ft.	2.00	18.00	
T. OCCIDENTALIS GLOBOSA		Globe Arbor Vitae	
A formal round bushy evergreen of dwarf habits.			
12 to 15 in.	1.50		
15 to 18 in.	2.00		
T. OCCIDENTALIS PLICATA (Douglassi Spiralis)			
Pyramidal growing evergreen with spiral like foliage.			
12 to 18 in.	1.25	11.00	

T. OCCIDENTALIS VAR. VERVAENEANA

Broad conical tree of a delicate mottled pale green color.

	Each	Per 10	Per 100
4 ft.	5.00		

T. OCCIDENTALIS VAR. PYRAMIDALIS**Pyramid Arbor Vitae**

Erect pyramid growing tree, very formal.

2 to 3 ft.	1.50	12.00
3 to 4 ft.	2.50	
4 to 5 ft.	4.00	

T. OCCIDENTALIS VAR. WARREANA **Siberian Arbor Vitae**

Moderate growing tree of darker green color than any of the above.

2 ft.	1.50	12.00
2 to 2½ ft.	2.25	21.00
2½ to 3 ft.	3.00	

TSUGA CANADENSIS**Hemlock**

Beautiful graceful evergreen of dense habits. For grouping or hedges it is indispensable.

1½ to 2 ft.	1.50	13.50	120.00
2 to 2½ ft.	2.00	18.00	150.00
2½ to 3 ft.	2.50	21.00	200.00
3 to 3½ ft.	3.00	27.00	250.00
3½ to 4 ft.	3.50	30.00	275.00
4 to 5 ft.	4.50	42.00	390.00
5 to 6 ft.	6.00	50.00	420.00
6 to 7 ft.	7.00	60.00	

T. CAROLINIANA**Carolina Hemlock**

A variety found in the South with more open growth and darker foliage.

12 to 18 in.	1.50	13.50
1½ to 2 ft.	2.00	18.00
2 to 2½ ft.	3.00	

YEW See **Taxus***Porch Planting*

*Kalmia Latifolia*

EVERGREEN SHRUBS

ANDROMEDA FLORIBUNDA

Lily-of-the-Valley Shrub

White bell-shaped flowers similar in appearance to Lily-of-the-Valley.

	Each	Per 10	Per 100
12 to 15 in.	2.50	20.00	

BUXUS

Boxwood

Because of the United States Quarantine forbidding importations of these trees, our stock has become so reduced that it is impractical to list sizes. We can, however, still supply good trees in several styles and grades, and will gladly furnish prices and other information on application.

DAPHNE CNEORUM

Garland Flower

Low spreading evergreen shrub covered with pink flowers in spring, resembling our native arbutus in shape and fragrance.

6 to 8 in.	.60	5.00	28.00
8 to 10 in.	.75	6.00	32.00
10 to 12 in.	1.00	8.00	45.00
12 to 15 in.	1.25	12.00	60.00

EUONYMUS RADICANS**Climbing Euonymus**

An evergreen vine for covering walls or as an undergrowth.
Not very rapid.

	Each	Per 10	Per 100
2 years	.50	4.50	36.00
3 years	.60	4.80	

E. RADICANS VAR. VARIEGATA**Variegated Climbing Euonymus**

A variegated form of the above.

2 years	.50	4.50	36.00
3 years	.60	4.80	

E. RADICAN VEGETUS**Broad-leaved Climbing Euonymus**

Advertised as the Evergreen Japanese Bitter Sweet. Its berries resemble our native Bitter Sweet.

3 years	.60	4.50	
---------	-----	------	--

KALMIA LATIFOLIA**Mountain Laurel**

Most admired of our native shrubs, with its deep green glossy foliage and pink and white flowers.

12 to 15 in.	.75	6.00
15 to 18 in.	1.25	10.00
1½ to 2 ft.	2.00	18.00
2 to 2½ ft.	3.00	

LAUREL. See *Kalmia**Rhododendron and Azaleas***RHODODENDRON CAROLINIANUM** **Carolina Rhododendron**

Low growing compact shrub with pale pink flowers.

12 to 18 in.	2.00
1½ to 2 ft.	4.00
2 to 2½ ft.	5.00

R. CATAWBIENSE	Native Red Rhododendron		
Found in the Alleghany Mountains. Rosy-lavender flowers with dark green leaves.			
	Each	Per 10	Per 100
12 to 18 in.	2.00	18.00	
1½ to 2 ft.	2.75	24.00	
2 to 2½ ft.	3.50	30.00	
R. HYBRIDS	Grafted Rhododendron		
These come in various colors from white to maroon.			
15 to 18 in.	3.00		
1½ to 2 ft.	3.75		
2 to 2½ ft.	4.50		
2½ to 3 ft.	6.50		
R. MAXIMUM	Native White Rhododendron		
The buds are pink, but the open flower is pure white. Fine for massing and shady places.			
12 to 18 in.	1.75	15.00	
1½ to 2 ft.	2.50	21.00	150.00
2 to 2½ ft.	3.00	27.00	
YUCCA FILAMENTOSA	Adam's Needle		
Long lance-like foliage with tall spikes of creamy white, tulip-like flowers. A deep-rooted plant suitable for banks and sandy soil.			
3 years	.40	3.00	24.00
4 years	.50	4.00	30.00

HEDGE PLANTS

BARBERRY, THUNBERGS OR JAPANESE

	Per Doz.	Per 100
12 to 18 in.	3.30	25.00
18 to 24 in.	4.50	35.00
24 to 30 in.	5.40	40.00

PRIVET, AMOOR RIVER

18 to 24 in.	2.40	18.00
24 to 36 in.	3.00	20.00
36 to 48 in.	4.20	30.00

PRIVET, CALIFORNIA

12 to 18 in.	.75	5.00
18 to 24 in.	1.20	8.00
24 to 36 in.	1.80	10.00
36 to 48 in.	2.10	15.00

PRIVET, IBOTA

18 to 24 in.	2.10	15.00
24 to 36 in.	3.00	22.00
36 to 48 in.	4.20	30.00

DECIDUOUS SHRUBS

ACANTHOPANAX PENTAPHYLLA		Aralia	
Light green foliage and light colored bark.			
		Each	Per 10
	2 to 3 ft.	.50	4.50
	3 to 4 ft.	.60	5.50
			Per 100
			36.00
			45.00
ALMOND	See Prunus		
ALTHEA	See Hibiscus		
ARALIA	See Acanthopanax		
AZALEA ARBORESCENS		White Fragrant Azalea	
Rather spreading. Foliage brilliant in fall.			
	12 to 18 in.	1.50	
	1½ to 2 ft.	2.00	
A. CANADENSIS	Rhodora		
Lavender colored flowers in late May. Good for moist places.			
	12 to 18 in.	1.00	9.00
	1½ to 2 ft.	1.50	
A. LUTEA (Calandulacea)	Flame Azalea		
Flowers yellow to orange red in June.			
	12 to 18 in.	1.50	
	1½ to 2 ft.	2.00	
A. MOLLIS	Japanese Azalea		
Yellow and orange flower of large size.			
	12 to 15 in.	1.25	10.00
	15 to 18 in.	1.75	15.00
	1½ to 2 ft.	2.50	
A. NUDIFLORA	Purple Azalea		
Deep pink flowers. A rather low shrub.			
	12 to 18 in.	1.25	
	1½ to 2 ft.	1.75	
A. VISCOSA	Swamp Pink		
Fragrant white and pink flowers.			
	12 to 18 in.	1.50	
	1½ to 2 ft.	2.00	
	2 to 2½ ft.	2.50	
A. YODOGAMA	Double Japanese Azalea		
Rose pink double flowered azalea.			
	2 to 2½ ft.	3.50	
	2½ to 3 ft.	5.00	
BENZOIN AESTIVALE (Lindera)		Spice Bush	
Tall spreading shrub for shady spots.			
	1½ to 2 ft.	.50	
	2 to 3 ft.	.60	



Barberry Thunbergii

BERBERIS THUNBERGII **Japanese Barberry**

Especially desirable for foundation planting and hedges. Most brilliant of our shrubs in the fall and winter when it is covered with scarlet berries.

12 to 18 in.	.30	2.75	25.00
1½ to 2 ft.	.40	3.75	35.00
2 to 2½ ft.	.50	4.50	40.00

B. THUNBERGII NANA **Box Barberry**

Low growing with finer foliage than above. For a low border hedge it is very desirable.

8 to 12 in.	.50	4.50	40.00
-------------	-----	------	-------

B. VULGARIS PURPUREA **Purple-leaved Barberry**

Reddish purple foliage.

1½ to 2 ft.	.50	4.20
2 to 3 ft.	.60	4.80

BRIDAL WREATH See *Spirea Prunifolia*

BUDDLEIA DAVIDII MAGNIFICA (Variabilis) **Butterfly Bush**

Long spikes of lilac blue flowers after the style of a lilac in late summer.

2 yr. plants	.50	4.00	30.00
--------------	-----	------	-------

CALYCANTHUS FLORIDA **Allspice**

Chocolate colored flowers in June.

2 to 3 ft.	.50	4.20
------------	-----	------

CARAGANA ARBORESCENS **Siberian Pea**

Erect growing shrub. Yellow flowers in June and pale green leaves.

2 to 3 ft.	.50		
3 to 4 ft.	.60		
4 to 5 ft. Standards	.75	6.00	
5 to 6 ft. Standards	1.00	9.00	
6 to 7 ft. Standards	1.50	12.00	

CHIONANTHUS VIRGINICA		White Fringe	
Broad deep green foliage. Covered with fringe-like white flowers in June.			
1½ to 2 ft.	.75		
2 to 3 ft.	1.25		
3 to 4 ft.	2.00		
CLETHRA ALNIFOLIA		Sweet Pepper Bush	
Medium sized shrub, bearing spikes of white fragrant flowers in July.			
1½ to 2 ft.	.50	4.20	30.00
2 to 3 ft.	.60	4.50	36.00
CORNUS ALBA (Siberica)		Red-bark Dogwood	
Bright red bark conspicuous in winter.			
2 to 3 ft.	.50	3.60	27.00
3 to 4 ft.	.60	4.50	36.00
C. ALBA ELEGANTISSIMA		Variegated Cornus	
A white and green variegated leaved sort of the above variety.			
1½ to 2 ft.	.50		
2 to 3 ft.	.60		
3 to 4 ft.	.75		
C. ALBA SPATHII		Golden-leaved Cornus	
Golden yellow and green leaves.			
1½ to 2 ft.	.50		
2 to 3 ft.	.75		
C. MASCULA		Cornelian Cherry	
A tall variety bearing bright yellow flowers in early spring.			
3 to 4 ft.	.60	4.50	
4 to 5 ft.	.75	6.00	
C. STOLONIFERA LUTEA (Aurea)		Golden-bark Dogwood	
Bright yellow branches making a fine shrub for planting with C. Alba.			
2 to 3 ft.	.50	4.20	
3 to 4 ft.	.60	4.50	39.00
CYDONIA JAPONICA		Japanese Quince	
Bright flowers, like apple blossoms, cover the branches in the spring. Sometimes called Fire Bush.			
1½ to 2 ft.	.50	3.60	30.00
2 to 3 ft.	.60	4.20	
DESMODIUM PENDULIFLORUM		Sweet Pea Shrub	
Drooping branches of rosy-pink pea-like flowers in September.			
2 years	.50		
DEUTZIA CRENATA			
White flowers tinged pink. June.			
2 to 3 ft.	.50	4.00	
3 to 4 ft.	.60		
D. GRACILIS		Dwarf Deutzia	
Low bushy shrub covered with snow-white flowers in May.			
12 to 18 in.	.40		
1½ to 2 ft.	.50	4.50	
2 to 3 ft.	.60	5.00	

D. GRACILIS ROSEA

Like the above but with flowers slightly tinted with pink.
 Each Per 10 Per 100
 2 to 3 ft. .75

D. LEMOINEI

Erect medium shrub with pure white flowers in great abundance in May.
 2 to 3 ft. .60

D. PRIDE OF ROCHESTER

Pink and white double flowers in June.
 1½ to 2 ft. .50 3.60 30.00
 2 to 3 ft. .60 4.20 36.00

D. SCABRA

Double white flowers in June.
 2 to 3 ft. .50 3.60
 3 to 4 ft. .60 4.20



Hydrangea Arborescens Grandiflora

EUONYMUS ALATUS

Winged-bark Strawberry Shrub

A Japanese shrub with corky or winged branches and oval bright green leaves which change to the most brilliant crimson and red in the fall, making it one of our most conspicuous plants, very desirable for massing or individual planting.

2 to 3 ft. .75 6.00 54.00
 3 to 4 ft. .90 7.50 60.00
 4 to 5 ft. 1.50 12.00 100.00
 5 to 6 ft. 2.50 21.00 180.00
 6 to 7 ft. 5.00 40.00

EXOCHORDA GRANDIFLORA

Pearl Bush

Tall shrub covered with paper white flowers in June.
 2 to 3 ft. .75

FORSYTHIA INTERMEDIA

Golden Bell

Rather erect shrub with golden yellow flowers.
 2 to 3 ft. .50 4.20 30.00
 3 to 4 ft. .60 4.50 36.00

F. FORTUNEII**Fortune's Golden Bell**

Among our most conspicuous early spring flowers which cover the bush as effectually as the leaves which immediately follow.

	Each	Per 10	Per 100
2 to 3 ft.	.50	4.20	30.00
3 to 4 ft.	.60	4.80	36.00

F. SUSPENS**Weeping Golden Bell**

A trailing variety.

3 to 4 ft.	.60
------------	-----

GOLDEN BELL See Forsythia

HONEYSUCKLE See Lonicera

HAMAMELIS VIRGINICA**Witch Hazel**

Tall native shrub with yellow flowers in the fall.

2 to 3 ft.	.60
------------	-----

HIBISCUS SYRIACUS (ALTHEA)**Rose of Sharon**

Tall shrub with profusion of rose-like blossoms in mid-summer in red, purple, pink and white colors.

2 to 3 ft.	.50	4.50
3 to 4 ft.	.75	5.00
Standards	.75	

HYDRANGEA ARBORESCENS GRANDIFLORA**Snowball Hydrangea**

Large clusters of ball-shaped flowers in midsummer.

1½ to 2 ft.	.50	4.20	36.00
2 to 3 ft.	.60	5.40	
3 to 4 ft.	.75	6.00	

H. PANICULATA

A tall shrub for borders.

2 to 3 ft.	.60
3 to 4 ft.	.75

H. PANICULATA GRANDIFLORA

The common fall blooming Hydrangea with large panicles of white flowers turning to pink.

1½ to 2 ft.	.50	4.50	39.00
2 to 3 ft.	.75	6.00	54.00
3 to 4 ft.	1.00	7.50	66.00

Tree Form.

2 to 3 ft.	.75	6.50	
3 to 4 ft.	1.25	10.00	
4 to 5 ft.	1.50	12.00	100.00

HYPERICUM DENSIFLORUM**St. John's Wort**

A complete shrub with yellow flowers in midseason.

1½ to 2 ft.	.50	4.20	30.00
-------------	-----	------	-------

ILEX VERTICILLATA**Black Alder**

Conspicuous in winter because of its brilliant berries.

1½ to 2 ft.	.50
-------------	-----

JAPANESE QUINCE See Cydonia

KERRIA JAPONICA FLORA PLENO**Globe Flower**

Double yellow flowers in May. The bark is the same color as the leaves.

1½ to 2 ft.	.50	
2 to 3 ft.	.60	5.00

K. JAPONICA VARIEGATA

Green and white leaves. The growth is short and very spreading. A fine border shrub.

	Each	Per 10	Per 100
12 to 18 in.	.50	4.20	
18 to 24 in.	.60	4.80	

LIGUSTRUM AMURENSE**Amoor Privet**

The most hardy of our privets. Erect growing and fine for hedges.

1½ to 2 ft.	.25	2.00	18.00
2 to 3 ft.	.30	2.50	22.00
3 to 4 ft.	.40	3.50	30.00

L. IBOTA**Japanese Privet**

Another very hardy privet, excellent for hedges and foundation planting. Its graceful drooping branches are very effective.

1½ to 2 ft.	.20	1.75	16.50
2 to 3 ft.	.30	2.50	22.00
3 to 4 ft.	.40	3.50	30.00

L. IBOTA VAR. REGELIANUM**Regel's Privet**

Very spreading variety for shrub borders or hedges.

12 to 18 in.	.25	2.00	15.00
1½ to 2 ft.	.35	3.00	24.00
2 to 2½ ft.	.45		

L. OVALIFOLIUM**California Privet**

In demand because of its glossy foliage and its quick dense growth. Not quite as hardy as the other varieties.

12 to 18 in.	.10	.60	5.00
1½ to 2 ft.	.15	1.00	8.00
2 to 3 ft.	.20	1.50	10.00
3 to 4 ft.	.25	1.75	15.00

LILAC See Syringa**LONICERA FRAGRANTISSIMA Fragrant Bush Honeysuckle**

Tall growing shrub. Flowers white and fragrant in May.

2 to 3 ft.	.60		
3 to 4 ft.	.75		

L. MORROWII

Medium in size, drooping branches covered with white flowers in May followed by red fruit.

2 to 3 ft.	.50	4.00	30.00
3 to 4 ft.	.60	4.50	36.00

L. RUPRECHTIANA

Tall shrub of dense growth. White flowers and orange fruit.

2 to 3 ft.	.50	4.00	
3 to 4 ft.	.60	4.80	

L. TARTARICA VAR. ALBA White Tartarian Honeysuckle

Tall erect growth and white flowers.

3 to 4 ft.	.60	4.50	
------------	-----	------	--

L. TARTARICA GRANDIFLORA

Erect shrub with pink blossoms.

2 to 3 ft.	.50	4.00	
3 to 4 ft.	.60	4.50	36.00

L. XYLOSTEUM		Fly Honeysuckle	
Strong irregular habits. Yellowish white flowers.			
	Each	Per 10	Per 100
2 to 3 ft.	.50	4.00	
3 to 4 ft.	.60	4.50	36.00
MYRICA CERIFERA			Bayberry
Spreading shrub with dark glossy green foliage. Does well in sandy soil.			
15 to 18 in.	.50		
1½ to 2 ft.	.60		
PHILADELPHUS CORONARIUS			Mock Orange
Common Syringa.			
2 to 3 ft.	.50	4.00	30.00
3 to 4 ft.	.60	4.50	36.00
P. CORONARIUS VAR. AUREA			Golden-Leaf Syringa
The golden foliage contrasts well in shrub planting.			
12 to 18 in.	.50	4.50	40.00
1½ to 2 ft.	.60	5.00	45.00
2 to 2½ ft.	.75		
P. ERECTA			
Graceful shrub with smaller foliage and flowers than the common Syringa.			
2 to 3 ft.	.50	4.00	
3 to 4 ft.	.60	4.80	
P. GRANDIFLORA			Large Flowered Syringa
Very large blooms but lacking fragrance.			
2 to 3 ft.	.50	4.00	
3 to 4 ft.	.60	4.50	36.00
PRUNUS JAPONICA			Flowering Almond
Beautiful double pink and white flowers in early spring that cover the bush.			
1½ to 2 ft.	.60		
2 to 3 ft.	.75		
3 to 4 ft.	1.00		
PURPLE FRINGE	See Rhus Cotinus		
PYRUS JAPONICA	See Cydonia		
RHODOTYPOS KERRIOIDES			White Kerria
Medium sized shrub bearing single white flowers followed by black berries.			
2 to 3 ft.	.50	4.00	30.00
3 to 4 ft.	.60	4.50	
RHUS COTINUS			Purple Fringe
Smoke Bush. An old-fashioned shrub with purplish clusters of fine flowers.			
2 to 3 ft.	.60		
3 to 4 ft.	.75		
R. CANADENSIS (Aromatica)			Fragrant Sumac
Medium size. Gorgeous flame color in fall.			
1½ to 2 ft.	.50	4.50	
2 to 3 ft.	.60	5.00	

R. COPALLINA		Shining Sumac	
Beautiful glossy green foliage turning crimson in fall. Tall growing.			
	Each	Per 10	Per 100
2 to 3 ft.	.50		
3 to 4 ft.	.60		
R. TYPHINA LACINIATA		Cut-leaf Sumac	
Variety of Staghorn Sumac with deeply cut lace-like leaves.			
1½ to 2 ft.	.40	3.00	25.00
2 to 3 ft.	.50	4.00	
3 to 4 ft.	.60	4.50	
RUBUS ODORATUS		Flowering Raspberry	
Rosy-purple flowers in summer. Medium			
2 to 3 ft.	.50	4.20	
ROSA RUGOSA		Japanese Rose	
Dark green wrinkled leaves. Flowers single followed with clusters of scarlet berries as large as cherries.			
R. RUGOSA ALBA		White Rugosa	
1½ to 2 ft.	.60	5.00	45.00
R. RUGOSA RUBRA		Pink Rugosa	
12 to 18 in.	.50	4.00	30.00
1½ to 2 ft.	.60	4.80	42.00
2 to 3 ft.	.75	6.00	
SAMBUCUS AUREA		Golden Elder	
Rapid growing shrub of spreading habits. Foliage bright golden yellow.			
2 to 3 ft.	.50	4.20	30.00
3 to 4 ft.	.60	4.50	36.00
S. CANADENSIS		Common Elderberry	
Our native berry bearing Elder.			
2 to 3 ft.	.50	4.00	
SPIREA BUMALDA		Dwarf Pink Spirea	
Excellent for bordering shrub beds. Flowers pink, in flat panicles in summer.			
12 to 18 in.	.50	4.00	
1½ to 2 ft.	.60	4.50	
S. BUMALDA VAR. FROEBELII		Crimson Spirea	
Crimson flowers in flat panicles. Medium to dwarf in size and excellent for shrub groups.			
1½ to 2 ft.	.50	4.50	36.00
2 to 3 ft.	.60	5.40	45.00
S. BUMALDA VAR. WATERII		Dwarf Crimson Spirea	
Similar to Bumalda except in color, which is dark crimson.			
12 to 15 in.	.40	3.00	
15 to 18 in.	.50	4.00	
1½ to 2 ft.	.60	4.50	
S. CALLOSA ALBA		Dwarf White Spirea	
Very dwarf plant for bordering.			
1 ft.	.50	4.00	
1½ ft.	.60	4.50	

*Spirea Van Houttei*

S. OPULIFOLIA			Ninebark
Rapid growing tall shrub.			
	Each	Per 10	Per 100
2 to 3 ft.	.50	4.00	
3 to 4 ft.	.60	4.50	36.00
S. OPULIFOLIA AUREA			Golden-Leaved Spirea
Large shrub with golden yellow leaves.			
2 to 3 ft.	.50	4.00	
3 to 4 ft.	.60	4.50	36.00
S. PRUNIFOLIA FLORA PLENA			Bridal Wreath
Very erect tall shrub, covered in May with small double white flowers.			
2 to 3 ft.	.60	4.50	
3 to 4 ft.	.75	6.00	
S. THUNBERGI			
Small sized shrub with lance-like foliage on pendant branches.			
1½ to 2 ft.	.50	4.00	36.00
2 to 3 ft.	.60	4.80	
S. VAN HOUTTEI			St. Peter's Wreath
Tall shrub with drooping branches which are completely covered in late May with clusters of white flowers. Highly valued for specimen or group planting.			
1½ to 2 ft.	.40	3.00	24.00
2 to 3 ft.	.50	4.00	30.00
3 to 4 ft.	.60	4.50	36.00
4 to 5 ft.	.75	6.00	
STEPHANANDRA FLEXUOSA			Lace Shrub
Angular spreading branches with beautiful tinted foliage.			
2 to 3 ft.	.50	4.00	

SYMPHORICARPOS RACEMOSUS		Snow Berry	
Produces clusters of pure white berries.		An old-time shrub.	
2 to 3 ft.	.50	4.00	33.00
3 to 4 ft.	.60	4.80	
S. VULGARIS		Indian Currant	
Clusters of coral berries resembling small bunches of currants.			
1½ to 2 ft.	.40	3.50	
2 to 3 ft.	.50	4.00	30.00
S. VULGARIS VARIEGATA		Variegated Indian Currant	
Leaves are bright yellow.			
1½ to 2 ft.	.50	4.00	30.00
2 to 3 ft.	.60	4.50	36.00



Lilac

SYRINGA **Lilac**
 These we offer in many varieties, including a great variation in colors both single and double.

S. JAPONICA **-Japanese Lilac**
 A tall variety with immense trusses of creamy white flowers in July.
 2 to 3 ft. .60

S. ROTHOMAGENSIS		Rouen Lilac	
Slender branches. Deep violet-blue flowers.			
		Each	Per 10 Per 100
	2 to 3 ft. bushes	.50	
	3 to 4 ft. trees	.75	
S. VILLOSA			
Late bloomer of delicate pink color.			
	1½ to 2 ft.	.50	4.00
	2 to 3 ft.	.60	4.50
S. VULGARIS			Common Purple Lilac
	1½ to 2 ft.	.40	3.00 25.00
	2 to 2½ ft.	.50	4.00 33.00
	3 to 4 ft.	.60	4.50 40.00
	4 to 5 ft.	.75	6.00
S. VULGARIS ALBA			Common White Lilac
	1½ to 2 ft.	.40	3.00 25.00
	2 to 3 ft.	.50	4.20 33.00
	3 to 4 ft.	.60	4.80 40.00
	4 to 5 ft.	.75	6.00
S. VULGARIS HYBRIDS			Grafted or Names Sorts
Varieties, single flowered:			
	Charles X	—	Reddish-purple
	Marie LeGrey	—	White
	Rubra de Marley	—	Reddish-purple
	Souv. de Ludwig Spaeth	—	Red
	Ville de Troyes	—	Dark purple
	Virginalis	—	White
Varieties, double flowered:			
	Belle de Nancy	—	Satin pink
	Mme. Lemoine	—	White
	Michael Buchner	—	Clear lilac purple
	Mme. Casimir Perier	—	White
	1½ to 2 ft (Bushy)	.50	
	2 to 3 ft.	.60	
	3 to 4 ft.	.75	
	2 to 3 ft. (Tree form)	.75	
	3 to 4 ft.	1.00	
SYRINGA	See <i>Philadelphus</i>		
VIBURNUM CARLESII			Mayflowered Viburnum
Beautiful Japanese shrub with clusters of white flowers tinted pink at center like our native <i>Arbutus</i> , and of the same fragrance.			
	1 ft.	.75	
	1½ ft.	1.00	
VIBURNUM DENTATUM			Arrow Wood
Tall shrub with white flowers and blue-black berries.			
	2 to 3 ft.	.50	4.00 33.00
	3 to 4 ft.	.60	4.80 42.00
V. JAPONICA (Sieboldi)			
Large glossy leaves.			
	1½ to 2 ft.	.60	4.50
	2 to 3 ft.	.75	6.00
V. LANTANA			Wayfaring Tree
Fruit red, changing to black.			
	2 to 3 ft.	.50	4.50
	3 to 4 ft.	.60	5.00

V. LENTAGO			Sheep Berry
	Glossy green leaves and blue berries.		
		Each	Per Doz. Per 100
	1½ to 2 ft.	.50	4.00
	2 to 3 ft.	.60	5.40 45.00
	3 to 4 ft.	.75	
V. OPULUS			Cranberry Tree
	Upright shrub producing bunches of red berries like cranberries.		
	1½ to 2 ft.	.40	3.00
	2 to 3 ft.	.50	4.00 30.00
	3 to 4 ft.	.60	4.50 36.00
V. OPULUS STERILE			Common Snowball
	2 to 3 ft.	.50	4.00
	3 to 4 ft.	.60	
V. TOMENTOSUM			Single Japan Snowball
	Medium size. Flowers flat and white, foliage bronze green.		
	1½ to 2 ft.	.50	4.20
	2 to 3 ft.	.60	4.50 36.00
V. TOMENTOSUM PLICATUM			Japanese Snowball
	Large clusters of pure white ball shaped flowers.		
	2 to 3 ft.	.75	
WEIGELIA CANDIDA			
	Pure white trumpet shaped flowers.		
	2 to 3 ft.	.60	4.50
	3 to 4 ft.	.75	
W. EVA RATHKE			Red Weigelia
	Bright crimson flowers.		
	2 to 3 ft.	.75	6.00
W. ROSEA			Pink Weigelia
	Pink flowers.		
	2 to 3 ft.	.50	4.20
	3 to 4 ft.	.60	5.00
W. ROSEA VARIEGATA			Variegated Weigelia
	Golden variegated foliage.		
	1½ to 2 ft.	.50	4.00
	2 to 3 ft.	.60	5.00
XANTHORRIZA APIIFOLIA			Yellow Root
	Dwarf shrub much used for undergrowth.		
	10 to 12 in.	.40	3.00 21.00



Hall's Japan Honeysuckle

CLIMBING VINES

ACTINIDIA ARGUTA		Silver Sweet Vine	
Extremely rapid growing Japanese vine.		Glossy green leaves.	
	Each	Per 10	Per 100
2 years	.75	6.00	
3 years	1.00	7.50	
AKEBIA QUINATA			
Slender growing vine.			
2 years	.75		
AMPELOPSIS QUINQUEFOLIA		Woodbine	
Our common American Ivy or Virginia Creeper.			
2 years	.50	4.00	30.00
3 years	.60	4.50	36.00
A. QUINQUEFOLIA ENGLEMANII		Engleman's Ivy	
An improved variety with smaller foliage.			
2 years	.50	4.00	30.00
3 years	.60	4.80	36.00
A. VEITCHII		Boston Ivy	
The Japanese Ivy used so extensively for covering walls.			
2 years	.50	4.00	30.00
3 years	.60	4.50	36.00

		Each	Per 10	Per 100
ARISTOLOCHIA SIPHO			Dutchman's Pipe	
Large heart-shaped leaves which create a dense screen.				
	3 years	1.50		
	2 years	1.25		
A. TOMENTOSUM				
Finer growth and smaller leaves than the above.				
	2 years	.50	4.50	36.00
	3 years	.75	6.00	
BIGNONIA RADICANS				Trumpet Vine
Coarse growing vine with orange flowers in September.				
	3 years	.50	4.50	
BITTER SWEET		See <i>Celastris Scandens</i>		
BOSTON IVY		See <i>Ampelopsis Veitchii</i>		
CELASTRIS SCANDENS				Bitter Sweet
Native vine with orange scarlet berries.				
	2 years	.50	4.00	
CLEMATIS				
Large flowered varieties:				
	Jackmanii—Purple or Blue	Henryi—White		
	Mad. Edward Andre—Red			
	2 years	1.00	7.50	
C. PANICULATA				Japanese Virgin Bower
Vines covered in August with white star-like flowers of exquisite fragrance.				
	2 years medium	.50	4.00	30.00
	2 years extra	.60	4.50	36.00
	3 years	.75	6.00	45.00
HONEYSUCKLE		See <i>Lonicera</i>		
HUMULUS LUPULUS				Hop Vine
	3 years	.50		
LONICERA HALLEANA				Japanese Honeysuckle
Sweet scented yellow and white flowers.				
	2 years	.50	4.00	30.00
	3 years	.60	4.50	36.00
L. SEMPERVIRENS				Scarlet Trumpet Honeysuckle
Coral Honeysuckle.				
	2 years	.60	4.80	
LYCIUM BARBATUM				Matrimony Vine
Shrubby vine.				
	3 years	.60		
MATRIMONY VINE		See <i>Lycium</i>		
WISTARIA SINENSIS				Purple Wistaria
Pendulous clusters of blue flowers in May.				
	2 years	.50	4.00	
	3 years	.75	6.00	
	4 years Extra heavy	1.00	7.50	
W. CHINENSIS ALBA				White Wistaria
	2 years	.75		



K. A. Victoria

Roses and Their Culture

We have made this branch of our business one of the most important, and are giving each year more time and study to this particular line. Already we are growing many thousand roses, and we note the difference in results obtained from the northern grown roses as compared with southern and foreign products.

HOW TO GROW ROSES

Select a sunny location in the open, southern exposure preferred, sheltered, if possible, from north winds.

Prepare beds by using good soil and cow or well rotted horse manure. Old sod well cut is also beneficial. Beds should be at least two feet in depth. For convenience of customers we offer cow manure put up in bags. See inside last page of this catalogue.

PLANTING

Budded Roses have much stronger roots, and show by an abrupt offset where the bud was inserted and the stock cut off. When transplanted, this junction must be set **3 or 4 inches below the surface** of the ground. This favors the formation of new roots from the budded or top portion and greatly lessens the tendency of the roots to send up suckers, which must never be permitted to grow. The roots must not be exposed to frost nor allowed to become dry. The soil should be firmly compressed about the roots, and most of the top should be cut away before

planting. If the soil and weather be dry, a good soaking of water may be applied, and then shade the ground and plants with mulching. If shaded by paper or other devices from drying winds until they commence growing, their success will be assured. The season for transplanting hardy Roses is April, May, October and November.

Pruning. This should be regulated by the habit of growth, the weak shoots cut in closely, the strong left longer. Moss Roses and Austrian Yellow Roses need the least pruning. Hybrid Perpetuals, grown to produce flowers for exhibition, require close pruning before the middle of April, the weak shoots being cut close back, and the strong ones to 5 or 6 eyes. If less is cut away, the number of blooms will be larger, but the size of the flowers will be smaller. Climbing Roses should have their old shoots and such as are weak entirely cut away, while several vigorous branches may be left their entire length.

Watering. In dry weather water is of much benefit, if properly applied. Frequent surface waterings are worse than none, for they seldom fail to produce bad health and disease. When water is given, it should be in sufficient quantity to reach the lower roots, and to prevent its quickly drying out a mulch on the surface is very useful.

For winter protection, draw the soil one foot high about the plants, or even more, if convenient. Manure can be put on for additional protection. It need not be rotted; green will answer just as well, and can be covered under in the spring.

INSECTS

A weekly application of Bordeaux-Arsenate of Lead Mixture, at the rate of eight ounces to five gallons of water, applied with sprayer, under side of foliage, during growing season will keep roses free from almost all insect pests and fungous diseases. A mulching of two inches of tobacco stems covering ground is very beneficial.

A liberal use of cold water, sprayed with force from the hose nozzle on the underside of the leaves, will keep the plants free from green fly and other insects.

Hellebore, Powdered White. For the destruction of slugs, worms, caterpillars, etc. Less poisonous than Paris Green and London Purple, and safer to use. Use as a powder or dissolve one ounce in three gallons of water.

SELECTION OF HARDY VARIETIES

Our Select List of Roses is the result of long-continued study and trial. It comprises the very best varieties which have been collected by direct importations from Holland, as well as American grown. These are hardy, strong plants, grown outdoors, and have bloomed in the nursery rows. They are, therefore, not to be compared with the cheap imported Roses, or those which are so freely advertised and sent out by mail, which, being grown in the greenhouse, seldom stand the shock of removal or give the purchaser much pleasure.

POT GROWN

While we use every modern method possible to keep our dormant roses fresh for planting out, yet as the season advances the plants are certain to start or become dried to some extent. We, therefore, have established in pots plants of the same size as the dormant ones, and of the leading sorts, which may be planted as late as July and blossom the first season. By planting **Pot Grown** roses you will be assured that all will grow.

Per Contra. Notwithstanding our Roses are packed and delivered with so much care, and excel in beauty, size, and freshness, we shall doubtless continue to hear of extravagant, or more correctly, exorbitant prices paid for inferior plants to agents and speculators, who perambulate the country with gorgeous colored pictures and yet more blazing and ridiculous promises.

HYBRID TEA ROSES

Two-year dormant plants, 90c. each; \$9.00 per doz.; \$65.00 per 100, except where noted.

- A. R. Goodwin.** Rich coppery-orange, opening to a soft salmon pink. Free.
- Captain Christy.** Flesh pink, deeper in the center. Considered one of the best.
- Chateau de Clos Vougeot.** Crimson center, fiery scarlet tips. Darkest H. T.
- Coronation.** Crimson scarlet flowers, sometimes flecked with white.
- *Countess of Gosford.** Salmon-pink, suffused saffron-yellow. Fine, showy.
- Columbia.** Glowing pink. A splendid, large, fully double rose. Most attractive.
- Dorothy Page Roberts.** Coppery pink, suffused apricot-yellow. Very large.
- Duchess of Wellington.** A delightfully fragrant rose. Intense saffron-yellow.
- *Ecarlate.** Intensely brilliant scarlet. Exceedingly free bloomer.
- Edith Part.** Carmine, flushed pink. Flowers double and delicately scented.
- Edward Mawley.** Rich velvety-crimson, globular flowers borne in profusion.
- *Etoile de France.** Deep crimson with cerise-red center.
- Farbenkonigin.** Bright carmine, overlaid with silvery gloss. Very handsome.
- General McArthur.** Brilliant crimson-scarlet. A splendid rose.
- General S. A. Janssen.** Deep carmine. Flowers large, double and well formed.
- George Dickson.** Deep scarlet shaded velvety crimson. Large; fragrant.

- Grace Molyneux.** Creamy apricot with flesh center. Large; fragrant; free.
- Gorgeous.** Amber veined with reddish copper. Large; rare color.
- Gruss an Teplitz.** Rich scarlet shading to crimson. Vigorous; free bloomer.
- Harry Kirk.** Deep yellow, shading lighter at edge.
- Hoosier Beauty.** An American variety of intense crimson-scarlet color.
- J. B. Clark.** Intense deep scarlet, shaded blackish crimson. Very double.
- Jonkheer J. L. Mock.** Outside of petals carmine, inside flesh pink.
- Joseph Hill.** Copper, amber and pink. Large, full and well-formed flowers.
- Kaiserine Augusta Victoria.** Cream, slightly shaded lemon. Very fragrant.
- Killarney.** Flesh, shaded white, suffused pale pink. A lovely variety.
- Killarney Brilliant.** Deeper in color than the above; flowers more double.
- *King George V.** Rich blackish crimson.
- Konigin Carola.** Color a beautiful satiny rose; reverse of petals silvery rose.
- Lady Alice Stanley.** Beautiful coral-rose. A magnificent variety, nearly reaching perfection.
- Lady Pirrie.** A delightful garden rose of very distinct coloring; the outside of the petals is reddish-salmon, inside apricot, flushed fawn and copper.
- *La Detroit.** Shell pink, tinted soft rose.
- La France.** Pink, tinted silvery blush; large; fragrant; free.
- Lady Ashtown.** Pale rose, shading to yellow at base of petals. Fine buds.
- *Lady Battersea.** Deep cherry red; long pointed flowers in profusion.
- *Lady Hillingdon.** Deep apricot yellow; violet foliage; vigorous.
- Lady Ursula.** Flesh pink; large; tea scented.
- Laurent Carle.** Brilliant velvety-carmine. A robust and free blooming rose.
- Lieut. Chauree.** Glowing crimson. A vigorous grower.
- *Los Angeles.** Flame pink, toned coral, and shaded gold. \$1.25.
- Louis Catherine Breslau.** Shrimp. Pink, shading to orange-yellow.
- Lyon.** Shrimp pink or coral; fragrant; delightful.
- Mme. Edouard Herriot.** Coral or brick-red. Greatly admired.
- Mme. Abel Chatenay.** Carmine rose, shaded salmon. Good grower; free bloomer.
- Mme. Caroline Testout.** Beautiful silvery-rose. Excellent in every way.
- *Mme. Jules Grolez.** Rose and satiny pink. A well-formed, double rose.
- *Mme. Leon Pain.** Silvery pink, shading to salmon.

- Mme. Ravery.** Beautiful orange-yellow.
- Mrs. Aaron Ward.** Color Indian yellow, shading to lemon-cream at the edges of petals. Very large and full. A splendid new garden rose.
- Mrs. Charles Russell.** Deep rose to rosy pink. Has many excellent qualities.
- Mrs. A. R. Waddell.** Soft rosy salmon, suffused golden. Blooms freely.
- Mrs. W. C. Miller.** Pearly blush, shaded salmon. Excellent.
- National Emblem.** Deep velvety crimson, shading to vermilion at the edges. A steady bloomer.
- Ophelia.** Salmon-flesh, shading to rose. Grand.
- Pharisaer.** Silvery pink, suffused salmon. Fine buds; long stems.
- Pilgrim.** Beautiful pink.
- *Prince E. C. de Arenberg.** Brilliant scarlet with dark shadings. Desirable.
- Prince de Bulgarie.** Silvery flesh, shaded rosy salmon. Fine.
- Radiance.** Soft carmine-pink. Double; sweet-scented; free.
- Red Radiance.** A crimson sport of radiance.
- *Red Letter Day.** Velvety, brilliant, scarlet-crimson.
- *Souv. du Pres. Carnot.** Rosy flesh, sometimes nearly white. Excellent.
- *Sunburst.** Rich cadmium yellow. Center orange-yellow.
- Viscount Folkstone.** Creamy pink, salmon center. Large and fragrant.
- White Killarney.** Pure white; productive; constant.
- *White Testout.** Same as Testout except that color is pure white.
- Willowmere.** Coral red, opening to shrimp pink.
- *Winnie Davis.** Brilliant apricot-pink with reflex lighter tints. Handsome.

SPECIAL COLLECTION OF HYBRID-TEA ROSES

We recommend the following twelve varieties of hybrid-tea roses as suited for any garden. All of the kinds have been thoroughly tried out. For description see general list of hybrid-tea roses.

Gen. S. A.	K. A. Victoria	Louise Catherine Breslau
Janssen	Killarney	Mme. Ravery
Hoosier Beauty	La France	Mme. Caroline Testout
Gross an Teplitz	White Killarney	Ophelia
Edward Mawley		

The above collection for \$9.00.

After May 15th we can supply many varieties of roses from pots at \$1 each, \$10.50 per dozen.

HYBRID PERPETUAL ROSES

Two-year dormant plants, 75 cents each; \$7.50 doz.; \$60.00 per 100, except where noted.

Alfred Colomb. Extra large, very double; color rich crimson; fragrant.

American Beauty. Very double, of a deep crimson color.

Anna de Diesbach. Brilliant carmine; delightfully fragrant. One of the best.

Baron de Bonstettin. Blackish crimson with maroon shadings.

Baroness Rothschild. Beautiful light pink, shaded white. Most desirable.

Captain Hayward. Bright crimson-carmine; of splendid form.

Clio. Flesh color, shading to rose in center. Large, fine, vigorous.

Earl of Dufferin. Velvety crimson, shaded with maroon. Large, finely formed.

Eugene Furst. Beautiful shade of velvety crimson, shading crimson-maroon.

Fisher Holmes. Finely shaped flowers of dark velvety crimson.

Frau Karl Druschki. Pure paper white; large and free flowering.

General Jacqueminot. Brilliant crimson color; large and fragrant.

George Arends. The Pink Druschki. Soft pink; and free blooming. Distinct.

Gloire de Chedane Guinoisseau. Bright vermilion-red, shaded velvety crimson. Magnificent.

Hugh Dickson. Brilliant crimson, shaded scarlet. Free, vigorous, fragrant.

John Hopper. Bright rose with carmine center. Large and well-formed flowers.

Jubilee. Dark crimson, almost black.

***Ludwig Moller.** The Yellow Druschki. Deep golden-yellow flowers of great beauty. \$1.25 ea.

Mme. Gabriel Luizet. Beautiful satiny pink. A vigorous and healthy grower.

Magna Charta. A bright, clear pink, finished with crimson.

Margaret Dickson. White with pale flesh center. Good form; handsome foliage.

Marshall P. Wilder. Cherry red, mingled with carmine.

Mrs. John Laing. A constant blooming hardy rose. Color brilliant shell pink.

Mrs. R. G. S. Crawford. Deep rose pink; fine form, constant bloomer.

Paul Neyron. A deep rose color; produces largest flowers of any known rose.

Prince Camille de Rohan. Deep velvety crimson; flowers large. Best dark red.

Soleil d'Or. Golden yellow, shaded nasturtium red. Free blooming; hardy.

Ulrich Brunner. Blossoms are a bright cherry red, and very fragrant.

A SUGGESTION

For the benefit of customers not familiar with the different varieties of roses we suggest the following selection. We believe this list of one dozen roses to be the best selection of most hardy sorts.

Alfred Colomb
 Captain Hayward
 Eugene Furst
 Frau Karl Druschki
 George Arends
 Gen. Jacqueminot
 Mrs. R.G.S. Crawford
 Mrs. John Laing
 Magna Charta
 Mme. Gabriel Luizet
 Paul Neyron
 Ulrich Brunner



CLIMBING ROSES

Two-year dormant plants, 60 cents each; \$6.00 per doz.; \$45.00 per 100; except where noted.

American Beauty. Rose pink; fragrant; good foliage.

***American Pillar.** Chaste pink; single blossoms.

Aviateur Bleriot. Rich, deep saffron-yellow. Fragrant. 75 cents.

***Christine Wright.** Bright wild-rose pink. Flowers 3½-4 in. in diameter. 75 cents.

Climbing American Beauty. Rose pink; fragrant; good foliage.

***Crimson Rambler.** Large clusters of crimson flowers.

Dr. Van Fleet. Flesh pink. Flowers are full, double and fragrant. Choice.

***Dorothy Perkins.** Soft shell-pink.

***Excelsa.** Intense crimson-maroon. Healthy foliage. Very fine.

Flower of Fairfield. Everblooming Crimson Rambler.

Paul's Scarlet Climber. Vivid scarlet, semi-double flowers of medium size, which do not burn or fade in the sun. Produced in large clusters in great profusion. Extremely hardy. One of the most promising climbing roses of recent years. 2-year plants, \$1.00; plants in pots, \$1.25 each.

- Silver Moon.** Clear silvery-white. Foliage is mildew-proof. Fragrant.
- Tausendschon.** Soft pink turning to flesh. The blossoms are produced in large trusses.
- ***White Dorothy Perkins.** Same as Dorothy Perkins, except color is white.

BABY RAMBLER ROSES

Two-year dormant plants, 75 cents each; \$7.50 per doz.; \$50.00 per 100.

- Baby Crimson Rambler.** Rosy crimson.
- ***Catherine Zeimet.** Pure white flowers in abundance. Fragrant.
- ***Erna Teschendorf.** Bright carmine-red. One of the best.
- ***George Elger.** Rich chrome-yellow.
- ***Jessie.** Bright cherry-crimson flowers, produced in huge clusters.
- Madam Taft.** Rosy crimson.
- ***Phyllis.** Beautiful carmine-pink flowers in large panicles.
- ***Tausendschon.** Bush form of the climbing Tausendschon. Soft pink turning to deep rosy-carmine.

RUGOSA ROSES

Conrad F. Meyer. Silvery rose.	.75	7.50	
Rugosa rubra. Red.	.60	5.75	42.00
Rugosa alba. White.	.60	6.00	45.00

F. J. Grootendorst. A cross of *Rosa Rugosa* and *Baby Rambler*. A strong, shrubby grower like the *Rugosa*, which it resembles in foliage as well. The flowers are produced in large clusters like the *Crimson Baby Rambler*. A wonderful rose for individual planting or in masses. 2-year plants, \$2.00 each.

* Grown on own roots.

NOTE—Pot-grown plants of many of the above varieties will be ready for delivery after May 15.

HARDY HERBACEOUS PERENNIALS

Prices: 25 cents each; \$2.50 per dozen; \$15.00 per 100;
EXCEPT WHERE NOTED.

Achillea, the Pearl	White	All summer	2 ft.
Aconitum Autumnale	Blue	Sept.	3 ft.
Napellus	Blue	July	4 ft.
Alyssum Saxatile Compacta	Yellow	May	1 ft.
Anemone Japonica Rubra	Rose	Sept. & Oct.	2 ft.
Alba	White	Sept. & Oct.	2 ft.
Queen Charlotte	Double Pink	Sept. & Oct.	2 ft.
Prince Henry	Deep Pink	Sept. & Oct.	2 ft.
Whirlwind	Double White	Sept. & Oct.	2 ft.
Aquilegia Chrysantha	Yellow	May	2 ft.
Alba	White	May	2 ft.
California Hybrids	All colors	May	2 ft.
Coerulea	Blue	May	2½ ft.
Nivea Grandiflora	White	May	3 ft.
Arabis Alpina	White	Early spring	6 in.
Armeria Martima Splendens	Crimson	During sum'r	1 ft.
Artemisia Lactiflora	Creamy-white	Aug. & Sept.	3-4 ft.
Asclepias Tuberosa	Orange	June to Sept.	2 ft.
Asters, Hardy, 10 varieties	White, Blue Pink and Lavender	Sept. & Oct.	4-6 ft.
Boltonia Asteroides	White	Sum'r & fall	5-7 ft.
Latisquama	Pink	Aug. & Sept.	4-5 ft.
Campanula Carpatica	Blue and White	June to Sept.	9 in.
Media	Blue, Rose, White	June & July	2-3 ft.
Calycanthema	Blue, Rose, White	June & July	2 ft.
Persicifolia	Blue and White	June & July	2 ft.
Centaurea Montana	White and Blue	July to Sept.	2 ft.
Chrysanthemum—Hardy	Red, White,		
large flowering pompon	Yellow, Pink	Sept. frost	1½-2 ft.
Varieties:			
Alice Howell	Orange Yellow.	Early	
Border Beauty	Orange petals tipped with gold		
Brown Bessie	Pompon. Reddish bronze		
Carrie	Light yellow		
Chatillonnaise	Light yellow. Large		
Etoile de Or	Bright yellow. Large		
Excelsior	Bright golden yellow		
Favorite	Rosy pink		
Firelight	Brilliant carmine, shaded scarlet		
Glory of Seven Oaks	Golden yellow		
Klondike	Deep brilliant yellow		

L'Argentuillais	Deep chestnut. Early		
Model	Light yellow pompon.		
Mrs. F. Collier	Small white		
Nina Blick	Golden bronze. Free		
Niza	Deep pink pompon. Earliest of pinks, dwarf		
Oconto	Japanese. Large white. October 15		
Skibo	Golden yellow. Pompon. October 20		
Snow Clad	Pure white		
Source de Or	Deep bronze, large flowers		
Tennyson	Fine light pink		
Well's Scarlet	Terra cotta red		
Shasta Daisy, Alaska	White	July to frost	2 ft.
Coreopsis Lanceolata	Golden yellow	June to frost	2 ft.
Daisy Shasta (See Crysanthemum)			



Delphinium

Delphinium Belladonna	Turquoise blue	June to frost	3-4 ft.
Formosum	Deep blue	June to frost	3-4 ft.
Hybrids, Kelway's Gold			
Medal	All shades of blue	June to frost	3-4 ft.
Chinensis	White and blue	June to frost	2-3 ft.

Dianthus Plumarius Fl. Pl.	Garden Pinks		
	Red, white & pink	June & July	1 ft.
Dictamnus Fraxinella	Pink and white	June & July	2½ ft.
	35c each		
Dielytra Spectabilis	Pink and white	May & June	2 ft.
	50c each, \$5.00 per doz.		
Digitalis, Assorted	Purple, pink, white yellow	June & July	3-4 ft.
Funkia Media Picta,			
Variegated foliage	Purple	July	6-12 in.
Subcordata Grandiflora,	Day Lily		
	White	Aug. & Sep.	18-24 in.
	35 cents each, \$3.50 doz.		
Gailardia Grandiflora		June to frost	2 ft.
	Center dark red-brown, petals crimson-orange and vermilion		
Gypsophylla Paniculata	White	June & Aug.	2-3 ft.
Helenium Autumnale			
Superbum	Golden yellow	Aug & Sept.	5-6 ft.
Var. Rubrum	Red	Aug. & Sept.	4 ft.



Japan Iris

Hemerocallis,			
Flava and Fulva	Yellow & Orange	June & July	3-4 ft.
Hibiscus, Assorted	Pink and White	July to Sept.	3-5 ft.
Hollyhocks	Named colors	July & Aug.	5-6 ft.
Double	Named colors	July & Aug.	5-6 ft.
Iberis Sempervirens	White	Early sp'ng	8-10 in.
Iris Germanica, Assorted	Named sorts	May & June	2-3 ft.
Iris Japanese, Assorted	Named sorts	June & July	3-4 ft.
35 cents each; \$3.50 per dozen; \$25.00 per 100			
Lobelia Cardinalis	Cardinal-red	Aug. & Sept.	3-4 ft.
Lupinus Polyphyllus	Blue, Pink, White	June to Sept.	2-3 ft.
Lychnis Chalcedonica	Scarlet	June to Sept.	3 ft.
Lily-of-the-Valley, Pips	White	May	6 in.
Clumps 50 cents each; \$5.00 per dozen			
Monarda Didyma	Scarlet	July & Aug.	2-3 ft.
Myosotis Palustris	Bright Blue	Spring until autumn	6 in.
Pachysandra Terminals,			
Field Grown	Green foliage		6-8 in.
Paeonia, Chinese Assorted Red, White and Pink			
Price: 40 cents each; \$4.00 per dozen; \$25.00 per 100			
Achille, Daubenton, Delachie, Edward Simmons, Grandiflora			
Rosea, Humei, La Tendresse, L'Elegant, Mme. Serrat, Perfection,			
Plutarch, Prince de Salm Dyck, Solfatare.			
Price: 50 cents each; \$5.00 per dozen; \$30.00 per 100			

Special Varieties of Paeonies

Albert Crousse.	Large convex bloom, very full, flesh pink, center shaded clear pink. Erect, of medium habit; late season of bloom.	.50
Alsace-Lorraine.	Flat flowers of creamy white; petals pointed, giving a water lily effect. Tall and a free bloomer.	\$1.00
Asa Gray.	Large compact flower; flesh color sprinkled with carmine. Midseason.	.60
Baroness Schroeder.	Flesh color, changing quickly to white; creamy center.	.75
Charlemagne.	Very pale salmon rose; globular flowers, strong and very compact; late.	.60
Couronne d'Or.	Large, pure white, showing golden stamens when in full bloom.	.50
Duchess De Nemours.	Very fine cup-shaped bloom, sulphur white; fine bud.	.50
Eugene Verdier.	Delicate flesh color at center, outside petals silvery pink.	.50
Festive Maxima.	Pure, waxy white with occasional flecks of crimson on the central petals. The most popular Peony in existence.	.40
Felix Crousse.	Brilliant red with flame center.	.50
Helena.	White with a faint straw center.	.50
Kelway's Queen.	Rose pink, fragrant.	1.75

La Rosiere.	Light sulphur-yellow, deeper at center.	Exquisite.	
			.75
La Tulipe.	Tulip shaped buds of bright pink, streaked crimson.		.50
Marechal Vaillant.	Immense blooms of crimson borne on long stems.		.50
Mme. Crousse.	Large pure white flowers, slightly flecked with crimson.		.75
Mme. Ducl.	Rose pink with silvery reflex.		.50
Mme. Lemoine.	Soft flesh white of large size.		.75
Officinalis Rubra.	Old-fashioned deep red of the garden.		.75
Rubra Superba.	Dark crimson. Late.		.50
Single Flowering.			.75
Arborea or Tree Pæonia.	Pink and rose.		2.50
Papaver Orientalis, As-	Maroon, Salmon,	May & June	3 ft.
sorted—Oriental Poppy	Rose, Scarlet, Pink		
Nudicaule, Assorted, Ice-	Scarlet, Yellow,	June to Oct.	1 ft.
land Poppy	White		

HARDY PERENNIAL PHLOX

Annie Cook.	Flesh pink.
Astrild.	Clear large red.
B. Comte.	French purple.
Elizabeth Campbell.	Large spikes of bright salmon flowers, changing to pink in center.
Europa.	White; decided crimson eye.
Frau Antone Buchner.	Largest pure white.
Goliath.	Crimson scarlet; very tall.
Jean D'Arc.	Pure white; late.
Le Caid.	Pink; darker eye.
Mrs. Lingard.	White flowers with pale pink center. Early.
Mrs. Jenkins.	Beautiful clear white.
Peach Blow.	Pale pink, shading lighter toward edge.
Prosper Henry.	Large white; bright crimson eye.
Rheinlander.	Beautiful salmon-pink.
Rynstrom.	Color of Paul Neyron rose; very large.
Sir Edwin Landseer.	Flowers bright crimson. Most attractive.
J. H. Slocum.	One of the best crimson Phloxes.
Special French.	Beautiful clear pink.
Thor.	Deep salmon-pink.
Wanadis.	White with lilac stripes. Very distinct purple eye. Somewhat resembles Phlox Divaricata Canadensis.
W. C. Egan.	Delicate lilac with reddish eye.
Platycondon	Blue, White Jul. to Sep. 2-2½ ft.

Primula			
Veris, Invincible Giant	Yellow	June & July	18 in.
Japonica	White, Lilac, Bright Rose, Deep Pink	Jun. & Jul.	18-24 in.
Pyrethrum Hybridum	Red, Pink, Laven- der, Yellow	June	3-4 ft.
Pink, Hardy Garden (See Dianthus)			
Rudbeckia, Golden Glow	Golden Yellow	July to Sept.	5-6 ft.
Scabiosa Caucasica	Lavender	June-Sept.	15-18 in.
Sedum Spectabilis	Rose	Late summer and fall	18 in.
Shasta Daisy (See Chrysanthemum)			
Sweet William, Assorted	Crimson, Scarlet, White, Pink, etc	June	1 ft.
Stokesia Cyanea	Blue and White	July to Oct.	18 in.
Tritoma Pfitzeriana	Orange-scarlet	Aug. to Oct.	3 ft.
Valarian Officinalis	White tinted Rose	June to July	4 ft.
Veronica Spicata	Blue	June to Aug.	1½ ft.
Longifolius Subsessilis	Blue	July to Sept.	2-3 ft.
Viola Cornuta, Blue	Blue	Early spring to late fall	6 in.
Admiration			
Lutea Splendens	Yellow	Early spring to late fall	6 in.
White Admiration	White	Early spring to late fall	6 in.

DAHLIAS

BOSTON NOVELTY COLLECTION FOR 1922

Comprises the best and latest varieties in cultivation, each one a gem in itself. They are wonderfully floriferous, large and with long stems. Not to be surpassed.

Alta Powell. (Pæony). Lemon yellow, edged carmine red.	Miss H. Hollis. (Show). Deep scarlet.
Tom Lundy. (Cactus). Dark velvety red.	Robert Mantell. (Show). Dark crimson.
Mrs. Landale. (Cactus). Golden yellow, suffused old rose.	Mme. Theresa Steinert. (Pæony). Deep red, white ground.
Moonbeam. (Decorative). Lemon yellow.	Dr. Tevis. (Decorative). Rose and old gold.
Mrs. H. E. Fiske. (Pæony). White.	G. H. Carr. (Decorative). Clear purple.
Achievement. (Collarette). Maroon and white.	Bessie Boston. (Decorative). Ruby crimson.

One each of the 12 varieties, \$10.00 postpaid

CACTUS DAHLIAS

COLLECTIONS

- | | |
|------------------------------------|---|
| Brigadier. Crimson scarlet. | Mrs. J. Emberson... Lemon,
speckled pink. |
| Eureka. Violet crimson. | Royal Scarlet. Pure scarlet. |
| Libelle. Rose magenta. | |
| Perle de Lyon. White. | |

One each of the above 6 varieties, \$1.00 postpaid

- | | |
|--|---|
| Amazon. Purplish violet. | J. H. Jackson. Crimson maroon. |
| Amos Perry. Scarlet. | Modern. Lilac rose. |
| Butterfly. Crimson, tipped with
white. | Mont Blanc. Pure white. |
| Falcon. Maroon. | Mrs. J. Emberson. Lemon,
speckled pink. |
| F. H. Chapman. Yellow, shaded
orange. | Saxonia. Purple. |
| J. B. Riding. Orange, tinged
apricot. | Royal Scarlet. Pure scarlet. |

One each of the above 12 varieties, \$2.00 postpaid

One each of 25 varieties, including the above and additional varieties, \$3.75 postpaid.

DECORATIVE DAHLIAS

COLLECTIONS

- | | |
|--|--|
| Alphonse Isore. Garnet and vio-
let. | Mrs. Roosevelt. Delicate light
pink. |
| Auguste Nonin. Scarlet. | Semiramis. Pink and yellow. |
| Hortulanus Witte. Pure white. | Gen. Foch. Dazzling scarlet. |

One each of the above 6 varieties, \$1.50 postpaid

- | | |
|--|--|
| Alphonse Isore. Garnet and vio-
let. | Hortulanus Witte. Pure white. |
| Auguste Nonin. Scarlet. | Jack Rose. The color of the
well-known rose. |
| Aurora Borealis. Salmon. | Mrs. Roosevelt. Delicate light
pink. |
| Beauty of Kent. Red with white
tips. | Princess Juliana. Queen of whites |
| Fireburst. Scarlet. | Souvenir de Gustave Doazon.
Rich scarlet. |
| Gen. Foch. Dazzling scarlet. | |

One each of the above 12 varieties, \$3.00 postpaid

Collection of 25 varieties (including the above and additional varieties) \$5.00 postpaid.

SHOW AND FANCY DAHLIAS

A SUPERB COLLECTION

- | | |
|--|--|
| Dreer's White. White. | Ruth. Orange buff. |
| Maud Adams. White overlaid
pink. | Stradella. Purplish crimson. |
| Rose. Bright rose. | Vivian. Pure white, edged pure
violet. |

One each of the above 6 varieties, \$2.00 postpaid

FRUIT DEPARTMENT

APPLES, Standard

	Each	Per 10	Per 100
6 to 7 ft.	1.00	9.00	75.00
5 to 6 ft.	.75	7.00	60.00
Varieties:			
Early			
*Astrachan—Red			
*Early Harvest—Yellow			
*Golden Sweet—Yellow			
*Sweet Bough—Yellow			
William's Favorite—			
Red and white			
*Yellow Transparent—Yellow			
Mid-Season			
*Duchess of Oldenburg—			
Striped			
*Fall Pippin—Yellow			
Gravenstein—Striped			
Fameuse—Red			
*McIntosh Red—Red			
*Porter			
Late			
*Baldwin—Red			
Bellflower—Yellow			
*Delicious—Striped			
Hubbardston—Red			
*King—Striped			
*Northern Spy—Red			
*R. I. Greening—Green			
Roxbury Russett—Russett			
Seek-No-Further—Striped			
Spitzenburg—Red and white			
Tolman Sweet—Yellow			
Wagener—Red			
*Wealthy—Striped			

APPLES, Dwarf, on Doucin Stock. Varieties marked *

5 to 6 ft.	1.25	10.00
4 to 5 ft.	1.00	9.00
3 to 4 ft.	.90	8.00

APPLES, Crab

6 to 7 ft.	1.00
5 to 6 ft.	.75

Varieties:

Hyslop—Red
Transcendent—Striped

CHERRIES

6 to 7 ft.	1.50	13.50
------------	------	-------

Varieties:

Sweet

Bigarreau—Black
Black Tartarian—Black
Gov. Wood—Red on white
Windsor—Dark
Yellow Spanish—White

Sour

Early Richmond—Red
May Duke—Red
Montmorency—Red
Morello—Red

PEAR TREES, Standard

6 to 7 ft.	1.50	13.50
5 to 6 ft.	1.25	11.00

Varieties:

*Anjou—Winter
*Bartlett—Summer
*Clapp's Favorite—Summer
*Duchess—Fall
Lawrence—Winter

*Seckel—Fall
Sheldon—Fall
Vermont Beauty—Summer
Wilder—Summer
Worden Seckel—Fall

PEARS, Standard

5 to 6 ft. 2.00

Varieties:

Beurre Bosc

Winter Nellis

Dana's Hovey

PEARS, Dwarf. Varieties marked * above

4 to 5 ft. 1.00 9.00

3 to 4 ft. .75 7.00

PEACHES

4 to 6 ft. .60 5.00 40.00

Varieties: In the order of their ripening.

Mayflower

—Red

Greensboro

—White with red cheek

Waddell

—White and blush

Carman

—White with red cheek

Mountain Rose

—White and Red

Champion

—White and Red

Crawford Early

—Yellow

Belle of Georgia

—White with red cheek

Old Mixon

—White with red cheek

Elberta

—Yellow

J. H. Hale

—Yellow

Crawford Late

—Yellow

PLUMS

6 to 7 ft. 1.50 12.50

5 to 6 ft. 1.00 9.00

Varieties: In the order of their ripening.

Japanese**European**

Red June—Red

Lombard—Purple

Abundance—Red

Damson—Blue

Burbank—Red

Beauty of Naples—Yellow

Wickson—Red

German Prune—Blue

Bradshaw—Blue

QUINCES

4 to 5 ft. 1.25 11.00

3 to 4 ft. 1.00 9.00

Varieties:

Borgeat

Orange

Champion

Rea's Mammoth

GRAPE VINES

2 year .60 5.00

Varieties:

Agawam—Red

Diamond—White

Brighton—Red

Moore's Early—Black

Concord—Black

Niagara—White

Delaware—Red

Worden—Black

GRAPE VINES

2 year .75 7.00

Varieties:

Campbell's Early—Black

Green Mountain—White

Eaton—Black

SMALL FRUIT STOCK

CURRANTS

	Each	Dozen	Per 100
2 year	.35	3.50	25.00
Varieties:			
Black Naples—Black		Perfection—Red	
Cherry—Red		Wilder—Red	
Fay's Prolific—Red		White Grapes—White	
London Market—Red			

GOOSEBERRIES

2 year	.50	4.50	
Varieties:			
Downing—Red		Red Jacket—Red	
Pearl—White			

RASPBERRIES, Red and Black

Varieties:	.15	1.00	6.00
Red		Black Cap	
Cuthbert		Cumberland	
Golden Queen (Yellow)		Gregg	
Herbert		Plum Farmer	
Marlboro			
St. Regis			

RASPBERRIES, Columbian (Purple)

	.20	1.25	10.00
--	-----	------	-------

BLACKBERRIES

Varieties:	.10	1.00	6.00
Eldorado		Rathburn	
Mercereau		Snyder	

RHUBARB

	.25	2.50	
--	-----	------	--

ASPARAGUS

2 year		.35	2.00
--------	--	-----	------



We recommend this well known brand of genuine Sheep Manure, the best of all natural fertilizers. Highly concentrated, sterilized, with all weed seeds killed in the drying process. Safe and unequalled for lawns, producing a thick velvety permanent green turf for home, golf course or country club. Nothing will produce such a wealth of foliage and beautiful bloom in the flower garden. Splendid for shrubbery, trees, vines, etc. It is equally effective for all vegetables, fruits and berries, increasing production and improving quality. A convenient wagon load of manure in a bag. Use 6 to 10 lbs. for each 100 square feet.

5 lb. Carton,	\$0.35	100 lb. Bag,	\$ 3.00
10 lb. Carton,	.60	¼ Ton,	14.00
25 lb. Bag,	1.00	½ Ton,	26.00
50 lb. Bag,	1.75	1 Ton,	50.00

Wizard Brand Cow Manure in pulverized form is a cool, slow acting manure ideally suited for roses, ferns, bench and potting soils. Cannot be excelled for mulching and top dressing lawns, perennial beds and shrubbery on sandy soil. Safe and effective wherever plant food and humus are needed. Packed in 100 lb. bags only.

100 lb. Bag,	\$ 2.75	½ Ton,	\$ 24.00
¼ Ton,	12.50	1 Ton,	45.00



INDEX TO DEPARTMENTS

Deciduous Trees	3
Evergreen Trees	11
Evergreen Shrubs	19
Hedge Plants	21
Deciduous Shrubs	22
Climbing Vines	34
Roses	36
Hardy Herbaceous Perennials	44
Dahlias	49
Fruit Department	51
Fertilizers	54

