

191

# WHOLESALE PRICE LIST

Plants, Bulbs, Trees, Roses,  
Shrubs, Vines, Perennials.

---

---

*Spring*  
*1918*

COLLEGE OF AGRICULTURE  
DEPARTMENT OF FLORICULTURE  
CORNELL UNIVERSITY  
ITHACA, N. Y.

---

---

## John Connon Co.

LIMITED

Florists and Nurserymen

Hamilton - Ontario

JANUARY, 1918.

## TERMS OF SALE

☐ **ORDERS** from unknown correspondents must be accompanied by cash or satisfactory references.

☐ **TERMS: NET CASH.** No discount. To customers of approved credit, accounts will be rendered on the first of each month. If remittance does not reach us by the twelfth, sight draft will be made, unless other arrangements are agreed upon.

☐ **RESPONSIBILITY**—All goods travel at purchaser's risk and cost.

☐ **CLAIMS**—We guarantee stock to leave our nursery in good condition, but cannot be held responsible for stock that does not grow, nor do we guarantee the success of the grower purchasing the plants. Any claims for allowances must be made immediately on receipt of invoice or the same will not be entertained.

☐ **TWO HUNDRED AND FIFTY**, twenty-five or three of any one variety will be furnished at the thousand, hundred and ten rates, respectively. Less quantities will be charged at an advance.

☐ **ALL GOODS** are offered subject to being unsold on receipt of order, and we reserve the right to advance prices without notice.

☐ **CUSTOMERS** are requested to state mode of conveyance by which they desire their plants forwarded. The Dominion, Canadian and American Express Companies, and the G. T. R., C. P. R., and T. H. & B. Railway, connecting with M. C. R., all operate from Hamilton and Stoney Creek.

---

---

### Greenhouses:

83 NIAGARA STREET

Telephone 275

Near Burlington Street car line.

---

### Nurseries: STONEY CREEK, ONTARIO

Telephone: Winona Exchange

☐ Our Nurseries are located about half a mile from Stoney Creek, seven miles from Hamilton, and but a few minutes walk from Stop 61 on the Hamilton, Grimsby and Beamsville Electric Railway (cars leave Hamilton every hour), and one mile from the Stoney Creek stations on the Grand Trunk and Toronto, Hamilton and Buffalo Railways.

---

### Office and Retail Store:

69 KING STREET EAST

Telephone 867

Address all correspondence to 69 King St. E., Hamilton, Ont.

Some varieties offered in this catalogue—including Roses—are imported from Europe. As ocean freight traffic is at present so uncertain, we shall be unable to fill orders for this particular stock should our shipments fail to reach us.

We ask your attention to notes re Claims and Responsibility on opposite page.



# JOHN CONNON CO.

LIMITED

*Florists and Nurserymen*

HAMILTON, ONT.

---

---

## Wholesale Price List, Spring 1918

---

---

We will cheerfully mail a copy of our Retail Catalogue to any address on application.

---

---

### GREENHOUSE DEPARTMENT

Prices are quoted f. o. b. Hamilton for orders over five dollars in value. For smaller orders we are compelled to make a small charge to cover packing cost, and plants are shipped out of pots. For plants shipped in pots packing charges are added.

#### FLOWERING AND DECORATIVE PLANTS.

All Flowering and Decorative Plants quoted herein are from 2 in. to 2½ in. pots, unless otherwise stated.

##### Achyranthes.

Emersoni. Deep red foliage..... Per 100  
\$ 3 50

##### Alternanthera.

Red..... \$ 3 50  
Red. 3 inch pots..... 6 00

##### Alyssum, Sweet.

Single White. Splendid for cutting, also for baskets..... \$ 3 50

##### Asparagus.

Plumosus. 2 inch pots..... \$ 4 00  
Plumosus. 3 inch pots..... 8 00  
Plumosus. 4 inch pots..... 15 00  
Sprengeri. 3 inch pots..... 7 00

### BEGONIAS

#### Fibrous-Rooted Varieties.

Erfordia Grandiflora. Carmine  
3 inch pots. May shipment..... \$ 8 00  
4 inch pots. May shipment..... 15 00  
Luminosa. Bright Scarlet.  
2 inch pots..... 4 00  
3 inch pots. May shipment..... 8 00  
4 inch pots. May shipment..... 15 00  
Prima Donna. Light carmine.  
2 inch pots..... 4 00  
3 inch pots. May shipment..... 8 00  
4 inch pots. May shipment..... 15 00

##### Cannas.

Named varieties. May shipment. 4 inch pots..... \$10 00  
Mixed varieties. May shipment. 4 inch pots..... 9 00  
Alphonse Bouvier. 5 feet. Flowers dark crimson.  
Buttercup. 3 feet. Clear yellow.

---

WHERE PRICES ARE QUOTED PER HUNDRED, QUANTITIES OF LESS THAN TEN WILL BE CHARGED AT AN ADVANCE OF ONE CENT, EACH PLANT.

## CANNAS.—Continued

- Charles Henderson. 4 feet. Crimson flowers of fine substance.  
 Chautauqua. 4 feet. Bronze foliage, scarlet flowers.  
 Cinnabar. 5 feet. Orange red, edged yellow.  
 Crimson Bedder. 3 feet. Brilliant scarlet.  
 Discolor Gigantea. 6 feet. Bronze foliage, very large blooms.  
 David Harum. 3 feet. Bronze foliage, bright vermilion scarlet.  
 Duke of Marlborough. 4½ feet. Dark crimson.  
 Florence Vaughan. 4 feet. Bright rich golden yellow, spotted red.  
 Gladiator. 4 feet. Bright yellow, spotted with crimson.  
 J. D. Eisele. 3½ feet. Bright vermilion scarlet, overlaid with orange.  
 Italia. 5 feet. Clear yellow, shading to orange scarlet.  
 King Humbert. 5 feet. Bronze foliage, flowers orange scarlet.  
 Musafolia. 6 feet. Foliage dark green, tinged bronze.  
 New York. 5 feet. Bronze foliage, flowers rich scarlet.  
 Prince Weid. 4 feet. Rich deep crimson, large trusses.  
 Progression. 5 feet. Yellow, spotted red.  
 Richard Wallace. 4½ feet. Canary yellow, very large flowers.  
 Wyoming. 6 feet. Purple foliage with large orange flowers.

## Celosia.

## Feathered Cockscomb.

	Per 100
Mixed. 2 inch pots.....	\$ 3 50

## Cobea.

## May Shipment.

Scandens. Blue. 4 inch pots.....	\$ 9 00
Scandens, alba. White. 4 inch pots.....	9 00

## Coleus.

2 to 2½ inch pots.....	\$ 3 50
3 inch pots.....	6 00

- Ardwell Gem. A golden Verschaffelti, with bright yellow and golden markings.  
 Beckwith Gem. Centre soft crimson maroon, bordered green and gold, serrated edge.  
 Blizzard. Bright red, yellow margin.  
 Firebrand. Bright maroon, shaded glowing scarlet.  
 Golden Bedder. Standard yellow bedder.  
 Louis Beck. Chocolate brown.  
 Spotted Gem. Yellow, freely spotted with chocolate.  
 Trailing Queen. A popular variety for every purpose, especially suitable for window boxes and hanging baskets.  
 Verschaffelti. The favorite crimson.  
 Named Varieties. Our selection.....\$ 3 25

## Cordyline, or Dracaena.

Indivisa. 3 inch pots.....	\$ 8 00
Indivisa. 4 inch pots.....	12 00
Indivisa. 6 inch pots, good specimens.....	25 00

## Caladium Esculentum.

## May Shipment.

Elephant's Ear. Splendid bedding plants with immense foliage.	
Started Plants, 5 inch pots.....	\$12 00
Started Plants, 6 inch pots.....	15 00

## Cuphea Platycentra.

Cigar Plant. Scarlet flowers; suitable for rockeries and baskets.....	\$ 3 50
---	---------

## Cyclamen Giganteum.

Raised from seed grown for us by a famous English specialist.

2 inch pots.....\$ 5 50  
3 inch pots. May shipment..... 10 00

**Excelsior.** Deep red flowers, very large.

**New Salmon.** The finest salmon yet raised.

**Princess May.** Pure white, tipped crimson.

**Rosy Morn.** Rich rose, an attractive variety.

## Ferns.

May Shipment.

	Each
<b>Boston.</b> 4 inch pots.....	\$ 0 25
<b>Elegantissima Compacta.</b> 4 inch pots.....	25
<b>Roosevelt.</b> 4 inch pots.....	25
<b>Teddy, Junr.</b> 4 inch pots.....	25
<b>Whitmani.</b> 4 inch pots.....	25

## Fuchsias.

	Per 100
2½ inch pots.....	\$ 4 00
3 inch pots.....	6 00
4 inch pots.....	10 00

## Geraniums.

Double and semi-double Varieties.

2 to 2½ inch pots, \$4.00 per 100; \$35.00 per 1000.

4 inch pots, May shipment, \$10.00 per 100.

**Madame Buchner.** Pure snow white.

**Marquis de Castellane.** Soft crimson, a pleasing shade.

**Rosedale.** Bright scarlet, large trusses.

**S. A. Nutt.** Dark crimson, a splendid variety.

Variegated Varieties.

	Per 100
<b>Madame Salleroi.</b> Bright green and white foliage.....2 in.	\$3 50. 3 in. \$6 00
<b>Silver-leaved S. A. Nutt.</b> Crimson flowers, silver foliage.....	2 in. \$5 00. 4 in. 12 00

Scented Leaved Varieties.

Mixed. 2 in.....	\$3 50
4 in.....	9 00

## Gnaphalium Lanatum.

A useful plant for hanging pots, window boxes and borders; silvery-gray foliage..... \$3 50

## Heliotrope.

**Jersey Beauty.** Brilliant blue, white eye..... \$3 50

## Iresine.

Purplish red foliage; for edging..... \$3 50

## Ivy.

<b>Parlor or German.</b> .....	\$3 50
<b>Parlor or German.</b> 3 inch pots.....	5 00
<b>Parlor or German.</b> 4 inch pots.....	8 00

## Lobelia.

May Shipment.

<b>Kathleen Mallard.</b> Double, rich deep blue.....	\$3 50
<b>Mrs. Clibran.</b> Single, bright blue.....	3 50
<b>Hybrida Sapphire.</b> The best trailing Lobelia grown.....	3 50

## Marguerites.

Single. White	Per 100
2 inch pots.....	\$ 4 00
3 inch pots.....	7 00
Mrs. F. Sander. Double white.	
2 inch pots.....	5 00
3 inch pots. May shipment.....	8 00
Boston Yellow. The best yellow.	
3 inch pots. May shipment.....	10 00

## Moon-Flower.

Popular Climbing Vine, grows rapidly, white flowers. 4 inch pots.	
May shipment.....	\$ 8 00
Leari. A blue variety.	
4 inch pots. May shipment.....	\$ 8 00

## Pansies.

Giant varieties, mixed. Frame grown.....	\$ 5 00
--	---------

## Petunias.

Double Fringed. Good assortment.....	\$ 4 50
Giants of California. April and May shipment.	
2 inch pots.....	\$ 4 00
3 inch pots.....	6 00
Hender's Superb Fringed.	
2 inch pots.....	3 50

## Primulas.

May and June Shipment.

Obconica Gigantea.....	\$ 4 00
Sinensis. Chinese.....	4 00

## Salvia.

Zurich. Scarlet; splendid variety, grown from cuttings.....	\$ 3 50
4 inch pots. May shipment.....	9 00

## Tradescantia.

Green and Variegated.....	\$ 3 00
---------------------------	---------

## Tropaeolum.

Double Nasturtium. Yellow, Red.....	\$ 3 50
-------------------------------------	---------

## Verbena.

Seedlings from choice varieties.....	\$ 3 50
--------------------------------------	---------

## Vinca.

Major Variegata. For hanging baskets and window boxes; foliage green and white, flowers blue.	
2 inch pots.....	\$ 4 00
3 inch pots.....	6 00

## Annuals.

May and June Shipment.

Antirrhinum, Aster, Marigold, Phlox Stocks, Zinnia, etc.....	\$ 1 00
--	---------

## Basket Plants.

For Hanging Baskets, Vases and Window Boxes, including Alyssum, Coleus, Gnaphalium, Ivy, Nasturtium, Petunias, Tradescantia, and other suitable plants. Our Selection.....	\$ 3 00
--	---------



## SUMMER FLOWERING BULBS.

### DAHLIAS.—Divided Field Roots.

Varieties marked \* are best for cutting.

#### Cactus Varieties.

Price, per 10, \$0.90; per 100, \$8.00.

- \***Floradora.** Beautiful wine crimson color.
- General Buller.** Deep maroon, tipped white, a very free bloomer.
- \***Jealousy.** Large yellow, long stems.
- \***J. H. Jackson.** Brilliant crimson maroon, very dark.
- \***Kriemhilde.** Brilliant pink, shading to white centre; fine for floral work.
- Perlehilde.** Pearly pink, tipped clear white.
- Pink Pearl.** A pleasing shade of rose pink, one of the best of this color.
- Progenitor.** Bright carmine, rich color.

#### Decorative Varieties.

Price, per 10, \$0.90; per 100, \$8.00.

- Atlas.** Maroon, large and fine flower.
- \***Catherine Duer.** Bright iridescent crimson-scarlet, large and strong growing
- Countess of Pembroke.** Pure lavender, a very fine variety.
- \***Crimson Decorative.** Crimson, rich and effective color.
- Crimson Queen.** Rich deep crimson, incurved centre.
- \***Electric.** Red, large and brilliant.
- Grand Duke Alexis.** Large blooms, white tinged with lavender.
- \***Henry Patrick.** Large pure white, a splendid cut flower variety.
- \***Jack Rose.** Rich velvety crimson, producing large blooms in abundance, splendid for cutting.
- \***Lyndhurst.** One of the best bright scarlets, large, with long stems.
- \***Maid of Kent.** Intense scarlet, variegated with pure white; sometimes a solid scarlet.
- \***Miss Minnie McCullough.** Very soft yellow, overlaid with bronze, a superb variety.
- Orange King.** Rich orange, early flowering.
- Wm. Agnew.** Rich, carmine-red, very rich color, immense size.
- Zulu.** Black maroon, one of the darkest varieties grown.

#### Show and Fancy Varieties.

Price, per 10, \$0.90; per 100, \$8.00

- Amy.** Fawn, tipped crimson.
- A. D. Livoni.** Soft pink, very free flowering.
- \***Arabella.** Pale primrose, tipped and shaded old rose and lavender, very fine form.
- Bird of Passage.** Very large, crimson, with purplish tinge.
- Black Diamond.** Rich dark maroon, large flowers.
- Crimson Variegated.** Crimson, in varying shades, very attractive.
- Cuban Giant.** Very large bright maroon, early and free flowering.
- Glowing Coal.** Bright glowing scarlet, attractive color, free blooming and of good size.
- \***Le Phare.** Fine bright red, splendid long stems.
- Lieberheimer.** Red, tipped white, pretty, free flowering.
- Miss Dodd.** Pure yellow, very fine flower.
- \***Penelope.** White, flaked lavender, one of the best.
- \***Red Hussar.** Cardinal red, large blooms borne on strong stems.
- Red Indian.** Deep red, large and fine flowering.
- Ruby Queen.** Red, a very pleasing shade.
- \***White Swan.** Pure white, free flowering, popular cut flower.

#### Single Varieties.

Price, per 10, \$0.90; per 100, \$8.00.

- \***Alba Superba.** The best white single Dahlia, good for cutting
- Crimson Century.** A fine variety, rich crimson, good habit.
- \***Twentieth Century.** Rosy carmine, tipped white, very large.

**DAHLIAS—Continued.**

Varieties marked \* are best for cutting.

**Pompon Varieties.**

Price, per 10, \$0.90; per 100, \$8.00.

**Jupiter.** Dark velvety crimson.**Margarette.** Pale lilac, a choice color.**Philip Freud.** Orange salmon, an effective variety.**\*Purity.** The best white Pompon Dahlia grown.**Miscellaneous Varieties.**

Price, per 10, \$0.90; per 100, \$8.00.

**Geisha.** Peony-flowered. Scarlet and gold.**President Viger.** (Collarette). Carmine and white.**Mixed Dahlias.**

	Per 10	Per 100
Mixed Pinks.....	\$ 0 60	\$ 5 00
Mixed Reds.....	0 60	5 00
Mixed Yellows.....	0 60	5 00
Mixed Whites.....	0 60	5 00
Mixed, all colors.....	0 50	4 50

**Gladiolus.****Selected Bulbs.**

	Per 10	Per 100
<b>America.</b> Flesh pink, tinted with lavender, especially valuable for florists' use.....	\$ 0 35	\$ 3 00
<b>Augusta.</b> Pure white, with blue anthers; the best white for florists' use.....	35	3 00
<b>Brenchleyensis.</b> Rich vermilion scarlet.....		
<b>Europa.</b> One of the finest whites grown.....	50	4 50
<b>Glory of Holland.</b> Pure white with lavender anthers.....	40	3 50
<b>Mrs. Francis King.</b> Light scarlet of pleasing shade.....	35	3 00
<b>White and Light Varieties.</b> A good mixture for florists' use....	30	2 50
<b>Mixed.</b> A special selection.....	25	2 25

**Hardy Lilies.**

	Per 10	Per 100
<b>Album.</b> 7 to 9 inch bulbs.....	\$ 1 50	\$14 00
<b>Auratum.</b> 8 to 10 inch bulbs.....	1 50	14 00
<b>Roseum.</b> 7 to 9 inch bulbs.....	1 40	13 00
<b>Rubrum.</b> 7 to 9 inch bulbs.....	1 40	13 00
<b>Triginum plena.</b> Double Tiger Lily. 7 to 9 inch bulbs.....	1 40	13 00

**Nursery Department**

Prices are quoted at Stoney Creek, with packing charged at cost.

**CONNON'S SELECT ROSES.**

The list of Roses offered you comprises varieties that have been thoroughly tested, and will prove satisfactory in this climate.

25 or 3 of any one variety will be furnished at the 100 and 10 rates, respectively; less than 3 will be charged at the each price.

Those ordering not less than 10 plants of any one variety and a total of 50, will be allowed the 100 rate.

**HYBRID PERPETUAL ROSES.**

Strong two-year-old dormant field grown budded plants.

	Each	Per 10	Per 100
<b>Alfred Colomb.</b> Carmine-crimson, a superb rose, scented.....	\$ 0 19	\$ 1 70	\$15 00
<b>Anna de Diesbach.</b> Bright pink, very full and double.....	19	1 70	15 00
<b>Baron de Bonstettin.</b> Rich, dark red, splendid large flowers.....	19	1 70	15 00

## HYBRID PERPETUAL ROSES—Continued.

	Each	Per 10	Per 100
<b>Baron de Rothschild.</b> Rich satiny pink, very large..	\$0 19	\$ 1 70	\$15 00
<b>Captain Christy.</b> Flesh tinted white, large, free flowering.....	19	1 70	15 00
<b>Cliff</b> Flesh color, shaded in the centre with rosy pink, large.....	19	1 70	15 00
<b>Commander Jules Gravereaux.</b> Velvety red, shaded maroon, large.....	24	2 20	20 00
<b>Duke of Connaught.</b> Bright, velvety crimson.....	19	1 70	15 00
<b>Earl of Dufferin.</b> Brilliant velvety crimson, shaded dark maroon.....	19	1 70	15 00
<b>Fisher Holmes.</b> Dark scarlet, large flowers.....	19	1 70	15 00
<b>Frau Karl Druschki.</b> (Snow Queen). Pure snow white, long buds, large.....	19	1 70	15 00
<b>General Jacqueminot.</b> Bright red, velvety, fragrant	19	1 70	15 00
<b>George Arends.</b> (Pink Frau Karl Druschki). Large, rose colored, fragrant.....	22	2 00	18 00
<b>Gloire de Chedaine Guinoisseau.</b> Bright vermilion-red, large and double.....	24	2 20	20 00
<b>Hugh Dickson.</b> Brilliant crimson, shaded scarlet, large scented flowers.....	19	1 70	15 00
<b>John Hopper.</b> Brilliant rose, changing to bright pink, shaded with crimson.....	19	1 70	15 00
<b>Mme Charles Wood.</b> Bright fiery crimson large, double and fragrant.....	19	1 70	15 00
<b>Mme Gabriel Luizet.</b> Pale pink, a beautiful large flower.....	19	1 70	15 00
<b>Madame Plantier.</b> Pure white double flowers, vigorous grower.....	19	1 70	15 00
<b>Magna Charta.</b> Deep pink, large, fragrant and vigorous.....	19	1 70	15 00
<b>Margaret Dickson.</b> White, pale flesh centre, a splendid large rose.....	19	1 70	15 00
<b>Mrs. John Laing.</b> Soft pink, fragrant, free flowering	19	1 70	15 00
<b>Mrs. R. G. Sharman Crawford.</b> Deep rosy pink, outer petals pale blush.....	19	1 70	15 00
<b>Paul Neyron.</b> Deep shining rose, enormous size.....	19	1 70	15 00
<b>Prince Camille de Rohan.</b> Deep velvety crimson, shaded black, fragrant.....	19	1 70	15 00
<b>Ulrich Brunner.</b> Cherry crimson, large size, fine form.....	19	1 70	15 00

## EVERBLOOMING HARDY HYBRID TEA ROSES.

Strong two-year-old dormant field grown budded plants.

Hybrid Tea Roses have deservedly become very popular; while not quite so hardy as the Hybrid Perpetuals, with slight protection in winter they will carry over and give a wealth of bloom all summer and fall till frost checks them.

The following varieties include many of the best of recent introductions:

	Each	Per 10	Per 100
<b>American Beauty.</b> Rosy carmine, large and fragrant	\$0 22	\$ 2 00	\$18 00
<b>Arthur R. Goodwin.</b> Rich coppery-orange, opening to soft salmon-pink, full, free-flowering.....	23	2 10	19 00
<b>Belle Siebrecht.</b> Brilliant pink, a superb rose.....	22	2 00	18 00
<b>Bessie Brown.</b> Creamy white, immense size, full double and fragrant.....	23	2 10	19 00
<b>Betty.</b> Glowing coppery rose, suffused yellow, large and fragrant.....	23	2 10	19 00
<b>British Queen.</b> New. Beautiful pure white, slightly tinted pink, fragrant.....	24	2 20	20 00
<b>Clothilde Soupert.</b> Ivory White, shading to silvery rose towards the centre.....	24	2 20	20 00

HYBRID TEA ROSES—Continued.		Each.	Per 10	Per 100
<b>Dean Hole.</b> Silvery carmine, with salmon shading, prolific and vigorous.....		\$0 22	\$ 2 00	\$18 00
<b>Edward Mawley.</b> Rich velvety crimson, large flowers, profuse bloomer.....		24	2 20	20 00
<b>Etoile de France.</b> Velvety crimson, of striking beauty.....		22	2 00	18 00
<b>Farbenkonigin, or Queen of Colors.</b> Color Imperial pink, large, fragrant, most beautiful.....		22	2 00	18 00
<b>General McArthur.</b> Rich crimson-scarlet, vigorous and fragrant.....		22	2 00	18 00
<b>George C. Waud.</b> Glowing vermillion, suffused orange red, large, perfect form; a beautiful variety.....		22	2 00	18 00
<b>George Dickson.</b> Velvety black crimson, flowers large and perfect in shape, fragrant.....		22	2 00	18 00
<b>Gross an Teplitz.</b> Brightest crimson-scarlet, fragrant and always in bloom.....		22	2 00	18 00
<b>Herzogin Marie Antoinette.</b> Deep coppery yellow, a striking color.....		25	2 30	21 00
<b>J. B. Clark.</b> Intense scarlet, shaded crimson, of vigorous growth.....		22	2 00	18 00
<b>Jonkheer J. L. Mock.</b> Deep imperial pink, reverse of petals silvery rose-white, very profuse bloomer, highly scented; of exceptional merit.....		22	2 00	18 00
<b>Kaiserin Augusta Victoria.</b> Pearly white, beautiful fragrant flowers.....		24	2 20	20 00
<b>Killamey.</b> Beautiful silvery pink, long buds and large petals.....		22	2 00	18 00
<b>King George V.</b> Rich blackish crimson, a beautiful and unique color, large full flowers produced freely, of vigorous growth.....		25	2 30	21 00
<b>Lady Hillingdon.</b> Deep orange yellow, long pointed buds, in continuous bloom, a strong healthy variety.....		25	2 30	21 00
<b>La France.</b> Clear satiny-pink, large full and fine form.....		22	2 00	18 00
<b>Laurent Carle.</b> Brilliant carmine, large perfumed flowers, profuse bloomer, very hardy.....		24	2 20	20 00
<b>Lyon.</b> Shrimp pink edges, petals coral red, shaded with chrome yellow in centre, hardy and vigorous.....		22	2 00	18 00
<b>Lieutenant Chaure.</b> Velvety crimson, shaded with garnet, free flowering, vigorous.....		24	2 20	20 00
<b>Mme. Abel Chatenay.</b> Rosy-carmine, shaded with salmon.....		22	2 00	18 00
<b>Mme. Caroline Testout.</b> Satiny rose, one of the very best roses for bedding.....		22	2 00	18 00
<b>Mme. Edouard Herriot (The Daily Mail Rose).</b> Superb coral red, shaded with yellow and rosy-scarlet, a beautiful rose.....		25	2 30	21 00
<b>Mme. Jules Grolez.</b> Beautiful bright china rose, superb bedder.....		22	2 00	18 00
<b>Mme. Leon Pain.</b> Silvery salmon, with deep orange-yellow, distinct, large.....		22	2 00	18 00
<b>Mme. Ravary.</b> Rich, deep nankeen yellow, double and fragrant.....		22	2 00	18 00
<b>Maman Cochet.</b> Rich deep rosy pink, very profuse bloomer.....		25	2 30	21 00
<b>Marquis de Sinety.</b> Rich golden yellow, shaded with bright rosy-red, fragrant; a beautiful rose.....		25	2 30	21 00
<b>Miss Alice Rothschild.</b> Deep citron yellow, large, full and fragrant.....		25	2 30	21 00
<b>Miss Cynthia Forde.</b> Deep, brilliant rose, shading on back of petals to light rosy-pink, large, fragrant.....		25	2 30	21 00

## HYBRID TEA ROSES—Continued.

	Each	Per 10	Per 100
Mrs. Aaron Ward. Distinct shade of Indian yellow, free flowering and attractive.....	\$0 25	\$ 2 30	\$21 00
Mrs. G. Sawyer. Rose pink in color, flowers perfect in shape.....	25	2 30	21 00
Prince de Bulgarie. Silvery flesh color, shaded with salmon, beautiful large flowers.....	22	2 00	18 00
Rayon d'Or. The buds are a deep apricot splashed with red, opening a rich yellow; of vigorous growth, profuse bloomer, dark, healthy foliage..	24	2 20	20 00
Richmond. Brilliant crimson-scarlet, perfumed.....	22	2 00	18 00
Sunburst. Rich cadmium yellow, with orange-yellow centre, a superb rose.....	25	2 30	21 00
White Killarney. Pure white long buds and large flowers.....	22	2 00	18 00
White Maman Cochet. A very large and beautifully formed white rose, exquisite flowers, produced in profusion.....	25	2 30	21 00
Wm. Shean. Pure pink, petals shell shaped and long, decidedly one of the best.....	25	2 30	21 00
Willowmere. Rich shrimp-pink, shaded yellow in centre. An improved "Lyon" Rose.....	25	2 30	21 00

## BABY RAMBLER ROSES.

Strong two-year-old dormant field grown budded plants.

All suitable varieties for forcing in pots, and very popular for bedding purposes

	Each	Per 10	Per 100
Baby Tausendschon (Louise Walter). Flowering with enormous trusses of flowers exactly like Tausendschon, it is one of the most continuous and profuse bloomers. Color: beautiful rose, shading to pink. Forces readily and its flowers keep well.....	\$0 20	\$ 1 80	\$16 00
Catherine Zeimet. Pure white, large clusters, freely produced.....	19	1 70	15 00
Cecile Brunner. Blush white, shaded pale rose.....	24	2 20	20 00
George Elgar. Golden coppery-yellow, passing to clear yellow.....	24	2 20	20 00
Erna Teschendorff. A most wonderful rose for forcing. Color: brilliant red. Strong, robust grower and responds readily to forcing. The best of its color yet introduced.....	20	1 80	16 00
Jessie. Bright cherry crimson, borne in large clusters, splendid for forcing.....	19	1 70	15 00
Mme. N. Levasseur (Crimson Baby Rambler). Color is a clear and brilliant ruby red, fine for forcing in pots and for dwarf hedges and bedding.....	19	1 70	15 00
Mrs. W. H. Cutbush. A beautiful color of cerise-tinted pink, very large trusses.....	19	1 70	15 00

## AUSTRIAN, OR YELLOW BRIAR ROSES.

Strong two-year-old field grown plants. Each Per 10 Per 100.

Beaute de Lyon. Coral red, shaded with yellow, a striking variety.....	\$0 20	\$ 1 80	\$16 00
Persian Yellow. Deep yellow, double, hardy.....	20	1 80	16 00
Soleil d'Or (Golden Sun). Color from orange yellow to old gold; large and distinct, a splendid rose....	20	1 80	16 00

## MOSS ROSES.

Strong, two-year-old field grown plants. Each Per 10 Per 100

Blanche Moreau. Pure white.....	\$0 20	\$ 1 80	\$16 00
Cristata. Pink, prettily crested.....	20	1 80	16 00
Wm. Lobb. Red.....	20	1 80	16 00

## Lord Penzance's Hybrid Sweet Briar Roses.

Strong, two-year-old field grown plants.

	Each	Per 10	Per 100
Anne of Gierstein. Dark crimson, large foliage, good grower.....	\$0 20	\$ 1 80	\$16 00
Flora McIvor. Pure white, flushed with rose.....	20	1 80	16 00
Lady Penzance. Beautiful soft tint of copper, delicious perfume.....	20	1 80	16 00
Lord Penzance. Beautiful soft shade of fawn, lemon-yellow in centre.....	20	1 80	16 00
Lucy Bertram. Rich deep crimson, pure white centre.....	20	1 80	16 00
Common Sweet Briar. English Sweet Briar, or Eglantine. Single pink flowers; valued mostly on account of the fragrance of its leaves.....	16	1 40	12 00

## RUGOSA ROSES.

Strong, two-year-old field grown plants.

	Each	Per 10	Per 100
Rugosa Alba. Forms hardy shrub, pure white flowers, red berries in autumn.....	\$0 19	\$ 1 70	\$15 00
Rugosa Rubra. Similar to white except the flowers are deep rose.....	19	1 70	15 00
Blanc Double de Coubert. A splendid double, pure white.....	20	1 80	16 00
Conrad F. Meyer. Clear silvery rose, large double flowers.....	19	1 70	15 00
Mme Georges Bruant. White, semi-double, large.....	19	1 70	15 00
Hansa. Double red. A new and splendid variety.....	20	1 80	16 00

## CLIMBING HYBRID TEA ROSES.

Strong two-year-old field grown plants.

	Each	Per 10	Per 100
Gloire de Dijon. Fawn, shaded salmon, large, good form.....	\$0 22	\$ 2 00	\$18 00
Marechal Neil. Bright golden yellow, a magnificent rose.....	24	2 20	20 00

## HARDY RAMBLER ROSES.

Strong two-year-old field grown plants.

	Each	Per 10	Per 100
American Pillar. Enormous single pink flowers in clusters, splendid variety, attractive red berries in Fall.....	\$0 19	\$ 1 70	\$15 00
Aviator Bleriot. A new and beautiful saffron-yellow rambler rose; large clusters.....	24	2 20	20 00
Baltimore Belle. Double pale blush flowers, produced in clusters.....	19	1 70	15 00
Climbing American Beauty. Rosy-crimson, fragrant and hardy. Large flowers produced in profusion.....	24	2 20	20 00
Crimson Rambler. Bright crimson flowers, produced in large trusses, a grand variety.....	19	1 70	15 00
Dorothy Perkins. Resembles the Crimson Rambler in habit, beautiful shell-pink, large and double....	19	1 70	15 00
Excelsa. Foliage dark, glossy green and mildew proof. Flowers are very double, large, and produced in immense clusters, color intense crimson maroon.....	19	1 70	15 00
Flower of Fairfield. A perpetual flowering Crimson Rambler, color more brilliant than the old favorite, in bloom all summer.....	19	1 70	15 00
Gold Finch. Yellow, beautiful, flowers in clusters....	19	1 70	15 00
Hiawatha. Brilliant crimson, large single flowers in clusters.....	19	1 70	15 00

## HARDY RAMBLER ROSES—Continued.

	Each	Per 10	Per 100
Lady Gay. A glorified Dorothy Perkins. Delicate cherry-pink, produced in large clusters.....	\$0 19	\$ 1 70	\$15 00
Prairie Queen. Dark, carmine rose, large, fragrant and double.....	19	1 70	15 00
Tausendschon. Color beautiful rose, shading to pink large flowers in clusters.....	19	1 70	15 00
Wichuriana. Pure white flowers, single and fragrant, glossy green foliage, red berries in Fall....	19	1 70	15 00
White Dorothy. A white variety of Dorothy Perkins	19	1 70	15 00
White Rambler (Thalia). Similar to Yellow Rambler except in color.....	19	1 70	15 00
Yellow Rambler (Agliaia). Bright yellow, small full flowers, produced in clusters, fragrant.....	19	1 70	15 00

## TREE SHAPED ROSES.

Stems about 4 ft. high. Each, 35c.

Excelsa. (Polyantha.) Crimson flowers in clusters.
Frau Karl Druschki. (H.P.) Pure white.
General Jacqueminot. (H.P.) Bright scarlet.
Gruss an Teplitz. (H.T.) Scarlet, very prolific.
Kaiserin Augusta Victoria. (H.T.) Beautiful white flowers.
Mme. Caroline Testout. (H.T.) Bright rose, very fine.
Mrs. Aaron Ward. (H.T.) Indian-yellow, bright and attractive.
Mrs. John Laing. (H.P.) Soft pink, fragrant.
Soleil d'Or. (A.B.) Color ranges from orange yellow to old gold.
Ulrich Brunner. (H.P.) Bright cherry-red, exquisite.

## DECIDUOUS TREES.

	Each	Per 10	Per 100
<b>Acer dasycarpum. SILVER LEAVED MAPLE.</b>			
6 to 8 ft.....	\$0 40	\$ 3 50	
8 to 10 ft.....	45	4 00	
10 to 12 ft.....	50	4 50	
<b>dasycarpum Weiri. WEIR'S SILVER MAPLE.</b>			
6 to 8 ft.....	50	4 50	
8 to 10 ft.....	55	5 00	
10 to 12 ft.....	60	5 50	
<b>japonicum atropurpureum. PURPLE JAPANESE MAPLE.</b>			
2 to 2½ ft., burlapped ball.....	75	7 00	
<b>Negundo. ASH LEAVED, OR MANITOBA MAPLE,</b>			
6 to 8 ft.....	40	3 50	
8 to 10 ft.....	45	4 00	
<b>platanoides. NORWAY MAPLE.</b>			
6 to 8 ft.....	50	4 50	40 00
8 to 10 ft.....	60	5 50	50 00
<b>platanoides schwedleri. SCHWEDLER'S PURPLE MAPLE.</b>			
6 to 8 ft.....	90	8 50	
8 to 10 ft.....	1 00	9 50	
<b>saccharum. HARD, OR SUGAR MAPLE.</b>			
6 to 8 ft.....	55	5 00	
8 to 10 ft.....	70	6 50	
<b>Aesculus hippocastanum. COMMON HORSE CHESTNUT.</b>			
6 to 8 ft.....	80	7 50	
<b>hippocastanum alba plena. DOUBLE WHITE HORSE CHESTNUT.</b>			
6 to 8 ft.....	90	8 50	

## DECIDUOUS TREES—Continued.

	Each	Per.10	Per 100
<i>Ailanthus glandulosa</i> . TREE OF HEAVEN. 10 to 12 ft.....	\$0 60	\$ 5 50	\$50 00
<i>Aralia spinosa</i> . ANGELICA TREE. 3 to 4 ft.....	35	3 00	
<i>Betula alba</i> . WHITE WEEPING BIRCH. 6 to 8 ft..... 8 to 10 ft.....	55 65	5 00 6 00	
<i>alba laciniata pendula</i> . CUT LEAF WEEPING BIRCH. 6 to 8 ft.....	65	6 00	
<i>Catalpa Bungei</i> . 3 to 4 ft.....	75	7 00	
<i>speciosa</i> . WESTERN CATALPA. 6 to 8 ft.....	40	3 50	
<i>Cercidiphyllum Japonicum</i> . KADSURA TREE. 3 to 4 ft.....	45	4 00	
<i>Chionanthus virginica</i> . WHITE FRINGE. 1½ to 2 ft..... 2 to 3 ft.....	30 40	2 50 3 50	
<i>Cratægus oxyacantha</i> . ENGLISH, OR MAY THORN. 3 to 4 ft..... 4 to 5 ft..... 5 to 6 ft..... 6 to 7 ft.....	25 30 35 40	2 00 2 50 3 00 3 50	
<i>oxyacantha alba plena</i> . DOUBLE WHITE HAWTHORN. 3 to 4 ft..... 4 to 5 ft.....	40 50	3 50 4 50	
<i>oxyacantha pauli plena</i> : PAUL'S DOUBLE SCARLET HAWTHORN. 3 to 4 ft..... 4 to 5 ft..... 5 to 6 ft.....	40 45 50	3 50 4 00 4 50	
<i>Fagus sylvatica</i> . PURPLE BEECH. 3 to 4 ft.....	65	6 00	
<i>Fraxinus Americana</i> . WHITE ASH. 6 to 8 ft..... 8 to 10 ft.....	45 55	4 00 5 00	
<i>Gleditschia triacanthos</i> . HONEY LOCUST. 2 ft.....	10	80	6 00
<i>Magnolias</i> . LARGE-FLOWERED VARIETIES. Strong, bushy plants, well set with buds; with burlapped balls. 3 to 4 ft.....	1 35		
<i>Alexandrina</i> . Purplish red.			
<i>Soulangeana</i> . White inside, purplish outside.			
<i>Speciosa</i> . White.			
<i>Morus tartarica</i> . RUSSIAN MULBERRY. 6 to 8 ft.....	45	4 00	
<i>Populus Carolinensis</i> . CAROLINA POPLAR. 6 to 8 ft..... 8 to 10 ft.....	30 35	2 50 3 00	23 00 28 00
<i>nigra fastigata</i> . LOMBARDY POPLAR. 6 to 8 ft..... 8 to 10 ft.....	35 40	3 00 3 50	30 00
<i>Prunus</i> . See Shrubs.			
<i>Quercis rubra</i> . RED OAK. 6 to 8 ft.....	85	8 00	
<i>Rhus cotinus</i> . PURPLE FRINGE, OR SMOKE TREE. 1½ to 2 ft..... 2 to 3 ft.....	25 30	2 30 2 50	



## DECIDUOUS TREES—Continued.

	Each	Per 10	Per 100
<b>Rhus typhina.</b> STAGHORN SUMAC.			
2 to 3 ft.....	\$0 25	\$ 2 30	
3 to 4 ft.....	30	2 50	
<b>Robinia pseudacacia.</b> BLACK LOCUST.			
6 to 8 ft.....	40	3 50	
<b>Salix babylonica.</b> BABYLONIAN WEeping WILLOW.			
6 to 8 ft.....	40	3 50	30 00
8 to 10 ft.....	45	4 00	
<b>caprea.</b> PUSSY WILLOW.			
8 to 10 ft.....	45	4 00	
<b>Nioba.</b> GOLDEN-BARKED WEeping WILLOW.			
6 to 8 ft.....	40	3 50	
8 to 10 ft.....	45	4 00	
10 to 12 ft.....	50	4 50	
<b>regalis.</b> ROYAL WILLOW.			
6 to 8 ft.....	50	4 50	
<b>vitellina aurea.</b> GOLDEN-BARKED WILLOW.			
5 to 6 ft.....	40	3 50	
6 to 8 ft.....	45	4 00	
8 to 10 ft.....	50	4 50	
<b>vitellina britzensis.</b> BRONZE-BARKED WILLOW.			
5 to 6 ft.....	40	3 50	
6 to 8 ft.....	45	4 00	
<b>Sorbus aucuparia.</b> EUROPEAN MOUNTAIN ASH.			
6 to 8 ft.....	60	5 50	
<b>Tilia Americana.</b> AMERICAN LINDEN, BASSWOOD.			
6 to 8 ft.....	55	5 00	45 00
8 to 10 ft.....	65	6 00	
10 to 12 ft.....	75	7 00	
<b>Europæa.</b> EUROPEAN LINDEN.			
6 to 8 ft.....	55	5 00	
8 to 10 ft.....	65	6 00	
<b>Ulmus Americana.</b> AMERICAN ELM.			
6 to 8 ft.....	50	4 50	40 00
8 to 10 ft.....	60	5 50	50 00
<b>Campestris.</b> ENGLISH ELM.			
6 to 8 ft.....	55	5 00	
8 to 10 ft.....	60	5 50	

## HARDY EVERGREEN TREES.

The higher priced Conifers are supplied with a burlapped ball of earth. All Evergreens have been transplanted and are strong, well-furnished plants.

	Each	Per 10	Per 100
<b>Abies concolor.</b> WHITE FIR.			
1½ to 2 ft.....	\$ 1 25		
2 to 2½ ft.....	1 75		
4 to 5 ft.....	3 00		
<b>Veitchi.</b> VEITCH'S SILVER FIR.			
1 to 1½ ft.....	60	5 00	
1½ to 2 ft.....	1 25		
2 to 2½ ft.....	1 75		
2½ to 3 ft.....	2 00		
3 to 4 ft.....	2 50		
4 to 5 ft.....	3 00		
<b>Juniperus chinensis aurea.</b> GOLDEN CHINESE JUNIPER.			
1½ to 2 ft.....	90		
2 to 2½ ft.....	1 20		

EVERGREEN TREES—Continued.		Each	Per 10	Per 100
<b>Juniperus chinensis Pfitzeriana.</b> A beautiful new dwarf variety.				
	1½ to 2 ft.....	\$ 0 95		
	2 to 2½ ft.....	1 20		
<b>communis hibernica.</b> IRISH JUNIPER.				
	1½ to 2 ft.....	85		
	2 to 2½ ft.....	1 25		
<b>Suecica.</b> SWEDISH JUNIPER. Similar to the Irish Juniper, but much hardier.				
	1½ to 2 ft.....	90	8 50	
	2 to 2½ ft.....	1 25	12 00	
<b>Sabina.</b> SAVIN JUNIPER.				
	1½ to 2 ft.....	90	8 50	
	2 to 2½ ft.....	1 25	12 00	
<b>virginiana.</b> RED CEDAR.				
	1½ to 2 ft.....	80	7 50	
	2 to 3 ft.....	1 00	9 00	
	3 to 4 ft.....	1 25		
<b>virginiana glauca.</b> BLUE VIRGINIA CEDAR.				
	1½ to 2 ft.....	95		
	2 to 2½ ft.....	1 25		
	2½ to 3 ft.....	1 60	15 00.	
<b>virginiana schottii.</b> Very hardy, rich green color.				
	1½ to 2 ft.....	1 25		
	2 to 2½ ft.....	1 50		
<b>Picea alba (canadensis).</b> WHITE SPRUCE.				
	1½ to 2 ft.....	22	2 00	18 00
	2 to 2½ ft.....	26	2 40	22 00
	2 to 2½ ft.....	30	2 50	
	3 to 4 ft.....	40		
<b>Alcockiana.</b> ALCOCK'S SPRUCE.				
	2 to 2½ ft.....	1 25		
<b>excelsa.</b> NORWAY SPRUCE.				
	1 to 1½ ft.....	14	1 20	10 00
	1½ to 2 ft.....	16	1 40	12 00
	2 to 2½ ft.....	18	1 60	14 00
	2½ to 3 ft.....	25	2 30	21 00
	3 to 4 ft.....	30	2 50	
	4 to 5 ft.....	40	3 50	
<b>Omorica.</b> SERBIAN SPRUCE.				
	2 to 2½ ft.....	1 25		
<b>pungens.</b> COLORADO BLUE SPRUCE.				
	1½ to 2 ft.....	1 00	9 50	
<b>pungens glauca Kosteri.</b> KOSTER'S BLUE SPRUCE.				
	1½ ft.....	1 50	14 00	
	2 ft.....	2 00	18 00	
	2½ ft.....	2 25	22 00	
	3 ft.....	3 25		
	4 ft.....	4 50		
<b>Pinus Austriaca:</b> AUSTRIAN PINE.				
	1½ to 2 ft.....	1 00	9 50	
	2 to 2½ ft.....	1 10	10 00	
	2½ to 3 ft.....	1 25		
<b>Mughus.</b> DWARF MOUNTAIN PINE.				
	1 to 1½ ft.....	1 10	10 00	
	1½ to 2 ft.....	1 35	12 50	
<b>ponderosa.</b> BULL PINE.				
	2 to 2½ ft.....	75	7 00	
	3 to 4 ft.....	1 00		

## EVERGREEN TREES—Continued.

	Each	Per 10	Per 100
<b>Pinus strobus. WHITE PINE.</b>			
1 to 1½ ft.....	\$0 35	\$ 3 00	
1½ to 2 ft.....	50	4 50	\$40 00
2 to 2½ ft.....	60	5 50	
<b>Pseudotsuga Douglasi. DOUGLAS SPRUCE.</b>			
1½ to 2 ft.....	85	8 00	
2 to 2½ ft.....	1 15	11 00	
2½ to 3 ft.....	1 25	12 00	
<b>Retinospora obtusa. JAPANESE CYPRESS.</b>			
1½ to 2 ft.....	75	7 00	
2 to 2½ ft.....	1 00	9 50	
<b>pisifera aurea. GOLDEN PEA-FRUITED CYPRESS.</b>			
1½ to 2 ft.....	1 00	9 00	
2 to 2½ ft.....	1 10	10 00	
<b>pisifera filifera. THREAD-BRANCHED CYPRESS.</b>			
1½ to 2 ft.....	1 00	9 50	
2 to 2½ ft.....	1 10	10 00	
<b>pisifera plumosa. PLUME-LIKE CYPRESS.</b>			
1½ to 2 ft.....	1 00	9 00	
2 to 2½ ft.....	1 10	10 00	
2½ to 3 ft.....	1 25		
3 to 4 ft.....	1 75	16 00	
<b>Taxus cuspidata brevifolia. JAPANESE YEW.</b>			
1½ ft.....	1 10	10 00	
<b>Thuja occidentalis. AMERICAN ARBOR VITÆ.</b>			
2 to 3 ft.....	40	3 50	
<b>occidentalis pyramidalis. PYRAMIDAL ARBOR VITÆ.</b>			
1½ to 2 ft.....	90	8 50	
2 to 2½ ft.....	1 00	9 00	
2½ to 3 ft.....	1 10	10 00	
<b>occidentalis lutea. GOLDEN ARBOR VITÆ.</b>			
1½ to 2 ft.....	80		
2 to 2½ ft.....	1 10		
<b>occidentalis Wareana. WARE'S SIBERIAN ARBOR VITÆ.</b>			
2 to 2½ ft.....	1 10		
<b>Tsuga canadensis. CANADIAN HEMLOCK.</b>			
1½ to 2 ft.....	90	8 50	
2 to 3 ft.....	1 00	9 00	

## BOXWOODS.

## April Delivery.

Boxwoods make beautiful specimen plants in any form, and are useful for all decorative purposes. The bush plants can also be used with splendid effect for window boxes.

Prices on Pyramid and Globe Box include green painted tubs. If wanted out of tubs, ten per cent. discount will be allowed.

## Pyramid-Shaped.

Height	Base	Each	Pair
2½ ft.....	13 to 14 inches	\$ 2 00	\$ 3 75
3 ft.....	15 to 16 inches	3 00	5 75
4 ft.....	18 to 20 inches	4 25	8 00
5 ft.....	22 to 24 inches	6 50	12 50

Note the large size at base, which gives the Pyramids a much more shapely appearance than those usually sold.

## Globe-Shaped.

15 inches high.....	15 inches broad.....	3 00	5 75
18 inches high.....	18 inches broad.....	4 50	8 50

## Bush-Shaped.

These are not supplied in tubs.

	Each	Per 10	Per 100
Bushy Plants, 12 inches high.....	\$ 35	\$ 3 00	\$28 00
Bushy Plants, 18 inches high.....	55	5 00	47 00
Bushy Plants, 24 inches high.....	1 25	12 00	

## FLOWERING AND ORNAMENTAL SHRUBS.

	Each	Per 10	Per 100
<b>Amelanchier botryapium.</b> DWARF JUNE BERRY.			
1½ to 2 ft.....	\$ 20	\$ 1 80	\$16 00
2 to 3 ft.....	25	2 30	
<b>Amorpha fruticosa.</b> FALSE INDIGO.			
1½ to 2 ft.....	15	1 30	11 00
2 to 3 ft.....	20	1 80	16 00
3 to 4 ft.....	25	2 30	
<b>canescens.</b> LEAD PLANT.			
1 to 1½ ft.....	15	1 30	11 00
<b>Azalea mollis.</b> JAPANESE AZALEA.			
12 to 15 inches.....	40	3 50	
15 to 18 inches.....	50	4 50	
<b>Baccharis halmifolia.</b> GROUNDSEL BUSH.			
1½ to 2 ft.....	16	1 40	
<b>Berberis Thunbergii.</b> JAPANESE BARBERRY. Splendid bushy plants.			
1 to 1½ ft.....	16	1 40	12 00
1½ to 2 ft.....	18	1 60	14 00
2 to 2½ ft., extra strong.....	24	2 10	18 00
2½ to 3 ft., very bushy.....	30	2 70	24 00
3 to 4 ft., very heavy stock.....	35	3 20	30 00
<b>vulgaris.</b> GREEN BARBERRY.			
1½ to 2 ft.....	16	1 40	
2 to 3 ft.....	20	1 80	16 00
<b>vulgaris purpurea.</b> PURPLE BARBERRY.			
1½ to 2 ft.....	25	2 30	
2 to 3 ft.....	30	2 80	
<b>Buddleia variabilis.</b> BUTTERFLY BUSH.			
2 to 3 ft.....	20	1 80	
<b>Caragana arborescens.</b> SIBERIAN PEA.			
1½ to 2 ft.....	16	1 40	12 00
2 to 3 ft.....	20	1 80	16 00
<b>Caryopteris mastacanthus.</b> BLUE SPIREA.			
1 to 1½ ft.....	20	1 80	16 00
<b>Cornus alba sibirica.</b> SIBERIAN RED DOGWOOD.			
1½ to 2 ft.....	16	1 40	
2 to 3 ft.....	18	1 60	14 00
<b>alba sibirica aurea.</b>			
1½ to 2 ft.....	20	1 80	
2 to 3 ft.....	24	2 20	
<b>mascula.</b> CORNELIAN CHERRY.			
1½ to 2 ft.....	20	1 80	
2 to 3 ft.....	24	2 20	
<b>sanguinea.</b> EUROPEAN RED DOGWOOD.			
2 to 2½ ft.....	20	1 80	16 00
2½ to 3 ft.....	22	2 00	
<b>Cydonia Japonica.</b> JAPAN QUINCE.			
1½ to 2 ft.....	15	1 30	11 00
2 to 2½ ft.....	18	1 60	14 00
2½ to 3 ft.....	20	1 80	16 00
3 to 4 ft.....	24	2 20	20 00
4 to 5 ft., very heavy.....	35	3 00	

## FLOWERING AND ORNAMENTAL SHRUBS—Continued.

	Each	Per 10	Per 100
<b>Deutzia crenata candidissima plena. DOUBLE WHITE.</b>			
1½ to 2 ft.....	\$0 15	\$ 1 30	\$11 00
2 to 2½ ft.....	18	1 60	14 00
2½ to 3 ft.....	20	1 80	16 00
3 to 4 ft.....	25	2 30	21 00
<b>crenata. Pride of Rochester. DOUBLE PINK.</b>			
1½ to 2 ft.....	16	1 40	12 00
2 to 2½ ft.....	19	1 70	15 00
2½ to 3 ft.....	22	2 00	18 00
3 to 4 ft.....	25	2 30	
<b>gracilis. DWARF WHITE.</b>			
1 to 1½ ft.....	19	1 70	15 00
1½ to 2 ft.....	22	2 00	
<b>Elæagnus augustifolia. RUSSIAN OLIVE.</b>			
1½ to 2 ft.....	16	1 40	12 00
2 to 3 ft.....	18	1 60	14 00
3 to 4 ft.....	20		
4 to 5 ft.....	24		
5 to 6 ft.....	30		
<b>longipes. JAPANESE OLEASTER.</b>			
1½ to 2 ft.....	18	1 60	14 00
<b>Euonymus Europeus. EUROPEAN SPINDLE TREE.</b>			
1½ to 2 ft.....	15	1 30	11 00
2 to 2½ ft.....	17	1 50	13 00
2½ to 3 ft.....	20	1 80	16 00
<b>Forsythia fortunei. FORTUNE'S GOLDEN BELL.</b>			
2 to 2½ ft.....	18	1 60	14 00
2½ to 3 ft.....	20	1 80	16 00
3 to 4 ft.....	25	2 30	
<b>intermedia. HYBRID GOLDEN BELL.</b>			
1½ to 2 ft.....	16	1 40	12 00
2 to 2½ ft.....	18	1 60	14 00
2½ to 3 ft.....	20	1 80	16 00
3 to 4 ft.....	25	2 30	
<b>suspensa. DROOPING GOLDEN BELL.</b>			
2 to 2½ ft.....	18	1 60	14 00
2½ to 3 ft.....	20	1 80	16 00
<b>Hibiscus syriacus. ALTHEA, OR ROSE OF SHARON.</b>			
Any of the following varieties:			
1½ to 2 ft.....	16	1 40	12 00
2 to 2½ ft.....	18	1 60	14 00
2½ to 3 ft.....	20	1 80	16 00
<b>Admiral Dewey. Double white.</b>			
<b>Amplissima. Double rose.</b>			
<b>Anemonæflorus. Double dark red.</b>			
<b>Carnea. Double, flesh color, with red marks.</b>			
<b>Celestis. Single blue.</b>			
<b>Leopoldii. Striped.</b>			
<b>Ranunculus. Double white, with crimson eye.</b>			
<b>Roseus. Double, dark rose.</b>			
<b>Rubis. Single red.</b>			
<b>Violaceus. Double, light violet.</b>			
<b>Hydrangea arborescens grandiflora alba. HILLS OF SNOW.</b>			
2 to 3 ft.....	30	2 70	24 00
<b>paniculata grandiflora.</b>			
1 to 1½ ft.....	14	1 20	10 00
1½ to 2 ft.....	16	1 40	12 00
2 to 2½ ft.....	18	1 60	14 00
2½ to 3 ft.....	20	1 80	16 00
3 to 4 ft.....	25	2 20	
<b>Tree Shaped. Stems about 3 ft.....</b>	50	4 50	

## FLOWERING AND ORNAMENTAL SHRUBS—Continued.

	Each	Per 10	Per 100
<b>Kerria Japonica plena.</b> (Corchorus.) DOUBLE FLOWERED KERRIA.			
2 to 2½ ft.....	\$0 20	\$ 1 80	\$16 00
2½ to 3 ft.....	22	2 00	
<b>Ligustrum Amurense.</b> AMOOR RIVER PRIVET.			
1½ to 2 ft.....	8	70	6 00
2 to 3 ft.....	10	90	8 00
<b>ovalifolium.</b> CALIFORNIA PRIVET.			
1½ to 2 ft.....	8	70	6 00
2 to 3 ft.....	10	90	8 00
<b>vulgaris.</b> COMMON PRIVET.			
1½ to 2 ft.....	8	70	6 00
2 to 3 ft.....	10	90	8 00
<b>Lilac.</b> See SYRINGA.			
<b>Lonicera Morrowi.</b> JAPANESE BUSH HONEYSUCKLE.			
2 to 2½ ft.....	16	1 40	
2½ to 3 ft.....	18	1 60	
3 to 4 ft.....	24	2 20	
<b>tartarica alba.</b> WHITE BUSH HONEYSUCKLE.			
2 to 2½ ft.....	18	1 60	14 00
2½ to 3 ft.....	20	1 80	16 00
3 to 4 ft.....	22	2 00	18 00
<b>tartarica rosea.</b> PINK BUSH HONEYSUCKLE.			
2 to 2½ ft.....	18	1 60	14 00
2½ to 3 ft.....	20	1 80	16 00
3 to 4 ft.....	22	2 00	18 00
<b>tartarica rubra.</b> RED BUSH HONEYSUCKLE.			
2 to 2½ ft.....	18	1 60	14 00
2½ to 3 ft.....	20	1 80	16 00
3 to 4 ft.....	22	2 00	18 00
<b>Mahonia aquifolium.</b> OREGAN GRAPE.			
1½ to 2 ft.....	25	2 30	
<b>Philadelphus.</b> SYRINGA, OR MOCK ORANGE.			
<b>coronarius.</b> COMMON MOCK ORANGE.			
1½ to 2 ft.....	18	1 60	14 00
2 to 3 ft.....	20	1 80	16 00
3 to 4 ft.....	25	2 30	21 00
<b>grandiflorus.</b> LARGE FLOWERED.			
2 to 2½ ft.....	20	1 80	16 00
2½ to 3 ft.....	22	2 00	18 00
3 to 4 ft.....	25	2 30	
<b>Prunus Pissardi nigra.</b> PURPLE LEAVED PLUM.			
4 to 5 ft.....	30	2 70	25 00
<b>sinensis alba plena.</b> DOUBLE WHITE ALMOND.			
2 to 2½ ft.....	26	2 40	22 00
3 to 4 ft.....	30	2 70	25 00
<b>sinensis rosea plena.</b> DOUBLE PINK ALMOND.			
3 to 4 ft.....	30	2 70	25 00
<b>triloba plena.</b> DOUBLE PINK FLOWERING PLUM.			
3 to 4 ft.....	30	2 70	25 00
<b>Rhamnus cathartica.</b> COMMON BUCKTHORN.			
2 to 3 ft.....	15	1 20	
<b>Rhododendrons.</b> Hardy varieties, well set with buds.	1 25	11 00	
1½ to 2 ft., strong, with burlapped balls.			
<b>Album grandiflorum.</b> White....			
<b>Charles Bagley.</b> Cherry red.			
<b>Everestianum.</b> Rosy-lilac, spotted and fringed.			
<b>Purpureum elegans.</b> Purple.			
<b>Roseum elegans.</b> Rose.			

## FLOWERING AND ORNAMENTAL SHRUBS—Continued.

Each Per 10 Per 100

**Rhodotypus kerrioides.** WHITE KERRIA.

1½ to 2 ft.....	\$0 20	\$ 1 80	\$16 00
2 to 3 ft.....	24	2 20	20 00

**Ribes alpinum.** MOUNTAIN CURRANT.

1½ to 2 ft.....	18	1 60	14 00
2 to 3 ft.....	20	1 80	16 00

**aureum.** YELLOW FLOWERING CURRANT.

2 to 2½ ft.....	20	1 80	16 00
2½ to 3 ft.....	22	2 00	
3 to 4 ft.....	30	2 80	

**sanguineum.** RED FLOWERING CURRANT.

2 to 2½ ft.....	20	1 80	16 00
2½ to 3 ft.....	22	2 00	

**Sambucus nigra.** COMMON ELDER.

1½ to 2 ft.....	15	1 30	11 00
2 to 3 ft.....	17	1 50	13 00
3 to 4 ft.....	19	1 70	
4 to 5 ft.....	21	1 90	
5 to 6 ft.....	25	2 30	

**nigra aurea.** GOLDEN ELDER.

1½ to 2 ft.....	18	1 60	14 00
2 to 2½ ft.....	20	1 80	16 00
2½ to 3 ft.....	22	2 00	18 00

**nigra lacinata.** CUT-LEAVED ELDER.

1½ to 2 ft.....	16	1 40	12 00
2 to 3 ft.....	18	1 60	14 00
3 to 4 ft.....	20	1 80	

**nigra variegata aurea.** GOLDEN VARIEGATED ELDER.

2 to 2½ ft.....	19	1 70	15 00
2½ to 3 ft.....	22	2 00	18 00

**Spiræa Anthony Waterer.** Dwarf crimson.

1 to 1½ ft.....	18	1 60	14 00
-----------------	----	------	-------

**billardi.** Bright pink

2 to 2½ ft.....	20	1 80	16 00
2½ to 3 ft.....	22	2 00	18 00

**multiflora arguta.** White.

2 to 2½ ft.....	20	1 80	16 00
2½ to 3 ft.....	22	2 00	18 00

**opulifolia.** NINEBARK.

3 to 4 ft.....	25	2 30	
----------------	----	------	--

**opulifolia aurea.** GOLDEN NINEBARK.

2 to 2½ ft.....	18	1 60	14 00
2½ to 3 ft.....	20	1 80	16 00

**prunifolia.** PLUM-LEAVED SPIRÆA.

2 to 2½ ft.....	22	2 00	
2½ to 3 ft.....	24	2 20	

**Thunbergi.** SNOW GARLAND.

1 to 1½ ft.....	16	1 40	12 00
1½ to 2 ft.....	18	1 60	
2 to 2½ ft.....	20	1 80	16 00
2 to 3 ft.....	22	2 00	

**Van Houttei.** White.

2 to 2½ ft.....	18	1 60	14 00
2½ to 3 ft.....	20	1 80	16 00
3 to 4 ft.....	24	2 20	20 00

## FLOWERING AND ORNAMENTAL SHRUBS—Continued.

	Each	Per 10	Per 100
<b>Symphoricarpos racemosus.</b> SNOWBERRY.			
1½ to 2 ft.....	\$0 16	\$ 1 40	\$12 00
2 to 2½ ft.....	18	1 60	14 00
2½ to 3 ft.....	20	1 80	16 00
3 to 4 ft.....	25	2 30	
<b>vulgaris.</b> CORAL BERRY OR INDIAN CURRANT.			
1½ to 2 ft.....	16	1 40	12 00
2 to 3 ft.....	20	1 80	16 00
<b>vulgaris variegata.</b> VARIEGATED CURRANT.			
1½ to 2 ft.....	16	1 40	12 00
<b>Syringa.</b> LILAC.			
<b>alba grandiflora.</b> Large, single, white.			
2 to 2½ ft.....	26	2 40	22 00
2½ to 3 ft.....	29	2 70	
<b>Belle de Nancy.</b> Double pink, with white centre.			
1½ to 2 ft.....	23	2 10	19 00
2 to 2½ ft.....	26	2 40	22 00
2½ to 3 ft.....	29	2 70	
<b>Charles X.</b> Purplish lilac, single.			
2 to 2½ ft.....	26	2 40	22 00
2½ to 3 ft.....	29	2 70	
<b>Japonica.</b> Creamy white.			
2 to 2½ ft.....	28	2 60	
2½ to 3 ft.....	30	2 80	
<b>Josikæa.</b> Violet.			
2 to 2½ ft.....	24	2 20	20 00
2½ to 3 ft.....	27	2 50	23 00
<b>Madame Lemoine.</b> Double, white, superb.			
2 to 2½ ft.....	28	2 60	24 00
2½ to 3 ft.....	30	2 80	26 00
<b>Persica.</b> PURPLE PERSIAN LILAC.			
2 to 2½ ft.....	26	2 40	22 00
2½ to 3 ft.....	29	2 70	
<b>Persica alba.</b> WHITE PERSIAN LILAC.			
2 to 2½ ft.....	26	2 40	22 00
2½ to 3 ft.....	29	2 70	
<b>President Grevy.</b> Double, beautiful blue.			
1½ to 2 ft.....	24	2 20	20 00
2 to 2½ ft.....	28	2 60	24 00
2½ to 3 ft.....	30	2 80	
<b>Rothomagensis.</b> ROUEN LILAC.			
2 to 2½ ft.....	26	2 40	22 00
2½ to 3 ft.....	29	2 70	
<b>Rubra de Marley.</b> Single red.			
2 to 2½ ft.....	26	2 40	22 00
2½ to 3 ft.....	29	2 70	
<b>Villosa.</b> Pink.			
2 to 2½ ft.....	24	2 20	20 00
2½ to 3 ft.....	27	2 50	
<b>vulgaris.</b> COMMON PURPLE LILAC.			
1½ to 2 ft.....	17	1 50	13 00
2 to 3 ft.....	20	1 80	16 00
3 to 4 ft.....	24	2 20	
<b>vulgaris alba.</b> COMMON WHITE LILAC.			
2 to 2½ ft.....	19	1 70	15 00
2½ to 3 ft.....	21	1 90	17 00



## FLOWERING AND ORNAMENTAL SHRUBS—Continued.

	Each	Per 10	Per 100
<i>Tamarix Africana</i> .			
3 to 4 ft.....	\$0 24	\$2 20	\$20 00
<i>hispida æstivalis</i> .			
2 to 3 ft.....	20	1 80	
<i>odessana</i> .			
2 to 3 ft.....	20	1 80	16 00
3 to 4 ft.....	22	2 00	18 00
<i>Viburnum opulus sterilis</i> . COMMON SNOWBALL.			
1½ to 2 ft.....	18	1 60	14 00
2 to 2½ ft.....	20	1 80	16 00
2½ to 3 ft.....	22	2 00	18 00
3 to 4 ft.....	25	2 30	
<i>plicatum</i> . JAPANESE SNOWBALL.			
1½ to 2 ft.....	30		
<i>Weigelia candida</i> . White.			
2 to 2½ ft.....	20	1 80	16 00
2½ to 3 ft.....	22	2 00	18 00
3 to 4 ft.....	25	2 30	21 00
<i>Eva Rathke</i> . Crimson.			
1½ to 2 ft.....	26	2 40	22 00
2 to 2½ ft.....	30	2 80	
2½ to 3 ft.....	35	3 30	
<i>rosea</i> . Pink.			
1½ to 2 ft.....	18	1 60	14 00
2 to 2½ ft.....	21	1 90	17 00
2½ to 3 ft.....	25	2 30	21 00
3 to 4 ft.....	28	2 60	24 00
<i>rosea variegata</i> .			
2 to 2½ ft.....	21	1 90	17 00
2½ to 3 ft.....	25	2 30	

## HARDY VINES AND CLIMBERS

Strong field grown plants, unless otherwise stated.

	Each	Per 10	Per 100
<i>Akebia quinata</i> . FIVE LEAVED AKEBIA.			
Hardy, fast growing vine, magnificent.			
2 year.....	\$0 13	\$ 1 10	\$ 9 00
3 year.....	15	1 30	11 00
<i>Ampelopsis Engelmanni</i> . Very hardy, clinging variety.			
1 year.....	14	1 20	10 00
2 year.....	16	1 40	12 00
3 year.....	18	1 60	14 00
<i>Veitchii</i> . BOSTON IVY.			
1 year.....	14	1 20	10 00
2 year.....	16	1 40	12 00
3 year.....	18	1 60	14 00
<i>quinquefolia</i> . VIRGINIA CREEPER.			
1 year.....	13	1 10	9 00
2 year.....	15	1 30	11 00
3 year.....	17	1 50	13 00

## HARDY VINES AND CLIMBERS—Continued.

	Each	Per 10	Per 100
<b>Aristolochia Siph.</b> DUTCHMAN'S PIPE.			
2 year.....	\$0 20	\$ 1 80	\$16 00
3 year.....	24	2 20	20 00
4 year, extra strong.....	34	3 20	30 00
<b>Bignonia radicans.</b> (Tecoma.) TRUMPET VINE.			
2 year.....	16	1 40	12 00
3 year.....	18	1 60	14 00
<b>Celastrus scandens.</b> AMERICAN BITTERSWEET.			
2 year.....	16	1 40	12 00
3 year.....	18	1 60	14 00
4 year.....	20	1 80	16 00

## CLEMATIS.

## Large Flowering Varieties.

Strong two-year-old field grown plants.

	Each	Per 10	Per 100
No. 1 grade.....	\$0 30	\$ 2 80	\$26 00
No. 2 grade.....	26	2 40	22 00
Pot grown.....	30	2 80	26 00
<b>Duchess of Edinburgh.</b> Double white, scented.			
<b>Henryii.</b> Creamy white.			
<b>Jackmani.</b> Violet purple.			
<b>Jackmani alba.</b> Pure white.			
<b>Sieboldi.</b> Lavender.			
<b>Ville de Lyon.</b> Bright red.			
<b>Clematis paniculata.</b> SWEET SCENTED JAPANESE CLEMATIS.			
3 year.....	18	1 60	
<b>Euonymus radicans.</b> CLIMBING EUONYMUS.			
2 year.....	15	1 30	11 00
radicans variegata, 2 year.....	15	1 30	11 00
<b>Hedera helix.</b> ENGLISH IVY.			
2 year.....	14	1 20	10 00
<b>Humulus lupulus.</b> HOP.			
2 year.....	14	1 20	10 00
<b>Lonicera aurea reticulata.</b> GOLDEN LEAVED HONEYSUCKLE.			
2 year.....	14	1 20	10 00
3 year.....	16	1 40	12 00
<b>Belgica.</b> MONTHLY FRAGRANT HONEYSUCKLE.			
2 year.....	14	1 20	10 00
<b>Halliana.</b> HALL'S JAPANESE HONEYSUCKLE.			
2 year.....	14	1 20	10 00
3 year.....	16	1 40	12 00
<b>Lycium Europæum.</b>			
3 year.....	16	1 40	12 00
<b>Pueraria thunbergiana.</b> KUDZU VINE.			
	14	1 20	10 00
<b>Wistaria sinensis.</b> CHINESE BLUE WISTARIA.			
2 year.....	25	2 30	
3 to 5 ft.....	42	4 00	38 00
<b>sinensis alba.</b> CHINESE WHITE WISTARIA.			
3 to 5 ft.....	42	4 00	38 00

## HARDY HERBACEOUS PERENNIALS.

Strong field grown plants unless otherwise stated.

	Each	Per 10	Per 100
<b>Achillea ptarmica plena. The Pearl. SNEEZEWORD.</b>			
Double white. 2 ft. July-Sept.....	\$0 11	\$ 1 00	\$ 9 00
<b>Millefolium Cerise Queen. Bright cherry-red.</b>			
2½ ft. June-October.....	11	1 00	9 00
<b>Aconitum autumnale. MONK'S HOOD. Blue. 3½</b>			
ft. August-October.....	12	1 10	10 00
<b>Alyssum saxatile. GOLDEN TUFT. Yellow. 1 ft.</b>			
April-May.....	10	90	8 00
<b>saxatile plena. Double yellow.....</b>	15	1 30	11 00
<b>Agrostemma coronaria. CAMPION. Rosy-crimson.</b>			
2½ to 3 ft. June-July.....	11	1 00	9 00
<b>Anchusa Italica. Dropmore Variety. ALKANET.</b>			
Blue. 5 ft. May-July.....	12	1 10	10 00
<b>Italica Opal. Light blue. 4ft. May-July.....</b>	12	1 10	10 00
<b>Anemone Japonica. JAPANESE WINDFLOWER. 2½ ft.</b>			
September-October			
<b>alba. Single white.....</b>	11	1 00	9 00
<b>Queen Charlotte. Silvery-pink, semi-double....</b>	12	1 10	10 00
<b>Whirlwind. White, semi-double.....</b>	12	1 10	10 00
<b>Rubra. Red.....</b>	12	1 10	10 00
<b>Aquilegia. COLUMBINE. 2 to 3 ft. May-June....</b>			
<b>cærulea. Blue and white.....</b>	10	90	8 00
<b>californica hybrida. Long-spurred, mixed</b>	11	1 00	9 00
<b>chrysantha. Long-spurred, bright yellow.....</b>	11	1 00	9 00
<b>grandiflora nivea. Large pure white.....</b>	11	1 00	9 00
<b>Long Spurred Hybrids. Mixed colors.....</b>	11	1 00	9 00
<b>Arabis, alpina grandiflora superba. White. 6 in.</b>			
April-May. Pot grown.....	10	90	8 00
<b>Armeria maritima. SEA PINK. 1 ft. June-September.</b>	11	1 00	9 00
<b>Artemisia lactiflora. Pale cream, ornamental fern-like</b>			
foliage. 5 ft. August-September.....	14	1 20	10 00
<b>Asters, Hardy. MICHAELMAS DAISIES.</b>			
<b>amellus rubellus. Lilac color. 2 ft. July-</b>			
August.....	18	1 60	14 00
<b>Cordifolius. Blue. 4 ft. September.....</b>	16	1 40	12 00
<b>Ideal. Pale mauve. 4ft. September.....</b>	18	1 60	14 00
<b>Novæ-Angliæ Lil Fardel. Clear rose-pink,</b>			
large. 5 ft. September-October.....	14	1 20	10 00
<b>Ryecroft Purple. Purple. 5 ft. Sept.-Oct.</b>	16	1 40	12 00
<b>Novæ-Belgii</b>			
<b>Feltham Blue. Large, bright blue. 4 ft....</b>	18	1 60	14 00
<b>Perry's Pink. Bright rose, fine variety. 3</b>			
ft. October-November.....	18	1 60	14 00
<b>Astilbe Arendsi Hybrids. Beautiful feathered flowers</b>			
fine for cutting.			
<b>Brunhilde. Creamy pink. with lilac shade, 4 ft</b>	22	2 00	18 00
<b>Ceres. Lilac rose with silvery sheen. 3 ft.....</b>	22	2 00	18 00
<b>Salmon Queen. Salmon pink, very fine. 2½ ft</b>	22	2 00	18 00
<b>Venus. Brilliant rosy purple. 3½ ft.....</b>	22	2 00	18 00
<b>Bellis perennis plena. ENGLISH DAISY. Colors,</b>			
white and pink.....	10	90	8 00

## HARDY HERBACEOUS PERENNIALS—Continued.

	Each	Per 10	Per 100
<i>Bocconia cordata</i> . PLUME POPPY. Creamy-white. 6 ft. July-September.....	\$0 10	\$ 90	\$ 8 00
<i>Boltonia asteroides</i> . FALSE CHAMOMILE. White. 4 to 5 ft. August-October.....	10	90	8 00
<i>latisquama</i> . Lavender. 5 ft. August.....	12	1 10	10 00
<i>Campanula</i> . BELLFLOWER.			
<i>carpatica</i> . CARPATHIAN HAREBELL. Blue. 8 in. June-October.....	11	1 00	9 00
<i>carpatica alba</i> . White form of the preceding....	11	1 00	9 00
<i>glomerata superba</i> . Intense violet-blue. 1½ to 2 ft. June-August.....	11	1 00	9 00
<i>lactiflora</i> . White, with bluish-violet, splendid. 3½ ft. June-August.....	12	1 10	10 00
<i>media calycanthera</i> . CANTERBURY BELLS. White, pink, blue. 3ft. June-July.....	10	90	8 00
<i>persicifolia</i> . PEACH BELLS. Large blue flowers 2 ft. June-September.....	12	1 10	10 00
<i>persicifolia alba</i> . White form of the preceding..	12	1 10	10 00
<i>pyramidalis</i> . CHIMNEY BELL FLOWER. Blue. 2 ft. July-September.....	11	1 00	9 00
<i>alba</i> . White.....	11	1 00	9 00
<i>Centaurea dealbata</i> . KNAPWEED. Deep pink, fine for cutting. 1½ ft. July-August.....	12	1 10	10 00
<i>macrocephala</i> . Large, thistle-like, golden yel- low flowers. 3 ft. July-August.....	12	1 10	10 00
<i>montana</i> . PERENNIAL CORNFLOWER. Violet 2 ft. May-August..	12	1 10	10 00
<i>Cerastium tomentosum</i> . SNOW-IN-SUMMER. White 6 in. June.....	10	90	8 00
<i>Chrysanthemum arcticum</i> . ARCTIC DAISY. Large white flowers, prolific. 2½ ft. Sept.- Oct.....	18	1 60	14 00
<i>maximum</i> . SHASTA DAISY. White. Newest varieties. 2 ft. July-October.....	10	90	8 00
<i>maximum</i> . King Edward VII. Large white 2½ ft. July-October.....	12	1 10	10 00
<i>uliginosum</i> . GIANT DAISY. White. 3 ft. September-October.....	13	1 20	11 00
<i>Cimicifuga racemosa</i> . SNAKEROOT. Handsome, pure white flowers. 6 ft. July-Aug.....	14	1 30	12 00
<i>Clematis recta</i> . Pure white. 5 ft. June-July.....	13	1 20	12 00
<i>recta purpurea</i> . Bright purple. 4 ft. June-July	13	1 20	11 00
<i>Coreopsis lanceolata</i> . LANCE-LEAVED TICKSEED. Rich golden yellow. 1½ ft. June- October.....	10	90	8 00
<i>Delphiniums</i> . LARKSPUR. June-October.....			
Choice Hybrids.			
<i>Belladonna</i> . Sky blue. Blooms all summer....	20	1 80	16 00
<i>Duke of Connaught</i> . Blue, flushed crimson- purple, white eye. 4 to 5 ft.....	24	2 20	20 00
<i>Fanny Stormmouth</i> . Beautiful light blue.....	22	2 00	18 00
<i>King of Delphiniums</i> . Deep blue, with large white centre; massive spikes, 6 ft. in height, a magnificent semi-double variety.....	34	3 20	30 00

## HARDY HERBACEOUS PERENNIALS—Continued

	Each	Per 10	Per 100
<b>Delphiniums.</b> <b>La France.</b> Inner petals rich rosy lavender, outer petals sky blue, light centre.....	\$0 22	\$ 2 00	\$18 00
<b>Lizzie.</b> Cambridge blue, edged with rose, yellow and white centre.....	24	2 20	20 00
<b>Moerheimi.</b> Pure white single flowers in continuous bloom, strong growth, 5 ft.	27	2 50	23 00
<b>Standard Varieties.</b>			
<b>formosum.</b> Dark blue. 2 to 3 ft. June-July.	12	1 10	10 00
<b>grandiflorum chinense.</b> Blue. 1½ ft. July-August.....	11	1 00	9 00
<b>grandiflorum chinense album.</b> White form of preceding.....	11	1 00	9 00
<b>Mixed Hybrids.</b> Excelsior strain.....	11	1 00	9 00
<b>Dianthus barbatus.</b> SWEET WILLIAM. 1½ ft. May June. White, crimson, pink.....	11	1 00	9 00
<b>Mixed.</b> A fine strain.....	10	90	8 00
<b>Dicentra spectabilis.</b> BLEEDING HEART. Rosy crimson. 2 ft. May-July.....	12	1 10	10 00
<b>Digitalis gloxiniflora.</b> FOXGLOVE. 3 ft. June-July. White. Rose, yellow. Purple.....	11	1 00	9 00
<b>Mixed colors.</b> .....	10	90	8 00
<b>Doronicum plantagineum excelsum.</b> LEOPARD'S BANE. Golden yellow. 3 ft. May-June.....	11	1 00	9 00
<b>Erigeron speciosus hybrida grandiflora.</b> FLEA BANE. Lavender. 2 ft. July-August.....	12	1 10	10 00
<b>Eryngium amethystinum.</b> SEA HOLLY. Large blue flowers. 2 to 3 ft. July-September....	12	1 10	10 00
<b>Eulalia Japonica zebrina stricta.</b> 5 ft. FALSE PAMPAS GRASS.....	13	1 20	11 00
<b>Japonica gracillimus.</b> 5 ft.....	13	1 20	11 00
<b>Eupatorium ageratoides.</b> WHITE SNAKEROOT. Minute white flowers in dense heads. 3 to 4 ft. August-September.....	11	1 00	9 00
<b>Fraseri.</b> White. Fine for cutting.....	11	1 00	9 00
<b>Funkia subcordata grandiflora.</b> DAY LILY. White. 2½ ft. July-August.....	12	1 10	10 00
<b>ovata, or cœrulea.</b> BLUE DAY LILY. 1½ ft. July-August.....	12	1 10	10 00
<b>undulata media variegata.</b> 3 ft. Silver striped foliage.....	12	1 10	10 00
<b>Gaillardia grandiflora.</b> Showy and useful for cutting 2 ft. June-October.....	10	90	8 00
<b>Galega officinalis.</b> GOAT'S RUE. Blue. 2½ ft. July-August.....	11	1 00	9 00
<b>officinalis alba.</b> white.....	11	1 00	9 00
<b>Geum atrosanguineum plena.</b> AVENS. Double scarlet. 1 ft. June-July.....	10	90	8 00
<b>Gypsophila paniculata.</b> BABY'S BREATH. White. 2 to 3 ft. July-August.....	10	90	8 00
<b>paniculata plena.</b> Double white, fine for cutting	18	1 60	14 00
<b>Helenium autumnale superbum.</b> SNEEZE WEED. Clear yellow. 6 ft. Sept.-October....	11	1 00	9 00
<b>grandicephalum striatum.</b> Reddish-brown. 5 ft. August-October.....	11	1 00	9 00
<b>Riverton Beauty.</b> Lemon yellow. 3ft. Sept.-October.....	12	1 10	10 00
<b>Riverton Gem.</b> Old gold, changing to red. 2½ ft. September-October.....	11	1 10	9 00

## HARDY HERBACEOUS PERENNIALS—Continued

Each Per 10 Per 100

	Each	Per 10	Per 100
<b>Helianthus. HARDY SUNFLOWER.</b>			
Soleil d'Or. Double sunflower yellow, splendid variety. 4 to 5 ft. August-October...	\$0 11	\$ 1 00	\$ 9 00
rigidus Miss Mellish. Rich yellow. 6 ft. July August.....	10	90	8 00
sparsifolius. Large golden yellow flowers with brown centre, splendid for cutting. 6 ft. August-September.....	11	1 00	9 00
<b>Heliopsis pitheriana. ORANGE SUNFLOWER. Yellow. 7 ft. June-October.....</b>	11	1 00	9 00
<b>Hemerocallis. YELLOW DAY LILY.</b>			
aurantica. Large, trumpet shaped, orange and bright yellow, scented. 3 to 4 ft. June-July.....	16	1 40	12 00
Florham. Rich golden yellow, large.....	14	1 20	10 00
fulva. TAWNY DAY LILY. Bronze orange. 4½ ft. June-July.....	11	1 00	9 00
Gold Dust. Orange, bronze on outside. 2½ ft. May-June.....	11	1 00	9 00
Orangeman. Bright orange. 2½ ft. June-July.....	10	90	8 00
<b>Heuchera sanguinea. CORAL BELLS. Bright red. 1½ ft. June-September.....</b>	11	1 00	9 00
<b>Hibiscus moshceutos. SWAMP ROSE MALLOW. Rosy red. 4 ft. August-September.....</b>	11	1 00	9 00
moscheutos. (Crimson Eye.) White, crimson at base. 4 ft. August-September.....	11	1 00	9 00
<b>Hollyhocks. CONNON'S SUPERB. 6 ft. July-Aug. Double Yellow. Double Pink Queen. Double Crimson. Double White.</b>			
Double Mixed.....	10	90	8 00
Allegheny. Semi-double, fringed. Mixed colors.....	11	1 00	9 00
<b>Iberis sempervirens Snowflake. HARDY CANDY-TUFT. Large snowy-white flowers. 1 ft. May-June.....</b>	11	1 00	9 00
<b>Incarvillea Delavayi. HARDY GLOXINIA. Rose colored. 1½ ft. June-July.....</b>	10	90	8 00
<b>Inula glandulosa grandiflora. Very large orange-yellow flowers. 2 ft. June-July.....</b>	12	1 10	10 00
<b>Iris barbata. 2 to 3 ft. May-June. S-Standards; F-Falls.</b>			
Albion. S, dull yellow. F, purple veined with white.....	10	90	8 00
Askabad. Light blue and purple.....	10	90	8 00
Canary Bird. S and F, yellow.....	11	1 00	9 00
Cynthia. S and F, mauve.....	10	90	8 00
Florentina alba. S, white, suffused lavender; F, white.....	10	90	8 00
Florentina purpurea. S, purple; F, deep purple.....	10	90	8 00
Honorabilis. S, deep yellow; F, yellow, shaded red.....	10	90	8 00
Jenny Lind. S, light yellow; F, yellow overlaid with pink.....	10	90	8 00
Kharput. S, pale purple; F, dark purple.....	10	90	8 00
Madame Chereau. S and F, white, edged with bluish lavender.....	10	90	8 00
Marie. S, mauve; F, light purple.....	10	90	8 00
Mrs. H. Darwin. S, white; F, violet.....	10	90	8 00
Pallida (Odoratissima.) Large lilac-blue flowers, fragrant and beautiful.....	15	1 30	11 00
Spectabilis. S, light violet-purple; F, deep violet purple.....	10	90	8 00
Yacht Blue. S, blue; F, dark blue.....	10	90	8 00

## HARDY HERBACEOUS PERENNIALS—Continued.

	Each	Per 10	Per 100
Iris Named Varieties. Our selection. Per 1,000			
\$60.00.....	\$0 09	\$ 80	\$ 7 00
Mixed.....	8	70	6 00
Iris Kämpferi. JAPANESE IRIS. 3 ft. June-July....	14	1 20	10 00
Bandai-no-nami. Double White.			
Hatsushimo. Single white, extra large.			
Iso-no-nami. White, striped blue, upper petals blue, large.			
Shoko-no-Nishiki. Single white, veined purple, upper petals violet red.			
Tokyo-no-Hana. Double, deep blue, yellow centre, extra large.			
Warai-hotei. Double blue.			
Mixed. ....	10	90	8 00
Iris Pumila cyanea. Rich purple. 10 in. May.....	10	90	8 00
Iris sibirica. Bright lilac blue. 3 ft. May-June.	10	90	8 00
sibirica alba. White. 3 ft. June.....	10	90	8 00
Liatris spicata. BUTTON SNAKEROOT. Rosy purple, 3 ft. July-September.....	11	1 00	9 00
Lupinus polyphyllus cæruleus. LUPINE. Deep blue, 3 ft. June-July.....	11	1 00	9 00
polyphyllus alba.....	11	1 00	9 00
Lychnis chalcedonica. JERUSALEM CROSS. Scarlet. 4 ft. June-August.....	11	1 00	9 00
Lythrum roseum superbum. ROSY LOOSE-STRIPE. 4 to 5 ft. June-August.....	10	90	8 00
Monarda didyma, Cambridge Scarlet. OSWEGO TEA. Bright crimson. 3 ft. July-September.....	12	1 10	10 00
Montbretia crocosmiæflora. Deep golden orange....	12	1 10	10 00
Myosotis palustris semperflorens. FORGET-ME-NOT. Blue. 1 ft. All summer and autumn..	10	90	8 00
Oenothera Fraseri. EVENING PRIMROSE. Yellow 2 ft. June-October.....	11	1 00	9 00
Youngi. Yellow. 2 ft. June-September..	11	1 00	9 00
Pachysandra terminalis. JAPANESE SPURGE. white 8 inches. May-June.....	14	1 20	10 00
Pæonies. Double. 2 ft. June.			
Delachei. Dark red, large and free blooming...	22	2 00	18 00
Duchesse de Nemours. Very large, pure white, fragrant, vigorous grower, splendid cut flower variety.....	22	2 00	18 00
Eduis superba. Bright, deep pink with lighter edges, large, fragrant, splendid.....	22	2 00	18 00
Festiva maxima. Pure white, centre petals occasionally tipped red, a superb variety, fragrant.....	24	2 20	20 00
La Rosiere. White, slightly tinted yellow, large size, fragrant.....	22	2 00	18 00
Livingston. Pale lilac rose, with a silver tip, centre petals flecked carmine, extra good commercial bloom.....	25	2 30	
Louis van Houtte. Rich, dark crimson. fragrant large, and very striking	20	1 80	16 00
Magnifica. Pale rose, centre cream and white..	20	1 80	16 00
Queen Victoria. Pure white, creamy white centre, fragrant.....	20	1 80	16 00

## HARDY HERBACEOUS PERENNIALS—Continued

	Each	Per 10	Per 100
<b>Pæonies, Rubra Superba.</b> Brilliant deep crimson, very fragrant, large, late variety.....	\$0 20	\$ 1 80	\$16 00
<b>Zoe Calot.</b> Delicate pink, large globe-shaped flowers.....	20	1 80	16 00
<b>Officinalis alba.</b> Blush white, early flowering.....	18	1 60	14 90
<b>Officinalis rosea.</b> Bright pink, early flowering.....	18	1 60	14 00
<b>Rubra.</b> Crimson, early flowering.....	18	1 60	14 00
<b>Tenuifolia plena.</b> Crimson, double, fine feathery foliage, very early.....	24	2 20	20 00
<b>Double Pink Shades, mixed</b> .....	16	1 40	12 00
<b>Double Red Shades, mixed</b> .....	16	1 40	12 00
<b>Double White Shades, mixed</b> .....	17	1 50	13 00
<b>Double Mixed.</b> All colors.....	15	1 30	11 00
<b>Papaver nudicaulis.</b> ICELAND POPPY. 1 ft. May-October. Orange, white, yellow.....	11	1 00	9 00
<b>Orientalis.</b> ORIENTAL POPPY. 2 to 3 ft. June.....	11	1 00	9 00
<b>Named Varieties</b> .....	12	1 10	10 00
<b>Beauty of Livermere.</b> Crimson, with black blotch.			
<b>Mrs. Perry.</b> Orange apricot.			
<b>Rembrandt.</b> Orange scarlet.			
<b>Penstemon barbatus Torreyi.</b> BEARD TONGUE. Crimson-scarlet. 3 to 4 ft. June-Aug.	10	90	8 00
<b>Phlox amœna.</b> Bright rosy pink. 6 in. May-June	12	1 10	10 00
<b>divaricata (Canadensis).</b> Lilac to mauve. 6 to 12 in. May-June.....	12	1 10	10 00
<b>Phlox paniolata.</b> HARDY GARDEN PHLOX. 2 to 3 ft. July-October. 2-year-old field grown plants.			
<b>New Varieties:</b>			
<b>Baron von Dedem.</b> Glistening scarlet, with crimson centre, splendid large variety.....	14	1 20	10 00
<b>Europa.</b> Snow white, with crimson carmine centre, large flowers and trusses, quite distinct.....	14	1 20	10 00
<b>Elizabeth Campbell.</b> Bright salmon pink, with crimson centre, most attractive....	12	1 10	10 00
<b>Frau Anton Buchner.</b> Pure white, very fine, dwarf habit.....	14	1 20	11 00
<b>George A. Strohleln.</b> Bright orange scarlet with brilliant crimson centre.....	14	1 20	11 00
<b>Rosenberg.</b> Bright reddish-violet, with blood-red centre, large flowers and trusses.....	12	1 10	10 00
<b>Rynstroom.</b> Deep shining rose, very large trusses, beautiful variety.....	12	1 10	10 00
<b>Von Lassburg.</b> Pure white, very large and splendid variety .. .	14	1 20	11 00
<b>Standard Varieties:</b> .....	11	1 00	9 00
<b>Coquelicot.</b> Brilliant orange red with crimson centre.			
<b>Eclaircur.</b> Brilliant rosy magenta, with lighter halo.			
<b>Etna.</b> Deep coral red, large flowering.			
<b>Flora Hornung.</b> White, with large crimson centre, dwarf.			
<b>Jeanne d'Arc.</b> White, good late variety.			
<b>Jean Bart.</b> Pale clear pink, cherry red centre.			
<b>La Vague.</b> Clear lilac pink, cherry red centre.			



## HARDY HERBACEOUS PERENNIALS—Continued.

Phlox Standard Varieties.	Each	Per 10	Per 100
Madame Paul Dutrie. Delicate pink, beautiful variety.			
Percheur d'Islande. Salmon pink, striped white.			
Tapis Blanc. Pure white, dwarf.			
Mixed. All colors.	\$0 10	\$ 90	\$ 8 00
<b>Phlox suffruticosa. EARLY FLOWERING HARDY</b>			
PHLOX. 2 ft. June-October.....	12	1 10	10 00
Belle Pyramide. Rosy lilac.			
Indian Chief. Bright dark purple.			
Miss Lingard. Pure white			
<b>Phlox sublata. MOSS, OR MOUNTAIN PINKS. 6 in.</b>			
May-June.....	11	1 00	9 00
Lilacina. Light lilac color.			
Rosea. Bright rose.			
<b>Physalis franchetti. CHINESE LANTERN PLANT 2ft.</b>	10	90	8 00
<b>Physostegia virginiana. FALSE DRAGON'S HEAD.</b>			
pink. 3 ft. July-September.....	10	90	8 00
<b>Platycodon grandiflorum. BALLOON FLOWER. Bright</b>			
bluish-violet. 2 to 3 ft. July-August	11	1 00	9 00
<b>grandiflorum album. White.....</b>	11	1 00	9 00
<b>Polemonium Richardsoni (humile). JACOB'S LADDER</b>			
Blue. 6 to 12 in. May-June.....	11	1 00	9 00
<b>Richardsoni alba. White.....</b>	11	1 00	9 00
<b>Potentilla formosa. CINQUEFOIL. Rosy red. 1½</b>			
ft. June-August.....	10	90	8 00
<b>Pyrethrum roseum grandiflora. Double and single</b>			
mixed. 1½ ft. June.....	11	1 00	9 00
<b>roseum plena. Double varieties in crimson,</b>			
pink and white.....	18	1 60	14 00
<b>Rudbeckia laciniata plena. GOLDEN GLOW.</b>			
Double yellow. 6 to 7 ft. July-Sept....	10	90	8 00
<b>Newmanni speciosa. Rays deep golden yellow,</b>			
black disc 2½ ft. July-October.....	12	1 10	10 00
<b>purpurea. Large reddish-purple. 3 ft. July-</b>			
October.....	10	90	8 00
<b>Salvia pratensis. MEADOW SAGE. Violet. 3 ft.</b>			
May-August.....	11	1 00	9 00
<b>Saxifraga. ALPINE VARIETIES.</b>			
<b>umbrosa. LONDON PRIDE. White, sometimes</b>			
suffused with red, flowers.....	14	1 20	10 00
<b>Saxifraga. MEGASEA VARIETIES.</b>			
<b>cordifolia. Light rose.....</b>	15	1 30	11 00
<b>speciosa. Rosy pink.....</b>	15	1 30	11 00
<b>Scabiosa caucasica. BLUE BONNET. Lilac-blue.</b>			
useful for cutting. 2 ft. June-Aug....	14	1 20	11 00
<b>Sedum kamtschaticum. STONECROP. Yellow. 1 ft</b>			
June-August.....	12	1 10	10 00
<b>lydium glaucum. Bluish foliage. 3 in.....</b>	12	1 10	10 00
<b>spectabile brilliant. Crimson pink. 15 in. Sept</b>			
13	1 20	11 00	
<b>Spiraea aruncus. GOAT'S BEARD. Creamy white.</b>			
4½ ft. June-July.....	12	1 10	10 00
<b>filipendula plena. MEADOW SWEET. White. 2</b>			
ft. June-July.....	12	1 10	10 00
<b>palmata elegans. Pink and white. 4 ft. June-</b>			
July.....	10	90	8 00
<b>Statice latifolia. SEA LAVENDER. Blue. 2 ft.</b>			
July-September.....	11	1 00	9 00

## HARDY HERBACEOUS PERENNIALS—Continued

	Each	Per 10	Per 100
<i>Statice tatarica</i> . Bluish-violet. 2½ ft. July-September.....	\$0 11	\$ 1 00	\$ 9 00
<i>Stokesia cyanea</i> . CORNFLOWER ASTER. Blue. 1 ft. August-October.....	11	1 00	9 00
<i>Thalictrum aquilegifolium</i> . MEADOW RUE. White 4ft. June-July.....	12	1 10	10 00
<i>Tradescantia Virginiana</i> . SPIDERWORT. Blue. 2 ft. May-September.....	11	1 00	9 00
<i>Tritoma uvaria grandiflora</i> . RED HOT POKER. Rich ochre-red. 3 ft. August-October.....	11	1 00	9 00
<i>Veronica incana</i> . SPEEDWELL. Deep violet. 2½ ft. June-September.....	12	1 10	10 00
<i>longifolia subsessilis</i> . Blue. 2½ ft. August-September.....	15	1 30	11 00
<i>spicata</i> . EUROPEAN SPEEDWELL. Deep violet. 3 ft. July-October.....	10	90	8 00
<i>Viola cornuta</i> , George Wermig. TUFTED PANSY. 6 in. May-October. Blue, resembles a violet.....	12	1 10	10 00
<i>Vinca minor</i> . PERIWINKLE. Blue. 3 in. May-June.....	10	90	8 00
<i>minor variegata</i> .....	10	90	8 00
<i>Yucca filamentosa</i> . ADAM'S NEEDLE. White.....	11	1 00	9 00
<b>CULINARY ROOTS.</b>			
Chives.....	8	70	6 00
Peppermint.....	8	70	6 00
Spearmint.....	8	70	6 00
Perennial Savory.....	14	1 20	10 00
Sage, Holt's Mammoth.....	9	80	7 00



Nurseries, Stoney Creek.

## List of Contents

PAGE		PAGE
Abies.....		Foxglove.....
Acer.....		Flea Bane.....
Achillea.....		Fraxinus.....
Achyranthes.....		Fuchsia.....
Aconitum.....		Funkia.....
Adam's Needle.....		
Aesculus.....		Gaillardia.....
Agrostemma.....		Galega.....
Ailanthus.....		Gas Plant.....
Akebia.....		Geraniums.....
Alkanet.....		Geum.....
Almond, Flowering.....		Giant Daisy.....
Alternanthera.....		Gladiolus.....
Althea.....		Gleditschia.....
Alyssum.....		Gloxinia, Hardy.....
Amelanchier.....		Gnaphalium.....
Amorpha.....		Goat's Beard.....
Ampelopsis.....		Golden Bell.....
Anchusa.....		Golden Glow.....
Anemone.....		Golden Tuft.....
Angelica Tree.....		Gypsophila.....
Aquilegia.....		
Arabis.....		Hawthorn.....
Aralia.....		Helanium.....
Arbor Vitæ.....		Helianthus.....
Arctic Daisy.....		Heliopsis.....
Aristolochia.....		Heliotrope.....
Armeria.....		Hemerocallis.....
Artemisia.....		Hemlock.....
Ash.....		Heuchera.....
Asparagus.....		Hibiscus.....
Aster.....		Hollyhock.....
Astilbe.....		Honeysuckle, Bush.....
Azalea.....		Honeysuckle, Climbing.....
		Hop.....
Baby's Breath.....		Horse Chestnut.....
Baccharis.....		Hydrangea.....
Balloon Flower.....		
Barberry.....		Iberis.....
Basswood.....		Incarvillea.....
Basket Plants.....		Indian Currant.....
Beard Tongue.....		Inula.....
Begonias.....		Iresine.....
Bellflower.....		Iris.....
Berberis.....		Ivy.....
Betula.....		
Bignonia.....		Jacob's Ladder.....
Birch.....		Japanese Windflower.....
Bitter Sweet.....		Japan Quince.....
Blue Bonnet.....		Jerusalem Cross.....
Bocconia.....		Juneberry.....
Boltonia.....		Juniper.....
Boston Ivy.....		Juniperus.....
Boxwood.....		
Black Locust.....		Kadsura Tree.....
Bleeding Heart.....		Kerria.....
Buckthorn.....		Knapweed.....
Buddleia.....		Kudzu Vine.....
Caladium.....		
Calycanthus.....		
Campanula.....		
Cannas.....		
Canterbury Bells.....		
Caragana.....		
Caryopteris.....		
Catalpa.....		
Celastrus.....		
Celosia.....		
Centaurea.....		
Cerastium.....		
Cercidiphyllum.....		
Chionanthus.....		
Chives.....		
Chrysanthemum.....		
Cimicifuga.....		
Cinquefoil.....		
Clematis.....		
Cobea.....		
Coleus.....		
Columbine.....		
Coral Berry.....		
Cordyline.....		
Coreopsis.....		
Cornflower Aster.....		
Cornus.....		
Corylus.....		
Cyclamen.....		
Cydonia.....		
Cypress.....		
Dahlia.....		
Daisy.....		
Day Lily.....		
Delphinium.....		
Deutzia.....		
Dianthus.....		
Dicentra (Dielytra).....		
Dictamnus.....		
Digitalis.....		
Dogwood.....		
Doronicum.....		
Dracæna.....		
Dutchman's Pipe.....		
Elder.....		
Eleagnus.....		
Elephant's Ear.....		
Elm.....		
Erigeron.....		
Eryngium.....		
Eulalia.....		
Euonymus.....		
Eupatorium.....		
Fagus.....		
False Chamomile.....		
False Dragon's Head.....		
False Indigo.....		
Ferns.....		
Forsythia.....		

## LIST OF CONTENTS—Continued.

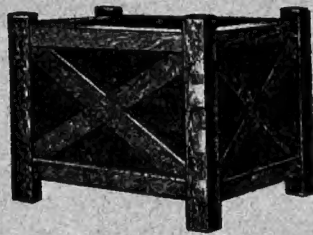
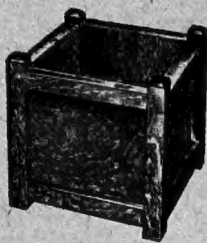
PAGE		PAGE		PAGE	
Larkspur.....	24	Petunias.....	4	Sneezewort.....	22
Leopard's Bane....	25	Peuraria.....	22	Snowball.....	21
Liatris.....	27	Philadelphus.....	18	Snowberry.....	20
Ligustrum.....	18	Phlox.....	28	Snow-in-Summer....	24
Lilac.....	20	Physalis.....	28	Sorbus.....	13
Lilium.....	6	Physostegia.....	29	Spearmint.....	30
Lily of the Valley..	24	Picea.....	14	Speedwell.....	30
Linden.....	13	Pine.....	14	Spiraea.....	19, 29
Lobelia.....	3, 27	Pinus.....	15	Spruce.....	15
Lonicera.....	18, 22	Platycodon.....	29	Statice.....	29, 30
Loose-Strife.....	27	Plum, Flowering....	18	Stokesia.....	30
Lupine.....	27	Plume Poppy.....	23	Sunflower.....	25
Lupinus.....	27	Polemonium.....	29	Swamp Rose Mal- low.....	26
Lychnis.....	27	Poplar.....	13	Sweet William.....	24
Lycium.....	22	Poppy.....	28	Syringa.....	20
Lythrum.....	27	Populus.....	12	Symphoricarpos....	20
Magnolia.....	12	Potentilla.....	29	Tamarix.....	21
Mahonia.....	18	Primula.....	4, 29	Taxus.....	15
Malus.....	14	Privet.....	18	Tecoma.....	21
Maple.....	11	Prunus.....	18	Thorn, English or May.....	13
Marguerite.....	4	Pseudotsuga.....	15	Thuya.....	15
Matrimony Vine....	22	Pyrethrum.....	29	Thyme.....	30
Meadow Sweet.....	29	Quercus.....	12	Tickseed.....	24
Meadow Rue.....	30	Red Hot Poker.....	29	Tilia.....	13
Michaelmas Daisy..	23	Retinospora.....	15	Thalictrum.....	30
Mint.....	30	Rhamnus.....	18	Tradescantia.....	4, 30
Mock Orange.....	18	Rhododendrons.....	18	Tritoma.....	30
Monarda.....	27	Rhodotypus.....	19	Tropæolum.....	4, 13
Monk's Hood.....	22	Rhus.....	12, 13	Trollius.....	29
Montbretia.....	27	Ribes.....	19	Trumpet Vine.....	21
Moonflower.....	4	Robinia.....	13	Tsuga.....	15
Morus.....	12	Roses 6, 7, 8, 9, 10, 11		Ulmus.....	13
Mountain Ash.....	13	Rose of Sharon.....	18	Verbena.....	4
Myosotis.....	27	Rudbeckia.....	29	Veronica.....	30
Norway Spruce.....	14	Sage.....	29, 30	Viburnum.....	21
Oak.....	12	Salix.....	13	Viola.....	30
Oenothera.....	27	Salvia.....	4, 29	Vinca.....	4, 30
Orange Lily.....	26	Sambucus.....	19	Virginia Creeper....	21
Orange Sunflower..	25	Savory.....	30	Weigelia.....	21
Oswego Tea.....	27	Saxifrage.....	29	White Snakeroot....	25
Pachysandia.....	27	Scabiosa.....	29	Wistaria.....	22
Pæony.....	27, 28	Sea Holly.....	25	Yellow Day Lily.....	26
Pansy, Tufted.....	30	Sea Lavender.....	29	Yew.....	15
Papaver.....	28	Sea Pink.....	23	Yucca.....	30
Penstemon.....	28	Sedum.....	29		
Peppermint.....	30	Shasta Daisy.....	24		
Periwinkle.....	30	Siberian Pea.....	16		
		Snake Root.....	24		
		Sneeze Weed.....	25		

# PLANT BOXES

— for —

*Boxwood, Bay Trees,  
Hydrangeas, etc.*

STRONGLY AND ARTISTICALLY MADE  
OF CYPRESS AND FINISHED IN BROWN



Style of Nos. 1 and 2

Style of Nos. 3, 4, 5 and 6

	Inside	Outside	Price
No. 1 Size—	8 x 8 in.	10 x 10 in. - -	\$1.15 each
No. 2 Size—	10 x 10 in.	12 x 12 in. - -	1.50 each
No. 3 Size—	12 x 12 in.	14 x 14 in. - -	1.85 each
No. 4 Size—	14 x 14 in.	16 x 16 in. - -	2.25 each
No. 5 Size—	16 x 16 in.	18½ x 18½ in. - -	2.80 each
No. 6 Size—	18 x 18 in.	20½ x 20½ in. - -	3.35 each

---

---

## WHOLESALE PRICE LIST

*Spring 1918*

---

---

# JOHN CONNON CO.

LIMITED

Florists and Nurserymen

HAMILTON, - ONTARIO

# Members of Florists' Telegraph

✧ Delivery ✧



Long  
Distance  
Phone  
867  
Hamilton  
Ontario

Our flower service is as close to you as your long distance phone, post or telegraph office.

Telegrams  
Connon  
Florist  
Hamilton  
Ontario

We will be glad to execute your orders for delivery in this district.

Mail all correspondence to 69 King St. E., Hamilton, Ont.

## JOHN CONNON CO.

LIMITED

FLORISTS  
AND NURSERYMEN

HAMILTON, - - -

ONTARIO