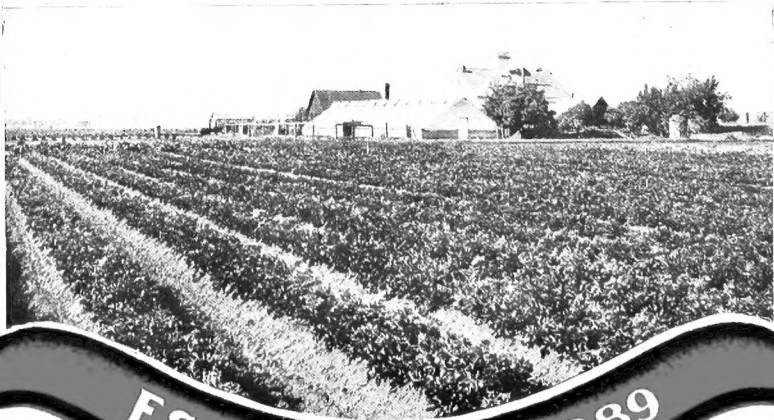


ANNUAL CATALOGUE



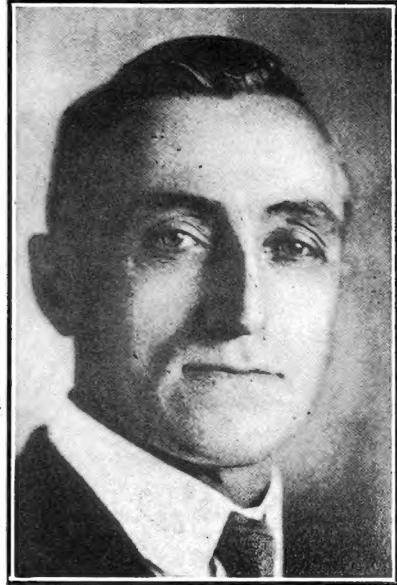
KELLY
Gardens

SPOKANE, WASH.



ESTABLISHED 1889

**A Message
from
Kelly
Gardens**



A. A. KELLY
OWNER OF KELLY GARDENS

*To Our Customers
for 1922*

THIS is our thirty-third year of distributing **KELLY PLANT** service. We take pride in announcing that thousands of customers remember us each season with their orders for **KELLY PLANTS**.

We appreciate this confidence and patronage and we wish you to know that your dollars exchanged for the products of our labors plus our best service is invested in increased acreage, more modern equipment and facilities, for better service to you.

Increased consumption of fresh vegetables and small fruits is positively specific, for this food is the most natural, inexpensive, readily accessible and healthiest for the human family.

Beginning with a good plant the crop is more than half grown and a successful and profitable garden will be yours with **KELLY PLANTS**.

And I am, Yours to Command,

A. A. KELLY.



**STATE COLLEGE OF
WASHINGTON**
Pullman, Wash.

E. O. Holland, Pres.
E. C. Johnson, Dean.
Geo. Severance, Vice Dean.

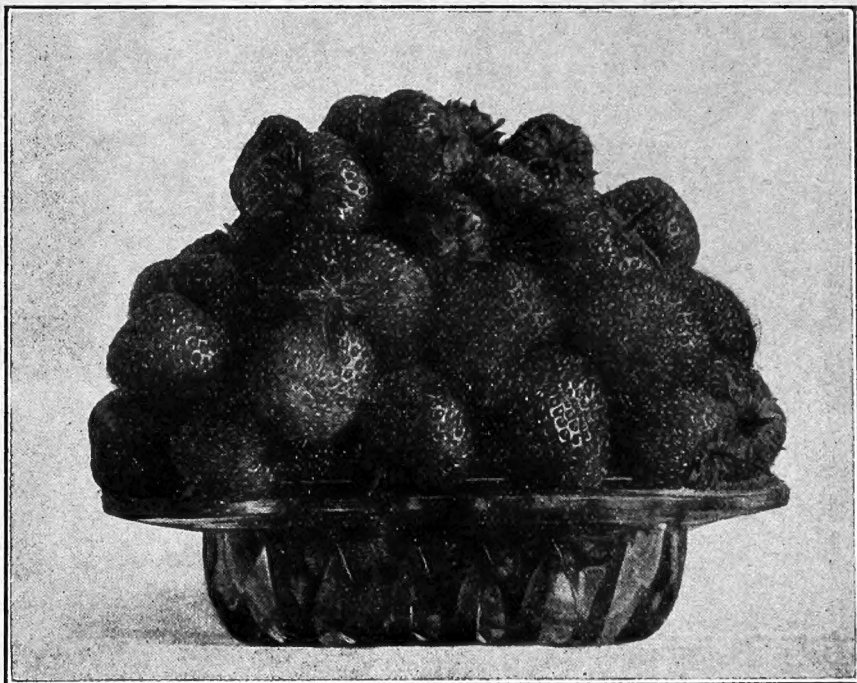
April, 1921. "The strawberry plants are all growing nicely and the asparagus is also coming all right."

Geo. Severance.



The illustrations throughout are reproductions from actual photographs taken on **KELLY GARDENS**

THE NEW STRAWBERRY THE SPOKANE



GROWN AND INTRODUCED BY US FOR THE FIRST TIME THIS SEASON. SECURED BY SELECTING FROM TYPES THAT HAD OUTSTANDING CHARACTERISTICS APPROACHING OUR IDEALS FOR AN ADAPTABLE VARIETY FOR THE COMMERCIAL GROWER AS WELL AS FOR THE HOME GARDEN IN OUR GREAT WEST.

It is a standard variety and so far in our trials it has had no inclination to bear fruit the first season but devotes its energy into building itself into a robust plant for the big crops to follow in succeeding years.

The ambition of every plant propagator is to increase the essential characteristics of Strawberries that will meet the requirements of his present and prospective customers in at least those of quality, quantity and adaptability.

We are offering the SPOKANE in quality, equal to any variety of the forty or more that we have tested. It is as prolific as even the best of standards and gives us promises of adapting itself to most any soil in the west. It is a very strong plant with unusual large thick leaves that will prove to be a strong drought and fungous resistant. It seems lacking in heavy plant production which is encouraging, for large and heavy fruit production.

Our efforts have been directed to the introduction of a strawberry plant that will yield a heavy crop of fruit the second and third season after planting upon our non-irrigated soils, with the SPOKANE as the result and it will exceed the expectations of the most sanguine in the irrigated sections.

It is a mid-season, staminate, maturing during June and July in a wide latitude.

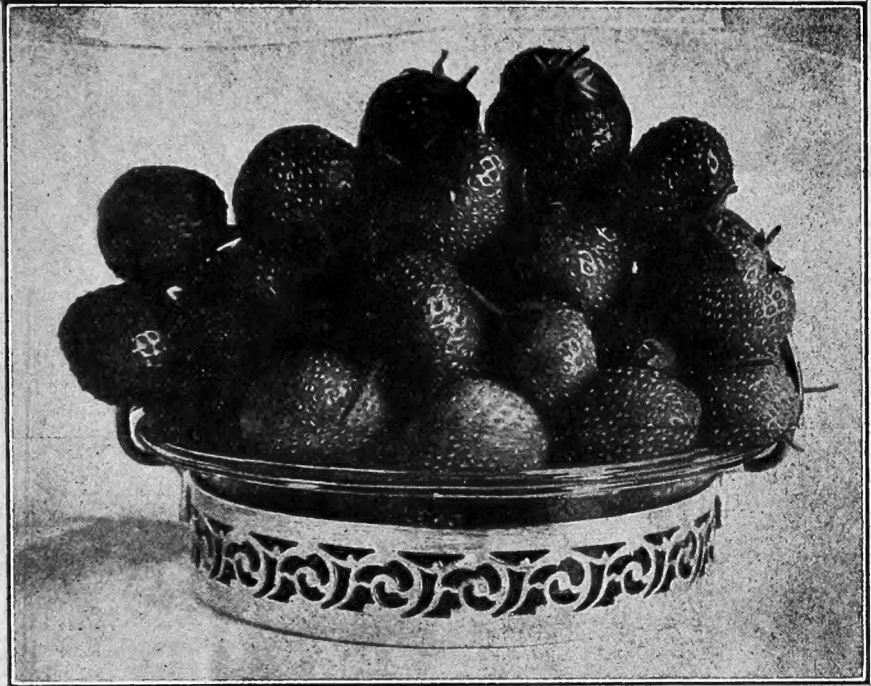
WE UNHESITATINGLY RECOMMEND THE SPOKANE FOR YOUR PLANTING

That the SPOKANE will have rapid and universal distribution we have priced them very reasonable.

159—STRAWBERRY SPOKANE

Postpaid Doz. 50c; 25—\$1.00; 50—\$1.75; 100—\$3.00
Not Postpaid 200—\$5.50; 300—\$7.50; 400—\$9.00; 500—\$10.00

EVERBEARING STRAWBERRIES



EVERBEARING STRAWBERRIES are the greatest addition to the small fruit family that has ever been introduced. Anyone can appreciate the economic value of the **EVERBEARING** when the fruit production has been hastened at least nine months.

Think of picking ripe fruit ninety days from the setting of the plant and continually fruiting until the freezing of the fruit and plant, prevents further growth, in the early winter.

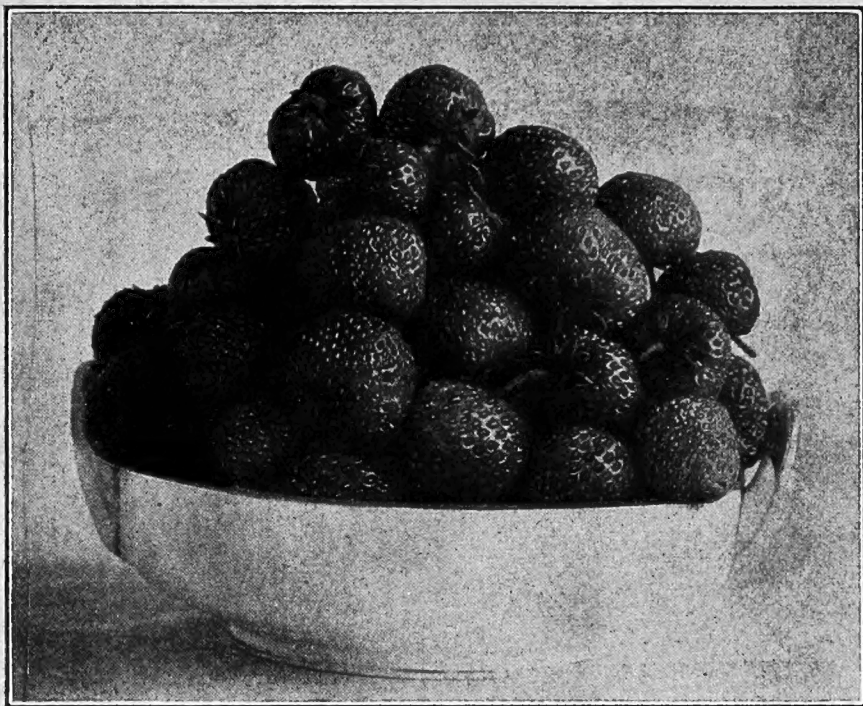
Then the following spring the **EVERBEARERS** resume their activities with all varieties of strawberries but differ from standard varieties, in that the **EVERBEARERS** continue fruiting all the summer and fall. **KELLY'S PROGRESSIVE AND SUPERB** have repeated their continuous fruiting from spring till winter, for four years in succession, and the last year's crop about as good as either of the other years, with this possible exception that the first year's fruit seemed a little larger than other years production.

Among our southland customers where frozen soil conditions do not prevail, they are very enthusiastic in their report, that the **KELLY EVERBEARERS** have produced continuously for more than one year, before the period of dormancy took place. This is accounted for by the well known established fact that the **KELLY PLANTS** grown in the cool north, free from disease and pests, are vigorous and capable of heavy production.

Vegetable, fruit and nurserymen growers are agreed that the production of their crops is increased many fold by planting propagating stock produced in the cold high altitudes of the Pacific Northwest, and this opens up a greater field for the **KELLY PLANTS**.

"IN A GOOD PLANT THE CROP IS MORE THAN HALF GROWN"

STRAWBERRY SUPERB



No matter where you live we can send you SAFELY the KELLY EVER-BEARERS and today make out your order and enjoy luscious strawberries all of this summer and succeeding years.

For many years we have been improving EVERBEARERS by selection and careful roguing so that we are positive that we have in the KELLY SUPERB and KELLY PROGRESSIVE strains, the most prolific, best quality and TRUE EVERBEARING to be had from any source. Big crops of big fruit in Strawberries are the result of rich soil and abundance of moisture.

WITH THE KELLY STRAIN YOU NEED NOT REMOVE THE FIRST BLOSSOMS.

Our stock of EVERBEARERS is large and we expect to fill every order this season but we know it is good advice to permit us to book your orders early. We usually begin digging EVERBEARERS in March. Early set plants will prove most satisfactory.

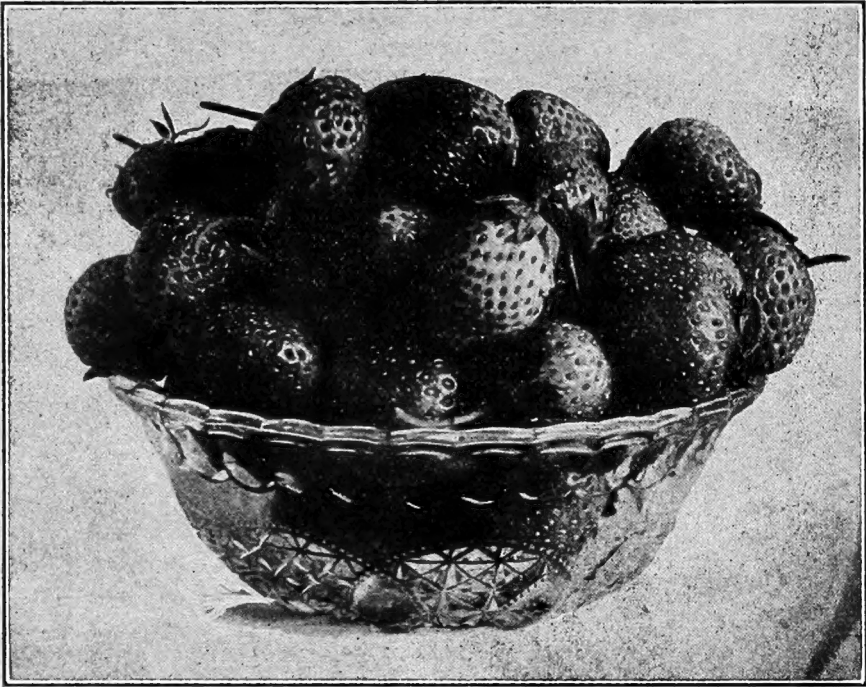
92—**STRAWBERRY SUPERB**, Everbearing. The fruit is large, firm and of the best quality. We recommend it as the best variety everything considered, for a market berry.

Postpaid Doz.—50c; 25—\$1.00; 50—\$1.75; 100—\$3.00
 Not prepaid 200—\$5.50; 300—\$7.50; 400—\$9.00; 500—\$10.00; 1,000—\$20.00

SEND US YOUR ORDER NOW, WILL DELIVER AS DIRECTED OR WHEN EACH VARIETY IS SEASONABLE.

“IN A GOOD PLANT THE CROP IS MORE THAN HALF GROWN”

STRAWBERRY AMERICUS



93—**STRAWBERRY PROGRESSIVE**, Everbearing. Undoubtedly the most complete and satisfactory variety to every one of our customers for the home garden or close to market. The KELLY strain popularizes itself where ever grown. It is a veritable mass of fruit and the best quality.

Postpaid Doz.—50c; 25—\$1.00; 50—\$1.75; 100—\$3.00
 Not prepaid 200—\$5.50; 300—\$7.50; 400—\$9.00; 500—\$10.00; 1,000—\$20.00

10—**STRAWBERRY AMERICUS**, Everbearing. This is the most prolific ever-bearer that we have grown. It seems to devote its whole energy to the production of fruit even at the expense of foilage. It is more highly flavored and much sweeter than Superb or Progressive. The fruit, however, is smaller. It is worthy of trial.

Postpaid Doz.—50c; 25—\$1.00; 50—\$1.75; 100—\$3.00

TESTIMONIALS

Dec. 1921—"Received strawberry plants in good shape." Fruitland Nursery, Oregon.

May, 1921—"I received three crates of plants in fine condition. They are beautiful plants and I lost no time in getting them out." Hanna E. Pritchard, Idaho.

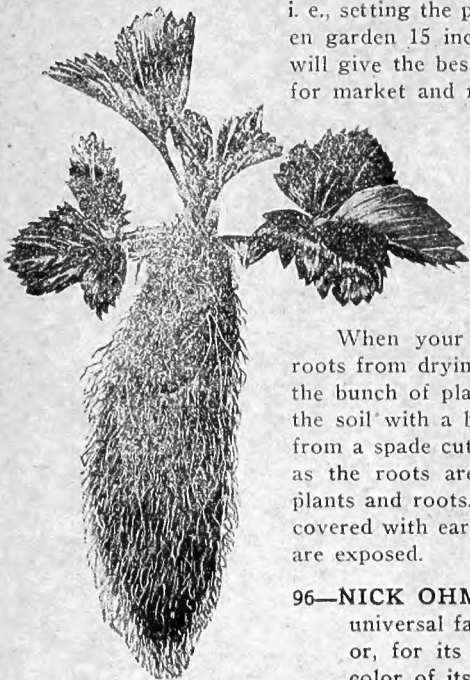
**SEND US YOUR ORDER NOW, WILL DELIVER AS DIRECTED OR
 WHEN EACH VARIETY IS SEASONABLE.**

"IN A GOOD PLANT THE CROP IS MORE THAN HALF GROWN"

STANDARD VARIETIES OF STRAWBERRIES

**WE HAVE NO STRAWBERRY PESTS
STATE INSPECTED**

CULTURE—To secure extra large fruits, the hill culture, i. e., setting the plants 2 feet apart each way, and in the kitchen garden 15 inches each way, keeping all runners trimmed, will give the best results. The strawberry grower who grows for market and money will hardly find the above system as profitable as setting the plants from 12 to 15 inches apart in the row and the rows from 2½ to 3 feet apart. His aim should be, the first season to grow a strong mother plant, fruiting it for the two following seasons, and as soon as the second crop is harvested, plow the field down.



When your plants arrive, unpack at once, protect the roots from drying winds. When ready to set in the field, set the bunch of plant roots in a pail of muddy water and open the soil with a broad dibber (a handy tool can be made from a spade cut down to about five inches in width) as deep as the roots are long, pressing the soil firmly around the plants and roots. Don't set too deep that the crown may be covered with earth, or not deep enough that part of the roots are exposed.

96—NICK OHMER—This variety has become practically a universal favorite; especially noted for its fine, rich flavor, for its large, well-shaped berries and rich crimson color of its fruit.

80—AROMA—While a trifle later than the intermediate varieties, it will yield a very large part of its crop in the very first pickings; it will continue about as late as Gandy, and with us it produces a fair picking after every other variety has quit. It is planted extensively both North and South.

81—WARFIELD—The most popular pistillate variety grown. It is large, beautiful, cone-shaped berry with a fadeless, dark red exterior; the deep color is extended clear to the center of the fruit. Any variety that we offer will fertilize it except Gandy or Aroma.

82—CLARK'S SEEDLING—This variety originated in our state; a seedling of the old popular (Wilson variety. Like the Hood River, a near relation, it is unsurpassed as a shipping variety, and in some sections very prolific.

95—CHESEPEAKE—We have added this most popular late variety upon the endorsement of many critical strawberry growers.

83—MAGOON—Indeed in this splendid berry we have almost perfection. Of first quality, great productiveness, attractive shape and color; nothing better for canning. For the local market or home garden, nothing surpasses it, and with but few equals.

84—HOOD RIVER—The leading standard shipping variety. The berry that has made the town of its name famous, and its growers financially rich. Dark red color, uniform size, good quality, but not heavy in yield. A specialty berry for the grower whose market is somewhat distant.

- 85—**NEW OREGON**—A comparatively new variety, originating in the state which bears its name. It belongs to the Hood River type, or Wilson's Albany, and the claim for its superiority is in its great productiveness, not losing the shipping qualities of the famous Hood River. The young plants are most robust, and have the characteristic of a variety that will prove very successful on non-irrigated soils.
- 86—**GOLD DOLLAR**—A California variety. The first imported berry that arrives in our state worth while. Medium in size, conical in shape, light red in color. It is the first early berry that I have considered of sufficient merit to catalogue.
- 87—**GLEN MARY**—A bright, handsome standard sort, grown the country over and perfectly reliable.
- 88—**SENATOR DUNLAP**—Its color is a rich dark red with glossy finish. It has become a very popular variety, perhaps on account of its uniformity. The plants are rather small but strong and vigorous and carry much pollen, which usually insures a heavy crop production. In yield, it compares favorably with any variety.
- 89—**MARSHALL**—If you will give this variety the extra care with which it quickly responds, you will have the very largest and most beautiful fruit for your trouble.
- 90—**WM. BEST**—Nothing better for quality, shape and attractiveness.
- 91—**GANDY**—The plant is a rampant grower; having strong fruit stems, holding the heavy weight of the fruit erect; slow in forming and thereby ripening its fruit, and in the height of its glory, when the early and midseason varieties are about done fruiting.
- 94—**BRANDYWINE**—A medium to late old standard variety.



Your **EVERBEARING** plants are growing here. Strawberries and Celery of this appearance and quality are a pride to the grower and will always exchange for profitable prices. Photographed October, 1919.

All prices are net, packed, crated and delivered to transportation carriers here. Express is the usual means of transportation, but parcel post is often the most convenient. To stations where there is no agent all express must be prepaid. Send sufficient to prepay. Any excess will be refunded at once.

Parcel post charges in first and second zones up to 150 miles from Spokane on strawberry plants are about as follows: On 500 plants, about 50c, and on 1000 plants from 60c to \$1.00.

PRICE LIST OF STANDARD STRAWBERRY PLANTS

Standard Varieties	— POSTPAID —				— NOT POSTPAID —				
	Doz.	25	50	100	200	300	400	500	1000
83—Magoon (S)	\$0.30	\$0.40	\$0.75	\$1.25	\$2.25	\$3.00	\$4.00	\$5.00	\$10.00
88—Sen. Dunlap (S)30	.50	1.00	1.50	2.50	3.25	4.25	5.00	10.00
89—Marshall (S)30	.50	1.00	1.50	2.50	3.25	4.25	5.00	10.00
87—Glen Mary (S) ..	.30	.50	1.00	1.50	2.50	3.25	4.25	5.00	10.00
90—Wm. Belt (S).....	.30	.40	.75	1.25	2.25	3.00	3.75	4.00	8.00
82—Clark's Seed. (S) ..	.30	.40	.75	1.25	2.25	3.00	3.75	4.00	8.00
84—Hood River (S)...	.30	.40	.75	1.25	2.25	3.00	3.75	4.00	8.00
159—Kelly's									
Spokane (S)....	.50	1.00	1.75	3.00	5.50	7.50	9.00	10.00	20.00
81—Warfield (P).....	.30	.40	.75	1.25	2.25	3.00	3.75	4.00	8.00
80—Aroma (S).....	.30	.40	.75	1.25	2.25	3.00	3.75	4.00	8.00
91—Gandy (S).....	.30	.40	.75	1.25	2.25	3.00	3.75	4.00	8.00
85—New Oregon (S) ..	.30	.50	1.00	1.50	2.50	3.25	4.25	5.00	10.00
86—Gold Dollar (S)...	.30	.50	1.00	1.50	2.50	3.25	4.25	5.00	10.00
95—Chesepeake (S)...	.30	.40	.75	1.25	2.25	3.00	3.75	4.00	8.00
96—Nick Ohmer (S) ..	.30	.40	.75	1.25	2.25	3.00	3.75	4.00	8.00

(S)—Staminate or Perfect.

(P)—Pistillate or Imperfect.

TESTIMONY

July, 1921—"I purchased of you a FLAT of Tomato Plants and am glad to inform you that they have developed to be the finest plants around here. There are many tomatoes and covered with bloom."
A. Treumann, Wash.

June, 1921—"Plants arrived on time and in fine shape."

A. Hellman, Idaho.

GOOD HOPE POULTRY FARM, Spokane, County.—"The Chicken KALE plants that you have grown for us has given us excellent results. It supplies an abundance of the best and cheapest green food for our thousands of poultry, from early summer clear into the winter. We will want again for next spring, thousands of Chicken KALE in Flats."
John Van Hees, Prop.

"IN A GOOD PLANT THE CROP IS MORE THAN HALF GROWN"

**SEND US YOUR ORDER NOW, WILL DELIVER AS DIRECTED OR
WHEN EACH VARIETY IS SEASONABLE.**

POTTED PLANTS

FOR FROSTY AND COLD LOCATIONS

The positively sure method of success in maturing TOMATOES, EGG PLANT and PEPPERS in the short season localities so common in these northern latitudes is to set KELLY'S INDIVIDUALS. Thousands upon thousands of the KELLY INDIVIDUALS containing these semi-tropical plants are annually doing their duty in maturing their fruit under unfavorable conditions. The whole secret is in the strong thrifty plant, well hardened, growing in a specially prepared soil and the plant and roots are not in the least disturbed when resetting takes place. With this form and method, plants that are perishable by frost or inclement weather, can be held and easily protected while growing all the time, until conditions are favorable.

The additional cost of the KELLY INDIVIDUALS is a mere trifle when compared with the positiveness of the resultant crop.

The KELLY INDIVIDUALS plant pots are made from spruce veneer in two sizes. The small INDIVIDUAL is $2\frac{1}{2} \times 2\frac{1}{2} \times 3$ inches and the large INDIVIDUAL is $4 \times 4 \times 3$ inches.

It makes no difference where you are located, whether it is in the high mountains or the low valleys, the KELLY INDIVIDUALS will reward you with matured TOMATOES, EGG PLANT and PEPPERS.

(Description, variety and prices will be found in the classified offerings throughout the catalog.)

STRAWBERRY HALLOCKS AND VENEER PLANT POTS

193—VENEER PLANT POTS—Size $2\frac{1}{2} \times 2\frac{1}{2} \times 3$ inch. Made up ready to use. Can be used more than one season.

Not prepaid. 50—85c; 100—\$1.50; 500—\$5.00

194—VENEER PLANT POTS—Size $4 \times 4 \times 3$ inch. Made up ready for use. Can be used more than one season.

Not prepaid. 50—\$1.00; 100—\$1.65; 500—\$5.75

195—VENEER STRAWBERRY HALLOCKS—Made up ready for use. Each one strong, well made and durable. NOT the folding kind. We offer them with or without the 24 pint crate. (WRITE FOR PRICES.)

FLOWER SEEDS

168—ASTERS. White Crego—Unquestionably the best of all. Prize winners at all our Aster Shows.

169—ASTERS. Pink.

176— " Rose.

177— " Blue.

178— " Purple.

179— " Lavender.

Separate colors—White, Pink, Rose, Blue, Purple, Lavender: pkt.....15c

Mixed, all colors: pkt.25c

187—SALVIA FLOWERING SAGE—One of the most beautiful late summer and fall flowering plants. The mass of fiery red bloom is very attractive. Pkt.15c

188—KOCHIA—Fire Bush or Summer Cypress. A beautiful decorative bush, 2 ft. or over, imitating the Evergreen Cypress. Pkt.....15c

185—SWEET PEAS. Spencer. One of the most popular strains.

Mixed, pkt. 15c; oz. 30c.

189—PANSY—Steele's Mastodon. The finest strain produced. Nothing equals it in size of bloom and markings. Pkt.25c

In addition to the above we have a stock of annual and perennial Flowering seeds.

FLOWERING PLANTS THAT WILL EMBELLISH YOUR HOME AND GROUNDS, SPEEDILY AND INEXPENSIVELY, WILL BE FOUND ELSEWHERE.

"IN A GOOD PLANT THE CROP IS MORE THAN HALF GROWN"
FLATS—A Sure Crop

FLATS—A Sure Crop



FLATS or shallow boxes, containing about sixty growing plants, is the most positive method of securing a 100% stand and a maximum crop, excepting only our POTTED INDIVIDUALS. If for any reason, you do not wish to set them out upon arrival, they may be kept for weeks, growing steadily. The plants are spaced evenly so that you may cut out a 1x2x3 inch cube of soil, with each plant, preventing wilting or setback.

Hundreds of our customers prefer KELLY PLANTS in FLATS for they are sure of a crop of vegetables and flowers.

We can supply FLATS of TOMATO, CABBAGE, KALE, PEPPERS, CELERY, CAULIFLOWER, EGG PLANT, PANSY, CARNATION, KOCHIA, ASTERS, SALVIA. (Note—For your choice in variety refer to classified plants throughout the catalog.)

FLATS each \$1.25, not prepaid. Sent safely only by Express.

SWEET POTATOES

We will agree to properly pack and deliver to carriers in first-class condition, but under no circumstances will we guarantee safe delivery or sound condition to destination.

CULTURE—A warm, sandy loam is the ideal soil and should be reasonably well supplied with humus. Location should have southerly exposure. Set the plants on ridges, made by throwing two shallow furrows together and smoothing down, rounding with rake or light harrow, setting the plants (slips) 18 to 20 inches apart in the row, rows 3 feet apart.

44—SWEET POTATO PLANTS—Set plants in June, 9000 plants per acre, 200 pounds of seed per acre. There is no one seed stock that we purchase that is so susceptible to extreme changes in conditions as the sweet potato seed.

Price of plants, postpaid Doz.—30c; 50—\$1.00; 100—\$1.50; 1000, \$10.00.
Write for prices on seed sweet potatoes.

SEND US YOUR ORDER NOW, WILL DELIVER AS DIRECTED OR
WHEN EACH VARIETY IS SEASONABLE.

SEED POTATOES

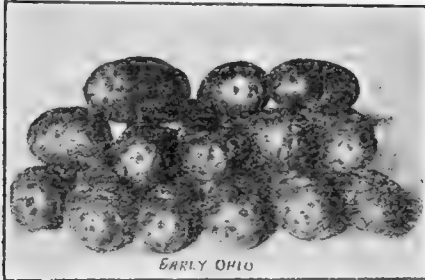
INCREASE THE PRODUCTION OF YOUR POTATO CROPS BY PLANTING PURE BRED SEED FROM STOCK THAT IS CAREFULLY GROWN FOR SEEDING PURPOSES.

The numerous diseases of the potato which are very infectious and generally unknown to too many potato growers are very largely the cause of light yields and poor keeping.

The State inspection of growing seed potatoes and the State certification does limit to a minimum the serious danger of potato production. Recently, great discoveries have been made by our Federal and State pathologists in identifying diseases of the plant and tuber together with methods of prevention and treatment. And investigators and scientists are aiding our growers of seed potatoes which will overcome the great losses in potato production that occur very periodically.

Seed potatoes grown here, in the cool north are very vigorous and where careful attention is directed to roguing and selection with the proper safeguards of spraying and treating our Northern grown seed has responded by greatly increased yields.

WE OFFER YOU STATE INSPECTED SEED POTATOES GROWN ON OUR NON-IRRIGATED LAND.



165—POTATO—Early Ohio. No variety has all the qualities combined as in this popular early.

Postpaid1 lb.—25c; 5 lb.—\$1.00

Not prepaid 25 lb. \$2.00; 100 lb. \$6.00

166—POTATO—Netted Gem. Known also as California Russet, Netted Burbank, etc. It is the best main crop potato today and of the highest quality. Exceptionally fine for baking.

Postpaid 1lb.—30c; 5lb.—\$1.00

Not prepaid 25 lb.—\$2.00; 100 lb. \$6.

167—POTATO—Carman No. 2. A real good main crop variety. White skin and flesh and a late keeper. Will produce a fair crop on light soils.



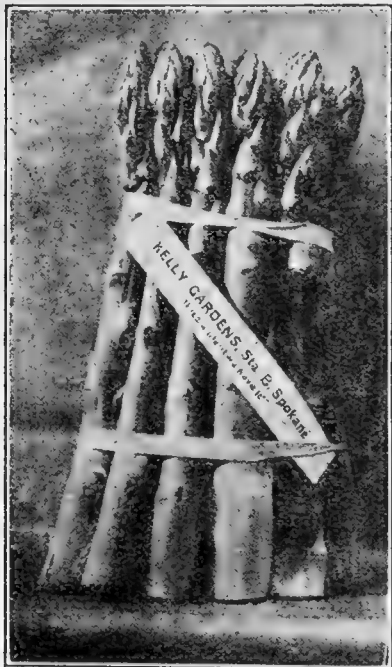
Postpaid 1 lb. 20c; 5lb. 75c.

Not prepaid 25 lb. \$1.50; 100 lb. \$4.00

SEND US YOUR ORDER NOW, WILL DELIVER AS DIRECTED OR WHEN EACH VARIETY IS SEASONABLE.

“IN A GOOD PLANT THE CROP IS MORE THAN HALF GROWN”

ASPARAGUS



The grower finds this vegetable about the first one that always finds ready sale at profitable prices, and the earliest income of his "out-in-the-open" crops. In addition it is so easily harvested and prepared for market that indeed it is a most acceptable crop. No garden, whether it be for the market or the home, is really complete without a bed of good roots. To the truck farmer who is looking for a money-maker crop that will fit well into his large areas of crop production, he will find nothing better.

CULTURE — Perhaps no other vegetable plant of so much importance adapts and accommodates itself to any and all conditions of soil and climate. It really succeeds anywhere, but the better the conditions the better the crop. We ordinarily advise to select a location to one side or one end of the garden, because, like any permanent crop, it may be out of our way in other garden operations. Mark out the lines or rows, preferably north and south, four feet apart, and plow out the line, going at least twice, to make a furrow trench six to eight inches deep. Stretch a line in bottom of furrow, marked with colored twine every 20 inches to two feet, and set plant at each mark, spreading out the roots carefully, covering the roots three or four inches deep with nice, moist soil and covering (note this carefully) the "crown" **only one inch deep**. When set the crown should be four to five inches below the original and level surface of the field. As the tiny shoots appear, work in the loose soil to the furrow gradually until by early fall the field is level. A row or two of most any vegetable can be grown between the rows the first and second seasons.

which will at least pay all expenses upon the non-income asparagus crop. The third year thereafter cutting can begin and the season lengthened for cutting as the plants become more aged. A bed set is good for 20 years at least.

In the fall, when the tops are matured (yellow), mow and burn. The asparagus is a gross feeder and can utilize any kind of manure. Early in the spring loosen the whole surface with a cultivator or other suitable tool, but remember the crown is only four or five inches below the surface. **If the crown or bud is destroyed, the roots are valueless.**

The culture for the kitchen is substantially the same, only that the plants may be set 15 to 18 inches apart each way; however, by close planting the life of the bed is shortened. Our best authorities differ slightly as to the best age of plants for setting, being about equally divided between the one and two-year-old plants. Possibly the majority favor the one-year-old for large plantations, while two-year-old are recommended where land is comparatively expensive and for smaller fields of from one to two acres. A three-year-old plant will be found satisfactory in the kitchen garden, or "filling in" where plants have occasionally missed.

WHEN TO PLANT—Set plants in March, April, May, September, October or November, 5000 to 6000 plants per acre; 50 to 100 plants for home garden.

2—PALMETTO—The best acquisition to our comparatively few varieties. It is less subject to rust and insect enemies than any of the older varieties.

3—ARGENTEUIL—This comparatively new variety is becoming very popular. It has much to recommend it, coming as it does from the greatest asparagus growing section of the world, near Paris, France.

Prices Asparagus Roots—

- 1 year: Doz., 25c; 25, 40c; 50, 75c; 100, \$1.00; 1000, \$6.00.
- 2 year: Doz., 40c; 25, 50c; 50, 85c; 100, \$1.50; 1000, \$10.00.
- 3 year: Doz., 50c; 25, \$1.00; 50, \$1.50; 100, \$2.25; 1000, \$15.00.

SEND US YOUR ORDER NOW, WILL DELIVER AS DIRECTED OR
WHEN EACH VARIETY IS SEASONABLE.

CABBAGE

Set April 1 to July 1, 50 plants for kitchen garden; 5000 plants per acre.

The cabbage, having been bred to stand much rough treatment, can be relied upon to produce even under unfavorable conditions. This plant, as well as the whole family (Brassicæ), is subject to the ravages of many kinds of insect pests. The most destructive, probably, is the green cabbage worm, the progeny of the pretty white-winged butterfly. Arsenate of lead is the sovereign remedy for all leaf eating insects—1 lb. to 40 gallons of water—and sprayed frequently. The aphid which usually is only destructive to the late summer or fall cabbages, can be eradicated by thoroughly spraying with black leaf forty or tobacco spray. For field culture, set the plants 20 inches apart in the rows and rows 2½ to 3 feet apart. For the kitchen garden, or where intensive culture is practiced, set the plants 20 to 24 inches apart each way.

- 4—**BRUSSELS SPROUTS (Half Dwarf)**—A very palatable cabbage vegetable. Very easily grown and profitable for the market gardener. The cabbage aphid is about the only pest, but can be quickly exterminated by the timely use of tobacco spray. Postpaid Doz., 15c; 50, 50c
- 5—**EARLY JERSEY WAKEFIELD**—The standard early variety the country over. The largest, most compact and hardiest of all early varieties, maturing in 70 to 80 days. Set plants April 1 to June 1.
Transplanted....Postpaid—Doz., 20c; 50, 75c; 100, \$1.00; not prepaid—1000, \$7.00
Not transplanted....Postpaid—Doz., 15c; 50, 50c; 100, 75c; not prepaid—1000, \$5
- 7—**COPENHAGEN MARKET**—A new introduction from Denmark. While extensively advertised as an early, with us it belongs to the second early class. It is a strong grower and will be found satisfactory as a second early or as a late variety. Prepaid, Doz., 20c; 50, 75c; 100, \$1.00; not prepaid, 1000 \$5
- 8—**DANISH BALL HEAD OR HOLLANDER**—Set May 10 to July 1, 7000 plants per acre. The leading variety for market or home use, maturing in 100 to 110 days. The shrewd market gardeners now plant nothing else. It will make a head under the most unfavorable conditions and scarcely exceeds seven pounds with the best conditions. For this reason it can be grown quite close, and because of its solidity and uniform size it is always preferred by the merchant and consumer. Cabbage usually pays well and many seasons pays handsomely.
Seedlings Postpaid—Doz., 15c; 50, 50c; 100, 75c; not prepaid, 100, \$5.00
- 9—**CABBAGE, RED, FOR PICKLING**— Prepaid—Doz., 15c; 50, 50c
- 6—**CABBAGE, FIELD GROWN**—Field grown plants of all cabbage varieties, usually ready in June.
Prepaid—Doz., 10c; 50 35c; 100, 60c; not prepaid, 1000, \$3.50
- 97—**CABBAGE**—Early varieties, in FLATS. Each \$1.25 by express, not prepaid
- 98—**CABBAGE**—Late varieties, in FLATS. Each \$1.25 by express, not prepaid

We deliver free to your express or postoffice all plants of 100 or less, except Asparagus Roots, Rhubarb Roots, Individuals, Flats and Potted Plants.

TESTIMONIALS

GOOD HOPE FARM, Spokane County.—“The Ruby King and Chinese Giant Pepper plants that we received from you in Flats are simply wonderful producers. The Chinese Giant were too large for a standard shipping crate.” John Van Hess, Proprietor.

SEND US YOUR ORDER NOW, WILL DELIVER AS DIRECTED OR
WHEN EACH VARIETY IS SEASONABLE.

“IN A GOOD PLANT THE CROP IS MORE THAN HALF GROWN”

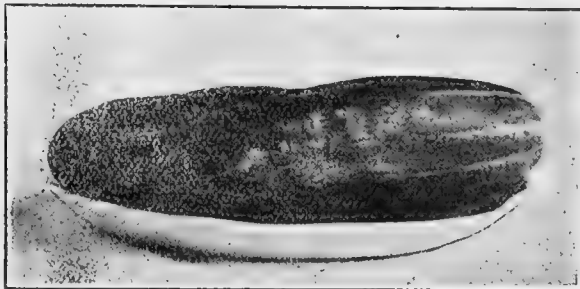
HORSE RADISH

CULTURE—Prepare ground as for any garden crop. Plant sets, sloping cut end down, in dibber holes, top of set one inch below surface. One foot apart in the row and rows 2½ to 3 feet, or set 20 inches apart each way.

23—COMMON VARIETY—Plant in April and May 10,000 sets per acre. One of the most profitable of garden crops. Smooth, nice roots will always sell on any market. Always treat it as an annual by digging the entire crop every fall and winter and resetting each spring.

Prepaid, Doz., 30c; 50, \$1.00; 100, \$1.50; 1000, \$10

CUCUMBER



20—CUCUMBER (Individuals)— A hill of plants growing ready to set out, that will produce "slicers" weeks in advance of the usual seed grown.

Not prepaid.

Doz. 75c; 100, \$4.00

21—DILL—The plant that gives the zest to dill pickles.

Plants—Prepaid—Doz., 15c; 100, \$1.00

66—MATURED DILL—At pickle time. Prepaid—Bunch, 20c; doz. bunches, \$1.50

19—CRESS (True Water)—A most delicious salad plant. While it can be grown in a very moist location, it thrives best when its roots are submerged in running water. Any suitable location should have a supply of water cress.

Prepaid—Doz., 30c; 100, \$2.00

CAULIFLOWER



It is generally supposed that this always high-priced vegetable is very difficult to produce. It is if your propagation stock, whether it be seeds or plants, is inferior.

I am using the very best cauliflower seed produced, grown by one of the most expert growers in the world.

11 — CAULIFLOWER Snowball—For the early crop, set during first half of May. Late crops, the most profitable, set May 10 to July 1, 7500 plants per acre. Matures 80 to 100 days. We offer the very best imported direct from one of the most successful cauliflower seed growers in Europe. Fall matured cauliflower is a handsome paying crop; always ready sale in any market. Every fall and pickling season finds our markets bare of good, solid cauliflower.

Prepaid—Doz., 30c; 50, \$1.00; 100, \$1.25; not prepaid—1000, \$7.00

74—CAULIFLOWER—Snowball in FLATS. Each \$1.25 by express, not prepaid.

17—CHICORY—WITLOOF or FRENCH ENDIVE—The roots can be used when dried and parched as a substitute for coffee, but this variety is purposely grown for Witloof, used as a salad, both raw and cooked. Set the roots in a trench, cover with soil 3 to 6 inches, and when the tops appear cut off an inch or so from the crown. This blanched "Witloof" or "French Endive" is an epicurean delicacy. Strong roots.

EGG PLANT

EGG PLANT—Set May 15 to July 10. Set plants 2x3 feet. A very delicious vegetable-fruit. Succeeds best on a warm sandy or gravelly soil that is fertile. If your soil is cold or season short use only our small or large **INDIVIDUALS**.

- 22—**BLACK BEAUTY**—The very best variety. Postpaid, Doz., 30c; 50, 75c; 100, \$1.25; not prepaid—1000, \$8.00
- 190—**BLACK BEAUTY**—In **FLATS**. Each \$1.25 by express, not prepaid.
- 191—**BLACK BEAUTY**—In the **INDIVIDUALS**. Not prepaid.
Doz., 60c; 25, \$1.00; 100, \$3.00
- 192—**BLACK BEAUTY**—In the large **INDIVIDUALS**, 4 inch, each 20c; Doz., \$1.75; 100, \$10.00
- 24—**KALE**—Dwarf. A succulent fall and winter greens.
Postpaid—Doz., 20c; 50, 75c.
- 12—**KALE**—Chicken and Cow. A plant that will produce green succulent relishable food for poultry and cattle from July till January. As each leaf is plucked the younger leaves are excited to more rapid growth which results in a continuous crop-
per plant.
Postpaid—Doz., 20c; 50, 65c; 100, \$1
- 99—**KALE**—Chicken and Cow in **FLATS**. Each \$1.25 by Express, not prepaid.
- 25—**KOHL RABI**—An excellent, easily grown vegetable. When cooked has the flavor of turnips and cabbage, combined. Postpaid—Doz., 20c; 50, 75c.
- 26—**LEEK**—A close relation to the onion family. Mild and pleasing flavor. Easily grown with plants. Postpaid 100, 35c; 500, \$1.50
- 18—**CHIVES (Schnittlauch)**—An onion-like plant with finely grown leaves. Invaluable for flavoring soups, stews and salads. One setting will last for many years as the roots multiply rapidly.
Postpaid; roots—15c bunch; Dozen bunches, \$1.25



HERBS

Access to a supply of green-growing aromatic and medicinal herbs aid greatly in the culinary art of the housewife.

- 45—**BASIL (Sweet)**—An aromatic annual. For soups and sauces.
- 46—**CARAWAY**—Seeds used for pastry, bread, etc. Leaves are used for colic in children.
- 47—**MARJORAM SWEET**—Leaves used for dressings, broths, etc. Dry the leaves for winter use.
- 48—**SAVORY (Summer)**—Used extensively for flavoring meats, stews, dressings, etc.
- 49—**THYME**—An aromatic perennial for seasoning. Its medicinal properties are highly recommended for sick and nervous headaches.
All Herbs, postpaid
- 28—**MINT (Spearmint) PLANTS**—The flavor is a lasting, agreeable one, for sauces, stews, etc. Very hardy, perennial.
Prepaid, Each, 10c; doz., 75c; 100, \$4.00
- 29—**OKRA or GUMBO**—The young seed pods are used in soups, stews, etc. Set out at tomato season time. Easily grown. Prepaid, Doz., 25c; 50, 60c
- 30—**ONION**—Big plants ready to set out and will produce a more tender green onion and earlier than from sets. Will mature big bulbs a month earlier than from seed. Plants much cheaper than sets and more reliable than seed sown.
Prepaid—100 plants, 35c; 1000 plants, \$2.50

- 31—**POTTING SOIL**—In our plant operations the soil is an important factor. It must contain such foods and in proper proportions to grow a strong, thrifty and robust plant and also its mechanical condition is not to be forgotten. Thus, in our plant operations yearly tons of sand, alluvial soil, decomposed animal manures are graded, screened and mixed for our plant beds and boxes. We offer you this soil for your flowering or other plants.
 20 pounds, not prepaid\$0.40
 50 pounds, not prepaid75
 100 pounds, not prepaid 1.00
- 32—**PARSLEY (Moss Curled)**—A bed of parsley is a requirement in the kitchen garden. The "chef" will find many uses in garnishing and flavoring. The plants can be lifted in the fall, transplanted in boxes, set in a warm, sunny location and will furnish green sprigs all winter, or the leaves can be dried without the loss of flavor. Prepaid—Doz., 20c; 50, 50c
- 67—**PARSLEY ROOTS**—For winter forcing. Prepaid—Doz., 50c; 100, \$2.00
- 68—**PARSLEY IN POTS**—Place in your kitchen window and have green parsley all winter. Not prepaid—Each pot, 35c

PEPPERS

PEPPERS—Set May 15 to June 15, 10,000 plants per acre. Requires a rich, warm soil. All of our sandy and gravelly soils are well adapted to this plant. Set in rows 12 to 15 inches apart and the rows 2½ to 3 feet apart, or 15 to 20 inches apart, each way. The cities use large quantities during "mango" and pickling season, and the peppers ship well long distances.



- 33 **RUBY KING**—The standard variety for many years. So sweet they can be eaten raw like an apple. In this latitude and climate will grow as large as the so-called Giants, and much more prolific.
 Prepaid—Doz., 30c; 50, 75c; 100, \$1.00; not prepaid—1000, \$7.00
- 34—**PIMENTO**—A delicious sweet-flavored salad and stuffing pepper. The most popular in cultivation. Include this in your order.
 Prepaid—Doz., 30c; 50, 75c; 100, \$1.00; not prepaid, 1000, \$7.00
- 36—**CHERRY RED PEPPER**—Resembles large, bright red cherries; ripen anywhere in this latitude. Just the variety to give "zest" to pickles and other foods. The green cherries are just as pungent as when ripe and will keep a long time after gathering. When dried they hold their flavor for years. Transplanted ... Postpaid—Doz., 30c; 50, 75c; 100, \$1.00; not prepaid, 1000, 7.00
- 11—**CHINESE GIANT**—The largest, sweetest peper in cultivation. Bullnose type. Excellent for mangoes.
 Prepaid—Doz., 30c; 50, 75c; 100, \$1.00; not prepaid, 1000,\$7.00
- 38—**SAGE (English Mammoth—Perennial)**—So easily grown and most used of all herbs; every garden should have at least a dozen plants. Very hardy—indispensable for fowl dressing, winter sausage and head cheese.
 Plants Prepaid—Doz., 30c; 50, 75c
- 69—1 year rootsNot prepaid—Each, 20c; doz. \$1.50; 100, \$10.00
- 39—**SWISS CHARD**—A spinach beet top greens—an attractive vegetable and quite popular. Prepaid—Doz., 20c; 50, 75c
- 40—**TOBACCO**—Set plants in June, 2 feet by 3 feet, 7000 per acre. We annually grow a small field of tobacco and believe there are many locations in the Northwest where tobacco can be profitably grown. Its value as an insect repeller in the garden and poultry house is well worth the time to produce it. Wise orchardists are producing their own tobacco for spraying, at a big saving.
- CONNECTICUT SEED LEAF**—The best variety for this locality.
 Prepaid—Doz., 20c; 50, 75c; 100, \$1.25

TOMATOES



Outside of, perhaps, celery, no other vegetable crop returns so much money into the pockets of the market gardener as the tomato. The cities consume an unlimited quantity of the ripe product, the immense canning establishments require an unlimited quantity, and the green fruit finds a ready sale. Probably no other plant has less waste. Fabulous returns are yearly reported and in every instance can be traced to a strong, thrifty and hardy plant as a base. This is the one secret of successful tomato growing.

The plant is a native of tropical America and must have considerable heat in its propagation. Artificial heat with nothing short of glass covering is at all to be considered. Unless you have this necessary equipment, it were better that you secure your plants from a professional plant grower.

We have tested nearly all the leading varieties of merit on the light clay soils, and on the warm gravelly soils so common to this Northwest, and have decided that, to date, there is nothing better than the varieties listed below. We maintain a trial grounds, and would be pleased to test any variety that is well recommended from any of our friends.

CULTURE—A warm soil of medium fertility will grow good tomatoes. Irrigation is an aid, but much judgment should be used. Over-irrigation retards the ripening process. For field culture, mark out lines 4 or 5 feet, or if land is at hand, 5 feet by 5 feet. Set the plants at each intersection, just a little deeper than originally grown. Use a little water in setting, insuring a better stand if conditions after setting are unfavorable. Frequent cultivation (weekly) and artificial irrigation when the soil becomes so dry that assimilation of food cannot take place. The bacterial blight, or wilt, is a prevalent disease, and while no specific remedy is known, the Bordeaux mixture acts as a preventative. This is also true of the fungus or "black rot," "blister rot," etc., attacking the fruit at the blossom end. The little black flea beetle (*Haltica*) is extremely troublesome for a short time, but with a good spraying or two with arsenate of lead (one pound to 4 gallons) or a good coating of the leaves with air-slaked lime will discourage the lively little black bug.

Staking, tying and pruning the plant can be practiced by the home gardener with profit, but to the average grower for market or canners it hardly pays for the extra labor and expense.

SEND US YOUR ORDER NOW, WILL DELIVER AS DIRECTED OR
WHEN EACH VARIETY IS SEASONABLE.

"IN A GOOD PLANT THE CROP IS MORE THAN HALF GROWN"

TOMATOES

EARLIANA is unquestionably the greatest variety introduced. It is the earliest best tomato for the Northwest for we have tested everything of promise to date. **KELLY'S** strain of **EARLIANA** is from selected fruit matured in the cool north. Set tomato plants from May 10 to July 1st. It will require for an acre, set 4x4 ft., 2725 plants; 4x5 ft., 2175, and set 5x5 ft., 1750.

41—TOMATO—KELLY'S EARLIANA—

Prepaid, Transplanted—Doz., 30c; 50, 85c; 100, \$1.25
 Not prepaid—500, \$4.50; 1000, \$9.00; 5000, \$40.00
 Prepaid, Not Transplanted—Doz., 20c; 50, 50c; 100, 75c
 Not prepaid—500, \$2.50; 1000, \$5.00; 5000, \$20.00

58—TOMATO KELLY'S EARLIANA—In Flats. Each \$1.25 by Express, not prepaid.

63—TOMATO—KELLY'S EARLIANA—In INDIVIDUALS.

Not prepaid—Doz., 60c; 25, \$1.00; 50, \$1.75; 100, \$3.00; 500, \$12.00

35—TOMATO—KELLY'S EARLIANA—In large 4-inch INDIVIDUALS.

Not prepaid—Each, 20c; Doz., \$1.75; 100, \$10.00

42—TOMATO—Dwarf Champion or Tree—A very robust strong sturdy plant that produces the most solid and handsome fruit of any variety. Its quality is unexcelled. Very popular with some of our customers. It is later than our Earliana.

Prepaid, Transplanted—Doz., 30c; 50, 85c; 100, \$1.25
 Not prepaid—500, \$4.50; 1000, \$9.00; 5000, \$40.00
 Prepaid, not transplanted—Doz., 20c; 50, 50c; 100, 75c
 Not prepaid—500, \$2.50; 1000, \$5.00; 5000, \$20.00

15—TOMATO—D. C. or Tree—In Flats. Each \$1.25 by Express not prepaid.

71—TOMATO—D. C. or Tree—In INDIVIDUALS.

Not prepaid—Doz., 60c; 25, \$1.00; 50, \$1.75; 100, \$3.00; 500, \$12.00

70—TOMATO—D. C. or Tree—In large 4 inch INDIVIDUALS.

Not prepaid—Each 20c; Doz., \$1.75; 50, \$5.00

NOTE—We do not recommend the NOT transplanted tomato plants for setting out in the field unless climatic and soil conditions are extremely favorable, in the higher altitudes and cold sections of the Northwest. However, many of our customers use these not-transplants for setting in cold frames, later setting in the field, with excellent results.

43—TOMATO, HUSK or GROUND CHERRY—Unexcelled for canning, preserving, etc. Fruit of a handsome yellow color, easily grown and will keep a long time if husks are removed.
 Postpaid—Doz., 30c; 50, 85c; 100, \$1.25

120—TOMATO (Red Cherry)—Bright red, ripens early. Excellent for preserving.

121—TOMATO (Red Peach)—An early red fruit.

122—TOMATO (Red Plum)—Plum shape and size.

123—TOMATO—(Red Pear)—Very similar to pear in shape. This variety, like the Cherry, Peach and Plum, is excellent for preserving, canning, etc.

124—TOMATO (Yellow Pear)—A very popular preserving variety.

Price of all Preserving Prepaid—Doz., 30c; 50, 85c

SEED TESTING

I test all my seeds in solid soil at a low temperature which are about the conditions when planting out in the open.

Most any seed, regardless of age or vitality, will sprout if the temperature surrounding it is abnormally high. With my method the viable seed must not only sprout but must have vitality enough to force itself through the covering of soil. When you get germinative percentages from this testing it can be depended upon.

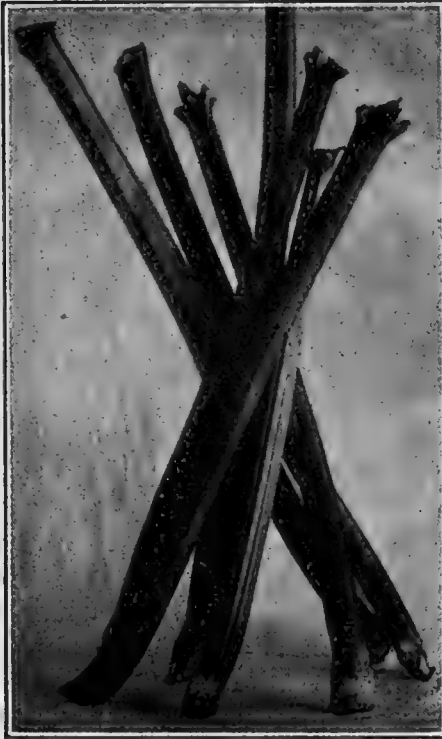
NOTICE TO PLANTERS AND SEED MERCHANTS

Send 100 seeds of each sample to be tested and as soon as possible a written report will be returned to you giving you date sown, date germinated and per cent of germinable vitality. This service will cost you only 15 to 25 cents per each sample.

SEND US YOUR ORDER NOW, WILL DELIVER AS DIRECTED OR
 WHEN EACH VARIETY IS SEASONABLE.

"IN A GOOD PLANT THE CROP IS MORE THAN HALF GROWN"

RHUBARB OR PIE PLANT



The large, fleshy stalks filled with pleasantly acid juice and used the year around. It is the universal favorite during the spring as a substitute for fruit, and its medicinal properties are well known. Peeled, sliced, packed in jars, cover with cold water and seal, it keeps indefinitely. Its season is lengthened by enterprising growers by digging the roots which are two years old or more in late fall, allowing to freeze thoroughly, and when frozen, set in dugout, cellar, furnace pit, under the greenhouse benches, or most any place where sufficient soil can be placed around the roots, kept moist and dark at a temperature of about 45 to 55 degrees. Grown in this manner, the quality is superb, without much leaves or epidermis. The market grower will find this means of propagation very profitably, with scarcely any limit to the demand, being offered at a time when fruits and vegetables are scarce. The rhubarb is so easy of culture that no directions seem needed. It is so hardy that it will grow under the most unfavorable conditions, yet no plant

responds better to high culture. It is a gross feeder of animal manures with sufficient moisture to liquify. In a word, no garden is complete without this easy-growing and profitable plant. We offer you strong, sturdy roots.

37—**MAMMOTH VICTORIA**—Practically the only variety in cultivation. There is nothing better regardless of the euphonious names given to this plant by some plantsmen.

—NOT PREPAID—

1-year—Each, 10c; doz., \$1.00; 50, \$3.00; 100, \$5.00; 500, \$15.00; 1000, \$30.00
 2-year—Each, 20c; doz., \$1.50; 50, \$4.00; 100, \$6.00; 500, \$20.00; 1000, \$40.00
 3-year—Each, 35c; doz., \$3.00; 50, \$8.00; 100, \$15.00; 500, \$50.00; 1000, \$100.00

TEN LEADING CROPS THAT PAY IN EVERY MARKET AND EVERY SEASON

Strawberries	Cauliflower	Rhubarb	Cabbage	Horse Radish
Asparagus	Peppers	Tomatoes	Onions	Celery

SEND US YOUR ORDER NOW, WILL DELIVER AS DIRECTED OR WHEN EACH VARIETY IS SEASONABLE.

"IN A GOOD PLANT THE CROP IS MORE THAN HALF GROWN"

CELERY

CULTURE—Of the vegetables that are grown in large quantities, celery is unquestionable the most profitable. Three important requirements are essential—good plants, rich soil, plenty of moisture. The rest is easy. Make a shallow furrow two or three inches deep, set the plants seven inches apart and the rows four feet or more apart. Use a dibber (round pointed hardwood stick) open the soil. Set the plant, firmly cover the roots, but do not cover the tiny heart of the plant. The double row is only adding another row of plants seven inches apart each way and the rows five feet apart. When the plant has grown five or six inches in height firmly grip the plant near its top with one hand and draw the soil up to it, being careful not to let any soil get in between the leaves. This operation is called "handling." Add the dirt as it grows until it is matured and ready for the market. Light boards may be used for bleaching by placing on either side of the row when plants have attained about 1 foot in height.

The intensive system as we partly use it is to set the plants upon the level surface 12 by 12 inches apart each way.

Clean and frequent cultivation. No hilling required, as the closeness of the plants is sufficient to exclude light, which favors bleaching.

Our crops of White Plume celery are considered by all the finest ever offered in this market.

65—CELERY—White Plume—In FLATS. Each \$1.25 by Express, not prepaid.

73—CELERY—Golden Self Blanching—In FLATS. Each \$1.25 by Express, not prepaid

12—PERFECTED WHITE PLUME—This is a magnificent celery and most easily grown; its clear whiteness makes it an ornament to the table, and its quality well nigh perfect.

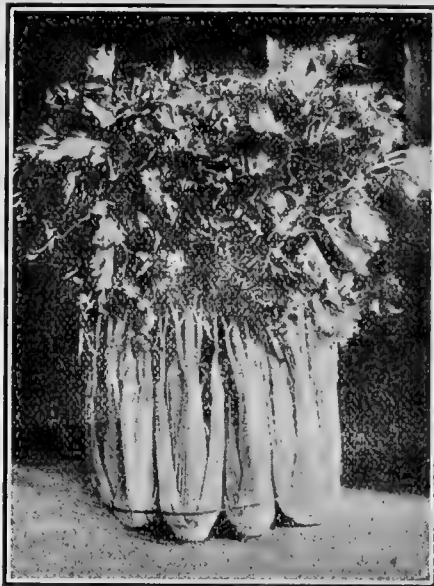
14—GOLDEN SELF BLANCHING—It has of late years sprung into popular favor and deserves much credit. It belongs to the dwarf varieties, not over 20 inches in height, solid, compact, yellow heart, finest quality. It is now grown to the exclusion of all varieties in California for shipping North and East. This variety will surely please you or your customers.

110—EASY BLANCHING—The production again in my fields this last season now convinces me that it is a very valuable addition to our celery varieties. It is a rapid grower and seems to me does not require the exacting conditions of the Golden Self Blanching. It bleaches to a beautiful white yellow and the best quality. It will keep fairly well, but severe frosts tend to make the leaf stalks pithy. Be sure to try this new variety.

Prices Celery Plants—White Plume, Golden Self Blanching, Easy Blanching—
Postpaid—Doz., 20c; 50, 50c; 100, 75c; not prepaid—500, \$2.50; 1000, \$5.00

16—TURNIP ROOTED CELERY—In his variety of celery the roots have been developed and not the leaf stalk. The edible root is easily grown in rich, moist soil. Excellent for soups, stews, and makes a delicious salad.

Postpaid—Doz., 25c; 50, 75c



One dozen of our Golden Self Blanching—Weight 44 lbs.

Every year and for years our Celery has been awarded First Prize at our Inter-State Fair and received Diploma and Gold Medal at Alaska-Yukon Exposition in 1909, the Gold Medal at Panama-Pacific Exposition at San Francisco in 1915.

LETTUCE



- 27—**LETTUCE (Wonderful)**—If you want a big, solid head lettuce, let us supply your plants. Slow to run to seed.
 Prepaid—Doz. 15c; 100, 60c; not prepaid—1000, \$4.00

We grow large quantities of Grand Rapids for green houses and hot bed planting. We have them in flats, potted and in beds. Write for prices.

ORNAMENTALS

- 50—**HOP ROOTS**—A leading climber for porches, verandas, etc. Propagated by pieces of underground roots.
 Postpaid—Each, 10c; doz., 75c; 100, \$5.00
- 51—**IRIS (Flags)**—The Iris is a very popular early flowering plant. Very easily grown and perfectly hardy. Admirable for borders along walks or roadways. Flowers in profusion for weeks in early summer. I can offer two colors: Yellow with white veins, and blue with white veins.
 Postpaid—Roots, each, 15c; doz., \$1.25
- 52—**SYRINGA (Lilac)**—*S. Vulgaris*. Purple. Two well known to need any description.
 Postpaid—Strong roots, each, 50c; doz. \$4.00
- 53—**GERANIUMS**—All colors, 2-inch pots, doz., \$2.00; doz. from 4-inch pots, \$3.50. Potted plants not prepaid.
- 54—**DAISY (Shasta)**—One of Burbank's hybrids. Very hardy. Perennial. Beautiful long petals of a glistening white.
 Postpaid, roots, each 30c; doz., \$2.50
- 55—**AQUILEGA (Columbine)**—A luxurious flowering perennial. Mixed colors.
 Postpaid, Roots, each, 30c; doz., \$2.50
- 56—**SWEET WILLIAM**—The well-known, showy, hardy and most beautiful perennial. Double mixed.
 Postpaid, Roots, 25c; doz., \$2.50
- 59—**CARNATION (Mammoth Flowering Margeurite)**—Striped varieties. Rose, white, scarlet, yellow and mixed.
 Postpaid—Doz., 30c; 50, \$1.00; 100, \$1.50
- 60—**MIGNONETTE**—Select choice varieties mixed.
 Postpaid—Doz., 30c; 50, \$1.00; 100, \$1.50
- 130—**SALVIA or SCARLET SAGE**—One of the most easily grown annuals. Hardy and most beautiful blooms. You should include this in your order. A glare of red all summer.
 Postpaid—Plants, doz., 30c; 50, \$1.00; 100, \$1.50
- 64—**SALVIA (Scarlet Sage)**—In FLATS. Each, \$1.25 by Express, not prepaid.
- 75—**KOCHIA Mexican Fire Bush**—A quick growing foliage and hedge plant. Very attractive. Clean, bright green until early fall, when blooms appear, turning to a deep red tinge. A hardy annual. Be sure to include this plant in your order.
 Postpaid—Doz., 35c; 50, \$1.00; 100, \$1.50
- 61—**HONEYSUCKLE**—Tartarian. A beautiful flowering shrub. One of the hardy growing hedge and screen plants. Probably the most rapid grower of all the hardy shrubs, often attaining a height of ten or more feet in a few years.
 Not prepaid—2 to 3 feet, each, 75c; per 10, \$6.00; per 100, \$50.00
- 62—**PRIVET (Ligustrum Vulgaris)**—This hardy privet will make the most beautiful and lasting hedge. Used as a border it will complete the lasting and natural beauty of your home and grounds.
 Not prepaid—2 to 3 feet, each, 50c; per 10, \$4.00; per 100, \$30.00

We deliver to your express or post office all orders of one hundred plants or less except Asparagus Roots, Rhubarb Roots, Individuals and Flats or Potted Plants and plants noted "Not Prepaid."

ORDER FOR PLANTS, ROOTS, ETC.

KELLY GARDENS

**EAST SPRAGUE AVENUE
SPOKANE, WSAH.**

Established 1889

I cannot guarantee variety, description or productiveness of my offerings, but I will guarantee that I will use every effort to produce and procure the very best obtainable and deliver to you safely and promptly.

Remittance must accompany this order. We do not send plants C. O. D.

Name

Write your name very plain.

P. O. R. F. D. No.

Express Office State

Date 192.....

Ship by Parcel Post Express

YOU MAY ORDER BY NUMBER ONLY, BY NAME ONLY OR BOTH, WHICHEVER YOU PREFER.

AMOUNT ENCLOSED

\$.....|.....cts

Parcels Post and Express Station without an Agent **MUST BE PREPAID.**

Add \$.....|.....cts

Total \$.....|.....cts

No. Catalog	Quantity	VARIETY	Dollars	Cents

Send my order about.....

NOTE—I will thank you for the names and addresses of those who plant and care for a garden, written on the back of this sheet.

ROSES

TWO YEAR OLD DORMANT ON OWN ROOTS A SPLENDID SELECTION OF HARDY DORMANT OWN ROOT ROSES

The following list comprises the very best of the hardy dormant Roses and must be planted in a dormant or semi-dormant condition, hence send your order at once. All plants will be forwarded in proper season.

These are NOT potted plants.

Postpaid Not
Each Prepaid
Dozen

British Queen. Finest white rose. H. T.	\$0.75	\$7.50
Duchess of Albany. Deep pink. H. T.75	7.50
Edward Mawley. Wine crimson. H. T.75	7.50
Etiolle de France. Red crimson. H. T.75	7.50
Viscount Folkstone. White and pink. H. T.75	7.50
Gen. Jacqueminot. Crimson. H. P.75	7.50
Helen Gould. Red. H. T.75	7.50
Mme. Caroline Testout. Satiny pink. H. T.75	7.50
Winnie Davis. Apricot pink. H. T.75	7.50
Frau Karl Druschi. Snow white. H. P.85	8.50
Mrs. John Laing. Pink. H. P.85	8.50
Ophelia. Salmon flesh. H. T.85	8.50
Prince de Rohan. Velvet crimson. H. P.85	8.50
Ulrich Brunner. Scarlet crimson. H. T.85	8.50
Tausendschoen Climber. Beautiful rose carmine. Hardy climber....	.75	7.50
Flower of Fairfield. Brilliant crimson. Hardy climber.75	7.50
Climbing Augusta Victoria. Pure white. Hardy climber85	8.50

GLADIOLI

The beautiful and easily grown Gladioli should find a place in every flower lover's garden. The bulbs or corms are planted two to three inches deep in most any soil and location, setting the bulbs about six or eight inches apart, in the row and the rows two feet or more apart. Cut the spike when the first flower opens and then placing in the water inside the entire spike will develop gradually its entire flower blooms.

The following list is a splendid selection of the finest varieties.

Halley. Salmon.	Panama. Very deep pink.
Mrs. Francis King. Salmon red.	Princepine. Beautiful scarlet.
Mrs. Frank Pendleton. White suffused pink.	Schwaben. Yellow.
Niagara. Clear yellow.	War. Fine scarlet.

Price of Bulbs: Postpaid, each, 10c; Dozen, \$1.00; 25, \$1.50.

GLADIOLI BULBLETS

These little bulblets are the "seed" of the blooming Gladioli bulbs. Plant like garden peas. It requires two to three years to produce the large flowering bulbs.

Mrs. Frank Pendleton; Schwaben; Princepine; Mrs. F. King; War; Scarsdale.

Price of Bulblets: Postpaid, per 100 each variety, 20c.

PEONIES

There is scarcely any other perennial that equals the Peony. The beauty of its delicate colors equals the rose and its massive boldness rivals the Dahlia. Like all of the perennials, because of their permanency, it is attracting the lovers of home flower gardens.

While September is the best time to set the roots yet most of our clumps will bloom this year if set very early in the spring.

Charlemagne. Double salmon pink. Postpaid, each, 65c. Not prepaid, Doz.,	\$6.00
Duchess d'Orleans. Pink and salmon. Postpaid, each, 60c; Not prepaid, Doz.,	\$5.50
Edulus Superba. An early pink. Postpaid, each, 65c; Not prepaid, Doz.,	\$6.00
Gen. Dodds. Dark tyrian rose. Postpaid, each, 85c; Not prepaid, Dozen.,	\$8.00
Queen Victoria. An early white. Postpaid, each, 60c; Not prepaid, Dozen,	\$5.50

KELLY GARDENS

SPOKANE

WASHINGTON

ROSES

THE QUEEN OF FLOWERS



Plant a ROSE and enjoy the pleasure of their beauty, the fragrance of their bloom, the wonder of their coloring and the admiration of your friends.

POTTED ROSES in our 2½ inch INDIVIDUALS. A wonderful list of select varieties in all colorings and shadings suitable for any location in the great northwest. Abbreviations used: H. T., Hybrid Teas; H. P., Hybrid Perpetual.

POTTED ROSES ON THEIR OWN ROOTS.

EVERY PLANT WILL BE SURE TO GROW FOR WE SEND IT TO YOU WITHOUT DISTURBING THE SOIL FROM THE ROOTS. THIS METHOD PROVIDES A POSITIVE MEANS OF PLANTING YOUR ROSES AT ANY TIME DURING THE SUMMER WITHOUT DANGER OF LOSS AND AT THE SAME TIME YOU HAVE A VIGOROUS GROWING PLANT READY TO GO.

	Postpaid Each	Not Prepaid Dozen
Chrissie McKeller. Crimson and carmine. H. T.	\$0.35	\$3.25
Columbia. Pink. A grand new rose. H. T.40	3.60
Etirole de France. Red crimson velvet. H. T.35	3.25
Edward Mawley. Vinous crimson. H. T.35	3.25
Gen. McArthur. Scarlet crimson. H. T.35	3.25
Geo. Ahrends. Brilliant pink. H. P.40	3.75
Gorgious. Orange yellow. H. T.35	3.25
Lady Ashton. Carmine pink. H. T.35	3.25
Madame Caroline Testout. Red satiny rose. H. T.40	3.60
Mrs. A. R. Waddell. Rosy scarlet. H. T.40	3.60
Ophelia. Salmon flesh. H. T.40	3.60
Radiance. Carmine rose. H. T.35	3.25
Ulrich Brunner. Scarlet crimson. H. T.40	3.60
Gen. Jacqueminot. Shining crimson. H. P.40	3.60
Helen Gould. Watermelon red. H. T.35	3.25
Frau Karl Druschli. Snow white. H. P.40	3.75
Hoosier Beauty. Crimson scarlet. H. T.35	3.25
Viscount Folkstone. White and pink. H. T.35	3.25
La France. Silvery pink. H. T.35	3.25
Paul Neyron. Very large shining pink. H. P.40	3.60
Winnie Davis. Apricot pink. H. T.40	3.60
Mrs. John Laing. Shining pink. H. P.40	3.60
Prince Camille de Rohan. Velvet crimson. H. P.40	3.60
Climbing American Beauty. Best red climber. Hybrid Noisette....	.35	3.25
Crimson Rambler. Best crimson climber. Cl. Polyantha35	3.25
Dr. Van Fleet. Best flesh pink climber. Wichuraiana35	3.25

FROM _____

Write name very plain in ink.

P. O. _____

R. F. D. NO. _____

STATE _____

—
"Ship Safely Anywhere"
—

Everbearing
Strawberry Plants
Vegetable Plants
and Roots

—
Thirty Years' Cultural
Experience in Our
Free Catalogue

KELLY GARDENS

SPOKANE

East Sprague Ave.

WASH.

PANSIES



I use only Steele's famous Mastodon Pansies Private Stock Seed and produce the most showy, exquisitely marked and largest blooms grown. Any dozen plants will show more varieties in color than any rainbow ever seen.

125—PANSY—Mastodon, mixed colors. Postpaid, **Doz., 35c; 25, 60c; 100, \$2.00**

201—PANSY—Mastodon, mixed colors in **FLATS**. Each **\$1.25** by Express not prepaid.

202—PANSY—Mastodon in the **INDIVIDUALS**. All colors mixed or specify colors desired. Not prepaid. **Each, 10c; Doz., \$1.00; 25, \$1.60; 50, \$2.50; 100, \$4.00**

ASTERS

I grow many thousands of asters and use only the highest quality of seed obtainable. With proper culture, our plants will produce for you "show asters."

57—CREGO—The greatest of all Asters. Beautiful, graceful blooms of the chrysanthemum type. In pink, white, rose, lavender, purple and blue.

Postpaid—**Doz., 30c; 50, 75; 100, \$1.25**

104—ASTERS (Crego)—In **FLATS**. All colors mixed. **Each, \$1.25** by Express not prepaid

108—ASTERS (Crego)—In **FLATS**, in the six separate colors, named above. Specify **Each, \$1.25**, by Express, not prepaid color

DAHLIAS

At our annual fall flower show it is conclusively demonstrated by the magnificent exhibits of dahlia blooms by amateurs as well as dahlia specialists that the dahlia will thrive anywhere in the Inland Empire. The dahlia is of such easy culture with the mass of wealth of bloom that every home ground should be easily and cheaply decorated.

My offerings are classified in the four most popular types, and in each classification you may find colors to suit the most fastidious. Out of the hundreds of varieties you will find these most popular.

CACTUS

150—AMAZONE—Large free blooming, red diffused with purple. **Each 30c.**

151—CAUDIEE—Pure white. Very strong stems. **Each, 35c.**

153—FERNAND OLIVET—Hybrid, large, maroon with dark center. **Each 20c**

154—MRS. HENRY WIET—Scarlet bloom. Long stems. **Each 25c.**

DECORATIVE

160—HENRY MEIER—Rich golden yellow. **Each, 30c.**

161—GAIEFY—Free blooming, variegated variety. **Each 35c.**

162—MANITOU—Gigantic purple with blood red. **Each 35c.**

163—SOUV. DE DOUAZON—Orange scarlet, very popular. **Each 25c.**

164—JEANNE CHARMET—Pinkish lilac shaded white. **Each 25c.**

186—PAUL BUNYON—Salmon pink with luminous golden sheen. **Each, 50c.**

PEONY

170—ORIENT—A bright scarlet gold, except stems. More showy than the once popular Geisha. **Each 60c.**

171—H. J. LOVINK—Immense, lilac shade on white. **Each 35c.**

172—PURITY—Graceful, fluffy white. **Each 50c.**

173—MRS. H. L. CORBETT—Beautiful soft pink, tinted lavender. **Each 35c.**

174—JOHN HENRI—Light velvety maroon with claw shaped petals. Cactus peony type. **Each 30c.**

175—JOHN WILLIAMS—Large flowers of golden copper on strong stems. **Each 35c**

SHOW

180—CALEB POWERS—Large shell pink. **Each 40c.**

181—DREER'S YELLOW—Quilled. Seven inches across. Clear yellow. **Each 40c.**

182—TILLAMOOK—Grand quilled crimson. **Each 25c.**

183—MISS HELEN HOLLIS—Gigantic flowers. Deep scarlet, long stems. **Each 50c.**

184—W. W. RAWSON—Large quilled flower. White overlaid with lavender blush. **Each, 35c**

SEEDS

WE are GROWERS and IMPORTERS of QUALITY SEEDS.

- 112—**ASPARAGUS (Argenteuil)**—A comparatively new French introduction. Very popular in our Southwestern states. Disease resistant.
Prepaid—oz., 20c; ¼ lb., 60c; 1 lb., \$1.50
- 113—**ASPARAGUS (Palmetto)**—The very best variety. Finest quality and best for Postpaid—oz., 20c; ¼ lb., 45c; 1 lb., \$1.25
- 114—**BEETS (Early Egyptian)**—Dark Red. Postpaid—oz., 15c; ¼ lb., 40c
- 115—**SWISS CHARD (Lucullus)**—A very delicious vegetable, easily grown. Oz., 15c
- 116—**BRUSSELLS SPROUTS**—Postpaid—Pkt., 10c.
- 100—**CAULIFLOWER (Snowball)**—Postpaid—Pkt., 25c; ¼ oz., \$1.00; oz., \$3.00.
- 117—**CABBAGE (Early Jersey Wakefield)**—The earliest best cabbage in existence. Postpaid—Pkt., 10c; oz., 30c; ¼ lb., \$1.00
- 106—**CABBAGE (Copenhagen Market)**—The largest of the second early varieties. Postpaid—pkt., 10c; oz., 30c; ¼ lb., \$1.00
- 105—**CABBAGE (Danish Ball Head)**—The best late cabbage grown. Postpaid—pkt., 10c; oz., 30c; ¼ lb., \$1.00
- 118—**CABBAGE Red Rock**—Best for pickling. Pkt., 10c; oz., 35c.
- 119—**CARROTS (Oxheart)**—An easily pulled table variety. Pkt., 10c; oz., 20c.
- 102—**CELERY (White Plume)**—The most popular white variety. Pkt., 15c; oz., 50c.
- 103—**CELERY (Golden Self Blanching)**—A handsome fall and winter celery. Pkt., 20c; oz., \$1.50
- 126—**CELERY (Easy Blanching)**—A new variety. Whitish-yellow heart with green leaves. Pkt., 15c; oz., 50c.
- 127—**CUCUMBERS (Davis Perfect)**—The best slicing cucumber. Pkt., 10c; oz., 15c; ¼ lb., 50c
- 128—**EGG PLANT (Black Beauty)**—The best variety. Pkt., 10c; oz., 50c.
- 129—**KOHL RABI (Early Purple)**—A relishable vegetable with the flavor of cabbage and turnip combined. Pkt., 10c.
- 131—**Dill**. Produces a plant the whole of which is used to flavor pickles. Pkt. 10c; oz. 25c
- 132—**KALE (Dwarf)**—A fall and winter greens. Pkt., 10c; oz., 30c.
- 133—**KALE (Chicken and Cow)**—This plant produces more green food for chickens and cattle than any other plant. Pkt., 10c; oz., 25c.
- 134—**LETTUCE (Grand Rapids)**—A leaf lettuce for greenhouse and outside. Pkt., 10c; oz., 30c
- 135—**LETTUCE (Wonderful)**—The best head variety. Pkt., 10c; oz., 30c.
- 136—**MELON MUSK (Rocky Ford)**—A deep netted standard variety. Pkt., 10c; oz., 25c.
- 137—**MELON (Honey Dew)**—A new type of melon, claimed to be the cross of the muskmelon and the casaba. Pkt., 15c; oz., 40c.
- 138—**WATERMELON (Kleckley's Sweet)**—The best early melon. Pkt., 10c; oz., 20c.
- 139—**PARSNIPS (Hollow Crown)**—The best variety. Pkt., 10c; oz., 20c.
- 140—**PARSLEY (Moss Curled)**—The leading variety. Pkt., 10c; oz., 20c.
- 141—**PEPPER (Ruby King)**—The most popular pepper in cultivation. Pkt. 15c; oz. 30c
- 142—**PEPPER (Pimento)**—A sweet mango variety. Pkt., 15c; oz., 30c.
- 143—**PEPPER (Chinese Giant)**—The largest sweet pepper grown. Pkt., 15c; oz., 30c
- 144—**ONION (Prizetaker)**—A large mild light yellow skin. Pkt., 10c; oz., 30c.
- 145—**ONION (White Globe)**—A large white good keeper. Pkt., 10c; oz., 30c.
- 146—**PUMPKIN (Sugar)**—The sweetest for pies. Pkt., 10c; oz., 25c.
- 147—**RADISH (Early Scarlet Turnip)**—The quickest and best. Pkt., 10c; oz., 20c.
- 148—**SPINACH (Bloomsdale Savoy)**—The finest quality. Pkt., 10c; oz., 20.
- 149—**RHUBARB (Victoria)**—The mammoth variety. Pkt., 10c; oz., 20c.
- 107—**TOMATO (Earliana)**—The earliest best tomato in cultivation. Pkt., 10c; oz., 40c; ¼ lb. \$1.25
- 109—**TOMATO (Dwarf or Tree)**—A sturdy vigorous growing plant that produces the very best quality in fruit. Pkt., 10c; oz., 25c.
- 152—**SQUASH (Giant Crookneck)**—A good early variety. Pkt., 10c; oz., 20c.
- 155—**SQUASH (Boston Marrow)**—A fine quality late summer and fall squash. Pkt., 10; oz., 20c.
- 156—**SQUASH (Hubbard)**—The best fall and winter variety. Pkt., 10c; oz., 20c.
- 157—**RUTABAGA (Purpletop)**—A superior yellow variety. Pkt., 10c; oz., 20c.
- 158—**TURNIP (White Globe)**—Fine quality. Best for market. Pkt., 10c; oz., 20c.