

# LINN COUNTY NURSERY

SNYDER BROS., Proprietors



NEW YORK STATE  
COLLEGE OF AGRICULTURE,  
DEPARTMENT OF HORTICULTURE,  
CORNELL UNIVERSITY,  
ITHACA, N. Y.

DESCRIPTIVE CATALOGUE,  
SPRING OF 1913

**Fruit Trees, Small Fruits,**  
Evergreens and Ornamentals  
**CENTER POINT, IOWA**

# Directions for Ordering

Always state whether shipment is to be made by freight, express or mail; if by freight or express, state route preferred. When ordering by mail make your remittance sufficient to cover postage.

**Size and Price** of stock should be carefully specified. We use every effort to avoid mistakes, but in a busy season these occasionally occur. If notified promptly of any mistakes, however, we will gladly rectify them.

**Please Remit Cash With Order** whenever possible, especially with small orders. Satisfactory security is required from strangers who desire to open an account with us. Remittance may be made by check, draft, money order or registered letter. Stamps are acceptable for amounts less than \$1.00.

**We Make No Extra Charge** for packing and delivering to freight or express office. The greatest care is taken to pack so that stock will arrive in first-class condition.

**Order Early.** Every spring we are compelled to refuse orders for certain lines of stock of which we are entirely sold out. Order early and you will be sure of getting what you want as well as the pick of the stock.

**Trees and Plants by Mail.** To those living at a distance or who are unable to come after stock, we can send vines, shrubs, plants and small trees by mail prepaid if the following postage is sent in addition to the price. If too much is sent the balance will be returned. For Grape vines, Raspberry, Blackberry or Dewberry plants, Climbing vines and Phlox, 5c each, 20c per dozen. For Rose bushes, Gooseberry and Currant bushes, and Shrubs 18 to 24 in. or smaller, 5c each, 30c per dozen. For Strawberry plants, 5c per dozen, 25c per 100.

Prices of small fruit trees, including postage. New Hybrid Plums, 30c each, \$3.00 per dozen. Other varieties of fruits, 20c each, \$2.00 per dozen.

---

## MISCELLANEOUS

**Raffia**—Best Madagascar—for tying buds and plants. 20c per pound; six pounds for \$1.00.

**Grafting Thread**—Unwaxed, 10c per ball; waxed, 15c per ball. If by mail, add 2c per ball for unwaxed and 7c per ball for waxed.

**Grafting Knives**—Hand forged, razor steel. 40c each. By mail 45c.

**Budding Knives**—Ebony handle, bone tip for raising bark, finest razor steel. 75c each. Add 5c for postage.

**Pruning Shears**—Best made; \$1.00 each. By mail, \$1.10.

**Root Grafts**—We have a large stock of most kinds of fruit tree seedlings, and will be prepared to put up first-class root grafts of almost everything mentioned in this catalogue. Send list of grafts wanted and we will make the price right. Orders for grafts must be received before March 1.

---

State of Iowa

## Certificate of Nursery Inspection

Office of State Entomologist

Ames, Iowa

**This is to Certify,** That in accordance with Chapter 53 of the Acts of the Twenty-seventh General Assembly, as amended by the Thirty-first General Assembly (Code Section 2575-a51), the nursery stock for sale by the Linn County Nurseries, Snyder Bros., Props., of Center Point, Iowa, has been inspected by a duly authorized inspector and has been found apparently free from dangerously injurious insects and plant diseases.

This certificate is invalid after July 1, 1913.

Certificate No. 55.

Dated July 17, 1912.

H. E. SUMMERS,

State Entomologist.

# THE LINN COUNTY NURSERY



The Linn County Nursery was established in 1892 by A. Snyder & Son. After the death of the senior member of the firm, it was conducted for several years by S. W. Snyder, who in 1907 was joined by a younger brother, under the firm name of Snyder Bros. Both the present members, therefore, have had a long experience in this business, and in twenty years have seen it grow from a few rows of stock on the farm to over thirty acres of stock, growing mostly at Center Point.

The orchard originally planted by A. Snyder has been greatly enlarged and now contains hundreds of varieties and more are being planted every year. From the start, it has been the aim of the proprietors to use as parent trees only those trees of a variety which have produced the best results in the orchard; this makes our trees what many call "pedigreed stock."

**Descriptions.** It is our intention in this catalogue to furnish accurate descriptions and in every case avoid exaggerations which are so common in nursery catalogues. We aim to test out every variety in our orchard before giving it a place in the catalogue.

**W:** firmly believe in selection, and always cut propagating wood from the trees which produce the best results in the orchard. Practically all our scions are grown in our own orchard. Those which are not are procured from the most reliable sources. We never send out want lists to see where they can be bought cheapest.

**Prices.** Our prices are not the lowest—the care which we devote to growing stock increases the cost greatly—but our trees are so vastly superior to those grown without particular care that the difference in first cost appears small by comparison. The point to be considered is that of final results, and in this our trees will outdistance the cheaper ones many times over.

**Packing Facilities.** Our packing house and cellars are located just south of the Rock Island station at Center Point, and all stock is delivered from there instead of from the farm.

This year we are building a large and substantial packing house which will give us an additional 6,400 square feet of floor space. This will enable us to arrange our stock in a thoroughly systematic order and to put up orders speedily and promptly without any exposure whatever to sun or wind. We give particular attention to having all stock packed so it will reach its destination in good condition, even should there be some unnecessary delay in transit.

**Guaranty.** We exercise great care to keep our varieties true to name and are ready at any time to replace any stock that may prove untrue, or refund the amount paid for same; but it is mutually agreed that we are not to be held liable for any amount greater than the original price of the goods.

**Condition.** We accept all orders on condition that they shall be void should any injury befall the stock from hail, frost, storm, fire or other causes over which we have no control.

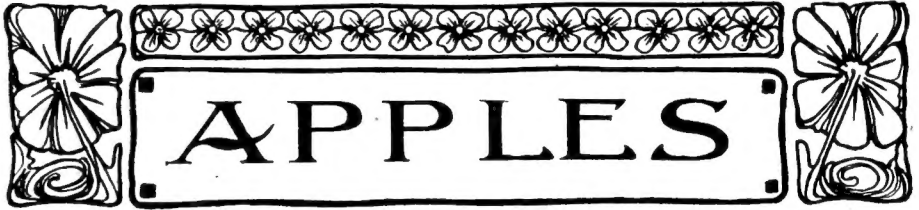
**Certificate.** A certificate of Nursery Inspection, certifying that our nurseries have been inspected by the State Entomologist and found free from all dangerous insects, pests and diseases, is attached to all orders that leave our nurseries.

**Visitors Welcome.** Tree-lovers find much satisfaction in seeing and selecting the stock they buy; we therefore take pleasure in inviting all interested in nursery stock to visit our nurseries and inspect the stock.

Anyone wanting extra large and fine specimens of Evergreens or Shade Trees can select them at any time of the year. Anything thus selected will be tagged with the customer's name and delivered at the proper time.

**Varieties Not Listed in This Catalogue.** We have some trees of many kinds not listed in this catalogue. If you do not see what you want, write us; we can secure for you anything grown by American nurserymen, if we do not have it, and the price will be right.

SNYDER BROTHERS, Center Point, Iowa.



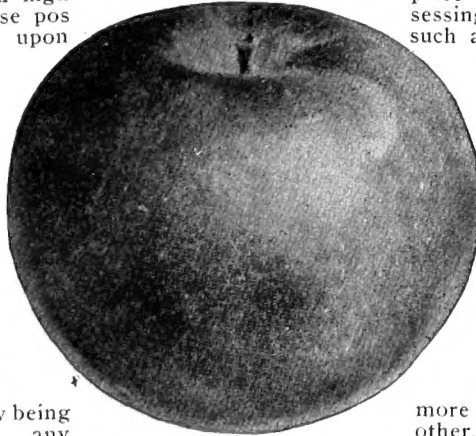
This most wholesome fruit is being used more extensively every year. An orchard is indispensable to every home. Many diseases are unknown to those who regularly include apples freely in their diet, and physicians say a person who uses apples freely is not likely to acquire the liquor habit. Surely apples have a value which is being more and more appreciated and is causing a rapidly increasing consumption of them. With proper care in selecting varieties, apples may be had the year round if well cared for.

Iowa is in the heart of the apple producing region of the United States. The quality of the Iowa apples cannot be excelled and their size and color compare well with the big tasteless apples of the far west. By the application of intensive methods of orcharding it has already been proved that apples can be made as sure a crop here as anywhere.

**Commercial Orcharding** is a great undeveloped industry in this state. There are thousands of acres upon which no more profitable investment could be made than to plant a commercial orchard. The enormous quantity of apples shipped into our state and sold for a high price ought to be incensing suitable soil and location to embark upon such an enterprise.

**Varieties.** In commercial orchard it plant but few varie should be selected securing the best perience has shown of the single varie or less barren.

**Size of Plant** to choose small, or two years old five feet high, as safely transported, satisfactory results larger trees; in four foot size is now being planting than any



**Wealthy.**

planting a com- is judicious to ties, and these with reference to pollination. Ex- that large blocks ties are often more

It is always best thrifty trees one and from three to these are more and with more than older and fact, the three to more used in commercial other.

**How Propagated.** Our apple trees are grafted by the most approved methods, aiming to produce trees best adapted to withstand the rigors of this climate. They are grafted on Vermont seedlings which are hardier than the French Crab seedlings commonly used. We use the piece root and long scion and plant up to the top bud, this makes a tree on its own roots and of known hardiness. Experience has repeatedly proved that trees grafted on whole roots are not harder than the seedling root used, which is very variable and often too tender.

**PRICE LIST OF APPLE TREES.**

	Each	10	100
Large size, 2 and 3 years, 5 to 7 feet.....	.40	\$3.75	\$35.00
Medium size, 2 and 3 years, 4 to 6 feet.....	.30	2.75	25.00
Small size, 1 and 2 years, 3 to 4 feet.....	.20	2.00	15.00

Five at 10, and 50 at 100 rates. A few trees of a long list of varieties will be charged for at each rates.

## SUMMER APPLES

**Beautiful Arcade**—Medium large, yellow with red splashes and streaks. Flesh white, tender, sweet and very pleasant. Last of August and September. Tree an upright grower, very hardy and vigorous; one of the most desirable varieties for the north and northwest.



**Liveland.**

**Benoni**—Medium, round, yellow with red stripes; of excellent quality. August. An old variety much prized by many.

**Colton (Early Colton)**—Medium to large, round, yellow, juicy and rich; excellent for eating or cooking. Very hardy, vigorous and prolific.

**Duchess (Oldenburg, Duchess of Oldenburg)**—Large, yellow with large stripes; sour. Very valuable for market and culinary purposes. August and September. A Russian variety which is very hardy, vigorous and prolific.

**Liveland (Liveland Raspberry, Lowland Raspberry)**—Medium to large; beautifully blushed; round; flesh tender, mild and delicious. Our best and earliest apple. Tree very hardy, thrifty and prolific.

**Red Astrachan**—Large; red; sour, but of good quality. August.

**Sops of Wine**—Medium to large, roundish; red; flesh mild and of excellent quality. August and September.

**Summer Pear**—Large, round; yellow, with red cheek; mild, melting and very good. Very hardy, vigorous, and a new variety of much promise.

**Tetofsky**—Medium; yellowish, with red stripes; acid, of good quality. August. A hardy, slow growing variety.

**Yellow Transparent**—Large; yellow; sour; of good quality and very early. One of the hardest of varieties, but very subject to blight.

## FALL APPLES

**Anisim**—Medium, roundish; red; mild and good. September and October. Very hardy and prolific. A Russian variety.

**Bailey Sweet**—Medium to large, round; red; sweet and good. September to November.

**Chenango (Chenango Strawberry)**—Large to very large; yellow, red striped; mild and very good. August and September.

**Dyer**—Large, round; reddish-yellow; mild; of very highest quality. September and October.

**Eastman**—Large, roundish; yellow, reddish striped; good. September to October. Very hardy and vigorous.

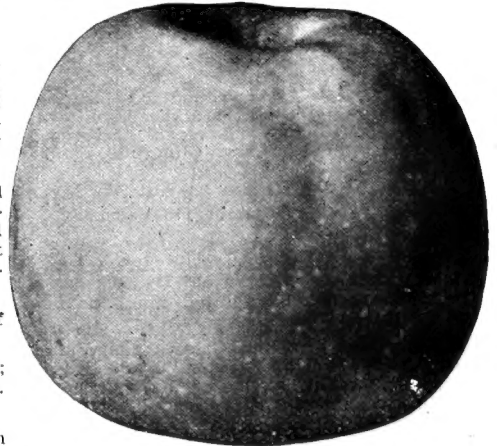
**Fall Bellflower**—Large; yellow; mild and good. September to November.

**Fall Orange**—Large to very large, round; reddish-yellow; mild and good. September to October. A variety which does extremely well in some localities.

**Hibernal**—Large; red striped; very sour; of poor quality. September and October. Extremely hardy; valuable as a stock for top-working.

**Irish Peach**—Medium; yellowish; beautifully blushed; flesh juicy, acid and good. Ripens just after Duchess. Tree very hardy and prolific.

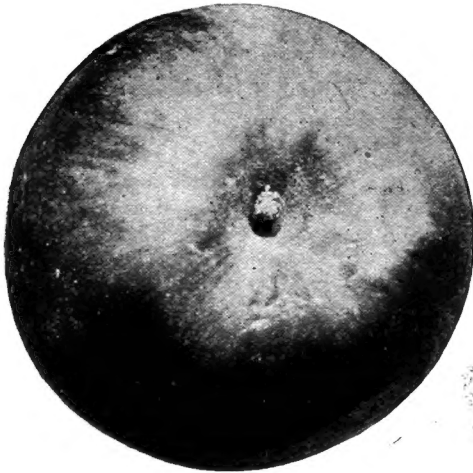
**Longfield**—Medium or small if not thinned; round; yellow with red blush; flesh white; fine grained; tender, and richly



**Grimes Golden.**

flavored. October and later. Very hardy, and extremely prolific; often bears in the nursery. One of the very best apples on the list for culinary purposes.

**Wealthy**—Large to very large; roundish; yellow, red striped; flesh mild, very good. October and November. Valuable for home use or market. It is a winter ap-



**Roman Stem.**

ple in the north; one of the best varieties for cold storage.

**Wolf River**—Very large; roundish; white with red stripes; mild; of fair quality for cooking.

## WINTER VARIETIES

**Akin**—Akin's Red.—Much like Jonathan. Medium, round, red very good. Vigorous, hardy, and a high quality apple.

**Allen's Choice**—Medium, roundish, striped, very good, juicy and aromatic. December to March. A very early bearer; vigorous and hardy.

**American Blush**—Large, roundish, beautiful, yellow and bright red; flesh yellow, fine grained, mild and richly flavored. December to February. Vigorous and productive.

**Arctic**—Large; roundish, yellow with red; mild and good. December to February.

**Ben Davis**—Large to very large; yellow with red stripes; mild and of fair quality. A late variety; valuable chiefly for market; should not be planted much north of Central Iowa.

**Black Annette**—Medium size; roundish; very dark green and red; mild and good. December to April. One of the most valuable for domestic purposes.

**Black Ben Davis (Regan's Red)**—Large to very large; dark red; mild and very good. December to March. Larger, better colored and somewhat better than Ben Davis, but of about the same hardiness.

**Canada Baldwin**—Large; roundish: red and

good. December to March. A very hardy, vigorous, upright growing variety.

**Champion (Collin's Red)**—Large; bright red; good. A market variety of the Ben Davis type, but keeps longer. Vigorous, healthy, and a regular bearer.

**Delaware Red**—Medium to large; bright red; flesh fine grained; crisp; juicy; excellent and a splendid keeper. Tree thrifty and hardy.

**Delicious (Peru)**—Medium to large; yellow with red stripes; very fragrant and of the very best quality. November to February.

**Gano**—Large to very large; yellow with red stripes; mild and good. December to March. Valuable for a market variety.

**Grimes (Grimes Golden)**—Medium to large; deep yellow; mild and of very best quality. December to March. One of the very best apples for domestic or commercial planting.

**Hinkley (Lone Tree Seedling, Ideal, Legal Tender)**—Fruit almost identical with Rome Beauty; but tree more hardy and vigorous. One of the most promising of the new varieties.

**Iowa Blush**—Medium or small; roundish; greenish-yellow with red blush; mild and very good. December to March. Valuable for home use; very hardy and productive.

**Isherwood**—Large to very large; roundish; yellow with red blush; mild and good. January to April. Healthy and very vigorous. A good variety for Central Iowa.



**Northwest Greening.**

**Janet (Jeniton, Rall's Janet)**—Medium size; yellow with red stripes; mild and good. December to March. Should not be planted north of Central Iowa.

**University**—Large; clear yellow with small dots; flesh yellow; pleasant; subacid and very good. Late fall and early winter.

**Patten** (Patten's Greening)—Large to very large; round; yellow and good. October. A very hardy, crooked growing tree. Valuable in the North where it is a winter apple.

**Plum Cider**—Large; yellow with red stripes; mild; good. October to December, and later.

**Snow**—Medium; roundish; red striped or crimson; flesh mild; snow white; juicy; very highly flavored and delicious. November and December. One of the very best apples of its season.

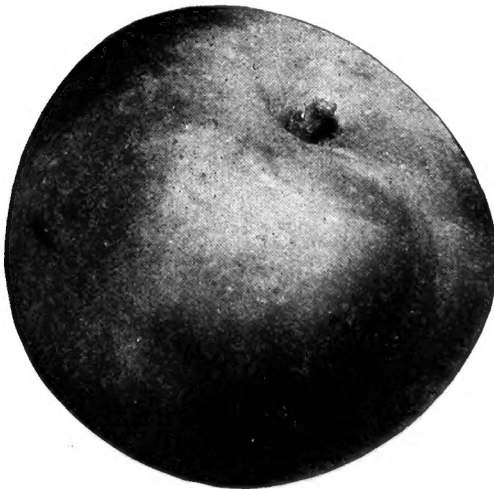
**Jonathan**—Medium to large; roundish or conical; yellow and red; mild and very good. December to March. One of the most valuable for all purposes but should not be planted extensively north of Central Iowa.

**Lansingburg**—Medium; roundish; yellow and red; mild and of fair quality. Keeps the year round.

**Malinda**—Large; yellow and red; mild and good. December to March. Very hardy; vigorous and prolific. One of the most valuable for planting in the North.

**Mann**—Large; roundish; yellowish-green; mild and keeps very late.

**McIntosh Red**—Large; round; yellow and red; mild and good. December to February. A splendid apple of the Fameuse type.



Salome.

**Nelson Sweet**—Large; roundish; dark green; very sweet and good. Keeps all winter. A strong, free grower and very hardy.

**Northern Spy**—Large to very large; roundish; yellow with red stripes; mild and very good. December to March. An old variety which is gaining in popularity. We have been propagating our stock from a superior strain of this variety

which we believe to be one of the best things on our list.

**Northwestern Greening**—Large to very large; green or yellowish-green; mild and good. One of the very best cooking apples of all, and on this account it sells well wherever known. December to April. Tree very hardy and vigorous.

**North Star**—Large; roundish red and yellow; mild and good. November to December. Very vigorous and hardy; one of the best for commercial planting in the northern part of the state.

**Paradise Winter Sweet**—Large; roundish; yellow; sweet and very good. The best of all sweet apples for cooking. December to March. Hardy and very vigorous, but not very prolific in some localities.

**Roman Stem**—Medium to large; round; yellow; red blushed; mild; very good. December to April. An old variety unexcelled for home use; one of the very best for cooking.

**Salome**—Large; round; yellow and red; mild and good. December to April. A very beautiful apple which is rapidly becoming popular.

**Sheriff**—Medium to large; red; mild and good. December to February. Bears early and regular. A variety too little known.

**Stayman** (Stayman Winesap)—Large to very large; roundish; red; mild and good. December to March. A seedling of the old Winesap, of much the same color and quality, but larger and hardier. One of the best for commercial planting.

**Talman Sweet**—Medium to large; yellow; very sweet and good. December to February.

**Wagner**—Large; roundish; yellow and red striped; mild and good. December to March.

**Walbridge**—Medium to large; yellow and red striped; mild and of fair quality. December to March.

**White Pippin**—Large to very large; roundish; white with a little red and yellow; mild and very good. December to March.

**Windsor**—Medium to large; round; yellow and red; mild and good. December to February.

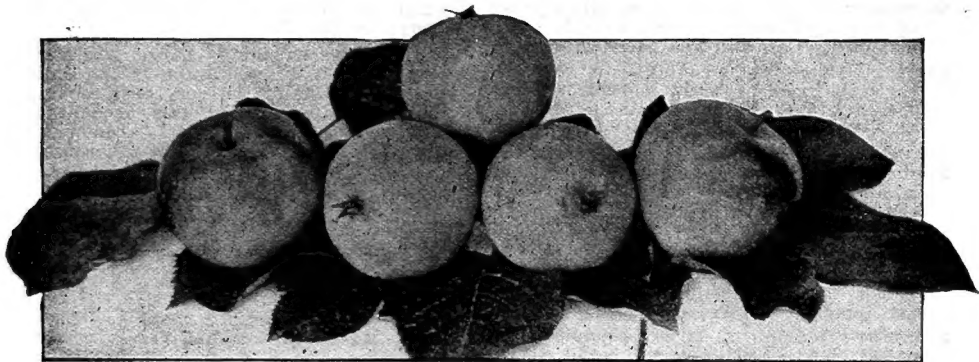
**Willow Twig**—Large; roundish; yellow and red; mild and good. February to April.

**Winter Banana**—Large; round; bright yellow; mild; very good. December to March.

**Winter Fameuse**—Medium size; roundish; not as well colored as Fameuse or Snow; of the same quality, but keeps two or three months longer.

**Weisner's Dessert**—Medium to large; yellow and red; mild and delicious. December to March. An apple of very high quality.

**Yellow Belleflower**—Large to very large; yellow; very good for all purposes. November to January.



# Crab Apples

These hardy and beautiful trees should be among the first things planted. They can be depended upon to stand where other apples are not hardy enough, and produce an abundance of good fruit. Many of them make splendid eating apples and are a great delight to children. Prices, the same as for apples.

- Alaska**—Fruit larger than Transcendent; a good keeper and very good.
- Briar Sweet**—Medium; yellowish with red blush; very sweet and good. August to September. Slightly bitter if not fully ripe.
- Excelsior**—Large; handsome and good. Ripens just after Duchess. A seedling of Wealthy and of similar quality.
- Florence**—Large; yellow and red; very good for all purposes. Very hardy and productive.
- Gideon**—Large; yellow and white; very good. One of the best of the new varieties.
- Golden Beauty**—Very large and handsome; golden yellow; very good.
- Hyslop**—Dark red; popular and hardy, except for blight. November to February.
- Red Siberian**—Small but very prolific. September.
- Sweet Busset**—Large to very large; yellow with some russet very sweet and rich; a delightful eating apple. September.
- Soulard**—Very large; yellowish, with the flavor of the Wild Crab. February to June. Valuable for cooking; very hardy and prolific.
- Transcendent**—Large; yellow and red; very good. Tree hardy, but blights badly.
- White Arctic**—Very large; white; tender; rich and juicy. Vigorous and very hardy.
- Whitney "No. 20"**—Large to very large; greenish and red; very juicy and good. A splendid variety for eating and cooking. Tree very vigorous, hardy and handsome.
- Wild Red Crab**—A hybrid of the wild crab and cultivated apple. Fruit is as large as Whitney, red nearly all over, and keeps the year round. It has the aroma and flavor of the Wild Crab which makes it just the thing for people who like the sauce of the Wild Crab, as they are so much larger. The tree is far the most vigorous of any apple tree we ever grew, is very easy to transplant, makes a beautiful symmetrical tree, and is a regular and very young bearer.

*We charge the minimum price at which the very  
 best stock can be sold*



# Pears

Although formerly considered very unfavorable for Pear growing, Iowa soil and climate are proving themselves well adapted to the production of several varieties. No one should plant Pears extensively in this state without first assuring himself what varieties will succeed in his soil, but with proper investigation, we are convinced that every section of Iowa will produce some variety of Pear with excellent results, and the trees blight less. As a commercial fruit the pear stands close to the apple and the peach, and we are convinced that the time is near at hand when Iowa will grow the pears needed for its own markets.

The varieties listed below are considered especially free from blight, which is the great enemy of the Pear. This disease usually shows itself by the blackening and drooping of the leaves, and is controlled by cutting off the infected branches several inches beyond the point to which the disease extends and burning them. Dipping the pruning tools frequently during the process in a solution of bichloride of mercury will prevent their spreading the disease.

**PRICE LIST OF PEAR TREES.**

	Each	10	50	100
Large size, 5 to 7 feet, 2 to 3 years.....	\$0.50	\$4.50	\$20.00	\$37.50
Medium size, 4 to 5 feet, 2 to 3 years.....	.40	3.50	15.00	27.50

**Dwarf Pears.** Varieties marked with a \* can be furnished in dwarfs; these are budded on Quince roots. Large size, caliper 3/4-inch and up, same price as large sized standards.

**\*Bartlett**—Large; yellow and red; juicy; melting and highly flavored. August and September. An early and abundant bearer. This excellent variety blights badly in many places in Iowa, so cannot be recommended for general planting.

**Flemish Beauty**—Large to very large; yellow with red blush; melting; juicy; sweet and good. September.

**Garber**—Large to very large; yellow and red; firm and granular; juicy and acid; of fair quality. October. A very vigorous grower.

**Golden Russet**—Large; golden yellow; russeted; firm; granular; juicy and good. A very thrifty and healthy variety; very promising for southern and central Iowa.

**Howell**—Large; yellow and red; very juicy and good. September.

**\*Kieffer**—Large; yellow; russeted; granular; juicy and sweet. October and November. A very hardy, vigorous variety, remarkably free from blight. An early and abundant bearer; valuable chiefly for cooking and canning. The fruit should be kept until well ripened before using.

**Krull**—Large; yellowish-firm; becoming juicy, melting, rich and sweet. A very late keeping variety; hearty and vigorous.

**Lincoln**—Large; yellow and red; buttery, melting, sweet and

very good. September. Hardy and prolific.  
**Mongolian Snow**—Medium to large; yellow; russeted; firm; similar in quality to Kieffer. Should be ripened in the house. Very vigorous, hardy and productive.

**Mt. Vernon**—Large; yellow and red; granular; melting; juicy and good. October.

**Rossney**—Large; yellowish; buttery, juicy, melting and very good. Hardy, vigorous and free from blight.

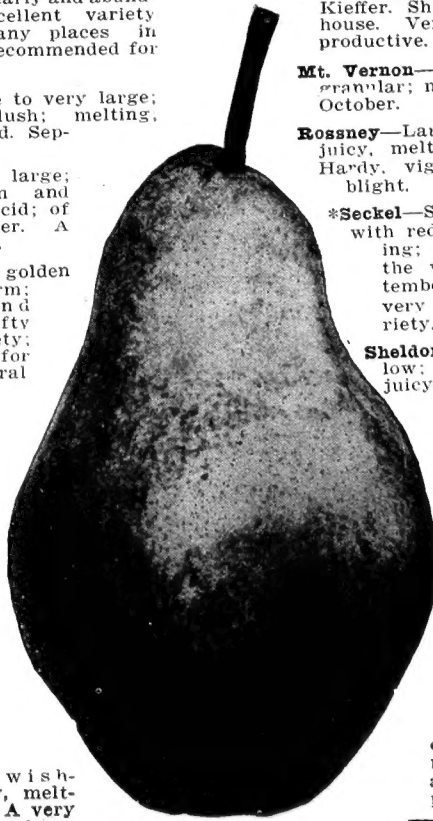
**\*Seckel**—Small; brownish-green with red russet; buttery; melting; juicy and delicious; of the very best quality. September. A slow growing, very hardy and healthy variety.

**Sheldon**—Large; greenish-yellow; russeted; melting; juicy, sweet and good. October.

**Vermont Beauty**—Medium size; yellow and red; rich and juicy; very good. October. Very hardy, vigorous and prolific.

**\*Wildcr**—Small to medium; yellow shaded crimson; fine grained; tender and good. Vigorous and productive. August.

**Worden Seckel**—A seedling of Seckel; of similar quality, but much superior in size and color. Hardy and productive. October.



**Bartlett.**

**We save you money**

# Peaches

Hardy peaches is one of our leading specialties. The list of varieties we offer is the result of years experimenting in endeavoring to find varieties hardy enough to endure the trying Iowa winters. Our greatest success has been with varieties originated here in Iowa. The following list cannot be excelled for hardiness. We do not claim that Peach trees are as hardy as plum and apple, but they have succeeded in living through the most severe winters. While old trees were badly injured or killed last winter, younger trees survived and recovered from their injuries. Our trees are one year old and most of them wintered outside last winter.



Our Peach trees are budded upon the hardiest stock in existence, namely, seedlings produced from seed of the Bailey peach grown here in Linn County. Plant them about a foot deeper than they stood in nursery, so that if the tree is ever killed back to the ground it will throw up a sprout from above where it was budded and thus renew the tree.

## PRICE LIST OF PEACH TREES.

	Each	10	100
5 to 6 feet.....	.30	\$2.75	\$25.00
4 to 5 feet.....	.25	2.00	18.00
3 to 4 feet.....	.20	1.50	14.00

**Bailey** (Friday Seedling)—Medium size; whitish with red cheek; flesh white; juicy; sweet and good. Pit very small and free. September. This variety has been grown in Iowa for over seventy years and has averaged three crops every five years.

**Banner**—A Canadian variety; medium to large; deep yellow with crimson cheek; freestone. Flesh yellow, rich, firm and good. September.

**Bednar**—Originated in Cedar Rapids, Ia. Large; oblong; yellow; free stone; very good. September.

**Bokara No. 3**—Medium to large; free stone; yellow with red cheek; flesh yellow, juicy and good. September. A hardy variety from Asia.

**Champion**—Large; creamy white with red cheek; flesh white, very sweet, juicy and rich. August. One of the best and hardiest of the early varieties.

**Elberta**—Very large; yellow with red blush; free stone; flesh yellow, juicy and good. Vigorous and moderately hardy. September.

**Leigh**—Originated in Mt. Vernon, Ia. Large; white with red blush; free stone. Flesh white, very sweet, juicy, and good. August. The original trees have produced as many as eight bushels at a crop.

**Lone Tree**—Originated in Johnson county, Ia. Medium to large; golden yellow; flesh yellow, juicy, rich and very good. Pit very small and free. September.

**Myers**—Medium to large; yellow and red. Free stone; flesh yellow, juicy and rich. This peach has been grown in South-

**Pierpont**—Another Linn county seedling; large; yellow with red cheek; flesh white, juicy and excellent. Pit very small and very productive. Very promising. Free. September. Apparently very hardy and promising.

**Robins**—A local variety of much promise. Medium size; yellow and red; free stone; flesh light yellow, sweet and good. This is the earliest variety of the list, ripening the last of July or first of August.

**Russell No. 1**—Medium size; whitish with red cheek; pit small and free; flesh greenish-white, juicy and good. Middle of August to September. One of the very hardiest.

**Sawyer**—Large; freestone; flesh yellow, rich and juicy. One of the first peaches grown in Iowa.

**Sterns**—Originated in Western Michigan. Large; round; yellow with brilliant red. Pit small and perfectly free; flesh firm, yellow and very good. A promising new variety.

**Wolf**—(Wolf's Lone Tree Seedling.)—A seedling of the Lone Tree; its equal in size and quality, but has a bright red cheek and ripens ten days earlier. Tree hardy and very productive. Very promising.



**Elberta.**

eastern Iowa for many years and has made a splendid record.

## Gooseberries

All we have said about currants is also applicable to gooseberries. In addition to the arsenical, they should be sprayed with a fungicide to prevent mildew in unfavorable seasons.

**Champion**—Large, roundish; greenish-yellow; very good. One of the most productive of all. Entirely free from mildew. We consider this our leading variety; the very best for all purposes. Two-year, No. 1, 20c each; \$2.00 per dozen; \$15.00 per 100.

**Downing**—Large to very large, round; green; juicy and good. A very satisfactory variety. Two-year, No. 1, 15c each; \$1.50 per dozen; \$12.00 per 100.

**Houghton**—Medium, roundish; pale red; very good. Enormously productive. An old standby. It has the genuine gooseberry flavor. Two-year, No. 1, 10c each; \$1.00 per dozen; \$8.00 per 100.



# Plums

No other fruit has a greater variety of uses, or is capable of satisfying a greater variety of tastes than the plum. It is in its native element in Iowa soil and climate, this section having been favored with many choice varieties in its primitive state.



**Burbank.**

**Varieties.** We are making this fruit a specialty and our experimental orchard is our delight. Up to the present we have planted in it 275 varieties, many of which have been discarded. It is our aim to test all varieties which come well recommended and propagate only the best. By careful selection one may enjoy fresh plums from early in July until late October.

**How Propagated.** All our plum trees are budded or grafted on native plum seedlings, which experience has proved are the only stocks which are satisfactory in this climate.

**Cultivation.** If you give them your best land and as thorough and frequent a cultivation as you do your cornfield or garden you will succeed. Clean cultivation is one of the remedies for the plum curculio.

**Crooked Trees.** It is practically impossible to grow what some people would call a "decent" tree of some varieties, yet these same trees afterward develop into well shaped orchard trees.

## PRICE LIST OF PLUM TREES

(Except the new Cherry and Apricot Hybrids)

	Each	10	50	100
5 to 7 feet, 2 to 3 years.....	.50	\$4.50	\$20.00	\$37.00
4 to 5 feet, 2 to 3 years.....	.40	3.50	15.00	27.50
3 to 4 feet, 1 to 2 years.....	.30	3.00	10.00	18.00
2 to 3 feet, 1 year switches.....	.15	1.50	7.00	12.50

5 at 10, 25 at 50, and 50 at 100 rates. Orders for 25 or 50 trees containing a long list of varieties cannot be filled at 50 or 100 rates.

## AMERICAN VARIETIES

These include our common red and yellow plums, and are native to this part of the United States. These are the hardiest of the plums.

**Aurora**—Medium; round; dark red; pit very small; very good for cooking or market. Vigorous and very productive.

**Beatty**—Large to very large; oblong; very beautiful; yellow and red; free stone; very good. Last of August. Equal to De Soto for cooking and dessert. An upright growing, symmetrical tree; very hardy and thrifty.

**Benson**—Medium; round red; very good. Late. Valuable for market or cooking.

**Chas. Downing**—Large, round, and very bright red; thin skinned, but a good keeper and of the very best quality. This variety must be planted with others to secure pollination.

**De Soto**—Our old standby. Medium to large; roundish; bright yellow and red, free stone; very good for every purpose. Last of August. Very hardy and healthy; its one fault is overbearing; thin the fruit for best results.

**Hawkeye**—Large to very large; oblong; thick skinned; grayish purple; good for dessert, but cooks very sour. Last of August. Hardy and productive.

**Miner**—An old variety; large; round; dull red; cling stone; valuable for all purposes. September. Should be planted with other varieties to secure pollination, otherwise it may be a shy bearer.

**Moreman**—Medium; round; dark red; meaty and good. Late.

**Newman**—Medium; red; very thin skinned; good. A very productive variety and valuable for market.

**Reed**—Small; round; red; very late. Very good for all purposes.

**Snyder**—Originated by J. H. Fairchild, Coggon, Ia. Large to very large; reddish-purple; thick skinned; very good for dessert but cooks sour. Thrifty and productive.

**Stoddard**—Large; round; red; good for dessert. August. Develops too much acid for cooking.

**Surprise**—Large; red; cling stone; rich, sugary and delicious. September. Good

for all purposes. Prolific, vigorous and hardy far into the Northwest. One of the most valuable for market or home use.

**Terry**—Large to very large; purplish red; thin but tough skinned; very good. A thrifty and prolific variety, especially valuable for market.



**Surprise.**

**Whitaker**—Large; bright red; cling stone; sweet, juicy and very good. Skin thin, and peels like a scalded tomato. The best and most dependable early variety; it very rarely fails. Middle of July.

**Wyant**—Large; purplish red; free stone; thick skinned; easy to peel. August. One of the very best plums for dessert but develops too much acid in cooking to suit most people. Very productive and hardy.

## Japanese Group

The varieties of this numerous family which we consider worthy to be retained in the orchard are very limited. The reason we retain any of them is on account of their superior quality of fruit and great productiveness. In point of hardness and other characteristics of tree, none of them can be highly recommended. We continue to propagate a few of the best varieties, which we list below.

**Abundance** (Sweet Botan.)—Large to very large; greenish yellow with red blush and marked suture; excellent. One of the very sweetest of fruits. A vigorous, upright grower and extremely prolific.

**Burbank**—Large to very large; marbled and overspread with dull red; cling stone. August. Flesh yellow, very sweet and agreeable. Very productive.

**First**—Large; greenish yellow with some

red; very thin skin; cling stone; very sweet and good. Tree thrifty, moderately hardy, and very productive. It ripens in July, at raspberry time, and is the only early plum which is thoroughly good for all purposes.

**Maynard**—Very large; round; dull red; firm; juicy, rich and sweet; very good. A very vigorous grower; one of Burbank's recent introductions.

## Domestic Group

This family embraces the European varieties of plums and prunes. They must be sprayed regularly to prevent the curculio and brown rot from destroying the crop. If it were not for these pests, this class of plums, including prunes, could be as easily and profitably produced as any of the common natives, and it is, in fact, a serious question whether it is profitable to try to grow the common natives without spraying regularly.

Spraying is so beneficial to trees and fruit that no one should hesitate at the time and trouble it involves.

Once we succeed in bringing a crop of these garden plums, as they are sometimes called, to maturity, there is a greater satisfaction to be derived from the various uses to which they may be applied than from any other class of plums. Many of them are most delicious dessert fruits, some are unexcelled for culinary use. We submit a short list of the best of this class for this section.

**Blue Moldovka**—Large to very large; blue; free stone; flesh juicy, rich and luscious; especially good for dessert. A Russian variety; productive, hardy and desirable.

**Communia**—Large; roundish-oblong; dark blue; flesh yellow, juicy, sweet and very good for all purposes. September.

**Deaton**—Large; light green; freestone. Excellent for dessert or culinary use. Last of August.

**French Damson**—Medium size; dark blue, almost black; free stone; flesh yellowish green. Splendid for dessert or cooking. Fruit colors long before ripe. Last of September. Very prolific, hardy and vigorous.

**German Prune**—Large; oblong; purple or blue; rich, juicy and very good. Vigorous and very productive. One of the best of the prune family.

**Reine Claude**—(Bavay's Green Gage)—Large; oval; greenish; good. A great favorite wherever known. September. A spreading, rather slow growing tree.

**Eichland**—Medium to large; oblong; reddish purple or coppery; free stone; flesh yellow and sweet; valuable for market. Last of August.

**Shipper's Pride**—Very large; dark purple, and very showy. Flesh juicy, sweet and good; valuable for market. Last of August.

**Shropshire Damson**—Medium size; dark purple; very good. Fruit is borne in clusters. Very fine for cooking and preserving. October.



German Prune.

**Spanish King**—Large; roundish-oblong; blue; flesh yellow, juicy, sweet and very good. One of the best of this class of plums for all purposes. Hardy and vigorous. September.

**Tatge**—Large; roundish-oblong; dark blue; flesh yellow, sweet and good. Similar to Spanish King. Makes an excellent prune. September.

**Ungarnished Prune**—Large, dark blue; free stone; very good when well ripened. Not an early bearer, but very productive. A variety which has proven very profitable for us.

## HYBRID GROUP

No class of fruits recently introduced is attracting more attention than the Hybrid Plums. The hardiness and productiveness of the native fruits are being combined with the superior fruits of the tender imported varieties with wonderful results.

**Gold**—(Robinson and Botan.)—Large to very large; golden yellow with some red; juicy, sweet and good. Very productive fairly hardy and vigorous.

## CHERRY PLUMS

All hybrids of the Western Sand Cherry and cultivated plums.

**Compass**—(Miner Plum and Sand Cherry.)—Small; purplish-red; very good for cooking. Tree wonderfully productive, thrifty and healthy.

Prices of the following varieties: 5 to 7 ft., 75c each; 4 to 5 ft., 60c each; 3 to 4 ft., 40c each.

**Opata**—A cross of the Sand Cherry and Gold Plum. Fruit 1 to 1 3-16 inches in diameter; dark purplish red with blue bloom; flesh green, and flavor a mingling of the sprightliness of the Sand Cherry with the rich sweetness of the Gold Plum. Pit very small. Season, July 15.



**Sapa**—A cross of the Sand Cherry and Burbank's large, purple fleshed plum called Sultan. Fruit slightly larger than Opata. Skin, flesh and juice very dark purple-red, which makes this entirely unlike any other fruit grown here. Sapa took first prize at Minnesota State Fair in 1909.

**Wachampa**—Another cross between Sand Cherry and Sultan plum. Fruit about as large as Sapa, of uniform size, purplish, with light red flesh and very small pit; sweet and good. In our estimation, one of the best of the lot. August.

**Sansoto**—A cross of Sand Cherry and DeSoto plum. Fruit round, about the size of the DeSoto plum, almost black when fully ripe. Flesh yellowish green, sprightly pleasant, skin thin; pit very small; cling stone. A vigorous variety. August.

**Cheresoto**—Same parentage as Sansoto and very much the same except in shape. Cheresoto is long and has a small point at the apex. These two varieties are remarkably thrifty growers and, we believe, far superior to the Compass cherry. August.

## APRICOT PLUMS

Hybrids of the large, flat, Chinese Apricot, *Prunus Simoni* and our native plum. These varieties are very hardy and all are remarkably vigorous growers.

**Hanska**—Fruit large; distinctly flat; bright red, with heavy bloom; flesh firm, yellow, of very fine quality and richly fragrant. The apricot flavor is brought out to perfection in cooking. Very vigorous, hardy and productive.

**Inkpa, Kaga and Toka**—Of the same pedigree as Hanska and very similar to it in fruit. These four varieties are all remarkably vigorous and make the finest nursery trees of anything we have ever grown. We believe there is a great future for this class of hybrids.

# Cherries

Cherry trees thrive on almost any well drained soil, but not where water stands about the roots. Our stock of cherry trees for this year is especially fine. We know they will give far better results than any shipped in stock. The following is a list of the best out of many varieties.



## PRICE LIST OF CHERRY TREES.

	Each	10	50	100
First-class, 2 year, 5 to 6 feet.....	.50	\$4.50	\$20.00	\$37.00
First-class, 2 year, 4 to 5 feet.....	.40	3.50	15.00	27.50
First-class, 1 year, 3 to 4 feet.....	.30	3.00	10.00	18.00
First-class, 1 year, 2 to 3 feet.....	.20	2.00	8.00	15.00

**Baldwin**—Very large; dark red; round, and good. Tree vigorous and healthy; very resistant to leaf diseases. A promising new variety.

**Dyehouse**—Large, round; red, and good. Is slightly earlier than Richmond and much like it.

**English Morello**—Almost identical with Wragg. One of the best of this class of cherries.

**Homer**—Fruit large, dark red, and good; ripens about the same time as Richmond. This is claimed to be the very hardiest of the cherries and has been grown in Minnesota for many years where other varieties are too tender.

**Montmorency**—Large to very large, round; red; ten days later than Richmond. Flesh firm, meaty, much superior to Richmond in quality. Tree very hardy and productive. One of the most profitable varieties to plant.

**Ostheim**—Large; dark red, almost black; tender, juicy and mild, almost sweet; very good. A hardy Russian variety; the best of the Morellos.

**Richmond** (Early Richmond)—The standard early variety. Red, round and juicy. First of June. Valuable for market or home use. Tree hardy, and a regular bearer.

**Timme**—One of the most promising new cherries. Fruit large, rich and meaty; berry hardy and prolific. Ripens with Richmond but is more productive. Pronounced by those who have it to be the best variety for eating off the tree or for canning.

**Wragg**—Large; handsome, dark red; good. Early July. Should not be picked until dark colored. Hardy and productive.

## SWEET VARIETIES

**Yellow Glass** (Double Glass)—Fruit large, roundish, heart-shaped; bright yellow; juicy, very sweet and good; one never tires of eating them. Tree very vigorous; certainly the hardiest of sweet cherries. Imported by Professor Budd from Silesia in 1882.



# Grapes

There is not a yard so small but there is room for from one to a dozen grape vines. They may be trained on a building, arbor or fence if necessary, and they will richly reward the planter with an abundance of the most healthful fruit. The great quantity of grapes now used for making grape juice makes it almost impossible to have an over-production of this fruit. Any well-drained land will produce grapes.

Plant them in rows, six to eight feet or more apart. Dig holes so as not to have to fold the roots in planting and cut back the top to two buds. Prune off most of the new growth each fall, lay down the vines and cover with dirt for winter protection.

**Agawam**—Red; large to very large; aromatic, sweet and good. Very vigorous and productive. Needs winter protection. 10c each; \$1.00 per dozen; \$8.00 per 100.

tion. 10c each; \$1.00 per dozen; \$8.00 per 100.

**Campbell's Early**—Black; very sweet, juicy and good. This variety does not seem to be adapted to this part of the country. In our vineyard the vines have not paid for themselves and do not promise to do so. 25c each; \$2.75 per dozen.

**Concord**—Black. The well known standard variety for all purposes. Size medium; succeeds wherever grapes are known. 10c each; 90c per dozen; \$7.00 per 100.

**Delaware**—Light red; bunch and berry small and compact; very sweet and highly flavored. Best in quality of all American grapes. Needs winter protection for good results. 10c each; \$1.00 per dozen.

**Diamond**—(Moore's Diamond)—Large, round and greenish-white; sweet, juicy and very good. Healthy, vigorous and prolific and very hardy. One of the best of the white varieties. 10c each; \$1.00 per dozen; \$8.00 per 100.

**Moore's Early**—Black; berries large to very large, round; very sweet and good. Two to three weeks earlier than Concord. This variety grows in favor every year; one of the most profitable for market and should be in every garden. 15c each; \$1.50 per dozen; \$10.00 per 100.

**Niagara**—White; large to very large; melting, sweet, with a peculiar, agreeable flavor. Hardy and productive. The best and most satisfactory of white grapes for all purposes. 10c each; \$1.00 per dozen; \$8.00 per 100.

**Pocklington**—White; very large and showy; sweet and good. Vigorous and hardy. Ripens with Concord. 10c each; \$1.00 per dozen; \$8.00 per 100.

**Woodruff Red** (Woodruff)—Large to very large; very sweet and good. A little earlier than Concord. Very vigorous, hardy and healthy. 25c each; \$2.50 per dozen; \$17.50 per 100.

**Wozzen**—Black; berry and bunch large and compact. Sweeter, better, and a little earlier than Concord. A strong grower, heavy yielder, healthy and hardy. The best and most satisfactory variety to plant for home use or market. 15c each; \$1.50 per dozen; \$10.00 per 100.

**Wyoming Red**—Light red; bunch and berry small, tender, sweet and good. Vigorous, hardy, and the earliest red grape. 10c each; \$1.00 per dozen; \$8.00 per 100.

**Beta**—A medium sized black grape, quite acid but of good quality. Early, prolific and healthy. It is valuable chiefly for its hardiness. It is hardy without protection far into Minnesota, and on this account it is especially valuable for arbors where the large varieties are a little too tender. 25c each; \$2.50 per dozen; \$17.50 per 100.

**Brighton**—Red; large, sweet and delicious. Should be planted with other varieties to secure pollination. Requires protec-



# Currants

Currants do best on good, rich, moist soil and should be well manured and cultivated. Plant four to six feet apart and prune closely at the time of setting. Keep the old wood pruned out every year. The currant worm can be destroyed by a timely use of any of the arsenicals, or by white hellebore, if the fruit is too near maturity to use poisons. This fruit has been in great demand the last few years and without doubt is one of the most profitable fruits of all to grow.

**Cherry**—Berries very large; bright red, mild and good. An early variety, well adapted for market. 15c each; \$1.50 per dozen; \$10.00 per 100.

**Fay's (Fay's Prolific)**—Berries very large; bright red; mild and good. Another good market variety. 15c each; \$1.50 per dozen; \$10.00 per 100.

**London Market**—Berries large; bright red, firm and good. Clusters compact and very long. Vigorous and hardy; very healthy. One of the best for market. 15c each; \$1.50 per dozen; \$10.00 per 100.

**Perfection**—A cross between Fay's and White Grape, retaining the valuable characteristics of both; beautiful bright red, as large as Fay's, holding its size to the end of the bunch. Easy to pick, very prolific, mild and of very good quality. A valuable new variety. Two-year, No. 1 25c each; \$2.75 per dozen.

**Pomona**—Berries large; bright red; very mild and good. One of the most productive varieties known. 15c each; \$1.50 per dozen; \$10.00 per 100.

**Victoria**—A standard variety; very large; bright red, mild and good. Very productive. A splendid variety. 10c each; \$1.00 per dozen; \$8.00 per 100.

**White Grape**—Berries very large; white; sweet and very mild; excellent. One of the very best currants of all. 15c each; \$1.50 per dozen; \$10.00 per 100.



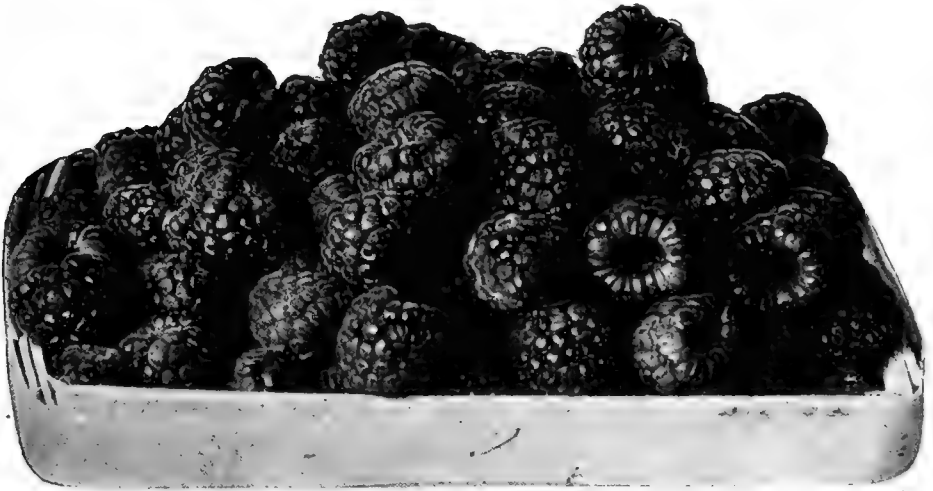
White Grape.

# Dewberries

Great care and peculiar treatment are necessary for successful dewberry growing. They do well in high, well drained clay soil, but can be grown with good success on almost any good soil. Plant in rows seven feet apart and four to five feet in the row. Begin pruning by pinching out the ends of the canes as soon as they reach a length of three feet, and of the laterals when they reach two feet. In the fall prune away all but six of the best canes to each hill and these canes to a length of four to five feet. Press them closely to the ground lengthwise of the row and cover with three inches of forest leaves or by throwing a light furrow upon them. Uncover in spring when all danger of freezing is past and tie to a wire trellis.

**Lucretia**—Claimed to be the best of the blackberry family and as productive as any. The berries are far larger and incomparably better than any blackberry, and of unequalled excellence; soft, sweet and luscious throughout; of brightest glossy color. The Lucretia dewberry has

received the indorsement and praise from the best horticulturalists in the country. Its eminent success in all soils, from Maine to California, from Minnesota to Florida, is something phenomenal in small fruit culture. Transplants, 10c each; 75c per dozen; \$5.00 per 100. Tip plants, \$3.00 per 100; \$25.00 per 1000.



# Raspberries

A common plan for laying out a raspberry plantation is to plant in rows six to eight feet apart and from two to three feet or more in the row; but recent experience has convinced us that there is a better way. It is to plant in hedge rows eight to ten feet apart and twelve to eighteen inches apart in the row. The dense hedge row smothers out all weeds and renders cultivation easier and quicker. The space between the rows should be frequently and well cultivated.

It is a well known fact that raspberries are always finer, larger and sweeter if grown partially in the shade; the hedge row furnishes this condition. It also protects the young canes from being twisted and broken by the wind. The result is more canes, finer fruit, and easier and quicker cultivation. Give this plan a trial and you will be convinced of its advantages over the old way.

We have transplants this year of Gregg, Kansas, Cardinal and Haymaker. These are tip plants which have been grown one year, and will grow much easier and give far better results than tip plants.

## Black Varieties

**Conrath**—A large, hardy variety; ripening between Older and Gregg. Productive, and a good shipper. 5c each; 50c per dozen; \$2.50 per 100; \$15.00 per 1000.

**Cumberland**—Very large; firm, sweet and very good; splendid for any purpose. Very vigorous, healthy and hardy. A little earlier than Gregg; one of the best varieties. 5c each; 50c per dozen; \$3.00 per 100; \$25.00 per 1000.

**Gregg**—Very large and productive; sweet and good, very firm. One of the best shippers. Eight to ten days later than Older. Same price as Conrath.

**Kansas**—Large, early, moderately firm; very good. Enormously productive; withstands drought splendidly. Many give it first place for home use or market. Same price as Conrath.

**Older**—Large, roundish; very early, rich and good. A great drought resister. Ripens perfectly; seeds small. Originated

in Iowa, and is one of the hardiest on the list; a fine variety for home use or local market; not firm enough for long shipments. Same price as Conrath.

**Plum Farmer**—Large to very large; sweet and juicy, but firm; early and very productive. Splendid for every purpose; the most vigorous, healthy and hardy of any variety we have tested. A new and promising variety. Same price as Cumberland.

## Purple Cap Varieties

**Cardinal**—Large; dark red, firm, with an agreeable rich flavor which develops to perfection in cooking. There is no better variety for canning or jam; it ripens rather late. The canes are very strong and vigorous, with few thorns, and very free from diseases. One of the hardiest and most productive of all raspberries. Transplants, one-year-old, 10c each; 75c per dozen; \$5.00 per 100. Tip plants, 5c each; 50c per dozen; \$3.50 per 100.

**Haymaker**—A rival of the Cardinal; large, dark red, firm and excellent. Very vigorous and hardy. Claimed to be the most profitable raspberry on earth. Price same as Cardinal.

## Red Varieties

These multiply by suckers and sprout all over the ground near them, so they must be confined to narrow rows by running the plow through frequently during the growing season. With proper care and cultivation they excel all other raspberries in quality and equal them in productiveness.

**Colorado Ironclad**—Medium to large; bright

red, sweet and delicious, but too soft for market use. Canes are very healthy, vigorous and hardy. A splendid variety for home use. Ripens with King. 5c each; 50c per dozen; \$2.50 per 100.

**King**—Generally considered the best early red raspberry. Berries large; bright red and moderately firm. It ripens with the earliest black variety. Canes are hardy, productive and vigorous. 5c each; 50c per dozen; \$3.00 per 100.

**Louison**—Very large; beautiful dark crimson; splendid quality and very productive. It endures our coldest winters without protection. One of the very best of the red raspberries. Same price as King.

## Blackberries

Practically the same general directions apply as for the raspberries. Our plants are root-cutting plants and are worth tenfold more to the fruit grower than sucker plants from old, exhausted patches; be sure you get the genuine nursery propagated plants and you will succeed. The blackberry is a stronger bush than the raspberry and should be planted in rows eight feet apart, and from two to three feet apart in the row; otherwise, its culture is the same as for the raspberry.

**Improved Snyder**—For some time we have been working up a stock of a superior strain of this variety which is in every way superior to the common Snyder. Several years experience with this new strain leads us to believe them to be hardier, more vigorous and to produce

more and better fruit than the common Snyder. The canes are extremely hardy and very productive, the fruit is medium to large in size, contains no hard, sour core, and is sweet and juicy, but firm. We have shipped them over 500 miles in good condition. 5c each; 50c per dozen; \$3.00 per 100; \$20.00 per 1000.

## Asparagus

Asparagus is one of the earliest and finest of spring vegetables; so easy of culture, profitable and wholesome, that every family garden should have a liberal supply.

Choose well drained, fertile soil, work it up fine and deep, and place the plants in rows four feet apart and eight inches apart in the rows; spread out the roots in a trench made deep enough to permit their crowns to be covered with three or four inches of mellow soil; give the rows a liberal dressing of well rotted manure at least once a year, and fifteen pounds of salt per rod length early every spring. Do no cutting the first season.

Price, 2 year roots, 50c per dozen; 75c per 25; \$1.25 per 50; \$2.00 per 100.

**Columbian Mammoth White**—A distinct variety of strong, vigorous growth, producing very large white shoots that in favorable weather remain white until two or three inches high, or as long as fit for use. Market gardeners and those

growing for canning will find this a profitable variety.

**Conover's Colossal**—A mammoth variety of vigorous growth; tender and excellent quality. Sends up fifteen or twenty very large sprouts each year.

## Juneberries

**Improved Dwarf**—This is one of our most wholesome fruits. A delicious fruit to eat out of hand, or for pies and canning. Perfectly hardy and never fails to bear.

Fruit resembles the blueberry and is borne in attractive clusters. Should be in every garden. 20c each; \$2.00 per dozen.

## Rhubarb or Pie Plant

**Linnaeus**—Large, early, tender and fine. 10c each; \$1.00 per dozen; \$6.00 per 100.

**Victoria**—A large variety of excellent quality. Same price as Linnaeus.

# Strawberries

No one owning a home, or for that matter, one who is renting for a term of years, can put a little money to a better use than to buy three or four hundred strawberry plants. Nothing will bring quicker and greater satisfaction to the planter, more keen delight to his children, or lessen the burden of his good wife in providing for the table than a well kept strawberry bed.

The best time to plant strawberries is in early spring, and on fertile, new soil, or old land brought to a high state of cultivation. If horses are to be used in cultivation, plant in rows three and one-half to four feet apart, and one to three feet in the row, but for hand culture, one to two feet will answer.

Here is the plan we have found the most profitable and which always gives large, fine fruit. Set the plants as early in the spring as the season will permit, and pinch off all the blossom stalks which appear the first season; this throws all the strength into a good stand of new plants for the next year. About November 1 cover with rye or wheat straw just deep enough so they can come up through it; if too much is on, remove a part of it when spring comes and leave the rest of it to keep the berries off the soil. Now dig enough of these new plants to start a new bed, which treat as before, and as soon as the crop is off plow the old bed under. Keep this up year after year and you will have the finest fruit that can be produced.

Our plants are strictly nursery grown and will give far better satisfaction than can possibly be obtained with plants taken from an old fruiting bed. Such plants are not worth the digging.

## Spring Bearing Variety

**Senator Dunlap**—Out of a long list of more than thirty spring bearing varieties which we used to catalog, we now retain but one, the Senator Dunlap; a product of the Mississippi Valley and especially adapted to it. Probably no other variety of fruit ever introduced here has given as universal satisfaction, as this one. Every claim made for it has been more than met. Some of its strong points are:

best self-fertilizers, and also the best for fertilizing pistillate varieties.

3. A long fruiting season—coming in with the medium early and holding out when most others are gone—developing and ripening all its berries.

4. Uniformly large, well shaped, dark bright red glossy berries with a very large, bright green calyx. Berries of the finest quality and flavor.

5. A good keeper. Its long keeping qualities and attractive appearance make it more saleable than most others.

6. A good canner, retaining its bright red color in the cans.

We obtained our breeding stock direct from the introducer. Our plants are pure, and the best that can be produced. 25c per dozen; \$1.00 per 100; \$2.00 per 250; \$3.50 per 500; \$6.00 per 1000.



1.—A clean, healthy and vigorous plant; capable of resisting intense cold and severe drought, and making an abundance of good and strong plants when almost every other variety fails.

2. A long blooming season, with an abundance of pollen, making it one of the

## Fall Bearing Variety

**Americus**—For several years we have sought a variety to place beside the Senator Dunlap and now one has appeared, viz., the Americus Fall Bearing strawberry. This new fruit really belongs in a class by itself, it is so unlike the common varieties. The Americus is the result of one man's many years of ceaseless effort to produce a successful fall bearing strawberry, and is a most remarkable variety and the best of all the fall bearing sorts.

Plants set early in the spring will make a mat of new plants and all will produce a crop of fruit in the fall. It produces fruit continuously from May until November, and young plants begin bearing as soon as rooted, unless disbudded. The fruit is medium to large, bright light red, very solid, and has the splendid flavor of the native Wild Strawberry. The plants are very vigorous, deep rooted and healthy, and the blossoms strongly self fertilizing. Price, \$1.50 per dozen; \$7.50 per 100.

# Evergreens

The following species are the best kind of evergreens to plant in this state for shelter belts and ornaments. There is nothing which will add more to the value of a farm or more comfort to its occupants than a well arranged plantation of evergreens. Their shade is cool and refreshing in summer, and a belt of them is the greatest barrier against winter blasts that can be provided.

Our evergreens have been two or three times transplanted; are heavily rooted, stocky and thrifty plants. Failure with evergreens is usually due to careless handling, planting or cultivation. Any soil that will grow corn or garden vegetables is suitable for evergreens

## DIRECTIONS FOR PLANTING AND CARING FOR EVERGREENS.

**Handling.** Evergreen roots must always be very carefully protected from the sun and dry air. If they ever become thoroughly dried, the tree, unlike other trees, can never be revived. The roots should be dipped in a paste of mud before placing in the hole.

**Planting.** Dig holes large, so that the trees are not crowded, using the top soil in the bottom of the hole and arranging the roots carefully, working the fine soil around and among them with your hand and shaking the tree occasionally as the filling is going on, to settle the soil. When the roots are well covered, hold the tree upright, treading the soil very firmly around and over them with the feet. When this is done you have a basin or a hole around the tree that will hold half a pail of water; fill this basin with water and in half an hour or so, after the water has soaked away, fill the basin with good, mellow soil without much tramping.

**Watering.** The month of August is the critical period for newly planted evergreens, for during this month, unlike deciduous trees, evergreens make a new root growth which requires moisture. If the rains have not been plentiful the trees should be watered. Make a basin around each tree by pulling away the soil with a hoe and water as above. If the season is very hot and dry, this watering should be commenced the latter part of July and continued through the period of drought.

**Cultivation.** Thorough cultivation is very essential to the growth of vegetation of all kinds and nothing appreciates it more than evergreens. They should be cultivated at least once a week up to August 1, when a good mulching of partially rotted hay or straw may be given. Care should be taken not to use green manure as it is detrimental.

**Seedlings.** The largest sizes of seedlings may be planted and treated as above; smaller sizes should be planted in well prepared beds with a dibble and shaded the first season.

**Windbreaks.** Plant spruces, firs and arborvitae in single rows, four to six feet apart; double rows, ten feet apart; Scotch and bull pines, single row, eight feet and double row ten to twelve feet; white pine, single row, eight feet, double row, twelve to fourteen feet.

**Hedges.** Arborvitae, ten to eighteen inches, fifteen inches apart; eighteen to twenty-four inches, eighteen inches apart; two feet and larger, two feet apart. Spruce and cedar, two to four feet apart, according to size.

## PINES

**White Pine** (*Pinus strobus*)—One of the best, largest and longest lived Evergreens. The foliage is warm light green, often with a bluish tinge. The leaves are in fives, three to four inches long, very soft and delicately fragrant. After getting well started it is the most rapid grower of all Evergreens and adapts itself to a great variety of soils. It is one of the best for shelter, and the best large growing Evergreen to plant near buildings or along streets to be trimmed up for shade; few trees unite so many elements of beauty and utility as our native White Pine. 4 to 5 feet, 60c each; 3 to 4 feet, 50c each, \$4.50 per 10, \$40.00 per 100; 2 to 3 feet, 40c each, \$3.50 per 100; 18 to 24 inches, 30c each, \$2.50 per 10, \$20.00, per 100.

**Bull Pine or Western Yellow Pine** (*Pinus ponderosa*)—A heavy wooded pine and a rapid grower, forming a tree of great size. Its very long coarse foliage is a beautiful light green and stands out squarely from the limbs, thus making it very valuable for landscape or windbreaks. This tree requires the best of care in transplanting, but when once

started, thrives in almost any location, either wet or very dry. Undoubtedly this is the best pine for Western Iowa and beyond. 2 to 3 feet, 40c each, \$3.50 per 10, \$30.00 per 100; 18 to 24 inches, 30c each, \$2.50 per 10, \$20.00 per 100; 12 to 18 inches, 25c each, \$2.00 per 10, \$15.00 per 100.

**Scotch Pine** (*Pinus sylvestris*)—A rapid growing, lardy variety with stout erect shoots and green foliage. Good for shelter or landscape planting. It is one of the hardest Evergreens and adapts itself rapidly to trying climate of the North and Northwest. It also thrives in the Southwest or West. It is rather short lived, and cannot be depended upon for more than twenty-five or thirty years. 3 to 4 feet, 50c each, \$4.50 per 10, \$40.00 per 100; 2 to 3 feet, 40c each, \$3.50 per 10, \$30.00 per 100; 18 to 24 inches, 30c each, \$2.50 per 10, \$20.00 per 100.

**Mugho or Dwarf Mountain Pine** (*Pinus Mugho*)—This unique Alpine species forms a very compact, dark green, dome-shaped bush, broader than high. It is very valuable for planting on lawns, terrace banks, hillsides, rockeries, etc., 12 to 18 inches broad, 50c each, 18 to 24 inches, 60c each.

## SPRUCES

### American White Spruce (*Picea alba*)—

A pyramidal tree of dense growth, with light silvery green foliage. A longer lived, more compact, and in all respects a better tree than Norway Spruce. One of the best for general use and very fine for lawn planting. 2 to 3 feet, 50c each, \$4.50 per 10; 18 to 24 inches, 40c each, \$3.00 for 10, 12 to 18 inches, 30c each, \$2.50 per 10.

### Black Hills Spruce—A strain of the White

Spruce, native to the Black Hills. Slower growing, more dense and better colored than White Spruce. Some specimens rival Colorado Blue Spruce in color. One of the hardiest and easiest to transplant of all the Spruces. Selected trees with ball and burlap; 4 ft., \$2 each, 3 1-2 feet, \$1.75 each; 3 feet, 1.50 each, \$12.00 per 10; 2 1-2 feet, \$1.00 each, \$9.50 for 10; 2 feet, 75c each, \$7.50 for 10; 18 to 24 inches, 60c each, \$5.50 for 10, \$50 per 100; 12 to 18 inches, 50c each, \$4.50 per 10, \$40 per 100.



Arborvitae.

### Colorado Blue Spruce or Silver Spruce—

(*Picea pungens*.)—This Evergreen grows over a greater range of territory than any other member of the Evergreen family. Its home is in the clefts and recesses of the Rocky Mountains, where it grows on barren soils, exposed to the roughest weather. It heads the family of Spruces for hardiness and longevity

and is the most ornamental of the Evergreen family. Seedlings vary from dark green to silvery blue; no description can do it justice, it has to be seen to be appreciated. The grafted specimens are the purest blue it is possible to produce. Selected blue specimens, \$1.00 per foot; green or bluish green, 60c per foot. Sizes 1 to 6 feet.

**Koster's Grafted Blue Spruce—\$1.50 per foot.** Sizes, 1 to 4 feet.

### Norway Spruce (*Abies excelsa*)—A very

popular variety from Europe. It has been more extensively planted in this country than any other Evergreen. It is a rapid grower, easy to transplant, and adapted to a great variety of soils, but rather short lived. 3 to 4 feet, 60c each; 2 to 3 feet, 40c each, \$3.00 per 10, \$25.00 per 100; 18 to 24 inches, 30c each, \$2.00 per 10, \$17.50 per 100; 12 to 18 inches, 20c each, \$1.50 per 10, \$12.50 per 100.

## ARBORVITAE

### American Arborvitae. (*Thuja occidentalis*.)—One of the finest Evergreens for

ornamental screens or hedges. It grows rapidly, soon forming the most beautiful hedge. It bears trimming to any extent desired, and plants which have been rendered compact by clipping retain the fresh green of their leaves in winter better than those with more open foliage. For an ornamental hedge, plants may be set 15 to 24 inches apart; for a screen to grow tall, plant about 2 to 3 feet apart. 2 to 3 feet, 40c each, \$3 per 10, \$25 per 100; 18 to 24 inches, 30c each, \$2 per 10, \$17.50 per 100; 12 to 18 inches, 20c each, \$1.75 per 10, \$12.50 per 100.

### Siberian Arborvitae—One of the hardiest

and most compact growing Evergreens. It grows conical in shape and is very fine for specimens, groups or shearing. Foliage is deep, rich green. 2 to 3 feet, \$1.00 each, \$9.00 for 10; 18 to 24 inches, 75c each, \$7.00 per 10; 12 to 18 inches, 50c each, \$4.50 per 10.

### George Peabody Arborvitae—One of the

most beautiful members of the Arborvitae group. A vigorous, compact grower with beautiful golden green foliage. Hardy and valuable to contrast with other colors. 2 to 3 feet, \$1.00 each; 18 to 24 inches, 75c each; 12 to 18 inches, 50c each.

### Pyramidal Arborvitae—A very compact

hardy Arborvitae which forms an elegant and very slender shaft of dark green. Superior to, and much harder than Irish Juniper. Much planted in cemeteries and is one of the most satisfactory of the ornamental Evergreens, with fine, bright green foliage, silvery underneath. Hardy, but requires moisture. 3 to 4 feet, \$1.50 each; 2 to 3 feet, \$1.25 each; 18 to 24 inches, 75c each; 12 to 18 inches, 60c each, \$5.00 for 10.

## FIRS

**Balsam Fir** (*Abies Balsamea*.)—A well-known, popular tree; very handsome while young, assuming an upright, conical form. Leaves dark green above, silvery beneath; retains its color throughout the winter; grows rapidly, and is desirable in every way, but should be planted where there is plenty of moisture. 5 to 6 feet, \$1.00 each; 4 to 5 feet, 75c each; 2 to 4 feet, 50c each; 2 to 3 feet, 40c each; 18 to 24 inches, 30c each.

**Concolor Fir or White or Silver Fir** (*Abies concolor*)—This Evergreen is of the rarest beauty; its beautiful silvery green

foliage is the same the year round. It is a good grower and makes a large tree. It does best where somewhat protected from severe Southwest or West winds and sun. 4 to 5 feet, \$3.00 each; 3 to 4 feet, \$2.50 each; 2 to 3 feet, \$1.75 each; 12 to 18 inches, \$1.00 each.

**Virginia Juniper** (Red Cedar)—A well known American tree which varies much in habit and color of foliage. It succeeds well on the Western plains and dry, sandy soils where other Evergreens fail. Very desirable for ornamental purposes, windbreaks and hedges. 18 to 24 inches, 40c each, \$3.50 per 10; 12 to 18 inches, 25c each, \$2.50 per 10, \$20.00 per 100.

## Shade and Ornamental Trees

We can furnish a limited number of fine trees larger than are quoted of most kinds. If interested in these, send for prices.



**Carolina Foplar**—A pyramidal robust grower with glossy, serrated, bright green leaves; the most rapid grower of all trees. Valuable for quick results. Does not produce seeds or sprouts. Smoke and soot do not injure it. Perfectly hardy, and fine for shade. 10 to 12 feet, 50c each; 8 to 10 feet, 40c each, \$4.00 per dozen; 6 to 8 feet, 30c each, \$3.00 per dozen.

**Norway Maple**—A handsome tree of rapid growth, forming a wide, round head of spreading branches, with broad, dark green leaves. Strong, compact and very vigorous. One of the best for street, park or lawn. 10 to 12 feet, \$1.25 each; 8 to 10 feet, \$1.00 each \$8.00 per 10; 5 to 6 feet 60c each; \$5.00 per 10.

**Sugar or Hard Maple**—One of the most

beautiful shade or ornamental trees; when given plenty of room, it forms a fine, round, dense head. In autumn its foliage presents varying and very beautiful colors as cold weather approaches, often becoming gorgeous. 10 to 12 feet, \$1.00 each; 8 to 10 feet, 75c each; 7 to 8 feet, 60c each; 6 to 7 feet, 50c each; 5 to 6 feet, 40c each.

**Reitenbach's Norway Maple**—Beautiful and striking because of its rich changing foliage, which is soft green in spring, purple in midsummer and purplish scarlet in autumn. Vigorous, pyramidal, and valuable for its coloring. 5 to 7 feet, \$1.00 each.

**Purple Norway Maple**—The gleaming red and purple tints of its young leaves and shoots contrast brightly with the dell-



cate green of spring. At maturity they are purplish green, in autumn, tints and shades of gold. 8 to 10 feet, \$2.00 each; 6 to 8 feet, \$1.50 each; 5 to 6 feet, \$1.25 each; 4 to 5 feet, \$1.00 each.



Carolina Poplar.

**Norway Maple**—A handsome tree of rapid growth, forming a wide, round head of spreading branches, with broad, dark green leaves. Strong, compact and very vigorous. One of the best for street, park or lawn. 10 to 12 feet, \$1.25 each; 8 to 10 feet, \$1.00 each, \$8.00 per 10; 5 to 6 feet, 60c each, \$5.00 per 10.

**Catalpa Bungei** (Chinese Catalpa)—A curious dwarf which grows only 8 to 10 feet high and twice as broad. Ours are Bay trees. Grafted fine heads, 6 to 8 feet, 3 year heads, \$1.50 each.

**Catalpa Speciosa** (Hardy Catalpa)—A very rapid growing, hardy tree, with large tropical appearing foliage, and large conspicuous bunches of blossoms in spring, followed by long bean-like pods. Desirable for shade and street trees. 8 to 10 feet, 60c each; 7 to 8 feet, 40c each; 6 to 7 feet, 30c each; 5 to 6 feet, 25c each; 4 to 5 feet, 20c each.

**Magnolia Acuminata** (Cucumber Tree)—A hardy, pyramidal tree which bears large creamy yellow flowers in midsummer. The fruit cones are large and cucumber shaped, turning red in autumn. 3 to 4 feet, 60c each.

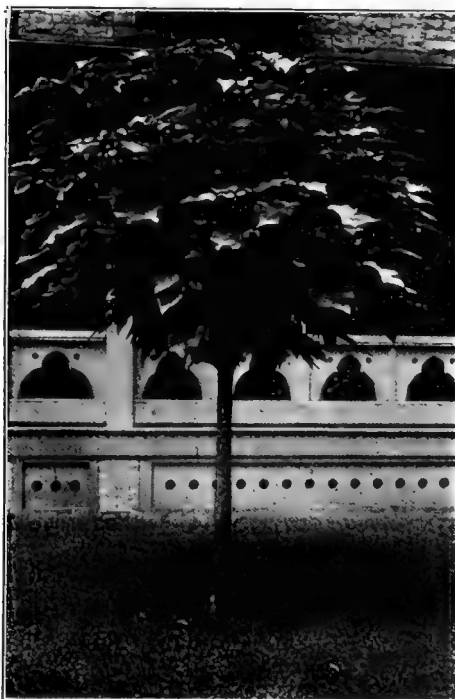
**European White Birch**—A rapid growing shade tree of beautiful form. Very desirable for street or lawn planting. By the time the tree is five or six years old the bark on the trunk and larger branch-

es becomes a beautiful silvery white color. Entirely hardy in all parts of the Northwest. Makes elegant shade. 12 to 14 feet, \$1.00 each; 10 to 12 feet, 75c each; 8 to 10 feet, 60c each; 7 to 8 feet, 50c each; 5 to 7 feet, 40c each.

**Linden** (Basswood)—A very graceful and beautiful tree for planting on the lawn. Its leaves are moved with the least breath of air and show the white surface underneath. Its blossoms are delightfully fragrant, and the busy bee delights in their sweetness. 10 to 12 feet, \$1.00 each; 8 to 10 feet, 75c each; 7 to 8 feet, 60c each; 6 to 7 feet, 50c each; 5 to 6 feet, 40c each; 4 to 5 feet, 35c each; 3 to 4 feet, 25c each.

**Russian Olive**—The only real hardy deciduous tree with real silvery foliage which thrives here. It is very valuable for landscape work to contrast with the green of other trees. Its blossoms are extremely fragrant; a small sprig will perfume an entire house. It attains only medium size, and bears heavy pruning remarkably well. 6 to 8 feet, 40c each; 5 to 6 feet, 30c each; 4 to 5 feet, 25c each.

**Horse Chestnut**—A very popular tree for street or lawn planting. Hardy. Covered in early summer with magnificent spikes of flowers. 5 to 6 feet, 60c each.



Catalpa Bungeii.

**Pin Oak**—This is considered the most beautiful of all the oaks, and is certainly the most popular for street or park planting. As the tree grows the branches droop until the lower ones touch the ground, giving it a peculiar ovate outline. The leaves are deep green, glossy and finely divided, changing to orange and scarlet in the fall. The avenues of Pin Oaks in Fairmount Park, Philadelphia, are greatly admired. 8 to 10 feet, \$1.25 each; 7 to 8 feet, \$1.00 each, \$10.00 per dozen; 6 to 7 feet, 75c each, \$7.50 per dozen; 5 to 6 feet, 50c each, \$5.00 per dozen.

**Chestnut Oak**—Native to dry situations; of tall and beautiful growth. The leaves are shaped like Chestnut leaves. 4 to 5 feet, 75c.

**Bechtel's Double Flowering Crab**—A wild crab which produces masses of double rose-like flowers of a delicate pink color, and most delightful fragrance. Blooms while quite young and is as hardy as our common wild crab. 3 to 4 feet, 75c 3 feet, 50c each.

**Mountain Ash, Oak-leaved**—A handsome and hardy variety, with deeply lobed leaves; distinct and fine. Covered in autumn with bright scarlet berries. 5 to 6 feet, 40c each.

**Sycamore, American** (*Platanus occidentalis*)—A very rapid growing, spreading native tree; always clean and healthy. One of the most desirable among our native trees for shade and street planting. 6 to 8 feet, first-class, 50c each; 5 to 6 feet, 40c each; 4 to 5 feet, 30c each.

**Ginkgo or Maidenhair**—An ornamental tree, native of Japan. A very handsome, strange and striking tree, combining some of the characteristics of the evergreens and deciduous trees. It is of medium height, fairly rapid in growth, and hardy. Its foliage resembles the Maidenhair fern, hence its name. A rare and interesting tree. 6 to 8 feet, 75c each; 5 to 6 feet, 60c each.

**White or American Elm**—One of the best shade or street trees. 8 to 10 feet, 50c each; 7 to 8 feet, 40c each; \$4.00 per dozen. 6 to 7 feet, 30c each; \$3.00 per dozen. 5 to 6 feet, 25c each; \$2.50 per dozen. 4 to 5 feet, 20c each; \$2.00 per dozen. 3 to 4 feet, \$1.50 per dozen.

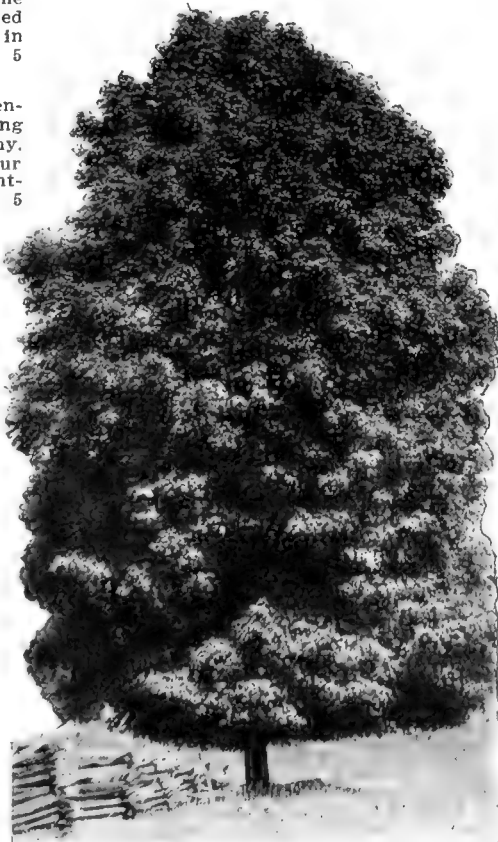
**Soft Maple**—8 to 10 feet, 35c each; 6 to 8 feet, 30c each, \$3.00 per dozen; 5 to 6 feet, 25c each, \$2.50 per dozen.

**Laurel Leaved Willow**—A hardy, broad leaved willow, with a symmetrical round top; leaves broad, large, very dark, glossy green and of striking appearance. The most ornamental of the willows. Very hardy and thrifty. 5 to 6 feet, 40c each; 4 to 5 feet, 30c each; 3 to 4 feet, 25c each.

**American Ash**—One of the most reliable of our native trees. It resists drought remarkably well and is not subject to injury by insects. A very thrifty grower, and worthy of more general planting. 6 to 8 feet, 50c each, \$4.50 per 10; 5 to 6 feet, 40c each, \$3.50 per 10; 4 to 5 feet, 30c each, \$2.50 per 10.

**Black Walnut**—One of the most rapid growing of our native nut trees. A beautiful spreading tree, valuable for shade, nuts and lumber. Our transplants are easy to get to grow. 6 to 8 feet, 70c, \$6.50 per 10; 5 to 6 feet, 50c each, \$4.50 per 10; 4 to 5 feet, 40c each, \$3.50 per 10.

**Cestena** (Purple Leaved Plum.)—A cross of the Sand Cherry and Purple Leaved Plum, *Prunus Pissardi*. A beautiful, hardy, ornamental shrub with rich purple-red leaves; in every way able to fill the place of the Purple Leaved Plum, which is too tender for planting here. This is not a fruit tree, and is for ornamental planting only. 3 to 4 feet, 50c each; 2 to 3 feet, 30c each.



Hard Maple.



Tea's Weeping Mulberry.

## Weeping Trees

**Birch, Cut-leaved Weeping**—Unquestionably one of the most popular of all the weeping or pendulous trees. Its tall, slender, yet vigorous growth, graceful drooping branches, white bark and delicately cut foliage present a combination of attractive characteristics rarely met with in a single tree. Entirely hardy; perfect, full grown specimens are seen in Minnesota, where the mercury drops to 30 or 40 degrees below zero. 10 to 12 feet, \$1.50 each; 8 to 10 feet, \$1.25 each; 7 to 8 feet, \$1.00 each; 5 to 7 feet, 75c each; 4 to 5 feet, 60c each; 3 to 4 feet, 50c each.

**Camperdown Weeping Elm**—This forms one of the most picturesque drooping trees. It is of rank growth, the shoots often making a zigzag growth outward and downward of several feet in a single season. The leaves are large, dark green and glossy, and cover the tree. Two-year heads, \$1.50 each; one-year heads, \$1.25 each.

**Tea's Weeping Mulberry**—One of the hardiest and most vigorous of the weeping trees. It forms a perfect umbrella-shaped head, with long, sweeping branches which reach to the ground. Produces fruit the same as Russian Mulberry. Two-year old heads, \$2.00 each; one-year heads, \$1.50 each.

## Ornamental Shrubs

### LILACS.

Nothing is more beautiful than a clump, hedge or screen of these, and they should go into every border. In many country dooryards the neglected lilacs continue to bloom with a fragrance and beauty that is unsurpassed by any other shrub.

**Common Purple**—4 to 5 feet, 25c each, \$2.00 per dozen, \$15.00 per 100; 3 to 4 feet, 20c each, \$1.50 per dozen, \$10.00 per 100.

### BUDED VARIETIES.

**Alphonse Lavalle**—Large panicles of double violet-blue flowers. 4 to 5 feet, 75c each.

**Belle de Nancy**—Double white flowers that are tinged with purple. 4 to 5 feet, 75c each.

**Frau Gammann**—One of the best; a free bloomer, with medium sized white flowers, borne in large panicles. 4 to 5 feet, 60c each.

**Mme. Abel Chatenay**—Pure white flowers in compact panicles. 4 to 5 feet, 75c each.

**President Grevy**—The individual flowers are very large and double, a beautiful blue in color. The panicles are larger than those of any other variety. 4 to 5 feet, 75c each.

**Ludwig Spaeth**—The single flowers are very dark purple, and distinct from other kinds. 4 to 5 feet, 60c each.

**Senateur Volland**—A good variety, with double rose-red flowers. 4 to 5 feet, 75c each.



Snowball.

## SPIREAS

Low growing shrubs well adapted for hedges, shrubberies or single specimens on the lawn. They grow easily in almost any moderately moist soil and with very little care or attention.

**Spirea Anthony Waterer**—A charming small shrub, seldom growing higher than two or three feet. Its handsome trusses of crimson flowers are produced in great profusion from spring until fall. Beautiful in clusters or in low hedge. 18 to 24 inches, 35c each, \$3.00 per dozen; 12 to 18 inches, 25c each, \$2.00 per dozen.

**Spirea Van Houttei**—The grandest of the spireas. Perfectly hardy, a strong grower and profuse bloomer. It has small, delicate white blossoms, borne in clusters which almost cover the bush about June 1. A handsome bush even when not in bloom. Often called Bridal Wreath. Suitable for low screen, hedges or borders. Heavy clump \$1.00; 3 to 4 feet, 30c each, \$25.00 per 100; 2 to 3 feet, 25c each, \$17.50 per 100; 18 to 24 inches, 20c each, \$15.00 per 100; 12 to 18 inches, 15c each, \$10.00 per 100.

## Other Shrubs

**Tamarix**—This hardy and very beautiful shrub, of strong but upright growth, is clothed with foliage as light and feathery as that of the asparagus, and its delicate fringing pink flowers are borne in spikes. Very ornamental at the back of shrubbery and desirable for decorations and bouquets. 3 to 4 feet, 30c each.

**Snowball**—A well-known shrub, producing its snowy white flowers in large balls or masses in May or June. For the best effect, trim into a round ball shaped bush. 2 to 3 feet, 30c each, \$3.00 per dozen; 18 to 24 inches, 25c each, \$2.50 per dozen.

**Hydrangea Paniculata Grandiflora**—A fine, hardy shrub which is very popular, easy to grow and blooms the same year it is planted. The flowers are in immense panicles, creamy white at first, changing to pure white, and turning pink and brownish with age. It blooms in August and continues through September. The flowers will be larger and finer if given good rich soil, and the plants cut back each spring fully one-half the past year's growth. Tree form, 4 to 5 feet, \$1.00 each; 3 to 4 feet, 75c each. Bushes, 2 to 3 feet, 35c each; 18 to 24 inches, 25c each.

**Hydrangea Aborescens Grandiflora** (Hills of Snow)—A new variety with large white flowers resembling Snowball. The flowers are produced continually from June until late August. Two feet, 60c each.

**Mock Orange** (Syringa)—One of the most desirable shrubs. Flowers are one inch to two inches in diameter, pure white and delightfully fragrant. It grows to a height of eight to ten feet and blooms

profusely in the spring. 3 to 4 feet, 35c each; 2 to 3 feet, 25c each.

**California Privet**—These ideal hedge plants have such an array of good points that we can no longer spare them for hedges alone. They are moderately hardy, nearly evergreen, grow freely in all soils, have a dense neat habit, and bloom profusely. The flowers are white, fragrant, and borne in graceful racemes or clusters through June and July. The leaves are small, oval and glossy. 2 to 3 feet, 25c each; \$1.25 per dozen; \$10.00 per 100.

**Amoor Privet**—Hardier than California Privet, and is desirable for all purposes. 18 to 24 inches, 25c each; \$15.00 per 100.

**Berberis Thunbergii**—A perfectly hardy Japanese form which is unequalled for low hedges. Produces an abundance of low flowers in May and is all aglow with scarlet leaves and berries in the fall. 18 to 24 inches, 25c each, \$20.00 per 100; 12 to 18 inches, 20c each, \$15.00 per 100.

## Climbing Vines

**Ampelopsis Engelmanni** (Engelman's Ivy)  
—Not poisonous. Similar to our native Virginia Creeper, but is more dense, rapid growing and clings readily to any smooth surface. A very desirable vine for all kinds of walls, tree trunks, etc.; much hardier than Boston Ivy. Strong two-year plants, 40c each.

**Trumpet Flower**—A splendid vine; vigorous, hardy, and a very rapid grower; well adapted for covering unsightly objects. The flowers are large, being fully four or five inches long and in clusters. Strong two-year old vines, 50c each.

**Wistaria**—A beautiful climber of rapid growth, often growing fifteen to twenty feet in a season, and producing long, pendulous clusters of pale blue flowers about the size and shape of a bunch of grapes; sometimes gives second crop of flowers in the fall. Two-year plants, 50c each.



American Ivy on Wall.

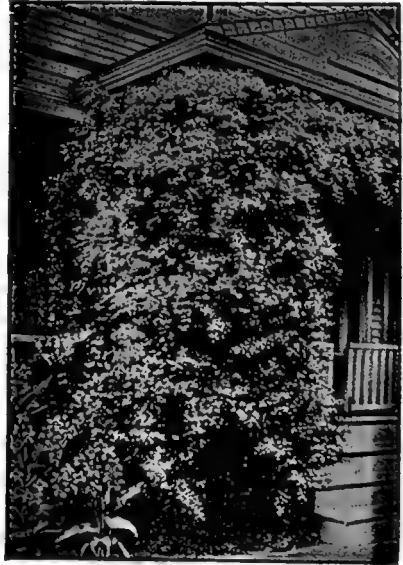
## CLEMATIS

These vines delight in a sunny situation and good rich soil. They are perfectly hardy but the top kills back in winter. There is nothing better for training on pillars, trellises, porches, or for covering rocks or old stumps. All strong field-grown plants.

**Clematis Paniculata**—This remarkable flower blooms in September. It is one of the finest hardy climbers, with handsome foliage, and of very vigorous, rapid growth. In late summer it produces dense sheets of medium sized, pure white flowers of the most pleasing fragrance, making a gorgeous sight. This is a new Japanese plant, perfectly hardy and finely adapted for covering any object. 50c each.

**Clematis Jackmanii**—This is perhaps the best known of the Clematis. The plant is a free grower, and an abundant and successful bloomer, producing flowers until frost. Flowers are large and of an intense violet-purple, remarkable for their velvety richness. It has no superior. July to October. 75c each.

**Clematis Madame Edouard Andre** (The Red Clematis)—A hybrid of the popular Jackmanii, which it much resembles in freedom of bloom, vigorous growth and shape of flowers, but is a distinct carmine-red in color. 75c each.



**Clematis Henryi**—The best white variety. Fine large creamy white flowers; strong grower, hardy, perpetual bloomer. 75c each.

## Roses

Our bushes are all strong, field-grown, two-year-old plants on their own roots, and are not to be compared to the cheap bushes often offered which are budded on short-lived foreign stocks.

Plant them three to four inches deeper than they stood in the nursery and in the richest, best soil obtainable. Trim off nearly all the top and they will do much better than if it was left on. Use powdered sulphur for mildew, arsenate of lead for eating insects and tobacco infusion or strong soap solution for lice.

### Climbing Roses

**Crimson Rambler**—A new Japanese rose, bearing numerous clusters of bright crimson flowers; a superb climber, very hardy and free flowering. One of the best for training on walls, pillars and fences. It gives universal satisfaction. 50c each.

**Dorothy Perkins**—One of the best of all the climbers. Hardy, a good grower, and blooms very freely the first year set. The flowers are of good size, produced in enormous clusters, very dainty and fragrant, and lasts much longer than the other rambles. 50 cents.

**Persian Yellow**—A perfectly hardy climber. Brightest yellow of all roses; produces an abundance of medium sized flowers in June. Two-year, No. 1, 50c each.

**Prairie Queen**—An old, well-known climber. Flowers double, bright pink, fading to nearly white. 35c each.

**Tausendschon** (Thousand Beauties)—A rapid growing, almost thornless climber

of exceptional value and attractiveness. Its many flower clusters show every shade of rose and crimson, with white and yellow variegations. 75c each.

### Half-Climbing Roses

**Baltimore Belle**—Very double, white with pink blush. One of the best climbing roses, but must be protected in winter. 35c each.

**Grenville or Seven Sisters**—Large clusters with flowers varying from white to crimson. Luxuriant dark green foliage; perfectly hardy. 35c each.

### Hybrid Tea Roses

**American Beauty**—Rich rosy crimson, delightfully fragrant and a very free, continuous bloomer; vigorous, healthy and moderately hardy. 50c each.

**Gruss an Teplitz** (Virginia R. Coxe.)—The flowers are a dazzling crimson, large and moderately double, produced in great profusion throughout the whole season. The bush is hardy, and a strong, vigor-

ous grower. This is much the best rose of the class we have seen. 50c each.

**La France**—A very popular variety. Buds and flowers of lovely form and of great size; exceedingly fragrant. Color, fine silvery-pink. It begins to bloom early and continues until frost. 50c each.

## Hybrid Perpetual Roses

**Baby Rambler**—Really a dwarf Crimson Rambler. A true perpetual bloomer, perfectly hardy, free from insects and diseases, and of easy culture. A mass of bloom every day from May until frost. It is useful for bedding, edging walks, driveways and for house culture, etc. 75c each.

**Frau Karl Druschki** (White American Beauty)—Pure white, large, fragrant, well formed, and very similar to American Beauty, except in color. Very hardy and vigorous; by far the best white rose of all. 50c each.

**General Jacqueminot**—This may truthfully be called the rose for the million. A universal favorite. Bright scarlet, exceedingly rich and velvety. One of the hardiest. 35c each.

**Harrison Yellow**—A very bright yellow double rose, hardy and a profuse bloomer. 50c each.

**Madame Plantier**—Pure white, produced in great abundance early in the season. An excellent hardy white rose. 35c each.

**Paul Neyron**—One of the very largest roses known, often measuring five inches in diameter; color, bright rose; very fresh and pretty. A strong, healthy grower with clean, glossy foliage and one of the most prolific bloomers in the hybrid class. Young plants in the nursery rows bloom almost without intermission from June until October. 35c each.

**Prince Camille de Rohan** (Black Prince)—Very large, deep velvety crimson, al-

most black. Very fragrant. By all means include this in your collection. 50c each.

**Ulrich Brunner**—A splendid rose and one of the best of the class. Flowers very large, well formed, brilliant cherry red, and highly fragrant; produced in great profusion. Vigorous, hardy and healthy. 50c each.

## Moss Roses

**Glory of Mosses**—Very heavily mossed; flowers glossy pink; fragrant. One of the best. 35c each.

**Luxembourg Moss**—Large, bright crimson. A very fine, luxuriant grower and free bloomer. 35c each.

**White Moss**—Large, full, double, pure white and very fragrant. Perfectly hardy. 35c each.

## Rugosa Roses

**Rosa Rugosa**—Foliage shiny, bright green; flowers single and very fragrant, bright rose color with yellow center. The leaves and buds are very beautiful. In time of winter it bears bright red berries. Requires no protection whatever and is well adapted for hedges. Strong two and three-year plants, 25c each, \$2.50 per dozen.

**Conrad Ferdinand Meyer**—This variety has the ornamental foliage of the Rugosa and the beautiful fragrant flowers of the Hybrid Perpetual. The flowers are large, double, very fragrant and of a delicate silvery pink. Very vigorous and hardy without protection. 50c each.

**Hansa**—Violet-red, large, fragrant, and perfectly double. The flowers are in dense clusters which all bloom at once, thus appearing like one immense rose from a distance. Flowers are produced freely throughout the season. Absolutely hardy. 50c each.

# Hardy Perennial Phlox

No class of hardy plants is more desirable. They thrive almost anywhere with a little care, and are useful for borders about shrubbery and for groups. The flowers are very showy and brilliant, and last through a long season. In the last few years they have wonderfully improved.

The following are some of the most choice varieties. Price, unless otherwise noted, 20c each; \$2.00 per dozen.

**B. Conte**—A glowing purple; one of the finest of the dark colored varieties. Tall.

**Eclairer**—Salmon and scarlet with crimson eye; medium.

**Henry Murger**—Very large, pure white with carmine center; tall. 30c each.

**Jeanne d'Arc**—Pure white, very large heads, and late blooming. Very tall and vigorous.

**Lothair**—Carmine pink with crimson eye; medium. A splendid variety.

**Louis Blanc**—Reddish-violet with purple shading. A distinct dark colored variety and first of all to bloom. Medium height.

**Von Hochberg**—A brilliant crimson, the richest of its color; tall.

**Von Lassberg**—Purest white, flowers very large; one of the best white varieties.

# Peonies

The herbaceous peonies have long been great favorites among hardy plants, but the wonderful improvements wrought by the plant breeder in recent years make them far more popular than ever. Many of the improved varieties rival the finest roses in fragrance and coloring, besides blooming much earlier and being much larger.

Peonies do best in good, rich, deep soil and a sunny situation, although they do well in partial shade. They are hardy in the far north and west, requiring no protection. Once planted and started they need but little care. The blooms are often small or even single the first year after planting but increase in size and beauty each year. They should be planted in September or October if possible, but may be planted in the spring. Plant about three inches below the surface in deeply worked, rich soil. If planted in the spring they may not bloom until the next spring. We offer the following list of choice varieties at reasonable prices. If wanted in large quantities, please write for prices.

- Agnes Mary Kelway**—Sweetly fragrant, light rose guard, yellow petaloids, with rose tuft; a most lovely flower. 50c each.
- Alba Sulphurea**—White with yellow center. A fine flower and favorite. 25c each.
- Alba Lauries**—Deep bright red, very double, and late. A grand flower which loves deep, rich soil. 25c each.
- Festiva Maxima**—A large ball of white with center petals dashed with red; an early bloomer and splendid keeper. In great demand for cut flowers, and is very popular everywhere. One of the very best peonies known. 75c each.
- Fragrans**—An excellent variety; deep rose; late. 25c each.
- Francois Ortegat**—A very brilliant crimson, producing a blaze of splendor, almost purple. It is a vigorous and striking flower, with a delightful spicy fragrance. No collection is complete without it. 50c each.
- Golden Harvest**—Blush-white and canary yellow, sweetly fragrant, full bloomer, and better than many higher priced varieties. 75c each.
- Grandiflora Carnea Plena**—Variegated, robust, and a very free bloomer. Valuable for cut flowers; a charming flower of medium season. 40c each.
- Grandiflora Bosea**—Pink and early. The outer and center petals are red; slightly fragrant. A prolific bloomer; robust and vigorous. 35c each.
- Grandiflora Rubra**—This is a very king among peonies, and one of the latest. It seems to hold itself in reserve, getting strength to put forth an exhibition of splendor. Its flowers are of an immense size, intense and glowing; you look at them and think the best has been in reserve until last, and yet it is hard to call any one the best in this procession of peonies which has passed during the season. 50c each.
- L'Espearance**—A beautiful rose-pink, fragrant, and an early bloomer; very fine for cut flowers. One of the best. 50c each.
- Madame Chaumy**—A light pink, perfect in form, and very fragrant; does best in partial shade. 30c each.
- Magnifica**—Large, delicate and fragrant; red, turning to pink. 35c each.
- Marie Lemoine**—This flower fills all the requirements we demand of our favorites. It is as sweet as a rose. It opens slightly yellow, then fades to purest white. A wholesale bloomer; very winsome and attractive. Never leave this out of your collection. 50c each.
- Plutarch**—A satiny crimson; exceedingly brilliant and striking, with a pond-lily fragrance; a very charming flower. \$1.00 each.
- Pottsi**—A splendid flower; deep crimson. One of the earliest. 30c each.
- Reeves**—An immense flower and free bloomer; light rosy pink, center petals dashed with red. 30c each.
- Richardson's Rubra**—Late; deep crimson with a purple shade. A grand, fragrant, full orbed flower; one of the best. 75c each.
- Rubra Triumphans**—Fragrant flowers of brilliant crimson. It does not bloom as soon as some others, the plants seem to require age, but are worth waiting for. 30c each.



**Festiva Maxima.**

**The Bride**—A small delicate, sweet flower; winsome, attractive and well named. 40c each.

**The Queen**—Single, large, white with a cushion of gold. 35c each.

**Victoria Tricolor**—Rose-pink and salmon. One of the most vigorous and prolific bloomers we have; fragrant and desirable. 25c each.

**Other Herbaceous Plants**

**Boltonia Asteroides** (False Chamomile)—One of the showiest of hardy perennial plants, with large aster-like, pure white flowers. It blooms throughout the fall and makes a dense mass of white from July until September. 4 to 6 feet high, 20c each; \$2.00 per dozen.

**Giant Daisy** (Pyrethrum Uliginosum)—One of the very finest autumn flowering plants. It grows four feet or more

high, and is covered with very large white, daisy-like flowers from August until frost. The plant also makes a handsome appearance when not in bloom. Price same as Boltonia.

**Golden Glow**—A hardy perennial plant, growing six to eight feet high, branching freely, and bearing on long, graceful stems hundreds of exquisite double blossoms of the brightest golden color, and as large as the Cactus Dahlia. Strong roots, 25c each.

**Yucca Filamentosa**—An interesting and tropical-appearing plant which will endure any of our northern winters and is therefore valuable for those localities where flowering plants are scarce. It is an evergreen perennial, throwing up in the middle of the summer, flower stalks three feet in height, bearing a profusion of creamy-white, bell-shaped blossoms. One of the most beautiful plants for the lawn. Two-year plants, 50c each.

# Forest Tree Seedlings

These are just the thing for starting hedges, screens, windbreaks and timber plantations. If wanted in large quantities, write for special prices.

No matter how valuable the land, every farmer can make a wood-lot profitable. It can constitute a windbreak and at the same time furnish posts and repair material and fuel. There is much land along streams which might be planted to trees and would become very valuable instead of furnishing only poor pasture as it does now. The time is soon coming when good timber will be in great demand in this state.

Where planted for groves, cultivated crops may be planted between the rows for several years. The land may be planted to corn and a seedling planted in the place of every alternate hill. In this way the seedling will get the necessary cultivation.

**PRICE LIST OF TREES.**

	100	1000
Ash, American, 12 to 18 inches.....	\$1.25	\$10.00
6 to 12 inches.....	1.00	8.00
Box Elder, 18 to 24 inches.....	1.75	15.00
12 to 18 inches.....	1.50	10.00
6 to 12 inches.....	1.25	6.00
Catalpa, Hardy, 24 to 36 inches.....	1.75	15.00
18 to 24 inches.....	1.50	12.50
12 to 18 inches.....	1.25	10.00
6 to 12 inches.....	1.00	7.50
Elm, White, 18 to 24 inches.....	2.00	10.00
12 to 18 inches.....	1.75	7.50
6 to 12 inches.....	1.50	6.00
European Larch, 12 to 15 inches.....	5.00	
6 to 12 inches.....	3.00	
Honey Locust, 12 to 15 inches.....	1.50	10.00
8 to 12 inches.....	1.25	7.50
Russian Mulberry, 18 to 24 inches.....	1.00	10.00
12 to 18 inches.....	.85	8.00
6 to 12 inches.....	.65	6.00
Osage Orange, 12 to 18 inches.....	.75	5.00
6 to 12 inches.....	.50	3.00
Soft Maple, 18 to 24 inches.....	1.00	10.00
12 to 18 inches.....	.75	7.00
6 to 12 inches.....	.50	4.00
Black Walnut, 18 to 24 inches.....	2.00	20.00
6 to 12 inches.....	1.50	15.00

**Fruit Tree Seedlings for Grafting or Budding**

Consisting of apple, plum, pear, cherry, and peach seedlings. Write for prices.



# ORDER SHEET

Order No.....

Do you wish us to substitute to the best of our judgement in case any varieties or size ordered should be exhausted? Write **"YES"** or **"NO"**..... We will be glad to give you the benefit of our years of experience.

## LINN COUNTY NURSERY, Center Point, Ia.

DATE.....191....

Ship the following trees and plants to

Name of Purchaser.....

Postoffice.....

County..... State.....

By.....  
 (Freight, mail or express.)

Via.....  
 (Give route preferred.)

To.....  
 (Name freight or express office, if different from Postoffice.)

Date you wish order shipped.....

Enclosed find cash - \$.....

Check - - - - - P. O. Money Order - .....

Draft - - - - - Exp. Money Order - .....

Quantity	Name of Variety.	Size	Amount.

See other side.



# SPRAYING INFORMATION

Spraying is now recognized as a necessary operation to keep plants and trees healthy, especially where grown extensively; accordingly we print a few of the standard formulas and a very brief outline of treatment for the common fruits. For more complete information send to the Horticultural Department at Ames, Iowa, for a bulletin on spraying.

## FOR BITING INSECTS.

### Lead-Arsenate.

Lead acetate (sugar of lead)	11 oz.
Sodium arsenate	4 oz.
Water	50 gals.

Pulverize and dissolve the acetate and arsenate separately and pour together. This formula may be used two or three times this strength without injury to plants. It adheres better than any other arsenical spray and is altogether more desirable.

## FOR SUCKING INSECTS.

### Kerosene Emulsion.

Kerosene (coal oil)	2 gals.
Rain-water	1 gal.
Soap	½ lb.

Dissolve soap in water by boiling; take from fire and while hot turn in kerosene and churn briskly for five minutes. To be diluted before using with nine parts water. For scale, insects and sucking insects on growing plants.

### TOBACCO INFUSION.

Tobacco (waste stems.)	1 lb.
Boiling water	4 gals.

Add hot water to tobacco leaves and stems and let stand until cold. Strain and add one pound of whale oil soap or two pounds of soft soap to each fifty gallons of infusion. For lice.

## LIME-SULPHUR WASH.

Numerous brands of this can be bought more cheaply than it can be made in small quantities. For a winter spray, dilute so as to have from twelve to fifteen pounds of sulphur to fifty gallons of water. Also valuable as a fungicide and may be used in place of Bordeaux Mixture by diluting so as to have about forty pounds of sulphur to fifty gallons of water.

## FUNGICIDES.

### Bordeaux Mixture.

Copper-sulphate	5 lbs.
Quicklime (not air-slacked.)	5 lbs.
Water	50 gals.

Dissolve the copper-sulphate (blue stone) by suspending a wooden vessel, such as a half barrel, containing twenty-five gallons of water, slack the lime in another vessel. The slacking should be done slowly, otherwise it is apt to be granular. Now dilute the slacked lime in twenty-five gallons of water and pour it and the copper-sulphate into the spray barrel at the same time. Do not pour in first one and then the other, as this will not allow the proper combination of chemicals to take place and a sediment will be formed that will clog the pump and nozzles. It is well to strain the solutions as they are poured together, for which purpose a copper strainer having eighteen to twenty-four meshes to the inch is recommended. Do not add the lime until ready to apply the mixture.

Stock solutions of dissolved copper-sulphate and lime may be prepared and kept in separate cans throughout the spraying season. The proportions of blue stone, lime and water should be carefully entered.

### Combination of Fungicide and Insecticide.

When spraying for a fungus disease, except when plants are in the dormant state, an arsenical mixture may be added to the Bordeaux to advantage, and the spraying will be effective against the biting insects as well as plant disease. To the Bordeaux add the usual amount of Paris Green or Lead arsenate, letting the Bordeaux answer for the specified amount of water.

## General Treatment for Fruits.

**Apples and Pears.** For fungus diseases and eating insects, Lead Arsenate and Bordeaux, or Lime and Sulphur solution; 1st, just as buds open; 2nd, just before blossoms open; 3rd, just after petals fall; 4th, ten or twenty days later; 5th, late July or early August (this is important for the second brood of codling moth). For scales on any kind of trees use Lime and Sulphur Wash early in spring before growth, and late in the fall.

**Plums and Cherries.** For curculio, fruit rot and leaf diseases, Bordeaux and Lead Arsenate, or Lime and Sulphur solution; 1st, before blossoms open; 2nd, just after petals fall; 3rd, ten days later; 4th, ten or twenty days later; 5th, late July or early August. For web worms, Arsenate of Lead whenever necessary.

**Peaches.** For leaf curl and fruit rot, Lime-Sulphur Wash before buds open.

**Grapes.** For mildew and black rot, Bordeaux Mixture; 1st, before new growth is eight inches long (important); 2nd, just before blooming; 3rd, just after fruit sets (important); 4th, ten to twenty days later.

**Currants and Gooseberries.** For leaf spot and worms, Bordeaux or Lime and Sulphur solution and Lead Arsenate; 1st, when worms appear; 2nd, when fruit is half grown; 3rd, Bordeaux after picking; 4th, repeat two weeks later if necessary.

**Strawberries.** For leaf roller, Lead Arsenate, double strength, just after moths are first noticed; 2nd, repeat one week later. Cut leaves and burn as soon as fruit is off. For leaf diseases, Bordeaux when growth begins, at intervals of ten days if necessary.

**Potatoes.** For beetles, Lead Arsenate (double strength) when they appear and from eight to ten days afterwards. For blight, Bordeaux one and one-half times the standard mixture, with the Arsenate. For scab, soak seed potatoes two hours in Formaline (40 per cent solution) one pint to thirty gallons of water.

**Cucumbers, Melons, Etc.** For striped beetles, tobacco dust as soon as through the ground; for lice, Kerosene Emulsion applied to under side of leaves.

