

NATIONAL MUSEUM  
OF  
VICTORIA

MELBOURNE :: AUSTRALIA

MEMOIRS

(World List abbrev. Mem. nat. Mus. Vict.)

---

No. 22

25th JULY, 1956

Part 2

---

A CHECK LIST  
OF  
AUSTRALIAN ELATERIDAE  
(Coleoptera)

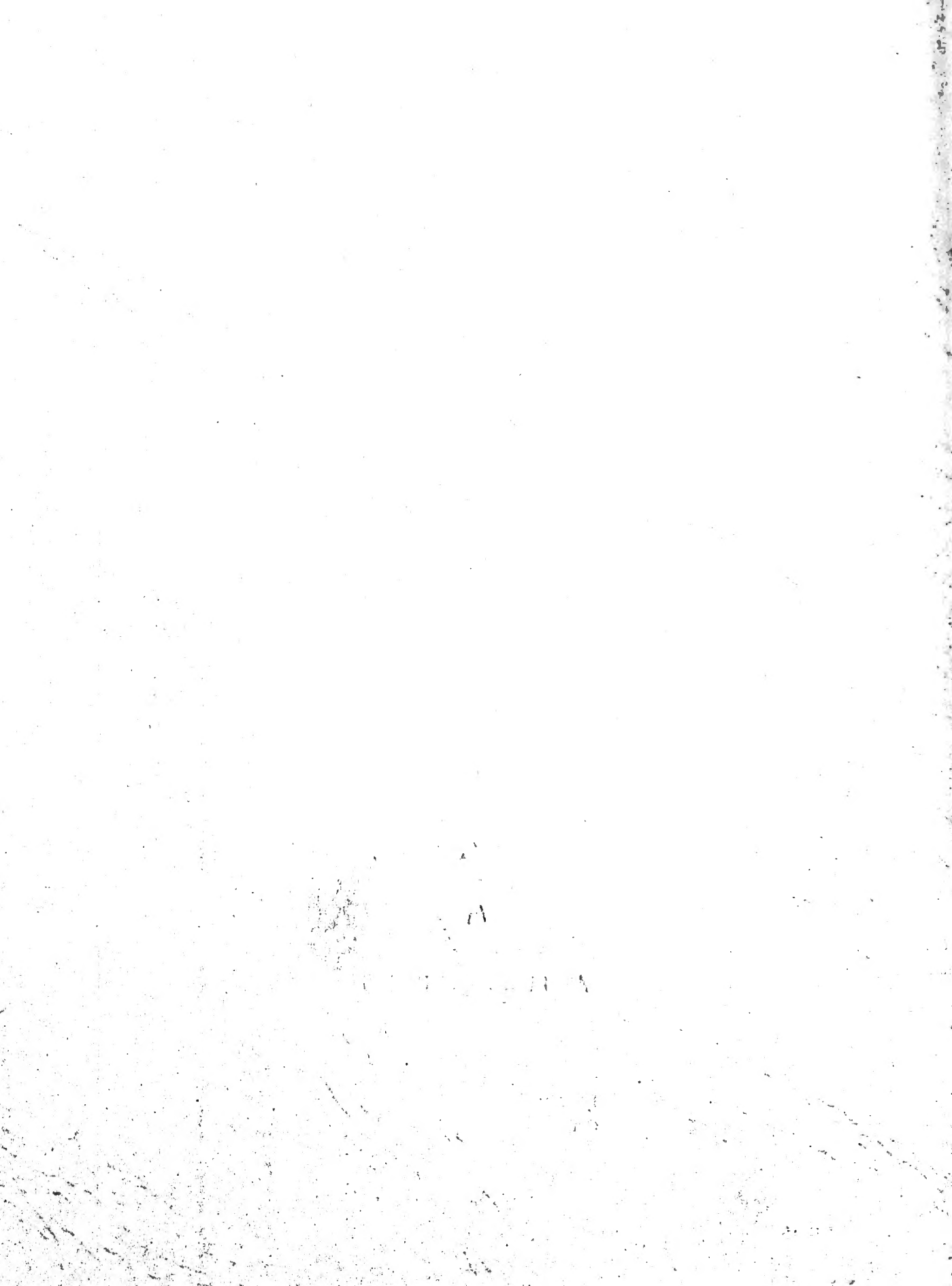
*by*

ARTURS NEBOISS

---

PUBLISHED BY ORDER  
OF THE TRUSTEES

---



# A Check List of Australian Elateridae (Coleoptera)

By *Arturs Neboiss, M.Sc., F.R.E.S., Assistant Curator of Insects,  
National Museum of Victoria.*

(Received for publication, May 1, 1956.)

## INTRODUCTION

This check list has been prepared for publication before the monographic revision of the whole family is undertaken, and shows the work done before the beginning of 1956.

Australian species of Elateridae were included in Schenkling's *Coleopterorum Catalogus* (1925-1927) which is also the latest catalogue. During the last 30 years a number of species has been described from Australia, and a number of alterations made to their systematic positions. This check list includes all available information regarding all Australian genera and species. The general classification is that used by Schwarz in *Genera Insectorum* (1906-7) and Schenkling in *Coleopterorum Catalogus* (1925-27) with respective changes as they appeared in the later literature.

Each generic name is accompanied by the reference to the original description and the name of genotype.

Specific names under one genus are placed in alphabetical order, and contain three separate parts of information:

- (a) Distribution—as it is listed in the literature.
- (b) References to the literature, including synonymy, biology, etc.
- (c) Location of the type specimen or specimens where known.

The following abbreviations are used for the distribution:

- N.T.—Northern Territory.
- N-th Austr.—Northern Australia.
- N-th Qld.—Northern Queensland.
- Qld.—Queensland.
- N.W. Austr.—North-western Australia.
- Centr. Austr.—Central Australia.
- N.S.W.—New South Wales.
- Vic.—Victoria.
- S.A.—South Australia.
- Tas.—Tasmania.
- W.A.—Western Australia.

Abbreviations used for the Collections where types are located are as follows:

Brit. Mus.—British Museum (Natural History), London, England.

D.E.I.—Deutsches Entomologisches Institut, Berlin, Germany.

I.R.Sc.N.B.—Institut Royal Sciences Naturelles de Belgique, Brussels, Belgium.

Stockh. Mus.—Naturhistoriska Riksmuseum, Stockholm, Sweden. (This includes also Schönherr Collection.)

U.S.N.M.—United States National Museum, Washington, U.S.A.

Austr. Mus.—Australian Museum, Sydney, N.S.W.

C.S.I.R.O.—C.S.I.R.O Division of Entomology, Canberra, A.C.T.

Macl. Mus.—Macleay Museum, University of Sydney, N.S.W.

Nat. Mus.—National Museum of Victoria, Melbourne, Vic.

Qld. Mus.—Queensland Museum, Brisbane, Qld.

S.A. Mus.—South Australian Museum, Adelaide, S.A.

Coll. F.E.W.—Mr. F. E. Wilson, private collection, Melbourne, Vic.

?—Location of type specimen unknown to author.

Names of species appear under each generic name where it has been described or transferred to; but full details and synonymy are given under the latest systematical position thus giving an easy reference for every possible published combination of genus and species. This method has been adopted to make the finding of the latest systematic placing of species possible in cases where only an old reference or identification is known.

No reference has been made to the published catalogues under the specific names, except in cases where the said catalogue is proposing or for the first time recording important systematic changes.

This check list contains 577 species, one subspecies, and one variety, all of which are placed in 62 genera under 17 different subfamilies.

Any criticism and additional information, especially that regarding the location of types, would be greatly appreciated by the author.

#### NEW NAMES PROPOSED IN THIS CHECK LIST:

*Lacon elstoni* nom. nov. for *Lacon conspiciendus* Elston 1927 not 1924.

*Conoderus ignobilis* nom. nov. for *Conoderus ruficollis* Schwarz not Blackburn.

*CTENICERINAE* nom. nov. for subfamily *CORYMBITINAE* Schenkling.

## ACKNOWLEDGMENTS

Museums overseas and in Australia were most co-operative and helped considerably in preparing this list, giving details of the type specimens in their collections and other information required. I am indebted to Miss Christine von Hayek, of the British Museum (Natural History), London, for most encouraging help and information. Also to Prof. Dr. H. Sachtleben, of Deutsches Entomologisches Institut, Berlin; Dr. R. Malaise, of Naturhistoriska Riksmuseum, Stockholm; Dr. J. M. Vrydagh, of Institut Royal Sciences Naturelles de Belgique, Brussels; Dr. E. T. Giles, of South Australian Museum, Adelaide; Dr. J. W. Evans and Mr. A. Musgrave, of Australian Museum, Sydney; Mr. J. R. Henry, of Macleay Museum, Sydney; Mr. F. E. Wilson for detailed information, and to Miss Joyce M. Shaw, librarian, National Museum of Victoria, for help in obtaining the numerous volumes of books required for this work.

Family *ELATERIDAE*Subfamily *AGRYPNINAE*

*Agrypninae* Fleutiaux, 1919, Voy. All. & Jean. Afr. ord. Col. 13: 6.

Genus *Agrypnus* Eschscholtz

*Agrypnus* Eschscholtz, 1829, in Thon. Ent. Arch. 2(1): 32.

GENOTYPE: *Elater murinus* Linnè, 1758, Syst. Nat., ed. 10, 1: 406.

*ereptus* Fleutiaux

S.A.

*Agrypnus ereptus* Janson, MSS.

*Agrypnus mastersi* var. "c", Candeze, 1874, Mem. Soc. Sci. Liege (2)4: 13.

*Agrypnus ereptus* Fleutiaux, 1902, Bull. Soc. ent. Fr. 1902: 164.

*Agrypnus ereptus* Schwarz, 1906, Gen. Ins. 46: 9, pl. 1, fig. 2.

TYPE: ?.

*grandis* Hope

N.T.

*Agrypnus grandis* Hope, 1842, Ann. Mag. Nat. Hist. 9: 428.

*Agrypnus grandis* Erichson, 1843, Arch. Naturgesch. 9(2): 175.

TYPE: ?.

*laticornis* Macleay — see *Agrypnus mastersi* Macleay.

*mastersi* Macleay

Qld., N.W. Austr., W.A.

*Agrypnus Mastersii* Macleay, 1872, Trans. ent. Soc. N.S.W. 2: 249.

*Agrypnus laticornis* Macleay, *ibid.*: 250.

*Agrypnus mastersi* var. *duboulayi* (var. "b") Candeze, 1874, Mem. Soc. Sci. Liege (2)4: 13.

*Agrypnus mastersi* var. *laticornis* (var. "a") Candeze, *ibid.*

*Agrypnus mastersi* Candeze, 1878, Ann. Mus. Stor. nat. Genova 12: 100.

*Agrypnus Mastersi* Blackburn, 1895, Trans. roy. Soc. S. Austr. 19: 47.

*Agrypnus mastersi* Schenkling, 1925, Col. Cat. 11(80): 6.

*Agrypnus mastersi* Elston, 1930, Ark. Zool. 22: 1.

TYPE: Austr. Mus.

TYPE of *A. laticornis* Macl.: Austr. Mus.

*modestus* Boisduval — see *Adelocera modesta* (Boisd.).

**resectus** Candeze N-th Austr.  
*Agrypnus resectus* Candeze, 1857, Mem. Soc. Sci. Liege 12: 45.  
 TYPE: ?.

Genus *Adelocera* Latreille

*Adelocera* Latreille, 1829, in Cuvier Regne Anim., ed. 2, 4: 451.

GENOTYPE: *Elater ocalis* Germar, 1824, Ins. Sp. Nov. 1: 49.

*caliginosa* Guerin — see *Lacon caliginosus* (Guerin).

**modesta** (Boisduval)\* Cosmopolitan, Terra typica-Australia.  
*Agrypnus (Elater) modestus* Boisduval, 1835, Voy. Astrol. Ent. 2: 108.  
*Adelocera modesta* Candeze, 1857, Mem. Soc. Sci. Liege 12: 71.  
*Adelocera modesta* Fleutiaux, 1923, Trans. Ent. Soc. Lond. 1922: 410.  
 TYPE: ?.

**socia** (Candeze) N.T., N-th Qld.  
*Lacon socius* Candeze, 1874, Mem. Soc. Sci. Liege (2)4: 87.  
*Lacon socius* Elston, 1924, Trans. roy. Soc. S. Austr. 48: 198.  
*Adelocera socia* Zwaluwenburg, 1946, Proc. Hawaii ent. Soc. 13(1): 109.  
 TYPE: ?.

Genus *Lacon* Castelnau

*Lacon* Castelnau, 1836, in Silberman Rev. Ent. 6: 11.

GENOTYPE: *Elater punctatus* Herbst, 1779, Beschäft. Berl. Ges.: 336.

*adelaidae* Blackburn — see *Lacon carinulatus* Cand.

**adustus** Elston Qld.  
*Lacon adustus* Elston, 1924, Trans. roy. Soc. S. Austr. 48: 205.  
 TYPE: S.A. Mus. PARATYPES: Austr. Mus., Nat. Mus., Coll. F.E.W.

**alboguttatus** Macleay N.W. Austr.  
*Lacon alboguttatus* Macleay, 1888, Proc. Linn. Soc. N.S.W. (2)3: 1238.  
 TYPE: ?.

*alternans* Macleay — see *Lacon variabilis* Cand.

**andersoni** Blackburn S.A.  
*Lacon andersoni* Blackburn, 1892, Proc. Linn. Soc. N.S.W. (2)6: 508.  
 TYPE: ?.

**applanatus** Elston W.A.  
*Lacon applanatus* Elston, 1924, Trans. roy. Soc. S. Austr. 48: 206.  
 TYPE: Austr. Mus. PARATYPES: S.A. Mus., Coll. F.E.W.

**aquilus** Elston N.T.  
*Lacon aquilus* Elston, 1927, Trans. roy. Soc. S. Austr. 51: 360.  
 TYPE: S.A. Mus. PARATYPE: Austr. Mus.

\* For complete list of synonymy and references see Fleutiaux (1923) and Schenkling (1925).

**arbitrarius** Elston

N.W. Austr.

*Lacon arbitrarius* Elston, 1924, Trans. roy. Soc. S. Austr. 48: 208.

TYPE: Austr. Mus. PARATYPES: S.A. Mus.

**assus** Candeze

Qld., N.S.W.

*Lacon assus* Candeze, 1857, Mem. Soc. Sci. Liege 12: 145.

*Lacon gayndahensis* Macleay, 1872, Trans. ent. Soc. N.S.W. 2: 250.

*Lacon assus* Elston, 1924, Trans. roy. Soc. S. Austr. 48: 197.

TYPE: ?.

TYPE of *L. gayndahensis* Macl.: Austr. Mus.

**atricolor** Macleay

N.W. Austr.

*Lacon atricolor* Macleay, 1888, Proc. Linn. Soc. N.S.W. (2)3: 1236.

TYPE: ?.

**badius** Elston

S.A.

*Lacon badius* Elston, 1927, Trans. roy. Soc. S. Austr. 51: 350.

TYPE: S.A. Mus. PARATYPES: Austr. Mus., Coll. F.E.W.

**bellator** Elston

N.T.

*Lacon bellator* Elston, 1927, Trans. roy. Soc. S. Austr. 51: 354.

TYPE: S.A. Mus. PARATYPE: Austr. Mus.

**bigener** Elston

N.T.

*Lacon bigener* Elston, 1924, Trans. roy. Soc. S. Austr. 48: 208.

TYPE: S.A. Mus. PARATYPES: Austr. Mus., Coll. F.E.W.

*bimaculatus* Schwarz — see *Lacon duplex* Blackb.

**brevipennis** Elston

S.A.

*Lacon brevipennis* Elston, 1927, Trans. roy. Soc. S. Austr. 51: 360.

TYPE: Austr. Mus.

**brightensis** Blackburn

Vic.

*Lacon brightensis* Blackburn, 1892, Proc. Linn. Soc. N.S.W. (2)6: 503, 509.

TYPE: (Cotypes) Austr. Mus., S.A. Mus.

**bullatus** Carter

W.A.

*Lacon bullatus* Carter, 1939, Proc. Linn. Soc. N.S.W. 64: 301.

TYPE: Austr. Mus.

**caliginosus** (Guerin)

N.S.W., Vic., S.A., Tas.

*Adelocera caliginosa* Guerin, 1832, Voy. Coquille, Zool. 2(2): 68, pl. 2, fig. 7.

*Adelocera caliginosa* Boisduval, 1835, Voy. Astrol. Ent. 2: 98.

*Elater caliginosus* Boisduval, *ibid.*: 105.

*Agrypnus caliginosus* Dejean, 1837, Cat. Col. 3rd ed.: 99.

*Lacon caliginosus* Germar, 1840, Zeitschr. Ent. 2: 261.

*Adelocera caliginosa* Blanchard, 1845, in Cuvier, Reg. anim. Ins.: 202, pl. 30, figs. 1, 1a.

*Lacon caliginosus* Candeze, 1857, Mem. Soc. Sci. Liege 12: 144.

*Lacon caliginosus* Elston, 1924, Trans. roy. Soc. S. Austr. 48: 197.

TYPE: ?.

- carinulatus** Candeze S.A.  
*Lacon carinulatus* Candeze, 1857, Mem. Soc. Sci. Liege 12: 152.  
*Lacon adelaidae* Blackburn, 1892, Proc. Linn. Soc. N.S.W. (2)6: 505.  
*Lacon carinulatus* Elston, 1924, Trans. roy. Soc. S. Austr. 48: 197.  
 TYPE: ?.  
 TYPE of *L. adelaidae* Blkb.: ?.
- castaneus** Elston N.W. Austr.  
*Lacon castaneus* Elston, 1927, Trans. roy. Soc. S. Austr. 51: 358.  
 TYPE: S.A. Mus. PARATYPE: Austr. Mus.
- castelnaui** Candeze W.A.  
*Lacon Castelnaui* Candeze, 1882, Mem. Soc. Sci. Liege (2)9: 11.  
*Lacon castelnaui* Elston, 1924, Trans. roy. Soc. S. Austr. 48: 200.  
 TYPE: I.R.Sc.N.B.
- cineraceus** Elston Qld.  
*Lacon cineraceus* Elston, 1927, Trans. roy. Soc. S. Austr. 51: 359.  
 TYPE: S.A. Mus. PARATYPE: Austr. Mus.
- communis** Macleay N.W. Austr.  
*Lacon communis* Macleay, 1888, Proc. Linn. Soc. N.S.W. (2)3: 1238.  
 TYPE: ?.
- commutabilis** Elston N.T.  
*Lacon commutabilis* Elston, 1924, Trans. roy. Soc. S. Austr. 48: 207.  
 TYPE: Austr. Mus. PARATYPES: S.A. Mus., Coll. F.E.W.
- compactus** Candeze N-th Austr.  
*Lacon compactus* Candeze, 1882, Mem. Soc. Sci. Liege (2)9: 10.  
 TYPE: I.R.Sc.N.B.
- conspiciendus** Elston N.T.  
*Lacon conspicendus* Elston, 1924, Trans. roy. Soc. S. Austr. 48: 206.  
 TYPE: S.A. Mus. PARATYPE: Austr. Mus.  
*conspiciendus* Elston (1927 not 1924) – see *Lacon elstoni* nom. nov.
- cordipennis** Candeze W.A.  
*Lacon cordipennis* Candeze, 1874, Mem. Soc. Sci. Liege (2)4: 99.  
 TYPE: ?.
- corvinus** Candeze W.A.  
*Lacon corvinus* Candeze, 1882, Mem. Soc. Sci. Liege (2)9: 12.  
 TYPE: I.R.Sc.N.B.
- costipennis** Germar Vic., S.A., W.A.  
*Lacon costipennis* Germar, 1848, Linn. Ent. 3: 181.  
*Lacon costipennis* Candeze, 1857, Mem. Soc. Sci. Liege 12: 151.  
*Lacon costipennis* Elston, 1924, Trans. roy. Soc. S. Austr. 48: 198.  
 TYPE: ?.



- crassus** Candeze Qld.  
*Lacon crassus* Candeze, 1874, Mem. Soc. Sci. Liege (2)4: 88.  
*Lacon crassus* Candeze, 1878, Ann. Mus. Stor. nat. Genova 12: 103.  
*Lacon crassus* Schwarz, 1906, Gen. Ins. 46: 24, pl. 1, fig. 9.  
*Lacon crassus* Elston, 1924, Trans. roy. Soc. S. Austr. 48: 200.  
 TYPE: ?.
- cruentatus** Elston Centr. Austr.  
*Lacon cruentatus* Elston, 1927, Trans. roy. Soc. S. Austr. 51: 351.  
 TYPE: S.A. Mus. PARATYPE: Austr. Mus.
- dealbatus** Candeze Qld.  
*Lacon dealbatus* Candeze, 1882, Mem. Soc. Sci. Liege (2)9: 13.  
 TYPE: I.R.Sc.NB.
- divaricatus** Candeze Qld., N.S.W., Vic., S.A.  
*Lacon divaricatus* Candeze, 1864, Mem. cour. Acad. R. Belg. 17: 12.  
*Lacon divaricatus* Candeze, 1874, Mem. Soc. Sci. Liege (2)4: 96.  
*Lacon divaricatus* Elston, 1924, Trans. roy. Soc. S. Austr. 48: 200.  
 TYPE: Brit. Mus.
- duboulayi** Candeze Australia(?) (Nicol Bay?)  
*Lacon Duboulayi* Candeze, 1874, Mem. Soc. Sci. Liege (2)4: 89.  
*Lacon duboulayi* Elston, 1924, Trans. roy. Soc. S. Austr. 48: 200.  
 TYPE: ?.
- duplex** Blackburn Vic.  
*Lacon duplex* Blackburn, 1891, Proc. Linn. Soc. N.S.W. (2)6: 506, 509.  
*Lacon bimaculatus* Schwarz, 1902, Dtsch. ent. Z. 1902: 113.  
*Lacon duplex* Elston, 1924, Trans. roy. Soc. S. Austr. 48: 197.  
 TYPE: Austr. Mus.  
 TYPE of *L. bimaculatus* Schw.: D.E.I.
- elstoni** nom. nov. Qld., N.W. Austr.  
*Lacon conspicendus* Elston, 1927, Trans. roy. Soc. S. Austr. 51: 353.  
 (Name praeoccupied by Elston 1924.)  
 TYPE: S.A. Mus.
- eucalypti** Blackburn S.A.  
*Lacon eucalypti* Blackburn, 1891, Proc. Linn. Soc. N.S.W. (2)6: 507, 509.  
 TYPE: Brit. Mus.
- farinensis** Blackburn N.S.W., S.A.  
*Lacon farinensis* Blackburn, 1900, Trans. roy. Soc. S. Austr. 24: 49.  
*Lacon farinensis* Elston, 1924, Trans. roy. Soc. S. Austr. 48: 198.  
 TYPE: S.A. Mus.
- farinosus** Elston N.T.  
*Lacon farinosus* Elston, 1927, Trans. roy. Soc. S. Austr. 51: 355.  
 TYPE: S.A. Mus. PARATYPE: Austr. Mus.

- fasciolatus** Macleay N.W. Austr.  
*Lacon fasciolatus* Macleay, 1888, Proc. Linn. Soc. N.S.W. (2)3: 1239.  
 TYPE: ?.
- fatuus** Candeze W.A.  
*Lacon fatuus* Candeze, 1874, Mem. Soc. Sci. Liege (2)4: 91.  
 TYPE: ?.
- fergusoni** Elston Qld.  
*Lacon fergusoni* Elston, 1927, Trans. roy. Soc. S. Austr. 51: 350.  
 TYPE: Austr. Mus. PARATYPE: S.A. Mus.
- ferrugineus** Candeze Australia? (Nicol Bay?)  
*Lacon ferrugineus* Candeze, 1874, Mem. Soc. Sci. Liege (2)4: 87.  
 TYPE: ?.
- foveicollis** Macleay N.W. Austr.  
*Lacon foveicollis* Macleay, 1888, Proc. Linn. Soc. N.S.W. (2)3: 1237.  
 TYPE: ?.
- froggatti** Macleay N.W. Austr.  
*Lacon Froggatti* Macleay, 1888, Proc. Linn. Soc. N.S.W. (2)3: 1234.  
 TYPE: ?.
- gayndahensis* Macleay — see *Lacon assus* Cand.
- geminatus** Candeze N.T., Qld., N.S.W.  
*Lacon geminatus* Candeze, 1857, Mem. Soc. Sci. Liege 12: 149.  
*Lacon geminatus* Elston, 1924, Trans. roy. Soc. S. Austr. 48: 201.  
 TYPE: I.R.Sc.N.B.
- gibbosus** Schwarz N-th Qld.  
*Lacon gibbosus* Schwarz, 1903, Dtsch. ent. Z. 1903: 379.  
 TYPE: D.E.I.
- gibbus** Candeze N-th Austr.  
*Lacon gibbus* Candeze, 1882, Mem. Soc. Sci. Liege (2)9: 10.  
*Lacon gibbus* Elston, 1924, Trans. roy. Soc. S. Austr. 48: 200.  
 TYPE: I.R.Sc.N.B.
- granulatus** Macleay Qld.  
*Lacon granulatus* Macleay, 1872, Trans. ent. Soc. N.S.W. 2: 251.  
*Lacon granulatus* Elston, 1924, Trans. roy. Soc. S. Austr. 48: 200.  
 TYPE: Austr. Mus.
- guttatus** Candeze Vic., S.A.  
*Lacon guttatus* Candeze, 1857, Mem. Soc. Sci. Liege 12: 151.  
*Lacon maculatus* Macleay, 1872, Trans. ent. Soc. N.S.W. 2: 251.  
*Lacon guttatus* Lea, 1920, Proc. Linn. Soc. N.S.W. 45: 379.  
*Lacon guttatus* Elston, 1924, Trans. roy. Soc. S. Austr. 48: 199.  
 TYPE: Brit. Mus.  
 TYPE of *L. maculatus* Macl.: Austr. Mus.

- hackeri** Elston Qld., N.S.W.  
*Lacon hackeri* Elston, 1927, Trans. roy. Soc. S. Austr. 51: 357.  
 TYPE: Qld. Mus. PARATYPE: Austr. Mus.
- humilis** Erichson Vic., Tas.  
*Lacon humilis* Erichson, 1842, Arch. Naturgesch. 8(1): 136.  
*Lacon humilis* Candeze, 1857, Mem. Soc. Sci. Liege 12: 148.  
*Lacon humilis* Candeze, 1874, Mem. Soc. Sci. Liege (2)4: 90.  
*Lacon humilis* Blackburn, 1892, Proc. Linn. Soc. N.S.W. (2)6: 509.  
 TYPE: ?.
- impressicollis** Elston Tas.  
*Lacon impressicollis* Elston, 1924, Trans. roy. Soc. S. Austr. 48: 202.  
 TYPE: S.A. Mus. PARATYPE: Austr. Mus., Coll. F.E.W.
- incultus** Macleay N.T., N.W. Austr.  
*Lacon incultus* Macleay, 1888, Proc. Linn. Soc. N.S.W. (2)3: 1235.  
*Lacon incultus* Elston, 1924, Trans. roy. Soc. S. Austr. 48: 201.  
 TYPE: ?.
- insignitus** Candeze Qld.  
*Lacon insignitus* Candeze, 1874, Mem. Soc. Sci. Liege (2)4: 98.  
 TYPE: Brit. Mus.
- labiosus** Candeze W.A.  
*Lacon labiosus* Candeze, 1874, Mem. Soc. Sci. Liege (2)4: 86.  
 TYPE: ?.
- lacrymosus** Candeze S.A.  
*Lacon lacrymosus* Candeze, 1874, Mem. Soc. Sci. Liege (2)4: 96.  
*Lacon lacrymosus* Blackburn, 1892, Proc. Linn. Soc. N.S.W. (2)6: 509.  
*Lacon lacrymosus* Elston, 1924, Trans. roy. Soc. S. Austr. 48: 199.  
 TYPE: Brit. Mus.
- lateralis* Schwarz — see *Compsolacon lateralis* (Schwarz).
- laticollis** Candeze Qld., N.S.W., Vic., S.A., W.A.  
*Lacon laticollis* Candeze, 1857, Mem. Soc. Sci. Liege 12: 146, pl. 2, fig. 12.  
*Lacon laticollis* Candeze, 1874, Mem. Soc. Sci. Liege (2)4: 88.  
*Lacon laticollis* Elston, 1924, Trans. roy. Soc. S. Austr. 48: 198.  
 TYPE: ?.
- lindensis** Blackburn S.A.  
*Lacon lindensis* Blackburn, 1892, Proc. Linn. Soc. N.S.W. (2)6: 504, 509.  
*Lacon lindensis* Elston, 1924, Trans. roy. Soc. S. Austr. 48: 199.  
 TYPE: S.A. Mus.
- lineatellus** Macleay N.W. Austr.  
*Lacon lineatellus* Macleay, 1888, Proc. Linn. Soc. N.S.W. (2) 3: 1236.  
 TYPE: ?.

- macleayi*** Candeze N-th Austr.  
*Lacon Macleayi* Candeze, 1882, Mem. Soc. Sci. Liege (2)9: 11.  
 TYPE: ?.
- maculatus*** Macleay – see *Lacon guttatus* Candeze.
- maculosus*** Macleay — see *Lacon variabilis* Candeze.
- mamillatus*** Candeze Qld., N.S.W.  
*Lacon mamillatus* Candeze, 1857, Mem. Soc. Sci. Liege 12: 144, pl. 2, fig. 4.  
 TYPE: Brit. Mus.
- mansuetus*** Blackburn N.S.W.  
*Lacon mansuetus* Blackburn, 1892, Proc. Linn. Soc. N.S.W. (2)7: 288.  
*Lacon mansuetus* Elston, 1924, Trans. roy. Soc. S. Austr. 48: 198.  
 TYPE: S.A. Mus.
- marginatus*** Candeze S.A.  
*Lacon marginatus* Candeze, 1874, Mem. Soc. Sci. Liege (2)4: 91.  
 TYPE: ?.
- marginipennis*** Schwarz S-th Austr. (Vic.?)  
*Lacon marginipennis* Schwarz, 1903, Dtsch. ent. Z. 1903: 380.  
 TYPE: D.E.I.
- marmoratus*** Candeze Qld., N.S.W.  
*Lacon marmoratus* Candeze, 1874, Mem. Soc. Sci. Liege (2)4: 94.  
*Lacon squalescens* Blackburn, 1892, Proc. Linn. Soc. N.S.W. (2)7: 289.  
*Lacon marmoratus* Elston, 1924, Trans. roy. Soc. S. Austr. 48: 197.  
 TYPE: ?.  
 TYPE of *L. squalescens* Blkb.: ?.
- mjöbergi*** Elston Qld.  
*Lacon mjöbergi* Elston, 1930, Ark. Zool. 22: 5.  
 TYPE: Stockh. Mus. PARATYPES: Austr. Mus.
- monachus*** Candeze Vic.  
*Lacon monachus* Candeze, 1882, Mem. Soc. Sci. Liege (2)9: 12.  
 TYPE: I.R.Sc.N.B.
- multipunctatus*** Elston N.T.  
*Lacon multipunctatus* Elston, 1927, Trans. roy. Soc. S. Austr. 51: 358.  
 TYPE: S.A. Mus.
- murrayensis*** Blackburn S.A.  
*Lacon murrayensis* Blackburn, 1891, Proc. Linn. Soc. N.S.W. (2)6: 504, 509.  
*Lacon murrayensis* Elston, 1924, Trans. roy. Soc. S. Austr. 48: 199.  
 TYPE: Austr. Mus.
- nigrescens*** Macleay N.W. Austr.  
*Lacon nigrescens* Macleay, 1888, Proc. Linn. Soc. N.S.W. (2)3: 1234.  
 TYPE: ?.

- octavus** Candeze Qld.  
*Lacon octavus* Candeze, 1874, Mem. Soc. Sci. Liege (2)4: 95.  
*Lacon octavus* Candeze, 1878, Ann. Mus. Stor. nat. Genova 12: 103.  
TYPE: ?.
- orthoderus** Elston N.T.  
*Lacon orthoderus* Elston, 1924, Trans. roy. Soc. S. Austr. 48: 204.  
TYPE: S.A. Mus. PARATYPE: Austr. Mus.
- palpalis** Candeze N-th Austr.  
*Lacon palpalis* Candeze, 1882, Mem. Soc. Sci. Liege (2)9: 13.  
TYPE: I.R.Sc.N.B.
- parallelus** Candeze Qld.  
*Lacon parallelus* Candeze, 1874, Mem. Soc. Sci. Liege (2)4: 90.  
TYPE: Brit. Mus.
- parvulus** Macleay N.W. Austr.  
*Lacon parvulus* Macleay, 1888, Proc. Linn. Soc. N.S.W. (2)3: 1239.  
TYPE:
- perplexus** Elston N.W. Austr., N.T.  
*Lacon perplexus* Elston, 1924, Trans. roy. Soc. S. Austr. 48: 202.  
TYPE: Austr. Mus. PARATYPES: S.A. Mus., Coll. F.E.W.
- pictipennis** Candeze N.S.W., Vic., S.A., Tas.  
*Lacon pictipennis* Candeze, 1857, Mem. Soc. Sci. Liege 12: 150.  
*Lacon pictipennis* Candeze, 1874, Mem. Soc. Sci. Liege (2)4: 93.  
TYPE: ?.
- pinguis** Candeze Qld.  
*Lacon pinguis* Candeze, 1895, Mem. Soc. Sci. Liege (2)18: 9.  
TYPE: I.R.Sc.N.B.
- plagiatus** Candeze Qld.  
*Lacon plagiatus* Candeze, 1878, Ann. Soc. ent. Belg. 21 (Compt. Rend.): 54.  
*Lacon plagiatus* Elston, 1924, Trans. roy. Soc. S. Austr. 48: 201.  
TYPE: I.R.Sc.N.B.
- pleureticus** Candeze Qld.  
*Lacon pleureticus* Candeze, 1874, Mem. Soc. Sci. Liege (2)4: 93.  
*Lacon pleureticus* Elston, 1924, Trans. roy. Soc. S. Austr. 48: 201.  
TYPE: Brit. Mus.
- porriginosus** Candeze N.W. Austr., W.A., S.A.  
*Lacon porriginosus* Candeze, 1874, Mem. Soc. Sci. Liege (2)4: 93.  
*Lacon porriginosus* Elston, 1924, Trans. roy. Soc. S. Austr. 48: 199.  
TYPE: ?.
- praelongus** Elston Qld.  
*Lacon praelongus* Elston, 1927, Trans. roy. Soc. S. Austr. 51: 355.  
TYPE: S.A. Mus. PARATYPE: Austr. Mus.

- princeps*** Candeze Qld.  
*Laeon princeps* Candeze, 1874, Mem. Soc. Sci. Liege (2)4: 89.  
*Laeon princeps* Candeze, 1878, Ann. Mus. Stor. nat. Genova 12: 102.  
*Laeon princeps* Elston, 1924, Trans. roy. Soc. S. Austr. 48: 200.  
 TYPE: ?.
- productus*** Elston N.T.  
*Laeon productus* Elston, 1924, Trans. roy. Soc. S. Austr. 48: 203.  
 TYPE: S.A. Mus. PARATYPE: Austr. Mus.
- punctatissimus*** Elston N-th Austr.  
*Laeon punctatissimus* Elston, 1927, Trans. roy. Soc. S. Austr. 51: 362.  
*Laeon punctatissimus* Elston, 1930, Ark. Zool. 22: 3.  
 TYPE: S.A. Mus. PARATYPE: Austr. Mus.
- punctipennis*** Candeze W.A.  
*Laeon punctipennis* Candeze, 1874, Mem. Soc. Sci. Liege (2)4: 99.  
 TYPE: ?.
- recticollis*** Elston Qld.  
*Laeon recticollis* Elston, 1930, Ark. Zool. 22: 4.  
 TYPE: Stockh. Mus. PARATYPES: Austr. Mus.
- reticulatus*** Elston N.W. Austr.  
*Laeon reticulatus* Elston, 1930, Ark. Zool. 22: 6.  
 TYPE: Stockh. Mus. PARATYPES: Austr. Mus.
- rubescens*** Macleay N.W. Austr.  
*Laeon rubescens* Macleay, 1888, Proc. Linn. Soc. N.S.W. (2)3: 1234.  
 TYPE: ?.
- rubicundulus*** Macleay N.W. Austr.  
*Laeon rubicundulus* Macleay, 1888, Proc. Linn. Soc. N.S.W. (2)3: 1237.  
 TYPE: ?.
- rubiginosus*** Candeze N-th Austr.  
*Laeon rubiginosus* Candeze, 1882, Mem. Soc. Sci. Liege (2)9: 11.  
 TYPE: ?.
- rufopiceus*** Macleay N.W. Austr.  
*Laeon rufopiceus* Macleay, 1888, Proc. Linn. Soc. N.S.W. (2)3: 1235.  
 TYPE: ?.
- rufulus*** Elston N.W. Austr.  
*Laeon rufulus* Elston, 1927, Trans. roy. Soc. S. Austr. 51: 361.  
 TYPE: S.A. Mus. PARATYPE: Austr. Mus.
- scopulosus*** Elston Qld.  
*Laeon scopulosus* Elston, 1924, Trans. roy. Soc. S. Austr. 48: 204.  
 TYPE: S.A. Mus. PARATYPE: Austr. Mus.
- sculptus*** Candeze Qld., N.S.W., Vic., S.A.  
*Laeon sculptus* Candeze, 1874, Mem. Soc. Sci. Liege (2)4: 95.  
 TYPE: ?.
- semivestitus* Elston — see *Compsolaeon semivestitus* (Elston).

*socius* Candeze — see *Adelocera socia* (Cand.).

*squalescens* Blackburn — see *Lacon marmoratus* Cand.

**stigmaticus** Elston N.W. Austr., Qld.

*Lacon stigmaticus* Elston, 1927, Trans. roy. Soc. S. Austr. 51: 352.

TYPE: S.A. Mus. PARATYPES: Austr. Mus., Coll. F.E.W.

**subcompactus** Elston N.S.W.

*Lacon subcompactus* Elston, 1927, Trans. roy. Soc. S. Austr. 51: 356.

TYPE: Austr. Mus.

**submarmoratus** Elston Qld.

*Lacon submarmoratus* Elston, 1924, Trans. roy. Soc. S. Austr. 48: 205.

TYPE: S.A. Mus. PARATYPES: Austr. Mus., Coll. F.E.W.

**subtilis** Macleay N.W. Austr.

*Lacon subtilis* Macleay, 1888, Proc. Linn. Soc. N.S.W. (2)3: 1236.

TYPE: ?.

**torresi** Candeze Qld.

*Lacon torresi* Candeze, 1897, Mem. Soc. Sci. Liege (2)19: 10.

TYPE: I.R.Sc.N.B.

**ursulus** Candeze N.S.W., Vic., S.A.

*Lacon ursulus* Candeze, 1857, Mem. Soc. Sci. Liege 12: 147.

*Lacon ursulus* Candeze, 1874, Mem. Soc. Sci. Liege (2)4: 89.

*Lacon ursulus* Elston, 1924, Trans. roy. Soc. S. Austr. 48: 198.

TYPE: ?.

**validus** Elston Qld.

*Lacon validus* Elston, 1924, Trans. roy. Soc. S. Austr. 48: 203.

TYPE: S.A. Mus. PARATYPE: Austr. Mus.

*van-de-polli* Candeze — see *Lacon variabilis* Cand.

**variabilis** Candeze\* Austr., Tas.

*Lacon variabilis* Candeze, 1857, Mem. Soc. Sci. Liege 12: 148.

*Lacon alternans* Macleay, 1872, Trans. ent. Soc. N.S.W. 2: 251.

*Lacon variabilis* Candeze, 1874, Mem. Soc. Sci. Liege (2)4: 90.

*Lacon variabilis* Sharp, 1877, Ann. Mag. nat. Hist. (4)19: 479.

*Lacon van-de-polli* Candeze, 1887, Notes Leyden Mus. 9: 285.

*Lacon maculosus* Macleay, 1888, Proc. Linn. Soc. N.S.W. (2)3: 1238.

*Lacon variegatus* Schwarz, 1907, Gen. Ins. 46: 316.

*Lacon variabilis* Lea, 1920, Proc. Linn. Soc. N.S.W. 45: 379.

*Lacon variabilis* Elston, 1924, Trans. roy. Soc. S. Austr. 48: 200.

*Lacon van-de-polli* Schenkling, 1925, Col. Cat. 11(80): 30.

*Lacon variatus* Schenkling, *ibid.*

*Lacon variabilis* McDougall, 1934, Qld. agric. J. 42: 43-70.

TYPE: Brit. Mus.

TYPE of *L. alternans* Macl.: Austr. Mus.

TYPE of *L. van-de-polli* Cand.: ?.

TYPE of *L. maculosus* Macl.: ?.

\* In Schenkling's "Coleopterorum Catalogus" 1925, 11 (80): 30, *L. variabilis* Cand. together with *L. alternans* Macl. and *L. maculosus* Macl. are entered as synonyms for *L. van-de-polli* Cand. There is no reason for this entry, and further analysis of the synonymy shows that the name *L. variabilis* Cand. has priority. If the synonymy of *L. maculosus* is correct, Schwarz's name *L. variegatus* automatically becomes a synonym of *L. variabilis*, and the same happens to the Schenkling's new name *L. variatus*. The above entry is based on the available literature only, and the correct answer will be available after a careful examination of all four types.

*variatus* Schenkling — see *Lacon variabilis* Cand.

*variegatus* Schwarz see *Lacon variabilis* Cand.

***variolus*** Candeze N.W. Austr., Qld.

*Lacon variolus* Candeze, 1874, Mem. Soc. Sci. Liege (2)4: 92.

*Lacon variolus* Candeze, 1878, Ann. Mus. Stor. nat. Genova 12: 102.

*Lacon variolus* Elston, 1924, Trans. roy. Soc. S. Austr. 48: 201.

TYPE: ?.

***veternosus*** Elston\* Qld.

*Lacon veternosus* Elston, 1930, Ark. Zool. 22: 5.

TYPE: S.A. Mus. PARATYPE: Austr. Mus.

***victoriae*** Candeze Qld., N.S.W., Vic., S.A., Tas.

*Lacon victoriae* Candeze, 1864, Mem. cour. Acad. R. Belg. 17: 12.

*Lacon victoriae* Candeze, 1874, Mem. Soc. Sci. Liege (2)4: 97.

*Lacon victoriae* Blackburn, 1892, Proc. Linn. Soc. N.S.W. (2)6: 508, 509.

*Lacon victoriae* Blackburn, 1900, Trans. roy. Soc. S. Austr. 24: 49.

*Lacon victoriae* Elston, 1924, Trans. roy. Soc. S. Austr. 48: 199.

TYPE: Brit. Mus.

***ylgarnensis*** Blackburn W.A.

*Lacon ylgarnensis* Blackburn, 1892, Proc. Linn. N.S.W. (2)7: 289.

*Lacon ylgarnensis* Elston, 1924, Trans. roy. Soc. S. Austr. 48: 200.

TYPE: Brit. Mus.

***zietzi*** Blackburn S.A.

*Lacon zietzi* Blackburn, 1895, Trans. roy. Soc. S. Austr. 19: 48.

TYPE: S.A. Mus.

#### Genus *Compsolacon* Reitter

*Compsolacon* Reitter, 1905, Best. Tab. 56: 6.

GENOTYPE: *Archontas crenicollis* Menetries, 1832, Cat. Rais.: 156.

***lateralis*** (Schwarz) N-th Qld., S.A.

*Lacon lateralis* Schwarz, 1903, Dtsch. ent. Z. 1903: 381.

*Lacon lateralis* Schwarz, 1906, Gen. Ins. 46: 25, pl. 1, fig. 10.

*Lacon lateralis* Elston, 1927, Trans. roy. Soc. S. Austr. 51: 352.

*Compsolacon lateralis* Zwaluwenburg, 1947, Proc. Hawaii ent. Soc. 13: 110.

TYPE: D.E.I.

***semivestitus*** (Elston) N.W. Austr., N-th Qld.

*Lacon semivestitus* Elston, 1927, Trans. roy. Soc. S. Austr. 51: 352.

*Compsolacon semivestitus* Zwaluwenburg, 1947, Proc. Hawaii ent. Soc. 13: 110.

TYPE: Austr. Mus.

\* Although Elston published some notes on this species in Arkiv för Zoologi 1930, 22: 5, with references to the type specimen, it was not possible to find the original description, and there is some doubt if that ever has been published. The type specimen is in the South Australian Museum, Adelaide, and bears the following label:

"Coen R., Q.

W. D. Dodd."

This species is not recognizable from the very brief differences mentioned in the above publication and therefore a redescription based on the type specimen is necessary.



Genus *Homoeolacon* Blackburn*Homoeolacon* Blackburn, 1890, Trans. roy. Soc. S. Austr. 13: 90.GENOTYPE: *Homoeolacon gracilis* Blackburn, *ibid.**gracilis* Blackburn

N.T.

*Homoeolacon gracilis* Blackburn, 1890, Trans. roy. Soc. S. Austr. 13: 91.*Homoeolacon gracilis* Elston, 1924, Trans. roy. Soc. S. Austr. 48: 197.

TYPE: I.R.Sc.N.B. COTYPE: S.A. Mus.

Genus *Pseudolacon* Blackburn*Pseudolacon* Blackburn, 1890, Trans. roy. Soc. S. Austr. 13: 89.GENOTYPE: *Pseudolacon rufus* Blackburn, *ibid.*: 90.*rufus* Blackburn

W.A.

*Pseudolacon rufus* Blackburn, 1890, Trans. roy. Soc. S. Austr. 13: 90.

TYPE: Brit. Mus.

Genus *Myrmodes* Candeze*Myrmodes* Candeze, 1857, Mem. Soc. Sci. Liege 12: 168.GENOTYPE: *Myrmodes akidiformis* Candeze, *ibid.*: 169.*akidiformis* Candeze

N-th Austr.

*Myrmodes akidiformis* Candeze, 1857, Mem. Soc. Sci. Liege 12: 169, pl. 2, fig. 16.

TYPE: ?.

*?elongatus* Carter

Qld.

*Myrmodes* (?) *elongatus* Carter, 1939, Proc. Linn. Soc. N.S.W. 64: 302.

TYPE: Austr. Mus.

Genus *Trieres* Candeze*Trieres* Candeze, 1900, Ann. Soc. ent. Belg. 44: 78.GENOTYPE: *Trieres ramitarsus* Candeze, *ibid.**ramitarsus* Candeze

S.A.

*Trieres ramitarsus* Candeze, 1900, Ann. Soc. ent. Belg. 44: 78.*Trieres ramitarsus* Schwarz, 1906, Gen. Ins. 46: 31, pl. 1, fig. 12.

TYPE: I.R.Sc.N.B.

Subfamily *HEMIRRHIPINAE**Hemirrhypinae* Fleutiaux, 1919, Voy. All. & Jean. Afr. or. Col. 13: 5, 23.Genus *Alaus* Eschscholtz*Alaus* Eschscholtz, 1829, in Thon, Ent. Archiv 2(1): 32.GENOTYPE: *Elater oculatus* Linne, 1758, Syst. Nat. ed. 10. 1: 404.*albatrus* Candeze

N-th Austr.

*Alaus albatrus* Candeze, 1897, Mem. Soc. Sci. Liege (2)19: 15.

TYPE: ?.

- darwini*** Blackburn N.T.  
*Alaus darwini* Blackburn, 1890, Proc. Linn. Soc. N.S.W. (2) 4: 1259.  
 TYPE: Brit. Mus.
- funebri*** Candeze Qld., N.W. Austr.  
*Alaus funebri* Candeze, 1857, Mem. Soc. Sci. Liege 12: 233.  
 TYPE: Brit. Mus.
- funereus*** Candeze Qld.  
*Alaus funereus* Candeze, 1865, Mem. cour. Acad. R. Belg. 17: 17.  
*Alaus funereus* Candeze, 1874, Mem. Soc. Sci. Liege (2) 4: 146.  
 TYPE: Brit. Mus.
- gibboni*** Newman N-th Qld.  
*Alaus gibboni* Newman, 1857, Trans. ent. Soc. Lond. (N.S.) 4: 51.  
*Alaus gibboni* Candeze, 1874, Mem. Soc. Sci. Liege (2) 4: 146.  
 TYPE: ?.
- gigas*** Candeze Qld., N.S.W.  
*Alaus gigas* Candeze, 1857, Mem. Soc. Sci. Liege 12: 234.  
*Alaus gigas* Gestro, 1875, Ann. Mus. Stor. nat. Genova 7: 10.  
 TYPE: Brit. Mus.
- immaculatus*** Schwarz N-th Qld.  
*Alaus immaculatus* Schwarz, 1902, Dtsch. ent. Z. 1902: 115.  
 TYPE: ?.
- lectilis*** Candeze N.S.W.  
*Alaus lectilis* Candeze, 1897, Mem. Soc. Sci. Liege (2) 19: 15.  
 TYPE: I.R.Sc.N.B.
- macleayi*** Candeze Qld., N.S.W.  
*Alaus Mac-Leayi* Candeze, 1857, Mem. Soc. Sci. Liege 12: 235.  
 TYPE: Brit. Mus.
- melancholicus*** Candeze Qld.  
*Alaus melancholicus* Candeze, 1874, Mem. Soc. Sci. Liege (2) 4: 147.  
*Alaus melancholicus* Elston, 1930, Ark. Zool. 22: 7.  
 TYPE: Brit. Mus.
- prosectus*** Candeze Qld., N.S.W.  
*Alaus prosectus* Candeze, 1857, Mem. Soc. Sci. Liege 12: 236.  
*Alaus prosectus* Froggatt, 1925, Aust. for. J. 8(12): 327-330, figs. 1-8.  
 TYPE: Brit. Mus.
- pumilus*** Candeze Qld., N.S.W.  
*Alaus pumilus* Candeze, 1874, Mem. Soc. Sci. Liege (2) 4: 149.  
 TYPE: Brit. Mus.
- sericeus*** Candeze Qld.  
*Alaus sericeus* Candeze, 1874, Mem. Soc. Sci. Liege (2) 4: 148.  
*Alaus sericeus* Candeze, 1878, Ann. Mus. Stor. nat. Genova 12: 106.  
 TYPE: Brit. Mus.

**suboculatus** Candeze

Qld.

*Alaus suboculatus* Candeze, 1857, Mem. Soc. Sci. Liege 12: 229.

*Alaus variegatus* Schwarz, 1902, Dtsch. ent. Z. 1902: 114.

*Alaus suboculatus* Schwarz, 1906, Gen. Ins. 46: 38.

*Alaus variegatus* Schwarz, *ibid.*, pl. 2, fig. 4.

*Alaus suboculatus* Fleutiaux, 1907, Bull. Soc. ent. Fr. 1907: 162.

TYPE: Brit. Mus.

TYPE of *A. variegatus* Schwarz: ?.

**subsericeus** Schwarz

N.S.W.

*Alaus subsericeus* Schwarz, 1902, Dtsch. ent. Z. 1902: 115.

TYPE: D.E.I.

*variegatus* Schwarz — see *Alaus suboculatus* Candeze.

**victoriae** Schwarz

Vic.

*Alaus victoriae* Schwarz, 1902, Dtsch. ent. Z. 1902: 116.

TYPE: D.E.I.

Genus ***Tetrigus*** Candeze

*Tetrigus* Candeze, 1857, Mem. Soc. Sci. Liege 12: 254.

GENOTYPE: *Tetrigus parallelus* Candeze, *ibid.*

**australicus** Blackburn

N-th Qld.

*Tetrigus australicus* Blackburn, 1896, Trans. roy. Soc. S. Austr. 20: 35.

TYPE: Nat. Mus.

Subfamily ***TETRALOBINAE***

*Tetralobinae* Fleutiaux, 1919, Voy. All. & Jeann. Afr. or. Col. 13: 5, 32.

Genus ***Pseudotetralobus*** Schwarz

*Pseudotetralobus* Schwarz, 1902, Stettin ent. Ztg. 63: 210.

GENOTYPE: *Pseudotetralobus dohrni* Schwarz, *ibid.*

**albertisi** (Candeze)

N.W. Austr., N.T., N-th Qld.

*Tetralobus albertisi* Candeze, 1878, Ann. Mus. Stor. nat. Genova 12: 108.

*Pseudotetralobus albertisi* Schwarz, 1902, Stettin ent. Ztg. 63: 210.

*Pseudotetralobus albertisi* Elston, 1928, Trans. roy. Soc. S. Austr. 52: 182.

*Pseudotetralobus albertisi* Elston, 1930, Ark. Zool. 22: 8.

TYPE: ?.

**apicipennis** Elston

W.A.

*Pseudotetralobus apicipennis* Elston, 1928, Trans. roy. Soc. S. Austr. 52: 185.

TYPE: S.A. Mus. PARATYPES: Austr. Mus.

**australasiae** (Gory)

W.A.

*Tetralobus australasiae* Gory, 1836, Ann. Soc. ent. Fr. 5: 513, pl. 14, fig. 1.

*Tetralobus manglesi* Hope, 1842, Proc. zool. Soc. Lond. 10: 75.

*Tetralobus australasiae* Candeze, 1857, Mem. Soc. Sci. Liege 12: 381.

*Tetralobus manglesi* Blackburn, 1889, Trans. roy. Soc. S. Austr. 12: 139-140.

*Tetralobus australasiae* Blackburn, 1889, Proc. Linn. Soc. N.S.W. (2)3: 1417.

*Pseudotetralobus australasiae* Elston, 1928, Trans. roy. Soc. S. Austr. 52: 183.

TYPE: ?.

TYPE of *P. manglesi* (Hope): ?.

- capucinus** (Candeze) Qld.  
*Tetralobus capucinus* Candeze, 1882, Mem. Soc. Sci. Liege (2)9: 27.  
*Pseudotetralobus capucinus* Schwarz, 1902, Stettin ent. Ztg. 63: 210.  
 TYPE: ?.
- castaneus** Elston N.T., Qld.  
*Pseudotetralobus castaneus* Elston, 1928, Trans. roy. Soc. S. Austr. 52: 184.  
 TYPE: S.A. Mus. PARATYPES: Austr. Mus., Coll. F.E.W.
- conspicuosus** Elston N.W. Austr.  
*Pseudotetralobus conspicuosus* Elston, 1928, Trans. roy. Soc. S. Austr. 52: 187.  
 TYPE: Austr. Mus.
- corrosus** (Candeze) Qld.  
*Tetralobus corrosus* Candeze, 1878, Ann. Soc. ent. Belg. 21 (Compt. Rend.): 57.  
*Pseudotetralobus corrosus* Schwarz, 1902, Stettin ent. Ztg. 63: 210.  
*Pseudotetralobus corrosus* Schwarz, 1906, Gen. Ins. 46: 58, pl. 3, fig. 4.  
*Pseudotetralobus corrosus* Elston, 1928, Trans. roy. Soc. S. Austr. 52: 184.  
 TYPE: I.R.Sc.N.B.
- cylindriformis* Candeze — see *Pseudotetralobus fortunei* (Hope).
- fortunei** (Hope) S.A.  
*Tetralobus fortunei* Hope, 1842, Proc. zool. Soc. Lond. 10: 74.  
*Tetralobus fortunei* Candeze, 1857, Mem. Soc. Sci. Liege 12: 385.  
*Tetralobus cylindriformis* Candeze, 1864, Mem. cour. Acad. R. Belg. 17: 2.  
*Tetralobus cylindriformis* Blackburn, 1889, Proc. Linn. Soc. N.S.W. (2)3: 1418.  
*Tetralobus fortunei* Blackburn, 1889, Trans. roy. Soc. S. Austr. 12: 139.  
*Tetralobus fortunei* Froggatt, 1917, Agric. Gaz. N.S.W. 28(12): 894.  
*Pseudotetralobus fortunei* Elston, 1928, Trans. roy. Soc. S. Austr. 52: 183.  
 TYPE: ?.  
 TYPE of *P. cylindriformis* (Cand.): ?.
- manglesi* (Hope) — see *Pseudotetralobus australasiae* (Gory).
- murrayi** (Candeze) Qld.  
*Tetralobus murrayi* Candeze, 1857, Mem. Soc. Sci. Liege 12: 382.  
*Tetralobus murrayi* Blackburn, 1889, Proc. Linn. Soc. N.S.W. (2)3: 1417.  
*Pseudotetralobus murrayi* Schwarz, 1902, Stettin ent. Ztg. 63: 210.  
*Pseudotetralobus murrayi* Elston, 1928, Trans. roy. Soc. S. Austr. 52: 183.  
 TYPE: ?.
- pumilus** (Candeze) Qld.  
*Tetralobus pumilus* Candeze, 1895, Mem. Soc. Sci. Liege (2)18: 18.  
*Pseudotetralobus pumilus* Schwarz, 1902, Stettin ent. Ztg. 63: 210.  
*Pseudotetralobus pumilus* Elston, 1928, Trans. roy. Soc. S. Austr. 52: 184.  
 TYPE: I.R.Sc.N.B.
- punctipennis** Elston N.W. Austr.  
*Pseudotetralobus punctipennis* Elston, 1928, Trans. roy. Soc. S. Austr. 52: 186.  
 TYPE: S.A. Mus.

- quadrifoveatus** (Macleay) N.W. Austr.  
*Tetralobus quadrifoveatus* Macleay, 1888, Proc. Linn. Soc. N.S.W. (2)3: 1240.  
*Pseudotetralobus quadrifoveatus* Schwarz, 1902, Stettin ent. Ztg. 63: 210.  
*Pseudotetralobus quadrifoveatus* Elston, 1928, Trans. roy. Soc. S. Austr. 52: 184.  
 TYPE: ?.

- sulcicollis** Elston Qld.  
*Pseudotetralobus sulcicollis* Elston, 1928, Trans. roy. Soc. S. Austr. 52: 186.  
 TYPE: S.A. Mus. PARATYPE: Austr. Mus.

- thoracicus** (Blackburn) W.A.  
*Tetralobus thoracicus* Blackburn, 1890, Proc. Linn. Soc. N.S.W. (2)5: 309.  
*Pseudotetralobus thoracicus* Schenkling, 1927, Col. Cat. 11(88): 526.  
 TYPE: Nat. Mus.

Subfamily **DICREPIDIINAE**

*Dicripidiinae* Fleutiaux, 1919, Voy. All. & Jean. Afr. or. Col. 13: 5, 38.

Genus **Propsephus** Hyslop

- Psephus* Candeze, 1859, Mem. Soc. Sci. Liege 14: 21.  
*Propsephus* Hyslop, 1921, Proc. U.S. nat. Mus. 58: 666.  
 GENOTYPE: *Psephus beniniensis* Candeze, 1859, Mem. Soc. Sci. Liege 14: 21.

- quadraticollis** (Schwarz) S.A.  
*Psephus quadraticollis* Schwarz, 1906, Dtsch. ent. Z. 1906: 353.  
 TYPE: D.E.I.

Subfamily **PACHYDERINAE**

*Pachyderinae* Fleutiaux, 1919, Voy. All. & Jean. Afr. or. Col. 13: 6, 57.

Genus **Glypheus** Candeze

- Glypheus* Candeze, 1859, Mem. Soc. Sci. Liege 14: 168.  
 GENOTYPE: *Glypheus villosulus* Candeze, ibid.: 169.

- alpinus** Blackburn Vic.  
*Glypheus alpinus* Blackburn, 1892, Proc. Linn. Soc. N.S.W. (2)7: 290.  
 TYPE: ?.

- cruciger** Carter N.S.W.  
*Glypheus cruciger* Carter, 1939, Proc. Linn. Soc. N.S.W. 64: 302.  
 TYPE: Austr. Mus.

- decoratus** Candeze Australia  
*Glypheus decoratus* Candeze, 1897, Mem. Soc. Sci. Liege (2)19: 32.  
 TYPE: ?.

- lansbergei** Candeze Vic.  
*Glypheus lansbergei* Candeze, 1882, Mem. Soc. Sci. Liege (2)9: 44.  
 TYPE: ?.

**militaris** Carter N.S.W.

*Glyphicus militaris* Carter, 1939, Proc. Linn. Soc. N.S.W. 64: 303.

TYPE: Austr. Mus.

**nigrinus** Carter N.S.W.

*Glyphicus nigrinus* Carter, 1935, Proc. Linn. Soc. N.S.W. 60: 181.

TYPE: ?. PARATYPE: Coll. F.E.W.

**piceus** Candeze N.S.W.

*Glyphicus piceus* Candeze, 1900, Ann. Soc. ent. Belg. 44: 85.

*Glyphicus piceus* Carter, 1935, Proc. Linn. Soc. N.S.W. 60: 181.

TYPE: I.R.Sc.N.B.

**sanguineus** Elston Qld.

*Glyphicus sanguineus* Elston, 1930, Ark. Zool. 22: 8.

TYPE: Stockh. Mus.

**subfasciatus** Carter N.S.W.

*Glyphicus subfasciatus* Carter, 1935, Proc. Linn. Soc. N.S.W. 60: 181.

TYPE: ?.

**villosulus** Candeze N.S.W., Vic.

*Glyphicus villosulus* Candeze, 1859, Mem. Soc. Sci. Liege 14: 169, pl. 3, fig. 17.

TYPE: ?.

#### Genus *Simodactylus* Candeze

*Simodactylus* Candeze, 1859, Mem. Soc. Sci. Liege 14: 169.

GENOTYPE: *Acolas cinnamomeus* Boisduval, 1835, Voy. Astrol. Ent. 2: 106.

**brunneus** Schwarz S.A.

*Simodactylus brunneus* Schwarz, 1906, Dtsch. ent. Z. 1906: 355.

TYPE: ?.

**cinnamomeus** (Boisduval) Australia

*Acolus (Elater) cinnamomeus* Boisduval, 1835, Voy. Astrol. Ent. 2: 106.

*Simodactylus cinnamomeus* Candeze, 1859, Mem. Soc. Sci. Liege 14: 170, pl. 3, fig. 18.

TYPE: ?.

**suturalis** Schwarz Qld.

*Simodactylus suturalis* Schwarz, 1906, Dtsch. ent. Z. 1906: 354.

TYPE: D.E.I.

#### Subfamily CONODERINAE

*Conoderince* Fleutiaux, 1919, Voy. All. & Jean. Afr. or. Col. 13: 6, 58.

#### Genus *Glyphochilus* Candeze

*Glyphochilus* Candeze, 1859, Mem. Soc. Sci. Liege 14: 180.

GENOTYPE: *Glyphochilus leptus* Candeze, ibid.: 182.

- bicolor** Candeze N.S.W.  
*Glyphochilus bicolor* Candeze, 1873, Ann. Soc. ent. Belg. 21 (Compt. Rend.): 75.  
 TYPE: ?.
- brunnipes** Schwarz W.A.  
*Glyphochilus brunnipes* Schwarz, 1902, Dtsch. ent. Z. 1901: 321.  
 TYPE: D.E.I.
- championi** Candeze W.A.  
*Glyphochilus championi* Candeze, 1882, Mem. Soc. Sci. Liege (2)9: 45.  
 TYPE: ?.
- furvus** (Erichson) Tas.  
*Atelopus furvus* Erichson, 1842, Arch. Naturgesch. 8(1): 142.  
*Acroniopus (furvus)* Erichson, 1843, Arch. Naturgesch. 9(2): 175.  
*Glyphochilus furvus* Candeze, 1859, Mem. Soc. Sci. Liege 14: 523.  
*Glyphochilus tasmanicus* Candeze, 1859, ibid.: 181.  
*Glyphochilus furvus* Candeze, 1891, Cat. Elat.: 67 (note).  
 TYPE: ?.  
 TYPE of *G. tasmanicus* Cand.: ?.
- laticollis** Schwarz S.A.  
*Glyphochilus laticollis* Schwarz, 1902, Dtsch. ent. Z. 1901: 320.  
 TYPE: D.E.I.
- leptus** Candeze N.S.W., Vic., W.A.  
*Glyphochilus leptus* Candeze, 1859, Mem. Soc. Sci. Liege 14: 182.  
 TYPE: ?.
- lucidus** (Erichson) Tas.  
*Atelopus lucidus* Erichson, 1842, Arch. Naturgesch. 8(1): 143.  
*Acroniopus (lucidus)* Erichson, 1843, Arch. Naturgesch. 9(2): 175.  
*Glyphochilus lucidus* Masters, 1886, Proc. Linn. Soc. N.S.W. (2)1: 266.  
 TYPE: ?.
- montanus** Blackburn N.S.W.  
*Glyphochilus montanus* Blackburn, 1892, Proc. Linn. Soc. N.S.W. (2)7: 290.  
 TYPE: S.A. Mus.
- occidentalis** Candeze W.A.  
*Glyphochilus occidentalis* Candeze, 1882, Mem. Soc. Sci. Liege (2)9: 45.  
 TYPE: ?.
- opaculus** Schwarz W.A.  
*Glyphochilus opaculus* Schwarz, 1902, Dtsch. ent. Z. 1901: 321.  
 TYPE: D.E.I.
- tasmanicus* Candeze — see *Glyphochilus furvus* (Erichson).
- ustulatus** Schwarz N.S.W.  
*Glyphochilus ustulatus* Schwarz, 1902, Dtsch. ent. Z. 1901: 322.  
 TYPE: D.E.I.

**venustus** Schwarz

N.S.W.

*Glyphochilus venustus* Schwarz, 1902, Dtsch. ent. Z. 1901: 319.

TYPE: D.E.I.

Genus **Conoderus** Eschscholtz\**Conoderus* Eschscholtz, 1829, in Thon, Ent. Arch. 2(1): 31.*Monocrepidius* Eschscholtz, 1829, *ibid.*GENOTYPE: *Conoderus fuscifasciatus* Eschscholtz, *ibid.***acuminatus** (Macleay)

Qld.

*Monocrepidius acuminatus* Macleay, 1872, Trans. ent. Soc. N.S.W. 2: 252.

TYPE: Austr. Mus.

*alpicola* (Blackburn) — see *Conoderus minor* (Macleay).**alternatus** (Schwarz)

Vic.

*Monocrepidius alternatus* Schwarz, 1903, Dtsch. ent. Z. 1903: 398.

TYPE: D.E.I.

**angustipes** (Blackburn)

W.A.

*Monocrepidius angustipes* Blackburn, 1890, Proc. Linn. Soc. N.S.W. (2)5: 561.

TYPE: Brit. Mus.

*antennalis* (Candeze) — see *Conoderus moncillei* (Candeze).**antennarius** (Schwarz)

S.A.

*Monocrepidius antennarius* Schwarz, 1906, Dtsch. ent. Z. 1906: 359.

TYPE: D.E.I.

**antennatus** (Schwarz)

Vic.

*Monocrepidius antennatus* Schwarz, 1906, Dtsch. ent. Z. 1906: 358.

TYPE: D.E.I.

**aphiloides** (Candeze)

Qld., N.S.W., Vic.

*Monocrepidius aphiloides* Candeze, 1859, Mem. Soc. Sci. Liege 14: 237.*Monocrepidius Mastersii* Macleay, 1872, Trans. ent. Soc. N.S.W. 2: 252.*Monocrepidius aphiloides* Lea, 1920, Proc. Linn. Soc. N.S.W. 45: 379.

TYPE: Brit. Mus.

TYPE of *M. mastersi* Macl.: Austr. Mus.**arbitrarius** Elston

N.W. Austr.

*Conoderus arbitrarius* Elston, 1929, Trans. roy. Soc. S. Austr. 53: 347.

TYPE: Austr. Mus.

**ater** (Schwarz)

Vic.

*Monocrepidius ater* Schwarz, 1906, Dtsch. ent. Z. 1906: 363.

TYPE: missing from D.E.I. since 1942.

*atratus* (Macleay) — see *Conoderus brevipennis* (Candeze).\* Schenkling, 1925 in Col. Cat. 11 (80): 107-111, and 1927, *ibid.* 11 (88): 527 recorded all species, except one, originally described as *Monocrepidius* under the genus *Conoderus*, therefore Schenkling's reference is omitted from each separate species entry.*M. angustipes* Blkb. which is the only species not entered in Schenkling's catalogue, is here used under the generic name of *Conoderus*.



- aurulentus** (Candeze)\* W.A.  
*Monocrepidius aurulentus* Candeze, 1878, Ann. Soc. ent. Belg. 21 (Compt. Rend.): 78.  
*Monocrepidius aurulentus* Candeze, 1882, Mem. Soc. Sci. Liege (2)9: 52.  
 TYPE: — of one *M. aurulentus* in I.R.Sc.N.B.
- baldiensis** (Blackburn) Vic.  
*Monocrepidius baldiensis* Blackburn, 1892, Proc. Linn. Soc. N.S.W. (2)6: 514, 515.  
 TYPE: Brit. Mus.
- basalis** (Gyllenhal)\*\* Qld., N.S.W., Vic., S.A.  
 ♀ *Elater basalis* Gyllenhal, 1817, in Schönherr, Syn. Ins. 1(3) Appx.: 130.  
 ♂ *Elater australasiae* Boisduval, 1835, Voy. Astrol. Entom. 2: 104.  
*Monocrepidius australasiae* Erichson, 1842, Arch. Naturgesch. 8(1): 136.  
*Monocrepidius australasiae* Germar, 1848, Linn. Ent. 3: 180.  
*Monocrepidius australasiae* Candeze, 1859, Mem. Soc. Sci. Liege 14: 230.  
*Monocrepidius australasiae* Schwarz, 1906, Gen. Ins. 46: 97.  
 TYPE: Stockh. Mus. (Schönherr Coll.)  
 TYPE of *M. australasiae* Boisd.: Brit. Mus.
- basilaris** (Candeze) Qld.  
*Monocrepidius basilaris* Candeze, 1878, Ann. Mus. Stor. nat. Genova 12: 116.  
 TYPE: ?.
- bicolor** (Schwarz) Vic.  
*Monocrepidius bicolor* Schwarz, 1902, Dtsch. ent. Z. 1902: 122.  
 TYPE: D.E.I.
- breviceps** (Macleay) — see *Conoderus eveillardii* (LeGuillou).
- brevipennis** (Candeze) N-th Qld.  
*Monocrepidius brevipennis* Candeze, 1859, Mem. Soc. Sci. Liege 14: 239.  
*Monocrepidius atratus* Macleay, 1872, Trans. ent. Soc. N.S.W. 2: 253.  
*Monocrepidius brevipennis* Schenkling, 1925, Col. Cat. 11(80): 107.  
 TYPE: ?.  
 TYPE of *M. atratus* Macl.: Austr. Mus.
- brucki** (Candeze) N.S.W., Vic.  
*Monocrepidius Bruckii* Candeze, 1859, Mem. Soc. Sci. Liege 14: 236.  
 TYPE: ?.
- brunnipes** (Schwarz) Qld.  
*Monocrepidius brunnipes* Schwarz, 1902, Dtsch. ent. Z. 1902: 119.  
 TYPE: ?.
- candezei** (Macleay) Qld.  
*Monocrepidius Candezei* Macleay, 1872, Trans. ent. Soc. N.S.W. 2: 256.  
 TYPE: Austr. Mus.

\* There are two descriptions published for the name *aurulentus* as shown above, in the years 1878 and 1882 respectively. It is impossible to separate the species from the descriptions, and there is only one *aurulentus* type known, although from the descriptions it is clear that there have been two different specimens used, because of the given size (one is 2 mm. shorter than the other). Based on this explanation *M. aurulentus* Candeze 1882 is kept temporarily under the name of *M. aurulentus* Candeze 1878.

\*\* Comparison of the types of both species has been made possible through the courtesy and co-operation of Miss C. von Hayek and Dr. R. Malaise, to whom I express my sincere thanks. Examination was made by Miss von Hayek who came to conclusion that both specimens are male and female of the same species. Based on this statement the above synonymy is established.

- carinatus** (Candeze) N.T., Qld., W.A.  
*Monocrepidius carinatus* Candeze, 1859, Mem. Soc. Sci. Liege 14: 238.  
 TYPE: Brit. Mus.
- castaneipennis** (Macleay) Qld.  
*Monocrepidius castaneipennis* Macleay, 1872, Trans. ent. Soc. N.S.W. 2: 256.  
*Conoderus castaneipennis* Elston, 1930, Ark. Zool. 22: 11.  
 TYPE: Austr. Mus.
- cerdo** (Erichson) S.A., Tas.  
*Monocrepidius cerdo* Erichson, 1842, Arch. Naturgesch. 8(1): 137.  
*Monocrepidius cerdo* Candeze, 1859, Mem. Soc. Sci. Liege 14: 232.  
 TYPE: ?.
- cineus** (Blanchard) — see *Conoderus llati* (LeGuillou).
- collaris** (Schwarz) S.A.  
*Monocrepidius collaris* Schwarz, 1906, Dtsch. ent. Z. 1906: 360.  
 TYPE: D.E.I.
- commodus** (Blackburn) S.A.  
*Monocrepidius commodus* Blackburn, 1895, Trans. roy. Soc. S. Austr. 19: 48.  
 TYPE: S.A. Mus. PARATYPE: Austr. Mus.
- compactus** (Candeze) Qld.  
*Monocrepidius compactus* Candeze, 1878, Ann. Soc. ent. Belg. 21 (Compt. Rend.): 79.  
 TYPE: I.R.Sc.N.B.
- condensus** (Schwarz) S.A.  
*Monocrepidius condensus* Schwarz, 1906, Dtsch. ent. Z. 1906: 360.  
 TYPE: ?.
- cordieri** (LeGuillou) Vic., Tas.  
*Monocrepidius Cordieri* LeGuillou, 1844, Rev. Zool. 7: 221.  
*Monocrepidius Cordieri* Candeze, 1859, Mem. Soc. Sci. Liege 14: 242.  
 TYPE: ?.
- corymbitoides** (Schwarz) Vic.  
*Monocrepidius corymbitoides* Schwarz, 1902, Dtsch. ent. Z. 1902: 358.  
 TYPE: D.E.I.
- coxalis** (Candeze) N.W. Austr., Qld., Tas., W.A.  
*Monocrepidius coxalis* Candeze, 1859, Mem. Soc. Sci. Liege 14: 243.  
 TYPE: ?.
- crassus** (Schwarz) Vic.  
*Monocrepidius crassus* Schwarz, 1907, Stettin ent. Ztg. 68: 72.  
 TYPE: D.E.I.
- decimus** (Macleay) non Candeze — see *Conoderus macleayanus* Schenkling.

- discoidalis** (Schwarz) Vic.  
*Monocrepidius discoidalis* Schwarz, 1903, Dtsch. ent. Z. 1903: 386.  
 TYPE: D.E.I.
- dolosus** (Schwarz) — see *Conoderus minor* (Macleay).
- elongatulus** (Macleay) Qld.  
*Monocrepidius elongatulus* Macleay, 1872, Trans. ent. Soc. N.S.W. 2: 256.  
 TYPE: Austr. Mus.
- erubescens** (Candeze) Vic.  
*Monocrepidius erubescens* Candeze, 1859, Mem. Soc. Sci. Liege 14: 231.  
 TYPE: Brit. Mus.
- eveillardi** (LeGuillou) Qld., N.S.W.  
*Monocrepidius Eveillardii* LeGuillou, 1844, Rev. Zool. 7: 221.  
*Monocrepidius Eveillardii* Candeze, 1859, Mem. Soc. Sci. Liege 14: 235.  
*Monocrepidius breviceps* Macleay, 1872, Trans. ent. Soc. N.S.W. 2: 252.  
*Monocrepidius rubicundus* Macleay, 1872, ibid.: 253.  
*Monocrepidius eveillardi* Lea, 1920, Proc. Linn. Soc. N.S.W. 45: 379.  
 TYPE: ?.  
 TYPE of *M. breviceps* Macl.: Austr. Mus.  
 TYPE of *M. rubicundus* Macl.: ?.
- fabrilis** (Erichson) S.A., Tas.  
*Monocrepidius fabrilis* Erichson, 1842, Arch. Naturgesch. 8(1): 137.  
*Monocrepidius fabrilis* Candeze, 1859, Mem. Soc. Sci. Liege 14: 241.  
 TYPE: ?.
- fictus** (Candeze) Qld.  
*Monocrepidius fictus* Candeze, 1859, Mem. Soc. Sci. Liege 14: 241.  
 TYPE: ?.
- filicornis** (Schwarz) Vic.  
*Monocrepidius filicornis* Schwarz, 1902, Dtsch. ent. Z. 1902: 359.  
 TYPE: D.E.I.
- flaveolus** (Schwarz) Vic.  
*Monocrepidius flaveolus* Schwarz, 1907, Stettin ent. Ztg. 68: 74.  
 TYPE: D.E.I.
- flavicans** (Candeze) Qld.  
*Monocrepidius flavicans* Candeze, 1878, Ann. Mus. Stor. nat. Genova 12: 116.  
 TYPE: ?.
- flavidus** (Candeze) N.S.W.  
*Monocrepidius flavidus* Candeze, 1878, Ann. Soc. ent. Belg. 21 (Compt. Rend.): 80.  
 TYPE: I.R.Sc.N.B.
- flavobasalis** (Schwarz) Vic.  
*Monocrepidius flavobasalis* Schwarz, 1907, Stettin ent. Ztg. 68: 73.  
 TYPE: D.E.I.

- fortis* (Blackburn) N-th Austr., N.T.  
*Monocrepidius fortis* Blackburn, 1889, Proc. Linn. Soc. N.S.W. (2)3: 1422.  
 TYPE: S.A. Mus.
- frontalis* (Blackburn) Vic.  
*Monocrepidius frontalis* Blackburn, 1892, Proc. Linn. Soc. N.S.W. (2)6: 510, 515.  
 TYPE: Brit. Mus. COTYPE: S.A. Mus.
- fulvipennis* (Macleay) Qld.  
*Monocrepidius fulvipennis* Macleay, 1872, Trans. ent. Soc. N.S.W. 2: 254.  
 TYPE: Austr. Mus.
- fuscicornis* (Erichson) Tas.  
*Monocrepidius fuscicornis* Erichson, 1842, Arch. Naturgesch. 8(1): 138.  
*Monocrepidius fuscicornis* Candeze, 1859, Mem. Soc. Sci. Liege 14: 168.  
 TYPE: ?.
- fuscipennis* (Schwarz) Vic.  
*Monocrepidius fuscipennis* Schwarz, 1906, Dtsch. ent. Z. 1906: 362.  
 TYPE: D.E.I.
- ignobilis* nom. nov. Vic.  
*Monocrepidius ruficollis* Schwarz, 1902, Dtsch. ent. Z. 1902: 121.  
 (Name preoccupied by Blackburn 1892.)  
 TYPE: D.E.I.
- inamoenus* (Blackburn) S.A.  
*Monocrepidius inamoenus* Blackburn, 1895, Trans. roy. Soc. S. Austr. 19: 49.  
 TYPE: Brit. Mus.
- ingens* (Blackburn) Vic.  
*Monocrepidius ingens* Blackburn, 1892, Proc. Linn. Soc. N.S.W. (2)7: 291.  
 TYPE: S.A. Mus.
- jekeli* (Candeze) Vic.  
*Monocrepidius Jekelii* Candeze, 1859, Mem. Soc. Sci. Liege 14: 244, pl. 4, fig. 14.  
 TYPE: ?.
- juvenis* (Blackburn) N-th Austr.  
*Monocrepidius juvenis* Blackburn, 1889, Proc. Linn. Soc. N.S.W. (2)3: 1420.  
 TYPE: Brit. Mus. COTYPES: S.A. Mus.
- latus* (Schwarz) Qld.  
*Monocrepidius latus* Schwarz, 1906, Dtsch. ent. Z. 1906: 357.  
 TYPE: D.E.I.
- leliti* (LeGuillou) Qld.  
*Monocrepidius Leluti* LeGuillou, 1844, Rev. Zool. 7: 220.  
*Monocrepidius cinereus* Blanchard, 1853, Voy. Pole Sud. Zool. 4: 84, pl. 6, fig. 6.  
*Monocrepidius Leluti* Candeze, 1859, Mem. Soc. Sci. Liege 14: 228.  
*Monocrepidius Leluti* Candeze, 1878, Ann. Mus. Stor. nat. Genova 12: 114.  
 TYPE: ?.  
 TYPE of *M. cinereus* Blanch.: ?.

- lenticulatus*** (Schwarz) Qld.  
*Monocrepidius lenticulatus* Schwarz, 1906, Dtsch. ent. Z. 1906: 356.  
 TYPE: D.E.I.
- macer*** (Candeze) Vic.  
*Monocrepidius macer* Candeze, 1878, Ann. Soc. ent. Belg. 21 (Compt. Rend.): 80.  
 TYPE: I.R.Sc.N.B.
- macleayanus*** Schenkling N.W. Austr.  
*Monocrepidius decimus* Macleay (non Candeze) 1888, Proc. Linn. Soc. N.S.W. (2)3: 1244.  
*Monocrepidius Macleayi* Schwarz, (non Blackburn) 1907, Gen. Ins. 46: 316.  
*Conoderus macleayanus* Schenkling, 1925, Col. Cat. 11(80): 109.  
 TYPE: ?.
- macleayi*** (Blackburn) Vic.  
*Monocrepidius macleayi* Blackburn, 1892, Proc. Linn. Soc. N.S.W. (2)6: 512, 515.  
 TYPE: Brit. Mus.
- macleayi* (Schwarz) non Blackburn — see *Conoderus macleayanus* Schenkling.
- mastersi* (Macleay) — see *Conoderus aphiloides* (Candeze).
- menevillei*** (Candeze) W.A.  
*Monocrepidius Menevillii* Candeze, 1859, Mem. Soc. Sci. Liege 14: 233.  
*Monocrepidius antennalis* Candeze, 1882, Mem. Soc. Sci. Liege (2)9: 52.  
*Monocrepidius antennalis* Kraatz, 1891, Dtsch. ent. Z. 1891: 125.  
*Monocrepidius Menevillei* Schwarz, 1906, Gen. Ins. 46: 99.  
 TYPE: ?.  
 TYPE of *M. antennalis* Cand.: ?.
- mentitor*** (Blackburn) Vic.  
*Monocrepidius mentitor* Blackburn, 1892, Proc. Linn. Soc. N.S.W. (2)7: 294.  
 TYPE: Brit. Mus. PARATYPES: S.A. Mus., Austr. Mus.
- mentitus*** Elston N.W. Austr.  
*Conoderus mentitus* Elston, 1930, Ark. Zool. 22: 13.  
 TYPE: Stockh. Mus. PARATYPE: Austr. Mus.
- minor*** (Macleay) Qld., Vic.  
*Monocrepidius minor* Macleay, 1872, Trans. ent. Soc. N.S.W. 2: 253.  
*Monocrepidius alpicola* Blackburn, 1892, Proc. Linn. Soc. N.S.W. (2)6: 511, 515.  
*Monocrepidius dolosus* Schwarz, 1903, Dtsch. ent. Z. 1903: 387.  
*Monocrepidius minor* Lea, 1920, Proc. Linn. Soc. N.S.W. 45: 379.  
 TYPE: Austr. Mus.  
 TYPE of *M. alpicola* Blkb.: Brit. Mus. PARATYPE: S.A. Mus.  
 TYPE of *M. dolosus* Schw.: D.E.I.
- minutus*** (Schwarz) Vic.  
*Monocrepidius minutus* Schwarz, 1903, Dtsch. ent. Z. 1903: 388.  
 TYPE: D.E.I.

- miser** (Candeze) W.A.  
*Monocrepidius miser* Candeze, 1859, Mem. Soc. Sci. Liege 14: 239.  
 TYPE: ?.
- mjöbergi** Elston Qld.  
*Conoderus mjöbergi* Elston, 1930, Ark. Zool. 22: 13.  
 TYPE: Stockh. Mus. PARATYPE: Austr. Mus.
- narrabrensis** (Blackburn) N.S.W.  
*Monocrepidius narrabrensis* Blackburn, 1892, Proc. Linn. Soc. N.S.W. (2)7: 293.  
 TYPE: Brit. Mus.
- nebulosus** (Macleay) Qld.  
*Monocrepidius nebulosus* Macleay, 1872, Trans. ent. Soc. N.S.W. 2: 254.  
 TYPE: Austr. Mus.
- nigricornis** (Schwarz) Vic.  
*Monocrepidius nigricornis* Schwarz, 1903, Dtsch. ent. Z. 1903: 384.  
 TYPE: D.E.I.
- nigrifrons** (Schwarz) Vic.  
*Monocrepidius nigrifrons* Schwarz, 1907, Stettin ent. Ztg. 68: 75.  
 TYPE: D.E.I.
- nigripennis** (Candeze) Vic.  
*Monocrepidius nigripennis* Candeze, 1878, Ann. Soc. ent. Belg. 21 (Compt. Rend.): 79.  
 TYPE: I.R.Sc.N.B.
- nigrolaterus** (Schwarz) Vic.  
*Monocrepidius nigrolaterus* Schwarz, 1903, Dtsch. ent. Z. 1903: 385.  
 TYPE: D.E.I.
- nitidicollis** (Schwarz) N.S.W., Vic., S.A.  
*Monocrepidius nitidicollis* Schwarz, 1903, Dtsch. ent. Z. 1903: 387.  
 TYPE: D.E.I.
- nitidulus** (Candeze) Centr. Austr., N.S.W.  
*Monocrepidius nitidulus* Candeze, 1878, Ann. Soc. ent. Belg. 21 (Compt. Rend.): 80.  
 TYPE: ?.
- nonus** (Macleay) N.W. Austr.  
*Monocrepidius nonus* Macleay, 1888, Proc. Linn. Soc. N.S.W. (2)3: 1243.  
 TYPE: ?.
- octavus** (Macleay) N.W. Austr.  
*Monocrepidius octavus* Macleay, 1888, Proc. Linn. Soc. N.S.W. (2)3: 1243.  
 TYPE: ?.
- olliffi** (Blackburn) N.S.W.  
*Monocrepidius Olliffi* Blackburn, 1892, Proc. Linn. Soc. N.S.W. (2)7: 295.  
 TYPE: Brit. Mus. PARATYPE: S.A. Mus.

- ovensensis** (Blackburn) Vic.  
*Monocrepidius ovensensis* Blackburn, 1892, Proc. Linn. Soc. N.S.W. (2)6: 514, 515.  
TYPE: Brit. Mus.
- palmerstoni** (Blackburn) N-th Austr.  
*Monocrepidius Palmerstoni* Blackburn, 1889, Proc. Linn. Soc. N.S.W. (2)3: 1421.  
TYPE: S.A. Mus.
- parvus** (Schwarz) Vic.  
*Monocrepidius parvus* Schwarz, 1903, Dtsch. ent. Z. 1903: 389.  
TYPE: D.E.I.
- pellitus** (Schwarz) N-th Qld.  
*Monocrepidius pellitus* Schwarz, 1903, Dtsch. ent. Z. 1903: 383.  
TYPE: D.E.I.
- picescens** (Schwarz) S.A.  
*Monocrepidius picescens* Schwarz, 1907, Stettin ent. Ztg. 68: 71.  
TYPE: D.E.I.
- picticollis** (Blackburn) N-th Qld.  
*Monocrepidius picticollis* Blackburn, 1892, Proc. Linn. Soc. N.S.W. (2)7: 293.  
TYPE: Brit. Mus.
- plagiatus** (Candeze) Qld.  
*Monocrepidius plagiatus* Candeze, 1882, Mem. Soc. Sci. Liege (2)9: 52.  
TYPE: I.R.Sc.N.B.
- planiusculus** (Candeze) N-th Austr.  
*Monocrepidius planiusculus* Candeze, 1878, Ann. Soc. ent. Belg. 21 (Compt. Rend.): 79.  
TYPE: I.R.Sc.N.B.
- planus** (Candeze) N.S.W.  
*Monocrepidius planus* Candeze, 1878, Ann. Soc. ent. Belg. 21 (Compt. Rend.): 79.  
TYPE: I.R.Sc.N.B.
- plasoni** (Schwarz) S.A.  
*Monocrepidius Plasoni* Schwarz, 1906, Dtsch. ent. Z. 1906: 361.  
TYPE: D.E.I.
- primus** (Macleay) N.W. Austr.  
*Monocrepidius primus* Macleay, 1888, Proc. Linn. Soc. N.S.W. (2)3: 1240.  
TYPE: ?.
- punctatostriatum** (Candeze) Vic.  
*Monocrepidius punctatostriatum* Candeze, 1859, Mem. Soc. Sci. Liege 14: 236.  
TYPE: ?.
- quartus** (Macleay) N.W. Austr.  
*Monocrepidius quartus* Macleay, 1888, Proc. Linn. Soc. N.S.W. (2)3: 1242.  
TYPE: ?.

- quintus** (Macleay) N.W. Austr.  
*Monocrepidius quintus* Macleay, 1888, Proc. Linn. Soc. N.S.W. (2)3: 1242.  
 TYPE: ?.
- rectangulus** (Candeze) Qld.  
*Monocrepidius rectangulus* Candeze, 1859, Mem. Soc. Sci. Liege 14: 233.  
 TYPE: ?.
- regularis** (Candeze) Qld.  
*Monocrepidius regularis* Candeze, 1878, Ann. Mus. Stor. nat. Genova 12: 115.  
 TYPE: ?.
- rubicundus* (Macleay) — see *Conoderus creillardii* (LeGuillou).
- ruficollis** (Blackburn)\* Vic.  
*Monocrepidius ruficollis* Blackburn, 1892, Proc. Linn. Soc. N.S.W. (2)6: 509, 515.  
 TYPE: Brit. Mus.
- ruficollis* (Schwarz) — see *Conoderus ignobilis* nom. nov.
- rufifrons** (Candeze) Qld., N.W. Austr.  
*Monocrepidius rufifrons* Candeze, 1878, Ann. Soc. ent. Belg. 21 (Compt. Rend.): 78.  
*Conoderus rufifrons* Elston, 1930, Ark. Zool. 22: 10.  
 TYPE: I.R.Sc.N.B.
- rufopilosus** (Schwarz) Vic.  
*Monocrepidius rufopilosus* Schwarz, 1902, Dtsch. ent. Z. 1902: 118.  
 TYPE: D.E.I.
- rugulipennis** (Schwarz) N.S.W.  
*Monocrepidius rugulipennis* Schwarz, 1907, Stettin ent. Ztg. 68: 76.  
 TYPE: D.E.I. — missing since 1942.
- rutilicornis** (Erichson) S.A., Tas.  
*Monocrepidius rutilicornis* Erichson, 1842, Arch. Naturgesch. 8(1): 138.  
*Monocrepidius rutilicornis* Candeze, 1859, Mem. Soc. Sci. Liege 14: 242.  
 TYPE: ?.
- scapularis** (Guerin) N.S.W.  
*Elater scapularis* Guerin, 1830, Voy. Coquille. Zool. 2(2): 69.  
*Elater scapularis* Boisduval, 1835, Voy. Astrolabe Ent. 2: 104.  
*Conoderus scapularis* Schenkling, 1925, Col. Cat. 11(80): 110.  
 TYPE: ?.
- scutellatus** (Candeze) N.S.W.  
*Monocrepidius scutellatus* Candeze, 1859, Mem. Soc. Sci. Liege 14: 240.  
 TYPE: ?.
- secundus** (Macleay) N.W. Austr.  
*Monocrepidius secundus* Macleay, 1888, Proc. Linn. Soc. N.S.W. (2)3: 1241.  
 TYPE: ?.

\* Schenkling 1925 in Col. Cat. 11 (80): 110 enters Schwarz's *Monocrepidius ruficollis* as being the same as Blackburn's, but there are no published statements known to me why these two species should be regarded as synonymous. There are differences in the colour, the shape of prothorax and carinae of the posterior angles of the prothorax. Therefore a new name is proposed here to the Schwarz's species.



- seniculus** (Candeze) Qld.  
*Monocrepidius seniculus* Candeze, 1878, Ann. Soc. ent. Belg. 21 (Compt. Rend.): 79.  
 TYPE: I.R.Sc.N.B.
- septimus** (Macleay) N.W. Austr.  
*Monocrepidius septimus* Macleay, 1888, Proc. Linn. Soc. N.S.W. (2)3: 1243.  
 TYPE: ?.
- sextus** (Macleay) N.W. Austr.  
*Monocrepidius sextus* Macleay, 1888, Proc. Linn. Soc. N.S.W. (2)3: 1242.  
 TYPE: ?.
- simulans** (Candeze) Qld., N.W. Austr.  
*Monocrepidius simulans* Candeze, 1878, Ann. Mus. Stor. nat. Genova 12: 117.  
 TYPE: ?.
- socius** (Candeze) Vic.  
*Monocrepidius socius* Candeze, 1878, Ann. Soc. ent. Belg. 21 (Compt. Rend.): 78.  
 TYPE: ?.
- sordidulus** (Schwarz) Vic.  
*Monocrepidius sordidus* Schwarz, 1902, Dtsch. ent. Z. 1902: 120.  
*Monocrepidius sordidulus* Schwarz, 1907, Gen. Ins. 46: 316.  
 TYPE: D.E.I.
- sordidus* (Schwarz) — see *Conoderus sordidulus* (Schwarz).
- spatulatus** (Candeze) N.S.W.  
*Monocrepidius spatulatus* Candeze, 1882, Mem. Soc. Sci. Liege (2)9: 53.  
 TYPE: ?.
- squalescens** (Candeze) N-th Austr.  
*Monocrepidius squalescens* Candeze, 1887, Notes Leyden Mus. 9: 286.  
 TYPE: ?.
- squalidus** (Candeze) S.A.  
*Monocrepidius squalidus* Candeze, 1878, Ann. Soc. ent. Belg. 21 (Compt. Rend.): 80.  
 TYPE: I.R.Sc.N.B.
- striatus** (Macleay) Qld.  
*Monocrepidius striatus* Macleay, 1872, Trans. ent. Soc. N.S.W. 2: 252.  
 TYPE: Austr. Mus.
- striatus* (Candeze) non Macleay — see *Conoderus strigatus* (Cand.).
- strigatus** (Candeze) Qld.  
*Monocrepidius striatus* Candeze, 1878, Ann. Soc. ent. Belg. 21 (Compt. Rend.): 79.  
*Monocrepidius strigatus* Candeze, 1891, Cat. Elat.: 74.  
 TYPE: ?.
- subflavus** (Macleay) Qld.  
*Monocrepidius subflavus* Macleay, 1872, Trans. ent. Soc. N.S.W. 2: 255.  
 TYPE: Austr. Mus.

- subgeminatus** (Macleay) Qld.  
*Monocrepidius subgeminatus* Macleay, 1872, Trans. ent. Soc. N.S.W. 2: 255.  
 TYPE: Austr. Mus.
- submaculatus** (Macleay) Qld.  
*Monocrepidius submaculatus* Macleay, 1872, Trans. ent. Soc. N.S.W. 2: 255.  
 TYPE: Austr. Mus.
- submarmoratus** (Macleay) Qld.  
*Monocrepidius submarmoratus* Macleay, 1872, Trans. ent. Soc. N.S.W. 2: 254.  
*Conoderus submarmoratus* Elston, 1930, Ark. Zool. 22: 9.  
 TYPE: Austr. Mus.
- sulcatus** (Candeze) Qld.  
*Monocrepidius sulcatus* Candeze, 1878, Ann. Soc. ent. Belg. 21 (Compt. Rend.): 78.  
 TYPE: I.R.Sc.N.B.
- sulcicollis** (Eschscholtz) Australia.  
*Monocrepidius sulcicollis* Eschscholtz, 1829, in Thon. Ent. Arch. 2(1): 31.  
*Monocrepidius sulcicollis* Candeze, 1859, Mem. Soc. Sci. Liege 14: 267.  
 TYPE: ?.
- tabidus** (Erichson) Vic., Tas.  
*Monocrepidius tabidus* Erichson, 1842, Arch. Naturgesch. 8(1): 137.  
*Ludius crocopus* Hope, 1845, Trans. ent. Soc. Lond. 4: 9 (China).  
*Monocrepidius tabidus* Candeze, 1859, Mem. Soc. Sci. Liege 14: 234.  
 TYPE: ?.
- tenuicornis** (Schwarz) Vic.  
*Monocrepidius tenuicornis* Schwarz, 1907, Stettin ent. Ztg. 68: 70.  
 TYPE: missing from D.E.I. since 1942.
- tepperi** (Blackburn) N-th Austr.  
*Monocrepidius Tepperi* Blackburn, 1889, Proc. Linn. Soc. N.S.W. (2)3: 1419.  
 TYPE: S.A. Mus.
- terrae-reginae** (Blackburn) N-th Qld.  
*Monocrepidius terrae-reginae* Blackburn, 1892, Proc. Linn. Soc. N.S.W. (2)7: 292.  
 TYPE: Brit. Mus.
- tertius** (Macleay) N.W. Austr.  
*Monocrepidius tertius* Macleay, 1888, Proc. Linn. Soc. N.S.W. (2)3: 1241.  
 TYPE: ?.
- torresi** (Candeze) Qld.  
*Monocrepidius torresi* Candeze, 1880, Ann. Mus. Stor. nat. Genova 15: 190.  
 TYPE: I.R.Sc.N.B.
- tumidus** (Candeze) N-th Austr.  
*Monocrepidius tumidus* Candeze, 1887, Notes Leyden Mus. 9: 286.  
 TYPE: ?.

- undatus** (Candeze) N-th Austr.  
*Monocrepidius undatus* Candeze, 1859, Mem. Soc. Sci. Liege 14: 229.  
 TYPE: Brit. Mus.
- variegatus** (Blackburn) N-th Austr.  
*Monocrepidius variegatus* Blackburn, 1889, Proc. Linn. Soc. N.S.W. (2)3: 1422.  
 TYPE: Co-types: S.A. Mus., Austr. Mus.
- ventralis** (Candeze) Qld.  
*Monocrepidius ventralis* Candeze, 1878, Ann. Soc. ent. Belg. 21 (Compt. Rend.): 78.  
 TYPE: ?.
- viduus** (Candeze) Tas.  
*Monocrepidius viduus* Candeze, 1859, Mem. Soc. Sci. Liege 14: 243.  
 TYPE: ?.
- vitticollis** (Schwarz) Vic.  
*Monocrepidius vitticollis* Schwarz, 1902, Dtsch. ent. Z. 1902: 117.  
 TYPE: D.E.I.
- vitticollis** var. **prosternalis** (Schwarz) N-th Qld.  
*Monocrepidius vitticollis* var. *prosternalis* Schwarz, 1902, Dtsch. ent. Z. 1902: 117.  
 TYPE: D.E.I.

Genus *Aeolus* Eschscholtz\*

- Aeolus* Eschscholtz, 1829, in Thon. Ent. Arch. 2(1): 33.  
 GENOTYPE: *Elater scriptus* Fabricius, 1801, Syst. El. 2: 244.
- australis** Candeze N.S.W., W.A.  
*Aeolus australis* Candeze, 1859, Mem. Soc. Sci. Liege 14: 284.  
 TYPE: ?.
- bimaculatus** (Carter) Qld., N.S.W.  
*Pseudaeolus bimaculatus* Carter, 1939, Proc. Linn. Soc. N.S.W. 64: 303.  
 TYPE: Austr. Mus. PARATYPE: S.A. Mus.
- cinnamomeus* Boisduval — see *Simodactylus cinnamomeus* (Boisd.)
- queenslandicus** Blackburn N-th Qld.  
*Aeolus queenslandicus* Blackburn, 1892, Proc. Linn. Soc. N.S.W. (2)7: 295.  
 TYPE: Brit. Mus.
- suillus** Candeze N.S.W.  
*Aeolus suillus* Candeze, 1878, Ann. Soc. ent. Belg. 21 (Compt. Rend.): 82.  
 TYPE: I.R.Sc.N.B.
- vagefasciatus** (Carter) N.S.W.  
*Pseudaeolus vagefasciatus* Carter, 1939, Proc. Linn. Soc. N.S.W. 64: 304.  
 TYPE: Austr. Mus.

\* Candeze (Cat. Elat. p.77, 1891) suggests that the Australian species should be placed under a subgenus *Pseudaeolus*. Carter (1939) followed Candeze's suggestion, but uses *Pseudaeolus* as a generic name. In this check list all species are included in the genus *Aeolus*, until a monographic revision of this group is undertaken to settle their correct position.

- versicolor** Candeze W.A.  
*Aeolus versicolor* Candeze, 1882, Mem. Soc. Sci. Liege (2)9: 54.  
 TYPE: ?.
- waggae** Candeze N.S.W.  
*Aeolus waggae* Candeze, 1882, Mem. Soc. Sci. Liege (2)9: 54.  
 TYPE: I.R.Sc.N.B.
- zig-zag** (Carter) N-th Qld.  
*Pseudacolus zig-zag* Carter, 1939, Proc. Linn. Soc. N.S.W. 64: 304.  
 TYPE: Austr. Mus.

Genus *Heteroderes* Latreille\*

- Heteroderes* Latreille, 1834, Ann. Soc. ent. Fr. 3: 155.  
 GENOTYPE: *Heteroderes fuscus* Latreille, 1834, ibid.
- albidus** (Macleay) Qld.  
*Monoerepidius albidus* Macleay, 1872, Trans. ent. Soc. N.S.W. 2: 255.  
*Heteroderes albidus* Candeze, 1878, Ann. Soc. ent. Belg. 21 (Compt. Rend.): 83.  
 TYPE: Austr. Mus.
- cairnensis** Blackburn N-th Qld.  
*Heteroderes cairnensis* Blackburn, 1893, Trans. roy. Soc. S. Austr. 17: 296.  
 TYPE: S.A. Mus. PARATYPE: Austr. Mus.
- carinatus** Blackburn N-th Austr.  
*Heteroderes carinatus* Blackburn, 1889, Proc. Linn. Soc. N.S.W. (2)3: 1423.  
 TYPE: S.A. Mus.

Subfamily *ELATERINAE*

*Elaterinae* C. Schaef. 1911, in Calwer, Käferb. ed. 6: 649.

Genus *Drasterius* Eschscholtz

- Drasterius* Eschscholtz, 1829, in Thon. Ent. Arch. 2(1): 33.  
 GENOTYPE: *Elater bimaculatus* Fabricius, 1801, Syst. El. 2: 245.
- australis** Candeze N.S.W.  
*Drasterius australis* Candeze, 1900, Ann. Soc. ent. Belg. 44: 87.  
 TYPE: I.R.Sc.N.B.
- opacus** Candeze N.S.W.  
*Drasterius opacus* Candeze, 1900, Ann. Soc. ent. Belg. 44: 87.  
 TYPE: I.R.Sc.N.B.
- spissus** Candeze N.S.W.  
*Drasterius spissus* Candeze, 1900, Ann. Soc. ent. Belg. 44: 87.  
 TYPE: I.R.Sc.N.B.

\* Leconte and Horn (1883) in "Coleoptera of North America" states: "The genus *Heteroderes*, adopted by Candeze, appears to be untenable and heterogeneous, our species are therefore referred to *Monoerepidius*." Schenkling's list is followed here.

Genus *Elastrus* Candeze*Elastrus* Candeze, 1859, Mem. Soc. Sci. Liege 14: 433.GENOTYPE: *Elastrus anchastinus* Candeze, ibid.: 434.*flavipes* Macleay\*

Qld.

*Elastrus flavipes* Macleay, 1872, Trans. ent. Soc. N.S.W. 2: 257.

TYPE: Austr. Mus.

Genus *Elater* Linné*Elater* Linné, 1758, Syst. Nat. ed. 10. 1: 404.GENOTYPE: *Elater ferrugineus* Linné, ibid.: 405.*asperulus* Candeze

Australia

*Elater asperulus* Candeze, 1882, Mem. Soc. Sci. Liege (2)9: 64.

TYPE: I.R.Sc.N.B.

*australis* Candeze

Australia

*Elater australis* Candeze, 1859, Mem. Soc. Sci. Liege 14: 483.

TYPE: I.R.Sc.N.B.

*basalis* Gyllenhal — see *Conoderus basalis* (Gyllenhal).*caliginosus* Boisduval — see *Lacon caliginosus* (Guerin).*cinnamomeus* Macleay

N.W. Austr.

*Elater cinnamomeus* Macleay, 1888, Proc. Linn. Soc. N.S.W. (2)3: 1245.

TYPE: ?.

*goryi* Boisduval

Australia

*Elater Goryi* Boisduval, 1835, Voy. Astrol. Ent. 2: 109.

TYPE: ?.

*granulatipennis* Lea

N.S.W., King Isl.

*Elater granulatipennis* Lea, 1908, Proc. roy. Soc. Vict. (N.S.) 20(2): 156.

TYPE: S.A. Mus.

*histris* Boisduval — see *Ophidius histris* (Boisduval).*inconspicuus* Macleay

N.W. Austr.

*Elater inconspicuus* Macleay, 1888, Proc. Linn. Soc. N.S.W. (2)3: 1245.

TYPE: ?.

*longiusculus* Macleay

N.W. Austr.

*Elater longiusculus* Macleay, 1888, Proc. Linn. Soc. N.S.W. (2)3: 1245.

TYPE: ?.

*mastersi* Macleay

Qld.

*Elater Mastersii* Macleay, 1872, Trans. ent. Soc. N.S.W. 2: 257.

TYPE: Austr. Mus.

*nigroterminatus* Macleay, W. S. — see *Anilicus nigroterminatus* (Macl. W. S.).

\* There is some doubt as to whether this species is placed in the correct genus.

- perplexus** Candeze Vic., W.A.  
*Elater perplexus* Candeze, 1859, Mem. Soc. Sci. Liege 11: 482.  
 TYPE: I.R.Sc.N.B.
- pusillus** Candeze S.A.  
*Elater pusillus* Candeze, 1878, Ann. Soc. ent. Belg. 21 (Compt. Rend.): 135.  
 TYPE: I.R.Sc.N.B.
- scapularis* Guerin — see *Conoderus scapularis* (Guerin).
- sydneyanus* Boisduval — see *Acroniopus sydneyanus* (Boisduval).
- tinctipes** Candeze N.S.W.  
*Elater tinctipes* Candeze, 1900, Ann. Soc. ent. Belg. 44: 87.  
 TYPE: I.R.Sc.N.B.
- wenthworthensis** Blackburn N.S.W.  
*Elater wenthworthensis* Blackburn, 1892, Proc. Linn. Soc. N.S.W. (2)7: 297.  
 TYPE: Brit. Mus.
- xanthomus** Macleay, W. S. Australia  
*Elater xanthomus* Macleay, W. S., 1827, King's Survey . . . 2, Appx. B: 441.  
 TYPE: ?.

Genus *Megapenthes* Kiesenwetter

- Megapenthes* Kiesenwetter, 1858, Naturg. Ins. Dtsch. 4: 353.  
 GENOTYPE: *Elater lugens* Redtenbacher, 1842, Gen. et Spec. Col. Austr.: 11.
- apicatus** Candeze W.A.  
*Megapenthes apicatus* Candeze, 1864, Mem. cour. Acad. R. Belg. 17: 31.  
 TYPE: Brit. Mus.
- automolus* Candeze — see *Neotrichophorus automolus* (Cand.).
- dolens* Candeze — see *Neotrichophorus dolens* (Cand.).
- dubiosus** Schwarz Vic.  
*Megapenthes dubiosus* Schwarz, 1907, Stettin ent. Ztg. 68: 78.  
 TYPE: D.E.I.
- futilis** Candeze N-th Austr., Qld.  
*Megapenthes futilis* Candeze, 1887, Notes Leyden Mus. 9: 287.  
 TYPE: I.R.Sc.N.B.
- lituratus** Candeze N-th Austr.  
*Megapenthes lituratus* Candeze, 1887, Notes Leyden Mus. 9: 287.  
 TYPE: ?.
- macdougalli** Blair Qld.  
*Megapenthes macdougalli* Blair, 1935, Ent. mon. Mag. 71: 102.  
 TYPE: Brit. Mus.

- misellus** Schwarz S.A.  
*Megapenthes misellus* Schwarz, 1907, Stettin ent. Ztg. 68: 79.  
 TYPE: D.E.I.—missing from collection.
- ruficollis** Schwarz Vic.  
*Megapenthes ruficollis* Schwarz, 1902, Dtsch. ent. Z. 1902: 360.  
 TYPE: D.E.I.—lost.
- rufipes** Candeze S.A.  
*Megapenthes rufipes* Candeze, 1864, Mem. cour. Acad. R. Belg. 17: 31.  
 TYPE: Brit. Mus.
- vulneratus** Schwarz S.A.  
*Megapenthes vulneratus* Schwarz, 1907, Stettin ent. Ztg. 68: 77.  
 TYPE: D.E.I.

Genus *Melanoxanthus* Eschscholtz

*Melanoxanthus* Eschscholtz, 1836, in Silberm. Rev. Ent. 4: tab.  
 GENOTYPE: *Elater malanocephalus* Fabricius, 1801, Syst. El. 2: 239.

- abdominalis** Candeze Qld.  
*Melanoxanthus abdominalis* Candeze, 1895, Mem. Soc. Sci. Liege (2)18: 39.  
 TYPE: I.R.Sc.N.B. (Terra typica—New Guinea.)
- angularis** Candeze Qld.  
*Melanoxanthus angularis* Candeze, 1878, Ann. Mus. Stor. nat. Genova 12: 129.  
*Melanoxanthus angularis* Carter, 1939, Proc. Linn. Soc. N.S.W. 64: 305.  
 TYPE: ?.
- australis** Candeze Vic.  
*Melanoxanthus australis* Candeze, 1859, Mem. Soc. Sci. Liege 14: 520.  
 TYPE: I.R.Sc.N.B.
- biarctus** Carter N-th Qld.  
*Melanoxanthus biarctus* Carter, 1939, Proc. Linn. Soc. N.S.W. 64: 305, pl. 8, fig. 4.  
 TYPE: S.A. Mus. PARATYPES: Nat. Mus.
- brunneus* Candeze (Australia not Borneo) — see *Melanoxanthus ferrugineus* Candeze.
- columbinus** Carter N-th Qld.  
*Melanoxanthus columbinus* Carter, 1939, Proc. Linn. Soc. N.S.W. 64: 306, pl. 8,  
 fig. 3.  
 TYPE: Macl. Mus. PARATYPES: S.A. Mus., Qld. Mus.
- cuneiformis** Candeze N.S.W.  
*Melanoxanthus cuneiformis* Candeze, 1882, Mem. Soc. Sci. Liege (2)9: 69.  
 TYPE: I.R.Sc.N.B.
- dilaticollis** Candeze Qld.  
*Melanoxanthus dilaticollis* Candeze, 1882, Mem. Soc. Sci. Liege (2)9: 69.  
 TYPE: I.R.Sc.N.B.

- dimidiatus** Candeze S.A.  
*Melanoxanthus dimidiatus* Candeze, 1878, Ann. Soc. ent. Belg. 21 (Compt. Rend.): 138.  
 TYPE: I.R.Sc.N.B.
- fasciolatus** (Macleay) N.W. Austr.  
*Cardiophorus fasciolatus* Macleay, 1888, Proc. Linn. Soc. N.S.W. (2)3: 1246.  
*Melanoxanthus fasciolatus* Carter, 1939, Proc. Linn. Soc. N.S.W. 64: 304, 309.  
 TYPE: ?.
- ferrugineus** Candeze Australia  
*Melanoxanthus brunneus* Candeze (Australia not Borneo), 1878, Ann. Soc. ent. Belg. 21 (Compt. Rend.): 138.  
*Melanoxanthus ferrugineus* Candeze, 1891, Cat. Elat.: 101.  
 TYPE: ?.
- flavosignatus** Carter Qld.  
*Melanoxanthus flavosignatus* Carter, 1939, Proc. Linn. Soc. N.S.W. 64: 306, pl. 8, fig. 1.  
 TYPE: Macl. Mus.
- froggatti** (Macleay) N.W. Austr.  
*Cardiophorus Froggatti* Macleay, 1888, Proc. Linn. Soc. N.S.W. (2)3: 1246.  
*Melanoxanthus froggatti* Carter, 1939, Proc. Linn. Soc. N.S.W. 64: 304, 309.  
 TYPE: ?.
- insolitus** Carter N-th Qld.  
*Melanoxanthus insolitus* Carter, 1939, Proc. Linn. Soc. N.S.W. 64: 307, pl. 8, fig. 6.  
 TYPE: Macl. Mus.
- jucundus** Carter N-th Qld.  
*Melanoxanthus jucundus* Carter, 1939, Proc. Linn. Soc. N.S.W. 64: 305, pl. 8, fig. 2.  
 TYPE: Austr. Mus.
- lativittis** Carter Qld.  
*Melanoxanthus lativittis* Carter, 1939, Proc. Linn. Soc. N.S.W. 64: 307, pl. 8, fig. 7.  
 TYPE: Macl. Mus.
- quadriguttatus* Erichson - see *Anilicus quadriguttatus* (Erichson).
- ruficollis** Candeze N-th Qld.  
*Melanoxanthus ruficollis* Candeze, 1878, Ann. Mus. Stor. nat. Genova 12: 127.  
*Melanoxanthus ruficollis* Carter, 1939, Proc. Linn. Soc. N.S.W. 64: 305.  
 TYPE: ?.
- rufoniger** Carter Qld.  
*Melanoxanthus rufoniger* Carter, 1939, Proc. Linn. Soc. N.S.W. 64: 308, pl. 8, fig. 11.  
 TYPE: S.A. Mus.
- semiruber** Carter N-th Qld.  
*Melanoxanthus semiruber* Carter, 1939, Proc. Linn. Soc. N.S.W. 64: 307, pl. 8, fig. 5.  
 TYPE: Macl. Mus.



Subfamily *PHYSORRHININAE*

*Physorrhininae* Fleutiaux, 1919, Voy. All. & Jean. Afr. or. Col. 13: 5, 71.

Genus *Anchastus* LeConte

*Anchastus* LeConte, 1853, Trans. Amer. Philos. Soc. (N.S.) 10: 459.

GENOTYPE: *Anchastus digitatus* LeConte, *ibid.*

*australis* Candeze

Vic.

*Anchastus australis* Candeze, 1878, Ann. Soc. ent. Belg. 21 (Compt. Rend.): 85.

TYPE: I.R.Sc.N.B.

Subfamily *HYPNOIDINAE*

*Hypnoidinae* Fleutiaux, 1919, Voy. All. & Jean. Afr. or. Col. 13: 5, 74.

Genus *Hypnoidus* Dillwyn

*Hypnoidus* Dillwyn, 1829, Memor. Rel. Coleopt. Ins. etc.: 32.

GENOTYPE: *Elater riparius* Fabricius, 1792, Ent. Syst. 1(2): 232.

*dimidiatus* (Macleay)

N.W. Austr.

*Cryptohypnus dimidiatus* Macleay, 1888, Proc. Linn. Soc. N.S.W. (2)3: 1245.

*Cryptohypnus semifasciatus* Macleay, 1888, *ibid.*: 1246.

*Hypnoidus dimidiatus* Schenkling, 1925, Col. Cat. 11(80): 211.

*Hypnoidus dimidiatus* Carter, 1939, Proc. Linn. Soc. N.S.W. 64: 309.

TYPE: ?.

TYPE of *C. semifasciatus* Macl.: ?.

*flavicans* (Candeze)

Vic.

*Cryptohypnus flavicans* Candeze, 1889, Ann. Soc. ent. Belg. 33: 104.

*Hypnoidus flavicans* Schenkling, 1925, Col. Cat. 11(80): 211.

TYPE: I.R.Sc.N.B.

*flavopictus* Carter

N.S.W.

*Hypnoidus flavopictus* Carter, 1939, Proc. Linn. Soc. N.S.W. 64: 309, pl. 8, fig. 9.

TYPE: Macl. Mus.

*semifasciatus* (Macleay) — see *Hypnoidus dimidiatus* (Macleay).

*variegatus* (Macleay)

Qld.

*Cryptohypnus variegatus* Macleay, 1872, Trans. ent. Soc. N.S.W. 2: 257.

*Hypnoidus variegatus* Schenkling, 1925, Col. Cat. 11(80): 211.

TYPE: Austr. Mus.

Subfamily *CARDIOPHORINAE*

*Cardiophorinae* Leng, 1910, Cat. Col. Amer.: 175.

Genus *Cardiophorus* Eschscholtz

*Cardiophorus* Eschscholtz, 1829, in Thon, Ent. Arch. 2(1): 34.

GENOTYPE: *Elater thoracicus* Fabricius, 1775, Syst. Ent.: 214.

*australis* (Candeze) — see *Paracardiophorus australis* (Cand.).

*bicolor* Candeze — see *Paracardiophorus bicolor* (Cand.).

- compactus* Candeze — see *Paracardiophorus compactus* (Cand.).  
*consobrinus* (Candeze) — see *Paracardiophorus consobrinus* (Cand.).  
*consputus* Candeze — see *Paracardiophorus consputus* (Cand.).  
*despectus* Candeze — see *Paracardiophorus despectus* (Cand.).

***elevatus*** Zwaluwenburg W.A.

*Cardiophorus elevatus* Zwaluwenburg, 1947, Proc. Hawaii ent. Soc. 13: 111, fig. 1.

TYPE: U.S.N.M.

- divisus* (Candeze) — see *Paracardiophorus divisus* (Cand.).  
*elisas* (Candeze) — see *Paracardiophorus elisas* (Cand.).  
*eucalypti* Blackburn — see *Paracardiophorus eucalypti* (Blkb.).  
*fasciolatus* Macleay — see *Melanoranthus fasciolatus* (Mael.).  
*flavipennis* Candeze — see *Paracardiophorus flavipennis* (Cand.).  
*froggatti* Macleay — see *Melanoranthus froggatti* (Mael.).  
*fulcosignatus* Candeze — see *Paracardiophorus fulcosignatus* (Cand.).  
*hamatus* Candeze — see *Paracardiophorus hamatus* (Cand.).  
*humilis* (Candeze) — see *Paracardiophorus humilis* (Cand.).  
*lenis* (Candeze) — see *Paracardiophorus lenis* (Cand.).  
*longicornis* (Candeze) — see *Paracardiophorus longicornis* (Cand.).  
*macleayi* Schwarz — see *Paracardiophorus macleayi* (Schwarz).

***malkini*** Zwaluwenburg W.A.

*Cardiophorus malkini* Zwaluwenburg, 1947, Proc. Hawaii ent. Soc. 13: 112, fig. 2.

TYPE: U.S.N.M.

- mastersi* Macleay — see *Microdesmcs mastersi* (Mael.).  
*minus* Candeze — see *Paracardiophorus minus* (Cand.).  
*octavus* Candeze — see *Paracardiophorus octavus* (Cand.).  
*pallidipennis* Candeze — see *Paracardiophorus pallidipennis* (Cand.).  
*quadrinaculatus* Macleay — see *Paracardiophorus macleayi* (Schwarz).  
*tumidicollis* Schwarz — see *Paracardiophorus tumidithorax* (Schwarz).  
*tumidithorax* Schwarz — see *Paracardiophorus tumidithorax* (Schwarz).  
*venustus* Candeze — see *Paracardiophorus venustus* (Cand.).  
*victoriensis* Blackburn — see *Paracardiophorus victoriensis* (Blkb.).

Genus ***Paracardiophorus*** Schwarz

*Paracardiophorus* Schwarz, 1895, Dtsch. ent. Z. 1895: 39.

GENOTYPE: *Cardiophorus musculus* Erichson, 1840, Zeitschr. Ent. 2: 299.

***alternatus*** Carter W.A.

*Paracardiophorus alternatus* Carter, 1939, Proc. Linn. Soc. N.S.W. 64: 312, pl. 9, fig. 10.

TYPE: Austr. Mus.

- amabilis** Carter Vic., S.A.  
*Paracardiophorus amabilis* Carter, 1939, Proc. Linn. Soc. N.S.W. 64: 312, pl. 9, fig. 6.  
 TYPE: Austr. Mus.
- antennalis** Schwarz N.S.W.  
*Paracardiophorus antennalis* Schwarz, 1907, Stettin ent. Ztg. 68: 81.  
*Paracardiophorus antennalis* Carter, 1939, Proc. Linn. Soc. N.S.W. 64: 310.  
 TYPE: D.E.I.
- assimilis** Carter Qld., N.S.W.  
*Paracardiophorus assimilis* Carter, 1939, Proc. Linn. Soc. N.S.W. 64: 313, pl. 9, fig. 3.  
 TYPE: C.S.I.R.O. PARATYPES: S.A. Mus., Coll. F.E.W.
- atronotatus** Carter N.S.W.  
*Paracardiophorus atronotatus* Carter, 1939, Proc. Linn. Soc. N.S.W. 64: 313, pl. 8, fig. 10.  
 TYPE: Nat. Mus.
- attenuatipennis** Elston Qld.  
*Paracardiophorus attenuatipennis* Elston, 1930, Ark. Zool. 22: 17.  
*Paracardiophorus attenuatus* Carter, 1939, Proc. Linn. Soc. N.S.W. 64: 310.  
 (Obvious error for *P. attenuatipennis* Elst.)  
 TYPE: Stockh. Mus. PARATYPES: Austr. Mus.
- attenuatus* Elston — see *Paracardiophorus attenuatipennis* Elst.
- australis** (Candeze) N.S.W.  
*Horistonotus australis* Candeze, 1860, Mem. Soc. Sci. Liege 15: 269.  
*Cardiophorus australis* Candeze, 1891, Cat. Elat.: 136.  
*Paracardiophorus australis* Schwarz, 1895, Dtsch. ent. Z. 1895: 40.  
*Horistonotus bicolor* Rainbow, 1904, Rec. Austr. Mus. 5(4): 247, fig. 37.  
*Paracardiophorus australis* Carter, 1939, Proc. Linn. Soc. N.S.W. 64: 310.  
 TYPE: ?.  
 TYPE of *H. bicolor* Rainb.: Austr. Mus.
- bicolor** (Candeze) N.S.W.  
*Cardiophorus bicolor* Candeze, 1878, Ann. Soc. ent. Belg. 21 (Compt. Rend.): 164.  
*Paracardiophorus bicolor* Schwarz, 1906, Gen. Ins. 46: 173.  
 TYPE: I.R.Sc.N.B.
- carissimus** Carter W.A.  
*Paracardiophorus carissimus* Carter, 1939, Proc. Linn. Soc. N.S.W. 64: 314, pl. 9, fig. 2.  
 TYPE: Austr. Mus. PARATYPES: Nat. Mus.
- compactus** (Candeze) Vic.  
*Cardiophorus compactus* Candeze, 1882, Mem. Soc. Sci. Liege (2)9: 83.  
*Paracardiophorus compactus* Schwarz, 1906, Gen. Ins. 46: 173.  
*Paracardiophorus compactus* Carter, 1939, Proc. Linn. Soc. N.S.W. 64: 310.  
 TYPE: I.R.Sc.N.B.

- consobrinus** (Candeze) N-th Qld.  
*Horistonotus consobrinus* Candeze, 1878, Ann. Mus. Stor. nat. Genova 12: 133.  
*Cardiophorus consobrinus* Candeze, 1891, Cat. Elat.: 133.  
*Paracardiophorus consobrinus* Schwarz, 1906, Gen. Ins. 46: 173.  
*Paracardiophorus consobrinus* Carter, 1939, Proc. Linn. Soc. N.S.W. 64: 310.  
 TYPE: I.R.Sc.N.B.
- consputus** (Candeze) Vic.  
*Cardiophorus consputus* Candeze, 1878, Ann. Soc. ent. Belg. 21 (Compt. Rend.): 164.  
*Paracardiophorus consputus* Schwarz, 1906, Gen. Ins. 46: 173.  
*Paracardiophorus consputus* Carter, 1939, Proc. Linn. Soc. N.S.W. 64: 311.  
 TYPE: I.R.Sc.N.B.
- cooki** Carter N-th Qld.  
*Paracardiophorus cooki* Carter, 1939, Proc. Linn. Soc. N.S.W. 64: 314, pl. 8, fig. 14.  
 TYPE: S.A. Mus.
- despectus** (Candeze) Vic.  
*Cardiophorus despectus* Candeze, 1882, Mem. Soc. Sci. Liege (2)9: 83.  
*Paracardiophorus despectus* Schwarz, 1906, Gen. Ins. 46: 173.  
*Paracardiophorus despectus* Carter, 1939, Proc. Linn. Soc. N.S.W. 64: 310.  
 TYPE: I.R.Sc.N.B.
- dimidiatus** Schwarz Vic.  
*Paracardiophorus dimidiatus* Schwarz, 1902, Dtsch. ent. Z. 1902: 124.  
*Paracardiophorus dimidiatus* Carter, 1939, Proc. Linn. Soc. N.S.W. 64: 311.  
 TYPE: D.E.I.
- dissimilis** Schwarz N.S.W., W.A.  
*Paracardiophorus dissimilis* Schwarz, 1903, Dtsch. ent. Z. 1903: 390.  
*Paracardiophorus dissimilis* Carter, 1939, Proc. Linn. Soc. N.S.W. 64: 310.  
 TYPE: D.E.I. — missing from collection.
- divisus** (Candeze) Vic.  
*Horistonotus divisus* Candeze, 1864, Mem. cour. Acad. R. Belg. 17: 45.  
*Cardiophorus (divisus)* Candeze, 1878, Ann. Soc. ent. Belg. 21 (Compt. Rend.): 164.  
*Paracardiophorus divisus* Schwarz, 1902, Dtsch. ent. Z. 1902: 125.  
 TYPE: I.R.Sc.N.B.
- dulcis** Carter Vic., S.A.  
*Paracardiophorus dulcis* Carter, 1939, Proc. Linn. Soc. N.S.W. 64: 314, pl. 9, fig. 7.  
 TYPE: Austr. Mus. PARATYPES: S.A. Mus.
- elisus** (Candeze) Vic.  
*Horistonotus elisus* Candeze, 1864, Mem. cour. Acad. R. Belg. 17: 44.  
*Cardiophorus (elisus)* Candeze, 1878, Ann. Soc. ent. Belg. 21 (Compt. Rend.): 164.  
*Paracardiophorus elisus* Schwarz, 1902, Dtsch. ent. Z. 1902: 125.  
 TYPE: I.R.Sc.N.B.

- eucalypti** (Blackburn) Vic., S.A.  
*Cardiophorus eucalypti* Blackburn, 1892, Proc. Linn. Soc. N.S.W. (2)6: 516.  
*Paracardiophorus eucalypti* Schenkling, 1925, Col. Cat. 11(80): 251.  
 TYPE: ?.
- flavipennis** (Candeze) W.A.  
*Cardiophorus flavipennis* Candeze, 1878, Ann. Soc. ent. Belg. 21 (Compt. Rend.): 165.  
*Paracardiophorus flavipennis* Schwarz, 1906, Gen. Ins. 46: 173.  
 TYPE: I.R.Sc.N.B.
- fulvosignatus** (Candeze) N.S.W.  
*Cardiophorus fulvosignatus* Candeze, 1878, Ann. Soc. ent. Belg. 21 (Compt. Rend.): 163.  
*Paracardiophorus fulvosignatus* Schwarz, 1902, Dtsch. ent. Z. 1902: 125.  
 TYPE: I.R.Sc.N.B.
- hamatus** (Candeze) N.S.W.  
*Cardiophorus hamatus* Candeze, 1878, Ann. Soc. ent. Belg. 21 (Compt. Rend.): 164.  
*Paracardiophorus hamatus* Schwarz, 1906, Gen. Ins. 46: 173.  
 TYPE: I.R.Sc.N.B.
- humilis** (Candeze) Vic., Tas.  
*Horistonotus humilis* Candeze, 1864, Mem. cour. Acad. R. Belg. 17: 45.  
*Cardiophorus (humilis)* Candeze, 1878, Ann. Soc. ent. Belg. 21 (Compt. Rend.): 164.  
*Paracardiophorus humilis* Schwarz, 1902, Dtsch. ent. Z. 1902: 125.  
*Paracardiophorus humilis* Carter, 1939, Proc. Linn. Soc. N.S.W. 64: 311.  
 TYPE: ?.
- jugulus** Elston N.W. Austr.  
*Paracardiophorus jugulus* Elston, 1930, Ark. Zool. 22: 16.  
 TYPE: Stockh. Mus. PARATYPES: Austr. Mus.
- lenis** (Candeze) Vic.  
*Horistonotus lenis* Candeze, 1864, Mem. cour. Acad. R. Belg. 17: 44.  
*Cardiophorus (lenis)* Candeze, 1878, Ann. Soc. ent. Belg. 21 (Compt. Rend.): 164.  
*Paracardiophorus lenis* Schwarz, 1902, Dtsch. ent. Z. 1902: 125.  
*Paracardiophorus lenis* Carter, 1939, Proc. Linn. Soc. N.S.W. 64: 310.  
 TYPE: ?.
- litoralis** Carter Qld., W.A., S.A., Tas.  
*Paracardiophorus litoralis* Carter, 1939, Proc. Linn. Soc. N.S.W. 64: 315, pl. 8, fig. 8.  
 TYPE: S.A. Mus. PARATYPE: Coll. F.E.W.
- longicornis** (Candeze) Qld.  
*Horistonotus longicornis* Candeze, 1878, Ann. Mus. Stor. nat. Genova 12: 133.  
*Cardiophorus (longicornis)* Candeze, 1878, Ann. Soc. ent. Belg. 21 (Compt. Rend.): 164.  
*Paracardiophorus longicornis* Schwarz, 1895, Dtsch. ent. Z. 1895: 40.  
 TYPE: I.R.Sc.N.B.

- macleayi** (Schwarz) N.W. Austr., Qld.  
*Cardiophorus quadrimaculatus* Macleay (non Motsch.), 1888, Proc. Linn. Soc. N.S.W. (2)3: 1246.  
*Cardiophorus quadrimaculatus* Schwarz, 1906, Gen. Ins. 46: 172.  
*Cardiophorus macleayi* Schwarz, 1907, Gen. Ins. 46: 315.  
*Cardiophorus macleayi* Elston, 1930, Ark. Zool. 22: 15.  
*Paracardiophorus macleayi* Carter, 1939, Proc. Linn. Soc. N.S.W. 64: 309.  
 TYPE: ?.
- minimus** (Candeze) W.A.  
*Cardiophorus minimus* Candeze, 1878, Ann. Soc. ent. Belg. 21 (Compt. Rend.): 165.  
*Paracardiophorus minimus* Schwarz, 1906, Gen. Ins. 46: 173.  
 TYPE: I.R.Sc.N.B.
- mjöbergi** Elston N.W. Austr.  
*Paracardiophorus mjöbergi* Elston, 1930, Ark. Zool. 22: 16.  
 TYPE: Stockh. Mus. PARATYPES: Austr. Mus.
- moseri** Schwarz Vic.  
*Paracardiophorus Moseri* Schwarz, 1902, Dtsch. ent. Z. 1902: 125.  
*Paracardiophorus moseri* Carter, 1939, Proc. Linn. Soc. N.S.W. 64: 310.  
 TYPE: D.E.I.
- nigrosuffusus** Carter N.S.W., Vic., S.A., (?)N.W. Austr.  
*Paracardiophorus nigrosuffusus* Carter, 1939, Proc. Linn. Soc. N.S.W. 64: 315, pl. 9, fig. 12.  
 TYPE: Austr. Mus. PARATYPES: S.A. Mus., Nat. Mus., Coll. F.E.W.
- occidentalis** Carter W.A.  
*Paracardiophorus occidentalis* Carter, 1939, Proc. Linn. Soc. N.S.W. 64: 316, pl. 9, fig. 9.  
 TYPE: S.A. Mus.
- octavus** (Candeze) W.A.  
*Cardiophorus octavus* Candeze, 1878, Ann. Soc. ent. Belg. 21 (Compt. Rend.): 164.  
*Paracardiophorus octavus* Schwarz, 1906, Gen. Ins. 46: 173.  
 TYPE: I.R.Sc.N.B.
- octosignatus** Carter S.A.  
*Paracardiophorus octosignatus* Carter, 1939, Proc. Linn. Soc. N.S.W. 64: 316, pl. 9, fig. 4.  
 TYPE: Macl. Mus. PARATYPES: S.A. Mus.
- pallidipennis** (Candeze) N.S.W.  
*Cardiophorus pallidipennis* Candeze, 1878, Ann. Soc. ent. Belg. 21 (Compt. Rend.): 164.  
*Paracardiophorus pallidipennis* Schwarz, 1906, Gen. Ins. 46: 173.  
 TYPE: I.R.Sc.N.B.

- quadrstellatus** Carter N.T.  
*Paracardiophorus quadrstellatus* Carter, 1939, Proc. Linn. Soc. N.S.W. 64: 317,  
 pl. 9, fig. 1.  
 TYPE: S.A. Mus.
- rufopictus** Carter W.A.  
*Paracardiophorus rufopictus* Carter, 1939, Proc. Linn. Soc. N.S.W. 64: 317, pl. 8,  
 fig. 12.  
 TYPE: Brit. Mus.
- sexnotatus** Carter Qld.  
*Paracardiophorus sexnotatus* Carter, 1939, Proc. Linn. Soc. N.S.W. 64: 317.  
 TYPE: Qld. Mus. PARATYPES: Nat. Mus.
- stellatus** Carter N.S.W.  
*Paracardiophorus stellatus* Carter, 1939, Proc. Linn. Soc. N.S.W. 64: 318, pl. 9,  
 fig. 5.  
 TYPE: Austr. Mus. PARATYPE: S.A. Mus.
- subcruciatus** Carter Qld.  
*Paracardiophorus subcruciatus* Carter, 1939, Proc. Linn. Soc. N.S.W. 64: 318,  
 pl. 9, fig. 8.  
 TYPE: Austr. Mus. PARATYPES: S.A. Mus.
- subfasciatus** Carter Vic.  
*Paracardiophorus subfasciatus* Carter, 1939, Proc. Linn. Soc. N.S.W. 64: 319,  
 pl. 9, fig. 13.  
 TYPE: Austr. Mus.
- tumidithorax** (Schwarz) Qld.  
*Cardiophorus tumidicollis* Schwarz, 1906, Gen. Ins. 46: 172. (nom. nud.)  
*Cardiophorus tumidithorax* Schwarz, 1907, Gen. Ins. 46: 316.  
*Cardiophorus tumidithorax* Schwarz, 1907, Stettin ent. Ztg. 68: 80.  
*Paracardiophorus tumidithorax* Carter, 1939, Proc. Linn. Soc. N.S.W. 64: 309.  
 TYPE: D.E.I. (under the name of *C. tumidicollis* Schw.)
- vagus** Schwarz N.S.W.  
*Paracardiophorus vagus* Schwarz, 1907, Stettin ent. Ztg. 68: 82.  
*Paracardiophorus vagus* Carter, 1939, Proc. Linn. Soc. N.S.W. 64: 311.  
 TYPE: D.E.I. — missing from collection.
- varians** Carter Qld., Centr. Austr.  
*Paracardiophorus varians* Carter, 1939, Proc. Linn. Soc. N.S.W. 64: 319, pl. 8,  
 fig. 13.  
 TYPE: S.A. Mus. PARATYPES: Nat. Mus., Coll. F.E.W.
- variegatus** Schwarz Vic.  
*Paracardiophorus variegatus* Schwarz, 1902, Dtsch. ent. Z. 1902: 123.  
 TYPE: D.E.I.

**venustus** (Candeze)

S. and W. Austr.

*Cardiophorus venustus* Candeze, 1860, Mem. Soc. Sci. Liege 15: 143, pl. 2, fig. 15.*Cardiophorus venustus* Schwarz, 1902, Dtsch. ent. Z. 1902: 125.*Paracardiophorus venustus* Carter, 1939, Proc. Linn. Soc. N.S.W. 64: 309.

TYPE: I.R.Sc.N.B.

**victoriensis** (Blackburn)

Vic.

*Cardiophorus victoriensis* Blackburn, 1892, Proc. Linn. Soc. N.S.W. (2)6: 516.*Paracardiophorus victoriensis* Schenkling, 1925, Col. Cat. 11(80): 252.

TYPE: ?.

**vittipennis** Carter

Vic.

*Paracardiophorus vittipennis* Carter, 1939, Proc. Linn. Soc. N.S.W. 64: 320, pl. 9, fig. 11.

TYPE: Coll. F.E.W.

**xanthomus** (Candeze)

Vic.

*Horistonotus xanthomus* Candeze, 1864, Mem. cour. Acad. R. Belg. 17: 45.*Cardiophorus (xanthomus)* Candeze, 1878, Ann. Soc. ent. Belg. 21 (Compt. Rend.): 164.*Paracardiophorus xanthomus* Schwarz, 1902, Dtsch. ent. Z. 1902: 125.

TYPE: I.R.Sc.N.B.

Genus **Cardiotarsus** Eschscholtz*Cardiotarsus* Eschscholtz, 1836, in Silberm. Rev. Ent. 4: tab.GENOTYPE: *Cardiotarsus capensis* Lacordiere, 1857, Hist. Nat. Ins. Gen. d. Col. 4: 193.**mjöbergi** Carter

Qld.

*Cardiotarsus mjöbergi* Carter, 1939, Proc. Linn. Soc. N.S.W. 64: 320.

TYPE: Austr. Mus.

Genus **Horistonotus** CandezeAll species described from Australia in this genus are transferred to the genus  
*Paracardiophorus*.*australis* Candeze — see *Paracardiophorus australis* (Cand.).*bicolor* Rainbow — see *Paracardiophorus australis* (Cand.).*consobrinus* Candeze — see *Paracardiophorus consobrinus* (Cand.).*divisus* Candeze — see *Paracardiophorus divisus* (Cand.).*elusus* Candeze — see *Paracardiophorus elusus* (Cand.).*humilis* Candeze — see *Paracardiophorus humilis* (Cand.).*lenis* Candeze — see *Paracardiophorus lenis* (Cand.).*longicornis* Candeze — see *Paracardiophorus longicornis* (Cand.).*xanthomus* Candeze — see *Paracardiophorus xanthomus* (Cand.).



Subfamily *ATHOINAE*

*Athoinae* C. Schauf., 1911, in Calwer, Käferb. ed. 6: 649, 657.

Genus *Limonius* Eschscholtz

*Limonius* Eschscholtz, 1829, in Thon Ent. Arch. 2(1): 33.

GENOTYPE: *Elater bructeri* Fabricius, 1801, Syst. Eleuth. 2: 243.

***angulatus*** Carter

Qld., N.S.W., Vic.

*Limonius angulatus* Carter, 1939, Proc. Linn. Soc. N.S.W. 64: 321.

TYPE: Austr. Mus. PARATYPES: S.A. Mus., Coll. F.E.W.

***collaris*** Candeze

N.S.W.

*Limonius collaris* Candeze, 1900, Ann. Soc. ent. Belg. 44: 18.

TYPE: I.R.Sc.N.B.

***niger*** Carter

N.S.W.

*Limonius niger* Carter, 1939, Proc. Linn. Soc. N.S.W. 64: 321.

TYPE: Austr. Mus. PARATYPE: Coll. F.E.W.

***pallidus*** Carter

Vic.

*Limonius pallidus* Carter, 1939, Proc. Linn. Soc. N.S.W. 64: 322.

TYPE: Nat. Mus.

***pubescens*** Carter

Qld., N.S.W.

*Limonius pubescens* Carter, 1939, Proc. Linn. Soc. N.S.W. 64: 321.

TYPE: Austr. Mus.

***pygmaeus*** Carter

S.A.

*Limonius pygmaeus* Carter, 1939, Proc. Linn. Soc. N.S.W. 64: 322.

TYPE: Macl. Mus.

Subfamily *CTENICERINAE* nom. nov.\*

*Corymbitinae* Schenkling, 1927, Col. Cat. 11(88): 357.

Genus *Ctenicera* Latreille

*Ctenicera* Latreille, 1829, in Cuvier Regne Anim. ed. 2, 4: 454.

*Corymbites* Latreille, 1834, Ann. Soc. ent. Fr. 3: 150.

*Ctenicera* Hyslop, 1921, Proc. U.S. nat. Mus. 58: 638.

GENOTYPE: *Elater pectinicornis* Linne, 1758, Syst. Nat. ed. 10, 1: 406.

***ambigua*** (Candeze)

Vic.

*Corymbites ambiguus* Candeze, 1882, Mem. Soc. Sci. Liege (2)9: 96.

TYPE: I.R.Sc.N.B.

***australica*** (Candeze)

Australia

*Corymbites australicus* Candeze, 1900, Ann. Soc. ent. Belg. 44: 96.

TYPE: I.R.Sc.N.B.

***compsorhabda*** (Candeze)

Qld.

*Corymbites compsorhabdus* Candeze, 1863, Mem. Soc. Sci. Liege 17: 175.

TYPE: ?.

\* The subfamily name *Corymbitinae* is replaced by *Ctenicerinae* because of the change in the generic name, and *Ctenicera* has priority to *Corymbites* (Hyslop, 1921).

- litura** (Candeze) Vic.  
*Corymbites litura* Candeze, 1882, Mem. Soc. Sci. Liege (2)9: 95.  
 TYPE: I.R.Sc.N.B.
- nigrina** (Macleay) Qld.  
*Corymbites nigrinus* Macleay, 1872, Trans. ent. Soc. N.S.W. 2: 258.  
*Corymbites nigrinus* Candeze, 1882, Mem. Soc. Sci. Liege (2)9: 96.  
 TYPE: Austr. Mus.
- nitidicollis** (Elston) Qld.  
*Poemmites nitidicollis* Elston, 1929, Trans. roy. Soc. S. Austr. 53: 347.  
 TYPE: S.A. Mus. PARATYPES: Austr. Mus.
- ramifer* (Eschscholtz) — see *Dicteniophorus ramifer* (Eschscholtz).
- rufipennis** (Macleay) Qld.  
*Corymbites rufipennis* Macleay, 1872, Trans. ent. Soc. N.S.W. 2: 258.  
*Corymbites rufipennis* Candeze, 1882, Mem. Soc. Sci. Liege (2)9: 96.  
 TYPE: Austr. Mus.
- suavis** (Candeze) Tas.  
*Corymbites suavis* Candeze, 1900, Ann. Soc. ent. Belg. 44: 96.  
 TYPE: ?.
- subpectinata** (Schwarz) N-th Qld.  
*Corymbites subpectinatus* Schwarz, 1902, Dtsch. ent. Z. 1902: 361.  
 TYPE: D.E.I.
- tasmanica** (Candeze) Tas.  
*Corymbites tasmanicus* Candeze, 1863, Mem. Soc. Sci. Liege 17: 123.  
 TYPE: ?.
- victoriae** (Schwarz) Vic.  
*Corymbites victoriae* Schwarz, 1902, Dtsch. ent. Z. 1902: 362.  
 TYPE: D.E.I.
- xanthoptera** (Candeze) Vic.  
*Corymbites xanthopterus* Candeze, 1863, Mem. Soc. Sci. Liege 17: 175.  
 TYPE: I.R.Sc.N.B.

Genus *Pristilophus* Latreille

- Pristilophus* Latreille, 1834, Ann. Soc. ent. Fr. 3: 151.  
 GENOTYPE: *Elater melancholicus* Fabricius, 1798, Ent. Syst. Suppl.: 139.
- (?)**impurus** Germar S.A.  
*Pristilophus impurus* Germar, 1848, Linn. Ent. 3: 180.  
*Pristilophus impurus* Candeze, 1891, Cat. Elat.: 175 (note).  
 TYPE: ?.

*trisulcatus* Erichson — see *Elatichrosis trisulcata* (Erichson).

Genus *Elatichrosis* Hyslop

*Chrosis* Candeze, 1863, non Guenee, 1845.

*Elatichrosis* Hyslop, 1921, Proc. U.S. nat. Mus. 58: 644.

GENOTYPE: *Chrosis exarata* Candeze, 1863, Mem. Soc. Sci. Liege 17: 186.

*angusticollis* (Blackburn) — see *Elatichrosis trisulcata* (Erichson).

*barbata* (Candeze) N.S.W.

*Chrosis barbata* Candeze, 1864, Mem. cour. Acad. R. Belg. 17: 54.

TYPE: I.R.Sc.N.B.

*exarata* (Candeze) Australia, Tas.

*Chrosis exarata* Candeze, 1863, Mem. Soc. Sci. Liege 17: 186.

TYPE: I.R.Sc.N.B.

*illita* (Candeze) Qld., Vic., S.A.

*Chrosis illita* Candeze, 1863, Mem. Soc. Sci. Liege 17: 187, pl. 2, fig. 7.

*Metablax Plasoni* Schwarz, 1903, Dtsch. ent. Z. 1903: 393.

*Elatichrosis illita* Schenkling, 1927, Col. Cat. 11(88): 406.

TYPE: Brit. Mus. PARATYPES: I.R.Sc.N.B.

TYPE of *M. plasoni* Schwarz: ?

*lansbergei* (Candeze) N.S.W.

*Chrosis Lansbergei* Candeze, 1882, Mem. Soc. Sci. Liege (2)9: 97.

TYPE: ?

*trisulcata* (Erichson) Vic., S.A., Tas.

*Pristilophus trisulcatus* Erichson, 1842, Arch. Naturgesch. 8(1): 139.

*Pristilophus trisulcatus* Germar, 1842, Zeitschr. Ent. 4: 92.

*Chrosis trisulcata* Candeze, 1863, Mem. Soc. Sci. Liege 17: 186, pl. 2, fig. 10.

*Chrosis angusticollis* Blackburn, 1900, Trans. roy. Soc. S. Austr. 24: 114.

*Elatichrosis trisulcata* Carter, 1939, Proc. Linn. Soc. N.S.W. 64: 305.

TYPE: ?

TYPE of *C. angusticollis* Blkb.: Brit. Mus.

Genus *Aphileus* Candeze

*Aphileus* Candeze, 1857, Mem. Soc. Sci. Liege 12: 184.

GENOTYPE: *Aphileus lucanoides* Candeze, *ibid.*

*depressus* Candeze Qld.

*Aphileus depressus* Candeze, 1857, Mem. Soc. Sci. Liege 12: 185.

*Aphileus lucanoides* var. *depressus* Elston, 1930, Ark. Zool. 22: 18.

TYPE: ?

*ferox* Blackburn N-th Qld.

*Aphileus ferox* Blackburn, 1895, Trans. roy. Soc. S. Austr. 19: 50.

TYPE: Brit. Mus.

*lucanoides* Candeze Qld., N.S.W.

*Aphileus lucanoides* Candeze, 1857, Mem. Soc. Sci. Liege 12: 184, pl. 3, fig. 5.

*Dorcastoma Jansoni* Newman, 1857, Trans. ent. Soc. Lond. (N.S.) 4: 52.

*Aphileus lucanoides* Gemminger & Harold, 1869, Cat. Col. 5: 1496.

TYPE: I.R.Sc.N.B.

Genus *Chrostus* Candeze

*Chrostus* Candeze, 1878, Ann. Soc. ent. Belg. 21 (Compt. Rend.): 169.

GENOTYPE: *Chrostus quadrifoveolatus* Candeze, *ibid.*: 170.

*quadrifoveolatus* Candeze

S.A.

*Chrostus quadrifoveolatus* Candeze, 1878, Ann. Soc. ent. Belg. 21 (Compt. Rend.): 170.

TYPE: ?.

Genus *Hapatesus* Candeze\*

*Hapatesus* Candeze, 1863, Mem. Soc. Sci. Liege 17: 188.

GENOTYPE: *Hapatesus hirtus* Candeze, *ibid.*

*dubius* Schwarz

Vic.

*Hapatesus dubius* Schwarz, 1902, Dtsch. ent. Z. 1902: 126.

TYPE: D.E.I.

*hirtus* Candeze

N.S.W., Vic., S.A.

*Hapatesus hirtus* Candeze, 1863, Mem. Soc. Sci. Liege 17: 188, pl 2, fig. 8.

TYPE: I.R.Sc.N.B.

*hirtus* var. *minor* Elston

Qld.

*Hapatesus hirtus* var. *minor* Elston, 1930, Ark. Zool. 22: 19.

TYPE: Stockh. Mus.

*hirtus* Lea nec Candeze - see *Hapatesus leai* Schenkling.

*jugulatus* Candeze

Qld., N.S.W.

*Hapatesus jugulatus* Candeze, 1900, Ann. Soc. ent. Belg. 44: 97.

*Hapatesus jugulatus* Elston, 1930, Ark. Zool. 22: 18.

TYPE: I.R.Sc.N.B.

*leai* Schenkling\*\*

King Isl.

*Hapatesus hirtus* Lea, 1908, Proc. roy. Soc. Vic. (N.S.) 20: 157.

*Hapatesus leai* Schenkling, 1927, Col. Cat. 11(88): 408.

TYPE: — not selected by Lea.

*minutus* Schwarz

Vic.

*Hapatesus minutus* Schwarz, 1903, Dtsch. ent. Z. 1903: 335.

TYPE: D.E.I.

*pretiosus* Candeze

N-th Austr.

*Hapatesus pretiosus* Candeze, 1887, Notes Leyden Mus. 9: 285.

*Hapatesus pretiosus* Elston, 1930, Ark. Zool. 22: 18.

TYPE: I.R.Sc.N.B.

\* Revision of this genus is being undertaken by the author and will be published shortly.

\*\**Hapatesus hirtus* Lea (1908) from King Island is not the same as *Hapatesus hirtus* var. *minor* Elston from Queensland, as Elston stated (1930), but they are two distinct species. Their new taxonomic position will be published in the above-mentioned revision.

Subfamily *CREPIDOMENINAE**Crepidomeninae* Schenkling, 1927, Col. Cat. 11(88): 409.Genus *Crepidomenus* Erichson*Crepidomenus* Erichson, 1842, Arch. Naturgesch. 8(1): 140.GENOTYPE: *Crepidomenus fulgidus* Erichson, *ibid.*

- aberrans*** Lea King Isl., Tas.  
*Crepidomenus aberrans* Lea, 1908, Proc. roy. Soc. Vic. (N.S.) 20: 158.  
 TYPE: S.A. Mus. PARATYPE: Nat. Mus., Macl. Mus.
- adelaidae*** Candeze S.A.  
*Crepidomenus adelaidae* Candeze, 1863, Mem. Soc. Sci. Liege 17: 199.  
 TYPE: I.R.Sc.N.B.
- aeneolus*** Candeze Vic.  
*Crepidomenus aeneolus* Candeze, 1895, Mem. Soc. Sci. Liege (2)18: 51.  
 TYPE: I.R.Sc.N.B.
- aenescens*** Schwarz Vic.  
*Crepidomenus aenescens* Schwarz, 1907, Stettin ent. Ztg. 68: 83.  
 TYPE: D.E.I.
- aeneus*** Candeze Australia  
*Crepidomenus aeneus* Candeze, 1878, Ann. Soc. ent. Belg. 21 (Compt. Rend.): 170.  
 TYPE: I.R.Sc.N.B.
- australis*** (Boisduval) Australia  
*Ludius australis* Boisduval, 1835, Voy. Astrol. Ent. 2: 108.  
*Crepidomenus australis* Candeze, 1863, Mem. Soc. Sci. Liege 17: 196.  
 TYPE: ?.
- cervus*** Carter Qld.  
*Crepidomenus cervus* Carter, 1939, Proc. Linn. Soc. N.S.W. 64: 324.  
 TYPE: Austr. Mus.
- cordifer*** Candeze Vic.  
*Crepidomenus cordifer* Candeze, 1878, Ann. Soc. ent. Belg. 21 (Compt. Rend.): 171.  
 TYPE: I.R.Sc.N.B.
- cyanescens*** Candeze N.S.W.  
*Crepidomenus cyanescens* Candeze, 1897, Mem. Soc. Sci. Liege (2)19: 68.  
*Crepidomenus cyanescens* Carter, 1939, Proc. Linn. Soc. N.S.W. 64: 326.  
 TYPE: I.R.Sc.N.B.
- decoratus*** Erichson Vic., Tas.  
*Crepidomenus decoratus* Erichson, 1842, Arch. Naturgesch. 8(1): 141.  
*Crepidomenus decoratus* Germar, 1842, Zeitschr. Ent. 4: 45.  
*Crepidomenus decoratus* Candeze, 1863, Mem. Soc. Sci. Liege 17: 193.  
 TYPE: ?.

- divaricatus** Carter Qld.  
*Crepidomenus divaricatus* Carter, 1939, Proc. Linn. Soc. N.S.W. **64**: 325.  
 TYPE: Austr. Mus.
- filiformis* Candeze — see *Paracrepidomenus filiformis* (Cand.).
- fulgidus** Erichson Vic., Tas.  
*Crepidomenus fulgidus* Erichson, 1842, Arch. Naturgesch. **8**(1): 140.  
*Crepidomenus fulgidus* Germar, 1842, Zeitschr. Ent. **4**: 45.  
*Crepidomenus fulgidus* Candeze, 1863, Mem. Soc. Sci. Liege **17**: 192, pl. 2, fig. 13.  
 TYPE: ?.
- georgei** Candeze Australia  
*Crepidomenus Georgei* Candeze, 1878, Ann. Soc. ent. Belg. **21** (Compt. Rend.): 170.  
 TYPE: I.R.Sc.N.B.
- hirsutulus** Schwarz S.A.  
*Crepidomenus hirsutulus* Schwarz, 1903, Dtsch. ent. Z. **1903**: 392.  
 TYPE: D.E.I.
- hirtus** Candeze S.A.  
*Crepidomenus hirtus* Candeze, 1863, Mem. Soc. Sci. Liege **17**: 195.  
 TYPE: I.R.Sc.N.B.
- illinitus** Schwarz N.S.W.  
*Crepidomenus illinitus* Schwarz, 1902, Stettin ent. Ztg. **63**: 293.  
 TYPE: D.E.I. PARATYPE: I.R.Sc.N.B.
- lansbergei** Candeze N.S.W.  
*Crepidomenus Lansbergei* Candeze, 1889, Ann. Soc. ent. Belg. **33**: 117.  
 TYPE: I.R.Sc.N.B.
- luteipes** Boheman N.S.W.  
*Crepidomenus luteipes* Boheman, 1858, Eugenes resa. . . **2**: 70.  
*Crepidomenus luteipes* Candeze, 1863, Mem. Soc. Sci. Liege **17**: 195.  
*Crepidomenus luteipes* Carter, 1939, Proc. Linn. Soc. N.S.W. **64**: 326.  
 TYPE: ?.
- marginalis** Schwarz Vic.  
*Crepidomenus marginalis* Schwarz, 1907, Stettin ent. Ztg. **68**: 83.  
 TYPE: D.E.I.
- metallescens** Candeze Australia  
*Crepidomenus metallescens* Candeze, 1863, Mem. Soc. Sci. Liege **17**: 197.  
 TYPE: ?.
- metallicus** Schwarz Vic.  
*Crepidomenus metallicus* Schwarz, 1906, Dtsch. ent. Z. **1906**: 364.  
 TYPE: D.E.I. — missing from collection.
- minus** Candeze S.A.  
*Crepidomenus minus* Candeze, 1878, Ann. Soc. ent. Belg. **21** (Compt. Rend.): 171.  
 TYPE: I.R.Sc.N.B.

- montanus** Carter N.S.W., Vic.  
*Crepidomenus montanus* Carter, 1939, Proc. Linn. Soc. N.S.W. 64: 325.  
TYPE: Austr. Mus. PARATYPE: Coll. F.E.W.
- navicularis** Carter N.S.W.  
*Crepidomenus navicularis* Carter, 1939, Proc. Linn. Soc. N.S.W. 64: 326.  
TYPE: Austr. Mus.
- nigrifrons** Schwarz S.A.  
*Crepidomenus nigrifrons* Schwarz, 1907, Stettin ent. Ztg. 68: 85.  
TYPE: D.E.I. — missing from collection.
- ovalis** Candeze N-th Austr.  
*Crepidomenus ovalis* Candeze, 1887, Notes Leyden Mus. 9: 288.  
TYPE: I.R.Sc.N.B.
- pulsi** Candeze N.S.W.  
*Crepidomenus pulsi* Candeze, 1878, Ann. Soc. ent. Belg. 21 (Compt. Rend.): 170.  
TYPE: I.R.Sc.N.B.
- quadraticollis** Schwarz S.A.  
*Crepidomenus quadraticollis* Schwarz, 1903, Dtsch. ent. Z. 1903: 392.  
TYPE: D.E.I.
- queenslandicus** Blair Qld.  
*Crepidomenus queenslandicus* Blair, 1935, Ent. mon. Mag. 71: 102.  
TYPE: Brit. Mus.
- rotundicollis** Candeze Australia  
*Crepidomenus rotundicollis* Candeze, 1878, Ann. Soc. ent. Belg. 21 (Compt. Rend.): 171.  
TYPE: I.R.Sc.N.B.
- rufipes** Schwarz S.A.  
*Crepidomenus rufipes* Schwarz, 1903, Dtsch. ent. Z. 1903: 391.  
TYPE: D.E.I.
- seniculus** Candeze N.S.W.  
*Crepidomenus seniculus* Candeze, 1863, Mem. Soc. Sci. Liege 17: 198.  
TYPE: ?.
- specularis** Candeze Tas.  
*Crepidomenus specularis* Candeze, 1889, Ann. Soc. ent. Belg. 33: 118.  
TYPE: I.R.Sc.N.B.
- subopacus** Candeze Australia  
*Crepidomenus subopacus* Candeze, 1878, Ann. Soc. ent. Belg. 21 (Compt. Rend.): 171.  
TYPE: I.R.Sc.N.B.
- sulcatus** Candeze Australia  
*Crepidomenus sulcatus* Candeze, 1878, Ann. Soc. ent. Belg. 21 (Compt. Rend.): 171.  
TYPE: I.R.Sc.N.B.

- sulcicollis*** Candeze S.A.  
*Crepidomenus sulcicollis* Candeze, 1897, Mem. Soc. Sci. Liege (2)19: 67.  
 TYPE: I.R.Sc.N.B.
- taeniatus*** Erichson Vic., Tas.  
*Crepidomenus taeniatus* Erichson, 1812, Arch. Naturgesch. 8(1): 141.  
*Crepidomenus taeniatus* Germar, 1812, Zeitschr. Ent. 4: 45.  
*Crepidomenus taeniatus* Candeze, 1863, Mem. Soc. Sci. Liege 17: 194.  
 TYPE: ?.
- testaceus*** Candeze Australia  
*Crepidomenus testaceus* Candeze, 1863, Mem. Soc. Sci. Liege 17: 198.  
 TYPE: ?.
- victoriae*** Candeze Vic.  
*Crepidomenus victoriae* Candeze, 1863, Mem. Soc. Sci. Liege 17: 197.  
 TYPE: I.R.Sc.N.B.
- ritticollis*** Schwarz N.S.W.  
*Crepidomenus ritticollis* Schwarz, 1902, Dtsch. ent. Z. 1901: 329.  
 TYPE: D.E.I.
- vulneratus*** Candeze S.A.  
*Crepidomenus vulneratus* Candeze, 1897, Mem. Soc. Sci. Liege (2)19: 68.  
 TYPE: I.R.Sc.N.B.

Genus *Paracrepidomenus* Schwarz

- Paracrepidomenus* Schwarz, 1906, Dtsch. ent. Z. 1906: 364.  
 GENOTYPE: *Paracrepidomenus fasciculatus* Schwarz, *ibid.*: 365.
- fasciculatus*** Schwarz N.S.W., Vic.  
*Paracrepidomenus fasciculatus* Schwarz, 1906, Dtsch. ent. Z. 1906: 365.  
 TYPE: D.E.I.
- filiformis*** (Candeze) Vic.  
*Crepidomenus filiformis* Candeze, 1863, Mem. Soc. Sci. Liege 17: 199, pl. 2, fig. 14.  
*Paracrepidomenus filiformis* Schwarz, 1906, Dtsch. ent. Z. 1906: 365.  
*Paracrepidomenus filiformis* Blackburn, 1912, Trans. roy. Soc. S. Austr. 36: 74.  
 TYPE: I.R.Sc.N.B.
- linearis*** (Schwarz) Australia  
*Metablax linearis* Schwarz, 1903, Dtsch. ent. Z. 1903: 395.  
*Paracrepidomenus linearis* Schwarz, 1906, Dtsch. ent. Z. 1906: 365.  
 TYPE: D.E.I.

Genus *Parablax* Schwarz

- Parablax* Schwarz, 1906, Dtsch. ent. Z. 1906: 368.  
 GENOTYPE: *Metablax trisulcatus* Schwarz, 1903, Dtsch. ent. Z. 1903: 394.
- bicolor*** (Blackburn) Vic.  
*Parasaphes bicolor* Blackburn, 1900, Trans. roy. Soc. S. Austr. 24: 115.  
*Parablax bicolor* Blackburn, 1911, Trans. roy. Soc. S. Austr. 35: 201.  
 TYPE: Brit. Mus. PARATYPES: S.A. Mus.



- quinquesulcatus** (Blackburn) Vic.  
*Parasaphes quinquesulcatus* Blackburn, 1900, Trans. roy. Soc. S. Austr. 24: 114.  
*Parablax quinquesulcatus* Blackburn, 1911, Trans. roy. Soc. S. Austr. 35: 201.

TYPE: Brit. Mus.

- trisulcatus** (Schwarz) S.A.  
*Metablax trisulcatus* Schwarz, 1903, Dtsch. ent. Z. 1903: 394.  
*Parablax trisulcatus* Schwarz, 1906, Dtsch. ent. Z. 1906: 368.

TYPE: D.E.I.

Genus *Ophidius* Candeze

*Ophidius* Candeze, 1863, Mem. Soc. Sci. Liege 17: 203.

GENOTYPE: *Ophidius elegans* Candeze, ibid.: 204.

*brevicornis* Macleay — see *Paranilicus brevicornis* (Macl.).

- dracunculus** Candeze N-th Austr., N.S.W.  
*Ophidius dracunculus* Candeze, 1863, Mem. Soc. Sci. Liege 17: 205, pl. 2, fig. 12.

TYPE: I.R.Sc.N.B.

- elegans** Candeze N.S.W., Vic.  
*Ophidius elegans* Candeze, 1863, Mem. Soc. Sci. Liege 17: 204.  
*Ophidius elegans* Candeze, 1895, Mem. Soc. Sci. Liege (2)18: 51.

TYPE: I.R.Sc.N.B.

- histris** (Boisduval) N-th Austr., Qld., N.S.W.  
*Elater histris* Boisduval, 1835, Voy. Astrol. Ent. 2: 105.  
*Ophidius histris* Candeze, 1863, Mem. Soc. Sci. Liege 17: 204, pl. 2, fig. 11.

TYPE: Brit. Mus.

- macleayi** Candeze Vic.  
*Ophidius Mac Leay* Candeze, 1895, Mem. Soc. Sci. Liege (2)18: 51.

TYPE: I.R.Sc.N.B.

- serricornis** Candeze N.S.W.  
*Ophidius serricornis* Candeze, 1878, Ann. Soc. ent. Belg. 21 (Compt. Rend.): 171.

TYPE: I.R.Sc.N.B.

Subfamily *HEMICREPIDIINAE*

*Hemicrepidiinae* Schenkling, 1927, Col. Cat. 11(88): 413.

Genus *Asaphoides* Schwarz

*Asaphoides* Schwarz, 1906, Dtsch. ent. Z. 1906: 366.

GENOTYPE: *Asaphoides nigripennis* Schwarz, ibid.

- ater** Schwarz N.S.W.  
*Asaphoides ater* Schwarz, 1906, Dtsch. ent. Z. 1906: 367.

TYPE: D.E.I.

- nigripennis** Schwarz N.S.W.  
*Asaphoides nigripennis* Schwarz, 1906, Dtsch. ent. Z. 1906: 366.

TYPE: D.E.I.

Genus *Parasaphes* Candeze*Parasaphes* Candeze, 1882, Mem. Soc. Sci. Liege (2)9: 101.GENOTYPE: *Parasaphes elegans* Candeze, *ibid.**bicolor* Blackburn — see *Parablar bicolor* (Blkb.).*elegans* Candeze Qld.*Parasaphes elegans* Candeze, 1882, Mem. Soc. Sci. Liege (2)9: 101.

TYPE: I.R.Sc.N.B.

*quinquesulcatus* Blackburn — see *Parablar quinquesulcatus* (Blkb.).Subfamily *DIMINAE**Diminae* Schenkling, 1927, Col. Cat. 11(88): 419.Genus *Diadysis* Candeze*Diadysis* Candeze, 1882, Mem. Soc. Sci. Liege (2)9: 98.GENOTYPE: *Diadysis morsii* Candeze, *ibid.*: 99.*morsii* Candeze N-th Austr.*Diadysis morsii* Candeze, 1882, Mem. Soc. Sci. Liege (2)9: 99.

TYPE: I.R.Sc.N.B.

Genus *Microdesmes* Candeze*Microdesmes* Candeze, 1882, Mem. Soc. Sci. Liege (2)9: 99.GENOTYPE: *Cardiophorus mastersii* Macleay, 1872, Trans. ent. Soc. N.S.W. 2: 258.*mastersii* (Macleay) Qld.*Cardiophorus Mastersii* Macleay, 1872, Trans. ent. Soc. N.S.W. 2: 258.*Microdesmes Mastersii* Candeze, 1882, Mem. Soc. Sci. Liege (2)9: 99.

TYPE: Austr. Mus.

Genus *Arachnodima* Candeze*Arachnodima* Candeze, 1895, Mem. Soc. Sci. Liege (2)18: 54.GENOTYPE: *Arachnodima opaca* Candeze, *ibid.*: 55.*opaca* Candeze Australia*Arachnodima opaca* Candeze, 1895, Mem. Soc. Sci. Liege (2)18: 55.

TYPE: I.R.Sc.N.B.

Subfamily *LUDIINAE**Ludiinae* Fleutiaux, 1919, Voy. All. & Jean. Afr. or. Col. 13: 99.Genus *Ludius* Berthold*Ludius* Berthold, 1827, Natürl. Fam. Tierreichs: 336.GENOTYPE: *Elater ferrugineus* Linné, 1758, Syst. Nat. ed. 10, 1: 405.*atripennis* Macleay Qld.*Ludius atripennis* Macleay, 1872, Trans. ent. Soc. N.S.W. 2: 259.

TYPE: Austr. Mus.

*australis* Boisduval — see *Crepidomenus australis* (Boisd.).

**exutus** Candeze Vic.

*Ludius exutus* Candeze, 1863, Mem. Soc. Sci. Liege 17: 304.

TYPE: Brit. Mus.

*hunteri* Boisduval — see *Dicteniophorus ramifer* (Eschsch.).

**hydropicus** Candeze Qld.

*Ludius hydropicus* Candeze, 1882, Mem. Soc. Sci. Liege (2)9: 104.

TYPE: I.R.Sc.N.B.

**lineatus** Candeze Qld.

*Ludius lineatus* Candeze, 1863, Mem. Soc. Sci. Liege 17: 304.

TYPE: Brit. Mus.

*ramifer* Eschscholtz — see *Dicteniophorus ramifer* (Eschsch.).

Genus *Neotrichophorus* Jacobson

*Neotrichophorus* Jacobson, 1913, Käfer Russel. . . 10: 742.

GENOTYPE: *Trichophorus guillebelli* Muls. & Godart, 1853, Opusc. Ent. 2: 181.

**automolus** (Candeze) N.S.W., Vic., S.A., W.A.

*Megapenthes automolus* Candeze, 1859, Mem. Soc. Sci. Liege 14: 495.

*Trichophorus automolus* Schwarz, 1907, Gen. Ins. 46: 260.

*Neotrichophorus automolus* Schenkling, 1927, Col. Cat. 11(88): 433.

TYPE: Brit. Mus. PARATYPES: I.R.Sc.N.B.

**dolens** (Candeze) S.A., W.A.

*Megapenthes dolens* Candeze, 1859, Mem. Soc. Sci. Liege 14: 495.

*Trichophorus dolens* Schwarz, 1907, Gen. Ins. 46: 260.

*Neotrichophorus dolens* Schenkling, 1927, Col. Cat. 11(88): 433.

TYPE: Brit. Mus.

Genus *Anilicoides* Candeze

*Anilicoides* Candeze, 1895, Mem. Soc. Sci. Liege (2)18: 52.

GENOTYPE: *Anilicoides depressus* Candeze, *ibid.*

**depressus** Candeze Qld.

*Anilicoides depressus* Candeze, 1895, Mem. Soc. Sci. Liege (2)18: 52.

TYPE: I.R.Sc.N.B.

Genus *Anilicus* Candeze

*Anilicus* Candeze, 1863, Mem. Soc. Sci. Liege 17: 328.

GENOTYPE: *Anilicus attenuatus* Candeze, *ibid.*: 330.

**attenuatus** Candeze Vic.

*Anilicus attenuatus* Candeze, 1863, Mem. Soc. Sci. Liege 17: 330, pl. 4, fig. 14.

TYPE: I.R.Sc.N.B.

- flavipennis** Candeze Qld., Vic.  
*Anilicus flavipennis* Candeze, 1878, Ann. Soc. ent. Belg. 21 (Compt. Rend.): 192.  
 TYPE: I.R.Sc.N.B.
- haemorrhoidalis** Candeze Australia  
*Anilicus haemorrhoidalis* Candeze, 1889, Ann. Soc. ent. Belg. 33: 120.  
 TYPE: I.R.Sc.N.B.
- loricatus** Candeze W.A.  
*Anilicus loricatus* Candeze, 1863, Mem. Soc. Sci. Liege 17: 331.  
 TYPE: Brit. Mus.
- nigroterminatus** (Macleay, W. S.) Australia  
*Elater nigroterminatus* Macleay, W. S., 1827, King's Survey . . . 2: Appx. B: 441.  
*Anilicus nigroterminatus* Candeze, 1891, Cat. Elat.: 192.  
 TYPE: Macl. Mus.
- quadriguttatus** (Erichson) Tas.  
*Melanoranthus quadriguttatus* Erichson, 1842, Arch. Naturgesch. 8(1): 139.  
*Anilicus quadriguttatus* Candeze, 1863, Mem. Soc. Sci. Liege 17: 332.  
 TYPE: ?.
- semiflavus** (Germar) Qld.  
*Ampedus semiflavus* Germar, 1844, Zeitschr. Ent. 5: 163.  
*Anilicus semiflavus* Candeze, 1863, Mem. Soc. Sci. Liege 17: 329.  
 TYPE: ?.

Genus *Paranilicus* Candeze

- Paranilicus* Candeze, 1878, Ann. Soc. ent. Belg. 21 (Compt. Rend.): 191.  
 GENOTYPE: *Paranilicus macleayi* Candeze, *ibid.*: 192.
- brevicornis** (Macleay) Qld.  
*Ophidius brevicornis* Macleay, 1872, Trans. ent. Soc. N.S.W. 2: 259.  
*Paranilicus brevicornis* Candeze, 1878, Ann. Soc. ent. Belg. 21 (Compt. Rend.): 192.  
*Paranilicus brevicornis* Schwarz, 1907, Gen. Ins. 46: 265, pl. 6, fig. 7.  
 TYPE: Austr. Mus.
- macleayi** Candeze Vic.  
*Paranilicus Mac Leayi* Candeze, 1878, Ann. Soc. ent. Belg. 21 (Compt. Rend.): 192.  
 TYPE: I.R.Sc.N.B.

Genus *Agriotes* Eschscholtz

- Agriotes* Eschscholtz, 1829, in Thon, Ent. Arch. 2(1): 34.  
 GENOTYPE: *Elater sputator* Linné, 1758, Syst. Nat. ed. 10. 1: 405.
- quadripunctatus** Blanchard N.W. Austr.  
*Agriotes quadripunctatus* Blanchard, 1853, Voy. Pole Sud. Zool. 4: 91, pl. 6, fig. 13.  
*Agriotes quadripunctatus* Candeze, 1863, Mem. Soc. Sci. Liege 17: 407.  
 TYPE: ?.

Genus *Agonischius* Candeze

*Agonischius* Candeze, 1863, Mem. Soc. Sci. Liege 17: 407.

GENOTYPE: *Agonischius pectoralis* Candeze, ibid.: 411.

***apicalis*** (Macleay)

Qld.

*Dicteniophorus apicalis* Macleay, 1872, Trans. ent. Soc. N.S.W. 2: 261.

*Agonischius apicalis* Candeze, 1878, Ann. Soc. ent. Belg. 21 (Compt. Rend.): 196.

TYPE: Austr. Mus.

***apicatus*** Schwarz

N-th Qld.

*Agonischius apicatus* Schwarz, 1902, Dtsch. ent. Z. 1902: 263.

TYPE: D.E.I.

***aulacoderus*** Elston

Qld.

*Agonischius aulacoderus* Elston, 1929, Trans. roy. Soc. S. Austr. 53: 348.

TYPE: Austr. Mus.

***australis*** Candeze

Qld.

*Agonischius australis* Candeze, 1878, Ann. Soc. ent. Belg. 21 (Compt. Rend.): 196.

TYPE: I.R.Sc.N.B.

***basilaris*** Candeze

N.S.W.

*Agonischius basilaris* Candeze, 1900, Ann. Soc. ent. Belg. 44: 98.

TYPE: I.R.Sc.N.B.

***brevis*** Candeze

N-th Austr.

*Agonischius brevis* Candeze, 1887, Notes Leyden Mus. 9: 289.

TYPE: I.R.Sc.N.B.

***laticornis*** Elston

Qld.

*Agonischius laticornis* Elston, 1930, Ark. Zool. 22: 21.

TYPE: Stockh. Mus. PARATYPES: Austr. Mus.

***lineatus*** Candeze

W.A.

*Agonischius lineatus* Candeze, 1878, Ann. Soc. ent. Belg. 21: 196.

TYPE: I.R.Sc.N.B.

***longicornis*** Candeze

Qld.

*Agonischius longicornis* Candeze, 1882, Mem. Soc. Sci. Liege (2)9: 105.

TYPE: I.R.Sc.N.B.

***mjöbergi*** Elston

Qld.

*Agonischius mjöbergi* Elston, 1930, Ark. Zool. 22: 20.

TYPE: Stockh. Mus. PARATYPE: Austr. Mus.

***semiflavus*** Candeze

N-th Austr.

*Agonischius semiflavus* Candeze, 1887, Notes Leyden Mus. 9: 288.

TYPE: I.R.Sc.N.B.

***ventosus*** Candeze

Qld.

*Agonischius ventosus* Candeze, 1889, Ann. Soc. ent. Belg. 33: 122.

TYPE: I.R.Sc.N.B.

**vittatus** (Macleay)

Qld.

*Dicteniophorus vittatus* Macleay, 1872, Trans. ent. Soc. N.S.W. 2: 261.*Agonischius vittatus* Candeze, 1878, Ann. Soc. ent. Belg. 21 (Compt. Rend.): 196.

TYPE: Austr. Mus.

Genus **Doloporus** Candeze*Doloporus* Candeze, 1887, Notes Leyden Mus. 9: 289.GENOTYPE: *Doloporus aterrimus* Candeze, ibid.: 290.**aterrimus** Candeze

N-th Austr.

*Doloporus aterrimus* Candeze, 1887, Notes Leyden Mus. 9: 290.

TYPE: I.R.Sc.N.B.

**thoracicus** Candeze

N-th Austr.

*Doloporus thoracicus* Candeze, 1887, Notes Leyden Mus. 9: 290.

TYPE: ?.

Genus **Ascesis** Candeze*Ascesis* Candeze, 1863, Mem. Soc. Sci. Liege 17: 440.GENOTYPE: *Ascesis australis* Candeze, ibid.: 441.**australis** Candeze

N.S.W.

*Ascesis australis* Candeze, 1863, Mem. Soc. Sci. Liege 17: 441, pl. 5, fig. 12.

TYPE: I.R.Sc.N.B.

**campyloides** Candeze

N.S.W.

*Ascesis campyloides* Candeze, 1897, Mem. Soc. Sci. Liege (2)19: 77.

TYPE: I.R.Sc.N.B.

**mastersi** Macleay

Qld.

*Ascesis Mastersii* Macleay, 1872, Trans. ent. Soc. N.S.W. 2: 260.

TYPE: Austr. Mus.

**testaceus** Elston

N.W. Austr.

*Ascesis testaceus* Elston, 1930, Ark. Zool. 22: 21.

TYPE: Stockh. Mus. PARATYPES: Austr. Mus.

Genus **Dicteniophorus** Candeze*Dicteniophorus* Candeze, 1863, Mem. Soc. Sci. Liege 17: 441.GENOTYPE: *Dicteniophorus fusiformis* Candeze, ibid.: 444.*apicalis* Macleay — see *Agonischius apicalis* (Macl.).**badiipennis** Candeze

Australia

*Dicteniophorus badiipennis* Candeze, 1863, Mem. Soc. Sci. Liege 17: 443.

TYPE: I.R.Sc.N.B.

**bifoveatus** Carter

N.S.W.

*Dicteniophorus bifoveatus* Carter, 1939, Proc. Linn. Soc. N.S.W. 64: 322.

TYPE: Austr. Mus.

*dubius* Schwarz — see *Anilicopsis dubius* (Schwarz).

- elegans*** Carter Qld., N.S.W.  
*Diteniophorus elegans* Carter, 1939, Proc. Linn. Soc. N.S.W. 61: 323.  
 TYPE: Austr. Mus.
- fusiformis*** Candeze N-th Austr.  
*Diteniophorus fusiformis* Candeze, 1863, Mem. Soc. Sci. Liege 17: 444.  
 TYPE: ?.
- hirticornis*** Carter Qld.  
*Diteniophorus hirticornis* Carter, 1939, Proc. Linn. Soc. N.S.W. 61: 323.  
 TYPE: Austr. Mus.
- lineatus*** Schwarz N.S.W.  
*Diteniophorus lineatus* Schwarz, 1902, Stettin ent. Ztg. 63: 308.  
 TYPE: D.E.I.
- melanoderus*** Candeze Vic.  
*Diteniophorus melanoderus* Candeze, 1863, Mem. Soc. Sci. Liege 17: 444.  
 TYPE: ?.
- quadrifoveatus*** Carter N.S.W.  
*Diteniophorus quadrifoveatus* Carter, 1939, Proc. Linn. Soc. N.S.W. 61: 324.  
 TYPE: Austr. Mus.
- ramifer*** (Eschscholtz) N.S.W., Vic., Tas.  
*Ludius ramifer* Eschscholtz, 1829, in Thon. Ent. Arch. 2(1): 34.  
*Ludius hunteri* Boisduval, 1835, Voy. Astrol. Ent. 2: 107, pl. 6, fig. 10.  
*Corymbites ramifer* Germar, 1843, Zeitschr. Ent. 4: 60.  
*Corymbites ramifer* Blanchard, 1853, Voy. Pole Sud 4: 87, pl. 6, fig. 9.  
*Diteniophorus ramifer* Candeze, 1863, Mem. Soc. Sci. Liege 17: 442.  
 TYPE: ?.  
 TYPE of *L. hunteri* Boisd.: ?.
- robustus*** Schwarz N.S.W.  
*Diteniophorus robustus* Schwarz, 1902, Stettin ent. Ztg. 63: 307.  
*Diteniophorus robustus* Schwarz, 1903, Dtsch. ent. Z. 1903: 396.  
*Diteniophorus robustus* Schwarz, 1907, Gen. Ins. 46: 284, pl. 6, fig. 10.  
 TYPE: D.E.I.
- rufolineatus*** Carter N-th Qld.  
*Diteniophorus rufolineatus* Carter, 1939, Proc. Linn. Soc. N.S.W. 61: 323.  
 TYPE: Austr. Mus.
- vittatus*** Macleay — see *Agonischius vittatus* (Macl.).
- vitticollis*** Macleay Qld.  
*Diteniophorus vitticollis* Macleay, 1872, Trans. ent. Soc. N.S.W. 2: 260.  
 TYPE: Austr. Mus.

Genus *Anilicopsis* Schwarz

*Anilicopsis* Schwarz, 1907, Gen. Ins. 46: 284.

GENOTYPE: *Dicteniophorus dubius* Schwarz, 1903, Dtsch. ent. Z. 1903: 397.

**dubius** (Schwarz) Australia

*Dicteniophorus dubius* Schwarz, 1903, Dtsch. ent. Z. 1903: 397.

*Anilicopsis dubius* Schwarz, 1907, Gen. Ins. 46: 285.

TYPE: ?.

Genus *Acroniopus* Erichson

*Atelopus* Erichson, 1842, Arch. Naturgesch. 8(1): 142.

*Acroniopus* Erichson, 1843, Arch. Naturgesch. 9(2): 175.

GENOTYPE: *Atelopus humilis* Erichson, 1842, Arch. Naturgesch. 8(1): 143.

**ater** Candeze N.S.W.

*Acroniopus ater* Candeze, 1863, Mem. Soc. Sci. Liege 17: 438.

TYPE: ?.

**fuliginosus** Candeze Australia

*Acroniopus fuliginosus* Candeze, 1863, Mem. Soc. Sci. Liege 17: 437, pl. 5, fig. 10.

TYPE: ?.

*furvus* (Erichson) — see *Glyphochilus furvus* (Erichson).

**humilis** (Erichson) Tas.

*Atelopus humilis* Erichson, 1842, Arch. Naturgesch. 8(1): 143.

*Acroniopus humilis* Candeze, 1863, Mem. Soc. Sci. Liege 17: 438.

TYPE: ?.

**infimus** (Erichson) Tas.

*Atelopus infimus* Erichson, 1842, Arch. Naturgesch. 8(1): 143.

*Acroniopus infimus* Candeze, 1863, Mem. Soc. Sci. Liege 17: 439.

*Acroniopus infinis* Schenkling, 1927, Col. Cat. 11(88): 480 — (obvious printer's error for *A. infimus* Er.).

TYPE: ?.

*lucidus* (Erichson) — see *Glyphochilus lucidus* (Erichson).

**marginicollis** Schwarz Australia

*Acroniopus marginicollis* Schwarz, 1906, Dtsch. ent. Z. 1906: 369.

TYPE: ?.

**pallidus** Blackburn N.T.

*Acroniopus pallidus* Blackburn, 1889, Proc. Linn. Soc. N.S.W. (2)3: 1423.

*Acroniopus pallidus* Carter, 1939, Proc. Linn. Soc. N.S.W. 64: 326.

TYPE: ?.

**pubescens** Macleay Qld.

*Acroniopus pubescens* Macleay, 1872, Trans. ent. Soc. N.S.W. 2: 260.

TYPE: ?.



**rufipennis** Macleay

Qld.

*Acroniopus rufipennis* Macleay, 1872, Trans. ent. Soc. N.S.W. 2: 259.*Acroniopus rufipennis* Carter, 1939, Proc. Linn. Soc. N.S.W. 64: 326.

TYPE: Austr. Mus.

**sydneyanus** (Boisduval)

N.S.W.

*Elater sydneyanus* Boisduval, 1835, Voy. Astrol. Ent. 2: 109.*Acroniopus sidneyanus* Schenkling, 1927, Col. Cat. 11(88): 480.

TYPE: ?.

Subfamily **DENTICOLLINAE***Denticollinae* Schenkling, 1927, Col. Cat. 11(88): 494.Genus **Macromalocera** Hope*Macromalocera* Hope, 1834, Trans. ent. Soc. Lond. 1: 13, pl. 1, fig. 3.GENOTYPE: *Macromalocera coenosa* Hope, *ibid.*: 14.**affinis** Blackburn

Centr. Austr.

*Macromalocera affinis* Blackburn, 1890, Proc. Linn. Soc. N.S.W. (2)5: 562.

TYPE: S.A. Mus.

**ceramboides** Hope

W.A., S.A.

*Macromalocera ceramboides* Hope, 1834, Trans. ent. Soc. Lond. 1: 14, pl. 1, fig. 3.*Macromalocera ceramboides* Candeze, 1863, Mem. Soc. Sci. Liege 17: 502.

TYPE: ?.

**coenosa** Hope

W.A.

*Macromalocera coenosa* Hope, 1834, Trans. ent. Soc. Lond. 1: 14.*Macromalocera coenosa* Candeze, 1863, Mem. Soc. Sci. Liege 17: 501.

TYPE: ?.

**sinuaticollis** Blackburn

N-th Austr., W.A., S.A.

*Macromalocera sinuaticollis* Blackburn, 1890, Proc. Linn. Soc. N.S.W. (2)5: 563.

TYPE: Nat. Mus.

Genus **Hemiopsida** Macleay*Hemiopsida* Macleay, 1872, Trans. ent. Soc. N.S.W. 2: 261.GENOTYPE: *Hemiopsida mastersi* Macleay, *ibid.***mastersi** Macleay

Qld.

*Hemiopsida Mastersii* Macleay, 1872, Trans. ent. Soc. N.S.W. 2: 261.

TYPE: Austr. Mus.

Genus **Stichotomus** Candeze*Stichotomus* Candeze, 1863, Mem. Soc. Sci. Liege 17: 507.GENOTYPE: *Cylindroderus corrigiolatus* Germar, 1848, Linn. Ent. 3: 181.**corrigiolatus** (Germar)

S.A.

*Cylindroderus corrigiolatus* Germar, 1848, Linn. Ent. 3: 181.*Stichotomus corrigiolatus* Candeze, 1863, Mem. Soc. Sci. Liege 17: 507.

TYPE: ?.

**fusiformis** Schwarz

N-th Austr.

*Stichotomus fusiformis* Schwarz, 1902, Dtsch. ent. Z. 1901: 336.

TYPE: ?.

**testaceus** Schwarz

S.A.

*Stichotomus testaceus* Schwarz, 1902, Dtsch. ent. Z. 1901: 336.

TYPE: ?.

Subfamily **PHYSODACTYLINAE***Physodactylinae* Schenkling, 1927, Col. Cat. 11(88): 508.Genus **Patricia** Zwaluwenburg*Patricia* Zwaluwenburg, 1947, Proc. Hawaii ent. Soc. 13: 113.GENOTYPE: *Patricia australica* Zwaluwenburg, *ibid.*: 114.**australiana** Zwaluwenburg

W.A.

*Patricia australica* Zwaluwenburg, 1947, Proc. Hawaii ent. Soc. 13: 114, figs. 3-4.

TYPE: U.S.N.M.

Genus **Nullarborica** Blackburn*Nullarborica* Blackburn, 1911, Trans. roy. Soc. S. Austr. 35: 202.GENOTYPE: *Nullarborica concinna* Blackburn, *ibid.***concinna** Blackburn

W.A.

*Nullarborica concinna* Blackburn, 1911, Trans. roy. Soc. S. Austr. 35: 202.

TYPE: Brit. Mus.

Genus **Antoligostethus** Blackburn*Antoligostethus* Blackburn, 1911, Trans. roy. Soc. S. Austr. 35: 203.GENOTYPE: *Antoligostethus lucidus* Blackburn, *ibid.***lucidus** Blackburn

N.W. Austr.

*Antoligostethus lucidus* Blackburn, 1911, Trans. roy. Soc. S. Austr. 35: 203.

TYPE: Brit. Mus.

## REFERENCES

Pagination is given for the complete article published, but pages in brackets refer to information on Elateridae only.

Publications marked thus (\*) have not been seen by the author.

1. Arnett, R. H., 1955, Proc. U.S. Nat. Mus. 103: 599-619.
2. Blackburn, T., 1889, Proc. Linn. Soc. N.S.W. (2)3: 1387-1506 (1416-1424).
3. — 1889, Trans. roy. Soc. S. Austr. 12: 132-148 (139-140).
4. — 1890, Proc. Linn. Soc. N.S.W. (2)4: 1247-1276 (1259-1261).
5. — 1890, Proc. Linn. Soc. N.S.W. (2)5: 303-366 (309).
6. — 1890, Proc. Linn. Soc. N.S.W. (2)5: 553-592 (561-564).
7. — 1890, Trans. roy. Soc. S. Austr. 13: 82-93 (89-91).
8. — 1892, Proc. Linn. Soc. N.S.W. (2)6: 479-550 (503-516).
9. — 1892, Trans. roy. Soc. S. Austr. 16: 16-61 (37).
10. — 1892, Proc. Linn. Soc. N.S.W. (2)7: 283-300 (288-297).
11. — 1893, Trans. roy. Soc. S. Austr. 17: 291-315 (296-297).
12. — 1895, Trans. roy. Soc. S. Austr. 19: 27-60 (47-50).
13. — 1896, Trans. roy. Soc. S. Austr. 20: 35-109 (35-36).
14. — 1900, Proc. roy. Soc. Vict. (N.S.) 12: 206-233 (213).
15. — 1900, Trans. roy. Soc. S. Austr. 24: 35-68 (49-50).
16. — 1900, Trans. roy. Soc. S. Austr. 24: 113-169 (114-115).
17. — 1911, Trans. roy. Soc. S. Austr. 35: 173-203 (201-203).
18. — 1912, Trans. roy. Soc. S. Austr. 36: 40-75 (74-75).
19. Blair, K. G., 1935, Ent. mon. Mag. 71: 102.
20. Blanchard, C., 1853, "Voy. Pole Sud." Zool. 4: 84-92.
21. Boheman, C. H., 1858, "Eugenies Resa. . . 1851-1853" 2: 66-72.
22. Boisduval, J., 1835, "Voy. Astrol." Ent. 2: 98-110.
23. Candeze, E., 1857, Mem. Soc. Sci. Liege 12: 1-400. (Monograph Vol. 1.)
24. — 1859, Mem. Soc. Sci. Liege 14: 1-543. (Monograph Vol. 2.)
25. — 1860, Mem. Soc. Sci. Liege 15: 1-512. (Monograph Vol. 3.)
26. — 1863, Mem. Soc. Sci. Liege 17: 1-534. (Monograph Vol. 4.)
27. — 1864, Mem. cour. Acad. R. Belg. 17: 1-63.
28. — 1874, Mem. Soc. Sci. Liege (2)4: 1-218.
29. — 1878, Ann. Mus. Stor. nat. Genova 12: 99-143.
30. — 1878, Ann. Soc. ent. Belg. 21 (Compt. Rend.): 51-61, 75-85, 135-143, 161-172, 189-199.
31. — 1880, Ann. Mus. Stor. nat. Genova 15: 188-198.
32. — 1880, Ann. Soc. ent. Belg. 23: 52-57, 77-83, 87-98, 110-114.
33. — 1882, Mem. Soc. Sci. Liege (2)9: 1-117.
34. — 1887, Notes Leyden Mus. 9: 285-290.
35. — 1889, Ann. Soc. ent. Belg. 33: 67-123.
36. — \* 1891, "Catalogue meth. Elat." (conn. en 1890): 1-246.
37. — 1895, Mem. Soc. Sci. Liege (2)18: 1-76.

38. — 1897, Mem. Soc. Sci. Liege (2)19: 1-88.
39. — 1900, Ann. Soc. ent. Belg. 44: 77-101.
40. Carter, H. J., 1935, Proc. Linn. Soc. N.S.W. 60: 179-193 (181-182).
41. — 1939, Proc. Linn. Soc. N.S.W. 64: 297-330 (301-326).
42. Dejean, M., 1837, "Cat. Col. de Coll. Dejean" (3rd ed.): 96-108.
43. Elston, A. H., 1924, Trans. roy. Soc. S. Austr. 48: 196-208.
44. — 1927, Trans. roy. Soc. S. Austr. 51: 350-362.
45. — 1928, Trans. roy. Soc. S. Austr. 52: 182-188.
46. — 1929, Trans. roy. Soc. S. Austr. 53: 347-352 (347-348).
47. — 1930, Ark. Zool. 22(1): 1-22.
48. Erichson, W. F., 1842, Arch. Naturgesch. 8(1): 83-287 (136-144).
49. — 1843, Arch. Naturgesch. 9(2): 149-288 (175).
50. Eschscholtz, J.,\* 1829, in Thon, "Entomol. Arch." 2(1): 31-35.
51. Fleutiaux, E., 1902, Bull. Soc. ent. Fr. 1902: 162-164.
52. — 1907, Bull. Soc. ent. Fr. 1907: 162.
53. Froggatt, W. W., 1917, Agric. Gaz. N.S.W. 28(12): 894-895.
54. — 1925, Austr. For. J. 8(12): 327-330.
55. Gemminger, M. & Harold, E., 1869, "Catal. Col." 5: 1487-1604.
56. Germar, E. F., 1840, Zeitschr. Ent. 2: 261.
57. — 1842, Zeitschr. Ent. 4: 45.
58. — 1842, Zeitschr. Ent. 4: 92.
59. — 1844, Zeitschr. Ent. 5: 163.
60. — 1848, Linn. Entom. 3: 153-247 (180-182).
61. Gestro, R., 1875, Ann. Mus. Stor. nat. Genova 7: 8-10.
62. Gory, M., 1836, Ann. Soc. ent. Fr. 5: 513-515.
63. Guerin-Meneville, F. E., 1830, "Voy. Coquille." Zool. 2(2): 68-69.
64. Guillou, E. Le-, 1844, Rev. Zool. 7: 220-225.
- . Gyllenhal, L., see Schönherr, C. J.
- . Harold, E., see Gemminger, M. & Harold, E.
65. Hope, F. W., 1836, Trans. ent. Soc. Lond. 1: 11-20 (13-14).
66. — 1842, Proc. zool. Soc. Lond. 10: 73-89 (75-76).
67. — 1842, Ann. Mag. Nat. Hist. 9: 423-430 (428).
68. Hyslop, J. A., 1921, Proc. U.S. nat. Mus. 58: 621-680.
69. Lacordaire, T., 1857, "Historie Nat. Ins. Genera Col." 4: 130-234.
70. Lea, A. M., 1908, Proc. roy. Soc. Vict. (N.S.) 20: 143-207 (155-156).
71. — 1910, Proc. roy. Soc. Vict. (N.S.) 23: 116-230 (218).
72. — 1917, Trans. roy. Soc. S. Austr. 41: 489-630 (576).
73. — 1920, Proc. Linn. Soc. N.S.W. 45: 375-403 (379).
74. — 1930, Trans. roy. Soc. S. Austr. 54: 148-154 (149).
75. McDougall, W. A., 1931, Bureau Sug. Exp. Stat. 31st Ann. Rep.: 47-48.
76. — 1933, Bureau Sug. Exp. Stat. 33rd Ann. Rep.: 66-67.
77. — 1934, Qld. agric. J. 42: 43-70.
78. Macleay, W. J., 1872, Trans. ent. Soc. N.S.W. 2: 239-318 (249-262).
79. — 1888, Proc. Linn. Soc. N.S.W. (2)3: 1227-1246 (1233-1246).

80. Macleay, W. S., 1827, in P. P. King "Survey of Intertrop. Coasts etc." 2; appx. B: 441.
81. Masters, G., 1872, "Cat. of the Deser. Col. of Austr.": 146-156.
82. — 1886, Proc. Linn. Soc. N.S.W. (2)1: 259-380 (261-281).
83. Newman, E., 1857, Trans. ent. Soc. Lond. (N.S.) 4: 51-57 (51-52).
84. Rainbow, W. J., 1904, Rec. Aust. Mus. 5(4): 245-247 (246-247).
85. Schenkling, S., 1925, "Coleopterorum Catalogus" 11(80): 1-263.
86. — 1927, "Coleopterorum Catalogus" 11(88): 265-636.
87. Schönherr, C. J., 1817, "Synonymia Insectorum" 1(3) Appx.: 129-142.
88. Schwarz, O., 1895, Dtsch. ent. Z. 1895: 39-40.
89. — 1902, Dtsch. ent. Z. 1901: 311-336.
90. — 1902, Dtsch. ent. Z. 1902: 113-126.
91. — 1902, Dtsch. ent. Z. 1902: 358-363.
92. — 1902, Stettin ent. Ztg. 63: 194-316.
93. — 1903, Dtsch. ent. Z. 1903: 377-398.
94. — 1906, Dtsch. ent. Z. 1906: 353-369.
95. — 1906, "Gen. Ins." 46: 1-224.
95. — 1907, "Gen. Ins." 46: 225-370 1 pls.
96. — 1907, Stettin ent. Ztg. 68: 70-86.
97. Zwaluwenburg, R., 1947, Proc. Hawaii ent. Soc. 13: 109-115.

## ADDENDA

98. McDougall, W. A., 1934, Qld. agric. J. 42: 690-726.
99. — 1935, Proc. int. Soc. Sug. Cane Tech. 5: 583-587.
100. Redtenbacher, L., 1868, "Reise der . . . Freggatte Novara" Zool. 2. Col. 1-249 (92-97).
101. Heller, K. M., 1900, in Semon, R. Denkschr. med.-naturw. Ges. Jena 8(17): 615-626 (620).

Two of the species, *Laeon scaber* Cand., and *Melanoxanthus melanocephalus* (Thunb.), from Sydney, mentioned in this latter publication will be discussed in the revision of the respective genera.

## INDEX OF SUBFAMILIES AND GENERA

Synonyms are printed in italics.

A		Doloporus	60
Aeroniopus	62	<i>Dorcastoma</i>	49
Adelocera	4	Drasterius	34
Aeolus	33		
Agonischius	59	E	
Agriotes	58	Elastrus	35
AGRYPNINAE	3	Elater	35
Agrypnus	3	ELATERINAE	34
Alaus	15	Elatichrosis	49
<i>Ampedus</i>	58		
Anchastus	39	G	
Anilicoides	57	Glypheus	19
Anilicopsis	62	Glyphochilus	20
Anilicus	57		
Antoligostethus	64	H	
Aphileus	49	Hapatesus	50
Arachnodima	56	HEMICREPIDIINAE	55
Asaphoides	55	Hemiopsida	63
Ascesis	60	HEMIRRHIPINAE	15
<i>Atolopus</i>	62	Heteroderes	34
ATHOINAE	47	Homoeolacon	15
		Horistonotus	42
C		HYPNOIDINAE	39
CARDIOPHORINAE	39	Hypnoidus	39
Cardiophorus	39		
Cardiotarsus	46	I.	
<i>Chrosis</i>	49	Iacon	4
Chrostus	50	Limonium	47
Compsolacon	14	LUDIINAE	56
CONODERINAE	20	Ludius	56
Conoderus	22		
<i>Corymbites</i>	47	M	
CORYMBITINAE	47	Macromalocera	63
CREPIDOMENINAE	51	Megapenthes	36
Crepidomenus	51	Melanoxanthus	37
<i>Cryptohypnus</i>	39	<i>Metablar</i>	54
Ctenicera	47	Microdesmes	56
CTENICERINAE	47	<i>Monocrepidius</i>	22
<i>Cylindroderus</i>	63	Myrmodes	15
D		N	
DENTICOLLINAE	63	Neotrichophorus	57
Diadysis	56	Nullarborica	64
DICREPIDIINAE	19		
Dicteniophorus	60	O	
DIMINAE	56	Ophidius	55

INDEX OF SUBFAMILIES AND GENERA — *continued.*

P			
PACHYDERINAE	19	Pseudaeolus	33
Parablax	54	Pseudolacon	15
Paracardiophorus	40	Pseudotetralobus	17
Paracrepidomenus	54	S	
Paranalicus	58	Simodactylus	20
Parasaphes	56	Stichotomus	63
Patricia	64	T	
PHYSODACTYLINAE	64	TETRALOBINAE	17
PHYSORRHININAE	39	<i>Tetralobus</i>	17
<i>Poenmites</i>	48	Tetrigus	17
Pristilophus	48	<i>Trichophorus</i>	57
Propsephus	19	Trieres	15
<i>Psephus</i>	19		

ALPHABETICAL INDEX OF SPECIES

Synonyms are shown in light italics.

A			
<i>abdominalis</i> Cand.	37	<i>antennatus</i> (Schw.)	22
<i>aberrans</i> Lea	51	<i>aphiloides</i> (Cand.)	22
<i>acuminatus</i> (Mael.)	22	<i>apicalis</i> (Mael.)	59
<i>adelaidae</i> Blkb. (Lacon)	6	<i>apicatus</i> Cand. (Megap.)	36
<i>adelaidae</i> Cand. (Crepid.)	51	<i>apicatus</i> (Schw.) (Agon.)	59
<i>adustus</i> Elst.	4	<i>apicipennis</i> Elst.	17
<i>aeneolus</i> Cand.	51	<i>applanatus</i> Elst.	4
<i>aenescens</i> Schw.	51	<i>aquilus</i> Elst.	4
<i>aeneus</i> Cand.	51	<i>arbitrarius</i> Elst. (Conod.)	22
<i>affinis</i> Blkb.	63	<i>arbitrarius</i> Elst. (Lacon)	5
<i>akidiformis</i> Cand.	15	<i>asperulus</i> Cand.	35
<i>albatus</i> Cand.	15	<i>assimilis</i> Cart.	41
<i>albertisi</i> (Cand.)	17	<i>assus</i> Cand.	5
<i>albidus</i> (Mael.)	34	<i>ater</i> Cand. (Aeron.)	62
<i>alboguttatus</i> Mael.	4	<i>ater</i> Schw. (Asaph.)	55
<i>alpicola</i> (Blkb.)	27	<i>ater</i> (Schw.) (Conod.)	22
<i>alpinus</i> Blkb.	19	<i>aterrimus</i> Cand.	60
<i>alternans</i> Mael.	13	<i>atratus</i> (Mael.)	23
<i>alternatus</i> Cart. (Paracard.)	40	<i>atricolor</i> Mael.	5
<i>alternatus</i> (Schw.) (Conod.)	22	<i>atripennis</i> Mael.	56
<i>amabilis</i> Cart.	41	<i>atronotatus</i> Cart.	41
<i>ambigua</i> (Cand.)	47	<i>attenuatipennis</i> Elst.	41
<i>andersoni</i> Blkb.	4	<i>attenuatus</i> Cand. (Anil.)	57
<i>angularis</i> Cand.	37	<i>attenuatus</i> Elst. (Paracard.)	41
<i>angulatus</i> Cart.	17	<i>aulacoderus</i> Elst.	59
<i>angusticollis</i> (Blkb.)	49	<i>aurulentus</i> (Cand.)	23
<i>angustipes</i> (Blkb.)	22	<i>australasiae</i> (Boisd.) (Conod.)	23
<i>antennalis</i> (Cand.) (Conod.)	27	<i>australasiae</i> (Gory) (Pseudot.)	17
<i>antennalis</i> Schw. (Paracard.)	41	<i>australiana</i> (Cand.) (Cten.)	47
<i>antennarius</i> (Schw.)	22	<i>australiana</i> Zwaluw. (Patr.)	64
		<i>australicus</i> Blkb.	17

ALPHABETICAL INDEX OF SPECIES.—*continued.*

<i>australis</i> (Boisd.) (Crepid.)	51	<i>carinatus</i> (Cand.) (Conod.)	24
<i>australis</i> Cand. (Aeolus)	33	<i>carinulatus</i> Cand.	6
<i>australis</i> Cand. (Agon.)	59	<i>carissimus</i> Cart.	41
<i>australis</i> Cand. (Anch.)	39	<i>castaneipennis</i> (Macl.)	24
<i>australis</i> Cand. (Asc.)	60	<i>castaneus</i> Elst. (Lacon)	6
<i>australis</i> Cand. (Drast.)	34	<i>castaneus</i> Elst. (Pseudotet.)	18
<i>australis</i> Cand. (Elat.)	35	<i>castelnaui</i> Cand.	6
<i>australis</i> Cand. (Melanox.)	37	<i>ceramboides</i> Hope	63
<i>australis</i> (Cand.) (Paracard.)	41	<i>cerdo</i> (Erich.)	24
<i>automolus</i> (Cand.)	57	<i>cervus</i> Cart.	51
		<i>championi</i> Cand.	21
		<i>cineraceus</i> Elst.	6
		<i>cinereus</i> (Blanch.)	26
		<i>cinnamomeus</i> (Boisd.) (Simod.)	20
		<i>cinnamomeus</i> Macl. (Elat.)	35
		<i>coenosa</i> Hope	63
		<i>collaris</i> Cand. (Lim.)	47
		<i>collaris</i> (Schw.) (Conod.)	24
		<i>columbinus</i> Cart.	37
		<i>commodus</i> (Blkb.)	24
		<i>communis</i> Macl.	6
		<i>commutabilis</i> Elst.	6
		<i>compactus</i> (Cand.) (Conod.)	24
		<i>compactus</i> Cand. (Lacon)	6
		<i>compactus</i> (Cand.) (Paracard.)	41
		<i>compsorhabda</i> (Cand.)	47
		<i>concinna</i> Blkb.	64
		<i>condensus</i> (Schw.)	24
		<i>consobrinus</i> (Cand.)	42
		<i>conspectus</i> Elst.	18
		<i>conspiciendus</i> Elst. (Lacon) 1924	6
		<i>conspiciendus</i> Elst. (Lacon) 1927	7
		<i>consputus</i> (Cand.)	42
		<i>cooki</i> Cart.	42
		<i>cordieri</i> (Le Guill.)	24
		<i>cordifer</i> Cand.	51
		<i>cordipennis</i> Cand.	6
		<i>corrigiolatus</i> (Germ.)	63
		<i>corrosus</i> (Cand.)	18
		<i>corvinus</i> Cand.	6
		<i>corymbitoides</i> (Schw.)	24
		<i>costipennis</i> Germ.	6
		<i>coxalis</i> (Cand.)	24
		<i>crassus</i> Cand. (Lacon)	7
		<i>crassus</i> (Schw.) (Conod.)	24
		<i>crocopus</i> Hope	32
		<i>cruciger</i> Cart.	19
		<i>cruentatus</i> Elst.	7
		<i>cuneiformis</i> Cand.	37
		<i>cyanescens</i> Cand.	51
		<i>cylindriformis</i> Cand.	18
B			
<i>badiipennis</i> Cart.	60		
<i>badius</i> Elst.	5		
<i>baldiensis</i> (Blkb.)	23		
<i>barbata</i> (Cand.)	49		
<i>basalis</i> (Gyll.)	23		
<i>basilaris</i> Cand. (Agon.)	59		
<i>basilaris</i> (Cand.) (Conod.)	23		
<i>bellator</i> Elst.	5		
<i>biarctus</i> Cart.	37		
<i>bicolor</i> (Blkb.) (Parabl.)	54		
<i>bicolor</i> Cand. (Glyphoch.)	21		
<i>bicolor</i> (Cand.) (Paracard.)	41		
<i>bicolor</i> (Rainb.) (Paracard.)	41		
<i>bicolor</i> (Schw.) (Conod.)	23		
<i>bifoveatus</i> Cart.	60		
<i>bigener</i> Elst.	5		
<i>bimaculatus</i> (Cart.) (Aeol.)	33		
<i>bimaculatus</i> Schw. (Lacon)	7		
<i>breviceps</i> (Macl.)	25		
<i>brevicornis</i> (Macl.)	38		
<i>brevipennis</i> (Cand.) (Conod.)	23		
<i>brevipennis</i> Elst. (Lacon)	5		
<i>brevis</i> Cand.	59		
<i>brightensis</i> Blkb.	5		
<i>brucki</i> (Cand.)	23		
<i>brunneus</i> Cand. (Melanox.)	38		
<i>brunneus</i> Schw. (Simod.)	20		
<i>brunnipes</i> (Schw.) (Conod.)	23		
<i>brunnipes</i> Schw. (Glyphoch.)	21		
<i>bullatus</i> Cart.	5		
C			
<i>cairnensis</i> Blkb.	34		
<i>caliginosus</i> (Guer.)	5		
<i>campyloides</i> Cand.	60		
<i>candezei</i> (Macl.)	23		
<i>capucinus</i> (Cand.)	18		
<i>carinatus</i> Blkb. (Heter.)	34		



ALPHABETICAL INDEX OF SPECIES.—*continued.*

D			
<i>darwini</i> Blkb.	16	<i>fasciculatus</i> Schw.	54
<i>dealbatus</i> Cand.	7	<i>fasciolatus</i> Macl. (Lacon)	8
<i>deboulayi</i> Cand.	7	<i>fasciolatus</i> (Macl.) (Melanox.)	38
<i>decimus</i> (Macl.)	27	<i>fatuus</i> Cand.	8
<i>decoratus</i> Cand. (Glyph.)	19	<i>fergusoni</i> Elst.	8
<i>decoratus</i> Erich. (Crepid.)	51	<i>ferox</i> Blkb.	49
<i>depressus</i> Cand. (Anil.)	57	<i>ferrugineus</i> Cand. (Lacon)	8
<i>depressus</i> Cand. (Aphil.)	49	<i>ferrugineus</i> Cand. (Melanox.)	38
<i>despectus</i> (Cand.)	42	<i>fictus</i> (Cand.)	25
<i>dilaticollis</i> Cand.	37	<i>filicornis</i> (Schw.)	25
<i>dimidiatus</i> Cand. (Melanox.)	38	<i>filiformis</i> (Cand.)	54
<i>dimidiatus</i> (Macl.) (Hypn.)	39	<i>flaveolus</i> (Schw.)	25
<i>dimidiatus</i> Schw. (Paracard.)	42	<i>flavicans</i> (Cand.) (Conod.)	25
<i>discoidalis</i> (Schw.)	25	<i>flavicans</i> (Cand.) (Hypn.)	39
<i>dissimilis</i> Schw.	42	<i>flavidus</i> (Cand.)	25
<i>divaricatus</i> Cand. (Lacon)	7	<i>flavipennis</i> Cand. (Anil.)	58
<i>divaricatus</i> Cart. (Crepid.)	52	<i>flavipennis</i> (Cand.) (Paracard.)	43
<i>divisus</i> (Cand.)	42	<i>flavipes</i> Macl.	35
<i>dolens</i> (Cand.)	57	<i>flavobasalis</i> (Schw.)	25
<i>dolosus</i> (Schw.)	27	<i>flavopictus</i> Cart.	39
<i>dracunculus</i> Cand.	55	<i>flavosignatus</i> Cart.	38
<i>dubiosus</i> Schw.	36	<i>fortis</i> (Blkb.)	26
<i>dubius</i> (Schw.) (Anilicop.)	62	<i>fortnumi</i> (Hope)	18
<i>dubius</i> Schw. (Hap.)	50	<i>foveicollis</i> Macl.	8
<i>duboulayi</i> Cand. (var. of <i>A. mastersi</i> )	3	<i>froggatti</i> Macl. (Lacon)	8
<i>duboulayi</i> Cand. (Lacon)	7	<i>froggatti</i> (Macl.) (Melanox.)	38
<i>dulcis</i> Cart.	42	<i>frontalis</i> (Blkb.)	26
<i>duplex</i> Blkb.	7	<i>fulgidus</i> Erich.	52
E		<i>fuliginosus</i> Cand.	62
<i>elegans</i> Cand. (Oph.)	55	<i>fulvipennis</i> (Macl.)	26
<i>elegans</i> Cand. (Paras.)	56	<i>fulvosignatus</i> (Cand.)	43
<i>elegans</i> Cart. (Dict.)	61	<i>funebri</i> Cand.	16
<i>elevatus</i> Zwaluw.	40	<i>funereus</i> Cand.	16
<i>elisus</i> (Cand.)	42	<i>furrus</i> (Erich.)	21
<i>elongatulus</i> (Macl.)	25	<i>fuscicornis</i> (Erich.)	26
<i>elongatus</i> Cart.	15	<i>fuscipennis</i> (Schw.)	26
<i>elstoni</i> Neb.	7	<i>fusiformis</i> Cand. (Dict.)	61
<i>ereptus</i> Fleut.	3	<i>fusiformis</i> Schw. (Stich.)	64
<i>erubescens</i> (Cand.)	25	<i>futilis</i> Cand.	36
<i>eucalypti</i> (Blkb.) (Lacon)	7	G	
<i>eucalypti</i> Blkb. (Paracard.)	43	<i>gayndahensis</i> Macl.	5
<i>evillardii</i> (Le Guill.)	25	<i>geminatus</i> Cand.	8
<i>exarata</i> (Cand.)	49	<i>georgei</i> Cand.	52
<i>exutus</i> Cand.	57	<i>gibboni</i> Newm.	16
F		<i>gibbosus</i> Schw.	8
<i>fabrilis</i> (Erich.)	25	<i>gibbus</i> Cand.	8
<i>farinensis</i> Blkb.	7	<i>gigas</i> Cand.	16
<i>farinosus</i> Elst.	7	<i>gorgi</i> Boisd.	35
		<i>gracilis</i> Blkb.	15
		<i>grandis</i> Hope	3

ALPHABETICAL INDEX OF SPECIES.—*continued.*

<i>granulatipennis</i> Lea	35	<i>laticollis</i> Cand. (Lacon)	9
<i>granulatus</i> Mael.	8	<i>laticollis</i> Schw. (Glyphoch.)	21
<i>guttatus</i> Cand.	8	<i>laticornis</i> Elst.	59
		<i>laticornis</i> Mael.	3
H		<i>lativittis</i> Cart.	38
<i>hackeri</i> Elst.	9	<i>latus</i> (Schw.)	26
<i>haemorrhoidalis</i> Cand.	58	<i>leai</i> Schenkl.	50
<i>hamatus</i> (Cand.)	43	<i>lectilis</i> Cand.	16
<i>hirsutulus</i> Schw.	52	<i>leluti</i> (Le Guill.)	26
<i>hirticornis</i> Cart.	61	<i>lenis</i> (Cand.)	43
<i>hirtus</i> Cand. (Crepid.)	52	<i>lenticulatus</i> (Schw.)	27
<i>hirtus</i> Cand. (Hap.)	50	<i>leptus</i> Cand.	21
<i>hirtus</i> Lea (Hap.)	50	<i>lindensis</i> Blkb.	9
<i>histrion</i> (Boisd.)	55	<i>linearis</i> (Schw.)	54
<i>humilis</i> (Cand.) (Paracard.)	43	<i>lineatellus</i> Mael.	9
<i>humilis</i> (Erich.) (Acron.)	62	<i>lineatus</i> Cand. (Agon.)	59
<i>humilis</i> Erich. (Lacon)	9	<i>lineatus</i> Cand. (Lud.)	57
<i>hunteri</i> (Boisd.)	61	<i>lineatus</i> Schw. (Diet.)	61
<i>hydropicus</i> Cand.	57	<i>litoralis</i> Cart.	43
		<i>litura</i> (Cand.)	48
I		<i>lituretus</i> Cand.	36
<i>ignobilis</i> Neb.	26	<i>longicornis</i> Cand. (Agon.)	59
<i>illinitus</i> Schw.	52	<i>longicornis</i> (Cand.) (Paracard.)	43
<i>illita</i> (Cand.)	49	<i>longiusculus</i> Mael.	35
<i>immaculatus</i> Schw.	16	<i>loricatus</i> Cand.	58
<i>impressicollis</i> Elst.	9	<i>lucanoides</i> Cand.	49
<i>impurus</i> Germ.	48	<i>lucidus</i> Blkb. (Antolig.)	64
<i>inamoenus</i> (Blkb.)	26	<i>lucidus</i> (Erich.) (Glyphoch.)	21
<i>inconspicuus</i> Mael.	35	<i>luteipes</i> Boh.	52
<i>incultus</i> Mael.	9		
<i>infimus</i> (Erich.)	62	M	
<i>infinis</i> (Erich.)	62	<i>macdougalli</i> Blair	36
<i>ingens</i> (Blkb.)	26	<i>macer</i> (Cand.)	27
<i>insignitus</i> Cand.	9	<i>macleayanus</i> Schenkl.	27
<i>insolitus</i> Cart.	38	<i>macleayi</i> (Blkb.) (Conod.)	27
		<i>macleayi</i> Cand. (Alaus)	16
J		<i>macleayi</i> Cand. (Lacon)	10
<i>jansonii</i> (Newm.)	49	<i>macleayi</i> Cand. (Oph.)	55
<i>jekeli</i> (Cand.)	26	<i>macleayi</i> Cand. (Paranil.)	58
<i>jucundus</i> Cart.	38	<i>macleayi</i> (Schw.) (Conod.)	27
<i>jugulatus</i> Cand.	50	<i>macleayi</i> (Schw.) (Paracard.)	44
<i>jugulus</i> Elst.	43	<i>maculatus</i> Mael.	8
<i>juvenis</i> (Blkb.)	26	<i>maculosus</i> Mael.	13
		<i>malkini</i> Zwaluw.	40
L		<i>mamillatus</i> Cand.	10
<i>labiosus</i> Cand.	9	<i>manglesi</i> Hope	17
<i>lacrymosus</i> Cand.	9	<i>mansuetus</i> Blkb.	10
<i>lansbergei</i> Cand. (Crepid.)	52	<i>marginatus</i> Cand. (Lacon)	10
<i>lansbergei</i> (Cand.) (Elatichr.)	49	<i>marginatus</i> Schw. (Crepid.)	52
<i>lansbergei</i> Cand. (Glyph.)	19	<i>marginicollis</i> Schw.	62
<i>lateralis</i> (Schw.)	14	<i>marginipennis</i> Schw.	10

ALPHABETICAL INDEX OF SPECIES. *continued.*

<i>marmoratus</i> Cand.	10	<i>nigripennis</i> Schw. (Asaph.)	55
<i>mastersi</i> Mael. (Agryp.)	3	<i>nigrolaterus</i> (Schw.)	28
<i>mastersi</i> Mael. (Asc.)	60	<i>nigrosuffusus</i> Cart.	44
<i>mastersi</i> (Mael.) (Conod.)	22	<i>nigroterminatus</i> (Mael. W.S.)	58
<i>mastersi</i> Mael. (Elat.)	35	<i>nitidicollis</i> (Elst.) (Cten.)	48
<i>mastersi</i> Mael. (Hemiop.)	63	<i>nitidicollis</i> (Schw.) (Conod.)	28
<i>mastersi</i> (Mael.) (Microd.)	56	<i>nitidulus</i> (Cand.)	28
<i>melancholicus</i> Cand.	16	<i>nonus</i> (Mael.)	28
<i>melanocephalus</i> (Thunb.)	67		
<i>melanoderus</i> Cand.	61	O	
<i>menevillei</i> (Cand.)	27	<i>occidentalis</i> Cand. (Glyphoch.)	21
<i>mentitor</i> (Blkb.)	27	<i>occidentalis</i> Cart. (Paracard.)	44
<i>mentitus</i> Elst.	27	<i>octavus</i> Cand. (Laeon)	11
<i>metallescens</i> Cand.	52	<i>octavus</i> (Cand.) (Paracard.)	44
<i>metallicus</i> Schw.	52	<i>octavus</i> (Mael.) (Conod.)	28
<i>militaris</i> Cart.	20	<i>octosignatus</i> Cart.	44
<i>minimus</i> Cand. (Crepid.)	52	<i>olliffi</i> (Blkb.)	28
<i>minimus</i> (Cand.) (Paracard.)	44	<i>opaca</i> Cand.	50
<i>minor</i> (Mael.) (Conod.)	27	<i>opaculus</i> Schw.	21
<i>minor</i> Elst. (var. Hapat.)	50	<i>opacus</i> Cand.	34
<i>minutus</i> (Schw.) (Conod.)	27	<i>orthoderus</i> Elst.	11
<i>minutus</i> Schw. (Hapat.)	50	<i>ovalis</i> Cand.	53
<i>misellus</i> Schw.	37	<i>ovensensis</i> (Blkb.)	29
<i>miser</i> (Cand.)	28		
<i>mjöbergi</i> Cart. (Cardiot.)	46	P	
<i>mjöbergi</i> Elst. (Agon.)	59	<i>pallidipennis</i> (Cand.)	44
<i>mjöbergi</i> Elst. (Conod.)	28	<i>pallidus</i> Blkb. (Aeron.)	62
<i>mjöbergi</i> Elst. (Lae.)	10	<i>pallidus</i> Cart. (Lim.)	47
<i>mjöbergi</i> Elst. (Paracard.)	44	<i>palmerstoni</i> (Blkb.)	29
<i>modesta</i> (Boisd.)	4	<i>palpalis</i> Cand.	11
<i>monachus</i> Cand.	10	<i>parallelus</i> Cand.	11
<i>montanus</i> Blkb. (Glyphoch.)	21	<i>parvulus</i> Mael.	11
<i>montanus</i> Cart. (Crepid.)	53	<i>parvus</i> (Schw.)	29
<i>morsi</i> Cand.	56	<i>pellitus</i> (Schw.)	29
<i>moseri</i> Schw.	44	<i>perplexus</i> Cand. (Elat.)	36
<i>multipunctatus</i> Elst.	10	<i>perplexus</i> Elst. (Laeon)	11
<i>murrayensis</i> Blkb.	10	<i>picescens</i> (Schw.)	29
<i>murrayi</i> (Cand.)	18	<i>piceus</i> Cand.	20
		<i>picticollis</i> (Blkb.)	29
N		<i>pictipennis</i> Cand.	11
<i>narrabrensis</i> (Blkb.)	28	<i>pinguis</i> Cand.	11
<i>navicularis</i> Cart.	53	<i>plagiatus</i> (Cand.) (Conod.)	29
<i>nebulosus</i> (Mael.)	28	<i>plagiatus</i> Cand. (Laeon)	11
<i>niger</i> Cart.	47	<i>planiusculus</i> (Cand.)	29
<i>nigrescens</i> Mael.	10	<i>planus</i> (Cand.)	29
<i>nigricornis</i> (Schw.)	28	<i>plasoni</i> (Schw.) (Conod.)	29
<i>nigrifrons</i> (Schw.) (Conod.)	28	<i>plasoni</i> Schw. (Elatiehr.)	49
<i>nigrifrons</i> Schw. (Crepid.)	53	<i>pleureticus</i> Cand.	11
<i>nigrina</i> (Mael.) (Cten.)	48	<i>porriginosus</i> Cand.	11
<i>nigrinus</i> Cart. (Glyph.)	20	<i>praelongus</i> Elst.	11
<i>nigripennis</i> (Cand.) (Conod.)	28	<i>pretiosus</i> Cand.	50
		<i>primus</i> (Mael.)	29

ALPHABETICAL INDEX OF SPECIES. — *continued.*

<i>princeps</i> Cand.	12	<i>rufipennis</i> (Macl.) (Cten.)	48
<i>productus</i> Elst.	12	<i>rufipes</i> Cand. (Megap.)	37
<i>prosectus</i> Cand.	16	<i>rufipes</i> Schw. (Crepid.)	33
<i>prosternalis</i> (Schw.) (var.)	33	<i>rufolineatus</i> Cart.	61
<i>pubescens</i> Cart. (Lim.)	47	<i>rufoniger</i> Cart.	38
<i>pubescens</i> Macl. (Acron.)	62	<i>rufopiceus</i> Macl.	12
<i>pulsi</i> Cand.	53	<i>rufopictus</i> Cart.	45
<i>pumilus</i> Cand. (Alaus)	16	<i>rufopilosus</i> (Schw.)	30
<i>pumilus</i> (Cand.) (Pseudotet.)	18	<i>rufulus</i> Elst.	12
<i>punctatissimus</i> Elst.	12	<i>rufus</i> Blkb.	15
<i>punctatostrigatus</i> (Cand.)	29	<i>rugulipennis</i> (Schw.)	30
<i>punctipennis</i> Cand. (Laeon)	12	<i>rutilicornis</i> (Erichs.)	30
<i>punctipennis</i> Elst. (Pseudotet.)	18		
<i>pusillus</i> Cand.	36	S	
<i>pygmaeus</i> Cart.	47	<i>sanguineus</i> Elst.	20
Q		<i>scaber</i> Cand.	67
<i>quadraticollis</i> Schw. (Crepid.)	53	<i>scapularis</i> (Guer.)	30
<i>quadraticollis</i> (Schw.) (Props.)	19	<i>scopulosus</i> Elst.	12
<i>quadriforeatus</i> Cart. (Diet.)	61	<i>sculptus</i> Cand.	12
<i>quadriforeatus</i> (Macl.) (Pseudotet.)	19	<i>scutellatus</i> (Cand.)	30
<i>quadriforeolatus</i> Cand.	50	<i>secundus</i> (Macl.)	30
<i>quadriguttatus</i> (Erich.)	58	<i>semifasciatus</i> Macl.	39
<i>quadrimaculatus</i> Macl.	44	<i>semiflarus</i> Cand. (Agon.)	59
<i>quadripunctatus</i> Blanch.	58	<i>semiflarus</i> (Germ.) (Anil.)	58
<i>quadristellatus</i> Cart.	45	<i>semiruber</i> Cart.	38
<i>quartus</i> (Macl.)	29	<i>semivestitus</i> (Elst.)	14
<i>queenslandicus</i> Blkb. (Aeol.)	33	<i>seniculus</i> (Cand.) (Conod.)	31
<i>queenslandicus</i> Blair (Crepid.)	53	<i>seniculus</i> Cand. (Crepid.)	53
<i>quinesulcatus</i> (Blkb.)	55	<i>septimus</i> (Macl.)	31
<i>quintus</i> (Macl.)	30	<i>sericeus</i> Cand.	16
R		<i>serricornis</i> Cand.	55
<i>ramifer</i> (Eschsch.)	61	<i>sexnotatus</i> Cart.	45
<i>ramitarsus</i> Cand.	15	<i>sextus</i> (Macl.)	31
<i>rectangulus</i> (Cand.)	30	<i>sidneyanus</i> (Boisd.)	63
<i>recticollis</i> Elst.	12	<i>simulans</i> (Cand.)	31
<i>regularis</i> (Cand.)	30	<i>sinuaticollis</i> Blkb.	63
<i>resectus</i> Cand.	4	<i>socia</i> (Cand.) (Adel.)	4
<i>reticulatus</i> Elst.	12	<i>socius</i> (Cand.) (Conod.)	31
<i>robustus</i> Schw.	61	<i>sordidulus</i> (Schw.)	31
<i>rotundicollis</i> Cand.	53	<i>sordidus</i> (Schw.)	31
<i>rubescens</i> Macl.	12	<i>spatulatus</i> (Cand.)	31
<i>rubicundulus</i> Macl.	12	<i>specularis</i> Cand.	53
<i>rubicundus</i> (Macl.)	25	<i>spissus</i> Cand.	34
<i>rubiginosus</i> Cand.	12	<i>squalescens</i> Blkb. (Laeon)	10
<i>ruficollis</i> (Blkb.) (Conod.)	30	<i>squalescens</i> (Cand.) (Conod.)	31
<i>ruficollis</i> Cand. (Melanox.)	38	<i>squalidus</i> (Cand.)	31
<i>ruficollis</i> Schw. (Megap.)	37	<i>stellatus</i> Cart.	45
<i>ruficollis</i> (Schw.) (Conod.)	26	<i>stigmatosus</i> Elst.	13
<i>rufifrons</i> (Cand.)	30	<i>striatus</i> (Cand.) (Conod.)	31
<i>rufipennis</i> Macl. (Acron.)	63	<i>striatus</i> (Macl.) (Conod.)	31
		<i>strigatus</i> (Cand.)	31

ALPHABETICAL INDEX OF SPECIES.—*continued.*

<i>suavis</i> (Cand.)	48	V	
<i>subcompactus</i> Elst.	13	<i>vagefasciatus</i> (Cart.)	33
<i>subcruciatus</i> Cart.	45	<i>vagus</i> Schw.	45
<i>subfasciatus</i> Cart. (Glyph.)	20	<i>validus</i> Elst.	13
<i>subfasciatus</i> Cart. (Paracard.)	45	<i>van-de-polli</i> Cand.	13
<i>subflavus</i> (Macl.)	31	<i>variabilis</i> Cand.	13
<i>subgeminatus</i> (Macl.)	32	<i>varians</i> Cart.	45
<i>submaculatus</i> (Macl.)	32	<i>variatus</i> Schenkl.	13
<i>submarmoratus</i> Elst. (Lacon)	13	<i>variegatus</i> (Blkb.) (Conod.)	33
<i>submarmoratus</i> (Macl.) (Conod.)	32	<i>variegatus</i> (Macl.) (Hypn.)	39
<i>suboculatus</i> Cand.	17	<i>variegatus</i> Schw. (Alaus)	17
<i>subopacus</i> Cand.	53	<i>variegatus</i> Schw. (Lacon)	13
<i>subpectinata</i> (Schw.)	48	<i>variegatus</i> Schw. (Paracard.)	45
<i>subsericeus</i> Schw.	17	<i>variolus</i> Cand.	14
<i>subtilis</i> Macl.	13	<i>ventosus</i> Cand.	59
<i>suillus</i> Cand.	33	<i>ventralis</i> (Cand.)	33
<i>sulcatus</i> (Cand.) (Conod.)	32	<i>venustulus</i> Schw.	22
<i>sulcatus</i> Cand. (Crepid.)	53	<i>venustus</i> (Cand.)	46
<i>sulcicollis</i> Cand. (Crepid.)	54	<i>versicolor</i> Cand.	34
<i>sulcicollis</i> Elst. (Pseudotet.)	19	<i>veternosus</i> Elst.	14
<i>sulcicollis</i> (Eschsch.) (Conod.)	32	<i>victoriae</i> Cand. (Crepid.)	54
<i>suturalis</i> Schw.	20	<i>victoriae</i> Cand. (Lacon)	14
<i>sydneyanus</i> (Boisd.)	63	<i>victoriae</i> Schw. (Alaus)	17
T		<i>victoriae</i> (Schw.) (Cten.)	48
<i>tabidus</i> (Erichs.)	32	<i>victoriensis</i> (Blkb.)	46
<i>taeniatus</i> Erichs.	54	<i>viduus</i> (Cand.)	33
<i>tasmanica</i> (Cand.) (Cten.)	48	<i>villosulus</i> Cand.	20
<i>tasmanicus</i> Cand. (Glyphoch.)	21	<i>vittatus</i> (Macl.)	60
<i>tenuicornis</i> (Schw.)	32	<i>vitticollis</i> Macl. (Diet.)	61
<i>tepperi</i> (Blkb.)	32	<i>vitticollis</i> (Schw.) (Conod.)	33
<i>terrae-reginae</i> (Blkb.)	32	<i>vitticollis</i> Schw. (Crepid.)	54
<i>tertius</i> (Macl.)	32	<i>vittipennis</i> Cart.	46
<i>testaceus</i> Cand. (Crepid.)	54	<i>vulneratus</i> Cand. (Crepid.)	54
<i>testaceus</i> Elst. (Asc.)	60	<i>vulneratus</i> Schw. (Megap.)	37
<i>testaceus</i> Schw. (Stich.)	64	W	
<i>thoracicus</i> Blkb. (Pseudotet.)	19	<i>waggae</i> Cand.	34
<i>thoracicus</i> Cand. (Dolop.)	60	<i>wenthworthensis</i> Blkb.	36
<i>tinctipes</i> Cand.	36	X	
<i>torresi</i> (Cand.) (Conod.)	32	<i>xanthomus</i> (Cand.) (Paracard.)	46
<i>torresi</i> Cand. (Lacon)	13	<i>xanthomus</i> Macl. W. S. (Elat.)	36
<i>trisulcata</i> (Erichs.) (Elatichr.)	49	<i>xanthoptera</i> (Cand.) (Cten.)	48
<i>trisulcatus</i> (Schw.) (Parabl.)	55	Y	
<i>tumidicollis</i> Schw.	45	<i>gilgarnensis</i> Blkb.	14
<i>tumidithorax</i> (Schw.)	45	Z	
<i>tumidus</i> (Cand.)	32	<i>zietzi</i> Blkb.	14
U		<i>zig-zag</i> (Cart.)	34
<i>undatus</i> (Cand.)	33		
<i>ursulus</i> Cand.	13		
<i>ustulatus</i> Schw.	21		

---

*W. M. Houston,*  
*Government Printer, Melbourne*  

---





