

Mimulus Memo



Windmill-Wildflower Hike to Mark Thirtieth Year

by Nancy Nies

MARCH 2015

CONTENTS

- Windmill-Wildflower Hike - 1
- Accolades - 2
- Field Trip Listings- 3
- President's Message - 6
- Wildflower Show - 9
- Meeting Topics - 9

EVENTS

MARCH

- 7 — Field Trip: Tejon Ranch—
Valley Fringe Portion
- 14 — Field Trip: Carrizo Plain N M
- 19 — Meeting, 7 pm
- 24 — Field Trip: Short Canyon
- 28 — Field Trip: Mill Creek

APRIL

- 11-19 — Calif. Native Plant Week
- 16 — Meeting, 7 pm
- 18 — Wildflower Show at
Bakersfield College Garden Fest
- 25 — Field Trip: Bitter Creek
National Wildlife Refuge

MAY

- 9 — Field Trip: BIOBLITZ
- 9 — Hike: Windmill-Wildflower
Hike — Tehachapi
- 30 — Field Trip: Old State Road
- 15 — Meeting, 7 pm

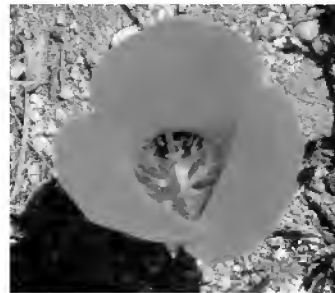
IN THE SPRING OF 1986, Paul Gipe—WHO HAD MOVED TO Tehachapi two years before, to work in the booming wind energy industry — had an idea. In order to give people the opportunity to learn about wind energy and at the same time enjoy spring wildflowers, he organized a hike on a nearby six-mile segment of the Pacific Crest Trail. At the time, he did not foresee the thirtieth annual **Windmill-Wildflower Hike** that would take place in 2015!



Photos: Paul Gipe

Grape-soda lupine (*Lupinus excubitus*), layia (*Layia* sp.), and popcorn flower (*Plagiobothrys* sp.)

The hike, sponsored by the local chapter of the Sierra Club, has been led for most of the past three decades by Kern-Kaweah chapter outings leader



Desert mariposa lily (*Calochortus kennedyi*) along the trail, May 2013

Tony Swan, with Paul present to field questions on wind energy, a subject on which he has written several books. The hike has become “one of the longest-running such events anywhere in the world,” says Paul. Over the years, nearly a thousand people — from children to octogenarians — have taken the hike over Cameron Ridge, with its scenic vistas of mountains and desert, thousands of wind turbines and, sometimes, spectacular displays of wildflowers.

Every year is botanically different, of course, depending on rainfall. As Paul says, “We can guarantee windmills, but not wildflowers.” Many years, however, hikers have been treated to the sight of whole hillsides splashed with

Windmill-Wildflower Hike (Continued)

the bright orange of California poppies (*Eschscholzia californica*) and the deep purple of grape-soda lupine (*Lupinus excubitus*). Lavender gilia (*Gilia sp.*) can be abundant alongside the trail, as can yellow sun cups (*Camissonia sp.*) and goldfields (*Lasthenia sp.*), white popcorn flower (*Plagiobothrys sp.*) and layia (*Layia sp.*). Paul, who currently coordinates the CNPS's Kern



Hikers enjoying wildflowers, 1990s

chapter, has compiled a tentative list of more than fifty native plants seen in bloom on the hike, at one time or another. Some years produce rare treats, like the dozen red-orange blooms of desert mariposa lily (*Calochortus kennedyi*) spotted along the trail in 2013.

Like the flowers, the weather can be unpredictable. Some years the May weather in the Tehachapi Pass is perfect for hiking, but Paul cautions that "the temperature can vary from near-freezing to sweltering." It can sometimes also be very windy, which should come as no surprise, since so many wind turbines have been sited in the area. Potential hikers are encouraged to be prepared for any weather eventuality.

You are invited to participate in the thirtieth annual Windmill-Wildflower Hike. First, however, it is important to be sure that you're up to hiking six miles at an elevation of 5,000 feet, on a trail with steep uphill and downhill portions. If the answer is yes, Paul recommends wearing long pants and hiking boots, and bringing a hat, jacket, sunscreen, lunch, and at least a quart of water per person. A car shuttle is always arranged, to transport hikers from the hike's end point back to their cars at the starting point. The hike usually takes about five hours, including rest stops and a lunch break.

This year's hike, set for **May 9**, will leave promptly at **9 a.m.** from a new meeting place, the

PCT trailhead sign northeast of the junction of Cameron Canyon Road and Tehachapi-Willow Springs Road. The sign is on the south side of Cameron Canyon Road, 100-200 feet northeast of the junction, on a large pull-out where cars may be parked. A carpool is scheduled to leave Bakersfield at **7:30 a.m.** For more information on the hike or on carpooling from Bakersfield, please call **Tony Swan** at **(661) 363-5106** or **Paul Gipe** at **(661) 325-9590**. For Paul's description of the hike on his website, followed by a photo gallery of past years' hikes, see: <http://www.wind-works.org/cms/index.php?id=603>.

Whether you're new to the hike or are a returning hiker, you are welcome to participate in this year's thirtieth annual Windmill-Wildflower Hike. Fresh mountain air, good exercise, dramatic views and thousands of wind turbines await you. And last, but certainly not least for CNPS members, there is hope that this winter's rains will bring a good showing of wildflowers. If you're curious enough to want to see for yourself what flower sightings are in store for this year's hikers, mark your calendar now! 🌸



Thank you to:

Thank you to **Sasha Honig** for coordinating the refreshments for the meetings.

Thank you to **Nancy Nies** for her excellent articles on local women botanists from the past.

Thank you to **Monica Tudor** for enlightening us with her articles and her experience in the Native Plant Gardening Discussion Group.

Thank you to **Richard Spjut** for his enjoyable talk on "Wildflowers of Western Australia" at our January meeting.

Thank you to **David Chipping** for his inspiring talk on the flowers of the Carrizo Plain and areas on the central coast at our meeting in February. 🌸

FIELD TRIPS

By Lucy Clark, Clyde Golden and Patty Gradek

KERN CNPS FIELD TRIPS ARE OPEN TO ALL. Occasionally, numbers will be limited by the land owners or agencies. We welcome you to join us to see and learn about our native plants and their habitats, to learn to identify plants, or to photograph them. If you are skilled in plant identification, you can help us all learn.

Please always dress in layers, wear boots or shoes you can hike in, and bring food and water. You may also want to bring a hat, sunscreen, binoculars, cameras, plant lists and useful references such as *Kern County Flora* and the *Jepson Manual*, or any book you like. We

All trips are by reservation only, so we know whom to expect, and how many will be attending each field trip.

try to meet at a spot where we can park some cars and car-pool to our location to save the air,

the gas, the money and make sure that we will have adequate space to park. CNPS does not arrange car pools; each person does so at the meeting place. If you ride with another driver, please remember to offer to help pay for gas.

All trips are by reservation only, so we know whom to expect, and how many will be attending each field trip. Each trip will have the contact person listed. Please email the contact person by two days before the field trip and indicate the names of those who will attend. Please also provide a cell phone number if we need to reach you that day.



IMPORTANT: If your plans or your party's plans change and you will not be attending, it is critical for safety, planning and courtesy reasons – that you call or email the contact person and let them know you will not be there.

March 7th, Saturday

VALLEY FRINGE PORTION OF TEJON RANCH
with **Scot Pipkin**

Contact: **Lucy Clark** – lucyg391@gmail.com

RSVP Deadline: **8pm, Thursday, March 5**

Scot Pipkin, Public Access Coordinator for the **Tejon Ranch Conservancy**, will be leading us on an early spring field trip through some of the parts of the Ranch that border the Valley. The Tejon Ranch is a beautiful place in the spring and we're hoping for



Stormy skies over Tejon Canyon

Photo: Scott Pipkin

great displays in these lower elevations. Plan on this being a full-day trip. The meeting place and time will be determined later so we can see the best displays. Those who RSVP will be given the meeting place and directions and the time we will meet. Pets and smoking are not allowed on the Tejon Ranch. You may want to bring the Tejon Ranch Plant List available on our chapter web site: kern.cnps.org, as well as any other references that are appropriate. If you have a four-wheel drive or an AWD, please bring it to help fellow members. The Conservancy has informed us the field trip will be limited to 30 participants.

March 14th, Saturday

CARRIZO PLAIN NATIONAL MONUMENT
with **Denis Kearns**

Contact: **Patty Gradek** – pattygradek@gmail.com

RSVP Deadline: **8 pm, April 2**

The Carrizo Plain National Monument is a very special area. This is the first time we've been able to schedule this field trip in three years, since we finally have adequate rainfall to produce a delightful wildflower display. **Denis Kearns**, BLM Botanist, will lead us on this trip. The trip will be limited to 20 people due to limits prescribed for such tours in the BLM Management Plan. Therefore, if you want to attend we suggest you contact Patty Gradek at pattygradek@gmail.com early, because



Carrizo Plain — Blazing Star (*Mentzelia ssp*)

Photo: Dinah Campbell

no more than 20 will be allowed to participate.

The Carrizo Plain is a magical, beautiful place. Denis may have us help evaluate past restoration efforts on the Monument.

Please meet at the parking lot of the BLM office at 3801 Pegasus Drive at 8:30 am for carpooling. It will be best to use four-wheel drive or high-clearance vehicles to get to some of the special sites. We will leave promptly at 8:45am. This will be a full-day field trip. There are restrooms at the Visitor Center.

March 24, Tuesday

MOJAVE DESERT – SHORT CANYON
with **Richard Spjut**

Contact: **Lucy Clark** – lucyg391@gmail.com
RSVP Deadline: **8pm, Sunday, March 22**

This will be a full-day trip and we'll see wildflowers that are blooming in the **Short Canyon** area of the Mojave Desert. We will meet at the Tuesday Morning

parking lot on the northwest corner of Fairfax and Auburn, off Hwy 178, at 8am to form carpools and will leave by 8:15 am. Bring a lunch and water. We will have a rest stop in the town of Lake Isabella and will then travel east on Hwy 178 to the junction with Hwy 14. We will possibly have a short stop at Walker Pass but more likely will have a short stop

along a frontage road parallel to Hwy 14 to see *Encelia farinosa*, *Petalonyx thurberi*, *Eriogonum inflatum*.

From Hwy 14/395 we will head west off the Frontage Road into Short Canyon and drive to the end of the road at the trailhead. The road is sandy in places and requires high clearance, and possibly four-wheel drive the last mile before reaching the trailhead. We will hike along the trail for perhaps a mile. If time permits, we will return to Hwy 178 along the dirt roads which should offer a scenic view of Owens Peak. Of interest are the endangered *Deinandra mohavensis*, the rare *Phacelia nashiana*, *Camissonia kernensis subsp. kernensis*, *Saltugilia latimeri* and relicts at their western limits of their archaic range such as *Tricardia watsonii* and *Quercus palmeri*. It's an excellent year for desert wildflowers.

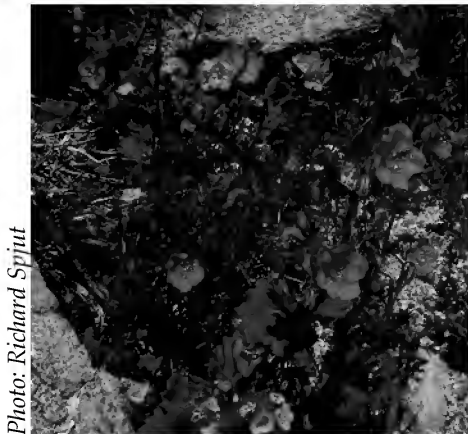


Photo: Richard Spjut

Charlotte's phacelia (*Phacelia nashiana*)

March 28th, Saturday

MILL CREEK off the OLD KERN CANYON ROAD
Contact: **Lucy Clark** - lucyg391@gmail.com
RSVP Deadline: **8 pm, Thursday, March 26th**

This is a relatively close place to see many beautiful plants along a fairly level trail, from a root parasite, naked broomrape to California Indian pink to a tiny yellow and white poppy. Hopefully, we will also be able to see, in Mill Creek, the California newt, known by the writer as the "red gummy newt", in its most southern habitat.

This trip can

be a half-day or a full-day trip,

depending on your needs. Meet at the Tuesday Morning parking lot on the northwest corner of Fairfax and Auburn, off HWY 178, at 7:30 am to form carpools. We will leave promptly at 7:45 am. People who need to leave before or just after lunch can ride together. Bring a lunch and water. Boots not needed, unless there has been recent rain.

Owl's Clover (*Castilleja exserta*)
on Mill Creek Trail



The Bitter Creek National Wildlife Refuge is important condor habitat.

April 25th, Saturday

BITTER CREEK NATIONAL WILDLIFE REFUGE
with **Pam DeVries**
Contact: **Patty Gradek** – pattygradek@gmail.com
RSVP Deadline: **8 pm, April 23rd**

The Bitter Creek National Wildlife Refuge is a very special place and it's open to the public only by permit from the U.S. Fish and Wildlife Service. **Pam DeVries**, professional botanist, helped us to obtain



Photo: Dinah Campbell

Photo: L. Nguyen, US Fish & Wildlife Service

the permit to enter the Refuge for this field trip. The permit limits this trip to 20 people. Therefore, if you want to attend we suggest you contact Patty Gradek at pattygradek@gmail.com early, because no more than 20 people will be allowed to participate.

The Bitter Creek National Wildlife Refuge protects the habitat of a variety of animals and plants, including the California condor, golden eagle, prairie falcon and the San Joaquin kit fox. The Refuge also contains rare plant species such as *Eremalche parryi* subsp. *kernensis*. Our botanical walk of approximately one mile will take place in an area selected by Pam DeVries and approved by the Fish and Wildlife Service.

Meet at the "Park and Ride" at the corner of Real Road and Stockdale Highway at 7:30 am to form carpools. We will leave promptly at 7:40 and will arrive at the refuge at 9:00 am. Refuge staff will meet us at the refuge headquarters and will give us a brief talk on the refuge and their current monitoring efforts prior to starting our walk. This will be a full day field trip and there are restrooms at the refuge headquarters.



Photo : Andrew Sorenson

South Fork of the Kern

May 9th, Saturday

BIOBLITZ at the TEJON RANCH, NATURE CONSERVANCY'S CALIENTE RANCHES and SOUTH FORK KERN RIVER VALLEY

Contact: **Scot Pipkin** – spipkin@tejonconservancy.org

The details on the **BioBlitz** are in the following letter from **Scot Pipkin** of the **Tejon Ranch Conservancy**. Please contact Scot if you would like to participate. This is an opportunity for accomplished naturalists to contribute to the conservation of these important areas!

Greetings Botanists,

This is Scot Pipkin from Tejon Ranch Conservancy. I am contacting you to share an exciting upcoming event and to see if you are interested in participating. This May 9th, Tejon Ranch Conservancy, The Nature Conservancy, Audubon Kern River Preserve, multiple

private landowners, and the Southern Sierra Research Station will be collaborating to conduct a first-ever BioBlitz in the San Emigdio/Tehachapi/Southern Sierra Region. As you know, this part of the world is particularly rich in natural resources and it is our intention to catalog as many plants, birds, mammals, amphibians, reptiles, insects, spiders, lichens, mosses, and fungi as possible in a 24-hour period.

The ecological significance of the Tehachapi Region has long been known to conservation groups. With a history of naturalists ranging from Xantus to Twisselman, these mountains have been the site of important observations and discoveries for generations. The establishment of the Wind Wolves Preserve and Bitter Creek National Wildlife Refuge, the signing of the 2008 conservation agreement on Tejon Ranch, private lands conservation by The Nature Conservancy, the consistent work by Audubon's Kern River Preserve, and generations of private landowners committed to stewarding their land are creating an incredible network of conservation ownerships. Despite these successes, there is much to learn about the distribution of species and relationships between populations in this region. This BioBlitz represents an opportunity to document the biodiversity and reflect the significance of the shared commitment to conservation.

Since this is our first time coordinating such an ambitious event, we are looking for accomplished naturalists to help us capture observations. Teams will be spread throughout the study region with naturalists of different expertise on each team. Some teams will be camping and others will be making day trips for their observations. If you or any of your naturalist friends would be interested in joining a team, we would love your participation. Right now, there will be teams fielded on the Tejon Ranch, Nature Conservancy properties/easements, and South Fork Kern River Valley. If any of these properties is particularly appealing to you, let me know and I can get you in touch with the appropriate person, since each property has slightly different parameters for their effort.

In addition to observing as much biodiversity as possible, the purpose of this BioBlitz is to demonstrate collaboration between the various conservation entities in our region. By adopting certain protocols such as the Kern River Preserve's rapid assessment technique for birds, we are hoping to capture broad data sets that might help inform regional conservation work. I hope you can help us with this historic and fun effort!

Sincerely,
Scot Pipkin, Public Access Coordinator
Tejon Ranch Conservancy
spipkin@tejonconservancy.org
(661) 248-2400, ext. 5

Field Trips (Continued)



Photo: Richard Spjut

Flannel bush (*Fremontodendron californicum*) on the east slope of Greenhorn Mountains from Old State Road, May 2014.

May 30th, Saturday

OLD STATE ROAD

Contact: **Lucy Clark** – lucy391@gmail.com

RSVP Deadline: **8 pm, Thursday, June 4th**

Old State Rd. was the main route over the Greenhorn Mountains from Alta Sierra to Kernville before SH155 was built and Kernville was relocated. It descends from 6000' to 2600' and offers diverse habitat and uncommon and rare plants are found adjacent to the road. In recent years it seems to have been botanically ignored. It passes through the area burned in last year's Shirley fire which should offer an opportunity to see fire-following plants.

The official trip will begin in Alta Sierra at the Greenhorn Grille (follow the signs to the GG) at 9:30am, and conclude in Wofford Heights in the afternoon. Old State Road is an unpaved road, well maintained by Kern County (much better than nearby USFS roads). Carpool suggestions will be provided to the people who RSVP.

June 14th, Sunday

HIGHER ELEVATION PORTIONS
of TEJON RANCH with **Mike White**

Contact: **Patty Gradek** – pattygradek@gmail.com

RSVP Deadline: **8 pm, Thursday, June 11th**

Mike White, Tejon Conservancy's Conservation Science Director, will be leading us on a field trip to the higher elevations of Tejon Ranch. Plan on this being a full-day trip. The meeting place and time will be determined later. Those who RSVP will be given the meeting place and directions and the time we will meet.

Pets and smoking are not allowed on the Tejon Ranch.

You may want to bring the Tejon Ranch Plant List available on our chapter web site: kern.cnps.org, as well as any other references that are appropriate. If you have a four-wheel drive or an AWD, please drive it to help fellow members. We have to inform the Conservancy of the numbers that will be attending and they will limit the field trip to 30 participants. ☘

PRESIDENT'S MESSAGE: More on the Dry Flora of Kern County

by *Richard Spjut*

ALTHOUGH KERN COUNTY REMAINS IN A drought — judging from late fall and winter precipitation — I expect to see a good flower show this year, not only in the wild but also at the annual Bakersfield College Garden Fest where we plan to hold the native plant show on April 18th. As observed Feb 28, the Carrizo Plain was staging extensive acreage of caterpillar phacelia (*Phacelia tanacetifolia*), goldfields (*Lasthenia* spp.) fiddlenecks (*Amsinckia* spp.), com-



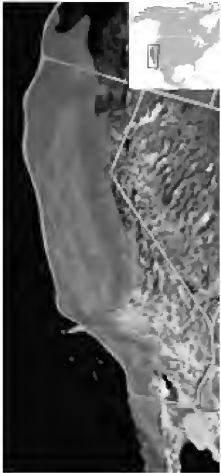
Photo: Richard Spjut

Caterpillar phacelia (*Phacelia tanacetifolia*), north end of the Carrizo Plain, Feb. 2015.

mon monolopia (*Monolopia lanceolata*), goldenbush (*Ericameria linearifolia*), and less abundant *Astragalus lentiginosus*, *Layia pentachaeta*, *Lupinus albifrons*, and *Plagiobothrys* spp. Nevertheless, we must not forget that the county flora is one that has survived "frequent" and "prolonged" periods of drought, as noted by Twisselmann (*A Flora of Kern County, California, 1967*). This is further exemplified below in the contrasting taxonomic and geographical relationships of the county flora and vegetation.

Our flora appears mostly outside the California Floristic Province, which is characterized by chaparral and forests of evergreen and deciduous hardwoods

Wikipedia (Feb. 2015)



California Floristic Province — red-orange areas

with some conifers, usually Douglas fir, generally below 4,000 ft. in elevation. All one has to do is drive north of Kernville along the Kern River into Tulare County, or west into other counties, to see the common California chaparral species — chamise (*Adenostoma fasciculatum*), toyon (*Heteromeles arbutifolia*), tan oak (*Lithocarpus densiflorus*), madrone (*Arbutus menziesii*), and others — that bypass Kern County. Even our manzanitas (*Arctostaphylos*), generally associated with the California chaparral — in particular the green-leaf (*A. patula*), and point-leaf (*A. pungens*) manzanitas — appear as foreigners

by their wide-ranging occurrences outside California, east to Utah and New Mexico, while the Parry manzanita (*A. parryana*), found largely in the Transverse and Peninsular ranges, has hybrid features of them.

The forests of the Sierra Nevada in Kern County are relatively dry. Incense cedar (*Calocedrus decurrens*), a common tree in the Greenhorn Mountains, and also present in the Tehachapi Mountains, is absent from Breckenridge Mountain, raising the question: Did a fire on Breckenridge Mountain wipe it out as it did for the Paiute cypress (*Hesperocyparis nevadensis*)? The occurrence of incense cedar is often associated with fire history (Sawyer et al., *Manual California Vegetation*, 2nd ed., 2008). Last summer (2014) an extensive fire occurred in the Greenhorn Mountains, where fire had been absent since the area was logged in 1800 (SSSA Report, Jan 30, 2012).



Photo: Richard Spjitt

Incense cedar (*Calocedrus decurrens*) seed cones, Oct. 2013.

Many Sierra Nevada species reach their southern limits near the Tulare County line; examples are red fir (*Abies magnifica* var. *critchfieldii*), and the giant sequoia (*Sequoiadendron giganteum*), and also many mosses (e.g., *Polytrichum juniperum*) and genera of fruticose lichens that seem to occur just about everywhere else (e.g., *Cladonia*, *Usnea*).

Much of our flora might be viewed as lying at the

western edge of an ancient (Tertiary) montane woodland and chaparral (transmontane) flora that was subjected to frequent fire; Paiute cypress, for example, depends on hot fire for successful seed dispersal. Under a broad species concept (*H. arizonica*, de Laubenfels, Novon 2012), the species has a much wider range, extending to Montana, Texas, and Mexico.



Photo: Richard Spjitt

Old cones of the Paiute cypress (*Hesperocyparis nevadensis*) awaiting fire in which heat will cause the cones to open and spread the seeds, along Old Kern Canyon Road, Apr. 2011

Another example is greasewood (*Forsellesia nevadensis*), a intricately branched shrub of the rock rose family (*Crossosomataceae*) that often grows inhospitable places such as Hells Canyon-Seven Devils Recreational Area, in the Grand Canyon and mountains around Death Valley. In Kern County it is found in canyons south of Lake Isabella, and on Laura Peak, but to my knowledge our chapter members have yet to see the plant in Kern County. Its occurrences, which are all widely scattered, may be related to fire history.

While the transmontane woodland and chaparral that characterizes much of the Kern County flora, other plants “typical of the Mojave region and its borders have penetrated into the southern San Joaquin Valley via the Tejon, Tehachapi, and Walker passes, thence spread northward in the inner Coast Ranges, some as far as



Photo: Richard Spjitt, May 2006

Greasewood (*Forsellesia nevadensis*) outlined in white in a pinyon-juniper woodland on limestone soil in the Spring Mountains of southwestern Nevada

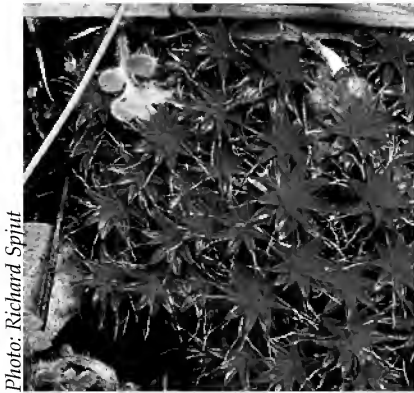


Photo: Richard Spjut

Syntrichia princeps, moss on steep shaded banks along Old Kern Canyon Road, May 2009.

Mount Diablo Range" as stated by **Daniel Axelrod** in his *Outline History of California Vegetation* (In M. G. Barbour & J. Major, *Terrestrial Vegetation of California*, 1977). Thus it would seem that the Kern County climate was drier in the past. Saltbrushes (*Atriplex* spp.), greasewood (*Sarcobatus vermiculatus*), hopsage (*Grayia spinosa*), iodinebush (*Allenrolfea occidentalis*) appear to be migrants from the desert into the Valley.

In addition to the *Trees and Shrubs of Kern County* (<http://www.worldbotanical.com/>), I have recently added lichens and bryophyte collections from Kern County to the CNPS Kern Chapter website (checklists). These were extracted from the consortia of North American bryophyte and lichen herbaria. Kern County has 171 lichen species in 54 genera, compared to 137 species ("taxa") in Ventura County (David Magney, *Checklist*, 11 Jan 2015), and to 124 species in 48 genera in the Spring Mountains near Las Vegas, Nevada; (Monica Proulx, *MA Thesis*, 2011), in further contrast to 217 species in 68 genera for the Mojave Desert, or ~1,575 species in 297 genera for all of California. Only 44 of the Kern species are found in Ventura County, whereas 45 are found in the Spring Mountains. The lichen data, as might be expected, indicate that the Kern County lichens have more in common with the desert species than with those of the California Floristic Province. As for the bryophyte flora, the county has records for 96 species, 88 are mosses in 42 genera, in contrast to ~300 moss species in the Southern Sierra Nevada (Daniel Norris, *Fremontia* 31, July 2003). The

fewer species in Kern County again indicates a long history of dry climate in the County, although wetter episodes are evident in fossil records from the Tehachapi Mountains (Constance Millar in *The Jepson Manual, 2nd ed, Geologic, Climatic, and Vegetation History of California*, 2012)



Photo: Richard Spjut

Xanthoparmelia sp, lichen on steep shaded banks along Old Kern Canyon Road



Meet Us on Meetup: Kern CNPS Meetup Page

THANKS TO HEATHER ELLISON, KERN CNPS has its own **Meetup** page. Come visit us at www.meetup.com/Kern-Chapter-California-Native-Plant-Society-Meetup/. There you'll find a calendar of upcoming events, photos of wildflowers past and present, and several of Clyde Golden's plant lists for areas around Bakersfield. The plant lists are a great help when identifying wildflowers in the field. These can be found under "**Files**" on the tab labeled "**More**". This information can also be found on our website at kern.cnps.org/ 🌸.



April 11-19, 2015

Visit cnpsweek.org for events, activities and information

*Chapter Meetings***upcoming TOPICS**

Thursday, March 19, 2015 - 7 pm:
Danny Slakey: CNPS Project Coordinator, Rare Plant Treasure Hunt : *Recent Developments in the CNPS Rare Plant Program*

Thursday, April 16, 2015 - 7 pm:
Clyde Golden, Denis Kearns, and Rich Spjut: *Report on plant collection for wildflower show, April 18*

Thursday, May 15, 2015 - 7 pm:
Michael Clem, President, CSUB Biology Club: *CNPS Conference - Conservation Report*
Clyde Golden, Kern CNPS Rare Plant Coordinator: *Wildflowers of the Mill Creek Trail*

Thursday, June 18, 2015 - 7 pm:
James André, Director of the University of California Granite Mountains Desert Research Center *Desert Flora, the status of floristic inventory, rate of new taxonomic discoveries, and conversation amid looming impacts.*

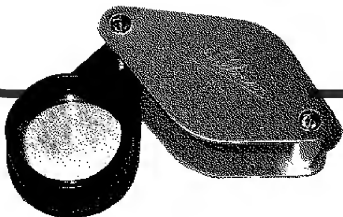
No Meetings in July and August

Thursday, September 17, 2015 - 7 pm:
Naomi Fraga, a research scientist at the Rancho Santa Ana Botanic Garden: *Flora of Owens Peak*

All chapter meetings are held the 3rd Thursday of each month at the Hall Ambulance Community Room 1031 21st Street (21st & N St.), Bakersfield, CA.

Meeting times:

- 6 pm — Discussion groups on plant identification and native plant gardening
- 7 pm — Program presentation



Wildflower Show



at Bakersfield College Garden Fest April 18, 2015

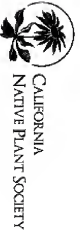
JOIN US AT THE CNPS WILDFLOWER SHOW TO BE held at Bakersfield College's 10th Annual Garden Fest from 9 am to 4 pm, Saturday, April 18th. Garden Fest is an open house featuring the Environmental Horticulture and Agriculture programs that draws thousands of visitors to the Bakersfield College campus for a day of family fun. With over 150 vendor booths featuring gardening, pets, farmer's market, cooking, outdoor leisure, arts & crafts, and environmentally-friendly home improvement ideas, there is something for everyone. 🌻



CNPS is the leader for providing reliable information on California native plants and plant conservation. Comprehensive information about California's flora and vegetation communities is available throughout the state for conservation and educational purposes. CNPS's leadership influences personal ethics and actions, as well as public policy for native plant protection.

Contacts:

President – Rich Spjut..... richspjut@gmail.com
 Vice President – Don Turkal..... Hovemimulus@btk.tr.com
 Coordinator – Paul Gipe pgipe@igc.org
 Treasurer – Monica Tudor dosporfas@msn.com
 Secretary – Sasha Honig..... andyn5@btk.tr.com
 Conservation – Fred Chenowith..... muthbyrd@sbcglobal.net
 Lucy Clark..... lucyg391@gmail.com
 Council Delegate – Dorie Giragosian dorengrigosian@peoplepc.com
 Field Trips – Patty & Dale Gradek pattygradek@gmail.com
 Lucy Clark..... lucyg391@gmail.com
 Clyde Golden cgold666@hotmail.com
 Meet-Up Coordinator – Heather Ellison..... hk_ellison@yahoo.com
 Newsletter – Dinah Campbell mimulus.memo@gmail.com
 Plant Sale – Dorie Giragosian dorengrigosian@peoplepc.com
 Monica Tudor dosporfas@msn.com
 Programs – Paul Gipe..... pgipe@igc.org
 Rich Spjut richspjut@gmail.com
 Publicity & Membership – Andy & Sasha Honig..... andyn5@btk.tr.com
 Rare Plants – Clyde Golden..... cgold666@hotmail.com
 Webmaster – Rich Spjut..... richspjut@gmail.com



CALIFORNIA
NATIVE PLANT SOCIETY

The Kern Chapter of the California Native Plant Society meets the third Thursday of each month at Hall Ambulance Community Room, 1013 21st St. (21st & N St), Bakersfield, CA. Chapter website: kern.cnps.org

The California Native Plant Society is a non-profit organization dedicated to the conservation of California native plants and their natural habitats, and to increasing the understanding, appreciation, and horticultural use of native plants. CNPS has 31 chapters throughout the state and membership is open to all persons — professional and amateur with an interest in California's native plants. Members have diverse interests including natural history, botany, ecology, conservation, photography, drawing, hiking and gardening. As a Kern County resident, your membership includes Eremontia, a quarterly journal with articles on all aspects of native plants; the Bulletin, a statewide report of activities and schedules; and The Mimulus Memo, the newsletter of the Kern Chapter.

Join CNPS or renew your membership online at www.cnps.org.

Student/Limited Income – \$25

Individual – \$45

Family or Library – \$75

Inside this Issue:

- FIELD TRIP DATES & DESCRIPTIONS
- WINDMILL-WILDFLOWER HIKE
- MEETING PLACE, DATES & TOPICS
- WILDFLOWER SHOW, MEETUP

Mimulus
Memo



CNPS-Kern Chapter
 c/o Dinah Campbell, Editor
 3806 Dalehurst Drive
 Bakersfield, CA 93306
mimulus.memo@gmail.com

