

STATE OF IOWA CERTIFICATE OF NURSERY INSPECTION

Office of State Entomologist, Ames, Iowa

This is to certify that in accordance with Chapter 53 of the Acts of the Twenty-seventh General Assembly, as amended by the Thirty-first General Assembly (Code Section 2575-a51), the nursery stock for sale by the Mount Arbor Nurseries, E. S. Welch, Propr., of Shenandoah, Iowa, has been inspected by a duly authorized inspector and has been found apparently free from dangerous injurious insects and plant diseases.

This Certificate is invalid after July 1, 1913.

Certificate No. 10

Dated 6 July, 1912

H. E. SUMMERS, State Entomologist.

SPRING OF 1913

ESTABLISHED 1875

WHOLESALE TRADE LIST

OF THE

Mount Arbor Nurseries

E. S. WELCH, Proprietor

Shenandoah, Iowa.

NEW YORK STATE COLLEGE OF AGRICULTURE, DEPARTMENT OF HORTICULTURE, CORNELL UNIVERSITY, ITHACA, N. Y.

We offer one of the largest, and most complete lines of General Nursery Stock in the United States

REFERENCES:

SHENANDOAH NATIONAL BANK

MERCANTILE AGENCIES

ANY BUSINESS FIRM IN SHENANDOAH

Use Nurseryman's Code in Telegraphing

Long Distance Bell

TELEPHONES:

Mutual No. 385

TO THE TRADE

In presenting our twenty-second Annual Spring List, I wish to thank our many customers for the liberal trade extended us in the past and to assure you of our appreciation of your continued patronage, which we shall make every effort to merit.

We urgently request correspondence and trial orders from new customers, feeling confident that you will be well pleased with our stock and method of doing business.

We have added to our equipment and plant until we have one of the most complete and best equipped nursery plants to be found anywhere, placing us in a position to give the best of service.

Stock Handled Under Cover. We have the exposure of stock reduced to the minimum. After digging, all stock is immediately sent to our large packing houses where it is graded, packed and handled under cover. Customers may rely on receiving stock in prime condition.

Large Assortment of Stock in Storage. Shipments made at any time.

Everything offered is young, thrifty, well-grown stock and graded to the highest standard.

We are always pleased to submit prices by letter on large lists of wants.

LOCATION AND SHIPPING FACILITIES

We are located in Southwest Iowa, fifty miles from Omaha, on well drained land, and have a fertile soil that cannot be surpassed in the United States. Three railroads (C. B. & Q., Wabash and K. & W.) afford competition in freight rates and a rapid and convenient shipping outlet in every direction. Two express companies (Adams and Wells Fargo) also give excellent service.

STORAGE

Our modern Storage Buildings are especially designed for handling Nursery Stock in the Best Possible Manner, enabling us to get the stock to our customers in prime condition. You should consider this in buying.

TERMS AND CONDITIONS

Shipping—Please give shipping directions, whether by freight or express; also route. If no directions are given, we will forward to the best of our judgment, without assuming responsibility, as all goods travel at purchaser's risk and expense. All freight shipments released to the value of \$5.00 or \$3.00 per cwt., according to classification governing unless otherwise instructed. Our shipping season usually begins the last of September and continues throughout the winter.

Packing—Prices quoted are net, boxing and baling additional, for which we charge to cover cost. Particular care is taken to pack all stock in a thorough manner so that it will reach destination in prime condition.

Terms—Cash or satisfactory security, except we extend the usual terms of credit, to known, responsible nurserymen. Orders to be sent C. O. D. should be accompanied by one-fourth cash to receive prompt attention.

Prices—The quotations in this list are for the wholesale trade only and limited to the Spring of 1913. Should prices change either higher or lower, during the season, the prices made at the time an order is accepted are expected to stand.

Rates—Fifty trees, of not less than ten of a variety, will be furnished at hundred rates; three hundred trees of not less than ten variety at thousand rates. Long list of varieties of a few trees of a kind subject to higher prices. All trees above the $\frac{1}{2}$ to $\frac{5}{8}$ grades are tied in bundles of ten in grading. Order ten or multiples of ten of a variety as far as possible.

Caution—We accept all orders on the condition that they shall be void should injury befall our stock from frost, hail, fire or other causes over which we have no control.

Grades—We grade carefully, in some cases by caliper, in others by height. When graded by both caliper and height the caliper must govern.

Dealers wishing to pack on our grounds will find our facilities first class and their orders will receive prompt attention.

Claims—All claims for errors and deductions must be made within ten days after receipt of goods.

Guarantee of Genuineness—While we exercise the utmost diligence and care to have our varieties true to name, and hold ourselves in readiness on proper proof, to replace all trees, etc., that may prove otherwise, or refund the amount paid, it is mutually understood and agreed between the purchaser and ourselves that we shall in no case be liable for any sum greater than the amount originally received for said trees, etc., that prove untrue.

For convenience in telegraphing a code is given for each grade.

Correspondence and inspection invited.

MOUNT ARBOR NURSERIES

GRADE COUNT—For the benefit of customers we give an approximate grade count of number, size and variety unsold at this date, of our principal surplus. Customers in ordering should give second choice in varieties and sizes as far as possible, especially if in a hurry for shipment, as we do not substitute or make any changes without permission.

HEIGHT AND CALIPER—Height given of Fruit Trees is approximate and represents the average height of most varieties. Slow growing kinds will fall short of height specified, as it is intended that the caliper shall govern.

APPLES

Our Apples are a fine lot of well grown trees with a strong root system. The grafted ones having been cut back when one-year, and then grown two years. Have a good lot of 2 year buds in a few leading varieties. All mighty good value at prices we are quoting.

Prices except as otherwise noted.

	Code	per 100	per 1000
First-class, 5 to 6 feet, $\frac{11}{16}$ and up.....	Fate	\$14 00	\$120 00
First-class, 4 to 6 feet, $\frac{5}{8}$ to $\frac{11}{16}$	Fair	11 00	90 00
First-class, 3½ to 5 feet, $\frac{1}{2}$ to $\frac{5}{8}$	Fame	7 00	60 00
First-class, 3 to 4 feet, $\frac{7}{16}$ to $\frac{1}{2}$, mostly branched.....	Fain	4 00	30 00
First-class, 2 to 3 feet.....	Fish	3 00	20 00
First-class, 4 to 5 feet whips.....	Fabius	6 00	50 00
First-class, 3 to 4 feet whips.....	Falum	4 00	35 00

	$\frac{11}{16}$ & up	$\frac{5}{8}$ - $\frac{11}{16}$	$\frac{1}{2}$ - $\frac{5}{8}$	$\frac{7}{16}$ - $\frac{1}{2}$	2-3 ft	4-5 ft	3-4 ft
Alexander.....	---	15	200	210	---	---	---
Allen's Choice.....	250 at 10c	40 at 7c	44 at 5c	---	---	---	---
Anisim.....	130	150	105	39	50	---	95
Arkansas Black.....	1800 at 10c	1100 at 7c	605 at 5c	500	75	---	240
Aut. Strawberry.....	430	460	220	50	---	---	75
Baldwin.....	1800	430	1400	825	100	460	200
Banana.....	530	120	310	61	---	45	---
Ben Davis.....	2400 at 10c	1790 at 7c	1640 at 5c	810	425	---	---
Benoni.....	150	110	62	---	---	---	---
Black Annette.....	230	150	120	---	---	---	---
Black Ben Davis.....	980	1024	725	500	240	---	---
Chenango.....	35	---	---	---	---	---	---
Delicious.....	3400	1840	1170	275	72	235 at 8c	147 at 6c
Duchess.....	1200 at 15c	1450 at 12c	600 at 8c	475	625	200	600
Ea. Harvest.....	560	630	1070	500	100	---	---
Fall Pippin.....	590	378	224	25	---	50	---
Fameuse.....	400 at 15c	290 at 12c	1200	425	100	225	520
Gano.....	3700 at 10c	2400 at 7c	3100 at 5c	1500	425	---	50
Golden Sweet.....	130	110	140	---	---	---	---
Gravenstein.....	310	470	395	150	---	---	25
Grimes Golden.....	2350	890	570	335	150	---	175
Haas.....	124	---	---	---	---	---	---
Hibernal.....	2400 at 10c	550 at 7c	469 at 5c	---	125	200	325
Hub Nonsuch.....	460	---	640	125	---	---	---
Huntsman.....	270	38	---	---	---	---	---
Ingram.....	610 at 10c	408 at 7c	120 at 5c	---	---	---	---
Iowa Beauty.....	278	165	76	---	---	---	---
Iowa Blush.....	730 at 10c	225 at 7c	216 at 5c	100	---	---	50
Isham Sweet.....	---	---	165	50	---	---	---
Janet.....	1050 at 10c	860 at 7c	1020 at 5c	313	125	---	294
Jeferis.....	335 at 10c	120 at 7c	127 at 5c	---	---	---	---
Jonathan.....	5400 at 10c	4600 at 7c	6400 at 5c	3200	1500	---	---
Kaump.....	330 at 10c	54 at 7c	40 at 5c	---	---	---	---

APPLES—Continued

	$\frac{1}{8}$ & up	$\frac{5}{8}$ - $\frac{1}{8}$	$\frac{1}{2}$ - $\frac{5}{8}$	$\frac{7}{8}$ - $\frac{1}{2}$	2-3 ft	4-5 ft	3-4 ft
King of T. Co.....	790	210	327	68	---	---	75
Lawver.....	264 at 10c	52 at 7c	23 at 5c	---	---	---	---
L. R. Romanite.....	80	90	170	---	---	---	---
Liveland.....	240	150	---	---	---	---	125
Longfield.....	610 at 10c	260 at 7c	238 at 5c	65	---	---	25
McIntosh.....	190 at 15c	1230 at 12c	2460	1500	780	---	1050 at 5c
McMahon.....	105	20	120	---	---	---	---
Maiden Blush.....	1110	615	530	500	200	---	125
Malinda.....	54	10	---	---	---	---	---
Mam. Black Twig.....	310	408	370	100	---	---	25
Mann.....	190	30	30	75	25	---	50
Milam.....	255	40	---	---	---	---	---
Milwaukee.....	90	47	40	---	---	---	---
Mo. Pippin.....	1260 at 10c	830 at 7c	440 at 5c	435	200	---	---
Northern Spy.....	2700	810	1485	200	---	---	175
N. W. Greening.....	2800 at 10c	1470 at 7c	2100 at 5c	1600	585	---	70
Okabena.....	205	64	25	---	---	---	---
Par. Winter Sweet.....	510	250	210	---	---	---	60
Patten's Greening.....	1020 at 10c	830 at 7c	840 at 5c	100	---	---	90
Peerless.....	690 at 10c	1230 at 7c	1340 at 5c	150	25	---	350
Perry Russett.....	210	250	240	---	---	---	---
Peter.....	255	300	370	79	85	---	188
Pewaukee.....	410	50	188	50	---	---	100
Pound Sweet.....	430	60	300	60	---	---	100
Prices Sweet.....	380	78	84	---	---	---	---
Rambo.....	1400 at 10c	480 at 7c	75 at 5c	---	---	---	---
Ramsdell's Sweet.....	390	430	480	110	---	---	125
Red Astrachan.....	410	960	1030	250	75	---	300
Red June.....	390	415	320	---	---	---	---
R. I. Greening.....	1050 at 10c	114 at 7c	174 at 5c	175	---	---	---
Ribston Pippin.....	410 at 10c	280 at 7c	125 at 5c	---	---	---	---
Romanstem.....	460	340	420	125	---	---	---
Rome Beauty.....	850	510	325	35	45	---	38
Salome.....	---	135	50	190	250	---	125
Scott's Winter.....	530	205	140	---	---	---	---
Seek no further.....	440	250	---	---	---	---	---
Smokehouse.....	55	---	---	---	---	---	---
Sops of Wine.....	450	---	204	---	---	---	---
Spitzenberg.....	680	300	305	---	---	---	---
Stayman's Winesap.....	1040 at 15c	760 at 12c	310 at 8c	60	50	250 at 8c	200 at 6c
Sugar Loaf.....	77	33	40	---	---	---	---
Sweet Bough.....	250	124	78	---	---	---	---
Sweet June.....	390	380	296	118	---	---	150
Sweet Russett.....	15	15	10	---	---	---	---
Talman Sweet.....	460	115	478	150	---	---	---
Tetofsky.....	15	110	260	---	125	---	275
University.....	825 at 10c	20	150 at 5c	---	---	---	---
Utter's Red.....	99	146	73	---	---	---	---
Wagner.....	470 at 15c	430 at 12c	300 at 8c	35	25	---	100
Walbridge.....	480 at 10c	220 at 7c	304 at 5c	---	---	---	---
Wealthy.....	4500	4850	3900	1125	640	990	1760
White Astrachan.....	60	33	12	---	---	---	---
White W. Pearmain.....	400 at 10c	115 at 7c	28 at 5c	---	---	---	---
Windsor Chief.....	380 at 10c	240 at 7c	188 at 5c	---	---	---	---
Winesap.....	2300 at 10c	1300 at 7c	1440 at 5c	775	305	---	125
Wolf River.....	1600 at 10c	980 at 7c	1190 at 5c	275	---	---	50
Yel. Belleflower.....	110	270	280	---	---	---	---
Yellow Horse.....	13	8	13	---	---	---	---
Yel. Newtown Pippin.....	---	70	50	---	---	---	---
Yel. Transparent.....	3100	1700	630	---	440	1400	1010
York Imperial.....	560	490	460	---	75	---	---

	Code	per 100	per 1000
APPLE, 5½ to 7 feet, ⅞ and up.....	Fadette	\$15 00

We have the following selected, extra sized trees, just the thing for city trade.

290 Ark. Black	62 Florence	820 N. W. Greening
190 Ben Davis	130 Hyslop	134 Okabena
130 Duchess	115 Iowa Blush	63 Peerless
100 Ea. Strawberry Crab	90 Jonathan	65 Rambo
620 Gano	114 Longfield	40 Red Astrachan
280 Grimes Golden	50 Minnesota	320 Yel. Transparent

APPLE—ONE YEAR

4 to 5 feet.....	Fegal	7 50
3 to 4 feet.....	Flamy	6 00
2 to 3 feet.....	Fustain	4 00

	4-5 ft.	3-4 ft.	2-3 ft.		4-5 ft.	3-4 ft.	2-3 ft.
Banana	120	87	---	Okabena	400	580	---
Grimes Golden	450	2150	450	Rome Beauty	58	1000	45
Jonathan	1700	2100	1500	Stayman's Winesap	1450-9c	3000-7c	1160-5c
McIntosh	600	1000	---	York Imperial	300	400	500
Northern Spy	500	1500	200				

CRABS

First-class, 5 to 6 feet, 1½ and up.....	Faculy	12 00	100 00
First-class, 4 to 6 feet, ⅞ to 1½.....	Faget	8 00	70 00
First-class, 3½ to 5 feet, ½ to ⅞.....	Fang	6 00	50 00
First-class, 3 to 4 feet, mostly branched.....	Fanile	4 00	30 00
First-class, 2 to 3 feet.....	Fray	3 00	20 00
First-class, 3 to 4 feet, whips.....	Farrell	4 00	30 00

	1½ up	⅞-1½	½-⅞	⅞-½	2-3 ft	3-4 ft
						Whips
Brier Sweet	179	230	125	---	---	---
Darrrt	350	260	140	---	---	---
Ea. Strawberry	460	370	369	---	---	---
Florence	1400	890	620	184	40	210
Hyslop	1800	850	865	100	---	165
Lyman's Prolific	16	---	---	---	---	---
Martha	140	123	105	37	---	---
Minnesota	420	115	90	---	---	---
Peach	60	30	20	---	---	---
Red Siberian	470	160	55	---	---	---
Shields	379	26	---	---	---	---
Soulard	60	150	69	---	---	---
Transcendent	370	400	480	216	150	140
Virginia	94	48	53	---	---	---
Whitney	1690	1830	1210	350	200	93
Yel. Siberian	225	97	46	---	---	---

CHERRIES

An excellent lot of smooth well-grown trees, mostly on Mahaleb Roots, can furnish an assortment on Mazzard Roots, at 2c per tree additional.

Two-years, 5 to 6 feet, ¾ and up.....	Feel	14 00	125 00
Two-years, 4 to 5 feet, ⅞ to ¾.....	Feeling	12 00	100 00
Two-years, 3 to 4 feet, ½ to ⅞.....	Fellow	10 00	75 00
Two-years, 2 to 3 feet, ⅞ to ½.....	Floyd	5 00	40 00

CHERRIES—Continued

	$\frac{3}{4}$ up- $\frac{5}{8}$ - $\frac{3}{4}$	$\frac{1}{2}$ - $\frac{5}{8}$	$\frac{3}{8}$ - $\frac{1}{2}$		$\frac{3}{4}$ up	$\frac{5}{8}$ - $\frac{3}{4}$	$\frac{1}{2}$ - $\frac{5}{8}$	$\frac{3}{8}$ - $\frac{1}{2}$
Baldwin	450	130	140	125	Late Richmond.....	510	150	100
Belle Magnifique.....	600	---	200	265	May Duke.....	420	460	100
* Bing	260	---	230	120	Montmorency Large.....	3500	5600	3400
* Black Tartarian.....	60	165	290	525	* Napoleon.....	---	180	240
Dyehouse.....	1800	3500	2600	1050	Ostheim.....	470	350	370
Early Richmond.....	4400	5600	4200	3300	* Schmidt's Big.....	---	80	130
* English Morello.....	700	1400	2200	1600	Terry.....	540	230	410
* Governor Wood.....	90	230	140	280	* Windsor.....	130	280	400
Homer.....	810	440	240	75	* Wragg.....	400	470	410
* Lambert.....	80	---	220	200	* Yellow Spanish.....	140	110	130
Late Duke.....	730	---	200	195				

Varieties marked with a *2 cents per tree additional.

550 Ea. Richmond 5½ to 7 feet 1 inch up @ \$15.00 per hundred.

CHERRIES—ONE YEAR

				Code	per 100 per 1000
4 to 5 feet, whips.....				Flipper	10 00
3 to 4 feet, whips.....				Fretty	8 00
2 to 3 feet, whips.....				Fetich	6 00
	4-5 ft.	3-4 ft.	2-3 ft.		4-5 ft.
Bing.....	850	720	600	Napoleon.....	480
Black Tartarian.....	20	280	19	Windsor.....	170
Lambert.....	560	840	550		

CHERRIES—DWARF ROCKY MOUNTAIN

110 4 to 5 feet, Transplanted.....	Forge	8 00
460 3 to 4 feet, Transplanted.....	Fogy	6 00
1600 2 to 3 feet, Transplanted.....	Felt	4 00
1900 18 to 24 inches, Transplanted.....	Fly	3 00
975 12 to 18 inches, Transplanted.....	Ferry	2 00

COMPASS—CHERRY-PLUM

1800 Two-years, 3½ to 4½ feet, $\frac{7}{16}$ to $\frac{9}{16}$	Faith	12 00
525 Two-years, 3 to 4 feet, $\frac{3}{8}$ to $\frac{1}{2}$	Fakirs	9 00
1070 Two-years, 2 to 3 feet.....	Fire	6 00

PLUM —ON PLUM

European Varieties

Two-years, 4½ to 6 feet, $\frac{3}{4}$ and up.....	Fiddle	16 00	150 00
Two-years, 4 to 5 feet, $\frac{5}{8}$ to $\frac{3}{4}$	Fidget	13 00	120 00
Two-years, 3½ to 4½ feet, $\frac{1}{2}$ to $\frac{5}{8}$	Fin	10 00	90 00
Two-years, 3 to 4 feet, $\frac{7}{16}$ to $\frac{1}{2}$	Filo	7 00	60 00

	$\frac{3}{4}$ up	$\frac{5}{8}$ - $\frac{3}{4}$	$\frac{1}{2}$ - $\frac{5}{8}$	3-4 ft		$\frac{3}{4}$ up	$\frac{5}{8}$ - $\frac{3}{4}$	$\frac{1}{2}$ - $\frac{5}{8}$	3-4 ft
Beauty of Naples.....	63	90	114	---	Italian Prune.....	530	1200	1600	1450
Bradshaw.....	50	390	160	240	Lombard.....	340	1200	1060	1640
Damson, Blue.....	---	---	120	140	Monarch.....	---	40	50	77
Damson, French.....	---	135	300	175	Moore's Arctic.....	---	105	348	290
Damson, Shrop.....	180	320	490	450	Ponds Seedling.....	140	450	640	400
German Prune.....	420	310	520	54	Reine Claude.....	30	295	450	250
Grand Duke.....	---	---	130	115	Shipper's Pride.....	---	120	260	465
Gueff.....	---	240	400	315	Tatge.....	470	630	645	225
Imperial Gage.....	139	250	105	885	Yellow Egg.....	---	280	170	255

PLUM—EUROPEAN, ONE YEAR

	Code	per 100	per 1000
5 to 6 feet.....	Falkner	12 00
4 to 5 feet.....	Famosa	10 00
3 to 4 feet.....	Foltz	8 00
2 to 3 feet.....	Freda	5 00

	5-6 ft	4-5 ft	3-4 ft	2-3 ft	5-6 ft	4-5 ft	3-4 ft	2-3 ft
Italian Prune.....	625	820	600	385	Shrop. Damson.....	---	---	400
Lombard.....	---	---	500	500				

PLUM—ON PLUM

Japanese Varieties

Two-years, 5 to 6 feet, $\frac{3}{4}$ and up.....	Fable	16 00	150 00
One- and two-years, 4 to 6 feet, $\frac{5}{8}$ to $\frac{3}{4}$	Facile	13 00	120 00
One- and two-years, $3\frac{1}{2}$ to $4\frac{1}{2}$ feet, $\frac{1}{2}$ to $\frac{5}{8}$	Facet	10 00	90 00
One- and two-years, 3 to 4 feet.....	Fanny	7 00	60 00

	$\frac{3}{4}$ up	$\frac{5}{8}$ - $\frac{3}{4}$	$\frac{1}{2}$ - $\frac{5}{8}$	3-4ft	$\frac{3}{4}$ up	$\frac{5}{8}$ - $\frac{3}{4}$	$\frac{1}{2}$ - $\frac{5}{8}$	3-4 ft.
Abundance.....	960	430	480	---	Red June.....	310	290	430 150
Burbank.....	1200	540	930	750	Satsuma.....	240	290	210 230
Climax.....	310	90	95	39	Wickson.....	---	65	70 45

Americana and Chickasaw Varieties

Two-years, 5 to 6 feet, $\frac{1}{2}$ and up.....	Fickle	17 00
Two-years, 4 to 6 feet, $\frac{3}{8}$ to $\frac{1}{2}$	Fill	14 00
Two-years, $3\frac{1}{2}$ to 5 feet, $\frac{1}{8}$ to $\frac{3}{8}$	Fig	10 00
Two-years, 3 to 4 feet.....	Fido	8 00
Two-years, 2 to 3 feet.....	Flake	7 00

	$\frac{1}{2}$ up	$\frac{3}{8}$ - $\frac{1}{2}$	$\frac{1}{8}$ - $\frac{3}{8}$	3-4 ft	2-3 ft
Cheney.....	160	420	1090	484	440
DeSoto.....	270	420	1230	550	360
Forest Garden.....	---	270	790	95	30
Hammer.....	260	430	310	---	---
Hawkeye.....	---	350	840	167	400
Klondike.....	139	180	150	---	---
Milton.....	760	510	400	50	100
Miner.....	510	730	360	186	240
Pottawattamie.....	620	510	230	---	---
Quaker.....	28	22	145	---	---
Stoddard.....	---	130	200	---	35
Surprise.....	780	650	510	115	90
Weaver.....	430	360	415	140	60
Wild Goose.....	1070	140	890	300	100
Wolf.....	---	480	1150	230	100
Wyant.....	---	425	1800	675	285

PEACHES

One-year, 5 to 6 feet, $\frac{1}{2}$ and up.....	Falcon	8 50	75 00
One-year, 4 to 6 feet, $\frac{3}{8}$ to $\frac{1}{2}$	Flood	8 00	70 00
One-year, 4 to 5 feet, $\frac{1}{8}$ to $\frac{3}{8}$	Floor	6 00	55 00
One-year, 3 to 4 feet, $\frac{3}{8}$ to $\frac{1}{2}$	Floon	5 00	40 00
One-year, 2 to 3 feet.....	Filar	3 00	25 00

	$\frac{1}{2}$ up	$\frac{3}{8}$ - $\frac{1}{2}$	$\frac{1}{8}$ - $\frac{3}{8}$	$\frac{3}{8}$ - $\frac{1}{2}$	2-3 ft
Alexander.....	300	350	730	640	900
Alton.....	160	---	---	---	---
Bailey.....	340	100	20	---	---
Beers Smock.....	230	210	40	---	---
Blood Cling.....	50	10	---	---	---

PEACHES—Continued

	$\frac{11}{16}$ up	$\frac{9}{16}$ - $\frac{11}{16}$	$\frac{7}{16}$ - $\frac{9}{16}$	$\frac{3}{8}$ - $\frac{1}{2}$	2-3 ft
Bokara No. 3.....	250	140	460	250	190
Carman.....	570	630	490	610	1130
Champion.....	810	1840	3500	1900	1700
Crawford's Early.....	840	1030	1060	---	610
Crawford's Late.....	510	950	1800	1070	1275
Crosby.....	250	530	1060	1050	900
Early Rivers.....	140	30	---	---	---
Elberta.....	2100	2700	2200	700	3500
Fitzgerald.....	750	760	1080	700	610
Greensboro.....	410	290	780	725	750
Heath Cling.....	400	230	510	370	485
Mixon Cling.....	430	170	60	---	---
Mountain Rose.....	59	175	670	530	570
Muir.....	40	---	---	---	---
Russell.....	88	190	460	385	320
Salway.....	310	430	940	1330	1475
Stump.....	140	400	750	475	425
Triumph.....	590	330	360	150	650
Wonderful.....	55	140	450	440	470

PEARS—STANDARD

	Code	per 100	per 1000
Two-years, 5 to 6 feet, $\frac{3}{4}$ and up.....	Fright	16 00	140 00
Two-years, 4 to 6 feet, $\frac{5}{8}$ to $\frac{3}{4}$	Filch	12 00	110 00
Two-years, $3\frac{1}{2}$ to 5 feet, $\frac{1}{2}$ to $\frac{5}{8}$	Flyke	9 00	80 00
Two-years, 3 to 4 feet, $\frac{3}{8}$ to $\frac{1}{2}$	Factory	6 00	50 00

	$\frac{1}{4}$ up	$\frac{5}{8}$ - $\frac{3}{4}$	$\frac{1}{2}$ - $\frac{5}{8}$	3-4 ft	$\frac{3}{4}$ up	$\frac{5}{8}$ - $\frac{3}{4}$	$\frac{1}{2}$ - $\frac{5}{8}$	3-4 ft
B. de Anjou.....	740	610	625	188	L. B. de Jersey.....	90	105	45 25
Clapp's.....	1300	1450	1070	590	Seckel.....	130	590	960 410
Duchess.....	650	530	290	440	Sheldon.....	240	510	610 300
Flemish Beauty.....	1460	1080	1090	468	Tyson.....	50	46	---
Garber.....	490	210	---	---	Vermont Beauty.....	---	180	210 240
Koonce.....	1030	370	250	135	Wilder.....	43	150	100 130
Lawrence.....	90	120	185	80	Worden-Seckel.....	---	10	78 30

PEARS—BARTLETT

190 Two-years, 5 to 6 feet, $\frac{11}{16}$ and up.....	Fabian	18 00	-----
630 Two-years, 4 to 6 feet, $\frac{5}{8}$ to $\frac{11}{16}$	Fabrile	14 00	-----
110 Two-years, $3\frac{1}{2}$ to 5 feet, $\frac{1}{2}$ to $\frac{5}{8}$	Falcate	11 00	-----
540 Two-years, 3 to 4 feet, $\frac{3}{8}$ to $\frac{1}{2}$	Fanion	8 00	-----
450 Two-years, 2 to 3 feet.....	Fusty	5 00	-----

PEARS—KIEFFER

3800 Two-years, 5 to 7 feet, $\frac{3}{4}$ and up.....	Fiber	12 00	100 00
2100 Two-years, 4 to 6 feet, $\frac{5}{8}$ to $\frac{3}{4}$	Filley	10 00	80 00
1500 Two-years, 4 to 5 feet, $\frac{1}{2}$ to $\frac{5}{8}$	Fibril	8 00	70 00
340 Two-years, 3 to 4 feet, $\frac{3}{8}$ to $\frac{1}{2}$	Fantail	6 00	50 00

PEARS—DUCHESS

129 One-year Buds, 4 to 5 feet.....	Florine	8 00	-----
332 One-year Buds, 3 to 4 feet.....	Florita	6 00	-----
525 One-year Buds, 2 to 3 feet.....	Fit	4 00	-----

PEARS—DWARF

Two-years, $\frac{3}{4}$ and up.....	Filter	12 00	-----
Two-years, $\frac{5}{8}$ to $\frac{3}{4}$	Film	10 00	-----
Two-years, $\frac{1}{2}$ to $\frac{5}{8}$	Fettle	8 00	-----
Two-years, $\frac{3}{8}$ to $\frac{1}{2}$	Farina	5 00	-----

PEARS—DWARF—Continued

	$\frac{3}{4}$ up	$\frac{5}{8}$ - $\frac{3}{4}$	$\frac{1}{2}$ - $\frac{5}{8}$	$\frac{3}{8}$ - $\frac{1}{2}$		$\frac{3}{4}$ up	$\frac{5}{8}$ - $\frac{3}{4}$	$\frac{1}{2}$ - $\frac{5}{8}$	$\frac{3}{8}$ - $\frac{1}{2}$
Bartlett	110	240	120	380	Koonce	50	---	---	---
B. de Anjou	210	390	285	150	Lawrence	100	20	---	---
Clapp's Favorite	180	310	1010	1190	L. B. de Jersey	170	50	133	60
Duchess de Ang	180	240	---	---	Seckel	960	265	340	268
Flemish Beauty	110	---	---	---	Vermont Beauty	220	130	60	20
Kieffer	270	160	84	115	Wilder	120	185	80	15

APRICOTS

	Code	per 100	per 1000
One- and two-years, 5 to 6 feet, $\frac{3}{4}$ and up	Fold	15	00
One- and two-years, 4 to 6 feet, $\frac{5}{8}$ to $\frac{1}{2}$	Flurry	12	00
One- and two-years, 4 to 5 feet, $\frac{1}{2}$ to $\frac{5}{8}$	Frend	9	00
One-year, 3 to 4 feet, $\frac{7}{16}$ to $\frac{1}{2}$	Flank	7	00

	$\frac{3}{4}$ up	$\frac{5}{8}$ - $\frac{3}{4}$	$\frac{1}{2}$ - $\frac{5}{8}$	3-4 ft		$\frac{3}{4}$ up	$\frac{5}{8}$ - $\frac{3}{4}$	$\frac{1}{2}$ - $\frac{5}{8}$	$\frac{3}{8}$ - $\frac{1}{2}$
Alexander	250	90	55	43	Moorpark	360	25	37	12
Alexis	270	---	---	---	Royal	280	54	16	---
Budd	340	170	104	25	Wilson	360	134	45	---
Gibb	63	110	10	---					

APRICOTS—RUSSIAN

140 On own roots, 5 to 6 feet, $\frac{3}{4}$ and up	Fine	10	00
100 On own roots, 4 to 6 feet, $\frac{5}{8}$ to $\frac{3}{4}$	Finish	8	00
150 On own roots, 4 to 5 feet, $\frac{1}{2}$ to $\frac{5}{8}$	Finic	6	00

QUINCES

Two-years, $\frac{1}{16}$ and up	Fez	18	00
Two-years, $\frac{5}{8}$ to $\frac{1}{2}$	Fellis	15	00
Two-years, $\frac{1}{2}$ to $\frac{5}{8}$	Femur	12	50

	$\frac{1}{16}$ up	$\frac{5}{8}$ - $\frac{1}{2}$	$\frac{1}{2}$ - $\frac{5}{8}$		$\frac{1}{16}$ up	$\frac{5}{8}$ - $\frac{1}{2}$	$\frac{1}{2}$ - $\frac{5}{8}$
Bourgeat	80	94	115	Meeches	---	---	140
Champion	120	85	205	Orange	---	---	165

NECTARINES

125 Boston, 5 to 6 feet, $\frac{1}{16}$ and up	Fledge	15	00
20 Boston, 4 to 6 feet, $\frac{1}{16}$ to $\frac{1}{8}$	Fleece	14	00

MULBERRIES

130 Russian, 8 to 10 feet	Fever	12	50
820 Russian, 6 to 8 feet, branched	Fuddle	10	00
1070 Russian, 5 to 6 feet, branched	Funny	8	00
430 Russian, 4 to 5 feet, branched	Furor	6	00
125 Russian, 3 to 4 feet, branched	Funnel	3	00

See page 13 for price of Mulberry Seedlings.

GOOSEBERRIES

2100 Champion, 2 years, No. 1	Glad	6	00
4200 Champion, 1 year, No. 1	Gault	4	50
5800 Downing, 2 years, No. 1	Goad	6	50
6100 Downing, 1 year, No. 1	Goard	5	00
7200 Houghton, 2 years, No. 1	Gimlet	4	00
5300 Houghton, 1 year, No. 1	Gild	3	00
2300 Industry, 2 years, No. 1	Groat	9	00
500 Industry, 1 year, No. 1	Gabby	7	00
3500 Josselyn, (Red Jacket), 2 years, No. 1	Grail	6	00
1260 Josselyn (Red Jacket), 1 year, No. 1	Gaze	5	00
1050 Pearl, 2 years, No. 1	Grate	6	50
700 Pearl, 1 year, No. 1	Gratitude	5	00

CURRANTS

			Code	per 100	per 1000
Leading varieties, 2 years, No. 1.....			Gale	2 50	18 00
Leading varieties, 1 year, No. 1.....			Guard	2 00	15 00
	2-1	1-1			
Knight's Red.....	250	85	Red Dutch.....	1500	550
London Market.....	1437	175	Versailles.....	890	175
North Star.....	1600	1000	Victoria.....	3200	2100
Pomona.....	3800	200	Wilder.....	6500	1600
2800 Black Champion, 1 year, No. 1.....			Glen	3 00
525 Black English, 2 years, No. 1.....			Gath	3 50
550 Black Naples, 1 year, No. 1.....			Goose	3 00	25 00
465 Black Victoria, 1 year, No. 1.....			Glide	3 00	25 00
320 Chautauqua, 2 years, No. 1.....			Gebler	3 00
2100 Cherry, 2 years, No. 1.....			Gise	3 00	25 00
1700 Cherry, 1 year, No. 1.....			Gilpin	2 00	18 00
5700 Fay's Prolific, 2 years, No. 1.....			Game	3 00	25 00
4400 Fay's Prolific, 1 year, No. 1.....			Gang	2 50	18 00
285 Lee's Prolific, 1 year, No. 1.....			Girty	3 00
800 Perfection, 1 year, No. 1.....			Gent	8 00
2300 Red Cross, 2 years, No. 1.....			Gracula	2 50	20 00
1500 Red Cross, 1 year, No. 1.....			Granite	2 00	15 00
3300 White Grape, 2 years, No. 1.....			Grist	3 00	25 00
1800 White Grape, 1 year, No. 1.....			Gin	2 00	18 00

GRAPE VINES

650 Agawam (Roger's 15) large red, 2 years, No. 1.....	Goak	3 50	30 00
1100 Agawam (Roger's 15) large red, 1 year, No. 1.....	Goal	2 50	20 00
575 Brighton, dark red, 2 years No. 1.....	Goatee	4 00	35 00
1150 Brighton, dark red, 1 year, No. 1.....	Goat	3 00	25 00
800 Campbell's Early, choice black, 2 years, No. 1.....	Gobble	7 00
1400 Campbell's Early, choice black, 1 year, No. 1.....	Gob	5 00
700 Catawba, red, 2 years, No. 1.....	Goggle	3 00
300 Catawba, red, 1 year, No. 1.....	Gog	2 50	20 00
1600 Clinton, black, 2 years, No. 1.....	Gore	2 50	24 00
500 Clinton, black, 1 year, No. 1.....	Gong	2 00	17 50
500 Champion, black, 2 years, No. 1.....	Golly	3 00
475 Champion, black, 1 year, No. 1.....	Gol	2 50	20 00
27000 Concord, black, 2 years, No. 1.....	Gossip	2 50	20 00
18000 Concord, black, 1 year, No. 1.....	Gospel	2 00	13 00
200 Delaware, red, 2 years No. 1.....	Grad	3 50
750 Delaware, red, 1 year, No. 1.....	Grace	3 00	25 00
450 Elvira, white, 1 year, No. 1.....	Grog	2 00	18 00
800 Moore's Diamond, 2 years, No. 1.....	Gumbo	4 00	30 00
550 Moore's Diamond, 1 year, No. 1.....	Gump	3 00	20 00
7500 Moore's Early, black, 2 years, No. 1.....	Greaser	4 00	35 00
6100 Moore's Early, black, 1 year, No. 1.....	Gringo	3 00	25 00
2800 Niagara, white, 2 years, No. 1.....	Gibbett	3 50	30 00
3500 Niagara, white, 1 year, No. 1.....	Giddy	2 50	20 00
1050 Pocklington, white, 2 years, No. 1.....	Gilt	3 50	30 00
970 Pocklington, white, 1 year, No. 1.....	Gibe	2 50	20 00
200 Salem, red, 2 years, No. 1.....	Geysler	3 50
100 Salem, red, 1 year, No. 1.....	Gesture	2 50
7300 Worden, black, 2 years, No. 1.....	Gasket	4 00	32 50
4600 Worden, black, 1 year, No. 1.....	Gasp	3 50	22 50
490 Wyoming, red, 1 year, No. 1.....	Gip	3 00	25 00

RASPBERRIES

2300 Brandywine, red.....	Goom	1 00	8 00
1800 Cardinal, purple,	Gander	1 50	12 00
1500 Columbian, purple.....	Gall	1 50	12 00

RASPBERRIES—Continued

	Code	per 100	per 1000
25000 Cumberland, black	Garb	1 25	7 00
3000 Cuthbert, red	Grand	1 00	7 00
4000 Eureka	Garden	1 00	8 00
1100 Golden Queen	Goshen	1 50
2000 Gregg, black	Gulp	1 00	7 00
5200 Haymaker, purple	Grulla	1 50	12 00
65000 Kansas, black	Gruel	1 00	7 00
4500 King, red	Gulkana	1 00	7 00
500 Louden, red	Gargle	1 25	10 00
2350 Miller, red	Gyral	1 00	7 00
1500 Munger, black	Gove	1 00	7 00
10000 Plum Farmer, black	Grain	1 00	7 00

STRAWBERRIES

250000 Leading kinds	Gear	40	2 50
Aroma	Glen Mary	New York	
Bederwood	Gandy	Senator Dunlap	
Brandywine	Haverland	Splendid	
Crescent	Michael's Early	Warfield	

BLACKBERRIES

Root Cutting Plants

14500 Ancient Briton	Garter	1 25	10 00
5200 Blowers	Gubster	2 00	14 00
2300 Early Harvest	Garland	1 25	10 00
16300 Eldorado	Garnet	1 25	10 00
24500 Erie	Garcia	1 00	7 00
1650 Kenoyer	Grizzly	1 25	10 00
9400 Mersereau	Grotto	1 50	12 00
1050 Ohmer	Garrotte	1 00	8 00
33000 Rathbun	Gable	1 25	10 00
18000 Snyder	Garnish	1 25	10 00
3050 Stones Hardy	Gaunt	1 25	10 00
4750 Taylor's Prolific	Gehled	1 25	10 00
1850 Ward	Garza	1 25	10 00
14200 Wilson's Early	Group	1 25	10 00

DEWBERRIES

1700 Austin root cutting	Hackney	1 00	8 00
12000 Lucretia, tip plants	Hare	1 00	8 00
6000 Lucretia, root cutting plants	Head	1 25	10 00
950 Premo, tip plants	Hack	1 00	8 00

MISCELLANEOUS

10000 Asparagus, Columbian, 2 years	Haw	50	4 00
8000 Asparagus, Columbian, 1 year	Hush	40	3 00
15000 Asparagus, Conovers Colossal, 2 years	Hire	40	3 50
10000 Asparagus, Conovers Colossal, 1 year	Hull	40	2 50
10000 Asparagus, Palmetto, 2 years	Herrell	50	4 00
1500 Asparagus, Palmetto, 1 year	Hank	40	3 00
1200 Horse Radish	Hemp	1 50	10 00
450 Juneberries, Dwarf, 2 to 3 feet	Heap	5 00
375 Juneberries, Dwarf, 18 to 24 inches	Hate	4 00
675 Juneberries, Dwarf, 12 to 18 inches	Heel	2 50
18000 Rhubarb, Victoria, 2 years	Halt	2 50	20 00
12000 Rhubarb, Victoria, 1 year	Hoop	2 00	15 00
9500 Strawberry-Raspberry	Hart	2 00	12 00
200 Loganberry, 1 year	Homely	5 00

CUTTINGS

50000 Cottonwood	\$1.25 per 1000,	\$10.00 per 10000
100000 Poplar, Carolina	1.25 per 1000	10.00 per 10000
10000 Poplar, Norway	1.50 per 1000,	12.50 per 10000
35000 Willow Golden	1.25 per 1000,	10.00 per 10000
10000 Willow Laurel Leaved.....	1.50 per 1000	
5000 Willow Wisconsin	2.50 per 1000	

APPLE SEEDLINGS

We still have a good supply of American Grown Apple Seedlings, strong grade of Thrifty Stocks, mighty good value at our Prices. Can ship on receipt of orders.

One Years Time

To responsible parties wishing to purchase a quantity of Seedlings we will extend one years time without interest if desired, taking non-interest bearing note in settlement.

Exchange

Will exchange Apple Seedlings for other stock that we can use to advantage: Peach, Plum, Dwarf Pear and Ornamental Stock preferred. Write us advising what you have to trade.

Prices and Grades as Follows

	Code	per 1000
210,000 Heavy grade, $\frac{1}{4}$ inch and up, straight.....	Ictus	5 00
350,000 No. 1, $\frac{3}{8}$ and up, straight.....	Ibex	3 00
390,000 No. 2, straight roots, strong.....	Idiot	1 50
125,000 No. 2, branched roots, strong.....	Icicle	1 50
260,000 Grafters, about $\frac{3}{8}$ and up.....	Isaac	1 25
370,000 No. 3, about 2-16 to 3-16.....	Idol	60

The $\frac{1}{4}$ inch grade are desirable stocks for lining out for budding. Samples sent on Application.

FRUIT TREE STOCKS

Japan Pear Seedlings, No. 1, 3-16 inch and up.....	Immerse	7 00
Japan Pear Seedlings, No. 3.....	Impress	3 00
Native Plum Seedlings, No. 1, 3-16 and up.....	Impeach	13 00

FRENCH FRUIT TREE STOCKS

Apple Seedlings, No. 1, 5 to 7mm, branched.....	Idiom	5 00
Cherry Mahaleb, No. 1, 5 to 8mm.....	Ignite	7 50
Cherry Mahaleb, No. 2, 3 to 5mm.....	Ignoble	5 00
Mazzard, No. 1, 5 to 8mm.....	Illegal	12 00
Pear No. 2, 3, to 5 mm, branched.....	Imbibe	5 00

ROOT GRAFTS

Ever since the Mount Arbor Nurseries were established in 1875, growing Apple Seedlings, Apple Trees and making Apple Grafts for the trade and our own planting has been one of our specialties. For this work we employ only skilled labor and select the best of material. We use Orchard Scions as far as possible and vigorous healthy Seedlings, carefully selected when grading our blocks of Seedlings.

All Grafts are carefully assorted and only the best of material used in orders so that customers can depend upon getting a first-class article. Orders

ROOT GRAFTS—Continued

should be placed early to procure the best selection of varieties and to give the grafts ample time to callous before shipment. After our Grafts are made they are tied in bundles of 100, each bunch carefully labeled and packed away to callous.

Our Piece-Root Grafts are made with a six inch Scion and three and one-half inch Root, the same style that we make largely for our own planting. For Whole-Root Grafts we use the entire Seedling, either a straight or branched root as the customer may select. Any style of Graft made to order.

Whole Root Grafts

Some of our customers get best results from planting Whole Root Grafts, which are made with a Scion about six inches in length and a branched or straight Seedling. We recommend a strong branched Seedling as it will usually give the best results. One customer advises his Whole Root Grafts put up on heavy branched Seedlings made 8 to 12 inches more growth than the Piece Root Grafts under the same conditions.

Grafts should be planted at the earliest date in the Spring the season will permit, in rows about three and one-half feet apart and seven to eight inches apart in the row. The ground should be plowed deep (in the fall preferred) and well prepared before planting.

Machine Wrapped Grafts

We have installed five Graft Wrapping Machines run with electric motor for Wrapping Grafts. We have been able to do much better wrapping of the union of the Grafts and are confident the continuous machine wrapping will materially reduce the percentage of crown gall, which frequently develops about the union of root and Scion in grafted Apple Trees.

George G. Hedgecock, Pathologist of the U. S. Department of Agriculture, conducted extensive experiments in his "field studies of the crown gall and hairy root of the Apple Tree," (See Bulletin No. 186 Bureau of Plant Industry) and according to his experiments there was a difference in percentage of crown gall of nineteen per cent. in favor of the continuous thread wrapping; aside from an increase in the stand of 10.2 per cent.

PRICES OF GRAFTS IN ASSORTMENT

	per 1000
Apple and Crab, No. 1 Piece Root, 1000 to 5000.....	\$5 00
" " " " " " 5000 and up.....	4 00
" " " " Whole " 1000 to 5000.....	8 00
" " " " " " 5000 and up	7 00
Pear, No. 1, Piece Root.....	8 00
" " Whole " 	12 00

SAMPLES SENT ON APPLICATION

Prices are for 100 or multiples of 100 of a variety.

PRICE AND QUALITY OF GRAFTS

It may be possible to buy Grafts at lower prices than we are offering, but the cheapest grafts are not always the most profitable to plant. Our prices are as low as grafts can be made by competent workmen, in a thorough manner from the best of material, and machine wrapped. It never pays to sacrifice quality for cheapness. The cost of the Grafts is a small item compared with the final cost of the trees when matured for the orchard.

LEADING VARIETIES APPLE GRAFTS

Aiken	Gravenstein	Mam. Black Twig	Smokehouse
Alexander	Grimes Golden	Mann	Sops of Wine
Allen's Choice	Haas	Milam	Spitzenburg
Anisim	Hibernal	Mo. Pippin	Stark
Arkansas Black	Horse Yellow	N. W. Greening	Staymans Winesap
Aut. Strawberry	HubbardstonNonsuch	Northern Spy	Sutton Beauty
Banana	Huntsman	Paradise Win. Sweet	Sweet Bough
Bailey Sweet	Ingram	Patten's Greening	Sweet June
Baldwin	Iowa Beauty	Peerless	Talman Sweet
Ben Davis	Iowa Blush	Perry Russett	Tetofsky
Benoni	Isham Sweet	Peter	Utter's Red
Black Annette	Janet	Pewaukee	University
Black Ben Davis	Jefferis	Pound Sweet	Wagner
Chenango	Jonathan	Prices Sweet	Walbridge
Cooper's Ea. White	Kaump	Rambo	Wealthy
Delicious	King of T Co.	Ramsdell Sweet	White Pearmain
Domine	King David	Red Astrachan	Willow Twig
Duchess	Lawver (Del. Red	Red Beitigheimer	Winesap
Early Harvest	Winter)	Red June	Windsor Chief
Fall Pippin	L. R. Romanite	R. I. Greening	Wolf River
Fameuse	Longfield	Romanstem	Yellow Belleflower
Flora Bell	McIntosh Red	Rome Beauty	Yel. Newton Pippin
Gano	McMahon	Salome	Yellow Transparent
Golden Sweet	Maiden Blush	Scotts Winter	York Imperial
Golden Russet	Malinda	Seek-no-further	

FOREST TREE SEEDLINGS

	Code	per 1000
1500 Ailanthus, 2 to 3 feet.....	Waddie	8 00
2300 Ailanthus, 18 to 24 inches.....	Whilon	6 00
1500 Ailanthus, 12 to 18 inches	Wanilla	5 00
1500 Ash, 3 to 4 feet.....	Wallop	8 00
3800 Ash, 2 to 3 feet.....	Wag	5 00
2300 Ash, 18 to 24 inches.....	Ward	3 50
45000 Ash, 12 to 18 inches.....	Wail	2 50
18000 Ash, 6 to 12 inches.....	Wallet	1 50
15000 Box Elder, 6 to 12 inches.....	Wild	2 00
5000 Catalpa, Speciosa, 2 to 3 feet.....	Wedge	3 50
50000 Catalpa, Speciosa, 18 to 24 inches.....	Wonder	2 50
90000 Catalpa, Speciosa, 12 to 18 inches.....	Wind	1 75
40000 Catalpa, Speciosa, 6 to 12 inches.....	Window	1 00
800 Cherry, Wild Black, 18 to 24 inches.....	Walk	8 00
1000 Cherry, Wild Black, 12 to 18 inches.....	Waltz	6 50
1000 Chestnut, Am. Sweet, 18 to 24 inches.....	Weary	18 00
2000 Chestnut, Am. Sweet, 8 to 15 inches.....	Wilbur	12 00
3000 Elm, American White, 3 to 4 feet.....	Wed	15 00
6000 Elm, American White, 3 to 4 feet.....	Weak	10 00
4800 Elm, American White, 2 to 3 feet.....	Woof	6 00
31000 Elm, American White, 18 to 24 inches.....	Wean	4 00
46000 Elm, American White, 12 to 18 inch s.....	Wisp	2 50
21000 Elm, American White, 6 to 12 inches.....	Wafer	1 25
18000 Locust, Black, 2 to 3 feet.....	Wiggle	4 00
35000 Locust, Black, 18 to 24 inches.....	Walter	3 25
18000 Locust, Black, 12 to 18 inches.....	Whig	2 50
52000 Locust, Black, 6 to 12 inches	Wheeze	1 25
7500 Locust, Honey, 2 to 3 feet.....	Wharf	6 00
1500 Locust, Honey, 18 to 24 inches.....	Whim	5 00
10500 Locust, Honey, 12 to 15 inches	Whey	3 50
14000 Locust, Honey 6 to 12 inches.....	Whack	2 00
4200 Maple, Soft or Silver Leaved, 2 to 3 feet.....	Wabble	5 00
35000 Maple, Soft or Silver Leaved, 18 to 24 in.....	War	3 00

FOREST TREE SEEDLINGS—Continued

	Code	per 1000
12000 Maple, Soft or Silver Leaved, 12 to 18 in.....	Wing	2 50
23000 Maple, Soft or Silver Leaved, 6 to 12 in.....	Waffle	1 50
12000 Mulberry, Russian, 2 to 3 ft, Tops Dam'gd.....	Whimper	5 00
24000 Mulberry, Russian, 18 to 24 in.,Tops Dam'gd....	Wick	3 50
32000 Mulberry, Russian, 12 to 18 in., Tops Dam'gd....	Winter	2 50
21500 Mulberry, Russian, 6 to 12 in., Tops Dam'gd....	Wise	1 50
76000 Osage Orange, 1 yr., No. 1.....	Writ	2 00
17000 Osage Orange, 1 yr., No. 2.....	Warren	1 25
2800 Russian Olive, 2 to 3 feet.....	Wide	18 00
6500 Russian Olive 18 to 24 inches.....	Wilt	12 50
3800 Russian Olive, 12 to 18 inches.....	Wine	10 00
2500 Russian, Olive 6 to 12 inches.....	Witty	7 50
8400 Sycamore, American, 18 to 24 inches.....	Witch	10 00
14600 Sycamore, American, 12 to 18 inches.....	Wig	8 00
15000 Walnut, Black, 12 to 18 inches.....	Wenz	6 00

POPLAR CAROLINA, one year whips

	Code	per 100	per 1000
1300 5 to 6 feet.....	Plate	2 00	15 00
2000 4 to 5 feet.....	Plague	1 75	12 50
900 3 to 4 feet.....	Plaid	1 50	10 00

WILLOW RUSSIAN GOLDEN, one year from cuttings

		per 1000
8500 3 to 4 feet.....	Wilton	10 00
6500 2 to 3 feet.....	Winona	8 00
2900 18 to 24 inches.....	Wiley	6 50
1600 12 to 18 inches.....	Wilcox	5 00

DECIDUOUS TREES

Our shade and Ornamental trees are first-class, well-shaped, young and vigorous nursery grown trees, with good roots. They have been grown from seedlings transplanted in nursery row especially for this purpose.

	Code	per 100	per 1000
80 Ailanthus, 5 to 6 feet.....	Minerva	1 25
50 Ash, 3 inch caliper.....	Maggie	9 00
190 Ash, 2½ to 3 inch caliper.....	Miocene	6 00
200 Ash, 2-2½ inch caliper.....	Mix	4 00
260 Ash, 1½ to 2 inch caliper.....	Middy	3 50	30 00
300 Ash, 8 to 10 feet.....	Might	2 00	15 00
1400 Ash, 6 to 8 feet.....	Mend	1 25	10 00
1200 Ash, 5 to 6 feet.....	Mart	1 00	8 00
100 Ash, 4 to 5 feet.....	Mat	60	5 00
500 Ash, 3 to 4 feet.....	Mac	40	2 50
25 Beech, Purple Leaved, 4 to 6 feet.....	Maggie	4 00
20 Birch, European White, 8 to 10 feet.....	Mice	3 00	25 00
190 Birch, European White, 6 to 8 feet.....	Migrate	1 75	15 00
170 Birch, European White, 5 to 6 feet.....	Midget	1 50	12 50
80 Birch, European White, 4 to 5 feet.....	Mogul	1 25	10 00
27 Birch, Red River, 2½ to 3 inch caliper.....	Micola	7 50
40 Birch, Red River, 2 to 2½ inch caliper.....	Midkiff	5 00
300 Box Elder, 1½ to 2 inch caliper.....	Meager	2 50
1070 Box Elder, 8 to 10 feet.....	Maze	1 75	15 00
2400 Box Elder, 6 to 8 feet.....	Mark	1 25	10 00
1500 Box Elder, 5 to 6 feet.....	Mascot	1 00	7 00
460 Box Elder, 4 to 5 feet.....	Massage	70	5 00
80 Butternut, 5 to 6 feet.....	Magnet	1 75	15 00
55 Butternut, 4 to 5 feet.....	Mildly	1 50
45 Butternut, 3 to 4 feet.....	Mogy	1 25	10 00
50 Catalpa, Bungei, 8 to 10 feet.....	Mobley	6 00

DECIDUOUS TREES—CONTINUED

	Code	per 10	per 100
140 Catalpa, Bungei, 6 to 8 feet.....	Mob	5 00
120 Catalpa, Speciosa, 2½ to 3 inch caliper.....	Max	3 50
270 Catalpa, Speciosa, 2 to 2½ inch caliper.....	Mar	2 50
530 Catalpa, Speciosa, 1½ to 2 inch caliper.....	Maw	2 00	15 00
350 Catalpa Speciosa, 8 to 10 feet.....	Mango	1 50	12 50
460 Catalpa, Speciosa, 6 to 8 feet.....	Magic	1 25	10 00
500 Catalpa, Speciosa, 5 to 6 feet.....	March	1 00	7 00
400 Catalpa, Speciosa, 4 to 5 feet.....	Madley	75	5 00
180 Cherry Dbl. Flowering, 3 to 4 feet.....	Malice	1 50
120 Chestnut, American Sweet, 6 to 8 feet.....	Maim	2 50
410 Chestnut, American Sweet, 5 to 6 feet.....	Melt	2 00	18 00
350 Chestnut, American Sweet, 4 to 5 feet.....	Mind	1 50
160 Chestnut American Sweet, 3 to 4 feet.....	Major	1 25
70 Chestnut, Horse, White Flowering, 8 to 10 ft.....	Medusa	5 00
225 Chestnut, Horse, White flowering, 6 to 8 ft.....	Magle	4 00
210 Chestnut, Horse, white flowering, 5 to 6 ft.....	May	3 00	25 00
80 Chestnut, Horse, white flowering, 4 to 5 feet.....	Mind	2 50	20 00
570 Cottonwood, 1½ to 2 inch caliper.....	Merd	1 50
1500 Cottonwood, 8 to 10 feet.....	Malva	1 50	12 50
800 Cottonwood, 6 to 8 feet.....	Mantis	1 25	10 00
900 Cottonwood, 5 to 6 feet.....	Mauve	1 00	8 00
50 Crab, Bechtle's double flowering, 4 to 5 feet.....	Mild	3 00
430 Crab, Bechtle's double flowering, 3 to 4 feet.....	Milt	2 50	20 00
640 Crab, Bechtle's double flowering, 2 to 3 feet.....	Miff	2 00	15 00
240 Crab, Bechtle's double flowering, 18 to 24 in.....	Mite	1 25	10 00
80 Elm, American White, 2½ to 3 inch caliper.....	Macerate	7 50
820 Elm, American White, 2 to 2½ inch caliper.....	Madrid	5 00
300 Elm, American White, 1¾ to 2 inch caliper.....	Machete	3 50
2100 Elm, American White, 1½ to 1¾ inch caliper.....	Merit	3 00	25 00
3500 Elm, American White, 1¼ to 1½ inch caliper.....	Mirza	2 00	18 00
3100 Elm, American White, 8 to 10 feet.....	Mire	1 75	15 00
4200 Elm, American White, 6 to 8 feet.....	Map	1 25	10 00
1500 Elm, American White, 5 to 6 feet.....	Match	1 00	8 00
750 Elm, American White, 4 to 5 feet.....	Mate	75	6 00
1500 Elm, American White, 3 to 4 feet.....	Mida	50	4 00
70 Hackberry, 6 to 8 feet.....	Mizzzen	1 50
120 Hackberry, 5 to 6 feet.....	Mortar	1 25
80 Hackberry, 4 to 5 feet.....	Mangler	1 00
40 Hop Tree (Wafer Ash) 6 to 8 feet.....	Mesita	1 50
100 Hop Tree, (Wafer Ash) 5 to 6 feet.....	Messex	1 25
30 Kentucky Coffee Tree, 4 to 5 feet.....	Mechlin	1 25
25 Koelreuteria (Varnish Tree) 4 to 5 feet.....	Macaco	2 00
105 Larch, European, 3 to 4 feet.....	Motor	1 50
200 Larch, European, 2 to 3 feet.....	Marvel	1 25
50 Linden, American, 1½ to 2 inch caliper.....	Market	5 00
240 Linden, American, 8 to 10 feet.....	Mock	3 50
510 Linden, American, 6 to 8 feet.....	Mood	2 50
390 Linden, American, 5 to 6 feet.....	Morse	2 00
220 Linden, American, 4 to 5 feet.....	Moxie	1 50
50 Linden, European, 1½ to 2 inch caliper.....	Morn	5 00
340 Linden, European, 8 to 10 feet.....	Miser	3 50
120 Linden European, 6 to 8 feet.....	Magill	2 50
160 Linden, European, 5 to 6 feet.....	Mode	2 00
34 Locust, Black, 8 to 10 feet.....	Nevins	1 75	15 00
125 Locust, Black, 6 to 8 feet.....	Nagger	1 25	10 00
45 Locust, Black, 4 to 5 feet.....	Nab	75	5 00
500 Locust, Honey, 4 to 5 feet.....	Naive	1 25	10 00
140 Locust, Honey, 3 to 4 feet.....	Nambric	1 00	8 00
160 Locust, Honey, thornless, 5 to 6 feet.....	Nancy	1 50	12 50
90 Locust, Honey, thornless, 4 to 5 feet.....	Naxera	1 25	10 00

DECIDUOUS TREES—CONTINUED

	Code	per 10	per 100
50 Magnolia Acuminata, 6 to 8 feet.....	Naff	3 00
60 Magnolia Acuminata, 5 to 6 feet.....	Naval	2 50
18 Magnolia Acuminata, 4 to 5 feet.....	Nandu	2 00
30 Maple, Hard or Sugar, 1½ to 2 in. caliper....	Nay	6 00
130 Maple, Hard or Sugar, 1¼ to 1½ in. caliper.....	Norris	5 00
430 Maple, Hard or Sugar, 8 to 10 feet.....	Nozzle	4 00	35 00
1200 Maple, Hard or Sugar, 6 to 8 feet.....	Notion	3 00	25 00
330 Maple Hard or Sugar, 5 to 6 feet.....	Nerve	2 50	20 00
60 Maple, Norway, 1½ to 2 inch caliper.....	Near	6 00
1100 Maple, Norway, 8 to 10 feet.....	Naked	4 00	30 00
950 Maple, Norway, 6 to 8 feet.....	Naron	2 50	20 00
470 Maple, Norway, 5 to 6 feet.....	New	2 00	16 00
125 Maple, Norway, 4 to 5 feet.....	Null	1 50	12 50
18 Maple, Schwedlers, 1½ to 2 inch caliper.....	Nabee	8 00
70 Maple, Schwedlers, 8 to 10 feet.....	Nestle	6 50
60 Maple, Schwedlers, 6 to 8 feet.....	Nepesta	5 00
120 Maple, Schwedlers, 5 to 6 feet.....	Nilma	4 00
120 Maple, Schwedlers, 4 to 5 feet.....	Neva	3 00
125 Maple, Soft or Sil. Lvd., 2 to 2½ in. caliper.....	Neigh	3 50
3800 Maple, Soft or Sil. Lvd., 1½ to 2 in. caliper.....	Nettle	2 50	20 00
5500 Maple, Soft or Sil. Lvd., 8 to 10 feet.....	Nest	1 50	12 50
3500 Maple, Soft of Sil. Lvd., 6 to 8 feet.....	Nector	1 00	8 00
600 Maple, Soft or Sil. Lvd., 5 to 6 feet.....	Nate	1 00	7 00
45 Maple, Weir's Cut Leaved, 1½ to 2 in. caliper.....	Noxin	3 00
165 Maple, Weir's Cut Leaved, 8 to 10 feet.....	Noble	2 50	20 00
215 Maple, Weir's Cut Leaved, 6 to 8 feet.....	Noun	1 75	15 00
690 Maple, Weir's Cut Leaved, 5 to 6 feet.....	Nimble	1 50	10 00
470 Maple, Weir's Cut Leaved, 4 to 5 feet.....	Niger	1 00	8 00
300 Mountain Ash, European, 8 to 10 feet.....	Pagan	2 00	15 00
900 Mountain Ash, European, 6 to 8 feet.....	Pod	1 50	12 50
690 Mountain Ash, European, 5 to 6 feet.....	Pile	1 25	10 00
220 Mountain Ash, European, 4 to 5 feet.....	Piker	1 00	3 00
14 Mountain Ash, Oak Lvd., 1½ to 2 in. caliper.....	Parole	4 00
18 Mountain Ash, Oak Leaved, 6 to 8 feet.....	Panther	2 50
160 Mountain Ash, Oak Leaved, 5 to 6 feet.....	Pant	2 00	15 00
180 Mountain Ash, Oak Leaved, 4 to 5 feet.....	Pail	1 50	12 50
60 Mountain Ash, Oak Leaved, 3 to 4 feet.....	Padilla	80
10 Oak Burr, 5 to 6 feet.....	Pilton	2 50
38 Oak, Burr, 4 to 5 feet.....	Pimlon	2 00
35 Oak, Pin, 6 to 8 feet.....	Prince	3 50
40 Oak, Pin, 5 to 6 feet.....	Pallor	2 50
30 Oak, Pin, 4 to 5 feet.....	Palmer	2 00
14 Oak, Red, 6 to 8 feet.....	Palzo	3 50
16 Oak, Red, 5 to 6 feet.....	Page	2 50
35 Persimmons, American, 6 to 8 feet.....	Polite	2 00
60 Persimmons, American, 5 to 6 feet.....	Paw	1 75
90 Persimmons, American, 4 to 5 feet.....	Pando	1 50
25 Persimmons, American, 3 to 4 feet.....	Pond	1 25
70 Poplar, Bolleana, Sil. Lvd., 1½ to 2 in. cal.....	Pagosa	3 00
35 Poplar, Bolleana, Silver Leaved, 8 to 10 feet.....	Pedal	2 00	18 00
115 Poplar, Bolleana, Silver Leaved, 6 to 8 feet.....	Pedant	1 75	15 00
210 Poplar, Bolleana, Silver Leaved, 5 to 6 feet.....	Proof	1 50	12 50
50 Poplar, Bolleana, Silver Leaved, 4 to 5 feet.....	Poodle	1 25	10 00
180 Poplar, Canadian, 6 to 8 feet.....	Pocasin	1 25	10 00
135 Poplar, Canadian, 5 to 6 feet.....	Poesta	80	7 00
700 Poplar, Carolina, 2½ to 3 inch caliper.....	Peevish	3 50
1500 Poplar, Carolina, 2 to 2½ inch caliper.....	Puget	2 50	20 00
3500 Poplar, Carolina, 1½ to 2 inch caliper.....	Paling	1 50	12 50
5000 Poplar, Carolina, 1¼ to 1½ inch caliper.....	Pawn	1 25	8 00
4800 Poplar, Carolina, 8 to 10 feet.....	Potter	1 00	6 00

DECIDUOUS TREES—CONTINUED

	Code	per 10	per 100
6300 Poplar, Carcina, 6 to 8 feet.....	Park	60	4 00
4400 Poplar, Carolina, 5 to 6 feet.....	Pit	50	3 00
2000 Poplar, Carolina, 4 to 5 feet.....	Pint	40	2 00
75 Poplar, Lombardy, 2 to 2½ inch caliper.....	Plew	3 00
190 Poplar, Lombardy, 8 to 10 feet.....	Pacal	2 00
360 Poplar, Lombardy, 8 to 10 feet.....	Peace	1 50	12 50
120 Poplar, Lombardy, 5 to 6 feet.....	Pat	1 00	8 00
150 Poplar, Lombardy, 4 to 5 feet.....	Pix	80	6 00
90 Poplar, Norway, 2½ to 3 inch.....	Pencon	5 00
290 Poplar, Norway, 2 to 2½ inch caliper.....	Parham	2 50
800 Poplar, Norway, 1½ to 2 inch caliper.....	Panix	2 00	15 00
700 Poplar, Norway, 1¼ to 1½ inch caliper.....	Plato	1 50	12 50
300 Poplar, Norway, 8 to 10 feet.....	Pardon	1 25	10 00
320 Poplar, Norway, 6 to 8 feet.....	Parody	1 00	8 00
750 Poplar, Norway, 5 to 6 feet.....	Patmos	75	6 00
260 Poplar, Silver Leaved, 8 to 10 feet.....	Porto	2 00	15 00
410 Poplar, Silver Leaved, 6 to 8 feet.....	Pocco	1 50	12 50
380 Poplar, Silver Leaved, 5 to 6 feet.....	Peal	1 25	10 00
100 Poplar, Silver Leaved 4 to 5 feet.....	Pen	1 00	8 00
150 Poplar, Volga, 8 to 10 feet.....	Peart	1 50	12 50
330 Poplar, Volga, 6 to 8 feet.....	Pelt	1 25	10 00
55 Prunus Pissardi, 5 to 6 feet.....	Paz	2 00
43 Prunus, Triloba, 4 to 5 feet.....	Pebble	1 50
200 Prunus, Triloba, 3 to 4 feet.....	Poppy	1 25
67 Prunus, Triloba, 18 to 24 inches.....	Paloma	75
50 Red Bud or Judas Tree, 4 to 5 feet.....	Pilot	1 25
35 Red Bud of Judas Tree, 3 to 4 feet.....	Pistol	1 00
270 Russian Olive, 6 to 8 feet.....	Pekoe	1 50	12 50
700 Russian Olive, 5 to 6 feet.....	Poem	1 25	10 00
400 Russian Olive, 4 to 5 feet.....	Peanut	1 00	8 00
510 Russian Olive, 3 to 4 feet.....	Parson	75	6 00
50 Sycamore, American, 2 to 2½ inch caliper.....	Pollv	4 00
1000 Sycamore, American, 1½ to 2 inch caliper.....	Puddle	3 00	25 00
1500 Sycamore, American, 8 to 10 feet.....	Police	2 00	15 00
1400 Sycamore, American, 6 to 8 feet.....	Poet	1 50	12 50
750 Sycamore, American, 5 to 6 feet.....	Pointer	1 25	10 00
375 Sycamore, American, 4 to 5 feet.....	Paddy	1 00	8 00
20 Sycamore, European, 1½ to 2 inch caliper.....	Peptic	3 50
120 Sycamore, European, 6 to 8 feet.....	Pied	2 00
30 Thorn, dbl. flowering, scarlet, 4 to 5 feet.....	Penvir	2 50
40 Thorn, dbl. flowering, scarlet, 3 to 4 feet.....	Pill	2 00
20 Thorn, dbl. flowering, white, 4 to 5 feet.....	Pimple	2 50
28 Tulip Tree, 5 to 6 feet.....	Pasture	2 00
10 Tulip Tree, 3 to 4 feet.....	Polish	1 00
115 Walnut, Black, 1½ to 2 inch caliper.....	Piety	2 50
400 Walnut, Black, 8 to 10 feet.....	Pillow	2 00
390 Walnut, Black, 6 to 8 feet.....	Pout	1 75	15 00
370 Walnut, Black, 5 to 6 feet.....	Picnic	1 50	12 50
450 Walnut, Black, 4 to 5 feet.....	Pierce	1 25	10 00
50 Willow, Golden, 5 to 6 feet.....	Parade	75	5 00
600 Willow, Golden, 4 to 5 feet.....	Pulk	50	3 00
54 Willow, Laurel, Leaved, 6 to 8 feet.....	Pug	1 25
250 Willow, Laurel Leaved, 5 to 6 feet.....	Parch	1 00	8 00
700 Willow, Laurel Leaved, 4 to 5 feet.....	Press	75	6 00

WEeping TREES

90 Birch, Cut Leaved, 8 to 10 feet.....	Paral	6 00
230 Birch, Cut Leaved, 6 to 8 feet.....	Pallor	5 00
320 Birch, Cut Leaved, 5 to 6 feet.....	Paint	4 00	35 00

WEeping TREES—Continued

	Code	per 10	per 100
340 Birch, Cut Leaved, 4 to 5 feet.....	Pallet	3 00	25 00
34 Birch, Cut Leaved, 3 to 4 feet.....	Palace	2 60
130 Elm, Camperdown, 2 year heads.....	Piling	5 00
120 Elm, Camperdown, 1 year heads.....	Pike	4 00
190 Mountain Ash, 2 year heads.....	Pursue	3 00
60 Mountain Ash, 1 year heads.....	Pump	2 50
330 Mulberry, Tea's Russian, 2 year heads.....	Pilgrm	5 00
290 Mulberry Tea's Russian, 1 year heads.....	Pulp	4 00
70 Willow, Kilmarnock, 1 year heads.....	Pith	2 50
95 Willow, New American, 1 year heads.....	Picul	2 50
105 Willow, Wisconsin, hardy, 8 to 10 feet.....	Prose	2 50
45 Willow, Wisconsin, hardy, 6 to 8 feet.....	Pivot	1 50
230 Willow, Wisconsin, hardy, 5 to 6 feet.....	Pratt	1 25
215 Willow, Wisconsin, hardy, 4 to 5 feet.....	Prop	1 00
70 Willow, Wisconsin, hardy, 3 to 4 feet.....	Palisade	75

ORNAMENTAL SHRUBS

Our Shrubs are well grown, bushy stock, many of them twice transplanted and will compare favorably with any stock on the market.

340 Almond, dbl. flow. pink, white, 3 to 4 feet.....	Rabid	1 50	15 00
890 Almond, dbl. flow. pink, white, 2 to 3 feet.....	Rattle	1 25	12 50
870 Almond, dbl. flow., pink, white, 18 to 24 in.....	Rabble	1 00	9 00
450 Althea, Assorted, tree form, 4 to 5 feet.....	Ristine	1 25	10 00
600 Althea, Assorted, 3 to 4 feet.....	Ruff	1 25	8 00
300 Althea, Assorted, 2 to 3 feet.....	Ramie	1 00	6 00
400 Althea, Assorted, 18 to 24 inches.....	Rain	80	5 00
50 Azalia Mollis, 10 to 15 inches.....	Renovo	2 50
650 Barberry, Purple, Leaved 3 to 4 feet.....	Ramento	1 25	8 00
1750 Barberry, purple, Leaved, 2 to 3 feet.....	Rash	1 00	6 00
625 Barberry, Purple Leaved, 18 to 24 inches.....	Ray	60	4 00
1200 Barberry, Thunbergi, 2 to 3 feet.....	Risto	1 25	10 00
1800 Barberry, Thunbergi, 18 to 24 inches.....	Rupee	1 00	8 00
460 Barberry, Vulgaris, 3 to 4 feet.....	Randles	1 25	8 00
1500 Barberry, Vulgaris, 2 to 3 feet.....	Ramism	1 00	6 00
1050 Barberry, Vulgaris, 18 to 24 inches.....	Rampien	60	4 00
330 Buckthorn, 4 to 5 feet.....	Register	1 00	7 00
220 Buckthorn, 3 to 4 feet.....	Reflect	75	6 00
1500 Buckthorn, 2 to 3 feet.....	Reamer	50	4 00
80 Calycanthus, 2 to 3 feet.....	Rail	1 25	10 00
165 Caragana, Siberian Pea Tree, 3 to 4 feet.....	Rapine	1 00	6 00
1040 Caragana, Siberian Pea Tree, 2 to 3 feet.....	Rarefly	75	4 00
110 Cornus Siberica, Dogwood, 3 to 4 feet.....	Rent	1 25	10 00
180 Cornus Siberica, Dogwood, 2 to 3 feet.....	Renter	1 00	8 00
230 Cornus Siberica, Dogwood, 18 to 24 inches.....	Ready	75	6 00
75 Cornus Siberica, Dogwood, 12 to 18 inches.....	Real	60	4 00
20 Cornus Stolonifera, 2 to 3 feet.....	Redtop	1 25	10 00
70 Cornus Stolonifera, 18 to 24 inches.....	Redclay	1 00	8 00
125 Cranberry, High Bush, 3 to 4 feet.....	Roster	1 25	12 00
310 Cranberry, High Bush, 2 to 3 feet.....	Roland	1 00	9 00
880 Cranberry, High Bush, 18 to 24 inches.....	Raleigh	75	6 00
1200 Cranberry, High Bush, 12 to 18 inches.....	Rolla	60	4 00
275 Currant, flowering, 3 to 4 feet.....	Rubine	1 25	10 00
250 Currant, flowering, 2 to 3 feet.....	Ratchil	1 00	8 00
160 Currant, flowering, 18 to 24 inches.....	Rath	75	6 00
70 Cydonia Japonica, 3 to 4 feet.....	Roar	1 00	8 00
330 Cydonia, Japonica, 2 to 3 feet.....	Rub	80	6 00
1090 Cydonia Japonica, 18 to 24 inches.....	Rouse	75	4 00
10 Deutzia, Pride of Rochester, 3 to 4 feet.....	Ravine	1 25	10 00

ORNAMENTAL SHRUBS—CONTINUED

	Code	per 10	per 100
110 Deutzia, Pride of Rochester, 2 to 3 feet.....	Raw	1 00	8 00
25 Elder, Fern Leaved Acutiloba, 3 to 4 feet.....	Roxboro	1 25
50 Elder, Fern Leaved Acutiloba, 2 to 3 feet.....	Ralph	1 00
220 Elder, Golden, 4 to 5 feet.....	Ranlett	1 50	12 00
60 Elder, Golden, 3 to 4 feet.....	Robuff	1 25	10 00
140 Elder, Golden, 2 to 3 feet.....	Rookie	1 25	8 00
23 Exochordia Grandiflora, 3 to 4 feet.....	Relay	1 25
40 Exochordia Grandiflora, 2 to 3 feet.....	Rosette	1 00
39 Exochordia Grandiflora, 18 to 24 inches.....	Rapson	75
200 Forsythia, Intermedia, 2 to 3 feet.....	Requite	1 25	10 00
150 Forsythia, Intermedia, 18 to 24 inches.....	Respect	1 00	8 00
30 Forsythia, Suspensa, 3 to 4 feet.....	Raritan	1 25
110 Forsythia, Suspensa, 2 to 3 feet.....	Rarick	1 25	10 00
90 Forsythia, Suspensa, 18 to 24 inches.....	Retreat	1 00	8 00
200 Forsythia, Viridissima, 2 to 3 feet.....	Raid	1 00	8 00
280 Forsythia, Viridissima, 18 to 24 inches.....	Recede	75	6 00
40 Fringe, Purple 4 to 5 feet.....	Ruse	1 25
80 Fringe, Purple, 3 to 4 feet.....	Reek	1 00
25 Fringe, white, 3 to 4 feet.....	Runic	2 00
40 Fringe, White, 2 to 3 feet.....	Rust	1 50
190 Honeysuckle, Grandiflora, 2 to 3 feet.....	Reford	1 00	8 00
850 Honeysuckle, Grandiflora, 18 to 24 inches.....	Recher	75	5 00
125 Honeysuckle, Tart., pink, Red, 3 to 4 feet.....	Regal	1 00	8 00
660 Honeysuckle, Tart., Pink, Red, 2 to 3 feet.....	Regard	80	6 00
1150 Honeysuckle Tart., Pink, 18 to 24 in.....	Regime	60	5 00
500 Honeysuckle, Tartarian, White, 2 to 3 feet.....	Rantoul	75	6 00
400 Honeysuckle, Tartarian, White, 18 to 24 in.....	Ransom	60	5 00
100 Hydrangea, Arborescens Grand, 18 to 24 in.....	Raddin	1 25
1050 Hydrangea, P. G., 3 feet.....	Ream	1 50	12 50
1200 Hydrangea, P. G., 2 to 3 feet.....	Rack	1 25	9 00
980 Hydrangea, P. G., 18 to 24 inches.....	Rode	1 00	7 00
1040 Hydrangea, P. G., 12 to 18 inches.....	Rex	80	5 00
350 Hydrangea, Tree Form, 4 to 5 feet.....	Recoup	2 00	20 00
230 Hydrangea, Tree Form, 3 to 4 feet.....	Reuben	1 75	16 00
100 Lilac, Josikea, 3 to 4 feet.....	Revaro	1 50
77 Lilac, Josikea, 18 to 24 inches.....	Revel	1 00	8 00
330 Lilac, Josikea, 12 to 18 inches.....	Revet	80	6 00
490 Lilac, named varieties, 3 to 4 feet.....	Rena	2 50	20 00
260 Lilac, named varieties, 2 to 3 feet.....	Reba	2 00	15 00
260 Lilac, named varieties, 18 to 24 inches.....	Rekaldo	1 25	10 00
140 Lilac, Persian purple, 2 to 3 feet.....	Romerlus	1 50	12 50
110 Lilac, Persian, purple, 18 to 24 inches.....	Ribera	1 25	10 00
325 Lilac, Persian Rothomagensis, 2 to 3 feet.....	Rectify	1 25	12 50
95 Lilac, Persian Rothomagensis, 18 to 24 inches.....	Reduce	1 00	10 00
75 Lilac, purple, 2 to 3 feet.....	Regent	1 00	8 00
300 Lilac, purple, 18 to 24 inches.....	Rink		6 00
290 Lilac, Purple, 12 to 18 inches.....	Rice	60	5 00
100 Lilac, Red, 2 to 3 feet.....	Randol	1 00	8 00
500 Lilac, Red, 18 to 24 inches.....	Rochelle	75	6 00
600 Lilac, Red, 12 to 18 inches.....	Renick	60	5 00
70 Lilac, White, 2 to 3 feet.....	Roby	1 25
60 Lilac, White, 18 to 24 inches.....	Rip	1 00
Privet—see special heading.			
60 Rhododendron, separate colors, 18 to 24 in.....	Rim	6 00
280 Snowball, 4 to 5 feet.....	Ruston	1 50
350 Snowball, 3 to 4 feet.....	Rabato	1 25	10 00
870 Snowball, 2 to 3 feet.....	Rank	1 00	8 00
1260 Snowball, 18 to 24 inches.....	Ripper	75	6 00
975 Snowball, 12 to 18 inches.....	Rabbit	60	5 00

ORNAMENTAL SHRUBS—CONTINUED

	Code	per 10	per 100
25 Snowball, Japan, 3 to 4 feet.....	Rinach	2 00
30 Snowball, Japan, 2 to 3 feet.....	Rile	1 50	15 00
80 Snowball, Japan, 18 to 24 inches.....	Riprah	1 25
75 Snowberry, Red, 3 to 4 feet.....	Rider	1 25	10 00
155 Snowberry, Red, 2 to 3 feet.....	Richard	1 00	8 00
35 Spirea, Anthony Waterer, 2 to 3 feet.....	Ragged	1 50	12 50
500 Spirea, Anthony, Waterer, 18 to 24 inches.....	Ripple	1 25	10 00
615 Spirea, Anthony Waterer, 12 to 18 inches.....	Ridge	1 00	8 00
25 Spirea, Arguta, 3 to 4 feet.....	Retah	1 25	10 00
370 Spirea, Arguta, 2 to 3 feet.....	Ranum	1 25	10 00
240 Spirea, Arguta, 18 to 24 inches.....	Regest	1 00	8 00
100 Spirea, Aurea, 3 to 4 feet.....	Rugby	1 25	10 00
125 Spirea, Aurea, 2 to 3 feet.....	Rival	1 25	10 00
140 Spirea Aurea, 18 to 24 inches.....	Rive	75	6 00
100 Spirea, Billardi Rosea, 3 to 4 feet.....	Rodent	1 00
80 Spirea, Billardi Rosea, 2 to 3 feet.....	Rocket	75	6 00
130 Spirea, Bumalda, 18 to 24 inches.....	Rook	1 00	8 00
38 Spirea Bumalda 12 to 18 inches.....	Romage	75	6 00
105 Spirea Callosa, Alba, 18 to 24 inches.....	Romal	1 00
35 Spirea Opulifolia, 3 to 4 feet.....	Retex	1 25	10 00
70 Spirea, Opulifolia, 2 to 3 feet.....	Rapatee	1 00	8 00
100 Spirea, Prunifolia, 3 to 4 feet.....	Romper	1 50	12 00
120 Spirea, Prunifolia, 18 to 24 inches.....	Rondo	80
100 Spirea, Prunifolia, 12 to 18 inches.....	Roof	1 50
50 Spirea, Thunbergi, 2 to 3 feet.....	Rake	1 25
360 Spirea, Van Houtte, 3 to 4 feet.....	Rout	1 00	8 00
2500 Spirea, Van Houtte, 2 to 3 feet.....	Rote	75	6 00
2200 Spirea, Van Houtte, 18 to 24 inches.....	Router	60	4 00
1000 Spirea, Van Houtte, 12 to 18 inches.....	Rosin	50	3 00
38 Strawberry Tree, 3 to 4 feet.....	Raly	1 25
36 Strawberry Tree, 2 to 3 feet.....	Realm	1 00
25 Sumach, Cut Leaved, 3 to 4 feet.....	Ross	1 50
40 Sumach, Cut Leaved, 2 to 3 feet.....	Rostel	1 25
30 Sumach, Cut Leaved, 18 to 24 inches.....	Rotund	1 00
510 Syringa, assorted, 3 to 4 feet.....	Ruddy	1 25	10 00
700 Syringa, assorted, 2 to 3 feet.....	Ruck	1 00	8 00
250 Syringa, assorted, 18 to 24 inches.....	Ruffler	75	6 00
210 Syringa, assorted, 12 to 18 inches.....	Roused	50	4 00
30 Syringa, Golden, 2 to 3 feet.....	Rubicon	1 50
330 Syringa, Golden, 18 to 24 inches.....	Rope	1 25
185 Syringa, Golden, 12 to 18 inches.....	Rubied	1 00
144 Tamarix, 5 to 6 feet.....	Retro	1 50	12 50
440 Tamarix, 4 to 5 feet.....	Rare	1 25	10 00
490 Tamarix, 3 to 4 feet.....	Rotate	1 00	8 00
420 Tamarix, 2 to 3 feet.....	Ramsay	60	5 00
600 Tamarix, 18 to 24 inches.....	Raad	50	4 00
120 Wigelia, Candida, 2 to 3 feet.....	Rief	1 25	10 00
200 Wigelia, Candida, 18 to 24 inches.....	Ruffian	1 00	8 00
220 Wigelia, Eva Rathke, 3 to 4 feet.....	Rugate	1 75	15 00
310 Wigelia, Eva Rathke, 2 to 3 feet.....	Rugin	1 50	12 50
220 Wigelia, Eva Rathke, 18 to 24 inches.....	Ruin	1 00
225 Wigelia, Eva Rathke, 12 to 18 inches.....	Rule	80	7 00
90 Wigelia, Floribunda, 2 to 3 feet.....	Relay	1 25	10 00
100 Wigelia, Floribunda, 18 to 24 inches.....	Rumen	1 00	8 00
20 Wigelia, Rosea, 3 to 4 feet.....	Rue	1 50	12 50
610 Wigelia, Rosea, 2 to 3 feet.....	Rage	1 25	10 00
250 Wigelia, Rosea, 18 to 24 inches.....	Rug	1 00	8 00
170 Wigelia, Rosea, 12 to 18 inches.....	Rumpus	60	5 00
50 Wigelia, Variegated, 2 to 3 feet.....	Rave	1 50	12 00

PRIVET

	Code	per 100	per 1000
1000 Amoor River North, 2 to 3 ft.....	Selma	\$5 00
1500 Amoor River North, 18 to 24 inches.....	Strut	4 00
1200 Amoor River North, 12 to 18 inches.....	Strutter	3 00
1500 California, 4-6 canes, 3 to 4 feet.....	Sacrifice	3 00
14000 California, 3-6 canes, 2 to 3 feet.....	Sirrah	2 50	20 00
3500 California, 1-2 canes, 2 to 3 feet.....	Sutton	2 00	15 00
12600 California, 3-5 canes, 18 to 24 inches.....	Sirt	2 00	15 00
9400 California, 2-5 canes, 12 to 18 inches.....	Syrup	1 50	12 50
800 Ibota, 4-6 canes, 3 to 4 feet.....	Sweeney	6 00
7400 Ibota, 3-6 canes, 2 to 3 feet.....	Skirum	5 00	40 00
3300 Ibota, 3-5 canes, 18 to 24 inches.....	Sugar	4 00	30 00
1800 Ibota, 2-5 canes, 12 to 18 inches.....	Saxon	3 00	20 00
155 Regelinum, 3-6 canes, 2 to 3 feet.....	Susan	5 00
500 Regelinum, 3-5 canes, 18 to 24 inches.....	Shako	4 00
1000 Regelinum, 2-5 canes, 12 to 18 inches.....	Sandgap	3 00
900 Vulgaris, 3-6 canes, 2 to 3 feet.....	Stella	3 00
450 Vulgaris, 3-5 canes, 18 to 24 inches.....	Sincere	2 50
800 Vulgaris, 2-5 canes, 12 to 18 inches.....	Suitor	2 00

HEDGING

1625 Barberry, Purple Leaved, 18 to 24 inches.....	Shrug	\$4 00	\$.....
1200 Barberry, Purple Leaved, 12 to 18 inches.....	Shut	3 00
1800 Barberry, Thunbergi, 18 to 24 inches.....	Sideral	8 00
1050 Barberry, Thunbergi, 12 to 18 inches.....	Siege	5 00
750 Barberry, Thunbergi, 6 to 12 inches.....	Sigh	2 50
1050 Barberry, Vulgaris, 18 to 24 inches.....	Saga	4 00
1050 Buckthorn, 12 to 18 inches.....	Saint	2 00
1040 Caragana Arborescens, 2 to 3 feet.....	Skinny	4 00
750 Caragana Arborescens, 18 to 24 inches.....	Serve	3 00
1200 Caragana Arborescens, 12 to 18 inches.....	Saw	2 50
1090 Cydonia, Japonica, 18 to 24 inches.....	Sizar	4 00	35 00
1700 Cydonia, Japonica, 12 to 18 inches.....	Skain	3 00	20 00
1150 Honeysuckle, Tartarian, 18 to 24 inches.....	Silent	5 00	40 00
900 Honeysuckle, Tartarian, 12 to 18 inches.....	Silk	3 00	25 00
2200 Spirea, Van Houtte, 18 to 24 inches.....	Skep	4 00	35 00
1000 Spirea, Van Houtte, 12 to 18 inches.....	Skid	3 00	25 00

VINES,—Two-Years, No. 1.

	Code	per 10	per 100
1800 Ampelopsis, Engelmannii	Shadle	1 00	7 00
1400 Ampelopsis, Quinquefolia (American Ivy).....	Shadow	75	5 00
450 Ampelopsis, Veitchii (Boston Ivy).....	Soar	1 00	8 00
140 Aristolochia Sippo	Slack	2 50
115 Bignonia Grandiflora	Saber	1 00	8 00
100 Clematis, Coccinea	Soop	1 25	10 00
800 Clematis, Large Flowering, 3 years.....	Sudra	2 00	18 00
1800 Clematis, Large Flowering	Suds	1 75	16 00
Duchess of Edinburg	Jackmani		
Henry	Mad. Ed Andre		
600 Clematis, Paniculata, 3 years	Solo	1 25	10 00
1400 Clematis, Paniculata (Jap. Sweet scented).....	Spurn	1 00	8 00
70 Clematis, Viticella Blue.....	Sift	1 00
180 Honeysuckle, Chinese	Shore	1 25	10 00
270 Honeysuckle, Golden Leaved.....	Shade	1 25	10 00
760 Honeysuckle, Halliana (Hall's Japan).....	Saddle	1 00	8 00
175 Honeysuckle, Monthly Fragrant.....	Sheen	1 25	10 00
1200 Honeysuckle, Scarlet Trumpet.....	Span	1 25	10 00
55 Honeysuckle, Yel. Trumpet.....	Spake	1 00
410 Matrimony	Sloan	1 00	7 00
460 Wistaria, American Purple, strong plants.....	Stab	1 00	6 00

VINES—Two Years, No. 1—Continued

	Code	per 10	per 100
20 Wisteria, Chinese Blue.....	Sibley	1 25
130 Wistaria, Multijuga	Sharp	1 25	10 00
57 Wisteria, White.....	Shed	2 00

EVERGREENS

Transplanted stock. Dug fresh as orders are received
Expense of balling extra

130 Arbor Vitae, American, 3 to 4 feet.....	Tepid	2 00	15 00
590 Arbor Vitae, American, 2 to 3 feet.....	Tuft	1 50	12 00
830 Arbor Vitae, American, 18 to 24 inches.....	Talent	1 00	8 00
210 Arbor Vitae, Pryamidalis, 18 to 24 inches.....	Throax	2 50
360 Arbor Vitae, Pryamidalis, 12 to 18 inches.....	Teak	1 50
90 Arbor Vitae, Siberian, 2 to 3 feet.....	Tarheel	2 50
100 Arbor Vitae, Siberian, 18 to 24 inches.....	Tamesa	2 00
35 Balsam Fir, 2 to 3 feet.....	Tent	1 50
120 Balsam Fir, 18 to 24 inches.....	Talbot	1 25
240 Juniper, Irish, 2 to 3 feet.....	Tamper	2 50
190 Juniper, Irish, 18 to 24 inches.....	Temple	2 00
27 Juniper, Swedish, 2 to 3 feet.....	Tabor	2 50
60 Juniper, Swedish, 18 to 24 inches.....	Tardo	2 00
1400 Pine, Austrian, 2 to 3 feet.....	Terse	1 50	12 50
1200 Pine, Austrian, 18 to 24 inches.....	Taper	1 25	10 00
650 Pine, Austrian, 12 to 18 inches.....	Terror	1 00	8 00
125 Pine, Jack, 3 to 4 feet.....	Tempt	1 50
540 Pine, Jack, 2 to 3 feet.....	Tenso	1 25	10 00
530 Pine, Jack, 18 to 24 inches.....	Taper	1 00	8 00
150 Pine, Jack, 12 to 18 inches.....	Thebian	75	5 00
21 Pine, Scotch, 4 to 5 feet.....	Theta	2 50
170 Pine, Scotch, 3 to 4 feet.....	Tobe	1 50
1480 Pine, Scotch, 2 to 3 feet.....	Toft	1 25	10 00
1130 Pine, Scotch, 18 to 24 inches.....	Trotter	1 00	8 00
790 Pine, Scotch, 12 to 18 inches.....	Toga	75	6 00
740 Pine, White, 2 to 3 feet.....	Tonic	1 75	15 00
820 Pine, White, 18 to 24 inches.....	Topic	1 50	12 50
340 Pine, White, 12 to 18 inches.....	Toll	1 25	10 00
90 Red Cedar, 18 to 24 inches.....	Test	1 50
610 Spruce, Black Hills, 2 to 3 feet.....	Tong	2 00	17 00
1800 Spruce, Black Hills, 18 to 24 inches.....	Toot	1 75	15 00
1650 Spruce, Black Hills, 12 to 18 inches.....	Tape	1 25	10 00
130 Spruce, Colorado Blue, 2 to 3 feet.....	Themis	7 00
170 Spruce, Colorado Blue, 18 to 24 inches.....	Task	5 00
190 Spruce, Colorado Blue, 12 to 18 inches.....	Taral	3 50
60 Spruce, Colorado Blue, Green, 2 to 3 feet.....	Top	3 00
140 Spruce, Colorado Blue, Green, 18 to 24 inches.....	Tony	2 00
105 Spruce, Douglas, 3 to 4 feet.....	Tegmen	3 00
40 Spruce, Douglas, 18 to 24 inches.....	Totum	2 00
300 Spruce, Douglas, 12 to 18 inches.....	Teinds	1 50
* 90 Spruce, Koster's Blue, grafted, balled, 2 ft.....	Trudo	15 00
* 110 Spruce, Koster's Blue, grafted, balled, 18 in.....	Tharon	10 00
* 60 Spruce, Koster's Blue grafted, balled 12to18 in.....	Traitor	7 50
850 Spruce, Norway, 2 to 3 feet.....	Tone	1 50	12 50
1700 Spruce, Norway, 18 to 24 inches.....	Topple	1 25	10 00
790 Spruce, Norway, 12 to 18 inches.....	Tragic	75	6 00
300 Spruce, White, 2 to 3 feet.....	Trust	1 75	15 00
475 Spruce, White, 18 to 24 inches.....	Tram	1 25	10 00
190 Spruce, White, 12 to 18 inches.....	Thelma	75	6 00

*The Koster's grafted Blue Spruce are all shiners, and where trees of choice color are desired we recommend them in preference to the seedling stock of Colorado Blue Spruce.

ROSES

Hardy Out Door Grown Plants

			Code	per 10	per 100
Climbing, No. 1.....			Sandow	1 00	8 00
1800 Baltimore Belle	400 Farquhar		1700 Prairie Queen		
2800 Dorothy Perkins	270 Gardenia		200 Russell's Cottage		
100 Empress of China	900 Lady Gay		900 Seven Sister's at 6c		
Hybrid Perpetual, No. 1, assorted colors.....			Stamp	1 50	12 00
40 Anna Diesbach	800 Frau Karl Druschki		370 Margaret Dickson		
150 Alfred Colomb	40 Fisher Holmes		380 Marshall P. Wilder		
150 Baron d'Bonstettin	1800 Gen. Jacqueminot		240 Mrs. John Laing		
90 Baroness Rothschild	320 Gen. Washington		30 Marg. de St. Amande		
90 Captain Hayward	210 Glory de Paris		1800 Paul Neyron		
280 Clio	30 Hugh Dickson		640 P. C. de Rohan		
130 Coq. des Alps	170 John Hopper		130 Tom Wood		
240 Dinsmore	490 LaFrance, pink		535 Ulrich Brunner		
230 Eugene Furst	210 Magna Charta		160 Vieck's Caprice		
Hybrid Perpetual, No. 2, assorted colors.....			Stay	1 00	7 00
60 Anna Diebach	310 Frau Karl Druschki		230 Marshall P. Wilder		
70 Baron d'Bonstettin	36 Fisher Holmes		220 Mrs. John Laing		
30 Baroness Rothschild	500 Gen. Jacqueminot		350 Paul Neyron		
105 Capt. Hayward	220 Gen. Washington		140 Prince C. deRohan		
50 Clio	35 John Hopper		55 Tom Wood		
110 Coq des Alps	90 Magna Charta		45 Ulrich Brunner		
230 Dinsmore	120 Margaret Dickson		30 Vieck's Caprice		
35 Earl of Dufferin					
Moss, No. 1, assorted colors.....			Spare	1 50	12 00
210 Blanch Moreau	320 Henry Martin		70 Pink		
360 Crested	240 John Cranston		150 Red		
75 Countess Murinais	140 Perpetual White		30 Salet		

RAMBLERS—Two-Years, No.1, except as noted

1500 Baby, Crimson	Slab	1 50	12 50
350 Baby, Crimson, No. 2.....	Sharts	1 00	8 00
270 Baby, Pink	Supple	1 50	12 50
270 Baby, White.....	Sport	1 50	12 50
30 Baby, White, No. 2.....	Sopher	1 00
850 Blue (Veilchenblau)	Smerk	1 25	10 00
350 Crimson XX	Schulte	1 50	15 00
4100 Crimson	Share	1 50	12 00
850 Crimson, No. 2.....	Speed	1 00	6 00
1400 Flower of Fairfield (Everblooming Crim- son Rambler)	Stanhope	2 00	15 00
440 Philadelphia	Squash	1 25	10 00
70 Pink	Scarf	1 00	8 00
1750 White	Scalp	1 00	8 00
180 White, No. 2.....	Sulky	1 00	6 00
640 Yellow	Sham	1 25	10 00
85 Yellow, No. 2.....	Snooze	1 00	6 00

MISCELLANEOUS

Two-Years, No. 1, except as noted			
480 American Beauty	Shote	1 75	15 00
300 American Beauty, No. 2.....	Stevens	1 00	8 00
290 Guss an Tepnitz	Saltan	1 50
190 Harrison's Yellow	Shun	1 50	15 00
900 Lady Gay	Sterling	1 00	8 00
360 Lady Gay, No. 2.....	Streator	75	5 00
1200 Madam Plantier	Sall	1 00	8 00

MISCELLANEOUS—Continued

	Code	per 10	per 100
60 Madam Plantier, No. 2.....	Spur	75	5 00
1050 Persian Yellow	Salve	1 50	15 00
140 Persian Yellow, No. 2.....	Satan	80
30 Setigera		1 00
400 Soliel de Or.....	Sweet	1 50
280 Soliel de Or, No. 2.....	Scar	1 00
370 Tausendschon (Thousand Beauties).....	Somerset	1 50	12 50
Rugosa, No. 1.....	Squeal	1 25	10 00
140 Hansa	570 Rugosa Rubra	70 Sir Thos. Lipton	
230 Mad. Geo. Bruant	40 Rugosa Alba		
780 Tree Roses, No. 1, good assortment.....	Shelf	5 00	40 00
Wichuriana Hybrid (Memorial Creeping) No. 1.....	Sheaf	1 00	6 00
425 Manda's Triumph	80 Red Memorial	215 W. C. Egan	
210 Pink Roamer	370 S. O. Perfection	440 Wichuriana Type	

PEONIES-HERBACEOUS

450 Festiva Maxima		2 00	12 50
2100 Pink		75	5 00
740 Red		1 00	6 00
630 White		1 00	8 00
7000 Named Varieties		1 00	7 00
1070 Andre Lauries (Rose)	275 Isabella Karlitzka	970 Rose Quintal	
34 Alexander Dumas (red) at 10c	(pink)	460 F. Hortense (pink)	
125 Baroness Rothschild (pink)	160 LaMartine (crimson)	530 Fragrans (pink)	
38 Bride (white)	480 L. Esperence (pink)	230 F. Ortegai (crimson) at 10c	
34 Delicatissima (pink)	90 Louis Van Houtte (crimson)	80 Fulgida (crimson)	
340 Duc de Gazos (pink)	550 Off. Rubra (crimson)	210 Gen. Jacq. (crimson)	
440 Duchess de Orleans (pink-yellow)	40 Pottsii (crimson) at 10c	124 Rubra Superba at 10c	
57 Elegans (pink)	590 Queen Victoria (white) at 8c	27 Rubra Grandiflora at 10c	
		115 Rubra Triumphans at 8c	

HARDY PERENNIALS

75 Aquilegia (Columbine)	75	6 00
90 Asters	75	6 00
970 Bleeding Heart	1 00	8 00
80 Boltonia Latisquama	25	2 00
240 Chrysanthemums, hardy, separate colors.....	75	6 00
300 Daisy, Shasta	75	6 00
170 Delphinium (Larkspur)	75	6 00
80 Funkia	75
160 Gaillardia Grandiflora	1 00	6 00
420 Golden Glow	50
200 Hibiscus, assorted	75	5 00
800 Iris, German, assorted colors.....	60	5 00
400 Iris, Japan	80	6 00
300 Kudzu Vine	80
1400 Phlox, assorted	75	6 00
70 Platycodon	75	5 00
90 Sweet William	75	5 00
600 Yucca Filamentosa	50	4 00

BULBS AND TUBERS

135 Begonia	75	6 00
140 Caladium, Esculentum	1 25	10 00
Cannas, named varieties, see special heading....	50	4 00
1200 Dahlias, mixed colors.....	60	5 00
2100 Dahlias, in separate colors.....	75	6 00
860 Gladiolus, choice mixed.....	25	1 50

BULBS AND TUBERS—Continued

	Code	per 10	per 100
200 Lily of the Valley, Pips.....			2 00
75 Liliium, Tigrinum (Tiger Lily).....		80	5 00
800 Maderia Vine, good tubers.....		50	3 00
270 Poppy Oriental		75	5 00
1300 Tube Roses		30	2 00

CANNAS—Named Varieties

per 100 per 1000				per 100 per 1000	
200 Allemania.....	\$ 3 00	\$25 00	600 Major.....	\$2 50	\$20 00
800 Austria.....	2 50	20 00	200 Majestic.....	3 00	25 00
150 Burbank.....	3 00	25 00	400 Pennsylvania.....	3 00	25 00
135 Black Beauty.....	3 00	25 00	200 Progression.....	3 00	25 00
850 Bronze King.....	3 00	25 00	1800 Parthenope.....	2 50	20 00
100 Florence Vaughn.....	3 00	25 00	320 Shenandoah.....	3 00	25 00
1000 Indiana.....	2 50	20 00	400 Wyoming.....	3 00	25 00

SEEDS

per lb			per lb		100 lbs
Ash.....	\$ 10	\$ 8 00	Locust, Honey.....	\$ 25	\$20 00
Apple, American.....	30	25 00	Mulberry, Russian.....	2 00	-----
Apple, French Crab.....	40	35 00	Peach pits (North Carolina		
Catalpa, Speciosa.....	50	40 00	Naturals) per bu.....	1 75	-----
Locust, Black.....	30	25 00	Rhubarb.....	50	-----

NURSERYMEN'S SUPPLIES

Baling Cord, ten-ply tube, best for ordinary baling, per pound.....	\$ 10
Baling Cord, sisal, two-ply, for heavy bales, per pound.....	12
Box Clamps, lever style, durable, each.....	2 50
Box Straps, about 1 inch. wide, 12 inches long, per pound.....	05
Burlap, per yard.....	07
Catalogs, descriptive, each.....	15
Collating Books, ruled and printed, each postpaid.....	05
Cash Books, delivery, ruled ready for use, postpaid.....	07
Dibbles, best steel, for planting, each.....	1 00
Gloves, good quality, per pair 50c; per dozen pair.....	5 00
Grafting Thread, waxed, per ball (if by mail add 7c).....	12½
Grafting Thread, unwaxed, per ball (if by mail add 2c).....	08
Knives, Budding, Wostenholm, best made, each.....	75
Knives, Budding, good quality, each.....	35
Knives, Grafting, best, each.....	45
Knives, Pruning, Wostenholm's I. X. L., best made, each.....	75
Labels, notched, iron wired, 3½ inches, plain per 1,000.....	75
Labels, notched, copper wired, 3½ inches, plain per 1,000.....	1 00
Labels, notched and pierced, iron wired, plain, per 1,000.....	80
Mittens, mule skin, each 35c; per dozen.....	3 00
Needles, burlapping, 6 inch, bent, per dozen.....	65
Paper in rolls of 50 to 60 lbs., 36 inches wide, for lining boxes, per lb.....	03½
Order books, containing 50 orders, each 25c; perdozen.....	2 50
Raffia, best quality, per pound.....	15
Shears, pruning, California pattern, 9 inches, each.....	65
Shingle Shavings, baled, per cwt.....	1 00
Spades, Ames, strapped handles, best nursery spade, each.....	1 75
Tags, shipping, No. 5 "Manilla E," printed both sides, without firm name per 100.....	25
Twine, Sewing for burlapping, per pound.....	30
Twine, Wool, for tying, per pound.....	08
Twine, Tarred Lath Yarn, in 5-pound balls, per pound.....	10

MOUNT ARBOR NURSERIES

E. S. WELCH, Prop.

Shenandoah, Iowa

February 4, 1913

Surplus Scion List No. 4

We offer the following scions graded 10 inches and up, well ripened, and in prime condition, tied in bundles of 250. Will furnish 250 at thousand rates, broken bundles of less than 250 at hundred rates.

APPLE SCIONS 20c per 100, \$1.50 per 1000

3000 Ben Davis	3000 Longfield	1000 Ribston Pippin
2000 Gano	7000 Mo. Pippin	2000 Romanstem
3500 Hibernial	16000 N. W. Greening	2000 Sops of Wine
3000 Iowa Blush	3500 Pattens Greening	1000 University
500 Isham Sweet	1500 Peerless	3000 Walbridge
14000 Jonathan	500 Pewaukee	5000 Winesap
	3500 Ramsdell Sweet	7500 Wolf River

APPLE SCIONS 25c per 100, \$2.00 per 1000

2000 Ark. Black	500 Hub. Nonsuch	500 Spitzenberg
750 Aut. Strawberry	500 Huntsman	750 Sweet June
500 Benoni	250 Kaump	1250 Talman Sweet
250 Chenango	1000 McMahan	500 Utters Red
500 Fall Pippin	1000 Rambo	7500 Wealthy
3000 Grimes Golden	750 Scotts Winter	500 Windsor Chief

APPLE SCIONS 50c per 100, \$4.00 per 1000

5000 Delicious	1500 King David	3000 Staymans Winesap
----------------	-----------------	-----------------------

WESTERN ORCHARD APPLE SCIONS

5000 Banana @ \$3.00	3000 Grimes Golden @ \$3	18000 Rome Beauty @ \$3.00
5000 Gano @ \$2.50	15000 Jonathan @ \$2.50	5000 Winesap @ \$2.50

CRAB SCIONS 20c per 100, \$1.50 per 1000

4000 Early Strawberry	1500 Minnesota	8000 Transcendent
2000 Florence	2000 Red Siberian	250 Virginia
3000 Hyslop	1000 Shields	12000 Whitney @ \$1.25

PLUM SCIONS 25c per 100, \$2.00 per 1000

1000 DeSota	350 Milton	2750 Quaker
250 Forest Garden	500 Miner	430 Wolf
300 Hammer	500 Pottawattamie	400 Wyant
1500 Hawkeye		

PEAR SCIONS 30c per 100, \$2.50 per 1000

1500 B. de Anjou	1000 Clairgeau	3000 Kieffer
	500 Flemish Beauty	



11-16 and up

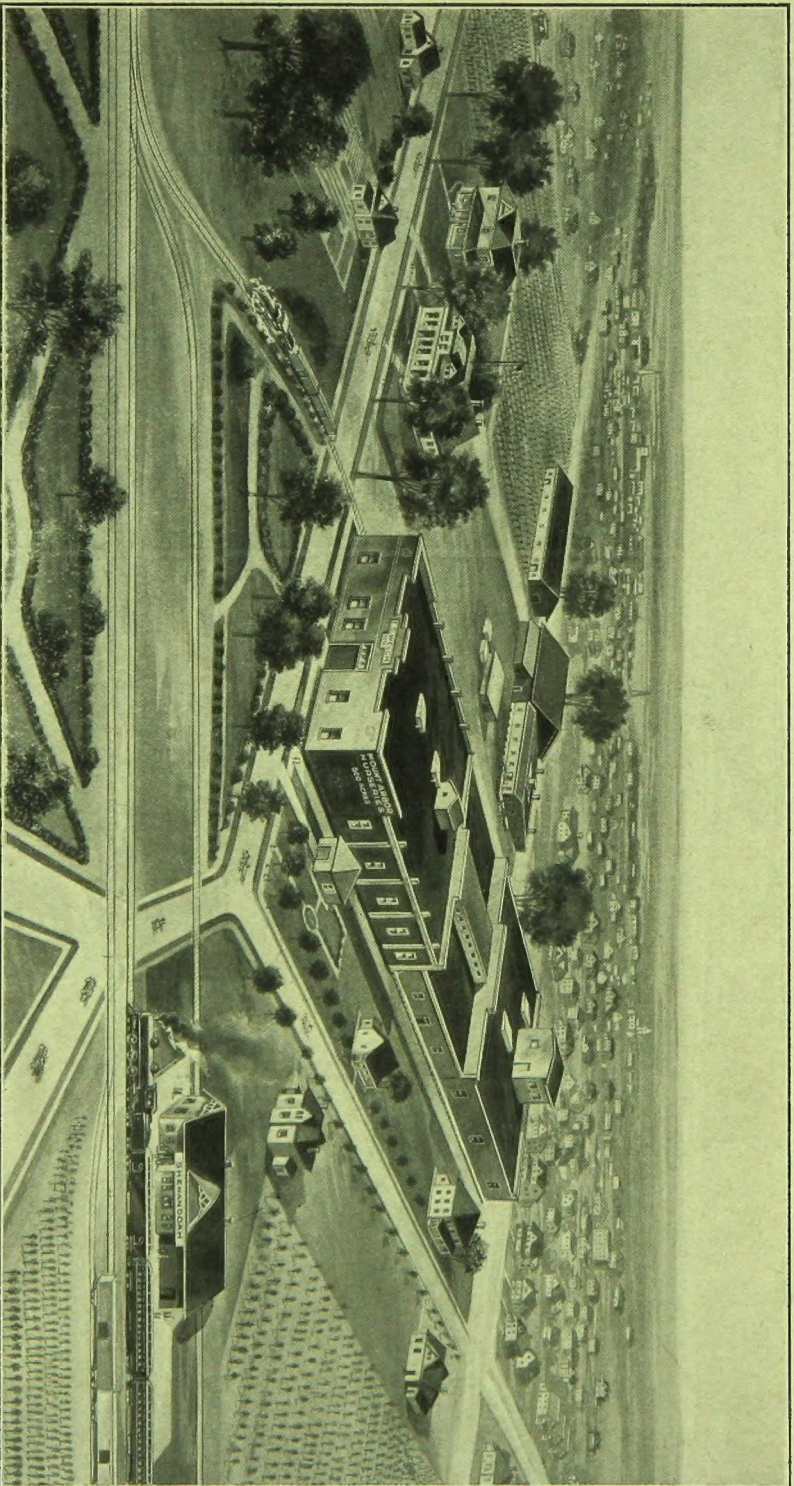
5-8 to 11-16

1-2 to 5-8

**Three Grades of our Two Year Apple with Three Year Roots.
Note the Splendid Root System and High Quality.**

MOUNT ARBOR NURSERIES,
E. S. WELCH, Prop.

Shenandoah, Iowa



Birdseye View of Packing Plant and Headquarters of Mount Arbor Nurseries, E. S. Welch, proprietor, Shenandoah, Iowa. One of the best equipped Nursery Plants in the United States. The large acreage of growing trees commences about two blocks north and extends for nearly three miles along the public highway.