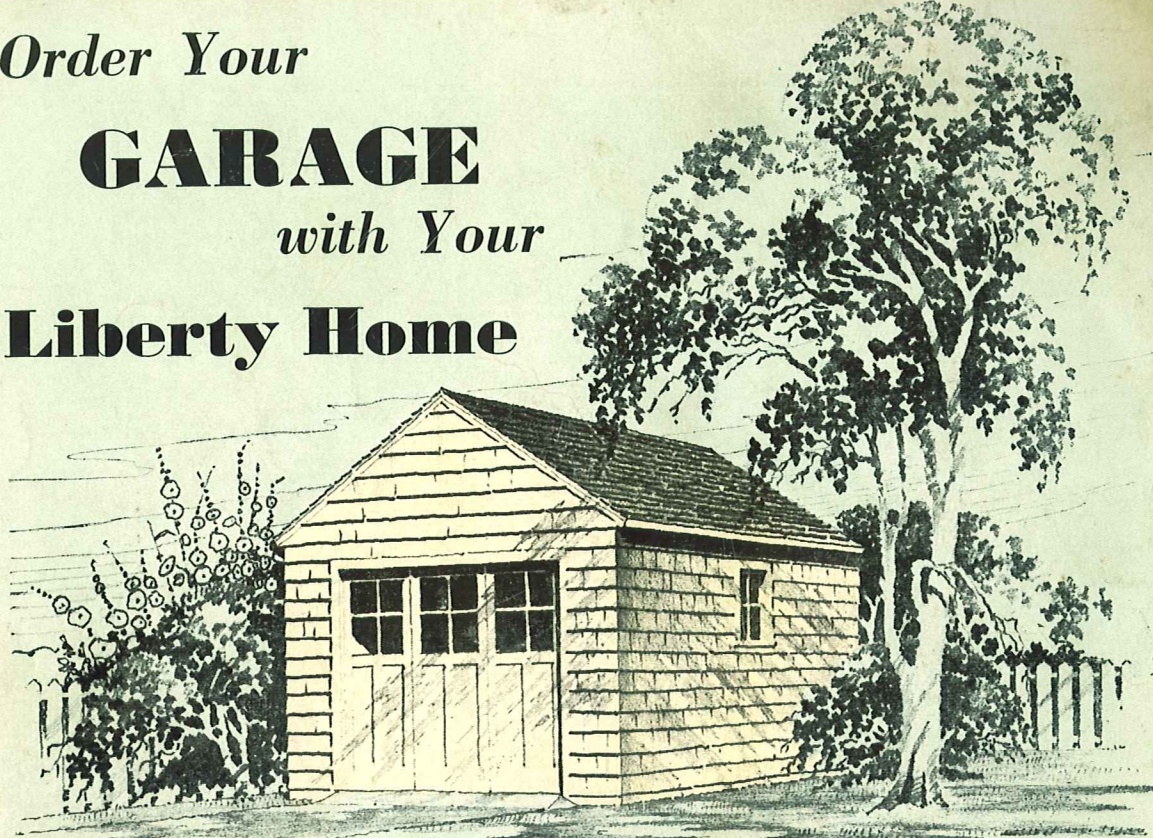


Order Your

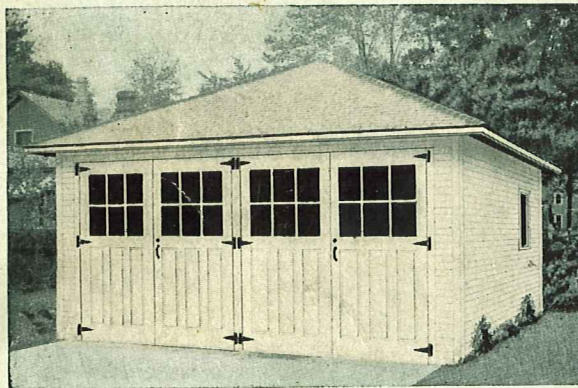
GARAGE

with Your

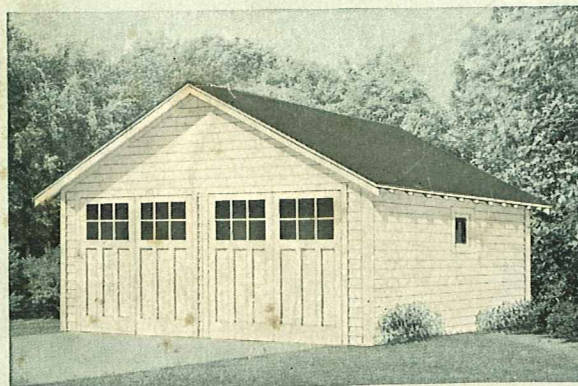
Liberty Home



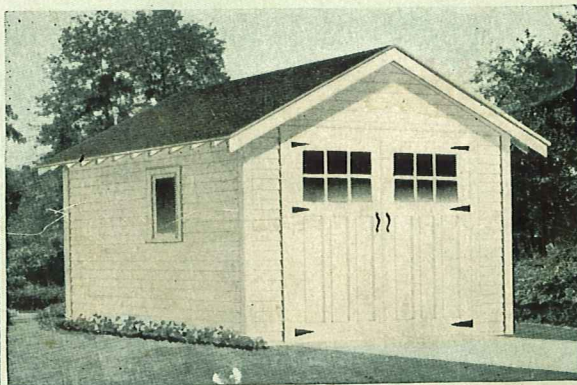
"The Ideal"



"The Chrysler"



"The DeSoto"



"The Standard"

The materials for Liberty Garages are all of the same high quality as used in Liberty Homes. Specifications include floor plate 2x4" embedded in concrete. Studding 2x4" on 24" centers. Rafters 2x4" on 24" centers. Clear Red Cedar Shingles for roof. Clear drop siding for entire sidewalls and gables except Ideal Garage which has 1x6" sheathing and Red Cedar shingles. Garage doors and swinging casement windows furnished as shown. All necessary nails, paint or stain for two full coats. Materials for floors not furnished as concrete is generally preferred.

All lumber is furnished accurately cut to fit, enabling any handy man to build a Liberty Garage without difficulty. Complete working plans and detailed instructions are furnished free.

Save the Freight by Ordering Your Garage Shipped with Your Liberty Home.

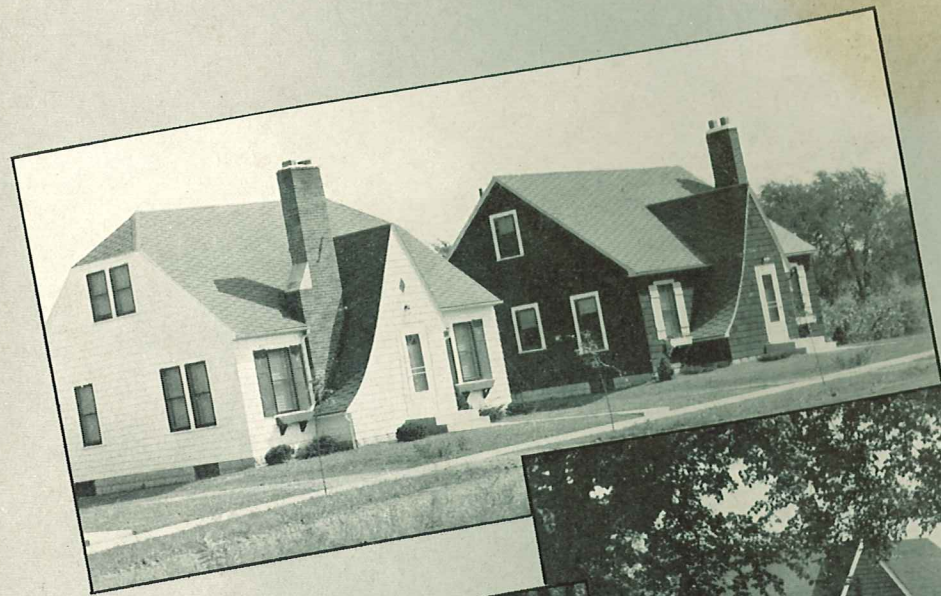


NEW

LIBERTY HOMES

by

LEWIS MFG. CO.
BAY CITY - MICHIGAN



Typical Liberty Homes

Liberty Homes have solved the housing problem for a multitude of families in all parts of the country. Because of their moderate price and the ease with which they can be built, they are bringing home ownership within the reach of thousands who might otherwise never be able to have a home of their own.

gc 25-
11/97 8760

DIRECT FROM  FACTORY TO YOU

LEWIS MANUFACTURING CO.
BAY CITY, MICHIGAN

ESTABLISHED 1896

LIBERTY *Ready Cut* HOMES

OFFICE OF THE
VICE-PRESIDENT

Dear Friend:

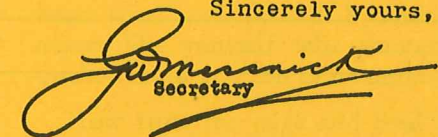
Here is our catalog of new Liberty Home designs. The more carefully you read it, the more convinced you will be, I believe, that it offers you the opportunity of securing a first-quality home at a price considerably lower than the same type of home would ordinarily cost you.

There is no easier or quicker way of getting your new home built and completed, ready to move into, than to buy it on the Liberty plan. You simply order the particular house that you want and we ship you at once the materials that you will need in building it—lumber cut to fit, ready to erect—also sash, doors, paint, glass, hardware, etc. Instead of having to shop around and buy all of the various kinds of materials, item by item, you receive them from us all in one lot, at a quantity price much lower than you would otherwise have to pay.

During the 43 years that we have been in business, thousands of families in all parts of the country have done just what you are doing now. They studied our catalog, selected the Liberty Home that suited them best, filled out the order blank and, surprising as it may seem, had their home finished and were living in it before the next rent-day rolled around. How well pleased they are you will see when you read their letters on the following pages.

The way is open to you to secure a Liberty Home just as many others have done before you. Here's the way to go about it! Read the catalog carefully. Pick out the home you like best and decide which of the four payment plans you prefer (see last page). Then just mail the order blank. Or, if you wish any additional information before filling out your order, write me a letter on the back of this sheet. I am not sure how long we can maintain our present **EXTREMELY LOW PRICES**, as the costs of building materials are constantly rising. So it will be to your advantage to place your order as soon as you possibly can. Mail your order or write me today!

Sincerely yours,


Secretary

DIRECT FROM FACTORY TO YOU



LESS
Carpenter Work
BY THE LIBERTY METHOD

IN BUILDING a house, the part of the work that is the hardest and takes up the most time is the measuring, sawing and planing the lumber—getting it ready to put up. The actual work of nailing it in place is easily and quickly done.

Make it a point some day to watch a carpenter building a house and see how much time he spends with his rule and pencil, figuring and measuring the lengths and angles of the various pieces of lumber, and then count up how many hours each day are consumed in sawing all of the lumber by hand. You will realize at once that a good share of the carpenter's time is being wasted in doing things which could be done much more quickly and cheaply by machinery.

The Liberty System of Home Building eliminates entirely the expense of having to pay a carpenter for the hours he spends every day in getting the lumber ready to nail in place. In our mills the work of measuring, sawing and mitering is all done by machinery—not only in a fraction of the time it takes to do it by hand but also with absolute accuracy.

The result is that you will not have to pay a carpenter nearly as much to build a Liberty Home because it will not take him nearly so long. In fact, in many cases, it is not necessary to hire a carpenter at all. With the difficult measuring and sawing eliminated, you can take advantage of the assistance offered by your friends and neighbors, and trust them with the work of nailing—because the lumber is cut to exact size and fits into its proper place without any alterations.

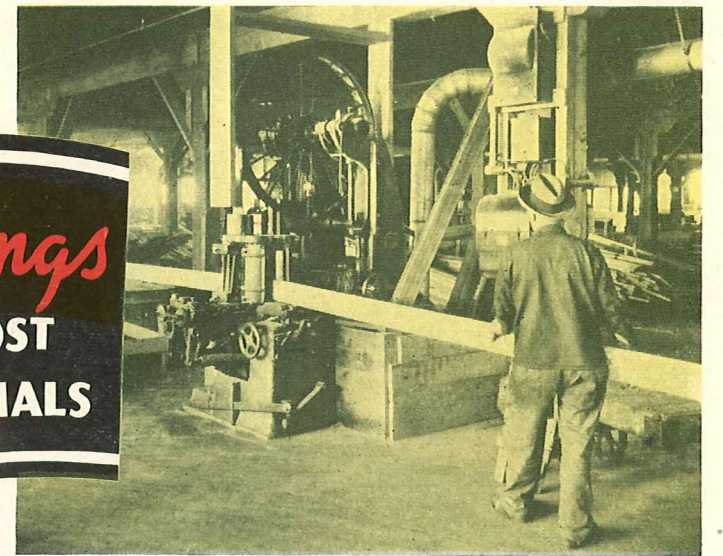


Away With Tedious Measuring and Sawing!

By purchasing the materials for your home from us, cut to size and ready to nail in place, you save hours and hours of work.

For example, it takes a carpenter about eight hours to measure and saw the rafters for the roof of an average size house. In our mill, however, we can saw the rafters for two or three dozen houses in the same length of time.

When you consider that the same saving applies throughout the various other parts of the construction, you will see at once why the Liberty System enables you to build your home at such an extremely low cost.



Big Savings
IN THE COST OF MATERIALS

THERE is no magic in our being able to furnish you with the materials for building your home at a price that will save you a substantial sum of money. The explanation is very simple!

In the first place, we manufacture an immense number of homes every year—and quantity production results in tremendous savings in the building of homes just as it does in the building of automobiles, refrigerators, stoves or any other manufactured product.

In the second place, the mammoth Liberty mills are equipped with the most modern electrically operated machinery, designed to cut lumber accurately and economically. Such efficient production methods enable us to produce the finished product at a fraction of the usual cost.

Thirdly, the business we do is not confined to one small community, but is nation-wide in its scope. Consequently we are able to purchase materials in tremendous quantities at much more advantageous

prices than if we had to buy our lumber, paints, hardware and other materials in small lots as a local contractor would have to do.

Then, too, we employ no agents, solicitors or traveling salesmen, whose salaries have to be added to the cost of what we sell. This, in itself, results in a considerable saving of money to you.

But the savings above mentioned are not all by any means. Read on and see!

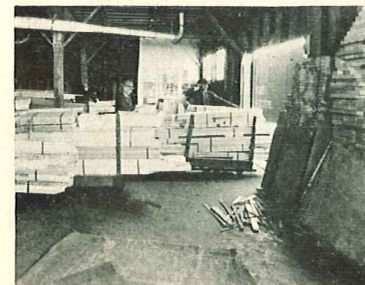
Not a Piece of Lumber Wasted!

Waste is one of the greatest enemies of Life. It robs your energy. It robs your bank account. Did you ever notice the heaps of wasted materials lying around a newly finished house. This wasted material costs the owner good money, just as much as the material actually used, yet it was thrown away. It makes you feel good to know that when you build the Liberty way, all this waste has been eliminated and you pay only for the material that is actually used for construction.

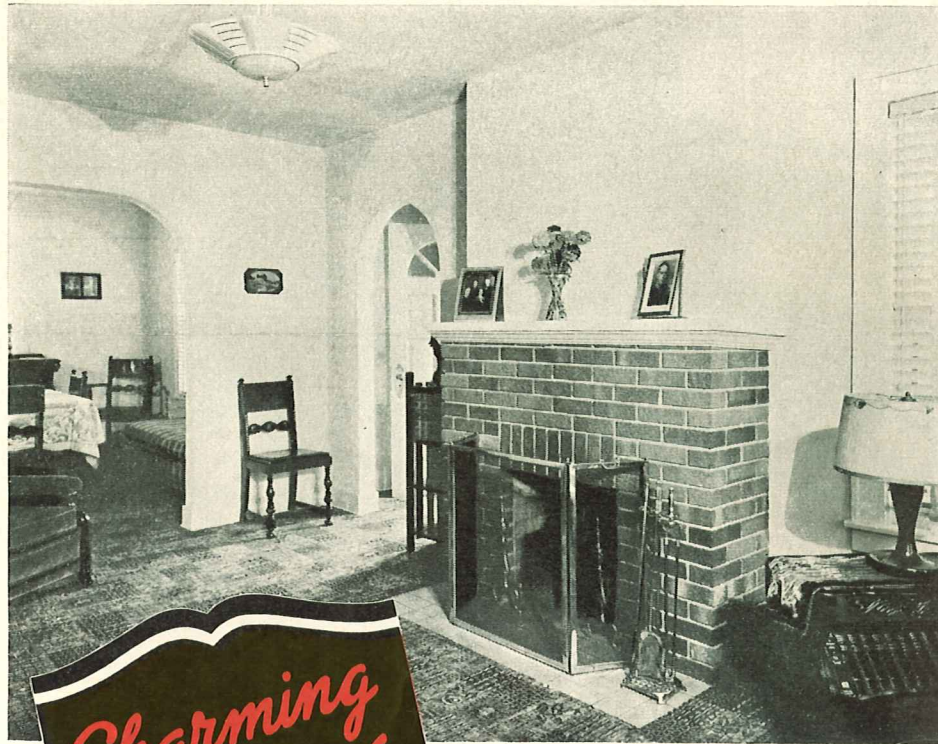
Not a Penny Thrown Away!

Good building material is too valuable to be wasted. Through scientific planning and manufacturing methods, every inch of good lumber is used. Where there is not waste, there is no overcharge. In building a Liberty Home you profit from these efficient production principles.

But this is not all that you save—as you will see when you read the following pages.



Lumber Is Cut to Fit



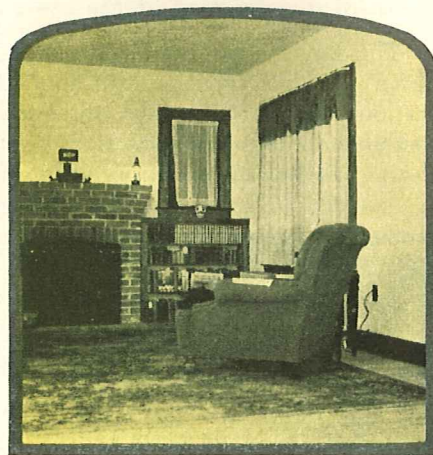
**Charming
Homes**
DESIGNED
BY ARCHITECTS

No Extra Fees for Architectural Service

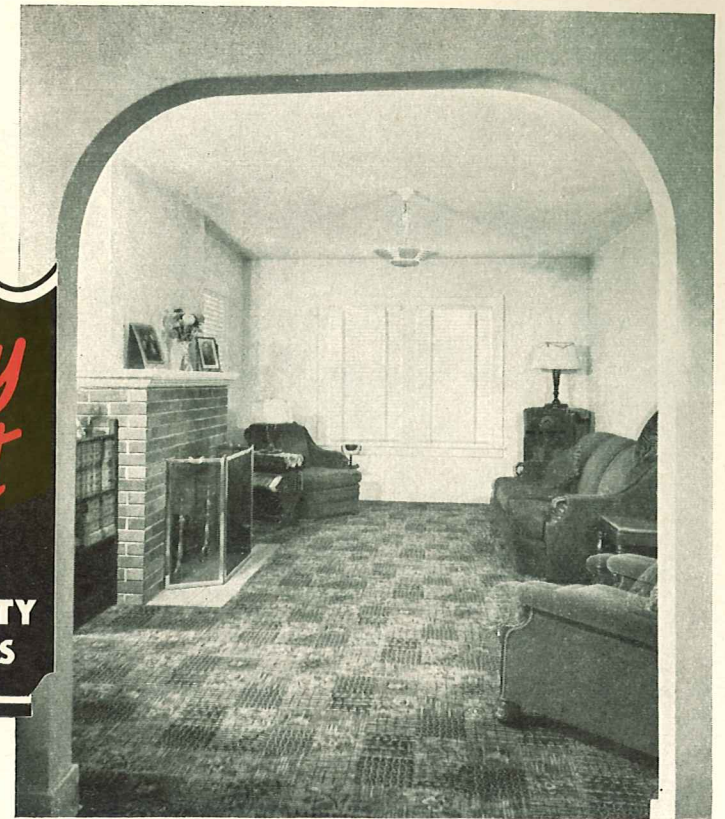
WHEN you build a Liberty Home you receive the benefit of valuable architectural service without having to pay any extra fee. Every Liberty Home is designed by an experienced architect, and the materials are selected and manufactured exactly in accordance with his detailed plans and specifications.

Our architectural service assures you that your home will be properly constructed in every particular. On the other hand, if you hire a carpenter to furnish the material and build you a house for a certain sum of money, there is no way for you to know definitely what the final results will be. He may scrimp here and there, perhaps splicing short pieces of lumber together where full length pieces are required. The result usually is a house of flimsy construction.

YEARS ago, before the Liberty Method of home-building was established, the ideal way to build a home was to have the work supervised from beginning to end by a capable architect who was experienced in designing and building good homes. An architect understands proper construction methods; he knows the proper materials to use for each particular purpose; he sees to it that your home is built exactly in accordance with approved plans and specifications.



Wouldn't you like a home with an attractive living room like this?



**Sturdily
Built**
WITH
HIGH QUALITY
MATERIALS

Fine Substantial Homes

HERE is nothing new or experimental about the construction principles followed in the designing of Liberty Homes. They are the outgrowth of 43 years of experience in the building of homes of a fine, substantial type—homes numbered well up into the thousands in practically every section of the country.

One of the outstanding superiorities of Liberty construction is that every piece of lumber is of adequate size and strength to meet the particular requirements of the use to which it is to be put.

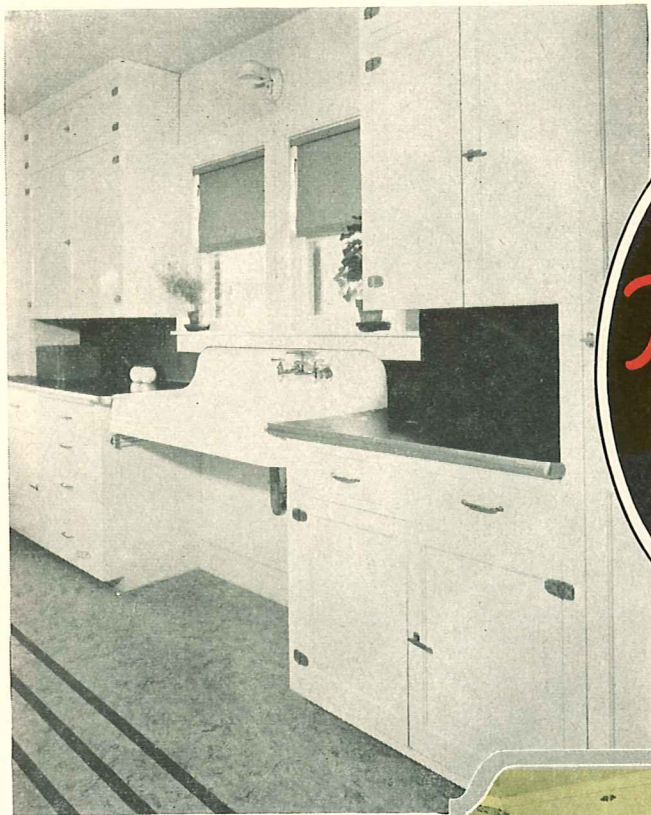
For example, where experience has shown certain timbers, such as girders, joists, studs and rafters, must be of a particular weight or dimension in order to insure the proper degree of sturdiness and rigidity, our architects see to it that the specifications, in every case, fully meet such requirements.

Make This Simple Comparison

Contrast this with houses that you see a carpenter erecting without architectural supervision. Observe how the carpenter has filled in here and there with crooked boards and short pieces full of knots. Then when the house is finished, squint along the walls and see if they are straight. See if the rooms are the same dimension at one side as at the other by examining the floor boards, or by looking to see if the wallpaper has the same pattern in the corners of the room from top to bottom.



A cosy bedroom in the home of a Liberty owner



A Truly Fine Home

AT A MODERATE PRICE

Perfect Construction

Correctly Planned
In Every Detail

IN THE Liberty System of home building, nothing is left to chance. Every construction detail is figured out by our architects in advance, so that when the house is shipped to you, every piece of lumber is cut the right length and at the correct angle to fit properly. Consequently, when the work of erection is completed, you have a house that stands four square—with walls straight and plumb, and every detail of its construction carried out exactly as called for in the plans.

Even though you were to pay an architect several hundred dollars to design your home, you could have no home more solidly and substantially constructed than a Liberty.



Conforms to Building Codes

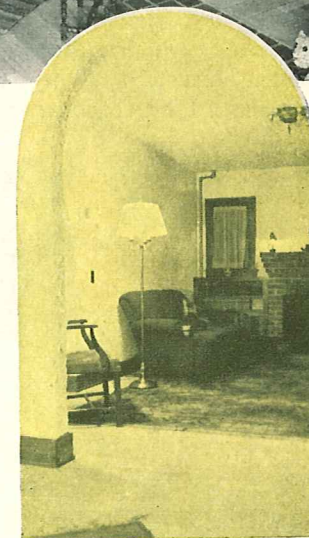
The construction of Liberty Homes is carried out in strict accordance with the best modern engineering practice and will fully meet the requirements in practically all localities.

If, however, there should be any change from standard construction that your local building code requires, we will be glad, when requested, to provide for such changes and furnish the materials accordingly, charging only for the extra material, if any, that may be needed.

Life is more enjoyable in a home of your own.



Build a Home
AND SOLVE THE RENT PROBLEM



Liberty homes are planned so that the furniture can be tastefully arranged.

The Money You Spend for Rent Will Soon Pay for a Home

THE only way to protect yourself against rising rents is to build a home of your own. Otherwise you are forever at the mercy of landlords and are forced to pay whatever they choose to demand. How much more pleasant it is to have a home of your own, free from constant worries about being obliged to move, should your landlord take a notion to raise your rent beyond what you can afford to pay!

And, best of all, think how nice it is to have a home of your own when you get along in years and your income drops! Then it will be harder than ever to meet the monthly rent payments. Decide now to protect yourself from this future burden by building a home of your own this very month. There is nothing that will give you greater satisfaction, comfort, and a sense of security in years to come!

Change in Floor Plans May Be Made to Suit Your Individual Taste

The plans for each and every Liberty Home shown in this catalog have been developed by our architects with great care, resulting in plans that are most practical from the standpoint of convenience in arrangement, as well as economy in building. We recommend you choose the design that suits you best and build it just as planned by our architects. Maximum savings will be the result.

If you should find, however, that minor changes in the plan or in the specifications would be desirable in your particular case, we will be glad to accommodate you by making such changes which our architects consider practical.

Be Your Own Contractor!

Save the Money That You Would Otherwise Have to Pay Out!

THE Liberty method of construction is so simple that many purchasers of Liberty Homes do all of the building themselves. If you have the time, you will save just that much more money, and, in addition, you will have a great deal of pleasure.

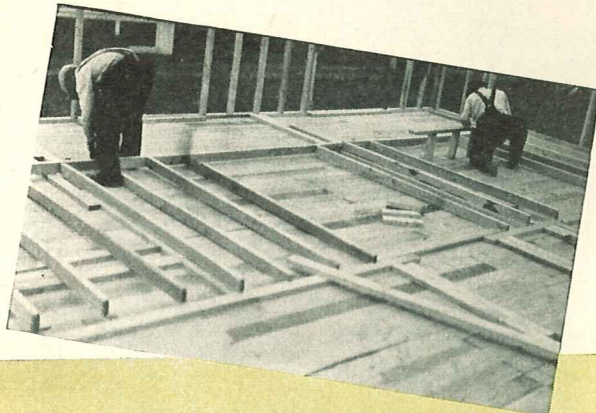
But, whether or not you do the building yourself, the Liberty method enables you to save money by being your own contractor. The fact that Liberty construction plans are so much more complete than the usual architects' drawings makes it possible to build a Liberty home without

the least difficulty.

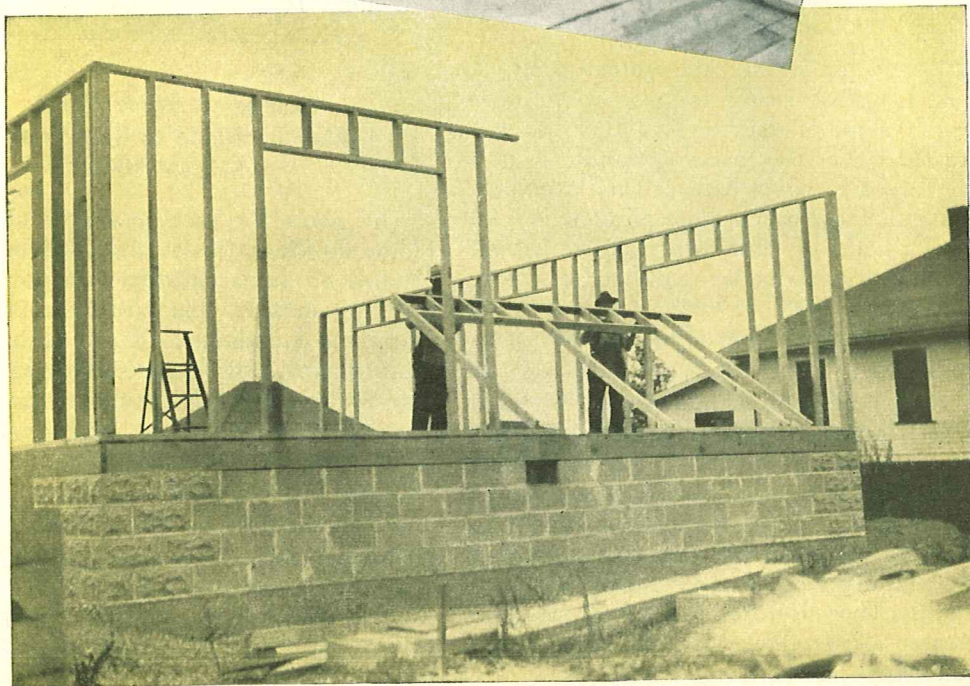
The figures on the next page will give you an idea as to how long it will take to erect the particular Liberty home you want, if you hire one carpenter and two helpers to do the work. You can, of course, shorten this time considerably by arranging to help in whatever spare time you have, thereby also reducing the expense of carpenter labor.

You will see by the letters from our customers (pages 43 and 45) that many of them had no outside help at all—yet they did not have the least bit of trouble.

With the lumber cut to fit, it is surprising how little time it takes to erect a Liberty Home.



Easiest Method of Building a Home

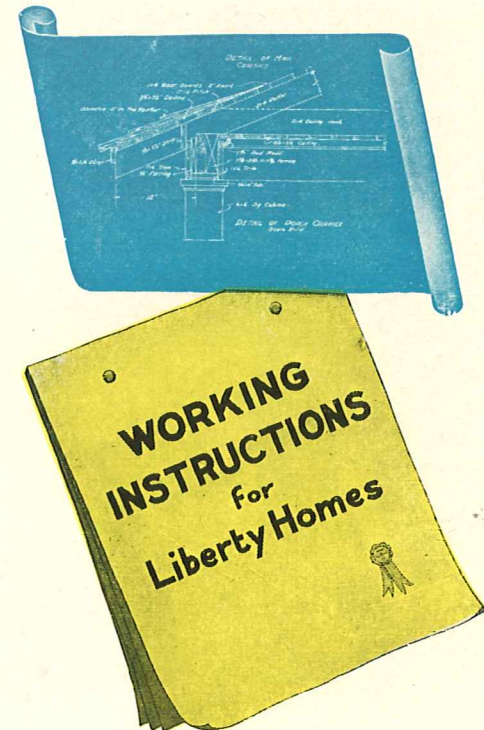


Easy to Build!

No Experience Necessary

EVERY step in the building of a Liberty Home is figured out for you, so that all you have to do is follow the drawings and instructions which we furnish you.

Take the foundation, for example. As soon as your order is received, our architectural department will send you the detailed working blueprints and complete instructions on how to build your foundation—either with a basement or without it—in accordance with the soundest building principles. By the time the materials for your home are delivered, your foundation should be completed, ready for your carpenters to start building without losing one hour.



Plans That Eliminate Guess-work No Time Wasted! Nothing to Figure Out!

OUR complete detailed plans and working instructions show you just how to go about it. We send you these working instructions, together with a complete set of blueprints, several days before the materials for your home are to arrive.

You will find the Liberty method of construction very easy to understand. Every step

is clearly explained, and the materials numbered to correspond with the working plans and instructions. No time is lost in sorting. Whether you do the work yourself or hire a carpenter, the work of erecting a Liberty Home is easy, simple, and systematic. Your home will be up and ready to move into almost before you know it.



Blueprints Easy to Follow

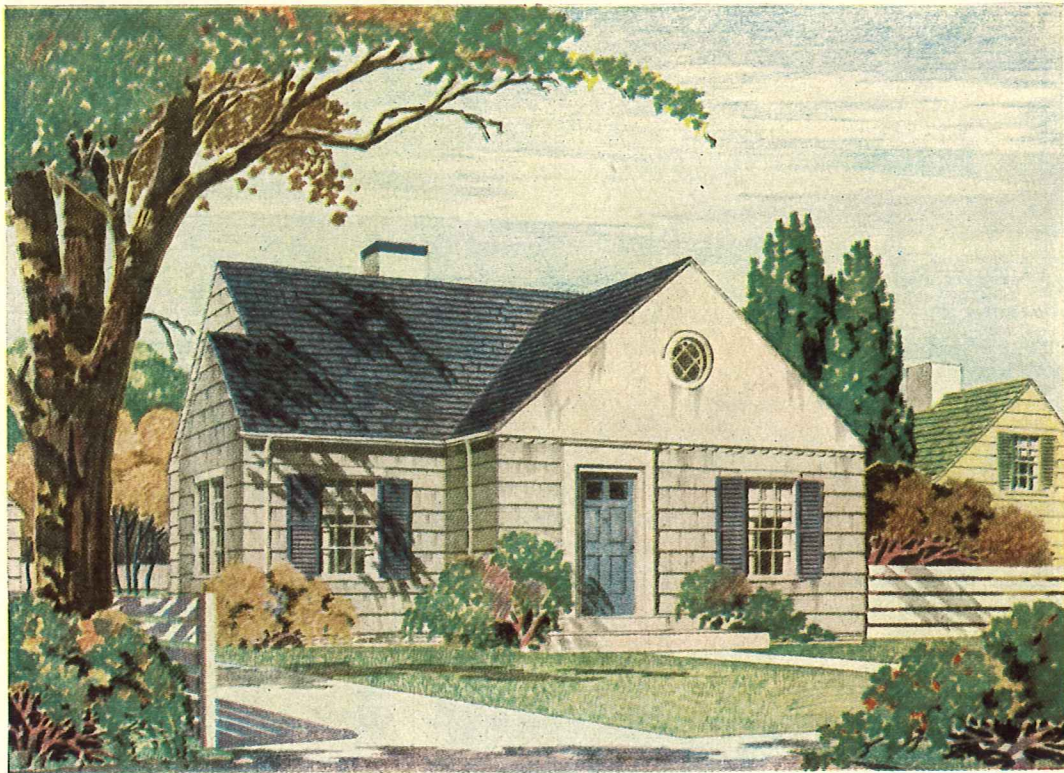
"We are well pleased with our Liberty home and garage. I have done all the work myself with my wife as helper. Several carpenters have looked at our house lately and think I did a good job the whole way thru. I have never worked at carpenter work in my life, but I was able to read the blue print with no trouble at all, and I just followed it, and did fine." GEORGE SANDERS, N.J.

Basement in Process of Construction from Blueprint

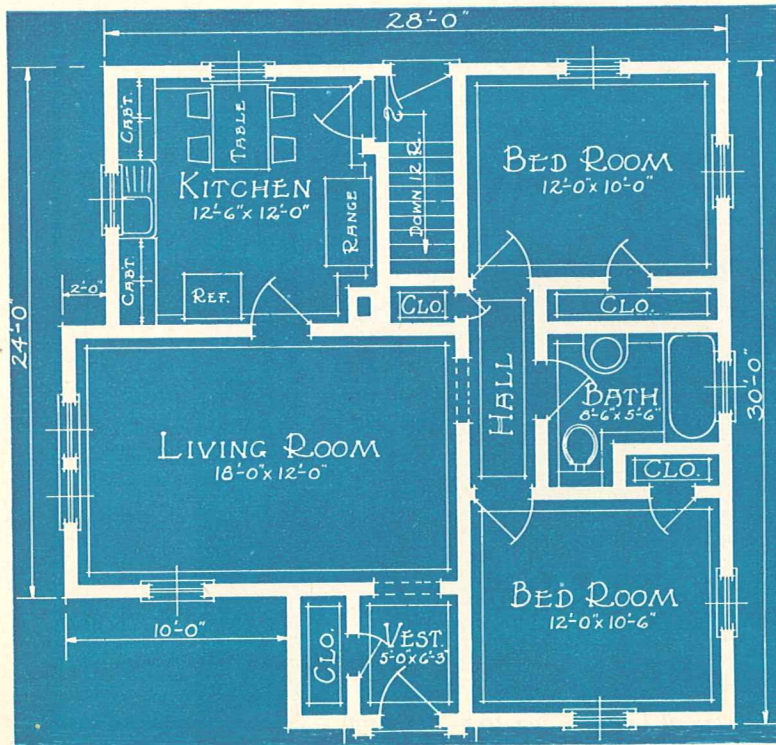
Estimated Time To Build

Following is given the estimated number of days' time required by one carpenter with two helpers working eight hours a day to build each Liberty Home.

	DAYS
Ashland	22
Beverly	14
Brighton	16
Cambridge	23
Cascade	14
Castlewood	10
Clinton A	12
Clinton B	13
Columbia	21
Concord	16
Cornell	17
Delaware	17
Dover	17
Eden	7
Edmund	15
Lafayette	16
La Salle	22
Mayfair	19
Nantucket	20
National	16
Newport	21
Newport Alt. Plan	18
Pilgrim	20
Regent	21
Richmond	25
St. Regis	28
Senator	17
Sheridan	15
Sterling A	12
Sterling B	15
Tacoma	18
Van Dyke	24
Vernon	21
Wellington A	18
Wellington B	23
Worthington	21



The CORNELL - - *A Home You Will Be Proud to Call Your Own*

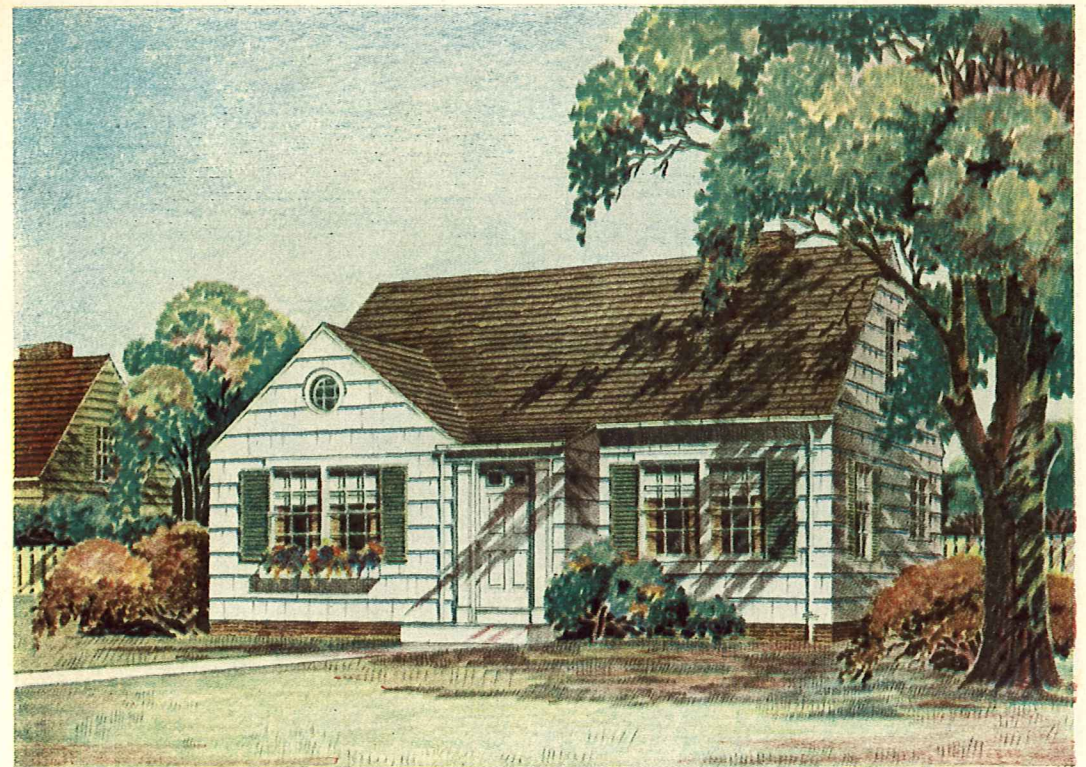


For attractiveness in outward appearance and convenience in interior arrangement, it would be difficult to find a home more appealing than the charmingly designed Cornell.

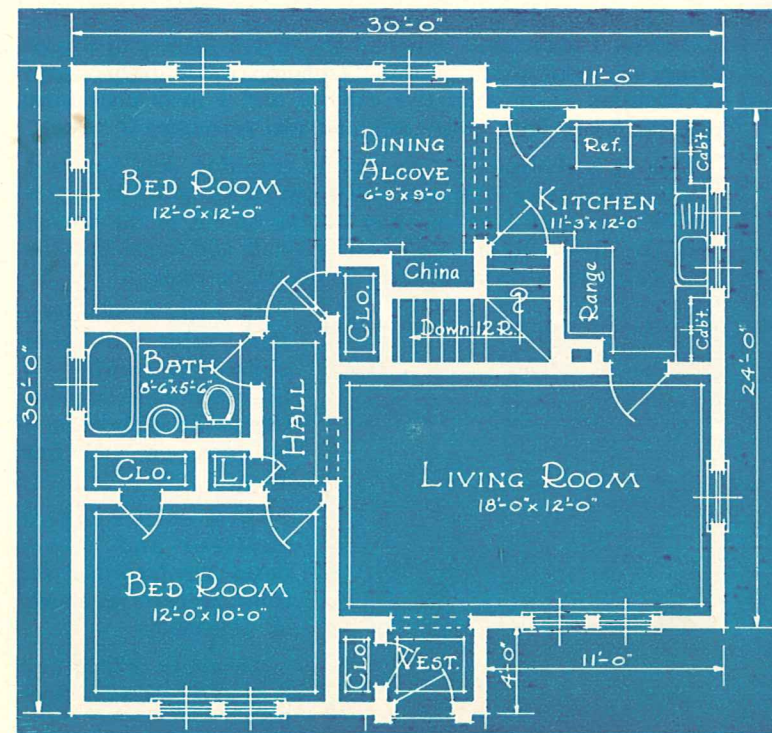
Departing from the more conventional square or rectangular type of house, its jutting front and outward-extending living room give it a distinguished appearance that is seldom found except in much more expensive homes. The slatted Colonial shutters and the front gable, with its circular window set off by a background of plain matched siding, combine to contribute to the exterior a touch of distinction, while the double layer and 12-inch exposure of the shingles on the sidewall creates an effect that is unusually pleasing.

When you study the floor plan, you will be immediately impressed by the size of the living room. Measuring 18 feet in length and 12 feet in width, it provides ample room not only for an abundance of chairs and occasional tables but also for a grand piano. This room, as well as all of the others, has a full ceiling height of 8 feet.

Among the other notable features are a large guest closet off the vestibule, a clothes closet in each of the bedrooms, and a linen closet opening off the hallway.



The MAYFAIR - - *An Ideal Home Good to Look At - Pleasant to Live In*



Seldom will you find a home that can compare with the Mayfair from the standpoint of an attractive exterior combined with a well-planned interior. In fact, it is hard to imagine how either one could be improved to add a higher degree of beauty or a greater degree of convenience than has been attained in this superbly modern home.

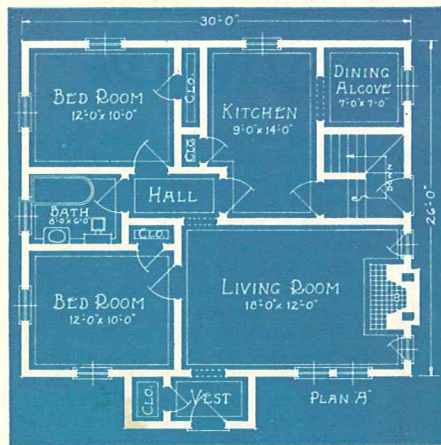
With double-lap shingles accentuating the breadth of its 30 ft. front, and with slatted Colonial shutters to lend a touch of color and contrast, the Mayfair cannot but excite the admiration of all who have an eye for beauty. Everyone who sees it is immediately filled with the desire to own it.

Glance at the floor plan and observe what a large living room the Mayfair provides. Then look at the kitchen and see how a series of cabinets (Style C-4) can be arranged along the right-hand side, with the sink and work-table in the center, directly in front of the window. And do not overlook the cosy dining-alcove, just to the left, with a recessed space for a china cabinet.

You will like the convenient location of the bathroom—between the two bedrooms—and also the provision for a closet in each bedroom, with an extra guest closet off the vestibule. In fact, the more carefully you study the Mayfair, the more delighted you will be with its completeness in every way.

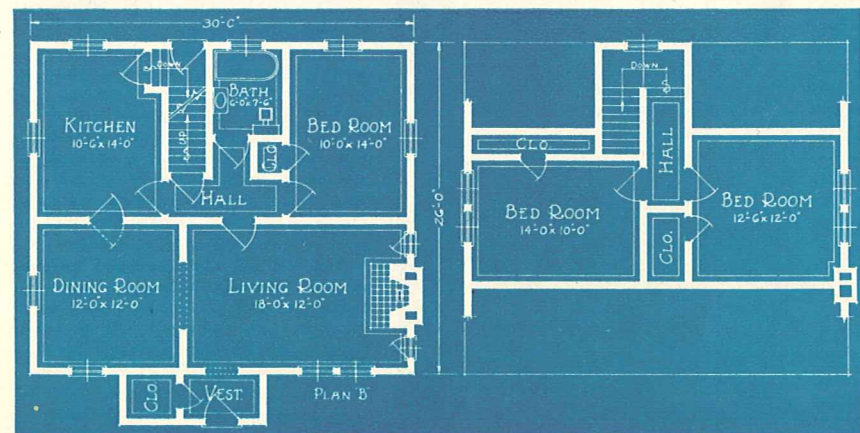


The WELLINGTON -- A Prize Winner -- Attractive - Economical - Well Planned



The neat English exterior of this favorite design, with the brown stained sidewall shingles, encloses an interior plan that will please the tastes of many modern families. Modern home makers require more in a home than an attractive exterior, as they become more and more economical in the saving of time and steps. Convenience is one of the first requisites of a good design. In both plans of the Wellington we find the happy combination of an attractive exterior and a most convenient plan combined with good taste and real economy.

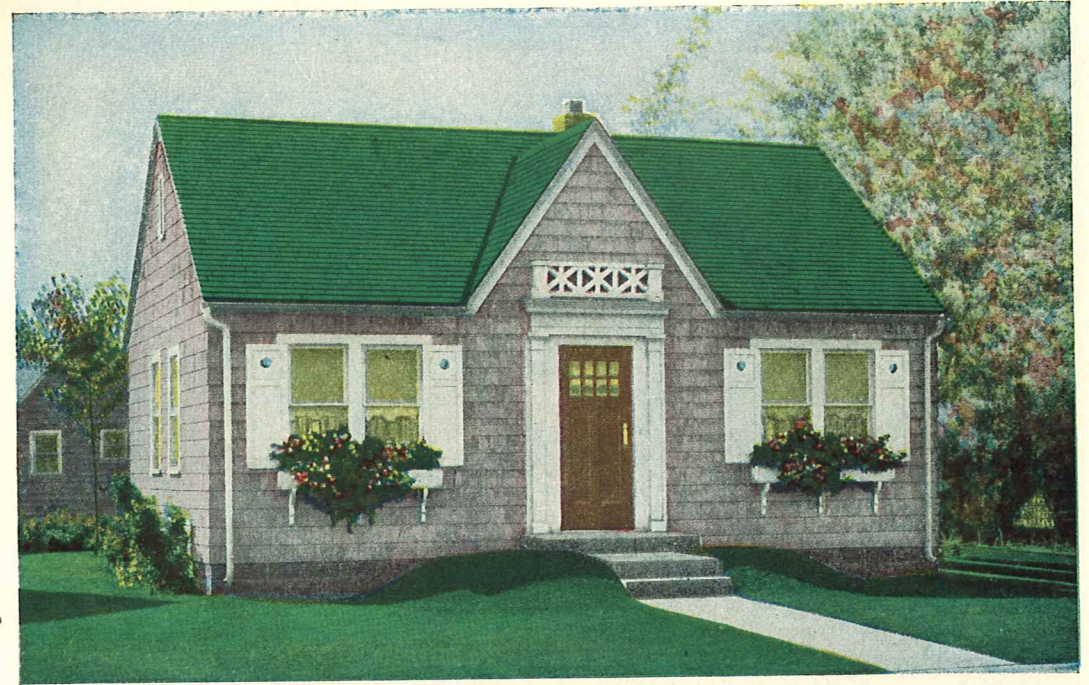
Plan A is designed for the family requiring only two bedrooms with a large attic space that can easily be made accessible by having an attic stairway leading up out of the kitchen over the present cellar stairs. The small additional cost for attic stairs, extra door, etc., will be quoted on request.



In Plan B the large attic space has been utilized to provide for two bedrooms in addition to the splendid large bedroom on the first floor.

Ornamental window shutters and flower boxes are furnished for front windows as shown in illustration.

Height of ceilings first floor 8'6", second floor 8'0".



The CONCORD--A Most Attractive Bungalow - Well Planned - Low in Cost

To look at the pleasant exterior design and to visit its well-arranged interior, no one would guess that the Concord is priced as low as the figure shown on our price list.

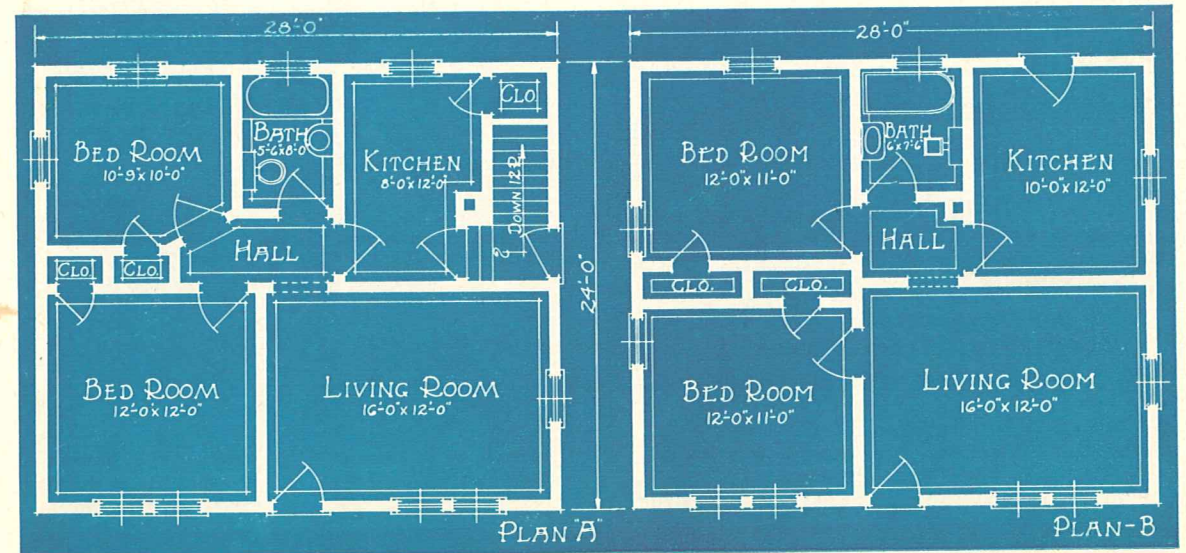
The Concord is a charming home that offers you the choice of two good plans with large, comfortable rooms with generous closet space. Plan A is arranged with a grade cellar stairway. In Plan B the grade entrance addition as shown on page 47 should be used when a cellar stairway is desired.

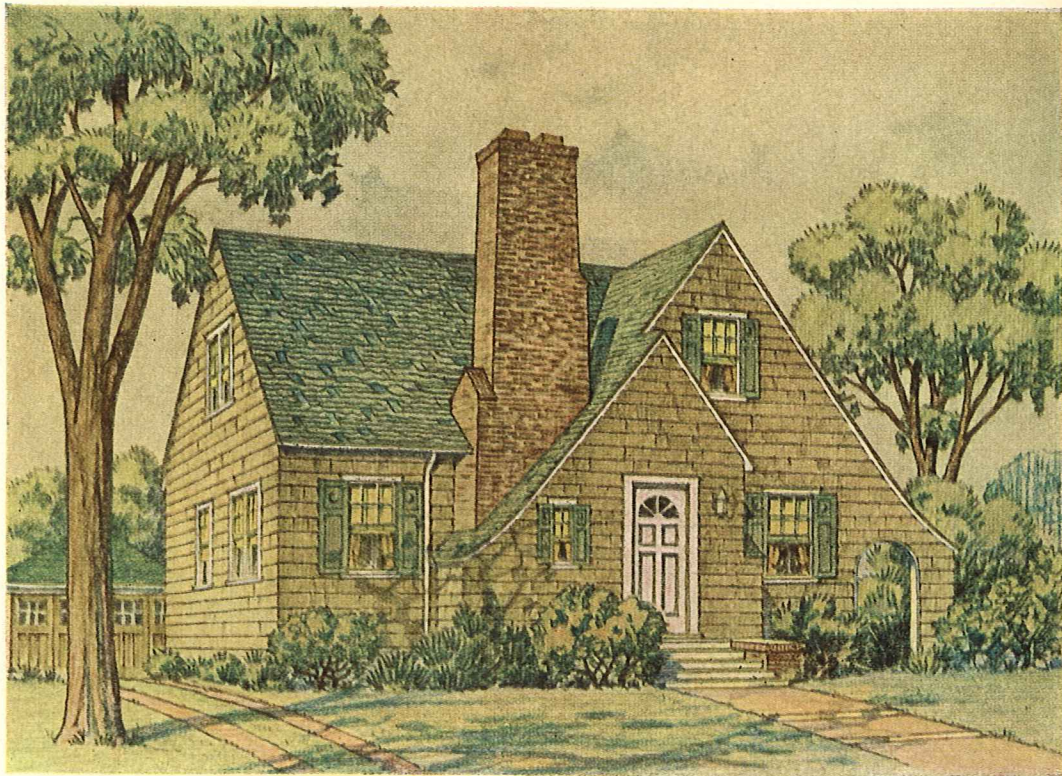
In the Concord every inch of space is used to good

advantage, and whichever plan you choose, you will have a home that will give you much more satisfaction than your money could buy anywhere else.

And here's another thing in its favor—the roomy attic can easily be finished off to make another bedroom.

Shingles are furnished for the sidewalls with gray creosote stained for two full brush coats. These shingles are guaranteed to give satisfactory service for 25 years as explained on page 41. Shutters and flower boxes furnished as shown. Height of ceilings 8'6".

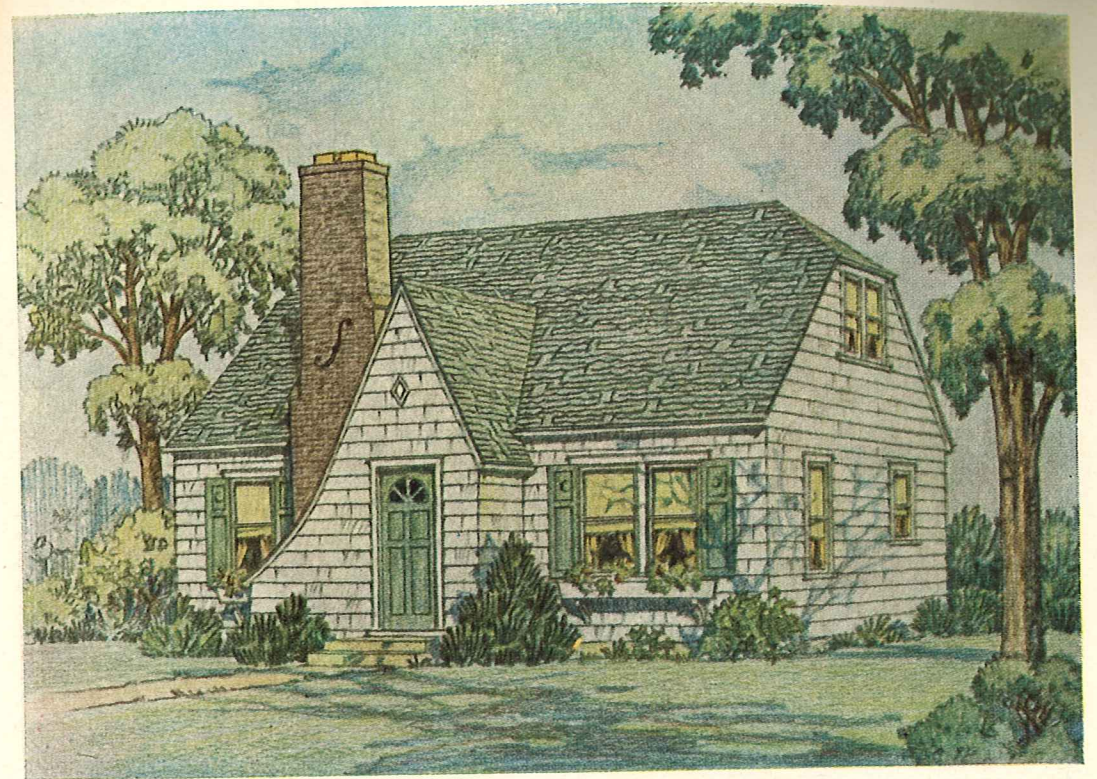
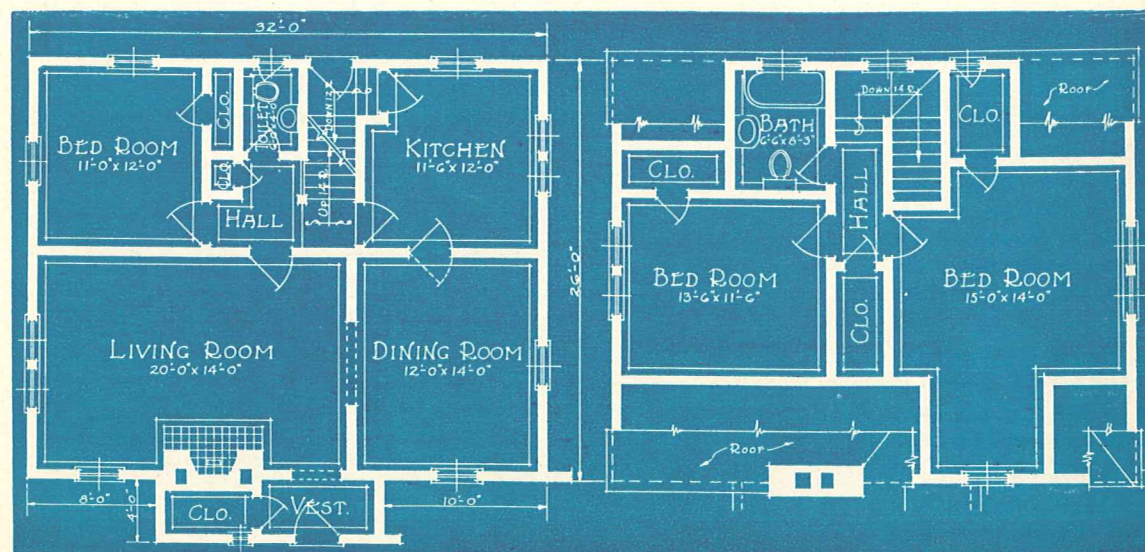




The ST. REGIS—A Home of Tasteful Design and Roomy Interior

In this popular home, the St. Regis, we are proud to offer the very latest style of home, from the standpoint of exterior design as well as interior arrangement. A delightful balanced effect is given by the sweeping lines of the roof which extends down past the chimney on one side and over a trellised archway on the other side, giving

it a total frontage of 38 feet. The exterior may either be shingled, as shown above, or finished with wide siding. Notice how large and pleasant the rooms are and how conveniently they are arranged. Height of ceilings first floor 8'6", second floor 8'0". See detailed specifications beginning on page 40.

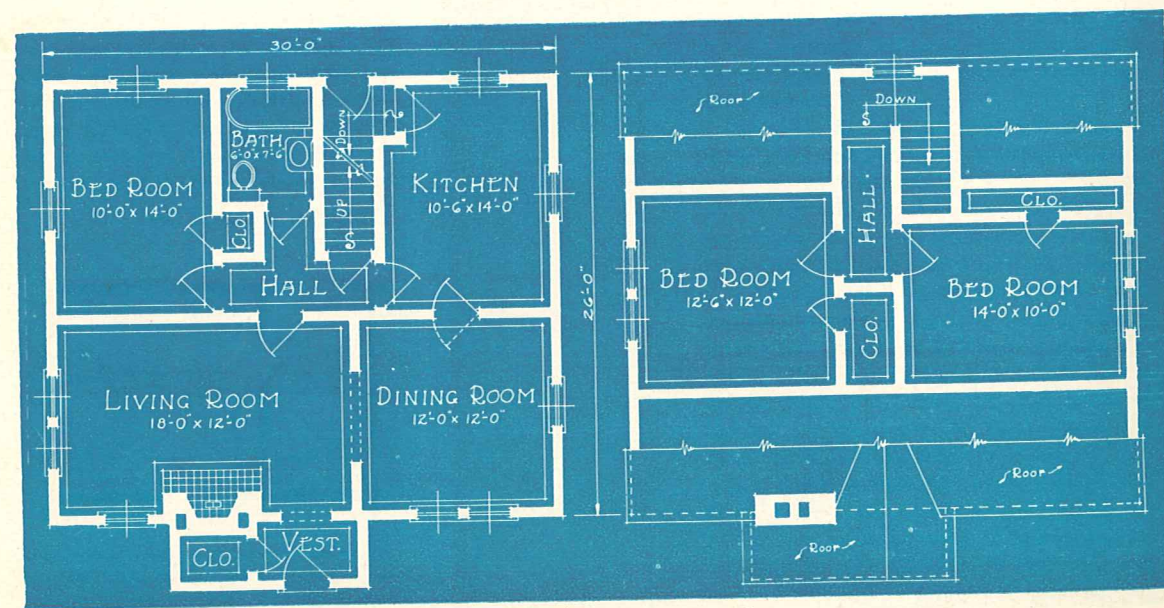


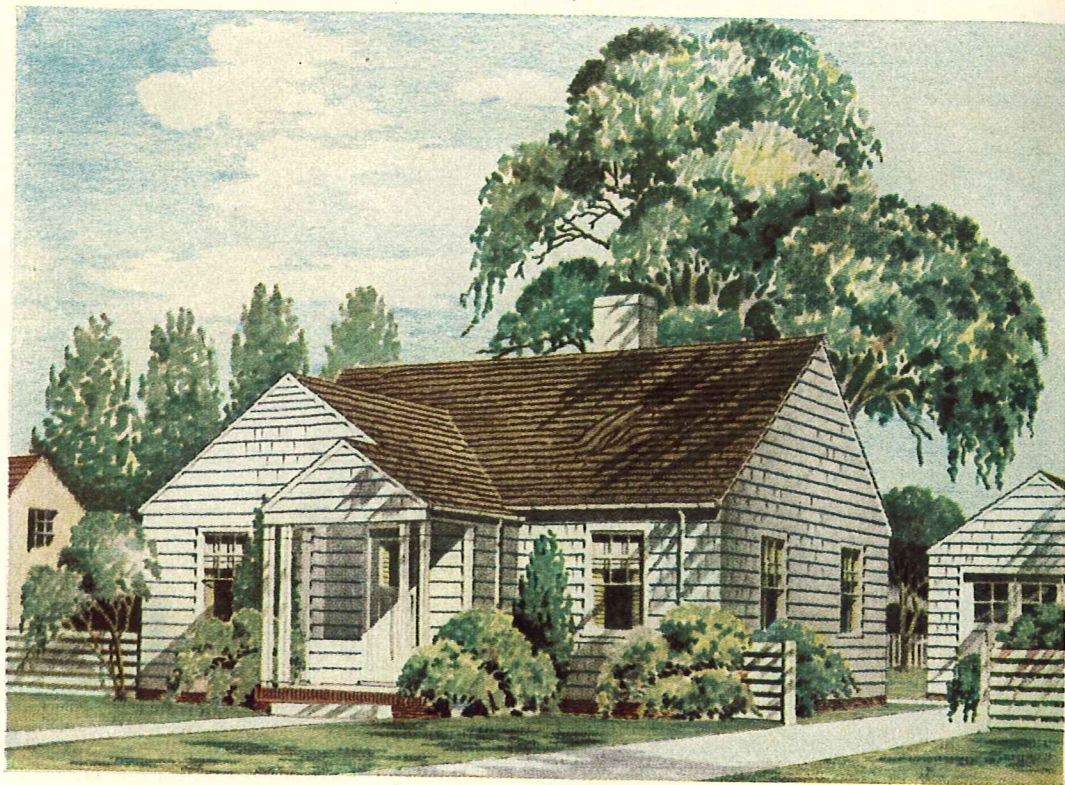
The CAMBRIDGE

One cannot help but admire the beauty, refinement and restfulness of this lovely design. With its graceful entrance treatment, and the soft gray shingle sidewalls, blending in perfectly with the general exterior design, it is a home that is highly desirable in any locality. Here, indeed, is a home

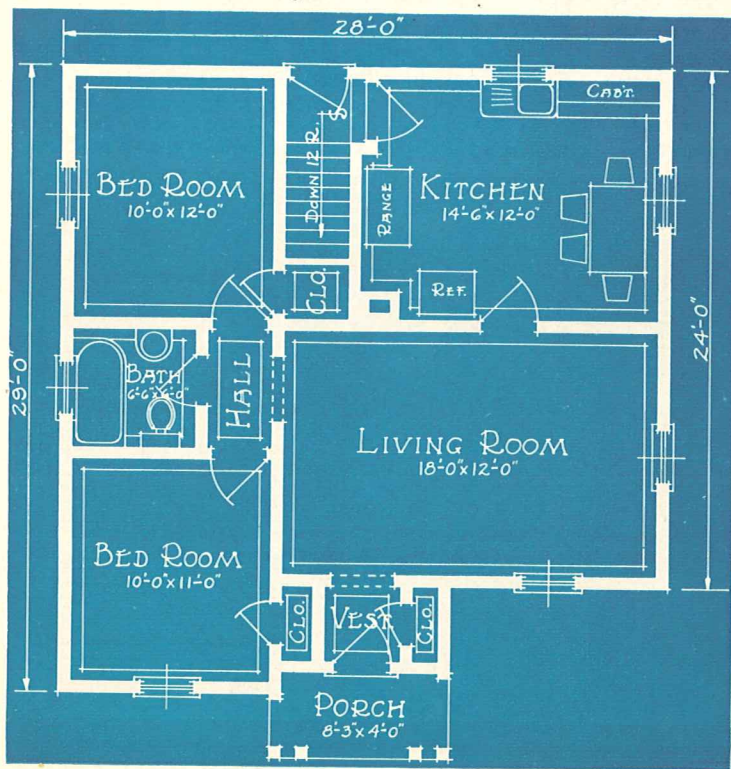
that invites home ownership. In selecting the Cambridge you obtain the perfect combination of an unusually attractive exterior and an ideal interior plan, all at an astonishing low cost.

Height of ceilings first floor 8'6", second floor 8'0". Front door design No. 9 as shown.



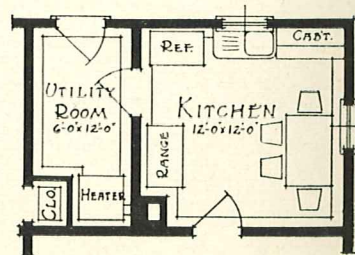


The DOVER—Planned for
Comfortable - Convenient Living

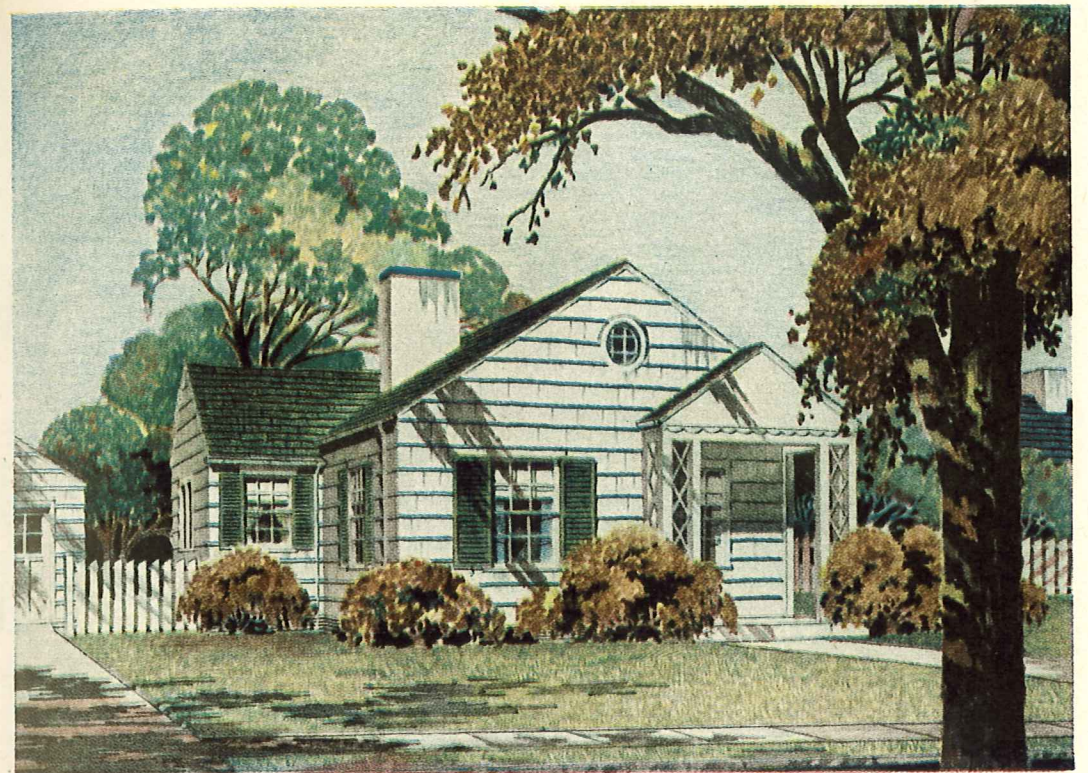


In the Dover you have an unusually good-looking home, perfectly suited to the needs of the average family. Economical to build and maintain, it deserves your careful consideration. The rooms are all large and comfortable. The kitchen is of a size that will provide ample space for dining. The white shingled sidewalls and all exterior trim in white gives a very delightful effect. You have your choice, however, of the color of paints and stains you prefer.

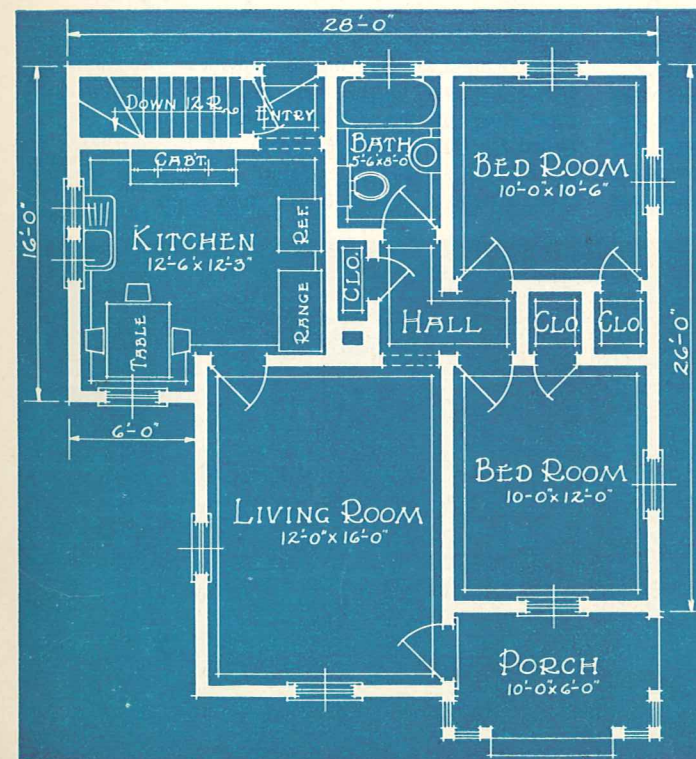
Height of ceilings 8 feet.



Where no basement is desired a utility room can be had in place of the cellar stairs as shown in the above alternate plan.



The BRIGHTON -- A Prize Winning
Home of Unusual Charm and Coziness

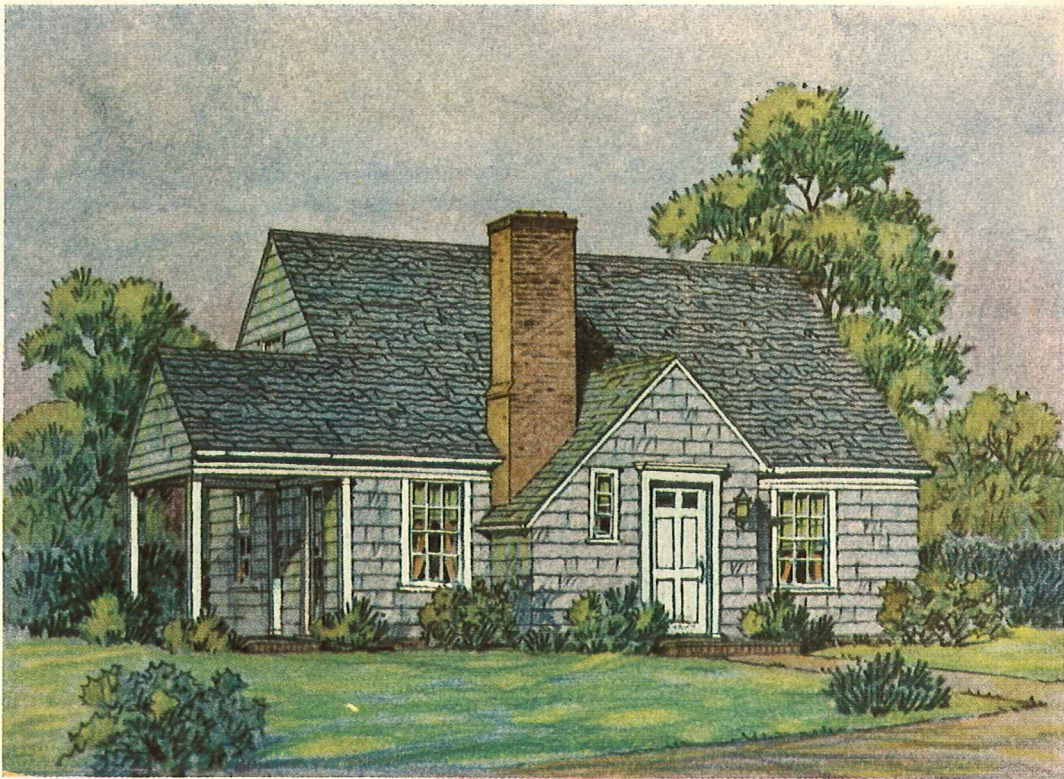


If you have had in mind that when you eventually built a home it would be one that was cosy-looking, with a latticed porch on which you could sit and while away the long summer evenings, you will find in the Brighton your heart's desire. And you can depend upon it that passersby will gaze with envious eye—because here is indeed a home of outstanding attractiveness.

One of the features contributing to its beauty is the plain matched siding in the porch gable, which contrasts with the double-lapped shingles on the sidewalls. At the same time, the circular window and the slatted Colonial blinds add an ornamental touch that is decidedly pleasing.

A generous size living room, with large windows to make it light and airy, is another feature that makes the Brighton unusually desirable. Then, too, each of the bedrooms has a clothes closet, and there is an extra closet off the hall for the storage of linens. All of the rooms have a ceiling height of 8 feet.

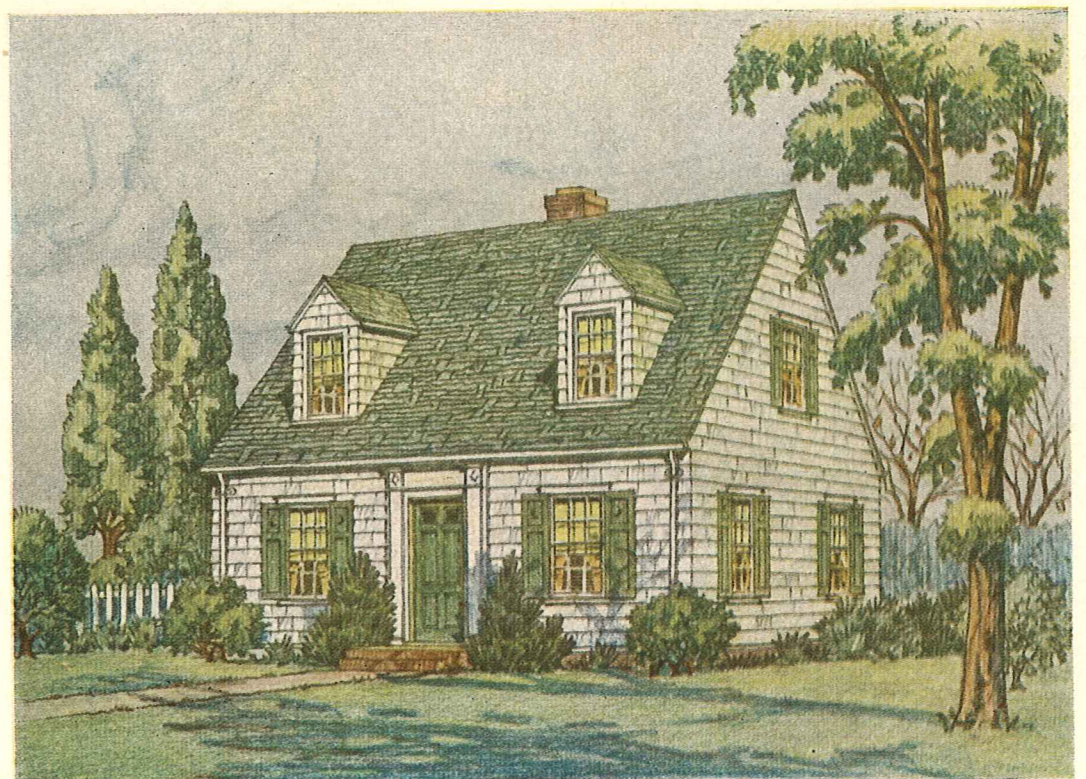
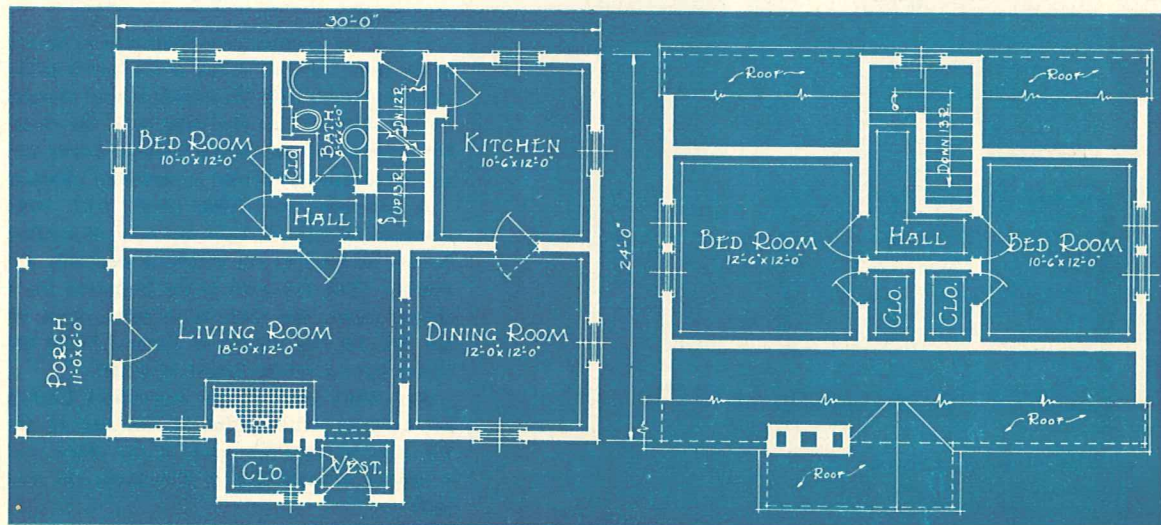
And don't overlook the convenient kitchen arrangement, with a sink at one end of the windows, a breakfast nook at the other, and a cabinet in style C-5 or C-6 along the rear wall.



The ASHLAND—Six Rooms of Charm and Refinement in this Popular Design

The charm of this model home, its delightful homelike quality, does not depend upon elaborate, costly features, but is the result of good proportions in every detail—The interior plan is in keeping with the attractive exterior. The large comfortable rooms, cheerful fireplace and pleasant porch, leave little to be desired. The downstairs bedroom is a feature many desire, and upstairs there are

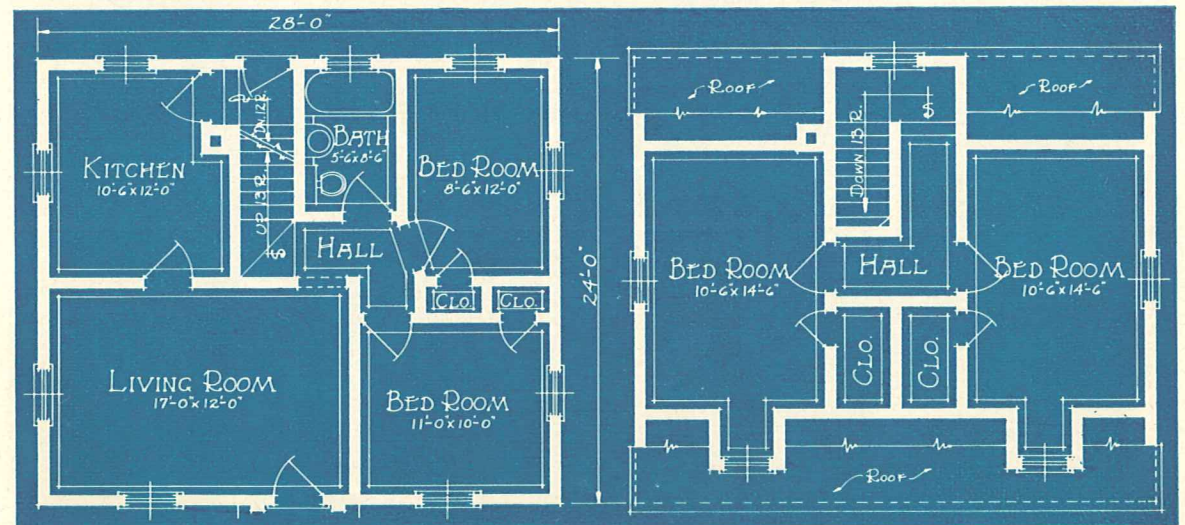
the two additional bedrooms easily accessible to the bathroom. Ample closet space is provided with individual closets for each of the three bedrooms and convenient guest closet off the vestibule entrance. Shingles are furnished for the sidewalls or siding will be substituted for the sidewall shingles as explained in the detail specifications. Height of ceilings 8 feet, both floors.

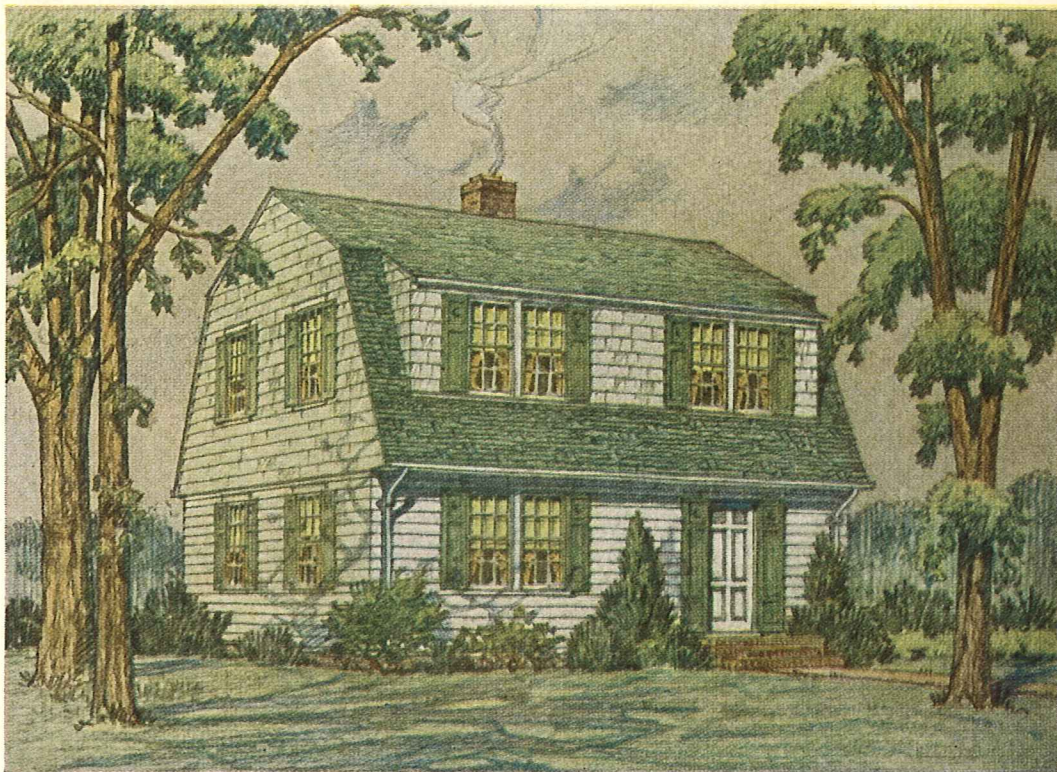


The NEWPORT—A Delightful Cape Cod Colonial—Ideal Plan

This handsome and distinctive Cape Cod Colonial home has won for itself a place high in the esteem of home-builders everywhere. With an exterior as delightful as the Newport it is not surprising to find the interior arrangement equally as desirable—A large living room, four light airy bedrooms all convenient to the bathroom. One corner of the large kitchen will provide ample space for

dining. Since the Newport has such a complete, comfortable living arrangement on the first floor, an alternate plan is offered which provides for an unfinished attic in place of the regular 2nd floor plan. Should you need only 2 bedrooms at present you can build the "Newport Alternate Plan" now and then finish the upstairs later. Height of ceilings, both floors, 8 feet.

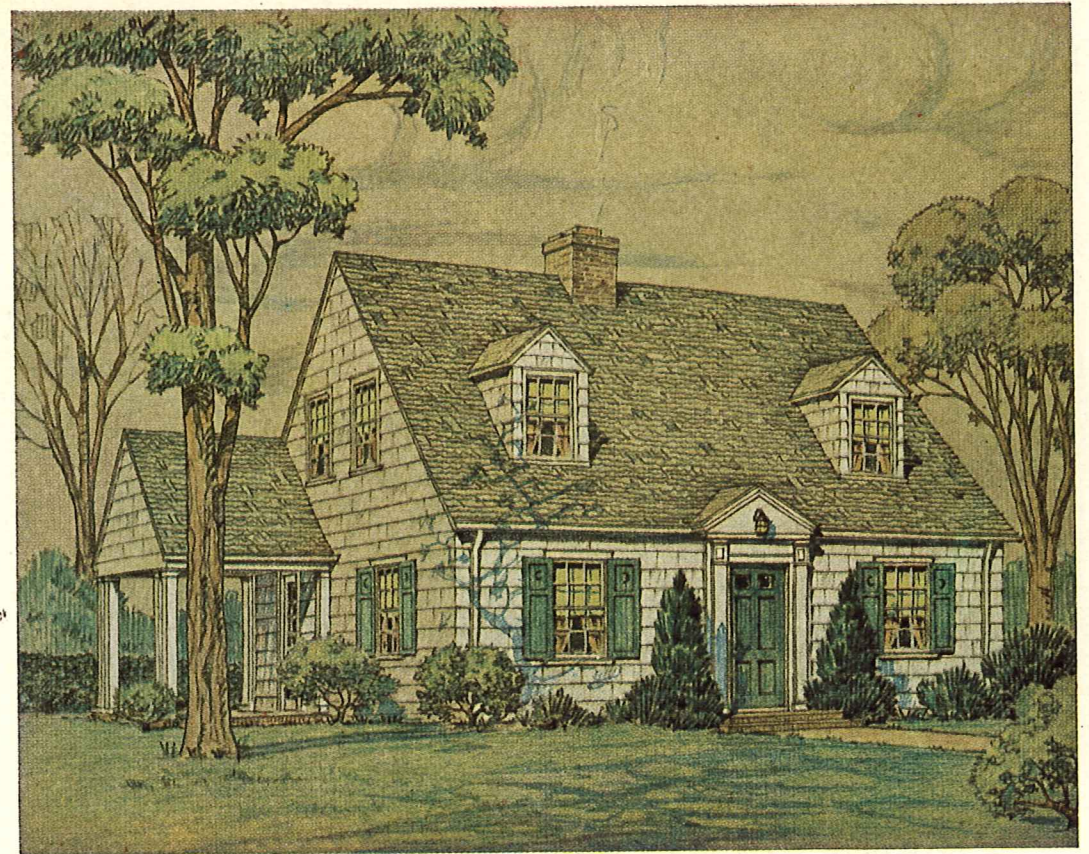
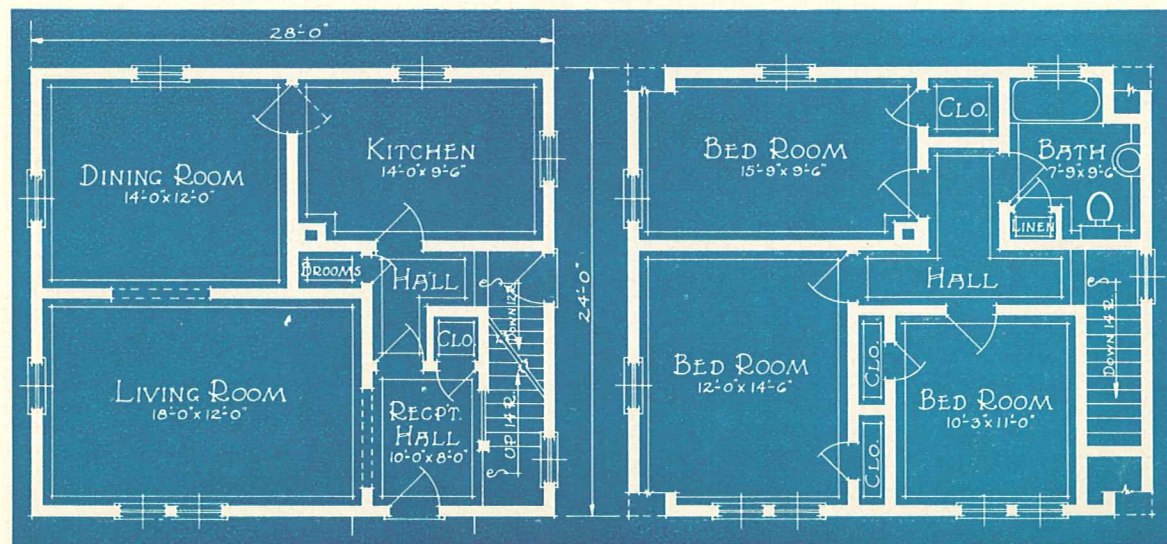




The VAN DYKE

This beautiful Colonial home has the exterior grace and dignity and interior spaciousness that usually come only in homes of much higher price. It is this combination of charm, comfort and economy that makes the Van Dyke a most popular design decades after its model first flourished in the hospitable Colonies. The use of siding for the first story and stained shingles for the gables and dormer sidewalls is most appropriate, however, you may specify siding in place of the stained shingles if you desire. From the moment you enter the Van Dyke through the

shuttered Colonial entrance you are impressed with its air of roominess. Every detail in the interior plan bespeaks comfort and hospitality. Not a feature is lacking that would make this a more desirable home. And like all Liberty Homes the Van Dyke has those fundamentals that insure lifetime satisfaction—yet at a cost considerably less than you would pay for a home of commonplace design, inferior construction and materials. Height of ceilings 8 feet. Read the detailed specifications beginning on page 40.

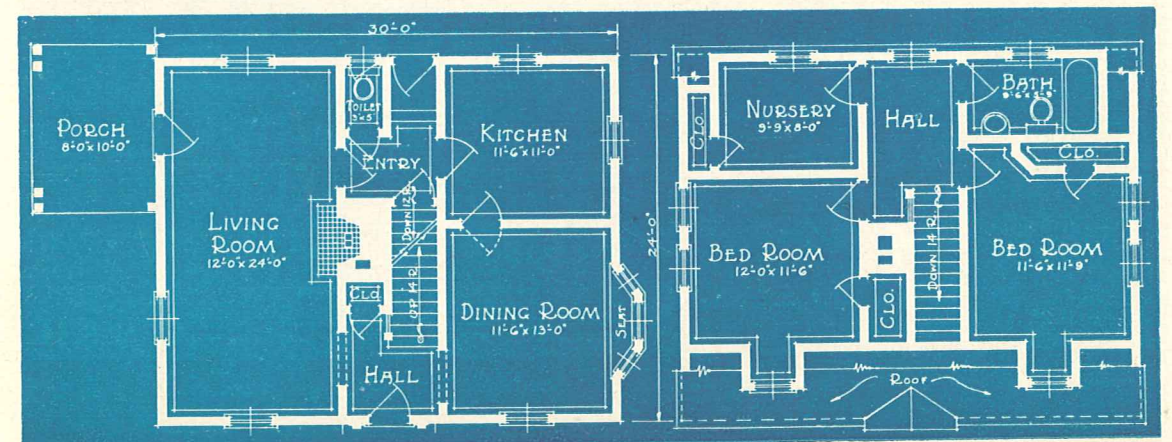


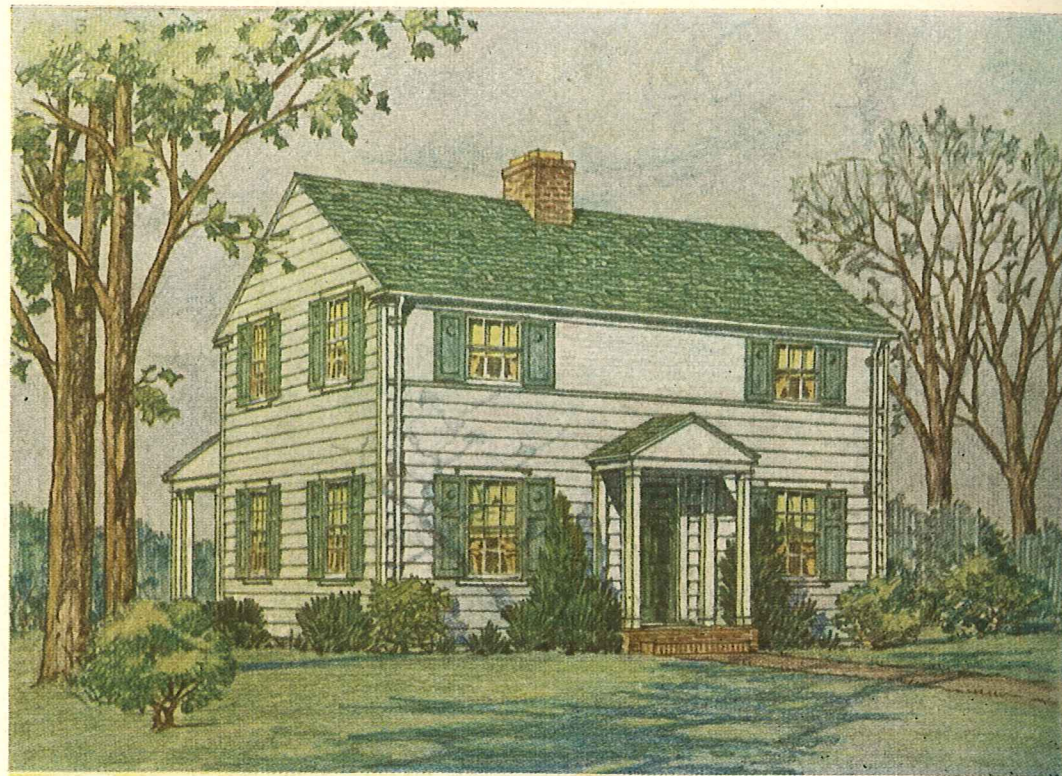
The RICHMOND

Exterior design makes for desirability and determines the true value of a home equally as much as the interior arrangement. In the Richmond, a true Cape Cod Colonial design, you have a home with an exterior that is perfect to the smallest detail, and an interior arrangement that provides the maximum in comfort and convenience. There is something quite satisfying and restful about the Richmond with its shingled sidewalls, the formal entrance, quaint dormers, shuttered windows. The floor plan is of a well established and popular type, having the entrance in the center, a large living room on one side opening onto

the attractive side porch, and on the other side the dining room and kitchen. Notice the attractive bay window in the dining room with its built-in window seat. Adjoining the large kitchen and handy to the living room is the rear entry and down-stairs toilet.

The open stairway leads up out of the vestibule to a roomy, well-lighted hall upstairs which connects with the three bedrooms and bath. Although shingles are regularly furnished for the sidewalls, siding would be in good taste and will be furnished if desired. Height of ceilings, both floors, 8 feet.

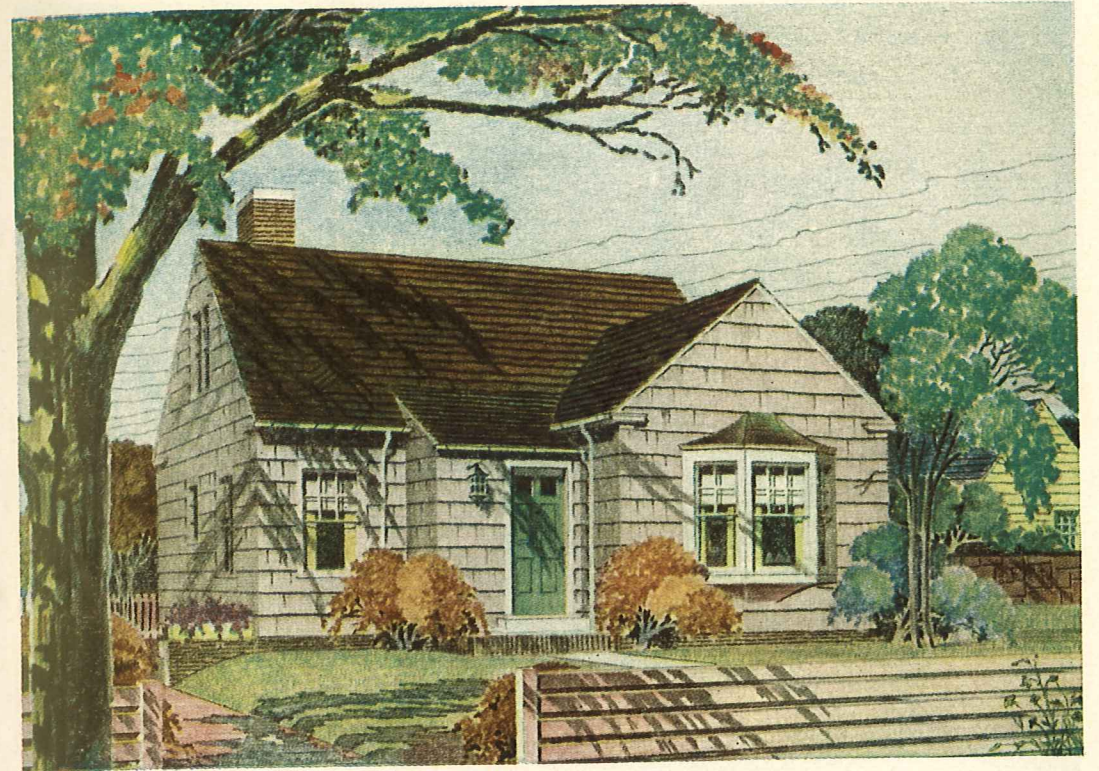
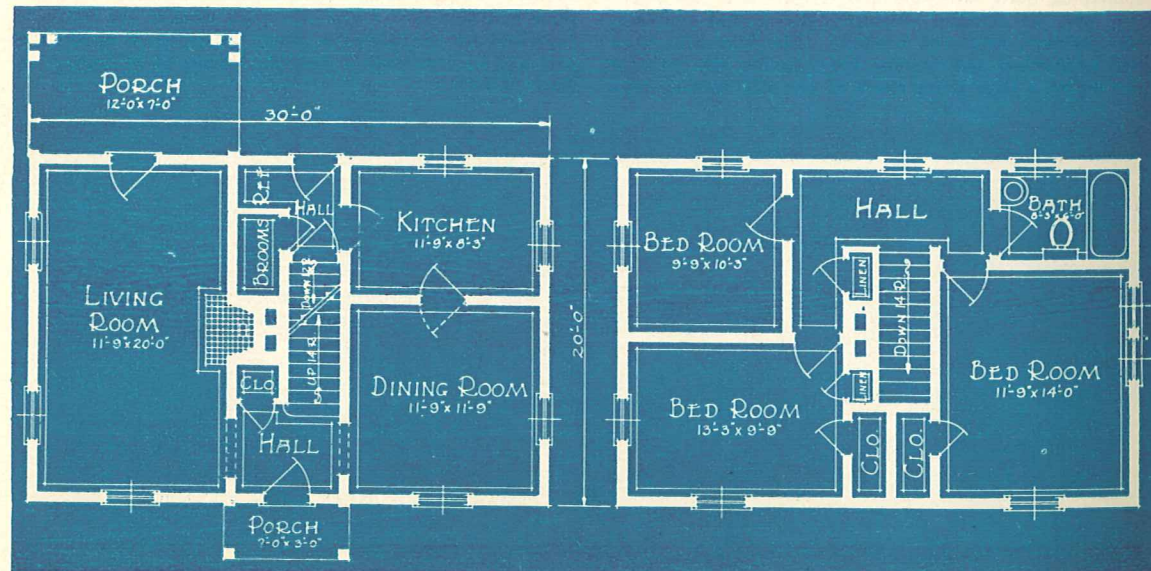




The REGENT—A Most Desirable 2-Story Colonial - Attractive - Economical

Few homes possess such a quiet, graceful dignity as this very desirable two-story Colonial design. The clean lines of the Regent with wide siding and shuttered windows make it most attractive to the eye. Modern treatment to the exterior is attained by the matched V-Joint siding used on the front wall down to the sills of the second story windows. The compact plan of the Regent

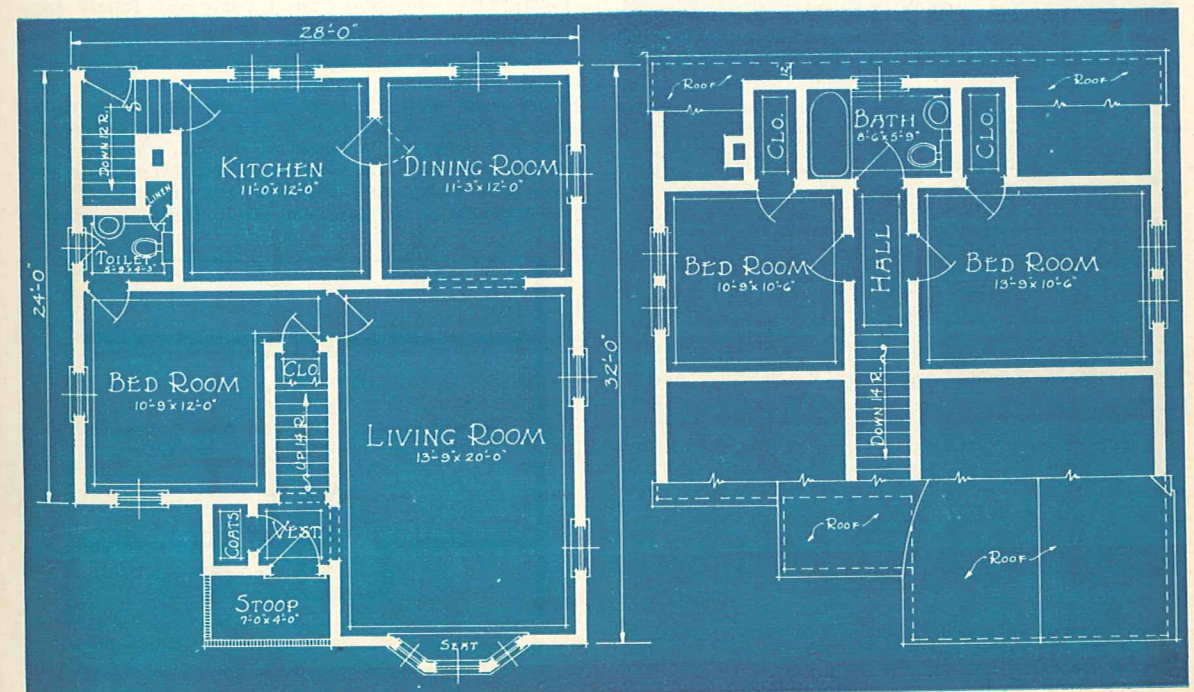
has been laid out to provide every modern comfort and all at a cost that will come well within the means of the average family—The generous size living room with porch at the rear, ample closet space and the three light, airy bedrooms and bath all opening off the cheerful hall leaves nothing to be desired. Height of ceilings, both floors, 8 feet.

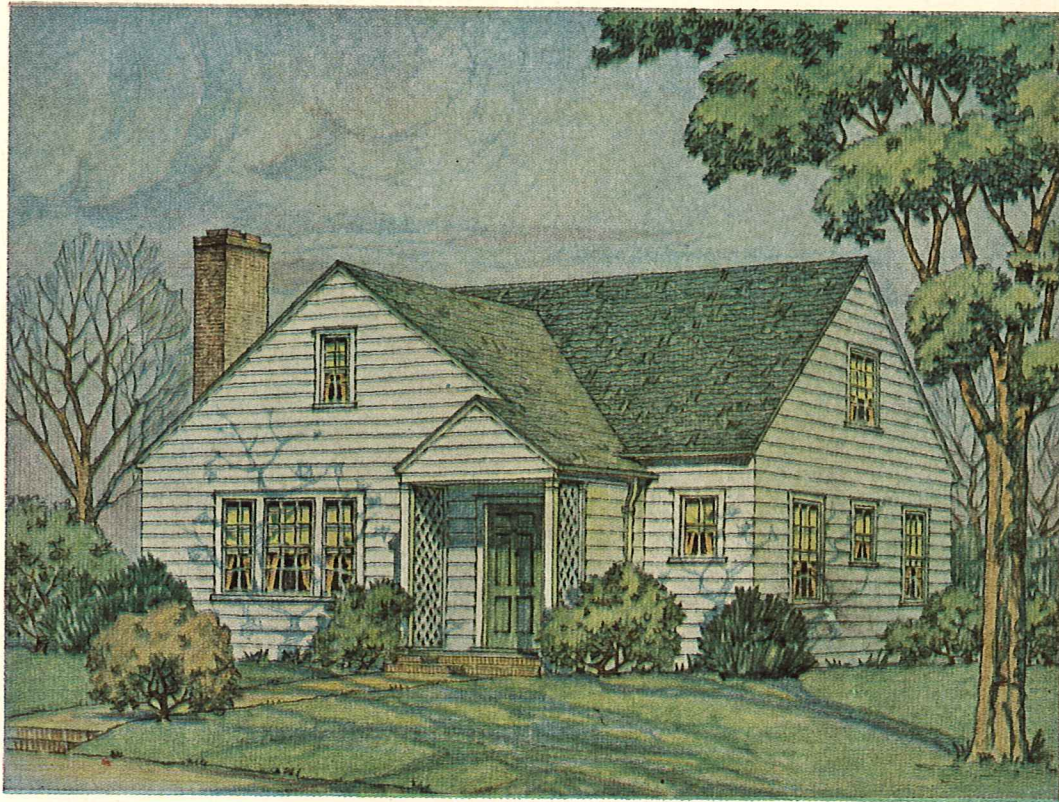


The WORTHINGTON

To prospective home builders who have looked high and low for an attractive, well planned, six-room home at a price within the means of the average family, the Worthington should have a strong appeal. It cannot help but satisfy those who seek the maximum in living comfort for a small investment.

The floor plan arrangement is ideal with an unusually large comfortable living room, dining room, kitchen and three splendid bedrooms. One bedroom is conveniently located on the first floor with a private toilet. Closet space is ample. Shingles furnished for sidewalls with the color of stain you prefer. Height of ceilings 8'.

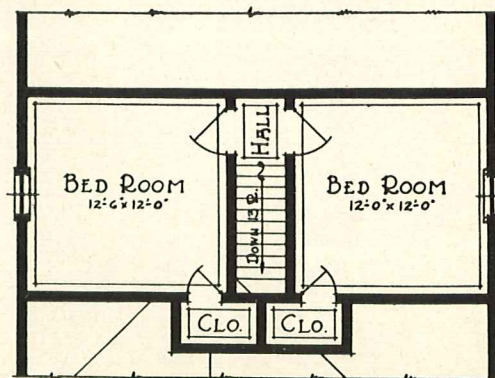




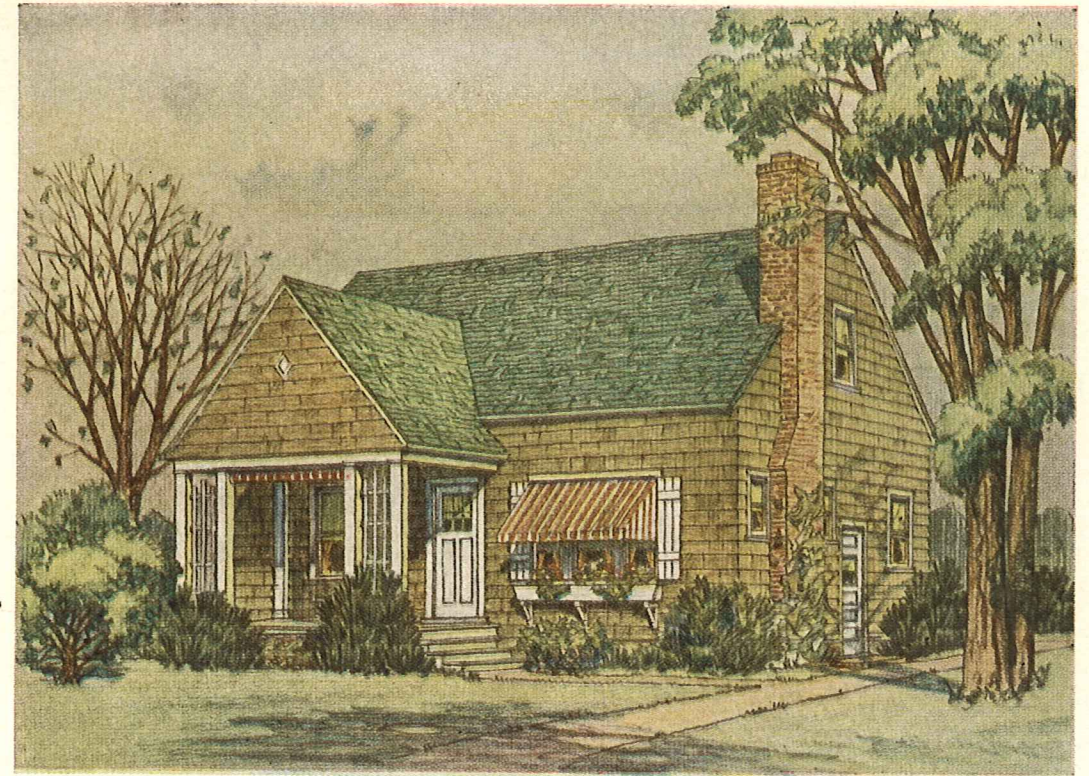
The VERNON

The lasting satisfaction one derives from a home depends largely on its exterior attractiveness, and from that standpoint, too, the Vernon is sure to win admiration. It is one of the most interesting new designs of the modern architectural period—beauty—convenience—practicability—roominess, all at a low cost. Rarely does one find a home with so many outstanding features.

As one enters the Vernon he is at once impressed with its air of roominess. Plastered archways connecting the living room with the front hall and the dining room gives a feeling of spaciousness. Two cheerful bedrooms, each one occupying a corner of the house and located handy to the bath, the very convenient kitchen, and the large attic, make this a home that truly deserves to win the approval of all those who see it. Height of ceilings 8'6".



Suggested arrangement for 2nd floor. Price covering necessary materials will be quoted on request.



The TACOMA

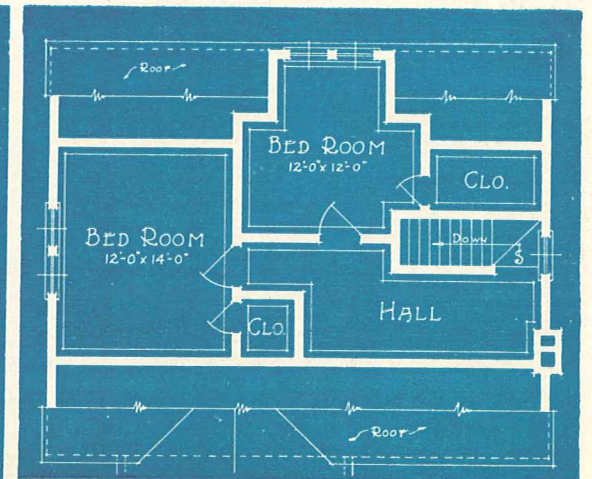
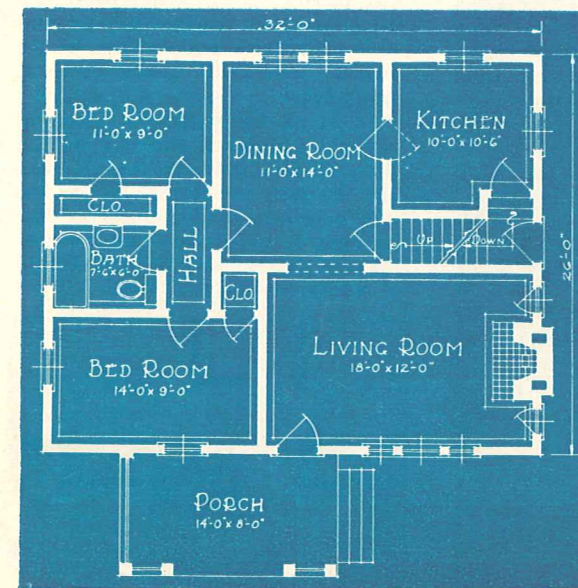
We take a great deal of pride in presenting the Tacoma as we feel that it will meet a long-felt want in the hearts of many. It not only has beauty in every detail of its exterior, but an exceptionally well laid out interior plan as well.

One of the features of the Tacoma which appeals to many home builders, is to have a home in which you have a complete living arrangement on the first floor and have it practical at very little extra expense to have addi-

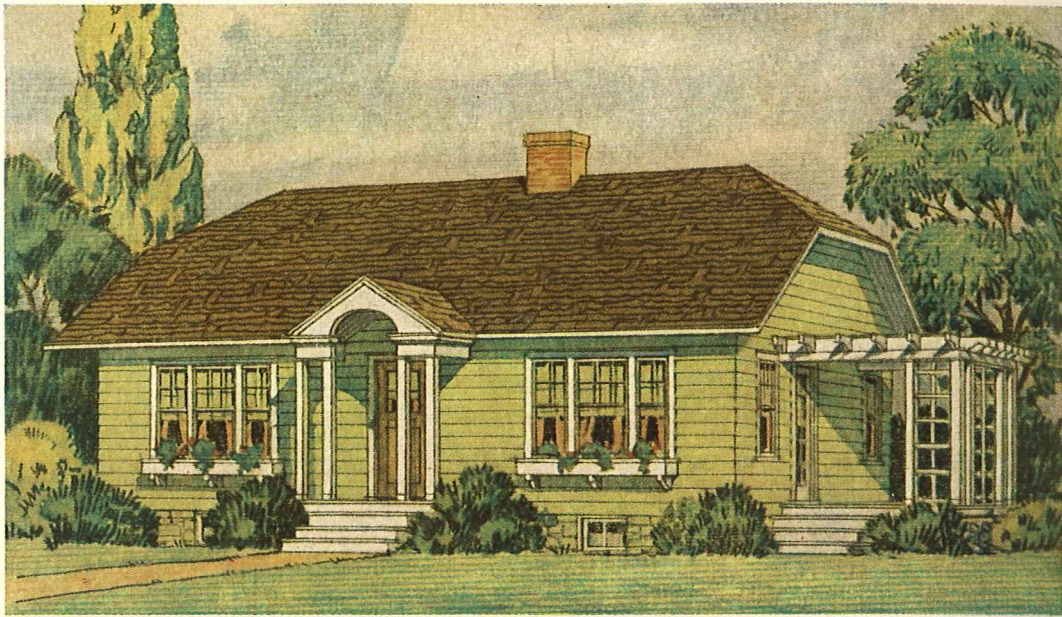
tional rooms finished off on the 2nd floor at some future time.

The regular price of the Tacoma includes the stairway to attic, 2x8" 2nd floor joists, windows as shown and attic flooring so that the arrangement shown on the suggested plan below can be carried out at a minimum cost. The price of the materials needed for completing the 2nd floor plan as shown will be quoted on request.

Height of ceilings: first floor 8'6", second floor 8'0".



The exterior walls of the Tacoma are planned to be covered with clear Red Cedar shingles, stained a rich brown. For the flower boxes, window shutters, porch columns, etc., we suggest a light cream color that will harmonize nicely with the brown shingles.



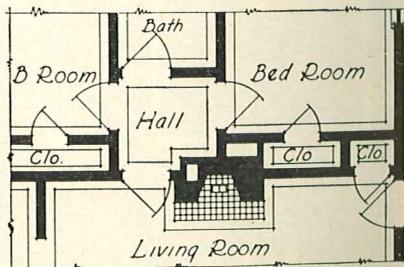
The LA SALLE

Here is a delightful five-room home that has met with enthusiastic acceptance among home builders everywhere. It is a design that seems to portray the suburban neighborhood of happy, contented home owners.

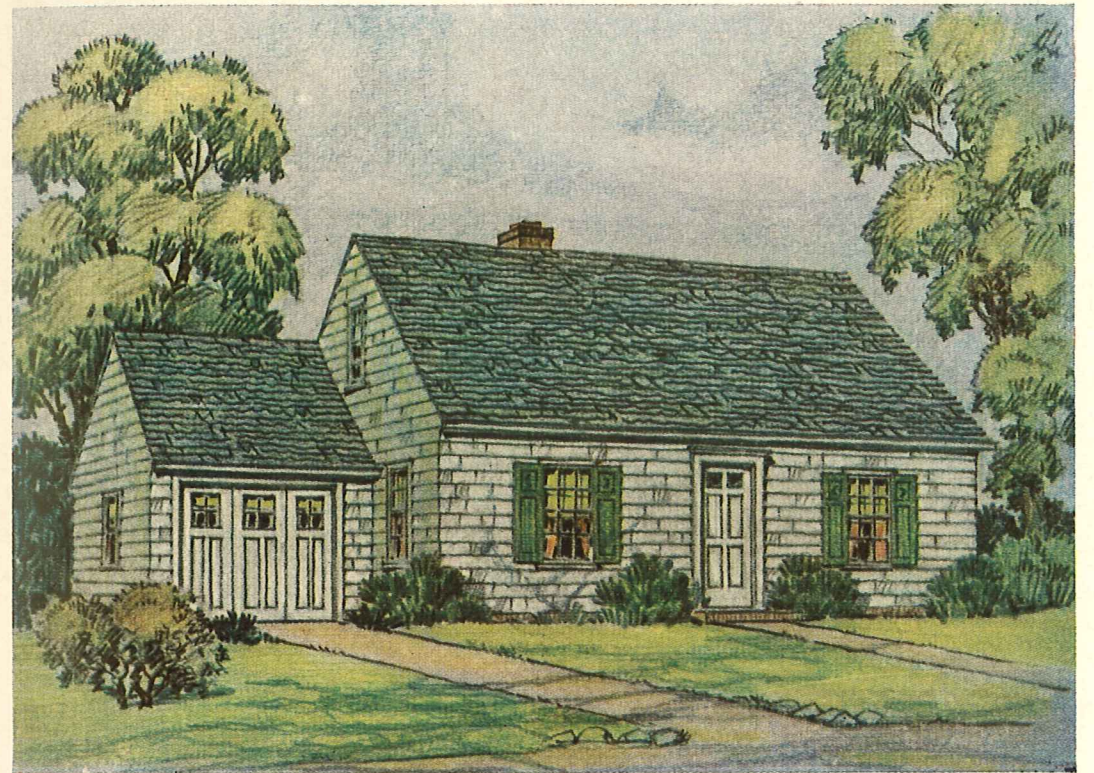
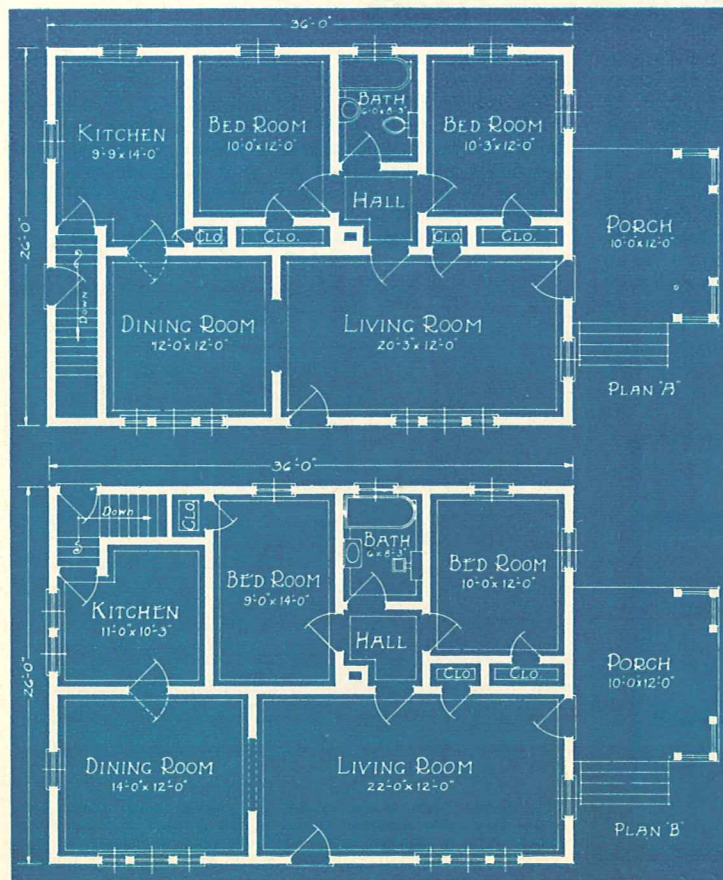
Among the world's riches there are a few whose value cannot be reckoned in terms of dollars and cents. Not the least of these is that deep satisfaction which comes from home-ownership—the knowledge that in your name stands the title to a cottage on a quiet street—a yard, a garden of beautiful flowers—a refuge from the eternal pursuit of business—a home, within which you will find most of the joy and happiness that this life offers.

The LaSalle has the typical colonial entrance in the center, balanced with the attractive grouping of three windows and flower box on each side. On the end is the pleasant porch. Note the exceptionally large, well-proportioned living room. A fireplace may be constructed without any sacrifice to the present convenient arrangement as shown below.

All in all the LaSalle is about as perfectly designed a bungalow as any home builder could wish for. It gives just the right combination of coziness with roominess, comfort and handsome appearance, and its low price will be the most welcome surprise of all. Height of ceilings, either plan, 9 feet.



Suggested fireplace arrangement



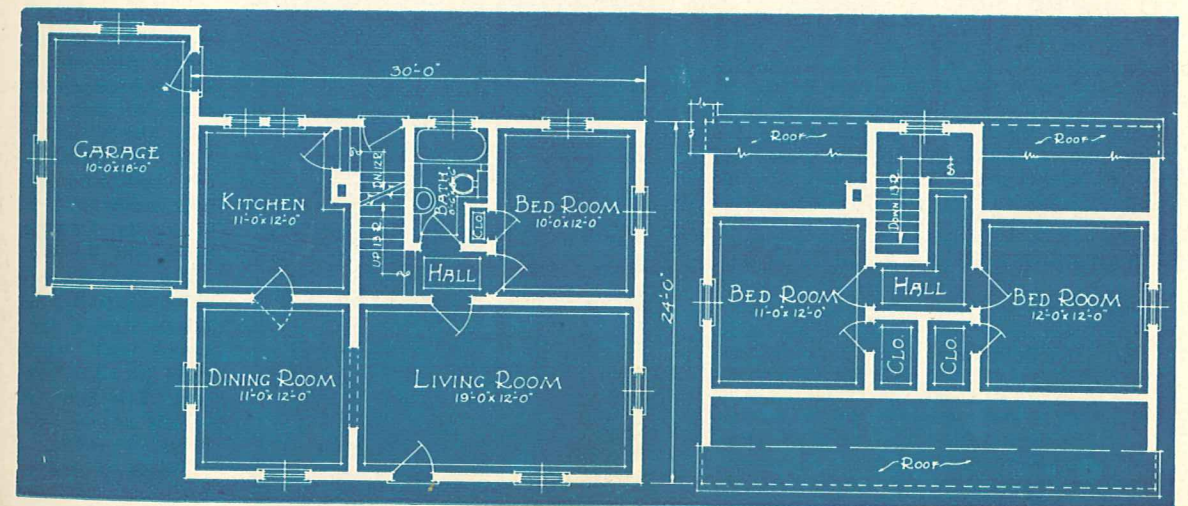
The NANTUCKET

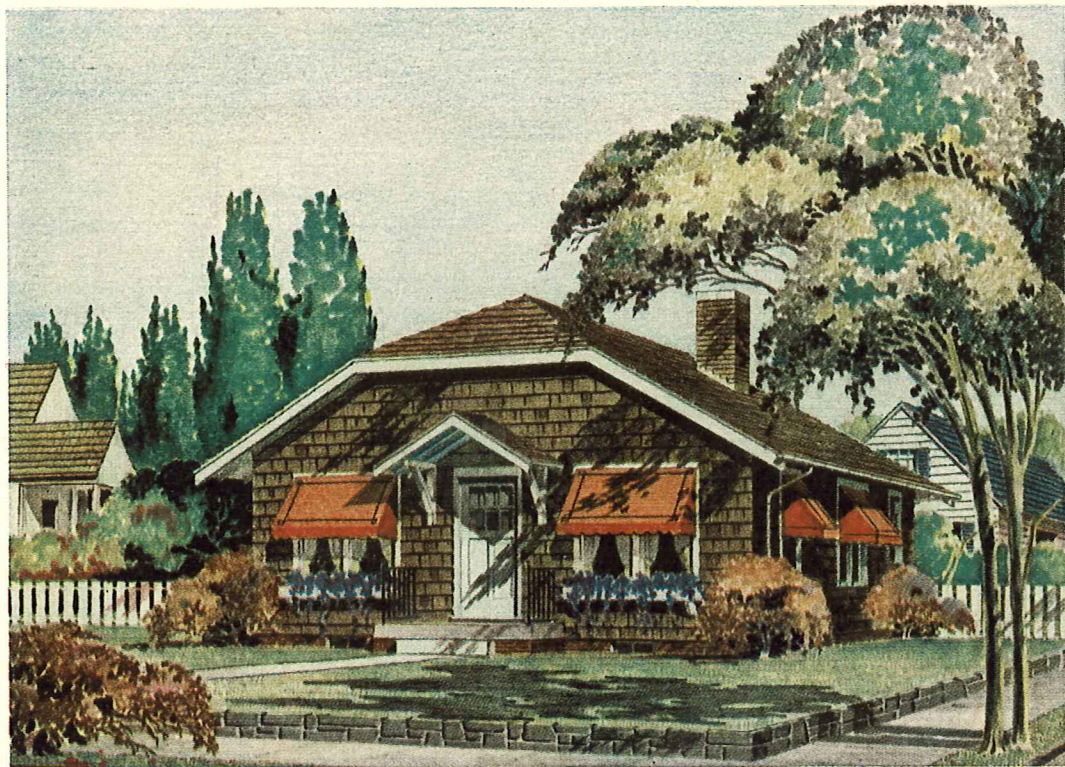
An Ideal Garage-attached Six Room Home

Planned on traditional lines of early New England architecture and accommodated to the requirements of present-day living, this prize-winning Cape Cod Cottage is a perfect example of sane, efficient planning. Although compact, it has ample floor space with the rooms arranged to afford the privacy all too often lacking in small houses.

Economical planning should, and in the Nantucket does,

provide for the matter of low upkeep as well as original building cost. Having eight-foot ceilings on both floors, it is easy to heat. The attached garage is a particularly desirable feature from the standpoint of construction and design as well as convenience. Aside from being a perfect, practical plan, it is also a hospitable little home and a sound and readily salable investment.





The LAFAYETTE—A Prize Home— One You Will Be Proud to Own

This artistic bungalow has always appealed to those who want a large well-planned home yet must keep the cost down as low as possible. Although the Lafayette has considerable floor space, much real comfort and genuine charm, it is priced so amazingly low that many people

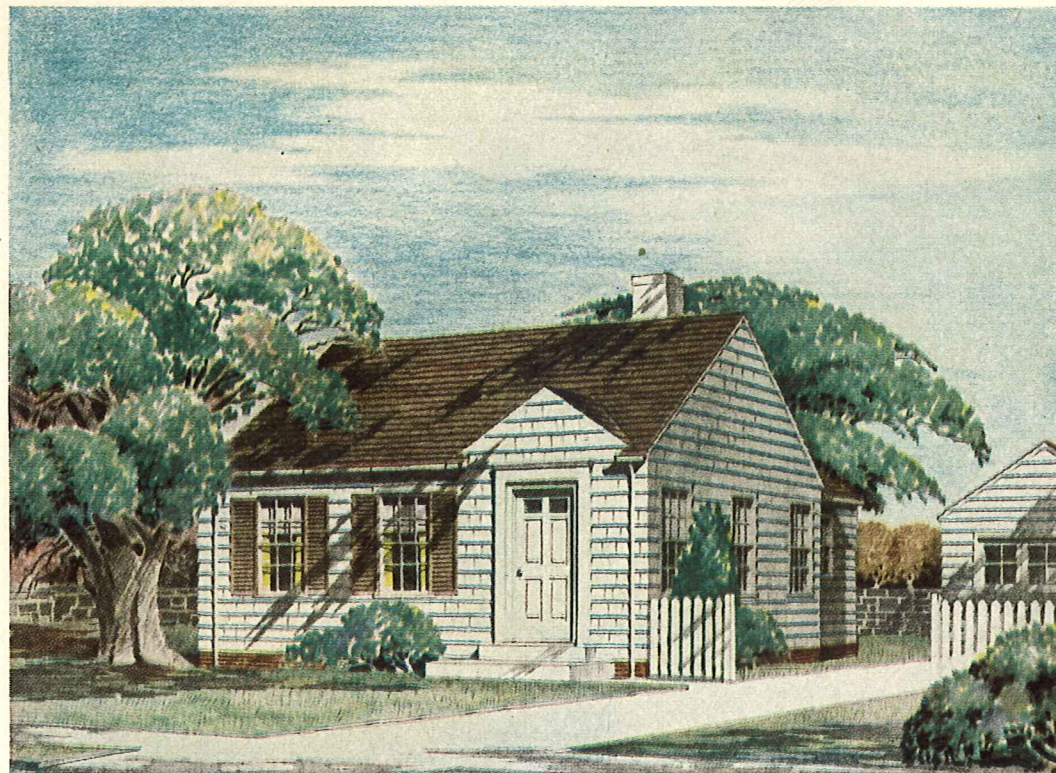
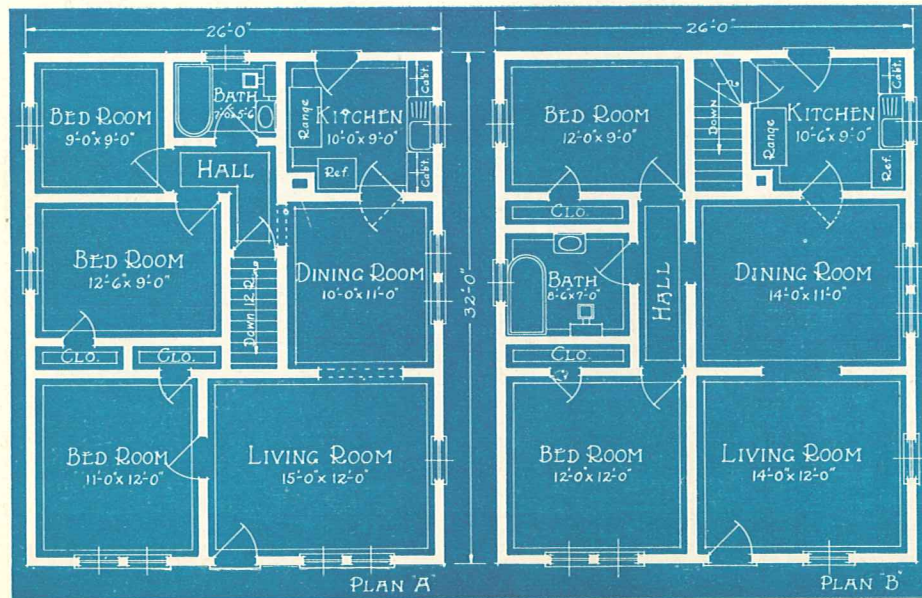
ask us how we do it. Certainly they find no signs of economizing in the quality or quantity of materials, no skimping anywhere. The economy is achieved in our own plant management. You enjoy the perfect fruit of our efforts—a home that fulfills your most cherished dreams;

at several hundred dollars less than you expected to pay.

Plan "A" offers six rooms and bath with the cellar stairs conveniently located leading down from the hall and near the kitchen. Plan "B" provides two bedrooms and bath besides the Living room, Dining room, and Kitchen.

For the sidewall shingles a rich brown shingle stain is furnished with white paint for all outside trim. This home is equally attractive entirely in white.

Height of ceilings 8' 6".



The EDMUND

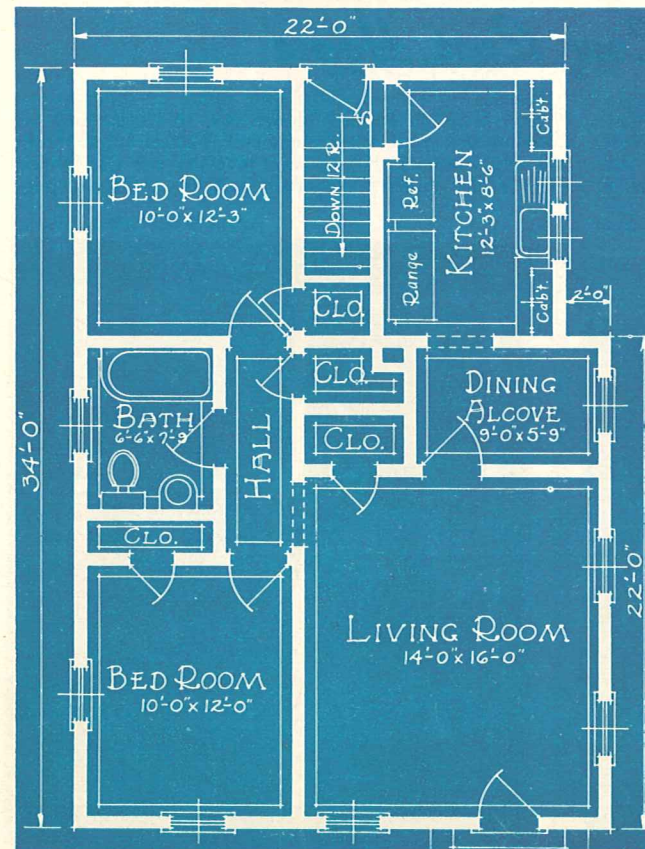
The attractive simplicity of design which characterizes the Edmund makes it the ideal type of home for those whose taste in architecture leans toward the simple and dignified rather than the ornate. With the shingles stained white, and the Colonial slatted shutters in a pleasing shade of brown, the effect is highly entrancing. The color combination may, of course, be varied, according to the taste of the individual purchaser, as we supply both paint and stain in any color desired.

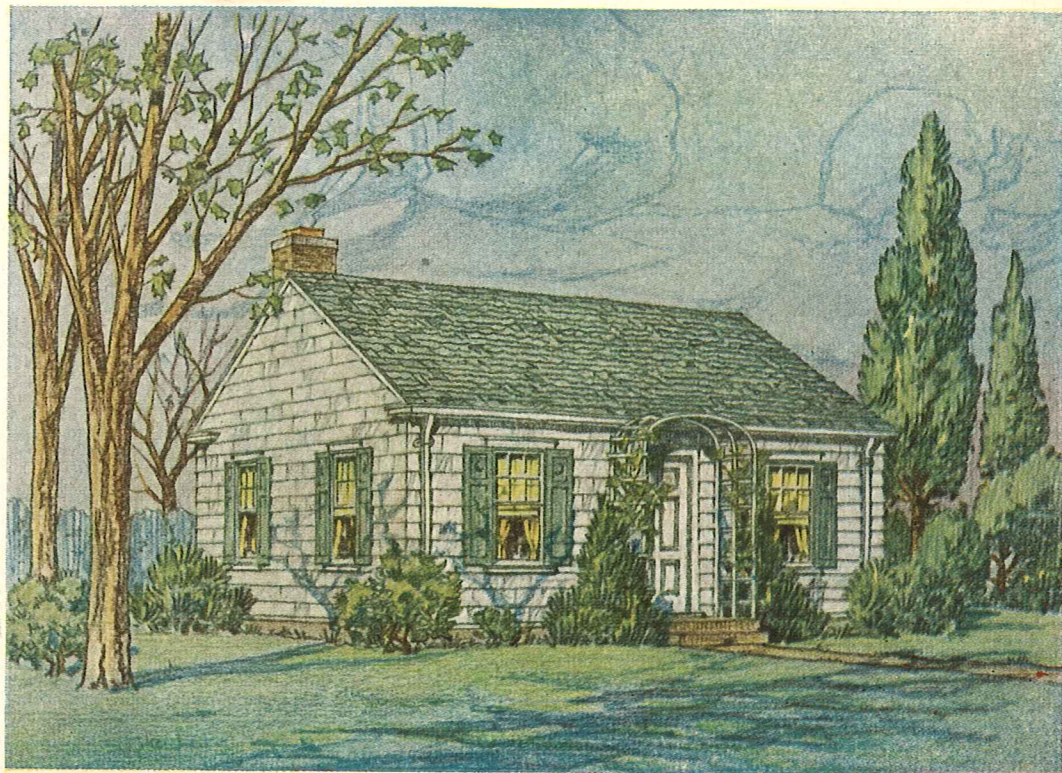
Differing from many of the other Liberty Homes in floor plan, this model has a living room lighted by three windows, one at the front, and two at the sides. Besides being unusually large, the living room has another feature that you cannot help but appreciate—a convenient closet at the rear for guest wraps. Each of the bedrooms also has its own individual closet, and there is still another closet off the hall which can be used either for clothing or for linens, as desired.

A notable feature, seldom found except in large size houses, is the dining alcove, located between the living room and the kitchen. Imagine this cosy room daintily furnished with a modern dining set, and with bright colored curtains on the window! Could you think of anything that would contribute more to making every mealtime an occasion to be looked forward to?

Now glance at the convenient kitchen arrangement! On one side, in a recessed nook, space is provided for a range and a refrigerator, while on the opposite side you can have a cabinet arrangement like C-4, shown on page 46. With everything arranged to best advantage, here is truly a step-saving kitchen!

If you are planning on a moderately priced home, and yet one that has every modern feature, we commend this model to your careful consideration.

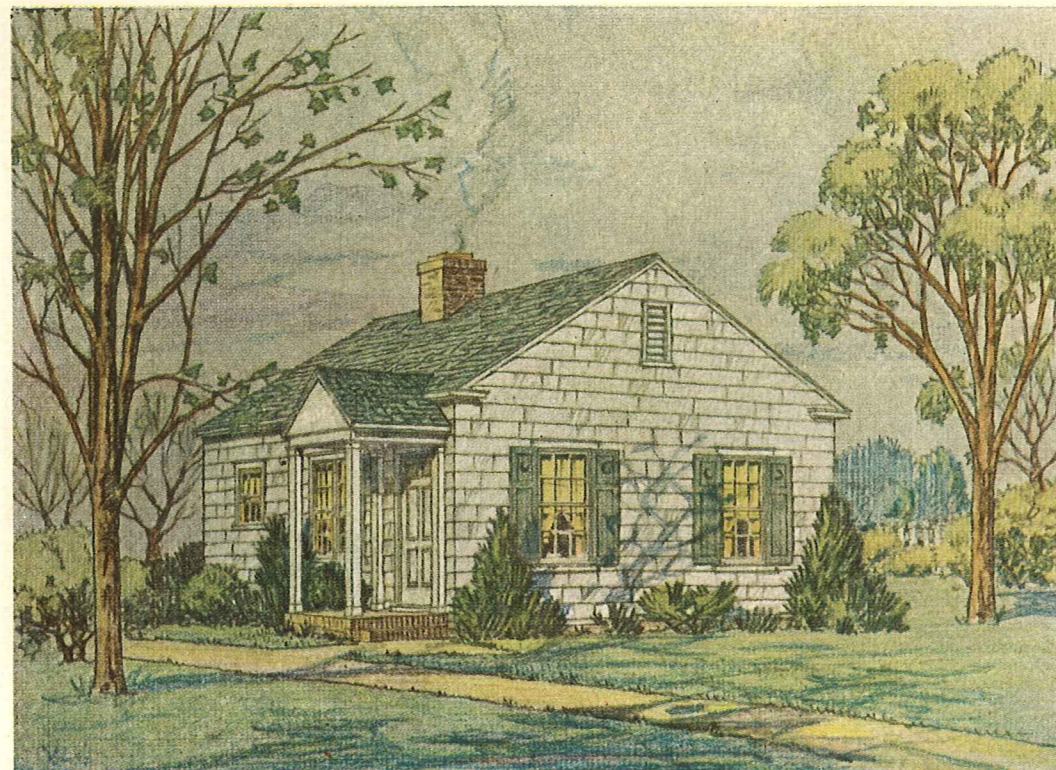
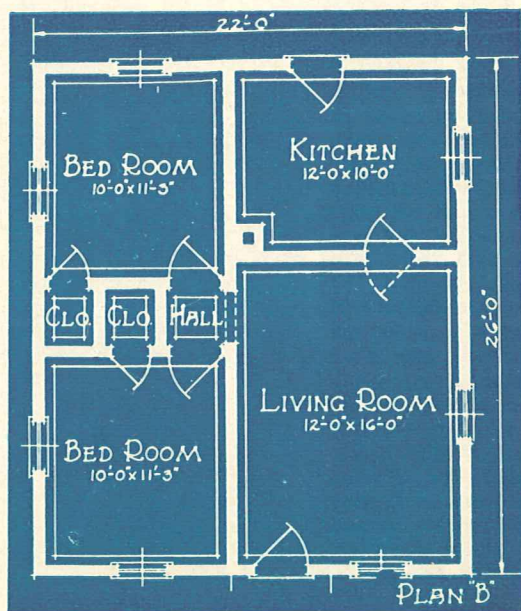
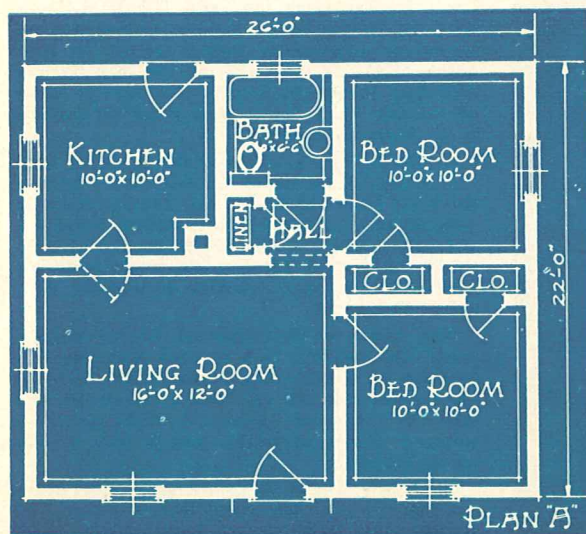




The CASTLEWOOD—*America's Favorite Low Cost Home*

The Castlewood is a design which proves that you do not need a lot of money to own the kind of a home that meets all your needs for comfort and appearance as well as sturdiness. Notice the splendid large living room, the roomy bedrooms, each with its own closet. In Plan A you have the convenient linen closet located handy to the bathroom. Height of ceilings 8 feet.

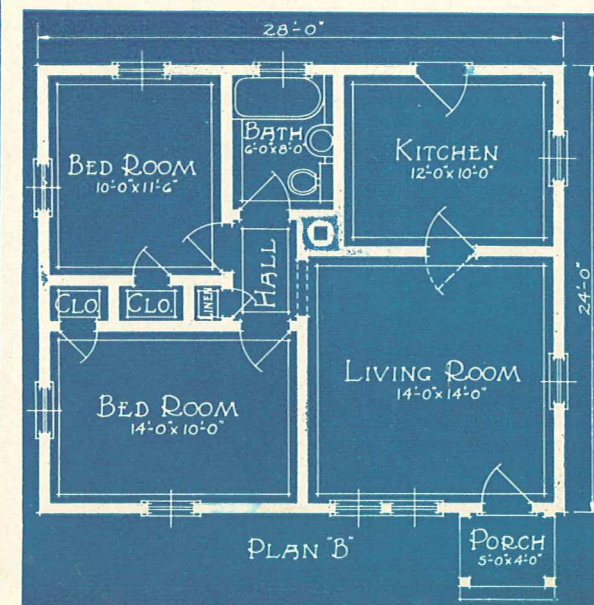
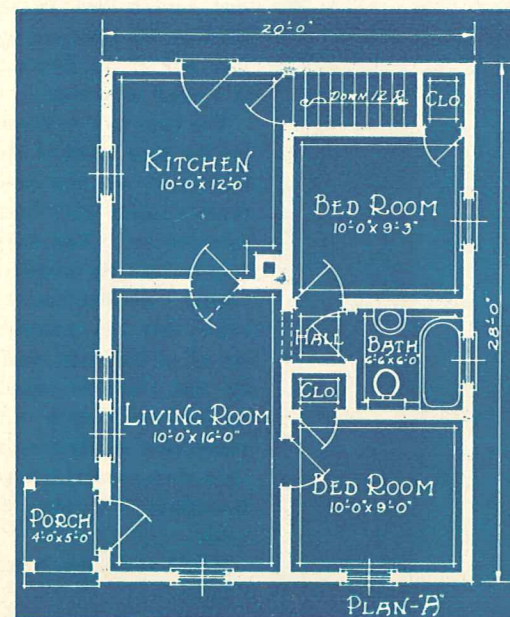
Shingles for the sidewalls, your choice of either brown or gray stain. Front door design No. 10. Upper sash all windows divided lights. Ornamental shutters for all front and side windows. If you wish to order the Castlewood without the shutters the credit will be \$4.00 per pair.

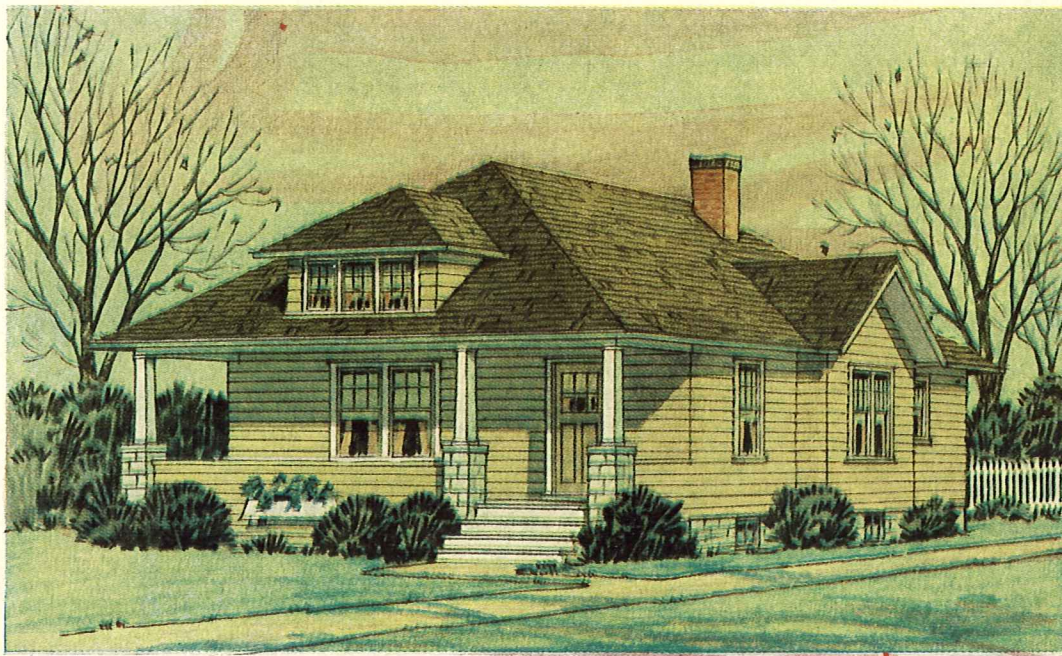


The CLINTON—*2 Splendid Plans Unsurpassed in Value*

The importance of good architectural service in the building of a modest home is demonstrated clearly in the Clinton. Here you have a design whose proportions are perfect in every detail, giving the exterior that attractive appearance which is always admired but so rarely obtained in the small home.

The Clinton is available in two sizes as shown, Plan A being 20'x28' and Plan B 28'x24'. Gray stain is furnished for sidewall shingles. All windows have the divided top and bottom sash as shown. Ornamental blinds furnished for front windows. Front door design 10. Porch floor and outside steps cement. Height of ceilings 8 feet.





The PILGRIM

This beautiful bungalow has a host of friends, and is indeed worthy of their admiration. Its exterior shows a distinct character of its own, but the inside arrangement of rooms in each of the two floor plans, the placing of the windows, the closets, all have the solid, substantial virtues that make a home practical to live in.

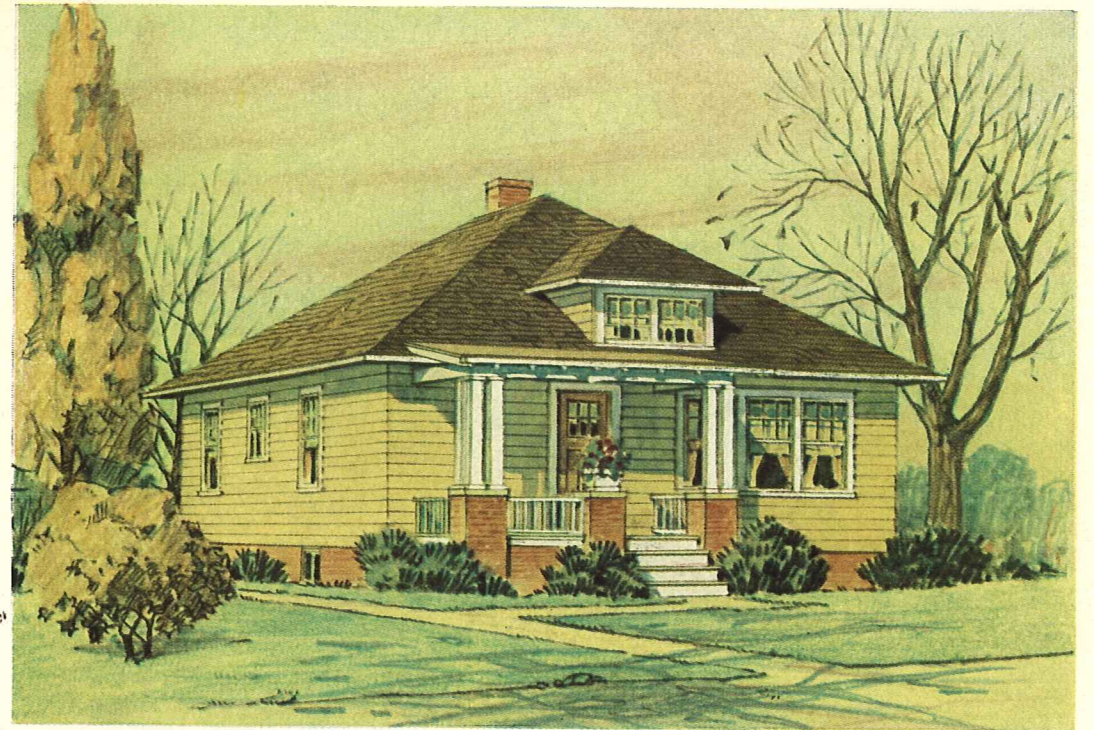
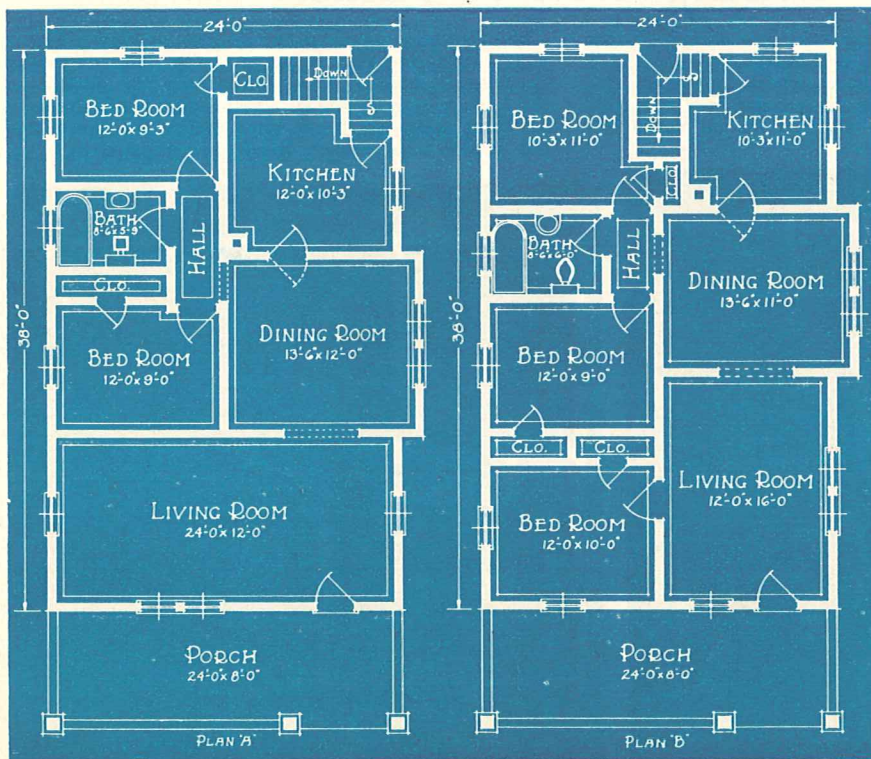
The Pilgrim is a perfect example of how it is possible to have the desirable features of the more expensive homes at a low cost.

Two floor plans are offered, Plan A with two bedrooms and plan B three bedrooms. In plan A the living room extends across the entire front and if you desire a

fireplace, an ideal place for it would be in the left wall where the single window is now located. Should you intend to build a fireplace we will omit this window and furnish two smaller casement windows, one for each side of the fireplace, at a small extra cost.

You have only to examine the floor plans of the Pilgrim to see how well family's needs have been provided for. You have only to read the complete Liberty specifications to know that the materials are all of the finest quality and that the sound, durable construction will insure your satisfaction in this wonderful home throughout the years to come.

Height of ceilings, 8 feet 6 inches.

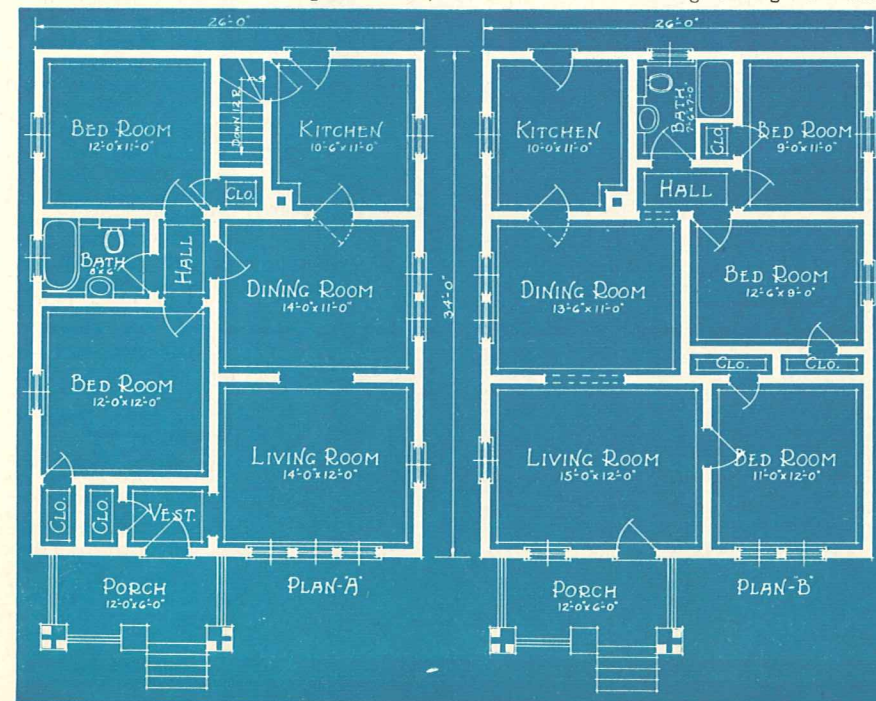


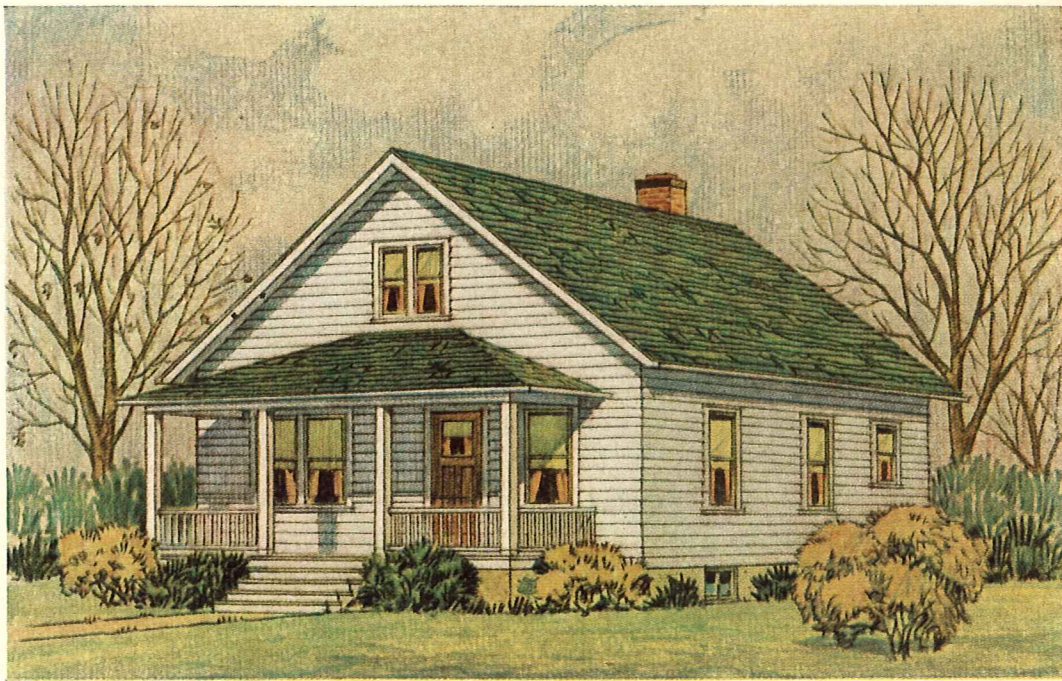
The SENATOR — A Wonderful Bungalow at a Surprisingly Low Cost

The Senator, a typical American bungalow design is a genuine prize winner. The wide roof with the attractive dormer, the inviting porch, contribute their share to the excellent proportions of this popular bungalow. Two floor plans are offered. Plan A having five rooms, two of which

are bedrooms while Plan B has six rooms with three bedrooms. In Plan A you will find the entrance hall with its guest closet for outer wraps. The living room has an abundance of light and the wide archway connecting with the dining room gives it added roominess and brightness.

The two big bedrooms (each with its own closet) and the bathroom open off the hallway giving this side of the house much desired privacy. The cellar stairway leads down from the kitchen very handy to the rear door. Plan B is arranged with three splendid bedrooms in addition to the well proportioned living room, dining room and kitchen. Each bedroom has its own closet. The bathroom is conveniently located in the rear off of the hall which connects with the two bedrooms and dining room. To provide access to the cellar the grade entrance addition described on page 47 should be used. For the man who desires a modest home we know of no better investment than the Senator. Height of ceilings 8'6".





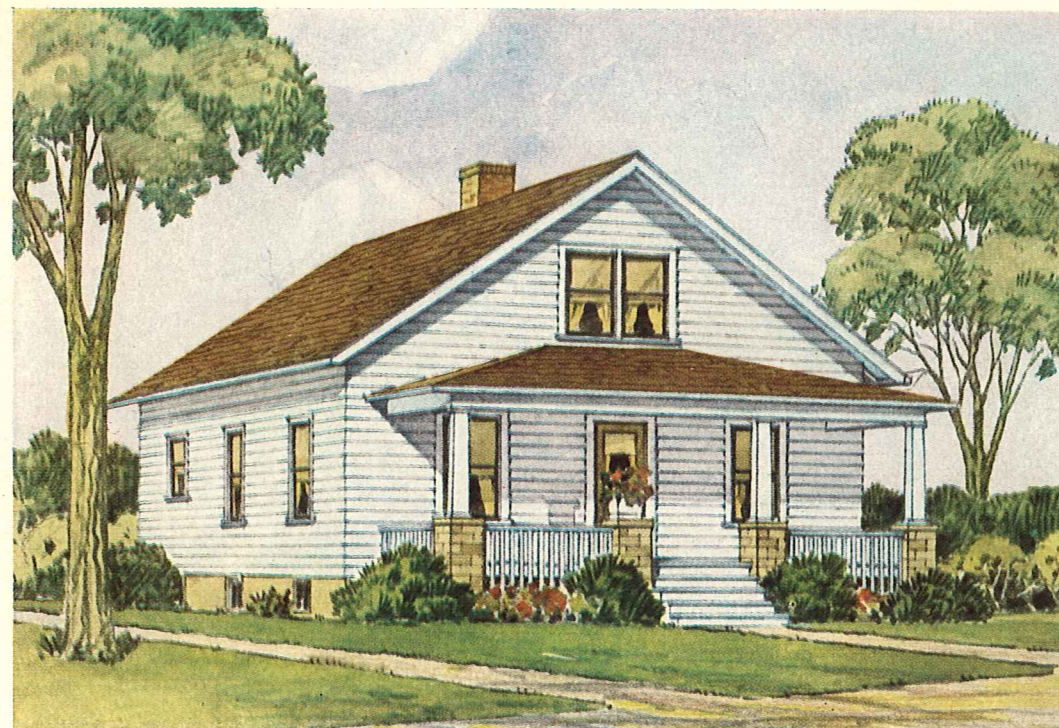
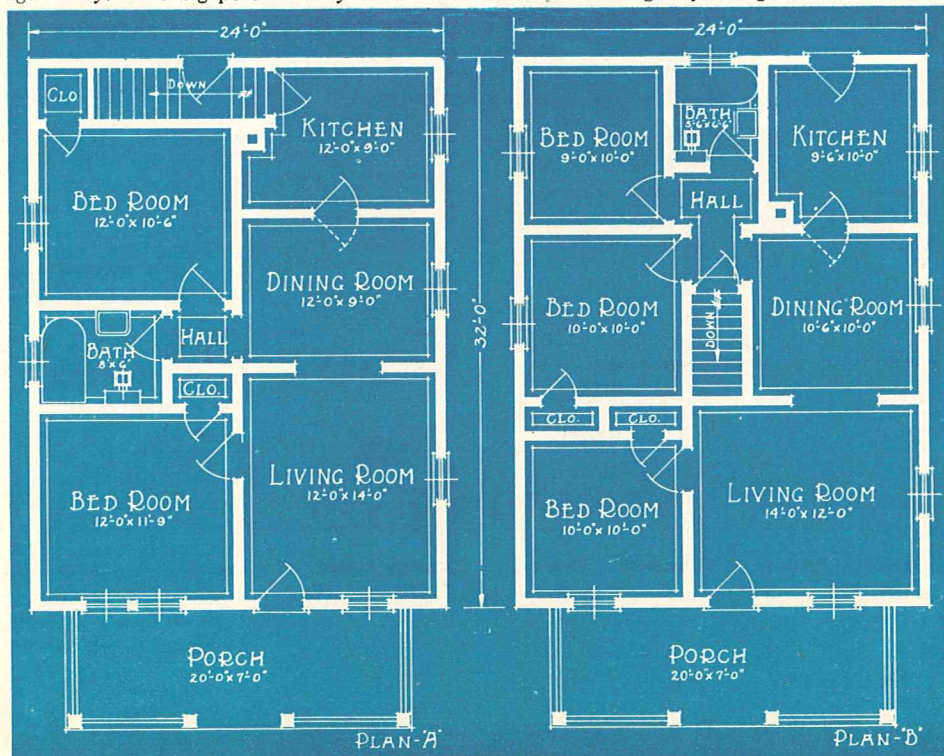
The DELAWARE — A Big Favorite With Home Builders Everywhere

It is easy to see why the Delaware is a big favorite with home-builders everywhere. In appearance, arrangement and size of rooms—it is an ideal home for the average family. The big porch is very convenient. There is

also the advantage of the large attic space which can be finished off any time later on to give two additional bedrooms at a very small cost. If you desire a home that will give you a great deal of comfort and convenience at very low cost, then we heartily recommend the Delaware.

Two floor plans are offered. Plan A gives a living room and good wall space, a dining room, kitchen, two roomy bedrooms each with its own closet, a bathroom, hall and grade cellar stairs. Plan B has three well arranged bedrooms, living room, dining room, kitchen, two closets, a bathroom, hall and cellar stairs. Prices include 20'x7' porch as shown. Height of ceilings 8'6".

NOTE:—If you wish to make use of the large attic space, which has a height of over 8 feet, we will furnish complete attic stairs over the cellar stairs in either plan 2x6 attic floor joists with flooring to cover a space of 14 feet wide through center of attic, at a small additional cost.



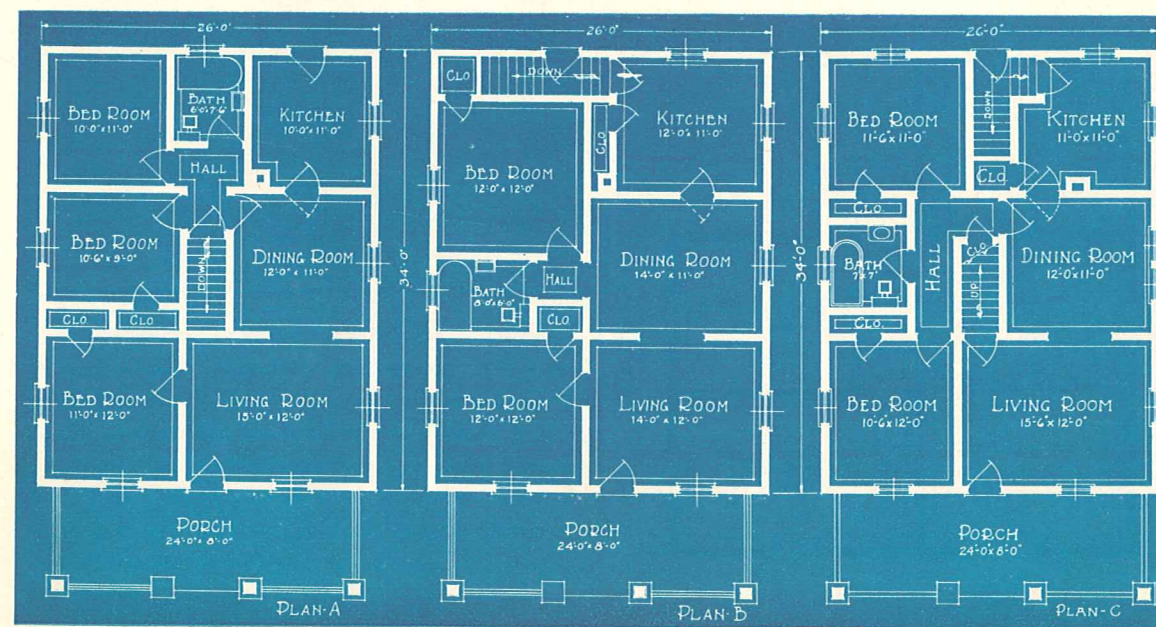
The COLUMBIA — Attractive - Well Planned - Low in Cost

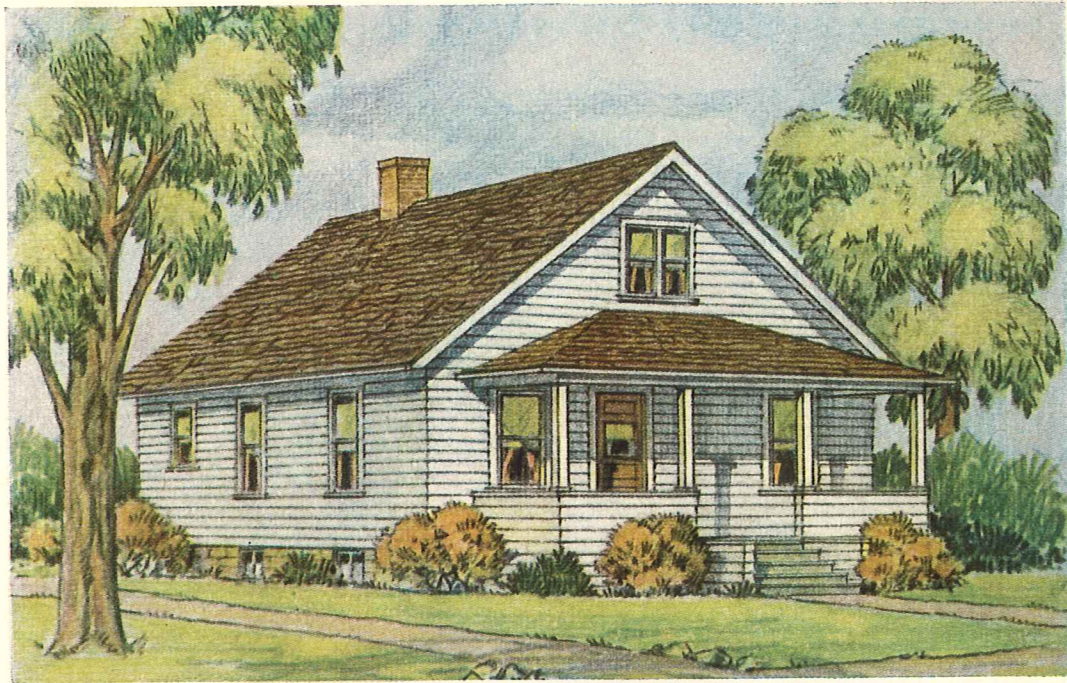
The Columbia is a type of home that has proved its merit and economy over a period of years. It is a design that is in good taste in any community and one that offers a maximum of room area at a minimum cost.

The large attic space is a feature that is especially desirable as it provides ample space for two extra bedrooms should they be needed. In Plan "C" the stairway

to the attic is furnished leading up from the living room with the attic flooring being furnished. In Plans "A" and "B" this feature can be had at an additional cost which will be quoted on request.

Height of ceilings 1st floor 8'6". Height of attic at center 9½ feet.

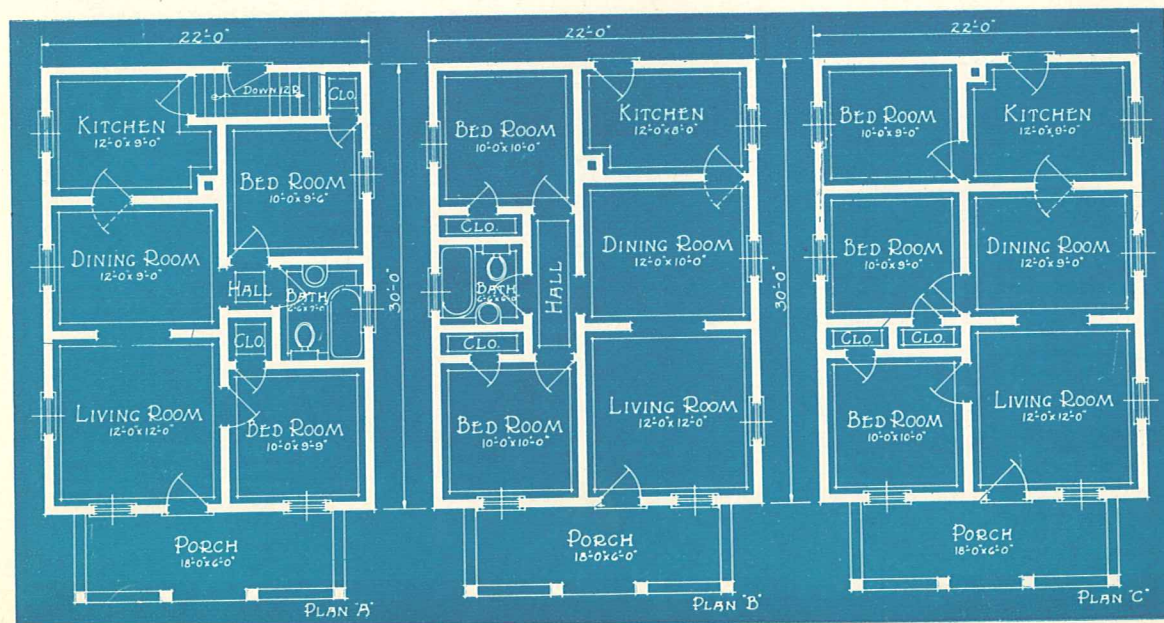




The SHERIDAN — A Universally Popular Home - 3 Model Plans

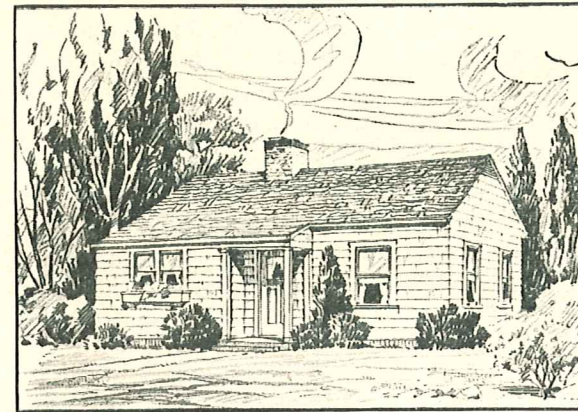
Right before you is positive proof that you can combine beauty and practicability in a home of modest cost. Few homes offer so much comfort and satisfaction. Its artistic exterior gives a distinct impression of quality, enhanced by the pleasing roof lines and wide, hospitable porch. And inside, the Sheridan fulfills all the promises of its handsome exterior. The rooms in all three plans are spacious, conveniently arranged, comfortable. Plan A

and B each have five splendid rooms, living room, dining room, two bedrooms, kitchen; also closets and bathroom. In Plan A the cellar stairs is furnished leading down from the kitchen to the grade landing and basement. Plan C has three fine bedrooms with two good closets, pleasant living room, dining room and kitchen. The porch, size 18'x6', is furnished as shown—Height of ceilings 8'6".

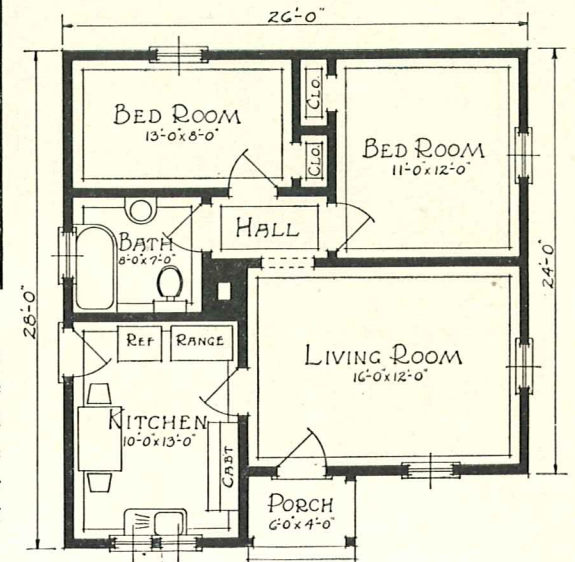


THE BEVERLY

A perfect gem of small home design. Its floor plan features the latest and most efficient ideas of comfort and efficiency.

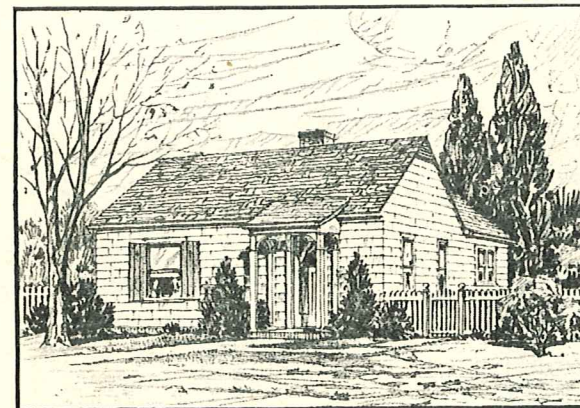


To get an attractive, well-planned home like the Beverly for so little cost is a happy surprise to home builders. You can save even more by building it yourself in your spare time. Everything is made so simple with all measuring and sawing done in advance for you that no previous experience is needed. Shingles are furnished for sidewalls with either Silver Gray or Rich Brown stain as preferred. Height of ceilings 8'6".

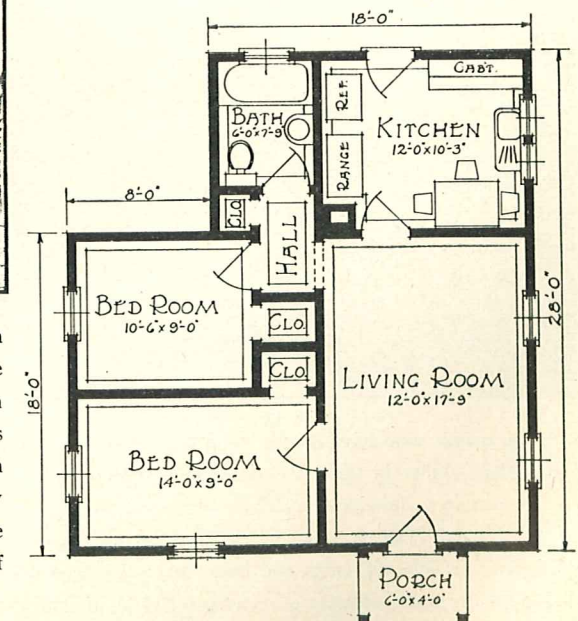


THE CASCADE

For the family of average means, this attractive, low cost home provides every necessity for comfortable living.



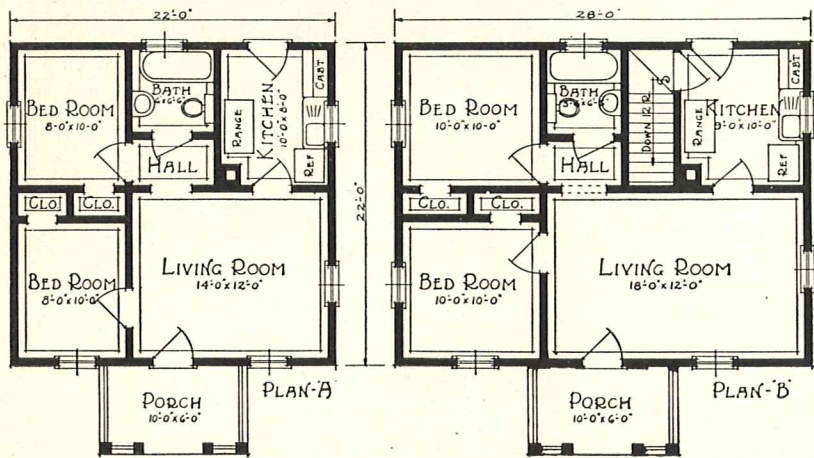
No matter whether a home is small and compact it can be made artistic, comfortable and homelike. The Cascade proves this clearly. The interior plan provides a living room that is spacious and comfortable, two splendid bedrooms with closets for each. The kitchen is a model kitchen in every respect allowing ample space for dining. Silver Gray or Rich Brown stain furnished for sidewall shingles. See detailed specifications beginning on page 40. Height of ceilings 8'6".



THE STERLING



Home-ownership, today, has been made comparatively easy for the man who has the will and determination to own his own home. Modern construction methods have reduced building costs to such an extent that a large investment is no longer necessary. The Sterling proves this. It is a design that offers so much real home comfort for your investment that nobody would believe when they see your Sterling completed that you didn't pay several hundred dollars more for it. No frills, but a good substantial design that gives the maximum returns in real home value. Height of ceilings 8'6".



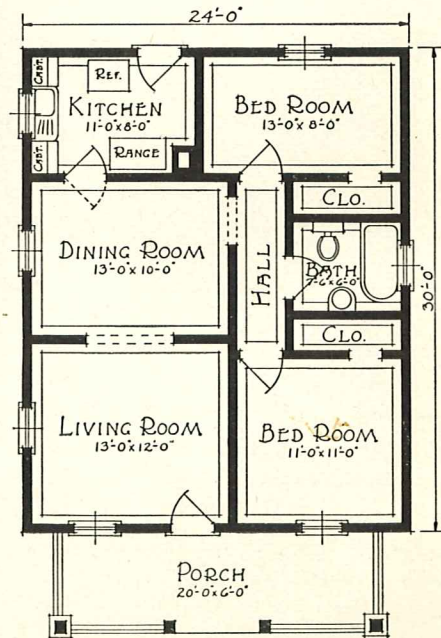
"Easy to Build"

"We are very proud of our new Sterling B," write Mr. and Mrs. Samuel Bado of W. Va. "It was no trouble at all to build it because of the easily read blue print and instructions."

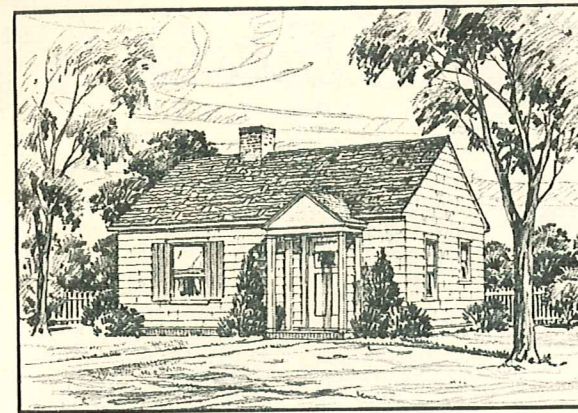
THE NATIONAL



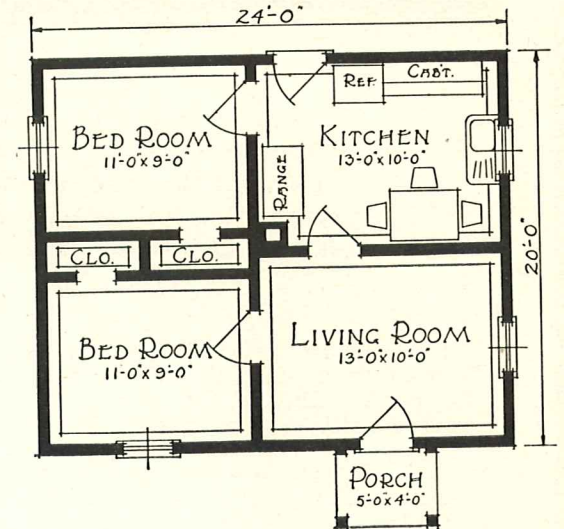
Many people who have longed for a cozy home of their own have found their choice in the National. Rarely indeed will you find the convenience in a bungalow, available at so low a cost, as you secure in the National. The large porch, the ideal arrangement of the rooms, the privacy of the bedrooms and bath, make the National a favored design among home-builders everywhere. Height of ceilings 8 feet.



THE EDEN



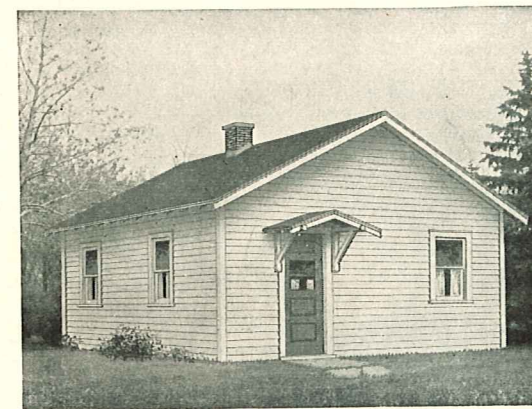
A distinctive little bungalow that has an artistic individuality usually found only in the larger and more expensive homes. It is well planned with all the comfort and convenience of a five-room home.



The attractive exterior of the Eden with its shingled side-walls, enhanced by the hospitable porch and shuttered window, gives a distinct impression of quality. You have only to read the detailed specifications beginning on next page to know that the materials furnished are all of the finest quality and that the sturdy construction will insure your satisfaction with your investment throughout the years to come. Height of ceilings 8'6".

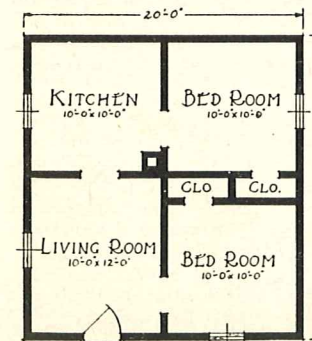
Popular Garage Home

THE ERIE



If you have purchased your lot but are not ready to build your future home, you can save a large sum in rent by building this practical garage home which will provide temporary, yet comfortable, living quarters for your family until your permanent home is completed. In designing the Erie Garage Home the construction of the floors, sidewalls, and partitions has been arranged to make it possible for you to convert it into a 2-car garage quickly and at a minimum expense, giving you a well-built, insulated garage that will be in keeping with the permanent home you build later on. When requested we will furnish exterior door complete in back wall of kitchen for \$9.75 extra.

SPECIFICATIONS for the Erie Garage Home



Floor Joists—2x6"—24" on centers, overlaid with Clear Douglas Fir flooring $2\frac{5}{8} \times 2\frac{3}{8}$ ", evenly matched.
Single 2x4" plate is used at the bottom and a double 2x4" plate at the top of all walls and partitions.
Wall and Partition Studding—2x4"—24" on centers.
Ceiling Joists—2x4"—24" on centers.
Rafters—2x4"—24" on centers.
4x6" built-up Girder furnished under center partition.

1 x 6" roof boards laid tight covered with Green Mineral Surfaced roll roofing.
6" T & G Drop siding for sidewalls.
2 coats of paint furnished for siding and outside trim. 2 coats of varnish furnished for all interior woodwork except floors.
Interior woodwork consisting of 2-member base and shoe for all rooms and jambs and backband style trim for all interior openings.
Height of ceilings 8'.

Quality Material - and

Sturdy Construction

The sturdiness of a house depends upon two things:—(1) the quality and kind of the materials used and (2) the method of construction followed. One is as essential as the other.

Liberty Homes are sturdy homes because the materials which go into them are the proper kind for the particular place used and are of unquestionable quality—selected and graded with unusual care. But this is not all! Every joist, every stud, every header, every rafter, is of the right size and strength necessary to support the maximum load it is expected to carry. Every piece of framing material is cut accurately to insure

snug-fitting joints. The joists and studding are doubled around openings and properly braced at all crucial points so that there is no sagging or swaying. The completed structure stands firm and solid—strong and sturdy, from foundation to peak of roof. There is no better type of construction than that used in Liberty Homes, as you will see when you read the detailed specifications which follow.

Here's What Goes Into a Liberty Home!

Framing Material

No. 1 Fir, carefully selected for quality and strength and thoroughly seasoned. This material is all machine surfaced on four sides to standard width and thickness, accurately cut to fit and marked to conform with the complete detail working plans.

Girders

No. 1 Fir, built up of three 2x8's are furnished for all homes excepting the Castlewood, Clinton A, Eden, Sheridan and Sterling which have girders built up of three 2x6's.

Foundation Wall Plates

2x6" Wall Plates are furnished for around the entire top of foundation wall.

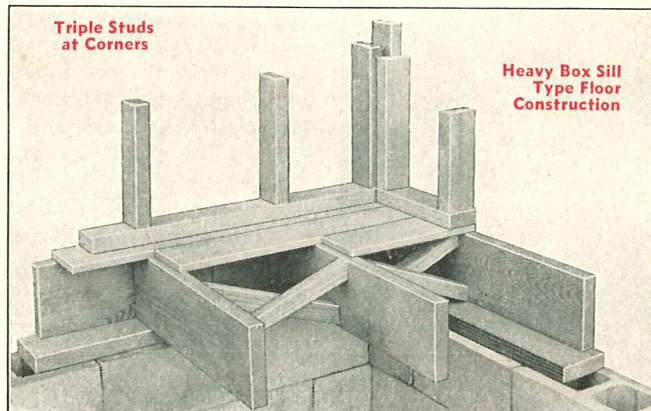
Floor Joist Headers

2x8" Headers are furnished for across ends of floor joists (see illustration) forming a "Box Sill Type Construction."

Main Floor Joists

2x8" first floor joists spaced 16" on centers are

furnished with all homes excepting the Castlewood, Clinton A, Eden, Sheridan and Sterling which have 2x8" floor joists spaced 24" on centers. In all 2-story designs the second floor joists are 2x8" spaced 16" on centers.



Attic Floor Joists

2x8" Attic Floor Joists, spaced 16" on centers are furnished with all designs where attic stairs are furnished to provide access to the attic.

Ceiling Joists

2 x 6" Ceiling Joists spaced 16" on centers are furnished for all designs except the Clinton A and

Eden which have 2x4" ceiling joists 16" on centers.

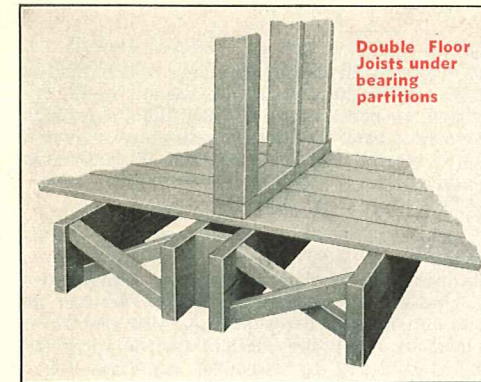
Rafters

2x6" Main Roof Rafters, 24" on centers, are furnished for all homes except the Cascade, Castlewood, Clinton A, Eden, Sheridan and Sterling which have 2x4" rafters 24" on centers with collar beams furnished as required. For the Regent and Van Dyke designs 2x4" rafters are furnished 16" on centers.

Wall and Partition Plates

A single 2x4" plate is used at the bottom and a

double 2x4" plate at the top of all walls and partitions. This forms a "Fire Stop" which prevents any circulation of air between the studding from cellar to attic, thereby reducing the fire hazard and in addition results in a much warmer and more substantial home.



Studding

2x4" spaced 16" on centers for all outside walls and partitions. Studs and headers are doubled around openings. Triple studs furnished at corners.

Bridging—Tie Plates

Cross-bridging, cut to fit ready to nail in place is furnished for all floor joist spans. On all spans up to 12 feet a single row of bridging is furnished. On all spans 14 feet and over two rows of bridging are furnished.

Sheathing

1x6" selected No. 2 Silver Fir, cut to fit, is furnished as a sub-floor for entire floor surface on both first and second floors and for sidewall sheathing on all exterior walls under the siding or shingles. Silver Fir is one of the stiffest and strongest conifers in proportion to its weight—contains no pitch or resin—is an excellent insulation against heat and cold. Heavy asphalted insulating building paper is supplied for between the subflooring and finish flooring on both floors and between the sidewall sheathing and siding or shingles on the sidewalls.

Roof Boards

1x4" Silver Fir roof boards, spaced 2" apart are furnished for all roof surfaces. Spacing the roof boards in this manner permits air to get at the shingles underneath thereby insuring a long lasting roof. When Asphalt shingles are ordered, 1x6" roof boards are furnished laid tight.

Furring

All necessary furring material is furnished as required. This includes 2x2" material to fur out partitions for soil pipe, 1x6" partition backing, etc.

Roof Shingles

16" No. 1 "Certigrade" Red Cedar shingles, laid with a 5" exposure, are furnished for both the main roof and porch roofs. These high grade shingles, 100% edge-grain, 100% clear and 100% heartwood can be expected to have a life of more than 35 years under average conditions. They are guaranteed by

the manufacturer to give satisfactory service for not less than 25 years. (Shingle stain for roof shingles not furnished.)

Asphalt Shingles

Barrett's guaranteed Asphalt shingles are optional in place of the Red Cedar shingles for the roof at the extra price as quoted on price list. Illustrated folder describing the Barrett's shingle will be sent on request.

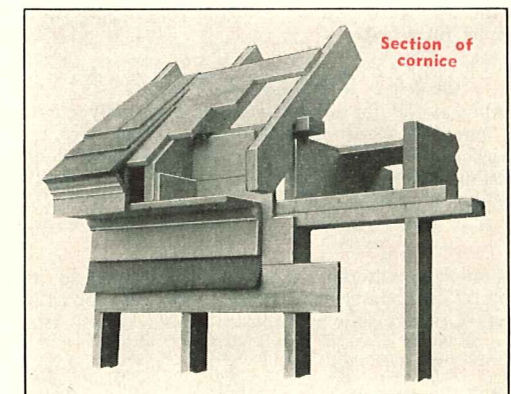
Sidewalls—Siding

1/2x8" Clear Redwood or Red Cedar Bevel siding with metal miters for corners, is furnished for the sidewalls of the Vernon, Regent and Van Dyke. For all other designs showing siding, 1/2x6" Clear Redwood or Red Cedar Bevel siding (our option) is furnished.

Sidewalls—Shingles

16" No. 1 "Certigrade" Red Cedar Shingles are furnished for finishing the exterior sidewalls of all designs where shingled sidewalls are shown in the illustration. These shingles are the same high quality as the roof shingles, being 100% edgegrain, 100% clear and 100% heartwood and when properly applied on sidewalls can be expected to last indefinitely. Shingles are laid in single courses with an exposure of 7" to the weather except on the Brighton, Cornell and Mayfair designs which have the sidewall shingles laid in double courses (two layers of shingles in each course) with a 12" exposure to the weather. Shingle stain is furnished for two full brush coats in the color you prefer, either Silver Gray, Rich Brown or White.

If siding should be desired in place of the sidewall shingles we will substitute your preference of either 1/2x6" or 1/2x8" bevel siding with three coats of paint at a small additional cost which will be quoted on request.



Porchwork

Complete materials are furnished for porches except where design calls for masonry construction. All porch columns and newels are completely assembled. Porch railing, balusters, etc., machined ready to be fitted in place. Porch flooring is selected Clear Douglas Fir, 3/4x2 3/4". Clear matched ceiling, 3 1/4" face is supplied for overhead ceiling of all porches. This ceiling is all machined to a smooth finish, ready for the exterior varnish which is furnished for two full coats.

Exterior Mouldings and Trim

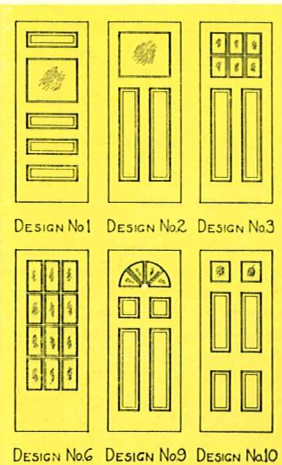
All mouldings, corner boards, brackets, including fascia and frieze boards are clear, machined to a smooth finished surface and furnished complete in required sizes and in lengths sufficiently long to allow for accurate fitting.

Cornice Ceiling

Clear matched ceiling, 3/4" face is furnished for all open cornices.

Doors—Exterior

The various types of exterior doors are as shown in illustration. All doors are first quality, manufactured with solid rails, solid stiles, solid raised panels and are glazed as shown. Design No. 1 door is furnished for all rear entrances. Design No. 6 is used where plan calls for entrance to side porch as in the Richmond. All front doors are furnished according to the type as shown in illustration of home.



Doors—Interior

All inside doors are standard size 2'8" x 6'8", furnished in the modern and attractive two-panel design having beautiful rotary cut Fir panels. Closet doors 2 feet wide are furnished for closets.

Door and Window Jambs

All jambs are furnished for Lath and Plaster construction. If you intend using wallboard with no plaster finish your order should specify the thickness of the wallboard you are using so proper size jambs can be furnished.

Outside Steps

All material for outside steps is accurately cut to fit, bundled, ready to nail together. Steps are not furnished for either front or rear when porch floors or stoops are cement. In such cases the steps should also be of cement.

Flower Boxes

Complete materials, machined and ready to assemble, are furnished for flower boxes and supporting brackets where shown in illustration.

Trellis Work

All materials necessary for trellises is furnished where shown in illustration.

Ornamental Shutters

Ornamental window shutters are furnished complete as shown in illustration with screws for fastening shutters to wall. If you desire to have the shutters omitted on your order the credit will be \$4.00 per pair.

Finish Flooring

Selected Clear Douglas Fir finish flooring 2 5/8" x 2 3/8", evenly matched and well suited for a

varnished floor is furnished throughout. Select oak flooring, 1 3/8" x 2 1/4", is optional and will be substituted for the Fir flooring where desired at an additional cost. At the extra cost quoted on price list Select Oak flooring will be furnished to cover the entire floor surface in the main rooms which include the living and dining rooms, front halls and vestibules.

Attic Floor

1x6" Selected Silver Fir Sheathing is furnished for attic floor when attic stairs are shown. In the Tacoma and Vernon designs the attic floor covers the entire area where the future rooms are shown on suggested second floor plan. In other designs having attic stairs the attic flooring is furnished to cover a space 14 feet wide through center of attic.

Door and Window Frames

All door and window frames are manufactured from clear White Pine. Pulley stiles are cut for pockets and are bored for pulleys. All members are machined to exact size, each frame bundled separately and ready to assemble. All frames have special offset for screens and storm sash. Exterior door frames are furnished with oak thresholds.

Window Sash

All sash are manufactured from clear White Pine—the finest sash produced—glazed with fine quality window glass which is well bedded, tacked and puttied. Windows are furnished with plain or divided sash to conform with illustrations of the various designs as pictured in the catalog.

Interior Woodwork

All interior woodwork complete for windows, door casings, door jambs, stops, baseboards, base shoe, stairwork, etc., is manufactured from clear selected kiln-dried Yellow Pine. All interior casings for around door and window openings are furnished in the modern two-member backband style. All interior finish is carefully machined to a smooth, satin-like finish, ready for the stain and varnish and is carefully packed to insure reaching you in perfect condition.

Stairways

The most efficient planning and construction are incorporated in Liberty Stairs. The intricate work of stair making is all done for you by modern machinery here in our factory. Stair posts are assembled and the treads, risers, mouldings, railings and balusters, ready to be fitted in place. Cellar stairs as well as stairs to the attic are furnished complete where shown on plans.

Finish Hardware

All finish hardware for the doors and windows is furnished complete. Mortise locksets manufactured by Corbin in a new modern attractive design, finished in dull brass are furnished for all doors. Loose pin mortise butts 3 1/2" x 3 1/2" also in brass finish are furnished for all doors. Special ball bearing double acting floor hinge and bevel plate glass push plates size 3x12" furnished for the swinging door to kitchen. Sash locks and sash lifts are furnished for all check rail windows in a non-rusting sanded brass finish. Casement window butts and catches for all swinging windows.

Building Hardware

All building hardware supplies are furnished complete as required including sash cord, counterbalanc-

ing weights and pulleys for all check rail windows, hot dipped zinc coated shingle nails, all other nails and brads of proper size and quantities. Heavy weight asphalt saturated insulating paper is furnished for between the sub-flooring and finish flooring and between the sidewall sheathing and siding or shingles.

Tinwork

All tinwork supplies as required are furnished including ridge roll, ornamental hip shingles, roll valley tin, metal corners for mitered siding, chimney flashings, etc. This material is all standard 28 gauge copper alloy, heavily galvanized. Eave troughs and down spouts not furnished.

Outside Painting Materials

Pittsburgh Paint Products are furnished for all exterior work. White lead and pure linseed oil paint for three full coats, a prime coat and two finish coats, are furnished in pure white or any color selected for the siding and all exterior trim. The necessary quantities of pure linseed oil and turpentine are furnished for thinning. Pittsburgh's long-wearing "Florhite" Porch Floor Enamel is furnished for two coats on porch floors and steps. Color card showing outside paints, porch floor enamels, inside enamels and stains, from which you can choose the colors you prefer for your home will be mailed on request.

Finishing Interior Woodwork

Strictly pure gum shellac and water-spar quick drying varnish or oil stain and water-spar varnish are furnished for all interior woodwork including doors and trim, window trim, stairwork, baseboards, etc., for two full coats. If Enamel finish is preferred, we will furnish a high quality four-hour quick drying Enamel in either semi-gloss or high-gloss finish for the woodwork in any room at no extra charge. Enamel finish is very practical and desirable and when used a special prepared undercoater is fur-

nished for the first coat to give a proper base under the Enamel. No wallpaper, paints or enamels are furnished for inside walls or ceilings.

Finishing Interior Floors

For interior floors a Natural Finish is recommended. For a Natural Finish we furnish sufficient quick-drying water-spar varnish for two full coats. If stained floors are desired we will furnish oil stain in the finish you prefer for the first coat. When Oak flooring is ordered a natural oak paste filler is furnished in addition to two full coats of water-spar varnish.

Fireplace and Chimneys

Although on some of the plans the location of fireplaces and chimneys is suggested according to our best judgment, we believe it best to leave the final decision up to the home builder himself. Therefore, the materials are not cut for fireplace or chimney openings, and you may locate the chimneys where you prefer. If you do not want a fireplace you need not build it at all. No materials for fireplaces or chimneys are furnished (see masonry materials).

Masonry Materials Plaster Base

The prices of such items as brick, sand, gravel, cement, wallboard, plaster base and plaster are so nearly the same in all localities it is to the advantage of our customers to secure these materials from their local mason supply dealer as needed. By doing so, they can start the foundation work in time to have it completed when the Liberty Home arrives. It is of utmost importance that the foundation be built correctly. We, therefore, furnish complete foundation plans, which are prepared for each individual order showing the proper foundation construction. There is no charge for this service. Our aim is to aid our customers in every possible way to secure a first-quality home in the safest, quickest, most practical way and at the very lowest expenditure.

Liberty Owners Tell Us:

"Your Lumber Is the Finest We Ever Saw"

Even Better Than Advertised

"We are very well pleased with the material you have sent us. Everyone that has looked at this lumber has said that it is better than I could have gotten at home. I have seen many articles in catalogs and then when you receive them you find that they have misrepresented their products. I want to say that is not the case with your products. They were more than I expected."
Verl Sterns, Iowa.

Took Only 15 Days to Erect

"At present we are building the "Tacoma." It took one carpenter and two helpers 15 days to erect it, finishing work not included. It will take them 3 or 4 days more to complete everything. Every piece fitted together just like a machine. The carpenters enjoyed erecting it. The material was the best grade, none better to be had, and plenty of it."
E. A. Arndt, Minn.

Not Another House to Equal It

"Since seeing some other new homes that were built near us, I really appreciate our Liberty home more than ever. The layout on floor plan is another thing (besides the wonderful lumber) that most everyone comments on, and my husband and I think there isn't another house quite like it. In fact we think it is perfect. Thanks to you again for making it possible for people like us to have such a sweet and lovely home."
Mrs. Ralph J. Miller, Pa.

Man and Wife Did All the Work

"I have received your Liberty Home and I am about ready to move in. Lumber was in first class shape and fitted perfectly. I have done all the work myself with the help of my wife and friends and am well satisfied in every way."
Edward Lambert, N. H.

House Unharmd by Hurricane

"I have only the highest praise for Liberty homes, and especially as to their durability. In the recent hurricane, our home certainly stood the test. The wind was blowing 60 miles an hour in the center of the town and it must have been blowing even harder out here where we are on a hill near the shore of Long Island Sound. All around us the trees were torn up by the roots, and houses were swept from their foundations. Yet our house stood unharmed through it all. It certainly speaks well for the durability of Liberty Homes."
E. S. Haines, Conn.

Had the Best Time of His Life

"I started my vacation when the lumber came and had a carpenter to help me for two weeks. At the end of that time we had the roof on. Since then I have been working myself and have been having the best time of my life doing something I don't know too much about, but getting along so well that I know my house is the best built home around this part of the country. The lumber causes everyone to stare, whether they know what good lumber is or not. It is so much better than lumber bought locally that it speaks for itself."
A. O. Grimm, Pa.

Lumber Cut-to-Fit —Ready to Erect

Paints, Varnish, Nails,
Glass, etc., All Included

No Extras to Buy!

Here's
What
We Ship
You

- | | | |
|---|--|--|
| 1. Built-up girders. | 25. Clear Y.P. inside trim. | 36. Hot dipped zinc coated nails for roof shingles. |
| 2. Foundation wall plates. | 26. Clear Y.P. baseboard and base shoe. | 37. Copper alloy flashings for chimneys, valleys, ridge roll, hip shingles, etc. |
| 3. Floor joist headers. | 27. Main stairway complete. | 38. Waterproof insulating building paper for floors and sidewalls. |
| 4. Floor joists. | 28. Basement and attic stairs complete where shown on plans. | 39. Corbin locksets for all doors, hinges, push plates, window hardware fittings. |
| 5. Ceiling joists. | 29. Attic flooring. | 40. Three full coats Pittsburgh Paints for siding and all exterior trim. Shingle stain for two full brush coats for sidewall shingles. Necessary oil, turpentine, etc. furnished. Water-spar varnish, stains, enamels, for 2 coats interior floors and trim. |
| 6. Collar beams as needed. | 30. All exterior and interior doors. | 41. Complete architects plans and working instructions. |
| 7. Rafters. | 31. Door and window frames. | |
| 8. Wall and partition plates. | 32. Window sash already glazed with clear flat drawn glass. | |
| 9. Studding 16" on centers and doubled around openings. | 33. Flower boxes with brackets as shown in illustration. | |
| 10. Triple corner posts. | 34. Ornamental window blinds where shown in illustration. | |
| 11. Tie plates. | 35. All nails in sizes required and guaranteed quantities. | |
| 12. Double cross bridging. | | |
| 13. Roof boards. | | |
| 14. Sidewall sheathing. | | |
| 15. Sub-flooring. | | |
| 16. Partition furring. | | |
| 17. Porch material as specified. | | |
| 18. Outside steps. (Unless shown in masonry.) | | |
| 19. Lifetime "Certigrade" Red Cedar shingles for roof. Guaranteed 25 years. | | |
| 20. Clear Redwood or clear Red Cedar bevel siding, or "Certigrade" Red Cedar shingles for sidewalls. | | |
| 21. All cornice material furnished according to detail. Clear matched ceiling over exposed projections. | | |
| 22. All mouldings as required. | | |
| 23. All outside trim material, clear selected stock. | | |
| 24. Clear Douglas Fir finish flooring. | | |

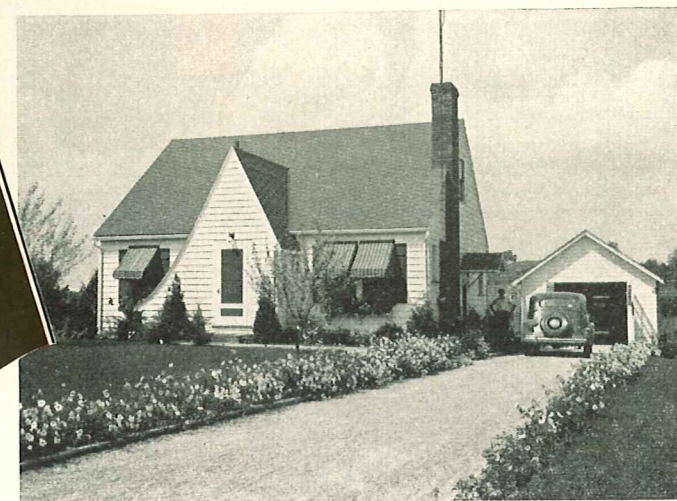
We
Pay
Freight

At the prices quoted on the homes shown in this catalogue, we pay all the freight charges to any point in the 21 states listed below.

Connecticut	Maine	Ohio
Delaware	Massachusetts	Pennsylvania
Illinois	Michigan	Rhode Island
Indiana	Minnesota	Vermont
Iowa	New Hampshire	Virginia
Kentucky	New Jersey	West Virginia
Maryland	New York	Wisconsin

QUICK DELIVERY Shipment Made in 10 to 15 Days Following Receipt of Order and reaches destination usually in 4 to 5 days.

SEE THE
Big
Savings
OUR
CUSTOMERS
MAKE



IT WOULD require dozens of pages to reproduce the multitude of letters which we have received from Liberty Home Owners telling how well pleased they are over the tremendous savings they made as compared with what they would have had to pay for a home of the same quality and size at the prices charged by

builders or contractors in their own locality. The letters below are typical examples of what our customers say. Read them. They are conclusive proof that you can save hundreds of dollars by taking advantage of the Liberty Ready-Cut System when you build your new home.

Read
What These
Owners
Say!

Saved \$700 on Materials

"The carpenter who is doing the work erecting our 'Clinton' certainly likes working with your materials. This is his first experience building a Liberty Home and he hopes to put up many more of them. We can truthfully say that we have already saved about \$700.00" — Joseph Patko, N. J.

Price Amazes Carpenters

"The material you sent for the Columbia 'A' is the best that any carpenter has seen around here. It was all clearly marked and blueprints complete in every respect and your instructions were clear. There have been several first class carpenters inspecting my home and all asked me how much the lumber cost me. The closest guess was \$2,300.00. They call me a liar, but I show them the bill and then they just shake their heads." — Steve Drahushak, N. Y.

Lumber Dealers Wanted \$550 More

"We received our 'Clinton B' Liberty Home in perfect condition. We have had a number of inquiries about costs, etc. and most of the inquiries are: 'How can such good materials be put up at such low cost?' We secured estimates from local and nearby dealers for same amount of material. They asked \$550.00 more for same." — O. A. Johnson, Conn.

Saved a Lot of Money

"I suppose you've been wondering how I'm getting along with my house, the 'Cambridge'. It was completed in about one month, furnace, plastering, plumbing, wiring, ready to live in. The wood part didn't take more than ten days with one carpenter. This was his first ready-cut house and he said he would never build anything else if he could help it. I certainly saved a lot by buying from you." — John Gal, Ohio

Made a Saving of \$1,000

"I received the Liberty ready-cut home and can honestly say the material is much better than any I could have bought locally. I saved at least \$1,000.00. Anyone who wants to save money and can drive a nail has no excuse for not owning a Liberty" — Russel Thompson, Ind

A Saving of \$2,000

"We are living in our new home and are sure satisfied with it and your prompt service and treatment. I consider the material first class, and will say I have saved at least \$2,000 as compared with what it would have cost me if I had bought material at home." — A. B. Hills, Pa.

Happy with Savings

"Lumber arrived in perfect condition and house is nearly complete for us to move in. We certainly are well pleased with lumber, and saved a lot of money." — Mr. and Mrs. W. E. Ashbaugh, Pa.

Figures He Saved \$1,500

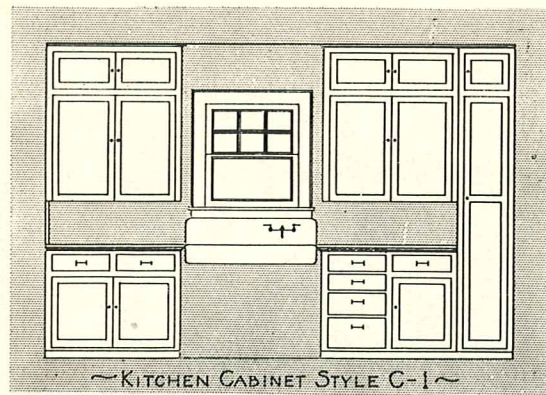
"Received my Wellington 'A' in fine condition and it certainly is fine lumber. It is as nice lumber as I have ever seen going into a house. There have been a few lumber salesmen around and have admired the lumber very much. We have the home almost under roof. Everything has fit fine and the blueprints are easily understood. Also we have done all the work ourselves outside of getting a man to help put the roof on and a bricklayer to put the fireplace and chimney up. We dug our own foundation by hand, laid up the foundation, then put up all the houseframing. We figure that we saved about \$1,500.00 on labor and materials and are thankful that we sent for your catalog when we did." — Albert M. Mohn, Wis.

Low Price Surprises Everyone

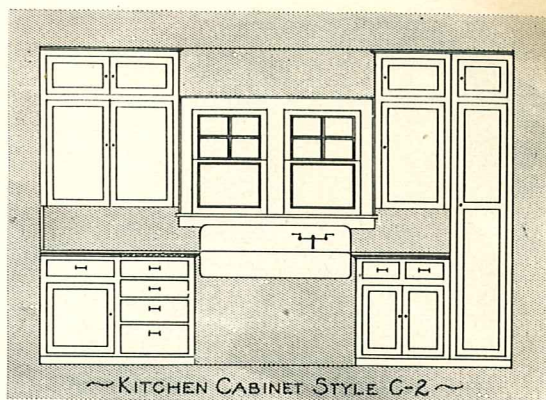
"At present, I am building my 'Concord' Liberty home and I am very well pleased with the lumber you have sent me. I have had very many people stop to inspect the home and they do not believe that I have paid so little for my home, as they tell me that it is impossible to receive such good lumber for such a small price." — Lloyd A. Deemer, Pa.

Saved at Least \$500

"I find material of first grade, as good, if not better, than I could have bought locally. I also know that anyone can put one up without carpenter experience, and that I saved at least \$500.00 on our home." — B. O. Shadman, Pa.



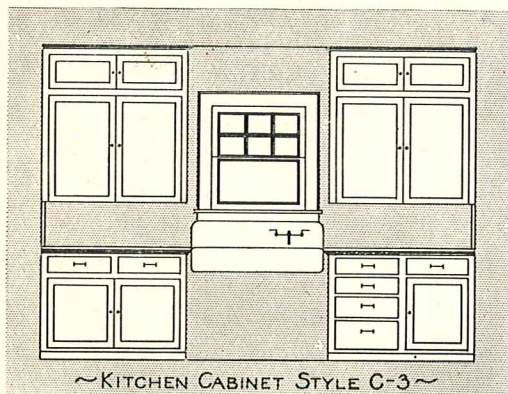
~ KITCHEN CABINET STYLE C-1 ~



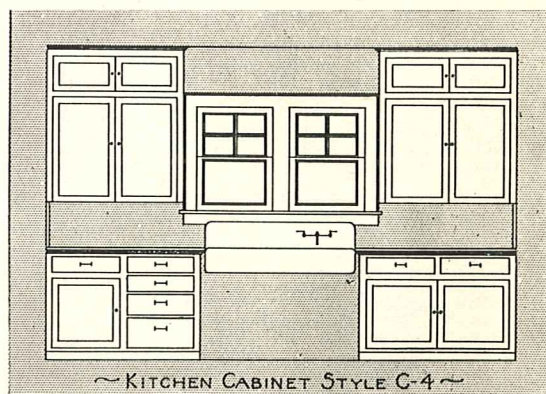
~ KITCHEN CABINET STYLE C-2 ~

Practical Modern Kitchens

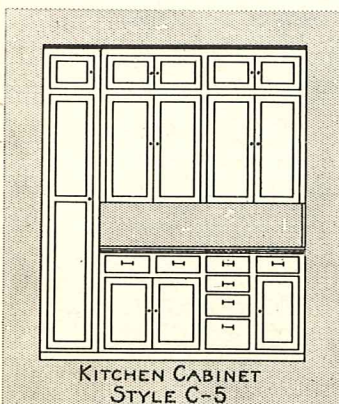
Kitchen cabinets may be had in any of the arrangements here shown. They are designed to provide a maximum of convenience, being equipped with sliding breadboards and adjustable shelves. Bottom sections are 20 inches deep, providing a large work-table area. The upper sections are 12 inches deep. When you write and tell us which Liberty Home you are thinking about purchasing, we will suggest the type of cabinet that is most suitable.



~ KITCHEN CABINET STYLE C-3 ~



~ KITCHEN CABINET STYLE C-4 ~



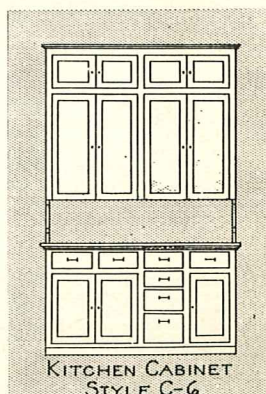
KITCHEN CABINET
STYLE C-5

The Cabinets shown at the top of the page, Cabinets C-1 and C-2, are designed for exterior walls 12 feet or more in length.

Cabinets C-3 and C-4 are adapted to exterior walls 12 feet in length or less.

If cabinet is desired for an interior wall, styles C-5 and C-6 are most practical.

All cabinets are supplied in natural wood, unpainted, complete hardware fittings are furnished, together with stain and varnish or enamel to match other kitchen woodwork.



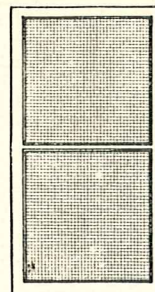
KITCHEN CABINET
STYLE C-6

Special Features You May Desire

The various items illustrated below are not included in the materials regularly furnished for Liberty Homes, because many of our customers wish to wait and purchase them when they need them. It is more economical, however, to order

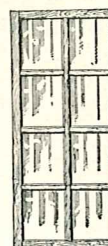
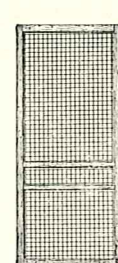
them so that they can be shipped along with the materials for the house, thereby saving any extra transportation charges. The prices of these items will be found on the price list of Liberty Homes.

Window Screens — Combination Doors — Storm Sash



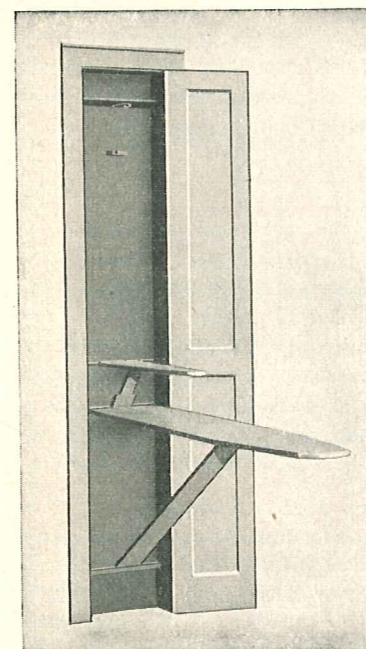
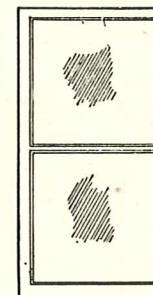
Screen
Panel

Strongly constructed to give dependable service for many years. Zinc coated screen wire is used which is rust-proof. Shipped complete ready for fitting. Prices include necessary hardware.



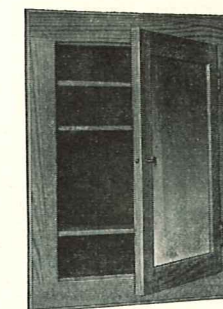
Storm
Panel

You can save a large portion of your fuel cost each year and enjoy added comfort by equipping your home with storm doors and storm sash. Prices include all hardware fittings.



Built-In Ironing Board

An ironing board built in the wall is always clean and handy for use. The board is firmly supported insuring absolute rigidity. Price quoted applies only when ordered with a Liberty Home.



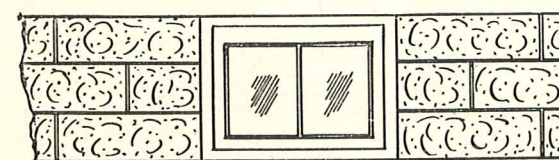
Medicine Cabinet

A convenient built-in cabinet for your bathroom. Contains mirror in door size 14 by 18 inches, 3 adjustable shelves 3 1/4" deep. Requires rough opening in wall 20" wide and 24" high.

Wiring Supplies

The wholesale prices for wiring supplies as quoted on price list cover all necessary materials for the complete wiring of each home including Romex Sheathed Cable in size 14-2 wire, all fixture boxes, switch boxes and base plug boxes equipped with the new approved suspension type metal hangers, special entrance wire, conduit, ground wires and other fittings together with all necessary accessory items such as friction tape, solder, etc., giving complete wiring service up to the Power Company's lead-in wire. (Main Entrance switch, light bulbs or light fixtures are not furnished.) All materials are endorsed by the National Fire Underwriters Association.

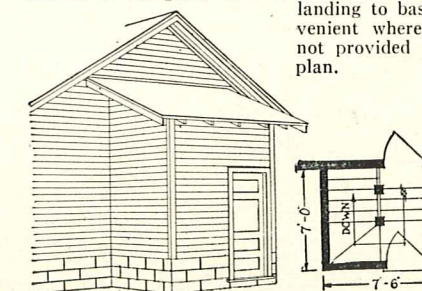
Cellar Windows



If you intend having a basement you should include in your order the number of cellar windows that are needed. Price quoted includes everything complete, frame, two-light glazed sash, and hardware. Make opening in foundation 2 feet 8 inches wide by 2 feet high and the frames can then be set in place after wall is completed.

Grade Entrance Addition

An enclosed grade entrance addition with stairs leading from kitchen to the grade landing and grade door and from grade landing to basement. Very convenient where cellar stairs are not provided for in the regular plan.



5 Attractive Payment Plans!

To accommodate all our customers we offer several different payment plans. Naturally, the most economical way to buy is for cash. But if it is not convenient for you to forward the entire cash with your order you may choose any one of the other payment plans described below. All remittances should be by certified check, bank draft, money order or your own personal check.

1 Cash in Full with Order

A cash discount of Five Dollars is allowed off of the cash price of any home when the full amount is sent with the order. The cash price of each home is shown on the price list which is enclosed. This price includes everything listed under the specifications, including pre-paid freight, in accordance with our guarantee.

2 One-Third with Order, Balance on Delivery

If you prefer to send one-third of the cash price with your order, you may do so, and then pay the remaining two-thirds when the materials arrive and you take delivery. Under this method of payment no cash discount is allowed.

3 Five-Day Examination

Deposit the full purchase price for your home in your own bank. Fill out the order blank. Ask your bank to fill out the "Letter of Deposit" on the back of the order. Mail the order to us. The materials will be shipped to you for five days' examination. The bank will not release the money to us until the five-day examination period is over, and you find everything satisfactory. Under this plan no monthly payment terms or cash discount are allowed.

4 Building Loan

If you are planning on financing your new home through a Bank, Building & Loan Association or other financial institution we are ready to co-operate by arranging terms of payment that will be mutually satisfactory. When you have made arrangements for your loan, then fill out the order blank and mail it to us with the name of the loaning agency you are dealing with. No payment is required with the order under these terms as we will arrange with the loaning agency for payment as the construction work progresses.

5 Monthly Payment Plan Three Years to Pay

For homebuilders who find that it is not convenient to meet the regular cash terms, we have developed a convenient monthly payment plan. A small down payment is required with the order and the balance is then payable in equal monthly payments extended over a period of either two or three years, whichever you prefer.

If you own a lot free and clear or the means to obtain one, and a little cash besides, you can do like thousands of our customers have done, who have used this plan to secure homes of their own, and who could never otherwise have done so.

Write for the Time Payment terms on the Liberty Home you want to build.

You have studied the house designs. You have studied the specifications. You have read the letters from other Liberty Home builders. You have seen that Liberty Homes as pictured in this book are designed by skilled architects and engineers, who planned homes that are staunch, sturdy, practical, but also beautiful. One of these homes is just the home you want. Then don't put off building it. Home ownership has been made so easy that you are simply wasting good money if you keep on paying rent. You can be living in the home or your choice within a few short weeks. Decide which of the payment plans listed above will be most convenient for you, then write and let us help you with your plans at once.

Use the Order Blank on Next Page

LIBERTY HOME ORDER BLANK

TERMS FOR PURCHASE TO APPLY ON THIS ORDER

- Cash in full with order
- One-third with order, balance on delivery
- Five-Day Examination plan
- Building Loan
- Monthly Payment Plan

Date

Ordered by

Street or R.F.D.

City State.....

SHIPPING INSTRUCTIONS

Ship to

City

County State.....

Railroad

LEWIS MANUFACTURING COMPANY,
BAY CITY, MICHIGAN

DO NOT WRITE IN THIS SPACE

Enter my order for the..... Liberty Home which is to be shipped as instructed with the freight charges fully prepaid to my station.

Enclosed is payment of \$..... according to terms of purchase specified above.

It is understood that everything will be furnished complete, as called for in the specifications, and that safe delivery to my station is guaranteed.

Signed.....

PAINT SELECTION

Outside Walls

Outside Trim

Porch Floor

Finish Floors

Inside Trim

OPTIONS TO BE INCLUDED

.....

.....

.....

.....

.....

.....

.....

.....

.....

.....

LETTER OF DEPOSIT

Date

City

State

LEWIS MANUFACTURING COMPANY :
BAY CITY, MICHIGAN

.....has deposited with us
the sum of (\$.....)
which sum has been set aside as a special fund for you, and is to be released and
paid to you within five days after the arrival of the car with the materials for the
LIBERTY HOME ordered from you.

If said MR.
should not be satisfied that the materials conform with the specifications as de-
scribed in the catalog of Liberty Homes, and so notifies us within the above five
day period, we will hold this deposit pending an investigation and will forward it
to the LEWIS MANUFACTURING COMPANY, Bay City, Michigan, immedi-
ately upon being advised by

Mr.
that a satisfactory adjustment has been made.

NAME OF BANK

SIGNATURE OF OFFICER

OFFICIAL TITLE

BANK
SEAL
HERE

Our *Extraordinary* Offer!

Materials
Shipped to You

Free

... for Your
Inspection

WITHOUT your paying us a single penny in advance, we will ship to your station all materials for any Liberty Home you order. Keep your money right in your own bank. Just fill out both sides of the order blank at the back of this catalog, mail it to us, and we will ship you the materials so that you can examine them and

see that every-
thing is exactly
as we have rep-
resented.



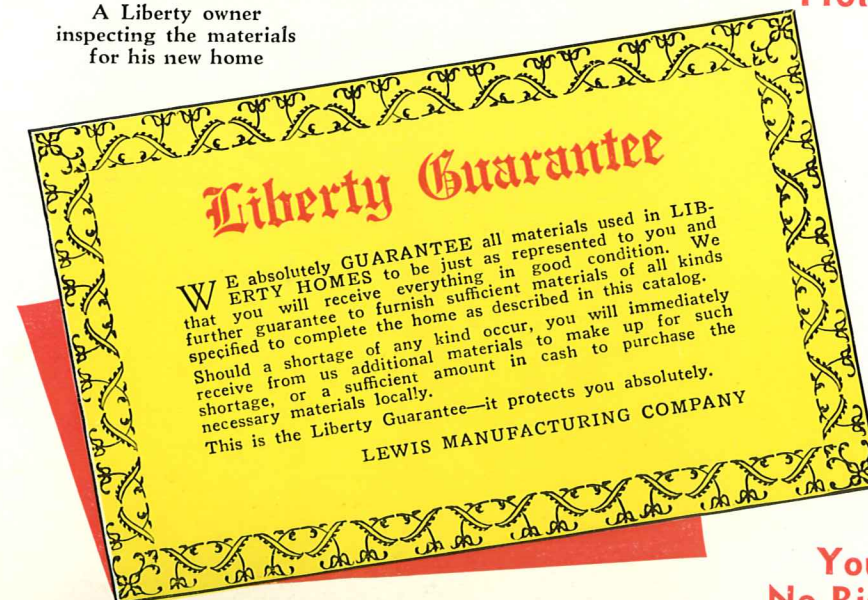
A Liberty owner
inspecting the materials
for his new home

You can keep the materials for five days, so that you will have ample time to inspect them thoroughly. Not until you have found that the materials meet with your unqualified approval will your bank release the purchase money to us. Can you think of any offer that could be fairer?

DO IT NOW! Look over the Liberty Home designs. Decide upon the one that suits you best, and mail your order to us today. The home of your dreams will be on its way to you without the slightest delay, and we pledge the resources and abilities of our entire organization to the end that you may be satisfied and happy in your Liberty Home.

Our Guarantee Protects You!

This iron-clad
Guarantee gives
you absolute
assurance you
will be satisfied
with any Liberty
Home you buy.



**You Take
No Risk at All!**