

NEWSLETTER

of the WISCONSIN ENTOMOLOGICAL SOCIETY

Volume 24, Number 1

Les Ferge, Editor

March 1997

NEXT MEETING TO BE IN MILWAUKEE ON APRIL 19

The next meeting of the Wisconsin Entomological Society will be held on Saturday, April 19th at the Milwaukee Public Museum, 800 W. Wells Street. The meeting will begin at 1:30 in the Education Lab, ground floor. Please check in at the Information Booth in the main lobby to be admitted. A map with directions and locations of nearby parking areas appears on the back of this Newsletter. The closest parking is at the MacArthur Square ramp, directly adjacent north of (behind) the Museum.

The highlight of this meeting is an opportunity to experience the new *Butterflies Alive!* exhibit, featuring a stroll through an enclosed butterfly garden, where numerous butterflies may be seen flying freely, feeding at flowers, or possibly emerging from their chrysalids. Details regarding the remainder of the program are not available, but a few short talks are being planned. Please contact Phil Pellitteri at (608) 262-6510 if you would like to make a presentation. If anyone is interested in viewing the research collection, before the meeting, please arrange in advance by calling Sue Borkin at (414) 278-2758.

There is more than ever to see and do at the Museum. The new Humphrey IMAX Dome Theater has features such as *The Living Sea* or *Space*. The shows are very popular, and reservations are suggested. For more information, call (414) 319-IMAX. Also, an expanded food service area is available for your convenience.

1997 DUES NOTICE

Enclosed in this Newsletter is your dues envelope for 1997. Your prompt attention will be most appreciated. Dues are to be sent directly to the Treasurer, Tom Rocheleau, 3100 Buena Vista St, Madison, WI 53704. To determine your status, please check the address label on this Newsletter. Appearing after your name will be the last year dues are paid for and your membership category (Individual, Family, Sustaining or Patron). Also be sure to notify us of any address changes or corrections when you send in your dues, or notify us at the address below.

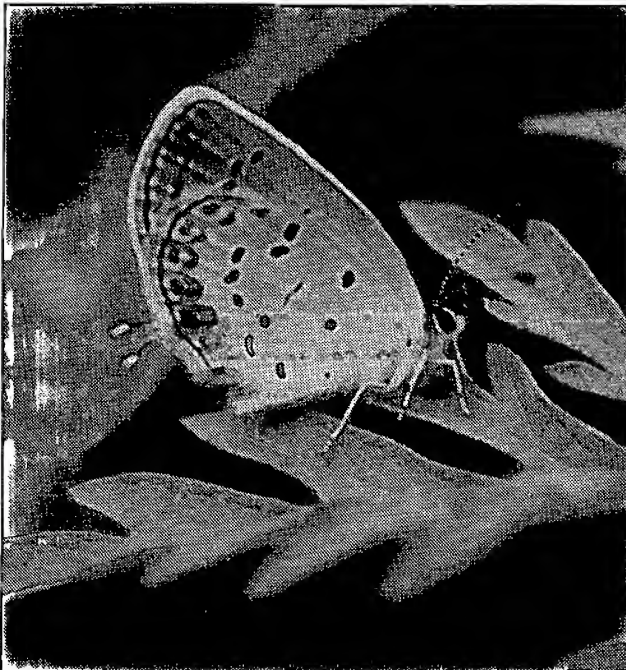
ANNUAL MEETING NOTES

"Election" of officers took place at the annual meeting last December. Since there were no new nominations or volunteers, last year's officers were voted in for another term. The officers for 1996 are: President, Phil Pellitteri; Vice-President, Gene Drecktrah; Secretary, Carol Ferge; and Treasurer, Tom Rocheleau. The winning entries in our Annual Photo Salon appear within.

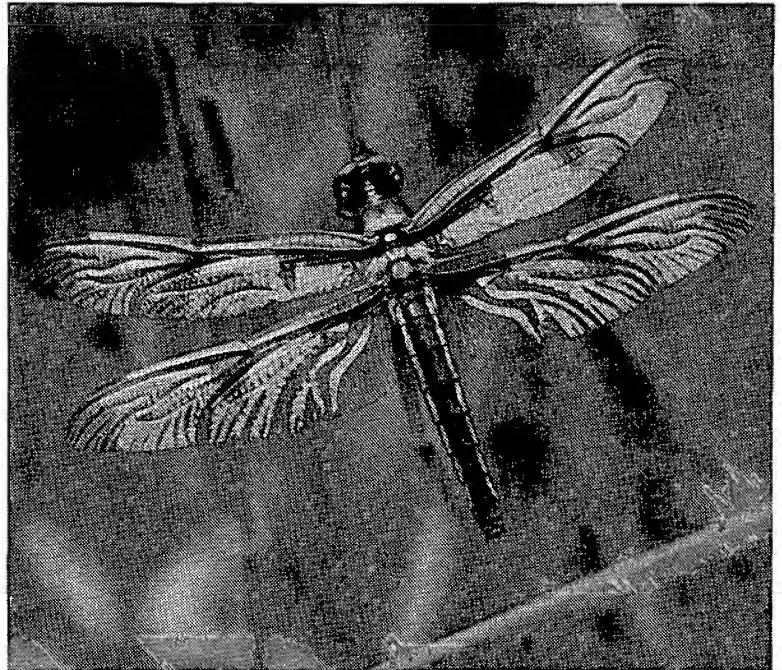
The Newsletter of the Wisconsin Entomological Society is published three times a year, at irregular intervals. It is provided to encourage and facilitate the exchange of information by the membership, and to keep the members informed of the activities of the organization. Members are strongly encouraged to contribute items for inclusion in the Newsletter. Please send all news items, notes, new or interesting insect records, season summaries, research requests, and report any address changes to the editor: Les Ferge, 7119 Hubbard Avenue, Middleton, WI 53562.



BLACK SWALLOWTAIL - JANICE STIEFEL (1st place)



EASTERN TAILED BLUE - KARL LEGLER (2nd place)



12-SPOTTED SKIMMER - JANICE STIEFEL (3rd place)

THE NABA-XERCES FOURTH OF JULY BUTTERFLY COUNT, 1996

The 22nd annual NABA-Xerces Fourth of July Butterfly Count was held in the summer of 1996 and sponsored by the North American Butterfly Association (NABA). Participants in the count conducted a one-day census of all butterflies observed at sites within their count area, a 15-mile diameter circle.

In 1996, 310 counts were held, including 5 received after the deadline to be published in next year's report. This was a 4% increase from the 297 held in 1995 (including 8 counts submitted late being published with the 1996 counts) and a 22% increase from the 254 in 1994. The program has grown just shy of 1000% since the original 29 counts in 1975!

The 273 U. S. counts (up from 264 in 1995) occurred in 45 states, the same as 1995. The 33 Canadian counts (29 last year) were in five provinces (same as 1995), and four Mexican counts were held in two states, the same as 1995. With 19 counts, California edged out both New York and Texas by just one count for the most 1996 counts. Three counts (Berkeley, CA, Gilpin County, CO and Lower Pearl River, LA-MS) have been held for all 21 years of the count program.

The sum of people participating in each count is 3,464, although some people are tallied more than once, since they participated in two or more counts. This was up over 17% from last year and almost 40% since 1994.

As usual, the counts with the greatest species diversity occurred in Mexico, which had between 113 and 143 species, short of the 1992 record of 169 species at Puerto Vallarta. In 1996 north of Mexico, Gilpin County, CO (with 97 species) edged out Ramsey Canyon, AZ (with 95 species), just a bit short of the record 103 species at Gilpin County in 1994.

In 1996, Western Suffolk County, NY counted the most adult individuals (8,405), largely because of 5,570 European Skippers. The previous two years, Fox River-Seney, MI set new records for total individuals (20,289 in 1995; 17,191 in 1994) with new continental highs for European Skippers each year. Previously, the Klamath Falls, OR count held the record for most individuals (16,994 in 1992), largely the result of 13,500 Clouded Sulphurs.

To order the 1996 report (specify reports desired for previous years), please send a check or money order payable to NABA for \$9.00 (NABA members) or \$13.00 (non-members) for each report (includes postage) to: **4th of July Butterfly Count, 909 Birch Street, Baraboo, WI 53913**. For more information on NABA, the count program, how to conduct a count, and counts in your area, please write, including a self-addressed, stamped business envelope to: **NABA, 4 Delaware Road, Morristown, NJ 07960**.

SPECIES DIVERSITY CONFERENCE IN MADISON

The 1997 Spring Symposium of the Aldo Leopold Chapter of the Society for Conservation Biology will be held on Saturday, April 12 in Birge Hall on the UW-Madison campus. Among the goals of this all-day program is to summarize the state of scientific knowledge of Wisconsin's species diversity for all major taxonomic groups. Dan Young of the UW Entomology Department will speak on the insects. For more information and registration materials, contact: **Aldo Leopold Chapter, Society for Conservation Biology, Science Hall - 550 N. Park St., Madison, WI 53706; Phone (608) 263-7771**.

1997 NATURAL HISTORY WORKSHOPS

The UW-Milwaukee Field Station's workshops offer a unique opportunity to explore focused topics in natural history under the guidance of noted authorities. Hands-on field and laboratory investigations teach ecology, evolution, use of taxonomic keys and new techniques. Workshops are designed to accommodate participants with a broad range of experience. Enrollment in each session is limited to 20, providing an informal atmosphere and individualized instruction. The following workshops are being offered:

Small Mammal Trapping & Handling - Wisconsin DNR Staff - 30-31 May

Aquatic Invertebrate Identification & Ecology - Dr. Jerry Kaster, UW-Madison - 13-14 June

Aquatic Vascular Plants - Dr. Tim Gerber, Rock Valley College, IL - 11-12 July

Bird Banding: Trapping and Bird Examination Methods - Vicki Piaskowski, UW-Milw. - 13 September

Taxonomy & Evolution of Composites - Dr. Robert Kowal, UW-Madison - 19-20 September

If you would like to participate, please write or call for additional information:

Dr. James A. Reinartz

**UWM Field Station
3095 Blue Goose Road
Saukville, WI 53080**

Phone (414) 675-6844

Fax (414) 675-0337

1996 WISCONSIN LEPIDOPTERA SEASON SUMMARY

Coordinator: Les Ferge (LAF). **Contributors:** Bob Borth (RJB), James A. Ebner (JAE), Hugo L. Kons Jr. (HLK), Judith A. Maxwell (JAM), James C. Parkinson (JCP), Tom Rocheleau (TR), Scott & Ann Swengel (SAS), Andrew H. Williams (AHW). Determinations provided by George J. Balogh (GJB) and Mogens C. Nielsen (MCN).

Thousands of specimen records were contributed. Due to this massive volume of data, only records representing new distributional information, infrequently recorded species or notable immigrants were included in the accompanying species account. Eight Noctuid moth species previously unrecorded in Wisconsin were added to the state list, which brings the total for that family to 724 species. The macro-moth total now stands at 1202 species.

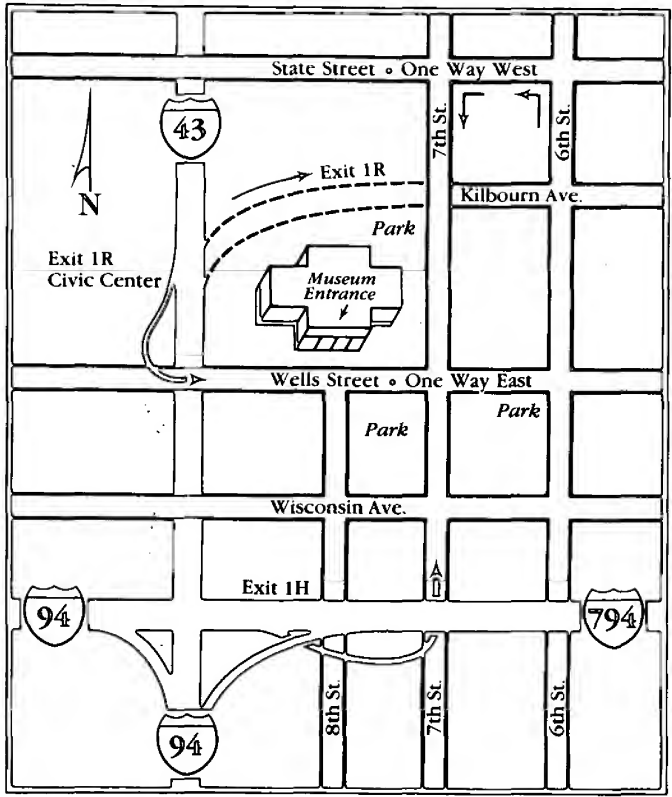
The season was slow to get underway, due to a persistent cool spring weather pattern. Summer weather continued cool, with conditions being about two weeks behind normal. Moderate to normal temperatures occurred from July onward, with September and October having the best late-season moth collecting conditions in several years. Ann and Scott Swengel reported low numbers of resident butterfly species as well as a poor year for migratory species. Six southern immigrant butterfly species were recorded, represented mainly by single individuals, including *Eurema lisa*, *Nathalis iole*, *Strymon melinus*, *Junonia coenia*, *Euptoieta claudia* and a long look at an *Agraulis vanillae*. Monarchs appeared at their regular time in late May, but were scarce until August.

SPECIES NAME	COUNTY	LOCALITY	DATE	DATE 2	COLL	NOTE
BUTTERFLIES						
(Hesperiidae)						
<i>Erynnis martialis</i> (Scudder)	Burnett	Crex Meadows & vicinity	23 May 96		SAS	
<i>Erynnis martialis</i> (Scudder)	Burnett	Namekagon Barrens	10 Aug 96		JCP	
<i>Oarisma powesheik</i> (Parker)	Green Lake	Puchyan Prairie	20 Jul 96		TR	County Record
<i>Hesperia ottoe</i> Edwards	Crawford	Hogback & Rush Creek Prairie	16 Jul 96		SAS	
<i>Hesperia ottoe</i> Edwards	Grant	Dewey Heights Prairie	16 Jul 96		SAS	
<i>Hesperia ottoe</i> Edwards	Sauk	Spring Green Preserve	16 Jul 96		SAS	
<i>Hesperia leonardus</i> Harris	Dane	Walking Iron Prairie	2 Sep 96		TR	
<i>Hesperia leonardus</i> Harris	Douglas	Solon Springs	10 Aug 96		JCP	
<i>Hesperia leonardus</i> Harris	Marathon	Wausau	29 Aug 96		JCP	
<i>Problema byssus</i> (Edwards)	Grant	Dewey Heights Prairie	16 Jul 96		SAS	
<i>Poanes massasoit</i> (Scudder)	Grant	Thomas Wet Prairie	6 Aug 96		AHW	County Record
<i>Poanes viator</i> (Edwards)	Green Lake	Puchyan Prairie	20 Jul 96		TR	County Record
<i>Euphyes dion</i> (Edwards)	Dane	Goose Lake	30 Jul 96		TR	
<i>Euphyes conspicua</i> (Edwards)	Green Lake	Puchyan Prairie	20 Jul 96		TR	County Record
<i>Euphyes conspicua</i> (Edwards)	Grant	Thomas Wet Prairie	23 Jul 96	17 Aug 96	AHW	County Record
<i>Euphyes bimacula</i> (Grote & Robinson)	Green Lake	Puchyan Prairie	5 Jul 96		TR	County Record
<i>Atrytonopsis hianna</i> (Scudder)	Sauk	Spring Green Preserve	30 May 96		SAS	
<i>Atrytonopsis hianna</i> (Scudder)	Jackson	Belle Mound	26 Jun 96		SAS	
<i>Amblyscirtes hegon</i> (Scudder)	Lincoln	Pine River Twp.	15 Jun 96		JCP	
(Pieridae)						
<i>Eurema lisa</i> (Boisduval & LeConte)	Sauk	International Crane Foundation	6 Jul 96		SAS	
<i>Eurema lisa</i> (Boisduval & LeConte)	Burnett	Namekagon Barrens	10 Aug 96		JCP	
<i>Nathalis iole</i> Boisduval	Burnett	Namekagon Barrens	10 Aug 96		JCP	
(Lycaenidae)						
<i>Satyrrium liparops strigosum</i> (Harris)	Waukesha	Okauchee	19 Jul 96		JAE	
<i>Incisalia polios</i> Cook & Watson	Ashland	Long Island	8 Jun 96		LAF	County Record
<i>Incisalia irus</i> (Godart)	Wood	Highway X	20 May 96	12 Jun 96	SAS	
<i>Incisalia irus</i> (Godart)	Jackson	Belle Mound	21 May 96	6 Jun 96	SAS	
<i>Incisalia henrici</i> (Grote & Robinson)	Burnett	Namekagon Barrens	29 May 96		TR	
<i>Incisalia henrici</i> (Grote & Robinson)	Jackson	Belle Mound	21 May 96		SAS	
<i>Strymon melinus</i> Hubner	Juneau	Necedah NWR	30 May 96		SAS	
<i>Strymon melinus</i> Hubner	Grant	Cassville	19 Jul 96		JCP	
<i>Everes amyntula</i> (Boisduval)	Douglas	Solon Springs Barrens	29 May 96		TR	
<i>Lycaeides melissa samuelis</i> Nabokov	Jackson	Belle Mound	26 Jun 96		SAS	
<i>Lycaeides melissa samuelis</i> Nabokov	Burnett	Crex Meadows & vicinity	24 Jul 96		SAS	
(Riodinidae)						
<i>Calephelis muticum</i> McAlpine	Fond du Lac		26 Jul 96		JAE	
(Heliconiidae)						
<i>Agraulis vanillae</i> (Linnaeus)	Crawford	Hogback Prairie	16 Jul 96		SAS	County Record, sighted
(Nymphalidae)						
<i>Polygonia faunus</i> (Edwards)	Marathon	Bevent	29 Aug 96		JCP	
<i>Junonia coenia</i> (Hubner)	Waukesha	Okauchee	12 Aug 96		JAE	
<i>Euptoieta claudia</i> (Cramer)	Grant	Cassville	19 Jul 96		JCP	
<i>Speyeria idalia</i> (Drury)	Crawford	Hogback Prairie	16 Jul 96	14 Aug 96	SAS	
<i>Speyeria idalia</i> (Drury)	Columbia	Pine Island WA	20 Jul 96	26 Aug 96	SAS	
<i>Speyeria idalia</i> (Drury)	Iowa	Thompson Prairie	26 Jul 96	14 Aug 96	SAS	
<i>Boloria freija</i> (Thunberg)	Price	Fifield Twp.	24 May 96		LAF	

SPECIES NAME	COUNTY	LOCALITY	DATE	DATE 2	COLL	NOTE
<i>Bolonia titania grandis</i> B. & McD.	Douglas	Lyman Lake	10 Aug 96		JCP	
<i>Phyciodes batesii</i> (Reakirt)	Bayfield	Moquah Barrens	25 Jun 96		LAF	
<i>Charidryas gorgone carlota</i> (Reakirt)	Jackson	Belle Mound	6 Jun 96		SAS	
<i>Charidryas gorgone carlota</i> (Reakirt)	Crawford	Hogback & Rush Creek Prairie	16 Jul 96		SAS	
<i>Charidryas gorgone carlota</i> (Reakirt)	Burnett	Crex Meadows & vicinity	24 Jul 96		SAS	
<i>Euphydryas phaeton</i> (Drury) (Satyridae)	Grant	Thomas Wet Prairie	13 Jun 96		AHW	County Record
<i>Coenonympha tullia inornata</i> Edwards	Price	Fifield Twp.	5 Jul 96		LAF	
<i>Erebia discoidalis</i> (Kirby)	Price	Fifield Twp.	24 May 96		LAF	
<i>Erebia discoidalis</i> (Kirby)	Douglas	Lyman Lake	29 May 96		TR	
<i>Oeneis chryxus strigulosa</i> McDunnough (Danaiidae)	Burnett	Staples Lake	30 May 96		TR	County Record
<i>Danaus plexippus</i> (Linnaeus)	Sauk	Spring Green Preserve	19 May 96		SAS	earliest sighting, E. Spencer
<i>Danaus plexippus</i> (Linnaeus)	Jackson	Belle Mound	21 May 96		SAS	
<i>Danaus plexippus</i> (Linnaeus)	Waukesha	Eagle & Okauchee	14 Jun 96	18 Oct 96	JAE	
<i>Danaus plexippus</i> (Linnaeus)	Sauk	International Crane Foundation	25 Oct 96		SAS	
MOTHS						
(Thyatiridae)						
<i>Habrosyne gloriosa</i> (Gn.)	Richland	Lone Rock	13 Jun 96		TR	County Record
(Geometridae)						
<i>Archiearis infans</i> (Mosch.)	Marathon	Nine Mile Swamp Area	21 Apr 96		LAF	
<i>Paleacrita merriicata</i> Dyar	Vernon	Battle Bluff Prairie	19 Apr 96		LAF	County Record
<i>Erastria coloraria</i> (F.)	Monroe	Fort McCoy	13 Jul 96		JAM	County Record
<i>Epirrita autumnata henschawi</i> (Swett)	Richland	Orion Twp.	12 Oct 96		LAF	County Record
<i>Operophtera bruceata hyperborea</i> (Hulst) (Mimallonidae)	Iowa	Blue Mounds	5 Nov 96		LAF	County Record
<i>Cicinnus melsheimeri</i> (Harr.) (Lasiocampidae)	Eau Claire	Eau Claire	1 Jun 96		JCP	
<i>Heteropacha rileyana</i> Harv. (Saturniidae)	Richland	Richwood Twp.	16 Aug 96		JCP	
<i>Sphingicampa bicolor</i> (Harr.)	Grant	Cassville	18 Jul 96		JCP	
<i>Anisota virginensis</i> (Drury) (Sphingidae)	Richland	Lone Rock	20 Jun 96		TR	County Record
<i>Ceratonia catalpae</i> (Bdv.)	Richland	Lone Rock	21 Aug 96		TR	
<i>Sphinx luscitosa</i> Clem.	Burnett	Namekagon Barrens	21 Jun 96		RJB	
<i>Hemaris diffinis</i> (Bdv.)	Grant	Bush Clover Prairie	16 Aug 96		AHW	larvae on <i>Triosteum</i> sp.
<i>Hyles gallii</i> (Rottemburg) (Notodontidae)	Burnett	Namekagon Barrens	19 Jun 96	21 Jun 96	RJB	County Record
<i>Clostera brucei</i> (Hy. Edw.)	Burnett	Namekagon Barrens	24 May 96	19 Jun 96	RJB	County Record
<i>Notodonta scitipennis</i> Wlk.	Monroe	Ft. McCoy Oak Savanna SNA	9 Jun 96		JAM	County Record
<i>Dasylophia anguina</i> (J. E. Smith)	Richland	Lone Rock	13 Jun 96		TR	County Record
<i>Schizura apicalis</i> (G. & R.)	Manitowish	Dunbar Barrens	2 Aug 96		TR	County Record
<i>Hyparpax aurora</i> (J. E. Smith)	Burnett	Namekagon Barrens	19 Jun 96	21 Jun 96	RJB	
<i>Hyparpax aurora</i> (J. E. Smith) (Arctiidae)	Dane	Walking Iron Prairie	23 Jul 96		TR	
<i>Crambidia pura</i> B. & McD.	Richland	Lone Rock	30 Aug 96		LAF	County Record
<i>Phragmatobia lineata</i> Newman & Donahue	Marathon	Hatley	3 Jul 96		JCP	County Record
<i>Grammia speciosa</i> (Moschler)	Forest	Logger Lake	2 Aug 96		TR	County Record
<i>Grammia figurata</i> (Drury)	Grant	Cassville	18 Jul 96		JCP	
<i>Grammia phyllira</i> (Drury)	Monroe	Ft. McCoy Oak Savanna SNA	9 Jun 96		JAM	County Record
<i>Grammia phyllira</i> (Drury)	Richland	Lone Rock	5 Jul 96		TR	County Record
<i>Grammia phyllira</i> (Drury)	Dane	Walking Iron Prairie	6 Aug 96	31 Aug 96	TR	
<i>Grammia oithona</i> (Stkr.)	Dane	Walking Iron Prairie	31 Aug 96		TR	
<i>Cyrcia inopinatus</i> (Hy. Edw.)	Monroe	Ft. McCoy Oak Savanna SNA	9 Jun 96	12 Aug 96	JAM	County Record
<i>Cyrcia inopinatus</i> (Hy. Edw.)	Dane	Walking Iron Prairie	28 Jul 96	6 Aug 96	TR	
<i>Pygarctia spraguei</i> (Grt.) (Noctuidae - Herminiinae)	Monroe	Ft. McCoy Oak Savanna SNA	9 Jun 96		JAM	County Record
<i>Idia diminuendis</i> (B. & McD.)	Monroe	Fort McCoy	13 Jul 96		JAM	County Record
<i>Idia diminuendis</i> (B. & McD.)	Bayfield	Moquah Barrens	12 Aug 96		LAF	County Record
<i>Macrochilo bivittata</i> (Grt.)	Green Lake	Puchyan Prairie	11 Aug 96		TR	County Record
<i>Macrochilo louisiana</i> (Fbs.)	Grant	Thomas Wet Prairie	29 Jun 96		AHW	County Record
<i>Tetanolita floridana</i> (Sm.) (Noctuidae - Rivulinae)	Outagamie	Appleton	30 Aug 95		HLK	STATE RECORD, verified GJB
<i>Melanomma auricinctana</i> Grt.	Outagamie	Mosquito Hill Nature Center	30 Aug 95		HLK	STATE RECORD
<i>Mycterophora inexplicata</i> (Wlk.)	Manitowish	Dunbar Barrens	29 Jul 95		HLK	STATE RECORD

SPECIES NAME	COUNTY	LOCALITY	DATE	DATE 2	COLL	NOTE
(Noctuidae - Hyphenodinae)						
<i>Hyphenodes caducus</i> (Dyar)	Jefferson	Faville Prairie	15 Aug 96		LAF	County Record, verified GJB
<i>Hyphenodes fractilinea</i> (Sm.)	Jefferson	Faville Prairie	15 Aug 96		LAF	County Record, verified GJB
<i>Hyphenodes palustris</i> Fgn.	Jefferson	Faville Prairie	15 Aug 96		LAF	County Record, verified GJB
<i>Hyphenodes sombrus</i> Fgn.	Jefferson	Faville Prairie	15 Aug 96		LAF	County Record, verified GJB
(Noctuidae - Hypheninae)						
<i>Bomolocha sordidula</i> (Grt.)	Richland	Lone Rock	17 Aug 96		TR	County Record
(Noctuidae - Catocalinae)						
<i>Metalectra discalis</i> (Grt.)	Marinette	Dunbar Barrens	2 Aug 96		TR	County Record
<i>Metalectra tantillus</i> (Grt.)	Richland	Lone Rock	20 Jun 96		TR	County Record
<i>Drasteria graphica atlantica</i> B. & McD.	Richland	Lone Rock	13 Jun 96	20 Jun 96	TR	
<i>Catocala piatrix</i> Grt.	Richland	Lone Rock	21 Aug 96	24 Aug 96	TR	County Record
<i>Catocala serena</i> Edw.	Green Lake	Puchyan Prairie	4 Sep 96		TR	County Record
<i>Catocala obscura</i> Stkr.	Trempealeau	Trempealeau	23 Aug 96		JCP	
<i>Catocala vidua</i> (J. E. Smith)	Dane	Festge Park	31 Aug 96	20 Oct 96	TR	
<i>Catocala nebulosa</i> Edw.	Richland	Lone Rock	21 Aug 96	24 Aug 96	TR	County Record
<i>Catocala subnata</i> Grt.	Richland	Lone Rock	21 Aug 96	24 Aug 96	TR	County Record
<i>Catocala amatrix</i> (Hbn.)	Green Lake	Puchyan Prairie	4 Sep 96		TR	County Record
<i>Catocala illecta</i> Wlk.	Richland	Richwood Twp.	19 Jul 96		JCP	
<i>Catocala abbreviatella</i> Grt.	Monroe	Ft. McCoy Oak Savanna SNA	27 Jul 96		JAM	County Record
<i>Catocala nuptialis</i> Wlk.	Richland	Lone Rock	17 Aug 96		TR	
<i>Catocala nuptialis</i> Wlk.	Trempealeau	Trempealeau	23 Aug 96		JCP	
<i>Catocala whitneyi</i> Dodge	Richland	Lone Rock	21 Jul 96		LAF	County Record
<i>Catocala whitneyi</i> Dodge	Monroe	Ft. McCoy Oak Savanna SNA	27 Jul 96		JAM	
<i>Catocala amestris</i> Stkr.	Grant	Cassville	19 Jul 96		JCP	
<i>Catocala amestris</i> Stkr.	Richland	Lone Rock	22 Jul 96		TR	County Record
<i>Catocala amestris</i> Stkr.	Monroe	Ft. McCoy Oak Savanna SNA	31 Jul 96		JAM	County Record
<i>Catocala connubialis</i> Gn.	Jackson	Castle Mound Road	20 Aug 96		RJB	County Record
<i>Catocala connubialis</i> Gn.	Dane	Walking Iron Prairie	31 Aug 96		TR	County Record
(Noctuidae - Plusiinae)						
<i>Abrostola ovalis</i> Gn.	Dane	Hawk Hill Prairie	10 Jun 96		TR	County Record
<i>Autographa rubida</i> Ottol.	Bayfield	Drummond Twp.	24 Jun 96		LAF	County Record
(Noctuidae - Euteliinae)						
<i>Paectes oculatrix</i> (Gn.)	Dane	Hawk Hill Prairie	10 Jun 96		TR	County Record
<i>Paectes oculatrix</i> (Gn.)	Richland	Lone Rock	13 Jun 96	5 Jul 96	TR	County Record
(Noctuidae - Acontiinae)						
<i>Exyra fax</i> (Grt.)	Bayfield	Port Wing	12 Aug 96		LAF	County Record
<i>Oruza albocostaliata</i> (Pack.)	Dane	Walking Iron Prairie	6 Aug 96		TR	
<i>Cerma cora</i> Hbn.	Burnett	Namekagon Barrens	19 Jun 96		RJB	County Record
<i>Tarachidia semiflava</i> (Gn.)	Outagamie	Mosquito Hill Nature Center	18 Jun 95		HLK	STATE RECORD, verified GJB
<i>Tarachidia tortricina</i> (Zell.)	Monroe	Ft. McCoy Oak Savanna SNA	9 Jun 96		JAM	
<i>Bagisara rectifascia</i> (Grt.)	Burnett	Namekagon Barrens	19 Jun 96		HLK	County Record
(Noctuidae - Acronictinae)						
<i>Acronicta betulae</i> Riley	Richland	Lone Rock	13 Jun 96	17 Aug 96	TR	County Record
<i>Acronicta betulae</i> Riley	Richland	Richwood Twp.	16 Aug 96		JCP	County Record
<i>Acronicta falcata</i> (Grt.)	Burnett	Namekagon Barrens	19 Jun 96		RJB	County Record
<i>Acronicta falcata</i> (Grt.)	Monroe	Ft. McCoy Oak Savanna SNA	27 Jul 96		JAM	County Record
<i>Acronicta lithospila</i> Grt.	Richland	Lone Rock	13 Jun 96	6 Aug 96	TR	County Record
<i>Acronicta lanceolaria</i> (Grt.)	Burnett	Namekagon Barrens	25 May 96		HLK, RJB	STATE RECORD, det. LAF
<i>Merolonche dolli</i> B. & McD.	Burnett	Namekagon Barrens	25 May 96		HLK, RJB	det. LAF
(Noctuidae - Amphipyriinae)						
<i>Apamea nigrion</i> (Sm.)	Richland	Lone Rock	20 Jun 96		TR	STATE RECORD
<i>Luperina stipata</i> (Morr.)	Green Lake	Puchyan Prairie	11 Aug 96	16 Sep 96	TR	County Record
<i>Luperina stipata</i> (Morr.)	Jackson	Black River Falls	6 Sep 96		JCP	County Record
<i>Oligia bridghami</i> (G. & R.)	Green Lake	Puchyan Prairie	11 Aug 96		TR	County Record
<i>Meropleon diversicolor</i> (Morr.)	Green Lake	Puchyan Prairie	4 Sep 96		TR	County Record
<i>Meropleon ambifuscum</i> (Newman)	Dane	Walking Iron Prairie	31 Aug 96		TR	
<i>Meropleon ambifuscum</i> (Newman)	Green Lake	Puchyan Prairie	4 Sep 96	30 Sep 96	TR	County Record
<i>Meropleon ambifuscum</i> (Newman)	Monroe	Fort McCoy	1 Oct 96		LAF	County Record
<i>Lemmeria digitalis</i> (Grt.)	Green Lake	Puchyan Prairie	16 Sep 96	30 Sep 96	TR	County Record
<i>Selicanis cinereola</i> Sm.	Monroe	Fort McCoy	1 Oct 96		LAF	
<i>Spartiniphaga inops</i> (Grt.)	Green Lake	Puchyan Prairie	4 Sep 96		TR	County Record
<i>Spartiniphaga panatela</i> (Sm.)	Ashland	Long Island	12 Jul 96		LAF	County Record
<i>Chortodes inquinata</i> (Gn.)	Green Lake	Puchyan Prairie	11 Aug 96		TR	County Record
<i>Archanara oblonga</i> (Grt.)	Green Lake	Puchyan Prairie	11 Aug 96	4 Sep 96	TR	County Record
<i>Archanara subflava</i> (Grt.)	Ashland	Long Island	9 Aug 96		LAF	County Record
<i>Archanara laeta</i> (Morr.)	Green Lake	Puchyan Prairie	11 Aug 96	4 Sep 96	TR	County Record

SPECIES NAME	COUNTY	LOCALITY	DATE	DATE 2	COLL	NOTE
<i>Archana laeta</i> (Morr.)	Richland	Lone Rock	17 Aug 96		TR	
<i>Macronoctua onusta</i> Grt.	Green Lake	Puchyan Prairie	16 Sep 96		TR	County Record
<i>Papaipema cerina</i> (Grt.)	Clark	Foster Twp.	1 Oct 96		LAF	County Record
<i>Papaipema impecuniosa</i> (Grt.)	Green Lake	Puchyan Prairie	30 Sep 96		TR	County Record
<i>Papaipema lysimachiae</i> Bird	Green Lake	Puchyan Prairie	4 Sep 96		TR	County Record
<i>Papaipema speciosissima</i> (G. & R.)	Clark	Foster Twp.	1 Oct 96		LAF	County Record
<i>Papaipema speciosissima</i> (G. & R.)	Jackson	NE of Black River Falls	6 Sep 96		JCP	
<i>Papaipema rutila</i> (Gn.)	Dane	Festge Park	20 Oct 96		TR	County Record, det. MCN
<i>Papaipema baptisiae</i> (Bird)	Green Lake	Puchyan Prairie	4 Sep 96	30 Sep 96	TR	County Record
<i>Papaipema nepheleptena</i> (Dyar)	Green Lake	Puchyan Prairie	16 Sep 96		TR	County Record
<i>Papaipema circumlucens</i> (Sm.)	Richland	Richwood Twp.	16 Aug 96		JCP	County Record
<i>Papaipema circumlucens</i> (Sm.)	Clark	Foster Twp.	1 Oct 96		LAF	County Record
<i>Papaipema appassionata</i> (Harv.)	Marathon	Hatley	7 Sep 96		JCP	
<i>Papaipema rigida</i> (Grt.)	Clark	Foster Twp.	1 Oct 96		LAF	County Record
<i>Papaipema sciata</i> Bird	Green Lake	Puchyan Prairie	30 Sep 96		TR	County Record
<i>Papaipema sciata</i> Bird	Clark	Foster Twp.	1 Oct 96		LAF	County Record
<i>Papaipema sciata</i> Bird	Richland	Orion Twp.	12 Oct 96		LAF	County Record
<i>Papaipema sciata</i> Bird	Jefferson	Faville Prairie	13 Oct 96		LAF	County Record
<i>Papaipema sciata</i> Bird	Crawford	Rush Creek SNA	16 Oct 96		LAF	County Record
<i>Papaipema beeriana</i> Bird	Green Lake	Puchyan Prairie	16 Sep 96	30 Sep 96	TR	County Record
<i>Hydraecia stramentosa</i> Gn.	Jackson	Black River Falls	6 Sep 96		JCP	County Record
<i>Hydraecia stramentosa</i> Gn.	Bayfield	Drummond Twp.	19 Sep 96		LAF	County Record
<i>Bellura gortynoides</i> Wik.	Forest	Mole Lake	2 Jul 96		TR	County Record
<i>Enargia mephisto</i> Franc.	Marathon	Hatley	3 Jul 96		JCP	County Record
<i>Chytonix sensilis</i> Grt.	Monroe	Fort McCoy	12 Aug 96		JAM	County Record
<i>Caradrina meralis</i> (Morr.)	Monroe	Fort McCoy	11 Sep 96		LAF	County Record
<i>Crambodes talidiformis</i> Gn.	Grant	Thomas Wet Prairie	14 Jul 96	25 Jul 96	AHW	larvae on <i>Verbena hastata</i>
<i>Plagiomimicus pityochromus</i> Grt.	Richland	Lone Rock	6 Aug 96		TR	County Record
<i>Plagiomimicus pityochromus</i> Grt. (Noctuidae - Cuculliinae)	Dane	Walking Iron Prairie	31 Aug 96		TR	County Record
<i>Xylena cineritia</i> (Grt.)	Burnett	Namekagon Barrens	25 May 96		RJB	County Record
<i>Lithophane amanda</i> (Sm.)	Burnett	Namekagon Barrens	25 May 96		RJB	County Record
<i>Lithophane amanda</i> (Sm.)	Douglas	Gordon	27 May 96		RJB	County Record
<i>Epiglaea decliva</i> (Grt.)	Richland	Lone Rock	12 Oct 96		LAF	County Record
<i>Epiglaea decliva</i> (Grt.)	Vernon	Genoa	16 Oct 96		LAF	County Record
<i>Epiglaea apiata</i> (Grt.)	Green Lake	Puchyan Prairie	21 Sep 96		TR	County Record
<i>Chaetoglaea cerata</i> Franc.	Jackson	Black River Falls	1 Oct 96		LAF	County Record
<i>Chaetoglaea cerata</i> Franc.	Monroe	Fort McCoy	1 Oct 96		LAF	County Record
<i>Psectraglaea camosa</i> (Grt.)	Bayfield	Moquah Barrens	20 Sep 96		LAF	
<i>Catabena lineolata</i> Wik.	Grant	Thomas Wet Prairie	14 Jul 96	25 Jul 96	AHW	larvae on <i>Verbena hastata</i>
<i>Oncocnemis saundersiana</i> Grt.	Monroe	Ft. McCoy Oak Savanna SNA	23 Aug 96		LAF	STATE RECORD
<i>Oncocnemis riparia</i> Morr.	Monroe	Ft. McCoy Oak Savanna SNA	5 Jul 96		JAM	County Record
<i>Cucullia asteroides</i> Gn. (Noctuidae - Hadeninae)	Grant	Thomas Wet Prairie	23 Aug 96		AHW	larva on <i>Solidago canadensis</i>
<i>Trichodea artesta</i> (Sm.)	Richland	Lone Rock	13 Jun 96	6 Aug 96	TR	
<i>Sideridis congermana</i> (Morr.)	Marathon	Hatley	3 Jul 96		JCP	County Record
<i>Papestra biren</i> (Goetze)	Burnett	Namekagon Barrens	19 Jun 96		RJB	County Record
<i>Hadena capsularis</i> (Gn.)	Monroe	Ft. McCoy Oak Savanna SNA	9 Jun 96	27 Jul 96	JAM	
<i>Anarta luteola</i> G. & R.	Price	Fifield Twp.	24 May 96		LAF	County Record
<i>Anarta luteola</i> G. & R.	Ashland	Butternut	25 May 96		LAF	County Record
<i>Anarta luteola</i> G. & R.	Douglas	Lyman Lake	29 May 96		TR	County Record
<i>Leucania adjuta</i> (Grt.)	Jefferson	Faville Prairie	13 Oct 96		LAF	STATE RECORD
<i>Tricholita notata</i> Stkr. (Noctuidae - Noctuinae)	Vernon	Battle Bluff Prairie	18 Aug 96		LAF	County Record
<i>Euxoa quebecensis</i> (Sm.)	Ashland	Long Island	22 Jun 96		LAF	County Record
<i>Euxoa immixta</i> (Grt.)	Grant	Muscoda	19 Jul 96		JCP	
<i>Euxoa immixta</i> (Grt.)	Richland	Gotham	5 Jul 96		TR	County Record
<i>Richia grotei</i> (Franc. & Todd)	Richland	Richwood Twp.	16 Aug 96		JCP	County Record
<i>Richia grotei</i> (Franc. & Todd) (Noctuidae - Heliiothinae)	Trempealeau	Trempealeau	23 Aug 96		LAF	County Record
<i>Schinia indiana</i> (Sm.)	Jackson	Belle Mound	6 Jun 96		SAS	
<i>Schinia bina</i> (Gn.)	Bayfield	Moquah Barrens	25 Jun 96		LAF	County Record
<i>Schinia florida</i> (Gn.)	Dane	Mazomanie	12 Aug 96		TR	County Record
<i>Schinia lucens</i> (Morr.)	Crawford	Rush Creek Prairie	20 Jul 96		LAF	County Record
<i>Schinia lucens</i> (Morr.)	Dane	Walking Iron Prairie	23 Jul 96		TR	
<i>Schinia nundina</i> (Drury)	Richland	Richwood Twp.	16 Aug 96		JCP	County Record
<i>Schinia nundina</i> (Drury)	Richland	Lone Rock	17 Aug 96	24 Aug 96	TR	



DIRECTIONS

From North:
 South on I-43
 Exit 1R (right)
 Civic Ctr. / Wells St.
 Wells St. to 8th St.

From South:
 North on I-94 / I-43
 Exit 1R (right)
 Civic Ctr. / Kilbourn Ave.
 Left on 6th St.
 Left on State St.
 Left on 7th St.

From West:
 East on I-94
 Exit 1H (right)
 Civic Ctr. / 7th St.
 3 Blocks North on
 7th St. to Wells St.

ADDRESS CORRECTION REQUESTED

Les Ferge, Editor
 7119 Hubbard Avenue
 Middleton, WI 53562



WISCONSIN ENTOMOLOGICAL SOCIETY