

1900

----

1908



---

**C. W. BROWNELL & CO.**

Wholesalers and Exporters of

**Orchid, Rotted and Azalea Peats**

**Leaf Mould**

**Live Sphagnum Moss for Orchids**

**Baled Sphagnum Moss**

**Green Clump Moss, Etc., Etc.**

---

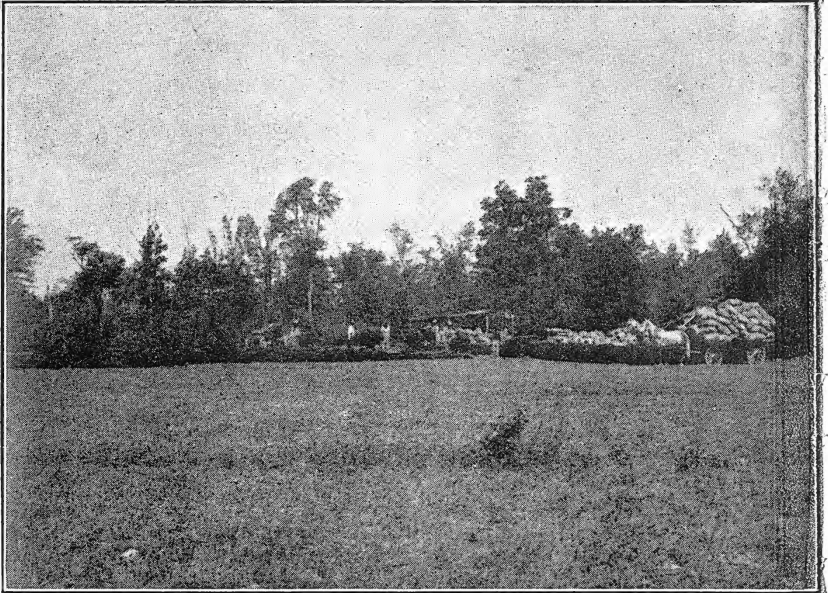


**Orange Co.**

**WALDEN, N. Y.**

YB

RL77



The above cut shows a view of our plant at Walden, N. Y., where our output this year has averaged over 200 barrels per day since April 1st, 1908.

*To the Trade,*

In offering you this price list of our commodities, we would direct your attention:

FIRST—To the fact that we are strictly wholesalers. We ask your co-operation and support to enable us to maintain this position.

SECOND—We guarantee our goods absolutely. If our stock, when received, is not exactly as represented, we desire you to return same at our expense.

THIRD—Our experience enables us to furnish you with exactly what you need promptly. We are not jobbers, but gather our own stock, giving ample opportunity to study and profit by the requirements of first class florists, both in this country and abroad.

We solicit your patronage, assuring you of our earnest endeavor to give your business careful and intelligent attention.

## ORDERING.

Always state fully the variety and quantity of our stock desired, including shipping instructions and post office address. When not otherwise stated goods will be forwarded via fast freight.

## TERMS.

Considering our prices, we expect cash. We will allow 2 per cent. discount on all invoices paid within ten days from date of invoice; thirty days, net cash. All invoices, when due, subject to sight draft without further notice. As to our own responsibility we would refer you to the

National Bank of Walden, Walden, N. Y.

Dun or Bradstreet's.

## FREIGHT RATES.

All our goods are listed at fourth class rate, with the exception of Sphagnum Moss, which is first class. We pay particular attention to the weight of all shipments, and Bill of Lading covering shipment is forwarded with invoice to avoid any overcharge by the railroad. We are in a position to furnish at all times, rates to any point. Estimates on car lots cheerfully furnished on request.

## SHIPPING FACILITIES.

West Shore Railroad.

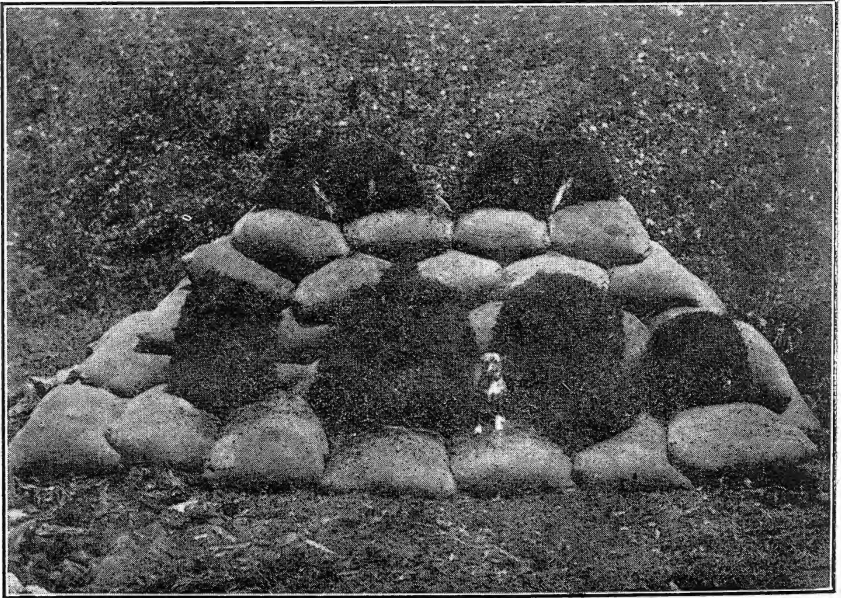
Central New England Railroad.

N. Y., N. H. & H. R. R.

Boat to New York, via Ramsdell Line.

Trolley to Newburgh, connecting with New York

Central Railroad.



The above plate shows some very fine specimens of Osmunda Fibre (Yellow variety) just after being cut in the swamp. They are the largest specimens we have exhibited.



Showing our method of getting the bogs out of the swamp. We often have to run these board roads to a distance of 2,000 feet in order to reach a good bed of *Osmunda*.

---

ORCHID OR FIBROUS PEAT—(*Osmunda Fibre*).

Shipped in 1 bbl. sacks, F. O. B. Walden, N. Y. (May be shipped in bbls. at 25 cents extra.)

The genuine *osmunda* fibre, clean, free from sticks, fern cores, dirt, foreign roots, etc.

Yellow or Brown variety.

1 to 25 bbls., at \$1.00.

25 to 500 bbls., at 75 cents.

CLEAR BLACK OSMUNDA—SELECTED.

The very finest grade of *Osmunda*, very durable and destined for the select culture of Orchids where a durable peat is required. Not offered in large quantity.

1 to 25 bbls., at \$1.50.

Clear Black *Osmunda* Fibre. Hand picked and ready for use.

1 to 25 bbls., at \$2.00.



This plate shows our method of trimming the Osmunda roots. The bogs are cut in pieces and all the roots, fern cores and dirt carefully taken out.



### ROTTED PEAT.

Screened through one-fourth inch screen. Very fine quality and well rotted.

1 to 15 bbls., at \$1.00.

15 to 50 bbls., at 75 cents.

50 to 500 bbls., at 65 cents.

### AZALEA PEAT.

For Azaleas, Ericas, Ferns, Etc.

1 to 15 bbls., at \$1.00.

15 to 50 bbls., at 75 cents.

50 to 500 bbls., at 65 cents.

### LEAF MOULD.

Gathered in Oak Swamp and well rotted. Screened through one-fourth inch screen.

1 to 15 bbls., at \$1.00.

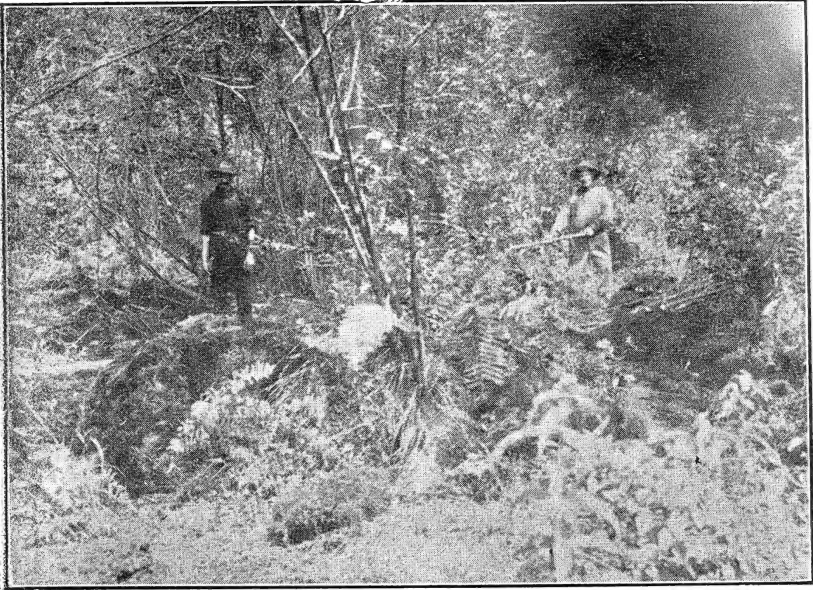
15 to 50 bbls., at 75 cents.

50 to 500 bbls., at 65 cents.

Price per ton or car lots furnished on request.

### LEAF-MOULD FOR ORCHIDS.

Owing to the slight demand for this commodity we do not carry it in stock, but can furnish same during the summer months.



Showing our men at work in swamp, cutting the Osmunda roots free from the ground.

---

### LIVE SPHAGNUM MOSS FOR ORCHIDS.

(Carried in stock throughout the year.)

We offer a very superior grade. The Moss is of the heavy variety with large soft heads. Free from sticks, leaves, etc. We secured this year, after considerable expense, a large tract of 50 acres on which the moss has never been gathered. We offer same, shipped in light bbls., with heads bunched for top dressing, etc.

1 to 25 bbls., at \$2.00.

25 to 100 bbls., at \$1.50.

Gathered clean for mixing with peat or where a very clean moss is desired.

1 to 25 bbls., at \$1.50.

25 to 100 bbls., at \$1.25.

BALED SPHAGNUM MOSS FOR PACKING PURPOSES,  
DESIGN WORK, ETC.

We have established a warehouse at Barnegat, N. J., where we gather this moss. Do not be fooled any longer about Selected Stock Moss or Natural Growth Moss and pay an exorbitant price accordingly. It all comes out of the same bin. We find it no harder to gather a good grade of moss than a poor grade. All our moss is freshly gathered and tightly baled. We will guarantee it to carry anywhere in perfect condition.

Large, 10 bbl. Bale.

1 to 20, 10-bbl. Bales, at \$2.50.

20 to 100, 10-bbl. Bales, at \$2.25.

Small, 5 bbl. Bale.

1 to 20, 5-bbl. Bales, at \$1.50.

20 to 100, 5-bbl. Bales, at \$1.40.

Moss will be burlapped at 25 cents extra per bale.

Nursery moss we offer from time to time and those interested will be sent our special quotation lists, which we send out monthly.

Special prices will be quoted on car lots.

GREEN CLUMP MOSS.

1 to 10 sacks, at \$1.25.

10 to 25 sacks, at \$1.00.

SILVER SAND.

Shipped in bbls. at \$1.50.



Showing a view of 150 acres of swamp land owned and controlled by us, which in our estimation will produce 50,000 barrels of Osmunda fibre. The largest tract we have ever seen.

# Testimonials

SIEBRECHT & SON,  
Florists and Nurserymen.

No. 425 Fifth Ave., New York City, Dec. 26th, 1907.

MESSRS. C. W. BROWNELL & Co.,  
Walden, N. Y.

Gentlemen:—We wish to say in regard to the quality of your Orchid Peat, of which you have furnished us 500 barrels during the last two or three years, that it is of an excellent quality, and we doubt very much indeed if any better material for Orchid culture could be found anywhere.

Yours very truly,

SIEBRECHT & SON.

GEORGE SCHLEGEL,  
Lithographer.

New York, December 21, 1907.

MESSRS. C. W. BROWNELL & Co.,  
Walden, N. Y.

Gentlemen:—I have used your Orchid Peat for several years and find it ideal for the purpose. It is clean fibre and most suitable for growing all varieties of the Orchid family. My head gardener is much pleased at the results obtained.

Yours truly,

GEORGE SCHLEGEL.

BURNETT BROS.

Seeds, Bulbs and Plants, also Garden Sundries.

New York, December 19, 1907.

MESSRS. C. W. BROWNELL & Co.,  
Walden, N. Y.

Dear Sirs:—Consignment of Orchid Peat, Moss, etc., just arrived, and we find same very satisfactory. We beg to thank you for your promptness in shipping our orders, and would state that as long as you supply us with this quality of goods you may rely upon our future business.

Very truly yours,

BURNETT BROS.

GEORGE FIELD,  
Wholesale Florist.

Washington, D. C., December 16, 1907.

MESSRS. C. W. BROWNELL & Co.,  
Walden, N. Y.

Dear Sirs:—In compliance with your request I beg to state that I have been using your Orchid Peat for about two years. I find that my orchids thrive well in its use, and as far as my experience goes it has proved very

satisfactory to me. With regards to your live Sphagnum Moss, my trouble has been that I cannot get enough of it—it is remarkably clean and good.

Yours very truly,

GEORGE FIELD.

STUMPP & WALTER CO.,  
Seed and Bulb Growers and Importers.

New York, December 19, 1907.

MESSRS. C. W. BROWNELL & Co.,  
Walden, N. Y.

Dear Sirs:—Replying to yours of recent date beg to say that we have been handling your goods for the past few years, and must say they have been satisfactory in every particular.

With regards, we are

Very truly yours,  
THE STUMPP & WALTER CO.

THE "SALTFORD FLOWER SHOP,"  
Pinehurst Conservatories.

Poughkeepsie, N. Y., December 16, 1907.

MESSRS. C. W. BROWNELL & Co.,  
Walden, N. Y.

Gentlemen:—Have used both your Orchid and Rotted Peat and found both to be of excellent quality. Your Sphagnum Moss for design work is very good. Have used same for several yeears and have had no cause to complain at all.

Yours truly,  
THE SALTFORD FLOWER SHOP.

WASHINGTON FLORISTS CO.,  
Greenhouses and Nursery.

Washington, D. C., December 17, 1907.

MESSRS. C. W. BROWNELL & Co.,  
Walden, N. Y.

Dear Sirs:—The Sphagnum Moss received to-day. We find it is clean of sticks and ready for filling designs without any picking over. Our cateleyas upon which we have used your Orchid Peat are doing fine; have never had a better crop, and we cheerfully recommend your goods.

Most respectfully yours,  
WASHINGTON FLORISTS CO.

ARTHUR T. BODDINGTON,  
Importer and Exporter of Seeds, Bulbs and Plants.

New York City, June 25th, 1906.

MESSRS. C. W. BROWNELL & Co.,  
Walden, N. Y.

Gentlemen:—I shall be in the market again this Fall for a large quantity of Orchid Peat, Live Sphagnum and Bale Sphagnum Moss. Kindly inform me as soon as possible what your are going to be able to do for me. The

Orchid Peat and Sphagnum which I had from you for the past two (2) years has been most satisfactory, my customers all speaking very highly of the quality I have shipped them from time to time.

Truly yours,  
ARTUHR T. BODDINGTON,  
Per J. W. Biglow.

CARRILLO & BALDWIN,  
Orchid Collectors, Growers and Importers.

Secaucus, N. J., U. S. A., December 16, 1907.

MESSRS. C. W. BROWNELL & Co.,  
Walden, N. Y.

Gentlemen:—It gives us pleasure to inform you that the large consignments of peat you have from time to time sent us have been very satisfactory. We consider it about the best peat on the market for orchid culture.

Respectfully yours,  
CARRILLO & BALDWIN.

Highland Falls, New York, March 8th, 1907.

C. W. BROWNELL & Co.,  
Walden, N. Y.

Dear Sirs:—Please send me four bags of Yellow Variety of Orchid Peat and oblige.

I enclose sample of last lot received from you, the best peat I have ever used, send me the same quality and oblige,

Yours truly,  
A. GALBRAITH,  
Supt. for J. Pierpont Morgan, Esq.

Hastings-on-Hudson, N. Y., Dec. 16, 1907.

We have used for the past several years Peat and Sphagnum Moss for Orchid growing from Messrs C. W. Brownell & Co., Walden, N. Y., and it gives us pleasure in saying without hesitation that we always found their material the best and cheapest we could buy on the market. This applies also to their Leaf Mould, Rotted Peat, etc.

R. ASTLEY.

J. M. THORBURN & CO.,  
Seedsman.

New York, June 26th, 1906.

MESSRS. C. W. BROWNELL & Co.,  
Walden, N. Y.

Dear Sirs:—In answer to your favor of 23d inst. we beg to say that our dealings with you have always been satisfactory and we have no cause for complaint.

We have always found your goods as represented.

Yours truly,  
J. M. THORBURN & Co.

JULIUS ROEHRS,

Grower of Decorative Plants and Orchids.

Rutherford, N. J., Oct. 27th, 1904.

MESSRS. C. W. BROWNELL & Co.,

Walden, N. Y.

Dear Sirs:—You may send yet this Fall about 100 bags of Peat, and reserve for Spring Delivery, 1st of March, another 100 bags.

Truly yours,

J. ROEHRS.

HENRY F. MICHELL CO.,

Seeds, Bulbs, Garden Implements and Poultry Supplies.

Philadelphia, Pa., June 27th, 1906.

C. W. BROWNELL & Co.,

Walden, N. Y.

Gentlemen:—Your valued favor of the 23rd inst. received and contents carefully noted. Regarding stock purchased from you, we must say that the same has given us the very best of satisfaction. We have been using your goods for a number of years, and as the demand has increased each year, it certainly must be due to the quality of goods which your house sends out.

Assuring you of our further favors, we are,

Yours very truly,

HENRY F. MICHELL CO.

BOBBINK & ATKINS,

Importers, Nurserymen and Florists.

Rutherford, N. J., June 26th, 1906.

MESSRS. C. W. BROWNELL & Co.,

Walden, N. Y.

Gentlemen:—We wish to say that we received the last shipment of Moss, and it seems to be as usual, the high grade which we have always received from you.

We wish to say that this grade of Moss is particularly well adapted for the packing and shipping of all kinds of hardy old-fashioned flowers and nursery stock. We hope to use a large number of bales this Fall.

Yours truly,

BOBBINK & ATKINS.

ALBERT M. HERR,

Wholesale Florist.

Lancaster, Pa., July 2d, 1906.

MESSRS. C. W. BROWNELL & Co.,

Walden, N. Y.

Gentlemen:—The Moss I have had through your firm has been satisfactory in every respect. The size of the bales, the quality of the moss and the size of the bill are so evenly balanced that nothing more could be asked of you.

Respectfully yours,

ALBERT M. HERR.



Staatsburg-on-Hudson, N. Y., January 3, 1908.

C. W. BROWNELL & Co.,  
Walden, N. Y.

Dear Sir:—In reply to yours I wish to state that I have handled a lot of your Orchid Peat every year since you started in business and have always found it first class in every respect.

Yours truly,  
WM. MARSHALL.

S. J. REUTER & SON.

Westerly R. I., Dec. 31, 1907.

MESSRS. C. W. BROWNELL & Co.,  
Walden, N. Y.

Dear Sirs:—We have used quite a large amount of your Sphagnum Moss, Azalia Peat and Leaf Mould from time to time, which we have always found very satisfactory. As long as it is possible, we shall buy from you whatever we need in your lines.

Thanking you for your prompt and courteous attention to our orders in the past, we beg to remain,

Yours truly,  
L. J. REUTER,  
For S. J. Reuter & Son, Inc.  
T. J. DWYER & Co.,

Nurserymen and Landscape Gardeners.

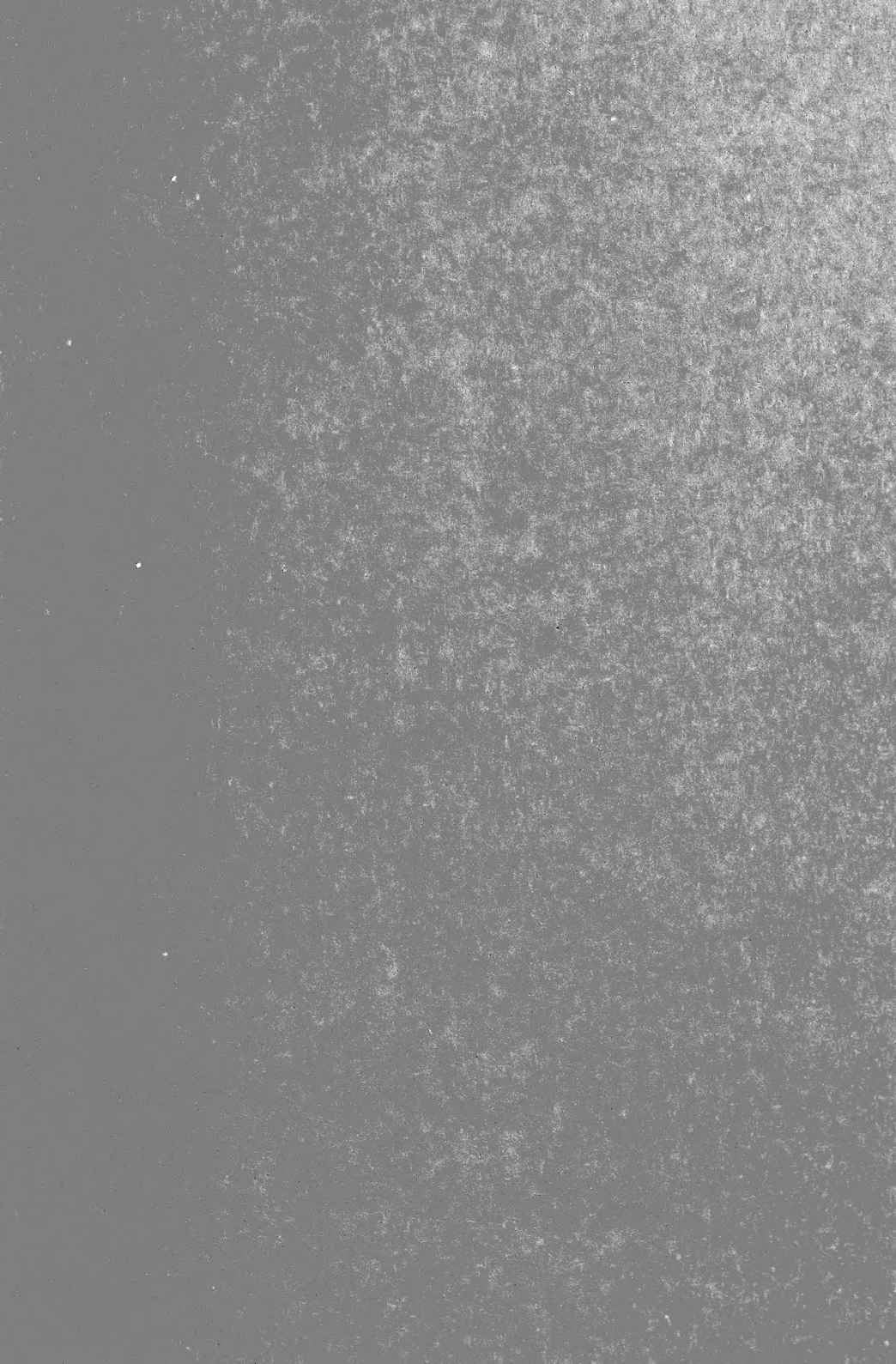
Cornwall, N. Y., Dec. 31, 1907.

MESSRS. C. W. BROWNELL & Co.,  
Walden, N. Y.

Dear Sirs:—It gives us great pleasure to say to you that the Moss which we have received from you since our business relations has been all that we could expect and has given us general satisfaction all around. Our customers in a great many instances write that their stock was received in excellent condition and this is greatly to do with the dampness and moisture which your moss holds to the roots of the stock.

Very truly yours,  
T. J. DWYER & Co.,  
Per M. J. D.

Samples of our stock will be mailed gratis if application is made at our main office, Walden, N. Y.



CITIZEN BOOKLET PRINT  
WALDEN, N. Y.