

Pomona United Nurseries

Everything Needed for Orchard and Garden Shipped C. O. D.

Spring

DANVILLE, N. Y.

1922



POMONA UNITED NURSERIES, DANSVILLE, N. Y.



SPRING 1922

Upon Arrival Heel in the Trees Temporarily

Nursery stock intended for spring planting should be ordered early to insure delivery in time for planting. As soon as received by the planter, the trees should be removed from the box or bale, bunches cut apart at the bottom and heeled in until ready to plant. Dig a trench of sufficient width to hold the roots of a row of trees and deep enough so that when the trench is filled the roots will be covered with about two feet of earth. If this work is properly done trees may be left for reasonably long periods without injury. To insure prompt service, order early. The spring season is a busy time with the nurseryman and he can give better attention to the orders received before the rush season begins.

"The roots of early planted trees throw out their feeders before the buds open. Such trees make a heavier growth. They get a stronger hold upon the soil, and are better able to endure the hot, dry summers."— G. B. Brackett U. S. Pomologist, U. S. D. A., Washington, D. C.

Our Shipping Season

We pack and ship all winter to Southern States. Our regular Spring packing and shipping season usually opens here about the first of April, and continues into the month of May. The planting season is not regulated by any particular month or day, nor by the state of vegetation where the planting is to be done, but by the condition of the trees to be planted. Hence, trees can be sent with safety from Dansville, N. Y., to localities several degrees south, even if they do not arrive until the ordinary transplanting season in that locality is passed.

What Trees to Plant

The true standard upon which to purchase is the age. The two-year old tree is usually the best for commercial planting although one-year-olds are quite generally used. In ordering nursery stock deal direct with the grower rather than through agents. State the kind of trees wanted, be willing to pay a fair price for the right kind and varieties. Take good care of them upon arrival to assure healthy growth when they are planted.

The **Fruit Tree** is a symbol of home and comfort and good cheer. It is the emblem of good works. By the woodshed or the pump, or against the barn or over the garden fence, the fruit tree connects the residence with the world of life. Every day of the year is in its fabric, and every essence of wind and sun and snapping frost is in its blossom and its fruit.

Prices of Nursery Stock

It hardly seems necessary to say anything about the prices printed in this catalog, but owing to the great scarcity of nursery stock there are so many poor trees, trees not true to name—trees with poor root system—trees four, five and six years old, listed as bearing age and affected in one way or another, being offered for sale, that we feel compelled to ask our customers to consider quality and to remember that we sell nothing but the best one and two year trees of the size listed.

All Trees are strictly first class of the grade offered, well rooted and branched, fresh dug, and guaranteed to please.

Consolidation Announcement

The business, including lists of customers and good will of the

Pomona Nurseries
Sheerin's Wholesale Nurseries
Wells Wholesale Nurseries

has been consolidated and will hereafter be conducted under the title of

POMONA UNITED NURSERIES

This consolidation, brought about through the financial co-operation of several of Dansville's leading business men, tends towards greater economies of management and adds greatly to the facilities and strength of the business.

The active management will be under the charge of F. W. Wells, who has been actively interested in the nursery business for thirty-two years as producer and seller of nursery stock direct to the planter.

In making this consolidation we were conscious of the fact that by far the most valued asset of any concern is its satisfied customers and it was in full confidence that the list of customers of the nurseries consolidated would continue loyal to the new concern that we were prompted to engage in the enterprise

Recognizing the fact that in mail order business in general there is a growing tendency toward the C. O. D. method of delivery, we have adopted the policy of offering to deliver all orders on a C. O. D. basis.

References

Notwithstanding the fact that it is our policy to sell on a C. O. D. delivery basis we cheerfully refer you as to our responsibility to any bank or business man here in Dansville, or if desired we can doubtless refer you to customers in your immediate vicinity.



Pomona Ship C. O. D.

Prepaid

Freight, Express and Postage

We Trust You. No cash required to apply on account when shipping C. O. D.

All C. O. D. and Cash Orders of \$7.00 and over prepaid to states listed.

All C. O. D. and Cash Orders less than \$7.00 you pay transportation charges.

We prepay transportation charges to all points in the following states :

Connecticut, Delaware, Illinois, Indiana, Maine, Maryland, Massachusetts, Michigan, New Hampshire, New Jersey, New York, Ohio, Pennsylvania, Rhode Island, Vermont, Virginia, West Virginia.

To all other points we prepay one-half of the transportation charges.

To all who prefer to send Cash with Order a 6% discount will be allowed.

NO DISCOUNT ALLOWED ON C. O. D. ORDERS

Plant Enough Fruit at Least For Family Use

Over in Scotland, there is a familiar saying running like this "Be aye stickin' in a tree: it will be growin' while you're sleepin'". If we gave this more consideration there would be more rural places adding materially to their attractiveness, and their larder as well, in fruit season. Nothing on the ground so nearly completed the home as the addition of a good fruit supply—apples particularly. If judiciously planted they may be enjoyed from season to season in their own fresh state.



The word "Orchard" is defined as a "garden of fruit trees" as a garden is a space of a few feet or acres, even so an orchard may be of some half dozen or hundreds of trees. Thus an orchard is within the means of the average man, and the most modest rural place has bits of ground where an apple orchard might be thriving, its branches spreading for beauty, profit and material benefit.

No. 2418

STATE OF NEW YORK

Department of Farms and Markets

DIVISION OF AGRICULTURE

Certificate of Inspection of Nursery Stock

This is to certify that the stock in the nursery of the Pomona United Nurseries, Dansville, County of Livingston, State of New York, was duly examined in compliance with the provisions of section 305 of the agricultural Law and it was found to be apparently free from any contagious or infectious disease or diseases, or the San Jose scale, or other dangerously injurious insect pest or pests. This certificate expires Sept. 1, 1922.

Dated Albany, N. Y., Jan. 25, 1922.

GEORGE E. HOGUE, Commissioner of Agriculture.

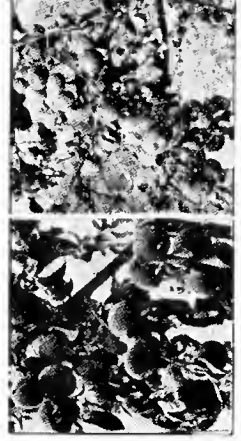
Propagated Where the Best Trees Grow

Select Varieties of Dwarf Apples

Dwarf Apple Trees Appeal to City Buyers whose small gardens have no room for Standard Trees, but offer ample space for a few dwarfs



Like Dwarf Pear Trees they come into bearing much earlier than Standard Trees. Their low broad heads are within reach, so that apples or pears can be easily picked. You can plant your garden full of dwarf fruit trees and still grow strawberries and vegetables. With dwarfs some varieties will bear the second year, and will bear a full crop the fourth year. The use of dwarf trees is pears. While more dwarf trees can be planted upon an acre, and larger fruit can be produced, still they have not found favor among commercial orchardists except in a few sections where an extra high grade fruit is desirable. Dwarf trees are secured by propagating upon a slow growing root.



We offer the best trees budded on Paradise or Doucin stocks. They will succeed in many places where standard trees fail. We can supply in the following varieties:

Yellow Transparent, Gravenstein, Baldwin, McIntosh, Alexander, Duchess, Grimes' Golden, Yellow Belleflower, Twenty Ounce, Delicious, Wagener, Jonathan, Wealthy, Opalescent, Red Astrachan.

Special Wholesale Price for all Varieties of Dwarf Apple Trees

Largest Size	2 Year Trees	4 to 5 Ft.	85c each	10 for \$7.50
Medium Size	2 Year Trees	3 to 4 Ft.	75c each	10 for 6.50
Smaller Size	2 Year Trees	2 to 3 Ft.	50c each	10 for 4.75



Dwarf Apple Tree Collection No. 4

5 Dwarf Apple Trees 2 to 3 ft. high, \$2.25

All selected varieties of the highest value for the home garden, one each of the following varieties:

1 Banana 1 McIntosh 1 Baldwin
1 Yellow Transparent 1 Delicious

These varieties produce fruit three to four years after transplanting and dwarf trees appeal to city buyers where small gardens do not permit of planting standard trees.

Our Price for 5 Trees \$2.25
Agents Price, \$10.00

Dwarf Pear Tree Collection No. 6

5 Dwarf Pear Trees, 2 to 3 feet high, \$2.25

Every garden has room for a few trees of Dwarf Pear and Apple. We have made up a collection of varieties named below that will supply a family with all the Pears needed for canning and dessert.

1 Bartlett 1 Clapp's Favorite 1 Seckel 2 Duchess

Don't fail to order one of these collections and save the high cost you are paying for fruit, by growing it yourself.

Our Price for 5 Trees \$2.25 Agents Price \$9.00



These are special reduced prices on Dwarf Fruit Trees

Select Varieties of Peaches



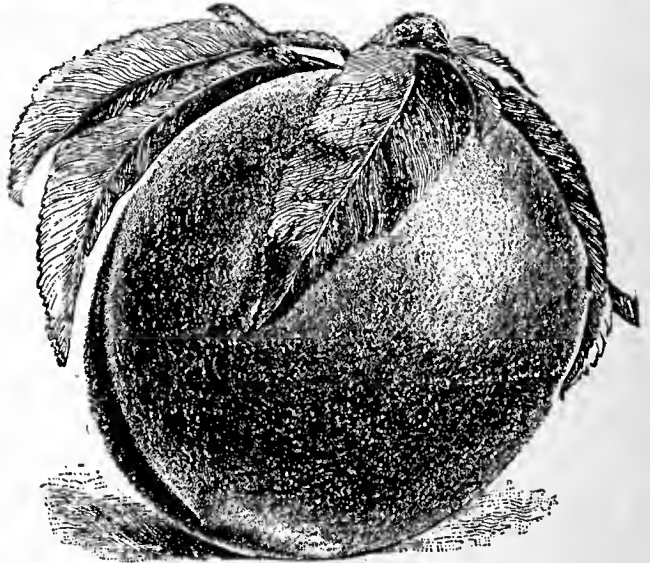
A BLOCK OF 1-YEAR PEACH TREES

- Gold Drop**—Medium size; hardy, very productive, quality the best, early bearer. Last of Sept.
- Wager**—Medium, yellow, good quality. Tree hardy and productive. A profitable late variety. Last of Sept.
- Hiley**—A large, early, white Peach highly colored on sun-exposed side. A profitable commercial variety; very hardy in wood and bud.
- Matthews' Beauty**—Fruit large; ripens two weeks later than Elberta. Skin golden yellow, streaked with red; flesh yellow, firm, excellent flavor. Perfect freestone.
- Reeves' Favorite**—Yellow with beautiful red cheek. Tree fine and large; bears crop regularly.
- Stump**—Roundish, white, with bright red cheek; flesh white, juicy and good. Late. Sept.
- Sneed**—Very early; fruit creamy white with crimson blush; productive; not inclined to rot.

Peach trees are easily cultivated, their comparative freedom from disease, the short period before they become productive, with the immense demand for the fruit and the facilities with which it may be shipped to distant markets, make peach growing extremely profitable, and there are few kinds of fruits more highly prized and more keenly relished.

To secure healthy, vigorous and fruitful trees, the ground must be kept clean and mellow and it should receive an occasional dressing of wood ashes. It should be remembered that peaches are all borne on wood of the previous season's growth, and that this makes it absolutely necessary to prune the trees yearly, to remove dead branches and let in light and air, and keep the trees in good shape to produce bearing wood.

- Triumph**—Earliest yellow-flesh peach, with good eating and shipping qualities, sure and abundant bearer; strong, vigorous grower.
- Willett**—Bright yellow, mostly covered with red. Flesh juicy and rich. Sept. Freestone.



FITZGERALD PEACH

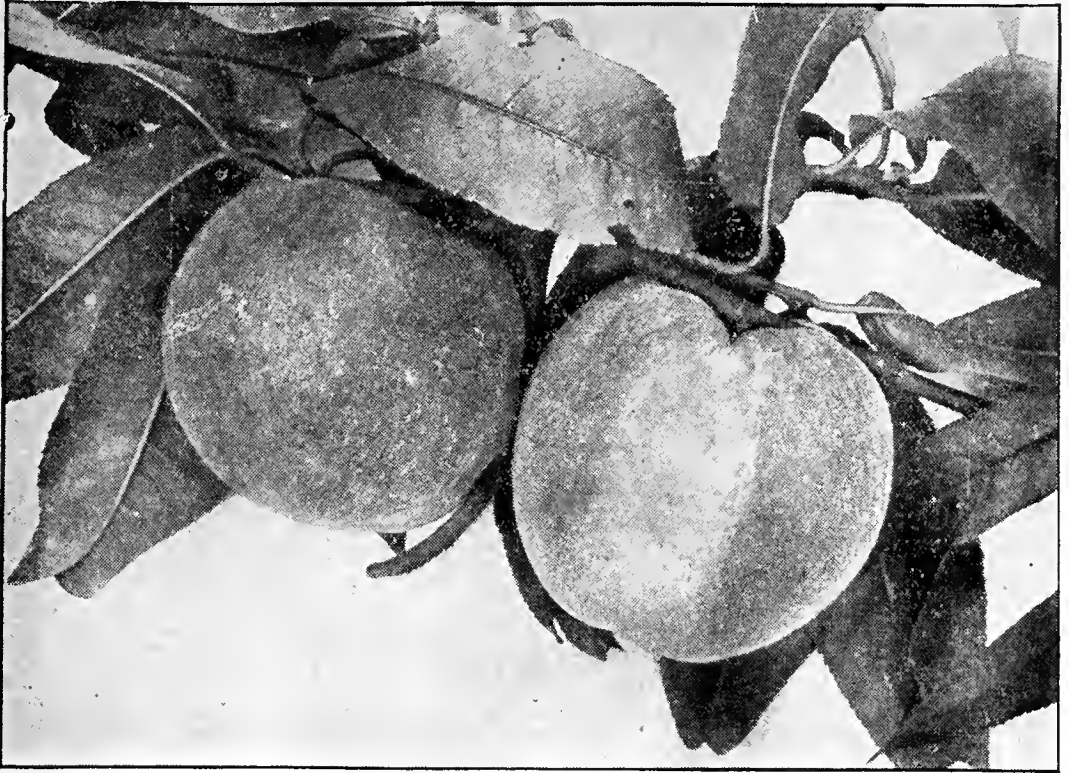


- Hill's Chili**—Medium; deep yellow shaded with dark red. Hardy, vigorous and productive. Good market variety. First of Sept.
- Kalamazoo**—Large, golden yellow, with crimson cheek; flesh thick yellow, superb quality, small pit. Strong grower, early bearer, hardy and productive.
- Salway**—Large; deep yellow, red cheek. Flesh yellow, juicy. Oct.
- Smock**—Large size; light orange yellow with red cheek. Flesh yellow, juicy and rich. Oct.
- Yellow St. John**—One of the best of the early yellow varieties. Of medium size, orange yellow with a red blush on sunny side.

Special Wholesale Price for all varieties of Peach Trees budded on stocks from Natural Pits:

Extra Size Trees,	5 to 6 Feet	XXX	75 cents each	10 for \$6.75	100 for \$37.50
Medium Size Trees	4 to 5 Feet	XX	70 cents each	10 for \$6.25	100 for \$32.50
Orchard Size Trees	3 to 4 Feet	X	65 cents each	10 for \$5.75	100 for \$25.00

Propagated Where the Best Trees Grow



NIAGARA PEACHES (Reduced)

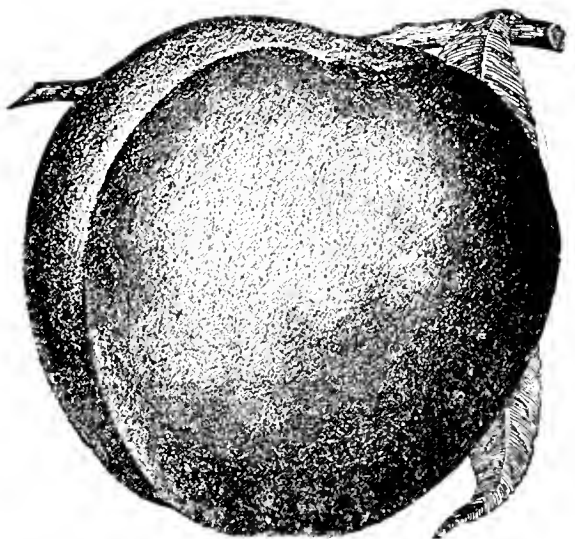
Niagara Peach—One of the best medium early yellow peaches that has been introduced for many years past is the Niagara. It originated in Niagara county, New York, and has been grown there for about ten years past, but only in a small way, until very lately. The fruit of the Niagara peach is much like that of Early Crawford in appearance, being large, oval, yellow with brilliant red cheeks. The flavor is rich and piquant, reminding one of the very best peaches he ever ate. The season is medium early, coming in just before Elberta.

Foster—Large, deep orange red, becoming very dark red on the sunny side; flesh yellow, very rich and juicy.

Banner—Tree a good grower, exceedingly hardy in both wood and buds; bears young, is very productive. Fruit large; deep yellow with crimson cheek; flesh, yellow, excellent quality, rich, firm; equal to any as a keeper and shipper. A profitable late market variety. The first crops on young trees are small sized fruit. Last Sept.

Crosby Frost-proof Peach—A fine, handsome, yellow peach, with remarkably small pit, that bears regular crops north of the peach belt. Quality delicious; season follows quickly after Early Crawford. Crosby is now so well known that it will be no experiment planting it.

Beer's Smock—Large, yellow, with red cheek; flesh yellow and of the very best quality for the season; a regular and enormous bearer, making it very desirable for market purposes. Ripens a few days later than Smock.



Special Wholesale Price for all varieties of Peach Trees budded on stocks from Natural Pits:

Extra Size Trees,	5 to 6 Feet	XXX	75 cents each	10 for \$6.75	100 for \$37.50
Medium Size Trees	4 to 5 Feet	XX	70 cents each	10 for \$6.25	100 for \$32.50
Orchard Size Trees	3 to 4 Feet	X	65 cents each	10 for \$5.75	100 for \$25.00



EARLY CRAWFORD PEACHES (Reduced)

Crawford's Early—A magnificent large yellow peach of good quality. Tree vigorous and prolific; its size, beauty and productiveness make it one of the most popular varieties. Season beginning of September. This valuable peach has long been a favorite for large size, beauty and quality of fruit. Most people when they buy peaches ask for Crawford's, knowing but little about any other variety. In past years this was the earliest peach, but now much earlier kinds are known, hence it is about mid-season in ripening. Everybody who plants peach trees plants Crawford's Early.

Belle of Georgia—Large; white, with red cheek; flesh white, firm and of excellent flavor. Tree a rapid grower and very productive. Early July.

Hale—Large, attractive, yellow flesh, fine grained and unusually solid.

Rochester—Early, good size, yellow free stone of fine quality, ready for market the middle of Aug.

Crosby—A remarkably fine peach for the home use or market. Ripens just before Crawford's Late. Middle of Sept.

Chair's Choice—Deep yellow, with red cheek; flesh yellow and very firm. Oct.

Engle's Mammoth—Large, round, suture slight; yellow with red cheek; flesh yellow, stone small, free; sweet, rich, juicy.

Pomona Trees—The Standard of Value and Quality, And the Greatest of these is Quality

Special Wholesale Price for all varieties of Peach Trees budded on stocks from Natural Pits:

Extra Size Trees, 5 to 6 Ft.,	XXX 75 cents each,	10 for \$6.75,	100 for \$37.50
Medium Size Trees, 4 to 5 Ft.,	XX 70 cents each,	10 for \$6.25,	100 for \$32.50
Orchard Size Trees, 3 to 4 Ft.,	X 65 cents each,	10 for \$5.75,	100 for \$25.00

Now is the Time to Plant Peach Trees

There are 49,000,000 less Peach Trees in the Orchards of the U. S. today than ten years ago.

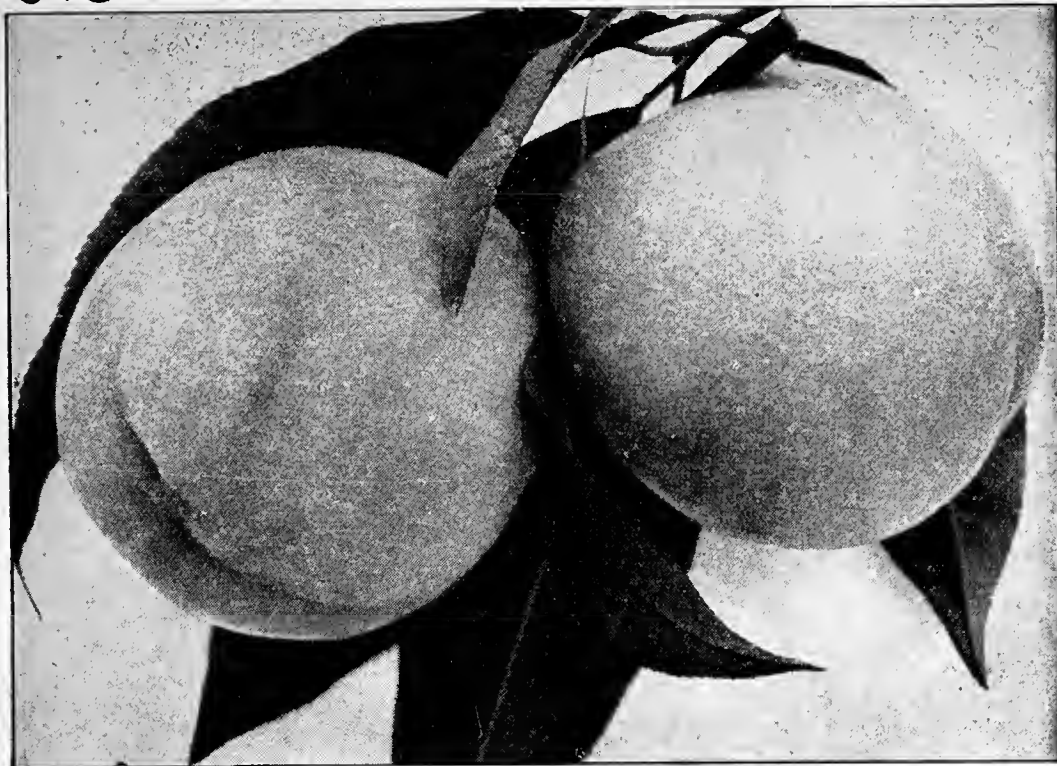
Peach Trees of Bearing Age

1920	65,654,921
1910	94,506,657
Decrease	28,851,736
Per cent of decrease.....	30.5

Peach Trees Not of Bearing Age

1920	21,623,657
1910	42,266,243
Decrease	20,642,586
Per cent of decrease.....	48.8

These figures were issued by the Dept. of Commerce Washington, D. C., June 27, 1921.



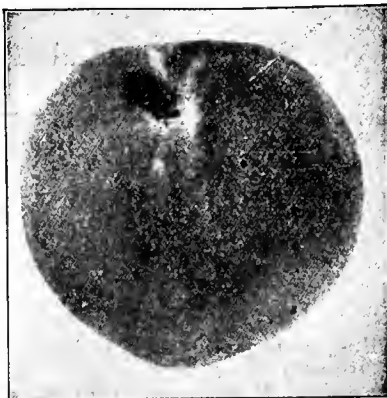
ELBERTA PEACH

Elberta—A valuable, large peach of good quality. The best orchard variety, and valuable also for planting in the garden. Elberta is hardier in bud than many varieties, therefore a more uniform cropper. Elberta is large, yellow, with red cheek, juicy and high-flavored, flesh yellow; freestone. Season medium early, following quickly upon Early Crawford

Champion—Tree and fruit buds extremely hardy—has stood eighteen degrees below zero and produced a full crop the following summer. The flavor is delicious, sweet, rich and juicy; skin creamy white with red cheek, strikingly handsome. A good shipper. Last of Aug.

Crawford's Late—Of large size; skin yellow or greenish yellow, with dull red cheek; flesh yellow. Tree vigorous; moderately productive; one of the finest late sorts. Last of Sept.

Fitzgerald—Fully equal to Crawford's Early in size, quality and color, a very early bearer, hardy, succeeding in Canada and in Michigan perfectly; fruit large, brilliant yellow with red cheek; highest quality; ripens after Crawford's Early.

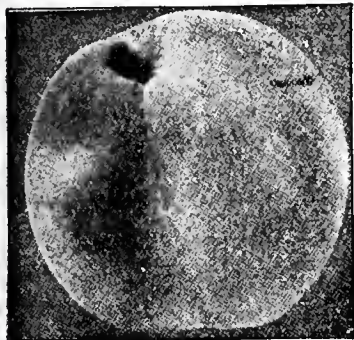


CARMAN HARDY PEACH (reduced)

Carman—A very hardy peach, ripening at same time as Early Rivers, yet almost as large and fine as Elberta. Skin pale yellow with blush on sunny side; flesh white, tender, sweet and melting. Ships well. Middle of August.

Early Rivers—Large; color creamy white, with a delicate pink cheek, flesh melting, with a remarkably rich, racy flavor. Middle of Aug.

Greensboro—A valuable early white peach. Much larger in size than Alexander, ripening about the same time. July.



CHAMPION PEACH (reduced)

Special Wholesale Price for all varieties of Peach Trees budded on stocks from Natural Pits:					
Extra Size Trees,	5 to 6 Feet	XXX	75 cents each	10 for \$6.75	100 for \$37.50
Medium Size Trees	4 to 5 Feet	XX	70 cents each	10 for \$6.25	100 for \$32.50
Orchard Size Trees	3 to 4 Feet	X	65 cents each	10 for \$5.75	100 for \$25.00



Among the great variety of fruits produced in our Country there is none so healthful, so easily grown and useful in so many ways in cooking, preserving and making jellies as the Apple, truly named the King of Fruits.

Special Wholesale Price for All Varieties of Apple Trees

2 Year Trees			Each	Ten	Hundred
Large Size	5½ to 7 Feet	XXX	.70	\$6.50	\$52.50
Orchard Size	4½ to 5 Feet	XX	.60	5.50	42.50
Large Size	1 Year 3 Feet and Up		.65	6.00	47.50

Red Astrachan—The well known early variety. Fruit large, roundish, nearly covered with deep crimson, juicy, rich, acid and fine. Highly regarded on account of its fine appearance, earliness and hardiness. Tree a vigorous grower and sure bearer. Aug.

Yellow Transparent—A Russian variety. Tree an upright grower and a very early and abundant bearer. Fruit of good size; skin clear white, turning to a pale yellow; flavor acid and very good. Ripens from ten days to two weeks earlier than Early Harvest.

Early Harvest—Medium to large; pale yellow; fine flavor. Tree a moderate, erect grower, and a good bearer; a beautiful and excellent variety for orchard and garden. Aug.

Sweet Bough—Large, pale greenish yellow; tender and sweet. Moderate grower and a good bearer. Aug.

Early Strawberry—Medium, striped with deep red; tender, sub-acid and excellent; a poor grower but productive. Aug.

Williams' Favorite—A bright red apple, of mild, agreeable flavor. Aug. to Sept.

Carolina Red June—Small or medium, deep red, quality good. Tree hardy and a fine grower. Aug.

Golden Sweet—Large, pale yellow, tree a good grower and very productive. Aug. to Sept.

Fanny—Large, deep rich crimson, tender, juicy, pleasant. Tree vigorous and very productive. Aug.

SPECIAL APPLE COLLECTION NO. 1

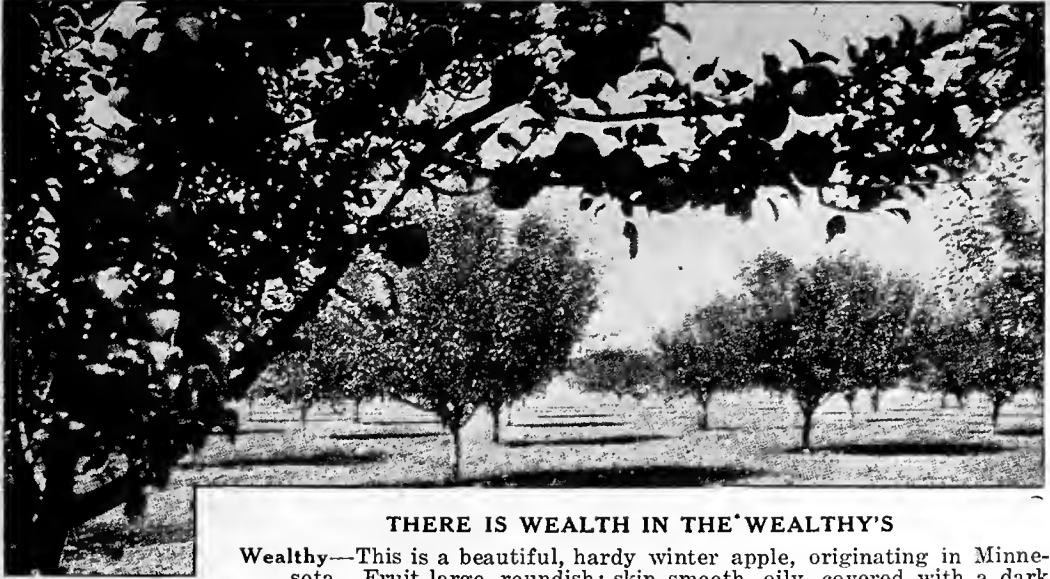
10 Selected Varieties
4½ to 5 Feet for \$4.98

- | | |
|-------------|-----------------|
| 1 King | 1 Grimes Golden |
| 1 Greening | 1 Banana |
| 1 Baldwin | 1 Northern Spy |
| 1 Delicious | 1 Yellow Trans. |
| 1 Wealthy | 1 Red Astrachan |

Special Price, \$4.98
Sold by Agents for \$10.00



Propagated Where the Best Trees Grow



THERE IS WEALTH IN THE 'WEALTHY'S

Wealthy—This is a beautiful, hardy winter apple, originating in Minnesota. Fruit large, roundish; skin smooth, oily, covered with a dark red. Flesh white, tender, juicy, vinous, sub-acid; quality very good.

This is one of the few most desirable varieties for Minnesota, Wisconsin, Iowa, Nebraska, as well as the Eastern and Middle States. In season it differs somewhat, according to locality; in New York and neighboring states its season is Dec. to Feb., and owing to its early bearing qualities it is planted largely as a filler.

Maiden's Blush—Medium size, flat, quite smooth and fair; pale yellow with beautiful red cheek. Tender, sprightly, pleasant acid flavor. Tree vigorous and productive. Good market variety. Sept. and Oct.

Gravenstein—An apple of excellent quality. For culinary purposes it is perhaps unexcelled by any variety of its season. Fruit large and uniform in size, skin thin, tender greenish yellow overlaid with dark red. Sept.

Fall Pippin—Very large, roundish, oblong; yellow; flesh tender, rich and delicious. Tree spreading, and a fine bearer; valuable for table or market use. Sept.

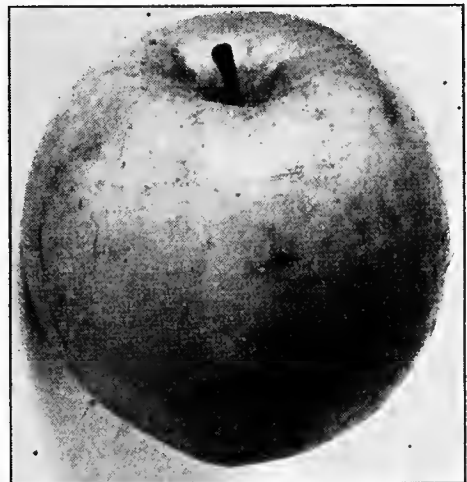
Alexander—A Russian variety, very hardy and abundant bearer. Fruit large, deep red; flesh white, crisp, tender, good flavor. Oct.

Pumpkin Sweet (Pound Sweet.)—A fine, large, yellow sweet apple. Excellent for baking or stewing. Oct. to Jan.

Autumn Strawberry—Medium, streaked, tender, juicy, fine and productive. Sept. to Oct.

Duchess of Oldenburg—A Russian variety of large size and beautiful appearance. Roundish, streaked with red and yellow, flesh white, tender, juicy and fine. A cooking apple of highest quality and esteemed by many for dessert. Tree a strong vigorous grower and abundant bearer. Succeeds well in the Northwest. We recommend Duchess as being the most valuable commercial variety.

Rambo—Medium streaked and splashed with red, rich, sub-acid. Oct.



The Best Late Fall Apple—FAMEUSE

Fameuse (Snow Apple)—Hardy, Medium size; deep crimson; flesh is snowy white, tender, melting and delicious. Tree vigorous with dark wood; one of the finest dessert fruits, and valuable for market; succeeds particularly well in the North. Nov. to Jan.

DO NOT DELAY PLANTING

There are 65,000,000 less Apple Trees in the orchards of the U. S. today than ten years ago.

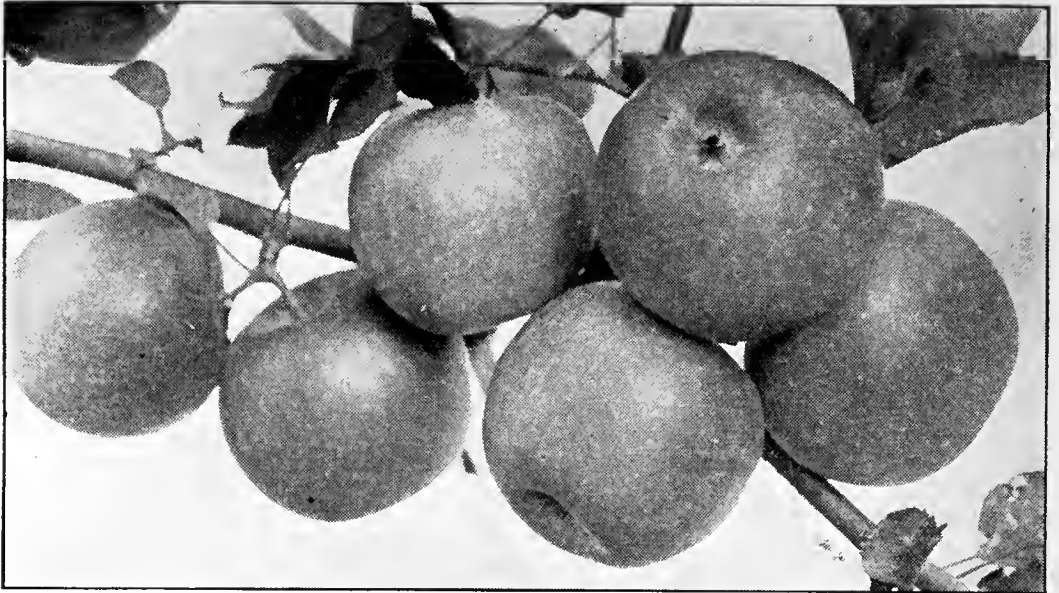
Apple Trees of bearing age:

1920	115,265,029
1910	151,322,840
Decrease	36,057,811
Per cent of decrease.....	23.8

Apple Trees not of bearing age:

1920	36,171,604
1910	65,791,848
Decrease	29,620,244
Per cent of decrease.....	45.0

These figures were issued by the Department of Commerce, Washington, D. C., June 27, 1921.



HUBBARDSTON NONESUCH

Hubbardston Nonesuch. Here is an apple that is not surpassed the world over for large size, great beauty of color or for excellent quality. It is an apple that should be growing in every garden and orchard. Fruit large, roundish; color bright red on yellow skin; flesh yellow, with a fine, rich, aromatic flavor, sub-acid. The tree is a vigorous grower, and is exceedingly productive, bearing an abundant crop of fruit every year. Nov. to Jan.

McIntosh Red. An exceedingly valuable Canadian sort; medium size, nearly covered with dark red; flesh white, fine, very tender, juicy and refreshing. A good annual bearer of fair, handsome fruit. Resembles the Fameuse, but larger and more hardy, and fully equal in quality to this standard sort. Its season of ripening varies according to the location. In Northern New England it is a winter variety while in sections a little further South it is considered a fall or early winter apple.

Roxbury Russet—Medium to large. Surface rough, greenish covered with russet. Tree free grower, spreading; a great bearer. Keeps until June. Its great popularity is its productiveness and long keeping.

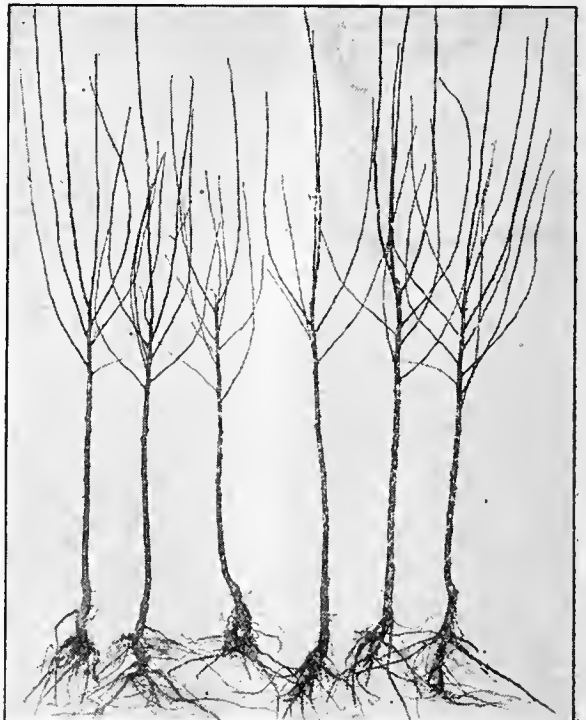
Esopus Spitzenburg—Large, deep red with gray spots, and delicately coated with bloom; flesh yellow, crisp, rich and excellent. Nov. to Apr.

Stayman's Winesap—Fruit medium, large; skin green and yellow, red-striped; flesh yellow, firm; quality excellent. A seedling of Winesap but larger, better and more productive. Dec. to Apr.

The U. S. Chamber of Commerce Says:

A fruit grower is engaged in the most profitable department of agriculture. He has ready money for what he needs, and as a rule lives on a higher plane and consumes more of the comforts and luxuries of life.

Jacob Sweet—A large showy apple, green or yellowish, often with bright blush. One of the best sweet apples. Oct. to Apr.



STANDARD APPLE TREES, 5½ to 7 ft. High



PLATE OF PERFECT BALDWIN APPLES

Baldwin—A great market apple, very productive of fair handsome fruit. No variety yields larger crops or bears shipment better, or is more attractive in color, size and shape, than the Baldwin. It is esteemed as an eating apple, and for cooking. Thousands of barrels of this fruit are exported to England annually. For a commercial orchard it can be relied upon. Large, bright red, crisp, juicy and rich; tree vigorous, upright and productive. In New England, New York, Ontario and Michigan, this is one of the most popular and profitable sorts for table or market. Dec. to Mar.

Rome Beauty—A large and handsome, apple, almost entirely covered with bright red; of high quality. The flesh is tender, juicy and highly flavored. It is a popular apple over a wide range of country, particularly in the West. Dec. to Mar.

Newtown Pippin (Albemarle Pippin)—This is one of the best apples for shipping to foreign markets. When fully ripe it is yellow with red cheek and a smooth skin.

Bailey Sweet—A beautiful red apple of good quality. Oct. to Jan.

Northwestern Greening—A hardy winter apple of very large size, much larger than R. I. Greening. This apple is highly prized in localities where the ordinary Greening will not succeed. Prof. H. E. VanDeman says: "One of the best of the hardy kinds." The size is large, very round and symmetrical in shape; color, green, which turns yellow at full maturity; flesh yellowish, fine grained, tender, juicy; sub-acid; quality good; equal to Wealthy in point of hardiness. Jan. to Apr.

Twenty Ounce—Very large; greenish, becoming yellow, mottled and splashed with bright red. Flesh tender and juicy. Sept.

Grimes' Golden—Medium to large size; skin golden yellow, sprinkled with gray dots; flesh crisp, tender, juicy, sprightly, very good to best. Grown in the South and Southwest. Jan. to Apr.

Smoke House—This grand apple is a great favorite in Pennsylvania and doesn't seem to be known much elsewhere. Tree a vigorous grower, healthy, hardy and a reliable cropper. The fruit hangs well to the tree and is of good color and quality, uniform in size and shape. Oct. to Mar.

Gano—A fine commercial sort. Very hardy. A half brother to Ben Davis, though of better quality. Very richly colored, uniform in size; keeps until March; rapid grower, fruit very handsome, flesh pale yellow, mild, sub-acid, good. Large, good marketing and keeping.

Yellow Belleflower—Season, winter. A hardy apple of large size, a beautiful golden color, often with red, blush; conical in shape. Flesh very tender and fine grained, crisp, juicy, sub-acid, of excellent quality. Oct. to Feb.

Boiken—Medium size; yellow, tart, acid, long keeper. A very good cooking apple.

Winter Varieties of Apples



BRANCH OF R. I GREENING APPLES

Rhode Island Greening—This large and superior winter apple is famous over a large extent of country, and is more highly prized for cooking and eating than any other variety. It is a good keeper but will keep better if picked early. This Greening is a beautiful yellow color when ripe, and is a most abundant yielder. March to April.

Sutton Beauty—Fruit large, waxy yellow striped with crimson; flesh white, tender, juicy, mild acid; quality good and a remarkable keeper. Tree vigorous, a handsome grower, very productive. Dec. to Feb.

Golden Russet—Medium to large size, dull russet, with a tinge of red on the exposed side; flesh greenish, crisp, juicy, and high flavored; hardy, bears well. Nov.

Jonathan—A beautiful red apple, highly flavored and of excellent quality, being tender, juicy, spicy, and rich—a splendid family sort and highly profitable for market. Tree long-lived, productive. Nov. to Apr.

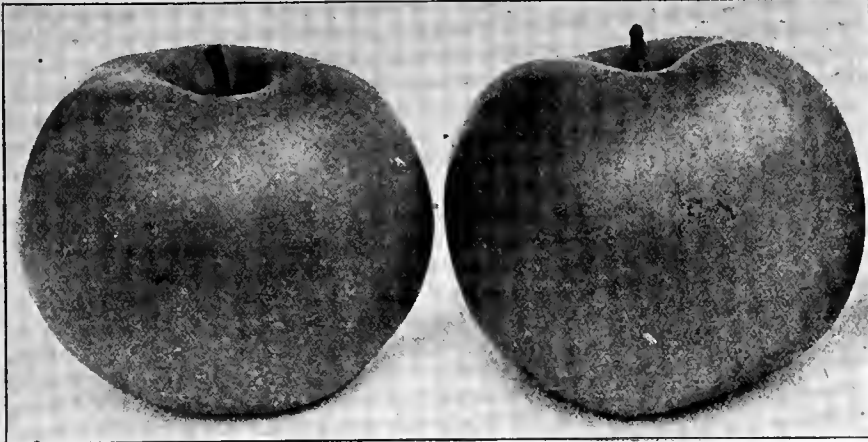
King of Tompkins County—One of the standard varieties grown for commercial purposes, and gives the greatest satisfaction when top-worked on some hardier variety. The fruit is of a bright red color, large and uniform. It is well adapted for marketing in fancy packages and is in good demand for both special and general trade, often selling at an advance over standard varieties. The flesh is yellowish, crisp, tender, juicy and sub-acid, and of the best quality.

Wagener—Medium to large; deep red in the sun; flesh firm, sub-acid, and excellent; very productive, bears very young. Dec. to May.

Delicious—This apple is appropriately named for its handsome appearance as well as high quality. Everyone should plant one or more trees. Fruit large, oblong, nearly covered with bright red; of the highest quality.



DELICIOUS APPLE—Large in Size as will be seen by the comparative size of a Silver Dollar



I
Will
Plant
Them
Quality
Tells

WINTER BANANA APPLES

Winter Banana—Perfect in form; golden yellow, and beautifully shaded with bright crimson red; flesh lemon-yellow, fine grained, sub-acid, rich, aromatic flavor, and of the highest quality. A good keeper. Tree remarkably strong grower. A valuable market variety. Nov. to Jan.

Northern Spy. One of the standard and best known varieties. Has long been a favorite among commercial sorts in northern New England, Michigan, New York and adjoining states. Dec. to March.

York Imperial—A fine, hardy, large, red apple; succeeds over a wide range of country. A fine market sort, bringing highest prices. Fruit large, oblong, smooth, skin yellow and nearly covered with light to dark red; flesh yellow, juicy, firm, sub-acid, good. An early bearer. Nov. to Feb.

Seek-No-Further—Medium to large, slightly russeted with dull red stripes; tender, rich, spicy and fine; good grower and bearer. Nov. to Feb.

SELECT VARIETIES OF CRAB APPLES

Whitney's Seedling—Large, averaging one and one-half to two inches in diameter; skin smooth, glossy, green striped, splashed with carmine; flesh firm, juicy and rich. A great bearer and very hardy.

Transcendent—Medium to large; roundish, oblong; golden yellow, with a rich crimson cheek, covered with a delicate white bloom; flesh yellow, crisp and when fully ripe, pleasant and agreeable; perfectly hardy.

Large Red Siberian—About an inch in diameter, grown in clusters; yellow, lively scarlet cheek. Tree erect, vigorous, bears young.

Hyslop—Almost as large as Early Strawberry Apple; deep crimson; very popular on account of its large size, beauty and hardness. Keeps well into the Winter.

Personal Service is the Foundation of Our Success

Yes—Friendship, Good Faith, Sincerity and Personal Service do exist in business. They are the foundations of our success.

Ben Davis—Succeeds wherever apples are grown. There is no apple that has more favors on account of its hardness, productiveness, beauty and endurance in shipping. Nov. to Apr.

Williams' Favorite—A bright red apple, of mild, agreeable flavor. Aug. to Sept.

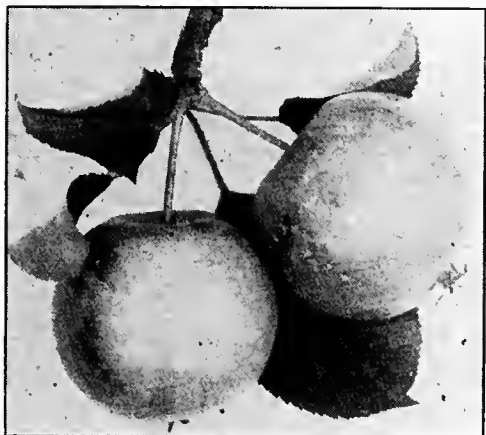
Carolina Red June—Small or medium, deep red, quality good. Tree hardy and a fine grower. Aug.

Gilliflower—(Black.) An old dessert apple; tree a good vigorous grower and a reliable cropper. Oct. to Feb.

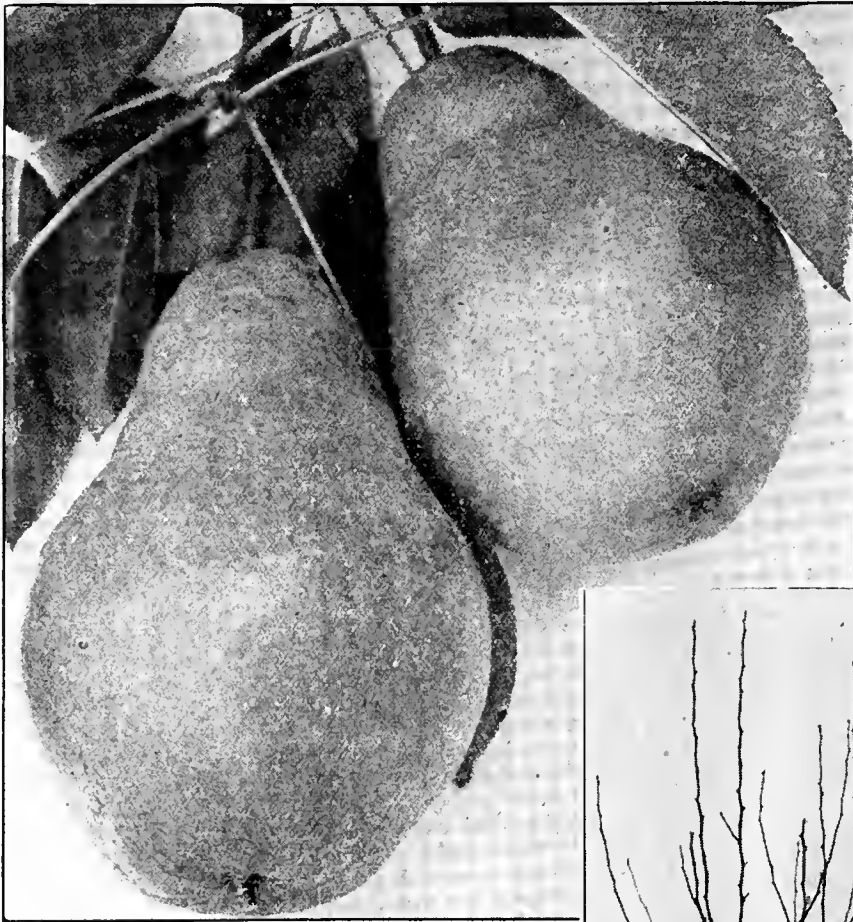
Mammoth Black Twig—The tree is a strong grower, a regular and abundant bearer. A good winter apple. Deep red; sub-acid, very high flavored.

Stark—Esteemed as a long keeper and valuable market fruit. Fruit large roundish; skin greenish yellow, much shaded with light and red, and sparkled with brown spots; flesh yellowish, juicy, mild sub-acid. Jan. to May.

Tolman Sweet—Season, winter. Medium to large size; color, light yellow; flesh, white, firm, rich, and very sweet. Excellent for winter baking. Keeps well into spring. A late, well known favorite. Nov. to April.



TRANSCENDENT CRAB



Select
Varieties
of
Standard
Pear
Trees

BARTLETT (The King of Pears)

Bartlett—Large, coloring when fully ripe to waxy yellow with red blush; juicy, melting, highly flavored. The tree bears early and abundantly. May be grown either as dwarf or standard, but succeeds best as standard. Aside from the fact that it bears early, regularly and abundantly, the Bartlett pear is justly popular on account of its size, beauty and excellence. It originated in Berkshire, Eng., about 1770. When introduced to this country its name was lost. Since it was cultivated and discriminated by Enoch Bartlett, it became universally known as the Bartlett. Aug. and Sept.

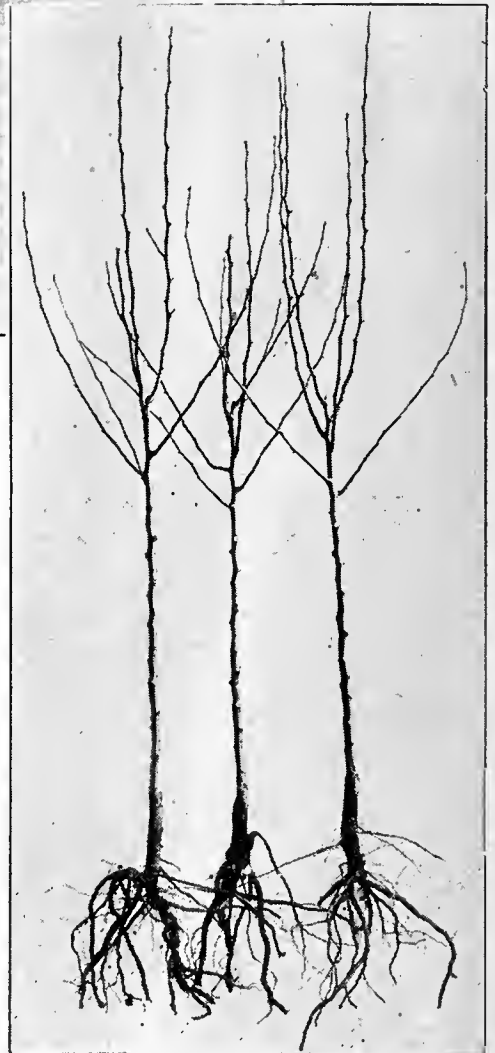
Seckel—Small size; yellowish russet, with red cheek; flesh whitish, buttery, very juicy and melting. The richest and finest variety known and extensively planted all over the country. A prolific bearer. Sept. to Oct.

**Special Wholesale Price for all Varieties
of Standard Pear Trees**

Large Size, 2 Yr. Trees, 5½ to 7 Ft., XXX, 85c each, 10 for \$8.00, 100 for \$75.00.

Orchard Size, 2 Yr. Trees, 4½ to 5 Ft., XX, 75c each, 10 for \$7.00, 100 for \$70.00.

Large Size, 1 Yr. Trees, 3 Feet and Up, 70c each, 10 for \$6.50, 100 for \$60.00.



STANDARD PEAR TREE 5½ to 7 Feet High



CLAPP'S FAVORITE PEAR

Sheldon—Large size; roundish; greenish yellow, mostly covered with thin light russet; very juicy, melting, sweet and vinous; a fine grower and good bearer. Oct. to Nov.

Duchess d' Angouleme—Very large; of greenish yellow, with patches of yellow and a dull red cheek; a vigorous and strong grower and a good bearer while quite young. Oct. to Nov.

President Drouard—Highly recommended for its rich flavor and great keeping qualities. Tree a vigorous grower. Fruit large and handsome; melting and juicy. Mar. to May.

Lawrence—Above medium size, yellow, tender and melting; quality best; one of the best winter pears. In season during mid-winter.

Louise Bonne de Jersey—Large size, pale green in the shade but overspread with brownish red in the sun; very juicy and melting with a rich and excellent flavor. Sept. to Oct.

Seckel—Color, bright red on one side and light golden on the other. Very hardy; bears young, and is an enormous producer.

The Genesee Valley

Supplies the world with fruit trees. Millions of trees and plants are shipped from Dansville each year. In the fertile state of New York is probably no valley which is more famous, more diversified in its agriculture, nor one possessing greater possibilities than that of the Genesee. It is here where trees are grown to perfection and are known to make a more healthy and vigorous growth than those grown elsewhere.

Good Trees cost the least and are the smallest investment you put into any field or garden. It is the smallest initial expense and counts for the most.

Clapp's Favorite—Large size; pale lemon yellow; flesh fine grained, juicy, melting, rich and buttery, earlier than Bartlett and resembling the Flemish Beauty in growth. It is equally hardy with Flemish Beauty; a good grower and productive. Very desirable in all sections, and especially so where other varieties fail. Care should be taken to pick the fruit at least ten days before it would ripen upon the tree. Aug. and Sept.

Anjou—For late fall and early winter use, there is no better variety. **Quality Equal to Bartlett.** A close second to Bartlett in public favor. Distributes its fruit well, and sands up under a load better than Bartlett. Equal in quality to Bartlett and holds up longer. Hardly so prolific as Bartlett, but usually higher in price and one of the most profitable sorts grown. In a pear orchard a combination of Bartlett and Anjou leaves nothing be desired. Oct. to Jan.

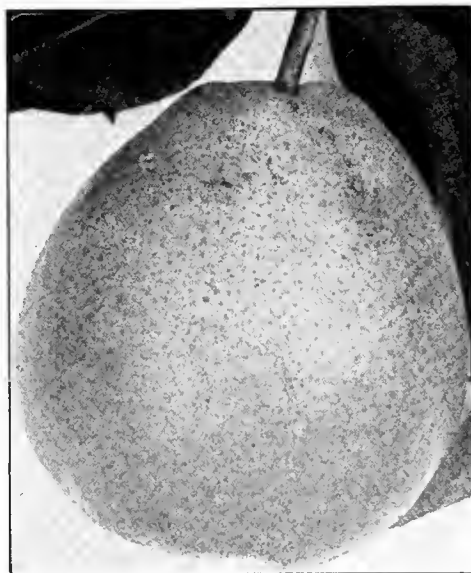
Beurre Clairgeau—Very large; light yellow, shaded with crimson and russet; an early and abundant bearer. Jan.

Howell—Large size; light-waxen yellow, sweet and melting; excellent quality; a strong and hardy grower and good bearer. Sept. to Oct.

Flemish Beauty—Large size; greenish yellow and brown; rich and juicy. An old and highly esteemed variety; a strong grower and a great bearer; hardy and desirable. Fruit almost covered with light russet, becoming reddish-brown when ripe. Large, beautiful, melting, sweet and rich. Tree is very hardy but needs sunny situations.

Wildor—Handsome, melting, sweet, pleasant, with small core, fine grained, tender and juicy. Greenish yellow with brownish red cheeks. Aug.

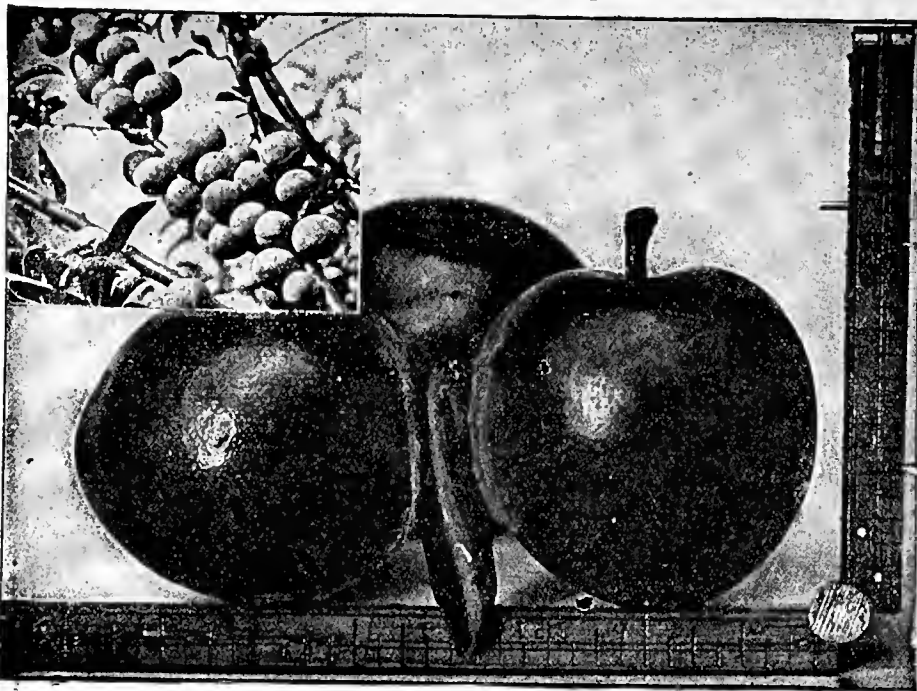
Kieffer—A vigorous grower, an early and regular bearer and very productive, fruit large, rich yellow, tinged with red, somewhat russet, flesh white, buttery and juicy. A good canning pear. Oct.



ANJOU PEAR

Select Varieties of Plums

The Plum does best on a strong, clay soil, where it grows the most thriftily, and as is the case with all other fruits, it is greatly benefited by thorough cultivation.



BURBANK—The Reliable Cropper

Burbank—The best and most profitable among growers for market; ripens 10 to 14 days after Abundance. Burbank is one of the best of Japan Plums. Unsurpassed for beauty and productiveness, as well as great hardiness of tree, with a foliage so perfect as to contribute in an essential degree to its health. Fruit large, oval often with a slight neck; skin reddish purple; flesh yellow, juicy and good. Its beauty and value as a market variety is unsurpassed.

Red June—Recommended as "by all odds the best Japanese Plum, ripening before Abundance." One of the vigorous, upright growers; productive; fair size, vermilion red; pleasant quality. Ripens a week before Abundance. Aug.

Wickson—Fruit remarkably handsome, very large, long, heart-shaped, color deep maroon red covered with white bloom; flesh firm and meaty, yellow, rich and aromatic; cling; pit small. Tree an upright vigorous grower. Excellent keeper and shipper, is being planted largely for market. Early Sept.

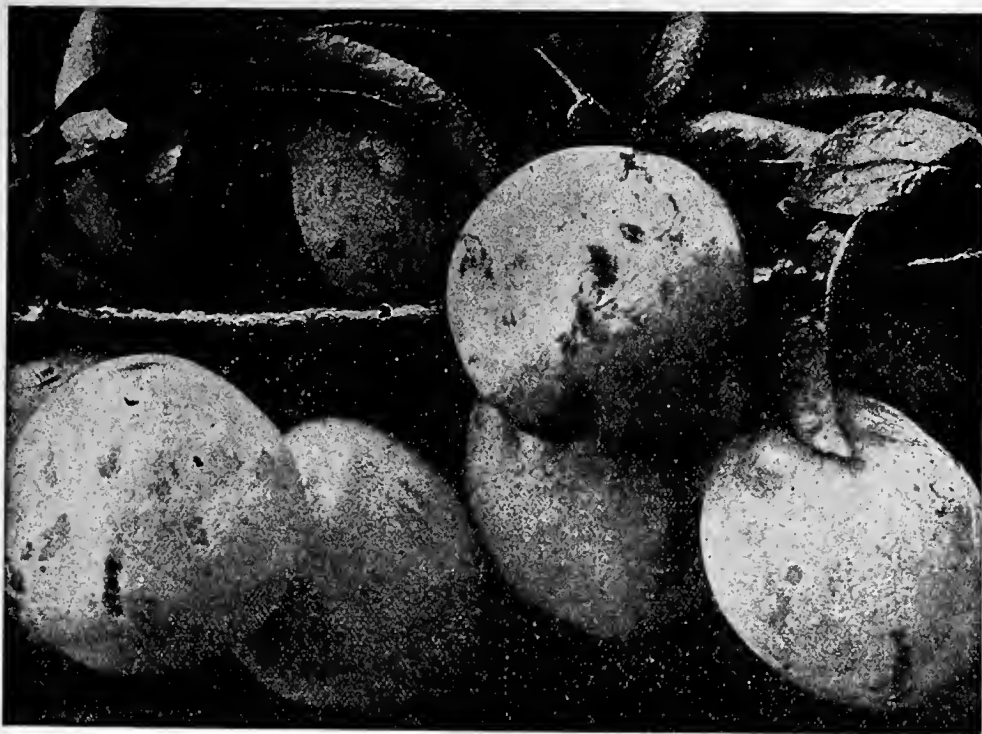


RED JUNE

Before planting your orchard make sure that you have selected varieties which are adapted to your soil, climatic and market conditions. If you have any question or wish our advice in selections, we are glad to help you and will answer to the best of our ability.

Special Wholesale Price for all Varieties of Plum Trees

2 YEAR TREES			Each	10	100
Large Size	5½ to 7 Feet	XXX	\$.90	\$8.50	\$85.00
Orchard Size	4½ to 5 Feet	XX	.85	7.75	75.00



ABUNDANCE PLUM—Hardy and Productive

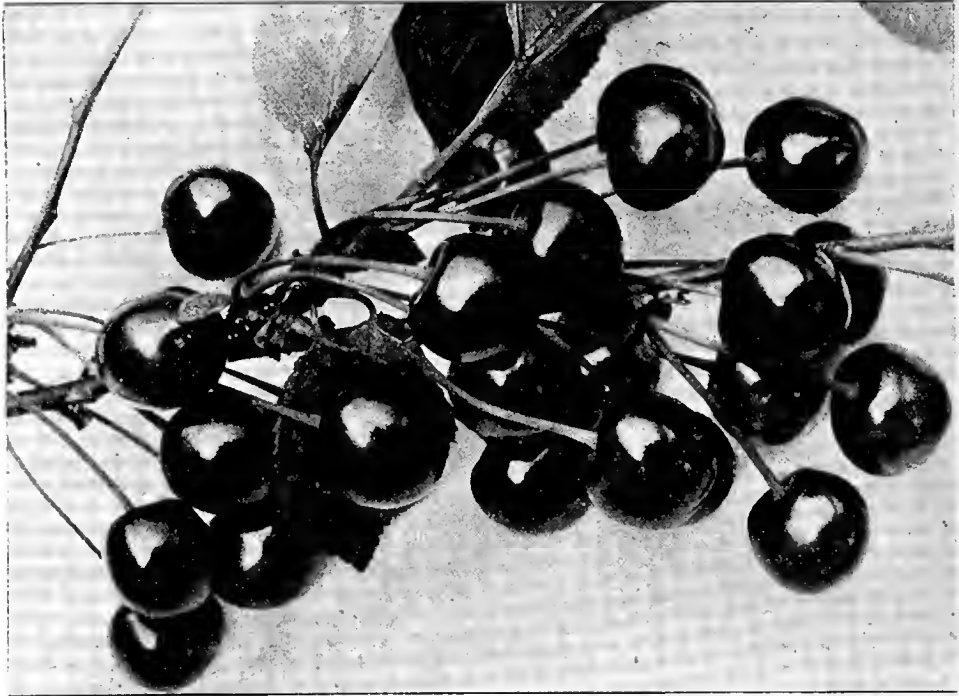
Abundance—The popular plum. Tree thrifty, hardy and beautiful; fruit large, showy and good, richly perfumed. The editor of *The Rural New Yorker* writes: "From one little Abundance tree we picked ten pecks of fruit. The quality is excellent. When fully ripe they are full of juice. The flesh is tender, and there is mingled with the plum a peach flavor that is refreshing and agreeable." First of August.

European Varieties of Plums

- Beauty of Naples**—Size large, color greenish-yellow, flesh firm, juicy and very fine flavored. Sept.
- Hungarian Prune**. (Pond's Seedling)—Very large, dark red, juicy and sweet. Sept.
- Felleberg**. A fine late prune; oval, purple; flesh juicy and delicious. Sept.
- German Prune**—A large, long oval variety, much esteemed for drying; color dark purple; of very agreeable flavor. Sept.
- Lombard**—A great favorite because it is a wonderful and early bearer and a hardy strong grower.
- Coe's Golden Drop**—Large and handsome. Last of September.
- Grand Duke**—Fruit oval with a short neck. Skin dark, almost a darkish purple.
- Green Gage**—Small; considered the standard of excellence; slow grower. August.
- Imperial Gage**—Fruit large, oval; skin pale green, flesh juicy, sweet, rich and excellent.
- Shipper's Pride**—The fruit is of a large size, dark purple; excellent for canning and an unusually good shipper.
- Shropshire Damson**—An English variety of great merit for preserving. Large. Oct.
- Yellow Egg**. A large beautiful egg-shaped yellow plum. Last of Aug.
- Geuii**—Fruit large, roundish, oval; skin dark purple, covered with thick blue bloom; flesh yellow.
- General Hand**—Very large, oval; golden-yellow; juicy, sweet and good. First of Sept.
- Reine Claude**—A delicious greenish-yellow Plum, spotted with red. It is of the finest quality and the housewife's ideal Plum for canning and preserving. Sept.
- Tatge**. Evidently a seedling of the Lombard. Is larger, more nearly round, darker color and finer quality than that well known and excellent variety.
- Pond's Seedling**—Tree a vigorous grower and most abundant bearer. One of the most attractive in cultivation. Sept.
- York State Prune**—Originated in Dansville. Large size and resembles German Prune in shape and color. Small stone and very free. Very valuable for commercial planting.
- Niagara**—Unsurpassed for beauty and productiveness as well as great hardiness of tree. Fruit large, oval often with a slight neck.
- Monarch**—It is roundish oval in shape and dark purplish blue in color.
- Moore's Arctic**—A very abundant and early bearer. Fruit ripens first of September. This is a purplish-black Plum with a thin blue bloom; flesh greenish-yellow, juicy and sweet.
- Bradshaw**—This is a very large, dark violet red plum, very juicy and good. The quality of Bradshaw is very fine and is very popular wherever planted.

Select Varieties of Cherries

The Cherry grows best on gravelly soil, and there attains its highest perfection, but will do very well in almost any situation except a wet one. It is one of the most ornamental of all fruit trees which, with its delicious and refreshing fruit, makes it very desirable for planting near the dwelling, where beauty and shade, as well as fruit, are so desirable.



The most popular Cherry MONTMORENCY ORDINAIRE hardy and productive

Montmorency Ordinaire—The most popular of hardy cherries for market and home use. This cherry is planted largely in all parts of the country. The fruit is in great demand by canning factories and others, and sells at fancy prices. Montmorency has been growing in popularity all over the country each year, so that it has been almost impossible to grow trees fast enough to keep up the demand. It is of large size, light red in color, stem rather short. The tree is very hardy and a vigorous grower. The trees bear fruit soon after planting. I visited a friend last summer who has a large orchard of Montmorency cherries in bearing. The trees have been planted only a few years, and yet they were laden with the most beautiful fruit.

Ostheim—Very hardy, fruit large and roundish. Flesh is liver colored, tender, juicy and almost sweet, although a sub-acid cherry. Quality good. Middle of July.

Olivet—A tree of this variety should be in every garden. The fruit is very large, has a shining deep red color; tender, mild sub-acid flavor. Finest table and canning Cherry you can get. Ripens in June.

Wragg—A Russian variety. One of the hardest cherries, vigorous and productive, medium size, dark purple, fine quality and has produced annual crops at the northernmost limit.

English Morello—The most valuable late cherry. Easily grown, producing a heavy crop every year. Fruit dark red, quality good, with a rich, acid flavor; late. Tree very hardy, for extremely cold latitudes. Aug.

Early Richmond—One of the most valuable and popular cherries, unsurpassed for cooking purposes. It is the good old variety that yields such marvelous crops in the gardens. The most hardy of all varieties, uninjured by the coldest winters. Tree slender in growth, with a roundish spreading head, exceedingly productive. Ripens through June.

May Duke—Large red; juicy and rich; an old excellent variety; vigorous, productive. June 15.

Louis Phillippe—Large dark red; flesh tender, mildly acid, good to best. Mid-July.

Special Wholesale Price for all Sweet and Sour Varieties of Cherry Trees.

				Each	10	100
Largest Size	2 Year Trees	5 to 7 Ft	XXX	.90	\$8.50	\$75.00
Orchard Size	2 Year Trees	4 to 5 Ft.	XX	.85	7.75	62.50
Largest Size	1 Year Trees	3 Ft. and up	XXX	.90	8.50	75.00

Propagated Where the Best Trees Grow

Select Varieties of Cherries

The fruit of which is heart-shaped with tender, sweet flesh and the trees rapid growers. With my experience in growing cherries I by all means urge every owner of a home with a little space to plant Sweet Cherry Trees. No fruit is more liked by members of the family than this delightful fruit when fresh picked, stewed or preserved.



NAPOLEON CHERRIES (Reduced one half)

- Napoleon Cherry**—Fruit very large, oblong, pale yellow, with a bright red cheek in the sun. Flesh very hardy, brittle, reddish at stone, juicy, and sweet. Tree a vigorous and erect grower, very productive. Early in July.
- Bing**—One of the most delicious Sweet Cherries grown. Tree very hardy and vigorous with heavy foliage. It succeeds in the East better than most sweet varieties. Fruit is large, dark brown or black and of very fine quality. Bing is a good shipper and should be planted with Lambert for commercial purposes.
- Black Tartarian**—Very large; bright purplish black; half tender; juicy, very rich. Tree a remarkably vigorous and erect grower, and an immense bearer. One of the most popular varieties in all parts of the country. Ripe last of June.
- Gov. Wood**—One of the best. Clear, light red; tender and delicious. Tree vigorous and productive. End of June.
- Lambert**—A valuable Sweet Cherry of the largest size. Skin dark purplish red, almost jet-black when ripe. Flesh firm, rich and juicy. Tree hardy, a strong grower and an enormous bearer.
- Yellow Spanish**—Large, pale yellow, with red cheek; firm, juicy and excellent, one of the best light colored cherries; productive. Last of June.
- Rockport**—Fruit large, heart-shaped; skin pale amber; sweet and excellent. July.
- Royal Ann (Napoleon)**—A valuable cherry of the largest size. Pale yellow, with bright red cheek; very firm, juicy and sweet; valuable for canning.
- Black Heart (Black Ox Heart)**—An old variety; deep black; flesh tender, juicy, sweet. July.
- Schmidt's Bigarreau**—Black; flesh dark, firm. Very productive. Is one of the best firm fleshed cherries of the largest size. July.
- Windsor**—Fruit large; liver colored, resembling the Elkhorn, ripening a few days after that variety; flesh remarkably firm, of fine quality. Tree hardy and prolific. Vigorous. Middle of July.

Our guarantee. If any stock does not prove true to name and as represented by us, and as bought by you, we will make good your loss by replacing free any trees or plants at any time within ten years after date of purchase. If for any reason we cannot agree on this adjustment, we are each to appoint one arbiter who shall choose a third party and we shall accept the award of the majority as binding on both parties. Except for such liability, and in respect to all nursery stock sold by us, we give no warranty, express or implied, as to description, quality, growth, productiveness or any other matter.



Select Varieties of Dwarf Pears

Dwarf Pear Trees often bear the same year planted, and the trees occupy but little room in the garden. They can be planted very closely together and kept headed back. There is scarcely a city or town lot so small that room cannot be found for a few dwarf fruit trees. Their hardiness makes it possible for anybody, anywhere, to produce delicious fruits. I am confident that if any patrons were to spend hours choosing from local nurseries or the agent's catalogues, they would not find an equal number of varieties that possessed more valuable features for the home or market than those offered in this list.

We offer the following list of superior varieties of Dwarf Pear Trees. These are about all the varieties that will succeed as Dwarf trees. (See description of these on other pages.)

Bartlett, Seckel, Clapp's Favorite, Duchess,
Anjou, Kieffer, Flemish Beauty and Wilder Early.

Special Wholesale Price for all Varieties of Dwarf Pear Trees

				Each	10	100
Extra Size	2 Year Trees	4 to 6 Ft.	XXX	.65	\$6.00	\$50.00
Medium Size	2 Year Trees	3 to 4 Ft.	XX	.55	5.00	45.00
Orchard Size	2 Year Trees	2 to 3 Ft.	X	.35	3.25	30.00

Select Varieties of Quince

The Quince is a fruit very useful for cooking, canning and preserving and should be more generally planted. It always brings good prices on the market. Very desirable in making preserves, as it imparts the fine quince flavor to any other fruit with which it is prepared. Quince Marmalade makes one of the finest preserves.



A PLATE OF ORANGE QUINCE

Orange—Large; roundish, of a bright golden yellow color, flesh firm and tough until cooked, when it becomes tender, juicy and of excellent flavor. Tree has rather slender shoots and oval leaves; very productive. This is the variety most extensively cultivated for the fruit. Ripe in October.

Rea (Rea's Mammoth)—A large and fine variety of the Orange Quince. Rich and aromatic, one of the largest and handsomest. Bears young. A strong grower and productive.

Van Deman—A strong grower, the hardiest, surest and youngest bearer. Fruit golden, big, fine flavored. Tree productive.

Champion—A good variety, but ripens rather late for some sections. One of the best for sections not subject to early frosts.

Meech's Prolific—A large, late ripening variety; one of the best.

Missouri Mammoth—Rich and aromatic, one of the largest and handsomest. Bears young and prolifically.

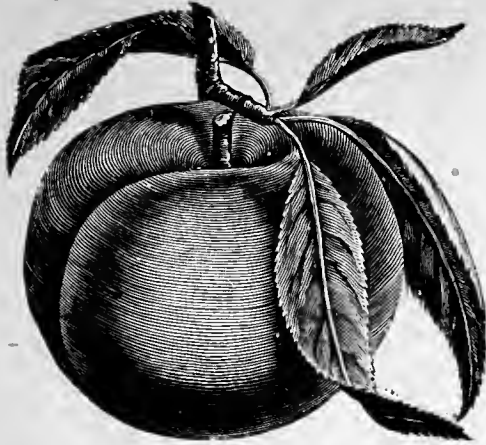


Special Wholesale Price for all Varieties of Quince Trees

Extra Size	2 Year Trees	4 to 6 Ft.	XXX	90c each,	10 for \$8.50
Medium Size	2 Year Trees	3 to 4 Ft.	XX	85c each,	10 for \$8.00
Orchard Size	2 Year Trees	2 to 3 Ft.	X	70c each,	10 for \$6.50

Propagated Where the Best Trees Grow

Selected Varieties of Apricots



ALEXANDER APRICOT

Gibb—Tree hardy, grows symmetrical, productive; fruit medium, yellowish, sub-acid, juicy and rich; the best early variety, ripening last of June.

J. L. Budd—Tree a strong grower and profuse bearer, fruit large, white with red cheek; sweet juicy, with a sweet kernel, as fine flavored as an almond; the best late variety.

Harris—Equal in size and quality to the best cultivated, recommended for its hardiness and good bearing qualities. June 20th to July 1st.

Montagamet—Deep yellow, one of the best for preserving. Sub-acid and of good quality. Tree vigorous and productive.

St. Ambrose—One of the largest and finest apricots, ripening early in August.

Wholesale Price of all varieties of Apricot trees 3 to 4 feet high, 75 cents each, 10 for \$7.00. 2 to 3 feet high 60 cents each, 10 for \$5.50.

Select Varieties of Nut Trees

Chestnut American Sweet is adapted to a great portion of this country. It is valuable as a nut producing tree, timber and ornamental purposes.

Wholesale Price of 3 to 4 ft. trees, \$1.00 each.

Chestnut Spanish—A handsome round-headed tree, producing abundantly, very large nuts that find a ready market.

Wholesale Price of Spanish Chestnut trees, 4 to 5 feet, \$1.00 each.

Butternut—A fine native tree producing a large, longish nut, which is prized for its sweet, oily nutritious kernel.

Wholesale Price of Butternut trees, 4 to 5 feet, \$1.00 each.

Pecans—This nut is very productive.

Wholesale Price, 3 to 4 feet, \$1.00 each.

Walnut, English—A fine, lofty, growing tree, with handsome, spreading head; produces large crops of thin-shelled, delicious nuts which are always in demand at good prices. Every home garden should have one or more English Walnuts. Tree very hardy.

Wholesale Price, 3 to 4 feet, \$1.50 each.

Walnut, Black—The common well-known Black Walnut, the wood of which is most beautiful and valuable. It is very productive in nuts, which are liked by many.

Wholesale Price, 5 to 6 feet, \$1.00 each.

Select Varieties of Strawberries

NOTE: Do not order Strawberry plants sent by freight. Our patrons order from 50 to 500 trees, and 500 or more strawberry plants by freight. Now the trees should go by freight and the strawberries by express, or small lots by mail. In all cases when desired by mail, add postage at rate of 20c per 100. Always state that strawberry plants are to be sent by express or mail.

Senator Dunlap—A well tested, early variety, one of the safe sorts to plant everywhere. Fruit good size, regular form, beautiful bright red, glossy, firm, splendid keeper and shipper, excellent quality, one of the best for canning.

Glen Mary—An exceedingly attractive berry, as large as the Sharpless. Color is a bright glossy crimson and so handsome that it brings the highest prices in market; moderately firm, and fine in flavor. The plant is vigorous, healthy and very productive and the berries maintain their large size until the close of the season.

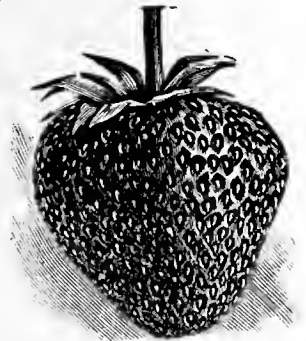
Brandywine—A very late and firm berry; a good shipper, good canner, a good all around strawberry. Season medium to very late.

Corsican is a great strawberry for many reasons. First, it is the biggest berry; second, it is the brightest and best color; third, it is a great yielder, and producer; fourth, and the most important of all the foliage is exceedingly vigorous and leathery, resisting fungus, drought, weeds, and even neglect of cultivation.

Special Wholesale Price for all varieties of Strawberries, except Fall Bearing, (by express) 25 for \$1.00, 100 for \$1.75, 1,000 for \$10.00.

By mail postpaid, 25 for \$1.00, 100 for \$1.95.

FALL BEARING VARIETIES—Americus and Productive, by express, 25 for \$1.25, 100 for \$3.50. By mail postpaid, 25 for \$1.45, 100 for \$3.75.



SENATOR DUNLAP

Garden Roots—Asparagus and Rhubarb

Conover's Colossal Asparagus—A standard variety of large size, tender and excellent quality. This variety is known everywhere. You will get more satisfaction out of a bed of asparagus than any other vegetable.

Wholesale Price for strong 2 year roots of Conover's Asparagus, 25 for 85 cents, 100 for \$2.25, 1000 for \$13.50.

Palmetto Asparagus—A very early variety; even, regular size, of excellent quality. No home garden can be complete without it. This is a large growing variety, particularly delicious in quality. Plant in rows 3½ feet apart, and one foot apart in the row. Let the lower ends of the roots extend down as far as they can but do not cover the crowns deep when planting.

Wholesale Price for strong 2 year roots of Palmetto Asparagus, 25 for 85 cents, 100 for \$2.25, 1000 for \$13.50.

Linnaeus Rhubarb—Large, early, tender and fine. The very best of all which is a good paying, all season crop. There is a constant demand for it.

Price of Rhubarb, strong 2 year roots, 20 cents each, 10 for \$1.50, 100 for \$10.00.



Gooseberries

Plant in good rich soil and give a liberal dressing of manure every season. Regular pruning every year is essential for the production of fine fruit. The English varieties especially do best in partial shade and should be heavily mulched.

Downing—Large, handsome pale green, and of splendid quality for both cooking and table use; bush a vigorous grower. **2 Year Bushes 45 cents, 10 for \$4.00.**

Houghton's—Small to medium; roundish, oval, pale, sweet, tender, very good; plants spreading; shoots slender. **2 Year Bushes 45 cents each, 10 for \$4.00.**

Josselyn—Large size, smooth, prolific and hardy, of best quality. Have been tested over a wide extent of territory by the side of all the leading varieties, and so far is the freest from mildew. **2 Year Bushes 45 cents each, 10 for \$4.00.**

Red Jacket—A new red berry of large size and good quality; hardy and very productive. **2 Year Bushes 45 cents each, 10 for \$4.00.**

Columbus—Fruit of largest size, oval, handsome, a greenish yellow, finest quality. Plant a strong, robust grower, free from mildew. **2 Year Bushes 45 cents each, 10 for \$4.00.**

Due to a Federal Quarantine, we can only ship to the following states
Currant and Gooseberry Bushes: Connecticut, Illinois, Indiana, Massachusetts, Michigan, New Jersey, Ohio, New York and Pennsylvania.

Select Varieties of Currants

The Currant is one of the most productive and best paying small fruit that we have. There is, we believe, more profit to the acre in currants than any other small fruit.

Cherry (Red)—Very large; deep red; bunches short. Plants erect, stout, vigorous and productive.

Fay's Prolific (Red)—A cross between Cherry and Victoria. Of large size, fine flavor, and claimed to be twice as prolific as the Cherry.

Red Cross—A strong growing variety. Cluster long; berry medium to large, bright red; quality good to best. Very productive.

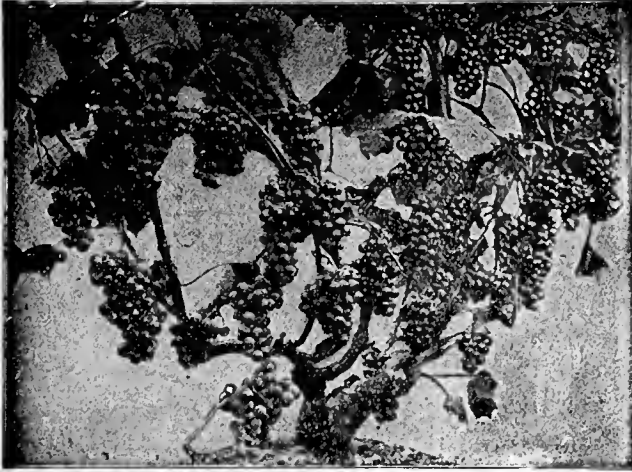


Wholesale Price for all Varieties of Currants, 2Year Bushes 35 cents each, 10 for \$3.00, 100 for \$25.00.

A federal Quarantine prohibits all Nurserymen shipping Currant and Gooseberry Bushes to many states and sections of the country. Should we receive any orders from a locality covered by this quarantine we will notify patrons.

Propagated Where the Best Trees Grow

Grapes are planted anywhere and everywhere—to trail over the sides of houses, on arbors, sheltering paths, fences, etc.; even people who live in the crowded parts of cities may have them.



CONCORD—The Best Late Black Grape

Concord—Bunch large, shouldered, compact; berries large, covered with a rich bloom. Vine a strong grower, very hardy.

Campbell's Early (Black)—Strong grower, with large, healthy foliage; productive, its keeping and shipping qualities are equaled by no other early grape.

Moore's Early (Black)—Bunch and berry large, round with heavy blue bloom; vine exceedingly hardy. Its earliness makes it desirable for an early market.

Agawam (Roger's No. 15) (Red)—Berries very large, thick skin, pulp soft, sweet, sprightly, very vigorous, ripens early.

Diamond—Leading early white grape, ripening before Moore's Early.

Pocklington—One of the largest and most showy white grapes of the Concord type.

Catawba—Berries large, round; when fully ripe of a dark copper color.

Lindley (Roger's No. 9)—Berries medium to large; flesh tender, sweet and aromatic; ripens early.

Salem (Roger's No. 53)—Bunch large, compact; berry large, round, coppery red, tender, juicy. Ripens with Concord.

Delaware—Red, finest flavor. Bunch and berry small, compact; sweet, thin skin; slow grower; requires good soil.

Diamond White—The leading early white grape, ripening before Moore's Early. White, with rich yellow tinge; juicy, few seeds, almost free from pulp, excellent quality; above medium size, adheres firmly to stem.

Chas. A. Green White—Claimed by the introducer to be a new and valuable variety, a vigorous grower and an enormous yielder of very large and beautiful clusters of excellent fruit.

McPike—This mammoth black grape has been exhibited in all parts of the country. Its great size, fine flavor and beauty creating quite a sensation. The bunches are large, even and compact.

Worden (Black)—A splendid grape of the Concord type, larger, better quality and earlier. Vines vigorous, hardy and productive.

Brighton—Perhaps the best red grape in cultivation. Bunch large, compact; strong grower and very productive; quality good.



NIAGARA GRAPE

Niagara White—Occupies the same position among the white varieties as Concord among the black; the leading profitable market sort. Bunch and berries large, greenish white changing to pale yellow when fully ripe.

COLLECTION OF GRAPE VINES

10 Strong No. 1 Vines for \$2.50

2 Worden 2 Concord 2 Chas. A.
2 Niagara 2 Brighton Green

All Strong No. 1 Vines for \$2.50

Special wholesale price for all varieties of Grapes on this page (except Concord) strong vines, No. 1, 35 cents each, 10 for \$3.00, 100 for \$27.50.

Special wholesale price for Concord Grape Vines (only) strong vines, 25 cents each, 10 for \$2.25, 100 for \$19.50.

RASPBERRIES

Will do well on any soil that will produce a good corn crop. Land should be thoroughly prepared and well enriched; ground bone is one of the best fertilizers. Keep well cultivated and free from weeds and suckers. As soon as they have done bearing, cut out the old wood to give more vigor to the young canes. Plant in rows five feet apart, three feet apart in rows.

Red Varieties

- St. Regis Everbearing**—A wonderful new variety of Red Raspberry, bears fruit the first season, bears for four months beginning about June fifteenth. The second crop of berries is borne on the ends of the new canes and ripens about the middle of August and continues until frost. Ripe fruit has been picked during the early part of November.
- Cuthbert**—Large, conical; deep rich crimson; firm, of excellent quality. Vigorous grower, entirely hardy and immensely productive. The best raspberry for general culture.
- Marlboro**—The best early red raspberry. Hardy and productive.
- London**—Ripens with the earliest and hangs to the last. Immensely productive and a fine shipper. Very hardy and does not sucker nearly so much as other red raspberries.



KANSAS BLACK RASPBERRY



ST. REGIS RASPBERRY

Black Raspberries

- Black Diamond**—One of the best for home and market use. For drying and evaporating it excels all others. The fruit is large and handsome.
- Cumberland**—Plants vigorous, hardy and productive; fruit large. Mid-season.
- Gregg**—Plants vigorous, hardy and productive; fruit above medium to very large.
- Kansas**—Largest size, strong, vigorous grower, hardy bearing immense crops. Size of Gregg.
- Plum Farmer**—Berry large and very productive, a great favorite in Western New York. A fine picker and one of the best market sorts.
- Ohio**—A very strong growing hardy sort; fruit nearly as large as Mammoth Cluster; more productive than any other variety.

Purple Raspberries

- Columbian**—Very large, often an inch in diameter; adheres firmly to stem and will dry on the bush if not picked.

Wholesale Price for all varieties of Raspberries by express, Strong Plants, 25 for \$1.50, 100 for \$5.00, 1000 for 25.00.

Select Varieties of Blackberries

This profitable fruit should be planted for garden use in rows five feet apart, with plants three feet apart in rows; for market, in rows six feet apart, with plants three feet apart in the rows. Give the plants the same cultivation as for raspberries.



THE HARDY ELDORADO BLACKBERRY

Eldorado—The best all-round berry yet produced, combining nearly all the good qualities found in a blackberry. The vines are very hardy and vigorous, enduring the winters of the far Northwest without injury, and their yield is enormous. The berries are large, jet black, borne in large clusters and ripen well together; they are very sweet, melting, have no hard core and keep for eight or ten days after picking with quality unimpaired.

Snyder—Extremely hardy; enormously productive; medium size.

Wilson's Early—Large size, black, quite firm, rich, sweet and good. Ripens early and matures its fruit rapidly; retains its color well after picking.



Minniewaska—Wonderful, hardy, productive, good blackberry, has not been forgotten by us, or our old patrons. Its principal points are hardiness, excellent quality, earliness, and continued bearing and productiveness. The secret of its great productiveness, is that it is an enormous grower. A large grower near Rochester states that his average receipts from an acre of Minniewaska blackberries

has been \$300 per year for the past five years.

Early Harvest—The earliest blackberry and valuable for market. The canes are strong and upright in growth and enormously productive. Berries sweet and of the highest quality.

Erle—Bush vigorous; berry large, round; good quality; early and productive.

Agawam—Ripens earlier than other kinds, and has a flavor similar and equal to the wild berry. Very hardy.

Ancient Briton—Bush hardy and very productive. One of the best old sorts, and still grown in immense quantities by successful market gardeners.

Blower—Large size, jet black, good shipper, best quality, unexcelled productiveness are the main characteristics of this splendid new sort.

Rathbun—Bush perfectly healthy, vigorous, but not a high growing sort; very rarely suckers from the roots. Fruit of largest size, highest quality, borne in great profusion.

Lawton—Very large, excellent quality, and an abundant bearer.

Kittatinny—At one time this was the most popular of all Blackberries. It is still first-rate for garden use, and in some localities for market. Berries large; canes strong in growth; productive.

Ward—A new Blackberry of great merit. A seedling of Kittatinny, which it resembles somewhat, having the good qualities of its parent and none of the defects. A very strong grower; it is perfectly hardy at its home in New Jersey. The fruit is black throughout and very prolific, firm and good for shipment, yet tender and melting, and of highest quality.

Wholesale Price for all varieties of Blackberries (by express) Strong Pants, 25 for \$2.00, 100 for \$5.25, 1000 for \$37.50.

Select Varieties of Upright Flowering Shrubs



DOUBLE FLOWERING ALTHEA

- Double Flowering Althea** (Rose of Sharon)
—One of the most showy flowering shrubs; strong, erect growing, with large bell-shaped, double flowers of striking color, borne abundantly in August and September when most other shrubs are out of bloom. I offer them in the three colors all being double blossoms.
- Double Red**—(Rubra flore pleno.)
Double Purple—(Purpurea flore pleno.)
Double White—(Alba flore pleno.)
- Calycanthus** (Sweet Scented Shrubs)—Flowers purple, very double and deliciously fragrant; remains in bloom for a long time; very desirable.
- Prunus Pissardi** (Purple-Leaved Plum)—The finest purple-leaved small tree or shrub. The young branches are a very dark purple; the leaves when young are lustrous crimson, changing to a dark purple, and retain this beautiful tint till they drop late in autumn; no other purple-leaved tree or shrub retains its color like this.

Upright Honey Suckle Tartarian (White)—
Pure white flowers followed by deep red berries, that fill the bush till autumn; very attractive.

Upright Honey Suckle Tartarian (Pink)—
Pink flowers which contrast beautifully with the foliage.

Snowball Common (*V. opulus*)—A well known favorite shrub of large size, with globular clusters of pure white flowers in the latter part of May.

Snowball Japanese (*Viburnum Plicatum*)—
From North China; has very rich deep green foliage, of handsome form and beautiful globular heads of pure white flowers, quite distinct from those of the common sort.

Syringa—European Fragrant or "Mock Orange" (*Philadelphia Coronarius*)—
A well-known very hardy shrub, with showy white flowers which are very fragrant.

Syringa Golden-Leaved (*P. Foliis Aureis*), A beautiful new variety with bright yellow foliage, which affords pretty contrasts with other shrubs, especially with the purple-leaved variety.

Quince, Japan Scarlet (*Cydonia*)—Has bright scarlet crimson flowers in great profusion, early spring; one of the best hardy shrubs; makes a beautiful, ornamental hedge.

Prunus Tricoba (Double Flowering Plum)—A highly interesting and desirable addition to hardy shrubs; flowers semi-double, of a delicate pink, upwards of an inch in diameter, thickly set on the long slender branches; native of China; hardy.

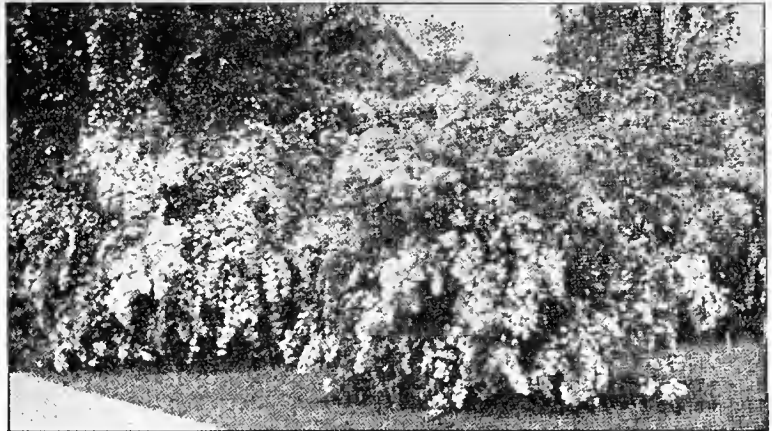
Fringe Purple, or Smoke Tree—A very elegant and ornamental large shrub, with curious, hair-like flowers which, being a pinkish brown color, gives it the names "Purple Fringe" and "Smoke Tree." The blossoms are in July, sometimes literally covering the tree and remaining all summer.

Special Wholesale Price for all varieties of Flowering Shrubs, Large Size, 2 to 3 ft., 2 year, 45 cents each, 10 for \$4.25.

Propagated Where the Best Trees Grow

Spiraea Van Houttei—

The very finest of the Spiraeas. In May and early June, the plant is covered with a mass of large white flowers presenting a beautiful appearance. Very hardy.



SPIRAEA VAN HOUTTEI

dark foliage and light pink flowers in May and at intervals through the summer.

Spiraea Anthony Waterer—

A dwarf variety bearing dark crimson flowers all summer. Very desirable.

Spiraea Callosa Alba—

A dwarf white flowering variety; very fine, remains in flower all summer.

Spiraea Billardi—Rose colored flowers. Blooms nearly all summer.

Spiraea Bumalda—A spreading low bush with

LILACS

Lilac, Purple—The well-known variety, one of the best. A good grower; flowers and young wood fragrant; purple.

Lilac, White—A very desirable contrast to the purple; those who have one should have the other.

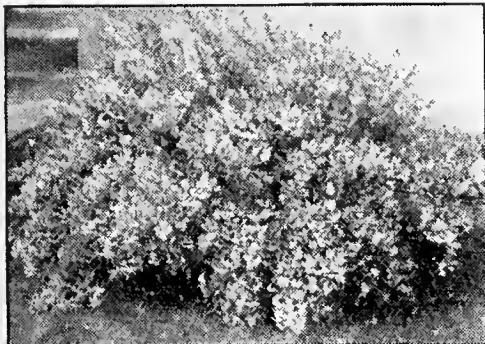
DEUTZIA

Deutzia Lemoinei—Flowers pure white, borne on stout branches of upright growth. Dwarf and free flowering, much prized for cemetery planting and in front of taller shrubbery.

Deutzia Double Flowering (Crenata)—Flowers double white, tinged with rose. One of the most desirable flowering shrubs in cultivation.

Deutzia Pride of Rochester—A new variety raised from Deutzia Crenata, and exceeding all others in size of flowers, length of panicles, profuseness of bloom and vigorous habit; a charming acquisition to the list of Deutzias.

Deutzia Slender Branched (Gracilis)—A charming variety introduced by Dr. Siebold. Flowers pure white and so delicate that they are very desirable for decorative purposes.



DEUTZIA, PRIDE OF ROCHESTER

WEIGELAS



WEIGELA ROSEA

Weigela Eva Rathke—Flowers brilliant crimson; a beautiful, distinct, clear shade.

Weigela Rosea (Rose-colored Weigela)—An elegant shrub, with fine rose-colored flowers; of erect, compact growth; blossoms in June.

Weigela Candida (White-flowered Weigela)—Of vigorous habit, an erect grower, becoming in time a large sized shrub; flowers pure white and produced in great profusion in June.

Hydrangea Paniculata Grandiflora—Absolutely hardy; thrives in all soils; grows rapidly and blossoms profusely. The flowers are pure white, afterward changing to pink, and are borne in large pyramidal trusses often more than a foot long and six to eight inches in diameter. Begins to bloom early in August, and continues to bloom for several weeks.

Special Wholesale Price for all Varieties of Flowering Shrubs, Large Size 2 to 3 Feet, 2 Year, 45 cents each, 10 for \$4.25.

Select Varieties of Ornamental Trees



CATALPA BUNGEI

Catalpa Bungei (Umbrella Catalpa)—Grafted one stems six to eight feet high, it makes an umbrella-shaped top without pruning. Perfectly hardy, and flourishes in almost all soils and climates.

Wholesale price for Catalpa Bungei trees, 6 to 8 feet, \$2.50 each.

Carolina Poplar—A remarkably rapid, luxuriant grower; leaves large, glossy, pale to deep green. Valuable as a street or shade tree when shade is desired quickly. It will also be found useful for planting as a screen to hide unsightly buildings.

Wholesale Prices for Carolina Poplar trees:

10 to 12 feet high, 75 cents each, 10 for \$6.00, 100 for \$40.00.

8 to 10 feet high, 65 cents each, 10 for \$4.75, 100 for \$30.00.

6 to 8 feet high, 50 cents each, 10 for \$4.00, 100 for \$18.50.

Wier's Cut-Leaved Maple—One of the most remarkable and beautiful trees, with cut or dissected foliage. Its growth is rapid, shoots slender and drooping, as graceful as cut-leaved Birch.

Price of Wier's Cut-Leaved Maple trees, 8 to 10 ft., \$1.50 each, 6 to 8 feet, \$1.25 each.

American Linden or Basswood—A rapid growing, large-sized, beautiful native tree, with very large leaves and fragrant flowers.

Price of American Linden trees, 6 to 8 feet, \$1.50 each.

Horse Chestnut (White Flowering)—Very handsome; has magnificent spikes of white flowers. As a lawn tree or for the street it has no superior.

Trees 5 to 6 feet, \$1.50 each.

If you do not find the varieties of Ornamental Trees and Flowering Shrubs needed write for special quotations.

Cut-Leaved Weeping Birch—The most popular of the weeping trees. Its tall, slender, yet vigorous growth, graceful branches, silvery white bark, and delicately cut foliage, present a combination of attractive characteristics rarely met with in a single tree.

Price of Cut-Leaved Weeping Birch, 5 to 6 feet trees, \$1.85 each.

Catalpa, Speciosa—Most rapid grower. Valuable for timber, fence posts, railroad ties, etc., possessing wonderful durability. Large, heart-shaped, downy leaves, and compound panicles of white flowers.

Trees 6 to 8 feet, 75 cents each.

Maple, Ash-Leaved (Box Elder)—A rapid-growing variety, with handsome, light green foliage; very hardy, desirable for street planting.

Price of Ash-Leaved Maple Trees, 8 to 10 feet, \$1.25 each, 6 to 8 feet, \$1.00 each.

Maple Norway—One of the hardiest ornamental shade trees, and one of the most beautiful.

Price of Norway trees, 8 to 10 feet, \$2.25 each, 6 to 8 feet, \$2.00 each.

Sugar Maple—This native tree of ours is a universal favorite for street planting, and desirable everywhere.

Price of Sugar Maple trees, 8 to 10 feet, \$2.25 each, 6 to 8 feet, \$2.00 each.

Maple, Silver-Leaved, or Soft—Foliage bright green above and silvery underneath. An exceedingly rapid grower. A very satisfactory tree.

Price of Silver-Leaved Maple, 8 to 10 feet, \$1.00 each, 6 to 8 feet, 75c each.

American Elm—The most admired of all American trees. It is very attractive in any suitable location; it is entirely hardy, and easily transplanted.

Price of American Elm: First-class trees, 6 to 8 feet high, \$1.00 each, 8 to 10 feet high, \$1.25 each.



SILVER LEAF MAPLE

Propagated Where the Best Trees Grow

Ornamental Hedge Plants and Vines



HEDGE OF BARBERRY THUNBERGII

Wholesale Prices of Barberry Thunbergii, well branched
Strong plants, 18 inches, 45 cents each, 10 for \$4.00, 100 for \$35.00.
Strong plants 12 to 15 inches, 35 cents each, 10 for \$3.25, 100 for \$30.00.

Henryii Clematis—A vigorous grower and a free bloomer, producing its large pure white flowers constantly during the summer and early autumn. The best large-flowered variety producing white flowers.
Price for strong 2 year plants 65 cents each

Hallena (Hall's Japan Honeysuckle)—An almost evergreen honeysuckle of the greatest value, being hardy and of strong growth. The flowers are fragrant, of a pure white, changing to yellow.
Price of strong 2 year plants 50 cents each

Ampelopsis Veitchi (Boston Ivy)—This is one of the finest climbers we have for covering walls, as it elings firmly to the smoothest surface, covering it closely with overlapping foliage, giving it the appearance of being shingled with green leaves.
Price of strong 2 year plants 65 cents each

Jackmanni Clematis—The flowers are large, intense, rich, velvety violet-purple, and are produced in such masses as to form a cloud of bloom.
Price for strong 2 year plants 65 cents each

California Privet—A vigorous-growing variety of fine habit, thick, glossy, nearly evergreen leaves. Of all ornamental hedge plants this is the most highly prized. If cut to the ground one or two years after planting, it makes a very thick hedge right from the bottom, sending up many strong shoots. The Privet in all its varieties deserves attention as an ornamental plant. It is almost an evergreen, and grows freely in all soils; compact and regular in its form, and bears shearing to any extent.

Wholesale price of California Privet
Strong 2 year plants, well branched, 18 to 24 inches high, 15 cents each, 10 for \$1.25, 100 for \$8.00, 1000 for \$75.00.
2 to 3 feet high, 25 cents each, 10 for \$1.50, 100 for \$10.00, 1000 for \$90.00.

Barberry Thunbergii—From Japan. A beautiful shrub of dwarf habit, not growing more than three feet high; covered with yellow flowers, followed by scarlet fruits on long stems that last nearly all winter. The foliage is dense, green, changing to a coppery red in autumn. It makes a very beautiful and showy hedge.

Paniculata Clematis (Sweet-scented Japan Clematis)—Of very rapid growth, quickly covering trellises and arbors with handsome, clean, glossy foliage. The flowers are of medium size, fragrant, pure white, borne in immense sheets in September.

Price of strong 2 year plants 50 cents each



CLEMATIS
 JACKMANNI

SPECIAL NOTICE

We do not raise our prices to enable us to pay transportation charges.

Select Varieties of Roses

In spite of all the flowers which from time to time have become popular and have had their day as "fads," the Rose, the "Queen of Flowers," still holds her scepter and compels all others to acknowledge her queenly right and beauty.

The Roses which we offer below are all strong two-year field-grown bushes, either American-grown or have been imported from England.



MARSHALL P. WILDER

MAGNA CHARTA

COQUETTE DES ALPS

- Marshall P. Wilder**—Bright cherry carmine; very fragrant and one of the freest bloomers. Vigorous.
- Baron de Bonstetten**—Flowers large and very double; color rich, dark red, passing to deep velvety maroon. Very fragrant.
- Clio**—New. The perfection in Hybrid Perpetuals. Of delicate satin blush with a little deeper center. Large, well shaped and very double. Strong, robust, hardy and prolific. A jewel.
- Alfred Colcomb**—Brilliant carmine crimson, very large, full, of fine globular form and extremely fragrant.
- Anne de Diesbach**—One of the best and most satisfactory Hybrid Perpetual Roses. A strong, vigorous grower, extremely hardy; producing very large, double flowers, of a lovely shade of carmine and delightfully fragrant.
- Prince Camille de Rohan**—Very dark velvety crimson, changing to intense maroon.
- Blanche Robert**—Pure white, large and full, buds very beautiful. A strong grower and a desirable variety.
- American Beauty**—Very large and double. Of globular shape. Deep pink, shaded with carmine. Fragrance exquisite.
- Paul Neyron**—This magnificent rose, by far the largest variety in cultivation; very double and full, of a beautiful deep rose color, and delightfully fragrant; borne upon vigorous, upright shoots in great abundance throughout the entire season. We recommend this variety very highly.
- Mrs. John Laing (H. P.)**—A splendid free-flowering, sweetly fragrant rose of beautiful form. Color, clear, bright, shining, silvery pink, exquisitely shaded. Immense flowers, full and double, borne in great profusion on long stiff canes.
- Perpetual White Moss**—Pure white.
- Salet Moss**—A vigorous grower and perpetual bloomer. Light rose, large, full. The best of the class. A true, perpetual moss blooming at intervals from June until November.
- Dorothy Perkins**—Perfectly hardy; flowers of large size for this class of rose, usually about one and one-half inches across; are borne in clusters from ten to thirty and are very double; the petals are very prettily rolled back and crinkled; the buds are remarkably pretty, being pointed in shape and of just the right size for the button hole. Color beautiful, clear shell pink.
- Crimson Rambler**—A climbing rose of unusual attractions. Very hardy, having withstood 10 degrees below zero without covering. Vigorous in growth, having grown 8 to 10 feet in a season. Produces a profusion of blossoms, having been known to produce 300 blossoms on one shoot. The Crimson Rambler is especially adapted for covering trellises. Its cluster form, its brilliancy, the abundance of its bloom.
- Frau Karl Druschki (Sometimes called Snow Queen) (H. P.)**—A wonderful rose—fine, large, free-flowering, hardy, white. Extraordinarily strong-growing, branching freely.
- General Jacqueminot (H. P.)**—The leading rose. Deep, brilliant shaded crimson, with large petals, globular with high center. A well known favorite.
- Madame Plantier (H. P.)**—Pure white, above medium size; full. Produced in great abundance early in the season. One of the best white roses for hedges. Specially recommended for cemetery planting.

Special Wholesale Price for all Varieties of Roses, Strong 2 Year Bushes, 70 cents each, 10 for \$6.50.

Buying Choice Trees and Plants by Parcel Post

It is easier to buy by mail than to go to a store. In many instances it is possible to buy a better quality of trees and plants by mail than can be procured in other ways.

The greater portion of our business is transacted through the mails. The planter in California can purchase with as great an assurance of satisfaction as if he personally selected his trees and plants.

Trees and Plants ordered are personally selected. One from our office, who has spent an entire lifetime in the business, carefully selects the trees and plants and follows instructions closely.

Our method of packing enables us to ship to remote sections with great success. We believe that we give more attention to digging and packing than is customary.

Our Mail Order Trees and Plants are flourishing in localities where the smoke of the railroad engine is never seen, and at other distant points where railroad charges would deter you from ordering.



Varieties of Trees and Plants—By Parcel Post Postpaid at Prices Attached

Apple Trees by Parcel Post

For this season's mailing we have an extra fine block of one year old trees. Such trees that every buyer will be pleased with. The varieties are: Northern Spy, Yellow Transparent, Wealthy, Baldwin, York Imperial, Duchess, Wagener, King, Jonathan, McIntosh, Banana and Delicious.

Parcel Post Price of Apple Trees 3 ft. high, 50c each, 10 for \$4.85

Standard Pear Trees

We have by a special method grown some mailing size trees of a few varieties as follows: Bartlett, Kieffer, Clapp's Favorite, Seckel and Flemish Beauty.

Parcel Post Price of Pear Trees 3 ft. high 65c each, 10 for \$6.00.

Peach Trees

We offer varieties of mailing size peach trees as follows: Niagara, Elberta, Early and Late Crawford, Champion, Carman, Fitzgerald, Reeve's Fav., Chair's Choice, Greensboro, Kalamazoo and Crosby.

Parcel Post Price of Peach Trees 2 to 3 ft. high 45c each, 10 for \$4.25.



Cherry Trees



For this season we can dig some extra fine mailing size trees, very strong, well rooted trees, of varieties as follows: Early Richmond, Montmorency, English Morello, Dyehouse, Windsor, Napoleon and Black Tartarian.

Parcel Post Price of Cherry Trees 3 ft. high 75c each, 10 for \$6.75.

Quince Trees

We offer three varieties of mailing size quince trees: Orange, Bourgeat and Champion. Very strong, heavily rooted, 2 to 3 feet.

Parcel Post Price 65c each, 10 for \$6.00.

Dwarf Pear Trees

We can supply the following varieties: Duchess, Seckel, Clapp's Favorite, and Bartlett.

Parcel Post Price of Dwarf Pear Trees, 2 to 3 feet high 55c each, 10 for \$5.00.

Plum Trees

Plum trees generally grow so heavy at one year old that it is impossible to get mailing-size trees, but we have some nice trees, strong, heavy rooted, three feet high, of varieties as follows: Abundance, Burbank, Climax, Red June, Wickson.

Parcel Post Price of Plum Trees 3 ft. high 50c each, 10 for \$4.85.

Raspberries—All varieties offered in catalogue by Parcel Post at 10 for 80c

Blackberries—All varieties offered in catalogue by Parcel Post at 10 for 95c.

Ornamental Shrubs, Roses and Vines—Strong, well rooted bushes of all varieties offered can be sent by Parcel Post if 3 cents extra is added to each price quoted in this catalogue.

Dwarf Apple Trees

Our list of varieties is: Delicious, McIntosh, Baldwin, Grimes' Golden, Wealthy and Yellow Transparent.

Parcel Post Price for Dwarf Apple Trees 2 to 3 feet high 70c each, 10 for \$6.50.

Grape Vines

Worden. A splendid black grape.

Moore's Early (Black.) Bunch and berry large, round with heavy blue bloom.

Concord. Bunch large, compact, berries large.

Brighton. The best red grape in cultivation.

Diamond. Leading early white grape.

Niagara. Occupies the same position among white varieties as Concord among black.

Parcel Post Price of Grape Vines 1 yr., 35c each, 10 for \$3.25.

POMONA COLLECTIONS OF Trees and Plants for the Home Garden

Apple Collection No. 11



5 Selected Winter Varieties
2 yr. 4½ to 5 ft. high, \$2.35

- 1 R. I. Greening
- 1 Northern Spy
- 1 Baldwin
- 1 Wagener
- 1 Delicious

Pomona Wholesale Price \$2.35

Apple Collection No. 2

5 Selected Fall Varieties
2 Yr. 4½ to 5 Ft. high, \$2.35

- 1 Fameuse
- 1 Duchess
- 1 Wealthy
- 1 Yellow Trans.
- 1 Red Astrachan



Pomona Wholesale Price \$2.35

Apple Collection N. 3



5 Selected Fall and Winter Varieties
2 Yr. 4½ to 5 Ft. high for \$2.35

- 1 Baldwin 1 Northern Spy
- 1 R. I. Greening
- 1 Wealthy 1 Red Astrachan

Pomona Wholesale Price \$2.35

Pear Collection No. 4

5 Selected Trees 2 Year
4½ to 5 Ft. high for \$3.25

- 1 Bartlett
- 1 Seckel
- 1 Clapps Favorite
- 1 Anjou
- 1 Kieffer



Pomona Wholesale Price \$3.25

Cherry Collection No. 5



5 Selected Trees 2 Year
4 to 5 Ft. high for \$3.75

- 1 Montmorency
- 1 Early Richmond
- 1 English Morello
- 1 Dyehouse
- 1 Wragg

Pomona Wholesale Price \$3.75

Peach Collection No. 6



5 Selected Trees 1 Year
4 to 5 feet high for \$2.75

- 1 Elberta
- 1 Carman
- 1 Champion
- 1 Niagara
- 1 Early Crawford

Pomona Wholesale Price \$2.75

Plum Collection No. 7

5 Selected Trees 2 Year
4½ to 5 feet high for \$3.50

- 1 Abundance 1 Lombard
- 1 Red June 1 Burbank
- 1 Niagara



Pomona Wholesale Price \$3.50

Rose Collection No. 8



5 Selected Bushes
2 year No. 1 for \$3.15

- 1 Margaret Dickson
- 1 Paul Neyron
- 1 P. C. De Rohan
- 1 Magna Charta
- 1 Liveforever

Pomona Wholesale Price \$3.15

Special Grape Collection No. 9

10 Strong No. 1 Vines for \$2.50

- 2 Worden 2 Concord
- 2 Niagara 2 Brighton
- 2 Chas. A. Green
- All Strong No. 1 Vines



Pomona Wholesale Price \$2.50

Rose Collection No. 10



5 Climbing Rose Bushes
2 year No. 1 for \$3.00

- 1 Crimson Rambler
- 1 Pink Rambler
- 1 White Rambler
- 1 Dorothy Perkins
- 1 Liveforever

Pomona Wholesale Price \$3.00

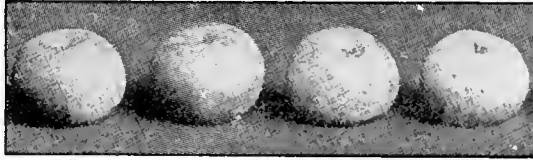
When Ordering these Special Collections Please Order by Number
These Collections are Shipped by Express

POMONA UNITED NURSERIES, DANSVILLE, N. Y.

Bargains in Apple Trees, 2 yr., 3½ to 4 ft. High

45 cents Each

10 for \$4.00



100 for \$32.50

1000 for \$275.00

List of Varieties

Arkansas Black	Fameuse	King	Rome Beauty	Spitzenburg
American Blush	Fanny	Maiden's Blush	Rox. Russet	Sweet Bough
Baldwin	Fallwater	Mann	Red Astrachan	Tolman Sweet
Ben Davis	Gano	McIntosh	R. I. Greening	Wagner
Banana	Golden Sweet	Northern Spy	Stark	Wolf River
Duchess	Grime's Golden	N. W. Greening	Stayman Winesap	Wealthy
Delicious	Hubbardston	Newtown Pippin	Smokehouse	Yellow Trans.
Early Harvest	Jonathan	Pound Sweet	Seek No Further	York Imperial

Full description of above varieties will be found on other pages of this catalogue.

Special Wholesale Price for all varieties of Apple Trees on this page:

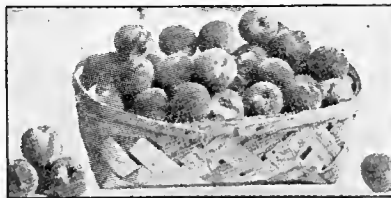
Reliable Planting Size Trees, 2 years, 3½ to 4 feet high, 45 cents each, 10 for \$4.00, 100 for \$32.50.

Fifty Trees at hundred rates providing not less than 10 of any one variety.

Bargains in Peach Trees 1 Year, 2 to 3 ft. High

30 Cents Each

10 for \$3.00



100 for \$22.50

1000 for \$195.00

Early Crawford—Large; yellow and red; good quality. Reliable commercial sort.

Niagara—Large; yellow and red; fine quality; as good as Crawford but a more dependable bearer; the principal commercial sort now grown in the famous Niagara County.

Crawford's Late—Very large, productive and good; yellow with dull red cheek. Flesh yellow. Last of September.

Elberta—Large, yellow and red, handsome, fair quality. Most popular market peach.

Fitzgerald—It is one of the hardiest peaches, both in bloom and tree; very prolific.

Engle's Mammoth—Large, round, suture slight; yellow with red cheek; flesh yellow, stone small, free; sweet, rich, juicy.

Crosby—Medium size; bright orange yellow streaked with carmine. One of the best standard market sorts.

Chair's Choice—Has no superior in quality and flavor, and for profit is without a rival; large, yellow, free, rich in color, flesh very firm, and ripens after Smoek; great bearer.

Foster—Large, deep orange red, becoming very dark red on the sunny side; flesh yellow, very rich and juicy.

Carman—A very hardy peach, ripening at same time as Early Rivers, yet almost as large and fine as Elberta. Skin pale yellow.

Champion—Fruit large, beautiful in appearance; flavor delicious, skin creamy white, with red cheek; freestone. Trees hardy.

Special Wholesale Price for all varieties of Peach Trees on this page:

Reliable planting size trees, 2 to 3 feet high, 30 cents each, 10 for \$3.00, 100 for \$22.50.

Fifty Trees at hundred rates providing not less than 10 of any one variety.

All Bargain Size Trees are Strictly First Class of the Grade offered, Well Rooted, Fresh Dug, and guaranteed to please. No order accepted for less than Five Dollars at these prices.

ALL ORDERS SHIPPED C. O. D.

(AS OFFERED ON PAGE 2)

POMONA UNITED NURSERIES



Collection of Plum Trees

For the Home Garden

3 Trees by Mail, C.O.D. } **\$1.50**
Postage Paid, for only }

1 Abundance

1 Burbank

1 Red June

No Money Required With Order

All trees first class, 2 to 3 ft. high,
True to Name.

We Offer in This Catalogue a Large List of Mailing Size Trees

Collection of Fruit Trees

For the Home Garden

5 Trees by Mail, C.O.D. } **\$2.50**
Postage Paid, for only }

1 Burbank Plum

1 Elberta Peach

1 Wealthy Apple

1 Bartlett Pear

1 Montmorency Cherry

No Money Required With Order

All trees first class, 2 to 3 ft. high,
True to Name.



— DANSVILLE, N. Y. —