

1307 21 28

## Wholesale Trade List



ICELAND POPPIES  
(PAPAVER NUDICAULE)

# Eastern Nurseries

Spring, 1912

Henry S. Dawson, Manager

Jamaica Plain, Mass.



↔ **Society of American Florists** ↔  
— AND —  
**Ornamental Horticulturists.**

*This is to Certify that  
Eastern Nurseries  
are entitled to*

**HONORABLE MENTION**

*for collection of evergreens,*

*Exhibited at Boston, Massachusetts, March, 1911*



*George Asmus President*

*H. B. Brown Secretary*

# WHOLESALE PRICE LIST. SPRING 1912

## Eastern Nurseries.

Henry S. Danson, Manager.

JAMAICA PLAIN, MASS.

---

SHIPPING SEASON opens about March 20 to April 1 in the Spring, and continues until May 20 to June 1, and opens about October 1 in the Fall, and continues until the ground freezes.

ORDERS.—Write plainly and give **explicit directions** as to address and mode of shipment; otherwise we will forward **according to our best judgment**. All goods travel at purchaser's risk. We assume **no responsibility for the goods after delivery to the forwarding companies**.

When losses occur by delays, claims should be made **at once** on the forwarding companies.

CLAIMS, to receive consideration, must be made **within ten (10) days of receipt of goods**.

While we exercise the greatest care to have all Trees, Shrubs and Plants genuine and reliable, and hold ourselves prepared to replace, on proper proof, all that prove untrue, **we do not give any warranty, expressed or implied**; and in case of an error on our part, it is mutually agreed between the purchaser and ourselves that we shall not at any time be held responsible for a greater amount than the original price of the goods.

PACKING.—We take great care in packing, using damp moss to protect roots. Boxes and bales are charged for at cost.

RATES.—The prices in this list supersede all previous rates, and apply to quantities specified, but two hundred and fifty will be furnished at the thousand rate, twenty-five at the one hundred rate, and five at the ten rate.

TERMS, CASH WITH ORDERS, except to such persons as satisfy us as to their responsibility.

A **Certificate of Inspection** will accompany each shipment.

Address all communications to office.

**EASTERN NURSERIES,**

**Jamaica Plain, Mass.**

Our Nurseries are located at Holliston, Mass., and we are glad to have those interested visit them at any time. Full directions for reaching them will be found on the last page of cover.



# Wholesale Trade List

OF THE

## EASTERN NURSERIES,

HENRY S. DAWSON, Manager.

JAMAICA PLAIN, MASS.

### EVERGREENS.

			10	100
<b>Ables</b>	<b>alcockiana</b>	Alcock's Fir		
	2 to 2½	ft. with ball . .	\$2.00 each	\$18.50
	2½ to 3	ft. with ball . .	\$2.25 each	20.00
	3 to 3½	ft. with ball . .	\$2.75 each	25.00
	3½ to 4	ft. with ball . .	\$3.25 each	27.50
	<b>balsamea</b>	Balsam Fir		
	2½ to 3	ft. with ball . .	\$ .50 each	4.50
	3 to 3½	ft. with ball . .	\$ .60 each	5.00
	3½ to 4	ft. with ball . .	\$ .75 each	6.00
	4 to 5	ft. with ball . .	\$ .90 each	8.50
	5 to 6	ft. with ball . .	\$1.25 each	10.00
	6 to 7	ft. with ball . .	\$1.75 each	15.00
	7 to 7½	ft. with ball . .	\$2.25 each	20.00
	7½ to 8	ft. with ball . .	\$3.00 each	37.50
	<b>concolor</b>	White Fir		
	2½ to 3	ft. with ball . .	\$2.75 each	25.00
	3 to 3½	ft. with ball . .	\$3.00 each	27.50
		4 ft. with ball . .	\$3.50 each	32.50
	5 to 5½	ft. XX with ball	\$ 6.00 each	
		6 ft. XX with ball	\$10.00 each	
		6½ ft. XX with ball	\$12.00 each	
		7 ft. XX with ball	\$15.00 each	
		7½ ft. XX with ball	\$20.00 each	
		8 ft. XX with ball	\$25.00 each	
		8½ ft. XX with ball	\$27.50 each	
		9 ft. XX with ball	\$30.00 each	
	<b>pectinata</b>	European Silver Fir		
	2 to 2½	ft. with ball . .	\$1.75 each	15.00
<b>Andromeda</b>	<b>catesbaei</b>	Catesby's Leucothoe		
	8 to 12	in. . . . .	\$ .75 each	7.50 50.00
		<b>floribunda</b>	Mountain Fetter Bush	
	8 to 10	in. XX with ball	\$1.00 each	9.00 85.00
	10 to 12	in. XX with ball	\$1.25 each	12.50 100.00
	12 to 15	in. XX with ball	\$1.50 each	13.50 125.00
	15 to 18	in. XX with ball	\$1.75 each	15.00 137.50
	18 to 24	in. XX with ball	\$2.25 each	20.00
	<b>japonica</b>			
	18	in. . . . .	\$ .75 each	6.50 50.00
<b>Ables</b>	<b>fraseri</b>			
	4 to 5	ft. with ball . .	\$1.50 each	13.50
	5 to 6	ft. with ball . .	\$2.00 each	
	6 to 7	ft. with ball . .	\$3.00 each	27.50
	<b>orientalis</b>	Oriental Spruce		
	2 to 2½	ft. with ball . .	\$1.50 each	13.50
	2½ to 3	ft. with ball . .	\$1.75 each	15.00
	<b>veitchii</b>	Japanese Spruce		
	1½ to 2	ft. XX with ball	\$1.75 each	15.00

Send for Our New Booklet

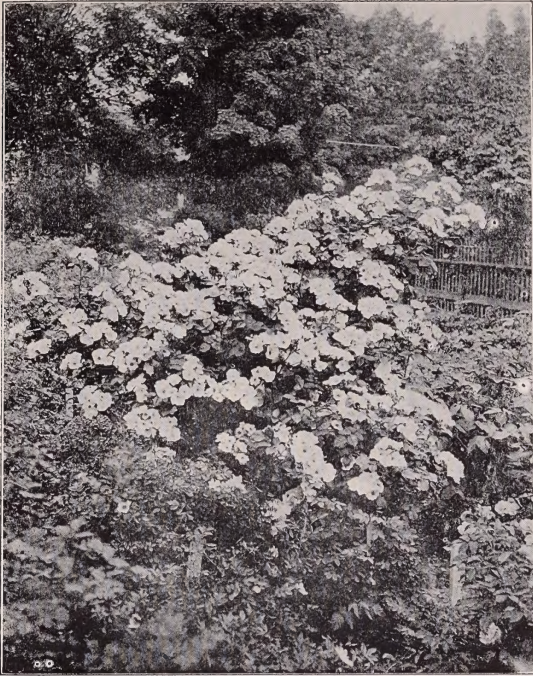
		10	100
<b>Buxus sempervirens</b>	Tree Box (Pyramids)		
	1½ to 2 ft. XX with ball	\$1.00 each	\$ 7.50
	2 to 2½ ft. XX with ball	\$1.50 each	12.25
	3 ft. XX with ball	\$4.50 each	37.50
	3½ ft. XX with ball	\$5.00 each	45.00
	4 to 5 ft. XX with ball		
		\$6 to \$10 each	
	<b>suffruticosa</b> Dwarf Box		
	4 to 5 in. XX str. with ball . . .		6.00
		\$40 to \$50 M	
	5 to 6 in. XX str. with ball . . .		7.00
		\$50 to \$60 M	
<b>Chamaecyparis</b>	See Retinospora		
<b>Crataegus pyrcantha</b>	Evergreen or Pyrcantha Thorn		
	1 to 1½ ft. pot-grown . . .	\$1.00 each	8.00
	1½ to 2 ft. " . . .	\$1.25 each	10.00
	2 to 2½ ft. " . . .	\$1.50 each	12.50
<b>Daphne cneorum</b>	Garland Flower		
	2 years with ball	\$ .50 each	4.00
	3 years with ball	\$.60 each	5.00
	4 years with ball	\$.75 each	7.00
			60.00
	(These plants have been grown from cuttings in our own nursery.)		
	<b>mezereum</b>		
	2 ft. with ball . . .	\$1.00 each	7.50
<b>Euonymus radicans</b>	Evergreen Creeper		
	broad leaf, 1 yr. . . . .	1.00	8.00
	" " 2 yr. . . . .	1.25	10.00
	" " 3 yr. . . . .	1.50	12.00
	narrow leaf, 1 yr. . . . .	1.00	8.00
	" " 2 yr. . . . .	1.25	10.00
	" " 3 yr. . . . .	1.50	12.00
<b>Hedera helix</b>	English Ivy		
	5 inch pots . . . . .	2.00	15.00
<b>Juniperus communis</b>	Common Upright Juniper		
	2 to 2½ ft. XX with ball	\$1.00 each	7.00
	3 to 3½ ft. XX spec. with ball . .		
		\$1.25 each	9.00
	3½ to 4 ft. XX spec. with ball . . .		
		\$1.75 each	15.00
	<b>var. prostrata</b> Trailing Canadian Juniper		
	10 to 15 in. . . . .	\$1.00 each	7.50
	15 to 24 in. . . . .	\$1.25 each	10.00
			80.00
	<b>sabina procumbens</b>		
	8 to 12 in. spread . . . . .	\$.75 each	6.00
	18 to 24 in. " . . . .	\$1.00 each	7.50
			60.00
	<b>aurea</b> Yellow Trailing Canadian Juniper		
	12 to 15 in. . . . .	\$1.00 each	7.50
	<b>virginiana</b> Red Cedar		
	1½ to 2 ft. . . . .	\$.50 each	4.00
	2 to 2½ ft. . . . .	\$.75 each	6.00
	2½ to 3 ft. . . . .	\$1.00 each	9.00
	3 to 3½ ft. . . . .	\$1.25 each	10.00
	3½ to 4 ft. . . . .	\$1.75 each	15.00
	4 to 4½ ft. . . . .	\$2.25 each	20.00
	4½ to 5 ft. . . . .	\$3.00 each	27.50
	5 to 5½ ft. . . . .	\$4.00 each	37.50
	5½ to 6 ft. . . . .	\$5.00 each	45.00
	6 to 6½ ft. . . . .	\$6.50 each	60.00

## EVERGREENS.

			10	100
<b>Juniperus virginiana glauca</b>	Blue Virginian Cedar			
1 to 1½ ft.	. . . . .	\$1.00 each	\$ 9.00	\$ 75.00
2½ ft.	. . . . .	\$2.00 each	15.00	
3 ft.	. . . . .	\$2.50 each	20.00	
3½ ft.	. . . . .	\$3.00 each	25.00	
4 ft.	. . . . .	\$3.75 each	35.00	
4½ ft.	. . . . .	\$4.25 each	40.00	
5 ft.	. . . . .	\$4.75 each	45.00	
5½ ft.	. . . . .	\$5.25 each	50.00	
6 ft.	. . . . .	\$6.00 each	50.00	
<b>pfitzeriana</b>				
2 ft.	. . . . .	\$1.75 each	15.00	
2½ ft.	. . . . .	\$2.00 each	17.50	
<b>Kalmia latifolia</b>	Mountain Laurel			
1 to 1½ ft.	XX with ball	\$1.25 each	10.00	90.00
1½ to 2 ft.	XX with ball	\$1.75 each	15.00	125.00
2 to 2½ ft.	XX with ball	\$2.00 each	17.50	150.00
2½ to 3 ft.	XX with ball	\$2.75 each	25.00	225.00
3 to 3½ ft.	XX with ball	\$3.25 each	30.00	275.00
NOTE: We can also supply large or small quantities of fine collected stock of Kalmias 1½ to 3 ft.				
Price per car containing from 300 to 400 plants, \$150 to \$200 per car, F. O. B. our shipping point.				
Write for prices on less than car-load lots.				
<b>Picea alba</b>	White Spruce			
2 to 3 ft.	XX with ball	\$ .75 each	6.00	
3 to 3½ ft.	XX with ball	\$1.25 each	10.00	
3½ to 4 ft.	XX with ball	\$1.50 each	13.50	
4 to 4½ ft.	XX with ball	\$2.00 each	17.50	
4½ to 5 ft.	XX with ball	\$2.50 each	22.50	
<b>excelsa</b>	Norway Spruce			
2 to 2½ ft.	. . . . .	\$ .35 each	3.00	25.00
2½ to 3 ft.	. . . . .	\$ .50 each	3.50	30.00
3½ to 4 ft.	. . . . .	\$ .60 each	5.00	35.00
4 to 4½ ft.	. . . . .	\$ .75 each	6.00	50.00
4½ to 5 ft.	. . . . .	\$1.00 each	7.50	60.00
5 to 5½ ft.	. . . . .	\$1.50 each	13.50	
<b>excelsa Remonti</b>	Dwarf Spruce			
1 to 1½ ft.	. . . . .	\$1.50 each	13.50	
<b>gregoriana</b>	Gregory's Dwarf Spruce			
1 to 1½ ft.	. . . . .	\$2.50 each	22.50	
<b>orientalis</b>	Eastern Spruce			
1½ to 2 ft.	XXX with ball	\$1.00 each	8.00	
2 to 2½ ft.	XXX with ball	\$1.25 each	10.00	
2½ to 3 ft.	XXX with ball	\$2.50 each	17.50	
<b>pumila</b>	Black Dwarf Spruce			
8 to 14 in.	. . . . .	\$2.00 each	17.50	
<b>pungens</b>	Colorado Spruce			
2 to 3 ft.	. . . . .	\$1.50 each	12.50	
3 to 3½ ft.	. . . . .	\$2.00 each	17.50	
<b>glauca</b>	Colorado Blue Spruce			
2½ to 3 ft.	. . . . .	\$2.50 each	22.50	
<b>kosterlana</b>	Koster's Blue Spruce			
1½ to 2 ft.	. . . . .	\$2.00 each	17.50	150.00
2 to 2½ ft.	. . . . .	\$2.50 each	22.50	200.00
2½ to 3 ft.	. . . . .	\$3.00 each	27.50	250.00
3 to 3½ ft.	XXX with ball	\$4.00 each	37.50	
3½ to 4 ft.	XXX with ball	\$6.00 each	50.00	

Rhododendron Maximum and Kalmia Latifolia

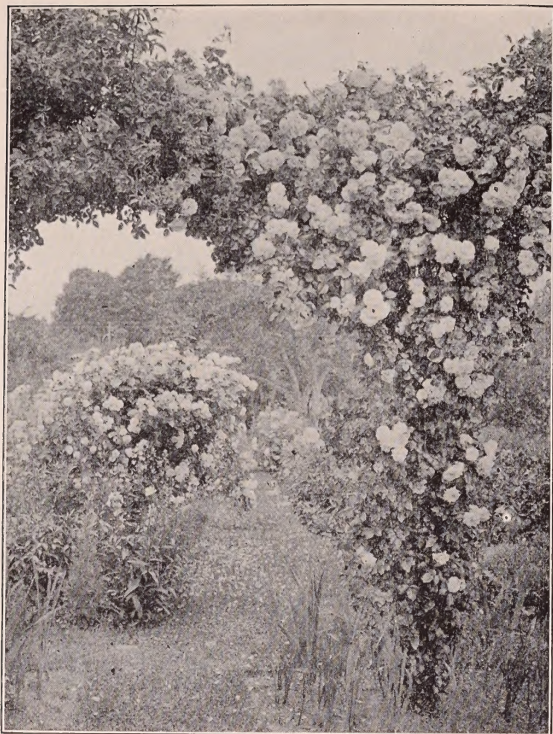




## SARGENT

This latest Silver Medal Rose, originated by Jackson Dawson, is now offered for the first time for Fall, 1912, delivery. This seedling combines the good qualities of R. Wichuriana, R. Crimson Rambler, and R. Baroness Rothschild which have been used in its evolution. The flowers are single, about three inches across, pale rose in color, and produced in greatest profusion in pyramidal clusters all along the strong branches, blooming from the middle of May till the end of June. The foliage is a beautiful glossy green and remains in good condition till late Fall.

As this stock is limited book your orders now. \$1.50 each.



## WM. C. EGAN

This rose was awarded a medal by the Massachusetts Horticultural Society in 1900. It was produced by crossing Gen. Jacqueminot on Rosa Wichuriana, but shows no trace of either in its bloom. The flower is large and very full, resembling in shape as well as color *Souvenir de la Malmaison*. Although only an annual bloomer, it remains in flower several weeks, and the large trusses of superb blooms are unusually attractive. Mr. Dawson considered this the best of all his numerous hybrids. It is unquestionably hardy and reliable. 5 inch pots, 75 cents each; \$6.00 per ten.



			10	100
<b>Pinus austriaca</b>	<b>Austrian Pine</b>			
1 to 1½	ft.XXX with ball	\$ .35 each	\$ 3.00	\$25.00
1½ to 2	ft.XXX with ball	\$ .50 each	4.00	35.00
2 to 2½	ft.XXX with ball	\$ .75 each	6.00	50.00
2½ to 3	ft.XXX with ball	\$1.00 each	7.50	60.00
<b>banksiana</b>	<b>Banks or Jack Pine</b>			
2 to 2½	ft. . . . .	\$ .50 each	4.00	35.00
2½ to 3	ft. . . . .	\$ .75 each	6.00	50.00
3 to 3½	ft. . . . .	\$ .90 each	7.50	60.00
3½ to 4	ft. . . . .	\$1.00 each	8.00	75.00
<b>cembra</b>	<b>Swiss Stone Pine</b>			
2 to 2½	ft.XXX with ball	\$1.50 each	13.50	135.00
2½ to 3	ft.XXX with ball	\$1.75 each	15.00	150.00
3 to 3½	ft.XXX with ball	\$2.00 each	17.50	225.00
3½ to 4	ft. . . . .	\$3.00 each	25.00	325.00
4 to 4½	ft. . . . .	\$4.00 each	35.00	400.00
4½ to 5	ft. . . . .	\$5.00 each	45.00	
5 to 5½	ft. . . . .	\$6.00 each	55.00	
5½ to 6	ft. . . . .	\$7.00 each	65.00	
6 to 6½	ft. . . . .	\$8.00 each	75.00	700.00
6½ to 7	ft. . . . .	\$9.00 each	80.00	
7 to 7½	ft. . . . .	\$10.00 each	90.00	
<b>mugho</b>	<b>Dwarf Mountain Pine</b>			
6 to 8	in.XXX with ball	\$ .35 each	3.00	25.00
8 to 12	in.XXX with ball	\$ .50 each	4.50	40.00
12 to 15	in.XXX with ball	\$ .75 each	6.00	50.00
15 to 18	in.XXX with ball	\$1.25 each	10.00	
1½ to 2	ft.XXX with ball	\$1.75 each	15.00	
<b>resinosa</b>	<b>Red or Norway Pine</b>			
2½ to 3	ft. . . . .	\$2.00 each	17.50	
3 to 4	ft. . . . .	\$3.00 each	27.50	
<b>PINUS STROBUS White Pine</b>				
8 to 12	in. . . . .	\$ .20 each	1.50	10.00
1 to 1½	ft. . . . .	\$ .30 each	2.00	15.00
1½ to 2	ft. . . . .	\$ .40 each	3.00	20.00
2 to 3	ft. . . . .	\$ .50 each	4.00	35.00
3 to 4	ft. . . . .	\$ .75 each	7.00	65.00
4 to 5	ft. . . . .	\$1.25 each	10.00	85.00
5 to 6	ft. . . . .	\$2.25 each	20.00	
6 to 7	ft. . . . .	\$3.25 each	30.00	
7 to 8	ft. . . . .	\$4.00 each	37.50	
NOTE—We have a very fine block of Pinus Strobus in all sizes, and are confident that our stock is as fine as any in New England. We shall be glad to give special prices on large lots, in person or by mail.				
<b>Pinus sylvestris</b>	<b>Scotch Pine</b>			
2 to 3	ft.XXX with ball	\$ .75 each	\$ 6.00	\$ 50.00
3 to 4	ft.XXX with ball	\$1.00 each	8.00	75.00
4 to 5	ft.XXX with ball	\$1.50 each	12.50	100.00
<b>Pseudotsuga douglasi</b>	<b>Douglas Spruce</b>			
1½ to 2	ft.XXX with ball	\$1.00 each	7.50	
2 to 2½	ft.XXX with ball	\$1.25 each	10.00	
2½ to 3	ft.XXX with ball	\$1.50 each	13.50	
3 to 3½	ft.XXX with ball	\$1.75 each	15.00	
3½ to 4	ft.XXX with ball	\$2.25 each	20.00	
4 to 7½	ft.XXX with ball	\$5.00 each	45.00	
7½ to 8	ft.XXX with ball	\$6.00 each	50.00	
8 to 8½	ft.XXX with ball	\$7.00 each	60.00	
8½ to 9	ft.XXX with ball	\$8.00 each	70.00	
8 to 9½	ft.XXX with ball	\$9.00 each	80.00	

in Carload Lots. Write for Prices.

			10	100
<b>Retinospora filifera</b>	Thread-branched Japan Cypress			
1½ to 2	ft. XX with ball	\$2.25 each	\$20.00	\$
2 to 2½	ft. XX with ball	\$2.75 each	25.00	
2½ to 3	ft. XX with ball	\$3.25 each	30.00	
	<b>obtusa</b> Obtuse-leaved Japanese Cypress			
1 to 1½	ft. XX with ball	\$1.00 each	9.00	
1½ to 2	ft. XX with ball	\$1.50 each	13.50	
2 to 2½	ft. XX with ball	\$2.00 each	17.50	
2½ to 3	ft. XX with ball	\$2.50 each	22.50	
3 to 3½	ft. XX with ball	\$3.25 each	30.00	
	<b>crippsi</b> New Japan Cypress			
4 to 4½	ft. XX with ball	\$6.00 each	55.00	
4½ to 5	ft. XX with ball	\$7.50 each	60.00	
	<b>pisifera</b> Pea-fruted Japanese Cypress			
2 to 3	ft. XX with ball	\$2.00 each	17.50	
3 to 4	ft. XX with ball	\$3.52 each	32.50	
4 to 5	ft. XX with ball	\$4.50 each	40.00	
	<b>plumosa</b> Plume-like Japanese Cypress			
1 to 2	ft. XX with ball	\$.50 each	4.00	30.00
2 to 3	ft. XX with ball	\$1.00 each	7.50	60.00
3 to 4	ft. XX with ball	\$2.00 each	17.50	150.00
4 to 5	ft. XX with ball	\$3.00 each	25.00	
5 to 6	ft. XX with ball	\$3.75 each	35.00	
6 to 7	ft. XX with ball	\$6.00 each	55.00	
7 to 7½	ft. XX with ball	\$8.00 each	75.00	
7½ to 8	ft. XX with ball	\$10.00 each	90.00	
	<b>plumosa aurea</b> Golden Plume-like Japanese Cypress			
2 to 2½	ft. XX with ball	\$.75 each	6.00	
2½ to 3	ft. XX with ball	\$1.25 each	10.00	
4 to 4½	ft. XX with ball	\$4.00 each	37.50	
4½ to 5	ft. XX with ball	\$6.00 each	50.00	
	<b>squarrosa</b> Squarrose-leaved Japan Cypress			
2 to 2½	ft. XX with ball	\$1.75 each	15.00	
<b>Rhododendron hybrids</b> , English grown, in the following varieties:				
	<b>Album elegans</b> large delicate violet flowers			
1½ to 2	ft. . . . .	\$2.00 each	17.50	
2 to 2½	ft. . . . .	\$3.00 each	27.50	
2½ to 3	ft. . . . .	\$4.00 each	30.00	
3 to 3½	ft. . . . .	\$5.00 each	45.00	
3½ to 4	ft. . . . .	\$6.00 each	50.00	
	<b>Album grandiflorum</b> large delicate violet flowers			
1½ to 2	ft. . . . .	\$2.00 each	17.50	
2½ to 3	ft. . . . .	\$3.00 each	27.50	
	<b>Atrosanguineum</b> dark rich rose color, good foliage			
1½ to 2	ft. . . . .	\$2.50 each	20.00	
2 to 2½	ft. . . . .	\$3.00 each	27.50	
	<b>Blandyanum</b> rosy crimson, abundant bloomer			
2	ft. . . . .	\$2.50 each		
2 to 2½	ft. . . . .	\$3.25 each		
	<b>Boule de Nieve</b> very dwarf, pure white			
1½	ft. . . . .	\$2.50 each	22.50	
2	ft. . . . .	\$3.25 each	30.00	
	<b>Caractacus</b> rich, deep crimson, one of the best as to habit			
1½ to 2	ft. . . . .	\$2.00 each	17.50	
2 to 2½	ft. . . . .	\$2.75 each	25.00	
2½ to 3	ft. . . . .	\$3.00 each	27.50	
3 to 3½	ft. . . . .	\$3.75 each	35.00	

**Rhododendron Maximum and Kalmia Latifolia**

Rhododendron hybrids (continued)	10	100
<b>Charles Bagley</b> cherry red		
1½ to 2 ft. . . . .	\$2.00 each	\$17.50
2 to 2½ ft. . . . .	\$2.75 each	25.00
<b>Charles Dickens</b> dark red		
1½ to 2 ft. . . . .	\$2.25 each	20.00
2 to 2½ ft. . . . .	\$3.00 each	27.50
2½ to 3 ft. . . . .	\$3.75 each	35.00
<b>Charles Sprague Sargent</b> crimson, one of the best		
18 in. . . . .	\$2.50 each	22.50
<b>Delicatissimum</b> white, delicately tinted with red		
1½ to 2 ft. . . . .	\$2.00 each	17.50
2 to 2½ ft. . . . .	\$2.75 each	25.00
<b>Everestianum</b> light lavender, best of hardy		
Rhododendrons		
1½ to 2 ft. . . . .	\$2.00 each	17.50
2 to 2½ ft. . . . .	\$2.75 each	20.00
2½ to 3 ft. . . . .	\$3.00 each	27.50
<b>E. S. Rand</b> rich crimson		
1½ to 2 ft. . . . .	\$2.00 each	17.50
2 to 2½ ft. . . . .	\$2.75 each	25.00
<b>F. D. Godman</b> crimson		
1½ to 2 ft. . . . .	\$2.00 each	17.50
<b>Gloriosum</b> pink		
1½ to 2 ft. . . . .	\$2.00 each	17.50
2 to 2½ ft. . . . .	\$2.50 each	22.50
2½ to 3 ft. . . . .	\$3.00 each	25.00
<b>Gen. Grant</b> red		
1½ to 2 ft. . . . .	\$2.00 each	17.50
<b>H. H. Hunnewell</b> violet red		
1½ to 2 ft. . . . .	\$2.50 each	22.50
<b>H. W. Sargent</b> deep carmine		
1½ to 2 ft. . . . .	\$2.00 each	17.50
2 to 2½ ft. . . . .	\$2.75 each	25.00
<b>Kettledrum</b> deep red		
2 to 2½ ft. . . . .	\$2.50 each	22.50
<b>Lady Armstrong</b> beautiful pale rose		
1½ to 2 ft. . . . .	\$2.00 each	17.50
2 to 2½ ft. . . . .	\$2.50 each	22.50
<b>Mrs. Milner</b> fine crimson, early		
1½ to 2 ft. . . . .	\$2.00 each	17.50
2 to 2½ ft. . . . .	\$2.50 each	22.50
<b>Minnie</b> finest white		
1½ to 2 ft. . . . .	\$2.00 each	17.50
2 to 2½ ft. . . . .	\$2.75 each	25.00
<b>Old Port</b> dark red		
1½ to 2 ft. . . . .	\$2.00 each	17.50
<b>Parsons' Gloriosum</b> soft rose		
2 to 2½ ft. . . . .	\$2.50 each	20.00
2½ to 3 ft. . . . .	\$3.00 each	25.00
3 to 3½ ft. . . . .	\$3.25 each	27.50
<b>Parsons' Grandiflorum</b> rose		
1½ to 2 ft. . . . .	\$2.00 each	17.50
2 to 2½ ft. . . . .	\$2.50 each	22.50
2½ to 3 ft. . . . .	\$3.00 each	25.00
3 to 3½ ft. . . . .	\$3.50 each	30.00

in Carload Lots. Write for Prices.



	10	100
<b>Rhododendron hybrids</b> (continued)		
<b>President Lincoln</b> fine rosy crimson		
1½ to 2 ft. . . . .	\$2.00 each	\$17.50
2 to 2½ ft. . . . .	\$2.50 each	22.50
2½ to 3 ft. . . . .	\$2.75 each	25.00
3 to 3½ ft. . . . .	\$3.50 each	
<b>Purpureum elegans</b> best purple		
1½ to 2 ft. . . . .	\$2.00 each	17.50
2 to 2½ ft. . . . .	\$2.75 each	25.00
<b>Roseum elegans</b> deep rose		
1½ to 2 ft. . . . .	\$2.00 each	17.50
2 to 2½ ft. . . . .	\$2.75 each	25.00
2½ to 3 ft. . . . .	\$3.00 each	27.50
3 to 3½ ft. . . . .	\$3.50 each	32.50
3½ to 4 ft. . . . .	\$4.25 each	40.00
Good assortment in the following sizes:		
1 to 1½ ft. with ball . . .	\$1.25 each	10.00 90.00
1½ to 2 ft. with ball . . .	\$2.00 each	15.00 140.00
NOTE—These Rhododendrons have wintered two to three seasons in our nursery, are well acclimated, and are much superior to newly imported stock.		
<b>ferrugineum</b> Dwarf Rhododendron		
10 to 12 in. with ball . . .	\$2.00 each	17.50
<b>hirsutum</b> Dwarf Rhododendron		
10 to 12 in. with ball . . .	\$1.75 each	15.00
<b>ponticum</b> Dwarf Rhododendron		
12 to 15 in. with ball . . .	\$2.00 each	17.50
<b>Wilsonianum</b> Wilson's Dwarf Rhododendron		
12 to 15 in. with ball . . .	\$2.00 each	17.50
15 to 18 in. with ball . . .	\$2.25 each	20.00
18 to 24 in. with ball . . .	\$3.25 each	25.00
<b>RHODODENDRON MAXIMUM</b> Great Laurel		
2 to 2½ ft. nursery grown	\$1.75 each	15.00 110.00
2½ to 3 ft. " " "	\$2.00 each	17.50
3½ to 4 ft. " " "	\$2.50 each	25.00
4 to 4½ ft. " " "	\$4.00 each	35.00
5 to 7 ft. XX fine spec. with ball		\$10 to \$20 each

NOTE: These plants are growing in our own nursery and are fine bushy specimens, each with a ball of fibrous roots and wrapped in burlap. **COLLECTED CLUMPS** F.O.B. our shipping point, in carload lots.

3 to 5 ft. . . . . at \$125 per car  
Smaller sizes on application.

We make a specialty of collected Rhododendron Maximum in carload lots. They vary in size from 1½ to 6 ft. From 65 to 350 plants can be put into a car, depending on the size of the plants desired. We ship only A No. 1 plants, and are the largest dealers in this fine evergreen in the country.

Special prices on large quantities.

Send for our **Rhododendron Booklet**.

	10	100
<b>Taxus canadensis</b> Canadian Yew		
12 in. . . . .	\$1.00 each	\$ 9.00 \$ 75.00
<b>Taxus cuspidata</b> Japanese Yew		
1 to 1½ ft. . . . .	\$1.75 each	15.00
1½ to 2 ft. . . . .	\$2.00 each	17.50
2 to 2½ ft. Amer'n grown	\$3.50 each	30.00
2½ to 3 ft. Amer'n grown	\$4.50 each	40.00

Send for Our New Booklet

		10	100
<b>Thuja ellwangeriana</b>	Ellwanger's Arbor Vitæ		
3 to 4 ft.	. . . . .	\$3.00 each	\$25.00
4 to 4½ ft.	. . . . .	\$4.00 each	37.50
<b>globosa</b>	Globe Arbor Vitæ		
8 to 12 in.	. . . . .	6.00	50.00
1 to 1½ ft.	. . . . .	7.50	60.00
1½ to 2 ft.	. . . . .	\$1.25 each	10.00
2 to 2½ ft.	. . . . .	\$2.50 each	20.00
<b>George Peabody</b>			
1 to 2 ft.	. . . . .	5.00	40.00
2 to 2½ ft.	. . . . .	7.50	60.00
<b>Hovey</b>	Hovey's Golden Arbor Vitæ		
1½ to 2 ft. with ball	. . . . .	\$1.50 each	12.50
2 to 2½ ft. with ball	. . . . .	\$1.75 each	15.00
4 to 4½ ft. with ball	. . . . .	\$3.50 each	30.00
<b>Little Gem</b>			
10 to 12 in. X 8 to 10 in.	. . . . .	\$1.50 each	12.50
<b>occidentalis</b>	American Arbor Vitæ		
1 to 1½ ft.	. . . . .	1.50	12.50
2 to 2½ ft.	. . . . .	2.50	22.50
2½ to 3 ft.	. . . . .	3.00	27.50
3 to 4 ft. XX with ball	. . . . .	5.00	40.00
4 to 5 ft. XX	" " \$1.25 each	10.00	90.00
5 to 5½ ft. XX	" " \$1.75 each	15.00	135.00
5½ to 6 ft. XX	" " \$2.00 each	17.50	150.00
6 to 7 ft. XX	" " . . . . .		
	\$2.50 to \$4.00 each		
7 to 8 ft. XX with ball	. . . . .	\$5 to \$7.50 each	
8 to 9 ft. XX with ball	. . . . .	\$8.00 to \$9.00 each	
	<b>pyramidalis</b> Pyramidal Arbor Vitæ		
2 to 3 ft.	. . . . .	\$.75 each	6.00
3 to 4 ft.	. . . . .	\$1.25 each	10.00
5 to 5½ ft.	. . . . .	\$2.75 each	25.00
5½ to 6 ft.	. . . . .	\$3.50 each	30.00
<b>Readii</b>			
1½ to 2½ ft.	. . . . .	7.50	60.00
<b>Standishii</b>			
1 to 1½ ft.	. . . . .	\$1.50 each	12.50
<b>Waxii</b>			
1 to 1½ ft.	. . . . .	7.50	
<b>Woodwardii</b>			
1 to 2 ft.	. . . . .	7.50	60.00
<b>warreana (Siberica)</b>	Siberian Arbor Vitæ		
1½ to 2 ft.	. . . . .	4.50	40.00
2 to 2½ ft.	. . . . .	6.00	50.00
<b>Tsuga canadensis</b>	American Hemlock		
1 to 1½ ft.	. . . . .	3.75	35.00
1½ to 2 ft. with ball	. . . . .	\$.50 each	4.50
2 to 2½ ft.	" " . . . . .	\$.75 each	6.00
2½ to 3 ft.	" " . . . . .	\$1.50 each	13.50
3 to 3½ ft.	" " . . . . .	\$1.75 each	15.00
3½ to 4 ft.	" " . . . . .	\$2.00 each	17.50
4 to 5 ft.	" " . . . . .	\$3.50 each	32.50
5½ to 6 ft. X fine spec. with ball	. . . . .		
	burlapped, \$6 to \$9 each		
<b>Yucca filamentosa</b>	Adam's Needle		
	4 years . . . . .	1.50	12.00
	X heavy spec. . . . .	3.50	

# TREES AND SHRUBS.

		10	100
<b>Acer dasycarpum</b>	Silver Maple		
2 to 2½ in. cal.	. . . . .	\$1.25 each	\$ 10.00
<b>ginnale</b>	Tartarian Maple		
4 to 5 ft.	. . . . .	\$.50 each	4.50 40.00
6 to 8 ft.	. . . . .	\$.75 each	6.00 50.00
<b>negundo</b>	Ash-leaved Maple		
10 to 12 ft. (2¾ to 3¼ in. cal.)	. . . . .	\$1.75 each	15.00
<b>platanoides</b>	Norway Maple		
8 to 10 ft.	. . . . .	\$.75 each	6.00 50.00
10 to 12 ft.	. . . . .	\$1.00 each	8.50 75.00
12 to 14 ft.	. . . . .	\$1.50 each	13.50 125.00
	<b>Schwedleri</b> Schwedler's Maple		
6 to 8 ft.	. . . . .	\$.75 each	6.00
<b>saccharinum</b>	Sugar Rock Maple		
6 to 8 ft. 1¼ in. cal.	. . . . .	\$.60 each	5.50 50.00
8 to 10 ft. 1½ to 1¾ in. cal.	. . . . .	\$.75 each	6.50 60.00
10 to 12 ft. 1¾ to 2 in. cal.	. . . . .	\$1.00 each	7.50 70.00
12 to 14 ft. 2 to 2¼ in. cal.	. . . . .	\$1.50 each	13.50 110.00
14 to 16 ft. 2¼ to 2½ in. cal.	. . . . .	\$1.75 each	15.00
16 to 18 ft. 2½ to 2¾ in. cal.	. . . . .	\$2.35 each	22.50
<b>Aesculus hippocastanum</b>	European Horse Chestnut		
6 to 8 ft.	. . . . .	\$.75 each	6.00
<b>Aralia pentaphylla</b>	Five-leaved Aralia		
2 to 3 ft.	. . . . .		1.75 15.00
3 to 4 ft.	. . . . .		2.00 17.50
<b>spinosa</b>	Hercules Club		
2 to 3 ft.	. . . . .		1.75 15.00
4 to 5 ft.	. . . . .	\$.40 each	3.50 25.00
<b>Azalea arborescens</b>	Fragrant White Azalea		
1 to 1½ ft.	. . . . .	\$1.25 each	10.00
<b>Ghent Hybrids</b>			
1½ to 2 ft.	. . . . .	\$1.10 each	9.00 80.00
2 to 3 ft.	. . . . .	\$1.75 each	15.00 110.00
In the following varieties:			
<b>Bouquet de Flore</b>	soft rose, double		
<b>Coccinea speciosa</b>	orange red		
<b>Daviesi</b>	white, large flowers, fragrant		
<b>Geant de Batailles</b>	dark red		
<b>Gloria mundi</b>	vermilion red		
<b>Grand monarque</b>	salmon		
<b>Ignaea nova</b>	violet red		
<b>Louis A. Van Houtte</b>	beautiful soft red, double		
<b>Nancy Waterer</b>	bright yellow		
<b>Narcissiflora</b>	sulphur yellow, double		
<b>Nero</b>	bright red		
<b>Pallas</b>	bright red		
<b>Rembrandt</b>	bright violet red		
<b>Sang de gandbruges</b>	brilliant carmine red		
<b>Souvenir de Louis Van Houtte</b>	white, with rose		
<b>Unique</b>	bright yellow		
<b>mollis</b>	Chinese Azalea		
1 to 1½ ft.	. . . . .		5.00 40.00
1½ to 2 ft.	. . . . .	\$1.00 each	8.00 70.00
2 to 2½ ft.	. . . . .	\$1.10 each	9.00 80.00

Send for Our New Rhododendron Booklet



TREES AND SHRUBS.

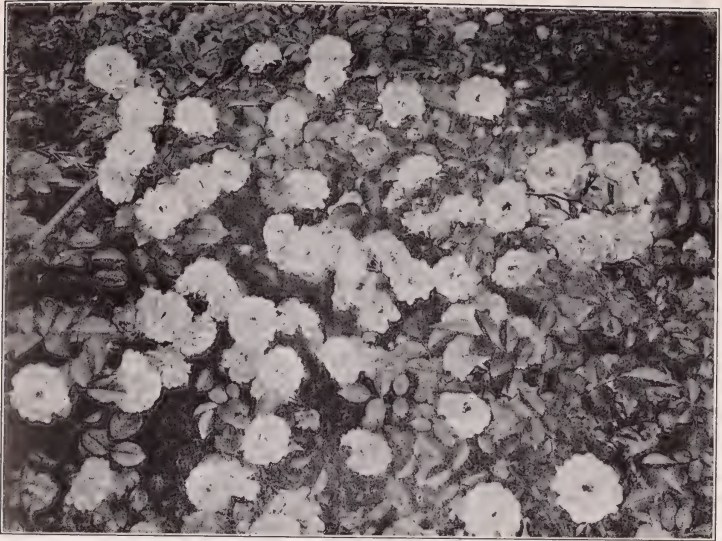
11

		10	100
<i>Azalea nudiflora</i>	Wild Pink Azalea		
1½ to 2 ft.	.....	\$1.25 each	\$10.00
3 to 4 ft.	XXXX fine spec.	\$4.00 each	35.00
<i>vaseyi</i>	Southern Azalea		
2 to 3 ft.	.....	\$3.00 each	25.00
<i>viscosa</i>	Native White Azalea		
1½ to 2 ft.	.....	\$1.25 each	10.00
<i>canadensis</i>			
18 to 24 in.	.....		4.00
<i>Baccharis halimifolia</i>	Groundsel Shrub		
3 to 4 ft.	.....		2.25
<i>Berberis thunbergii</i>	Japanese Barberry		
1 to 1½ ft.	.....		1.00
1½ to 2 ft.	.....		1.25
2 to 2½ ft.	.....		2.50
<i>vulgaris</i>	Green or Common Barberry		
1½ to 2 ft.	.....		1.00
2 to 3 ft.	.....		1.50
3 to 4 ft.	.....		2.00
<i>purpurea</i>	Purple Barberry		
1½ to 2 ft.	.....		1.00
2 to 3 ft.	.....		1.25
3 to 4 ft.	.....		1.75
<i>Betula alba</i>	European White Birch		
4 to 5 ft.	.....	\$.50 each	4.00
6 to 8 ft.	.....	\$1.25 each	10.00
<i>laciniata</i>	Weeping Cut-leaf Birch		
6 to 8 ft.	.....	\$1.00 each	7.50
<i>lenta</i>	Sweet Birch		
6 to 8 ft.	.....	\$.75 each	5.00
<i>rubra or nigra</i>	Red or River Birch		
8 to 10 ft.	.....	\$.75 each	6.00
<i>Calycanthus floridus</i>	Strawberry Bush		
1½ to 2 ft.	.....		1.20
2 to 2½ ft.	.....		1.50
<i>Caragana arborescens</i>	Siberian Pea Tree		
3 to 4 ft.	.....		3.00
<i>Carpinus americana</i>	American Horn Beam		
4 to 5 ft.	.....		3.50
5 to 6 ft.	.....		5.00
6 to 7 ft.	.....		7.00
<i>betulus</i>	European Horn Beam		
1½ to 2 ft.	.....		1.00
6 to 7 ft.	.....	\$.75 each	6.00
<i>Ceanothus americana</i>	New Jersey Tea Tree		
1½ to 2 ft.	.....		2.00
<i>Cercis canadensis</i>	Red-bud or Judas Tree		
2 to 3 ft.	.....		2.50
6 to 8 ft.	.....	\$1.75 each	15.00
<i>Chionanthus virginica</i>	White Fringe		
2 to 3 ft.	.....	\$.40 each	3.00
3 to 4 ft.	XX fine	\$.50 each	4.00
<i>Clethra alnifolia</i>	Sweet Pepper Bush		
1½ to 2 ft.	.....		1.50
2 to 3 ft.	.....		1.75

Send for Our New Rhododendron Booklet

		10	100
<b>Cornus alba</b> (Siberica) True Red-twigged Dogwood			
	1½ to 2 ft. . . . .	\$ 1.25	\$ 9.00
	2 to 3 ft. . . . .	1.50	10.00
	3 to 4 ft. . . . .	1.75	12.00
<b>flaviramea</b> (lutea) Yellow-stemmed Dogwood			
	1½ to 2 ft. . . . .	1.25	10.00
	2 to 3 ft. . . . .	1.35	12.50
	3 to 4 ft. . . . .	1.75	15.00
<b>florida</b> White-Flowering Dogwood			
	4 to 5 ft. . . . .	5.00	45.00
	5 to 6 ft. . . . .	7.50	60.00
	6 to 7 ft. . . . .	\$2.00 each	15.00
	7 to 8 ft. . . . .	\$2.25 each	20.00
			175.00
<b>mascula</b> Cornelian Cherry			
	2 to 3 ft. . . . .	1.50	10.00
	3 to 4 ft. . . . .	1.75	10.00
<b>paniculata</b> Panicked or Gray Dogwood			
	3 to 4 ft. . . . .	1.75	12.50
	4 to 5 ft. . . . .	2.00	15.00
	5 to 6 ft. . . . .	2.75	20.00
<b>rubra</b> Red-flowering Dogwood			
	2 to 2½ ft. . . . .	\$1.00 each	8.00
	2½ to 3 ft. . . . .	\$1.25 each	10.00
			90.00
<b>sanguinea</b> Red Osier			
	3 to 4 ft. . . . .	\$ .20 each	1.00
			10.00
<b>sericea</b> Silky Dogwood			
	3 to 4 ft. . . . .	1.50	12.00
<b>stolonifera</b> Red Osier Dogwood			
	2 to 3 ft. . . . .	1.50	10.00
	3 to 4 ft. . . . .	1.75	12.00
<b>Corylus americana</b> American Hazelnut			
	3 to 4 ft. . . . .	2.00	
<b>Crataegus arnoldiana</b> Arnold's Thorn			
	2 to 3 ft. . . . .	2.00	17.50
	3 to 4 ft. . . . .	3.00	25.00
<b>carrieri</b>			
	4 to 5 ft. . . . .	\$1.50 each	12.50
<b>cordata</b> Washington Thorn			
	2 to 3 ft. . . . .	2.00	17.50
	3 to 4 ft. . . . .	3.25	30.00
	4 to 5 ft. . . . .	4.25	40.00
	5 to 6 ft. XXX heavy spec. . . . .	7.50	60.00
	6 to 8 ft. XX heavy spec. . . . .	\$1.50 each	12.00
<b>crus-galli</b> Cockspur Thorn			
	2 to 3 ft. . . . .	2.00	17.50
	7 to 8 ft. XXX heavy spec. . . . .	\$1.50 each	12.00
<b>oxyacantha</b> English Hawthorn			
	2 to 3 ft. . . . .	2.50	
	6 to 8 ft. . . . .	\$1.50 each	
	3 to 4 ft. . . . .	6.00	
	5 to 6 ft. . . . .	\$1.25 each	10.00
<b>punctata</b>			
	4 to 5 ft. . . . .	\$1.25 each	10.00
<b>Cydonia japonica</b> Japanese Quince			
	1½ to 2 ft. . . . .	1.00	8.00

Send for Our New Booklet



## FARQUHAR

This rose was awarded the silver gilt medal of the Massachusetts Horticultural Society, certificated by the Horticultural Society of New York. The Farquhar Rose has glossy, bright green foliage which does not drop, but retains its lustre until cut down by severe frost, a feature which makes it most valuable for covering trellises, pillars, summer-houses and rocks. It is perfectly hardy and bears magnificent clusters of bright pink double flowers on long stems which are most serviceable for vases and table decorations, and bloom several weeks later than the Dawson Rose. Fifty cents each; \$4.00 per ten.





## MINNIE DAWSON

This rose was awarded a medal by the Massachusetts Horticultural Society in 1896. It was produced by crossing *Rosa Multiflora* and Dawson. The flower is double white with yellow center and is very delicate. It is a climber and has foliage similar to the Dawson. \$1.00 each; \$9.00 per ten.

<i>Cytisus laburnum</i>	Golden Chain	10	100
	3 to 4 ft. . . . .	\$.50 each	\$ 4.00
<i>Deutzia crenata</i>	Single White		
	1 to 2 ft. . . . .	1.00	8.00
	2 to 3 ft. . . . .	1.50	10.00
	<i>gracilis</i> Dwarf Deutzia		
	12 to 18 in. . . . .	1.00	8.00
	<i>Lemoinei</i>		
	1½ to 2 ft. . . . .	1.00	8.00
	2 to 3 ft. . . . .	1.50	10.00
	Pride of Rochester Double White Flowers		
	2 to 3 ft. . . . .	1.50	10.00
	<i>scabra</i>		
	2 to 2½ ft. . . . .	1.25	10.00
	3 to 3½ ft. . . . .	1.50	12.00
<i>Elaeagnus angustifolia</i>	Oleaster		
	2½ to 3 ft. . . . .	1.75	15.00
	<i>argentea</i> Silver-leaved Oleaster		
	2½ to 3 ft. . . . .	1.75	15.00
	<i>longipes (edulus)</i> Japanese Oleaster		
	1 to 2 ft. . . . .	1.50	12.00
	2 to 3 ft. . . . .	1.75	15.00
	3 to 4 ft. . . . .	2.25	17.50
	<i>odoratus</i>		
	2½ to 3 ft. . . . .	1.75	15.00
	<i>umbellata</i>		
	6 to 7 ft. . . . .	3.00	20.00
<i>Euonymus alatus</i>	Cork bark		
	1. to 1½ ft. . . . .	\$.75 each	6.00
	2 to 3 ft. . . . .	\$1.25 each	10.00
	3 to 4 ft. . . . .	\$2.25 each	20.00
	4 to 5 ft. . . . .	\$4.00 each	40.00
	5 to 6 ft. . . . .	\$7.00 each	50.00
	6 to 7 ft. . . . .	\$8.00 each	75.00
	<i>americanus</i> Strawberry Bush		
	3 to 4 ft. . . . .	2.50	20.00
	<i>bungeanus</i> Spindle Tree		
	5 to 6 ft. XXX . . . . .	3.50	30.00
	6 to 7 ft. XXX spec. . . . .	4.50	40.00
	<i>obovatus</i> Running Strawberry Bush		
	1½ to 2 ft. . . . .	2.00	15.00
	2 to 2½ ft. . . . .	2.50	20.00
	<i>radicans</i> Evergreen Creeper (See Evergreens).		
<i>Exochorda grandiflora</i>	Pearl Bush		
	2 to 2½ ft. . . . .	2.00	
	2½ to 3 ft. . . . .	2.50	
<i>Fagus sylvatica</i>	Europæan Beech		
	2 to 3 ft. . . . .	2.00	15.00
	3 to 4 ft. . . . .	\$.50 each	4.50
	<i>Riversii</i> Rivers' Blood-leaved Beech		
	3 to 4 ft. . . . .	1.00	9.00
	5 to 6 ft. . . . .	1.25	10.00
<i>Forsythia fortunei</i>	Fortune's Golden Bell		
	2 to 3 ft. . . . .	1.25	10.00
	3 to 4 ft. . . . .	1.50	12.00
	5 to 6 ft. XXX heavy spec. . . . .	4.00	30.00
	6 to 7 ft. XXX heavy spec. . . . .	4.50	35.00

	10	100
<b>Forsythia intermedia</b>		
2 to 3 ft. . . . .	\$ 1.25	\$ 10.00
3 to 4 ft. . . . .	1.75	15.00
4 to 5 ft. XXX heavy spec. . . . .	4.00	30.00
<b>sieboldii</b>		
4 to 5 ft. XXX spec. . . . .	4.00	30.00
5 to 6 ft. XXX heavy spec. . . . .	4.50	35.00
<b>suspensa</b> Weeping Golden Bell		
2 to 3 ft. . . . .	1.50	12.00
<b>viridissima</b>		
4 to 5 ft. XXX heavy spec. . . . .	4.00	35.00
<b>Fraxinus americana</b> White Ash		
8 to 10 ft. . . . .	5.00	40.00
10 to 14 ft. 1½ to 2 in. cal. \$1.00 each	7.50	65.00
<b>Gymnodalus canadensis</b> Kentucky Coffee		
5 to 6 ft. . . . . \$1.00 each	8.50	
<b>Halesia tetraptera</b> Silver-bell		
2 to 3 ft. . . . .	3.00	
3 to 4 ft. . . . .	4.00	
<b>Hamamelis virginiana</b> Witch Hazel		
2 to 3 ft. . . . .	2.50	18.00
3 to 4 ft. . . . .	3.00	25.00
4 to 5 ft. . . . .	4.00	35.00
<b>Hibiscus althea</b> Rose of Sharon		
In following varieties:		
<b>Alba plena</b> white		
6 to 7 ft. . . . . \$ .50 each	4.00	
<b>Ardens</b> purplish blue		
4 to 5½ ft. . . . . \$ .50 each	4.00	
purple		
6 ft. . . . . \$ .50 each	4.00	
<b>Boule de Feu</b> very double red		
4 to 4½ ft. . . . . \$ .50 each	4.00	
<b>Carnea plena</b> flesh color		
2½ to 3 ft. . . . . \$ .50 each	4.00	
<b>Comte de Haimont</b> pink		
4 to 5 ft. . . . . \$ .50 each	4.00	
<b>Duchess de Brabant</b> lilac		
5 to 6 ft. . . . . \$ .50 each	4.00	
<b>Joan d'Arc</b> double pure white		
5 to 6 ft. . . . . \$ .50 each	4.00	
<b>Lady Stanley</b> white		
5 to 6 ft. . . . . \$ .50 each	4.00	
<b>Monstrosa</b> large double white flowers		
4 to 5 ft. . . . . \$ .50 each	4.00	
<b>paconiflora</b> white with cherry red eye		
5 to 5½ ft. . . . . \$ .50 each	4.00	
<b>Totus albus simplex</b> single pure white		
3 to 3½ ft. . . . . \$ .50 each	4.00	
<b>Hippophaea rhamnoides</b> Sea Buckthorn		
3½ to 4 ft. . . . .	1.25	
4 to 4½ ft. . . . .	1.75	
<b>Hydrangea arborescens</b> Wild Hydrangea		
2 to 3 ft. . . . .	1.75	15.00



TREES AND SHRUBS.

15

<i>Hydrangea paniculata</i>	type	10	100
	2 to 3 ft.	\$ 1.25	\$
	3 to 4 ft.	1.75	
	gr. fl.		
	2 to 3 ft.	1.75	12.00
	Standards		
	4 to 5 ft.	\$.75 each	5.00
<i>Hypericum aureum</i>	Golden St. John's Wort		
	1½ to 2 ft.	1.75	
<i>Ilex glabra</i>	Ink Berry		
	1½ ft.	\$1.00 each	7.50
	<i>verticillata</i>	Black Alder	
	3 to 4 ft.	3.00	25.00
<i>Kerria japonica</i>	Globe Flower		
	1½ to 2 ft.	2.00	15.00
<i>Ligustrum ibota</i>	Japanese Privet		
	1½ to 2 ft.	1.00	8.00
	2 to 3 ft.	1.50	10.00
	3 to 3½ ft.	1.75	12.00
NOTE—This makes one of the finest Hedge Plants.			
	<i>media</i>	Chinese Privet	
	2 to 3 ft.	1.25	8.00
		\$70 M	
	<i>ovalifolium</i>	California Privet	
	2 to 3 ft.	1.00	8.00
	3 to 4 ft.	1.50	10.00
	<i>regelianum</i>	Regel's Dwarf Privet	
	1½ to 2 ft.	1.50	12.00
	2 to 2½ ft.	1.75	15.00
	2½ to 3 ft.	2.25	18.00
<i>Liriodendron tulipifera</i>	Tulip Tree		
	5 to 6 ft.	\$.60 each	5.00
	6 to 8 ft.	\$.75 each	6.00
<i>Lonicera bella</i>	<i>albida</i>		
	6 to 7 ft.	\$.75 each	6.00
	<i>candida</i>	Brilliant Honeysuckle	
	4 to 5 ft.	2.50	
	<i>chrysantha</i>		
	3 to 4 ft.	2.25	20.00
	<i>morrowi</i>	Japanese Bush Honeysuckle	
	2 to 3 ft.	1.50	10.00
	3 to 4 ft.	1.75	15.00
	4 to 5 ft. XXX heavy spec.	5.00	30.00
	<i>tartarica</i>	Red Tartarian Honeysuckle	
	2 to 3 ft.	1.50	10.00
	3 to 4 ft.	1.75	15.00
	4 to 5 ft.	2.25	
	5 to 6 ft.	2.75	
<i>Magnolia alexandrina</i>	Chinese var.		
	3½ to 4 ft. XXX heavy spec. with ball	\$2.25 each	20.00
	<i>glauca</i>	Sweet or Swamp Magnolia	
	2 to 3 ft.	\$2.75 each	25.00
	<i>soulangiana</i>	Soulang's Magnolia	
	3 to 4 ft. XXX heavy spec.	\$2.00 each	17.50
	4 to 5 ft. XXX heavy spec.	\$2.75 each	25.00
	5 to 5½ ft. XXX heavy spec.	\$3.75 each	35.00

"Everything for the Hardy Garden."

		10	100
<i>Magnolia stellata</i>	Hall's Japanese Magnolia		
2 to 2½ ft.	XXX heavy spec. . . . .		
	\$2.00 each	17.50	
2½ to 3 ft.	XXX heavy spec. . . . .		
	\$3.00 each	25.00	
<i>Malus atrosanguineum</i>			
5 to 5½ ft.	. . . . . \$1.00 each	8.50	
<i>baccata</i>	Siberian Flowering Crab		
4 to 5 ft.	. . . . . \$ .75 each	6.50	
<i>floribunda</i>	Flowering Crab		
4 to 5 ft.	. . . . . \$ .75 each	7.00	65.00
5 to 6 ft.	. . . . . \$1.00 each	8.50	
6 to 7 ft.	. . . . . \$1.25 each	10.00	
<i>ioensis</i>	Betchel's Double Flowering Crab		
4 to 5 ft.	. . . . .	7.50	60.00
<i>Parkmanni</i>	Parkman's Crab		
3 to 4 ft.	. . . . . \$1.00 each		
<i>schedeckeri</i>			
4 to 5 ft.	. . . . . \$ .75 each	7.00	65.00
5 to 6 ft.	. . . . . \$1.00 each	8.50	75.00
<i>spectabilis</i>	Chinese double flowering Crab		
5 to 6 ft.	. . . . . \$1.00 each	8.50	
	<i>flora plena alba</i>		
5 to 6 ft.	. . . . . \$1.00 each	8.50	
<i>toringo</i>	Dwarf Crab		
4 to 5 ft.	. . . . . \$ .75 each	7.00	
<i>Morus</i>	Tea's Weeping Mulberry		
4 yr. heads	. . . . . \$1.50 each	12.50	
<i>Myrica asplenifolia</i>	Sweet Fern		
2 to 2½ ft.	. . . . .	2.00	17.50
<i>cerifera</i>	Bayberry		
1 to 1½ ft.	. . . . .	1.50	10.00
1½ to 2 ft.	. . . . .	1.75	15.00
2 to 2½ ft.	. . . . .	2.25	20.00
2½ to 3 ft.	. . . . .	2.75	
<i>Oxydendron arboreum</i>	Sorrel Tree		
2 to 3 ft.	. . . . . \$ .75 each	7.00	
4 to 5 ft.	. . . . . \$1.50 each	10.00	
<i>Panax sessilifolia</i>			
3 to 4 ft.	. . . . .	1.50	12.00
<i>Phelodendron amurense</i>	Chinese Cork Tree		
15 to 18 ft.	3 to 5 in. cal. \$1.00 each	9.00	
<i>Philadelphus avalanche</i>			
2 to 2½ ft.	. . . . .	1.50	12.50
2½ to 3 ft.	. . . . .	1.75	15.00
	<i>coronarius</i> Mock Orange		
1½ to 2 ft.	. . . . .	1.00	9.00
2 to 3 ft.	. . . . .	1.50	12.00
3 to 4 ft.	. . . . .	1.75	15.00
5 to 6 ft.	. . . . .	2.75	25.00
	<i>grandiflorus</i> Large-flowered Mock Orange		
2 to 3 ft.	. . . . .	1.50	12.00
3 to 4 ft.	. . . . .	1.75	15.00
4 to 5 ft.	str. . . . .	3.00	25.00
5 to 6 ft.	. . . . .	4.50	
<i>Platanus orientalis</i>	Oriental Plane or European Button Ball		
8 to 10 ft.	. . . . . \$1.00 each	8.50	
10 to 12 ft.	2 in. cal. . . \$2.50 each	22.50	

Send for Our New Rhododendron Booklet

		10	100
<b>Populus alba</b>	White or Silver Poplar		
10 to 12	ft. 1 $\frac{1}{4}$ to 1 $\frac{1}{2}$ in. cal. . . . .	\$ 4.50	\$
12 to 15	ft. 1 $\frac{3}{4}$ to 2 in. cal. . . . .	6.00	
<b>bolleana</b>	Bolle's Poplar		
4 to 5	ft. . . . .	1.50	75.00
8 to 10	ft. . . . . \$1.00 each	9.00	
<b>fastigiata</b>	Lombardy Poplar		
5 to 6	ft. . . . .	2.00	17.50
6 to 8	ft. . . . .	2.75	25.00
12 to 14	ft. 1 $\frac{1}{2}$ to 1 $\frac{3}{4}$ in. cal. \$ .75 each	6.00	50.00
<b>monolifera</b>	Carolina Poplar		
8 to 10	ft. . . . . \$ .40 each	3.50	30.00
10 to 12	ft. 1 $\frac{1}{2}$ to 1 $\frac{3}{4}$ in. cal. \$ .50 each	4.50	40.00
12 to 14	ft. 1 $\frac{3}{4}$ to 2 in. cal. \$ .75 each	6.50	60.00
<b>Prunus pissardi</b>	Purple leaf Plum		
2 to 3	ft. . . . . \$ .25 each	2.00	15.00
5 to 6	ft. . . . . \$ .30 each	2.50	18.00
<b>triloba</b>	Double Flowering Plum		
1 $\frac{1}{2}$ to 2	ft. . . . . \$ .25 each	2.00	17.50
<b>Pyrus arbutifolia</b>	Red Choke Berry		
2 to 2 $\frac{1}{2}$	ft. . . . .	1.75	15.00
2 $\frac{1}{2}$ to 3	ft. . . . .	2.00	17.50
<b>floribunda</b> var. <b>nigra</b>	Black Choke Berry		
3 to 4	ft. . . . . \$ .15 each	1.00	8.00
4 to 5	ft. . . . . \$ .20 each	1.50	10.00
5 to 6	ft. . . . . \$ .30 each	2.50	20.00
<b>Quercus bicolor</b>	Swamp White Oak		
4 to 5	ft. . . . . \$ .75 each	6.00	50.00
5 to 6	ft. . . . . \$ .90 each	7.50	60.00
<b>coccinea</b>	Scarlet Oak		
6 to 7	ft. . . . . \$1.25 each	10.00	
7 to 8	ft. . . . . \$1.50 each	13.50	
8 to 9	ft. . . . . \$2.00 each	17.50	
9 to 10	ft. . . . . \$2.50 each	20.00	
<b>macrocarpa</b>	Mossy Cup Oak		
6 to 7	ft. . . . . \$1.00 each	9.00	
<b>palustris</b>	Pin Oak		
6 to 7	ft. low-branched \$1.00 each	8.50	60.00
7 to 8	ft. " \$1.25 each	10.00	85.00
8 to 9	ft. " \$1.35 each	12.50	90.00
9 to 10	ft. " \$1.50 each	13.50	120.00
10 to 11	ft. " \$2.00 each	17.50	150.00
11 to 12	ft. " \$2.50 each	22.50	175.00
<b>robur</b> var. <b>fastigiata</b>	Pyramidal English Oak		
8 to 10	ft. . . . . \$3.25 each	30.00	
<b>rubra</b>	Red Oak		
4 to 5	ft. . . . . \$ .75 each	6.00	50.00
5 to 6	ft. . . . . \$1.00 each	8.50	75.00
6 to 7	ft. . . . . \$1.25 each	10.00	90.00
7 to 8	ft. . . . . \$1.35 each	12.50	100.00
8 to 10	ft. . . . . \$1.50 each	13.50	125.00
10 to 12	ft. . . . . \$2.00 each	17.50	150.00
<b>Rhamnus catharticus</b>	Buckthorn		
2 to 3	ft. . . . . \$ .20 each	1.75	15.00
3 to 4	ft. . . . . \$ .25 each	2.00	17.50
<b>lanceolata</b>			
3 to 4	ft. . . . . \$ .25 each	2.00	17.50
<b>Rhodotypos kerrloides</b>	White Kerria		
2 to 3	ft. . . . . \$ .20 each	1.20	10.00

Send for Our New Rhododendron Booklet

		10	100
<i>Rhus aromatica</i>	Fragrant Sumac		
1½ to 2	ft. . . . .	\$.50 each	\$ 3.50
2 to 3	ft. . . . .	\$.75 each	6.00
<i>cotinus</i>	Smoke Tree or Purple Fringe		
2 to 3	ft. . . . .	\$.20 each	1.50
3 to 4	ft. . . . .	\$.25 each	1.75
<i>glabra</i>	Smooth Sumach		
2 to 3	ft. . . . .	\$.20 each	1.75
	<i>lacinolata</i> Cut-leaved Sumach		
2 to 3	ft. . . . .	\$.30 each	2.50
3 to 4	ft. . . . .	\$.40 each	3.00
<i>Ribes aureum</i>	Golden Currant		
2 to 3	ft. . . . .	\$.15 each	1.00
3 to 4	ft. . . . .	\$.20 each	1.50
4 to 5	ft. . . . .	\$.30 each	2.50
5 to 6	ft. . . . .	\$.35 each	3.00
6 to 7	ft. . . . .	\$.40 each	3.50
	<i>sanguineum</i> Red-flowering Currant		
1½ to 2	ft. . . . .	\$.20 each	1.75
<i>Rosa blanda</i>	Early Wild Rose		
1½ to 2	ft. . . . .	\$.20 each	1.50
2 to 3	ft. . . . .	\$.25 each	1.75
	<i>Crimson Rambler</i>		
2 to 3	ft. . . . .	\$.25 each	2.00
	<i>Dawson</i> Pink Climber		
	3 yrs. . . . .	\$.35 each	2.00
	<i>Daybreak</i> (Dawson Hybrid) Pink Memorial		
	3 yrs. . . . .	\$1.00 each	7.50
		\$500 per M.	60.00
	4 yrs. . . . .	\$1.25 each	10.00
		\$700 per M.	80.00
	<i>Dorothy Perkins</i> Double Pink Rambler		
2 to 3	ft. . . . .	\$.25 each	1.50
	<i>Farquhar</i> Pink Climber		
2 to 3	ft. . . . .	\$.35 each	3.00
	<i>Frau Karl Druschki</i> finest double white		
2 to 3	ft. . . . .	\$.50 each	3.00
	<i>Gardenia</i>		
	2 ft. . . . .	\$1.25 each	10.00
	<i>Hiawatha</i> crimson		
2 to 3	ft. . . . .	\$.35 each	2.00
	<i>Lady Duncan</i> Dawson Hybrid		
	2 yrs. . . . .	\$1.00 each	10.00
	3 yrs. . . . .	\$1.35 each	12.50
	<i>Lady Gay</i> (new) deep rich rose strong grower		
2 to 3	ft. . . . .	\$.35 each	2.00
	<i>lucida</i> Glossy Rose		
1½ to 2	ft. . . . .	\$.20 each	1.20
2 to 2½	ft. . . . .	\$.25 each	1.50
2½ to 3	ft. . . . .	\$.30 each	2.00
	<i>lucida alba</i> White Wild Rose		
1½ to 2	ft. . . . .	\$.25 each	2.00
	<i>Manda's Triumph</i>		
	2 ft. . . . .	\$1.25 each	10.00
	<i>Minnie Dawson</i> Dawson hybrid white		
2 to 3	ft. . . . .	\$1.00 each	10.00
	<i>Mme. George Bruant</i> double white rugosa		
2 to 2½	ft. . . . .	\$.35 each	3.00

Send for Our New Rhododendron Booklet



			10	100
<i>Rosa multiflora</i>	Bramble Rose			
	2 to 3 ft. . . . .	\$.20 each	1.50	12.00
	3 to 4 ft. . . . .	\$.25 each	2.00	15.00
	<i>Nitida</i>			
	1½ to 2 ft. . . . .	\$.20 each	1.50	12.00
	<i>Queen of the Prairie</i> double red flower			
	2 to 3 ft. . . . .	\$.20 each	1.75	15.00
	<i>repens</i>			
	2 to 3 ft. . . . .	\$.25 each	2.00	15.00
	<i>rubiginosa</i> Sweet Brier			
	1½ to 2 ft. . . . .	\$.20 each	1.50	12.00
	2 to 3 ft. . . . .	\$.25 each	2.00	15.00
	<i>rugosa</i> Japanese Rose			
	1½ to 2 ft. . . . .	\$.15 each	1.20	8.00
	2 to 2½ ft. . . . .	\$.20 each	1.50	10.00
	2½ to 3 ft. . . . .	\$.25 each	1.75	12.00
	<i>alba</i> White Japanese Rose			
	1½ to 2 ft. . . . .	\$.25 each	2.00	15.00
	<i>setigera</i> Prairie Rose			
	2 to 3 ft. . . . .	\$.20 each	1.75	15.00
	<i>spinossissima</i>			
	1½ to 2 ft. . . . .	\$.50 each	4.00	30.00
	2 to 2½ ft. . . . .	\$.75 each	6.00	40.00
	<i>South Orange Perfection</i>			
	2 ft. . . . .	\$1.25 each	10.00	
	<i>Wedding Bell</i>			
	2 ft. . . . .	\$1.00 each	9.00	
	<i>wichuriana</i> Memorial Rose			
	3 yrs. . . . .	\$.30 each	2.25	17.50
	<i>Hybrid Perpetuals and Teas</i>			
	Except where otherwise noted :			
	2 to 3 ft. . . . .	\$.25 each	2.00	17.50
	<i>American Pillar</i> pink			
	1½ to 2 ft. . . . .	\$.75 each	6.00	50.00
	<i>Baroness Rothschild</i> pale rose, very large flowers			
	<i>Bessie Brown</i>			
	1½ to 2 ft. . . . .	\$.50 each	4.50	40.00
	<i>Betty</i>			
	1½ to 2 ft. . . . .	\$.35 each	2.75	
	<i>Captain Christy</i> delicate flesh color			
	<i>Captain Haywood</i> bright crimson			
	<i>Conrad F. Meyer</i>			
	1½ to 2 ft. . . . .	\$.35 each	2.75	20.00
	<i>General Jacqueminot</i> brilliant carmine			
	<i>Gruss an Teplitz</i> deep red, hybrid tea rose			
	<i>Harrison</i> yellow			
	<i>La France</i>			
	<i>Mabel Morrison</i> white			
	<i>Madame Caroline Testout</i> large double silvery rose			
		\$.35 each	3.00	25.00
	<i>Magna Charta</i> bright pink			
	<i>Margaret Dickson</i> white, with pale flesh center			
	<i>Mme. Gabriel Luizet</i> pale pink			
	<i>Mrs. John Laing</i> soft pink, fragrant, free bloomer			
	<i>Mrs. R. Sharman Crawford</i> deep rose pink, flowers large and perfect, free bloomer			

		10	100
<i>Rosa</i>	<i>Paeonia</i>		
	Paul Neyron dark rose, of enormous size		
	Prince Camille de Rohan deep velvety crimson		
	Rogosa Blanche de Coubert		
	1½ to 2 ft. . . . .	\$.35 each	\$ 3.00 \$ 25.00
	Cecile Brunner		
	5 in. pots . . . . .	\$.75 each	6.00
	Ulrich Brunner bright cherry red		
<i>Rubus</i>	<i>deliciosus</i>		
	1½ to 2 ft. . . . .	\$.25 each	2.00 17.50
	<i>Odoratus</i>		
	1½ to 2 ft. . . . .	\$.25 each	2.00
<i>Salix</i>	<i>britzensis</i> Red-barked Willow		
	7 to 8 ft. . . . .	\$.40 each	3.50 30.00
	<i>pentandra</i> Laurel-leaved Willow		
	3 to 4 ft. . . . .	\$.25 each	2.00 15.00
	4 to 5 ft. . . . .	\$.35 each	3.00 25.00
	<i>regalis</i> Royal or White-leaved Willow		
	3 to 4 ft. . . . .	\$.25 each	2.00 15.00
	6 to 7 ft. . . . .	\$.40 each	3.25 25.00
	<i>vittelina alba</i> Golden Willow		
	2 to 3 ft. . . . .	\$.20 each	1.75 15.00
	3 to 4 ft. . . . .	\$.25 each	2.00 17.50
<i>Sambucus</i>	<i>aurea</i> Golden Elder		
	3 to 4 ft. . . . .	\$.25 each	2.00 15.00
	<i>nigra</i> Europæan Elder		
	3 to 5 ft. . . . .	\$.25 each	2.00 17.50
	<i>racemosus</i> or <i>pubescens</i> Red-berried Elder		
	2 to 3 ft. . . . .	\$.20 each	1.75 15.00
<i>Sorbus</i>	<i>aucuparia</i> Mountain Ash		
	5 to 6 ft. . . . .	\$.60 each	5.00 45.00
	6 to 8 ft. . . . .	\$.75 each	6.50 50.00
<i>Spiraea</i>	<i>Anthony Waterer</i> Waterer's Spiræa		
	1 to 1½ ft. . . . .	\$.15 each	1.40 12.00
	1½ to 2 ft. . . . .	\$.20 each	1.75 15.00
	2 to 2½ ft. . . . .	\$.25 each	2.00 17.50
	<i>arguta</i>		
	1½ to 2 ft. . . . .	\$.15 each	1.20 10.00
	<i>callosa alba</i> White Bush Meadow Sweet		
	1½ to 2 ft. . . . .	\$.15 each	1.25 10.00
	<i>callosa rosea</i> Rosy Bush Meadow Sweet		
	3 to 4 ft. . . . .	\$.20 each	1.75 10.00
	<i>opulifolia</i> Ninebark		
	3 to 4 ft. . . . .	\$.15 each	1.20 10.00
	4 to 5 ft. . . . .	\$.20 each	1.50 12.00
	5 to 6 ft. . . . .	\$.25 each	1.75 15.00
	6 to 8 ft. . . . .	\$.30 each	2.25 20.00
	<i>opulifolia aurea</i> Golden Ninebark		
	3 to 4 ft. . . . .	\$.20 each	1.50 12.00
	4 to 5 ft. . . . .	\$.25 each	2.00 15.00
	<i>Prunifolia</i> Bridal Wreath		
	1½ to 2 ft. . . . .	\$.20 each	1.50 12.00
	<i>Thunbergii</i> Thunberg's Spiræa		
	1½ to 2 ft. . . . .	\$.15 each	1.25 10.00
	2 to 2½ ft. . . . .	\$.20 each	1.75 15.00
	2½ to 3 ft. . . . .	\$.25 each	2.00 17.50

Send for Our New Booklet



## LADY DUNCAN

This fine rose was awarded a silver medal by the Massachusetts Horticultural Society in 1900. It is a hybrid of the ever excellent Rugosa and the Memorial Rose (R. Wichuriana). It has the prostrate long rampant growth of the Wichuriana, while the Rugosa blood shows in the luxuriant, dark, glossy foliage, and in the profusion of large, single flowers. The petals of rich glowing pink melt into an exquisite large yellow centre. Lady Duncan is perfectly hardy, even to Canada, is a strong grower, free bloomer, and of long duration of blooming.

The stock is limited. Order now for Spring delivery. Good strong plants which will yield a mass of blossoms in late June of this year. \$1.00 each, \$10 per dozen.



## DAYBREAK

This rose was awarded a silver medal by the Massachusetts Horticultural Society in 1899. It is a rose of Wichuriana type crossed with Rambler Dawson. A vigorous grower, profuse bloomer, excellent too for forcing. The flowers are single, in great pyramidal clusters of deep, yellowish pink, somewhat darker than Lady Duncan, the petals of a lighter shade toward the centre. The foliage is bright, glossy green, and the habit trailing, like its parent, Wichuriana. 2 to 3 feet, \$1.00 each; \$9.00 per ten.



		10	100
<b>Spiraea Van Houtteii</b>	<b>Van Houtte's Spiræa</b>		
1½ to 2 ft.	\$.10 each	\$ .85	6.00
2 to 2½ ft.	\$.15 each	1.00	8.00
2½ to 3 ft.	\$.20 each	1.50	12.00
3 to 4 ft.	\$.25 each	2.00	15.00
4 to 5 ft.	\$.30 each	2.75	25.00
5 to 5½ ft.	\$.50 each	4.00	35.00
<b>Styrax japonica</b>	<b>Japanese Styrax</b>		
1½ to 2 ft.	\$.20 each	1.50	12.50
<b>Symphoricarpus racemosus</b>	<b>Snowberry</b>		
2 to 3 ft.	\$.20 each	1.75	15.00
	<b>vulgaris Indian Currant</b>		
2 to 3 ft.	\$.15 each	1.00	7.00
3 to 4 ft.	\$.20 each	1.25	9.00
<b>Symplocos cratagoides</b>			
2 to 3 ft.	\$1.25 each	10.00	75.00
3 to 4 ft.	\$1.50 each	12.50	100.00
<b>Syringa japonica</b>	<b>Japan Tree Lilac</b>		
5 to 6 ft.	\$.75 each	6.00	50.00
<b>Josikaea</b>			
3 to 4 ft.	\$.30 each	2.50	20.00
<b>Persica</b>	<b>Persian Lilac</b>		
1 to 2 ft.	\$.20 each	1.75	15.00
2 to 3 ft.	\$.25 each	2.25	20.00
3 to 4 ft.	\$.35 each	3.00	25.00
4 to 5 ft.	\$.75 each	6.00	50.00
	<b>alba White Persian Lilac</b>		
2 to 3 ft.	\$.25 each	2.25	20.00
3 to 4 ft.	\$.35 each	3.00	27.50
<b>villosa</b>	<b>Himalayan Lilac</b>		
1½ to 2 ft.	\$.20 each	1.75	15.00
<b>vulgaris</b>	<b>Common Purple Lilac</b>		
2 to 3 ft.	\$.15 each	1.25	10.00
3 to 4 ft.	\$.20 each	1.75	15.00
<b>vulgaris alba</b>	<b>Common White Lilac</b>		
1½ to 2 ft.	\$.20 each	1.75	15.00
2 to 3 ft.	\$.25 each	2.00	17.50
3 to 4 ft.	\$.35 each	3.00	30.00

NAMED VARIETIES

1½ to 2 ft.	\$.35 each	2.00	17.50
2 to 3 ft.	\$.50 each	4.50	35.00
3 to 4 ft.	\$.75 each	6.00	50.00
4 to 5 ft.	\$1.00 each	7.50	60.00

We have a very fine stock of named varieties in the following sorts:

- Abel Carriere single cobalt blue
- Alba grandiflora single pure white
- Alphonse Levallee single pale lilac
- Belle de Nancy double white
- Charles Bret
- Chas. Joly fine reddish purple
- Charles X single dark reddish purple
- Casimir Perrier double white
- Charles Dixe
- Comte Horace de Chriseul
- C. B. Van Ness large dark purple

"Everything for the Hardy Garden."

<i>Syringa Congo</i> reddish purple			
Condorset double reddish purple			
Doyen Keteleer double purple			
Emile Lemoine double pinkish lavender			
Geant de Batailles			
Jean Bart double lilac			
Jean d'Arc			
Lavalensis rosea double mauve			
La Mauve double mauve			
Leon Simon lavender			
Lemoine flora plena			
Louis Henry			
Marie Legraye single white, very fine			
Matthew de Dombasle double white			
Maxime Cornu double pinkish violet			
Michel Buchner double lavender			
Mme. Abel Chatenay double white, fine			
Mme. Cornu			
Mme. Lemoine double white, fine			
Monument Carnot			
Phllemon			
Pierre de Bouveau double purple			
Pierre Cargneany			
President Carnot double deep lilac			
President Grevy double bluish lavender			
President Seymour			
Prince de Beauves double purple			
Pyramidale			
Rubra de Marley single rich, rosy purple			
Souvenir de Louis Christy			
Souvenir de Ludwig Spath single rich deep purple.			
One of the finest			
Souvenir de L. Thibaut double reddish purple,			
large flowers			
Virginity very fine white			
Volcan			
Wm. Robinson			
		10	100
<i>Stephanandra Flexuosa</i>			
2 to 3 ft. . . . .	\$.20 each	\$ 1.75	\$ 15.00
<i>Tilia americana</i> American Linden			
6 to 8 ft. 2¼ in. cal. . . . .	\$.75 each	6.00	50.00
8 to 10 ft. 2½ in. cal. . . . .	\$1.00 each	8.50	75.00
<i>europaea</i> European Linden			
6 to 8 ft. . . . .	\$.75 each	6.00	50.00
8 to 10 ft. . . . .	\$1.00 each	8.50	75.00
var. <i>Platyphyllos</i> Large-leaved Linden			
6 to 8 ft. . . . .	\$1.25 each	10.00	
8 to 10 ft. . . . .	\$1.50 each	13.50	
10 to 12 ft. . . . .	\$1.75 each	15.00	
<i>Ulmus americana</i> American Elm			
6 to 8 ft. 1¼ in. cal. . . . .	\$.50 each	4.00	35.00
8 to 10 ft. 1¼ to 1½ in. cal. . . . .	\$.75 each	6.00	50.00
10 to 12 ft. 1½ to 1¾ in. cal. . . . .	\$1.25 each	9.00	
12 to 14 ft. 2 to 2¼ in. cal. . . . .	\$2.00 each	17.50	

*Rhododendron Maximum* and *Kalmia Latifolia*

		10	100
<i>Ulmus Campestris</i>	English Elm		
6 to 8 ft.	.25 each	\$10.00	\$85.00
8 to 10 ft.	1.75 each	15.00	
10 to 12 ft.	2.50 each	22.50	
<i>Viburnum Americanum</i>			
2 to 3 ft.	.20 each	1.50	9.00
3 to 4 ft.	.25 each	1.75	12.00
4 to 5 ft.	.30 each	2.25	17.50
<i>acerifolium</i>	Maple-leaved Viburnum		
1½ to 2 ft.	.35 each	3.00	
<i>cassinoides</i>	Withe Rod		
2 to 2½ ft.	.35 each	2.50	20.00
3 to 3½ ft.	.40 each	3.50	
3½ to 4 ft.	.50 each	4.50	
5 to 5½ ft.	1.00 each	9.00	
5½ to 6 ft.	1.25 each	10.00	
<i>dentatum</i>	Arrowwood		
2 to 3 ft.	.20 each	1.75	15.00
3 to 4 ft.	.25 each	2.00	17.50
4 to 5 ft.	.50 each	4.00	
5 to 6 ft.	.75 each	6.00	
6 to 7 ft.	1.25 each	10.00	
7 to 8 ft.	1.50 each	12.50	
<i>dilatatum</i>	Japanese Bush Cranberry		
1 to 2 ft.	.40 each	3.00	25.00
2 to 3 ft.	.45 each	3.50	
3 to 4 ft.	.75 each	6.00	
<i>lantana</i>	English Wayfaring Tree		
1 to 2 ft.	.20 each	1.75	15.00
2 to 3 ft.	.30 each	2.50	20.00
3 to 4 ft.	.35 each	3.00	25.00
<i>lentago</i>	Sheepberry		
1 to 2 ft.	.20 each	1.75	15.00
2 to 3 ft.	.30 each	2.50	17.50
<i>molle</i>			
3 to 4 ft.	.20 each	1.75	12.00
4 to 5 ft.	.25 each	2.00	15.00
5 to 6 ft.	.35 each	2.50	20.00
<i>opulus</i>	High Bush Cranberry		
2 to 3 ft.	.20 each	1.50	12.00
3 to 4 ft.	.25 each	1.75	15.00
4 to 5 ft.	.35 each	2.75	20.00
5 to 6 ft.	.50 each	3.50	30.00
<i>opulus nana</i>	Dwarf Cranberry Bush		
12 to 15 in.	.35 each	3.00	
<i>plicatum</i>	Japan Snowball		
1½ to 2 ft.	.35 each	3.00	
3 to 4 ft.	.50 each	4.00	
<i>prunifolium</i>	Black Haw		
1½ to 2 ft.	.35 each	3.50	30.00
2 to 2½ ft.	.50 each	4.00	
<i>tomentosum</i>	Single Japanese Snowball		
1½ to 2 ft.	.20 each	1.50	10.00
2 to 3 ft.	.25 each	1.75	15.00
3 to 4 ft.	.35 each	2.25	20.00
4 to 5 ft.	.60 each	5.00	
<i>Xanthoxylum americana</i>	Prickly Ash		
3 to 4 ft.	.75 each	6.00	
<i>Xanthorhiza apiifolia</i>	Yellow Root		
8 to 10 in.	.15 each	1.35	10.00
10 to 12 in.	.20 each	1.50	12.00

## VINES AND CLIMBING PLANTS.

	10	100
<b>Actinidia Arguta</b>		
4 yrs. . . . .	\$.30 each	\$ 2.50 \$ 20.00
<b>Akebia Quinata</b>		
3 yrs. . . . .	\$.30 each	2.50 17.50
<b>Ampelopsis Engelmannii</b> Scarlet Virginia Creeper		
2 yrs. strong 5 in. pots	\$.35 each	3.00 25.00
3 yrs. strong 5 in. pots	\$.35 each	3.00 25.00
<b>Henryii</b> (New) Chinese		
5 in. pots . . .	\$1.00 each	9.00
NOTE:—In habit this new climber resembles our native woodbine. The ground color of the leaves is dark velvety green, with the mid-rib and principal veins silvery white. The foliage has a very striking appearance in autumn when the ground color changes to vivid red, the mid-rib and vein remaining white. In Massachusetts this vine requires protection during winter, but would probably prove quite hardy south of New York, or even farther north where the influence of the ocean moderates the temperature.		
<b>heterophylla</b>		
3 yrs. . . . .	\$.50 each	3.50 30.00
<b>quinquefolia</b> Virginia Creeper		
2 yrs. . . . .	\$.12 each	1.00 6.00
	\$50 per M.	
3 yrs. . . . .	\$.15 each	1.25 7.00
	\$60 per M.	
<b>veitchii</b> Boston Ivy		
2 yrs. . . . .	\$.25 each	2.00 17.50
<b>Aristolochia siphon</b> Dutchman's Pipe		
4 yrs. XX str. . . .	\$.60 each	4.50
<b>Celastris scandens</b> Bitter Sweet		
3 yrs. . . . .	\$.15 each	1.25 10.00
4 yrs. . . . .	\$.20 each	1.50 12.00
<b>Clematis coccinea</b>		
3 yrs. . . . .	\$.35 each	3.00
<b>Gypsy Queen</b>		
3 yrs. 5 in. pots	\$.50 each	3.50
<b>Henryii</b> white		
2 yrs. 5 in. pots	\$.50 each	3.50
<b>Jackmanii</b> blue		
3 yrs. 5 in. pots	\$.50 each	3.50
<b>Montana Rubra</b> New (Chinese)		
3 yr. 5 in. pots	\$1.00 each	9.00
NOTE:—This beautiful hardy new Clematis begins to bloom early in June when a profusion of soft, rosy-red blooms resembling those of the Japanese Anemone are produced. As the flowers are borne on the young wood, they appear more or less freely until frost.		
<b>mongolica</b> white, new, blooming in June		
3 yrs. . . . .	\$.25 each	1.75 15.00
<b>paniculata</b> white, blooming in September		
3 yrs. . . . .	\$.25 each	1.50 12.00
<b>sieboldii</b> white with purple center		
5 in. pots . . .	\$.40 each	3.00

**Rhododendron Maximum and Kalmia Latifolia**



VINES AND CLIMING PLANTS. 25

		10	100
Clematis Tanguticus	Fine Chinese		
	5 in. pots . . .	\$1.00 each	\$ 8.50
NOTE:—Variety of free and rapid growth; foliage dense and bright green. A good climber and one of the best ground covering plants. Flowers bright yellow.			
	Ville de Lyon		
	3 yrs. 5 in. pots	\$ .50 each	3 50
Euonymus radicans	Evergreen Creeper	See	Evergreens
Hedera helix	English Ivy		
	5 in. pots . . .	\$.25 each	2.00 5.00
Hydrangea Petiolaris	Climbing Hydrangea		
	6 in. pots . . . . .	\$1.50	13.50
Lonicera halleana	Hall's Honey-suckle		
	2 yrs. . . . .	\$.20 each	1.50 10.00
	3 yrs. . . . .	\$.25 each	1.75 12.00
	Albertii		
	3 yr. . . . .	\$.20 each	1.50 12.00
Lycium europaeus	Matrimony Vine		
	3 yrs. . . . .	\$.20 each	1.50 9.00
	sinensis Chinese Matrimony Vine		
	3 and 4 yrs. . . . .	\$.20 each	1.50 9.00
Periploca graeca	Silk Vine		
	3 yrs. . . . .	\$.25 each	2.00 15.00
Rosa Crimson Rambler			
	2 to 3 ft. . . . .	\$.25 each	2.00 15.00
	Dawson pink climber		
	3 yrs. . . . .	\$.35 each	2.00 15.00
	Daybreak (Dawson hybrid)		
	3 yrs. . . . .	\$1.00 each	7.50 60.00
		\$5.00 per M.	
	4 yrs. . . . .	\$1.25 each	10.00 80.00
		\$7.00 per M.	
	Dorothy Perkins double pink climber		
	2 to 3 ft. . . . .	\$.25 each	1.50 12.00
	Farquhar pink climber		
	2 to 3 ft. . . . .	\$.35 each	2.00 17.50
	Hiawatha crimson		
	2 to 3 ft. . . . .	\$.35 each	2.00 15.00
	Lady Gay New Deep, rich rose Strong grower		
	2 to 3 ft. . . . .	\$.35 each	2.00 17.50
	multiflora Bramble Rose		
	2 to 3 ft. . . . .	\$.20 each	1.50 12.00
	setigera Prairie Rose		
	2 to 3 ft. . . . .	\$.20 each	1.75 15.00
	wichuriana Memorial Rose		
	3 yrs. . . . .	\$.30 each	2.25 17.50
Tecoma radicans	Trumpet Vine		
	3 yrs. . . . .	\$.20 each	1.50 12.00
Vitis riparia	Frost Grape		
	3 yrs. X . . . . .	\$.35 each	3.00
Vinca minor	Periwinkle		
	XX clps. . . . .		1.00 6.00
		\$45 to \$55 per M.	
Wistaria multijuga	Loose-clustered Wistaria		
	3 yrs. . . . .	\$.50 each	4.00
	alba Loose-clustered White Wistaria		
	3 yrs. . . . .	\$.50 each	4.00
	sinensis Chinese Wistaria		
	3 yrs. . . . .	\$.50 each	4.00

in Carload Lots. Write for Prices.

# HARDY HERBACEOUS PLANTS.

		10	100
200	<i>Achillea</i> "The Pearl" . . . . .	\$1.00	\$ 5.00
300	<i>tomentosa</i> Yellow yarrow . . .	1.00	6.50
240	<i>Aconitum napellus</i> Monk's hood . . .	1.75	7.00
125	<i>Fiskeri</i> . . . . .	2.00	8.00
100	<i>Adonis vernalis</i> Spring adonia . . . .	1.00	
360	<i>Agrostemma coronaria</i> Rose campion .	1.00	5.00
300	<i>alba</i> . . . . .	1.00	5.50
250	<i>Ajuga alpina</i> Bugle . . . . .	1.00	6.00
130	<i>genevensis</i> . . . . .	1.25	6.00
350	<i>reptans</i> Creeping bugle . . . . .	1.00	6.50
350	<i>Athaea rosea</i> , double, single, under separate colors . . . . .	1.00	7.00
1400	<i>Alyssum saxatile compactum</i> Gold-dust	1.00	6.00
150	<i>Amsonia salicifolia</i> . . . . .	1.50	6.50
300	<i>Anchusa barrelieri</i> Alkanet . . . . .	1.00	7.00
150	<i>Anemone japonica</i> , pink in pots . . . .	1.50	8.00
350	<i>Anthemis tinctoria</i> Chamomile . . . . .	1.00	6.00
180	<i>Anthericum liliago</i> St. Bernard's lily .	1.00	5.50
500	<i>Aquilegia canadensis</i> Columbine . . . .	1.00	6.00
100	<i>chrysantha</i> Golden columbine . . . .	1.00	6.00
100	<i>coerulea</i> . . . . .	1.00	7.00
100	<i>alba</i> . . . . .	1.00	7.00
	<i>Haylodgensis</i> . . . . .	1.25	
300	<i>nivea grandiflora</i> white . . . . .	1.00	6.00
30	<i>Jetschani</i> large yellow . . . . .	1.25	
200	<i>Olympia</i> lilac . . . . .	1.25	7.00
300	single, double, mixed . . . . .	1.00	5.00
1000	<i>Arabis alpina</i> Rock Cress . . \$55 per M.	1.00	6.00
1000	<i>Archostophylos uva-ursi</i> (in pots) . . .	2.00	15.00
400	<i>Armeria cephalotes</i> Thrift . . . . .	1.00	5.00
300	<i>formosa</i> and <i>alba</i> . . . . .	1.00	6.00
900	<i>maritima splendens</i> . . . . .	1.00	6.00
50	<i>Artemesia aborotatum</i> Southern wood .	1.50	
900	<i>Asclepios tuberosa</i> Butterfly weed . . .	1.00	6.00
50	<i>Asphodelus albus</i> White Asphodel . . .	1.00	6.50
150	<i>Aster amethystinum</i> . . . . .	1.00	6.00
	<i>longifolius</i> long-leaved . . . . .	1.00	
300	<i>nova anglica</i> New England Aster	10.0	5.50
250	<i>nova belgii</i> . . . . .	1.50	6.00
300	<i>sibericus</i> . . . . .	1.00	5.00
300	<i>spectabilis</i> . . . . .	1.50	5.50
300	<i>tomsoides</i> . . . . .	1.00	5.50
30	<i>Bambusa metake</i> . . . . . \$ .50 each		
350	<i>Baptisia australis</i> False Indigo . . . .	1.50	7.00
900	<i>Bocconia japonica</i> Plume Poppy . . . .	1.25	5.50
400	<i>Bellis perennis</i> English Daisy . . . . .	1.00	5.00
500	<i>Boltonia asteroides</i> False Chamomile . .	1.00	5.00
50	<i>latisquama</i> . . . . .	1.00	5.00
50	<b>CALLUNA VULGARIS</b> XX Heather . . . .	1.50	12.50
	<i>alba</i> White Heather . . . . .	1.75	15.00

Rhododendron Maximum and Kalmia Latifolia

HARDY HERBACEOUS PLANTS. 27

		10	100
	Campanula carpatica . . . . .	\$1.00	\$ 7.00
100	medium blue . . . . .	1.00	7.00
100	white . . . . .	1.00	8.00
120	glomerata . . . . .	1.00	7.00
300	medium blue . . . . .	1.00	6.00
300	pink . . . . .	1.00	6.00
	white . . . . .	1.00	6.00
1000	persicifolia Peach-leaved Bell flower	1.00	7.00
50	var. moerheimi . . . . .	1.50	
	Catananche coerulea bicolor . . . . .	1.50	
30	Centaurea babylonica . . . . .	1.50	
100	dealbata . . . . .	1.00	6.00
40	macrocephala . . . . .	1.50	
400	montana Mountain knapweed	1.00	5.50
50	rose . . . . .	1.50	
100	white . . . . .	1.50	6.00
400	Cerastium arvense . . . . .	1.00	5.00
1400	tomentosum . . . . .	1.25	6.00
575	Chrysanthemum, hardy, in following vars.,	1.50	12.00
	Boheme		
	Boston, cerise with yellow centre		
	Cerise Queen,* cerise		
	Eloise		
	Erminie		
	Fred J.		
	Jerry		
	Julia Legrave, garnet		
	Prince of Wales, white, good		
	The Hub, white with yellow centre		
350	maximum str. clps. . . . .	1.50	6.00
800	roseum (Pyrethrum) . . . . .	1.25	6.00
30	double . . . . .	1.50	
60	Cimicifuga simplex Black Snakeroot . .	1.25	10.00
5	Clematis davidiana Herbaceous Clematis	1.50	
20	erecta . . . . .	1.50	
1500	Convallaria majalis Lily of the Valley .		
	XX clumps	1.75	15.00
300	Coreopsis delphinifolia . . . . .	1.25	6.00
1000	lanceolata . . . . . \$50 per M.	1.00	5.50
600	palmata . . . . .	1.25	5.50
300	rosea . . . . .	1.00	5.50
200	Daphne cneorum Garland Flower 2 yr. .	4.50	40.00
350	3 yr. . . . .	5.00	45.00
1200	4 yr. X str. . . . .	7.50	60.00
450	Delphinium chinensis, blue . . . . .	1.00	5.00
200	white . . . . .	1.00	5.00
200	coelestinum . . . . .	1.00	6.00
150	elatum Tall Larkspur . . . . .	1.25	6.00
800	formosum . . . . .	1.00	6.00
1250	Lemolne's Hybrids . . . . .	1.00	7.50

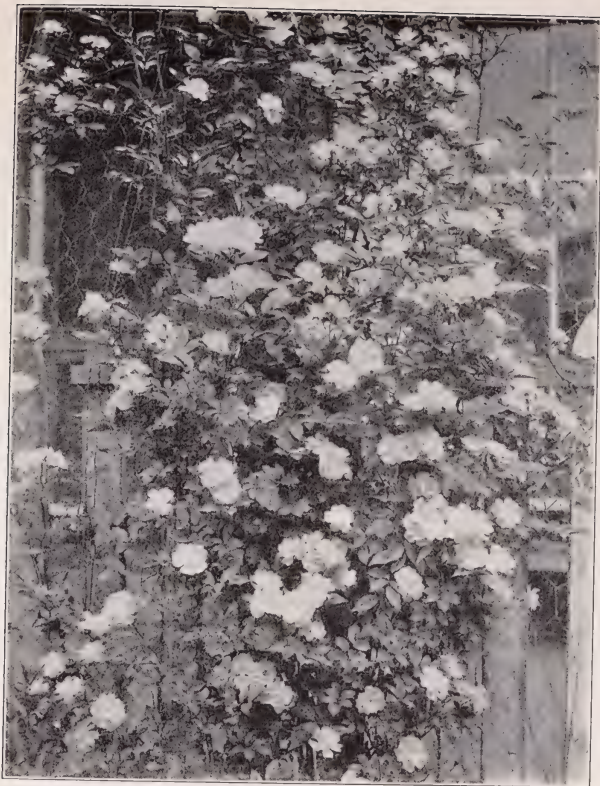
in Carload Lots. Write for Prices.

28 HARDY HERBACEOUS PLANTS.

		10	100
300	<i>Dianthus atrorubena</i> . . . . .	\$1.25	\$ 7.00
700	<i>barbatus</i> crimson Sweet William	1 25	6.00
600	pink beauty . . . . .	1.25	6.00
600	white . . . . .	1.25	6.00
1700	mixed . . . . .	1.00	4.50
600	<i>plumarius</i> Garden Pink . . . . .	1.00	6.00
650	double . . . . .	1.25	6.00
300	<i>fragdens</i> . . . . .	1.25	5.00
300	<i>Dicentra spectabilis</i> Bleeding Heart . . . . .		
	XX strong	1.50	10.00
	<i>Dictamnus fraxinella</i> Gas Plant . . . . .	2.00	
500	<i>Digitalis ambigua</i> Yellow Fox-glove . . . . .	1.00	6.00
2000	<i>purpurea</i> and <i>alba</i> Common and white Fox-glove . . . . .	1.00	6.00
250	<i>Doronicum caucasicum</i> . . . . .	1.75	9.00
400	<i>plantagineum</i> . . . . .	1.50	8.00
100	<i>Echeveria</i> in var. . . . .	1.75	15.00
50	<i>Echinops ritro</i> Globe Thistle . . . . .	1.00	
100	<i>Epimedium niveum</i> . . . . .	1.50	9.50
250	<i>macranthum roseum</i> . . . . .	2.50	9.00
180	<i>Erigeron coulterum</i> . . . . .	1.25	7.00
250	<i>Eryngium amethystinum</i> Sea Holly . . . . .	1.50	7.00
100	<i>Erysinum pulchellum</i> . . . . .	1.50	7.00
100	<i>Eupatorium ageratoides</i> . . . . .	1.50	
	<i>coelestinum</i> . . . . .	1.00	6.50
80	<i>perfoliatum</i> . . . . .	1.75	
375	<i>Festuca glauca</i> . . . . .	1.75	15.00
30	<i>Funkia ovata</i> Day Lily . . . . .	2.00	
200	<i>sieboldiana</i> . . . . .	1.50	9.50
25	<i>subcordata</i> gr. fl. White Day Lily	1.25	
500	<i>Gaillardia grandiflora</i> Blanket Flower . . . . .	1.00	5.00
100	<i>Galega officinalis purpurea</i> Goat's Rue	1.00	7.00
	<i>Genista tinctoria</i> Dyer's Weed . . . . .	1.75	15.00
150	<i>Geranium platypetalum</i> . . . . .	1.50	9.00
400	<i>sanguineum</i> . . . . .	1.50	6.00
100	<i>Geum chiloense</i> Chilian Avens . . . . .	1.50	7.00
100	<i>coccineum</i> Scarlet Avens . . . . .	1.00	7.00
350	<i>triflorum</i> . . . . .	1.00	7.00
70	<i>Globularia vulgaris</i> . . . . .	1.50	
50	<i>Gypsophila acutirola</i> . . . . .	1.50	
50	<i>paniculata</i> Baby's Breath . . . . .	1.25	6.00
200	<i>repens</i> Trailing Baby's Breath	1.25	7.00
130	<i>Helenium autumnale superbum</i> . . . . .	1.25	7.00
900	<i>Hoopseii</i> . . . . .	1.00	7.00
130	<i>pumillum magnificum</i> . . . . .	1.00	7.00
120	<i>superbum roseum</i> . . . . .	1.00	7.00
300	<i>Helianthus maximilliana</i> . . . . .	1.00	6.00
250	<i>Miss Mellish</i> . . . . .	1.00	6.00
900	<i>mollis</i> . . . . .		5.00
100	<i>multiflorus</i> fl. pl. . . . .	1.25	7.00
200	<i>multiflorus</i> . . . . .	1.25	7.00

Rhododendron Maximum and Kalmia Latifolia





## DAWSON

This rose was awarded a medal by the Massachusetts Horticultural Society in 1894. This charming hybrid was raised from seed of Multiflora crossed by Gen. Jacqueminot. It is a vigorous plant with long shoots, covered during the blooming season with pretty clusters of fragrant, bright pink, semi-double flowers, and is very desirable. Fifty cents each; \$4.00 per ten.



OUR HARDY HERBACEOUS PLANTS.

HARDY HERBACEOUS PLANTS. 29

		10	100
12	orgyalis . . . . .	\$1.00	50
300	rigidis . . . . .	1.00	5.00
100	tomentosum . . . . .	1.00	6.00
200	Heliopsis laevis . . . . .	1.00	5.00
350	Hemerocallis dumortierii Day Lily . . .	1.50	7.00
700	flava . . . . .	2.00	7.00
550	fulva . . . . .	1.50	7.00
20	Kwanso . . . . .	1.75	
150	rutilans . . . . .	1.50	7.00
600	thunbergii . . . . .	1.25	7.00
300	Hesperis matronalis Sweet Rocket . . .	1.00	6.00
20	Heuchera sanguinea . . . . .	1.75	
350	Hibiscus, crimson-eye . . . . .	1.00	6.00
400	militaris . . . . .	1.50	6.00
350	moscheutos . . . . .	1.00	6.00
2500	Hypericum adpressum . . . . .	1.25	10.00
1000	XXX clumps . . . . .	1.75	12.50
100	kalmianum . . . . .	1.50	10.00
2000	Iberis sempervirens Hardy Candytuft .	1.00	6.00
	\$55 per M.		
400	Inula ensifolia . . . . .	1.25	8.00
90	helenium . . . . .	1.25	
1000	Iris Germanica, mixed . . . . .	1.00	6.00
350	Purple Drop . . . . .	1.25	7.00
350	Purple Prince . . . . .	1.50	7.00
75	White Strand . . . . .	1.75	
600	Yellow Stand, Bronze . . . . .	1.50	8.00
50	Paliida, Odorotissima . . . . .	1.00	
25	Ciengalti . . . . .	\$1.25 each	10.00
25	Her Majesty large rose . . . . .	10.00	
27	Homer dark lavender blue	50¢ each	4.50
31	Queen of the May pale rose	35¢ each	2.00
59	Plicata Bridesmaid . . . . .	35¢ each	2.00
40	Variegata aurea . . . . .	25¢ each	1.50
75	Mme. Chereaux white, frilled azure		
	blue . . . . .	25¢ each	1.50
1500	Kaempferi Japan Iris . . . . .	1.50	9.00
1600	Gold Band, white . . . . .	1.75	10.00
	under name . . . . .	50¢ each	5.00 35.00
60	Sano-Watashi rich purple		
20	Koki-non-iro light violet with white veins		
35	Komochi-guma rich purple		
30	Yomono-umi finest double white		
15	Kumoma-non-son white, shaded blue		
60	Gekka-no-nami very pure white, early		
30	Sishi-ikari white ground, veined with dark purple		
35	Yayaura white, occasionally marked with		
	light violet		
35	Ho-o-jo crimson, white center		
35	Hano-no-nishiki violet purple veined with white		
15	Kosui-no-iro white shaded lilac		

in Carload Lots. Write for Prices.

		10	100
30	Iris Shivataka-Taki pure white		
30	Shi-un-ryo		
40	Kan-ran		
30	Fuji-mine		
30	Kabata		
1000	pseudacorus . . . . .	\$1.00	\$6.00
700	siberica . . . . .	1.00	6.00
600	alba . . . . .	1.25	7.00
550	versicolor . . . . .	1.50	9.00
200	Jasione perennis . . . . .	1.50	8.00
250	Lamium maculatum roseum . . . . .	1.00	8.00
700	white . . . . .	1.25	8.00
	Lathyrus latifolius Climbing Pea . . . . .	1.25	
400	Lepachys pinnata . . . . .	1.00	6.00
500	Liatris spicata Blazing Star . . . . .	1.00	7.00
100	Lilium canadensis Canadian Lily . . . . .	1.75	15.00
50	philadelphicum . . . . .	1.50	15.00
160	Linum perenne Perennial Flax . . . . .	1.00	6.00
1100	Lobelia cardinalis Cardinal Flower . . . . .	1.00	6.50
	\$60 per M.		
750	siphilitica Blue Lobelia . . . . .	1.50	8.00
150	Lotus corniculata Bird's-foot Trefoil . . . . .	1.50	6.00
690	Lupinus polyphyllus Blue Perennial Lupin . . . . .	1.00	7.00
150	white . . . . .	1.25	7.00
200	Lychnis chalconica Red Maltese Cross . . . . .	1.00	5.00
200	white . . . . .	1.00	5.50
200	flos-cuculi . . . . .	1.25	7.00
600	viscaria flora plena . . . . .	1.00	6.00
200	splendens German Catchfly . . . . .	1.00	6.00
250	Lysimachia clethroides . . . . .	1.00	6.00
2000	nummularia Money-wort . . . . .	1.00	5.50
	\$45 per M.		
180	vulgaris . . . . .	1.00	5.50
250	Lythrum salicaria . . . . .	1.00	6.00
300	Monarda didyma Oswego Tea . . . . .	1.00	6.00
200	fistulosa Wild Bergamot . . . . .	1.00	7.00
	Myosotis Forget-me-not . . . . .	1.00	6.00
200	Nepeta Mussini . . . . .	1.25	7.00
450	Oenothera frazeri . . . . .	1.00	7.00
60	fruticosa . . . . .	1.25	
400	lamarkiana Evening Primrose . . . . .	1.50	
60	Youngii Sundrops . . . . .	1.50	
100	Ornithogalum umbellatum . . . . .	1.00	8.00
1000	Pachysandra procumbens . . . . .	1.50	
2500	terminalis . . . . .	1.50	12.00
	Paeonies (herbaceous) except where otherwise noted, XXX clumps . . . . .	3.50	25.00
15	Alba Plena, pure white		
25	Alfred de Musset, flesh color rose center		
4	Bicolor, yellowish center, tinged with rose		
75	Boule de Neige, fine white, tinted with yellow		
99	Cytheree, flesh color, center spotted with carmine		

Send for our New Rhododendron Booklet



		10	100
10	<b>Paeonies</b> Duchess de Nemours, cream white		
45	Edulis Delache, mauve rose		
96	Festiva, white, very fine	\$ 3.00	\$
101	maxima, finest white, petals spotted with carmine	4.00	
8	Fulgida		
107	Gloria mundi, soft rose, very fine		
7	Hercules		
8	Humei		
9	H. Demay		
3	Isabel Kalitzky		
60	Lals, delicate rose, sulphur yellow center		
2	Marie Lemoine, flesh pink to white		
300	mixed	1.75	7.00
53	Mmc. Calot, light rose		
20	Mons. Jules Elle, flesh pink		
49	Mons. Bouquet, brilliant dark rose		
18	Pagamini, red, light pink center		
36	Potlri, rosea alba		
50	Rubra Triumphans, rich carmine		
50	Tricolor, gr. fl., light rose		
6	W. T. Smith		
46	Zoe Calot, white, tinged with delicate rose		
50	<b>Papaver laevigata</b> . . . . .	1.50	
60	nudicaule, orange Iceland Poppy	1.00	7.00
85	yellow . . . . .	1.25	
300	mixed . . . . .	1.00	6.00
550	orientale . . . . .	1.25	9.00
100	Parkman Oriental Poppy	1.25	10.00
100	<b>Pardanthus chinensis</b> . . . . .	1.00	7.00
150	<b>Parthenium hysterophorus</b> Prairie Dock	1.00	7.00
200	<b>Penstemon Barbatus Torreyi</b> . . . . .	1.50	6.00
350	laevigata . . . . .	1.25	6.00
700	<b>Phlox amoena</b> Dwarf Phlox . . . . .	1.00	5.00
550	carolina . . . . .	1.25	7.00
250	divaricata Wild Sweet William . . . . .	1.50	9.50
	paniculata in var. . . . \$65 per M.	1.25	8.00
200	Albion, fine white		
175	Blanch Nain, dwarf white		
300	Boquet Fleuri, pure white, crimson eye, very fine		
100	Chateaubriand, pure white, crimson eye .		
200	Cyclone, white, dark carmine eye		
800	Czarina, fine white		
200	Eclairer, brilliant pink, extra fine		
1000	Independence, large flower, early white		
150	F. G. Van Lassburg, finest white in cultivation		
650	Jean d'Arc, late white		
370	Lothair, salmon red, crimson eye		
25	Madsen, white suffused with crimson and with crimson eye		
500	Mrs. Arnold Turner, large flower, white with pink centre, one of best		

“Everything for the Hardy Garden.”

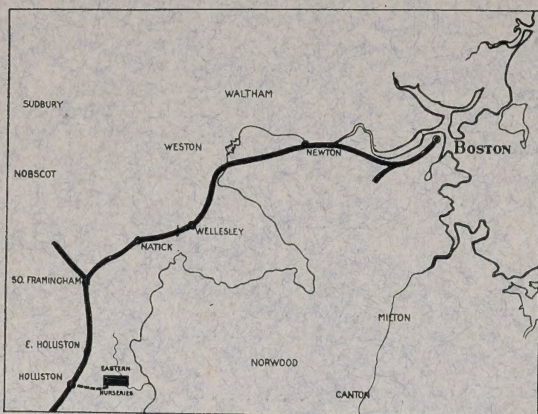
	Phlox paniculata in var.	
150	Mrs. Lingard, fine white, early	
20	Miss Cook, early dwarf white with carmine eye	
25	Ornament, clear rose, large panicles of bloom	
200	Pantheon, bright carmine	
10	Pecheur de Island, crimson red	
100	Prof. Schlicman, pure mauve, crimson eye, late bloomer	
50	Richard Wallace, white, deep crimson eye	
		10 100
50	reptans . . . . .	\$1.50 \$
700	subulata, pink Moss Pink . . . . .	1.00 6 00
1000	white . . . . .	1.00 6 00
300	Physostegia virginica . . . . .	1.25 5 00
500	Platycodon grandiflora Chinese Bell-flower	
	blue . . . . .	1.00 6 00
100	white . . . . .	1.25 7 00
400	Plumbago larpentae Leedwort . . . . .	1.25 9 50
60	Polemonium coeruleum Jacob's Ladder	1.00 7 00
1000	Polygonum compactum . . . . .	1.50 8 00
300	reptans . . . . .	1.50 8 00
1300	sieboldii . . . . .	1.50 8 00
40	Potentilla hybrida . . . . .	1.25 7 50
100	Primula polyanthus Polyanthus Primrose	1.75 10 00
50	vera . . . . .	1.75
200	Pulmonaria officinalis Lungwort . . . . .	1.50 7 00
	Pyrethrum roseum (See Chrysanthemum)	
800	uliginosum . . . . .	1.00 6 00
25	Ranunculus acris flora plena . . . . .	1.00 6 00
300	repens flora plena	
	Double Creeping Buttercup	1.00 6 00
300	Rudbeckia hirta Black-eyed Susan . . . . .	1 00 6 00
400	laciniata . . . . .	1.00 6 00
100	maximum . . . . .	1.50
200	Newmanni . . . . .	1.50 6 00
300	subtomentosa . . . . .	1.00 6 00
500	Ruellia ciliosa . . . . .	1.50 6 00
2000	Sedum acre Stone Crop . . . . .	1.50 7 00
400	lydium roseum . . . . .	1.25 8 00
400	spectabilis Showy Sedum . . . . .	1.25 6 00
98	Brownii . . . . .	1.50
300	Pulchellum . . . . .	1.50 8 00
400	variegata . . . . .	1.00 5 00
20	Senicus chiorem . . . . .	1.50
200	Silene maritima Seaside Catchfly . . . . .	1.25 6 00
200	Silphium perfoliatum Cup Plant . . . . .	1.25 8 00
30	Solidago Drummondsi . . . . .	2.00
20	rigida . . . . .	1.50
350	tenuifolia . . . . .	1.25 7 00
300	Spiraea aruncus Goat's Beard . . . . .	1.00 7 50
400	filipendula . . . . .	1.00 7 00
10	lobata . . . . .	2.00

HARDY HERBACEOUS PLANTS. 33

		10	100
250	<i>Spiraea palmata</i> . . . . .	\$1.50	\$ 7.50
25	<i>ulmaria</i> . . . . .	2.00	
25	<i>flora plena</i> . . . . .	1.25	
250	<i>Stachys lanata</i> Woolly Wound-wort . .	1.50	6.00
50	<i>Stellaria holostea</i> Easter Bell . . . . .	1.50	9.00
200	<i>Stokesia cyanea</i> Stoke's Aster . . . . .	1.25	6.00
30	<i>Telekia speciosum</i> . . . . .	1.75	
300	<i>Thalictrum Fendleri</i> . . . . .	1.25	7.00
100	<i>minor</i> . . . . .	1.50	8.00
400	<i>Thymus serpyllum</i> Creeping Thyme . .	1.00	7.00
300	<i>vulgaris</i> Common Thyme . . . . .	1.00	6.50
250	<i>Tradescantia virginica</i> Spiderwort . . .	1.00	6.00
280	<i>Tricyrtis hirta</i> Japanese Toad Lily . .	1.75	9.50
100	<i>Trillium recurvatum</i> . . . . .	1.50	9.00
250	<i>Tunica saxifraga</i> . . . . .	1.50	7.00
50	<i>Uvularia grandiflora</i> Bellwort . . . . .	1.75	
150	<i>Valeriana officinalis</i> Common Valerian	1.50	7.00
150	<i>Vernonia altissima</i> . . . . .	1.25	8.00
150	<i>noveboracensis</i> Ironweed . . . . .	1.25	8.00
800	<i>Veronica alpestris</i>		
	Thyme-leaved Speedwell . . . . .	1.25	6.00
400	<i>chamaedrifolia</i> . . . . .	1.25	6.00
280	<i>gentianoides</i>		
	Gentian-leaved Speedwell . . . . .	1.25	6.00
600	<i>incana</i> Hoary Speedweell . . . . .	1.25	6.00
200	<i>longifolia subsessilis</i> . . . . .	1.25	6.00
350	<i>rupestris</i> . . . . .	1.50	6.00
150	<i>sibericus</i> Siberian Speedwell . . . . .	1.25	6.00
600	<i>spicata</i> . . . . .	1.25	6.00
150	<i>virginiana</i> Common Speedwell . . . . .	1.25	6.00
1300	<i>Vinca minor</i> , XX Periwinkle . . . . .	1.00	6.00
	\$45 to \$55 per M.		
7000	<i>Viola cornuta</i> in var. Tufted Pansy . .	1.50	7.00
250	white . . . . .	1.50	7.00
30	cream white . . . . .	1.25	
200	<i>Yucca filamentosa</i> XX str. . . . .	1.25	7.50

in Carload Lots. Write for Prices.





## HOW TO REACH OUR NURSERIES AT HOLLISTON

Ten trains leave Boston for Holliston direct every day, via Boston & Albany R. R., and twenty-five or more leave for South Framingham. Take electric cars from South Framingham to Holliston. Electrics leave on the hour before noon, and on the hour and half hour in the afternoon.

Our representatives will be glad to meet any persons who desire to visit our Nurseries, at Holliston Depot, on notice to Mr. Driscoll, Telephone Natick 345, or to our office at Jamaica Plain, Telephone, Jamaica 377.