

❁ *Spring of 1902.* ❁

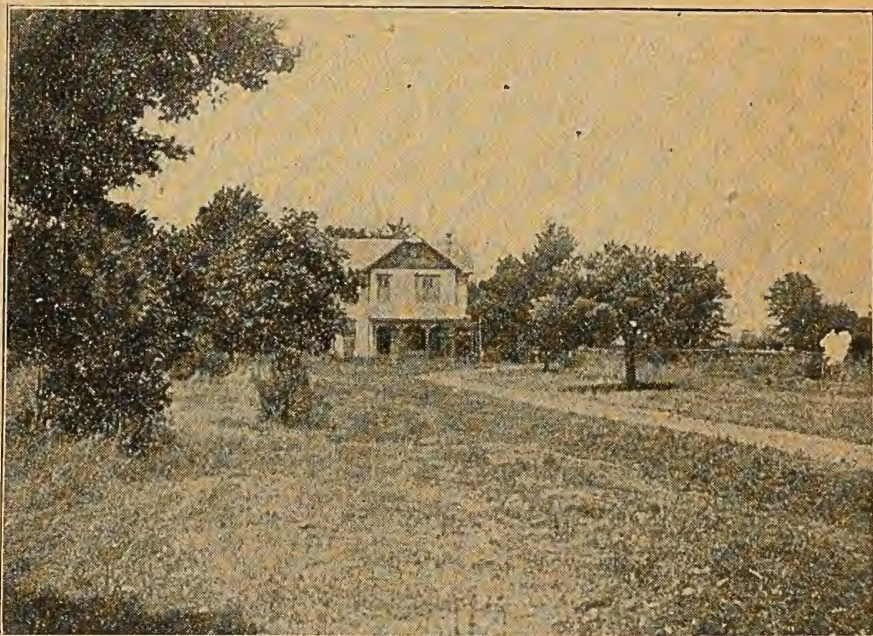
CATALOGUE

OF THE

*Hopewell Nursery and Seed*  
*.... Farm....*

A CAREFUL SELECTION OF THE

*Best Vegetables, Finest Flowers, and most Profitable*  
❁ ❁ *Fruits.* ❁ ❁



*Not the Finest of Catalogues, but the Best Seeds, Plants*  
*and Trees.*

***T. C. Furnas & Co.,***

*Rural Route No. 2.*

*Sheridan, Indiana.*

# To all who are Interested in Horticulture

## In any of its Branches--Greeting.

### Some Reasons why we ask You to Favor Us with your Orders.

We make no promises that we do not fulfil. Quality of stock considered. We make prices as low as any one, and in many cases lower. We want your future trade, and therefore we cannot afford to treat you other than in a way to give you satisfaction.

We guarantee everything true to name or money paid for same will be refunded.

We are ready to assist our patrons in every way in our power.

If you desire information on any horticultural subject write us and we will give you the information or tell you where you may find it.

If you want suggestions on laying out and planting your grounds or orchards do not hesitate to call our attention to it and we will help you to the best of our ability.

Remember we guarantee reasonable satisfaction in every case.

We give prompt and personal attention to every order large or small.

We have many varieties of fruits, flowers etc. not given in this price list, some have proven unworthy, some are on trial. Write us in regard to any variety you may be interested in. When you order send addresses of your friends for our catalogue. Orders with addresses always receive extras free to repay you for your trouble. Money sent by registered letter, draft or money order at our risk. No charge for boxing or packing. If any thing is wrong let us know, we want to correct mistakes. Certificate of inspection will be sent with all orders of trees etc.

Furnas Seeds are Tested Seeds. All seeds which do not come up to our high standard are discarded. We sell only the Best Seeds.

This means much to our customers. Our Seeds are carefully grown and tested and are worth far more than ordinary seeds of uncertain value.

This catalogue is small but it contains the best things to be found in Fruits, Flowers and Vegetables. By issuing a cheap inexpensive catalogue we are able to give greater value for the same amount.

We do not issue a long list of untried varieties but only those which have a distinct and proven value.

At Hopewell Nursery and Seed Farm we are conducting tests and experiments which cannot fail to be of great value. Our customers will have the benefit of this work as we shall issue from time to time pamphlets dealing with our work here and giving the results of our experiments.

If you have a fruit or vegetable you desire tested or propagated we shall be glad to do so, but we will not sell such Seeds or Fruits without consent of owner.

### Extra Packets.

We send some extras with every order. We have some new varieties we have not catalogued yet, which we are going to send to our customers for testing.

Note our cheap collection offers in the list of each kind of vegetables.

Try buying your Seeds direct from a Seed Farm.

## A Few Suggestions to Our Customers.

**How to Order.**—Use the order sheet, sent with the catalogue when possible. Keep a copy of your order and be sure to sign your name, post office, county and state every time you write to us.

**How to Remit.**—Send cash with order, by draft, Post Office Money Order, Express Money Order or Registered Letter. Postage stamps will be taken as cash.

**Cost of Remitting.**—Customers may select seeds to the amount of the cost of registered letter, draft or money order.

**Order Early.**—Please order as soon after you get this catalogue as possible, then you will have your seeds at hand for planting when you need them.

**Shipping Instructions.**—When goods are to be shipped by freight or express give plain shipping directions; otherwise we use our best judgment in regard to the matter.

**Errors in Filling.**—If there is any mistake in filling your order, let us know as soon after you receive the order as possible.

**We Guarantee** that all seeds, plants or other goods shall reach our customers in good condition. Report at once should there be any cause for complaint.

**When to Order.**—We are now prepared to fill orders as rapidly as received. Send in combined orders for seeds, trees, and plants, and if you do not wish trees and plants sent until time to plant in your locality, will send seeds at once and balance of order later, at any time you desire.

**By Express or Freight** means that we deliver the stock to the railroad here, and the purchaser pays transportation charges on receipt of the goods.

**Express Rates.**—Plants, seeds and trees are taken by the Express companies at a reduction of twenty per cent

from the regular rates for merchandise. When distance is not too great it is best to order perishable plants by express; larger stock can be sent than by mail.

Seeds and trees in large quantities go safely and cheaper by freight.

### SPECIAL DISCOUNTS.

#### Packet and Oz. Seed Discounts.

Purchasers may make selections of seeds in **PACKETS AND OUNCES** from this catalogue at these discounts:

For 25 cents Seeds in packets and oz. to the amount of 30 cents.

For 50 cents seeds in packets and oz. to the amount of 65 cents.

For \$1.00 select seeds in pkts and oz. amounting to \$1.40

For \$2.00 select seeds in pkts. and oz. amounting to \$2.85.

For amounts above \$2.00 select 45 cents in pkts or oz. for each dollar.

#### On Seeds in Bulk, and Trees and Plants

From catalogue prices by the  $\frac{1}{2}$  lb., pound, peck or bushel, and trees and plants, when cash is sent with order, purchaser may deduct 5 per cent on an order from \$3.00 to \$5.00, and 10 per cent on an order from \$5.00 to \$10. This discount refers to seeds quoted in catalogue by weight or measure, and all trees and plants.

In all cases (unless otherwise stated) seeds are sent postpaid in packets, ounces, pounds, pints and quarts. Larger quantities go by freight or express at the purchaser's expense.

If ordered shipped by express or freight at purchaser's expense, deduct 15 cents per quart, 8 cents per pint from price of beans, peas and pop corn; 10 cents per quart, 6 cents per pint from price of sweet corn and 8 cents per pound on other garden and flower seeds.

1-2 pound at pound rate; 1-2 peck at peck rate; 1-2 bushel at bushel rate.

# Vegetable Seeds.

\* \* \*

*Varieties that Tests at the Hopewell Farm have Proven to be of Especial Value.*

Our Packets of all Kinds of Seeds are Unusually Large and Well Filled, Containing Almost Twice the Amount of Some Seedsmen. Note Liberal Discounts on Preceding Page.

We use great care to sell seeds from carefully selected strains of each variety. Such seeds cost more but are worth very much more than cheap seeds.

## Artichoke.

**Green Globe.**—Produces large globular heads; scales green shading to purple; best for general use. Pkt. 19c, oz. 30c.

## Asparagus.

**Conover's Colossal.**—The standard variety. Per pkt. 4 cts. oz. 8 cts.  $\frac{1}{4}$  lb. 18 cts. per lb. 35 cts.

**Barr's Mammoth.**—This variety has brought in market much higher price than other varieties. Stalks are very large, sometimes an inch in diameter, with few scales. Makes shoots fit for market in a single day. Per pkt. 3 cents; oz. 8 cents;  $\frac{1}{4}$  lb. 15 cents; lb. 50 cents.

**Columbian Mammoth White.**—A white asparagus, which furnishes white shoots which stay white as long as fit for use, without earthing up or any other artificial blanching. Per pkt. 5 cents; oz. 10 cts;  $\frac{1}{4}$  lb. 25 cents; per lb. 50 cents.

**Donald's Elmira.**—A distinct variety growing to a large size, tender and succulent, highly esteemed by gardeners where known. Pkt. 4 cents; oz. 8 cents;  $\frac{1}{4}$  lb. 20 cts. lb. 58 cents.

**Palmetto.**—Very early and desirable on that account. Large size, strong growth and excellent quality. Pkt. 3c; oz. 5c;  $\frac{1}{4}$  lb. 15c. lb. 45c.

## Beans.

### DWARF—GREEN PODDED VARIETIES.

#### Burpee's Stringless Green Pod.

This is the only green-podded bush bean that is always absolutely stringless. It is the finest quality, and immensely productive. The pods are round and full. Best of the green podded beans. Pkt. 5c; pint 20c; qt. 35c.

**Improved Prolific Tree.**—A strong grower which bears its load of pods well up from the ground; not liable to rust; beans medium size, white and of splendid quality; resembles the ordinary Navy bean but is more productive. A good field variety. Pkt. 5c;  $\frac{1}{2}$  pt. 10c; pt. 18c; qt. 35c. pk. by exp. or freight \$1.00; bu. \$3.75.

**Extra Early Red Valentine.** (Imp. Round Pod). A decided improvement on the Old Valentine, fully ten days earlier; pods are tender and brittle. Very profitable for market gardeners. Pkt. 5c.,  $\frac{1}{2}$  pt. 12c., pt. 20c., qt. 35c., pk. by exp. or freight, \$1.40, bu. \$5.50.

**Early Round-Pod Six Weeks.** It is extra early, a vigorous grower and very productive. Compared with the Long Yellow Six Weeks Bean, it is more prolific, the pods are longer. Pkt. 5c.,  $\frac{1}{2}$  pt. 12c., pt. 20c., qt. 38c. pk. by exp. or freight, \$1.40, bu. \$5.50.

**Dwarf Horticultural.** A well tried variety; we consider this one of the very best of all the beans we have tested for shelled beans. Productive, healthy grower. Pkt. 5c.,  $\frac{1}{2}$  pt. 12c., pt. 20c., qt. 35c., pk. by exp. \$1.40.

**Improved Navy.** A selection of the Navy type of bean. It is very productive and of better quality than the common Navy. Pkt. 5c.,  $\frac{1}{2}$  pt. 10c., pt. 18c., qt. 30c., pk. by exp. or freight \$1.50, bu. \$3.50.

**Extra Early Refugee.** One of the earliest of green-podded sorts. It has all the excellent qualities of the well-known Refugee, with the additional advantage of being ready for market at least 10 days earlier. It is an immense yielder, be the season wet or dry. Pkt. 5c.,  $\frac{1}{2}$  pt. 12c., pt. 20c., qt. 38c., pk. by exp. or freight, \$1.40, bu. \$5.50.

**Early Mohawk.** The hardiest variety, and therefore can be planted much earlier than other sorts. A strong grower, with large bush and coarse leaves. Not of very high quality but valuable on account of its earliness. Pkt. 5c.,  $\frac{1}{2}$  pt. 12c., pt. 20c., qt. 35c., pk. by expr. or freight \$1.40, bu. \$5.50.

**Improved White Kidney.**—An excellent shell bean. Pkt. 5c;  $\frac{1}{2}$  pt. 10c; pt. 20c. qt. 35c.

#### WAX OR YELLOW-POD VARIETIES.

**Challenge Dwarf Black Wax.** This is fully one week earlier than any other Wax Bean. The pods are large and of good color, and ripen remarkably uniformly and well together. There is none better for first early crop. Pkt. 5c.,  $\frac{1}{2}$  pt. 12c., pt. 20c., qt. 35c.

**Golden-Eyed Wax.** This is a strong vigorous grower, holding its load of pods well up from the ground. The pods are of a beautiful waxy appearance. Fine quality. Is not troubled with rust. Pkt. 5c.,  $\frac{1}{2}$  pt. 12c., pt. 20c. qt. 35c.

**Detroit Wax.** A good Wax Bean of excellent quality. Pkt. 5c., pt. 18c. qt. 35.

#### JONES' STRINGLESS WAX.

**A New White-seeded Sort, with Long Stringless Pods, Rustproof and Productive.**

This grand absolutely stringless bean is of true bush type, of strong growth, compact bushy tops, is absolutely rustproof. The pods are long, perfectly round and exceptionally solid, of a delicate light yellow color, perfectly stringless, showing no coarseness even when past their prime; retains its brittleness and fine table quality when nearly matured. When ripe the seeds are white, medium, round and plump. Pkt. 5c;  $\frac{1}{2}$  pt, 12c; pt. 20c; qt. 38c; pk. by exp. \$1.40.

**Davis Kidney Wax.** This plant is a vigorous grower, carrying the pods well up from the ground. In productiveness it is astonishing, as it will produce one-third more than other Wax Beans. The pods are long, straight, oval, of clear waxy-white color, and handsome, often growing to a length of seven to eight inches, and when fit for use, are quite stringless and of very fine flavor. One of the main points of superiority over other sorts is its extreme hardness. Pkt. 5c.  $\frac{1}{2}$  pt. 13c., pt. 22c., qt. 38., pk. exp. \$1.50, bu. \$5.75.

**Rust-Proof Golden Wax.** Early, excellent quality; pods stringless, golden yellow, very fleshy; cooks quickly. Free from rust. Keeps a long time after picking. Seeds medium size. oval, mottled. Pkt. 5c.,  $\frac{1}{2}$  pt. 12c., pt. 20c., qt. 35c., pk. by express \$1.50.

**Saddle Back Wax.**—The pods are long, large, round, full of meat, stringless. Best quality, rich golden color. Pkt. 5c;  $\frac{1}{2}$  pt. 13c; pt. 22c; qt. 40c; by exp. pk, \$1.50,

Remember we sell selected tested seeds only. Our profit is smaller than if we sold cheap seeds of uncertain quality but your profit is much greater,

**Yosemite Mammoth Wax.**—The pods of this monster wax bean are very long, nearly all solid pulp and absolutely stringless, cooking tender and delicious. In color they are a rich golden yellow; the plant is a very strong grower and immensely productive; only a trifle later than the early varieties. Pkt. 5c.  $\frac{1}{2}$  pt. 15c; pt. 25c. qt. 45c.

**Special Bean Offer** Six packets 25 cents, your selection.

#### DWARF LIMA VARIETIES.

**Burpee's.**—The only bush form of the large type of Lima. The bushes grow eighteen to twenty inches high, of stout growth and always erect. It is an immense yielder, the pods being filled with very large beans of most excellent quality. Pkt. 5c;  $\frac{1}{2}$  pt. 15c; pt. 25c; qt. 40c.

**Dreer's.**—The true bush form of the chubby Dreer's or potato Lima. The pods are heavy and thick. It is quite productive and of excellent quality. Pkt. 5c;  $\frac{1}{2}$  pt. 15c; pt. 25c; qt. 40c.

**Henderson's.**—This is a bush form of the small Seiva pole bean. It is the original bush form of the pole beans. It is the most productive of any. Very early and immensely productive. Pkt. 5c;  $\frac{1}{2}$  pt. 15c; qt. 40c.

**Special Offer.**—4 packets Bush Beans your selection, for 16 cents.

#### POLE BEANS.

**Kentucky Wonder, or Old Homestead.**

We can recommend this as one of the earliest green podded varieties, and unsurpassed for using in the green state. It is enormously productive, the pods hanging in great clusters from top to bottom of the poles. Pods entirely stringless, long, silvery green. Pkt. 5c;  $\frac{1}{2}$  pt. 15c; pt. 25c.

**Dutch Case Knife.**—One of the earliest pole beans; an old standby. Excellent for shelling. This is an excellent corn-hill bean; plant two in a hill. Pkt. 5c;  $\frac{1}{2}$  pt. 12c; pt. 22c; qt. 40c.

#### White Creaseback or Best of All.

One of the earliest green podded pole beans. Very productive and of extra fine quality. The handsome green pods grow from 5 to 6 inches long, perfectly round with a crease in the back. The pods are entirely stringless, very fleshy and of superior quality. A valuable variety for planting with corn. Pkt. 5c;  $\frac{1}{2}$  pt. 15c; pint 25c; peck \$1.40.

#### Horticultural Cranberry, or Bird's Egg Bean.

A very popular old variety. Early and very productive. Valuable as a snap or shell bean. Pkt. 5c; 1-2 pt. 15c; pt. 25c; pk. \$1.40.

#### Lazy Wife Pole Bean.

Pods are broad, thick, fleshy and stringless. They retain their excellent qualities until almost ripe. Its immense productiveness renders this variety indispensable. Pkt. 5c; 1-2 pt. 18c; pint 30c.

#### Early Golden Cluster Wax.

A strong, vigorous grower. It produces its first pods nearly as early as the Dwarf Golden Wax, and continues to bear until killed by frost; wonderfully prolific; pods grow in clusters of three to six, and are six to eight inches long, beautiful golden yellow. It snaps easily, is stringless, cooks tender and is of very delicious flavor. We cannot too highly recommend this. Pkt. 5c; 1-2 pt. 14c; pt. 23c; qt. 40c; pk. by express \$1.90.

#### Special Offer.

One packet of each of the six pole beans for 24 cents.

#### POLE LIMA BEANS.

##### Ford's Mammoth Pole Lima.

The largest and most productive lima bean. The pods of this most desirable bean grow to an average length of 8 inches and are produced in great clusters. The pods have from 5 to 7 beans of excellent quality, both green and dry. It might be called the ever-bearer, as the pods are produced early at the bottom of the pole, and are continuously produced until the frost destroys the vines. Pkt. 5c; 1-2 pt. 12c; pt. 20c; qt. 35c; pk. by exp. \$1.25; bu. \$4.50.

##### King of the Garden.

A very large vigorous growing pole lima, requiring but two vines to the pole; pods very large and well filled. Quality unsurpassed. Give it a trial. Price 5 cents per packet; 1-2 pt. 15 cents; pint 25c; qt. 40 cents.

**Hopewell Farm is a real farm where we carry on our business of growing and selling seeds, trees and plants.**

**Improved Lima. (Dreer's.)**

Earlier and more productive than the old sort. Vines very stout and vigorous. The pods are much thicker than those of the other Limas, and contain from four to five beans, which are large, thick, white and of the best quality. Pkt. 5c; 1-2 pt. 15c; pt. 30c; qt. 50c.

**Scibert's Early Lima.**

The earliest of the large limas. The beans are large. The vines hardy and productive. The pods are peculiarly thin and flexible, and are more easily shelled than any other Lima bean. Pkt. 5c; 1-2 pt. 15c; pt. 25c; qt. 40c; by exp. pk. \$1.75.

Each packet of beans will contain 2 ounces, or sufficient for about 20 hills. We pay postage on all beans by the pint or quart. If wanted by express deduct 8 cents per pint from above prices.

**Special Offer No. 3.**

1 packet 4 pole beans for 15 cents.

Do not forget our liberal discounts given on inside page of first cover.

What our catalogue lacks in colored plates is more than made up to you by more and better seeds.

## Beets.

An Ounce of Beet Seed is generally sufficient for a home garden. It requires from 5 to 6 lbs. to sow an acre.

**Crosby's Improved Egyptian.**

This new strain is very popular, for forcing and early outdoor sowing; of good size; top and tap roots very small; fine quality, and of very quick growth. This grand variety has given satisfaction everywhere. Pkt. 4c., ounce 8c., 1-4 lb. 18c., lb. 59c.

**Early Blood Turnip.**

(Dewing's Improved.) An excellent strain, of large size, smooth, deep blood-red. Pkt. 3c., ounce 7c., 1-4 lb. 15c., lb. 48c.

**Edmand's Turnip.**

The skin and flesh are deep blood-red in color, sweet and tender, of good size, round and smooth. Cannot fail to give satisfaction. Pkt. 3c., ounce 7c., 1-4 lb. 15c., lb. 48c.

**Long Smooth Blood Red.**

Roots long and slender, penetrating the soil deeply, but seldom growing more than three inches in diameter. The flesh is very dark, tender, sweet and free from woodiness. The beets are rather late in maturing, but retain their sweet flavor throughout the season, and are excellent keepers when stored for winter use. Pkt. 3c., 1-4 lb. 15c., lb. 45c.

Plant good seeds and raise crops that you will be proud of.

**Detroit Dark Red Turnip.**

A grand beet for bunching for market; tops exceptionally small and upright; roots are perfect turnip shape with small tap roots. Color of skin dark blood red; flesh bright red. Quality is of the very best, sweet, tender and lasting. Lb. 75c., 1-4 lb. 25c., 2 ounces 15c., ounce 10c., pkt. 4c.

**Eclipse.**

Very early, dark crimson color, smooth, globe shape, small top, and of the best quality. One of the best extremely early beets; if sown late it is good for winter use. Pkt. 3c., ounce 7c., 1-4 lb. 15c., lb. 48c.

**New Half-Long Blood.**

In form it is thick at the top and tapers to a point, about half the length of the Long Blood Beet. It grows to a large size, always smooth and handsome. Skin and flesh deep blood-red. It's a good one. Pkt. 4c., ounce 7c., 1-4 lb., 17c., lb. 48c.

**Edmand's Early Turnip.**

It is of uniform, handsome, round shape, very smooth and of good marketable size, with neat, small, bronzy-red foliage. It does not grow large and coarse, hence can be planted closely together. Flesh and skin dark red, very tender and sweet. Pkt. 3c., 1-4 lb. 15c., lb. 50c.

**Special Beet Offer.**

Four packets, your selection for 10 cts.

## Mangel Wurzel.

4 to 6 lbs. are required per acre.

**Mammoth Long Red.**

This is an enormous productive variety, yielding from 50 to 70 tons to the acre, a single root often weighing from 20 to 30 pounds. It is the best long red Mangel, and of the greatest value for stock feeding. It grows well above ground and is easily pulled. Our strain is an extra selec-

tion from the largest and thickest Mangels. Lb. 40c. 1-4 lb. 15c. ounce 5c. 3 pods. 5 lbs. by exp., at buyer's expense, 1.25.

**Champion Yellow Globe,**

The best yellow globe in cultivation. Lb. 40c. 1-4 lb. 15c. ounce 5c. 5 lbs. by express 1.20, pkt. 25c.

**Golden Tankard.**

The best yellow mangel in cultivation. A distinct and valuable yellow-fleshed variety, which contains a larger percentage of sugar and nutritive matter than any of the red-skinned sorts. It is more relished by milch cows and sheep than any other. In shape it is almost cylindrical. It is very easily pulled and is very hardy. Pkt. 2c, lb. 40c, 1-4 lb. 15c, ounce 5c, 5 lbs. by express at buyer's expense, 1.25.

**Giant.**

Very large, heavy yielder. Pkt. 3c, ounce 5c, 1-4 lb, 15c, lb, 35c.

**Lane's Improved Sugar Beet.**

This is the most productive of the sugar beets, yielding nearly as much as the Mangels, is rich sugar. Grown for stock feeding. Pkt. 3c, ounce 5c, 1-4 lb, 12c, lb, 35c, 5 lbs. by express 1.25.

**Klein Wanzleben.**

This variety yields 14 to 18 per cent of sugar and is considered the best for sugar making. Pkt. 3c, ounce 5c, 1-4 lb, 12c, lb, 35c.

**Special Offer.**

Buy six Packets of Best Mangel Wurzel for 12 cents.

**Brussels Sprouts.**

One of the most delicious vegetable of the cabbage family.

**Improved Dwarf.**

A variety of excellent quality. Pkt. 3c; ounce 12c; 1-4 lb, 35c.

**Paris Market.**

This is a very fine new variety, of half-dwarf

growth, bearing handsome, solid, round sprouts of best quality, crowded together on the stalk, 1 to 2 inches in diameter, resembling cabbage in miniature. The sprouts are used as greens and become very tender and of rich flavor when touched by frost. Sow in May and treat the same as Winter Cabbage. Lb. \$1.40; 1-4 lb, 40c; ounce 15c; 1-2 ounce 10c; pkt. 5c.

**Borecole or Kale.****DWARF GREEN CURLED KALE.**  
(German Green or Sprouts.)*Extra Selected Stock.*

This is hardier than cabbage, and makes excellent greens for winter and spring use. The leaves are as curly as Parsley, tender and of very fine flavor. It is improved by frost. Sow the seed in May or June, transplant in July and treat same as cabbage. Immense quantities of this are grown in the South and shipped to Northern

markets. We have an excellent strain of it. Lb. 60c; 1-4 lb, 20c; ounce 10c; pkt. 4c.

**Tall Green Curled.**

Fine curled. Lb. 70c; 1-4 lb, 20c; ounce 10c; pkt. 4c.

**BROCCOLI.****Large White Mammoth.**

Heads compact. Pkt. 10c; 1-2 ounce 15c; ounce 30c.

**The Best American Grown Cabbage.****Furnas' Selected Early Jersey Wakefield.***The Best Early Cabbage in Cultivation.*

It forms fine solid heads of good size, conical in shape, with very few outside leaves, and of the best quality. Grown only from selected heads. Our strain is pure; warranted to give satisfaction. Lb. \$3.00; 1-4 lb, 80c; ounce 30c; 1-2 ounce 20c; pkt. 8c.

**Early Jersey Wakefield.**

Good seed but not selected as above. Lb. \$2.10 1-4 lb, 60c; ounce 20c; pkt. 4c.

**Extra Early Express.**

An extra early sort, in which the plants are compact with round thick leaves, that form an oval head, which is astonishingly large for the size of the plants. Lb. 2.25; 1-4 lb, 75c; 2 ounces 40c; ounce 25c; pkt. 4c.

**Large Jersey or Charleston Wakefield.**

This sort forms uniform solid heads considerably larger than the Early Wakefield and matures only a few days later. Lb. 2.60; 1-4 lb, 70c; ounce 20c; 1-2 ounce 12c; pkt. 3c.

**Henderson's Early Summer.**

A deservedly popular second early variety, forming large, solid, flattened heads of excellent quality. Fully double the size of the Wakefield. Pkt. 8c; ounce 12c.

**Early Winningstadt.**

Very hardy and sure to head. It seems to suffer less from the cabbage worm than any other sort. Heads regular, conical. Lb. 1.85; 1-4 lb, 50c; ounce 15c; pkt. 4c.

**Our seeds produce the best vegetables and finest flowers,**



**Henderson's Succession.**

This popular second early cabbage is an excellent keeper. Mr. Henderson says: "It is the finest cabbage whether for medium early, main crop or late keeper." Pkt. 4c; ounce 20c; 1-4 lb. 75c.

**Surehead.**

A very popular strain which is SURE TO HEAD. One of the very best late cabbages. Heads are very uniform in shape, of the Flat Dutch type, weighing ordinarily 10 to 15 lbs. each, with few loose outer leaves. Very fine quality, hard, and of fine texture. A remarkably good shipper. For home use or market it will please all who grow it. Pkt. 3c; 1-2 ounce 10c; ounce 18c; 1-4 lb. 60c; lb. 1.75.

**AUTUMN KING.** Lb. 2.00; 1-4 lb. 60c; ounce 20c; 1-2 ounce 12c; pkt. 5c.

**Bridgeport Drumhead.**

One of the best shipping varieties. It makes large, round solid heads which very seldom burst, or rot. Lb. 2.50; 1-4 lb. 70c; 2 ounces 45c; ounce 25c; 1-2 ounce 10c. pkt. 3c. By express, 5 lbs. 11.00. 10 lbs. 20.00

**Giant Red Erfurt.**

Very deep red and hard as a rock. Lb. 2.00. 1-4 lb. 60c. ounce 20c. 1-2 ounce 12c. pkt. 2c.

**Our seeds are pedigreed and will produce the right kind, they are fresh, pure and true to name.**

**Mammoth Rock Red.**

Without doubt the finest strain of red or purple cabbage for pickling grown. Heads large, round, solid and dark blood red to the centre. Give it a trial. Price per pkt. 3c. ounce 15c.

**Late American Drumhead Savoy.**

Pkt. 3c. ounce 18c.

**De Vertus Savoy.**

One of the largest of its kind. Lb. 2.00 1-4 lb. 50c. ounce 20c. 1-2 ounce 12c. pkt. 5c.

**Special Cabbage Offer.**

**Five packets your selection, for 15c.**

**Three Ozs. of seed to 100 Yards. Carrots. Four Lbs. to the Acre.**

**Very Early Scarlet Forcing.**

(French Horn.) The reddish orange colored roots are nearly round. When fully matured they are about two inches in diameter, but should be used before they are fully grown, when they are tender and delicious. Pkt. 5c. ounce 10c. 2 ounces 12c. 1-4 lb. 20c. lb. 75c.

**Nantes' Half Long Early.**

This is the sweetest of all carrots, of good shape and size. The roots are almost cylindrical, very smooth, grow about six inches long. Leaves fine, flesh entirely red, very sweet and almost entirely without a core. They are

**Early "Allhead" or Faultless.**

For uniformity, reliability of heading, size earliness and quality, it has no equal. Lb. 1.75; 1-4 lb. 45c; ounce 12c; pkt. 4c.

**Early Flat Dutch.**

A remarkably fine strain; a sure header. Heads solid and of good flavor. They mature in Early Summer and stand long without bursting. Lb. 1.50; 1-4 lb. 40c; ounce 12c; pkt. 4c.

**All Seasons.**

An early Drumhead variety, producing heads of good size, which are large and thick through, making it very desirable either for early summer or late fall use. In richness of flavor it is unsurpassed. Pkt. 4c; ounce 20c; 1-4 lb. 40c; lb. 1.75.

**Fottler's Improved Brunswick.**

An extra fine strain with very uniform, large solid heads. Always sure to head. Lb. 1.50; 1-4 lb. 40c; ounce 15c; 1-2 ounce 8c; pkt. 3c. By express, 5 lbs. 8.00; 10 lbs. 15.00.

**Dutch Winter or Hollander.**

The best cabbage for late spring sales and for shipping. The heads are of medium size, averaging about 8 lbs., and are very solid, and in their fine white color entirely distinct from other strains. While the quality is good, they are uniformly excellent keepers, the heads being often just as solid and perfect when taken out in the Spring as when put away in the Fall. No cabbage will sell against it.

**Dutch Winter or Hollander, Furnas' Extra Selected Stock,** Lb. 2.25; 1-4 lb. 65c; 2 ounces 35c; ounce 20c; 1-2 ounce 12c; pkt. 5c. By express, 5 lbs. 10.00; 10 lbs. 18.75.

**Premium Flat Dutch.**

We recommend this sort for markets that require a large very solid head. No cabbage is so universally grown as this. For heading, evenness of crop and size our strain of this cannot be surpassed. Lb. 2.00; 1-4 lb. 50c; 2 ounces 30c; ounce 16c; 1-2 ounce 10c; pkt. 3c. By express, 5 lbs. 9.00; 10 lbs. 16.00.

easily pulled and keep well. Like all carrots, it likes a rich, deep, mellow soil, free from stones. A most excellent sort. Pkt. 3c. ounce 8c. 1-4 lb. 25c. lb. 75c.

**Half Long Danvers'**

This is a broad-shouldered carrot, cylindrical in shape, stump rooted, of excellent color, best flavor, a most wonderful producer. Ready in about 65 days from the time of sowing. It is not only one of the best for the table, but owing to its shape, size and great yield and the fact that it is so easily harvested, one of the best for stock. Pkt. 3c. ounce 10c. 1-4 lb. 20c. lb. 75c.

**Improved Long Orange.**

A well-known variety, thickest near the crown, tapering regularly to a point, color deep orange. Suitable for the table or field crop. Pkt. 3c. ounce 8c. 1-4 lb. 18c. lb. 75c.

**Special Carrot Offer.**

Any two packets for 5 cents.

Why plant poor seeds when you can get the very best seed to be had at our low prices.

See Discounts  
Inside Front  
Cover Page.

## Celery.

Sow the seed in open ground as soon as fit to work in April, or for very early use in hot bed or cold frame. Cover very lightly. Rolling or pressing in the seed has been found more satisfactory than covering. Cut the tops off once or twice before planting out, to make them stocky. When the plants are five or six inches high, transplant the dwarf varieties three feet, and the taller sorts four feet between the rows. Cultivate well, and when large enough blanch by earthing up.

**Giant Golden Heart.**

The best celery for winter storage. It is not only the best keeper but is large, solid, sweet, and of a beautiful golden color. It is a selection from the Dwarf Golden Heart, grows larger than its Parent, but otherwise possesses all its excellent qualities. We recommend it to gardeners as well as for home use. Lb. 2.65, 1-4 lb. 75c. 2 ounces 40c. ounce 20c. 1-2 ounce 12c. pkt. 5c.

**Dwarf Golden Heart.**

A distinct variety of sturdy dwarf habit. It is solid, an excellent keeper and of fine nutty flavor. An exceedingly showy and desirable variety for both market and family use. Pkt. 4c. ounce 12c. 1-4 lb. 40c.

**Giant Pascal.**

It is a selection from the Golden Self-Blanching, and adds to the general good qualities of its parent superior keeping qualities. The stalks are very large, solid, crisp and of a rich nutty flavor, free from any trace of bitterness, blanches very easily and quickly, and retains its freshness a long time after being marketed. The heart is golden yellow, very attractive. A good keeper. We recommend it for winter use. Lb. 1.75, 1-4 lb. 60c. 2 ounces 35c, ounce 20c 1-2 ounce 12c. pkt. 5c.

**Pink Plume.**

Its beautiful white stalks suffused with pink, make it very attractive. It is earlier than White Plume and will keep as long as any variety of celery, hence making it one of the best to grow for market. It is a strong, healthy grower and does not rust. Pkt. 4c. 1-2 ounce 10c. ounce 18c. 1-4 lb. 55c. lb. 1.80.

We solicit the orders of all who want the best seeds at the lowest prices at which they can be produced and sold.

**Well Known Standard Sorts.**

We furnish the following at the uniform price of Lb. 1.50. 1-4 lb. 40c. 2 ounces 25c. ounce 15c. 1-2 ounce 8c. pkt. 4c: **Dwarf Golden Heart, Perfection Heartwell, Boston Market, Crawford's Half Dwarf, Solid Ivory or Kalamazoo,**

**Golden Self-Blanching.**

This has become a standard variety. Its growth is compact, vigorous, ribs straight, solid, crisp, and tender. The heart is large, solid, of a rich, golden yellow color, and of a delicious flavor, without banking up, the outer ribs become a yellowish white color as it approaches maturity but will be more tender by banking up. Unlike other self-blanching kinds, this is an excellent keeper. Pkt. 5c 1-2 ounce 25c ounce 40c 1-4 lb. 1.25 lb. 4.50.

**White Plume.**

(Select Strain.) Probably this is the most popular celery known. Matures early and makes a fine appearance on account of its white stalks and foliage. Needs but little earthing up. Pkt. 4c. 1-2 ounce 10c ounce 18c 1-4 lb. 55c lb. 1.65.

**Celeriac.**

(Turnip-Rooted Celery.) Grown extensively for its roots, which are turnip-shaped, very smooth, tender and marrow-like. The roots are cooked and sliced. When used with vinegar they make excellent salad. Give thorough cultivation. Pkt. 3c ounce 15c.

**Celery Plants.**

We can make you special price on celery plants. See Plant Department.

**Special Offer.**

One packet of any five varieties of Celery for 18 cents.

Let us have your order. We want to prove to you the truth of our claim that it will pay you to buy of the Hopewell Seed Farm.

Customers are invited to consult us freely when in doubt as to the kinds of Flowers or vegetables to sow for certain purposes.

# Corn, Sweet or Sugar.

**PLEASE NOTE** that prices quoted by us for pints and quarts are post-paid by us. If ordered by express deduct at rate of 10 cents per quart. One-half pints furnished at pint rates. One pint plants 100 hills. 5 to 8 quarts per acre in hills 4 feet apart, or less, each way in drills or broadcast for fodder 1 r-2 to 2 bu. per acre.

## Improved Early Champion.

The earliest large Sweet corn. Often produces ears 12 inches long in 60 days. This new variety is without vuestion the earliest large sweet corn yet introduced, being only a few days later than the first early small sorts. Ears large, pure white grains, with medium sived white cob, very sweet, tender and full of milk, yielding two and three ears to the stalk. The best kind for early planting. Pkt. 5c pint 16c vuart 30c peck 60c.

## The Cory.

This has always been considered the earliest of all. Will produce good ears for the table in fifty days after planting. Grows about four feet high and usually produces two ears to the stalk. Ears about 6 inches long. Pkt. 5c 1/2 pint 12c pint 20c vuart 35c peck 80c bushel 2.75

## Crosby's Early.

An early corn of large sive and choice vuality. It has long been a standard variety. Price same as The Cory.

## Burbank Early Marine.

An early variety of most excellent flavor. Pkt 4c, 1-2 pt 12c, pt 18c, qt 30.

## Old Colony.

This variety is two weeks earlier than the Evergreen. It is considered the sweetest by canning factories. A splendid variety for market or home use. Price same as Evergreen.

## Stowell's Evergreen.

Is more largely grown than any other variety being the general favorite among canners and market gardeners for late use. Ears large, grains deep, tender, and fine flavored, remaining a long time in edible condition. Pkt. 5c 1/2 pint 10 cents pint 15c vuart 25c peck 75c bushel 2.25.

## Country Gentlemen.

(Improved Shoe-peg.) This is probably the most delicious flavored variety grown. Very productive, medium early in season, ears of small to medium sive, kernels pure white, very deep and placed irregularly but closely on the cob. Try it if you want something fine. Pkt. 5c 1/2 pint 12c pint 20c vuart 35c peck 80c bushel 2.75.

## Black Mexican

Kernel black when ripe. It is very sweet. Price same as Evergreen.

## Late Mammoth.

Planted same time as other varieties, this will come in after they are gone. Ears very large and sweet; very best vuality and a great yielder. A good variety for growing to feed to stock. Price same as Evergreen.

## The Three Best Varieties of Sweet Corn for Succession.

### MAMMOTH WHITE CORY

### EARLY CHAMPION

### STOWELL'S EVERGREEN

	By Mail, Postpaid	At Buyer's Expense.
One packet each of the three kinds.....	.15.....	.10
One pint " " " " " .....	.40.....	.25
One vuart " " " " " .....	.70.....	.45
1/2 peck " " " " " .....		1.10
One peck " " " " " .....		2.50
One bushel " " " " " .....		9.00

To secure a more complete succession we plant the Black Mexican, Old Colony or Country Gentleman.

# Cucumber.

## Japanese Climbing Cucumber.

This novelty is entirely distinct from all other Cucumbers. Unlike all other varieties it climbs on poles, trellises or fences like a vine. Good vuality. Pkt. 5c, ounce 15c.

## Evergreen, or Extra Long White Spine

*One of the best table sorts.*

A fine strain, producing smooth, regular fruits, frevently twelve inches long. Lb. 65c, 1-4 lb. 20c, ounce 10c, pkt. 4.

## The "Cumberland" Pickle.

The best Pickling Cucumber known. Enormously Prolific. A Shy Seed-er. Fine for Both Slicing and Pickling.

This variety of the hardy, White Spine type, is a rapid, strong grower and is very prolific in fruit. The pickles differ from all other hardy sorts in being thickly set with fine spines, except on the extreme stem-end. During the whole period of growth, from the time they first set until full grown, the form is exceptionally straight and symmetrical, making them as choice for a slicing variety as for pickles. The flesh is firm, very crisp and tender at all stages. Pkt. 10c, 1-2 ounce 15c, 1 ounce 25c, 2 ounces 40c, 1-4 lb. 70c, 1 lb. 2.50.

### Early Cyclone Cucumber.

It is of the desirable White Spine type, being shorter, thicker and holding better its deep green color than any other Early Cucumber in cultivation. It is very prolific and grows its fruit in bunches of threes and fours of uniform size and shape. Valuable either for slicing or for pickling. Pkt. 4c, 1-2 ounce 10c, 1 ounce 15c, 2 ounces 25c, 1-4 lb. 40c, 1 lb. 1.25.

### West India Gherkin.

A very small, oval-shaped, prickly variety, grown extensively for pickling for which purpose it is admirably adopted. Price 5 cents per packet, 10 cents per ounce.

## Egg Plant.

This vegetable does not receive the attention it deserves. Culture same as Peppers, except that it should be started earlier in the spring, and not planted in the garden until quite warm weather.

### New York Improved Spineless.

A great improvement over the old strain, large size, skin deep purple, flesh white, tender, excellent quality. Pkt 4c, 1-2 ounce 15c, ounce 25c.

**Pearl White.** A new variety, grows to about the size of the New York Improved Purple. Color pure white, turning to a light lemon color as it ripens. It is a heavy bearer and requires rich soil. Pkt 5c, 1-2 ounce 20c, ounce 35c.

## Lettuce.

2 ounces of seed to 100 yards of row; 4 pounds to the acre. 40 to 50 days from seeding to maturity.

### Curled or Loose Seaved Sorts.

#### Tilton's White Star.

Of the Black Seeded Simpson type but grows larger and more rapidly, and its leaves are broader, thicker, darker and less frilled at the edge. It forms a large loose head, excellent quality. The plants remain long in condition for use. Pkt. 3c, ounce 12c, 1-4 lb 50c.

## Cool and Crisp.

This is a very valuable, early and productive Cucumber. At the pickling stage they are straight, long, smooth, even and slim, and are of a dark green color until fully grown. It is also excellent for slicing, the Cucumber being of good size and exceedingly tender and crisp. Pkt. 4c, ounce 10c, 1-4 lb 20c, 1 lb 50c.

**Siberian** Very early; a week ahead of Early Russian. Plants very hardy, of quick, stout, short growth, allowing close planting, yielding a large quantity of the very best shaped, small green pickles, the size so popular for bottle pickles. Price same as Cool and Crisp.

Any of the following, per pkt. 3c; oz. 8c; except where noted.

	1-4 lb	1 lb
Siberian, the earliest sort.....	\$ .20	.60
Livingston's Evergreen, for pickling...	.20	.50
Everbearing, a continuous bearer.....	.15	.50
Parisian Pickling, ounce 15c.....	.40	1.25
Improved White Spine.....	.15	.50
Extra Early Green Prolific.....	.20	.50
Green Prolific, or Boston Pickling:		
5 pounds 1.60.....	.15	.50
Tailby's Hybrid.....	.20	.50
Early Cluster, 5 lbs 1.65.....	.15	.50
Early Frame, 5 lbs 1.40.....	.15	.50
Emerald.....	.20	.50
Serpent, or Snake, ounce 20.		
Goliath, enormously large, grows from 20 to 25 in, good frame and out-doors		
Pkt 10c, 1-2 ounce 20c, ounce 30c.		

## Leek.

Aside from being valuable for soups and salads, blanched Leek makes an excellent dish when sliced and cooked like green peas. They are wholesome and palatable and should be grown in every garden.

**Broad Scotch or Lodon Flag** Hardy, a large strong plant, with broad leaves. Lb 1.10, 1-4 lb 50c, ounce 10c, pkt 4c.

**Extra Early Dwarf** This is similar to the New York Improved Purple in form, color and quality. Hardy, can be grown where the seasons are too short for any other kind. Pkt 4c, 1-2 ounce 10c, ounce 18c.

### Grand Rapids Forcing.

#### Selected Stock.

This grand forcing variety stands more neglect in the way of watering and ventilation, will grow more weight on the same ground, and stand longer after maturity than the Black seeded Simpson. It is of handsome appearance, a strong grower and not apt to rot. Pkt. 3c.

### Early Curled Simpson.

White seeded. One of the best of the 'leaf' Lettuces. Pkt. 3c.

**Black Seeded Simpson.  
Selected Stock.**

It forms large, loose leaves of ideal color, the leaves are large, thin, very tender, and of very good quality. It is one of the best sorts for use under glass as well as for outdoor planting Pkt 3c

**Oak Leaved.**

A good new lettuce Oak shaped light colored

leaves, exceedingly tender. Pkt. 3c ounce 8c  
2 ounces 14c 1-4 lb 25c,

**Tomhannock.**

We have not found a variety of better flavor than this old standby. It is very slow to run to seed, very tender and brown color, Pkt, 3c ounce 8c 2 ounces 14c 1-4 lb 25c

**Cabbage or Heading Varieties.**

The following varieties, unless otherwise stated, 3c per packet, ounce 10c, 1-4 lb 25c 1 75c,

**Denver Market Forcing.**

Early, good for open ground or forcing, heads light green in color.

**Hubbard Market.**

Large, good for home use or market,

**Golden Head.**

Golden yellowish heads, very compact,

**New Buttercup.**

Beautiful yellow,

**White Cabbage**

Large, tender, sweet,

**When we recommend a variety you can safely plant it.**

**Any four packets of lettuce for 10 cts. your selection.**

**Water Melons.**

Our seed is saved from selected specimens and not from culls after the marketable melons are sold as is sometimes done.

PRICES, unless otherwise stated, pkt 3c, ounce 8c 2 ozs, 15c 1-4 lb 20c 1b 60c.

Our tests of varieties of melons at Hopewell Farm are extensive. We recommend only those which have proven of especial merit. We head the list with the two best varieties for home use.

**Stokes' Early**

Medium size, almost round, green blotched with white. Seeds very small and black, rind very thin, flesh bright red, melting, sugary, and delicious beyond description, good for a home market which appreciates a good melon of good quality,

**Peerless**

Medium to large in size, early, quality about same as Stokes Early which is equivalent to saying there is none better, very prolific, wonderful strong grower. From the time the plant appears above the ground until maturity its the strongest grower we have on Hopewell Farm, but not large enough for general market, Pkt. 6c, oz, 15c, 1-4 lb 60c lb. 1.50.

The following varieties 3c per pkt, oz, 7c 1-4 lb, 18c. 1b. 55c. They are all good.

**Pinney's Early, Dark Icing, Mountain Sweet, Kalb Gem, Hungarian Honey, Early Fordhook, Black Spanish Cole's Early,**

**Jones' Jumbo.**

Good quality, best shipping melon.

**Black Diamond.**

Better than Kalb Gem in every way. Very large, vigorous, prolific, fine quality, good shipper.

**Sweetheart.**

Vigorous, productive, flesh tender and sweet, early. This is a good melon for home market but for shipping the larger tougher rind varieties are better. Pkt. 5c, oz, 10c, 1-4 lb. 30c 1b. 85c.

**Hoosier King.**

Large, productive, strong grower, fine quality and splendid for shipping.

**We have no high rent to pay at the Hopewell Farm, therefore we sell as much for 3 or 4 cents as many seedsmen charge 5 or 10 cents for. Try our seeds and see for yourself.**

## Musk Melons.

Prices on all melon seed unless otherwise stated pkt. 3c; oz. 7c;  $\frac{1}{4}$  lb. 16c; lb. 45c.

### Extra Early Hackensack.

10 days earlier than Old Hackensack. Large, 4 to 9 lbs, very prolific, flesh yellow, very thin skin, fine flavor, sweet and juicy.

### Osage.

Large and of good quality, yellow flesh, does not do as well for us as some other varieties.

### Montreal Market Nutmeg.

Large, round, deeply ribbed, thick green flesh fine flavor, a most excellent melon.

### Perfected Delmonico

Heavily netted, globe shaped, flesh orange yellow, of fine flavor.

### Bay View

Large, prolific, green flesh. An old melon and a good one.

### Columbus.

Thick, green flesh, delicious flavor, prolific.

### Emerald Gem

Round, smooth, fine flavor, but too small.

### Banquet.

Small, but larger than Emerald Gem. For quality this is our choice: It bears small round yellow fleshed melons in great abundance.

### Chicago Market.

One of the best Nutmegs. Early, large size thick green flesh, free from rot.

### Netted Gem or Rocky Ford.

Globe shaped melons of rich sugary flavor

### Surprise.

Still the leader at Hopewell Farm for a general purpose home use and market melon. Large deep salmon colored flesh and of the finest flavor. One of the very best.

Following list at same prices as above:

**Banana, Yellow Meated Japan, Shumway's Giant, Extra Early Nutmeg.**

## Peppers.

All peppers are 3c per pkt. 18c per oz. 40c per 1-1 lb.

### Ruby King.

Red, very sweet and mild.

### Bell, or Bull Nose.

Early, thick meated, very mild.

### Red Cayenne.

Long, slim, pointed, hot, pungent.

### Sweet Mountain

Productive. beautiful red in color, very large sweet.

### Dolden Dawn.

Exceedingly productive, medium size, best quality, sweet.

### Celestial.

Pear shape, very attractive, best of the small hot peppers.

Five packets of peppers, your selection for 10 cents.

## Peas.

The varieties are named in their regular order of ripening. All varieties of peas, unless otherwise stated are 5c per large pkt. 1-2 pt. 12c, pt. 20c, quart 35c. Write for special price by the bushel.

### Early Varieties.

#### Maud S.

Earliest of all peas. Smooth blue pea, very productive, but not so sweet as the wrinkled varieties.

#### Alaska.

Very early, smooth blue pea of excellent quality. 18 to 20 inches high.

#### Tom Thumb.

A smooth blue pea, very early productive.

#### Prosperity or Gradus.

Wrinkled, almost as early as the smooth varieties and very much better quality. 30 inches high, immensely productive. One of the best for home or market.

Pk 1, 8c,  $\frac{1}{2}$  pt. 18c, pint 30c.

### American Wonder

Hardy, dwarf wrinkled pea, very sweet, productive for a dwarf variety. A standard early variety.

### Nott's Excelsior.

Enormously productive, pods long, quality delicious. One of the very best wrinkled sorts.

### Premium Gem.

Bears immense loads of large pods well filled with large peas of extra fine quality. Wrinkled.

### Medium and Late Varieties.

#### Admiral,

Medium early, wrinkled, most excellent quality and wonderfully prolific. This and Champion of England are by far the most prolific in our tests at Hopewell Farm.

**Shropshire Hero.**

Medium early, very large, quality unsurpassed prolific, vines two feet in length.

**Stratagem.**

One of the best, prolific, and fine flavor.

**Heroine.**

Vines about 30 inches high, peas very large, and good flavored. Pods sometimes contain eight to ten large peas. Good for market gardeners.

**Horselord's Market Garden.**

Just the thing for market. Good for home use. Grows two feet high and is very productive.

**Pride of the Market.**

Excellent quality, grows about two feet high A productive, strong growing variety.

**Champion of England.**

After all our tests we believe this is still the best Main crop, late variety, vines 4 to 4½ feet high, enormously productive, and of the very best quality, very sweet.

**Melting Sugar.**

Edlble pods, grows 5 to 6 feet high, bears abundantly.

**Late Tall Marrowfot.**

Very tall, productive.

**Six packets of peas, your selection, for 25 cents.**

## Parsnips.

Try our selected strains of this valuable vegetable.

**Magnum Bonum.**

A new variety of great merit, not as large as the Hollow Crown, but a great yielder. Pkt. 5c, oz. 10c. 1-4 lb. 20c, lb. 60c.

**Imperial Guernsey.**

Thicker and shorter than Hollow Crown. Excellent quality. Pkt. 2c, oz. 7c. 1-4 lb. 15c.

**Hollow Crown or Long Smooth.**

Large, tender, most excellent quality, sugary,

delicious. Pkt. 2c, oz. 6c. 1-4 lb. 10c, lb. 35c.

**Special Parsnip Offer.**

One packet of each of the three varieties for 6 cents.

Do you want seeds that are sure to grow if properly planted? That is the only kind we sell.

## Pumpkin.

Price except where otherwise stated. pkt. 3c., oz. 10c., 1-4 lb. 20c., lb. 55c.

**Quaker Pie or Friend.**

A grand new variety, of oval shape, cream colored, very prolific, good keeper, fine grained and very sweet. Pkt. 5c., oz. 15c., 1-4 lb. 25c. LARGE FIELD, pkt. 2c. oz. 5c., 1-4 lb. 10c. lb. 28c.

**Sugar.**

Small but very sweet, extra fine for making pumpkin pies.

**Calhoon.**

Medium size, cream colored outside, flesh yellow. Fine grained and thick.

**Winter Queen.**

Grows about eight to ten inches in diameter, a good keeper and of excellent quality.

	Pkt.	Oz.	1-4 lb.	lb.
Japanese Pie.....	3c.	8c.	20c.	55c.
Golden Oblong, very fine.....	3c.	8c.	20c.	55c.
Sweet Potato.....	3c.	8c.	20c.	60c.
Large Tours, or Mam French.....	8c.	10c.	60c.	...

**Special Offer.**

Any 3 packets of Pumpkins, your selection 10 cents.

## Radishes.

Price of all radishes pkt. 3c, oz. 7c, 1-4 lb. 20c, lb. 60c.

**Early Scarlet Globe.**

White tip, very early. Our tests prove this to be one of the very best early varieties.

**Earliest Carmine Turnip.**

Earliest of all. Mature in about 21 days. Good for forcing or open air culture. Fine flavor, crisp, tender, color deep carmine red.

**French Breakfast.**

Oval shaped, tender, a crisp, scarlet, white tipped variety.

**Early Long Scarlet.**

Long, smooth, crisp, tender, quick grower, fine for market or home garden.

**Chartier.**

Best long radish in all our tests. Very tender and sweet, color is crimson at top, gradually

changing into white at bottom. Very handsome.

**White Strasburg.**

Large, very sweet and fine quality, remains in eating condition longer than any other variety at Hopewell Farm. Try this fine variety.

The following varieties at same price as above They are all good, not a poor one in the lot:

**Non Plus Ultra, Olive Shaped, Deep Scarlet, Scarlet Turnip, Early White, Early Long Scarlet, Short Top, Improved Breakfast, 20 Day, Erfurt, Golden Yellow, Summer Turnip, Scarlet Gem, Colorado Glass,**

## Furnas' Selected Onion Seed.

Cheap onion seed are sure to be of poor quality this year. We know our seed to be of the very highest grade. Prices, unless otherwise stated, pkt. 8c, oz. 10c, 1-4 lb. 30c, lb. \$1.00.

### Prizetaker.

Excellent keeper, very large size, bright straw color, handsome shape. Onions of this variety have been raised to weigh five pounds and over from seed the first year by planting in a hot bed and then transplanting to good soil. Same type as the immense imported onions seen in fruit stores and sold at high prices. Pkt. 5c, ½ oz. 12c, oz. 18c, 1-4 lb. 45c, lb. \$1.35.

### Yellow Globe Danvers.

Considered one of the most reliable to grow for market. Handsome, round in form, straw color, fine, white, mild flesh, most excellent quality.

### Large Red Weatherfield.

Another standard variety. Red, sure cropper, heavy yielder, fine quality.

### Mammoth Silver King.

Largest of all, color silver white, flesh snowy white, sweet flavor.

The following varieties at same price as given above. Each of these varieties is a good reliable one, but space forbids description.

**Early Red Globe, Extra Early Red, Southport, White Globe, Yellow Strassbury, or Dutch, White Portugal, or Silver Skin, Giant Rocca, Bermuda Onions.**

Buy some onion seed, sow them very thick and raise your own sets for next year. Use Red Globe, Early Red, Danvers, Southport, etc. for this purpose.

## Tomato.

Prices, unless otherwise stated, Pkt. 8c, ½ oz. 12c, oz. 20c, ¼ lb. 55c, lb. \$2.00.

### Earliest of All

Very early and valuable on that account. Some wrinkled, but is earlier than any smooth variety. Medium size and good quality.

### Atlantic Prize.

After all our tests of different tomatoes this is our favorite early variety. Only a few days later than the rough first early varieties. Medium in size, smooth, round tomatoes of excellent quality; color scarlet. During the drought of 1901 it was the most productive variety we had.

### Dwarf Champion or Tree Tomato.

Grows in strong upright bush form, medium to large, productive, of good quality, color purplish pink. Pkt. 4c, oz. 20c, ¼ lb. 65c, lb. \$2.40.

### Freedom.

A new early tomato of great promise. Large for an early tomato, firm and solid, but few seeds, excellent quality, borne in clusters, bearing continuously until killed by frost. Pkt. 5c, oz. 25c, 1-4 lb. 75c.

### Mikado or Turner Hybrid.

A most excellent main crop variety, very large size and very productive; bears enormous crops of tomatoes of the best quality; solid

flesh and few seeds. Strong grower, leaves resemble those of potatoes.

### New Stone.

Large, very prolific, good quality, great main crop variety largely used by gardeners and market men.

### Magnus.

Extra large and fine, almost globe shape, very handsome. One of the best. Pkt. 10c, oz. 30c, 1-4 lb. 85c.

### Spark's Earliana.

Good and early.

### Favorite.

Large, early, smooth.

### Golden Queen.

Best yellow.

### Red Peach.

Tomatoes resemble red peaches in outside appearance.

**Trophy, Old Favorite, Red Cherry, Yellow Plum, Red Currant and Yellow Peach**

### Ground Cherry or Bush Tomato.

Used for preserves.

## Turnips.

PRICES—Pkt. 8c, ½ oz. 5c, oz. 10c, 1-4 lb. 20c, lb. 55c, postpaid. Write for prices on large lots.

### Early Red Top Milan.

Very early.

### Purple Top Munich.—White.

Purple Top Strap Leaved.—Standard main crop variety.

White Globe—White, excellent.

### Cow Horn.

Long, grows half out of the ground.

### White Egg.

White Milan—Earliest.

Early Flat Dutch.



# Ruta Baga, or Swede.

Price same as Turnip.

## Monarch.

Large, heavy cropper.

## American Improved.

Splendid main crop variety. Heavy yielder.

## Miscellaneous Farm Seeds.

### Australian Salt Brush.

Price, pkt. 10c., oz., 20c., 1-4 lb. 40c., 1b. \$1.95 prepaid.

### Beans—Velvet Bean.

(*Dolchos Multifloris*)—Pkt. 10c., lb. 25c., postpaid. By freight or express, pk. 90c., bu. \$3.00.

### Soja Bean, or Coffee Bean.

Price, large pkt. 10c., 1-2 lb. 20c., lb. 35c., postpaid. By express or freight, per pk. 95c., per bu. \$8.50, bags included.

### Barley, Success.

Price, lb. 20c., 3 lbs. 55c., postpaid; pk. 35c., bu. \$1.25., 10 bu. \$11.00, bags free, by freight or express, large Sample packet mailed free for 6 cts in stamps.

### Buckwheat, Japanese.

The most productive and earliest variety (1-2 bu. acre). Price, lb. 20c., 3 lbs. 50c., postpaid. By express or freight, pk. 40c., bu. 1.25, bags 15c. each.

**Silver Hull.**—Same price as above.

### Broom Corn.

Price, lb. 25c., postpaid; by express, 10 lbs. 50c., 50 lbs. 2.25., 100 lbs. 4.00.

### Cow Peas.

Black.—Pkt. 10c., pt. 20c., qt. 35c., postpaid. Pk. 1.00; bu. 3.25.

Whippoorwill.—Same price.

### Kaffir Corn.

White or Red—Each, pkt. 5c., lb. 20c., 3 lbs 50c., postpaid; 10 lbs. 50c., 100 lbs. 3.75, not postpaid.

### Oats.

Lincoln—Very productive, stands up well, thin hull, and very heavy meat, early and apparently rust proof. The best oats we have tried. Bu. 1.15., 2 bu. or more 1.00 per bu., bags 15c. each extra.

### Dwarf Essex Rope.

A great sheep feed, grows very quickly, may

be sown broadcast, 5 lbs. to acre or in drills and and cultivated as corn. When sown in drills 2 lbs. are required per acre. Does well sown with oats, after the oats are harvested the rape will make an immense amount of feed. Price, pkt. 10c., 1-4 lb. 15c., lb. 23c., postpaid. By freight or express, 10 lbs. 75c., 50 lbs. 3.25; 100 lbs. 6.00. Be sure and get the genuine. Bags, 15c. each for 50 lb. lots and over.

### Milo Maize.

A variety of sorghum, non-saccharine, growing stalks 8 to 10 feet high. It makes its crops in very dry seasons. Plant in 3-foot rows, leaving one or two plants every 12 inches in the row cultivate same as corn; 3 to 5 lbs. per acre.

**White or Yellow.** Lb. 20c., 10 lbs. 75c., 50 lbs. 3.00., 100 lbs. 5.50.

### The Mammoth Virginia Peanut

Is the most profitable variety to grow, largest pods and kernels of any variety; also yields fewer imperfect pods. Pkt. 10c. 1-2 lb. 20c. lb. 30c. postpaid.

### Spanish Peanut.

The earliest variety grown; pods are small but remarkably solid and well filled. Pkt. 10c 1-4 lb. 12c. lb. 30c.

### Sugar Cane.

**Early Amber.**—Its early maturity adapts it almost to every section. It has given entire satisfaction wherever introduced as a profitable crop for fodder as well as for sugar-making. Pkt. (1-4 lb.) 10c. lb. 20c. postpaid; 10 lbs. 60c. 50 lbs. 2.50; 100 lbs. 4.50.

### Sunflower.

**Mammoth Russian**—Single heads measures 12 to 20 inches in diameter and contain an immense quantity of seed; an excellent food for poultry. Two lbs. of seed will plant an acre. Oz. pkt. 5c. 1-2 lb. 12c. lb. 20c. postpaid. By express 5 lbs. 85c. 10 lbs. 60c. 25 lbs. 1.25; 100 lbs. 4.50.

## Field Corn.

**The Leaming.**—Large yellow corn, prolific, a standard variety in the middle west. Average about 20 rows. Price, 8-bu. lots, 3.90; bu. 1.40. pk. 45c. If postpaid, pkt. 10c. pt. 20c. qt. 30c.

### Dunchan's White Prolific.

Best corn in cultivation for strong soils, large

ears, deep grains, will out yield all other varieties on strong soil. On light soil some smaller variety will do better. Price same as Leaming.

### Iowa Gold Mine.

Ears medium size, very deep grained, golden yellow in color. Very small cob.

## Furnas' Selected Flower Seeds.

The following list contains the best varieties and mixtures to be had. No matter how high priced they are there are no better seeds than we offer you. We call especial attention to our mixtures. In each case the different varieties have been most carefully mixed.

We have not room for lengthy descriptions, but our customers get more good seeds for the same amount of money than they can elsewhere.

Note our discounts on inside cover page. There is a vast difference between good and cheap flower seeds. The special carefully selected strains we are selling cost a little more but are sure to give satisfaction

### Abutilous.

#### Abrus Precatorius.

Weather plant. Soak seed before planting. Pkt. 5c.

#### Alleghany Vine.

A hardy climber. Dainty green foliage, flowers red, pink and white. Pkt. 5c.

Extra select mixture of above and other varieties, pkt. 4c.

### Ageratum.

This is a free blooming, rapid growing plant. No flower is a more persistent bloomer in hot weather than this. We offer a very fine mixture composed of all colors and standard varieties and some new rare ones. Pkt. 5c.

#### SWEET ALYSSUM.

Price of each variety, 3c per pkt.

#### Benthami.

Dwarf, fine for cut flowers.

#### Golden Saxatile.

Golden yellow, showy in moss.

Little Gem.—Small, snowy white.

### Amaranthus.

A beautiful plant on account of its many colored foliage. Fine mixture containing all the best standard varieties. Pkt. 5c.



SWEET ALYSSUM

### Asters.

#### Giant Comet.

Best and most handsome aster. Flowers are very large, double, as many as 20 to 25 magnificent blooms resembling Japanese chrysanthemums, all borne on a single plant at one time. Splendid for cut flowers. Plants grow about 18 inches high. Best seed of following varieties at 8c. per pkt., any 3 pkts. for 20c.

Snow White, large, The Bride, first white then pink, Yellow, Pink, very fine, Lavender, Dark Blue, Crimson, Giant Comet, Mixed.

#### Poony Flowered Asters.

This class of asters grow about two feet high, the flowers being borne on long stems. Blooms large, double and shaped like a Polony

We have an extra fine mixture of the following colors.



Pure white, white and blue, black, brilliant rose, blood red, pink, dark blue, light blue, scarlet and sky blue.

Mixture of above colors 10c per packet, 3 for 24 cents. Any one color same price.

**Improved Victoria.**

Flowers very double, large and beautifully imbricated, and about 20 inches in height. Pkt. containing following colors at 8c each, any 3 for 20c. Separate colors at same price.

White, light blue, apple blossom, crimson, pink, dark blue, indigo blue, white ground, and white turning to azure blue.

**Hopewell Best Mixture of Tall Asters.**

Finest aster mixture to be had anywhere. It is a mixture of the largest flowering, most beautiful, striking and distinct colors of the best varieties and colors to be found among the

**Victoria, Giant Comet, Paeony Flowered** crown classes of asters. This mixture is sure to please with its wonderful range of colors and varieties. Pkt. 10c, 3 for 25c.

**Aster Mixture.**

Good mixture, but not equal to above for 5c per pkt. 5 pkts. for 20c.

**Dwarf Varieties.**

Our premium mixture of all the best varieties and colors known today. This mixture cannot be excelled and probably not equaled anywhere. This will astonish and please by its wonderful variations of large, beautiful and various colored flowers.

**Simple's New Branching.**

Immense chrysanthemum-like flowers, often 5 inches in diameter. Grows about 2 feet high. Beautiful beyond description; Pkt. 4c; pure white, pkt. 7c.

**AQUILEGIA OR COLUMBINE.**

This large-flowering pure white variety is perfectly hardy and a beautiful plant for pots, and, if planted in groups, presents a perfect mat of white flowers. Pkt. 10c.

AQUILEGIA, Double mixed, pkt. 8c.

SINGLE VARIETIES, Mixed, pkt. 4c.

CHRYSANTHIA, Golden Columbine pkt. 8c.

VULGARIS, double white, pkt. 4c.

COERULEA, sky-blue, pkt. 4c.

VERVAENEANA ATROVIOLOACEA PL., double darkest purple, pkt. 4c.

**ASPARAGUS PLUMOSIS.**



**Asparagus Fern.**

Leaves are bright green, better than ferns for house culture. Pkt. (5 seeds) 6c; 25 seeds 80c.

**Ampelopsis Veitch or Boston Ivy.**

A variety of Woodbine, with olive green foliage, which turns to bright scarlet, crimson and orange in the Fall. Climbs smooth walls. Pkt. 4c; ½ oz. 12c.

You will not be disappointed if you plant Furnas' flower seed.

**Asparagus Sprengeri.**

Also called Emerald Feather and Abyssinian Parlor fern. Highly praised everywhere. It grows to be 4 to 6 feet long, of fresh, green leathery foliage; grows freely the whole year round. pkt. (15 seeds) 8c.

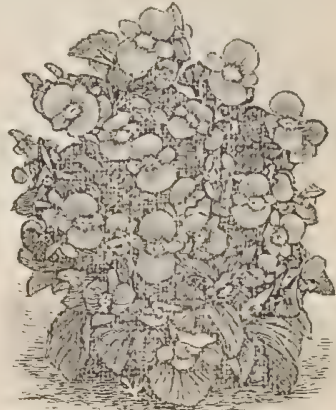
**Antirrhinum or Snapdragon.**

This old garden favorite, with its odd-shaped flowers and deliciously fragrant blooms is one of the showy border plants of easiest culture.

**Queen of the North**—New, most beautiful of all snapdragons. The plants grow into handsome bushes producing flowers which are white and large and have a sweet perfume. Suitable for bedding and pot culture. Pkt. 10c.

**Tall Sorts.** Mixed 4c; ½ oz. 12c.

**Dwarf Sorts.** Mixed, 4c, ½ oz. 12c.



**Vernon Begonias.**

As a Begonia for out door bedding this has no equal. It is a marvellous bloomer. The plants are covered with flowers. It is one of the handsomest, most free blooming plants and is equally valuable as a pot plant. They grow from seed and bloom quite small. Pkt 10c, 3 for 25c.

## Balsams.

The seed we sell will produce the finest, largest double flowers and in endless variety of colors and varieties. Our mixture is composed of Snow White, Pink, Scarlet, Light Lemon, Scarlet, spotted, White, Satin White. Mixture of all of above, pkt. 4c, 3 pkts. for 10c.

### Bawallia, New Giant.

Grand for beds and borders. grows in bush form about one foot high and covered with beautiful sky blue flowers. Pkt. 8c, 3 for 25c.

Mixed Bowollia, pkt. 4c.

### Bird of Paradise.

Mixed, Packet 4c.

### Candytuft.—Giant Empress.

Finest flower, plant branches freely and when covered with its white flowers is most beautiful. Pkt. 4c, 1-2 oz. 15c.

Mixture of the following: New Dwarf Hybrids Snowflake, Rocket, Tom Thum, Purple Lilac, Dwarf and sweet scented. Pkt. 4c, 1-2 oz. 10c, oz. 15c.

### Centrosema Grandiflora.

Hard Perennial of wonderful beauty. Pkt. 5c.

### Coxcomb.

**Dwarf Varieties** —Mixed Crimson, Pink, Golden striped combs.

**Tall Varieties.**—Mixed, Either kind 3c 4 pkts. for 10c.

### Cannas—Giant Flowered.

If sown early will bloom first year. Some will be of but little value but most of them will equal the named varieties. Cannas Selected Seed, pkt. 4c, 3 pkts. 10c, oz. 25c.

### CANTERBURY BELL.

Special mixture of single and double varieties all colors. Pkt. 8c.

### Campunula or Cup and Saucer.

A new Canterbury Bell of good value, flowers 3 and 4 inches in diameter, profuse bloomer. Pkt. 3 cents.

### Carnations—Giant Margaret.

Will bloom in about four months from sowing of the seed. All colors, many of the blooms will equal the Florists greenhouse grown Carnations. Grand mixture, all colors pkt. 8 cents.

### Calliopsis.

#### MIXTURE.

This mixture contains all of the best varieties and colors of these beautiful hardy flowers. A great many kinds have been selected for this special mixture and we know it is sure to give an abundance of flowers in great variety. Pkt. 6c, 4 pkts. for 25c.

### Zanzibar Castor Beans.

Leaves of extraordinary size and many colored. Very ornamental. Pkt. 3c, oz. 10c.

### Centaurea.

An especially fine collection of these old favorites, composed of the following, all mixed together in one pkt. BLUE, EMPEROR, KARN BLENSE, DOUBLE CORN FLOWER, VICTORIA, MARGARET, etc. Pkt. 5c, 3 pkts. for 10c.

### Cleme Pungens.

Giant spider plant, grows 3 or 4 feet high, loose panicles of bloom of all shades of pink and crimson. Pkt. 4c, ½ oz. 15c, oz. 25c.

### Centaurea—Dusty Miller.

Raised for bedding; leaves silvery gray and white. Pkt. 4c.

### Annual Chrysanthemums.

Will furnish fine cut flowers throughout the season. No plant better for this purpose. Mixture of all colors, pkt. 4c.

### Japanese Chrysanthemums.

Seed saved from 50 varieties. Sow seed early as many will bloom the first year and give many new and beautiful varieties. Pkt. 10c, 3 pkts. for 25c.

Remember when you buy of us you buy direct from a seed farm.

### Cobea.

Very handsome, annual climber, purplish Lilac blooms. Pkt. 3c. White Cobea, Pkt. 8c.

### Coleus.

Fine mixed. Packets 4 cents.

### Cyclomen.

Giant Flowered. These beautiful flowers may be raised from seed much cheaper than from bulbs. White, White with Pink eye or dark Crimson, either color, pkt. of 10 seeds 15c. Fine mixed 10 seeds 1c cents, 20 seeds 20 cents.

### Datura or Trumpet Flower.

For a showy plant in some vacant place it is allright. Do not put in with other plants. Pkt. of all colors 3 cents.

### Cosmos.

**Early Flowering.**—This selected strain will begin blooming as early as July. Packet 8c 3 pkts. for 15c. Good Mixed Cosmos, pkt. 3c.

### Coreopsis Lanceolata.

Perennials, good for cut flowers. Pkt. 3 cents; 1-4 ounce 12 cents.

### Cypress Vine.

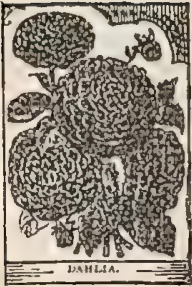
Best vine for running on trellises or fence. will grow 10 feet high. Mixed colors. Pkt. 3c; 1-2 ounce 15 cents.

### Double Daisies.

Will bloom first season and with slight protection in winter will continue to live and bloom for several years. Double Mammoth mixture, Packet 5 cents.

We could furnish a different grade of flower seed at much lower prices but prefer to sell only the best.

Examine our special flower and vegetable seed offers.



### Dahlias.

These will grow and bloom first year from seed. Plant in shallow box in March or April, then transplant into open ground. Our mixture will give the finest of blooms. Double mixed pkt. 5 cents, Single mixed pkt. 5 cents.

### Delphurrium or Larkspur.

Mixed. This mixture is very valuable on account of its great variety in shades of color, ranging from yellow to pure white. Every shade of blue, single, semi-double, and perfectly double. Pkt. 4c, 3 for 10c.

### Escholtzea or California Poppies. Golden West.

This is a grand new variety. Flowers 3 to six inches in diameter, various forms, flat, cup-shaped, some deep with flaring edges and various other beautiful forms. Color, canary yellow with orange blotch at base of petals. Pkt. 5c.

### Four O'clock, or Marvel of Peru. Pkt. 3c, oz. 12c.

### Gaillardia or Blanket Flower. Pkt. 3 cents.

### Everlasting Flowers. Per pkt. 3 cents.

### Ornamental Grasses, Pkt 5 cts. Digitalis—Foxglove.

Hardy, perennial, colors varied and beautiful. Pkt. 3c.

### Annual Larkspur.

DWARF ROCKET, Pkt. 3c.  
TALL DOUBLE ROCKET. Pkt. 3c.

### Dianthus.

Hardy Garden Pinks. These are superior to all other annuals for beautiful cut flowers, easy of culture and certain to have profusion of bloom. Our special mixture contains a great variety of the best and most varied colors. Pkt. 5c.

### Forget-me-not.—Myasotis.

Best grand mixture, pkt. 3c.

### Gaillardia Grandiflora

A beautiful hardy compact grower. Pkt. 10c.

### Ornamental Gourds.

Twelve most useful and beautiful varieties. mixed. Pkt. 6c.

### Marigolds.

**Special Mixture**—Of Tall African Marigold. Includes all the best colors, made up from separate varieties. Pkt. 3c.

**Special Mixture** of French Marigolds, pkt. 4 cents.

### Godetia.

Most beautiful of hardy annuals. The following Varieties, Pkt. 3c. Mixture of all. Pkt. 3c.  
**Dutchess of Albany, Bizar.**  
**Dwarf Tody Albemarle.**  
**Tody Satin Rose, Nameless Beauty.**  
**Queen of Farries.**



### Geranium

These are easily raised from seed and will produce many new varieties.— Pkt. 6c.

### Hollyhocks.

Grand Mixture of best double varieties all colors. Packet 5 cents.

### Morning Glories



### Japanese Imperial Morning Glory.

Pkt. 5c, 3 for 20c.

**FINEST COLLECTION** of Dwarf Morning Glories, comprising all the best kinds. Pkt. 5c.

### Double Japanese Morning Glories. Pkt. 10c.

### Morning Glory Collection.

All colors, pkt. 3c.

### Pink Hybrid Moonflower.

Pkt. (15 seeds) 8 cts.

### Double Monkey Flower.

Pkt. 10c.

**Single Monkey Flower.** Pkt. 4c.

**Maurandya:**

Hardy climbing vine, superior to Ivy. Mixed colors. Pkt. 10 cents.

Japanese Hop Vine. Pkt. 8c.

Climbing Dalichos or Hyacinth Bean. Pkt. 20 seeds 8c.

Lemon Verbena. Pkt. 3c.

Lobelia. Pkt. 4c.

Mignonette.

Mixture of many varieties and colors, pkt. 4 cents.

Giant Mignonette. Extra Large pkt 10 cents.

Lobelia, Bedding Queen. Pkt. 10c.

## Nasturtiums,

Tall Varieties.



Collection of the named varieties mixed in one packet, all the finest colors, Pkt. 4c, oz. 10c, 1-4 lb. 20c.

### Madam Gunther's Hybrids.

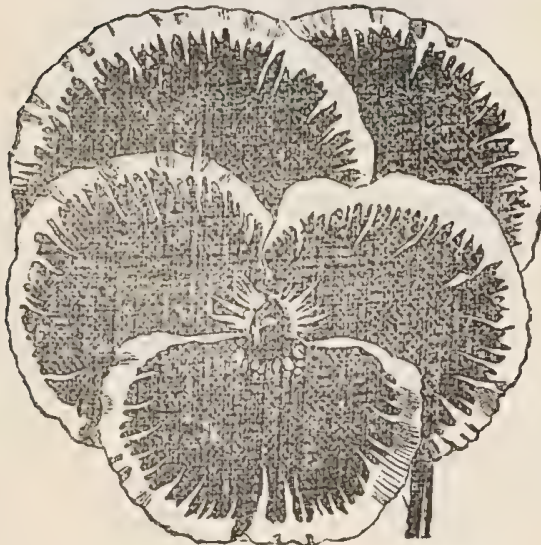
All colors, many not found in any other mix-

tures. Pkt. 5c, oz. 10c, 1-4 lb. 30c.

### DWARF VARIETIES.

Ten varieties, mixed, the very finest colors to be found. Pkt. 5c, oz. 10c, 1-4 lb. 30c.

## Pansies,



### Masterpiece.

Wonderously Crimped and curled until they appear double, Grand. Packet 20 cents.

Giant Sweet Scented, Flowers of enormous size, and very sweet scented. Packet 20 cents.

**Mammoth Butterfly.** Flowers Extra Large and very freely produced, great variety of colors and markings, seldom two alike. Packet 10 cents, 3 for 25 cents.

**Trimordean Mixture.** Flowers large with dark blotch on the lower petals. Packet 5 cents; 1-4 ounce 10 cents (1250 seeds.)

**Furnas' Giant Pansy Mixture.** Remarkably large and beautiful blooms. Sure to give great profusion of bloom and all colors. Packet 6 cents, 3 for 15 cents.

**Improved German Mixture.** A splendid bedding mixture. Packet 4 cents.

**Wallflower Colors.** Gorgeous Colors. Packet 4 cents.

**Peacock Mixture.** Bright Colors, showy. Packet 4 cents.

**Hopewell Mixture.** We have taken especial care to select the best varieties with largest blooms and greatest variety of colors for this great mixture. Packet 4 cents, 3 for 10 cents.

## Petunia.

### Finest Mixed.

Includes many of the new large flowering kinds. Pkt. 4c.

### Double Lilliput.

Spotted and blotched. Pkt. 25c.

**Large Flowering Double Fringed.**  
Pkt. 12c.

## Phlox.

### HARDY ANNUALS.

#### Phlox Drummondii.

Many colors, pkt. 3c. 1-1 oz. 15c.

#### Dwarf Phlox.

Best mixture pkt. 5c.

#### Furnas' Special Phlox Mixture.

A carefully prepared mixture of the best varieties and strains. Pkt. 4c. 3 for 10c.

#### Large Flowering Phlox

Larger than Drummondii. Mixed. pkt. 6c. 1-1 oz. 25c.

#### Double Flowering Phlox

Flowers are double and semi-double and last longer than those of the single Phlox. Pkt. 6c.

**Furnas' flower seeds grow and produce the best flowers.**

## Portulacca.

Grand flower for hot dry situation. Should be in full sunlight.

Collection of all the best and most beautiful colors. Pkt. 3 cents.

## Poppies.

### Poppies.

These old-fashioned flowers are at present regaining their old-time popularity, which they well deserve. Their brilliant, dazzling colorings and wonderful variety make a very effective display in the garden or for cut-flowers.

#### HOPEWELL Special Poppy Mixture.

Comprises all the best Double and Single Pop-

pies, some entirely new ones. Will make a grand display. Price, ounce 30 cents, 1-2 ounce 20 cents, pkt. (500 seeds) 6 cents, 3 for 15 cents.

**Iceland Poppies.** Packet 8 cents.

**Tulip Poppies.** Packet 6 cents.

**Sherley Poppy.** Packet 6 cents.

**Double Poppies, good mixture.** Pkt. 4 cents

1-2 ounce 10 cents, ounce 15 cents.

## Chinese Primrose Mixture.

This mixture includes all the finest colors of single and some of the new double ones. Packet 12 cents.

**Chinese Primrose, Good Mixture.** Packet 4 cents.

**Primrose Forbisi. Baby Primrose.** Packet 8 cents

Our Flower Seed packets contain a larger number of Seeds than those from most seedsmen. In many cases double the amount.

Note our low prices on vegetable plants. See plant department.

Furnas' vegetable seeds produce big crops.

## Sweet Peas.

Any of the following varieties pkt. 3c, oz. 7c, 1-4 lb. 15c. ADMIRATION, Rosy to Lavender, AMERICA, red striped on white ground, AUFORA, orange salmon on white, BLANCHE BURPEE, white, BLACK KNIGHT, darkest in color of all, BLANCH FERRY, pink and white, early, DOROTHY TENNANT, EMILY ECKFORD, LADY G HAMILTON, LADY MARY CURRIE, MAID OF HONOR, LADY BURPEE.

### Hopewell Mixed Sweet Peas.

This grand mixture is made by selecting about seventy-five of the best varieties, of all colors and shades and thoroughly mixing them so that each packet is sure to contain some of each. This mixture is sure to give satisfaction. No better can be had at any price. Pkt. 3c, oz. 7c, 1-4 lb. 18c.

### Mixture.

Many colors but not equal to above, pkt. 2c, oz. 6c, 1-4 lb. 10c.



One packet of each of the following nine varieties for 25 cents.

### New Dwarf, or Cupid Sweet Peas.

**WHITE CUPID.** Grows 10 inches high, making a compact plant. The flowers are of pure white, of good substance, two and three to a stem; sweet. Pkt., 100 seeds, 5c, oz. 10c, 2 ozs. 15c, 1-4 lb. 20c, 1b. 60c.

**BEAUTY CUPID.** The flowers are large, delicate rose color, whitening toward the edges, slightly streaked carmine at the base; Pkt. (100 seeds) 5c, oz. 10c, 2 ounces 15c, 1-4 lb. 25c.

**ALICE ECKFORD CUPID.** Creamy white, suffused with flesh pink, the wings are silver white with a faint pink flush in the center. Pkt., 100 seeds, 5c, oz. 10c, 3 ozs. 15c, 1-4 lb. 25c.

**PRIMROSE CUPID.** White Cupid except that the flowers are of a rich creamy tint. Pkt., 100 seeds, 5c, oz. 10c, 2 ozs. 15c, 1-4 lb. 25c.

**BOREATTON CUPID.** Wings deep mauve, underlaid and suffused with rosy purple. Pkt., 75 seeds, 5c, oz. 15c.

**Mont Blanc** made its appearance a few years ago as a single plant in a field of Earliest Blanch Ferry, and was in bloom about a week before that variety had expanded its first flower. Mont Blanc has not the rank and often sprawling habit of the other varieties, but is of a much neater, more graceful, almost pyramidal growth, the plant is not as high as the average sweet pea. The leaves are unusually narrow, and of a pleasing light gray-green color. The individual flower is very large and of the purest white. The masses of snow white flowers are borne well clear of the foliage, so that scarcely a single flower is hidden. Price per pkt. 30 seeds 10c., 5 pkts. 40c, 10 pkts. 50c.

**COUNTRESS OF RADNOR CUPID.** Flowers of immense size and are borne three and four on a stem; color clear lavender. Pkt., 75 seeds 5c, oz. 15c.

**STELLA MORSE CUPID.** Creamy white, tinted with apricot. Pkt. 5c, oz. 10c, 1-4 lb. 25c.

We have some fine new varieties of Sweet Peas we do not catalogue but will send some with each sweet pea order for testing.





**Mixed Double Sweet Peas.**

These do not always come true for they are the result of crossing and are not yet entirely fixed in type. Pkt. 5c, oz. 10c.

**Bush Sweet Peas.**

Pkt. 4c, oz. 8c.

**Sunflower Mixture.**

Many varieties, mixed. Pkt 5c, oz. 12c.

**Boston Smilax.**

Soak seed 24 hours in hot water. Pkt. 5c.

**Stocks.**

Furnas' special mixture. Includes all the best varieties. Pkt. 8c.

**Sweet Williams.**

Mixture of all colors, pkt. 8c.

## Verbenas.

Very easy to grow and one of the very best annuals. For best results the seed should be planted in house or hot bed and transplanted to open ground after all danger of frost is over.

**Best Mixture.** Contains all the finest varieties. Pkt. 4c.

## Wall Flower.

SINGLE MIXED, packet 3c.

DOUBLE MIXED, packet 3 cents.

Remember our packets of flower seeds contain an unusually large amount of seeds.



## Zinnias.

OUR MIXTURE contains the best new hybrids, and crested and curled and Giant Curled. Will produce the finest flowers. Pkt. 5c.

**Wild Cucumber.** Pkt. 3c, 1-2 oz. 10c.

## Summer Flowering Bulbs.

First class bulbs at very low prices. Postpaid at prices given below.

**Spotted Leaf Calla.**

Each 12c, dozen, 1.10.

**Tuberous Begonias.**

Mixed colors, single 7c each, 4 for 25c, doz. 70c.  
Double, 15c each, 4 for 50c, dozen 1.50.

**Amaryllis Johnsonii.**

Large bulbs, each 30c.

**Cinnamon Vine**

Good strong roots 5c each, 6 for 25c, doz. 40c.

**Century Vine.**

60c each.

**Formossisisimia or Scarlet Mexican Lily.**

Large bulbs 15c each.

**Gloxinias.**

Mixed colors, each 8c, doz. 85c.

## Gladiolus.



Our best mixture comprising all manner of shades of colors, with largest and most abundant flowers. First size bulbs each 5c, 50c per dozen; medium sized bulbs, will bloom first year, 4c each, 40c per dozen.

## Calladium

or  
Elephant's Ears.

Fine bulbs medium size 8c each, 3 for 20c.

Fine bulbs  $\frac{1}{2}$  to 2 inches in diameter 12c each, 3 for 35c.

Fine bulbs 2 $\frac{1}{2}$  to 3 ins. in diameter, 18c each, 3 for 45c.

Fine bulbs 3 to 4 ins. in diameter, 25c each, 3 for 70c.

### Crimmum Kirki,

Medium, 10c. Extra Large 1-2 lb. 90c.

### Summer Flowering Oxalis.

White, Pink or Red, Doz. 10c., 50c. per 100.

### Hardy Lillies, Prices include postage.

*Auratum*, Good Eanded. 20c. each, 3 for 50c

*Monstrosum Album*, 20c. each, 3 for 50c.

*Speciosum Rubrum*. 20c. each, 3 for 50c.

*Lorgiflorum*. 15c. each, Doz. 1.25.

*Tigrinum*, Single. 10c. each, Doz. 1.00.

*Tigrinum*, Double. 10c. each, Doz. 1.50.

*Lily of the Valley*, 5c. each, Doz. 50c.

*Japanese Iris*, Most beautiful of Summer Flowering Plants. 20c. each, 3 for 50c.

*German Iris*, 8c. each, 6 for 35c.

Our flower seeds will surprise you by their quickness of growth and profusion of bloom.

## Tuberoses.

### Single.

4c each, 3 for 10c, 35c per dozen.

### Albino.

5c each, 40c per dozen.

### Armstrong's Everblooming.

Each 10c, dozen 1.00.

### Mammoth Dwarf.

### Excelsior Pearl.

5c each, 3 for 12c, 35c per dozen.

### Tall Double.

5c each, 3 for 12c, 35c per dozen.

### Silver Leafed.

5c each, 50c per dozen.



**Fancy Leaved Calladium.** We have a fine collection of mixed bulbs of these beautiful plants. They are sure to please. Their beautiful markings place them at the head of ornamental plants. Strong Bulbs 15c. each.

Our Flower Seed packets contain a larger number of Seeds than those from most seedsmen. In many cases double the amount.

## Greenhouse Plants.

Except when stated, prices are for plants sent postage paid. Our plants are strong, healthy, and in every way first class. We have made prices as low as the high grade plants we sell can be sold. We respectfully ask you to give us a trial order and see the liberal manner in which we treat our customers.

### Discounts on Greenhouse Plants.

For each 50 cents in cash sent us you may select free of charge, plants to the value of 15 cents, that is, for 50 cents select plants to the value of 65 cents. For \$1.00 select plants to the value of \$1.30. For \$1.50 select plants to the value of \$1.95, and on up at same rate. Plants, six at dozen rates; fifty at 100 rates.

### Acalypha Triumphans.

Ornamental bedding plant; foliage is bronze, crimson and green. Rapid grower. 10c each, 3 for 25c.

### Acalypha Marginoto.



Dark green cores with a margin of pink. 8c each; 3 for 20 cents.

One of each of the three Acalypha for 20c.

### Chenille Plant. Acalypha Sanders.

Fine bedding plant on lawn. Strong plants 12c each.

### Aspidistro.

Variiegated leaved palm-like plant. Thrives in hot air or ordinary living room. 20 cents each.

### Asparagus Sprengeri.

Fine plants 10c each.

### Asparagus Plumosis Nanus.

Extra fine plants 10c each.

### Ageratum.

Stella Gurney. A free blooming plant used for borders or pot plants. 10c each.

### Abutilon. Savitsi.

A most beautiful variegated plant. A large part of each leaf being white it gives a most attractive appearance. 12c each.

### Boule de Nerge.

White flowers. A free blooming variety. 10c each, 3 for 25c.

### Golden Bells.

Bright yellow; flowers very large. 10c each, 2 for 25c.

### Giant Flowering Browollia.

Large violet blue flowers, very easy to grow. Constant bloomer winter and summer. 10c each.

## Begonias.

We have strong fine plants of the following varieties at 10c each, 3 for 25c, 6 for 40c, unless otherwise stated.

**Argentea Gutata.** Purplish bronze leaves, white flowers, good pot plant.

**Bertha de Chateanrocher.** Coral red flowers.

**Decorus.** Good variety.

**Erfordi.** Rosy salmon flowers; wonderfully free bloomer;

**Foliosa,** Should be in every collection,

**Purity.** Finest white variety, blooms very profusely, Fine for pot culture in house.

**Robusta.** Bears coral red flowers in greatest profusion. Fine.

**Rubra,** flowers bright scarlet. One of the best and most popular begonias. A most excellent house plant.

**M. de Lessups.** Fine bloomer.

**Metallica.** Color delicate pink. Metallic velvet-like colored foliage. One of the best,

**White Erfordi.** A beautiful white variety.

**Thustari.** Splendid bloomer of beautiful pink flowers.

**Washington.**

**Georia de Lorraine.** A marvelous winter bloomer. The plants are covered with beautiful pink blooms from October to April.

**Vernon.** Red, always in bloom. Grand bedder.



### Rex Begonias.

We have a fine collection of these beautiful foliage plants. Space forbids description of each. Give us an idea of what you want and we can supply it, as we have all shades and colors. Large, fine plants 15c each, 3 for 30c, 6 for 50c.

### BRIDAL WREATH.

This beautiful climbing plant is deserving more attention than it is receiving. Its rapid growth, beautiful foliage and graceful twining habit and ease of growth all fit it for a popular plant for general cultivation. It is a free and persistent bloomer. A splendid plant for training over windows in the house during the winter or for use in the open air during summer wherever a climbing plant is wanted.

Strong plants 10c each, 3 for 25c.

## Cannas.

Unless otherwise stated strong plants postpaid 15c each, 1.25 per dozen.

### David Harem.

Height 3 to 3½ feet. Vermillion scarlet. 20c each.

### Indian.

4 feet. Bronze foliage scarlet flowers. 20c each.

### Black Beauty.

3 to 5 feet. leaves almost black.

### A Bouvier.

5 feet crimson flowers, green foliage.

### Alsaca.

3½ feet, green foliage, flowers pale yellow.

### Florence Vaughan.

Flowers rich yellow, dotted with red. One of the best, 5 feet, a splendid bloomer.

### Semaphore.

5 to 6 feet, foliage dark bronze, one of the colored foliage varieties. Flowers orange color.

### Burbank.

5 feet, green foliage, canary yellow with crimson spots.

### Discolor.

10 feet, bronze foliage.

### Paniculata

Pure white and flowers borne in great clusters Hardy. 10c each, 3 for 25c.

### Jackemanni.

Four to six inches in diameter, violet purple, distinctly veined. 50c each.

### Dwarf Florence Vaughan. 20c each.

### Chicago.

5 feet, Deep Vermillion.

### Martha Washington.

3 feet constant bloomer, green foliage, bright rose.

### Beauty Poiterine

2½ feet, green foliage crimson flowers.

### Chas. Henderson.

4 feet, green foliage, crimson flowers.

### Madam Crozy.

Deep vermilion with gold border around each petal.

### Paul Marquart

4 feet, green foliage. Flowers deep salmon.

### Alemannia.

6 feet, green foliage, largest flowers which are freely produced.

### Italia. Red. 5 feet high.

### Queen Charlotte.

4 feet, green foliage, orange scarlet with gold band.

### Burlington. 5 feet, flowers orange.

## Clematis.

### Flammula.

A handsome rapid growing graceful plant. When in full bloom the small bright green foliage is almost hidden by the mass of flowers.

### Henryii.

Very large pure white flowers. Hardy.

## Carnations.



Good strong plants of the following varieties at 5c each or 50c per dozen. — FLORA HILL, white, AMERICA, red, WHITE CLOUD, WM. SCOTT, pink, ETHEL CROCKER, pink, G. H. CRANE,

The following varieties include many of the new high priced varieties:

NORWAY, 15 cents each.

CRESSBOOK, 15 cents each.

MARQUIS, 10 cents each.

GOLD NUGGET, 10 cents each.

GENERAL MACEO, 6 cents each.

PROSPERITY, 10 cents each.

ESTELLA, 10 cents each.

## Coleus.

We have a fine general assortment of these beautiful bedding plants. Our list of varieties includes the finest colors and markings to be had. Here is a partial list of varieties.

John Good, Admiral Sampson, John Rogers, Crisp Beauty, Gold King, Mrs. F. Sanders, Queen of the West, South Park, Dora Copp, Setting Sun, Butterfly, Hero, Progress, Fire Crest, Yeddo, Chicago bedder, Empress of India

Prices of strong plants 4c each, 40c per dozen. The set of 17 varieties, one of each for 50c.

### CHRYSANTHEMUMS.

Price 10c each, 3 for 25c.

**Gold Mine.** Large, golden yellow.  
**Pink Ivory.** Ball shaped flowers of light pink.  
**Mrs. Jerome Jones.** Late blooming, white  
**Miss G. Pitcher.** Midseason yellow.  
**Vivian Morrell.** Midseason, pink.  
**Madam F. Bergman.** Early, white.  
**Ivory.** White ball like flowers.  
**May Foster.** Pure white.  
**Mayflower.** White.  
**Mrs. J. G. Whelden.** Early, yellow.  
**Oakland.** Late, terra cotta.  
**Mrs. Persin.** Midseason pink.  
**Louis Bachmer.** Large, flowers of lavender color.

### CALLA LILY.



#### Little Gem.

A perfect calla but small. 10 cents each.

For the other callas see Bulbs.

## Fuchsias.

Price 8c each, 3 for 20 cents.

#### Black Prince.

A strong grower and a profuse bloomer. Single.

#### Elm City.

Immense flowers, double.

#### Phenomenal.

Blooms are immense in size, violet purple. One of the best.

#### Glaire de Marchi.

Corolla large, white and double.

**Beauty of Exter.**

New, flowers very large, often semi-double.

**Speciosa.**

Grand winter bloomer, single.

**Wave of Life.**

Foliage light yellow, corolla single, violet color.

**Rose of Castile.**

Bluish white tube and sepals. Single.

The following varieties at same price as above:

Constancy, **Enfant Prodigy**, **Anna Neville**, **Lustre**, **Minnesota**, **Rifford**, **Esperance**, **Rose of Castile**, **Trilby**, **Trailing Queen**, **Marenga**, **Carmalie**.**Fancy Leafed Caladium.**

Fine plants 15 cents each.

**Giant Flowering Caladium.**

A grand blooming plant with leaves somewhat resembling ordinary caladiums. Blooms resemble those of callas. Gives off a powerful and delightful fragrance at night. Will bloom freely winter and summer. Strong plants 25c; 3 for 90c.

**Ferns.****Boston Fern.**

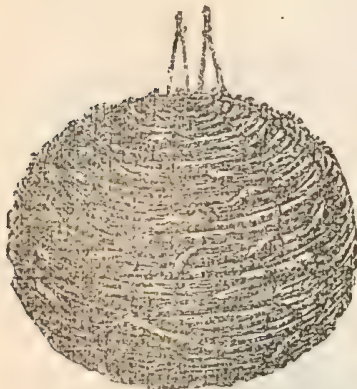
A healthy, rapid growing house plant. Strong plants 10 cents each, 3 for 25 cents.

**New Sword Fern Wittbaldin:**

Strong grower, erect, graceful, 15 cents each, 2 for 25 cents.

**Japanese Fern Ball.**

These beautiful fern balls are a novelty of real merit. But little care and attention are required. The dormant balls are soaked in water for two or three hours every second or third day until growth starts after which an occasional watering is all that is necessary. The beautiful appearance of a ball of living green fern leaves adds a decided charm to the home. We can mail the dormant ball only. Full directions for starting with each ball.

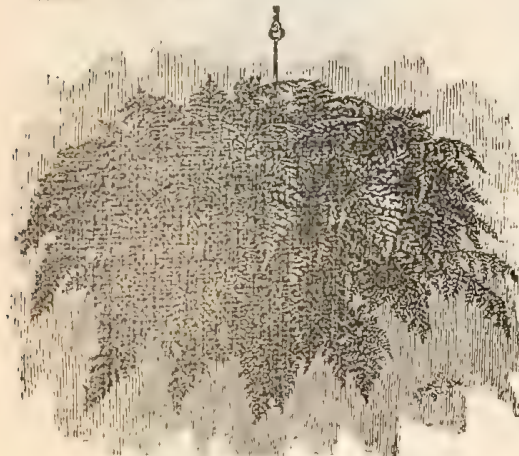


MIKADO FERN BALL-DORMANT.

The balls may be dried off and then started again in the same manner. Largest size, 8 to 9 inches in diameter, 60 cents postpaid; 5 inches in diameter, 40 cents postpaid.

**Fiscus Elastic India Rubber Tree.**

A good plant for warm, dry living rooms. Fine plants 18 to 20 inches in height, 75 cents each. (Can be sent by express only.)



MIKADO FERN BALL-IN LEAF.

**Heliotropes.**

These beautiful fragrant flowers deserve a place in every collection. Strong plants of the two best varieties, SNOW WREATH and NIGHTINGALE, 8c each 3 for 20c.

# Geraniums.

We have a good collection of these popular plants of the best varieties for bedding and winter blooming in the house. Price unless otherwise stated, 10c each, 3 for 25c, 67c per doz. for strong plants sent postpaid.

## Beauty Poiterine.

Large trusses of semi-double pink flowers. A free bloomer.

## Ben Schrader.

A marvellous combination of pink and white. A grand variety. 12c each.

## Double New Life.

The outer florets are bright red, the florets in the center are pure white. Very fine.

## Dr. Beaumentz.

A free flowering variety. Double scarlet.

## Esther.

Very dark red, perfectly double. Florets very compact, color maroon, with purple shadings in center. 15c each.

## Freddie.

Single, color dark rich red, constant bloomer. One of the best for bedding or winter blooming. 15c each.

## James Kelway.

Single, red, free bloomer.

## J. Ricard.

A fine double purplish crimson geranium.

## LaFayette.

One of the best white varieties.

## Madam Bruant.

Single, very pretty. Center is white veined with carmine. A free bloomer winter or summer.

## Margaret de Layers.

Large trusses of single white flowers.

## Mary Gause.

A healthy grower, constant and profuse bloomer. Color white, with pink and pink shading in center. 15c each.

## Madam Hoste.

Center white edged with scarlet. Single.

## Madam Rozain.

One of the best for bedding, double white, free bloomer.

## Pres. Leon Symons.

Double, a good bedder; red trusses.

# Hibiscus.

## Peachblow.

Beautiful double flowers 4 to 5 inches across, clear pink color, with small deep crimson center. Very free bloomer. 15c each, 3 for 40c.

## Double Crimson.

A beautiful, free blooming crimson variety. 15c each.

## Matrimony Vine.

Grand climbing vine, hardy, covered with scarlet fruit in fall. 10c each.

## Musa Ensete or Abyssinian Banana.

Grand lawn plants or for conservatory in winter. 40c each.

In comparing prices remember we send good strong plants well packed.

# Nicotrania Alfinis.

Grows two feet high and produces fragrant pure white flowers of large size. Plants 3c each, 20 cents per dozen. Seeds 4 cents per packet.

## Russella Elegantissima.

A new semi-trailing plant, splendid for hanging baskets, wonderful bloomers; being almost covered with their brilliant coral flower. 10c each 3 for 25c.

## Queen of the West.

A splendid bedder. Single, scarlet.

## S. A. Nutt.

One of the best, double, flowers dark crimson, large trusses and freely produced.

## Vera Vend.

Large flowered, double, center white marked with red or orange, outer edge rosy orange.



## Wm. Langguth.

A stout stocky plant, beautiful green leaves. Each leaf is marked with a broad snow white band. By far the best of the variegated leaved geraniums. Tree bloomer, flowers bright red, large and double. 20c each.

Special Offer.—20 geraniums, our selection for \$1.00.

## Weeping Lantana.

The best plant for hanging baskets. A rapid grower, graceful drooping habit. The clusters of lilac colored flowers are most freely produced. It is a plant worthy of all praise and attention it is now receiving. 10c each, 3 for 25c, 8 for 50c.

## Emily Bayard Lantana.

A splendid variety. 10c each, 8 for 25c.

## American Lemon.

A beautiful plant which blooms and bears fruit under ordinary care. 10c each, 3 for 25c.

## Orange, Otheite.

A beautiful plant, blooms profusely, has regular orange fragrance. 10c each, 3 for 25c.

## Wandering Jew.

A beautiful trailing plant. Makes a very rapid growth. Excellent for hanging baskets. We have two varieties, light green and variegated. 4c each, 25c per dozen.

## Olanders.

Grand plants for tubs or verandas or lawns. Either variety 2c, each or 10c of each for 20c.

**Rosea.**

Double, pink flowers, sweet.

**Lilian Henderson.**

Double, white, large flowers, fragrant.

**Lutea**—Double, yellow primrose flowers, fragrant.

We are always glad to help customers in every way we can. Let us help you solve your horticultural and floral-cultural problems.

**Lemon Verbena**—10 cents each.

**Russella Elegantissimo.**

A new semi-trailing plant, Splendid for hang-

**Swinsania Alba,**

This is a grand decorative plant. Foliage is pinnated feathery, fern like, beautiful white blooms which resemble sweet peas in shape. Will grow in almost any place where it has sufficient light. Constant bloomers, one of our best house plants. 10c. each, 3 for 25 cents.

**Swansonia Splendins.**

Same as Alba except, the blooms are scarlet.

**Umbrella Plant.**

A beautiful decorative plant which requires but little care and attention, except watering. Should have plenty of water. 10 cents each.

**Jasmine Grandiflorum.**

Pure white flowers, star shaped, delightful fragrance. 30 cents each.

## Justica.

One of each of the three Justica for 20 cents.

**Carnea**—Very strong grower. Throws up long stems on which are produced pink plumbeous flowers. Good for house or outdoor culture. 10 cents each, 3 for 25 cents.

**Justica Sanguine**—10c. each, 3 for 25c.

**New Dwarf**—This new variety begins

blooming when quite small and continues blooming right along. Easy to grow and sure to bloom. 10 cents each.

All our plants are vigorous and healthy. We do not send out small weak over-crowded plants.

**White Day Lily.**

Broad beautiful leaves, large white flowers borne in great profusion. 10 cents each.

## Roses.

We make a specialty of these, the most beautiful of flowers. Lack of space forbids extended description but each statement may be relied on, as we recommend only such varieties as have a distinct merit. Our tests of varieties this season will include a hundred or more varieties not given here, many new and untried varieties will be given a trial on our own grounds before offering them to our customers. In November we will issue our **ROSE BULLETIN** and Circular, giving the results of the summer work among the roses at Hopewell Farm, with description giving the virtues and faults of each variety with culture notes and seasonable hints as to protection of out-door roses, care of winter house plants etc. This will be a valuable report, it will not be for sale, but is issued for the benefit of our customers.

Each person who orders roses of us this spring will receive a copy of this bulletin without further request.

Our rose plants are strong, healthy and larger than are usually sent by mail. Price includes postage. Prices unless stated otherwise, 10 cents each 3 for 20 cents, 7 for 40 cents.

**Hardy Varieties.** Unless otherwise stated the following varieties are hardy and will withstand severe winters, but for best results should be protected during the winter. To do this the branches should be bent to the ground and the whole plant covered with leaves or evergreen boughs. Leaves are excellent for this purpose but need to be held in place by laying boards or evergreen limbs on them.

**Roses repay all care given them by increased growth and beauty.**

Prices include postage and are for strong well grown greenhouse plants which may be set in open ground soon as weather permits or they may be potted.

**Baldwin.** Best hardy everblooming rose of recent introduction, color carmin crimson.

**Catherine Mermet.** Flesh color with beautiful silver luster. Fine, should have good protection.

**Burbank.** Very fine blooming, hardy, deep pink in color, an everbloomer.

**Clothilde Soupert.** White with rose center, a very satisfactory rose in every way.

**Champion of the World.** A grand old everblooming red rose of delightful fragrance. Blooms all the time.

**Dutchess de Brabant.** Color, light rose delightful perfume, gives great profusion of bloom.

**Evergreen Gem.** The best of the evergreen memorial roses, Sweet Briar fragrance, double flowering, rare beauty, trails on ground, good for covering stumps, trellises etc.

**Dinsmore.** A hardy Hybrid perpetual, color deep crimson. Good.

**Hermosa.** Beautiful pink, fragrant.

**Jubilee.** Pure deep red, grand garden rose.



## The La France Set of Roses.

**La France.** There is no more satisfactory rose for outdoor use than this perfectly hardy, wonderful abundant bloomer, strong, free grower, pink in color, very beautiful. We have a large stock of fine plants sure to please.

**Striped La France.** Similar to La France except in color. It is beautifully striped and blotched.

### Red La France or Dutchess of Albany.

Same as La France in hardiness, growth and free blooming habits hint a darker shade in color.

**White La France.** A true white La France, very beautiful, in bud and full bloom, vigorous and hardy.

## Special Offer. One each of the 4 Varieties of La France for 25 cents.

**Madam Chas. Wood.** A remarkable free bloomer. Flower very large, color, scarlet. A vigorous grower and very hardy.

**Souv. of Wooton.** A red rose of great beauty, most excellent for summer outdoor

blooming. Truly a grand rose in every respect.

**Madam Plantier.** A grand hardy white hybrid perpetual rose. An abundant bloomer.

**Vicks Caprice.** A beautiful many colored rose. Fine bloomer.

### Hardy Roses.

Strong 2 year outdoor grown roses of the following varieties at 20c each, 2.00 per dozen: Annie Diesbach, Gen. Jacqueminot, John Hopper, Margaret Dixon, Mrs. J. H. Lang, Paul Neyron, Crimson Rambler, White Rambler, Pink Rambler, Wichuriana, Princess Adelaide, Madam Plantier, Magna Charta, Alfred Colomb. La France and American Beauty, 25 cents each.

### Special.

One strong 2-year outdoor grown plant of each of the following nineteen varieties for 2.75, any twelve, your selection, for 2.00, any 3 for 50 cents. N. B.—Our supply of some of these varieties may be exhausted before the season is over, so be sure to state in your order whether we may substitute a variety of equal merit if out of the one ordered.

Alfred Colomb, Charles Le Fibre, Coquet Des Alpes, Francoise, Michelon, General Jacqueminot, General Washington, La France, La Reini, Madam Plantier, Magna Charta, Marshal Wilder, Paul Neyron, Prince Camille de Rohan.

### Moss Roses.

Countess de Murinais, Princess, Adelaide.

### Climbers.

Baltimore Bell, Climbing Victor Verdier, Queen of the Prairie.

## Climbing Roses.

Price unless stated, 8c each.

### Climbing Bridesmaid.

Hardy in protected situations even in the north, color same as the renowned and unequalled bridesmaid. 12c each.

### Climbing Malmaison.

Same as the old favorite Malmaison except it is a climber. Each 10c.

### Empress of China.

New, hardy. Climber. Color soft red. 10c 3 for 25c.

### Mrs. Robert Peary, or Climbing Kaiserin.

Grandest white climbing rose, large pointed buds. This is a grand rose. 10c each, 3 for 25c.

### Climbing Wooton.

Hardy, vigorous. Finest of red roses, sweet fragrance. A large plant covered with its large blooms. A beautiful beyond description. 12c each.

### Climbing Meteor;

Very rapid grower wonderfully free bloomer. Flowers larger than Meteor, and borne in great abundances.

### Queen of Prairie,

an old favorite,

### Tennessee Belle,

a bright beautiful pink rose,

### Baltimore Belle.

Pale blush in color, very double.



### MOSS ROSE.

Running General Jacqueminot,  
A hardy climbing rose,

### Pink Rambler.

Hardy, vigorous, profuse bloomer,

**Crimson Rambler.**

This hardy climber is now well known. There is no more beautiful sight than a crimson Rambler in full bloom.

**James Sprunt.**

A strong grower and a profuse bloomer, cherry red.

**The Following Varieties** are not entirely hardy in severe winters, but all except those marked tender may be wintered in the open ground if well covered as before explained.

**Prices** unless otherwise stated, strong green house plants 8c each, 3 for 20c, 6 for 40c, 12c per dozen.

**Antoine Verdier.**

Light red, a good bloomer.

**Bride.**

Grand forcing rose, tender, white.

**Cornelia Cook.**

A grand free growing white rose.

**Enchantress.**

Good for blooming in open air or as a pot plant. White with cream center.

**Beauty Inconstance.**

Blooms of many colors all open at one time.

**Agrippenia.**

This is an excellent bedding rose. Free bloomer, color velvety crimson.

**Bridesmaid.**

Tender, but a good summer bedder. Pink.

**Baron Berge.**

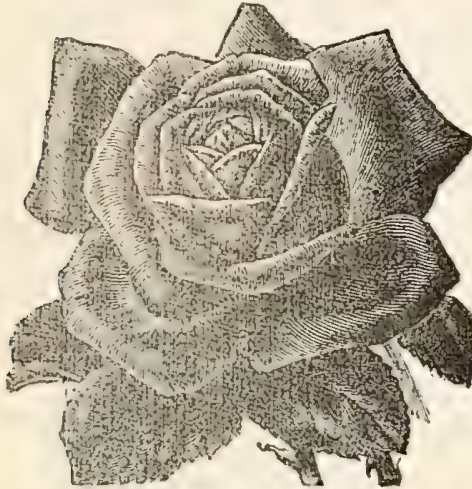
Flowers are large and very freely produced. Blooms continuously all summer.

**Eliza Chatrand.**

A free blooming polyantha, rose color.

**Enfant de Lyon.**

Pink, a free bloomer.

**Pink Soupert.**

A beautiful pink rose.

**Sweet Little Queen.**

Buds are long, full and double, color salmon center outer petals cream color.

**Snowflake.**

or WHITE HERMOSA. We have no better snow white bedding rose than this.

**White Daily.**

White buds, long and pointed.

**White Rambler.**

Wonderfully free grower. A true Rambler.

**Yellow Rambler.**

Will stand zero weather, but when the temperature goes much below zero, protection is necessary.

**George Pernet.**

A good Polyantha rose, color rose with touches of yellow.

**Kaisern Augusta Victoria.**

Creamy white, fragrant, constant bloomer.

**Liberty.**

A great forcing rose, tender.

**Madam Franciska Kruger.**

Copper yellow, fine.

**Maman Cochet.**

A fine pink rose.

**Miniature.**

This polyantha is the smallest of all roses, color cream rose, flowers almost cover the whole plant.

**Mignarette.**

A perfectly double pink polyantha.

**Pacquerette.**

Best of the polyanthas. Pure white, abundant bloomer.

**Perle des Jardins.**

A fine clear yellow rose. Flowers large and perfect.

**Maid of Honor.**

Somewhat similar to Bridesmaid.

**Madam Caroline Kuster.**

Large lemon yellow blooms.

**Madam Joseph Schwartz.**

A hardy tea rose, white flushed with crimson.

**Metzor.**

Gives a profusion of velvety crimson blooms with fine long stems.

**Marie Guillott.**

White, tinted with pale yellow; fine for bedding in open ground.

**Priscilla or White Maman Cochet.**

This is one of our grandest summer roses. Good for late plant also, white, but in sunshine is beautifully tinted with pink. A remarkably free grower and bloomer.

**Papa Gontier.**

Color crimson. Splendid for cut flowers, and does well out of doors.

**Queen.**

Beautiful pure white, not entirely double when entirely open.

**Queen Scarle.**

A free blooming scarlet rose; flowers of medium size.

**Souv. D. President Carnot.**

A most beautiful rose colored, free blooming rose.

**Catherine Guillott.**

A copper colored rose, open flowers are large and double.

**Golden Fairy.**

A rich golden yellow polyantha.

**SPECIAL ROSE OFFER.**

Twenty-one first-class strong Greenhouse plants for one dollar, prepaid. Our selection of varieties, no two alike. 10 for 50 cents.

Eighteen Roses, good greenhouse plants, your selection of varieties for \$1.00  
We fill small orders with the same care as large ones.

# Fruit Department.

Our Trees, Plants and Vines are Clean, Healthy and Strictly up to Grade. Certificate of Inspection with every order. Prices include Boxing, Packing and delivery to railroad here.

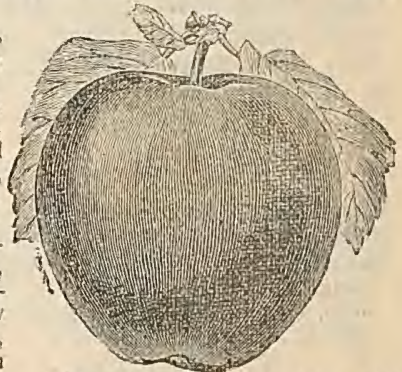
We advise shipment by freight except for strawberry plants. Special attention is given to careful packing. We guarantee stock to arrive in good condition. We use great care and believe everything true to name, if by any means a mistake should occur we will refund the amount paid or replace without cost the stock which proves untrue to name. Space forbids lengthy descriptions. What extra space would cost we give to you in lower prices. Remember we give greater value for money invested than any other firm. 6 at doz; 50 at 100; 500 at 1000 rate.

	Each	Doz.	100
First Class—5 to 7 feet .....	\$.20	\$2.20	\$16.00
Select Medium—4 to 5 feet.....	.15	1.70	13.00

**Varieties**—Summer, Red Astrichan, Yellow Transparent, Alexander, American Summer Pearmain, Benoni, Chenargo, Dutchess of Oldenburg, Early Harvest, Early Strawberry, Golden Sweet, Red June, Sweet Bough, Sweet June.

**Fall**.—Autumn Strawberry, Fall Orange, Fall Wine, Maiden Blush, Rambo, Wealthy Famense.

**Winter**.—American Golden Russet, Ark, Black, Bailey Sweet, Baldwin, Ben Davis, Big Rambo, Canada Red, Cayugo, Red Streak, Detroit Red, Gano, Gravenstine, Grimes Golden, Janet, Johnathan, King, Mann, Mam Black Twig, Northern Spy, Pewaukee, Rhode Island Greening, Roman Stem, Smith Cider, Tulpehochen, Wagoner, White Winter, Pearman, Wine-sap, Willow Twig, York Imperial, Yellow Bellflower, Crabs, Hyslop, Transcendent, Quaker Beauty, Siberian, Gen. Grant, Van Wicks sweet, Whitney, Sweet Crab.



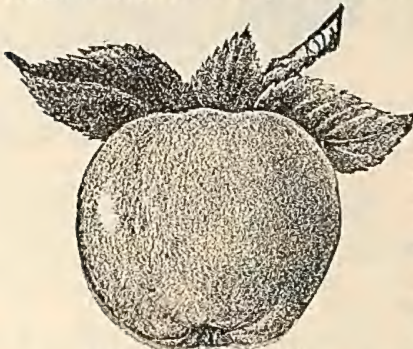
Best described by saying. It is a very dark red Ben Davis, bears as near every year as any variety we have tested. Our orchard planting in the spring of 1902 will be largely Gano.

## PEARS—STANDARD.

Varieties marked D. can be furnished as dwarfs also.

**Summer**—Koonce D, Osbands SummerTyson D, Wilder D, Seckel **Fall** and **winter**—Bartlett D, Beurre D, Anjou D, Bell Lucrative, Beurre Clarigeau, Clapps Favorite D, Dutchess de Angouleme D, Flemish Beauty D, Garber, Howell Keiffer D, Lawrence D, Lincoln, Coreless D, Louise Bonde Jersey D, Mt. Vernon, Sheldon, Vermont Beauty D.

First Class 5 to 6 feet	\$.25	\$2.50	\$20.00
Medium—4 to 5 feet	.20	2.00	16.00



YELLOW TRANSPARENT.

A beautiful early apple. Bears young. There is no more desirable very early apple.

**PEARS--DWARF.**

First Class.—3 to 4 feet.....	\$1.50	\$15.00
Varieties—Those marked D. in above list.		

**PLUMS.**

First Class.—4 to 6 feet.....	\$3.00	\$15.00
Medium Grade—3 to 5 feet.....	.20	

Varieties—Wild Goose, Lombard, Stanton, Yellow Egg, Burbank, Arctic, Moores, Robinson, Imperial Gage, Shropshire, Damson, Saratoga, Abundance, Botan, Yellow Egg, Burbank, Chobat, Hale, Red June, Satsuma, Hawkeye, Newman, Willard, Wickson.



Abundance Plum.

One of the best of the Japanese varieties. Very sweet, immensely productive

**PEACHES.**

First Class—5 to 6 feet 15 cents each \$1.35 per dozen, \$10.00 per hundred.  
 Medium—3 to 5 feet 12 cents each, \$1.10 per dozen, \$8.00 per hundred.  
 Varieties—Early Crawford, Late Crawford, Elberta, Champion, Dewey, Alexander, Lemon Free, Crosby, Lemon Cling, Indian, Golden Drop, Heath Cling, Smock, Sneed, Fitzgerald, Greensboro, Kalamazoo, Lemon Free, Snow Orange, Ward's Late, Troth's Early, Yellow St. John.

**CHERRIES.**

First Class.—5 to 6 feet.....	\$3.50	30.00
Select Medium—3 to 5 feet.....	30	25.00

Varieties—Early Richmond, Dye House, English Morello, Late Duke, Late Morello, Louis Phillip, Montmorency, Empress, Eugene, Centennial.



MONTMERCENCY CHERRY.

Large, fine flavor. Ripens ten days later than the Early Richmond. Very productive. One of the very best varieties.

**QUINCES.**

First Class—4 to 5 feet .25 2.25  
 Medium.—3 to 4 feet .20 2.00  
 Varieties—Orange, Champion, Mo., Mammoth.

**EVERGREENS.**

	Eac.1	Doz	100
Arbor Vitae, American, 2 feet.....	.20	1.80	
Arbor Vitae, Medium 12 inches.....	.19	1.00	6.00
Arbor Vitae, Pyramidalis 2 to 3 feet.....	.30	2.00	
Norway Spruce, 18 inches 2 feet.....	.20	2.00	
Norway Spruce 12 inches.....	.19	1.00	7.00

## GRAPES.

Fine two year old vines, 10 cents each; strong one-year old vines 8 cent each.

**Varieties**—Concord, Brighton, Catawpa, Delaware, Moore's Early, Niagara, Moyer Lindley Salem, Worden, Pocklington, Empire State, Campbell's Early, 25 cents each.

**Special grape offer**—One each Niagra, Moore's Early, and Brighton, 2 year for 20 cents postpaid. One of each by freight or express for 15 cents.

## STRAWBERRIES.

We offer no long list of varieties, but the list embraces some of the very best. Perfect flowering varieties are marked P. and imperfect flowering Imp. Strawberry plants sent postpaid at dozen rates. If sent by mail at 100 rates, 20 cents per hundred must be added for postage.

Varieties	Doz.	100	1000
Michels Early P, Jesse P. Haverland Imp. Crescent	.15	.35	3.00
Brandywine P. Brunette P. Gandy P. Excelsior P.			
Ridgeway P. Tenn. Prolific P. Gladstone, Sample P. Ruby P. Bubath, Bismark, Glen Mary, Clyde			
Enormous and Klondyke Greenville, Cumberland	.25	.45	4.00

## RASPBERRIES.

Red Raspberries.

Cuthbert, Turner, Miller and Loudon	.20	1.00	9.00
-------------------------------------	-----	------	------

**Blackcap Raspberries.**

Gregg, Eureka, Nemaha, Conrath, Kansas	.25	1.25	9.00
--	-----	------	------

**Blackberries.**

Snyder, Taylor's Prolific, Ancient Brittin, Lawton,	.25	1.00	9.00
---	-----	------	------

Stone Hardy, Early King, the best of the early varieties, very productive, hardy, prolific, Sweet	.50	1.25	
---	-----	------	--

First class mixed plants, all good varieties		.50	4.50
--	--	-----	------

**Dewberries.**

Lucretia, the best variety, early, large and Prolific		.82	8.00
---	--	-----	------

**Currants 1 Year No. 1.**

Red Dutch, Victoria, White Grape,	.40	3.50	
-----------------------------------	-----	------	--

Pomona, most profitable of all, medium size, very productive, excellent quality	.65	5.00	
---	-----	------	--

**Gooseberries.** Doz. 100

Industry	1.50		
----------	------	--	--

Houghton	.50	3.00	
----------	-----	------	--

Downing	.75	5.00	
---------	-----	------	--

## ORNAMENTAL DECIDUOUS TREES.

Bechtel's Double Flowering Crab 3 to 4 feet.....	35 cents each
--	---------------

Purple Leaved Beech 4 to 5 feet.....	45 cents each.
--------------------------------------	----------------

Catalpa 6 to 8 feet.....	20 cents each.
--------------------------	----------------

Catalpa Bungiu 6 to 8 feet, grafted.....	65 cents each.
--	----------------

Tulip Tree 6 to 8 feet.....	40 cents each.
-----------------------------	----------------

Willow, Gold Bark 6 to 8 feet.....	30 cents each
------------------------------------	---------------

**Weeping Trees.**

Elm, Camperdown 2 year heads.....	65 cents each
-----------------------------------	---------------

Teas, Mulberry 5 to 7 feet, 1 year heads...	60 cents each.
---	----------------

Weeping Willow, 2 year heads.....	30 cents each.
-----------------------------------	----------------

page missing