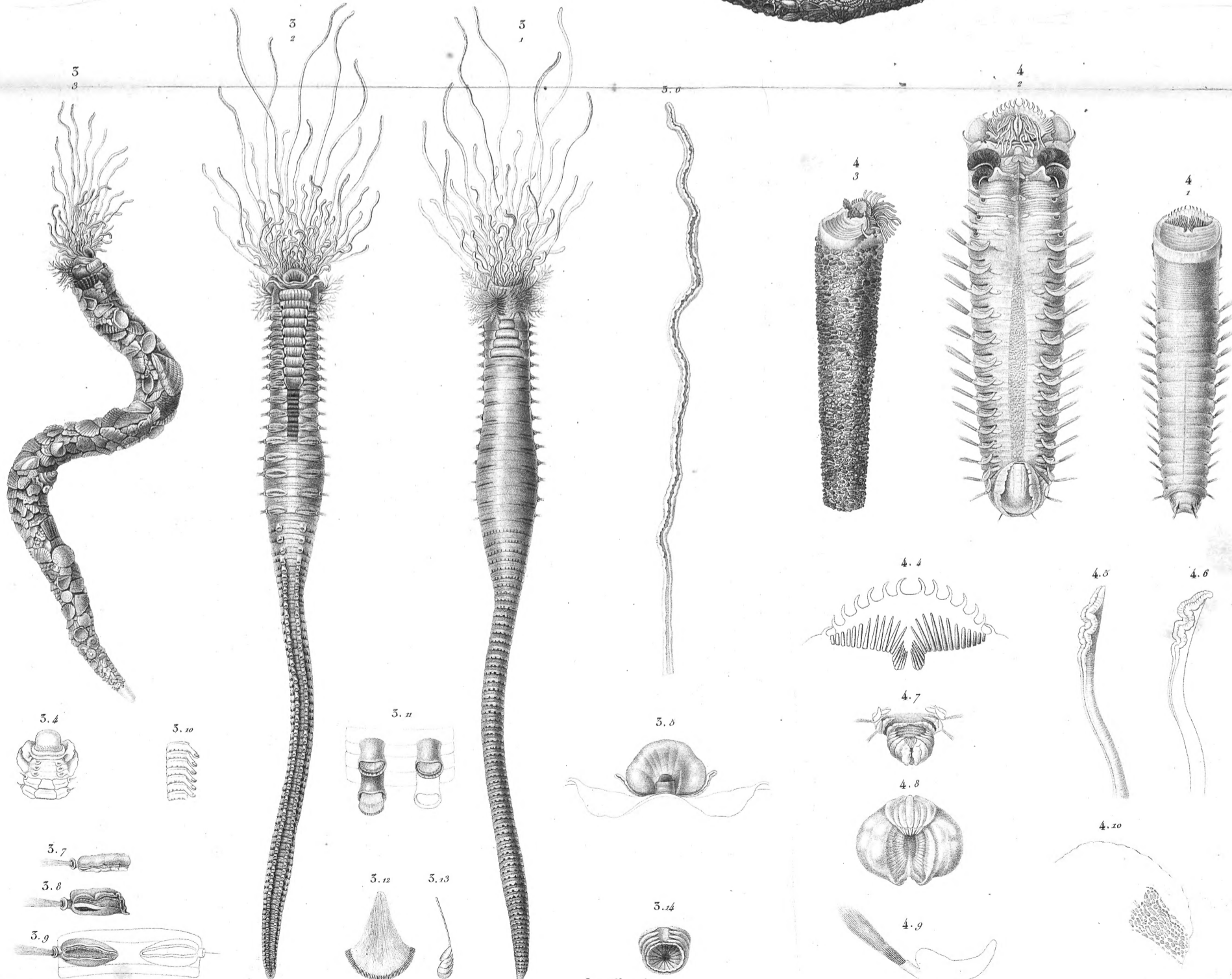
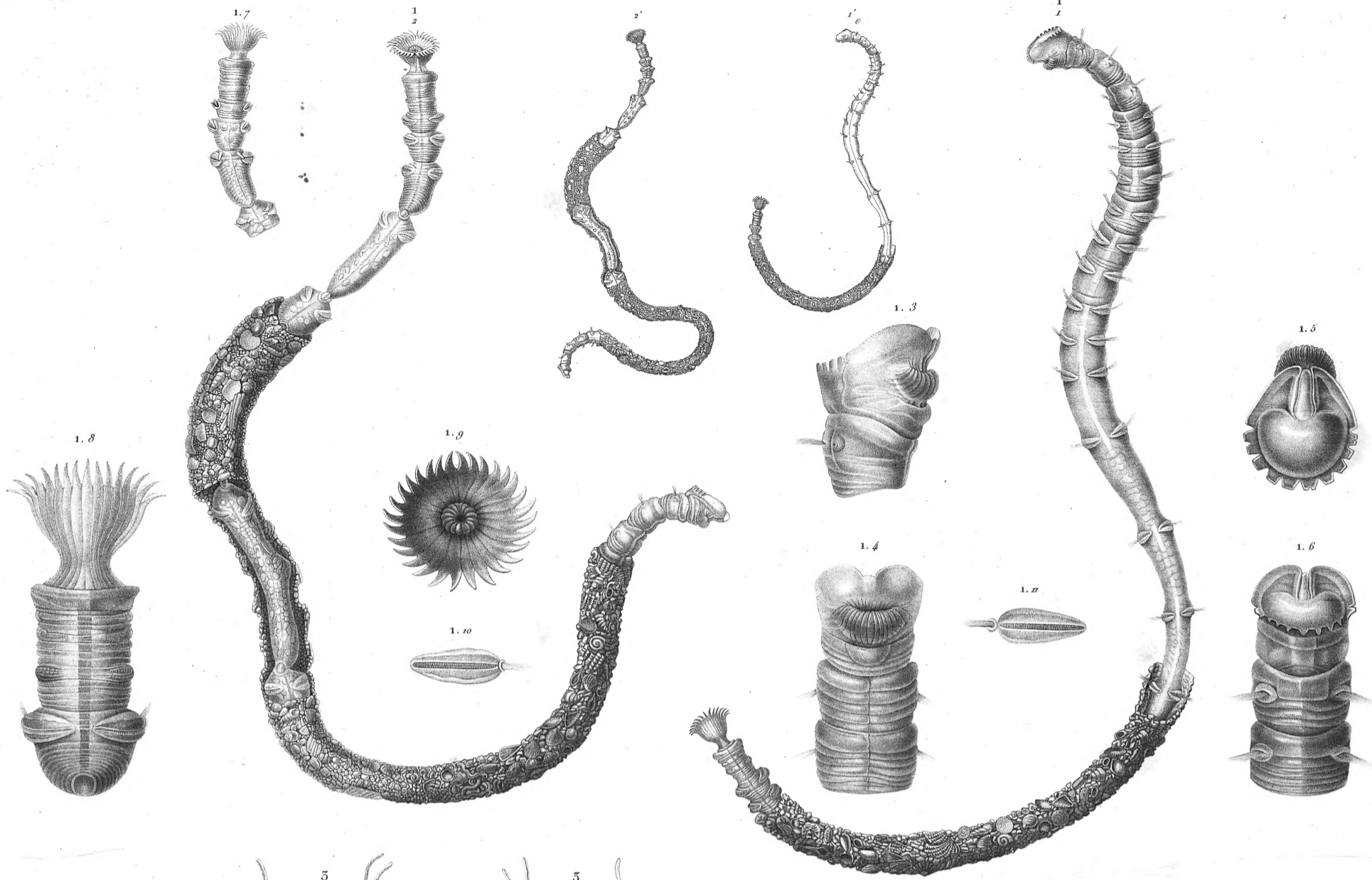


11336
Purchased
by
Mrs. J. M. Smith

6 QL
391
A6938
1820
Atlas
INV2RB

Sanguy
Système des amélicides, Atlas



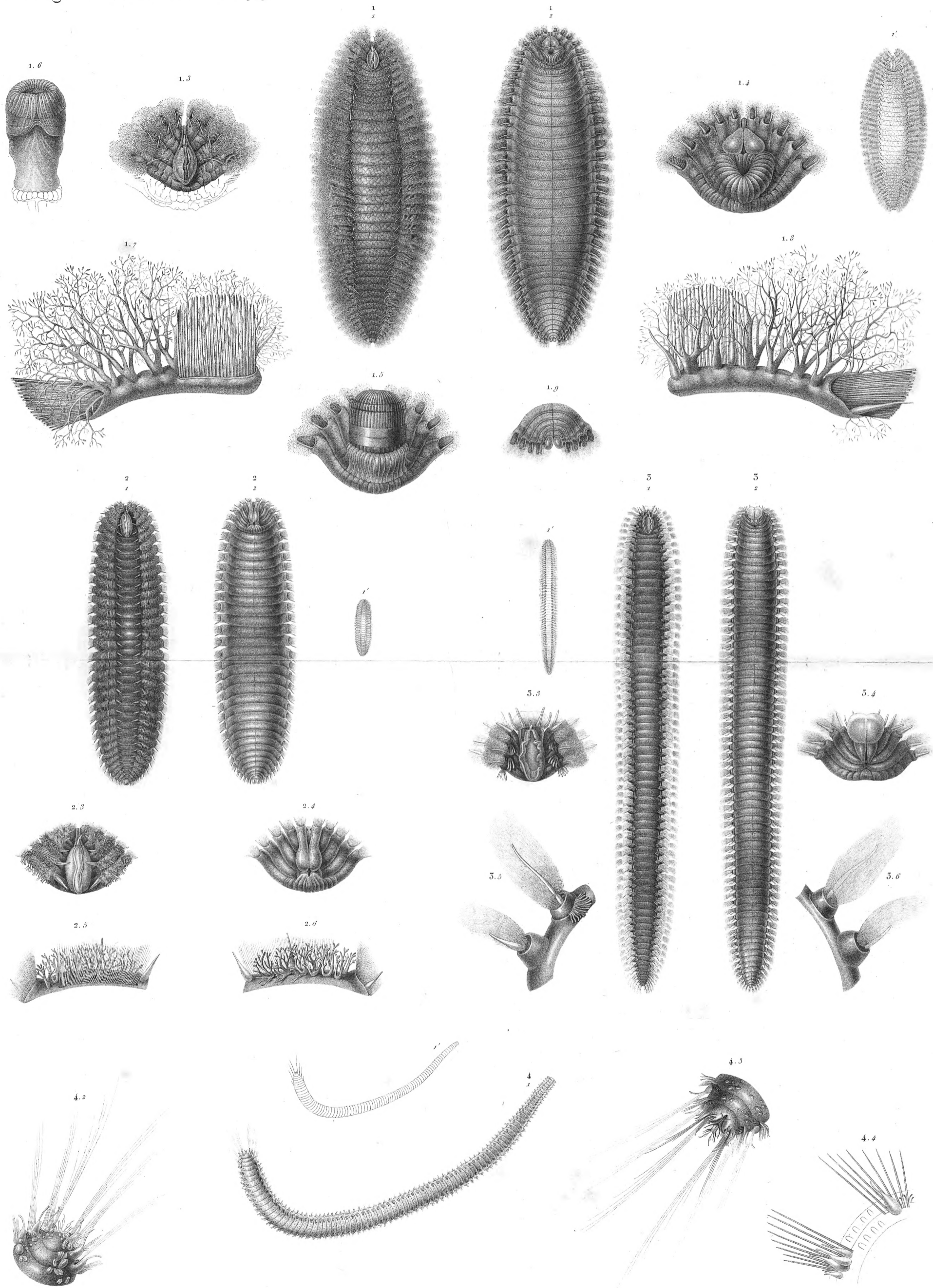


Dessiné et gravé en 1805-1812.

Ruotte, fils, sc. fort.

Bridson et M^{re} Collas sc.

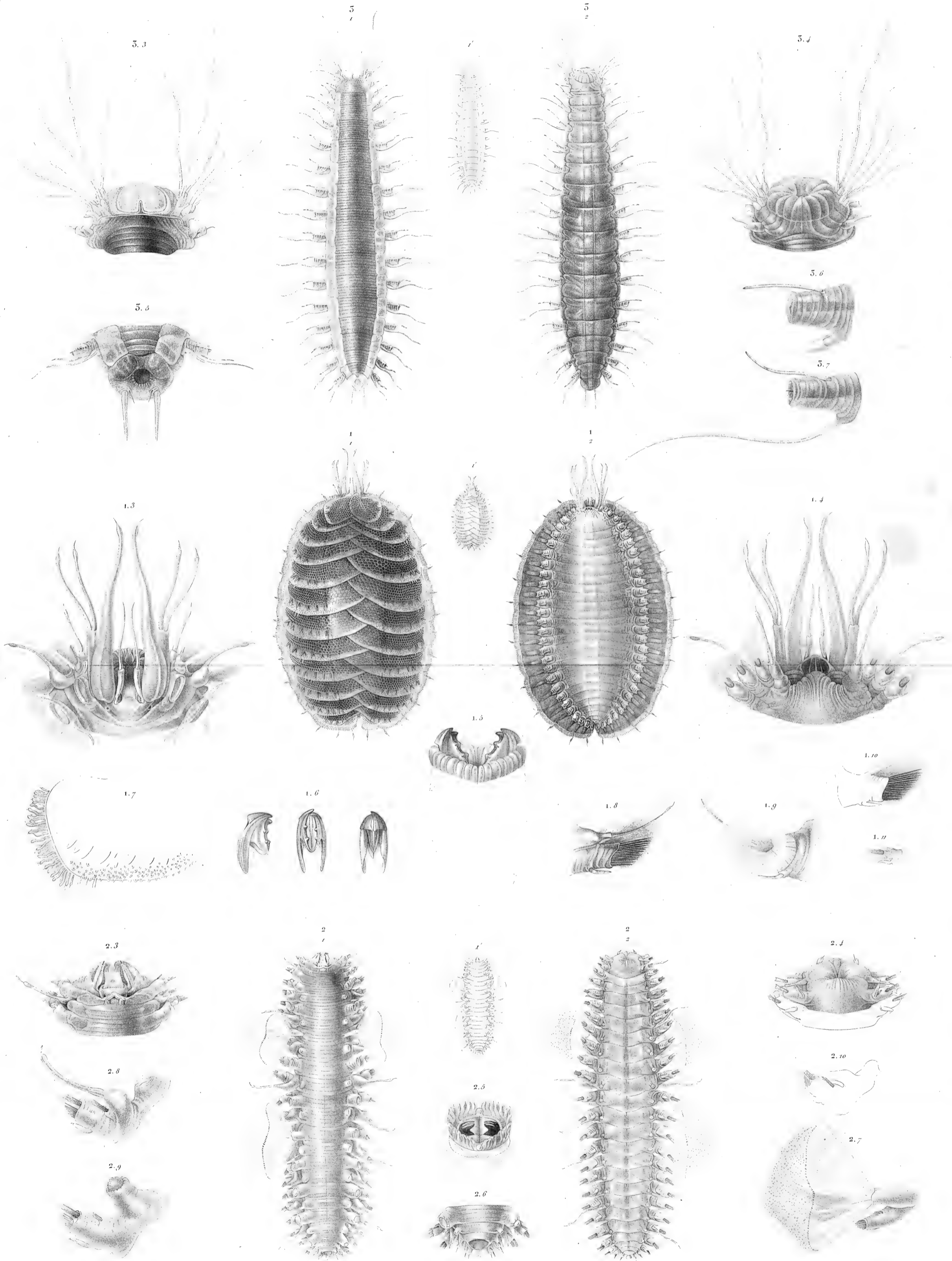
CLYMÈNES. TÉRÉBELLES. AMPHICTÈNES.



Dessiné et gravé en 1805-1812.

EUPIROSYNES. PLÉIONES. ARISTÉNIES.

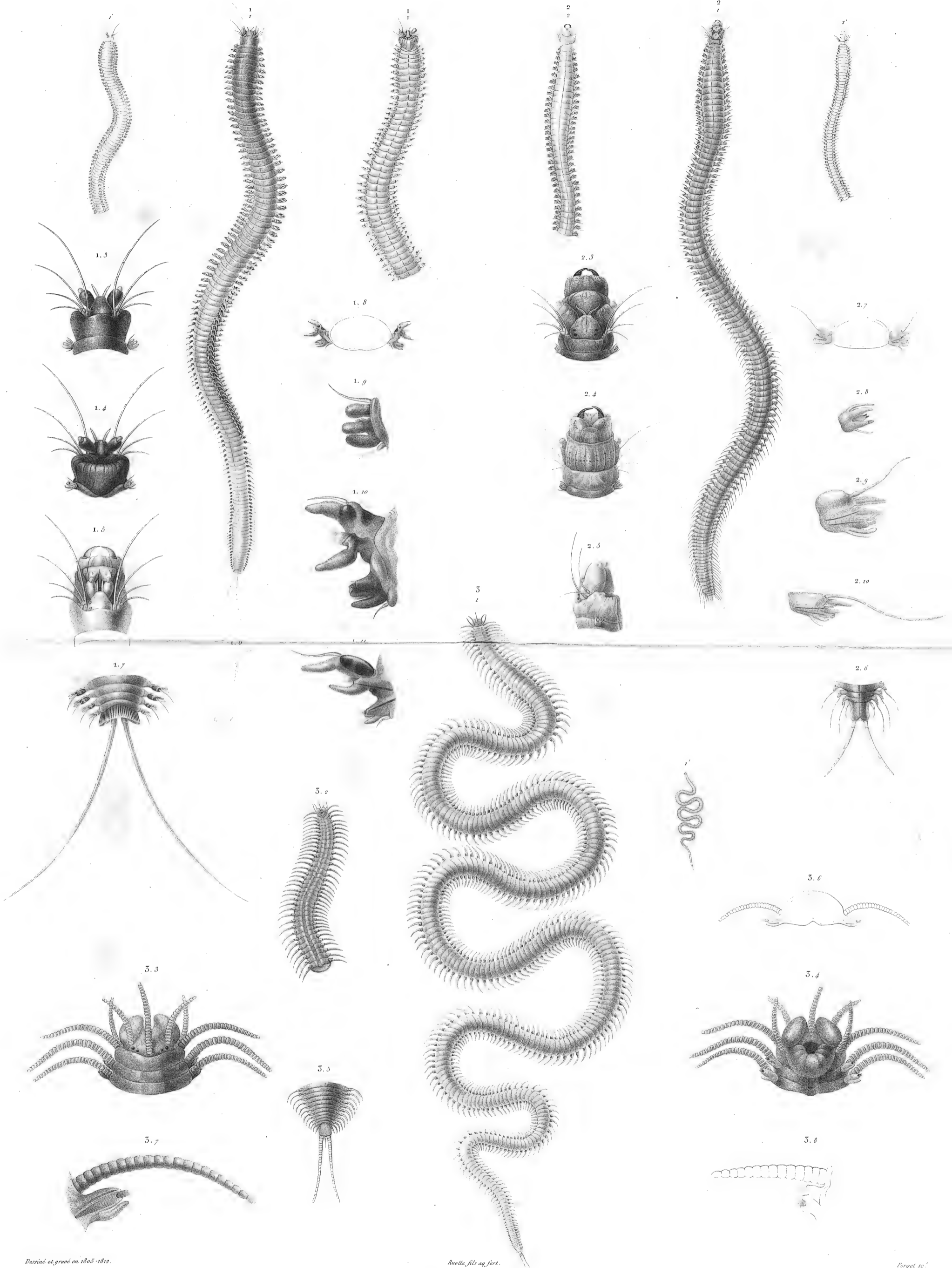
Tavernter sculpsit.



Desiné et gravé en 1803-1812.

POLYNOÉS. HÉSIONES.

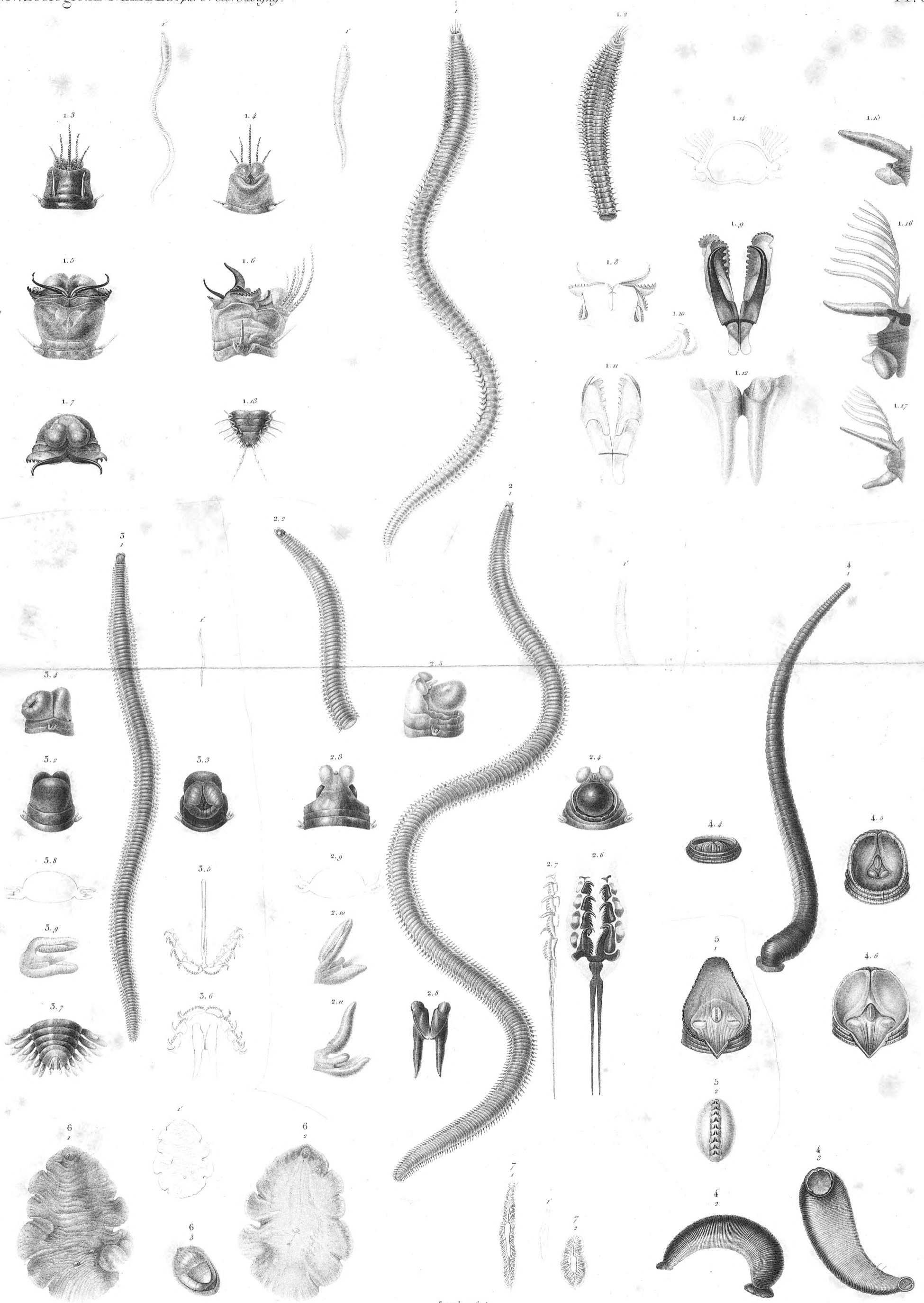
Lelou sc.



Disiné et gravé en 1805-1812.

Quelle, file et fort.

Forgel sc.

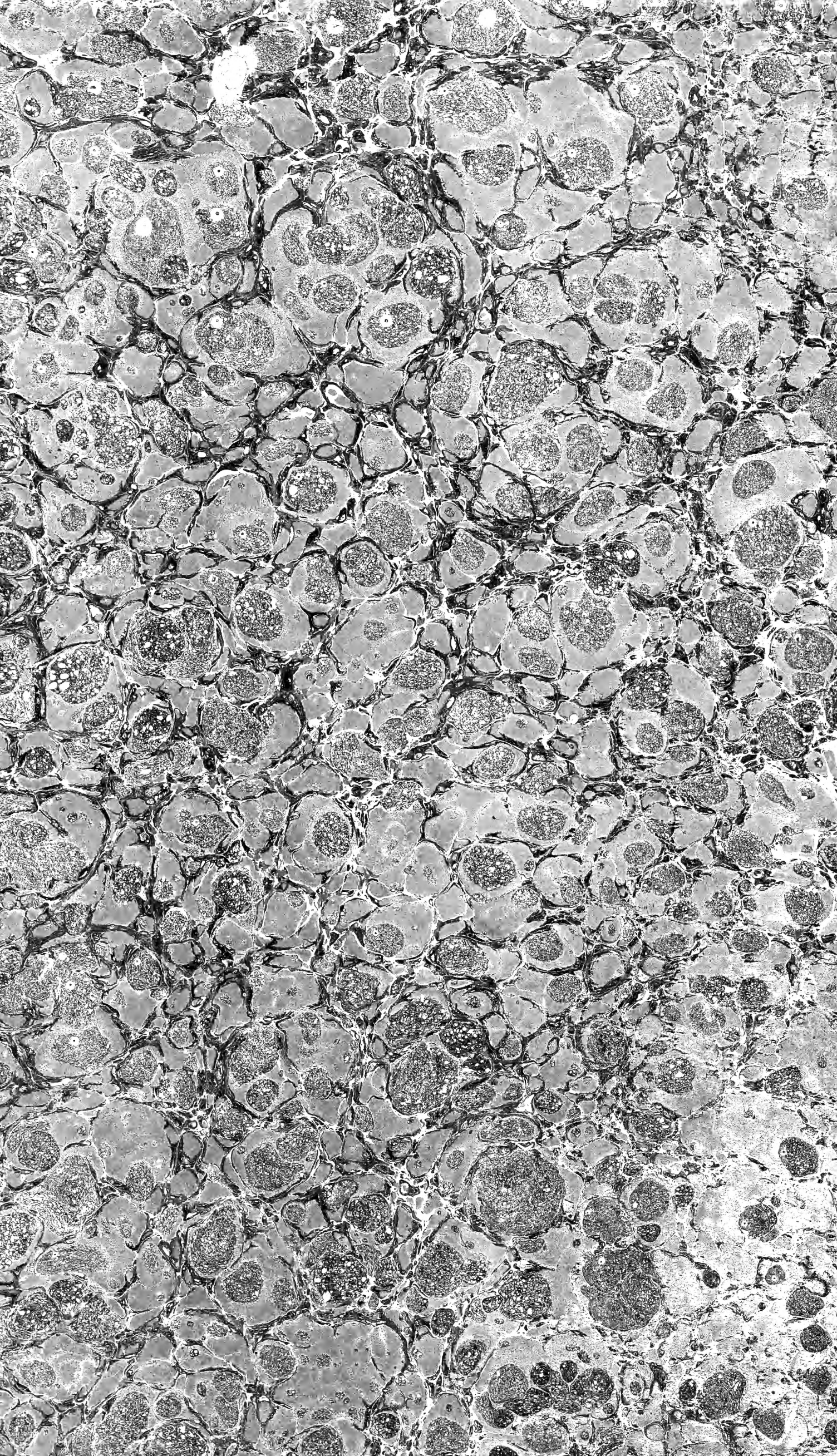


Dessiné et gravé en 1805 par Stiz.

Renard, ay fort.

Forget sc.

LÉODICES. AGLAURES. ENONES. BDELLES. PLANAIRES.





J SMITHSONIAN INSTITUTION LIBRARIES L
3 9088 00922 3884