

212

FALL 1914

TRADE PRICE LIST

FOR NURSERYMEN, DEALERS, FLORISTS
AND LANDSCAPE ARCHITECTS ONLY

Framingham Nurseries

Framingham, Massachusetts

(LOCATED TWENTY-ONE MILES WEST OF BOSTON)

TREES, SHRUBS, EVERGREENS
VINES AND ROSES



W. B. WHITTIER & COMPANY

FRAMINGHAM, MASS.

LONG DISTANCE TELEPHONE
FRAMINGHAM 331

CABLE ADDRESS
FRAM BOSTON

QUALITY OF STOCK

The stock offered in this list is strictly first-class, and, we believe, absolutely free from all injurious insects or diseases. We aim to keep our Nurseries clean, so that the stock is healthy and vigorous. We invite inspection. Visitors are always welcome. See back cover for location of Nurseries.

SUBSTITUTION

We never substitute one variety for another. In case the size ordered is exhausted, we send the next size thereto and charge accordingly. Should the variety be exhausted, we at once notify the customer.

The Planting Season

Evergreens can be successfully transplanted during August and September. Herbaceous Perennials do best when moved during September and before the middle of October. Trees and Shrubs can be safely planted any time after October 1st, until freezing weather sets in.

Directions for Shipping

Parties ordering are requested to state explicitly the mode of conveyance by which they desire their stock forwarded.

When no route is designated, we exercise our judgment; but in no case do we assume any responsibility after packages are shipped, unless for our own mistakes. When losses occur by detention, claims should at once be made on the TRANSPORTATION COMPANY.

INSPECTOR'S CERTIFICATE ACCOMPANIES EVERY SHIPMENT

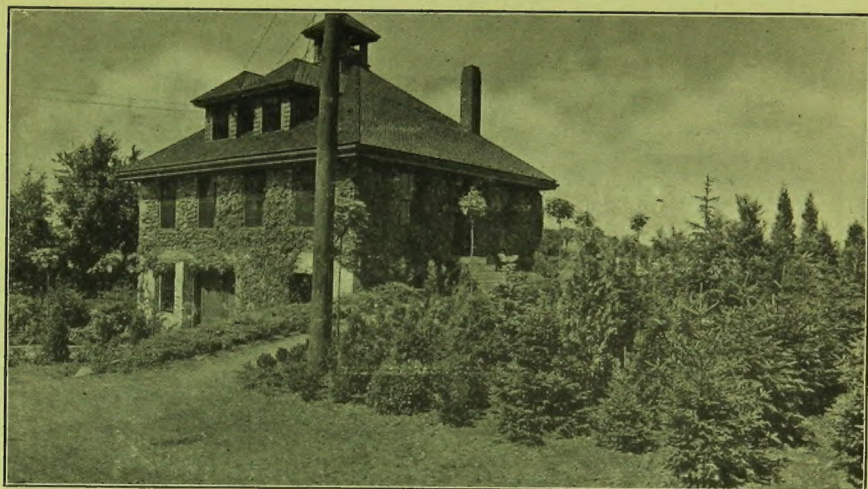
CONDITIONS OF SALE

First—The articles on the following list will be furnished at the annexed prices only when the quantity specified shall be taken. Five hundred will be furnished at the thousand rate; fifty at the hundred rate and five at the ten rate.

Second—While we exercise the greatest care to have all Trees, Shrubs and Plants genuine and reliable, and hold ourselves prepared to replace, on proper proof, all that prove untrue, we do not give any warranty, expressed or implied; and in case of any error on our part, it is mutually agreed between the purchaser and ourselves that we shall not at any time be held responsible for a greater amount than the original price of the goods. No complaints will be considered that are not made within ten days after receipt of stock.

Third—The prices annexed do not include the boxes or bales. A charge for the actual cost of the boxes or the material used in baling is made. No charge for conveyance to freight station.

Our terms are cash, unless by special agreement. We can ship by express C. O. D., when desired, with charges for collection added to the bill—provided 20 per cent of the amount of the order accompanies the same as a guarantee. Said guarantee will be required only from parties with whom we have no business acquaintance. All bills remaining unpaid December 1st in fall, and June 1st in spring, will be subject to sight draft without further notice.



OFFICE OF THE FRAMINGHAM NURSERIES
DECIDUOUS SHADE AND ORNAMENTAL TREES.

IMPORTANT—This list includes only such varieties of stock as we have now in our nurseries, in sizes and quantities offered. In filling orders we shall grade stock according to these specifications. Should orders be received for sizes not found in this list, or should any specified grade be exhausted, we will send the nearest size we have in stock at the time the order is received and charge accordingly; unless otherwise advised.

	Each	Per 10	Per 100
ACER colchicum rubrum 6 to 8 ft.	\$1 00	\$8 00	
dasycarpum (Silver-leaved Maple) 8 to 10 ft. ...	60	5 00	
10 to 12 ft. 1¼ to 1½ in. caliper	75	6 50	50 00
12 to 14 ft. 2 to 2½ in. caliper	1 00	9 00	
14 to 16 ft. 2¾ to 3 in. caliper	1 50	12 50	
dasy. var. Weirii (Weir's Cut-leaved Maple)			
5 to 7 ft.	40	3 50	
7 to 8 ft.	50	4 50	
8 to 10 ft. 1 to 1¼ in. caliper	60	5 00	
10 to 12 ft. 1¼ to 1½ in. caliper	1 25	10 00	
14 to 16 ft. 2 to 2½ in.	2 50	22 50	
negundo 8 to 10 ft.	50	4 50	40 00
10 to 12 ft.	75	6 00	
n. var. argentea variegata 5 to 6 ft.	50		
n. var. aurea marginata 3 to 4 ft.	40	3 50	
4 to 5 ft.	50	4 00	
platanoides (Norway Maple) 8 to 10 ft.	60	5 50	45 00
10 to 12 ft. 1¼ to 1½ in. caliper	1 00	8 50	70 00
12 to 14 ft. 1½ to 1¾ in. caliper	1 35	12 50	100 00
14 to 16 ft. 1¾ to 2 in. caliper	2 00	17 50	
14 to 16 ft. 2 to 2½ in. caliper	2 50	20 00	175 00
14 to 16 ft. 2½ to 3 in. caliper specimens	5 00		
Specimens 3 to 4 in. caliper	\$5 00 to 10 00		

	Each	Per 10	Per 100
ACER Continued			
p. var. Geneva (Red leaved) 10 to 12 ft.	1 25	\$10 00	
12 to 14 ft.	1 50	12 50	
p. var. Schwedleri (Purple leaved) 8 to 10 ft.	75	6 50	60 00
10 to 12 ft. 1½ to 1¾ in. caliper	1 25	10 00	90 00
12 to 14 ft. 1¾ to 2 in. caliper	2 00	17 50	
14 to 16 ft. 2¾ to 3 in. caliper	4 00		
polymorphum var. atropurpureum (Japanese Purple-leaved Maple) 2 to 2½ ft.	1 25	10 00	
2½ to 3 ft.	2 00	17 50	
3 to 4 ft.	2 50		
p. var. atro. dissectum (Japanese Purple Cut-leaf Maple) 2 to 2½ ft.	2 50		
2½ to 3 ft.	3 00		
p. var. aureum	2 50	20 00	
rubrum (Red Maple) 8 to 10 ft.	75	6 50	50 00
10 to 12 ft. extra	1 25	10 00	75 00
12 to 14 ft. extra	1 50		
saccharum (Sugar Maple) 8 to 10 ft.	75	6 50	50 00
10 to 12 ft.	90	8 00	75 00
12 to 14 ft.	1 25	11 00	100 00
Tataricum var. ginnala (Tartarian Maple)			
3 to 4 ft.	20	1 50	
6 to 8 ft.	1 00	8 50	
8 to 10 ft.	1 25	10 00	
AESCULUS hippocastanum (Horse Chestnut)			
8 to 10 ft. extra-strong straight transplanted trees	1 00	9 00	80 00
10 to 12 ft. 2 to 2½ in. caliper	1 50	14 00	125 00
12 to 14 ft. 2¼ to 2¾ in. extra specimens	3 50	30 00	
12 to 14 ft. 3 to 3½ in. caliper extra specimens ..	4 00	35 00	
hip. var. alba plena (Double white) 6 to 8 ft.	1 00	9 00	
10 to 12 ft.	1 25	10 00	
hip. var. carnea 5 to 6 ft.	50	4 50	
6 to 8 ft.	75	6 50	
8 to 9 ft.	1 25	10 00	
hip. var. rubicunda (Red flowering Horse Chestnut)			
5 to 6 ft.	75	6 00	
7 to 8 ft.	90	7 50	
ALNUS glutinosa 4 to 5 ft.			
5 to 6 ft.	30	2 50	
5 to 6 ft.	40	3 50	
ARALIA Maximowiczii (Acanthopanax) 8 to 10 ft. ..			
10 to 12 ft. specimens	1 50		
10 to 12 ft. specimens	2 50		
(We have tested this variety on our grounds and find it perfectly hardy)			
spinosa (Hereules Club) 2 to 3 ft.	25	2 00	
4 to 5 ft.	40	3 50	
BETULA alba (European White Birch) 6 to 8 ft. ...			
8 to 10 ft.	50	4 00	30 00
8 to 10 ft.	75	6 00	50 00
10 to 12 ft.	1 00	7 50	60 00

TRADE PRICE LIST

	Each	Per 10	Per 100
BETULA Continued			
alba var. laciniata (Cut-leaved Birch) 5 to 6 ft. . .	75	6 50	
6 to 8 ft.	1 00	9 00	
8 to 10 ft.	1 25	11 00	
10 to 12 ft.	2 50		
nigra (Red or Water Birch) 10 to 12 ft.	1 25	10 00	
12 to 14 ft. 4 to 5 in. caliper	3 50		
papyracea (Canoe Birch) 6 to 8 ft.	60	5 50	35 00
8 to 10 ft.	75	5 00	40 00
10 to 12 ft.	1 00	7 50	
CARPINUS Americanus (Hornbeam) 3 to 4 ft.	40	3 00	20 00
4 to 5 ft.	50	4 00	30 00
5 to 6 ft.	60	5 00	40 00
7 to 8 ft.	75		
8 to 10 ft.	1 00		
betulus 4 to 5 ft.	40	3 50	
5 to 6 ft.	60	5 00	40 00
CASTANEA Americana (American Sweet Chestnut)			
5 to 6 ft.	60	5 00	40 00
8 to 10 ft.	1 00	8 00	60 00
10 to 12 ft.	1 50	12 50	
CATALPA speciosa 6 to 8 ft.	50	4 00	
8 to 10 ft.	75	6 00	
Bungei 5 to 6 ft. 3 yr. heads	2 00		
CERASUS Japonica rosea plena			
J. var. rosea plena pendula—Half standards	2 50		
J. var. rosea plena pendula—Pyramids	2 00		
multiflora pendula—Half standards	2 00		
Sinensis flore alba plena	2 00		
Sinensis flore rosea plena	2 50		
CERCIDIPHYLUM Japonicum 6 to 8 ft.	1 50	12 50	
CERCIS Canadensis (Judas Tree) 3 to 4 ft.			
4 to 5 ft.	40	3 50	
5 to 6 ft.	50	4 50	
7 to 8 ft.	75	6 50	
CHIONANTHUS virginica (White Fringe)			
3 to 4 ft.	50	4 00	35 00
4 to 5 ft.	65	6 00	
CORNUS florida 3 to 4 ft.			
4 to 5 ft.	40	3 50	
5 to 6 ft.	65	6 00	
7 to 8 ft.	85	7 50	
florida rubra 2½ to 3 ft.	75	7 00	
3 to 4 ft.	1 25	12 00	
CRATAEGUS Arnoldianum 2 to 3 ft.			
3 to 4 ft.	25	2 00	15 00
5 to 6 ft.	40	3 50	30 00
Desirable for hedges			
Azarolus var. Carriere 5 to 7 ft.	75	6 00	
10 to 12 ft.	2 50		
coccinea 3 to 4 ft.	40	3 50	30 00
4 to 5 ft.	50	4 50	40 00

	Each	Per 10	Per 100
CRATAEGUS Continued			
crus-galli (Cockspur Thorn) 2 to 2½ ft.	35	3 00	20 00
oxycantha (Common Hawthorn) 3 to 4 ft.	30	2 50	20 00
oxy. var. flore plena (Double white thorn)			
4 to 5 ft.	50	4 50	
5 to 6 ft.	60	5 50	
oxy. var. flore plena Paulii (Paul's Double Scarlet Thorn)			
4 to 5 ft.	50	4 50	
5 to 6 ft.	60	5 50	
oxy. var. Wm. Paul 5 to 6 ft.	60	5 50	
10 to 11 ft.	2 50		
Cordata (Washington Thorn) 3 to 4 ft.	40	3 50	30 00
4 to 5 ft.	50	4 00	
CYTISSUS laburnum 8 to 10 ft.	75	6 00	
FAGUS ferruginea (American Beech) 3 to 4 ft.	75	6 50	60 00
4 to 5 ft.	1 00	9 00	
5 to 6 ft.	1 50	12 50	
6 to 7 ft.	2 00	15 00	
sylvatica var. asplenifolia (Tree Form)			
8 to 10 ft. grafted on stems six feet high, nice tops	3 50	30 00	
syl. var. pendula 5 to 6 ft.	2 50		
syl. var. purpurea (Purple-leaved Beech)			
6 to 7 ft.	1 50	12 50	
8 to 9 ft.	2 00	17 50	
syl. var. purpurea pendula (Purple leaved weeping Beech)			
6 to 7 ft. specimens	3 50		
syl. var. Riversii (Rivers' Purple Beech)			
5 to 6 ft. three times transplanted	1 50	12 50	
6 to 7 ft.	2 50	20 00	
7 to 8 ft. fine specimens	3 50	30 00	
8 to 9 ft. specimens	5 00		
9 to 10 ft. specimens	7 50		
FRAXINUS alba (American White Ash)			
5 to 6 ft. three times transplanted	30	2 50	
6 to 7 ft.	35	3 00	
8 to 10 ft.	50	4 00	
JUGLANS nigra (Black Walnut) 3 to 4 ft.	50	4 00	
5 to 6 ft.	80		
LARIX Europaea (European Larch) 4 to 5 ft.	50	4 00	
5 to 6 ft.	60	5 00	
6 to 7 ft.	75	6 00	
LIRIODENDRON Tulipifera (Tulip Tree)			
8 to 10 ft.	1 00	8 50	
MAGNOLIA			
Lennei 3 to 4 ft.	1 50		
soulangeana 3 to 4 ft.	1 50	12 50	
4 to 5 ft.	2 50	20 00	
5 to 6 ft. fine specimens	3 50	30 00	
6 to 7 ft. fine specimens	4 00	35 00	

TRADE PRICE LIST

	Each	Per 10	Per 100
MAGNOLIA Continued			
speciosa 3 to 4 ft.	2 00	17 50	
4 to 5 ft.	2 50	20 00	
5 to 6 ft. fine specimens	3 50	30 00	
6 to 7 ft. fine specimens	4 00	35 00	
stellata (Halleana) 2 to 3 ft. bushy specimens	2 00	17 50	
3 to 4 ft. bushy specimens	3 50	30 00	
MORUS tatarica pendula (Tea's Weeping Mulberry)			
6 yr. heads XX	3 00	25 00	
These are nice symmetrical specimens			
NYSSA multiflora 5 to 6 ft.	1 00		
PLATANUS occidentalis (Plane Tree) 8 to 10 ft.	75	6 00	
10 to 12 ft.	1 00	7 50	
POPULUS alba var. Bolleana 8 to 10 ft.	60	5 00	
10 to 12 ft.	75	7 00	
12 to 15 ft.	1 25	10 00	
3 to 4 in. caliper specimens	\$2 00 to \$3 00 each		
alba var. canescens 10 to 12 ft.	1 00	7 50	65 00
14 to 16 ft.	1 50	12 50	
deltoides (Carolina Poplar) 6 to 8 ft.	30	2 50	
8 to 10 ft.	40	3 50	
10 to 12 ft.	60	5 00	45 00
12 to 14 ft.	1 00	7 50	
16 to 18 ft. specimens	2 00		
fastigiata (Lombardy Poplar) 8 to 10 ft.	50	4 50	35 00
10 to 12 ft.	75	6 50	50 00
12 to 14 ft.	1 00	9 00	75 00
14 to 16 ft.	1 50	12 50	100 00
Simonsii 10 to 12 ft.	1 00	8 50	75 00
20 ft. specimens	2 00		
A desirable shade tree for seashore planting			
PRUNUS pissardi (Purple-leaved Plum) 4 to 5 ft.	30	2 50	
5 to 6 ft.	40	3 50	30 00
6 to 7 ft. good stocky trees	50	4 50	40 00
7 to 8 ft. good stocky trees	75	6 50	
PTELEA trifoliata (Hop Tree) 3 to 4 ft.	20	1 50	
4 to 5 ft.	35	3 00	
PYRUS angustifolia (Bechtel's Double Flowering Crab)			
3 to 4 ft.	50	4 50	
4 to 5 ft.	75	6 00	
floribunda 4 to 5 ft.	75	6 50	
flor. var. atrosanguinea 4 to 5 ft.	75	6 50	
Parkmanni 4 to 5 ft.	75		
var. Scheideckeri 4 to 5 ft.	75	6 50	
QUERCUS bicolor (Swamp White Oak) 6 to 8 ft. ..	1 00		
8 to 10 ft.	1 50		
coccinea 6 to 8 ft.	1 25	10 00	
8 to 10 ft.	1 75		
10 to 12 ft.	2 50		

	Each	Per 10	Per 100
QUERCUS Continued			
<i>palustris</i> (Pin Oak) 5 to 6 ft.	85	7 50	70 00
6 to 8 ft.	1 00	9 00	85 00
8 to 10 ft.	1 50	12 50	
10 to 12 ft.	2 25	20 00	
<i>rubra</i> (Red Oak) 6 to 8 ft.	1 00	9 00	80 00
8 to 10 ft.	1 25	12 00	100 00
10 to 12 ft.	2 00		
SALISBURIA <i>adiantifolia</i> (Ginko Tree) 6 to 8 ft. ...	75	6 00	
SALIX <i>alba</i> 5 to 6 ft.	25	2 00	15 00
<i>babylonica</i> 6 to 8 ft.	75	6 50	
<i>pentandra</i> (Laurel-leaved Willow) 5 to 6 ft.	40	2 50	20 00
6 to 7 ft.	50	4 00	30 00
7 to 8 ft.	60	5 00	45 00
<i>rosmarinifolia</i> (Rosemary Willow)			
3½ to 4 ft. bushy	40	3 50	30 00
4 to 5 ft. bushy	50	4 00	
<i>vitellina aurea</i> 5 to 6 ft.	35	3 00	
6 to 8 ft.	40	3 50	
<i>v. aurea</i> var. <i>pendula</i> 5 to 6 ft.	40	3 50	
SORBUS <i>aucuparia</i> (European Mountain Ash)			
6 to 7 ft.	50	4 00	
8 to 10 ft.	60	5 00	
10 to 12 ft.	85	7 50	65 00
<i>sorbus quercifolia</i> (Oak-leaved Mountain Ash)			
8 to 10 ft.	1 00	8 00	
SYRINGA <i>Japonica</i> (Japanese Tree Lilac)			
4 to 5 ft.	50	4 00	
6 to 8 ft.	75	5 00	
10 to 12 ft.	1 25	10 00	
<i>Pekinensis</i> (Chinese Tree Lilac) 3 to 4 ft.	50	4 00	
4 to 5 ft.	75	6 50	
TAXODIUM <i>distichum</i> (Bald Cypress) 3 to 4 ft.	40	3 00	
4 to 5 ft.	50	4 00	
TILIA <i>Americana</i> (American Linden) 8 to 10 ft.	90	8 00	
10 to 12 ft. 1¾ to 2 in. caliper	1 50	12 50	110 00
12 to 14 ft. 2¼ to 2¾ in. caliper	2 00	17 50	
12 to 14 ft. 2½ to 3 in. caliper	3 00		
<i>Europaea</i> (European Linden) 6 to 8 ft.	60	5 00	
8 to 10 ft. 1¼ to 1½ in. caliper	1 00	8 50	75 00
10 to 12 ft.	1 50	12 50	
<i>Eup.</i> var. <i>dasystyla</i> 10 to 12 ft.	1 25	10 00	
12 to 14 ft. 2 to 2½ in.	2 50	22 50	
2½ to 3 in. specimens	3 50		

TILIA Continued

	Each	Per 10	Per 100
Eup. var. platyphylla			
8 to 10 ft. 1½ to 2 in. caliper	1 00	9 00	85 00
10 to 12 ft. 2 to 2¼ in. caliper	1 50	14 00	125 00
12 to 14 ft. 2¾ to 3 in. caliper	3 00	25 00	

☞ Our Lindens are especially fine, have straight, well-developed tops, and have been several times transplanted.

ULMUS Americana (American Elm) 8 to 10 ft.....	75	6 00	50 00
10 to 12 ft.....	1 00	8 50	75 00
12 to 14 ft. 2 to 2½ in. caliper	1 75	15 00	
3 to 4 in. caliper, specimens	\$3 50 to 7 00		
campestris (English Elm) 8 to 10 ft.	1 00	8 50	
10 to 12 ft.	1 75	15 00	
12 to 14 ft.	2 00	17 50	
14 to 16 ft. 2½ to 3 in.	2 50	20 00	
var. Wheatleyii 8 to 10 ft.	1 25	10 00	
10 to 12 ft.	1 50	12 50	
Dumont 8 to 10 ft.	1 50	12 50	

☞ Rapid grower, fastigate form, valuable for seashore

fulva var. montana (Scotch or Wych Elm)

8 to 10 ft. 1 00 9 00

Presthans 8 to 10 ft. 1 00 9 00

☞ Broad leaf, pyramidal rapid growing Eup. Elm

LARGE SPECIMEN TREES

We have a few of the following varieties of trees which will caliper from 3 to 5 inches and are in good condition for transplanting.

Prices will be given upon application.

NORWAY MAPLE

SILVER MAPLE

HORSE CHESTNUT

AMERICAN ELM

AMERICAN LINDEN

DASYSTYLA LINDEN

PLATYPHYLLOS LINDEN

BOLLEANA POPLAR

CAROLINA POPLAR

AUTO-TRUCK DELIVERY

We make deliveries by auto-truck within reasonable distances from the nurseries when desired, and charge according to mileage and size of truck used. We are located 21 miles west of Boston.

DECIDUOUS SHRUBS

Our shrubs are grown with plenty of space in the nursery rows to insure good, vigorous growth, and they lift with strong roots; they are healthy and make quick development after planting.

	Each	Per 10	Per 100
AMELANCHIER canadensis 2 to 3 ft.	25	1 50	12 00
AMORPHA fruticosa 2 to 3 ft.	15	1 00	8 00
3 to 4 ft.	20	1 20	10 00
ARALIA pentaphylla 2 to 3 ft.	15	1 00	8 00
3 to 4 ft.	20	1 50	10 00
spinosa (See under trees).			
AZALEA arborescens 1½ to 2 ft. bushy plants	90	8 00	
2 to 2½ ft. bushy	1 25	10 00	
2½ to 3 ft. bushy	1 50	12 50	
calendulacea 18 to 24 in.	90	8 00	
2 to 2½ ft.	1 25	10 00	
mollis 12 to 18 in. well branched and budded.	40	3 50	30 00
18 to 24 in.	75	6 00	50 00
mollis Standards 2½ to 3 ft. stems	1 25	10 00	
pontica (Ghent Azalea)			
18 to 24 in. stocky, well-budded plants	1 25	10 00	
Named varieties 2 to 2½ ft.	1 50	12 50	
Varieties: Cardinal, bright red; Bouquet de flora, pink; Davesii, white; Nancy Waterer, yellow; Pallas, dark red.			
Vaseyi 18 to 24 in.	1 25	10 00	
viscosa 18 to 24 in.	1 00	9 00	
BACCHARIS halimifolia 2 to 3 ft.	15	1 20	
BERBERIS Thunbergii (Japanese Barberry)			
12 to 15 in. bushy, \$50 00 per thousand			6 00
15 to 18 in. bushy, \$60 00 per thousand	15	1 00	7 00
1½ to 2 ft. bushy	20	1 50	8 00
2 to 2½ ft.	25	2 00	15 00
vulgaris (Common Barberry) 2 to 2½ ft.	15	1 20	8 00
2½ to 3 ft.	20	1 50	10 00
3 to 3½ ft.	25	2 00	
vulg. var. purpurea (Purple-leaved Barberry)			
2 to 3 ft.	15	1 20	6 00
3 to 4 ft.	20	1 50	10 00
CALYCANTHUS floridus 2 to 3 ft.	20	1 50	10 00
CARAGANA arborescens (Siberian Pea) 3 to 4 ft.	20	1 50	8 00
4 to 5 ft.	25	2 00	15 00
CARYOPTERIS mastacanthus (Blue Spirea)			
2 yrs.	20	1 50	
CEANOTHUS Americanus 15 to 18 in.	20	1 50	
CEPHALANTHUS occidentalis (Button Bush)			
2 to 3 ft.	20	1 20	8 00
3 to 4 ft.	25	1 50	10 00
CHIONANTHUS virginica (See under Trees)			

	Each	Per 10	Per 100
CLETHRA alnifolia (Sweet Pepper Bush)			
1½ to 2 ft.....	15	1 20	\$10 00
2 to 3 ft.....	20	1 50	12 00
COLUTEA arborescens 3 to 4 ft.	20	1 50	10 00
4 to 5 ft.....	25	2 00	15 00
CORNUS alternifolia (Blue Dogwood) 2 to 3 ft.	20	1 20	10 00
3 to 4 ft.....	25	1 50	
4 to 5 ft.....	30	2 00	
Mascula (Cornelian Cherry) 2 to 3 ft.	15	1 20	
3 to 4 ft.....	20	1 50	
4 to 5 ft.....	25	2 00	
paniculata (Gray Dogwood) 2 to 3 ft.	15	1 20	10 00
3 to 4 ft.....	20	1 50	
sanguinea (Red Osier) 2½ to 3 ft.	20	1 50	10 00
sericea (Silky Cornel) 2 to 3 ft.....	15	1 20	8 00
4 to 5 ft.....	25	1 50	12 00
5 to 6 ft.....	30	2 50	15 00
Siberica or alba (Red barked Dogwood)			
2 to 3 ft.....	15	1 00	7 00
3 to 4 ft.....	20	1 50	9 00
4 to 5 ft.....	25	2 00	
5 to 6 ft.....	40	3 00	
Sib. var. elegantissima variegata 2 to 3 ft.	25	2 00	
5½ to 6 ft. pyramids	1 00		
Sib. var. Spaethi aurea 2 ft.	25	2 00	
stolonifera 3 to 4 ft.	20	1 50	10 00
4 to 5 ft.....	25	2 00	15 00
S. var. Baleyi 5 to 6 ft.	30	2 50	
S. var. lutea (Yellow-barked Dogwood) 2 to 3 ft. .	20	1 50	12 00
CORONILLA Emerus 18 to 24 in.	25	1 50	
CORYLUS Americana 2 to 3 ft.	20	1 50	12 00
Avellana var. aurea 2 to 2½ ft.	25	2 00	15 00
COTONEASTER Simonsi 1½ to 2 ft.	25	2 00	
CYDONIA Japonica (Japan Quince) 1½ to 2 ft.	15	1 00	8 00
DAPHNE mezereum var. album 12 to 18 in.	35		
m. var. roseum 12 to 18 in.	35		
DESMODIUM penduliflorum 3 yrs. field-grown	20	1 50	12 00
DEUTZIA candidissima 3 to 4 ft.	20	1 50	10 00
crenata 3 to 4 ft.	20	1 50	10 00
crenata var. Pride of Rochester 3 to 4 ft.	20	1 50	10 00
c. var. Waterii 3 to 4 ft.	20	1 50	10 00
gracilis 15 to 18 in.	15	1 20	9 00
18 to 24 in.	20	1 50	12 00
Lemoinei 2 to 3 ft. bushy plants	20	1 50	10 00
DIERVILLA lutea 2 to 3 ft.	15	1 20	10 00
3 to 4 ft.....	20	1 50	
ELEAGNUS angustifolia 2 to 3 ft.	20	1 20	10 00
3 to 4 ft.....	25	1 50	12 00


	Each	Per 10	Per 100
ELEAGNUS Continued			
argentea 2 to 3 ft.	20	1 20	10 00
3 to 4 ft.	25	2 00	15 00
longipes 2 to 2½ ft.	20	1 20	10 00
EUONYMUS alatus			
2 to 3 ft.	30	2 00	15 00
3 to 4 ft.	45	3 50	25 00
4 to 5 ft. specimens	1 50	12 50	100 00
5 to 6 ft. specimens	2 50	20 00	
Europaeus 3 to 4 ft.	25	2 00	15 00
4 to 5 ft.	30	2 50	
Obovatus 18 to 24 in.	20	1 50	10 00
☞ Desirable for covering rocky banks.			
EXOCHORDA grandiflora 2 to 3 ft.			
3 to 4 ft.	25	2 00	
FORSYTHIA Fortunei (Golden Bell) 2 to 3 ft.			
3 to 4 ft.	20	1 50	9 00
4 to 5 ft.	25	1 80	12 00
suspensa 2 to 3 ft.	20	1 50	10 00
3 to 4 ft.	25	2 00	12 00
viridissima 3 to 4 ft.	20	1 50	10 00
4 to 5 ft.	25	2 00	12 00
HAMAMELIS Virginica (Witch Hazel) 3 to 4 ft.			
4 to 5 ft.	30	2 50	20 00
5 to 6 ft.	40	3 50	
HALESIA tetraptera (Silver Bell) 4 to 5 ft.			
40	3 50		
HIBISCUS (Althea or Rose of Sharon)			
Note: Hibiscus should not be planted in the fall.			
Orders taken for spring delivery only.			
HYDRANGEA			
arborescens grandiflora (Hills of Snow)			
1½ to 2 ft.	25	2 00	15 00
paniculata grandiflora 2 to 3 ft.			
3 to 3½ ft.	25	2 00	15 00
radiata 2½ to 3½ ft.	20	1 25	10 00
vestita 2½ to 3 ft.	25	1 50	
HYPERICUM aureum 2 to 3 ft.			
20	1 20	9 00	
densiflorum 2½ to 3 ft.			
20	1 50		
Kalmianum 2½ to 3 ft.			
20	1 20	9 00	
Moserianum 2 yrs.			
20	1 50	12 00	
ILEX verticillata (Black Alder) 1½ to 2 ft.			
2 to 3 ft.	25	2 00	15 00
3 to 4 ft.	35	2 50	20 00
v. var. laevigata (large fruiting variety)			
1½ to 2 ft.	25	2 00	15 00
2 to 3 ft.	30	2 50	20 00
3 to 4 ft.	40	3 50	

TRADE PRICE LIST

13

	Each	Per 10	Per 100
KERRIA Japonica 2 to 2½ ft.	\$ 20	\$1 20	\$10 00
Japonica var. flora plena 2 to 2½ ft.	20	1 20	
Japonica var. follis variegatis 12 to 15 in.	20	1 50	
LIGUSTRUM amurense (Amoor River Privet)			
2 to 3 ft.	20	1 20	9 00
3 to 4 ft. XX	25	2 00	
ibota (Chinese Privet) 1½ to 2 ft.			6 00
2 to 3 ft.	15	1 00	7 00
3 to 4 ft.	20	1 50	12 00
ibota var. Regelianum (Spreading Form)			
18 to 24 in.	20	1 50	10 00
media (Japanese Privet) 2 to 2½ ft.	15	1 00	7 00
3 to 4 ft.	20	1 50	12 00
ovalifolium (California Privet)			
12 to 18 in.			3 00
18 to 24 in.			4 00
2 to 3 ft. \$35 00 per thousand.	15	1 00	5 00
3 to 4 ft. \$50 00 per thousand.	20	1 20	6 00
vulgare 2½ to 3 ft.	15	1 20	9 00
LINDERA Benzoin 2 to 3 ft.	25	2 00	
LONICERA fragrantissima 2 to 3 ft.	25	2 00	
Ledebouri 18 to 24 in.	20	1 50	
Morrowii 2 to 3 ft.	15	1 20	8 00
3 to 4 ft.	20	1 50	10 00
4 to 5 ft.	25	2 00	15 00
Morrowii, spreading form 2 to 3 ft.	20	1 50	12 00
3 to 4 ft.	25	2 00	15 00
Ruprechtiana 2 to 3 ft.	15	1 20	8 00
3 to 4 ft.	20	1 50	10 00
Tatarica 2½ to 3 ft.	15	1 20	9 00
3 to 4 ft.	20	1 50	10 00
4 to 5 ft.	25	2 00	
T. var. grandiflora alba 2 to 3 ft.	15	1 20	9 00
T. var. grandiflora rosea 3 to 4 ft.	20	1 50	12 00
4 to 5 ft.	30	2 50	
MAHONIA aquifolium (See evergreen shrubs)			
PANAX Sessiliflora 3 to 4 ft.	20	1 50	12 00
5 to 6 ft. bushy	75	6 50	
PHILADELPHUS coronarius (Mock Orange)			
3 to 4 ft.	20	1 50	12 00
c. var. aureus (Golden Syringa) 12 to 15 in.	25	2 00	
Gordonianus 3 to 4 ft.	15	1 20	10 00
4 to 5 ft.	20	1 50	12 00
grandiflorus 3 to 4 ft. stocky plants	20	1 20	9 00
4 to 5 ft.	25	2 00	12 00
Lemoinei 2 to 3 ft.	20	1 50	12 00
3 to 4 ft.	25	2 00	
var. Avalanche 2 ft.	20	1 50	
Mont Blanc 2½ to 3 ft.	25	1 20	

	Each	Per 10	Per 100
PHOTINIA villosa 4 to 5 ft.	60		
POTENTILLA fruticosa 18 to 24 in.	15	1 00	7 00
2 to 3 ft.	20	1 50	
PRUNUS sinensis alba plena (Double White Almond)			
2 to 3 ft.	25	2 00	
s. var. rosea plena (Double Pink Flowering Almond)			
2 to 3 ft.	25	2 00	
triloba 2 to 3 ft.	30	2 50	
PTELEA (See under Trees)			
PYRUS arbutifolia (Chokeberry) 2 to 3 ft.	15	1 00	8 00
3 to 4 ft.	20	1 50	10 00
nigra 3 to 4 ft.	20	1 50	
RHAMNUS catharticus (Buckthorn) 4 to 5 ft.	30	2 50	
5 to 6 ft.	40	3 50	
frangula			
2 to 3 ft.	20	1 20	8 00
3 to 4 ft.	25	1 50	10 00
RHODOTYPUS kerrioides 2 to 3 ft.	15	1 20	10 00
3 to 4 ft.	20	1 50	12 00
RHUS aromatica (Fragrant Sumac) 15 to 18 in.	20	1 50	12 00
1½ to 2 ft.	30	2 50	18 00
Cotinus (Purple Fringe) 2 to 3 ft.	20	1 50	
3 to 4 ft.	25	2 00	
4 to 5 ft.	35	3 00	
glabra (Smooth Sumac) 2 to 3 ft.	20	1 20	10 00
3 to 4 ft.	25	1 50	12 00
4 to 5 ft.	30	2 00	
typhina (Staghorn Sumac) 3 to 4 ft.	20	1 50	10 00
5 to 6 ft.	35	2 50	
6 to 8 ft.	50	4 00	
RIBES aureum (Yellow Flowering Currant)			
2 to 3 ft.	20	1 50	12 00
3 to 4 ft.	25	2 00	
ROSA blanda 3 to 4 ft.	20	1 50	10 00
Carolina (Swamp Rose) 1½ to 2 ft.	15	1 20	10 00
3 to 4 ft.	20	1 50	
lucida 1½ to 2 ft.	15	1 20	9 00
var-alba 12 to 18 in.	20	1 80	15 00
multiflora Japonica 2 to 3 ft.	15	1 20	8 00
3 to 4 ft.	20	1 50	10 00
nitida 12 to 18 in.	15	1 00	8 00
18 to 24 in.	20	1 20	10 00
rubiginosa (Sweet Briar Rose) 3 to 4 ft.	20	1 20	8 00
4 to 5 ft.	25	1 50	10 00
rubrifolia (Red-leaved Rose)			
2½ to 3 ft. strong plants	15	1 20	8 00
3 to 4 ft.	20	1 50	10 00

	Each	Per 10	Per 100
ROSA Continued			
rugosa 18 to 24 in. XX	20	1 20	9 00
2 to 2½ ft. XX	25	1 50	12 00
3 to 4 ft.	25	2 00	15 00
rugosa alba 18 to 24 in.	20	1 20	10 00
2 to 2½ ft.	25	1 50	12 00
setigera (Prairie Rose) 2 to 3 ft.	15	1 20	8 00
3 to 4 ft.	20	1 50	10 00
4 to 5 ft.	25	2 00	
Wichuraiana 2 yrs.	20	1 50	10 00
RUBUS odoratus 2 to 3 ft.	15	1 00	8 00
laciniata (Cut-leaved Blackberry)	30	2 00	
 Good for covering rocks.			
SAMBUCUS Canadensis (Common Elder)			
3 to 4 ft.	25	1 50	12 00
nigra aurea (Golden Elder) 2 to 3 ft.	20	1 50	12 00
3 to 4 ft.	25	2 00	15 00
SPIRAEA arguta 3 to 4 ft.	20	1 50	10 00
4 to 5 ft. XX specimens	60	5 00	
blumeii (Pink) 18 to 24 in.	20	1 50	12 00
Bumalda 1½ to 2 ft.	15	1 20	
B. var. Anthony Waterer			
12 to 15 in. bushy plants	15	1 20	9 00
18 to 24 in.	20	1 50	12 00
callosa 3 to 4 ft.	20	1 50	
c. var. alba 18 to 24 in. bushy plants	15	1 20	10 00
c. var. superba 15 to 18 in.	15	1 20	8 00
opulifolia (Nine Bark) 3 to 4 ft.	20	1 50	10 00
4 to 5 ft.	25	1 80	12 00
o. var. aurea (Golden Spiraea) 3 to 4 ft.	15	1 20	10 00
4 to 5 ft.	20	1 50	12 00
5 to 6 ft.	30	2 50	18 00
prunifolia (Bridal Wreath) 3 to 4 ft.	25	1 50	12 00
rotundifolia 3 to 4 ft.	20	1 50	
sorbifolia (Ash-leaved Spiraea) 3 to 4 ft.	20	1 50	10 00
Thunbergii 1½ to 2 ft.	15	1 00	8 00
2 to 2½ ft.	20	1 50	10 00
ulmifolia (white, very fine) 3 to 4 ft.	25	2 00	10 00
Van Houttei 3 to 4 ft.	20	1 50	12 00
4 to 5 ft.	30	2 00	15 00
5 to 6 ft.	50	4 00	25 00
STEPHANANDRA flexuosa 3 to 4 ft.	30	2 00	
SYMPHORICARPUS racemosus (Snowberry)			
2 to 3 ft. strong stock	15	1 20	9 00
vulgaris (Indian Currant) 2 to 2½ ft.	15	1 00	6 00
2½ to 3 ft.	20	1 20	8 00
SYMPLOCOS cratargoides 3 to 4 ft.	50	4 50	
4 to 5 ft.	75		

	Each	Per 10	Per 100
SYRINGA Josikaea 3 to 4 ft.	25	2 00	18 00
4 to 5 ft.....	35	3 00	
Persica (Persian Lilac) 2 to 3 ft.	25	2 00	
Rothomagensis 2½ to 3 ft.	25	2 00	
SYRINGA villosa 2 to 3 ft.	25	2 00	
3 to 4 ft.....	35	2 50	
vulgaris (Common Lilac) 2 to 3 ft.	20	1 50	10 00
3 to 4 ft.....	25	1 80	15 00
4 to 5 ft.....	40	3 50	
vulgaris alba (Common White Lilac) 2 to 3 ft.	20	1 50	12 00
3 to 4 ft.....	25	1 80	15 00
4 to 5 ft.....	40	3 50	30 00
v. var. Charles X. (single reddish purple) 2 to 3 ft.	25	2 00	
v. var. Marie Le Gray (single white) 2 to 3 ft. ...	30	2 50	
v. var. Mme. Lemoine (large double white)			
2 to 3 ft.....	30	2 50	
3 to 4 ft.....	40	3 50	
v. var. rubra de Marley (single rosy purple)			
2 to 3 ft.....	25	2 00	
v. var. S. de L. Spaeth (single dark red) 2 to 3 ft.	25	2 00	
TAMARIX Africana 2½ to 3 ft.	20	1 50	10 00
Gallica 3 to 4 ft.	20	1 50	10 00
VACCINIUM corymbosum (High Bush Blueberry).			
1½ to 2 ft.	50	4 00	
VIBURNUM dentatum 2 to 3 ft.	15	1 20	10 00
3 to 4 ft.....	20	1 50	12 00
4 to 5 ft.....	25	2 00	15 00
5 to 6 ft.....	35	3 00	25 00
lantana 2 to 3 ft.	20	1 50	
3 to 4 ft.....	25	2 00	
lentago 2 to 3 ft.	25	2 00	
3 to 4 ft.....	30	2 50	
4 to 5 ft.....	25	1 80	15 00
opulus (High Bush Cranberry) 2 to 3 ft.	15	1 20	10 00
3 to 4 ft.....	20	1 50	12 00
opulus sterilis (Common Snowball) 3 to 4 ft.	20	1 50	
4 to 5 ft.....	30	2 00	15 00
Sieboldii 4 to 5 ft.	60	5 00	
Extra bushy specimens 5 to 6 ft.....	1 00		
tomentosum 2 to 3 ft.	20	1 50	
3 to 4 ft.....	25	2 00	18 00
4 to 5 ft.....	40	3 00	
tomentosum var. plicatum (Japanese Snowball)			
2 to 3 ft.....	25	2 00	18 00
3 to 4 ft.....	35	3 00	

	Each	Per 10	Per 100
WEIGELA alba 3 to 4 ft.	25	2 00	15 00
candida 3 to 4 ft.	25	2 00	15 00
Desboisi 3 to 4 ft.	25	2 00	15 00
Eva Rathke 1½ to 2 ft.	25	2 00	15 00
floribunda 3 to 4 ft.	25	2 00	15 00
rosea 3 to 4 ft.	25	2 00	15 00
variegata 2 ft.	25	2 00	
XANTHORRHIZA apiifolia 10 to 12 in.	20	1 50	
YUCCA filamentosa 4 yrs. XX	15	1 20	10 00

CLIMBING AND TRAILING ROSES

Crimson Rambler 2 yrs. strong	30	2 50	20 00
Dorothy Perkins (Pink) 2 yrs.	20	1 50	
Dorothy Perkins (Excelsa, Red) 2 yrs.	30	2 50	
Farquhar 2 yrs. strong	30	2 50	
Hiawatha (Single red) 2 yrs.	30	2 50	
Tausendschon	30	2 50	

HARDY ROSES

Hybrid Perpetual and Other Varieties.

Strong Field-grown Plants; 25 each; \$2.00 per 10; \$15.00 per 100

Everblooming Bedding Roses are marked with a * and are 30 cts. each, \$2.50 per 10, \$20.00 per 100

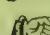
- Alfred Colomb—Carmine-crimson, large, very fragrant.
- Anne de Diesbach—Carmine, very large, double fragrant.
- *Baby Rambler—Free blooming.
- Baron de Bonstettin—Velvety Maroon shaded with deep crimson.
- Baroness Rothschild—Light Pink, large, free blooming.
- Fisher Holmes—Brilliant crimson.
- Frau Karl Druschki—Pure, paper-white, large.
- Gen. Jacqueminot—Brilliant crimson, large.
- *Gruss an Teplitz—Deep crimson-scarlet.
- *Hugh Dickson—Brilliant crimson, free bloomer.
- *Madam Caroline Testout—Flowers large, double, silvery rose.
- Madam Gabriel Luizet—Silvery pink, fragrant, fine foliage..
- Magna Charta —Pink, suffused with carmine, large.
- Marchioness of Londonderry—Very large flowers, ivory-white.
- Margaret Dickson,—White, with pale flesh centre, fragrant.
- M. P. Wilder—Cherry-carmine, fragrant, large flowers.
- Mrs. John Laing—Soft pink; large and exceedingly fragrant.
- Mrs. R. G. Sharman-Crawford—Deep rosy pink, large flowers.
- Paul Neyron—Deep rose, very large, fragrant.
- Soleil d’Or—Varying in color from gold and orange to reddish gold.
- Victor Verdier—Bright rose, carmine center.


VINES, AND CLIMBERS

	Each	Per 10	Per 100
ACTINIDIA arguta 3 yrs.	20	1 50	
polygama 3 yrs.	20	1 50	
AKEBIA quinata 3 yrs. strong plants	20	1 50	
AMPELOPSIS quinquefolia (Virginia Creeper)			
3 yrs. strong field-grown plants	15	1 00	7 00
4 yrs.	20	1 20	9 00
quinq. var. Engelmanni 2 yrs.	15	1 00	8 00
3 yrs. fine strong plants field-grown	20	1 50	10 00
Veitchii (Boston Ivy) 2 yrs. field-grown	15	1 20	10 00
ARISTOLOCHIA sipho (Dutchman's Pipe Vine)			
3 yrs.	50	3 50	
BIGNONIA radicans (Trumpet Vine)			
3 yrs. strong plants	20	1 20	10 00
CELASTRUS articulatus (Japanese Bittersweet)			
3 yrs.	20	1 50	12 00
CLEMATIS Henryii 2 yrs. field-grown	30	2 50	
Jackmanni 2 yrs. field-grown	30	2 50	
Mme. Baron Viellard 2 yrs. field-grown	30	2 50	
paniculata 2 yrs. field-grown	20	1 20	8 00
3 yrs. field-grown	25	1 50	10 00
virginiana 2 yrs.	15	1 20	8 00
DOLICHOS Japonicus (Kudzu Vine) strong plants ..	25	2 00	
EUONYMUS radicans (See under Evergreen Shrubs)			
HEDERA Helix (English Ivy) 2 yrs.	25	2 20	18 00
LONICERA (Honeysuckle)			
brachypoda	20	1 20	9 00
b. var. aurea	20	1 00	8 00
Halleana (Hall's Japan Honeysuckle)			
3 yrs. strong field-grown plants	20	1 50	10 00
LYCIUM barbarum (Matrimony Vine)			
3 to 4 ft. field-grown transplanted	15	1 20	8 00
VITIS Coignetiae 3 yrs.	30	2 50	
heterophylla 3 yrs.	25	2 00	
WISTARIA Chinensis (Chinese Wistaria) blue			
3 yrs.	40	3 00	
4 yrs. extra strong	60	5 00	
We have a few extra large Wistaria Chinensis, seven or eight years old.	2 50		
Chinensis (Tree Form)			
3 to 4 ft. stems 6 yr. heads	2 50	20 00	
Chinensis alba (Chinese White Wistaria)			
3 yrs. strong plants	50	4 50	
multijuga 3 yrs.	35	3 00	
m. var. alba 2 yrs.	40	3 50	


HARDY EVERGREEN TREES


The Evergreens we list are well developed and heavily rooted; they have been several times transplanted. We have a quantity of large specimens not listed; these can be selected at the nursery when prices will be given. A visit to our nurseries will pay you.

 We always burlap the roots, unless otherwise requested, at an additional expense of five (5) cents per tree for small trees under three (3) feet and ten (10) cents per tree for all sizes above three feet.

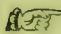
	Each	Per 10	Per 100
ABIES balsamea (Balsam Fir) 2 to 3 ft.....	50	4 00	30 00
3 to 4 ft.	75	6 00	
4 to 5 ft.	1 00	9 00	
6 to 7 ft.	1 50	12 50	
b. var. Hudsonia 12 to 15 in. spread.....	3 00		
Concolor (Silver Fir) 2½ to 3 ft.....	3 00	25 00	
3 to 4 ft.....	3 50	30 00	
4 to 5 ft. specimens.....	4 00	35 00	
5 to 6 ft. specimens.....	6 00	55 00	
 We have large specimens of <i>Abies concolor</i> , from six to nine feet. Prices from \$7 00 to \$15 00 each, according to size, also a few larger specimens, prices on application.			
Fraseri (Fraser's Fir) 3 to 4 ft.....	1 00	8 00	65 00
4 to 5 ft.....	1 50	12 50	100 00
5 to 6 ft.....	2 00	17 50	
Nordmanniana (Nordman's Fir) 2 to 2½ ft....	1 50	12 50	
2½ to 3 ft.....	2 00	17 50	
3 to 4 ft.....	2 50		
Veitchii (Japanese Fir) 3 to 4 ft.....	2 50	22 50	
4 to 5 ft.	3 00	27 50	
5 to 6 ft. specimens	6 00		
JUNIPERUS Chinensis (Chinese Juniper)			
2 to 2½ ft.	1 25	10 00	
2½ to 3 ft.	1 50	14 00	
3 to 4 ft.	2 00	15 00	
4 to 5 ft.	2 50	22 50	
5 to 6 ft.	3 50	32 50	
C. var. aurea 1½ to 2 ft.....	1 00	8 50	
2 to 2½ ft.....	1 50	12 50	
2½ to 3 ft.	2 00	17 50	
C. var. recurva squamata 12 to 15 in.....	1 25	10 00	
Communis (Dwarf Spreading or Prostrate Juniper)			
12 to 15 in.	50	4 50	
15 to 18 in.....	60	5 50	
18 to 24 in.....	75	6 50	60 00
24 to 30 in.....	1 25	10 00	
30 to 36 in.	1 50		
3 to 4 ft. specimens.....	\$3 00 to	4 00	

JUNIPERUS Continued	Each	Per 10	Per 100
com. var. aurea (Golden Spreading Juniper)			
15 to 18 in.	1 00	8 50	
com. var. Cracovia 2 to 2½ ft.	1 50	12 50	
com. var. Hibernica (Irish Juniper) 18 to 24 in.	50	4 00	
24 to 30 in.	60	5 00	
30 to 36 in.	75	6 50	
com. var. Suecica (Swedish Juniper)			
18 to 24 in.	40	3 50	30 00
24 to 30 in.	60	5 00	45 00
30 to 36 in.	75	7 00	60 00
3 to 3½ ft.	1 25	11 00	
Japonica var. argentea 18 to 24 in.	1 00	8 50	
2½ to 3 ft.	1 50		
3 to 4 ft.	2 00		
4 to 5 ft. specimens.	4 00		
Jap. var. aurea 2 to 3 ft.	2 00	17 50	
Pfizeriana 2½ to 3 ft.	2 50	18 50	
3 ft. specimens	3 00	22 50	
prostrata (Trailing Juniper) 15 to 18 in.	75	6 50	
18 to 24 in.	1 00	8 50	65 00
Sabina (Savin Juniper) 20 to 24 in.	1 00	8 50	
24 to 30 in.	1 25	10 00	
S. var. tarmariscifolia 18 to 24 in.	1 75	15 00	
Stricta 15 to 18 in. specimens.	75	6 50	50 00
18 to 24 in. specimens.	1 00	9 00	75 00
2 to 2½ ft. specimens.	1 50	12 50	
3 to 3½ ft. XX specimens.	2 50		
Juniperus stricta is rather a slow growing dwarf Juniper, grows very compact, perfectly hardy, and forms a perfect specimen where a dwarf evergreen is required.			
Virginiana (Red Cedar)			
3 to 4 ft.	1 25	10 00	85 00
4 to 5 ft.	2 00	17 50	
5 to 6 ft.	2 50	20 00	
V. var. elegantissima 2 to 2½ ft.	1 50	12 50	
4 to 5 ft. \$3 00 to	5 00		
V. var. aurea 2½ to 3 ft.	2 25		
3 to 3½ ft.	3 00		
3½ to 4 ft. bushy.	4 00		
V. var. glauca 4 to 5 ft. extra specimens.	3 50	30 00	
5 to 6 ft. extra specimens.	5 00	45 00	
6 to 7 ft. extra specimens \$6 00 to	7 50		
V. var. Globosa 12 to 15 in.	1 50	12 50	
V. var. schottii 4 to 5 ft.	3 00	27 50	

	Each	Per 10	Per 100
PICEA alba (White Spruce) 2 to 3 ft.....	50	4 00	35 00
3 to 4 ft.	1 00	7 50	60 00
4 to 5 ft.	1 50	12 50	100 00
5 to 6 ft.	2 00	17 50	
6 to 7 ft.	3 00	27 50	
7 to 8 ft.	4 00		
(We have a large stock of White Spruce. Our trees have been planted from 2½ to 3 ft. apart and have developed into fine specimens, very compact and most of them quite high colored.)			
Alcockiana (Alcock's Spruce) 3 to 4 ft.....	2 50	22 50	
4 to 5 ft.	3 00	27 50	
5 to 6 ft.	4 00	37 50	
Doumetti 4 to 4½ ft. broad specimens.....	4 00		
Engelmanni 3 to 4 ft.	2 50	20 00	
4 to 5 ft.	3 50	30 00	
5 to 6 ft. specimens	5 00	45 00	
6 to 7 ft. specimens	7 00	65 00	
8 to 9 ft. specimens	10 00	90 00	
9 to 10 ft. specimens	13 00	120 00	
10 to 12 ft. specimens\$15 00 to	20 00		
 Our Engelman Spruce are exceptionally fine specimens and have been frequently transplanted.			
excelsa (Norway Spruce) 2 to 3 ft.....	50	4 00	25 00
3 to 4 ft.	75	6 00	45 00
4 to 5 ft.	1 00	7 50	60 00
5 to 6 ft.	1 50	12 50	
6 to 7 ft.	2 00	17 50	125 00
exc. brevifolia 12 to 15 in.....	2 50		
exc. var. Gregoriana 12 to 18 in.....	2 00		
Strong 14 to 18 in.	2 50		
exc. var. inverta (Weeping Spruce) 3 to 4 ft....	1 50		
exc. var. Maxwelli 18 to 24 in.....	3 00		
excelsa pumila 12 to 15 in.....	2 25		
exc. var. Pyramidalis 2 to 2½ ft.....	2 00		
exc. var. Remonti 16 to 20 in.....	2 00		
2 to 2½ ft.	3 00		
Omorica 2 to 2½ ft.....	2 50		
Orientalis 2 to 3 ft.	1 50	12 50	
O. var. nana gracilis 18 to 24 in.....	3 00		
3 ft.	5 00		
polita (Tiger Tail Spruce) 2 to 3 ft.....	1 50	12 50	
pungens (Colorado Spruce, green form) 3 to 4 ft.	2 00	17 50	
4 to 5 ft.	3 00	25 00	

	Each	Per 10	Per 100
PICEA Continued			
p. var. glauca (Colorado Blue Spruce)			
3 to 3½ ft. specimens.....	3 50	30 00	
3½ to 4 ft. specimens.....	4 00	35 00	
4 to 5 ft. specimens.....	5 00	45 00	
5 to 6 ft. specimens.....	7 00	65 00	
6 to 7 ft. specimens.....	, \$8 00 to 12 00		
 We have a few specimens in larger sizes than those quoted above, prices running from \$9 00 to \$15 00 each. These large trees are usually selected by the customer at the nursery, when a price will be made to correspond with the tree selected.			
pungens var. Kosteriana (Koster's Blue Spruce)			
18 in.	1 25	10 00	
2½ to 3 ft. specimens.....	3 50	30 00	
3 to 4 ft. specimens.....	4 50	40 00	
4 to 5 ft. specimens.....	6 00	50 00	
5 to 6 ft. specimens.....	7 50	60 00	
PINUS Austriaca (Austrian Pine) 2 to 2½ ft....			
2½ to 3 ft.	1 25	10 00	
3 to 4 ft.	2 00	17 50	
Cembra (Swiss or Stone Pine) 1½ to 2 ft.....			
2 to 2½ ft.....	1 25	10 00	
divricata or banksiana (Jack Pine) 3 to 4 ft....			
4 to 5 ft.	1 00	9 00	65 00
mughus (Dwarf Mountain Pine)			
12 to 15 in. diameter	75	6 50	55 00
15 to 18 in. diameter	1 00	8 50	75 00
18 to 20 in. diameter.....	1 50	12 50	
20 to 24 in. diameter.....	2 00	17 50	
2 to 2½ ft. diameter.....	2 50		
Strobus (White Pine) 2 to 3 ft.....			
3 to 4 ft.	1 00	8 00	40 00
4 to 5 ft.	1 75	15 00	75 00
5 to 6 ft.	2 00	18 50	
Sylvestris (Scotch Pine) 3 to 4 ft.....			
4 to 5 ft.....	60	5 00	40 00
5 to 6 ft.	1 00	8 50	75 00
5 to 6 ft.	1 50	12 50	100 00
PSEUDO-TSUGA Douglasi (Douglas Spruce)			
2 to 3 ft.	75	6 50	
3 to 4 ft.	1 50	12 50	
4 to 5 ft.	2 50	22 50	
5 to 6 ft.	3 25	30 00	
7 to 8 ft.	6 00	55 00	

	Each	Per 10	Per 100
RETINOSPORA filifera (Thread-branched Japanese Cypress) 1½ ft.	1 25	10 00	
2 to 2½ ft.	2 00	15 00	
2½ to 3 ft.	2 50	22 50	
3 to 4 ft.	4 00	35 00	
4 to 5 ft.	6 00		
filifera var. aurea 18 to 24 in. broad.	3 50		
2 to 2½ ft. broad.	5 00		
pisifera 2 to 3 ft.	1 25	10 00	
3 to 4 ft.	1 75	15 00	
4 to 5 ft.	2 00	17 50	
p. var. aurea 2 to 3 ft.	1 50	12 50	
3 to 4 ft.	2 00	17 50	
4 to 5 ft.	3 00	27 50	
5 to 6 ft.	4 00		
plumosa 18 to 24 in.	75	6 00	
2 to 2½ ft.	1 25	10 00	
5 to 6 ft.	3 50		
6 to 7 ft.	5 00		
8 to 9 ft. specimens.	\$7 00 to	12 00	
plumosa var. aurea 12 to 18 in.	60	5 00	
18 to 24 in.	75	6 00	
2 to 2½ ft.	1 25	10 00	
3 to 4 ft.	2 50	22 50	
4 to 5 ft.	3 00	27 50	
5 to 6 ft.	4 50	40 00	
6 to 7 ft.	6 00		
7 to 8 ft. specimens.	\$7 00 to	10 00	
Special price will be given on large quantities of the above.			
squarrosa Veitchii 2 to 2½ ft.	1 25	10 00	
2½ to 3 ft.	1 50	12 50	
3 to 3½ ft.	2 50		
4 to 5 ft. specimens.	5 00		
SCIADOPITYS verticillata 15 to 18 in.	2 50		
18 to 24 in.	3 50		
TAXUS (Yew)			
Baccata var. aurea 15x18 in. X.	1 50		
B. var. adpressa 18 to 24 in.	1 50	12 50	
B. var. elegantissima aurea 15 in.	1 50	12 50	
Canadensis (American Yew) 15 to 18 in.	75	6 00	50 00
18 to 24 in.	1 00	8 50	75 00
24 to 30 in. specimens.	2 00		
cuspidata (Japanese Yew) 15 to 18 in.	1 00	9 00	80 00
18 to 24 in.	1 50	14 00	125 00
24 to 30 in.	2 00	17 50	
30 to 36 in.	2 50	22 50	

	Each	Per 10	Per 100
TAXUS Continued			
c. var. <i>brevifolia</i> 10 to 12 in.....	1 00	8 50	70 00
15 to 18 in.....	1 50	12 50	100 00
18 to 24 in.	2 25		
<i>repandens</i> 15 to 18 in.....	1 50	12 50	
18 to 24 in.	2 00	17 50	
24 to 30 in.	2 50	22 50	
THUYA occidentalis (American Arbor Vitae)			
2½ to 3 ft.....	35	3 00	25 00
3 to 4 ft.....	60	5 00	40 00
4 to 5 ft.....	1 00	8 00	65 00
5 to 6 ft.....	1 50	12 50	100 00
6 to 7 ft. broad bushy specimens.....	2 00	17 50	150 00
7 to 8 ft.....	2 50		
7 to 8 ft., 4 ft. at base, specimens.....	4 00		
 All of our American Arbor Vitae have been recently transplanted and root pruned.			
occ. var. aurea (Peabody's Golden Arbor Vitae)			
2 to 3 ft.	50	4 00	
3 to 4 ft.....	1 00	9 00	
4 to 5 ft.....	1 50	12 50	
5 to 6 ft.....	2 00	17 50	
6 to 7 ft.....	3 50	30 00	
occ. var. filicoides 2½ to 3 ft.....	1 50	12 50	
3 to 4 ft.....	2 00	17 50	
occ. var. globosa 10 to 15 in.....	50	4 50	
15 to 18 in.....	75	7 00	60 00
2 ft. bushy specimens.....	2 50		
occ. var. Hoveyii (Hovey's Arbor Vitae)			
18 to 24 in.	75	6 00	50 00
2 to 3 ft.	1 00	8 50	65 00
3 to 4 ft.	3 00	25 00	
4 to 5 ft. bushy specimens	4 00	37 50	
occ. var. pyramidalis (Pyramidal Arbor Vitae)			
3 to 4 ft.....	75	6 00	50 00
4 to 5 ft.	1 25	10 00	75 00
5 to 6 ft.....	1 75	13 00	
6 to 7 ft. specimens	3 50		
occ. var. Siberica (Siberian Arbor Vitae)			
1½ to 2 ft.....	50	4 50	40 00
2 to 2½ ft.....	65	5 50	50 00
2½ to 3 ft.....	75	7 00	
3 to 4 ft.....	1 50	12 50	
occ. var. Vervaeana 2 to 2½ ft.....	50	4 00	
2½ to 3 ft.....	75	6 00	
6 to 7 ft. fine specimens	4 00		

	Each	Per 10	Per 100
TSUGA canadensis (Hemlock) 2 to 2½ ft.....	90	8 50	80 00
2½ to 3 ft.	1 25	10 00	90 00
3 to 4 ft.	1 75	15 00	135 00
4 to 5 ft. bushy	3 00	25 00	
5 to 6 ft. bushy	4 00	35 00	
EVERGREEN SHRUBS.			
ANDROMEDA floribunda			
12 to 15 in. broad bushy plants	1 50	12 50	
15 to 18 in. broad and bushy.....	1 75	15 00	
A. Japonica 15 to 18 in.	1 75	15 00	
Berberis or Mahonia aquifolia 15 to 18 in.....	25	2 00	15 00
18 to 24 in.....	35	3 00	
BUXUS Standard Box			
20 to 24 in. stem, 12 to 15 in. crown.....	2 00		
pyramidalis (Pyramidal Box)			
2½ to 3 ft. high, 15 to 18 in. base.....	2 00		
3 to 3½ ft. high, 18 to 20 in. base.....	3 00		
3½ to 4 ft. high, 20 to 22 in. base.....	3 50		
5 to 5½ ft. high, 22 to 24 in. base.....	5 00		
Bush form 18 in.	75	7 00	
Globe form 15 to 18 in. sheared specimens.....	3 50	30 00	
microphylla 18 to 24 in.....	1 25		
suffruticosa (Dwarf Box) 3 to 4 in.		80	5 00
DAPHNE cneorum 8 to 10 in.....	60	5 00	40 00
EUONYMUS radicans 3 yrs.	15	1 20	8 00
4 yrs. strong	20	1 50	12 00
rad. var. vegetus (Round-leaved Euonymus)			
3 yrs. strong field-grown plants	20	1 50	12 00
rad. var. variegata 4 yrs.	20	1 50	12 00
KALMIA latifolia (Mountain Laurel) 12 to 15 in.	50	4 50	40 00
15 to 18 in.....	75	6 50	50 00
18 to 24 in.....	1 00	9 00	80 00
2 to 2½ ft.....	1 50	12 50	
2½ to 3 ft.	2 00	17 50	
2½ to 3 ft. extra bushy specimens.....	2 50	22 50	

NOTICE.

We invite your inspection of our Evergreens and other nursery stock, which we have in large quantity and fine quality. If you require any large specimens it will pay you to come and select the trees. Directions for reaching the nurseries are given on the last page.

AUTO-TRUCK DELIVERY

We make deliveries by auto-truck within reasonable distances from the nurseries when desired, and charge according to mileage and size of truck used. We are located 21 miles west of Boston.




RHODODENDRONS.

Our stock of Rhododendrons comprises the best of the Hybrids, which we have tested as to hardiness, and the native Catawbiense and Maximum also the dwarf Alpine varieties. We can furnish fine collected plants of the native Maximum by the car load sizes from two to six feet. Prices given on application.

	Each	Per 10	Per 100
RHODODENDRONS—Alpine (Dwarf Hybrid Varieties)			
Ferrugineum 8 to 10 in.	1 00		9 00
Hirsutum 10 to 12 in.	1 00		9 00
Punctatum 15 to 18 in.	1 00		9 00
Wilsonii 18 to 24 in.	1 50		12 50
RHODODENDRONS—Hardy Hybrid Varieties.			
Tree Form 4 to 5 ft. bushy heads.....	5 00		
Abraham Lincoln (rosy red) 18 to 24 in.....	1 00		9 00
Album elegans (white large flower) 18 to 24 in.	1 00		9 00
2½ to 3 ft.	2 50		22 50
3 to 3½ ft.	3 50		30 00
Album Grandiflorum (white) 18 to 24 in.....	1 00		9 00
Atrosanguineum (crimson scarlet) 18 to 24 in..	1 00		9 00
2 to 2½ ft.	1 50		12 50
Boule de Neige (Pure white dwarf extremely			
hardy) 18 to 24 in. bushy.....	1 50		12 50
24 by 24 in. broad bushy specimens.....	2 00		17 50
Candidissimum (white) 18 to 24 in.....	1 00		9 00
Caractacus (rich purplish crimson) 18 to 24 in..	1 00		9 00
2 to 2½ ft.	1 50		12 50
2½ to 3 ft.	2 50		20 00
3 to 3½ ft.	3 00		27 50
Catawbiense grandiflora alba 18 to 24 in.....	1 00		9 00
2 to 2½ ft.	1 50		12 50
2½ to 3 ft.	2 50		22 50
Charles Bagley (crimson) 24 to 30 in.....	1 50		12 50

RHODODENDRONS Continued	Each	Per 10	Per 100
Charles Dickens (rich crimson) 18 to 24 in.....	1 00	9 00	
2 to 2½ ft.	1 50	12 50	
2½ to 3 ft.	2 50		
Delicatissimum (blush white) 18 to 24 in.....	1 00	9 00	
2 to 2½ ft.	1 50	12 50	
2½ to 3 ft.	2 50		
3 to 3½ ft.	4 00	35 00	
Edward S. Rand (bright scarlet) 18 to 24 in....	1 00	9 00	
2 to 2½ ft.	1 50	12 50	
2½ to 3 ft.	2 50		
Everestianum (rosy lilac crimped) 18 to 24 in..	1 00	9 00	
2 to 2½ ft.	1 50	12 50	
2½ to 3 ft.	2 50		
F. D. Codman (Crimson) 18 to 24 in.....	1 00	9 00	
Hanna Felix (bright scarlet) 3 to 3½ ft.....	4 00		
H. H. Hunnewell (Dark crimson) 18 to 24 in....	1 00	9 00	
24 to 30 in.	1 50	12 50	
H. W. Sargent (Crimson) 18 to 24 in.....	1 00	9 00	
2 to 2½ ft.	1 50	12 50	
2½ to 3 ft.	2 50		
Kettledrum (very lively crimson) 18 to 24 in...	1 00	9 00	
2 to 2½ ft.	1 50	12 50	
Lady Armstrong (pale rose, spotted) 18 to 24 in.	1 00	9 00	
2 to 2½ ft.	1 50	12 50	
2½ to 3 ft.	2 50		
Lady Clermont 18 to 24 in. (Dark red).....	1 00	9 00	
Lee's Dark Purple 18 to 24 in.....	1 00	9 00	
2 to 2½ ft.	1 50		
Mrs. Milner (rich crimson) 18 to 24 in.....	1 00	9 00	
24 to 30 in.	1 50	12 50	
30 to 36 in.	2 50		
Parson's gloriosum (Large blush) 18 to 24 in...	1 00	9 00	
Parson's grandiflorum (red) 18 to 24 in.....	1 00	9 00	
2 to 2½ ft.	1 50	12 50	
Pres. Lincoln (Rose) 18 to 24 in.....	1 00	9 00	
Roseum elegans (fine rose) 18 to 24 in.....	1 00	9 00	
24 to 30 in.	1 50	12 50	
2½ to 3 ft.	2 50	22 50	
NATIVE RHODODENDRON			
Catawbiense (native) 2½ to 3 ft.....	2 00		
3 to 4 ft.	2 50	22 50	
Catawbiense grandiflorum (rosy lilac)			
18 to 24 in.	1 00	9 00	
2 to 2½ ft.	1 75	15 00	
2½ to 3 ft.	2 50	22 50	200 00
3 to 4 ft.	3 00	27 50	

RHODODENDRONS Continued	Each	Per 10	Per 100
Maximum (hardy native) 2 to 3 ft.	1 25	10 00	
3 to 4 ft.	2 00	17 50	
4 to 5 ft.	3 50	30 00	
Extra large bushy specimens	\$7 50 to 10 00		


 In car load lots, prices on application.

HARDY PERENNIALS

	Per 10	Per 100
ANEMONE Japonica (Wind Flower) from 2½ in. pots	1 00	7 00
var. Alba		
var. Rosea		
var. Rubra		
	var. Prince Heinrich	
	var. Queen Charlotte	
CAMPANULA (Bell Flower)	1 00	8 00
var. persicaefolia grandiflora		
var. persicaefolia grand. alba		
CLEMATIS recta	20c each	1 50
DELPHINIUM (Hardy Larkspur)	1 20	10 00
var. Belladonna		

HERBACROUS PAEONIES.

Named Varieties	1 50	12 00
Alice de Julve Court, dark crimson, very fine		
Anemonaeflora, pink		
Bridesmaid, white		
Commodore Dewey, dark red		
Duchess de Nemours, pink		
Fairy Queen, red, tinged with purple		
Faust, very desirable, bright pink		
Gen. Grant, large red		
Grandiflora rubra, red, very desirable		
Marquise d'Ivory, pure white with crimson blotch		
Mars, red		
Mad. Angusta Peltereau, very pale pink, large flower		
Marie Lemoine, blush, fading to white		
M. Rousselin, light pink, center crimson		
Mrs. Hovey, white, very good		
Nivea plenissima, single clear pink		
Osgoods seedling, rose		
Prolifera tricolor, pink		
Princess N. Roberts, white, very fine		
Plutarch, pink		
Purpurea superba, dark purplish red		
Queen's Perfection, pink, very desirable		
Richardson's rubra Superba, dark red		
Rubra triumphans, deep crimson		
Festiva Maxima, large white, center streaked with crimson35c each	3 00 25 00
Mixed Paenies	1 00	8 00

 Our stock of Paenies include many more varieties than listed above, but those we list are among the best known to cultivation at present.

	Each	Per 10	Per 100
PHLOX, paniculata		1 00	7 00
Varieties:—			
Atlas, salmon pink.			
Beauty of Framingham, rose color.			
Embracement, deep pink			
Independence, tall pure white			
Jean D'Arc, pure white			
Le Soliel, brilliant china rose, rose center			
Mad. Pape Carpentier, pure white			
Pantheon, bright pink.			
Peach Blow, delicate pink, rose center			
Richard Wallace, white with rose center			

☞ For General Assortment of Hardy Perennials Refer to Catalogue Bay State Nurseries, North Abington, Mass.

FRUIT TREES.

APPLES, 11-16 and up, 5 to 7 ft.	\$ 35	\$3 00	\$25 00
SUMMER VARIETIES:			
Golden Sweet, Red Astrachan.			
AUTUMN VARIETIES:			
Alexander, Gravenstein, Duchess, Maiden's Blush.			
WINTER VARIETIES:			
R. I. Greening, Wolf River, King, Wealthy, Baldwin, Staymen's Winesap, Hubbardston's Nonesuch, McIntosh Red, Ben Davis.			
DWARF APPLES	50	4 00	
SUMMER—Yellow Transparent.			
AUTUMN—Graventsein, Duchess.			
WINTER—Baldwin, McIntosh Red, Hubbardston's Nonesuch.			
CRAB APPLES, 5 to 7 ft.	35	3 00	
VARIETIES:—Hyslop, Martha, Transcendent.			
STANDARD PEARS, 11-16 and up, 5 to 7 ft.	40	3 50	30 00
VARIETIES:—Bartlett, Beurre d'Anjou, Duchess, Clapp's Favorite, Lawrence, Seckel, Sheldon.			
Beurre Bosc 11-16ths and up	100	8 50	
DWARF PEARS, 11-16 and up	25	2 50	
VARIETIES:—Bartlett, Beurre d'Anjou, Duchess, Louis Bonne, Seckel.			
CHERRIES, ¾ in. and up, 5 to 7 ft.	40	3 50	30 00
VARIETIES:—Black Tartarian, Early Richmond, Governor Wood, Montmorency, Windsor, Yellow Spanish			
PLUMS, ¾ in. and up, 5 to 7 ft.	40	3 50	
VARIETIES:—Abundance, Bradshaw, Burbank, Lombard, Red June, Satsuma, Shropshire Damson, Wickson, Yellow Egg.			

	Each	Per 10	Per 100
PEACHES, 4 to 5 ft. 9-16 in. and up	\$ 25	\$2 00	\$15 00
VARIETIES:—Carman, Champion, Crosby, Early Crawford, Elberta, Foster, Greensboro, Late Crawford, Mt. Rose.			
QUINCES, 3 to 4 ft.	40	3 00	
VARIETIES:—Champion, Meeche's Prolific, Orange, Rea's Mammoth.			
SMALL FRUITS.			
GRAPES, 2 yrs.....	20	1 50	12 00
VARIETIES:—Brighton, Concord, Delaware, Diamond, Moore's Early, Niagara, Pocklington, Salem, Worden.			
Green Mountain	30	2 50	
CURRENTS, 2 yrs. No. 1		75	6 00
VARIETIES:—Cherry, Fay's Prolific, White Grape.			
GOOSEBERRIES			
Downing, Houghton		15	1 20
Industry, Josselyn, Pearl.....		20	1 50
RASPBERRIES		50	3 00
VARIETIES:—Columbian, Cuthbert, Gregg and Marlboro.			
BLACKBERRIES		50	3 00
VARIETIES:—Eldorado, Kansas, Rathbun, Snyder, Wil- son's Early.			
ASPARAGUS, Columbian, Mammoth White			1 50
Conover's Colossal, Palmetto.....			1 00
RHUBARB, Myatt's, 3 yrs.....		1 50	

AUTO-TRUCK DELIVERY

We make deliveries by auto-truck within reasonable distances from the nurseries when desired, and charge according to mileage and size of truck used. We are located 21 miles west of Boston.

YOUR ATTENTION

Is called especially to the following stock listed in this Trade-List. All of it is strictly first class. We have made prices reasonable, quality and size considered.

DECIDUOUS TREES

Acer dasycarpum—Silver-leaved Maple
Acer saccharum—Sugar or Rock Maple
Betula alba—European White Birch
Crataegus coccinea—American White Thorn

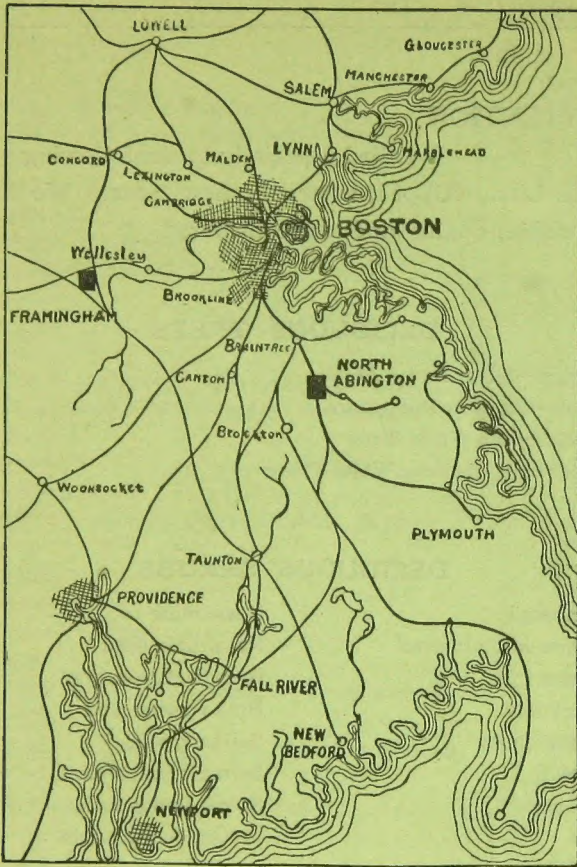
DECIDUOUS SHRUBS

<i>Berberis Thunbergii</i>	<i>Rosa nitida</i>
<i>Berberis vulgaris</i> var. <i>purpurea</i>	<i>Rosa rubiginosa</i>
<i>Euonymus alatus</i>	<i>Rosa Rugosa rubra</i>
<i>Forsythias</i> in variety	<i>Rosa Rugosa alba</i>
<i>Hypericum Kalmianum</i>	<i>Spirea arguta</i>
<i>Ilex verticillata</i>	<i>Spirea Thunbergii</i>
<i>Lonicera Tatarica</i>	<i>Spirea Van Houtte</i>
<i>Rosa Carolina</i>	<i>Viburnum dentatum</i>
<i>Rosa multiflora</i>	

WE INVITE INSPECTION

We have a large stock of Evergreen Trees and Shrubs, Rhododendrons and other stock, and we believe it will pay you to visit the nurseries, where you can judge as to its quality and condition. If you require any large specimens it will be worth while to select them at the nurseries.

Directions for reaching our nurseries will be found over the page.



THE FRAMINGHAM NURSERIES FRAMINGHAM, MASSACHUSETTS

THE NURSERIES are located in Framingham, 21 miles west of Boston, on the Boston & Albany Division of the New York Central R. R. Trains leave the South Station at frequent intervals during the day. The Nurseries are about two miles north of the South Framingham station, and may be reached by Saxonville electric car, getting off at Cochituate Road and walking a few minutes east. Or by the Boston & Worcester cars from South Framingham, getting off at the rear entrance of the Nursery and walking north, through the Nursery to the office, which is 7 minutes away. Or the Nurseries may be reached by the Boston & Worcester electric cars from Park Square, Boston, from which point cars leave every 15 minutes. Any Chestnut Hill or Brookline Village cars will connect with the Boston and South Framingham or the Boston and Worcester cars, either of which pass the rear entrance to our Nurseries. All conductors are familiar with the stop at the Framingham Nurseries. The running time by trolley to the Nurseries is one hour and ten minutes. The fare is twenty-three cents from Boston.