

The ACADEMY NEWSLETTER

November 1989

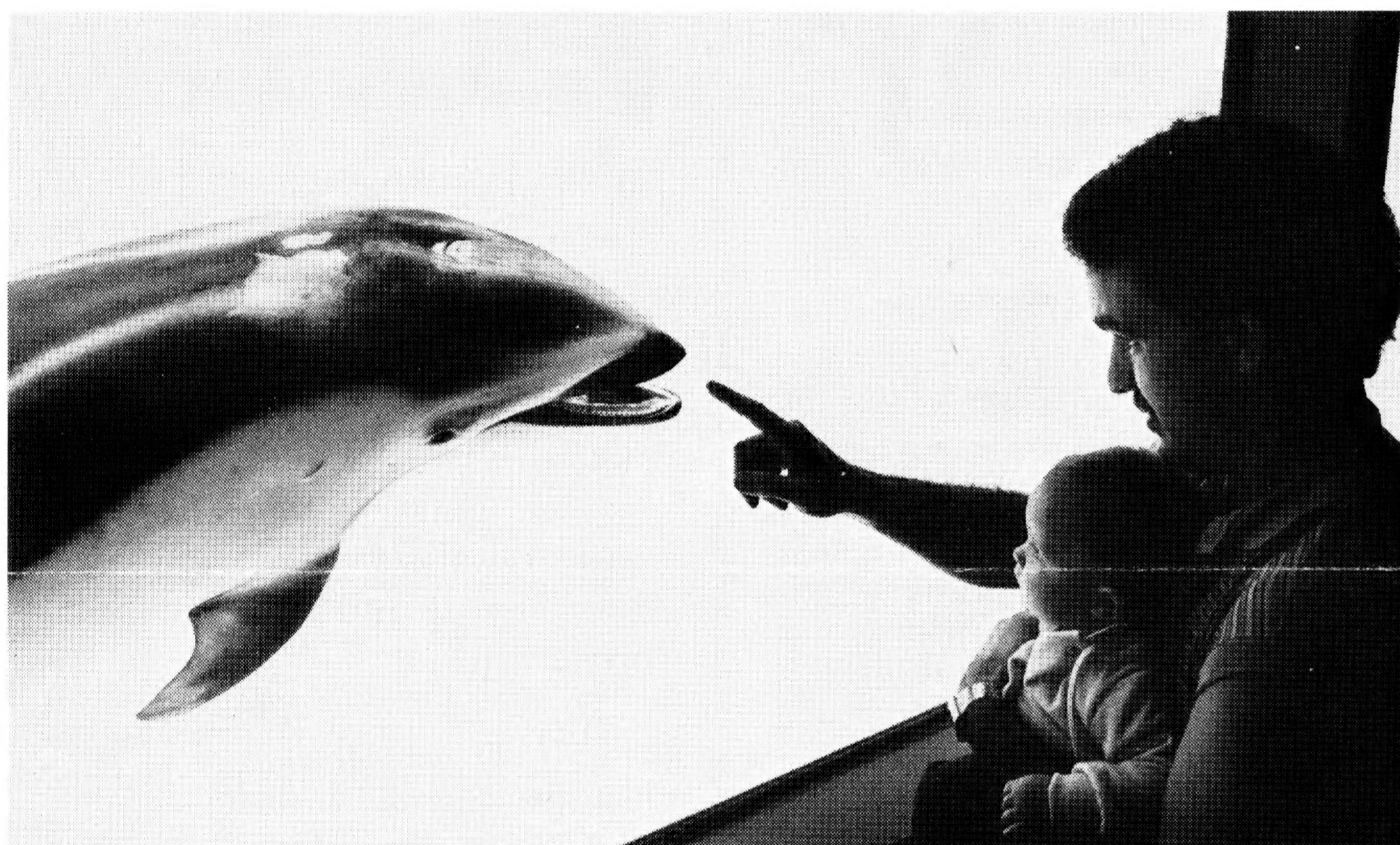


**Run To The
Far Side V**
Sunday,
November 26
8:30 a.m.



On Sunday, November 26 at 8:30 a.m., come join us as we Run to the Far Side. This fifth-annual Run promises to be better than ever with help from media sponsors KGO-TV and KRQR, and major sponsor, Diet Pepsi. Every runner will receive a long-sleeved original "Run to the Far Side" t-shirt. Run or walk the 5K in costume and become eligible for the on-stage presentation and judging. This year, the costume theme is "The Wizard of Oz." Prizes will be awarded for the fastest and best Far Side costumes. Fees are \$15 if received by November 17 or \$18 on race day. Entry forms are available at the Information Desk of the Academy or by calling the Academy Run Office at (415)750-7144.

Members' Open House
Tuesday, November 14 and Wednesday,
November 15 6:00-9:00 p.m.



Susan Middleton

Whether you're a long-time Academy member or a new member, come to Open House on November 14 and 15 from 6-9 p.m. We guarantee you'll learn something new about the Academy. Take a self-guided tour and you'll be treated to a side of the Academy that the public rarely sees.

When you visit our nine research departments you will meet the staff who work behind the scenes, committed to the study of natural diversity. You will also be offered a unique view of the Steinhart Aquarium from the inside out. Take a walk behind the tanks and see the inner workings of the aquarium.

The staff of the Morrison Planetarium will offer members several different views of the stars. On Tuesday, November 14, Earth and Space Hall will be transformed into a mini-observation

area. With the use of projectors, staff will demonstrate how they recreate the night-time sky. On Wednesday, November 15, short Planetarium and Laserium demonstrations, featuring our new star console, will be given in the Planetarium. If weather permits, telescopes will be set up in the courtyard on both nights. Learn about educational programs, like the Science In Action program on KCBS radio, that take the Academy beyond Golden Gate Park. Radio personality Jerry Kay will be on hand to share his unique perspective on science. The Academy's Pepperwood Natural Preserve in Sonoma County will be represented for the first time this year.

All exhibits and the Discovery Room will be open for children and their parents. The Academy Store will offer children's activities and a demonstration of origami,

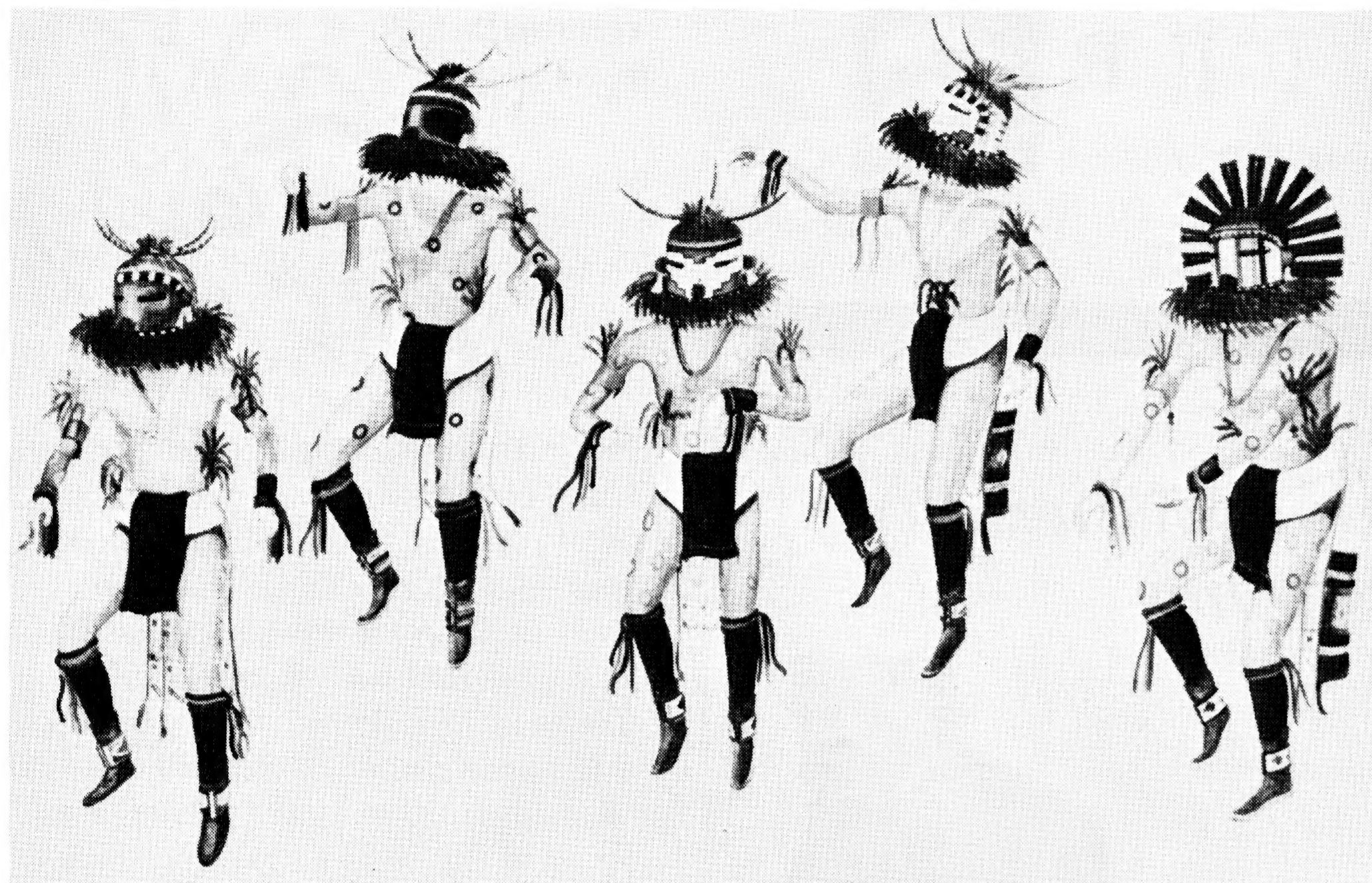
the Japanese art of paper folding. Complimentary juice and cookies will be served in the Jungle Cafe.

To accommodate our 22,000 members and to avoid crowding, we ask that members whose last names begin with A-L attend on November 14; letters M-Z should attend on November 15. If you cannot make it on your designated evening, don't worry; just come on the alternate night. Please feel free to bring a guest if you like; we'll encourage them to become Academy members. Due to Open House, Members' meetings will not be held in November, but will resume on December 13 and 14. Next month, Joe Kane, author of *Running the Amazon*, will share his experiences as part of the first expedition to successfully navigate the entire Amazon from its source to the Atlantic Ocean.

Lecture

Kachina Images in Hopi Art

Tuesday, November 28 7:30 p.m.



A'avatsbooyam with Sootantaqa by Emerson H. Quannie

In conjunction with the exhibit, "When the Rainbow Touches Down," the Academy is proud to present a special five-part lecture series on Native American art.

Join Hopi scholar Hartman H. Lomawaima on Tuesday, November 28, at 7:30 p.m. when he presents "Kachina Images in Hopi Art." Mr. Lomawaima received his S.B. from Northern Arizona University, Ed. M. from Harvard University and has done postgraduate work in Cultural Anthropology at Stanford.

Tickets are \$3 for members and \$5 for non-members. To order tickets for this lecture, please use the convenient order form below.

Other lectures in this series will include:

- Anthropologist John Adair on Navajo Culture;
- Tryntje Van Ness Seymour, curator of "When the Rainbow Touches Down," on Southwest American Indian Art;
- Navajo historian, Carl Gorman, on Navajo ceremonials;
- Polly Schaafsma on Rock Art symbolism.

For more information about the lecture series, call (415)750-7217.

Native American Film Preview

Tuesday, November 7 7:30 p.m.



"Thunder and Lightning" by Jonathan Nordlicht

On Tuesday, November 7 at 7:30 p.m., the Academy and the American Indian Film Institute will present a special preview of a series of films and videos that are by or about Native Americans. One of the presentations is "Thunder and Lightning," a film about the Hopi Creation Myth. The Academy's special exhibit, "When the Rainbow Touches Down," will be open before and after the film presentations.

Tickets for this special evening are \$5 for members and \$7 for non-members. To order tickets, please use the convenient order form below. For more information, call (415)750-7217.

TICKET ORDER FORM

Event	Member Tickets	Non-Member Tickets	Total \$
Native American Film Preview	\$5 _____	\$7 _____	_____
Kachina Images in Hopi Art	\$3 _____	\$5 _____	_____

Name _____

Address _____

City _____ Zip _____

Daytime phone _____

Evening phone _____

No refunds/No exchanges

Please remember to send separate checks for each activity and a self-addressed, stamped envelope to:

The Special Programs Office
California Academy of Sciences
Golden Gate Park
San Francisco, CA 94118

Young Audiences

Sunday, November 26 1:00 p.m.

With major funding from the McKesson Foundation and Grants for the Arts, Young Audiences presents an exciting series of performing arts programs for children, taking place one Sunday each month in Wattis Hall of Human Cultures. On Sunday, November 26, the lively trio, A Capella, explores the stylistic variations of *a capella* singing, from ancient African chants to modern-day rap music, with students participating in the performance.

Film Presentation

The Wilderness Idea: John Muir, Gifford Pinchot and the First Great Battle for Wilderness

November 30 & December 1 7:30 p.m.



John Muir with President Theodore Roosevelt at Glacier Point in Yosemite National Park

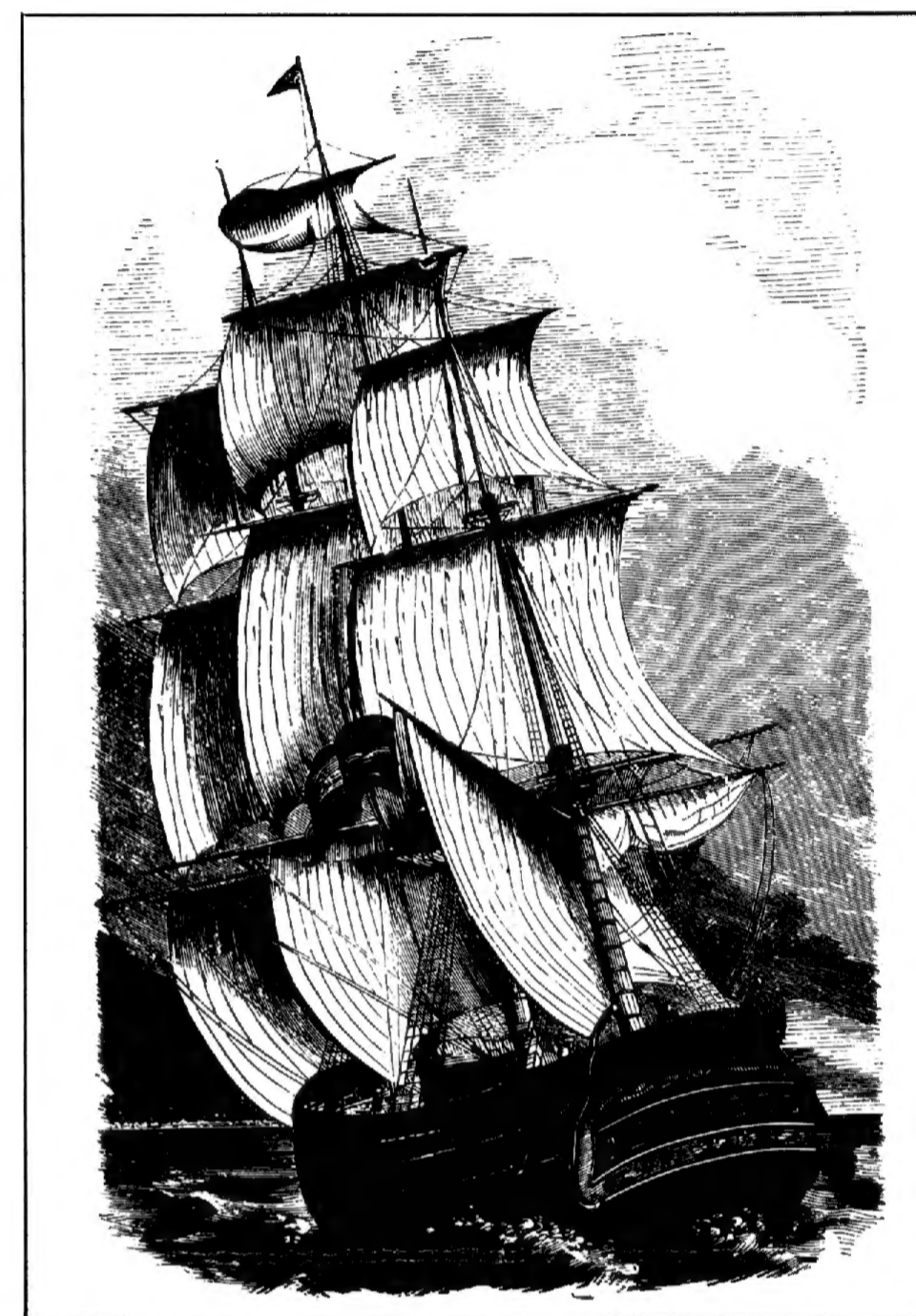
The California Academy of Sciences is proud to sponsor the California premiere of "A Wilderness Idea," a one-hour film by Lawrence Hott and Diane Garey. This documentary film traces the paths of Gifford Pinchot, the first American-born forester who defined conservation as the wise management of resources, and John Muir, renowned conservationist. President Theodore

Roosevelt was influenced by both men's philosophies and vastly expanded the national park and forest systems during his presidency. The Academy is sponsoring a two-evening premiere of this film to commemorate the twenty-fifth anniversary of the Wilderness Act of 1964. The first screening on Thursday, November 30, will be introduced by filmmaker Lawrence Hott. Joining him on that evening only will be renowned wilderness writers Wallace Stegner and Roderick Nash who will answer questions from the audience. At 6:00 p.m., there will be a reception for the filmmakers and speakers. Tickets for the November 30 lecture are \$7 for members and \$10 for non-members; combined reception/lecture tickets are \$20 for members, \$23 for non-members. Tickets for the second showing on Friday, December 1 include an introduction of the film by Mr. Hott and are \$5 for members and \$7 for non-members. To order tickets for these special evenings, please use the convenient ticket form below. For more information, call (415)750-7217.

Lecture

Invisible Voyagers: Whalemens in California 1795-1920

Tuesday, November 21 7:30 p.m.



Full-rigged ship

In this lecture/slide presentation, noted historian and author of *On the Northwest: Commercial Whaling in the Pacific Northwest, 1790-1967*, Robert Lloyd Webb will focus on pelagic whaling in California prior to the Gold Rush. Mr. Webb, curator of the Maine Maritime Museum, will discuss the little-known relationship between California and deep water whalemens from several nations. Whaleship arrivals, particularly before the Gold Rush, brought visitors and some residents to California, but their impact on the country has not been explored in full until now. Mr. Webb will also discuss the rise of San Francisco as a whaling port between 1870 and 1920. His book will be on sale after the lecture and the author will be available to sign his latest work. Tickets for this lecture are \$3 for members and \$5 for non-members. To order tickets, please use the convenient order form below. For more information, please call (415)750-7217.

TICKET ORDER FORM

Event	Member Tickets	Non-Member Tickets	Total \$
Invisible Voyagers	\$3 _____	\$5 _____	_____
The Wilderness Idea			
• November 30 Lecture	\$7 _____	\$10 _____	_____
Lecture/Rec.	\$20 _____	\$23 _____	_____
• December 1 Lecture	\$5 _____	\$7 _____	_____

Name _____

Address _____

City _____ Zip _____

Daytime phone _____

Evening phone _____

No refunds/No exchanges

Please remember to send separate checks for each activity and a self-addressed, stamped envelope to:

The Special Programs Office
California Academy of Sciences
Golden Gate Park
San Francisco, CA 94118

Traditional Arts in November

Traditional Arts Programs are special programs for Academy visitors that take place each Saturday in Wattis Hall. These programs are made possible through a generous gift from the Paul L. and Phyllis Wattis Foundation. All programs begin at 1:00 p.m. For more information, call (415)750-7142.

November 4 — Wilma Pang and the Rainbow Dancers present folk dances from China's many provinces.

November 11 — Sonoko Tsuchiya demonstrates the art of Japanese fabric flowers. Exquisitely hand-painted and realistic in their depiction, these flowers are delicately shaped from individual petals and closely resemble those in nature.

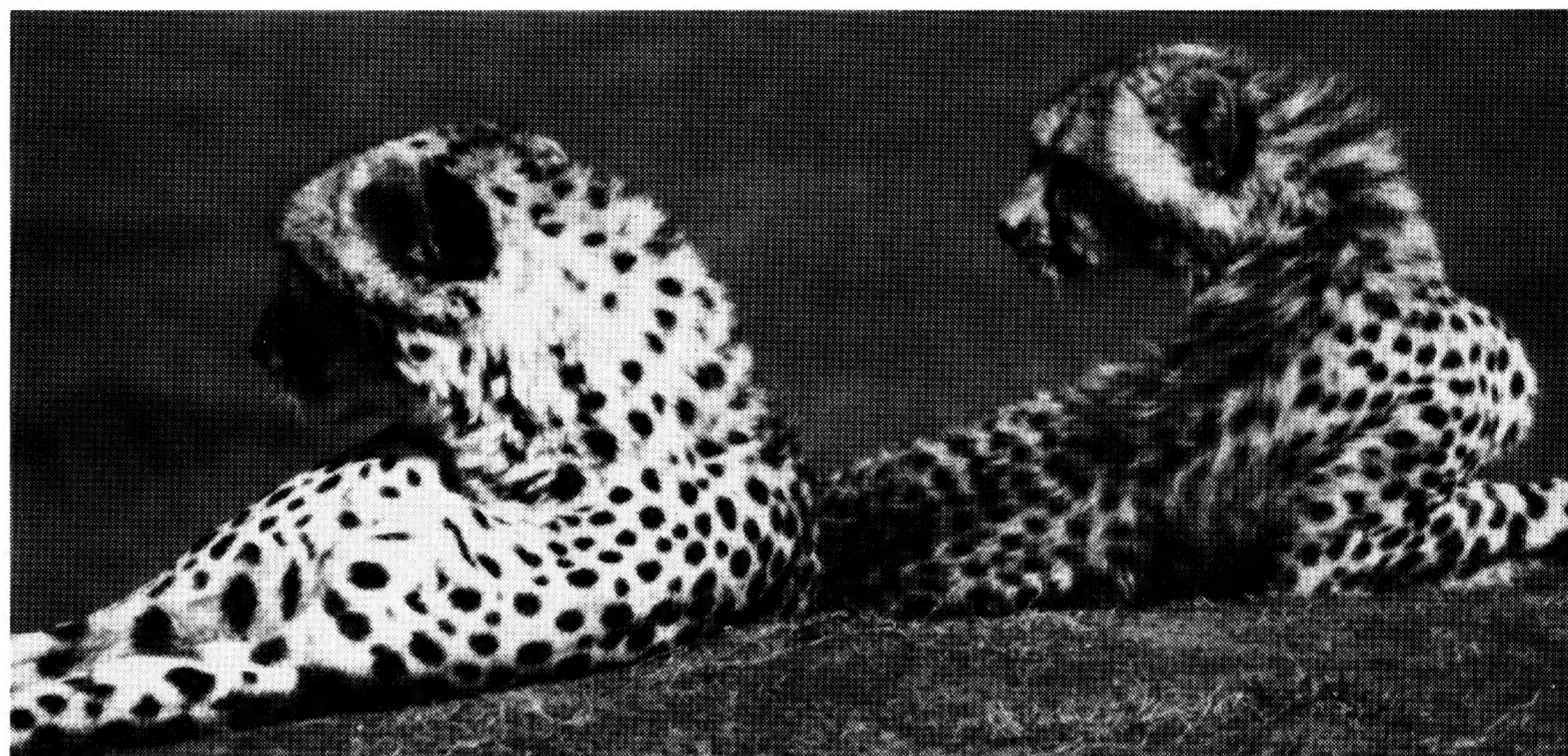
November 18 — Nayo Ulloa, Guido Moscoso and Jose Lara perform indigenous music from different regions in Bolivia on a variety of traditional instruments.

November 25 — The Academy is honored to host a special program with visiting guests from New Mexico. Kathy Sanchez, granddaughter of renowned San Ildefonso potter Maria Martinez, is joined by Santana and Adam Martinez (Maria's son) to discuss and demonstrate the techniques of the now-famous Tewa Pueblo black-on-black ware.

On Your Mark, Get Set, Help!

Join us again as we lace up our shoes for the Run to the Far Side. Volunteers are needed to help on race day—Sunday, November 26. Whether you are a veteran run volunteer or a novice, we have a job for you. Lend a hand, earn a t-shirt and have some fun. To sign up as a volunteer, call the Run Office at (415)668-2243.

Join the Academy on Safari In Tanzania February 1–16, 1990 Leader: Beth Dunbar



Sandy Leitch

Two Cheetahs

This is the optimum time to visit Tanzania as we —

- Experience one of the greatest natural wonders of the world: the annual migration of one-and-one-half million wildebeests, zebras and giraffes to their grazing lands in the vast Serengeti Plains;
- See the many predators such as lions and cheetahs that follow the herds and observe the numerous and diverse birds of East Africa.

Traveling with your fellow Academy members, you will enjoy the luxury of private, tented accommodations. The camp is fully staffed with excellent cooks and drivers who will provide hot shower facilities, ice for a cold soda or evening cocktail, and laundry service.

The camp will be set up at three different locations during the safari, taking optimal advantage of the movement of the game. While your staff is busily moving the camp to the next exciting area, safari members will stay overnight in one of Tanzania's lodges.

Our group is limited to 15 participants, including our Academy lecturer, Beth Dunbar. Beth is a life-long naturalist and wildlife photographer with a great affinity for African natural history. As an Associate of the California Academy of Sciences, she has led numerous safaris to Kenya, Tanzania, Zambia, Zimbabwe and Botswana as well as to India and Nepal. The cost for this unparalleled excursion is \$4,091 plus air fare. For more information, call the Academy Travel Office at (415)750-7222.

Other 1990 Expeditions include:

Antarctica
January 13–26
Lecturer: Dr. Kathy Ann Miller

Belize
February 18–March 2
Leader: Sharon Matola, Founder & Director, Belize Zoo

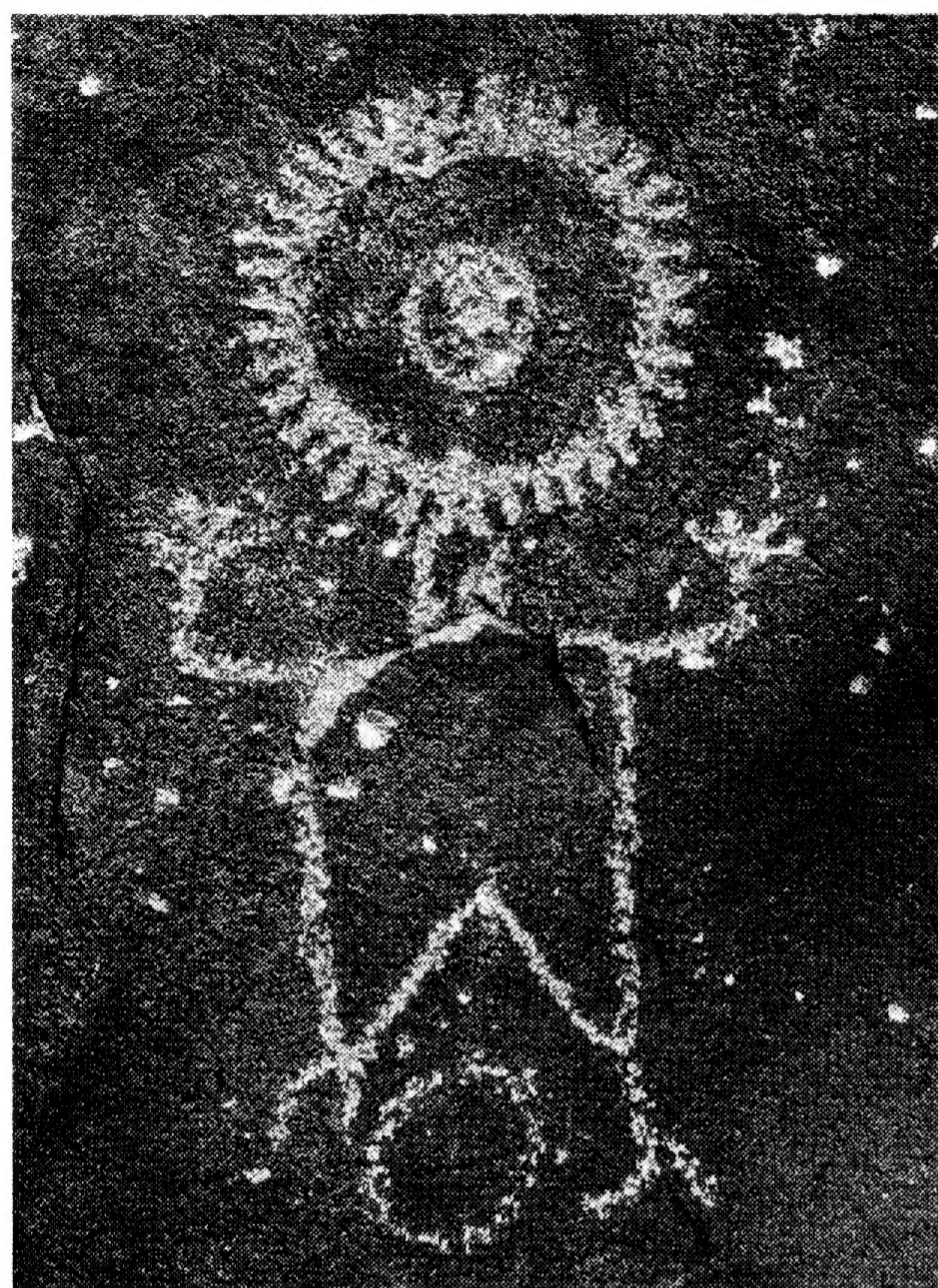
Baja California
March 4–11
Leader: Dr. Jim Kelley

Springtime Gardens of England
May 9–26

Indonesia: Secret Islands East of Bali
June 3–20
Lecturers: Dr. John McCosker and Dr. Stephen Jay Gould

For more information on these and other exciting expeditions, call the Academy's Travel Office at (415)750-7222.

Stone Spirits Opens November 11



Stone Spirits, opening November 11 in the Academy's Cowell Gallery, is a collection of color photographs of ancient petroglyphs by Native Americans. Petroglyphs are a unique form of ancient rock art etched directly into stone surfaces darkened over thousands of years by a "desert varnish," or patina formed by the weathering process. This patina provides a "canvas" for the artist who scrapes away the dark surface to reveal the light-colored rock beneath.

The photographs in this exhibit feature petroglyphs from two different sites. The oldest range between 2,000 and 6,000 years of age and are located in Little Petro-

glyph and Sheep Canyons in the Coso Mountain Range near China Lake in the Mojave Desert. The Coso Range canyons contain the highest concentration of rock art in the New World.

The more recent petroglyphs featured in Stone Spirits are from a site along the Rio Grande River near the San Juan Pueblo in Northern New Mexico. These petroglyphs were produced approximately 400-600 years ago and are found on the boulders scattered among the sagebrush, chamisa and grass of the open plateaus above the river canyon. Common motifs found in the San Juan Pueblo region are the large decorative shield design and shield bearer, kachina figures and masks, the horned serpent and both realistic and mythical depictions of birds. Abstract designs such as circles, stars, and geometric forms often appear among the more representational figures at this site.

The photographs featured in Stone Spirits are the work of Robert L. Canfield, a San Francisco architect and amateur photographer. His work reflects a life-long interest in early native peoples of the American Southwest. Stone Spirits is made possible through a generous grant from Homestake Mining Company and will be on display through July 29, 1990.

New Sky Show

'A Christmas Star' Opens December 1

Travel back in time 2,000 years to unravel one of the most enduring yuletide mysteries, the legend of the "Star of Bethlehem." "A Christmas Star," through January 1, will show at 2:00 p.m. weekdays and 1:00, 2:00, 3:00, and 4:00 p.m. on weekends and New Year's Day. The Planetarium will be closed Christmas Day.

"Startalk" looks at the phases of the moon, the constellations and what's up in the current night sky

from sunset to sunrise. Shows are at noon on Saturdays and Sundays.

Note: Special holiday schedule for the Planetarium. Beginning December 18, there will be a special holiday schedule Monday through Friday. "A Christmas Star" will be shown at 2:00 and 3:30 p.m., and a special showing of "Startalk" will be shown at 12:30. This special schedule runs through December 29.

Lecture

The Spacelab Missions: The Promise of the Space Shuttle

Tuesday, November 14
7:30 & 9:00 p.m.



Dr. Michael Lampton

On Tuesday, November 14 at 7:30 and 9:00 p.m., the Morrison Planetarium presents Dr. Michael Lampton, Senior Research Fellow of the Space Sciences Lab at U.C. Berkeley, who will discuss his part in the Space Shuttle Program. Dr. Lampton is a Space Shuttle Payload Specialist and is now on flight training status for the Spacelab mission scheduled for launch in December 1990. Tickets for the 7:30 talk are no longer available, however seats are available on a stand-by basis. For free tickets to the 9:00 talk, send a self-addressed, stamped envelope to "The Universe," Morrison Planetarium, California Academy of Sciences, Golden Gate Park, San Francisco, CA 94118. Please indicate the program you wish to attend and the number of tickets needed. The Planetarium requests that if you already hold tickets but are unable to attend, please call (415)750-7127 to cancel your reservation so others may attend.

A December 5 lecture by Dr. Frank Drake of the SETI Institute concludes the Fall series when he presents "Search for Intelligent Life in Space." For more information on ticket availability for these lectures, call the Universe Line at (415)750-7129.

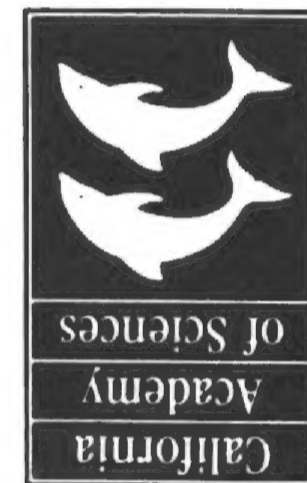
*Time Dated Material
Please Expedite*

November 1989

Open daily 10 am to 5 pm

(415) 221-5100

*San Francisco, California 94118-4599
Golden Gate Park*



*Non-Profit Organization
U.S. Postage Paid
Permit No. 7544
San Francisco*

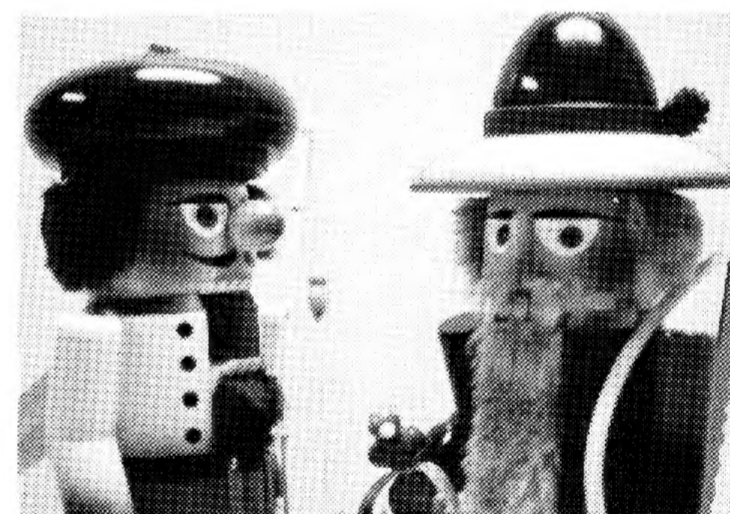
November at the Academy

- 4 Traditional Arts—Chinese Folk Dance, 1:00 p.m.
- 7 Native American Film Preview 7:30 p.m.
- 11 Traditional Arts—Japanese Fabric Flowers, 1:00 p.m.
- 14 Lecture: Spacelab, 7:30 & 9:00 p.m.
- 14 & 15 Members' Open House
- 18 Traditional Arts—Bolivian Music, 1:00 p.m.
- 21 Lecture: Whaling, 7:30 p.m.
- 25 Traditional Arts—Pueblo Pottery Demonstration, 1:00 p.m.
- 26 Run to the Far Side V, 8:30 a.m.
- 26 Young Audiences—A Capella singing, 1:00 p.m.
- 26 Pottery Demonstration—Kathy Sanchez, Santana & Adam Martinez, 2:15 p.m.
- 28 Lecture: Kachina Images In Hopi Art, 7:30 p.m.
- 30 Film: "The Wilderness Idea," 7:30 p.m.

Coming Up in December

- 1 Film: "The Wilderness Idea," 7:30 p.m.
- 1 Sky Show: "The Christmas Star"
- 5 Lecture: "Search for Intelligent Life in Space"
- 13 & 14 Members' Meeting

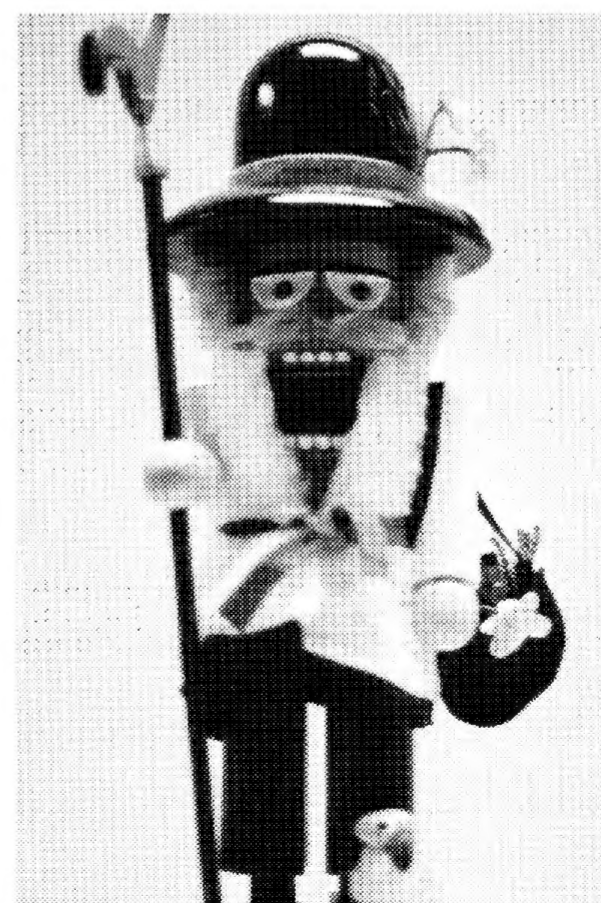
Academy Store



"Did you know?"



"Let's tell everyone!"



*Join us for
Members'
Holiday Shopping
Night
Wednesday,
November 29
6-9 p.m.*