

July Meetings

Dates & Times

Matinee, 2:30 p.m., Wednesday, July 8, 1981

Evenings, 8:00 p.m. Wednesday and Thursday, July 8 and 9, 1981

Place

May Treat Morrison Auditorium

Speaker

Louis A. Allen

Subject

"People of the Dreamtime"



In anticipation of the special program of aboriginal artists of Australia scheduled later this month (see following panel), Mr. Louis Allen, collector and authority on primitive art will present this month's members' meetings, **People of the Dreamtime**.

Allen's interest in aboriginal art was sparked many years ago when he admired a striking work at a Sydney exhibit of bark paintings. For 17 years he made repeated trips to aboriginal camps in the bush country of Arnhem Land to secure examples of the rare and beautiful paintings and to listen to the artists and storytellers who could unravel their mysteries. The result of his thoughtful studies was a book entitled, *Time Before Morning: Art and Myth of the Australian Aborigines*, a work which documents one of our last links with the Stone Age.

Join Mr. Louis Allen at any of the three members' meetings this month as he shares the rich legends that are woven into the culture of Australia's aborigines. Your membership card admits you through the main entrance or the Wattis Hall entrance for all of the meetings. Please be prepared to show your membership card once again at the auditorium door during the matinee presentation.



Members of the California Academy of Sciences will have a rare opportunity to see a unique presentation of Australia's ancient indigenous culture when dancers, musicians and artists visit the Academy on Monday, July 27. This special presentation is part of a national tour of 28 aboriginal artists from four communities in Northern and Central Australia. The schedule of events includes:

4:00 p.m. in Morrison Auditorium:

The film *Desert People* prepared by noted ethnographic film maker, Ian Dunlop, shows how the original inhabitants of the continent survived thousands of years in one of the world's harshest and driest environments.

5:00 p.m. in Wattis Hall of Man:

A slide/lecture on Papunya painting by Andrew Crocker, authority on traditional designs and images executed on canvas, plus a display of paintings both completed and in progress.

6:00 p.m. in Wattis Hall of Man

Traditional aboriginal music and dance will be performed on the stage in the Wattis Hall of Man by members of the traveling group.

6:30 p.m. On the green near the Wattis Hall entrance:

A demonstration of boomerang and spear throwing, weather permitting.

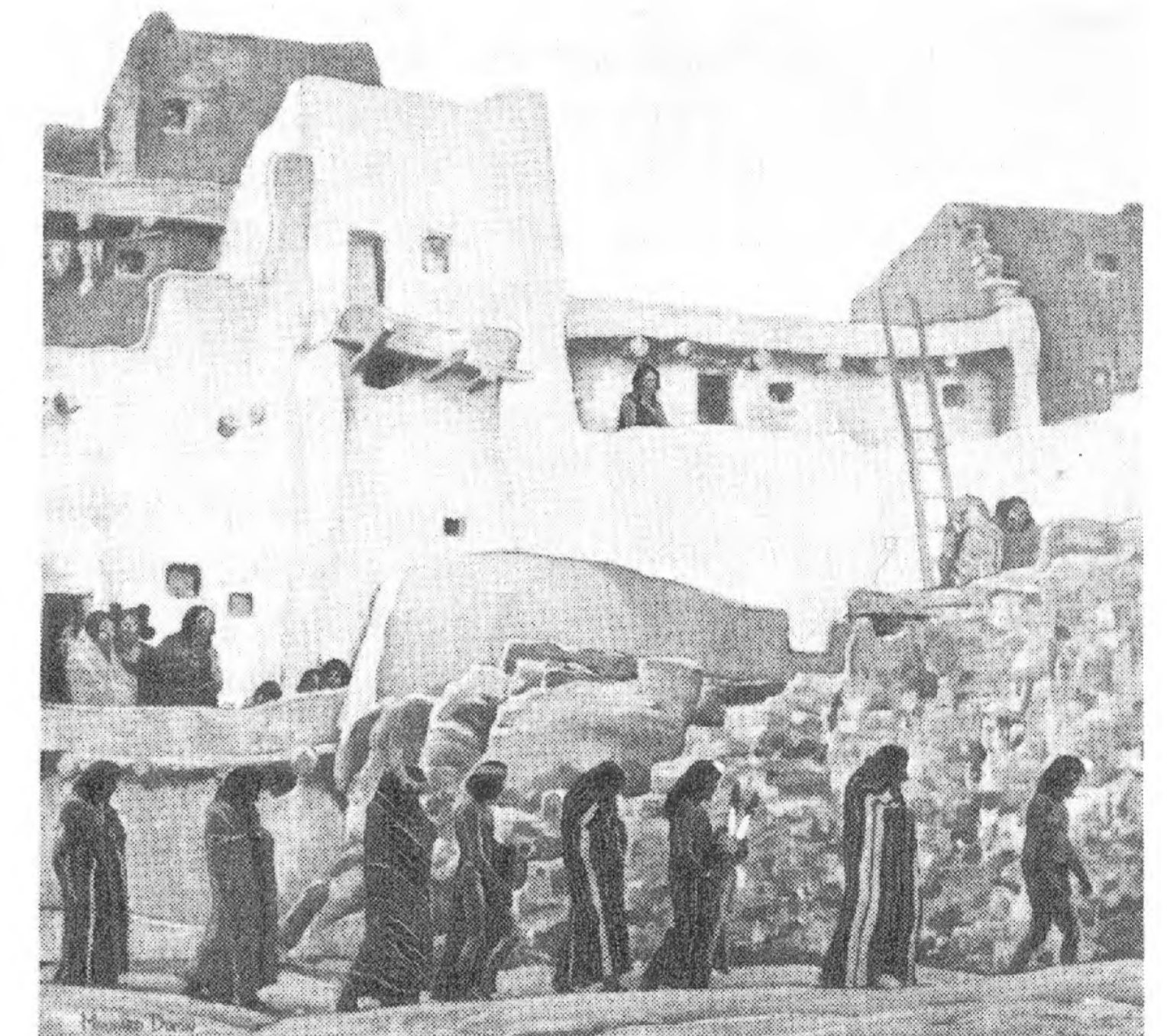
(All times are approximate for the live performances.)

ON TUESDAY, JULY 28, BEGINNING AT NOON, THE ENTIRE ABORIGINAL ARTISTS OF AUSTRALIA GROUP WILL GIVE A FREE PUBLIC PERFORMANCE AT NORTH FIELD NEAR THE LOWIE MUSEUM AT THE UNIVERSITY OF CALIFORNIA IN BERKELEY.

These special events are made possible through the Los Angeles Dance Festival-Orinoco Dance Foundation and are sponsored by Mobil Oil Corporation, the National Endowment for the Arts and the Government of Australia. Local appearances are sponsored by the California Academy of Sciences and the Lowie Museum of Anthropology, University of California, Berkeley.

Call 221-5100 for further information.

Special Exhibits



"The Wise Men"

MAYNARD DIXON: Images of the Native American continues in the Peterson-McBean Galleries. This beautiful collection of the works of Western artist, Maynard Dixon, includes both paintings and sketches from the years between 1900 and 1940.

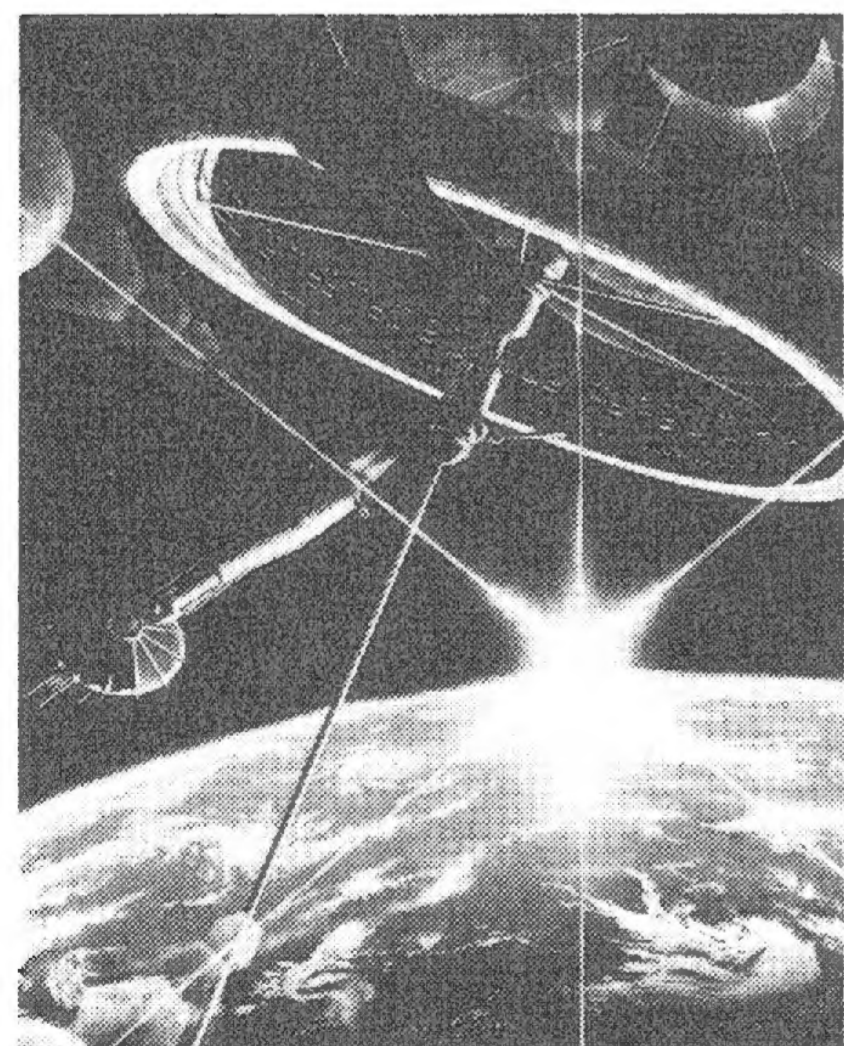
A 96-page slipcased and hardbound exhibition catalogue with over 40 color plates is for sale at \$20.00, and a special exhibition poster entitled "The Wise Men" is available

Morrison Planetarium

for \$6.00. Both are available at the Nature Company Museum Shop at the Academy. Members will, of course, receive their usual 10% discount.

Continuing exhibits include **Exploring the Deep Frontier: The Adventure of Man in the Sea**, through September 7; **The Fishing Fleet: Changing Times, Changing Faces**, through the Summer; **Reflections on Alaska**, a color photograph exhibit on display through August 2.

Imagine mile-wide cities floating in space or a massive engineering project transforming the face of Mars into a livable environment. Just as the West was once a vast, untamed frontier beyond the horizon, now the horizon is the surface of the Earth itself, and the new frontier is outer space. **Islands in the Sky**, the current planetarium sky show, looks at some of the ways that are within our grasp to utilize the resources of this "new frontier". Performances are everyday at 12:30, 2:00, and 3:30 p.m., extra shows on Wednesday, Thursday, Friday and holidays at 11:00 a.m., and Wednesday and Thursday evenings at 7:30 p.m.



Because of the many requests, a limited number of the beautiful **Islands in the Sky** show posters have been printed. They are available at the Academy's Nature Company Museum Store. Get yours while supplies last!!

Exploring the Skies of the Season describes "what's up" in the current night sky over San Francisco. Performances on Saturday and Sunday at 11:00 a.m. Please use your planetarium passes for free admission to both of these shows.

Light Shows

Enjoy the three dazzling presentations produced by Eye See the Light Show, Inc.

Lights Fantastic — an experience in classical, jazz, rock, and electronic music for the whole family!

Friday and Saturday at 5:00 and 7:30 p.m.
Wednesday, Thursday, & Sunday at 5:00 p.m.

Rock Fantasy — Pink Floyd, Jefferson Starship, Yes, Led Zeppelin, and more.

Thursday at 10:30
Friday and Saturday at 9:00 and 10:30 p.m.
Sunday at 7:30 p.m.

Spotlight: Journey — one of the most exciting rock groups today.

Wednesday, Thursday, & Sunday at 9:00 p.m.

For more information, call 387-6300. Tickets are available through BASS at 835-3849. Admission is \$3.75 for adults and \$1.75 for seniors (65 and over) and children under 10.

Members are reminded that this is **not** a regular planetarium show, so your complimentary passes are **not** usable for this attraction.

Enjoy the Late Summer Evenings at the Academy.

Beginning July 4 the California Academy of Sciences will be open every day from 10 a.m. until 8 p.m. This schedule will continue through September 7, Labor Day.

MEMBERSHIP FEES

The Academy's membership fees have remained the same for some time, during which the costs of operation have more than doubled. The budget reached \$2 million for the first time in 1971 — it now exceeds \$4.6 million. Examples of particularly heavy cost increases are for utilities, postage, printing Pacific Discovery Magazine and the Newsletter, fuel, insurance, and staff salaries. At the same time tax support provided by San Francisco has decreased from thirty-three to less than twenty percent.

During the FY 1981-1982 budget preparation it was determined, reluctantly, that admission fees and membership dues should be increased. Effective July 1, 1981 the following rates will be in effect:

Admission fees-

Adults	\$ 1.50
Youths 12-17 & Seniors	0.75
Children 6-11 & Groups	0.50

Admission is free on the first Wednesday of each month.

Membership dues-

Individual	\$ 25.00
Family	30.00
Contributing	50.00
Sustaining	100.00
Senior Family	25.00
Life Membership	500.00
Friends	1,000.00 (annual)

Junior Academy membership remains at \$5.00. All memberships provide free admission to the Academy. Adult memberships include subscription to Pacific Discovery, Newsletter, Monthly Membership Programs, and other mailings and notices for members, as well as a discount on most items at the Nature Company Store. The new rates will be effective on membership renewals after July 1, 1981.



Fisherman's Fancy

According to fisherman's lore, it is unsafe to eat mussels during those months without the letter "r" in their names. Why is this so?

At what depths are the salmon biting? Perhaps depth depends upon the salmon's response to barometric pressure.

Why is it that on one day an angler can catch a trout on a "Royal Coachman" and not on a "Quill Gordon"? Perhaps the fish are responding to color.

Those that enjoy seafood, as well as catching their own, have long followed but rarely understood the reasons behind such fishing lore. A biological basis exists for these and other phenomena.

An informative and fun weekend awaits both the veteran fisherman and the interested novice as we learn about the life-cycles and habitats of a variety of aquatic creatures, where and when to find them and even a few good recipes!

Brush up on your fly casting and fly tying at workshops offered courtesy of the Golden Gate Angling and Casting Club. Or, join us for a day of salmon fishing outside the Golden Gate!

Saturday, July 18

MORNING LECTURE SERIES

9-9:30 a.m.

"The Shelled Ones: Shrimp and Clams"

*Dustin Chivers, Department of Invertebrate Zoology
California Academy of Sciences*

Did you know that there are three species of Dungeness crabs in our area, comprising one of the world's largest populations? Or that delicious shrimp grow in abundance in our bay? We will learn about these peculiar creatures and how to catch and identify them.

9:30-10:00

"Shoreline Treasures: Oysters, Clams and Mussels"

*Dr. Barry Roth, Department of Invertebrate Zoology,
California Academy of Sciences*

Large Miwok and Ohlone Indian shell mounds remain as evidence of man's long use of oysters, clams and mussels as major food sources. What do we know about these mollusks which we continue to enjoy today? Dr. Roth will describe life-cycles and explain how to harvest them both commercially and for sport.

10:00-10:30

"Abalone"

*Dr. Earl Ebert, Senior Marine Biologist, Department of
Fish and Game*

The abalone population along our coast continues to decline. What is the cause? Sea Otters? Commercial

divers? Degradation of the marine habitat? We will look at this problem and man's attempts to rear these much sought-after mollusks for commercial purposes in an effort to stem the decline.

Break

10:45-11:15

"Nature's Perfect Cycle: The Life of the Salmon"

*Dr. John McCosker, Steinhart Aquarium, California
Academy of Sciences*

Did you know that a salmon spawned in Lagunitas Creek will return after three years of traveling through North Pacific waters to the exact stream where his life began? Dr. McCosker will tell us about the fascinating biology and life-cycle of these fish.

11:15-12:00

"The 'Reel Life' In San Francisco Bay"

*Larry Green, Fisherman's Forecaster for KCBS Radio
and Outdoor Columnist for the San Francisco Progress*

San Francisco Bay is a salt water fisherman's delight. Stripers, sturgeon and salmon are but a few of the fish that can be caught within sight of the city lights of San Francisco. We will look at many of these fish, where to catch them, and the equipment needed to ensure a successful fishing experience.

12:00-12:45 p.m.

Film: "The Way of a Trout"

A glimpse of the rainbow trout and a trout stream ecosystem with an emphasis on the species that prey on trout, including man.

"The Art of Fly Fishing"

Perk Perkins, Orvis of San Francisco

Join fisherman Perk Perkins as he lectures on why fly fishing is probably the most thorough way to participate in nature while impacting it least. We will look at the scientific and conservation appeal of fly fishing along with information on how to get started, what equipment is needed and the best places to go.

AFTERNOON WORKSHOPS

Fly Tying Lecture/Demonstrations

Goethe Room

1:30, 2:30 and 3:30 p.m.

Why is fly tying considered an "art"? We will watch and learn from members of the Golden Gate Angling and Casting Club just how to create beautiful lures which can fool even the wisest fish in the stream. Enrollment is limited to 15 persons per class. See attached enrollment form for details.

Fly Casting Workshops

On the Green, next to the rear entrance of the Academy

1:30, 2:00, 2:30, 3:00 and 3:30

"Accuracy" is the word in casting! Members of the Golden Gate Angling and Casting Club will be assisting those who need tips on the finer points of casting while, at the same time, getting interested beginners started. Please bring your own equipment. See enrollment form for details.

Sunday, July 19

A Salmon Fishing Excursion

6:00 a.m. - 4:30 p.m.

Come aboard the sportcruiser *Argo* for an exciting day of salmon fishing. Staff members of the Steinhart Aquarium will be along to answer your questions. See attached enrollment form for details.

Ticket Information and Reservation Form

Tickets are available for the program **Fisherman's Fancy** with this registration form. Reservations will be accepted in order of receipt and unfortunately telephone reservations cannot be accepted for this event. Tickets will be sold at the door on a space available basis.

For further information please call the Education Office at (415) 221-5100.

TICKET ORDER FORM

Please mail this form with check, made payable to the CALIFORNIA ACADEMY OF SCIENCES, and a self-addressed, stamped envelope to:

FISHERMAN'S FANCY
California Academy of Sciences
Golden Gate Park
San Francisco, CA 94118

Saturday, July 18

Morning Lecture Series

\$3 members, \$5 non-members

Fly Tying Lecture/Demonstration

\$3 members, \$5 non-members

1:30 2:30 3:30 *circle preferred time*

Casting Workshops

\$3 members, \$5 non-members

1:30 2:00 2:30 3:00 3:30

circle preferred time

Sunday, July 19

Salmon Fishing Excursion

6:00 a.m. - 4:00 p.m. — \$45

Includes: Boat, breakfast, lunch (hot roast beef, salad and all the trimmings), coffee, soft drinks, assistance from crew and aquarium staff, and all equipment and bait. Does not include: fishing license.

Name _____

Address _____

Zip Code _____

Daytime Telephone # _____

TOTAL AMOUNT ENCLOSED _____

NO REFUNDS/NO EXCHANGES

Education and Travel

National Parks Tour II

September 12 - 20

Charles Chesterman leads members on a geologic tour to Bryce Canyon National Park, Zion National Park and the Grand Canyon. Cost is \$1098 per person, including air. For information, call Gulliver's Travels at (415) 346-4400.

Darwin's Galapagos

October 28 - November 10

Members will cruise aboard the *M.V. Santa Cruz* to those living laboratories of evolution known as the Galapagos Islands. Costs range from \$2100 to \$3400 for land/cruise arrangements. Air fare is currently \$863. For information, call the Academy Travel Office at (415) 221-5100.

Baja California Overland

November 7 - 14

Sea of Cortez Cruise

November 14-21

Botanist Annetta Carter leads this exciting bus tour south of the border to beautiful Baja California. A 6-day cruise aboard the *Baja Explorador* through the southern islands of the Sea of Cortez is offered as an optional extension. The Overland trip is \$695, air fare is \$226. The Sea of Cortez extension is \$895 and \$216 for air. For information, call the Academy Travel Office at (415) 221-5100.

Ancient Aegean Civilizations

From the Bronze Age to Byzantium

September 1 - 14

Dr. and Mrs. Lindsay will accompany members on a spectacular cruise aboard the *M.V. Regina Maris* to Greece, the Greek Islands and Asia Minor. A special excursion, led by Drs. Stephen and Stella Miller to their excavations at Nemea will complete this exploration of the classical world of the Aegean. Costs, including air fare from San Francisco are \$3,760 to \$4460. For information, call the Academy Travel Office at (415) 221-5100.

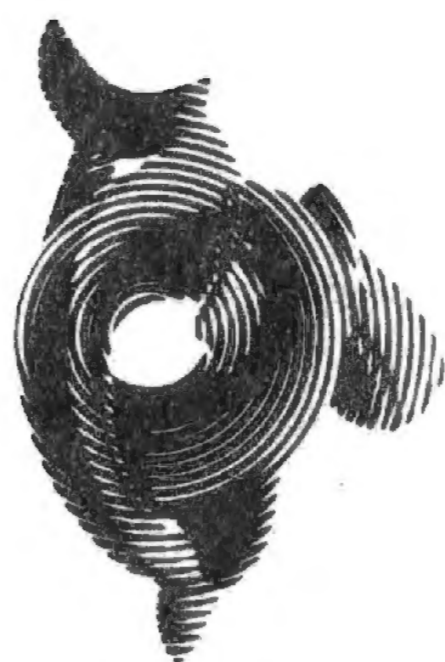
Coral Seas Cruising Expedition

November 15 - December 13

Dr. John McCosker will lead members on a cruise to the Great Barrier Reef of Australia. Participants will travel in comfort aboard the *Lindblad Explorer* on this special trip which is co-sponsored with the Oceanic Society. Costs range from \$4910 - \$8130 for the cruise. Air is currently \$2093. For information, call the Academy Travel Office at (415) 221-5100.

Golden Gate Park, San Francisco, California 94118

No.499



California
Academy of
Sciences

Non-Profit Organization
U.S. Postage Paid
Permit No. 7544
San Francisco, California

GRAPHIC
ARTS
OF
MASSACHUSETTS

California Academy of Sciences
Newsletter July, 1981

