



Exp 40
Schmitt
3

(3)

— 4 $\frac{1}{8}$ " —





Exp 40
Schmitt
5

5

$4\frac{1}{8}$





Exp 40 -
Admitt
4

(4)

4 $\frac{1}{8}$ "





Exp 40
Schmitt
2

(2)

— 4 $\frac{1}{8}$ " —





Ex P40
Schmitt
6

6

4 $\frac{1}{8}$ "





Ex p 40
Schnitt
7

7

4 $\frac{1}{8}$

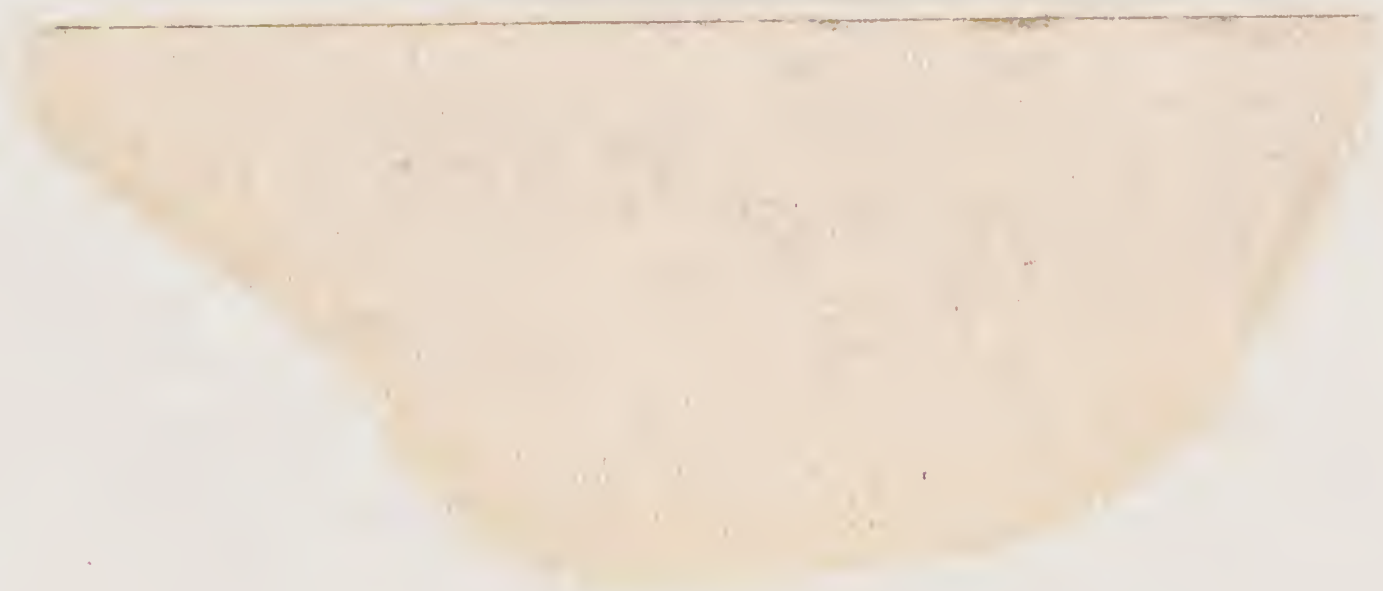




Et p. 100
Schmitt
1

①

— $4\frac{1}{8}$ " —





Exp 40
Schmitt
8





1343



15257



15781



1952



1575



15785



5 21 51





14227



15783

M.S. TORHELEYD

EVSTNYI—SVEFLA—NOR



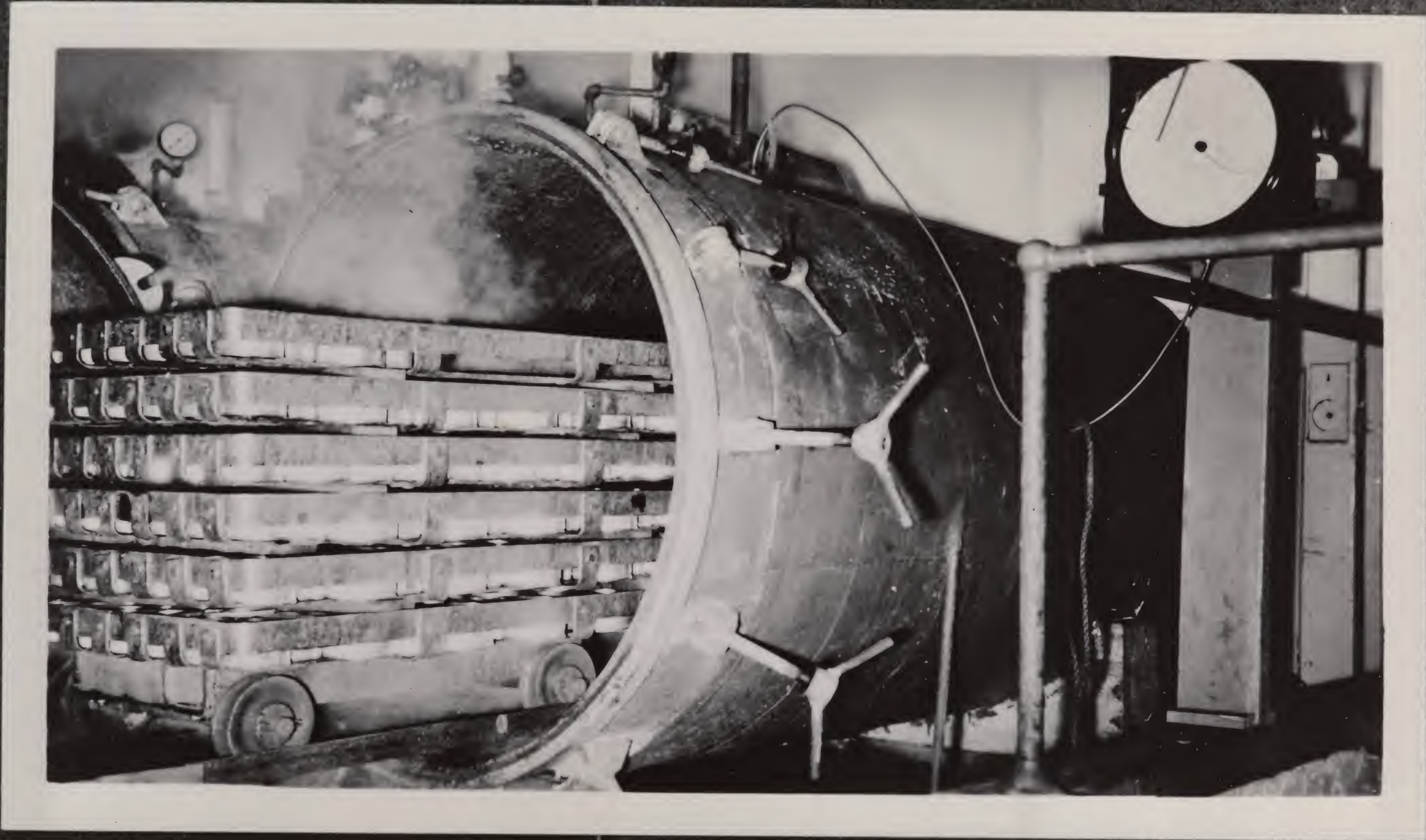
ALVIN SYBELT - NUOVA

1875

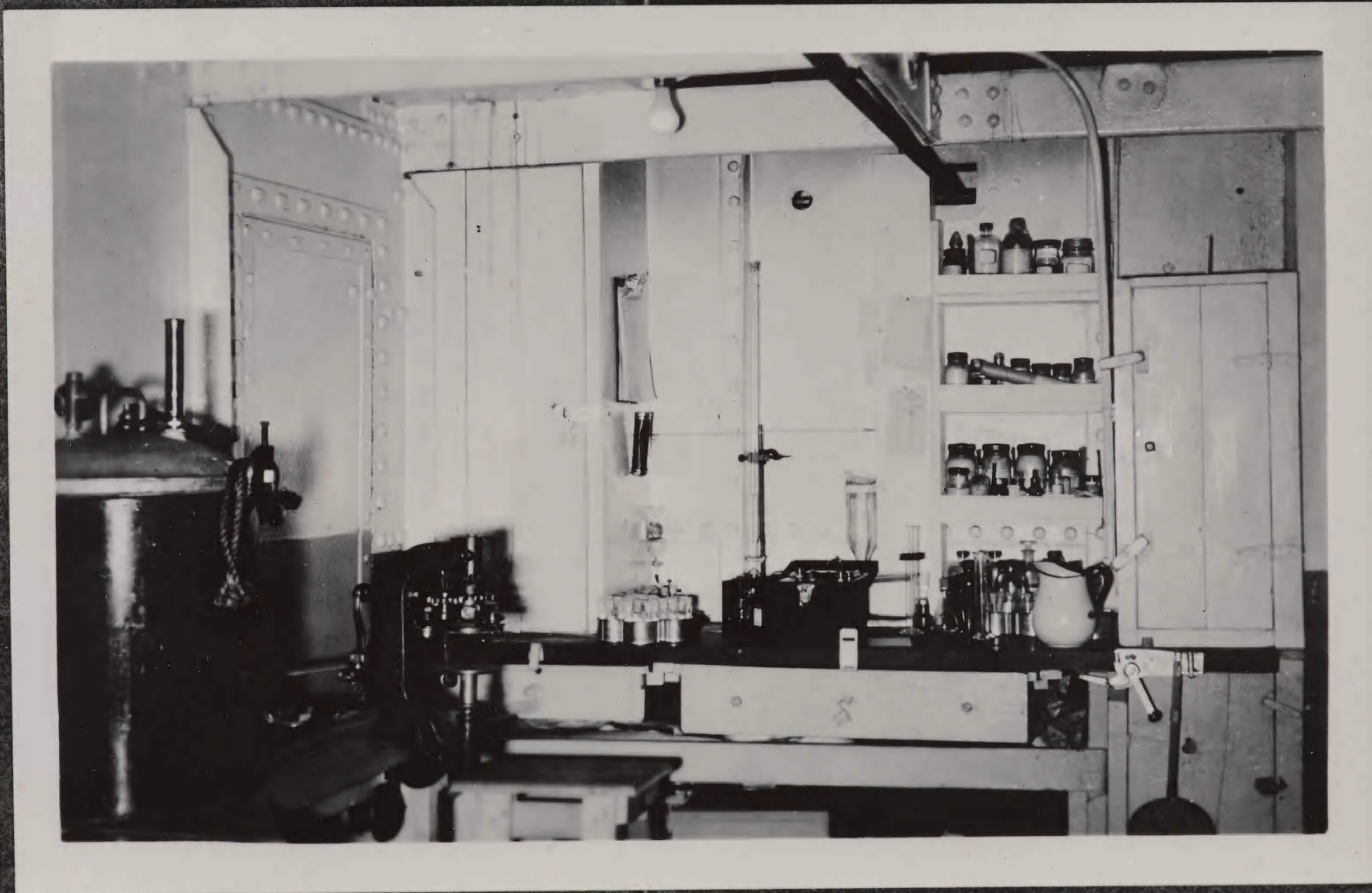


ALBERTA — KUUVAK

14780



15452



15758

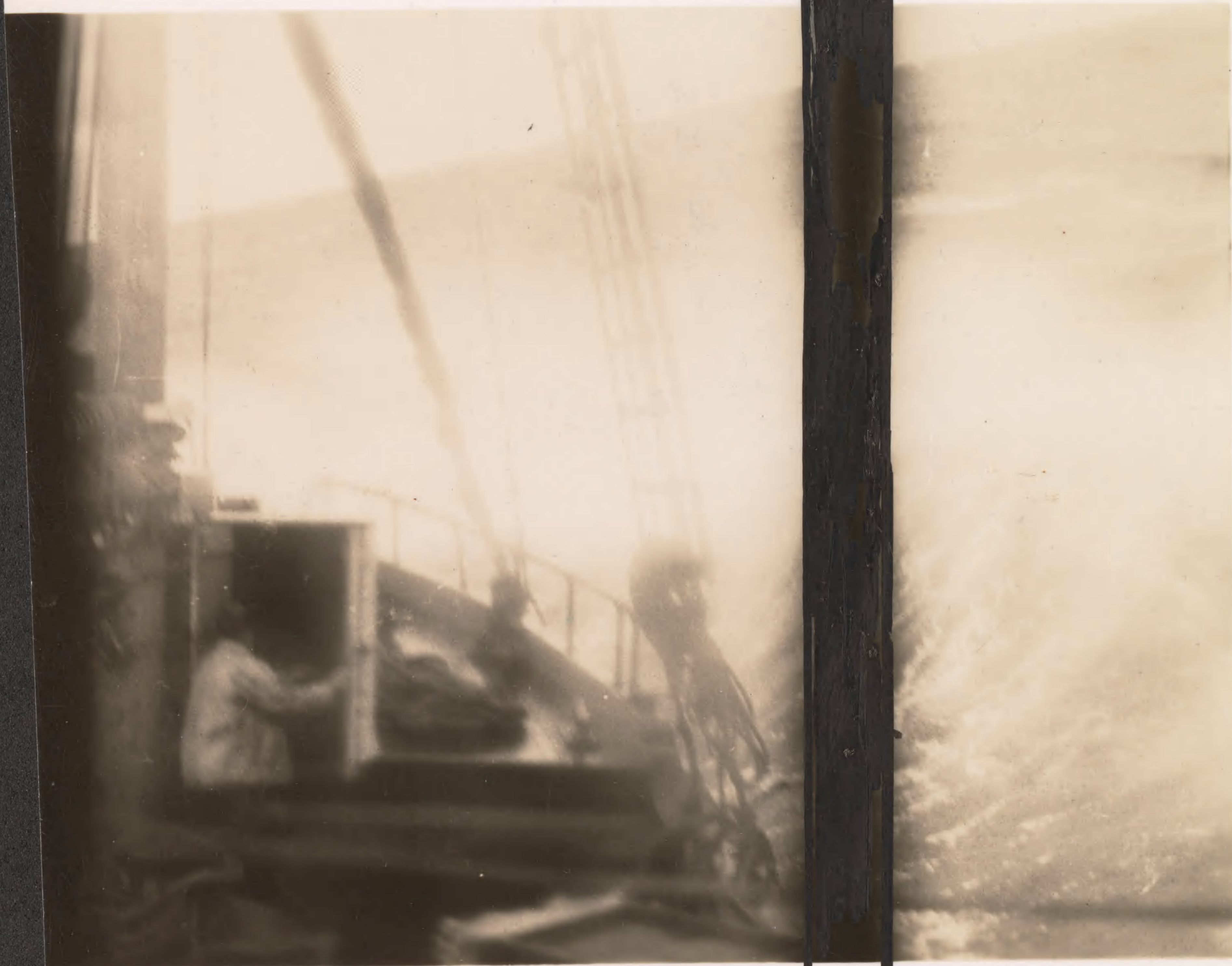




15459









48348 mis, ♀

Grade 6.178 mch
Lang. 5.477

abs 4 lb 4 oz.

part 4 1/2 to 4 1/2 lb.



7 ⁵/₈ from tip of rostrum
to mid. of post margin

Canoe Bay

Sept. 1940

Paralithodes cantschatica















