



Exp 40
Schmitt
3

(3)

— 4 $\frac{1}{8}$ " —





Exp 40
Schmitt
5

5

$4\frac{1}{8}$





Exp p 40 -
A dunnitt
4

(4)

4 $\frac{1}{8}$ "



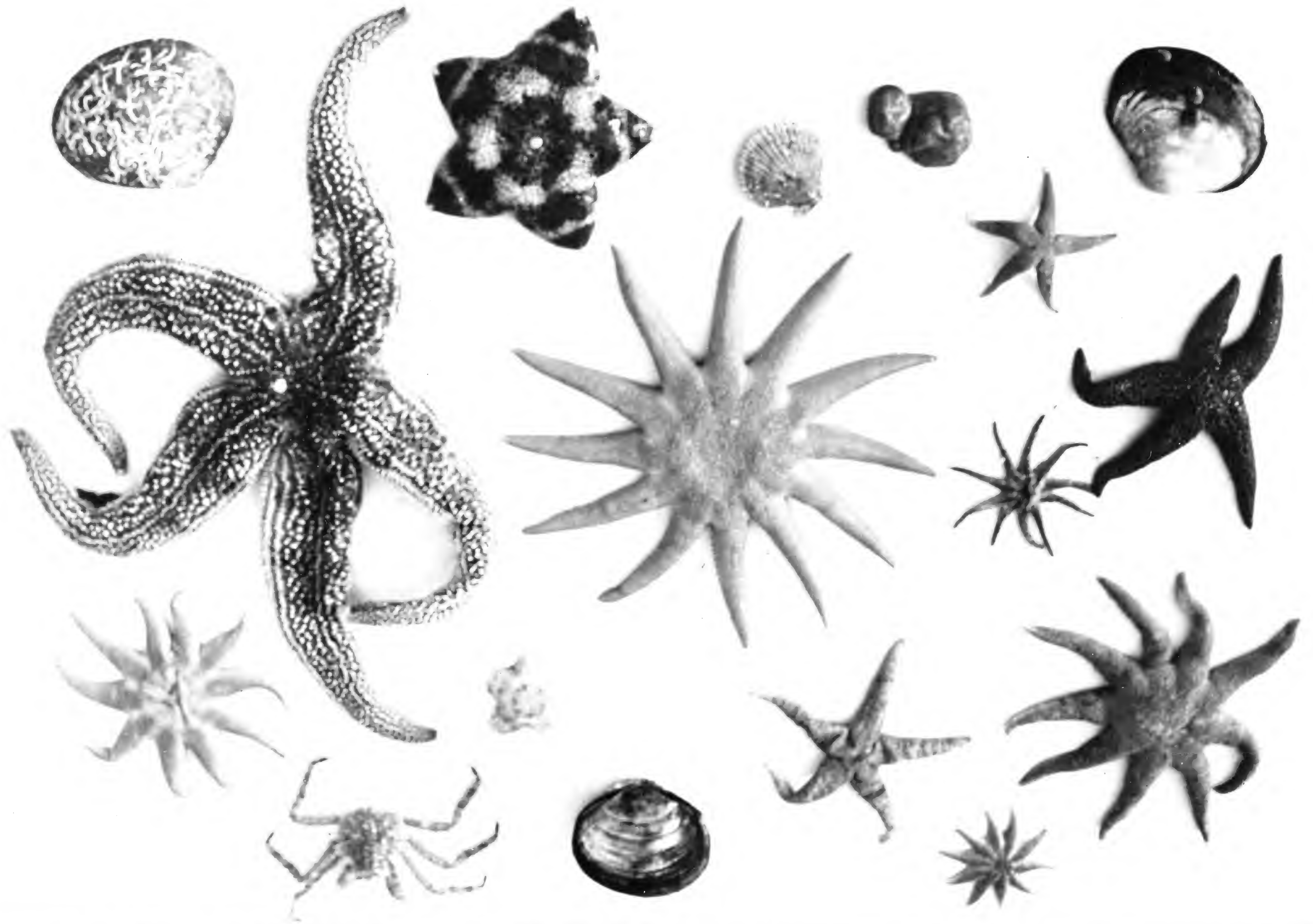


Exp 40
Schmitt
2

(2)

— $4 \frac{1}{8}$ " —





EX P40
Schmitt
6

6

4 ¹/₈ "





Ex p 40
Schnitt
7

7

4 $\frac{1}{8}$ "

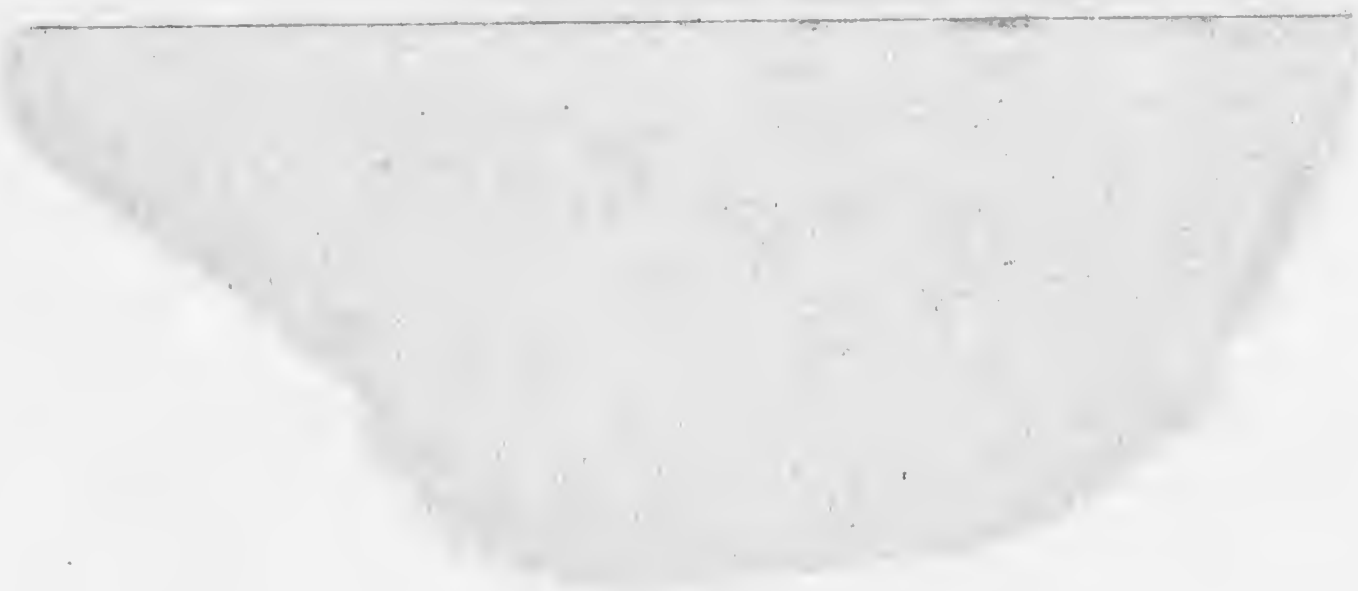




Et p. 112
Schmitt
1

①

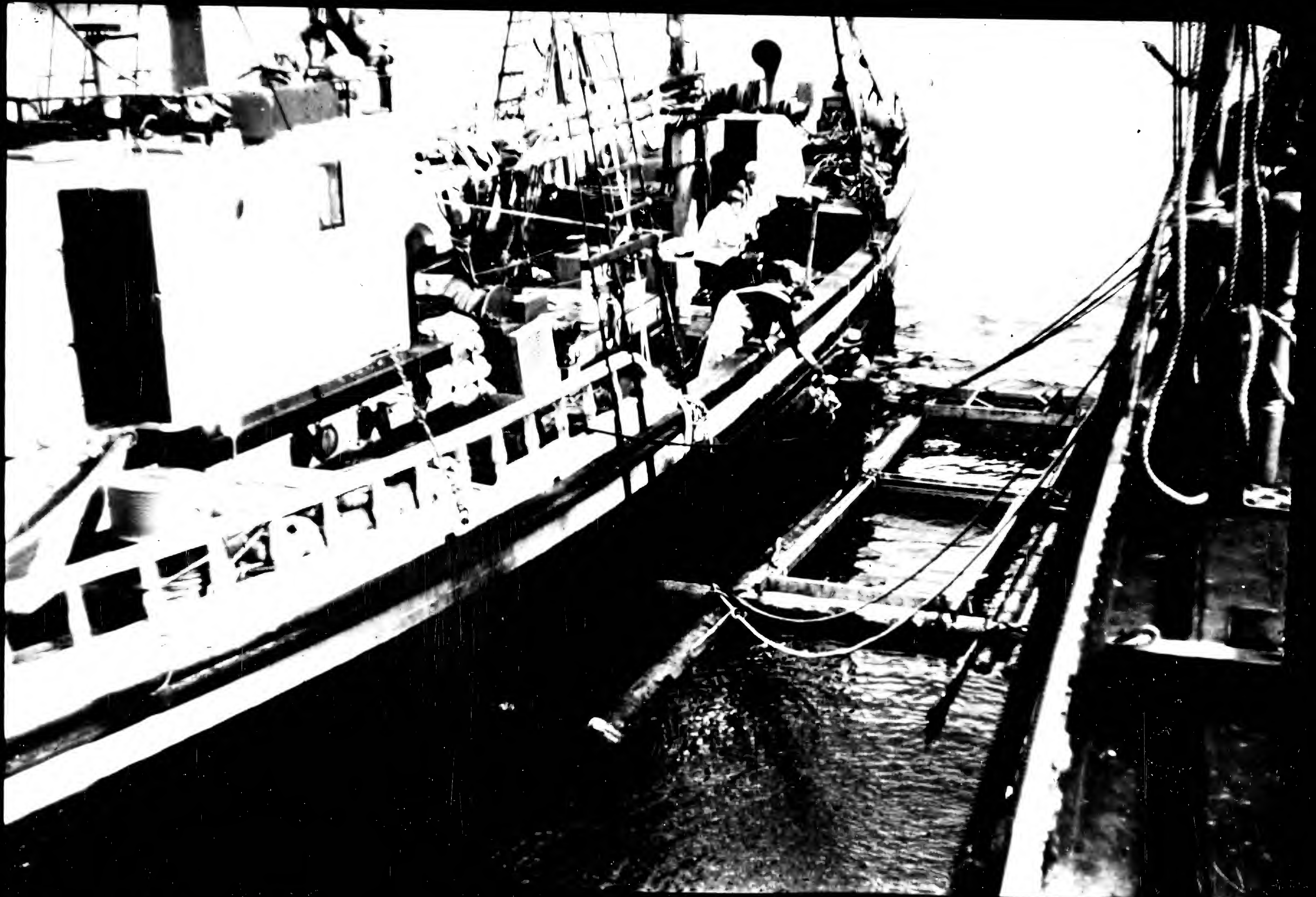
— $4\frac{1}{8}$ " —





Exp 40
Schmitt
8

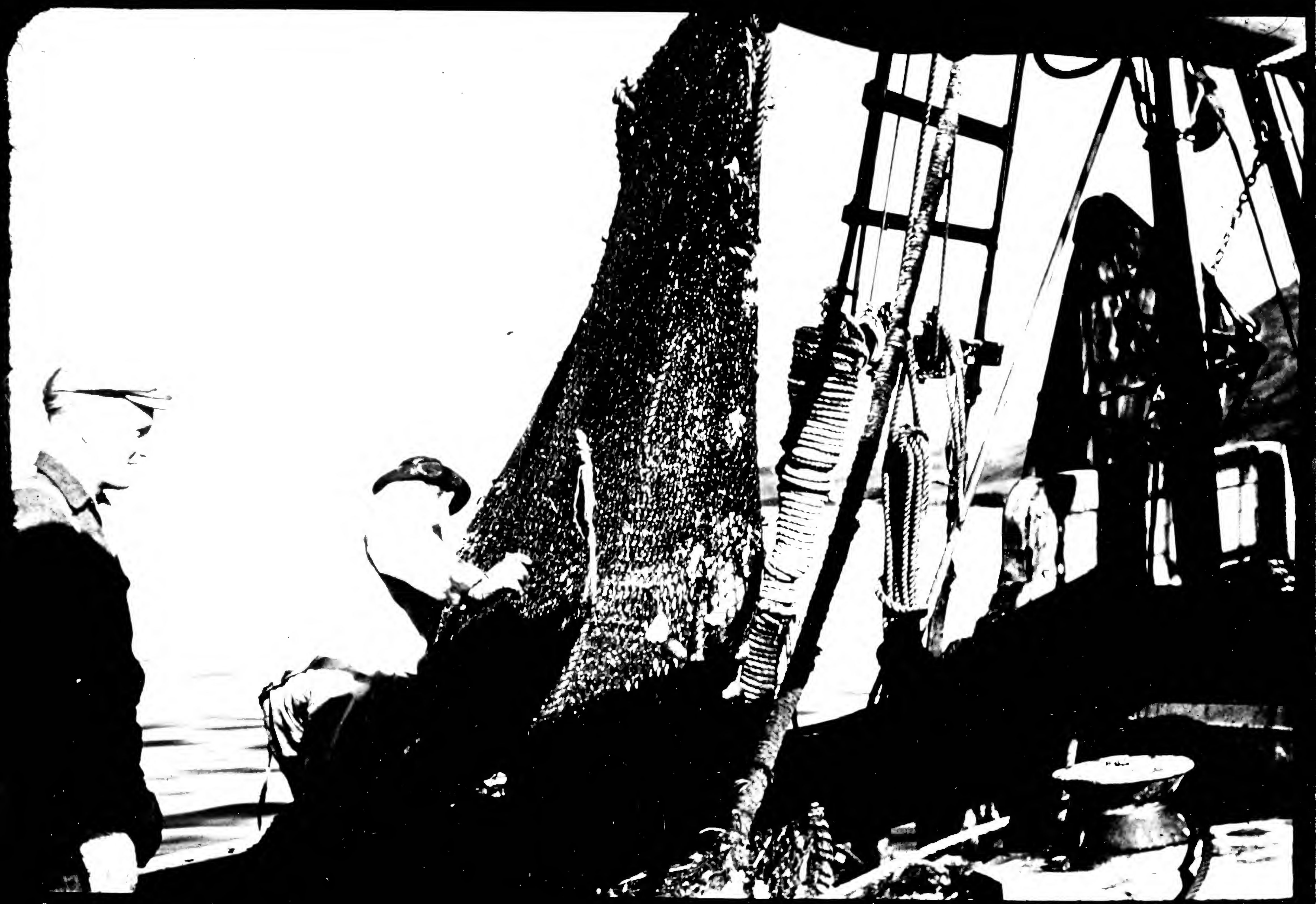




1243



15257



15781



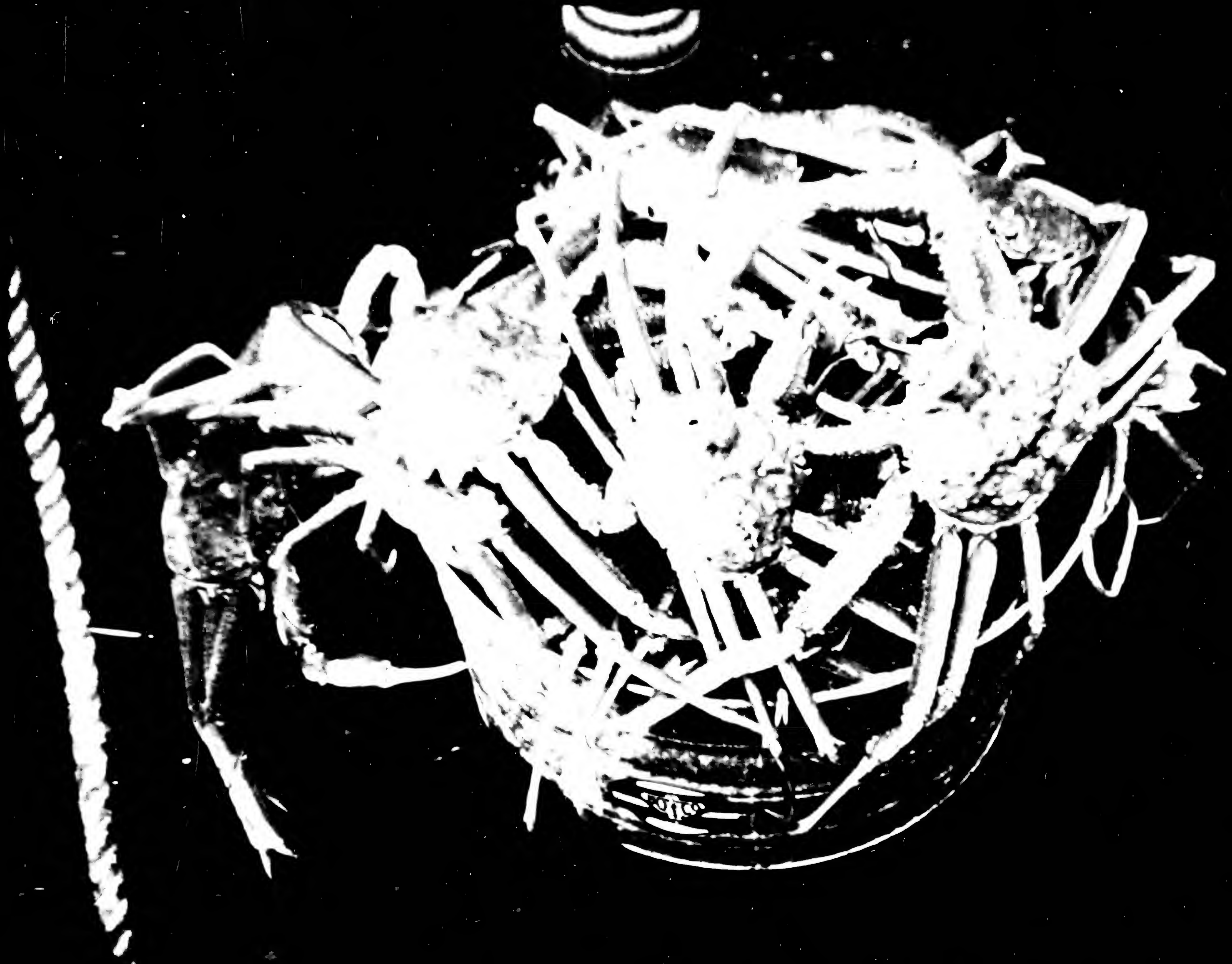
Handwritten text at the bottom left corner, possibly a date or reference number, including the characters "1945".



12451



15789



5 21 51



1941



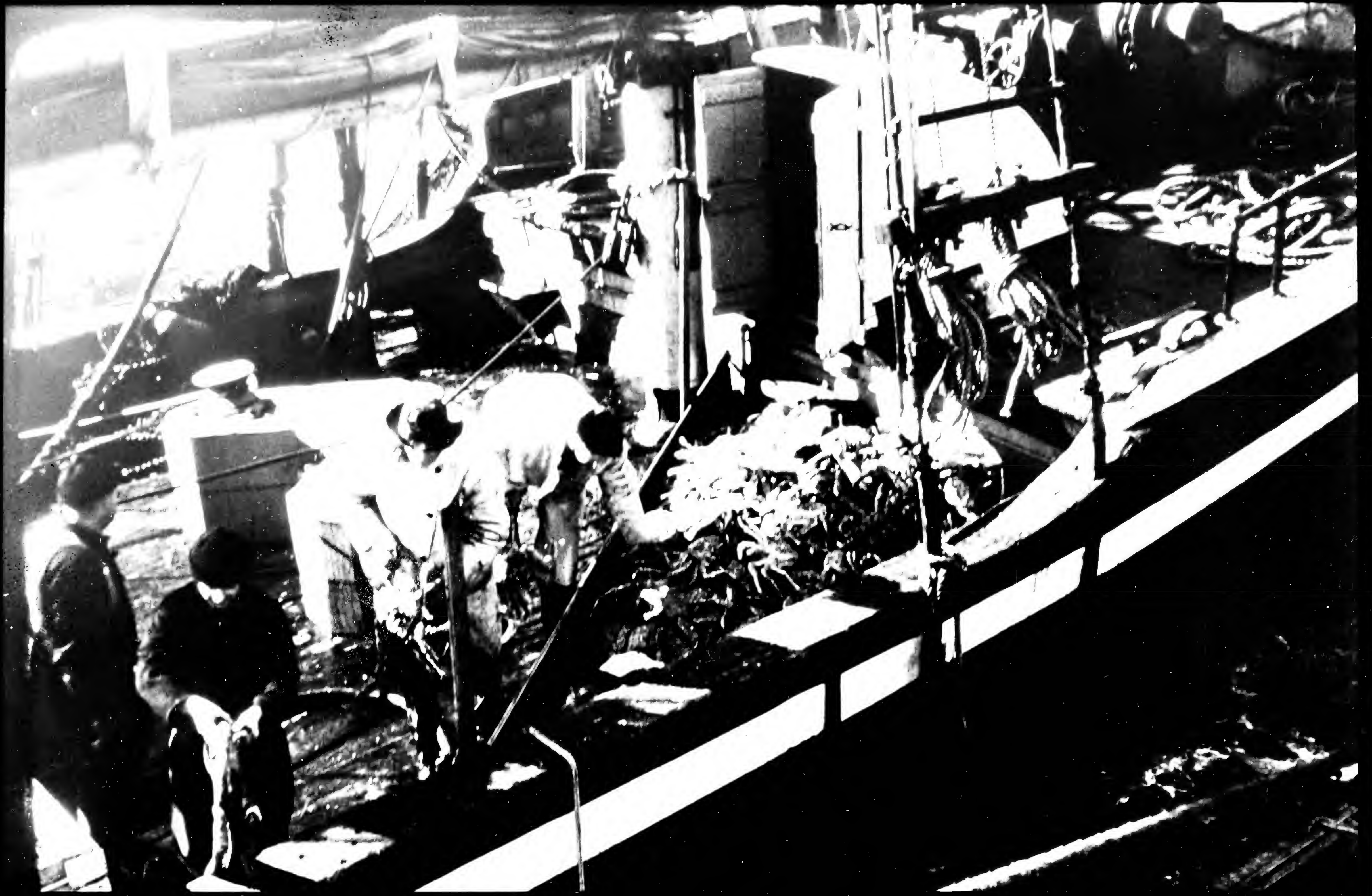
1482



M. S. TONJELEYO

15 783

EVANS—GUYER—L.A.—N.Y.



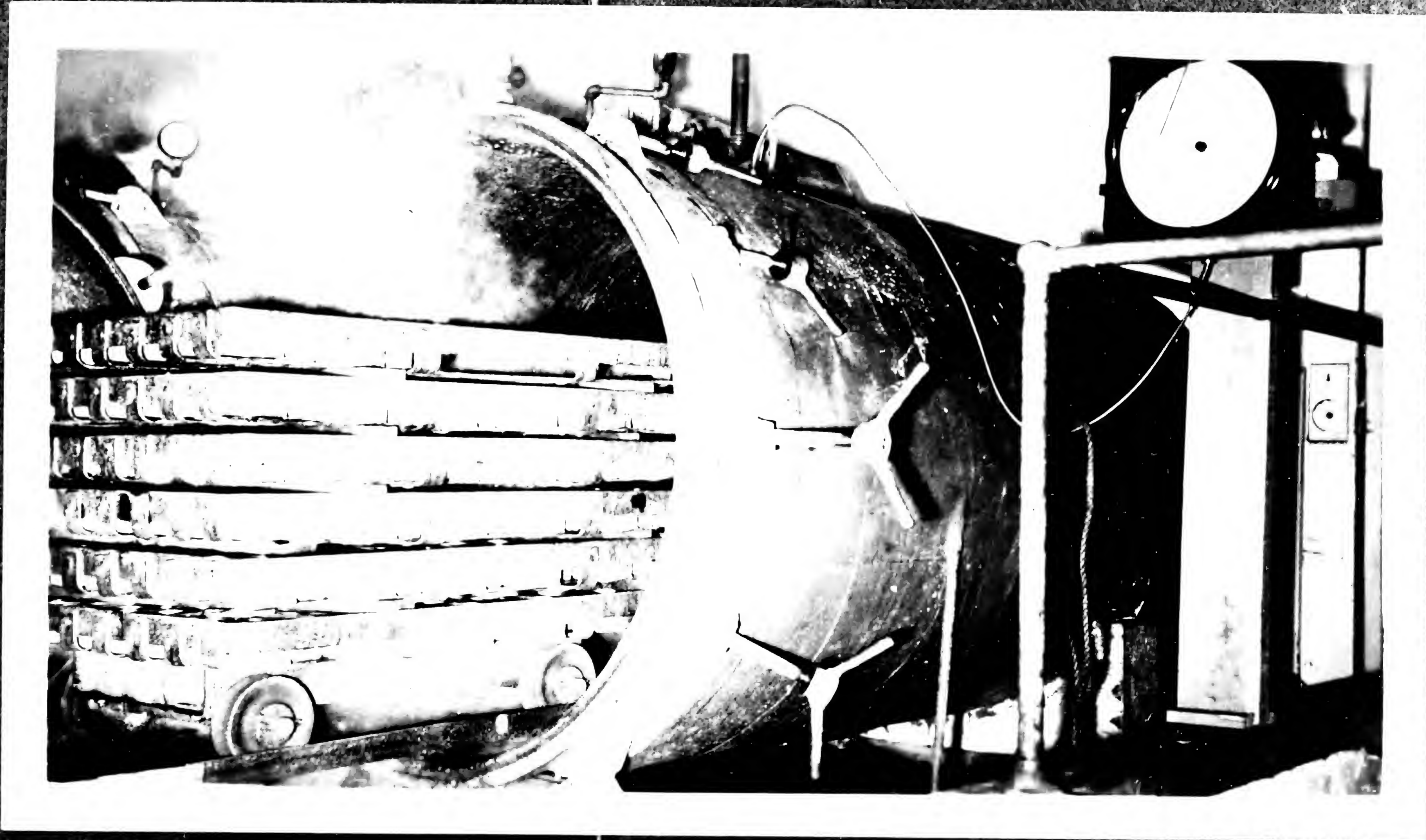
QUEEN—NOVA

1878

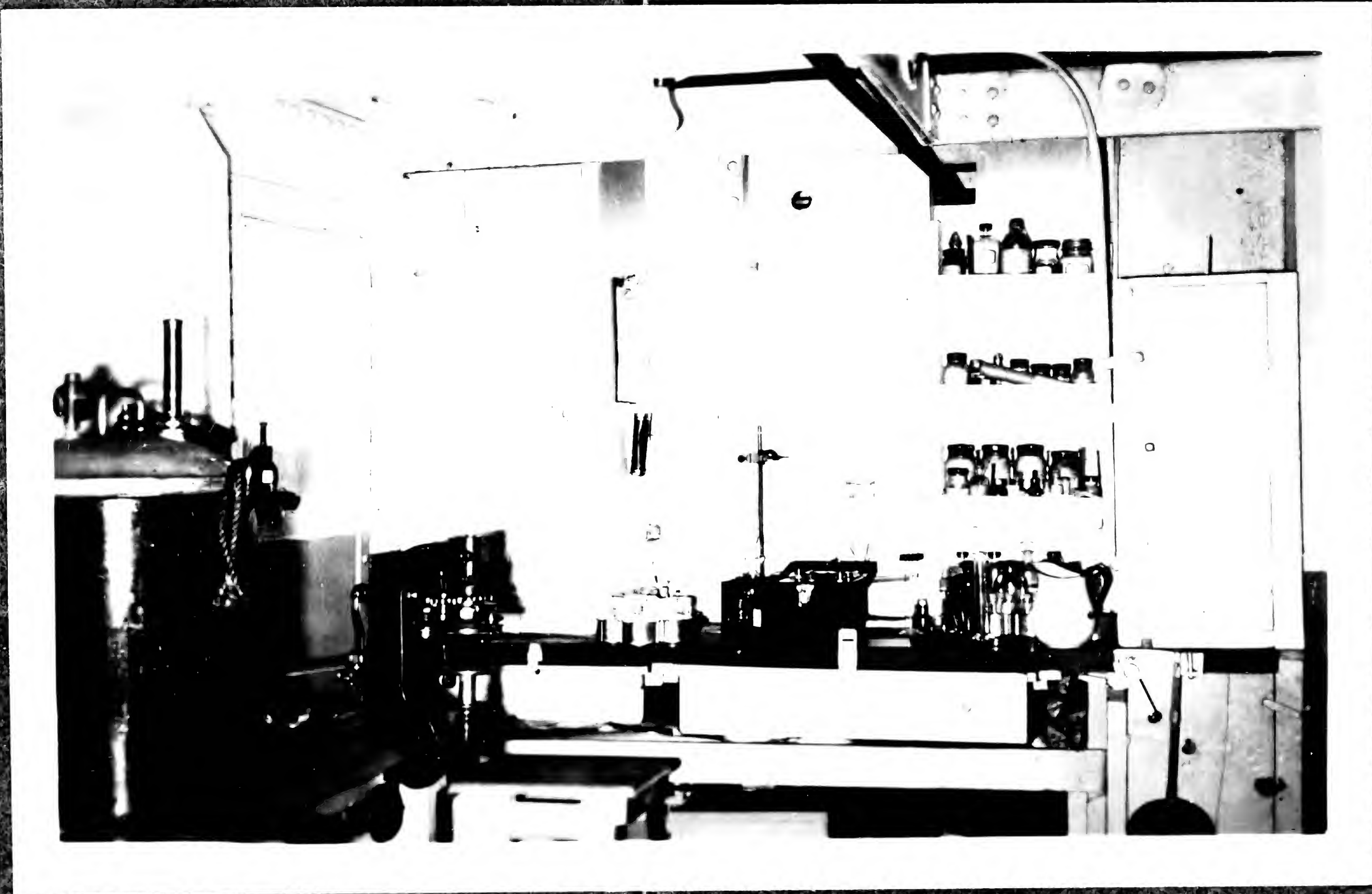


J. ELLA - KUUVIK

14780



15452



5751

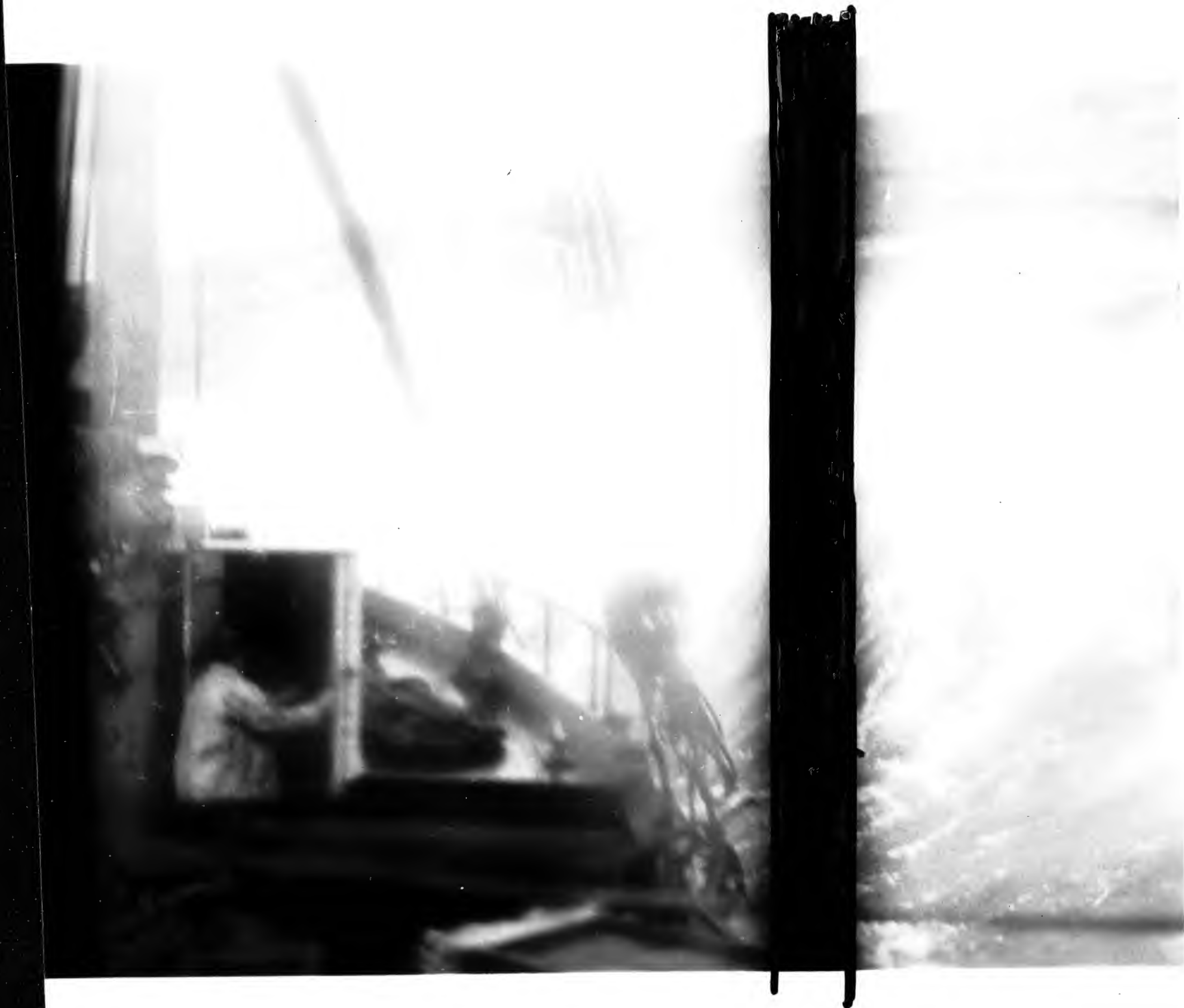


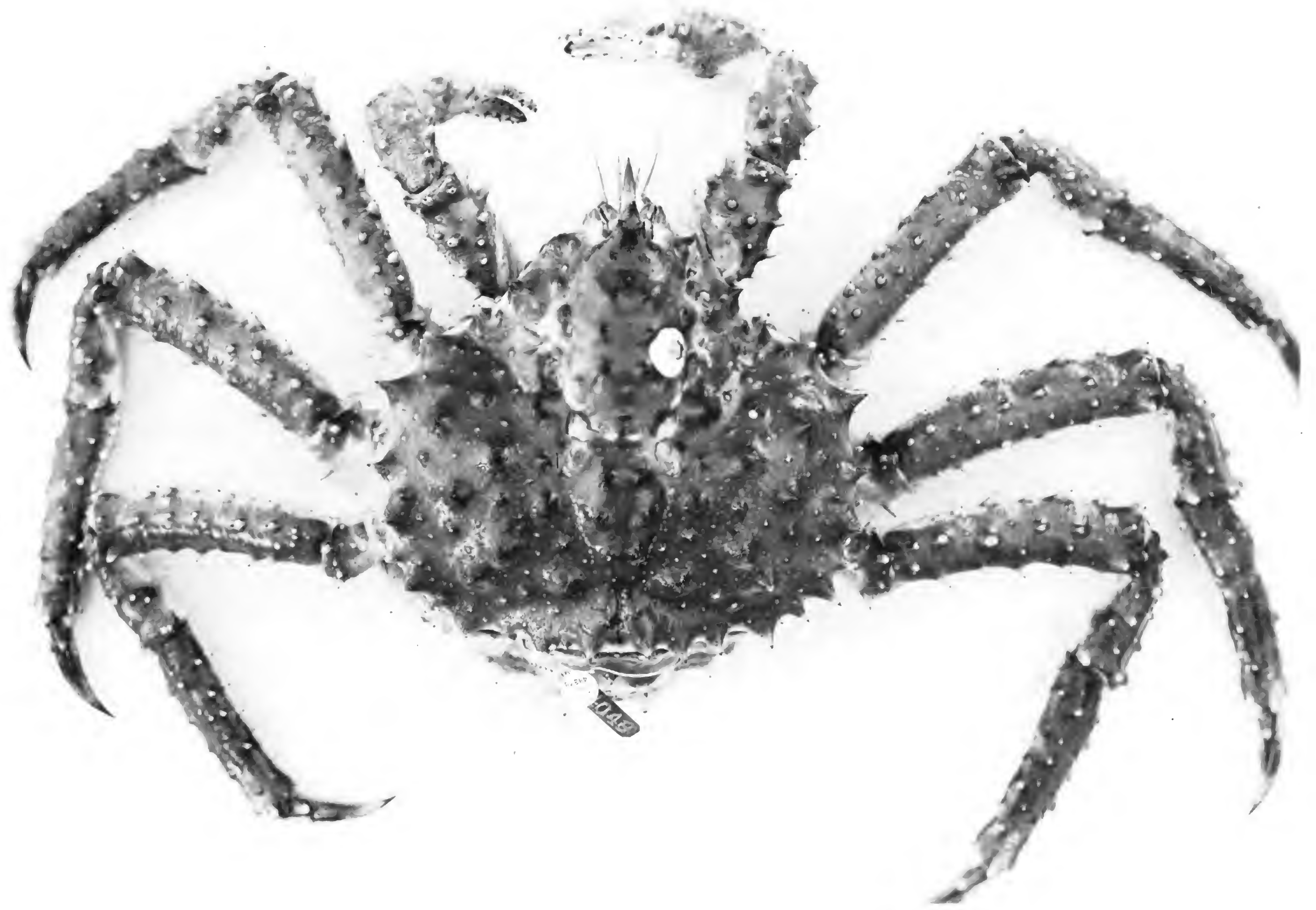


15759









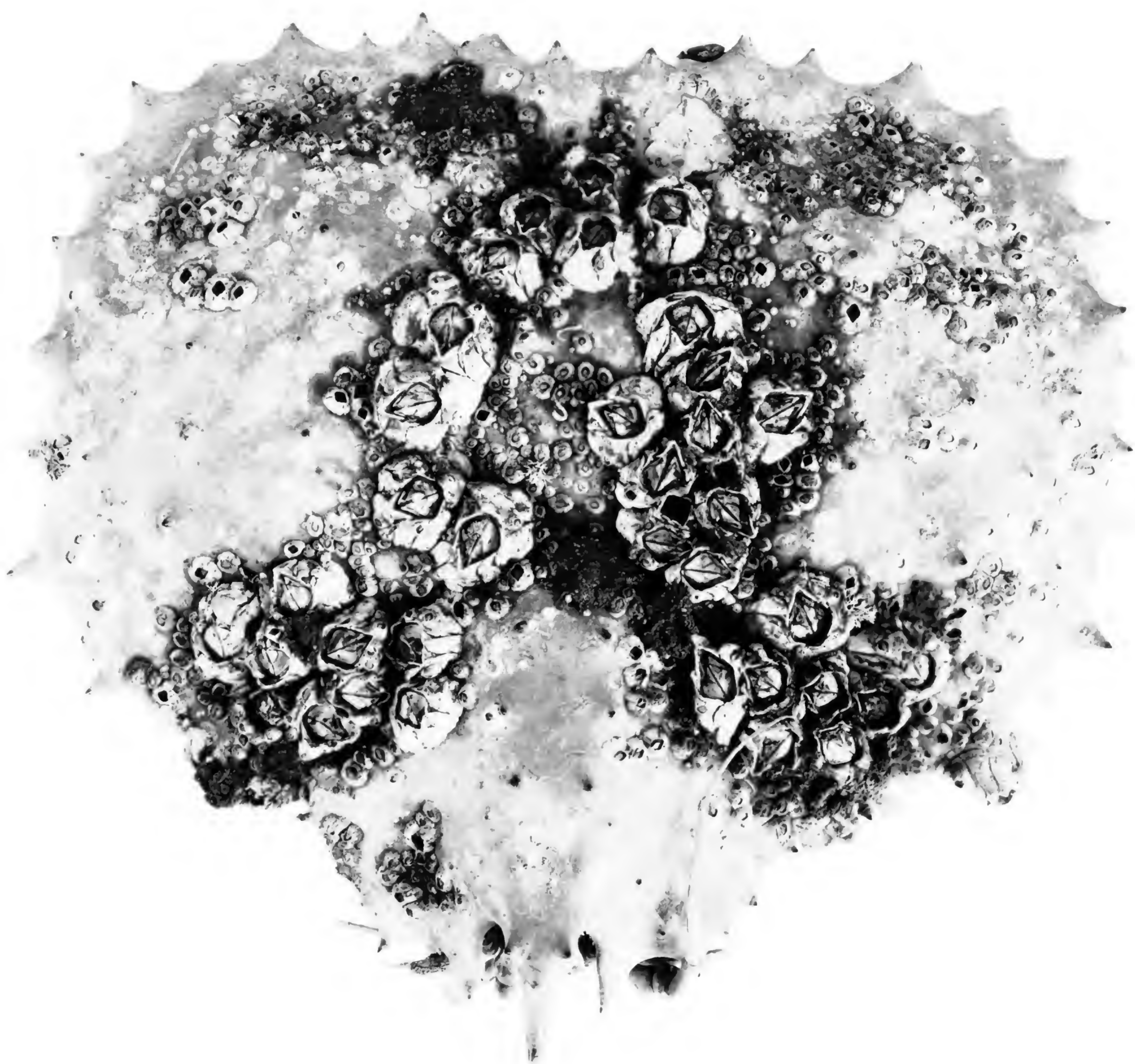
48348 mis, ♀

Yield 6.178 mch
Lang. 5.477

abs 4 lb 4 oz.

total $4\frac{1}{9}$ to $4\frac{1}{2}$ lb.

PLATE 1. GALEY-KUDAK



7 $\frac{5}{8}$ from tip of rostrum
to mid. of post margin

Canoe Bay

Sept. 1940

Paralithodes cantschatica

