

## Historic, archived document

Do not assume content reflects current scientific knowledge, policies, or practices.





# ALLEN'S CATALOGUE 1912

CHOICEST STRAWBERRY PLANTS  
AND OTHER SMALL FRUITS

CHESAPEAKE  
SEE PAGE 1

W.F. ALLEN  
SALISBURY, MARYLAND

# Nineteen Hundred and Twelve



WENTY-SEVEN years ago, I started in the plant business on a small scale. My desire to please and satisfy my customers is the same today as it was when I first began, and I attribute my success to this fact. Many of my customers who bought from me when I first commenced business are still sending me their orders. Your order of a dime receives the same attention as an order for several hundred dollars, and is filled with exactly the same quality of selected plants.

My plant business is constantly growing, and so rapidly that it keeps me on the hustle to keep pace with it. "There Must Be a Reason." I have 120 acres in strawberry plants alone for plant stock in order to take care of my large trade this year. Blackberry, raspberry, currant and gooseberry plants and grapevines are profitable for my customers and worth growing. It takes many thousands of these plants every year to supply my constantly increasing trade.

Ornamental shrubbery and hedge plants, the things that help so much to beautify your home surroundings and make them pleasant and worth while, are getting to be no small part of my business. My whole business career has been filled with the desire to please my customers—the only way to build up a prosperous and thrifty business. Thanking you for many past favors and trusting to merit continuance of your patronage, I remain, wishing you a most prosperous year,

Yours faithfully,

W. F. ALLEN

## Please Read This, and Then, Please Read It Again

We fill strawberry-plant and other small-fruit-plant and shrubbery orders any time after November 1, during November, December, January, February, March, April and until May 1. From May 1 to May 10 we will fill a limited number of orders on stock that is unsold and put it in the very best possible order, but at purchaser's risk as to results.

After May 10, and during June, July, August, September and October, we most positively will not fill any orders for small-fruit plants. (This, however, does not apply to vegetable or flower plants.)

During March and April, the great planting season, almost our entire attention and that of over one hundred employees is given up to filling plant orders.

We are willing to answer any questions during the summer months as promptly as possible if written in a short style and to the point. Long letters are subject to long delays. This notice was made necessary from the fact that we receive hundreds of orders for strawberry plants during the summer months when we have no plants in fit condition to transplant, and when not one in ten could make even good plants grow if we could send them, unless it were potted plants, which we do not grow at all.

## IMPORTANT TO CUSTOMERS

**Orders** should be sent in just as soon as possible after receiving this catalogue. It is better for you as well as for the nurseryman.

**Remit** by Money Order, Registered Letter or Bank Draft; Postage Stamps will be accepted for the fractional parts of a dollar, the larger denominations preferred. Foreign customers will please send Money Order on Salisbury, Md., or Bank Draft payable in New York.

**Time of Shipment.** From the time you receive this catalogue to May 1. By far the larger part of our shipments are made during March and April. Bermuda, Cuba, Florida, California and other similarly located sections are supplied any time in the fall and winter after November 1.

**True To Name.** While I use every precaution to have all plants, etc., true to name (and I believe we come as near doing this as any one in the business), I will not be responsible for any sum greater than the cost of the stock, should any prove otherwise than as represented.

**Guarantee.** I guarantee plants ordered by mail or express to reach customers in good condition when promptly taken from the express office and opened at once.

**Claims,** if any, must be made on receipt of goods. I cannot become responsible for stock that is allowed to lay around your station or express office, for neglect of purchaser or his employees to care for stock after it has been received, or for misfortunes caused by droughts, floods, frosts, insects, etc. These things are entirely beyond my control.

**At Purchaser's Risk.** Plants shipped by freight will be at purchaser's risk, and all small-fruit plants shipped after May 1 will be packed and shipped in best condition possible, but always at purchaser's risk.

**Packing.** I make no charges for boxing or packing at rates quoted in this catalogue. Everything is delivered f. o. b. trains at rates named.

Our prices include the packing and the package.

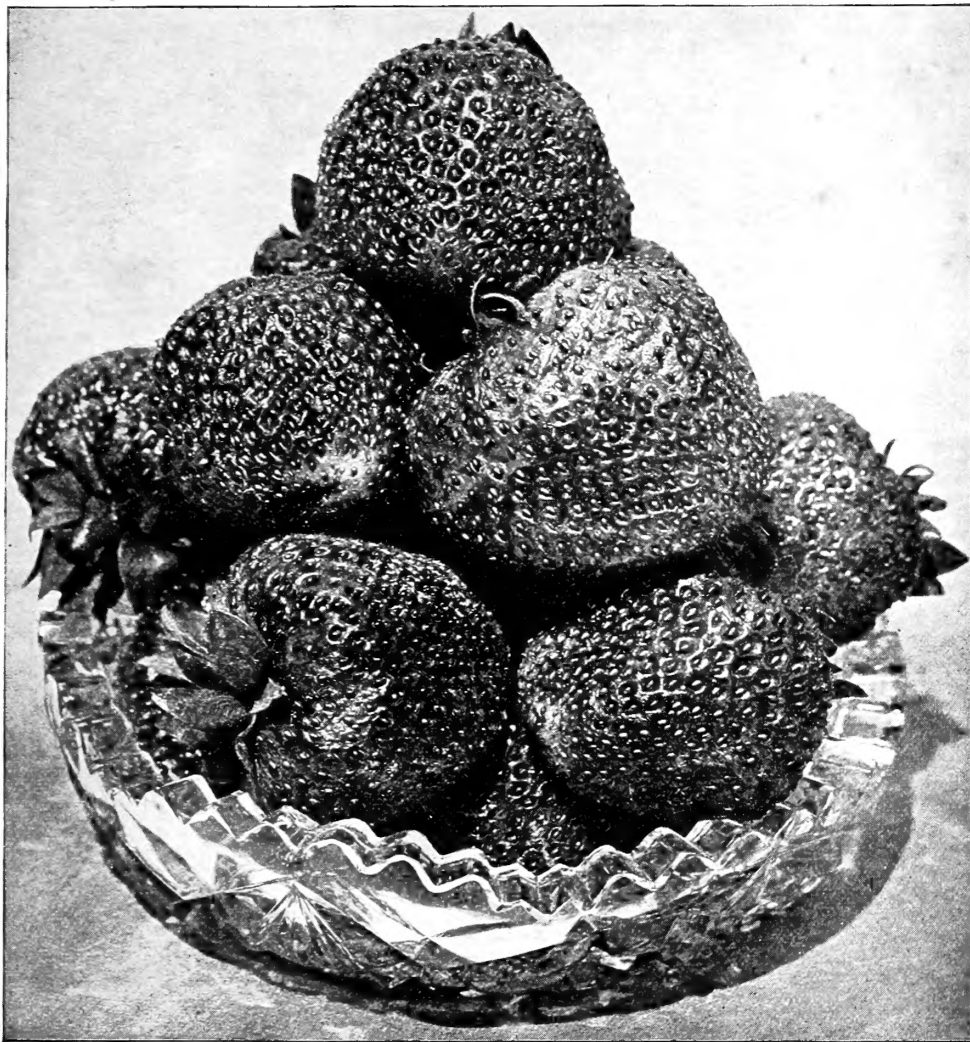
**Twenty-five.** All plants are tied twenty-five in a bundle.

**Payment.** Invariably, cash in advance. It is my desire that all customers should have the very best of success and, strange as it may seem, plants that are not paid for seldom do well.

MARYLAND	
STATE HORTICULTURAL DEPARTMENT DEPARTMENTS OF ENTOMOLOGY AND VEGETABLE PATHOLOGY MARYLAND AGRICULTURAL COLLEGE AND EXPERIMENT STATION	R. W. SILVESTER PRESIDENT AGRICULTURAL COLLEGE Prof. T. B. BRIDGES STATE ENTOMOLOGIST Prof. J. B. NORTON STATE PATHOLOGIST
CERTIFICATE OF NURSERY INSPECTION	
No. 17.	
To Whom It May Concern:	
THIS IS TO CERTIFY That on the 23 day of August 1911 we examined the Nursery Stock of W. F. Allen growing in his nursery at Salisbury, City of Wicomico State of Maryland, in accordance with the laws of Maryland, 1899, CHAPTER 289, SECTION 56, and that said nurseries and premises are apparently free, so far as can be determined by inspection, from the San Jose Scale, Peach Yellow, Pear Blight and other dangerously injurious insect pests and plant diseases.	
This Certificate is invalid after August 1, 1912, and does not include nursery stock not grown within this State, unless such stock is previously covered by certificate and accepted by the State Entomologist and State Pathologist.	
COLLEGE PARK, MD., Sept. 5 1911	
J. B. Norton, State Pathologist.	



# ALLEN'S STRAWBERRY PLANTS

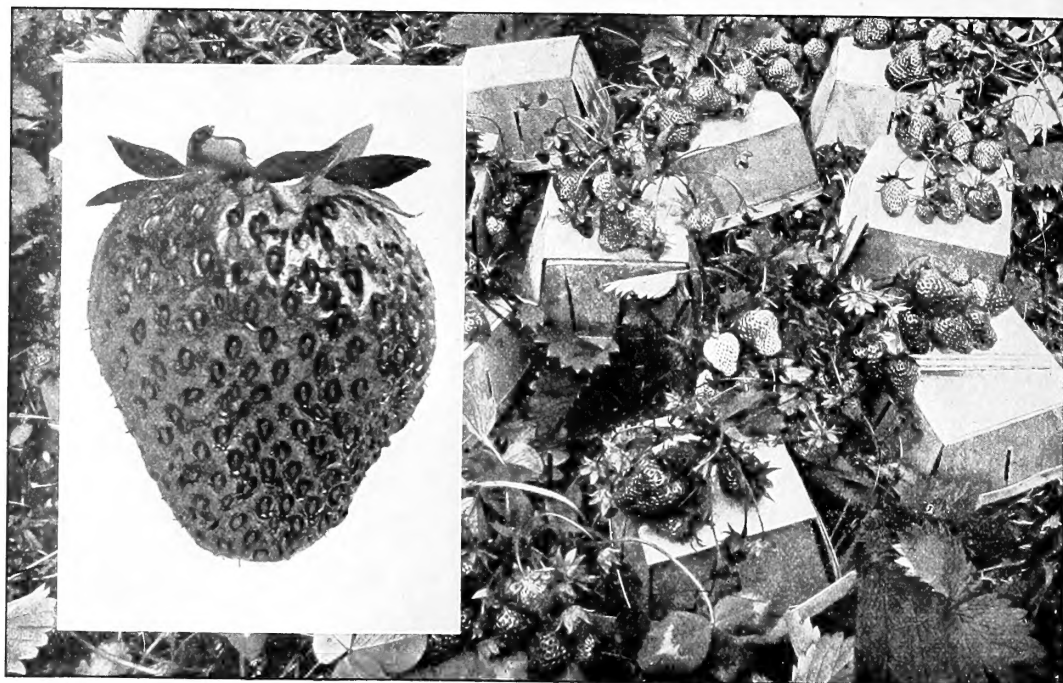


Chesapeake Strawberries. If there is a better one, I have never seen it

**CHESAPEAKE.** This variety, which I first offered to the public in 1906, has made a great record. It is grown commercially all over the United States, and is giving the best results in every section. I visited a number of prominent growers in Connecticut and New Jersey, and every one put it at the head of the list. In truth, if there is another variety that is as perfect in form, as good in quality, and as firm, I have yet to see it. The plants are large and vigorous; no rust and no weakness of any kind. The foliage is thick and leathery; upright leaf-stems, with leaves almost round. Like all other Strawberry plants, to be at its best it should be planted in rich, springy land, but does remarkably well on any land that will grow strawberries of any kind. It does not make a large amount of runner, but beds up just right to give the best results in fruiting.

The blossoms are perfect, fruit uniformly large, averaging larger than the Gandy, and as compared with Gandy, it is more productive, firmer, better quality, without the green tips which are often found in that variety. I use the Gandy as a comparison because it is universally known. The fruit is borne on large stems, the great proportion of which stand upright, holding the fruit from the ground. The Chesapeake bears more fruit on single stems than any variety I have seen. The time of ripening is practically the same as the Gandy, starting three or four days earlier.

It is not a variety that sets an immense quantity of fruit, but every blossom makes a berry; the result is a good crop of berries that are well developed and strictly fancy. Personally, I consider it the very best late berry on the market, whether it is grown for home market, local market or distant shipment. The Chesapeake is the easiest variety to pick of any that I know, and pickers can pick more of this than any variety that I have handled, and where pickers are scarce this a great advantage. Everybody who has seen the berry, both growers and merchants who sell the fruit, are undivided in their good opinion of this berry. 25 cts. per doz., 40 cts. for 25, 50 cts. for 50, \$1 per 100, \$1.75 for 250, \$3 for 500, \$5 per 1,000.



The Winner Strawberry. I feel perfectly safe in urging you to try this variety

**WINNER.** This new berry gives promise of a valuable addition to the list of Strawberries. It is a native of Pennsylvania, and comes to me so highly recommended that I bought out the entire stock, and we have the plants now growing in our nurseries. In health and vigor of plant they are all that could be desired. The berry is very productive, large size and shaped somewhat similar to Haverland, but unlike that variety it has a perfect blossom and is a larger and stronger grower. It has excellent market qualities and in fact is a valuable all-round general-purpose berry. I felt that this berry was unusually good or I should not have bought the control of it as I did. I feel perfectly safe in urging my customers to give this berry a trial, believing it will give satisfaction and make a valuable addition to your list. Moreover, I confidently expect to see this variety become a standard berry. \$1 per doz., \$2 for 25, \$3 for 50, \$6 per 100, \$13 for 250, \$25 for 500, \$50 per 1,000.

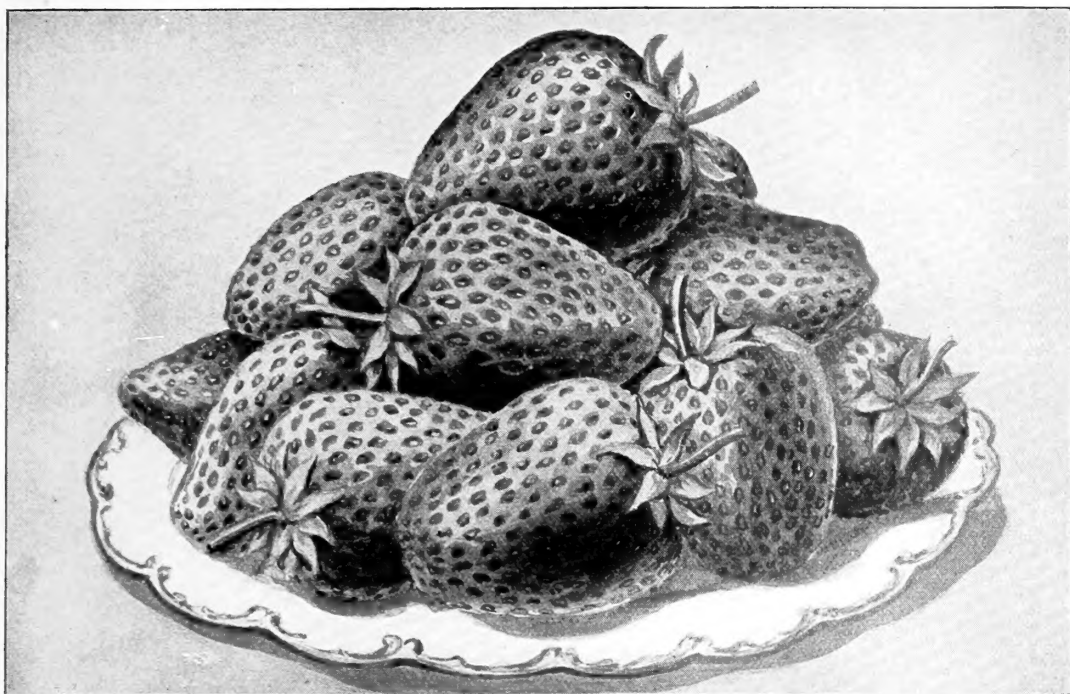
**Abington.** Perfect in blossom. A vigorous grower; quite productive of large, firm, well-colored berries, suitable either for shipping or home use. A good berry that will generally give satisfactory results. I have been growing it for several years and it has always been good.

**Almo.** I procured this variety from Mr. T. C. Kevitt, of New Jersey after seeing it in fruit on his place. Plants are very robust and thrifty growers; foliage light green. Berries a rich glossy red and look as though they had been varnished. Mr. Kevitt was so favorably impressed with this berry that he offered to return money paid for plants if they did not grow larger crops of Strawberries than any other variety. The berry was certainly fine as I saw it on his grounds, and it has made an excellent growth for me. Well worthy of trial.

**Amanda.** A seedling of the Sample crossed with Maximus. Bisexual, or perfect flowering, with lots of pollen. The berry is extremely large, with form varying from the top shape to thick and broad; in color it is a deep red. The flesh is deep crimson and rich, with a fine, mild flavor. Firm and good for canning, as it holds its color well after being cooked. Foliage extra large and vigorous; free from rust; makes plenty of good, strong plants, with deep roots, thus standing drought well. It is very productive, the berries holding their large size well to the end of season. Season medium to late.

**Armstrong.** From medium to late in season, large size, good quality and perfect blossom. It seems to be on the New York type and somewhat resembles that variety. For several years it is claimed that it has been in the hands of German fruit-growers in New York state, and that it was one of the largest and most productive berries grown in that section. I find it a very satisfactory variety, and, while there is some little difference, the description of New York fits this berry very nicely, both as to plant and fruit.

**Aroma.** A popular berry in the West, where it is grown by many in place of the Gandy. Foliage is smooth, deep green, of spreading habit, and gives the sun a clear right of way to the crowns. The leaves are long, broad and clean. As a pollinizer for late pistillates it is unexcelled, and its picking season is unusually long, as the blooms begin to open medium early and continue until late. The berries of this variety are very large and in color are bright red. The flavor of the fruit is deliciously aromatic and very rich, and the flesh is smooth and solid. Its appearance in the box is most attractive, the prominent yellow seeds heightening the effect of the bright red of the flesh. It grows well when planted in springy, rich land. Among the growers of the Southwest this berry is planted extensively. It is so liked by them that they have made it their leading variety.



The Lea will take a front rank among early market sorts

**LEA.** We offered this berry for the first time in our 1910 Catalogue, and it has made good. As soon as enough plants can be produced to put it in the hands of the average commercial grower, it will take a front rank among the early market sorts. This is an entirely different type of berry from the Twilley, although equal to it as a commercial variety. While the Twilley is a late variety, the Lea is early and the crop will be almost marketed when the Twilley starts. The Lea makes a strong, sturdy growth without a spot of rust, has perfect blossoms, very firm, productive and ripens evenly all over at once, without green tips, and is uniformly medium large in size, as represented by the above illustration, which well represents it. I consider the berry very promising, and shall plant as many plants as I can spare from my trade.

Mr. Curtis, the originator, in writing of the Lea, speaks of it as follows: "It was the best thing I had in the Strawberry line. Climax produced a few more quarts, but did not bring near the money. The Lea sold along with the Bubach, and will stand more rainy weather and keep in better condition than any berry that I know. It is a vigorous grower of strong, healthy plants, and should not be allowed to mat too thickly on the rows for best results."

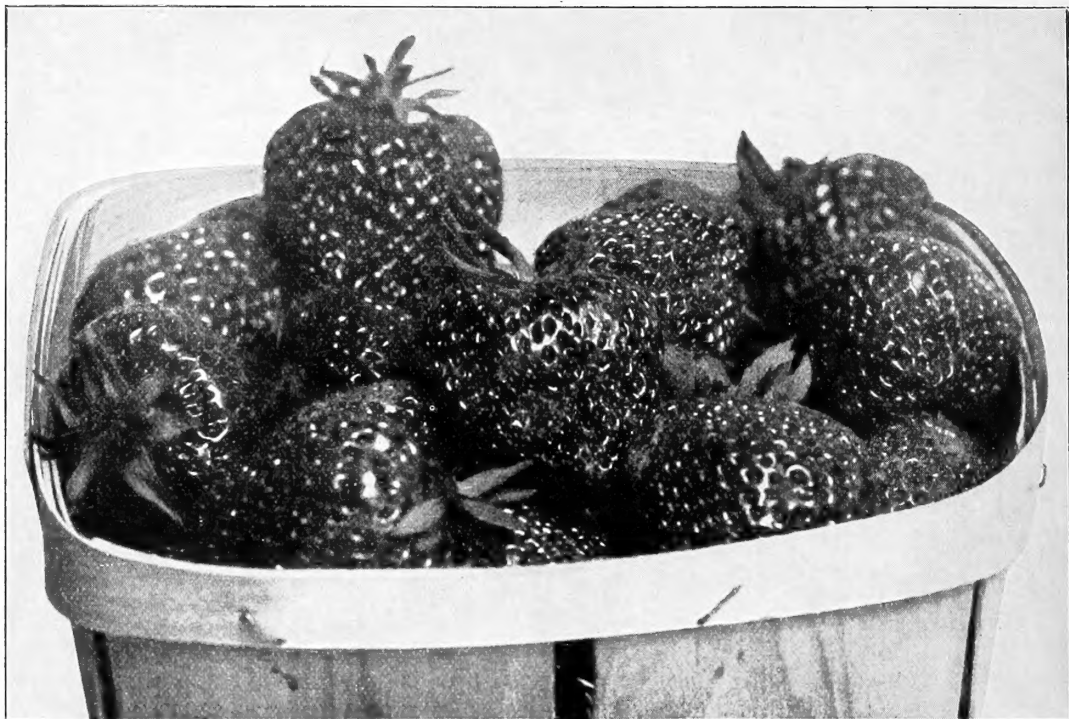
On account of the scarcity of plants my price on this variety last spring was rather high, but it is a great grower, and this season we have a good supply and we are offering it at a lower price per thousand this spring than we asked per hundred last spring. The Lea is a good market sort that you will not regret planting. 25 cts. per doz., 40 cts. for 25, 60 cts. for 50, \$1 per 100, \$1.75 for 250, \$3 for 500, \$5 per 1,000.

**Barrymore.** A healthy and vigorous grower. The blossoms staminate or perfect. The berries are glossy in color, rich, dark crimson, with red flesh of excellent quality. The fruit is firm enough to ship well. The berries are large, ripen at mid-season and are regular conical in shape. This berry originated by H. L. Crane of Massachusetts. My attention was first brought to the variety while visiting Boston during the fall of 1907, and a year later I succeeded in getting a few plants at the modest price of \$100 per thousand. During the Massachusetts Horticultural Show, in 1908, the Barrymore was awarded a silver medal and three first premiums, which is quite a record for any new berry for one season. The Barrymore has made a good showing with us, both in fruit and plant.

**Bedar Wood.** The plants are very hardy and will produce a big crop of medium-sized fruit that is rather soft for shipment. It has very long and large, coarse roots, which extend deep in the soil and enable it to endure dry weather better than

most varieties. For this reason it will probably give better results than most others in very dry sections. The foliage is very dark green in color; very tall and has long, narrow leaves.

**Bethel.** This new berry originated in Kent county Delaware, and has now been before the public for two seasons. One of the encouraging points about this variety is that those who have seen it in fruit are the largest buyers of plants. It is an excellent shipper, being equal to the Gandy in firmness. The originator has now had it growing for five years. Many persons tried to purchase the plants soon after it was originated but the owner refused to sell until two seasons ago. A buyer who handles the variety to a considerable extent describes it thus: "Immense size, fine shipping qualities, dark red clear to the center; flavor unsurpassed. Has few equals as a table berry; a heavy cropper covering a long bearing season commencing medium early. The vine is a strong, upright grower, free from rust. Blossoms perfect."



Early Market. I can recommend it to my customers

**EARLY MARKET.** This is a new early berry which has gained quite a distinction for earliness, productiveness, large size and fine quality in the vicinity of Elmira, N. Y., where it originated. I was so well pleased with this variety that I have bought the control of it and now have as fine a stock of strong, vigorous and healthy plants as any one could wish to see growing at my place. All told, I have probably 40,000 plants of this variety, and if there is a spot of rust on a single plant I have failed to find it. The illustration shown above will give you an idea of the shape and size of the berry, which, for an early variety, we consider very fine. I shall plant it largely myself, and conscientiously recommend it to my customers. \$1 per doz., \$2 for 25, \$3 for 50, \$5 per 100, \$10 for 250, \$20 for 500, \$40 per 1,000.

**Blaine.** It produces strong, healthy plants, with rank foliage. Has a liberal number of runners. The foliage has very much the appearance of the Gandy, but it has made a much stronger growth than the Gandy has made in an adjoining patch under similar conditions. This variety is mid-season to late and hails from Iowa. The berries are large, of fine color and flavor and very firm. It is claimed to be a cross of Bedar Wood and Lovett. I doubt this, however, as it is evidently closely related to the Gandy, if it does not prove to be identical with it.

**Black Beauty.** The originator describes it thus: "This plant is a result of eighteen years of scientific breeding, terminating in one of the grandest creations in the Strawberry world. A large, healthy, well-balanced plant of the multiple-crown type. Berry rich, aromatic, sweet, firm and free from core. Conical in shape, large, even and smooth; dark red in center, and so rich in sugar and essential oils that it will remain sweet when left hanging on the plant several days after being fully ripe. Season late."

**Bountiful.** This is a New Jersey berry, which has made excellent growth and looks very promising. It is said to be a seedling of the Glen Mary, crossed with the Clyde. The plants are large, vigorous and numerous, with dark green foliage; a good yielder of large fruit, which is showy and attractive,

roundish, conical and sometimes slightly flattened. The flesh is red and juicy, moderately firm and of good flavor. Season medium early. I consider this berry worth a trial.

**Brandywine.** Too well known to require any extended description. It is especially valuable in tropical and semi-tropical climates. Stock of plants this season very short.

**Buster.** Of Canadian origin, and is said to be a cross of Sharpless and Bubach. My attention was first called to this variety during the spring of 1906, when a late, heavy frost killed almost all other berries. Buster gave us a full crop. It is vigorous and healthy, having a luxuriant, dark green foliage that defies a reasonable amount of dry weather. The fruit holds up large all through its long season. This is a good, reliable variety that I would advise my patrons to plant. I would not advise, however, that it be planted on thin, sandy land, as it will not do its best on such soil; but on good, medium heavy soil it will please you from the time it starts to grow after you have set the plants until you have harvested your crop. It is large in size, bright red in color, firm, medium quality and medium to late in ripening. The blossoms are pistillate, but extremely hardy. I especially recommend this berry to those who admire the Bubach type.





Bubach. I have a fine strain of this grand old variety

**BUBACH.** I will speak of this variety by first asking how many of the older customers there are that do not remember Bubach, or, as it used to be called, Bubach No. 5; and I want to ask further how many of the older customers there are that have seen many, if any, better berries than the Bubach was when it was first put on the market; and right here I want to say that I have a very fine strain of this grand old variety that I think is just about as good as the Bubach was in its earlier days. Our Bubach plant beds are just about 2 feet across, with as fine, luxuriant, healthy growth as you will find in almost any variety of this section. The fact is, we have had so much demand for this grand old variety that I have kept it among my leaders, and only once in ten years have I failed to sell every plant that I had. My present stock will exceed half a million, and I doubt very much if there will be a plant left. "The Bubachs were by far the finest berries and brought the best price. In my experience of Strawberry growing for fifteen years I have never seen any berry to equal the Bubach," is the verdict of one customer, and we have many similar ones. We have a very fine stock of Bubach plants, and shall be pleased to have the orders of all customers who admire this variety. 20 cts. per doz., 35 cts. for 25, 50 cts. for 50, 75 cts. per 100, \$1.25 for 250, \$2 for 500, \$3.50 per 1,000.

**Cardinal.** Makes a vigorous growth; very productive, very firm and handsome. It looks so well and yields so well, and, being easily grown, it is claimed to be one of the most profitable market varieties in Ohio. The berries average large and are bluntly conical, with a bright green cap that holds up remarkably well after shipping. It possesses the solidity of the old Wilson, united with the vigor of plant, prolificacy and brightness of color of the famous Crescent, while the berries are larger than either. Season, medium to late; blossoms pistillate.

**Clyde.** The Clyde is an immensely productive variety, with fruit nearly or quite as large as Bubach. It would be a popular variety over a

wide range of country but for the fact that its foliage sometimes gives way about fruiting time and is not sufficient to protect the immense crop of fruit. This can be to some extent guarded against by an application of nitrate of soda in the spring before fruiting. The Clyde has been largely grown in Kentucky and seems to have been a favorite, and is even now with many growers.

**Commonwealth.** This is a Massachusetts berry. I have fruited this berry and find it bears a good quantity of firm, large berries. A variety that I recommend for the North, but not for the South, as I think it is more adapted to northern sections, and for best results should be given rich soil and high culture.

#### Best Plants Ever Had

Plants received in good condition, and are the best we have ever had, and we buy extensively. Thanks for same.—C. M. GARDNER & SONS, Ada Co., Idaho, May 6, 1911.

#### A Few Words from California

Strawberries received in good condition. Have set them out and think them the finest plants ever set. Accept thanks for them.—MRS. A. J. KINTIN, Clay Co., Cal.

**BRADLEY.** Perfect blossom. Splendid in growth, health and vigor of plants. The berries are good color, uniform, conical in shape, with some of the largest slightly flattened at the tip. Large in size and moderately firm, making it a good shipping berry. This berry is exceedingly productive, yielding with me over 5,000 quarts per acre on thin land without fertilization. All points considered, it is one of the very best on my list. It is entirely distinct from any other berry, and I believe it will be a long time before we get anything to surpass it. I shall plant five acres or more for fruit and this means that I have great faith in it. 25 cts. per doz., 40 cts. for 25, 60 cts. for 50, 90 cts. per 100, \$1.50 per 250, \$2.25 for 500, \$4 per 1,000.

**Chipman.** This variety has been attracting quite a good deal of attention in the Strawberry sections of Delaware. The plants are strong, upright in growth, large and healthy, with tall, broad, bright, glossy green foliage, and have never shown any signs of rust or disease. It succeeds equally well on light or heavy soil, and it is predicted that it will soon become one of the leading commercial varieties. It has strong, perfect blossoms and is a good variety to plant with pistillate sorts. The fruit is large, medium-early, with large green caps of even size and shape. The berries lay close to the ground under the foliage, and it is one of the best medium earlies. I am not giving a long description of the Chipman, but suffice it to say that I am planting it for market.

**Climax.** This variety has been planted over a wide range of territory, and has given general satisfaction. It is a berry that no one need hesitate to plant for second early, although, like all other varieties, there may be some sections where it will not do so well as some others. This is undoubtedly one of the best second-early varieties, coming three or four days after such varieties as Excelsior, Mitchell's Early, etc. It is very productive and holds on for a long season. The foliage is of a light green color that can be distinguished from other varieties for quite a distance. The plants are strong and vigorous, making an upright growth, and show no sign of rust. But few varieties ever put on the market have sprung into prominence quite so fast as Climax. Our sales for three or four years have

run from 600,000 to 800,000 plants annually, which indicates the general popularity of the variety.

**Colossus.** Imperfect blossom. To those who remember the Bubach as it was when introduced twenty-five years ago, it will be sufficient to say that the Colossus is all that the Bubach was in its vigorous growth, when first put on the market. It bears large, evenly-colored, handsome berries, literally lying in piles around the large, healthy, vigorous plants, which are produced in sufficient abundance to make wide matted rows where they are desirable. It is a berry that is bound to please all who wish to grow a large crop of large, rich, handsome berries.

**Crescent.** For many years this was to Strawberry culture what the Early Rose potato has been to potato culture. There are quite a good many grown yet, but not so extensively as formerly. About twenty years ago it was the most largely planted of any variety in this section, but later has given way, to a great extent, to other varieties. Many growers in the West, however, are still planting the Crescent. It produces great crops of fine berries, and those who have never grown it have missed one of the best medium-to-late varieties.

**Darlington.** This new variety comes to me from New Jersey. I do not know who originated it or where it came from, as the party from whom I obtained the plants did not feel disposed to give this information, if he knew. The following is borrowed from his description: "One of our customers called our attention to this new berry, and we were surprised to learn, after careful inquiries in the neighborhood where it was originated, that it would be impossible to attempt to introduce a new variety among the people. They were planting Darlington and would plant nothing else. They had been planting it for several years, and had guarded it so carefully that it had never, so far as we could learn, passed beyond the boundary of that immediate vicinity, therefore, we can promise our trade that this variety will be entirely new to them. We believe the Darlington to be a seedling from Gandy. It has a deep red color and is a good shipper. A variety that grows a large plant and makes a fine bed. It is far more productive than Gandy; to condense the facts, it leads the Gandy a long chase in size, vigor and yield." Considered very promising; try it.



Bradley. One of the best on my list

#### Pleased With The Plants

Received plants yesterday in fine condition, and very much pleased with same. They are the finest plants, on the whole, that I ever received. I thank you very much for promptness and when I need more plants I will write you.—W. A. CASE, Sullivan Co., N. Y., April 26, 1911.

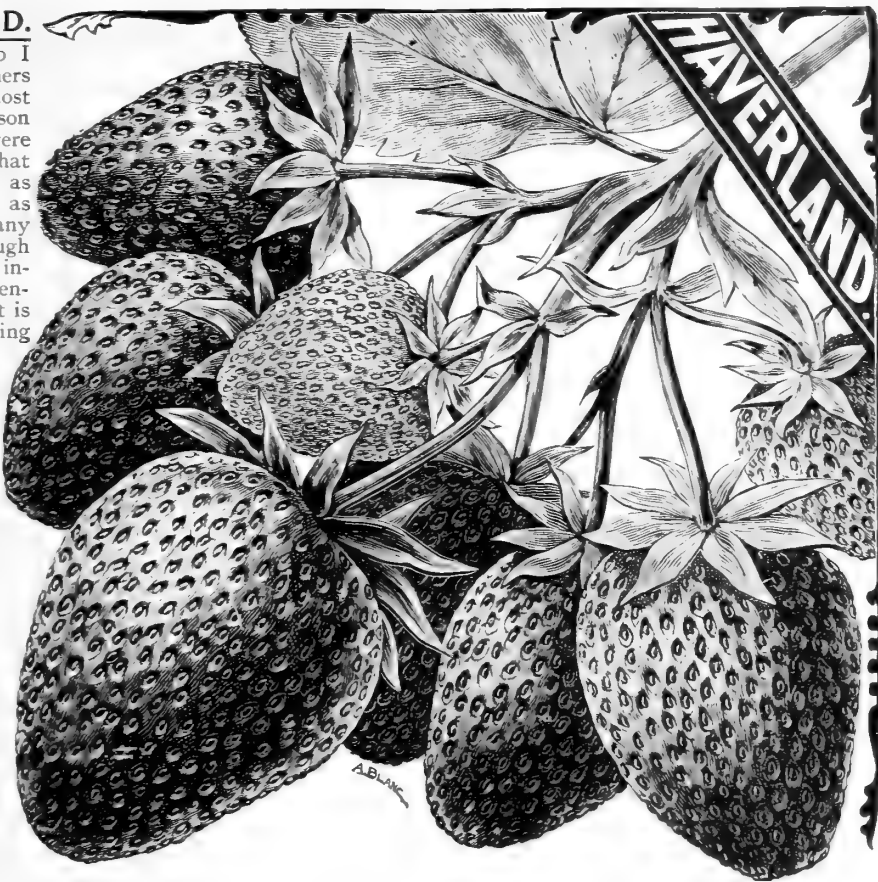
#### From My Own State

The Fay's Prolific arrived in good condition. Thank you.—M. LINGSTEDT, Montgomery Co., Md.

**HAVERLAND.**

Several years ago I asked my customers to vote on the most popular mid-season variety. There were twice as many that named Haverland as their preference as there were of any other kind. Although the Haverland was introduced over twenty-five years ago, it is still one of the leading commercial sorts and seems to be growing more popular every day. It is one of the most popular varieties that we handle, and of the older ones we have a larger sale for it from year to year than of any variety on our list; some seasons it is impossible to supply the demand.

This year we have a very large stock of this variety, and we expect to be able to fill all orders. Last year we expected to have enough and perhaps some to spare, but every



plant of Haverland was sold. The plants are healthy and vigorous, making ample runners. It seems to do well in nearly every part of the country. It is popular North, East, South and West, and we seldom, almost never, had any complaint from this variety. It is a good one to tie to. The blossoms are pistillate, medium size and extremely hardy. The Haverland should be well mulched, as the fruit-stems are not able to hold the immense load of berries from the ground. It is so enormously productive that the bright, large, juicy berries lie in great heaps around the plants. Under favorable circumstances the larger berries will grow as large as guinea eggs. Of course, under ordinary culture, it will not be so large as this, but the average size is usually satisfactory, under almost any conditions. The Haverland is a good standard berry that bears a big crop, above medium size, quality and appearance. 20 cts. per doz., 30 cts. for 25, 40 cts. for 50, 60 cts. per 100, \$1 for 250, \$1.60 for 500, \$3 per 1,000.

**Deacon.** This variety was procured from C. S. Pratt last spring, who describes it as follows: "No berry under cultivation will stand the neglected and rough usage that this one can endure. It is a lazy man's berry and will bear a tremendous crop of fine berries under the most adverse conditions. If you have a piece of land too poor to grow white beans just set in Deacon Strawberries and it will pay you the best dividends it ever did." Blossoms perfect.

**Early Harvest.** This variety comes from Arkansas and is described by the originator as follows: "It forms immense tops and roots, with numerous crowns on good soil. The Early Harvest is not fully staminate and requires pollination for which Excelsior is well fitted. By many it will be preferred to the Excelsior because it is very nearly as early, with as good color and firmness, and excels its size and productiveness."

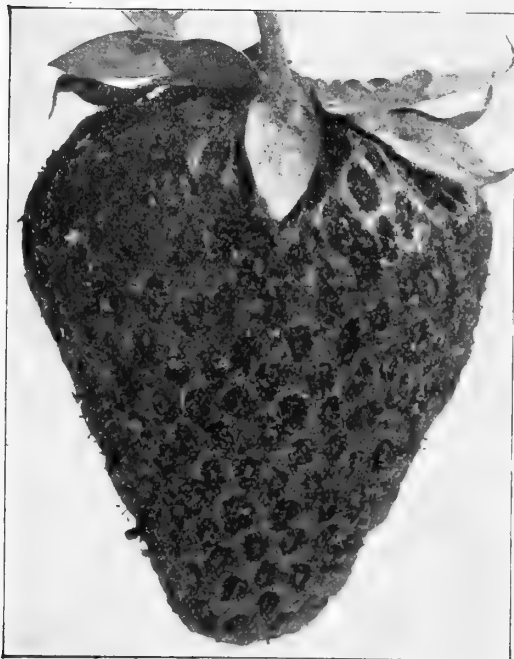
**Early Hathaway.** Under favorable conditions I find this gives a very good crop of excellent berries

early in the season. It is a strong, staminate variety and is a good one for fruiting early pistillate varieties. Good-sized, firm and of a most attractive color. It justly holds its claim as a superior early-market variety. If you desire a new variety give this plant a trial.

**Ekey.** Very promising. Repeated inquiries for this variety have induced me to put it in stock. I find it described in M. Crawford's catalogue as follows: "Early, medium, and makes a short season. This fine berry has been before the public five years and has won its way from the first. It makes plants sparingly, but they are of extra size and yield well. The fruit is peculiarly attractive, very large, long and dark red and glossy; the flesh is also dark red and solid. The flavor is pleasantly tart, sprightly and agreeable." The Ekey has made a better growth with me than the foregoing description would indicate; we find the plants strong, healthy and vigorous, as described, and enough of them. I am very favorably impressed with the variety.



**HELEN DAVIS.** This variety has a strong fruiting stem, more fruit stems are sent out from a single stem than by most other varieties. It has no particular preference as to soil. The berries are exceedingly large, many of them averaging as large as medium-sized eggs. The berry holds up well after picking and the calyx remains green and bright, indicating that it is to become



First Quality. A prominent new sort

a prime favorite with commercial Strawberry growers. Its color is a subdued crimson and extends from center to circumference. The flavor of this variety is like no other Strawberry, and is delicious. The velvet quality of the meat gives the Helen Davis a distinction absolutely its own. When it comes to productiveness, no other variety ever developed can outyield it, and its capacity for endurance under trying circumstances shows it to be a marvel of vitality. We hope that you may give the Helen Davis a generous trial this season. 40 cts. per doz., 75 cts. for 25, \$1.25 for 50, \$2 per 100, \$4 for 250, \$8 for 500, \$15 per 1,000.

### **FIRST QUALITY.**

Fruited here for the first time last summer under very trying circumstances, it being one of the driest seasons we have ever experienced. Notwithstanding, it gave an excellent showing of very fine fruit of exceptionally high qualities. The plant growth is excellent, dark green in color; a very vigorous and upright grower. I am favorably impressed with it and shall plant out a good large patch and I advise my customers to try at least a few. It is claimed that First Quality will bear double the berries that can be produced from Gandy or Brandywine, and judging from the past season, I do not doubt it. It is undoubtedly a great cropper; firm, uniform shape and colors up well. There is something about the flavor that grows in favor. It is a large berry, pointed somewhat after the order of Haverland. I consider this one of the most promising of the new sorts. It is eagerly sought after by growers who desire a fancy berry as well as a large crop of berries. 25 cts. per doz., 40 cts. for 25, 60 cts. for 50, \$1 per 100, \$1.75 for 250, \$3 for 500, \$6 per 1,000.

**Enormous.** A medium-to-late pistillate variety. The berries are broad and wedge-shaped with a crimson-colored surface and dark yellow seeds. The flavor is excellent, and the name is suggestive of its size. Very productive and firm enough for shipping. Try it.

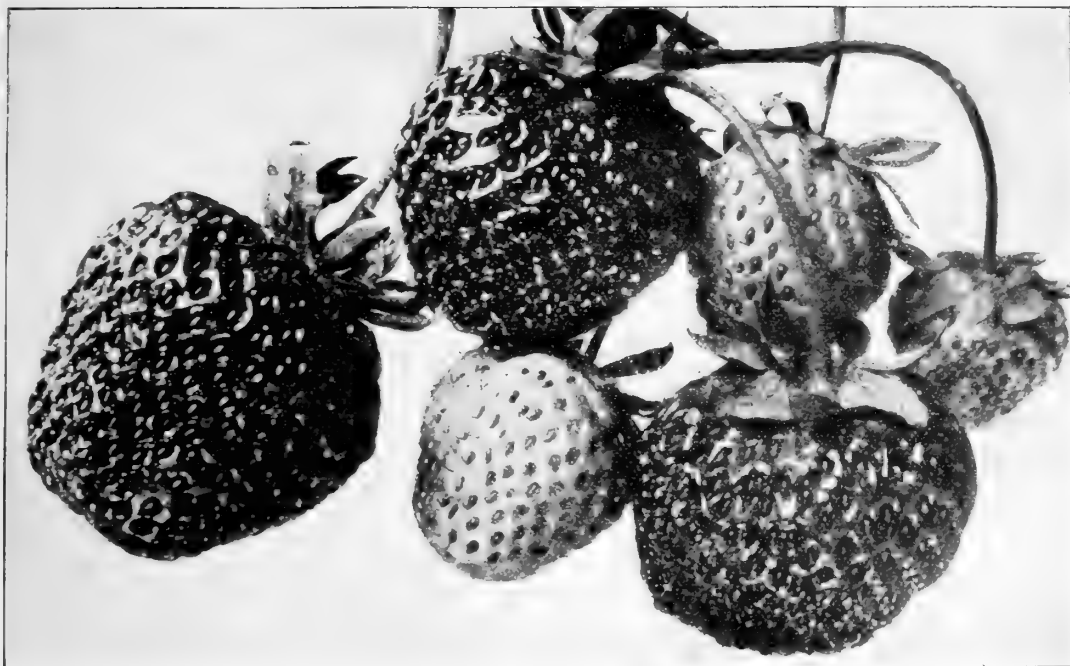
**Excelsior.** A standard for earliness by which all others are compared. The berries are about medium in size, very productive and firm; one of the best shipping berries on the list. If given half a chance, it will take care of itself and bring splendid returns. It is too sour to suit the taste of the average person and has, therefore, never been popular for the home garden. As a first-early shipping berry it has few equals and is decidedly the best of the old standard extra-early market sorts, and if there is a variety that will give ripe fruit earlier in the season, year after year, I have not yet found it. If left on the vines until thoroughly ripe, it is very highly flavored and will be appreciated by those who do not object to its being rather tart.

**Ewell's Early.** Originally found on an island in Pocomoke Sound, in Virginia, near the Maryland line. This plant is believed to have come from the seed of Strawberries carried home from Maryland by Virginia pickers. It is a hardy plant and as vigorous a grower as a sweet potato plant. It will grow anywhere that corn and grass will grow. It is a strong grower and the vines quickly cover the ground. It is fully as early as the Excelsior, and is claimed to be more productive and a much better berry in every respect. The foliage is fully as large as the Gandy, and about 4 inches taller. Mr. Wm.

S. Richardson, of Marion Station, Maryland, who purchased original plants from the discoverer, has this to say about Ewell's Early: "I have never yet seen any variety that will equal Ewell's Early as a strong, vigorous grower, and to any one who plants for profit I would advise that they plant a few thousand of this variety, feeling confident that they will make no mistake." Mr. Richardson has been growing plants on the Vanderbilt Farm for 30 years.

**Fairfield.** There is quite a demand for this berry, especially among those who do not admire the qualities of the Excelsior, Mitchell's Early and Hoffman. The plants are strong growers, with healthy foliage much resembling the Haverland. One will not go out of the way when planting this variety for an early crop. Of fair quality. It is a good berry to plant either for home use or market, as it is firm enough to make a good shipper. It is early, and somewhat larger and of much better quality than the above-mentioned berries. My stock this season is unusually fine.

**Fendall.** Originated in Baltimore county, Md., by Charles E. Fendall. We fruited this variety the past season and were very much pleased with it. It is a strong-growing plant, with very attractive, luxuriant, light green foliage. The berries are large, and are very fine in flavor. The berries are perfect beauties, rich in color, smooth and glossy, with long stems and large caps. The plant and fruit are bound to command attention wherever seen. It is a variety that should not be overlooked. Blossoms pistillate.



Early Ozark. A wonderful new early market Strawberry

**EARLY OZARK.** Early Ozark was sent out from Missouri by Chas. Schull, and is a cross of Aroma and Excelsior. The demand locally for this berry is very strong. Growers on the Peninsula who had Early Ozark in fruiting last spring are very enthusiastic over it, and everybody is wanting plants. I could find dozens of growers who would verify all of the strong claims that have been made for this wonderful new early market Strawberry. I was very fortunate in planting a large plot of these last spring and they are making an excellent showing, being among the thriftiest and most promising. We are receiving good reports from the Ozark from every section where we have sold plants and it is highly praised by practically every grower who has fruited it. The growth of the Early Ozark is a distinct luxuriant appearance entirely its own. The foliage stands up erect. The leaves are thick and leathery, of a distinct green, which makes it appear as though it had been varnished. The berries are very firm, averaging large size, and early; in fact, it is claimed to be the largest very early berry yet produced, which means a great deal to the commercial grower. I have a very fine stock of plants this season and shall be pleased to book orders from all who want to grow this money-making variety.

**Gandy.** Too well known to require any extended description. It is the standard late variety by which all other late berries the country over are compared. Probably no higher compliment could be paid the variety than this. It should be planted in black swamp land, if possible, otherwise in clay land of a springy nature; never on dry, sandy land. We always have a big demand for this variety, and for that reason have prepared a large stock of it. At this time it is without doubt one of the most largely planted of the late varieties. Blossoms perfect.

**Gill.** An early variety, uniform in shape, nearly round and above the average of the early varieties in size. It colors all over and becomes quite deep red when fully ripe. The flesh is light red and has a pleasing flavor. It makes larger and stronger plants than most early varieties, entirely free from disease. No rust spots have appeared on it on my grounds. Well worthy of a trial.

**Glen Mary.** Glen Mary has now become too well known to need a lengthy description. Originated in West Chester, Pa., and introduced by myself in 1906, it has become one of the leading standard varieties through New England, the Middle West and the Northwest. I doubt if there is a more popular berry throughout this vast region than the Glen Mary. It has no particular

choice of soils and does not require petting. The roots are long and well developed, providing plenty of moisture during a drought. The foliage is large, upright in growth, dark green in color. The Glen Mary is only semi-staminate, but as its blossoms carry enough pollen to fruit its own berries it is listed as a staminate variety, but I would not recommend it to plant with pistillate varieties as a pollinizer. The berries are big, dark red beauties, with prominent seeds of bright yellow; the meat is rich and juicy, and crimson in color. They are of such high flavor that when once eaten more are wanted. As a good, firm shipper it is very popular; for fancy local market there are few, if any, better, and for this reason it is popular with both the large and the small grower. One customer from Connecticut says: "I have found no plant to come up with Glen Mary, taking all sides of the question into consideration." Another customer reports: "I have grown Glen Mary for several years and find it my most profitable variety." Another customer from New Jersey writes: "It is the only variety with which I have made a success."

#### Arrived in Good Condition

I wish to acknowledge for the Station the receipt of Strawberry plants. The stock arrived in good condition.—O. M. TAYLOR, Geneva, N. Y., May 5, 1911.

**MASCOT.** I offered this variety in 1910, but as I had never fruited it, could not say very much personally as to its qualities. After fruiting it for two seasons I am prepared to say that it is one of the largest berries that we are growing. The berries are of a beautiful, glossy red color, good quality and productive. The plants make a healthy, strong growth, with plenty of plants. I see no reason why this would not become a popular standard variety. I picked a number of quarts where twenty-seven filled a basket heaping full. I do not know much about the history of this berry further than that it hails from Virginia and seems to be a strong competitor to the Gandy. It commences to ripen a few days earlier and continues to bear after the Gandy is gone. I would advise you not to fail to include this in your list. 25 cts. per doz., 40 cts. for 25, 60 cts. for 50, \$1 per 100, \$1.75 for 250, \$3 for 500, \$5 per 1,000

**Gold Dollar.** Vigorous, healthy growth, productive of medium to large, round, highly colored and highly flavored berries. Mr. W. T. Allen of Brownsville, Oregon, a grower of this variety, wrote us that "The plant bears early and the berries are large in size for so early a berry. As early as Michel's Early and about the same size as Wilson's Albany. Quite prolific."

**Goldsboro.** Perfect blossoms; foliage strong, vigorous, thick, leathery and glossy. A good grower and productive of large, handsome fruit; very smooth and glossy; fine quality, especially recommended for home use or near market. A good, handsome berry that will make your mouth water for it and not disappoint you when you eat it. Too soft for distant shipment.

**Governor Rollins.** Originated in Massachusetts by Benjamin H. Smith and named in honor of Governor Rollins of New Hampshire. The plants are medium size, making a healthy growth of thick, dark green leaves. The fruit is firm, large, perfect in shape, dark red in color and very fine quality, and holds up well until the last picking and matures all of its fruit. It is a productive and promising variety.

**Governor Fort.** A new one from New Jersey and introduced by T. C. Kevitt, who describes it as follows: "Kevitt's phenomenal new seedling Strawberry of high rank, or improved Glen Mary. It is a result of a cross between Glen Mary and Sample. The berries take after the Sample in shape and color; in flavor and productiveness it takes after Glen Mary. I have been striving hard and strenuously for a number of years to obtain a Strawberry with the same generative fruit-producing power as the Glen Mary and to eliminate the objectionable white tip. Governor Fort is coreless and rich in flavor; berries literally melt in your mouth. The plants grow enormous clusters of berries, individual stems often producing eight to ten perfectly shaped berries." Mr. Kevitt was so positive of the good qualities of this berry that he offered to return all money paid for plants last season if they did not yield more fruit, grow better and ripen later than any other variety.

**Gray's Dollar.** Hails from Indiana. Has not fruited here yet, but has made a very vigorous growth of strong, healthy plants. It is described by the originator as follows: "Plant large and stocky, an excellent grower and free from rust; has a perfect blossom and its long vigorous roots render it resistant of both drought and frost. Berries very large and perfectly even in shape and hold out well until the end of the season. As firm as Gandy and more productive."

**Heritage.** Berries uniform, large, beautiful in shape; splendid color; delicious flavor. It is medium firm and makes a big yield; blossoms are staminate, or perfect, and have a rich green cap, which adds very much to the appearance and market value. Originated in New Jersey, where there was so much good said about it that I bought quite a few plants and put it in stock a year or two ago.

#### Plants Full of Fruit

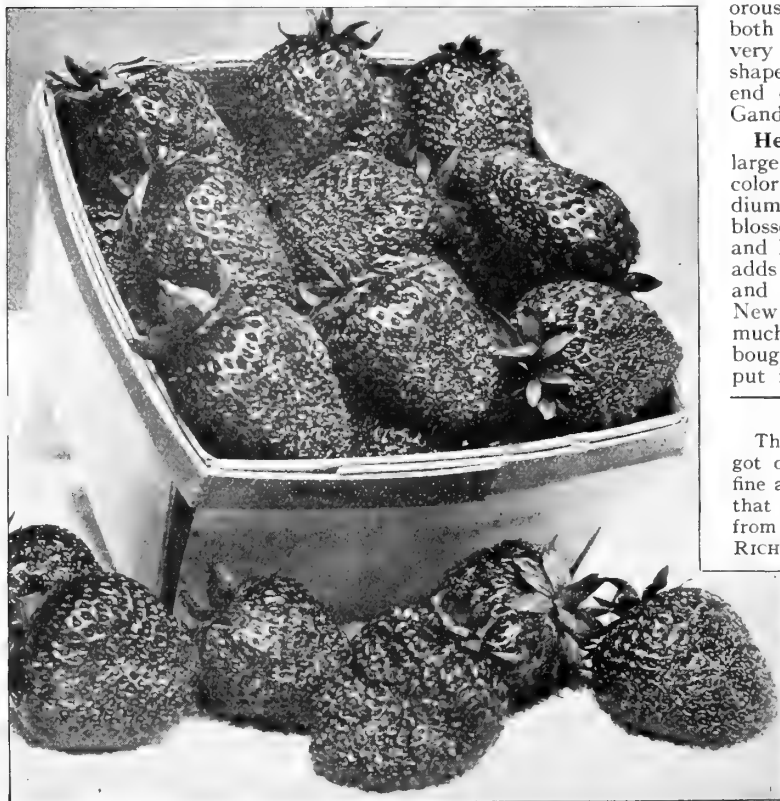
The Strawberry plants that I got of you last spring are looking fine and full of fruit. I must say that everything that I have got from you has been strictly fine.—RICHARD WHITE, Pulaski Co., Ill.

#### Takes the Blame

Plants arrived on Saturday in good shape, and if they do not grow I will not blame you, as I consider them extra-fine plants, the best I have ever received.—R. H. WINING, Indiana Co., Apr. 24, 1911.

#### We Pack Plants Properly

Plants arrived in good condition.—JOHN MCCORMICK.



Mascot. One of the largest berries that we grow

**THREE W'S.** A very popular, perfect-blooming midseason variety. Plants very large and stocky; amply able to produce big crops. The foliage is beautiful, dark green in color and very attractive. Fruit is large, fine quality and very productive, covering a long season from medium-early to late and is one of the best to plant with pistillate varieties. It is quite firm and a good keeper. In 1904 Three W's won highest prize at the World's Fair at St. Louis and made a record of keeping ten days. In 1905 it made a big crop after going through the freeze of April 15 and 16, while other standard varieties produced only 25 per cent of a crop. For several years the demand for Three W's has been such that we have seldom had plants enough. I am pleased to say that this season we have a very large stock of exceptionally fine plants and I feel quite confident that we will be able to take care of all orders on this variety. 25 cts. per doz., 40 cts. for 25, 60 cts. for 50, 90 cts. per 100, \$1.50 for 250, \$2.25 for 500, \$4 per 1,000.

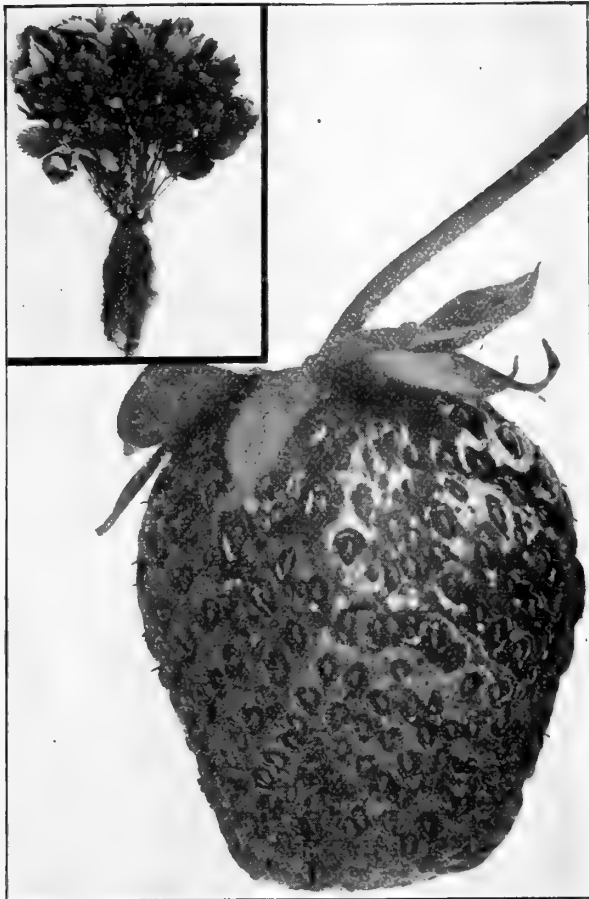
**Highland.** This variety has fruited with me for the third time and it gave an immense crop of fine-looking, large berries. The fact is I am very much pleased with it and believe it will be a money-maker among the commercial varieties. It makes very large, healthy plants. The fruit is of good size, fine color and form. It is giving good results at the Experiment Stations and, so far as I have heard, is giving satisfaction among growers everywhere.

**Howard.** Perfect blossoms, superb growth of vigorous, healthy, light green foliage; very productive, season late. I have fruited the Howard for several years and have always been very well pleased with it. It is a good variety.

**Howard's Early.** A new early variety. It is a great plant-maker. The originator, Mr. A. J. Howard, Somerset county, Md., who grew it successfully for three or four years before putting it on the market, advises planting it a little further apart than other varieties and not let the bed get too thick for best results. Mr. Howard describes it as follows: "One of the best qualities of Howard's Early is that it does not put on all its blossoms at once and you are about sure of a crop, cannot fail on account of the frost. It is a very early sort, about two days behind the Excelsior and fully as early as the Hoffman. The berries are bright red, medium size and carry well, and are about the size of the Virginia, and similar in shape but of a better color."

**Hummer.** The Hummer is a big fellow, as its name would indicate, and hails from Michigan. Its exact origin is not known, but it is probably a seedling of the New York, as it resembles that variety in many respects. Some of our customers claim, however, that it is even more productive. With all of its other good qualities it is a grand, good berry, which is emphasized by the fact that we have seldom had plants enough to go around.

**Ideal.** One of the newest berries. The plant is a strong, vigorous grower with clean foliage, free from rust, sending out very large, heavy runners, making strong, thrifty plants. Blossoms staminate, or perfect, need no fertilizing. Season, medium to late; a very heavy cropper of large, uniform berries, holding well up in size to the last picking. The finest berry, the best shipper, the best canner; re-



Three W's. Won highest prize at St. Louis, 1904

mains whole and keeps its shape when cooked, goes to market bright and crisp, does not bruise or discolor; the best looker in the boxes; the best seller. If you want the best selling berry, the best shipping and best canning berry, get a few plants of the Ideal. Mr. Joseph W. Haines, the originator of this berry says: "I have been growing Strawberries for market for forty-five years and bought nearly all the new ones, but never got anything to near compare with the Ideal. It is the firmest berry I ever saw, and the description is rather underdrawn than overdrawn."

#### Promptness Appreciated

The plants, arrived in fine shape. They are fine, large plants and I am more than pleased with them and thank you for your promptness in filling the order. —C. M. ARNEY, Center Co., Pa., May 5, 1911.

#### Everything O. K.

The plants as ordered, arrived on same day as postcard notifying me of shipment. Plants are fine, and all parties well satisfied. The count was right and everything O. K. Wishing you all success.—GEO. DEPENBROCK, Hamilton Co., Ohio, May 1, 1911.

#### Finest Berries Sent to Market

I enclose order for 5,000 Chesapeake and trust I am not too late. My Strawberries of this variety were pronounced the finest of any sent to Boston market last year.—JOHN W. NICHOLS, New Haven Co., Conn.

**KLONDYKE.**

Perfect blossom; vigorous grower; good crop of fruit; early; medium to large in size; well-colored, with no green tips, and very firm. One of the best shippers, commands top price in market and frequently brings a premium over other varieties, owing in a great measure to its unusual firmness. The Klondyke is being planted more and more largely in the semi-tropical sections; it is also planted in all sections of the country. I think I would be safe in saying that there are a thousand acres of Klondyke growing for market within fifteen miles of Salisbury. If you want a good berry that will bring a top price in market and ship anywhere, do not hesitate to plant Klondyke. 20 cts. per doz., 30 cts. for 25, 40 cts. for 50, 60 cts. for 100, \$1 for 250, \$1.60 for 500, \$3 per 1,000.



Klondyke. If you want a good berry, plant Klondyke

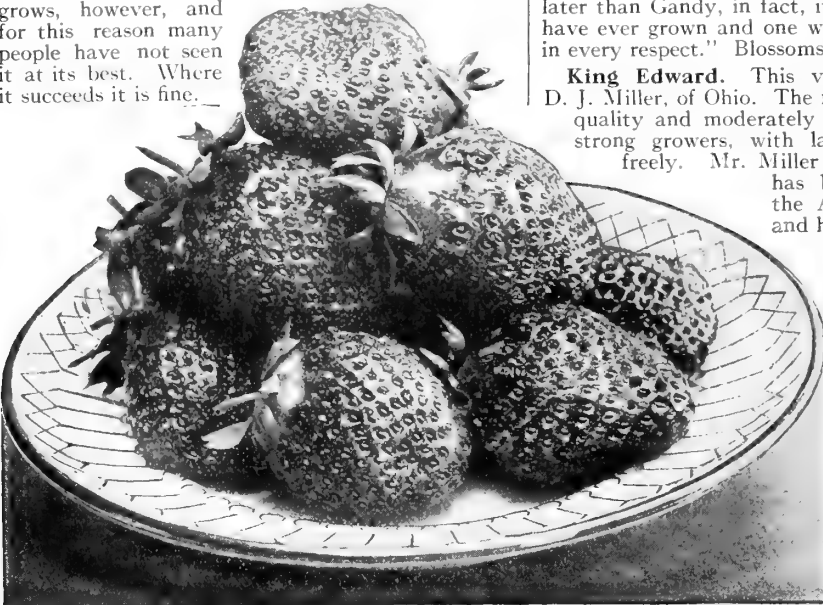
**WILDWOOD.**

A valuable addition to the list of home berries. It is one of the rankest growers on the farm, having almost covered the ground the past summer, notwithstanding that through the principal growing season we were practically without rain. The berry is of medium size, of a bright scarlet color and has that much-admired flavor of a wild Strawberry. It is very productive and a berry that I am sure will please every one who wants early berries for any other purpose than long shipment. It is too soft for long shipment, but first early for the home table or home market. This new Strawberry comes to us from Iowa. The name of this berry was suggested by its very delicious wild Strawberry flavor and the luxuriant growth of the plants. Your garden will not be complete without a few plants of this excellent variety. 25 cts. per doz., 40 cts. for 25, 60 cts. for 50, \$1 per 100, \$1.75 for 250, \$3 for 500, \$6 per 1,000.

**Jessie.** We usually keep a few plants of Jessie in stock for our customers who refuse to give up this variety. Where the soil conditions are favorable, the Jessie is an exceedingly fancy berry for either home use or market. It is very choice as to the soil in which it grows, however, and for this reason many people have not seen it at its best. Where it succeeds it is fine.

**July.** This variety was planted by me for the first time last spring, and as yet I have not had an opportunity to fruit it. It has made an excellent growth of very strong, large plants, however, and the originator describes it thus: "Berries medium in size, good color and firm; very productive and later than Gandy, in fact, it is the latest berry we have ever grown and one we are well pleased with in every respect." Blossoms imperfect.

**King Edward.** This variety originated with D. J. Miller, of Ohio. The fruit is very large, good quality and moderately firm. The plants are strong growers, with large foliage, and bear freely. Mr. Miller says the King Edward has been well tested from the Atlantic to the Pacific, and has made a great record and, all things considered, is the greatest berry he has ever grown. Mr. Miller is very enthusiastic over his new berry and expects it to meet with great success. Here it is very fine, large and productive.



Wildwood. Has the much-admired flavor of the wild berry

The Strawberry plants I got of you this spring are doing fine.—J. C. SAIN, Missoula Co., Mont.



**OREM.** This variety is sent out by M. Crawford Company, of Cuyahoga Falls, Ohio, but seems to have originated in Maryland. The Orem is a vigorous grower and has fine foliage to protect the beautiful berries from the hot sun. It comes in with the Gandy and bears an abundance of fine berries after the Gandy is gone, and bears about three times as many as the Gandy. The berries are exceedingly large and smooth, light red with yellow seeds and dark green caps which makes them very attractive. Being very firm it can be left on the vines two or three days after they are ripe and still be in first-class shape for market. Everything seems to favor this berry. It is one of the kind that bears under almost any conditions. 25 cts. per doz., 40 cts. for 25, 60 cts. for 50, \$1 per 100, \$2 for 250, \$4 for 500, \$8 per 1,000.

**Kansas.** Fruit rather above medium in size and immensely productive; color bright brilliant crimson, not only on the surface, but through and through. It is one of the most fragrant of Strawberries. Plant is free from rust and disease. I hear excellent reports from this variety and especially on the Pacific coast, and I shall be pleased to have my customers in that section give it a trial. I do not mean by the above that it is not a valuable variety in other sections, as one of the best crops I ever grew was of this kind.

**Lady Thomson.** It makes strong, healthy plants that produce large crops of medium-large, firm berries. The great North Carolina market berry. In the great Strawberry-growing section around Chadbourn, N. C., and other sections in the eastern part of the state, this berry has been grown largely to the exclusion of almost everything else, thousands of acres of it having been grown in that section. This does not mean that it will not do well in other sections, as we ship plants of this into many other sections. It is more particularly adapted to the warmer climates than to the North.

**Mammoth Beauty.** A good strain of the Haverland. The plants are healthy, large and vigorous, sending out ample runners. The bloom is of medium size and hardy. The fruit is of long and large, and bright crimson when the sun strikes it directly, shading to a light red on the shady side. It is round at the stem and gradually tapers to an obtuse point. It was sent out by C. S. Pratt as a new variety; he claims that a grower in Massachusetts recommended the variety and claimed it to be one of the most profitable in that section. It does well in any section.

**Manhattan.** This new candidate for public favor hails from New Jersey, and is said to be a monster in size. The introducer claims that eight and nine berries have been selected that will fill a quart, and he also claims that two-ounce berries are a frequent occurrence. I quote the following from his description. "When well grown, the Manhattan approaches the Ideal more than any other Strawberry of our acquaintance. In size, large and very uniform. Texture very firm, but not coarse; color bright red and glossy. The calyx is remarkable in keeping its green color long after picking, causing the berry to retain its fresh appearance for three or four days on the market stands. The flavor is excellent, comparing favorably with Marshall and Wm. Belt. It is very productive on my soil, which is clay-loam. We do not advise planting of this freely without thorough tests. Like all choice varieties it requires special soils and con-



Orem. Large, smooth light red berries

ditions, this fact will make it the more profitable to those who can master its requirements." A number of very strong testimonials are given, and to those who wish to grow very large fancy berries I would certainly recommend a trial of the Manhattan. Blossoms perfect.

**Marshall.** Too well-known to need any extended description. This berry has been popular in the New England market for years; the grocers are always delighted to get it on account of its rich, dark red, glossy color, that is bound to attract and please customers. It is one of the richest-flavored Strawberries grown. It is a strictly fancy berry, but not quite so productive as some other varieties. Its large size and fancy quality, however, will go a long way toward making up this deficiency. This berry finds a ready sale in any market.

**LONGFELLOW.** This variety has a perfect blossom and the season is claimed to be from early to late. The introducer describes the Longfellow as "very large and producing the largest number of uniform big berries of any variety of its season. In form it is very long and of a perfect Strawberry type. In color it is dark red, the rich, deep redness extending from circumference to center. The flavor is rich and sweet, texture firm, making it an excellent market variety." 25 cts. per doz., 40 cts. for 25, 60 cts. for 50, \$1 per 100, \$2 for 250, \$4 for 500, \$8 per 1,000.

**SAMPLE.** Originated by J. D. Gowing, of Reading, Mass. It has become one of the standard berries throughout the country. I was favorably impressed with this berry the first time I saw it and unhesitatingly paid \$200 for 1,000 plants. I have never been sorry for this purchase, as I was one of the first to get it, and it has become a great, standard variety, one that seems to give satisfaction over the whole country. It is a good berry for the experienced grower and a safe one for the inexperienced. It has been termed by some as a mortgage lifter; at any rate, it is too good to be omitted by large or small growers. It has extra-large blooms for a pistillate variety, and it is so hardy it is seldom damaged by frost. The berries are large, bright red and have a smooth, glossy appearance. The Sample is not only one of the most beautiful late berries, but one of the largest and most prolific. The berries lie in piles along the row, and are so uniform that it is seldom necessary to sort them, even by those who practise doing so. It is an excellent shipper, a good canner and a good, all-round berry. 20 cts. per doz., 30 cts. for 25, 40 cts. for 50, 60 cts. per 100, \$1 for 250, \$1.60 for 500, \$3 per 1,000.

**Mellie.** This is an Arkansas variety, and is claimed to be a cross of the Warfield and Lady Thomson. It is described by the originator as being early to midseason, and a pistillate. "The Mellie is a great midseason cropper." "A giant in filling crates and one of the most productive varieties." At the Ohio Experiment Station on the test plot it ranked second in productiveness and only missed first place by one-eighth of a quart out of over a hundred kinds. It resembles Warfield in color and shape, but is superior in size, and has not the defect of too short fruit stems, like the Warfield, which makes hard picking. The Mellie is an immense yielder of fine berries. On account of its large size, pickers are always eager to pick it.



Longfellow. Excellent for market

**Mitchell's Early.** Originated in Arkansas. For eating from the vines after it is fully ripe there is probably no better variety, and until the Excelsior came it was the leading early market berry in this section, as well as for home use. If grown on good soil, it must be kept thin or it will go too much to vines. Too well known to need further description.

**Missionary.** I have put this in stock at the urgent request of a number of my customers and also because it was highly recommended to me by some of the most prominent produce merchants in New York City. It has a very vigorous plant, healthy, medium large, with berries large, holding their size well through the season. In season it is early, but not quite so early as Excelsior and Hoffman. It is quite productive, firm and a good shipper, and is becoming quite a popular market berry with growers here on the Peninsula. I have a very fine stock of plants this season and shall be pleased to supply all desiring this variety.

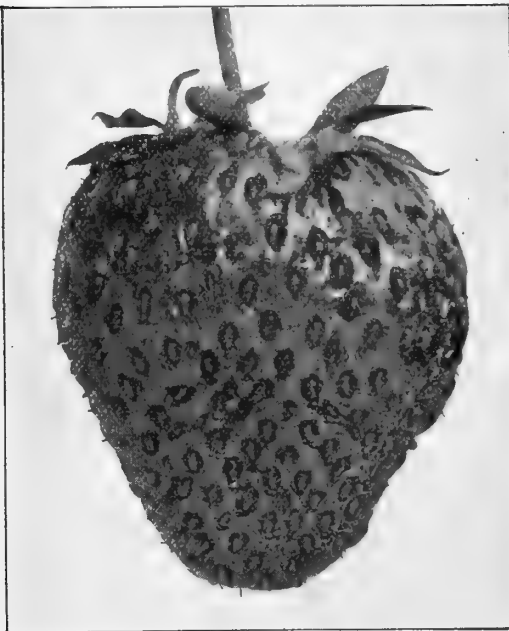
**Monroe.** Originated at Scottsville, N. Y., by Mr. Morgan, and is said to be a seedling of the Sample. A large, very smooth, dark red berry with healthy, green calyx firmly embedded in the fruit which is extra firm with high qualities. Much like Wm. Belt in flavor and color, but firmer and more uniform in shape. The blossoms are perfect and they continue to bloom through a long season. The plant is a good one making plenty of runners that develop into large stocky plants which yield with the Sample and Clyde. I have grown them on a stiff gray gravel, also on light and heavy loam, and they did well on both. The above description is borrowed from the introducer.

#### Thanks Us for Favors

Received plants in fine condition Saturday night. Thanking you kindly for favors, I remain.—ALFRED HOLZNAGLE, Monmouth Co., N. J., April 24, 1911.

#### Plants Growing Nicely

I have received my plants all O. K., and they are growing nicely. Thank you.—JOSEPH KAY, Mason Co., W. Va., May 8, 1911.



Sample. The mortgage-lifter berry



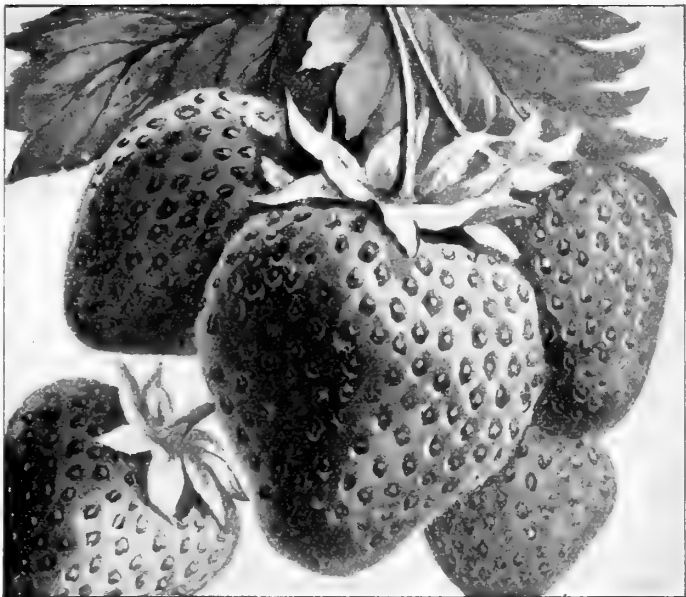
**SENATOR DUNLAP.**

This is unquestionably a variety that beginners who know practically nothing about Strawberries can depend upon. The Dunlap is one of those healthy plants that, if given half a chance, will look out for itself wherever you plant it. The foliage is tall, upright, with a long leaf, and has more than the ordinary power of developing a heavy crown system. Its long roots go down into the subsoil for moisture, and a severe drought has less effect on this berry than on any others. Originated in Illinois by J. T. Reasoner and named after Senator Dunlap of the same state. Mr. Reasoner claims that the Dunlap has started to encircle the globe, and from the demand that we have had for plants for two or three seasons past I guess he is about right. My own trade on this variety extends from Canada to Cuba and from ocean to ocean. It has an extra-long flowering season; the bloom is handsome and exceeding rich in pollen, which makes it valuable to plant with such pistillate kinds as ripen in its season. It has a perfect blossom. I fruited this berry for several seasons and find it one of the best medium size, midseason varieties. The berries resemble Warfield in color and ripen about the same time. It is a better berry than the Warfield, better able to resist drought and less liable to be injured by the continued rainy weather during picking-season. The fruit is dark red, with a glossy finish, shading to a dark scarlet on the under side, with prominent yellow seeds resembling gold imbedded in highly-colored wax. The meat is bright red all through and is exceedingly juicy. For a medium-sized, very productive, midseason berry, do not hesitate to plant Senator Dunlap. 20 cts. per doz., 30 cts. for 25, 40 cts. for 50, 60 cts. per 100, \$1 for 250, \$1.60 for 500, \$3 per 1,000.

**New York.** The plant is one of the largest and healthiest on the place. The foliage is light green, a luxuriant grower and free from disease. It is very prolific; bears through a long season. The berries are very large, some rather pointed, while others are thick and broad. The color is red with a shiny surface. The seeds are so near the same color as the berry and deep set that they are scarcely noticeable. Small berries have no show by the side of the New York, no matter how cheap they are offered. Its excellent quality and wonderful productiveness make it very profitable to grow. It is a prize-winner, just the kind to make the grower famous in his local market and give him the best trade. It is not firm enough to ship long distances, except under refrigerator. The New York has gained in popularity until it is today one of the largest-grown varieties for the home garden or local market, and it is seldom that we have plants enough to supply the demand, especially to those who order late. We have many glowing accounts of its superior quality from our customers. One customer says: "The New York is of immense size and very productive." If you have never planted the New York you should not fail to do so.

**New Oregon.** Not having fruited this berry I will give the originator's description. "The New Oregon, after seven years of active competition, still leads all other main crop berries, and as a general purpose or fancy market berry has no competitor. The color is a rich, dark red, extending to the center. Berries very large—fifteen specimens have filled a quart. The berry is firm and of fine, even form; flavor is rich, sweet and delicious. As a table and canning variety it is unexcelled. The New Oregon is early and continues in bearing a long season." The plants have made an elegant growth here and look promising.

**New Home.** Of Western origin and introduced by me several years ago. For some reason, for which I cannot account, this berry has not become popular except in a few instances. Before introducing this variety I grew several remarkable fine crops of fruit. They were such that I considered it at that time an exceedingly valuable variety.



Senator Dunlap. Beginners can depend upon this variety

It seems, however, that it does not keep up its reputation from home, and to those who have not already planted it and know whether or not it will give satisfaction, I would advise planting it only in a small way. Where it succeeds, as it has done here, it is certainly a valuable market berry.

**Nick Ohmer.** This is an Ohio berry that has now been on the market for a number of years. This berry has a strong, perfect blossom, and is productive of rich, dark glossy red globular berries, highly colored all the way through and of superior flavor. It is a great market berry and a superb variety for the home table. It does not seem to be a great favorite with the general mass of Strawberry growers, notwithstanding some of the larger growers plant it heavily. For the last two or three years it is becoming especially popular in the Southern states, Florida in particular, where it is largely grown for the Northern markets,

**Sweet-Potato Plants Fine**

We received the sweet-potato plants in very fine order. Thanking you for past favors, I remain.—W. A. BISHOP, Richmond Co., N. Y.

**RED-BIRD.**

This must be grown thin to get a good marketable crop. The vines grow like weeds, and unless kept thin will mat so thickly that they will impoverish each other, thereby causing the fruit to be small, but if kept from getting too thick, they set a heavy crop of good-sized berries that ripen early and carry well. After fruiting this another season I have nothing to take back from what I said of it last year. It gave us the first medium-large berries that were firm enough to ship. The fruit will average larger than the Excelsior and with me will bear twice as much per acre, although I consider the Excelsior a fairly good yielder. It can be fruited with Excelsior, Climax or Lee, and if grown thin is a valuable market sort.

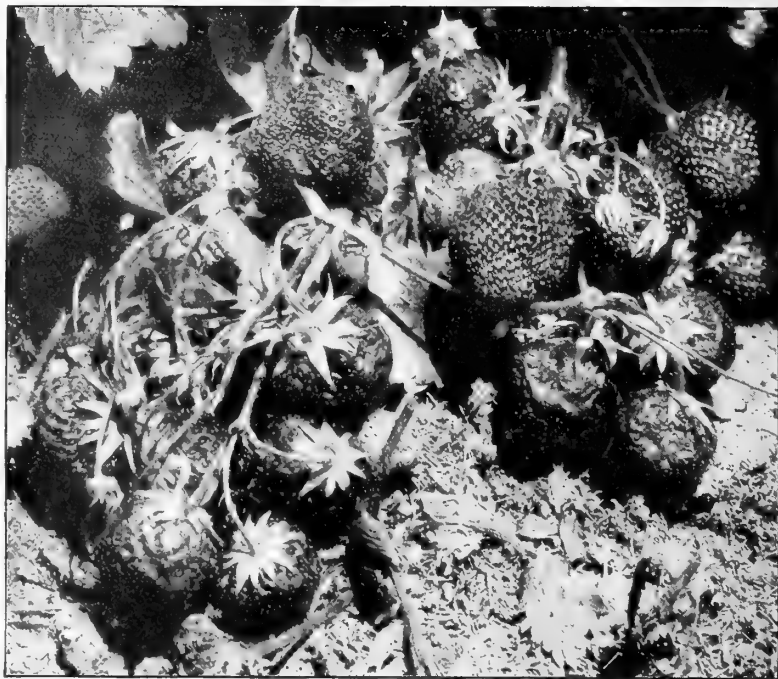
The berries are very tart and would not be considered good eating without plenty of sugar, but as a first early-shipping berry, considering size, productiveness and firmness, it probably has but few equals. It is a pistillate variety, and the earliest pistillate variety that I know of. When I had this berry in fruit, I sent for one of the largest growers in the state and he has been growing it in large quantities ever since, and I understand is well pleased with it. 20 cts. per doz., 30 cts. for 25, 40 cts. for 50, 60 cts. per 100, \$1 for 250, \$1.60 for 500, \$3 per 1,000.

**Norwood.** The originator, N. B. White, describes this variety as follows: "The plants are strong, making a liberal number of strong runners, but not excessive. Has a perfect blossom and holds its size well through the season. The berry is conical and regular in shape. Color bright red all the way through, growing darker with age; it is firm, a good keeper and will ship well. The quality is unsurpassed and the size unequaled, some attaining the enormous size of 2 inches in diameter. It is supposed to be a cross of the Marshall and Corsican, as it came up where the Marshall had been grown. The Norwood was named and given first prize by the Massachusetts Horticultural Show at its exhibition in 1906." My stock was obtained from the originator, for which I paid the nominal sum of \$40 per 100. The first season I made only about 500 plants from this hundred, but I now have a fair-sized stock and have put the price at \$5 per 1,000. It very much resembles the Marshall in plants and growth, and it is my opinion that it is identical with that variety.

**Oak's Early.** This is a very early, firm-shipping berry. It originated in Somerset county, Md. Some think it better than Excelsior. It is, to say the least, probably equal to that variety; equally as early, equally as vigorous in growth, equally as productive and equally as sour.

**Reached Mark of Perfection**

Your Chesapeake Strawberries cannot be recommended too highly. They have surely reached the mark of perfection. They are by far my favorite.—L. L. BOYER, Christian Co., Mo.



Red-Bird. The first berries that were firm enough to ship

**Ohio Boy.** This is a new berry sent out by A. A. Eppert, of Ohio, for which he claims great things. Mr. Eppert says it would take a small newspaper to give all the good points of his new berry. Among other things, he claims it to be very hardy. The variety has made a good showing in plant-growth with us this season, but as we have not fruited it yet, I shall have to wait until another season before giving a very definite description. From what I have seen of it I should judge it was worthy of trial.

**Oom Paul.** The fruit is large, the larger berries being sometimes a little flattened. The berries are dark red all the way through, firm and of good quality. I see no reason why this variety has not been planted more largely. I have fruited the Oom Paul for several years and consider it a good variety either for home use or market, as it is firm enough to ship well.

**Patagonia.** This is Luther Burbank's new berry for which he claims so much. I procured plants last spring, but it has not fruited in the East that I am aware of, and we only offer the plants to those who wish to give it a trial. One thing that Mr. Burbank claims for this berry is superior quality. From a few berries which we picked from young plants this summer I can certainly say that the quality is very fine indeed. Further than this, I can give no description until after fruiting it next year.

**Plants Are Good**

The Strawberry plants on my order came to hand a few days ago in good condition and good plants. I expect to order from you again next year.—J. W. PIGG, Washington Co., Iowa.

**SUPERB.**

This is undoubtedly the best of the fall-bearing varieties. It is a perfect blossom, and is a seedling of Autumn crossed with Cooper. A healthy growing plant that makes runners freely. Fruit large, dark red, glossy, firm and good quality. Edw. H. Reil, Pres. of the Alton, Ill., Horticultural Society, to whom plants were sent for trial, writes as follows: "Superb of which you sent me six plants is, so far, the most promising. It bore right along from the time plants got well established until this writing, October 26. I did not disbud, except at the start, because I wanted to be able to judge them fairly and test their vitality." A prominent New York grower says: "The Superb is the largest fall Strawberry I have ever seen. It is glossy and very attractive as well as of finest flavor. It brings every blossom to maturity, there being no blanks, which is a strong point in a fall-bearing Strawberry." I thought so well of this variety that, in addition to what I had growing, I have purchased about one-half of the originator's stock, who claims that it is not only the best fall-bearing variety that he has, but also his best spring-bearing variety, giving a full crop in the spring and then after a short rest bears nearly all summer. To those who are interested in fall-bearing Strawberries, I recommend the Superb as the best to be had in that line. \$2.50 per doz., \$4.25 for 25, \$8 for 50, \$15 per 100.

**Parsons' Beauty.** Parsons' Beauty originated in this country near Parsonsburg. It is very productive, medium large and of good quality. To anyone who has a near market, where the fruit can be hauled in or picked one day and sold the following morning, I would recommend this variety. Some claim that it will ship well, but I have never found that I could recommend this as a berry that would ship a long distance and give good results. It makes a luxuriant growth of dark green, vigorous plants, which bear an immense crop of medium to large berries.

**Paul Jones.** This is a pistillate variety, and is claimed to be a seedling of the Haverland and Brandywine. It has been thoroughly tested in different soils, with all kinds of treatment, and has never been found wanting. It is claimed to be wonderfully productive of beautiful berries, and the most wonderful of all, will keep a week and be just as handsome as when first picked. Of a brilliant, glossy color, which seems to have a varnished surface, and is claimed to be an excellent shipping variety. It is claimed that berries kept a week in a common house-cellar, were exhibited at the Worcester County Horticultural Society by the side of fresh-picked berries, and the only difference in appearance was the added richness in coloring of the week-old berries. It is said to be fully as productive as Haverland or Sample. I have not fruited the variety yet, but it has made an excellent showing in the field so far as growth is concerned, making a good quantity of strong, healthy plants.

**Prolific.** I have quite a nice lot of plants and shall be pleased to supply those who wish to try this new variety. The Prolific originated at the Experiment Station in New York state, and I



Superb. The best of the fall-bearing sorts. This picture was taken September 30, 1911

will quote the Station's description: "Plants very numerous, vigorous, unusually productive, yielding on the Station grounds at the rate of 14,000 quarts per acre. On account of its vigor, the great productiveness of its plants and the attractiveness of the large, well-colored berries, this variety gives promise of taking front rank among standard commercial Strawberries. Fruit very large to above medium, retains size well as season advances; roundish conic to blunt wedge-shaped; attractive bright scarlet; flesh firm." This variety was sent out in 1908.

**Pride of Cumberland.** Originated in New Jersey. The berry is brilliant red and holds its luster and freshness a long time after being picked. It is very attractive, and always brings the highest market price. Where everything is favorable it is productive, very firm and good quality. It is a strong, staminate variety and an excellent one to plant with medium to late pistillate sorts. Were it not for the fact that its blossoms are easily injured by unfavorable weather, I think this would be one of the leading market berries.

---

#### I Ship Promptly

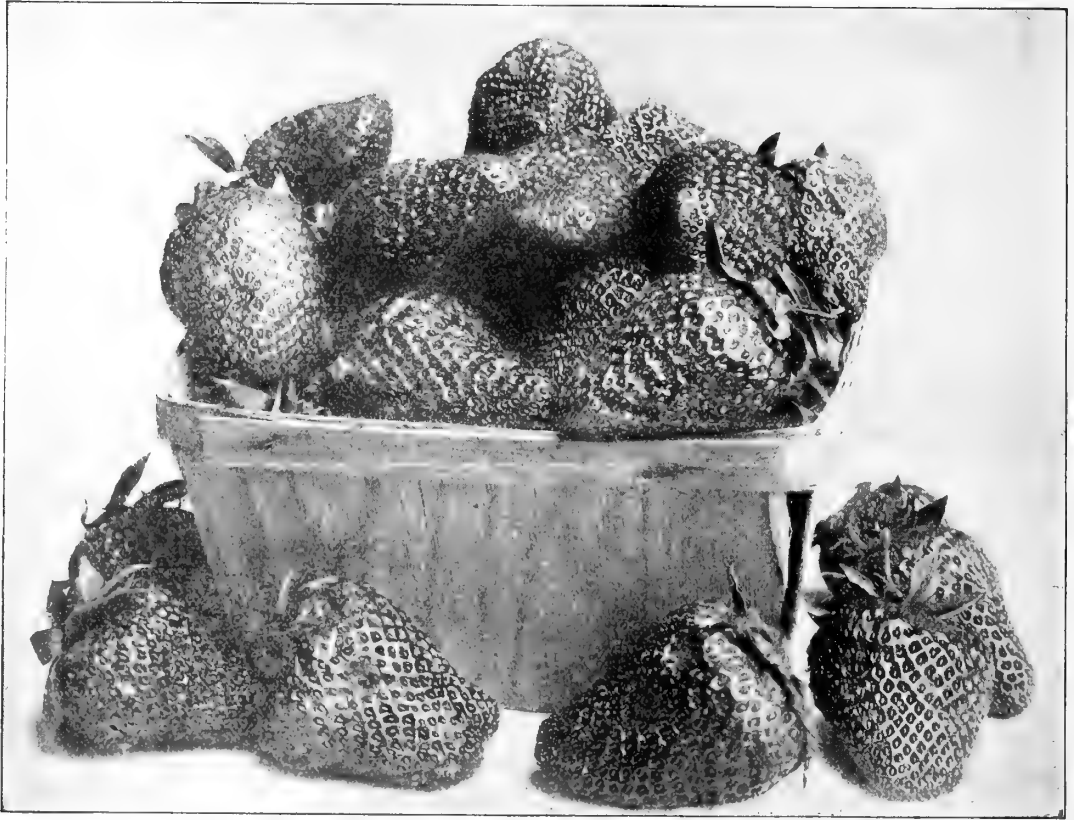
Thanks for good count and prompt shipment of Potato Plants.—J. U. STOUT, Huron Co., Mich.

#### I Know How To Pack

The Sweet Potato Plants arrived in fine condition.—J. G. S. CHALFANT, Washington Co., Pa.

#### Fine Cabbage Plants

Cabbage Plants I received of you last spring were fine.—E. A. BISBEE, Crawford Co., Pa.



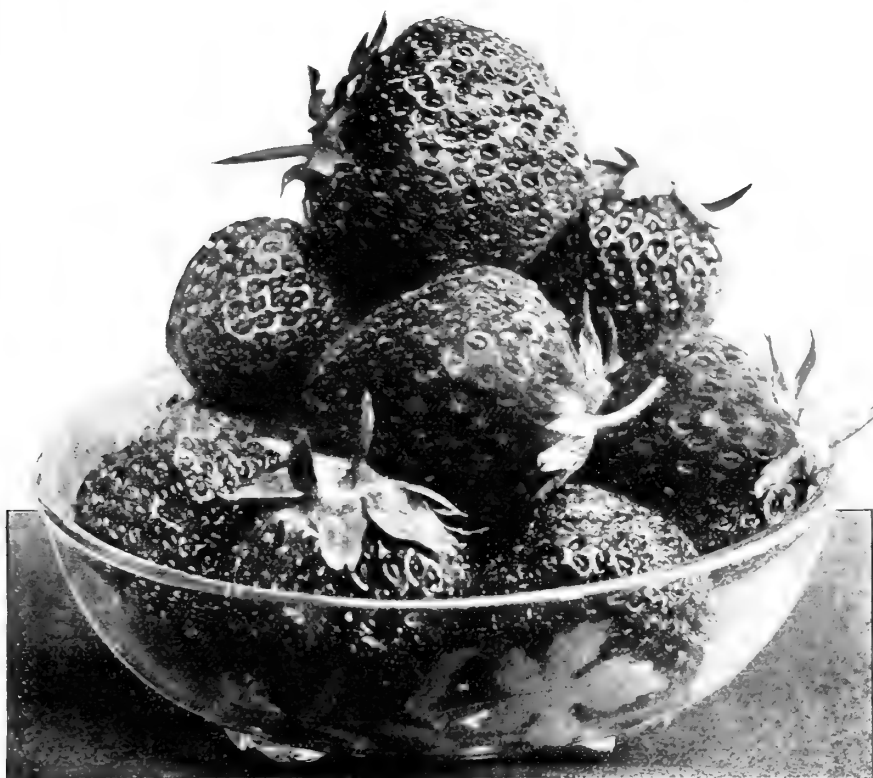
O. I. C. Strawberry is large, firm and unsurpassed in quality

**O. I. C.** This berry is truly a high, sandy loam Strawberry, but the land must be rich if best results are expected. It is a deep-rooted Strawberry, with strong-growing plant, free from all diseases that we know of. While this berry is not the largest of berries, it is large enough and firm enough to carry well, and sell for 5 cts. or 6 cts. above the average of other varieties. The quality of the O. I. C. is unsurpassed. It is red to the center and has no cavity in the center as do most berries of this size. The cap or calyx is most beautiful, and remains green until the very last berries are picked. We picked from one acre this season at one picking 960 quarts, and 4806 quarts during the season; this was on low, springy land, but being a very dry season they were in the right place. Would not advise planting on land of this kind as they would have too much foliage if it were not a dry season. These berries do not run down as most berries do, the last picking is of a good, marketable size. To show you how much confidence the introducers have in this berry, they sold to Mr. W. W. Seward, of Ridgely, Md., 75,000 O. I. C. plants this spring, guaranteeing him a yield of 4,000 quarts per acre under ordinary field culture. This berry was fruited for the first time in the spring of 1908 by Mr. O. Cordrey. It was the best berry he had out of eighteen of the very best known market varieties. This did even better the next season compared with fifteen other varieties than it did in the spring of 1908. 30 cts. per doz., 50 cts. for 25, 80 cts. for 50, \$1.25 per 100, \$2.50 for 250, \$4 for 500, \$8 per 1,000.

**Roosevelt.** A vigorous grower. The foliage is lusty, the root large and long. The fruit abundant, beautifully shaped, a dark rich red, inside and out; flavor unsurpassed, if equaled. Firm and solid, and, like the namesake, will stand lots of rough handling and still be a perfect specimen of its kind. Any reason why the name Roosevelt? Because, he who made the name worthy is admitted by all, friend or foe, to be honest, vigorous and true. And that is what I claim for the Roosevelt Strawberry. 'Tis honest in its every part, its form, color, taste, and canning qualities. Hence the name Roosevelt. It grows well on gravelly soil and without any special care or forcing in any way.

**Saint Louis.** Originated in Arkansas by J. A. Bauer. This variety, as grown here, makes a very strong, healthy plant, with plenty of runners, and

very productive of large berries, considering the early season at which they ripen. They ripened with me the past season fully as early as the Excelsior or any of the other very early varieties. The berries are about the same shape, fully as large, and almost, if not quite, as productive as the Haverland. But for one weakness I would prefer this berry to any of the early berries I have ever seen. It is more productive of large berries than any other extra-early sort that I have ever grown, and I have had about all there has been introduced of any importance for twenty-five years. The one thing that keeps it from taking first place as an early berry is the fact that it is too soft, which practically takes it out of the market as a shipping variety, but for the home table or the local market it is the largest very early variety. Every home gardener should grow it.



Fendall. A berry bound to command attention wherever seen



New York. Just the kind to make the grower famous in his local market





Gandy. A splendid late berry

**Sam Wherry.** I now have a stock of several thousand, which I am offering at a very reasonable price while the stock lasts. The plants seem to be healthy and a strong grower with me. I like the appearance of the plant very much, but as what plants I had to start with have been kept busy for propagating purposes, I have not seen much of the variety, and only offer to those who wish to make a test of it. I can only say that it is a good, strong, healthy grower, and the parentage is good. The Farm and Ranch describes it in part thus: "The plant is large, free from rust, vigorous, and makes enough plants for fruiting rows if planted 5 feet in row. The bloom is phenomenally large. The berry turns red before it is ripe; very firm, extra-large, and prolific."

**Silver Coin.** I have not fruited this variety yet, but it has made an excellent growth and promises well. The introducer speaks of it as follows: "The most pro-

lific large Strawberry; the largest very prolific Strawberry. The quality is grand; rich, full, sugary and very aromatic. Its brilliant flame-red color remains unchanged after the berries soften. It is very firm, keeps in good condition from three to five days. The plants are strong, free from rust and blight. The blossoms are large, with lots of pollen. It has been thoroughly tested for several years and its merits proved by actual, practical tests. Originated in New Jersey, and coins gold for those who plant it for market."

**Sharpless.** This is an old favorite and a good many are still asking for it, especially to plant in the garden for the home table. Too well known to need further description.

**Saunders.** This is one of the few varieties that give best results on medium or light soil and yield good crops, and for several years was my favorite berry. For two or three years the demand for this variety seemed to wane, but it evidently is coming into popularity again, judging from the inquiries we are receiving for it. It is certainly a good berry and no one will go far wrong in planting it. The fruit is large and a deep, glossy red.

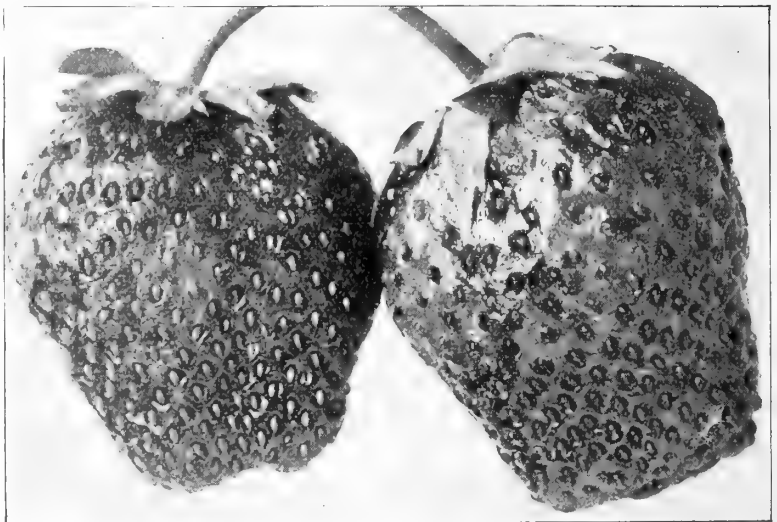
**Splendid.** A very productive variety of uniform, medium size. This is another variety that must be kept thin in order to keep it from getting too thick on the row for best results, as it surely will do if left to have its own way. It has a strong, staminate blossom, and is a good one for pollenizing such pistillate varieties as Warfield, Crescent and others of that type.

#### Pleased with Plants

Plants received O. K. and in good order. Well pleased.—WM. K. MOYER, Schuylkill, Pa.

#### Plants as Represented

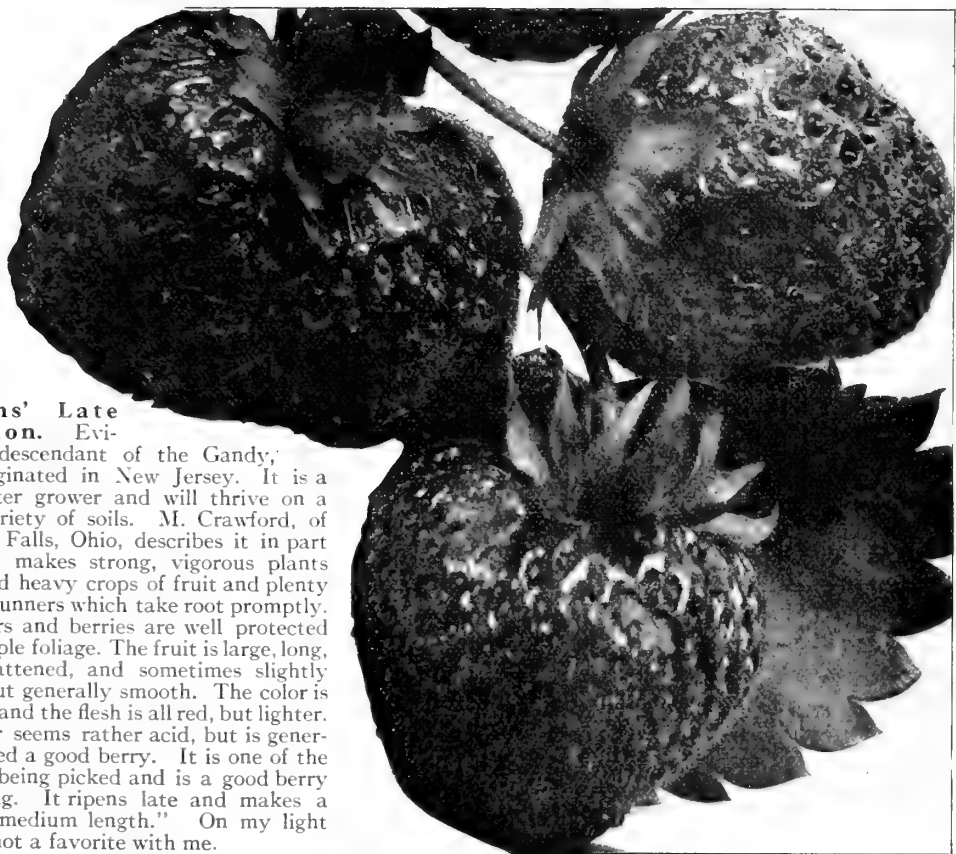
The Strawberry plants arrived the 7th O. K. We have been getting plants of you off and on for twelve or fourteen years, and never have got a plant that was heated or that was not true to name and true in count. I have recommended you to several Strawberry growers and they all say that they were as you represented. Hoping that you will stay in the business for years to come, I remain.—C. M. WALTON, Franklin Co., Ohio.



Chipman. Has attracted a great deal of attention in Delaware

**Stevens' Late Champion.**

Evidently a descendant of the Gandy, which originated in New Jersey. It is a much better grower and will thrive on a greater variety of soils. M. Crawford, of Cuyahoga Falls, Ohio, describes it in part thus: "It makes strong, vigorous plants which yield heavy crops of fruit and plenty of sturdy runners which take root promptly. The flowers and berries are well protected by the ample foliage. The fruit is large, long, a little flattened, and sometimes slightly creased, but generally smooth. The color is bright red and the flesh is all red, but lighter. The flavor seems rather acid, but is generally counted a good berry. It is one of the best after being picked and is a good berry for canning. It ripens late and makes a season of medium length." On my light land it is not a favorite with me.



Glen Mary. Popular with large and small growers

**Tennessee Prolific.** Perfect blossoms; fine grower; productive; large size, moderately firm and popular with many growers. One of the best staminate varieties to plant with medium early and medium pistillate kinds. A good, reliable sort that has many friends. It is well to plant this berry with the Haverland and other varieties of its season.

**Twilley.** This new berry was offered for the first time in my 1910 catalogue. It won the \$200 prize offered in my 1908 catalogue for one dozen strawberry plants of the best unintroductory variety sent me during that season to be fruited in 1909. In plant growth it makes a large, vigorous foliage of a healthy, rich, light green color. During the last half of August and all of September, the six weeks when Strawberries do their best growing in this section, we were practically without rain. Notwithstanding this, the Twilley has nearly covered the ground planted 2 feet apart in the row, with rows  $3\frac{1}{2}$  feet apart, while many varieties in the same field have made a poor showing. It is large in size, well-colored, and what is very important to the commercial grower, it is exceedingly firm. I believe it will equal in this respect any berry that has ever been produced. The eating quality is also very good. The Twilley will hold an important place among the list of fancy Strawberries, whether wanted for the home garden or for distant commercial purposes. Time of ripening medium late. The Twilley is a good plant maker, and I believe it will give general satisfaction to all who plant it. This berry should appeal to every grower, whether for local or distant markets, it will always be a leader.



This picture shows two plants of the same variety. Some growers charge more for plants than others. There is a reason





Excelsior. A standard variety for earliness



The Twilley. Will hold an important place in the list of fancy Strawberries

**Uncle Jim.** Another of the New York type. Originated by James Dornan, of Michigan. It is said to be a chance seedling, and its parentage is not known. It is a good, reliable variety, and while it came from an entirely different source, I doubt if many growers could distinguish it from New York, either in plant or fruit.

**Virginia.** Originated on the Eastern Shore of Virginia, from which state it takes its name. The plants make a good growth, with plenty of runners, which never show any rust. The foliage, while distinct, is similar to the Hoffman, but is larger and stronger. The Virginia is productive, of good-sized early berries. While it is not of the firmest, it is firm enough to make a good shipping berry, and being uniformly of good size and of a bright, glossy red color, it can be depended on to bring good prices in the market. It makes the best appearance in the crate of any medium-size berry that I know of. The originator claims to have produced 12,000 quarts per acre. One grower from Idaho says: "The Virginia produced a great crop, so much so that I set out this fall all the plants I had." A Vermont grower writes: "The Virginia and Marshall were the best of all for fancy prices."

**Warfield.** A well-known standard variety. A persistent plant-maker, and if not kept thinned out they will mat so thickly that it will be impossible for them to bear fruit of a desirable size, but if kept thin it is very productive, of medium-size, highly flavored and highly colored fruit. Very productive, midseason, and especially popular in the West. For syrups for canning, etc., it is especially desirable on account of its high color. Our stock is excellent.

**Woolverton.** Introduced by the Late John Little, of Ontario, Canada. I have fruited this variety for a number of years. It will succeed on almost any soil, but will do better on a sandy loam, where the soil is not too dry. The plants make a good growth, have perfect blossoms, which makes it an excellent pollenizing variety. It is no uncommon thing to see blooms and ripe berries on this variety at the same time. A good, reliable, standard variety.



Climax. One of the best second-early sorts

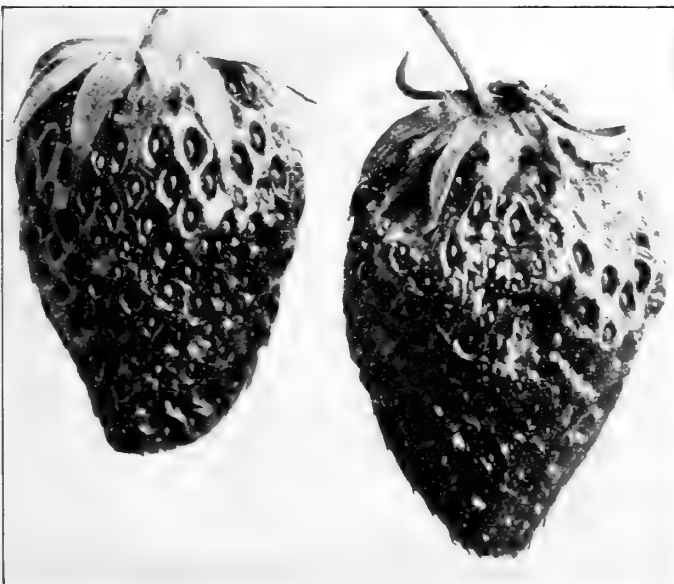
#### Plants Bear Firm Berries

The Sample berry plants that you sent me were received in excellent condition, and the berries are large and fine; they look as if they were varnished, and are also very firm.—H. W. REILLY, Lancaster Co., Pa.

#### From a Canadian Customer

I received strawberry plants in good condition and I am very much pleased with them. Many thanks.—C. NESBITT, Quebec, Canada.

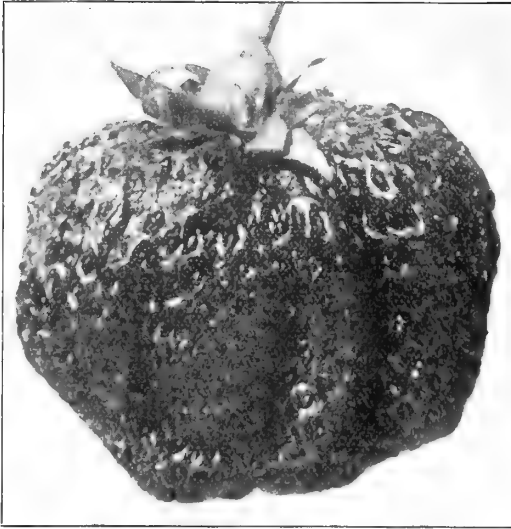
See our Collections of Strawberries on pages 25 and 26.



Fairfield. Firm enough to make a good shipper



Mammoth Beauty



Colossus. Bound to please all

**Wm. Belt.** There are few lovers of Strawberries that would not cross a plot and pick out the William Belt as the best flavored. It is the standard for quality the country over. The demand for this variety has been much greater for the past few years, and we frequently dispose of every plant that we have, and sometimes do not have enough. A Washington grower says: "The William Belt and Chesapeake for flavor and good eating are dandies. I am going to run all my patch to these two kinds. They stood the drought best and are in good shape now." Notwithstanding the William Belt is somewhat subject to rust, its popularity seems to increase right along, owing, no doubt, to its exceptionally good qualities. I find, however, that it does not rust so badly now as it did a few years ago, and there are few amateur

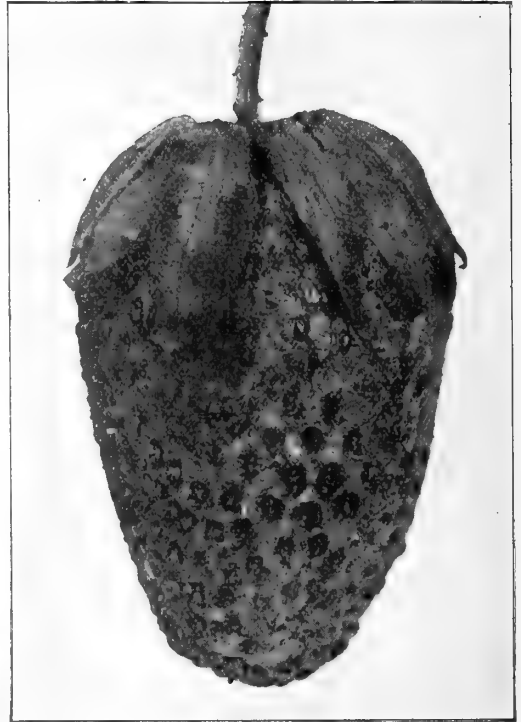
growers who do not include this in their collection. For fancy market and the home table it is indispensable. I know of nothing that approaches it in quality except Chesapeake.

#### Knows Where to Order Again

The Strawberry plants ordered of you arrived in excellent condition. They are, in fact, the best-looking plants I ever received, and I have had many orders filled by other firms in the past. We are busy setting them out and confidently expect a good yield from them. I am very grateful for your promptness and shall know where to place future orders.—FRANK W. GIBSON, Cumberland Co., Maine.

#### The Strawberry Plants Are All Right

The Strawberry plants you sent me are all right and in good order. I thank you for early shipment.—J. R. WOLFE, Lebanon Co., Pa., April 22, 1911.



Ekey. I am favorably impressed with this variety

#### Never Received Better Plants

Received plants yesterday in fine condition and am very much pleased with same. They are the finest plants, on the whole, that I ever received. I thank you very much for promptness, and when I need more plants will write you.—W. A. CASE, Sullivan Co., N. Y., April 26, 1911.

#### Packing Not Excelled

The plants came in perfect condition, as "Allen's plants" have always come to me, and I set them same day, and they are growing well with not a missing hill so far. Your manner of packing for shipment excels anything I know. Thank you very much for your kindness.—F. L. SMITH.

#### Grape-Vines Sent to Florida

Grape-vines received in good order for being shipped so far. I thank you very much for careful packing. I hope I can place more orders with you.—L. U. NAGLE, Putman Co., Fla.



This is how my plants are shipped



Wm. Belt. The standard for quality the world over

## Collections of Fruits

### COLLECTION A. Home-garden collection, early to late

25 Wildwood.....	\$o 40	25 Bradley.....	\$o 40
25 Fairfield.....	30	25 Mascot.....	40
25 Senator Dunlap.....	30	25 Chesapeake.....	40

Postage 37 cts., total \$2.57. All by mail postpaid for \$1.50

### COLLECTION B. Good reliable market varieties, early to late

25 Early Ozark.....	\$o 40	25 Haverland.....	\$o 30
25 Lea.....	40	25 Three W's.....	40
25 Klondyke.....	30	25 Chesapeake.....	40

Postage 37 cts., total \$2.57. All by mail postpaid for \$1.80

### COLLECTION C. New varieties especially recommended for trial

12 First Quality.....	\$o 25	12 Early Market.....	\$1 00
12 Helen Davis.....	40	12 Winner.....	1 00
12 Ideal.....	30	12 Twilley.....	25
12 Longfellow.....	25	12 Lea.....	25
12 Orem.....	25	12 O. I. C.....	30

Postage 50 cts., total \$4.75. All by mail postpaid for \$3

All the following collections are by express, receiver to pay charges

### COLLECTION D. Home-garden collection, early to late

50 Mitchell's Early.....	\$o 50	50 Bradley.....	\$o 60
50 Senator Dunlap.....	40	50 Chesapeake.....	60

Total, \$2.10. Will furnish this collection for \$1.60

### COLLECTION E. Reliable market varieties

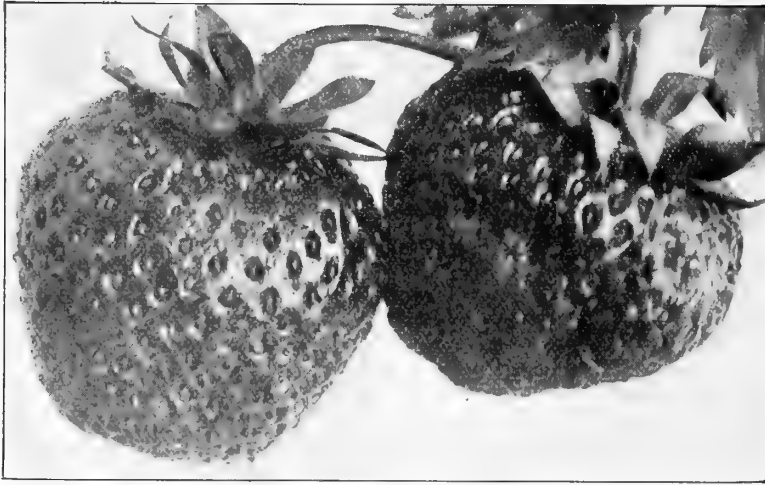
50 Lea.....	\$o 60	50 Three W's.....	\$o 60
50 Klondyke.....	40	50 Bradley.....	60
50 Early Ozark.....	60	50 Colossus.....	60
50 Haverland.....	40	50 Chesapeake.....	60

Total, \$4.40. This collection furnished for \$3

### COLLECTION F. One-half acre collection of good reliable varieties for either home use or market

1,000 Climax.....	\$3 00	1,000 Haverland.....	\$3 00
1,000 Senator Dunlap.....	3 00	1,000 Gandy.....	3 00

Total, \$12. This collection furnished for \$11



Missionary. Productive, fine and a good shipper

**COLLECTION G.—One-acre collection of good reliable varieties for either home use or market**

1,000 Fairfield.....	\$3 00	1,000 Haverland.....	\$3 00
1,000 Climax.....	3 00	1,000 Three W's.....	4 00
1,000 Senator Dunlap.....	3 00	1,000 Colossus.....	4 00
1,000 Klondyke.....	3 00	1,000 Gandy.....	3 00

Total \$26. This collection furnished for \$23.50

**COLLECTION H**

A collection of the newer varieties recommended for trial; it will give interesting and profitable results.

25 Bethel.....	\$0 40	25 Mascot.....	\$0 40
25 Darlington.....	40	25 Monroe.....	75
25 First Quality.....	40	25 New Oregon.....	50
25 Gold Dollar.....	50	25 Ohio Boy.....	40
25 Early Market.....	2 00	25 Orem.....	40
25 Helen Davis.....	75	25 Winner.....	2 00
25 July.....	40	25 Silver Coin.....	40
25 Lea.....	40	25 Twilley.....	40
25 Longfellow.....	40	25 Wildwood.....	40
25 Manhattan.....	75	25 O. I. C.....	50

Total \$12.55. We furnish this collection of twenty varieties for \$10.

**COLLECTION I**

This we call our Experimental Station special, and is made up of 25 plants each of the 104 varieties offered in this catalogue, which amounts to \$51.10. We will furnish this collection to Experimental Stations or any one who wishes to test out our entire list for \$35.

**COLLECTION J**

This is our "try them all" collection, and is especially prepared for the individual grower who wishes to test out the varieties for himself in order that he may know just what will suit him best to plant. It will give a comparative test of all the new and standard old varieties, and in many cases varieties will be found in this collection which will surpass the varieties you are already growing. It will tell you just what to plant better than any one else can possibly do. This collection is made up of 12 plants each of the 104 varieties on our list, amounting at catalogue price to \$30.45. I will furnish this collection for \$20.

**COLLECTION K**

This we call our home-garden collection. This collection, if planted and cared for, will give your family fruit fresh from the vines, bringing pleasure and health that cannot be estimated in dollars and cents.

200 Strawberry plants, 50 each Wildwood, Sen. Dunlap, Mascot and Chesapeake, \$2.20.	50 Purple Raspberry plants, Columbian, 75 cts.
50 Dewberry plants, 25 each Lucretia and Austin's, 80 cts.	50 Currant plants, 25 each Wilder and Cherry, \$3.
50 Blackberry plants, 25 each Early Harvest and Eldorado, \$1.50.	24 Gooseberry plants, 12 each Houghton and Downing, \$1.90.
100 Red Raspberry plants, 50 each King and Cuthbert, \$1.50.	12 Grape-Vines, two each Moore's Early, Concord, Niagara, Delaware, Wyoming Red and Vergennes, \$1.
100 Black Raspberry plants, 50 each Cumberland and Black Diamond, \$1.50.	100 Asparagus, Giant Argenteuil, \$1.
	12 Rhubarb, Victoria, \$1.

Total \$16.50. I will furnish the lot for \$13.50

## DEWBERRIES

**Austin's (Mayes).** An early Dewberry of excellent quality. I always plant about one-third of my field in Austin's and the remainder in Lucretia. It is very hardy and seldom fails to give a good large crop. The berries are large and thick, but lack firmness for long shipment, hence valuable chiefly for home or local market. If, however, they are kept picked up close as soon as ripe and not allowed to remain too long on the vines, they may be shipped a reasonable distance, and prices will usually compare very favorably with other varieties, as you get extra-early fruit, which is in better demand. Austin's ripens with me about a week earlier than Lucretia, and for this reason is valuable to grow in connection with that variety. Dewberry plants should be planted very early in the spring, as they start to grow early, and the sooner they can be planted the better. Any time when the ground is not frozen is suitable for planting them, even in the winter. Do not wait until very late in the season and then blame the plant-grower if your plants do not do as well as you expected. We can fill your order any time after you receive this catalogue.



Cluster of Dewberries

**Lucretia.** The most largely grown of all the Dewberries for market. It is earlier than the earliest blackberry and as large as the largest of them. The canes are very hardy and exceedingly prolific, thriving almost everywhere; of slender trailing habit, and entirely free from disease and insect attacks. The fruit is superb, large and handsome; jet-black, rich and melting. It is probably the best shipping variety of all the Dewberries in cultivation.

## THE STRAWBERRY-RASPBERRY

The Strawberry-Raspberry begins to ripen about the same time as the raspberry. The canes die down every season after fruiting and do not require trimming. The ground can be cleared of all growth in the fall, or preferably in early spring, and the new sprouts will appear and grow rapidly and bear fruit the same season. It requires little attention, especially when planted in good soil. The plants should be set in a row about 18 to 24 inches apart and from 3 to 4 inches in depth. They are perfectly hardy and do well in almost any climate. The plants attain a height of 2 to 3 feet, producing fruit in branching clusters, bearing

ripe fruit, small green berries and large white blossoms at the same time, presenting a beautiful appearance. The berries are unusually large, two or three times as large as the red raspberry, bright red in color, and of excellent flavor. The fruit preserved or cooked is very good. It is claimed the fruit has been sold for 20 cts. per quart, which may be true; nevertheless, I do not think there would be a large sale for it; for one reason, it does not carry well. The plant or shrub, however, I am more inclined to recommend as a curiosity and for its ornamental value. \$1 per doz. \$1.50 for 25.

## LOGANBERRY

(Blackberry-Raspberry)

The vine is an exceedingly strong grower, trails upon the ground like a dewberry. Fruit is often an inch or more in length, dark red, with the shape of a blackberry, the color of a red raspberry, and the flavor a combination of both. A splendid shipper, now widely known and deservedly popular. I have an excellent stock of very fine plants of this desirable berry and shall be pleased to have your orders. \$1 per 12, \$1.50 for 25, \$2.75 for 50, \$5 for 100, \$20 for 500.



The Loganberry

The plants arrived in fine condition.—J. WM. MAYBURY, New Haven Co., Conn., May 6, 1911

From Bermuda

Your favor of the 10th came duly to hand on Monday last, 14th, together with shipment of Strawberry plants. They arrived in splendid condition, and I have to thank you for your prompt attention.—R. KEMPE, Bermuda.



## BLACKBERRIES

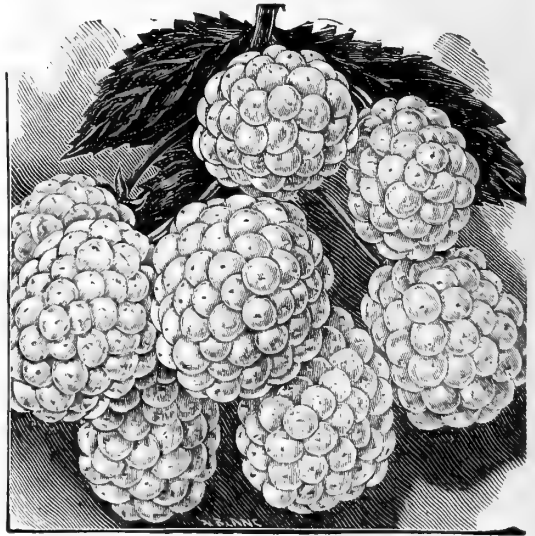
**Blowers.** A well-known variety from western New York. A sturdy grower and a very prolific bearer. The fruit is large and continues to ripen through a long season. The plant is hardy in its native region, and has endured quite a low degree of temperature unharmed. Since 1904, the Blowers have been distributed widely throughout the country, and, so far, only one report of winter-killing has been received and that from northern Minnesota.

**Eldorado.** Possibly the best known of all Blackberries the country over, and perfectly reliable in every way. It is a good grower and hardy everywhere. The berries are of good size, glossy black, and very sweet and tender; they retain their luster a long time after being picked. This variety was discovered by an Ohio grower several years ago. It is unquestionably one of the finest berries in cultivation.

**Iceberg.** The best of the light-colored Blackberries yet introduced. The berries are very attractive; when fully ripe they are pure white, so transparent that you can see the seeds. The white berries, mingled with black ones, present a very pleasing appearance. A great curiosity.

**Early Harvest.** Berries medium in size; bright, glossy black; sweet and tender. It succeeds admirably in the South and is a favorite on the Pacific coast, but it is said to be not entirely hardy north of New Jersey. Extremely early and very productive, rendering it profitable and popular.

**Mercereau.** Foliage large, abundant and entirely free from rust. Early to midseason; large size, good flavor. The berries are sparkling black, which adds greatly to their market value. The canes are exceedingly strong, upright in habit of growth. This berry succeeds well in almost any soil, although a fertile loam is best for full development.



**Iceberg.** The best of all light-colored sorts

**Rathbun.** This is evidently a seedling of the Wilson, and has all the vigor and productiveness of that once-popular variety, with berries equally large, beautiful and firm, ripening at the same time as its supposed parent, with all of its good qualities of keeping, shipping, etc. It is a native of western New York and is harder than the old Wilson. Time of ripening early, being in advance of all other varieties except Early Harvest and others of that class. Its large size and earliness make it especially valuable.

**Snyder.** Season early. Berries of medium size, but are borne in great abundance, literally covering the bush with sweet and juicy fruit. Its great hardiness of cane renders it valuable for cold climates, and hence popular for planting in the North as well as in warmer sections.

**Nanticoke.** My attention was attracted to this new berry about two years ago. When I first saw the plant, it was growing side by side with other well-known varieties, such as Eldorado, etc., but had made more than twice the growth of the Eldorado, notwithstanding that the Eldorado had been fertilized and the Nanticoke had not. This berry is only moderately firm, and I could not advise growing it on a large scale to ship a great distance, but it will stand shipping to a near market; for instance, it can be picked one afternoon and marketed the next. Its quality is delicious and is sure to please every one. The size of the berries is about the same as the Eldorado.



**Eldorado.** A good grower and hardy everywhere





Nanticoke. Nothing I have seen will surpass it

#### BLACKBERRIES, continued

The plant is literally loaded with fruit, nothing I have seen will surpass it; in fact, but few if any will equal it. What seems to me to be the most valuable characteristic of this Blackberry is its season of ripening, starting in with its first berries about the time all other blackberries are gone, and then giving immense quantities of delicious fruit for five or six weeks. For the market-gardener who has customers that appreciate good things in season and out, for the small grower who ships to not too distant market, it is a most valuable addition to his Blackberry list. On account of the very small stock at present I am only enabled to offer this by the piece, at \$1 each. I wish to add, however, that any one buying one or more plants of the Nanticoke Blackberry at \$1 each, who is not entirely satisfied with it after the second-fruiting season, can have his money back by agreeing not to propagate, plant or dispose of any more of the plants. This is not the Himalayan berry, and is not in any way related to it, but as grown here there is no comparison, the Nanticoke is many times superior.

**Ward.** Is a variety of great merit. It has now been fruited for a number of years and bears large crops annually. It was found growing wild in New Jersey. Its fine fruit, strong canes, clean, healthy foliage, loaded with enormous crops of large berries, always attract attention. Free from rust, vigorous and hardy. A seedling of the Kittatinny and closely resembles it in color.

#### Berries Paid Well

I want to speak a good word for those Chesapeake; they certainly are the finest berry I ever saw. I got \$4 per case for my fancy berries. 25 cts. a quart for some special orders. Every one that saw them said they were the finest berries they ever saw. Will set more Chesapeakes this spring.—JAS. W. GIFFIN, Coles Co., Ill., Jan. 28, 1911.

**Watt.** I am offering this fine new Blackberry to my customers for the first time, and since I have not fruited it I am borrowing the following description from M. Crawford, of Ohio: "The plant is an excellent grower, much better than Eldorado, which was beside it, and fully equal to the Blowers which came next. The wood of the Watt is of very fine texture and so tough that the branches rarely if ever split down with its load of fruit. In fact, its habit of growth and productiveness are such as to commend it to all who cultivate Blackberries. Its period of ripening extends over a long season, beginning soon after the earliest and continuing until October. Our last picking for market last year was on the September 25, but there were berries after October 1. The fruit is all that could be reasonably expected. Large, jet-black, glossy and attractive; the quality is excellent. We do not warrant it to be proof against insects or diseases of the Blackberry, but we believe that it will resist their attacks as well as any and better than some." With me plants and root cuttings put in last spring have made the strongest, healthiest growth of any variety on the place. I am very much impressed with it and highly recommend it for trial.

#### These Plants Are Winners

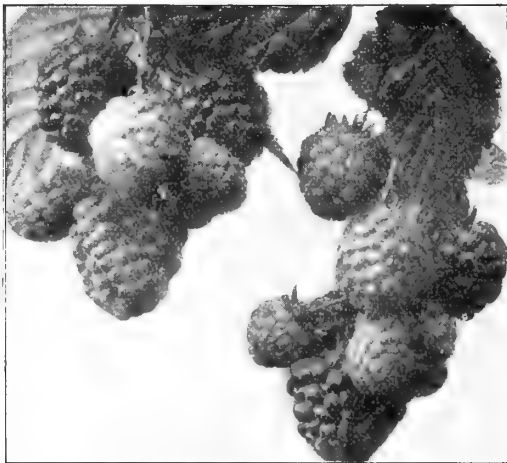
The Chesapeake Strawberry plants ordered of you a couple of years ago beat anything in this section of the state.—WM. MCCUTCHAN, Hennepin Co., May 27, 1911.



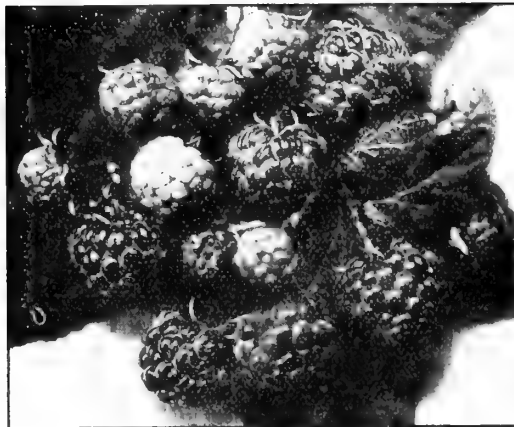
Watt. I highly recommend it for trial

#### A Dozen Plants Missing, and Satisfied

I want to let you know by these lines that I received the Strawberry plants which I ordered of you in a good condition, and am very well pleased with them. The plants are growing nicely, only a dozen plants missing out of the 2,500. I thought I would let you know that I am well satisfied.—ABRAHAM STROUSE, Bucks Co., Pa., May 22, 1911.



Columbian. Undoubtedly one of the best



Royal Purple. A model grower

which I am acquainted. For canning purposes it is undoubtedly one of the very best Raspberries in cultivation, yields an enormous crop and is perfectly hardy, probably the easiest grown of all Raspberries. Those who have failed with other varieties will be almost sure to succeed with this.

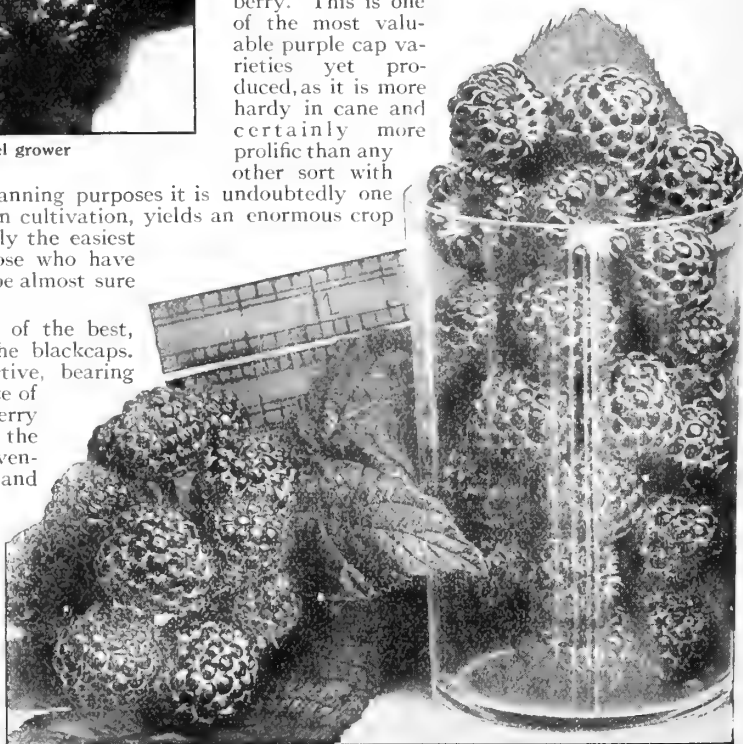
**Cumberland** (Black). One of the best, if not the very best, of all the blackcaps. It is very hardy and productive, bearing its fruit about midseason. Size of fruit the largest of the Raspberry family, far surpassing any of the other sorts. The berries run seven-eighths of an inch in diameter, and are of such handsome appearance that they are sure to bring the top of the market. The bush is exceedingly healthy and vigorous, throwing out stout canes. In all orders for black Raspberry plants the Cumberland should be one of the varieties. There is a demand for this berry. No matter how small your garden is give it a trial.

## RASPBERRIES

**Black Diamond** (Black). Extremely popular in western New York, where it is largely grown. It is unsurpassed for evaporating. The fruit is almost as large as the Kansas and of sweet, sugary flavor. Black Diamond is a very superior early blackcap, one producing fruit of large size, firm and of high quality, with a prolific cane of strong growth and iron-clad hardness. It is said to be the sweetest of the black Raspberries, has few seeds and is a firm, good shipper.

**Cuthbert** (Red). This is a variety that I can unhesitatingly recommend either for the home garden or for market. I doubt very much if there is any variety that will surpass it. It is a strong grower, with healthy foliage, and on good soil it is very productive. Cuthbert is one of the old, standard, reliable sorts that will give a good crop of large, red berries, and it is probably more largely grown than any other variety, in this country, whether for market or home use. The berries are of large size, a good scarlet color, firm, good quality, sprightly and rich.

**Columbian** (Purple). This variety is sometimes listed as a red variety, which, however, is not entirely correct. The berries are more of a purplish color. The Columbian is a variety of the Shaffer type of remarkable vigor and productiveness. It is very hardy and propagates from tips. Fruit very large, often an inch in diameter, shape somewhat conical, color dark red, bordering on purple; adheres firmly to the stem and will dry on the bush if not picked; seeds small and deeply imbedded in a rich, juicy pulp, with a distinct flavor of its own, making it a most delicious table berry. This is one of the most valuable purple cap varieties yet produced, as it is more hardy in cane and certainly more prolific than any other sort with



Black Diamond. A superior early blackcap



Cuthbert Raspberries. I doubt if there is any variety that will surpass it

#### RASPBERRIES. continued

**Kansas (Black).** For a good, second-early blackcap there is nothing better than this. It possesses all the valuable attributes of a profitable market sort, and its large size and attractive appearance insure for it always a ready sale and good prices. The fruit is nearly as large as the Gregg and with much less bloom; handsome, firm and of fine quality. Its canes are of strong growth, entirely hardy and prolific, with tough, healthy, clean foliage.

**King (Red).** Undoubtedly the best of the early red varieties, and unites earliness with large size. Bright scarlet color, flesh firm; good quality and productive. It makes a vigorous growth, and is very hardy. Its lively, bright color and firmness make it a favorite with those who grow red Raspberries for market. It is very hardy, standing cold and heat where many others fail.

**Royal Purple.** Claimed to be the greatest advance yet made in purple Raspberries. The Royal Purple originated in Indiana with a grower who says: "It surpasses anything I have ever seen in the Raspberry line." The original bush stands in a stiff blue-grass sod and has borne thirteen successive crops, and some of the time in winters the mercury has gone 35 degrees below zero. The bushes, of healthy growth, bear the largest berries of any I have seen, and so far as I can tell from one-year plants it bears out the originator's description. The canes are model growers, vigorous and healthy. The color of the bark is a

deep rich red, unlike Columbian or Shaffer, and the canes are smooth except near the roots. Pickers can go through these bushes and gather fruit without tearing or scratching their skin. The berries are large, purple in color, very firm, good keepers and shippers. They pick easily from the bushes and can be gathered before fully ripe if wanted when the color is more attractive. It is firm enough to be handled and shipped to near market in quart baskets. They do not crumble when picked, and present a better appearance in the basket than most purple sorts. One strong point in their favor is the season of ripening, which is fully two weeks later than the Columbian for the bulk of the crop. With me, this season, it has been giving quite a few berries all summer after the regular crop was passed. This berry has all the qualifications to make it a good seller. You should give it a trial this spring.



Cumberland. One of the best of the blackcaps

## CURRANTS

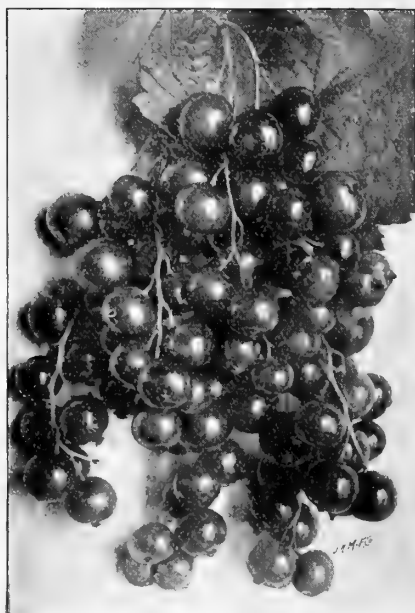
**Soil and Cultivation.** Red Currants are more particular in regard to soil than most other small fruits. They will grow in a hot sandy soil, but are never so productive as in a cool, moist clay loam, and no small fruit will repay liberal manuring better. While the vitality of the plant is great and it will grow in almost any soil if fertile, the moisture-retaining character of a clayey soil, well supplied with humus, will always make the crop greater and better.

**Pruning and Training.** While some growers have attempted to train the Currant to a single stem in tree-like form, this is not the best, especially as a commercial fruit. The bush form in which shoots are thrown up from the base is always the best. The pruning needed is to prevent too many shoots coming up from the base and crowding the bush, and cutting out of the old gnarly shoots that have served their purpose. Half a dozen thrifty shoots will make more and larger fruit than a crowded cluster, and the effort should be to maintain a supply of vigorous two-year-old shoots, and then eliminate the stunted ones. The first season allow three good shoots to grow, and the next spring shorten these slightly if they have made a long growth, and encourage new shoots from below. In a dry sandy soil I have found that a good mulch of sifted coal ashes under the plants will retain moisture better than any other material.

**Cherry.** Very large; deep red, rather acid; bunch is short, plant erect, stout, vigorous and productive.

**Fay's Prolific.** Less acid than Cherry, bunch large, berries medium, bright and sparkling. One of the leading red varieties and a remarkable cropper.

**White Grape.** This is the largest and most productive of the white varieties. Flavor sweet and very fine for the table.



Red Cross Currants. Vigorous and productive

**Wilder.** One of the strongest growers and most productive. Bunch and berry large, bright, attractive red color, even when dead ripe. Hangs on bushes in fine condition for handling as late as any known variety. Ripens at same time as Fay's and hangs on bush much longer; fully as prolific. A popular variety both for table or for market.

**Pomona.** Of good size and flavor. Bright red and long-stemmed, hanging in fine condition long after ripe. Bears early and abundantly.

**Red Cross.** A large and productive variety, and undoubtedly one of the best Currants if not the very best midseason variety on the market. The masses of fruit are so dense as to cut off the naked canes from view and the fruit has a mild and pleasant flavor. One proof of its popularity is that we sell more of this variety than anything else on our list. It is a vigorous grower and is very productive.

### Paid More for Inferior Plants

The privet plants ordered from you arrived today, and I wish to congratulate you upon the same. I have in the past paid over twice as much for far inferior plants, and I shall take pleasure in recommending you to anyone whom I hear making inquiries about hedge plants. With best wishes.—F. D. Cock, Elizabeth City Co., Va., March 13, 1911.

### Pleased To Do Business with Us

Your shipment of privet arrived in good shape, am pleased with them. It is a pleasure to do business with people who are prompt as you have been in making shipments.—F. R. SCHUBERT, Detroit, Mich., May 19, 1911.

### Best He Ever Planted

I received strawberry plants in first-class condition, and they were the best I ever planted. Thanks.—J. H. VAN REED, Berks Co., Pa.



Wilder Currants  
One of the strongest growers



Houghton. One of the healthiest and hardiest

## GOOSEBERRIES

**Pruning and Training.** The Gooseberry has attained a greater commercial importance of late years than formerly, and in many sections has become a very profitable fruit. It is always sold in the green state, though the ripe fruit is very acceptable to most people. Like the currant, the Gooseberry thrives best in a cool climate and a moist clay soil. When grown in a warm, sandy soil, it will be found that the coal-ash mulch advised for the currant will be a great advantage. The Gooseberry is worthless in the South, and seldom fruits well south of Maryland, except in the mountain sections.

Amateur growers often train the Gooseberry, like the currant, to a single stem, but commercially the bush form is the only profitable way to grow them. Little pruning is needed, and that mainly to remove the stunted shoots and to keep up a supply of vigorous new shoots from the base. They may be set from 5 to 6 feet apart each way, and cultivated both ways. The richer the soil, the more distance apart, of course, as the growth will be stronger in the strong soil. Spraying regularly with Bordeaux mixture is important to keep down the mildew from the fruit. The varieties grown in this country have mainly been produced, from the native species. The English Gooseberry is much larger, but far more inclined to disease, than the native species, though some of the English sorts have been grown with success, and now, with spraying it is probable that most of them can be

grown. It is important, as one means for preventing mildew, that the head of the bush be kept open and not allowed to get crowded with shoots, as in a crowded state the mildew is always worse.

The growing of Gooseberries is not appreciated as it should be. Some growers are planting more Gooseberries each year. Agricultural Colleges are urging growers to plant Gooseberries because they are profitable. There is a demand for them.

**Downing.** One of the oldest and most remarkable of the large-fruited varieties. Handsome, pale green and splendid quality; fine for both cooking and table use. A vigorous grower and usually free from mildew.

**Houghton.** One of the healthiest and hardiest of the Gooseberry family, and a variety that almost always produces a full crop and never fails entirely. Very productive, berries of medium size and for general purposes one of the best.

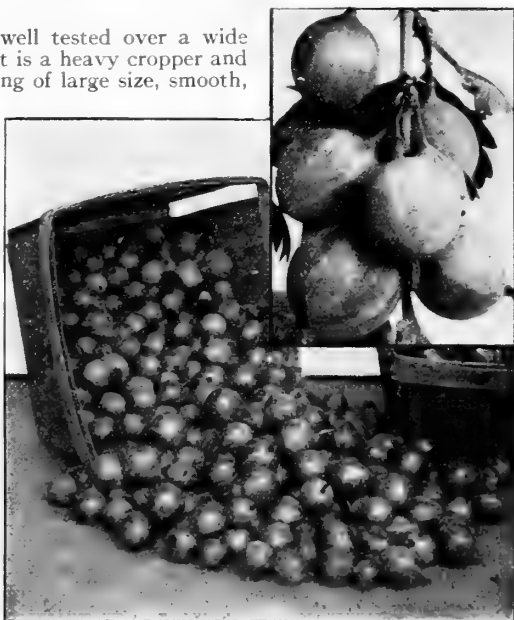
**Josselyn (Red Jacket).** This variety has been well tested over a wide range of territory and has proven very satisfactory. It is a heavy cropper and has bright green, healthy foliage. An American seedling of large size, smooth, prolific and hardy. Quality among the best.

**Mountain Seedling.** A new variety, with unusual vigor and great productiveness. It is slightly larger than Houghton, and seems to have all of the good qualities of that variety. It makes heavier canes and holds the foliage longer than anything on the place.

**Pearl.** A cross between Houghton and some large English variety. Very hardy, free from mildew, and superior in size and quality. It is claimed to be more productive than the Downing and resembles that variety quite a little. This variety does well in colder climates. In Canada it is known not to mildew and has proven to be most productive. It has many good qualities.

### Privet Better Than Expected

I have planted the privet hedge you sent me. You certainly treated me fairly in this deal, and they were far better than I expected to get, for I thought you would send simply rooted cuttings, and these must be about two years old. They are very fine and nearly all growing. One man paid \$10 for just 100 plants, and they are a full year behind mine. Thanking you for your courtesy and square dealing, I am.—F. R. STUTSMAN, Elkhart Co., Ind., May 2, 1911.



Downing Gooseberry. One of the best large-fruited sorts





Concord. Decidedly the most popular Grape in America

## GRAPES

The Grape is probably the most important of the small fruits, not only commercially in various sections, but for the home garden. There is no fruit more easily grown in any soil and any climate in the country. It is particularly the fruit for sandy and gravelly soils of free and open texture and good drainage. It takes little room in the home garden, for the garden fences can be transformed into trellises, and not only answer their purpose as an enclosure, but will be made more beautiful and attractive when covered with vines. This is especially true where woven-wire fences are used. Then, too, the walks of the garden can have arbors built over them and the vines trained overhead and take room that would otherwise produce nothing.

**Planting and Training.** In planting Grapes, always use strong one-year-old vines. The previous preparation of the soil is of importance, for the Grapes are long-lived and need a deeply prepared and well-enriched soil. Good drainage is essential, for the Grape-vine will not thrive in a wet soil. The best soils generally, are those of a sandy or gravelly nature, with a subsoil easily drained. Deep and thorough preparation should be made before planting, and the soil well-enriched. In garden soils, where stable manure has been used for years, it is best to use a heavy application of raw bone-meal. In fact, there is nothing that the vines like better than a bone, and any waste bones about the place will be usefully buried under the vines in planting.

**Brighton (Red).** Bunch medium to large, long, compact, shouldered; berries medium; skin thin; flesh tender, sweet, with scarcely any pulp; quality best. A free grower and very productive.

**Campbell's Early (Black).** Cluster large and shouldered, moderately compact, very early and productive. This is claimed to be the finest Grape that has been produced in a long time. It makes a strong growth, with abundant thin, healthy foliage. Quality about the same as Concord.

**Concord (Black).** Early; decidedly the most popular Grape in America, and deservedly so. Bunch large, shouldered, compact; berries large, covered with a rich bloom; skin tender, but sufficiently firm to carry well. Succeeds everywhere.

**Delaware (Red).** Compact bunch, very delicious; always bring the highest price in market and always considered the best for home use. Berries small; skin thin, but firm. Ripens with Concord, or a little before. It should be in every garden.

**Diamond (White).** Bunch large, compact, shouldered; berries large, round; skin thin, but tough; flesh tender, spicy, with but little pulp. Vine a good grower, with thick, healthy foliage; hardy and productive; very fine quality. Ripens a little before Concord.

**Martha (White).** Sometimes turning pale yellow, when fully ripe. Bunch medium, compact, shouldered. Berries medium; skin thin, tender; flesh very sweet. Vine healthy and hardy. Similar to Concord in appearance and habit. Ripens with Concord.

**Eaton (Black).** Similar in foliage to Concord. In growth, health, hardiness of vine and in every other respect its equal, while in size of bunch and berry it is much larger and more attractive. Ripens a little earlier than Concord. Adheres firmly to the stem; skin thin, but tough; pulp tender, separating freely from the seeds and dissolving easily in the mouth; very juicy.



## GRAPES, continued

**Elvira** (White). Bunch and berry medium. Very compact. Vine a vigorous, strong, healthy grower and very productive. Ripens late; about with Catawba.

**Empire State** (White). Bunch medium long, compact; berries medium, quality best; vine a strong grower, hardy, with a large, healthy foliage and short-jointed canes, which ripen early. Superior in quality to Niagara.

**Lindley**. (Red). Bunch medium long, not usually shouldered; berries large; flesh tender, sweet, with high aromatic flavor of best quality. A good keeper, with firm, tough skin. Ripens with Delaware. Vine healthy, vigorous and hardy.

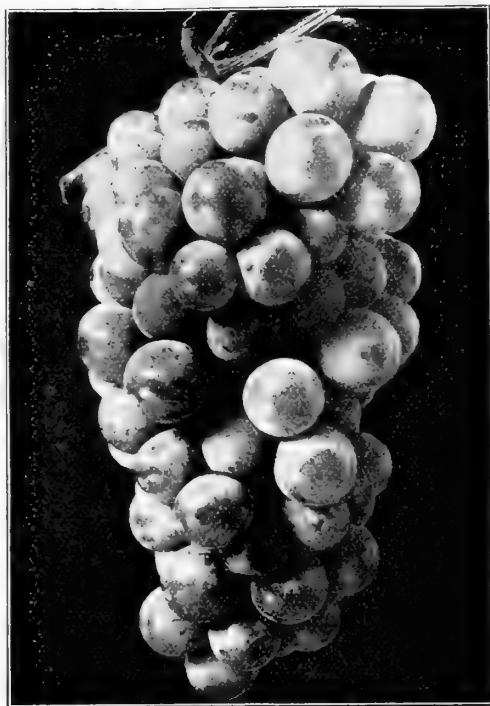
**Moore's Early** (Black). Bunch rarely shouldered, not quite so large as Concord; berries larger and very much like it in flavor and quality. Foliage thick, leathery, somewhat resembling Concord, except on the under side, which is covered with a yellowish brown down. Ripens so early as to be nearly out of the market before Concord starts in, therefore a very popular early market variety. Succeeds best on rich soil.

**Niagara** (White). Bunch very large and handsome, often shouldered, compact; berries large, round; skin thin, tough, does not crack and carries well; has not much pulp when fully ripe; melting, sweet, with a flavor and aroma peculiarly its own and agreeable to most tastes; ripens with Concord. Vine very vigorous and productive. Succeeds everywhere.

**Pocklington** (Pale Green). Usually with a

## Privet Arrived In Good Condition

The Privet arrived in good condition, has been set out, and we are much pleased with it.—S. G. PETICOLAS, Douglass Co., Neb.



Niagara. Has a flavor peculiarly its own

tinge of golden yellow where exposed to the sun; bunch large, very compact; berries very large, covered with a beautiful white bloom; flesh juicy, sweet, with considerable pulp. Foliage large and healthy. A seedling of the Concord, ripening soon after it, and considered its equal in quality.

**Wilder** (Black). Bunch large, shouldered; berries large; skin thick and firm; flesh sweet, tender and sprightly, pleasant flavor; a good keeper. Ripens early or about with Concord. Vine healthy, vigorous and productive. A popular market variety.

**Woodruff Red** (Red). Originated in Michigan. Bunch medium to large, short, compact; berry large; skin, thick, of a beautiful, bright red color; very handsome and attractive, making it a profitable market variety. Vine very vigorous, hardy, healthy and unusually productive. Ripens with Concord.

**Worden** (Black). Bunch large, sometimes shouldered, compact; berries very large; skin thin. Superior to the Concord in the following points: Better quality, larger berries, more compact, and ripens five to ten days earlier. Fully equals Concord in vigor, health and productiveness. We recommend it strongly.

**Wyoming Red** (Red). A very early red Grape. Bunch large, compact and handsome; berries small to medium; skin bright red, thick, firm; fruit sweet, somewhat foxy, but agreeable to most tastes. Vine a very strong grower, very hardy and healthy; foliage small, thick and leathery. Its chief points of merit are its health and earliness.

## Satisfied with the Privet

I would like to take this opportunity to say that the Privet which you sent to Mrs. Doubleday is very satisfactory.—F. N. DOUBLEDAY, New York City.



Woodruff. A profitable market variety

## ASPARAGUS

Asparagus plants should be set in the spring as soon as possible after the ground is fit. Do not allow the plants to dry, but keep them moist before planting. There has been in times past a great deal of needless work in planting Asparagus. This was especially true of the cultivation in the home gardens. Years ago it was common in private gardens to dig out a plot and pave the bottom, and then fill in with rich soil after setting the roots very deep, with the idea that they must be kept from running into the subsoil, when, in fact, the tendency of the roots and tops is always to get nearer to the surface.



*From Long Island R. R. Experiment Station*  
Giant Argenteuil Asparagus. The finest and most prolific of all

### Giant Argenteuil.

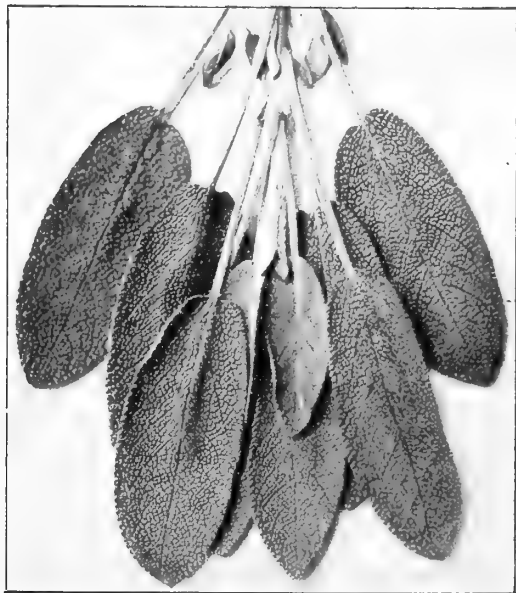
Finest and most prolific of all; stock of immense size; attractive, rich and tender; comes into cutting condition earlier than most other varieties. Very reliable and a sure money-maker. Comparatively free from rust and blight.

**Palmetto.** Early, large and comparatively free from rust; makes a heavy yield. Altogether, this variety is very popular and is regarded by most growers as one of the most profitable of the market sorts.

## MISCELLANEOUS ROOTS

### HORSE-RADISH (Bohemian, or Maliner Kren)

This is grown by planting the small sets or pieces from the side roots in deep, rich soil, and cultivating in the same manner as with the ordinary variety of Horse-radish, but the plants are so much stronger in growth that the roots grow to considerably larger size and greater weight. Undoubtedly, this is the best variety to grow.



Holt's Mammoth Sage (Reduced)

### RHUBARB (Pie Plant)

Plant in dry, rich soil to secure large, heavy stalks in rows 4 feet apart, with the plants 3 feet apart. Set the roots so that the crown will be about one inch below the surface. Top-dress annually in the fall with good stable manure and fork under in the spring. Our quotations are for good, strong divisions.

### SAGE

**Holt's Mammoth.** This useful plant, which produces leaves of great size, should be in every garden. The plant is vigorous and is a very strong grower and does not run to bloom like other varieties. It is really the only variety of Sage worth extensive cultivation and in every way desirable. Very hardy; does well in all sections.

### Glad to Order More from Us

Plants we got from you last year were very nice, and were packed the best, and came in the best shape of any we ever bought. And if at any time we should want more, we shall only be too glad to send to you for them. —J. R. JOHNSON, Randolph Co., W. Va.

## Price-List of Small-Fruit Plants

## Strawberry Plants

PAGE		12	25	50	100	250	500	1,000	5,000
2	Abington. Per.....	\$0 20	\$0 35	\$0 50	\$0 75	\$1 25	\$2 00	\$3 50	\$15 00
2	Almo. Per.....	25	40	60	1 00	1 75	3 00	5 00	
2	Amanda. Per.....	40	75	1 25	2 00	3 50	6 00	12 00	
2	Armstrong. Per.....	25	40	60	90	1 50	2 25	4 00	
2	Aroma. Per.....	20	35	50	75	1 25	2 00	3 50	15 00
3	Barrymore. Per.....	25	40	60	1 00	1 75	3 00	6 00	
3	Bedar Wood. Per.....	25	40	60	90	1 50			
3	Bethel. Per.....	25	40	60	1 00	1 75	3 00	6 00	
4	Blaine. Per.....	25	40	60	90	1 50	2 25	4 00	17 50
4	Black Beauty. Imp.....	25	40	60	1 00	1 75	3 00	6 00	
4	Bountiful. Per.....	25	40	60	1 00	1 75	3 00	6 00	
6	Bradley. Per.....	25	40	60	90	1 50	2 25	4 00	17 50
4	Brandywine. Per.....	25	40	60	90				
5	Bubach. Imp.....	20	35	50	75	1 25	2 00	3 50	15 00
4	Buster. Imp.....	25	40	60	90	1 50	2 25	4 00	17 50
5	Cardinal. Imp.....	25	40	60	1 00	1 75	3 00	5 00	
1	Chesapeake. Per.....	25	40	60	1 00	1 75	3 00	5 00	20 00
6	Chipman. Per.....	20	35	50	75	1 25	2 00	3 50	15 00
6	Climax. Per.....	20	30	40	60	1 00	1 60	3 00	13 75
5	Clyde. Per.....	25	40	60	1 00	1 75	3 00	5 00	
6	Colossus. Imp.....	25	40	60	90	1 50	2 25	4 00	17 50
5	Commonwealth. Per.....	25	40	60	1 00	1 75	3 00	5 00	20 00
6	Crescent. Imp.....	20	35	50	75	1 25	2 00	3 50	15 00
6	Darlington. Per.....	25	40	60	1 00	1 75	3 00	6 00	25 00
7	Deacon. Per.....	30	50	90	1 50	3 00	5 50	10 00	
7	Early Harvest. Imp.....	25	40	60	1 00	2 00			
9	Early Ozark. Per.....	25	40	60	1 00	1 75	3 00	5 00	20 00
7	Early Hathaway. Per.....	20	35	50	75	1 25	2 00	3 50	
4	Early Market. Per.....	1 00	2 00	3 00	5 00	10 00	20 00	40 00	
7	Ekey. Per.....	25	40	60	90	1 50	2 25	4 00	17 50
8	Enormous. Imp.....	25	40	60	1 00	2 00			
8	Excelsior. Per.....	20	30	40	60	1 00	1 60	3 00	13 75
8	Ewell's Early. Per.....	25	40	60	1 00	2 00	3 50	6 00	
8	Fairfield. Per.....	20	30	40	60	1 00	1 60	3 00	13 75
8	Fendall. Imp.....	25	40	60	1 00	1 75	3 00	6 00	25 00
8	First Quality. Per.....	25	40	60	1 00	1 75	3 00	6 00	25 00
9	Gandy. Per.....	20	30	40	60	1 00	1 60	3 00	13 75
9	Gill. Per.....	25	40	60	90	1 50	2 25	4 00	17 50
9	Glen Mary. Per.....	25	40	60	90	1 50	2 25	4 00	17 50
10	Gold Dollar. Per.....	30	50	80	1 25	2 50	4 00	8 00	
10	Goldsboro. Per.....	25	40	60	90	1 50	2 25	4 00	17 50
10	Gov. Fort. Per.....	40	75	1 25	2 00	4 00			
10	Gov. Rollins. Imp.....	20	35	50	75	1 25	2 00	3 50	
10	Gray's Dollar. Per.....	25	40	60	1 00	1 75	3 00	5 00	20 00
7	Haverland. Imp.....	20	30	40	60	1 00	1 60	3 00	13 75
8	Helen Davis. Per.....	40	75	1 25	2 00	3 50	6 00	12 00	50 00
10	Heritage. Per.....	25	40	60	1 00	1 75	3 00	5 00	
11	Highland. Imp.....	25	40	60	1 00	2 00	4 00	8 00	
11	Howard. Per.....	25	40	60	90	1 50	2 25	4 00	
11	Howard's Early. Per.....	25	40	60	1 00	2 00	3 50	6 00	
11	Hummer. Per.....	25	40	60	1 00	1 75	3 00	5 00	
11	Ideal. Per.....	30	50	90	1 50	3 00	5 00	10 00	40 00
12	Jessie. Per.....	30	50	90	1 50	2 50			
12	July. Per.....	25	40	60	1 00	2 00	4 00	8 00	35 00
12	King Edward. Per.....	25	40	60	1 00	1 75	3 00	6 00	25 00
13	Kansas. Imp.....	25	40	60	90	1 50	2 25	4 00	
12	Klonoyke. Per.....	20	30	40	60	1 00	1 60	3 00	13 75
13	Lady Thomson. Per.....	20	30	40	60	1 00	1 60	3 00	13 75
3	Lea. Per.....	25	40	60	1 00	1 75	3 00	5 00	20 00
14	Longfellow. Per.....	25	40	60	1 00	2 00	4 00	8 00	35 00
13	Mammoth Beauty. Imp.....	20	30	40	60	1 00	1 60	3 00	13 75
13	Manhattan. Per.....	40	75	1 25	2 00	4 00			
13	Marshall. Per.....	25	40	60	1 00	1 75	3 00	5 00	20 00
10	Mascot. Per.....	25	40	60	1 00	1 75	3 00	5 00	20 00
14	Mellie. Imp.....	20	35	50	75	1 25	2 00	3 50	
14	Missionary. Per.....	20	30	40	60	1 00	1 60	3 00	13 75
14	Mitchell's Early. Per.....	20	35	50	75	1 25	2 00	3 50	15 00
14	Monroe. Per.....	40	75	1 25	2 00	4 00			

## PRICE-LIST OF STRAWBERRY PLANTS, continued

PAGE		12	25	50	100	250	500	1,000	5,000
15	New York. Per.....	\$0 25	\$0 40	\$0 60	\$0 90	\$1 50	\$2 25	\$4 00	\$17 50
15	New Oregon. Per.....	30	50	90	1 50	3 00	5 00	10 00	
15	New Home. Per.....	20	30	40	60	1 00	1 60	3 00	13 75
15	Nick Ohmer. Per.....	25	40	60	90	1 50	2 25	4 00	17 50
16	Norwood. Per.....	25	40	60	1 00	1 75	3 00	5 00	
16	Oak's Early. Per.....	25	40	60	90	1 50	2 25	4 00	17 50
16	Ohio Boy. Per.....	25	40	60	1 00	1 75	3 00	6 00	25 00
16	Oom Paul. Per.....	25	40	60	90	1 50			
13	Orem. Per.....	25	40	60	1 00	1 75	3 00	6 00	25 00
18	O. I. C. Per.....	30	50	80	1 25	2 50	4 00	8 00	35 00
16	Patagonia. Per.....	1 00	2 00	3 00	5 00				
17	Parsons' Beauty. Per.....	20	30	40	60	1 00	1 60	3 00	13 75
17	Paul Jones. Imp.....	25	40	60	90	1 50	2 25	4 00	17 50
17	Prolific. Per.....	25	40	60	1 00	1 75	3 00	5 00	
17	Pride of Cumberland. Per.....	25	40	60	1 00	1 75	3 00	5 00	20 00
16	Red Bird. Imp.....	20	30	40	60	1 00	1 60	3 00	13 75
18	Roosevelt. Per.....	30	50	90	1 50	3 00	5 00	10 00	
18	St. Louis. Per.....	25	40	60	1 00	1 75	3 00	5 00	20 00
20	Sam Wherry. Per.....	25	40	60	1 00	1 75	3 00	5 00	20 00
20	Silver Coin. Per.....	25	40	60	1 00	1 75	3 00	6 00	25 00
14	Sample. Imp.....	20	30	40	60	1 00	1 60	3 00	14 50
20	Saunders. Per.....	25	40	60	90	1 50	2 25	4 00	17 50
15	Sen. Dunlap. Per.....	20	30	40	60	1 00	1 60	3 00	13 75
20	Sharpless. Per.....	25	40	60	90	1 50	2 25	4 00	
20	Splendid. Per.....	20	30	40	60	1 00	1 60	3 00	13 75
21	Stevens L. Champ. Per.....	25	40	60	1 00	1 75	3 00	5 00	
17	Superb (Fall-Bearing). Per.....	2 50	4 50	8 00	15 00				
21	Tennessee Prolific. Per.....	20	30	40	60	1 00	1 60	3 00	13 75
11	Three W's. Per.....	25	40	60	90	1 50	2 25	4 00	17 50
21	Twilley. Per.....	25	40	60	1 00	1 75	3 00	5 00	20 00
23	Uncle Jim. Per.....	25	40	60	1 00	2 00			
23	Virginia. Imp.....	20	35	50	75	1 25	2 00	3 50	15 00
22	Warfield. Imp.....	20	30	40	60	1 00	1 60	3 00	13 75
2	Winner. Per.....	1 00	2 00	3 00	6 00	15 00	25 00	50 00	
24	Wm. Belt. Per.....	25	40	60	90	1 50	2 50	4 50	20 00
12	Wildwood. Per.....	25	40	60	1 00	1 75	3 00	6 00	
23	Woolverton. Per.....	20	35	50	75	1 25	2 00	3 50	15 00
	Mixed Plants.....				50	75	1 25	2 00	

Per. or Imp. following name of variety designates whether variety has perfect or imperfect blossoms.

All customers wishing Strawberry Plants by mail must add at the rate of 5 cts. per doz., 8 cts. for 25, 13 cts. for 50, and 25 cts. per 100 to the above prices for postage, otherwise they will be sent by express.

Canadian customers must add twice the amount, as we have to pay double postage to your country.

The prices given per 1,000 or 5,000, as the case may be, is for that quantity of one variety, and not for an assortment. To illustrate, we offer 5,000 Glen Mary for \$17.50, whereas if 5,000 plants of five different varieties are wanted they must come under the 1,000 rate.

The figures at left of name in price-list indicate the page on which the variety is described.

## Dewberries

PAGE		12	25	50	100	250	500	1,000
27	Austin's (Mayes).....	\$0 25	\$0 40	\$0 60	\$1 00	\$2 00	\$3 25	\$6 00
27	Lucretia.....	25	40	60	1 00	2 00	3 25	6 00

## Blackberries

		12	25	50	100	250	500	1,000
28	Nanticoke.....	\$1 each...						
28	Blowers.....	\$0 60	\$1 00	\$1 75	\$3 00			
28	Eldorado.....	50	75	1 25	2 25	\$4 50	\$8 00	\$15 00
28	Early Harvest.....	50	75	1 25	2 00	4 00	7 00	12 50
28	Iceberg.....	60	1 00	1 75	3 00			
28	Mercereau.....	60	90	1 50	2 50	5 00		
28	Rathbun.....	60	90	1 50	2 50	4 50	8 00	15 00
28	Snyder.....	50	75	1 25	2 25	4 50	8 00	15 00
29	Ward.....	50	75	1 25	2 25	4 50		
29	Watt.....	1 00	1 75	3 00	5 00			

## Price-List of Raspberries

		12	25	50	100	250	500	1,000
30	Cuthbert (Red).....	\$0 50	\$0 75	\$1 25	\$2 00	\$4 00	\$7 00	\$12 50
31	King (Red).....	50	75	1 25	2 00	4 00	7 00	12 50
30	Cumberland (Black).....	50	75	1 25	2 25	4 50	8 00	14 00
31	Kansas (Black).....	50	75	1 25	2 00	4 00	7 00	12 50
30	Black Diamond (Black).....	50	75	1 25	2 00	4 00	7 00	12 50
30	Columbian (Purple).....	50	75	1 25	2 25	4 50	8 00	14 00
31	Royal Purple.....	2 00	3 00	5 50	10 00			

## Currants

PAGE		12	25	50	100	250	500
32	Cherry	\$0 90	\$1 50	\$2 50	\$4 50		
32	Fay's Prolific	90	1 50	2 50	4 50		
32	Pomona	1 00	1 75	3 00	5 00		
32	Red Cross	1 00	1 75	3 00	5 00	\$11 00	\$20 00
32	White Grape	90	1 50	2 50	4 50		
32	Wilder	90	1 50	2 50	4 50	10 00	17 50

## Gooseberries

	12	25	50	100	250	500	1,000
33	Downing	\$1 00	\$1 75	\$3 25	\$6 00	\$13 50	\$25 00
33	Houghton	90	1 50	2 75	5 00	11 00	20 00
33	Josselyn (Red Jacket)	1 00	1 75	3 25	6 00		
33	Mountain Seedling	1 00	1 75	3 25	6 00		
33	Pearl	1 00	1 75	3 25	6 00		

If wanted by mail, the postage on Raspberries, Blackberries, Dewberries, Currants and Gooseberries will be 10 cts. per doz., 50 cts. per 100, extra.

## Grapes

PAGE		Each	Doz.	50	100	250
34	Brighton (Red)	\$0 15	\$1 00	\$1 75	\$3 25	\$6 00
34	Concord (Black)	10	75	1 25	2 25	4 00
34	Campbell's Early (Black)	40	3 00	5 00		
34	Diamond (White)	15	1 00	1 75	3 25	6 00
34	Delaware (Red)	15	1 00	1 75	3 25	6 00
34	Eaton (Black)	40	3 00	5 00		
35	Elvira (White)	15	1 00	1 75	3 25	6 00
35	Empire State (White)	20	1 25	2 25	4 00	8 00
35	Lindley (Red)	15	1 00	1 75	3 25	6 00
34	Martha	15	1 00	1 75	3 25	6 00
35	Moore's Early (Black)	15	1 00	1 75	3 25	6 00
35	Niagara (White)	15	1 00	1 75	3 25	6 00
35	Pocklington (White)	15	1 00	1 75	3 25	6 00
35	Wilder (Black)	15	1 00	1 75	3 25	6 00
35	Worden (Black)	15	1 00	1 75	3 25	6 00
35	Wyoming Red (Red)	15	1 00	1 75	3 25	6 00
35	Woodruff Red (Red)	25	1 75	3 00	5 00	10 00
27	LOGANBERRY		1 00	1 50	2 75	5 00
27	STRAWBERRY-RASPBERRY		1 00	1 50	2 75	5 00

## Asparagus

	12	25	50	100	250	500	1,000
36	Giant Argenteuil (2 years)	\$0 25	\$0 40	\$0 60	\$1 00	\$1 75	\$3 00
36	Palmetto (2 years)	25	40	60	1 00	1 75	3 00

## Miscellaneous

	12	25	50	100	250	500	1,000
36	Rhubarb (Victoria)	\$1 00	\$1 75	\$3 00	\$5 00		
36	Horse-radish (New Bohemia)	25	40	60	1 00		
36	Sage (Holt's Mammoth)	1 00	1 75	3 00	5 00	\$11 00	\$20 00

Single grape-vines will be sent postpaid at prices given. If dozen lots are to go by mail, add 20 cents per dozen for postage. Loganberry, Strawberry-Raspberry, Asparagus, Horse-radish and Sage will be sent by mail at dozen rates. All larger quantities by express.

## CANTALOUPE AND CUCUMBERS

In Cantaloupes, I doubt if there is a variety on the market today that will anywhere near compare with the Eden Gem in the qualities that make up a valuable market variety. The Burrell strain of Eden Gem is unquestionably the very best market Cantaloupe there is to be had. The quality is very fine. The Cantaloupe is rough-netted all over, therefore making an excellent showing, and when you open the Cantaloupe the purchaser is not deceived by the quality, as there is positively none better. We take particular pains to save the best of the best for our own use, and generally have a surplus. It is of this that I offer.

In Cucumbers, I grew 40 acres the past season for commercial purposes. Of all the varieties, and I have tested them about all, we have found nothing that equals Peninsula Prize, as a market Cucumber. It is a healthy, vigorous grower, very productive, of medium long, uniform, and very dark colored fruits. We have saved a considerable amount of seed from the very best of those that I have grown of this variety; we know there is none superior, very few, if any, equal. This is the seed that I am offering you.

**CANTALOUPE, Eden Gem** (Burrell Strain). \$1 per lb., \$8 for 10 lbs., \$75 per 100 lbs.

**CUCUMBERS, Peninsula Prize.** \$1 per lb., \$8 for 10 lbs., \$75 per 100 lbs.

The prices on above seeds are by express, receiver to pay charges, except by the single pound rate, which will be sent by mail postpaid.

# ORNAMENTAL SHRUBS

## **Althaea** (Hibiscus; Rose of Sharon)

**Ardens.** A familiar purplish blue variety; very fine. 12 to 18 in., 15 cts. each, \$1.40 per doz.; 18 to 24 in., 20 cts. each, \$2 per doz.; 2 to 3 ft., 25 cts. each, \$2.50 per doz.

**Duc de Brabant.** Deep red. 12 to 18 in., 15 cts. each, \$1.40 per doz.; 18 to 24 in., 20 cts. each, \$2 per doz.; 2 to 3 ft., 25 cts. each, \$2.50 per doz.

**Alba plena.** Deep white. 12 to 18 in., 15 cts. each, \$1.40 per doz.; 18 to 24 in., 20 cts. each, \$2 per doz.; 2 to 3 ft., 25 cts. each, \$2.50 per doz.

**Lady Stanley.** Deep pink; very fine. 12 to 18 in., 15 cts. each, \$1.40 per doz.; 18 to 24 in., 20 cts. each, \$2.30 per doz.; 2 to 3 ft., 25 cts. each, \$2.80 per doz.

## **Ampelopsis Veitchii** (Boston Ivy)

A strong, rapid-growing, deciduous vine; handsome green foliage, assuming charming tints in the fall. Perfectly hardy and most popular of the running vines. 15 cts. each, \$1.50 per doz.



*Clematis paniculata*

## **Cercis canadensis** (Red Bud)

Small, rapid-growing, round-headed tree or bush. 2-yr. plants, 25 cts. each.

## **Clematis paniculata**

The most desirable, useful and beautiful of hardy garden vines, being a luxuriant grower, profuse bloomer and possessing fine foliage. Particularly useful for covering verandas, pillars, fences, where a trellis or support can be provided for it to climb on. The white flowers are very pretty, fragrant and produced in the greatest profusion in late summer. Strong, field-grown plants, 35c. each, \$2.50 per doz.

## **Colutea arborescens**

A very rapid-growing, large shrub, with delicate, light green foliage; yellowish red, pea-shaped flowers in June, followed by curious and showy red pods. Strong, two-year plants, 30 cts. each, \$2.50 per doz.

## **Cornus**

**Mascula.** Cornelian Cherry. Handsome shrub of dense growth; showy yellow flowers before the foliage and large, shining, scarlet berries in the fall. Strong, 2-yr. plants, 25 cts. each, \$2 per doz.

**Sibirica.** Red-branched Dogwood. A very conspicuous and ornamental winter shrub on account of its blood-red bark. Strong, 2-yr. plants, 25 cts. each, \$2 per doz.

## **Crataegus Oxyacantha** (Hawthorn)

Their sweet-scented flowers are followed by bright red berries. They bloom about the second week in May; very desirable. Strong, 2-yr. plants, 20 cts. each, \$2 per doz.

## **Cydonia**

**Japonica.** Red Japanese Quince. One of the most brilliant flowering shrubs in our collection. A well-known sort of rather bushy growth; completely covered with dazzling scarlet flowers very early in the spring. Strong, 2-yr. plants, 25c. each.

**Umbilicata.** Brilliant rosy red flowers, followed by large, showy fruit; one of the very best; very fine. Strong, 2-yr. plants, 25 cts. each, \$2 per doz.

## **Cytisus Laburnum** (Golden Chain)

An extremely bright and graceful shrub in early summer; the racemes of wistaria-like golden yellow flowers make it very beautiful. 25 cts. each, \$2 per doz.

## **Deutzia**

**Crenata.** Flowers double, white, tinted with rose. One of the most desirable shrubs in cultivation. 12 to 18 in., 15 cts. each, \$1.50 per doz.; 2½ to 4 ft., 25 cts. each, \$2 per doz.

**Gracilis.** Of dwarf, bushy habit. The racemes of white flowers completely cover the plant, making it one of the most attractive shrubs of its season, blossoming in June. 12 to 15 in., 20 cts. each, \$2 per doz.

**Pride of Rochester.** A variety producing large, double white flowers. This is one of the very finest Deutzias and is sure to give satisfaction everywhere. 12 to 18 in., 15c. each, \$1.50 per doz.; 2½ to 3 ft., 25 cts. each, \$2 per doz.





Hydrangea paniculata grandiflora

**Hydrangea paniculata grandiflora**

Blooms from July to September. There is no shrub more showy than this favorite Hydrangea, whose branches are bent beneath the weight of the huge white flower cluster. As the season advances the panicles fade into tints of pink, red and sometimes green. A vigorous grower in nearly all soils, and hardy in most parts of the United States. Should be in all collections; valuable as a specimen and useful for grouping. 12 to 15 in., 20 cts. each, \$2 per doz.; 18 to 24 in., 25 cts. each, \$2.50 per doz.

**Jasminum nudiflorum (Yellow Jasmine)**

Blooms in February and March. Hardy only in sheltered places north of Philadelphia. Admired for its yellow flowers in the first warm days of spring. 15 to 18 in., 25 cts. each, \$2.25 per doz.; 18 to 24 in., 35 cts. each, \$3 per doz.

**Euonymus Europaeus (Burning Bush)**

Erect shrub or small tree; good foliage and desirable in shrubbery masses; most attractive in autumn when covered with orange-scarlet seed vessels. Strong, 2-yr. plants, 20 cts. each, \$2 per doz.

**Forsythia (Golden Bell)**

**Suspensa.** Flowers bright yellow, somewhat drooping; blooms very early in the spring. Strong, 1-yr. plants, 15 cts. each, \$1.50 per doz.; strong, 2-yr. plants, 20 cts. each, \$2 per doz.

**Fortunei.** This makes long, pendent shoots, being extremely pretty when its arched branches are full of golden yellow flowers in April. This is the most erect-growing variety and decidedly the best when only one variety is planted. Strong 1-yr. plants, 15 cts. each, \$1 per doz.; strong 2-yr. plants, 25 cts. each, \$2.25 per doz.

**Ginkgo biloba (Maidenhair)**

Recently this tree has sprung into great popularity. It is remarkable as a deciduous member of the pine family, with oddly shaped leaves that resemble those of the Maidenhair Fern; highly ornamental for lawn planting. Small, well-rooted trees, 20 cts. each, \$2 per doz.

**Halesia tetraptera**

(Snowdrop Tree; Silver Bell)

Medium size, producing, as soon as the leaves appear, a great number of large, crowded clusters of pure white, bell-shaped flowers. Strong 2-yr. plants, 25 cts. each, \$2.25 per doz.

**Hamamelis Virginica**

(Witch Hazel)

A tall-growing shrub, often growing 8 feet, with very large, dark green foliage and showy yellow flowers just before the leaves fall in autumn; very hardy and easy of culture. Strong 2-yr. plants, 20 cts. each, \$2 per doz.

**Kerria Japonica**

**Single.** Shrubs with tender, bright green branches that are ornamental even when divested of leaves. They grow in almost any soil, and do well in open or shaded places. All the varieties have attractive foliage; valuable for shrubberies. Orange-yellow flowers borne in abundance. Strong 2-yr. plants, 25 cts. each, \$2.25 per doz.

**Double Chochorus.** Same as above, except with double flowers, and if only one variety is to be planted this one is to be preferred. Plant is a free bloomer, producing quantities of yellow flowers in June and July. Strong, 2-yr. plants, 25 cts. each, \$2.25 per doz.

**Koelreuteria paniculata (Varnish Tree)**

A small, round-headed tree from China, with large pinnate leaves; conspicuous on account of its brilliant golden blossoms, which are produced the latter part of July, when few, if any, trees are in bloom. Strong, 2-yr. trees, 25 cts. each, \$2.25 per doz.



A fine Privet Hedge about my home

**Ligustrum (Privet for Hedging)**

**Ovalifolium.** California Privet. Widely known as a hedge plant. It is a vigorous grower everywhere, endures the unnatural condition of cities and is one of the best shrubs for hedge planting. The half-evergreen, glossy foliage and pure white flowers in July make it an ornamental shrub that is generally useful. It is a rapid grower under all conditions, has handsome, glossy foliage that lasts well into winter and withstands any amount of trimming. We have a very large stock of especially fine plants that are splendidly rooted and not to be compared with a great deal of the weak stuff offered by agents. If you are intending to plant a hedge, let me hear from you. 12 to 15 in., 2-yr., \$1.25 per 100, \$10 per 1,000; 15 to 18 in., 2-yr., 50 cts. per doz., \$1.50 per 100, \$12.50 per 1,000; 18 to 24 in., 2-yr., 60 cts. per doz., \$2 per 100, \$16 per 1,000; 2 to 3 ft., 2-yr., 75 cts. per doz., \$3 per 100, \$20 per 1,000. 4 ft. or over, heavy specimens, 20 cts. each.

**Amurense.** Amoor River Privet. Oblong, glossy, green foliage, half evergreen; will grow to 15 feet if not trimmed. A variety strongly recommended; useful either as a shrub or for hedging; very hardy. 12 to 15 in., \$2 per 100, \$16 per 1,000; 15 to 18 in., \$2.50 per 100, \$20 per 1,000; 2 1/2 to 3 ft., strong, 2-yr., \$3 per 100, \$25 per 1,000.

**Ibota.** True, upright Ibota; large, glossy, distinct foliage; large, fragrant white flowers, produced in great profusion. Used principally as a shrub. 12 to 15 in., 75 c. per doz., \$3 per 100; specimen plants, 3 ft., strong and well-branched, 30c. each, \$3 per doz.

**In Fine Shape**

The California Privet came to hand this morning in fine shape.—E. E. CLEMENTS, New Haven Co., Conn., April 19, 1911.



*Philadelphus coronarius*

**Lagerstroemia Indica (Crape Myrtle)**

Too much cannot be said in praise of this beautiful, deciduous Indian shrub. The masses of flowers are profusely borne from spring until autumn on small as well as large plants. A splendid plant for bedding out in the North where it gives perfect satisfaction, even though it dies out in the winter in cold sections. It will spring up from the roots in the spring and give an abundance of blooms all through the late summer. We have some very fine plants; strong and bushy. 18 to 24 in., 50 cts. each.

**Lycium Chinense (Matrimony Vine)**

A vigorous, hardy climbing plant. It will cover a great amount of space in a short time, and every new growth is at once covered with bright purple flowers, which are succeeded by brilliant scarlet berries nearly an inch long. It will grow and thrive in either shade or bright sunlight. 20 cts. each, \$2 per doz.

**Lonicera (Bush Honeysuckle)**

**Tatarica.** One of the first shrubs to bloom and leaf out in the early spring. Very pretty. Sometimes in full leaf and bloom before the last snows are over. Flowers delicate pink. 2 ft., 40 cts. each.

**Grandiflora rosea.** A very ornamental, strong-growing kind, having pretty pink and white flowers early in the spring. 25 cts. each, \$2.25 per doz.

**Punica.** A trailing variety, with large, deep crimson flowers, with yellow throats; blooms throughout the whole summer. 25 cts. each, \$2.25 per doz.

**Mahonia (Ashberry)**

**Aquifolia.** A native shrub of medium size, with large, shining, prickly leaves, similar to those of the famous English Holly, which turns scarlet in the fall; bright yellow leaves in May, succeeded by bluish berries. 12 to 15 in., strong, 25 cts. each, \$2.25 per doz.

**Japonica.** A new variety from Japan, with very broad, spiny foliage of a light green color; yellow flowers in May. 12 to 15 in., strong, 30 cts. each, \$2.50 per doz.

**Paulownia Imperialis (Empress Tree)**

Very showy and valuable tropical-looking tree; medium size; extremely rapid growth, surpassing all others in size of leaves; those on young trees are often of immense size; flowers blue, trumpet-shaped, formed in large, upright panicles. Very conspicuous, fragrant and beautiful. 18 to 20 inches, strong, well-rooted, 50 cts. each; large trees, 4 to 5 ft., heavy, \$1 each.

**Philadelphus (Mock Orange)**

**Grandiflora.** Forms a large, spreading bush, with graceful, drooping branches. A common and desirable shrub; blooms in May and June. 12 to 15 in., 15 cts. each, \$1 per doz.; 15 to 18 in., 20 cts. each, \$1.50 per doz.; 18 to 24 in., 25 cts. each, \$2 per doz.; 2 to 3 ft., 35 cts. each, \$3 per doz.

**Lemoinei.** Of upright growth; small leaves and fragrant flowers. Not so well known as the older kinds, but one of the best. 12 to 15 in., 15 cts. each, \$1.25 per doz.; 18 to 24 in., 20 cts. each, \$2 per doz.; 2 to 3 ft., 25 cts. each, \$2.50 per doz.

**Coronarius.** Sometimes called Garland Syringa. A well-known shrub, with pure white, highly scented flowers. One of the first to bloom. 12 to 15 in., 15c. each, \$1 per doz.; 15 to 18 in., 20c. each, \$1.50 per doz.; 2 to 3 ft., 30c. each, \$2.50 per doz.

**PHILADELPHUS, continued**

**Speciosissimus.** Of dwarf habit, forming bushes about 3 feet in height, and covered with very large, sweet-scented flowers; distinct and very fine. 12 to 15 in., 20 cts. each, \$1.50 per doz.; 2 to 3 ft., 30 cts. each, \$2.50 per doz.

**Aurea.** Foliage golden yellow; very effective. Keeps its color the entire season, and will be found valuable for creating pleasing and striking contrasts with purple-leaved shrubs. Small, well-rooted, 20 cts. each, \$2 per doz.

**Rhamnus Catharticus (Buckthorn)**

The dark foliage masses of this dense, twiggy shrub are relieved by a profusion of attractive white flowers in June and July, followed by showy black fruit. Strong, 2-yr. plants, 25 cts. each.

**Rhus (Sumach) Cotinus  
(Purple Fringe)**

Much admired for its curious fringe or hair-like flowers that cover the whole surface of the plant at midsummer. 18 to 24 in., 25 cts. each, \$2.25 per doz.; 3 to 4 ft., 35 cts. each, \$3 per doz.

**Rosa (Sweet Briar)**

**Rubiginosa.** The well-known Sweet Briar, with highly-scented foliage; small, pink, fragrant flowers and quantities of bright fruit. Blooms in June. Strong, 2-yr. plants, 25 cts. each.

**Rugosa.** The foliage exhibits a mass of dense, luxuriant, glossy green. The flowers are large, and the perfection of form and color; are produced continuously throughout the season and until late in autumn, and as they mature are replaced by small golden and red fruit. Strong, 2-yr., well-rooted plants, 25 cts. each.

**Roses**

**Crimson Rambler.** A strong, rapid grower that produces exceedingly large and brilliant clusters of small, double crimson flowers in great profusion. There is nothing finer for trailing over verandas. Well-rooted, large, 2-yr. plants, 25c. ea., \$2 per doz.

**Dorothy Perkins.** A splendid sort, with beautiful, shell-pink flowers, full, large and double. The tresses often contain 30 or 40 individual flowers. Good climber. Well-rooted. Large, strong, 2-yr. plants, 25 cts. each, \$2 per doz.

These two foregoing Roses are the most important of the Rambler Roses; once planted, they become practically permanent.

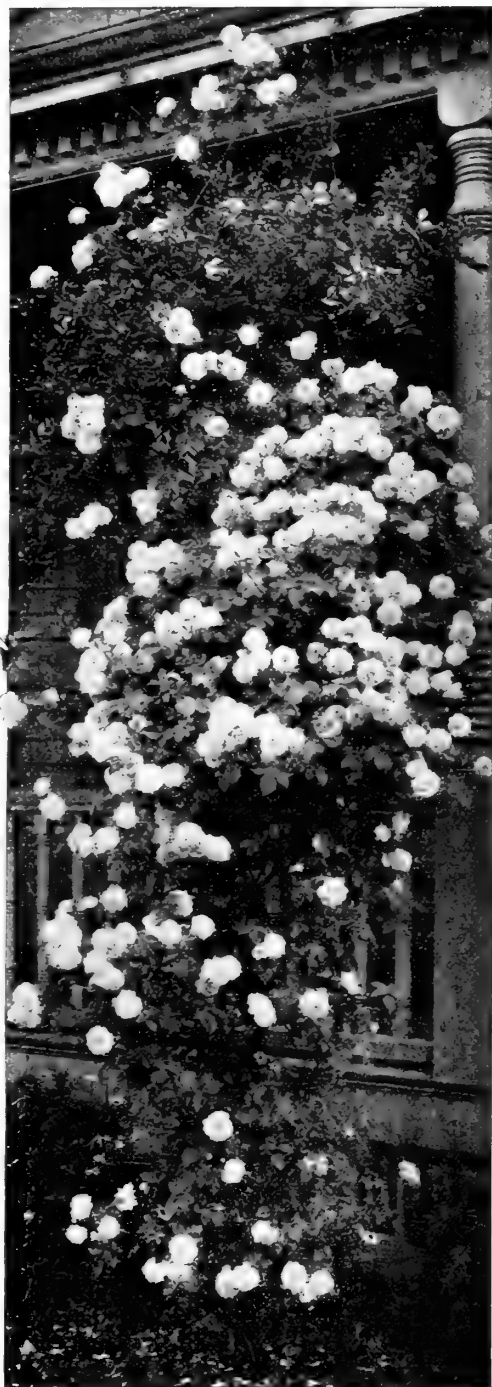
**Salix (Willow)**

**Babylonica.** Weeping Willow. Our common and well-known Weeping Willow; perfectly hardy and a rapid grower. 2 to 3 ft., strong, well-rooted, 25 cts. each; 4 to 5 ft., 40 cts. each.

**Rosmarinifolia.** Rosemary Willow. A handsome, odd-looking tree, with rounded head, slender twigs and small, silvery leaves. Strong, well-rooted plants, 2 to 3 ft., 25 cts. each.; 4 to 5 ft., 40 cts. each.

**Regalis.** Royal Willow. Rich, silvery foliage; very ornamental. Small plants, well-rooted. 25 cts. each.

**Vitellina aurea.** Golden Weeping Willow. Grows into a massive, low-headed tree. Light green leaves and brilliant yellow bark that is particularly bright in the leafless months of winter. It makes a fine specimen, with a personality that other trees do not possess. Strong, 2- to 3-ft. trees, 25 cts. each; 4 to 5 ft., 50 cts. each.



Dorothy Perkins Roses

**SALIX, continued**

**Aurea pendula.** Very similar to the preceding variety, but with somewhat longer branches. Small, well-rooted trees. 25 cts. each.

**Britzensis.** Red-barked Willow. This tree makes a very pretty specimen. Strong, well-rooted plants, 2 to 3 ft., 25 cts. each; 4 to 5 ft., 50 cts. each.



Spiraea Van Houttei

### Sophora Japonica (Japan Pagoda Tree)

One of the nicest little trees for large or small plantings. It presents a neat, attractive appearance, with small, shining green leaves. In August, when there are few other flowers, this is showy, with clusters of white bloom. The wood of young trees is olive-green. 18- to 20-in. trees, 30 cts. each, \$2.50 per doz.

### Spiraea

**Van Houttei.** Among the very finest of flowering shrubs; a strong, hardy grower of graceful, drooping habit, with handsome foliage. The profusion of bloom weighs the slender branches and covers the bush with a beautiful canopy of white. Desirable from any standpoint. 12 to 15 in., 15 cts. each, \$1 per doz., \$5 per 100; 2 to 3 ft., 20c. each, \$2 per doz., \$8 per 100; 3 to 4 ft., 30 cts. each, \$3 per doz., \$12 per 100.

**Douglasi.** Spikes of beautiful, deep rose-colored flowers in July and August. 12 to 18 in., 15 cts. each, \$1 per doz.; 2 to 3 ft., 25 cts. each, \$2 per doz.

**Thunbergii.** Of dwarf habit and rounded, gracefully formed branches, slender and somewhat drooping; foliage a yellowish green; flowers small, white; appearing in early spring, being one of the first Spireas to flower; esteemed on account of its neat, graceful habit. Strong, 18 to 24-in. plants, 25 cts. each, \$2 per doz.

**Anthony Waterer.** Blooms from June until frost. One of the most popular shrubs, possessing the characteristics and robust habit of the parent form, but with crimson flower heads of a richer, brighter hue. Good foliage, frequently splashed with odd, though pretty, yellowish white markings. A beautiful edging and desirable plant at the front of shrubberies or wherever a low bush is desired. Strong, well-rooted plants, 12 to 15 in., 20 cts. each, \$2 per doz.; large clumps, 50 cts. each.

**Paniculata.** One year, 25 cts. each; 2-yr., 3 ft., 35 cts. each.

**Callosa rosea.** Produces an abundance of deep, rosy flowers which last practically all summer. Grows freely and a very satisfactory shrub. 18 to 24 in., 25 cts. each, \$2 per doz.

### Stephanandra flexuosa

A thick shrub, with graceful branches and handsome small foliage that is almost as delicate as a fern, and turns a bronze-red in late summer and autumn. Small, inconspicuous, fragrant flowers are up and down the branches. Grows easily, and is adapted to rocky places and shrubby borders. Strong plants, 2 to 2½ ft., 35 cts. each, \$3 per doz.

### Symphoricarpos

**Racemosus.** Snowberry. Small, red flowers in July and August, succeeded by white berries; very attractive. Strong plants, 18 to 24 in., 25 cts. each, \$2 per doz.

**Vulgaris.** Indian Currant. Blooms in July. Similar in character to the above; useful in the same ways; purplish red berries in autumn. Strong plants, 18 to 24 in., 25 cts. each, \$2 per doz.

### Syringa

**Vulgaris.** Common Purple Lilac. Strong, well-rooted plants, 35 cts. each, \$2.50 per doz.

**Vulgaris alba.** Common White Lilac. Strong, well-rooted plants, 35 cts. each, \$2.50 per doz.

**Persica alba.** A fine, old variety of rather dwarf habit; very fragrant white flowers, tinged with purple. 35 cts. each.

### Tamarix Africana

Shrubs of strong, but slender, upright growth; clothed with foliage as light and feathery as that of the asparagus. Their delicate fringing flowers are usually some warm shade of pink or red. Hardy as far north as Massachusetts. Very ornamental at the back of shrubby borders and valuable for seaside planting. 1-yr., 18 to 24 in., 15 cts. each, \$1 per doz.; 2-yr., 2 to 3 ft., 20 cts. each, \$2 per doz.; 2-yr., 4 to 6 ft., 25 cts. each, \$2.50 per doz.

### The Way They Always Arrive

I received the plants in the very best condition.—  
GEORGE EHMCKE, Dodge Co., Neb., April 25, 1911.

## Viburnum

**Opulus.** Common Snowball. This is the Snowball that decorated the old farmyards beside the peony and lilac. When well cared for it is a beautiful shrub, with large, globular clusters of white flowers, blooming about Decoration Day. 15 to 18 in., 20 cts. each, \$2 per doz.

**Plicatum.** Japanese Snowball. This is a beautiful shrub from Japan, with dark, crinkled leaves, and has a sterile flower in large, spherical clusters, like the old-fashioned Snowball. As its foliage is free from insect attacks and is darker green, it is superior to the old-fashioned Snowball. It can be planted as a single specimen near the house and will give almost immediate effect. 15 to 18 in., 20 cts. each, \$2 per doz.; 2 to 3 ft., 25 cts. each, \$2.50 per doz.

**Cassinoides.** This is native both to damp and dry upland. It is a graceful shrub of about 7 feet high, with light green, elliptical leaves and white flowers, followed by black berries. 12 to 15 in., 25 cts. each, \$2.50 per doz.

**Oxycoccus** (High Bush Cranberry). Both ornamental and useful, its red berries resembling cranberries; esteemed by many; hang until destroyed by frost late in the fall. Strong plants, 15 to 18 inches, 25 cts. each, \$2.50 per doz.

## Weigelas (Diervilla)

An important group, indispensable for ornamental planting. They thrive in any soil, are strong growers and generally hardy. When young, of upright habit, growing with age into more graceful shrubs. Useful as specimens and desirable for groups and masses. In May and June the Weigelas are aglow with a wealth of flowers, borne all along their branches, and some varieties flower sparingly through the summer.

**Arborea grandiflora.** A beautiful pink; a very fine variety. 12 to 18 in., strong, 25 cts. each, \$2 per doz.; 2 to 3 ft., 30 cts. each, \$2.50 per doz.

**Conquete.** Very large, deep pink flowers; the largest flowers of all varieties and one of the most beautiful. 1-yr., 12 to 18 in., 20 cts. each, \$2 per doz.; 2-yr., 2½ to 4 ft., 30 cts. each, \$3 per doz.

**Candida.** A vigorous, healthy-growing variety, with pure white flowers; very pretty. 1-yr., 15 to 18 in., 20 cts. each, \$2 per doz.; 2-yr., strong, 3 to 4 ft., 30 cts. each, \$2.50 per doz.

**Desboisii.** A beautiful variety, with deep, rose-colored flowers, resembling Rosea, but flowers much darker. One of the best. 15 to 18 in., 20 cts. each, \$2 per doz.; 3 to 4 ft., 2-yr., strong, 25 cts. each, \$2.50 per doz.

**Ducharte.** Free-flowering, double, dark red. 1-yr., strong, 15- to 18-in plants, 25 cts. each, \$2 per doz.

**Eva Rathke.** An exceedingly showy variety; decidedly the best of its color. An almost continuous bloomer; flower a beautiful crimson, a beautiful, distinct, clear shade. The plant while in bloom is almost as fine as an Azalea. 1-yr., 12 to 15 in., 15 cts. each, \$1.25 per doz.; 15 to 18 in., 20 cts. each, \$2 per doz.; 2½ to 3 ft., 25 cts. each, \$2.50 per doz.

## WEIGELA, continued

**Gustave Mallet.** A valuable variety, with an abundance of rose-colored flowers; very fine. 12 to 15 in., 15 cts. each, \$1.25 per doz.; 15 to 18 in., 20 cts. each, \$2 per doz.; 3 to 4 ft., 25 cts. each, \$2.50 per doz.

**Groenewegeni.** Flowers red outside, with a lighter shade inside. A very pretty variety. Do not fail to include this in your list. 1-yr., 12 to 18 in., 15 cts. each, \$1.25 per doz.; 2-yr., strong, 2 to 3 ft., 25 cts. each, \$2.50 per doz.

**Hendersonii.** A vigorous, compact grower, with an abundance of pink flowers. An excellent variety. 1-yr., 12 to 18 in., 15c. each, \$1.25 per doz.; large, 2-yr., 2½ to 4 ft., 25 cts. each, \$2.50 per doz.

**Rosea.** An elegant shrub of fine, rose-colored flowers, of erect, compact growth; a very fine variety. Strong 2-yr. plants, 2 to 3 ft., 50 cts. each.

**Symondsii.** Rose and white flowers, beautifully contrasted. 12 to 15 in., 1-yr., strong, 15 cts. each, \$1.25 per doz.; 18 to 24 in., 2-yr., strong, 20 cts. each, \$2 per doz.; 2 to 3 ft., 2-yr., strong, 25 cts. each, \$2.50 per doz.

**Stelzneri.** An abundant display of rosy pink flowers in May that is often sparingly repeated late in the summer. A standard variety of vigorous, bushy habit. 1-yr., strong, 15c. each, \$1.50 per doz.; 2½ to 4 ft., 2-yr., strong, 25 cts. each, \$2.50 per doz.

**Van Houttei.** Clear carmine flowers and a profuse bloomer; a good one. 12 to 15 in., 1-yr., strong, 15 cts. each, \$1.25 per doz.; 2 to 3 ft., 2-yr., strong, 25 cts. each, \$2 per doz.

We have a very large stock of Weigelas, and would be pleased to make special quotations by the 100 and 1,000 to any one desiring a large stock.



Weigela rosea

### What Most of My Customers Say

Privet received and am much pleased with it.—E. S. BENTON, Brooklyn, N. Y., May 12, 1911.





Hardy Phlox

### Wistaria

**Chinensis.** The common variety, which flowers so profusely in May. Flowers pale blue and fragrant. It withstands the smoke of cities and will grow anywhere. 12 to 18 in., strong, well-rooted, 25 cts. each, \$2.50 per doz.; 3 to 4 ft., 2-yr., 35 cts. each, \$3 per doz.

**Chinensis alba.** A beautiful white-flowering form of our common Wistaria that possesses the strong-growing, hardy qualities of its parent and is especially pretty to have flowering in connection with its pale blue flowers. 12 to 18 in., strong plants, 35 cts. each, \$3 per doz.; 2 to 3 ft., 45 cts. each, \$4 per doz.

#### Pleased with Condition and Size

We received the shipment of hedge and we are certainly pleased with the condition and size of plants. Thanking you for prompt shipments.—ISAAC F. BROWN, Union Co., Pa., May 4, 1911.

### Ornamental Grasses

**Erianthus ravenne.** Plume Grass. A very ornamental Grass, thriving in sunny situations in light, well-drained soils. It forms a handsome, broad clump, growing from 7 to 12 feet high, with beautiful plumes and graceful, dark, bronzy green foliage; is admirable to plant in connection with other grasses, or as a background for shrubbery. 20 cts. each, \$2 per doz.

**Yucca filamentosa.** Adam's Needle. A low evergreen without a central stem. The long, narrow leaf-blades come out from the root crown. In June or July it shoots up heavy stalks, laden at the top with ivory-white flowers. It is valuable in separate or mixed plants. Small plants, 10 cts. each, \$1 per doz.; large clumps, 25 cts. each, \$2.50 per doz.

### HARDY PHLOX

We have a fine stock of Hardy Phlox, consisting of the best varieties in cultivation.

**Bacchante.** Deep, rosy carmine; enormous flowers. 10 cts. each, \$1 per doz.

**Coquelicot.** A fine, pure scarlet, with crimson-red eye. 10 cts. each, \$1 per doz.

**Obergartner Wettig.** Bright magenta, with crimson-carmine eye; largest flowers and truss of its type. 10 cts. each, \$1 per doz.

**Mrs. Jenkins.** The best white, immense heads; early and free bloomer. 10c. each, \$1 per doz.

**Von Hochburg.** The ideal crimson; the richest of its color. 15 cts. each, \$1.50 per doz.

**Prof. Schliemann.** Bright currant-red, with a bright crimson eye. 10 cts. each, \$1 per doz.

**Beranger.** Ground-color white, delicately suffused with rosy pink and distinct amaranth-red eye. 15 cts. each, \$1.50 per doz.

**Hardy Phlox in Mixture.** We have a large stock of mixed varieties, mostly seedlings of the above-named kinds. We doubt if there is a better mixture on the market than ours. Many of the varieties are equal to the named sorts. I can furnish good, strong plants, outdoor-grown, at 5 cts. each, 50 cts. per doz., \$4 per 100.

### Caladium esculentum

Fine tropical-looking yard plants, with enormous leaves. Small bulbs, 5 to 6 inches in circumference. 5 cts. each, 40 cts. per doz; medium bulbs, 6 to 10 in., 10 cts. each, 75 cts. per doz.; very large bulbs, 10 in. and over, 20 cts. each.



Planting of Ornamental Grasses



Bed of Cannas

## CANNAS

**Austria.** A fine variety of the orchid-flowered type; large, handsome foliage; canary-yellow blooms.  $3\frac{1}{2}$  ft., 10 cts. each, \$1 per doz., \$5 per 100.

**Black Beauty.** Small red bloom; rich bronze foliage. Best of all the red-leaved sorts. 5 to 6 ft., 10 cts. each, \$1 per doz., \$5 per 100.

**Black Prince.** Immense flowers of dark, velvety maroon, almost black.  $3\frac{1}{2}$  to 4 ft., 10 cts. each, \$1 per doz., \$5 per 100.

**Burbank.** Lemon-yellow; giant flowers. 4 ft., 10 cts. each, 80 cts. per doz., \$4 per 100.

**Charles Henderson.** Deep, but brilliant crimson flowers. 4 ft. 10 cts. each, 80 cts. per doz., \$4 per 100.

**Florence Vaughan.** Flowers of the most brilliant golden yellow, dotted with brightest scarlet. 5 ft. 10 cts. each, 80 cts. per doz., \$4 per 100.

**Hiawatha.** Variegated foliage; large flowers, with broad, crimped petals. Color delicate rosy pink with border of clear cerise. 3 feet. 10 cts. each, \$1 per doz., \$5 per 100.

**Indiana.** One of the best of this class. Beautiful orange flowers of good substance. 5 to 6 feet. 10 cts. each, \$1 per doz., \$5 per 100.

**J. D. Eisele.** Bright vermilion-scarlet, overlaid with orange; a fine bedder. 5 feet. 10 cts. each, \$1 per doz., \$5 per 100.

**Jean Tissot.** Brilliant vermilion, with bright orange markings; foliage green. 5 feet. 10 cts. each, \$1 per doz., \$5 per 100.

**Louisiana.** Strong, vigorous grower; produces a mass of glossy green foliage; vivid scarlet flowers. 6 feet. 10 cts. each, 80 cts. per doz., \$4 per 100.

**Louise.** Rich rose-pink, delicately dappled and streaked with red. 4 to 5 ft., 10 cts. each, 80 cts. per doz., \$4 per 100.

**L. Patrie.** Green foliage; pink bloom.  $4\frac{1}{2}$  ft., 10 cts. each, 80 cts. per doz., \$4 per 100.

**Mlle. Berat.** The nearest approach to a pink in a first-class bedder.  $4\frac{1}{2}$  ft., 10 cts. each, 80 cts. per doz., \$4 per 100.

**Musafolia.** This is the finest foliaged Canna yet seen, with enormous musa-like leaves, 3 by 5 feet, of a dark green, bronze-tinged color, the edges of the leaves being beautifully banded with bronze purple. In size and beauty of foliage it is a revelation, and makes a clump or single specimen plant for the lawn which no other foliage can approach. Attains a height of 8 feet. 10 cts. each, \$1 per doz., \$5 per 100.

**Pennsylvania.** The flowers are pure deep scarlet, of immense size. 5 ft., 10 cts. each, \$1 per doz., \$5 per 100.

**Pillar of Fire.** A tall-growing variety; the foliage is fine; a rich crimson-scarlet. 5 ft., 10 cts. each, \$1 per doz., \$5 per 100.

**Pres. Myers.** The flowers are a rich cherry-carmine; foliage bronze. 4 ft., 10 cts. each, 80 cts. per doz., \$4 per 100.

**Queen Charlotte.** The center of the petal is a brilliant crimson-scarlet, shaded with crimson and bordered with a wide belt of gold.  $3\frac{1}{2}$  ft., 10 cts. each, \$1 per doz., \$5 per 100.

**Richard Wallace.** A canary-yellow with exceptionally large flowers. 5 ft., 10 cts. each, \$1 per doz., \$5 per 100.

**Robusta.** A very fine, tall-growing, dark-leaved variety. 6 to 7 ft., 10 cts. each, \$1 per doz., \$5 per 100.

**Shenandoah.** A splendid red or bronze-leaved sort; bears fine, large trusses of salmon-pink flowers. 4 to 5 ft., 10 cts. each, \$1 per doz., \$5 per 100.

**Wyoming.** Bronzy purple foliage, with immense spikes of massive orange flowers. 5 to 6 ft., 10 cts. each, \$1 per doz., \$5 per 100.

### Success with Small Fruits

My 32-page booklet on Cultural Directions of Small Fruits, etc., will be mailed free on receipt of every order during 1912. This booklet was prepared by an acknowledged authority on fruits and fruit culture, Professor W. F. Massey, of Salisbury, Md.



From my selection of Mixed Dahlias

mixture entirely of my own selection, all good, showy varieties, not labeled. 75c. per doz., \$3 per 100.

## DAHLIAS

All quotations on Dahlias are for divided clumps.

**Grand Duke Alexis.** Very large; white, tinted pale lavender; very fine. 15 cts. each, \$1.25 per doz.

**Nymphaea.** Color clear, light shrimp-pink; very fine. 15 cts. each, \$1.25 per doz.

**William Agnew.** Rich, dazzling red; large size, and the best of all the red-flowering varieties. 10 cts. each, \$1 per doz., \$5 per 100.

**A. D. Livoni.** Beautiful, soft pink; early and profuse bloomer; one of the best. 10 cts. each, \$1 per doz., \$5 per 100.

**Progress.** The color is clear, soft rosy lake, beautifully penciled and spotted with glowing crimson. 15 cts. each, \$1.50 per doz.

**Sir Charles Mills.** A beautiful, clear yellow; an early and free bloomer; one of the best yellows. 10 cts. each, \$1 per doz., \$5 per 100.

**Striped Banner.** Crimson-scarlet, tipped with white. 15 cts. each, \$1.25 per doz.

**Snowclad.** Small, very durable and a prolific bloomer; pure white. 10 cts. each, \$1 per doz., \$5 per 100.

**General Buller.** One of the best of the Cactus Dahlias; flowers very free; deep cardinal-red, shaded purplish maroon; many of the petals tipped with white. 20c. ea., \$1.50 per doz.

**Jealousy.** Lemon-yellow; very fine, beautiful and a free bloomer. 15 cts. each, \$1.25 per doz.

**Mixed Varieties.** Those who want a beautiful display but do not care for name or variety, I will send a beautiful

## VEGETABLE PLANTS

For the last three or four years I have been doing a large business in vegetable plants, selling many hundred thousand. My specialties in this line are sweet potato plants, early cabbage plants, early tomato plants, cauliflower, eggplants, peppers, etc. I pack plants to ship almost any distance; you need have no fear about ordering on that account.

### Sweet Potato Plants

There is probably no section where better Sweet Potatoes can be grown than here in the eastern shore of Maryland. All customers are advised to buy plants. We expect to have a very fine stock at the proper season.

All my Sweet Potato plants are grown from vine slips in coldframes without artificial heat, thus insuring my patrons the most vigorous and healthy plants to be had.

**Big Stem Jersey.** (See illustration.) This is a very popular variety, especially with those who wish to get their crop in market before others begin to dig. It is a heavy yielder, good quality, either for market or home use, and the most largely grown of all varieties in this section. Plants 60 cts. per 100, postpaid; \$2 per 1,000, by express, receiver to pay charges.

**Gold Skin.** This is a beautiful yellow Potato, usually growing very chunky. It has a peculiarity of being almost a golden yellow inside, and is sometimes described as being all heart. The quality is very fine, and this is in every way a very desirable Potato, either for home use or market. Price of plants same as Big Stem Jersey.

**Red Nansemond.** This variety has a blood-red skin, but inside is yellow and dry. It cooks very fine, and many think it one of the best on the market. Red Nansemond is especially popular where a dry Potato is desired. This is also an excellent keeper. Price of plants same as Big Stem Jersey.



Big Stem Jersey. Of good quality for home use or market

**TRUE TO NAME.** While I use every precaution to have all plants, etc., true to name (and I believe we come as near doing this as any one in the business) I will not be responsible for any error or mistake that should arise otherwise as represented.

DEC 20 1911

[illegible]

Early in the season I usually have in stock everything listed in this catalogue, but late in the season I frequently run out of some of the varieties; therefore, when you order late, please state whether I shall substitute something equally as good and as near like the variety ordered as possible, or return your money for any stock that I may be out of. Answer

Please write below the names and addresses of any acquaintances or friends who might be interested in or buyers of Strawberry Plants, Shrubs, etc.



**SWEET POTATOES, continued**

**Yellow Nansemond** (Up-Rivers). This is a chunky, smooth yellow Sweet Potato; yields heavily and for all purposes a desirable variety. Price of plants, same as Big Stem Jersey.

**Nancy Hall.** A valuable new addition to the Sweet Potato family. Exceedingly vigorous, enormously productive, good quality and very early, being large enough for market at least two weeks earlier than any other variety that I know of. Skin white, tinted yellow, with flesh as yellow as the Gold Skin. If you want Sweet Potatoes two weeks ahead of your neighbor plant Nancy Hall. 100 by mail, postpaid, \$1; \$2.50 per 1,000 by express, you to pay charges.

**Cabbage Plants**

This is one of my specialties in vegetable plants. I ship hundreds of thousands North for early setting, and I understand the parties who have been buying them have been highly pleased. The demand for my plants has increased very rapidly during the past few years, and I am planning for a still bigger increase this year. My early Cabbage plants will be ready from the 1st to the 10th of April, and we grow the three leading varieties, as follows:

**Early Jersey Wakefield.** The best of the first early Cabbage in cultivation. It forms fine, solid heads of good size, conical in shape with few outside leaves. The quality is of the best. I offer this as the earliest strain of this variety, and is sure to give satisfaction.

**Large Charleston Wakefield.** Selected stock; large, solid heads of good quality. A few days later than Early Jersey Wakefield, larger in size and combines all the good qualities of an early, long-keeping sort.

**Early Summer.** This is one of the best of the large, early flat-head varieties. It is an exceedingly valuable market variety, adapted for close planting, and will thereby give a large number of heads per acre. Matures after ten days after Early Jersey Wakefield. The heads are very compact and solid, and usually double the weight of the Early Jersey Wakefield.

**Early Jersey Wakefield Cabbage**

We can supply either of the above varieties, \$1.25 for 500, \$2 per 1,000, 10,000 or over at \$1.50 per 1,000. I especially solicit orders for Cabbage plants from Northern growers. I believe that we can give you better plants early in the season and for less money than you can grow them at home.

**Cauliflower**

My plants are very fine, grown from best imported seed of Early Snowball. Ready any time after April 15 at 75 cts. per 100, \$4 per 1,000.

**Tomato Plants**

My Tomato plants are usually ready for the field from May 1 and after. The plants I offer are about 6 inches high, well hardened and ready for open field planting. I offer the following varieties: **Earliana, Chalk's Jewel, June Pink, and Allen's Best.** The price is \$1 per 100, \$6 per 1,000 by express, receiver to pay charges.

**Eggplant**

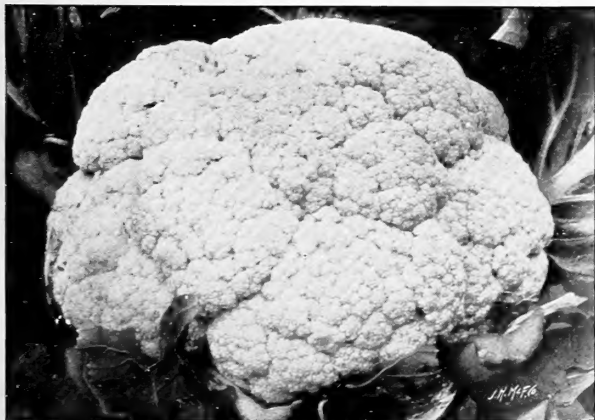
I have been very successful in growing extra-fine plants of this delicious vegetable, and offer the two best varieties, **Black Beauty** and **New York Improved Spineless.** Of the two I think **Black Beauty** the best. Plants ready about May 10 to 15 and after. Price, \$1 per 100, \$8 per 1,000.

**Pepper Plants**

Well-grown, strong, stalky and hardened, ready for the field during May and June. **Ruby King**, the most popular variety. Price, 75 cts. per 100, \$4 per 1,000.

**Grow More and Better Small Fruits**

You can have bigger and better crops if you will. Let my little guide called "Success with Small Fruits" give you some useful suggestions. If you are not clear about soils for Strawberries, preparation of the soil, time for planting, etc., or want to know more about the home and distant market, this little guide is just what you want. Blackberries, Raspberries, Currants, Grapes, Dewberries, Asparagus, Rhubarb, etc., are so clearly described that you cannot help but get some useful information. This guide will be sent on receipt of every order for 1912.

**Snowball Cauliflower**



HAVERLAND  
SEE PAGE 7

W.F. ALLEN  
SALISBURY  
MARYLAND