

CRYPT  
Q14  
71  
.13 I4  
F43a  
1896

FIELD COLUMBIAN MUSEUM

ANNUAL  
EXCHANGE CATALOGUE

FOR THE YEAR 1896-97



CHICAGO, U. S. A.  
November, 1896.

262484

FIELD COLUMBIAN MUSEUM

ANNUAL  
EXCHANGE CATALOGUE

FOR THE YEAR 1896-97



CHICAGO, U. S. A.

November, 1896.

CRYPT

QH

71

1314

F4300

1896

1098213743

262484

JACKSON PARK, CHICAGO, U. S. A.

The Field Columbian Museum begs to submit this list of excess and duplicate material for the consideration of kindred institutions and of individual collectors. The specimens and examples contained herein are offered in exchange for an equivalent in similar material. All offers should include as much detail as possible concerning both the specimens and objects desired and those offered as an exchange. Unless otherwise provided it will be understood that the consignee pays all transportation charges in each case. Please address all communications to

Frederick J. V. SKIFF,  
Director.



## DEPARTMENT OF ANTHROPOLOGY.

### ALASKAN ESKIMO.

- 10 fish nets.
- 10 fish traps.
- 20 fish hooks.
- 40 fish spears and harpoons.
- 10 bird spears.
- 2 bows.
- 20 arrows.
- 10 adzes.
- 10 scrapers.
- 10 knives (woman's and carving).
- 20 pouches made of mammal and bird skins.
- 100 skin and fur garments—coats, trousers, boots, shoes, gloves, etc.

### NORTHWEST COAST INDIANS.

- 40 masks.
- 10 models of houses.
- 20 horn spoons.
- 6 wooden chests.
- 6 wooden combs.
- 10 rattles.
- 30 baskets.
- 10 fish nets.
- 40 fish hooks.
- 100 mats, pieces of costume, textile materials, cordage, etc.
- 20 stone implements.

### CALIFORNIA—Antiquities.

- 20 stone mortars, two to twelve inches in diameter.
- 10 stone pestles, six to ten inches in length.
- 10 plummet shaped stones.
- 12 shell dishes, rough perforate or imperforate.
- 14 bone implements.

**COLORADO AND UTAH—Antiquities.****Cliff House Relics.**

- 12 vases of coiled earthenware.
- 12 vases with designs in black.

**NEW MEXICO AND ARIZONA—Ethnology.****Pueblo Articles.**

- 6 painted dance wands.
- 6 painted dance dolls.
- 20 yucca trays.

**INDIANA—Antiquities.**

- 40 arrow points of gray flint.
- 40 spear points of gray flint.

**TENNESSEE—Antiquities.**

- 10 celts.
- 30 arrow points.
- 20 spear points.

**ALABAMA—Antiquities.**

- 50 arrow points.
- 20 spear points.

**ARKANSAS—Antiquities.**

- 100 arrow points.
- 50 spear points.
- 10 jasper celts.
- 5 discoidal stones.
- 20 earthenware vases, decorated in colors.
- 20 " " incised decoration.
- 60 " " plain.
- 6 " " pipes.

**KENTUCKY—Antiquities.**

- 30 arrow points.
- 20 spear points.

**MEXICO—Ethnology.****Oaxacan Indians.**

- 20 vases, plain black and red earthenware.



**Tarahumari Indians.**

- 20 woollen sashes, elaborately patterned.
- 2 blankets.
- 2 ponchos.

**MEXICO—Antiquities.**

- 100 stone implements.
- 100 specimens of earthenware.

**NICARAGUA—Antiquities.**

- 20 vases, plain and painted earthenware.
- 20 fragmentary vases, plain and painted earthenware.

**COSTA RICA—Antiquities.**

- 20 vases, plain and painted earthenware.
- 20 fragmentary vases, plain and painted earthenware.

**COLOMBIA—Antiquities.**

- 20 ancient earthenware vases of varied form and decoration.
- 20 ancient earthenware spindle whorls.
- 10 polished celts.

**PERU—Antiquities.**

- 100 ancient earthenware vases of varied form and decoration.
- 25 objects of polished stone—cups, dishes, stellar club-heads, llama cups, etc.
- 6 contents of graves.
- 6 mummies.
- 25 examples of figured fabrics.

**PARAGUAY—Ethnology.**

- 400 arrows.
- 40 bows.
- 20 wooden weapons.
- 60 close woven carrying bags.
- 50 netted carrying bags.
- 6 netted hammocks.
- 40 pieces of cordage and twine.
- 6 pieces of hair and wool cordage.

- 10 necklaces or girdles of deer hoofs.
- 40 pendants or girdles of brilliant feathers.
- 15 girdles of feathers.
- 100 head plumes of brilliant feathers.
- 6 necklaces of reed-stem sections.
- 150 pendants of bunched feathers of brilliant hues.
- 120 neck ornaments of brilliant feathers.
- 200 tufted neck ornaments of brilliant feathers.
- 60 ear pendants of feathers.
- 2 necklaces of rough shells.
- 2 pendants of rough shells.
- 3 woolen belts.
- 4 necklaces of squared shell.
- 20 ear pendants of roughly trimmed shell.
- 20 neck pendants of roughly trimmed shell.
- 3 pendants of wood.
- 4 pendants of quill.
- 6 tobacco pipes.
- 10 necklaces of hard seeds.
- 10 " " nut shells.
- 3 " " animal teeth.
- 20 " " " bones.
- 3 pendants of deer hoofs.
- 4 pendants of rattlesnake rattles.

#### **EUROPE—Archeology.**

- 100 specimens of utensils, weapons and ornaments; unassorted.

#### **AFRICA—Ethnology.**

- 500 specimens of utensils, weapons and ornaments; unassorted.

#### **CEYLON, JAVA, AUSTRALIA.**

- 200 specimens of utensils, weapons and ornaments; unassorted.

#### **SOUTH SEA ISLANDS—Ethnology.**

- 500 specimens of utensils, weapons and ornaments; unassorted.

**DEPARTMENT OF BOTANY.****RUSSIA.**

267.	Bast Fiber	<i>Tilia parviflora</i> Boiss.
269.	Bags made of	“
271.	Rope “ “	“
273.	Boxes “ “	“
274.	Mats “ “	“
275.	Shoes “ “	“
867.	Halter “ “	“
868.	Eyed Rope “	“

**COREA.**

1081.	Dried Persimmons.
1082.	Dried Dates.
1084.	English Walnuts.
1086.	Silver Nuts.
1087.	Lotus Seed.
1089.	Castor Oil Beans.
1090.	Rice (Pearl).
1091.	Rape Seed.
1092.	Rice.
1093.	Millet Seed.
1094.	Broom Corn.
1095.	Black Beans.
1096.	“ “
1097.	Red Beans.
1098.	Pea Beans.
1099.	Corn.
1100.	Blue Millet.
1101.	Pearl Barley
1102.	Barley.
1103.	Wheat.
1104.	Rye.
1105.	Oil Seed.

1106. Steamed Rape Seed.  
 1107. Buckwheat.  
 1108. Black Rape.

**JAPAN.****WOODS.**

1623. *Betula alba* L.  
 1650. **Katsura.** *Cercidiphyllum Japonicum* S. and Z.  
 1652. **Shina=No=Ki.** *Tilia cordata* var. *Japonica* Miq.  
 1653. **Chan=Chin.** *Cedrela Chinensis* Juss.  
 1654. **Tochi=No=Ki.** *Æsculus turbinata* Bl.  
 1655. **Harigiri.** *Acanthopanax ricinifolium* Seem.  
 1656. **Kaki.** *Diospyros Kaki* L. f.  
 1658. **Kiri.** *Paulownia imperialis* S. and Z.  
 1659. **Kusu=No=Ki.** *Cinnamomum Camphora* Nees.  
 1660. *Juglans regia* var. *sinensis* C.  
 1661. **Sawa=Gurumi.** *Pterocarya rhoifolia* S. and Z.  
 1662. **Shii=No=Ki.** *Quercus cuspidata* Thunb.  
 1663. **Shirakashi.** *Quercus glauca sericea* Thunb.  
 1664. **Aka=Gashi.** *Quercus acuta* Thunb.  
 1665. **Ichi=Gashi.** *Quercus gilva* Bl.  
 1666. **Minebari.** *Alnus firma* S. and Z.  
 1667. **“Soro” or Shide.** *Carpinus laxiflora* Bl.  
 1668. **Sawara.** *Thuya gigantea Japonica* Maxim.  
 1669. **Nezuko.** *Thuya piscifera* B. and H.  
 1670. **Araragi.** *Taxus cuspidata* S. and Z.  
 1671. **Kaya.** *Torreya nucifera* S. & Z.  
 1672. **Shirabe.** *Abies Veitchii* H. and H.  
 1674. **Koya=Maki.** *Sciadopitys verticillata* S. and Z.  
 1675. **Icho.** *Ginko biloba* L.

**SHINGLES.**

1719. **Kuri.** *Castanea vulgaris Japonica.*  
 1727. **Hiba or Asuhi.** *Thuya dolabrata* L.  
 1785. **Sugi.** *Cryptomeria Japonica* Don.

**VENEERING.**

- 1725½. **Hinoki.** *Thuya obtusa* B. and H.  
 1734. **Sawara.** *Thuya pisifera.*  
 1755. **Sawara.** “ “

1770. **Momi.** *Abies firma* S. and Z.  
 1784. **Sugi.** *Cryptomeria Japonica* Don.  
**TUB TIMBERS.**  
 1733. **Sawara.** *Thuya pisifera.*  
**MISCELLANEOUS.**  
 1819. **Chan.** Pitch.  
 1820. Turpentine Oil.  
 1897. Pyroligneous Acid.  
 1899. Acetic Soda.  
 1912. Lacquer Juice.  
 1914. Lacquer Black.  
**TANNING BARKS.**  
 1821. **Kashiwa.** *Quercus dentata* Thunb.  
 1822. **Konara.** *Quercus glanduliflora* Bl.  
 1823. **Toneriko.** *Fraxinus pubinervis* Bl.  
 1824. **Kuri.** *Castanea vulgaris Japonica* DC.  
 1827. **Shira Kaba.** *Betula alba* Linn.  
 1836. **Sugi.** *Cryptomeria Japonica* Don.  
**DYE WOOD.**  
 1828. **Kurumu.** *Juglans regia.*  
 1829. **Kiwada.** *Phellodendron amurense.*  
 1830. **Sakura.** *Prunus pseudo-cerasus.*  
**STARCHES.**  
 1902. **Kuzu.** *Pueraria Thunbergiana.*  
 1903. **Warabi.** *Pteris aquilina.*  
 1904. **Katako Yuri**  
**or Katakuri.** *Erythronium densiflora canis* L.  
**MUSHROOMS.**  
 1915. **Kotake.**  
 1916. **Iwa-Take.**  
 1918. **Shimeji.**  
 1925. **Shii-Take.**  
**WAXES.**  
 1919. **Ibota.**  
 1928. **Juro.**  
 1922. Raw Camphor.  
 1926. **Urushi.** Seeds of *Rhus vernicifera* DC.  
 1827. **Haze.** “ “ *Rhus succedanea.*

**BRITISH INDIA.**

3052. **Deodar Oil.** Cedrus Libani.
- NUTS.**
3058. **Harra.** Terminalia Chebula Retz.  
3072. Calophyllum inophyllum. L.
- SEEDS.**
3059. Argemone Americana.  
3060. Melia Azedirachta A. Juss.  
3062. Semecarpus Anacardium Linn  
3064. Citrullus Colocynthis Schrad.  
3065. Jatropha Curcas L.  
3066. Terminalia Bellerica Roxb.  
3067. Bassia latifolia Roxb.  
3068. Pongamia glabra Vent.  
3070. Moringa pterygosperma Gaertn.  
3071. **Cashew.** { Anacardium occidentale L.  
3073. **Katbilawa or Chirinji.** Buchanania latifolia Roxb.
- BARK.**
3080. **Maljan.** Bauhinia Valii Wight & Arn.
- WOODS.**
3087. Michelia Champaca Linn.  
3089. **Bobby.** Calophyllum Wightianum Wall.  
3092. Schima Wallichii Choisy.  
3095. Shorea robusta Gaertn.  
3098. Bombax malabaricum DC.  
3099. **Hadang.** Eriolaena Candollii Wall.  
3100. **Dhaman.** Grewia tiliaefolia Vahl.  
3104. Protium serratum Engl.  
3106. Amoora spectabilis Miq.  
3108. Cedrela Toona Roxb.  
3109. Chloroxylon Swietenia DC.  
3110. **Ber.** Zizyphus Jujuba Lam.  
3111. Schleicheria trijuga Willd.  
3114. **Moohal or Molina.** Odina Woodier Roxb.  
3116. **Tiwas or Kanara.** Eugenia dalbergioides Benth.

3117. **Sisham or Blackwood.** *Dalbergia latifolia* Roxb.
3118. *Dalbergia Sissoo* Roxb.
3121. **Padouk.** *Pterocarpus indicus* Willd.
3122. **Hedi or Haladwan.**
3124. **Buswanpad.** *Bauhinia Vahlii* Wight & Arn.
3125. *Bauhinia racemosa* Lam.
3127. **Tamba.** *Xylia dolabriformis* Benth.
3130. **Kinai. Bellati.** *Albizzia procera* Benth.
3131. **Siris. Godhunchi.** *Albizzia odoratissima* Benth.
3133. *Albizzia Lebbek* Benth.
3134. **Harra.** *Terminalia Chebula* Retz.
3135. **Kindal. Bilimati.** *Terminalia paniculata* Roth.
3136. **Ain. Sasada. Karimati.** *Terminalia tomentosa* Wight & Arn.
3139. *Terminalia myriocarpa* Huerck & Muell.
3141. **Dhawra.** *Anogeissus latifolia* Wall.
3144. **Nana.** *Lagerstrœmia lanceolata* Wall.
3146. “ *parviflora* Roxb.
3147. “ *flos-reginæ* Retz.
3149. **Kalam.** *Mitragyna parviflora* Korth.
3154. **Moka.** *Schrebera Swietenioides* Roxb.
3157. **Dhengum.** *Cordia Macleodii* Hook.
3158. **Waras.** *Heterophragma Roxburghii* DC.
3160. *Stereospermum xylocarpum* B. & H.
3162. **Padal. Kareadri.** *Stereospermum chelonoides* DC.
3164. **Teak.** *Tectona grandis* Linn.
3166. **Khamer.** *Gmelina arborea* Roxb.
3167. **Balgi.** *Vitex altissima* Linn.
3168. *Cinnamomum glanduliferum* Meissn.
3169. (Sandalwood.) *Santalum album* Linn.
3170. **Kali Ein Kassie Khaga.** *Bridelia retusa* Spreng.
3171. *Morus lævigata* Wall.
3250. *Ptereospermum suberifolium* Lam.
- TANNING BARKS.**
3181. **Kath or Khair.** *Acacia Catechu* Willd.
3182. *Albizzia stipulata* Boir.

## GUMS.

3184. **Semla Gond.** Bauhinia retusa Roxb.  
 3191. **Kino.** Pterocarpus Marsupium Roxb.  
 3193. Acacia arabica Willd.  
 3194. Zizyphus Jujuba Lam (medicinal).  
 3196. Anogeissus latifolia Wall.

## RESINS.

3198. **Raf.** Shorea robusta Gaertn.  
 3200. Canarium strictum Roxb.

## DYE WOOD.

3207. **Tesu.** Butea frondosa Roxb (flowers).  
 3210. **Rasaut.** Berberis aristata DC.  
 3220. Morinda citrifolia.  
 3221. Ventilago maderaspatana Gaertn.  
 3224. **Lodh.** Symplocos cratægoides Buch.

## MISCELLANEOUS.

3204. **Mowha.** Bassia latifolia Roxb (candied flowers).  
 3186. **Khair.** Acacia Catachu Willd (extract).

## CEYLON.

## WOODS.

4126. **Kokkoddi.**  
 4128. **Othiya.**  
 4131. **Kedawaka.**  
 4132. **Vedu=Karnari.** Diospyros ovalifolia Wight.  
 4133. **Kekuna.** Canarium Zeylanicum Blume.  
 4136. **Tuvari.** Maba buxifolia Pers.  
 4142. Feronia elephantum Correa.  
 4143. Ficus glomerta Roxb.  
 4147. Atalantia missionis Oliver.  
 4150. **Ela=Mudella.** Barringtonia acuteangula Gaertn.  
 4153. **Etamba.** Mangifera Zeylanica Hook.  
 4160. Mallotus rhamnifolius Muell.  
 4161. **Kuladi. Kurundu.** Limonia alata Wall.

## MISCELLANEOUS.

4183. Coconut Oil (25 years old).  
 4194. Croton Oil Seeds. Croton sp.  
 4196. Theobroma sp. Chocolate Beans  
 (1st Quality).



4204. **Kasumba.** Bixa Orellana L Annatto Seed.

**SIAM.**

**GUMS.**

4981. Artocarpus integrifolia Linn.

4999. **See Siet Thet.** Acacia Catechu Willd.

**DYE WOODS.**

4984.

4989. Garcinia sp.

4991. **Turmeric.** Curcuma longa Linn.

4994. " "

4997. " "

4998. " (Jaw Tree Root).

**MISCELLANEOUS.**

4982. **Chan.** (Pitch).

4983. " (Resin).

4985. **Gamboge.** Garcinia Hanburyi Hook. (Gamboge).

4986. " Garcinia sp.

4988. (Palm fruit).

4990. **Plong.** (Mangrove Bark).

4992. (Dengoo Galls).

4993. **Maklua Seed.** Diospyros ehretioides Wall.

4995. (Stick Lac).

4996. Fishing Torches.

5000. **Cutch.** Acacia Catechu Willd.

5001. Edible Bird's Nests.

5002. **Saat.** Bixa Orellana L (Annato in shell).

5029. **Turmeric.**

5052. Job's Tears. Coix lachryma Linn.

5067. **Poot.** (Fruit of tree).

5068. **Kantarika.** (Seed Pod of)

5071. **Mahk.** (Betel Nut).

5072. **Phrik Tai.** Piper Nigrum Linn.

5073. (Bastard Cardamons).

5074. **Deplee.** Piper longum.

5075. **Kravan.** Elettaria Cardamonum Mat.

5076. **Phrik Duey Kai.** (Peppers).

5082. **Khum Chai.**

5084.	<b>Pak Chee Haum.</b>	(Coriander Seed).
5085.	<b>Kow Mow.</b>	(Pounded Rice).
5089.		(Coffee).
5095.		(Radish seed).
5098.	<b>Peanuts.</b>	<i>Arachis hypogaea</i> Linn.
5100.	<b>Tang Moe.</b>	(Watermelon seeds).
5101.		(Green Peas).
5103.		(Seeds of Samrong tree).
5104.	<b>Maa Tai.</b>	(Peas).
5105.	<b>Lan Tao.</b>	"
5106.		(Black Peas.
5116.	<b>Pungtalai.</b>	Seeds.

**SPAIN—CUBA.****WOODS. (Small Pieces).**

5601.	<b>Alamo Blanco.</b>	<i>Populus alba</i> Linn.
5603.	<b>Encina.</b>	<i>Quercus ilex</i> Linn.
5604.	<b>Quejigo.</b>	<i>Quercus muricata</i> Linn.
5605.	<b>Tejo.</b>	<i>Tarcus baccata</i> Linn.
5606.	<b>Box.</b>	<i>Buxus sempervirens</i> Linn.
5607.	<b>Lilo.</b>	
5608.	<b>Acebo.</b>	<i>Ilex aquifolium</i> Linn.
5609.	<b>Paraiso.</b>	<i>Ailanthus glandulosus</i> .
5610.	<b>Avellano.</b>	<i>Corylus Avellana</i> Linn.
5611.		
5612.	<b>Morera Blanca.</b>	<i>Morus alba</i> Linn.
5613.	<b>Ciruelo.</b>	<i>Prunus domestica</i> Linn.
5615.	<b>Albaricoque.</b>	
5616.	<b>Almendro.</b>	<i>Amygdalus communis</i> Linn.
5617.	<b>Peral.</b>	<i>Pyrus communis</i> Linn.
5618.	<b>Alamo Negro</b> <b>o Olmo.</b>	<i>Populus</i> sp.
5619.	<b>Acacia.</b>	<i>Acacia</i> sp.
5620.	<b>Olivo.</b>	<i>Olea Europaea</i> Linn.
5621.	<b>Chopo Real.</b>	<i>Populus</i> sp.
5622.	<b>Chopo Comun.</b>	<i>Populus alba</i> Linn.
5623.	<b>Morera Negro.</b>	<i>Morus rubra</i> L.
5624.	<b>Cerezo.</b>	

5625.	<b>Manzano.</b>	<i>Pyrus Malus</i> L.
5626.	<b>Fresno.</b>	<i>Fraxinus</i> sp.
5627.	<b>Arlo.</b>	<i>Berberis vulgaris</i> L.
5628.	<b>Guindal.</b>	<i>Prunus</i> sp.
5629.	<b>Pino Rodeno.</b>	<i>Pinus Pinaster</i> Soland.
5630.	<b>Pino Albar.</b>	<i>Pinus sylvestris</i> L.
<b>WOODS.</b>		
5631.	<b>Nogal.</b>	<i>Juglans regia</i> L.
5632.	<b>Saz.</b>	<i>Salix</i> sp.
5633.		
5634.	<b>Pino Doncel.</b>	<i>Pinus sylvestris</i> L.
5635.	<b>Sauce de Babilonio.</b>	<i>Salix Babylonica</i> L.
5636.	<b>Espino Majueto.</b>	<i>Crataegus oxycantha</i> L.
5637.	<b>Acer de Montpellier.</b>	<i>Acer monspiculanum</i> L.
5638.	<b>Mostajo.</b>	<i>Crataegus aria</i> L.
5640.	<b>Tila.</b>	<i>Tilia</i> sp.
5641.	<b>Abedul.</b>	<i>Betula alba</i> L.
5643.		
5644.	<b>Enebro.</b>	<i>Juniperus communis</i> L.
5645.		
5646.	<b>Olmo.</b>	<i>Ulmus campestris</i> L.
5647.	<b>Pino Carrasco.</b>	<i>Pinus maritima</i> L.
<b>MISCELLANEOUS.</b>		
5674.	<b>Zumaque curtiente.</b>	
5675.	Tanning Bark.	(Encino Bark).
5676.	” ”	(Pino Bark. Ground).
5678.	<b>Wina.</b>	(Bark Fiber).
5680.		“ ”

**LIBERIA.**

6315.	<b>Samuro Beans.</b>	<i>Physostigma venenosum</i> Balf. (Ordeal Beans of Old Calabar).
6324.	<b>Cocos.</b>	(Palm Nuts).
6326.		<i>Clinogyne dichotoma</i> Salisb. (Arrowroot Starch).
6327.	Camwood or Barwood.	<i>Baphia nitida</i> Lodd.

**AUSTRALIA.****WOODS.**

6803. Spotted Gum. (Paving Blocks, of *Eucalyptus maculata* Hook.)  
 6804. Tallowwood. (Paving Blocks, of *Eucalyptus microcorys* F. Muell.)  
 6807. Forest Oak. (Shingles of *Casuarina torulosa* Dryand.)  
 6824. *Dysoxylum Fraseranum* Benth.  
 6842. *Cedrela Toona* Roxb.

**PARAGUAY.****MEDICINAL PRODUCTS.** (Dried for commerce, not herbaria).**PLANTS.**

9371. **Amandiyu.** *Gossypium barbadense* L.  
 9394. **Tembetary.** *Zanthoxylum hyemale* A. St. Hil.  
 9400. **Pariaso.** *Melia Azedarach* L.  
 9404. **Aguara ybai.** *Schinus terebinthifolius* Raddi.  
 9407. **Aguariba guazu.** *Schinus Molle* Linn. (*S. Aroeira* Vell).  
 9411. **Visnal.** *Prosopis ruscifolia* Griseb.  
 9415. **Taperigua.** *Cassia divaricata* Nees.  
 9429. **Nburucaya.** *Passiflora caerulea* L.  
 9441. *Begonia cucullata* Willd.  
 9443. **Nanibu caa.** " *hirtella* Link.  
 9458. **Marcela paraguay.** *Achyrocline satureioides* DC.  
 9459. **Vira vira.** *Gnaphalium luteo-album* L.  
 9460. **Achicaria.** *Cichorium Intybus* L.  
 9462. **Cipa caballo.** *Xanthium spinosum* L.  
 9468. **Yribu retima.** *Eupatorium Indigofera* Parodi.  
 9507. **Amandiyu ra.** *Ipomœa gossypioides* Parodi.  
 9508. **Arachichu.** *Solanum nigrum* L.  
 9509. **Jua.** " *paniculatum* L.  
 9511. **Camambu.** *Physalis angulata* L.  
 9513. **Palan Palan.** *Nicotiana glanca* R. Grah.  
 9514. **Tupycha hu.** *Scoparia dulcis* L.  
 9519. **Poleo guazu.** *Lippia polystachya* Griseb.  
 9522. **Aguara panda.** *Stachytarpheta dichotoma* Vahl.

9523.		<i>Vitex montevidensis</i> Cham.
9526.	<b>Cabara loa.</b>	<i>Lantana Camara</i> L.
9527.	<b>Albahaca del Campo.</b>	<i>Ocimum carnosum</i> Link & Otto.
9534.	<b>Caa me.</b>	<i>Chenopodium anthelminticum</i> L.
9542.	“ <b>tay mi.</b>	<i>Polygonum acre</i> H. B. K.
9548.	<b>Caay atia.</b>	<i>Euphorbia hypericifolia</i> L.
9552.	<b>Caa piguy.</b>	<i>Parietaria debilis</i> Forst.
9553.	“ <b>piy.</b>	<i>Urtica urens</i> L.
9554.	<b>Pyno.</b>	“ <i>caracasana</i> Griseb.
9555.	<b>Amboy.</b>	<i>Cecropia palmata</i> Willd.
9558.	<b>Pyno guazu.</b>	<i>Urera baccifera</i> Gaudich.
9587.		<i>Adiantum cuneifolium.</i>
9589.	<b>Culantrillo mi.</b>	“ <i>platyphyllum.</i>
9593.	<b>Jzau.</b>	<i>Usnea australis.</i>
9666.	<b>Cabara caa.</b>	<i>Lantana Camara</i> L.

## STEMS.

9428.	<b>Nburucaya etc.</b>	<i>Passiflora edulis</i> Sims.
9432.	<b>Jaccaratia.</b>	<i>Carica dodecaphylla</i> Vell.
9505.	<b>Cabello de Angel.</b>	<i>Cuscuta racemosa</i> Mart.
9567.	<b>Jua peca morati.</b>	<i>Smilax Brasiliensis</i> Spreng.
9568.	“ <b>pyta.</b>	<i>Smilax fluminensis</i> Steud.
9580.	<b>Capii pe.</b>	<i>Panicum divaricatum</i> L.
9386.	<b>Naranja dulce.</b>	<i>Citrus Aurantium</i> L.
9387.	“ <b>hay.</b>	“ “ “
9388.	“ <b>hehe.</b>	“ “ “
9389.	<b>Sour Orage.</b>	“ <i>Bigaradia</i> Loisel. ( <i>C. Aurantium</i> L.).
9391.	<b>Ibira tay.</b>	<i>Pilocarpus pennatifolius</i> Lem.
9424.	<b>Guaviyu.</b>	<i>Eugenia pungens</i> Berg.
9426.	<b>Eucalypto.</b>	<i>Eucalyptus salicifolia</i> Cav. (cult.).
9427.	<b>Arazo.</b>	<i>Psidium Guajava</i> L.
9430.	<b>Mamon mi.</b>	<i>Carica Papaya</i> L.
9465.		<i>Eupatorium Indigofera</i> Parodi.
9499.	<b>Sapiranguy.</b>	<i>Tabernaemontana Hystrix</i> Steus.
9500.	<b>Tayagua Naranja.</b>	<i>Crataeva Tapia</i> L.
9501.	<b>Arachihu pochy.</b>	<i>Spigelia glabrata</i> Mart.

9504. **Petereby hu.** *Cordia Gerascanthus* L.  
 9516. **Verbasco.** *Verbascum Thapsus* L.  
 9539. *Phytolacca dioica* L.
- FLOWERS.**
9385. **Naranja Pete.** *Citrus Aurantium* L.  
 9417. *Acacia macracantha* Humb. & Bonpl.  
 (A. Aroma Gill).  
 9444. **Sauco.** *Sambucus australis* Cham. & Schl.  
 9451. **Mbui mi flor.** *Solidago microglossa* DC.  
 9453. **Chilca.** *Baccharis calliprinos* Griseb.  
 9454. **Chilca.** *Baccharis salicifolia* Pers.  
 9463. **Manzanilla.** *Pectis odorata* Griseb.  
 9502. **Borrajo.** *Borago officinalis* L.  
 9524. **Verbena.** *Lippia citriodora* H. B. K.
- FRUITS.**
9398. **Cedro blanco.** *Cedrela fissilis* Vell.  
 9420. **Tatane.** *Pithecolobium scolare* Griseb.  
 9421. *Prosopis ruscifolia* Griseb.  
 9422. **Guayacara.** *Cæsalpinia melanocarpa* Griseb.  
 9449. **Nandypa.** *Genipa Americana* L.  
 9524. **Verbena.** *Lippia citriodora* H. B. K.
- ROOTS.**
9414. **Vyra hehe.** *Periandra dulcis* Mart.  
 9418. **Uruzu hehe.** *Rhynchosia diversifolia* Micheli.  
 9433. **Tayuaya guzu.** *Trianosperma piscifolia* ?  
 9434. " " *Cayaponia Tayuya* (Mart.) Cogn.  
 (*Trianosperma Tayuya* Mart).  
 9445. **Caa cangay mi.** *Galium hirtum* Lam.  
 9446. **Ipecacuana del pragauay.** *Richardsonia pilosa* H. B. K.  
 9447. **Caa cangay guazu.** *Galium trifidum* L.  
 9448. *Rubia tinctorum* L. (cult.)  
 9464. **Achicaria.** *Cichorium Intybus* L.  
 9537. *Petiveria tetrandra* Gomez.  
 9538. **Vetivert.** *Andropogon squarrosus* L.  
 9540. **Salsa muera.** *Muhlenbeckia sagittifolia* Meissn.  
 9546. **Caa pari.** *Euphorbia papillosa* St. Hil.

9550. **Tarape.** *Dorstenia Brasiliensis* Lam.  
 9559. **Cara pia.** “ *Cayapia* Vell.  
 9565. **Capii ybi.** *Sisyrinchium palmifolium* L.  
 9574. **Capii caty mi.** *Kyllingia odorata* Vahl.  
 9575. **Capii caty guazu.** “ *triceps* Rottb.

## BARKS.

9408. *Quebrachia Balansae* (Engl.) Griseb.  
 (Schinopsis Balansae Engl).  
 9419. **Yvira pita.** *Peltophorum Vogelianum* Walp.  
 9450. **Nandipa.** *Genipa Americana* L.

## RIND.

9379. **Limon.** *Citrus Medica* L.  
 9380. **Naranja hay.** “ *Aurantium* L.  
 9381. **Cascara de naranjas amargas.** “ *vulgaris* Risso.  
 9382. **Naranja pete.** “ *Aurantium* L.

## BARK CHIPS.

9376. **Palo Santo.** *Bulnesia Sarmienti* Lorentz.  
 9425. **Nangapiry.** *Eugenia uniflora* Berg ?

## EXTRACT.

9498. *Quebracho* Extract (70% tannin).

## TEAS. (From different commercial firms).

9656. **Yerba Virgen Especial.** *Ilex Paraguensis* A. St. Hil.  
 9657. **Mate leaves.** “ “ “  
 9658. **Yerba te or Mate te** “ “ “  
 (Powdered).  
 9659. **Ilex Mate.** “ “ “  
 9664. **Paraguay Tea.** “ “ “

## BRAZIL.

## ROOTS.

11010. **Peripirioca.**  
 11087. **Sarsaparilla.** *Smilax Spruceana* A. D. C.

## OILS.

11121. **Oleo de Piqui.**  
 11145. **Balsam Capiri.**  
 11157. **Castor Oil.**

## RESINS &amp; GUMS.

11212. **Resina de Almecega.**  
 11213. " " **Jatoba.** (Fossil) *Hymenaea Courbaril* L.  
 11216. " " **Angico.**  
 11219. " " **Jatoba.** (Recent.) *Hymenaea Courbaril* L.  
 11228. **Goma de Batata.** *Ipomoea pisonis* (Mart.) ?  
 11238. **Resina de Jatahuy.**  
 11241. **Brea de terra.**

## COTTONS.

11271. Ginned Cotton. From Natal, State of Rio Grande del Norte.  
 11272. Cotton. " " " " "  
 11276. **Pello de Croato.** " Ceara.  
 11277. **Baina ou la de Barriguda.** From Bahia.  
 11280. **Baina de Pocote.** " Ceara.  
 11281. **Pello de Croato.** " "  
 11282. " " **Grao de bode.** " "  
 11283. **Pello de Imbiratanha.** " "  
 11286. **Semente de Algodon.** (Cotton seed).

## FRUITS &amp; SEEDS.

11242. **Yndaya.** Palm Nuts from Minas Geraes.  
 11296. **Jequirite.** *Abrus precatorius* L.  
 11297. " " " "  
 11298. **Tongo.** **Tonka Bean.** *Dipteryx odorata* (L) Willd.  
 11299. **Semente de pau branco fructo.**  
 11312. **Gergelim.**  
 11331. **Pichurium.** *Nectandra Puchury-major* Nees & Mart?  
 11343. (Palm Nuts).

## VENEZUELA.

## WOODS. (Small pieces).

13009. **Clemon.** *Thespesia populnea* Soland.  
 13010. **Aspai o Cacaõ.** *Quararibea turbinata* Poir.  
 13014. **Huecito.** *Prockia* sp.  
 13022. **Durote.** *Inocarpus provacensis* ?  
 13025. **Taya.**



13032.	<b>Cachimbo.</b>	
13035.	<b>Caobano blanco.</b>	Guarea Ruagea C. DC.
13040.	<b>Cedro.</b>	
13042.	<b>Caoba.</b>	Swietenia Mahogani DC.
13044.	<b>Cartna or Balustre.</b>	Tecoma sp.
13051.	<b>Manzanillade Montana.</b>	Rhus juglandifolia Willd.
13053.	<b>Garcigonzalez.</b>	
13054.	<b>Gateado.</b>	Astronium sp.
13063.	Canada.	
13079.	<b>Lagunaro.</b>	Pterocarpus indicus Willd.
13081.	<b>Majonio.</b>	Lonchocarpus sp.
13082.	<b>Aco.</b>	“ violaceus Oliver ?
13084.	<b>Borracho.</b>	Piscidia Erythrina L.
13085.		Geoffræa sp.
13090.	<b>Cereipo.</b>	Myrospermum sp.
13091.	<b>Estorage.</b>	“ “
13098.	<b>Canafistula.</b>	Cassia sp.
13099.	“ <b>macho.</b>	“ grandis L.
13101.	<b>Urape.</b>	Bauhinia multinervia DC.
13102.	<b>Palo d'Arco.</b>	Tecoma sp.
13106.	<b>Alcornoque.</b>	Hymenæa floribunda H. B. K.
13107.	<b>Aceite.</b>	Copaifera officinalis L.
13112.	<b>Cuji.</b>	Acacia sp.
13113.	<b>Saman.</b>	Pithecolobium Saman Benth.
13114.	<b>Volador.</b>	
13118.	<b>Mangle.</b>	
13119.	<b>Balustre.</b>	Centrolobium robustum Mart.
13123.	<b>Angelino.</b>	Homalium racemosa Jacq.
13125.	<b>Cucharo.</b>	Condaminea tinctoria DC.
13127.	<b>Olivo.</b>	Jacquinia armillaris Jacq.
13139.	<b>Berraco.</b>	Tabernaemontana psychotrifolia H. B. K.
13142.	<b>Membrillo.</b>	
13146.	<b>Amargo.</b>	
13147.	<b>Pardillo Bobo.</b>	Cordia reticulata Vahl.
13149.	<b>Pardillo.</b>	“ Gerascanthus L.
13153.	<b>Chiripa.</b>	

13170. **Araguaney.** *Tecoma spectabilis* Planch. & Linden.  
 13171. **Limoncillo.** *Bravaisia floribunda* DC.  
 13173. **Guarantaro amarillo.**  
 13176. **Laurel negro.** *Nectandra turbacensis* Nees.  
 13179. **Albericoque.**  
 13187. **Mora.** *Dimorphandra Mora* B. & H.  
 13192. **Toco.** *Crataeva gynandra* L.  
 13196. **Mapurite.** *Zanthoxylum* sp.  
 13213. **Copey.** *Clusia rosea* Jacq.

## FRUITS &amp; SEEDS.

13221. **Mustard.** *Sinapis nigra* L.  
 13237. **Gingilie or Ajonjoli.** *Sesamum Indicum* L.  
 13260. **Cevadilla or Sabadilla.** *Schoenecaulon officinale* A. Gray.  
 13265. **Ojo de Samuro.** *Mucuna pruriens* DC.  
 13267. **Tongo. Tonka Bean.** *Dipteryx odorata* (L.) Willd.  
 13329. **Dividive.** *Caesalpinia coriaria* Willd.  
 13368. **Secua.** *Fevillea trilobata* L.

## ROOTS.

13278. **Raiz de Mato.**  
 13301. **Sarsaparilla.** *Smilax* sp.  
 13314. *Chusquea scandens* Kunth.  
 13333. **Bejuco de Cadena.** *Bauhinia splendens* H. B. K.

## BARKS.

13273. **Cucharo.** *Condaminea tinctoria* DC.  
 13274. **Bosua.** *Zanthoxylum ochroxylum* DC.  
 13275. **Cort. de Torco.** *Nectandra sanguinea* Roland.  
 13279. **Corteza de Balsamo.**  
 13281. **Cipo.**  
 13282. **Cuspa.** *Cusparia febrifuga* Humb.  
 13285. **Granadillo.**  
 13288. **Cereipo.**  
 13299. **Corteza amarilla.**  
 13303. **Cort. Simaruba.**  
 13307. **Cort. de Say.** *Weinmannia Balbisiana* H. B. K.  
 13308. **Corteza de Quina.**

13309. **Merei.**  
 13334. **Red Mangrove.** Rhizophora Mangle L.  
**EXTRACT.**  
 13310. **Aloes.** Aloe succotrina Lam.?  
**LEAVES.**  
 13293. **Guachamacan.** Malouetia nitida Spruce.  
 13294. (Coca leaves).  
 13297. **Sen Silvestre.**

**RESINS.**

13356. **Caricarito.** Hedwigia balsamifera Sw.  
 11358. **Algorrobo** (No. 1.) Hymenæa Courbaril L.  
 11360. " (No. 2.) " " "  
 13361. " (No. 3.) " " "  
 13365. **Yabo.** Cercidium viride.

**COTTONS.**

13250. **Algodon armarillo.**  
 13337. **Barcelona cotton.**

**STARCHES.**

13340. **Yuca.** Manihot utilissima Pohl.  
 13346. **Maize.** Zea Mays L.  
 13347. **Sweet Potato.** Ipomœa Batatas Poir.  
 13349. **Potato.** Solanum tuberosum L.  
 13350. **Apio.** Arracacia xanthorrhiza Bancr.  
 13351. **Mapuei.** Discorea trifida L.  
 13352. **Chica.** Campsiandra comosa Benth.  
 13344. **Banana Flour.** Musa sapientum L.

**HEMPS & FIBERS.**

13317. **Pita hemp.** Furcraea sp.  
 13318. " " (Braided.)  
 13320. **Jipijapa.** Carludovica sp.  
 13324. **Cogollo fiber.**  
 13316. **Moriche** " Mauritia flexuosa L.

**BRITISH GUIANA.****OILS & SYRUPS.**

13513. **Cocoanut Oil.**  
 13514. **Crabwood** " Carapa Guianensis publ.

13516. **Kokerite** Oil. Maximiliana regia Mart.  
 13520. Native  
Copaiba Oil. Copaifera sp.  
 13515. Lemon Syrup.  
 13517. **Cassareep**. Juice of Mainhot utilissima Pohl.  
 13519. Cherry Syrup.

## MISCELLANEOUS.

13525. Locust Gum. Heymenæa Courbaril L.  
 13528. Castor Oil Seeds.  
 13531. Cassava Bread.  
 13576. **Wallaba** Shingles. Eperua falcata Hubl.  
 13584. **Dakamabally**  
Starch. Andira exelsa H. B. K.

## TRINIDAD.

## WOODS.

14042. **Carapa** Shingles. Carapa Guianensis Hubl.  
 14043. Fustic. Chlorophora tinctoria Gaudich.

## GUATEMALA.

## WOODS.

15850. **Cuhalote**.  
 15985. **Raiz de Balahudla**. (Bark).

## SEEDS &amp; FRUITS.

15505. **Semilla de Higuera**.  
 15507. **Nueces**.  
 15526. **Cafe Cerezo**.  
 15529. Sesame Seeds. Sesamum indicum L.  
 15931. **Cordoncillo**. Piper angustifolium R. & P.  
 15937. **Cocos**.  
 15939. **Oregano**. (Plant). Origanum vulgare L.  
 15940. **Yixte**. (A prepared meal).  
 15941. Chocolate.  
 15943. Cotton.

## FIBERS &amp; COTTONS.

15905. **Fibra de Jolol**.  
 15907. **Fibra de Henequen**.

15909. **Cocotero=fiber.**  
 15919. **Algodon Ixcaco.**  
 15942. **Algodon.**

## MISCELLANEOUS.

15976. **Chichigua** bark.  
 15997. India Rubber.

## MEXICO.

## RESINS &amp; GUMS.

16025. **Copal.** Hymenaea sp.?  
 16472. **Guayote** gum.

## FRUITS &amp; SEEDS.

16095. **Huizache** pods.  
 16103. **Corozo** nuts.  
 16105. **Cocos.**  
 16115. Dried Red Peppers.  
 16116. " " "  
 16117. " Cascabel Peppers.  
 16502. Wild Black Pepper.  
 16527. Rabbit's teeth Plant Seeds.

## MISCELLANEOUS.

16455. **Chicle.** (Chewing gum).  
 16107. Sarsaparilla. (Roots).

## DEPARTMENT OF GEOLOGY.

### FOSSILS.

1. *Cryptozoon proliferum*, Hall, Calciferous, Saratoga, N. Y., 1.
2. *Eozoon Canadense*, Dawson, Laurentian, Petite Nation, Can., 1.
3. *Scolithus linearis*, Hall, Potsdam, York, Pa., 4.
4. *Strophomena alternata*, Con., Ordovician, Cincinnati, O., 2.
5. *Conularia pyramidata*, Hoeningh, Ordovician, May, Calvados, France, 2.
6. *Dalmania socialis*, Barr., Ordovician, Bohemia, 2.
7. *Receptaculites Oweni*, Hall, Galena Limestone, Ills., 4.
8. *Selenoides lowensis*, Owen, Galena Limestone, Ills., 3.
9. *Monticulipora ramosa*, D'Orb., Trenton, Tyrone, Ky., 1.
10. *Tentaculites*, Ordovician, United States, 1.
11. *Favistella stellata*, Hall, Cincinnati Group, Indiana, 1 large, 2 small specimens.
12. *Pleurotomaria subconica*, Hall, Trenton Group, Beloit, Wis., 3.
13. *Cypricardites rotundatus*, Hall, Trenton Group, Beloit, Wis., 3.
14. *Maclurea Bigsbyi*, Hall, Trenton Group, Knoxville, Tenn., 3.
15. *Diplograptus pristis*, Hall, Utica Slate, Utica, N. Y., 3.
16. *Monticulipora delicatula*, Nich., Cincinnati Group, Warren Co., Ohio, 3.
17. *Streptelasma corniculum*, Hall, Cincinnati Group, Warren Co., Ohio, 3.
18. *Leptoena sericea*, Sow., Hudson River Group, Richmond, Ind., 1.
19. *Climacograptus typicalis*, Cincinnati Group, Batavia, O., 1.
20. *Orthis lynx*, Eich., Hudson River Group, Rising Sun, Ind., 4.
21. *Orthis sinuata*, Hall, Hudson River Group, 3.
22. *Orthis lynx*, Eich., " " " 3.
23. *Rhynchonella dentata*, Hall, Hudson River Group, Richmond, Ind., 8.
24. *Rhynchonella capax*, Con., Hudson River Group, Waynesville, Ohio, 5.
25. *Orthis occidentalis*, Hall, " " " Cincinnati, Ohio, 4.

26. *Strophomena fracta*, Meek, Hudson River Group, Richmond, Ind., 5.
27. *Strophomena alternata*, Hudson River Group, 5.
28. *Streptorhynchus sulcatus*, Vern., Hudson River Group, 4.
29. *Streptorhynchus planoconvexus*, Hall, Hudson River Group, Cincinnati, Ohio, 4.
30. *Ambonychia radiata*, Hall, Hudson River Group, Ohio(?), 3.
31. *Cyclonema biley*, Con., Hudson River Group, Cincinnati, O., 5.
32. *Orthoceras Duseri*, H. & W., " " " 2.
33. *Pentamerus oblongus*, Sow., Clinton Group, Rochester, N. Y. 2.
34. *Lingulella cuneata*, Con., Medina Sandstone, Medina, N. Y., 1.
35. *Arthropycus Harlani*, Con., Medina Sandstone, " " 1.
36. *Astylospongia inciso-lobata*, Roem., Upper Silurian, Perry Co., Tenn., 24.
37. *Astylospongia stellato-sulcatim*, Roem., Upper Silurian, Perry Co., Tenn., 15.
38. *Astylospongia praemorsa*, Roem., Upper Silurian, Perry Co., Tenn., 25.
39. *Palaeomanon cratera*, Roem., Upper Silurian, Perry Co., Tenn., 20.
40. *Astraeospongia* sp., Roem., " " " " 20.
41. *Caryocrinus ornatus*, Say, Niagara, Chicago, 7.
42. *Pleurotomaria*, Niagara, Chicago, 6.
43. *Ichthyocrinus corbis*, W. & M., Niagara Group, Chicago, 5.
44. *Saccocrinus* sp., Niagara Group, Chicago, 15.
45. *Diphyphyllum caespitosum*, Hall, Niagara Group, Chicago, 2.
46. *Monomorella* sp., Niagara Group, Chicago, 3.
47. *Illaenus insignis*, Hall, Niagara Group, Chicago, 4.
48. *Cladopora reticulata*, Hall, " " 2.
49. *Favosites favosus*, Goldf., " " 4.
50. *Orthoceras annulatum*, Sow., Niagara Group, Lemont, Ills., 2.
51. *Phragmoceras* sp., Niagara Group, Chicago, 2.
52. *Strombodes pentagonus*, Goldf., Niagara Group, Chicago, 4.
53. *Calymene Blumenbachii*, var. *Niagarensis*, Hall, Niagara Group, Lemont, Illinois, 20.
54. *Pentamerus oblongus*, Sow., Niagara Group, Chicago, 5.
55. *Zaphrentis turbinatum*, Hall, " " 3.
56. *Orthoceras Scammoni*, McC., " " 1.
57. *Halysites catenulatus*, Linn., " Louisville, Ky., 2.

89. *Spirifera medialis*, Hall, Moscow Shale, Moscow, N. Y., 8.
90. *Naticopsis gigantea*, Hall, Hamilton Group, Ottumwa, Can., 7.
91. *Orthis impressa*, Hall, Hamilton Group, Rockford, Iowa, 3.
92. *Aspidosoma teschbeimanum*, Roem., Upper Devonian, Bundenbach, R. Prussia.
93. Fucoid, Subcarboniferous, Southern Indiana, 1.
94. *Pecopteris villosa*, Brgt., Carboniferous, Mazon Creek, Grundy Co., Ills.
95. *Neuropteris hirsuta*, Lesq., Coal Measures, Mazon Creek, Grundy Co., Ills., 10.
96. *Trigonocarpum trioculare*, Hild., Carboniferous, Youngstown, Ohio, 3.
97. *Annularia inflata*, Lesq., Coal Measures, Mazon Creek, Grundy Co., Ills., 2.
98. *Lepidodendron veltheimianum*, Brgt., Subcarboniferous, Neider Burbach, Germany, 2.
99. *Lepidodendron*, Dona Ana Co., New Mexico.
100. *Cyathophyllum Murchisoni*, Carboniferous, Bristol, Eng., 2.  
2 specimens cut longitudinally and transversely and polished to show structure.
101. *Cyathophyllum*, Carboniferous, Bristol, Eng., 3 polished specimens.
102. *Lithostroton irregulare*, Carboniferous, Bristol, England, 2 polished specimens.
103. *Lithostroton*, Carboniferous, Bristol, Eng., 2 polished spec.
104. *Lithostroton Canadense*, St. Louis Group, Glasgow, Ky., 1.
105. *Syringopora Romulosus*, Goldf., Subcarboniferous, Indiana, 1.
106. *Dibunophyllum*, Carboniferous, Fosterly, Durham, England, 1 large, polished Slab.
107. *Platycrinus hemisphericus*, M. & W., Keokuk Group, Crawfordsville, Ind., 3.
108. *Batocrinus Indianensis*, Lyon, Keokuk Group, Crawfordsville, Ind., 2.
109. Crinoid stems (Enlarged), Subcarboniferous, Barren Co., Kentucky, 4.
110. *Pentremites Godoni*, DeFr., Kaskaskia Group, Meade Co., Kentucky.
111. *Pentremites pyriformis*, Say, Kaskaskia Group, 5.
112. *Pentremites cervinus*, Hall, Kaskaskia Group, Chester, Ia., 2.



58. *Helolites interstinctus*, Linn., Niagara Group, Louisville, Ky., 1.
59. *Pisocrinus gemmiformis*, Asm., " St. Paul, Ind., 5.
60. *Retzia evax*, Hall, Niagara Group, Waldron, Ind., 5.
61. *Rhynchonella neglecta*, Hall, Niagara Group, Waldron, Ind., 5.
62. *Rhynchonella Indianensis*, Hall, " " 5.
63. *Rhynchonella acinus*, Hall, " " 5.
64. *Pentamerus oblongus*, Sow., " Yellow Springs,  
Ohio, 2.
65. *Periechocrinus moniliformis*, Upper Silurian, Dudley, Eng., 1.
66. *Orthoceras inchoatum*, Barr., " Lockhow, Bohemia  
Specimen cut longitudinally to show internal structure, 1.
67. *Eridophyllum Simcoense*, Bill., Upper Helderberg, Dansville,  
N. Y., 1.
68. *Phacops cephalotes*, Cordo, Silurian, Bohemia, 1.
69. *Strophodonta cavumbona*, Hall, Lower Helderberg, N. Y., 5.
70. *Rensselaeri ovoides*, Eaton, Oriskany Sandstone, Schoharie,  
N. Y., 4.
71. *Heliophyllum Greeni*, Davis, Corniferous, Falls of the Ohio, 2.
72. *Atrypa reticularis*, Linn, Corniferous, Charlestown, Ind., 4.
73. *Syringopora*, Devonian, Falls of the Ohio, 1.
74. *Favosites Emmonsi*, Roem., Devonian, Louisville, Ky., 1.
75. *Athyris vittata*, Hall, Devonian, Indiana, 5.
76. *Atrypa primipalaris*, Devonian, Geroldstein, Prussia.
77. *Atrypa reticularis*, Linn., " " " 5.
78. *Atrypa aspera*, " " " 5.
79. *Spirigera*, " " " 15.
80. *Orthis striatula*, Schloth., " " " 4.
81. *Acervularia Davidsoni*, E. & H., Hamilton Group, Iowa City,  
Iowa, 2 large, polished specimens, 2.
82. *Heliophyllum Halli*, E. & H., Hamilton Group, Leroy, N. Y., 2.
83. *Dictyophyton tuberosum*, Hall, Chemung Group, Bath,  
Steuben Co., N. Y., 3.
84. *Michelinia insignis*, Roem., Upper Devonian, Charleston, Ind., 1.
85. *Phillipsastrea gigas*, Owen, Upper Devonian, Crab Orchard,  
Ky., 1.
86. *Atrypa reticularis*, Linn., Moscow Shale, Moscow, N. Y., 8.
87. *Atrypa aspera*, Schloth., " " " " 8.
88. *Athyris spiriferoides*, Eaton, " " " " 2.

113. *Productus semireticulatus*, Phil., Carboniferous, Visi, Belgium, 3.
114. *Orthis Michelini*, L'Eveille, Sub-carboniferous, Buttonhole Knob, Ky., 5.
115. *Spirifera ovalis*, Phil., Carboniferous, Dublin Co., Ireland, 3.
116. *Spirifera pinguis*, Sow., " " " " 2.
117. *Spirifera linearis*, " " " " 3.
118. *Rhizodus Hibberti*, Ag., Carboniferous, Edinburgh, Scotland, 1. (Tooth).
119. *Nautilus*, Subcarboniferous, Franklin Co., Ky., 1.
120. *Palaeoniscus Freieslebeni*, Blu., Permian, Saxony, 2.
121. *Callipteris conferta*, Stern., Permian, Lebach, Germany, 1. Leaf impressions.
122. *Terebratula elongata*, Schloth., Permian, Poesneck, Thuringia, 20.
123. *Camarophoria schlotheimi*, Bach, Permian, Poesneck, Thuringia, 20.
124. *Equisetum*, Keuper, Stuttgart, Wurtemberg, 2. (Stems).
125. *Equisetum arenaceum*, Brown, Keuper, Stuttgart, Wurtemberg, 1. (Stem).
126. *Encrinus liliiformis*, Schloth., Muschelkalk, Jena, Germany, 1.
127. *Nucula strigillata*, Goldf., Triassic, Tyrol, Italy. 10.
128. Ammonite, Triassic, Austrian Tyrol, 2 cut and polished specimens.
129. *Arcestes*, Triassic, Golling, Austria, 2 cut and polished specimens.
130. *Ischypterus tenuiceps*, Newb., Triassic, Connecticut Valley, 2.
131. *Ancylogonatum Carbonacium*, Roem., Lower Oolite, Whitby, England, 2. (Stems).
132. *Zamia gigantea*, Lias, Whitby, Eng. 2. (Fragments of leaves).
133. *Otozamites gracilis*, Fiestm., Inferior Oolite, Whitby, Eng., 2. (Fragments of leaves).
134. *Cycadoidea megalophylla*, Buck., Purbeck Beds, Isle of Portland, England, 1. (Section of Trunk).
135. *Apiocrinus Parkinsoni*, Schloth., Bradford Clay, Bradford, England, 2.
136. *Lumbricaria intestinum*, Munst., Lithographic Slates, Bavaria.
137. *Hemicidaris crenularis*, Law., (?) Upper Jurassic, Yonne, France, 3.

138. *Hemicidaris intermedia*, Fleming, Upper Oolite, Calve, England, 2.
139. *Hoboclypus agariciformis*, Forbes, Lower Oolite, Crickly, England, 1.
140. *Rhynchonella tholia*, D'Orb., Lias, Calvados, France, 3.
141. " *tetraedra*, Sow., Middle Lias, England, 4.
142. " *obsoleta*, Inferior Oolite, Bath, Somerset, Eng., 3.
143. " *vistulica*, Middle Jurassic, Cracow, Poland, 3.
144. " *rimosa*, Buch., Lias, Balingen, Wurtemberg, 5.
145. *Spirifera Walcotti*, Lower Lias, Radstock, England, 3.
146. *Rhynchonella plicatella*, Sow., Inferior Oolite, Broad Windsor, England, 4.
147. *Aeger tipularius*, Schloth., Lithographic Slates, Bavaria, 3 fine specimens, 3.
148. *Lima gigantea*, Sow., Lower Lias, Lyme Regis, England, 1.
149. *Nautilus striatus*, Sow., Middle Lias, England, 2 large and 2 small specimens.
150. *Amaltheus margaritatus*, Sow., Lias, Lyme Regis, England, 2.
151. *Cardioceras cordatum*, Sow., Middle Jurassic, Ardennes, France, 4.
152. *Cardioceras vertebrale*, Sow., Lias, Lyme Regis, England, 1.
153. *Arietites stellaris*, Sow., Lower Lias, Lyme Regis, England, 1 specimen, 12 inches in diameter.
154. *Liparoceras Henleyi*, Sow., Middle Lias, Charmouth, Eng., 2.
155. *Ludwigia Murchisonæ*, Sow., Lower Oolite, Sherborne, Dorset, England, 3.
156. *Hildoceras bifrons*, Brug., Upper Lias, Whitby, Eng., 3.
157. " " " " " Laverpilliere, France, 2.
158. *Arietites bisulcatus*, Brug., Lower Lias, Eng., 1 spec. 12 in. in diameter.
159. *Coeloceras commune*, Sow., Upper Lias, Whitby, Eng., 3.
160. *Stephanoceras Humphriesianum*, Sow., Inferior Oolite, Sherborne, Eng., 2 large and 2 small specimens.
161. *Stephanoceras Blagdeni*, Sow., Middle Jurassic, Dorset, Eng., 1.
162. " *Braikenridgi*, Sow., Lower Oolite, Sherborne, Dorset, Eng., 2.
163. *Phylloceras heterophyllum*, Sow., Upper Lias, Whitby, Eng., 1 specimen, 10 inches in diameter.

164. *Olcostephanus gigas*, D'Orb., Upper Jurassic, Eng., 1 specimen 12 inches, 2 specimens 8 inches in diameter.
165. *Lytoceras fimbriatum*, Sow., Middle Lias, Charmouth, Eng., 1.
166. *Aegoceras*, Lias, England, specimen 9 in. in diameter, 1.
167. *Cosmoceras Koenighi*, Middle Jurassic, Ardennes, France, 2.
168. " *Elizabethae*, Pratt, Oxford Clay, Christian Malford, England, 2.
169. *Parkinsonia neuffensis*, Opp., Middle Jurassic, Bayeux, Malvados, France, 2.
170. *Macrocephalites macrocephalus*, Middle Jurassic, Wurtemberg, 2.
171. *Parkinsonia Parkinsoni*, Sow., Inferior Oolite, Eng., 4.
172. *Perisphinctes plicatilis*, Sow., Middle Jurassic, Yonne, France, 1.
173. *Aptychus latus*, Kimmeridge Clay, Ely, Eng., 5.
174. *Belemnites giganteus*, Middle Jurassic, Wurtemberg, 4.
175. " *explicatus*, Upper Jurassic, Moscow, Russia, 4.
176. " *elegans*, Middle Jurassic, Hickingen, Wurtemberg, 3.
177. *Geoteuthis bollensis*, Zict., Upper Lias, Holzmaden, Wurtemberg, 1.
178. *Leptolepis*, Lithographic Slates, Solenhofen, Bavaria, 2.
179. *Thrissops*, " " " " " 2.
180. *Dapedius punctatus*, Agass., Upper Lias, Wurtemberg, 2.
181. *Ichthyosaurus communis*, Conyb., Lias, Lyme Regis, Eng., (Jaws and part of Skull).
182. *Betulites vestii oblongus*, Lx., Dakota Group, Ellsworth Co., Kansas, (4 leaf impressions).
183. *Sterculia Snowii*, Lx., Dakota Group, Ellsworth Co., Kansas, (2 leaf impressions).
184. *Credneria triacuminata*, Ha., Upper Cretaceous, Blankenberg, Hartz, Germany, (1 leaf impression).
185. *Protophyllum praestans*, Lx., Dakota Group, Ellsworth Co., Kansas, (1 leaf impression).
186. *Sassafras acutilobum*, Lx., Dakota Group, Ellsworth Co., Kansas, (2 leaf impressions).
187. *Placoscyphia labrosa*, Smith, Middle Greensand, Folkestone, England, 3.
188. *Cyclolites ellipticus*, Lam., Cretaceous, Gosau, Austria, 1 spec.

189. *Hippurites radiosus*, Desm., Upper Cretaceous, Lamerac, France, 2.
190. *Radiolites Jouanetti* Lapeirousia, D'Orb., Upper Cretaceous, Lamerac, France, 2.
191. *Marsupites ornatus*, Sow., Upper Chalk, West Brighton, England, 1.
192. *Ananchytes ovata*, Leske, Upper Chalk, Kent, England, 6.
193. " " " " " " Wendon, France, 5.
194. *Placenticerus placenta*, De Kay, Upper Cretaceous, Cheyenne River, Black Hills, So. Dakota, 5.
195. *Nautilus elegans*, Sow., Lower Chalk, England, 1.
196. *Ananchytes gibba*, DeFr., Upper Chalk, Elboefu, France, 1.
197. *Micraster coranguinum*, Lam., Upper Cretaceous, France, 2.
198. " " " " " " testudinarium, Goldf., Upper Cretaceous, Rouen, France, 2.
199. *Hemiaster Fourneli*, Upper Cretaceous, Constantine, Algeria, 3.
200. *Micraster turonensis*, Upper Cretaceous, La Valette, France, 2.
201. *Rhynchonella vespertilio*, " " " " Charente, France, 4.
202. *Terebratula Leonensis*, Cretaceous, Leon River, Texas, 3.
203. *Ostrea scyphax*, Coq., Upper Cretaceous, Batna, Algeria, 1.
204. *Terebratula neryiensis*, D'Arch., Cretaceous, Tournay, Belgium, 3.
205. *Acanthoceras rothomogensis*, DeFr., Lower Chalk, Dover, England, 6.
206. *Vola quadricostata*, Sow., Upper Cretaceous, Maestricht, Holland, 2.
207. *Spondylus spinosus*, Sow., Upper Chalk, Kent, England, 2.
208. *Exogyra sinuata*, Lower Greensand, Maidstone, Kent, Eng. 2.
209. *Spondylus santonensis*, D'Orb., Upper Cretaceous, La Valette, France.
210. *Inoceramus sagensis*, Owen, Cretaceous, Cheyenne River, Black Hills, South Dakota, 4.
211. *Inoceramus*, Tertiary, Canon City, Col., 4.
212. *Pleurotomaria gurgita*, Gault., Ardennes, France, 3.
213. *Lucina subundata*, M. & H., Ft. Pierre Group, Montana, 4.
214. *Rostellites Texanus*, Cour., Cretaceous, Shell Mts., Texas, 4.
215. *Clupea bravissima*, Blo., Cretaceous, Lebanon, Syria, 4.
216. *Nautilus Dekayi*, Morton, Cretaceous, Cheyenne River, Black Hills, So. Dakota, 4.

217. *Baculites compressus*, Say., Cretaceous, Cheyenne River, Black Hills, So. Dakota, 4.
218. *Hoplites splendens*, Sow., Gault Clay, Folkestone, Eng., 6.
219. *Scaphites nodosus*, Owen, Ft. Pierre Group, Cheyenne River, Black Hills, So. Dakota, 10.
220. *Crioceras emmerici*, Lower Cretaceous, Churon Bases, Alpes, France, 2.
221. *Nummulites complanatus*, Eocene, Kressenberg, Bavaria, 10.
222. *Echinolampas Kleinii*, Agass., Oligocene, Bunde, Westphalia, 3.
223. *Lobocarcinus Paulino-Wurtembergicus*, H. V. Meyer, Eocene, Makattam, near Cairo, Egypt, 3.
224. *Lorenia Forbesi*, Miocene, Victoria, Australia, 3.
225. *Dreissena conglobata*, Partsch, Pliocene, Vienna, Austria, 1.
226. *Pecten hemphilli*, Tertiary, San Diego, Cal., 3.
227. " *flabelliformis*, Pliocene, Asti, Piedmont, Italy, 3.
228. *Cardium planicostum*, Eocene, Claiborne, Alabama, 2.
229. *Cytherea nitida*, Eocene, Paris Basin, France, 10.
230. " *laevigata*, Nyst., Miocene, Grignon, France, 10.
231. *Dentalium hexagonum*, Sow., Tertiary, San Diego, Cal., 10.
232. *Opalia varicostata*, Stearns, Tertiary, San Diego, Cal., 7.
233. " *anomala*, Stearns, Tertiary, San Diego, Cal., 5.
234. *Turritella bicarinata*, Eich., Miocene, Steinabrum, Austria, 4.
235. *Vermetus*, Tertiary, Udder Valla, Sweden, 6.
236. *Turritella turris*, Bast., Grund, Hanover, 3.
237. *Natica millepunctata*, Lam., Miocene, Grund, Hanover, 3.
238. " *coepacea*, Lam., Eocene, Paris Basin, France, 2.
239. " *helicina*, Broc., Miocene, Soos, Austria, 5.
240. " *mutabile*, D'Orb., Eocene, Grignon, France, 6.
241. *Campeloma multilineata*, M. & H., Eocene, Montana, 10.
242. *Nassa limata*, Chem., Pliocene, Modena, Italy, 4.
243. *Fusus longaevus*, Lam., Eocene, Grignon, France, 3.
244. *Pyrula bulbosus*, D'Orb., Eocene, Paris, France, 10.
245. *Oliva straminea*, Con., Claiborne Group, Claiborne, Alabama, 5.
246. *Pleurotoma asperulata*, Miocene, Grund, Hanover, 3.
247. " *dimidiata*, Broc., Miocene, Soos, Austria, 7.
248. " *spiralis*, Miocene, Baden, 4.

249. *Pleurotoma prisca*, Eocene, Barton, England, 6.  
 250. *Pleurotoma monilis*, Miocene, Baden, 5.  
 251. *Mangelia angulata*, Chr., Tertiary, San Diego, Cal., 3.  
 252. *Helix Tryonii*, Newe, Tertiary, Santa Barbara Id., Cal., 3.  
 253. *Clypeaster Ghizehensis*, Eocene, Ghizeh, Egypt, 2.  
 254. *Panopoea faujasi*, Men., Pliocene, Palermo, Sicily, 1.  
 255. *Cyprina islandica*, Lin., Quaternary, Ficarizzi, Sicily, 1.  
 256. *Turritella Jewetti*, Quaternary, Los Angeles, Cal., 3.  
 257. *Cassidaria echinophora*, Leidy, Quaternary, Palermo, Sicily, 2.  
 258. *Mallotus villosus*, Cuvier, Leda Clay, (Quaternary) Green's  
 Creek, Gloucester, Ont., 2.  
 259. *Nassa fassata*, Quaternary, Los Angeles, California, 3.  
 260. *Styemys Nebrascensis*, Leidy, Miocene; Bad Lands, So.  
 Dakota, 3.  
 261. *Oreodon Culbertsoni*, Leidy, Miocene, Bad Lands, So. Dakota,  
 2 skulls.  
 262. *Ostrea*, Quaternary, Marl Beds, Crassen Co., N. C., 5.  
 263. *Venus*, Quaternary, Palermo, Sicily, 4.  
 264. *Cardium echinatum*, Quaternary, Sicily, 3.  
 265. *Pachyodon tenuis*, Gabb, Quaternary, Upper Amazon, 2.  
 266. *Pachyodon obliquum*; Gabb, Quaternary, Upper Amazon, 6.

### ROCKS.

**All these specimens are trimmed to a uniform size of 3x4x1 inches.**

267. Amphibole-granite, Quincy, Mass., 1.  
 268. Rhyolite, Itapan, Mexico, 1.  
 269. Quartz-porphry, Muldenthal, Saxony, 1.  
 270. Graphic-granite, Bedford, N. Y., 1.  
 271. Vitrophyre, Merssen, Saxony, 1.  
 272. Granitite, St. Johnsbury, Vermont, 1.  
 273. Petrosilex, Dannemora, Sweden, 1.  
 274. Granite, Hartmannsdorf, Saxony, 1.  
 275. Trachyte, Drachenfels, Rhenish-Prussia, 1.  
 276. Elaeolite-syenite, Ditro, Siebengebirge, Hungary, 1.  
 277. Leucite-basanite-porphry, 3.  
 278. " basalt, Lacher See, Rhenish-Prussia, 1.  
 279. Diabase-porphryrite, Egypt, 1.

280. Hornblende-andesite, Fenancingo, Mexico, 1.  
 281. Contorted basalt, Auvergne, France, 3.  
 282. " " Mt. Vesuvius, 2.  
 283. Olivine-diabase, Metzelberg, R. Prussia, 1.  
 284. Dolerite, Zschirnstein, near Schandau, Saxony, 2.  
 285. Kimberlite, Elliott Co., Ky., 1.  
 286. Serpentine, Florence, Italy, 3 rough, 3 polished specimens.  
 287. " Impruneta, Italy, 5 polished specimens.  
 288. " Zoblitz, Saxony, 2.  
 289. " Galway, Ireland, 1.  
 290. " Lizard Point, Cornwall, England, 5 polished specimens.  
 291. Ophiolite, Moriah, New York, 1.  
 292. Gypsum, Grand Rapids, Michigan, 2.  
 293. Alabaster, Castellino, Italy, 3 polished specimens.  
 294. Anhydrite, Eisleben, Thuringia, 1.  
 295. Keuper Sandstone, Wurtemberg, 1.  
 296. Mottled " Medina, New York, 1.  
 297. Banded " Hot Springs, South Dakota, 2.  
 298. Quadersandstein, Grillenburg, Saxony, 1.  
 299. Medina Sandstone, Western New York, 1.  
 300. " " Medina, " " 1.  
 301. Conglomerate, Roxbury, Mass., 1.  
 302. Basalt Conglomerate, Wolfsberg, Siebengebirge, R. Prussia, 1.  
 303. Fluorspar Breccia, Krummerstein, Saxony, 2.  
 304. Greywacke, Lahneck, Nassau, 4.  
 305. Quartzite, Lannesdorf, R. Prussia, 1.  
 306. " Freiberg, Saxony, 2.  
 307. " Fontainebleau, France, 3.  
 308. Shale, Auvergne, France, 3.  
 309. Trias Shale, S. Britain, Conn., 1.  
 310. Catlinite, Pipestone, Minnesota, 2.  
 311. Porcellanite, Yellowstone National Park, Wyoming, 1.  
 312. Marl, Noisy le See, Seine, France, 3.  
 313. Lignite, Skoplau, near Grimma, Saxony, 2.  
 314. Anthracite, Zwickau, Saxony, 1.  
 315. Bituminous Limestone, Chicago, Ills., 3.



- 316. Encrinal Limestone, Lockport, New York, 2.
- 317. Limestone, Allegheny City, Pa., 2.
- 318. Metamorphosed Chalk, Moira, Ireland, 2.
- 319. Campan Marble, Payale, Hautes Pyrenees, France, 1.
- 320. Marble, Brenner, Tyrol, 1.
- 321. " Knoxville, Tennessee, 1.
- 322. " Creole quarries, Marietta, Georgia, polished, 2.
- 323. " Knoxville, Tennessee, polished, 3.
- 324. " Vitulano, Italy, polished, 3.
- 325. " "Dark Ashburton", Ashburton, Devonshire, England, polished, 3.
- 326. Marble, "Mottled Ogwell", Ogwell, Devonshire, England, polished, 3.
- 327. Marble, Pink-clouded-Petitor, Devonshire, England, 2.
- 328. Fossiliferous Argillite, Bundenback, R. Prussia, 3.
- 329. Argillite, Hydeville, Vermont, 3.
- 330. " Plauen, Saxony, 3.
- 331. Epidosite, Afton, Va., 3.
- 332. Garnetite, Gardernheim, Hessen, 1.
- 333. Graphite gneiss, Snarum, Norway, 1.
- 334. Gneiss, Freiberg, Saxony, 1.

### ROCK STRUCTURES.

- 335. Landscape Marble, Bristol, Eng., 2.
- 336. Volcanic Bomb, Auvergne, France, 4.
- 337. Spheroidal Basalt, Cheix, Auvergne, France, 2.
- 338. Trap, showing jointed structure, Mt. Tom., Mass., 4.
- 339. Clay-iron-stone Concretions, Mazon Creek, Grundy Co., Illinois, 10.
- 340. Clay Concretions, Riga, Vermont, 5.
- 341. " " Perry, Wyoming Co., N. Y., 3.
- 342. Chert Nodules, Lemont, Illinois, 6.
- 343. Septarium, Weymoth, England, cut and polished, 2.
- 344. Quartz Geodes, Keokuk, Iowa, 4.
- 345. Sand Concretions, Rochester, N. Y., 3.
- 346. Flint Nodules, Dover, England, 2.
- 347. Itacolumite, North Carolina.
- 348. Septarium, 18 Mile Creek, Erie Co., N. Y.

## MINERALS.

349. Selen-Sulphur, crystallized, Girghenti, Sicily, 2.  
 350. Sulphur, crystallized, " 3.  
 351. Copper, " Lake Superior, Mich., 2.  
 352. Stibnite, " Shikoku, Japan, 3.  
 353. " " Hungary, 3.  
 354. Realgar, Felsobanya, " 2.  
 355. Orpiment Moldavia, Banat, Hungary, 3.  
 356. Galena, crystallized, Joplin, Mo.  
 357. " " Freiberg, Saxony, 4.  
 358. Sphalerite, " Cumberland, England, 6.  
 359. " " Missouri, 3.  
 360. Alabandite, Nagyag, Transylvania, 1.  
 361. Cinnabar, Almaden, Spain, 1.  
 362. Chalcopyrite, crystallized, French Creek, Pa., 2.  
 363. " Caldera, Chili, 1.  
 364. Pyrite, crystallized, Brosso, Piedmont, 3.  
 365. Marcasite on Dolomite, crystallized, Joplin, Mo., 3.  
 366. " crystallized, Cumberland, England, 2.  
 367. " " Folkestone, England, 2.  
 368. " " Joplin, Mo., 3.  
 369. Lollingite, var. Leucopyrite, Edenville, N. Y., 2.  
 370. Bournonite, crystallized, Cornwall, Eng., 4.  
 371. Tetrahedrite, " " " 2.  
 372. Halite, Friedrichsthal, Wurtemberg, 2.  
 373. Sylvite, Strassfurt, Prussia, 5.  
 374. Proustite, crystallized, Chanascillo, Chili, 3.  
 375. Fluorite, crystallized, violet, Cumberland, England, 5.  
 376. " " green, Macomb, N. Y., 3 large,  
 3 small specimens.  
 377. Quartz, crystallized, Hot Springs, Arkansas, 4.  
 378. " " Little Falls, N. Y., 100 crystals.  
 379. " " Tavetsch, Tyrol, 2.  
 380. " " Guanajuato, Mexico, 3.  
 381. " " Cumberland, England, 5.  
 382. " " Joplin, Mo., 3.  
 383. Quartz with Actinolite, crystallized, Japan, 4.

384. Tabular Quartz, Black Hills, So. Dakota, 2 large specimens.  
385. Quartz after Crocidolite, cut and polished, 3.  
386. Amethyst, crystallized, in silicified wood, near Holbrook, Arizona, 10.  
387. Amethyst, crystallized, Thunder Bay, Lake Superior, 2.  
388. Heliotrope, Cambay, India, 3.  
389. Agate, Uruguay, cut and polished, 10.  
390. Agate, polished ornaments, 15.  
391. Jasper, polished trays and stands, 10.  
392. Silicified Wood, cut and polished, Paka, Bohemia, 3.  
393. " " Holbrook, Arizona, 20.  
394. " " Bennett Valley, Sonoma Co., Cal., 10.  
395. Hematite, (Kidney Ore), Cleator Moor, Cumberland, Eng., 5.  
396. " crystallized, Cumberland, Eng., 3.  
397. " " Island of Elba, 3.  
398. Martite, " Cerro Mercado, Durango, Mex., 6.  
399. Limonite, Lake Superior, 2.  
400. Calcite, scalenohedrons, Joplin, Mo., 3.  
401. " " Guanajuato, Mexico, 3.  
402. " " Furness, Lancashire, Eng., 5.  
403. " crystallized, rhombohedrons, Guanajuato, Mex., 4.  
404. " " Galena, Ills., 1.  
405. " " Cornwall, England, 4.  
406. " Incrustations, Clermont, France, 1.  
407. " crystallized, rhombohedrons, Cumberland, Eng., 7.  
408. " cleavage rhombohedrons, Lamparras Co., Texas, 3.  
409. Fontainebleau limestone, Fontainebleau, France, 2.  
410. Dolomite, crystallized, Joplin, Mo., 6.  
411. " " Yellowstone Natl. Park, Wyoming, 1.  
412. Smithsonite, Laurium, Greece, 5.  
413. Aragonite, Organ Mountains, New Mexico, 2.  
414. Aragonite, (Flos Ferri), Styria.  
415. Aragonite, crystallized, Sicily, 2.  
416. Witherite, " Cumberland, England, 2.  
417. Cerussite, " Organ Mts., New Mexico, 2.  
418. Malachite, Bisbee, Arizona, 4.  
419. Malachite, polished, Arizona, 3.

420. Goethite, Příbam, Bohemia, 2.
421. Albite, var. Peristerite, crystallized, Macomb, N. Y., 1.
422. Orthoclase, crystallized, Tamagama Yama, Japan, 10.
423. Hydromagnesite, Hoboken, N. J., 1 large specimen.
424. Microcline, crystallized, Pike's Peak, Colo., 2.
425. Amazonstone, " " " " 3.
426. Labradorite, polished, Labrador, 5.
427. Leucite, crystallized, Mt. Vesuvius, Italy, 2.
428. Enstatite, var. Bronzite, Webster, N. C., 2.
429. Hypersthene, Labrador, 1.
430. Pyroxene, crystallized, St. Lawrence Co., N. Y., 3.
431. Aegirite, " Magnet Cove, Ark., 5.
432. Orthoclase, Pike's Peak, Colo., 20 crystals.
433. Beryl, crystallized, North Carolina, 4.
434. Jade, var. Nephrite, South Island, New Zealand, 2 polished specimens.
435. Rhodonite, Langbanshütten, Sweden, 2.
436. Amphibole, Russell, New York, 4.
437. Canaanite, Canaan, Conn., 3.
438. Beryl, crystallized, Albany, Maine, 6.
439. Yellow Beryl, crystallized, New Milford, Conn., 4.
440. Eudialyte, Greenland, 3.
441. Cancrinite, Litchfield, Maine, 2.
442. Lazurite, Persia, 2 rough, 2 polished specimens.
443. Garnet, var. Grossularite, crystallized, Morelos, Mex., 2.
444. " " Essonite, " Ala Piedmont, 3.
445. " " Almandite, " 10 large crystals.
446. " crystallized, Salida, Colorado, 5 large crystals.
447. " var. Topazolite, crystallized, Ala, Piedmont, 1.
448. " " Almandite, New Milford, Conn., 5 crystals.
449. Wernerite, crystallized, Hinchinbrook, Can., 2.
450. Zircon, " Cheyenne Canon, Colo., 2.
451. Topaz, Minas Geraes, Brazil, 3 crystals.
452. " Stoneham, Me., 1.
453. Cyanite, Litchfield, Conn., 1.
454. " Corundum Mts., N. C., 1.
455. Ilvaite, Island of Elba, 2.

456. Prehnite, Paterson, N. J., 1.
457. Calamine, crystallized, Ogdensburgh, N. J., 3.
458. Rubellite in Lepidolite, San Diego Co., Cal., 5.
459. Staurolite, twin crystals, Farmington, Ga., 6.
460. Apophyllite, crystallized, Guanajuato, Mex., 3.
461. Heulandite, " Nova Scotia, 3.
462. Laumontite, " Nagyag, Transylvania, 1.
463. Stilbite, " Nova Scotia, 3.
464. Chabazite, var. Acadialite, crystallized, Nova Scotia, 2.
465. Natrolite, crystallized, Bergen Hill, N. J., 2.
466. Magnetite in Muscovite, Mitchell Co., N. C., 2.
467. Muscovite, Auburn, Maine, 3.
468. Giesekite, Natural Bridge, Lewis Co., New York, 1.
469. Agalmatolite, China, 3 carved specimens.
470. Lepidolite, Rosena, Moravia, 2.
471. Zinnwaldite, Zinnwald, Saxony, 2.
472. Williamsite, Texas, Pa., 2.
473. Serpentine, Lizard Point, Cornwall, Eng., 10 polished specimens.
474. Talc, Gapfergrun, Bavaria, 6 polished specimens.
475. Pyrophyllite, Graves' Mountain, Ga., 2.
476. Chrysocolla, Chile, S. A., 2.
477. Titanite, crystallized, Fine, St. Lawrence Co., N. Y., 8.
478. Dysanalyte, Magnet Cove, Ark., 25 small crystals.
479. Columbite, Middletown, Conn., 4.
480. " Moss, Norway, 2.
481. Aeschynite, Hittero, Norway, 3.
482. Apatite, crystallized, Snarum, Norway, 5.
483. " " Renfrew, Ontario, Canada, 12.
484. Wavellite, Montgomery Co., Ark., 6.
485. Sussexite, Franklin, N. J., 1.
486. Ulexite, Chile, S. A., 3.
487. Borax, Borax Lake, California, 10 crystals.
488. Barite, crystallized, Cumberland, England, 10.
489. Celestite, Girghenti, Sicily, 2.
490. Crocoite, crystallized, Berezov, Siberia, 1.
491. Gypsum, var. Selenite, Wayne Co., Utah, 2 large crystals.
492. Alabaster, Castelino, Italy, 3 polished specimens.

- 493. Satin Spar, Bridgeford, Eng., 3 polished specimens.
- 494. Selenite, Montmartre, Paris Basin, France, 2.
- 495. Picroalunogen, Island of Elba, 2.
- 496. Alunogen, Cerros Pintaclos, Tarapaca, Chile, 2.
- 497. Copiapite, Copiapo, Chile, 3.
- 498. Amarantite, Sierra Gordo, Chile, 2.
- 499. Herregrundite, Herregrund, Norway, 2.
- 500. Wulfenite, crystallized, Bennett Mine, Organ Mts., N. Mex., 3.
- 501. Succinite (Amber), Baltic Coast, Prussia, 4.
- 502. Jet, Whitby, England, 1 polished specimen.

## DEPARTMENT OF ECONOMIC GEOLOGY.

## GOLD, SILVER AND LEAD ORES.

600.	Auriferous Quartz, Okanagon Co., Wash.,	5 lbs.
601.	“ “ Culver Mine, Kittitas Co., Wash.,	½ “
602.	“ “ California,	25 “
603.	“ “ Minarett Mine, Fresno Co., Cal.,	15 “
604.	“ “ Diamond Creek, Nevada Co., “	50 “
605.	“ “ Gold Hill Mine, Nevada City, Nevada Co., Cal.,	25 “
606.	Gold Ores, New Mexico,	50 “
607.	Auriferous Quartz and Pyrite, Copperopolis Mine, New Mexico,	8 “
608.	Auriferous Quartz, Oro Fino, New Mexico,	5 “
609.	“ “ and Pyrite, Soudan Mine, Hillsboro’ Co, New Mexico,	5 “
610.	Auriferous Quartz, Republic Lode, Las Animas Dist., New Mexico,	10 “
611.	Auriferous Quartz and Galena, Soudan Lode, Las Animas Dist., New Mexico,	1 “
612.	Gold Ore, May Queen Lode, Las Animas, New Mexico,	3 “
613.	Auriferous Quartz, Socorro Co., New Mexico,	50 “
614.	“ “ Merett Mine, “ “	20 “
615.	Gold Ore, Gold Bug Mine, Durango, Colo.,	½ “
616.	Gold and Silver Ores, Idaho Springs, “	50 “
617.	Gold-Silver-Lead Ore, La Martine Mine, Idaho Springs, Colorado,	50 “
618.	Gold-Silver-Lead Ore, Stanley Mine, Idaho Springs, Colorado,	50 “
619.	Gold-Silver-Lead Ore, Kangaroo Mine, Idaho Springs, Colorado,	15 “
620.	Gold-Silver-Lead Ore, Whale Mine, Idaho Springs, Colorado,	15 “

621.	Gold-Silver-Copper Ore, Hot Pot Mine, Idaho Springs, Colorado,	50 lbs.
622.	Gold-Silver Ore, Pyrite, May Queen Mine, Idaho Springs, Colorado,	75 "
623.	Gold-Silver Ore, Sulphides, Crockett Mine, Idaho Springs, Colorado,	3 "
624.	Gold-Silver Ore, Pyrite, Crystal Mine, Idaho Springs, Colorado,	20 "
625.	Gold Ore, Cripple Creek, Colorado,	50 "
626.	" " Free Coinage Mine, Cripple Creek, Colo.,	10 "
627.	" " Matoa " " " "	3 "
628.	" " Townsite " " " "	1 "
629.	" " Anaconda " " " "	1 "
630.	" " York " " " "	3 "
631.	" " Gold Key " " " "	1/2 "
632.	" " Trail " " " "	20 "
633.	" " Lee Claire " " " "	50 "
634.	" " Morning Glory " " " "	50 "
635.	" " Zenobia " " " "	5 "
636.	" " Mohawk " " " "	5 "
637.	" " Victor " " " "	75 "
638.	" and Silver Ore, Sulphides, Silver Belle Mine, Gunnison Co., Colo.,	5 "
639.	Gold Ore, Sulphides, Iron Clad Mine, Ouray Co., Colo.,	20 "
640.	Gold and Silver Ore, Sulphides, Hoosier Boy Mine, Hinsdale Co., Colo.,	5 "
641.	Auriferous Quartz, Tariff Mine, San Miguel Co., Colo.,	1 "
642.	" " Gold Medal Mine, " " " "	5 "
643.	Gold Ore, Tressie Mine, Chaffee Co., Colo.,	15 "
644.	Gold-Silver-Lead Ore, Sulphides, Pat Murphy Mine, Chaffee Co., Colo.,	20 "
645.	Gold and Silver Ore, Sulphides, Sunnyside Mine, Eureka Dist., San Juan Co., Colorado.	50 "
646.	Gold Ore, Nevada Mine, San Juan Co., Colorado,	20 "
647.	Auriferous Quartz, Pharmacist Mine, El Paso Co., Colo.,	15 "
648.	Auriferous Sulphides, Lee Goss Mine, Park Co., Colo.,	25 "
649.	Auriferous Pyrite and Sphalerite, Phillips Mine, Park Co., Colorado,	5 "



650.	Auriferous Sulphides, Lee Goss Mine, Park Co., Colo.,	200 lbs.
651.	“ “ Humboldt Mine, Boulder Co., Colorado,	15 “
652.	Auriferous Sulphides, Hudson Mine, Boulder Co., Col.,	1 “
653.	“ Pyrite, Buckthorn Mine, Boulder Co., Colo.,	20 “
654.	“ Sulphides, Niwot Mine, Boulder Co., Colo.,	25 “
655.	Gold and Silver Ore, Sulphides, Ground Hog Mine, Eagle Co., Colorado,	½ “
656.	Gold and Silver Ore, Polar and Rocky Point Mines, Eagle Co., Colorado,	100 “
657.	Gold Ore, Western Belle Mine, La Plata Co., Colo.,	2 “
658.	“ “ Tellurides, Columbus Mine, La Plata Co., Colorado,	1 “
659.	Gold and Silver Ore, Sulphides, Pelican Mine, La Plata Co., Colorado,	2 “
660.	Gold and Silver Ore, Sulphides, Mammoth Mine, La Plata Co., Colorado,	20 “
661.	Gold and Silver Ore, Sulphides, Rossiter Mine, Gilpin Co., Colorado,	50 “
662.	Gold and Silver Ore, Sulphides, Leverton Mine, Gilpin Co., Colorado,	50 “
663.	Auriferous Pyrite, Bald Mt., Gilpin Co., Colo.,	15 “
664.	Gold Ore, Wyoming, Gilpin Co., Colo.,	25 “
665.	“ “ Talcose slate, Haile Mine, N. C.,	10 “
666.	Auriferous Quartz, Vernon, La.,	15 “
667.	“ Pyrite, Caethe Mine, Minas Geraes, Brazil,	30 “
668.	“ Quartz, Santa Isabel Mine, U. S. of Col.,	2 “
669.	“ “ Locksley Mine, New South Wales,	4 “
670.	Argentiferous Galena, Wasa Mine, E. Kootenay, British Columbia,	100 “
671.	Argentiferous Galena, Spokane Mine, W. Kootenay Dist., British Columbia,	10 “
672.	Argentiferous Galena, Lanark Mine, Illicillawaet, British Columbia,	50 “
673.	Silver Ore, Broad Guage Mine, Kettle Falls, Wash.,	2 “
674.	“ “ Idaho Mine, Okanagon Co., Wash.,	5 “
675.	“ “ Kern Co., California,	20 “
676.	Argentiferous Galena, Colorado,	500 “
677.	“ “ Montezuma Mine, Colorado,	25 “

678.	Silver Ore, Wanpacca Mine, No. Cottonwood Dist., Colorado,	5 lbs.
679.	Argentiferous Sulphides, Boulder Co., Colo.,	5 "
680.	" Galena, Silver Ledge Mine, Central Dist., Boulder Co., Colorado,	25 "
681.	Silver Ore, Oxydized, Poor Woman Mine, Boulder Co., Colorado,	2 "
682.	Silver-Lead-Copper Ore, Sultana Mine, Breckenridge Co., Colorado,	2 "
683.	Argentiferous Galena, Monte Christo Mine, Chaffee Co., Colorado,	20 "
684.	Argentiferous Sulphides, Tickler Mine, St. Elmo, Chaffee Co., Colorado,	10 "
685.	Argentiferous Galena, Northern Boy Mine, Chrysolite Mt., Chaffee Co., Colorado,	30 "
686.	Argentiferous Galena, Iron City Mine, St. Elmo, Chaffee Co., Colorado,	10 "
687.	Argentiferous Sulphides, Goldfield Group Mines, St. Elmo, Chaffee Co., Colorado,	10 "
688.	Argentiferous Galena, Mary Murphy Mine, Chaffee Co., Colorado,	10 "
689.	Argentiferous Sulphides, Copper Maid Mine, Hope Mt., Chaffee Co., Colorado,	8 "
690.	Silver Ore, Emerald Mine, Texas Creek, Chaffee Co., Colorado,	4 "
691.	Argentiferous Galena, Golden Link Mine, Idaho Springs, Clear Creek Co., Colorado,	200 "
692.	Argentiferous Galena, Joe Reynolds Mine, Idaho Springs, Clear Creek Co., Colo.,	250 "
693.	Argentiferous Sulphides, Amy C. Mine, Idaho Springs, Clear Creek Co., Colo.,	5. "
694.	Argentiferous Galena, Black Iron Mine, Battle Mt., Eagle Co., Colo.,	1 "
695.	Argentiferous Galena, Running Mine, Central City, Colorado,	300 "
696.	Argentiferous Galena, Wide Awake Mine, Durango, Colorado,	50 "
697.	Argentiferous Galena, Adelaide Mine, Eagle Co., Colo.,	5 "
698.	" " Jack Whacker Mine, Rock Creek Dist., Gunnisson Co., Colo.,	2 "

699.	Argentiferous Galena, Stanley Mine, Gunnison Co., Colorado,	2 lbs.
700.	Argentiferous Galena, Mayflower Mine, Lake City, Hinsdale Co., Colo.,	75 "
701.	Argentiferous Galena, La Plata Co., Colo.,	10 "
702.	" " Bed Rock Gulch, La Plata Co., Colorado,	2 "
703.	Argentiferous Sulphides, Republic Mine, La Plata Co., Colorado,	50 "
704.	Silver-Lead Ore, Uncompahgre Dist., Ouray Co., Colorado,	1 "
705.	Copper-Silver Ore, Mineral Farm Mine, Mt. Hayden, Ouray Co., Colo.,	200 "
706.	Gold-Silver-Copper Ore, Crown Jewell Mine, Bath Dist., Park Co., Colo.,	2 "
707.	Argentiferous Galena, Leadville, Colo.,	10 "
708.	Silver-Lead Ore, Carbonate, Dolomite Group Mine, Leadville, Colo.,	5 "
709.	Argentiferous Sulphides, Iron Mine, Leadville, Colo.,	5 "
710.	Silver-Lead Ore, Carbonate, Iron Mine, " " "	10 "
711.	Argentiferous Galena, Dunham " " "	100 "
712.	" " Elk " " "	250 "
713.	" " Continental Chief Mine, Leadville, Colo.,	50 "
714.	Argentiferous Sulphides, White Cap Mine, Leadville, Colorado,	15 "
715.	Silver-Lead Ore, Carbonate, Humboldt Mine, Leadville, Colo.,	4 "
716.	Argentiferous Sulphides, Chrysolite Mines, Leadville, Colorado,	2 "
717.	Silver-Lead Ore with Cerargyrite, Forest City Mine, Leadville, Colo.,	5 "
718.	Silver-Lead Ore, Carbonate, Forest City Mine, Leadville, Colo.,	1 "
719.	Silver-Lead Ore, Carbonate, Big Chief Mine, Leadville, Colo.,	10 "
720.	Silver-Lead Ore, Silver Wreath Mine, Leadville, Colo.,	10 "
721.	" " " Castle View " " "	5 "
722.	Argentiferous Sulphides, Wolfstone " " "	10 "
723.	" " Mikado " " "	15 "

724.	Iron-Manganese-Silver Ore, Emmett Mine, Leadville, Colorado,	15 lbs.	
725.	Argentiferous Galena, Vermont Mine, Lake City, Colo.,	100	"
726.	" " Carbonate Union Mine, Rico, Colorado,	1	"
727.	Silver-Lead Ore, Ethelana Mine, Rico, Colo.,	50	"
728.	Argentiferous Galena, Crown Jewell Mine, Telluride, San Miguel Co., Colo.,	5	"
729.	Argentiferous Galena, Boomerang Mine, Telluride, San Miguel Co., Colo.,	3	"
730.	Argentiferous Galena and Blende, San Bernardo Mine, San Bernardo, San Miguel Co., Colo.,	15	"
731.	Silver-Lead Ore, What Cheer Mine, San Miguel Co., Colo.,	10	"
732.	Silver-Lead Ore, Summit Co., Colo.,	15	"
733.	Argentiferous Galena, Creede, "	50	"
734.	" " Ridge Mine, King Solomon Dist., Creede, Colo.,	60	"
735.	Argentiferous Galena, New York Chance Mine, Creede, Colorado,	3	"
736.	Argentiferous Galena, Last Chance Mine, Creede, Colorado,	10	"
737.	Argentiferous Galena, Amethyst Mine, Creede, Colo.,	150	"
738.	Galena, New Mexico,	500	"
739.	Argentiferous Galena, Mountain Queen Mine, New Mexico,	3	"
740.	Silver-Lead Ore, Carbonate, Mary Mine, New Mexico,	3	"
741.	" " " " Stonewall Jackson Mine, New Mexico,	10	"
742.	Silver-Lead Ore, Carbonate, Red Cloud Mine, Galinas Mts., New Mexico,	10	"
743.	Gold-Silver-Copper Ore, Sulphides, Dona Ana Co., New Mexico,	50	"
744.	Argentiferous Galena, Bonito, Lincoln Co., New Mexico,	$\frac{1}{2}$	"
745.	Argentiferous Galena, Hope Mine, Bonito, Lincoln Co., New Mexico,	1	"
746.	Gold-Silver-Copper Ore, Sulphides, Gray Eagle Mine, Kingston, Sierra Co., New Mexico,	100	"

747.	Silver-Lead Ore, Carbonate, Socorro Tunnel, Socorro Co., New Mexico,	3 lbs.
748.	Silver-Lead Ore, Carbonate, Kelly Mine, Socorro Co., New Mexico,	50 "
749.	Silver-Lead Ore, Carbonate, Sulphuret Mine, Magdalena, New Mexico,	5 "
750.	Argentiferous Galena, Sulphuret Mine, Magdalena, New Mexico,	10 "
751.	Argentiferous Galena, M. A. Mine, Magdalena, New Mexico,	4 "
752.	Silver-Lead Ore, Luella Mine, Magdalena, N. M.,	2 "
753.	" " " Carbonate, Maverick Mine, Magdalena Dist., New Mexico,	2 "
754.	Silver-Lead Ore, Contact Mine, Magdalena Dist., N. M.,	10 "
755.	Silver-Lead Ore, Carbonate, Ida Hill Mine, Magdalena, Dist., New Mexico,	3 "
756.	Silver-Lead Ore, Carbonate, Bear Mine, Magdalena Dist., New Mexico,	8 "
757.	Argentiferous Galena, Highland Mary Mine, Magdalena Dist., New Mexico,	20 "
758.	Argentiferous Galena, Grand Tower Mine, Kelly, Magdalena Dist., New Mexico,	20 "
759.	Silver-Lead Ore, Carbonate, Andrew Jackson Mine, Magdalena Dist., New Mexico,	5 "
760.	Silver-Lead Ore, Carbonate, Enterprise Mine, Kelly, Magdalena Dist., New Mexico,	3 "
761.	Silver-Lead Ore, Carbonate, Graphic Mine, Kelly, Magdalena Dist., New Mexico,	5 "
762.	Silver-Lead Ore, Carbonate, Review Mine, Kelly, Magdalena Dist., New Mexico,	2 "
763.	Silver-Lead Ore, Carbonate, 58 Mine, Kelly, Magdalena Dist., New Mexico,	4 "
764.	Argentiferous Galena, Cavern Mine, Kelly, Magdalena Dist., New Mexico,	2 "
765.	Silver Ore, San Jose del Bricho Mine, Valencia, Mexico,	15 "
766.	Silver Ore, Secho, Mexico,	100 "
767.	Argentiferous Galena, White Rock Mine, Fairview, N. S. Wales,	5 "
768.	Silver Ore, White Rock Mine, Drake, N. S. Wales,	10 "

769.	Argentiferous Galena, Wangabah Mine, Clarence River, N. S. Wales,	10 lbs.
770.	Argentiferous Sulphides, N. S. Wales,	10 "
771.	" Galena, Emmaville, N. S. Wales,	10 "
772.	Silver Ore, Onetree Cordillera Mine, Tuena, N. S. W.,	10 "

### COPPER ORES.

773.	Copper Ore, Keweenaw Point, Michigan,	1500 lbs.
774.	Chalcopyrite, Colorado,	15 "
775.	" Lancaster Co., Pa.,	50 "
776.	" Utah,	3 "
777.	" Ecuador,	2 "
778.	" Nymagee Mine, N. S. Wales,	20 "
779.	" " " "	50 "
780.	" Girilambone Mine, West Bogan, N. S. W.,	15 "
781.	" Cordillera Hill, Peelwood, N. S. Wales,	20 "
782.	" Burruga Copper Mine, Bathurst Dist., New South Wales,	200 "
783.	Bornite, Arizona,	75 "
784.	" United Vera Mine, Yavapai Co., Arizona,	3 "
785.	" and Chalcopyrite, Cape of Good Hope, S. A.,	100 "
786.	Botryoidal Malachite, Bisbee, Arizona,	10 "
787.	Malachite and Cuprite, Wyoming,	10 "
788.	" Aruba, West Indies,	2 "
789.	" Mexico,	3 "
790.	" Venezuela, S. A.,	5 "
791.	Azurite; Colorado,	10 "
792.	" Greece,	15 "
793.	Cuprite and Malachite, Old Dominion Mine, Gila Co., Arizona,	100 "
794.	Cuprite and Malachite, Wyoming,	4 "
795.	" Arizona,	50 "
796.	Cuprite and Chrysocolla, Arizona,	50 "
797.	" Pavine Co., California,	½ "
798.	Melaconite, Bisbee, Arizona,	10 "
799.	Chrysocolla, Old Dominion Mine, Gila Co., Arizona,	50 "
800.	" Big Johnny " " " "	100 "
801.	" Buckeye " " " "	50 "

**ZINC ORES.**

802.	Sphalerite and Galena, Washington Co., Arizona,	10 lbs.
803.	Argentiferous Sphalerite, Leadville, Colo.,	10 "
804.	Sphalerite, Wisconsin,	200 "
805.	" Mineral City, Ill.,	25 "
806.	" and Fluorite, Mineral City, Ill.,	100 "
807.	" " Calamine, Aurora, Mo.,	10 "
808.	" Jasper Co., Mo.,	25 "
809.	" and Calcite, Jasper Co., Mo.,	50 "
810.	" Joplin, Mo.,	100 "
811.	" Granby, Mo.,	100 "
812.	" and Marcasite, Wagner Mine, Shullsburg, Wisconsin,	100 "
813.	" Wisconsin,	25 "
814.	" North Wales,	5 "
815.	" Minera Mines, North Wales,	20 "
816.	" and Calcite, Minera Mines, North Wales,	5 "
817.	" Halkyn Mine, North Wales,	3 "
818.	" and Galena, Mallwyn Mines, North Wales,	100 "
819.	" Filkowitch, Caucasus, Russia,	1 "
820.	Smithsonite, Helena Mine, Shullsburg, Wis.,	20 "
821.	" Phillips Mine, " "	25 "
822.	" Spain,	100 "
823.	" Dist. of Gaz, Spain,	3 "
824.	" San Juan Batista Mine, Spain,	25 "
825.	" Russia,	50 "
826.	" Laurium, Greece,	100 "

**IRON ORES.**

827.	Hematite, Fremont Co., Colorado,	20 lbs.
828.	" Michigan,	25 "
829.	" Lone Mt., Lincoln Co., New Mexico,	5 "
830.	" Magdalena, Socorro Co., " "	2 "
831.	" Wisconsin,	50 "
832.	Specular Ore, Republic Mine, Marquette Range,	5 "
833.	Magnetic " " " " "	5 "
834.	Hematite, New Shaft. Sec. 16. " "	5 "

835.	Hematite, Dexter Mine, No. 1, Marquette Range,	5 lbs.
836.	“ No. 2, “ “	5 “
837.	“ Champion Mine, “ “	5 “
838.	“ Bessemer Ore, Salisbury Mine, Marquette Range,	5 “
839.	Hematite, Chandler Mine, Vermillion Range,	5 “
840.	“ Long Lake Mine, “ “	5 “
841.	“ Castile Mine, Menominee Range,	5 “
842.	“ Granada Mine, “ “	5 “
843.	“ Rand Mine, “ “	5 “
844.	“ Norrie Mine, “ “	5 “
845.	“ Globe Mine, “ “	5 “
846.	“ Tilden Mine, “ “	5 “
847.	“ Newport Mine, “ “	5 “
848.	“ Mountain Iron Mine, Mesabi Range,	5 “
849.	“ Marion Mine, Va.,	4 “
850.	“ Mono “ Va.,	10 “
851.	“ Guatemala,	5 “
852.	“ Bristol, England,	5 “
853.	Limonite, New Mexico,	2 “
854.	“ Pilot Knob, Va.,	50 “
855.	“ Wythe Co., Va.,	10 “
856.	“ Bedford Co., Va.,	500 “
857.	“ Paint Ore, Bedford Co., Va.,	5 “
858.	“ Buena Vista, Va.,	5 “
859.	“	200 “
860.	“ Venezuela, S. A.,	5 “
861.	“ Parana, Brazil,	20 “
862.	“ Laurium, Greece,	200 “
863.	“ Bathurst Co., N. S. Wales,	25 “
864.	Turgite, Amba, West Indies,	3 “

#### MANGANESE ORES.

865.	Manganite, Cripple Creek, Va.,	25 lbs.
866.	“ Isabella Mine, Santiago, Cuba,	10 “
867.	“ San Luis Mine, “ “	10 “
868.	Psilomelane, North West Arkansas,	2 “



869.	Psilomelane, Santiago, Cuba,	15 lbs.
870.	“ Cleifden, N. S. Wales,	25 “
871.	Pyrolusite, North West Arkansas,	3 “
872.	“ Jordan Vein, Va.,	15 “
873.	“ Woodstock, N. S. Wales,	15 “
874.	Rhodonite, Duffreyn Mine, Cornwall, Eng.,	1 “
875.	Wad, Glade Mt., Smith Co., Va.,	15 “
876.	“ Brazil,	25 “

### ORES OF MINOR METALS.

877.	Nickeliferous Pyrrhotite, Sudbury, Canada,	500 lbs.
878.	Garnierite, Riddles, Oregon,	10 “
879.	Tin Ore, Black Hills, S. D.,	200 “
880.	“ Wyoming,	25 “
881.	“ East Pool Mine, Cornwall Eng.,	75 “
882.	“ New Cooks Kitchen Mine, Cornwall, Eng.,	15 “
883.	“ Corn Brea Mine, Cornwall, Eng.,	15 “
884.	“ Albion Mine, N. S. Wales,	15 “
885.	“ Cosmopolitan Mine, Barrier Ranges, N. S. Wales,	25 “
886.	Tin Ore, Wheal Edith Mine, New England, N. S. Wales,	10 “
887.	Tin Ore, Mole Table Land, New England, N. S. Wales,	20 “
888.	Tin Ore,	50 “
889.	Cinnabar in Schist, Ainime, New Granada,	5 “
890.	“ “ Slate, Almaden, Spain,	5 “
891.	“ “ Conglomerate, Almaden, Spain,	15 “
892.	Stibnite, Kern Co., Cal.,	150 “
893.	Auriferous Stibnite, Hall Grove, N. S. Wales,	20 “
894.	Stibnite and Galena, San Emigdio, Kern Co., Cal.,	10 “
895.	“	15 “
896.	Leucopyrite, Brazil,	20 “
897.	Chromite, Volos, Greece,	15 “
898.	Concentrates from Sulphide Ores for assay practice,	500 “

### COAL.

899.	Lignite, Caledonia Mine, Colo.,	3 lbs.
------	---------------------------------	--------

900.	Lignite, Boulder Co., Colo.,	5 lbs.
901.	“ Excelsior Mine, Boulder Co., Colo.,	45 “
902.	“ Castle Rock Mine, Washington,	100 “
903.	“ Venezuela,	150 “
904.	“ Alta Gracia, Venezuela,	10 “
905.	“ Brazil,	45 “
906.	“ Greece,	10 “
907.	Bituminous Coal, Engleville Mine, Las Animas Co., Colorado,	75 “
908.	Bituminous Coal, Oak Gulch Mine, Las Animas Co., Colorado,	75 “
909.	Bituminous Coal, Carbon Hills Mine, Pierce Co., Washington,	75 “
910.	Bituminous Coal, Castle Rock, Wash.,	150 “
911.	“ “ Whatcomb Co., “	5 “
912.	“ “ Skagit Co., “	70 “
913.	“ “ N. S. Wales,	50 “
914.	Semi-Bituminous Coal, Williamsburg Mine, Fremont Co., Colo.,	8 “
915.	Semi-Bituminous Coal, Oak Creek Mine, Fremont Co., Colo.,	4 “
916.	Anthracite, Anthracite Mine, Gunnison Co., Colo.,	8 “
917.	“ Ruby “ “ “ “ “	5 “

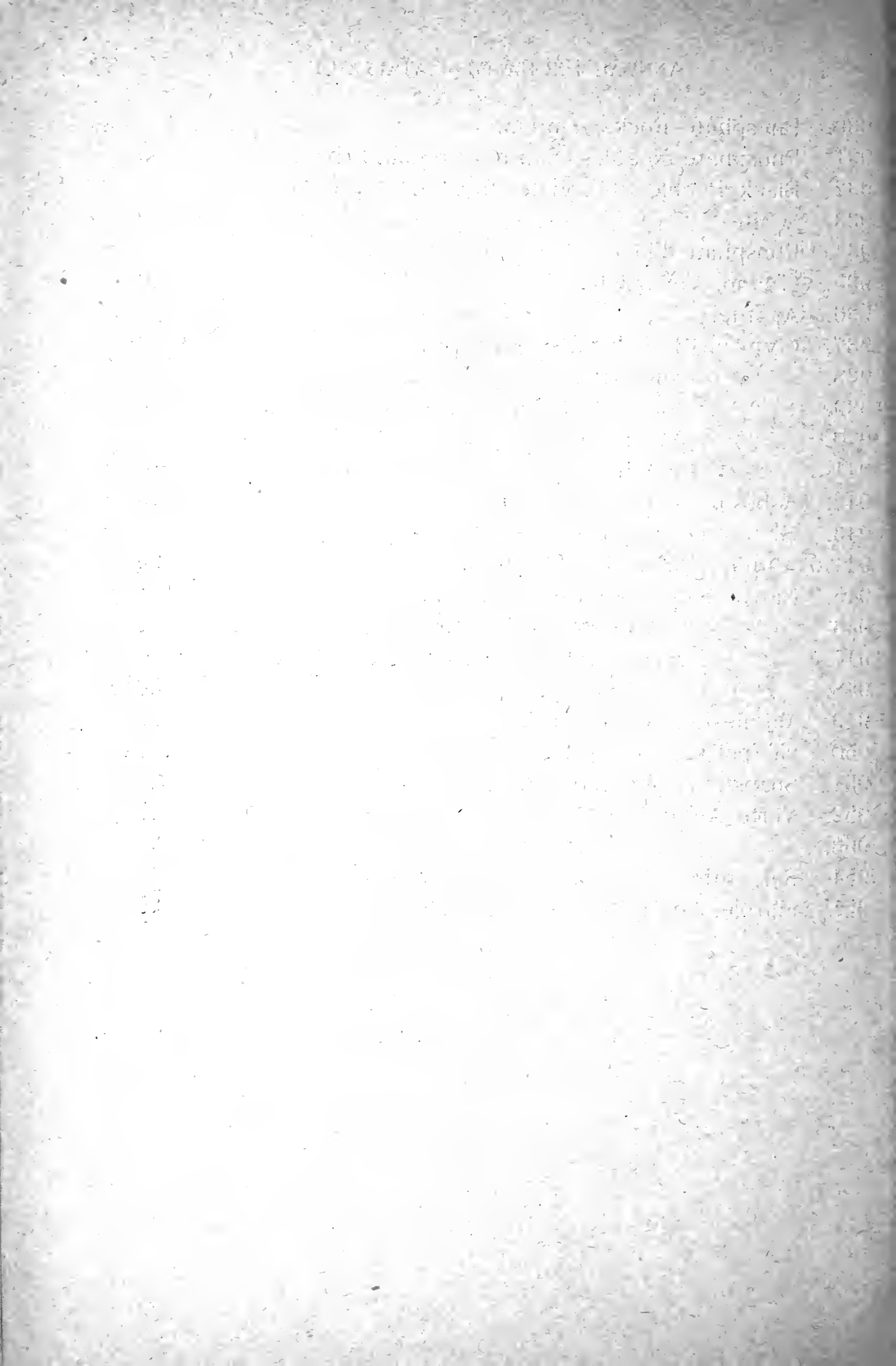
#### CARBON MINERALS.

918.	Asphalt, Rio Blanco, Colo.,	10 lbs.
919.	“ Seyssel Mines, France,	50 “
920.	“ Kern Co., Cala.,	25 “
921.	“ Refined, Seyssel Mines, France,	20 “
922.	Maltha “ California,	5 “
923.	Ozocerite, Utah,	5 “
924.	Kerosene Shale, Broxburn Oil Co., Scotland,	20 “
925.	“ “ Hartley Vale, N. S. Wales,	75 “
926.	Graphite, N. S. Wales,	25 “

#### MISCELLANEOUS.

927.	Kimberlite, Kimberly, S. Africa,	10 lbs.
928.	Phosphorite, Aidea Moret, Spain,	50 “
929.	“ Caceres, “	100 “

930.	Phosphate Rocks, Florida,	100 lbs.
931.	Phosphate Nodules, South Carolina,	500 "
932.	Black Pebble Phosphate, Florida,	50 "
933.	White " " "	100 "
934.	Phosphate Float, "	75 "
935.	Guano, Venezuela,	50 "
936.	Apatite,	100 "
937.	Gypsum, Loveland, California,	50 "
938.	" Durango, "	5 "
939.	" Lone Mt., Lincoln Co., New Mexico.	15 "
940.	" Venezuela,	5 "
941.	" Brazil,	10 "
942.	Asbestos, Macon Co., Ga.,	20 "
943.	Chrysotile, Canada,	10 "
944.	Alunite, Bulladelah, Australia,	25 "
945.	Native Salt, Inyo Co., California,	1 "
946.	" " Winsford, Cheshire, Eng.,	1 "
947.	" Sulphur, Lone Mt., Lincoln Co., N. M.,	10 "
948.	" " Sicily,	50 "
949.	Magnesite, California,	50 "
950.	"Tripoli" Seneca, Mo.,	100 "
951.	Soapstone, Madison Co., Va.,	20 "
952.	Verte Antique, California,	25 "
953.	" " Virginia,	20 "
954.	Serpentine, Amador Co., California,	10 "
955.	Marble, Gunnison Co., Colorado,	25 "



## ZOOLOGY.

The absence of the curator of the Department of Zoology on an expedition to Africa accounts for the omission of a list of duplicates in that Department. The Museum has considerable Zoological material for exchange and will naturally acquire much more as the result of the African mission. A second catalogue if possible, will be published in 1897, containing the excess Zoological specimens omitted now and the accessions of the intervening time, including the African duplicates.





