

**AM
101
.H8128
MSRL**

Palmer

167
Smith
78997
76

THE

FIRST & SECOND

ANNUAL • REPORTS, •

OF

THE HORNIMAN MUSEUM,

FOREST HILL, S.E.

1891-2.

308053

FREDERICK J. HORNIMAN, F.R.G.S., &c.

R. QUICK, M.J.S.,

CURATOR.

C. D. WATKINS,

NATURALIST.

AM

101

H 8128

1891-98

MRC

THE

FIRST & SECOND

ANNUAL REPORTS,

OF

THE HORNIMAN MUSEUM.

FOREST HILL, S.E.

1891-2.

FREDERICK J. HORNIMAN,

Fellow of the Royal Geographical Society.
Fellow of the Royal Historical Society.
Fellow of the Zoological Society.
Fellow of the Linnean Society.
Fellow of the Entomological Society.
Fellow of the Society of Antiquaries of Scotland.
Member of the Marine Biological Association.
Member of the British Association.
Member of the Japan Society, &c., &c.

R. QUICK, M.J.S.,
CURATOR.

C. D. WATKINS,
NATURALIST.



~~507.42~~

~~11789~~

~~71-874~~

~~1871-72-1874~~

The Horniman Museum.

LONDON ROAD,
FOREST HILL, S. E.

THE above MUSEUM is open FREE to the general Public EVERY Wednesday and Saturday, from 2 p.m. until 9 p.m. (also on Bank Holidays from 10 a.m. to 9 p.m.)

Arrangements are made for the reception of Schools, Societies and Clubs, in large or small numbers, who can now examine at their leisure the various objects of interest.

The Collection is divided into two sections—ART and NATURE. The ART Collection comprises Exhibits from China, Japan, India, viz: Wood Carving, Lacquering, Inlaying, Metal Work, Pottery and Embroidery, &c. &c., a Horse Armoury, including the Spanish Torture Chair, Elizabethan Rooms, Old English Parlour and Pantry, Oriental Armoury, Oriental Figure Room, Greek, Roman, and Egyptian Antiquities, (Mummies, &c.) Carvings in Ivory, Ethnographical Saloon, Porcelain and Glass Rooms, Collection of Pipes from all parts of the world, and Musical Instruments, &c.

That devoted to NATURE, a large collection of Entomological Specimens, (Butterflies, Moths, Beetles, &c.) Natural History—Beasts, Birds and Fishes, Geological Specimens, Fossils, Minerals, Specimens of Wood, Shells, Corals, and Birds' Eggs, and Nests, &c.

A CATALOGUE GUIDE IS SUPPLIED GRATIS.

NOTE.—The Museum is Three Minutes' walk from Lordship Lane Station, L.C.D.R.
and Six Minutes from Forest Hill Station, L.B.S.C.R.

FIRST ANNUAL REPORT

OF THE

HORNIMAN MUSEUM,

Forest Hill, S.E.

THE following table shows the number of Visitors to the Museum for the past year :—

1891.

Month	No. of Days Open.	Attendance during Month.	Remarks.
January	9	2291	
February	8	3711	Reception in this Month.
March	10	6961	Easter Week in this Month.
April	9	4390	
May	11	4450	Whit Week in this Month.
June	8	1913	
July	9	2160	
August	11	6409	Bank Holiday in this Month.
September	9	3562	
October	9	2892	
November	8	1735	
December	9	2334	Christmas Week in this Month.
Total for the year	110	42808	

Total attendance for the year 42,808, being an average of 389 on opening days.

The attendance on the Bank Holidays, when the Museum

Good Friday	810
Easter Monday	3548
Whit Monday	1516
August Monday	1808
Boxing Day	1090
Total	8772

was open from 10 A.M. to 9 P.M., was as follows :—

The attendance on the five Bank Holidays during the past year has been 8,772, showing an average of 1,754.

The Horniman Museum was declared open to the public by Sir MORELL MACKENZIE, M.D., on December 24th, 1890, when a large number of friends and inhabitants of the neighbourhood were present.

It was open again on the Bank Holiday with a large attendance, and has since been open every Wednesday and Saturday from 2 P.M. until 9 P.M.

An "At Home" and Reception by Mr. and Mrs. HORNIMAN was given on February 11th, and in the evening Mr. HORNIMAN entertained a number of friends to a banquet at the Hôtel Métropole to "Welcome Home" Sir SOMERS VINE on his return from his world-wide travels in connection with the Imperial Institute of the United Kingdom, the Colonies, and India.

On August 20th Mr. HORNIMAN placed the Museum at the disposal of the Committee of the Metropolitan Association for Befriending Young Servants, to hold their annual treat in. Mrs. CLARKE, Mrs. POWELL, Miss POOLE (*Secretary*), and other ladies interested in the Society, were present, and ninety girls. The Rev. G. DANIELL distributed the prizes.

Visits have been paid to the Museum by The Deptford Working Men's Association, The Y.M.C.A., Camberwell Branch, Miss WEST, and twenty-six scholars, from the Lewisham Bridge Board School, The Bromley Naturalists' Society (eleven), Miss BAILEY, and eight scholars, Mr. AMESE, and party (twelve).

The valuable and interesting collection of Books and Manuscripts have been temporarily removed for want of space; they consist of the Biblical Collection, Books on Natural History, Travel, Art, and other subjects connected with the Museum, also the Transactions and Journals of the learned societies.

The following gifts have been made to the Museum :—

Afghan Lacquered Box, and Idol from the				
Nicobar Islands, &c.	Sir SOMERS VINE.
Guns from the Crimea	Mr. J. CRAIG.

Carved Wooden Kaffir Bowl	Mr. F. J. ASTON.
Cocoons of Moth from Australia	Mr. H. B. QUICK.
Burmese Grass Cloak	Mr. A. HACKSHAW.
Monastic Seals	Mr. W. T. ROGERS.
Skull of Jackal, and German Window	Mr. R. QUICK.
Shells and Coral	Mrs. G. N. LIVESAY.
White Skylark	Mr. F. R. RICHES.
Gunlocks, from fire at the Tower of London			Mr. SOLE.

Mr. HORNIMAN has also added several very interesting ethnographical specimens, pipes, and other curios in the various Departments.

Mr. WATKINS has mounted a new case of the Indian leaf-imitating butterfly, *Kallima-inachis*, and arranged a number of insects, collected during the Emin Pasha Relief Expedition by W. BONNY, of STANLEY'S Rear Guard, from the forests of the Aruwimi, and various other entomological specimens, birds, and bats, &c.

Three Coloured Tables of the Stratified Rocks and Typical Scale Section of the Earth's Crust, by Mr. A. KEMP, have been hung over the case of geological specimens.

The Horse Armoury and Oriental Armoury has been overhauled, cleaned, "silicoed," and re-arranged, also the Indian exhibits, by the Curator.

RICHARD QUICK, M.J.S.

January, 1892.

Curator.

SECOND ANNUAL REPORT
OF THE
HORNIMAN MUSEUM,
Forest Hill, S.E.

THIS Institution continues to be popular, as the following figures and statistics will show.

The accompanying table gives the number of Visitors to the Museum for the past year:—

1892.

Month	No. of Days Open.	Attendance during Month.	Remarks.
January	9	2017	
February	8	1776	Snow.
March	9	2644	
April	11	6900	Easter Week in this Month.
May	8	2227	
June	11	3330	Whit Week in this Month.
July	9	2645	
August	10	5230	Bank Holiday in this Month.
September	8	3181	
October	9	2590	
November	9	1803	Rain.
December	11	2445	Christmas Week in this Month.
Total for the year .	112	36794	

Total attendance for the year, 36,794; being an average of 328 on opening days.

Total since the opening, by the late Sir MORELL MACKENZIE, M.D., December 24th, 1890, 82,448.

Good Friday	1114
Easter Monday	2281
Whit Monday	1018
August Monday	1402
Boxing Day	716
<hr/>	
Total	6531

The attendance on the Bank Holidays, when the Museum was open from 10 A.M. to 9 P.M., is shown by the figures in the accompanying table.

Total attendance on the five Bank Holidays during the past year has been 6,531, showing an average of 1,306.

On January 20th the Museum was closed during the funeral of the late Duke of Clarence, the flag flying at half-mast.

On March 1st Mr. QUICK read a paper on "A Journey on a Bavarian Raft," before the Dulwich Scientific and Literary Association, which was illustrated by specimens of costumes, cutlery, pipes, &c., from the Museum collection. Mr. HORNIMAN presided.

In May Mr. HORNIMAN lent a collection of bridle-bits, spurs, stirrups, &c., from the Armoury, to the Saddlers' Company, where they formed part of a loan exhibition at the Saddlers' Hall, Cheapside.

On June 30th Mr. HORNIMAN gave the use of the Museum for the Metropolitan Association for Befriending Young Servants to hold their annual treat in. Several ladies interested in the Association were present, and 120 girls. The prizes were distributed on the lawn after the Museum had been inspected, and a tour made of the grounds.

On July 27th Mr. HORNIMAN gave a reception to the Worshipful Master and Brethren of the "Alliance" Lodge of Freemasons, accompanied by ladies. The company, numbering 60, included Sir John Monckton, Past-Master; Colonel T. D. Sewell, Sheriff Foster, M.P., and others. On arriving they inspected the

Museum, after which they passed through the illuminated grounds to Surrey Mount, where supper was served; followed by a selection of vocal music, given by members of the "Alliance" Lodge. As a souvenir of the occasion, each guest received on departing a specimen of some rare butterfly, mounted in a glass-covered case.

On September 20th the Nurses from the Earlswood Asylum, Redhill, paid a visit (by invitation) to the Museum; a tea was provided for them; afterwards they saw over the grounds, and ascended the tower at the back of Surrey Mount.

On November 29th Mr. WATKINS read a paper on "The Wild Silks of India," before the Dulwich Scientific and Literary Association, which was illustrated by specimens of Indian moths and silks, &c., from the Museum Collection. Mr. HORNIMAN presided.

The following gifts have been made to the Museum:—

Mungoos or Ichneumon	Mr. J. CLARK.
Japanese Gown "Kimono"	Captain WARREN.
Chinese Rain Cloak	Mrs. E. C. MATTHEWS.
Old English Locks and Keys	Mr. J. ALCUTT.

Mr. HORNIMAN has also added several very interesting specimens in the various Departments, such as musical instruments—including some good examples from China, viz. the "Cheng," or mouth-organ; "Pepa," or four-string guitar; "San-heen," or two-string guitar; "Yue-kin," or moon lyre, and horn, &c.; also a German lyre-guitar, made by Joseph Schwerzer, Stadt-am-hof, Ratisbon, about 1800; old English cithers, &c.—opium and tobacco pipes, curios from China, Japan, and India, also minerals, &c.

Much labelling has been done in the different Departments, and several cases re-arranged.

Mr. HORNIMAN has been invited (and has kindly consented) to lend his collection of saddlery, bridle-bits, spurs, &c.

(seventeenth and eighteenth century) to the World's Columbian Exposition at Chicago next year.

VISITS have been paid to the Museum by the FOLLOWING
SOCIETIES, SCHOOLS, AND CLUBS, &c.

February	Sydenham Mutual Improvement Society ...	16
March	Young Ladies' School, Forest Hill ...	15
April	Forest Hill Scientific and Microscopical Society	30
„	Hazell's United Athletic Club, Rambling Section	100
„	Young Ladies' School, Bromley	29
„	Sydenham College for Ladies	
„	St. Mary's Sunday School Class, Lewisham...	
„	Norwood Convent School	
May	Bellenden Road Board School, Peckham ...	
„	Young Ladies' School, Streatham Common...	17
„	Mrs. Pierson's Boys' School, Brockley ...	
„	Wyndham Literary and Debating Society Camberwell... ..	
„	Brixton Scientist Association	
„	Napier Street Hall Choir, Deptford ...	20
June	Alexandra School, Penge	42
„	The Roan School for Girls, Greenwich ...	40
„	Metropolitan Association for Befriending Young Servants, Peckham Branch ...	120
July	Employees' Mutual Improvement Society ...	20
„	Colls Road Board School, Peckham ...	37
„	Young Ladies' School, Brockley	17
„	Pupil Teachers' Society, Board School, Peckham	100
„	Camberwell Green Chapel, Young Men's Society	40
„	Alliance Lodge of Freemasons	60

September	Deptford Society of Friends	15
„	Foundery Lane Board School, Camberwell	
„	Nurses from Earlswood Asylum, Redhill	16
„	Deptford Society of Friends (second visit)	22
„	Ashby College, Wickham Road, Brockley	16
October	Ladies College, Dulwich, Mrs. Davies	20
„	The Goldsmith's Institute, Ramblers' Club, New Cross	18
„	New Cross High School	
„	Ivydale Road Board School, Nunhead	70
„	St. Luke's Institute, Peckham (Seniors)	
November	Elliot Bank School, Forest Hill	
„	St. Luke's Institute, Peckham (Juniors)	
„	Polytechnic Ramblers, Regent Street, W.	
„	Sussex House School, Streatham	15
„	East Dulwich College, Barry Road	
December	Asylum Road Board School, Peckham	32
„	Dulwich College, Dulwich...	
„	Lewisham Bridge Board School	

Making a total attendance of 1,070, and an average of 26 per Society, &c., divided as follows:—14 Societies, 3 Clubs, 5 Colleges, 13 Private Schools, and 6 Board Schools.—Total 41.

The Printed Books (including the collection of Bibles) and the Manuscripts are temporarily withdrawn.

RICHARD QUICK, M.J.S.

January 2nd, 1893.

Curator.

f Admin

(507.42 m)

942

THE
 HORNIMAN MUSEUM,
 LONDON ROAD,
 FOREST HILL, S.E.

— THIRD —
 ANNUAL REPORT,
 1893.

FREDERICK JOHN HORNIMAN, F.R.G.S., &c.

RICHARD QUICK, M.J.S.,
 Curator.

C. D. WATKINS,
 Naturalist.

LONDON.

308053

Special
 JAN 15 1894
 199264

THE THIRD
ANNUAL REPORT

OF

The · Horniman · Museum,

FOREST HILL, S.E.

1893.

FREDK. JOHN HORNIMAN,

Fellow of the Royal Geographical Society.

Fellow of the Royal Historical Society.

Fellow of the Zoological Society.

Fellow of the Linnean Society.

Fellow of the Entomological Society.

Fellow of the Society of Antiquaries of Scotland.

Member of the Marine Biological Association.

Member of the British Association.

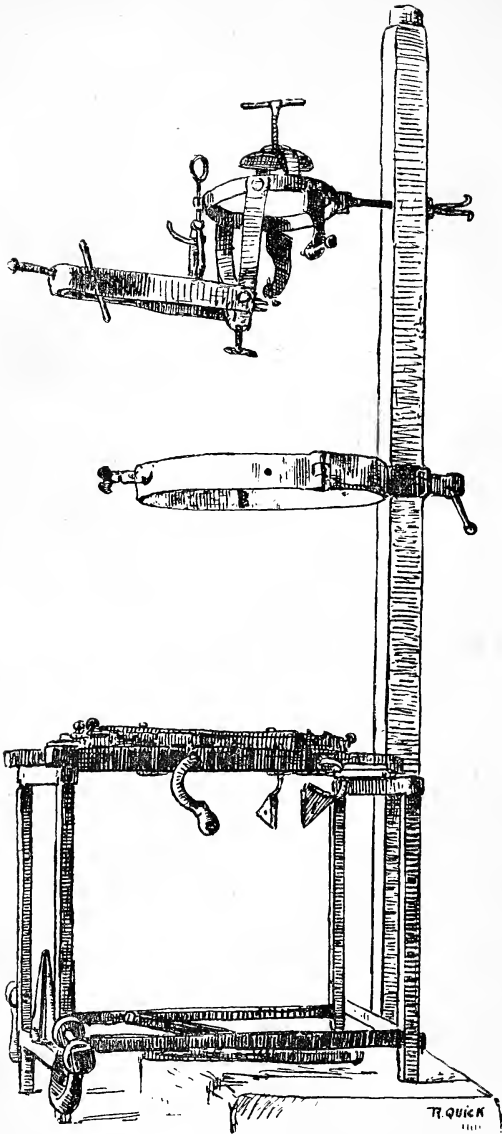
Member of the Japan Society, &c., &c.

RICHARD QUICK, M.J.S.,

CURATOR.

C. D. WATKINS,

NATURALIST.



SPANISH TORTURE CHAIR,

*From the Dungeons of the Inquisition at Cuenca,
Dated 1676.*

THE HORNIMAN MUSEUM,

LONDON ROAD,

FOREST HILL, S.E.

THE above MUSEUM is open **FREE** to the general Public EVERY Monday, Wednesday and Saturday, from 2 p.m. until 9 p.m. (also on Bank Holidays from 10 a.m. to 9 p.m.)

Arrangements are made for the reception of Schools, Societies, and Clubs, in large or small numbers, who can now examine at their leisure the various objects of interest.

The Collection is divided into two sections—**ART** and **NATURE**. The **ART** Collection comprises Exhibits from China, Japan, India, viz. : Wood Carving, Lacquering, Inlaying, Metal Work, Pottery and Embroidery, &c., &c., a Horse Armoury, including the Spanish Torture Chair, Elizabethan Rooms, Old English Parlour and Pantry, Oriental Armoury, Oriental Figure Room, Greek, Roman, and Egyptian Antiquities (Mummies, &c.), Carvings in Ivory, Ethnographical Saloon, Porcelain and Glass Room, Collection of Pipes from all parts of the world, Musical Instruments, Models of Ships, showing the Evolution of Transit, &c.

That devoted to **NATURE**, a large collection of Entomological Specimens (Butterflies, Moths, Beetles, &c.) Natural History—Beasts, Birds and Fishes, Geological Specimens, Fossils, Minerals, Specimens of Wood, Shells, Corals, and Birds' Eggs, and Nests, &c.

A CATALOGUE GUIDE IS SUPPLIED GRATIS.

NOTE.—The Museum is Three Minutes' walk from Lordship Lane Station, L.C.D.R., and Six Minutes from Forest Hill Station, L.B.S.C.R.



RAKAN, OR BUDDHIST SAINT.

Life size, carved wood, Japanese (commonly called a Magician).

THIRD ANNUAL REPORT
 OF THE
HORNIMAN MUSEUM,
FOREST HILL, LONDON, S.E.

THIS Institution continues to be popular, as the following figures and statistics will show.

The accompanying table gives the number of Visitors to the Museum for the past year :—

1893.

Month.	No. of Days Open.	Attendance during Month.	Remarks.
January	8	2063	
February	8	2408	
March	10	3454	
April	10	4775	Easter Week in this Month..
May	11	3721	Whit Week in this Month.
June	8	2004	
July	10	4561	Royal Wedding in this Month.
August	10	4934	Bank Holiday in this Month.
September	9	3566	
October	6	2049	
November	9	1877	
December	10	6389	Receptions in this Month.
Total for the year	109	41,801	

The total attendance for the year was 41,801; being an average of 383 on opening days, and an increase of 5107 on last year.

Total since the opening, by the late Sir MORELL MACKENZIE, M.D., on December the 24th, 1890, 124,247.

The attendance on the Bank Holidays, when the Museum was open from 10 a.m. to 9 p.m. is shown by the figures in the accompanying table :—

Good Friday	712
Easter Monday	1425
Whit Monday	1316
August Monday	1123
Boxing Day	2225
Total	6801

Total attendance on the five Bank Holidays during the past year has been 6801, showing an average of 1360, and an increase of 270 on the past year.

On January the 26th Mr. HORNIMAN lent a collection of Civic Medals, commemorating the Visits of Foreign Princes, &c., to the City of London, &c., and some Japanese “Kakemonos,” and Paintings on ribbed cut velvet, for the Conversazione of the Dulwich Scientific and Literary Association.

In March Mr. HORNIMAN lent a collection of bridles, spurs, &c.. from the Armoury to the World’s Columbian Exposition at Chicago.

On June 8th the Museum was honoured by a visit from His Highness the Maharajah of Bhaunagai. The Prince was introduced by Mr. Manning. (whose guest he was) to Mr. HORNIMAN, and was accompanied by the Gentlemen of his Council, including Mr. Bhowngree and Dr. Burjoujee. His Highness was conducted by Mr. HORNIMAN over the Museum, and expressed himself much pleased with all he saw.

On July the 6th, being the Royal Wedding Day of their Royal Highnesses the Duke and Duchess of York, the Museum was open from 2 to 8 o'clock. In the afternoon about 100 children were entertained by the kindness and generosity of Mr. HORNIMAN. There were boys from the Shaftesbury House Industrial Home, Forest Hill, girls from the Louise House Industrial Home, Forest Hill, and girls from the Lansom Home, Dulwich. On arriving they were shown over the Museum, and afterwards passed on to the lawn at the back, when lemonade and buns were discussed, and greatly appreciated. This over, they were taken through the grounds to the paddock, a large field adjoining, where games were indulged in. In the evening the grounds, front and back, were tastefully illuminated with coloured lights and Japanese lanterns, some of the latter, as they waved to and fro in the gentle breeze, being perfect dreams of beauty.

The colours and shapes of many of the lanterns were both original and quaint.

The illuminations throughout were carried out by Mr. HORNIMAN'S bailiff, Mr. Sparks, to whom every praise is due. Over 2,300 visitors passed the turnstile, and enjoyed the summer evening on the lawns; all felt greatly indebted to Mr. HORNIMAN for the exceptional treat he had afforded them on this occasion of national rejoicing.

On July the 8th, Mr. HORNIMAN contributed some Japanese specimens, relating to fishing, &c., through the Japan Society to the Japan Section of the Cornwall County Fisheries' Exhibition, which was held at Truro, on the 25th of this month; also some fishing

nets from New Guinea, Malay Peninsula, and Madagascar, &c.

During the summer season Mr. Watkins showed some living specimens of British and Foreign Caterpillars in their various stages, in the Long Gallery; they were found to be very interesting and instructive to students of entomology.

On August the 12th Mr. HORNIMAN's father died at Croydon, in his 91st year. The funeral took place on the 16th at the Friends' Burial Ground at Croydon.

On September the 8th Mr. HORNIMAN went on a tour through Ireland, and purchased several interesting curios, viz. : a duplicate of the Wishing Chair from Giant's Causeway, and a few musical instruments. He returned on the 25th of the same month.

On November the 20th Mr. HORNIMAN lent a collection of old Bibles, 15th and 16th century, to the Croydon Auxiliary British and Foreign Bible Society.

On December the 7th Mr. HORNIMAN held a Reception in the Museum, to meet the Master, Wardens and Court of Assistants of the Worshipful Company of Bakers, and a few friends. The company numbered over 70. On arriving at the Museum, coffee and light refreshments were served; after which, a tour of the Museum was made under the personal guidance of Mr. Horniman and the Curator. The party then wound their way up through the illuminated grounds to Surrey Mount, and there partook of more substantial

refreshment. The visitors each received a souvenir on leaving.

On December the 19th, Mr. HORNIMAN gave a *Conversazione* to the President (Mr. H. J. Powell, M.A., L.C.C.,) and Members of the Dulwich Scientific and Literary Association. The Company, on arriving at the Museum, formed themselves into parties, and so inspected its contents under the personal direction of Mr. Horniman and Mr. Quick, the Curator, (both members of the Association).

Refreshments were served in one room, while in another Mr. HORNIMAN had engaged the services of Mr. Barnett, who gave an interesting entertainment with his Phonograph; this was much appreciated by one and all. Mr. Powell thanked Mr. HORNIMAN, on behalf of the Association, for his kindness in entertaining them.

The front lawn was illuminated.

On Boxing Day, the formal re-opening of the Museum took place; the company assembled at 10.30 on the lawn at the back, where they were photographed. Mr. HORNIMAN, in a few introductory remarks, alluded to the recent acquisitions, and to the new departments, viz. : the Model Room and Insectarium, and then introduced Sir SOMERS VINE.

Sir SOMERS VINE spoke of the pleasure afforded him by attending, and he ventured to say, with some knowledge of what collections were, that no man possessed a more thoroughly unique and noble collection than did Mr. HORNIMAN. He referred to the genuineness of the exhibits, and said that whilst,

therefore, the visitors were acquiring instruction as well as amusement, they might also be perfectly sure that the objects they saw before them came from the different parts of the world stated, and had been used by the people as described (this referred more particularly to the Ethnographical specimens). He was very pleased that Mr. HORNIMAN had now on exhibition many of his own objects, gathered from all parts of the world, and he hoped and trusted that they would derive some advantage and pleasure from witnessing and viewing them. There was certainly a great deal of instruction to be obtained. He specially asked attention to a magnificent carved Indian archway from Jeypore, and said that they could grasp the vast amount of patience and detail it represented when he told them that it had taken six men seven years to carve. Having enumerated other interesting specimens and objects recently added from his own collection, such as the Dahomey war-drum, ornamented with the skulls and thigh-bones of their enemies ; a Dahomey executioner's knife, which had done many sanguinary deeds ; the enormous straw hats worn by the natives of British Honduras ; the Boomerangs from North Queensland ; and the Zulu chief's buffalo cloak, &c. ; he concluded by saying that he only echoed the feelings of the people when he said that they were grateful to Mr. HORNIMAN for giving them the benefit of his kindness and generosity. He hoped that the appreciation of what Mr. HORNIMAN had done, and was willing and anxious to do in the future, would lead many more people to come to the Museum and see the great and useful work in which Mr. HORNIMAN was engaged.

Among those present were: Sir John Richard Somers Vine, F.R.G.S., F.R.S., C.B., Mr. and Mrs. Emslie Horniman, Mr. T. P. O'Connor, M.P., Rev. J. H. Pulley, Rev. H. Stevens, Dr. Todd, Mr. and Mrs. Manning, Mr. E. Clarke, Mr. J. Vine, Mr. C. Johnson, Mr. Douglas, Mr. Eason, Mr. Conder, Mr. and Mrs. Marler, Mr. and Mrs. Arnold, Mr. and Mrs. Brymer, Mr. Selfe, Mr. Hyde, Mr. McVeagh, Miss S. Walker, Mr. Camerne, Mr. Blakeley, Mr. Bagster, Mr. Grainger, Mr. Bache, &c.

The chief event of the year was the addition of a new Room, No. 11A, to be devoted to Models of Conveyance, such as models of Indian Canoes and Surf Boats, Katamarangs, and all other kinds of craft, from all parts of the world, showing the evolution of transit both on land and water. Also that the Zoological Collection had been re-arranged, and all the animals placed under glass, and are now being fully labelled.

From the 1st of January, 1894, Mr. HORNIMAN decided to open the Museum on an extra day, viz., Monday; making it now three days a week open to the Public—Monday, Wednesday, and Saturday.

From observation it has been noted that during the year several persons (students and children from the Board Schools) made notes and sketches, chiefly from the Armour, Indian and Japanese specimens, and Butterflies, &c. Young collectors and enthusiasts have brought their Shells, Birds' Eggs, Butterflies, &c., to identify and name.

The following gifts have been made to the Museum :—

Three Pilgrim Badges	...	Mr. S. DAY.
Puff Adder and Whip Snake		
from Pietermaritzburg, Natal		Dr. W. H. HATFIELD.
Collection of Fossils	Mr. G. BROWN.
Chinese Mandarin's Summer		
and Winter Hat	Anonymous.
Pair of Petrels...	Mr. H. R. RABBETTS.
Old English Safe Locks	Mr. J. ACUTT.
Natural History Specimens	Mr. J. H. HUBBARD.

Mr. HORNIMAN has greatly enriched the various Collections during the past year, notably by acquiring Sir Somers Vine's Ethnographical Collection, including the splendid Indian Carved Wooden Archway from Jeypore, which occupied six men seven years in its construction. A few of the principal acquisitions may be here mentioned, viz. :—

Japanese Bronze Temple Bell and wood stand for same. The bell was taken from a Buddhist Temple ; it is beautifully ornamented ; between the four strike-spots are circular panels with conventional butterflies, above are four oblong panels with raised balls, around the upper and lower part is a scroll of floral design, above the strike-spot and between the panels are Japanese characters (a legend) in relief, the loop-handle is composed of two dragons' heads. The height of the bell is one foot nine inches, the circumference at the base three feet nine and three-quarter inches.

A very handsome Japanese Cloisonné Enamel Vase, five feet high and seven feet six inches in cir-

circumference at the widest part. It took nearly four years to make, and is full of minute and intricate design. It was made by the firm of Kawano & Co., of Nagoya, a town celebrated for workers in this art. It was commenced in 1887. On the vase around the neck are designed two dragons of brown and blue; below, around its widest circumference, are five panels or medallions with different figures in each, playing on musical instruments. The panels are surrounded by the chrysanthemum treated in a conventional and realistic manner. Between these medallions the "hoho" is treated in a decorative manner, and below this a border of birds, &c., encircles the base. Then come upright panels of dragons and "hohos" (or mythical birds), alternately placed with dark and light background; the lower part of the body of the vase is a plain dark blue enamel. The vase is also exquisite in colour. The wire generally used throughout is of brass, while some of the panels are outlined with a thicker silver wire, giving relief and variety to the whole.

A Collection of Antiquities from Cyprus, viz. : Pottery, Glass, and Bronzes, which were found between 1875 and 1877, by the late Mr. G. Constantinidi and sundry villagers in and around Paphos.

A Viola-da-Gamba, made by Joachim Tielke at Hamburgh in 1602; a very fine instrument, carved and inlaid.

Two "Megoums," Burmese string instruments, in the form of a crocodile, with carved head and feet, &c.

Two Irish Harps, one by J. Egan, dated 1820.

Two sets of Irish Union Bag Pipes, complete with drones, chanter, and bellows.

A French Melophon, invented in 1837 by Leclere, a watchmaker in Paris. In shape it is like a guitar. The body of the instrument contains a set of bellows, and on the upper part a series of single reeds are disposed; the bellows are worked by the right hand; the neck is fitted with seven rows of thirteen knobs each; they communicate to a key, the opening of which gives a current of air which sets the reed in vibration; it is sufficient to press on one of them to make the instrument sound.

A Violin by Ward, made in Dublin 1764.

A 17th Century Dulcimer, a German Serpent.

A 17th Century Cordophon, German, with 12 strings, a very curious instrument.

Two 16th Century Psalteries, German, beautifully inlaid and carved; two Japanese "Kotos," a kind of dulcimer; a fine French Harp, by Consineau, of Paris, carved and painted, 18th century; also a German Harp, signed Deis, München, 18th century, and many other instruments.

Mummy of an Egyptian Lady in Coffin, XXIst Dynasty; 3,000 years old; both in splendid preservation.

Several Indian and Japanese Buddhas, and other idols.

A Burmese Buddha, carved in crystal and inlaid with gold, from the king's palace, 1891.

A Roman bronze Urn.

Two dital Harps by E. & G. Light, London.

African Slave Chains, from Dar Salam, East Africa.

Dahomey Tom-tom, 10 ft. long, with curious handle in the form of a leopard.

Burmese Buddha, wood, gilt.

Indian god, "Ganesa," God of Wisdom, carved in stone, 17th. century, weight 3 cwt.

Old English Piano, by Schœne & Vincen, late Zumpe, dated 1798.

Flint lock gun with 7 barrels, English.

New Zealand Jade God.

Bornean Hunting "Sumpitan" or blowpipe, made of bamboo.

Bornean War "Sumpitan," or blowpipe, made of iron wood, with spear head attached.

Bornean war spear, and musical instrument.

Model of Indian palanquin.

Model of Katamarang, or Ceylon boat, with outrigger.

New species of Ornithoptera or bird wing butterflies.

Two fine specimens of peacocks.

Two flying fish.

Australian kangaroo.

Kagayan War Horn, from Borneo.

Wooden Nutcrackers, 17th century, English.

Spanish Tambourine, painted.

Chinese Water Pipe.

Sword, 15th century. English.

Chinese Chopsticks, inlaid.

Chinese Money Sword.

Cannon, taken from a Slave Dhou at Zanzibar.

Old English Wine Bottle, dated 1764.

&c., &c.

VISITS have been paid to the Museum by the following SOCIETIES, SCHOOLS AND CLUBS, &c.

January	Rev. Carter and party of Unitarian Ministers...	
„	Young Ladies' School, Milbourne House, Forest Hill	10
February	St. Columb School, Park Road, Forest Hill ...	10
„	Bellenden Road Board School, Peckham ...	17
„	Young Ladies' School, Honor Oak Road, Forest Hill	18
„	Preparatory School, Sydenham	10
„	Lambeth Field Club and Scientific Society ...	12
March	Eliot Bank School, Forest Hill	10
„	St. John's School, Penge	34
April	Brightlands Boys' School, West Dulwich ...	—
„	Nunhead Passage Board School, Peckam ...	10
„	Melvin Road Board School, Penge (girls) ...	18
„	Wickham College, Manor Road, Brockley (boys)	11
May	Hollydale Board School, Nunhead (boys) ...	11
„	Chrystos School, Peckham (girls)	12
„	St. Michael's School, Lower Sydenham (boys)	43
„	The Lads' Rest, Dulwich	13
June	Young Ladies' School, Norwood	12
„	Young Ladies' School, Friern Road, Dulwich	10
„	South Place Institute, Ramblers' Club ...	21
„	Princess House, Y.W.C.A., Brompton Road, S.W.	10
„	Ashby College for Young Ladies, Brockley ...	17
July	Girls' Industrial Home, Louise House, Forest Hill	36

July.	Boys' Industrial Home, Shaftesbury House, Forest Hill	35
„	Girls' Lansom Home, Dulwich	26
„	Members of the Museums' Association	—
„	Highleigh House School, Brockley	25
„	The Finsbury Park Y.M.C.A. Ramblers	10
„	St. John the Evangelist Boys' Bible Class, Penge, with Rev. W. Plant	20
„	St. Peter's Choir Boys, Dulwich Common, with Rev. J. H. Pulley	12
„	Ivydale Road Board School, Nunhead	10
„	St. John the Evangelist Girls' Bible Class, Penge	14
„	Rathfern Road Board School, Catford	—
July	Preparatory School, Dulwich	10
„	Southwark Y.M.C.A.	15
„	Working Men's Club and Institute, Clerkenwell	—
August	St. James's Choir, Hatcham, Brockley	10
September	Goodrich Road Board School, East Dulwich (boys)	21
„	Young Ladies' School, Melbourne Road, Forest Hill	—
„	St. James's Bible Class, Forest Hill	—
„	St. John's Sunday School, Penge	11
October	Jessop Road Board School, Herne Hill (girls)	16
November	Westbourne Park Rambling Club	10
„	St. Nicholas Mutual Improvement Society, Deptford	10
„	Dulwich Hamlet Board School (boys)	24
December	Croydon Y.M.C.A.... ..	35
„	Worshipful Company of Bakers, &c.	72
„	Lewisham Bridge Board School (girls)	31

December. Dulwich Scientific and Literary Association,						
	&c.	80
„ Dulwich College, Dulwich	—

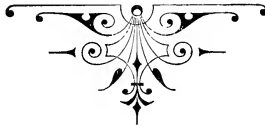
Making a total attendance of 887, and an average of 18 per Society, &c., divided as follows :—10 Societies, 3 Clubs, 3 Colleges, 20 Private Schools, 10 Board Schools, 4 Industrial Schools. Total 50 ; increase of 9 on last year.

Upwards of 500 Books were added to the Library during the year, mostly Works on Travel.

RICHARD QUICK, M.J.S.

Curator.

January 1st, 1894.



Forest Hill :

——— PRINTED AT THE VICTORIA WORKS, ——

118 STANSTEAD ROAD.

(507.42)
M

942

THE HORNIMAN MUSEUM,

LONDON ROAD,

FOREST HILL, S.E.

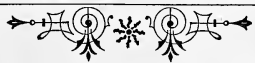


305733
cancelled
HORNIMAN MUSEUM

FOURTH

Annual Report

—❖— **1894.** —❖—



FREDERICK JOHN HORNIMAN, F.R.G.S., &c.

RICHARD QUICK, M.J.S.,
Curator.

C. D. WATKINS,
Naturalist.

F. SLADE,
Assistant.



THE
FOURTH
ANNUAL REPORT

OF

The · Horniman · Museum,

FOREST HILL, S.E.

LONDON.

1894.

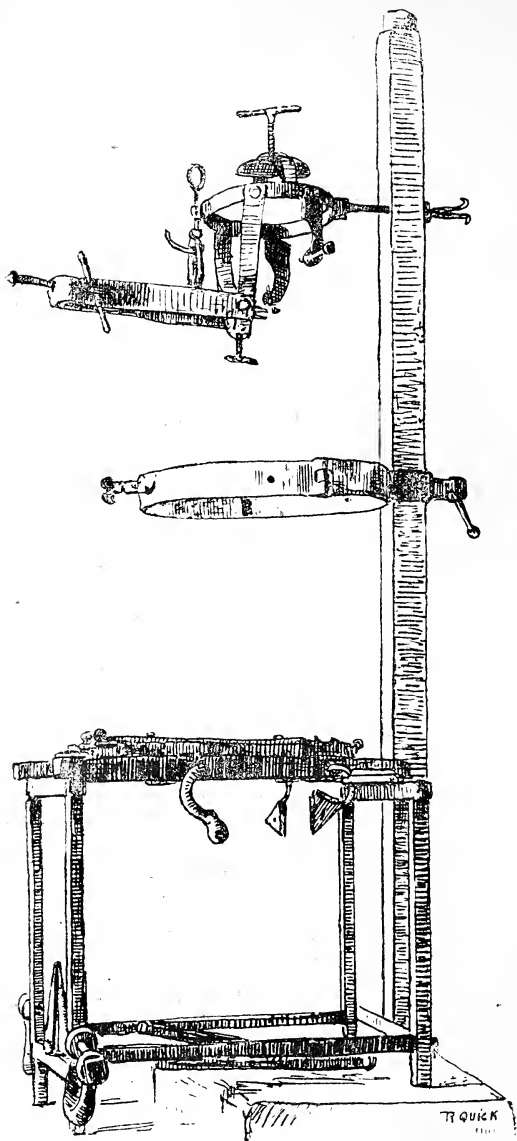
FRED^K. JOHN HORNIMAN,

Fellow of the Royal Geographical Society.
Fellow of the Royal Historical Society.
Fellow of the Linnean Society.
Fellow of the Zoological Society.
Fellow of the Entomological Society.
Fellow of the Anthropological Institute.
Fellow of the Society of Antiquaries of Scotland.
Associate of the British Archæological Association.
Member of the Marine Biological Association.
Member of the British Association.
Member of the Japan Society, &c., &c.

RICHARD QUICK, M.J.S.,
CURATOR.

C. D. WATKINS,
NATURALIST.

F. SLADE,
ASSISTANT.



SPANISH TORTURE CHAIR,

*From the Dungeons of the Inquisition at Cuenca,
Dated 1676.*

THE HORNIMAN MUSEUM,

LONDON ROAD,

FOREST HILL, S.E.

THE above MUSEUM is open **FREE** to the Public EVERY Monday, Wednesday and Saturday, from 2 p.m. until 9 p.m. (also on Bank Holidays from 10 a.m. to 9 p.m.)

Arrangements are made for the reception of Schools, Societies, and Clubs, in large or small numbers, who can now examine at their leisure the various objects of interest.

The Collection is divided into two sections—ART and NATURE. The ART Collection comprises Exhibits from China, Japan, India, viz.: Wood Carving, Lacquering, Inlaying, Metal Work, Pottery and Embroidery, &c., &c., a Horse Armoury, including the Spanish Torture Chair, Elizabethan Rooms, Old English Parlour and Pantry, Oriental Armoury, Oriental Figure Room, Greek, Roman, and Egyptian Antiquities (Three Mummies, &c.), Carvings in Ivory, Ethnographical Saloon, Porcelain and Glass Room, Collection of Pipes from all parts of the world, Musical Instruments, Models of Ships, showing the Evolution of means of Transit, &c., Pre-historic Antiquities, &c.

That devoted to NATURE, a large collection of Entomological Specimens (Butterflies, Moths, Beetles, &c.) Natural History—Beasts, Birds and Fishes, Geological Specimens, Fossils, Minerals, Specimens of Wood, Shells, Corals, and Birds' Eggs, and Nests, also many Specimens in Spirits, &c.

A CATALOGUE GUIDE IS SUPPLIED GRATIS.

NOTE.—The Museum is Three Minutes' walk from Lordship Lane Station, L.C.D.R., and Six Minutes from Forest Hill Station, L.B.S.C.R.



RAKAN, OR BUDDHIST SAINT.

Life size, carved wood, Japanese (commonly called a Magician).

FOURTH ANNUAL REPORT
 OF THE
HORNIMAN MUSEUM,
FOREST HILL, LONDON, S.E.

THIS Institution continues to be popular, as the following figures and statistics will show.

The accompanying table gives the total number of Visitors to the Museum for the past year:—

1894.

Month.	No. of Days Open.	Attendance during Month.	Remarks.
January	14	6448	Receptions in this Month.
February	12	5992	—
March	13	9099	—
April	13	4697	Easter Week in this Month.
May	13	5330	Whit Week in this Month.
June	13	3402	—
July	13	4153	Receptions in this Month.
August	13	10111	Bank Holiday in this Month.
September	13	6016	Receptions in this Month.
October	15	3733	Receptions in this Month.
November	12	2857	—
December	14	4391	Christmas Week.
Total for the year	158	65,329	—

The total attendance for the year was 65,329 ; being an average of 413 on opening days, and an increase of 23,528 on last year.

This is no doubt owing to the extra day (per week) on which the Museum has been opened.

These figures clearly show the increased interest taken by the public.

The total attendance since the opening (by the late Sir MORELL MACKENZIE, M.D.), on December the 24th, 1890, was 189,576.

The attendance on the Bank Holidays when the Museum was open from 10 a.m. to 9 p.m. is shown by the figures in the accompanying table:—

Good Friday	1215
Easter Monday	2268
Whit Monday	1318
August Monday	1645
Boxing Day	1464
Total.. .. .	7910

The total attendance on the five Bank Holidays during the past year has been 7,910, showing an average of 1,582, and an increase of 1,109 on the past year.

The following Table shows the Number of Visitors to the Museum during successive years:—

Year.	1891	1892	1893	1894
Total	42,808	36,794	41,801	65,329
Daily Average ..	389	328	383	413

On January the 19th, Mr. Horniman gave a Reception to the Choir of St. Peter's Church, Dulwich Common, and a few friends, members of the congregation. About sixty-five were present. Light refreshments and a Phonograph were provided.

On January the 23rd, Mr. Horniman held a Reception to meet the Worshipful Master and Brethren of the London Lodge of Freemasons, accompanied by ladies. The Company numbered over 70.

On arriving, light refreshments were partaken of, and the Museum Collection inspected.

A Phonograph in one of the rooms was the centre of much interesting pleasure.

The party afterwards walked through the illuminated grounds to Surrey Mount, where more substantial refreshments were served. Each guest received a souvenir on leaving.

On February the 2nd, the Bakers' Company School, of St. John's, at Hackney, visited the Museum. About 50 boys total.

On April the 9th Mr. Horniman left for a tour through the Channel Islands, and returned on the 24th of the same month.

In May Mr. Horniman presented a few duplicate specimens to the New Museum now being formed at Victoria Park, St. Helen's (Lancashire).

On June the 4th Mr. Horniman lent some models of Indian native carriages, and a Sedan Chair of Queen Anne period, to the Coaching Exhibition, held at the Royal Aquarium; and on the 26th a collection of Old Bibles, Civic Medals, &c., were similarly lent to the Royal Historical Society, for their annual *Conversazione*.

On July the 10th, Mr. Horniman held a Reception (second time) to meet the Master and Wardens of the Worshipful Company of Bakers, and the Worshipful

Master and Brethren of the London Lodge and of the Alliance Lodge, accompanied by ladies. The company numbered over 80. On arriving at the Museum, coffee and light refreshments were served on the lawn; after which a tour of the Museum was made under the personal guidance of Mr. Horniman and the Curator. Later they proceeded to Surrey Mount. The illuminations were prevented by the heavy rain. A string band played in the Conservatory, and refreshments were served in the Dining Room.

On July the 19th Mr. Horniman placed the grounds at the back of the Museum at the disposal of the parishioners of St. Peter's Church, Dulwich Common, for the purpose of presenting a testimonial to Mr. Manning in recognition of his services to the Church as People's Warden, which office he filled for 14 years. The ceremony took place under the spacious verandah at the rear of the Museum, from which the grounds rising to Surrey Mount, illuminated with over 1,000 Vauxhall lights and 700 Japanese lanterns, formed an exceedingly effective and pretty spectacle.

The company arrived at 8 o'clock, and were received by Mr. and Mrs. Horniman, and served with light refreshments on the lawn. At 8.30, the vicar (Rev. H. J. Pulley) took the chair, and amongst those present were Mr. and Mrs. J. R. Manning, Mrs. Pulley, Rev. Dr. Todd, Mr. Blakeley, Mr. N. G. Burch, Rev. E. J. Ashwin, Mr. Bagster, Mr. and Mrs. Massey, Mr. and Mrs. A. Bayles, Col. Cochrane, Mr. R. Edkins, Mr. T. F. Franklin, Mr. H. J. Mansell, Mr. E. Maller, Mr. M. Wallace, Mr. C. D. Watkins, Mr. W. J. McVeagh, Mr. R. Quick, &c.

The Vicar, in making the presentation, which consisted of a massive and handsome silver tray, spoke in eulogistic terms of the services Mr. Manning had rendered to the Church; and expressed his pleasure

at seeing so many of the congregation present to do honour to an old and valued friend. Mr. Franklin also spoke of Mr. Manning's services to the parish. Mr. Manning replied; and feelingly acknowledged the gift, after which votes of thanks were passed to the Vicar for presiding (on the proposition of Mr. Burch) and to Mr. and Mrs. Horniman (at the instance of Mr. Wallace). The visitors numbered a little over 80.

On July the 25th, Mr. Horniman went on a tour through Holland and Belgium, visiting the Antwerp International Exhibition, and returning on August the 25th.

On August the 24th the local Police and their wives were entertained. After viewing the Museum, they had a meat tea on the lawn, at the back. In the absence of Mr. Horniman, Mr. Quick presided. Seventy-three sat down to table; after which they made a general inspection of the grounds and various greenhouses. Sergeant Barnes proposed a hearty vote of thanks.

On September the 28th, Mr. Horniman entertained forty of the Cadets from H.M.S. Worcester, accompanied by Capt. D. Wilson Barker, and the Rev. A. B. Pedley, chaplain. The party arrived at 3.30; and, after inspecting the Museum, sat down to a tea served under the verandah, at which Mr. Horniman presided; after which the Cadets passed through the grounds, and ascended the tower. Before leaving, hearty cheers were given for the host, in recognition of his hospitality.

On October the 26th, Mr. Horniman gave a reception to His Excellency the Japanese Minister, Viscount Aoki, President, and the members of the

Japan Society. The guests were received in the Japanese, or Reception, Room by Mr. Horniman; coffee and Japanese tea were served in an adjoining room. A telegram, sent by His Excellency Viscount Aoki, read as follows: "Frederick John Horniman, Esq., Forest Hill, London. Pressure of official duties does not permit me to leave Berlin now, and I deeply regret my inability to be present at your reception. Accept my sincere thanks for the honour extended to me, and remember me kindly to members of our Society. Aoki." Letters regretting inability to be present were received from the Lord Mayor, Sir Trevor and Lady Lawrence, Professor W. Anderson, (Chairman of Council), Mr. and Mrs. Emslie Horniman, Mr. Elliot Lees, M.P., Lady Colin Campbell, Mr. Marcus B. Huish, Mr. Hyde Clarke, Mr. J. H. Morris, Mr. R. A. McLean, Captain Ingles, Mrs. Gordon, Mr. R. J. Lake.

Upwards of a hundred guests had arrived, in spite of the inclement weather. Amongst those present were Mr. Arthur Diósy (founder of the Society and Vice-Chairman of the Council), Mrs. A. Diósy, Mr. Charles Holme and Mr. Ringaburo Tayui (Hon. Secretaries), Mr. Paul Bevan (Hon. Treasurer), Mr. J. Mogford (Hon. Librarian), Mr. A. E. Brice (Assistant Secretary), Sir Edward J. Reed, K.C.B., M.P. (Vice-President), General Sir Julius Raines, K.C.B., Sir J. Benjamin Stone, Professor A. H. Church, Captain K. Yendo, Dr. Pole, Mr. T. N. Ito, Mr. Yasuya Uchida, Mr. Hayashi, Mr. T. Okamura, Mr. K. Morikawa, Mr. T. Toki, Mr. F. A. Satow, Mr. Y. Takai, Captain C. Rolleston, Professor C. Stewart, Archdeacon and Mrs. Shaw, of Tokio, Dr. Marsh, Mr. T. Douglas Murray, Mr. Frank Dillon, Rev. R. Brooks Egan, Mr. W. Gowland, Mr. H. Hartley, Mr. Purdon Clarke (director of the South Kensington Museum), Mr. H. Wallact, Mr. A. Markoff, Dr. and Mrs. McAlister, Mr. and Miss Cushing, Mr. and Mrs. J. R. Manning, Mr. and Mrs.

Angier, Mr. W. F. Hall, Mr. and Mrs. Fairley, Mrs. England (Banbury), Mr. Tomkinson (Kidderminster), Mr. Kenneth Havers, Mrs. Arnold, Mr. George Mackey (Birmingham), Mr. R. Meyer, Mr. and Mrs. Yates Edwards, Mr. and Mrs. L. Liberty, Mr. and Mrs. E. Barnard, Mr. and Mrs. J. E. Kaye (Rochdale), Mrs. P. S. Lineham, Mr. J. E. Liddiard, Mr. and Mrs. J. Leyland, Mr. and Mrs. Da Costa, Mr. J. Larkin, Mr. and Mrs. J. W. Jones, Mr. and Mrs. H. Cox, Mr. J. Offord, Mr. and Mrs. A. Stevenson, Mr. and Mrs. P. J. Smith, Mr. White Cooper, Mr. and Mrs. J. Sparks, Mr. and Mrs. R. Cooper, Mr. E. Crawshaw, Mr. C. Head, Mr. and Mrs. Karples, Mr. and Mrs. E. M. Courtney, Mr. and Miss Brind, Mr. G. Cawley, Mr. W. S. Hall, Mr. and Mrs. J. Flower, M. Bing (Paris), Mr. Larkin, Mr. and Mrs. Nielson, Mr. and Mrs. J. N. Wilson, Mr. Gleeson White, Mr. and Mrs. R. Quick.

The company then inspected the various collections, and afterwards adjourned to Surrey Mount. The table decorations here and at the Museum were composed of choice chrysanthemums; and the Japanese flag and the Union Jack were displayed in friendly company. Refreshments were provided in the Dining Room; whilst in the Drawing Room the visitors had the pleasure of hearing a selection of music, arranged by Mr. Dalgety Henderson. The artists were Miss Ethel Bevans, Mr. Franklin Clive, and Mr. Albert Fox.

Prior to the guests taking their departure, Mr. Y. Uchida, the Japanese *Chargé d'Affaires*, said:—"In the unavoidable absence of his Excellency, the Viscount Aoki, the president of the Japan Society (who is detained abroad), the pleasant duty devolves on me of proposing, as I now do most heartily, a cordial vote of thanks to our kind host, our fellow member, Mr. Horniman, for the brilliant and instructive entertainment he has given us this evening." Mr. A.

Diósy, Vice-Chairman of the Council, seconded the motion, which was carried with acclamation.

Mr. Horniman, in returning thanks, said it had been a very great pleasure to him to receive his fellow members of the Japan Society; and to testify to his admiration for the gallant Japanese people, and for the exquisite products of their wonderful artistic taste and skill. They had only to look at a few specimens in the Museum to see that the artisans of Japan were artists in the truest sense of the word.

The members of the Society, on leaving, were each presented with a box of exotic butterflies as a memento of their visit.

On November the 1st Mr. Horniman left for a tour through India. He is expected to return about the middle of March next.

A new department was opened in the autumn for the exhibition of some old and curious Manuscripts, and editions of Bible, including specimens from the fourteenth to the eighteenth centuries; also a collection of civic and other medals and coins, including Roman imperial coins, British (from the Conquest to the present time), and foreign coins.

It remains here only to observe that, during the year, several persons (students and school children) have made notes and sketches, chiefly from the Armour; the Egyptian, Indian, and Japanese specimens; and the Butterflies; &c. Young collectors and enthusiasts have brought their Shells, Birds' Eggs, Butterflies, Coins, &c., to identify and name.

The following GIFTS have been made to the Museum during the year:—

Wasps' Nest, taken from a box tree at Dulwich, Dec. 1893 ...	Mr. J. LINDGREN.
Collection of Fossils, from the Red and Coraline Crags of Suffolk	Major E. F. MOORE.
Collection of Bones, Teeth, and Flints from the Devonshire Caves	Mr. H. HARLAND.
Primitive Toasting Fork, 18th Century, used on a flat hearth-stone at Gouthland, North Yorks	The same.
Soudanese Knife and Shell of Armadillo	Mr. H. WATTS.
Oak Cross from the Council Chamber, Tower of London...	Anonymous.
Collection of Flint Implements and Slave's Hut	Mr. T. M. POWELL.
Trap-door Spider's Nest; and Japanese Painted Shell ...	Mr. W. ALDRIDGE.
Bronze Celt, from New Cross ...	Mr. BARRETT.
Double Canoe model, from Humphrey Island (Manihiki) Central Pacific	Mrs. DAVIS.
Stone Adze, from North America	Mr. J. W. JONES.
Pair of Bronze Compasses ...	Mr. J. CHURLEY.
Mediæval Bone Skate, Japanese Playing Cards... ..	Mr. F. S. WELLS.
Stone Adze, from France ...	Mr. G. E. DIBLEY.
German Glass Bottle, 17th Century; Indian Card Case, &c....	Mr. J. KEMP.
Zulu Stone Pipe Bowl	Mr. F. SLADE.
Collection of Birds' Eggs ...	Mr. A. G. WRIGHT.
Pipe from Lobengula's Camp, Matabele	Mr. W. BOYD SMITH.
Bows and Arrows from South Sea Islands	Mr. W. G. INNES.
Washington Centennial Medal...	Mr. J. D. CRIGHTON.
Indian Elephant's Tooth; Elizabethan Candlestick, &c. ...	Capt. M. ROONEY.

Photograph of the Mammoth in the Zoological Museum, St. Petersburgh	By the Director.
Bronze Medal, Indian and Colo- nial Exhibition, 1886... ..	Mr. J. R. MANNING.
Labrador Longtail Duck	Mr. J. LINKLATER.
Japanese Bronze Mirror and Japanese Rice Bowl, Hizen ware	Gen. Sir JULIUS RAINES,
Three Medals	Miss L. HADEN. [K.C.B.]
Duelling Pistol, two barrels	Mr. R. QUICK.

A few of the principal acquisitions by PURCHASE may be here mentioned, viz. :—

A Collection of Romano-British and Mediæval Antiquities found in various parts of London during excavations between 1890 and 1893.

A Collection of ancient Peruvian Pottery, termed "Huacas," or water crofts, including two whistling vessels, from one of the burial places near Cuzco.

A Roman Amphora, of the "bottle" or bulbous shape, with tapering base, being one of the kind which was used for holding wine, and was pressed into the sand which covered the ground of the wine cellar. This interesting and perfect specimen was found while digging for building purposes at Primrose Hill, in 1891. It is 25½ in. high, and 34 in. in circumference at the widest part.

A finely-executed native model of an Esquimaux "Kajak," a kind of canoe. In it is seated an Esquimaux man in a seal-fishing outfit, and on the canoe his tackle, harpoon, spear, line, paddle, ice chisels, knives, &c. The model is made of skin, tipped at both ends with bone, and is correct in every detail.

A model of an Irish Corragh, one of the fishing boats largely used by the fishermen in the west of Ireland, who make them throughout themselves. The framework

is composed of deal, ribbed with hazel rods. It is then covered with several thicknesses of stout calico, each being well tarred, to make it perfectly water-tight. Four oars are employed.

Four models of Boats from the Sulu Archipelago, Malaysia.

Six flint palæolithic Implements from the Suffolk gravels at Icklingham.

A Chinese Temple Bell, made of meteoric iron and silver, taken from a Buddhist Temple at Kuhlan, a town on the Island of Tylo, about 30 miles from Macao; in November, 1854, by Captain M. Rooney, of the barque "Caldera." This vessel, having been disabled in a typhoon, took shelter in a bay, and at midnight was boarded by Chinese pirates, who made the crew and passengers prisoners, the cargo being seized. Some war vessels were sent to the island, and the piratical stronghold of Kuhlan was taken and destroyed. This bell formed part of the spoil, (a picture of it will be found at the end of this report). The bell is 27 in. high, inclusive of the handle, which rises 6 in. above the top of the bell; and 5 ft. 6 in. in circumference at the base, or mouth. The body of the bell is thus 21 in. in height. The handle is in the form of a dragon.

A Chinese Table and Couch, brought from Ningpo in 1860.

Two Chinese Oil Paintings, 6 ft. 8 in. by 3 ft.. being views on the Canton River. Early 19th century.

A Chinese brass Fire Pump.

A Chinese Map of the Gulf of Pechili, bought in Pekin in 1861.

A fine Tusk of the extinct Mammoth, *Elephas Primigenius*, measuring along the curve 7 ft. 4 in. The circumference at the base is 22 in., and at the opposite end, where it is broken, 15 in. It was dredged up in a trawl off the Knowl by the "Welfare," of Lowestoft. 1894.

A Dyak drum and tobacco pipe from Borneo.

An Indian silver and amber necklace.

An Indian soapstone model of the "Taj Mahal," at Agra.

A Burmese Buddha-in-Nirvana ; The figure, in marble, lying in a wood stand in the shape of a dragon.

The lid of an Egyptian mummy case ; with two heads, a hand and a foot of mummies.

Two Japanese inlaid panels on zebra wood.

A Japanese wood fire pump.

Six Japanese spears, or halberds, with inlaid handles.

Several tobacco pipes, formerly in the Bragge Collection.

The Common Bittern, *Botaurus Stellaris*.

The model of a Sampan from Formosa.

A piece of brick from the Porcelain Tower of Nankin.

Two Chinese soapstone figures.

A North American Indian hatchet.

A pocket revolver, which formerly belonged to General "Stonewall" Jackson.

A Japanese bronze gong.

A Chinese wood mariner's compass.

A Maori greenstone adze.

A gun wheellock, 16th century.

An Arab matchlock gun.

VISITS have been paid to the Museum by the following SOCIETIES, SCHOOLS and CLUBS, &c.

January	Blackheath Road Board School, Greenwich (Girls) 13	13
"	Southwark Home for Lads, Southwark Street	—
"	Haseltine Road Board School, Lower Sydenham	10
"	St. Peter's Choir and Friends, Dulwich Common (Rev. H. J. Pulley, M.A.) ...	65
"	The London Lodge of Freemasons and Friends	73
"	Borough Polytechnic Antiquarian Society ...	10
February	Baker's Company's School, St. John's at Hackney (boys) 50	50
"	Lewisham Park School, Lewisham (boys) ...	25
"	Oakfield Young Ladies' School, West Dulwich	16
"	Wickham College, Manor Road, Brockley (boys)	16
"	South Norwood College (boys) 10	10
"	Working Men's Club and Institute, Clerkenwell	28
"	St. John's School, Dulwich 10	10
March	The Goldsmiths' Institute, New Cross (Ladies' Rambling Club) 16	16
"	Ashby College for Young Ladies, Brockley ...	15
"	Young Ladies' School, Coventry Park, Streatham 16	16
"	People's Palace Rambling Club —	—
"	Young Ladies' School, Crystal Palace Road ...	22
"	Orford College for Ladies, Gipsy Hill ...	10
"	Young Ladies' School, Brockley 12	12
"	Orford College for Ladies, Gipsy Hill (2nd visit)	10
April	Young Ladies' School, Crystal Palace Road (2nd visit) 10	10
May	St. Michael's School, Lower Sydenham (boys and girls) (Mr. G. E. Dibley) 85	85
"	Girls' Industrial Home, Forest Hill 11	11
"	Goodrich Road Board School, East Dulwich (boys) 24	24
June	Sunday School Class, Walworth (boys) ...	10
"	Cheltenham College Mission Choir Boys, Nunhead 22	22
"	James Allen's Girls' School, Dulwich ...	13
"	Crawford Street Board School, Camberwell (girls) 10	10
"	Gloster Road Board School, Peckham ...	14
"	Crompton Street Board School, Newington (girls) 16	16
July	Coldbath Mission, Greenwich (women) ...	14
"	Freemasons' and Bakers' Company 85	85
"	Alleyn's School, Dulwich (Rev. J. H. Smith, B.A.) 100	100

July	Mr. Manning's Presentation	80
„	Young Ladies' School, Brockley	19
„	East Dulwich Grove Young Abstiners' Union			18
August	St. Mark's Sunday School, Peckham (boys)	12
„	Y.M.C.A., Exeter Hall, Rambling Club	—
„	Local Police and Wives	73
September	Selhurst Wesleyan Bible Class (girls)	11
„	Kenilworth High School, Beckenham	12
„	St. John's Sunday School, Penge (boys)	12
„	Cadets from H.M.S. "Worcester," off Green-			
	hithe (Capt. Barker)	42
October	South London Schools' Cricket Association	34
„	Brightland's Boys' School, Alleyn Park,			
	Dulwich	10
„	The Japan Society—Reception	106
November	Eliot Bank School, Forest Hill	—
„	Wellesey House School, Forest Hill	—
December	Lewisham Bridge Board School (girls)	26
„	Lambeth Field Club and Scientific Society	20
„	Vernon House School, Peckham (boys)	13

Making a total attendance of 1,349, and an average of 26 per Society, &c., divided as follows:—8 Societies, 4 Clubs, 9 Colleges, 17 Private Schools, 7 Board Schools, 2 Industrial Schools, 5 Sunday Schools, 3 Miscellaneous. Total, 52; increase of 2 on last year.

Several valuable and interesting Books were added to the Library during the year, mostly Works on Travel, Art, and Archaeology, &c.

RICHARD QUICK, M.J.S.,

Curator.

January 1st, 1895.





CHINESE TEMPLE BELL.

(For description, see Report.)

Forest Hill:

— PRINTED AT THE VICTORIA WORKS, —
115 STANSTEAD ROAD.

(507.42)

m

157434

THE HORNIMAN MUSEUM,

LONDON ROAD,

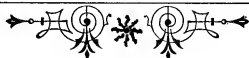
FOREST HILL, S.E.



FIFTH

Annual Report

1895.



FREDERICK JOHN HORNIMAN, M.P., F.R.G.S.

RICHARD QUICK, M.J.S.,
Curator.

C. D. WATKINS,
Naturalist.

F. SLADE,
Assistant Naturalist.

THE
FIFTH
ANNUAL REPORT

OF

The · Horniman · Museum.

FOREST HILL, S.E.

LONDON.

1895.

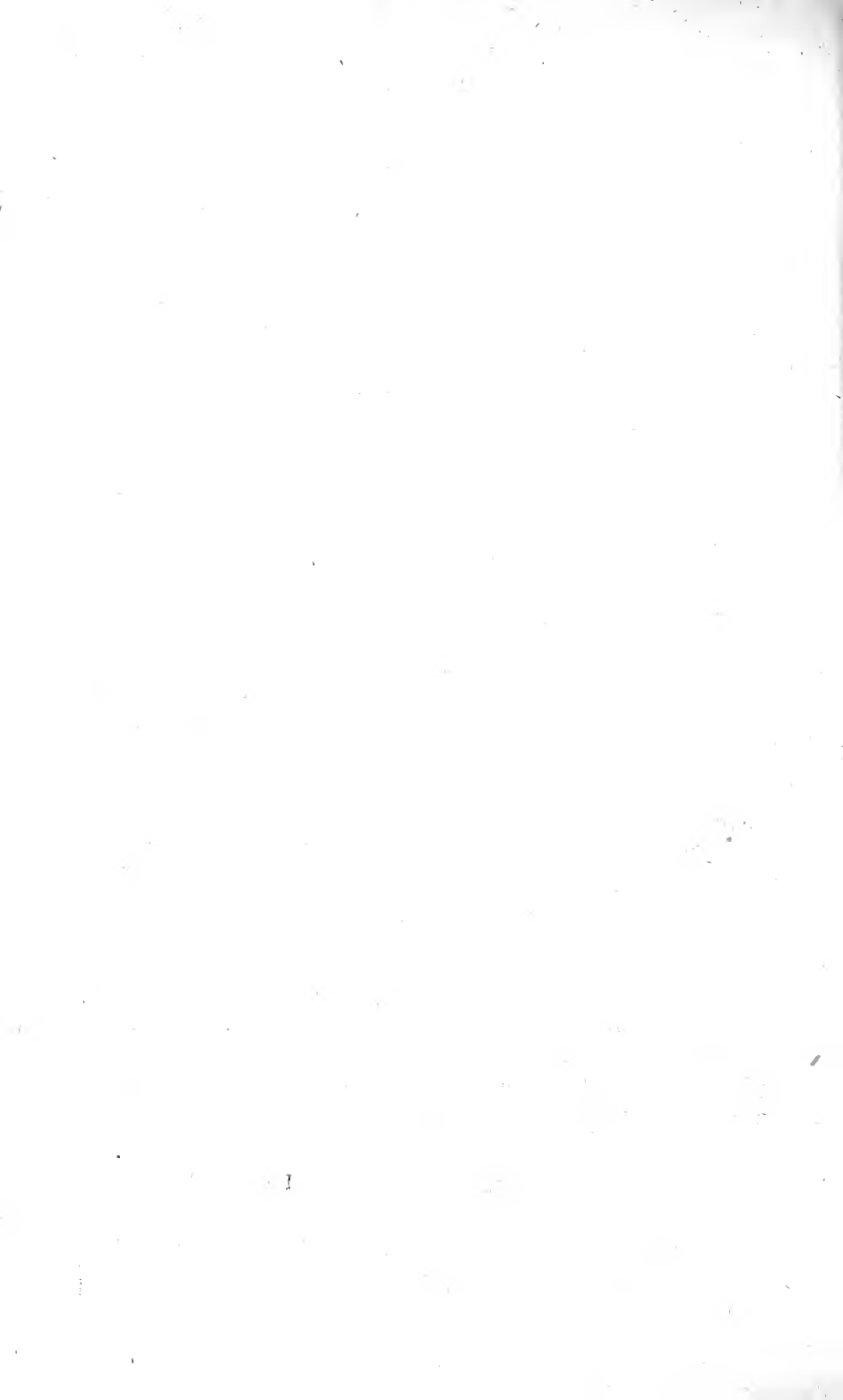
FREDK JOHN HORNIMAN, M.P.,

Fellow of the Royal Geographical Society.
Fellow of the Royal Historical Society.
Fellow of the Linnean Society.
Fellow of the Zoological Society.
Fellow of the Entomological Society.
Fellow of the Anthropological Institute.
Fellow of the Society of Antiquaries of Scotland.
Associate of the British Archæological Association.
Member of the Marine Biological Association.
Member of the British Association.
Member of the Japan Society, &c., &c.

RICHARD QUICK, M.J.S.,
CURATOR.

C. D. WATKINS,
NATURALIST.

F. SLADE.
ASSISTANT NATURALIST.



THE HORNIMAN MUSEUM,
LONDON ROAD,
FOREST HILL, S.E.

THE MUSEUM is open **FREE** to the Public EVERY Monday, Wednesday and Saturday, from 2 until 9 p.m. : Sundays, 2 to 5 : Bank Holidays from 10 a.m. to 9 p.m.

Arrangements are made for the reception of Schools, Societies, and Clubs, in large or small numbers.

The Collection is divided into two sections—ART and NATURE. The ART Section comprises Exhibits from China, Japan, India, viz. : Wood Carving, Lacquering, Inlaying, Metal Work, Pottery and Embroidery, &c., &c., a Horse Armoury (including the Spanish Torture Chair), Elizabethan Rooms, Old English Parlour and Pantry, Oriental Armoury, Japanese Figures, and Greek, Roman, and Egyptian Antiquities (Three Mummies, &c.), Carvings in Ivory, Ethnographical Saloon, Porcelain and Glass Room, Collection of Pipes from all parts of the world, Musical Instruments, Models of Ships, showing the Evolution of means of Transit, &c., Pre-historic Antiquities, &c.

The Section devoted to NATURE includes a large number of Entomological Specimens (Butterflies, Moths, Beetles, &c.), Beasts, Birds, and Fishes, Geological Specimens, Fossils, Minerals, Exhibits of Wood, Shells, Corals, and Birds' Eggs, and Nests, also many Specimens in Spirits, &c.

A CATALOGUE GUIDE IS SUPPLIED GRATIS.

NOTE.—The Museum is Three Minutes' walk from Lordship Lane Station, L.C.D.R., and Six Minutes from Forest Hill Station, L.B.S.C.R.

FIFTH ANNUAL REPORT

OF THE

HORNIMAN MUSEUM,

FOREST HILL, LONDON, S.E.

THIS Institution continues to be popular, as the following figures and statistics will show.

The following table gives the total number of Visitors to the Museum for the past year:—

1895.

Month.	No. of Days Open.	Attendance during Month.	Remarks.
January	13	3740	_____
February	12	1702	_____
March	13	3188	_____
April	15	13123	Easter Week in this Month.
May	11	3695	_____
June	19	16424	Whitsun Week in this Month.
July	18	9206	_____
August	17	15102	Bank Holiday in this Month.
September	18	7853	_____
October	17	4736	_____
November	17	3734	_____
December	18	3304	Christmas Week.
Total for the year.	188	85807	_____

The total attendance for the year was 85807; being an average of 456 on opening days, and an increase of 20478 on last year.

The total attendance since the opening (by the late Sir MORELL MACKENZIE, M.D.), on December the 24th, 1890, has been 275,383.

The attendance on the Bank Holidays when the Museum was open from 10 a.m. to 9 p.m. is shown by the figures in the accompanying table:—

Good Friday	2231
Easter Monday	3325
Whit Monday.. .. .	3785
August Monday	2768
Boxing Day	314
Total	12423

The total attendance on the five Bank Holidays during the past year has been 12,423 showing an average of 2,584, and an increase of 4,513 on the past year, although the Boxing Day attendance fell off owing to the very bad weather.

The following Table gives the Number of Visitors to the Museum during the last four years:—

Year.	1892	1893	1894	1895
Total.. .. .	36,794	41,801	65,329	85,807
Daily Average ..	328	383	413	456

The following Table shows the Number of Visitors to the Gardens for the summer months of 1895:—

Month.	No. of days open.	Total.	Daily Average.
June	19	25,809	1,358
July	17	11,964	745
August	16	18,775	1,173
September	18	7,147	395
October	13	2,628	202
Total	83	66,323	799

On February the 6th, Mr. Horniman returned from his Indian Tour.

On March 25th Mr. Quick read a paper on "Japan and Japanese Art," as illustrated in the Horniman Museum, before the Dulwich Scientific and Literary Association. The lecture was illustrated by lantern slides (photos), taken from specimens in the Museum, and a few actual objects.

On June the 1st Lord Battersea, accompanied by Lord Meath, opened the Gardens adjoining the Museum to the public, on the same days as the Museum, and which in future would be open on Sunday afternoon. There was a large gathering, and amongst the company present were Miss Flower, Lady Vincent, Mr. and Mrs. Emslie Horniman, Sir Edward Reid, Rev. and Mrs. Pulley, Rev. and Mrs. Scott, Mr. and Mrs. J. R. Manning, Rev. G. Jones, Miss Benwell, the Misses Gillett, Mr. J. W. Jones, Mr. and Mrs. Selfe, Mr. and Miss Sayer, Mr. Walcott, Professor Corfield, Mr. and Mrs. Lawrence, Mr. and Mrs. Levy, Dr. Todd, General Roberley, Mr. Hastings Stewart, Mr. Rhodes, Mr. Richardson, Mr. M. Judge, Mr. Freeman, Mr. and Mrs. C. Barry, Mr. and Miss Diósy, Mr. and Mrs. Lineham, Dr. and Miss Rand, Mrs. Maidlow, Mrs. Gordon, Mr. and Mrs. Simpson, Mr. and Mrs. R. Quick. After the opening ceremony, Mr. Horniman took the company round the Museum. Later, rockets were sent up and the grounds illuminated.

June 16th being Hospital Sunday, Mr. Quick had boxes placed in the Museum and Gardens, when a handsome collection was made for the Metropolitan Hospital Sunday Fund, £8. 17s., in the following manner:—£5 from Mr. Horniman, £1 8s. 3d. in silver, and £2. 8s. 9d. in coppers. The total was forwarded to the Mansion House. Visitors to the Museum, 1,423; to the Gardens, 2,374.

On June the 27th Mr. Horniman gave his employés a treat of an excursion, on the *Koh-i-noor*, to Clacton-on-Sea. The party numbered in all twenty-two, three or four being unavoidably absent. The necessary arrangements were carried out by the Curator.

The party left the Old Swan Pier, at London Bridge, at 9 a.m., by the tender, and boarded the *Koh-i-noor* at Gravesend. Southend was reached soon after mid-day, and here the company adjourned to the dining saloon. Clacton pier was reached at a quarter-past two. After wiring the safe arrival to Mr. Horniman, the party enjoyed themselves on the sands, cliffs, &c. At half-past four they re-embarked, and after a smooth passage, arrived at London Bridge at half-past ten, having had a delightful day's outing.

On July the 16th Mr. Horniman was returned Member of Parliament for Penryn, Falmouth, and Flushing.

In August a collection of African curios, ivory carvings, bead work, weapons, &c., was lent to the African Loan Exhibition, held at the Crystal Palace, and later in October a similar collection was lent to the Missionary Loan Exhibition held at Bedford.

A few duplicate specimens were presented to the Dewsbury Museum.

In September Mr. Horniman presented the two live opossums, which were at the Museum during the summer, to the Regent's Park Zoological Gardens.

On August the 28th, Mr. Horniman, as President of the Forest Hill Sports, presented the prizes to the successful competitors on the Museum Lawn.

Amongst those present on the platform were Mr. F. Fletcher, founder and promoter of the Local Sports; Mr. T. Chitty, Chairman of the Committee; Mr. E. C. Crump, Treasurer; Mr. Barclay, Secretary; Mr. and Mrs. J. R. Manning, Mr. Martin, Mr. and Mrs. R. Quick, &c. The Anerley School Band was present, and played on the Lawn, and the Grounds were illuminated. 3,822 visitors enjoyed a pleasant evening.

On August 30th Mr. Horniman held a Reception to meet the Worshipful Master and Brethren of the Alliance Lodge, &c.

On September 10th Mr. Horniman left on a tour round the world, embracing New York, San Francisco, Japan, China, Burmah, and South India.

During the year Mr. Quick read two short papers before the British Archæological Association, on a Mediæval Bed Warmer and an Ancient Celtic Bell, (*see illustration*) recently acquired for the Museum.

Mr. Slade has remounted many of the Birds, and gone generally through the Zoological Collection, Corals, and Shells.

The following GIFTS have been made to the Museum during the year:—

Singhalese Ring, 18th centy., silver	Mr. J. FERNANDO (Ceylon)
Brass Ear Ornaments from Ceylon	TWO LITTLE TAMIL GIRLS
Mediæval Bed Warmer	Mr. H. BROOKER
Ebony Walking Stick from Colombo, Bombay Card Case, Bell, &c.	Mr. J. KEMP
Collection of Fossils from the London Clay of Sheppy	Mr. W. H. SHRUBSOLE
Shark's Teeth, S. America	Mr. W. H. SHRUBSOLE
Piece of Mummy Coffin	Mrs. BARROWS

Mexican Pottery (three specimens)	Mr. R. H. COLLINS
Walking Stick (formerly the property of Mr. W. E. Gladstone)	Mr. F. G. FARDON
Medal, William IV....	MR. W. ALDRIDGE
Small Burmese Bell	Mr. M. ROONEY
Silver Burmese Buddha	Mr. NEALE
Dutch Pipe and German Jug	Mr. W. ACUTT
Two German Beer Glasses	Mrs. W. GUNDY
Mineral Specimen (copper &c.)	Mr. H. LAVIN (Penryn)
Shoe, Queen Anne period	Mr. T. REED (Falmouth)
Shells...	Mr. J. BURTON
Skeleton (child's)	Mr. H. ANDREWS (Canterbury)
Chinese Opium Pipe, &c.	Mr. T. WEBBER, J.P. (Falmouth)
German Porcelain Pipe	Mr. F. SLADE
Roman Mosaic (58 in. by 31 in.)	Mr. G. R. HARDING
Miniature of a Lady, and specimen of Labradorite	Mr. C. SPENCE
Two Cat-'o-nine-tails or Flogging Whips	Mr. W. H. SHRUBSOLE
Whalebone, Boomerang, and Unguentarium	Miss L. SYMONS (Falmouth)
Flint Cores from Northfleet	Mr. G. E. DIBLEY
Plate of Mason's Ironstone China...	Mr. J. PEARSON
Old Bronze Stewpan on feet	Mrs. A. CARPENTER
Two Caudle Cups (Davenport)	Mr. J. W. WARMAN
Cut Glass Milk Jug (Old English)	Miss E. E. M. HOCKLEY
Pair of Old English Razors and Knife and Fork	Mr. S. DAY
Old English Costrel, Tea Pot, &c.	Mrs. E. WELLS
Chinese Woman's Dress and Mask	Mrs. ROONEY
Chinese Porcelain, Irish Carved Box, Egyptian Amulet, Shells	SIR EDWARD REID
Head of Egyptian Mummy and Mummy Ibis, from the same tomb	Mr. A. P. ALLEN
Wedgwood Dish	Mr. R. QUICK
Collection of 50 Duplicate Insects...	COMMITTEE OF THE COLombo MUSEUM (Ceylon)

Minerals and Shells... ..	Mr. C. H. DEDMAN
White Ferret	Mr. T. SWAN
German Pipe and Sabots	Mr. R. N. KELSEY

The following EXCHANGES have been made :—

Collection of Casts of Pre-historic Implements from the Smithsonian Institute	THE UNITED STATES NATIONAL MUSEUM (Washington)
Dresden Cup and Saucer, China	Mr. J. PEARSON
Pair of Japanese Wooden Figures	Mr. W. ALDRIDGE
Burmese Buddha and Two Singalese Steel Styli	Prof. R. DAVIDS
Birds' Eggs	SIR EDWARD REID

A large collection of objects from India and Ceylon, purchased by Mr. Horniman during his recent travels in those countries, were arranged and placed on exhibition at Easter.

It consisted of art products in great variety, *repoussé* silver and lacquered ware, personal ornaments, brass and copper work, enamelled ware, jewellery, embroidery in gold thread, silver thread, and silk, pottery, weapons of many kinds, clay modelling, wood and ivory carving, inlaid work on marble and wood.

Idols of various kinds, made of marble, stone, brass, bronze, wood, and *papier maché*, musical instruments, pipes, palm-leaf books, prayer blocks and wheels, devil-masks, etc.

A Japanese *cloissonné* enamel "Koro," or incense burner, from Nagoya.

The vase, including the tripod on which it stands, is six feet in height, and the whole rests on a carved wooden base nine inches high. Also a set of seven small vases from the same town (made expressly for the Museum) illustrating the process of Japanese *cloissonné* enamel.

A Collection of pre-historic (Neolithic) flint and stone Implements from Denmark, containing some fine specimens of axes, hammers, hatchets, gouges, chisels, daggers, and spear heads, saws, scrapers, and flakes, etc.

A bronze cannon from Borneo.

A handsome Japanese sword.

A Mallicollo figure, called a mummy, from the New Hebrides, brought from New Zealand by A. H. Stewart, Esq., in 1886.

It was the custom, on the death of a warrior or chief, to make an image or figure of bamboo, to represent as well as possible the deceased.

The real head, or skull, was taken from the buried chief and smeared over with clay, and put on the model, and the whole set up in the god's house, with the weapons, etc., of the departed. Some say these images are worshipped.

A curious fact to be noticed in these figures, is that the head of the arm-bone or *humerus* is carved like a face.

Collection of ancient appliances for making fire and holding light.

Collection of stone implements.

Collection of musical Instruments and curious forms of violins.

Collection of Ethnographical specimens, formed by the late Mr. W. Gadsby.

Japanese idols, vases, etc.

Three very fine Meerschaum pipes, and one of carved buck horn.

Collection of Norwegian carved wooden beer tankards and mangle boards.

Collection of Models of ships, boats, canoes, etc., formerly in the possession of the United Service Institution, Whitehall.

Canoe from the North West Coast of America, 7 feet 6 inches long.

A few of the principal acquisitions by PURCHASE may be here mentioned, viz :—

A Japanese shrine, or Butsumono, from Nikko, brought from Japan in 1892.

It is upright and oblong in form, made of wood, pannelled, with folding doors and engraved metal hinges, etc. The interior is richly gilt, and contains a representation of a temple, with graduated pagoda roof, and double row of columns in elaborately carved wood, gilt, and ornamented with gilt chased bands. Below this is a space partly occupied by Kyilins carved in wood, under which is a deeper space, with three groups of birds, forming drawers.

At the top there is a lintel of wood, with chrysanthemums in carved open work, gilt.

There is an inner set of folding latticed doors fitted with gauze and carved panels, in open work, of birds, etc. In the exterior base are three drawers.

The whole is a fine specimen, and stands 6 feet 2 inches high, and 4 feet 4 inches wide, by 2 feet 10 inches deep.

A Moriori "toki," or stone implement—a rare specimen—was found amongst the limestone rock shelters at Ngapara, about 17 miles inland from Oamaru, on the East Coast of the South Island of New Zealand, by Mr. S. Edwards.

The stone of which it is made is a kind of brownish-green schist. It is 12 inches in length, and perforated at the blade end.

A fine specimen of the *Ichthyosaurus*, from the lias at Keynsham, near Bath. Length about 10 feet, and diameter of the eye 7 inches. Part of another fossil from Street, near Glastonbury.

VISITS have been paid to the Museum by the following SOCIETIES, SCHOOLS and CLUBS. &c.

January	Christ Church School, Streatham (girls) ...	16
„	Sydenham College (boys)	10
February	North London Natural History Society ...	—
March	The College for Young Ladies, Crystal Palace Road	18
„	Ladies' School, Minshall House, Beckenham...	14
April	Sunday School Teachers and Friends... ..	17
„	Royal Normal College for the Blind	27
„	Working Men's Club and Institute, Clerkenwell	30
May	North Surrey District School, Anerley (boys)...	30
„	Young Men's Bible Class, Marlboro' Chapel, North Camberwell	30
„	King's College, Strand, IV. Form	27
„	Carpenter's Institute, London Wall, Great Tichfield Street Students	60
„	King's College, Students, Carpenter's Comp...	58
June	Sunday School, Lewisham High Road Congregational Church	15
„	Westminster Society School, Herne Hill (girls)	22
„	St. Luke's Rambling Club, South Hackney...	—
„	Goodrich Road Board School, Dulwich (girls)	21
„	Westminster Training Home for Girls... ..	15
„	Pleasant Sunday Afternoon Society (Mr. T. L. Sayer and party)	61
July	South Place Ramblers	—
„	Anerley District School (girls)	62
„	The Salvation Army	—
„	Anerley District School (girls), 2nd visit ...	38
„	Jessop Road Board School, Herne Hill (girls)	30

August	Bell Green Baptist Chapel, School, Sydenham (girls)	60
„	St. Jude's Sunday School, Peckham	32
„	St. Andrew's Sunday School, Peckham	12
„	St. Michael's School, Lower Sydenham (boys and girls), (Mr. G. E. Dibley)	60
„	St. ——— Mission, East Dulwich	10
September	Holly House Mission, Lordship Lane... ..	22
„	St. Mark's Church School, South Norwood (girls)	21
„	Hughes Fields, Board School, Deptford (boys 34, girls 45)	79
October	Kender Street Board School, New Cross, (boys)	48
„	Convent of the Faithful Virgin, Upper Nor- wood	13
„	Kender Street Board School (boys), 2nd visit	37
„	Anerley District School (boys)... ..	10
„	Lambeth Field Club and Scientific Society ...	13
„	Kender Street Board School (girls), 3rd visit...	43
November	Anerley District School (boys)... ..	28
„	Kender Street Board School (girls), 4th visit	29
„	Anerley District School (boys)... ..	30
„	Lee Middle Class School (boys)	17
December	West House High School, Forest Hill (girls)	11
„	Eliot Bank School, Forest Hill	—
„	Millburn House School, Forest Hill	—

Making a total attendance of 1,208, and an average of 28 per Society, &c., divided as follows:—3 Societies, 3 Clubs, 5 Colleges, 8 Private Schools, 3 Church Schools, 7 Board Schools, 6 Industrial Schools, 6 Sunday Schools, 5 Miscellaneous. Total, 46.

Several valuable and interesting Books were added to the Library during the year, mostly Works on Travel, Art, Archaeology, &c.

RICHARD QUICK, M.J.S.,

Curator.

January 1st, 1896.

NOTES ON THE ILLUSTRATIONS.

THE IRISH WISHING CHAIR.

A duplicate of the original, at the Giants' Causeway, Antrim, was brought over by Mr. Horniman in 1893. It has been recently placed on the Museum Lawn. The columns are hexagonal, and have formed themselves at right angles to the plane of their cooling. The whole Causeway was formed by the overflowing of a thick sheet of lava, subjected to a very gradual cooling.

The above chair clearly exhibits the ball and socket joint.

OLD ENGLISH VIOLIN.

This very interesting and rare specimen of a 17th century violin was found at Ledbury by Mr. J. Baker in 1894. It bears the following label:—

John Crouck at y^e 3
Lutes in Drury Lane
neare Princes St.
London, 1682.

It is said that this is the only specimen in existence by this maker.

Jacob Rayman was one of the first to make violins in this country; they date from 1620—1650. The oldest Strad violin dates from 1669. The Crouck specimen is a very early one for England.

The condition is surprisingly good, excepting the absence of the varnish. It has its original head and neck, and contains its original label. It is 23 inches in length.

PANEL FROM THE JUGGERNAUT CAR OF INDIA,

Or, correctly speaking, Jaggan-natha. It is carved in teak, and represents Vishnu and his Sabite or female form, Lakshmi, riding on the watery principle of nature—the alligator, &c. It is 14 inches high by 10 inches wide. The whole is a very fine specimen of ancient Indian deep carving.

JAIN FIGURE, OR SAINT, called NEMI-NATHA,

The 22nd of the Jain Hierarchs; date, Samvat 1208 = A.D. 1151. Symbol, a conch shell.

This beautifully carved blackstone image is 33 inches high and 27 inches wide at the base. Below the crossed legs is an inscription in Sanskrit, giving date, symbol, &c.

Jainism, or the Jain faith, is everywhere spoken of as a most ancient religion, and some consider it the parent of Buddhism. They all revere 24 deified saints, or Jins, and the above is one of them. The figures are generally nude; in other respects they are very like the Buddhist images.

ANCIENT CELTIC BELL.

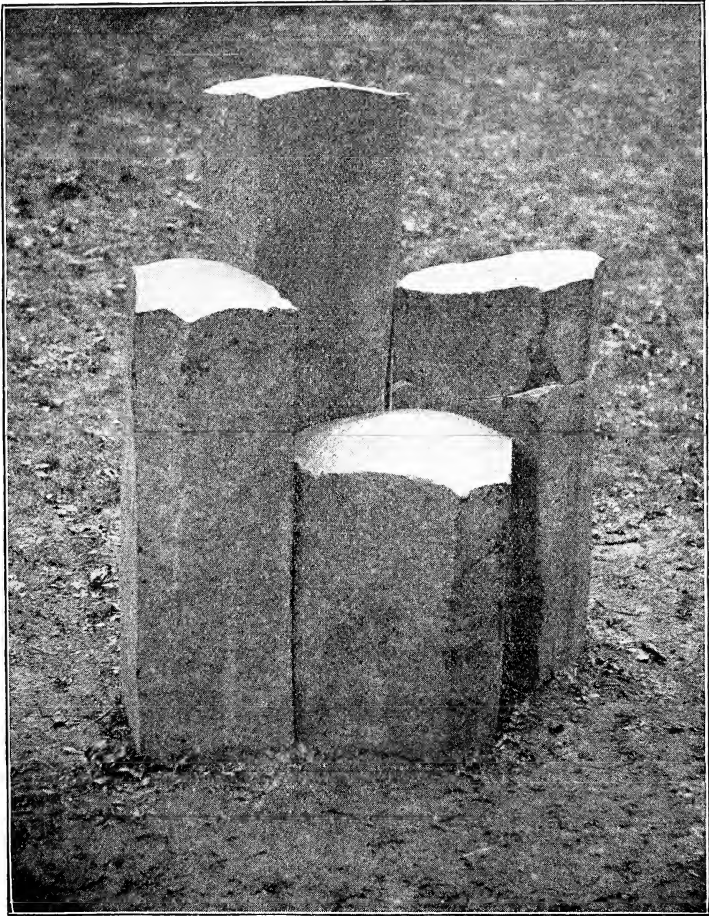
This interesting bell was found at Bosbury, in Herefordshire, by Mr. J. Baker, on November, 1888. Bosbury is a most ancient parish, and formerly, in the 12th century, was the place of residence of the bishops of the diocese (Hereford); so that this bell really might have lain there for generations. The bell is formed of a single plate of iron about 22 inches in length by 10 inches in breadth. This has been bent or folded on itself in the middle; the sides are well rivetted with three large and three small flat-headed nails. There is still a piece of wood of the handle remaining, which, though very old, is most probably not so ancient as the bell itself. The iron clapper is still intact.

The bell had most likely been dipped into melted bronze, so as to cover its whole surface, as portions of a bronze coating still remain both inside and out. The object of this was no doubt to protect the iron from the effects of the weather. The bell measures $10\frac{1}{2}$ inches in height, not including the handle. It is 6 inches in length along the top by $2\frac{1}{2}$ inches in breadth, and is 6 inches by $4\frac{1}{2}$ at the mouth. The whole now weighs 5 lbs. 6 oz.

The relic, taken as a whole, is in a wonderfully perfect state of preservation, although it has lost the greater part of its original bronze coating. From its character and shape, it evidently belongs to the quadrangular type of Celtic bells of the 6th century.

These bells are comparatively common in Ireland, but extremely rare in England.





THE IRISH WISHING CHAIR.

(See page 15).



OLD ENGLISH VIOLIN.

(See page 15).



PANEL FROM THE JUGGERNAUT CAR OF INDIA.

(See Page 15.)



JAIN FIGURE, OR SAINT, CALLED NEMI-NATHA.

(See page 16.)



ANCIENT CELTIC BELL.

(See page 16).

137697

507.42
m

THE HORNIMAN MUSEUM,

LONDON ROAD,

FOREST HILL, S.E.

SIXTH

Annual Report

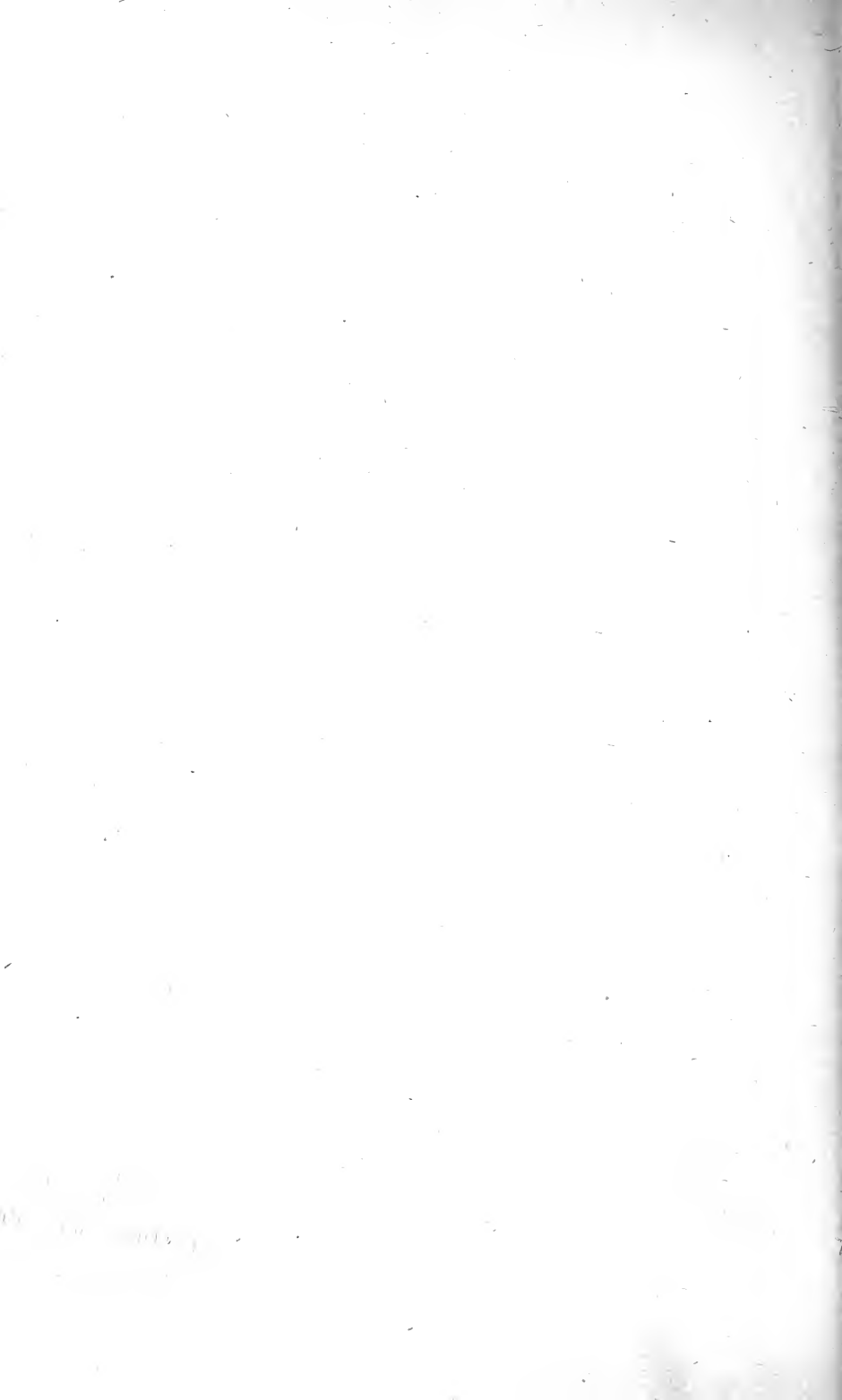
ETC.,

1896.

FREDERICK JOHN HORNIMAN ; M.P., F.R.G.S.

with RICHARD QUICK, M.J.S. *Comps*
Curator.

FRANK SLADE,
Naturalist.



THE
SIXTH
ANNUAL REPORT, &c.
OF
The Horniman Free Museum
FOREST HILL,
LONDON, S.E.

1896.

FREDK. JOHN HORNIMAN, M.P.,

Fellow of the Royal Geographical Society.
Fellow of the Royal Historical Society.
Fellow of the Linnean Society.
Fellow of the Zoological Society.
Fellow of the Entomological Society.
Fellow of the Anthropological Institute.
Fellow of the Society of Antiquaries of Scotland.
Associate of the British Archæological Association.
Member of the Marine Biological Association.
Member of the British Association.
Member of the Japan Society.
Member of the Egypt Exploration Committee,
etc., etc.

RICHARD QUICK, M.J.S.,
CURATOR.

FRANK SLADE,
NATURALIST.

*Printed at the Victoria Works,
118 Stanstead Road, Forest Hill, London, S.E.*

THE HORNIMAN FREE MUSEUM,

LONDON ROAD,

FOREST HILL, S.E.

THE MUSEUM is open FREE to the Public EVERY Monday, Wednesday and Saturday, from 2 until 9 p.m.: Sundays, 2 to 5: Bank Holidays from 10 a.m. to 9 p.m. Arrangements are made for the reception of Schools, Societies, &c., in large or small numbers.

The Collection is divided into two sections—ART and NATURE. The ART SECTION comprises Exhibits from China, Japan, India, viz.: Wood Carving, Lacquering, Inlaying, Metal Work, Pottery, and Embroidery, &c., &c., a Horse Armoury (including the Spanish Torture Chair), Elizabethan Rooms, Old English Parlour and Pantry, Oriental Armoury, Japanese Figures, and Greek, Roman, and Egyptian Antiquities (Seven Mummies, &c.), Carvings in Ivory, Ethnographical Saloon, Porcelain and Glass Room, Collection of Pipes, Musical Instruments, Models of Ships, Canoes, and Conveyances, showing the Evolution of means of Transit, Pre-historic and Archæological Antiquities. &c.

The Section devoted to NATURE includes a large number of Entomological Specimens (Butterflies, Moths, Beetles, &c.), Beasts, Birds, and Fishes, Geological Specimens, Fossils, Minerals, Exhibits of Wood, Shells, Corals, and Birds' Eggs, and Nests, also many Specimens in Spirits, &c.

A CATALOGUE GUIDE IS SUPPLIED GRATIS.

*NOTE.—The Museum is Three Minutes' walk from Lordship Lane Station, L.C.D.R.
and Six Minutes' from Forest Hill Station, L.B.S.C.R.*

SIXTH ANNUAL REPORT

OF THE

HORNIMAN MUSEUM,

FOREST HILL, LONDON, S.E.

THIS Institution continues to be popular, as the following figures and statistics will show.

The following table gives the total number of Visitors to the Museum for the past year :—

1896.

Month.	No. of Days Open.	Attendance during Month.	Remarks.
January	17	4556	_____
February	17	5175	_____
March	18	3587	_____
April	18	9204	Easter Week in this Month.
May	18	5825	Whitsun Week in this Month.
June	17	3661	_____
July	17	4154	_____
August	19	10402	Bank Holiday in this Month.
September	17	5790	_____
October	17	3779	_____
November	18	2963	_____
December	17	3023	Christmas Week.
Total for the year.	210	62119	_____

The total attendance for the year was 62119, being an average of 296 on opening days.

The total attendance since the opening (by the late Sir MORELL MACKENZIE, M.D.), on December the 24th, 1890, has been 337,738.

The attendance on the five Bank Holidays is shown by the accompanying table:

Good Friday	1083
Easter Monday	2546
Whit Monday	1624
August Monday	1635
Boxing Day	537
Total	7425

The total attendance on Bank Holidays during the past year thus shows an average of 1425, and is a decrease of 4998 on the past year. The Boxing Day attendance fell off owing to the bad weather.

The following Table gives the number of Visitors to the Museum during the last five years:—

Year	1892	1893	1894	1895	1896
Total	36,794	41,801	65,329	85,807	62,119
Daily Average .. .	328	383	413	456	296

The following Table shows the Number of Visitors to the Gardens, for the summer months of 1896:—

Month.	No. of days open.	Total.	Daily Average.
June	7	2115	302
July	17	4342	255
August	17	9446	555
September	12	3024	252
Total	53	18927	1364

The Sunday afternoon attendance for the year has been 11,539, being an average of 221, and showing a decrease of 234 on the average for that day.

EVENTS OF THE YEAR, ETC.

On February the 2nd Mr. Horniman returned from his Tour in the East.

On February the 5th the Museum flag was flown half-mast high during the funeral of H.R.H. Prince Henry of Battenberg.

On March the 16th Mr. Quick gave a lecture on "Bells," before the Dulwich Scientific and Literary Association. The lecture was illustrated by limelight lantern slides (photos.) taken from specimens in the Museum, and from all the celebrated bells in the world. A collection of ancient and foreign bells from the Museum were on exhibition.

On March the 24th a few interesting objects were lent to the Industrial Exhibition, held in the Town Hall of Bermondsey, and which display was opened by H.R.H. Princess Mary Duchess of Teck.

On March the 25th a few exhibits were lent to the Surrey Commercial Dock Company's Institute and Club, Rotherhithe.

In April a sedan chair and other models were lent to the Horseless Carriage Exhibition, and a few Burmese curios to the Burmese Loan Exhibition, both held at the Crystal Palace.

On May the 25th (Whit Monday) the new Oriental Saloon was opened, containing the antiquities, &c., collected by Mr Horniman during his Tour last year in Burma and Egypt.

June the 14th being Hospital Sunday, boxes were placed in the Museum and Gardens, when a collection was made for the Metropolitan Hospital

Sunday Fund in the following manner :—£5 5s. from Mr. Horniman, £3 4s. 9d. in silver, and 11s. 9d. in coppers. The total of £9 1s. 6d., was forwarded to the Mansion House. Last year the amount collected was £8 17s. 0d.

On June the 28th Mr. Horniman invited the Burmese Troupe, then at the Crystal Palace, and Mr. Henry Gillman (general manager of the Palace), and Mr. Robert Fowle (who had brought the natives from Burma) to visit the Museum. All were conveyed in two large brakes. They left the Palace at 2.30, and arrived at the Museum about 3 p.m., where they were welcomed by Mr. Horniman, who personally conducted them over the Museum. The armoury and torture chair gave them a shudder, and yet fascinated them; and the old English bedroom was found full of interest. Some of the Musical Instruments were well known to the musical part of the troupe. They were much struck also with the mummies; and astonished at the immense variety of treasures from all parts of the world, and especially at seeing so much from their own country. The natural history department likewise came in for its share of attraction. After this the party were taken through the Gardens to Surrey Mount, where a very interesting group was photographed by Mr. Crowhurst, and a Reproduction of which will be found at the end of this report. Tea, cake, and fruit were next partaken of, served on tables on the lawn, and enjoyed by all. Some appropriate speeches were afterwards made. The foreign visitors were attired in highly-coloured costumes; the women wearing white blouses above their gaily-striped skirts. The party included silver-smiths, wood-carvers, tapestry weavers, cigar-makers, dancers, singers, jugglers, and football players, besides a couple of Brahmins and a Buddhist priest. The carriages arrived about 5.30 for the return journey. The company, which numbered thirty-four, started

for the Palace, looking the very picture of contented happiness.

On June 30th Mr. Horniman gave his employés their annual treat of an excursion, on the *Royal Sovereign*, to Margate. The party numbered in all twenty-four. The necessary arrangements were carried out by the Curator. The party left the Old Swan Pier, at London Bridge, at 9.35 a.m. The journey and scenery were much admired and appreciated by all, and an excellent dinner was provided on board. Margate pier was reached at half-past two. After wiring the safe arrival to Mr. Horniman, the party enjoyed themselves on the sands. Soon after four they re-embarked, and after a pleasant passage—windy, but not rough—arrived at London Bridge at a quarter to ten, having spent a most delightful day.

In August a collection of Pottery and Porcelain was lent to the Royal Cornwall Polytechnic Society, for an Exhibition held at Falmouth. Later in October a small collection of Idols and curios belonging to the Museum was lent to the Missionary Loan Exhibition held at Birmingham.

On October the 21st, being Trafalgar Day, and the 91st anniversary of the death of Lord Nelson, the Curator made a special display of the Nelson Relics, &c., in the Reception Room. They were arranged on a table, covered with the Union Jack, and consisted of a miniature painting of the Admiral on ivory, some Nelson jugs and mugs, a small model of the *Victory*, some Spanish daggers, &c. On the case was laid a beautiful wreath prepared by Mr. Sparks.

During the year Mr. Quick read some notes (and exhibited a few specimens) on Palæolithic Chert Implements, found at Broom, before the British Archæ-

logical Association (*See Illustration*), recently acquired for the Museum.

Mr. Slade, the Naturalist, has re-arranged the Birds, and gone generally through the Zoological Collection, and mounted and classified a new collection of Indian Butterflies from Darjeeling and the Himalayas.

The Curator has re-arranged the Pottery, Musical Instruments, Hindu Idols, Armoury and Egyptian Collection, the cases of which have been re-lined with a light green paper, which is found to make a good background.

During the year, several persons (students and school children, &c.) have made notes and sketches, chiefly from the Armorial, Egyptian, Indian, Japanese, and Entomological specimens. Many young collectors and enthusiasts have also brought their Shells, Birds' Eggs, Butterflies, &c., to identify and name; and photographs of objects have been taken for different magazines, &c.

VISITS have been paid to the Museum by the following SOCIETIES, SCHOOLS, CLUBS, &c.

January	Lambeth Field Club and Scientific Society	18
„	Linden Grove Board School, Camberwell (boys)	12
„	National Preparatory School, Streatham (boys)	8
March	Jews' Orphanage Asylum, West Norwood (boys)	56
„	St. Johns' Church School, Deptford (boys) ...	17
April	Working Men's Club and Institute Union ...	6
„	Jews' Orphanage Asylum, West Norwood, 2nd visit	20
„	Hackney Social Union Society	19
„	Working Men's Club and Institute Union, 2nd visit	25
May	Royal Normal College for the Blind, Upper Norwood	15

May	Elderton Road Board School, Rotherhithe (boys)	18
„	Waterloo Road Board School, Lambeth (boys)	75
June	Elderton Road Board School, Rotherhithe, 2nd visit	11
„	Ady's Road Board School, East Dulwich (girls)	41
„	Southampton Street Board School, S.E. (boys)	15
„	Ady's Road Board School, East Dulwich (girls), 2nd visit... ..	35
„	Waverley Park Sunday School, Nunhead (boys)	11
„	Goodrich Road Board School, Dulwich (boys)	5
„	Goodson Road Board School, Rotherhithe (girls)	22
„	Lansom Industrial Home for girls, Dulwich ...	26
„	Independent Order of Odd Fellows, South London	12
July	St. Johns' Church Sunday School Class, Penge (boys)	10
„	Waverley Park Methodist Chapel Sunday School, Nunhead (girls)	15
„	Royal Normal College for the Blind, Upper Norwood, 2nd visit	10
„	Burleigh House Ladies' School, Silverdale, Sydenham	18
„	The Westinghouse Brake Company Employés and Mutual Improvement Society	6
„	Ebery Road Board School, East Dulwich ...	21
August	Jews' Orphanage Asylum, West Norwood, 3rd visit (boys)	10
September	British Womens' Temperance Association, Brixton Hill Branch	15
„	Dalmain Road Board School, Forest Hill (girls)	20
October	St. Nicholas Church School, Deptford (girls) ...	16
„	Bloomsbury Young Men's Club	3
„	Woodford House Kindergarten School, Croydon	22
„	St. John's Church School, Deptford 2nd visit	23
„	Lewisham Bridge Board School (girls)... ..	38
November	Hallston Road Board School,	—
„	Westcomb Park, Greenwich (girls)	16
„	Eliot Bank School, Forest Hill	—
„	Hallston Road Board School, Greenwich 2nd visit	16

November	College House School for Ladies, Queen's Road, Peckham	8
„	Hallston Road Board School, Greenwich	visit	20
„	Surrey Square Board School, Old Kent Road, (boys)	18
„	Jews' Orphanage Asylum, West Norwood (girls)		41
December	Lambeth Field Club and Scientific Society	...	9
„	St. Andrew's National School, Stockwell (boys)		12
„	St. Michael's School, Lower Sydenham, (Mr. G. E. Dibley) (boys)	54
„	Highbury Quadrant Literary Association, N.		12
„	St. Andrew's National School, Stockwell (girls)		18

Making a total attendance of 941 and an average of 20 per Society, &c., divided as follows:—6 Societies, 4 Clubs, 2 Colleges, 4 Private Schools, 7 Church Schools, 16 Board Schools, 3 Sunday Schools, 5 Miscellaneous. Total, 74. Increase of 1 on last year.

PRESENTATIONS.

The following have been given to the Museum during the year:—

	<i>Presented by</i>
Four Indian Chouries or fly whisks	Dr. G. B. BATTEN.
Fossils from Southwold	Mr. G. RICHES
Whisker curler	Mr. G. A. WILLIAMS
Black Duck's Egg, East Indian ...	Miss THORNTON
Old Black Ware Teapot and Lustre Ware ditto	Mr. H. OBORNE
Old Indian Coins	Mr. K. DOSABHAI PATEL.
Gold Quartz from S. India	Capt. H. WILLIAMS
13 Panels or Wall Tiles of glazed terra-cotta, Burmese (15th century)	Lieut.-Col. S. F. PEILE
Marble Buddha from Myingyau, Up. Burma (<i>See Illustration</i>)	" "
Royal Seal	Mr. J. ACUTT

Old Black-ware Teapot	Mrs. R. QUICK
Fossil Fruit (<i>Nipadites Parkinsonii</i>) from London Clay, Sheppey ...	Mr. W. H. SHRUBSOLE
Burmese Shan Guns... ..	Capt. CARRUTHERS
Model of River Boat, Burmese ...	JUDGE MOUNG BAH WAH
Old Clock from Hampton Court ...	Mr. S. DAY
Egyptian Mummy, head and feet of	Dr. DALTON
Revolver in case, formerly the pro- perty of Major-General Sir W. H. Sleeman, K.C.B.	Mr. T. WEBBER, J.P. (Falmouth)
Elephant's Tooth	Mrs. J. R. KEDDIE, Gaya.
Winchester repeating rifle, 1860 ...	Mr. J. KEMP
Worcester and Minton Plates ...	"
Indian Shawl and Desk	"
Chinese Bronze Lantern and Bell...	"
Old Oak Carving, two Ebony Sticks from Ceylon, White Tailed Eagle, and Dried Cat	"
Old Terra-cotta Tobacco Jar, ancient Horse Shoes, and Lock	"
Singhalese Hydraulic Scarecrow or Dujaholmana, or Water Sound- ing Bell	Mr. F. W. GORE (Kandy)
Canister Shot brought from Sebastopol by Admiral Hillyer, R.N.... ..	Mr. N. FOX (Falmouth)
Egyptian Coffin, from Dêr-el-Bahari (See <i>Illustration</i>)	EGYPTIAN EXPLORATION FUND COMMITTEE
Various Curios, Chinese Shoes, Greybeard, Minerals, etc.... ..	Mr. W. WOODLAND
Houssa Saddle and Stirrups, and a collection of Central African Native made objects from Bandingo ...	Mrs. A. R. MANNHEIMER
Bronze Bas Relief	Mr. G. E. DIBLEY
Skulls, Elephants' Teeth, and Coral	Mrs. WILSON
Old Wooden Tinder Box, and Chinese Bamboo Carving	Mr. J. SPARKS
Venetian Glass Tobacco Pipe, and Satsuma Dish and Plate	Mr. S. H. EACHUS

West African Beaded Belt	Mr. W. STUCKEY
Burmese Boat and Cart (models of)...	Mr. R. FOWLE
Old Tortoise-shell Back Comb	Mrs. E. ROONEY
Old Beaded Purse	Mr. G. ENGLISH
Collection of Australian Birds, and Flying Squirrel	Miss J. BRADFORD
Zulu Stone Tobacco Pipe	Mr. F. SLADE
Chinese Silver Puzzle Ring, Chate- laine, and Ear-rings	Mrs. E. MABERLY
Two Small Roman Bells found in Cambridgeshire	Mr. H. N. MAYNARD
Helmet worn by Afghan Artillery, 1858	Col. G. COCHRANE
Collection of Roumanian Musical Instruments, Distaff Spindle, etc.	Mr. E. J. HORNIMAN
Hungarian Double and Single Flute	Mr. E. LOVETT
American Buffalo's Tail	Mr. R. QUICK
Ancient Horse Shoe	Mr. J. PITTMAN
Collection of Indian Seeds, etc. ...	Mr. E. BEYNON
Piece of the Old Chain Pier, Brighton	Mr. H. SAVILLE
Iron bolt from ditto	Mr. J. KEMP

The presentations this year have been more than in any previous one.

PRESENTATIONS to the LIBRARY.

	<i>Presented by</i>
Bijou Book, 2 × 1¼ inches	Mr. J. W. WARMAN
Illustrated Bible, II. Vols., 1752 ...	Mr. J. KEMP
Christianity, and its introduction into Britain (by the Presenter) ...	Mr. C. ANDERSON
Illustrated Catalogue of the Sneek Collection of Musical Instruments.	Mr. T. W. TAPHOUSE
The Outward and Inward Man (by the Presenter)	JUDGE MOUNG BAH WAH
Gazetteer of the Kachin Hills, Burma	Lieut. E. POTTINGER.

EXCHANGES.

Roman Samian Vessel, found at Stroud	Mr. G. E. DIBLEY
Old Wooden Yorkshire Hand Mangle, and Indian and Dutch Pipes ...	Mr. E. LOVETT

ACQUISITIONS BY PURCHASE.

A few of the principal objects bought may be here mentioned, viz :—

Collection of Ancient Carib flint and stone Implements from the West Indies, containing some fine specimens of axes, hammers, and other tools ; also some very curious carved stones, termed “ Banner Stones.”

Ancient Chinese Iron Temple Bell, 4ft. 6ins. high.

Collection of Ancient Phœnician Glass from Mount Carmel, Tyre, etc. (*See Notes and Illustration at end*).

Collection of Ancient Cyprian Pottery and Glass.

Old Japanese Bronze Temple Bell ; Height 33¼ins.

Two Old English Brass Cooking Pots.

Collection of curios from New Zealand, comprising clubs, spears, bows, arrows, carved horns, canoes, idols, and specimens of Kauri gum, Kava bowls, Whales' teeth, etc.

Four Antique Italian Hand-Bells.

French Convent Bell.

Collection of Birds.

Two Models of Boats from Java.

Fossil Turtle (*Chelone subcristata*), London from clay at Sheppey.

Eskimo Sealskin Jacket.

Collection of Spoons from various countries.

Venetian Glass Bottle.

Eight Palæolithic Chert Implements from Broom, near Axminster (*See Illustration*).

Old Wiltshire Sheep-Bell with leather band.

Pair of Shoes made for the Marquis of Hereford, 1820.

Three Old Massive Carved Teak Doors from Ahmedabad, India.

Collection of Egyptian Tablets (casts, coloured).

Swiss Eagle Owl.

Likewise the large collection of objects from Burma and Egypt, purchased by Mr. Horniman during his recent travels in those countries, and consisting of the following :—

Art products in great variety, *repoussé* silver bowls, &c., personal ornaments, brass and copper work, jewellery, Burmese embroidery in gold and silver thread, and silk called Kalagas, Shan weapons, clay modelling, wood and ivory carving, inlaid work on wood, etc. Also marble, stone, and wooden idols, musical instruments, pipes, palm-leaf books, etc. Also a life-size figure of a Burmese Princess, with gorgeous drapery of gold embroidery and velvet, etc. Also some Gongs from the ex-King Theebaw's Palace, etc. Also four fine Egyptian Mummies, in coffins, and other ancient Egyptian objects.

Some valuable and interesting Books were added to the Library during the year, mostly Works on Travel, Art, Archæology, &c.

RICHARD QUICK, M.J.S.,

Curator.

January 1st, 1897.

NOTES ON THE ILLUSTRATIONS.

BURMESE BUDDHA.

This is of marble, and was at one time partly painted and gilded. It was taken from a Pungyi Kyaung or Temple at Myingyau, in Upper Burma. The Kyaung was burnt to the ground, and the idol was found lying face downwards. It was rescued by General Sir R. Low, at the time that the Naval Brigade accompanied the Burma Field Force in 1885. The figure is seated, and is three feet in height (being thus the largest marble idol in the Museum); and was presented by Lieutenant Colonel S.F. Peile. SHAKYAMUNI GAUTAMA BUDDHA was the founder of the religion that bears his name. He was the son of a king, and was born about 624 B.C. in Kapilavastu, a city to the north of Benares, the present head-quarters of the Buddhist faith in India. At the age of twenty-nine he left his father's court, and retired from the world, passing six years in the forest of Uruwela, where he went through a course of ascetic discipline. "Thus, by a purely human process, the Prince Imperial of India found the light, and painfully won his way to Buddha-hood. Now no longer man, he is Buddha, the enlightened, the awakener." This "deified" man has exercised a stronger influence upon the world than has any other uninspired person in any age or country. The religion which he founded is professed by no fewer than 370,000,000 persons. He is said to have lived to the age of 81, and thus to have died about 543 B.C.

EGYPTIAN MUMMY CASE, AND COFFIN OF UR-AMEN:

A chief prophet of Amen-Ra. On the lid are represented the following:—The scarabæus pushing forward the disc of the sun. The goddess Nut, called in the inscription the "Mistress of Heaven." Three columns of hieroglyphics to Neith, Osiris, and Seker. Ra, Horus, and Chnum (the latter being the chief god of Ombos). The two Utchats or symbolic eyes of Horus. Tho' adoring the god Ptah (repeated twice). The inside cover (for laying upon the mummy) is decorated the same as the lid. Conspicuous is a long column of inscription containing an address to Osiris and the goddess Nut, wherein the deceased is called Mer-Men-fitiu, *i.e.*, chief of bowmen. It would appear from this that Ur-Amen, besides being a prophet, was connected with the military class, very powerful at that period. At the side of this

inscription are eight divisions, representing Osiris, Horus, Nephthys, Isis, two Utchats and Uraïï, or sacred serpents, with standards of Amenti (the abode of the dead faces). The side of the coffin are also decorated. On the right face are, Ptah-Sekari, Thoth and Osiris seated on a throne in the presence of Amset, Tuamantef, Kebhsenuf. the deceased worshipping Osiris and the four genii of the dead (Amset, Hapi, Tuamantef, and Kebhsenuf). On the left face are the standard of Ptah-Sekari, Thoth, Ptah-Socharis. and the deceased adoring Osiris, followed by three genii of the the dead. On the bottom of the coffin (inside) is a figure of Athor, the lady of the West.

The coffin was found at Dêr-el-Bahari, and is of the XXIst Dynasty, or about B.C. 1000. This interesting relic was presented to Mr. Horniman by the Committee of the Egypt Exploration Fund.

PALÆOLITHIC CHERT IMPLEMENTS.

The three implements here represented (selected from eight in the Museum collection) were found last march at Broom, in the valley of the Axe, in the parish of Hawkchurch, near Axminster; their exact location being in a gravel pit near Chard Junction. They are particularly curious and interesting, because no palæolithic implements have as yet been discovered further west in Britain, so that they are the oldest work of man known to this country. The centre tongue-shaped implement is $8\frac{1}{2}$ ins. in length and $4\frac{1}{2}$ ins. in breadth at its butt end. It is beautifully chipped into shape, and furnishes a very fine specimen. The other two are termed Oval implements, and are similar in form to the remaining five.

ANCIENT PHŒNICIAN GLASS.

The specimens forming this Collection were mostly found in 1894, in tombs on Mount Carmel, Tyre, the Jordan Valley, and to the east of the latter (the land of Bashan). They are all fine examples, and perfect in preservation.

Some of the bottles are formed of what is called clear glass, though really of a greenish or bluish hue. The beautiful iridescence which many of the vases and bottles exhibit is not intentionally produced, but is the effect of time, which has partially decomposed the surface of the glass, which, if the article be not handled with very great care, flakes off. In fact, through the lapse of so many centuries, the glass has sometimes so foliated that it has become thin and fragile enough to actually collapse

when touched. Much depends on the atmosphere of the particular tomb in which found.

These parts of the country had evidently been of great importance in pre-Christian times.

Carmel was no doubt a kind of holy place for sepulture. A few of the specimens in the case are from Paphos in Cyprus, and exhibit a particularly iridescent effect of colour.

The central bottle, $8\frac{1}{2}$ ins. high, is from Tyre, and is, indeed, most brilliant and lovely in its hues. The top central vase is of brown gold with green handles. A very unique specimen is the double eye unguent glass, bound with glass thread, and having six handles. Note also the bronze spoon and stylus. The various forms are well brought out in the photograph of the case. The collection comprises vessels for containing oils, perfumes, tear bottles, &c. These glass objects must have been of great value at the time of their manufacture; and no doubt have therefore been placed in the tombs of leading members of the communities, great merchants, chieftains and their families. Before burial the same articles most likely ornamented the palaces of such persons. The glass is as well-made as it would be to-day, and yet it is, of its kind, probably as old as any known specimens. The kind of paste glass sometimes found in Phœnicia is perhaps the only older kind of glass existent.

The invention of glass, as related by Pliny, was purely accidental. The legend is worth repeating here, on account of the fact that some of the specimens were secured from the identical locality where the making of this substance is said to have originated. "Some Phœnician merchants, returning from Egypt with a cargo of natron or soda, halted for a meal on the sandy beach under Mount Carmel, and lit a fire. While cooking, they rested their pots on blocks of natron; and the glass was produced in consequence of the heat of the fires causing the alkali to form a flux for the siliceous sand." There is some doubt about the truth of this story, as it requires a very great heat indeed to fuse the materials necessary for the production of glass. Sidon (not far from Carmel) was the great centre of the Phœnician glass making industry.

THE BURMESE GROUP.

The Burmese party, which visited the Museum on June the 28th, were photographed (as already stated) in a group in front of the entrance to Surrey Mount.

For an account of the visit see page 7. In the centre of the group of native ladies Mr. Horniman is seated; and behind them stand the two Brahmins, Moug Neware and Moug Gyee. The other foreigner is a Singhalese. The rest of the group include

Mr. Henry Gillman, Mr. R. Fowle, Lieut. A. B. —, Mr. and Mrs. W. Aldridge, Mr. Burt, Mr. and Mrs. J. R. Manning, Mr. A. Haden, Mr. and Mrs. R. Quick while seated in front is a little Burmese boy. The Buddhist priest unfortunately declined to be included in the picture. (On the following Sunday the same party visited the Queen at Windsor Castle, by command of Her Majesty).

R. Q.





BURMESE BUDDHA.

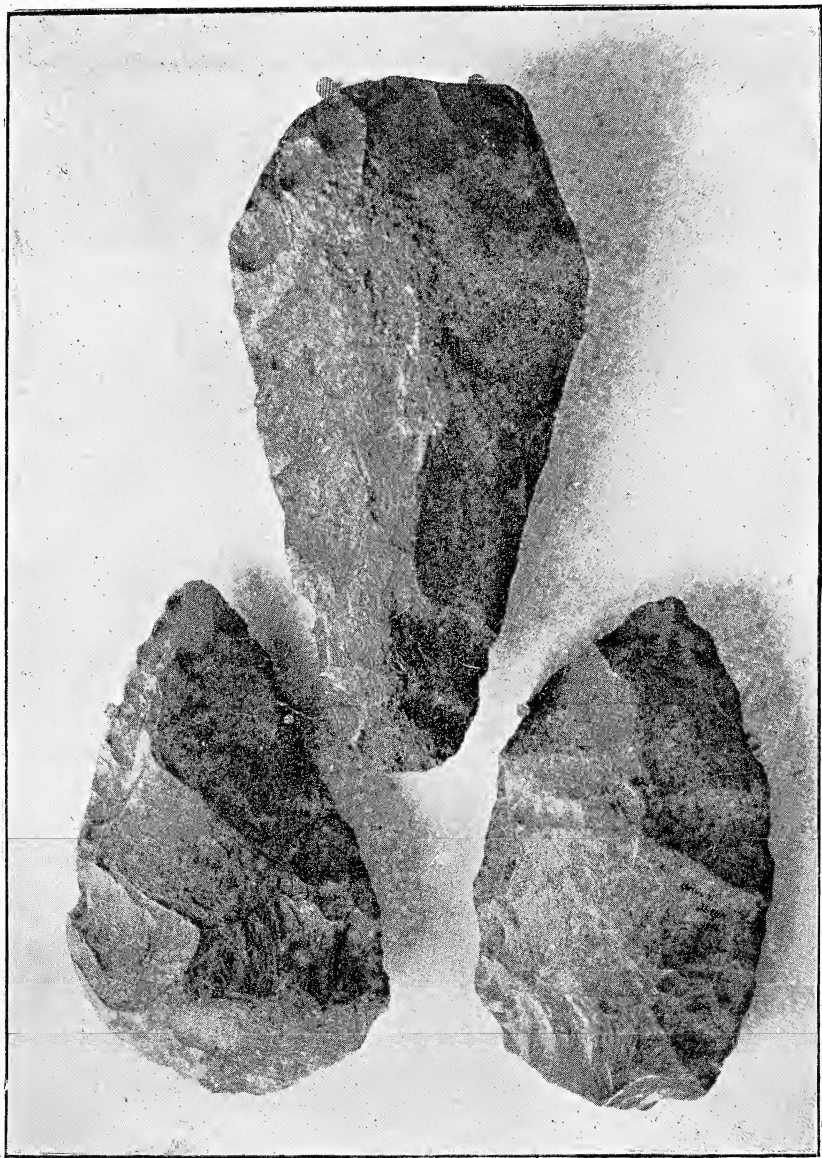
(See page 16).



EGYPTIAN MUMMY CASE.

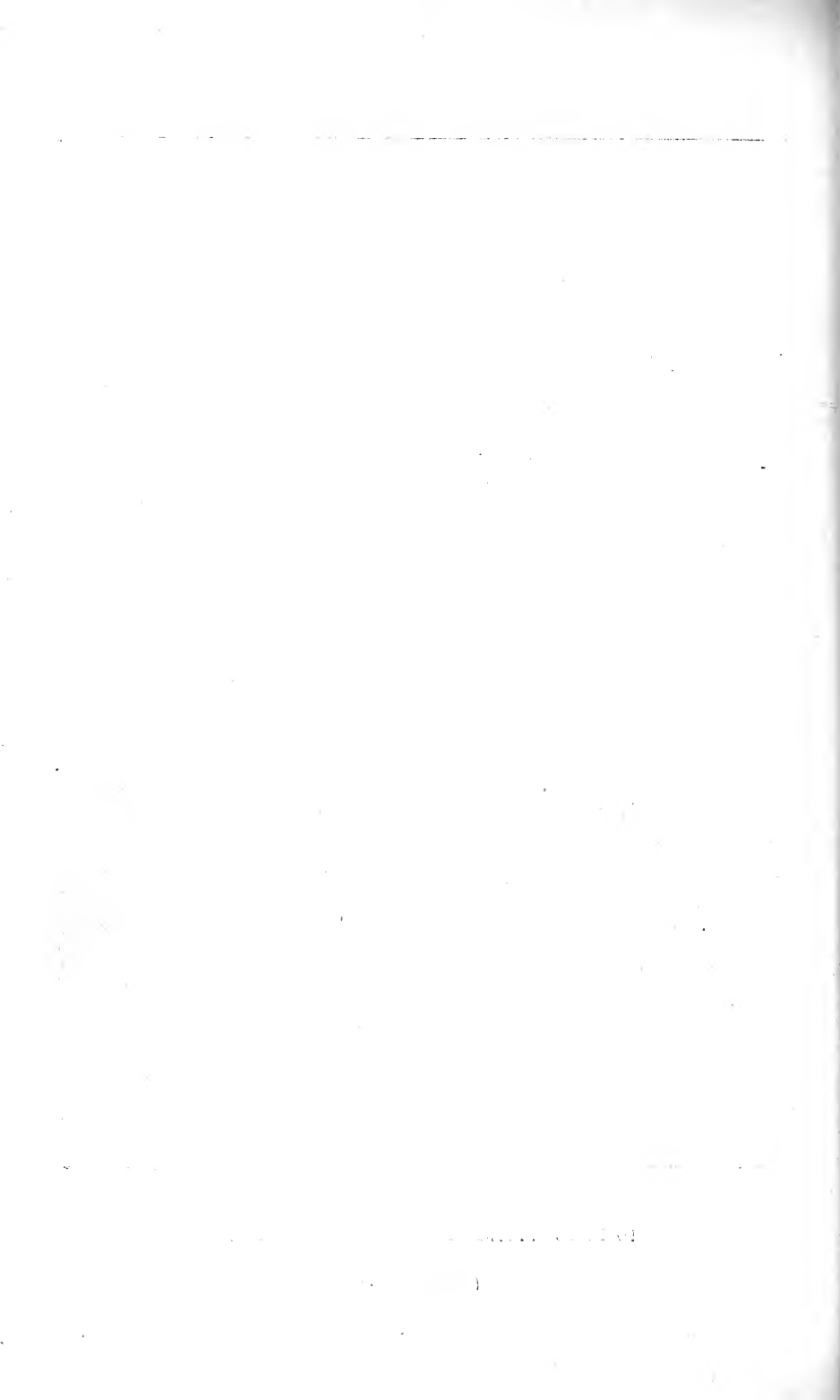
(See page 16.)





PALÆOLITHIC CHERT IMPLEMENTS.

(See page 17.)

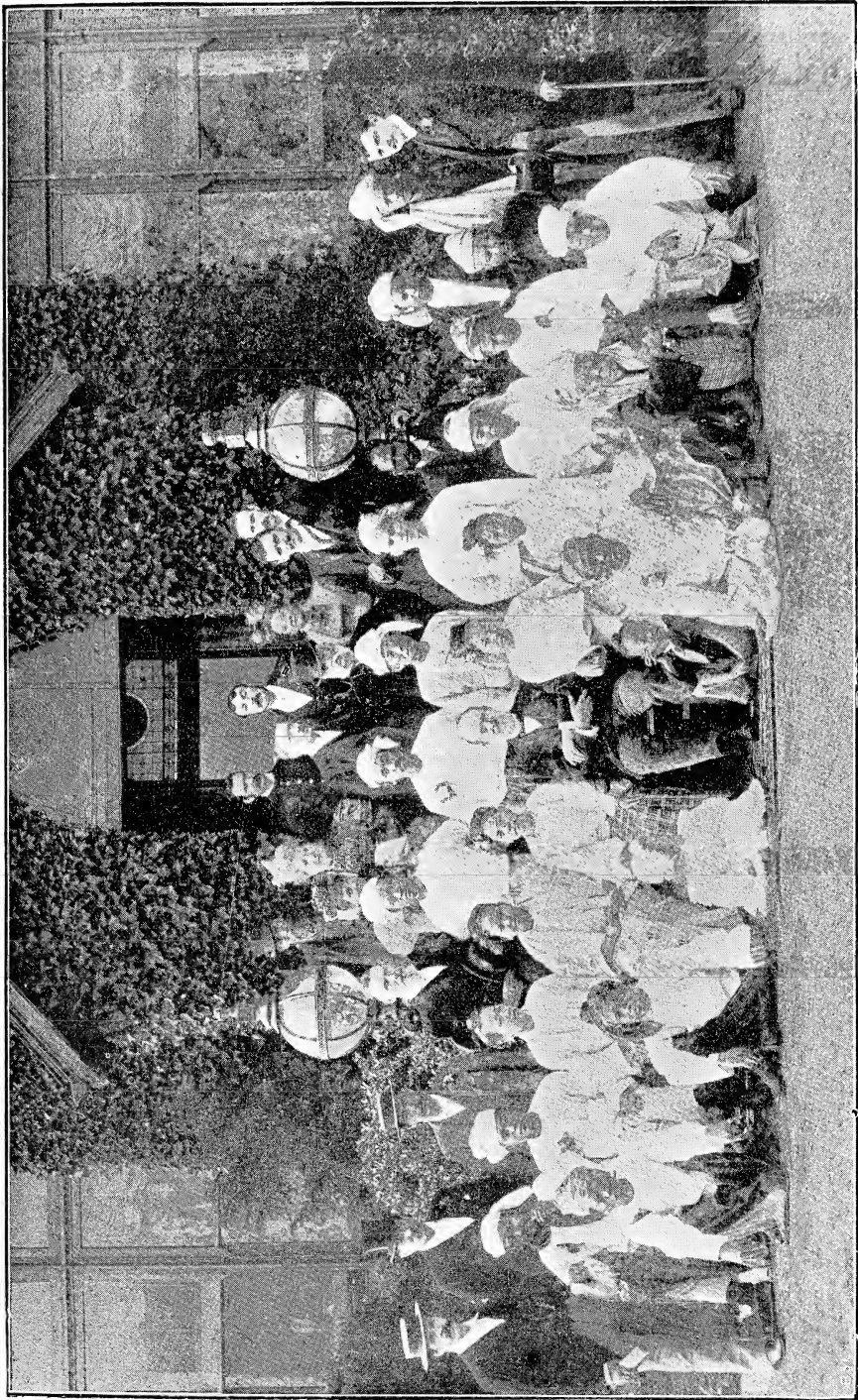




ANCIENT PHOENICIAN GLASS.

(See page 17.)





BURMESE GROUP.
(See page 18).

380969

(507.42)

m

manuscripts

THE

HORNIMAN FREE MUSEUM

LONDON ROAD,

FOREST HILL, S.E.

SEVENTH

Annual Report

1897.

AND FOR JANUARY, 1898.

FREDERICK JOHN HORNIMAN; M.P., F.R.G.S.

RICHARD QUICK, M.J.S.
Curator.

FRANK SLADE, F.Z.S.,
Naturalist.

199264

THE
SEVENTH
ANNUAL REPORT
OF
The Horniman Free Museum,
FOREST HILL,
LONDON, S.E.

1897, AND JANUARY, 1898.

FREDK. JOHN HORNIMAN, M.P.,

Fellow of the Royal Geographical Society,
Fellow of the Royal Historical Society,
Fellow of the Linnean Society,
Fellow of the Zoological Society,
Fellow of the Entomological Society,
Fellow of the Anthropological Institute,
Fellow of the Society of Antiquaries of Scotland,
Associate of the British Archæological Association,
Member of the Marine Biological Association,
Member of the British Association,
Member of the Royal Institute,
Member of the Japan Society,
Member of the Egypt Exploration Committee,
Etc., etc.

RICHARD QUICK, M.J.S.,
CURATOR.

FRANK SLADE, F.Z.S.
NATURALIST.

*Printed at the Victoria Works,
118 Stanstead Road, Forest Hill, S.E.*

THE HORNIMAN FREE MUSEUM,

LONDON ROAD,

FOREST HILL, S.E.

THE MUSEUM is open FREE to the Public EVERY Monday, Wednesday and Saturday, from 2 until 9 p.m.; Sundays, 2 to 5; Bank Holidays from 10 a.m. to 9 p.m. Arrangements are made for the reception of Schools, Societies, &c., in large or small numbers.

The Collection is divided into two sections—ART and NATURE. The ART SECTION comprises Exhibits from China, Japan, India, viz.: Wood Carving, Lacquering, Inlaying, Metal Work, Pottery, and Embroidery, &c., &c., a Horse Armoury (including the Spanish Torture Chair), Elizabethan Rooms, Old English Parlour and Pantry, Oriental Armoury, Japanese Figures, and Greek, Roman, and Egyptian Antiquities (Seven Mummies, &c.), Carvings in Ivory, Ethnographical Saloon, Porcelain and Glass Room, Collection of Pipes, Musical Instruments, Models of Ships, Canoes, and Conveyances, showing the Evolution of means of Transit, Pre-historic and Archæological Antiquities, &c.

The Section devoted to NATURE includes a large number of Entomological Specimens (Butterflies, Moths, Beetles, &c.), Beasts, Birds, and Fishes, Geological Specimens, Fossils, Minerals, Exhibits of Wood, Shells, Corals, and Birds' Eggs and Nests, also many Specimens in Spirits, &c.

A CATALOGUE GUIDE IS SUPPLIED GRATIS.

NOTE.—The Museum is Three Minutes' walk from Lordship Lane Station, L.C.D.R., and Six Minutes from Forest Hill Station, L.B.S.C.R.

SEVENTH ANNUAL REPORT
OF THE
HORNIMAN MUSEUM,
FOREST HILL, LONDON, S.E.

THIS Institution continues to be popular, as the figures and statistics here furnished will show.

THE following table gives the total number of Visitors to the Museum for the past year:—

1897.

Month.	No. of Days Open.	Attendance during Month.	Remarks.
January	17	3469	_____
February	16	4223	_____
March	18	4257	_____
April	18	19008	Easter Week in this Month.
May	19	8183	_____
June	18	8565	Whitsun Week in this Month.
July	17	6300	_____
August	18	16245	Bank Holiday in this Month.
September	17	8180	_____
October	18	5241	_____
November	17	3601	_____
December	16	3111	Christmas Week.
Total for the year ..	209	90383	_____

The total attendance for the year was 90,383, being an average of 432 on opening days, and an increase of 28,264 on last year.

The attendance on the Bank Holidays, when the Museum was open all day, is shown by the accompanying table :

Good Friday	4931
Easter Monday	4643
Whit Monday	3015
August Monday	2546
Boxing Day	1217
Total	16352

The total attendance on Bank Holidays during the past year thus exhibits an average of 3270, and is an increase of 3927 on the past year.

The following Table shows the Number of Visitors to the Gardens, for the summer months of 1897 :—

Month.	No. of days open.	Total.	Daily Average.
April	10	29601	2960
May	19	14164	745
June	18	20612	1145
July	17	17165	1009
August	18	27516	1529
September	17	9945	585
Boxing Day	1	1207	1207
Total	100	120210	1202

The Sunday afternoon attendance for the year has been 19,527, being an average of 375, and showing an increase of 154 on the average for that day.

The following Table gives the number of Visitors to the Museum during the last six years :—

Year	1892	1893	1894	1895	1896	1897
Total	36,794	41,801	65,329	85,807	62,119	90,383
Daily Average ..	328	383	413	456	296	432

The total attendance since the opening (by the late Sir MORELL MACKENZIE, M.D.), on December the 24th, 1890, has been 440,267.

EVENTS OF THE YEAR, 1897.

On January the 19th Mr. Horniman lent a number of Curios to the Dulwich Scientific and Literary Association for their *Conversazione*, at the Lordship Lane Hall. The collection consisted of Toys, ancient, foreign, and nondescript, also a collection of medicine-man's ornaments, made of pure silver by the Arauco Indians of Chile, and shell ornaments from New Guinea.

On January the 28th, a collection of Japanese pipes, pouches, etc. (all smokers' utensils), were lent to the *Conversazione* held by the Japan Society at Hanover Square.

On February the 24th Mr. Horniman presided at a lecture, given before the Dulwich Scientific and Literary Association by Mr. H. W. Mengedoht, on "Mummies and their History." After giving a very graphic account of the different methods of embalming, and how these varied at different periods, he proceeded to illustrate his subject, by unrolling, with the assistance of Mr. Quick, the mummy which Mr. Horniman had kindly lent for the occasion from the Museum collection.

The body was first removed from the case of painted sycamore, and placed on the table. The mummy measured a little over five feet in its bandages. The ancient Egyptians were short in stature. Over the whole of the bandages was a kind of shroud bound with tape-like strips, passing round and across and diagonally. The bandages were numerous and of different texture, applied with great neatness and precision. The limbs were separately bandaged. On the ends of two of the bandages some hieroglyphical characters were found, bearing reference to the date of the operation, &c., the month correspond-

ing with our March. The bandages being removed, the body was exposed. The brain had been extracted through the nostrils, and the viscera from the abdomen by an incision in the left side, and returned into the cavity, which was filled with the dust of some bitter wood. The nails on both the hands and feet were perfect, and had been stained with hennah. No scarabæi or other ornaments were found upon it, and the lecturer declared it to be a Memphite mummy of the period of about 1500 B.C. It was that of a woman of about 60 years of age.

On the lid of the coffin the name was given of Peta-Amen-Neb-Nest-Taiu, who was a priestess of Amen-Ra and daughter of an officer of high rank at Thebes (whose mummy is now in the British Museum).

Mr. Horniman gave to each of the visitors present a small sample of the mummy cloth, as a souvenir of the occasion.

In March a collection of Curios, etc., were lent to the Sydenham and Forest Hill Auxiliary Scholars' Industrial Exhibition, Sunday School Union, held in the Lecture Hall, Dartmouth Road, Forest Hill.

On Good Friday, April 16th, the extension of the Grounds at the rear of the Museum was opened by Mrs. F. J. Horniman. Mr. and Mrs. Horniman and friends drove from Croydon for the occasion. A large gathering had assembled to welcome them; a few speeches and cheers followed, and the proceedings terminated.

On April the 21st Mr. Quick collected at the Museum the sum of £3 10s. for the Prince of Wales's Hospital Fund.

On April the 22nd Mr. C. D. Watkins died, after a long illness, aged 71 years. He had been with Mr. Horniman for over 14 years, formerly as Curator in the Museum, and for the last 7 years had filled the post of Naturalist only. He possessed great knowledge of Entomology, and was a great lover of insects; privately he was a breeder and exhibitor of poultry, and had taken several prizes. He leaves an only son, William, the well-known Entomologist.

On May the 19th a collection of old fans was lent to the Fan Makers' Company's Exhibition, held in the Drapers' Hall, City, for which loan Mr. Horniman obtained the prize of a bronze Medal.

On the same day Mr. Quick exhibited some of the Benin carvings in ivory and wood, recently acquired for the Museum, before the British Archæological Association. (*See Illustrations and Notes*).

June the 20th being Hospital Sunday, boxes were placed in the Museum and Gardens, and a collection was made for the Metropolitan Hospital Fund, with the following result:—£5 5s. od. from Mr. Horniman, £4 from the public in silver, and 16s. 9d. ditto in coppers. The total of £10 1s. 9d. was forwarded to the Mansion House. Last year the amount collected was £9 1s. 6d.

June the 22nd being Commemoration or Queen's Day, a grand Fête and Sports were held in the Grounds to commemorate the Queen's Diamond Jubilee. In the afternoon one hundred children were entertained by the kindness and generosity of Mr. Horniman. There were boys from the Shaftesbury House Industrial Home, Forest Hill; girls from the Louis House Industrial Home, Forest Hill, and girls from the Lampson Home, Dulwich. On arriving they were each presented with a Jubilee medal, and

at the interval during the sports they had lemonade and buns, etc., in a tent set apart for them. The Sydenham Temperance Band played all day.

The programme of the Sports was as follows:— Ascent of Balloons at 3; 1. Industrial Boys' Race, 100 yards; 2. Industrial Girls' Race; 3. Open Boys' Race; 4. Lampson Home Girls' Race; 5. Band Race; 6. Industrial Boys' Sack Race; 7. Industrial Girls' Egg and Spoon Race; 8. Open Sack Race; 9. Three-legged Race; 10. Girls' (Lampson) Egg and Spoon Race.

Mr. Horniman gave money prizes for all the races. During the games Mr. and Mrs. Horniman (on their return from seeing the Jubilee procession) walked round and visited the various groups of children, when they were greeted with applause and cheers. In the evening the grounds, both at front and back, were tastefully illuminated with thousands of coloured lights and Japanese lanterns. On the front of the Museum there were different devices in coloured lights such as "V.R." "1837-1897." Stars and other devices were placed in front of all the windows, &c. Fireworks were let off on the upper lawn at 9.30. Soon after ten a number of the Jubilee bonfires were clearly seen in all directions. It was close on eleven before the grounds were cleared. The attendance of 13,000 visitors was the largest on record. All seemed to thoroughly enter into the national rejoicing.

On July the 1st Mr. Horniman gave his employees their annual treat of an outing, this time to Hastings. The party numbered in all twenty-seven. The necessary arrangements had been carried out by the Curator. A portion of the party left Forest Hill station at 8.20 a.m., and was joined by the remainder at Croydon at 8.32. Hastings was reached at 11 o'clock. After wiring the safe arrival to Mr.

Horniman, the party enjoyed themselves on the beach and in boats until the time came to do justice to an excellent dinner provided by Messrs. Ferrari Bros., at the Memorial Restaurant. At three the party made a trip to Eastbourne by the "Alexandra," and returned at six for tea. Afterwards a walk was taken up and round the old castle. At 8.10 the party started on their homeward journey, arriving at Forest Hill at about 11 o'clock, after having spent a most delightful day. The weather was perfect.

On July 12th the Prince and Princess of Wales opened the Park Hospital at Hither Green, and on their way back passed through Forest Hill and by the Museum. The London Road was gaily adorned with Venetian masts, flags and festoons of artificial flowers, and the whole front of the Museum was beautifully decorated with bunting, flags and lanterns. The Royal Standard was flown from the Museum flag-pole, and the Union Jack at the opposite end of the lawn, and between them was suspended a string of flags and lanterns. Across the road was hung Mr. Horniman's heraldic flag, bearing his coat of arms, and on each side were two large flags. Small pinion flags were fixed to the guide wires of the flag-pole, and on the wall of the Museum was hung the Horniman family banner. The Sydenham Temperance Band discoursed music at the front, and, as the Royal party approached, struck up the National Anthem. At 5.15 the West Kent Yeomanry cavalry were seen trotting up the road, looking very soldierly and smart in their hussar uniforms with white braid and red facings. Then came the outriders in scarlet. Next followed the two four-horse barouches with postilions, in the first carriage of which were the Prince and Princess of Wales and Princess Victoria. They were received with loud cheers. On the Museum lawns were assembled the Boys and Girls of the Industrial Home, with children from Christ

Church National School, St. Philips' National School, Holy Trinity National School and St. Bartholomew's School, Sydenham.

In August a number of Japanese and other works of art and a collection of miniatures were lent by Mr. Horniman to the Royal Cornwall Polytechnic Society, for an exhibition held at Falmouth. In September Mr. Quick gave a lecture, before the same Society, on "Japan and Japanese Art," illustrated with lantern slides, and by specimens kindly lent by Mr. Horniman.

On November the 3rd the Museum flag was flown half-mast high during the funeral of H.R.H. Princess Mary Adelaide, Duchess of Teck.

On November the 6th a collection of Curios was lent to an Industrial Exhibition held in connection with the Peckham Park Road Sunday School Union.

Mr. Slade, the Naturalist, has gone through the Entomological collection.

The Curator has gone generally through the various departments.

Illustrated articles on different departments in the Museum have appeared in the *Strand Magazine*, *The Illustrated London News*, *The Minute*, *Natural Science*, *The Reliquary* and *Illustrated Archæologist*, *The Royal Asiatic Journal*, &c.

During the year, several persons (students and school children, &c.) have made notes and sketches, chiefly from the Armorial, Egyptian, Indian, Japanese, and Entomological specimens. Many young collectors and enthusiasts have also brought their Shells, Birds' Eggs, Butterflies, &c., to identify and name; and photographs of objects have been taken for different magazines, &c.

VISITS have been paid to the Museum by the following SOCIETIES, SCHOOLS, CLUBS, &c.

January	Battersea Field Club and Scientific Society ...	6
"	The Polytechnic Reading Circle, Regent Street	20
"	Dulwich College	5
"	North Surrey District School, Anerley (boys)	30
February	" " " " " 2nd visit	24
"	Devonshire House Private School, Anerley (boys)	23
March	Young Ladies' School, Forest Hill	10
"	Baptist Chapel Sunday School, Croydon (youths)	19
"	Young Ladies' School, Norwood	9
"	St. Anthony School, East Dulwich	10
"	Colls Road Board School, Peckham	48
"	Young Ladies' School, Herne Hill	9
"	College House School, Queen's Road, Peckham	10
April	Waller Road Board School, Hatcham (girls) ...	34
"	St. John's Church School, Deptford (girls) ...	19
"	Eliot Bank School, Forest Hill (boys)	5
"	St. John's Sunday School, Penge (girls)	9
May	Y.M.C.A., Exeter Hall, Rambler's Club	13
"	St. Andrews' National School, Stockwell (girls)	15
"	Young Ladies' School, Forest Hill	10
"	St. Andrew's National School, Stockwell (girls)	
	(2nd visit)	13
"	North Surrey District School, Anerley (girls) ...	41
"	St. John the Baptist, Islington, Young Men's	
	Club	40
"	St. Barnabas School Choir, Dulwich	18
"	Morley College, Waterloo Road	12
"	Adys Road Board School, East Dulwich	176
"	Sayers Street Board School, Walworth (boys)	11
June	Southampton Street Board School, Camberwell	
	(boys)	15
"	St. Andrew's National School, Stockwell (girls)	
	3rd visit	13
"	West House High School, Forest Hill (girls) ...	10
"	St. Chrysostom's Brigade, Peckham (boys) ...	40

June	Boys' Industrial Home, Shaftesbury House, Forest Hill	40
„	Girls' Industrial Home, Louise House, Forest Hill	30
„	Lampson Home for Girls, Dulwich	30
„	Adelaide House High School, Camberwell ...	15
„	Emmanuel Church Sunday School Band of Hope, Dulwich	80
July	Friern Road Board School, Dulwich (girls) ...	34
„	Young Ladies' School, Brockley	18
„	St. Andrew's National School, Stockwell (boys)	9
„	Mother's Meeting, Wesleyan Methodist Settle- ment, Bermondsey	200
„	Ilderton Road Board School, Rotherhithe (boys)	10
„	Clairmont House Private School, Brockley ...	31
„	St. Mary Magdalene Sunday School, Peckham	200
August	St. James's, Clerkenwell, Girl's Club	44
„	St. Mary Magdalene Band of Hope, Peckham	50
„	St. Mark's Bible Class, Peckham	17
„	Wesleyan Sunday School, Forest Hill	65
„	Emmanuel Congregational Sunday School, Band of Hope	90
„	St. Mary's Bible Class, Peckham (2nd visit) ...	28
„	St. Anthony's Church School, Lordship Lane (girls)	30
„	St. Michael's Church Bible Class, Borough ...	12
September	Mothers' Meeting, Society of Friends, Deptford	50
„	North Surrey District School, Anerley (boys) 3rd visit	27
„	St. Mark's Church School, South Norwood (girls)	13
„	Friern Road Board School, East Dulwich (girls) 2nd visit	22
„	West Norwood Collegiate School (boys) ...	14
October	St. Mark's Church School, South Norwood (girls), 2nd visit	20
„	St. James' Church, Holloway, Young Mens' Rambling Club	18

October	Union Young Men's Association, Islington ...	7
„	Surrey Square Board School, Old Kent Road	26
November	Scribbler Literary Society, Charlton	14
„	Bethnal Green Free Library Society	—
„	Young Ladies' School, West Hill, Sydenham	—
„	Orford College for Ladies, Gipsy Hill	10
„	Surrey Square Board School, Old Kent Road, (boys), 2nd visit	14
„	Biblical and Ethical Circle, East Dulwich ...	10
„	St. Saviour's Church Worker's Society, Peckham	11
December	Anerley Wesleyan Athletic Association, about	20
„	Ilderton Road Board School, Rotherhithe (boys) second visit	7

Making a total attendance of 2021, and an average of 29 per Society, &c., divided as follows:—8 Societies, 4 Clubs, 3 Colleges, 13 Private Schools, 10 Church Schools, 11 Board Schools, 10 Sunday Schools, 7 Industrial Schools, 3 Miscellaneous. Total 69. Increase of 22 on last year.

As is well known, the Code for year 1895 of the Board and Elementary Schools allows visits to be paid during school hours under proper guidance to Museums, Art Galleries, and other Institutions of educational value, such visits being counted as “attendances” at school. It has been noted that several schools have taken advantage of this by visiting this Museum.

PRESENTATIONS OF CURIOS, &c.

The following have been presented to the Museum during the year:—

	<i>Given by</i>
Slave Money (bronze ring)	Mr. W. ALDRIDGE
Two Human Lower Jaws, from a barrow at Alfredston, Fossil Wood,	Mr. G. F. BROWN
Roman Tile and photo relief Map of Asia	Mr. H. F. BRION
Japanese Umbrella	Mr. T. W. BELL
Sea Mouse	Mr. E. S. CARLOS
Japanese Mirror	Mr. G. W. DEARLING
Box, coins, nails, &c., from wreck of the “Lutine,” 1799	Mr. A. FLETCHER

Two Japanese Matchlock Guns	...	Mr. J. W. GARNHAM
Spectacles, Knife, &c.	Mr. W. J. GOODWIN
Model of Katamaran	Mr. M. E. HUMPHREYS
Old English Key	Mr. J. HOLT
Indian Snake	Mr. C. W. KNIGHT
Two Old Irish Bible Boxes	Major J. MEAD, J.P.
Zulu wood Meat Bowl	Mrs. MIDDLETON
Old English Snuffers...	Mr. F. P. MUNRO
Photo of Mammoth's Tusk	Major E. S. F. MOORE
Platypus (Queensland)	Mr. W. D. NISBET
Old Horn Lantern	Mr. H. OBORNE
Piece of Walrus Hide	Mr. E. PERCEVAL
Collection of China, Idols, Snuffboxes, Clubs, &c.	By the Executors of the late Mrs. PURNELL
Burmese Gourd Pipe	Lieut. Col. S. C. F. PEILE
Venetian Glass Plate	Mr. R. QUICK
Dragon Fly	Mrs. RIMINTON
Burmese Buddhist Rosary	Mr. T. W. ROOKE
Two American Corn Cobs	Mr. L. RAMSDEN
Edward III. Groat, &c.	Mr. A. W. ROWLETT
Kitten with eight legs	Mr. T. A. LEWELL
Curios from Horta, Island of Fayal, one of the Azores, 1866.	Mrs. LEGA WEEKS
Ditto	Miss LEGA WEEKS
Frogs, Insects, &c.	Committee of COLOMBO MUSEUM, (Ceylon).

PRESENTATIONS to the LIBRARY.

		<i>Given by</i>
Illustrated Catalogue of Birds	COMMITTEE of the BRIGHTON MUSEUM
Dutch Bible, 1639, and Greek New Testament, 1627	Mr. A. T. BURT
Cornish Lease, 1617	Messrs. DEEBLE & SON, Falmouth
Illustrated Catalogue of the Secrétan Collection	Mr. R. QUICK
The Actor, 1700	MR. A. READER
Illustrated Catalogue of the Castle Museum, Norwich	Mr. J. REEVE
Greek Bible, 1661	Mr. A. W. ROWLETT

EXCHANGES.

Two Roman Bells and one Venetian	
Hand-bell	Mrs. J. CROSLY BROWN
Two Lizards from Borneo	Mr. CHAPMAN

ACQUISITIONS BY PURCHASE.

A few of the principal objects purchased may be here mentioned, viz :—

Japanese Shrine and Buddha.

Italian Lyre-Guitar (*See Notes and Illustration*).

Turtle Shell and Turtle's Head mounted.

Sperm Whale's Lower Jaws.

Old Chinese Matchlock Gun (7 ft. 4 ins. in length), and taken from a pirate junk at Foo Choo.

Collection of Ivory and Horn, in various stages, and showing commercial uses.

Collection of Flint Arrow Heads (Neolithic).

Palæolithic implements (from Old Fletton).

Two Molar Teeth of Mammoth (found in a railway cutting near Coulsdon, Surrey, January, 1897).

Pochette or Kit Violin.

Collection of Curios from the City of Benin, on West Coast of Africa (*See Notes and Illustrations*).

Two Bow Street Runners' Staves.

Kaffir Water Pipe.

Collection of Silk Bobbins.

Persian Nargheil Pipe. Gourd Bottle.

Carved Emu Eggs, from New South Wales.

Old Barber's Basin of Delft.

Norwegian Hand Mangle.

Ceremonial Axe, from the Hervey Group, South Pacific.

Collection of Butterflies from Borneo, &c.

Some valuable and interesting Books were bought for the Library during the year, mostly Works on Travel, Art, Archæology, &c.

RICHARD QUICK, M.J.S.;

Curator.

December 31st, 1897.

CLOSING OF THE
 OLD HORNIMAN MUSEUM,
 PREPARATORY TO THE
 ERECTION OF A NEW MUSEUM

(*See Next Page*).



The attendance for the month of January, 1898, was as follows :—Museum, 15,324 (Gardens 19,253), making a grand total of 455,591 since the Museum was open to the public seven years ago. On the 29th (the closing day), the figures were: Museum 5465, Gardens 11,803; total 17,268 visitors.

The final public Fête was brought to a close on Saturday, January 29th. Mr. and Mrs. Horniman drove from Croydon in the evening and inspected the Museum and Gardens, with their many friends, for the last time. At 9 o'clock Mrs. Horniman lighted the huge bonfire, which burnt up well and was seen for miles around. Fireworks followed. The whole of the Grounds were beautifully illuminated with Japanese lanterns and thousands of coloured fairy lights. The Sydenham Temperance and the Forest Hill Gasworks Bands were in attendance, and played alternately in the Grounds.

At 10-30 p.m. bombs were let off as a signal that the Museum and Gardens were finally closed (after an existence of thirty years), in order to prepare for the building of a new Museum. Mr. and Mrs. Horniman left amidst the cheers of the crowd.

R. Q.

January 29th, 1898.

MEMORANDUM.

The various exhibits in the Museum are being prepared for packing and removal, preparatory to clearing the site for the New Museum: the Foundation Stone will probably be laid early in June, and the building erected by the end of the year. Some six months will be required for fitting up the New Buildings, and placing the exhibits.

It is anticipated that the Museum will be opened in the summer of 1899.

The Park and Recreation Ground I am having prepared ready for opening the coming Easter.

J. Johnstone


FALMOUTH HOUSE,
 HYDE PARK.

February 1st, 1898.

NOTES ON THE ILLUSTRATIONS.

ITALIAN LYRE-GUITAR.

See Page I.

This rare and beautiful specimen of early nineteenth century Italian work was obtained by Mr. Baker in Ledbury. The maker (who will be seen by the facsimile of the label) was one of the finest fabricators or makers of these instruments.

GIO: BATTISTA, Fabricatore e Figlio	
Raff. fecit Neapoli 1815 in Sa.	
Ma. dell'Ajuto.	Num. 32.

The Guitar is $32\frac{1}{4}$ ins. in height and $14\frac{1}{2}$ in width, and has three small sound holes, six strings, ebony ornamentation over the table, and a coating of beautifully pure varnish. It is played like the ordinary Guitar.

Gennaro, another member of the same family (probably a brother), made a Guitar for the celebrated violinist, Nicolo Paganini, in 1819, at Naples. The great beauty of the above instrument lies in its elegant and graceful form, its high finish, and its lovely Neapolitan varnish, which was and is noted for its transparency. In partial contrast to it is a fine German specimen purchased in Munich, and of date about 1800, chiefly of satin-wood, with brass eagles' heads and frets. It was made in a suburb of Ratisbon (Regensburg), and bears the following label:—

JOSEPH SCHWEIGER, Instrumentenmacher in Stadt-am-hof.
--

When I was in Ratisbon in 1882, I instituted enquiries respecting this maker, and found that his son had only recently died; and that both he and his father were celebrated as musical instrument makers. This Lyre-Guitar is 32 ins. in height by $13\frac{1}{2}$ in width; it has two small sound holes; its front is unvarnished, and its back is from a beautiful piece of wood with a varnish of special richness.

BENIN CARVINGS.

See Pages II., III., IV., and V.

The Curios which came from the city of Benin are particularly interesting, inasmuch as Mr. Horniman has purchased them from Mr. W. J. Hider, S. B. S. Royal Navy, who had collected them during the occupation of the City by the British expeditionary force. Mr. Hider had them in a brass-roofed stone building, in which he was attending the wounded. When the city was burnt on February the 18th, nearly everything contained was destroyed, so that these antiquities, &c., furnish the chief among the few to survive the flames.

The Collection consists of the following articles:—A carved wooden case, having the appearance of a mirror-frame (see illustration, page ii). The sliding lid or cover is missing. This must be compared with the next specimen (page iii), when will be seen at once the object and the use to which it was put, namely, as an envelope or dispatch case, employed by the chiefs for sending important messages, &c., from one person to another.

The figures at the top of the above specimen are carved all round, and represent two men in a boat or canoe. One figure, seated, is holding a paddle in his right hand, and with his left is clasping the right hand of the opposite figure, who is standing. This position of the hands is very interesting, as it exactly resembles the manner in which the Hittites commence their inscriptions, viz., with two men facing and holding their hands in this conventional manner, as is to be seen on stone tablets in the British Museum. This object shows the Egyptian influence while other specimens display by their ornamentation evidence of a Portuguese contact, dating from as far back as the 16th century, when the Portuguese colonized the West Coast of Africa. The case is carved from one piece of wood, locally called "oroko," and is 16 ins. in height to the top of the figures, while the frame or case is $9 \times 7\frac{1}{4}$ ins. The back is plain: probably the carving was not completed.

The next illustration (see page iii) is a similar carved wooden case; fortunately having its sliding cover, on which are carved two sacred Ju Ju birds (a kind of crow). This case, like the other, was used for the transmission of documents, or of important messages, just as the Japanese despatch box was employed. On the top of the case is a human figure seated on a horse and holding a large sword in his right hand, while the left hand is raised (a part is missing). This hand no doubt held the chain bridle, which is to be seen on the head of the animal. The character of the carving, the profile face with the front view eye, like the ancient Egyptian representations, is also like the former specimen, but the scroll-like border is of Portuguese character.

On the back are carved a decapitated man and a crocodile—symbolic of the human sacrifices perpetrated by the Benin kings. The height to the top of the figures is 14 ins. ; the frame or case is $8 \times 5\frac{3}{4}$ ins.

The next illustration represents two ancient carvings in ivory, being official maces or staffs of office, carried by the high executioner, or before him by his attendants. The one represents a human figure holding a sword in his right hand, while in the left is an inverted bell, rung to announce a human sacrifice. This form of bell is peculiar to the West Coast of Africa. Both of these carvings again show Portuguese influence. They have a beautiful brown patina (rust), and are much worn by age. They were found, like most of the specimens, in the king's palace. They are 12 ins. in length.

The next illustration represents two of the Bronze Bells used for summoning the populace to a human sacrifice. The one is quadrangular, with a human face in the centre in relief, and is $6\frac{1}{4}$ ins. in height by 4 ins. in width at the bottom. The other bell, representing a curious human face, was probably made in England, as it has on the back "Rd 199,063." It is $6\frac{1}{4}$ ins. in height.

Two very fine ancient pieces of ivory carving form the next illustration (see page v), viz., an armlet and bracelet, the former worn by one of the king's wives, the latter by one of his daughters. The armlet is carved on a thin piece of elephant's tusk, with human faces and other curious forms, the eyes and other parts being inlaid with metal, gilt. The object is very thin, and displays great skill in the carving. The length is $5\frac{1}{8}$ ins. Diam. $3\frac{1}{2}$ ins.

The bracelet is covered with different human faces, some of the negro type, others with beards and long hair, rather Russian in style. The length is $3\frac{3}{4}$ ins., and the diam. $2\frac{1}{4}$ ins.

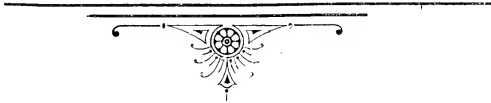
Next come fans of bush deer and goat skin, beautifully made, painted and worked. The large double or folding one is of hide, stained. The rest of the collection comprises knives, combs, iron, bronze and brass bracelets, &c. Also a Snider rifle taken from a dead chief, the butt of which weapon is studded with upwards of one hundred brass-headed nails, denoting the number of persons shot by the late owner with this particular piece.

EGYPTIAN MUMMY CASE AND COFFIN OF A PRIESTESS.

See Page VI.

This illustration represents the lid of the coffin (see page vi), of the priestess Peta-Amen-Neb-Nest-Taiu, the unrolling of which is described in the Report on page 6. She lived in the XXI Dynasty, and so was about 3500 years old. It came from Thebes. The coffin is in a beautiful state of preservation, and the painting and characters are all distinct. The features (as will be seen) are characteristic of the Egyptian type. On the lid is represented the goddess Nut. The Soul visiting the body, with the four canopic jars under the bier. The four genii of the dead represented twice, and two Uchats or symbolic eyes. Five columns of dedication to Amen, Seb Ap-Uat, Ra, and Osiris-Kheut Amenti respectively.

R. Q.







CARVED WOOD CASE FROM BENIN.

(For description see page 18.)



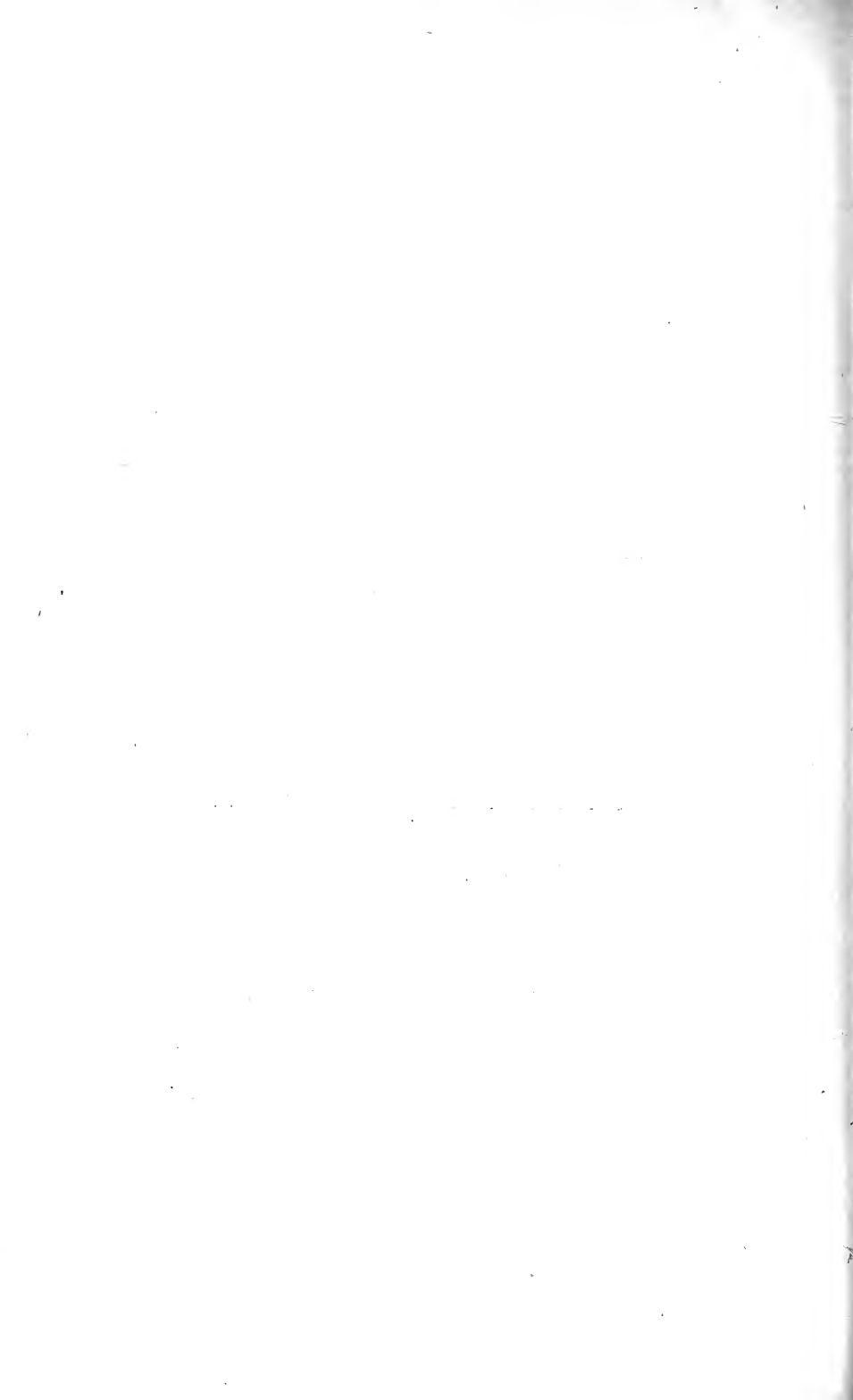


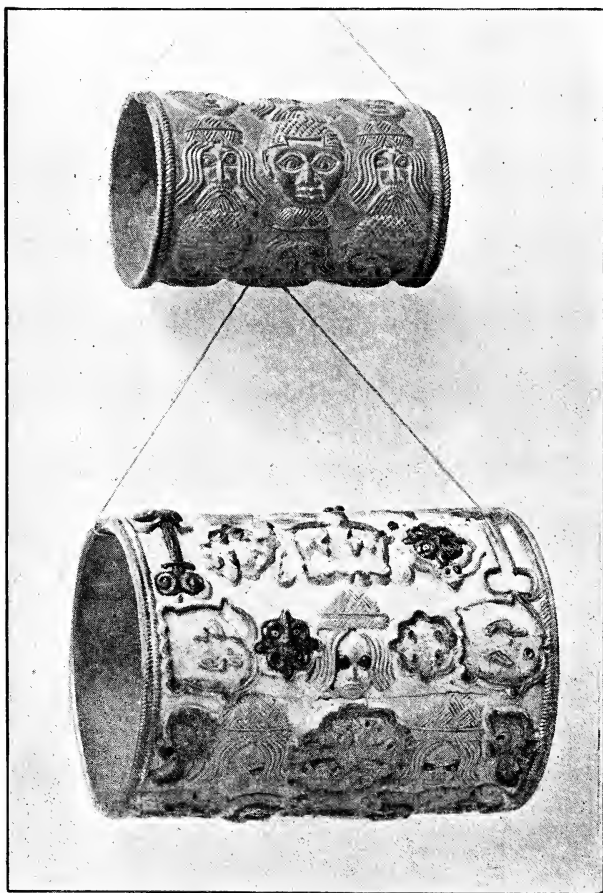
CARVINGS IN IVORY FROM BENIN.



BRONZE BELLS FROM BENIN.

(For descriptions see page 19.)





IVORY BRACELETS FROM BENIN.

(For description see page 19.)

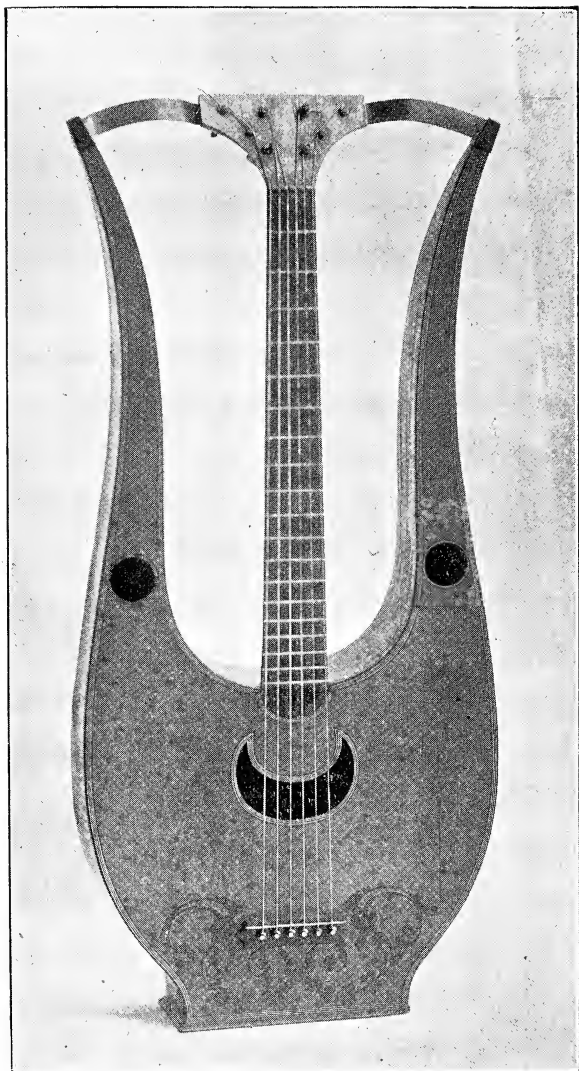




EGYPTIAN MUMMY CASE.

(For description see page 20.)

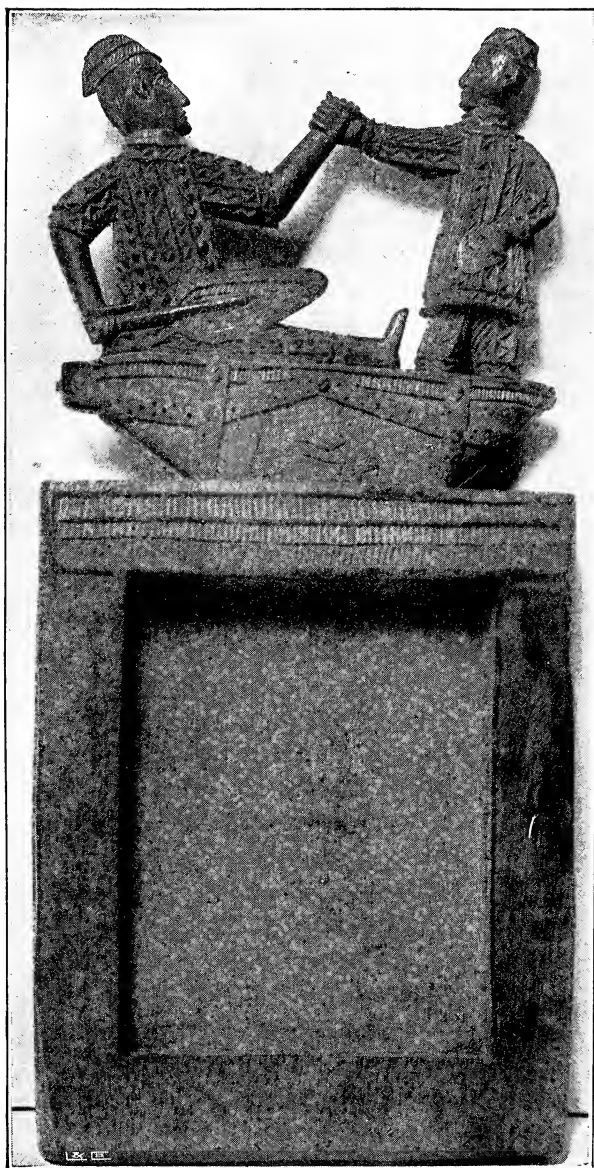




ITALIAN LYRE-GUITAR.

(For description see page 17.)





BENIN CARVED FRAME.

(For description see page 18.)

(507.42
m)

THE HORNIMAN MUSEUM

LONDON ROAD,
FOREST HILL, S.E.

MAR 10 1898
50583



EIGHTH
Annual Report.
1898.



FREDERICK JOHN HORNIMAN, M.P., F.R.G.S.

RICHARD QUICK, M.J.S.,
Curator.

F. SLADE, F.Z.S.,
Naturalist.

A. W. PEPPER,
Librarian.

199264
Italian

THE
EIGHTH
ANNUAL REPORT

OF

The · Horniman · Museum.

FOREST HILL,
LONDON, S.E.

1898.

FRED^K. JOHN HORNIMAN M.P.,

Fellow of the Royal Geographical Society.
Fellow of the Royal Historical Society.
Fellow of the Linnean Society.
Fellow of the Zoological Society.
Fellow of the Entomological Society.
Fellow of the Anthropological Institute.
Fellow of the Society of Antiquaries of Scotland.
Associate of the British Archæological Association.
Member of the Marine Biological Association.
Member of the British Association.
Member of the Royal Institute.
Member of the Japan Society.
Member of the Egypt Exploration Committee.
Member of the Royal Asiatic Society.
Etc., Etc.

RICHARD QUICK, M.J.S.,
CURATOR.

FRANK SLADE, F.Z.S.
NATURALIST.

A. W. PEPPER,
LIBRARIAN.

THE
EIGHTH ANNUAL REPORT
OF THE
HORNIMAN MUSEUM,
FOREST HILL, LONDON, S.E.
1898.

THE attendance at the Museum for the month of January was 15,324, making a grand total of 455,591.

On the closing day (January 29th) the figures were:—Museum, 5,465; Gardens, 11,803.

The final closing of the Museum's First Home was celebrated by a public Fête, and was brought to a close on Saturday, the 29th of January.

Mr. and Mrs. Horniman drove over from Croydon in the evening, and, with their many friends, inspected the Museum and Gardens, for the last time.

At nine o'clock Mrs. Horniman lighted the huge bonfire, which was followed by fireworks.

The whole of the Grounds were beautifully illuminated with Japanese lanterns and thousands of coloured fairy lights.

The Sydenham Temperance and the Forest Hill Gasworks Bands were in attendance, and played in the Grounds.

At 10.30 p.m. bombs were let off as a signal that the Museum and Gardens were finally closed, in order to prepare for the building of a new Museum.

The whole Fête was a great success, and everything went off without a hitch. The weather was wonderfully fine.

The following table shows the number of visitors to the Gardens and Park for the months in 1898:—

Month.	No. of Days Open.	Total.	Daily Average.
January	12	19,253	1604
April	30	14,546	485
May	31	5,273	170
June	30	12,020	400
July	31	11,400	368
August	31	15,900	513
September	30	4,900	163
October.. .. .	31	3,120	100
Total	226	86,412	382

The following table gives the number of visitors to the Museum during the last seven years:—

Year.	1892	1893	1894	1895	1896	1897	1898
Total ..	36794	41801	65329	85807	62119	90383	15324
Daily Average }	328	383	413	456	296	432	666

The total attendance since the opening (by the late Sir Morell Mackenzie, M.D.), on December the 24th, 1890, has been 455,591.

EVENTS OF THE YEAR 1898.

The present Museum Building was finally closed on January the 29th.

In February and March the contents of the Museum were packed in cases, and a full list made of them.

On April the 3rd our work was continued up at Surrey Mount.

In May the old building was demolished.

On May the 28th the Museum flag was flown half-mast high during the funeral of Mr. Gladstone.

The foundations of the new Museum were completed by Messrs. Colls and Son, of Camberwell. They commenced on June the 6th, and finished on September the 9th.

The contract for the superstructure was let to Messrs. Brown, Son and Blomfield, of Whitechapel, and the work was started by them on October the 26th.

On November the 16th the foundation stone ceremony was performed by Mrs. Frederick John Horniman, at 11 o'clock. Among those present were Mr and Mrs. F. J. Horniman, Mr. and Mrs. E. J. Horniman, Mr. C. Harrison Townsend, F.R.I.B.A. (architect), Mr. C. E. Blomfield (Brown, Son and Blomfield, builders), Mr. C. J. Mann

(surveyor), Mr. A. Wickham Jarvis, A.R.I.B.A. (clerk of the works), Mr. L. Crane, Mr. R. Quick (curator), Mr. F. Slade (naturalist), Mr. A. W. Pepper (librarian), &c.

A handsome silver trowel was presented to Mrs. Horniman, who then made a very appropriate speech. The upper stone was lowered into its place, after which Mrs. Horniman tapped it with a mallet and used the level, declaring the stone duly and properly laid ; and the ceremony closed.

On November the 7th, Mr. Quick gave a Lecture on "The Evolution of the Tobacco Pipe," before the Dulwich Scientific and Literary Association. The lecture was illustrated by limelight lantern slides (photos.) taken from specimens in the Museum, and of native men and women smoking pipes from different parts of the world. A small collection of curious pipes from the Museum were on exhibition.

The Grounds and Park were opened to the Public on Good Friday, April the 8th, and were closed for the winter months on November the 5th. Commissionaire Sergeant Wilkes was appointed park-keeper, &c.

June the 12th being Hospital Sunday, boxes were placed in the Gardens, and a collection was made for the Metropolitan Hospital Fund, with the following result :—£5 5s. from Mr. Horniman, £5 11s. 3d. from the public in silver, and 15s. ditto in copper.

The total sum of £11 11s. 3d. was forwarded to the Mansion House. Last year the amount collected was £10 1s. 9d., or an increase of £1 9s. 6d. on last year.

Table showing the collections made for the last four years for the Hospital Sunday Fund :—

		£	s.	d.		Increase.
1895	8	17	0	..	£ s. d.
1896	9	1	6	..	0 4 6
1897	10	1	9	..	1 0 3
1898	11	11	3	..	1 9 6

On December the 14th, a collection of £2 1s. 6d. was made for the Sirdar Fund for the Gordon Memorial College, at Khartoum, and sent to the Lord Mayor.

Mr. Slade (the Naturalist) has gone through the Entomological Collection, &c.

Mr. Pepper (the Librarian) has classified and compiled a catalogue of the books in the Library. Total number of books and pamphlets, 5,370

The Curator has started the re-arrangement of the various Departments under the following heads, viz. :—

ART.

1. PRE-HISTORIC : Stone, Bronze and Iron Ages.
2. POTTERY : Ancient and Mediæval of all nations.
3. GLASS AND ENAMEL.
4. CARVINGS : in Wood, Stone, Ivory, &c.
5. METAL WORK : in Copper, Tin, Bronze, Iron, &c.
6. ARMOUR : Horse Furniture.
7. LOCKS AND KEYS.
8. RELIGIOUS FURNITURE : Idols, &c.
9. RELIGIOUS BUILDINGS : Models of Temples, &c.
10. BELLS.

11. LAMPS, and Lighting Apparatus.
12. MUSICAL INSTRUMENTS :
13. PIPES: Tobacco and Opium Pipes.
14. JEWELLERY: Personal Ornaments and Charms.
15. TOYS AND GAMES, &c.
16. MEANS OF CONVEYANCE, &c.
17. ETHNOGRAPHY.
18. MUMMIES: Egyptian, &c.
19. AGRICULTURAL IMPLEMENTS and Tools.
20. COSTUMES: Head and Feet gear, &c.
21. COINS, MEDALS and SEALS.

NATURAL HISTORY.

22. ZOOLOGY: Mammalia, Birds, Reptiles, Fishes, Shells, Corals, Sponges, Entomology, Crustacea, Starfish, Birds' Eggs, &c.
23. GEOLOGY.
24. MINERALOGY: Native Elements, &c.
25. BOTANY.

VISITS have been paid to the Museum by the following Societies, Schools, &c. :—

January	Lambeth Field Club and Scientific Society	...	12
"	Devonshire House School, Anerley (boys)	...	30
"	Employees Victoria Printing Works, Forest Hill		15
"	North London Natural History Society	...	10
"	Y.M.C.A., Exeter Hall, Rambling Club	...	20
"	Emery Road Board School, West Norwood		
	(girls)	16
"	Ladies' School, Devonshire House, Forest Hill		11
"	The High School, Croydon	80

TO THE GROUNDS.

May	Boys' Brigade, Thornton Heath	120
July	Emmanuel Congregational Church, Dulwich		
	(Band of Hope)...	50
"	St. Mary's Bible Class, Peckham	35
"	Mothers' Meeting, Nunhead	72
"	Sunday School, Nunhead	260
—Making a total attendance of 731, and an average of 56 per Society, &c.			

PRESENTATIONS OF CURIOS, &c.

The following objects have been presented to the Museum during the year:—

	<i>Given by—</i>
Old Drawshave	Mr. S. PITTMAN
Briar and Meerschaum Pipes in half-finished stage (showing process of manufacture)	Mr. J. KOPPENHAGEN
Early English Pot	Mr. J. KOPPENHAGEN
Curios from Australia and Ceylon	Mr. E. H. SMITH
Irish Duden Pipe, &c.	Sir EDWARD REID
Bakers' Tally	Mr. E. LOVETT
Old Pig Scraper and Horseshoe ...	Mr. F. W. MADGE
Old Japanese Programme	Mr. F. L. BURNSIDE
Two Palæolithic Chert Implements	Mr. H. S. GRAY
Egyptian Mummy Head	Miss L. HADEN

EXCHANGES.

Wood Cattle Bell, Java	} Mr. E. LOVETT
Brass ditto ditto	

ACQUISITIONS BY PURCHASE.

A few of the principal objects purchased may be here mentioned, viz. :—

Large Meerschaum Pipe (Russian Sleigh party)
 Do. do. (Samson and the Lion)
 Briar Pipe, Silver Mounted
 Chinese Fan in Case
 Carved Coconut
 Ebony Idol, Ganesa
 Chinese Panel
 Old English Brass Pot
 German Wood Tankard
 Three Dutch Hand Mangles
 Five Carpenters' Tools, Planes, &c., dated 1765
 Three Hindu Copper Vessels, used in Hindu Worship
 Collection of various Tobacco Pipes and Pipe Stoppers, &c., &c.

RICHARD QUICK, M.J.S.,

Curator.

December 31st, 1898.

NOTES ON THE ILLUSTRATIONS.

VIOLA-DA-GAMBA.

The Viola-da-Gamba, or leg viol, derives its name from its having been held between the knees of the player, hence the German call it "Kniegeige." It formed the bass of a "chest of viols," much used in the 17th century.

In the 18th century the Viola-da-Gamba was replaced by the violoncello, which became more popular with composers.

This splendid specimen was made by the celebrated Joachim Tielke, at Hamburg, in 1602. He was considered the finest instrument maker in the world at that time.

It is in perfect preservation, and, with the exception of the neck, is just as the great master left it. It has a beautifully carved peg-box (at one time relieved with gold), which is surmounted by a woman's head, quite characteristic of this maker.

The profile of the head is very good, though a little worn.

Taken as a whole, it is an exceptionally fine example of art workmanship in stringed instruments.

For playing purposes, the old broad finger-board and neck have been removed, without in any way interfering with the beauty of the instrument.

But from an antiquarian point of view, we should have preferred it with its original neck.

The following is a facsimile of the label :—

JOACHIM TIELKE.

in Hamburg, Un 1602

It is four feet in length, and originally it had six strings.

Used as a Violoncello, with four strings, this instrument possesses a quality of tone unequalled by many of the finest Cremonese instruments. It was while in the possession of the late Dr. Steward, of Birmingham (father-in-law of the late Mr. Hart, of Wardour Street, the eminent violin expert and dealer), that the alteration of the neck and finger-board were made, and under his direction nothing was done to interfere with the original character of the instrument but what could be restored. He was careful in preserving the peg-box and scroll.

After Dr. Steward's death, the instrument passed into the hands of the late Dr. J. R. Liston, also a collector of stringed instruments, and it was from him that Mr. Horniman obtained it.

Two views are here given of the instrument. In the front will be noticed the peculiar "f" holes so characteristic of the maker.

The body of the instrument has a border of inlaid ivory, on both front and back.

There are one or two specimens by this maker in the South Kensington Museum; otherwise, examples by Tielke are very rare in this country.

The Viola-da-Gamba is about the size of the Violoncello, but has a flat back, like the double bass, the openings in the breast have not the "f" shape, but are variously cut. The finger-board was originally provided with frets, which were afterwards discontinued. The six strings were usually tuned in fourths.

This instrument is now dispensed with in the orchestra, as its higher notes are equally well and more easily produced on the tenor violin, and the effect of the lower strings is much finer on the violoncello.

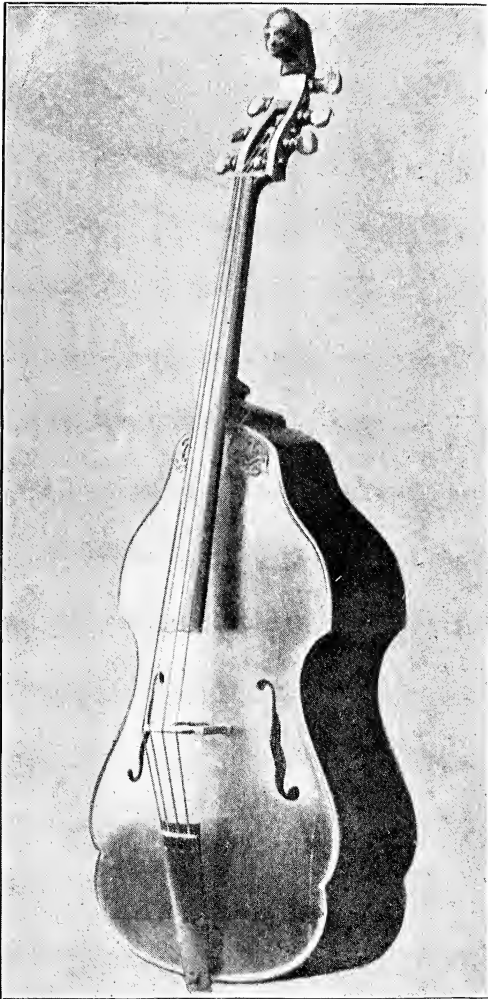
George Neumarck, of Königsberg, who lived in the 17th century, had presented to him by Simon Dach, a very beautiful Viola-da-Gamba, said to have been a masterpiece of the same Tielke.

Neumarck set out for Hamburg with the hopes of finding the maker of his grand Viola-da-Gamba, but alas, old Tielke was dead and also his son. His widow and grandchildren he found.

At Hamburg, George Neumarck played the Viola-da-Gamba in the Church of St. Jacobis. It was one that was made by Tielke in 1580. (just 22 years older than the one here represented). When sadly in want of money, he sold it to a Jew, who afterwards sold it to Baron Rosenkrantz, of Bremen.

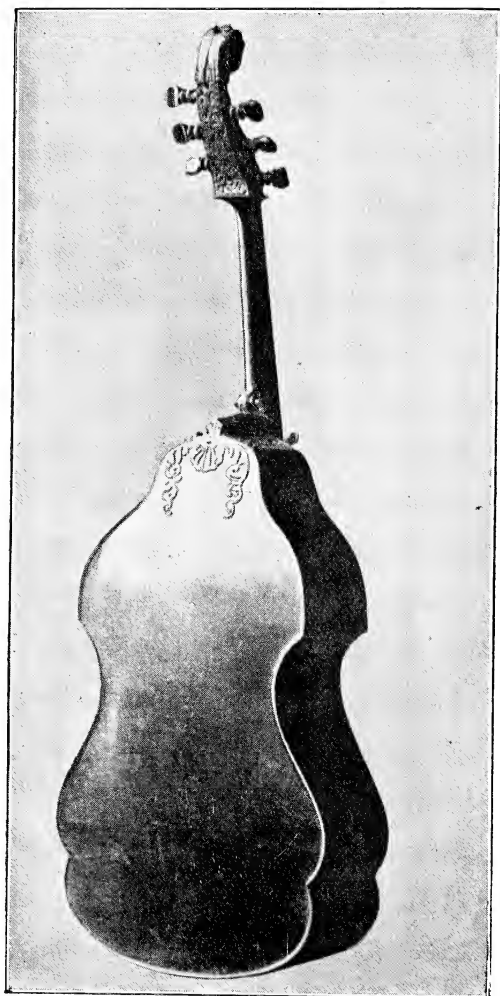
It was at his (the Baron's) house that Janotha Tielke (the grand-daughter of the great master) was living as attendant on the Baroness, that Master George Neumarck was engaged to play at a grand reception, and there it was that Janotha and George Neumarck fell in love. The Baron gave the Gamba to him, and shortly after he married the old instrument maker's grand-daughter.

R. Q.



VIOLA-DA-GAMBA.

J. TIELKE : 1602.



VIOLA-DA-GAMBA.

J. TIELKE : 1602.

Forest Hill :

———— PRINTED AT THE VICTORIA WORKS, ————

118 STANSTEAD ROAD.

SMITHSONIAN INSTITUTION LIBRARIES



39088009211806