

ANNUAL REPORT 2002

HEATWAVE! What Can Ancient GLOBAL WARMING Tell Us about the Future?

pg 7

The World Beyond the CLASSROOM

pg 9

Did Human Ancestors Gaze upon Dinosaurs?

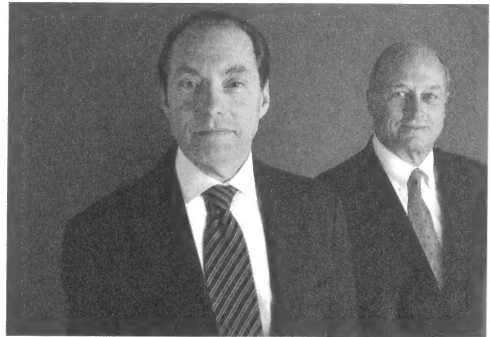
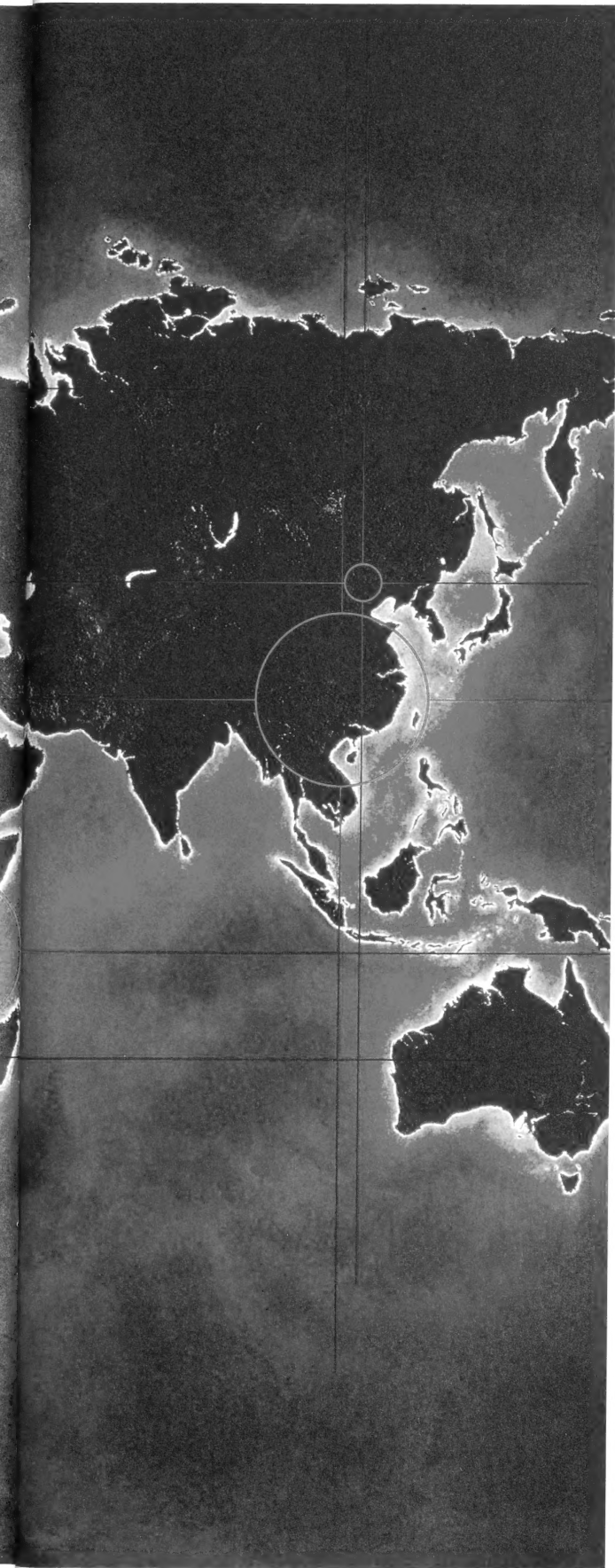
pg 3

Missing Land, Missing History

pg 5

page 2	Letter from the Chairman and President
3	Feature Stories
11	Financial Highlights
13	Contributors





To Our Friends:

If we've learned one thing this year, it is that the world can change rapidly. The Field Museum is keeping up with these changes by actively understanding and affecting the world in which they take place.

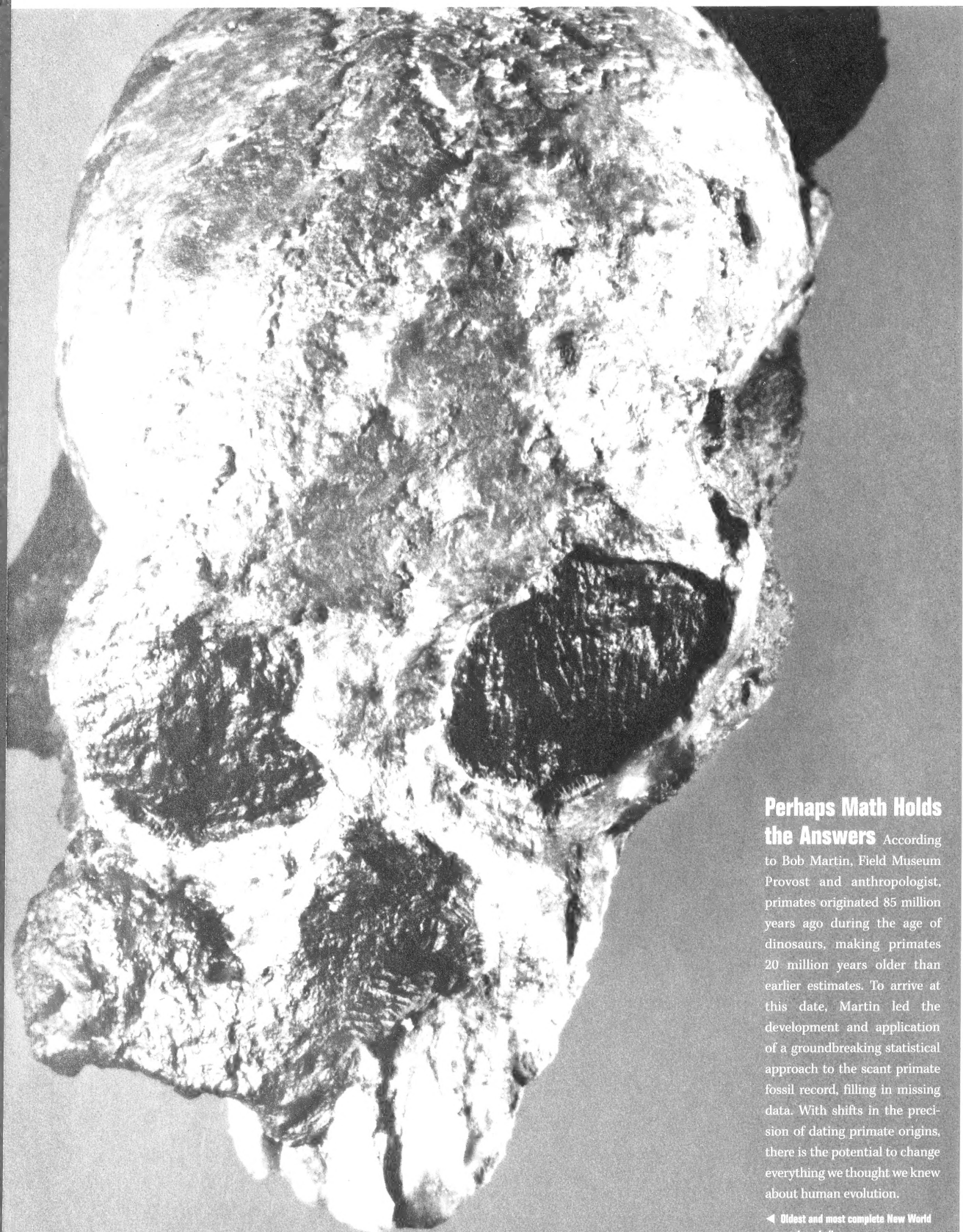
The Field Museum continues its mission of scientific research and conservation. We race to save endangered species and environments and teach others to do the same. Our ornithologists help students in the Congo track its threatened bird populations. Our paleontologists study early climate changes to understand what is happening with the climate today. And many of our scientists are studying the DNA of plants, animals, and fungi to prevent extinction and promote recovery.

With our exhibitions we interpret the world in which we live, helping 1.6 million visitors a year understand the changes taking place around them. Teams of designers and developers produce exhibitions on a range of subject matters that teach about the past, present, and future. Our educators are training teachers to use the Museum as an essential learning tool. Our technologists are producing websites that relay scientific breakthroughs and discoveries as they happen.

As you explore the 2002 annual report, we hope you'll share our enthusiasm for The Field Museum's discovery and research occurring within our walls and around the world. We look forward to your continued support.

Ron Gidwitz
Chairman

John W. McCarter, Jr.
President



Perhaps Math Holds the Answers

According to Bob Martin, Field Museum Provost and anthropologist, primates originated 85 million years ago during the age of dinosaurs, making primates 20 million years older than earlier estimates. To arrive at this date, Martin led the development and application of a groundbreaking statistical approach to the scant primate fossil record, filling in missing data. With shifts in the precision of dating primate origins, there is the potential to change everything we thought we knew about human evolution.

◀ Oldest and most complete New World monkey skull

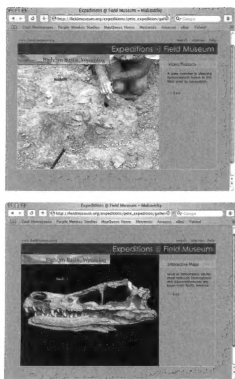
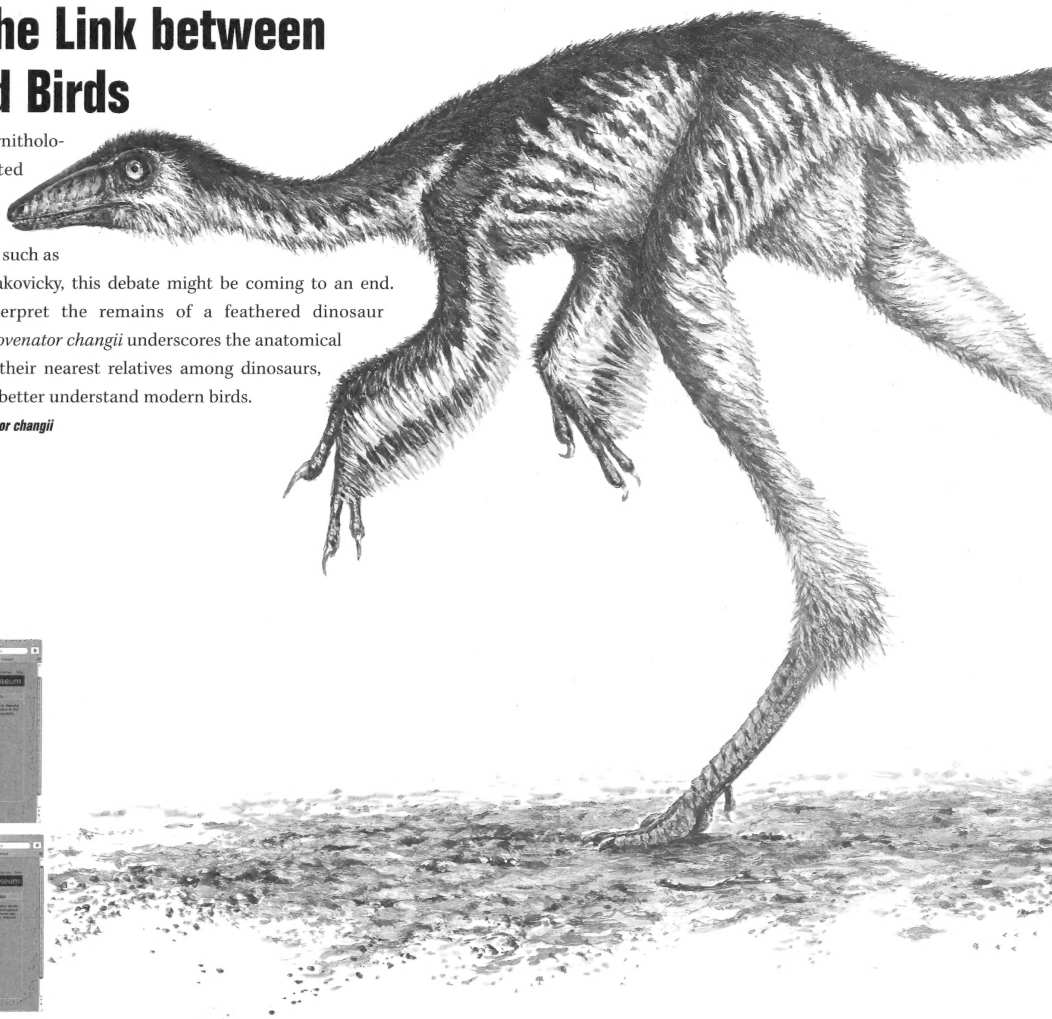
Did Human Ancestors Gaze upon Dinosaurs?

Ruffling Feathers:

Finding the Link between Dinos and Birds

Paleontologists and ornithologists have long debated whether birds evolved from dinosaurs. Thanks to the work of scientists such as paleontologist Peter Makovicky, this debate might be coming to an end. Makovicky helped interpret the remains of a feathered dinosaur uncovered in China. *Sinovenator changii* underscores the anatomical similarities of birds to their nearest relatives among dinosaurs, while helping scientists better understand modern birds.

► Dino reconstruction, *Sinovenator changii*



In the field with The Field!

If you've ever dreamed of joining us on a scientific expedition, you can—through the Internet. Using interactive maps, online video reports, and email, Field Museum scientists share the excitement of fieldwork as it happens all over the world. Led by Jennifer Eagleton and Allyson Meyer, expeditions@fieldmuseum.org allows audiences to join archaeological excavations in China and Mexico, hunt dinosaurs in Wyoming, and explore hydrothermal vents in the Pacific Ocean. Not only does this program give the public up-to-the-minute information on these groundbreaking expeditions, but it might also inspire the future generation of Field Museum scientists.

▲ www.fieldmuseum.org/expeditions



Cuba: Undiscovered Territory

Cuba's political isolation has understandably meant biological isolation. But that is changing, and quite rapidly. Conservation biologist Debra Moskovits was recently granted permission to lead one of the first systematic environmental surveys in Cuba. This rapid biological inventory provided information on the remaining wilderness and biodiversity of the country and encouraged Cuba's government to act quickly to preserve its resources.

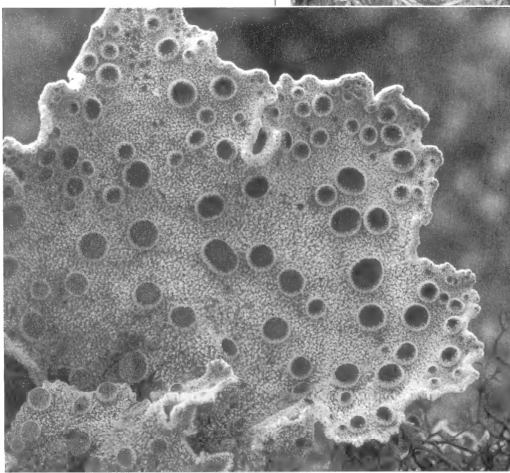
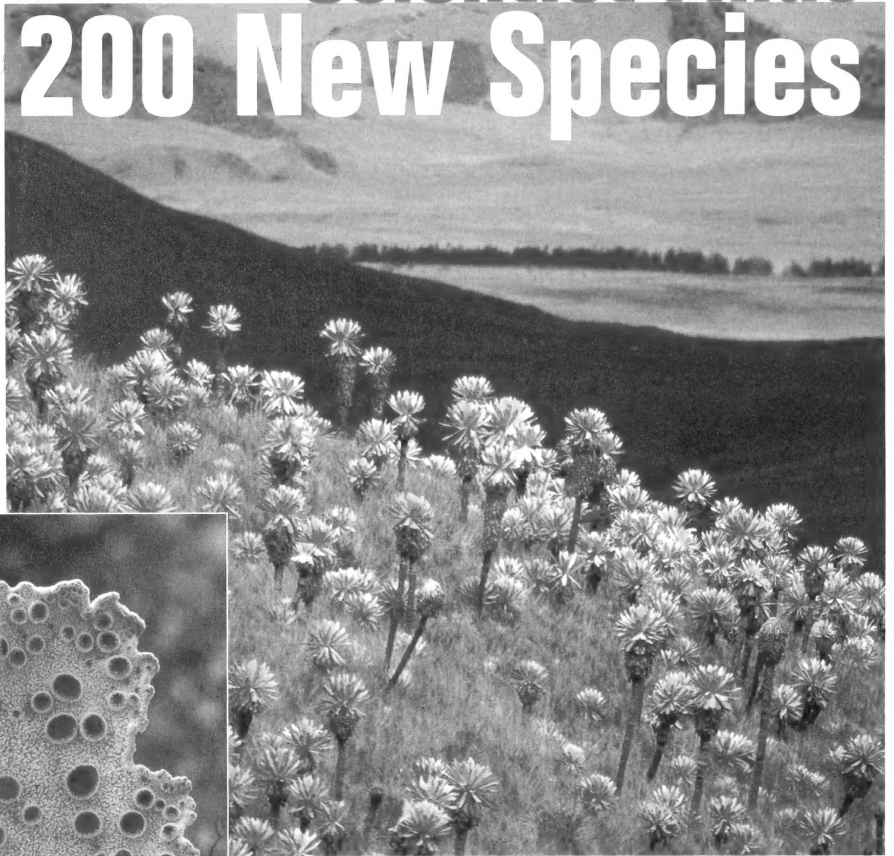
◀ Cuba wilderness

Scientist Finds 200 New Species

As manager of botany collections, one might imagine that Robert Luecking spends his days hidden among the storage cabinets, recording, labeling, and cataloguing specimens. That couldn't be further from the truth. Luecking is actively dispelling that image by conducting biogeography expeditions, creating ecology inventories, and building scientific websites. Luecking also conducts academic research and has discovered more than 200 new lichen species.

► Ecuadorian wet paramo *EL ANGEL*

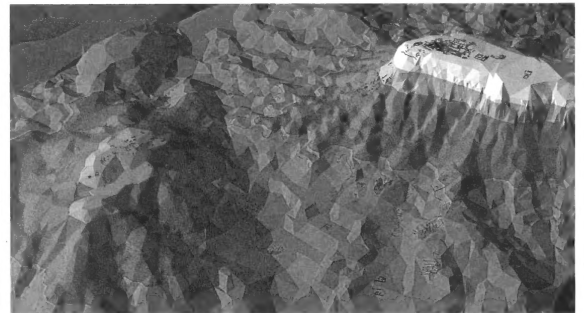
▼ *Sticta humboldtiana*



Tools of Yesterday, Technology of Tomorrow

Botanist Sabine Huhndorf bases much of her research on the traditional practices of gathering specimens and examining them under a microscope. But Huhndorf puts a modern twist on her work by using DNA analysis. By combining these methods of study, Huhndorf can unlock the secrets of genetic information unobtainable through observation alone. This combination of practices reveals new worlds of biodiversity and gives scientists even more opportunity for discovery.

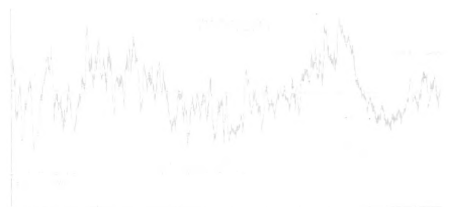
Missing Land, Missing History

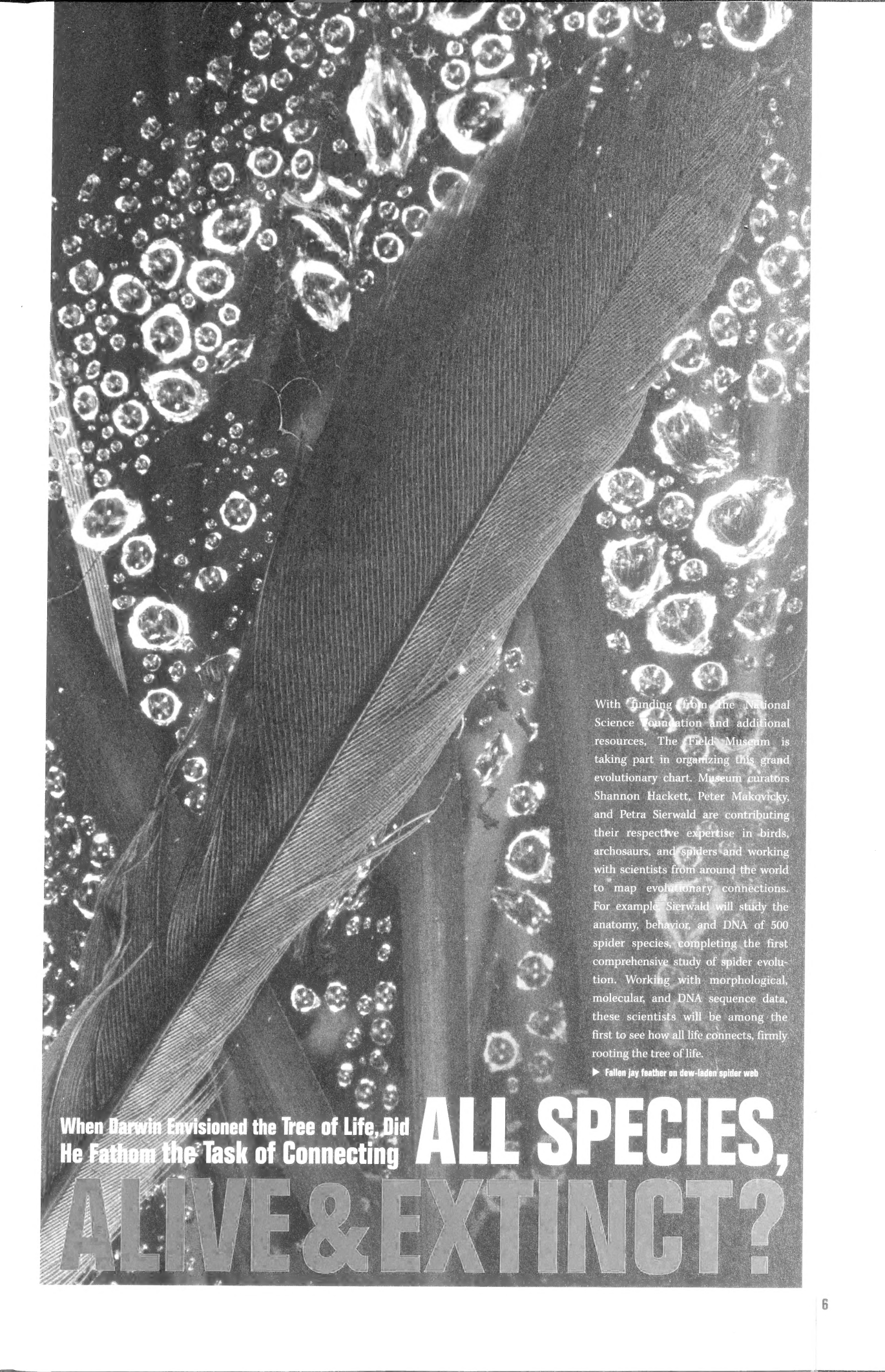


1,400 years ago in the Peruvian Andes, two empires competed for access to the water on which their survival depended. Today, no written record of these cultures or their feud remains, and erosion has degraded the landscape. To understand Cerro Baúl, Moquegua, Peru, its people, and its history, anthropologist Ryan Williams uses satellite imagery and computer modeling to rebuild the ancient terrain. This gives Williams insight into this lost history and provides a better understanding for the modern inhabitants, who still vie for water today.

▲ 3-D model of the Wari enclave at Cerro Baúl, Moquegua, Peru

▼ History of precipitation data from paleoclimate data in the South-Central Andes



A black and white photograph of a jay feather with dew drops on a spider web. The feather is the central focus, showing its intricate structure. The spider web is covered in numerous dew drops of various sizes, some of which are in sharp focus, creating a bokeh effect in the background. The overall composition is artistic and evocative, suggesting the connection between the natural world and scientific inquiry.

With funding from the National Science Foundation and additional resources, The Field Museum is taking part in organizing this grand evolutionary chart. Museum curators Shannon Hackett, Peter Makovicky, and Petra Sierwald are contributing their respective expertise in birds, archosaurs, and spiders and working with scientists from around the world to map evolutionary connections. For example, Sierwald will study the anatomy, behavior, and DNA of 500 spider species, completing the first comprehensive study of spider evolution. Working with morphological, molecular, and DNA sequence data, these scientists will be among the first to see how all life connects, firmly rooting the tree of life.

► Fallen jay feather on dew-laden spider web

When Darwin Envisioned the Tree of Life, Did He Fathom the Task of Connecting

ALL SPECIES, ALIVE & EXTINCT?



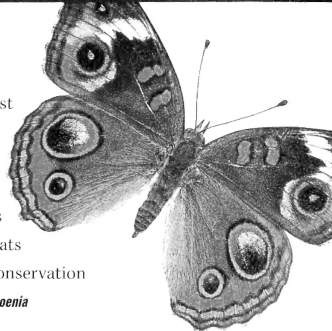
HEATWAVE! What Can Ancient Global Warming Tell Us about the Future?

Geologist Jennifer McElwain recently completed a highly successful expedition in East Greenland. From the high cliffs along Hurry Inlet, McElwain unearthed 1.5 tons of plant fossils that hold evidence of ancient global warming. By examining plant stomata (pores), McElwain can estimate past carbon dioxide levels and extrapolate the temperatures and climate of 200 million years ago. From the evidence gathered, McElwain can reach across time to compare climate change and extinctions and give us hints of the world tomorrow.

▲ Seed fern leaf, *Lepidopteris ottonis*, approximately 200 million years old

You Don't Know What You've Got 'Til It's Gone

DNA analysis gives scientists the invaluable knowledge that just because two things look alike, it doesn't mean that they are the same. Unknown species of North American butterflies may blend into the crowd, but their DNA reveals they may be "cryptic species," distinct and sometimes endangered. Zoologist Paul Goldstein is moving quickly to identify these species and learn about their habitats and behavior. Armed with this information, he hopes to implement conservation strategies and save them, before it is too late. ► Common Buckeye, *Junonia coenia*



An Endangered Ecosystem

In Our Own Backyard

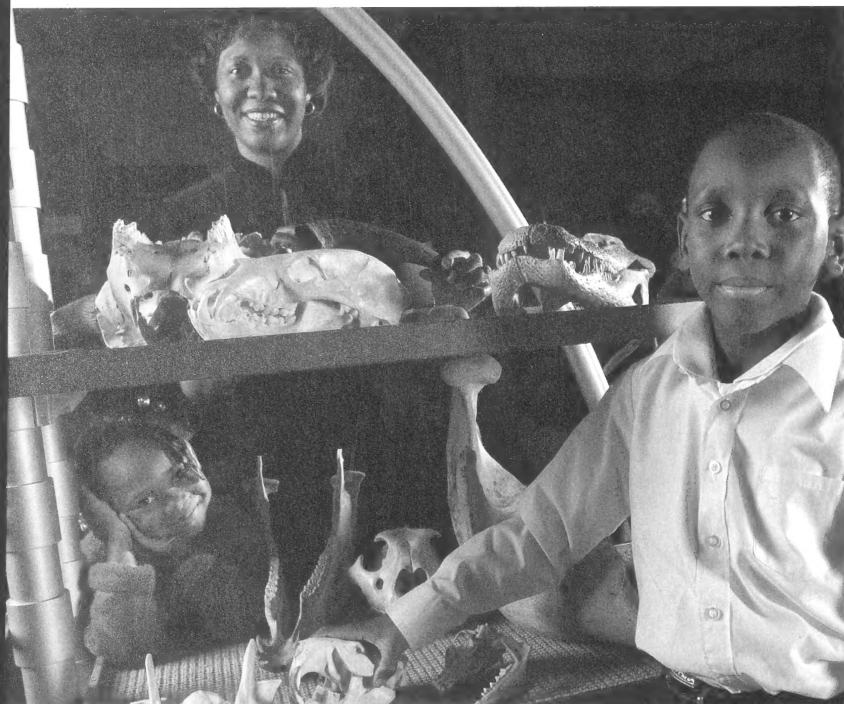
The Museum's Center for Cultural Understanding and Change (CCUC) knows that people and their environment are inextricably connected. That is precisely why the USDA Forest Service funded CCUC to study the people of Calumet, a Chicago neighborhood, and their pristine, yet threatened, landscape. Led by Alaka Wali, CCUC documented a diverse mix of people and a range of environmental conditions, from gardens growing in tires and cinder blocks to found art made from scrap steel. This evidence of the social assets of Calumet will be the basis for reclaiming the environmental heritage of the city and preserving it for the future.

▼ Lake Calumet



Making the Grade

Think of it as a very hard quiz... That is what the Center for Cultural Understanding and Change (CCUC) might have thought as it underwent an external audit last year. The Field Museum invited three eminent scholars to examine closely the quality, impact, and successes of CCUC's programs and activities. After intense scrutiny and critique, the review panel praised CCUC's many accomplishments. The first of a rolling series of reviews of the academic departments, this audit will help CCUC base future plans on its proven successes.

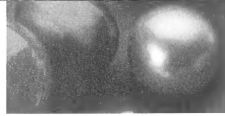


FREE DAYS (and More!) at The Field

As administrator of the Museum's Diversity Project, Patricia Williams Lessane partners with Chicagoland families, schools, churches, and community organizations to provide complimentary access to the Field and its programs. Through grants from the National Recreation Foundation and Kraft Foods, more than 1,000 children and adults like the Lindseys (left) have enjoyed overnights, lectures, festivals, special exhibitions, and summer camp free of charge. Williams Lessane and her colleague Beth Crownover represent the Field by leading a national consortium of urban museums committed to improving access to economically disadvantaged families with programs like the Diversity Project.

◀ Lindsey family, participants in the Diversity Project

EXHIBITIONS

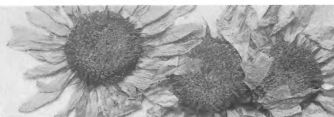


Pearls *Pearls*, a Field Museum and American Museum of Natural History co-production, was a rare opportunity to highlight two important branches of Field Museum study: natural science and social science. More than 180,000 visitors gazed upon splendid examples from the Museum's collections, learned about the science behind the ocean's natural treasures, and saw how these lustrous gemstones play an important role in culture.



Chocolate Just in time for Valentine's Day, *Chocolate* premiered to audiences hungry for an in-depth look at the natural and cultural history of this special treat. Because of chocolate's rich Mesoamerican history, the exhibition features bi-lingual labels in Spanish and English.

After closing at The Field Museum, *Chocolate* began a national tour of 10 venues across the United States. *Chocolate* and its tour were fully developed by The Field Museum.



From Prairie to Field: Photographs by Terry Evans

Photographer Terry Evans spent three years exploring and photographing various Field Museum collections before presenting the idea of an exhibition. The Museum jumped at the chance to display Evans's stunning photographs and also remind visitors of the extent and importance of our collections. Because of the enthusiastic public response, the Terry Evans exhibition is now traveling, bringing the message of The Field Museum and its collections to venues across the United States.

The World beyond the Classroom



Last year Chicago Public School students had the chance to chat with explorers from around the world. The program *Live...From National Geographic* brought scholars and adventurers to The Field Museum to talk about their work. Participants included the Egyptian Director of the Pyramids, a conservationist who crossed the Congo Basin on foot, an anthropologist who dares to enter dangerous war zones. Students participated in special programs that introduced them to some very unique careers and exposed them to worlds vastly different from their own.

▲ Michael Fay staring down an elephant in "Crossing the Heart of Africa"

The Portable Museum

Since 1977, the Harris Loan Extension Program Has Allowed Teachers to Take a Little Bit of The Field into the Classroom.

Today, the Museum continues its outreach through two of the most popular education programs in Chicago. The Harris Loan Center provides educators with hands-on materials to use in their classroom. The Field Ambassadors program has teachers from public, private, and parochial schools vying for opportunities to get the inside scoop on the resources of the Museum. More than 185 teachers have completed the program, which includes training on new and dynamic ways of using the Museum as a learning tool. Ambassadors bring Harris Loan materials into their schools and help their fellow teachers plan effective fieldtrips. Supported by the Polk Bros. Foundation and the Ryerson Tull Foundation, the Ambassadors are making The Field Museum an essential tool for education in Chicago.

◀ Rose Roche, a high school science teacher and Field Ambassador, uses the *Chocó* lesson plans throughout the semester to cover topics as far-reaching as economic botany, zoology, and economics.



The Sue Sensation: Extinction Can't Keep this Dino Down!

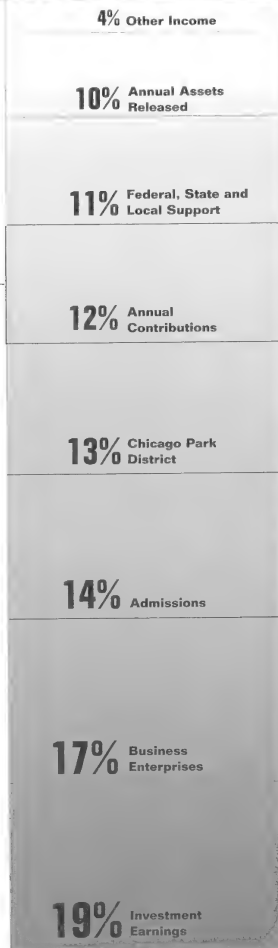
Since Sue's 2000 unveiling, the craze for the largest, most complete *Tyrannosaurus rex* remains undiminished. To date, more than 5 million people from around the world have visited Sue, while her merchandise—shirts, mugs, books—has totaled more than \$5 million in sales. The two traveling casts of Sue are scheduled to appear at more than 25 venues. Showing no signs of slowing, Sue's popularity as a Chicago icon continues to attract more than 1 million visitors each year.

Financial Highlights

\$ in millions
 year ended December 31, 2002
 unaudited figures; further
 information available upon request

\$7.1m

- 40% Individual Giving
- 27% Members
- 16% Corporations
- 11% The Women's Board
- 5% Foundations
- 1% Field Associates

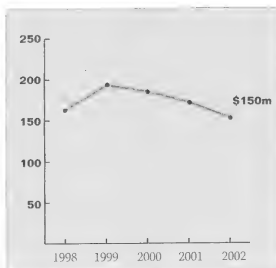
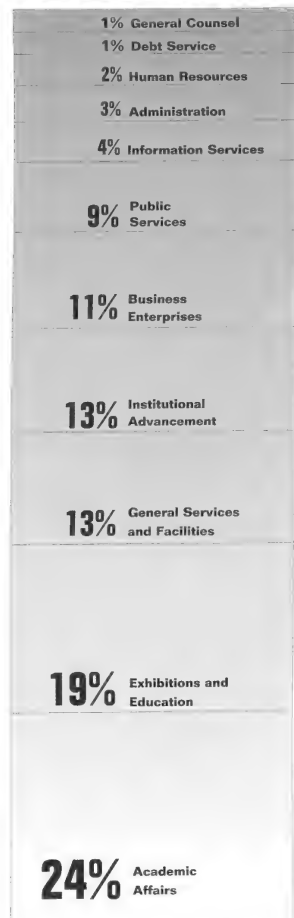


Attendance Total 1,618,006

- 60% General Attendance
- 20% School Groups
- 8% Members
- 5% Special Events
- 3% After Hours Attendance
- 2% Public Programs
- 2% Group Sales

\$57.3m Revenues and Net Assets Released

\$55.9m Expenses



Endowment

New in 2003/04



Eternal Egypt

Masterworks of Ancient Art
from The British Museum

Through August 10, 2003

See magnificent treasures from 3,000 years of ancient Egyptian culture. Walk among colossal stone sculptures, golden mummy masks, and delicate papyrus scrolls. Drawn from the Egyptian collections of The British Museum, this landmark exhibition explores the art of one of the world's most ancient and sophisticated cultures.

Splendors of China's Forbidden City

The Glorious Reign of Emperor Qianlong

March 12 - September 12, 2004

Featuring recreated palace environments and more than 500 stunning artifacts, this exhibition transports visitors to the inner circle of the Chinese imperial court at the pinnacle of its wealth and power. Field Museum scientists are working closely with Chinese colleagues to bring once-hidden artifacts, many of which have never before left the palace walls, to the United States.

Machu Picchu

Unveiling the Mystery
of the Incas

October 15, 2004 - January 9, 2005

Travel back in time to Machu Picchu as it once was—an Inca royal retreat high in the Andes Mountains of South America. Recreated scenes and over 400 artifacts paint a vivid and rich picture of Inca daily life and help to demystify the cultural legacy of this pre-Columbian empire.

The Year of Biodiversity and Conservation

An Exploration of The Field
Museum's Service to Earth

September 2003 - May 2004

Explore The Field Museum's contributions to biodiversity science. The Year of Biodiversity and Conservation will offer exclusive opportunities to meet our scientists, attend lectures, visit special exhibitions, and participate in educational programs that commemorate The Field Museum's service to the Earth. Each month will highlight a different aspect of biodiversity based on some of the most provocative issues of our time.

Baseball As America

Through July 20, 2003

"Shoeless" Joe's shoes. Babe's bat. Jackie's jersey. See the treasures of our cherished national pastime and discover how baseball embodies the American spirit. Drawn from the collections of The National Baseball Hall of Fame and Museum in Cooperstown, New York, over 500 artifacts show how baseball mirrors our nation's values, struggles, triumphs, and aspirations. Celebrate good times, great feats, and legendary heroes when you rediscover this beloved sport through the lenses of history, science, economics, and popular culture.

Jacqueline Kennedy: The White House Years

Selections from the
John F. Kennedy Library
and Museum

November 13, 2004 - May 8, 2005

This exclusive exhibition, featuring more than 70 garments worn by the former first lady, revisits the Kennedy years and explores how Jackie Kennedy's style, intelligence, and charisma influenced American culture and diplomacy. The Field Museum is the final venue before this unforgettable exhibition returns to permanent storage.

Einstein

October 17, 2003 - January 4, 2004

See the world through the eyes of a genius. Einstein had the daring imagination and passionate vision to change how we look at our universe. Meet the man behind the revolutionary theories through photographs, personal possessions, letters, original manuscripts, and multimedia displays. Delve into Einstein's personal life, explore his humanitarian ideals, and understand his groundbreaking work.

Contributors

Page 13

The Field Museum wishes to thank the many individuals, foundations, corporations, and organizations who have helped us pursue our mission in 2002. Your generous support sustains our research and collections activities, maintains and improves our public museum, enables our education programs, and helps keep Chicago's own Field Museum one of the world's great museums.

Thank you.

Major Donors

The Field Museum recognizes the donors of our most significant cash gifts from 2002.

\$1,000,000 or more

Anonymous
Chicago Park District
Illinois Department of Natural Resources
Gordon and Betty Moore Foundation
The Grainger Foundation
National Science Foundation

\$500,000 - 999,999

Catherine H. Ellis Revocable Trust
The Comer Foundation
Robert R. McCormick Tribune Foundation
The Women's Board

\$100,000 - 499,999

Anonymous (2)
Abbott Laboratories
Commonwealth Edison
A. Watson Armour III Charitable Lead Trust
Estate of Abby K. Babcock
Gilbert E. and Katharine Phelps Boone Estate
The Chicago Community Trust
Comer Science & Education Foundation
Earthwatch
Exelon Corporation
Joan W. and Irving B. Harris
Illinois Clean Energy Foundation
Illinois Department of Commerce and Community Affairs
Illinois State Library
Institute for Museum and Library Services
LaSalle Bank
The John D. and Catherine T. MacArthur Foundation
Monsanto Company
National Aeronautics and Space Administration
National Recreation Foundation
The Negaunee Foundation
The Northern Trust Corporation
The Philanthropic Collaborative
Mr. and Mrs. Robert A. Pritzker / The Pritzker Foundation
The Arthur Rubloff Trust
Sara Lee Foundation
Save America's Treasures
The Siragusa Foundation
In Memory of Edward Byron Smith
Tasaki Shintju Co., Ltd.
U.S. Department of Education
U.S. Department of Energy
William Randolph Hearst Foundations

\$25,000 - 99,999

Anonymous (3)
Bank One
The Barker Welfare Foundation
The Brinson Foundation
Mr. and Mrs. Roger O. Brown
The Buchanan Family Foundation
The California Community Foundation
Field Associates
Estate of Evelyn Frank
Estate of Herbert B. Fried
Lloyd A. Fry Foundation
GE Fund
Goldman, Sachs & Company
Mr. and Mrs. Jack M. Greenberg
Illinois Arts Council
Illinois Department of Commerce and Community Affairs; Illinois Bureau of Tourism
Illinois Tool Works Foundation
Kraft Foods
Mr. and Mrs. Frederick A. Krehbiel
McDougal Family Foundation
Lynn and Tony McGuire
Museum Loan Network
National Geographic Society
National Park Service
Office of Naval Research
Nuveen Investments
Polk Bros. Foundation
Peter and Alicia Pond
Schwarz Paper Company
Timothy R. Schwertfeger and Gail Waller
Adele S. Simmons and John L. Simmons
Mr. and Mrs. Peter J. Solomon
The Rockefeller Foundation
Mrs. Herbert A. Vance
Ms. Nancy L. Wald
Mr. and Mrs. Miles D. White
USDA Forest Service
United Airlines

\$10,000 - 24,999

Anonymous
A.T. Kearney, Inc.
ABN AMRO North America, Inc.
Mrs. Pamela Kelley Armour
Australian Biological Resources Study
Ms. Linda Bammann and Mr. Paul Terzani
The Bay Foundation
Donald Bronk Revocable Trust
Mr. and Mrs. Thomas R. Butler
Mr. and Mrs. Theodore H. Butz / The Butz Foundation
Elizabeth F. Cheney Foundation
Chicago Public Schools
Coca-Cola Bottling Company of Chicago
Conservation Foundation for Chicago Wilderness
Mr. and Mrs. Frank Considine
Mr. and Mrs. Robert W. Crawford, Jr.
Mr. and Mrs. Lester Crown
Estate of Kenneth A. Evans
Mr. and Mrs. W. James Farrell
Mr. and Mrs. Michael W. Ferro, Jr.
Mr. and Mrs. Marshall Field
Marshall B. Front Family Charitable Foundation / Laura D. and Marshall B. Front
Mr. Jack W. Fuller
Mr. and Mrs. King Harris / Harris Family Foundation
Mr. and Mrs. Harlow N. Higinbotham
Household International, Inc.
Mrs. Robert C. Hyndman
Illinois Humanities Council
Intrinsic Technologies, L.L.C.

Key

- Trustee
- Staff
- ◆ Multi Year Pledge
- Deceased

Table of Contents

13 Major Donors

13 Restricted Gifts and Grants

Individuals and Family Foundations

Special Gifts

The Women's Board Field Dreams

Foundations, Corporations and Public Entities

Donated Collections

16 Unrestricted Gifts and Grants

The Founders' Council

The Annual Fund

The Women's Board Annual Appeal

Foundations, Corporations and Public Entities

Edward Ayer Society

In-Kind Contributions

Matching Gifts and Grants

21 Volunteer Leadership

The Founders' Council Steering Committee

The Women's Board Executive Committee

Field Associates Executive Committee

The Cultural Collections Steering Committee

The Friends of The Field Museum Library Steering Committee

22 Volunteers

22 Board of Trustees

Reinhardt H. and Shirley R. Jahn Foundation
John R. Halligan Charitable Fund
Josephine Bay Paul and C. Michael Paul Foundation
Estate of M. Rosalie Kempe
John A. Kolden and Nancy W. Knowles-Kolden
Mr. and Mrs. James A. LaGrippe
Bertha Lebus Charitable Trust
Leo Burnett Worldwide
Ms. Renée Logan
Mr. and Mrs. John W. Madigan
Mr. and Mrs. Robert H. Malott
Mr. and Mrs. Scott P. Marks, Jr.
Mr. and Mrs. Arthur C. Martinez
The Oscar G. and Elsa S. Mayer Family Foundation
McDonald's Corporation
William G. McGowan Charitable Fund, Inc.
Mr. and Mrs. Andrew J. McKenna
Merrill Lynch & Co.
Molex Incorporated
Morgan Stanley
Motorola, Inc.
Ms. Jeanne E. Murray
National Financial Partners, Corp.
Mr. and Mrs. Harry G. Nelson
Mr. and Mrs. John Doane Nichols
Mr. and Mrs. Neil S. Novich
The Albert Pick, Jr. Fund
Mr. and Mrs. Richard Pigott
Pittway Corporation
Susan A. Willetts and Alan K. Pritz
Robert Morris College
Mr. and Mrs. Phillip B. Rooney
Mr. and Mrs. Patrick G. Ryan
Ryerson Tull Foundation
Mr. John A. Shea
Tribune Company
Estate of Jane B. & Chester D. Tripp
UBS Financial Services
The Warwick Foundation

Restricted Gifts and Grants

Restricted gifts and grants are contributions from individuals and family foundations, corporations, foundations and public entities designated for specific programs.

Individuals and Family Foundations

\$1,000,000 or more

Anonymous
Mr. and Mrs. Marshall Field
• Americas Research
• Botany Fund
• Capital Campaign
Christina and Ronald Gidwitz
• Capital Campaign
The Grainger Foundation
The Jacqueline Kennedy
• The White House Years Exhibition
Mr. and Mrs. Robert A. Pritzker / The Pritzker Foundation
• Pritzker Laboratory for Molecular Systematics and Evolution
The Simpson Family
• James Simpson Theatre

\$500,000 - 999,999

The Comer Foundation/Comer Science and Education Foundation
• Global Warming: A Geological Perspective
• Chicago: A New Canvas
• Zoology Special Projects

The Meeker Family
• John Caldwell Meeker Postdoctoral Fellow

Catherine H. Ellis Revocable Trust
• Endowment Fund

The Women's Board
• General Operating Fund

\$100,000 - 499,999

Anonymous
• Archaeological Metals Program
A. Watson Armour III Charitable Lead Trust
• Endowment Fund
Estate of Abby K. Babcock
• Endowment Fund
Gilbert E. and Katharine Phelps Boone Estate
• East Asian Studies

The Cultural Collections Committee
• Anthropology Laboratory

Marshall B. Front Family Charitable Foundation / Laura D. and Marshall B. Front
• Capital Campaign

Joan W. and Irving B. Harris
• Environmental and Conservation Programs

Barry and Carol Hastings
• Capital Campaign

Mr. and Mrs. John W. McCarter, Jr.
• Capital Campaign

The Negaunee Foundation
• expeditions@fieldmuseum™
• Antioch Internship Fund

The Philanthropic Collaborative
• Americas Research

The Arthur Rubloff Trust
• Endowment Fund

Adele S. Simmons and John L. Simmons
• Capital Campaign

In Memory of Edward Byron Smith
• Special Purpose

Mr. and Mrs. Miles D. White
• Capital Campaign

\$25,000 - 99,999

Anonymous
 The Brinson Foundation
 • *Halls of the Americas*
 Mr. and Mrs. Roger O. Brown
 • *Barbara E. Brown Fund for Mammals Research*
 Mr. and Mrs. Frank Considine*
 • *Willard L. Boyd Fund*
 Evelyn Frank Endowment, Inc.
 • *Endowment Fund*
 Field Associates
 • *Capital Campaign*
 Estate of Herbert B. Fried
 • *Endowment Fund*
 McDougal Family Foundation
 • *Delivery and Evaluation of an Environmental Continuum*
 Peter* and Alicia Pond
 • *Technology Initiatives*
 Peter J. Solomon Family Foundation
 • *Special Purpose*
 Ms. Nancy Wald
 • *Endowment Fund*

\$10,000 - 24,999

The Bay Foundation
 • *Environmental Conservation Programs*
 Estate of Donald R. Bronk
 • *Endowment Fund*
 Estate of Kenneth A. Evans
 • *Endowment Fund*
 Bertha Lebus Charitable Fund
 • *Zoology Fund*
 Estate of M. Rosalie Kempe
 • *Endowment Fund*
 Ms. Renée Logan
 • *Capital Campaign*
 The Oscar G. and Elsa S. Mayer Family Foundation
 • *Education Outreach Programs*
 Mr. Michael Perlstein*
 • *Varian Fry: Assignment Rescue Exhibition*
 Mr. and Mrs. Harry G. Nelson
 • *Nelson Insect Fund*
 Mr. John A. Shea
 • *Anthropology Fund*
 • *Anthropology Laboratory*
 Estate of Jane B. and Chester D. Tripp
 • *Endowment Fund*

\$5,000 - 9,999

Mrs. Pamela Kelley Armour
 • *Endowment Fund*
 Dr. and Mrs. L.W. Copleston
 • *Queen Elizabeth I Medallion Exhibition*
 Mr. and Mrs. Jerry EtsHokin
 • *Special Projects Fund*
 Dr. and Mrs. James E. Hannigan
 • *Americas Research*
 Mr. Thomas B. Harris
 • *Education Outreach Programs*
 Dr. and Mrs. George B. Rabb
 • *Karl P. Schmidt Fund*
 Mr. and Mrs. Melvin A. Traylor, Jr.
 • *Library Fund*

\$2,500 - 4,999

Mr. and Mrs. Charles W. Benton
 • *Anthropology Fund*
 Charles Stanhope Adams Nature Research Foundation Trust
 • *Bhutan Biodiversity Fund*
 Mr. Robert D. Rodgers
 • *Ornithologists' Research Fund*
 Mr. and Mrs. John S. Runnells II
 • *Mary W. Runnells Rare Book Room*

\$1,500 - 2,499

Mr. and Mrs. T. Stanton Armour
 • *General Library Endowment*
 Mr. and Mrs. Robert C. Brunner
 • *Varis Reptile Research*
 Mr. and Mrs. Hervé de Maigret
 • *Tsavo Lions Project*
 The Donnelley Foundation
 • *Donnelley Fund*
 Curator Gary Feinman* and Adjunct Curator Linda Nicholas*
 • *Anthropology Oaxaca Research*
 The Jocarno Fund / Shirley and John Schlossman
 • *Environmental Conservation Programs*
 Mr. and Mrs. Jerome J. Nerenberg
 • *Special Projects Fund*
 Mr. and Mrs. Donald W. Patterson
 • *Americas Research*
 Dr. Alaka Wali*
 • *Americas Research*

\$1,000 - 1,499

Mr. and Mrs. James H. Duncan
 • *Americas Research*
 Mr. Gregory J. Gajda
 • *Library Endowment*
 Ms. Joan Goldstein
 • *Zoology Fund*
 Mr. David E. Hanley
 • *Americas Research*
 Dr. Malcolm H. Haas
 • *Mammals Fund*
 Mrs. Harold H. Hines, Jr.
 • *Americas Research*
 Estate of Edith Hokenson
 • *Endowment Fund*
 Dr. Kenneth Kaye
 • *Anthropology Fund*
 Mr. and Mrs. E. Jerome McCarthy
 • *Education Outreach Programs*
 Mr. David P. Meyer
 • *Americas Research*
 Mr. H. Nelson Rowley III
 • *Moulding Invertebrate Fund*
 Mrs. Robert P. Schauss
 • *Environmental Conservation Programs*

\$500 - 999

Freed Family Foundation
 • *Karl P. Schmidt Fund*
 Mrs. Fui Lian Inge*
 • *Varis Reptile Research Fund*
 Dr. Robert F. Inge*
 • *Varis Reptile Research Fund*
 Ms. Theresa S. Moseley Taylor
 • *East African Project*
 Mrs. William A. Patterson, Jr.
 • *Americas Research*
 Mrs. Eve Y. Rooth
 • *Anthropology Fund*

\$250 - 499

Mr. Harry Axelrod
 • *Americas Research Fund*
 Mr. Walter S. Baer and Ms. Jerri L. Weiss
 • *Education Outreach Programs*
 Mr. and Mrs. Dean Calhoun
 • *Library Fund*
 Ms. Carol M. Carpenter
 • *Tsavo Lions Project*
 Mr. and Mrs. Chase S. Curtis
 • *Americas Research*
 Mr. Scott Fanning
 • *Library Endowment Fund*
 Mr. and Mrs. Charles C. Haiffner III
 • *Library Endowment Fund*
 Ms. Ronna B. Lerner
 • *Americas Research*
 Mr. and Mrs. Kenneth Nebenzahl
 • *Library Endowment Fund*
 Ms. Karen Nordquist
 • *Geology Fund*
 Dr. and Mrs. Robert J. Patterson
 • *Tsavo Lions Project*
 David E. Willard*
 • *Ornithologists' Research Fund*

Special Gifts

The Field Museum is pleased to recognize the following contributors who support the projects of The Women's Board including the Annual Gala, Children's Holiday Celebration, Outreach Luncheon, Annual Appeal, and Field Dreams. In addition, we thank all of those who support the Annual Gala and Annual Appeal of the Field Associates.

\$1,500 or more

A.T. Kearney, Inc.
 Abbott Laboratories
 ABN AMRO North America, Inc.
 Aon Corporation
 ARAMARK Management Services
 Ariel Mutual Funds
 Mr. and Mrs. T. Stanton Armour
 Linda Bammann* / Bank One
 Dr. and Mrs. Robert A. Beatty
 Mr. and Mrs. Harrington Bischof
 Mr. and Mrs. Phillip D. Block III
 BlueCross BlueShield of Illinois
 The Boeing Company
 Mr. and Mrs. Roger O. Brown
 Mr. and Mrs. Andrew W. Brown
 Mr. and Mrs. Vincent J. Buonanno
 Mr. and Mrs. Robert N. Burt
 Mr. and Mrs. Henry T. Chandler
 Charter Consulting
 Joyce and Bruce Chelberg
 Ms. Pamela Crutchfield and Mr. Myron Szold
 The Community Foundation
 Mr. and Mrs. Mark Crane
 The Crown Family
 Dr. Elnora D. Daniel and Mr. Herman Daniel
 Mr. and Mrs. Robert J. Darnall
 Robert and Quinn Delaney
 Deloitte & Touche
 Delta Dental
 Mr. and Mrs. Byram E. Dickes
 R.R. Donnelley & Sons Company
 Edelman Public Relations Worldwide
 Exelon Corporation
 Mrs. Robert C. Ferris
 Mr. and Mrs. Marshall Field
 FMC Foundation
 Mr. and Mrs. Peter B. Foreman
 Mr. and Mrs. Cyrus F. Freidheim, Jr.
 Frette Illinois, Inc.
 Front Barnett Associates / Laura and Marshall* Front
 Mr. and Mrs. Maurice F. Fulton
 Mr. and Mrs. Harry S. Gables
 Mr. and Mrs. James J. Glasser
 Goldman, Sachs & Company
 Mr. and Mrs. J. Douglas Gray
 Mr. and Mrs. Jack M. Greenberg
 Mr. and Mrs. Roger Griffin
 Mr. and Mrs. Gregory L. Guyett
 Mr. and Mrs. King Harris
 Mr. and Mrs. Wayne Hedien
 Mr. and Mrs. Patrick J. Herbert III
 Mr. and Mrs. John W. Higgins
 Mr. and Mrs. John L. Hines
 Mr. and Mrs. David B. Horn
 Household International, Inc.
 Illinois Tool Works Foundation
 Institutional Capital Corporation
 Jeffrey and Hollye Jacobs
 Mr. and Mrs. Richard Jernstedt
 Noel and Doris Kaplan
 Kemper Insurance Companies
 Mr. and Mrs. Donald G. Kempf, Jr.
 Mr. and Mrs. John J. Kinsella
 Ms. Sue Klosse*
 Kraft Foods
 LaSalle Bank
 Mr. and Mrs. Harold W. Lavender, Jr.
 The Lego Store, Chicago
 Fay* and Daniel Levin
 Mr. and Mrs. William S. Macdonald
 Mr. and Mrs. John W. Madigan
 Madison Dearborn Partners
 Mr. and Mrs. Robert H. Malott
 Mr. and Mrs. Scott P. Marks, Jr.
 Mr. and Mrs. Arthur C. Martinez
 Mr. and Mrs. Frank D. Mayer, Jr.
 McDonald's Corporation
 Mr. and Mrs. Lester H. McKeever, Jr.
 Mr. and Mrs. Andrew J. McKenna
 McKinsey & Company
 Withrow W. Meeker
 Merrill Lynch
 Mr. and Mrs. Richard M. Morrow
 Mr. and Mrs. Raymond Mota/Mota Construction Company Inc.
 Motorola, Inc.
 Clare Muñana and John McCartney
 John and Victoria Myers
 The Negaunee Foundation/Mr. and Mrs. Richard W. Colburn
 Mr. and Mrs. John Doane Nichols
 The Northern Trust Company
 Neil* and Deborah Novich
 Mr. and Mrs. James J. O'Connor
 Mr. and Mrs. William A. Osborn
 Mr. and Mrs. Jerry K. Pearlman
 Pharmacia Corporation
 Mrs. Marlene Welsh Phillips
 Mr. and Mrs. Richard J. Pigott
 Mr. Sidney L. Port
 Col. (IL) James N. Pritzker, Ret.
 Mr. and Mrs. Robert A. Pritzker
 Quaker Foods and Beverages
 Reyes Holdings, LLC
 Robert R. McCormick Tribune Foundation
 Mr. and Mrs. Phillip B. Rooney
 Mr. and Mrs. Jeffrey S. Ross
 Ms. Janice B. Ruppel
 Mr. and Mrs. Patrick G. Ryan
 Mr. and Mrs. Richard H. Schnadig
 Schwarz Paper Company
 Mr. and Mrs. Gordon Segal
 The ServiceMaster Company LP
 Mr. and Mrs. Michael S. Sigal
 Skidmore, Owings & Merrill
 Mr. and Mrs. Raymond I. Skilling
 Mr. and Mrs. Charles H. Solberg, Jr.
 Mr. and Mrs. Neele E. Stearns, Jr.
 Mr. and Mrs. Roger W. Stone
 Mr. and Mrs. Harvey J. Struthers
 Mr. and Mrs. Richard L. Thomas
 Tiffany & Co.
 Tribune Publishing Company
 United Airlines
 Barbara H. West
 Mr. and Mrs. Miles D. White
 Ms. Susan Willetts* and Mr. Alan K. Pritz
 William Blair & Company
 Rev. Dr. Ruth Teena Williams
 Linda S. Wolf* / Leo Burnett Worldwide

The Women's Board Field Dreams

A program of The Women's Board since 1997, Field Dreams provides support to non-budgeted scientific and staff projects.

Mr. and Mrs. Philip Block III
 • *Highland Peruvian Textiles*
 Mr. and Mrs. Robert N. Burt
 • *Bird Hall Binoculars*
 Mrs. Robert Adams Carr
 • *Highland Peruvian Textiles*
 Mrs. R. Emmett Dedmon
 • *Student Training in China*
 Mr. and Mrs. Byram E. Dickes
 • *Highland Peruvian Textiles*
 Mr. and Mrs. Marshall Field
 • *Highland Peruvian Textiles*
 • *Environmental and Conservation Field Research*
 Mr. and Mrs. Francis Foster
 • *Highland Peruvian Textiles*
 Mr. and Mrs. William D. Frost
 • *Student Training in China*
 Mr. and Mrs. Patrick J. Herbert III
 • *Volunteer Van*
 Mr. and Mrs. Thomas Hodgson
 • *Tanzanian CD-ROMs and Posters*
 Mr. and Mrs. Philip Hummer
 • *Highland Peruvian Textiles*
 Mrs. Robert C. Hyndman
 • *Environmental and Conservation Field Research*
 Mrs. Glen A. Lloyd
 • *Tanzanian CD-ROMs and Posters*
 Mr. and Mrs. Arthur C. Martinez
 • *Highland Peruvian Textiles*
 Mrs. Edward D. Matz
 • *Highland Peruvian Textiles*
 Elisabeth C. Meeker
 • *Oaxaca Curatorial Facility*
 • *Cretaceous Dinosaurs in Wyoming*
 • *East Greenland Expedition*
 • *Tanzanian CD-ROMs and Posters*
 Withrow W. Meeker
 • *Environmental and Conservation Field Research*
 • *Highland Peruvian Textiles*
 Mr. and Mrs. Charles S. Potter, Jr.
 • *Chicago Underwater Wilderness*
 Mr. and Mrs. Albert Pyott
 • *Highland Peruvian Textiles*
 • *Environmental and Conservation Field Research*
 Mrs. Richard H. Schnadig*
 • *East Greenland Expedition*

If you have any questions regarding the listing of your name please contact The Women's Board Office at 312.665.7135.

Key

- Trustee
- Staff
- ◆ Multi Year Pledge
- Deceased

The Field Museum is grateful to the generous supporters of the evening held in honor of Marshall Field on May 7, 2002.

Anonymous
 Mr. and Mrs. John Alexander
 Marilyn Alsdorf and Robert Gluth
 Aon Corporation
 Ariel Mutual Funds
 Pamela Kelley Armour
 Mr. and Mrs. T. Stanton Armour
 Mr. and Mrs. Vernon K. Armour
 Ms. M. L. Barley
 Etta Moten Barnett
 Mr. Edward P. Bass
 Prue and Frank Beidler
 Mr. and Mrs. Stephen P. Bent
 Mr. and Mrs. Frank W. Blatchford III
 Mr. and Mrs. Philip D. Block III
 Mr. and Mrs. Robert E. Bouma
 Bruce Boyd
 John A. Bross
 Kent and Diane Buchanan
 Mr. and Mrs. Willard Bunn III
 Mr. and Mrs. Dean L. Buntrock
 Mr. and Mrs. Tyler R. Cain
 Mr. and Mrs. Peter R. Carney
 Mrs. Robert Adams Carr
 Mr. Donald A. Cornue
 Mr. and Mrs. Joseph F. Cullman 3rd
 Daphne Hoch Cunningham and John T. Cunningham
 Mr. and Mrs. Robert W. Crawford, Jr.
 Dr. Elnora D. Daniel
 Mrs. Emmett Dedmon

- Key**
 ■ Trustee
 ♦ Staff
 ◆ Multi Year Pledge
 □ Deceased

Mr. and Mrs. Wesley M. Dixon, Jr.
 The Donnelley Foundation
 Strachan Donnelley, Ph.D.
 Mr. and Mrs. Thomas E. Donnelley II
 Mr. and Mrs. Reed H. Eberly
 Ms. Pamela Ebsworth
 Josephine Elting
 Mr. and Mrs. Michael W. Ferro, Jr.
 The Field Family
 The Field Foundation of Illinois, Inc.
 Ms. Susan M. Forney
 Marshall and Laura Front
 Mr. and Mrs. Maurice F. Fulton
 Mr. and Mrs. Christopher B. Galvin
 Mr. and Mrs. Gary E. Gardner
 Gerald S. Gidwitz
 Nancy Gidwitz
 Christina and Ronald Gidwitz
 Mr. and Mrs. James J. Glasser
 Mr. and Mrs. Julian R. Goldsmith
 Alice and Ren Goltra
 Dr. and Mrs. Larry J. Goodman
 John and Jean Greene
 Ms. Merle Gross
 Lewis and Misty Gruber
 Mrs. Paul W. Guenzel
 Mr. and Mrs. Robert C. Gunness
 Patrick J. Hagan
 Mr. and Mrs. Samuel C. Hair
 Julie and Parker Hall
 Mr. and Mrs. Corwith Hamill
 Catharine and David Hamilton
 Mr. and Mrs. King Harris
 Mr. and Mrs. Robert S. Hartman
 Barry G. Hastings / Northern Trust
 Mr. and Mrs. Thomas Z. Hayward, Jr.
 Marilyn and Dick Helmholz
 Mr. and Mrs. Patrick J. Herbert III
 Mr. Michael Hershkovitz
 Mrs. Mary P. Hines
 Mr. and Mrs. Philip W. Hummer
 Sue B. Ish
 Jeff and Hollye Jacobs
 Dr. Kenneth Kaye
 Connie and Dennis Keller
 Mr. and Mrs. John P. Keller
 Ms. Laura Kracum
 Mr. and Mrs. Frederick A. Krehbiel
 Susan M. Crown and
 William C. Kunkler III
 William Kurtis and Donna LaPietra
 Mercedes A. Laing
 Joan and Melvin Lane
 Lorna Langdon
 LaSalle Bank
 Fay and Daniel Levin
 Lawrence and Dana Linden
 Mrs. Glen A. Lloyd
 Mr. and Mrs. William S. Macdonald
 Holly and John Madigan
 Marlene A. Malek
 John and Adrienne Mars
 Mrs. Frank D. Mayer
 Dr. and Mrs. Hugh A. McAllister, Jr.
 Laurie M. McBride
 Thomas McGrath and Peggy Bennett
 Lynn and Tony McGuire
 Hugo and Lois Melvoine
 Mr. and Mrs. Richard M. Morrow
 Mr. and Mrs. Aidan I. Mullett
 Robert S. and Mary P. Murreley
 Dr. and Mrs. Charles F. Nadler
 Jossy and Ken Nebenzahl
 The Negaunee Foundation
 Alexandra and John Nichols
 Gordon and Betty Orians
 Ms. Irma Parker
 Marion Phelps Pawlick
 Mrs. Charles S. Potter
 Mr. and Mrs. Robert A. Pritzker

Ms. Singleton Rankin
 The Hon. and Mrs. William K. Reilly
 Daniel F. and Ada L. Rice Foundation
 Mr. Godfrey A. Rockefeller
 Andrew and Betsy Rosenfield
 Mr. and Mrs. John S. Runnells II
 Roger and Vicki Sant
 Mrs. Gerda Schild
 Mr. and Mrs. Richard H. Schnadig
 Mr. and Mrs. Peter D. Scully
 Mr. and Mrs. Gordon I. Segal
 Mr. and Mrs. John R. Siragusa
 Mr. and Mrs. Edward Byron Smith, Jr.
 Helen B. Spaulding
 Elizabeth Steins
 Robert Stephens and Julie Packard
 Donald M. Stewart
 Ms. Linda S. Stone
 Mrs. W. Clement Stone
 Mr. and Mrs. Theodore D. Ticken, Jr.
 The Hon. and Mrs. Russell E. Train
 Mrs. Herbert A. Vance
 Mr. and Mrs. Rodney B. Wagner
 Mr. and Mrs. John R. Walter
 Mr. Robert H. Waterman, Jr.
 Mrs. Leland Webber
 Mr. Christopher M. Weld
 Vernon Wesby
 Mr. and Mrs. Henry P. Wheeler
 Mr. and Mrs. Miles D. White
 Mr. and Mrs. John Karl Wilen II
 William Blair & Company
 Mrs. Elizabeth Winston
 Linda and Ron Wolf
 William N. Wood Prince
 Mr. and Mrs. Blaine J. Yarrington
 Mr. and Mrs. Edward Yastrow
 Mrs. George B. Young

Foundations, Corporations and Public Entities

\$5,000,000 or more

Robert R. McCormick Tribune Foundation*
 • *Halls of the Americas*
 Gordon and Betty Moore Foundation*
 • *Science in Action for Conservation*

\$2,500,000 - 4,999,999

Monsanto Company*
 • *Underground Adventure Exhibition and the Environmental Education Initiative*

\$1,000,000 - 2,499,999

Abbott Laboratories*
 • *Living Together Exhibition Nature's Pantry Program*
 Illinois Department of Natural Resources
 • *Central Plant Renovation-Phase III*
 • *Collections Resource Center-Phase I*
 • *Lake Calumet Biodiversity Blitz*
 • *Mighty Acorns Conservation 2002*
 • *Public Museum Operating Program for Environmental Outreach*
 The John D. and Catherine T. MacArthur Foundation*
 • *Building Capacity for Biodiversity Research, Conservation, and Education in Bhutan*
 • *The Cofan Foothills/Cordillera Azul Foothills*
 • *Collaborative Biodiversity Research and Training in Uganda and the Democratic Republic of Congo*
 • *Cuba: Urgent Conservation Opportunities in the Caribbean*

National Science Foundation
 • *Collaborative Research: Archosaur Phylogeny*
 • *Collaborative Research: Early Bird: A Collaborative Project to Resolve the Deep Nodes of Avian Phylogeny*
 • *Development of Novel CO2 Partial Pressure-Based Paleo-Altimeter*
 • *Imperial Interaction in the Andes: Wari and Tiwanaku at Cerro Bail*
 • *A Lu-Hf Isotopic Investigation of the Origin and Evolution of the Indian Ocean Mantle Domain*
 • *Phylogenetics and Evolutionary Biomechanics of Coral Reef Fishes*
 • *Pre-ceramic Chronology in the Norte Chico Region of Peru*
 • *REU supplement: Hinterlands and Cities: Archaeological Investigations of Economy and Trade in Tsavo, Kenya*
 • *Subaward to: Assembling the Tree of Life: Phylogeny of Spiders*
 • *Supplement to: Mammals, Birds, and their Parasites along an Elevational Gradient in Southeastern Peru*
 • *Supplement to PEET: CRIPTON: Collections, Research, Inventories, and People for Taxonomic*
 • *Testing the Generality of Macroevolutionary Patterns with Bellerophon Molluscs*
 • *Ticlichen-The Costa Rican Lichen Biodiversity Inventory*
 • *Understanding the Evolution of Neotropical Diversity: Implications from Phylogenetic Patterns in Two Co-Distributed Avian Genera*

\$250,000 - 999,999

BP plc*
 • *Cleopatra of Egypt: From History to Myth Exhibition*
 Commonwealth Edison
 • *Solar Power Partnership*
 Exelon Corporation
 • *Splendors of China's Forbidden City: The Glorious Reign of Emperor Qianlong Exhibition*
 William Randolph Hearst Foundations
 • *Endowed Fund for Education Outreach Programs*
 Illinois Department of Commerce and Community Affairs
 • *Solar Power Partnership—Phase II*
 LaSalle Bank*
 • *Eternal Egypt: Masterworks of Ancient Art from The British Museum Exhibition*
 Marshall Field's*
 • *Jacqueline Kennedy: The White House Years Exhibition*

Nuven Investments*
• Center for Cultural Understanding and Change
• Living Together Exhibition

Save America's Treasures
• Preservation and Conservation of the North American Ethnographic and Archaeological Collections

The Siragusa Foundation
• Education Outreach Programs
• Early Childhood Initiative
• The Siragusa Center

Tasaki Shinju Co., Ltd.
• Pearls Exhibition

U.S. Department of Education
• Giving New Life to a Teaching Resource: Revitalization of Life over Time

U.S. Department of Energy
• Life over Time Revitalization

\$100,000 - 249,999

The Barker Welfare Foundation*
• Capital Campaign

The Chicago Community Trust
• Education Programs for Chocolate and Pearls Exhibitions

Earthwatch
• Ecology and Behavior of Maneless Lions in a Human-Dominated Landscape

Ford Motor Company*
• Education Outreach Programs
• Eternal Egypt: Masterworks of Ancient Art from The British Museum Exhibition

GE Fund*
• Teacher/Student Services Project

Illinois Clean Energy Community Foundation
• Solar Power Partnership

Illinois Department of Commerce and Community Affairs; Illinois Bureau of Tourism
• Tourism Marketing Partnership Grant for Baseball As America

Illinois State Library
• Digital Imaging Project

Institute of Museum Library Services
• General Operating Support

W. Alton Jones Foundation*
• Training and Tools for Conservation
• Centro Rio Los Amigos

National Aeronautics and Space Administration
• Geochemical and Isotopic Investigation of Meteorites

National Recreation Foundation
• The Diversity Project

Sara Lee Foundation
• Bamboo Masterworks: Japanese Baskets from the Lloyd Cotsen Collection Exhibition

\$50,000 - 99,999

The Brinson Foundation
• Halls of the Americas

Elizabeth F. Cheney Foundation*
• Splendors of China's Forbidden City: The Glorious Reign of Emperor Qianlong
• Bamboo Masterworks: Japanese Baskets from the Lloyd Cotsen Collection Exhibition

The California Community Foundation
• Americas Research Fund

Illinois Arts Council
• General Operating Support

Polk Bros. Foundation
• Field Ambassadors Program

Ryerson Tull Foundation*
• Field Ambassadors Program

\$25,000 - 49,999

Lloyd A. Fry Foundation
• Center for Cultural Understanding and Change: Cultural Connections Program

Kraft Foods
• The Diversity Project

Museum Loan Network
• Pacific Musical Instruments
• Survey of the Vanuatu Collections

National Geographic Society
• Manelessness in Tsavo Lions and Male Pattern Balding
• Paleontological Exploration of the Upper Jurassic Houcheng Formation; Hebei, China

National Park Service
• Consultation with the Yurok Tribe of the Yurok Reservation, Klamath, CA

Office of Naval Research
• U.S. - Japan Cooperative Research—Underwater Vehicles
• Aquatic Propulsion and Maneuverability Mechanics and Neural Control of Fin Locomotion in Fishes
• Swimming Mechanics of Hawaiian Coral Reef Fishes

The Rockefeller Foundation
• Defining the Twenty First Century Global Agenda: Hip Hop Culture as Transformative Activity

USDA Forest Service North Central Research Station
• Calumet Region Angler Study

\$1,000 - 24,999

The Albert Pick, Jr. Fund
• Soil Adventure Mobile Program

Australian Biological Resources Study
• A Taxonomic Revision of the Thelotremales in Australia

Chicago Public Schools
• Center for Cultural Understanding and Change

City of Chicago: Department of Cultural Affairs
• City Arts - General Operating Support Program IV

Conservation Foundation for Chicago Wilderness
• Calumet Ecology Revitalization Phase II

Illinois Humanities Council
• Center for Cultural Understanding and Change: Cultural Connections Program

William G. McGowan Charitable Fund, Inc.
• Environmental Conservation Programs

JP Morgan Chase & Co.
• The Diversity Project

NatureServe
• Mapping Neotropical Mammal Distributions

Peoples Energy
• Lake Calumet Biodiversity Blitz

Robert Morris College
• Center for Cultural Understanding and Change: Cultural Connections Program

Shoshone National Forest
• Geology Fund

U.S. Fish and Wildlife Service
• Evolution of Relationships and Conservation Status of the *Neonympha mitchellii* Complex
• Lake Calumet Biodiversity Blitz

Waste Management
• Lake Calumet Biodiversity Blitz

Wilmer. Cutler & Pickering
• Ornithologists' Fund

Donated Collections

The following individuals and organizations donated significant collections to improve The Field Museum's scientific stature.

Anthropology

Edwina Faulk Cox
Basil Cross and William Brinka
Richard Faron
Paul Hockings
Abraham Hoffer
Takaronga and Rangitapu Kuantonga
Eugenia Love
Irene Lozano
Brad Orvieto and Anne Van Zelst-Orvieto
Sam[®] and Helen Zell
Mr. and Mrs. Theodore W. Van Zelst

Botany

Arizona State University
Bishop Museum
Botanische Staatssammlung München, Germany
The British Museum
California Academy of Sciences
Centro de Investigación Científica de Yucatán, A.C.
Duke University
Eastern Illinois University
Eszterházy Károly College, Hungary
Herbário Alberto Castellanos, Brazil
Hiroshima University, Japan
Instituto de Ecología, A.C., Mexico
Instituto de Botánica del Nordeste, Argentina
Robert M. King
Kunming Institute of Botany, Chinese Academy of Sciences
Ludwig Maximilians Universität, Germany
David Meagher
Missouri Botanical Garden
Museu Botânico Municipal, Brazil
Nationaal Herbarium Nederland, Leiden University, Netherlands
Nationaal Herbarium Nederland, Utrecht University, Netherlands
National Science Museum, Tokyo, Japan
National Sun
Naturhistorisches Museum Wien, Austria
New York Botanical Garden
North Carolina State University
Reserva Ecológica do IBGE, Brazil
Royal Botanic Gardens Australia, New South Wales, Sydney
Royal Botanic Gardens, Kew
David Shephard
Swedish Museum of Natural History
United States National Herbarium
Universidad Central de Venezuela
Universidad de Costa Rica
Universidad Nacional de Cajamarca, Peru
Universidad Privada Antenor Orrego, Peru
Universidade de São Paulo, Brazil
Universidade Estadual Paulista, Brazil
Universidade Federal de Minas Gerais, Brazil
Universidade Federal de Uberlândia, Brazil
Universidade Federal do Rio de Janeiro, Brazil
Universidade Federal do Rio Grande do Sul, Brazil
Universität Göttingen, Germany
Université Laval, Quebec, Canada
University of Aarhus, Denmark
University of California, Riverside
University of Kentucky
University of Melbourne, Australia
Utah State University

Geology

Ken Anderson
C. Kevin Boyce
Tor Bjorklund
D. Cooper
Rick Heddon
Peter Larson
J. McConnell
Museum of Comparative Zoology, Harvard
Joseph V. Smith
Thomas V. Testa
Carl Ulrich
Richard Whitaker
J. Wittry

Zoology

The American Museum of Natural History
Tamara K. Anderson
Thomas G. Anton
Kendall Clements
R. Clinebell
Rachel Collin
Scott Demel*
Jochen Gerber*
Tim Grabowski
V. Grebennikov
Mary Johnson*
Ann Beth Heierling
P. Hlavac
H. Howden
Tan Heok Hui
P. Kovarik
James J. Krupa
J. Kucera
Margaret Lowinger-Needelman
Duane McPherson
Russ Minton*
H. Nelson
H. Oorschot
The Pennsylvania State University
Philadelphia Academy of Sciences
Mario de Pinna
Rebecca Price
B. Ratcliffe
W. Rossi
J. M. Salgado
M. Schulke
W. D. Shepard
Kristin Sherrard
Clara Richardson Simpson
Bette Solomon
J. Stuke
K. Swagel*
University of Texas, Marine Biomedical Institute
A. C. van Bruggen
Olga Yaroslavskaia

Key

- Trustee
- Staff
- ◆ Multi Year Pledge
- ▲ Permanent Founders' Council Member
- Deceased

Unrestricted Gifts and Grants

The Founders' Council

The Founders' Council recognizes individual donors and family foundations who contribute \$1,500 or more annually in unrestricted support.

Steward \$25,000 or more

Anonymous
The Buchanan Family Foundation*
Mr. and Mrs. Richard W. Colburn*
Mr. and Mrs. Gary C. Comer
Mr. and Mrs. Frederick A. Krehbiel*
Timothy R. Schwertfeger* and Gail Waller
Mrs. Herbert A. Vance*

Conservator \$10,000 - 24,999

Anonymous (2)
Mr. and Mrs. Thomas R. Butler
Mr. and Mrs. Theodore H. Butz
Mr.* and Mrs. Robert W. Crawford, Jr.
Mr.* and Mrs. Michael W. Ferro, Jr.
Mr.* and Mrs. Marshall Field*
Marshall B. Front Family Charitable Foundation / Laura D. and Marshall B.* Front
Mr. Jack W. Fuller*
Mr.* and Mrs. Harlow N. Higinbotham
Reinhardt H. and Shirley R. Jahn Foundation
John A. Kolden and Nancy W. Knowles-Kolden*
Mr. and Mrs. James A. LaGrippe
Lynn and Tony McGuire
Ms. Jeanne E. Murray*
Mr.* and Mrs. Richard J. Pigott
Peter* and Alicia Pond*
Ms. Susan Willetts* and Mr. Alan K. Pritz
Linda* and Ron Wolf

**The Founders' Council
(continued)**

Collector
\$5,000 - 9,999

Mr. and Mrs. T. Stanton Armour[▲]
Mr.[▲] and Mrs. Bowen Blair[▲]
Edwin J. Brach Foundation[▲]
Mr. and Mrs. Albert C. Buehler, Jr.[▲]
Rosemarie and Dean Buntrock[▲]
Mr.[▲] and Mrs. John A. Canning, Jr.
Dr. and Mrs. Robert Wells Carton[▲]
Mr.[▲] and Mrs. Frank W. Considine[▲]
Mr. Stanton R. Cook[▲]
Nancy Corral[▲]
Mr. and Mrs. Jerry EtsHokin
Ms. Sylvia Fergus
Mrs. James H. Ferry, Jr.
Ms. Abigail B. Field / The Edith B. and Lee V. Jacobs Fund No. 3
Mr. and Mrs. Harry S. Gables
Ms. Sue Ling Gin[▲]
Mr.[▲] and Mrs. Jack M. Greenberg
Mrs. Jean Gullo
Greg and Stephanie Guyett
Mr. and Mrs. Burton W. Hales, Jr.
Mrs. Sally M. Hands
Mr. and Mrs. Laurin H. Healy[▲]
Wayne[▲] and Colette Hedien[▲]
Mrs. Harold H. Hines, Jr.[▲]
Mrs. John J. Hoellen[▲]
Dr. Wayne J. Holman III[▲]
Mayer & Morris Kaplan Family Foundation
Mr. and Mrs. Michael L. Keiser[▲]
Mr. and Mrs. Richard R. Kracum
Otto W. Lehmann Foundation
Elizabeth Amy Liebman
Cary J.[▲] and Lisa Kimley Malkin[▲]
Mr.[▲] and Mrs. Scott P. Marks, Jr.
Mr. and Mrs. Miles L. Marsh
Mr. and Mrs. Arthur C. Martinez
Mr.[▲] and Mrs. Hugo J. Melvoin[▲]
Mr. and Mrs. Richard M. Morrow[▲]
Mr.[▲] and Mrs. Raymond Mota
Ms. Irma Parker
Col. (IL) James N. Pritzker, Ret.
Elizabeth A. Raymond and Paul A. Hybel
Ms. Ruth Regenstein[▲]
Mr. and Mrs. John H. Roberts
John[▲] and Jeanne Rowe
Mr. and Mrs.[▲] Richard H. Schnadig[▲]
John G. Searle Family Trust
Adele S. Simmons[▲] and John L. Simmons
Duane E. and Christine M. Stout
Mr. and Mrs. John W. Taylor III
Mr. and Mrs. Theodore D. Tieken, Jr.
Mr.[▲] and Mrs. William J. White
Mr. and Mrs. Arnold R. Wolff
Mrs. J. Howard Wood
Mr.[▲] and Mrs. Blaine J. Yarrington[▲]

Surveyor
\$2,500 - 4,999

Anonymous
Alexander & Alexander, Attorneys at Law
The Allyn Foundation, Inc.[▲]
Mr. and Mrs. Richard J. Almeida
Aileen S. Andrew Foundation
Mr. Harry Axelrod
Ms. Linda Bammann[▲]
Mr.[▲] and Mrs. Robert O. Bass[▲]
Mr. and Mrs.[▲] Philip D. Block III
Mr.[▲] and Mrs. Norman R. Bobins
Mr. and Mrs. Roger O. Brown[▲]
Miss Nara Cadarin
Lenore and Douglas Cameron
Mr. and Mrs. Peter Roy Carney
Mr. Kent Chandler, Jr. / The Buchanan Family Foundation[▲]
Mr. and Mrs. Bruce S. Chelberg
Dr. and Mrs. Kenneth W. Ciriacks
Ms. Betty L. Cleeland
Ms. Michelle L. Collins[▲]
Mr. Jim Croft[▲] and Mrs. Marilyn Martinson Croft[▲]
Janet Diederichs
Mr. and Mrs. Wesley M. Dixon, Jr.[▲]
Phyllis Weil Ellis
Mr. and Mrs. Samuel H. Ellis
Mr. and Mrs. Michael P. Emmert
Mr. and Mrs. Philip L. Engel
Mr. and Mrs. Jerome L. Ettelson
Mrs. Silvia G. Fader
Sonia and Bill Florian
Ginny and Peter Foreman
Ms. Susan M. Forney
Mr. and Mrs. John E. Freund[▲]
Mr. and Mrs. Robert E. Gallagher
Mr. and Mrs. Wilbur H. Gantz
Mr. and Mrs. C. Gary Gerst
Christina and Ronald[▲] Gidwitz[▲]
Richard and Mary L. Gray
Mr. and Mrs. Patrick A. Griffin
Mrs. Paul W. Guenzel[▲]
Mrs. D. Foster Harland[▲]
Barry[▲] and Carol Hastings
Mr. and Mrs. John L. Hines
Peggy Hoberg
Mr. and Mrs. Lawrence Howe
Mr. and Mrs. William J. Hunckler III
Mr. Robert S. Ingersoll
Mr.[▲] and Mrs. Richard M. Jones[▲]
Donald P. and Byrd M. Kelly Foundation
Mr. and Mrs. Richard L. Keyser
Mr. and Mrs. Charles M. Kierscht[▲]
Mr. and Mrs. T. Eric Kilcollin
Mr. and Mrs. John J. Kinsella
Mr. and Mrs. John E. Kirkpatrick
Ms. Sue Klose[▲]
Mr. Timothy K. Krauskopf and Ms. Mele Howland
The Lannan Foundation
Ms. Renée Logan[▲]
Mr. Eric Mah / Gim Electric Lewis and Susan Manilow
Mr.[▲] and Mrs. John W. McCarter, Jr.[▲]
Chuck and Monica McQuaid
Dr. and Mrs. David V. Milligan
Mr.[▲] and Mrs. Leo F. Mullin[▲]
Mr. and Mrs. Kenneth Nebenzahl
New Prospect Foundation
Mrs. Bobbi F. Newman
Mrs. Frances Newman[▲]
Mr.[▲] and Mrs. James J. O'Connor
Robert K. Parsons and Victoria J. Herget
Mr. and Mrs. Gordon S. Prussian
Mr. and Mrs. John Sheeld Reed[▲]
James and Barbara Robins
Mr. and Mrs. David Rose
Mr.[▲] and Mrs. John S. Runnells II[▲]
Mr. Rick Sakiak
Mr. and Mrs. Peter D. Scully
Segal Family Foundation II
Mr. and Mrs. Stephen H. Sentoff

Dr. and Mrs. Thomas W. Shields[▲]
Lynne and Chip Shotwell
Mr. and Mrs. John D. Simms
Mr. and Mrs. John B. Snyder
Mr. and Mrs. H. E. Sommer
Dr. Stuart P. Sondheimer
Mr. and Mrs. William D. Staley
Liz and Jules Stiffel
Mr. Patrick E. Sullivan
Ms. Georgiana M. Taylor
Mr. and Mrs. Richard L. Thomas
Mr. and Mrs. Melvin A. Traylor, Jr.[▲]
Mr. and Mrs. A. D. Van Meter
Ms. Nancy L. Wald
Mr. and Mrs. Daniel J. Walsh
Mr. and Mrs. Michael Werner
Mr.[▲] and Mrs. Miles D. White
Mr. and Mrs. Robert E. Wilkens
Abra Prentice Wilkin Charitable Trust
Mark H. Zornow, M.D.

Member
\$1,500 - 2,499

Anonymous (5)
Sharon A. Alistar and M. Mehdi Alistar
Mrs. James W. Aisdorf[▲]
Mr. and Mrs. Paul F. Anderson
Mrs. Robert Gardner Anderson
Judith L. and Robert D. Appelbaum
Mrs. Pamela Kelley Armour[▲]
Mrs. Edwin N. Asmann[▲]
Mr. Cameron S. Avery and Ms. Lynn B. Donaldson
Mr. and Mrs. James H. Bankard
Mr. William C. Bartholomay
Mr. and Mrs. A. R. Barton
Mr. Henry G. Bates, Jr.
Mr. and Mrs. Peter V. Baugher
Mr. and Mrs. Thomas M. Bege
Mr. and Mrs. Donald A. Belgrad
Mr.[▲] and Mrs. Charles W. Benton
Mrs. James F. Beré
Mr. and Mrs. Ronald Berger
Mr. and Mrs. Robert L. Berner, Jr.
Mr. and Mrs. Frank W. Blatchford III
Mr. and Mrs. Andrew K. Block
George H. and Nancy L. Bodeen
Mr. Steven Bono
Mrs. Naomi T. Borwell
Mr. and Mrs. Donald F. Bowey, Jr.
Mr.[▲] and Mrs. Willard L. Boyd[▲]
Mrs. Murray C. Brown
Mr. and Mrs. Robert C. Brunner
Mr. and Mrs. Willard Bunn III
Ms. Susanne B. Bush
John D. Butler Family Fund
Mr. and Mrs. Rhett W. Butler
Mr. and Mrs. Wiley N. Caldwell
Campia Family Foundation
Mr. Frantz R. Cartright
Lawrence and Martha Casazza
Mrs. Hammond Chaffetz[▲]
Mr. and Mrs. Henry T. Chandler[▲]
Mr. and Mrs. John S. Chapman
Mrs. Virginia B. Cherry[▲]
Mrs. Alice B. Childs
Mr.[▲] and Mrs. Worley H. Clark, Jr.
Mr. and Mrs. Douglas Cohen
Mr. and Mrs. James J. Conrad
Mr. and Mrs. James M. Costello
Mr. and Mrs. Mark Crane[▲]
Dr. Dolores E. Cross[▲]
Mr. and Mrs. Thomas C. Dabovich
Mr. and Mrs. Robert J. Darnall
Mr. Daniel DaValle
Mr. and Mrs. Byram E. Dicks
Mr. Robert M. Dreves
Mr. and Mrs. Raymond H. Drymalaski
Mr. Thomas R. Dolcer
Enivar Charitable Fund
Mr. and Mrs. Gerald J. Eskin
Miss Shirley M. Evans
Mr. Marc Ewing
Mr. and Mrs. Carl F. Faust, Jr.

Mary and Bruce Feay[▲]
Mr. and Mrs. William L. Feather
Jamee and Marshall Field Foundation
Ms. Jamee C. Field / The Edith B. and Lee V. Jacobs Fund No. 1
Ms. Stephanie C. Field / The Edith B. and Lee V. Jacobs Fund No. 2
Mr. and Mrs. Morgan L. Fitch, Jr.
Ms. Kathleen M. Flanagan
Mr. Lee J. Flory
Peter B. and Donna B. Freeman
Mr. and Mrs. Cyrus F. Freidheim, Jr.
Dr. Fred G. Freitag and Ms. Lynn N. Stegner
Mr. and Mrs. Donald B. French
Joanne Benazzi Friedland
Fulk Family Foundation
Mr. and Mrs. Maurice F. Fulton
Mr. and Mrs. William E. Gardner
Laura and Steve Gates
Mrs. Robert B. Gerrie[▲]
Mrs. Betsy Getz[▲]
Mr. and Mrs. Camilo Ghiron
Mr. and Mrs. Paul C. Gignilliat, Jr.
Dr. Kennedy Gilchrist
Mr. and Mrs. James J. Glasser
Mr. and Mrs. Stefan J. Goldblatt
Mr. John C. Goodall, Jr.[▲]
Mr. Lawrence W. Gougler
Mrs. John S. Graettinger
Mr. and Mrs. Timothy S. Greening
Sandra L. Grung
Mr. Daniel P. Haerther
Mr. and Mrs. William J. Hagenah
Mrs. William M. Hales[▲]
Dr. and Mrs. James E. Hannigan
Mr. and Mrs. David Harris
Mr. and Mrs. King Harris
Mr. and Mrs.[▲] Robert S. Hartman[▲]
Mr. and Mrs. Thomas Z. Hayward, Jr.
Mr. and Mrs. Ben W. Heineman, Sr.[▲]
Mr. Richard H. Helmholtz
Mr. and Mrs. Paul C. Hennessy
Mr. and Mrs. Patrick J. Herbert III
Mr. and Mrs. David C. Hess
Mr. Samuel I. Hill and Ms. Elizabeth A. Upsall
Mr. and Mrs. David C. Hilliard
Ms. Melody L. Hobson[▲]
Mr. Michael F. Hodous and Mrs. Irrgard T. Hodous-Raff
Marshall and Doris Holleb
Mrs. Gerald V. Hollins
Mr. and Mrs. Arthur Holzheimer[▲]
Mrs. H. Earl Hoover[▲]
Mr. and Mrs. R. Thomas Howell, Jr.
Stewart S. Hudnut
Mr. and Mrs. Peter H. Huizenga
Mr. and Mrs. Robert L. Hulseman
Mr. and Mrs. Philip W. Hummer
Mr. and Mrs. J. Thomas Hurvis
Dr.[▲] and Mrs.[▲] Robert F. Inger
Mr. Steve Isaac and Ms. Judy Olds
Fruman and Marion Jacobson
Mr. and Mrs. David A. Kantor
Mr. and Mrs. Noel Kaplan
Kaiser Family Foundation
Mr. and Mrs. Charles W. Lake, Jr.[▲]
Ms. Lisa Kearns Lanz and Mr. Gerald R. Lanz
Mr. and Mrs. John P. Keller
Mr. and Mrs. Sheldon E. Kent
Mr. and Mrs. Steven A. Kersten
Mrs. Harvey W. King
Mr. and Mrs. Robert E. King
Mr. and Mrs. Joseph A. Konen
Mr. and Mrs. James A. Kuehnle, Jr.
Mr. and Mrs. Harold W. Lavender, Jr.
Mr. Sheldon Leibowitz
Robert B. Lifton and Carol R. Rosofsky
John and Paula Lillard
Mrs. Glen A. Lloyd[▲]
Amy and Steve Louis Foundation
Mr. Robert B. and Mrs. Gail J. Loveman
Kevin and May Lyden

Mr. Pat MacLeod / Western Waterproofing Co., Inc.
Mr. and Mrs. John D. Mabie
Mr. and Mrs. Edward G. Maier
Marilyn Malkin and Larry Wolf
Sandy and Jerry Manne
Ira and Janina Marks Charitable Trust
Mr. and Mrs. Jeremiah Marsh
Ms. Jennifer L. Martin[▲]
Mr. and Mrs. Richard P. Mayer
Mr. and Mrs. Michael B. McCaskey
Mr. and Mrs. Archibald McClure
Mr. and Mrs. Mark G. McGrath
Bruce and Jane McLagan
L. Steven and Erma S. Medgyesy
Elisabeth C. Meeker
Mr. and Mrs. Donald E. Merz
Mr. and Mrs. Theodore N. Miller
Patricia B. Miller
Dr. and Mrs. David V. Milligan
Mr. and Mrs. Newton N. Minow
Richard and Carol Mork
Mrs. Arthur T. Moulding[▲]
Mr. James P. Munroe
Mrs. John B. Naser[▲]
Mr. and Mrs. Jerome J. Nerenberg
Mr. and Mrs. John Doane Nichols
Mr. and Mrs. Arthur C. Nielsen, Jr.
Mr. and Mrs. Donald E. Nordlund
Mr. and Mrs. Barry Nudel
Mr. Stephen O'Malley
Mr. and Mrs. William A. Osborn
Mr. and Mrs. James Otis, Jr.
Mr. and Mrs. Richard C. Oughton[▲]
Dr. C. M. Owens
Mr. and Mrs. Edward Pasquesi
Lanny and Terry Passaro[▲]
Ms. Catherine M. Patrick
Mr. and Mrs. Nicholas G. Penniman IV
Mr. Michael A. Perlestein
Mr. and Mrs. Charles F. Peterene, Jr.
Meline and Allan Pickus
Mr. and Mrs. Leslie S. Pinsof
Carl and Barbara Plochman
Joanne and Roger Plummer
Mr. and Mrs. Charles A. Pollock
Mrs. Charles S. Potter[▲]
Dr. and Mrs. Kenneth J. Printen
Mr. and Mrs. Philip J. Purcell
Mr. and Mrs. Albert E. Pyott
Susan Kressin and James Radtke
Mr. and Mrs. Michael G. Rahal
Victoria and George A. Rahaney Fund
Mr. and Mrs. Douglas C. Roberts
Mr. and Mrs. Thomas H. Roberts, Jr.
Mr. and Mrs. John R. Rodelli
Mr. and Mrs. Edward W. Ross
Ms. Lisa Ross and Dr. William Myers
Mrs. Dorothy B. Rothschild
Mr. and Mrs. Norman J. Rubash
Ms. Janice B. Ruppel
Mr. and Mrs. William G. Ryan
Mr. and Mrs. Steven M. Ryan
Mrs. Robert P. Schauss
Ms. Karla Scherer
John and Shirley Schlossman
Mr. and Mrs. David L. Schlotterback
Mr. and Mrs. F. Eugene Schmitt
Mrs. Dorothy D. Schnadig
Mr. and Mrs. Fred C. Schulte
Richard and Peggy Schulze
Mrs. Elizabeth E. Sengupta
Mr. and Mrs. Richard J. Senior
Mr. Matthew I. Shapiro
Mrs. Henry J. Shapiro[▲]
Mrs. Rose L. Shure
Mr. John T. Shutack
Mr. and Mrs. Romolo Sidoli
Mr. and Mrs. Malcolm N. Smith[▲]
Mr. and Mrs. Scott C. Smith
Ms. Toni S. Smith
Larry and Maxine Snider
Walter and Kathleen Snodell

Key
■ Trustee
● Staff
▲ Permanent Founders' Council Member
□ Deceased

Mr. and Mrs. Gerald A. Spore
 Mr. and Mrs. Joachim W. Staackmann
 Mrs. Susan Stein
 Mr. and Mrs. Manfred Stein/eld*
 Mr. Tom Stip
 Mr. and Mrs. Robert D. Stuart, Jr.
 Mr. and Mrs. John W. Sullivan*
 Mr. and Mrs. Ed Thayer
 Mr. Albert Thewis
 Mr. and Mrs. George S. Trees, Jr.
 Mr. and Mrs. Howard J. Trienens*
 Ms. Alice A. Tucker
 Mr. Fred L. Turner
 Mr. and Mrs. Scott F. Turow
 Mr. and Mrs. Edgar J. Uihlein, Jr.*
 Helen J. Urban and Thomas N. Urban, Sr.
 Charitable Foundation
 Mr. Richard A. Virzi
 Mr. and Mrs. William R. Voss
 Mrs. Roy I. Warshawsky
 Mr. and Mrs. Hempstead Washburne*
 Mr. and Mrs. H. Thomas Watkins
 Mr. Ezra Weatherspoon
 Mrs. E. Leland Webber*
 Mrs. Howard L. Willett, Jr.*
 Cynthia Winship* and Chris Milne
 Mrs. William W. Wirtz
 Mr. Arthur M. Wood
 Mr. and Mrs. Edward Yastrow
 Mrs. Mary A. Young
 Mr. and Mrs. Robert P. Zabel
 Mr. Max Zar
 Ms. Christine C. Zogus

If you have any questions regarding your Founders' Council membership, please contact Heather Scott at 312.665.7773.

The Annual Fund

The Annual Fund recognizes individual donors and family foundations who contribute \$250 - 1,499 annually in unrestricted support.

Field Explorers

\$1,000 - 1,499

Mrs. Hope A. Abelson
 Mr. and Mrs. Howard Arvey
 Mr. and Mrs. Walter Alexander
 Mr. Aaron A. Barlow
 Mr. and Mrs. A. R. Barton
 Mr. and Mrs. Donald Blanke
 Mrs. William A. Boone
 Mr.* and Mrs. Christopher D. Bowers
 Mr. Fred J. Brunner /
 Fred J. Brunner Foundation
 Mr. and Mrs. Donald C. Clark
 Mr. and Mrs. Thomas M. Cole
 Mr. John R. Covington /
 Howard L. Willett Foundation, Inc.
 Susan M. Crown and
 William C. Kunkler III*
 Mrs. Ken M. Davee
 Mr. and Mrs. G. Thomas Delahunty
 Dr. and Mrs. Eric J. Dybal
 Mr. and Mrs. Donald B. French
 Mrs. Gerald V. Hollins
 Mr. and Mrs. Richard S. Holson, Jr.
 Mrs. Nancy A. Horner
 Mrs. George M. Illich, Jr.
 Mr. Steve Isaac and Ms. Judy Olds
 Mr. and Mrs. Daniel P. Kearney
 Mr. and Mrs. Douglas M. Kinney
 Mr. and Mrs. Gerald A. Kolschowsky
 Mr. and Mrs. Marshall S. Leaf
 The Loewenthal Fund
 Mr. and Mrs. Timothy J. Malloy
 Mr. Asher J. Margolis
 Mr. and Mrs. Peter I. Mason
 Mr. Robert A. McClevey, Jr.
 Dr. Debra Moskovits*
 Lawrence S. Newmark &
 Gloria Newmark Foundation
 Mr. and Mrs. Karl V. Rohlen, Jr.
 Mr. and Mrs. Harold Rosenson
 Mrs. Harriet W. Rylaarsdam
 Ms. Christine A. Salvator
 Mr. and Mrs. George SchAAF
 Mr. and Mrs. Robert E. Shaw
 The Sulzer Family Foundation
 Mr. and Mrs. Gilbert Tauck
 Ms. Anne Van Meter
 Mr. Eric Wanger
 Ms. Janiece S. Webb
 Mrs. Jack Weinstein

Field Naturalist

\$500 - 999

Anonymous
 Mr. and Mrs. R. L. Abrahams
 Mr. and Mrs. Lowell E. Ackmann
 Mrs. Mavis M. Adams
 Ms. Catherine Ashdown and
 Mr. Neal Lofchy
 Mrs. William H. Avery
 Mr. and Mrs. Robert H. Bacon, Jr.
 Mr. Conrad Balcer
 Mr. and Mrs. Mervin R. Barnes
 Dr.* and Mrs. William K. Barnett
 Dr. Verna L. Baughman
 Mr. and Mrs. Walter W. Becky II
 Mr. and Mrs. Jack E. Blackmon
 Mr. George W. Blossom III
 Mr. and Mrs. Fred O. Borchering
 Mr. Keith D. Bowersox
 Dr. and Mrs. Robert E. Boyd III
 Ms. Dana Brink*
 Mr. Herbert A. Bruckner
 Miss Judith Caloud and
 Ms. Mary A. Caloud
 Dr. Mary A. Chuman
 Mr. and Mrs. William D. Coates
 Miss Marion E. Cowan
 Mr. and Mrs. William D. Cox, Jr.
 Ms. Kathy Crumlish and
 Ms. Kergan Street
 Dr. and Mrs. Tapas K. Das Gupta
 Mr. and Mrs. Allen Davies
 Mr. Mark Dawson
 Mrs. Carla M. Dehmow
 Dick Family Foundation
 Ms. Bernadette Doran
 Dr. Erl Dordal
 Mrs. Robert C. Edwards
 Ms. Lina L. Egebrecht
 Mr. Richard H. Eshbaugh*
 Mr. and Mrs. Justin M. Fishbein
 Mrs. Suzanne W. Frank
 Mr. and Mrs. Waldo Friedland
 Mr. and Mrs. Carlos M. Frum
 Ms. Elsie C. Gadzinski
 Dr. and Mrs. Patrick E. Garry
 Mr. and Mrs. Stephen L. Geifman
 Mr. Fred W. German
 Ms. Mary Jane Gibbs
 Mr. David Gillam
 Mr. Robert Golant
 Mr. and Mrs. David F. Goldberg
 Mr. and Mrs. Terry L. Graham
 Mr. and Mrs. Leland E. Graul
 Mr. Jacob P. Gruver Family
 Dr. and Mrs. Rolf M. Gunnar
 Mr. Michael Hammerman
 Mrs. Herbert L. Hanna
 Mr. and Mrs. Stanley Harris
 Mrs. Augustin S. Hart, Jr.
 Mr. and Mrs. Max E. Hartl
 Ms. Anne Haskel*
 Mr. and Mrs. Thomas C. Heagy
 Ms. Jo Heindel
 Mr. and Mrs. Wilfred H. Heitmann
 Mr. and Mrs. Harold H. Hensold, Jr.
 Mr. and Mrs. Scott E. Hertenstein
 Mr. Edward C. Hirschland*
 Mr. and Mrs. Richard C. Hoffman
 Ms. Rose M. Houston
 Dr. Maria Roma Hrycelak and
 Dr. George Jury Hrycelak
 Tex and Susan Hull
 Mr. David L. Hulse
 Mr. Robert J. Huseman
 Ms. Maria A. Iafollo
 Mr. and Mrs. Richard M. Jaffee
 Mrs. Mignon D. Jaicks
 Mr. and Mrs. Sidney F. Jarrow
 Mr. and Mrs. Horace W. Jordan
 Ms. Verla Kasmerchak
 Mr. and Mrs. Dennis J. Keller
 Dr. Dee M. Kilpatrick
 Mr. and Mrs. John A. Krohn
 Ms. Raminder Kumar

Ms. Anne E. Kutak
 Dr. and Mrs. Gordon R. Lang
 Mr. and Mrs. Michael Leahy
 Mr. and Mrs. William M. Lee, Jr.
 Ms. Ruth W. Lekan
 Mr. and Mrs. Robert E. Lindgren
 Mr. and Mrs. Robert R. Lipsky
 Mr. and Mrs. Gavin Lowrey
 Mr. Robert J. Lueders
 Mr. Bernard A. Mack, Jr.
 Mr. and Mrs. Gabriel Marchan
 Mr. and Mrs. S. Edward Marder
 Peter and Dorothy Marks/
 The Ira and Janina Marks
 Charitable Foundation
 Ms. Marie A. Marotta
 Mr. and Mrs. Irl H. Marshall, Jr.
 Mr. Mark McCormick
 Mrs. Elnora D. McKinlay
 Mr. and Mrs. Bernard D. Meitzer
 Mr. and Mrs. Ronald M. Melvin
 Mr. Kent R. Meridith
 Ms. Ann S. Merritt
 Mr. and Mrs. Horst J. Metz
 Miss Muriel M. Meyer
 Mr. and Mrs. Robert R. Moeller
 Mr. and Mrs. R. Scott Morris
 Ms. Helga E. Muench
 Mr. and Mrs. Nicholas S. Murray
 Mrs. Joyce C. Mutz
 Mr. and Mrs. Vernon R. Nelson
 Mr. and Mrs. Werner E. Neuman
 Mr. and Mrs. William W. Oelman
 Ms. Sally Origer*
 Mr. and Mrs. Charles J. Osicka
 Ms. Sarah R. Packard
 Mr. and Mrs. Anthony R. Pasquinelli
 Burt and Diane Pickard-Richardson
 Ms. Nancy E. Plax and
 Mr. Steven Schwartzman
 Ms. Evelyn N. Pyle
 Mrs. A.F. Quern
 Mrs. Sheila Reynolds
 Mr. and Mrs. Richard M. Rosenberg
 Mr. and Mrs. Gerson M. Rosenthal
 Mr. and Mrs. Donald I. Roth
 Dr. Judith A. Roth and
 Mr. Stuart M. Weg
 Dr. and Mrs. Myron E. Rubnitz
 Ms. Kristine L. Rull
 Ms. Rachel Ryan
 Ms. Julie F. Schauer
 Ms. Barbara M. Schleck and
 Mr. Gary M. Ropski
 Mr. and Mrs. C. Olin Sethness
 Mr. and Mrs. Scott R. Sevon
 Mr. and Mrs. G. Curtiss Shaffer
 Mr. William Siskel
 Mr. J. Fritz Skeen and
 Ms. Helen Morse
 Mr. Goff Smith
 Mr. and Mrs. Maurice Smith
 Mr. and Mrs. Robert W. Smolen
 Mr. and Mrs. Dan W. Snyder
 Ms. Elizabeth L. Snyder
 Mr. Tom Sourlis
 Mr. and Mrs. John R. Stanek
 Mr. and Mrs. Phillip L. Stern
 Mr. and Mrs. Ivan G. Strauss
 Ms. Sharon S. Sweeney
 Mr. and Mrs. John S. Swift III
 Mr. Gerald M. Torrence
 Mrs. Elizabeth K. Twede
 Mr. and Mrs. J. V. Van Cura, Jr.
 The Vilim/Quang Family
 Ms. Georgiana Vitti
 Mr. and Mrs. Maurice Walk
 Mr. and Mrs. Robert G. Weiss
 Mr. and Mrs. Lawrence G. Wilcox
 Mr. Anthony A. Winkelman and
 Ms. Donna L. Richey-Winkelman
 Ms. Claudia Winkler
 Mr. and Mrs. Richard M. Withrow
 Mr. Peter M. Wuertz
 Dr. and Mrs. Gerald D. Young, Jr.
 Mr. John Sacret Young
 Mr. and Mrs. David E. Zarski

Key

- Trustee
- Staff
- ▲ Permanent Founders' Council Member
- Deceased

Field Adventurers

\$250 - 499

Anonymous (6)
 Mr. and Mrs. Steven A. Adelman
 Mrs. Genevieve Alexander
 Mr. William N. Aldeen
 Dr. and Mrs. Dominic Allocco
 Mr. Kenneth D. Aman
 Mr. Thomas W. Andrews
 Mr. and Mrs. Edward M. Apke
 Mr. and Mrs. S. Frank Arado, Jr.
 Ms. Peggy Au Schatz
 Mr. and Mrs. Donald J. Babo
 Mr. and Mrs. Alan Bagliore
 Mr. and Mrs. R. Emmett Bailey
 Mr. and Mrs. Theodore L. Banks
 Mr. and Mrs. Charles R. Bartels
 Mr. Craig Bartlett
 Mr. Clyde E. Bassett, Jr.
 Mr. Michael Bauschelt
 Mr. John M. Beal
 Mr. and Mrs. Bernard J. Beazley
 Mrs. Earl J. Beck
 Mrs. Barbara B. Beebe
 Mr. and Mrs. Steven R. Bell
 Ms. Ann Bentzen-Bilkvist
 Mr. and Mrs. Edward C. Berry
 Mr. Kemery Bloom and
 Ms. Cathy Brown
 Mr. and Mrs. D. Jeffrey Blumenthal
 Mr. and Mrs. Joseph W. Bohne
 Mr. and Mrs. Robert B. Breisblatt
 Mr. and Mrs. Howard Brennan
 Mr. Baird Brown
 Mr. and Mrs. George Brown
 Mr. Josiah Brown
 Mr. and Mrs. Steven M. Brown
 Mr. and Mrs. William M. Brown
 Mr. Steve Buchtel and
 Ms. Laura Devine
 Mr. and Mrs. Jon Buck
 Ms. Joyce I. Budd
 Mr. and Mrs. Reginald T. Bulkeley
 Mr. and Mrs. Werner Buol
 The Michael C. Burcham Family
 Mr. and Mrs. Harlan S. Byrne
 Mrs. Kathleen E. Calhoun
 Mr. John D. Callaway
 Ms. Janie L. Campbell
 Mr. and Mrs. Stephen J. Carloti
 Mr. and Mrs. Robert E. Carroll
 Mr. Edward Castro
 Mr. and Mrs. Joseph K. Catanzaro
 Mr. and Mrs. Frank H. Chandler
 Mr. and Mrs. Robert P. Charles
 Mr. and Mrs. Matthew Chelich
 Ms. Margarita Christakas
 Mr. and Mrs. John Christian
 Mr. Irving V. Clarke
 Mr. and Mrs. David K. Clayton
 Mr. Peter L. Clerkin
 Mr. Brian L. Coffey

Key

- Trustee
- Staff
- Deceased

The Annual Fund**Field Adventurers**
\$250 - 499 (continued)

Ms. Lorie B. Cohen
Mr. Louis J. Cohn and
Mrs. Patricia Kroness
Mr. and Mrs. Franklin A. Cole
Mr. Charles E. Collopy
Mr. and Mrs. John C. Colman
Mr.* and Mrs. Donald A. Cooke
Mr. and Mrs. Granger Cook, Jr.
Mr. and Mrs. Bryan P. Cooley
Mr. and Mrs. Larry A. Cooper
Mr. and Mrs. Stuart Cornew
The Corrie Family
Mr. and Mrs. William R. Cottle
Ms. Patricia R. Cowhey
Mr. and Mrs. Thomas W. Coyle
Mr. and Mrs. Randy Crabtree
Ms. Susan M. Crowell
Mr. Harold Cunningham
Dave and Jeannette Cuomo
Mr. and Mrs. David P. Currie
Mr. L. Cutforth and
Dr. Nancy B. Cutforth
Mrs. Dino J. D'Angelo
Mrs. Philip R. Danley
Mrs. William W. Darrow
Mr. Charles A. Davis
Ms. Judith Davis Downey
Mr. and Mrs. Gerald D. Dawes, Jr.
Mr. Bruce Dean
Mr. and Mrs. Seymour S. DeKoven
Mr. Keith Dice
Mr. and Mrs. David S. Dickson
Ms. Janet E. Diehl
Mr. and Mrs. Rocco A. Dimeo
Mr. and Mrs. William M. Distin
Ms. Mary Lois Dolphin
Mr. H. James Douglass
Mr. David S. Downing
Mr. Irving Drobny
Mr. and Mrs. Harvey Dulin
Mr. Michael Dupaix
Mr. and Mrs. John C. Duros
Ms. Glenna R. Eaves
Mr. and Mrs. Griff M. Ehrenstrom
Mr. Merrick Elfman
Mr. J. Thomas Eller
Ms. Jean B. Elshain
Ms. Janice Engle
Mr. and Mrs. Christopher Ervin
Mrs. Bergen Evans
Dr. and Mrs. Richard H. Evans
Mr. and Mrs. Fabio Fabbri
Mrs. Walter D. Fackler
Mr. and Mrs. Daniel G. Falotico
Ms. Joan Fencil
Dr. and Mrs. Balbino B. Fernandez
Mr. and Mrs. Jose L. Ferrer
Mr. and Mrs.* Conrad Fialkowski
Mr. and Mrs. Robert W. Fick
Ms. Lisa P. Finis

Dr. and Mrs. James J. Foody
Mr. and Mrs. Arthur A. Frank, Jr.
Mr. and Mrs. Richard J. Franke
Mr. and Mrs. R. K. Frew
Mr. and Mrs. John W. Fritz
Mr. and Mrs. Roger G. Fuelster
Mr. and Mrs. David R. Fulton
Mr. and Mrs. J. Patrick Gallagher, Jr.
Ms. Martha A. Garcia
Mr. and Mrs. John R. Gardner
Mr. and Mrs. John Garvey
Mr. Richard J. Geddes and
Ms. Rebecca Davidson
Ms. Victoria Geisel*
Mr. and Mrs. James R. George
Mr. and Mrs. Stephen A. Gerlicher
Dr. Louis W. Gierke
Mr. Norman Glassberg
Mr. and Mrs. William E. Glassuer
Mr. and Mrs. Thomas F. Glennon
Mr. Gregory A. Goberville
Mr. William H. Gofen
Mr. and Mrs. Joseph P. Goldberg
Mr. and Mrs. George J. Goldstein
Mr. Robert R. Gowland
Ms. Judith A. Graf
Ms. Patricia Gramling-Babb
Mr. and Mrs. James F. Greenawalt
Ms. Mary Ann Greening
Mr. and Mrs. Wayne J. Grobarcik
Mr. David M. Gronke
Ms. Heidi M. Gugelman
Mr. and Mrs. Joseph G. Hagee
Mr. and Mrs. John A. Hagenah
Mr. and Mrs. John M. Haight III
Mr. Thomas Hammerman
Dr. and Mrs. Henry Hankin
Ms. Alice E. Harper
Ms. Mary Anne Harrison
Mrs. JoAnne Heal
Ms. Joyce E. Heidemann
James A. and Mary E. Henderson
Mr. and Mrs. W. F. Hendrickson
Dr. and Mrs. Leo M. Henikoff
Mr. Steven Hernandez
Mr. Guy C. Herrmann
Mr. and Mrs. Joseph D. Herz
Ms. Leslie J. Herzog
Mr. and Mrs. Robert M. Hickey
Mr. and Mrs. Daniel P. Hidding
Mr. and Mrs. Arthur Higgins
Ms. Edna M. Hill
Mrs. Helen E. Hinkes
Mr. Mark Hinojosa and
Ms. Katherine Foran
Mr. and Mrs. Richard M. Hirsch
Mr. and Mrs. James M. Hohner
Mrs. Grace E. Hokin
Mr. and Mrs. John A. Holabird, Jr.
Mr. and Mrs. Fred Holubow
Ms. Celia Homans
Mr. and Mrs. Dean T. Honda
Mrs. George F. Hook
Mr. and Mrs. James Hovis
Kristen* and Josh Jacobs
Mr. and Mrs. Kenneth J. James
Mr. and Mrs. Richard Jernstedt
Mr. and Mrs. Andy Johnson
Mr. Carl Johnson
Mr. and Mrs. David C. Johnson
Mr. and Mrs. Robert A. Jones, Jr.
Ms. Linda M. Jung
Mr. and Mrs. Alan Kadet
Mr. and Mrs. Jerome Kahn
Mrs. Loretta Kahn
Ms. Sally Kahn
Mr. Michael Kalway
Ms. Patricia M. Kammerer
Mr. and Mrs. Larry Kaufman
Dr. Algimantas Kelertas
Mrs. Janet I. Kelly
Mr. Thomas L. Kelly
Ms. Miriam J. Kelm
Mr. and Mrs. George P. Kendall, Jr.

Mr. and Mrs. T. Charles Kenniff
Mr. and Mrs. Thomas L. Kittle-Kamp
Ms. Judith L. Knie
Mr. and Mrs. William R. Kohler
Mr. and Mrs. Anthony N. Konstant
Ms. Irene B. Kozowski
Mr. Paul R. Kressin
Mr. and Mrs. Bradley R. Krey
Dr. Robert A. Kubicka and
Dr. Claire Smith
Mr.* and Mrs. George C. Kuhlman, Jr.
Mr. and Mrs. Daniel Kurtzman
Mr. Mark R. Laatsch
Mr. and Mrs. Sheridan Lam
Mr. and Mrs. James Lancaster
Mr. and Mrs. Dirk B. Landis
Mr. and Mrs. Bradley G. Lane
Mr. and Mrs. Herbert G. Lawrence
Ms. Melissa K. Lee*
Mr. Paul A. Lehman and
Ms. Ronna Stamm
Ms. Deirdre LeMire
Mr. and Mrs. Ralph Leonard
Mr. and Mrs. Vincenzo O. Leone
Mr. and Mrs. Robert M. Levin
Mr. and Mrs. Anthony R. Licata
Ms. Charlotte T. Lindar and
Mr. Alexander Gorbunoff
Mr. and Mrs. Mark A. Livengood
Dr. Arthur Loewy
Mr. and Mrs. Thomas E. Long
Dr. and Mrs. Roland E. Lonser
Mr. and Mrs. James H. Lorie
Dr. John R. Lurain and
Dr. Nell S. Lurain
Gary E. MacDougal and
D. Charlene Gehm
Mr. and Mrs. Michael Mackey
Ms. Eileen M. Mahoney and
Mr. Jaesoo Lim
Mr. Arthur G. Maling
Mrs. Alberta K. Maljan
Mr. Barry A. Malkin
Mr. and Mrs. Jacob Margulies
Ms. Linda T. Mascorro
Dr. and Mrs. Harold J. Matthies
Mr. and Mrs. George H. Maze
Mr. Thomas J. McDowell
Ms. Sherry L. McFall and
Mr. Kenneth J. Porrello
Mr. R. Edward McGreevy, Jr.
Mr. Breece R. McKinney
Ms. Kathryn T. McNeil
Mr. and Mrs. James R. Meindl
Mr. and Mrs. Parker E. Mellingshausen
Mr. Glenn E. Merritt
Mr. and Mrs. Bob Mertz
Mr. and Mrs. David A. Meskan
Ms. Heather Metz*
Ms. Beverly M. Meyer
Mr. and Mrs. Kendall R. Meyer
Mr. Jan Miecznikowski
Mr. and Mrs. Michael E. Mikolajczyk
Ms. Patricia A. Miller &
Mr. Subhash R. Rao
Mr. and Mrs. Paul J. Miller
Dr. and Mrs. Robert P. Miller
Mr. James C. Mills and
Mrs. Lois Zoller
Ms. Helen R. Minciotti and
Mrs. Michael G. Koehler
Mr. Ralph V. Miner
Dr. Anthony G. Montag and
Dr. Katherine L. Griem
Ms. Cynthia A. Moody
Mr. Thomas H. Moog
Mr. Gary L. Moore
Mrs. Mary Lou Morelli
Mr. and Mrs. Henry C. Morf
Ms. LaNell Morgan
Mr. and Mrs. John A. Morris
Ms. Sabrina Morton
Mr. John F. Mose
Gregory M. Mueller*
Mr. and Mrs. Richard A. Mueller
Mr. and Mrs. Paul B. Mulhollem

Ms. Leota A. Murray
Ms. Christine M. Myers
Ms. Linda Neal
Mr. and Mrs. Kevin M. Neary
Mr. and Mrs. Cary L. Neiman
Ms. Karen E. Nelson
Mr. and Mrs. Charles J. Nelson
Mrs. Dawn C. Netsch
Mr. Jonathan B. Newcomb
Mr. and Mrs. Donald J. Newton
Ms. Karen Nickelson
Mr. John P. Nielsen
Dr. and Mrs. Gary L. Nordbrock
Mr. and Mrs. Neil O'Connor
Ms. Roberta A. Olshansky
Mr. and Mrs. Norman Olson
Mr. and Mrs. Thomas G. Opferman
Mr. and Mrs. Ernest Oppman
Mr. Richard Orsan
Dr. and Mrs. David Oxtoby
Bruce D. Patterson, Ph.D.*
Mr. and Mrs. Jim Patterson
Dr. and Mrs. Robert J. Patterson
Mr. and Mrs. David Perry
Ms. Bonnie R. Peterson
Ms. Elnora Pettit-Conover
Ms. Irene S. Phelps
Ms. Susan I. Phillips
Mr. and Mrs. Stanley M. Pillman
Mr. Gabriel C. Plebanski
Mr. and Mrs. John C. Pottage
Mr. James R. Potter
Mr. and Mrs. Joseph S. Quinn
Ms. Patricia Quinn
Dr. Brian C. Randall and
Dr. Mary C. Kemen
Ms. Lisa Rauch
Dr. Mark S. Reiter and
Dr. Kathleen A. Ward
Mr. and Mrs. Thomas A. Reitingier
Mr. and Mrs. Don H. Reuben
Mr. and Mrs. John F. Richards
Mr. Kenneth W. Riches
Mr. and Mrs. Harold A. Richman
Mr. and Mrs. Michael C. Riordan
Mr. and Mrs. Stephen L. Ritchie
Mr. and Mrs. Charles C. Roberts
Ms. Anita J. Rogers
Ms. Marilyn Rohn
Mr. and Mrs. Steven J. Rohrbach
Mr. James R. Roll
Mr. Jack H. Rosenberg
Dr. and Mrs. Julio V. Rossi
Dr. and Mrs. Jay Rothenberg
Mr. Christophe Rouchon
Mr. and Mrs. Allen A. Rovick
Mr. Robert M. Ruckstuhl
Mr. and Mrs. Thomas D. Rutherford
Mrs. Alyne Salstone
Mr. and Mrs. Calvin P. Sawyier
Mr. James A. Scharnell
Riki Schatell
Mr. Paul Schelstraete
Mr. and Mrs. Timothy Schilling
Mr. and Mrs. Thomas J. Schnitzer
Mr. and Mrs. Bernard C. Schubert
Ms. Tina Schubert
Mr. Matt Schulze
Mrs. Marilyn L. Schweitzer and
Mr. Michael Firman
Heather A. Scott*
Mrs. John H. Scott
Ms. Florence M. Selko
Ms. Denise Selz
Mr. and Mrs. Chris Seth
Mr. and Mrs. Timothy M. Shanahan
Mr. Robert V. Shannon and
Ms. Gina B. Kennedy
Mr. and Mrs. Gene J. Sikora
Mrs. Sandra Silver
Mr. and Mrs. Michael Simpson
Mr. and Mrs. Frank M. Sims
Mr. Richard Skolly and
Dr. Kate A. Feinstein
Mr. and Mrs. Stephen Slajus

Ms. Maureen M. Slavin
Mr. and Mrs. David Slivnick
Mr. and Mrs. Robert O. Smith
Dr. Zachary N. Soiya
Mr. Noel Solinger and
Mrs. LeAnne Sawyers
The Solot Family Foundation
Mr. and Mrs. John F. Sonderegger
Mrs. Uta-DeTappan Staley
Mrs. Marjorie S. Staresin
Mr. Alfred E. Steinhaus
Dr. and Mrs. Paul W. Stiffler
Mr. and Mrs. Norman A. Stone
Mr. and Mrs. John Stransky
Ms. Marcia D. Stratinsky
Mr. John J. Streit
Mr. and Mrs. Howard Sulkin
Mr. George R. Sundell and
Ms. Wendy Casebeer
Mr. and Mrs. David O. Swain
Mr. and Mrs. David W. Swartz
Mr. and Mrs. John A. Swett
Mr. J. R. Swihart
Yoshio Takamoto
Ms. Sally Tarbell
Ms. Jamie P. Taylor
Mr. Kenard Taylor III
Ms. Kimberly K. Taylor
Ms. Mary Thennes
Ms. Pamela A. Thomas
Mr. and Mrs. Richard K. Thomas
Mr. and Mrs. Ronald Thompson
Dr. and Mrs. David C. Tiemeier
Mr. Raymond D. Tindel and
Mrs. Gretel Braidwood
Mr. Eugene Tkalicth
Mr. and Mrs. Thomas D. Trainor
Dr. and Mrs. Michael R. Treister
Roanne T. Tsutsui, DDS
Mr. and Mrs. John Turner
Mr. and Mrs. Timothy W. Turner
Mr. and Mrs. Robert L. Underwood
Mr. David J. Unger
Dr. Anthony Urlakis
Mr. and Mrs. John B. Van Duzer
Mr. and Mrs. Peter E. Van Nice
Mr. John M. VanderLinden and
Mr. John Wm. Butler
Ms. Tania L. Vargas
Mr. C. Luis Vasquez
Mr. Howard A. Vaughan
Mr. and Mrs. Carlos R. Vega
Mr. and Mrs. David J. Vitale
Mr. and Mrs. Richard J. Voegel
Mr. and Mrs. Richard A. Waichler
Mr. and Mrs. Malcolm M. Walker
Mr. and Mrs. W. Lawrence Walton
Mr. and Mrs. Brian F. Ward
Ms. Leslie A. Weaver
Mr. and Mrs. Leonard L. Weber
Mr. and Mrs. Norman R. Wechter
Mr.* and Mrs. Charles W. Wegener
Mr. and Mrs. Sol S. Weiner
Mr. and Mrs. Jack Weisman
Mr. and Mrs. Steven A. Weiss
Dr. Dennis K. Wentz and
Dr. Anne Colston Wentz
Mr. Wayne W. Whalen
Mr. and Mrs. Henry P. Wheeler
Mr.* and Mrs. Donald W. White
Ms. Jean A. White
Mr. and Mrs. Scott White
Dr. and Mrs. C. F. Whitney
Mr. and Mrs. Raymon Whitney
Mr. and Mrs. Jeremy R. Wilson
Mr. and Mrs. Timothy Wilson
Mr. and Mrs. James R. Wimmer
Mr. Michael J. Wisnowski
Mr. and Mrs. William E. Wolf
Mr. and Mrs. George C. Wright
Mrs. Hobart P. Young
Mr. and Mrs. Steve Young
Rev. and Mrs. Peter A. Zadeik
Mr. and Mrs. Phillip C. Zarcone
Mr. and Mrs. William Zigterman

The Women's Board Annual Appeal

The Women's Board Annual Appeal raised more than \$115,000 thanks to the generosity of the following contributors.

Anonymous (2)

- Mrs. Keene H. Addington II
- Mrs. John Ahearne
- Mrs. Stanley N. Allan
- Mrs. Andrew B. Albee
- Mrs. Richard J. Almeida
- Mrs. James W. Alsdorf
- Mrs. A. Watson Armour III
- Mrs. Pamela Kelley Armour
- Mrs. T. Stanton Armour*
- Mrs. Stephen B. Baird
- Mrs. Claude A. Barnett
- Mrs. Robert O. Bass
- Mrs. Robert A. Beatty
- Mrs. Edward H. Bennett, Jr.
- Mrs. Harry O. Bercher
- Mrs. David R. Bibbs
- Mrs. Michael A. Bilandic
- Mrs. Harrington Bischof
- Mrs. Bowen Blair
- Mrs. Philip D. Block III*
- Mrs. Edwin R. Blomquist
- Mrs. John J. Borland, Jr.
- Mrs. Willard L. Boyd
- Mrs. Andrew W. Brown
- Mrs. Cameron Brown
- Mrs. Roger O. Brown
- Ann M. Buckley
- Mrs. Albert C. Buehler, Jr.
- Mrs. Vincent Buonanno
- Mrs. Clark Burrus
- Mrs. Robert N. Burt
- Mrs. Douglas H. Cameron
- Ms. Kathleen Carbonara
- Mrs. Robert Adams Carr
- Mrs. Robert Wells Carton
- Mrs. Hammond Chaffetz
- Nora F. Chandler
- Mrs. Michael Chung
- Mrs. W. H. Clark, Jr.
- Mrs. Roosevelt D. Collins
- Mrs. Rosecrain Collins
- Mrs. Frank W. Considine
- Mrs. Mark Crane
- Mrs. John V. Crowe
- Mrs. Sandra K. Crown
- Mrs. Robert Lane Cruikshank
- Mrs. John T. Cunningham
- Mrs. Patrick F. Daly
- Mrs. Dino J. D'Angelo
- Mrs. John A. Daniels
- Mrs. Robert J. Darnall
- Mrs. Howard M. Dean, Jr.
- Mrs. Edwin J. DeCosta*
- Mrs. Robert O. Delaney
- Mrs. Charles Dennehy
- Mrs. Byram E. Dickes
- Mrs. John M. Dixon
- Mrs. Gaylord Donnelley[□]
- Mrs. Thomas E. Donnelley II
- Mrs. W. Gregory Doolin
- Mrs. William C. Douglas
- Mrs. Maurice F. Dunne, Jr.
- Mrs. Murrell J. Duster
- Mrs. Jerrold L. Eberhardt
- Mrs. William Farley
- Mrs. W. James Farrell
- Mrs. Alexander H. Fautot
- Mrs. Michael W. Ferro, Jr.
- Mr.* and Mrs. Marshall Field
- Mrs. Peter B. Foreman
- Mrs. Francis G. Foster, Jr.
- Mrs. Hubert D. Fox
- Mrs. Earl J. Frederick
- Mrs. Gaylord A. Freeman
- Mrs. Robert P. Freeman
- Mrs. Cyrus F. Freidheim, Jr.
- Frette Illinois, Inc.

- Laura De Ferrari Front
- Mrs. William D. Frost
- Mrs. Maurice F. Fulton
- Mrs. Gary E. Gardner
- Mrs. John S. Garvin
- Mrs. John S. Gates
- Mrs. Robert B. Gerrie
- Mrs. Isak V. Gerson
- Mrs. James J. Glasser
- Mrs. Julian R. Goldsmith
- Mrs. O. R. Goltra
- Ms. Virginia D. Goodrich
- Mrs. David W. Grainger*
- Mrs. J. Douglas Gray
- Mrs. Jack M. Greenberg
- Mrs. Roger Griffin
- Mrs. Gregory L. Guyett
- Mrs. Lee Michael Hall
- Mrs. King Harris
- Mrs. Neil F. Hartigan
- Mrs. David C. Hawley
- Mrs. Wayne E. Hedien
- Mrs. Ben W. Heinerman
- Mrs. Nicholas J. Helmer
- Jean Baldwin-Herbert
- Mrs. John W. Higgins
- Mrs. Harlow N. Higinbotham
- Mrs. Edward Hines
- Mrs. John L. Hines
- Mrs. Thomas R. Hodgson
- Mrs. Robert B. Hoffman
- Mrs. John A. Holabird, Jr.
- Mrs. David B. Horn
- Mrs. Henry W. Howell
- Mrs. R. Thomas Howell, Jr.
- Mrs. Barry G. Hoyt
- Mrs. Philip W. Hummer
- Ms. Janice S. Hunt
- Mrs. Robert C. Hyndman
- I and G Charitable Foundation
- Mrs. Sue B. Ish
- Mrs. Richard Jernstedt
- Mrs. James C. Jones
- Mrs. Donald G. Kempf, Jr.
- Mrs. John J. Kinsella
- Mrs. William T. Kirk, Jr.
- Mrs. Robert D. Kolar
- Mrs. Richard R. Kracum
- Mrs. Alan J. Lacy
- Donna LaPietra
- Judith K. Lavender
- Mrs. Benjamin F. Lenhardt, Jr.
- Mrs. Edward H. Levi
- Mrs. Michael S. Lewis
- Mrs. William S. Macdonald
- Mrs. Walter M. Mack
- Mrs. John W. Madigan
- Mrs. Robert H. Malott
- Mrs. Scott P. Marks, Jr.
- Ms. Jennifer L. Martin
- Mrs. Arthur C. Martinez
- Mrs. Edward D. Matz
- Mrs. Frank D. Mayer
- Mrs. Frank D. Mayer, Jr.
- Mrs. Richard P. Mayer
- Mrs. John W. McCarter, Jr.
- Mrs. George Barr McCutcheon II
- McDonald's Corporation
- Mrs. Lester H. McKeever, Jr.
- Mrs. Andrew J. McKenna
- Mrs. Eugene J. McVoy[□]
- Elisabeth C. Meeker
- Withrow W. Meeker
- Mrs. Hugo J. Melvoin
- Mrs. Allen C. Menke
- Mrs. Newton N. Minow
- Mrs. Carolyn S. Moore
- Mrs. David F. Mosher
- Mrs. Aidan I. Mullett
- Mrs. Charles F. Nadler
- Mrs. Joseph E. Nathan
- Mrs. Earl L. Neal
- Mrs. Ray E. Newton, Jr.
- Alexandra C. Nichols

- Ms. Mary C. Niehaus
- Mrs. Neil S. Novich
- Mrs. James J. O'Connor
- Mrs. Paul W. Oliver, Jr.
- Mrs. Ralph T. O'Neil
- Mrs. James Otis, Jr.
- Mrs. Richard C. Oughton
- Ms. Cynthia A. Patterson
- Mrs. Donald W. Patterson
- Mrs. O. Macrae Patterson
- Mrs. Matthew Paull
- Mrs. Jerry K. Pearlman
- Ms. Martha A. Peterson
- Mrs. Marlene Welch Phillips
- Mrs. Richard J. Pigott
- Mrs. Charles S. Potter
- Mrs. Charles S. Potter, Jr.
- Mrs. Robert A. Pritzker
- Mrs. Albert E. Pyott
- Mrs. Neil K. Quinn
- Mrs. S. Waite Rawls III
- Mrs. Marco A. Reategui
- Mrs. Clyde W. Reighard
- Mr. Kevin H. Rhodes and Ms. Melinda J. Lopes
- Mrs. Phillip B. Rooney
- Mrs. Jeffrey S. Ross
- Mrs. John S. Runnells II
- Ms. Janice B. Ruppel
- Mrs. Patrick G. Ryan
- Mrs. F. Eugene Schmitt
- Mrs. Richard H. Schnadig*
- Mrs. Gordon Segal
- Mrs. Richard J. L. Senior
- Mrs. Ivan Shandor
- Mrs. Thomas C. Sheffield, Jr.
- Mrs. C. William Sidwell
- Mrs. Michael S. Sigal
- Mrs. John R. Siragusa
- Mrs. Richard D. Siragusa
- Mrs. Raymond I. Skilling
- Mrs. Edward Byron Smith, Jr.
- Mrs. H. Brooks Smith
- Mrs. Sarah Sprowl
- Mrs. Harlan F. Stanley
- Mrs. Neele E. Stearns, Jr.
- Mrs. John Stepan
- Mrs. Adlai E. Stevenson
- Mrs. Roger W. Stone
- Mrs. Robert H. Strotz
- Mrs. Harvey J. Struthers
- Mrs. James J. Stukel
- Mrs. John W. Sullivan
- Mrs. Paul Svoboda
- Miss Sharon S. Sweeney
- Mrs. Edward F. Swift III
- Mrs. Hampden M. Swift
- Mrs. John W. Taylor III
- Mrs. Richard L. Thomas
- Mrs. Robert W. Thomas
- Mrs. Stephen B. Timbers
- Ms. Sherry S. Treston
- Mrs. Howard J. Trieniens
- Mrs. James A. Tuchler
- Mrs. Theodore W. Van Zelst
- Mrs. Carson Veach
- Mrs. Virginia von Schlegell
- Mrs. John R. Walter
- Mrs. Hempstead Washburne
- Mrs. E. Leland Webber
- Mrs. Barbara H. West
- Mrs. Bradford Wheatley
- Mrs. Henry P. Wheeler
- Mrs. Miles D. White
- Mrs. Julian B. Wilkins
- Rev. Dr. Ruth Teena Williams
- Mrs. Robert H. Wilson
- Mrs. Elizabeth H. Winston
- Nancy Hamill Winter
- Mrs. Clarence N. Wood
- Mrs. Blaine J. Yarrington

Foundations, Corporations and Public Entities

\$100,000 or more

- The Chicago Park District
- Institute for Museum and Library Services

\$25,000 - 99,999

- Anonymous
- Bank One
- The Chicago Community Trust
- Exelon Corporation
- Goldman, Sachs & Company
- Illinois Arts Council
- Illinois Tool Works Foundation
- United Airlines

\$10,000 - 24,999

- Coca-Cola Bottling Company of Chicago
- Intrinsic Technologies, L.L.C.
- John R. Halligan Charitable Fund
- Molex Incorporated
- Morgan Stanley
- National Financial Partners, Corp.
- UBS Financial Services

\$5,000 - 9,999

- Aon Corporation
- City of Chicago Department of Cultural Affairs
- The Nathan Cummings Foundation
- GKN Foundation
- Household International, Inc.
- The McGraw-Hill Companies
- Morton Salt, A Rohm & Haas Company
- Patrick and Anna M. Cudahy Fund
- Pittway Corporation
- Quarles & Brady LLC
- Walgreen Co.

\$1,000 - 4,999

- A.M. Castle & Company
- American Agricultural Insurance Company
- AMSTED Industries Foundation
- Central Steel & Wire Company
- Draper & Kramer Incorporated
- Metcalf Federal Relations
- Byerson Tull Foundation
- S-B Power Tool Company
- Sahara Enterprises, Incorporated
- Winnetka Garden Club

\$500 - 999

- Cardinal Colorprint Corporation
- N. Demos Foundation, Inc.
- Old Republic International Corporation

Key

- Trustee
- Staff
- ◆ Multi Year Pledge
- Deceased

Edward Ayer Society

The Edward Ayer Society recognizes individuals whose charitable gift planning assures a bright future for The Field Museum.

- Anonymous
- Frances C. Abraham
- Barbara and Steven Adelman
- Mary Jane Arnam
- Carol and Jim Banach
- Helen R. Beiser, M.D.
- Robert and Ruth Berns
- John and Alrene Blomstrom
- Mr.* and Mrs. Willard L. Boyd
- Mrs. Robert Adams Carr
- Mr. and Mrs. Thomas C. Dabovich
- Mrs. Lowell B. Dwinell
- Mr. and Mrs. Richard H. Eshbaugh
- Curtis B. Fjork
- Mrs. Warren Gjorup
- Samuel C. Hair
- Gilbert Hansen
- David and Betty Hess
- Dr. and Mrs. James C. Hunt
- Susanne E. Larsh, M.D.
- Robert E. Lewis, Ph.D.
- Mr. and Mrs. J. de Navarre Macomb, Jr.
- Ann Mallow
- Arthur and Lois Marc
- Margaret Martling
- Mr.* and Mrs. Hugo J. Melvoin
- Marie E. Peruscini and Edward C. Bapple
- Mrs. John W. Pocock
- William J. Pross
- Mr. and Mrs. Alfred L. Putnam
- Mrs. Gerhart Schild
- David and Mary Schlotterback
- Mrs. Robert E. Vernon
- Mr. and Mrs. Charles R. Walgreen, Jr.
- Carmen W. Walsh
- Nestor R. Weigand, Jr.
- Vida B. Wentz, M.D.
- Vernon L. Wesby
- Barbara H. West
- Mr. and Mrs. Donald W. White
- Virginia Whittaker
- Charles H. Wilson

In-Kind Contributions

A New Leaf
Art Effect
Artistic Events by Carlyn Berghoff Catering, Inc.
Mr. and Mrs. Ira M. Asher
Aveda
BACARDI Limon
BACARDI O
BACARDI USA, Inc.
Barneys New York
BBJ Rentals, Inc.
Belgin Chocolatier Piron
Belvedere Vodka
Bittersweet Pastry Shop
Blommer Chocolate Company
Blue Plate Catering
Bob's Candies, Inc.
Bombay Sapphire Gin
Botanicals Incorporated
Brown Forman Corporation
Caliterra
Calphalon Culinary Center
Campagnola Restaurant
Cartier
Celebrity Kids Portrait Studio
Chicago Confectionery Co.
Corner Bakery
Crate & Barrel
Crème De La Crème
The Dance Center of Columbia College Chicago
Di Saronno Amaretto
Dr. and Mrs. Richard A. Domanik
Dr. and Mrs. Eric J. Dybal
Edgebrooks Baskin Robins 31 Flavors
Elan Furs
Eli's Cheesecake Company
Fairytale Brownies
Farrallon Restaurant
FGS, Inc.
Mr. and Mrs. Marshall Field
The Flower Firm, Ltd.
Food for Thought Catering
Frango
French Pastry School
Fresh, Inc.
Frost Lighting
The Fudge Pot
Gayety's Chocolates
Geja's Cafe
Gertrude Hawk Chocolates
Ghiradelli Soda Fountain & Chocolate Shop
Mr. and Mrs. Paul C. Gignilliat, Jr.
Godiva Chocolatier
Goose Island Beer Company
The Greenbrier
Hall's Rental Service, Inc.
Hamby Studios
Harry & David
Hugo's Frog Bar & Fish House
Mr. Steve Isaac and Ms. Judy Olds
Ivan Carlson & Associates
Jacadi of Paris
Jelly Belly Candy Company
Jewell Events Catering
kate spade / Jack Spade
Kathryn Beich Candy
Kenyon Oppenheimer, Inc.
Korbel Chardonnay Champagne
Kurtis Productions, Ltd.
La Perla
Long Grove Confectionary
Mr. and Mrs. Lowry
Madison & Friends
Margie's Candy

Mrs. Janina Marks
Marly Chocolates
Marshall Field & Company
Maxine
Michael Picard French Wine
Milani Trevi
mk Restaurant
Moonstruck Chocolate Bar
Motorola
The North Face
Niman Ranch
Oberweis Dairy
Oh My Goodness
One Sixty Blue
Pee't's Coffee & Tea
Peninsula Spa
Meline and Allan Pickus
Piron Chocolatier
Private Label Products
Ms. Patricia Rain
Ralph Lauren
Victoria and George A. Ranney Fund
Regency Catering & Event Planning
Rita's Catering & Event Planning
Ronsley Special Events
Salon Systems, Inc.
Mr. and Mrs. Robert E. Shaw
Shaw's Crab House
Soapstone
Solo Sessions
Spago
Sur La Table
Target Corporation
Teuscher Chocolates of Switzerland
Tiffany & Co.
Ty Incorporated
United Airlines
Vong's Thai Kitchen
Vosges Haut-Chocolat
Ms. Janiece S. Webb
Williams-Sonoma
Wolfgang Puck Catering and Events

Matching Gifts and Grants

Aon Corporation
AT&T Foundation
Bank of America
Bank One, NA
Boeing
BP plc.
Caterpillar Foundation
Chubb & Son
CNA Insurance
Coca-Cola Bottling Company of Chicago
Computer Associates International, Inc.
Corn Products International
R.R. Donnelley & Sons Company
Eli Lilly and Company
The Field Foundation of Illinois
Fleet Matching Gifts Program
Follett Corporation
General Mills Foundation
Georgia-Pacific Corporation
W.W. Grainger, Inc.
John Hancock Mutual Life Insurance Company
Harris Bank Foundation
Honeywell International
Houghton Mifflin Company
Household International, Inc.
Illinois Tool Works Foundation
International Business Machines Corporation
Kirkland & Ellis

Key

- Trustee
- Staff
- Deceased

Leo Burnett USA
Lucent Technologies Foundation
The John D. and Catherine T. MacArthur Foundation
The May Department Stores Company
May Stores Foundation Incorporated
Mayer Brown Rowe & Maw
McDonald's Corporation
William G. McGowan Charitable Fund, Inc.
Mobil Foundation Incorporated
The Northern Trust Corporation
Nuveen Investments
Pactiv Corporation
Peoples Energy
Pepsico Foundation
Philip Morris Incorporated
Polk Bros. Foundation
Prudential Financial, Inc.
The Quaker Oats Company Foundation
Robert R. McCormick
Tribune Foundation
Rothschild Investment Corp.
SBC Foundation
Sony Pictures Entertainment
Sprint Corporation
Third Coast Capital
UBS Financial Services
Unilever United States, Inc.
United Technologies Corporation
United Way of South Hampton Road
Wm. Wrigley Jr. Company Foundation

Volunteer Leadership

The Women's Board Executive Committee

Mrs. Richard H. Schnadig*
President
Mrs. Edward Byron Smith, Jr.
Vice President
Mrs. David B. Horn
Vice President
Mrs. Douglas H. Cameron
Secretary
Mrs. Lester H. McKeever, Jr.
Treasurer
Mrs. John W. Higgins
Board Member At Large
Mrs. Jack M. Greenberg
Board Member At Large
Mrs. Stephen B. Baird
Co-Chair, Field Dreams
Mrs. Michael A. Blandie
Chair, Special Events
Ms. Kathleen Carbonara
Co-Chair, Outreach Luncheon
Mrs. Robert Wells Carton
Co-Chair, Volunteers
Mrs. John T. Cunningham
Co-Chair, Hospitality
Mrs. Dino J. D'Angelo
Co-Chair, Volunteers
Mrs. Alexander H. Faurot
Co-Chair, Hospitality
Mrs. Gary E. Gardner
Chair, Long Range Planning
Mrs. Jack M. Greenberg
Co-Chair, The Bamboo Ball
Mrs. Gregory L. Guyett
Chair, Programs
Mrs. Harlow N. Higinbotham
Co-Chair, Children's Holiday Celebration
Mrs. Robert C. Hyndman
Chair, Nominating
Judith K. Lavender
Co-Chair, Children's Holiday Celebration
Mrs. William S. Macdonald
Co-Chair, Trips
Mrs. John W. Madigan
Co-Chair, Outreach Luncheon
Dorothy Mackevich Marks
Co-Chair, Board Luncheons
Mrs. Andrew J. McKenna
Co-Chair, The Bamboo Ball
Elisabeth C. Meeker
Co-Chair, Field Dreams
Mrs. David F. Mosher
Co-Chair, Annual Appeal

Mrs. S. Waite Rawls III
Chair, Bylaws
Mrs. Richard J. L. Senior
Chair, Fellowship/Scholarship Program
Mrs. Ivan Shandor
Co-Chair, Hospitality
Mrs. John R. Siragusa
Co-Chair, Annual Appeal
Mrs. Harvey J. Struthers
Co-Chair, Membership
Mrs. John W. Taylor III
Co-Chair, Membership
Mrs. Miles D. White
Co-Chair, Trips
The Founders' Council Steering Committee
Mr. Cary J. Malkin*
Chairman
Janet Diederichs
Vice Chairman
Mr. James H. Bankard
Mr. Donald Bowey, Jr.
Mr. Douglas H. Cameron
Mrs. Robert W. Carton
Donna B. and Peter B. Freeman
Mr. and Mrs. John E. Freund
Joanne Benazzi Friedland
Laura and Marshall* Front
Laura D. Gates
Mrs. W. George Greig
Mrs. Barry J. Hastings
Mr. Noel Kaplan
Mr. and Mrs. Charles M. Kierscht
Mr. and Mrs. T. Eric Kilcollin
Mr. Robert B. and Mrs. Gail J. Loveman
Mr. Edward G. Maier
Mrs. Cary J. Malkin
Mr. Scott P. Marks, Jr.*
Elisabeth C. Meeker
Mr. Robert K. Parsons
Mrs. Elizabeth Raymond
Ms. Lisa Ross
Mr. and Mrs.* Richard H. Schnadig
Mr. and Mrs. Malcolm N. Smith
Mr. Larry Snider
Mr. and Mrs. John W. Taylor III
Ms. Alice A. Tucker
Priscilla A. (Pam) and Douglas H. Walter
Mr. Michael Werner
Mrs. William W. Wirtz

Field Associates Executive Committee

Sue Klose*
President
Betsy Bischof
Susu Block
David Hodges
Jeffrey B. Koebler
Kurt Mrowicki
Marisa Bryce
Danielle Cunningham Cupps
Donald Draudt
Sara Eichholz
Laura Ferris
Todd Halamka
John E. McGovern III
Victoria Martin Myers
Lisa Scavarda
Alexander Sherman
Katherine Dold White
Angela Wilkinson

The Cultural Collections Steering Committee

Charles W. Benton*
Chair
Dodie Baumgarten
Becky D'Angelo
Robert G. Donnelley
Susan Faurot
June Finfer
Louise R. Glasser
James J. Glasser
Morris Goodman

Warren Haskin
Mary P. Hines
Gail Hodges
Judith K. Lavender
Renée Logan
Kathleen Rummel
John A. Shea
Rebecca Sive
Lisa Stringer
Theodore W. Van Zelt

Honorary Steering Committee Members

Jan Carton
Connie Crane
Babs Kent
Carolyn Moore

The Friends of The Field Museum Library Steering Committee

Mr. Edward C. Hirschland*
Chairman
Mr. and Mrs.* T. Stanton Armour
Mr. Michael A. Dloogatch
Mr. Robert G. Donnelley
Mr. Gregory J. Gajda
Mrs. Mary P. Hines
Mrs. Withrow W. Meeker
Mr. Kenneth Nebenzahl
Mr. Joel Oppenheimer
Mrs. Richard C. Oughton
Mrs. Marie-Louise Rosenthal
Mr. John S. Rannels II*

Volunteers

The Field Museum volunteers donated more than 75,000 hours (worth more than \$1,000,000) serving school groups and visitors and assisting curators and collections managers.

400 hours or more

Irene Broede, *Education, Geology*
Sidney Camras, *Zoology - Insects*
Pamela Clayburn, *Geology*
Peter Cruikshank, *Environmental Conservation Programs*
Frank DeLoach, *Education*
Mildred Frank, *Education, Guest Relations*
Peter Gayford, *Anthropology*
Robert Gowland, *Library*
Richard Hidaka, *Education, Geology*
Fui Lian Inger, *Zoology - Amphibians and Reptiles*
Dennis Kinzig, *Education, Geology*
Armand Littman, *Zoology - Invertebrates*
Jack MacDonald, *Anthropology*
John McConnell, *Geology*
John McGowan, *Education*
Ellis Murphy, *Education, Anthropology*
John Nelson, *Education*
Mary Nelson, *Education*
Karen Nordquist, *Education, Geology*
Kavita Sharma, *Anthropology*
Beth Spencer, *Education*
John Swanton, *Education*
Grace Takata, *Education*
Hedy Turnbull, *Geology*
Aimee Willetts, *Guest Relations*
George Wolnak, *Education, Geology*

200 - 399 hours

Robert Andersen, *Education*
Joe Becker, *Environmental Conservation Programs*
Ruth Berns, *Human Resources*
Roger Bohn, *Education*
Myriam Borelli, *Education*
Barbara Bouton, *Botany*
Jeanette Brass, *Education*
Renee Bueckert, *Zoology - Insects*
Jack Burgeman, *Education*

Thomas Burke, *Geology*
 Mary Capizzi, *Education*
 Jean Chang, *Anthropology*
 Ross Chisholm, *Education*
 Jennifer Clark, *Anthropology*
 Amanda Comminos, *Education*
 James Costello, *Education*
 Patricia Dalton, *Education*
 Gabriele Da Silva, *Education*
 Edith Dervin, *Guest Relations*
 Allan Diamond, *Education*
 Marion Dunn, *Education*
 James Durham, *Guest Relations*
 Bill Duvall, *Education*
 Sharleen Frank, *Education*
 Christina Frazer, *Education*
 Bernice Gardner, *Education*
 Arlene Ghiron, *Zoology - Insects*
 Halina Goldsmith, *Education*
 Marceline Gordon, *Guest Relations*
 Evelyn Gottlieb, *Education*
 Astrid Guerra, *Zoology - Insects*
 Gayle Guzik, *Education*
 Kiyoko Hamilton, *Education*
 Esther Hankin, *Guest Relations*
 Mary Harland, *Education*
 Jane Hidaka, *Guest Relations*
 Tung Hsu, *Anthropology*
 Lois Hutchinson, *Education*
 Herbert Hymen, *Zoology - Birds*
 Salvatore Ingrassia, *Education*
 Bernice Jacobs, *Education*
 Malcolm Jones, *Education*
 Edwin Kapus, *Zoology - Invertebrates*
 James Kase, *Zoology - Insects*
 Melissa Kelly, *Zoology - Mammals*
 Tom Kerstann, *Education*
 Nancy Klaud, *Public Relations*
 Ruth Larson, *Education*
 Milton Levin, *Education*
 Leonore Levit, *Education*
 Andrea Luke, *Education*
 Teresa Mayfield, *Zoology - Amphibians & Reptiles*
 Amina Cora Mayo, *Education*
 William McAndrew, *Education*
 Joanna McCaffrey, *Zoology - Insects*
 Louise McCurry, *Education*
 Robert McFarland, *Anthropology*
 Alfred McGowan, *Guest Relations*
 Lenore Melzer, *Guest Relations*
 Nancy Miller, *Education*
 Lorenzo Monteleone, *Education*
 Carolyn Moore, *Anthropology*
 Robert Morrow, *Education*
 Harry Moskow, *Guest Relations*
 Katie Nash, *Anthropology*
 Lawrence Necheles, *Education*
 Marie Orendach, *Education*
 Kenneth Peters, *Geology*
 Lorraine Pieja, *Education*
 Hugo Quiroz, *Environmental Conservation Programs*
 Judith Rom, *Guest Relations*
 Sarah Rosenbloom, *Education*
 Benjamin Runge, *Education*
 Nina Sandlin, *Zoology - Insects*
 Esther Schechter, *Anthropology*
 Florence Selko, *Education*
 Mae Simon, *Education*
 Reginald Simon, *Information Technology*
 Chester Spears, *Education*
 Robert Spieler, *Education*
 Helen Stein, *Education*
 William Stein, *Education*
 James Stola, *Education*
 Lisa Stringer, *Anthropology*
 Jane Thain, *Guest Relations*
 Warren Valsa, *Geology*
 Mary Velez, *Education*
 John Vicha, *Education*
 Raymond Vodden, *Geology*
 Deborah Wagner, *Geology*
 David Walker, *Zoology - Invertebrates*
 Jack Wittry, *Geology*
 Edward Yastrow, *Anthropology*

The Board of Trustees

Officers

Ronald J. Gidwitz
Chairman
 Marshall Field
Vice Chairman, Governance
 Marshall B. Front
Vice Chairman, Development
 Sue Ling Gim
Vice Chairman, External Affairs
 Wayne E. Hedien
Vice Chairman, Finance
 William C. Kunkler III
Vice Chairman, Facilities & Administrative Services
 Neil S. Novich
Vice Chairman, Information Technology
 Miles D. White
Vice Chairman, Collections and Research
 Linda Wolf
Vice Chairman, Public Programs
 Philip L. Harris
Secretary
 John W. McCarter, Jr.
President and CEO

Life Trustees

Mrs. T. Stanton Armour
 Gordon Bent
 Bowen Blair
 Willard L. Boyd
 Worley H. Clark, Jr.
 Frank W. Considine
 Stanton R. Cook
 Mrs. Edwin DeCosta
 Thomas E. Donnelley II
 Mrs. David W. Grainger
 Mrs. Robert S. Hartman
 Richard M. Jones
 James J. O'Connor
 John S. Runnells II
 William L. Searle
 Robert L. Wesley
 Blaine J. Yarrington

Trustees

James L. Alexander
 Linda Barmann
 Charles Benton
 Judith S. Block
 Norman R. Robins
 Christopher D. Bowers
 John A. Canning, Jr.
 Gery J. Chico
 Robin T. Colburn
 Michelle L. Collins
 James W. Compton
 Robert W. Crawford, Jr.
 Dr. Dolores E. Cross
 Julian Day
 Jay Delaney
 Nina J. Fain
 Michael W. Ferro, Jr.
 Jack W. Fuller
 Jack M. Greenberg
 Philip L. Harris
 Barry G. Hastings
 Harlow N. Higinbotham
 Edward C. Hirschland
 Melody Hobson
 Sue Klose
 William H. Kurtis
 Cary J. Malkin
 Scott P. Marks, Jr.
 Andrew J. McKenna, Jr.
 Hugo J. Melvojn
 Raymond Mota
 Leo F. Mullin
 Richard Pigott
 Peter B. Pond
 Robert A. Pritzker
 John W. Rowe
 Maria N. Saldaña
 Mrs. Richard H. Schnadig
 Timothy R. Schwertfeger
 Michael M. Sears
 Adele S. Simmons
 Faith A. Smith
 Laura S. Washington
 Kelly R. Welsh
 William J. White
 Susan A. Willetts
 Sam Zell

Credits

Baseball As America

This exhibition was organized by The National Baseball Hall of Fame and Museum, Cooperstown, New York. The national tour of *Baseball As America* is sponsored by Ernst & Young.

Chocolate

Chocolate and its national tour were developed by The Field Museum, Chicago. This project was supported, in part, by the National Science Foundation. Education programs supported by The Chicago Community Trust.

Eternal Egypt: Masterworks of Ancient Art From The British Museum

The exhibition is organized by the American Federation of Arts and The British Museum.

The exhibition and its national tour are made possible by Ford Motor Company. Ford has also provided additional support for this venue.

The Chicago presentation is made possible through the generous support of LaSalle Bank.

Additional support has been provided by the Benefactors Circle of the AFA.

Einstein

This exhibition is organized by the American Museum of Natural History, New York; The Hebrew University of Jerusalem; and the Skirball Cultural Center, Los Angeles. *Einstein* is made possible through the generous support of Jack and Susan Rudin and the Skirball Foundation, and of the Corporate Tour Sponsor: TIAA-CREF.

Jacqueline Kennedy: The White House Years Selections from the John F. Kennedy Library and Museum

This exhibition has been organized by The John F. Kennedy Library and Museum and the Metropolitan Museum of Art.

This exhibition is made possible through the generous support of The Grainger Foundation and Marshall Field's.

Live ... from NATIONAL GEOGRAPHIC

The educational activities related to the series are presented in collaboration with The Field Museum, the Geographic Society of Chicago, the National Geographic Education Foundation and the Illinois Geographic Alliance. Thanks to our media sponsors Pioneer Press and Chicago Public Radio WBEZ-FM.

Machu Picchu: Unveiling the Mystery of the Incas

This exhibition was organized by the Yale Peabody Museum of Natural History. The exhibition is made possible by grants and support from the National Endowment for the Humanities, the National Science Foundation, the Connecticut Humanities Council, The Heritage Mark Foundation, The William Bingham Foundation, Yale University and The Peruvian Connection.

Pearls

This exhibition was organized by The American Museum of Natural History, New York, in collaboration with The Field Museum, Chicago. National Sponsor Tasaki Shinju Co., Ltd. Education programs supported by The Chicago Community Trust.

Splendors of China's Forbidden City: The Glorious Reign of Emperor Qianlong

This exhibition was developed by The Field Museum, Chicago, in cooperation with the Palace Museum, Beijing. Sponsored by Exelon. Additional support provided by the Elizabeth F. Cheney Foundation.

Sue

Sue at The Field Museum is made possible by McDonald's Corporation. A major sponsor of *Sue* is Walt Disney World Resort. Additional support has been provided by the Illinois Department of Natural Resources/Illinois State Museum. The Elizabeth Morse Charitable Trust is the generous sponsor of this exhibition.

A T. rex Named Sue

This exhibition was created by The Field Museum, Chicago, and made possible by the generosity of McDonald's Corporation.

The Field Museum salutes the people of Chicago for their long-standing, generous support of the Museum through the Chicago Park District.

The Field Museum is grateful for the generous support of the Chicago Park District, the Illinois Arts Council, and a CityArts program 4 grant from the City of Chicago Department of Cultural Affairs.

Annual Report Staff

Alexander Sherman
Project Manager
 Jennifer Johnston
Writer/Editor
 Jean Cattell
Manager of Graphic Design
 Lori Walsh
Lead Graphic Designer
 Amanda Reeves
Graphic Designer
 Thomas Brandenburg
Graphic Designer
 Mark Widhalm
Photographer
 Tara Gibson
Donor List Manager

Photography

Cover, World Map: T. Flach, 300228-002
 Pg 1 World Map: T. Flach, 300228-002
 Pg 2 Ron Gidwitz/John McCarter (Chairman and President); M. Widhalm, FM#GN90539_15d
 Pg 3 Skull (*Chilecebus*): M. Widhalm, FM#GE085944
 Pg 4 *Sinovenator, changii*: M. Skrepnick
 Pg 4 Website: www.fieldmuseum.org/expeditions
 Pg 4 Cuba: A. Pistoiesi, 10135047
 Pg 5 Ecuadorian wet paramo: R. Luecking
 Pg 5 Lichen: R. Luecking
 Pg 5 GIS model: R. Williams
 Pg 5 Charts: Thompson 1992
 Pg 6 Jay Feather: D. Gulin, IH102760
 Pg 7 Fossil Leaf (*Lepidopteris ottonis*): M. Widhalm, FM#GE086362_01d
 Pg 8 Common Buckeye Butterfly (*Nymphalidae Junonia coenia*): J. Weinstein, FM#Z94207_4c
 Pg 8 Lake Calumet (Oil refinery tanks): M. Widhalm, FM#GN90555_08d
 Pg 9 Diversity Project (Lindsey Family): M. Widhalm, FM#GN90552_16d
 Pg 9 NGS Elephant: Michael Nichols, courtesy of National Geographic
 Pg 9 Chocolate: Public Domain
 Pg 9 Pearls: D. Finnin, © American Museum of Natural History
 Pg 9 Sunflowers: T. Evans
 Pg 10 Field Ambassador (Eloise Roach): M. Widhalm, FM#GN90551_24d
 Pg 10 SUE XING key chain: M. Widhalm, FM#GN90570_01d
 Pg 12 Baseball: Public Domain
 Pg 12 Detail from the Mummy Mask of Satdjehuty, Eighteenth Dynasty: © Trustees of The British Museum, courtesy of the American Federation of Arts.
 Pg 12 Plant: R. Testa FM#GN89777_12c
 Pg 12 Einstein: Courtesy of the archives, California Institute of Technology
 Pg 12 Qianlong: © The Palace Museum, Beijing
 Pg 12 Macchu Picchu: Painetworks
 Pg 12 Jacqueline Kennedy: Mark Shaw, Photo Researchers

FIELD MUSEUM 2002

Research

\$15 Million in New Grants

220 Publications

420,000 sq. ft. for Research,
Laboratories and Collections

Collections

21.8 Million Specimens and Artifacts

840 Incoming Specimens Per Day

72,000 Loaned Specimens and Objects

Education

320,000 Children on School Fieldtrips

8,100 Educational Programs

3.2 Million Website Visitors

Exhibitions

10 Temporary Exhibits

1.6 Million Visitors

500,000 sq. ft. of Public Space

Institution

45,000 Memberships

\$37 Million in Gifts and Grants

\$57 Million Annual Budget

\$150 Million Endowment

Field
Museum

1400 South Lake Shore Drive
Chicago, Illinois 60605-2495
312.922.9410
www.fieldmuseum.org