


■■■
ANNUAL REPORT TO DONORS

2013



X
8
The Field
Museum



Maximizing its scientific
influence and delivering
rich experiences to visitors,
The Field Museum is
accomplishing great things.

It is in the numbers:

■ ■ ■

Cover: A model of a giant octopus as it appears today (above) in the Museum's exhibition Opening the Vaults: Wonders of the 1893 World's Fair and in 1893 at the World's Columbian Exposition. The modern-vintage combination evokes a similar feature in the Museum's new app. Learn more on page 22.

21 percent increase in attendance at formal education programs from 2012. **3 million** people viewed *The Brain Scoop* on YouTube in its first six months at The Field Museum. **1 million** people in North America visited traveling exhibitions created by the Museum. **9,200** citations of Field Museum publications were made by scholars across the globe.





Dear friends,

The year 2013 was a good one for your Museum. After months of work by Board members and staff, we unveiled a new strategic plan for your Museum that will guide us into the next decade. Like all strategic plans, the preparation and self-scrutiny that goes into it is as valuable as the final result. We all learned a great deal in this process.

The Plan directs the Museum to grow its impact in science and public programs. We have already implemented an important step through the reorganization of the sciences. Previously organized by academic discipline (anthropology, botany, geology, zoology, and conservation ecology), the Science and Education unit is now organized by objective (collections, integrative research, and science action). The areas of study remain vibrant, and the new structure fosters interdisciplinary work—an approach necessary for the big scientific questions the Museum is best suited to tackle.

The Plan correctly identifies the visitor experience as central to our future. We must use new technologies to allow visitors to discover their own questions about our collections. We must have more and better live encounters with scientists for our visitors. And we must give our visitors a chance to go behind the scenes—an experience you already know can be transforming.

We have begun to reach Internet audiences through the YouTube channel *The Brain Scoop* and have plans to expand other online platforms like Virtual Visits to classrooms, game development, and more.

We invite you to learn more about the direction in which the Museum is going. In a very real sense, the Museum's contributions to science and education are yours: you make the work of The Field Museum possible through your generous support and guidance. We are deeply grateful to you and depend on your sustained affection for this wonderful institution.

Warm regards,

John W. Rowe
Chairman

Richard W. Lariviere, PhD
President and CEO

TABLE OF CONTENTS

SCIENCE

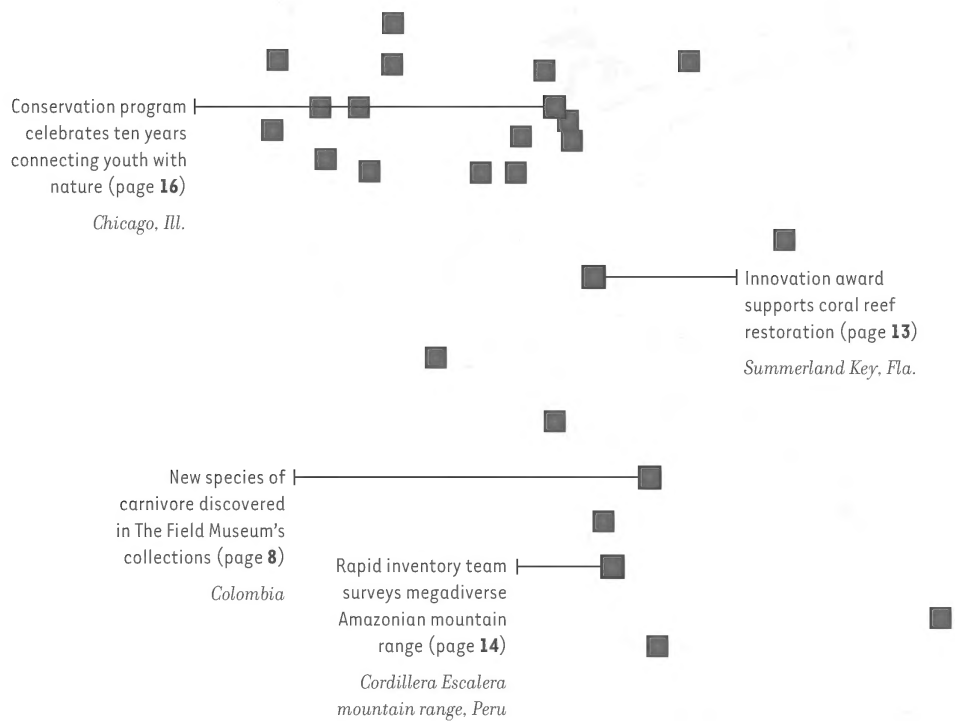
- 6 Collections
- 10 Integrative Research
- 14 Science Action

PUBLIC ENGAGEMENT

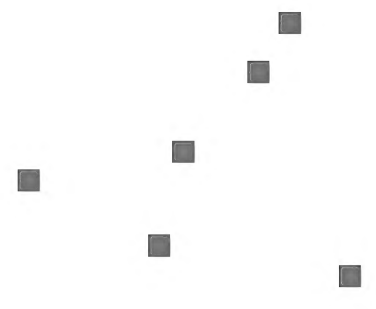
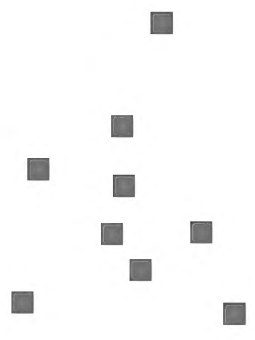
- 18 Learning
- 22 Exhibitions

HONOR ROLL

- 27 Board of Trustees
- 28 Donors



■ ■ ■ Within days of The Field Museum opening its doors in 1894, its scientists were launching expeditions around the planet in order to explore and understand it. That spirit of inquiry continues unabated today; and it took Museum researchers to more than thirty countries in 2013 to collect specimens, conduct research, conserve landscapes, and strengthen communities.



Fieldwork yields new shrew
with an extraordinarily
strong spine (page 13)
*Democratic Republic
of Congo*



■■■ The value of The Field Museum's encyclopedic **collections** lies in the information they hold: information that can resolve age-old cultural riddles, connect species on the tree of life, help us understand the dynamics of diseases, or simply satisfy curiosity about our world. In 2013, the Museum accelerated its efforts to increase that value enormously by maximizing use of and access to the collections, maintaining its status as a must-visit destination for researchers, and strengthening its relevance to the world.

Museum expands access to top collections

Collections staff members Stephanie Ware, Daniel Le, and Breezy Snyder (from left to right) scan plant specimens as part of a large-scale effort to digitize key collections across the Museum. With generous support from The Grainger Foundation, collections staff logged 250,600 records in 2013, including 100,500 images. This opening of digital access—in addition to the thousands of scientists served each year through visits and loans—is expanding the number of researchers who utilize the Museum's collections. And it is deepening their importance as a wellspring of critical information about the planet and its inhabitants.





New species of carnivore discovered in The Field Museum's collections

The study skin below is of an olinguito, the first new species of carnivore from the Americas in thirty-five years. And it was discovered in The Field Museum's collections. In 2003, Smithsonian mammalogist Kristofer Helgren, studying The Field Museum's collection of olingo skins (raccoon-like South American mammals), noticed several that were strikingly different from the others. In August 2013, after a decade of research, he described the olinguito as a new species. The Field Museum has built one of the world's best collections of South American mammals and is an essential destination for researchers.



Pioneering approach to collections stewardship engages cultural heritage groups

Postdoctoral Scientist Lisa Niziolek (above left) and volunteer Lani Chan analyze Chinese ceramics from the Philippines as part of the Museum's co-curation program. This emerging approach to collections stewardship involves cultural groups in the mutual care and interpretation of heritage objects. With roots in its forty-year relationship with the Maori community of New Zealand, the Museum has become a leader in co-curation. During the past two years, the Museum has developed a partnership with Chicago's Filipino community. They work with staff to catalogue and conserve objects in the Philippine collections as well as document stories about the objects' cultural use and significance.



Botanical collections aid a criminal investigation

Research Assistant Laura Briscoe (left) holds a handful of mosses collected by a team of Field Museum botanists as part of a criminal investigation last year. In June 2011, a four-month-old baby went missing in Ludington, Michigan. A vital clue to her whereabouts was plant residue on a suspect's shoe. Investigators called in Matt von Konrat, head of botanical collections, to identify the unique combination of plant species found on the shoe and help narrow down sites where those plants could be found together. In such cases, the environment itself serves as a fingerprint, and museum collections constitute a forensic database.

250,600 objects and specimens were added to the collections database. 100,500 images were added to the collections database. 33,000 objects and specimens were loaned to researchers across the globe. 7,800 science researchers visited the collections. 14 countries were visited on collecting expeditions.



Museum-based science is at a turning point. With exploding quantities of specimen data, big-data genomics, and the integration of high-tech tools in archaeology and geoscience, it is imperative that **research** becomes more integrative and team-based than ever before in order to answer the big questions in science. The Field Museum is increasing its commitment to inquiry-driven teams and boundary-crossing research to enhance the impact of collections-based science and generate the type of discoveries that only a natural history museum can produce.

New scientists bring energy to research

Postdoctoral Scientist Steven Leavitt discusses species boundaries with other postdoctoral scientists and graduate students. In 2013, the Museum launched an effort to attract a new corps of postdoctoral scientists. Dr. Leavitt, supported by the University of Chicago, arrived in the fall. Four more postdoctoral scientists will join him in 2014. They will study a range of topics, from urbanization to genomic analysis. These new positions—supported by the Negaunee Foundation, University of Chicago, and University of Illinois at Chicago—will add vitality to research, bridge programs, and generate new insights.

From left to right: Steven Leavitt, Research Associate Andrew Young, Research Assistant Gracen Brilmyer, Postdoctoral Scientist Dirk Mezger, and Intern Andrea Thompson.





Newly discovered dinosaur ruled the Cretaceous before *T. rex*

During an excavation in Utah (below left), Associate Curator Peter Makovicky and former Postdoctoral Scientist Lindsay Zanno, now of North Carolina State University, discovered a new species of dinosaur: *Siats meekerorum* (below right). Announced to the world last year, *Siats* was the apex predator of the mid-Cretaceous, co-existing with small-bodied tyrannosaurs. The find suggests the extinction of allosauroids, such as *Siats*, allowed tyrannosaurs to advance into the top predator niche. Scientists named the dinosaur after a cannibalistic monster from Native American mythology and the John Caldwell Meeker family for their support of paleontological research at The Field Museum.



Amazonian tree expert joins staff through visiting scholar program

Robert O. Bass Visiting Scholar Nigel Pitman collects specimens of Amazonian trees during fieldwork in northern Peru. Dr. Pitman, a noted botanist whose research focuses on the ecology of Amazonian tree communities, joined the Museum's staff in July 2013. In October, he and an international team published a groundbreaking study in the journal *Science* about tree diversity in the Amazon. Dr. Pitman bolsters the Museum's historic strength in South American botany, brings new expertise on plant conservation, and collaborates actively with Museum scientists across the three centers.



9,200 citations of Field Museum publications were made by scholars across the globe. 615 archaeological sites were discovered. 235 journal articles were published. 110 species or other taxa were described. 105 interns and 30 resident graduate students were hosted. 90 graduate students were advised.



Innovation award supports coral reef restoration

Curator Rüdiger Bieler (left, at right) and colleague David Vaughan of Mote Marine Laboratory observe live coral in culturing tanks at the Tropical Research Laboratory on Summerland Key, Florida. In 2013, Dr. Bieler received The Field Museum's Science Innovation Award in support of his reef restoration project. This new annual award targets projects that are groundbreaking, interdisciplinary, and impactful. Dr. Bieler is collaborating with a team from Mote to revive coral reefs by grafting live coral fragments onto dead coral boulders and monitoring the future development of the reef community. Coral reefs support approximately 40 percent of all marine life on the planet. An estimated 90 percent of indigenous coral coverage in the Florida Keys and Caribbean has been lost since the 1970s. Dr. Bieler's reef project illustrates the type of role the Museum can play in ensuring the future health of Earth.

Fieldwork yields new shrew with an extraordinarily strong spine

The skeleton below is the type specimen (the basis for a new species description) of Thor's Hero Shrew. On a trip in 2012 to the Democratic Republic of Congo, Bill Stanley, Field Museum mammalogist and director of the Collections Center, collected a little shrew that seemed rather unspectacular—until he dissected it in Chicago and found an incredibly robust spine with interlocking vertebrae. DNA analysis helped identify it as a new species. *Scutisorex thori* is only the second-known species of hero shrew, which have spines approximately four times stronger than that of humans. It adds another piece to the puzzle of shrew evolution.



(Actual size)

■ ■ ■ The **Science Action Center** leverages the Museum's expertise in studying the world's diversity to secure large-scale advances in conservation and community quality of life. The Action team works in the places on Earth where conservation action can protect the largest number of species (the tropics) and benefit the largest number of people (urban centers).

Rapid inventory team surveys megadiverse Amazonian mountain range

The Rapid Inventory team, including Field Museum Senior Conservation Ecologists Douglas Stotz (white shirt) and Corine Vriesendorp (blue shirt), unloads supplies for its twenty-sixth inventory. In fall 2013, the team mounted a three-week exploration of the cultural and biological diversity in and around the Cordillera Escalera mountain range in northern Peru. The team recorded some 1,600 plant and animal species, approximately forty of them new to science. The impact of these inventories now totals millions of acres of rainforest protected from deforestation.





323,500 acres of high conservation value in Peru were inventoried. **232,300** people consulted the Science Action Center's online resources, including field guides. **5,200** local people were trained as citizen-scientists in Chicago and the Andes-Amazon. **40** new species were discovered during the twenty-sixth rapid inventory. **35** restoration and conservation projects were undertaken in Chicago.



Workshop empowers Colombian women in conservation

Ecology coordinator Tyana Wachter teaches indigenous women in Colombia to create Rapid Color Guides of their medicinal and useful plants in a workshop. The workshop partner, Asociación de Mujeres Indígenas, includes members of five ethnic groups. Over two days in July 2013, participants (most of whom had never used a computer before) learned to photograph plants, download them to a computer, edit them in Photoshop, and produce completed guides. These guides are used for plant identification and to preserve indigenous knowledge about the medicinal and practical uses of the plants.



Conservation program celebrates ten years connecting youth with nature

Since 2003, The Field Museum has been helping students on Chicago's Southeast Side and the Calumet region become knowledgeable environmental advocates in their communities. Students learn to turn science into action through a consecutive ladder of conservation education programs from fourth grade through high school, through workshops, fieldwork, and restoration projects. Each year, the program helps more than 3,700 students preserve nature in their communities (above) while building leadership skills and conducting professional development workshops for the local educators and community partners who work with these teens.

Listen to the students speak about their experiences at <http://vimeo.com/72896557>.



Steel company returns campus to natural dune habitat

Last summer, The Field Museum and the Nature Conservancy partnered with steel manufacturer ArcelorMittal to restore seven acres of the company's campus in East Chicago to native habitat. After mowing stopped, the Blue Flag Iris (above) and other plants emerged. Recent inventories of the site documented more than fifty species of plants, including one state-endangered species and two state-threatened species. The area includes walking paths with educational signage to engage area residents.



Students restore their own backyard to native landscape

On May 24, two hundred students from the program Calumet Is My Backyard (CIMBY) met at the Museum for the Science Summit. Students, including those above, spoke with the public about their environmental conservation work and what it means to them. CIMBY is a joint project of the Museum and Chicago Public Schools that integrates service learning and conservation action. During the 2012 to 2013 school year, students from twelve schools completed 2,350 stewardship hours and helped restore one acre of land.

Funding for CIMBY is provided by the Ford Motor Company Fund.



The Field Museum pairs the advances it makes in integrative research and science action with its collections to create object-based **learning** opportunities for the public. The Museum is redesigning the visitor experience to make collections and science even more compelling to the new generation.

Three million people go behind the scenes

Emily Graslie (left) and cameraman Tom McNamara film an episode of *The Brain Scoop* featuring guest star Associate Curator Janet Voight in her laboratory at The Field Museum. In July 2013, the institution hired Ms. Graslie, the host and writer of the educational YouTube channel *The Brain Scoop*, as its first-ever chief curiosity correspondent. *The Brain Scoop* video series shares the behind-the-scenes work of natural history museums by featuring the unique stories of the specimens that comprise these significant collections, the scientists who study them, and the exhibition-making process.

In its first six months at The Field Museum, *The Brain Scoop* produced eighteen episodes, which garnered three million new views and 62,000 additional subscribers to the channel. It boasted 192,000 total subscribers by the end of its first year. By meeting the public on its own terms—in this case, YouTube’s free and accessible platform—the Museum reaches and creates relationships with a much larger, global audience: 43 percent of total views on the channel come from outside of the United States.

See *The Brain Scoop* team in action and subscribe at youtube.com/thebrainscoop.





JANET R. YOIGHT
Assistant Professor of Biology



Field Museum science goes live in school classrooms

Digital Learning Specialist Sara Zufan (right) discusses the importance of museum collections to scientific research with Director of Collections Bill Stanley in the program Virtual Visits from The Field. More than 1,200 students have peered inside a Field Museum laboratory from the comfort of their classroom through this program. Using a sixty-minute live web broadcast, middle and high school students travel behind the scenes and meet a Field Museum scientist. Students can see, hear, and interact with Field Museum scientists, helping connect the research at the Museum with learning in the classroom. In the 2013 season, students learned about the Illinois gray squirrel's anatomy and habitat from Mr. Stanley. In fall 2014, Virtual Visits from The Field will launch three new modules on citizen science, ecological surveying, and deep sea thermal vents.

Major Sponsor: Target

Additional support provided by Chicago Blackhawks Charities



21 percent increase in attendance at formal education programs from 2012. **10.5 percent** increase in field trip enrollment from 2012. **3 million** people viewed *The Brain Scoop* on YouTube in its first six months at The Field Museum. **2,500** teachers brought the Museum's collections into their classrooms through the *N. W. Harris Learning Collection*, and **103,000** students learned from these materials.



Visitors become citizen scientists in new guest experience

Visitors in Stanley Field Hall (above) record data from digital images of plants. The program Microplants, which took place over a six-week period last summer, turned more than 750 Museum visitors into scientists. They generated a staggering 20,000 recorded data measurements from tiny land plants called liverworts, which are useful in monitoring climate change. The ongoing program is jointly spearheaded by the Education Department and Science and Education in collaboration with partnering institutions. The program connects everyday citizens to Museum research and harnesses their energy and enthusiasm to accelerate the pace of scientific discovery.

Learn how to participate at microplants.zooniverse.org.



Science comes alive for visitors

Collections Assistant Lauren Smith (left) dissects small mammals during Meet a Scientist. The program re-launched in 2013 as part of a renewed focus to bring science and research conducted behind the scenes directly to visitors. Every Friday from 10 AM to 12 PM, scientists are in the Museum's halls showcasing the wonders of the collections and highlights from their research. Through these experiences, visitors see artifacts and specimens from the 99 percent of the collections not on public display. By the close of 2013, 10,500 visitors interacted with scientists during these events.

The Field Museum brings science to life onsite through its **exhibitions**. In 2013, the Museum recast its exhibitions in context of the story of life on Earth. Special exhibitions leveraged Field Museum collections more than ever. The Museum is accelerating the production of its own exhibitions and expanding its traveling exhibition program to extend The Field Museum experience across the globe.

Exhibition celebrates the founding of the Museum and its first collections

A model of a giant octopus and a taxidermic lion are just two artifacts from the World's Columbian Exposition on view in *Opening the Vaults: Wonders of the 1893 World's Fair* (Oct. 25, 2013–Sep. 7, 2014). Praised as provocative and ambitious by the *New York Times*, the exhibition tells the story of the fair and the beginning of the Museum, presenting artifacts rarely—if ever—exhibited since 1893. A fraction of the Museum's twenty-six-million-specimen collection today, these first objects continue to prompt scientific discovery 120 years later.

Learn more at <http://worldsfair.fieldmuseum.org/>.

Opening the Vaults: Wonders of the 1893 World's Fair was created by The Field Museum.
Lead Sponsors: Allstate Insurance Company, Exelon, UL

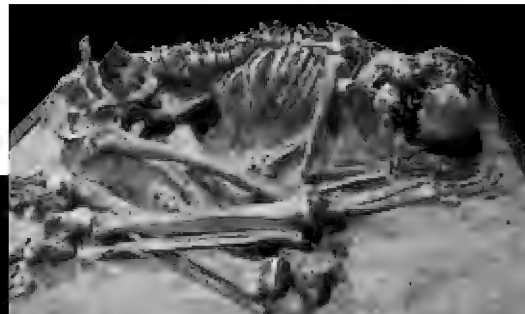
New app deepens visitor engagement with exhibitions

The Museum's first mobile tour application (inset) launched in October to coincide with the presentation of *Opening the Vaults: Wonders of the 1893 World's Fair*. Made possible through a grant from The Grainger Foundation, the app allows visitors to "curate" their Museum experiences by following Field-generated tours, creating custom tours on the spot, and sharing their activity through social media. Along the way, they delve into behind-the-scenes stories through augmented reality, audio clips, imagery, videos, and appearances by Field scientists. In just ten weeks, the app saw 6,500 visitor downloads. And in its first six months, the app surpassed its first year goal.

Download the app today from the App Store or Google Play Store.





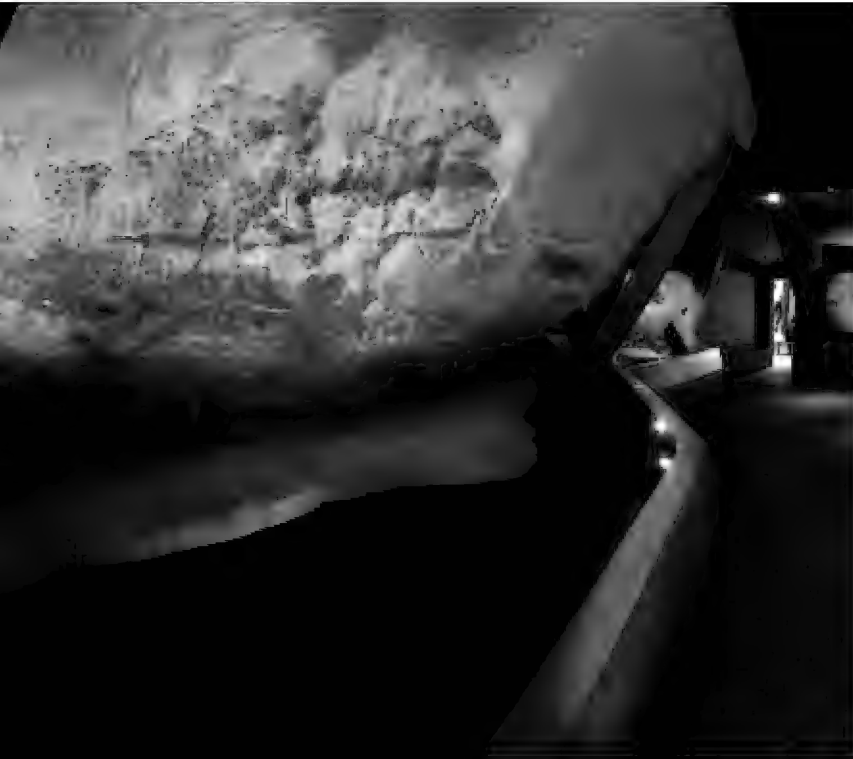


Exhibition collaboration generates record daily attendance

The larger-than-life-size model of a firefly (above) is one of several techniques used to explain the mysterious world of bioluminescence in the exhibition *Creatures of Light: Nature's Bioluminescence* (Mar. 7, 2013–Jan. 5, 2014). Through deep-sea fishes illuminating the perpetually dark depths of the oceans to glowworms dangling from the ceiling of New Zealand's famous Waitomo Caves, visitors discovered the ways light is used to attract a mate, lure unsuspecting prey, or defend against a predator. The Field Museum augmented its presentation by incorporating specimens from its collections. The show generated the highest daily exhibition attendance in recent history.

Creatures of Light: Nature's Bioluminescence is organized by the American Museum of Natural History, New York, in collaboration with The Field Museum and the Canadian Museum of Nature, Ottawa, Canada. Proud Sponsor: Discover

1 million people in North America experienced traveling exhibitions created by The Field Museum. **230,000** miles were traveled by exhibition staff to market, install, and de-install exhibitions. The **165th** Field Museum traveling exhibition opening occurred with *Nature Unleashed: Inside Natural Disasters*.



Exhibition makes its North American debut at the Museum

Scenes from the Stone Age: The Cave Paintings of Lascaux (Mar. 20–Sep. 8, 2013) made its North American debut at The Field Museum. In its Chicago presentation, the exhibition featured The Field Museum’s famed Magdalenian woman (above left), who lived near Lascaux around the time the cave was in use. A forensic reconstruction of her face by renowned sculptor Elisabeth Daynès accompanied it. A UNESCO World Heritage Site, the caves feature some of the earliest examples of humans interpreting their surroundings through art. The exhibition presented exact replicas of the famous paintings, which have been closed to the public since 1963.

This exhibition was created by The General Council of Dordogne, with support provided by the Regional Council of Aquitaine, the French Ministry of Culture and Communication, and the European Union.



Traveling exhibitions penetrate new markets

The Field Museum’s traveling exhibition program expanded into new markets in 2013. Highlights include rebuilding the perennially popular exhibition *Chocolate* (originally launched in 2002) for its fourth tour as well as entering three new markets with *Nature Unleashed: Inside Natural Disasters* (Calgary, Ottawa, and Salt Lake City). The program saw record success in another new market: Des Moines. At the Science Center of Iowa, *A T. rex Named Sue* was the highest attended exhibition in its history. The team also completed advanced planning for its 2014 schedule, which includes the Museum’s first European appearance with *Mammoths and Mastodons: Titans of the Ice Age* at the National Museums of Scotland.

Chocolate and its national tour were developed by The Field Museum. This exhibition was supported, in part, by the National Science Foundation. Nature Unleashed: Inside Natural Disasters and its national tour were developed by The Field Museum. National Tour Sponsor: Allstate Insurance Company. A T. rex Named Sue was created by The Field Museum and made possible through the generosity of McDonald’s Corporation.

■■■ Your support ensures the vitality of The Field Museum's scientific and educational work now and in the future.

\$8.4 million in unrestricted support was received and pledged (the highest amount in Museum history).

\$2.1 million was raised by the Women's Board gala (a 75 percent increase from 2012). **3,400** donors (a 15 percent increase from 2012).

535 volunteers contributed their time and skills.



Board of Trustees

Executive Committee

John W. Rowe
Chairman

John A. Canning Jr. ^A
Chairman Emeritus

Norman R. Bobins
Government Relations

Dr. Richard A. Chaifetz
Pension

Michael W. Ferro Jr.
Governance

James S. Frank
Finance

Marshall B. Front
Investment

Wilbur H. Gantz III ^A
Science

William C. Kunkler III
Development

Richard W. Lariviere, PhD ^E
President and CEO

Bobby Mehta
Public Programs

James J. O'Connor Jr.
Facilities and Administrative Services

Nydia Searle
Secretary

Michael Tang
Assistant Secretary

Mark Tebbe
Technology

David M. Tolmie
Assistant Secretary

Kelly R. Welsh
Audit

Linda S. Wolf
Marketing

James L. Alexander

Anthony K. Anderson

Susan M. Benton

Thomas L. Bernardin

Howard B. Bernick

Jean-Claude Brizard

John L. Bucksbaum

Gregory C. Case

Richard W. Colburn

Kenneth W. Coquillet

Professor Sir Peter Crane, FRS ^N

Robert W. Crawford Jr.

Louis T. Delgado

Roger K. Deromedi

Richard Elden

Charles M. Falcone ^N

Rick Fezell ^N

Jamee C. Field

Marshall Field V ^A

Janice L. Fields

Michael E. Flannery

J. Erik Fyrwald

Ronald J. Gidwitz

Ruth Ann M. Gillis

Sue Ling Gin

Robert H. Gordon ^A

Antonio J. Gracias

Jack M. Greenberg

Judy Greffin

Lewis S. Gruber ^A

Adnaan Hamid

David G. Herro

David D. Hiller ^A

Melody Hobson ^A

Terry A. Jenkins ^N

Todd Kaplan

Bryant L. Keil

Michael L. Keiser

Constance T. Keller ^A

Richard L. Keyser

Randolph R. Kurtz

Diane von Schlegell Levy

Timothy J. McCarty

W. James McNerney Jr.

Clare M. Muñana

Neil S. Novich

David C. Parry

Aurie A. Pennick

Peter B. Pond

J. B. Pritzker

Douglas P. Regan ^N

M. Jude Reyes

Larry D. Richman

Thomas S. Ricketts

Patrick G. Ryan Jr.

Michael J. Sacks

Jai Shekhawat

Alejandro Silva

Adele S. Simmons ^A

Matthew K. Simon

Maureen Dwyer Smith

Glenn F. Tilton

Everett S. Ward

Laura S. Washington

Gregory D. Wasson

Miles D. White

W. Rockwell Wirtz

Patrick Wood-Prince

Ex-officio Trustees

Liz Sharp ^N

Kevin P. Stineman ^N

Bryan S. Traubert

Kim White

National Trustees

Gail K. Boudreaux

Leo F. Mullin

Life Trustees

Mrs. T. Stanton Armour

Charles W. Benton

Judith S. Block

Willard L. Boyd ^A

Worley H. Clark ^A

James W. Compton

Frank W. Considine ^A

Stanton R. Cook

James A. Delaney III

Thomas E. Donnelley II

Juli P. Grainger ^D

Betty R. Hartman ^D

Wayne E. Hedien

Doris B. Holleb

Richard M. Jones

William H. Kurtis

Robert B. Loveman ^A

Cary J. Malkin

Scott P. Marks Jr.

John W. McCarter Jr.

Hugo J. Melvoin ^{AD}

James J. O'Connor Sr.

Richard J. Pigott ^A

Kimberly Querrey

Robert L. Wesley

William J. White

Blaine J. Yarrington

Opposite page

From left to right: (front row) James S. Frank, Kim White, William C. Kunkler III, Ronald J. Gidwitz, Doris B. Holleb, James L. Alexander, Marshall Field V, Judith S. Block, John W. Rowe, Richard W. Lariviere, John A. Canning Jr., Dr. Richard A. Chaifetz, Richard Elden, Charles W. Benton, Clare M. Muñana, (middle row) Jack M. Greenberg, Adnaan Hamid, Laura S. Washington, Maureen Dwyer Smith, Adele S. Simmons, Richard L. Keyser, Alejandro Silva, Ruth Ann M. Gillis, Rick Fezell, Charles Falcone, Nydia Searle, Bobby Mehta, David M. Tolmie, Aurie A. Pennick, Peter B. Pond, Todd Kaplan, (back row) Kenneth W. Coquillet, Everett S. Ward, Neil S. Novich, Michael E. Flannery, Robert W. Crawford Jr., Professor Sir Peter Crane, Randolph R. Kurtz, Roger K. Deromedi, David C. Parry, Jai Shekhawat, Judy Greffin, Mark Tebbe, Robert H. Gordon, Susan M. Benton, Louis T. Delgado, and Robert B. Loveman.

^T Trustee ^A Edward E. Ayer Legacy Society donor ^C Corporate Relations Program member

^D Deceased ^E Field Museum employee ^N New Trustee

The Founders' Council

The Founders' Council is The Field Museum's premiere annual giving donor society. Member gifts of \$2,500 or more fund scientific innovation and ensure the Museum continues to inspire visitors and future scientists.

Steering Committee

Robert B. Loveman^{TA}
Chair
Kate Donaldson and Ryan Whitacre
Mrs. Noel Kaplan
Elisabeth C. Meeker
Ms. Liz Sharp^N
Mr. Lanny Passaro
Mr. and Mrs. Richard H. Schnadig^A
Pricilla A. (Pam) and Douglas H. Walter

\$100,000+

Anonymous (2)
Mr.^T and Mrs. Richard Elden
Mr.^T and Mrs. Michael W. Ferro Jr., Merge Foundation Fund at The Chicago Community Foundation
Mr.^T and Mrs. Michael L. Keiser
Robert M. and Diane von Schlegell Levy^T
Mr. and Mrs.^T Michael D. Searle

\$50,000-99,999

Anonymous
Rita and John^T Canning^A
Mr.^T and Mrs. Gregory C. Case
Dr.^T and Mrs. Richard A. Chaifetz
Mr.^T and Mrs. Roger K. Deromedi
Dr.^N and Mrs. Charles M. Falcone
Mr.^{TA} and Mrs. Marshall Field
Ms. Janice L. Fields^T and Mr. Doug Wilkins
Mr.^T and Mrs. James S. Frank
Wilbur^T and Linda Gantz^A
Mr. David G. Herro^T
Mr. and Mrs.^T Dennis J. Keller^A
Mr.^T and Mrs. Richard L. Keyser
Mr. William C. Kunkler^T and Ms. Susan Crown
Mr.^T and Mrs. Bobby Mehta
The Negaunee Foundation
The Richard H. Driehaus Charitable Lead Trust^A
John W.^T and Jeanne M. Rowe

Cari and Michael^T Sacks
Mr.^T and Mrs. W. Rockwell Wirtz

\$25,000-49,999

Anonymous (2)
Mr. and Mrs. Frank L. Bauer
Mr.^T and Mrs. Norman R. Bobins
Barbara^E and Roger Brown
John^T and Jackie Bucksbaum
The Comer Foundation Fund at The Chicago Community Trust
Mr. Stanton R. Cook^T
Mr.^T and Mrs. Kenneth W. Coquilllette
Mr.^T and Mrs. Robert W. Crawford Jr.
Ms. Elizabeth I. Crown and Mr. William Wallace
Mr.^N and Mrs. Rick Fezell
Ms. Jamee C. Field^T / The Edith B. and Lee V. Jacobs Fund No. 1

Mr.^T and Mrs. Michael E. Flannery
Peggy and Steve Fossett Foundation
Christina and Ron^T Gidwitz
Mr.^T and Mrs. Lewis S. Gruber^A
Hamid Family Foundation
Katie Hazelwood and Todd^T Kaplan
Mr. David D. Hiller^{TA}
Ms. Mellody Hobson^{TA}
Howard B. Bernick Foundation^T
J. B.^T and M.K. Pritzker Family Foundation
Mr.^N and Mrs. Terry A. Jenkins
Dr. H. Fisk Johnson
Clare Muñana^T
Mr.^T and Mrs. Neil S. Novich
Mr.^T and Mrs. David C. Parry
Peter^T and Alicia Pond
Kimberly Querrey^T and Louis Allen Simpson
Mr. Douglas P. Regan^N and Ms. Kathy Brock
Thomas^T and Cecelia Ricketts
Lydia and Patrick^T Ryan Jr.
Mr. and Ms. Louis L. Schorsch
Mr. Jai Shekhawat^T
Matthew K.^T and Julie Simon
Mr.^T and Mrs. Mark Tebbe
Mr.^T and Mrs. David M. Tolmie
Mr.^T and Mrs. Gregory D. Wasson
Kim^T and Miles^T White



Donning a personalized Chicago Cubs jersey, President Richard W. Lariviere led 31,000 baseball fans in the seventh-inning stretch at Wrigley Field on August 19. The night concluded with an eleven-to-one win for the Cubs against the Washington Nationals. Trustee Tom Ricketts, chairman of the Cubs, made this night possible. Thank you, Tom!

Linda^T and Ron Wolf
Mr.^T and Mrs. Patrick Wood-Prince

\$10,000-24,999

Anonymous (3)
Mr.^T and Mrs. Tom Bernardin
Mr. and Mrs.^T Philip D. Block III
Linda and Vincent Buonnano
Carol and Tom Butler
Mr. and Mrs. Theodore R. Butz / The Butz Foundation
Ms. Janet W. Diederichs^A
Janet and Craig Duchossois
Ginny and Peter Foreman
Mr.^T and Mrs. Erik Fyrwald
Gallagher Family Foundation
Ms. Ruth Ann M. Gillis^T
Mr.^T and Mrs. Antonio J. Gracias
Mr.^T and Mrs. Jack M. Greenberg
Mr. and Mrs.^T William E. Greffin
Mr. and Mrs. Matthew Harris
Mrs. Stephanie C. Harris / The Edith B. and Lee V. Jacobs Fund No. 2
Wayne E.^T and Colette J. Hedien
Mrs. Harold H. Hines Jr.^A
Doris B. Holleb^T
Dr. and Mrs. Wayne J. Holman III
Mr. and Mrs. J. Thomas Hurvis
Mrs. Noel Kaplan
Mr. Bryant L. Keil^T

Mr. and Mrs. Keith Kizziah
Ms. Nancy W. Knowles
Laurie and Rich Kracum
Mr. Randolph R. Kurtz^T
Dr.^{TE} and Mrs. Richard W. Lariviere
The Lavin Family Foundation
Mr. Robert B.^T and Mrs. Gail J. Loveman^A
Mr. and Mrs. Barry L. MacLean
Lewis and Susan Manilow
Marshall B. Front Family Charitable Foundation / Laura De Ferrari and Marshall B. Front^T
Mr.^T and Mrs. W. James Mc Nerney Jr.
Mr.^{TD} and Mrs. Hugo J. Melvoin^A
Cathy and Bill Osborn
Ms. Aurie A. Pennick^T
Mr. and Mrs. Gordon S. Prussian
Mrs. William L. Searle
Mr.^T and Mrs. Alejandro Silva
Harold B. Smith
Maureen Dwyer Smith^T and Edward Byron Smith Jr.
Tawani Foundation
Mr. D and Mrs. Theodore D. Ticken Jr.
Mrs. Herbert A. Vance
Ms. Nancy Hamill Winter

\$5,000-9,999

Anonymous

Alexander and Alexander
Attorneys at Law ^T

Mrs. ^TT. Stanton Armour

Mr. Harry Axelrod ^A

Mr. E. M. Bakwin

Mrs. Mary Baniak and
Mr. Mike Baniak

Dr. Verna L. Baughman

Ms. Susan M. Benton ^T

Mr. and Mrs. David W. Bernauer

Dr. and Mrs. Norman L.
Blankenship

Rosemarie and Dean Buntrock

Dr. George T. Caleel and Mrs.
Rebecca Childers Caleel

Dr. and Mrs. ^D Robert Wells Carton

Mr. and Mrs. Henry T. Chandler ^A

Mrs. Joyce E. Chelberg

Mr. ^T and Mrs. Worley H. Clark Jr. ^A

Ms. Betty L. Cleeland

Froilan and Cecilia Concepcion

Mr. and Mrs. James J. Conrad

Mary and Jim Costello

Mark and Connie ^D Crane

Mr. Jim W. Croft ^F and Mrs.
Marilyn Martinson Croft

Mr. and Mrs. John T. Cunningham

Dr. and Mrs. Tapas K. Das Gupta

Mr. Richard A. Ditton

Mr. and Mrs. Samuel H. Ellis

Ms. Shirley M. Evans ^{AD}

Mr. and Mrs. James H. Ferry III

Mr. Andrew J. Filipowski and
Mrs. Melissa Oliver

Mr. and Mrs. Philip M. Friedmann
General Packaging Products

Ms. Abigail B. Gerry / The Edith B.
and Lee V. Jacobs Fund No. 3

Mr. and Mrs. Camillo Chiron

Mr. and Mrs. James J. Glasser

Mr. and Mrs. Richard C. Godfrey

Richard and Mary L. Gray

Mrs. Charles C. Haffner III

Mr. and Mrs. William J.
Hagenah III

Mrs. D. Foster Harland

Harris Family Foundation

Pamela K. and Roger B. Hull

Mr. and Mrs. Bruce H. Lauer

The Lefkofsky Family Foundation

Mrs. Deirdre LeMire

Mr. Richard J. Loewenthal Jr.

Benjamin and Sandra Madey

Mr. ^T and Mrs. Scott P. Marks Jr.

Mr. ^T and Mrs. Timothy J. McCarty

Dr. Kennon P. McKee

Susan Mikalauski

Goldie Wolfe Miller and Jack Miller

Mr. ^T and Mrs. Leo F. Mullin

Ms. Christine M. Myers

Mr. and Mrs. Madhavan K. Nayar

Mrs. Mary Jane Nordlund

Mr. ^T and Mrs. James J.
O'Connor Sr.

Mrs. China I. Oughton

Mr. and Mrs. Charles W. Palmer

Lanny and Terry Passaro

Mr. and Mrs. John W. Puth

Mr. and Mrs. Robert Raimondi

Ms. Helen S. Reed

Mrs. John Shedd Reed

Reinhardt H. & Shirley R. Jahn
Foundation

Mr. and Mrs. Paul A. Rubschlager

Mr. and Mrs. Robert J. Sanborn

Mrs. Robert E. Sargent

Karla Scherer

Mr. and Mrs. Gordon I. Segal /
Segal Family Foundation

Mr. Roger D. Shaw Jr.

Mrs. Ann T. Shields

Rose L. Shure ^A

Mr. and Mrs. Romolo Sidoli

Adele S. Simmons ^T and John L.
Simmons ^A

Ms. Elizabeth L. Snyder

Joachim and June Staackmann

Glenn ^T and Jacqueline Tilton

Mr. Timothy A. Torok

Mr. and Mrs. Stuart B. Townsend

Mr. and Mrs. George S. Trees Jr.

Mr. Howard J. Trienens

Mr. and Mrs. Robert J. Wagner ^A

Mr. and Mrs. John R. Walter

Mr. Everett S. Ward ^T and
Ms. Iris Sims

Barbara H. West ^A

Mrs. Henry P. Wheeler

Mrs. Ann S. Wolff

\$2,500-4,999

Anonymous (4)

Sharon Alister and M. Alister

Mrs. John W. Allyn ^D / The Allyn
Foundation, Inc.

Mr. and Mrs. Richard J. Almeida

Mr. and Mrs. Thomas Anderson

Mrs. Birute J. Apke

Susan and Stephen Baird

Warren L. Batts

Mr. and Mrs. James N. Bay Jr.

Ms. Cheryl Beebe and Mr. James A.
Grimm

Mr. ^T and Mrs. Charles W. Benton

Mr. and Mrs. Harrington Bischof

Dr. R. D. Bock and Dr. Renee
Menegaz-Bock

Mr. and Mrs. John J. Borland Jr.

Robert and Laura Boyd

Willard L. ^T and Susan K. Boyd ^A

Mr. and Mrs. Richard S. Brennan

Mr. and Mrs. Andrew W. Brown

Mr. and Mrs. David M. Buck

Mr. and Mrs. Randolph Burt

Mr. and Mrs. Wiley N. Caldwell

Mr. and Mrs. Peter R. Carney

Joan and Tom Castino

Ceres Foundation

Mrs. Hammond Chaffetz

Mr. and Mrs. John S. Chapman

Mr. and Mrs. Paul S. Chatalas

Kenneth and Linda Ciriacks

Mr. James W. Compton ^T

Mr. and Mrs. William A. Crane

Mr. and Mrs. Robert O. Delaney Jr.

Mr. and Mrs. Byram E. Dickes

Dr. and Mrs. David G. Dodwell

Mr. Thomas R. Doler

Ms. Shawn M. Donnelley and
Mr. Christopher M. Kelly

Mr. ^T and Mrs. Thomas E.
Donnelley II

Phyllis Weil Ellis

La and Philip Engel ^A

Enivar Charitable Fund

Mrs. Jerome L. Ettelson

Mr. and Mrs. W. J. Farrell

Mr. and Mrs. Robert Feitler

Mr. Harve A. Ferrill

Mr. and Mrs. Kevin Flynn

Donna and Peter Freeman

Mr. and Mrs. Joel M. Friedman

Ms. Donna J. Godel and
Mr. Roger E. Godel

Mrs. Delta A. Greene

Timothy and Joyce Greening ^A

Mr. and Mrs. Edward C. Haffner

Mr. and Mrs. Dean M. Harrison

Dr. Malcolm H. Hast ^A

Beverly and Warren Hayford

Mr. and Mrs. Thomas Z.
Hayward Jr.

Janet and Bob Helman

Mr. and Mrs. Patrick J. Herbert III

Mr. and Mrs. John L. Hines ^A

Ms. Peggy Hoberg ^A

Mr. and Mrs. Arthur Holzheimer

Mr. Lawrence V. Howe Jr.

Dr. Maria R. Hrycelak

Ms. Lorraine M. Hurt and
Mr. George M. Ingram

Jill Hutchison and David Rosholt

Mr. and Mrs. W. Bruce Johnson

Ms. Pamela M. MacVicar Johnson

Mr. Charles L. Katzenmeyer ^F

Mr. and Mrs. Jerry M. Kelly ^A

Mr. and Mrs. Sheldon E. Kent

Mr. and Mrs. T. Eric Kilcollin
King Family Foundation

Mr. and Mrs. William J. Kirby

Mr. and Mrs. Jeffrey D. Korzenik

Mr. Richard G. Kron and
Ms. Deborah A. Bekken ^F

Dr. Robert A. Kubicka and
Dr. Claire Smith

Ms. Wende L. Fox Lawson and
Mr. James Lawson

Mr. and Mrs. Patrick Layng

Mr. and Mrs. Elliot Lehman

Ronna Lerner and Joel Horowitz

Ms. Renée Logan

Mr. and Mrs. Craig Luce

Ms. Susan H. Luciu

Mr. J. David Lynn

Mr. J. Robert Lynn

Dr. Douglas R. MacAyeal and
Ms. Linda A. Sparks

Cary J. ^T and Lisa Klimley Malkin

Mr. and Mrs. Timothy J. Malloy

Sandy and Jerry Manne

Marie Marotta

Mrs. Donna J. Matson and
Mr. Robert W. Carpenter

Mr. ^T and Mrs. John W. McCarter Jr.

Mr. and Mrs. Archibald McClure

Dr. William B. McDonald ^A

Mr. and Mrs. John E. McGovern III

^T Trustee ^A Edward E. Ayer Legacy Society donor ^C Corporate Relations Program member

^D Deceased ^F Field Museum employee ^N New Trustee

The Founders' Council cont'd

Bruce and Jane McLagan
 Mr. and Mrs. Charles P. McQuaid
 Erma S. Medgyesy^A
 Ms. Elisabeth C. Meeker
 Mr. and Mrs. Richard J. Metzler
 Mr. and Mrs. Michael A. Miles
 Mr. Donald R. Monson and
 Ms. Ying Hsu
 Ms. Christina J. Norton and
 Mr. John A. Biek
 Mr. and Mrs. Todd J. Ohlms
 Mrs. Virginia O'Neill
 Mr. Joe Ortiz and Ms. Ana Justice
 Ms. Donna L. Owens
 Mr. and Mrs. Edward Pasquesi
 Mr.^T and Mrs. Richard J. Pigott^A
 Carl and Barbara Plochman
 Mr. and Mrs. Philip J. Purcell III
 James A. Radtke and Susan A.
 Kressin
 Mr. Alan Resetar^E and
 Mrs. Donna Resetar^A
 Lynne King Roberts
 Ms. Anita J. Rogers^A
 Mr. and Mrs. Jeffrey S. Ross
 Mr. and Mrs. Norman J. Rubash
 Dr. Myron E. Rubnitz and
 Mrs. Susan B. Rubnitz
 Ryan Ruskin
 Mr. Richard M. Saklak
 Mr. and Mrs. F. Eugene Schmitt
 Karen and Frank Schneider
 Mr. and Mrs. Thomas J. Schnitzer
 Fred and Sue Schulte
 Mr. and Mrs. Richard J. L. Senior
 Mr. and Mrs. Stephen H. Sentoff
 Mr. and Mrs.^N Jeffrey S. Sharp
 Bob and Charlene Shaw^A
 Pam and Tom Sheffield /
 JS Charitable Trust
 Mrs. Dolores Silverman
 Mrs. Jackson W. Smart Jr.
 Dr. James L. Smith
 Mr. and Mrs. Benjamin
 Smith-Donald
 Mr. and Mrs. John B. Snyder
 Ms. Erich Sommer
 Mr. and Mrs. Jeffrey Sommer
 Mr. and Mrs. Scott E. Sommer
 Ms. Amanda A. Sonneborn and
 Mr. Peter R. Malecki
 Ms. Heather T. Sparling and
 Mr. Jason Bakk

Mrs. Susan Stein
 Liz Stiffel
 Mr. Kevin L. Stoeckel and
 Mrs. Emily Heisley Stoeckel
 Mr. and Mrs. Roger W. Stone
 Harvey and Mary Struthers
 Ms. Judith B. Sugarman^A
 Mr. Arthur T. Susman
 Mr. and Mrs. Robert Szalay
 Mr. and Mrs. John W. Taylor III
 Mr. and Mrs. Courtney D. Tedrowe
 Mr. and Mrs. Ed Thayer
 Mr. and Mrs. Richard L. Thomas
 Jim and Carol Tichy
 Dr. Michael M. Todd
 Mr. and Mrs. William R. Voss
 Mr. Albert Wald
 Mr. and Mrs. Douglas H. Walter
 Mrs. Roy I. Warshawsky
 Professors Johannes and
 Julia R. Weertman
 Mr. Lon Wehrle^A
 Mr. and Mrs. Brian B. Whalen
 Mr. Ryan B. Whitacre and
 Ms. Katherine T. Donaldson
 Ms. Jean A. White and
 Ms. Helene Beisecker
 Dr. Chester Wilson Jr.
 Ms. Claudia L. Winkler^A
 Mr. and Mrs. Robert Zentner
 Mark H. Zornow, MD

Annual Fund

The Annual Fund supports The Field Museum's people and programs. These contributions allow the Museum to meet critical needs and keep its doors open to the public 364 days a year.

\$1,000–2,499 (Field Explorers)

Anonymous (8)
 Mr. and Mrs. A. Robert Abboud
 Mr. William N. Aldeen and
 Ms. Shelley Torres
 Mr. and Mrs. Richard J. Almeida
 Mr.^T and Mrs. Anthony K.
 Anderson
 Mr. and Mrs. Paul Anest
 Mr. Michael D. Arnold and
 Ms. Monica Wallace
 Ms. Ann Griffith Ash
 Ms. Yvette Ault
 Mrs. Laura Bader and
 Mr. Victor Sturm
 Mr. and Mrs. David Baier
 Mr. and Mrs. Donald A. Belgrad
 Mr. and Mrs. Andrew K. Block
 Mr. James A. Brainer
 Mr. and Mrs. Robert B. Breisblatt
 Mr. Jean-Claude Brizard^T and
 Dr. Brooke Stafford-Brizard
 Nancy L. and William M. Brown
 Mr. and Mrs. Nathan A. Brown
 Samuel and Beth Buchsbaum
 Dr. Sharon S. Burke
 Mr. and Mrs. John D. Burns II
 Mr. and Mrs. Clark Burrus
 Ms. Jeanne C. Busch
 Mr. and Mrs. Philip A. Canfield
 Mr. and Mrs. Gregory P. Casimer
 Mrs. Silas S. Cathcart
 Laura Biddle Clarke
 Mr. and Mrs. John C. Colman
 Ms. Nancy Corral
 Ms. Christine Courtnege
 Mr. Justin Daab and
 Ms. Lois Morrison
 Ms. Rebecca Dauparas
 Mr. and Mrs. Allen R. Davies
 Mr. and Mrs. William L. Davis III
 Lori and Bill Dawson
 Mr. and Mrs. Mark D. Dawson
 Ms. Diana L. DeBoy
 Ms. Nancy Dehmlow
 Mr. and Mrs. Thomas Delahunty
 Mr. and Mrs. David Devonshire
 Dr. Richard A. Domanik and
 Dr. Janice Y. Domanik
 Dr. Naomi S. Donnelley
 Mrs. Glenda W. Duncan
 Mr. and Mrs. Timothy Earle
 Ms. Erika E. Erich
 Mr. and Mrs. Eugene F. Fama
 Mr. and Mrs. William Farley
 Mary and Bruce Feay^A
 Mr. Edward T. Fishwick and
 Ms. Mary M. Case
 Mr. Eric Flint and
 Mrs. Lucille Robbins
 Sonia and Bill Florian
 Joanne Benazzi Friedland
 Mr. Gary Friedlander
 Mr. and Mrs. Timothy D. Friedman
 Mr. and Mrs. Maurice F. Fulton
 Mr. and Mrs. Christopher O. Glass
 Ms. Susan Goldschmidt and
 Mr. Miles Taub
 Mr. John C. Goodall Jr.
 Mr. and Mrs. Arthur Gooding
 Mr. and Mrs. David S. Harrington
 Mr. and Mrs. Raymond V. Hartman
 Mr. and Mrs. Jeffrey R. Havsy
 Ms. Cynthia S. Heusing and
 Mr. David H. Kistenbroker
 Mr. and Mrs. Mark C. Hibbard
 Mr. and Mrs. Thomas H. Hodges
 Mr. and Mrs. Charles F. Hofbauer
 Mr. and Mrs. Richard C.
 Hoffman Jr.
 Mr. and Mrs. Richard M. Holm
 Ms. Janice Honigberg
 Mrs. Nancy A. Horner
 Mr. and Mrs. Peter Huizenga
 Tex and Susan Hull
 Dr. and Mrs. James D. Hurst
 Mr. Matthew Isoda and Ms. Brigid
 M. Maniates Isoda
 Mr. and Mrs. Fruman Jacobson
 Ms. Deborah Johnson and
 Ms. Angela Nesci
 Mr. and Mrs. James M. Johnson
 Mrs. Samuel C. Johnson II
 Mr. and Mrs.^E Christopher
 Jorgensen
 Mr. and Mrs. Robert Judelson
 Linda M. Jung

Mr. and Mrs. Jordan L. Kaplan
 Ms. Janet Kelly
 Mr. and Mrs. Eric Kennedy
 Mr. and Mrs. John E. Kirkpatrick
 Mr. and Mrs. Lester B. Knight III
 Mr. and Mrs. Norman A. Koglin
 Mr. William T. W. Kwan
 Mr. and Mrs. Lee Lane
 Ms. Cathy G. Lazaroff
 Mr. and Mrs. Michael P. Leahy
 Mr. Sheldon L. Leibowitz
 Mr. and Mrs. John G. Levi
 Mrs. Robert R. Lipsky
 Mrs. Laura Litten and
 Mr. Andre Leduc
 Mr. Barry A. Malkin and
 Ms. Jodi Block
 Mrs. Charlotte Marks
 Ms. Jamie C. Marshall and
 Mr. Richard Sobkowiak
 Ms. Michelle L. Maton and
 Mr. Michael C. Schaeffer
 Mr. and Mrs. Frank D. Mayer Jr.
 Heidi and Gregory Mayer
 Bess Catherine McCord and
 James McCord
 Mr. and Mrs. Ronald McKee
 Mr. and Mrs. Andrew J.
 McKenna Sr.
 Mr. and Mrs. John A. McKenna
 Mrs. Leslie Cantz McLamore and
 Mr. Scott McLamore
 Mr. and Mrs. John McLean
 Mr. Ian McNish
 Ms. Marietta McPike
 Dr. Steven A. Melnyk
 Ms. Pamela G. Meyer
 Ms. Nancy M. Michael
 Mr. and Mrs. Robert R. Moeller ^A
 Mr. and Mrs. Carl E. Moore Jr.
 Ms. Mary K. Moreland and
 Mr. Daniel T. Jenks
 Mr. Robert Moyer and
 Ms. Anita Nagler
 John C. and Victoria Martin Myers
 Ms. Mary Nalbandian
 Mr. and Mrs. Kenneth Nebenzahl
 Mr. and Mrs. John Doane Nichols
 Ms. Lora Nickels ^E and
 Mr. Thomas Tague
 Mr. and Mrs. John P. Nielsen ^A
 Mr. ^T and Mrs. James J.
 O'Connor Jr.

Ms. Kristen M. Olson
 Mr. Francisco Ortiz
 Ms. Sarah R. Packard
 Ms. Elizabeth Parker and
 Mr. Keith Crow
 Mr. James D. Parsons
 Robert K. Parsons and
 Victoria J. Herget
 Mr. and Mrs. Joseph Paszczyk ^A
 Ari and Zoe Paxinos
 Mr. and Mrs. Robert P. Perkaus Jr.
 Mr. and Mrs. John F. Podjasek III
 Mr. Michael P. Polsky
 Mr. Irwin Press
 Mrs. Mary F. Quednau
 Mr. and Ms. George A. Ranney Jr.
 Nancy and Warren Rasmussen
 Mr. and Mrs. Stephen L. Ritchie
 Roberts Family Foundation
 Mr. and Mrs. Donald E. Rocop
 Mr. and Mrs. Phillip B. Rooney
 Mr. and Mrs. Richard M. Rosenberg
 Mr. and Mrs. Harold Rosenson
 Mr. Richard R. Rosin and
 Ms. Anne McPhee
 Mrs. Doris D. Roskin
 Mr. and Mrs. Alexander L. Ross
 Mr. and Mrs. Edward W. Ross
 Mr. and Mrs. John W. Rutledge
 Mr. and Mrs. Patrick G. Ryan
 Mrs. Rachel Ryan
 Jessica and Steve Sarowitz
 Ms. Barbara M. Schleck and
 Mr. Gary M. Ropski
 Ms. Carol H. Schneider
 Mr. and Mrs. Alan Sebulsky
 Mr. and Mrs. David Sensibar
 Mr. Robert M. Shafis ^E and
 Ms. Carol A. Erickson
 Mrs. Victoria M. Skala
 Mr. and Mrs. Walter S. Snodell III
 Mr. and Mrs. Charles H. Solberg Jr.
 The Solot Family Foundation
 Mr. and Mrs. James Stanczak
 Mr. and Mrs. Stanley M. Stevens
 Ms. Marilyn Stewart
 James and Pamela Stola
 Mr. and Mrs. Ivan G. Strauss
 Mr. and Mrs. Robert D. Stuart Jr.
 Mr. and Mrs. Bert O. Sullivan Jr.

Mr. and Mrs. Blake H. Swift
 Mr. and Mrs. Thomas Tisbo
 Mrs. and Mr. Mary Beth Turek
 Mr. and Mrs. Richard Uihlein
 Mr. Jeffrey A. Urbina and
 Ms. Gaye Lynn Hill
 Mr. and Mrs. Thomas Veldman
 Mr. John P. Ver Bockel and
 Ms. Kathleen E. Carbonara
 Mr. and Mrs. Daniel J. Walsh
 Ms. Jeri L. Webb ^E
 Mr. and Mrs. Robert G. Weiss
 Mr. Bartholomew Weldon and
 Ms. Deborah Zroka
 Mr. Kelly R. Welsh ^T and
 Ms. Ellen S. Alberding
 Ms. Stacey Weltmer
 Mr. William J. White ^T
 Mr. and Mrs. Raymon Whitney
 Mr. and Mrs. Paul R. Wiggan
 Dr. David E. Willard ^E
 Mr. Lawrence J. and
 Mrs. Margaret V. Witry ^A
 Mr. and Mrs. William E. Wolf
 Mr. and Mrs. Tom Wotovich
 Mr. and Mrs. Joseph Zajac
 Mr. and Mrs. Dennis M. Zaslavsky
 Ms. Tara Zientek

\$500-999 (Field Naturalists)
 Anonymous (3)
 Mr. and Mrs. John Aalbregtse
 Mr. and Mrs. Arthur Adams
 Barbara and Steven Adelman ^A
 Ms. Eva Adler and Ms. Lorica Adler
 Mrs. Roberta R. Allen
 Dr. and Mrs. Dominic J. Allocco
 Darrell and Deb Anderson
 Mrs. Patricia S. Anderson
 Mr. Thomas A. Andreoli and
 Ms. Anne W. Mitchell
 Mr. and Mrs. S. Frank Arado Jr.
 Mr. and Mrs. Daniel Arntzen
 Dr. and Mrs. Anthony J. Ascioti
 Ms. Andrea Atlass and
 Mr. Kenneth Kuehule
 Ms. Kaye B. Aurigemma
 Mr. Rodney Austin
 Mrs. Juliette F. Bacon
 Richard P. Bail and Janice G. Bail
 Ms. Joy L. Bailey

Mr. and Mrs. Ryan Balber
 Ms. Katherine M. Barnash
 Carlo Basile and Kim Basile
 Ms. Sandra Bass
 Mr. and Mrs. Douglas D. Baum
 Mr. and Mrs. Eric Beaumont
 Mr. and Mrs. Philip S. Beck
 Mr. and Mrs. Robert D. Becker ^A
 Mr. Matthew Benoit and
 Dr. Cathleen Dohrn
 Mr. and Mrs. Robert L. Berner Jr.
 Mr. and Mrs. Charles E. Bidwell
 Mr. Thomas R. Bland
 Mr. and Mrs. John C. Blomgren
 Nancy and George H. Bodeen
 Mr. Peter Bowe and
 Ms. Barbara Stewart
 Mr. Keith D. Bowersox
 Mr. and Mrs. Scott Brady
 Mr. Richard T. Brannegan ^A
 Mr. and Mrs. Michael Bresolin
 Ms. Laural Briggs and
 Mr. Tim Scale
 Mr. John A. Bross Jr.
 Mr. and Mrs. Steven L. Brown
 Mr. and Mrs. Jackson Brunsting
 Mrs. Ellen S. Buchen
 Mr. and Mrs. Joshua T. Buchman
 Mr. and Mrs. Thomas Buck
 Mrs. Elizabeth Buker
 Mr. and Mrs. Joshua S. Burden
 Lenore and Douglas Cameron
 Mr. and Mrs. Walter R. Carlson
 Mr. and Mrs. Robert E. Carroll
 Mr. and Mrs. Frantz R. Cartright
 Mr. and Mrs. Donald Cassil
 Mrs. Alice G. Childs
 Ms. Jacqueline Chosnek and
 Mr. David M. Williams
 Mr. and Mrs. Howard Chun
 Mr. Nathaniel P. Clapp and
 Ms. Sarah Dietz
 Mr. and Mrs. James A. Clark
 Mr. Ray Colebaugh
 Mr. John T. Coletta
 Mr. and Mrs. Mercer Cook
 Mr. George M. Covington
 Mr. William D. Cox Jr.
 Ms. Noreen Coyan and
 Mr. Donald Simmonds

^T Trustee ^A Edward E. Ayer Legacy Society donor ^C Corporate Relations Program member

^D Deceased ^E Field Museum employee ^N New Trustee

Annual Fund cont'd

Mr. Guy R. Crane	Mr. and Mrs. James E. Forrest	Mr. and Mrs. B. Peter Hofmann	Dr. and Mrs. Jay H. Kleiman
Professor ^N and Lady Peter R. Crane	Mr. and Mrs. Henry S. Frank	Mr. and Mrs. Thomas J. Hope	Mr. Barry Kohl
Mr. and Mrs. Bruce Crown	Mr. and Mrs. William J. Friend	Mr. and Mrs. William S. Hoppe	Mr. and Mrs. Glenn A. Kolososki
The Honorable Barbara Flynn Currie	Mr. John F. Fyfe and Ms. Joan M. Greco	Mr. and Mrs. Michael Huchel	Mrs. Alberta Kosik
Mr. Charles F. Custer	Ms. Frances Gale and Ms. Virginia Gale	Ms. Laurie Huget and Mr. Werner Huget	Ms. Patricia Kosmerl
Robert and Cathy Daly	Mr. and Mrs. J. Patrick Gallagher Jr.	Mrs. Diane S. Humphrey	Mr. and Mrs. Martin J. Kozak
Mrs. Kenneth W. Dam	Ms. Jeanne K. Gang and Mr. Mark Schendel	Mr. and Mrs. G. Cleveland Hunt Jr.	Mr. Paul R. Kressin and Ms. Kay Lee
Mr. William R. Darman and Ms. Maria Mau	Mr. Kristopher Garcia and Mrs. Theresa Garcia-Lechocki	Ms. Patricia J. Hurley	Mr. and Mrs. Stuart Kriegermeier
Michael Daugherty	Mr. and Mrs. Gary E. Gardner	Mr. and Mrs. Justin Huscher	Emerson and Martha Lacey
Dr. and Mrs. Lloyd Davidson	Dr. and Mrs. John S. Carvin	Mr. Steve M. Isaac and Ms. Judy Olds	Mr. and Mrs. Alan J. Lacy
Ms. Rebecca Davidson ^A	Mr. and Mrs. Isak V. Gerson	Mr. and Mrs. Andrew M. Jarosz	Mr. James R. Lancaster
Kent and Susanne Davis	Mr. and Mrs. Kanwal Ghaey	Mr. and Mrs. Sidney F. Jarrow	Mr. and Mrs. Dirk B. Landis
Ms. Patricia R. Davis	Mrs. Mary Jane Gibbs	Mr. and Mrs. Jerald L. Johnson	Mr. and Mrs. William W. Lane
Mr. and Mrs. Randall Davis	Mr. and Mrs. David A. Gillam	Mr. and Mrs. Brian Jones	Mr. and Mrs. David R. Larson
Louis ^T and Margarette Delgado	Dr. Chris Godell	Mr. and Mrs. George T. Jones Jr.	Mrs. Winfred M. Leaf
Ms. Katherine H. Deming and Mr. Joseph Cavanaugh	Mr. and Mrs. John A. Goodman	Mr. and Mrs. Tom F. Kacprowicz	Ms. Leslie A. Lee
Mr. and Mrs. William E. Derrah III	Mr. and Mrs. James P. Gorter	Mrs. Karen A. Kammer	Mr. and Mrs. Gary Lessenberry
Owen Deutsch and Rona Talcott	Ms. Patricia A. Gowland	Ms. Verla Kasmerchak	Bonita and Bob Levin
Mr. and Mrs. Blair C. Dickinson	Mr. and Mrs. Chris Grams	Mr. and Mrs. Richard W. Kasperson	Ms. Carolyn S. Levin
Ms. Leonora Dickson	Ms. Karen L. Granda and Mr. John S. Mrowiec	Ms. Anne Kavanagh and Mr. Terry Smith	Mr. and Mrs. Donald Lewis
Mr. and Mrs. James S. DiMatteo	Mr. and Mrs. Richard Gray	Ms. Katharine Kelly	Mr. and Mrs. Robert E. Lindgren
Mr. and Mrs. Thomas W. Doddridge	Ms. Catherine A. Griffin	Mr. Christopher M. Kennedy	Mr. Charles N. Lindsey and Mr. Zikri Yusof
Dr. Julie A. Dodds and Dr. William G. Humphrey	Mr. Larry Grote	Mr. and Mrs. Robert A. Kilinskis	Mr. and Mrs. Bert H. Lindstrom
Mr. and Mrs. David W. Dodson	Dr. Rolf M. Gunnar	Mr. and Mrs. Thomas L. Kittle-Kamp	Mr. and Mrs. Mark A. Livengood
Mr. and Mrs. Kevin M. Doherty	Mr. and Mrs. John A. Hagenah		Charlene and Gary MacDougal
Ken and Karen Dort	Ms. Elizabeth W. Halpern		Mr. and Mrs. Bernard A. Mack Jr. ^A
Mr. Charles R. Droege and Ms. Julie Wroblewski	Mr. and Mrs. M. Hill Hammock		Mr. and Mrs. Craig A. Mackrides
Mr. and Mrs. Harvey Dulin	Mr. and Mrs. Joel L. Handelman		Mr. and Mrs. C. Patrick MacLeod
Ms. Diana L. Duncan ^E	Dolores K. Hanna		Ms. Charlene Marcus
Ms. Helen M. Dunlap	Mr. and Mrs. Mike Harms		Ms. Carmen Maso
Mr. and Mrs. Thomas E. Durica	Ms. Alice E. Harper		Mr. and Mrs. Richard P. Mayer
Mark G. Egan and Katherine Z. Egan	Ms. Patricia A. Harper		Mr. and Mrs. James McClelland
Ms. Linda L. Egebrecht ^A	Ms. Katherine P. Harris and Mr. Robert S. Jendra		Mrs. Withrow W. Meeker
Ms. Chere Lynn A. Elliott	Mr. and Mrs. Brent Hawkins		Mr. and Mrs. Robert C. Merrick
Mr. Douglas R. Elliott	Mr. and Mrs. Thomas S. Hebda		Ms. Barbara Merrill
Mr. and Mrs. Paul M. Embree	Ms. Joyce E. Heidemann		Mr. and Mrs. Scott D. Meyer
Mr. and Mrs. Fabio Fabbri ^A	Mr. and Mrs. David J. Height		Dr. and Mrs. Ernest E. Mhoon Jr.
Mr. and Mrs. John F. Faulhaber	Mr. and Mrs. John Henderson		Ms. Lee S. Mickus
Mr. and Mrs. Alexander H. Faurot	Mr. and Mrs. James P. Hepp		Mr. and Mrs. Jan Miecznikowski
Mrs. Joan L. Fencil	Mr. and Mrs. Scott E. Hertenstein		Mr. and Mrs. Michael E. Mikolajczyk
Mr. and Mrs. Raymond R. Fessler	Mr. and Mrs. Robert M. Hickey		Dr. and Mrs. Robert P. Miller
Mr. and Mrs. Cameron Findlay	Melissa Hilton and Jonathan Perman		Sara and Tyler Mongerson
Mr. and Mrs. Kenneth Fischl	Mr. and Mrs. C. Clarkson Hine		Dr. Anthony G. Montag and Dr. Katherine L. Griem
Mr. and Mrs. William D. Folland	Adrienne and Robert Hirsch		Mr. and Mrs. Leon W. Moore
			Mr. and Mrs. Reginald Moore
			Mr. and Mrs. George and Isela Morales



In 2013, The Field Museum established the Field LOYALTY Club to celebrate individuals who have supported the Museum for twenty or more years. The Museum celebrates the 1,600 members of its inaugural class. Thank you!

Mr. Peter Moran
Mr. Daniel N. Morgan
Mr. and Mrs. John A. Morris
Mr. and Mrs. David W. Mortara
Ms. Helga E. Muench
Ms. Pamela L. Murphy
Mr. and Mrs. James Murray
Ms. Carolyn E. Nasheim
Mr. and Mrs. Joseph Navarre
Mr. and Mrs. Neil C. Nelson
Mr. and Mrs. Robert J. Nelson
Mr. and Mrs. Jonathan B. Newcomb
Ms. Marjorie Newman
Mr. Jim H. Niehoff and
Mrs. Jolie R. Macier
Mr. and Mrs. Ed Nienow
Ms. Anne Nobles and
Mr. David L. Johnson
Mr. and Mrs. Dele Ogunleye
Mrs. Alexandra O'Neill
Mr. Robert I. Osterberg
Mr. David Otto
Ms. Phyllis Parish
Mr. and Mrs. Robert D. Parks
Mr. and Mrs. Homi B. Patel
Mr. and Mrs. Paul R. Payne
Mr. and Mrs. William B. Pearce
Mr. S. James Perlow and
Ms. Sandra J. Allen
Mr. and Mrs. Dan Peterson
Mr. Verne Peterson and
Ms. Julie Lipkin
Dr. David T. Petty
Mrs. Elizabeth B. Phillips
Mr. and Mrs. Burt
Pickard-Richardson
Ernst Pierre-Toussaint ^E
Mr. and Mrs. Louis R. Pignotti Sr.
Mr. John Pincenti
Ms. Nancy Plax and
Mr. Steven Schwartzman
Mrs. John W. Pocock ^A
Mr. and Mrs. Charles S. Potter Jr.
Mr. and Mrs. Keith Powell
Mr. and Mrs. John B. Priest
Ms. Lynne Rauscher-Davoust
Dr. and Mrs. Matthew J. Raymond
Mr. and Mrs. David Reese
Mrs. Sheila T. Reynolds ^A
Mr. Richard W. Richardson

Mr. ^T and Mrs. Larry D. Richman
Ms. Maureen Riordan
Ms. Janice E. Rodgers
Mr. Erik Roffelsen and
Ms. Nelleke Peters
Mr. Howard J. Romanek and
Mr. Irwin Romanek
Rose Houston
Charitable Foundation
Mr. and Mrs. Morton Rosen
Mr. and Mrs. Robert J. Ross
Mr. Ted Ross and Ms. Kathie Ayres
Mrs. Donald I. Roth
Mrs. Elizabeth D. Rothermel
Ms. Lynn M. Rubino
Mr. and Mrs. David A. Ruth
Mr. George Rykowski and
Ms. Silvia Schmid
Mr. D. P. Sager
Dr. and Mrs. Paul W. Saltzman
Ms. Maureen Sauser
Ms. Cynthia M. Scalzo and
Dr. Henry Brown
Mr. and Mrs. Morton O. Schapiro
Mrs. Lawrence K. Schnadig
Mr. and Mrs. Thomas J. Schultz
Ms. Thelma L. Schwartz ^A
Mrs. Marilyn L. Schweitzer and
Mr. Michael A. Firman
Mr. and Mrs. Daniel Schweller
Mr. and Mrs. G. Curtiss Shaffer ^A
Mr. and Mrs. Jonathan Shaver
Ms. Kate M. Sheehy
Alissa and Jonathan Shulkin
Mr. and Mrs. Michael Simpson
Ms. Maureen M. Slavin
Carrie Smaroff and
Duke G. Smaroff
Mr. and Mrs. Robert W. Smolen
Mr. and Mrs. James Snook
Mr. and Mrs. Dan W. Snyder Jr.
Mr. and Mrs. Ron Sonenthal
Mr. Tom Sourlis
Mr. and Mrs. Neele E. Stearns Jr.
Mr. and Mrs. Leon C. Stecher
Mr. Alfred E. Steinhaus
Mr. ^N and Mrs. Kevin Stineman
Mr. and Mrs. Theodore A. Struve
Dr. Susan Suntay and
Ms. Stephanie Suntay
Dr. and Mrs. Joseph W. Szokol

Mr. and Mrs. Gregory T. Taylor
Mr. and Mrs. Ronald Tesarik
Mr. and Mrs. Nick Thomas
Monica and Kevin Thompson
Mr. and Mrs. Raymond C. Tower
Ms. Sally L. TreKell
Ms. Mary Trowbridge and
Mr. William West
Mr. J. Michael Trumbold
Mr. and Mrs. John P. Tubutis
Mr. and Mrs. James A. Tuchler
Mr. Scott F. Turow
Mr. Peter M. Vale
Mr. and Mrs. Craig D. Vallorano
Mr. and Mrs. J. V. Van Cura Jr.
Mr. and Mrs. John E. Van Horn
Mr. Shawn K. VanDerziel ^F and
Mr. Jay Clarke
Mr. Ryan VanHolsbeke
Stephen J. Vivian and Tia M. Rains
Mr. Thomas W. Vogelsang and
Ms. Kathleen M. Moran
Mrs. Ann D. Wagner
Ms. Belle Waldfogel and
Ms. Georgean Goldenberg
Mr. and Mrs. Eric D. Wanger
Ms. Therese L. Wareham
Mrs. Hempstead Washburne
Mr. and Mrs. Gary W. Watt
Mr. and Mrs. K. Jay Weaver
Mrs. Carolyn H. Weinstein
Mary Weisman and James Weisman
Ms. Jane Wells and
Mr. Burton C. Ferrini
Mr. and Mrs. Kalman Wenig
Mrs. Madelin M. Wexler
Dr. Gary Wheeler
Mrs. Dorothy B. White ^{AD}
Dr. Wendall W. Wilson
Mr. and Mrs. Gregory Wintroub
Mr. Michael J. Wisnowski and
Ms. Dawn I. Walker
Ms. Melanie R. Wojtulewicz
Mr. and Mrs. J. Nelson Wood
David and Kay Wulf
Mrs. Nancy Wulfers
Mr. Theodore M. Wynnychenko and
Ms. Laura Hill
Ms. Jane Yakushiji
Mr. Kenneth A. Youga
Mrs. George B. Young

Dr. and Mrs. Gerald D. Young Jr.
Mr. and Mrs. Steven J. Young
Mr. and Mrs. Phillip C. Zarcone
Mr. and Mrs. Bruce Ziegler
Mr. and Mrs. Earl Zingraf

\$250-499 (Field Adventurers)
Anonymous (12)
Mr. Roger S. Adamek
Mr. Cyrus H. Adams
Mr. Henry W. Adams and
Ms. Barbara A. Agresti
Mr. and Mrs. David L. Ader
Dr. and Mrs. Leon Adler
Ms. Susan S. Adler
Mrs. John J. Ahearne
Mr. and Mrs. Walter Alexander
Mr. Parviz Ali and Ms. Ayesha
Fareeduddin
Mr. Scott W. Allard and
Ms. Heather Hill
Ms. Leslie Allison
Mr. and Mrs. Thomas J. Allison
Mr. and Mrs. Michael Altman
Ms. Dwana Amos
Mrs. Edith G. Andrew
Mr. Thomas W. Andrews
Ms. Alona W. Anspach
Mr. Basil Apostolou
Ms. Ruth Archer and Mr. Jim Helke
Mr. Joshua Arlow
Mr. and Mrs. Bruce T. Armstrong
Ms. Dorsey Armstong and
Mr. Paul Schneider
Mr. and Mrs. Barry G. Arnason
Mr. and Mrs. Delbert W. Arsenaull
Ms. Catherine Ashdown and
Mr. Neal Lofchy
Dr. Julia B. Ashenhurst
Ms. Noelle Au
Mr. and Mrs. Cooper Babich
Mr. and Mrs. John S. Babowice
Mr. and Mrs. Paul Backas
Mr. Luke Baer
Mr. and Mrs. Steve Baer
Ms. Lauren Baker
Mr. Timothy R. Baker and
Ms. Denise Guardino
Mr. and Mrs. William W. Baker
Mr. Edward M. Balcsik

^T Trustee ^A Edward E. Ayer Legacy Society donor ^C Corporate Relations Program member

^D Deceased ^F Field Museum employee ^N New Trustee

Annual Fund cont'd

- Mr. and Mrs. Randolph R. Baldridge
 Mr. and Mrs. John T. Baldwin
 Mr. and Mrs. Gregory Ball
 Dr. Eugene L. Balter and Ms. Judith R. Phillips
 Mr. Roger Bancroft
 Mr. Wayne A. Baran
 Mr. and Mrs. Randolph C. Barba
 Barbara Notz Hines Foundation
 Mr. Craig Bargowski
 Mrs. Margaret Barilich
 Tom Barkalow and Patricia Lougheed
 Mr. and Mrs. John W. Barr
 Laurence and Sarah Barr
 Mr. and Mrs. Richard P. Barrett
 Mr. and Mrs. Darrell Bast
 Ms. Cail M. Battistoni
 Mr. and Mrs. Kenneth J. Bazarnik
 Mr. and Mrs. Edward M. Becht
 Mr. William T. Beck and Ms. Doreine Carson
 Mr. and Mrs. Alvin G. Becker
 Reverend and Mrs. William C. Beckmann
 Mr. and Mrs. William Bedford
 Mr. and Mrs. Jeffrey Beech
 Ms. Nancy Behrendt
 Mr. and Mrs. George R. Bell
 Ms. Maryann Bell and Ms. Mary Suligoy
 Mr. and Mrs. Nikolai Beloreshki
 Mr. and Mrs. Michael D. Belsley
 Mrs. Glynis Benbow-Niemier and Mr. Thomas Niemier
 Mr. and Mrs. Stephen E. Benefiel
 Arlene and Wayne Bennett
 Ms. Christine Bennett and Mr. Leon Blair
 Mr. Edward Bennett
 Mr. and Mrs. Paul S. Bennington
 Ms. Ann Bentzen-Bilkvist
 Dr. and Mrs. Michael Bercek
 Ms. Lynne D. Bergero and Mr. Philip Bonner
 Dr. and Mrs. Victor M. Bernhard
 Mr. and Mrs. Robert Bernot
 Mr. and Mrs. Howard Bernstein
 Mrs. Lieselotte N. Betterman
 Mr. and Mrs. Adrian D. Beverly
- Mr. and Mrs. Sanjay Bhasin
 Mr. and Mrs. Vivek Bhatt
 Mr. and Mrs. Sam Bianco
 Mr. William E. Bible
 Ms. Lois J. Bider
 Mr. and Mrs. Douglas Bidwell
 Mr. and Mrs. Henry S. Bienen
 Mr. and Mrs. Michael A. Bill
 Dr. Michael D. Bishop
 Mr. Frank L. Bixby
 Ms. Kay A. Bjork
 Mr. and Mrs. Richard B. Black
 Mr. and Mrs. John Blaser
 Mr. and Mrs. Merrill Blau
 Mr. and Mrs. Jay S. Bleecker
 Mr. Jan Blok and Ms. Laura Melcher
 Mr. and Mrs. Stephen J. Bloom
 Mr. and Mrs. Irwin A. Blumensadt Jr.
 Mr. Jerry V. Bobek Jr.
 Mr. and Mrs. Anthony Bochniak
 Ms. Georgia Bockos
 Mr. and Mrs. Erwin F. Bogs
 Dr. Therese M. Bogs and Mr. W. Haser
 Mr. and Mrs. George Bohling
 Mr. Carl J. Bohne Jr.
 Mr. Daniel A. Bolm and Mrs. Peggy J. Keating-Bolm
 Mr. and Mrs. Thomas C. Boltik
 Dr. and Mrs. Michael Bommarito
 Mr. Marcello Bondurant
 Ms. Clarisa Bonilla
 Mr. and Mrs. Gary Booth
 Ms. Kristine Bordenave and Mr. James Feeney
 Mr. and Mrs. Charles Bowen
 Mr. and Mrs. William C. Bowman Jr.
 Mr. Loren Bowns and Ms. Cynthia Bowns
 Mrs. Barbara A. Boyer
 Dr. Bruce H. Boyer
 Dr. and Mrs. Bruce Hatton Boyer
 Mr. and Mrs. Dennis E. Bozych
 Mr. and Mrs. Stefan Brabeck
 Roger and Mary Bradford
 Ms. Maria Brandon and Mr. Randy Burrow
 Mr. Willard Bransky
- Tim^E and Julie Bratley
 Ms. Kimberlee A. Breckler
 Mrs. Marie Brelin
 Mr. Joseph B. Brennan
 Mr. and Mrs. Hugh F. Breslin
 Mr. and Mrs. David Brewer
 Mr. and Mrs. Lance M. Brisben
 Mary J. Brister and McKinley H. Brister
 Ms. Carolyn J. Brna
 Mr. Charles T. Brockmann
 Mr. and Mrs. John Broecker
 Ms. Bo Brown and Mr. Bob Faull
 Mr. Seth N. Brown and Ms. Marya Lieberman
 Ms. Shannon E. Brown
 Mr. and Mrs. Archibald T. Bryant
 Dr. Stephen J. and Mrs. Susan P. Buck
 Mr. and Mrs. Howard E. Buhse Jr.
 Mr. and Mrs. Michael Bukhalo
 Mr. and Mrs. Werner Buol
 Mr. and Mrs. Werner H. Buol
 Mr. Robert T. Burd
 Mr. Arthur M. Burgess and Ms. Linda Jaros
 Mr. and Mrs. Timothy L. Burke
 Mr. Timothy J. Burroughs and Ms. Barbara Smith
 Mr. and Mrs. Joseph Bydon
 Mr. Thomas Byrnes and Ms. Carol Rigmark
 Eileen Cahill and Family
 Ms. Judith A. Caloud^A
 Mr. and Mrs. Joseph Caltagirone
 Dr. and Mrs. Rafael Z. Campanini
 Dr. and Mrs. John R. Canning
 Mrs. Mary Cannizzaro
 Mr. and Mrs. Thomas M. Carmazzi
 Dr. and Mrs. Charles Carroll
 Mr. and Mrs. James R. Carter
 Mr. and Mrs. Steven Carter
 Mr. and Mrs. Milton Blouke Carus
 Dr. and Mrs. Jesus Casas
 Mr. and Mrs. John W. Castle
 Mr. and Mrs. Scott Caudell
 Ms. Cassia Cearley
 Ms. Mia Celano and Mr. Skip Dunn
 Mr. and Mrs. Gastone Celesia
 Ms. Michele Chaffee and Mr. Adam Nordin
- Mr. and Mrs. Wilfred P. Chapleau III
 Mr. and Mrs. Robert P. Charles
 Ms. June M. Chenelle
 Mr. and Mrs. Thong M. Cheng
 Ms. Joan S. Cherry and Mr. John R. Cara
 Mr. and Mrs. Paul Choi
 Mr. and Mrs. John A. Chojnicki
 Dr. and Mrs. Thomas J. Chorba
 Mrs. Emily J. B. Christian
 Mr. and Mrs. R. Lee Christie
 Ms. Marylynn Chrystal and Ms. Sarah Chrystal
 Ms. Josephine S. Chyatte
 Randall Clark
 Dr. and Mrs. Robert D. Clark
 Mr. and Mrs. Steve Clark
 Brian Clarke and Margaret Feit Clarke
 Mr. and Mrs. Albert C. Claus
 Ms. Michelle Clayton^E
 Ms. Sharon L. Cline
 Mr. and Mrs. John E. Clisham
 Mrs. Arleen A. Coates
 Mr. Benjamin A. Coats
 Mr. and Mrs. John Cogan
 Mr. and Mrs. Martin J. Cohen
 Mr. William S. Cohen
 Mr. and Mrs. Terrance Coleman
 Mr. and Mrs. Terrence Collins
 Ms. Cira V. Conley and Ms. Audrey Marquez
 Mrs. Gladys Connolly
 Mr. Edward Cooper
 Ms. Julia Corcoran
 Mr. and Mrs. Steve Cornell
 Mr. and Mrs. Matthew Corpolongo
 Ms. Kristine N. Cosentino
 Mr. and Mrs. Randall Costa
 Ms. Cynthia D. Cox and Mr. Robert Cox
 Mr. and Mrs. Thomas W. Coyle
 Ms. Susan Craft
 Andrew B. Critchell and Kelsey Critchell
 Mr. and Mrs. Jacob Crose
 Dr. Dolores E. Cross
 Mr. Brian Crowdon
 Ms. Susan M. Crowell and Ms. Kathleen Cooke

Ms. Eleanor L. Crumback
 Ms. Yvonne M. Curbis
 Dr. and Mrs. Arthur W. Curtis, MD
 Mr. and Mrs. David V. Curtis
 Mr. Michael P. Cwiklik
 Mr. and Mrs. Henry Czopek
 Mr. and Mrs. James M. Daly II
 Mr. and Mrs. Ron Damashek
 Mr. Rhett Damon
 Mr. and Mrs. Alfred E. D'Ancona II
 Mr. Michael Danforth and
 Ms. Eva Nielsen
 Mr. and Mrs. John A. Daniels
 Jackie and Donald R. Dann
 Mr. and Mrs. Michael Dashnaw
 Mr. and Mrs. Robert J. Dau
 Mr. and Mrs. Bruce Davidson
 Ms. Laura Davis
 Mr. and Mrs. Gerald D. Dawes Jr.
 Mr. and Mrs. Dennis De Bruler
 Mr. Pierre De Smul and
 Dr. Carol De Smul
 Mr. Bruce Dean
 Mrs. Howard M. Dean Jr.
 Mr. and Mrs. William W. Dean
 Mr. and Mrs. Mark D. Deaton
 Mr. and Mrs. Eugene C. Decker
 Mrs. Carla M. Dehmlow
 Ms. Judith A. DeLeon
 Ms. Emily R. Dempsey
 Mr. and Mrs. Charles Dennehy
 Mr. and Mrs. Brian DeRe
 Dr. and Mrs. Eugene R. DeSombre
 Mrs. Uta DeTappan-Staley
 Ms. Doris Devine
 Mr. John DeWerd
 Mr. William Dewoskin
 Ms. Eloise DeYoung
 Mr. and Mrs. Perry Di Girolamo
 Mr. and Mrs. Philip Diamond
 Ms. Mary D. Dickenson
 Ms. Amy T. Dickinson
 Ms. Patricia Ann Dihel
 Dr. and Mrs. John R. Dimar
 Mr. William D. Dini
 Mr. and Mrs. Paul F. Dittmann
 Ms. Henrietta L. Dixon
 Mr. Joshua Dlouhy
 Mr. and Mrs. Robert S. Dobis
 Mr. Michael Dobray
 Leonard and Patricia Dominguez
 Mr. and Mrs. Joseph E. Doninger
 Ms. Gloria Donnelly
 Ms. Laura Dooley
 Mr. and Mrs. Keith Dorman
 Mr. and Mrs. James H. Douglas
 Mr. Thomas A. Drebenstedt and
 Ms. Kathy Chilis
 Mr. Joseph H. Drummond
 Mr. Raymond Drymalski
 Dr. and Mrs. Anthony B. D'Souza
 Mr. Michael S. Dublak and
 Mrs. Sharon M. Authier
 Ms. Janet M. Dudgeon
 Mr. and Mrs. Ferne L. Dungan
 Ms. Kristine B. Easton^E
 Ms. Glenna R. Eaves and
 Mr. Christopher J. Boebel
 Mr. Marvin W. Ehlers
 Ms. Margaret M. Eiden
 The Robert G. Eiserman Family
 Mr. Allen E. Eliot
 Mr. J. Thomas Eller
 Professor Jean B. Elshtain and
 Mr. Errol Elshtain
 Mr. John E. Emel and
 Ms. Cordelia Ryan
 Mr. and Mrs. Tomy Endo
 Mr. and Mrs. Mark A. Ertler
 Mr. and Mrs. Ronald L. Eshleman
 Dr. Marilyn D. Ezri
 Mr. and Mrs. David P. Facklam
 Ms. Diana H. Fagan
 Mr. Brian C. Fahrenbach
 Mr. Harry R. Fair and
 Mrs. Carolyn E. Jordan
 Mr. and Mrs. Albert J. Falasz
 Ms. Ellen L. Falconer
 Ms. Irene Falout
 Captain and Mrs. W. T. Fantry
 Mr. and Mrs. James Fanuzzi
 Ms. Angela Farlow and
 Dr. Steven Best
 Mr. Carl B. Fausey and
 Mrs. Debbie Annett
 Mr. Nicholas Fawley and
 Ms. Mary Andorfer
 Ms. Julie A. Federico and
 Mr. Jay Mitchell
 Ms. Susan H. Feit and
 Dr. Neil R. Friedman
 Ms. Karen Felix
 Mr. Irv Feltman
 Dr. John D. Ferguson and
 Ms. Elizabeth H. Zimmerman
 Dr. and Mrs. Balbino B. Fernandez
 Mr. and Mrs. Jose L. Ferrer
 Mr. and Mrs. John Ferrero
 Mr. and Mrs. Conrad T. Fialkowski
 Mr. and Mrs. Robert W. Fick
 Ms. Amy M. Fielek
 Mr. Victor Filippini
 Dr. Paula Fillak and Mr. Alex Fillak
 Ms. Judith A. Findorff
 Mr. and Mrs. Sanford Finkel
 Ms. Deborah Finn
 Mr. Kevin Finneran
 Dr. and Mrs. Terrance E. Fippinger
 Ms. Susan Fischbach
 Mr. and Mrs. Peter D. Fischer
 Mr. and Mrs. Justin M. Fishbein
 Mr. and Mrs. Duncan G. Fisher
 Mr. and Mrs. James G. Fitzgerald
 Mr. and Mrs. Dale Fleming
 Mr. and Mrs. Peter L. Flemister
 Mrs. Sally Fletcher
 Mr. and Mrs. Steve Flexman
 Mr. Geoffrey A. Flick
 Ms. Dorothy Flisk
 Ms. Anita Flournoy
 Mr. and Mrs. John F. Flynn
 Mr. and Mrs. Bryan Ford
 Mr. Liam T. Ford and
 Ms. Ann R. Weiler
 Mr. and Mrs. James W. Forhan
 Ms. Katherine M. Fox
 Dr. and Mrs. Alvin L. Francik
 Mr. and Mrs. Patrick C. Frangella
 Mr. and Mrs. Lester E.
 Frankenthal III
 Dr. Stasia J. Frank-Powers and
 Dr. Richard J. Powers
 Mr. and Mrs. William D. Franz
 Mr. and Mrs. Larry Frazee
 Mr. and Mrs. John F. Freund
 Mr. Lewis E. Freyer
 Ms. Natale Fuller
 Dr. Brian Furlong and
 Dr. Denise Furlong
 Mr. and Mrs. Joe Furlong
 Dr. Sylvia E. Furner
 Ms. Anne V. Fussell
 Mr. and Mrs. Daniel B. Gaeta
 Mr. and Mrs. John Gage
 Mr. Gregory J. Gajda
 Mr. Thomas F. Gajewski and
 Ms. Marisa Alegre
 Albert and Sherri Galante
 Mrs. Elizabeth A. Gallanis
 Mr. James A. Galloway
 Mr. Donald C. Gancer
 Ms. Diane Mosak Ganden and
 Mr. Bryan Mosak
 Mr. and Mrs. Roger Gansauer
 Ms. Martha A. Garcia
 Lee Garrett
 Ms. Kendra Garstka
 Mr. and Mrs. John Gately
 Mr. Gregory Gates
 Mr. and Mrs. Gilbert Gavlin
 Ms. Hildegard H. Geiger
 Ms. Aimee Genova
 Ms. Julie L. Gentes
 Mr. and Mrs. Stephen A. Gerlicher
 Mr. and Mrs. Ed Gerns
 Ms. Jennie Giammasi and
 Mr. Robert L. Scamen
 Ms. Barbara A. Giddings and
 Mr. Robert Giddings
 Mr. and Mrs. Terrance Glaab
 Mr. and Mrs. Thomas F. Glennon
 Ms. Paula Glitman and
 Mr. Doug Stone
 Ms. Maureen Glynn
 Mr. Richard Gnaedinger
 Mr. and Mrs. William H. Gofen
 Ms. Julia Goff and Mr. Greg Goff
 Mr. Geoff Goldberg and
 Ms. Lynne Remington
 Mrs. Mary A. Goldberg
 Mr. Stephen Goldberg
 Mr. and Mrs. Samuel D. Golden
 Rabbi Douglas H. Goldhamer and
 Ms. Peggy L. Bagley
 Ms. Susan R. Goldman
 Ms. Joan Goldstein
 Mr. and Mrs. Marion Golebiowski
 Mr. Christopher G. Golec
 Ms. Judith Marx Golub
 Ms. Elizabeth L. Goodbody and
 Mr. Ralph P. Beck
 Mr. and Mrs. Gene M. Gooding
 Ms. Eve M. Gorman

^T Trustee ^A Edward E. Ayer Legacy Society donor ^C Corporate Relations Program member

^D Deceased ^E Field Museum employee ^N New Trustee

Annual Fund cont'd

- Mr. and Mrs. Anthony Gorski
 Mr. and Mrs. Donald E. Goss
 Mr. and Mrs. Numa R. Cottardi-Littell
 Mr. Robert Courley
 Terry Grace and Judith Gaietto-Grace
 Ms. Allison J. Graham
 Mr. and Mrs. William Graham
 Dr. Lance Grande ^E
 Mr. James C. Green
 Ms. Leila S. Green
 Mr. and Mrs. Richard K. Green
 Mr. Daniel Greenberg
 Dr. Norman C. Greenberg and Dr. Gilda M. Greenberg ^A
 Mr. and Mrs. Mark J. Greenwood
 Mr. Brian Gregory
 Kenneth and Anne Griffin
 Mr. and Mrs. Bobby D. Griffith
 Mr. and Mrs. Robert M. Grimm
 Mr. and Mrs. Wayne J. Grobarcik
 Mr. John F. Grobe
 Mr. and Mrs. David L. Grumman
 Ada Mary Gugenheim and Jon N. Will
 Dr. and Mrs. John W. Gustaitis Jr.
 Mr. and Mrs. Stephen E. Gustavson
 Mr. and Mrs. Roger Guzlas
 Mr. and Mrs. Peter Haak
 Mr. and Mrs. Dean L. Haas
 Mr. Robert A. Habermann
 Mr. and Mrs. Mervin D. Hagen
 Mr. and Mrs. John Hague
 Ms. Dianne Haines
 Ms. Holley Hall
 Mr. and Mrs. Jeffrey P. Hall
 Dr. and Mrs. George S. Hallenbeck
 Mr. Christopher J. Hallett and Ms. Jackie Lustig
 Mr. and Mrs. Errol Halperin
 Ms. Doris E. C. Hambacher
 Mr. Michael Hammerman
 Mr. and Mrs. Thomas J. Hammerman
 Mr. and Mrs. Michael S. Hammond
 Dr. Lanshan Han and Dr. Lili Du
 Mr. Larry L. Hanes
 Mr. David E. Hanley and Mrs. Jeri Alles
 Mr. Joseph Hanley and Ms. Kristy Mardis
 Dr. Luke Hanley and Ms. Debran Rowland
 Mr. Robert Hanlon and Mrs. Barbara MacDowall
 Ms. Rebecca Hanna
 Ms. Moira Harding and Mr. Raymond Parmer
 Mr. and Mrs. Michael Hargrave
 Ms. Bonnie K. Harkness and Mr. James F. Rogers
 Ms. Mattie H. Harris
 Mr. and Mrs. Ralph Harris
 Ms. Mary Anne Harrison
 Mrs. Ann Harvey
 Ms. Jahnna Harvey and Mr. Joshua Croft
 Mr. and Mrs. Edward D. Hatcher
 Mr. and Mrs. Martin F. Hauselmann
 Mr. and Mrs. Allan Hausfeld
 Ms. Emily J. Hayes
 Mary J. Hayes, DDS
 Mrs. Eugene Heal
 Lawrence R. Heaney, PhD ^E
 Mr. Michael Heaney
 Mr. and Mrs. F. Thomas Hecht
 Mrs. Bette Heide
 Mr. and Mrs. John Hellmuth
 Ms. Judith Helzner and Mr. Robert Bernstein
 Mr. and Mrs. Fritz Henderson
 Mr. and Mrs. Kenneth M. Henderson Jr.
 Ms. Joyce K. Herdlika
 Mr. and Mrs. Paul M. Herkes
 Ms. Sandra Herrington and Mr. Daniel Brashear
 Dr. Charlotte C. Herzog
 Mr. and Mrs. Tim Heyen
 Mrs. Patricia Heywood and Mr. Glen Komperda
 Mr. Daniel P. Hidding
 Mr. and Mrs. Gary Higgins
 Mr. and Mrs. Roger Higgins
 Mr. Will Hightower
 Mr. and Mrs. Harlow N. Higinbotham
 Mrs. Melissa E. Genova Hill and Mr. Joel Hill
 Mr. Kenneth R. Hilton and Mr. Kenton Owens
 Mr. and Mrs. Joseph Hinkel
 Mr. and Mrs. Patrick R. Hirsch
 Mr. and Mrs. Richard M. Hirsch
 Ms. Geraldine B. Hletko
 Dr. and Mrs. Zachary I. Hodes
 Mr. Larry Hoellwarth and Dr. Ann Shih-Hoellwarth
 Ms. Judy Hoffman
 Ms. Sandra N. Hoffman
 Mrs. Shirlee A. Hoffman
 Mr. and Mrs. James M. Hohner
 Edward and Jo Ann Holba
 Dr. and Mrs. James M. Holland
 Ms. Joan Hollick and Mr. Colin O'Donovan
 Mr. and Mrs. Fred Holubow
 Mr. and Mrs. Dean T. Honda
 Mr. and Mrs. Joel D. Honigberg
 Mr. and Mrs. Charles L. Honkisz
 Mr. and Mrs. Douglas J. Hood
 Mr. and Mrs. William L. Hood Jr.
 Mr. and Mrs. Doug Hoogstra
 Mr. Thomas A. Hootman and Ms. Pamela J. Sisler
 Mr. Glenn Hopkins
 Mr. and Mrs. Michael L. Horsley
 Mr. Steven Howard and Mrs. Kathy Look
 Mr. Fred Howayeck
 Mr. Jonathan T. Howe
 Mrs. Laurie W. Howick
 Mr. and Mrs. David Hubbard
 Ms. Lisa Huber and Mr. Tim Borden
 Dr. and Mrs. Michael S. Huckman
 Mr. and Mrs. Frederick J. Hug Jr.
 Mr. and Mrs. Jawanza Hughes
 Mr. and Mrs. Phillip D. Hulben
 Lynn and Philip Hummer
 Mr. and Mrs. Jeffrey L. Hunt
 Ms. Kathy Hurley
 Ms. Maria A. Iafollo
 Mrs. Sue B. Ish
 Mr. and Mrs. Glynn Isoda
 Ms. Cheryl Istvan and Mr. Keith Daubenspeck
 Mr. and Mrs. Roland Jabotte
 Mrs. Barbara Jackson
 Dr. Judith M. Jackson and Dr. Dannielle G. Jackson
 Mr. and Mrs. Robert A. Jahnke
 Mr. and Mrs. John Jakob
 Mr. and Mrs. Paul A. James
 Mr. and Mrs. Joseph Janas
 Joseph and Rebecca Jarabak
 Ms. Janice A. Jarnholm
 Mr. and Mrs. James S. Jasionowski
 Mrs. Barbara B. Javaras
 Mrs. Nadia Jelinek
 Miss Rose Mary Jelinek
 Mr. and Mrs. Terrence J. Jelinek
 Mr. and Mrs. Garrett Jenks
 Mr. James C. Jepsen and Ms. Jackie Finch
 Jeani and Rich Jernstedt
 Ms. Maria Jimenez
 Ms. Judy Johanson
 Ms. Ann K. Johnson
 Mr. Carl W. Johnson and Mrs. Laura M. Bloom-Johnson
 Mr. and Mrs. Leroy Johnson
 Dr. Mary R. Johnson
 Ms. Stacy L. Johnson ^A
 Mr. Christopher Jones and Ms. Gina Kimmel
 Mr. and Mrs. Douglas L. Jones
 Ms. Elizabeth Jones
 Mr. and Mrs. Kenneth P. Jones
 Mr. and Mrs. Robert A. Jones Jr.
 Mr. Thomas M. Jones
 Mr. Richard W. Josed
 Dr. Debra Joslin and Mr. Hal Hancock
 Dr. and Mrs. Gary M. Jouris
 Mr. and Mrs. Paul R. Judy
 Mrs. Elizabeth E. Jurjevich
 Miss Judith Kadish
 Mr. and Mrs. Thomas Kadlec
 Mr. and Mrs. Erik T. Kahler
 Tess Kahler
 Ms. Jill M. Kainu
 Dr. Srinivas Kakumani and Dr. Seetal Kakumani
 Ms. Kathleen G. Kallan
 Mr. and Mrs. Thomas Kallen
 Dr. Sona Kalousdian and Dr. Ira D. Lawrence
 Mr. Michael Kalway
 Mr. Dan Kane and Mrs. Sonia Dickerson
 Dr. Mary G. Kane and Mr. Vern Kerchberger

Mrs. Lily Kanter
 Mr. Michael Karayanis and
 Ms. Deena Rogers-Karayanis
 Themis and Melodie Karnezis
 Mr. and Mrs. John A. Karoly
 Mr. and Mrs. John S. Kasang
 Ms. Karen Kass and
 Ms. Kimberly Spagui
 Dr. Claudia A. Katz
 Mr. and Mrs. Gerald Kaufman
 Mr. and Mrs. Arthur H. Kay
 Mr. and Mrs. Michael G. Keck
 Ms. Mary Jane Keitel ^E and
 Dr. Mark Bouman ^E
 Mr. and Mrs. Robert Kelch
 Ms. Denise A. Kelley
 Mr. and Mrs. Austin Kelly
 Mr. and Mrs. Dennis J. Kelly
 Mr. and Mrs. William H. Kelly Jr.
 Ms. Miriam J. Kelm
 Ms. Doris Kennedy and
 Mr. Joseph Hoffman
 Mr. and Mrs. Terrence Kennedy
 Ms. Madalyn C. Kenney ^E
 Mr. and Mrs. William S. Kenney
 Mr. and Mrs. Harrison Kennicott
 Mr. Evan Kent and Dr. Karen Kent
 Dr. Susan B. Kern and
 Ms. Alex Yamron
 Ms. Paige Kerr
 Ms. Kate T. Kestnbaum
 Dr. and Mrs. Alan C. Keyes
 Mr. Omar S. Khalil
 Mr. Zuhair M. Khan
 Mr. and Mrs. James P. King
 Ms. Niamh King
 Mr. and Mrs. James R. Kirk
 Mr. and Mrs. William T. Kirk Jr.
 Ms. June A. Kirwan
 Mr. and Mrs. Dennis Klaeser
 Mr. and Mrs. Adam Klauber
 Ms. Anne V. Klecka
 Mr. Keith Kleehammer and
 Ms. Cheryl Sweeney
 Dr. and Mrs. Thornton C. Kline Jr.
 Mr. Joseph J. Klug
 Ms. Judith L. Knie
 Mr. and Mrs. Paul Knight
 Ms. Valerie Knight and
 Ms. Kathleen Benoit
 Mr. and Mrs. Alfred J. Knox

Mr. Timothy B. Knuth and
 Ms. Elizabeth Tate
 Ms. Lottie J. Kobza
 Ms. Sibyl Kobza and
 Ms. Laura L. Kobza
 Mr. and Mrs. Melvin J. Koenigs
 Mr. and Mrs. John Koenigsknecht
 Mr. and Mrs. Shohei Koide
 Mr. and Mrs. Robert D. Kolar
 Ms. Gera-Lind Kolarik
 Mr. and Mrs. James Kolata
 Ms. Betty H. Kolb
 Mr. and Mrs. John E. Koliopoulos
 Mr. and Mrs. Kelly Kost
 Mr. John A. Koten
 Ms. Regina Krakowski
 Mr. and Mrs. Jeffrey M. Krasner
 Mr. and Mrs. Walter P. Krauss
 Ms. Jennifer Krejci
 Mr. and Mrs. Lee V. Kremer
 Mr. and Mrs. Elliott H. Krieter
 Mr. and Mrs. Jeffrey A. Krizelman
 Mr. John Kristoff
 Mrs. William J. Kristy
 Mr. and Mrs. Brian Krob
 Mr. and Mrs. Larry S. Krucoff
 Mr. Brian L. Kruse
 Mr. and Mrs. Michael J. Kuehl
 Mr. and Mrs. Alfred F. Kugel
 Ms. Margaret Kullman
 Mr. Satyajit Siddharth Kumar
 Mr. and Mrs. Sheldon F. Kurtz
 Mrs. Pauline L. Kuta
 Ms. Anne E. Kutak
 Ms. Lynne La Jone and
 Mr. Chris Mollet
 Ms. Donna La Pietra and
 Mr. William H. Kurtis ^T
 Mr. and Mrs. Mark R. Laatsch
 Mr. Robert A. Ladewig
 Mrs. Virginia E. LaGue
 Mr. and Mrs. Philip E. Lake
 Ms. Olivia Lam
 Mr. and Mrs. Eliot A. Landau
 Mr. Frederic S. Lane
 Ms. Christine J. Laperuto and
 Mr. William J. Roznowski
 Ms. Aileen Laracuenta
 Mr. Albert K. Larsen
 Mr. and Mrs. Charles W. Larsen



Trustees and Museum Friends pose for a photograph with President Richard W. Laviere, Vice President Debra Moskowitz, and Museum ecologists in front of the ruins of Machu Picchu. They spent eight days in Peru last November to experience the Museum's rapid inventory program. During their eight-day trip, they visited Cusco, Manu National Park, as well as the Villa Carmen and Wayqecha Cloud Forest biological stations

From left to right: (front row) Ian Laviere, Debra Moskowitz, Robin B. Foster, (back row) Richard W. Laviere, Douglas Storz, Laurel Ross, Dianne Campbell, Thomas Campbell, Jack W. Fuller, Alvaro del Campo, Wilbur H. Gantz III, Constance T. Keller, and Susan M. Benton.

Mr. and Mrs. Jeff Larsen
 Mr. and Mrs. Tom Larson
 Ms. Linda S. Lauterbach
 Mr. and Mrs. William Lawrence
 Mr. and Mrs. Darryn Lazar
 Mr. and Mrs. David C. Lazar
 Mr. and Mrs. John H. Leach

Mr. Aaron Lebovitz and
 Ms. Donna Myers
 Dr. Steven H. Lee and
 Dr. Kimberly F. Lee
 Mr. William M. Lee Jr.
 Ms. Anita Lees and Ms. Lisa Lees
 Mr. and Mrs. Harold A. Leftwich

^T Trustee ^A Edward E. Ayer Legacy Society donor ^C Corporate Relations Program member
^D Deceased ^E Field Museum employee ^N New Trustee

Annual Fund cont'd

Mr. Paul A. Lehman and
Ms. Ronna Stamm
Mr. Mark Lenox
Mr. and Mrs. Kurt A. Lentsch
Mr. and Mrs. David Lentz
Mr. and Mrs. Vincenzo O. Leone
Mr. John R. Leopold
Mr. Jack Lerman and
Mrs. Elise Pike Lerman
Ms. Elizabeth R. LeRoy
Mr. Barry Lesht and
Ms. Kay Schichtel
Mr. and Mrs. Thomas E. Lesko
Mr. and Mrs. Jon M. Leverenz
Mr. and Mrs. Ellis Levin
Mr. and Mrs. Kenneth C. Lewin
Charles Ashby Lewis
Mr. Gilbert Lichstein and
Mrs. Ruth Czarnecki-Lichstein
Ms. Sarah F. Lichtenstein
Walter and Mr. Sam Walter
Dr. and Mrs. David B. Lieb
Keirstin and Ben Lincoln
Mr. Lars W. Lindquist
Mrs. Harriett J. Lindstrom
Ms. Kristin Lingren
Mrs. Cynthia C. Linton
Mrs. Mary S. Lippa
Mr. and Mrs. William F. Lloyd
Mr. and Mrs. J. William Locke
Shery and Mel Lopata
Mr. and Mrs. Mike Lorsbach
Ms. Colleen Loughlin and
Mr. John Sireck
Mr. and Mrs. Ralph Love
Ms. Holly Lowe
Mr. Scott Lowe and
Dr. Mary Martin-Lowe
Mr. and Mrs. Frank Lucido
Dr. and Mrs. Louis P. Lukancic
Mrs. Pamela A. Lunsman and
Ms. Kelly Englum
Jane and Steve Lupton
Dr. John R. Lurain and
Dr. Nell S. Lurain
Mr. David O. MacKenzie
Mrs. Robert F. MacNally
Mr. Jesse Macro Sr. and
Ms. Rachel Macro
Mr. and Mrs. John W. Madigan
Mr. and Mrs. Steve Magenta
Make Up First School of
Make Up Artistry

Ms. Betsy A. Makris
Alexandra Margo Malos
Mr. Dean Mamalakis and
Mrs. Louise Mangos-Mamalakis
Mr. and Mrs. Lester Mandelstein
Mr. Charles Mann
Mr. and Mrs. James Manz
Mr. and Mrs. Ira Marcus
Mr. and Mrs. Anuj Marfatia
Mrs. Cynthia Mark-Hummel and
Mr. John Hummel
Mr. and Mrs. David Markovitz
Mr. and Mrs. Tom Marley
Mr. and Mrs. McKim Marriott
Ms. Lynne Marshall
Todd and Erika Martin
Mr. and Mrs. Armando Martinez
Dr. Marco L. Martinez and
Dr. Susan Martinez
Mr. and Mrs. John Martini
Mr. William D. Mason and
Ms. Diana Davis
Mr. and Mrs. John Massey
Mr. John R. Masters and
Ms. Carmella Cottonaro
Mrs. Donald W. Mather
Mr. and Mrs. James R. Mather
Mr. and Mrs. James Mathews
Ms. Michelle Mathiesen
Mr. and Mrs. Alan Matson
Mr. Wesley D. Matthews and
Mrs. Viviana Matthews
Mr. and Mrs. Charles Mauter
Mr. and Mrs. Charles M. May
Ms. Teresa P. Mayfield
George and Nancy Maze
Mr. and Mrs. Henry H. Maze
Mr. Raymond McBride
Susan and John McBride
Mr. John McCartan
Mrs. Michelle McCarthy
Mr. and Mrs. Mark J. McCarville
Ms. Marilyn McClory
Lisa McClung and Blasko Ristic
Mr. Stuart A. McCrary and
Ms. Nancy L. Davis
Mr. and Mrs. Michael
McCullough Jr.
Ms. Nancy A. McDaniel ^
Mrs. Sherry L. McFall and
Mr. Kenneth J. Porrello

Ms. Lois M. McCoughran
Mr. Terry McGuire and
Ms. Sharon Graham
Mr. and Mrs. Joe McHaley
Mr. and Mrs. G. Thomas McKane
Ms. Susan A. McLaughlin and
Mr. Alan H. Rebar
Pat McMahon and L.W.
McMahon-Padolski
Ms. Danielle McMillan
Ms. Alisa McQueen and
Mr. Peter Lio

Mrs. Beverly M. Meyer
Mr. Craig S. Michelsen
Dr. Charles R. Middleton and
Dr. John S. Geary
Dr. James Miles
Dr. Peter V. Miller and
Dr. Dianne Rucinski
Mr. and Mrs. Ronald Miller
Mr. Vernon A. Miller and
Ms. Kathryn Tecza
Mr. James C. Mills and
Ms. Lois S. Zoller



Artist Bunky Echo-Hawk leads Field Associates and members of the Native American community in an interactive painting demonstration. The event, part of the Field Associates' Summer Membership Soiree, was sponsored by Trickster Art Gallery and the Chicago Blackhawks. Inviting feedback from the audience as he painted, Mr. Echo-Hawk created an original work of art for the exhibition *Bunky Echo-Hawk: Modern Warrior* (Sep. 27, 2013–Jun. 7, 2015).

Mr. and Mrs. John S. Meany Jr.
Mr. and Mrs. Joseph Meciej
Mrs. Terry J. Medhurst
Mr. Richard J. Medina and
Ms. Maria T. Galo
Mr. and Mrs. James Meehan
Ms. Judith M. Meek and
Ms. Nancy Wardrope
Mr. John M. Meeks
Ms. Claretta F. Meier
Mr. and Mrs. James R. Meindl
Mrs. Sarah J. Meisels
Mr. Ken Metcalfe

Mr. and Mrs. Naveed Mirza
Mr. and Mrs. Donald Mitchell
Dr. Michael E. and
Mrs. Kathy Moats
Mr. and Mrs. Thomas M. Monahan
Dr. and Mrs. Jose Montes
Mr. Jose Dennis A. Monteverde
Mr. James R. Montgomery
Ms. Cynthia A. Moody
Mr. and Mrs. Richard Moody
Mr. and Mrs. Michael Moon
Mrs. Frank J. Mooney
Mr. and Mrs. David Moore

Mr. and Mrs. Earl Moore	Mr. and Mrs. Charles J. Nelson	Mr. and Mrs. Dennis V. Osimitz	Mrs. Marlene W. Phillips
Ms. Valerie Moore ^F and Mr. Benjamin C. Recchie	Mr. and Mrs. Willard K. Nelson	Mr. and Mrs. James J. O'Sullivan Jr.	Susan I. Phillips ^E
Mr. and Mrs. Kenneth Moreau	Ms. Lisa Nemeroff	Mr. and Mrs. Elliott N. Otis	Ms. Nella Piccolin
Mr. and Mrs. Fred M. Morelli Jr.	Mrs. Charlotte Newfeld	Ms. Barbara E. Otte and Mr. Bruce C. Shelley	Mr. Dennis Picha and Ms. Cynthia Wylie
Mr. and Mrs. Lawrence M. Morgan	Mr. and Mrs. Donald J. Newton	Mr. and Mrs. John E. Owens	Mr. and Mrs. Craig A. Pickenpaugh
Mr. and Mrs. David D. Morimoto	Ms. Gina Nicholas	Ms. Alyssa Padilla	Mr. and Mrs. James Piechowski
Mr. and Mrs. James D. Morris	Mr. Wade Nichols	Mr. and Mrs. Raymond Paice	Mr. and Mrs. Edmund Piehler
Ms. Patricia D. Morris	Ms. Eleanor A. Nicholson	Mr. and Mrs. Bruce Palmer	Mr. and Mrs. Robert G. Pierce
Mr. and Mrs. Stephen M. Morris	Mr. and Mrs. Gary R. Nickels	Mr. Donald Panovich and Ms. Jean Zoerner	Mr. and Mrs. Robert L. Pierce
Ms. Sabrina R. Morton	Ms. Karen Nickelson	Mr. and Mrs. Michael S. Parfenoff	Mr. and Mrs. Dan Pierro
Vijai K. Moses and Dr. Raj Lartius	Mr. Eric Nielsen and Ms. Ellen Papacek	Mr. Jason Parke and Ms. Margaret Parke	Mr. and Mrs. Daniel T. Pigott
Mr. Michael H. Moskow and Mrs. Suzanne M. Kopp-Moskow	Mr. and Mrs. Carl Noduz	Ms. Cheryl Parker	Mr. and Mrs. Michael Pilla
Ms. Allison M. Moulton	Mr. Raymond L. Noftsgger and Dr. Tina Forchetti	Mrs. Eleanor Parker	Mr. and Mrs. Kris Pillai
Ms. Cheryl E. Mounts and Ms. Carla Williams	Mr. and Mrs. Richard S. Nopar	Ms. Karen S. Parker	Mr. and Mrs. Stephen Pinaire
Mr. Tyler G. Moynihan	Mr. Daniel Nora	Mr. Bill Parkhurst	Mr. and Mrs. Richard J. Pipala
Dr. Barbara Mudloff	Mr. and Mrs. Thomas Nordbrock	Stanley Parzen and Lynne Raimondo	Mr. John Piper
Mr. and Mrs. Kurt M. Mueller	Ms. June Novalich and Ms. Helene Novalich	Mr. and Mrs. Richard B. Paskin	Ms. Kass Plain and Ms. Maureen Plain
Lisa and John Mueller	Ms. Marion Nowak and Mr. Terry Boyd	Mr. and Mrs. Anthony C. Passanante	Mr. and Mrs. Walter J. Plank
Mr. and Mrs. Mark Mueller	Mr. W. Edward Null	Mr. Chris Pathaude and Ms. Pamela Ivers	Mr. and Mrs. Joseph B. Plauche
Mrs. Sandra L. Mueller ^A	Mr. and Mrs. Marcus J. Nunes	Mr. and Mrs. Donald W. Patterson	Mr. Peter W. Plumley and Ms. Anna M. Rappaport
Mr. and Mrs. Stephen Mueller	Dr. Elizabeth Nye, MD and Ms. Sandra Nye	Jim and Chris Patterson	Mr. Gregory A. Podczaski
Mr. William R. Muenster	Mr. Mark A. Oates and Ms. Elizabeth E. Lewis	Mr. and Mrs. Thomas G. Patterson	Mr. Philip E. Police
Ms. Maureen G. Mullally	Ms. Carrie O'Connor	Ms. Lisa J. Pattis	Mr. and Mrs. Jay Pollitt
Dr. Larry Munch	Mr. and Mrs. Daniel O'Connor	Mr. and Mrs. James B. Patton	Mr. and Mrs. Oren T. Pollock
Ms. Alicia Murasaki and Mr. Joe Carver	Mr. and Mrs. Neil O'Connor	Mr. Scott Pattullo and Ms. Jenny A. Johnson	Ms. Dana L. Pond
Mr. and Mrs. Edward C. Murawski	Mr. and Mrs. Donald R. Oder	Mr. and Mrs. Richard A. Paulus	Mr. and Mrs. Richard A. Posner
Mr. and Mrs. Guy B. Murdock	Mr. and Mrs. Ivan M. Odom	Mr. and Mrs. Rick Pavinato	Mr. William P. G. Potocek
Mrs. Matisa Murillo and Mrs. Mathilda Murillo	Ms. Ann M. Oehmen	Dr. David J. Peace and Ms. Karen Ferrer	Dr. Charles A. Pounian
Mr. and Mrs. J. B. Murphy	Mr. and Mrs. Robert Ohashi	Mr. Frederic C. Pearson	Mr. and Mrs. Michael Powers Sr.
Mr. and Mrs. James G. Murphy	Mr. and Mrs. William P. O'Keefe Jr.	Mr. and Mrs. Larry Pelletier	Mr. and Mrs. Paul C. Poy
Mr. John C. Murphy Jr.	Mr. and Mrs. Walter Olczak	Ms. Abigail Perkins	Mr. William C. Preston
Mrs. Charlotte Murray	Mr. and Mrs. Walter Oldham	Mrs. Marianne F. Perkins	Mr. Ronald Price and Mrs. Charlene Boeing-Price
Ms. Leota Ann Murray	Mrs. Carolyn A. Bury O'Leary	Mr. and Mrs. Norman Perman	Mrs. Sahalee Price and Mr. Brad Lee
Mr. Michael J. Murrin	Ms. Nancy Olive	Mr. and Mrs. David Perry	Dr. and Mrs. Richard A. Prinz
Mr. David E. Muschler and Ms. Ann L. Becker	Ms. Jean Olsen	Mr. Ira J. Peskind	Mr. and Mrs. Vincent Prolongeau
Mr. and Mrs. James W. Myers	Miss Marie E. Olsofka	Ms. Bonnie S. Peters	Mr. Alan J. Pulaski and Mrs. Jane C. Grady
Mr. and Mrs. Michael Myers	Mr. Steve Olson	Mr. James W. Peters	Mrs. Doris J. Puntney
Mr. and Mrs. William Myers	Mr. and Mrs. Theodore A. Olson	Mr. and Mrs. Mark Peters	Mrs. Chestine Puralowski
Mr. Jerry A. Nagles	Mr. Tod A. Olson and Ms. Julie Stauffer	Mr. and Mrs. Michael F. Petersen	Mr. James L. Puralowski and Ms. Ruth A. Francis
Mr. and Mrs. Ron Nahser	Mr. and Mrs. Ted Oppenheimer	Mr. David Peterson	Mr. and Mrs. John F. Pustola
Mr. Ganesh Natarajan and Ms. Faye Katt	Ms. Kathleen F. Orr and Dr. Edward S. Ogata	Mr. and Mrs. Kent Peterson	Mr. David Putman
Mr. and Mrs. Thomas Navta	Mr. and Mrs. Robert Orr	Mr. and Mrs. Jon Pfeffer	Mr. and Mrs. Albert E. Pyott
Dr. Shelly Neitzel and Dr. Andrew Laughy	Mr. and Mrs. Baltimore F. Ortega	Mr. and Mrs. Doug Pfeifer	The Quigley Family
			Mr. and Mrs. William Radzevich

^T Trustee ^A Edward E. Ayer Legacy Society donor ^C Corporate Relations Program member

^D Deceased ^E Field Museum employee ^N New Trustee

Annual Fund cont'd

- Mr. and Mrs. John Radzinski
Thomas and Karen Rafter
Mr. and Mrs. Norman X. Raidl
Mr. and Mrs. John R. Raitt
Miss Dorothy V. Ramm
Dr. Ruth G. Ramsey and
Dr. Michael M. Ramsey
Miss Clara Ranzetta
Mrs. Nancy V. Rascher
Mr. and Mrs. Carig Ratajczyk
Mr. and Mrs. S.Louis Rathje
Mr. and Mrs. Mark A. Ratner
Ms. Suzanne J. F. Reade and
Mr. Bruce Foudree
Mr. and Mrs. Chris Reagan
Mr. and Mrs. Walter W. Reed
Mr. and Mrs. Mark E. Reeves
Ms. Stacey Reicherzer
Ms. Jill Reid
Mr. Patrick K. Reidy
Mr. and Mrs. Craig Reiff
Dr. Mark S. Reiter and
Dr. Kathleen A. Ward
Dr. Sigrida Renigers and
Ms. Astra M. Patrick
Mr. and Mrs. Philip J. Reny
Mrs. Merle Reskin
Dr. Raiselle C. Resnick and
Dr. Kenneth I. Resnick
Ms. Linda Richardson and
Mr. James Bowles
Mr. Neil W. Rickert
Mrs. Mary Ellen Riedel
Mr. Wes Riess
Mrs. Patricia A. Riley
Ms. Amy A. Ripepi and
Mr. Garry J. Grasiniski
Mr. and Mrs. Steven A. Risley
Ms. Marsha Robinet
Mr. and Mrs. David E. Robinson
Mr. and Mrs. Timothy M. Rockhill
Mr. and Mrs. Ismael Rodriguez
Ms. Linda R. Rogers
Mr. and Mrs. James Rogula
Jill and Ron Rohde
Ms. Marilyn Rohn
Mr. and Mrs. Robert Rolih
Ms. Alicia D. Rollo
Joshua and Nancy Rolock
Mr. and Mrs. Allan H. Romberg
Mr. and Mrs. Luis A. Romero
- Mr. and Mrs. Benjamin Rooks [^]
Mrs. Roberta Rosell and
Mr. Howard Rosell
Mr. and Mrs. Harry B. Rosenberg
Mr. Jack H. Rosenberg and
Ms. Anne L. Wieboldt
Mr. and Mrs. Michael Rosenberg
Mr. and Mrs. Neil Rosenberg
Mr. and Mrs. Jack Rosenfeld
Mr. Karl Rosengren and
Ms. Sarah Mangelsdorf
Mr. and Mrs. Bernard Rosenstein
Gracemary and Peter Rosenthal
Mr. Warner A. Rosenthal
Robert and Marsha Rosner
Mr. and Mrs. Jonathan Ross
Mr. Michael C. Rothman and
Mrs. Bonnie F. Rothman
Mr. Phillip D. Rowe
Mr. Paul Rozylowicz and
Ms. Tammy Storoe
Mr. and Mrs. Richard S. Ruffolo
Mr. and Mrs. George T. Rummel
Mr. and Mrs. T. Alan Russell
Laura ^E and Steven Sadler
Ms. Christine A. Salvator
Mrs. Donald W. Sampson
Mr. and Mrs. Emil Sanchez
Mr. Richard H. Sanders
Mr. and Mrs. Roger L. Sanders
Mr. Norman L. Sandfield
Mr. and Mrs. Robert M. Sanford
Ms. Nancy Sans
Mr. and Mrs. Milan Saric
Mr. Peter F. Saunders and
Ms. Patricia J. Larson
Mr. and Mrs. Fred Savaglio
Mr. and Mrs. Graham Sayers
Ms. Vera Seekic and
Mr. Robert C. Osborne
Ms. Edna Schade
Mr. and Mrs. Peter Schaefer
Mr. and Mrs. William R. Schauer
Mr. and Mrs. Terry G. Schechner
Mr. and Mrs. Jon Scherf
Mr. and Mrs. David M. Schiffman
Mr. and Mrs. Timothy J. Schilling
Ms. Kathleen Schillo
Dr. and Mrs. Richard L. Schilsky
Mr. and Mrs. Nathan Schloss
Mr. David L. Schlotterback [^]
- Ms. Susan D. Schlough and
Mr. Andrew D. Abbott
Ms. Beth Schmidt
Mr. Richard C. Schmitt and
Mrs. Corinne R. Fargo-Schmitt
Mr. and Mrs. Arthur Schneider
Dr. John F. Schneider
Mr. Michael J. Schneider
Ms. Virginia Schnippel
Mr. and Mrs. Paul W. Schroeder
Mr. David L. Schultz
Dr. and Mrs. Peter F. Schultz
Mr. Craig R. Schuttenberg and
Ms. Colleen M. O'Leary
Dr. and Mrs. Maurice Schwartz
Mr. Melvin M. Schwartz and
Ms. M. Lisa Yaremko
Mr. and Mrs. Stevan F.
Schweighardt
Mr. and Mrs. Ronald K. Schwuchow
Ms. Margaret F. Scott
Ms. Virdell F. Scott
Mr. Kenneth R. Seeskin and
Ms. Bronna L. Wasserman
Mr. and Mrs. T. Dwaine Sell
Mr. Wayne Serven [^]
Mr. and Mrs. Chris L. Seth
Ms. Jennifer Shanahan
Mr. Owen J. Shapiro and
Ms. Elisabeth Rose
Mr. and Mrs. Robert E. Shapiro
Mr. and Mrs. John A. Shaw
Mr. Francis L. Sheahan
Mr. and Mrs. Charles Shenk
Mr. James V. Shipp and
Ms. Nancy Marie Casper
Mr. and Mrs. William Shorey
Mr. and Mrs. Duward F. Shriver
Mr. and Mrs. Douglas L. Shuman
Mr. Herbert S. Siegel
Ms. Bette H. Sikes
Mr. and Mrs. Alan H. Silberman
Mr. and Mrs. David Silke
Mr. and Mrs. Salvador Silva
Mr. Daniel H. Silverstein
Mr. Andrew B. Simmons and
Mr. Mitchell Loewenthal-Grassini
Ms. Ilene Simmons
Mr. and Mrs. William A. Simmons
Ms. Mae Simon
Mr. and Mrs. Eugene L. Simpson
- Mr. and Mrs. Andrew D. Singer
Mr. Junie L. Sinson
Ms. Carol B. Skala
Mr. Jeffrey Skender
Mr. Jacob Sklarsky and
Ms. Mariann McKeever
Mr. and Mrs. Frederick Sloneker
Mr. and Mrs. Mitchell Slotnick
Mr. and Mrs. Charles F. Small Jr.
Mr. Alvin M. Smith
Dr. Bernard Smith, MD
Mr. and Mrs. Charles F. Smith
Ms. Miriam A. Mobley Smith and
Mr. Donald Brower
Ms. Rebecca Gray Smith [^]
Toni Sandor Smith
Ms. Peggy Snorf
Mr. and Mrs. Tom Snyder
Mrs. Mary Sopocko
Miss Michelle Sotak
Mr. Donald Southworth and
Ms. Marilyn Cantisano
Mr. Shawn Spagnoli and
Ms. Ann Krause
Mr. Paul P. Spanier
Ms. Sharon E. Spanogle and
Mr. John A. Spanogle
Mr. and Mrs. Jerome Spearman
Mr. Michael J. Spence
Ms. Faith H. Spencer and
Mr. Mark Parts
Mr. Norman F. Spielman
Mr. and Mrs. Donald E. Sporleder
Mr. and Mrs. Eric Spratford
Bill and Orli Staley
Mr. and Mrs. David Stalle
Mr. and Mrs. Harlan F. Stanley
Mrs. Patricia Stanley
Mr. and Mrs. Paul Steadman
Mr. and Mrs. Michael R. Steel
Mr. and Mrs. Derek Steelberg
Mr. and Mrs. Floyd Steele
Mr. and Mrs. Kurt J. Steib
Mr. Jon Steimle
Mr. and Mrs. Richard Steinke
Mr. and Mrs. John A. Stepan
Mr. and Mrs. Robert Stephens
Mr. and Mrs. Charles M. Stern
Mr. and Mrs. Phillip L. Stern
Mrs. Doris F. Sternberg

Mr. and Mrs. Donald M. Stewart
Mr. Jason Stimley and
Ms. Veronica Posey
Mr. and Mrs. James B. Stinnett
Janet Stiven and Bernie Seewald
Mr. and Mrs. John Stocchetti
Mr. and Mrs. Howard L. Stocker
Mrs. Harriet C. Stone
Mr. and Mrs. Marv Strasburg
Ms. Marcia D. Stratinsky
Mr. James R. Streicker and
Ms. Mary W. Stowell
Mr. and Mrs. John J. Streit
Mr. and Mrs. Scott Subeck
Mr. and Mrs. Glen C. Suda
Constance and Howard Sulkin
Mr. and Mrs. John B. Sullivan
Mr. Richard Sullivan
Ms. Nancy W. Sutherland
Mr. and Mrs. Harold Sutton Jr.
Mr. Wayne Svoboda
Hobart K. and Janis F. Swan
Mr. and Mrs. Edwin L. Swanson
Ms. Linda J. Swanson
Mr. and Mrs. James H.
Swartchild Jr.
Mr. and Mrs. David W. Swartz
Ms. Kelsie Swatek
Ms. Loretta B. Sweeney
Mr. and Mrs. Steven Sweetser
Mr. Kenneth Swiatkowski and
Ms. Valerie Schoen
Mr. and Mrs. Edward F. Swift III
Mr. J. Roger Swihart
Mr. and Mrs. Robert J. Syrup
Dr. and Mrs. Jan P. Szidon
Mr. Steven Szyndrowski
Ms. Diane Talbot and
Mr. Alex Wiggins
Ms. Gayle Taylor
Ms. Kimberly K. Taylor and
Mr. Zachary Larson
Mr. and Mrs. R. F. Teerlink
Mr. Steven F. Tempel and
Ms. Deborah Zekich
Ms. Janette Tepas
Mr. Nicholas Terrell
Mr. and Mrs. Richard J. Thennes
Ms. Kathy Tholin and
Mr. Steve Starr
Mr. and Mrs. Robert W. Thomas
Ms. Kathleen Thompson
Mr. Stephen Tilley
Ms. Beverly Timm
Dr. and Mrs. James Timmons
Ms. Diane M. Tkach and
Mr. James Freundt
Ms. Virginia Tolk
Mr. and Mrs. Alvin V. Tollestrup
Mr. and Mrs. Wm. Ronald Tomecko
Dr. and Mrs. Maury K. Topolosky
Mr. and Mrs. Leonardo Torres
Mr. and Mrs. James M. Trapp
Dr. and Mrs. Michael R. Treister
Mr. and Mrs. Barton G. Tretheway
Mr. and Mrs. John Trofa
Mr. and Mrs. Christian Trummel Jr.
Mr. and Mrs. John E. Tulley
Mr. Adam Tumas Jr.
Mr. and Mrs. Dominic P. Turchi
Mrs. Elizabeth K. Twede
Dr. and Mrs. Richard Tye
Ms. Norma Uhran
Mr. and Mrs. Enrique J. Unanue
Mr. and Mrs. Michael Urbik
Ms. Paula M. Uscian
Mrs. Murray J. Vale
Mr. and Mrs. James Vallely
Mr. Robert C. Vallone
Ms. Melody A. Van Wermeskerken
Mrs. Theodore W. Van Zelst
Mr. John M. VanderLinden and
Mr. John W. Butler
Mr. and Mrs. Peter O. Vandervoort
Mrs. Christine E. Varela and
Ms. Angela Varela
Mr. and Mrs. Carson Veach
Dr. Sara Vegh and
Mr. Ken Ziejewski
Mr. S. R. Venkata and
Mrs. Mary Slater Venkata
Mr. and Mrs. Leonard M. VerVers
Mr. and Mrs. John F. Vicha
Mr. and Mrs. Randolph M.
Videkovich
Ms. Catalina Vielma
Mr. and Mrs. James R. Vieregge
Mr. and Mrs. Steven S. Viktora
Mr. Andrew T. Wagner
Mr. and Mrs. Richard A. Waichler
Ms. Rosa E. Walke
Mrs. Allison D. Walker
Mr. and Mrs. Herschel D.
Wallace III
Mr. Ronald J. Wallin and
Ms. Whitney A. Parker
Mrs. Marge Walls and
Mrs. Cassandra Sawyers
Mrs. Kathleen Ward and
Mr. Patrick Kelly
Mr. Robert Ward and
Ms. Gloria Seger
Mr. and Mrs. Kurt L. Warning
Mr. and Mrs. Scot E. Warren
Ms. Laura S. Washington [†] and
Mr. Michael W. Richmond
Ms. Ann Wasoff
Ms. Lauren B. Watkins and
Mr. Kevin D. McKee
Ms. Vicki Wator
Ms. Rosalind Wattel
Dr. Catherine L. Webb
Mrs. Deborah S. Weber and
Mr. George E. Ohlin
Mr. Leonard L. Weber
Mr. and Mrs. Andrew J. Weddig
Ms. Kathryn P. Weibel and
Mr. Steve Freeman
Mr. and Mrs. James Weidner
Mr. and Mrs. Richard Weiland
Mr. and Mrs. Gerald Weimann
Mr. and Mrs. James W. Weinberger
Mr. and Mrs. Tom Weinberger
Mr. and Mrs. John Weis
Mr. and Mrs. Jerome S. Weiskopf
Mr. and Mrs. James Weiss
Mr. David Wendling
Mrs. John A. Werhane
Mr. and Mrs. David D. Wesselink
Ms. Fiona Wheeler
Mrs. Carolyn M. White
Mr. Bennie E. Whiten Jr.
Dr. and Mrs. Jack M. Whitney III
Mr. and Mrs. Mark Wieclaw
Ms. Laura A. Wilber
Mr. and Mrs. Lawrence G. Wilcox
Mr. and Mrs. Mark Wilcox
Ms. Dana Wild
Dr. and Mrs. David B. Williams
Mrs. Audrey Williams-Lee and
Mr. Byron Lee
Mrs. April R. Wilson
Mr. and Mrs. Donald Wilson
Mr. and Mrs. Robert Wilson
Mr. and Mrs. Timothy R. Wilson
Mr. and Mrs. James R. Wimmer
Mr. and Mrs. James R. Wise
Mr. Robert F. Wisniewski
Mr. and Mrs. Arnold A. Witt
Ms. Robin Wold
Carl Wolf and Jennie Sochon
Dr. Anne R. Wolfe and
Mr. Brian Kelley
Mrs. Kathleen M. Wolfersberger
and Ms. Cheryl Wolfersberger
Dorothy H. Wolff and Eric Wolff
Mr. Edmund J. Wolff
Mr. Joseph Wolnski and
Ms. Jane Christino
Carole Wood and Carl Jenkins
Ms. Patricia A. Worth
Mr. Jeffrey J. Wunderlich
Mr. David S. Yabloug
Mr. and Mrs. Darryl Yerrick
Mr. and Mrs. Chad M. Yonker
Ms. Sandra L. Yost
Mrs. Janice C. Young
Owen and Linda Youngman
Mr. and Mrs. Donald Yurachek
Diane and Lawrence Zalusky
Mr. Denis M. Zamirowski
Mr. Daniel Zamudio and
Mr. Miguel Zamudio
Clementine Zavelle and Brian Ibsen
Ms. Barbara Zenner
Mr. and Mrs. Hugh Zentmyer
Mr. and Mrs. John T. Zick
Mr. and Mrs. William B.
Zigterman ^A
Mr. and Mrs. Jay H. Zimble
Mr. and Mrs. Frederick N.
Zimmermann
Mr. and Mrs. John A. Zimmie
Mr. Tim Zintl and Ms. Alyssa Zintl

[†] Trustee ^A Edward E. Ayer Legacy Society donor ^C Corporate Relations Program member

^D Deceased ^E Field Museum employee ^N New Trustee

World's Fair Families

In celebration of the exhibition Opening the Vaults: Wonders of the 1893 World's Fair, descendants of the World's Columbian Exposition's directors and exhibitors gathered to honor their families' civic leadership and raise funds for The Field Museum.

Organizing Committee

Judy^T and P. D. Block III
 Jamee and Marshall^T Field V
 Jamee C. Field^T
 Wentworth and John E. McGovern III
 Abby McCormick O'Neil
 George Ranney and Victoria Post Ranney
 Adele S. Simmons^{TA} and John Simmons
 Maureen Dwyer Smith^T and Edward Byron Smith Jr.

Mrs. Ellen S. Buchen
 Linda and Vincent Buonanno
 Mr. Frederick Quintard Cregier Jr.
 Ms. Shawn M. Donnelley and Mr. Christopher M. Kelly
 Mr.^T and Mrs. Thomas E. Donnelley II
 Mrs. Charles C. Haffner III
 Mirja and Ted Haffner
 Stephanie and John Harris
 Mr. and Mrs. Frank D. Mayer Jr.
 Mr. John Meehl
 Harold B. Smith
 Mr. and Mrs. Richard Uihlein
 Mrs. Henry P. Wheeler
 Ms. Nancy Hamill Winter



Trustees Marshall Field V (left) and Adele S. Simmons (right) deliver remarks at a special event held for the descendants of the Chicago families who helped organize the World's Columbian Exposition of 1893. Guests, including Trustee Judy Greffin (center left) and John E. McGovern III (center), enjoyed a behind-the-scenes tour of the Museum's production studio to learn about the making of the exhibition *Opening the Vaults: Wonders of the 1893 World's Fair*. Thank you!

Corporations, foundations, and government (unrestricted)

\$100,000+
 Chicago Park District on behalf of the people of Chicago
 John D. and Catherine T. MacArthur Foundation
 S&C Electric Company^C
 Superior Mechanical Systems Inc.^C
 Tave & Associates LLC^C
 Troutman Sanders LLP^C
 UnitedHealthcare^C
 W. W. Grainger Inc.^C

\$50,000-99,999
 Anonymous (2)
 United Continental Holdings Inc.^C

\$25,000-49,999
 Aon Corporation^C
 ArcelorMittal^C
 Baxter International Inc.^C
 Goldman, Sachs & Co.^C
 Peggy and Steve Fossett Foundation
 Kenneth Griffin on behalf of Citadel^C
 Hitz Foundation
 John R. Halligan Charitable Fund
 JPMorgan Chase & Co.^C
 Julius N. Frankel Foundation
 KPMG LLP^C
 Leo Burnett Worldwide^C
 McDonald's Corporation^C
 Northern Trust^C
 Pepsi Beverages Company^C
 Prince Charitable Trusts
 Walgreens^C

\$10,000-24,999
 A. Montgomery Ward Foundation
 Bloomberg^C
 The Butz Foundation
 Mr. Kent Chandler Jr. / The Buchanan Family Foundation
 The Davee Foundation
 Dover Foundation^C
 Hamill Family Foundation
 Harris Family Foundation
 ITW^C
 The Knowles Foundation
 McGraw-Hill Education^C
 McGraw Hill Financial Inc.^C
 MetLife^C
 Morgan Stanley^C
 Motorola Solutions^C
 NYSE Euronext^C
 The Robert E. Gallagher Charitable Trust
 A. G. Cox Charity Trust
 Aileen S. Andrew Foundation^C
 Akzo Nobel Inc.^C
 Allyn Foundation Inc.
 American Agricultural Insurance Company
 Amsted Industries Foundation
 Bertha Lebus Charitable Trust
 BRE NorthAmerica Industrial Fund
 Chauncey & Marion D. McCormick Family Foundation
 Chubb Group Insurance Companies^C
 ComPsych Corporation
 The Donnelley Foundation
 Draper and Kramer
 Fellowes Inc.
 Gerald A. and Karen A. Kolschowsky Foundation Inc.
 The Gerald Norton Foundation
 GKN Foundation
 The Horner Foundation
 Institutional Capital Corporation
 The Irving B. Harris Foundation
 Kroeschell Engineering Co.^C
 MAC Restoration Contracting Inc.^C
 The Manaaki Foundation
 Marlot Foundation
 McDermott Will & Emery LLP^C
 McKee Family Foundation
 Old Republic International Corporation
 Primera Engineers Ltd.^C
 Sahara Enterprises Incorporated
 Segal Family Foundation
 Shure Incorporated
 The Sommer Family Foundation
 The Sulzer Family Foundation
 Thorson Family Foundation
 University HealthSystem Consortium

The Edward E. Ayer Legacy Society

The Edward E. Ayer Legacy Society recognizes extraordinary people who remember The Field Museum through bequests, trusts, and other planned and life income gifts.

Anonymous (11)

Barbara and Steven Adelman

Marilynn Alsdorf

Mary Jane Arnam

Mr. Harry Axelrod

Mr. and Mrs. James H. Banach

Mr. and Mrs. Robert D. Becker

Dr. Helen R. Beiser

Robert and Ruth Berns

Willard L.^T and Susan K. Boyd

Mr. Richard T. Brannegan

Mr. and Mrs. Frederick W.

Brooke III

Mrs. George R. Brumlik

Leo R. Buckert

Judith A. Caloud

Rita and John^T Canning

Mrs. Robert Adams Carr

Mr. and Mrs. Henry T. Chandler

Mr.^T and Mrs. Worley H. Clark Jr.

Mr. and Mrs. Stephen F. Condren

Mr.^T and Mrs. Frank W. Considine

Ms. Rebecca Davidson

Ms. Janet W. Diederichs

Donald and Betts Baepler
Endowment for Ornithological
Study

Ms. Linda L. Egebrecht

La and Philip Engel

Mr. Richard F. Eveleth

Ms. Shirley M. Evans^D

Mr. and Mrs. Fabio Fabbri

Mary and Bruce Feay

Marshall Field V^T

Dr. and Mrs. Curtis B. Frank

Wilbur^T and Linda Gantz

Mr. and Mrs. William E. Gardner

Mr. Lyle Gillman

Mrs. Warren L. Gjorup

Robert and Beth Gordon

Dr. Norman C. Greenberg and

Dr. Gilda M. Greenberg

Timothy and Joyce Greening

Mr.^T and Mrs. Lewis S. Gruber

Ms. Tonja Rizai Hall



Sixty-seven donors and Museum friends enjoy remarks by President Richard W. Lariviere at the twentieth anniversary celebration of the Edward E. Ayer Legacy Society. Held on November 20, the luncheon honored the 140 current members of the Ayer Society and their contributions to the future of The Field Museum. Thank you!

Ms. Jeanne M. Hansen

Drs. Malcolm H. and Adele Hast

Mrs. Betty S. Hess

Mr. David D. Hiller^T

Mrs. Harold H. Hines Jr.

John and Marjorie Hines

Peggy L. Hoberg

Ms. Melody Hobson^T

Anita W. Hornbrook

Dr. and Mrs. James C. Hunt

Mr. Edward C. Jerkey

Ms. Stacy L. Johnson

Constance^T and Dennis Keller

Mr. and Mrs. Jerry M. Kelly

Robert E. Lewis, PhD

Gail J. and Robert B.^T Loveman

Mr. and Mrs. Bernard A. Mack Jr.

Ann C. Mallow

Mr. Peter A. Maren

Mr. Robert C. Marks

Ms. Nancy A. McDaniel

Dr. William B. McDonald and

Ptah Sekhmat Osiris

Erma S. Medgyesy

Hugo J. Melvojn^{TD}

Robert and Lois Moeller

Sandra L. Mueller

Drs. James and Sandra Napolitan

Mr. and Mrs. John P. Nielsen

Irma Parker

Joseph and Jo Ann Paszczyk

Ms. Marie E. Peruscini and

Mr. Edward C. Bapple

Mr.^T and Mrs. Richard J. Pigott

Mrs. John W. Pockock

Mr. and Mrs. Mane Pritza

Mrs. Alfred Lunt Putnam

Dr. Dominick S. Renga

Mr. Alan Resetar^E and

Mrs. Donna Resetar

Mr. Richard F. Reynolds

Mrs. Sheila T. Reynolds

Ms. Anita J. Rogers

Mr. and Mrs. Benjamin Rooks

Mr. David L. Schlotterback

Mr. Franklin R. Schmidt

Patricia O. Schnadig

Ms. Thelma L. Schwartz

Mr. and Mrs. G. Curtiss Shaffer

Bob and Charlene Shaw

Marian Shaw^D

Louise M. Sherman

Rose L. Shure

Miss Joanne Silver

Adele S. Simmons^T

Rebecca Gray Smith

Ms. Suzette Sodini

Mr. and Mrs. John R. Stanek

Duane E. and Christine M. Stout

Ms. Judith B. Sugarman

Datin Fui Lian Tan and Datuk

Dr. Robert F. Inger

Mr. Gerald M. Torrence

Rose and Robert Wagner

David Wargowski

Mr. Lon Wehrle

Nestor R. Weigand Jr.

Barbara H. West

Mrs. Dorothy B. White^D

Ms. Virginia L. Whittaker

Ms. Claudia L. Winkler

Mr. Lawrence J. and

Mrs. Margaret V. Witry

Mr. James G. Young

Mr. and Mrs. William B. Zigterman

Ms. Christine C. Zogus

Estate gifts and bequests

The Field Museum commemorates the following people for their profound bequest, legacy, and estate gifts received in 2013.

A. Watson Armour

Frank B. Foster

Evelyn Frank

Ilse Friend

Hugo J. Melvojn^{TAD}

Betty D. Prout

Gerda Schild

Jane B. and Chester D. Tripp

Lydia Walkowiak

^T Trustee ^A Edward E. Ayer Legacy Society donor ^C Corporate Relations Program member

^D Deceased ^E Field Museum employee ^N New Trustee



Women's Board Gala co-chairs Leslie Gantz McLamore (above left) and Julie Hughes O'Connell deliver opening remarks at the annual gala on October 26. Titled "A Fair to Remember: Chicago, 1893," the event raised \$2.1 million, making it the most financially successful gala in Field Museum history. Congratulations, Leslie and Julie, and thank you!

Women's Board Gala

The Women's Board Gala, the annual fundraiser for The Field Museum, raised more than \$2.1 million to support science, education, exhibitions, and conservation programs.

Host Committee (\$50,000+)

Abbott
Aon Corporation
BMO Harris Bank
The Boeing Company
Rita and John^T Canning^A
The Crown Family
Mr.^T and Mrs. Roger K. Deromedi
Jacky and Michael^T Ferro,
The Sun-Times Foundation and
The Chicago Community Trust
Wilbur^T and Linda Gantz^A
Christina and Ron^T Gidwitz

Jim Gordon and David M. Tolmie,^T
The Edgewater Funds

Mr. David G. Herro^T
Mr. and Mrs. Harlow N.
Higinbotham
ITW
J. B.^T and M.K. Pritzker Family
Foundation
JPMorgan Chase & Co.
Mr.^T and Mrs. Michael L. Keiser
Mr. and Mrs. Barry L. MacLean
The Negaunee Foundation
Northern Trust
Mr. and Mrs. J. Christopher Reyes
John W.^T and Jeanne M. Rowe

\$25,000-49,999

Jeffrey S. Aronin
The Duchossois Group Inc.
Exelon Corporation
Mr.^T and Mrs. James S. Frank

Grosvenor Capital Management LP
Leo Burnett Worldwide
Mr. and Mrs. William A. Osborn
Robert R. McCormick Foundation
Mr. and Mrs. Patrick G. Ryan
Walgreens
Wirtz Corporation

\$15,000-24,999

Dr.^T and Mrs. Richard A. Chaifetz
Froilan and Cecilia Concepcion
Dr. Adnaan Hamid^T and
Mrs. Elissa Efrogmson
Howard B. Bernick^T Foundation
Mr. and Mrs. Alan J. Lacy
Robert M. and Diane von
Schlegell Levy^T
PNC Financial Services Group Inc.
The PrivateBank
Mr. and Mrs. Tor Solberg
UnitedHealthcare

\$8,000-14,999

Allstate Insurance Company
ARAMARK Corporation
ARAMARK Parks & Destinations
ArcelorMittal
Mr. and Mrs. James N. Bay Jr.
Mr. and Mrs. Philip D. Block IV
BlueCross BlueShield of Illinois
Barbara^F and Roger Brown
Mr. and Mrs. Michael P. Cole
Mr.^T and Mrs. Robert W.
Crawford Jr.
Mr. and Mrs. W. J. Farrell
Fieldglass Inc.
Grant Thornton LLP
Mr.^T and Mrs. Jack M. Greenberg
Mr. and Mrs. King W. Harris
Katie Hazelwood and Todd^T Kaplan
Mr. and Mrs. John W. Higgins
Mr. and Mrs.^T Dennis J. Keller^A
Mr. and Mrs. Frederick A. Krehbiel
Mr. Randolph R. Kurtz^T
Locke Lord LLP
Mr. and Mrs. Andrew J.
McKenna Sr.
Mr.^T and Mrs. Bobby Mehta
Clare M. Muñana^T
Mr.^T and Mrs. Neil S. Novich
Peter^T and Alicia Pond
Elizabeth Pruett
Mr. and Mrs. Phillip B. Rooney
S&C Electric Company
Mr. and Mrs. Gordon I. Segal /
Segal Family Foundation
Matthew K.^T and Julie Simon
Mr.^T and Mrs. Mark Tebbe
Mr. and Mrs. Thomas Tisbo
Kim^T and Miles^T White
William Blair & Company
Wm. Wrigley Jr. Company
Linda^T and Ron Wolf

Special gifts

Special gifts include restricted support from donors who made gifts and new commitments in 2013.

\$1,000,000–4,999,999

The Boeing Company
The Grainger Foundation
Mr. and Mrs. ^T Dennis J. Keller ^A
National Science Foundation

\$100,000–999,999

Allstate Insurance Company
America for Bulgaria Foundation
American Research Center in Sofia Inc
Andrew W. Mellon Foundation
ArcelorMittal
Bobolink Foundation
Rita and John ^T Canning ^A
Cyrus Chung Ying Tang Foundation
Discover Financial Services
Dr. Ralph and Marian Falk Medical Research Trust
Elizabeth F. Cheney Foundation
The Elizabeth Morse Charitable Trust
Ernst & Young LLP
Exelon Corporation
Mr. ^T and Mrs. Marshall Field ^A
Mr. ^T and Mrs. James S. Frank Wilbur ^T and Linda Gantz ^A
Gordon and Betty Moore Foundation
Pamela K. and Roger B. Hull IDP Foundation, Inc.
Illinois Department of Natural Resources
Institute of Museum and Library Services
ITW
J. B. ^T and M. K. Pritzker Family Foundation
John D. and Catherine T. MacArthur Foundation
Mr. ^T and Mrs. Michael L. Keiser
Barry and Mary Ann MacLean–MacLean–Fogg Co.
Mr. Andrew H. Mathis
Mr. ^T and Mrs. Bobby Mehta
The Negaunee Foundation
PNC Financial Services Group Inc.

Prince Albert II of Monaco Foundation
Robert R. McCormick Foundation
John W. ^T and Jeanne M. Rowe
Cari and Michael ^T Sacks
The Searle Funds at The Chicago Community Trust
UL
Viking Cruises

\$25,000–99,999

Anonymous
Ms. Susan M. Benton ^T
Mr. and Mrs. ^T Philip D. Block III

D & R Fund
Ellis Goodman Family Foundation
Fifth Third Bank
Dr. Marjorie Fisher
Ford Motor Company Fund
Gantz Family Foundation
Gaylord and Dorothy Donnelley Foundation
Ms. Sue Ling Gin ^T
Hamill Family Foundation
Harris Family Foundation
JPMorgan Chase & Co.
JRS Biodiversity Foundation
Mr. and Mrs. Bruce H. Lauer

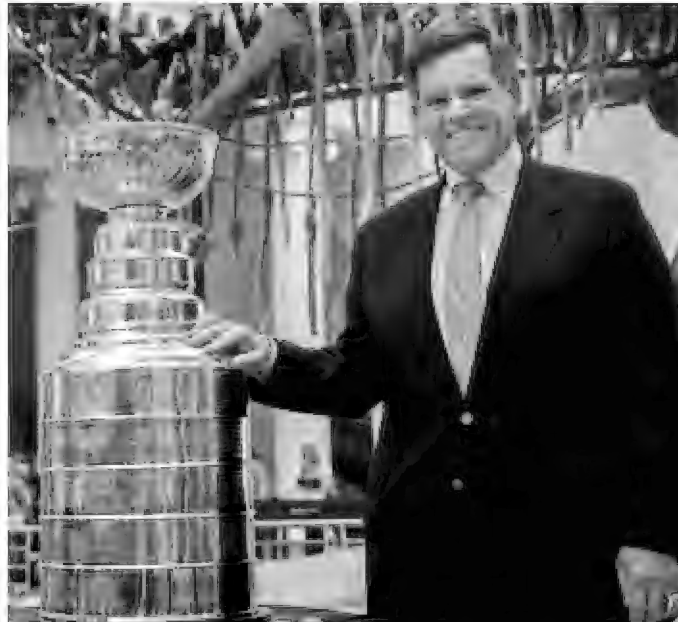
National Fish and Wildlife Foundation
National Park Service
Ms. Karen A. Nordquist
Pearson Education Holdings Inc.
Quest Foundation
The Regenstein Foundation
Richard H. Driehaus Charitable Lead Trust
Sally Mead Hands Foundation
Bob and Charlene Shaw ^A
Target
Glenn ^T and Jacqueline Tilton
William G. McGowan Charitable Fund Inc.

\$10,000–24,999

Anonymous (5)
Bears Care
Terry and Gail ^T Boudreaux
Barbara E. Brown ^E
CATH Associates
Consejo Superior de Investigaciones Cientificas
Mr. ^T and Mrs. Robert W. Crawford Jr.
General Packaging Products
Christina and Ron ^T Gidwitz
Drs. Jonathan Haas ^E and Winifred Creamer
Heitler Fund
Helen V. Brach Foundation
Hill Mechanical Group
The Hoellen Family Foundation
Institute for Aegean Prehistory
James S. Kemper Foundation
Jocarno Fund
Laurie and Rich Kracum
Marie Curie Foundation
Mr. ^T and Mrs. Leo F. Mullin
National Geographic Society
Richard H. Driehaus Foundation
Mr. and Mrs. Richard H. Schnadig
Siragusa Foundation
Mr. and Mrs. Orlin D. Trapp Jr.
U.S. Bancorp Foundation
WebFilings LLC

\$5,000–9,999

Anonymous
AT&T Inc.



Trustee W. Rockwell Wirtz, chairman of the Chicago Blackhawks, poses with the Stanley Cup and Sue. Mr. Wirtz generously hosted a public viewing of the trophy on October 12 to celebrate the Blackhawks' win of the NHL championship. Fans from the region, many of whom lined up the night before and slept on the front steps, flocked to the Museum. The crowd was so large, the Museum opened one hour early. More than 7,000 people took photographs with the Stanley Cup trophy. Congratulations, Rocky, and thank you for this unforgettable occasion!

The Brinson Foundation
Mr. T. Kimball Brooker
Dr. ^T and Mrs. Richard A. Chaifetz
Mrs. Joyce E. Chelberg
Chicago Blackhawks Charities
The Crown and Kunkler Family

Mr. ^T and Mrs. W. James Mc Nerney Jr.
Mrs. Withrow W. Meeker
Debra Moskovits ^E and Jack W. Fuller
Motorola Solutions Foundation

^T Trustee ^A Edward E. Ayer Legacy Society donor ^C Corporate Relations Program member
^D Deceased ^E Field Museum employee ^N New Trustee

Special gifts cont'd

Mr. and Mrs. Andrew K. Block
Charles Adams Nature Research
Foundation
Charles and M. R. Shapiro
Foundation
Mr. ^T and Mrs. Roger K. Deromedi
The Field Foundation of Illinois
Grand Victoria Foundation
Mrs. Robert C. Hyndman
Mr. Bryant L. Keil ^T
Mr. and Mrs. Martin Jesse Koldyke/
Koldyke Family Foundation
McGraw Foundation
Susan Mikalauski
Mr. and Mrs. Kenneth Nebenzahl
Mr. Gary L. Neilson and Ms. Trudy
A. Havens
Mr. F. Oliver Nicklin Jr.
Patrick and Anna M. Cudahy Fund
Mr. and Ms. George A. Ranney Jr.
The Warwick Foundation
Kim ^T and Miles ^T White
World Wildlife Fund

\$1,500–4,999

Anonymous (2)
Mr. ^T and Mrs. Charles W. Benton
Dr. Rüdiger Bieler ^F and
Dr. Petra Sierwald ^F
Thomas and Dianne Campbell
Mary and Richard Chamberlin
The Colmar Foundation
Pam and Howard Conant Jr.
Mr. and Mrs. Patrick Corrigan
Dr. Aureal T. Cross ^D
Mr. and Mrs. David Devonshire
The Donnelley Foundation
Mr. and Mrs. Paul M. Embree
Mary and Bruce Feay ^A
Mr. ^T and Mrs. Jack M. Greenberg
Dr. Malcolm H. Hast ^A
IBM
Jeani and Rich Jernstedt
Ms. Judy Johanson
Mr. and Mrs. W. Bruce Johnson
Mr. and Mrs. James M. Johnson
Ms. Kathleen Jordan
Ms. Anne Kavanagh and
Mr. Terry Smith
Mr. and Mrs. Dennis Klaeser
Ms. Phyllis Lockett

Marshall B. Front Family Charitable
Foundation / Laura De Ferrari and
Marshall B. Front ^T
Susan and John McBride
Ms. Nancy A. McDaniel ^A
Mr. and Mrs. Brian C. Miller
Multi Group Logistics
Mr. and Mrs. Walter B. Newsom
Mr. and Mrs. William A. Osborn
Mr. and Mrs. Shelby Pruett
Dr. George B. Rabb
Ms. Sri Reddy and
Mr. Brian R. Sullivan
Mr. and Mrs. Phillip B. Rooney
Mr. and Mrs. Andrew M. Rosenfield
Ryan Ruskin
Mr. and Mrs. John W. Rutledge
Mr. and Mrs. Steven M. Ryan
Mr. and Mrs. Stephen Schmitt
Mr. and Mrs. ^N Jeffrey S. Sharp
Alissa and Jonathan Shulkin
Mr. ^N and Mrs. Kevin Stineman
Mr. ^T and Mrs. David M. Tolmie
Vermont Community Foundation
David Weinberg and Jerry Newton
Mr. ^T William J. White
Ms. Claudia L. Winkler ^A

In-kind gifts

Abbott
ARAMARK Parks & Destinations /
Field to Table Catering and Events
Asado Coffee Company
Bay's English Muffins
BBJ Linen
Beam
Blue Plate
Chicago Athletic Clubs
Chicago Symphony Orchestra
The Chocolate Shoppe
Comcast
Creatia
Disney
ESRI Field To Table
Flower Firm
Food For Thought
Frost Chicago
Hall's Rental
HMR Designs
Ivan Carlson & Associates
Jewell Events Catering
Justin's
Kehoe Designs
Kraft Foods
Louis Glunz Beers Inc.
McDonald's Corporation
Microsoft
Motorola Solutions
Munro Campagna
Music Box Theatre
Oogie's Gourmet Popcorn
Pabst Brewing Company
PepsiCo / Frito-Lay Inc.
Potbelly
Quaker Oats
Shedd Aquarium
Target
United
Upton's Naturals
Walgreens
Windy City Paws
Wm. Wrigley Jr. Company

Volunteer leadership

The Women's Board

The Women's Board promotes awareness of The Field Museum's exhibitions, collections, research, conservation efforts, and public programs. Its philanthropic activities provide restricted and unrestricted funds that advance the Museum's scientific and educational mission.

Kim White ^T
President
Betsy Ahearne
Secretary
Laura Ferris Anderson
Women in Science Fellowship
Fran Beatty
Museum Relations
Janice Beck
Field Trips
Virginia Bobins
Nominating
Cathy Busch
Programs
Lenore Cameron
Field Dreams
Kathleen Carbonara
Vice President
Elizabeth O'Connor Cole
Programs
Jacky Ferro
Membership
Beth Glass
Vice President
Karen Gray
Nominating
Marty Higgins
Field Trips
Anne Kavanagh
Women in Science Fellowship
Kathleen Klaeser
Women in Science Luncheon
Kelli Klauber
Annual Appeal
Laurie Kracum
Membership
Lenore Macdonald
Bylaws
Dorothy Marks
Member-at-Large
Susan Clark McBride
Women in Science Luncheon, Member at Large
Lisa McClung
Treasurer

Leslie Gantz McLamore
Gala

Ellen O'Connor
Board Luncheons

Julie Hughes O'Connor
Gala

Cathy Osborn
Hospitality

Anne Patel
Field Dreams

Barbara Pearlman
Long Range Planning

Amanda Rutledge
Children's Holiday Celebration

Susan Sebulsky
Children's Holiday Celebration

Bonnie Stearns
Hospitality

Jackie Tilton
Board Luncheons

Amy Tuchler
Annual Appeal

President's Leadership Council

The President's Leadership Council enhances and expands the reach of The Field Museum's educational mission. Council members support and advocate for broadly accessible programs that increase people's understanding of the world's diverse cultures and environments.

Kevin Stineman^N
Chair

Michael Arnold
Education Initiatives

Randy Burt
Board Resources

Lori Dawson
Treasurer

Jeffrey Havsy
Membership

Jeffrey Korzenik
Membership

John E. McGovern III
Secretary

Catharon Miller
Programs, Field Trip

Ryan Ruskin
Vice Chair

Alissa Shulkin
Programs, Field Trip

Amanda Sonneborn
Board Resources

Steve Vivian
Education Initiatives

Anthropology Alliance

The Anthropology Alliance promotes interest in and support of The Field Museum's anthropological research and collections.

Bob Shaw^A
Chair

Aimee Genova
Nominating

Joan Goldstein
Programs

Timothy Greening^A

Yolande Lucas

Terry McGuire

Susan Mikalauskis
Membership

James Stola
Nominating

Sheila Whalen
Communications

Council on Africa

The Council on Africa brings together the Museum's supporters and scientists who share an interest in the African continent and its people. Council members' contributions are allocated to existing capacity-building projects, training young African scientists, and sponsoring research endeavors across the continent.

David M. Tolmie^T
Chair

Anonymous

Mary and Richard Chamberlin

Pam and Howard Conant Jr.

Marian F. Cook

Mary and Bruce Feay^A

Dr. and Mrs. James L. Foght

Susan M. Forney

Ms. Judy Johanson

Ms. Kathleen Jordan

Mr. and Mrs.^T Dennis J. Keller^A

Mr. and Mrs. Bruce H. Lauer

Deborah and Daniel Manoogian

Ms. Nancy A. McDaniel^A

Ms. Elisabeth C. Meeker

Adele S. Simmons^{TA} and

John L. Simmons

Mr.^T and Mrs. David M. Tolmie

Field Associates

The Field Associates is an Annual Fund level designated by and for young professionals (21 to 35 years old). Its mission is to engage Chicago's next generation.

Sarah Lichtenstein Walter
President

Tim Frisbie
Membership

Melissa Genova Hill
Membership

Ben Lincoln
Communications

Keirstin Lincoln
Programs

Helen Odom
Programs



Trustee Kim White concluded her two-year term as president of the Women's Board in May 2014. A transformational leader, she refocused the Women's Board's efforts on the Museum's new institutional priorities. She also led the Women's Board in reaching new levels of fundraising. Because of this fundraising success, the Women's Board made a significant contribution to advance these priorities. Thank you, Kim, for your inspiring leadership!

^T Trustee ^A Edward E. Ayer Legacy Society donor ^C Corporate Relations Program member
^D Deceased ^E Field Museum employee ^N New Trustee

Museum volunteers

Museum volunteers contribute their time and utilize their diverse skills to help advance The Field Museum's mission. In the public galleries, they help visitors discover the wonders of science and develop an appreciation for cultures around the world.

Behind the scenes, they support groundbreaking work. The following volunteers contributed 200 hours or more in 2013.

500+ hours

Richard Bisbing
Irene Broede
Drew Carhart
Ellis Caspary
Robin Delapena
John DeWerd
Christine Frazer
Peter Gayford
Matthew Girard
Richard Guzik

Bernice Jacobs
Dennis Kinzig
Joanne Levy
Peter Lowther
Sandra Mueller [^]
Timothy Nelson
Karen Nordquist
William Sherry
Andrew Wagner
Kurt Zahnle
Elaine Zeiger
Steven Zitowsky

200-499 hours

Eric Ahlgren
Robert Andresen
Robert Andrini
Jan Marie Aramini
John Balaban
Sandra Bauer

Gloria Berkwits
Robert Boswell
Theresa Boswell
Joan Bruchman
Joseph Cablk
Robert Cantu
Lei-Lani Chan
James Costello
Edith Dervin
Gary Drimmer
John Dunn
James Durham
Thomas Durica
Glenn Gabanski
Cynthia Garraway
Arlene Ghiron
Renee Goddijn
Soffia Kuehner Gray
Gayle Guzik
Mary Harland
Mattie Harris
Joyce Hecht
Ruthann Heidgerken
Aaron Heuer
Dan Horwitz
Jeff Hoswell
Gerald Hough
Lisa Hung
James Kase
Kelsey Keaton
Thomas Kerstann
Mary Ann Khan
Arlene Koziol
Milton Levin
Loretta Long
Jack MacDonald
Lettie McSpadden
Daniel Melone
Lenore Melzer
Beverly Meyer
Jacob Meyer
John Morris
John Nordloh
J. Claire Odland
Marie Orendach
Michael Padilla
Stephen Parshall

Angelina Patti
James Piekarczyk
Anita Punkay
Amanda Robinson
Judith Rom
Antonella Russo
Jay Samstag
Nina Sandlin
John Schmadeke
Annette Schmit
Thelma Schwartz [^]
Monica Sentoff
Stephen Sentoff
Terri Sinnott
Beth Spencer
Robert Spieler
James Stola
Lisa Stringer
Grace Takata
Darren Vilmin
Phyllis Walden
Jane Yakushiji
William Zandrew
Howard Zar



Docent Ellis Caspary leads a tour of *The Ancient Americas*. He is among 535 individuals who volunteered at the Museum in 2013. Together, they gifted 67,500 hours of service—the equivalent of thirty-seven full-time employees. In addition to leading tours, Mr. Caspary volunteers for Regenstein Conservator for Pacific Anthropology J. P. Brown, extracting information from CT scans of mummies. In 2013, he contributed more than 500 hours of service. Thank you, Ellis and all our volunteers!

Commemorative gifts

The following donors made gifts to The Field Museum in the name of a friend or loved one.

In Memory

Liam Kevin Aivazia

Dr. Aram Aivazian, Mr. and Mrs. John Alexanian, Mr. and Mrs. William Cote, Nairi Krikorian and Rafi Krikorian, Mr. Michael Marcotte, Professor Harvey Shear, and Mr. and Mrs. George Wesolowsky

Roger Burckert

Mr. and Mrs. Richard L. Benson

Harvey Epstein

Mr. and Mrs. Harry S. Epstein

Their beloved brother

Mr. and Mrs. Albert Frank

William Angus MacAulay

Ms. Jennifer Rosinski, Ms. Sarah Utley, and Mr. Angus MacAulay

Hugo Melvoin^{TA}

Mr. and Mrs. Frank D. Mayer Jr.

Lee A. Mishkin

Mr. Cary Tranter

Her late husband

Mrs. Frank J. Mooney

John Nordloh

Mr. and Mrs. Edward Ahlfors, Dr. and Mrs. David H. Bauman, Ms. Hilda R. Cavanaugh, Dr. and Mrs. Patrick J. Cavanaugh, Ms. Marilyn Conklin, Mr. and Mrs. Mark Conroy, Mr. and Mrs. Robert H. Coyier, Mr. and Mrs. James W. Damsma, Ms. Margaret A. Duffner, Ms. Jennifer Feather, Mr. and Mrs. David A. Flom, Mrs. Ann Frutkin, Mr. John Galkowski and Ms. Kathryn West, Mr. and Mrs. David R. Coetz Jr., Ms. Joyce E. Hecht, Mr. and Mrs. Edward M. Hipke, Mr. and Mrs. Robert H. Jenkins, Ms. Patricia Jiganti, Mr. and Mrs. Les Klevay, Mr. and Mrs. John S. Markwalter, Mrs. Beverly M. Meyer, Mr. and Mrs. Bernard J. Miller Jr., Mr. and Mrs. Robert J. Rhyner, Mr. Jules N. Stiffel, Mr. and Mrs. Gregory A. Tieder, Mr. and Mrs. John R. Weiss, and Ms. Meredith Wotman

Dr. Gertrude Novak

Ms. Marietta Cahn and Mr. John L. E. Seidler

Robert Rodgers

Ms. Beverly J. Rodgers

Olive Sherman

Mr. and Mrs. Richard L. Bell, Mr. Lee Sherman, and Mr. and Mrs. Matthew A. Smeenge

Jane Thain

Ms. Esther S. Altschul, Robert and Ruth Berns, Ms. Harriet S. Clowes, Mr. and Mrs. Bob Connor, Mr. John H. Dunn, Mrs. Elaine Fiffer, Ms. Barbara S. Graves, Mrs. Penny M. Hodges, Mrs. John A. Holabird Jr., Mrs. Colleen Kakarakis, Mr. and Mrs. Kenneth R. Mullin, Mr. and Mrs. Ward J. Premer, and Ms. Sarah S. Walter

Dr. Charles B. Van Gorder

Mr. and Mrs. Dennis Clauss

Nancy Wald

Mr. Albert Wald

Irene Wilzak

Mr. and Ms. Joseph F. Honor

Dvorah Yastrow

Mrs. Roslyn Grodzin and Mr. and Mrs. E. Donald Heymann

Edward Yastrow

Ms. Susan S. Adler, Mr. and Mrs. Henry Arenberg, Mr. and Mrs. Joseph Gagliardo, Mrs. Roslyn Grodzin, Laner Muchin Dombrow Becker Levin and Tomenberg Ltd., Mr. and Mrs. M. J. Padorr, Mr. and Mrs. Kenneth Pell, John and Shirley Schlossman, Mr. and Mrs. Rick Scott, Mr. and Mrs. Steven Shifrin, Dr. Alvin D. Star, Ms. Karen Ury, Mr. and Mrs. Richard Washer, and Mr. and Mrs. Shelby Yastrow

In Honor

Alvaro del Campo

Dr. Michael Allgeia

Michael Ferro's[†] birthday

Mr. James A. Star and Mrs. Sara Crown-Star

Al and Sharleene Frank

Ms. Mary M. Schmick

Tim Frisbie

Mrs. Lisa Soard

Mr. Charles L. Katzenmeyer^E

Mr. and Mrs. John T. Doherty

Jeffrey Korzenik

Illinois CPA Foundation and South Suburban Small Business Assoc.

Robert B. Loveman^{TA}

Mr. and Mrs. Steven A. Rosen

Dr. Charles Nadler

Mrs. Roy I. Warshawsky

Chester and Patricia Rozanski's

fiftieth wedding anniversary

Anonymous

George Shipperley

Ms. Kathryn Ray

Bill Simpson^E

Mr. and Mrs. Walter B. Watson Jr.

[†] Trustee ^A Edward E. Ayer Legacy Society donor ^C Corporate Relations Program member

^D Deceased ^E Field Museum employee ^N New Trustee

Gifted collections

Through generous gifts of objects and specimens, The Field Museum's collections have grown to become an indispensable scientific resource for scholars around the world. The Museum acknowledges the following donors who made gifts in 2013 to enhance the institution's collections.

Anthropological collections

Dean E. Arnold
 Alan Brodie ^D
 James Ethridge
 Marshall Gover
 David E. Howard
 Withrow Meeker
 Betty Starr
 John Terrell ^E
 Mary Stevenson Thieme
 John Varnum
 Cynthia Weill

Botanical collections

Adviesbureau voor Bryologie
 en Lichenologie
 Agriculture and Agri-Food Canada
 California Academy of Sciences
 Complutense University of Madrid
 Duke University
 Theodore Esslinger
 Eszterházy Károly College
 James G. Graham
 Harvard University
 Herbario CIAT
 Hiroshima University
 Instituto de Botânica, Brazil
 Landcare Research
 Thorsten Lumbsch ^E
 Missouri Botanical Garden
 Muséum national d'Histoire
 naturelle, Paris
 National Museum of Nature and
 Science, Tokyo
 National Museums of Kenya
 National Tropical Botanical
 Garden, Hawaii
 Natural History Museum, London
 New York Botanical Garden

The Ohio State University
 Oregon State University
 Oregon State University, J. C. Braly
 Natural History Collection
 Pfalzmuseum für Naturkunde
 R. M. Schuster
 John Silba
 Singapore Botanic Gardens
 Swedish Museum of Natural History
 Tasmanian Museum and Art Gallery
 Unitec Institute of Technology
 University of Campinas
 University of Bergen
 University of Graz
 University of New Hampshire
 University of São Paulo
 University of Texas at Austin
 University of Tsukuba
 University of Washington
 V. L. Komarov Botanical Institute

Geological collections

Physical geology

Terry Boudreaux
 Marlin D. Cilz

Fossil invertebrates

Irene Broede
 Lance Grande ^E
 Paul Mayer ^E
 Tim Nelson
 Karen Nordquist
 Travis Vivian
 Jack Wittry

Paleobotany

Rinchen Barsbold, Mongolian
 Academy of Sciences
 David T. Carlson
 Robert Sula
 Jack Wittry

Zoological collections

Amphibians and reptiles

Danny Balete
 Lauren Brown

Gary Glowacki
 Dr. Lawrence R. Heaney ^E
 Dr. Richard King
 James McCranie
 Alan Resetar ^E

Birds

Tony Abraham
 Nazia Akhter
 Daniella Amendola
 Bob Andrini
 Kathy Andrini
 Rietje Angkuw
 Jeff Armstrong
 Robin Austyko
 Tim Balassie
 John Bates ^E
 Bay Beach Wildlife Sanctuary
 Karen Bean ^E
 Chuck Berman
 Julie Biedess
 Carol Boose
 Robert Boswell
 Mary Boylon
 Nancy Bradt
 Anna Braum
 Daniel Brinkmeier
 Barbara Brown ^E
 Terry Bruce ^E
 Joan Bruchman
 Barbara Bush
 Eric Buttry
 Robin Carlson
 Kevin Carroll
 Pat Carson
 George Chavez ^E
 Suzanne Checchia
 Chicago Bird Collision Monitors
 Colorado Parks and Wildlife
 Ezekiel Cordeiro
 Ruta Cosimo
 Mark Covell
 Linda Cox
 Susan Crane
 Kelly Cronin

Nick Crouch
 Kate Cummings
 Nate Cvetas
 Luke Dahlberg
 I. Angela Daidone
 Donnie Dann
 Gary Davis
 Therese Davis
 Mike Dement
 Mark DeSantis
 Jessica Dexter
 Charles D'laroy
 David Dolak
 Jennifer Domeck
 Kelly Dougherty
 Stephen Doyle
 DuPage Airport
 Beth DuPont
 Glenna Eaves
 K. Eck
 Suzanne Edwards
 Josh Engel ^E
 Eric Erickson
 Marty Farrington
 Sandy Fejt
 Kevin Feldheim ^E
 Diane Fieri
 Flint Creek Wildlife Rehabilitation
 Rob Frye
 Glenn Gabanski
 Margaret Gawronski
 Matt Gies
 Matthew Girard
 Ian Glasspool ^E
 Thomas Gnoske ^E
 Scott Goedert
 Ingrid Gould
 Mark Grant
 Ed Graskamp
 Cindy Gray
 H. Griffin
 David Grimes
 Aaron Gyllenhaal
 Ethan Gyllenhaal
 Suzanne Hackbarth

Diane Hansen
 Mary Hennen^E
 Andy Hershberger
 William Heyn
 Libby Hill
 Jennifer Hoffman
 Robert Hughes
 Janice Humphrey
 Robert Jaden
 James Jagiello
 Kristen Jensen
 David Johnson
 Jessica Johnson
 Lin Johnston
 Chris Kadow-Dougherty
 Kayleigh Kaeffner
 John Kaiser
 Neil Kanemoto
 Scott Kazmierczak
 John Kelly
 Julian Kerbis^E
 Carol Kimbrell
 Albet Klamp
 Rachel Kleban
 Larry Krutulis
 Scott Kuipers
 Josephine Kujawa
 Ruth Kurczewski
 Kelly Kwasniewski
 Albert Legzdins
 Linda Lewelling
 Gloria Lowther
 Peter Lowther^E
 Mary Loye
 Peggy Macnamara^E
 Will Marcyniuk
 Ben Marks^E
 Annette Mastre
 June Matayoshi
 Meredith Matthews
 Trish May
 Mira McCombe
 Lynne Mecum
 Mary Lou Mellon
 Julia Meredith

Mark Miller
 Minnesota Department of
 Natural Resources
 Linda Mirabelli
 Jeff Miro
 Nancy Mores
 Donna Motherway
 Laura Muraoka
 A. Nichols
 Lora Nickels^E
 Cathy Patrick
 Bernadette Payne
 Arthur Pearson
 Dorothy Pesch
 Renee Peterson
 John Phelps^E
 Candace Pierce
 Dayani Pieri
 Scott Plant
 Elizabeth Pollack
 Marina Post
 Annette Prince
 Robert Prosis
 Leon Provencher
 Ken Purcell
 Michael Quigley
 M. Quiroz
 Teri Radke
 Andrea Reasoner
 Lisa Rest
 Rawlins Riles
 Gerri Rode
 Victor Rodriguez
 Bob Rogers
 Mary Anne Rogers
 Natalio Romero
 Laurel Ross^E
 Lindsey Rowland
 Robert Russ
 Mike Sackheiro
 Jaquelen Samuel
 Nancy Sanders
 Kevin Sapp
 Tiffany Saunders
 Mike Scelfo

Sigrid Schmidt
 Alma Schrage
 Eric Schumacher
 Alicia Seghi
 Brad Semel
 Barbara Shaw
 Michael Shelton
 Akiko Shinya^E
 Katie Sigmon
 Jim Sinegal
 Tammi Sinegal
 Kimberly Singleton
 Leo Smith^E
 Natalie Smith
 F. Stack
 David Stagman
 James Steffen
 Jill Stites
 Douglas Stotz^E
 Adam Strauss
 Celia Strauss
 Kalman Strauss
 Gail Strures
 Jan Sutkus
 Kevin Swagel^E
 Sandy Swanson
 Flora Swearingen
 Betty Sweetland
 Barbara Sydow
 Amy Tavolino
 Markas Thorson
 Jim Tibensky
 Gamaliel Torres
 Nathan Trautenberg
 Treasure Coast Wildlife Center
 Mike Trinchitella
 Suzanne Turner
 United States Department of
 Agriculture—Chicago Midway /
 O'Hare International Airports
 Chris Van Wassenhove
 Carroll Veidel
 Victoria Velinski
 Denise Verret
 Suzanne Verret
 Anita Victorn

Janet Voight^E
 Sarah Von Fremd
 Tyana Wachter^E
 Stuart Wagenius
 David Walker
 Ellen Walker
 Stephanie Ware^E
 Mark Westneat^E
 S. White
 Lindsay Wilkes
 David Willard^E
 Chris Williamson
 Carrie Willingham
 Willowbrook Wildlife Center
 Max Witynski
 Sandy Woltman
 Scott Woltman
 Ann Woodward
 Benjamin Wright
 Amanda Zeigler
 Dave Zerlin

Fishes

Anton De Kom University of
 Suriname
 Windsor Aguirre
 Anna Altschwager^E
 The American University in Cairo
 Auburn University Fish Collection
 Matthew P. Davis^E
 The Field Museum Exhibitions
 Department
 John G. Shedd Aquarium
 Museum of Zoology of the
 University of São Paulo
 Akiko Shinya^E
 Smithsonian Institution
 The University of Kansas
 Mark W. Westneat^E

Insects

Cheryl Barr
 Crystal Boyd
 Dr. Mariana R. ChaniPosse
 Dr. Estevam L. Cruz da Silva
 Dr. Carl W. Dick

^T Trustee ^A Edward E. Ayer Legacy Society donor ^C Corporate Relations Program member
^D Deceased ^E Field Museum employee ^N New Trustee

Dr. Katharina Dittmar	John Hart
Petr Dolejs	Larry Heaney ^E
Randy Durland	M. Hennen ^E
Dr. Ilya Enushchenko	Patty Johnson
Dr. Gustavo E. Flores	Kelly Larson
Dr. Steven M. Goodman ^E	Charles Leete
Dr. Robert W. Hamilton	Peter E. Lowther ^E
Mr. Peter Hlavác	Jillian Mayotte ^E
Dr. Hans Klompen	Dennis Meritt
Astri Leroy	Bill Murphy
Dr. Arno A. Lise	Andria Niedzielski
Dr. John T. Longino	Bruce Patterson ^E
Mr. David Matusik	Angelina Patti
Dr. Sean B. Menke	Joy Peplinski
Dr. Paulo C. Motta	Dorthy Pesch
Dr. Bruce D. Patterson ^E	A. Prince
Dr. Matt J. Paulsen	M. Quigley
Dr. Derek S. Sikes	J. Raber
Dr. Michael Staab	Mike Reed
Mr. Paul N. Thomas	D. Richards
Dr. Jason D. Weckstein ^E	M. J. S. Richards
	Arrah Jean Shumaker
	Lauren Smith
	Dave Stagman
	Bill Stanley ^E
	Douglas Stotz ^E
	Darrin M. Swagel
	Kevin Swagel ^E
	Yesenia Taveras
	Suzanne Turner
	Issac Walton
	D. E. Willard ^E

Invertebrates

Thomas G. Anton	Dave Stagman
Rüdiger Bieler ^E	Bill Stanley ^E
Rachel Collin	Douglas Stotz ^E
Bunjamin Dharma	Darrin M. Swagel
Jochen Gerber ^E	Kevin Swagel ^E
Jozef Grego	Yesenia Taveras
Amandine Nunes-Jorge	Suzanne Turner
Timothy A. Rawlings	Issac Walton
Manuel J. Tenorio	D. E. Willard ^E

Mammals

Mark Alvey^E
 Bob Andrini
 Rebecca Banasiak^E
 Dan Brinkmeier
 Werner Buol
 Sherry Erickson
 Frank Frelka
 Matt Goebel
 Mike Gornick
 Anna E. Goldman^E
 Joel Greenberg



If you feel an error has been made in presenting this honor roll, please contact the Office of Institutional Advancement at annualreport@fieldmuseum.org.

For a list of in-kind contributions to the collections, please visit fieldmuseum.org/about/annual-reports.

Producer: Charles L. Katzenmeyer
Project manager and editor:
Margaret Neeley

Contributors: Mark Alvey, Gretchen Baker, Eduarda Briseno, Karen Bean, Jean Cattell, Beth Crownover, Eve Gaus, Emily Graslie, Isabelle Heyward, Jaap Hoogstraten, Meghan Jorgensen, Meg Keslosky, Dawn Martin, Caroline Parsons, Natalie Vanoverbeke, John Weinstein, and Laura Woods

Designer: Bark Design, Chicago

Printer: Ace Graphics, Naperville

p. 32: photographer Margaret Neeley; p. 37: photographer Alvaro del Campo; p. 38: GN91849_177d, photographer Karen Bean; p. 42: (left) GN91881_061d, photographer Karen Bean, (center) GN91881_143d, photographer Karen Bean, (right) GN91881_073d, photographer Karen Bean; p. 43: GN91916_043_46Ad; p. 44: photographer Cheri Eisenberg; p. 45: GN91892_021d, photographer Karen Bean; p. 47: GN91962_013Bd; and p. 48: GN91969_147d, photographer Karen Bean.

© 2014 The Field Museum,
all rights reserved

Electronic edition: fieldmuseum.org/about/annual-reports

All photographs are © The Field Museum, photographer John Weinstein, unless otherwise noted. Cover: (top) GN91967_001Bd, (bottom) © The Werner Company, June 1893; p. 2: GN91976_046Ad; p. 7: GN91965_034Ad; p. 8: (left) Z95213_025d, (right) photographer Jamie Kelly; p. 9: photographer Juan Larraín, p. 11: GN91970_081Ad; p. 12: (top left) photograph by Peter Makovicky, (top right) illustrator Jorge Gonzales, (bottom) © Zaleth Cordero; p. 13: (top) photographer Petra Sierwald, (below) Z95216_01d, photographer Karen Bean; p. 15: DSC_6154_Helo_C2_ADC, photographer Alvaro del Campo; p. 16: (left) © William Trujillo, (right) 22284, photographer Jessica Canas; p. 17: (left) GN91818_265d, (right) © Paul Martin; p. 19: GN91968_071_72Ad; p. 20: photographer Eve Gaus; p. 21: (top) photographer Tom Campbell, (bottom) GN91774_082d; p. 23: GN91929_044d; p. 24: GN91764_098d; p. 25: (left) GN91874_214d, (inset) GN91874_039Bd, (right) Exhibitions Department; p. 26: GN91832_028d; p. 28: © the Chicago Cubs, photographer Stephen Green;

The Field
Museum

1400 South Lake Shore Drive • Chicago, Illinois 60605-2496 • fieldmuseum.org

...

Thank You.