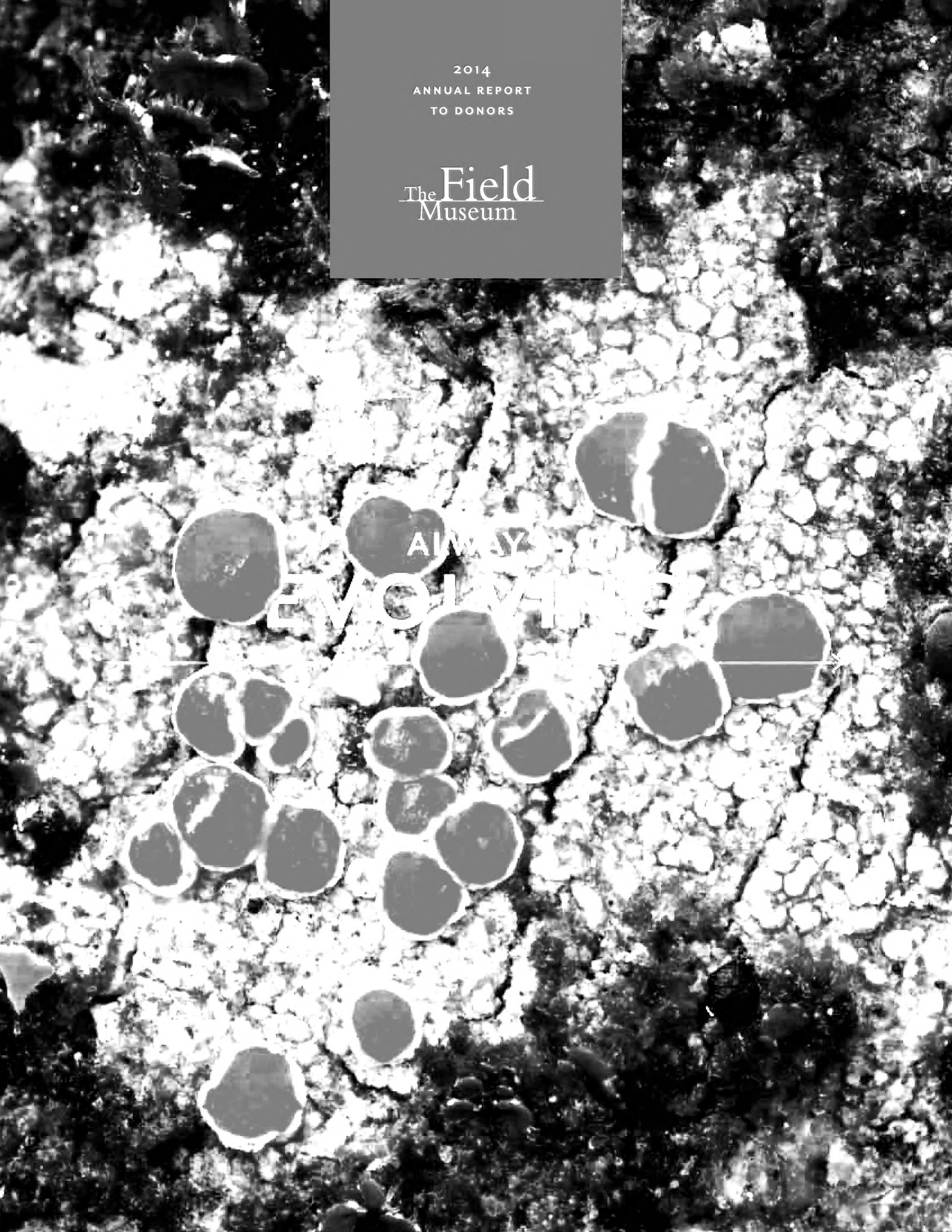


2014
ANNUAL REPORT
TO DONORS

The Field
Museum

ALWAYS
EVOLVING





CONTENTS

Science | 2

Public Engagement | 16

Donor Honor Roll | 24



Cover: *Haematomma accolens*, the Blood-Eye Lichen. Learn more about lichens on page 20.

Above: an artist's rendering of a *Bandringa* shark. Learn more on page 12.



DEAR FRIENDS,

In 2018, The Field Museum will observe its 125th Anniversary. For an American museum, such a milestone is rare and cause for extensive discussion by its Board of Trustees and staff. A comprehensive planning process has been conducted, culminating in a new vision. Over the next five years, *your* museum will

- transform the visitor experience into a personal journey of scientific discovery,
- deepen the impact of education programs,
- maximize the influence of collections-based science in research and conservation action, and
- build financial and organizational capacity to ensure long-term success.

On the cover of this report, you will find an image from *Lichens: The Coolest Things You've Never Heard Of*. The exhibition showcases tiny, complex organisms about which our audiences know very little. But thanks to research conducted by Field Museum scientists, our understanding of this hidden world is growing. Field Museum scientists have described 700 new species of lichens over the last fifteen years. Linking our strength in research with extensive collections to tell an unexpected story in new ways is just one example of how The Field Museum is *Always Evolving*.

Field Museum donors like you sustain the institution and fuel its growth. We are grateful to Bill and Linda Gantz and their family for many years of thoughtful leadership and a historic endowment gift. And, we thank The Negaunee Foundation for endorsing Field Museum research by endowing two senior curatorial positions. These thrilling gifts, and others to be recognized in the year ahead, are the foundation of a new effort to evolve how we study, document, interpret, and conserve the natural world.

Thank you for being a part of our storied past and ambitious future. Your support ensures The Field Museum will be *Always Evolving*.

Sincerely,

John W. Rowe
Chairman Emeritus

Constance T. Keller
Chair

Richard W. Lariviere, PhD
President and CEO

SCIENCE





▶ MAJOR GRANTS DRIVE ACTION
ON THE SOUTH LAKEFRONT

Every year, large numbers of birds migrate through downtown Chicago and die by colliding with buildings. For thirty-five years, The Field Museum has monitored these collisions. This work helped convince the Chicago Park District to create the Burnham Wildlife Corridor nearby, a two-mile-long native habitat for migrating birds. Thanks to the generous support of The Boeing Company, Chicago Park District, and Richard H. Driehaus Foundation, The Field Museum is engaging neighbors in this work and promoting the benefits of urban nature to area residents (below).



SCIENCE



25,000 TREES PLANTED IN ONE DAY

It takes the energy of many stakeholders to enhance the urban environment. On May 10, more than 700 community members from Bronzville and Pilsen, trained by The Field Museum, planted 25,000 native trees in the Burnham Wildlife Corridor. The planting not only enhances the habitat but also helps local residents build ties to this new natural area. Opposite: Curator Alaka Wali and President and CEO Richard W. Lariviere joined the effort.



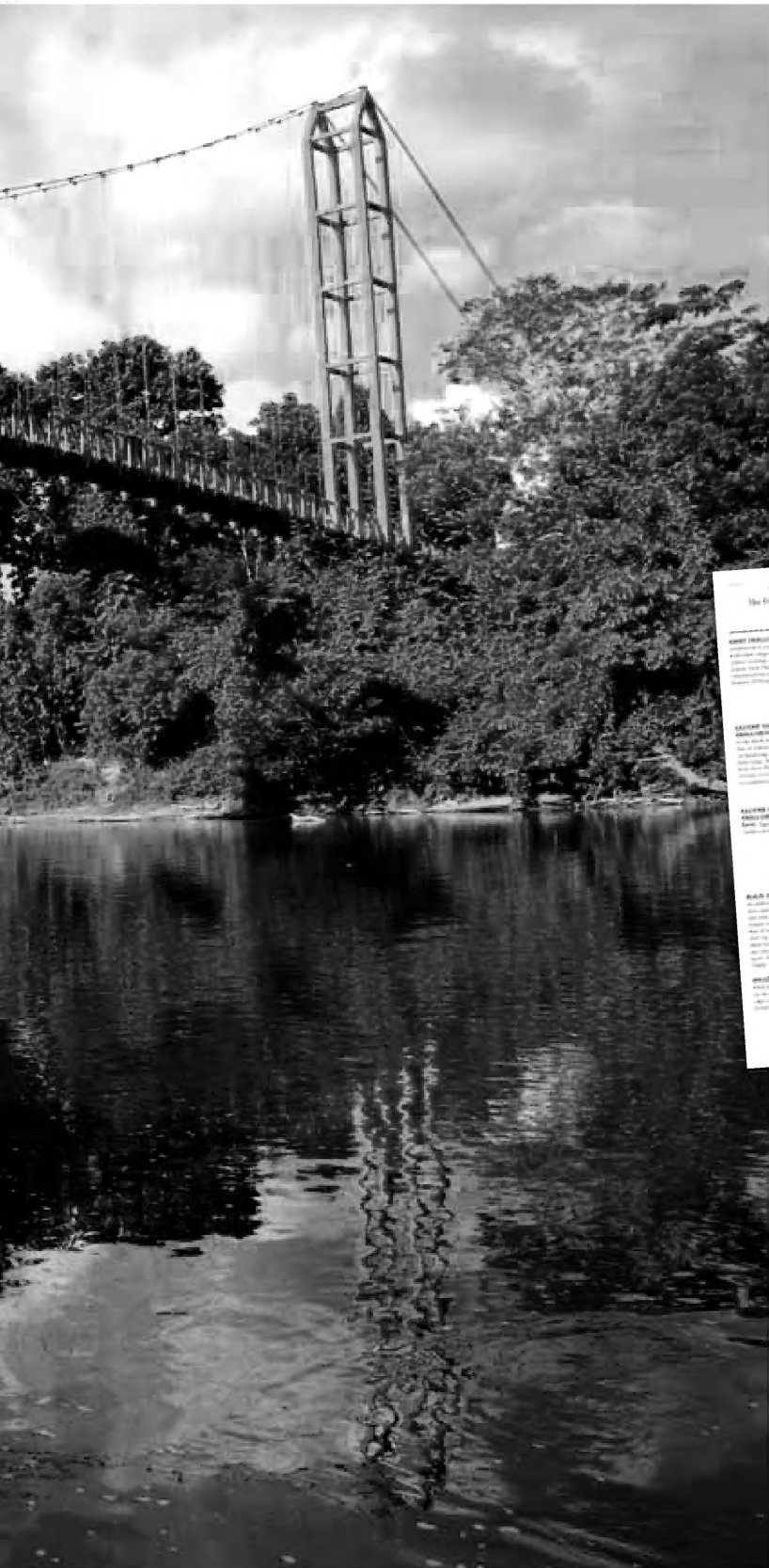
PROCESS FOR NATIONAL HERITAGE AREA FORMALLY LAUNCHED

On October 25, The Field Museum proudly announced the formal launch of a process required to establish the Calumet region as a federally designated National Heritage Area. The proposed area will connect the new Pullman National Monument to the Indiana Dunes National Lakeshore. The area includes globally rare biodiversity, seventy-four restoration sites, iconic industrial sites, and diverse neighborhoods. This project is made possible by a generous three-year grant from ArcelorMittal. Right: The proposed area is outlined in green.



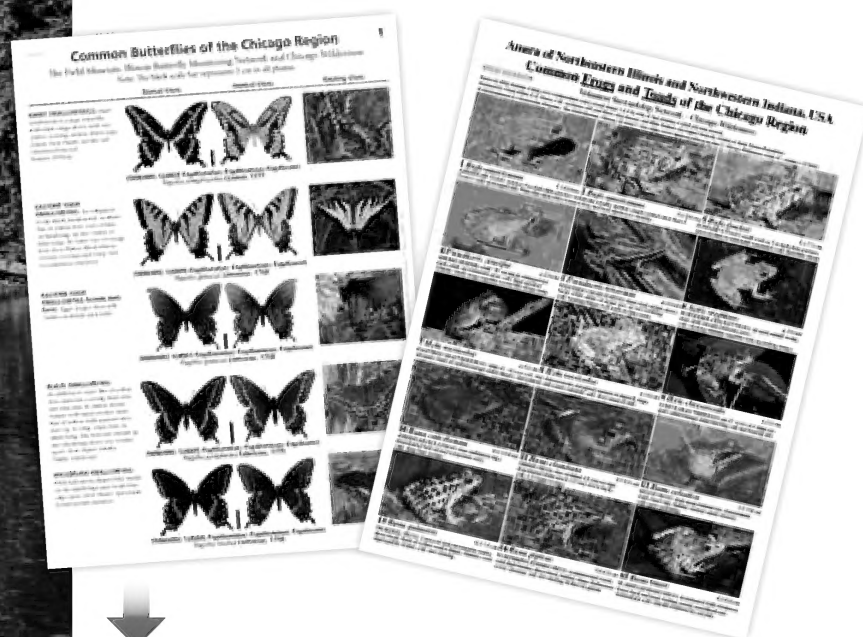
SCIENCE





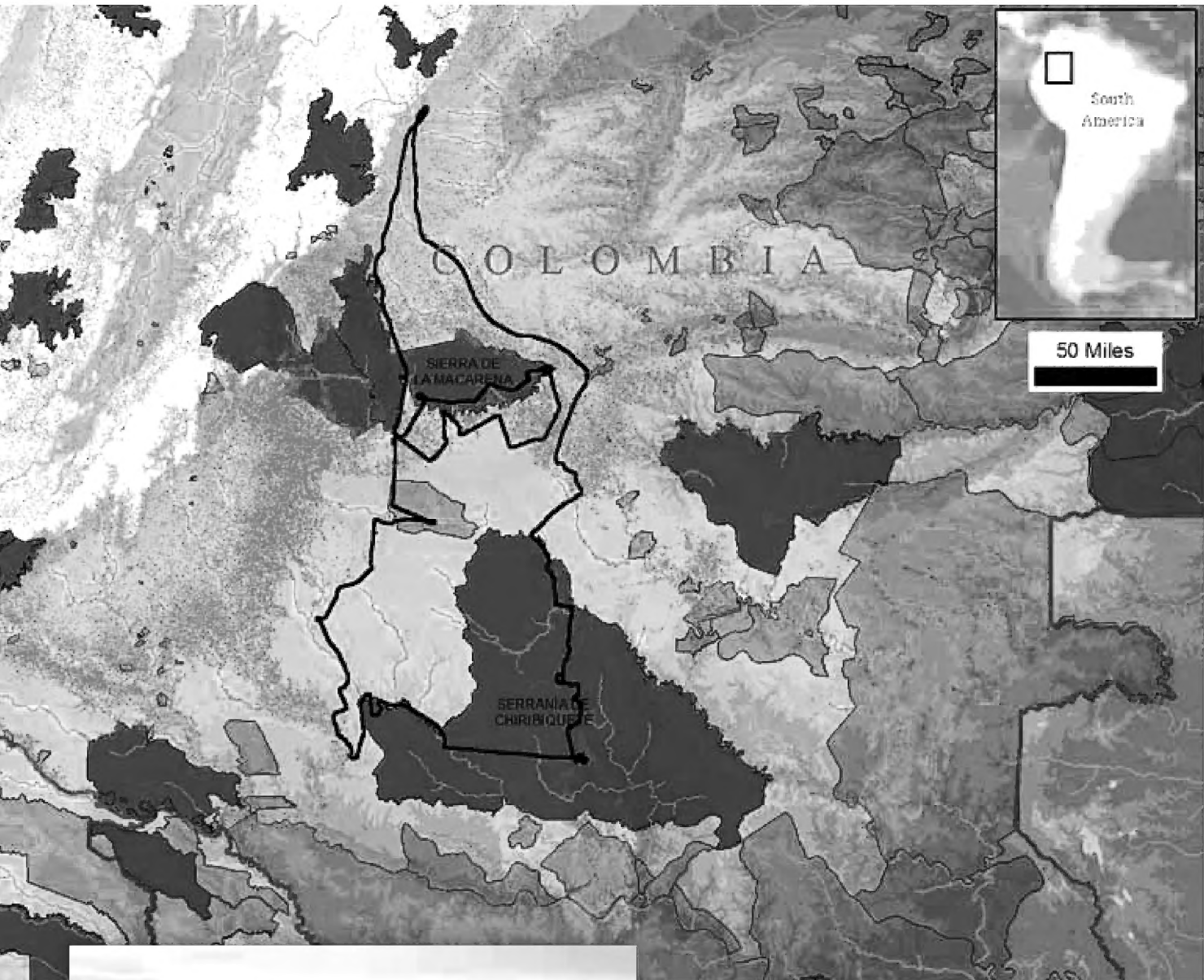
THE BOEING COMPANY ADVANCES CONSERVATION WORK

The Field Museum is honored to have received a gift of \$3 million from The Boeing Company to establish the Boeing Initiative for Conservation and Culture. The gift supports the Museum's Keller Science Action Center to continue conservation efforts in the Andes-Amazon (opposite) and Chicago regions. Boeing joins the institution in its mission to sustain Earth's unique biological and cultural heritage through action anchored in rigorous science.



THE FIELD MUSEUM IS THE WORLD'S LARGEST PRODUCER OF FIELD GUIDES

Having created more than 550, The Field Museum is the largest producer of field guides, which help individuals identify the flora and fauna in a particular environment. The Museum helped partners create seventy field guides in 2014 alone. Most guides highlight the plants and animals of poorly known forests in tropical America. The twelve guides to the biodiversity of the Chicago region are among the most popular. The guides are available for free online and are being downloaded at a rate of 150,000 per year, supporting the work of researchers and conservationists around the world. Download one at fieldguides.fieldmuseum.org for your next nature walk.



COLOMBIA'S NATIONAL PARKS SEEK FIELD MUSEUM EXPERTISE

The National Natural Parks System of Colombia commissioned a team of Field Museum scientists to evaluate deforestation (marked in red above), land use, and forest connectivity between the Colombian Andes and the Amazon lowlands. The team flew 1,700 kilometers over the Amazon in a small plane (flight path in black above), taking photographs every two seconds and tracing deforestation between two national parks. These photographs (example at left) were instrumental in an analysis of connectivity that halted the construction of 80 kilometers of road. Now, road building will proceed only when a plan and budget are in place to create ecological corridors that maintain connectivity between the national parks. The data from the flight, including 17,000 photographs, is available at col-overflight.fieldmuseum.org.

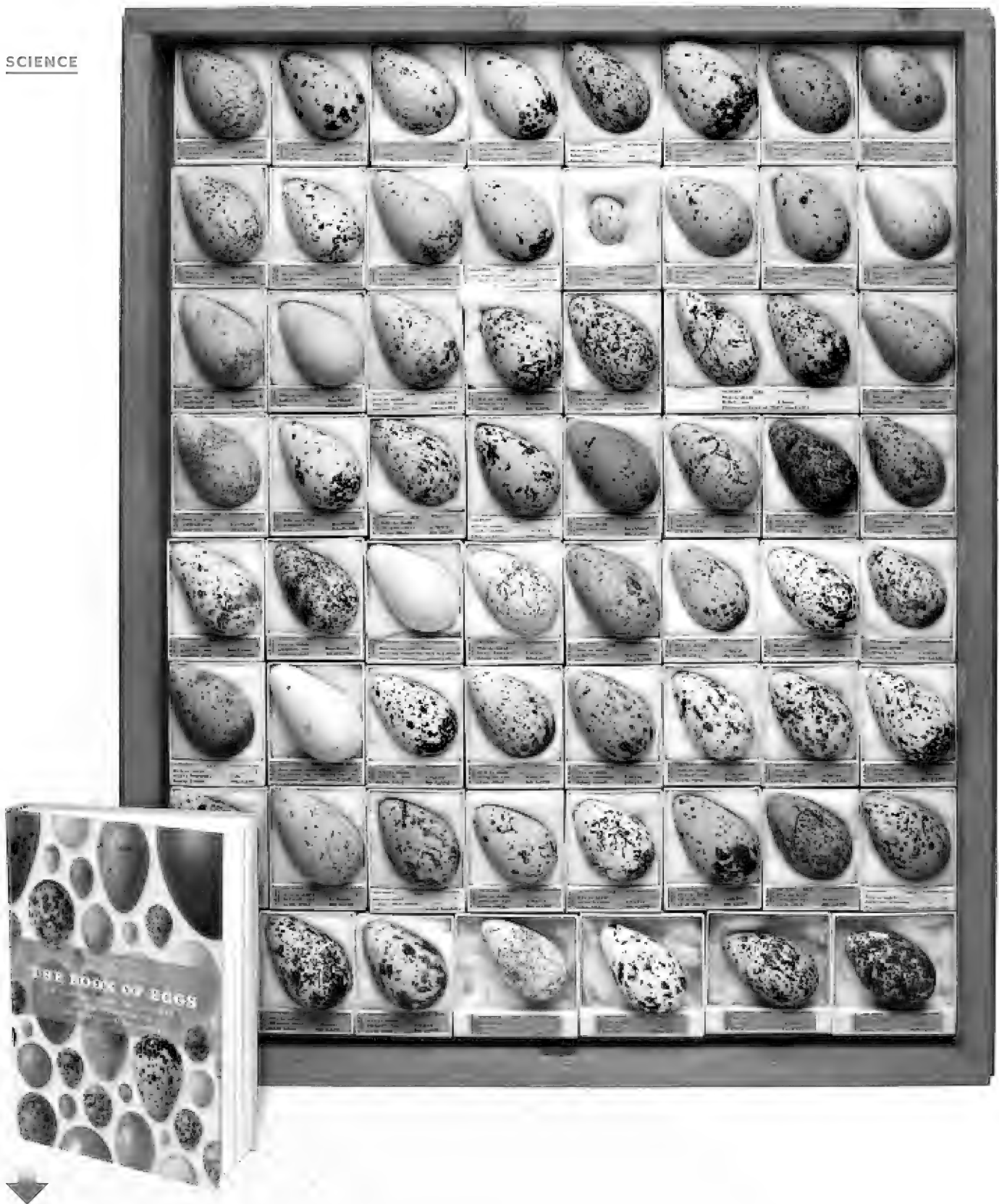


GROUNDWORK LAID FOR PROTECTED FORESTS IN MADAGASCAR

The Field Museum has been an active force in conserving the unique and fragile biodiversity of Madagascar for twenty-five years. MacArthur Field Biologist Steve Goodman and colleagues in Association Vahatra have conducted inventories of 400 forest sites, laying the groundwork for 1.3 million acres of protected forest in seven national parks. In 2014, The Field Museum-Vahatra team conducted seven biological inventories in five sites on the island nation and produced two important reference tools: a guide to the amphibians of Madagascar and the Atlas of Selected Land Vertebrates of Madagascar. Above: Team members transport supplies during an inventory. Right: The lemur is one of the species inventoried during recent work.

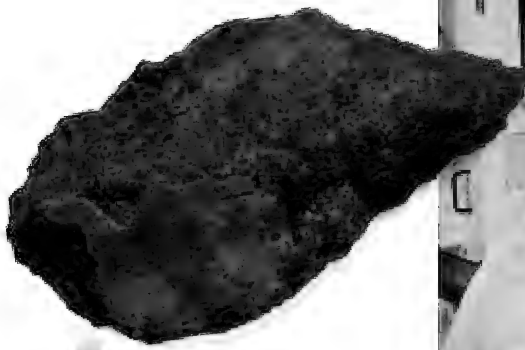


SCIENCE



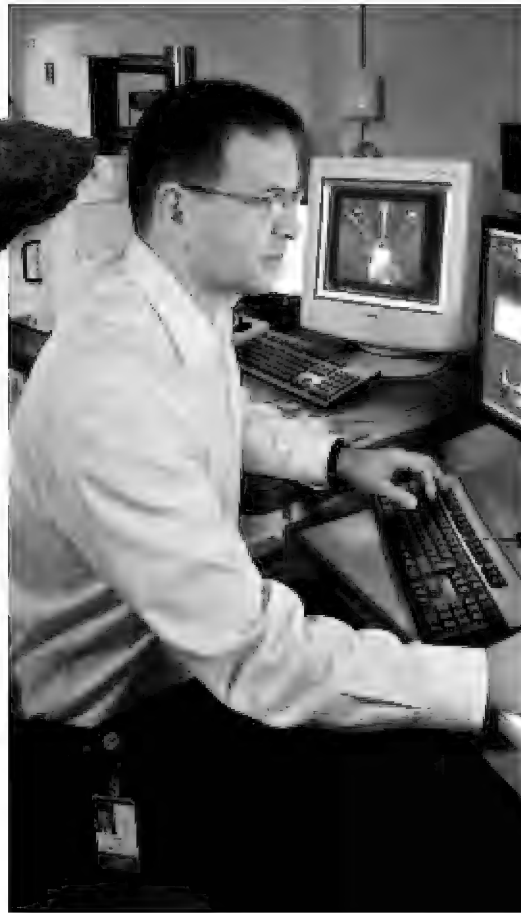
GUIDE TO BIRD EGGS FEATURES FIELD MUSEUM COLLECTION

From the brilliant green eggs of the Elegant Crested-Tinamou to the small brown eggs of the House Sparrow, bird eggs have inspired countless artists, biologists, and birders. Edited by Associate Curator John Bates and Research Associate Barbara Becker, The Book of Eggs introduces readers to 600 of the world's most intriguing eggs, the majority of which are a part of The Field Museum's Gantz Family Collections Center. This visually stunning and scientifically engaging book is replete with life-size photographs by Field Museum photographer John Weinstein and text explaining the breeding biology of each species.



MYSTERIOUS GREEN
METEORITE LANDS AT THE
FIELD MUSEUM

Long-time meteorite donor Terry Boudreaux gifted a unique specimen to The Field Museum. An unusual green color, the meteorite (above) is an important find from an asteroid type previously unknown to scientists. Studies reveal the meteorite is not primitive. It originated from a minor planet with a core, mantle, and crust. This specimen may yield important information about an unknown type of planetary body, which will help form a more complete picture of the solar system.



STARDUST PROVIDES CLUES TO THE
HISTORY OF THE SOLAR SYSTEM

On its way to gather dust from a comet's coma in 2004, NASA's Stardust space probe snagged seven grains of interstellar dust. Robert A. Pritzker Associate Curator of Meteoritics Philipp Heck (left) was part of an international team that analyzed these grains, which are the first examples of contemporary stardust (younger than the solar system) ever captured and analyzed on Earth. They published their results in the prestigious journal Science. Major news outlets reported the study, including BBC News, Forbes, The Guardian, and National Geographic. This contemporary stardust promises to reveal dramatic new information about the history of our solar system.



THE FIELD MUSEUM ACQUIRES FIELD JOURNAL BY ITS FIRST CURATOR OF ZOOLOGY

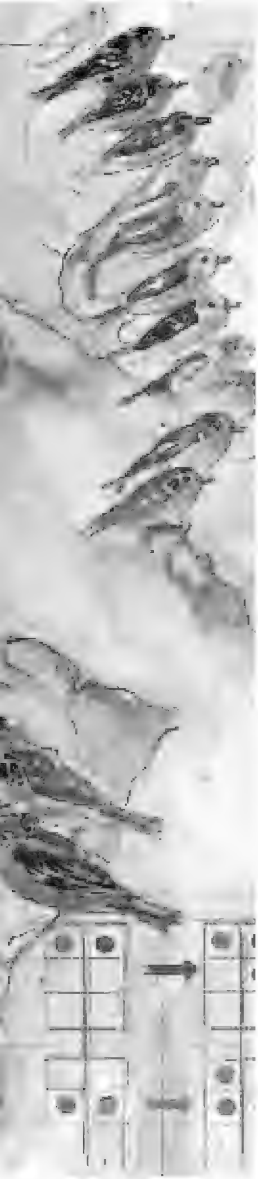
Daniel Giraud Elliot (above) led the 1896 Field Museum Expedition to East Africa, which is notable as the first zoological collecting expedition to Africa mounted by a North American museum. Elliot's journal chronicles the day-to-day activities of the expedition team as well as accounts of the specimens collected for The Field Museum, making it a valuable resource on these collections and the early history of the Museum. The acquisition was made possible in part through the Louann Hurter Van Zelst Purchase Fund.

SCIENCE**LONG-STANDING RIDDLE OF THE EVOLUTION OF BIRD MIGRATION SOLVED**

Conventional ornithological wisdom held that tropical birds gradually moved their breeding grounds north over millions of years. Associate Curator Rick Ree and Resident Graduate Student Ben Winger (University of Chicago) used a mathematical model and large datasets to turn that idea on its head. They demonstrated that the ancestors of many migratory birds once lived year round in North America and moved further south over time. Right: Migration Studies, a watercolor by Field Museum Artist in Residence Peggy Macnamara.

**THE FIELD MUSEUM'S COLLECTIONS REVEAL ILLINOIS WAS A SHARK NURSERY**

During the Pennsylvanian period (300 million years ago), sharks swam in the oceans just south of what is now Chicago. Thanks to The Field Museum's unparalleled collection of Mazon Creek fossils (example above), paleontologists from the University of Chicago and the University of Michigan have determined Bandringa sharks migrated downstream from freshwater swamps to spawn in shallow coastal waters. This is the only known example of freshwater-to-saltwater shark migration.



THE NEGAUNEE FOUNDATION ENDOWS TWO CURATORSHIPS

The Field Museum has employed leading scientists since its founding. To strengthen this tradition, The Negaunee Foundation announced a major new commitment to endow two curatorial positions. The first Field Museum scientists to hold these prestigious positions are Drs. Lance Grande (above), a leading authority on the Eocene fish fauna of Wyoming's Green River Formation, and Lawrence Heaney (right), an expert on the biodiversity and biogeography of Philippine mammals. Their titles are, respectively, Negaunee Distinguished Service Curator and Negaunee Curator of Mammals.



STUDY MAY HOLD PROMISING IMPLICATIONS FOR COMMERCIAL CANNABIS PRODUCTION

The importance of Cannabis in agriculture, industry, and medicine is booming. Associate Curator Corrie Moreau and Resident Graduate Student Max Winston (University of Chicago) co-authored a publication on the soil microbiome of several commercially grown Cannabis cultivars. Understanding the interactions between a plant and the soil microorganisms that support it has promising implications for commercial Cannabis production by improving plant fitness, disease resistance, and production yield.

SCIENCE



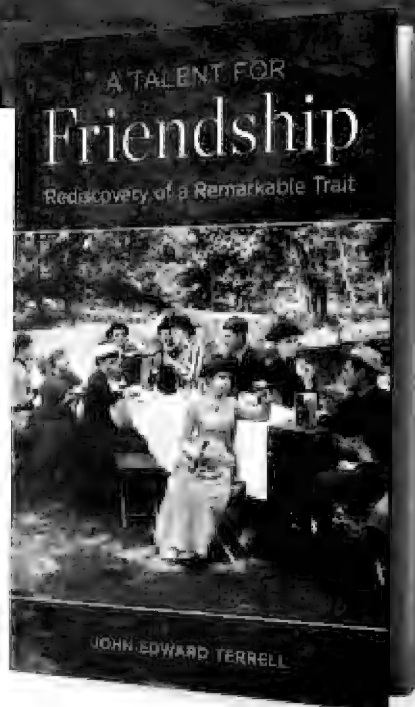
HISTORIC GIFT TO NAME GANTZ FAMILY COLLECTIONS CENTER

Trustee Bill Gantz with his wife, Linda, and their family announced a commitment of \$10 million to support endowment at The Field Museum; their's is the single largest gift from a family in the institution's history. The Gantz family sees this as an investment in both The Field Museum and Chicago. It will help ensure a strong financial position for the Museum and provide for scientific discovery in perpetuity. Their generosity will be honored by the newly named Gantz Family Collections Center, which includes the Museum's 27 million specimens and artifacts. The institution is grateful for their extraordinary support and dedication to its mission.



FIRST AMPHIBIOUS ICHTHYOSAUR MAKES MEDIA SPLASH

Publishing in the journal Nature, Rowe Family Curator of Evolutionary Biology Olivier Rieppel and colleagues from the University of California, Davis; the University of Milan; and Peking University described a new species of ancestral ichthyosaur from the late Lower Triassic (248 million years ago). Dubbed Cartorhynchus lenticarpus, the creature fills in a missing stage in ichthyosaur evolution, marking its transition from land to sea. The discovery received wide media attention, including from The Guardian, National Geographic, Science, and The Washington Post.



BOOK ARGUES HUMAN EVOLUTION IS SURVIVAL OF THE FRIENDLIEST

Regenstein Curator of Pacific Anthropology John Terrell authored the book A Talent for Friendship: Rediscovery of a Remarkable Trait. Dr. Terrell argues that evolution is not only about mutation and natural selection but also cooperation and collaboration. The remarkable human talent for turning strangers into friends has made it possible for humans to conquer lands and extend their social networks across Earth.

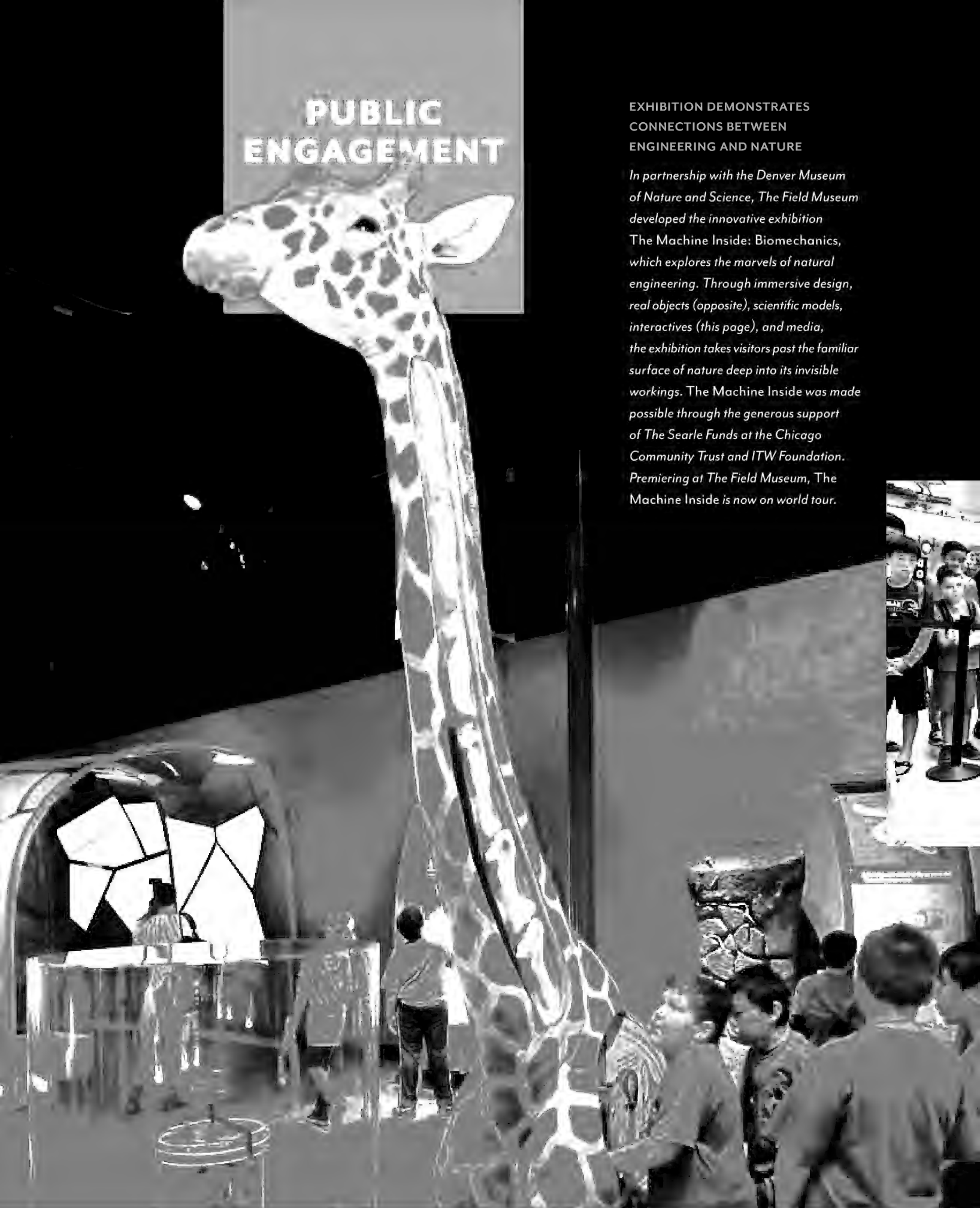
ANCIENT IRRIGATION YIELDS CLUES ABOUT HOW TO ADAPT TO CLIMATE CHANGES

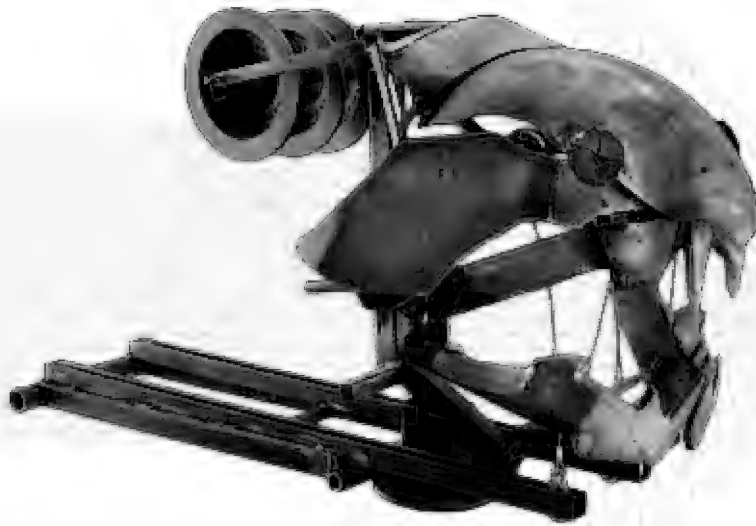
Associate Curator Ryan Williams and colleagues are studying 500- to 1,500-year-old agricultural terraces at Cerro Baul, located on the edge of the Wari Empire in Peru. Data derived from landscape laser scanning and high-resolution topographic imaging reveals how political strategies influenced water distribution networks and climate conditions affected agricultural landscapes. Ancient water-efficient technologies innovated in prehistoric droughts demonstrate ways to adapt to climate shifts in the water-challenged world of today.

PUBLIC ENGAGEMENT

EXHIBITION DEMONSTRATES
CONNECTIONS BETWEEN
ENGINEERING AND NATURE

In partnership with the Denver Museum of Nature and Science, The Field Museum developed the innovative exhibition The Machine Inside: Biomechanics, which explores the marvels of natural engineering. Through immersive design, real objects (opposite), scientific models, interactives (this page), and media, the exhibition takes visitors past the familiar surface of nature deep into its invisible workings. The Machine Inside was made possible through the generous support of The Searle Funds at the Chicago Community Trust and ITW Foundation. Premiering at The Field Museum, The Machine Inside is now on world tour.





TEENS STUDY GEOLOCATION OF BIRD COMMUNICATION AND BIOMECHANICS

During the summer, The Field Museum engaged fifty-three teens in an exploration of the institution's collections and research. Participants spent their time building geolocation-based games about bird communication, fabricating catapults based on the principles of biomechanics (above), and building interactive musical instruments to explore culture through sound. The workshops were included in the "Chicago City of Learning" initiative. Field Museum teens collectively earned 145 digital badges to mark their achievements.



MAJOR GIFTS SUPPORT FIRST DIGITAL TOOLKIT FOR TEACHERS

The Searle Funds at the Chicago Community Trust and ITW Foundation generously supported the production of The Field Museum's first educational digital toolkit. Presented in conjunction with The Machine Inside: Biomechanics, the toolkit helps middle-school teachers maximize students' ability to engage in physics through biology. All of the resources in the kit align with the Next Generation Science Standards, adopted by twenty-six states, and include numerous lessons and activities that can be shared via Tumblr, a microblogging and social-networking website.

PUBLIC ENGAGEMENT



THE FIELD MUSEUM CHAMPIONS WOMEN IN SCIENCE

Dedicated to inspiring women and increasing their participation in the sciences, The Field Museum group Women in Science hosts monthly presentations, produces an annual symposium, and provides internships as well as other resources to female scientists. Its public outreach activities include engaging Museum visitors (above) and youth participating in programs sponsored by local organizations, including the Girl Scouts. Women in Science has grown to 350 members across the Chicago region.



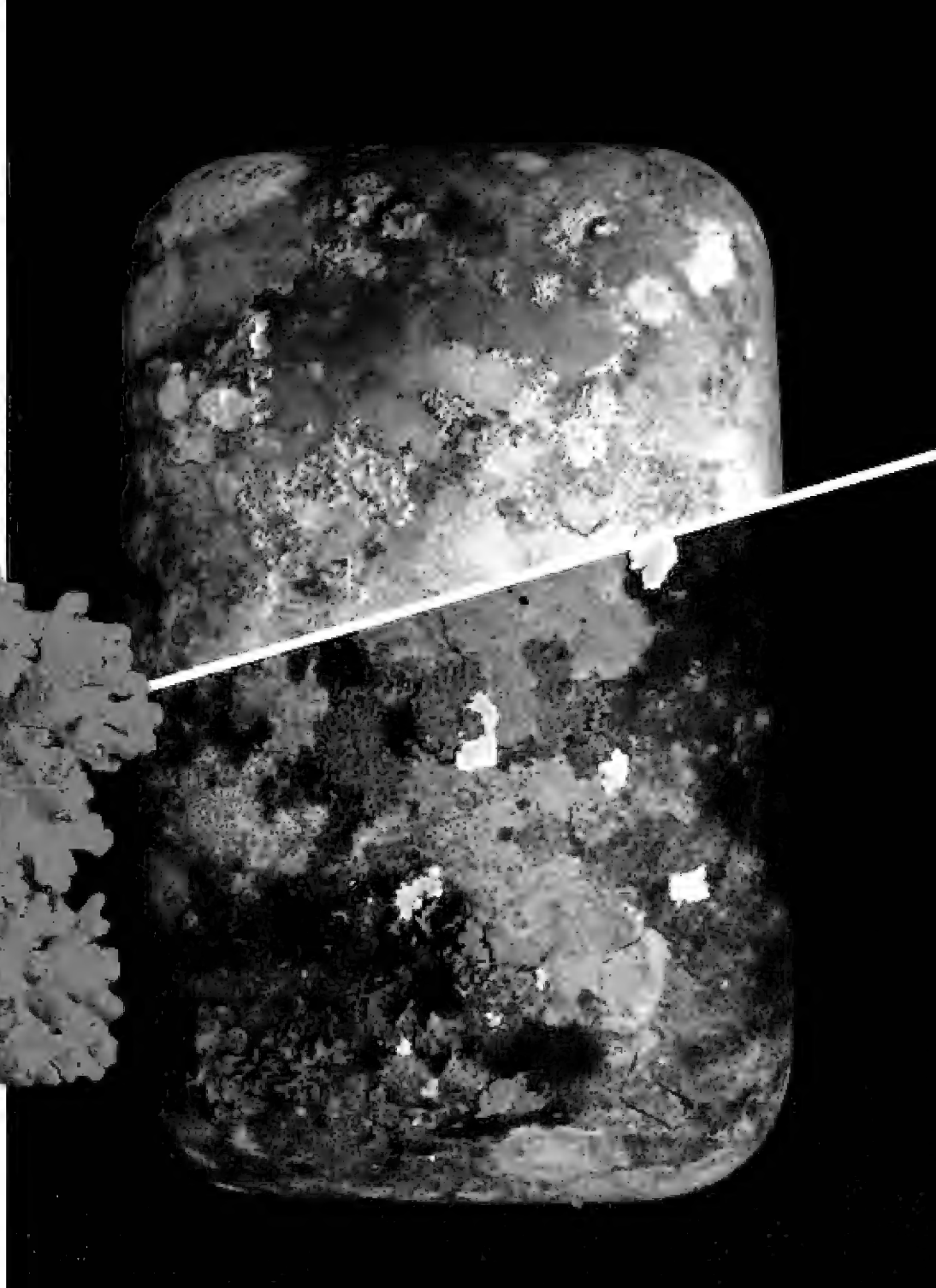
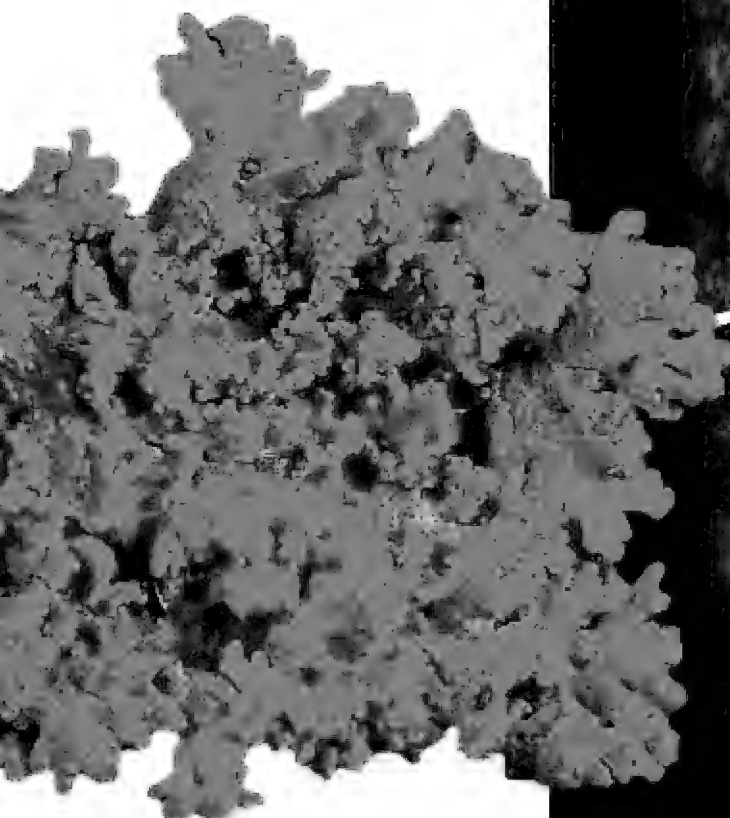
WOMEN'S BOARD FUNDS EMERGING WOMEN IN SCIENCE

On May 7, The Women's Board hosted its annual Women in Science Luncheon. Jeanne Gang, MacArthur Fellow and Founder and Principal of Studio Gang Architects, delivered the keynote address. Co-chaired by Marty Higgins and Kathleen Klaeser, the event raised funds to sponsor one fellowship for a doctoral candidate and six paid internships for high school students and undergraduates. More than 250 women applied for these opportunities. Positions are posted each spring at fieldmuseum.org/about/careers.



PARTNERSHIP TO IMPROVE SCIENCE TEACHING IN GRADE SCHOOLS

Thanks to the generous support of Rita and John Canning and The Quest Foundation, The Field Museum, the Big Shoulders Fund, Northwestern University, and the Peggy Notebaert Nature Museum entered into a four-year partnership to transform science teaching and learning in prekindergarten to third-grade classrooms at ten Chicago archdiocesan schools. The effort will enhance educators' ability to teach science effectively, improve students' ability to engage in science, and establish early science learning communities in each participating school. Left: A teacher examines a specimen from The Field Museum's collections during a training session.

PUBLIC ENGAGEMENT

LICHENS: THE COOLEST THINGS YOU'VE NEVER HEARD OF

A special exhibition Lichens: The Coolest Things You've Never Heard Of follows Field Museum lichenologists Thorsten Lumbsch and Robert Lücking on their research expeditions and explores the fascinating world of lichens. These organisms represent one of the most successful symbiotic life forms on Earth. They have existed since before dinosaurs colonized the planet, and even have made successful trips to outer space. Visitors see how lichens look to scientists, magnified and under ultraviolet light. Organized by The Field Museum, the project was made possible by a grant from the U.S. Institute of Museum and Library Services with additional support from longtime Field Museum friends Bruce and Mary Feay. Above left: Candelarra concolor, found in Chicago. Above right: an automobile side-view mirror with lichens as it appears to the naked eye (top) and under ultraviolet light (bottom).



NEW SERIES ENGAGES COMMUNITIES

The opening of Vodou: Sacred Powers of Haiti brought with it opportunities to engage the Haitian community, which has a vibrant presence in Chicago. On November 7, The Field Museum co-hosted an exhibition opening celebration with Haitian community leaders. Called Passport to Haiti, the event provided more than 200 members of the public with after-hours access to the exhibition (above) and featured live Haitian music (right). Several guests have since become Museum members and volunteers. The enthusiastic response to the event inspired the launch of a new series, Passport, through which the Museum hosts similar opening celebrations for its new cultural exhibitions. Purchase tickets for the next event at fieldmuseum.org/passport.



PUBLIC ENGAGEMENT



PARTNERSHIP WITH MUSIC
BOX THEATRE INTERSECTS POP
CULTURE AND SCIENCE

The Field Museum and the Music Box Theatre in Chicago's Lakeview neighborhood partnered to present a special film series highlighting the science behind some of Hollywood's greatest blockbusters: Jaws, Jurassic Park, and Raiders of the Lost Ark. Field Museum researchers—A. Watson Armour III, Manager of the Pritzker Laboratory for Molecular Systematics and Evolution, Kevin Feldheim, Associate Curator of Paleontology, Peter Makovicky, and Associate Curator of Eurasian Anthropology, Bill Parkinson—led discussions after the respective films.





**IDENTIFICATION DAY
INVITES VISITORS
TO SHOW OFF
THEIR TREASURES**

On September 27, The Field Museum renewed a tradition of identifying objects presented by visitors through Identification Day. The Museum invited the public to bring in specimens to be identified by Field Museum botanists, paleontologists, and zoologists. More than 2,000 people attended the festivities. Left: Fossil Invertebrate Collections Manager Paul Mayer helps a visitor better understand a specimen.



THE BRAIN SCOOP BRINGS AUDIENCES ON EXPEDITION

The Field Museum spent three weeks in the Peruvian Amazon recording 1,000 species of plants and 750 species of vertebrates, highlighting why the Tapiche-Blanco region—with expanses of hyperdiverse upland forests, peatlands, wetlands, and white-sand forests—deserves protection. Tom McNamara (left) and Emily Graslie (right) of The Field Museum's educational video series The Brain Scoop accompanied the team. To date, The Brain Scoop has been viewed more than 10 million times. Watch "Into Peru" at [youtube.com/user/thebrainscoop](https://www.youtube.com/user/thebrainscoop).

DONOR HONOR ROLL



TRUSTEES

Front row (from left to right): Adele S. Simmons, Liz Sharp, James L. Alexander, Norman R. Bobins, John A. Canning Jr., Constance T. Keller, John W. Rowe, Richard W. Lariviere, Ronald J. Gidwitz, Judith S. Block, Dr. Richard A. Chaifetz, Thomas S. Ricketts, Charles W. Benton, and Doris B. Holleb. Middle row: Kathleen Klaeser, Thomas L. Bernardin, Nydia Searle, Judy Greffin, Charles M. Falcone, Marsha A. Cruzan, Robert H. Gordon, David M. Tolmie, Elizabeth W. Reese, David D. Hiller, Wilbur H. Gantz III, Susan M. Benton, Robert B. Loveman, Mark Tebbe, and Ruth Ann M. Gillis. Back row: Jai Shekhawat, Everett S. Ward, Patrick Wood-Prince, Douglas P. Regan, Matthew K. Simon, Michael E. Flannery, Terry A. Jenkins, Roger K. Deromedi, Louis T. Delgado, Alejandro Silva, Randolph R. Kurtz, Robert W. Crawford Jr., and William C. Kunkler III.

BOARD OF TRUSTEES

Executive Committee

Constance T. Keller^A
Chair

John W. Rowe^P
Chairman Emeritus

Norman R. Bobins
Audit

John A. Canning, Jr.^{PA}
At-large

Dr. Richard A. Chaifetz
Retirement and Benefits

Marsha A. Cruzan^N
Development

James S. Frank
At-large

Marshall B. Front
Investment

Wilbur H. Gantz III^A
Science

Judy Greffin
Finance

William C. Kunkler III
Governance

Richard W. Lariviere, PhD^E
President and CEO

Bobby Mehta
Public Programs

Clare Muñana
Government Relations

James J. O'Connor, Jr.
Facilities and Administrative Services

Matthew K. Simon
Secretary

Mark Tebbe
Technology

W. Rockwell Wirtz
Marketing

James L. Alexander

Lucinda M. Baier^N

Susan M. Benton

Thomas L. Bernardin

Howard B. Bernick

Amy E. Best^N

John L. Bucksbaum

Barbara Byrd-Bennett^N

Gregory C. Case

Richard W. Colburn

Kenneth W. Coquillette

Sir Peter Crane FRS

Robert W. Crawford, Jr.

Louis T. Delgado

Roger K. Deromedi

Richard Elden

Charles M. Falcone

Rick Fezell

Jamee C. Field

Marshall Field V^P

Michael E. Flannery

J. Erik Fyrwald

Ronald J. Gidwitz^P

Ruth Ann M. Gillis

Sue Ling Gin^D

Robert H. Gordon^A

Antonio J. Gracias

Jack M. Greenberg

Lewis S. Gruber^A

Adnaan Hamid

David G. Herro

David D. Hiller^A

Terry A. Jenkins

Todd Kaplan

Bryant L. Keil

Michael L. Keiser

Jeffrey B. Keller^N

Richard L. Keyser

Randolph R. Kurtz

Diane von Schlegell Levy

Timothy J. McCarty

W. James McNerney, Jr.

Patricia Marroquin Norby^N

Neil S. Novich

Michael O'Grady^N

David C. Parry

Aurie A. Pennick

John F. Podjasek III^N

Peter B. Pond

J.B. Pritzker

John Rau^N

Elizabeth W. Reese^N

Douglas P. Regan

M. Jude Reyes

Thomas S. Ricketts

Patrick G. Ryan, Jr.

Michael J. Sacks

Nydia Searle

Michael E. Severino, MD^N

Jai Shekhawat

Alejandro Silva

Adele S. Simmons^A

Maureen Dwyer Smith

Dawn L. Solomon^N

Mark R. Walter^N

Everett S. Ward

Laura S. Washington

Gregory D. Wasson

Kelly R. Welsh

Linda S. Wolf

Patrick Wood-Prince

Ex-officio Trustees

Kathleen Klaeser^N

Ryan S. Ruskin^N

Liz Sharp

Kevin P. Stineman

Bryan S. Traubert

Kim White

National Trustees

Gail K. Boudreaux

Jean-Claude Brizard

Jeffrey T. Foland^N

Leo F. Mullin^P

Michael Tang

Life Trustees

Mrs. T. Stanton Armour

Charles W. Benton^D

Judith S. Block^P

Willard L. Boyd^A

Worley H. Clark Jr.^A

James W. Compton

Frank W. Considine^{PA}

Stanton R. Cook

James A. Delaney III

Thomas E. Donnelley II

Michael W. Ferro, Jr.

Juli P. Grainger^D

Wayne E. Hedien

Doris B. Holleb

Richard M. Jones^P

William H. Kurtis

Robert B. Loveman^A

Cary J. Malkin

Scott P. Marks, Jr.

John W. McCarter, Jr.

James J. O'Connor, Sr.^P

Richard J. Pigott^A

Kimberly Querrey

David M. Tolmie

Robert L. Wesley

Miles D. White^P

William J. White

Blaine J. Yarrington^P

THE FOUNDERS' COUNCIL

The Founders' Council is The Field Museum's premier annual giving donor society. Members contribute \$2,500 or more to fund scientific innovation and ensure the Museum continues to inspire visitors and future scientists.

Steering Committee

Thomas Ricketts^T
Co-chair

Liz Sharp^T
Co-chair

Kate Donaldson

Donna B. Freeman

Peter B. Freeman

Noel Kaplan

Robert B. Loveman^{TA}

Elisabeth C. Meeker

Lanny Passaro

Ryan S. Ruskin^N

Patricia O. Schnadig^A

Richard H. Schnadig

Heather T. Sparling Bakk

Douglas H. Walter

Ryan Whitacre

\$100,000+

Anonymous (2)

Mr.^T and Mrs. Richard Elden

Mr.^T and Mrs. Michael W. Ferro, Jr./
Merge Foundation Fund at
The Chicago Community Trust

Mr.^T and Mrs. Michael L. Keiser

Mr. Jerry A. Kolar

Mr. and Mrs.^T Michael D. Searle

\$50,000–99,999

Rita and John^{TP} Canning^A

Dr.^T and Mrs. Richard A. Chaifetz

Ms. Marsha A. Cruzan^N and
Mr. Thomas McGinnis

Mr.^T and Mrs. Roger K. Deromedi

Mr.^{TP} and Mrs. Marshall Field V

Mr.^T and Mrs. James S. Frank

Wilbur^T and Linda Gantz^A

Pamela K. and Roger B. Hull

Mr. and Mrs.^T Dennis J. Keller^A

Mr.^T and Mrs. Richard L. Keyser

Robert M. and
Diane von Schlegell^T Levy

The Negaunee Foundation

J.B.^T and M.K. Pritzker
Family Foundation

John W.^{TP} and Jeanne M. Rowe

Cari and Michael^T Sacks

Mr.^N and Mrs. Mark Walter

Mr.^T and Mrs. W. Rockwell Wirtz

\$25,000–49,999

Anonymous (3)

Mr. and Mrs. Frank L. Bauer

Howard B. Bernick Foundation^T

Mr.^T and Mrs. Norman R. Bobins

Barbara^F and Roger Brown

John^T and Jackie Bucksbaum

Mr.^T and Mrs. Gregory C. Case

Mr.^T and Mrs. Kenneth W.
Coquillette

Mr.^T and Mrs. Robert W.
Crawford, Jr.

The Richard H. Driehaus
Charitable Lead Trust

Efroymsen Family Fund

Evans Food Group Ltd.

Dr.^T and Mrs. Charles M. Falcone

Ms. Jamee C. Field^T/
The Edith B. and Lee V. Jacobs
Fund No. 1

Mr.^T and Mrs. Michael E. Flannery

Mr.^T and Mrs. Lewis S. Gruber^A

Katie Hazelwood and Todd Kaplan^T

Mr. David D. Hiller^{TA}

Ms. Mellody Hobson^A

Mr. William C. Kunkler^T and
Ms. Susan Crown

Mr. Randolph R. Kurtz^T

Mr.^T and Mrs. Bobby Mehta

Clare Muñana^T

Mr.^T and Mrs. Neil S. Novich

Mr.^N and Mrs. Michael O'Grady

Peter^T and Alicia Pond

Mr. and Mrs.^N Mike Reese

Mr. Douglas P. Regan^T and
Ms. Kathy Brock

Thomas^T and Cecelia Ricketts

Lydia and Patrick^T Ryan, Jr.

Matthew K.^T and Julie Simon

Mr.^T and Mrs. Mark Tebbe

Mr.^T and Mrs. Gregory D. Wasson

Kim^T and Miles^{TP} D. White

Mr.^T and Mrs. Patrick Wood-Prince

\$10,000–24,999

Anonymous (3)

Mr. and Mrs.^{TP} Philip D. Block III

Mr. David P. Brown

The Buchanan Family Foundation

Carol and Tom Butler

Mr. and Mrs. Theodore R. Butz,
The Butz Foundation

Mr. and Mrs. Thomas Campbell

Mr. Stanton R. Cook^T

Professor^T and Lady Peter R. Crane

Laura De Ferrari and
Marshall B. Front^T/Marshall B. Front
Family Charitable Foundation

Ms. Janet W. Diederichs^A

Mr. Richard A. Ditton

Janet and Craig Duchossois

Mr.^T and Mrs. Rick Fezell

Peggy and Steve Fossett Foundation

The Robert E. Gallagher
Charitable Trust

Ms. Ruth Ann M. Gillis^T

Mr. and Mrs. Richard C. Godfrey

Mr.^T and Mrs. Antonio J. Gracias

Mr.^T and Mrs. Jack M. Greenberg

Mr. and Mrs.^T William E. Greffin

Mr. and Mrs. King W. Harris/
Harris Family Foundation

Mrs. Stephanie C. Harris/
The Edith B. and Lee V. Jacobs
Fund No. 2

Wayne E.^T and Colette J. Hedien

Mrs. Harold H. Hines, Jr.^A

Doris B. Holleb^T

Dr. and Mrs. Wayne J. Holman III

Mr. and Mrs. J. Thomas Hurvis

Mr. and Mrs.^D Edgar D.
Jannotta, Sr.

Mr.^T and Mrs. Terry A. Jenkins

Dr. H. Fisk Johnson

Mrs. Noel Kaplan

Mr. Bryant L. Keil^T

Mr. and Mrs. Keith Kizziah

Ms. Nancy W. Knowles

Dr.^{TE} and Mrs. Richard W. Lariviere

The Lavin Family Foundation

Mr. Robert B.^T and
Mrs. Gail J. Loveman^A

Mr. Andrew H. Mathis

Mr.^T and Mrs. John W. McCarter, Jr.

Dr. Kennon P. McKee

Mr.^T and Mrs. W. James
McNerney, Jr.

Mr. and Mrs. Madhavan K. Nayar

Mr. Joe Ortiz and Ms. Ana Justice

Mr. and Mrs. William A. Osborn

David^T and Rosalind Parry

Mr. and Mrs. Gordon S. Prussian

Kimberly Querrey^T and
Louis Allen Simpson

Mrs. William L. Searle

Joachim and June Staackmann

Mr.^T and Mrs. David M. Tolmie

Mrs. Herbert A. Vance

\$5,000–9,999

Anonymous (2)

A.G. Cox Charity Trust

Alexander and
Alexander Attorneys at Law^T

Mrs. T. Stanton Armour^T

Mr. Harry Axelrod^{AD}

Mr. E.M. Bakwin

Mrs. Mary Baniak and
Mr. Mike Baniak

Dr. Verna L. Baughman

Ms. Susan M. Benton^T

Mr.^T and Mrs. Tom L. Bernardin
 Mr. and Mrs. David W. Bernauer
 Mr. and Mrs. Michael J. Birck
 Willard L.^T and Susan K. Boyd^A
 Mr. and Mrs. Jim Brittingham
 Mr. and Mrs. Andrew W. Brown
 Rosemarie and Dean Buntrock
 Dr. George T. Caleel and
 Mrs. Rebecca Childers Caleel
 Dr. Robert W. and Jean K.^D Carton
 Mr. and Mrs. Henry T. Chandler^A
 Joyce Chelberg
 Mr.^T and Mrs. Worley H. Clark, Jr.^A
 Ms. Betty L. Cleeland
 Froilan and Cecilia Concepcion
 Mr. and Mrs. James J. Conrad
 Mary and Jim Costello
 Mark and Connie^D Crane^A
 Dr. and Mrs. Tapas K. Das Gupta
 Mr. and Mrs. James M. Denny/
 John G. Searle Family Trust
 Mr. and Mrs. Samuel H. Ellis
 Mr. and Mrs. Eugene F. Fama
 Mr. and Mrs. Robert Feitler
 Mr. Harve A. Ferrill
 Ginny and Peter Foreman
 Mr. and Mrs. Philip M. Friedmann
 Mr. and Mrs. Camillo Ghiron
 Mr. and Mrs. James J. Glasser
 Richard and Mary L. Gray
 Mrs. Charles C. Haffner III
 Mr. and Mrs. William J. Hagenah III
 Ms. Barbara W. Hamilton
 Mrs. D. Foster Harland
 Mrs. Joan W. Harris
 Mr. and Mrs. Matthew Harris
 Reinhardt H. & Shirley R.
 Jahn Foundation
 Dr. Robert A. Kubicka and
 Dr. Claire Smith
 Mr. and Mrs. Bruce H. Lauer
 Liz and Eric Lefkofsky
 Mrs. Deirdre LeMire
 Mr. Richard J. Loewenthal, Jr.

Benjamin and Sandra Madey
 Mr.^T and Mrs. Scott P. Marks, Jr.
 Jack Miller Family Foundation
 Jack and Goldie Wolfe Miller Fund
 Ms. Christine M. Myers
 Mrs. Mary Jane Nordlund
 Mr.^{TP} and Mrs. James J. O'Connor, Sr.
 Mr. and Mrs. Charles W. Palmer
 Lanny and Terry Passaro
 Ms. Aurie A. Pennick^T
 Mr. and Mrs. John W. Puth
 Mr. and Mrs. Robert Raimondi



THE FIELD AT THE FIELD

On August 28, The Field Museum presented a behind-the-scenes evening at Wrigley Field. Hosted by Founders' Council co-chairs Liz Sharp and Tom Ricketts (above), the event offered guests the opportunity to view Field Museum collections and interact with scientists in areas of the stadium generally closed to the public. Designed to recruit new Founders' Council donors, the evening succeeded by drafting more than twenty "rookies." The event was made possible by the generosity of the Chicago Cubs. Top: Associate Curator Corrie Moreau discusses insects—some of them pests—outside the visiting-team dugout.

- Ms. Helen S. Reed
 Mr. and Mrs. Jeffrey S. Ross
 Paul and Joan Rubschlager
 Mr. and Mrs. Robert J. Sanborn
 Karla Scherer
 Mr. and Mrs. Gordon I. Segal/
 Segal Family Foundation
 Mr. and Mrs.^T Jeffrey S. Sharp
 Mrs. John Shedd Reed
 Mrs. Ann T. Shields
 Rose L. Shure^A
 Mr. and Mrs. Romolo Sidoli
 Mr. Jeffrey Skender
 Harold B. Smith
 Mr. and Mrs.^N David Solomon
 Mrs. Dorothy Spiewak
 Mr. and Mrs. Phillip G. Spiewak
 Mr. and Mrs. Ed Thayer
 Mr. and Mrs. Stuart B. Townsend
 Mr. Howard J. Trienens
 Mr. and Mrs. Robert J. Wagner^A
 Mr. and Mrs. John R. Walter
 Mr. Everett S. Ward^T and
 Ms. Iris Sims Barbara H. West^A
 Mrs. Henry P. Wheeler
 Mrs. Ann S. Wolff
 Mr. and Mrs. K. James Yager
- \$2,500–4,999**
 Anonymous (5)
 Mr. and Mrs. Gary D. Ahlquist
 Mr. and Mrs. Thomas Anderson
 Mr. and Mrs. John Anton
 Mrs. Birute J. Apke and
 Ms. Audra Apke
 Mr. Michael D. Arnold and
 Ms. Monica Wallace
 Mrs. Laura Bader and
 Mr. Victor Sturm
 Ms. Lucinda^N and Mr. David Baier
 Sue and Stephen Baird
 Ms. Heather T. Sparling Bakk and
 Mr. Jason Bakk
 Mr.^{TD} and Mrs. Charles W. Benton
 Mr. and Mrs. Harrington Bischof
- Dr. R.D. Bock and
 Dr. Renee Menegaz-Bock
 Mr. and Mrs. John J. Borland, Jr.
 Ms. Lori Breslauer^F and
 Mr. Steve Moore
 David and Michelle Buck
 Dr. Sharon S. Burke
 Mr. and Mrs. Randolph Burt
 Mr. and Mrs. Peter R. Carney
 Tom and Joan Castino^A
 Mr. and Mrs. John S. Chapman
 Mr. and Mrs. Paul S. Chatalas
 Dr. and Mrs. Kenneth W. Ciriacks
 Mr. James W. Compton^T
 Mr.^{TP} and Mrs. Frank W. Considine^A
 Mr. and Mrs. William A. Crane
 Mr. Jim W. Croft^F and
 Mrs. Marilyn Martinson Croft
 Mr. and Mrs. William Daley
 Mr. and Mrs. Robert O. Delaney, Jr.
 Mr. and Mrs. Byram E. Dicks
 Mr. Thomas R. Doler
 Dr. Richard A. Domanik and
 Dr. Janice Y. Domanik
 Mrs. Glenda W. Duncan
 Mr. Douglas R. Elliott
 Phyllis Weil Ellis
 La and Philip Engel^A
 Mrs. Jerome L. Ettelson
 Mr. and Mrs. W. James Farrell
 Mary and Bruce Feay^A
 Mr. and Mrs. Kenneth Fischl
 Mrs. Susan Flynn
 Mr.^N and Mrs. Jeffrey T. Foland
 Ms. Elizabeth Foster and
 Mr. Michael P. Walsh
 Peter B. and Donna B. Freeman
 Joanne Benazzi Friedland
 Mr. and Mrs. Joel M. Friedman
 Ms. Donna J. Godel and
 Mr. Roger E. Godel
 Mr. Donald Grasso
 Mrs. Delta A. Greene
 Timothy and Joyce Greening^A
 Ms. Joan M. Hall
- Dr. and Mrs. James E. Hannigan
 Mr. and Mrs. Dean M. Harrison
 Mr. and Mrs. Raymond V. Hartman
 Dr. Malcolm H. Hast^A
 Beverly and Warren Hayford
 Mr. and Mrs. Thomas Z.
 Hayward, Jr.
 Janet and Bob Helman
 Mr. and Mrs. Patrick J. Herbert III
 Ms. Leslie S. Hindman
 Mr.^A and Mrs. John L. Hines
 Ms. Peggy Hoberg^A
 Mr. and Mrs. Arthur Holzheimer
 Dr. Maria R. Hrycelak
 Mr. and Mrs. Alan M. Hubble
 The Humanist Fund
 Ms. Lorraine M. Hurt and
 Mr. George M. Ingram
 Mr. and Mrs.^F Christopher
 Jorgensen
 Mr. Charles L. Katzenmeyer^F
 Mr. and Mrs. Jerry M. Kelly^A
 Mr. and Mrs. Sheldon E. Kent
 Mr. and Mrs. T. Eric Kilcollin
 The King Family Foundation
 Mr. and Mrs. William J. Kirby
 Mr. and Mrs.^N Dennis Klaeser
 Mr. and Mrs. Glenn A. Kolososki
 Mr. Richard G. Kron and
 Ms. Deborah A. Bekken^F
 Mr. and Mrs. Marc Lagrois
 Ms. Wende L. Fox Lawson and
 Mr. James Lawson
 Mr. and Mrs. Patrick Layng
 Mr. and Mrs. Elliot Lehman
 Mr. and Mrs. Louis L. Lizzadro
 Ms. Renée Logan
 Mr. and Mrs. Craig Luce
 Ms. Susan H. Luciu
 Dr. Douglas R. MacAyeal and
 Ms. Linda A. Sparks
 Mr. Thomas T. Macejko and
 Dr. Amanda M. Macejko
 Mr. and Mrs. Timothy J. Malloy
 Sandy and Jerry Manne
- Marie A. Marotta
 Mrs. Donna J. Matson and
 Mr. Robert W. Carpenter^A
 Mr. and Mrs. Archibald McClure
 McKee Family Foundation
 Bruce and Jane McLogan
 Ms. Carlette C. McMullan and
 Mr. John Gibbons
 Ms. Melinda McMullen and
 Mr. Duncan Kime
 Mr. and Mrs. Charles P. McQuaid
 Erma S. Medgyesy^A
 Ms. Elisabeth C. Meeker
 Mrs. Pamela L. Miles
 Mr. Donald R. Monson and
 Ms. Ying Hsu
 Mr. and Mrs. Michael Moorman
 Ms. Christina J. Norton and
 Mr. John A. Biek
 Mrs. Virginia O'Neill
 Mrs. China I. Oughton
 Donna L. Owens
 Mr. and Mrs. Richard L. Parish III
 Ms. Denise Peterson
 Mr. and Mrs. Matt Pettinelli
 Mr.^T and Mrs. Richard J. Pigott^A
 Carl and Barbara Plochman
 Mr. John F. Podjasek III^N
 Mr. and Mrs. James Potts
 Mr. and Mrs. Paul E. Purcell
 James A. Radtke and
 Susan A. Kressin
 Lynne King Roberts
 Ms. Anita J. Rogers^A
 Mr. Richard R. Rosin and
 Ms. Anne McPhee
 Mr. and Mrs. Norman J. Rubash
 Dr. Myron E. Rubnitz^D and
 Mrs. Susan B. Rubnitz
 Ryan Ruskin^N and Michael Andrews
 Mr. David W. Ruttenberg
 Mrs. Robert E. Sargent
 Mr. and Mrs. F. E. Schmitt
 Mr. and Mrs. Richard H. Schnadig^A
 Karen and Frank Schneider
 Thomas and Barbara Schnitzer

ANNUAL FUND

Mr. and Mrs. Alan Sebulsky
 Mr. and Mrs. Richard J. L. Senior
 Mr. and Mrs. Stephen H. Sentoff
 Mr. Robert M. Shafis^E and
 Ms. Carol A. Erickson
 Mr. and Mrs. Andrew H. Shaw
 Bob and Charlene Shaw^A
 Pam and Tom Sheffield/
 JS Charitable Trust
 Mrs. Dolores Silverman
 Mrs. Jackson W. Smart, Jr.
 Ms. Elizabeth L. Snyder
 Mr. and Mrs. John B. Snyder
 Ms. Amanda A. Sonneborn and
 Mr. Peter R. Malecki
 Liz Stiffel
 Mr.^T and Mrs. Kevin Stineman
 Mr. Kevin L. Stoeckel and
 Mrs. Emily Heisley Stoeckel
 Mr. and Mrs. Harvey J. Struthers, Jr.
 Ms. Judith B. Sugarman^A
 Mr. Arthur T. Susman
 Mr. and Mrs. Robert Szalay
 Ms. Sharon Allyn Taylor
 Mr. and Mrs. Courtney D. Tedrowe
 Mr. and Mrs. Richard L. Thomas
 Jim and Carol Tichy
 Dr. Michael M. Todd
 Mr. Jeffrey A. Urbina and
 Ms. Gaye Lynn Hill
 Mr. and Mrs. Thomas Veldman
 Mr. and Mrs. David J. Vitale
 Mr. and Mrs. Douglas H. Walter
 Mrs. Roy I. Warshawsky
 Professors Johannes and
 Julia R. Weertman
 Mr. Lon Wehrle
 Mr. Ryan B. Whitacre and
 Ms. Katherine T. Donaldson
 Mr. William J. White^T
 Dr. Chester Wilson, Jr.
 Ms. Claudia L. Winkler^A
 Mr. and Mrs. Robert Zentner

The Annual Fund supports
 The Field Museum's people
 and programs. These donors
 help the Museum meet
 critical needs and keep its
 doors open to the public
 364 days a year.

\$1,000–2,499
(Field Explorers)

Anonymous
 Mr. and Mrs. A. Robert Abboud
 Mrs. Marilyn Alsdorf^A
 Mr. and Mrs. John Anderson
 Ms. Kirsten Anderson
 Mr. Thomas A. Andreoli and
 Ms. Anne W. Mitchell
 Mr. and Mrs. Craig Bargowski
 Mr. and Mrs. Aaron A. Barlow
 Ms. Sandra Bass
 Alben F. Bates and
 Clara G. Bates Foundation
 Warren L. Batts
 Mr. and Mrs. James N. Bay, Jr.
 Ms. Lisa K. Bibb
 Mr. and Mrs. Andrew K. Block
 Mr. and Mrs. Laurence O. Booth
 Mr. and Mrs. Scott Brady
 Mr. Jean-Claude Brizard^T and
 Dr. Brooke Stafford-Brizard
 Mr. and Mrs. R. Clayton Brock
 William and Nancy Brown
 Mrs. Ellen S. Buchen
 Samuel and Beth Buchsbaum
 Mr. and Mrs. John D. Burns II
 Mr. and Mrs. Clark Burrus
 Mr. and Mrs. Randolph Burt
 Mr. and Mrs. Gregory P. Casimer
 Mrs. Silas S. Cathcart
 Mr. and Mrs. Candelario Celio
 Mrs. Hammond Chaffetz
 Mr. and Mrs. William D. Coates
 Mr. and Mrs. John C. Colman
 Mr. and Mrs. John T. Cunningham

Mr. Justin Daab and
 Ms. Lois Morrison
 Mr. and Mrs. Mark D. Dawson
 Mr. and Mrs. Thomas Delahunty
 Mr. and Mrs. David Devonshire
 Dirk's Fish and Gourmet Shop
 Dr. Naomi S. Donnelley
 Mrs. Anne O. Earle
 Mrs. and Mr. Eliza H. Earle
 Ms. Chere Lynn A. Elliott
 Mr. and Mrs. Paul M. Embree
 Ms. Erika E. Erich
 Mr. and Mrs. Robert H. Fesmire
 Mr. and Mrs. Cameron Findlay
 Mr. Edward T. Fishwick and
 Ms. Mary M. Case
 Sonia and Bill Florian
 Mr. and Mrs. John E. Gepson
 Ms. Abigail B. Gerry/
 The Edith B. and Lee V. Jacobs
 Fund No. 3
 Mr. John D. Goerner
 Ms. Susan Goldschmidt and
 Mr. Miles Taub
 Mr. John C. Goodall, Jr.
 Mr. and Mrs. Chris Grams
 Ms. Sally A. Hagan
 Dr. and Mrs. Ira M. Hanan
 Ms. Kimberlee S. Herold
 Mr. and Mrs. Mark C. Hibbard
 The Hickey Family Foundation
 Mr. and Mrs. C. Clarkson Hine
 Mr. and Mrs. Thomas H. Hodges
 Mr. and Mrs. Charles F. Hofbauer
 Mr. and Mrs. Richard C.
 Hoffman, Jr.
 Ms. Sandra N. Hoffman
 Mr. and Mrs. Richard M. Holm
 Ms. Janice Honigberg
 Mrs. Elizabeth A. Hopp-Peters and
 Mr. Kurt T. Peters
 Mrs. Nancy A. Horner
 Mr. Joseph P. Howe
 Hubbard Inn

Ms. Laurie Huget and
 Mr. Werner Huget
 Mr. and Mrs. Peter Huizenga
 Tex and Susan Hull
 Dr. and Mrs. James D. Hurst
 Ms. Brigid M. Maniates Isoda
 Mr. and Mrs. Robert Judelson
 Linda M. Jung
 Mr. and Mrs. Alex Kallend
 Mr. and Mrs. Robert N. Karp
 Mr. and Mrs. Eric Kennedy
 Mr. and Mrs. John E. Kirkpatrick
 Mr. and Mrs. Lester B. Knight III
 Mr. and Mrs. Gerald A. Kolschowsky
 Mr. and Mrs. Alan J. Lacy
 Mr. and Mrs. Michael P. Leahy
 Mr. Sheldon L. Leibowitz
 Mr. and Mrs. John G. Levi
 Mr. and Mrs. Mark Light
 Mrs. Robert R. Lipsky
 Mrs. Laura Litten and
 Mr. Andre Leduc
 Mr. Robert D. Loprete
 Mr. and Mrs. C. Patrick MacLeod
 Cary J.^T and Lisa Klimley Malkin
 Ms. Jamie C. Marshall and
 Mr. Richard Sobkowiak
 Ms. Michelle L. Maton and
 Mr. Michael C. Schaeffer
 Bess Catherine McCord and
 James McCord
 Mr. and Mrs. Ronald McKee
 Mr. and Mrs. Andrew J.
 McKenna, Sr.
 Mr. and Mrs. John A. McKenna
 Mr. and Mrs. John McLean
 Mrs. Withrow W. Meeker
 Ms. Pamela G. Meyer
 Ms. Nancy M. Michael
 Mr. and Mrs. Brian C. Miller
 Mr. and Mrs. Robert R. Moeller^A
 IM Moller Family Foundation
 Ms. Cynthia A. Moody
 Mr. and Mrs. Carl E. Moore, Jr.

Ms. Mary K. Moreland and
Mr. Daniel T. Jenks

Mrs. Sandra L. Mueller^A

Ms. Helga E. Muench

Ms. Mary Nalbandian

Mr. and Mrs. Kenneth Nebenzahl

Mr. and Mrs. John Doane Nichols

Mr.^T and Mrs. James J. O'Connor, Jr.

Mr. and Mrs. William J. O'Neill

Dr. Stephanie Ortel

Mr. Francisco Ortiz

Ms. Sarah R. Packard

Mr. James D. Parsons

Robert K. Parsons and
Victoria J. Herget

Ari and Zoe Paxinos

Mr. and Mrs. Robert P. Perkaus, Jr.

Mr. and Mrs. Charles J. Pitman

Mr. and Mrs. Harvey B. Plotnick

Irwin Press and Andra Press

Mrs. Mary F. Quednau

Nancy and Warren Rasmussen

Mr. and Mrs. J. Christopher Reyes

Mr. and Mrs. Stephen L. Ritchie

Roberts Family Foundation

Ms. Janice E. Rodgers

Mr. and Mrs. Phillip B. Rooney

Mr. and Mrs. Steven A. Rosen

Mr. and Mrs. Richard M. Rosenberg

Mr. Robert A. Rosholt and
Ms. Sharon L. Brunelle

Doris Roskin

Mr. and Mrs. Alexander L. Ross

Mr. and Mrs. Edward W. Ross

Mr. and Mrs. Thomas D. Rutherford

Mr.^T and Mrs. Patrick G. Ryan

Jessica and Steve Sarowitz

Ms. Barbara M. Schleck and
Mr. Gary M. Ropski

Mr. and Mrs. Stephen Schmitt

Ms. Carol H. Schneider

Ms. Thelma L. Schwartz^A

Stephen A. and Marilyn Scott

David and Judith L. Sensibar

Alissa and Jonathan Shulkin

Mrs. Victoria M. Skala

Mr. Richard M. Skolly and
Dr. Kate A. Feinstein

Carrie Smaroff and
Duke G. Smaroff

Larry and Maxine Snider

Mr. and Mrs. Charles H. Solberg, Jr.

The Solot Family Foundation

Mr. and Mrs. Jeffrey Sommer

Mr. and Mrs. Scott E. Sommer

Ms. Marilyn Stewart

James and Pamela Stola

Mr. and Mrs. Ivan G. Strauss

Mr. and Mrs. Bert O. Sullivan, Jr.

Mr. and Mrs. Blake H. Swift

Mr. and Mrs. Gregory T. Taylor

Dr. Jeffrey M. Tilkin

Tiny Tiger Foundation

Mr. and Mrs. Thomas Tisbo

Mr. and Mrs. Raymond C. Tower

Mr. and Mrs. Richard Uihlein

Mr. John P. Ver Bockel and
Ms. Kathleen E. Carbonara

Mrs. Carolyn H. Weinstein

Mr. and Mrs. Robert G. Weiss

Mr. Bartholomew Weldon and
Ms. Deborah Zroka

Mr. Kelly R. Welsh^T and Ms. Ellen S.
Alberding

Lisa and Paul Wiggin

Dr. David E. Willard^E

Ms. Nancy Hamill Winter

Mr. and Mrs. William E. Wolf

Mr. and Mrs. Tom Wotovich

Mr. Daniel S. Yacker

Mr. David B. Yacker

Dr. and Mrs. Gerald D. Young, Jr.

Ms. Tara Zientek

Mark H. Zornow, M.D.

\$500–999 (Field Naturalists)

Anonymous (3)

Mr. and Mrs. John Aalbregtse

Mr. and Mrs. William T. Adkerson

Ms. Eva Adler and Ms. Lorica Adler

Ms. Susan S. Adler

Mrs. Roberta R. Allen

Dr. and Mrs. Dominic J. Allocco

Mr. and Mrs. Richard J. Almeida

Darrell and Deb Anderson

Mr. and Mrs. Daniel Arntzen

Ms. Ann Griffith Ash

Ms. Andrea Atlass and
Mr. Kenneth Kuehule

Ms. Noelle Au

Mr. Tony Augustine

Mr. Rodney Austin

Richard P. Bail and Janice G. Bail

Ms. Joy L. Bailey

Mr. Roger Bancroft

Mr. and Mrs. Peter Barclay

Dr. and Mrs. Milo Barrera

Mr. and Mrs. Douglas D. Baum

Mr. and Mrs. Eric Beaumont

Mr. and Mrs. Donald A. Belgrad

Mr. and Mrs. Ronald Benedict

Mr. Matthew Benoit and
Dr. Cathleen Dohrn

Mr. and Mrs. Robert L. Berner, Jr.

Mr. and Mrs. Adrian D. Beverly

Mr. Thomas R. Bland

Nancy and George H. Bodeen

Ms. Kristine Bordenave and
Mr. James Feeney

Mr. Peter Bowe and
Ms. Barbara Stewart

Mr. Keith D. Bowersox

Robert and Laura Boyd

Mr. James A. Brainer

Mr. Richard T. Brannegan^A

Mr. Willard Bransky

Tim^E and Julie Bratley

Mr. and Mrs. Michael Bresolin

Mr. John A. Bross, Jr.

Mr. and Mrs. Daniel J. Brown

Mr. and Mrs. Nathan A. Brown

Mr. and Mrs. Jackson Brunsting

Mr. and Mrs. Archibald T. Bryant

Mr. and Mrs. Thomas Buck

Mrs. Elizabeth Buker

Mr. and Mrs. Philip A. Canfield

Dr. and Mrs. John R. Canning

Mr. and Mrs. Drew A. Carhart

Mr. and Mrs. Walter R. Carlson

Mr. and Mrs. Frantz R. Cartright

Mr. and Mrs. Donald Cassil

Mrs. Alice G. Childs

Mr. Nathaniel P. Clapp and
Ms. Sarah Dietz

Mr. John T. Coletta

Mrs. Gary C. Comer

Pam and Howard Conant, Jr.

Ms. Nancy Corral

Ms. Christine Courtnege

Mr. William D. Cox, Jr.

Ms. Susan Craft

Mr. Guy R. Crane

Mr. and Mrs. Bruce Crown

Mrs. Elizabeth J. Crownover^E and
Mr. David Crownover

The Honorable
Barbara Flynn Currie

Mr. William R. Darman and
Ms. Maria Mau

Dr. and Mrs. Lloyd Davidson

Ms. Rebecca Davidson^A

Ms. Patricia R. Davis

Mr. and Mrs. William L. Davis III

Lori and Bill Dawson

Ms. Nancy Dehmlo

Ms. Lauren E. Del Carlo^E and
Mr. William D. Photopoulos

Ms. Judith A. DeLeon

Louis^T and Margarette Delgado

Mr. and Mrs. William E. Derrah III

Owen Deutsch and Rona Talcott

Mr. and Mrs. Blair C. Dickinson

Mr. and Mrs. James S. DiMatteo	Mr. and Mrs. John A. Hagenah	Mr. and Mrs. John E. Koliopoulos	Mr. and Mrs. John A. Morris
Mr. and Mrs. Thomas W. Doddridge	William M. Hales Foundation	Mr. and Mrs. Martin J. Kozak	Mr. and Mrs. Stephen M. Morris
Mr. and Mrs. David W. Dodson	Ms. Tonja Rizai Hall ^A	Mr. Paul R. Kressin and Ms. Kay Lee	Mr. and Mrs. David W. Mortara
Mr. and Mrs. Kevin M. Doherty	Mr. and Mrs. Joel L. Handelman	Emerson and Martha Lacey	Mr. and Mrs. James G. Murphy
Susanna and W. Gregory Doolin	Dolores K. Hanna	Mr. James R. Lancaster ^D	Mr. and Mrs. James Murray
Ken and Karen Dort	Ms. Alice E. Harper	Dr. Richard L. Landau	Mr. and Mrs. Neil C. Nelson
Mr. and Mrs. James Downey	Ms. Katherine P. Harris and Mr. Robert S. Jendra	Mr. and Mrs. William W. Lane	Mr. and Mrs. Jonathan B. Newcomb
Ms. Diana L. Duncan ^E	Ms. Mattie H. Harris	Ms. Cathy G. Lazaroff	Ms. Marjorie Newman
Ms. Helen M. Dunlap	Mr. and Mrs. John Hazelwood	Mrs. Winfred M. Leaf	Ms. Mary C. Niehaus
Mr. and Mrs. Thomas E. Durica	Mr. and Mrs. Thomas S. Hebda	Ms. Leslie A. Lee	Mr. and Mrs. Gary R. Nickels
Mark G. Egan and Katherine Z. Egan	Ms. Joyce E. Heidemann	Mr. Glenn Lefkovitz	Ms. Lora Nickels ^E and Mr. Thomas Tague
Ms. Linda L. Egebrecht ^A	Mr. and Mrs. David J. Height	Mr. and Mrs. Sigmund Lefkovitz	Mr. Jim H. Niehoff and Mrs. Jolie R. Macier
Dr. Marilyn D. Ezri	Dr. and Mrs. Marvin K. Henry	Bonita and Bob Levin	Mrs. Dorothy Jeanne Oakley
Mr. and Mrs. Fabio Fabbri ^A	Mr. and Mrs. Scott E. Hertenstein	Mr. and Mrs. Donald Lewis	Mr. and Mrs. Todd J. Ohlms
Mr. and Mrs. John F. Faulhaber	Mr. and Mrs. Robert M. Hickey	Mr. and Mrs. Robert E. Lindgren	Mr. Brian Olson
Ms. Susan H. Feit and Dr. Neil R. Friedman	Mr. and Mrs. Arthur Higgins	Mr. Charles N. Lindsey and Mr. Zikri Yusof	Dr. and Mrs. Charles Osadjan
Mrs. Joan L. Fencil	Melissa Hilton and Jonathan Perman	Mr. and Mrs. Bert H. Lindstrom	Mr. Robert I. Osterberg
Dr. and Mrs. Balbino B. Fernandez	Mr. and Mrs. Doug Hoogstra	Mr. and Mrs. Mark A. Livengood	Dr. Lois R. Owens and Ms. Kimberly D. Owens
Mrs. Sally Fletcher	Mr. and Mrs. William S. Hoppe	Charlene and Gary MacDougal	Mr. and Mrs. Joseph Paszczyk ^A
Mr. and Mrs. Charles E. Frank	Andrew and Cheri Houha	Mr. and Mrs. Bernard A. Mack, Jr. ^A	Mr. and Mrs. Homi B. Patel
Mr. and Mrs. Henry S. Frank	Rose Houston	Mr. and Mrs. John W. Madigan	Mr. and Mrs. Donald W. Patterson
Mr. Gary Friedlander and Ms. Wendy Sabbath	Charitable Foundation	Mr. Dean Mamalakis and Mrs. Louise Mangos-Mamalakis	Ms. Lisa J. Pattis
Mr. and Mrs. William J. Friend	Mr. and Mrs. G. Cleveland Hunt, Jr.	Mr. Charles Mann	Mr. Scott Pattullo and Ms. Jenny A. Johnson
Mr. and Mrs. J. Patrick Gallagher, Jr.	Ms. Patricia J. Hurley	Ms. Nina Mann	Mr. and Mrs. William B. Pearce
Miss Patricia Galloway	Illinois CPA Foundation	Ms. Charlene Marcus	Mr. S. James Perlow and Ms. Sandra J. Allen
Dr. and Mrs. John S. Garvin	Mr. Steve M. Isaac and Ms. Judy Olds	Ms. Carmen Maso	Ms. Bonnie S. Peters
Mr. and Mrs. Kanwal Ghaey	Mr. and Mrs. Andrew M. Jarosz	Heidi and Gregory Mayer	Dr. David T. Petty
Mrs. Mary Jane Gibbs	Mr. and Mrs. Sidney F. Jarrow	Mr. and Mrs. Richard P. Mayer	Mr. and Mrs. Robert L. Pierce
Mr. and Mrs. David A. Gillam	Mr. and Mrs. Donald Jeffers	Mr. Raymond McBride	Mr. and Mrs. Louis R. Pignotti, Sr.
Ms. Judy Girard	Jeani and Rich Jernstedt	Mr. and Mrs. Mark J. McCarville	Mr. and Mrs. Stephen Pinaire
Dr. Chris Godell	Mr. and Mrs. Jerald L. Johnson	Mr. and Mrs. James McClelland	Mr. John Pinenti
Mr. Gary Gordon and Ms. Marilyn Hirsch	Mr. and Mrs. Douglas L. Jones	Mr. and Mrs. Robert C. Merrick	Ms. Nancy Plax and Mr. Steven Schwartzman
Mr. and Mrs. James P. Gorter	Lynn and George Jones	Mr. and Mrs. Glenn E. Merritt	Mrs. John W. Pocock ^A
Dr. Robin Graham	Mr. and Mrs. Jordan L. Kaplan	Mr. and Mrs. Scott D. Meyer	Mr. and Mrs. Oren T. Pollock
Ms. Leila S. Green	Ms. Verla Kasmerchak	Dr. and Mrs. Ernest E. Mhoon, Jr.	Mr. and Mrs. Charles S. Potter, Jr.
Mr. Daniel Greenberg	Mr. John M. Kelly ^E	Mr. and Mrs. Jan Miecznikowski	Mr. and Mrs. James R. Potter
Dr. and Mrs. Rolf M. Gunnar	Ms. Katharine Kelly	Mr. and Mrs. Michael E. Mikolajczyk	Ms. Lee B. Price
Mr. and Mrs. Gregory L. Guyett	Mr. and Mrs. Thomas L. Kittle-Kamp	Dr. and Mrs. Robert P. Miller	Mr. and Mrs. John B. Priest
Mr. Alfred E. Hackbarth, Jr.	Dr. and Mrs. Jay H. Kleiman	Dr. Anthony G. Montag and Dr. Katherine L. Griem	Mr. and Mrs. John Pujals
Dr. Christopher Hagenah	Mr. Barry Kohl	Mr. and Mrs. Leon W. Moore	
		Mr. Peter Moran	

- Mr. and Ms. George A. Ranney, Jr.
 Mr. and Mrs. Mark A. Ratner
 Mr. Patrick K. Reidy
 Mr. and Mrs. Douglas M. Reimer
 Mr. Alan Resetar^F and
 Mrs. Donna Resetar^A
 Mr. Richard W. Richardson
 Mr. and Mrs. Donald E. Rocap
 Mr. Howard J. Romanek and
 Mr. Irwin Romanek
 Mr. and Mrs. Benjamin Rooks^A
 Mr. and Mrs. Harold Rosenson
 Mr. and Mrs. Robert J. Ross
 Mrs. Donald I. Roth
 Mrs. Elizabeth D. Rothermel
 Mr. and Mrs. John W. Rutledge
 Mr. George Rykowski and
 Ms. Silvia Schmid
 Mr. D.P. Sager
 Ms. Christina M. Sakowski
 Dr. and Mrs. Paul W. Saltzman
 Mr. and Mrs. Fred Savaglio
 Mr. and Mrs. John Schaff
 Dr. and Mrs. Morton O. Schapiro
 Mrs. Lawrence K. Schnadig
 Mr. and Mrs. Thomas J. Schultz
 Dr. Melvin M. Schwartz and
 Dr. M. Lisa Yaremko
 Mrs. Marilyn L. Schweitzer and
 Mr. Michael A. Firman
 Mr. and Mrs. Peter D. Scully
 Mr. and Mrs. G. Curtiss Shaffer^A
 Ms. Kate M. Sheehy
 Mr. and Mrs. Robert W. Smolen
 Mr. and Mrs. Dan W. Snyder, Jr.
 Mr. and Mrs. Ron Sonenthal
 Mr. and Mrs. David Stalle
 Mr. and Mrs. James Stanczak
 Mr. and Mrs. John R. Stanek
 Mr. and Mrs. Neele E. Stearns, Jr.
 Mr. and Mrs. Leon C. Stecher
 Mr. Alfred E. Steinhaus
 Mrs. Doris F. Sternberg
 Mrs. Harriet C. Stone
- Mr. and Mrs. Hampden M. Swift
 Dr. and Mrs. Joseph W. Szokol
 Mr. and Mrs. John W. Taylor III
 Mr. and Mrs. Mitch Theys
 Mr. and Mrs. Nick Thomas
 Glenn and Jacqueline Tilton
 Mr. and Mrs. James M. Trapp
 Ms. Sally L. TreKell
 Mr. and Mrs. James A. Tuchler
 Mrs. and Mr. Mary Beth Turek
 Mr. Scott F. Turow
 Mr. and Mrs. Enrique J. Unanue
 Mr. Peter M. Vale
 Mr. and Mrs. J. V. Van Cura, Jr.
 Mr. and Mrs. John E. Van Horn
 Mr. Shawn K. Vanderziel^F and
 Mr. Jay Clarke
 Mrs. Katherine Vennetti
 Robert Wagner
 Ms. Belle Waldfogel and
 Ms. Georgan Goldenberg
 Mr. and Mrs. Eric D. Wanger
 Mrs. Hempstead Washburne
 Mr. and Mrs. Ed Watkins
 Mr. and Mrs. Gary W. Watt
 Mr. and Mrs. K. Jay Weaver
 Ms. Jeri L. Webb^E
 Ms. Jane Wells and
 Mr. Burton C. Ferrini
 Mrs. Madelin M. Wexler
 Dr. Gary Wheeler
 Mr. Bennie E. Whiten, Jr.
 Mrs. Lynda Williams
 Mrs. April R. Wilson
 Mr. and Mrs. Gary Wilson
 Mr. Lawrence J. and
 Mrs. Margaret V. Witry^A
 Ms. Melanie R. Wojtulewicz
 Dorothy H. Wolff and Eric Wolff
 Mr. Joseph Wolnski and
 Ms. Jane Christino
 Mr. and Mrs. J. Nelson Wood
 Mrs. Nancy Wulfers
 Mr. Theodore M. Wynnychenko and
 Ms. Laura Hill
- Ms. Jane Yakushiji
 Mr. Kenneth A. Youga
 Mr. and Mrs. Thomas H. Ziolkowski
- \$250-499
 (Field Adventurers)**
- Anonymous (12)
 Mr. Roger S. Adamek
 Mr. Cyrus H. Adams
 Mr. Keene Addington III
 Barbara and Steven Adelman^A
 Mr. and Mrs. David L. Ader
 Mrs. John J. Ahearne
 Mr. and Mrs. Arlyn E. Albrecht
 Shelley Torres and Bill Aldeen
 Ms. Andrea Alexander
 Mr. and Mrs. Walter Alexander
 Mr. and Mrs. Thomas J. Allison
 Mr. and Mrs. Manolo Almagro
 Mr. and Mrs. Steve Almquist
 Mrs. Kristine Anderson
 Mr. and Mrs. Nicholas Antos
 Mr. Basil Apostolou
 Ms. Ruth Archer and Mr. Jim Helke
 Mr. and Mrs. Joshua Arlow
 Mr. and Mrs. Bruce T. Armstrong
 Mr. and Mrs. Delbert W. Arsenaault
 Ms. Catherine Ashdown and
 Mr. Neal Lofchy
 Mr. and Mrs. Paul Backas
 Mr. Douglas J. Bacon and
 Ms. Amanda Amert
 Mr. and Mrs. Phil Baker
 Mr. Timothy R. Baker and
 Ms. Denise Guardino
 Mr. and Mrs. Gregory Ball
 Mr. and Mrs. Randolph C. Barba
 Mrs. Margaret Barilich
 Tom Barkalow and
 Patricia Lougheed
 Ms. Katherine M. Barnash
 Mr. and Mrs. Mervin R. Barnes
 Ms. Frances Barrett
 Mr. and Mrs. Richard P. Barrett
- Carlo Basile and Kim Basile
 Mr. and Mrs. Darrell Bast
 Dr. and Mrs. Robert A. Beatty
 Mr. William T. Beck and
 Ms. Doreine Carson
 Mr. and Mrs. Robert D. Becker^A
 Dr. and Mrs. John Beckerman
 Reverend and
 Mrs. William C. Beckmann
 Mr. and Mrs. William Bedford
 Mr. and Mrs. Jeffrey Beech
 Ms. Nancy Behrendt
 Mr. Roy Benedek
 Mr. and Mrs. Stephen E. Benefiel
 Arlene and Wayne Bennett
 Mr. and Mrs. George Benson
 Mr. and Mrs. Robert A. Benziger
 Dr. and Mrs. Michael Bercek
 Dr. and Mrs. Leonard Berlin
 Dr. and Mrs. Victor M. Bernhard
 Mr. and Mrs. Robert Bernot
 Robert and Ruth Berns^A
 Mr. and Mrs. Howard Bernstein
 Mr. and Mrs. Charles Berthold
 Mrs. Lieselotte N. Betterman
 Mr. and Mrs. Sanjay Bhasin
 Mr. and Mrs. Sam Bianco
 Mr. William E. Bible
 Ms. Lois J. Bider
 Mr. and Mrs. Douglas Bidwell
 Dr. and Mrs. Henry S. Bienen
 Mr. Robert Biga
 Richard and Eve Biller
 Dr. Michael D. Bishop
 Mr. Frank L. Bixby
 Ms. Kay A. Bjork
 Mr. Derek Black
 Mr. and Mrs. Richard B. Black
 Mr. and Mrs. John Blaser
 Mr. and Mrs. Merrill Blau
 Mr. and Mrs. Jay S. Bleecker
 Mr. and Mrs. Stephen J. Bloom
 Mr. and Mrs. Irwin A.
 Blumensaadt, Jr.

Mr. Jerry V. Bobek, Jr.
 Ms. Georgia Bockos
 Mr. and Mrs. Erwin F. Bogs
 Dr. Therese M. Bogs and
 Mr. W. Haser
 Mr. and Mrs. George Bohling
 Mrs. Carl J. Bohne, Jr.
 Mr. Daniel A. Bolm and
 Mrs. Peggy J. Keating-Bolm
 Mr. and Mrs. Thomas C. Boltik
 Mr. Marcello Bondurant
 Ms. Clarisa Bonilla
 Mr. and Mrs. William C.
 Bowman, Jr.
 Mr. Loren Bowns and
 Ms. Cynthia Bowns
 Mrs. Barbara A. Boyer
 Mr. and Mrs. Dennis E. Bozych
 Roger and Mary Bradford
 Ms. Maria Brandon and
 Mr. Randy Burrow
 Ms. Kimberlee A. Breckler

Mrs. Marie Brelin
 Ms. Lisa Brenskelle
 Mr. and Mrs. Hugh F. Breslin
 Mr. and Mrs. David Brewer
 Mr. and Mrs. Robert Brightfelt
 Mr. Steven Brint
 Mr. and Mrs. Lance M. Brisben
 Mr. Charles T. Brockmann
 Ms. Bo Brown and Mr. Bob Faull
 Mr. Seth N. Brown and
 Ms. Marya Lieberman
 Ms. Shannon E. Brown
 Dr. Sharon Brown-Haynes
 Mr. and Mrs. Steven Brown
 Mr. and Mrs. Joshua T. Buchman
 Ms. Jo Ann Budde
 Mr. and Mrs. Werner Buol
 Mr. and Mrs. Werner H. Buol
 Mr. and Mrs. Timothy L. Burke
 Mr. Timothy J. Burroughs and
 Ms. Barbara Smith

Dr. and Mrs. Rodney L. Burton
 Mr. Thomas Byrnes and
 Ms. Carol Rigmark
 Eileen Cahill and Family
 Mr. Edward Calkins
 Judith A. Caloud^A
 Ms. Katherine W. Campion
 Mr. Leslie P. Capri
 Mr. and Mrs. Thomas M. Carmazzi
 Dr. and Mrs. Charles Carroll
 Mr. and Mrs. Robert E. Carroll
 Mr. and Mrs. James R. Carter
 Mr. and Mrs. Steven Carter
 Mr. and Mrs. Milton Blouke Carus
 Mrs. Jane Dunlap Carver
 Sheila Cawley and Stephen Kahnert
 Ms. Cassia Cearley
 Ms. Michele Chaffee and
 Mr. Adam Nordin
 Mrs. Christina M. A. Chatalas
 Mr. and Mrs. Thong M. Cheng

Ms. Joan S. Cherry and
 Mr. John R. Cara
 Mr. and Mrs. James N. Chodora
 Mr. and Mrs. John A. Chojnicki
 Mrs. Emily J. B. Christian
 Mr. and Mrs. R. Lee Christie
 Ms. Marylenn Chrystal and
 Ms. Sarah Chrystal
 Mr. and Mrs. Howard Chun
 Mr. and Ms. Michael Chung
 Ms. Josephine S. Chyatte
 Randall Clark
 Mr. and Mrs. Steve Clark
 Ms. Barbara Clarke
 Mrs. Diane D. Clarke
 Mr. and Mrs. Albert C. Claus
 Mr. and Mrs. Joe Clayton
 Mr. Thomas Cleary
 Mr. Peter L. Clerkin
 Ms. Sharon L. Cline
 Mr. and Mrs. John E. Clisham



HOFFMAN SCULPTURES TO BE RESTORED

Pamela Kelley Hull spent a lot of time at The Field Museum as a child—no surprise, as her grandfather Stanley Field was the institution's long-serving president. One of Mr. Field's many visible legacies at the Museum is the series of bronze sculptures he commissioned from artist Malvina Hoffman in 1930 for the Hall of Man. To honor that legacy, Mrs. Hull and her husband, Roger, generously funded the conservation of the life-size figures in this renowned collection (right). Above: the Hulls pose with one of the busts and President and CEO Richard W. Lariviere.



Mrs. Arleen A. Coates	Jackie and Donald R. Dann	Ms. Janet M. Dudgeon	Ms. Joy D. Fett
Mr. Benjamin A. Coats	Mr. and Mrs. Ronald J. Danner	Mr. and Mrs. Ferne L. Dungan	Mr. and Mrs. Conrad T. Fialkowski
Mr. Joseph Cofield	Mr. and Mrs. Bruce Davidson	Mr. Glenn Dunkel	Mr. and Mrs. Robert W. Fick
Mr. and Mrs. Martin J. Cohen	Kent and Susanne Davis	Mr. and Mrs. Steve Dyer	Mrs. Mary Fields and Mr. Albert Anderson
Mr. William S. Cohen	Mr. and Mrs. Gerald D. Dawes, Jr.	Ms. Glenna R. Eaves and Mr. Christopher J. Boebel	Ms. Amy M. Fielek
Mr. and Mrs. Michael P. Cole	Mr. and Mrs. Dennis De Bruler	Ms. Diane S. Edlelson and Mr. Phil Harler	Ms. Judith A. Findorff
Mr. and Mrs. Terrance Coleman	Mr. Pierre De Smul and Dr. Carol De Smul	Mr. Marvin W. Ehlers	Dr. and Mrs. Terrance E. Fippinger
Mr. and Mrs. Terrence Collins	Mr. Bruce Dean	Mr. and Mrs. Nakia Ehrhardt	Mr. and Mrs. Peter D. Fischer
Ms. Cira V. Conley and Ms. Audrey Marquez	Mr. and Mrs. Mark D. Deaton	Ms. Margaret M. Eiden	Mr. and Mrs. Justin M. Fishbein
Mrs. Gladys Connolly	Ms. Diana L. DeBoy	The Robert G. Eiserman Family	Mr. and Mrs. Duncan G. Fisher
Mr. Mark D. Contratto	Mr. and Mrs. Charles Decker	Mr. and Mrs. Thomas C. Eley III	Mr. and Mrs. James G. Fitzgerald
Mr. and Mrs. Mercer Cook	Mrs. Carla M. Dehmow	Mr. J. Thomas Eller	Mr. and Mrs. Dale Fleming
Mr. Blake Cooper and Ms. Sarah Keedy	Mr. and Mrs. Charles Dennehy	Mr. and Mrs. Tomy Endo	Mr. and Mrs. Peter L. Flemister
Mr. Marc Cooperman and Mrs. Christine Igo	Dr. and Mrs. Eugene R. DeSombre	Mr. and Mrs. Wayne Eng	Mr. and Mrs. Steve Flexman
Ms. Julia Corcoran and Mr. Hector Melin-Aldana	Mrs. Uta DeTappan-Staley	Mr. Mark Engels	Mr. Geoffrey A. Flick
Mr. Gerald Corrigan	Ms. Doris Devine	Mr. and Mrs. Carl England	Mr. Eric Flint and Mrs. Lucille Robbins
Mr. and Mrs. Patrick Corrigan	Mr. and Mrs. Philip Diamond	Ms. Lynne England	Ms. Anita Flournoy
Mr. Kevin Costello and Mr. James Costello	Ms. Amy T. Dickinson and Mr. Jim Futransky	Mr. Gary Epling	Mr. and Mrs. John F. Flynn
Ms. Noreen Coyan and Mr. Donald Simmonds	Ms. Leonora Dickson	Mrs. Karen Ernst	Dr. James and Martha Foght
Mr. and Mrs. Thomas W. Coyle	Mr. and Mrs. William Differding	Mr. and Mrs. Ronald L. Eshleman	Mr. and Mrs. William D. Folland
Mr. and Mrs. Robert D. Craig	Ms. Patricia Ann Dihel	Mr. and Mrs. Abdiel Estrella	Mr. and Mrs. Victor Fraccaro, Jr.
Andrew B. Critchell and Kelsey Critchell	Dr. and Mrs. John R. Dimar	Mr. and Mrs. John B. Evans	Dr. and Mrs. Alvin L. Francik
Mr. and Mrs. Jacob Crose	Mr. William D. Dini	Dr. and Mrs. Richard H. Evans	Mr. and Mrs. Lester E. Frankenthal III
Ms. Susan M. Crowell and Ms. Kathleen Cooke	Mr. and Mrs. Paul F. Dittmann	Mr. William Evans	Mr. and Mrs. William D. Franz
Ms. Yvonne M. Curbis	Mr. Joshua Dlouhy	Mr. and Mrs. David P. Facklam	Mr. and Mrs. Earl J. Frederick
Mrs. Louise H. Curry	Mr. and Mrs. Robert S. Dobis	Ms. Diana H. Fagan	Mr. and Mrs. Stephen Fredman
Dr. and Mrs. Arthur W. Curtis, M.D.	Leonard and Patricia Dominguez	Mr. Brian G. Fahrenbach	Mr. and Mrs. John Freechack
Mr. and Mrs. David V. Curtis	Mr. and Mrs. John Donato	Mr. Harry R. Fair and Mrs. Carolyn E. Jordan	Mr. Gerald Freedman and Ms. Elizabeth Sacks
Mr. Charles F. Custer	Mr. and Mrs. Joseph E. Doninger	Mr. and Mrs. Albert J. Falasz	Mr. and Mrs. John F. Freund
Mr. and Mrs. Henry Czopek	Ms. Shawn M. Donnelley and Mr. Christopher M. Kelly	Ms. Irene Falout	Dr. Sylvia E. Furner
Mr. and Mrs. Alfred E. D'Ancona II	Mr. ^T and Mrs. Thomas E. Donnelley II	Mr. and Mrs. James Fanuzzi	Ms. Anne V. Fussell
Mr. and Mrs. Zenel Dabeca	Dr. Erl Dordal and Mrs. Dorothy Powers	Mr. and Mrs. William Farley	Mr. and Mrs. John Gage
Dr. Jennifer Dabrowski and Mr. Steve Dabrowski	Mr. and Mrs. Keith Dorman	Mr. and Mrs. Alexander H. Faurot	Mr. Gregory J. Gajda
Mr. and Mrs. James M. Daly II	Mr. and Mrs. James H. Douglas	Carl B. Fausey ^A	Mr. Thomas F. Gajewski and Ms. Marisa Alegre
Robert and Cathy Daly	Mr. and Mrs. Gary Drimmer	Ms. Julie A. Federico and Mr. Jay Mitchell	Mr. and Mrs. Anand Gajula
Mr. Rhett Damon	Mr. and Mrs. Harry W. Drucker	Mr. Irv Feltman	Albert and Sherri Galante
Mr. and Mrs. John A. Daniels	Mr. and Mrs. Harry W. Drucker	Dr. John D. Ferguson and Ms. Elizabeth H. Zimmerman	Mr. Donald C. Gancer
	Mr. Joseph H. Drummond	Mr. and Mrs. Jose L. Ferrer	Ms. Paulette Gang
	Mr. and Mrs. Joel S. Dryer	Mr. George Fetherling	Mr. and Mrs. Roger Gansauer
	Mr. Michael S. Dublak and Mrs. Sharon M. Authier		

Mr. Kristopher Garcia and Mrs. Theresa Garcia-Lechocki	Dr. Norman C. Greenberg and Dr. Gilda M. Greenberg ^A	Mr. David E. Hanley and Mrs. Jori Alles	Mr. and Mrs. B. Peter Hofmann
Ms. Martha A. Garcia	Mr. and Mrs. John K. Greene	Mr. Joseph Hanley and Ms. Kristy Mardis	Mr. and Mrs. James M. Hohner
Mr. James Gaughan and Ms. Ann Hoffman	Mr. and Mrs. Mark J. Greenwood	Dr. Luke Hanley and Ms. Debran Rowland	Edward and Jo Ann Holba
Ms. Aimee M. Genova	Mr. Brian Gregory	Mr. Robert Hanlon and Mrs. Barbara MacDowall	Mr. Craig J. Holderness
Mr. and Mrs. Richard D. George	Ms. Mary Ann Grice	Mr. and Mrs. Josh Harper	Dr. and Mrs. James M. Holland
Mrs. Marylou Georgis	Ms. Catherine A. Griffin	Ms. Patricia A. Harper	Mr. and Mrs. Fred Holubow
Ms. Christine D. Giannoni ^E	Mr. and Mrs. Robert M. Grimm	Mr. and Mrs. David S. Harrington	Mr. and Mrs. Dean T. Honda
Mr. and Mrs. George Gill	Mrs. Mary M. Grobarcik	Ms. Mary Anne Harrison	Mr. and Mrs. Joel D. Honigberg
Ms. Mandy Gittler	Mr. John F. Grobe	Mrs. Augustin S. Hart, Jr.	Mr. and Mrs. Charles L. Honkisz
Mr. and Mrs. Stanford L. Glass	Dr. Amanda Gross	Mr. and Mrs. Edward D. Hatcher	Mr. Thomas A. Hootman and Ms. Pamela J. Sisler
Mr. and Mrs. Sidney Glenn	Ada Mary Gugenheim and Jon N. Will	Mr. and Mrs. Martin F. Hauselman	Mr. Glenn Hopkins
Mr. and Mrs. Thomas F. Glennon	Mr. Alfred H. Guhl	Mr. and Mrs. Allan Hausfeld	Mr. and Mrs. Grant Horsch
Ms. Maureen Glynn	Ms. Jennifer Guskey	Mr. Thomas Hawkins	Mr. and Mrs. Michael L. Horsley
Mr. Richard Gnaedinger	Dr. and Mrs. John W. Gustaitis, Jr.	Mary J. Hayes, DDS	Mr. and Mrs. Pete Horvath
Amy and Greg Goberville	Mr. and Mrs. Stephen E. Gustavson	Mr. Andrew Hazard and Mrs. Laura Callahan Hazard	Mrs. Ruth P. Horwich ^D
Mr. and Mrs. William H. Gofen	Mr. and Mrs. George Guzlas	Mrs. Eugene Heal	Mr. and Mrs. David Hubbard
Mr. and Mrs. Samuel D. Golden	Ms. Deborah J. Haak	Lawrence R. Heaney, PhD ^E	Dr. and Mrs. Michael S. Huckman
Ms. Joan Goldstein	Mr. and Mrs. Peter Haak	Mr. and Mrs. F. Thomas Hecht	Mr. and Mrs. Robert Huff
Mr. and Mrs. Marion Golebriowski	Mr. and Mrs. Dean L. Haas	Mrs. Bette Heide	Marilyn Hugh
Mrs. Amanda Gomez and Ms. Maria Araiza-Torres	Mr. Robert A. Habermann	Mr. and Mrs. Fritz Henderson	Mr. and Mrs. Jawanza Hughes
Mr. and Mrs. Gene M. Gooding	Mr. and Mrs. Mervin D. Hagen	Mr. and Mrs. John Henderson	Mr. and Mrs. Phillip D. Hulben
Mr. and Mrs. Austan Goolsbee	Mr. John Hague	Ms. Karen J. Hennessy	Mrs. Diane S. Humphrey
Ms. Eve M. Gorman	Mr. Gary W. Hall	Mr. and Mrs. James P. Hepp	Mr. and Mrs. Jeffrey L. Hunt
Mr. and Mrs. Donald E. Goss	Ms. Holley Hall	Mr. and Mrs. Paul M. Herkes	Mr. Edward H. Huson
Ms. Susan Gotsch	Dr. and Mrs. George S. Hallenbeck	Ms. Sandra Herrington and Mr. Daniel Brashear	Mr. Michael S. Hyman
Mr. and Mrs. Numa R. Gottardi-Littell	Ms. Elizabeth W. Halpern	Mr. Paul D. Hewitt	Donna and Marshall Isaacson
Mr. Robert Gourley	Ms. Doris E. C. Hambacher	Mr. and Mrs. Jeffery S. Heydaneck	Mr. and Mrs. Glynn Isoda
Ms. Patricia A. Gowland	Ms. Anne Hamblett	Mr. and Mrs. Tim Heyen	Mr. and Mrs. Stephen Israel
Ms. Meredith L. Gozo	Ms. Caroline Hamblett	Mr. Daniel P. Hidding	Mr. and Mrs. Roland Jabotte
Terry Grace and Judith Gaietto-Grace	Mr. and Mrs. Preston Hamilton	Mrs. Melissa E. Genova Hill and Mr. Joel Hill	Mr. and Mrs. Jeffrey Jackson
Ms. Sharon Graham and Mr. Terry McGuire	Mr. and Mrs. Tim Hamilton	Mr. Peter Hill	Dr. Judith M. Jackson and Dr. Dannielle G. Jackson
Mr. and Mrs. William Graham	Mr. Michael Hammerman	Mr. and Mrs. Kenneth Hiltz	Mr. and Mrs. John Jacoby
Ms. Karen L. Granda and Mr. John S. Mrowiec	Mr. and Mrs. Thomas J. Hammerman	Mr. and Mrs. Joseph Hinkel	Mr. and Mrs. Robert A. Jahnke
Dr. Lance Grande ^E	Ms. Amy Hammock	Mr. and Mrs. Richard M. Hirsch	Mr. and Mrs. John Jakob
Karen Z. Gray	Mr. and Mrs. M. Hill Hammock	Ms. Geraldine B. Hletko	Mr. and Mrs. Paul A. James
Mr. and Mrs. Richard Gray	Mr. and Mrs. Michael S. Hammond	Dr. and Mrs. Zachary I. Hodes	Joseph and Rebecca Jarabak
Lois V. Grayston	Mr. Paul Hamper	Mrs. Suzanne L. Hoffman and Ms. Rachael Smith	Ms. Janice A. Jarnholm
Mr. James C. Green	Dr. Lanshan Han and Dr. Lili Du		Mr. and Mrs. James S. Jasionowski
	Mr. and Mrs. John S. Hand		Mrs. Barbara B. Javaras
	Mr. Larry L. Hanes		Mr. John D. Jawor
			Mr. and Mrs. Garrett Jenks



PARKER/GENTRY AWARD HONORS
FOUNDER OF MONGABAY

President and CEO Richard W. Lariviere (left) presented The Field Museum's annual Parker/Gentry Award to Rhett A. Butler (right), founder of Mongabay.com (a popular environmental science and conservation news website) and Mongabay.org (a non-profit conservation education organization). The Parker/Gentry Award honors an outstanding individual or organization whose efforts have had a significant impact on preserving the world's rich natural heritage and whose actions can serve as a model to others. The Parker/Gentry Award is made possible by an endowment from an anonymous donor. For more information, visit parkergentry.fieldmuseum.org.

Mr. and Mrs. Tom Jenny
 Ms. Judy Johanson
 Mrs. Karen Johns
 Mr. and Mrs. W. Bruce Johnson
 Mr. Carl W. Johnson and
 Mrs. Laura M. Bloom-Johnson
 Ms. Deborah Johnson and
 Ms. Angela Nesci
 Dr. Maryl R. Johnson
 Dr. Randon Johnson
 Mr. Robert Johnson
 Dr. and Mrs. Robert E. Johnson
 Dr. and Mrs. Brian Jokhy
 Mr. Christopher Jones and
 Ms. Gina Kimmel
 Mr. and Mrs. John A. Jones
 Mr. and Mrs. Kenneth P. Jones
 Ms. Margaret Jones and
 Mr. Michael Ferro
 Mr. and Mrs. Robert A. Jones, Jr.
 Mr. Richard W. Josd
 Mr. and Mrs. Paul R. Judy
 Mrs. Elizabeth E. Jurjevich
 Mr. and Mrs. Richard Juro
 Mr. and Mrs. Tom F. Kacprowicz
 Mr. and Mrs. Erik T. Kahler
 Ms. Jill M. Kainu
 Ms. Sandra Kalemba

Ms. Kathleen G. Kallan
 Mr. Michael Kalway
 Ms. Patricia M. Kammerer
 Dr. Mary G. Kane and
 Mr. Vern Kerchberger
 Mrs. Lily Kanter
 Mr. Georges Karam
 Mr. and Mrs. John A. Karoly
 Mr. and Mrs. Richard W. Kasperson
 Ms. Janine Katonah
 Dr. Claudia A. Katz
 Mr. and Mrs. Michael G. Keck
 Ms. Denise A. Kelley
 Mr. and Mrs. Austin Kelly
 Mr. and Mrs. Brian Kelly
 Mr. and Mrs. Dennis J. Kelly
 Mr. and Mrs. Don Kempf
 Ms. Doris Kennedy and
 Mr. Joseph Hoffman
 Mr. and Mrs. Terrence Kennedy
 Ms. Madalyn C. Kenney^E
 Mr. and Mrs. William S. Kenney
 Mr. Evan Kent and Dr. Karen Kent
 Dr. Susan B. Kern and
 Ms. Alex Yamron
 Ms. Kate T. Kestnbaum
 Dr. and Mrs. Alan C. Keyes

Mr. and Mrs. Robert A. Kilinskis
 Mr. and Mrs. James P. King
 Mr. and Mrs. John J. Kinsella
 Mr. and Mrs. James R. Kirk
 Mr. and Mrs. William T. Kirk, Jr.
 Ms. June A. Kirwan
 Dr. David H. Kistner
 Mr. and Mrs. Adam Klauber
 Ms. Anne V. Klecka
 Mr. Keith Kleehammer and
 Ms. Cheryl Sweeney
 Ms. Arlene M. Kline
 Dr. and Mrs. Thornton C. Kline, Jr.
 Mr. Joseph J. Klug
 Dr. Edward T. Klunk
 Ms. Judith L. Knie
 Dr. Patricia Knod and
 Ms. Danielle Knod
 Mr. and Mrs. Alfred J. Knox
 Mr. Timothy B. Knuth and
 Ms. Elizabeth Tate
 Ms. Lottie J. Kobza
 Ms. Sibyl Kobza and
 Ms. Laura L. Kobza
 Mr. and Mrs. Melvin J. Koenigs
 Mr. and Mrs. Norman A. Koglin
 Dr. and Mrs. Robert Kohrman
 Mr. and Mrs. Shohei Koide

Mr. Stanley L. Korwin and
 Mrs. Nancy J. Hall
 Ms. Patricia Kosmerl
 Mr. and Mrs. Kelly Kost
 Mr. John A. Koten
 Mr. James W. Kowalsky and
 Dr. Vicki Kowalsky
 Mr. and Mrs. Richard R. Kracum
 Ms. Regina Krakowski
 Mr. and Mrs. Jeffrey M. Krasner
 Mr. and Mrs. Walter P. Krauss
 Ms. Margaret T. Kray
 Mr. and Mrs. Lee V. Kremer
 Mr. and Mrs. Stuart Kriegermeier
 Mr. and Mrs. Elliott H. Krieter
 Mr. and Mrs. Jeffrey A. Kriezelman
 Mr. John Kristoff
 Mr. and Mrs. Brian Krob
 Mr. and Mrs. Larry S. Krucoff
 Mr. and Mrs. Michael J. Kuehl
 Mr. and Mrs. Alfred F. Kugel
 Mr. Satyajit Siddharth Kumar
 Mr. and Mrs. C. Thomas Kunz
 Mr. and Mrs. Walter Kurczewski
 Mr. William H. Kurtis^T and
 Ms. Donna La Pietra
 Ms. Lynne La Jone and
 Mr. Chris Mollet

Mr. and Mrs. Mark R. Laatsch	Dr. John R. Lurain and Dr. Nell S. Lurain	Ms. Teresa P. Mayfield	Mr. and Mrs. David Moore
Mr. and Mrs. Philip E. Lake	Mr. and Mrs. Ronnie F. Luyun	Mr. and Mrs. Henry H. Maze	Mr. and Mrs. David D. Morimoto
Mr. and Mrs. Eliot A. Landau	Ms. Judith Macior	Mrs. Michelle McCarthy	Ms. Patricia D. Morris
Ms. Christine J. Laperuto and Mr. William J. Roznowski	Mr. David O. MacKenzie	Lisa McClung and Blasko Ristic	Mr. and Mrs. William J. Morrison
Mrs. Georgette Laris de-Fernandez and Mr. Joaquin Fernandez	Mr. and Mrs. Duncan A. MacLean	Mr. Stuart A. McCrary and Ms. Nancy L. Davis	Ms. Sabrina R. Morton
Mr. Albert K. Larsen	Dr. Victor J. Magar and Ms. Deborah Oestreicher	Ms. Nancy A. McDaniel ^A	Dr. Barbara Mudloff
Mr. and Mrs. Charles W. Larsen	Mr. and Mrs. Steve Magenta	Mrs. Sherry L. McFall and Mr. Kenneth J. Porrello	Mr. and Mrs. Kurt M. Mueller
Mr. and Mrs. John Lasbvicka	Mr. and Mrs. Michael S. Magnuson	Mr. and Mrs. G. Thomas McKane	Lisa and John Mueller
Ms. Linda S. Lauterbach	Make Up First School of Make Up Artistry	Pat McMahan and L.W. McMahan-Padolski	Mr. and Mrs. Stephen Mueller
Ms. Michelle D. Layman	Mrs. Abigail Maki	Ms. Danielle McMillan	Mr. and Mrs. David Mui
Mr. and Mrs. David C. Lazar	Ms. Betsy A. Makris	Ms. Sandy McNabb and Ms. Elizabeth Godwin	Mr. and Mrs. Raymond Munaretto
Dr. Steven H. Lee and Dr. Kimberly F. Lee	Dr. and Mrs. Michael Malczewski	Mr. and Mrs. John S. Meany, Jr.	Ms. Alicia Murasaki and Mr. Joe Carver
Ms. Anita Lees and Ms. Lisa Lees	Alexandra Margo Malos	Mr. and Mrs. Joseph Meciej	Mr. and Mrs. Edward C. Murawski
Mr. and Mrs. Paul Lehman	Mr. and Mrs. James Manz	Mrs. Terry J. Medhurst	Mr. and Mrs. Guy B. Murdock
Mr. Paul A. Lehman and Ms. Ronna Stamm	Mr. and Mrs. Ira Marcus	Mr. Richard J. Medina and Ms. Maria T. Galo	Mrs. Matisa Murillo and Mrs. Mathilda Murillo
Mr. and Mrs. Kurt A. Lentsch	Mr. Euclides Marin and Ms. Barbara Gallucci	Mr. and Mrs. John Meehl	Mr. and Mrs. J.B. Murphy
Mr. and Mrs. David Lentz	Mrs. Cynthia Mark-Hummel and Mr. John Hummel	Ms. Judith M. Meek and Ms. Nancy Wardrope	Mrs. Janet Murphy
Mr. and Mrs. Vincenzo O. Leone	Mr. and Mrs. David Markovitz	Mr. John M. Meeks	Mr. John C. Murphy, Jr.
Mr. Barry Lesht and Ms. Kay Schichtel	Ms. Laura Martin and Ms. Natalia Penner	Mr. and Mrs. James R. Meindl	Mr. Michael J. Murrin
Mr. and Mrs. Gary Lessenberry	Mr. and Mrs. Armando Martinez	Mrs. Sarah J. Meisels	Mr. and Mrs. James W. Myers
Dr. Josef B. Levi and Ms. Gail E. Long	Mr. and Mrs. Felipe Martinez	Dr. Steven A. Melnyk	Mr. and Mrs. William Myers
Ms. Carolyn S. Levin	Mr. Manuel Martinez and Ms. Kelli Stanko	Mr. and Mrs. Michael Mendenhall	Mr. and Mrs. Ron Nahser
Mr. and Mrs. Kenneth C. Lewin	Dr. Marco L. Martinez and Dr. Susan Martinez	Mrs. Beverly M. Meyer	Mr. and Mrs. John Nalbach
Charles Ashby Lewis	Mr. and Mrs. John Martini	Mr. Craig S. Michelsen	Mr. and Mrs. Chris Nard
Mr. and Mrs. Nick Lewis	Mr. Samuel J. Maselli	Dr. Charles R. Middleton and Dr. John S. Geary	Ms. Carolyn E. Nasheim
Mr. Gilbert Lichstein and Mrs. Ruth Czarnecki-Lichstein	Mr. and Mrs. John Massey	Susan Mikalauski	Mr. James Naughton and Ms. Anita Andren
Dr. and Mrs. David B. Lieb	Mr. John R. Masters and Ms. Carmella Cottonaro	Mr. Michael M. Mikos	Mr. and Mrs. Joseph Navarre
Ms. Kristin Lingren	Mrs. Donald W. Mather	Professor Sidney G. Miller, Jr.	Linda and Phil Neal
Mr. and Mrs. Herbert Lippitz	Mr. and Mrs. James R. Mather	Mr. Vernon A. Miller and Ms. Kathryn Tecza	Mr. and Mrs. Robert J. Nelson
Mr. and Mrs. William F. Lloyd	Mr. and Mrs. James Mathews	Ms. Cheryl Misch	Ms. Lisa Nemeroff
Mr. and Mrs. J. William Locke	Mr. Wesley D. Matthews and Mrs. Viviana Matthews	Dr. Michael E. and Mrs. Kathy Moats	Mr. Oscar Newman and Ms. Theo Lesczynski
Shery and Mel Lopata	Dr. Julie L. Mattson and Dr. Richard A. Mattson	Mr. and Mrs. Thomas M. Monahan	Mr. and Mrs. Donald J. Newton
Mr. and Mrs. Ralph Love	Mr. and Mrs. George A. Matwyshyn	Mr. Jose Dennis A. Monteverde	Ms. Gina Nicholas
Ms. Holly Lowe	Mr. and Mrs. Charles Mauter	Mr. James R. Montgomery	Ms. Eleanor A. Nicholson
Dr. and Mrs. Louis P. Lukancic	Mr. and Mrs. Charles M. May	Mr. and Mrs. Richard Moody	Ms. Karen Nickelson
Mrs. Pamela A. Lunsmann and Ms. Kelly Englum		Mr. Thomas H. Moog	Mr. Eric Nielsen and Ms. Ellen Papacek
Jane and Steve Lupton		Mrs. Frank J. Mooney	Mr. John P. Nielsen ^A
			Mr. Raymond L. Noftsgger and Dr. Tina Forchetti
			Mr. and Mrs. Richard S. Nopar

- Mr. and Mrs. Ryan Nord
 Mr. and Mrs. Alvin R. Norris
 Ms. June Novalich and
 Ms. Helene Novalich
 Mr. W. Edward Null
 Mr. and Mrs. Marcus J. Nunes
 Mr. and Mrs. Neil O'Connor
 Mr. and Mrs. Richard O'Grady
 Ms. Kathleen O'Regan
 Mr. and Mrs. James J. O'Sullivan, Jr.
 Mr. and Mrs. Donald R. Oder
 Mr. and Mrs. Ivan M. Odom
 Mr. Eric P. Ohlson
 Mr. and Mrs. Ronald Oleksy
 Mr. John Oliphant and
 Ms. Erin Oliphant
 Ms. Andrea Oliver
 Ms. Jean Olsen
 Ms. Kristen M. Olson
 Mr. Tod A. Olson and
 Ms. Julie Stauffer
 Ms. Audrey M. Ongman
 Mr. and Mrs. Scott Oostman
 Mr. and Mrs. Robert Orr
 Mr. and Mrs. Baltimore F. Ortega
 Mr. and Mrs. George Ortenzo
 Mr. and Mrs. Elliott N. Otis
 Ms. Christine Ott
 Ms. Barbara E. Otte and
 Mr. Bruce C. Shelley
 Mr. David Otto
 Mr. Mike J. Ouyang and
 Ms. Jiawen Yan
 Mr. and Mrs. John E. Owens
 Ms. Ronna J. Page
 Mr. and Mrs. Raymond Paice
 Mr. and Mrs. Bruce Palmer
 Mr. Philip Pappas and
 Dr. Ana Lucia Pappas
 Mr. and Mrs. Michael S. Parfenoff
 Mrs. Eleanor Parker
 Ms. Elizabeth A. Parker and
 Mr. Keith Crow
 Mr. William Parkhurst
 Mr. and Mrs. Robert D. Parks
- Stanley Parzen and
 Lynne Raimondo
 Mr. and Mrs. Richard B. Paskin
 Mr. and Mrs. Anthony C.
 Passanante
 Jim and Chris Patterson
 Mr. and Mrs. Thomas G. Patterson
 Nenad Pavlouie
 Ms. Laura Payne and
 Mr. Dan Windorska
 Dr. David J. Peace and
 Ms. Karen Ferrer
 Mr. and Mrs. Jerry K. Pearlman
 Mr. Frederic C. Pearson
 Mr. and Mrs. Larry Pelletier
 Mr. and Mrs. Ray J. Pensinger
 Ms. Abigail Perkins and
 Mr. Philip Perkins
 Mrs. Marianne F. Perkins
 Mr. and Mrs. Norman Perman
 Mr. and Mrs. David Perry
 Mr. Ira J. Peskind
 Mr. James W. Peters
 Mr. and Mrs. Mark Peters
 Mr. and Mrs. Michael F. Petersen
 Mr. and Mrs. Dan Peterson
 Mr. David Peterson
 Mrs. Beth Petti
 Mr. and Mrs. Jeffrey Pfluger
 Ms. Katherine Philippe
 Susan I. Phillips^E
 Mr. and Mrs. Craig A. Pickenpough
 Mr. and Mrs. James Piechowski
 Mr. and Mrs. Edmund Piehler
 Mr. Louis D. Pierce and
 Dr. Jean Pierce
 Mr. and Mrs. Robert G. Pierce
 Mr. and Mrs. Daniel T. Pigott
 Mr. and Mrs. Richard J. Pipala
 Mr. and Mrs. Walter J. Plank
 Mr. and Mrs. Joseph B. Plauche
 Mr. and Mrs. Charles F. Pleier
 Mr. Peter W. Plumley and
 Ms. Anna M. Rappaport
 Mr. Joshua Poje
- Mr. Philip E. Police
 Mr. and Mrs. Steve Pollack
 Mr. and Mrs. Mike Pollard
 Mr. and Mrs. Jay Pollitt
 Ms. Dana L. Pond
 Dr. and Mrs. Avner Porat
 Mr. and Mrs. Richard A. Posner
 Mr. William P. G. Potocek
 Dr. Charles A. Pounian
 Mr. and Mrs. Paul C. Poy
 Dr. and Mrs. Richard A. Prinz
 Ms. Mary Punmit and
 Mr. Lenny Chu
 Mrs. Doris J. Puntney
 Mrs. Chestine Puralewski
 Mr. and Mrs. John F. Pustola
 Mr. and Mrs. Albert E. Pyott
 The Quigley Family
 Mr. and Mrs. William Radzevich
 Mr. and Mrs. John Radzinski
 Helene and Norman X. Raidl
 Mr. Robert Raidt and
 Ms. Katharine Christmas
 Mr. and Mrs. John R. Raitt
 Dr. Ruth G. Ramsey and
 Dr. Michael M. Ramsey
 Mr. and Mrs. G. Benjamin Ranney
 Ms. Lynne Rauscher-Davoust
 Dr. William L. Ray and
 Dr. Katherine Widerborg
 Dr. Timothy W. Raykovich and
 Ms. Donna Vega
 Ms. Suzanne J. F. Reade and
 Mr. Bruce Foudree
 Mr. and Mrs. Mark E. Reeves
 Ms. Stacey Reicherzer
 Mr. and Mrs. Jeffrey R. Reid
 Dr. Mark S. Reiter and
 Dr. Kathleen A. Ward
 Mr. and Mrs. Charles A. Remsberg
 Dr. Sigrida Renigers and
 Ms. Astra M. Patrick
 Mr. and Mrs. Philip J. Reny
 Mrs. Merle Reskin
 Dr. Raiselle C. Resnick and
 Dr. Kenneth I. Resnick
- Mr. Michael Reynolds and
 Mr. Stefano Redaelli
 Mr. and Mrs. Alejandro Reynoso
 Ms. Della Richards
 Ms. Claudia Richman
 Mr. and Mrs. Jerald F. Richman
 Mr. Neil W. Rickert
 Mrs. Patricia A. Riley
 George Rimnac and P. Rimnac
 Mr. and Mrs. Dennis Riodan
 Ms. Amy A. Ripepi and
 Mr. Garry J. Grasinski
 Mr. Edward J. Risch and
 Mrs. Kerry Mullen
 Mr. and Mrs. Steven A. Risley
 Mr. and Mrs. David E. Robinson
 Mr. and Mrs. Timothy M. Rockhill
 Mr. Erik Roffelsen and
 Ms. Nelleke Peters
 Ms. Linda R. Rogers
 Mr. and Mrs. James Rogula
 Jill and Ron Rohde
 Ms. Marilyn Rohn
 Ms. Julie Ann Roin and
 Mr. Saul Levmore
 Mr. and Mrs. Robert Rolih
 Ms. Alicia D. Rollo
 Joshua and Nancy Rolock
 Mr. and Mrs. Edward M. Roob
 Mr. Jeff Rooney
 Mrs. Roberta Rosell and
 Mr. Howard Rosell
 Mr. and Mrs. Michael Rosenberg
 Mr. and Mrs. Paul Rosenblum
 Mr. and Mrs. Jack Rosenfeld
 Mr. and Mrs. Bernard Rosenstein
 Mr. Warner A. Rosenthal
 Mr. Michael C. Rothman and
 Mrs. Bonnie F. Rothman
 Mr. Phillip D. Rowe
 Ms. Lynn M. Rubino
 Mr. and Mrs. Thomas Rudbeck
 Mr. and Mrs. George T. Rummel
 Mr. and Mrs. George Russ
 Mr. JD Rutt and Ms. Bonnie Wright

Laura ^F and Steven Sadler	Mr. Wayne Serven	Mr. Michael J. Spence	Mr. and Mrs. Harry C. Steinmeyer
Mr. and Mrs. Raul Saenz	Mr. and Mrs. John A. Shaw	Ms. Faith H. Spencer and Mr. Mark Parts	Mr. and Mrs. Robert Stephens
Ms. Christine A. Salvator	Ms. Julie Shaw	Dr. and Mrs. Eliot B. Spiess	Mr. and Mrs. Charles M. Stern
Mr. John Salvino	Ms. Anneliese Sheahan and Mr. Zack Wolchesky	Mr. and Mrs. Donald E. Sporleder	Mr. and Mrs. Phillip L. Stern
Mr. Richard H. Sanders	Mr. Francis L. Sheahan	Mr. and Mrs. Eric Spratford	Mr. and Mrs. Donald M. Stewart
Mr. Norman L. Sandfield	Mr. and Mrs. Neil J. Sheehan	Mr. and Mrs. Harlan F. Stanley	Mr. and Mrs. John Stocchetti
Mr. and Mrs. Robert M. Sanford	Mr. and Mrs. Charles Shenk	Mrs. Patricia Stanley	Mr. and Mrs. Howard L. Stocker
Ms. Nancy Sans	Mr. James V. Shipp and Ms. Nancy Marie Casper	Mr. and Mrs. Jay Steffen	Mr. James R. Streicker and Ms. Mary W. Stowell
Mr. and Mrs. Milan Saric	Mr. and Mrs. Mark Shockley	Mr. and Mrs. Kurt J. Steib	Mr. and Mrs. John J. Streit
Mr. Peter F. Saunders and Ms. Patricia J. Larson	Mr. and Mrs. Duward F. Shriver	Mr. and Mrs. Richard Steinke	Mr. and Mrs. Glen C. Suda
Ms. Vera Sceekic and Mr. Robert C. Osborne	Mr. and Mrs. Douglas L. Shuman		
Mr. and Mrs. Peter Schaefer	Ms. Bette H. Sikes		
Mr. and Mrs. Terry G. Schechner	Mr. and Mrs. Alan H. Silberman		
Mr. and Mrs. David M. Schiffman	Mr. and Mrs. Thomas A. Silberman		
Mr. and Mrs. Timothy J. Schilling	Mr. and Mrs. Alex Silbey		
Ms. Kathleen Schillo	Mr. and Ms. Michael Silerzo		
Dr. and Mrs. Richard L. Schilsky	Mr. and Mrs. David Silke		
Mr. David L. Schlotterback ^A	Ms. Ilene Simmons		
Ms. Susan D. Schlough and Mr. Andrew D. Abbott	Mr. and Mrs. Michael Simpson		
Ms. Beth Schmidt	Mr. and Mrs. Amit Singh		
Mr. Richard C. Schmitt and Mrs. Corinne R. Fargo-Schmitt	Ms. Holly Lee Sipples		
Mr. and Mrs. Arthur Schneider	Ms. Carol B. Skala		
Dr. John F. Schneider	Mr. Jeffrey Skender		
Mr. Michael J. Schneider	Mr. and Mrs. Paul Skorupa		
Dr. and Mrs. G. Stephen Scholly	Ms. Maureen M. Slavin		
Mr. Richard Schreiner	Mr. and Mrs. Mitchell Slotnick		
Mr. and Mrs. Paul W. Schroeder	Mr. and Mrs. Charles F. Small, Jr.		
Mr. David L. Schultz	Dr. Bernard Smith, MD		
Dr. and Mrs. Peter F. Schultz	Mr. and Mrs. Charles F. Smith		
Mr. and Mrs. Richard J. Schultz	Mr. and Mrs. Marty Smith		
Mr. Craig R. Schuttenberg and Ms. Colleen M. O'Leary	Ms. Miriam A. Mobley Smith and Mr. Donald Brower		
Dr. and Mrs. Maurice Schwartz	Ms. Rebecca Gray Smith ^A		
Dr. Neena B. Schwartz	Toni Sandor Smith		
Mr. and Mrs. Stevan F. Schweighardt	Mr. Keith Solomon and Ms. Elana Beckerman		
Ronald and Jane Schwuchow	Mrs. Irina Solonenko and Ms. Natalia Solonenko		
Ms. Margaret F. Scott	Mr. and Mrs. John Sonderegger		
Mr. Mason M. Seglin	Miss Michelle Sotak		
Mr. and Mrs. T. Dwaine Sell	Mr. Donald Southworth and Ms. Marilyn Cantisano		
Mr. and Mrs. Richard J. L. Senior	Mrs. Barbara Speer		



IN MEMORY OF CONNIE CRANE

The Field Museum lost an exceptional friend in Connie Crane. For decades, Connie was a key supporter and a research associate in the former Anthropology Department, helping develop the Alsdorf Hall of Northwest Coast and Arctic Peoples. She co-founded the Cultural Collections Committee and was a member of The Women's Board as well as The Founders' Council with her husband, Mark. Regarding her involvement with The Field Museum, she said: "It's a big world and a big society, and we owe our communities a lot." Connie's infectious curiosity is sorely missed.

- Constance and Howard Sulkin
 Mr. Kevin Sullivan and
 Ms. Mary Rose Beirne
 Ms. Nancy W. Sutherland
 Mr. and Mrs. Harold Sutton, Jr.
 Mr. Wayne Svoboda
 Hobart K. and Janis F. Swan
 Mr. and Mrs. Edwin L. Swanson
 Mr. and Mrs. David W. Swartz
 Ms. Loretta B. Sweeney
 Mr. Kenneth Swiatkowski and
 Ms. Valerie Schoen
 Mr. J. Roger Swihart
 Ms. Megan Synenki
 Mr. and Mrs. Robert J. Syrup
 Dr. and Mrs. Jan P. Szidon
 Ms. Gayle Taylor
 Mr. Nicholas Terrell
 Ms. Hadas Teuscher and
 Ms. Margot Lakonishok
 Mr. and Mrs. Richard J. Thennes
 Mr. and Mrs. Richard A. Therrio
 Ms. Kathy Tholin and
 Mr. Steve Starr
 Mr. and Mrs. Robert W. Thomas
 Monica and Kevin Thompson
 Mr. Robert L. Thompson
 Mr. and Mrs. Gregory A. Tieder
 Ms. Beverly Timm
 Dr. and Mrs. James Timmons
 Dr. Margaret Tinzmann and
 Mr. Otto Tinzmann
 Ms. Diane M. Tkach and
 Mr. James Freundt
 Mr. John Tobias
 Ms. Laura Toledo and
 Mr. Hugo Ruualcaba
 Ms. Virginia Tolk
 Mr. and Mrs. Wm. Ronald Tomecko
 Mr. and Mrs. Leonardo Torres
 Mr. and Mrs. Andrew Trees
 Dr. and Mrs. Michael R. Treister
 Mr. and Mrs. Barton G. Tretheway
 Ms. Mary Trowbridge and
 Mr. William West
- Mr. and Mrs. Christian Trummel, Jr.
 Mr. and Mrs. John E. Tulley
 Mr. Adam Tumas, Jr.
 Mr. and Mrs. Dominic P. Turchi
 Mrs. Elizabeth K. Twede
 Dr. and Mrs. Richard Tye
 Ms. Norma Uhran
 Mrs. Murray J. Vale
 Mr. and Mrs. James Valley
 Mr. Robert C. Vallone
 Mr. and Mrs. Nicholas
 Van Holsbeke
 Ms. Melody A. Van Wermeskerken
 Mr. John M. VanderLinden and
 Mr. John W. Butler
 Dr. and Mrs. Peter O. Vandervoort
 Mr. Ryan VanHolsbeke
 Mr. John D. VanPelt and
 Ms. Sharon M. Quintenz
 Mr. Eugene C. Varnado
 Mr. and Mrs. Leonard M. VerVers
 Mr. and Mrs. John F. Vicha
 Mr. and Mrs. Randolph M.
 Videkovich
 Ms. Catalina Vielma
 Mr. and Mrs. Steven S. Viktora
 Mr. and Mrs. Paul Vogel
 Mr. Thomas W. Vogelsang and
 Ms. Kathleen M. Moran
 Mr. Raghu R. Vollala
 Matthew J. von Konrat^E and
 Genea Pitts
 Ms. Tatziana S. Wachter^F
 Ms. Mary Wadleigh
 Mr. and Mrs. Richard A. Waichler
 Mr. and Mrs. John Wainwright
 Ms. Rosa E. Walke
 Mrs. Allison D. Walker
 Mr. and Mrs. Herschel D. Wallace III
 Mrs. Marge Walls and
 Mrs. Cassandra Sawyers
 Mr. Ralph Wanger and
 Mrs. Monique Clarine
 Mrs. Kathleen Ward and
 Mr. Patrick Kelly
- Mr. Robert Ward and
 Ms. Gloria Seger
 Ms. Therese L. Wareham
 Mr. and Mrs. Kurt L. Warning
 Mr. and Mrs. Scot E. Warren
 Ms. Laura S. Washington^T and
 Mr. Michael W. Richmond
 Mr. Ludwig Wasik and
 Ms. Caitlin Rawlins
 Ms. Ann Wasoff
 Ms. Lauren B. Watkins and
 Mr. Kevin D. Mc Kee
 Mr. and Mrs. Steve C. Watts
 Mrs. Elaine D. Wayne
 Mr. Leonard L. Weber
 Mr. and Mrs. Andrew J. Weddig
 Ms. Kathryn P. Weibel and
 Mr. Steve Freeman
 Mr. and Mrs. James Weidner
 Mr. and Mrs. Tom Weinberger
 Mary Weisman and James Weisman
 Dr. and Mrs. Gene J. Weiss
 Mr. and Mrs. Steven A. Weiss
 Mr. Mace Welch
 Mr. and Mrs. David Wendling
 Mr. and Mrs. David D. Wesselink
 Mr. and Mrs. Brian B. Whalen
 Ms. Frances Whalen and
 Ms. Mary Whalen
 Mrs. Carolyn M. White
 Mr. James White and
 Mrs. Sandra Barnett-White
 Mr. and Mrs. Larkin Whitlock
 Dr. and Mrs. Jack M. Whitney III
 Ms. Laura A. Wilber
 Mr. and Mrs. Mark Wilcox
 Dr. and Mrs. David B. Williams
 Ms. Elaine Williams and
 Ms. Nicole Roberts
 Mr. and Mrs. Jason Williams
 Mrs. Audrey Williams-Lee and
 Mr. Byron Lee
 Mr. Robert I. Wilson
 Mr. and Mrs. Timothy R. Wilson
 Mr. and Mrs. James R. Wise
 Mr. Robert F. Wisniewski
- Mr. and Mrs. Arnold A. Witt
 Carl Wolf and Jennie Sochon
 Mrs. Kathleen M. Wolfersberger and
 Ms. Cheryl Wolfersberger
 Mr. Edmund J. Wolff
 Nancy and John Wood
 Mrs. Roycealee J. Wood
 Ms. Patricia A. Worth
 Mr. David Wright and
 Ms. Corinne E. Satterlee
 David and Kay Wulf
 Mr. Geroge R. Wunder and
 Ms. Carole E. Mattes
 Mr. and Mrs. Edward Yaghmour
 Mr. Adam R. Young
 Mrs. George B. Young
 Mrs. Janice C. Young
 Owen and Linda Youngman
 Mr. Kenneth Yu
 Dr. Flora Zaitseva and
 Dr. Don Morrison
 Diane and Lawrence Zalusky
 Mr. Denis M. Zamirowski
 Clementine Zavelle and Brian Ibsen
 Ms. Barbara Zenner
 Mr. and Mrs. John T. Zick
 Mr. and Mrs. William B. Zigterman^A
 Mr. and Mrs. Jay H. Zimblor
 Mr. and Mrs. John A. Zimnie
 Mr. Dan Zukosi and
 Ms. Dorothy M. Zukoski

**CORPORATIONS, FOUNDATIONS, AND
GOVERNMENT (UNRESTRICTED)**
\$100,000+

Chicago Park District, on behalf
of the people of Chicago
John D. and Catherine T.
MacArthur Foundation
United Airlines

\$50,000–99,999

Anonymous (2)
Aon
U.S. Bank

\$25,000–49,999

ArcelorMittal
Coeur Mining, Inc.
The Davee Foundation
Julius N. Frankel Foundation
Goldman, Sachs & Co.
John R. Halligan Charitable Fund
KPMG
Leo Burnett Worldwide
McDonald's Corporation
Nicor Gas
Pepsi Beverages Company
Prince Charitable Trusts
SpencerStuart
Walgreens
The Warranty Group

\$15,000–24,999

Abbott
Baxter International, Inc.
Bloomberg
Kenneth Griffin, on behalf of Citadel
JPMorgan Chase & Co.
S&C Electric Company
Tave Risk Management
UnitedHealthcare
W.W. Grainger, Inc.

\$10,000–14,999

Aramark Parks & Destination
Peggy and Steve Fossett Foundation
ITW Foundation
McGraw Hill Financial, Inc.
MetLife Foundation
Molex Incorporated
Mondelez International
Morgan Stanley
Motorola Solutions
Polk Bros. Foundation
Troutman Sanders LLP

\$5,000–9,999

Akzo Nobel, Inc.
BRE NorthAmerica Industrial Fund
Chubb Group Insurance Companies
Fellowes, Inc.
Kroeschell Engineering Co.
MAC Restoration Contracting, Inc.

\$1,000–4,999

Anonymous
American Agricultural
Insurance Company
Amsted Industries Foundation
Aurico Reports Inc.
Helen V. Brach Foundation
Lloyd A. Fry Foundation
Just Energy Foundation
McKee Family Foundation
The Gerald Norton Foundation
Old Republic International
Corporation
Sahara Enterprises, Inc.
Shure Incorporated
State Street Corporation
University HealthSystem
Consortium

THE EDWARD E. AYER LEGACY SOCIETY

The Edward E. Ayer Legacy
Society recognizes donors
who remember The Field
Museum through bequests,
trusts, and other planned or
life income gifts.

Anonymous (15)
Barbara and Steven Adelman
Marilynn Alsdorf
Mary Jane Arnam
Mr. Harry Axelrod^D
Donald and Betts Baepler
Endowment for
Ornithological Study
Mr. and Mrs. James H. Banach
Mr. and Mrs. Robert D. Becker
Dr. Helen R. Beiser
Robert and Ruth Berns
Willard L.^T and Susan K. Boyd
Mr. Richard T. Brannegan
Mr. and Mrs. Frederick W. Brooke III
Mrs. George R. Brumlik
Leo R. Buckert
Judith A. Caloud
Rita and John^{TP} Canning
Mrs. Robert Adams Carr
Mr. and Mrs. Henry T. Chandler
Mr.^T and Mrs. Worley H. Clark, Jr.
Mr. and Mrs. Stephen F. Condren
Mr.^{TP} and Mrs. Frank W. Considine
Mr. Mark and Connie^D Crane
Ms. Rebecca Davidson
Ms. Janet W. Diederichs
Ms. Linda L. Egebrecht
La and Philip Engel
Ms. Shirley M. Evans^D
Mr. Richard F. Eveleth
Mr. and Mrs. Fabio Fabbri
Carl B. Fausey
Mary and Bruce Feay
Dr. and Mrs. Curtis B. Frank
Wilbur^T and Linda Gantz
Mr. and Mrs. William E. Gardner

Mr. Lyle Gillman
Mrs. Warren L. Gjorup
Robert^T and Beth Gordon
Dr. Norman C. Greenberg and
Dr. Gilda M. Greenberg
Timothy and Joyce Greening
Mr.^T and Mrs. Lewis S. Gruber
Ms. Tonja Rizai Hall
Ms. Jeanne M. Hansen
Drs. Malcolm H. and Adele Hast
Mrs. Betty S. Hess
Mr. David D. Hiller^T
Mrs. Harold H. Hines, Jr.
John and Marjorie Hines
Peggy L. Hoberg
Ms. Melody Hobson
Anita W. Hornbrook
Dr. and Mrs. James C. Hunt
Mr. Edward C. Jerkey
Ms. Stacy L. Johnson
Constance^T and Dennis Keller
Mr. and Mrs. Jerry M. Kelly
Robert E. Lewis, PhD
Gail J. and Robert B.^T Loveman
Mr. and Mrs. Bernard A. Mack, Jr.
Ann C. Mallow
Mr. Robert C. Marks
Ms. Nancy A. McDaniel
Dr. William B. McDonald and
Ptah Sekhmat Osiris
Erma S. Medgyesy
Robert and Lois Moeller
Sandra L. Mueller
Drs. James and Sandra Napolitan
Mr. John P. Nielsen
Ms. Karen A. Nordquist
Irma Parker
Joseph and Jo Ann Paszczyk
Ms. Marie E. Peruscini and
Mr. Edward C. Bapple
Mr.^T and Mrs. Richard J. Pigott
Mrs. John W. Pocock
Mr. and Mrs. Mane Pritza
Mrs. Alfred Lunt Putnam

Dr. Dominick S. Renga
 Mr. Alan Resetar^E and
 Mrs. Donna Resetar
 Mr. Richard F. Reynolds
 Mrs. Sheila T. Reynolds
 Ms. Anita J. Rogers
 Mr. and Mrs. Benjamin Rooks
 Mr. David L. Schlotterback
 Mr. Franklin R. Schmidt
 Patricia O. Schnadig
 Ms. Thelma L. Schwartz
 Mr. and Mrs. G. Curtiss Shaffer
 Bob and Charlene Shaw

Marian Shaw^D
 Louise M. Sherman
 Rose L. Shure
 Miss Joanne Silver
 Adele S. Simmons^T
 Rebecca Gray Smith
 Ms. Suzette Sodini
 Duane E. and Christine M. Stout
 Ms. Judith B. Sugarman
 Datin Tan Fui Lian and
 Datuk Dr. Robert F. Inger
 Mr. Gerald M. Torrence
 Rose and Robert Wagner

David Wargowski
 Nestor R. Weigand, Jr.
 Barbara H. West
 Mrs. Dorothy B. White^D
 Ms. Virginia L. Whittaker^D
 Ms. Claudia L. Winkler
 Mr. Lawrence J. and
 Mrs. Margaret V. Witry
 Mr. James G. Young
 Mr. and Mrs. William B. Zigterman
 Ms. Christine C. Zogus

ESTATE GIFTS AND BEQUESTS

The Field Museum recognizes the following people for their bequests, legacies, and estate gifts.

Frank B. Foster
 Evelyn Frank
 John R. Gallagher
 John T. Geary
 Joseph Q. Heplar
 Leslie Hubricht
 Peter A. Maren
 Georgia Brown Petrie
 Betty D. Prout
 Raymond G. Simpson
 Jane B. and Chester D. Tripp
 Louis A. and Frances B. Wagner
 Donald W. and Dorothy B. White



WOMEN'S BOARD GALA RAISES \$1.7 MILLION

On October 25, The Women's Board hosted its annual gala with the theme *Caribbean Rhythms* and premiered the special exhibition *Vodou: Sacred Powers of Haiti*. Guests enjoyed the music of a steel-drum band and flavors of the islands as they raised \$1.7 million for The Field Museum.

Above (from left to right): Rich Jernstedt, Jeani Jernstedt (gala co-chair), Dennis Klaeser, Kathleen Klaeser (president of The Women's Board), Jan Lariviere, President and CEO Richard W. Lariviere, Donna La Pietra (gala co-chair), and Bill Kurtis.

WOMEN'S BOARD GALA

The Women's Board Gala, the annual fundraiser for The Field Museum, supports research, collections, public learning, and conservation programs.

\$50,000+ (Host Committee)

Abbott
Aon
BMO Private Bank
Rita and John^{TP} Canning
The Crown Family
Jacky and Michael^T Ferro, The Sun-Times Foundation and The Chicago Community Trust
Wilbur^T and Linda Gantz^A
GCM Grosvenor
Christina and Ron^{TP} Gidwitz
ITW
JPMorgan Chase & Co.
Mr.^T and Mrs. Michael L. Keiser
Mr. and Mrs. Barry L. MacLean
The Negaunee Foundation
Northern Trust
John W.^{TP} and Jeanne M. Rowe/
Exelon Corporation

\$25,000–49,999
Allstate Insurance Company
The Boeing Company
Mr.^T and Mrs. Roger K. Deromedi
Mr.^T and Mrs. James S. Frank
Kenneth Griffin, on behalf of Citadel
Mr. and Mrs.^T Dennis J. Keller^A
Leo Burnett Worldwide
George Lucas Family Foundation
Mr. and Mrs. J. Christopher Reyes
Mr.^T and Mrs. Patrick G. Ryan
Walgreens
Wirtz Corporation

\$15,000–24,999

Baxter International Inc.
Howard B. Bernick Foundation^T
BlueCross BlueShield of Illinois
Dr. Richard A. Chaifetz^T/
ComPsych Corporation
Mr.^T and Mrs. Robert W. Crawford, Jr.
The Duchossois Group, Inc.
Jeani and Rich Jernstedt
Mr. and Mrs.^N Dennis Klaeser/
Talmer Bank
Caron and Alan Lacy
Robert R. McCormick Foundation
Nicor Gas
Cathy and Bill Osborn
PNC
The PrivateBank
Solberg Manufacturing
UnitedHealthcare
We Energies Foundation

\$8,000–14,999
Aramark Corporation
Aramark Higher Education
ArcelorMittal USA
Mr. Robert Arthur, Magellan Corporation
Jim Gordon and Dave Tolmie^T,
The Edgewater Funds
Fieldglass, Inc.
Mary and Paul Finnegan
Grant Thornton LLP
Mr.^T and Mrs. Jack M. Greenberg
Harris Family Foundation
Mr. and Mrs. John W. Higgins
Mr.^T and Mrs. Richard L. Keyser
McDonald's Corporation
Mr. and Mrs. Andrew J. McKenna, Sr.
Mr.^T and Mrs. Bobby Mehta
Clare Muñana^T
Mr.^T and Mrs. Neil S. Novich
Mr.^{TP} and Mrs. James J. O'Connor, Sr.

Mr.^T and Mrs. Peter B. Pond
J.B.^T and M.K. Pritzker Family Foundation
Elizabeth Pruett/
Butler Family Foundation
Mr. and Mrs. Phillip B. Rooney
Mr.^T and Mrs. Matthew K. Simon
Mr. and Mrs. Thomas Tisbo
U.S. Bank
Kim^T and Miles^{TP} White

SPECIAL GIFTS

Special gifts include restricted support from donors who made gifts and new commitments in 2014.

\$10,000,000+

Wilbur^T and Linda Gantz

\$5,000,000–9,999,999

The Grainger Foundation
The Negaunee Foundation
Cyrus Chung Ying Tang Foundation

\$1,000,000–4,999,999

Anonymous
The Boeing Company
Mr. and Mrs.^T Dennis J. Keller^A
National Science Foundation
Daniel F. and Ada L. Rice Foundation
John W.^{TP} and Jeanne M. Rowe

\$100,000–999,999

Anonymous
Allstate Insurance Company
America for Bulgaria Foundation
ArcelorMittal
The Bobolink Foundation
John P. Calamos, Sr. Foundation
Rita and John^{TP} Canning^A
Cardinal Foundation
Ernst & Young LLP
Exelon Corporation
Mr.^{TP} and Mrs. Marshall Field
Mr.^T and Mrs. James S. Frank
Mr. David D. Hiller^{TA}
Pamela K. and Roger B. Hull
The Hunckler Family
IDP Foundation, Inc.
Illinois Department of Natural Resources
ITW
Henry Luce Foundation

Barry and Mary Ann MacLean—
MacLean-Fogg Co.
Robert R. McCormick Foundation
The Andrew W. Mellon Foundation
Gordon and Betty
Moore Foundation
National Aeronautics and
Space Administration
PNC
Regenstein Foundation
Cari and Michael^T Sacks
Mr. and Mrs. Richard H. Schnadig
Searle Funds at
The Chicago Community Trust
UL

\$25,000–99,999

Paul M. Angell Family Foundation
Archaeological Institute of America
The Brinson Foundation
Barbara E. Brown^E
Charles Schwab & Co, Inc.
Joyce Chelberg
Elizabeth F. Cheney Foundation
Chicago Blackhawks Charities
The Chicago Community Trust
Coeur Mining, Inc.
The Crown and Kunkler Family
Mrs. and Mr. Sara Crown-Star
DigitalGlobe Foundation
Discover
Gaylord and Dorothy
Donnelley Foundation
Efroymsen Family Fund
Mary and Bruce Feay^A
The Field Foundation of Illinois, Inc.
Ford Motor Company Fund
Mr.^T and Mrs. Erik Fyrwald
Mr. and Mrs. James J. Glasser
Ellis Goodman Family Foundation
Mr. Paul Goodman
Hamill Family Foundation
Sally Mead Hands Foundation
Harris Family Fund of
The New York Community Trust
JRS Biodiversity Foundation

John D. and Catherine T.
MacArthur Foundation
Elizabeth Morse Genius
Charitable Trust
Debra Moskovits^E and Jack W. Fuller
Motorola Solutions Foundation
National Park Service
Ms. Karen A. Nordquist^A
J.B.^T and M.K. Pritzker
Family Foundation
Quest Foundation
Bob and Charlene Shaw^A
Target
CAPT Dave Truitt
Viking Cruises

\$10,000–24,999

Anonymous (3)
The Robert and Isabelle Bass
Foundation, Inc.
Bears Care
Ms. Kathy Berger and
Mr. Louis L. Schorsch
CATH Associates
Chicago Wilderness Trust
Mr. and Mrs. John T. Cunningham
Richard H. Driehaus Foundation
General Packaging Products
Mr. and Mrs. Camillo Ghiron
Christina and Ron^{TP} Gidwitz
Hoellen Family Foundation
The Institute for Aegean Prehistory
Jocarno Fund
JPMorgan Chase & Co.
James S. Kemper Foundation
Mr. and Mrs. John W. Madigan
Mr.^T and Mrs. W.
James McNerney, Jr.
National Geographic Society
Ms. Carol H. Schneider
The Siragusa Foundation
Mr. and Mrs. Orlin D. Trapp, Jr.
United Airlines

\$5,000–9,999

95% Share Marketing, Inc.
Charles Adams Nature
Research Foundation
Helen V. Brach Foundation
Ceres Foundation
Patrick and Anna M. Cudahy Fund
Mr.^T and Mrs. Michael W. Ferro, Jr.
Dr. James and Martha Foght
Mr. and Mrs. Gregory L. Guyett
Mrs. Robert C. Hyndman
Indiana Dunes
Environmental Center
Kainz Family Foundation
Mr. and Mrs. Martin Jesse Koldyke/
Koldyke Family Foundation
Joyce and Lewis Matuszewich
Ms. Nancy A. McDaniel^A
Michaels Stores, Inc.
Susan Mikaluskis
Mr.^{TP} and Mrs. Leo F. Mullin
Multi Group Logistics
Mr. and Mrs. Kenneth Nebenzahl
Mr. F. Oliver Nicklin, Jr.
Mr.^{TP} and Mrs. James J. O'Connor, Sr.
Mr. and Mrs. Richard H. Schnadig
Charles and M. R.
Shapiro Foundation
The Sulzer Family Foundation
Mr. and Mrs. John W. Taylor III
WebFilings LLC
Kim^T and Miles^{TP} White
Witt/Kieffer

\$1,500–4,999

Anonymous
Dr. Rüdiger Bieler^E and
Dr. Petra Sierwald^E
Ms. Betty L. Cleeland
Ms. Joan Colmar
Mr. Mark and Connie^D Crane^A
Laura De Ferrari and
Marshall B.^T Front/Marshall B. Front
Family Charitable Foundation
The Donnelley Foundation

Mr.^T and Mrs. Thomas E.
Donnelley II
Mr. Cullen K. Gieselman
Dr. Malcolm H. Hast
Mr. and Mrs. Duncan Healy
Mr. and Mrs. John W. Higgins
IBM
Ms. Judy Johanson
Ms. Kathleen Jordan
Mr. John G. Maniatis
Deborah B. Manoogian
Ms. Vanessa J. McGuire
Mrs. Withrow W. Meeker
Mr. Gary L. Neilson and
Ms. Trudy A. Havens
Mr. and Mrs. Walter B. Newsom
Cathy and Bill Osborn
Mr. and Mrs. Donald W. Patterson
Princeton Internships in
Civic Service
Dr. George B. Rabb
Mr. and Mrs. J. Christopher Reyes
Mr.^T and Mrs. Patrick G. Ryan
Ms. Cynthia M. Scalzo and
Dr. Henry Brown
Mr. and Mrs. Thomas Tisbo
Mr.^T and Mrs. David M. Tolmie
The Warwick Foundation
David Weinberg and Jerry Newton
Dr.^E and Mrs. Patrick Ryan Williams

IN-KIND GIFTS

BBJ Linen
 Beatrix
 Blackfinn Ameripub
 Blue Plate
 Boka Restaurant Group
 Bombay Wraps
 Bucket List Brewing Company
 Bunches (a flower shop)
 Charles Schwab & Co, Inc.
 Chicago Bears
 Chicago Blackhawks
 Chicago Brew Bus
 Chicago Bulls
 Chicago Detours
 Chicago Shakespeare Theater
 Cuvee Chicago
 Dirk's Fish and Gourmet Shop
 Eli's Cheesecake Company
 Embassy Suites Chicago Downtown
 Field to Table
 Flower Firm
 Food for Thought
 Frost
 Girl & the Goat
 Goose Island Beer Company
 Hall's Rentals
 HMR Designs
 Hubbard Inn
 Johnny's IceHouse
 Kehoe Designs
 KOVAL
 Lagunitas Brewing Company
 Latin Street Dancing
 Lettuce Entertain You Restaurants
 Lou Malnati's Pizzeria
 Mercadito Hospitality
 Mrs. Murphy and Sons Irish Bistro
 Nacional 27
 Q BBQ
 Revolution Brewing
 Tom Ricketts^T / Wrigley Field
 Rockit Ranch Productions, Inc.
 Shaw's Crab House
 Smoque BBQ
 Suzhou Municipal Government,
 P.R.C.
 United Airlines
 Vanille Patisserie
 Vosges Haut-Chocolat



IN MEMORY OF SUE LING GIN

The Field Museum mourns the passing of longtime Trustee Sue Ling Gin. She was Founder and CEO of Flying Food Group, a Chicago-based company that provides high-quality culinary experiences for hundreds of thousands of airline passengers each day.

Sue Ling Gin was elected Trustee of The Field Museum in 1994 and remained an active, enthusiastic leader. At the Museum, she was an early champion of high-school internships and community-based conservation programs in Calumet. She served as a leader in an effort to fund the institution's major new permanent exhibition about Chinese culture and history, the Cyrus Tang Hall of China. To open in June 2015, the exhibition will feature a special gallery in Sue Ling Gin's honor funded by a generous commitment from the William G. McGowan Charitable Fund. She also advised the Museum on new business ventures to secure critical operating support for research and public learning.

VOLUNTEER LEADERSHIP

The Women's Board

The Women's Board promotes awareness of The Field Museum's exhibitions, collections, research, conservation efforts, and public programs. Its philanthropic activities provide unrestricted and restricted funds that advance the Museum's scientific and educational mission.

Kathleen Klaeser^N
President
Women in Science Luncheon

Betsy Ahearne
Vice President

Fran Beatty
Hospitality

Susu Block
Field Dreams

Virginia Bobins
Hospitality

Peggy Bodine
Field Trips

Sandra Deromedi
Annual Appeal

Beth Glass
Vice President

Donna Greenberg
Annual Appeal

Jeannie Herbert
Board Luncheons

Marty Higgins
Women in Science Luncheon

Jeani Jernstedt
Gala

Anne Kavanagh
Programs

Kelli Klauber
Membership

Donna La Pietra
Gala

Connie Magnuson
Secretary

Susan Clark McBride
Member at Large
50th Anniversary

Lisa McClung
Treasurer

Leslie Gantz McLamore
Member at Large
Community Outreach Initiative

Lis Meeker
Field Trips

Julie O'Connor
Board Luncheons

Christine Ott
Advancement Initiative

Cindy Scalzo
Field Dreams

Patricia Schnadig^A
Women in Science Fellowship
and Internships

Susan Sebulsky
Community Outreach Initiative

Pam Sheffield
Programs

Laura Silva
Membership

Bonnie Stearns
Nominating

President's Leadership Council

The President's Leadership Council is composed of established professionals who have a demonstrated interest in civic and philanthropic activity and seek a close affiliation with The Field Museum. Members support Museum initiatives through expertise-based volunteer work and leverage their personal and professional networks to raise the profile of the institution.

Ryan Ruskin^N
Chair

Mike Arnold
Membership

Randy Burt
Vice Chair

Paul Chatalas
Communications

Doug Elliott
Membership

Chris Grams
Communications

Jill Hutchison
Member Engagement

Amanda Sonneborn
Member Engagement

Field Associates

The Field Associates is an Annual Fund level auxiliary group of The Field Museum designed by, and for, young professionals. The Field Associates' mission is to engage Chicago's next generation of civic leaders at the Museum through networking, programming, fundraising, leadership, and service.

Helen Odom
President

Andrea Alexander
Evolve

Clarisa Bonilla
Treasurer

Andrew Critchell
Vice President

Brian Fahrenbach
Programs

Jennifer Guskey
Communications

Melissa Genova Hill
Membership

Beth Schmidt
Communications

Jeff Skender
Secretary

Michelle Sotak
Programs

Michael Steel
Membership

Ryan VanHolsbeke
Evolve

Council on Africa

The Council on Africa brings together The Field Museum's supporters and scientists

who share an interest in the African continent and its people. Council members' contributions are allocated to capacity-building projects, training young scientists, and sponsoring research endeavors across the continent.

Ms. Nancy A. McDaniel^A
Chair

Anonymous

Mary and Richard Chamberlin

Pam and Howard Conant, Jr.

Ms. Marian F. Cook

Mary and Bruce Feay^A

Dr. James and Martha Foght

Susan M. Forney

Ms. Judy Johanson

Ms. Kathleen Jordan

Mr. and Mrs.^T Dennis J. Keller^A

Mr. and Mrs. Bruce H. Lauer

Deborah B. Manoogian

Ms. Elisabeth C. Meeker

Adele S. Simmons^{TA} and
John L. Simmons

Mr.^T and Mrs. David M. Tolmie

Anthropology Alliance

The Anthropology Alliance promotes interest in and support of The Field Museum's anthropological research and collections.

Bob Shaw^A
Chair

Aimee Genova

Joan Goldstein

Susan Mikalauski

Kathleen Rummel

Jim Stola

Sheila Whalen

Carl Wolf

Kenneth Yu

MUSEUM VOLUNTEERS

Field Museum volunteers contribute their time and utilize their diverse skills to help advance the Museum's mission. In the public galleries, they help visitors discover the wonders of science and develop an appreciation for cultures around the world. Behind the scenes, they support groundbreaking work.

500+ hours

Robert Andresen
Richard Bisbing
Robert Boswell
Irene Broede
Christopher Brown
Drew Carhart
Ellis Caspary
Robin Delapena
John DeWerd
Christine Frazer
Bernice Jacobs
Janis Lariviere
Joanne Levy

Peter Lowther
Timothy Nelson
Karen Nordquist
Robyn Pearson
Louis Salas
Nina Sandlin
William Sherry
Andrew Wagner
Bob Wilson
Kurt Zahnle
Elaine Zeiger
Steven Zitowsky

200-499 hours

Eric Ahlgren
Thomas Anton
Jan Marie Aramini
John Balaban
Linda Barba
Sandra Bauer
Gloria Berkwits
Theresa Boswell
Irene Broede
Renee Buecker
Joseph Cablk

Robert Cantu
Mary Jo Cappitelli
Robert Case
Lei-Lani Chan
Kelsey Choo
Steven Clawson
Jim Costello
Carole Cotter
Edith Dervin
Mark DeSantis
Gary Drimmer
John Dunn
Thomas Durica
Annamarie Fadorsen
William Franz
Glenn Gabanski
Gerard Gagne
Joseph Gandolfi
Peter Gayford
Arlene Ghiron
Paula Glitman
Renee Goddijn
Lori Grove
Gayle Guzik
Richard Guzik

Mary Harland
Mattie Harris
Joyce Hecht
John Hill
Dan Horwitz
Jeff Hoswell
Roland Jabotte
Jessica Jackson-Brown
Judy Johanson
James Kase
Nancy Kaufmann
Julia Kennedy
Mary Ann Khan
Milton Levin
Janice Lim
Lettie McSpadden
Andrew Meissen
Daniel Melone
Beverly Meyer
John Morris
Sandra Mueller
Amanda Mulcahy
Ayesha Naqeeb
Robert North
Claire Odland



VOLUNTEER CORPS REACHES NEW HEIGHTS

Volunteers are an invaluable resource for The Field Museum. In 2014, they gave 82,000 hours of service to the Museum, the equivalent of forty-five full-time employees and \$2 million in labor. Volunteer hours increased 18 percent from 2013, representing the most time donated since 2003. At the annual Volunteer Recognition Ceremony, the Museum honored docent Lori Long and collections volunteer Drew Carhart with the Outstanding Service Award. Join the team at fieldmuseum.org/support/volunteer.

COMMEMORATIVE GIFTS

Marie Orendach
 Angelina Patti
 Joy Peplinski
 James Piekarczyk
 Anita Punkay
 Susan Reinke
 Amanda Robinson
 Judith Rom
 Charles Ruedebusch
 Jay Samstag
 Esther Schechter
 John Schmadeke
 Annette Schmit
 Jeffrey Schroder
 Monica Sentoff
 Stephen Sentoff
 Karen Sharpe
 Elizabeth Simmons
 Terri Sinnott
 Holly Smith
 Rebecca Smith
 Beth Spencer
 Robert Spieler
 James Stola
 Donna Stone
 Grace Takata
 Thomas Tervanis
 Conrad Triebold
 Darren Vilmin
 Phyllis Walden
 Jane Yakushiji
 William Zandrew
 Howard Zar

The following donors made gifts to The Field Museum in the name of a friend or loved one.

In Memory**Dr. Sidney Camras**

Mr. and Mrs. Jack Korzon,
 Mr. Michael J. Shapiro

Jean Keating Carton

Mr.^{TD} and Mrs. Charles W. Benton,
 Mr. Bruce Blair,
 Willard L.^T and Susan K. Boyd,
 Dr. John R. Dainauskas,
 Laura De Ferrari and Marshall B.^T
 Front, Ms. Shawn M. Donnelley,
 Mr.^T and Mrs. Thomas E.
 Donnelley II, Mr. and Mrs. Steve
 Dyer, Mr. and Mrs. Timothy
 Earle, Mrs. Jane T. Fenninger,
 Mr. and Mrs. Christopher Gaebe,
 Mr. Steve Goldberg,
 Mrs. Augustin S. Hart, Jr.,
 Mrs. David C. Hawley,
 Mr. and Mrs. Peter D. Horne,
 Mr. Lawrence V. Howe, Jr.,
 Ms. Jean O. Huntington,
 Ms. R. Ann Jones,
 Mr. and Mrs. Wade Judge,
 Mr. and Mrs. William T. Kirk, Jr.,
 Josephine P. & John J. Louis
 Foundation, Mr. and Mrs. Keith
 Morgan, Mrs. Janet Poor,
 Ms. Janice Rodgers and Mr. Dean
 Hagan, Pam and Tom Sheffield,
 Mrs. Carolyn M. Short,
 Ms. Nancy Hamill Winter,
 Lauren Wolven, Shannon, Carrie
 and Jen S., Mrs. Cecile Wooster

Constance W. Crane

Mr. and Mrs. Douglass H.
 Ackermann, Ms. Christina Codo,
 Mrs. Mary Lynn Cooney,
 Mr. and Mrs. Christopher M.
 Crane, Mr. and Mrs. Dewey B.
 Crawford, Mrs. Joan Emmert,
 Mr. and Mrs. Kenneth Fishman,
 Ms. Marianne Forsyte, Peter B.
 and Donna B. Freeman, Ms. Pearl
 Giammanco, Mrs. Julia L. Hall,
 Mrs. David C. Hawley, Ms. Lail L.
 Herman, Mr. and Mrs. Peter D.
 Horne, Ms. Florence L. Jacobson,
 Mr. Richard J. Loewenthal, Jr.,

Mr. and Mrs. David E. Mason,
 Mrs. Withrow W. Meeker,
 Ms. Francie Krogman Mello,
 Mrs. Roselee Nallira,
 Mr. and Mrs. Tom W. Perlmutter,
 Mr. Ellard L. Pfaelzer, Jr.,
 Mr. and Mrs. Matthew L. Renaud,
 Mr. and Mrs. John H. Roberts,
 Mr. and Mrs. Richard M.
 Rosenberg, Mr. and Mrs.
 Christopher Saturnus,
 Mr. Christopher A. Smith,
 Reverend Ronald A. Valentine,
 Mr. and Mrs. Ed Watkins,
 Mr. and Mrs. John B. Weber

Dr. Aureal T. Cross

Mr. and Mrs. Rich Bowman, Mr.
 and Mrs. Duane D. Weldon

Jack Daly

The Daly Family

Jim Durham

Ms. Claudia L. Winkler

Juli Grainger

Mr. and Mrs. Richard Clute,
 Dr.^{TE} and Mrs. Richard W.
 Lariviere, and W.W. Grainger, Inc.

Carol McKee

Mr. John Arganian

Hannah Vincent Messersmith

Ms. Lauren Nassau and
 Ms. Melanie Brown

Frank J. Mooney

Mrs. Frank J. Mooney

John Nordloh

Mr. Albert Sauer, Mr. and
 Mrs. Gregory A. Tieder

James R. Shouba

Mr. and Mrs. Jack Shouba

Paul C. Spiewak

Dorothy Spiewak, Phillip Spiewak,
 and Kathleen Boyle

Jane Thain

Ms. Ruth E. Knack

Brandon Tocco

Ms. Dina Mazina

Nancy Wald

Mr. Albert Wald

Zinette Yacker

Mr. Daniel S. Yacker

Ed and Didi Yastrow

Ms. Susan S. Adler

In Honor**Mark Alvey^E and Christine Niezgoda^E**

Mr. and Mrs. John C. Schmadeke

Peter and Donna Freeman

Mr. Graham Grady

Wilbur H. Gantz^{TA}

Ms. Margaret Gantz

Mary Harland

Mr. and Mrs. Albert Frank,
 Mr. and Mrs. Paul E. Punkay

Melissa Hilton

Ms. Kathryn McDonnell

Shelley and Tony Johnson

Ms. Anne Swenson

Patrick Leacock

Mr. Robert Salm

Robert Loveman^{TA}

Mr. and Mrs. Steven A. Rosen

Zachary Lukasiewicz

Ms. Holly Lukasiewicz

Colleen Remsberg

Mr. and Mrs. Richard D. George

Alan Resetar^{AE}

Anonymous

Alaka Wali^E

Mr. and Mrs. Paul Rosenblum

Laura Washington^T

Ms. Lillian L. Davis

Howard Zar

Mr. and Mrs. Bobby L. Eason

GIFTED COLLECTIONS

Through generous gifts of objects and specimens, The Field Museum's collections have grown to become an indispensable scientific resource for scholars around the world. The Museum acknowledges the following donors who made gifts in 2014 to enhance the institution's collections.

Anthropological Collections

Dean Arnold
Thomas Both
Scott Feebairn
Glenn Gabanski
Ellis Levin
Joni Olsen
Annette Peck
David Rilling
Suzhou Municipal Government
John Terrell^E
Cynthia Weill

Botanical Collections

Agriculture and AgriFood Canada
Boise State University
Botanisches Institut und Botanischer Garten der Universität Bonn
Eszterházy Károly College
Herbario CIAT
Hiroshima University
Kent State University
Missouri Botanical Garden
Museum of New Zealand
Nationaal Herbarium Nederland
Rancho Santa Ana Botanic Garden
Tasmanian Museum and Art Gallery
Universidad de Concepcion
Universidade de São Paulo
Universidade Estadual de Campinas
Universität Zurich
University of Minnesota
University of Washington

Geological Collections

Physical Geology

Terry Boudreaux
Drew Carhardt
Gerald Wassenburg

Fossil Invertebrates

Lance Grande^E
Paul Mayer^E
Tim Nelson
Karen Nordquist
Nicholas J. Pritzker

Fossil Vertebrates

Terry Boudreaux
Adam Lindgren
Glen Lee Nelson
Tim Nelson
Jack Wittry

Paleobotany

Terry Boudreaux

Library

Billups-Garth Archives,
Columbus-Lowndes Public Library
Craig & Robbyn Coulon
Mr. and Mrs. Charles W. Palmer
Phyllis Rabineau
W. Richard Rader
Edward J. Valauskas^A

Zoological Collections

Amphibians and Reptiles

Danny Balette
Dr. Lauren Brown
Dr. Lawrence R. Heaney
Joel Hutson
Dr. Richard King
Eric Lombard
Alan Resetar^{AE}
Aquila Wilks

Birds

Tony Abraham
Andrew Aldrich
Daniela Amendola
Bob Andrini
Valerie Andrla
Tim Balassie
Eve Barrs
John Bates^E
Bay Beach Wildlife Sanctuary
Annie Beall
Julie Biedess
Nancy Bigelow
Ken Blinn
Robert Boswell
Nancy Bradt
David Branigan
Kathy Branigan
Anna Braum
Laura Briscoe^E
Barbara Brown^E
Tim Brtis
Joan Bruchman
Casey Buchanan
Peter Buol^E
Bonnie Bush
J. R. Cabage
Robin Carlson
Kevin Carroll
Pat Carson
George Chavez^E
Suzanne Checchia
Chicago Bird Collision Monitors
Melissa Clarke
Norbert Cordeiro
Jane Cornwell
Ruta Cosimo
S. Crane
Kelly Cronin
Nick Crouch
Kate Cummings
Matthew Cvetas
Angela Daidone
Alissa Dalsing
Gary Davis
Therese Davis
Mark DeSantis
Jessica Dexter
Marielle Diel
Jennifer Dombek
Ann Domek
Kelly Dougherty
Anina Duboy
Asnish Duboy
DuPage County Airport
Glenna Eaves
Suzanne Edwards
Scott Ellis
Joshua Engel^F
Erik Erickson
Christine Esposito
Annamarie Faedorsen
Nancy Fagin
Marty Farrington
Mary Feay^A
Karen Feeney
Sandy Fejt
Kevin Feldheim^E
Paul Feldman
Mason Fidino
Flint Creek Wildlife Rescue
Bill Franz
Brad Freeman
Rob Frye
Glenn Gabanski
Jose Garcia
Jochen Gerber^F
Natalie Gillespie
Eric Ginsberg
Ian Glasspool^E
Thomas Gnoske^E
Renee Goddyn
Nathan Goldberg
Sophie Gordon
Ingrid Gould
Ed Graskamp

Emily Graslie ^E	Albert Legzdins	John Phelps ^E	Rosemary Smith
Cindy Gray	Hans Lim	Scott Plant	Victoria Smith
Kelley Green	David Livingston	Elizabeth Pollack	Steve Spitzer
Eugene Gribelsky	Tricia Lowery	Marina Post	David Stagman
Lori Grove	Peter Lowther ^E	Annette Prince	Janie Stamm
Ricky Gudgeon	Mary Loye	Robert Prosis	James Steffen
Aaron Gyllenhaal	Kristina Lugo ^E	Dan Provcachel	Kay Stepkin
Eric Gyllenhaal	Peggy Macnamara ^E	Kerry Puglisi	E. Stiffler
Ethan Gyllenhaal	M. Mann	Michael Quigley	Kyra Stillman
Suzanne Hackbarth	Benjamin Marks ^E	Jennifer Raber	Jill Stites
Jane Hanna ^E	Jennifer Marshall	Teri Radke	Douglas Stotz ^E
Floyd Hanson	Richard Marsan	Andrea Reasoner	Celia Strauss
John Heneghan	Zachary Martin	Marcia Richards	Kalman Strauss
John Hennen	June Matayoshi	Rawlins Riles	Jan Sutkus
Mary Hennen ^E	Meredith Matthews	Michele Rizzato	Kinley Svendsen
Andy Hershberger ^E	Steve May	Helen Robbins ^E	Darrin Swagel
Maria Hlohowskyj	Trish May	Gerri Rode	Kevin Swagel ^E
Scott Holingue	Paul Mayer ^E	Bob Rogers	Sandy Swanson
Theresa Horton	Lynne Mecum	Natalio Romero	Flora Swearingen
Steve Huggins	Melissa Meierhofer	Laurel Ross ^E	Betty Sweetland
Robert Hughes	Roger Melhouse	Lindsey Rowland	Barbara Sydow
Janice Humphrey	Laura Mendoza	Robert Russ	Ann Tanner
Carla Jaffe	Julia Meredith	Jennifer Russell	Craig Taylor
Gedi Jakovickas ^E	Marion Miller	R. Sadleir	Susan Terronez
Kristen Jensen	Minnesota Department of Natural Resources	Timothy Salazar	Jim Tibensky
David Johnson	Susan Mochel ^E	Ala'a Salem	Treasure Coast Wildlife Center
Jessica Johnson	Clover Morel	Jaquelen Samuel	Mike Trinchitella
Lin Johnston	Fran Morel	Hannah Samuels	Tom Trinley
Margaret Jones	Nancy Mores	Kevin Sapp	Eliz Trout
Chris Kadow-Dougherty	M.A. Muller	Mike Scelfo	Suzanne Turner
John Kaiser	Laura Muraoka	John Schmadeke	USDA—Midway/O'Hare
Neil Kanemoto	Jeanette Okulinski	Carrie Seltzer	F. Veenbaas
Laurel Karsco	Bruce Olson	Barbara Shaw ^A	Victoria Velinski
Rueben Keller	Nita Padani	Scott Shehan	Denise Verret
John Kelly	Roger Palmer	Michael Shelton	Suzanne Verret
Steven Klink	Bernadette Payne	April Sheridan	Anita Victorn
Louis Knapp	Arthur Pearson	Akiko Shinya ^E	Mary Viereg
Larry Krutul	Joy Peplinski	P. Sisodiya	Janet Voight ^E
Kayleigh Kueffner	Dorothy Pesch	Jeff Skrentny	Sarah Von Fremd
Tim Kuesel	Jonathan Pereira	Barbara Smirl	Ellen Walker
Scott Kuipers	Therese Peskowits	Alexis Smith	James Ward
Ruth Kurczewski	Renee Peterson	Jeff Smith	Sean Ware
Sarah Kurtis		Natalie Smith	Stephanie Ware ^E

Chris Warneke
 Sadic Waswa
 Kate Webbink^E
 Jason Weckstein^E
 Lori Wheeler
 Robert Wild
 Lindsay Wilkes
 David Willard^E
 Chris Williamson
 Geoff Williamson
 Carrie Willingham
 Willowbrook Wildlife Center
 Benjamin Winger^E
 Max Witynski
 Rebecca Wolfran
 Ann Woodward
 Christina Yang^E
 Christina Zelano
 Alyssa Zurarel

Fishes

The Academy of Natural Sciences
 Thomas G. Anton
 Exhibitions Department^E
 Justin R. Grubich
 Naturalis Biodiversity Center
 Dr. Uwe Römer
 Dr. Leo Smith
 John G. Shedd Aquarium
 Smithsonian Institution
 Kevin A. Swagel^E
 U.S. Army Corps of Engineers
 University of Louisiana at Lafayette

Insects

Dr. Carlos R. Brandão
 R. Michael Brattain
 Dr. Sidney Camras
 Dr. Steven M. Goodman^E
 Dr. Lawrence R. Heaney^E
 Mariángeles Lacava
 Dr. Robert E. Lewis
 Holly L. Lutz

Dr. Sean B. Menke
 Mr. John T. Nunn
 Dr. William A. Shear
 Dr. Derek S. Sikes
 Dr. Walter Tschinkel

Invertebrates

Thomas G. Anton
 Perla Baptista de Jesus
 Rüdiger Bieler^E
 Christian Borowski
 Gary S. Casper
 Daniel C. Dourson
 Anushka Faucci
 Frank Frumar
 Jochen Gerber^E
 Lawrence R. Heaney^E
 Thomas Lesh
 David Matusik
 Sean B. Menke
 Dirk Mezger

Paula M. Mikkelsen
 Alfred F. Newton
 Bruce D. Patterson^E
 Richard E. Petit
 Edward J. Petuch
 Mary Anne Rogers
 Lauren Sallan
 Kevin A. Swagel^E
 Margaret K. Thayer^E
 John K. Tucker
 Mark W. Westneat^E

Mammals

Mark Alvey^E
 Bob Andrini
 Rebecca Banasiak^E
 John Bates^E
 Dan Brinkmeier
 Rosalee Brown
 Werner Buol
 Josh Engel^E
 Sherry Erickson

Mary Feay^A
 Paul Feldmann
 Frank Frelka
 K. Gamble
 Brandino Giannoni
 Matt Goebel
 Anna E. Goldman^E
 Mike Gornick
 Joel Greenberg
 John Hart
 Larry Heaney^E
 M. Hennen^E
 Patty Johnson
 Rob Langdon
 Kelly Larson
 David Laxner
 Charles Leete
 Jim Louderman^E
 Peter E. Lowther^E
 Bill Murphy
 Andria Niedzielski
 Justin Ohotzke
 Julian Orr
 Ed Parzygnat
 Bruce Patterson^E
 Joy Peplinski
 Dorothy Pesch
 A. Prince
 M. Quigley
 J. Raber
 Mike Reed
 D. Richards
 M.J.S. Richards
 Mary Ann Rogers
 Arrah Jean Shumaker
 Lauren Smith
 Lauren E. Smith
 Dave Stagman
 Bill Stanley^E
 Douglas Stotz^E
 Darrin M. Swagel
 Kevin Swagel^E
 Mark Swanson

Yesenia Taveras
 Margaret Thayer^E
 Suzanne Turner
 Issac Walton
 D. E. Willard^E

If you feel an error has been made in presenting this donor honor roll, please contact the Office of Institutional Advancement at annualreport@fieldmuseum.org.



IN MEMORY OF JEAN KEATING CARTON

With the passing of Jean Keating Carton, The Field Museum lost a close friend, dedicated volunteer, and enthusiastic ambassador whose association with the Museum spanned more than fifty years. Jean became a charter member of the Women's Board in 1966 and served as its president and a member of the Board of Trustees from 1980 to 1982. She and her husband, Bob, were longtime members of The Founders' Council and charter members of the Cultural Collections Committee. She gave countless hours in service to the institution and always was brimming with ideas about how the Museum could engage the public. Jean was a model of lifelong learning who found joy in the natural world and everything that inhabits it.

Cover: photograph courtesy of Robert Lücking. Inside cover: photograph courtesy of John Megahan, University of Michigan. P. 1: © The Field Museum, GN92094_043Bd, photographer John Weinstein. P. 2: photograph courtesy of Josh Engel. P. 3: photograph courtesy of Sarah Casson. P. 4: © The Field Museum—GN91975_131Ad (top), GN91975_087d (bottom left), GN91975_182d (bottom right)—photographer John Weinstein. P. 5: photograph courtesy of Hannah Anderson Graver. P. 6: photograph courtesy of Alvaro Del Campo. P. 8: photograph courtesy of Alvaro Del Campo. P. 9: photograph courtesy of Link Olson, University of Alaska Museum (top); photograph courtesy of Robert Zingg (bottom). P. 10: photograph courtesy of University of Chicago Press; © The Field Museum, Z95150_03Ad, photographer John Weinstein. P. 11: © The Field Museum, Robert A. Pritzker Center for Meteoritics and Polar Studies; © The Field Museum, GN92124_019Ad, photographer John Weinstein; © The Field Museum, CSZ5910, photographer Carl Akeley. P. 12: photograph courtesy of Bill Simpson. P. 13: © The Field Museum, GEO86507-01d (top left); © The Field Museum, GN90881_32d, photographer John Weinstein (top right); photograph courtesy of USDA (bottom). P. 14: © The Field Museum, GN92130_010Ad, photographer John Weinstein. P. 15: photograph courtesy of Ryosuke Motani, UC-Davis (top); photograph courtesy of Ryan Williams (middle). P. 16: © The Field Museum, GN91950_081d, photographer John Weinstein. P. 17: © The Field Museum, GN91868_34Ad, photographer John Weinstein (top); © The Field Museum, GN92004_036d, photographer Karen Bean (bottom left). P. 18: © The Field Museum, Women in Science. P. 19: © The Field Museum, GN91972_253_258d, photographer John Weinstein (top); © The Field Museum, GN91908_023d, photographer Karen Bean. P. 20: © The Field Museum, Exhibitions Department (left and right). P. 21: © The Field Museum—GN92048_029d (top), GN92048_168d (bottom)—photographer John Weinstein. P. 22: © The Field Museum, Public Relations Department. P. 23: © The Field Museum, JML_4553, photographer Jean Lachat (top); photograph courtesy of Tom MacNamara (bottom left and right). P. 24: © The Field Museum, GN91991_23Ad, photographer John Weinstein. P. 27: © The Field Museum—GN92026_162d (top), GN92026_086dd (bottom)—photographer John Weinstein. P. 33: photographs courtesy of Michael Marozas. P. 36: © The Field Museum, GN92027_140d, photographer John Weinstein. P. 39: photograph courtesy of the Crane family. P. 42: © The Field Museum—CE_026_102514 (left), CE_001_102514 (right)—photographer Cheri Eisenberg. P. 45: photograph courtesy of Flying Food Group. P. 47: © The Field Museum, Human Resources Department. P. 52: © The Field Museum, GN90654_06d. P. 53: © The Field Museum, GN91976_046Dd, photographer John Weinstein (top); © The Field Museum, photographer John Weinstein (bottom). P. 53: photograph courtesy of Robert Lücking.

Producer:

Charles L. Katzenmeyer

Project manager and editor:
Margaret Neeley

Contributors: Mark Alvey,
Jean Cattell, Beth Crownover,
Eve Gaus, Mary Hummel,
Caroline Parsons, Heidi Rouleau,
John Weinstein, and Laura Woods.

Designer: Bark Design, Chicago

Printer: Ace Graphics, Naperville

chicago park district



The Field Museum gratefully acknowledges the generous support it receives from the Chicago Park District, on behalf of the people of Chicago.

© The Field Museum,
all rights reserved

Digital edition:

fieldmuseum.org/about/annual-reports



Thank you, John!

On March 16, 2015, John W. Rowe concluded his term as chairman of the Board of Trustees. He joined the Board in 1998 and served as vice chairman of governance before becoming chairman in March 2012. Over the years, John has been an active member of The Field Museum's executive, government relations, and development committees.

Generous support from John and his wife, Jeanne, spans many years and includes the endowment of the Rowe Family Curator of Evolutionary Biology and the Rowe Family Director of the Keller Science Action Center. They served on the first ever Women's Board gala host committee in 2013 for A Night at the World's Fair and in 2014 for Caribbean Rhythms.

During John's time as Trustee of The Field Museum, Exelon (for which he is chairman emeritus) has been a lead sponsor of numerous exhibitions, including *Maharaja: The Splendor of India's Royal Courts*, *Opening the Vaults: Wonders of the 1893 World's Fair*, and *Tutankhamun and the Golden Age of the Pharaohs*. The Field Museum is grateful to John, Jeanne, and Exelon for investing in the Museum's research and public-learning mission.

In 2013, Negaunee Distinguished Service Curator Lance Grande and colleagues honored John by naming after him a newly described species of ancient bird, *Eocypselus rowei* (below).





*An undescribed lichen of
the genus Lobariella.*

THANK YOU!

The Field
Museum