

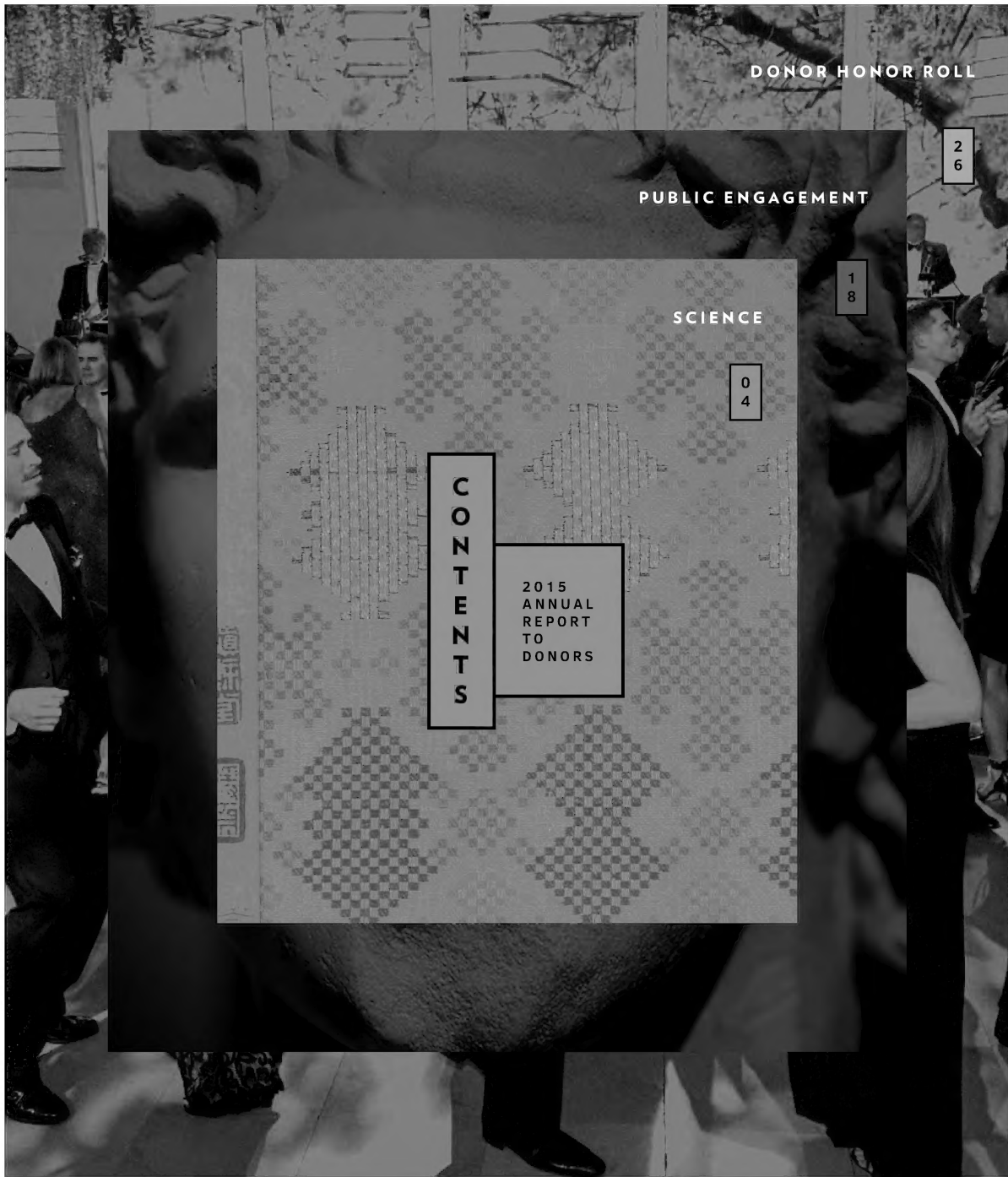
同旅兩寅孟秋

ANNUAL REPORT TO DONORS

2  
0  
1  
5



The Field  
Museum



DONOR HONOR ROLL

26

PUBLIC ENGAGEMENT

18

SCIENCE

04

C  
O  
N  
T  
E  
N  
T  
S

2015  
ANNUAL  
REPORT  
TO  
DONORS



## Dear Friends,

In 2015, The Field Museum launched a five-year strategic plan for transformation. Guided by its four main initiatives, your Museum is evolving for the 21st century.

On the cover of this report you will find images from the stunning *Cyrus Tang Hall of China*. In addition to being the largest exhibition in the United States to examine Chinese culture and history from an anthropological perspective, it incorporates new technologies and exhibition design to **transform the visitor experience into a personal journey of scientific discovery**.

The Museum made great strides in 2015 to **deepen the impact of its education programs**.

The *N. W. Harris Learning Collection*, now more than 100 years old, shared artifacts and specimens with 69,000 students in classrooms across the Midwest. New digital studio opportunities inspired teen scientists, and a workshop series offered training for educators to incorporate Museum collections and Next Generation Science Standards in classrooms.

This year, the Field played a fundamental role in protecting areas of biological and cultural importance, including the 3.3 million-acre Sierra del Divisor National Park in Peru and the Pullman National Monument on the South Side of Chicago. Museum scientists described new species, recorded rare evolutionary occurrences, and shared the trove of knowledge held in our collections with citizens and scientists around the world. The Museum will continue to **maximize the influence of collections-based science in research and conservation action** for years to come.

A healthy endowment strengthens every aspect of the institution. 2015 was a year of historic new commitments to the Museum's endowment. Your support and guidance **builds financial and organizational capacity to ensure long-term success**.

We invite you to explore your Museum's year of remarkable achievements and growth in this report.

With gratitude,

Constance T. Keller  
Board Chair

Richard W. Lariviere, PhD  
President and CEO

**COVER**—This two-horned, five-clawed dragon is depicted on a Qing Dynasty (AD 1644-1911) silk robe in the new *Cyrus Tang Hall of China* (see page three). The dragon symbol was traditionally used only by the emperor to acknowledge his special status.



### Looking at Chinese history through a new lens

The Field Museum unveiled the *Cyrus Tang Hall of China*, the first new permanent exhibition in four years. The hall showcases 400 Chinese artifacts from the Museum's extensive collections, including a 27-foot-long handscroll and objects from the Java Sea Shipwreck. In its first six months, the exhibition drew 320,000 guests who explored thousands of years of Chinese history. The hall debuted new digital technology, providing visitors with more choice and content than is possible with printed labels. The *Cyrus Tang Hall of China* is the Field's first exhibition available in an [interactive online format](#) in English and Chinese. The *Sue Ling Gin Garden* in the final gallery of the hall was created in memory of Trustee Sue Ling Gin-McGowan and features *guaishi*, or spirit stones, from Suzhou. The Museum is grateful to Cyrus Tang, Board Chair of the Cyrus Chung Ying Tang Foundation, and Trustee Michael Tang for their generosity and support. Thanks also to the William G. McGowan Charitable Fund for their gift in memory of Sue Ling Gin-McGowan.

**RIGHT**—This lacquered wooden statue from the Qing Dynasty depicts Wei Tuo, the guardian of written wisdom and laws in Chinese Buddhism. He is usually rendered as a general wearing full armor and holding a weapon.



**BELOW**—President Lariviere, Trustee Michael Tang, Board Chair Connie Keller, and Cyrus Tang at the *Cyrus Tang Hall of China* grand opening.



*The Cyrus Tang Hall of China is the largest permanent exhibition in the United States to examine Chinese culture and history from an anthropological perspective.*



**LEFT**—The bright yellow color of this silk robe from the Qing Dynasty was reserved for the imperial family. One of China's longest dynasties, the Qing established their emperor as the Son of Heaven, emphasizing his role as a link between the supernatural and human worlds.

**BELOW**—There is no one China. The first gallery of the exhibition focuses on the breadth of China's geographic, environmental, and social diversity. Displays highlight the varied geographic settings and the diversity of Neolithic societies that flourished there.





#### Darwinian discovery

Although this *Polylobus darwini* may not seem impressive at first glance, Charles Darwin himself collected it in 1834 off the coast of Chile. Museum staff discovered this tiny beetle while digitizing the Field's collection of 2,000 rove beetle type specimens, a project supported by the Grainger Digital Initiative. This unexpected encounter illustrates the depth of the Museum's collections and the importance of digitization efforts. Creating digital records allows staff to better understand the 30 million objects in the Field's holdings and to organize this information for future use.



2015  
ANNUAL  
REPORT  
TO  
DONORS

S  
C  
I  
E  
N  
C  
E



**Malvina Hoffman's famous bronzes restored**

Throughout much of 2015, conservators worked to restore the Museum's collection of historic bronzes by sculptor Malvina Hoffman. Unveiled in 1933, most of the sculptures were removed from public view by the 1970s. The conservation process included photo documentation, restoration, and research on the identities of the subjects who posed for the pieces. A generous gift from Pamela K. Hull, granddaughter of Stanley Field, and her husband Roger B. Hull supported this project. Eighty-three of the sculptures have been restored to their original beauty and more than 30 are on display in the new exhibition *Looking at Ourselves: Rethinking the Sculptures of Malvina Hoffman*. Thanks to The Elizabeth Morse Genius Charitable Trust and an anonymous donor for their support of the exhibition.







### Collections inspire art and cultural conversation

The Field partnered with the Erehwon Center for the Arts in the Philippines to create the exhibition *Art and Anthropology: Portrait of the Object as Filipino*. Five Filipino-American artists and five Philippines-based artists produced individual works of art and collaborated on two murals, all inspired by ethnographic objects from museum collections. The Field opened its Philippine collection of 10,000-plus artifacts for this project. The exhibition, funded by the John D. and Catherine T. MacArthur Foundation, is a reinterpretation of ethnographic objects through the creation of contemporary artifacts. The mural *Deconstructing "Filipino"* (below) is displayed in the Chicago exhibition along with individual paintings by all ten artists.



**ARTISTS**—Leonardo Aguinaldo, Elisa Racelis Boughner, Jen Buckler, Cesar Conde, Emmanuel Robles Garibay, Florentino G. Impas, Jr., Joel Javier, Trisha Oralie Martin, Jason Jacobe Moss, and Othoniel M. Neri



### Lace-bark specimens draw historian to Field Herbarium

The John G. Searle Herbarium houses some of the world's finest lace-bark specimens, so it's no surprise historian Steeve Buckridge, PhD, (Grand Valley State University) visited the collection while conducting research for his book *African Lace-Bark in the Caribbean: The Construction of Race, Class and Gender*. In the colonial era, slave and free women created lace for clothing and household decorations using the bark of the lagetto tree. Dr. Buckridge reported the Field's specimens provide visual evidence of how lace-bark was used and highlight an aspect of enslaved Africans' refined culture that has been overlooked in Caribbean historiography. Knowledge of how to create lace from the lagetto bark has now been lost and the tree is disappearing, making the Museum's collection an essential cultural and biological resource.



### Chicago's Filipino community collaborates with the Field

The Philippines Digital Co-Curation project, funded by an anonymous foundation, made tremendous progress with the help of enthusiastic volunteers. The team photographed more than 4,000 objects from the Philippines Heritage Collection, scanned 6,000 historical documents, and transcribed 3,500 of those texts. The content is available on a co-curated web portal that enables two-way sharing of scientific, historical, and cultural information about this important collection.



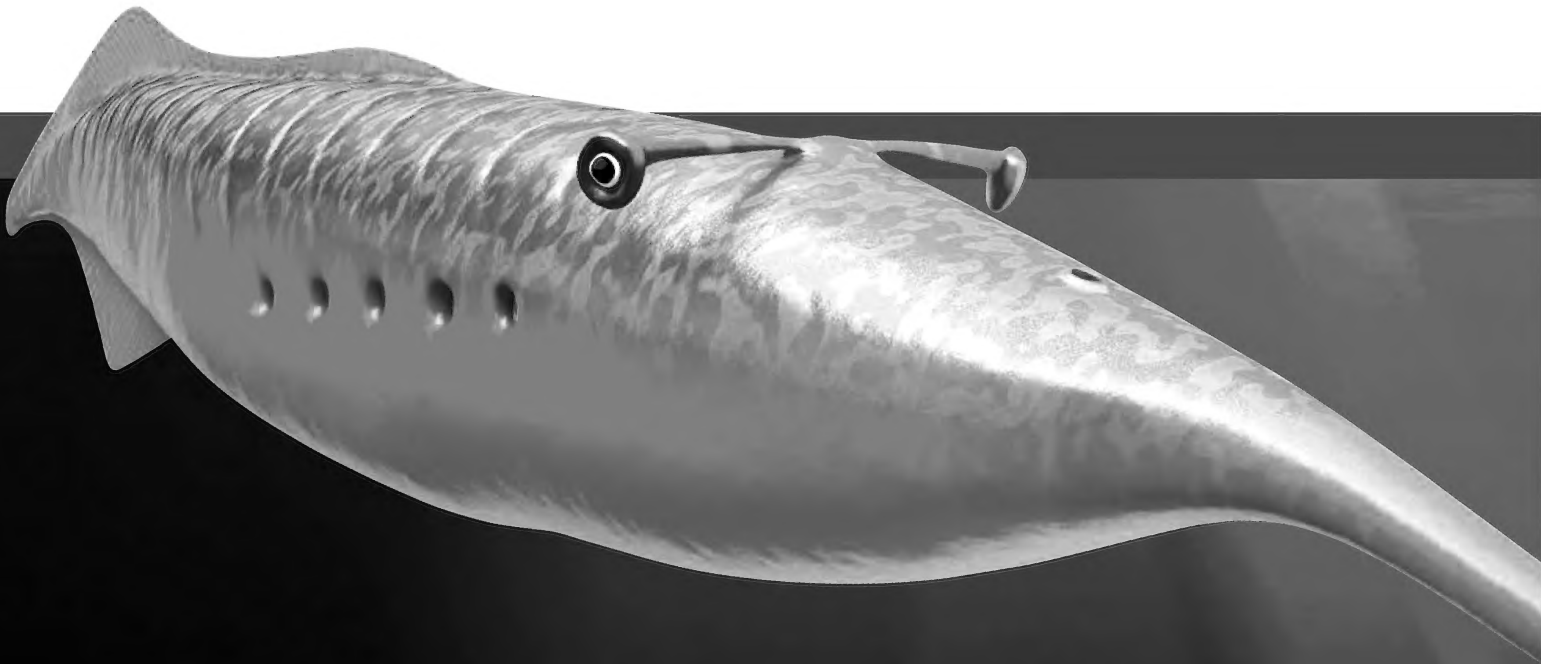
**Kish display raises awareness of destruction in Iraq**

In 2015, insurgent militants affiliated with the so-called “Islamic State” began destroying irreplaceable antiquities at museums and archaeological sites in Iraq. President Lariviere stated, “As custodians of one of the great natural history collections, The Field Museum is heartbroken by the destruction at the Mosul Museum and other cultural heritage areas.” To raise awareness of the damage to the world’s ancient culture and history, the Field displayed objects excavated at the site of Kish, an ancient Mesopotamian city in what is now the center of Iraq.

**LEFT**—The Museum acquired many of the objects in its Kish collection during a 1924 expedition to Iraq. This photograph shows workers employed by the expedition excavating the courtyard of a palace.

**New DNA sequencer advances genomics research**

A gift from René and Bruce Lauer enabled the recent acquisition of a MiSeq DNA sequencer, a valuable tool for Chicago’s evolutionary biology community. This “next generation” machine is capable of sequencing an organism’s entire genome—once a weeks-long process—in just a few days. In 2015, more than a dozen scientists from the Field and local universities harnessed the power of the instrument to study the genomes of ants, fungi, coca, tropical birds, sharks, and more.



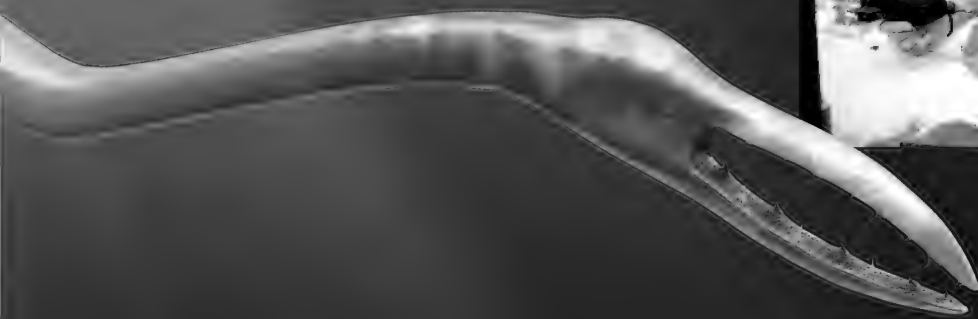


### Ensuring a bright future for beaded artifacts

Conservators are surveying more than 1,500 beaded objects in the North American collections to identify at-risk materials and ensure proper care and treatment. X-ray fluorescence technology and chemical analyses reveal some elements used to make beads harder, clearer, or more colorful may also lead to instability and deterioration over time. Results of this pilot project will inform strategies for long-term conservation and future grants needed to preserve these priceless objects.

### Museum makes monstrous discovery

The Illinois state fossil, the Tully Monster (*Tullimonstrum gregarium*), is found only in the Mazon Creek assemblage, about 50 miles south of Chicago. Collections Manager of Fossil Invertebrates Paul Mayer and MacArthur Curator of Fossil Invertebrates Scott Lidgard, PhD, led a Museum team to digitize the Field's collection of 1,800 Tully fossils. The resulting images were critical to a major study conducted by scholars at The Field Museum and Yale University to determine, after 50 years of uncertainty, that the Tully was not an invertebrate, but a vertebrate—a fish, related to modern-day lampreys.





### The Grainger Foundation creates historic endowment

The Grainger Foundation announced a \$20 million commitment to The Field Museum, the largest gift in the Field's history. The contribution will support two distinct priorities: research and public understanding of science.

A portion of the commitment provides a permanent endowment to ensure Museum scientists have the best research and analytical tools. Today's science breakthroughs are often technology-driven, and big data analysis is a rapidly growing component of research.

The endowment will help the Museum maintain its position as one of the world's leading natural history research institutions by regularly investing in new equipment, technologies, and specialized staff.

The Foundation's commitment will also create an interactive science learning space next to Stanley Field Hall. Opening in November 2016, this exhibition will focus on family-oriented learning programs and serve as a hub for scientist-led discussions and demonstrations, citizen-science initiatives, and other programs to engage guests in behind-the-scenes activities.



The Grainger Foundation has supported The Field Museum for 50 years. During our long association, the Foundation has partnered with us on several landmark projects, including the *Grainger Hall of Gems*, *Jacqueline Kennedy: The White House Years*, *The Nature of Diamonds*, and the Grainger Digital Initiative. This new investment strengthens the Field's core mission by maximizing the resources we can use to explore our world and communicate the importance of science to our visitors. We share a common vision with The Grainger Foundation of inspiring scientific curiosity in Chicagoans of all ages, now and for many decades to come."

RICHARD W. LARIVIERE, PHD, *President and CEO*



#241092



**Polk Family Charitable Fund supports young research scientists**

A significant grant from the Polk Family Charitable Fund has furthered the research of early-career Field Museum scientists. The grant enabled Ronald Fauseit, PhD, to conduct chemical analyses of Zapotec ceramic effigy vessels to pinpoint their origins and help identify any forgeries in the collection. This information provides necessary context for materials acquired more than 70 years ago, when data standards for new acquisitions were not as high. With improved and verified artifact information, scientists will better understand the role of the ceramic effigy vessels for the ancient Zapotecs.



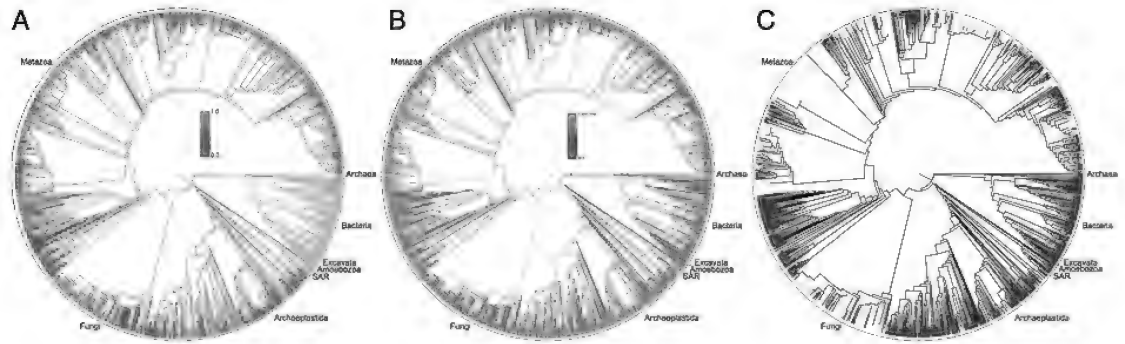
**The case of the missing ball court**

Ancient Pre-Columbian peoples played a sport now referred to as the “Mesoamerican ball game.” For more than four decades, archaeologists wondered why no ball court had been found at Lambityeco, Mexico (around AD 500–800). MacArthur Curator of Mesoamerican, Central American, and East Asian Anthropology Gary Feinman, PhD, and Adjunct Curator Linda Nicholas, PhD, finally discovered the court and excavated its northern half. Mexico’s National Institute of Anthropology and History is expanding the present cultural heritage and archaeological tourism location.



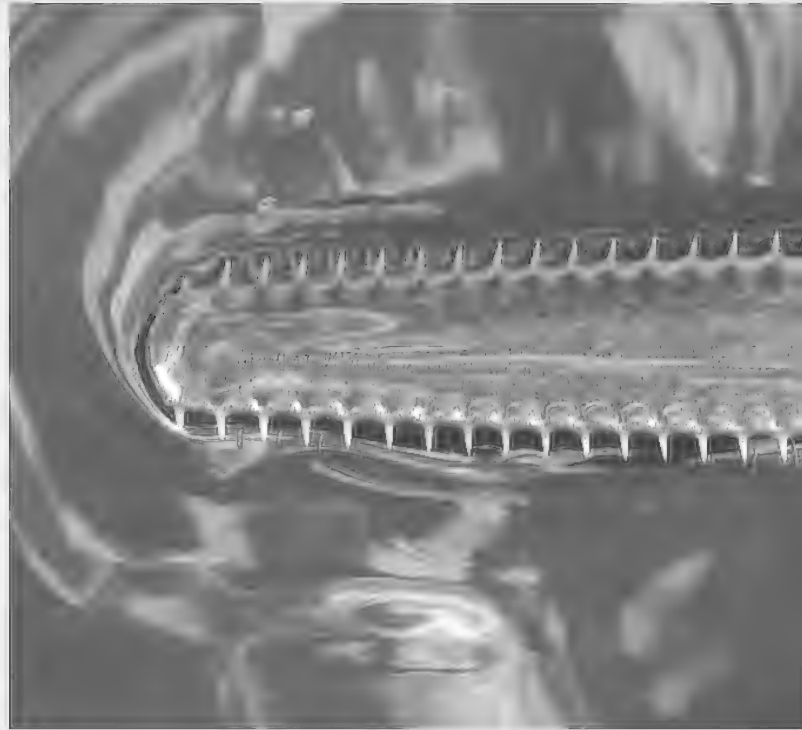
**Four new species found in Brazil**

*Timonya annae*, pictured above, is a small, fully aquatic amphibian from the Permian Period (around 298–252 million years ago) described for the first time by Associate Curator Ken Angielczyk, PhD, and an international team. In the same region of northeastern Brazil, researchers found and described two more amphibians and one reptile. These discoveries give scientists a clearer picture of ancient animal communities in a locality that has often been overlooked. Research was supported by The Grainger Foundation, the National Geographic Society, and the Negaunee Foundation.



**“Virgin births” in sawfish raise conservation concerns**

Smalltooth sawfish typically reproduce like other animals: sperm + egg = baby. However, a recent study by a team including Kevin Feldheim, PhD, A. Watson Armour III Manager of the Pritzker Laboratory for Molecular Systematics and Evolution, found 3% of sawfish in a Florida estuary were born through parthenogenesis, that is, without a male’s contribution. This is a coping strategy sometimes seen in situations where males are scarce, such as zoos. Parthenogenesis in a wild population could represent the species’ last-ditch effort to avert extinction. Learn more about parthenogenesis and the smalltooth sawfish at [fieldmuseum.org/sawfishbirth](http://fieldmuseum.org/sawfishbirth).



**Scientists document “backward evolution”**

This songbird from Madagascar, *Xanthomixis zosterops*, is one of the few known animals believed to have undergone despeciation, whereby separate species merge back together into one. A team of Field Museum and Malagasy scientists documented this rare evolutionary occurrence through DNA analysis and studies of the birds’ lice, which vary by species. John Bates, PhD, Associate Curator of Birds and Head of Life Sciences, said this new discovery is significant because many people might have doubted the possibility of despeciation. He added, “We’re responsible for preserving the earth’s species. Knowing more about how evolution works can help us do that.”

### ◀ Open Tree of Life launched

The Open Tree of Life is a groundbreaking digital map of the interconnections of life on Earth. This online tool, created by a scientific team including Associate Curator Rick Ree, PhD, links more than 2.3 million species into one “tree” of life. Developed with support from the National Science Foundation, the Open Tree will grow as new data is added, while advancing research in comparative biology, conservation, agriculture, and genomics. Explore this unprecedented instrument at [www.opentreeoflife.org](http://www.opentreeoflife.org).



### Field furthers plans to protect Calumet Area

More than 160 community members gathered to discuss the feasibility of a Calumet National Heritage Area at a summit in May. The Field's Chicago Region Program Director and President of the Calumet Heritage Partnership Mark Bouman, PhD, was a key organizer in the event. The summit celebrated Calumet's natural and cultural resources and set local goals for the region. The envisioned Heritage Area will protect the unique, biologically diverse landscape that stretches from the new Pullman National Monument to the Indiana Dunes National Lakeshore. For more information visit [www.calumetheritage.org](http://www.calumetheritage.org).





### Connie and Dennis Keller name Science Action Center

Constance “Connie” T. Keller, Chair of the Board of Trustees, and her husband Dennis J. Keller announced a commitment of \$10 million to the Museum’s endowment. Their support will help translate knowledge to practical application for nature preservation and cultural understanding in Chicago and around the world. In recognition of this historic gift, the Museum has named the Keller Science Action Center. The Action Center is unparalleled among museum-based conservation programs, both in its impact and unique approaches to bringing scientific information to communities with local governments and indigenous peoples. The Field Museum thanks Connie and Dennis for their 20 years of leadership and enthusiasm for protecting the natural world.



### Moore Foundation invests in Peruvian conservation

Since 2001, the Gordon and Betty Moore Foundation has generously supported the Museum’s conservation activities. A recent grant from the Foundation is stimulating large-scale efforts in Northern Peru. In December, the Field’s Andes-Amazon team members conducted an overflight of a potential new conservation area in the Putumayo drainage. The Twin Otter plane flew over expansive peatlands, large palm swamps, diverse upland forests, and a dazzling array of rivers, lakes, and streams, all captured in 90 GB of photos and videos. The overflight was a preparatory mission in advance of Rapid Inventory 28 to learn more about the Putumayo region. You can follow the progress of Rapid Inventory 28 on Facebook.



## Protecting the Yellowstone of the Amazon

On November 8, the Peruvian government designated 3.3 million-acres of Amazonian rainforest as the Sierra del Divisor National Park. For more than a decade, The Field Museum worked to conserve this spectacular mountain range, beginning with a flyover of the site in 2002. A rapid inventory in 2005 led to the discovery of more than 20 species new to science and provided a springboard for three years of intensive work with local communities. The new park forms the cornerstone of a vast conservation corridor, protecting an amazing diversity of plants and animals, safeguarding uncontacted indigenous people, and improving the quality of life in neighboring villages.

### Cordillera Escalera summit forges historic conservation agreements

The Andes-Amazon team convened a summit of indigenous groups and government agencies to discuss the protection of Peru's Cordillera Escalera Mountains. During two days of intense discussion, participants reached agreements about pursuing land conservation, combatting illegal logging, and halting road construction in the mountains. The summit marked the first organized meeting between the indigenous Shawi and Awajun peoples, whose relationship has historically been marked by distrust. Cooperation among residents will be critical to the long-term conservation of these spectacular mountains.





### Chicago community joins in conservation activities

Chicago conservation projects flourished in 2015 thanks to the collaboration of local communities and Keller Science Action Center staff. The annual Beaubien Woods Celebration drew more than 400 people to the South Side forest preserve to explore nature through science activities, as well as canoeing, archery, and fishing. Museum staff led an "expedition" for macro-invertebrates in Beaubien Flatfoot Lake and planted more than 1,000 native flowers with community volunteers. An ongoing project in Eggers Grove, south of Chicago at the Illinois-Indiana border, aims to increase native species biodiversity, discourage the spread of invasive species, and create a growing spirit of environmental stewardship in the local community. In 2015, 40 volunteers seeded more than 10,000 plants in the marsh. Museum staff continue to lead workdays every month in Eggers Grove.



### **President Obama designates Pullman as National Monument**

President Barack Obama announced the designation of the Pullman National Monument on February 19, 2015, drawing national attention to a portion of the Calumet area that includes the country's largest steel mill and sixth largest oil refinery. Museum staff have been working to protect the Pullman district as an educational and cultural space through their work in conserving the Calumet region. The Field's contribution to this project was made possible by ArcelorMittal, The Boeing Company, and Nicor Gas.

### **Ford nurtures youth action**

The Ford Motor Company Fund announced a \$40,000 grant for the Field's Youth Conservation Action projects. Ford has generously supported Museum programs since 2007, providing essential funding for a summer Environmental Leadership Internship, professional development for community action facilitators, and student-led programs such as Calumet Is My Back Yard. Ford employees also participated in the Field's corporate volunteer program, engaging in restoration efforts at Sand Ridge Nature Center in South Holland.



P  
U  
B  
L  
I  
C

E  
N  
G  
A  
G  
E  
M  
E  
N  
T

2015  
ANNUAL  
REPORT  
TO  
DONORS



**LEFT**—The wealthy and powerful men of Archaic Greece wore helmets and carried swords and shields. This displayed their power, even in the grave. These helmets were not meant for fighting but to indicate rank in the Underworld.



**ABOVE**—This realistic and graceful wreath features hundreds of leaves and blossoms. It was worn by Queen Meda and is one of the most remarkable gold objects of the ancient world.

**RIGHT**—John P. Calamos, Sr. provided essential funding for *The Greeks*.



**Epic partnership presents Greek exhibition**

*The Greeks—Agamemnon to Alexander the Great* brought 500 treasures from more than 20 of Greece's most prestigious national collections to Chicago. Co-presented by The Field Museum and the National Hellenic Museum, the exhibition invited visitors to explore 5,000 years of Greek history and the development of a civilization's politics, economics, and art. The Field Museum is grateful for leadership support from John P. Calamos, Sr. and the John P. Calamos Foundation. Mr. Calamos is the Founder, Chairman, and Global Chief Investment Officer of Calamos Investments and Board Chairman of the National Hellenic Museum.

### *Mammoths & Mastodons* returns to Chicago

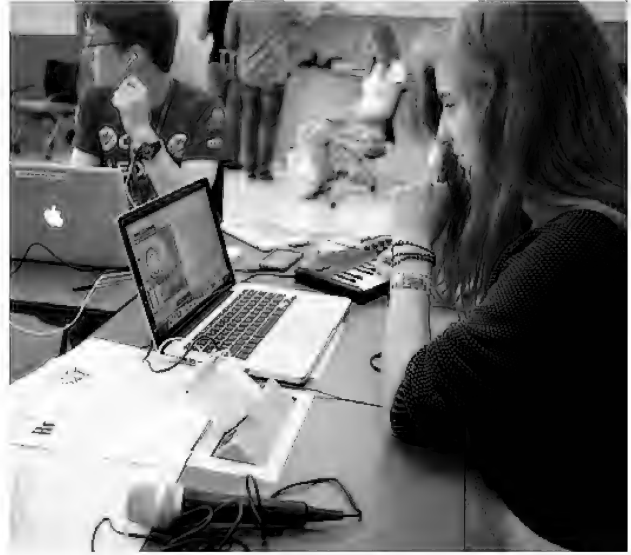
*Mammoths & Mastodons: Titans of the Ice Age*, created by The Field Museum, traveled around the country and returned to Chicago in 2015. The second showing of these colossal creatures drew even more visitors than the first. *Mammoths & Mastodons* closed in early 2016 and is on the road again. By the end of its tour, the exhibition will have been displayed by 14 museums in three countries.





### Artifacts and specimens spur education

Field Museum collections have inspired young people since the *N. W. Harris Learning Collection* was founded more than 100 years ago. In 2015, the *Harris Learning Collection* loaned 1,728 artifacts and specimens to enhance the education of more than 69,000 pre-K through 12th grade students. Teachers participated in the “Learning Through Collections” workshop series that offered free professional development for utilizing collection items in the classroom. The workshops showcased objects available for loan and concentrated on inquiry-based learning, Next Generation Science Standards, and College, Career, and Civic Life (C3) Standards.



### Teen-only space encourages science exploration

The Grainger Digital Media Studio launched Teen Open Studio in 2015. The Open Studio is a teen-only space that focuses on the intersection of science, technology, and learning. In the first year of the program, students examined mass extinction and civic action by designing public service announcement stickers about climate change and explored the history of conservation, creating their own videos about Field Museum dioramas.



### Rice Foundation funds new native gardens

The Daniel F. and Ada L. Rice Foundation announced a significant contribution to support the creation of native gardens at The Field Museum. The Rice Gardens will be rooted in Museum science and the institution’s commitment to educate the public about nature and conservation. Visitors will enjoy the space as a living exhibition focused on natural landscapes and Illinois’ indigenous plants and animals.



**John and Rita Canning support endowment and education programming**

Trustee and Past Board Chairman John Canning and his wife Rita, an active Women's Board member, announced a \$5 million gift to support endowment and learning programs. Part of the gift funds the Early Elementary Science Partnership (E2SP), a program that provides model science units, workshops, and in-classroom coaching to educators in pre-K through 3rd grade classrooms in ten Big Shoulders Fund schools. The partnership allows educators to enhance science instruction and implement Next Generation Science Standards. In recognition of this important gift, the Museum will name the Rita and John Canning Conference Center in the West wing of the building.





### The *Krampmacken* sails through the sky

On a cold February morning, the replica Viking ship *Krampmacken* sailed into The Field Museum. A crane raised the ship over the South staircase while staff ushered the vessel through the doors. The *Krampmacken* was placed outside *Vikings*, a traveling exhibition organized by the Swedish History Museum in partnership with MuseumsPartner in Austria. The exhibition featured hundreds of rare Scandinavian artifacts including astonishing jewelry and metal work revealing the Vikings were talented artists, farmers, and innovators. The Field thanks Discover and Viking Cruises for their sponsorship of this exhibition.



### Teen Volunteer Program engages public

Sixty-six high school students dedicated 5,000 hours to the Summer Teen Volunteer Program. The teens engaged more than 40,000 guests in Field science and collections. Twenty-seven teens continued as year-round volunteers in the *Crown Family PlayLab* and at other public learning events.

### Scientists visit students, virtually

*Virtual Visits from The Field* utilizes videoconferencing technology to bring scientists into classrooms to talk about research and collections. Each broadcast focuses on current work at the Museum, such as the popular “Cold Dinos: Exploring Fossils in Antarctica” with Pete Makovicky, PhD, Associate Curator of Dinosaurs (pictured). *Virtual Visits* are generously sponsored by Target.





### Blackhawks bring back Lord Stanley's Cup

The Field Museum was pleased to celebrate the Chicago Blackhawks' 2015 Stanley Cup Championship win with a visit from the Cup. After the Blackhawks' third championship in six years, nearly 2,000 Blackhawks fans flocked to Stanley Field Hall to have their photo taken with the Cup and team mascot Tommy Hawk. Congratulations and thanks to Trustee Rocky Wirtz and the Chicago Blackhawks!



### Everything is Dead! at The Field Museum

Instead of closing on July 4th weekend to accommodate anticipated crowds attending The Grateful Dead's *Fare Thee Well* concerts at Soldier Field, The Field Museum created a special exhibition and welcomed more than 17,000 guests over the three days. *All The Years Combine: Deadhead Treasures From The Grateful Dead Archive & GDTS Too* featured band-fan correspondence, drawings, posters, and "Tiger"—Jerry Garcia's famous guitar. The Field also hosted a musical performance by Jazz & Colors and held six events on its outdoor terraces.





### Amateurs and experts flock to ID Day

The Field Museum renewed its tradition of Identification Day, inviting the public to bring their found and collected biological specimens for examination. This year's event welcomed more than 2,500 participants of all ages. Scientists identified 80 specimens, including a blue-gray gnatcatcher bird, a seal skull, a giant walking stick insect, and numerous Mazon Creek fossils.

### Friendship between Chicago and China inspires art exhibition

The Field Museum was honored to display *City Windows*, an exhibition of Chinese paper cuts depicting iconic views of Chicago and Beijing. Qiao Xiaoguang, one of the finest contemporary practitioners of Chinese paper cutting, created the 15 original pieces as a tribute to the friendship that has grown between Chicago and China. Large-scale reproductions of the paper cuts are on display at Chicago's O'Hare Airport. Thanks to MACLEAN-FOGG, Wanxiang America, Inc., Wendy and Hank Paulson, and Margot and Tom Pritzker for making *City Windows* possible.





**D  
O  
N  
O  
R**

**H  
O  
N  
O  
R  
O  
L  
L**

**2015  
ANNUAL  
REPORT  
TO  
DONORS**

**TRUSTEES**

**LEFT**

*Front row (from left to right):* Robert W. Crawford, Jr., Norman R. Bobins, Adele S. Simmons, Jack M. Greenberg, and Lucinda M. Baier. *Middle row:* Aurie A. Pennick, Kathleen Klaeser, Jeffrey B. Keller, Sir Peter Crane FRS, and John F. Podjasek III. *Back row:* David D. Hiller, Kenneth W. Coquilllette, Ryan S. Ruskin, Douglas P. Regan, and Patrick Wood-Prince.

**CENTER**

*Front row:* John W. Rowe, Judith S. Block, Marshall Field V, Constance T. Keller, Richard W. Lariviere, Ronald J. Gidwitz, and James J. O'Connor, Sr. *Middle row:* Kermit R. Crawford, Alejandro Silva, Neil S. Novich, Dr. Richard A. Chaifetz, John L. Bucksbaum, W. Rockwell Wirtz, and Marsha A. Cruzan. *Back row:* Bobby Mehta, Randolph R. Kurtz, James S. Frank, Wilbur H. Gantz III, Jai Shekhawat, and Mark Tebbe.

**RIGHT**

*Front row:* James L. Alexander, Clare M. Muñana, Liz Sharp, and Robert B. Loveman. *Middle row:* Charles M. Falcone, Wayne E. Hedien, Dawn L. Solomon, John Rau, and James W. Compton. *Back row:* Matthew K. Simon, Everett S. Ward, Susan M. Benton, Lewis S. Gruber, Michael E. Flannery, and Dr. Patricia Marroqin Norby.



## Board of Trustees

### EXECUTIVE COMMITTEE

Constance T. Keller  
*Chair*

John W. Rowe  
*Chairman Emeritus*

Norman R. Bobins  
*Audit*

John L. Bucksbaum  
*Facilities and  
Administrative Services*

John A. Canning, Jr.  
*At Large*

Dr. Richard A. Chaifetz  
*Retirement and Benefits*

Marsha A. Cruzan  
*Development*

James S. Frank  
*Science Action*

Marshall B. Front  
*Investment*

Wilbur H. Gantz III  
*Collections*

Judy Greffin  
*Finance*

David D. Hiller  
*Integrative Research*

William C. Kunkler III  
*Governance*

Richard W. Lariviere<sup>‡</sup>  
*President & CEO*

Bobby Mehta  
*Learning*

Clare M. Muñana  
*Government Relations*

Peter B. Pond  
*Exhibitions*

Matthew K. Simon  
*Secretary*

Mark Tebbe  
*Technology*

W. Rockwell Wirtz  
*Marketing*

James L. Alexander

Lucinda M. Baier

Susan M. Benton

Thomas L. Bernardin

Howard B. Bernick

Amy E. Best

Gregory C. Case

Richard W. Colburn

Kenneth W. Coquillette

David Cotton

Sir Peter Crane FRS

Kermit R. Crawford

Robert W. Crawford, Jr.

Oscar A. David

Louis T. Delgado

Roger K. Deromedi

Richard Elden

Charles M. Falcone

Rick Fezell

Marshall Field V

Michael E. Flannery

J. Erik Fyrwald

Ronald J. Gidwitz

Ruth Ann M. Gillis

Robert H. Gordon

Antonio J. Gracias

Jack M. Greenberg

Lewis S. Gruber

Adnaan Hamid

Terry A. Jenkins

Jamee C. Field Kane

Todd Kaplan

Bryant L. Keil

Michael L. Keiser

Jeffrey B. Keller

Richard L. Keyser

Randolph R. Kurtz

Diane von Schlegell Levy

Margaret B. MacLean

Dr. Patricia Marroquin  
Norby

W. James McNerney, Jr.

Neil S. Novich

James J. O'Connor, Jr.

Michael O'Grady

David C. Parry

Aurie A. Pennick

John F. Podjasek III

Richard S. Price

J. B. Pritzker

John Rau

Elizabeth W. Reese

Douglas P. Regan

Thomas S. Ricketts

Michael J. Sacks

Nydia S. Searle

Michael E. Severino, M.D.

Jai Shekhawat

Alejandro Silva

Adele S. Simmons

Dawn L. Solomon

Mark R. Walter

Everett S. Ward

Laura S. Washington

Gregory D. Wasson

Melvin D. Williams

Patrick Wood-Prince

James A. Delaney III

Thomas E. Donnelley II

Michael W. Ferro, Jr.

Wayne E. Hedien

Doris B. Holleb

Richard M. Jones

William H. Kurtis

Robert B. Loveman

Cary J. Malkin

Scott P. Marks, Jr.

John W. McCarter, Jr.

James J. O'Connor, Sr.

Richard J. Pigott

Kimberly Querrey

David M. Tolmie

Robert L. Wesley

Miles D. White

William J. White

Blaine J. Yarrington<sup>‡</sup>

### EX-OFFICIO TRUSTEES

Beth A. Humbert-  
Schmidt

Kathleen Klaeser

Jesse H. Ruiz

Ryan S. Ruskin

Liz Sharp

Kevin Stineman

Bryan S. Traubert

### NATIONAL TRUSTEES

Gail K. Boudreaux

Jean-Claude Brizard

Jeffrey T. Foland

Leo F. Mullin

Michael Tang

### LIFE TRUSTEES

Mrs. T. Stanton Armour

Charles W. Benton<sup>‡</sup>

Judith S. Block

Willard L. Boyd

Worley H. Clark, Jr.

James W. Compton

Frank W. Considine

Stanton R. Cook<sup>‡</sup>

## Founders' Council

The Founders' Council is The Field Museum's premier annual giving donor society. Members contribute \$2,500 or more to support every aspect of the Museum's mission.

### LEADERSHIP COMMITTEE

Thomas S. Ricketts<sup>T</sup>  
*Co-Chair*

Liz Sharp<sup>T</sup>  
*Co-Chair*

Ms. Katherine T. Donaldson

Donna B. Freeman

Peter B. Freeman

Mrs. Noel Kaplan

Mr. Robert B. Loveman<sup>T</sup>

Elisabeth C. Meeker

Lanny Passaro

Ryan S. Ruskin<sup>T</sup>

Patricia O. Schnadig

Mrs. Martha A. Peterson Shaw

Ms. Heather T. Sparling

Douglas Walter

Pam Walter

Mr. Ryan B. Whitacre

\$75,000+

Chairman's Circle

Distinguished Leadership

Mr.<sup>T</sup> and Mrs. Gergory C. Case

Mr.<sup>T</sup> and Mrs. Michael W. Ferro, Jr., Alta Vista Fund at The Chicago Community Trust

Mr.<sup>T</sup> and Mrs. Michael L. Keiser

Mr. and Mrs.<sup>T</sup> Dennis J. Keller

Robert M. Levy and Diane von Schlegell Levy<sup>T</sup>

John W.<sup>T</sup> and Jeanne M. Rowe

Mr. and Mrs.<sup>T</sup> Michael D. Searle

\$50,000–74,999

Chairman's Circle Leadership

Anonymous (2)

Mr.<sup>T</sup> and Mrs. Norman R. Bobins

Rita and John<sup>T</sup> Canning

Dr.<sup>T</sup> and Mrs. Richard A. Chaifetz

Mr.<sup>T</sup> and Mrs. Roger K. Deromedi

Mr.<sup>T</sup> and Mrs. Marshall Field V

Mr.<sup>T</sup> and Mrs. James S. Frank

Wilbur<sup>T</sup> and Linda Gantz

Pamela K. and Roger B. Hull

Mrs. Jamee Field Kane<sup>T</sup>/  
The Edith B. and Lee V.  
Jacobs Fund No. 1

Mr.<sup>T</sup> and Mrs. Richard L. Keyser

Mr.<sup>T</sup> and Mrs. Bobby Mehta

The Negaunee Foundation

Cari and Michael<sup>T</sup> Sacks

Mark<sup>T</sup> and Kimbra Walter

\$25,000–49,999

Chairman's Circle

Anonymous (2)

Ms. Lucinda<sup>T</sup> and  
Mr. David Baier

Howard B. Bernick<sup>T</sup>

John<sup>T</sup> and Jackie Bucksbaum

Mr.<sup>T</sup> and Mrs. Frank W.  
Considine

Mr.<sup>T</sup> and Mrs. Kenneth W.  
Coquillet

Mr.<sup>T</sup> and Mrs. Robert W.  
Crawford, Jr.

Ms. Elizabeth I. Crown and  
Mr. William Wallace

Marsha Cruzan<sup>T</sup> and  
Thomas McGinnis

The Richard H. Driehaus  
Charitable Lead Trust

Efroymsen Family Fund<sup>T</sup>

Evans Food Group

Dr.<sup>T</sup> and Mrs. Charles M.  
Falcone

Mr. and Mrs. Eugene F. Fama

Mr.<sup>T</sup> and Mrs. Michael E.  
Flannery

Christina and Ron<sup>T</sup> Gidwitz

Mr.<sup>T</sup> and Mrs. Jack M.  
Greenberg

Mr. and Mrs.<sup>T</sup> William E. Greffin

Mr.<sup>T</sup> and Mrs. Lewis S. Gruber

Katie Hazelwood and  
Todd Kaplan<sup>T</sup>

Reinhardt H. and Shirley R.  
Jahn Foundation

Mr.<sup>T</sup> and Mrs. Jeffrey B. Keller

Mr. William C. Kunkler<sup>T</sup> and  
Ms. Susan Crown

Mr. Randolph R. Kurtz<sup>T</sup>

Clare M. Muñana<sup>T</sup>

Mr.<sup>T</sup> and Mrs. Neil S. Novich

Mr.<sup>T</sup> and Mrs. Michael O'Grady

Mr. John F. Podjasek III<sup>T</sup>

Peter<sup>T</sup> and Alicia Pond

Kimberly Querrey<sup>T</sup> and  
Louis Allen Simpson

John<sup>T</sup> and Colette Evans Rau

Mr. and Mrs.<sup>T</sup> Mike Reese

Mr. Douglas P. Regan<sup>T</sup> and  
Ms. Kathy Brock

Thomas<sup>T</sup> and Cecelia Ricketts

Lydia and Patrick Ryan, Jr.

Mr. Jai Shekhawat<sup>T</sup>

Matthew K.<sup>T</sup> and Julie Simon

Dawn L. Solomon<sup>T</sup>

Mr.<sup>T</sup> and Mrs. Mark Tebbe

Kim and Miles<sup>T</sup> White

Mr.<sup>T</sup> and Mrs. Patrick  
Wood-Prince

\$10,000–24,999

Founders' Council  
Conservator

Anonymous (2)

Ms. Amy E. Best<sup>T</sup>

Mr. and Mrs.<sup>T</sup> Philip D.  
Block III

Linda and Vincent Buonnano

Carol and Tom Butler

Mr. and Mrs. Theodore R.  
Butz/The Butz Foundation

Thomas and Dianne Campbell

Mr. and Mrs. James J. Conrad

Mr. Stanton R. Cook<sup>TD</sup>

Mr.<sup>T</sup> and Mrs. Kermit R.  
Crawford

Ms. Janet W. Diederichs

Janet and Craig Duchossois

Mr.<sup>T</sup> and Mrs. Rick Fezell

Peggy and Steve Fossett  
Foundation

Marshall B. Front Family  
Charitable Foundation/  
Laura De Ferrari and  
Marshall B. Front<sup>T</sup>

Ms. Ruth Ann M. Gillis<sup>T</sup>

Mr. and Mrs. Richard C.  
Godfrey

Mr.<sup>T</sup> and Mrs. Antonio J.  
Gracias

Mrs. Stephanie C. Harris/  
The Edith B. and Lee V.  
Jacobs Fund No. 2

Wayne<sup>T</sup> and Colette Hedien

Mr. David D. Hiller<sup>T</sup>

Mrs. Mary P. Hines

Doris B. Holleb<sup>T</sup>

Dr. and Mrs. Wayne J.  
Holman III

Mrs. Noel Kaplan

Mr. and Mrs. Keith Kizziah

Ms. Nancy W. Knowles

Laurie and Rich Kracum

Dr. Robert A. Kubicka and  
Dr. Claire Smith

Dr.<sup>TE</sup> and Mrs. Richard W.  
Lariviere

The Lavin Family Foundation

Mr. Robert B.<sup>T</sup> and Mrs. Gail J.  
Loveman

Dr. Kennon P. McKee

Mr.<sup>T</sup> and Mrs. W. James  
McNerney, Jr.

Mr. and Mrs. Madhavan K.  
Nayar

Mr.<sup>T</sup> and Mrs. James J.  
O'Connor, Sr.

Mr. and Mrs. William A. Osborn

David<sup>T</sup> and Rosalind Parry

Ms. Aurie A. Pennick<sup>T</sup>

Mr.<sup>D</sup> and Mrs. Gordon S.  
Prussian

Mrs. William L. Searle

Mr. and Mrs. Romolo Sidoli

Adele S. Simmons<sup>T</sup> and  
John L. Simmons

Joachim and June  
Staackmann

Ms. Wendy Strauss

\$5,000–9,999

Founders' Council Surveyor

Anonymous (3)

Alexander and Alexander  
Attorneys at Law<sup>T</sup>

Mrs. T. Stanton Armour<sup>T</sup>

Ms. Laura Bader and  
Mr. Victor Sturm

Mr. E. M. Bakwin

Mrs. Mary Baniak and  
Mr. Mike Baniak

Dr. Verna L. Baughman

Ms. Susan M. Benton<sup>T</sup>

Dave and Mary Bernauer

Mrs. Katherine Birck

Mr. and Mrs. Jim Brittingham

Mr. and Mrs. Andrew W. Brown

Rosemarie and Dean Buntrock



## The Field on Ice

Guests joined Blackhawk experts and Field Museum scientists behind-the-scenes at the United Center to experience Museum collections like never before. The Field Museum thanks Trustee Rocky Wirtz and the Chicago Blackhawks for hosting [The Founders' Council](#) for The Field on Ice.

**ABOVE**—Trustee and Chicago Blackhawks Chairman Rocky Wirtz, Founders' Council Co-Chair Liz Sharp, Public Address Announcer for the Chicago Blackhawks Gene Honda, Founders' Council Co-Chair and Chicago Cubs Chairman Tom Ricketts, and President Lariviere on the center ice.



Dr. George T. Caleel and  
Mrs. Rebecca Childers Caleel  
Dr. Robert W. Carton  
Mr.<sup>D</sup> and Mrs. Henry T. Chandler  
Joyce Chelberg  
Froilan and Cecilia Concepcion  
Mary and Jim Costello  
Mr.<sup>T</sup> and Mrs. David Cotton  
Mr. and Mrs. William A. Crane  
Mr. and Mrs. John T.  
Cunningham  
Dr. and Mrs. Tapas K.  
Das Gupta  
Mr. and Mrs. Robert O.  
Delaney, Jr.  
Mr. and Mrs. James M. Denny/  
John G. Searle Family Trust  
Mr. and Mrs. Samuel H. Ellis  
Mr. and Mrs. Robert Feitler  
Mr. Harve A. Ferrill  
Ginny and Peter Foreman  
Mr. and Mrs. Philip M.  
Friedmann  
Mr. and Mrs. Camillo Ghiron  
Mr. and Mrs. James J. Glasser  
Ms. Donna J. Godel and  
Mr. Roger E. Godel  
Richard and Mary L. Gray  
Mrs. Charles C. Haffner III

Mr. and Mrs. William J.  
Hagenah III  
Barbara W. Hamilton  
Mrs. D. Foster Harland  
Mr. and Mrs. Matthew Harris  
Beverly and Warren Hayford  
Jerry and Anna Marie Kelly  
Mr. and Mrs. Sheldon E. Kent  
Dennis and Kathleen<sup>T</sup> Klaeser  
Mr. and Mrs. Bruce H. Lauer  
Liz and Eric Lefkofsky  
Mr. Richard J. Loewenthal, Jr.  
Mr. Brent Makaus  
Mr. and Mrs. Timothy J. Malloy  
Mr.<sup>T</sup> and Mrs. Scott P. Marks, Jr.  
Mr. Andrew H. Mathis  
Mr.<sup>T</sup> and Mrs. John W.  
McCarter, Jr.  
Jack and Goldie Wolfe  
Miller Fund  
Mr. and Mrs. Thomas M.  
Mulcahy  
Mr.<sup>T</sup> and Mrs. Leo F. Mullin  
Mrs. George V. Myers  
Mrs. Mary Jane Nordlund  
Mr. and Mrs. Charles W. Palmer  
Lanny and Terry Passaro  
Mr. and Mrs. John W. Puth

Mr. and Mrs. Robert Raimondi  
Ms. Helen S. Reed  
Mrs. John Shedd Reed  
Paul and Joan Rubschlager  
Karla Scherer  
Mr. and Mrs. Gordon I. Segal/  
Segal Family Foundation  
Mr. and Mrs.<sup>T</sup> Jeffrey S. Sharp  
Mr. Roger D. Shaw, Jr.  
Mrs. Ann T. Shields  
Rose L. Shure<sup>D</sup>  
Harold B. Smith  
Ms. Elizabeth L. Snyder  
Mr. and Mrs. Robert A. Taylor  
Mr. and Mrs. Ed Thayer  
Mr. Howard J. Trienens  
Mrs. Herbert A. Vance  
Mr. and Mrs. Robert J. Wagner  
Everett S. Ward<sup>T</sup> and  
Iris K. Sims  
Professors Johannes and  
Julia R. Weertman  
Barbara H. West  
Mrs. Henry P. Wheeler  
Mr. James P. Wilkin and  
Mrs. Abra Wilkin  
Mr. and Mrs. Kenneth J. Yager

\$2,500–4,999  
Founders' Council Member  
Anonymous (4)  
Mrs. Birute J. Apke  
Mr. Michael D. Arnold and  
Ms. Monica Wallace  
Sue and Stephen Baird  
Mr. and Mrs. Aaron A. Barlow  
Mr. and Mrs. Philip S. Beck  
Mr. and Mrs. Michael D. Belsley  
Mr. and Mrs. Harrington Bischof  
Mr. and Mrs. Andrew K. Block  
Mr. and Mrs. Trenton Blythe  
Dr. R. D. Bock and  
Dr. Renee Menegaz-Bock  
Mr. David Bohan and  
Ms. Kathryn Kemp  
Mr. and Mrs. John J. Borland, Jr.  
Willard L.<sup>T</sup> and Susan K. Boyd  
Ms. Lori Breslauer<sup>E</sup>  
David and Michelle Buck  
Mr. and Mrs. Randolph Burt  
Mr. Andrew T. Call  
Tom and Joan Castino  
Mr. and Mrs. John S. Chapman  
Mr. and Mrs. Paul S. Chatalas  
Dr. and Mrs. Kenneth W.  
Ciriacks  
Mr.<sup>T</sup> and Mrs. Worley H. Clark, Jr.

Ms. Betty L. Cleeland	Jill Hutchison and David Rosholt	Mrs. China I. Oughton	Harvey and Mary Struthers
Mr. James W. Compton <sup>T</sup>	Mr. and Mrs. James M. Johnson	Ms. Donna L. Owens	Ms. Judith B. Sugarman
Mr. Mark Crane	Ms. Pamela M. MacVicar Johnson	Mr. and Mrs. Richard L. Parish III	Mr. Arthur T. Susman
Professor <sup>T</sup> and Lady Peter R. Crane	Mr. and Mrs. Alex Kallend	Mr. and Mrs. Joseph Paszczyk	Ms. Sharon Allyn Taylor
Dr. Jim W. Croft <sup>E</sup> and Mrs. Marilyn Martinson Croft	Charles L. Katzenmeyer <sup>E</sup>	Ms. Denise Peterson	Mr. and Mrs. Courtney D. Tedrowe
Mr. and Mrs. Mark D. Dawson	Mr. Bryant Keil <sup>T</sup>	Mr. <sup>T</sup> and Mrs. Richard J. Pigott	Mr. and Mrs. Richard L. Thomas
Mr. <sup>E</sup> and Mrs. Ray DeThorne and Family	Mr. and Mrs. Kenneth Keller	Mr. and Mrs. Charles J. Pitman	Jim and Carol Tichy
Mrs. Lidia B. Devonshire	Mr. and Mrs. T. Eric Kilcollin	Michael and Tanya Polsky	Mr. and Mrs. Thomas Tisbo
Mr. and Mrs. Byram E. Dicks	The King Family Foundation	James A. Radtke and Susan A. Kressin	Dr. Michael M. Todd
Mr. Thomas R. Doler	Mr. and Mrs. William J. Kirby	Ms. Anita J. Rogers	Mr. Jeffrey A. Urbina and Ms. Gaye Lynn Hill
Dr. Richard A. Domanik and Dr. Janice Y. Domanik	Mr. and Mrs. Glenn A. Kolososki	Mr. and Mrs. Jeffrey S. Ross	Mr. and Mrs. Thomas Veldman
Mrs. Glenda W. Duncan	Ms. Patricia Kosmerl	Mr. and Mrs. Norman J. Rubash	Mr. and Mrs. David J. Vitale
Ms. Mignon Dupepe and Mr. John Snyder	Mr. Richard G. Kron and Ms. Deborah A. Bekken <sup>E</sup>	Dr. Myron E. Rubnitz and Mrs. Susan B. Rubnitz	Mr. and Mrs. Douglas H. Walter
La and Philip Engel	Mr. and Mrs. Robert Kunkler	Ryan Ruskin <sup>T</sup> and Michael Andrews	Mr. and Mrs. Lon Wehrle
Mrs. Jerome L. Ettelson	Mr. and Mrs. Marc LaGrois	Mr. and Mrs. David W. Ruttenberg	Mr. Ryan B. Whitacre and Ms. Katherine T. Donaldson
Mr. and Mrs. Alexander H. Faurot	Ms. Wende L. Fox Lawson and Mr. Lawrence J. Lawson	Mr. and Mrs. Patrick G. Ryan	Ms. Jean A. White and Ms. Helene Beisecker
Mary and Bruce Feay	Mr. and Mrs. Patrick Layng	Mr. and Mrs. F. E. Schmitt	Mr. William J. White <sup>T</sup>
Mr. and Mrs. Kenneth P. Fischl	Mr. <sup>D</sup> and Mrs. Elliot Lehman	Mr. and Mrs. Stephen Schmitt	Ms. Claudia L. Winkler
Sonia and Bill Florian	Mrs. Deidre LeMire	Mr. and Mrs. Richard H. Schnadig	Ms. Nancy Hamill Winter
Mr. and Mrs. James Flugstad	Mr. and Mrs. Louis L. Lizzadro	Karen and Frank Schneider	Mr. and Mrs. William E. Wolf
Mrs. Susan Flynn	Ms. Renée Logan	Tom and Barbara Schnitzer	Mr. and Mrs. Tom Wotovich
Mr. <sup>T</sup> and Mrs. Jeffrey T. Foland	Mr. and Mrs. Larry Lubell	Mr. and Mrs. Alan Sebulsky	Ms. Elizabeth Yntema and Mr. Mark Ferguson
Donna B. and Peter B. Freeman	Ms. Susan H. Luciu	Mr. and Mrs. Richard J. L. Senior	Dr. and Mrs. Gerald D. Young, Jr.
Ms. Katie Freiburger	Dr. Douglas R. MacAyeal and Ms. Linda A. Sparks	Mr. and Mrs. Stephen H. Sentoff	Mr. and Mrs. Robert Zentner
Joanne Benazzi Friedland	Sandy and Jerry Manne	Mr. Robert M. Shafis <sup>E</sup> and Ms. Carol A. Erickson	If you feel an error has been made in presenting this donor honor roll, please contact Erin Meyer at <a href="mailto:emeyer@fieldmuseum.org">emeyer@fieldmuseum.org</a> .
Mr. and Mrs. Joel M. Friedman	Marie A. Marotta	Mr. and Mrs. Andrew H. Shaw	
Mrs. Delta A. Greene	Ms. Jamie C. Marshall and Mr. Richard Sobkowiak	Bob and Charlene Shaw	
Timothy and Joyce Greening	Bruce and Jane McLagan	Pam and Tom Sheffield/ JS Charitable Trust	
Mr. David Patrick Gries	Ms. Carlette C. McMullan and Mr. John Gibbons	Alissa and Jonathan Shulkin	
Mr. and Mrs. Edward C. Haffner	Ms. Carrie C. McNally	Mrs. Dolores Silverman	
Mr. and Mrs. Dean M. Harrison	Mr. and Mrs. Charles P. McQuaid	Mr. Richard M. Skolly and Dr. Kate A. Feinstein	
Mr. and Mrs. Raymond V. Hartman	Elisabeth C. Meeker	Mr. and Mrs. John B. Snyder	
Mr. and Mrs. Thomas Z. Hayward, Jr.	Mrs. Withrow W. Meeker	Ms. Amanda A. Sonneborn and Mr. Peter R. Malecki	
Mr. and Mrs. Patrick J. Herbert III	Mrs. Pamela L. Miles	Mr. Thomas South	
Mr. Robert Hevey	David and Sue Milligan	Ms. Heather T. Sparling and Mr. Jason Bakk	
Mr. and Mrs. John L. Hines	Mr. and Mrs. Franklin Moore	Mrs. Barbara A. Speer	
Ms. Peggy Hoberg	Mr. and Mrs. Michael Moorman	Liz Stiffel	
Mr. and Mrs. Richard M. Holm	Mr. James H. Niehoff and Ms. Jolie R. Macier	Mr. <sup>T</sup> and Mrs. Kevin Stineman	
Mr. and Mrs. Arthur Holzheimer	Ms. Christina J. Norton and Mr. John A. Biek	Mr. Kevin L. Stoeckel and Mrs. Emily Heisley Stoeckel	
Ms. Laurie Huget and Mr. Werner Huget	Mrs. Virginia O'Neill		
Ms. Lorraine M. Hurt and Mr. George M. Ingram	Mr. Jason Ortiz		



## 2015 Contributions

Philanthropy at The Field Museum supports the institution's people and programs. These contributions promote scientific research, create world-famous exhibitions, provide opportunities for education, and keep the Museum's doors open 364 days a year.

\$20,000,000+

The Grainger Foundation, Inc.

\$10,000,000–19,999,999

Mr. and Mrs.† Dennis J. Keller

\$5,000,000–9,999,999

Anonymous

Rita and John† Canning

Chicago Park District, on behalf of the people of Chicago

\$1,000,000–4,999,999

The Boeing Company

Mr. and Mrs. John P. Calamos, Sr.

D & R Fund/Glasser and Rosenthal Families

Wilbur† and Linda Gantz

Fay and Daniel Levin

William G. McGowan Charitable Fund, Inc.

Mr.† and Mrs. Bobby Mehta

National Science Foundation

The Negaunee Foundation

Cyrus Chung Ying Tang Foundation

\$500,000–999,999

Anonymous

Ernst & Young LLP

Gordon and Betty Moore Foundation

Nicor Gas

Peter† and Alicia Pond

John W.† and Jeanne M. Rowe

\$100,000–499,999

Anonymous

Allstate Insurance Company

Aon Corporation

ArcelorMittal

Bank of America

Bobolink Foundation

Barbara<sup>‡</sup> and Roger Brown

Joyce Chelberg

The Chicago Community Trust

Frank W. and Nancy S.

Considine Foundation

Mr. Mark Crane

Discover

Exelon Corporation

Mr.† and Mrs. Michael W. Ferro, Jr., Alta Vista Fund at The Chicago Community Trust

Mr.† and Mrs. Marshall Field V

Mr.† and Mrs. James S. Frank

General Packaging Products

Julian Grace Foundation

Sally Mead Hands Foundation

ITW

JPMorgan Chase & Co.

Robert M. Levy and Diane von Schlegell Levy†

John D. and Catherine T. MacArthur Foundation

Robert R. McCormick Foundation

The Andrew W. Mellon Foundation

National Aeronautics and Space Administration

National Oceanographic and Atmospheric Administration

Northern Trust

The Regenstein Foundation

Daniel F. and Ada L.

Rice Foundation

Cari and Michael† Sacks

Mr. and Mrs. Richard H. Schnadig

Mr. and Mrs.† Michael D. Searle

Adele S. Simmons† and John L. Simmons

U. S. Fish and Wildlife Service

United Airlines

Viking Cruises

\$50,000–99,999

Anonymous (2)

Abbott

AbbVie

Mr.† and Mrs. Norman R. Bobins

The Brinson Foundation

Mr.† and Mrs. Gregory C. Case

Dr.† and Mrs. Richard A. Chaifetz

Charles Schwab & Co, Inc.

The Crown and Kunkler Family†

Mr.† and Mrs. Roger K. Deromedi

The Field Foundation of Illinois, Inc.

Mrs. Jamee Field Kane†/  
The Edith B. and Lee V.  
Jacobs Fund No. 1

Mr.† and Mrs. Michael L. Keiser

Mr.† and Mrs. Richard L. Keyser

Barry and Mary Ann MacLean/  
MacLean-Fogg

Ms. Karen A. Nordquist

Mr.† and Mrs. Michael O'Grady



### Marie Louise Rosenthal Library receives endowment gift

Marie Louise Rosenthal was a dedicated volunteer in the Museum's Library for nearly 30 years. The library, housing an exceptional collection of material, some of it dating as far back as 1486, was named for Mrs. Rosenthal in 2005 by her children and their families. A new commitment from the D & R Fund further supports the core mission of the Rosenthal Library as a resource for Museum staff and visiting scholars. Mrs. Rosenthal's daughter Louise Glasser, son-in-law James Glasser, and daughter-in-law Babette Rosenthal announced a new endowment gift of \$1 million to keep the Library stable, productive, and innovating in the future. The Museum is grateful for the enduring friendship of the Rosenthal and Glasser families.

Mr.† and Mrs. Michael E. Flannery

Christina and Ron† Gidwitz

Mr.† and Mrs. Jack M. Greenberg

Guggenheim Partners

Harris Family Fund of  
The New York Community Trust

Pamela K. and Roger B. Hull

Polk Family Charitable Fund

Michael and Tanya Polsky

John† and Colette Evans Rau

Target

Tawani Foundation

U.S. Bank

Mark† and Kimbra Walter

Ms. Nancy Hamill Winter

\$25,000–49,999

Anonymous (6)

Paul M. Angell Family Foundation

Ms. Lucinda<sup>T</sup> and Mr. David Baier

The Robert and Isabelle Bass Foundation, Inc.

Mr. and Mrs. Frank L. Bauer

Baxter International Inc.

The Howard B. Bernick Foundation<sup>T</sup>

BMO Harris Bank

John<sup>T</sup> and Jackie Bucksbaum

Elizabeth F. Cheney Foundation

Chicago Blackhawks Charities

Mr.<sup>T</sup> and Mrs. Kenneth W. CoquilletMr.<sup>T</sup> and Mrs. Robert W. Crawford, Jr.

Ms. Elizabeth I. Crown and Mr. William Wallace

Marsha Cruzan<sup>T</sup> and Thomas McGinnis

Mr. and Mrs. John T. Cunningham

Gaylord &amp; Dorothy Donnelley Foundation

The Richard H. Driehaus Charitable Lead Trust

The Duchossois Group, Inc.

Janet and Craig Duchossois

Efroymsen Family Fund<sup>T</sup>

Evans Food Group

Dr.<sup>T</sup> and Mrs. Charles M. Falcone

Mr. and Mrs. Eugene F. Fama Mary and Bruce Feay

Ford Motor Company Fund

Julius N. Frankel Foundation

Marshall B. Front Family Charitable Foundation/  
Laura De Ferrari and Marshall B. Front<sup>T</sup>

Goldman, Sachs &amp; Co.

Ellis Goodman Family Foundation

Mr. and Mrs.<sup>T</sup> William E. Greffin

Kenneth Griffin on behalf of Citadel LLC

Mr.<sup>T</sup> and Mrs. Lewis S. Gruber

John R. Halligan Charitable Fund

Katie Hazelwood and Todd Kaplan<sup>T</sup>

Illinois Arts Council

The Institute for Aegean Prehistory

Reinhardt H. and Shirley R. Jahn Foundation

JRS Biodiversity Foundation

Mr.<sup>T</sup> and Mrs. Jeffrey B. KellerDennis and Kathleen<sup>T</sup> KlaeserMr. Randolph R. Kurtz<sup>T</sup>

Caron and Alan Lacy

Dr.<sup>TE</sup> and Mrs. Richard W. Lariviere

Leo Burnett Worldwide

Mazza Foundation

McDonald's Corporation

Mr.<sup>T</sup> and Mrs. W. James Mc Nerney, Jr.

Midwest Foods

Elizabeth Morse Genius Charitable Trust

Motorola Solutions Foundation

Clare M. Muñana<sup>T</sup>

National Geographic Society Navigant

Mr.<sup>T</sup> and Mrs. Neil S. Novich

Mr. and Mrs. William A. Osborn

Peoples Gas

Pepsi Beverages Company

Mr. John F. Podjasek III<sup>T</sup>

Prince Charitable Trusts

JB and MK Pritzker Family Foundation<sup>T</sup>Kimberly Querrey<sup>T</sup> and Louis Allen Simpson

Quest Foundation

Mr. Douglas P. Regan<sup>T</sup> and Ms. Kathy BrockThomas<sup>T</sup> and Cecelia Ricketts

Mr. and Mrs. Patrick G. Ryan

Lydia and Patrick Ryan, Jr.

Bob and Charlene Shaw

Mr. Jai Shekhawat<sup>T</sup>Matthew K.<sup>T</sup> and Julie SimonDawn L. Solomon<sup>T</sup>Mr.<sup>T</sup> and Mrs. Mark Tebbe

Mr. and Mrs. Orlin D. Trapp, Jr.

Walgreens

Wanxiang USA

Kim and Miles<sup>T</sup> WhiteMr.<sup>T</sup> and Mrs. Patrick Wood-Prince

\$10,000–24,999

Anonymous (4)

95% Share Marketing, Inc.

Alexander and Alexander Attorneys at Law<sup>T</sup>

Aileen S. Andrew Foundation

Aramark

Archer Daniels Midland Company

Bears Care

Ms. Susan M. Benton<sup>T</sup>Ms. Amy E. Best<sup>T</sup>Mr. and Mrs.<sup>T</sup> Philip D. Block III

Bloomberg

Mr. and Mrs. Andrew W. Brown

The Buchanan Family Foundation

Linda and Vincent Buonnano

Carol and Tom Butler

Mr. and Mrs. Theodore R. Butz/  
The Butz Foundation

Thomas and Dianne Campbell

Chicago Title &amp; Trust Company Foundation

Mr. Ricardo Chimal, Jr.

Comcast Corporation

The Comer Family Foundation

Mr. and Mrs. James J. Conrad

Mr.<sup>T</sup> and Mrs. Kermit R. Crawford

The Daphne Hoch Cunningham 2012 Charitable Lead Trust

The Davee Foundation

Ms. Janet W. Diederichs

Dover Corporation

Mr.<sup>T</sup> and Mrs. Rick Fezell

Peggy and Steve Fossett Foundation

Mr.<sup>T</sup> and Mrs. Erik Fyrwald

The Robert E. Gallagher Charitable Trust

Mr. and Mrs. Camillo Ghiron

Ms. Ruth Ann M. Gillis<sup>T</sup>

Mr. and Mrs. Richard C. Godfrey

Mr.<sup>T</sup> and Mrs. Antonio J. Gracias

W.W. Grainger, Inc

Richard and Mary L. Gray

Mr. and Mrs. King W. Harris/  
Harris Family FoundationMrs. Stephanie C. Harris/  
The Edith B. and Lee V. Jacobs Fund No. 2

Mr. Kenneth Haydek

Wayne<sup>T</sup> and Colette HedienMr. David D. Hiller<sup>T</sup>

Mrs. Mary P. Hines

Hoellen Family Foundation

Doris B. Holleb<sup>T</sup>

Dr. and Mrs. Wayne J. Holman III

Jocarno Fund

Mrs. Noel Kaplan

Ms. Nancy W. Knowles

Laurie and Rich Kracum

Dr. Robert A. Kubicka and Dr. Claire Smith

Lauer Foundation for  
Paleontology Science and Education NFP

Mr. and Mrs. Bruce H. Lauer

The Lavin Family Foundation

Cristina Sierra and Daniel Liberman

Mr. Robert B.<sup>T</sup> and Mrs. Gail J. Loveman

Malott Family Foundation

Mr.<sup>T</sup> and Mrs. John W. McCarter, Jr.

Dr. Kennon P. McKee

Mr. and Mrs. Andrew J. McKenna, Sr.

MetLife Foundation

Molex Incorporated

Morgan Stanley

Debra Moskovits<sup>E</sup> and Jack W. FullerMr.<sup>T</sup> and Mrs. Leo F. Mullin

Mr. and Mrs. Madhavan K. Nayar

Mr.<sup>T</sup> and Mrs. James J. O'Connor, Sr.David<sup>T</sup> and Rosalind ParryMs. Aurie A. Pennick<sup>T</sup>

PNC Financial Services

Mr.<sup>D</sup> and Mrs. Gordon S. Prussian

Mr. and Mrs. Phillip B. Rooney	A. G. Cox Charity Trust	Liz and Eric Lefkofsky	Professors Johannes and Julia R. Weertman
Paul and Joan Rubschlager	Professor <sup>T</sup> and Lady Peter R. Crane	Mr. Richard J. Loewenthal, Jr.	Barbara H. West
S&C Electric Company	Mr. and Mrs. William A. Crane	Mr. Brent Makaus	Mr. and Mrs. Bruce W. White
S&P Global	Dr. and Mrs. Tapas K. Das Gupta	Mr. and Mrs. Timothy J. Malloy	Abra Wilkin Fund
Mrs. William L. Searle	Mr. and Mrs. Robert O. Delaney, Jr.	Mr. <sup>T</sup> and Mrs. Scott P. Marks, Jr.	William Blair & Company
Segal Family Foundation	Mr. and Mrs. James M. Denny/ John G. Searle Family Trust	Mr. Andrew H. Mathis	Wintrust Financial Corp.
Mr. and Mrs. <sup>T</sup> Jeffrey S. Sharp	Mr. <sup>E</sup> and Mrs. Ray DeThorne and Family	Susan Mikalauski	Mr. and Mrs. Kenneth J. Yager
Mr. and Mrs. Romolo Sidoli	DeVry Education Group	Jack Miller Family Foundation	Ms. Elizabeth Yntema and Mr. Mark Ferguson
The Siragusa Foundation	Mr. and Mrs. Byram E. Dicks	Jack and Goldie Wolfe Miller Fund	
Joachim and June Staackmann	Edgewater Funds	Miniat Holdings	\$2,500–4,999
Strauss Foundation	Mr. and Mrs. Samuel H. Ellis	Mr. and Mrs. Thomas M. Mulcahy	Anonymous (4)
Tave Risk Management	Mr. and Mrs. Robert Feitler	Mrs. George V. Myers	Susan Aaron and Lawrence Aaron
Mr. and Mrs. Thomas Tisbo	Fellowes, Inc.	Mrs. Mary Jane Nordlund	The Allyn Foundation, Inc.
Everett S. Ward <sup>T</sup> and Iris K. Sims	Mr. Harve A. Ferrill	Mrs. China I. Oughton	Mrs. Birute J. Apke
Mrs. Henry P. Wheeler	Mr. and Mrs. Philip M. Friedmann	Palmer Family Foundation	Sue and Stephen Baird
	Ms. Donna J. Godel and Mr. Roger E. Godel	Mr. and Mrs. Charles W. Palmer	Mr. and Mrs. Aaron A. Barlow
\$5,000–9,999	Grant Thornton LLP	Lanny and Terry Passaro	Mr. and Mrs. Philip S. Beck
Anonymous (6)	Karen Z. Gray	The PrivateBank	Mr. and Mrs. Michael D. Belsley
Charles Adams Nature Research Foundation	Mrs. Charles C. Haffner III	The Puth Family Foundation	Mr. and Mrs. Harrington Bischof
Mrs. T. Stanton Armour <sup>T</sup>	Mr. and Mrs. William J. Hagenah III	Mr. and Mrs. John W. Puth	Mr. and Mrs. Andrew K. Block
Ms. Laura Bader and Mr. Victor Sturm	Ms. Barbara W. Hamilton	Dr. George B. Rabb	Mr. and Mrs. Trenton Blythe
Mr. E. M. Bakwin	Mrs. D. Foster Harland	Mr. and Mrs. Robert Raimondi	Dr. R. D. Bock and Dr. Renee Menegaz-Bock
Mrs. Mary Baniak and Mr. Mike Baniak	Harris Family Foundation	Ms. Helen S. Reed	Mr. David Bohan and Ms. Kathryn Kemp
Beam Suntory	Mrs. Joan W. Harris	Mrs. John Shedd Reed	Mr. and Mrs. John J. Borland, Jr.
Dave and Mary Bernauer	Mr. and Mrs. Matthew Harris	Mr. and Mrs. Jeffrey S. Ross	Willard L. <sup>T</sup> and Susan K. Boyd
Dr. Rüdiger Bieler <sup>E</sup> and Dr. Petra Sierwald <sup>E</sup>	Beverly and Warren Hayford	Karla Scherer	Brandt Foundation
Mrs. Katherine Birck	Mr. and Mrs. Patrick J. Herbert III	Ms. Carol H. Schneider	Ms. Lori Breslauer <sup>E</sup>
BlueCross BlueShield of Illinois	The James Huntington Foundation	Charles and M. R. Shapiro Foundation Inc.	Mr. and Mrs. Nathan A. Brown
Helen V. Brach Foundation	Mrs. Robert C. Hyndman	Arch W. Shaw Foundation	David and Michelle Buck
Curtiss T. and Mary G. Brennan Foundation	Institutional Capital Corporation	Charles H. & Beverly E. Shaw Foundation	Burt Family Foundation
Mr. and Mrs. Jim Brittingham	Mr. and Mrs. James M. Johnson	Rose L. Shure <sup>P</sup>	Mr. and Mrs. Randolph Burt
Rosemarie and Dean L. Buntrock Foundation	Charles L. Katzenmeyer <sup>E</sup>	Harold B. Smith	Mr. Andrew T. Call
Dr. George T. Caleel and Mrs. Rebecca Childers Caleel	Jerry and Anna Marie Kelly	Ms. Elizabeth L. Snyder	Tom and Joan Castino
Dr. Robert W. Carton	Mr. and Mrs. Sheldon E. Kent	Solberg Manufacturing, Inc.	Mr. and Mrs. John S. Chapman
CDW Corporation	Gerald A. and Karen A. Kolschowsky Foundation, Inc.	Mr. and Mrs. Neele E. Stearns, Jr.	Charles Sparks & Company
Ceres Foundation	Mr. and Mrs. Timothy Kolschowsky	Sulzer Family Foundation	Mr. and Mrs. Paul S. Chatalas
Mr. <sup>P</sup> and Mrs. Henry T. Chandler	Koppers Inc.	Mr. and Mrs. John W. Taylor III	Dr. and Mrs. Kenneth W. Ciriacks
Chubb Group Insurance Companies	Mr. and Mrs. Frederick A. Krehbiel	Mr. and Mrs. Robert A. Taylor	Mr. <sup>T</sup> and Mrs. Worley H. Clark, Jr.
Froilan and Cecilia Concepcion	Kroeschell Service, Inc.	Mr. and Mrs. Ed Thayer	Ms. Betty L. Cleeland
Mary and Jim Costello		Mr. <sup>T</sup> and Mrs. David M. Tolmie	Mr. James W. Compton <sup>T</sup>
Mr. <sup>T</sup> and Mrs. David Cotton		Mr. Howard J. Trienens	Mr. and Mrs. Patrick Corrigan
		Mrs. Herbert A. Vance	Dr. Jim W. Croft <sup>E</sup> and Mrs. Marilyn Martinson Croft
		Mr. and Mrs. Robert J. Wagner	
		Mr. and Mrs. John R. Walter	

Mr. and Mrs. Mark D. Dawson  
 Mrs. Lidia B. Devonshire  
 Mr. Thomas R. Doler  
 Dr. Richard A. Domanik and  
 Dr. Janice Y. Domanik  
 Mr.<sup>T</sup> and Mrs. Thomas E.  
 Donnelley II  
 Mrs. Glenda W. Duncan  
 DuPage Community  
 Foundation

Mr. and Mrs. James Flugstad  
 Mrs. Susan Flynn  
 Mr.<sup>T</sup> and Mrs. Jeffrey T. Foland  
 Donna B. and Peter B. Freeman  
 Ms. Katie Freiburger  
 Joanne Benazzi Friedland  
 Mr. and Mrs. Joel M. Friedman  
 Christine<sup>E</sup> and Gary Giannoni  
 Mrs. Delta A. Greene

Hayford Family Foundation  
 Mr. and Mrs. Thomas Z.  
 Hayward, Jr.  
 Mr. Robert Hevey  
 Mr. and Mrs. John L. Hines  
 Ms. Peggy Hoberg  
 Mr. and Mrs. Richard M. Holm  
 Mr. and Mrs. Arthur Holzheimer  
 Ms. Laurie Huget and  
 Mr. Werner Huget

Ms. Jamie C. Marshall and  
 Mr. Richard Sobkowiak  
 Lisa McClung and Blasko Ristic  
 McKee Family Foundation  
 Bruce and Jane McLagan  
 Ms. Carlette C. McMullan and  
 Mr. John Gibbons  
 Ms. Carrie C. McNally  
 Mr. and Mrs. Charles P.  
 McQuaid

Ms. Lorraine M. Hurt and  
 Mr. George M. Ingram

Elisabeth C. Meeker  
 Mrs. Withrow W. Meeker

Jill Hutchison and  
 David Rosholt

Mercer

Jeani and Rich Jernstedt

Mrs. Pamela L. Miles

Ms. Pamela M. MacVicar  
 Johnson

David and Sue Milligan

Mr. and Mrs. Alex Kallend

Dr. Anthony G. Montag and  
 Dr. Katherine L. Griem

Ms. Dolores Kohl Kaplan

Mr. and Mrs. Franklin Moore

Mr. and Mrs. Kenneth Keller

Mr. and Mrs. Michael Moorman

Mr. and Mrs. T. Eric Kilcollin

Mrs. Sandra L. Mueller

The King Family Foundation

New Prospect Foundation

Mr. and Mrs. William J. Kirby

Mr. and Mrs. Walter B. Newsom

Mr. and Mrs. Adam Klauber

Mr. James H. Niehoff and  
 Ms. Jolie R. Macier

Mr. and Mrs. Glenn A.  
 Kolososki

Ms. Christina J. Norton and  
 Mr. John A. Biek

Ms. Patricia Kosmerl

Novak Charitable Trust

Mr. and Mrs. Lee V. Kremer

Mr.<sup>T</sup> and Mrs. James J.  
 O'Connor, Jr.

Mr. Richard G. Kron and  
 Ms. Deborah A. Bekken<sup>E</sup>

Mrs. Virginia O'Neill

Mr. and Mrs. Robert Kunkler

Old Republic International  
 Corporation

Mr. and Mrs. Marc LaGrois

Mr. Jason Ortiz

Ms. Wende L. Fox Lawson and  
 Mr. Lawrence J. Lawson

Ms. Donna L. Owens

Mr. and Mrs. Patrick Layng

The Richard Laurence  
 Parish Foundation

Mr. and Mrs. Louis L. Lizzadro

Mr. and Mrs. Joseph Paszczyk

Ms. Renée Logan

Ms. Denise Peterson

Mr. and Mrs. Larry Lubell

Mr.<sup>T</sup> and Mrs. Richard J. Pigott

Ms. Susan H. Luciu

Mr. and Mrs. Charles J. Pitman

Ann & Robert H. Lurie  
 Children's Hospital Foundation

James A. Radtke and  
 Susan A. Kressin

MAC Restoration  
 Contracting, Inc.

Ms. Anita J. Rogers

Dr. Douglas R. MacAyeal and  
 Ms. Linda A. Sparks

Mr. and Mrs. Norman J. Rubash

Mr. and Mrs. Jim MacGinnitie

Dr. Myron E. Rubnitz and  
 Mrs. Susan B. Rubnitz

Mr. and Mrs. Michael S.  
 Magnuson

Ryan Ruskin<sup>T</sup> and  
 Michael Andrews

Sandy and Jerry Manne

Mr. and Mrs. John W. Rutledge

Marie A. Marotta

Mr. and Mrs. David W.  
 Ruttenberg



**In memory of Patricia Buehler Blankenship**

With the passing of Patricia Buehler Blankenship, The Field Museum lost an active supporter and great friend. For more than 30 years Mrs. Blankenship's enthusiasm and generosity enhanced science, exhibitions, and learning programs at the Museum. Mrs. Blankenship was an engaged member of The Founders' Council and the Women's Board. Beyond the Museum, Mrs. Blankenship will be missed as a passionate supporter of many cultural and educational institutions in Chicago and Naples, FL.

Ms. Mignon Dupepe and  
 Mr. John Snyder  
 La and Philip Engel  
 Mrs. Jerome L. Ettelson  
 Mr. and Mrs. Alexander H.  
 Faurot  
 Mr. and Mrs. Kenneth P. Fischl  
 Sonia and Bill Florian

Timothy and Joyce Greening  
 Mr. David Patrick Gries  
 Mr. and Mrs. Edward C. Haffner  
 Ms. Tonja Rizai Hall  
 Mr. and Mrs. Dean M. Harrison  
 Mr. and Mrs. Raymond V.  
 Hartman  
 Dr. Malcolm H. Hast

Ms. Cynthia M. Scalzo and Dr. Henry Brown	Mr. John P. Ver Bockel and Ms. Kathleen E. Carbonara	Mr. and Mrs. Robert Clifford	Ms. Patricia J. Hurley
The Schmitt Family Charitable Foundation	Mr. and Mrs. David J. Vitale	Mr. and Mrs. Eric Cohen	Dr. and Mrs. James D. Hurst
Mr. and Mrs. F. E. Schmitt	Ms. Nancy L. Wald	Ms. Christine Courtcnage	IBM
Mr. and Mrs. Stephen Schmitt	Mr. and Mrs. Douglas H. Walter	Ms. Camden Crie	Ivy Connect Inc.
Karen and Frank Schneider	The Warwick Foundation	Mr. John Crosson	Ms. Sherry John
Tom and Barbara Schnitzer	Mr. and Mrs. Lon Wehrle	Mr. William R. Darman and Ms. Maria Mau	Lynn and George Jones
Mr. and Mrs. Alan Sebulsky	Mr. Ryan B. Whitacre and Ms. Katherine T. Donaldson	Ms. Rebecca Davidson	Linda M. Jung
Mr. and Mrs. Richard J. L. Senior	Ms. Jean A. White and Ms. Helene Beisecker	The Diamond Family Foundation	Mr. and Mrs. J. George Kambouris
Mr. and Mrs. Stephen H. Sentoff	Mr. William J. White <sup>T</sup>	Dr. Naomi S. Donnelley and Mr. Joseph Butler	Mr. and Mrs. Jordan L. Kaplan
Mr. Robert M. Shafis <sup>E</sup> and Ms. Carol A. Erickson	Ms. Claudia L. Winkler	Susanna and W. Gregory Doolin	Ms. Meg Katzman
Mr. and Mrs. Andrew H. Shaw	Mr. and Mrs. William E. Wolf	Draper and Kramer	Mr. and Mrs. Eric Kauffman
Mr. and Mrs. Neil J. Sheehan	Mr. and Mrs. Tom Wotovich	Mr. and Mrs. Timothy Earle	Ms. Anne Kavanagh and Mr. Terry Smith
Pam and Tom Sheffield/ JS Charitable Trust	Dr. and Mrs. Gerald D. Young, Jr.	Mr. Douglas R. Elliott	Mr. Monty Kehl and Mr. Craig Wilbanks
Alissa and Jonathan Shulkin	Mr. and Mrs. Robert Zentner	Mr. William Ellison and Dr. Naomi Ellison	Mr. David M. Keller and Mrs. Avery W. Keller
Shure Incorporated	\$1,000–2,499	Mr. Harry R. Fair and Mrs. Carolyn E. Jordan	Mrs. Janet I. Kelly
Mrs. Kass F. Sigal	Anonymous (3)	Mr. and Mrs. William Farley	Mr. and Mrs. Eric Kennedy
Mrs. Dolores Silverman	Joan and A. Robert Abboud	Mrs. Juila B. Faust	Charles and Marion Kierscht
Mr. Richard M. Skolly and Dr. Kate A. Feinstein	Ms. Andrea Alexander	Mr. and Mrs. D. Cameron Findlay	Stephanie Kimmel <sup>F</sup> and Mike Conroy
Mr. and Mrs. Benjamin Smith-Donald	American Agricultural Insurance Company	Mr. Edward T. Fishwick and Ms. Mary M. Case	Ms. Holly King
Mr. and Mrs. John B. Snyder	AMSTED Industries	Ginny and Peter Foreman	Mr. and Mrs. John E. Kirkpatrick
Mr. and Mrs. Charles H. Solberg, Jr.	Mr. Thomas Anderson	Dr. Stasia J. Frank-Powers and Dr. Richard J. Powers	Mr. and Mrs. Lester B. Knight III
Ms. Amanda A. Sonneborn and Mr. Peter R. Malecki	Ms. Kaye B. Aurigemma	Freedom Title Corporation	Mr. and Mrs. Martin Jesse Koldyke/Koldyke Family Foundation
Mr. Thomas South	Margaret B. and Harry Axelrod Charitable Trust Fund	Mr. Gary S. Friedlander and Ms. Wendy Sabbath	Martin J. and Susan B. Kozak Fund
Ms. Heather T. Sparling and Mr. Jason Bakk	Mr. and Mrs. Craig Bargowski	Mr. and Mrs. John E. Gepson	Lake Forest Bank & Trust Co.
The Speer Family Fund	Ms. Sandra Bass	Mr. and Mrs. Kanwal Ghaey	Ms. Victoria Lautman
Liz Stiffel	Warren L. Batts	Mrs. Julia Goff and Mr. Gregg Goff	Mr. and Mrs. Michael P. Leahy
Mrs. Diane Stilwell-Weinberg	Mr. <sup>TD</sup> and Mrs. Charles W. Benton	Mr. and Mrs. Stanford J. Goldblatt	Bertha Lebus Charitable Trust
Mr. <sup>T</sup> and Mrs. Kevin Stineman	Mr. and Mrs. John Bohnen	Mr. John C. Goodall, Jr.	Mrs. Deirdre LeMire
Mr. Kevin L. Stoeckel and Mrs. Emily Heisley Stoeckel	Hyacinth and Le Monte G. <sup>E</sup> Booker, Sr.	Mr. and Mrs. David Greenspahn	Liam Ventures, Inc.
Harvey and Mary Struthers	Ms. Mary N. Bradbury	Mrs. Dorothy Harza	Mrs. Robert R. Lipsky
Ms. Judith B. Sugarman	Scott and Beth Brady	Ms. Kimberlee S. Herold	Mrs. Laura Litten and Mr. John Andre Leduc
Mr. Arthur T. Susman	Mr. and Mrs. Robert B. Breisblatt	The Hickey Family Foundation	Mr. and Mrs. John W. Madigan
Mr. and Mrs. Courtney D. Tedrowe	Mr. Jean-Claude Brizard <sup>T</sup> and Dr. Brooke Stafford-Brizard	Mr. and Mrs. Richard C. Hoffman, Jr.	Cary J. <sup>T</sup> and Lisa Klimley Malkin
Mr. and Mrs. Richard L. Thomas	William and Nancy Brown	Ms. Sandra N. Hoffman	Mr. Dean Mamalakis and Mrs. Louise Mangos-Mamalakis
Jim and Carol Tichy	Samuel and Beth Buchsbaum	Mr. and Mrs. B. Peter Hofmann	Mr. and Mrs. Arthur C. Martinez
Dr. Michael M. Todd	Mr. and Mrs. Willard Bunn III	Ms. Janice Honigberg	Ms. Carolyn Maruggi
Mr. Jeffrey A. Urbina and Ms. Gaye Lynn Hill	Mr. and Mrs. John D. Burns II	Ms. Heather Hsu	Ms. Michelle L. Maton and Mr. Michael C. Schaeffer
Mr. and Mrs. Thomas Veldman	Mr. and Mrs. Michael Burns	Mr. and Mrs. Peter Huizenga	Mr. and Mrs. <sup>D</sup> Frank D. Mayer, Jr.
	Mr. and Mrs. Philip A. Canfield	Tex and Susan Hull	Susan and John McBride
	Mrs. Silas S. Cathcart		
	CDM Foundation		
	Mrs. Hammond Chaffetz		

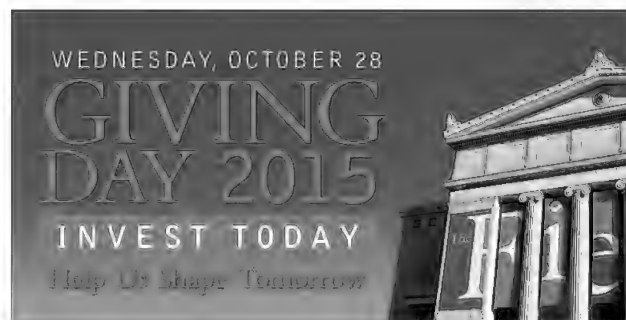
<sup>T</sup> Trustee   <sup>D</sup> Deceased   <sup>E</sup> Field Museum Employee

Mr. and Mrs. James McClelland	Mr. and Mrs. Norman Perman	Mr. and Mrs. Barry Steinmetz	Mrs. Roberta R. Allen
Mr. Michael McClure	Mr. John O. Peters	The Stanley & Kristin Stevens Family Fund	Dr. and Mrs. Dominic J. Allocco
Bess Catherine McCord and James McCord	Ernst Pierre-Toussaint <sup>E</sup>	Mr. and Mrs. Ivan G. Strauss	Mr. and Mrs. Richard J. Almeida
Mr. and Mrs. Ronald McKee	Mr. and Mrs. Stephen Pinaire	Mr. and Mrs. Blake H. Swift	Mrs. Kristine Anderson
Mr. and Mrs. John A. McKenna	Mr. and Mrs. Harvey B. Plotnick	Mr. and Mrs. James E. Taich	Cheryl <sup>E</sup> and John Aponte
Ms. Patricia M. McKiernan	Mr. and Mrs. Keith Powell	Datin Tan Fui Lian and Datuk Dr. Robert F. Inger	Mr. and Mrs. Barry G. Arnason
Mr. and Mrs. John McLean	Ms. Elaine Prebish	Mr. and Mrs. John B. Templeton	Mr. and Mrs. Daniel Arntzen
Erma S. Medgyesy	Irwin Press and Andra Press	Mr. and Mrs. Robert W. Thomas	Mr. Richard Assmus and Ms. Leah Welty
The Jill and Paul Meister Charitable Fund	Mr. and Mrs. Shelby Pruett	Dr. Jeffrey M. Tilkin	Mr. Tony Augustine
Ms. Pamela G. Meyer	Mrs. Mary F. Quednau	Tiny Tiger Foundation, Inc.	Mr. Rodney Austin
Peter Mikuzis & Associates LLC	Ginevra <sup>E</sup> and Ben Ranney	Mr. and Mrs. Raymond C. Tower	Richard P. Bail and Janice G. Bail
Mr. and Mrs. Robert R. Moeller	Nancy and Warren Rasmussen	Mr. and Mrs. James A. Tuchler	Ms. Joy L. Bailey
Ms. Cynthia A. Moody	Ms. Stacey Reicherzer	Mr. and Mrs. Richard Uihlein	Mr. Nathaniel Bailey
Mr. and Mrs. Edward J. Mooney	Mr. Walter J. Reinert <sup>E</sup>	University HealthSystem Consortium	Mr. and Mrs. Clyde N. Baker, Jr.
Mr. and Mrs. Carl E. Moore, Jr.	Mr. and Mrs. Miles Ridgway	Van Nice Foundation	Mr. and Mrs. John Ballard
Ms. Mary K. Moreland and Mr. Daniel T. Jenks	Mr. and Mrs. Stephen L. Ritchie	Mrs. Katherine Vennetti	Mr. and Mrs. Randolph C. Barba
Harold M. and Adeline S. Morrison Family Foundation	Roberts Family Foundation	Mr. and Mrs. John Wainwright	Ms. Katherine M. Barnash
Ms. Helga E. Muench	Lynne King Roberts	Walter Family Foundation	Dr. and Mrs. Milo Barrera
Ms. Mary Nalbandian	Mr. and Mrs. Peter W. Rogers	Mr. and Mrs. K. Jay Weaver	Mr. and Mrs. Douglas D. Baum
Jossy and Ken Nebenzahl	Ms. Alicia D. Rollo	Weinberg Family Foundation	Dr. and Mrs. Robert A. Beatty
Mr. Gary L. Neilson and Ms. Trudy A. Havens	Mr. and Mrs. Richard M. Rosenberg	David Weinberg and Jerry Newton	Mr. and Mrs. Eric Beaumont
Mr. and Mrs. John Doane Nichols	D. Roskin	Mr. Michael Weishuhn	Mr. and Mrs. Ronald Benedict
Ms. Lora Nickels <sup>E</sup> and Mr. Thomas Tague	Mr. and Mrs. Edward W. Ross	Ms. Jane Wells and Mr. Burton C. Ferrini	Ms. Sarah Birmingham
North Park University	Mr. H. Nelson Rowley III	Mr. Bennie E. Whiten and Ms. Susan E. Sporte	Mr. and Mrs. Robert L. Berner, Jr.
Leslie and Richard North	Rush University Medical Center	Mr. and Mrs. Raymon Whitney	Mr. and Mrs. Adrian D. Beverly
The Gerald Norton Foundation	Mr. and Mrs. Thomas D. Rutherford	Dr. David E. Willard	Mr. and Mrs. George M. Birmingham
Mrs. Alexandra O'Neill	John and Alice Sabl	Mr. Lawrence J. and Mrs. Margaret V. Witry	Mr. Thomas R. Bland
Mr. and Mrs. William J. O'Neill	Sage Products Inc	Ms. Melanie R. Wojtulewicz and Mr. Tony Crowe	Mr. Nancy L. Bodeen
Dr. Stephanie Ortel	Sahara Enterprises, Inc.	Mr. Joseph Wolnski and Ms. Jane Christino	Ms. Clarisa Bonilla
Mr. Joe Ortiz and Ms. Ana Justice	Sargent Family Foundation	Mr. David Wood	Ms. Kristine Bordenave and Mr. James Feeney
Ms. Sarah R. Packard	Ms. Barbara M. Schleck and Mr. Gary M. Ropski	Geena and Dennis Zaslavsky	Mr. Peter Bowe and Ms. Barbara L. Stewart
Ms. Elizabeth A. Parker and Mr. Keith S. Crow	Ms. Thelma L. Schwartz	Mark H. Zornow, M.D.	Mr. Keith D. Bowersox
Mr. James D. Parsons	Mr. and Mrs. Samuel C. Scott III		Robert and Laura Boyd
Robert K. Parsons and Victoria J. Herget	Stephen A. and Marilyn C. Scott	\$500-999	Mr. Tim Bradford
Mr. and Mrs. Jim Patton	Mrs. Francine Scully-Lippitz and Mr. Herbert Lippitz	Anonymous (11)	Mr. James A. Brainer
Mr. and Mrs. Jerry K. Pearlman	David and Judith L. Sensibar	Mr. and Mrs. John Aalbregetse	Mr. Richard T. Brannegan
Mrs. Margaret M. Pendry	Mr. and Mrs. John Simon	Mr. and Mrs. William T. Adkerson	Mr. Joshua Juicio Brennan and Mr. Matt Kelley
Mr. and Mrs. Richard S. Pepper	Larry and Maxine Snider	Ms. Eva Adler and Ms. Lorica Adler	Mr. and Mrs. Michael Bresolin
Mr. and Mrs. Robert P. Perkaus, Jr.	The Solot Family Foundation	Mr. and Mrs. Arjun Aggarwal	Mr. and Mrs. Robert Brightfelt
Mrs. Sandra Perlow	Mr. and Mrs. Jeffery Sommer		Mr. John A. Bross, Jr.
	Mr. and Mrs. Scott E. Sommer		Mr. and Mrs. Steven L. Brown
	State Street Corporation		Dr. and Dr. Scott C. Brun

Mr. and Mrs. Jackson Brunsting  
Mrs. Ellen S. Buchen  
Mr. and Mrs. Thomas Buck  
Ms. Ann M. Buckley  
Mr. and Mrs. Howard E. Buhse, Jr.  
Mr. and Mrs. Michael C. Bunnell  
Mr. and Mrs. Walter F. Burke  
David N. Butler, M.D.  
L. L. Butler  
Mr. and Mrs. Wiley N. Caldwell  
Carney Family Foundation  
CFC Family Fund  
Chinatown Museum Foundation  
Mr. Nathaniel P. Clapp and  
Ms. Sarah Dietz  
Mr. Ray Colebaugh  
Mr. John T. Coletta  
Ms. Carol Collins  
The Comer Foundation Fund at  
The Chicago Community Trust  
Pamela Conant  
Mr. and Mrs. Dale Cooney  
Mr. Edward Cooper  
Mrs. Mark Cox and  
Ms. Libby Jansen  
Mr. William D. Cox, Jr.  
Mr. Guy R. Crane  
Mr. and Mrs. Jacob Crose  
Dr. Dolores E. Cross  
Mr. Brian Crowdsen  
Mr. and Mrs. Bruce Crown  
The Honorable Barbara Flynn  
Currie  
Mr. and Mrs. John A. Daniels  
Dr. and Mrs. Lloyd Davidson  
Mr. and Mrs. Allen R. Davies  
Ms. Laura Davis  
Ms. Patricia R. Davis  
Mr. and Mrs. Randall Davis  
Mr. and Mrs. William L. Davis III  
Lori and Bill Dawson  
Ms. and Mr. Nancy Dehmlow  
Louis<sup>†</sup> and Margarette Delgado  
Mrs. Uta DeTappan-Staley  
Basil and Marcy deTineo  
Mr. and Mrs. Blair C. Dickinson  
Mr. and Mrs. James S. DiMatteo  
Mr. and Mrs. Thomas W.  
Doddridge  
Mr. and Mrs. David W. Dodson  
Dr. Erl Dordal and  
Mrs. Dorothy Powers  
Ken and Karen Dort  
Mr. and Mrs. James  
Downey Fund  
Mr. and Mrs. John Draper  
Ms. Diana L. Duncan<sup>‡</sup>  
Mr. and Mrs. Thomas E. Durica  
Mrs. Anne O. Earle  
Earth Share  
Mark G. Egan and  
Katherine Z. Egan  
Ms. Chere Lynn A. Elliott  
Mr. and Mrs. Paul M. Embree  
Ms. Erika E. Erich  
Mr. and Mrs. Fabio Fabbri  
Mr. Brian G. Fahrenbach  
Mr. and Mrs. John F. Faulhaber  
Mrs. Joan L. Fencil  
Mr. and Mrs. Robert H. Fesmire  
Ms. Judith A. Findorff  
Mr. and Mrs. Peter D. Fischer  
Mrs. Sally Fletcher  
Mr. and Mrs. William D. Folland  
Mrs. Adrian R. Foster  
Mr. and Mrs. Charles E. Frank  
Mr. and Mrs. Henry S. Frank  
Mr. and Mrs. J. Patrick  
Gallagher, Jr.  
Ms. Jeanne K. Gang and  
Mr. Mark Schendel  
Ms. Julie L. Gentes  
Mr. and Mrs. David A. Gillam  
Ms. Nika Gloyeske  
Dr. Chris Godell  
Mr. and Mrs. William H. Gofen  
Ms. Joan Goldstein  
Ms. Judith Marx Golub  
Mr. and Mrs. James P. Gorter  
Ms. Katherine Gory  
Mr. Hank Green  
Mr. Daniel Greenberg  
Mr. and Mrs. John K. Greene  
Mrs. Mary M. Grobarcik  
Dr. and Mrs. Rolf M. Gunnar  
Mrs. Anastasia Gutting  
Ms. Suzanne Gylfe  
Mr. and Mrs. John A. Hagenah

William M. Hales Foundation  
Dr. and Mrs. George S.  
Hallenbeck  
Mr. and Mrs. Charles W. Hand  
Mr. and Mrs. Joel L. Handelman  
Ms. Patricia A. Harper  
Ms. Jahanna Harvey and  
Mr. Joshua Groft  
Mary J. Hayes, D.D.S.

Mr. and Mrs. William S. Hoppe  
Andrew and Cheri Houha  
Rose Houston Charitable  
Foundation  
Beth A. Humbert-Schmidt<sup>†</sup> and  
Marc Schmidt  
Mr. and Mrs. G. Cleveland  
Hunt, Jr.  
Mr. Rex M. Hunt



**Inaugural Giving Day celebrates anniversary of Museum's first gift**

The Field conducted its first-ever Giving Day on October 28. The Museum reached out to friends, old and new, across social media. One hundred and forty-one people, most of them first-time donors, contributed more than \$30,000 in a single day. President Lariviere said, "We are grateful to Trustees Marshall Field V and Jamee Field Kane for their support and leadership in launching this endeavor."

Mr. and Mrs. John A. Hazelwood  
Mr. and Mrs. Eugene Heal  
Mr. and Mrs. Thomas S. Hebda  
Ms. Joyce E. Heidemann  
Janet and Bob Helman  
Dr. and Mrs. Marvin K. Henry  
Mr. and Mrs. Scott E. Hertenstein  
Melissa Hilton and  
Jonathan Perman  
Ms. Geraldine B. Hletko  
Mr. and Mrs. Fred Holubow  
Mr. and Mrs. Doug Hoogstra  
Mr. Glenn Hopkins  
Mrs. Elizabeth A. Hopp-Peters  
and Mr. Kurt T. Peters

Mr. Steve M. Isaac and  
Ms. Judy Olds  
Mr. and Mrs. Glynn Isoda  
Ms. Cheryl Istvan and  
Mr. Keith Daubenspeck  
Mr. and Mrs. John Jakob  
Mr. and Mrs. Sidney F. Jarrow  
Mr. and Mrs. James S.  
Jasionowski  
Mr. John D. Jawor  
Mr. and Mrs. Jerald L. Johnson  
Dr. Randon Johnson  
Mr. Robert Johnson  
Mr. Robert Johnson  
Mr. and Mrs. W. Bruce Johnson  
Mr. and Mrs. Douglas L. Jones

<sup>†</sup> Trustee <sup>‡</sup> Deceased <sup>‡</sup> Field Museum Employee

Mr. Jason Jong	Dr. Victor J. Magar and Ms. Deborah Oestreicher	Mr. Brian Olson	Mr. and Mrs. David A. Ruth
Mr. and Mrs. Christopher Jorgensen	Mr. and Mrs. Stephen J. Malkin	Mr. and Mrs. Norman Olson	Mr. and Mrs. Michael B. Sachs
Mr. Robert Kaplan	Ms. Nina Mann	Mr. Robert I. Osterberg	Mr. Bruce Sagan
Mr. and Mrs. Brian Kelly	Ms. Charlene Marcus	Dr. Lois R. Owens and Ms. Kimberly D. Owens	Mr. Norman L. Sandfield
Mr. and Mrs. Dennis J. Kelly	Peter Marks and Dorothy Mackevich Marks	Ms. Lisa J. Pattis	Mr. and Mrs. Fred Savaglio
Mr. Jamie Kelly <sup>E</sup>	Ms. Carmen Maso	Mr. Scott Pattullo and Ms. Jenny A. Johnson	Mr. and Mrs. John T. Schaff
Ms. Katharine Kelly	Mr. and Mrs. Richard P. Mayer	Mr. and Mrs. William B. Pearce	Dr. and Mrs. Morton O. Schapiro
Mr. Thomas Kichler	Mr. Raymond McBride	Mr. and Mrs. Frank Pensiero	Mr. and Mrs. Timothy J. Schilling
Mr. and Mrs. John J. Kinsella	Ms. Casey McCarthy	Mr. Sheldon Perlow and Mrs. Sandra Allen	Mrs. Jennifer Schmidt and Mr. Daniel Curry
Mr. and Mrs. Thomas L. Kittle-Kamp	Mrs. Michelle McCarthy	Ms. Bonnie S. Peters	Mrs. Lawrence K. Schnadig <sup>D</sup>
Dr. and Mrs. Jay H. Kleiman	Mr. and Mrs. Mark J. McCarville	Mrs. Sara Pfaff	Schnadig-Belgrad Foundation
Mr. Barry Kohl	Ms. Nancy A. McDaniel	Ms. Katherine Philippe	Mr. Richard Schreiner
Dr. and Mrs. Robert Kohrman	Mr. Aaron McGee	Mr. and Mrs. Burt Pickard-Richardson	Mr. and Mrs. Thomas J. Schultz
Ms. Valerie Kolesar	Ms. Agnes McKinney	Mr. and Mrs. Craig A. Pickenpaugh	Dr. Neena B. Schwartz
Mr. and Mrs. John E. Koliopoulos	Mrs. Leslie Gantz McLamore and Mr. Scott McLamore	Mr. and Mrs. Robert L. Pierce	Mrs. Marilyn L. Schweitzer and Mr. Michael A. Firman
Mr. Paul R. Kressin and Ms. Kay Lee	Ms. Joyce Meggett	Mr. and Mrs. Louis R. Pignotti, Sr.	Mrs. Dona Scott
Mr. and Mrs. Larry Krueger	Dr. Steven A. Melnyk	Mr. and Mrs. John Pincenti	Mr. and Mrs. G. Curtiss Shaffer
Mr. and Mrs. Michael J. Kuehl	Mr. and Mrs. Robert C. Merrick	Ms. Nancy Plax and Mr. Steven Schwartzman	Ms. Kate M. Sheehy
Mr. and Mrs. Alfred F. Kugel	Dr. and Mrs. Ernest E. Mhoon, Jr.	Mrs. John W. Pocock	Sidley Austin LLP
Mr. William H. Kurtis <sup>T</sup> and Ms. Donna La Pietra	Mr. and Mrs. Jan Miecznikowski	Ms. Cynthia Polayes	Louis and Nellie Sieg Fund
Emerson and Martha Lacey	Mr. and Mrs. Michael E. Mikolajczyk	Mr. and Mrs. Charles S. Potter, Jr.	Ms. Bette H. Sikes
Ms. Deborah M. Lader and Mr. Michael L. Silver	Dr. and Mrs. Robert P. Miller	Ms. Lee B. Price	Mr. and Mrs. Alejandro Silva, Jr.
Mr. and Mrs. Dirk B. Landis	Mr. and Mrs. Thomas M. Monahan	Mr. and Mrs. John B. Priest	Mr. Daniel H. Silverstein
Mr. William W. Lane	Mr. Robert V. Monfort	Ms. Kristin Prohl	Mr. and Mrs. Jeffrey Skender
Mr. Albert K. Larsen	Mr. and Mrs. Gerald W. Moore	Mr. and Mrs. William Radzevich	Ms. Maureen M. Slavin
Mrs. Winfred M. Leaf	Mr. and Mrs. Leon W. Moore	Mr. and Mrs. Todd Range	Mr. and Mrs. Robert W. Smolen
Mr. William M. Lee, Jr.	Mr. Peter Moran	Mr. and Mrs. Mark A. Ratner	Ms. Peggy Snorf
Mr. Glenn Lefkovitz	Mr. and Mrs. John A. Morris	Ms. Mae Rhodes	Mr. and Mrs. Dan W. Snyder, Jr.
Mr. and Mrs. Sigmund Lefkovitz	Vijai K. Moses and Dr. Raj Lartius	Mr. Richard W. Richardson	Mr. Keith Solomon and Ms. Elana Beckerman
Mr. and Mrs. Donald Lewis	Dr. Raj Lartius	George Rimnac and P. Rimnac	Mr. and Mrs. Ron Sonenthal
Mr. and Mrs. Robert E. Lindgren	Ms. Dorothy Mulholland	Mr. and Mrs. Richard H. Rinehart	Mr. and Mrs. James Stanczak
Mr. and Mrs. Bert H. Lindstrom	Mr. and Mrs. James G. Murphy	Ms. Marilyn Rohn	Mr. and Mrs. Leon C. Stecher
Ms. Kristin Lingren	Mr. and Mrs. James Murray	Mr. James Rollins	Ms. Dawn Stiers
Mr. and Mrs. Mark A. Livengood	Mr. and Mrs. John Nalbach	Mr. Howard J. Romanek and Mr. Irwin Romanek	Mrs. Harriet C. Stone
Mr. Joseph F. Lizzadro and Dr. Jennifer Lebbin	Mr. and Mrs. Neil C. Nelson	Mr. and Mrs. Harry B. Rosenberg	Steven Strohmeier <sup>E</sup>
Mr. Dominic Lomoro	Mr. and Mrs. Jonathan B. Newcomb	Rosenson Foundation	Mr. and Mrs. Theodore A. Struve
Mr. and Mrs. William S. Macdonald	Ms. Marjorie Newman	Mr. and Mrs. Robert J. Ross	Ms. Usha Subramanian <sup>E</sup> and Mr. Deepak Raghunathan
Mr. and Mrs. Bernard A. Mack, Jr.	Mr. and Mrs. Ray E. Newton	Mrs. Donald I. Roth	Mr. and Mrs. Scott Swanson
Mr. and Mrs. C. Patrick MacLeod	Ms. Mary C. Niehaus	Mrs. Elizabeth D. Rothermel	Mr. and Mrs. Gregory T. Taylor
	Ms. Anne Nobles and Mr. David L. Johnson		Mr. and Mrs. R. F. Teerlink
	NRG Energy		Mr. and Mrs. Mitchell Theys
	Mr. and Mrs. Ivan M. Odom		Mr. and Mrs. Nick Thomas
	Mr. Christopher Olofson		



Dr. Margaret B. Tinzmann and Mr. Otto Tinzmann  
 Ms. Sally L. TreKell  
 Mr. and Mrs. John P. Tubutis  
 Mr. and Mrs. John E. Tulley  
 Mr. and Mrs. Enrique J. Unanue Murray & Virginia Vale Foundation  
 Mr. Peter M. Vale  
 Mr. and Mrs. James Vallely  
 Mr. and Mrs. J. V. Van Cura, Jr.  
 Mr. and Mrs. John E. Van Horn  
 Mr. Shawn K. VanDerziel<sup>F</sup> and Mr. Jay Clarke  
 Mr. and Mrs. Nicholas VanHolsbeke  
 Mr. Ryan VanHolsbeke  
 Ms. Joan Walton-Moore  
 Mr. and Mrs. Eric D. Wanger Robert Wanger  
 Mr. and Mrs. Ed Watkins  
 Mr. and Mrs. Gary W. Watt  
 Mr. and Mrs. Brian B. Whalen  
 Mrs. April R. Wilson  
 Mr. and Mrs. Gary Wilson  
 Mr. and Mrs. Gregory Wintroub  
 Mr. Robert F. Wisniewski  
 Carl Wolf and Jennie Sochon  
 Michael Wright  
 David and Kay Wulf  
 Mrs. Nancy Wulfers  
 Mr. Geroge R. Wunder and Ms. Carole E. Mattes  
 Mr. Kenneth A. Youga  
 Mrs. George B. Young  
 Mr. and Mrs. Phillip C. Zarcone  
 Mr. and Mrs. Hugh Zentmyer  
 Mr. and Mrs. Bruce Ziegler  
 Mr. and Mrs. William B. Zigterman

\$250-499  
 Anonymous (13)  
 Mr. and Mrs. Brian Abrams  
 Mr. Roger S. Adamek  
 Mr. Cyrus H. Adams  
 Mrs. Keene H. Addington II  
 Barbara and Steven Adelman  
 Mr. and Mrs. David L. Ader  
 Ms. Susan S. Adler

Ms. Julieta Aguilera  
 Mrs. John J. Ahearne  
 Ms. Judith A. Akers  
 Mr. James Albertone and Mr. Robert Cunningham  
 Mr. and Mrs. Thomas J. Allison  
 Mr. and Mrs. Michael Altman  
 The Anderson Law Firm, LLC  
 Mr. Joshua Anderson  
 Mr. and Mrs. Matthew D. Anderson  
 Mr. and Mrs. Stephan Angel  
 Chaiyaraj Anuchitworawong  
 Ms. Ruth Archer and Mr. Jim Helke  
 Mrs. Rebecca I. Armatis-Furr and Mr. Jonathan Furr  
 Mr. and Mrs. Bruce T. Armstrong  
 Ms. Mary M. Armstrong  
 Mr. and Mrs. Carl Aronson  
 Mr. and Mrs. Delbert W. Arsenault  
 Ms. Ann Griffith Ash  
 Mr. and Mrs. John Atkinson  
 Mr. and Mrs. Cooper Babich  
 Mr. and Mrs. William Bach  
 Mr. and Mrs. Kevin Backus  
 Mr. Bruce Baker  
 Mr. and Mrs. Dan Baker  
 Mr. and Mrs. Gregory Ball  
 Dr. Eugene L. Balter and Ms. Judith R. Phillips  
 Mr. and Mrs. Mervin R. Barnes  
 Ms. Frances Barrett  
 Dr. Susan Barrett  
 Carlo Basile and Kim Basile  
 Ms. Lauren Bateman  
 Alben F. Bates and Clara G. Bates Foundation  
 Ms. Russena Bautista  
 Mr. John M. Beal  
 Mr. William T. Beck and Ms. Doreine Carson  
 Mr. and Mrs. Robert D. Becker  
 Reverend and Mrs. William C. Beckmann  
 Mr. and Mrs. William Bedford  
 Mr. and Mrs. Jeffrey Beech  
 Ms. Nancy Behrendt  
 Mr. Roy Benedek

Mr. and Mrs. Stephen E. Benefiel  
 Arlene and Wayne Bennett  
 Mr. Matthew Benoit and Dr. Cathleen Dohrn  
 Mr. and Mrs. Peter B. Bensinger  
 Mr. and Mrs. Robert A. Benziger  
 Dr. and Mrs. Michael Bercek

Dr. and Mrs. Henry S. Bienen  
 Dr. Michael D. Bishop  
 Mr. and Mrs. Frank L. Bixby  
 Mr. and Mrs. Richard B. Black  
 Mr. James Blanchet  
 Mr. and Mrs. Jay S. Bleecker  
 Mrs. Joan Blew



**THE BRAIN SCOOP  
PROJECT HYENA DIORAMA**

**Hyenas find new home**

In 2015, The Field Museum launched Project Hyena Diorama, a six-week online crowdfunding initiative. The campaign resulted in \$155,000 from more than 1,500 donors around the world. Many supporters learned about Project Hyena Diorama through The Brain Scoop, hosted by Chief Curiosity Correspondent Emily Graslie. The phenomenal public support funded the creation of the Museum's first habitat diorama in more than 60 years. The Field's four striped hyena specimens were originally collected in 1896 and mounted in 1899 by Carl Akeley. Project Hyena Diorama created new attention for the Museum and its famous habitat dioramas.

Mr. and Mrs. William Bergland  
 Mr. and Mrs. Tom Beris  
 Dr. and Mrs. Leonard Berlin  
 Dr. and Mrs. Victor M. Bernhard  
 Mrs. Lieselotte N. Betterman  
 Mr. and Mrs. Kevin Betton  
 Mr. and Mrs. Sam Bianco  
 Mr. William E. Bible  
 Ms. Lois J. Bider

Ms. Katherine Bliss and Mr. Jerry James  
 Mr. Jan Blok and Ms. Laura Melcher  
 Mr. and Mrs. Stephen J. Bloom  
 Mr. and Mrs. Irwin A. Blumensaadt, Jr.  
 Mr. Jerry V. Bobek, Jr.  
 Mr. and Mrs. Anthony Bochniak  
 Ms. Georgia Bockos

<sup>T</sup> Trustee   <sup>D</sup> Deceased   <sup>F</sup> Field Museum Employee

Mr. and Mrs. Erwin F. Bogs  
 Dr. Therese M. Bogs and  
 Mr. W. Haser  
 Mr. and Mrs. George Bohling  
 Mrs. Carl J. Bohne, Jr.  
 Mr. Tim Bolduc  
 Ms. Brienne Bolin  
 Mr. Daniel A. Bolm and  
 Mrs. Peggy J. Keating-Bolm  
 Mr. and Mrs. Thomas C. Boltik  
 Dr. and Mrs. Michael  
 Bommarito  
 Mr. Marcello Bondurant  
 Mr. and Mrs. Laurence O.  
 Booth  
 Ms. Melissa Bornstein  
 Mr. and Mrs. David Borosh  
 Mr. Loren Bowns and  
 Ms. Cynthia Bowns

Ms. Lynn Bromstedt  
 Mr. and Mrs. Jeff Brosdal  
 Ms. Shannon E. Brown  
 Ms. Shirley Brown-Berchou  
 Mr. and Mrs. Archibald T.  
 Bryant  
 Mr. and Mrs. Clint Bucher  
 Mr. and Mrs. Joshua T.  
 Buchman  
 Dr. Stephen J. and  
 Mrs. Susan P. Buck  
 Ms. Jo Ann Budde  
 Mr. Timothy J. Burroughs and  
 Ms. Barbara Smith  
 Mr. and Mrs. Michael Busch  
 Mr. Paul Butler Diaz, Jr.  
 Eileen Cahill and Family  
 California Academy of  
 Sciences

Mrs. Jane Dunlap Carver  
 Mrs. Constance Casey  
 Mr. and Mrs. Scott Caudell  
 Ms. Michele Chaffee and  
 Mr. Adam Nordin  
 Mr. Benjamin Chang  
 Mr. and Mrs. Wilfred P.  
 Chapleau III  
 Mr. and Mrs. Walter Chase  
 Mrs. Susan W. Chemler and  
 Mr. Tom Chemler  
 Mr. and Mrs. Thong M. Cheng  
 Mr. Thomas Chin and  
 Ms. Cheryl Yuen  
 Mr. and Mrs. James N. Chodora  
 Mr. and Mrs. John A. Chojnicki  
 Ms. Emily J. B. Christian and  
 Mr. John Christian  
 Mr. and Mrs. R. Lee Christie

Mr. and Mrs. Joseph Cofield  
 Mr. and Mrs. Martin J. Cohen  
 Mr. William S. Cohen  
 Mr. and Mrs. Stanley Cohn  
 Thomas and Annette Cole  
 Mr. Jonathan Colledge  
 Ms. Dorothy A. Collin  
 Ms. Kathleen Collins and  
 Mr. Charles Newell  
 Dr. and Mrs. Roosevelt D.  
 Collins  
 Mr. and Mrs. Terrence Collins  
 Ms. Joan Colmar  
 Mrs. Gladys E. Connolly  
 Mr. Edmond Constantinescu  
 Mr. Mark D. Contratto  
 Mr. and Mrs. Mercer Cook  
 Mr. Blake Cooper and  
 Ms. Sarah Keedy



### Field recognized for energy and environmental design

The Field became one of only a few museums in the nation to earn LEED (Leadership in Energy and Environmental Design) Gold certification for Existing Buildings Operations & Maintenance. The certification is a major achievement for a 94-year-old building with more than 480,000 square feet. Renovations in the past few years, including the installation of solar panels on the roof and the implementation of a composting program, have improved efficiency and reduced waste at the Museum. The Field is proud to be an environmentally-conscious institution in its daily operations.

Mrs. Barbara A. Boyer  
 Dr. and Mrs. Bruce H. Boyer  
 Mr. and Mrs. Dennis E. Bozych  
 Dr. and Mrs. David Bradley  
 Ms. Maria Brandon and  
 Mr. Randy Burrow  
 Tim<sup>E</sup> and Julie Bratley  
 Mrs. Marie Brelin  
 Ms. Marjorie Brennan  
 Christina Breslow<sup>E</sup>  
 Mr. and Mrs. Mark E. Brickman  
 Mr. Steven Brint  
 Mr. Charles T. Brockmann

Ms. Judith A. Caloud  
 Ms. Marie T. Campagna  
 Mr. and Mrs. Michael S.  
 Canmann  
 Mr. Leslie P. Capri  
 Mr. and Mrs. Thomas M.  
 Carmazzi  
 Mrs. Robert Adams Carr  
 Mr. and Mrs. Robert E. Carroll  
 Ms. Elizabeth A. Carter  
 Mr. and Mrs. Steven C. Carter  
 Mr. and Mrs. Milton Blouke  
 Carus

Ms. Maryllyn Chrystal and  
 Ms. Sarah Chrystal  
 Mr. and Mrs. Howard Chun  
 Mrs. Margaret R. Chung  
 Ms. Josephine S. Chyatte  
 Mr. and Mrs. Randall Clark  
 Mr. and Mrs. Steven L. Clark  
 Mrs. Diane D. Clarke  
 Mr. and Mrs. Albert C. Claus  
 Sharon L. Cline and  
 Robert W. Tatro  
 Mr. and Mrs. John E. Clisham  
 Mr. and Mrs. Gary Cloudman  
 Mr. Benjamin A. Coats

Mr. Marc Cooperman and  
 Mrs. Christine Igo  
 Ms. Julia Corcoran and  
 Mr. Hector Melin-Aldana  
 Mr. Mathew A. Cotton  
 Ms. Noreen Coyan and  
 Mr. Donald L. Simmonds  
 Mr. and Mrs. Thomas W. Coyle  
 Ms. Susan Craft  
 Mr. and Mrs. Christopher M.  
 Crane  
 Ms. Susan M. Crowell and  
 Ms. Kathleen Cooke  
 Ms. Yvonne M. Curbis  
 Mrs. Louise H. Curry

Dr. and Mrs. Arthur W. Curtis, M.D.	Mr. and Mrs. Robert S. Dobis	Ms. Irene Falout	Mr. James A. Galloway
Mr. and Mrs. David V. Curtis	Leonard and Patricia Dominguez	Mr. and Mrs. James Fanuzzi	Mr. Donald C. Gancer
Dr. and Mrs. Anthony B. D'Souza	Mr. and Mrs. John Donato	Mr. and Mrs. W. J. Farrell	Dr. Ronald J. Ganellen and Dr. Natalia S. Pascal
Mr. and Mrs. James M. Daly II	Mr. and Mrs. Joseph E. Doninger	Mr. Carl B. Fausey	Mr. and Mrs. Roger Gansauer
Robert and Cathy Daly	Mr. and Mrs. Richard Doonan	Ms. Julie A. Federico and Mr. Alton Jay Mitchell	Ms. Jan Garcia and Ms. Natalia Guzman
Mrs. Kenneth W. Dam	Mr. Michael P. Doran	Dr. Frederick N. Fedorchak and Ms. Veronica T. Kacmar	Ms. Kendra Garstka
Mr. and Mrs. John M. Damas	Mr. and Mrs. Keith Dorman	Dr. John D. Ferguson and Ms. Elizabeth H. Zimmerman	Mr. and Mrs. John Gately
Mr. and Mrs. Ron Damashek	Mr. George R. Dowell	Mr. and Mrs. Jose L. Ferrer	Mr. James Gaughan and Ms. Ann Hoffman
Mr. Michael Danforth and Ms. Eva Nielsen	Ms. Tanja Dower	Mr. and Mrs. Raymond R. Fessler	Ms. Hildegard H. Geiger
Jackie and Donald R. Dann	Mr. and Mrs. James Downey	Mr. and Mrs. Conrad T. Fialkowski	Mrs. Marylou Georgis
Mr. and Mrs. Robert J. Darnall	Mr. V. Michael Drayton	Mr. and Mrs. Robert W. Fick	Mr. and Mrs. Isak V. Gerson
Ms. AJ Darneal	Mr. Thomas A. Drebenstedt and Ms. Kathy Chilis	Dr. and Mrs. Terrance E. Fippinger	Mr. and Mrs. William Gillespie
Mr. and Mrs. Bruce Davidson	Mr. George D. Driggers	Mr. and Mrs. James G. Fitzgerald	Mr. Peter Ginn
Kent and Susanne Davis	Mr. and Mrs. Harry W. Drucker	Mr. and Mrs. Dale Fleming	Ms. Mandy Gittler
Mr. and Mrs. Stan Day	Mr. Joseph H. Drummond	Mr. and Mrs. Peter L. Flemister	Mr. and Mrs. Thomas F. Glennon
Mr. and Mrs. Dennis De Brueler	Mr. Michael S. Dublak and Mrs. Sharon M. Authier	Mr. and Mrs. Geoffrey A. Flick	Ms. Paula Glitman and Mr. Doug Stone
Mr. Pierre De Smul and Dr. Carol De Smul	Ms. Kristin Dudek	Ms. Dorothy M. Flisk	Ms. Maureen Glynn
Mr. and Mrs. William W. Dean	Ms. Janet M. Dudgeon	Mr. Kenneth Floody and Ms. Elizabeth Freebairn	Mr. Richard Gnaedinger
Mr. and Mrs. Mark D. Deaton	Mr. and Mrs. Ferne L. Dungan	Mr. Jeffrey Floresca	Ms. Roxanna Goebel
Ms. Diana L. DeBoy	Mr. Laurence Dunn	Dr. James and Martha Foght	Mr. and Mrs. Samuel D. Golden
Mrs. and Mr. Anne DeCastro	Ms. Diane Dyer-Neely	Mr. Liam T. Ford and Ms. Ann R. Weiler	Rabbi Douglas H. Goldhamer and Ms. Peggy L. Bagley
Mrs. Carla M. Dehmlow	Ms. Glenna R. Eaves and Mr. Christopher J. Boebel	Mr. and Mrs. William A. Forgette	Ms. Mary Golf
Mr. Jack Delaney	Ms. Diane S. Edlefson and Mr. Phil Harler	Mr. and Mrs. James W. Forhan	Mr. and Mrs. O. R. Goltra
Ms. Judith A. DeLeon	Ms. Margaret M. Eiden	Mr. and Mrs. George W. Forrest	Mrs. Carolina Goncalves
Mr. and Mrs. Charles Dennehy	The Robert G. Eiserman Family	Mr. and Mrs. James E. Forrest	Mr. and Mrs. Gene M. Gooding
Mr. and Mrs. Shawn Dennison	Mr. J. Thomas Eller	Mr. and Mrs. Victor Fraccaro, Jr.	Mr. and Mrs. Alex Gordon
Dr. and Mrs. Eugene R. DeSombre	Ms. Lilly Eng	Dr. and Mrs. Alvin L. Francik	Mr. Gary Gordon and Ms. Marilyn Hirsch
Ms. Doris Devine	Mr. and Mrs. Wayne Eng	Mr. and Mrs. William D. Franz	Ms. Eve M. Gorman
Mr. William Dewoskin	Mr. and Mrs. Dan Engel	Mrs. Anne Fraumann	Mrs. and Mrs. Kay A. Goss
Mr. Heath Deyo and Ms. Bevin Desmond	Mr. Mark Engels	Mr. and Mrs. Earl J. Frederick	Ms. Susan Gotsch
Mr. and Mrs. Philip Diamond	Mr. and Mrs. Carl England	Mr. and Mrs. Sadgio Fredianelli	Mr. and Mrs. Numa R. Gottardi-Littell
Mr. and Professor William Diaz	Ms. Lynne England	Mr. Gerald Freedman and Ms. Elizabeth Sacks	Mr. Robert Gourley
Ms. Amy T. Dickinson and Mr. Jim Futransky	Philip Enquist and Joanna Karatzas	Mr. and Mrs. Paul Freehling	Ms. Patricia A. Gowland
Ms. Leonora Dickson	Mr. Gary Epling	Mr. and Mrs. John F. Freund	Terry Grace and Judith Gaietto-Grace
Ms. Louise E. Dieterle	Mr. and Mrs. John B. Evans	Dr. Karen Friedman	Mr. and Mrs. William Graham
Ms. Samantha Dietz	Dr. and Mrs. Richard H. Evans	Mr. and Mrs. David Fryrear	Dr. Lance Grande <sup>E</sup>
Mr. and Mrs. William Differding	Mr. and Mrs. Scott Evans	Mrs. Muriel G. Fulton	Mr. and Mrs. Tom Graslie
Ms. Patricia Ann Dihel	Ms. Diana H. Fagan	Ms. Katharine Funkhouser	Mr. Brian Gray and Ms. Melissa Greenberg
Dr. and Mrs. John R. Dimar	Mr. and Mrs. Thomas Fahrenbach	Dr. Sylvia E. Furner	Mr. and Mrs. Richard Gray
Mr. William D. Dini	Mr. and Mrs. Albert J. Falasz	Mr. and Mrs. John Gage	Mr. James C. Green
Mr. and Mrs. Paul F. Dittmann	Mr. and Mrs. Arthur Falk	Mr. Gregory J. Gajda	
Ms. Laurita Doane	Mr. Daniel G. Falotico		

<sup>T</sup> Trustee   <sup>D</sup> Deceased   <sup>E</sup> Field Museum Employee

Mr. and Mrs. William W. Green III  
 Mr. and Mrs. John Greenwald  
 Mr. and Mrs. Mark J. Greenwood  
 Mr. Brian Gregory  
 Leslie Grider and Erin Grider  
 Ms. Catherine A. Griffin  
 Mr. and Mrs. Robert M. Grimm  
 Mr. John F. Grobe  
 Mr. Larry Grote  
 Mr. Steve Guajardo  
 Ada Mary Gugenheim and Jon N. Will  
 Mr. Alfred H. Guhl  
 Ms. Jennifer Guskey  
 Mr. Antonio Gutierrez and Ms. Brenda Payan  
 Mr. and Mrs. Dean L. Haas  
 Mr. Robert A. Habermann  
 Mr. Stanton T. Hadley  
 Mr. and Mrs. Mervin D. Hagen  
 Mr. and Mrs. John Hague  
 Mr. and Mrs. Joshua D. Hale  
 Ms. Holley Hall  
 Mr. Christopher J. Hallett and Ms. Jackie Lustig  
 Mrs. Elizabeth W. Halpern  
 Ms. Anthea Halsey  
 Mr. and Mrs. Preston Hamilton  
 Mr. Bryan Hamm  
 Mr. Michael Hammerman  
 Mr. and Mrs. Thomas J. Hammerman  
 Mr. and Mrs. M. Hill Hammock  
 Mr. and Mrs. Michael S. Hammond  
 Dr. Lanshan Han and Dr. Lili Du  
 Mr. and Mrs. John S. Hand  
 Dr. Chester S. Handelman and Mrs. Phyllis Handelman  
 Mr. Larry L. Hanes  
 Mr. Joseph R. Hanley and Ms. Kristy L. Mardis  
 Dr. Luke Hanley and Ms. Debran Rowland  
 Mr. Mel Harch  
 Mr. Andrew Hardy  
 Mr. Jaime Harmon and Ms. Michelle Clark  
 Harms Family Fund  
 Ms. Mattie H. Harris

Mr. and Mrs. Ralph Harris  
 Ms. Joyce A. Harty  
 Mr. and Mrs. Edward D. Hatcher  
 Mr. and Mrs. Martin F. Hauselman  
 Mr. and Mrs. Allan Hausfeld  
 Mr. Thomas Hawkins  
 Mr. and Mrs. Duncan Healy  
 Lawrence R. Heaney, PhD<sup>E</sup>  
 Mr. Michael Heaney  
 Mr. and Mrs. John Heaphy  
 Mr. and Mrs. F. Thomas Hecht  
 Mrs. Bette Heide  
 Mr. and Mrs. David J. Height  
 Mr. and Mrs. John Henderson  
 Mr. and Mrs. Jack Henkin  
 Mr. and Mrs. James P. Hepp  
 Mr. and Mrs. Paul M. Herkes  
 Mr. and Mrs. Joseph Hernandez  
 Mr. Paul D. Hewitt  
 Mr. and Mrs. Tim Heyen  
 Mr. and Mrs. Luis Hidalgo  
 Mr. Daniel P. Hidding  
 Mr. and Mrs. Howard E. Hight  
 Mrs. Melissa E. Genova Hill and Mr. Joel Hill  
 Mr. Peter Hill  
 Mrs. Edward M. Hines  
 Mr. Dan Hislop  
 Ms. Kathleen Hoban  
 Mr. and Mrs. Thomas H. Hodges  
 Mr. and Mrs. James M. Hohner  
 Edward and Jo Ann Holba  
 Mr. Craig J. Holderness  
 Mr. and Mrs. Dean T. Honda  
 Honeywell International  
 Mr. and Mrs. Joel D. Honigberg  
 Mr. Thomas A. Hootman and Ms. Pamela J. Sisler  
 Mr. and Mrs. Thomas J. Hope  
 Mr. and Mr. Thomas Hopkins  
 Mr. and Mrs. Michael L. Horsley  
 Mrs. Laurie W. Howick  
 Ms. Chishiang Hsu and Mr. Taylor Tian  
 Mr. and Mrs. David Hubbard  
 Dr. and Mrs. Michael S. Huckman

Mr. Pat Hughes and Ms. Brigid Hughes  
 Mr. and Mrs. Phillip D. Hulben  
 Human Resources Management Association of Chicago  
 Mrs. Diane S. Humphrey  
 Mr. and Mrs. James W. Hunt  
 Mr. and Mrs. Jeffrey L. Hunt  
 Mr. and Mrs. Christopher Hurley  
 Mr. and Mrs. Mark A. Isaily  
 Mr. and Mrs. Roland L. Jabotte  
 Mr. and Mrs. Jeffrey Jackson  
 Dr. Judith M. Jackson and Dr. Dannielle G. Jackson  
 Kristen and Josh Jacobs  
 Mrs. Marian Jacobson  
 Mr. and Mrs. John Jacoby  
 Mr. and Mrs. Robert A. Jahnke  
 Dr. Kenneth James  
 Mr. and Mrs. Paul A. James  
 Ms. Janice A. Jarnholm  
 Mr. and Mrs. Andrew M. Jarosz  
 Ms. Catherine A. Jaselskis and Mr. Gary G. Alberts  
 Mrs. and Mr. Nadia B. Jelinek  
 Mr. and Mrs. Terrence J. Jelinek  
 Ms. Nancy M. Jimenez and Mr. Rafael A. Jimenez  
 Ms. Judy Johanson  
 Mr. Carl W. Johnson and Mrs. Laura M. Bloom-Johnson  
 Dr. Maryl R. Johnson  
 Dr. and Mrs. Robert E. Johnson  
 Mr. and Mrs. Daniel H. Jones  
 Ms. Erma Jones and Mr. Philip Friedman  
 Mr. and Mrs. Kenneth P. Jones  
 Mr. and Mrs. Robert A. Jones, Jr.  
 Mr. Richard W. Josed  
 Mr. and Mrs. Paul R. Judy  
 Mr. and Mrs. Richard Juro  
 Mr. and Mrs. Tom F. Kacprowicz  
 Miss Judith Kadish  
 Ms. Jill M. Kainu  
 Ms. Sandra Kalemba  
 Ms. Kathleen G. Kallan  
 Dr. Sona Kalousdian and Dr. Ira D. Lawrence  
 Mrs. Karen A. Kammer

Mr. Zachary Kanarr  
 Dr. Mary G. Kane and Mr. Vern Kerchberger  
 Mrs. Lily Kanter  
 Mr. and Mrs. John A. Karoly  
 Mr. and Ms. Joseph Kartheiser  
 Ms. Verla Kasmerchak  
 Ms. Karen Kass and Ms. Kimberly Spagui  
 Mr. and Mrs. William O. Kasten  
 Ms. Kimberly Kavala and Mr. Brian Smith  
 Ms. Ami Kawanaga and Mr. Thomas Kurowski  
 Mr. and Mrs. Kevin Kearney  
 Mr. and Mrs. Michael G. Keck  
 Ms. Denise A. Kelley  
 Mr. and Mrs. Austin Kelly  
 Mr. and Mrs. William H. Kelly, Jr.  
 Ms. Miriam J. Kelm  
 Gaye Lovett Kelsey  
 Mr. and Mrs. Terrence Kennedy  
 Mr. and Mrs. Harrison Kennicott  
 Dr. Susan B. Kern and Ms. Alex Yamron  
 Ms. Kate T. Kestnbaum  
 Mr. Kevin Ketvertis  
 Dr. and Mrs. Alan C. Keyes  
 Mr. Brad Kimme and Ms. Sara Phalen  
 Mr. and Mrs. Edwin F. Kindig  
 Mr. and Mrs. James P. King  
 Mr. James R. King  
 Ms. Niamh King  
 Mr. and Mrs. Albert Kircher, Jr.  
 Mr. and Mrs. James R. Kirk  
 Mr. and Mrs. William T. Kirk, Jr.  
 Ms. June A. Kirwan  
 Mr. and Mrs. Frank L. Klapperich, Jr.  
 Mr. Mark Klausing  
 Ms. Anne V. Klecka  
 Mr. Keith Kleehammer and Ms. Cheryl Sweeney  
 Mr. Jim Kline  
 Dr. and Mrs. Thornton C. Kline, Jr.  
 Mr. Joseph J. Klug  
 Dr. Edward T. Klunk  
 Ms. Judith L. Knie

Mr. Timothy B. Knuth and  
Ms. Elizabeth Tate  
Ms. Lottie J. Kobza  
Ms. Sibyl Kobza and  
Ms. Laura L. Kobza  
Mr. and Mrs. Melvin J. Koenigs  
Mr. and Mrs. John Kohler  
Mr. and Mrs. Shohei Koide  
Mr. and Mrs. Robert D. Kolar  
Mr. Ernest Konker  
Mr. Stanley L. Korwin and  
Ms. Nancy J. Hall  
Mr. and Mrs. Robert S. Kosin  
Mr. Joseph A. Kosinski  
Mr. and Mrs. Kelly Kost  
Mr. John A. Kotten  
Mr. Thomas Koutsouf and  
Ms. Renee Sotos  
Ms. Regina Krakowski  
Ms. Nancy Kras  
Mr. and Mrs. Jeffrey M. Krasner  
Mr. Rob Krause and  
Mrs. Lisa W. Jones  
Mr. and Mrs. James R. Krick  
Mr. and Mrs. Jeffrey A.  
Krizelman  
Mrs. William J. Kristy  
Mr. and Mrs. Brian Krob  
Mr. and Mrs. Larry S. Krucoff  
Mr. James M. Krueger  
Mr. Brian L. Kruse and  
Ms. Alyson Koblas  
Mr. and Mrs. David Kuck  
Mr. Satyajit Siddharth Kumar  
Ms. Jennifer Kunkel and  
Ms. Brook Enhelder  
Mr. and Mrs. Walter W.  
Kurczewski  
Ms. Lynne La Jone and  
Mr. Chris Mollet  
Mr. and Mrs. Philip E. Lake  
Mr. Charles Lamb  
Mr. Craig Landon  
Mr. Frederic S. Lane  
Ms. Susan Lannin and  
Mr. Albert Ettinger  
Ms. Christine J. Laperuto and  
Mr. William J. Roznowski  
Mr. and Mrs. Charles W. Larsen  
Mr. and Mrs. David R. Larson  
Ms. Cheryl Laske

Mr. Anthony Lauer  
Ms. Linda S. Lauterbach  
Ms. Cara J. Law  
Ms. Michelle D. Layman  
Mr. and Mrs. David C. Lazar  
Ms. Cathy G. Lazaroff  
Mr. and Mrs. John H. Leach  
Mr. Aaron Lebovitz and  
Ms. Donna Myers  
Ms. Anita Lees and  
Ms. Lisa Lees  
Mr. Paul A. Lehman and  
Ms. Ronna S. Stamm  
Mr. and Mrs. Kurt A. Lentsch  
Mr. and Mrs. David L. Lentz  
Mr. and Mrs. Vincenzo O. Leone  
Mr. Jack Lerman and  
Mrs. Elise Pike Lerman  
Mr. Barry Lesht and  
Ms. Kay Schichtel  
Ms. Joanna Lesna and  
Mr. Darryl Wilson  
Mr. and Mrs. Gary Lessenberry  
Mr. Jay S. Levey  
Mr. and Mrs. John G. Levi  
Ms. Carolyn S. Levin  
Mr. and Mrs. Kenneth C. Lewin  
Mr. and Mrs. Nick Lewis  
Lewis-Sebring  
Family Foundation  
Mr. Gilbert Lichstein and  
Mrs. Ruth Czarnecki-Lichstein  
Dr. and Mrs. David B. Lieb  
Mr. Charles N. Lindsey and  
Mr. Zikri Yusof  
Mr. and Mrs. William F. Lloyd  
Mr. and Mrs. J. William Locke  
Mr. Brian Lockner  
Mr. Charles Lofgren  
Dr. and Mrs. Eugene B. Loftin  
Mr. and Mrs. Dermot Logan  
Ms. Marie Lona  
Shery and Mel Lopata  
Ms. Holly Lowe  
Mr. and Mrs. Gavin Lowrey  
Ms. Kristina Y. Lugo<sup>E</sup>  
Mrs. Pamela A. Lunsmann and  
Ms. Kelly Englum  
Ms. Sara Lyons  
Mr. Allan Maca

Ms. Judith L. Macior  
Mr. and Mrs. Craig A. Mackrides  
Mr. and Mrs. Duncan A.  
MacLean  
Mr. and Mrs. Steve Magenta  
Mr. and Mrs. Greg P. Malnick  
Alexandra Margo Malos  
Mr. and Mrs. Ira Marcus  
Mr. Jeffrey Margolis

Mr. and Mrs. John Martini  
Mr. Wallace Massie  
Mr. John R. Masters and  
Ms. Carmella Cottonaro  
Mrs. Donald W. Mather  
Mr. and Mrs. James R. Mather  
Mr. and Mrs. Verghese Mathew  
Mr. Wesley D. Matthews and  
Mrs. Viviana Matthews



**In memory of Stanton R. Cook**

The Field Museum mourns the passing of Stanton R. Cook, a distinguished member of the Board of Trustees since 1973. Mr. Cook was a remarkable leader serving on the Executive Committee, the Program Planning and Evaluation Committee, and the Facilities Planning Committee. He and his late wife Barbara supported the Field for more than 40 years and were charter members of the Founders' Council. Mr. Cook was a legend in the news publishing and television business, and was the former CEO of the Tribune Company.

Mrs. Cynthia Mark-Hummel and  
Mr. John Hummel  
Mr. and Mrs. David Markovitz  
Mr. Paul Marquez and  
Ms. Cindy Rangel  
Mr. and Mrs. Anthony Marten

Dr. Julie L. Mattson and  
Dr. Richard A. Mattson  
Mr. and Mrs. George A.  
Matwyslyn  
Ms. Joan M. Mazurek  
Mr. and Mrs. Russell McConnell

<sup>T</sup> Trustee   <sup>D</sup> Deceased   <sup>E</sup> Field Museum Employee

Mr. Stuart A. McCrary and Ms. Nancy L. Davis	Mrs. Carole Morey and Mr. Stephen Dudek	Mr. and Mrs. Richard H. Nicolaides, Jr.	Mr. and Mrs. Bruce Palmer
Mr. and Mrs. Michael McCullough, Jr.	Mr. William A. Morgan and Mrs. Gwen Herrin	Ms. Hilda Nieves and Mr. Barry Abrams	Mr. Philip Pappas and Dr. Ana Lucia Pappas
Mrs. Sherry L. McFall and Mr. Kenneth J. Porrello	Mr. and Mrs. David D. Morimoto	Carol M. Nigro	Ms. Phyllis Parish
Mr. and Mrs. G. Thomas McKane	Mr. and Mrs. Rick Morimoto	Ms. Alice Niziolek	Ms. Cheryl Parker
Ms. Amy McKeough and Maxwell McKeough	Ms. Sabrina R. Morton	Mr. Raymond L. Noftsger and Dr. Tina Forchetti	Mrs. Eleanor Parker
Pat McMahon and L.W. McMahon-Padolski	Russell S. and Sydney G. Mosburg Fund	Mr. and Mrs. Ryan Nord	Mr. William Parkhurst
Ms. Danielle McMillan	Mr. Robert Moyer and Ms. Anita Nagler	Mr. and Mrs. Kenneth R. Norgan	Mr. and Mrs. Robert D. Parks
Ms. Sandy D. McNabb and Ms. Elizabeth A. Godwin	Dr. Barbara Mudloff	Ms. Marietta Norvid	Mr. James Parolski and Ms. Eileen Moran
Ms. Lettie McSpadden	Mr. and Mrs. Kurt M. Mueller	Ms. June Novalich and Ms. Helene Novalich	Stanley Parzen and Lynne Raimondo
Mr. and Mrs. John S. Meany, Jr.	Mr. and Mrs. David Mui	Mr. and Mrs. Marcus J. Nunes	Mr. and Mrs. Anthony C. Passanante
Mr. and Mrs. Joseph Meciej	Ms. Maureen G. Mullally	Ms. Christine O'Brien	Mr. and Mrs. Donald W. Patterson
Mr. Richard J. Medina and Ms. Maria T. Galo	Mr. and Mrs. Michael Mullane	Mr. and Mrs. Timothy O'Brien	Jim and Chris Patterson
Mr. and Mrs. James Meehan	Mr. and Mrs. Raymond Munaretto	Mr. <sup>E</sup> and Mrs. John R. O'Connell	Mr. and Mrs. Tom Pawelek
Mr. and Mrs. John Meehl	Mr. and Mrs. Edward C. Murawski	Ms. Jennifer K. O'Connor	Dr. David J. Peace and Ms. Karen Ferrer
Ms. Judith M. Meek and Ms. Nancy Wardrope	Mr. and Mrs. Guy B. Murdock	Mr. and Mrs. Neil O'Connor	Mr. Frederic C. Pearson
Mr. John M. Meeks	Mrs. Marisa Murillo and Mrs. Mathilda Murillo	Ellen <sup>E</sup> and Michael P. O'Hanlon	Mr. Shauna Peet
Mr. and Mrs. James R. Meindl	Mr. and Mrs. J. B. Murphy	Ms. Kathleen O'Regan	Mr. and Mrs. Ray J. Pensinger
Ms. Marilynn Menuey	Mrs. Janet Murphy	Mrs. Dorothy Jeanne Oakley	Mr. and Mrs. Mathias Perdekamp
Mr. and Mrs. Charles Merwin	Ms. Sheila Murphy and Ms. Brigid Wolff	Mr. and Mrs. Trond Odegaard	Ms. Abigail Perkins and Mr. Philip Perkins
Ms. Annemarie Mesich	Ms. Corlis D. Murray	Mr. and Mrs. Donald R. Oder	Mr. and Mrs. David Perry
Mr. Ken Metcalfe	Mr. Michael J. Murrin	Mr. and Mrs. Dele Ogunleye	Mr. Aaron Persaud and Ms. Rebecca Zhao
Mr. and Mrs. Robert Metzger	Mr. and Mrs. Chester Musson	Mr. and Mrs. Jeffrey Oleniacz	Ms. Antonina Peshkova
Mrs. Erin Meyer <sup>E</sup>	Mr. and Mrs. James W. Myers	Ms. Nancy Olive	Mr. Ira J. Peskind
Mr. Craig S. Michelsen	Mrs. Luvie Myers	Mr. and Mrs. Victor Olowu	Mr. James W. Peters
Dr. Charles R. Middleton and Dr. John S. Geary	Mr. and Mrs. Michael Myers	Miss Marie E. Olsofka	Mr. and Mrs. Mark Peters
Ms. Catherine Miller and Mr. Greg Gunderson	Mr. and Mrs. William Myers	Mr. Tod A. Olson and Ms. Julie Stauffer	Mr. and Mrs. Michael F. Petersen
Mr. Vernon A. Miller and Ms. Kathryn Tecza	Dr. and Mrs. Jonathon H. Nadler	Dr. Adam Olszewski	Mr. and Mrs. Daniel B. Peterson
Mr. James C. Mills and Ms. Lois S. Zoller	Mr. and Mrs. Ron Nahser	Ms. Gladys Orozco and Mr. Rodolfo Gonzalez	Mr. and Mrs. Mark Peterson
Mrs. Jo Anne Moeller	Mr. and Mrs. Chris Nard	Ms. Kathleen F. Orr and Dr. Edward S. Ogata	Mr. Verne Peterson and Ms. Julie Lipkin
Vanajakshi Mogulla and Vishnu Patlolla	Mr. Kenneth Nassau	Mr. and Mrs. Robert W. Orr	Mr. and Mrs. Thomas D. Philipsborn
Mr. and Mrs. Matthew B. Monesmith	Mr. James Naughton and Ms. Anita Andren	Dr. Charles and Madeline Osadjan	Mrs. Elizabeth B. Phillips
Mr. Jose Dennis A. Monteverde	Ms. Amy Neidlinger	Mr. and Mrs. Dennis V. Osimitz	Mrs. Marlene W. Phillips
Mr. and Mrs. Richard Moody	Mr. and Mrs. Charles J. Nelson	Ms. Erica D. Osterloo <sup>E</sup>	Susan I. Phillips <sup>E</sup>
Mr. Thomas H. Moog	Mr. and Mrs. Timothy E. Nelson	Ms. Barbara E. Otte and Mr. Bruce C. Shelley	Mr. and Mrs. James E. Piechowski
Mrs. Frank J. Mooney	Ms. Lisa Nemeroff	Mr. David Otto	Mr. and Mrs. Robert G. Pierce
Mr. and Mrs. David Moore	Network for Good	Ms. Rebecca Owen	Mrs. Anita Pindiur-Harris and Mr. Nicholas Harris
	Mr. and Mrs. Richard W. Newcomb	Mr. and Mrs. John E. Owens	Mr. and Mrs. Walter J. Plank
	Mrs. Susan E. Newton	Ms. Catherine Paddock and Mr. Jonathan Hagstrum	
	Mr. and Mrs. Gary R. Nickels	Mr. and Mrs. Raymond Paice	
	Ms. Karen Nickelson	Ms. Ada Palmer	

Mr. and Mrs. Joseph B. Plauche	Mr. and Mrs. Charles A. Remsberg	Gail L. Sadock	Mr. and Ms. Michael Silerzo
Mr. Peter W. Plumley and Ms. Anna M. Rappaport	Dr. Sigrida Renigers and Ms. Astra M. Patrick	Mr. D. P. Sager	Mr. and Mrs. David Silke
Mr. and Mrs. Joshua Poje	Mr. Al Renslow and Mrs. Karen Fontaine	Ms. Christina M. Sakowski	Ms. Ilene Simmons
Mr. and Mrs. Steve Pollack	Mr. and Mrs. Philip J. Reny	Mr. Antonio Sanchez and Mrs. Leila Yabiku	Mr. and Mrs. Michael Simpson
Mr. and Mrs. Jay Pollitt	Dr. Raiselle C. Resnick and Dr. Kenneth I. Resnick	Mr. and Mrs. Emil Sanchez	Mr. Junie L. Sinson
Mrs. Rachel Polster and Mr. Brad Hickey	Mr. and Mrs. Alejandro Reynoso	Mr. and Mrs. Stephen Sandler	Ms. Carol B. Skala
Ms. Dana L. Pond	Mrs. Junell Richert	Ms. Nancy Sans	Mr. Thomas E. Skilling III
Ms. Faye Porter	Dr. Justin Richland and Dr. Lindsey Richland	Mr. and Mrs. Milan Saric	Mr. Jacob Sklarsky and Ms. Mariann McKeever
Marcy Posner and Michael Singer	Mr. Neil W. Rickert	Mr. Peter F. Saunders and Ms. Patricia J. Larson	Ms. Margaret Skrmetti <sup>‡</sup> and Mr. Jerel Bangayan
Mr. and Mrs. Richard A. Posner	Mrs. Cynthia E. Rickman-Williams and Mr. George P. Williams	Ms. Vera Scecik and Mr. Robert C. Osborne	Mr. and Mrs. Mitchell Slotnick
Mr. and Ms. Matthew Postlewaite	Mrs. Patricia A. Riley	Mr. and Mrs. David M. Schiffman	Ms. Edith Small
Mr. William P. G. Potocek	Ms. Amy A. Ripepi and Mr. Garry J. Grasiniski	Mr. Wilhelm Schlag and Mrs. Samantha Whitney	Mr. Austin W. Smit
Mrs. Beth Potocsnak	Mr. James Rivera and Mrs. Tamiko Casteel	Mr. David L. Schlotterback	Bernard Smith, M.D.
Dr. Charles A. Pounian	Dr. Wilfredo Rivera	Ms. Susan D. Schlough and Dr. Andrew D. Abbott	Mr. and Mrs. Charles F. Smith
Mr. and Mrs. Richard Price	Mr. and Mrs. David E. Robinson	Mr. Douglas M. Schmidt	Ms. Miriam A. Mobley Smith and Mr. Donald Brower
Mr. and Mrs. John Pujals	Ms. Chrissy Rodriguez	Mr. and Mrs. Arthur Schneider	Ms. Rebecca Gray Smith
Mrs. Doris J. Puntney	Ms. Jeanette Rodriguez <sup>‡</sup>	Dr. John F. Schneider	Mr. and Mrs. Stephen Smith
Mrs. Chestine Puralewski	Mr. and Mrs. Luis Rodriguez	Mr. Michael J. Schneider	Dr. and Mrs. Steven Smith
Mr. James L. Puralewski and Ms. Ruth A. Francis	Mr. and Mrs. Paul E. Roge	Mrs. Elizabeth Schroeder	Toni Sandor Smith
Mr. and Mrs. John F. Pustola	Jill and Ron Rohde	Mr. and Mrs. Paul W. Schroeder	Dr. John Song
Ms. Jennifer Putzier and Mr. Brian Power	Ms. Julie Ann Roin and Mr. Saul Levmore	Dr. and Mrs. Peter F. Schultz	Miss Michelle Sotak
Mr. and Mrs. John Radzinski	Mr. and Mrs. Robert Rolih	Mr. Craig R. Schuttenberg and Ms. Colleen M. O'Leary	Ms. Robyn Sotak
Mr. and Mrs. Charles Raich	Mr. and Mrs. Benjamin Rooks	Mr. and Mrs. Marc Schwartz	Ms. Lindsey Soukup
Helene and Norman X. Raidl	Mrs. Patricia Rooney	Mr. Carlos S. Schwarz and Mrs. Georgia Droulias-Schwarz	Mr. Donald Southworth and Ms. Marilyn Cantisano
Mr. and Mrs. John R. Raitt	Ms. Tracy Rose-Love and Mr. James Love	Mr. and Mrs. Charles Schweizer	Mr. Michael J. Spence
Miss Dorothy V. Ramm	Mr. Jack H. Rosenberg and Ms. Anne L. Wieboldt	Ronald and Jane Schwuchow	Mr. Norman F. Spielman
Dr. Ruth G. Ramsey and Dr. Michael M. Ramsey	Mr. and Mrs. Michael Rosenberg	Mr. and Mrs. Peter D. Scully	Mr. and Mrs. Donald E. Sporleder
Mr. and Ms. George A. Ranney, Jr.	Mr. and Mrs. Jack Rosenfeld	Mr. Richard Seehuus	Mr. Sean S. Sprague
Lynne Rauscher-Davoust	Mr. and Mrs. Bernard Rosenstein	Mr. Mason M. Seglin	Ms. Gloria Stachnik
Dr. Timothy W. Raykovich and Ms. Donna Vega	Mr. Warner A. Rosenthal	Mr. and Mrs. T. Dwaine Sell	Mr. David Standifer
Ms. Suzanne J. F. Reade and Mr. Bruce Foudree	Mr. Phillip D. Rowe	Mr. and Mrs. Chris L. Seth	Mr. Steven Starr and Ms. Kathryn Tholin
Mr. and Mrs. Thomas Reece	Ms. Roberta H. Rubin	Mr. and Mrs. John A. Shaw	Mr. and Mrs. Jay Steffen
Mr. and Mrs. Mark E. Reeves	Ms. Lynn M. Rubino	Mr. Francis L. Sheahen	Mr. and Mrs. Kurt J. Steib
Mr. Henry Reich	Mr. Aniz Ruda	Mr. Paul Sheehan and Ms. Andrea Ernest	Mr. and Mrs. Richard Steinke
Mr. and Mrs. Jeffrey R. Reid	Ms. Carol Ruda and Mr. Norm Hilgeudorf	Dr. Zheng Shen	Mr. and Mrs. John A. Stepan
Mr. Stephen Reid	Ms. Catherine Rudolph	Mr. James V. Shipp and Ms. Nancy Marie Casper	Mr. and Mrs. Robert Stephens
Mr. and Mrs. John B. Reilly	Mr. and Mrs. Gerard Russell	Mr. and Mrs. Tom Sholeen	Mrs. Sandra P. Sterling
Mr. and Mrs. Jeffrey Reis	Mr. James Ryan and Mrs. Julie Hextell	Mr. and Mrs. William Shorey	Mr. and Mrs. Phillip L. Stern
Dr. Mark S. Reiter and Dr. Kathleen A. Ward		Mr. and Mrs. Duward F. Shriver	Mrs. Doris F. Sternberg
		Mr. and Mrs. Douglas L. Shuman	Mr. and Mrs. Donald M. Stewart
		Mr. and Mrs. Alan H. Silberman	Mr. and Mrs. Jason Stratton
			Ms. Patricia A. Stratton

<sup>‡</sup> Trustee    <sup>‡</sup> Deceased    <sup>‡</sup> Field Museum Employee

Mr. James R. Streicker and Ms. Mary W. Stowell

Mr. and Mrs. John J. Streit

Mr. and Mrs. Glen C. Suda

Connie and Howard Sulkin

Mr. Michael J. Sullivan

Mr. Richard Sullivan

Mr. David Sundquist and Ms. Terri Schultz

Ms. Nancy W. Sutherland

Mr. and Mrs. Harold Sutton, Jr.

Mr. Wayne Svoboda

Hobart K. and Janis F. Swan

Ms. Anne Elizabeth Swaney

Mr. and Mrs. Edwin L. Swanson

Mr. Gerry Swanson

Mr. and Mrs. David W. Swartz

Ms. Loretta B. Sweeney

Mr. and Mrs. Steven Sweetser

Mr. Kenneth Swiatkowski and Ms. Valerie Schoen

John S. Swift Family Charitable Trust

Mr. J. Roger Swihart

Ms. and Mr. Megan Synenki

Mr. and Mrs. Robert J. Syrup

Dr. and Mrs. Jan P. Szidon

Ms. Gayle Taylor

Ms. Kelly Taylor and Mr. Josh Tavernier

Mr. Steven F. Tempel and Ms. Deborah Zekich

Mr. Brigham R. Temple

Mr. Nicholas Terrell

Mr. and Mrs. Richard J. Thennes

Mr. Robert L. Thompson

Mr. and Mrs. Gregory A. Tieder

Ms. Wendi Tillung

Ms. Beverly Timm

Dr. and Mrs. James Timmons

Ms. Diane M. Tkach and Mr. James Freundt

Ms. Virginia Tolc

Mr. and Mrs. Wm. Ronald Tomecko

Shelley Torres and Bill Aldeen

Mr. and Mrs. Andrew Trees

Dana Shepard Treister and Dr. Michael Roy Treister

Mr. and Mrs. Barton G. Tretheway

Ms. Mary Trowbridge and Mr. William West

Ms. Marlo Troy

Mr. and Mrs. Christian E. Trummel, Jr.

Ms. April Tufekcioglu

Mr. and Mrs. Dominic P. Turchi

Mrs. and Mr. Mary Beth Turek

Mr. Scott F. Turow and Ms. Adriane Glazier

Mrs. Elizabeth K. Twede

Mr. Robert C. Vallone

Ms. Melody A. Van Wermeskerken

Mr. John M. VanderLinden and Mr. John W. Butler

Dr. and Mrs. Peter O. Vandervoort

Mr. John D. VanPelt and Ms. Sharon M. Quintenz

Mrs. Christine E. Varela and Ms. Angela Varela

Mr. and Mrs. Joseph Vargo

Mr. Eugene C. Varnado

Mr. Martin Vega and Ms. Carmen Cruz

Dr. and Mrs. Jeffery S. Vender

Mr. and Mrs. Leonard M. VerVers

Mr. and Mrs. John F. Vicha

Mr. and Mrs. Randolph M. Videkovich

Mr. and Mrs. Paul Vogel

Mr. Thomas W. Vogelsang and Ms. Kathleen M. Moran

Mr. Raghu R. Vollala

Mrs. Donna L. Wadycki

Dr. and Mrs. Albert F. Wagner

Mrs. Nancy F. Waichler

Ms. Belle Waldfogel and Ms. Georgan Goldenberg

Ms. Rosa E. Walke

Mr. and Mrs. Alan Walker

Ms. Diane Walker

Ms. Katherine Walker

Mr. and Mrs. Herschel D. Wallace III

Marge Walls and Cassandra Sawyers

Mr. Ralph Wanger and Ms. Monique Clarine

Ms. Therese L. Wareham

David Wargowski

Mr. and Mrs. Kurt L. Warning

Ms. Laura S. Washington<sup>T</sup> and Mr. Michael W. Richmond

Mr. Ludwig Wasik and Ms. Caitlin Rawlins

Ms. Ann Wasoff

Ms. Sophia A. Watson

Mr. and Mrs. David B. Waud

Mr. Stanley Wearden and Ms. Deborah Davis

Mr. Leonard L. Weber

Mr. and Mrs. Andrew J. Weddig

Ms. Kathryn P. Weibel and Mr. Steve Freeman

Mr. and Mrs. James Weidner

Richard and Karen Weiland

Mrs. Claire Weimann

Mr. and Mrs. Tom Weinberger

Mr. and Mrs. Jerome S. Weiskopf

Mr. and Mrs. Steven A. Weiss

Mr. and Mrs. David D. Wesselink

Ms. Linda Westergren

Ms. Connie Wethington

Mrs. Madelin M. Wexler

Mr. and Mrs. Howard Whatmore, Jr.

Ms. Mary White

Mr. and Mrs. Mark Wieclaw

Mr. Lawrence G. Wilcox

Mr. and Mrs. Mark Wilcox

Ms. Crystina Williams and Ms. Amy Heaney

Dr. and Mrs. David B. Williams

Ms. Elaine Williams and Ms. Nicole Roberts

Mrs. Lynda Williams, PhD and Mr. Norman J. Williams

Ms. Nancy A. Williams

Mr. and Mrs. Donald Wilson

Mrs. Robert H. Wilson

Mr. and Mrs. Timothy R. Wilson

Mr. and Mrs. James R. Wimmer

Mr. and Mrs. James R. Wise

Dorothy H. Wolff and Eric S. Wolff

Mr. Edmund J. Wolff

Mr. and Mrs. Jonathan Wols

Mr. and Mrs. Stephen Woo

Nancy and John Wood

Mr. and Mrs. Terrence Woods

Mr. and Mrs. Mark Woodworth

Mr. and Mrs. Zachary Worshill

Mr. and Mrs. Edward Yaghmour

Ms. Nancy Ying

Mr. and Mrs. Fred Young

Mrs. Janice C. Young

Mr. Terrence A. Young

Owen and Linda Youngman

Ms. Bai Yuen

Diane and Lawrence Zalusky

Mr. Denis M. Zamirowski

Clementine Zavelle and Brian Ibsen

Mr. and Mrs. Jay H. Zimbler

Mr. and Mrs. John A. Zimnie

Mr. and Mrs. Earl Zingraf

Mr. and Mrs. John Zuffante

Mr. Dan Zukosi and Ms. Dorothy M. Zukoski

Mrs. Janice Zulkey

If you feel an error has been made in presenting this donor honor roll, please contact the Office of Institutional Advancement at [annualreport@fieldmuseum.org](mailto:annualreport@fieldmuseum.org).



### Matching Gift Companies

The following companies generously matched gifts of their employees, retirees, or directors in supporting The Field Museum in 2015.

- Anonymous
- AbbVie
- ADP Foundation
- Aetna
- Aon Corporation
- Apache Corporation
- ArcelorMittal
- AT&T Foundation
- Bank of America
- The Boeing Company
- BP
- Caterpillar Foundation
- Charles Schwab & Co, Inc.
- Ernst & Young LLP
- Expedia, Inc.
- The Field Foundation of Illinois, Inc.
- The FM Global Foundation
- The Gap, Inc.
- GE Foundation
- Google Inc.
- W.W. Grainger, Inc
- Honeywell International
- IBM
- ITW
- Johnson Controls, Inc.
- JPMorgan Chase

- John D. and Catherine T. MacArthur Foundation
- MetLife
- Microsoft Corporation
- Nokia
- Northern Trust
- Peoples Gas
- Polk Bros. Foundation
- Salesforce.com
- U.S. Bank
- Western Union Foundation

### The Edward E. Ayer Society

The Edward E. Ayer Society is the Museum's planned giving program. The Field Museum recognizes individuals who remember The Field Museum through bequests, trusts, and other planned or life income gifts.

- Anonymous (22)
- Barbara and Steven Adelman
- Marilynn Alsdorf
- Mary Jane Arnam
- Mr. Harry Axelrod<sup>o</sup>
- Donald and Betts Baepler Endowment for Ornithological Study
- Mr. and Mrs. James H. Banach
- Mr. and Mrs. Robert D. Becker
- Dr. Helen R. Beiser
- Robert and Ruth Berns
- Willard L.<sup>T</sup> and Susan K. Boyd
- Mr. Richard T. Brannegan
- Mr. and Mrs. Frederick W. Brooke III
- Mrs. George R. Brumlik
- Leo R. Buckert
- Judith A. Caloud
- Rita and John<sup>T</sup> Canning
- Mrs. Robert Adams Carr
- Mr. Henry T. Chandler<sup>o</sup>
- Mr.<sup>T</sup> and Mrs. Worley H. Clark, Jr.
- Mr. and Mrs. Stephen F. Condren

- Mr.<sup>T</sup> and Mrs. Frank W. Considine
- Mr. Mark Crane
- Ms. Rebecca Davidson
- Ms. Janet W. Diederichs
- Gary and Candace Drimmer
- La and Philip Engel
- Mr. Richard F. Eveleth
- Mr. and Mrs. Fabio Fabbri
- Carl B. Fausey
- Mary and Bruce Feay
- Dr. and Mrs. Curtis B. Frank
- Wilbur<sup>T</sup> and Linda Gantz
- Mr. and Mrs. William E. Gardner
- Mr. Lyle Gillman
- Mrs. Warren L. Gjorup
- Robert<sup>T</sup> and Beth Gordon
- Dr. Norman C. Greenberg and Dr. Gilda M. Greenberg
- Timothy and Joyce Greening
- Mr.<sup>T</sup> and Mrs. Lewis S. Gruber
- Ms. Tonja Rizai Hall
- Ms. Jeanne M. Hansen
- Drs. Malcolm H. and Adele Hast
- Mrs. Betty S. Hess
- David D. Hiller<sup>T</sup>
- John and Marjorie Hines
- Mrs. Harold H. Hines, Jr.
- Peggy L. Hoberg
- Anita and James Hornbrook
- Dr. and Mrs. James C. Hunt
- Mr. Edward C. Jerkey

### Levins invest in the future

The Field Museum is grateful to Ambassador Fay Hartog-Levin (Ret.) and Daniel Levin for announcing a major endowment gift. The Levins stated, "We consider The Field Museum to be a most important educational, research, and cultural institution, enhancing Chicago's reputation as a global city. We are proud to have committed \$2 million to the Field's endowment through current and future gifts to assure its ability to maintain a tradition of excellence." Mr. Levin is a long-term supporter of the Field and in 2003 the Museum recognized his involvement with the naming of Levin Hall, a premier exhibition space on the East side of Stanley Field Hall. In her storied career of public service, former Ambassador Fay Hartog-Levin was once Vice President for External Affairs at The Field Museum.



Ms. and Mr. Stacy L. Johnson  
 Mr. and Mrs.<sup>T</sup> Dennis J. Keller  
 Mr. and Mrs. Jerry M. Kelly  
 Fay and Daniel Levin  
 Robert E. Lewis, PhD  
 Mr. Robert B.<sup>T</sup> and  
 Mrs. Gail J. Loveman  
 Mr. and Mrs. Bernard A.  
 Mack, Jr.  
 Ann C. Mallow  
 Mr. Robert C. Marks  
 Ms. Nancy A. McDaniel  
 Dr. William B. McDonald and  
 Ptah Sekhmat Osiris  
 Erma S. Medgyesy  
 Robert and Lois Moeller  
 Sandra L. Mueller  
 Drs. James and Sandra  
 Napolitan  
 Mr. John P. Nielsen  
 Ms. Karen A. Nordquist  
 Irma Parker  
 Joseph and Jo Ann Paszczyk  
 Ms. Marie E. Peruscini and  
 Mr. Edward C. Bapple  
 Mr.<sup>T</sup> and Mrs. Richard J. Pigott  
 Mrs. John W. Pocock  
 Julia Potter  
 Mr. and Mrs. Mane Pritza  
 Mrs. Alfred Lunt Putnam  
 Dr. Dominick S. Renga  
 Mr. Alan Resetar<sup>E</sup> and  
 Mrs. Donna Resetar  
 Mr. Richard F. Reynolds  
 Mrs. Sheila T. Reynolds  
 Ms. Anita J. Rogers  
 Mr. and Mrs. Benjamin Rooks  
 Mr. David L. Schlotterback  
 Mr. Douglas M. Schmidt  
 Mr. Franklin R. Schmidt  
 Patricia O. Schnadig  
 Ms. Thelma L. Schwartz  
 Mr. and Mrs. G. Curtiss Shaffer  
 Bob and Charlene Shaw  
 David Shayne  
 Louise M. Sherman  
 Rose L. Shure<sup>D</sup>  
 Miss Joanne Silver

Adele S. Simmons<sup>T</sup>  
 Rebecca Gray Smith  
 Ms. Suzette Sodini  
 Mrs. Gabriela H. Sparacio  
 Duane E. and Christine M.  
 Stout  
 Ms. Judith B. Sugarman  
 Datin Tan Fui Lian and  
 Datuk Dr. Robert F. Inger  
 Mr. Gerald M. Torrence  
 Rose and Robert Wagner  
 David Wargowski  
 Nestor R. Weigand, Jr.  
 Dianne M. Weinand  
 Barbara H. West  
 Ms. Claudia L. Winkler  
 Mr. Lawrence J. and  
 Mrs. Margaret V. Witry  
 Mr. James G. Young  
 Mr. and Mrs. William B.  
 Zigterman  
 Ms. Christine C. Zogus

## Estates and Bequests

The Field Museum recognizes  
 the following people for their  
 bequests, legacies, and  
 estate gifts.

Mary Alison Ebert  
 Shirley M. Evans  
 Frank B. Foster  
 Evelyn Frank  
 Ilse Friend  
 Thomas Hofherr  
 Leslie Hubricht  
 Charles W. Lake, Jr.  
 Bertha Lebus Charitable Trust  
 Betty D. Prout  
 William Rom  
 Marian Shaw  
 Marion Stoerker  
 Jane L. Strasburg  
 Jane B. and Chester D. Tripp  
 Mary A. Triska  
 Donald W. and  
 Dorothy B. White  
 Virginia Whittaker

## In-Kind Gifts

3 Floyds  
 Acanto  
 The Betty  
 Blackfinn  
 Blue Man Group and  
 Briar Theatre  
 Chicago Blackhawks  
 Chicago Cubs  
 Chicago Distilling Company  
 Chicago Shakespeare Theater  
 Chuck Meyers  
 Cream Winery  
 Cubby Bear  
 Desthil  
 Diageo  
 Drinker, Biddle & Reath LLP  
 Esri Software  
 Flagship  
 Hubbard Inn  
 Beth A. Humbert-Schmidt<sup>T</sup>  
 Hyatt Centric  
 Jet Blue  
 Mr. and Mrs. Frederick A.  
 Krehbiel  
 Kuma's Too  
 Lagunitas  
 Mastro's  
 Mercadito  
 mfk. Restaurant  
 The Morton Arboretum  
 Mr. Chau Tu Nguyen  
 Dr. and Mrs. Tu Mahn Nguyen  
 Pinstripes  
 Racine Plumbing  
 Redhead Piano Bar  
 Revolution Brewery  
 Sage Products  
 John G. Shedd Aquarium  
 SoulCycle  
 Upton's Naturals  
 Viceroy Hotel



For a list of in-kind  
 contributions to the  
 collections, please visit the  
 digital edition of this report  
 at [fieldmuseum.org/about/  
 annual-reports](http://fieldmuseum.org/about/annual-reports).

## Women's Board Gala honors Tang Family

The Women's Board celebrated the opening of the *Cyrus Tang Hall of China* with The Wonders of China Gala to honor the Tang Family. The event received more than \$2 million in support and welcomed 570 guests. Thanks to Gala Chair Donna Greenberg and the Gala Host Committee for their leadership, and to The Sun-Times Foundation and Chicago Community Trust for their generous matching support.

**RIGHT**—President Lariviere, Jan Lariviere, Women's Board President Kathleen Klaeser, Dennis Klaeser, Gala Chair Donna Greenberg, and Trustee Jack Greenberg.



## Volunteer Leadership

### THE WOMEN'S BOARD

The Women's Board promotes The Field Museum's scientific programs, exhibitions, and educational outreach. Members facilitate philanthropic activities to provide essential unrestricted and restricted support.

Kathleen Klaeser<sup>T</sup>  
*President*

Elizabeth Ahearne  
*Vice President*

Frances Beatty  
*Hospitality*

Judith S. Block<sup>T</sup>  
*50th Anniversary*

Susanna Ross Block  
*Field Dreams*

Virginia Bobins  
*Hospitality*

Peggy Bodine  
*Field Trips*

Sandra Deromedi  
*Annual Appeal*

Elizabeth Glass  
*Vice President*

Karen Z. Gray  
*Women in Science Luncheon*

Donna L. Greenberg  
*Annual Appeal Gala*

Jean Baldwin-Herbert  
*Board Luncheons*

Martha Higgins  
*Women in Science Luncheon*

Elizabeth Kauffman  
*Outreach Initiative*

Anne Kavanagh  
*Programs*

Kelli S. Klauber  
*Membership*

Constance Magnuson  
*Secretary*

Susan Clark McBride  
*50th Anniversary*

Leslie Gantz McLamore  
*Outreach Initiative*

Elisabeth C. Meeker  
*Field Trips*

Christine Ott  
*Development Initiative*

Cynthia Scalzo  
*Field Dreams*

Patricia Schnadig  
*Women in Science Fellowship  
and Internships*

Susan Sebulsky  
*Outreach Initiative*

Laura Silva  
*Membership*

Margaret Snorf  
*Member at Large*

Bonnie E. Stearns  
*Nominating*

Leslie Zentner  
*Treasurer*

### PRESIDENT'S LEADERSHIP COUNCIL

The President's Leadership Council is an auxiliary group of established professionals with an interest in civic and philanthropic activity. Members support Museum initiatives through expertise-based volunteer work and utilize their personal and professional networks to raise the profile of the institution.

Ryan S. Ruskin<sup>T</sup>  
*Chair*

Michael D. Arnold

Paul S. Chatalas

Jill Hutchison

Amanda A. Sonneborn

Mr. Brian G. Fahrenbach

Ms. Jennifer Guskey

Melissa Genova Hill

Ms. Casey McCarthy

Mr. Aniz Ruda

Jeffrey Skender

Miss Michelle Sotak

Ms. Lindsey Soukup

Michael Steel

Mr. Ryan VanHolsbeke

### COUNCIL ON AFRICA

The Council on Africa brings together The Field Museum's supporters and scientists who share an interest in the African continent and its people. Council members' contributions help to fund training for scientists and research endeavors in Africa.

Anonymous

Mary and Rich Chamberlin

Ms. Marian F. Cook

Pamela Conant

Mary and Bruce Feay

Dr. James and Martha Fought

Ms. Judy Johanson

Ms. Kathleen Jordan

Mr. and Mrs.<sup>T</sup> Dennis J. Keller

Mr. and Mrs. Bruce H. Lauer

Deborah B. Manoogian

Ms. Nancy A. McDaniel

Elisabeth C. Meeker

Adele S. Simmons<sup>T</sup> and

John L. Simmons

Mr.<sup>T</sup> and Mrs. David M. Tolmie

### FIELD ASSOCIATES

The Field Associates is an auxiliary group created by, and for, young professionals. The Field Associates engage the next generation of civic leaders at the Museum through networking, programming, fundraising, leadership, and service.

Beth A. Humbert-Schmidt<sup>T</sup>  
*President, 2016*

Helen Odom  
*President, 2013–2015*

Ms. Andrea Alexander

Ms. Clarisa Bonilla

Mr. Paul Butler Diaz, Jr.

Andrew Critchell

Ms. Samantha Dietz

## Field Museum Volunteers

### ANTHROPOLOGY ALLIANCE

The Anthropology Alliance promotes interest in and support of The Field Museum's anthropological research and collections.

Bob Shaw  
*Chair*

Ms. Joan Goldstein

Joyce Greening

Susan Mikalauski

Kathleen Rummel

James Stola

Sheila Whalen

Carl Wolf

Field Museum volunteers contribute their time and skills to advance the Museum's mission. Behind-the-scenes and in public exhibitions, volunteers support Museum staff and visitors alike.

#### 500+ HOURS

Richard Bisbing

Robert Boswell

Irene Broede

Christopher Brown

John DeWerd

Philip Dittmann

Michael Ferrer

Christine Frazer

Laura Fruhauff

Peter Gayford

Bernice Jacobs

Janis Lariviere

Peter Lowther

Michael Marozas

Christopher McGarrity

Sandra Mueller

Robert North

Robyn Pearson

Nina Sandlin

William Sherry

Kurt Zahnle

Elaine Zeiger

Steven Zitowsky

#### 200-499 HOURS

Eric Ahlgren

Robert Andresen

John Balaban

Linda Barba

Mery Elyn Baron-Pocius

Sandra Bauer

Lauren Bawiec

Janice Bell Kaye

Gloria Berkwits

Arlene Bezark

Richard Bloomfield

Theresa Boswell

Joan Bruchman

Samantha Brunner

Melissa Burnett

Delano Busczynski

Joseph Cablk

Robert Cantu

Drew Carhart

Robert Case

Kelsey Choo

Harpreet Datt

Theodore Davies

Robin Delapena

Mark DeSantis

Italo Ravell Dias Ferreira

Gary Drimmer

John Dunn

Thomas Durica

Annamarie Fadorsen

Gabriel Flores

Elizabeth Fraccaro

William Franz

Glenn Gabanski

Gerard Gagne

Arlene Ghiron

Luke Ginger

Renee Goddijn

Timothy Greening

Ann Grelyak

Rachel Grill

Charles Guptill

Richard Guzik

Gayle Guzik

Mary Harland

Mattie Harris

Beverly Harris

Joyce Hecht

Aaron Heuer

John Hill

Jeff Hoswell

Thomas Iverson

Roland Jabotte

Judy Johanson

Shiteng Kang

James Kase

Nancy Kaufmann

Charles Kelly

Julia Kennedy

Mary Ann Khan

Anna Kosters

Sarah Kurtis

Ruth Larson

David Larson

Katie Lattal

Gabrielle Lehmann

Joanne Levy

Loretta Long

Joann Martinec

Lettie McSpadden

Daniel Melone

Aaron Mercer

Jacob Meyer

Beverly Meyer

Olivia Minella

John Morris



### Women in Science Luncheon receives unprecedented support

The Women's Board welcomed Diana M. Rauner, PhD, President of the Ounce of Prevention Fund and First Lady of the State of Illinois to keynote the annual Women in Science Luncheon on May 12. The record-setting event raised \$235,000 to support a graduate fellow and ten summer interns in the 2016 Women in Science Internship Program. Special thanks to lead sponsors Abbott, Archer Daniels Midland, Exelon, ITW, and Connie and Dennis Keller, and benefactors John and Jackie Bucksbaum, DeVry Education Group, J.P. Morgan, and Nicor Gas.

**ABOVE**—President Lariviere, Event Co-Chair Marty Higgins, Keynote Speaker Diana M. Rauner, Women's Board President Kathleen Klaeser, and Event Co-Chair Karen Gray at the Women in Science Luncheon.

Timothy Nelson	Grace Takata
Betty Newbart	Thomas Tervanis
Karen Nordquist	Andrea Thompson
Andrea Odegaard	Darren Vilmin
Marie Orendach	Phyllis Walden
Stephen Parshall	David Walker
Angelina Patti	Dustin Weddle
Lindsey Pettitt	Kuro Wilks
James Piekarczyk	Bob Wilson
David Prus	William Zandrew
Anita Punkay	Howard Zar
Sara Rastegar	
Loran Recchia	
Susan Reinke	
Amanda Robinson	
Judith Rom	
Alpha Sadcopen	
John Schmadeke	
Annette Schmit	
Jeffrey Schroder	
Monica Sentoff	
Stephen Sentoff	
Karen Sharpe	
Terri Sinnott	
Rebecca Smith	
Brian Smith	
Beth Spencer	
Robert Spieler	
Marc Stackler	
James Stola	
Donna Stone	
Lisa Stringer	
Ali Sultan	

## Commemorative Gifts

The following donors made gifts to The Field Museum in the name of a friend or loved one.

### IN MEMORY

#### Harvey Berman

Andrea and Larry Crain

#### Dr. Andrew Hill

Mr. Nick Blegen

#### Dr. Harold Honor

Ms. Pat Madej-Zenin  
Ms. Paula Schneiderman

#### Tiffany Ann Makaus

Mr. Brent Makaus

#### Frank J. Mooney

Mrs. Frank J. Mooney

#### Barbara Roob

Mrs. Robert C. Hyndman—  
Environmental and  
Conservation Programs

#### Richard Rosenberg

Ms. Nancy L. Zuraw

#### William T. Stanley, PhD<sup>E</sup>

Anonymous (8)  
Ms. Tia Amdurer  
Mr. Kenneth D. Angielczyk<sup>E</sup>  
and Ms. Audrey Aronowsky  
Mr. and Mrs. John Ballard  
Ms. Lauren E. Bawiec  
Ms. Susan M. Benton<sup>T</sup>  
Ms. Clarisa Bonilla  
Ms. Maureen Coleman and  
Mr. Jake Waldbauer  
Ms. Carol Collins  
Professor<sup>T</sup> and Lady Peter R.  
Crane  
Ms. Camden Crie  
Mrs. Louise H. Curry  
Mr. and Mrs. Mark D.  
Dawson  
Mr.<sup>T</sup> and Mrs. Roger K.  
Deromedi

Basil and Marcy deTineo  
Ms. Diana L. Duncan<sup>E</sup>  
Ms. Jean Eagleton  
Mary and Bruce Feay  
Dr. Stasia J. Frank-Powers  
and Dr. Richard J. Powers  
Christine<sup>E</sup> and Gary Giannoni  
Ms. Beth Grimaldi  
Mrs. Elzelien Hartog  
Dr. Malcolm H. Hast  
Sheryl Heidenreich  
Melissa Hilton and  
Jonathan Perman  
Kristen and Josh Jacobs  
Ms. Judy Johanson  
Charles L. Katzenmeyer<sup>E</sup>  
Ms. Meg Katzman  
Ms. Mary Jane Keitel<sup>E</sup> and  
Mr. Mark J. Bouman<sup>E</sup>  
Mr. Jamie Kelly<sup>E</sup>  
Stephanie Kimmel<sup>E</sup> and  
Michael Conroy  
Mr. and Mrs. Jeff Koziol  
Dr.<sup>TE</sup> and Mrs. Richard W.  
Lariviere  
Fay and Daniel Levin  
Ms. Patricia Lord  
Mr. and Mrs. Jim MacGinnitie  
Mr. and Mrs. Patrick C.  
MacLeod  
Mr. and Mrs. Timothy J.  
Malloy  
Mr.<sup>T</sup> and Mrs. John W.  
McCarter, Jr.  
The Jill and Paul Meister  
Charitable Fund  
Mr. Thomas McIntyre  
Patricia B. Miller  
Mr. Juan Miranda  
Mrs. Sandra L. Mueller  
Susan Neill<sup>E</sup>  
Ms. Lora Nickels<sup>E</sup> and  
Mr. Thomas Tague  
Ms. Marietta Norvid  
Mr. Carter O'Brien<sup>E</sup>

## Chicago's young professionals make EVOLVE a premier 2015 event

The *Field Associates'* annual fundraising event was a 2015 highlight for young professionals in the city. More than 250 guests visited the iconic Stanley Field Hall for dancing, music, and of course, Field Museum science and exhibitions. EVOLVE received more than \$40,000 in support.

**RIGHT**—Field Associate President Beth Humbert-Schmidt, Jennifer Guskey, Ryan VanHolsbeke, Lindsey Soukup, and Andrea Alexander.



Dr. Charles and Madeline Osadjan  
 Ms. Erica D. Osterloo<sup>E</sup>  
 Mr. and Mrs. Jim Patton  
 Mr. Tom E. Pawlik  
 Mrs. Richard J. Peterson  
 Allan and Karen Rechtschaffen  
 Mr. Chris Reynolds  
 Ms. Jill Reynolds  
 Ms. Peggy Reynolds  
 Ms. Regina Reynolds  
 Mrs. Sheila T. Reynolds  
 Siobhan Reynolds  
 Ms. Alicia D. Rollo

**Carolyn H. Weinstein**  
 Mr. and Mrs. Robert Golden  
 Ms. Janice Goldstein  
 Mrs. Cathy Horowitz  
 Ms. Jenny Kline  
 Mr. and Mrs. M. J. Padorr  
 Mr. and Mrs. Stephen Reiches  
 Ms. Martha Roth  
 Mr. and Mrs. Michael D. Silverman

**Delbert E. Yarnell**  
 Ms. Leslie Hirshfield

**Jean Herbert**  
 Ms. Colleen A. McElligott

**Constance T. Keller<sup>T</sup>**  
 Mr. and Mrs. Edward J. Mooney

**Jeffrey B. Keller<sup>T</sup>**  
 Ms. Katherine Walker

**Richard W. Lariviere, PhD<sup>TE</sup>**  
 Human Resources  
 Management Association  
 of Chicago

**Frances and Elliott<sup>9</sup> Lehman**  
 Mr. and Mrs. Robert E. Berns

## Gifted Collections

Through generous gifts of objects and specimens, The Field Museum's collections have grown to become an indispensable scientific resource for scholars around the world. The Museum acknowledges the following donors who made gifts in 2015 to enhance the institution's collections.

ANTHROPOLOGICAL  
 COLLECTIONS

D. E. Arnold



## Endowed Building Legacy Fund launched

Anticipating the centennial of The Field Museum's monumental lakefront building (in 2021), an anonymous donor has committed \$5 million to launch a Building Legacy Fund. The endowment will help ensure the facility remains functional and beautiful, while allowing for future improvements. This gift was made in honor Jim W. Croft, PhD, who served the institution for more than 30 years as Executive Vice President and Chief Financial Officer. The Field Museum is extremely grateful for a new commitment which celebrates and supports its iconic home.

Mrs. Elizabeth D. Rothermel  
 Mr. Bruce Sagan  
 Pam and Tom Sheffield/  
 JS Charitable Trust  
 Mr. and Mrs. Douglas L. Shuman  
 Mr. William F. Simpson<sup>E</sup>  
 Dr. Michelle Singleton  
 Dr. and Mrs. Steven Smith  
 Mr. and Mrs. Adlai E. Stevenson III  
 Ms. Patricia A. Stratton  
 Kizra Sullivan  
 Datin Tan Fui Lian and  
 Datuk Dr. Robert F. Inger  
 Mr. and Mrs. Peter Thomas  
 Ms. Shelia Trainor  
 Mr. Ryan B. Whitacre and  
 Ms. Katherine T. Donaldson  
 Ms. Elizabeth Williams  
 Ms. Laura A. Woods<sup>E</sup>  
 Michael Wright  
 Ms. Flora Zagorites  
 Geena and Dennis Zaslavsky<sup>T</sup>

### Jane L. Strausberg

Ms. Amy Cohen  
 Ms. Carol Hill  
 Dr. and Mrs. Joshua Kahn

## IN HONOR

**Ron Cummings**  
 Mr. and Mrs. Steve Cummings

**Paul Durietz**  
 Woodland Community  
 Consolidated School  
 District 50

**Joshua I. Engel**  
 Mr. and Ms. Charles S. Marn

**Mr.<sup>T</sup> and Mrs. James S. Franks'  
 50th Wedding Anniversary**  
 Mr. and Mrs. Charles E. Frank

**Laura De Ferrari and  
 Marshall B. Front<sup>T</sup>**  
 Larry and Maxine Snider

**Wilbur H. Gantz III<sup>T</sup>**  
 Ms. Margaret Gantz

**Donna Greenberg**  
 Ms. Dolores Kohl Kaplan

**Jane and Jon Lind**  
 Ms. Susan F. Thompson

**Mrs. Withrow W. Meeker**  
 Mrs. Margaret M. Pendry

**Alan Resetar<sup>E</sup>**  
 Anonymous

**Patricia Schnadig**  
 Mrs. Adrian R. Foster  
 Mr. and Mrs. Eric R. Schnadig

**Karen Sholeen**  
 Ms. Melanie Farnon  
 Ms. Denise M. Labeledz and  
 Mr. Jason Labeledz  
 Mr. Keith S. Labeledz

Bukidnon State University  
 Juanita Salvador Burris  
 Theodore N. Foss  
 Seth Goldstein  
 Margaret Lichter  
 Helen Samuels  
 Richard C. Schneider  
 William Stolz  
 Cynthia Weill

## BOTANICAL COLLECTIONS

Duke University  
 Eszterházy Károly College  
 Harvard University  
 Hiroshima University  
 Hungarian Academy of  
 Sciences  
 Instituto de Ecología  
 Korean Lichen & Allied  
 Bioresource Center  
 Michael D. Lee  
 Missouri Botanical Garden

Missouri Western State College	LIBRARY	Kate Cronin	Carla Jaffe
Museum of New Zealand Te Papa Tongarewa	William S. Goldman	Cole Czajkowski	Thomas Janas
National Museums of Kenya	Dr. John Terrell <sup>†</sup>	L. Davidson	Nikki Jarecki
National Tropical Botanical Garden	Edward J. Valauskas	Rachel Decorvo	Kristin Jensen
New York Botanical Garden	ZOOLOGICAL COLLECTIONS	Dave Descoteaux	David Johnson
Oregon State University	<b>Amphibians and Reptiles</b>	Charles DeLavoie	Jessica Johnson
Ramkhamhaeng University	Danilo Balete	Kathy DeSantis	T. Johnson
Royal Botanic Garden Edinburgh, Scotland	Alicia Beattie	Mark DeSantis	Lyn Johnston
Royal Botanic Gardens, Melbourne, Australia	Dr. Lawrence R. Heaney <sup>‡</sup>	Marielle Diel	Mark Johnston <sup>‡</sup>
San Diego Natural History Museum	Sarabeth Klueh-Mundy	Phil Dittman	C. Kadlea
Universidade Federal do Ceará	Dr. Larry Reed	Jennifer Dombeck	N. Kadlea
Universidade Federal do Rio Grande do Sul	Alan Resetar <sup>‡</sup>	Ann Domek	Chris Kadow-Dougherty
University of Connecticut	Bryan Stuart	Kelly Dougherty	John Kaiser
University of Otago	Aquila Wilks	Pamela Dowd	Neil Kanemoto
	Willowbrook Wildlife Center	Sean Dwyer	John Kelly
	<b>Birds</b>	Glenna Eaves	Stephen Klink
	Tony Abraham	Scott Ellis	Louis Knapp
GEOLOGICAL COLLECTIONS	Daniela Amendola	Marty Farrington	David Koeller
<b>Fossil Invertebrates</b>	Robert Andrini	Sandy Fejt	Krista Koeller
Daniel Blake	Steve Bailey	Miclele Fiala	James Koeppel
Lance Grande <sup>‡</sup>	Dr. John M. Bates <sup>‡</sup>	Owen Flagel	Alicia Kozikowske
Thomas Guensburg	Bay Beach Wildlife Sanctuary	Flint Creek Wildlife Rescue	Marcy Krause
Jack Wittry	Julie Biedess	Fox Valley Wildlife Center	Larry Krutulis
	Stephanie Bielke	Bill Franz	Scott Kuipers
<b>Fossil Plants</b>	Nancy Bigelow	Glenn Gabanski	Ruth Kurczewski
Tom Testa	Tina Bonofiglio	G. Ginsberg	Sarah Kurtis
Jack Wittry	Mary Boylan	Thomas Gnoske <sup>‡</sup>	Katy Laguzza
	Nancy Bradt	A. Goldmintz	Clark Landwehr
<b>Fossil Vertebrates</b>	Anna Braum	Ingrid Gould	R. Lang
Allen Graffham	Joshua Breems	M. Grant	LuAnn LaSusa
Rick Hebdon	Joan Bruchman	Ed Graskamp	Karsten Lawson
James A. Hopson	Liz Bullock	Cindy Gray	Al Legzdins
Adam Lindgren	Peter Buol	Lori Grove	Hans Lim
Geogios Lyras	Bonnie Bush	Ethan Gyllenhaal	Peter Lowther
Timothy Nelson	Walter Carrington	Suzanne Hackbarth	Mary Loye
Tom Testa	Kevin Carroll	Sheila Harris	Peggy Macnamara <sup>‡</sup>
Jack Wittry	John Cawood	Chris Hauser	S. Maggi
Wyoming State Geological Survey	Suzanne Checchia	Ben Heins	P. Maggione
	Chicago Bird Collision Monitors	Laura Helms	Crystal Maier <sup>‡</sup>
	Shivani Choudhary	Mary Hennen <sup>‡</sup>	Benjamin Marks <sup>‡</sup>
<b>Physical Geology/Meteorites</b>	Diane Cohen	Maria Hlohowskyj	Carolyn Marsh
Terry Boudreaux	Steve Constantelos	Debbie Hohmann	Jennifer Marshall
	Ezekiel Cordeiro	Scott Hologue	Zack Martin
	Ruta Cosimo	Joanna Hosteny	June Matayoshi
		Janice Humphrey	Dave Matusik
		Curtis Jackson	Laura Mauroka

Paul Mayer <sup>E</sup>	Jill Russell	Tatzyana Wachter <sup>E</sup>	David Matusik
Lynne Mecum	Kathleen Sadleir	Ellen Walker	J. V. McHugh
Laura Mendoza	Roxanne Sadleir	Sean Ware	Dirk Mezger <sup>E</sup>
Julia Meredith	Vivienne Sadleir	Chris Warneke	Dr. Paula Mikkelsen
Chicago Midway International Airport	Jaquelen Samuels	Chris Whelan	F. C. Mosher <sup>E</sup>
Paul Miessler	Jessica Sandy	Robert Wild	Dr. Roy A. Norton
Marion Miller	Save Our American Raptors	Mary Wiesen	Robert L. Otto
Minnesota Department of Natural Resources	Mike Scelfo	Lindsey Wilkes	Dr. Stewart B. Peck
Ingrid Moreno	May Schlotzhauer	Aquila Wilks	Dr. Philip D. Perkins
Kim Moseid	Kelly Schmidt	David Willard	R. Probst
Ashley Nelson	Susan Schmidt	Carrie Willingham	Éllie Reese
Sunny Nelson	Nikki Segawa	Willowbrook Wildlife Center	Rodney Rood
Ellia Oesterle	Barbara Shaw	Margaret Wilson	Dr. Walter Rossi
Jeanette Okulinski	Kathleen Slomski	Ashley Woltman	D. S. Sikes
Elizabeth O'Hara	Nicholas Sly	Sandy Woltman	Christopher Warenke
O'Hare International Airport	Alexis Smith	Ann Woodward	R. L. Westcott
Holly O'Mara	Jeff Smith	Ailani Wong	
Katie O'Neil	Natalie Smith	David Wong	<b>Invertebrates</b>
Oded Ovidia	Allison Spangenberg		Diva Amon
Rob Paral	Kym Spiller	<b>Fishes</b>	Rüdiger Bieler <sup>E</sup>
Sharon Parmet	David Stagman	Windsor Aguirre	Broward Shell Club
Dorothy Pesch	Bob Stanley	Thomas Anton	Jochen Gerber <sup>E</sup>
Therese Peskowits	James Steffen	Bay Beach Wildlife Sanctuary	Dr. Steven M. Goodman <sup>E</sup>
Caitlin Peters	Kay Stepkin	Mark Sabaj Perez	Dr. Lawrence R. Heaney <sup>E</sup>
Renee Petersen	Jill Stites	John Phillips	Jenna Judge
John Phelps <sup>E</sup>	Celia Strauss	Alan Resetar <sup>E</sup>	Katrin Linse
Scott Plant	Ian Surroz	Kevin Swagel <sup>E</sup>	Paula M. Mikkelsen
Marina Post	Kevin Swagel <sup>E</sup>	Philip Willink <sup>E</sup>	Elizabeth R. Petit
Annette Prince	Sandy Swanson	<b>Insects</b>	Fabricio Scarabino
Robert Prorise	Flora Swearingen	Albert Allen	John Wilk
Ben Provencher	Betty Sweetland	Dr. John M. Bates <sup>E</sup>	<b>Mammals</b>
Melinda Pruett-Jones	Barb Sydow	Kyle Bradford	Bay Beach Wildlife Sanctuary
Vasek Quesada	Sarah Tag	C. E. Carlton	Danny Balet
Michael Quigley	Linda Tartof	Dr. Stylianos Chatzimanolis	Brookfield Zoo
Jennifer Raber	Amy Tavolino	Johnathan Choi	Chicago Bird Collision Monitors
Teri Radke	James Tibensky	M. L. Draney	Terry Demos
George Reineke	Treasure Coast Wildlife Center	M. Ferro	Dr. Steven M. Goodman <sup>E</sup>
Rawlins Riles	Michael Trinchitella	Mr. Rudolf Gabzdil	Dr. Lawrence R. Heaney <sup>E</sup>
Kathleen Ritterbush	Graham Troyer-Joy <sup>E</sup>	Dr. Steven M. Goodman <sup>E</sup>	Julian Kerbis
Brad Roback	Suzanne Turner	H. A. Hespenheide	Minnesota Department of Natural Resources
Geri Rode	Chris Van Wassenhove	Betty Hill	Bruce Patterson <sup>E</sup>
Charlotte Ross	Victoria Velenski	M. Jorgensen	Noe de la Sancha
Richard Runbott	Denise Verret	Michael Kippenhan	Dr. William T. Stanley <sup>ED</sup>
Bob Russ	Suzanne Verret	Patrick Leacock <sup>E</sup>	Willowbrook Wildlife Haven
Lauren Russ	Anita Victorn	Julian J. Lewis	
	Sarah Von Fremd	Dr. Robert Lücking <sup>E</sup>	



Cover: © The Field Museum, A115163d\_032, photographer Karen Bean. Inside cover: © The Field Museum, CE\_374\_102315, photographer Cheryl Eisenberg (outside); photograph courtesy of Archaeological Museum of Pella (middle); © The Field Museum, A114798d\_002, photographer John Weinstein (inside). P. 1: © The Field Museum, GN92236\_033Bd, photographer John Weinstein. P. 2: © The Field Museum, A115201d\_014, photographer Karen Bean (left); © The Field Museum, A115183d\_002A, photographer John Weinstein (right). P. 3: © The Field Museum—GN92142\_021d (top), A114245d\_001 (middle)—photographer John Weinstein; © The Field Museum, GN92138\_044d, photographer Karen Bean (bottom). P. 4: © The Field Museum, GN92150\_48d, photographer John Weinstein (top); © The Field Museum, photographer Kelsey Keaton (bottom). P. 5: © The Field Museum, GN92150\_10\_12\_15d, photographer John Weinstein. P. 6: © The Field Museum—A114798d\_002 (top), A114800d\_05E (bottom)—photographer John Weinstein. P. 7: © The Field Museum, GN92191\_016d, photographer John Weinstein (top); © The Field Museum, photographers Daniel Le and Allie Stone (bottom left); photograph courtesy of Sarah Rivers (bottom right). P. 8: © The Field Museum, CSA52793 (top); © The Field Museum, GN92106\_025Ad, photographer John Weinstein (middle); illustration courtesy of Sean McMahon (bottom). P. 9: © The Field Museum, A114810d\_008, photographer John Weinstein (top); photograph courtesy of Mark Lopez, Argonne National Laboratory (bottom). P. 10: © The Field Museum, GN92024\_143Bd, photographer John Weinstein. P. 11: © The Field Museum, A114448\_12d, photographer John Weinstein (top); © The Field Museum, photographer Maggie Baker (middle); © The Field Museum, photographer Linda M. Nicholas (bottom left); photograph courtesy of Roger Smith (bottom right). P. 12: Image courtesy of Hinchliff et al., PNAS 112:41 (top); photograph courtesy of Greg Poulakis (middle); photograph courtesy of Association Vahatra (bottom). P. 13: © The Field Museum, GN92120\_387Ad, photographer John Weinstein. P. 14: © The Field Museum, GN92261\_055Bd, photographer John Weinstein (top); © The Field Museum, photographer Alvaro del Campo (bottom). P. 15: © The Field Museum, photographer Alvaro del Campo; © The Field Museum, photographer Corine Vriesendorp (bottom). P. 16: © The Field Museum, photographer Robb Telfer. P. 17: photograph courtesy of UPI, photographer Brian Kersey (top); © The Field Museum, photographer Robb Telfer (bottom). P. 18: photograph courtesy of Archaeological Museum of Pella (left); photograph courtesy of Museum of the Royal Tombs of Aigai, Vergina (right). P. 19: © The Field Museum, GN92205\_123d, photographer John Weinstein (left); photograph courtesy of Archaeological Museum of Sparta. P. 20: © The Field Museum—GN91323\_04d (top), GN91322\_160d (bottom)—photographer John Weinstein. P. 21: photograph courtesy of Renee Latronica (top left); © The Field Museum, GN91877\_044d, photographer Karen Bean (top right); illustration courtesy of Site Design Group, Ltd (bottom). P. 22: © The Field Museum—GN92080\_131d (top), GN92180\_025d (bottom)—photographer John Weinstein. P. 23: © The Field Museum—GN92087\_139d (top), GN92144\_022Ad (bottom left), GN92202\_090Ad (bottom right) – photographer John Weinstein. P. 24: © The Field Museum – GN92183\_020Ad (top), GN92149\_017d (bottom)—photographer John Weinstein; illustration courtesy of On The Scene Event Management (middle). P. 25: © The Field Museum, photographer Jean Lachat (top); © The Field Museum, GN92155\_007d, photographer Karen Bean. P. 26: © The Field Museum, GN92171\_014Ad, photographer John Weinstein. P. 29: © The Field Museum—GN92192\_352Ad (top), GN92192\_147d (right)—photographer John Weinstein. P. 31: © The Field Museum, GN91166\_66d, photographer John Weinstein. P. 34: photograph courtesy of Northwestern magazine. P. 39: © The Field Museum. P. 40: © The Field Museum, GN92194\_010Ad, photographer John Weinstein. P. 43: photograph courtesy of the family of Stanton Cook. P. 47: photograph courtesy of Fay and Dan Levin. P. 50: © The Field Museum, GN92121\_049d, photographer Karen Bean. P. 51: © The Field Museum, photographer Keith Nixon Photography. P. 52: photograph courtesy of Jim W. Croft. P. 54: © The Field Museum—GN91774\_043Bd (top), GN91604\_18d (middle)—photographer John Weinstein; image courtesy of Pat Bradley, Brad Dunn, and Greg Mercer (bottom). Inside back cover: © The Field Museum, A115030d\_005, photographer Karen Bean.

If you feel an error has been made in presenting this donor honor roll, please contact the Office of Institutional Advancement at [annualreport@fieldmuseum.org](mailto:annualreport@fieldmuseum.org).

**Publisher:**  
Charles L. Katzenmeyer

**Project Manager and Editor:**  
Ellen Woodward

**Contributors:** Mark Alvey, Deborah Bekken, Catie Boehmer, Beth Crownover, Aimee Davis, Jenny Flowers, Eve Gaus, Erin Meyer, Wendy Quinlan, Jeanette Rodriguez, Usha Subramanian, and John Weinstein.

**Designer:** Bark Design, Chicago

**Printer:** The Fox Company, Milwaukee, WI



The Field Museum gratefully acknowledges the generous support it receives from the Chicago Park District, on behalf of the people of Chicago.

© The Field Museum, all rights reserved.



**Digital edition:**  
[fieldmuseum.org/about/annual-reports](http://fieldmuseum.org/about/annual-reports)

I  
N  
M  
E  
M  
O  
R  
Y

BILL  
STANLEY



In October of 2015, The Field Museum lost one of its greatest treasures with the passing of Bill Stanley, PhD, Director of the Gantz Family Collections Center and Negaunee Collection Manager of Mammals. Bill passed away while conducting field work and training young scientists in Ethiopia. Bill was a dedicated and passionate scientist committed to understanding the capacity of natural history collections to teach us about our world, or as Bill would say, “to discover what makes this planet tick.” Bill began his career at the Museum in 1989; over the years he conducted countless field trips to Africa, trained dozens of interns and students, published more than 70 scientific papers, and mesmerized tens of thousands of visitors at Field Museum Members’ Nights—and he did it all with exuberance, enthusiasm, and joy.

Bill’s family and his childhood in East Africa helped cultivate his love for both nature and science. Bill was an inspiration to his colleagues and friends at the Museum and is greatly missed. To commemorate Bill’s earliest experiences in natural history and spread his message about encouraging young scientists, Museum staff created the short film *The Switch: A Bill Stanley Story* which won a Gold MUSE Award from the American Alliance of Museums.

The Field Museum community is committed to continuing Bill’s legacy. The Bill Stanley Memorial Fund supports ongoing work inspired by Bill’s greatest passions at the Museum—collections, training, and the natural history of Africa. Contributions to The Bill Stanley Memorial Fund will support the interface of exploration and training with Field Museum collections, with special opportunities for students from Africa. To make a gift in Bill’s memory and to see the short film *The Switch: A Bill Stanley Story* visit [fieldmuseum.org/stanley](http://fieldmuseum.org/stanley).

The Qingming Shanghe Tu is a 27-foot-long hand painting. A digital version is mounted on a touch table in the *Cyrus Tang Hall of China*. Visitors can zoom in and out to examine details and explore vignettes highlighted with pop-up text. The scroll is also available for viewing online at [fieldmuseum.org/qingming-scroll](http://fieldmuseum.org/qingming-scroll).



T  
H  
A  
N  
K  
Y  
O  
U



The Field  
Museum