

Historic, archived document

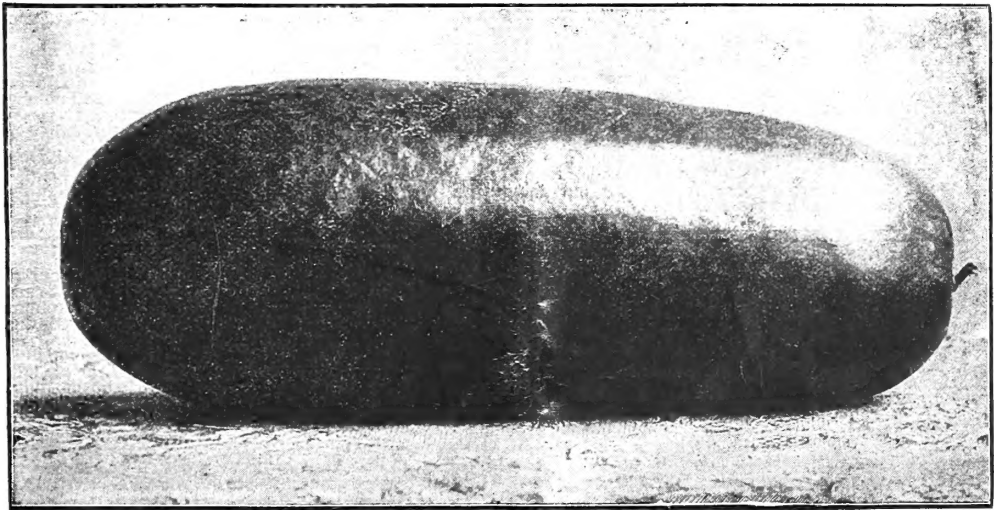
Do not assume content reflects current scientific knowledge, policies, or practices.

=1910=



**ANNUAL
SPRING**

CATALOGUE



ALEXANDER'S WATSON MELON

The Genuine Variety Introduced by Us. Best Eating
and Shipping Melon If You Plant Our Pure Seed.

Alexander Seed Co.

911 BROAD STREET

AUGUSTA, :: GEORGIA

YOU WOULDN'T BUY A HORSE OR A MULE

just because it was cheap, would you, without wanting to know something about what sort of an animal you were buying? You can buy old worn out "plugs" for \$50.00 or less when good mules or horses cost \$200.00 to \$250.00. Which is the cheapest? Is it common sense to put money (no matter how low priced the animal) into an old worn out mule or horse if you expect to use it for work? When you buy a work animal you look into the matter very carefully. Of course you want to get just as good an animal as you can for the lowest price, but if the animal is offered low, you at once get suspicious. If the price is below the usual market price for good animals you may be pretty certain there is something wrong about the animal even if you can't see anything wrong. Low price means low value and quality of the animal. When you buy a mule or a horse your idea usually is based on what you can get out of it in work, on your farm. A good, strong, healthy young mule that will stand the strain of hard work all through the year is a whole lot cheaper to you at \$200.00 or over than a 15-year-old "stove up," worthless animal that has hardly life enough in it to walk around the pasture, at from \$25.00 to \$50.00. Why do you pay \$150.00 to \$175.00 more for one animal than you do the other? Just because you are convinced in your own mind that the good, vigorous animal is worth the difference.

Now, you probably think this is sort of a queer line of talk for a seed catalogue. Possibly it is but we think not. There is a whole lot of difference between mules or horses, a difference well represented by the difference in market values. The \$50.00 mule and the \$250.00 mule are both mules, yet there is a big difference between them as you know. You wouldn't, if you wanted and expected to make a successful crop, depend on a "plug" mule or horse to do the season's work. Even if the animal didn't fall down and die in his tracks you know that it hasn't strength enough to do good solid work, the kind of work necessary to make a successful crop.

You know that there are just such differences between mules or horses as we have outlined. Do you realize that there is just as much difference in seeds as there is in mules? There are

"Plug" Seeds and Thoroughbred

and you or anyone else can't afford to plant "plug" quality seeds any more than one could afford to use a "plug" animal to work the crops. The worst thing about "plug" or low quality seed is that the difference don't show up like it does in an animal. They may all look very much alike but the real difference comes in exactly like it does with the animals—in the amount of work they will do for you on about the same amount of care and feed. It costs little or no more (sometimes less) to feed a good, strong, vigorous animal than it does the worn out one, yet the strong animal does three or four times the work in the same length of time. It costs just as much to plow, fertilize and cultivate an acre of land planted in "run of the gin" cotton seed which makes 200 pounds of lint as it does to tend one planted in our seed which has had the most careful attention in "breeding up" and growth and which will make 400 to 500 pounds of lint under exactly the same conditions.

It's not really a question of whether you can afford to buy seed from us to plant your cotton crop, but whether you can afford not to. It is our business to produce high grade seed. Such as we produce cannot be had from others, and we will tell you why. With all due respect to farmers who advertise planting seed for sale, they cannot and do not compete with us in quality. With the small acreage controlled they cannot afford to and do not spend the time and money we do in seed improvement. Their seed is too irregular. We saw cotton from an advertising farmer recently. It was a small boll cotton. One fine plant had 54 bolls, the next plant to it had only 2 and this irregularity ran all through the patch. You can't afford to grow the 2 or 4 or 6 boll plants in your crop. They take up just as much room and cost you just as much to grow as it does the 20 to 60 boll plants and what is true of cotton is true in greater or less degree of every item in this catalogue. It's time now to plan your 1910 crops and think about what kind of seed you are going to plant. Alexander's Seeds are thoroughbred, no "plug" quality comes into our house. "Plug" quality seed means "plug" crops. Which will you have at harvest time in 1910?

Seeds Postpaid

Three-fourth of the seed orders go from our store to our customers by mail. For that reason we make our catalogue so that all prices contained therein on seeds in packets, ounces, quarter-pounds, pints or quarts include postage prepaid by us. The prices show exactly what the seed will cost you delivered at your postoffice. Where prices are made on five or ten-pound lots or more, or pecks and bushels, price does not include postage, as such quantities are too large for mailing and must be sent by express or freight at your expense for charges.

If you make an order requiring express or freight shipments and wish to include in it some of the articles quoted postpaid, you may deduct eight cents per pound or fifteen cents per quar from the catalogue price on such articles.

If you are a large buyer of seeds send us a list of your wants on the "Special Quotation Sheet" enclosed in this catalogue, naming variety and quantity of each, and we will make you the very lowest possible price consistent with first-class quality of seeds, and find out just what the express or freight will be on your shipment. In this way you can easily know just what your order will cost delivered. If wanted by mail, the prices in this catalogue show you exactly what the seed cost delivered at your postoffice or at your door if you are on an R. F. D. route.

Send Cash With Order

There are many hundreds of seed buyers each season that write us asking us to send seeds on credit and open accounts with them. While we would be pleased to accommodate these friends, it is simply impossible for us to open hundreds of these small accounts. This is no reflection on the credit or standing of these friends, but the opening of so many accounts necessitates the employment of additional bookkeepers and an annual expenditure of hundreds of dollars in stationery and postage unnecessarily. This catalogue contains the price of each item, and it is no more trouble to remit when sending an order than to remit on receipt of a bill of the goods. All large mail-order houses, such as ours, have found it necessary to adopt this rule of "Cash With Order," and we must insist on remittance accompanying all orders sent for seed from this catalogue.

Alexander Seed Co.

Augusta - - - Georgia

OUR SEASONABLE SEEDS

ARE FOR

Your Southern Spring Plantings

Seeds Fresh, Vital and True to Name.

SEEDS POSTPAID Remember that the prices given in this list include the delivery of all seeds by the packet, ounce, quarter pound, pound, pint or quart, except where noted. Send us the amount named in this catalogue and we guarantee safe delivery by mail in these quantities.

OUR PREMIUMS Please bear in mind that on seeds in packets and ounces only, except cauliflower in ounces (no quarter pounds, pounds, pints or quarts), the purchaser may select 25 cents' worth extra on each dollar sent. This does not apply to orders for collections, prices for which are net.

CASH WITH ORDER Kindly remember that our terms are strictly cash with order. This is no reflection on your credit or standing, but we find it impossible to open up accounts on seed orders and conduct our business. It is just as easy to remit with the order as it is with a bill for the goods, and in almost every instance the price is named in this catalogue. Do not ask us to send an order for seeds and "you will remit on receipt of bill."

COST OF SENDING MONEY In all cases where the order for seeds amounts to one dollar or more, the cost of postoffice or express money order or cost of registering the letters from places that are not money order offices, may be deducted from the amount.

STAMPS On orders for seeds where the amount is less than 50 cents, we will accept postage stamps in good condition (one cent and two cent stamps preferred) the same as cash, but we would ask those remitting stamps to wrap them in oiled paper, if possible, to prevent them sticking together or to the order.

SPECIAL EXPRESS RATES We have obtained from the Southern Express Co. a special express rate on seeds shipped from us to our customers. The special rate is equivalent to a reduction of about one-third from the regular rates, and on shipments of less than 30 pounds we can, in most cases, ship by express cheaper than by freight. As a rule, we can ship 15 pounds of seed or a peck of peas or beans, or corn to any point reached by the Southern Express Co. for 35 cents. This does not apply to points on the Wells-Fargo, American or Pacific Express. The cost in these cases will be 35 cents for each company on a 10 or 15 pound shipment, making a charge of 70 cents for a point if handled by two different express companies.

ABOUT WARRANTY The Alexander Seed Co. gives no warranty, either express or implied, as to description, quality, productiveness or any other matter, of any seeds, bulbs or plants they send out, and will not be in any way responsible for the crop. If the purchaser does not accept the goods on these terms, they are at once to be returned, and any money that may have been paid for them will be refunded. Crops are dependent for success or failure on so many things besides the seed that it is impossible to give any warranty or guarantee. This does not mean that we lack confidence in the seeds we sell but we have no control over the goods after they leave our house, especially so, as to methods of planting, cultivation and fertilizing, all of which are important factors in the success of any crop. If we should warrant or guarantee seeds in any way we could be held responsible for the failure of the crop, regardless of cause, and this is a responsibility we can not accept.

ALEXANDER SEED CO.

WHY NOT MAKE AN ASPARAGUS BED?

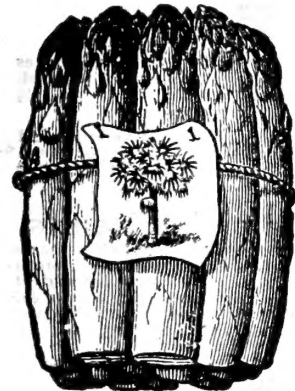
Asparagus is a most delicious vegetable, easily grown in most parts of the South. Seed can be sown in either fall or spring thinly in rows one foot apart. When well up give frequent cultivation until plants are one year old. In transplanting to permanent bed put roots 16 to 18 inches apart each way, placing the crown of the root 4 inches below the surface. Use your best soil for asparagus. You can not get it too rich nor can you use too much manure on this crop.

Palmetto The favorite and earliest Southern variety. Originating in South Carolina. Becoming more popular every year with both market and home gardeners. Adapted to all sections where asparagus can be grown. Packet, 5 cents; ounce, 10 cents; ¼ pound, 20 cents; pound, 60 cents; postpaid. In 5-pound lots or over, not prepaid, 40 cents per pound.

Palmetto Asparagus Roots You can save 1½ to 2 years' time in getting asparagus beds ready for cutting by the use of our large 2-year-old Palmetto Asparagus roots. Plant them in January and February. 50 roots, 75 cents; 100 for \$1.25; postpaid. By express or freight, not prepaid, 50 for \$2.75; 1,000 for \$4.50. Write for special prices on large lots.

French Globe Artichoke For table use, highly prized by French and Italians. Best imported French seed. Packet, 10 cents; ounce, 30 cents; ¼ pound, \$1.00.

Jerusalem Artichoke The Great Hog Food



Palmetto Asparagus

No root crop is growing in favor so rapidly for feeding hogs. A field of 500 bushels is nothing unusual. An acre will fatten 25 to 30 hogs easily, and hogs fed on them are free from cholera. The Southern farmer who neglects growing artichokes is making a mistake; they are adapted to our section, grow all summer, make enormous crops and stay in ground in perfect condition until the hogs are turned in. Plant in early spring in 4-foot rows like Irish potatoes, dropping seed piece, cut to single eye, every 2 feet. Pound, postpaid, 25 cents; 3 pounds, 70 cents. By freight or express, not prepaid, peck 65 cents; bushel, \$2.00. Barrel of 11 pecks (for 1 acre), \$5.00.



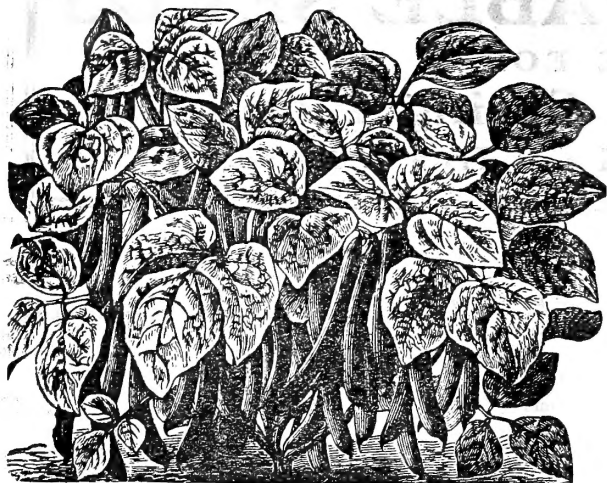
Jerusalem Artichoke.

About Small Orders

Every year we get hundreds of letters from seed buyers who say "I thought my order was too small to be worth sending, so just went up to my merchant's and got a few packets of seed and had 'bad luck' with my garden."

We want to say two things to every reader of this catalogue. The first is that you can never get best quality of garden seed from boxes in the stores any time or any place. Second, your order is always welcome in our house, no matter how small it may be and if it's only for 10 cents worth of seed it will be filled with exactly the same care and exactly the same quality of seed as if your order called for a hundred dollars worth or more. We are in business to serve every seed buyer.

Best Green Podded Bush Beans



A Single Plant of Our Refugée Beans

crops in either wet or dry seasons. A splendid shipper and each season becomes more popular for both market and home use. Pods of good size, meaty and tender. A first-class bush bean in every respect. Packet, 10 cents; ½ pint, 15 cents; pint, 25 cents; quart, 40 cents; postpaid. Peck, not prepaid, \$1.25; bushel, \$4.50.

Extra Early Red Valentine A standard variety for either market or home use in all parts of the South. Very early, a strong vigorous grower and a heavy bearer of good-sized, tender, meaty pods of the finest quality. Very even in ripening and a favorite everywhere in the South. Packet, 10 cents; ½ pint, 15 cents; quart, 40 cents; postpaid. Peck, not prepaid, \$1.25; bushel, \$4.50.

Stringless Green Pod It is beyond question the finest of all in quality. It is an absolutely stringless bean in all stages of growth with fine, long, green, round pods. It surpasses all other beans in its crisp, tender qualities and rich flavor. It is prolific, a strong grower and a week or more earlier than the Valentine. No home garden that wants the finest in quality should be without it. Packet, 10 cents; ½ pint, 15 cents; pint, 25 cents; quart, 45 cents; postpaid. Peck, \$1.40; bushel, \$5.00.

Longfellow { **Green** } Splendid extra early. Seed crop short. Pkt., 10 cts.; ½ pt., 15 cts.; pt., 25 cts.; qt., 45 cts.; postpaid.
Black Valentine { **Green** } For market gardeners use. Seed crop short. Pkt., 10 cts.; ½ pt., 15c.; pt., 25c.; qt., 45c.; postpaid.

Write for peck and bushel prices on these two varieties.

Wax Podded Bush "Snap" Beans

Davis' White Wax A very productive wax variety bearing large, handsome silvery white pods 5 to 6 inches long. The most handsome pods of all wax sorts. The seed being white makes it an excellent shell bean for winter use. In shipment it holds up splendidly and sells on its handsome appearance. Packet, 10 cents; ½ pint, 15 cents; pint, 25 cents; quart, 45 cents; postpaid. Peck, not prepaid, \$1.40; bushel, \$5.00.

Our Dwarf German Black Wax Both of these are well-known standard wax varieties, and especially are favorites everywhere in the South. Each packet, 10 cents; ½ pint, 15 cents; pint, 25 cents; quart, 40 cents; postpaid. Peck, not prepaid, \$1.25; bushel, \$4.75.

Improved Rust-Proof Golden Wax

BIGGER PACKETS FOR SAME MONEY

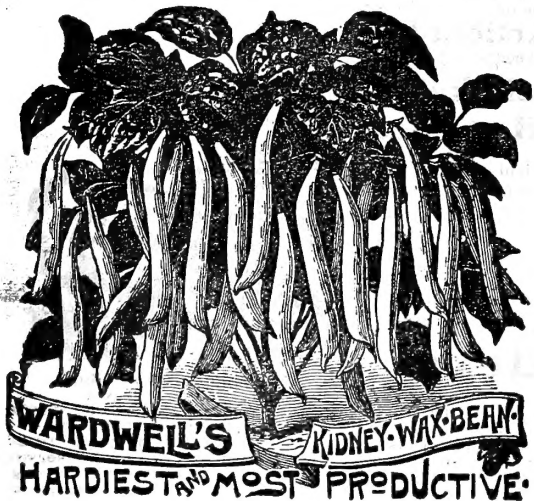
Wardwell's Kidney Wax Beans

Most popular of all wax varieties in the South for either market or home use. Matures in 5 to 6 weeks, a strong, vigorous grower, bearing heavy crops of long, showy pods, tender and of the finest flavor. In shipping it stands up well, bringing top prices. Is remarkably free from rust. Packet, 10 cents; ½ pint, 15 cents; pint, 25 cents; quart, 40 cents; postpaid. Peck, not prepaid, \$1.40; bushel, \$5.00.

Round Pod Kidney Wax

The same as Wardwell's Wax, but has pods entirely round instead of partly flattened. Early and productive. Pkt., 10c.; ½ pt., 15c.; pt., 25c.; qt., 45c. Peck, \$1.40; bu., \$5.00.

Currie's Rust-Proof Wax The nearest rust-proof of any variety of good Wax Bean. Vines vigorous, hardy and productive. One of the earliest and the pods are of fine appearance, holding up splendidly in shipment. A standard market gardener's variety for shipment. Pkt., 10c.; ½ pt., 15c.; pt., 25c.; qt., 45c.; postpaid. Peck, not prepaid, \$1.25; bu., \$4.50.



25	Family Bean Collection	25
One full size packet each of Extra Early Refugée, Wardwell's Kidney Wax, Old Homestead Pole and Florida Butter Bean postpaid for 25 cents. A fine collection for your Family Garden.		
25		25

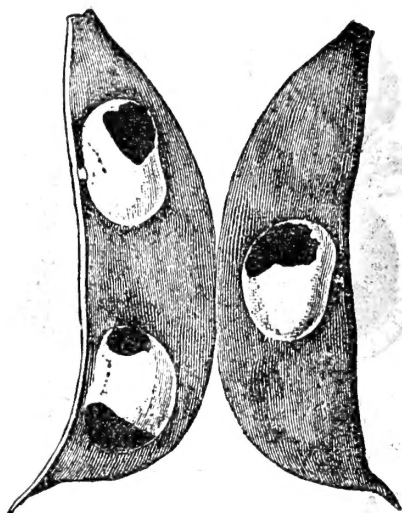
Pole and Lima Beans

These are the stand bys, something to furnish you snap and butter beans all through the summer and fall months and dry sabled beans during the winter. Some of these ought to find a place in your home garden. Nothing you can plant will pay you better in both quantity and quality returns.

"Old-Time" Florida Butter Bean

This superb variety has been almost lost sight of in the last ten years but we succeeded in getting "seed stock" of it from a prominent Florida farmer in whose family it has been kept pure. Florida Butter is the strongest grower

and heaviest bearer of the limas and a few hills of them in the garden will keep any family fully supplied with the most delicious "butter" beans all summer and fall. Size of pods are shown in our illustration and the plants are actually covered with them from June until the frost kills the vines. Beans are of the most excellent quality and the vines set the bloom and bear continuously from start to finish. If you like "butter beans" and don't plant the Florida Butter you will make a big mistake. Pkt. 10 cents; ½ pint, 20 cents; pint, 30 cents; quart, 65 cents, postpaid.



Open Pod of Florida Butter Bean

King of the Garden Lima Largest, richest and finest flavored of all pole beans. Vines strong and vigorous growing, and a heavy producer of big pods, well filled out with large beans of most delicious flavor. Packet, 10 cents; ½ pint, 20 cents; pint, 30 cents; quart, 50 cents; postpaid; peck, not prepaid, \$1.75.

Carolina or Sewee Beans The original lima bean, commonly known as "Butter Bean." Very prolific, fine flavored and sweet. A popular bean in all parts of the South; fine for using fresh or as a shell bean in winter. Packet, 10 cents; ½ pint, 15 cents; pint, 25 cents; quart, 45 cents, postpaid; peck, \$1.50.

Kentucky Wonder or Old Homestead

The heaviest bearer of all pole snap beans in the South. Immensely prolific, as shown in our illustration, being fairly covered with big, tender, green pods, borne in clusters. Always large, crisp, tender, and free from stringiness. Packet, 10 cents; ½ pint, 20 cents; pint, 30 cents; quart, 50 cents; postpaid. Half peck, not prepaid, \$1.00; peck, \$1.75.

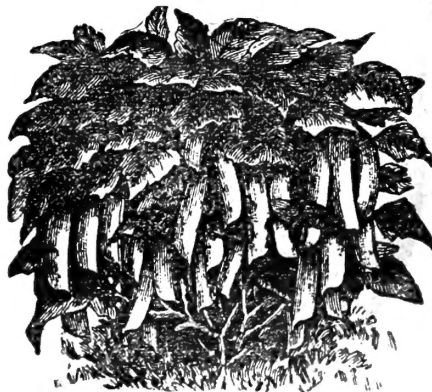
Corn Field or Cut Short, Fat Horse or Crease Back, Standard well-known varieties of pole beans, all useful for "snaps" during the summer and for shell beans during the winter. Every garden should have a few. Packet, 10 cents; ½ pint, 15 cents; pint 25 cents; quart, 45 cents; postpaid; peck, not prepaid, \$1.50.

Henderson Bush Lima Bush form of the Carolina or Sewee Lima. A heavy and sure cropper. Pick close and they bear from June until frost. One plant has made 200 full size pods. Packet, 10 cents; ½ pint, 15 cents; pint, 25 cents; quart, 45 cents; postpaid. Not prepaid, peck \$1.75; bushel, \$6.00.

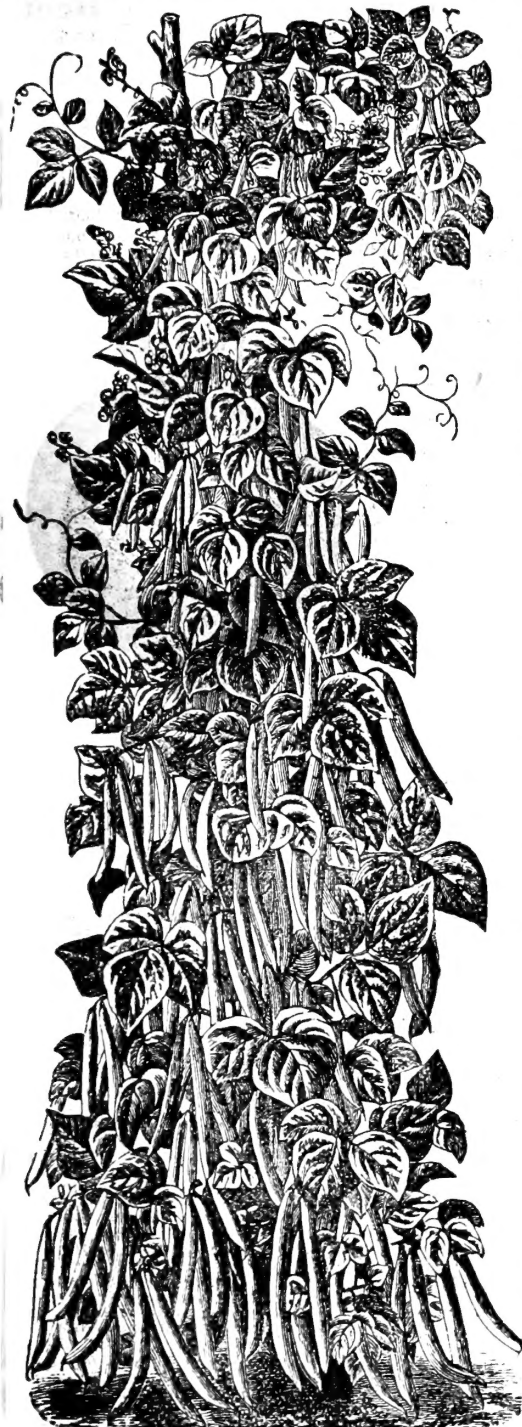
Burpee Bush Lima Bush form of Large White Lima. Packet, 10 cents; ½ pint, 20 cents; pint, 30 cents; quart, 50 cents; postpaid. Not prepaid, peck, \$2.00.

JACKSON WONDER

Native Georgia variety with brown colored seed. Fine grower, practically drought proof. Fine for home gardens. Seed very scarce. Packet 10 cents; ½ pt. 20 cents; pint 30 cents; quart, 55 cents; postpaid.



Henderson Bush Lima Beans.



Old Homestead or Kentucky Wonder Pole Beans.



Early Improved Blood Turnip Beet.

Alexander's Beet Seed

Culture Sow in rich or well-manured ground after same has been deeply plowed or spaded. Sow in rows 18 inches to 2 feet apart. Sow thin in the rows in this latitude from early spring up to August. Further south sow from September to December. The seed is rough and soil should be firmed or rolled after planting. When 2 to 3 inches high thin out to 5 or 6 inches apart in the row. The young plants are superior to turnips and spinach for greens. In light, sandy soil cover seed 2 inches; in stiff or clay soils, not over 1 inch. One ounce of seed plants 100 feet of row; for market garden planting, sow 10 pounds per acre.

Early Improved Blood Turnip Beet

The shape of this, the finest of all the Blood Turnip varieties, is shown by our illustration. Our extra early strain of it will be ready for use in six or seven weeks with good cultivation. It is the finest of all in quality and very productive. Color a deep blood red which it holds after being cooked. Always sweet, tender and free from stringiness. Good for either market or home use, and fine for making succession plantings. Plant this variety and you will never regret it. Packet, 5 cents; ounce, 10 cents; $\frac{1}{4}$ pound, 20 cents; pound, 60 cents; postpaid. 10 pounds, not prepaid, \$4.00.

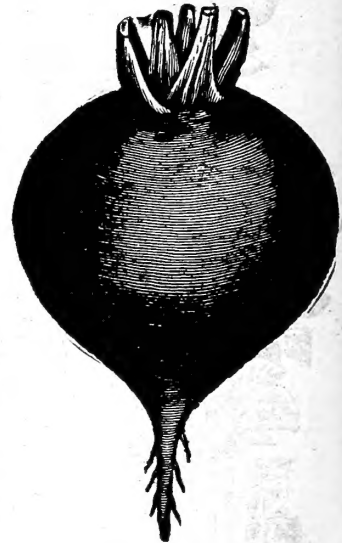
Extra Early Egyptian Not the best quality but earlier and flatter than our Crosby Egyptian. Valuable for market gardeners. Pkt., 5c.; oz., 10c.; $\frac{1}{4}$ lb., 20c.; lb., 60c.; postpaid. 10 lbs., not prepaid, \$4.25.

Alexander's Extra Early Eclipse Beet

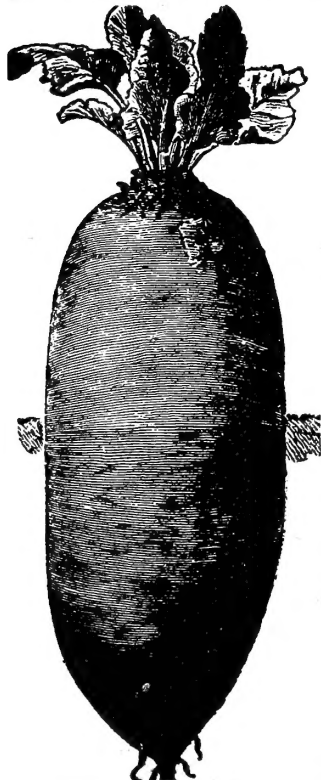
A most popular market gardener's beet for the South as well as a favorite for home gardens. Of remarkably fine form, smooth and free from stringy roots. Small top and a rapid grower. Color a deep blood red which it retains fully after being cooked. Quality extra fine, sweet and tender. A heavy cropper and its handsome appearance makes it an easy seller when placed on the market. Our specially selected strain of Eclipse has proven to be most successful for all plantings and our market garden friends will make no mistake by planting it largely this year. Packet, 5 cents; ounce, 10 cents; $\frac{1}{4}$ pound, 20 cents; pound, 55 cents; postpaid. 10 pounds, not prepaid, \$4.00.

Crimson Globe Beet A distinct new variety introduced by us last year. Extremely handsome appearance and perfect globe shape. Not quite as early as Eclipse, but larger. The beets average three inches in diameter; skin perfectly smooth and form very regular. In color it is a deep rich crimson; in quality very sweet and tender. Its foliage is small and distinct, being a rich bronze purple. We recommend it most highly for both home and market gardens. Packet, 5 cents; ounce, 10 cents; $\frac{1}{4}$ pound, 25 cents; pound, 75 cents; postpaid; 6 pounds, not prepaid, \$3.00; 10 pounds, \$5.00.

Crosby's Improved Egyptian A distinct improvement over the Extra Early Egyptian beet, the Crosby being of much more even and regular growth with a more globular shaped root. It is an early sort and of much better quality and flavor than the old kind. We have the true strain which is a favorite with market gardeners for earliest sales. Packet, 5 cents; ounce 10 cents; $\frac{1}{4}$ pound, 20 cents; pound, 65 cents; postpaid. 10 pounds, not prepaid, \$4.50.



Our Extra Early Eclipse Beet



Mammoth Long Red Mangel Beet.

Lentz' Extra Early Beet

A splendid variety. Nearly as early as the Egyptian, but larger and of extra fine quality. Color a dark blood red, tender and sweet at all stages of growth. Has small top and with favorable seasons can be used in six weeks from sowing. Very productive, a splendid keeper and shipper. Pkt., 5c.; oz., 10c.; $\frac{1}{4}$ lb., 20c.; lb., 60c.; postpaid.

Half Long Blood Beet Improved Long Blood

Old and well-known varieties, especially adapted for summer and fall use from spring plantings. They are both more deeply rooted than the turnip-shaped varieties and are more resistant to drought and summer heat. One of them ought to be in every Southern home garden, each season, for they furnish beets of best table quality long after the others. Each variety, packet, 5 cents; ounce, 10 cents; $\frac{1}{4}$ pound, 20 cents; pound, 60 cents; postpaid.

Swiss Chard or Sea Kale

A variety of beet grown for the leaves only. Packet, 5 cents; ounce, 10 cents; $\frac{1}{4}$ pound, 25 cents; pound, 70 cents; postpaid.

Mangel and French Sugar Beets for Stock Feed

The value of root crops for stock feeding, the Mangels, French Sugar Beet and Belgian Carrots can hardly be over-estimated. They are enormous yielders under good cultivation and they make an agreeable change of food for any animal kept on dry forage during the winter months. When planted in the spring and allowed to grow all summer, the yield is enormous and the value of the crop is shown by the increased flow of milk and the improved condition of the animals. Have your ground deeply plowed, then well harrowed. Sow seed in the spring in rows $2\frac{1}{2}$ to 3 feet apart and let grow until late fall. Use a naturally rich soil or fertilize heavily to get profitable results. Both the Mangel and Sugar Beets are equally profitable for stock feeding. In sections where their value is known almost every farmer plants from one to ten pounds of seed each year.

Mammoth Long Red Mangel

The most generally planted, being the heaviest and surest cropper. Single roots have been grown to weigh 61 pounds. Ounce, 5 cents; $\frac{1}{4}$ pound, 15 cents; pound, 40 cents; postpaid. 10-pounds lots or over, not prepaid, 25 cents per pound.

White French Sugar Beet

Not valuable as a sugar crop South, but its rich contents of sugar makes it a most valuable sort in fattening stock of all kinds. An immense yielder and profitable variety. Ounce, 5 cents; $\frac{1}{4}$ pound, 15 cents; pound, 40 cents; postpaid. 10 pounds or over not prepaid, 25 cents per pound.

Alexander's Cabbage Seed for the South

YOU NEED IT. WE HAVE IT. LET'S GET TOGETHER.

Let's get together on this Cabbage question. There is no crop grown that is so absolutely dependent on the quality of the seed as Cabbage. It is the most important of the Southern vegetable crops. Almost every truck farm has it and it is a stand-by in every home garden. We have not space here to go into details as to the sources of seed supply. The greatest danger is the cheap, European-grown seed that is used to make out prices with. This makes either a complete or partial failure nine years out of ten when planted South through our climatic conditions. Your only safety is to use no Cabbage seed except of the best American growth. Our Cabbage seed is grown for us by a Cabbage seed specialist who has spent a lifetime in the business and thoroughly understands our conditions here in the South. The seed we have has no superior and there is very little seed produced that is equal to it. It's just the kind of Cabbage seed you need to make a successful crop with. You can't get anything better if you pay \$10.00 per pound for it.

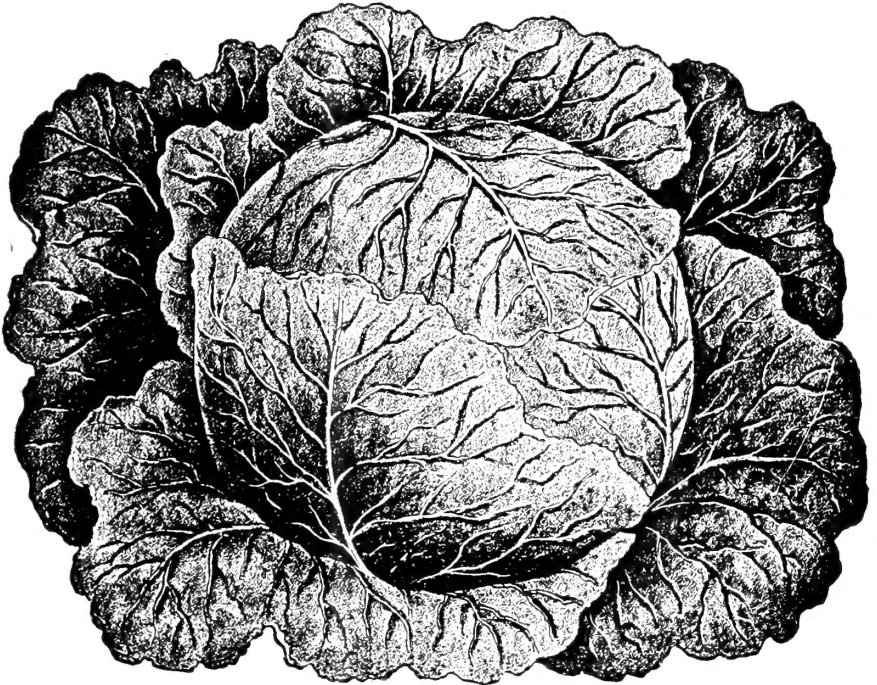
HOW TO GROW GOOD CABBAGE IN THE SOUTH.

The first requisite is first-class seed of best American growth such as ours. Cabbage can be grown on almost any soil from heavy muck to light sandy soils if the light soils be heavily manured or fertilized. For summer and fall planting seed can be sown any time from July 15th to November 15th. In sowing Cabbage during summer the beds should be shaded during the hottest part of the day. For summer planting use 1 ounce of seed for 1,500 plants.

When plants have six to eight leaves transplant to open ground, setting deep enough so that first leaves are level with the ground. Set in rows two feet apart and sixteen to eighteen inches apart in a row.

Cabbage is a heavy feeder. Most of the fertilizer should be worked into the soil before the young plants are set out. Give frequent cultivation, keeping the crop free from weeds or grass.

Most of the Cabbage crops in the South are grown with commercial fertilizers. In our section fertilizers containing 7 to 8 per cent. Phosphoric Acid, 5 per cent. Ammonia and 5 per cent. Potash have given the best results on Cabbage.

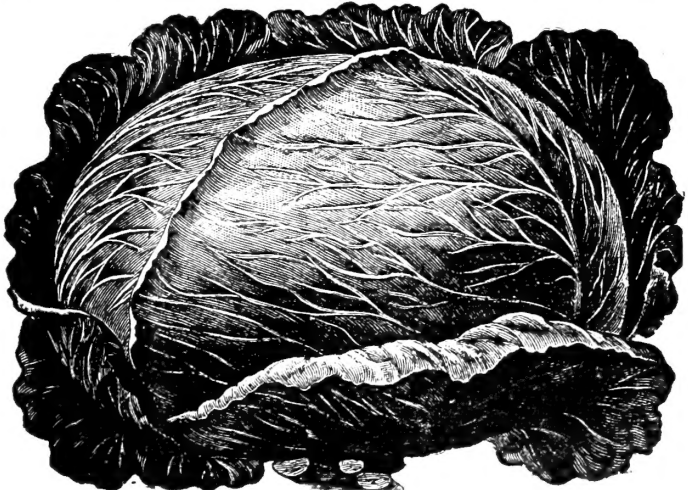


ALEXANDER'S "AUGUSTA EARLY TRUCKER" CABBAGE.

Augusta Trucker In our "Augusta Early Trucker" we have the best large early Flat Head Cabbage ever offered for planting in the South, a variety which will not only give the most satisfactory results in "home gardens," but has proven of the greatest possible value to the market gardens of South Carolina, Georgia, Florida, Texas and other Southern States. It suits all seasons; in fact, no Cabbage we have ever seen approaches it in so many desirable qualities. Sown in spring, it makes the best summer crop. Sown in the late summer months, it makes a most desirable Winter Cabbage. Our illustration gives you a good idea of its shape and appearance. Its size it is the most desirable for market, either local or for long distance shipment. It stands summer heat and winter cold without injury and is the heaviest yielder and the surest header of them all. We know of no Cabbage that combines so nearly all the good qualities that a Cabbage can have. Our advice to you is to plant the "Augusta Early Trucker" this spring. Packet, 10c; 1/2 ounce, 20c; ounce, 35c; 1/4 pound \$1.00; pound, \$3.25 postpaid.

Alexander's Surehead Cabbage

Our Surehead is the finest strictly main crop Cabbage on our list. It never fails to make fine large solid heads with few outer leaves. It's a strong vigorous grower, maturing two weeks after "Augusta Trucker" and is very regular in size, shape and color. It is a splendid variety for both spring and summer planting. It resists scalding sun and rains and is a good keeper, staying in good condition long after maturity. Invaluable for both home and market gardens and no Southern garden or truck farm should be without "Surehead" in 1910. Packet, 5 cents; 1/2 ounce, 15 cents; ounce 25 cents; 1/4 pound, 60 cents; pound, \$2.00; postpaid.



Alexander's Surehead Cabbage.



Our Early Improved Drumhead

EARLY JERSEY WAKEFIELD

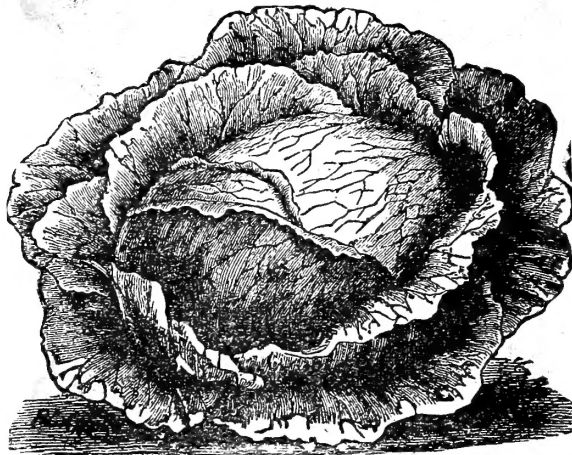
The Jersey Wakefield is the most popular extra early pointed variety for the market gardener and one of the most profitable extra earlies that can be planted. Frequently matures in 100 days from planting the seed. We sell immense quantities of this variety to the truck growers of the Carolina coast. Our special strain of Wakefield is unsurpassed. Some seedsmen charge \$8.00 to \$10.00 per pound for Wakefield cabbage. Actual test shows ours to be better than the \$10.00 stock. Buy of us at a fair price and get the best that can be grown. Packet, 5 cents; ½ ounce, 15 cents; ounce, 25 cents; ¼ pound, 75 cents; pound, \$2.50; postpaid.

Early Summer Fine early flat variety, maturing about 10 days after Jersey Wakefield. An old favorite sort. Packet, 5 cents; ounce, 20 cents; ¼ pound, 50 cents; pound, \$1.60.

All Seasons Good for either early or late crop. Heads of good size and thick through. Packet, 5 cents; ounce, 20 cents; ¼ pound, 50 cents; pound, \$1.60.

Charleston Wakefield Same as Early Jersey Wakefield except that it is about one-third larger and heavier, and matures ten days to two weeks later. Very sure and hard heading variety. Packet, 5 cents; ½ ounce, 15 cents; ounce, 25 cents; ¼ pound, 60 cents; pound, \$2.00.

Early Dwarf Flat Dutch Favorite early cabbage. Packet, 5 cents; ounce, 20 cents; ¼ pound, 50 cents; pound, \$1.60.



North Carolina Buncombe Cabbage

Premium Late Flat Dutch The best of our late Flat Dutch varieties. For July, August and September planting, to mature in winter and spring, it has no superior as it resists frosts and freezes to a remarkable degree. It is equally valuable for spring planting, as it seems to stand heat as well as cold. Packet, 5 cents; ounce, 20 cents; ¼ pound, 60 cents; pound, \$1.60; postpaid.

Early Winningstadt An old-time favorite that holds its own against new introductions in many sections. Pointed heads, very early, heads of good size for an extra early, very solid and one of the surest headers of them all. Packet, 5 cents; ½ ounce, 10 cents; ounce, 15 cents; ¼ pound, 40 cents; pound, \$1.50; postpaid.

Green Glazed A popular, rather loose headed variety largely planted in home gardens for summer and early fall use. A vigorous grower and the most resistant of all varieties to the attacks of insect pests. If you have trouble with bugs plant the Green Glazed. Pkt., 5c.; ½ oz., 15c.; oz., 25c.; ¼ lb., 65c.; lb., \$2.00; postpaid.

Alpha—Earliest of All Cabbages Our "Alpha" is a distinct type, most valuable for those who desire to mature heads in shortest possible time from sowing. It's almost flat but a week to ten days earlier than the Jersey Wakefield. It's the surest kind of a header, and the heads whether large or small are always solid. Of very dwarf growth and can be set a little closer than the Wakefield. In quality it's of the best. It's the best extra early flat headed cabbage on the market. It will please you. Packet, 10 cents; ½ ounce, 20 cents; ounce, 30 cents; ¼ pound, 75 cents; pound, \$3.00; postpaid.

Improved Early Drumhead This is the best of all of the early Drumhead cabbages for the South, just the right sort if you want an early crop of the Drumhead cabbages. It's a good grower and is especially valuable for the lighter soils of the South where many of the pointed cabbages fail to make good heads. It is not only hardy to resist winter cold, but is unexcelled to stand burning sun without scalding or blistering. Packet, 5 cents; ounce, 20 cents; ¼ pound, 60 cents; pound, \$1.60; postpaid.

Premium Late Drumhead Very similar to our Improved Early Drumhead except that it is some three weeks later and nearly double the size. For those wanting a very large late cabbage there is none better among the "Drumheads." It is two or three weeks later, and on rich soil in favorable seasons it will often attain a weight of 25 to 30 pounds. Packet, 5 cents; ounce, 20 cents; ¼ pound, 60 cents; pound, \$1.60; postpaid.

Perfection Drumhead Savoy The Savoys are the tenderest and richest flavored of all cabbage. Specially good results are obtained by summer plantings. Packet, 5 cents; ½ ounce, 15 cents; ounce, 25 cents; ¼ pound, 60 cents; pound, \$2.00.



Selected Early Jersey Wakefield

Buncombe Cabbage This variety, grown as it has been for a hundred years or more in the mountains of North Carolina as a winter crop, has attained a hardness that no other cabbage has. It makes large, firm, solid heads. Seed should be sown from July to October for best results. It's perfectly hardy in the South. Packet, 10 cents; ½ ounce, 20 cents; ounce, 30 cents; ¼ pound, 75 cents; pound, \$2.50; postpaid.

Succession Of rather large size, well flattened on top. In maturity it is almost 10 days later than Early Summer and Early Flat Dutch, but it is nearly double the size of those varieties. Is firm and solid, a very sure header and stands shipment to the North, arriving in good condition and color. Succession is a good variety and a favorite in many parts of Florida, Georgia, Louisiana and Texas for both spring and fall planting. We furnish you the highest grade obtainable in seeds of this variety; there is no better at any price. Packet, 5 cents; ounce, 20 cents; ¼ pound, 50 cents; pound, \$1.60; postpaid.

Large Early York Large, early, loose-headed pointed cabbage for home gardens only. Packet, 5 cents; ounce, 15 cents; ¼ pound, 40 cents; pound, \$1.35; postpaid.

Red Dutch Cabbage The best of all the red or purple colored cabbages; is largely used for pickling. Packet, 5 cents; ½ ounce, 15 cents; ounce, 25 cents; ¼ pound, 75 cents.

Garden and Stock Carrots

Culture Carrots are one of the best of our root crops and are too little planted in the South. At this season, sow from January to April for spring and summer use. Sow thinly in drills 18 inches apart and cover about 1 inch, firming or rolling the soil if dry. Do best on light, deep, sandy loam. One ounce sows 100 feet of drill. Use 4 to 5 pounds per acre.

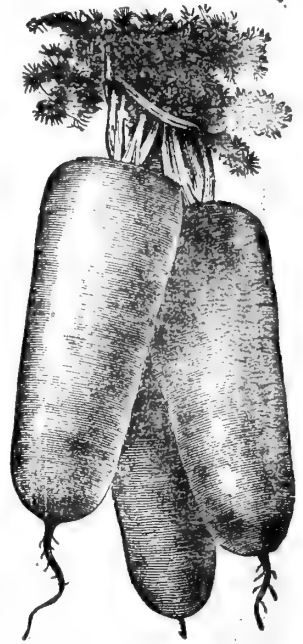
Danver's Half Long The most productive of all the half long varieties, often yielding 20 to 30 tons per acre on highly manured ground. Roots large, but of medium length as shown in our illustration, tapering abruptly at the point; very uniform in growth, very sweet, tender and of good flavor. Packet, 5 cents; ounce, 10 cents; $\frac{1}{4}$ pound, 25 cents; pound, 70 cents; postpaid.

Chantenay A new stump rooted French variety, the best of its class. Unexcelled in productiveness and quality, very uniform in growth. Roots about 5 inches long, large at top and gradually tapering in very symmetrical manner to the base. Medium early and fine for both market and home gardens. Packet, 5 cents; ounce, 10 cents; $\frac{1}{4}$ pound 25 cents; pound, 75 cents; postpaid.

Improved Long Orange The old standard and well-known variety, largely planted for general crop. In quality it is a table carrot but its productiveness is so great that you will find it profitable to grow for stock feed. Roots are long and require a deeply worked soil. Color a deep rich orange. Packet, 5 cents; ounce, 10 cents; $\frac{1}{4}$ pound, 25 cents; pound, 75 cents; postpaid.

Early Scarlet Short Horn One of the most popular of the early varieties. Color a deep orange yellow; of a most delicious flavor and makes a splendid crop in light shallow soils. A favorite in both market and home gardens. Roots 4 to 5 inches long. Packet, 5 cents; ounce, 10 cents; $\frac{1}{4}$ pound, 25 cents; pound, 70 cents; postpaid.

Large White Belgian (For Stock Feeding Only) The value of root crops for stock feeding is just being learned in the South. The large White Belgian is the greatest cropper of them all, having produced as high as 20 tons per acre. In the lower South they can be left in the ground and pulled as wanted for feeding. The use of carrots in connection with dry feed keeps the animals in good condition and in cows the flow of milk is greatly increased. If you feed stock through the winter plant the Belgian Carrot from February to April. Packet, 5 cents; ounce, 10 cents; $\frac{1}{4}$ pound, 20 cents; pound, 50 cents; postpaid.



Danver's Half Long

OUR HARDIEST CABBAGE PLANTS

Every year we sell hundreds of thousands of cabbage plants to market gardeners. These plants are grown on one of the sea coast islands of South Carolina. These plants are field or open ground grown entirely and are hardy and will stand conditions of weather in transplanting that would be death to hot bed plants such as we would have to furnish if shipped from Augusta. These plants are taken up direct from the beds in the open ground, are carefully and lightly packed and will stand long distance shipping without damage, and at a low cost for expressage. Plants packed in this way get the advantage of our special low express rate. No cabbage plants sold in less quantity than 500 and all shipments must be made by express.

We can supply these varieties:

Augusta Trucker, Early Spring, Henderson's Succession, Late Flat Dutch, Selected Early Jersey Wakefield, Charleston Wakefield and Early Flat Dutch. Prices by Express, not prepaid, 500 for \$1.00; 1,000 for \$1.50; 5,000 at \$1.25 per thousand. 10,000 lots or over at \$1.00 per thousand. All shipments made from growing station on the South Carolina Coast.

CAULIFLOWER

Transplant in wet weather if possible, to very rich soil, and cultivate early and often. Requires plenty of moisture when heads begin to form. $\frac{1}{4}$ ounce of seed produces about 500 plants. It matures in from 100 to 120 days from sowing. Try some Cauliflower this year.

Cauliflower is a most delicious vegetable and should be planted more generally, especially along the Atlantic and Gulf coasts where it does especially well. Sow seed from January to March and July to October.

"Dry Weather"

This splendid variety has been rightly named. While not quite as early as our Snowball still it will make much better and larger heads in dry seasons than any other. In spring plantings most years cauliflower runs up against hot dry weather at maturity and that's where "Dry Weather" Cauliflower wins out. It makes where others fail. Pkt., 20c.; $\frac{1}{4}$ oz., 65c.; oz., \$2.25; $\frac{1}{4}$ lb., \$8.50.

Early Snowball

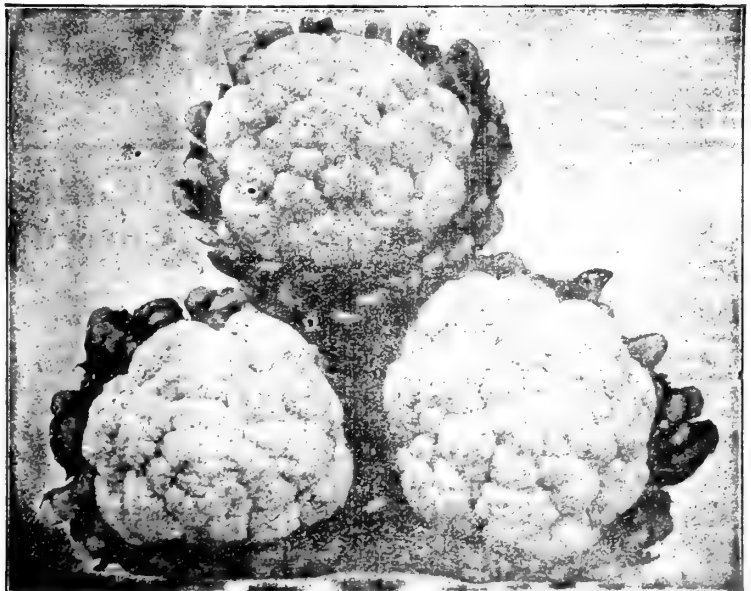
The finest strain of Snowball Cauliflower grown. A fine cropper, producing very firm and beautiful heads of snowy whiteness. Of very close, compact growth, making it a splendid sort for either close field planting or forcing in frames. Packet, 20 cts.; $\frac{1}{4}$ oz., 65 cts.; $\frac{1}{2}$ oz., \$1.10; oz., \$2.60; $\frac{1}{4}$ lb., \$7.50; lb., \$28.00; postpaid.

Early Dwarf Erfurt

Earliest small leaved dwarf variety either for forcing or open ground. Produces medium sized heads, very solid, pure white and of finest flavor. Pkt., 15c.; $\frac{1}{4}$ oz., 50c.; oz., \$1.50; $\frac{1}{4}$ lb., \$5.00; lb., \$18.00; postpaid.

Early Paris White

The earliest heading variety and largely grown for home gardens. Does not grow as large as the Snowball and Erfurt. Packet, 10 cents; $\frac{1}{2}$ ounce, 30 cents; ounce, 50 cents.



Heads of Cauliflower "Dry Weather and Snowball Type"

The Southern Ruralist

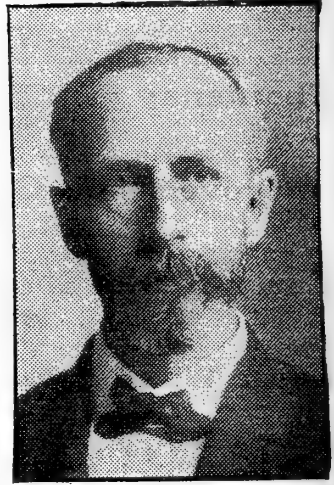
And The Two Men That Make It

It's Equal To An Extra Hand On Your Farm

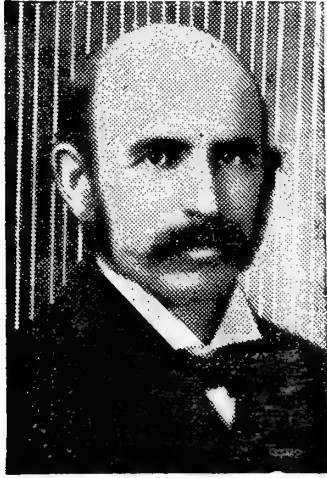
That's what a regular reader of the Ruralist wrote the editor once. He told the truth too, for if any man will read the Ruralist and put the good ideas he gets from it into his farm and garden operations he will get as much or more from it than he would from the labor of an extra hand.

We print the pictures here of the two men who edit and publish the Ruralist. Both of them are thoroughly practical as well as scientific men. Mr. Merriam has conducted both a truck and general farm in Fulton County, Georgia, for the last 15 years. He deals in daily practice with the same kind of soils you have; has to fertilize; has the same kind of insect pests and plant diseases to fight that you have, and tells you every issue of his successes, also his failures. No man who tries all the new things can't help but make some failures, and Mr. Merriam tells you about his. It's just as important for you to hear about what "won't do" as about great successes. Mr. Merriam tells you both. His farm is known as the "Ruralist Farm."

Dr. H. E. Stockbridge is not only a thoroughly practical man, being the owner of a large plantation near Americus, Ga., but is also a scientific agriculturist; a man not only of national, but international reputation. Not only has Dr. Stockbridge been Director of several of the



H. E. STOCKBRIDGE, Agr. Editor
being engaged for four years in that



F. J. MERRIAM, Editor and Publisher
State Experiment Stations, but was the organizer of the Agricultural Department of Japan, being engaged for four years in that work in Japan.

Dr. Stockbridge is a combination of the practical and scientific and in his writings in the Ruralist he imparts the great scientific truths of agriculture in language so simple that any one can understand them.

While Mr. Merriam and Dr. Stockbridge are the responsible editors, they are ably assisted in the various special Departments by such able men as C. L. Willoughby and T. H. McHatton, of the Georgia Experiment Station and the State University and who have charge, regularly, of such subjects as Dairying, Live Stock and Horticulture. Dr. C. A. Cary, Veterinarian of the Alabama Experiment Station, answers all questions relating to sick or diseased Live Stock; and Mr. F. J. Marshal, one of the most noted poultrymen of the South, has full charge of the Poultry Department.

During the year hundreds of articles are printed, written by farmers themselves on special subjects. The Ruralist pays out many hundred dollars every year for these special articles by farmer readers themselves on such subjects as **Labor-Saving Tools, Garden and Truck Crops, Increasing Yields of Cotton and Corn, Dairying, Forage Crops, Live Stock, Special Crops That Pay, Small Grains, Fruits, Farm Labor and Poultry.** Every one of these subjects is of interest to every farmer in the South.

COSTS YOU NOTHING EXTRA

Through a special agency arrangement with the publishers of the Ruralist we are able to offer you a year's subscription to the Southern Ruralist if you buy seeds from us to the amount of One Dollar or over. Send us a dollar or more to pay for your list of seeds and we will have the Southern Ruralist sent to you for a year without its costing you a cent extra. Your remittance for seeds, if it amounts to one dollar or over, pays for both seeds and paper. You need seeds to the amount of one dollar or more anyhow. Why not get double value for your money? The Ruralist isn't a cheap, trashy paper, but one that stands at the head of the list of Southern Agricultural papers. It comes twice a month and contains from 24 to 40 pages each month. Nothing cheap about the quality of the Ruralist. Thousands of its readers pay their dollar every year for it. You have the chance (through us) to get it for a year without its costing you a cent extra. Send us an order for seeds from this catalogue to the amount of one dollar or more and we will do the rest, and see that you get the Ruralist for one year as well as the seeds. Don't wait. Send now. If you want to see a copy of the Ruralist first, ask the Southern Ruralist Co., Atlanta, Ga., for a sample copy.

Some Odds and Ends of Seeds

There are some kinds of vegetables not known or not cared for by the great majority of gardeners. We have them, however, odds and ends of the vegetable garden, and list them below.

Broccoli Very similar to cauliflower, but much easier grown by the inexperienced. Cultivate same as cabbage, giving as rich soil as possible.

Alexander's Early Market—Largest and earliest variety making pure white heads. Packet, 10 cents; ounce, 35 cents.

Early Purple Cape—Heads very light purple color. Packet, 5 cents; ounce, 25 cents.

Brussels Sprouts Highly esteemed plant of the cabbage family, valuable for summer and fall planting in the South. Hardy in most parts of the South in winter. Plants grow 2 feet high and a very small head forms at each leaf joint on the stock. Flavor very fine. Packet, 5 cents; ounce, 20c; ¼ pound, 50 cents.

Celeriac or Turnip-Rooted Celery. Produces turnip-shaped roots which may be cooked, sliced and used with vinegar, making an excellent salad. Also used for flavoring

Erfurt Giant Celeriac. Packet, 5 cents; ounce, 15 cents; ¼ pound, 50 cents

Chervil An aromatic plant, used for seasoning; can also be cut up with lettuce when served as salad. Is sown in drills or broadcast in February for summer use. Packet, 5 cents; ounce, 15 cents; ¼ pound, 40 cents; pound, \$1.00; postpaid.

Endive Fine salad plant used like Lettuce. **Early Green Curled**—Leaves dark green, broad and curly, tender and crisp in quality. Packet, 5 cents; ounce, 15 cents; ¼ pound, 40 cents.

Corn Salad A delicious salad for winter use **Broad Leaved.** Packet, 5 cents; ounce, 10 cents; ¼ pound, 25 cents.

Water and Upland Cress

Sow upland cress in shallow drills. Make succession plantings, as it runs to seed quickly.

Upland Cress—Thrives in any good garden soil. Packet, 5 cents; ounce, 10 cents; ¼ pound, 25 cents.

Water Cress—Deliciously flavored, grows best in shallow running water. Packet, 10 cents; ½ oz., 25 cents; oz., 40 cents.

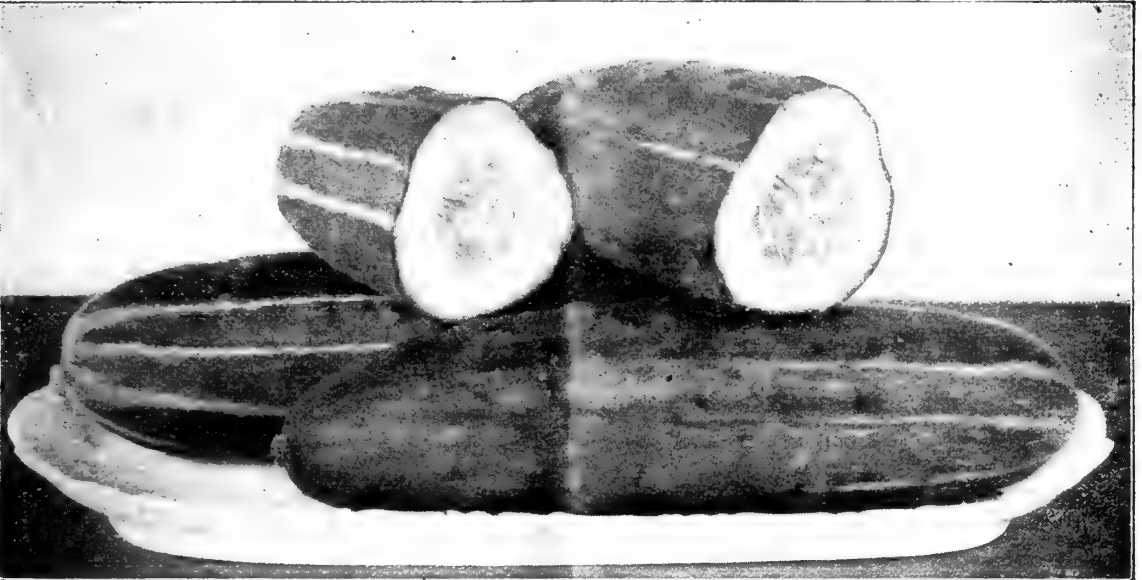
Dandelion

Sow seed in any good garden soil in February and March in drills, thinning out afterwards to 6 inches apart.

Improved Large Leaved—Packet, 10 cents; ¼ ounce, 30 cents; ounce, 50 cents.

Alexander's Cucumber Seed

Culture Cucumbers are very tender and should not be planted until danger of frost is past and ground becomes a little warm. If planted earlier than this they should be protected. Plant in hills 4 feet apart each way, 8 to 10 seeds to each hill. When rough leaves have formed thin out to 4 plants in each hill. 1 ounce of seed plants 80 hills, 1 1/4 pounds per acre.



Alexander's Selected Arlington White Spine Cucumber

By Selected Arlington we mean the first-class original strain that has always given such perfect satisfaction to Southern market gardeners and shippers and not the off-color, run-out stock so generally sold by Northern seed houses under the name of Arlington. The true Arlington is one of the finest White Spine strains. Almost every cucumber grown from it is perfect in size, shape and color. Uniformly, medium to large in size, just right for a market and slicing cucumber. Can be used when small for pickles. Skin hard and of deep green color. Packet, 5 cents; oz., 15 cents; 1/4 lb., 35 cents; lb., \$1.25; 10 lbs., not prepaid, \$10.00.

Seed Crop Very Short Weather conditions have been such that not over one-fourth of a crop of good cucumber seed has been harvested, hence higher prices than usual.

Japanese Climbing While this splendid variety can be grown in hills and allowed to run on the ground like other varieties and make splendid crops, they can best be grown on fences, poles or trellises, as they have a distinct climbing habit when given something to climb on and the product of a given area is increased three or four fold. The fruits are 10 to 12 inches long, of fine dark green color; flesh thick and crisp; never bitter; have very few seeds. Good for either slicing or pickling. Very prolific and when allowed to climb vines are well above ground and do not suffer from wet weather and insects. Continue to bear until fall. Try a few hills this year. Pkt., 10 cents; oz., 20 cents; 1/4 lb., 60 cents; lb., \$2.00; postpaid.

Early Fortune Southern truck growers have long wanted an extra dark White Spine cucumber for shipping, a cucumber that would hold its dark green color for a long time, a cucumber that stays plump and fresh looking after being shipped a thousand miles or so. Early Fortune is of a deep green color and don't show up white color before maturing as do most of the strains of White Spine that have been sold by Northern houses in recent years. This cucumber pleases every truck grower who plants it. Of fine shape, good size, regular growth and extra dark green color. Pkt., 10 cents; oz., 15 cents; 1/4 lb., 45 cents; lb., \$1.50; postpaid; 10 lbs., not prepaid, \$12.50.

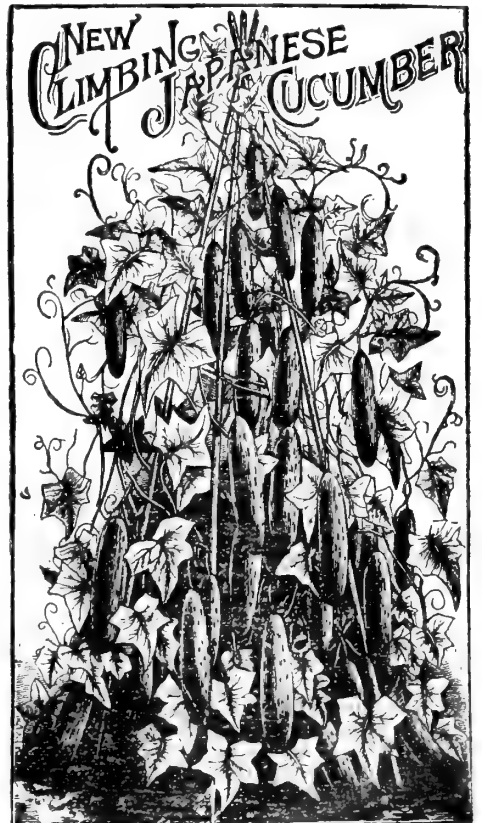
Long Green An old and favorite variety in the South, largely used for home use and nearby markets and in some sections as a shipper. Fruits extra long and of good size, holding its dark green color until matured. When 3 to 4 inches long they make fine pickles. Pkt., 5 cents; oz., 15 cents; 1/4 lb., 35 cents; lb., \$1.25; postpaid.

Early Frame Popular early variety for home gardens. Pkt., 5 cents; oz., 15 cents; 1/4 lb., 35 cents; lb., \$1.25.

Chicago Pickle The best variety of all for pickling. Its small size, dark green color and immense productiveness make it a favorite for that purpose. Packet, 5 cents; ounce, 15 cents; 1/4 pound, 35 cents; pound, \$1.25; postpaid.

Everbearing A splendid variety for home use because of its everbearing qualities. The first cucumbers are ready very early, then the vines continue to bear and produce whether the ripe cucumbers are picked off or not. A single vine will often show cucumbers in all stages of growth, the small ones being dark green, perfect in shape. Fine for pickling or slicing. Pkt., 5 cents; oz., 15 cents; 1/4 lb., 35 cents; lb., \$1.25.

Burr or Gherkin For pickling only. Packet, 5 cents; ounce, 20 cents.





Alexander's New Roasting Ear Corn

Our New Roasting Ear Corn is just what you need for earliest garden corn either for your own use or for market. It's neither a sweet corn nor a field corn, but just half way between. It's as early as the Adams varieties, maturing corn fit for table use in 70 to 75 days from planting with good seasons. Grows 5 to 6 feet tall, makes two to three ears of good size and is a quick seller on any market. Grows and makes well in any good garden soil. It's something better than either of the Adams varieties, a surer cropper in the spring, larger ears and better quality. It's just what you need in your garden this spring. Packet, 10 cents; ½ pint, 15 cents; pint, 25 cents; quart, 45 cents; postpaid. Peck, \$1.25; bushel, \$4.50.

Adams' Extra Early The standard earliest garden corn. Of very dwarf growth and for success requires very rich ground or heavy fertilizing. Naturally small ears and its only value is in its earliness. Largely a market gardener's variety. **Seed crop almost a failure this year.** Packet, 10 cts.; pt., 20 cts.; qt., 35 cts.; postpaid. Peck, not prepaid, \$1.00; bushel, \$3.75.

Adams' Large Early Similar to the Extra Early but larger, a surer cropper and 10 days later. Also largely a market variety and lacks the finer flavor of our "New Roasting Ear Corn" and the Sweet Corn. Seed crop very short. Packet, 10 cents; pint, 20 cents; quart, 35 cents; postpaid. Peck, not prepaid, \$1.00; bushel, \$3.75.

Country Gentleman (Sweet)

Leading growers all over the country declare this variety to be the best quality of all varieties of sweet corn. Our own experience and that of several hundreds of our Augusta gardeners confirm this opinion. It is one of the finest flavored and makes from 3 to 4 good sized ears to the stalk when properly cultivated. Grains are small, much shriveled, but very deep. Cob very small. It matures in mid-season, after Adams Large Early and just before Stowell's Evergreen. This, together with these two varieties, makes a splendid succession for family use, all of them being productive, strong growers, tender and of finest flavor. Packet, 10 cents; pint, 20 cents; quart, 35 cents; postpaid. Peck, \$1.25; bushel, \$4.75.

Stowell's Evergreen (Sweet)

The standard main crop variety. Ears of large size, long and well filled. Under good cultivation it produces 3 to 4 ears to each stalk. Stalks large and strong. Grains of good size, long and deep; cob small and slender. This variety holds in good eating condition longer than any other and is adapted to all parts of the South for main crop. Pkt., 10 cts.; pt., 20 cts.; qt., 35 cts.; postpaid. Peck, not prepaid, \$1.25; bu., \$4.50.

Black Mexican Late, dark-grained variety of finest quality of sweet corn for home use. Less subject to attacks of bud worm than other varieties. Packet, 10 cents; pint, 20 cents; quart, 35 cents; peck, \$1.25; bushel, \$4.50.

Alexander's Snow Flake Corn

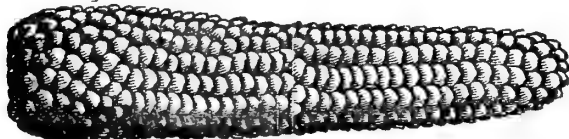
While properly classed as a field corn, we include it in this list for it makes splendid roasting ears. Of large size with deep grains and of a shape and appearance that make it most salable in our markets. A strong grower, maturing roasting ears in 75 to 80 days and averaging two ears to the stalk. Most valuable either for market or home use. Packet, 10 cents; pint, 20 cents; quart, 35 cents; postpaid. Peck, not prepaid, 65 cents; bushel, \$2.25.

Field Corn

For description and prices of field varieties—see field corn pages in back part of catalogue.

Grow a Supply of Pop Corn for Your Boys and Girls

Essentially a crop for your children. Let the children have a patch of it this year, furnishing them corn to pop during the long winter evenings.



Golden Queen Long ears with round yellow grains. When popped the corn is creamy white and a single kernel frequently expands to an inch in diameter. Packet, 10 cents; pint, 20 cents; quart, 35 cents; postpaid. Peck, by express, \$1.25.

Monarch White Rice Standard white grained variety with slender, round pointed grains. Hard and flinty, popping finely. Packet, 10 cents; pint, 20 cents; quart, 35 cents; postpaid. Peck, \$1.25 by express,

Celery Culture

For early transplanting sow seed in May or June; for later crops, in July and August and even later further South. Plants should stand in seed beds until 6 inches high. Celery ground should be rich and moist with deep soil. Plant in rows 3 feet apart, and 6 to 8 inches apart in the row. In our section keep the earth well drawn up as the plants grow to blanch them properly. In the lower parts of the South blanching by boards is necessary, as drawing up the earth causes "rusted" celery, which is unsalable. Celery is a heavy feeder and you can not expect satisfactory celery unless you use plenty of manure or commercial fertilizer. Seed beds should be partly shaded. Matures in from 120 to 150 days, according to seasons and location.



Alexander's White Plume

The earliest and most easily blanched variety. Our strain of this variety is claimed to be a perfect white and true to type. But few green stalks are found in our strain of White Plume. Requires but little drawing up of earth to properly blanch. Crisp, tender and of that rich nutty flavor so desirable in celery. This variety seems to do especially well in Georgia and South Carolina. Pkt., 5c.; oz., 20c.; ¼ lb., 50c.; lb., \$1.75; postpaid.

Giant Pascal Large and strong growing variety, especially good for the lighter soils. Splendid keeping qualities and almost rust-proof. A good variety for beginners in celery growing. Pkt., 5 cts.; oz., 20 cts.; ¼ lb., 60 cts.; lb., \$1.50.

Golden Self-Blanching The great market gardener's variety, grown almost exclusively in the lower South for shipment North. We advise the use of this variety to experienced growers only, as it requires most careful treatment. The seed we offer from this is French grown, any other being worthless. Seed crop almost an entire failure. Packet, 10 cents; ½ ounce, 35 cents; ounce, 60 cents; ¼ pound, \$2.00; pound, \$7.50.

Flavoring Celery Old celery seed, largely used for flavoring soups, pickles, sauces, etc. Ounce, 5 cents; ¼ pound, 15 cents; pound, 35 cents; postpaid.

Alexander's White Plume Celery

Good "Old Time" Georgia Collards

True Long or Georgia

The old-time Southern favorite collard. It stands all kinds of hard treatment and neglect with little injury and is a sure cropper in the South. Can be grown on land so poor that cabbage won't head on it, and furnish a plentiful supply of leaves of good quality. Makes quite a head in cool winters. Packet, 5 cents; ounce, 10 cents; ¼ pound, 25 cents; pound, 75 cents.

Improved White Georgia

Also called cabbage collard on account of its close bunching growth and light green leaves resembling the cabbage—combining the hardness of the collard with the whiteness and crispness of cabbage. You will never know how good collards can be until you try our Improved White Georgia. Packet, 10 cents; ounce, 15 cents; ¼ pound, 40 cents; pound, \$1.25.

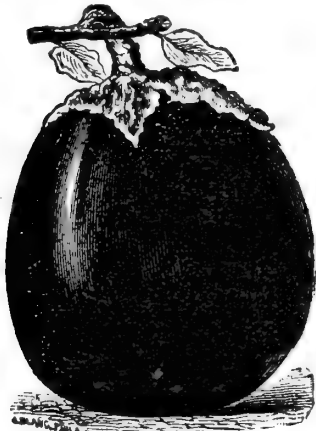
Egg-Plant

A most desirable vegetable. Do not sow seed (except in hot beds) until weather and soil gets warm. Will not stand any frost.

Improved Large Purple Thornless The standard variety of Egg-Plant for market gardeners and shippers. It gives perfect satisfaction both for market and home use. Our strain of seed is remarkably pure and streaked or off color fruit is unknown in well-cultivated crops. Plants are strong growers, producing 5 to 8 large sized, deep rich purple colored fruit. It is early for a large fruited variety, and gives entire satisfaction for market and home use. Packet, 10 cents; ½ ounce, 20 cents; ounce, 30 cents; ¼ pound, \$1.00; pound, \$.75.

Black Beauty A splendid new early variety, some ten days earlier than the New York Improved. The "eggs" are large and broad, of attractive form and fine flavor. Color is a rich, lustrous purplish black, uniform over the whole fruit. Free from thorns or spines. A heavy bearer and a most attractive market variety. Packet, 10 cents; ½ ounce, 20 cents; ounce, 35 cents; ¼ pound, \$1.25; pound, \$4.50; postpaid.

ALEXANDER'S HOME GARDEN STRAWBERRY COLLECTION

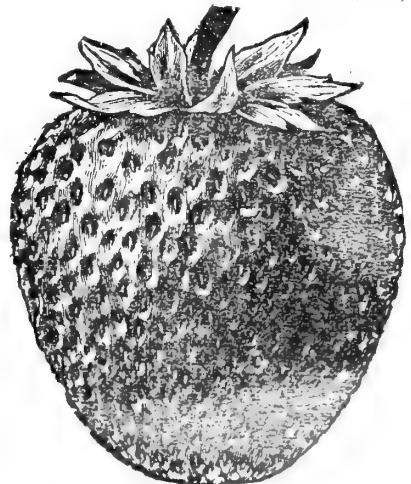


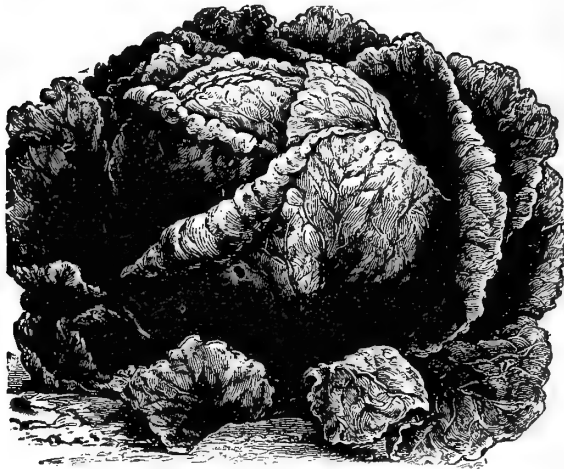
Egg-Plant

Right here in the midst of the vegetable list we want to remind you of strawberries. No home garden is complete without them and there is nothing that gives so much pleasure and satisfaction as a good bed of strawberries. Easily grown anywhere in the South, they are within the reach of every one to whom this catalogue goes.

After years of careful tests this Home Garden Collection has been selected as being the very best varieties to give the best of quality combined with greatest quantity and running through the entire strawberry season. Three hundred plants, well cultivated, will give an ordinary sized family a plentiful supply of most delicious berries. This "Home Garden Collection" consists of 100 plants each of Excelsior Extra Early, (See illustration), Lady Thompson (medium early and long bearing) and Gandy (Late). These 300 plants will be sent, all charges prepaid, to any of the offices of the Southern Express Company, for \$1.50, or to any office reached by any of the other express companies for \$1.75. Order them early and get them started before hot weather comes.

If you don't want as many as 300 plants, we will send 50 plants of each of the three varieties named, postpaid for \$1.00. In ordering this Collection call for "Alexander's Dollar Strawberry Collection." These collections are great bargains.





New York or Wonderful Cabbage Lettuce

Lettuce

Lettuce can be grown almost every month in the year in our section. If you have hot beds or even cold frames you can produce fine big heads all through the winter months. In Florida and along the Gulf Coast it is grown as an open ground crop through the winter months. The best way to grow lettuce is to sow seed thickly in rich earth and when plants are well up transplant in rows 2 feet apart, placing plants 6 inches apart in the row. Use rich ground or else fertilize heavily. If you want crisp, tender lettuce, free from bitterness, the growth must be very rapid. If lettuce is grown in above manner and head varieties used, you will not fail to make good heads. Sow 1 ounce of seed for 200 feet of row; 3 pounds per acre.

New York or Wonderful

A special favorite for all home and nearby market gardeners. It is really a crisp leaved variety that forms perfect heads of large size, two to three-pound heads being nothing unusual on rich soils with us. Very tender and free from bitterness. Outside leaves are of a rather light green shade, while the inside of the head is almost pure white. A good sort for either spring or fall planting in all parts of the South. Packet, 5 cents; ounce, 15 cents; $\frac{1}{4}$ pound, 30 cents; pound, \$1.00; postpaid.

Trianon (Cos) Our best French variety of Cos Lettuce. Heads long, conical and large; has a crispness and tenderness peculiarly its own. Tie up the heads to blanch properly. Packet, 5 cents; ounce, 10 cents; $\frac{1}{4}$ pound, 30 cents; pound, \$1.00; postpaid.

California Cream Butter

A splendid variety of big heading lettuce, good for open ground plantings at all seasons of the year. Fine sort for market gardeners and shippers. Heads are large and solid, the inside blanching to a beautiful cream yellow when properly grown. Outside leaves a medium shade of green. It is always crisp and tender, with a rich buttery taste. Pkt., 5c.; oz., 15c.; $\frac{1}{4}$ lb., 35c.; lb., \$1.25; postpaid. 5 lbs., \$5.00

Improved Hanson

A crisp leaved market gardener's favorite and much used in home gardens. Heads of medium size and of good quality. Splendid for spring, late summer and early fall. Packet, 5 cents; ounce, 10 cents; $\frac{1}{4}$ pound, 30 cents; pound \$1.00.

Big Boston Head Lettuce

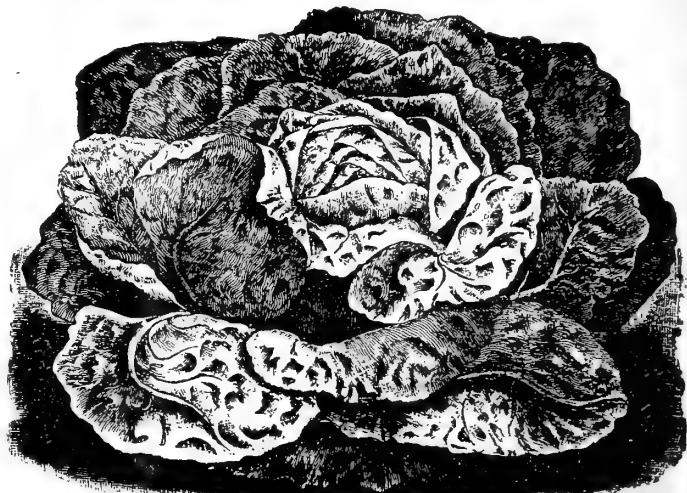
The standard market and shipping variety; grown almost exclusively in some sections. It is an extra large, round, firm heading sort and stays in fine condition long after being cut, thus making it a first-class market and shipping variety. Heads well at all seasons and is a favorite with our market as well as home gardeners. Its quality is of the best, being firm, tender and crisp. Pkt., 5 cts.; oz., 15 cts.; $\frac{1}{4}$ lb., 35 cts.; lb., \$1.25; postpaid. 5 lbs., \$5.00.

Alexander's Special Big Boston Lettuce

An extra select strain of Big Boston of special value for market gardeners and shippers. Makes just the right size heads for market and shipping and the most regular in growth of any lettuce we have ever seen. If you want the best in Big Boston plant this special strain. You will be more than satisfied. Packet, 10 cents; ounce 25 cents; $\frac{1}{4}$ pound, 75 cents; pound, \$2.50; postpaid.

Black Seeded Simpson

A market gardener's variety and is also used in home gardens because of its heat resisting qualities. Packet, 5 cents; ounce, 10 cents; $\frac{1}{4}$ pound, 30 cents; pound, \$1.00; postpaid.



Big Boston, The Great Head Lettuce for the South

Iceberg

A beautiful, crisp leaved lettuce. Grows a long time before running to seed in the spring, yet always crisp and tender. Heads hard, of conical shape and medium size. Inside of heads white, outer leaves light green. Packet, 5 cents; ounce, 10 cents; $\frac{1}{4}$ pound, 30 cents; pound, \$1.00.

May King

Splendid new lettuce. Extra early and about all head. Pkt., 10c.; oz., 25c.; $\frac{1}{4}$ lb., 75c.; lb., \$2.50.

New Chinese Mustard

A splendid variety from China. Is the earliest, has the largest leaves and is the mildest in flavor of all the varieties listed. Perfectly hardy at Augusta. Packet, 5 cents; ounce, 10 cents; $\frac{1}{4}$ pound, 25 cents; pound, 75 cents.

Giant Southern Curled or Creole

The old standard Southern variety, more generally used than any other. Packet, 5 cents; ounce, 10 cents; $\frac{1}{4}$ pound, 20 cents; pound, 60 cents; postpaid.

Ostrich Plume

An improved Southern curled, leaves much more curled than the old variety. Packet, 5 cents; ounce, 10 cents; $\frac{1}{4}$ pound, 20 cents; pound, 65 cents; postpaid.

White and Brown Mustard

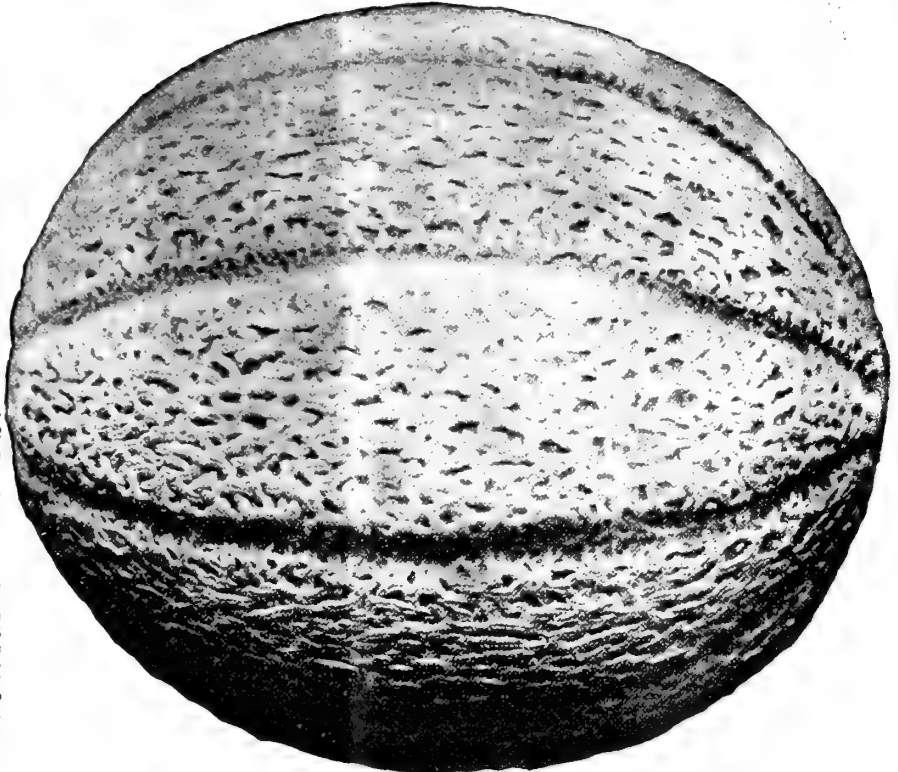
Either: Packet, 5 cents; ounce, 10 cents; $\frac{1}{4}$ pound, 15 cents; pound, 35 cents.



CANTALOUPEs and MUSKMELONS

CULTURE

These should be more largely grown for home use and nearby markets than they now are in the South. Tens of thousands of acres are planted for shipment every year. Why not furnish your home demand as well? Cantaloupes do best in light warm soils that contain plenty of vegetable matter. In heavy soils plant where cow peas or a similar crop has been grown the year before. Plant as soon as danger from frost is past in hills 6 feet apart each way. Plant 10 to 12 seeds to each hill to make sure of a stand. When first rough leaves show thin out to 2 plants in each hill. Work the soil frequently until the plants begin to run. After that pull up weeds by hand. Well-rotted stable manure is the best fertilizer, but if this is not obtainable use one pound of high-grade vegetable fertilizer to each hill, using care to thoroughly mix with soil and have it far enough down so that seed does not come in contact with the fertilizer when planted.



Alexander's Genuine Rockyford Cantaloupe Grown in Colorado.

Genuine Rockyford is now the most popular and valuable EARLY cantaloupe grown in the South either for home use or market. Thousands of acres of this variety are grown every year for northern shipment. Our illustration shows its heavy netting and regularly ribbed form. It has thick green meat of the most excellent flavor. It is just the right size for shipping or market use (packing 45 to the crate) and it is the earliest of all good quality cantaloupes. For home use you will find it most desirable.

The greatest possible care is taken in the production of our seed of this variety. It comes from the Rockyford, Colorado, district which has the reputation of producing the finest cantaloupes in the world. The greatest possible care is taken to save seed only from perfect melons of the standard size and if you plant Alexander's seed of the Rockyford you will have a crop that you will be proud of. It's the seed that will produce a paying crop for you, no matter whether you grow for market or home use.

There are thousands of pounds of Rockyford seed on the market saved from the Southern and Colorado crops after shipping season ends. It is offered at almost any price and we have refused dozens of offers of this class of seed every summer and fall. Look out for this class of seed. You can not afford to plant it if it is given to you free. Our seed is from crops grown exclusively for seed purposes. It is select seed. Packet, 5 cents; ounce, 10 cents; $\frac{1}{4}$ pound, 30 cents; pound, \$1.00, postpaid. 10 pound lots or over, not prepaid, at 80 cents per pound.

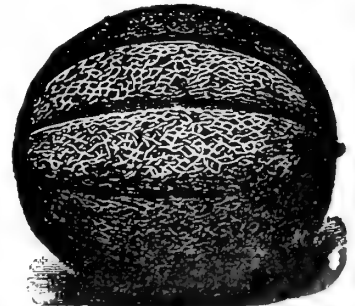
Alexander's Perfected Rockyford

This new strain of Rockyford of ours differs from the other in that it is solidly and deeply netted throughout. It's almost impossible to get any "slick" cantaloupes with this strain, so thoroughly and deeply is it netted. It's also the most regular in size and shape of all, the melons in a well cultivated crop being almost as nearly alike as peas in a pod. If you are a cantaloupe shipper you know what an advantage this is. If you are extra particular about your cantaloupe crop plant our "Perfected Rockyford." This will give you cantaloupes exactly such as you want all through the season. Packet, 15 cents; ounce, 30 cents; $\frac{1}{4}$ lb., 75 cents; pound, \$2.50 postpaid; 5 lb. lots, \$2.50 per pound; 10 lb. lots, \$2.25 per pound; 25 lb. lots and over \$2.00 per pound.

The Nixon Our famous Augusta variety which originated here and has for years been the favorite large cantaloupe in our city. Combining large size with finest flavor, it is one of the best of all cantaloupes. For years we have kept this melon pure by the most careful selection. Often weighs 8 to 12 pounds. Is almost round shape, rough, deeply netted skin; thick meat of the richest possible flavor and sweetness. It is purely a Southern melon and has no equal for a main crop melon in the South. Wherever grown it brings a fancy price in market. Seed supply very limited. Packet, 10 cents; ounce, 20 cents; $\frac{1}{4}$ pound, 60 cents; pound, \$2.00; postpaid.

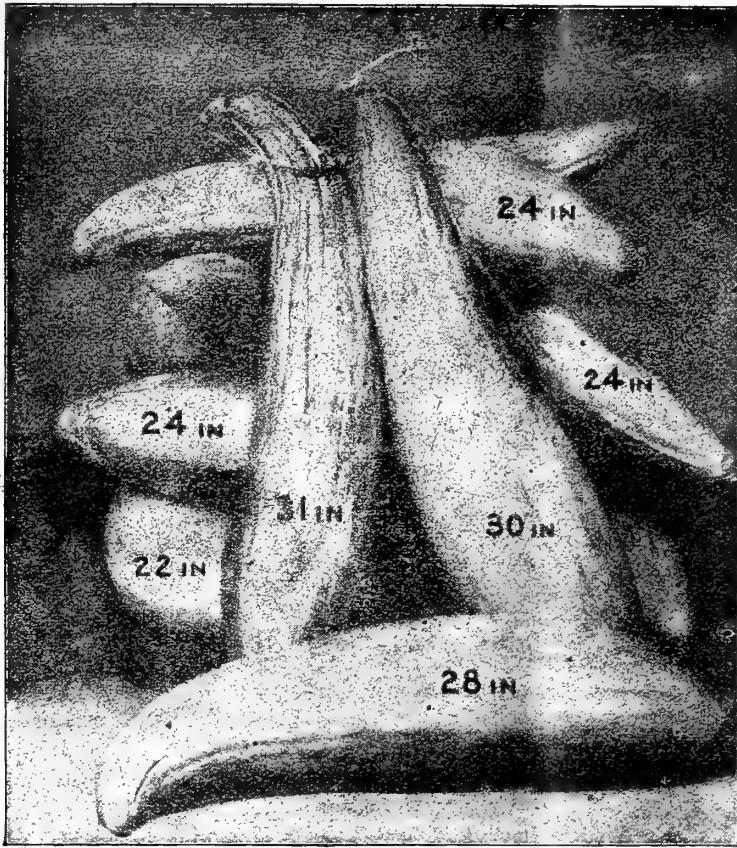
Montreal Market Next to the Nixon we consider this the best of the large varieties. Fine spicy flavor. In shape almost round, but flattened at each end. Grows to large size (10 to 15 pounds), but requires the best of cultivation. Skin green, deeply ribbed and well netted. Flesh very thick. Light green and very sweet. Pkt., 5 cents; oz., 15 cents; $\frac{1}{4}$ lb., 45 cents; lb., \$1.50; postpaid.

Extra Early Hackensack A favorite large extra early melon of fine flavor that does well for early crops. Weighs 5 to 8 pounds. Packet, 5 cents; ounce, 15 cents; $\frac{1}{4}$ pound, 45 cents; pound, \$1.50.



The Nixon.

Our Banana Muskmelon



We have, after many years' effort, secured a supply of seed of the true Banana Muskmelon with its fine banana-like flavor. The illustration, taken from a photograph of the melons produced on a single vine in our seed crop, shows the shape and length of our first-class strain. Just think of melons 24 to 31 inches long. Banana will grow and make on poorer land than any other variety and will stand summer sun without injury and furnish you melons long after all other varieties are gone. It should be in every home garden in the South, both for its fine eating qualities and for late use. Our seed supply is very limited. Packet, 15 cents; ounce, 25 cents; ¼ pound, 80 cents; postpaid.

Early Netted Gem

This melon is just the same as our Rockyford except in shape, which is perfectly round. The melons are extra early, very regular in size and shape, well ribbed and heavily netted. Flesh is very thick, fine flavored and greenish color. Very desirable for either home or market use. Packet, 5 cents; ounce, 10 cents; ¼ pound, 30 cents; pound, \$1.00; postpaid.

The Banquet

A fine melon for the South. A medium-sized melon of perfectly round shape. Its skin is densely netted over the entire surface, making it almost impervious to the attacks of squash borer and like insect pests. It is exceedingly prolific and of excellent quality. The foliage is very dense, shading the melons; almost entirely free from sun scald. It is almost insect and sun proof. A most excellent all round variety for either home use or shipment. Packet, 5 cents; ounce, 15 cents; ¼ pound, 40 cents; pound, \$1.25.

Alexander's Banana Muskmelon

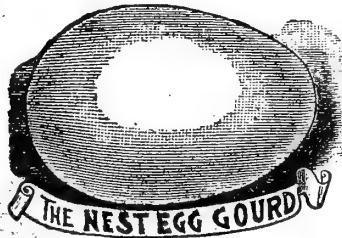
Augusta Market This exceptionally fine melon was introduced by us in 1896. In this cantaloupe we get uniformly large size melons of regular shape. Flesh of greenish white color, granular in texture, well netted, and the rich, spicy sweet flavor so desirable in cantaloupes, and so seldom found. You will find all the desirable qualities of the nutmeg class combined with large size in the Augusta Market. Melons weigh 8 to 12 pounds each and a more delicious melon we never tasted. Seed supply very limited. Pkt., 10 cts.; oz., 25 cts.; ¼ lb., 60 cts.; lb., \$2.00; postpaid.

Truckers and Market Gardeners And Public Institutions using large quantities of seeds are requested to send us a list

of their seed wants for a special quotation. While the prices in this catalogue are low, the quality of our seeds being considered, still on large quantities we can make somewhat lower prices. Send us your list. We will make you right prices for the right quality of seeds. For 35 years we have supplied some of the most critical trade in the South. We have pleased others; we can please you in quality and price. Let's get together on your spring seed supply.

Seed Crops Short of Cantaloupes, Melons, Cucumbers and other vine crops. Good seed is scarce and higher in price than usual.

Gourds furnish many useful household articles and are easily grown anywhere in the South. Care should be taken not to grow them near squash and pumpkins, as they cross easily, and make the squash intensely bitter. They should be grown where they have a chance to climb on fences or trellises for best results. They are all good climbers and make good shade for porches.



Japanese Nest Egg
Big Sugar Trough
The Dipper
The Dishcloth
Hercules or Club

GOURDS

All very useful varieties to have about the farm. Every one of them available for some useful purpose. Packet, 10 cents each, or one packet each of any 3 kinds for 25 cents; postpaid.

LEEK Culture of leek is about the same as onions. Sow either in late fall or early spring. Sow in beds or drills, and when 6 inches high transplant in rows, setting as deep as possible without covering center leaves.

Giant Musselberg—Our best variety and very popular. Hardy through winter in our section. Packet, 5 cents; ounce, 15 cents; ¼ pound, 40 cents; pound, \$1.25; postpaid.

KOHL RABI Also known as Turnip Rooted Cabbage. Sow in rows 18 to 20 inches apart, thinning out to 8 inches apart in rows when well up. Use when the bulb becomes 2 to 3 inches in diameter.

Large White Goliath—The best variety. Bulbs about the size of an apple when ready for use. Pale whitish green color. Packet, 5 cents; ounce, 20 cents; ¼ pound, 50 cents; pound \$1.75; postpaid.

KALE or Borecole—Very hardy member of the cabbage family, withstanding any Southern winter. Sow thinly in drills.

Dwarf German Green An extra hardy very popular with market gardeners. Packet, 5 cents; ounce, 10 cents; ¼ pound, 30 cents; pound, 60 cents; postpaid.

Dwarf Curled Scotch—1 pkt., 5c.; oz., 10c.; ¼ lb., 20c.; lb., 60c.; postpaid.

Georgia Watermelon Seed

is the finest in the world and we are situated right here in the very center of the best watermelon lands of Georgia. The Augusta section is the one that made Georgia famous as a watermelon-growing State, and our fancy selected seed is grown for us strictly in the Augusta District. No other section produces such fine melons as this; nowhere does the seed reach such perfect development; nowhere are there melon-growers that take such pride in careful selection to preserve the purity of strain.

Now a word of caution about melon seed. Our seed is from crops grown exclusively for seed. Not a melon is sold or shipped from our fields. The fancy seed is saved only from large melons of perfect shape. You get the best that it is possible to produce when you buy from us. It is our great specialty.

Don't be fooled into buying "cheap" melon seed. There are tens of thousands of pounds of "cull" seed saved from Southern shipping crops every year, seed from the refuse melons. It is offered at from 25 to 50 cents per pound, but not a pound of it is fit to plant if you want good melons. We don't sell that kind of seed. We have none but the best seed that will make you good crops of large perfect melons.

Culture Melons do best in rich sandy loam soil, but where this is not obtainable they can be grown on clay lands on warm, sunny hillsides. The best fertilizer is well rotted stable manure. The hills should be 8 to 10 feet apart each way. Give deep plowing and thorough cultivation, reducing the soil to a fine condition. Watermelons do not root very deeply, but they do spread. In applying fertilizer spread it to a considerable distance, say 3 feet out from the center of each hill. It is well to encourage this natural tendency to spread the roots. Where it is necessary to use commercial fertilizer use one as near the following formula as possible: Nitrogen, 3 per cent.; Potash, 8 per cent.; Phosphoric Acid (available), 8 per cent. This formula has given the best results on melon lands. Use 2 to 3 pounds of the above formula to each hill, working it in and mixing thoroughly with the soil. This should be done 10 days to 2 weeks before the seed is planted. First plantings can be made as soon as soil gets warm in the spring, and succession plantings can be made up to June in this latitude. Plant 8 to 10 seeds in each hill, thinning out, after the rough leaves have formed, to the 2 strongest plants in each hill. Cultivate lightly until runners come out well into the middles. If large weeds come up, cut them off. Do not pull them up, as it disturbs both the roots and the vines. The vines after they begin to run should never be moved or disturbed. It always injures the crop. When there are plenty of blooms on the plants pinch off the ends of the runners. Where extra large melons are desired leave only 1 plant to each hill and only one or two melons on each vine.

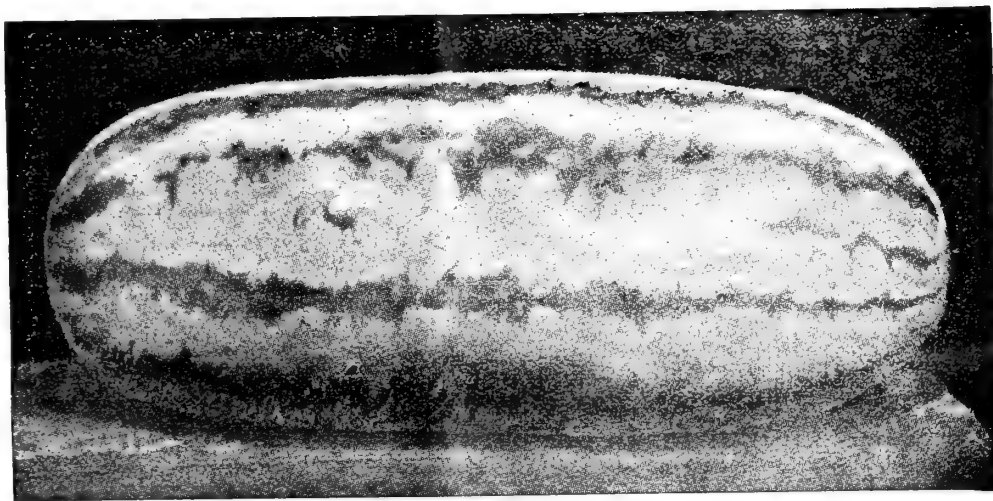
7-Ounce Melon Collection 50 Cents, Postpaid

Alabama Sweet, Carolina Bradford, Pride of Georgia, Duke Jones, Seminole Watermelon and Rockford Cantaloupe delivered by mail for 50 cents. At full catalogue prices this splendid collection would cost you 85 cents. It gives you an all season's supply, early medium and late melons. Send now.

One ounce each of Fancy Selected Augusta Rattlesnake,

Planted one acre of your Rattlesnake and made finest crop of melons in my life (40 years). Sold \$112.00 melons for cash and \$5.00 seed." W. R. Hay, York Co., South Carolina.

\$117.00 Per Acre Melons



Alexander's Fancy Select Augusta Rattlesnake

Our Augusta Rattlesnake is the finest main crop watermelon in the world, the variety that made Georgia famous as a melon-growing State, and the Augusta section is the only one where it is grown in all its old time purity. It's a standard in every Southern market, selling easily when other varieties won't move. It has a specially sweet flavor all its own, making the most delicious eating on hot summer days. Melons grown from Augusta seed are large, often reaching 70 pounds. Other varieties often do not sell on this market when "Rattlesnakes" are to be had. It has taken numerous prizes at fairs and expositions and is known everywhere as the finest of all main crop melons. There are few people in the South that don't know the Rattlesnake watermelons, but there are very few of them that know just how large, sweet and fine flavored they are unless they have had them grown from fancy select seed from our Augusta section. We have the right seed. Packet, 10 cents; ounce, 15 cents; ¼ pound, 40 cents; postpaid, \$1.25; 10 pounds, not prepaid, \$10.00.

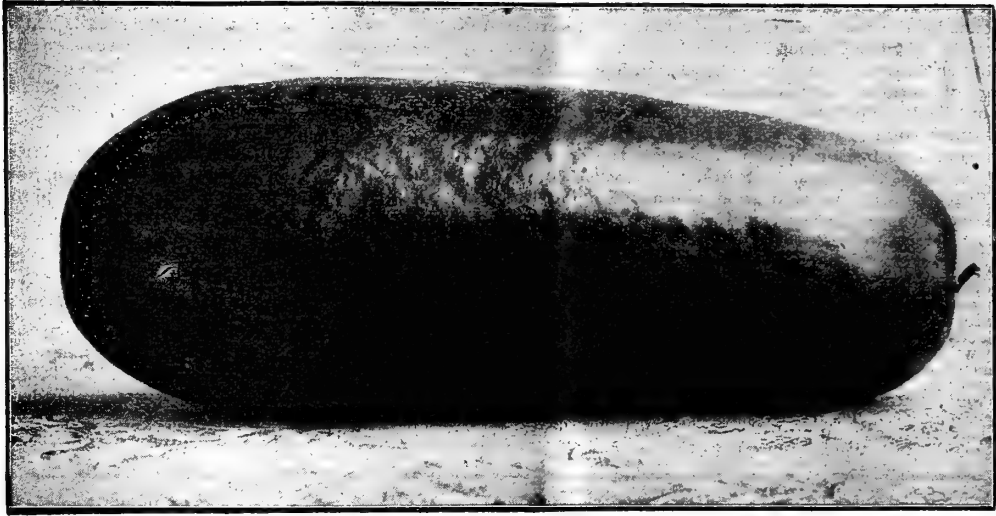
Triumph, the Biggest of All

If you want to grow the biggest melon plant the Triumph, 60 to 70 pound melons are common and one Triumph was raised in South Georgia weighing 159 pounds. Good shipper and an early variety. Packet, 5 cents; ounce, 10 cents; ¼ pound, 20 cents; pound, 65 cents; postpaid, 10 pound lots or over at 50 cents per pound.

The Jones or Philip Jones

This big melon originated in Burke County, Georgia, and is known under both names. Color of the skin is a solid dark green and flesh is bright red, being particularly sweet, juicy and melting and free from stringiness. In shape it is almost round and has the peculiarity of almost always lying on the blossom end while growing. Melons average large to very large, often weighing 70 to 80 pounds. For home use it is very good and for nearby markets its handsome appearance makes it an easier seller at good prices. Packet, 5 cents; ounce, 10 cents; ¼ pound, 25 cents; pound, 75 cents; postpaid.

Our Watson Watermelon



Big Sweet Watermelons
Don't they taste good in those hot June and July days? Time to buy seed of them now.

BEST OF EATING AND A SPLENDID SHIPPER

INTRODUCED AND GROWN BY THE ALEXANDER SEED CO.

We introduced the real Watson melon in 1906. It's now one of the most popular melons in the South. It was the melon that every seedsman and grower in the South had been looking for these many years, a combination melon of the finest eating quality and standing shipment, even the longest distances, in perfect condition. Equal to the Kleckley Sweet in sweetness and crispness of flesh and as good a shipper as Eden, Kolb Gem or Triumph.

Our introduction of the Watson melon means that buyers in Northern markets will know what a good first-class eating melon tastes like. Our Watson melon also means that a grower can sell all his crop in Southern markets if he wants to. It is the only all-purpose, combination melon on the market, a melon good for everybody, everywhere, for every purpose that a melon is used for.

Ships Just as Well as Eden—Tastes as Fine as Kleckley

Eden is considered the best shipping melon of the Southeastern States and Kleckley Sweet as the best eating quality early melon everywhere in the South. In a recent letter to us Mr. J. L. Derrick, of Edgefield County, South Carolina, says: "I am well pleased with the Watson melon. I am going to plant my crop in them next season. They have the fine eating qualities of the Kleckley Sweet, the flesh is solid, yet free from stringiness, is crisp and very sweet; the rind is thin but so tough that I find they ship as well as Eden."

W. H. Meek, Hot Springs, Arkansas, writes: "I found the Watson Melon all you claim for it. I only bought a small packet which planted 20 hills, and from them I made 46 marketable melons worth 25 cents each. I think that is a good turnout."

We could fill pages of this catalogue with testimonials. We know now that we have in the Watson the first combination melon ever produced that combines fine-eating quality, prolificness and shipping qualities, a melon equally valuable for both Southern and Northern markets. Our illustration shows its shape perfectly. It is a long, solid, extra dark green melon of large size with red flesh of the most tender and delicious eating qualities. A carload of Watson melons shipped to Atlanta brought double the regular market price on account of its fancy appearance. It's one of these melons of such fine appearance that it sells on sight, and what is still better its quality backs up its fine looks. The man who plants the Watson melon is never disappointed in either crop or market, and the man who buys and eats them is always ready to come back for more. If you grow melons for either home or market use you will make a big mistake if you don't plant the Watson melon in 1910.

Our Genuine Seed—The Kind That's Fit to Plant

We are sorry to say that the great popularity of the Watson melon has led to speculators buying up seed from the "tail end" of the shipping crop. This has been sold to other seedsmen, most of whom have bought it in good faith we believe, and it will be offered at various prices in the 1910 spring catalogues. To the best of our knowledge (with the possible exception of one other Georgia seed house) there is no firm in this country that will offer in 1910 any genuine Watson watermelon that has been grown exclusively for seed purposes. We have the genuine Watson melon and seed grown exclusively for seed, not a melon having been shipped from our crops. You can get the right seed from us and you will find it a great deal better to be safe than sorry after your crop is grown. Prices, packet, 10 cents; ounce, 15 cents; ¼ pound, 40 cents; pound, \$1.25; postpaid. Not prepaid, 10-pound lots and over at \$1.00 per pound.

Florida Favorite A most popular medium-sized, smooth early melon of beautiful shape. In color it is dark green slightly striped with lighter green, making a handsome appearance in market. Considerably used for "topping off" cars of the strictly shipping varieties, such as Blue Gem, Kolb Gem, etc. Flesh red, very crisp, tender, juicy and sweet. Seed white. Rind is of medium thickness. It is one of the most prolific melons known, and is generally grown for home use and nearby markets in all parts of the South. It stands up well in hot weather and is generally considered one of the surest and most popular varieties to plant. Packet, 5 cents; ounce, 10 cents; ¼ pound, 30 cents; pound, \$1.00; postpaid, 10-pound lots and over, not prepaid, at 80 cents per pound.

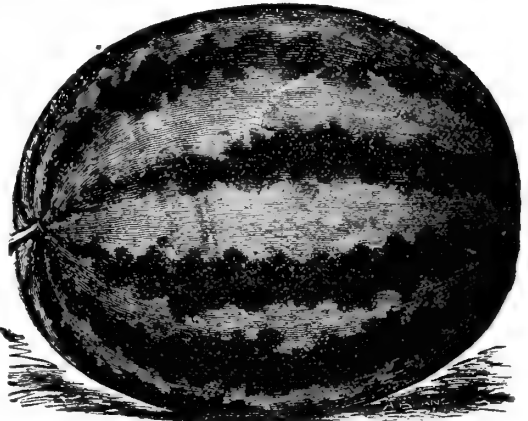
Kleckley Sweet Another popular and early melon a favorite wherever known for home and nearby market use. Vines strong and vigorous, melons of medium size and oblong form, being 18 to 24 inches long and 10 to 12 inches through. Skin is very deep, rich, dark green, making a handsome appearance in market. Flesh is bright red, ripening up close to the skin, the rind seldom being over ¼ inch thick. Flesh is crisp, extra sweet and melting, entirely free from stringiness. Undoubtedly one of the best early table melons grown. No garden is complete without it. Packet, 5 cents; ounce, 10 cents; ¼ pound, 30 cents; pound, \$1.00. 10-pound lots and over, not prepaid, at 80 cents per pound.

Seminole A splendid melon from Florida found originally among the Seminole Indians. It is the earliest of the long varieties, sometimes green and sometimes gray. Seeds brown, flesh red, very tender and sweet. One of the best Southern melons. Fine for home use and nearby markets. Packet, 5 cents; ounce, 10 cents; ¼ pound, 25 cents; pound, 75 cents; postpaid.

Augusta Sugar Loaf A favorite in our Augusta local markets. An extra long greenish white melon with crisp, tender, red flesh and very thin rind. Very large, often weighing 60 to 70 pounds. Packet, 5 cents; ounce, 10 cents; ¼ pound, 30 cents; pound, \$1.00; postpaid.

Our Harris' Earliest.

Our earliest good watermelon. An oval shaped melon originating in Tennessee. Beautifully striped with dark green and gray. It is extra early, hardy and a fine shipper; melons running from 20 to 30 pounds each and combining good shipping qualities with good eating qualities, something rare. Flesh is bright red, tender, sweet and delicious. Matures around Augusta about June 10th and continues to produce splendid melons until August. Its extreme earliness, fine appearance and superb table qualities make it a splendid seller in market at top prices. Our stock seed of this was obtained from Mr. Harris, the originator. Packet, 10 cents; ounce, 15 cents; $\frac{1}{4}$ pound, 35 cents; pound, \$1.00, postpaid. 10 pounds, not prepaid, \$8.00.



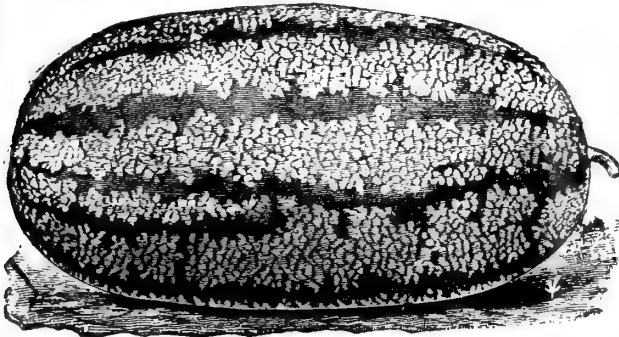
Our Harris' Earliest Watermelon

Our Carolina Bradford

Distinctively a home and nearby market melon and a great favorite with thousands of our customers in the Carolinas. Introduced by us in 1896, it at once became a favorite, pleasing every one who planted it. It's a strong, healthy grower. Melons are of medium size; 20 to 30 pounds; dark green striped with lighter green; flesh red and exceedingly sweet and tender. If you want the sweetest melon grown plant our Carolina Bradford. Packet, 10 cents; ounce, 15 cents; $\frac{1}{4}$ pound, 30 cents; pound, \$1.00.

Blue Gem or Gloussier

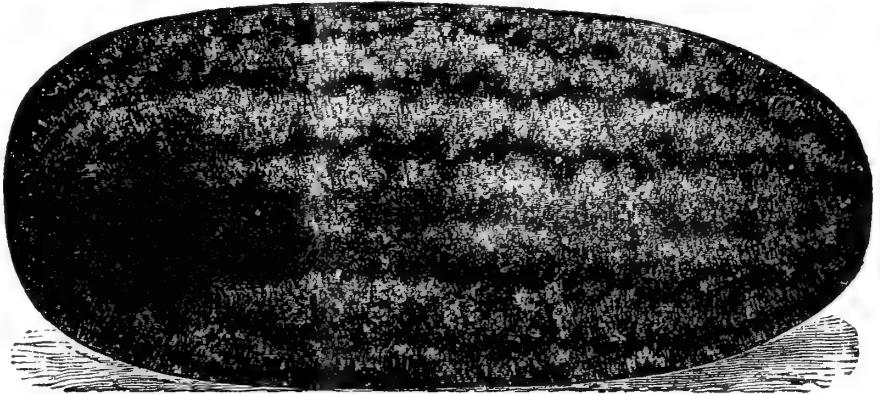
Really a blue Kolb Gem and far superior to the old Kolb Gem. It has all the good shipping characteristics of the Kolb Gem and much handsomer appearance in market. Dark bluish green color. Packet, 5 cents; ounce, 10 cents; $\frac{1}{4}$ pound, 25 cents; pound, 70 cents; postpaid. 10-pound lots or over, not prepaid, at 50 cents per pound.



Alexander's Carolina Bradford Watermelon

ALABAMA SWEET

In Texas it's almost impossible to sell a n y melon except Alabama Sweet. It's a splendid melon for the shipper who wants a long-shaped melon of good quality, closely resembling the Florida Favorite. It's always ahead of all the other long shipping varieties and rightly so. It's general appearance is such that it sells on sight at the highest prices. Its eating qualities are of the best. In ripening, it is an extra



Alabama Sweet—The Great Melon of the Southwestern States

early, coming in almost with the Seminole, and is one of the earliest medium to large size melons we have ever seen. Of long shape, as shown in our illustration. Flesh is very fine grained, solid and free from stringiness. A splendid shipper and is grown almost exclusively in many parts of Texas. Pkt., 10 cts.; oz., 15 cts.; $\frac{1}{4}$ lb., 30 cts.; lb., \$1.00; postpaid. 10 lbs., not prepaid, \$8.00.

Duke Jones Also known as "Jones Jumbo." A melon of North Florida origin, of good quality and makes a good shipper as well. Has thin, tough, dark green rind, bright red flesh, light colored seed. Eating quality good. Slightly oblong shape, very thick through, regular in shape and size. Makes fine appearance for either shipping or local markets and is a desirable melon for all purposes. An extra early variety. Packet, 5 cents; ounce, 10 cents; $\frac{1}{4}$ pound, 25 cents; pound, 70 cents; postpaid. 10-pound lots or over, not prepaid, at 50 cents per pound.

Pride of Georgia Old-time favorite Georgia variety. For home use and local markets. Packet, 5 cents; ounce, 10 cents; $\frac{1}{4}$ pound, 25 cents; pound, 70 cents; postpaid.

Kolb Gem Standard variety for shipping North. Too well known to need description. Packet, 5 cents; ounce, 10 cents; $\frac{1}{4}$ pound, 20 cents; pound, 60 cents; postpaid. 10-pound lots and over, not prepaid, at 45 cents per pound.

"A Powerful Good Cotton"

M. A. Kay, Anderson Co., South Carolina writes us. "From 1,230 pounds, picker's weight, I got a bale weighing 500 pounds, about 41 per cent. lint. Money Maker Cotton is a powerful good variety, the best I ever planted." If you plant Alexander's "Money Maker" Cotton in 1910 you will not only say that it's a "powerful good cotton," but what's better you will have a good bunch of money for your crop.

Bermuda Onions for Spring Planting



Bermuda Onions, this Group Weighed 8 Pounds and 5 Ounces

Earliest, sweetest, mildest of all onions and they make so quickly that you have full grown onions before you know it from spring planted seed. The reason why we haven't offered them for spring planting before is that we have not, until now been able to keep up with the demand of our Florida and Texas friends who plant thousands of acres of Bermudas every year. You won't be sorry if you plant Bermuda Onions (the black seed) in your spring garden.

Onion Culture

Onions can be grown to full size in the South direct from seed if planted in January and February in protected beds and transplanted to open ground as soon as ground can be worked in the spring. Too little attention is paid to onion growing as a money crop in the South and it is one of the most profitable crops that can be grown.

If wanted for pulling green, sow seed at rate of 1 ounce to 150 feet of drill in earliest spring, covering seed about $\frac{1}{2}$ inch. Give shallow but frequent cultivation, keeping entirely free from grass and weeds. As plants grow, thin out to 3 inches apart and when grown large enough for use green pull out every other one, allowing the rest to grow to full size. Onions require rich soil and do better when grown on same ground year after year. If you are interested in onions as a money crop write for our special pamphlet on onions. It's free if you ask for it and contains much valuable information.

Bermuda White This is the variety that forms the great shipping crop of Florida, Texas and Bermuda. Its name is misleading as it is really a light straw color. Is of flat shape as shown in illustration and is of the finest flavor; so mild that it can be eaten from the hand like an apple. Pkt., 10 cts.; $\frac{1}{2}$ oz., 15 cts.; oz., 25 cts.; $\frac{1}{4}$ lb., 75 cts.; lb., \$2.50; postpaid.

Bermuda Red Identical with the Bermuda White in everything except color which is a very light or pale red. Just as good as the White for home use or local markets, but does not bring as high a price as a shipping variety. Pkt., 10c.; $\frac{1}{2}$ oz., 15c.; oz., 25c.; $\frac{1}{4}$ lb., 70c.; lb., \$2.25; postpaid.

Bermuda Crystal Wax A pure silvery white Bermuda onion, the most beautiful onion ever grown. Packet, 10 cents; $\frac{1}{2}$ ounce, 20 cents; ounce, 35 cents; $\frac{1}{4}$ pound, \$1.00; pound, \$3.75.

Prizetaker Our Prizetaker is one of the best onions for our section. Ours is strictly American seed and must not be confounded with the low-priced imported seed of this variety so commonly sold. In size it is large to extra large, specimens weighing 4 to 5 pounds, having been grown direct from seed in one season. Ripens up hard and firm and presents a most handsome appearance. Outside is a light straw color, inside white. Flesh fine grained and of mild flavor. A first-class keeper, staying in perfect condition for months after harvest. Packet, 5 cents; ounce, 20 cents; $\frac{1}{4}$ pound, 60 cents; pound, \$2.00; postpaid.

Australian Brown Adapted to the entire South. Is of neat, round shape, as shown in our illustration. Medium size with a skin of deep amber brown, distinct from all other onions. Extremely hard and firm and of fine flavor. The best keeper of all; specimens have been kept in perfect condition over a year. Plant some Australian Brown this spring and you will be pleased with it. Packet, 5 cents; ounce, 15 cents; $\frac{1}{4}$ pound, 50 cents; pound, \$1.50; postpaid.

Yellow Globe Danvers Very hardy globe-shaped American variety. Splendid producer and keeper. Pkt., 5 cts.; oz., 15 cts.; $\frac{1}{4}$ lb., 50 cts.; lb., \$1.50; postpaid.

Large Red Wethersfield Color deep red. Large size, rather strong and easily grown from seed. Pkt., 5 cents; oz., 15 cents; $\frac{1}{4}$ lb., 50 cents; lb., \$1.50; postpaid.

White Silverskin Very popular, the one from which the ordinary white onion set is grown. Pkt., 5 cents; oz., 20 cents; $\frac{1}{4}$ lb., 65 cents; lb., \$2.00; postpaid.

Extra Early Red Pkt., 5 cts.; oz., 15 cts.; $\frac{1}{4}$ lb., 50 cts.; lb., \$1.50; postpaid.

White Multiplier Onion Sets

Favorite for first plantings South. Make green onions ready for use almost before you know it. Pt., 15 cts.; qt., 90 cts.; postpaid. Not prepaid, pk., 90 cts.; bu., \$3.00.

Yellow Sets

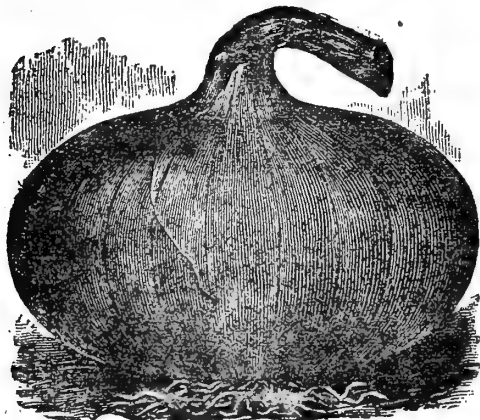
The sets of the Yellow Danvers. Good cropper and splendid keeper. Pint, 15 cts.; qt., 25 cts. Pk., not prepaid about 75 cts.; bu. (32 lbs.), about \$2.50.

Silver Skin

The popular white variety. Pt., 15c.; qt., 25c.; postpaid. Peck, not prepaid about 85c.; bu., \$2.75.



White Multiplier Onion Sets



Australian Brown, the Long Keeping Onion

GARDEN OR ENGLISH PEAS

Culture Garden or English Peas are constantly becoming more popular for both market and home use in the South. Any of the extra early varieties and marrowfats can be planted from January to March 15th in our section. The second earlies and the late varieties plant February 15th to March 15th. Plant 1 quart to 100 feet of drill; 2 bushels per acre.

Large Packets We have discontinued the small 5 cent packet of peas and beans by mail and now have 10 cent packets only, these containing nearly four ounces. Smaller quantities than this of peas and beans are almost useless.

Premier Extra Early Earliest of all garden peas and far better adapted to our Southern soil and climatic conditions than any of the extra earlies from Northern seed houses. It's the best pea of its class for Southern plantings. Very strong, vigorous grower for an extra early, a heavy bearer and good-sized pods crowded with well-developed peas of good quality. If you want an extra early pea to make a paying crop, our Premier Extra Early is your right variety. It comes quick and bears heavy. With good cultivation it's a week ahead of Landreth's Extra Early, Morning Star, First and Best and others. Grow without bushing. Packet, 10 cents; ½ pint, 15 cents; pint, 25 cents; quart, 40 cents; postpaid. Peck, not prepaid, \$1.50; bushel, \$5.50.

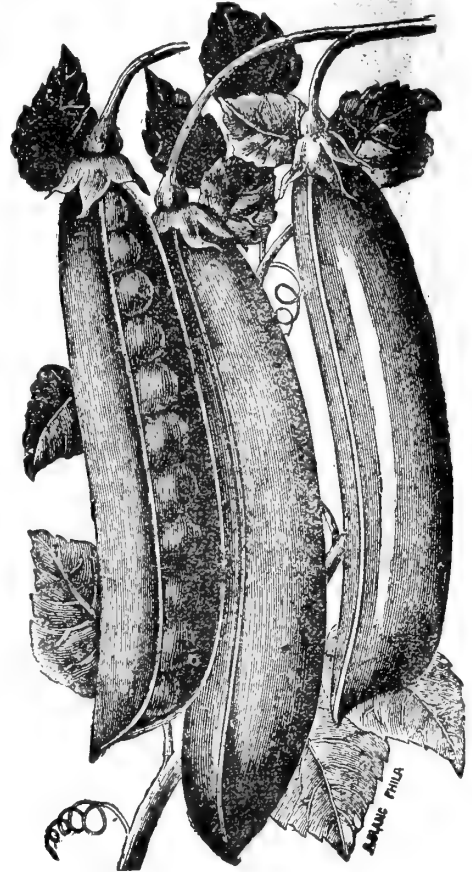
First and Best Also sold under the name of First in the Market, First of All, Philadelphia Extra Early, etc. In earliness it comes in about three days after Alaska; is a fairly strong grower (about 22 to 24 inches) and a good bearer. Is largely planted by gardeners along the coast. Packet, 10 cents; ½ pint, 15 cents; pint, 25 cents; quart, 40 cents; postpaid. Peck, not prepaid, \$1.50; bushel, \$5.00.

Alaska Extra Early Very popular early variety, a few days later than our Premier but the heaviest bearer of all the extra earlies and of better eating qualities. Seed of light bluish color. Crop very short this season. Packet, 10 cents; ½ pint, 15 cents; pint, 25 cents; quart, 45 cents; postpaid. Peck, not prepaid, \$1.50; bushel, \$5.00.

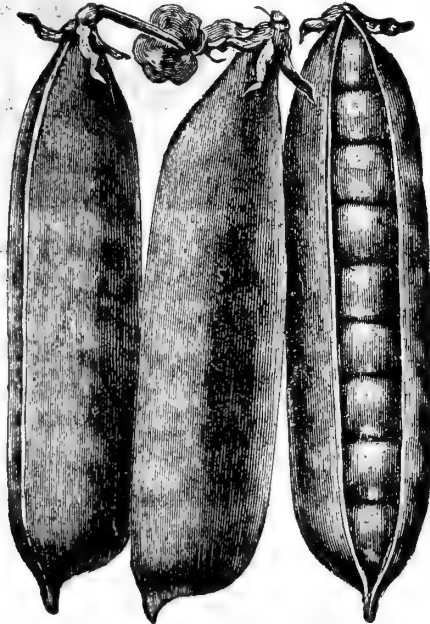
Extra Early Surprise Also known as Eclipse, Our new extra early wrinkled pea. It ranks with the earliest; vines grow 20 to 24 inches high and require no "brushing." Its extreme earliness, its sweetness, tenderness and

flavor and its heavy bearing qualities make it a leader. See natural size of the pods in our engraving. While the pods are a little smaller than the American Wonder, yet the Surprise outbears that famous variety two to one. Don't fail to try a few in your garden this year. Packet, 10 cents; ½ pint, 15 cents; pint, 25 cents; quart, 45 cents; postpaid. Peck, \$1.50; bushel, \$5.50.

For 35 Years
Alexander's
Seeds Have
Pleased



Premier Extra Early Peas.



Extra Early Surprise Peas.

Pride of Georgia (Second Early) In this new variety which we introduced three years ago, we have one that will be pleasing and profitable to every home garden and to every market gardener who markets in local or nearby markets. It belongs to the second early class and here in Georgia it is the heaviest of all bearers—one that we can well take a pride in. It's a stocky grower, 20 to 24 inches in height, and does not require staking. It comes in just after our Extra Early and continues in bearing four or five weeks. Pods are large and well filled out, containing usually 8 to 10 peas, very tender and of a delicious flavor. It's just what you need for a mid-season pea, combining strong but compact growth, great prolificness and the finest in quality. The home gardener will always want it, the market gardener's customers insist on having it. It is one of those wrinkled varieties of peas that melt in your mouth. Plant at least a few of them between February 15th and March 15th. Pkt., 10c; ½ pt. 15c; pt. 25c; qt. 45c; postpaid. Peck, \$1.50; bushel, \$5.50.

Improved Telephone Finest tall growing wrinkled pea, grows 4 to 5 feet high and must be staked or brushed. Very productive, each plant bearing 25 to 30 large pods, fully filled with large size peas of delicious flavor. Packet, 10 cents; ½ pint, 15 cents; pint, 25 cents; quart, 45 cents; postpaid. Peck, not prepaid \$1.75; bushel, \$6.50.

Melting Sugar-Edible Poddled

Finest in quality of all edible podded peas, sometimes called "Salad Peas." Instead of being shelled out like other peas, the pods are used cut up like snap beans. They are most delicious. Of tall growth and must be bushed or staked. Packet, 10 cents; ½ pint, 20 cents; pint, 30 cents; quart, 50 cents; postpaid.

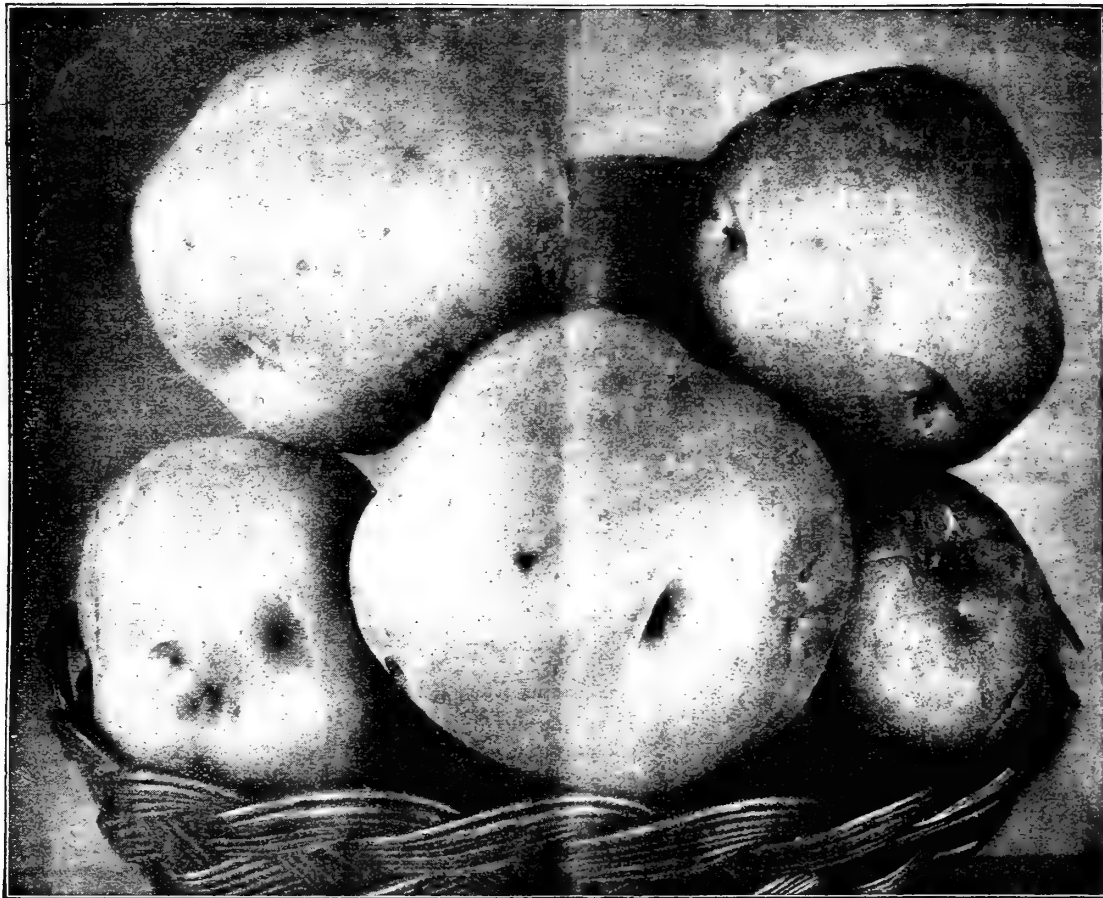
Little Gem Packet, 10 cents; ½ pint, 15 cents; pint, 25 cents; quart, 45 cents; postpaid.

Champion of England

An old favorite tall-growing variety and one of the best quality and the most profitable in the way of heavy crops. Must be bushed or staked, growing 4 to 5 feet high. Packet, 10 cents; ½ pint, 15 cents; pint, 25 cents; quart, 40 cents; postpaid. Not prepaid, peck, \$1.50; bushel, \$5.25.

Large White Marrowfat Can be planted any time during winter or spring. Grow 4 feet high and are heavy bearers. Packet, 10 cents; ½ pint, 15 cents; pint, 20 cents; quart, 35 cents; postpaid. Not prepaid, peck, \$1.00; bushel, \$3.50.

Black Eyed Marrowfat Same prices as Large White.



ALEXANDER'S NEW EXTRA EARLY BEAUTY POTATO

Our new potato, "Extra Early Beauty" is really one that is worth while planting in the South for a spring crop. It has good points that no other potato has and if you plant it you will be satisfied in every way with it. We have tested it thoroughly here in Georgia for the last four years and know exactly what it will do. It has beaten the old standard kinds, such as Bliss' Red Triumph and Early Rose, at every point. It is both extra early and extra prolific, earlier than Triumph and Rose and making twice as many select marketable potatoes. In shape it's like Triumph, in color of skin a creamy white, slightly netted with lighter color; flesh pure white. Cooks quickly, is almost snow white; mealy, but not too dry. Its keeping qualities are simply wonderful, having kept in perfect condition from spring until December. It's good for shipping or nearby market; for home use; good for sale and good for your own eating. If the market isn't right when crop matures it keeps till all the other kinds are gone. Do you know any of the other varieties that combine all the good points like this?

You need our Extra Early Beauty Potato. Our stock is limited. Order it early. Prices, pound, postpaid, 80 cents; 3½ pounds, \$1.00. Not prepaid, ½ peck: 50 cents; peck, 75 cents; ½ bushel, \$1.25; bushel, \$2.25; barrel (11 pecks) \$5.00.

Bliss' Red Triumph Most popular early red-skinned variety. Peck, 60 cents; bushel, \$2.00; barrel, \$4.50.

Select Early Rose An old standard variety and a favorite in the South. Is early, productive and extra good quality. We have genuine stock. Most of the Rose potatoes sold by stores are the Red Rose or late Rose which is of little or no value for Southern spring plantings. Don't be fooled on this matter of variety. Peck, 60 cents; bushel, \$2.00; barrel, about \$4.25.

Irish Cobbler Fine early variety with clean smooth skin and pure white flesh. Peck, 60 cents; bushel, \$2.00; barrel, about \$4.50.

Okra or Gumbo A most popular and healthful Southern vegetable which should be in every garden. Easily grown and bears until frost. Sow 1 ounce to 50 feet of row, 10 pounds per acre. Plant same time as cotton.

White Velvet Our strain of this is especially fine with smooth, round pods, free from ridges and not prickly. Seed crop very short this year. Pkt., 5c.; oz., 10c.; ¼ lb., 20c.; lb., 60c.; postpaid.

Perkins' Mammoth Long Podded

The finest green okra, the favorite for shipping and market purposes. Pods are an intense green in color, unusually long, nine to ten inches, very slim and do not get hard like other varieties. It is wonderfully prolific, the pods shooting out close to the bottom of the stalk and the whole plant is covered with them to a height of 5 or 6 feet. Packet, 5 cents; ounce, 10 cents; ¼ pound, 20 cents; pound, 60 cents; postpaid, 10 pounds, not prepaid, \$4.50.

Dwarf Green Prolific An old-time favorite that is popular. Packet, 5 cents; ounce, 10 cents; ¼ pound, 20 cents; pound, 50 cents; postpaid.



WHITE
VELVET
OKRA

SWEET and HOT PEPPERS

Sow in boxes or hot beds in earliest spring, transplanting to open ground when danger of frost is past, setting 18 inches apart in row. Hoe or cultivate often, keeping them free from weeds and grass. One ounce of seed to 1,500 plants.

Large Bell or Bull Nose The standard variety for both home use and shipment in the South. It is sweet and mild flavored, matures quickly and is very prolific and uniform in growth. Fruits 3 to 4 inches long and 2 to 3 inches across the shoulder. Packet, 5 cents; ½ ounce, 15 cents; ounce, 25 cents; ¼ pound, 50 cents; pound, \$1.75; postpaid.

Ruby King A standard for shipment. Similar to the Bell, but a little larger and later. Increasing in favor among market gardeners every year. Packet 5 cents; ½ ounce, 15 cents; ounce, 25 cents; ¼ pound, 50 cents; pound, \$2.00.

Chinese Giant Similar to Ruby King, but twice as large. Largest sweet pepper grown. Truck growers like it. Very early and productive, mild and sweet with thick flesh. Packet, 10 cents; ½ ounce, 30 cents; ounce, 50 cents; ¼ pound, \$1.50; pound, \$5.00.

Golden Dawn Immensely large, very sweet, mild pepper. Similar to Large Bell, but is of deep golden yellow color when ripe, making handsome appearance. Packet, 10 cents; ½ ounce, 20 cents; ounce, 30 cents; ¼ pound, 75 cents.

Mixed Peppers For family use most people want some sweet and some hot peppers. We offer you a mixture containing some of each variety catalogued by us, giving a supply of early and late, sweet and hot varieties, just what is needed in every home garden. Packet, 10 cents; 3 packets, 25 cents.

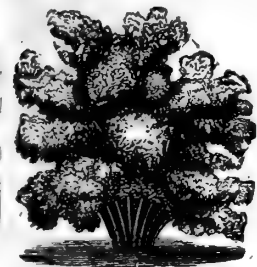
Long Red Cayenne Most popular and largely planted of the hot varieties. Very prolific, plants being covered with long red pods. Used for seasoning. Packet, 5 cents; ounce, 25 cents.

Red Chili Grows three-fourths to one inch long and the little peppers are intensely hot. Very prolific. Used largely in seasoning and making pepper sauce. Packet, 5 cents; ounce, 25 cents.



Large Bell or Bull Nose Pepper.

Double Moss Curled Parsley The most ornamental of all the curled varieties and a favorite in the home garden as well as being used exclusively by market gardeners to supply our hotels and markets. It is easily grown and should be in every garden. Packet, 5 cents; ounce, 10 cents; ¼ pound, 20 cents; pound, 65 cents; postpaid.



Moss Curled Parsley.

PARSLEY

Plain Leaved Parsley Is a very hardy strong growing variety, not ornamental, but grown for "seasoning" exclusively. A favorite in many home gardens. Packet, 5 cents; ounce, 10 cents; ¼ pound, 20 cents; pound, 50 cents; postpaid.

Sugar or Hollow Crown—Best all-round variety of parsnips for the South. The leaves start from a small depression in the crown, giving it the name. Rich, sweet flavor, very productive. Packet, 5 cents; ounce, 10 cents; ¼ pound, 20 cents; pound, 50 cents.

PARSNIP

Our Radishes For Spring

Culture The Radish is an almost universally grown vegetable and is the easiest grown. To be tender and crisp, radishes should be grown quickly, and quick growth is dependent on rich, mellow soil, sufficiently moist, and good, reliable, fresh, vital seed. To have a constant supply sowings should be made every 10 days or two weeks. One ounce will sow 50 feet of row; 8 pounds of seed per acre.

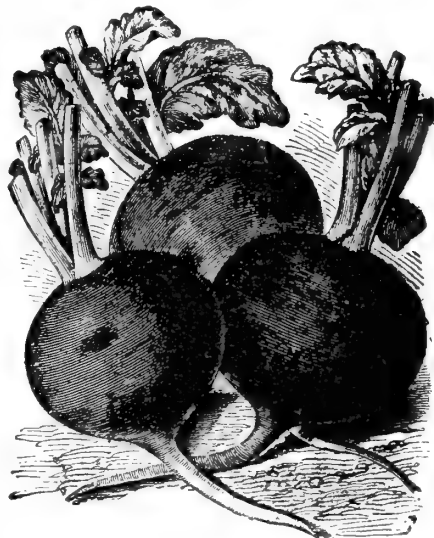
Alexander's All Seasons In our test grounds six years ago we discovered the value of this variety for planting at all seasons of the year. Beginning with January, succession plantings should be made every two weeks to keep up a continuous supply. Round in shape; in color a bright cherry red; flesh very crisp, tender and solid and grows to an unusual size without getting pithy. All seasons will please you no matter when you plant it. Packet, 5 cents; ounce, 10 cents; ¼ pound, 25 cents; pound, 75 cents; postpaid.

Early Scarlet Turnip Also sold under name of Rosy Gem and White Tipped Scarlet Ball. A standard variety for both market and home gardens. Turnip shaped and of a beautiful scarlet color shading to the purest white at the tip. Flesh very crisp and tender. Matures ready for use in 21 days. Packet, 5 cents; ounce, 10 cents; ¼ pound, 20 cents; pound, 60 cents; postpaid.

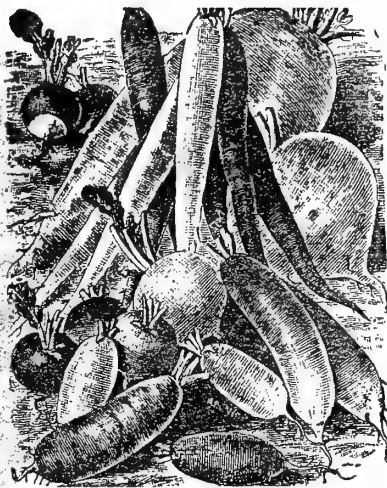
Ne Plus Ultra Of fine, round, turnip-shaped form. Color a bright scarlet, flesh tender, crisp and of delicate flavor. Its remarkable small top and quick growth make it especially valuable for forcing in frames or for close plantings in market gardens. Matures in 18 to 21 days. Packet, 5 cents; ounce, 10 cents; ¼ pound, 20 cents; pound, 60 cents, postpaid.

Hailstone The quickest growing radish on record. In every test it comes out ahead of all others, maturing in from 15 to 19 days from sowing. The radishes are regularly "turnip-shaped," measuring an inch in diameter and ½ inch deep, round, smooth and a beautiful snowy white; tap root short and slender; flesh solid, crisp and mild. Foliage very small, enabling you to plant very close. Packet, 5 cents; ounce, 10 cents; ¼ pound, 25 cents; pound, 75 cents; postpaid.

Cincinnati Market A comparatively new variety, very popular with market gardeners. Almost as long as our quickly, is very uniform in growth, white tipped. Flesh pure white and very transparent; crisp, tender and brittle; grows to good size and always free from pungent taste. Packet, 5 cents; ounce, 10 cents; ¼ pound, 20 cents, pound, 60 cents; postpaid. 10 pounds, not prepaid, \$4.00.



Alexander's All Seasons Radish.



Alexander's Radish Mixture.

Alexander's Radish Mixture There are many hundreds of our friends who want a succession of radishes but do not want to be troubled with making succession sowings. Our radish mixture will give these friends just what they want. It contains some of each kind of radish we list, early, medium and late, round, olive-shaped and long. Sown during late winter and spring, it gives you a supply of radishes in perfect table condition all through the season. Our illustration shows what you will get by planting our Radish Mixture. Packet, 5 cents; ounce, 10 cents; $\frac{1}{4}$ pound, 25 cents; pound, 75 cents; postpaid.

French Breakfast

Standard half long radish, valuable for both home and market gardeners' use. Pkt., 5c.; oz., 10c.; $\frac{1}{4}$ lb., 20c.; lb., 60c.; postpaid.

Improved Chartier

A long variety, splendid for early planting. The top of root is red, shading to pink in middle; with white tip. Fine flavor. Pkt., 5 cts.; oz., 10 cts.; $\frac{1}{4}$ lb., 20 cts.; lb., 60 cents; postpaid.



Early Long Scarlet Radish.

Early Long Scarlet The standard early long red variety for planting South in either spring or fall. Packet, 5 cents; ounce, 10 cents; $\frac{1}{4}$ pound, 20 cents; pound, 60 cents; postpaid.

Long White Vienna Best long white radish. Skin and flesh are pure white. A splendid radish for either home or market gardens. Packet, 5 cents; ounce, 10 cents; $\frac{1}{4}$ pound, 20 cents; pound, 60 cents; postpaid.

White Strasburg Best long white variety for summer use. Skin and flesh pure white, brittle and tender. Packet, 5 cents; ounce, 10 cents; $\frac{1}{4}$ pound, 20 cents; pound, 60 cents.

China Rose Winter For August and September sowings. For use during winter as wanted. Packet, 5 cents; ounce, 10 cents; $\frac{1}{4}$ pound, 25 cents; pound, 75 cents.

Black and White Spanish Radishes

For winter use. Each, packet, 5 cents; ounce, 10 cents; $\frac{1}{4}$ lb., 20 cents; lb., 65 cents.

Plant Pumpkins in Your Cornfield

Pumpkins ought to be largely grown. Fine for home use, always salable in town and good stock feed. Plant in corn at "laying by" time, hills 10 to 15 feet apart each way. In cutting leave 3 to 4 inches of stem and they will keep.

King of the Mammoths Largest of all, having been grown to 245 pounds. Flesh fine grained and a good keeper. Packet, 10 cents; ounce, 15 cents; $\frac{1}{4}$ pound, 35 cents; pound, \$1.25; postpaid.

Japanese Pie Our illustration shows exactly this variety. Much like the Cashaw but better. Weight 12 to 15 pounds, fine grained flesh. Packet, 5 cents; ounce, 15 cents; $\frac{1}{4}$ pound, 35 cents; pound, \$1.25.

Large Georgia Field Our large yellow stock pumpkin so generally grown in Georgia. Very productive and good keeper. Packet, 5 cents; ounce, 10 cents; $\frac{1}{4}$ pound, 20 cents; pound, 50 cents; postpaid.

Tennessee Sweet Potato One of our best varieties. Bell-shaped and slightly ribbed; Productive and splendid keeper. Fine quality. Packet, 10 cents; ounce, 15 cents; $\frac{1}{4}$ pound, 35 cents; pound, \$1.25; postpaid.

Large Cheese and Cashaw Each, packet, 5 cents; ounce, 10 cents; $\frac{1}{4}$ pound, 25 cents; pound, 75 cents.

Sow Some Spinach For Spring Greens

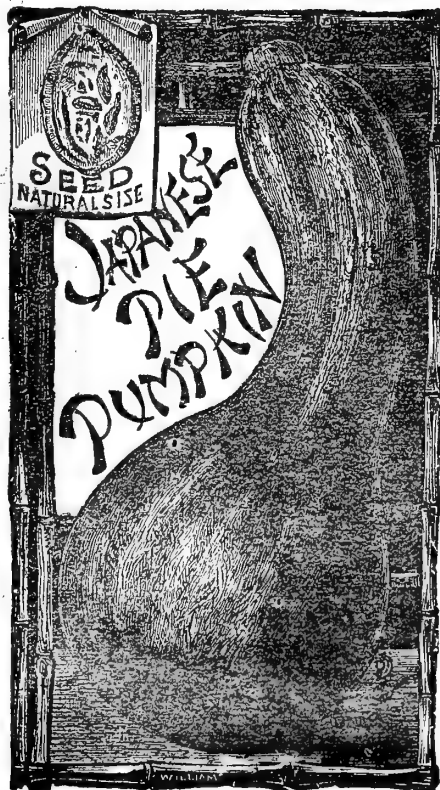
Alexander's Ever-Ready Spinach

The best of one long standing varieties. It's just what its name indicates, ready at all times for winter and spring cutting. Leaves are large, thick and heavily crimped with fleshy appearance. Resists both winter cold and the warm spring weather. Packet, 5 cents; ounce, 10 cents; $\frac{1}{4}$ pound, 20 cents; pound, 50 cents; postpaid. 10 pounds, not prepaid, \$3.00



Alexander's Ever-Ready Spinach.

Bloomsdale and Broad Flanders Each, packet, 5 cts.; oz., 10 cts.; $\frac{1}{4}$ lb. 15 cts.; lb., 40 cts.; postpaid.



Plant Money-Maker Cotton

Early Bush Squashes

Culture Squash will not stand frost and cold nights, so plantings should be delayed until frost danger is past. Work ground deeply before planting. Plant bush varieties in hills 4 feet apart each way, running varieties 8 feet apart. One or two shovelfuls of well-rotted manure to each hill gives best results. Plant 6 to 10 seeds to each hill, thinning out to two plants after rough leaves form. One ounce of seed plants 40 hills, 2 pounds per acre.

New Extra Early Prolific

Just what you need in your garden to give you the earliest squashes or, if you are a market gardener, to get in ahead of the others. In size and appearance it is almost like the Early White Bush or "Patty Pan," but is at least a week earlier, more regular in shape and bears twice as much. It's simply perfection in a medium-sized extra early prolific variety of bush squash. Plant it this spring. It will both please and pay you. Packet, 10 cents; ounce, 15 cents; $\frac{1}{4}$ pound, 35 cents; pound, \$1.00.

Mammoth White Bush This is an improved form of the Early White Bush or "Patty Pan"; identical with that variety except that the squashes are nearly double the size of the old variety. Is early, uniform in growth and very prolific. Has beautiful clear white skin and is from 8 to 12 inches in diameter. Fine quality and size for home gardens and nearby markets. Packet, 5 cents; ounce, 10 cents; $\frac{1}{4}$ pound, 25 cents; pound, 75 cents; postpaid.

Giant Summer Crookneck

In the Giant Crookneck we have a variety containing all the good qualities of the Crookneck class and at the same time giving double the size of the Old Yellow Summer Crookneck. For market gardeners growing for nearby markets and home gardens it is especially desirable. With this variety you get double the yield for the same area that you do with the other sorts. Packet, 5 cents; ounce, 10 cents; $\frac{1}{4}$ pound, 25 cents; pound, 75 cents.

Early White Bush

The well-known "Patty Pan" squash, a favorite white squash with all our gardeners. Also largely grown for shipment. Packet, 5 cents; ounce, 10 cents; $\frac{1}{4}$ pound, 25 cents; pound, 65 cents; postpaid. 10 pounds, not prepaid, \$4.50.

Yellow Summer Crookneck

An old standby; always a favorite in both home and market gardens. Fruits rather small; of bright orange color. Flavor very rich and buttery, the richest of all summer squashes. Packet, 5 cents; ounce, 10 cents; $\frac{1}{4}$ pound, 25 cents; pound, 65 cents; postpaid.

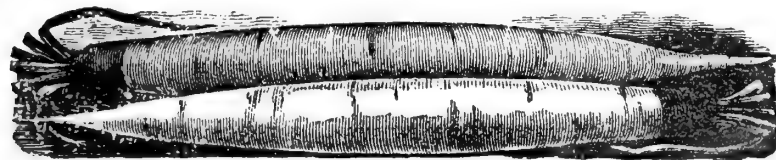
Winter or Running Varieties

Hubbard

Most largely planted winter variety. Flesh rich, very fine grained and sweet. Cooks up dry and is a perfect table variety. Packet, 5 cents; ounce, 10 cents; $\frac{1}{4}$ pound, 30 cents; pound, 90 cents; postpaid.

Boston Marrow

Popular variety. Oval form, flesh bright orange color, rich and sweet. Packet, 5 cents; ounce, 10 cents; $\frac{1}{4}$ pound, 30 cents; pound, 90 cents.



Mammoth White Sandwich Island Salsify, or Vegetable Oyster

the ground and use through winter as wanted. One ounce of seed plants 100 feet of row.

Mammoth Sandwich Island

The best of all varieties for the South. Larger and better than any other kind. Is much superior to the old Long White and the Black. Packet, 5 cents; ounce, 15 cents; $\frac{1}{4}$ pound, 30 cents; pound, \$1.00; postpaid.

Right Tomatoes For You

Culture

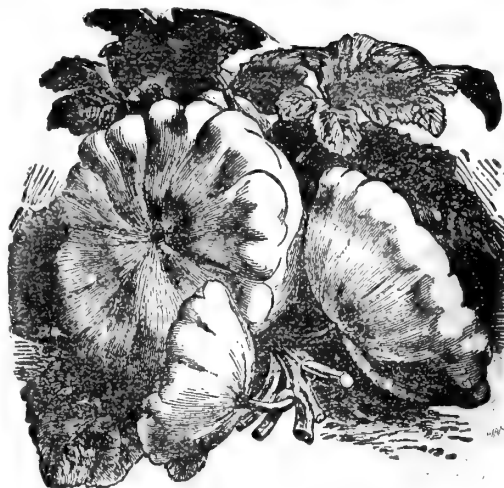
Sow in hot beds or protected boxes from January to March. Transplant to open ground after danger of frost is past, setting in the ground deep, up to the leaves. As plants grow support them with stakes. This keeps them up off the ground and prevents rotting. Sow 1 ounce of seed for 1,500 plants; 4 ounces per acre. Sow also in July for fall crop.

Long Keeper

No variety of tomato equals our Long Keeper in heat and drought resisting qualities, and this makes it especially valuable for summer and fall cropping. This is a new variety to most of our customers and we take pleasure in recommending it, especially as a variety to plant for summer use. It is early, productive and the longest keeper of any. Equally valuable for the market or for home gardens. Fruits average $2\frac{1}{2}$ to 3 inches in diameter and are of a bright red color. It has the right shape and solidity and stands burning sun without injury. Large packet, 5 cents; $\frac{1}{2}$ ounce, 15 cents; ounce, 25 cents; $\frac{1}{4}$ pound, 65 cents; pound, \$2.00; postpaid.

Ponderosa

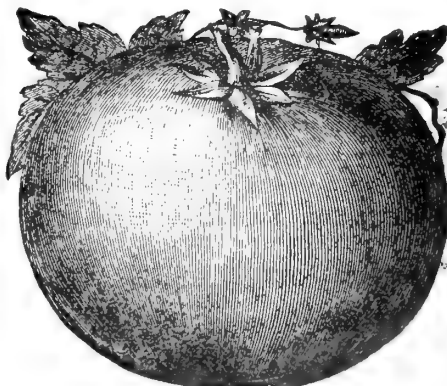
Largest of all. Packet, 10 cents; $\frac{1}{2}$ ounce, 20 cents; ounce, 30 cents.



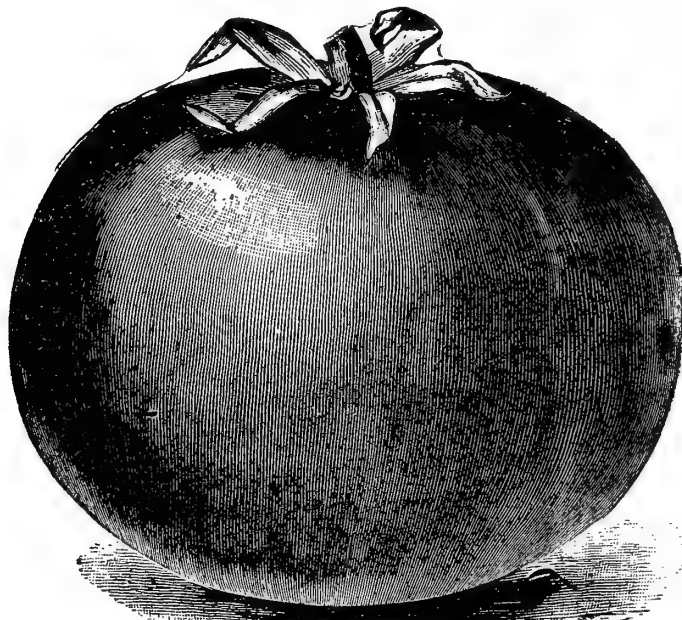
Alexander's New Extra Early Prolific Squash

SALSIFY OR VEGETABLE OYSTER

CULTURE—Sow seed in early spring in shallow drills 18 inches apart. Prepare good soil deeply, as Salsify is a deep rooter. Cultivate frequently and let grow all summer. Plants are hardy, so let them stay in. Freezing improves its eating qualities.



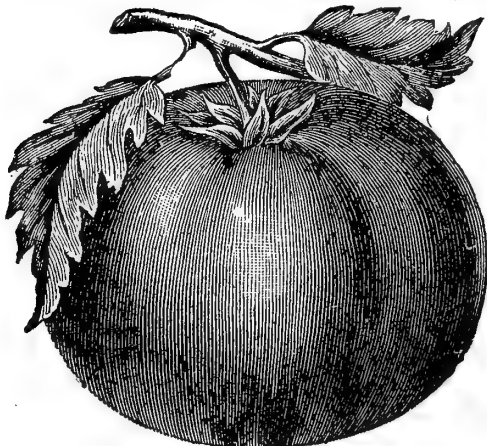
Alexander's Long Keeper Tomato



Our Great Main Crop Tomato, Matchless

the extreme extra earlies. Plants are of open growth, letting sunlight in to the fruits. This tomato is being sold under a dozen different names. We have the genuine. Packet, 10 cents; ½ ounce, 15 cents; ounce, 25 cents; ¼ pound, 75 cents; pound \$2.50.

Chalk's Early Jewel The best of all extra early sorts, and is far superior, the fruits being uniformly larger, smoother, thicker through, more solid and of much finer quality than any of the extra early tomatoes. The fruits are very deep through from stem to blossom end, being almost round or ball-shaped and from 3 to 3½ inches in diameter. The interior is very solid and fleshy with very few seeds, the seed cells being very small and the fruits nearly all solid flesh; quality is exceptionally sweet and free from acidity. Packet, 10 cents; ½ ounce, 20 cents; ounce, 30 cents; ¼ pound, 85 cents; pound \$3.00.



Alexander's Early Beauty Tomato

home and market gardeners for late crops. Packet, 5 cents; ½ ounce, 15 cents; ounce, 25 cents; ¼ pound, 60 cents; pound, \$1.75.

Dwarf Stone Largest fruited of all the dwarf growing self-supporting tomatoes. Very prolific, fruits being produced in clusters of three to five. Bright scarlet color, smooth, firm and solid. Fine flavor. Packet, 10 cents; ½ ounce 20 cents; ounce, 30 cents; ¼ pound, \$1.00; pound, \$3.25.

Livingston Globe A new tomato with many desirable points. Beautiful bright glossy red color, fruits rather globe shaped, although many of them do not show the full globe shaped form. Fine flavor and fruits very solid. Packet, 10 cents; ½ ounce, 20 cents; ounce, 35 cents; ¼ pound, \$1.25; pound, \$4.50 postpaid.

Red and Yellow Pear Shaped Excellent small variety of tomatoes. Of strong, vigorous growth and very productive. Suitable for preserves, pickles and pies. Each variety, 5 cents per packet.

Perfection An old variety, much planted in some sections. Packet, 5 cents; ounce, 20 cents; ¼ pound, 50 cents; pound, \$1.60.

Livingston's Favorite Standard sort, much used for home use. Packet, 5 cents; ounce, 20 cents; ¼ pound, 50 cents; pound, \$1.60.

Selected Trophy Once the most popular tomato. Packet, 5 cents; ½ ounce, 15 cents; ounce, 25 cents; ¼ pound, 60 cents; pound, \$1.75.

Golden Queen Best of all yellow skinned tomatoes. Packet, 5 cents; ½ ounce, 15 cents; ounce, 25 cents.

A GREAT MAIN CROP TOMATO The Matchless

For a first-class, general crop tomato for all purposes there is none equal to our Matchless. It follows such varieties as Alexander's Beauty, but stays with you all summer, its dense, heavy foliage protecting the fruits from mid-summer sun. It is large, smooth and of a very rich red color. Almost solid meat with a very little core and small seed spaces. A strong, vigorous grower and fruits heavily. The large size holding up to the end of the season. Fine for either home use or market, and unexcelled for canning. Packet, 10 cents; ½ ounce, 15 cents; ounce, 25 cents; ¼ pound, 75 cents; pound, \$2.50.

Our New Early Acme

The old Acme tomato always was a favorite with our customers, but it had serious faults which have been eradicated in our "New Early Acme," an early tomato that will please you. A vigorous grower with open growth, a heavy bearer that ripens evenly all over. Fruits in clusters of 3 to 5, of medium to large size. In color it is a purplish shade of red, the most desirable color for shipment or market. Has few seeds, is meaty and solid. Skin tough but thin. With its fine color you will find it most desirable for shipment, local market or home use. Packet 5 cts. 4 oz., 25 cts.; ¼ lb., 65 cts.; lb. \$2.00.

Spark's Earliana

The most famous of

fruits form in clusters of 5 to 8, medium

We have the genuine. Packet, 10

Alexander's Early Beauty

A favorite with our market garden customers and shippers as well as for an early maturing variety for the home garden. It's early and of open growth, letting the sun into the fruit, ripening it quickly. A good general cropper. We sell this variety almost exclusively to many of the tomato shippers of Florida. In color it's a rich, glossy crimson, fruits solid and meaty with small seed cavities. Medium size with thin, tough skin. Packet, 5 cents; ½ ounce, 15 cents; ounce, 25 cents; ¼ pound, 65 cents; pound, \$2.00.

Dwarf Champion A really first-class quality tomato of sufficiently stiff growth to be self-supporting when in fruit. Of very stocky, compact growth with heavy foliage, protecting the fruit from sun scald. Fruits are of very bright red color, of medium size, almost round and very smooth skin. One of the most desirable and popular varieties. Seed supply very short. Packet, 5 cents; ½ ounce, 15 cents; ounce, 25 cents; ¼ pound, 75 cents; pound \$2.50 postpaid.

New Stone One of the largest, most solid and meaty of all tomatoes and especially valuable for late plantings. It has heavy foliage, thus protecting the fruits from the burning sun of late summer and early fall. It is very solid and a good shipper; smooth and uniform in growth. Color a desirable red. Fine for canning for its solidity and few seeds. A splendid variety for both home and market gardeners for late crops. Packet, 5 cents; ½ ounce, 15 cents; ounce, 25 cents; ¼ pound, 60 cents; pound, \$1.75.

Best Turnips for Your Spring Planting

Early Red or Purple Top Strap Leaved

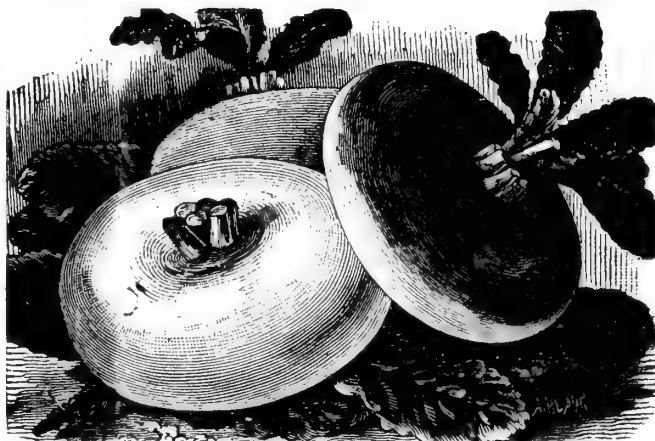
Also known as Purple Top Flat Dutch in some parts of the South. Almost identical in appearance with the Early White Flat Dutch except that the top of the bulb is a deep rich red or purple color. It's a quick grower in either spring or fall, with very fine grained, sweet, pure white flesh. The red top, extending down to where it rests in the soil, adds very much to its attractive appearance. Ounce, 5 cents; $\frac{1}{4}$ pound, 15 cents; pound, 45 cents; postpaid. 10-pounds, not prepaid, \$3.00.

Extra Early White Egg

Finest flavor of all early turnips and often ready for use in six weeks from sowing. Skin and flesh pure white, bulbs almost egg-shaped, solid and fine grained. Attractive when bunched for market. Ounce, 5 cents; $\frac{1}{4}$ pound, 15 cents; pound, 50 cents; postpaid. 10 pounds, not prepaid, \$3.50.

Early White Flat Dutch

One of the most popular varieties with our customers either for spring or summer plantings. Of medium size, perfectly round and flat. A quick grower and shows up well bunched. Skin pure white; bulbs very fine grained and solid. In maturity it follows our White Egg. Cooks quickly and has fine flavor. Ounce, 5 cents; $\frac{1}{4}$ pound, 15 cents; pound, 50 cents; postpaid.



Early White Flat Dutch. Early Red or Purple Top Strap Leaved

Alexander's Big 7 Ounce Turnip Collection, All for 25 Cents Postpaid

The most popular collection of seed we ever offered. We sell thousands of them. On receipt of 25 cents we will send you one ounce each of Early White Flat Dutch, Extra Early White Egg, Early Red Top Strap Leaved, Purple Top Globe, Yellow Aberdeen, "Bon Air" Rutabaga and Southern Seven Top, postpaid. This gives you 7 ounces of the finest varieties, early, medium and late, the greatest seed buyer's bargain we have ever offered. Don't delay. It's time to plant some of them now.

Red or Purple Top Globe Most popular and generally planted variety in the South. Medium early and a heavy cropper. Bulbs and flesh a pure white except the skin at top of bulb which is a deep rich red or purple. Flesh firm, pure white and fine flavor. Ounce, 5 cents; $\frac{1}{4}$ pound, 15 cents; pound, 50 cents; postpaid. 10 pounds, not prepaid, \$3.50.

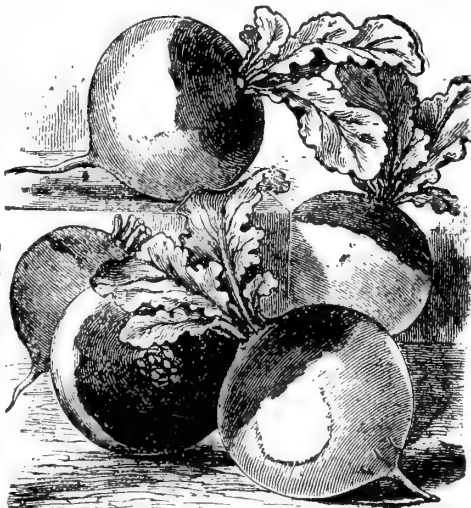
Pomeranian White Globe Largest of all turnips. Extra large; globe-shaped variety with pure white skin and flesh. Ounce, 5 cents; $\frac{1}{4}$ pound, 15 cents; pound, 45 cents; postpaid. 10 pounds, not prepaid, \$3.25.

Extra Early Purple Top Milan

Earliest of all turnips. Much like Purple Top Strap Leaved but 10 days to two weeks earlier. Perfect shape and color. Packet, 5 cents; ounce, 10 cents; $\frac{1}{4}$ pound, 20 cents; pound, 65 cents, postpaid.

"Bon Air" Rutabaga The only thoroughly satisfactory rutabaga for the South. Large, finely shaped bulbs, yellow skin, purple top and free from "stringy" necks. It combines all the good qualities of the old kinds with fine table qualities and perfect shape. It's the most profitable rutabaga you can grow. Packet, 5 cents; ounce, 10 cents; $\frac{1}{4}$ pound, 20 cents; pound, 60 cents; postpaid.

Well Known Varieties We have in stock regularly the Long White or Cow Horn, Yellow or Amber Globe, Mammoth Purple Top Globe, Golden Ball, Yellow Aberdeen, Seven Top, Sweet German or Rock and the Breadstone Rutabaga. Each—Ounce, 5 cents; $\frac{1}{4}$ pound, 15 cents; pound, 50 cents; postpaid.



Purple or Red Top Globe

TOBACCO SEED Our tobacco seed is grown for us by the largest and most careful growers of Virginia. None better at any price. One ounce sows a seed bed 50 feet square.

Choice Havana A heavy cropper and is generally used for cigar purposes. Has large, long leaf, fairly fine texture. Packet, 10 cents; ounce, 25 cents; $\frac{1}{4}$ pound, 75 cents.

Sweet Oronoko Finest variety in lower and central South for chewing. If you like to chew natural leaf, grow Oronoko and sun cure it. Packet, 10 cents; ounce, 25 cents.

Hester A fine and very superior yellow variety largely grown for home use as a smoking tobacco. Packet, 10 cents; ounce, 25 cents; $\frac{1}{4}$ pound, 75 cents.

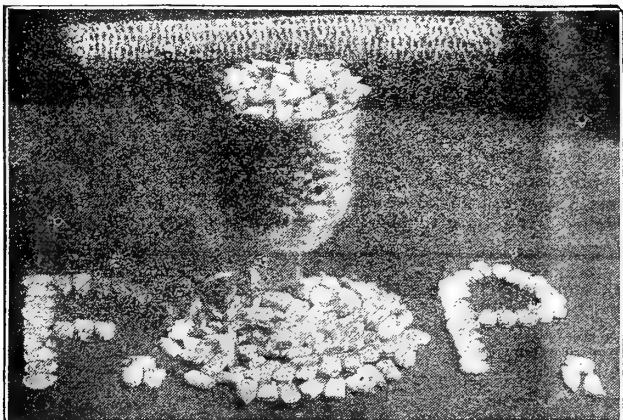
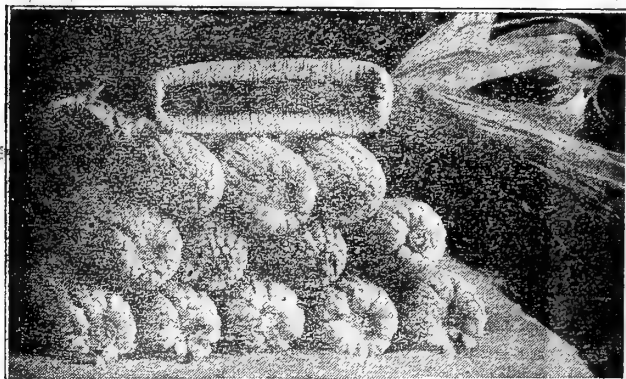
Sage A most popular garden herb, used for seasoning, the dried leaves being a market product. Packet, 10 cents; ounce, 25 cents.

Thyme Leaves and young shoots highly esteemed for seasoning, also for medicinal purposes. Pkt., 10 cts.; ounce, 25 cts.

Best Field Corn For Southern Farms

You can't be too particular about the field corn you plant. The right variety or difference in seed corn quality can and may make a difference of 15 to 25 bushels per acre. You can't afford to take chances. Buy Southern grown acclimated seed corn from us. Don't be fooled into buying the cheaper Western grown seed corn that is dumped into the South by the carload every year. We don't handle or sell a bushel of anything but Southern grown seed corn.

Alexander's Six-Ear For full description and prices see last page of catalogue.



The upper illustration shows a selection of perfect ears from 12 stalks, the one below shows corn shelled from a single ear.

Farmer's Pride Our 90% Corn

This great North Carolina corn introduced by us "makes good" everywhere it's planted. Farmer's Pride is remarkable both for its big yields per acre and the large amount of grain on each ear, which is 90%, or 13½ ounces of corn for each 1½ ounces of cob, the average ear weighing 15 ounces. The grain from the ear shown in the lower illustration shelled out a full pint and some over. Farmer's Pride runs 2 to 3 ears to each stalk, the ears being 7½ to 8½ inches in length, 14 to 20 rows of deep, perfectly shaped grains. Makes the finest of hominy and meal and ranks high in protein. Matures crop in 100 days and cures quickly. An unexcelled variety for dry seasons. Stalk of medium size with ears well placed and heavy shuck. Rarely blows over or is damaged by bad weather. Farmer's Pride has been grown exclusively for us by the originator for a number of years who grows no other. The **pure pedigree of Farmer's Pride** can be had of us only.

Florida don't claim to be a corn-growing State, but Farmer's Pride fills corn cribs just the same down there. One of our Holmes Co. Florida customers, Mr. Frank Hunt, writes: "In the spring I ordered one peck of Farmer's Pride Corn of you. Planted 1 acre which made 80¼ bushels. It's ahead of anything in this country."

Planted in 3½-foot checks with a perfect stand and only one ear per hill it will easily make 60 bushels per acre; it has a record under favorable conditions of 136 bushels on one acre. The good stands, fine ears and freeness from barren stalks is caused by the years of most careful seed selection. Price, (postpaid), packet, 10 cents; pint, 30 cents; quart, 50 cents. Not prepaid, peck, \$1.00; bushel, \$3.50; 10 bushels, \$30.00.

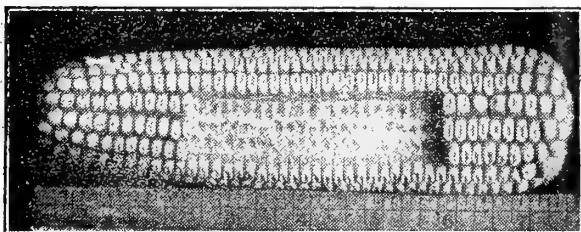
Champion Yellow Dent Early White Dent

Also known as White Pearl; Each packet, 10 cents; pint, 20 cents; quart, 35 cents; postpaid. Peck, not prepaid, 65 cents; bushel, \$2.00.

Not More Acres But More Corn Per Acre

The advice to plant more corn is good but it's mighty poor policy to plant the 10 to 15 bushel per acre kind of corn that's usually planted. 50 cents per acre seed cost will buy the highest priced corn in this catalogue. Any of these varieties with our seed will double your yield per acre, add 15 to 25 bushels per acre. Using Alexander's Seed cuts out the barren worthless stalks.

Marlboro Prolific has been a leader and near-leader at the different experiment stations for a number of years. At the Georgia Experiment Station for five years, from 1903 to 1907, our selection made the highest average yield—39.49 bushels per acre; stood first 1903, not tested 1904, second 1905, first again 1906 and third 1907, the seed planted 1907 was not supplied by us. This is a well-known variety to many Southern planters, a few of whom like it better than any other. The seed we offer is our own **special stock** grown from pedigree seed, and our very careful selection has greatly improved it above the usual stock.



Agents of the Department of Agriculture last year after examining all sources of supply found our stock to be very superior and placed a large order with us. It is a white variety and makes excellent roasting ears as well as stock feed. Mr. Tindal, of South Carolina, made a record yield of 182 bushels on one acre of this variety.

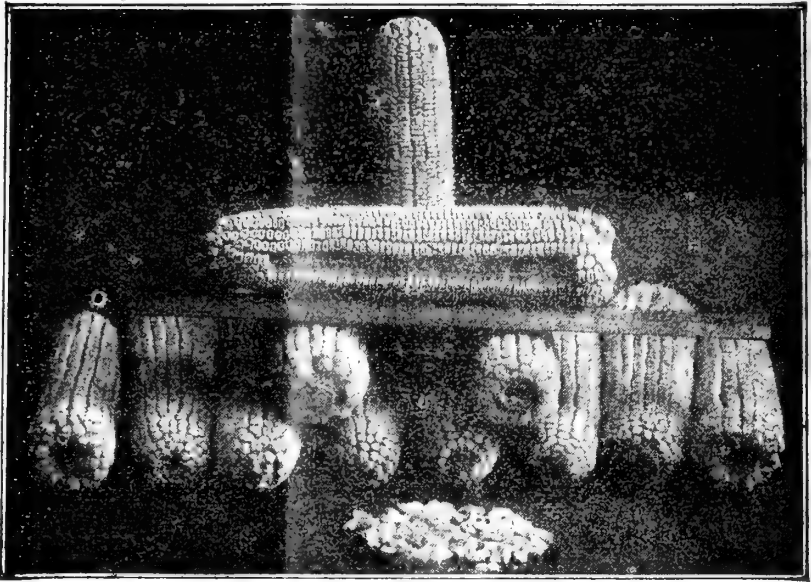
We have a limited stock of this select seed. Prices: packet, 10 cts.; pint, 20 cts.; quart, 35 cts.; postpaid. Peck, 75 cts.; bushel, \$2.50, not prepaid.

From Photograph, Ear of Our Marlboro Prolific

Shaw's Improved, Our Big Corn

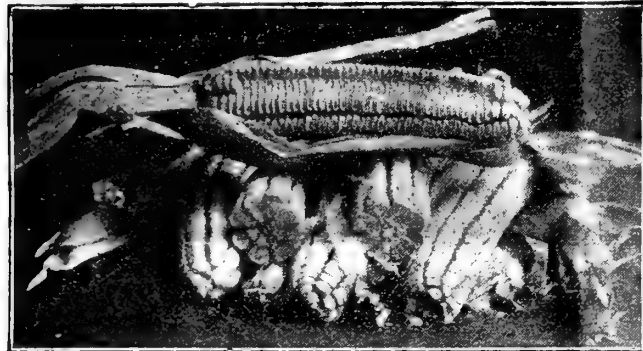
When the Shaw Corn was introduced a dozen or more years ago we must confess that we didn't like it. While it had good points it had plenty of bad ones. In all these years we have been working on this corn. We have got rid of its old bad habits and strengthened its good ones so much that we hardly think Mr. Shaw would recognize it as the same corn. Now it's a corn we can recommend fully to any one wanting a big-eared main crop corn.

Our ears of Shaw's Improved average 10 to 12 inches long, 18 to 20 rows perfectly formed white grains set firmly and deeply and covering cob from butt to tip, many ears making over 85 per cent. grain. Makes large, strong stalk with usually two good ears and an immense amount of forage; is deeply rooted and very storm resistant. Our seed stock is grown exclusively on one farm with no chance for mixture and on account of the great improvement we have made in it by our careful selection, it is becoming one of the most popular and widely planted varieties in the South. By our careful methods in selecting and breeding we have brought it to where there is practically no barren stalks and nubbins. No variety of corn anywhere is more carefully handled than this. It is a genuine thoroughbred and your yield will be all that you could desire if you get Alexander's selection.



12 Ears of Our Stock of Shaw's Improved Corn

Note the comparison between an average ear of our Shaw's and common corn, the kind that makes 10 to 15 bushels per acre. Length of ear of Shaw's is 12 inches; cob weighs 5½ ounces; grain, 20½ ounces, total, 26 ounces, and measures nearly a quart—almost three times as much as common corn. This corn planted in 3¼-foot rows and same distance in drill, will give 3,556 hills per acre and with one average ear per hill will make 79½ bushels. It usually makes two good ears per stalk. It has a record yield of 133 bushels in regular crop. Five acres planted in this seed will make more and better corn than fifteen of the ordinary corn, the reason is:—Most of the seed usually planted is not selected in the right way, you have too many barren stalks and nubbins. It will pay you to plant some of our Shaw Corn. Packet, 10 cents; ½ pint, 15 cents; pint, 25 cents; quart, 40 cents; postpaid. Peck, \$1.00; bushel, \$3.00.



A Few Ears of Our Hickory King Corn

Hickory King Corn

Ours has the largest grain and smallest cob of any white corn, a single grain often covering the cob. Productive and profitable; bears two to three ears of medium size on each stalk. Makes good roasting ears and finest meal. Almost all corn and very little cob. Matures fully hard corn in 115 days. Packet, 10 cents; pint, 20 cents; quart, 35 cents; postpaid. Peck, not prepaid, 65 cents; bushel, \$2.25.

Cocke's Prolific A famous Virginia variety with a record of 160 bushels per acre. A sure cropper, especially for uplands. Ears always fill out to tip of cob no matter how unfavorable the season. Ears of average size for a prolific corn, grain and cob white, and the hard, flinty grains make fine meal and are resistant to weevils. Average 3 to 4 ears per stalk and is good for roasting ears for either market or family use. Cocke's has superseded Blount's Prolific in the South, as it yields 25 to 30 per cent. more than that variety. Packet, 10 cents; pint, 20 cents; quart, 35 cents; postpaid. Peck, 65 cents; bushel, \$2.25.

Mexican June Corn

Very popular for late planting after oats, rye and wheat. Packet, 10 cents; pint, 25 cents; quart, 40 cents; postpaid. Not prepaid, peck, \$1.00; bushel, about \$3.00.

Georgia Gourd Seed

Packet, 10 cents; pint, 20 cents; quart, 35 cents; postpaid. Peck, 65 cents; bushel, \$2.00.

Alexander's Snow Flake

For full description and prices see page 10—Roasting Ear Varieties.

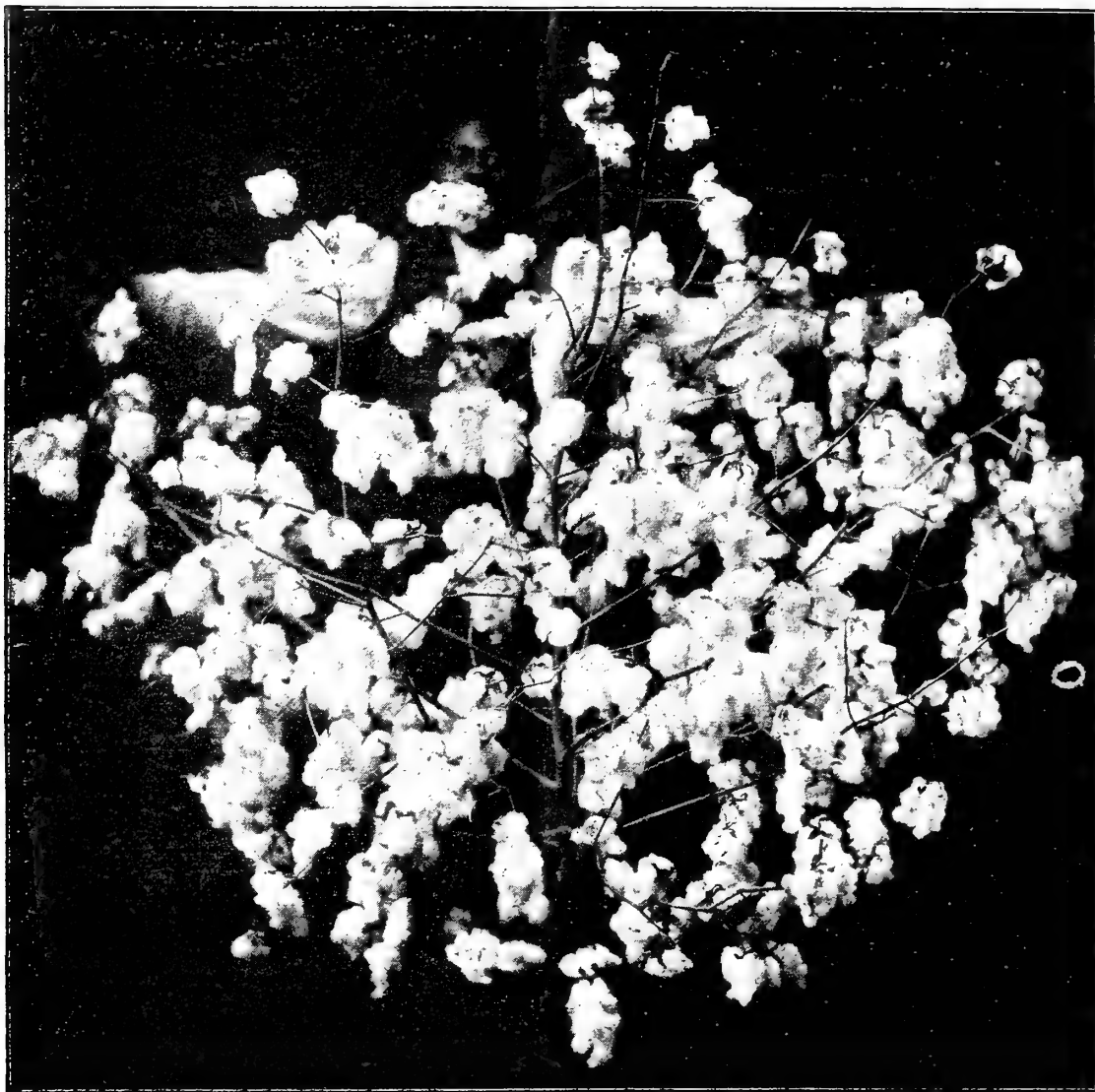
From Burke Co., Ga.

selecting the seed in the field as you do and never realized how such close study and careful selection would increase the yield.

I took the ear and nubbed both ends saving only the best formed seed and by actual measure got a pint and a half of selected seed, this I planted on a piece of my best corn land and gave it the same work and care as the balance of my crop that I planted in my common corn, and at the lowest estimate Shaw's will make twice as much per acre as my common corn. It will make two ears on nearly every stalk and while some of my regular corn has two ears to the stalk, the average is nothing like Shaw's which hasn't the barren stalks and so many small inferior ears.

Am sure if I had planted all in the selected seed I could have made more corn on half the land. This shows me that your care in selecting and improving the seed increases the vitality of the grain and gives a better stand of stalk that will produce a big crop. This has proven to me the value of improved and selected seeds and I am going to plant my whole crop in selected seed and make more and better corn on less land with less work.

E. D. DAVIDSON, Burke County, Georgia.



Alexander's Money Maker Cotton

A Cotton Record Sixteen years ago one of the most successful cotton growers of the South started to "breed up" his cotton to an ideal standard. He worked for a large, well-limbed stalk, shorter joints, three times as many bolls and large ones, together with longer and finer lint. He worked to produce a deep-rooted cotton to resist drought and storms and rust. The result of that 16 years is our "Money Maker Cotton" shown above reproduced from a photograph of a stalk from our crop. It tells the story of what "Money Maker" does far better than words can. We have tested it for the past eight years in every condition of soil and climate in the cotton region. Under the same conditions of cultivation it has always shown the heaviest yields and in 1906 it was 14 per cent. ahead of the next best variety. Our crop that year was 200 acres. Land was good, and with good fertilization and culture the average yield was 2½ bales per acre even with such a poor cotton-growing year as was 1906 in our section. No other variety has been so carefully bred and selected as "Money Maker." You can grow as much lint from 5 acres of this as you can from 20 acres of common seed. Get a start now.

You Can Make More Cotton on 12 Acres Than on 40 Acres

Some varieties of cotton make a fine record one season when everything is favorable and then fall badly the next. We want to give a Georgia farmer's three years' experience with "Money Maker." A three year test will tell what any cotton is good for.

Mr. A. C. Frasner, of Crisp Co., Ga., bought enough "Money Maker" seed of us to plant 12 acres. He wrote us October 6th, "I have made more cotton this year on 12 acres than the majority of farmers have on 40. Will get 14 bales on 12 acres." Later he writes: "The number of pounds of seed cotton in my first 6 bales was 8,660, and the next weight of lint 3,380 pounds, making practically 40% lint when the seed was much greener than later in season."

In August, 1907, Mr. Frasner writes: "I am determined to keep it pure and up to the high selection to which you have brought it. I want 3 bushels of Money Maker especially selected from your own re-selected and improved seed stock; will pay \$8.00 per bushel for the extra selected seed."

In October, 1908, he writes us at bottom of an order " 'Money Maker' still beats them all, my whole crop will average 400 pounds lint per acre; the season has not been good and the crop everywhere in this section is fully one-third off."

Do You Know any Other as Good as the above record? Nothing less than 400 pounds of lint per acre under regular farm conditions in Georgia. Isn't it a whole lot better than yours has done? Line up with us and plant a paying cotton in 1910.

PRICES Pound, postpaid, 40 cents; 3 pounds, \$1.00. Not prepaid, peck, 75 cents; bushel, \$2.00; 10 bushels, \$17.50; 100 bushels, \$150.00.

Our Cotton Experience Meeting

Splendid Testimony from the Different Cotton Growing States

Some of the greatest meetings of the world have been experience meetings. We want to have one right here, an experience meeting where the men who have had the real experience rise up and tell exactly what it has been. We have not space for it all here. Some more of the experiences will be found on page 30. Remember, this is not what the Alexander Seed Co. says, but the real experience of cotton farmers in the different cotton growing States.

South Carolina I don't know whether I am entitled to an opinion on Money Maker. Planted late on land that I am renovating. Don't know what to expect under favorable conditions, but it made a bale per acre and was cut off by frost.—F. E. B.—Lexington Co.

J. S. B., Orangeburg Co. says: "Bought 1 bushel Money Maker. It stands drought better than any other. Planted 2 acres with 1 bushel and it yielded me 2 bales. Planted on ordinary land and ordinary season."

Colleton Co., a customer writes: "Am more than pleased with Money Maker. You have the world beat on good seed. Have just got through my second picking and it has turned out 43 7/100 % lint. This is the best I have ever heard of for a big crop grown under ordinary conditions. Besides yield, the quality is there, the 9 bales already sold are grading fully middling. "Money Maker" is the cotton for me."

Good Old Texas It's a long jump from South Carolina to Texas but "Money Maker" makes good there too. Upshur Co., "Money Maker is best I ever planted. Planted 6 pounds seed on bottom land. An overflow destroyed part of it, then the boll weevil. On Oct. 27th got a bale picked off the 6 pounds of seed. Had 1,350 pounds seed cotton and the bale weighed 510 pounds. Neighbors anxious to get seed. Beats anything ever planted in this section." G. W. J.

Toole's Prolific Cotton

A splendid short staple cotton with many valuable points. It is a strong grower, matures quick, fruits until late in the season, has medium to large bolls, stalk of medium size. It roots deeply, resisting drought. It is wonderfully prolific and gins out 40 to 45 per cent lint of fine quality. Is easily picked, yet does not blow or fall out easily. It is the best poor land cotton. On good land, with good fertilizing, it easily makes two bales per acre. Hundreds of our customers who planted small quantities of it in past years will plant their entire crop in it in 1910. Prices—Per pound, postpaid, 35 cents; 3 pounds, \$1.00. Peck, not prepaid, 50 cents; bushel, \$1.50; 5-bushel lots at \$1.25; 10-bushel lots or over, \$1.00 per bushel.

Triple Selected, Toole's

We have 650 bushels of Toole's out of a crop grown for seed stock for our own 1910 crops. This is surplus above our own needs. None of it has made less than 40 per cent lint and is perfection in seed of the "Toole" variety. Pound, postpaid, 50 cents. Peck, not prepaid, \$1.00; bushel, \$3.00; 10 bushels, \$25.00.

Mortgage-Lifter (Big Boll)

The best variety of Improved Big Boll Cotton. Produces larger bolls and more of them than any other big-bolled cotton. Reports of 2 to 3 bales per acre of Mortgage-Lifter have been common from all the cotton-growing States the past three years. It gains in popularity every year. If you plant a big boll variety you will make no mistake planting this one. It's a vigorous grower, finely shaped and fairly covered with the biggest of bolls. Resists drought splendidly. Pound, postpaid, 35 cents; 3 pounds, \$1.00. Peck, not prepaid, 50 cents; bushel, \$1.50; 10-bushel lots at \$1.25 per bushel.

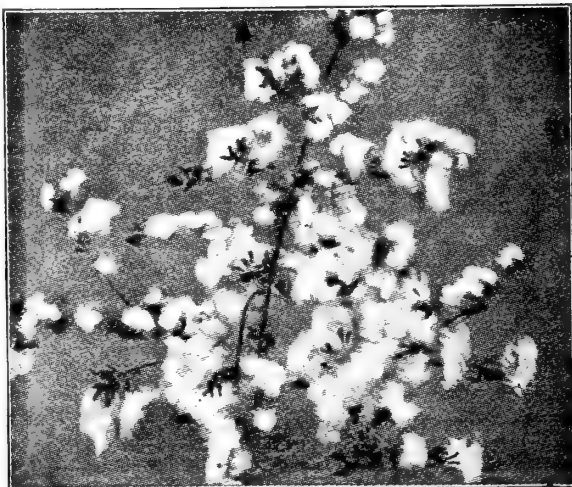
Mr. M. H. Kaufman Co., writes: "Planted 3 pounds Money Maker and will make 600 pounds seed cotton. Cotton buyers yesterday told me they would give 2 cents more per pound than for other cotton. Counted 188 bolls on one stalk, the most I have ever seen."

L. H. H., Hopkins Co., writes: "Well pleased with Money Maker. Had 3 pounds seed planted May 20th. Checked the ground and planted 1 acre. Have picked 1,160 pounds and will get about 400 pounds more. Well enough, planted when it was and boll weevil too."

Louisiana Got 6 pounds, planted on poor land with application of barn yard manure May 1st. Began raining July 25th and continued 13 days in succession which started boll weevil, after which I never got a boll. Never saw anything to equal it in fruiting. Got 700 pounds from 1/2 acre. Others got no more from 5 to 8 acres. W. L. M. Catahoula Parish.

Mississippi J. G. L., Coahoma Co., writes Nov. 18th: "Planted 2 acres 'Money Maker' and have picked 2,867 pounds seed cotton and ginned out 2 bales, one weighing 560, the other 570. It's simply fine. Have about 1,200 pounds more to pick."

J. J. D., Sec'y Farmer's Union, writes: "Planted a fraction more than 3/4 of an acre, ordinary land. Picked 1,506 pounds, at least 100 more to pick. Have ginned out a 504 pound bale and left roll in gin when done."



Toole's Improved Prolific Cotton

King's Improved Extra Early Our extra early perfected strain of King's Cotton is far superior to the original strain. Stalks small, erect and do not blow over easily. Bolls are small but plants are covered with them. Makes about 35 per cent lint. Ours is the earliest strain of King's and is grown for us in extreme North Georgia. It is the best seed of King Cotton you can buy. Pound, 20 cents; 3 pounds, 50 cents; postpaid, 1.00. Not prepaid, peck, 40 cents; bushel, \$1.00; 10 bushels, \$9.00; 100 pounds, \$3.00.

Peterkin Improved Pound, 20 cents; 3 pounds, 50 cents; postpaid, 1.00. Not prepaid, peck, 40 cents; bushel, \$1.00; 10 bushels, \$9.00; 100 pounds, \$3.00.

Excelsior Prolific Pound, 20 cents; 3 pounds, 50 cents; postpaid, 1.00. Not prepaid, peck, 50 cents; bushel, \$1.50; 10 bushels, \$10.00; 100 pounds, \$3.00.

Hawkin's Extra Prolific Pound, 20 cents; 3 pounds, 50 cents; postpaid, 1.00. Not prepaid, peck, 50 cents; bushel, \$1.25; 10 bushels or over, at \$1.00 per bushel.

Floradora Cotton Pound, 35 cents; 3 pounds, \$1.00; postpaid, 1.00. Peck, not prepaid, 60 cents; bushel, \$1.75; 10 bushels, \$14.50.

Russell Big Boll Pound, 20 cents; 3 pounds, 50 cents; postpaid, 1.00. Peck, not prepaid, 40 cents; bushel, \$1.00; 10 bushels, \$9.00; 100 pounds, \$3.00.

Cook's Improved (Brown's No. 1) We are unable to see any difference between these two so-called varieties. Pound, 20 cents; 3 pounds, 50 cents; postpaid, 1.00. Peck, not prepaid, 50 cents; bushel, \$1.25; 10 bushels, \$10.00.

Broadwell's Double Jointed Pound, postpaid, 50 cents; 3 pounds \$1.00. Peck, 75 cents; bushel \$2.70; 10 bushels, \$20.00.

Simpkins' Prolific Pound, 40 cents; 3 pounds, \$1.00; postpaid, 1.00. Not prepaid, peck, 50 cents; bushel, \$1.25; 10 bushels, \$10.00.

Hite's Early Prolific Pound, 50 cents; 3 pounds, \$1.00; postpaid, 1.00. Peck, not prepaid, 75 cents; bushel, \$2.00; 10 bushels, \$18.00.

Sea Island—Long Staple For use only in Florida and the Georgia and Carolina Coast sections. Growers in Central Florida should use no other. Pound, 20 cents; 3 pounds, 50 cents; postpaid, 1.00. Peck, not prepaid, 75 cents; bushel (42 pounds), \$2.75.

Cotton Experience Meeting Continued on Next Page

Don't Go Crazy On Cotton

We have had a season of high-priced cotton. A short crop, the result of a poor growing season on top of only a fair acreage put prices away up. Now, don't let us forget the experience of the years 1903 and 1904. The 1903 crop was short and prices high. In the spring of 1904 it seemed as if everybody tried to put every acre in cotton and no acres in corn, feed and forage crops. It's a great temptation to put in more acres of cotton this year. Don't do it. Plant enough acres in corn, feed and forage crops to see you through, then plant your cotton acreage in good selected seed of the best varieties and you will have things fixed right. No matter what the price of cotton is next fall you won't have to spend a dollar for grain and feed stuff and every bale of cotton will bring in cash money. Plant plenty of acres in grain and supply crops and then plan to make your cotton acres work full time. They will do it if you plant the right seed. Remember, Alexander's Cotton Seed makes fully twice as much cotton per acre without costing an extra cent for fertilizer and cultivation. You can do as hundreds of others are doing and get

Twice as Much N. M. Johnson, Marion County, S. C., writes: "Money Maker Cotton Seed bought of you last spring turned out all you claimed for them. Made nearly twice as much as other improved seed that I planted." J. D. Price, Lexington County, S. C., says: "Money Maker cotton yielded more per acre than any cotton I ever planted."

MISCELLANEOUS AND FARM SEEDS

A Word About Your Forage Crops

The forage, hay and grain question is always with us and it is the lack of a sufficient quantity of them that makes us contribute millions upon millions of our cotton money every year to the Northern and Western States for what we can grow as well and cheaper here at home.

If you buy hay, grain or forage you are hurting yourself. If you don't grow enough of them to not only supply your home needs and have some to sell in the nearby towns or cities, you are neglecting a profitable crop, one that nine times out of ten will bring in more per acre than the average cotton yield and do it with a whole lot less work and expense. Don't forget the hay, forage and feeding crops in 1910.

White Kaffir Corn Rapidly becoming a favorite in the South for its drought resisting qualities. Plant stocky and erect with wide foliage which makes the finest kind of forage. Two to four heads of grain produced by each stalk. If cut just before heading, shoots spring from the roots, producing a second crop of forage and a grain crop. Plant in 3-foot rows and cultivate same as corn. Plant 8 pounds of seed per acre, sowing it in the rows like other sorghums. Packet, 10 cents; pound, 25 cents; 5 pounds, \$1.00; postpaid. By express or freight, not prepaid, 6 cents per pound.

Early Amber Sorghum The earliest and favorite Southern variety for forage crops, either grown alone or broadcasted with peas. Plant in drills 8 pounds per acre or $\frac{1}{2}$ bushel (24 pounds) if broadcasted alone. If with peas use 1 bushel of peas and 1 peck (12 pounds) of sorghum. It pays to fertilize this crop heavily. Pound, 20 cents; 4 pounds, 75 cents; postpaid. Peck (12 pounds), not prepaid, 50 cents; bushel, about \$1.75. Write for market prices when ready to buy. Bushel prices change frequently.

Early Orange Sorghum Larger and 10 days later than Amber and more largely grown for the syrup, which is of fine quality and clear golden yellow color. Desirable for either syrup or forage. Pound, 20 cents; 4 pounds, 75 cents; postpaid. Peck, 50 cents; bushel, about \$1.75; not prepaid. Write for market prices when ready to buy in quantity.



White Kaffir Corn

Branching Sorghum (Yellow Milo Maize) Immense producer of fine quality forage. Grows 8 to 12 feet high, stooing heavily. Can be cut 3 or 4 times during season and at any stage of growth. Large seed heads, furnishing large grain crops almost equal to corn in feeding value. Plant in 4-foot rows, 8 pounds seed per acre. Pound, 25 cents; postpaid. 4 pounds, 90 cents; 10-pound lots or over, not prepaid, 8 cents per pound.

Pearl or Cat-Tail Millet Best known and most valuable of all green forage plants for the South. Sold recently under the name of "Pencilaria" and sold at enormous prices. Continues to grow and produce green forage all through the season. It has a record of producing 95 tons of green forage from one acre in 135 days. Valuable for green feed only, as it makes poor dry fodder. Sow April to June in rows 4 feet apart, using 10 pounds of seed per acre. Cultivate same as for corn. Pound, 25 cents; 4 pounds, 90 cents; postpaid. 10-pound lots or over, not prepaid about 10 cents per pound.

German Millet In this we handle none but Tennessee grown seed, the only stock fit to plant in the South. Beware of cheap Western seed offered at low prices. Sow from April 1 to June 15th, one bushel per acre. Pound, 20 cents; 6 pounds, \$1.00; postpaid. Bushel prices on application.

Spanish or "Two Crop" Peanuts Earliest; a fine bearer; bushy, erect growth; easily cultivated, the plow doing all the work. Planted in April they mature in August. Can be planted as late as August 1st. Heavy yielders of small, very sweet, well-filled out nuts. Pound, 25 cents; 4 pounds, 75 cents; postpaid. Peck, not prepaid, 50 cents; bushel, about \$1.75. Write for prices.

Our Sure Crop or Big Spanish Peanut

Introduced two years ago, this is proving to be the best peanut for the middle and lower South. In reality it's the Spanish Peanut doubled in size. It has all the good characteristics of the Spanish, earliness, bush form, nuts bunched closely around the stem, a heavy yielder of well-filled pods, nuts double the size of the old Spanish, and of such big size and handsome appearance as to make them a quick seller in any market. Packet (6 ounces) 20 cents; pound, postpaid, 35 cents; 3 pounds, \$1.00. Peck, not prepaid, 80 cents; bushel, \$3.00.

North Carolina Peanuts A medium size nut, much more prolific than the Virginia and more profitable to grow for stock feeding on the farms than the Virginia. Pound, 25 cents; 4 pounds, 75 cents; postpaid. Peck, not prepaid, 50 cents; bushel, about \$2.00.

Japanese Buckwheat The best variety and valuable in bloom as a bee food and in grain for poultry. Can be sown in early spring or late summer. Matures in 60 to 70 days. Does well in almost all soils and resists heat and drought. Pound, 25 cents; postpaid. Peck, not prepaid, 60 cents; bushel, \$2.00.



Spanish or "Two Crop" Peanuts

Chufas

A most profitable Southern crop for fattening hogs and poultry. The nuts grow near the surface and are easily harvested by hogs and chickens. Plant in April and May in 3-foot rows, dropping 2 or 3 Chufas every 10 to 12 inches. Give level culture. They mature in September and will lie in the ground until wanted. They are the best fattening crop. Packet, 10 cents; pound, 35 cents; postpaid. Peck, not prepaid, \$1.25; bushel, \$1.50.

Teosinte

A remarkable mammoth forage plant from Central America, one of the most valuable forage plants to be used in a green state. The yield is enormous and can be cut till frost. One Florida grower writes that it grew 5 inches per day by actual measurement. Plant in hills like corn after danger of frost is past. Seed is very hard and should be soaked a day or so before planting. Plant 3 pounds per acre. Ounce, 10 cents; ¼ pound, 25 cents; pound, 75 cents; postpaid.

Mammoth Sunflower

Every farm in the South should grow Mammoth Russian Sunflower for the seed for a poultry feed. There is nothing like it. Poultry fed on it grow rapidly and take on fine glossy plumage. A heavy yielder and easily grown on good land. Plant 4 quarts per acre. Packet, 10 cts. quart, 25 cts.; postpaid.

Burt or 90-Day Oats

For spring planting in our section. Write for prices.

Soja or Soy Beans

Splendid forage plant and soil enricher. Easily grown, stands drought well and is very productive. Plants grow 3 feet high. Stock like it. Has higher feeding value than cow peas. Packet, 10 cents; quart, 30 cents; postpaid. Peck, not prepaid, 85 cents; bushel, \$3.00.

Beggar Weed

Grows in popularity every year as a hay plant and soil enricher for the light sandy land of the lower South. It is that section what red clover is to Kentucky and Tennessee. Dense growth, 3 to 5 feet high, making nutritious hay or green forage of high feeding value. Planted in May or June two cuttings can be made each season. **Cleaned seed** (hull removed), pound, postpaid, 45 cents; 4 pounds, \$1.70. 10-pound lots or over, not prepaid, 30 cents per pound. Write for quantity price.

Lowland Rice—Upland Rice

Best strains of each. Pound, postpaid, 25 cents; 5 pounds, \$1.00; postpaid. Not prepaid, peck, 75 cents; bushel, \$2.50.

Cow Peas

The standard Southern crop for forage or for soil improvement, and no farm in the South ought to be without a greater or less acreage of them. At the time our catalogue goes to the printer, prices on these have not settled. When ready to buy write us for close market prices. The Augusta section is one that produces more cow peas than almost any, and we are in position to give you the best in both quality and prices when you are ready to buy. Write for bushel prices. **Varieties, Whippoorwill, Clay, Black, Unknown, Wonderful, Iron, New Era, Red Ripper, Mixed Peas** and others. Small quantities by mail postpaid. Packet, 10 cents; pint, 30 cents; quart, 35 cents.

Bermuda Grass

The most valuable of all summer pasture grasses in the South. Grows luxuriantly in the hottest sun and furnishes nutritious grazing for 9 months in the year. Grows well on all soils from the stiffest clay to the lightest sands. Sow seed broadcast, 6 pounds per acre, March to June. Seed germinates in 20 to 30 days when ground is warm. ¼ pound package, 25 cents; pound, 75 cents; postpaid. Special prices on 5-pound lots or over. **Bermuda Grass Roots.** Many prefer to plant the roots instead of seed. Plants 200 pounds of roots per acre. Price, \$2.00 per 100 pounds, not prepaid.

Johnson Grass

While considered a pest by many it is considered one of the most valuable hay grasses, there being thousands of acres of it grown in the Augusta section. It should be grown only where it can be controlled and kept from spreading into other crops. Makes 4 to 10 tons of hay per acre according to soil. Sow 1 bushel per acre in spring. Pound, postpaid, 25 cents; 5 pounds, \$1.00. Bushel of 24 pounds, not prepaid, about \$2.50.

Japan Clover

(**Lespedeza Striata**). An annual which reseeds itself where once established. Starts in early spring, is ready for grazing by June and continues until frost. All stock like it. Does well in central and lower South. Sow 25 pounds per acre in spring. Pound, postpaid, 45 cents; 10-pound lots or over, not prepaid, 25 cents per pound.

Alfalfa or Lucerne

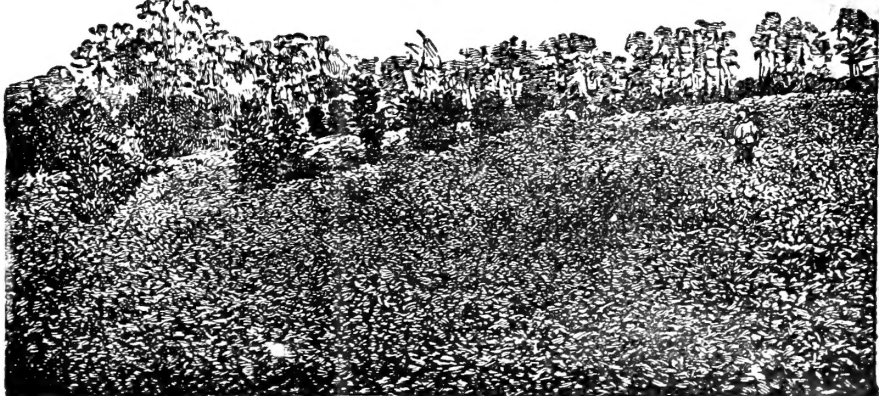
Most valuable permanent clover that can be grown and adapted to all the South except Florida. Once established it is perpetual, giving from 4 to 5 cuttings per year of the best clover hay. It starts slowly, needs careful attention the first year, but is well worth the trouble. Good results can be obtained from very early spring sowings. Pound, postpaid, 35 cents; 3 pounds, \$1.00; postpaid. Sow 20 pounds per acre. 10-pound lots and over, not prepaid, at 20 cents per pound.

Evergreen Lawn Mixture

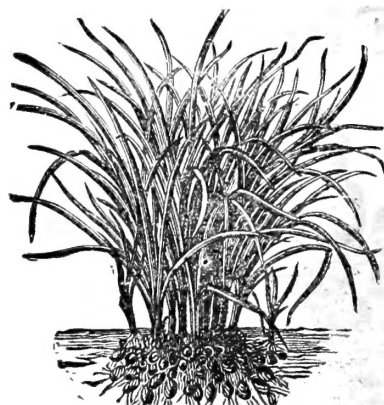
Our own mixture, the only satisfactory lawn grass mixture for the South that will produce an "Evergreen" lawn. Sow in earliest spring. Pound, postpaid, 40 cents; 3 pounds (sufficient for 900 square feet), \$1.00; postpaid. Not prepaid, bushel (15 pounds), \$3.50.

VELVET BEANS**THE SOUTH'S GREATEST SOIL ENRICHER
MAKES FORAGE—MAKES POOR LAND RICH**

The South's strongest growing forage plant and soil enricher. They make poor land rich and good land more productive. Makes fine green forage or hay crop, enriching the soil even when the hay crop is cut off. The Florida Experiment Station reported a yield of over 18,000 pounds of dry forage (9 tons) per acre. The yield is enormous, being the greatest producer of either green or dried forage in the world. It produces at least three times as much grain and forage as the strongest growing varieties of cow peas and should be planted on every Southern farm. If you do not care to cut them it is customary to turn stock in on them when frost kills the vines. Cattle, hogs and horses will eat beans and vines up clean in the field. Sow seed at rate of one peck per acre, making rows 5 to 6 feet apart, dropping a bean every foot. Cultivate until the vines begin to run. Best result comes from April and May planted seed. They also make a fine shade for porches and arbors. Pkt., 10 cts.; pint, 20 cts.; quart, 35 cts.; postpaid. Peck, not prepaid, 85 cents; bushel, about \$3.25.



Field of our Velvet Beans in Florida—Crop Half Grown



Chufas or Ground Almonds

Flower Seeds, Bulbs and Plants



Mixed Nasturtiums

- GAILLARDIA, or Blanket Flower—Thrives in poorest and driest soils, large, brilliant flowers, mixed, packet..... 05c
- HELIOTROPE—Always a favorite, grows in boxes or protected beds in our section, mixed, packet..... 10c
- HOLLYHOCKS—Finest double mixed, all shades and color. A splendid selection, packet..... 10c
- JAPANESE MORNING GLORIES—Rapid climbers, growing 20 to 30 feet and covered with extra large, finely marked, striped and blotched flowers all through the season, mixed colors, packet..... 10c
- JAPANESE HOP—Rapid growing climber for porches or trellises, easily grown, packet..... 05c
- IBERIS (CANDYTUFT)—A favorite. Pure white, 5 cents; mixed colors, packet..... 05c
- FORGET-ME-NOTS—Favorites everywhere for beds or borders, blue and white mixed, packet..... 05c
- LANTANA—Best French varieties. Grow anywhere in the South. Finest mixed colors, packet..... 10c
- MARVEL OF PERU—(Four o'Clocks). Showy, free flowering annuals. Mixed, all colors, packet..... 05c
- MARIGOLD—Large African. Very free flowering, growing 16 to 20 inches high. Mixed shades, packet..... 05c
- MOONFLOWER or EVENING GLORY—Popular in the South as a climber and shade for porches, arbors and trellises. Enormous white flowers, open nights and cloudy days, packet..... 10c
- MOONFLOWER, HEAVENLY BLUE—Similar to the white, but has intense sky blue color, packet..... 10c
- RICINUS (CASTOR BEAN)—Ornamental varieties for lawn and garden effects, packet..... 05c
- NASTURTIUMS—No flower that you plant in the South will give you such entire satisfaction as our splendid mixture of Nasturtiums
- NASTURTIUM, DWARF MIXED—Finest possible selection of shades and colors. Ounce, 15c; packet..... 05c
- NASTURTIUM, TALL MIXED—Same shades and colors as our Dwarf but tall growing. Ounce, 15c; packet..... 05c
- PANSIES, FINE MIXED—The medium-sized flowers, fine selection of colors, packet..... 05c
- PANSY, MASTERPIECE—A giant curled Pansy with crimped and curled petals, packet..... 25c
- PANSY, ALEXANDER'S PREMIUM—The finest Pansy mixture of all. Large size, finest colors, packet..... 15c
- PETUNIAS, SINGLE MIXED—Splendid bedding plants to bloom all summer. Mixed colors, packet..... 05c
- PHLOX DRUMMONDI—Earliest grown of all annual flowers. Finest shades and colors, packet..... 05c
- POPPIES, DOUBLE AND SINGLE MIXED—Our fine mixture of named varieties of Poppies. Brilliant, packet..... 05c
- SWEET PEAS, ALEXANDER'S SUPERB MIXED—The best of all Sweet Pea mixtures in this country. Made up by us from the best named sorts. Pound, 75c; postpaid; 1/4 pound, 25c; ounce, 10c; packet..... 05c
- SALVIA (SCARLET SAGE)—Makes an intensely brilliant bedding plant for the South. Packet..... 10c
- VERBENA—A favorite box and bedding plant with us. Fine mixed, packet..... 05c
- VINCA, OR MADAGASCAR PERIWINKLE—Desirable for open ground sowing. Mixed colors, packet..... 05c
- ZINNIAS—Showy and grow easily with little cultivation. Mixed shades and colors, packet..... 05c

- Canna Roots** From finest named varieties. Order by color, 10c each; \$1.00 per dozen; postpaid. Not prepaid, \$5.00 per hundred. Mixed Cannas, 75c dozen, postpaid; \$4.00 per hundred, not prepaid.
- Caladiums** Or Elephant's Ears. Fine for yard and lawn effects. First size, 10c each; \$1.00 per dozen; second size; 15c each; \$1.50 per dozen; postpaid.
- Gladioli** Splendid bloomers and adapted to our section. Our extra quality, large bulbs will surprise you. Fine selection of colors in our Gladioli mixture. 6 for 15c; 12 for 25c; 50 for 95c; 100 for \$1.80; postpaid.
- Tuberoses** DOUBLE EXCELSIOR PEARL—Extra fine, first size bulbs of blooming size. Favorites everywhere, 5c each; 6 for 20c; 12 for 35c; 50 for \$1.25; 100 for \$2.25; prepaid.
- Dahlias** A most popular flower. We have fine large field grown roots of Double Dahlias in red, yellow, pink, purple, White and variegated. 20c each; 3 for 50c; 6 for \$1.00; postpaid.

Alexander's Plant Collections

Nothing so tends to add value to your place in dollars or to your own pleasure and satisfaction as to have plenty of flowers around the home. Roses, geraniums and chrysanthemums are the standard kinds and all of them are easily grown. Prices are low and the small amount expended for one or more of our Plant Collections will well repay you.

- Roses** Sunny South Rose Collection. 12 Everbloomers, 3 White, 3 Red, 3 Yellow, 3 Pink, all different, 75 cents; postpaid.
- Geraniums** 12 finest double and single, large blooming geraniums, all different; postpaid for 75 cents.
- Chrysanthemums** 10 Superb exhibition varieties, all different, assorted colors, 50 cents; postpaid.
- Carnations** 12 finest double flowering Carnations, the cream of the best varieties, 75 cents; postpaid

Page of 1910 Special Offers

OUR SPECIAL COLLECTIONS OF SEEDS have been so popular in recent years that we are now giving special attention to this branch of our work. These collections are put up in advance of the regular seed selling season and are ready for mailing immediately on receipt of your order. Every one of them is a splendid bargain in seeds and the varieties contained have been most carefully selected for Southern home garden use,

10 Packets { QUARTER INTRODUCTORY VEGETABLE COLLECTION } 25 Cts.

1 Packet Alexander's Sure Head Cabbage.....	05c	1 Packet Alabama Sweet Watermelon.....	05c
1 Packet Alexander's Early Eclipse Beet.....	05c	1 Packet Rocky Ford Cantaloupe.....	05c
1 Packet Alexander's Wonderful Cabbage Lettuce.....	05c	1 Packet Early White Flat Dutch Turnip.....	05c
1 Packet New Stone Tomato.....	05c	1 Packet True Georgia Collard.....	05c
1 Packet Extra Early Long Scarlet Radish.....	05c		
1 Packet Giant Southern Creole Mustard.....	05c		50c

For 25 cents we will send the above 10 full-size packets of seed by mail, postpaid. No changes will be allowed in this collection. No others will be sold at these prices.

20 Packets { AUGUSTA HALF DOLLAR VEGETABLE COLLECTION } 50 Cts

1 Packet Alexander's Sure Head Cabbage.....	05c	1 Packet Alabama Sweet Watermelon.....	05c
1 Packet Premium Flat Dutch Cabbage.....	05c	1 Packet Giant Southern Creole Mustard.....	05c
1 Packet Alexander's Early Eclipse Beet.....	05c	1 Packet Australian Brown Onion.....	05c
1 Packet Early Scarlet Horn Carrot.....	05c	1 Packet White Velvet Okra.....	05c
1 Packet Arlington White Spine Cucumber.....	05c	1 Packet Early Long Scarlet Radish.....	05c
1 Packet Extra Early Red Valentine Bean (2 ounces).....	05c	1 Packet Early White Bush Squash.....	05c
1 Packet True Georgia Collard.....	05c	1 Packet Alexander's Beauty Tomato.....	05c
1 Packet Alexander's Wonderful Cabbage Lettuce.....	05c	1 Packet Pride of Georgia Pea (2 ounces).....	05c
1 Packet Rocky Ford Cantaloupe.....	05c	1 Packet Purple Top Globe Turnip.....	05c
1 Packet Philip Jones Watermelon.....	05c		
1 Packet Seminole (Extra Early) Watermelon.....	05c		\$1.00

For 50 cents we will send the above 20 packets of seed by mail, postpaid. No changes will be allowed in this collection. No others will be sold at these prices.

\$1 Home Garden Collection { ONE DOLLAR POSTPAID

1 Pint Extra Early Red Valentine Beans.....	25c	1 Packet Arlington White Spine Cucumber.....	05c
1 Pint Pride of Georgia Peas.....	25c	1 Packet Giant Southern Creole Mustard.....	05c
1 Ounce Alexander's Early Eclipse Beet.....	10c	1 Packet Mammoth White Bush Squash.....	05c
1 Packet Augusta Trucker Cabbage.....	10c	1 Ounce Augusta Rattlesnake Watermelon.....	15c
1 Packet Alexander's Sure Head Cabbage.....	05c	1 Ounce Purple Top Globe Turnip.....	10c
1 Packet Wonderful Cabbage Lettuce.....	05c	1 Packet Rocky Ford Cantaloupe.....	05c
1 Packet Alexander's Early Beauty Tomato.....	05c	1 Packet True Georgia Collard.....	05c
1 Ounce Alexander's Radish Mixture.....	10c		
1 Packet Australian Brown Onion.....	05c		\$1.50

ALEXANDER'S SPECIAL COTTON and CORN COLLECTIONS Cotton and Corn Postpaid

3 Pounds Money Maker Cotton.....	\$ 1.00
1 Pint Alexander's 6-Eared Corn.....	30
1 Year's Subscription to the Southern Ruralist.....	1.00
	\$2.30

Cotton and Corn, not Prepaid

1 Bushel Money Maker Cotton.....	\$2.00
1 Peck Alexander's 6-Eared Corn.....	1.00
1 Year's Subscription to the Southern Ruralist.....	1.00
	\$1.00

Send us \$1.00 and we will send the above postpaid

Shipped by Express or Freight for \$2.00

10 Packets { ALEXANDER'S INTRODUCTORY FLOWER SEED COLLECTION } 25 Cts.

1 Packet Sweet Alyssum.....	05c	1 Packet Pansy, Fine Mixed.....	05c
1 Packet Cosmos, Finest Mixed.....	05c	1 Packet Petunias, Single Mixed.....	05c
1 Packet Cypress Vine, Mixed.....	05c	1 Packet Poppies, Finest Mixed.....	05c
1 Packet Dianthus (Pinks), Double Mixed.....	05c	1 Packet Alexander's Superb Mixed Sweet Peas.....	05c
1 Packet Marvel of Peru, Mixed.....	05c		
1 Packet Nasturtium, Dwarf Mixed.....	05c		

Above 10 Packets, Postpaid, 25 Cts.

20 Packets { ALEXANDER'S HALF-DOLLAR FLOWER SEED COLLECTION } 50 Cts.

1 Packet Sweet Alyssum.....	05c	1 Packet Lantana, French Mixed.....	05c
1 Packet Ageratum, Mixed.....	05c	1 Packet Mignonette, Sweet Scented.....	05c
1 Packet Antirrhinum (Snap Dragon), Mixed.....	05c	1 Packet Dwarf Mixed Nasturtium.....	05c
1 Packet Asters, Fine Mixed.....	10c	1 Packet Pansy, French Mixed.....	10c
1 Packet Balsam, Rose Flowered.....	10c	1 Packet Petunias, Finest Mixed.....	05c
1 Packet Candytuft, Empress.....	10c	1 Packet Phlox, Finest Mixed.....	05c
1 Packet Canna, Crozy's, Mixed.....	10c	1 Packet Poppies, Finest Mixed.....	05c
1 Packet Celosia (Cockscomb) Dwarf Mixed.....	05c	1 Packet Alexander's Superb Mixed Sweet Peas.....	05c
1 Packet Japanese Morning Glory.....	10c	1 Packet Verbena, Finest Mixed.....	05c
1 Packet Cypress Vine, Mixed.....	05c		
1 Packet Dianthus (Pinks), Double Mixed.....	05c		

Above 20 Packets, Postpaid, 50 Cts.

Alexander's 6-Eared Corn



Alexander's 6-Eared Corn.

ANOTHER year has rolled around and crops are harvested. Those who planted Alexander's Southern Grown Seed Corn are not worrying over the prospect of having to buy corn. It's right there in the crib. We can again say that Alexander's 6-Ear is the greatest corn ever introduced for planters in any of the Southern States. Look at the illustration at the bottom of this page from a photograph of 6 ears taken from a single stalk of Alexander's 6-Eared Corn. Did you ever see a corn before that would make 6 ears like those on one stalk? We think not. It shows what the right variety and carefully "bred up" seed-stock will do.

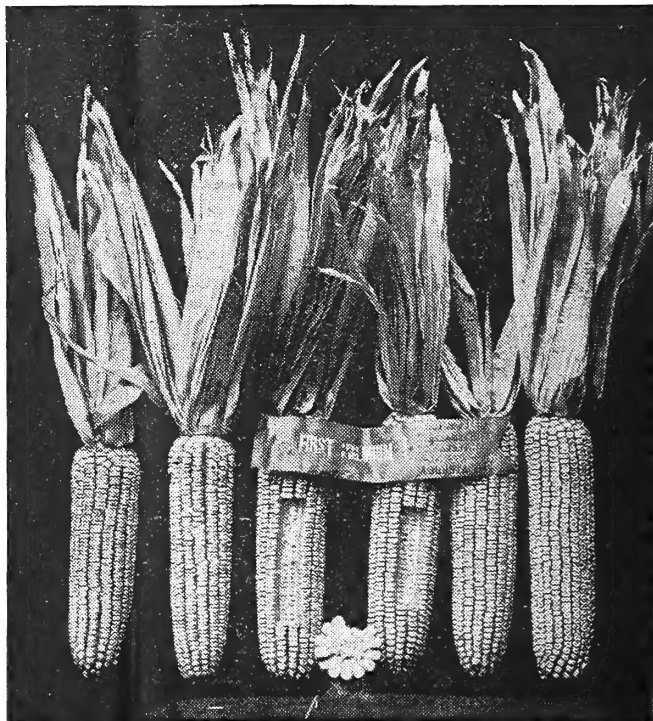
Our 6-EARED CORN is what you want if you are looking for perfection in prolific corn.

It is a splendid corn that will give you perfect satisfaction. Greatest producer of both grain and forage of any Southern Corn.

Note the illustration taken from photograph of a single stalk showing just how it grew on poor clay upland.

WE can recommend our 6-Eared Corn to you without reserve. Our illustration shows just what it is and what it will do for you if you plant it this year. It's the greatest producer of both grain and forage that we have ever seen, the yields of grain and forage being remarkable, even on the poorest sandy lands. You can make 100 bushels of corn per acre on good land with good cultivation with this variety. It's far better than Blount's Prolific, Cocke's Prolific, Marlboro and Albemarle Prolific, which have been the standard Southern varieties. It makes more and better ears with longer grains than any of these famous varieties.

Alexander's 6-Ear has deep grains, closely set on a small white cob. Each stalk makes from 4 to 8 medium-sized ears (we have seen 11 ears on one stalk). Grains rather hard, making it a good keeper in weevil infested sections. Matures in 110 to 120 days. In the "roasting-ear" stage it is splendid, being equal to the best sweet corns. Its root system is superb, enabling it to stand severe storms without blowing down. It's an all purpose corn, the best and the most profitable variety you can plant. It's the right corn for the farm, for the market garden and for the home garden. It's good on any kind of land and suffers less from drought than any other. You need it. Better order early and make sure of your supply. Packet, 10 cents; 1/2 pint, 20 cents; pint 30 cents; quart, 50 cents, postpaid. Peck, not prepaid, \$1.00; bushel, \$3.50.



6 Good Ears from a Single Stalk.