



THE AQUILA

Tommy Allen

9th grade

Anson High School





Digitized by the Internet Archive
in 2021 with funding from
North Carolina Digital Heritage Center

<https://archive.org/details/aquila196400anso>

The Aquila

1964

Published Annually
by
THE JOURNALISM DEPARTMENT
ANSON HIGH SCHOOL
Wadesboro, North Carolina

ROBERT BATTEN, Editor

Foreword

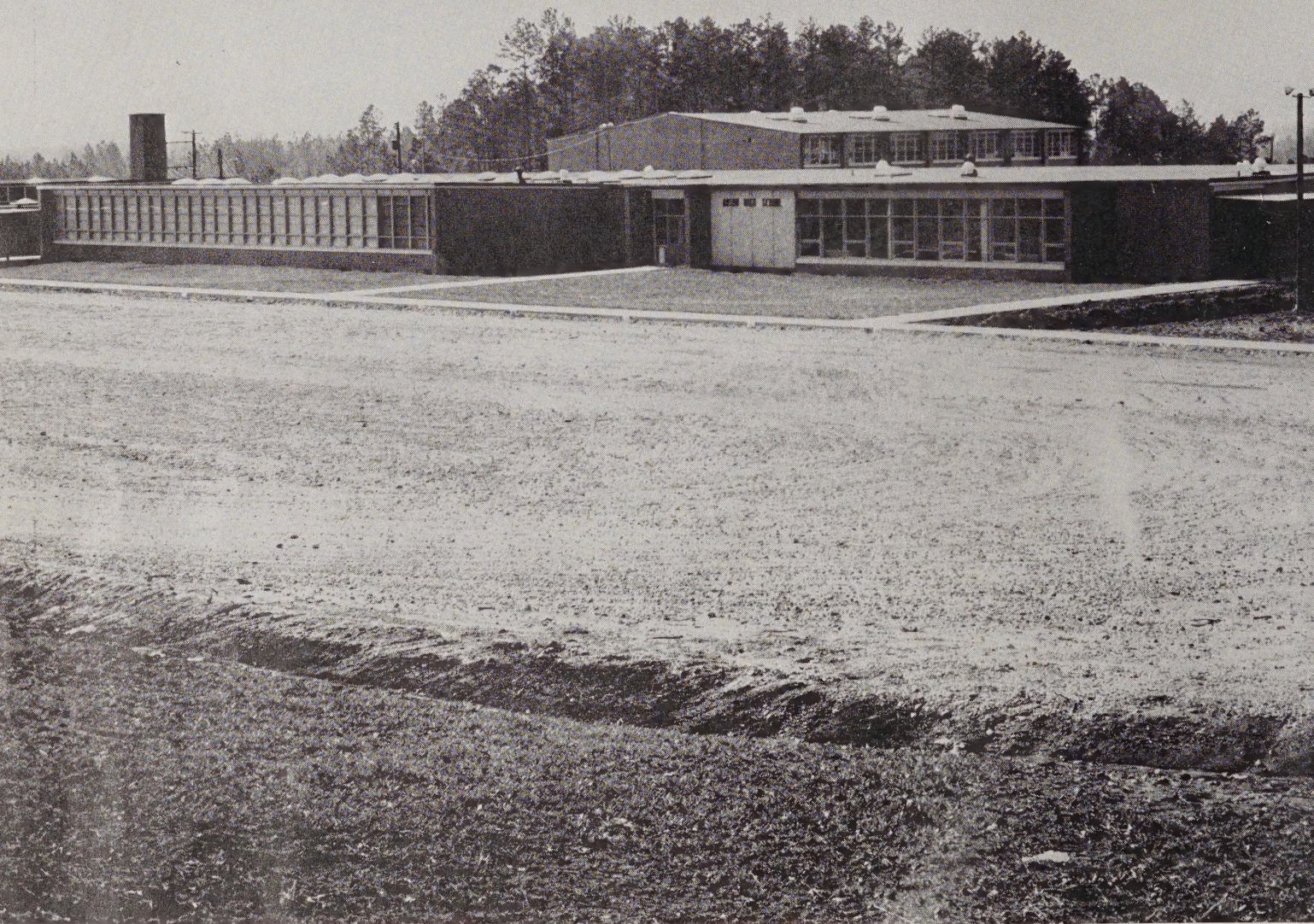
We, the annual staff, are delighted to present the 1964 AQUILA to the student body of Anson High School. We hope that this annual will be a milestone in your high school career, and that many years from now you will turn back to the 1964 AQUILA and enjoy once more the happy memories contained in it.



Dedication

MRS. RUTH H. BENNETT

With deep gratitude, respect, and love, we the Seniors of Anson High School proudly dedicate the 1964 AQUILA to Mrs. Ruth H. Bennett, our teacher and friend. Because of her belief in us and her understanding, we feel that she has shared with us many ideals that we will keep throughout life.



Anson High School
School Board

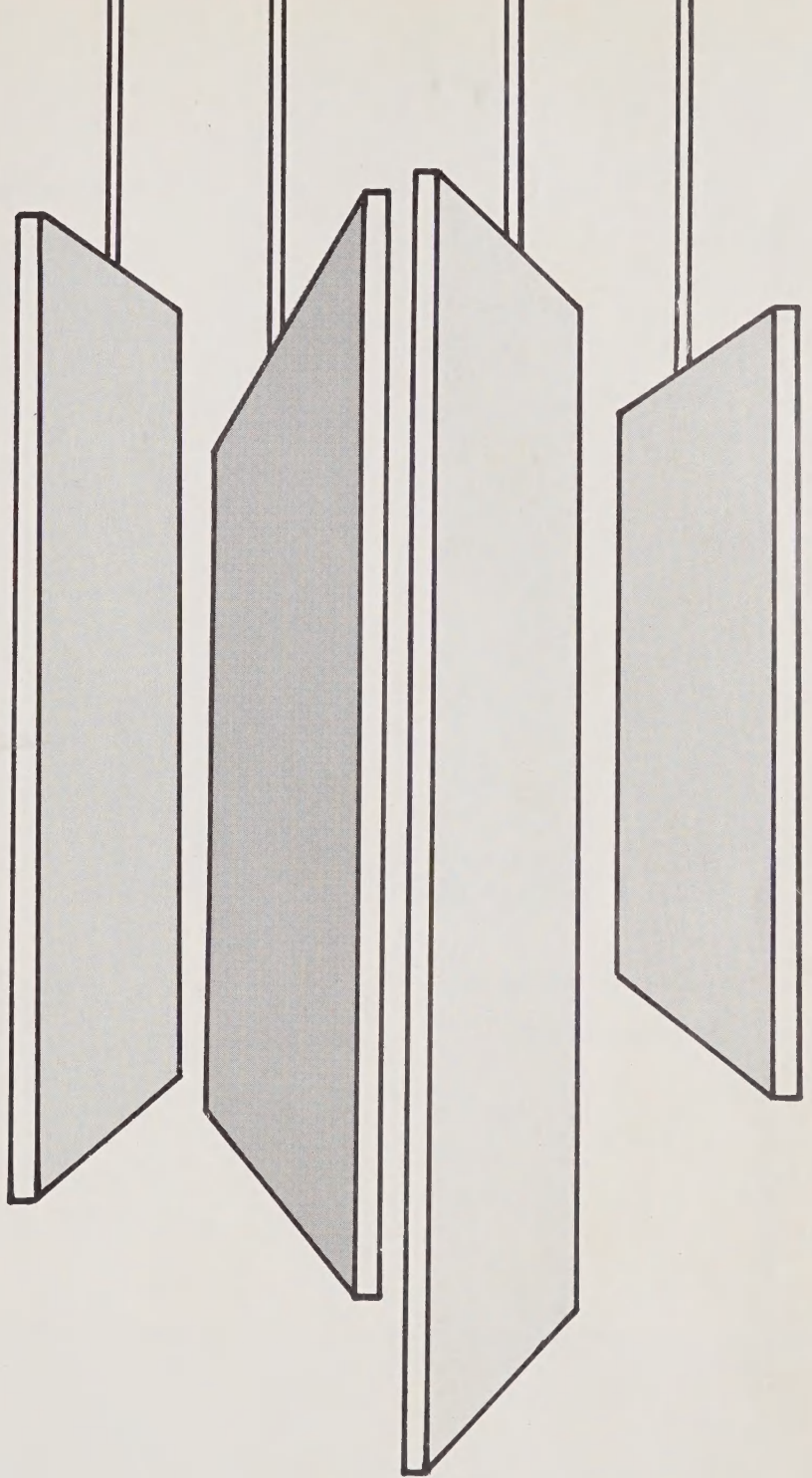
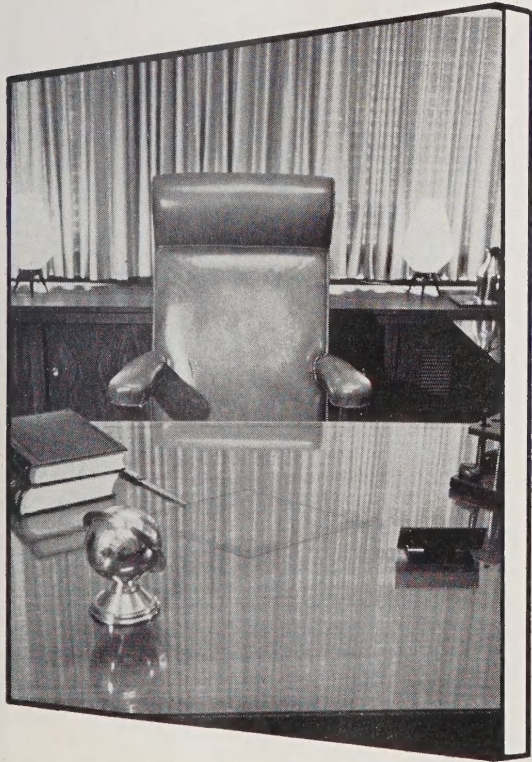
MRS. O. S. ANDERSON, Chairman

MR. FLOYD KIKER, Secretary

MR. G. ED TUCKER

MR. HASKELL TARLTON

MR. CHESTER H. EDWARDS

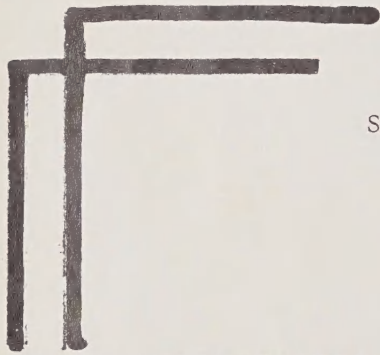


ADMINISTRATION

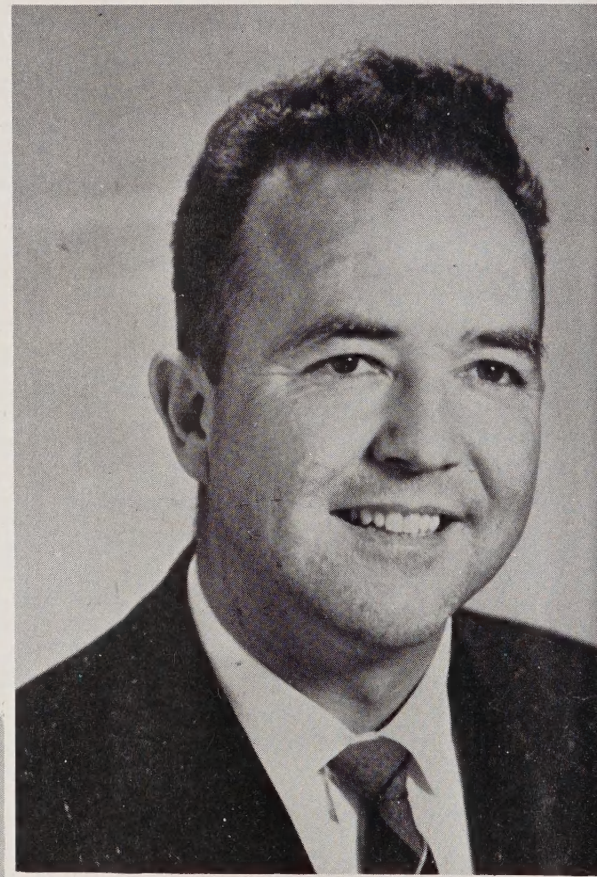
Administration



MR. R. O. McCOLLUM
Superintendent of Schools



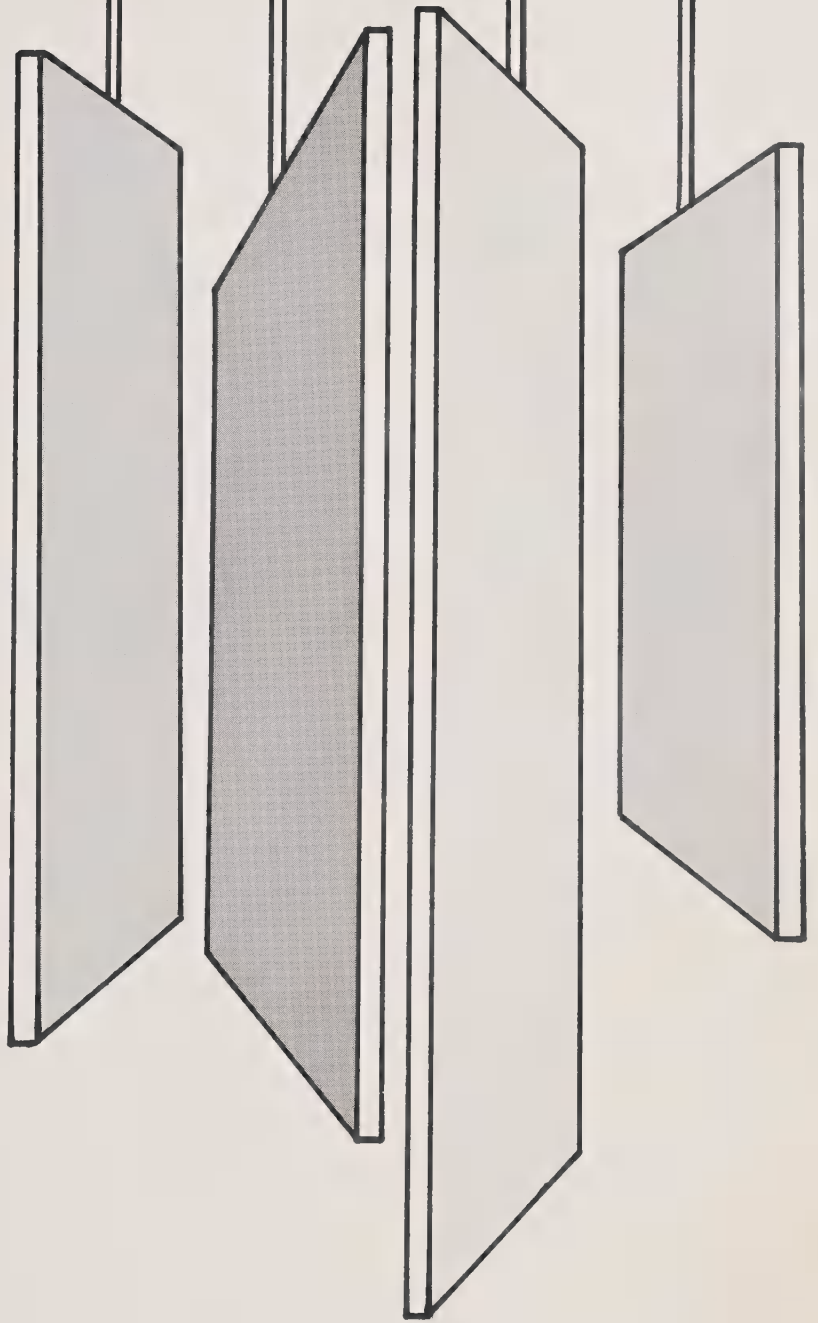
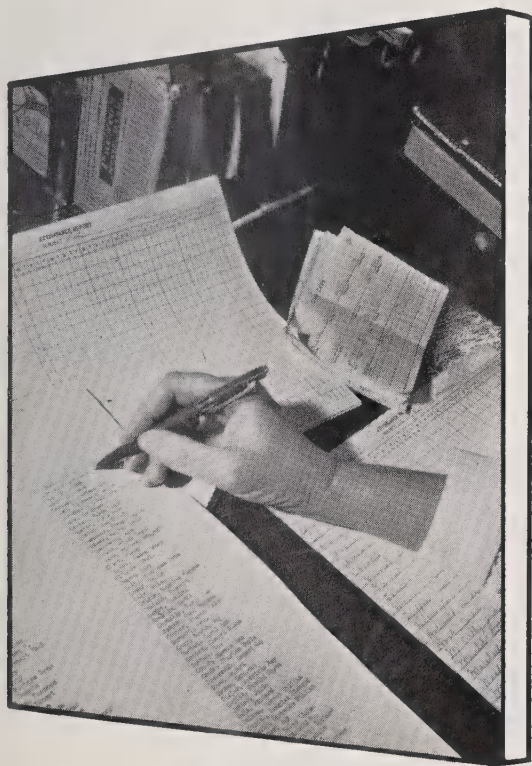
MR. W. G. SMITH
Supervisor of Public Instruction



MR. ARTHUR SUMMERS
Principal

MRS. MARTHA STEPHENS
Secretary





FACULTY

Faculty

MR. LEE G. ALLISON
Vocational Agriculture



MRS. RUTH H. BENNETT
English, Latin



MR. JAMES H. BOST
Science

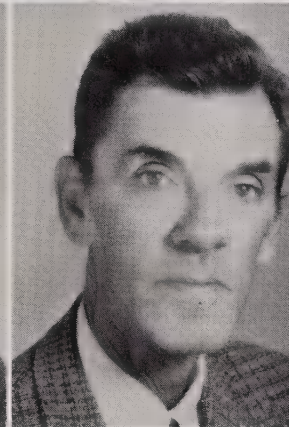
MR. WILLIAM W. BRITT
Social Studies



MR. JAMES M. BUFFKIN
Vocation Education,
Vocational Agriculture

MISS SARAH L. CAUDLE
Commercial

MRS. FRANCES M. CHILDS
Mathematics



MISS SARAH DAVIS
Mathematics

MR. HAROLD G. DELLINGER
Mathematics

MRS. JEAN S. DeSIO
Librarian



MRS. POLLY B. GADDY
Biology

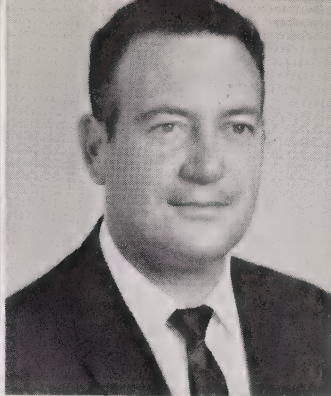
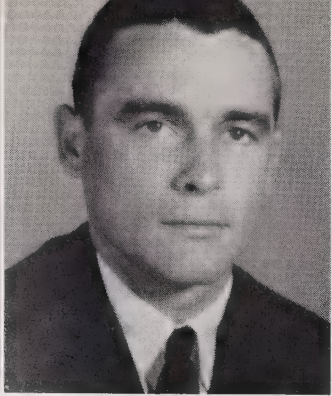
MISS HAZEL L. GREEN
Home Economics

MRS. JOSIE L. HARDISON
Music



MRS. RUBY A. HOUGH
Chemistry, Physics,
French

MRS. HELEN L. INGRAM
English, Journalism

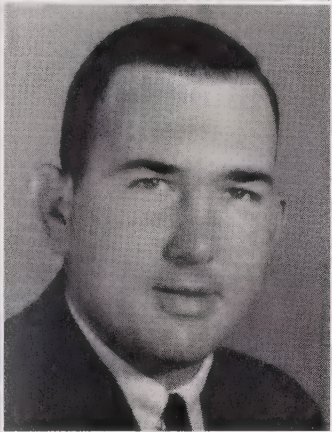


MR. TARON A. JONES
Guidance Counselor

MR. J. DON KING
Health, Physical Ed.,
Civics

MR. GRAHAM L. LUTZ
Vocational Agriculture

*Best of luck
in the
future
Richard P. [unclear]*



MR. ARTHUR W. KEWKIRK
English, American
History

MR. JAMES W. PELL
Physical Fitness,
Social Studies

MRS. ROSA P. SIMPSON
English



MISS GERALDINE SMITH
English

MRS. BETTY H. SUMMERS
Health, Physical Ed.,
World History

MRS. ANNETTE C. TARLTON
Commercial



MR. JAMES R. TURNER
Commercial

MRS. GERTRUDE C. WALL
Home Economics

MR. WILLIAM C. WEBB
Vocational Agriculture



MRS. FRANCES L. WILLIAMSON
Special Science



To the Class of 1964

Dear Seniors:

This year we are losing the last of the charter members of Anson High. This makes us realize how true the old quotation, "Time waits for no one."

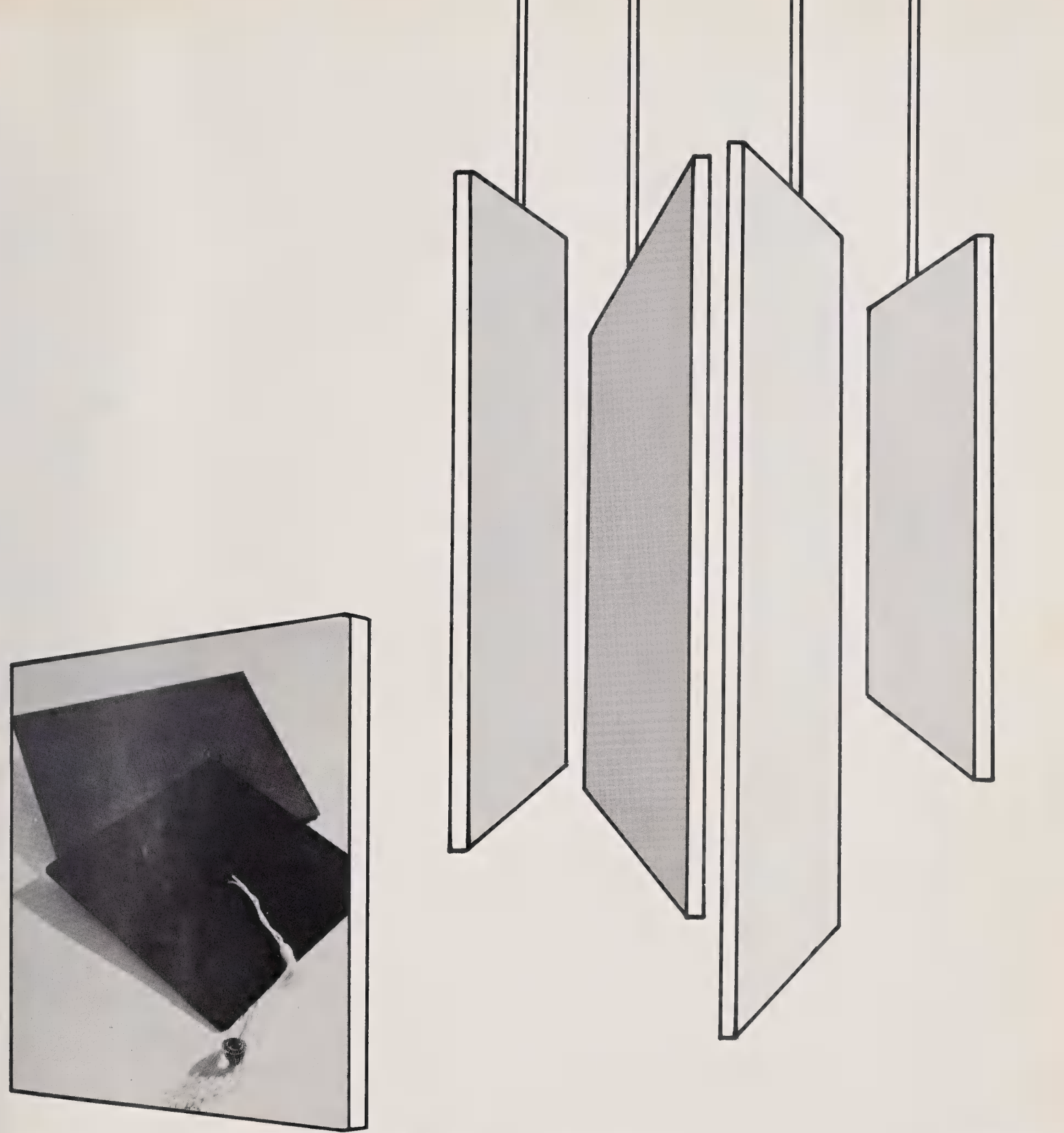
I have enjoyed immensely my association with you and take this opportunity to express my appreciation for your service, loyalty, and leadership in the development of Anson High School.

My very best wishes go with you.

Sincerely,

Arthur Summers

Arthur Summers



SENIORS



Senior Class Officers

President - - - - - ROBERT INGOLD
 Vice-President - - - - - TOMMY GRAY
 Secretary - - - - - SIBYL WRIGHT
 Treasurer - - - - - JENNETTE HORNE

The first class to begin high school at Anson will graduate this year . . . but their memories will remain. The school will remember the class of '64, and we will always remember our Alma Mater.

As freshmen, we began the process of getting acquainted, making friends, and learning about high school life.

The next year, as sophomores, we felt especially grown because we were no longer the "little wheels" of the school.

Our junior year was highlighted by our Junior-Senior prom - "In Apple Blossom Time."

As seniors, we received our long-awaited class rings. Throughout the year, we have eagerly prepared for our graduation.

Soon, our years at Anson High will be over; we will each go our separate ways as we travel down life's highway. Some things we will remember, some we will forget - but our memories of Anson High will remain forever.

MARY BEVERLY ALLEN

(Beverly)

"Don't feel sorry for yourself - - -
feel sorry for those who have
to live with you."

JAMES ELMER ASHCRAFT

(James)

"Keep doing some kind of work, that
the devil may always find you
employed."



ROSE MARIE AUSTIN

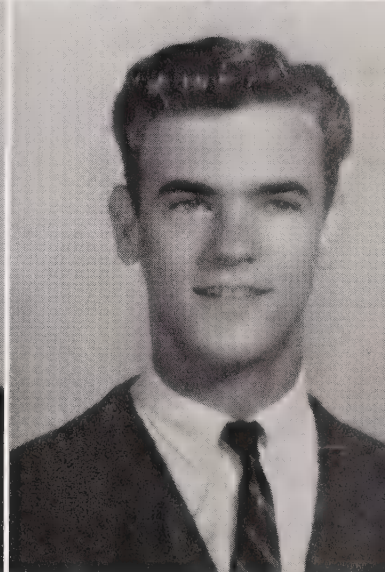
(Marie)

"Thinking is like loving and dying.
Each of us must do it for himself."

RONALD LEE BARNHILL

(Ronnie)

"Be kind to strangers, they're just
friends you haven't met yet."



ROBERT DANIEL BATTEN

(Robert)

"Triumphs for nothing and lamenting
toys is jollity for apes and
grief for boys."

SHIRLEY REBECCA BENTON

(Shirley)

"A boy is a pain in the neck until
he becomes a man, then he is a
pain in the heart."



ANN ELIZABETH BOWMAN

(Ann)

"Tact consists in knowing how far
to go too far."

BARBARA RUTH CAPEL

(Barbara)

"Love is a gift; it is not bought."





EDITH SUE CARPENTER

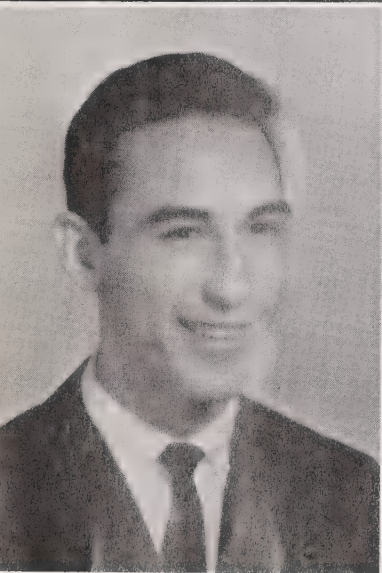
(Sue)

"A boy is a pain in the neck until he becomes a man, then he his a pain in the heart."

ROBERT BURL CARPENTER

(Burl)

"Have a lust for thine own work, and thou shalt be safe."



KENNETH HARRISON CARTER

(Kenny)

"Hope for the best, but prepare for the worst."

PAUL EUGENE CARTER

(Paul)

"Inflaming wine, pernicious to mankind."



HOUSTON PAUL COX, JR.

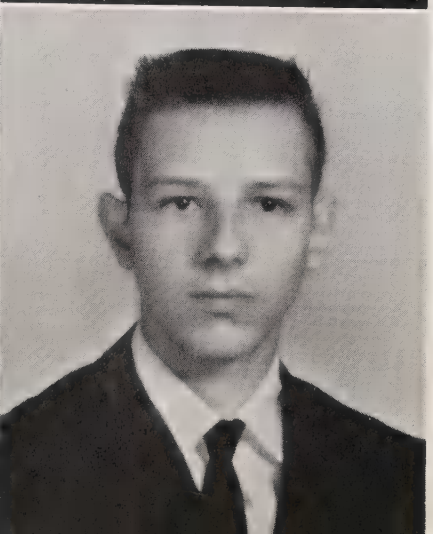
(Houston)

"The unspoken word never does harm."

BARBARA LEIGH DAVIS

(Barbara)

"But there's nothing half so sweet in life as love's young dream."



MILDRED IRENE DAVIS

(Mildred)

"A boy is a pain in the neck until he becomes a man, then he is a pain in the heart."

RONALD WILSON DIGGS

(Ronald)

"Everything comes if only a man will wait."



WILLIE THOMAS DIGGS

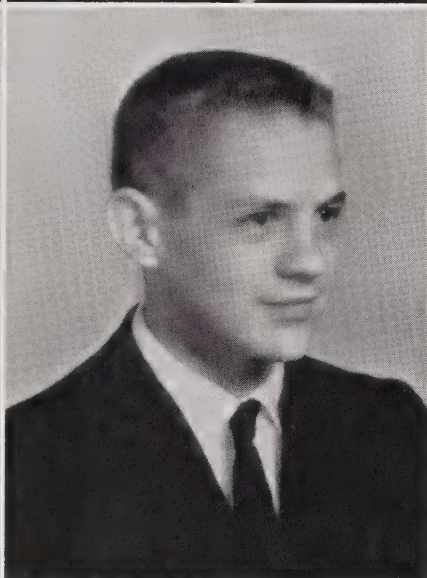
(Tommy)

"The one certain way of making things worse than they are, is saying they are worse than they are."

MARION ALLEN DUKE

(Allen)

"He who loses hope may then part with anything."



PEGGY ANN DUNN

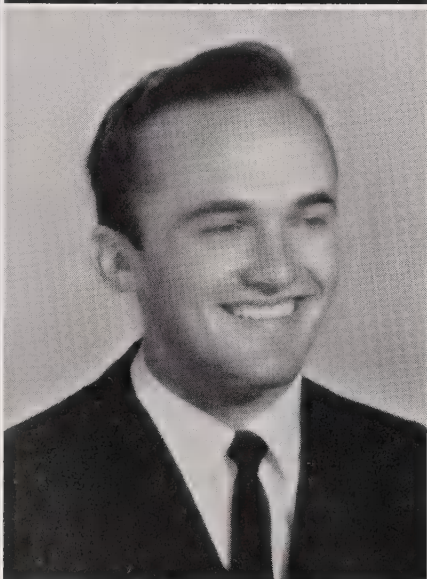
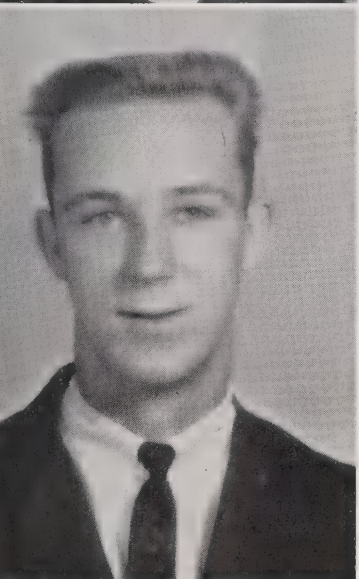
(Peggy)

"A smiling face and a kind heart go a long way."

JAMES MAX EARNHARDT

(Max)

"The evil that men do lives after them; the good is oft interred with their bones."



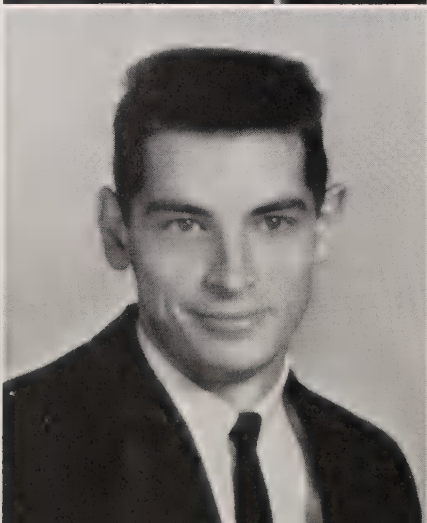
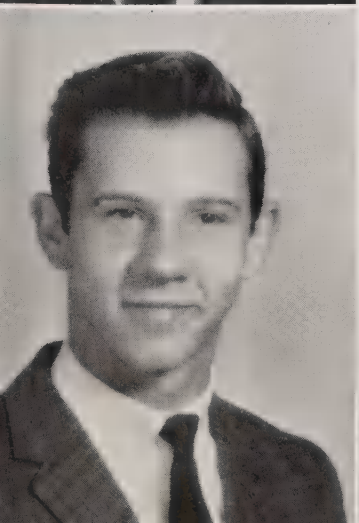
WILLIAM LEON EDWARDS

(Leon)

"Second thoughts are ever wiser."

JAMES FRANKLIN FLAKE

"Be cheerful; wipe thine eyes, some folks are the means of happier to arise."



JOHN ROBERT FLOYD

(Robert)

"The female knee is a joint; not an entertainment."

DONALD LEE GADDY

(Donald)

"A good name is better than riches."

BETTY JEAN GARRIS

(Betty)

"Life is an opportunity; use
it wisely."

SYLVIA LOUISE GOODMAN

(Sylvia)

"Laughter is not at all a bad be-
ginning for a friendship, and it
is far the best ending for one."



ROGER LEE GOODWIN

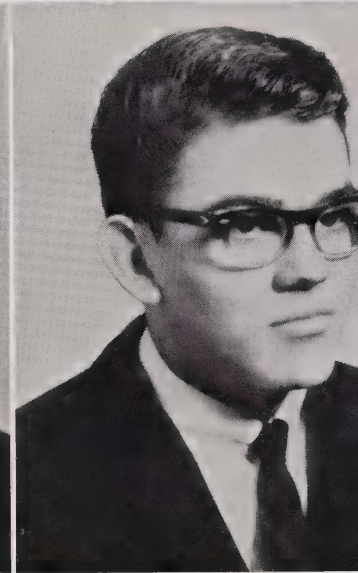
(Roger)

"Thinking is like loving and dying.
Each of us must do it for
himself."

THOMAS HYATT GRAY

(Tommy)

"Most friendship is feigning,
most loving mere folly."



NANCY LEE GREENE

(Nancy)

"To cherish memories of the past."

VIVIAN ANNE GREENE

(Vivian)

"Smile and the whole world
smiles back."



PATRICIA SUE HAMRICK

(Patty)

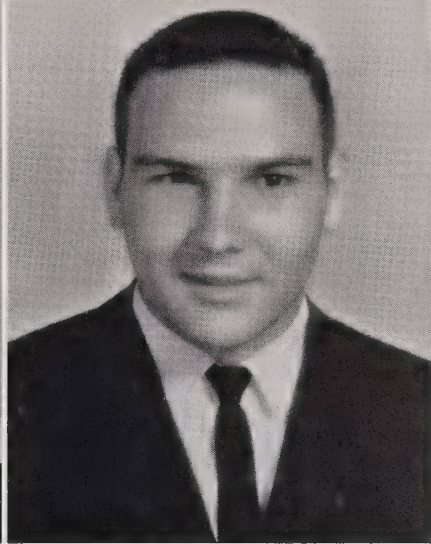
"Love doth approach disguised
armed in arguments; you'll be
surprised; muster your wits;
stand in your own defense or
hide your heads like cowards,
and fly hense."

JANIE LEE HAMILTON

(Jane)

"Life is the art of drawing
without an eraser."





KATHRINE ELIZABETH HARRINGTON

(Katherine)

"There is nothing either good or bad, but thinking makes it so."

JOHN GARRISON HASTY

(Gary)

"A good scare is worth more to a man than good advice."



SANDRA JEAN HASTY

(Sandra)

"It matters not how long we live but how."

WALTER ROSS HENDLEY

(Ross)

"So many worlds, so much to do, so little done, such things to be."



MICHAEL DOUGLAS HENRY

(Mickey)

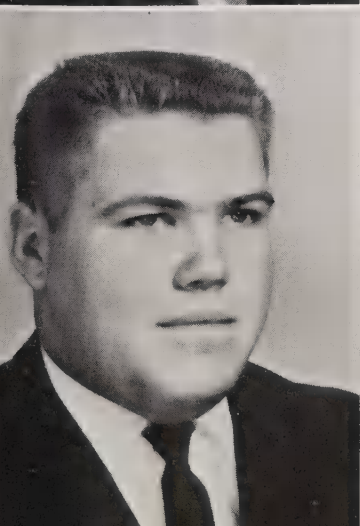
"Help! I'm being drafted."

CATHERINE LOUISE HILL

(Catherine)

"For one man is my world of all the men.

This wide world holds;
O Love, my world is you."



GARY CARSON HORNE

(Gary)

"Love all, trust a few, do wrong to none."

MARTHA JENNETTE HORNE

(Jennette)

"Absence is to love what wind is to fire; it extinguishes the small, it enkindles the great."

ROY LYNN HORNE

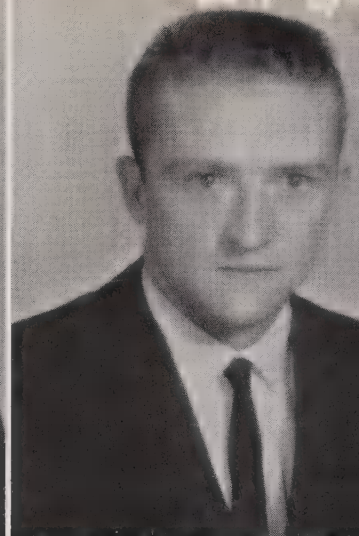
(Lynn)

"The speedway ends at the cemetery."

ROY LEE HOUGH

(Roy Lee)

"If you drink, don't drive!
If you drive don't drink!"



BRENDA JEAN HOWARD

(Jean)

"Look twice before you leap."

WILLIAM LAFAYETTE HUSSEY

(William)

"I worked, I played,
I had a heck of a time,
but, now comes time
for all this to end."



PRESLEY ROBERT INGOLD

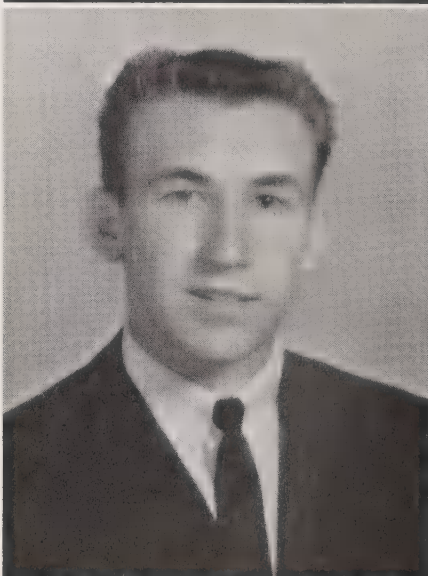
(Robert)

"There is nothing good or bad,
but, thinking makes it so."

THOMAS WAYNE JONES

(Wayne)

"My Falcon now is sharp
and passing empty."



VICTORIA NEAL KILLIAN

(Vicky)

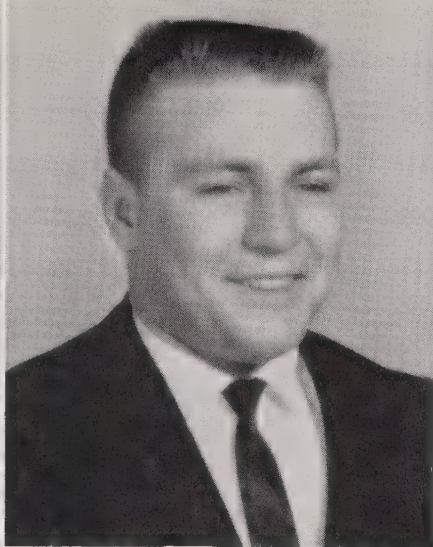
"To love is to place one's happiness
in the happiness of another."

SHIRLEY JEAN KNOTTS

(Shirley)

"To handle yourself use your head,
to handle others use your heart."





EMILY JEAN LEE

(Emily)

"A mighty pain to love it is,
And 'tis a pain that pain to miss;
But of all pains, the greatest pain
It is to love, but love in vain."

RONALD HILL LEE

(Ronnie)

"Expect the worst,
but hope for the best."



JULIA LOWERY MARTIN

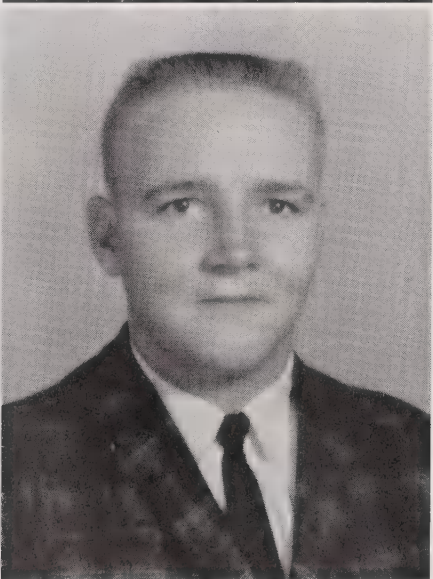
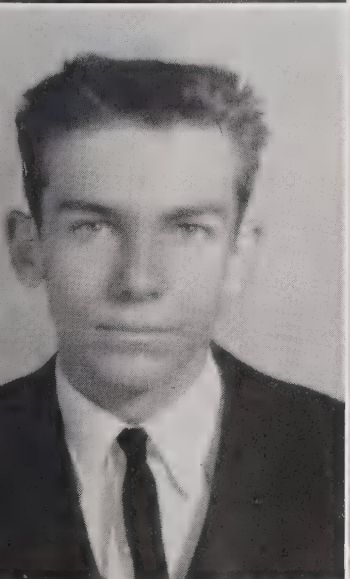
(Judy)

"Where love is great,
the littlest doubts are fear;
Where little fears grow great,
great love grows there."

MICHAEL HOWARD MARTIN

(Michael)

"If I were a star in the heavens,
I'd rise and set for you."



ROBERT HAROLD MARTIN

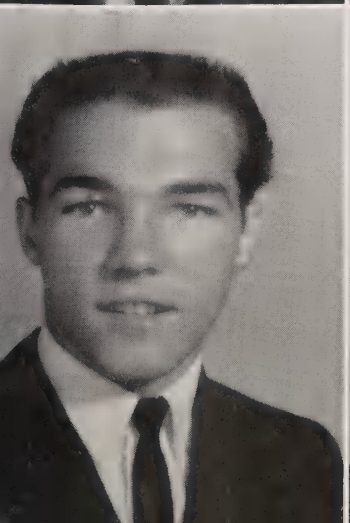
(Bobby)

"He who plants a tree
plants a hope."

CHARLES RODNEY McCORMICK

(Charlie)

"Any man may make a mistake,
but none but a fool will continue in it."



ROBERT LEE McCORMICK

(Bobby)

"Beauty is a flower."

ANNE BEACH McRAE

(Anne)

"It is no small art to sleep;
to achieve it one must
keep awake all day."

HARRIET BRICKER McRAE
(Harriet)

"Life is like an onion;
you peel it off one layer at a time,
and sometimes you weep."

ROY RUSSELL MOORE
(Roy)

"Be silent always
when you doubt your sense."



JERRY BLAKE NEWSOME
(Jerry)

"Forethought is better than
afterthought."

EUNICE MAUDE POPE
(Eunice)

"I am only one, but I am one."

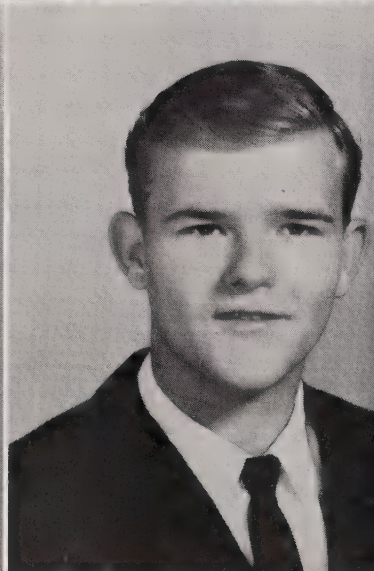


FELTON RAY POPE
(Felton)

"We are such little men
when the stars come out."

JERRY DONALD POPE
(Jerry)

"Men still die with their boots on -
on the accelerator."



MARY RUTH POPE
(Ruth)

"To sin by silence when they should protest
makes cowards of men."

KAY DAVIS PRICE
(Kay)

"It matters not what
you are thought to be,
but what you are."





MARTHA FRANCES RAMSEY

(Martha)

"Ask not what your country can do for you, but what you can do for your country."

REBECCA ANN RAMSEY

(Rebecca)

"It matters not how long you live, but how."



EDNA JEANETTE RANDALL

(Jill)

"Every day should be passed as if it were your last."

MYRA BETH ROGERS

(Beth)

"Always laughing, never sad, sometimes naughty, but never bad."



REBECCA HOPE SEIGLER

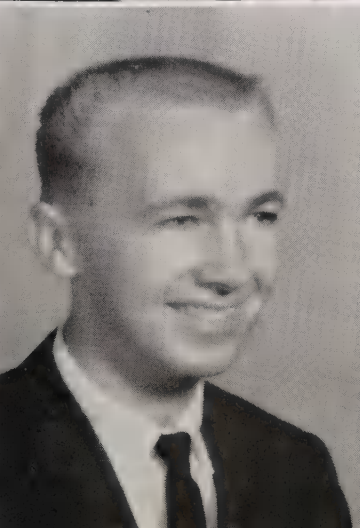
(Hope)

"Love is the feeling that you feel when you feel that you have a feeling that you never felt before."

JUDY CATHERINE SELLERS

(Judy)

"Everything has beauty but not everyone can see it."



JOSEPH VAN SMITH

(Joe)

"Men tire themselves in pursuit of rest."

WARREN CLARKE SURRATTE

(Warren)

"To handle yourself, use your head to handle others, use your heart."

VIVIAN AMELIA SURRATTE

(Vivian)

"Beauty without grace is a hook
without a bait."

PATRICIA LEIGH SWART

(Patricia)

"One pressing need today is for less
publicity on how to stay young and
more on how to grow up."



CECIL DWIGHT TAYLOR

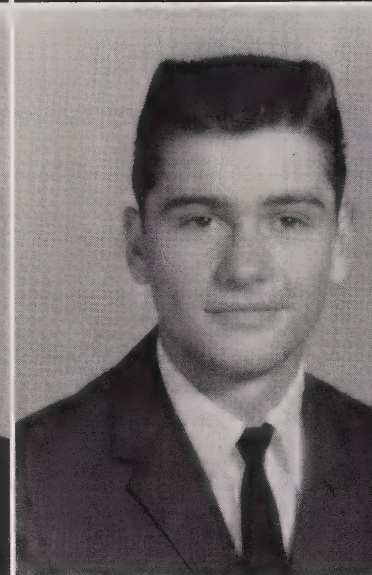
(Cecil)

"Absence is to love what wind is to
fire; it extinguishes the small, it
enkindles the great."

JOEL DAVID TAYLOR

(Joel)

"The best is yet to do."



BRICE LYNN THOMAS

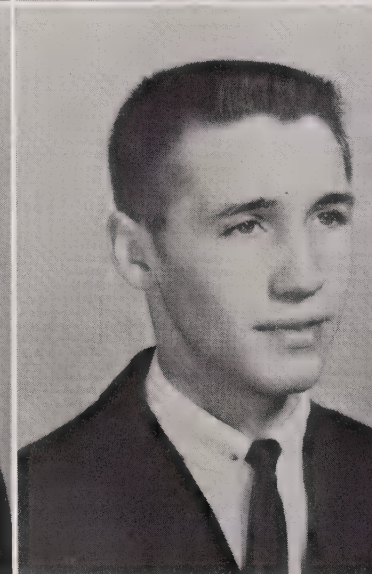
(Lynn)

"Bad conscience is only good
conscience doing its duty."

CHARLES EDWARD THOMAS

(Charles)

"On my honor, I do my best, take
what people give me, and steal the
rest."



HALLMAN CONWAY THOMAS

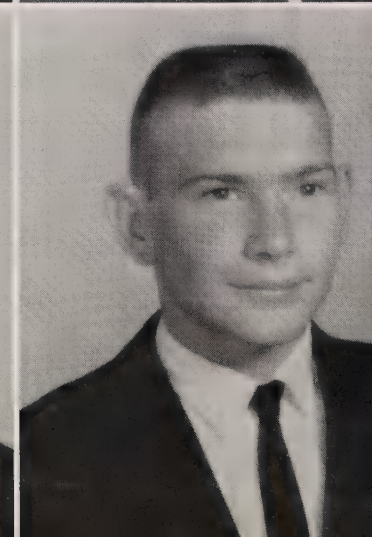
(Conway)

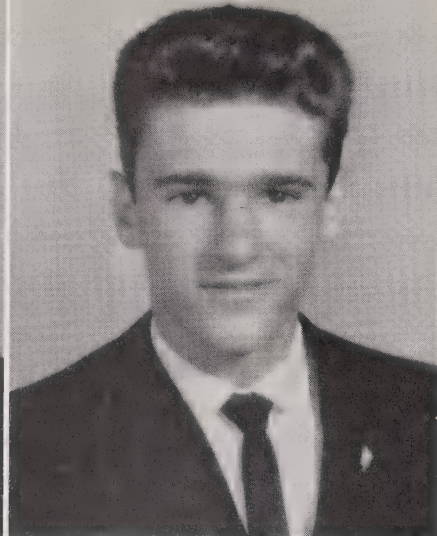
"How do I love thee? Let me count
the ways."

JOHN WALLACE THOMAS

(John)

"Love is a hand full, if you
like what you see."





JOSEPH HAMPTON THOMAS

(Joe)

"Be sincere whether you mean it or not."

RONALD DOLAN THOMAS

(Ronnie)

"A stubborn person is deaf, and hears no heedful friends."



WILLIAM BRUCE THOMAS

(Bruce)

"Look twice before you leap."

JEANNETTE GREER TREADAWAY

(Jeanette)

"Love and war are the same thing, and stratagems and policy are as allowable in the one as in the other."



HUGH EVANS TUCKER

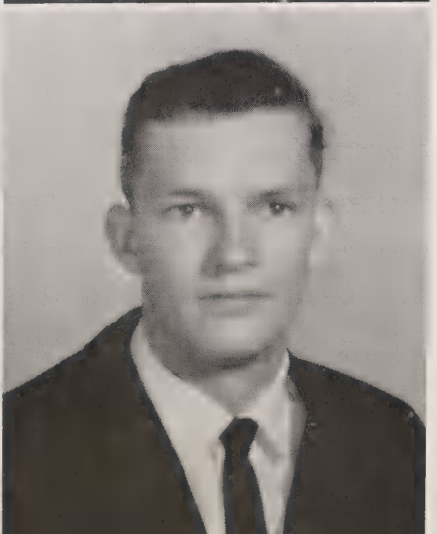
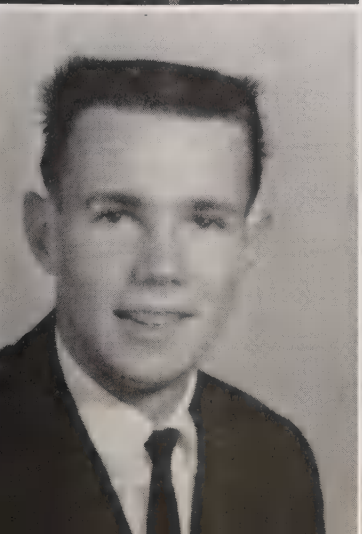
(Hugh)

"Live is an opportunity; use it wisely."

JOHN LARRY TUCKER

(Larry)

"Another thing you can get for a nickel is a four-cent stamp."



THOMAS ANDERSON TURNER

(Tommy)

"Look twice before you leap."

DAVID EUGENE VAUGHN

(David)

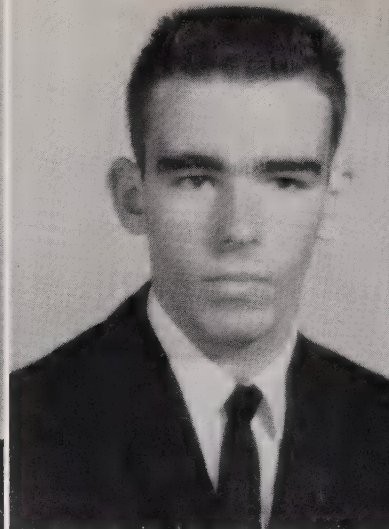
"If you lak-a me lak I lak-a you."

SANDRA DIANE WATKINS
(Sandra)

"An aim in life is the only
fortune worth finding."

LARRY THOMAS WILLIAMS
(Larry)

"I love thee, Lou, for a heart
that is kind, not for the
knowledge in thy mind."



MARY SIBYL WRIGHT
(Sibyl)

"For me, I am the mistress of my fate."



Alma Mater

Tune: NAVY BLUE AND GOLD

Here's to the Eagles of Anson High
We sing of colors true,
For who has better right than we
To have a symbol true?
Columbia Blue and red and white
In our hearts we will recall,
That the days we spend at Anson High
Are the happiest days of all.

We 'oft recall the loyal friends
And cherish evermore,
The days we spend at Anson High
A knowledge to implore,
Our teachers dear who help us here
A knowledge to obtain,
We love you and we hope you know
Your memories remain.



Best All-Around

SHIRLEY KNOTTS - LYNN THOMAS



Best-Looking

BARBARA DAVIS - ROSS HENDLEY



Most Intellectual

ANNE McRAE - MAX EARNHARDT



Wittiest

KAY PRICE - CECIL TAYLOR



Neatest

MARTHA RAMSEY - ROSS HENDLEY



Most Athletic

SHIRLEY KNOTTS - RONNIE LEE



Best Personality

KAY PRICE - LYNN THOMAS



Most Co-Operative

JUDY SELLERS - ROY MOORE



Most Considerate

SIBYL WRIGHT - ROY MOORE



Most Talented

ANN BOWMAN - KENNY CARTER



Most Likely to Succeed

JUDY SELLERS - LYNN THOMAS



Most Dependable

SIBYL WRIGHT - MAX EARNHARDT

Senior Statistics

- MARY BEVERLY ALLEN - Cheerleader 1, Homecoming Sponsor 1,4; F. H. A. 1,2,3,4; Nominating Committee 3, Glee Club 1,2,3,4; Music 2, Homeroom Reporter 1, Homeroom Secretary 2, Homeroom Treasurer 3,4; Prom Steering Committee 3; F. T. A. 3,4; Pianist 4, Pep Club 3,4; Health Career's Club 4, Health Career's Congress Representative 3, "Ancohi" Staff 4, "Aquila" Editor 4
- JAMES ELMER ASHCRAFT - Football 1, F.F.A. 1, Reporter 1, Homeroom Reporter 3
- ROSE MARIE AUSTIN - F. H. A. 1,2,3,4; Historian 4, F. B. L. A. 4, Class Secretary 3, Glee Club 1,2, Student Council 4, Homeroom Secretary 3, Pep Club 3,4, Prom Committee 3
- RONALD LEE BARNHILL - Baseball 1, F.F.A. 1,2, Social and Folk Dance Club 1
- ROBERT DANIEL BATTEN - National Honor Society 3,4; Executive Committee 4, F. T. A. 3,4; Historian 4; Student Council 3, Pep Club 3,4, Prom Committee 3, Prom Emcee 3, Basketball 1, Manager 1, Baseball 1,2,3,4; Co-Captain 3, Bus Driver 3,4, "Aquila" Editor 4, "Ancohi" Staff 4, Hootenanny Emcee 4
- SHIRLEY REBECCA BENTON - F. H. A. 1,2,4; Social and Folk Dance Club 1, F. B. L. A. 4, Glee Club 4, Homecoming Sponsor 4, Prom Committee 3
- ANN ELIZABETH BOWMAN - Glee Club 1,2, Pep Club 3,4, F. H. A. 4, Homeroom Reporter 4, Health Career's Club 4, Secretary 4, Homeroom Secretary 4, "Aquila" Staff 4, "Ancohi" Staff 4, Latin Club 1, "Most Talented" 4, Social and Folk Dance Club 1, Prom Entertainment 3
- BARBARA RUTH CAPEL - F. H. A. 1,2,4, Social and Folk Dance Club 1,2, F. B. L. A. 4, Glee Club 4, Homeroom Treasurer 3, Library Club 4
- ROBERT BURL CARPENTER - F. F. A. 1,2,3,4, Baseball 3
- EDITH SUE CARPENTER - J. V. Basketball 1, Glee Club 1,4, F. H. A. 1,2,4, F. B. L. A. 4
- KENNETH HARRISON CARTER - Bus Driver 4, Anson High Combo 4, "Most Talented" 4
- PAUL EUGENE CARTER - Baseball 1,2
- HOUSTON PAUL COX - Bus Driver 3,4, Anson High Combo 4, Library Club 4
- BARBARA LEIGH DAVIS - F. H. A. 1,2,3,4; Reporter 4, F. B. L. A. 4; Nominating Committee 4, Homeroom President 1,4, Student Council 1,2, "Miss Anson High" 2, Glee Club 2, "Best Looking" 4, Pep Club 3,4, Prom Committee 3, Bus Driver 3
- MILDRED IRENE DAVIS - Glee Club 1,4, Pep Club 4, F. H. A. 1,2,4, F. B. L. A. 4, F. T. A. 4, Bus Driver Substitute 3,4, Prom Waitress 2
- RONALD WILSON DIGGS - F. F. A. 1,2,3
- WILLIE THOMAS DIGGS - F. F. A. 1,2,3,4
- MARION ALLEN DUKE - Football 1, F. F. A. 1,2,3,4
- PEGGY ANN DUNN - Glee Club 1,2,3,4, Health Career's Club 4, F. H. A. 1,2,4, Music 4
- JAMES MAX EARNHARDT - F. F. A. 1, Student Council 2,4, F. T. A. 4, National Honor Society 3,4; Vice-President 3; President 4; Homeroom President 3, National Honor Society Convention Delegate 4, Marshal 3, "Most Intellectual" 4, "Most Dependable" 4, Morehead Scholarship Nominee 4, Prom Committee 3
- WILLIAM LEON EDWARDS - F. F. A. 1,2,3,4; Treasurer 3; Sentinel 4; Parliamentary Procedure Team 3
- JAMES FRANKLIN FLAKE - F. F. A. 1,2, Pep Club 3,4, Bus Driver 3,4, Prom Committee 3
- JOHN ROBERT FLOYD - Monogram 2,3,4, Pep Club 3,4, Football 2,3,4, Social and Folk Dance Club 1, Prom Committee 3
- DONALD LEE GADDY - Bus Driver 3,4, F. F. A. 1,3,4
- BETTY JEAN GARRIS - Homeroom President 1, Glee Club 4, F. H. A. 1,2,4, Prom Committee 3
- SYLVIA LOUISE GOODMAN - Homeroom Treasurer 1, Cheerleader 2,3, Pep Club 3,4, F. T. A. 3,4; Secretary 4, National Honor Society 4; Executive Committee 4, Student Council 3, Prom Waitress 2, Prom Committee 3, Homecoming Sponsor 4, "Aquila" Staff 4, "Ancohi" Staff 4
- ROGER LEE GOODWIN - F. F. A. 1, Prom Committee 3
- THOMAS HYATT GRAY - F. F. A. 1, Homeroom President 2,3, Pep Club 3,4, Prom Committee 3, F. T. A. 3,4; Parliamentarian 4, Class Vice-President 4
- NANCY LEE GREENE - F. H. A. 1,2,3,4, Glee Club 1,2
- VIVIAN ANNE GREENE - F. H. A. 1,2,3,4
- JANIE LEE HAMILTON - F. H. A. 1,2,3,4; Treasurer 3; Parliamentarian 4, Homeroom Secretary 4, Homeroom Treasurer 2, Basketball 1, Pep Club 3,4, Class Treasurer 3, Bus Driver 3, Prom Steering Committee 3, Football Sponsor 4, "Aquila" Staff 4, "Ancohi" Staff 4, Health Career's Club 4; President 4, Cheerleader 4, Student Council 4
- PATRICIA SUE HAMRICK - Health Career's Club 4, Glee Club 1,2,3,4, F. B. L. A. 4, F. H. A. 1,2,3,4, J. V. Basketball 1

KATHERINE ELIZABETH HARRINGTON - Glee Club 1,2,3,4, F. H. A. 1,2,3,4, F. B. L. A. 4, Lunchroom Staff 4, Music 1,2,3,4, Prom Waitress 2, Bus Driver 4, Prom Committee 3,
JOHN GARRISON HASTY - Football 3,4, Monogram Club 3,4; Sergeant-at-Arms 4, Pep Club 3,4
SANDRA JEAN HASTY - F. H. A. 1,2,3,4
WALTER ROSS HENDLEY - Student Council 1, F. T. A. 3,4; Vice-President 4, Health Career's Club 4, Delegate to Health Career Congress 3, Pep Club 3,4, Basketball 1, "Best Looking" 4, "Neatest" 4, "Aquila" Staff 4, "Ancohi" Staff 4
MICHAEL DOUGLAS HENRY - Baseball 1,2,3,4, Pep Club 3,4, Monogram Club 3,4, Glee Club 4, Football 4
CATHERINE LOUISE HILL - Homeroom Reporter 1, Glee Club 1, J. V. Basketball 1, Lunchroom Staff 1,2,3,4, Library Club 4, F. H. A. 1, F. B. L. A. 4; President 4, Prom Committee 3
GARY CARSON HORNE - F. F. A. 1,2,3,4, Football 4, Pep Club 4
MARTHA JENNETTE HORNE - F. H. A. 1,2,3,4; Historian 2; Treasurer 4, Pep Club 3,4, Cheerleader 4, Class Vice-President 3, Class Treasurer 4, Prom Committee 3, Football Sponsor 4, Homeroom Treasurer 1, F. B. L. A. 4; Vice-President 4, Bus Driver 3,4
ROY LYNN HORNE - F. F. A. 1,2,3,4
ROY LEE HOUGH - F. F. A. 1,2,3,4
BRENDA JEAN HOWARD - F. H. A. 1,2,3,4
WILLIAM LAFAYETTE HUSSEY - Pep Club 3,4, Baseball 2,3,4, Football 4, Monogram Club 3,4
PRESLEY ROBERT INGOLD - "Ancohi" Staff 4, "Aquila" Staff 4, Class President 4, Monogram Club 2,3,4, Prom Committee 3, Football 1,2,4, Baseball 3,4, F. F. A. 1, Student Council 1,4, Pep Club 3,4, Basketball 1, "Melody Makers" 4
THOMAS WAYNE JONES - F. F. A. 1,2,3, Football 1,2,4, Homeroom Reporter 1, Glee Club 4, Monogram Club 2,3,4, Pep Club 3,4
VICTORIA NEAL KILLIAN - Glee Club 1,2,3,4, Homecoming Sponsor 1, F. H. A. 1,2,3,4, Prom Waitress 2, Prom Steering Committee 3, Marshal 3, F. T. A. 3,4; Songleader 4, National Honor Society 3,4; Secretary 4, "Aquila" Staff 4, "Ancohi" Staff 4, Pep Club 3,4, Homeroom Secretary 3
SHIRLEY JEAN KNOTTS - F. H. A. 1,2,3,4, J. V. Basketball 1, Prom Waitress 1, Cheerleader 2,3,4; Chief 4, Homecoming Sponsor 1,2,3,4; Homecoming Queen 4, Miss Hi Miss 3, Prom Committee 3, Pep Club 3,4, Student Council Secretary 4, F. B. L. A. 4; Constitution Committee Chairman 4, "Most Athletic" 4, "Best All Around" 4
EMILY JEAN LEE - Glee Club 1,2,3,4, F. H. A. 1,2,3,4, Pep Club 3,4, Prom Committee 3
RONALD HILL LEE - F. F. A. 1,2,3,4; Vice-President 3; President 4; Delegate to National F. F. A. Convention 4, Football 2,3,4; Captain 4, Pep Club 3,4, Monogram Club 2,3,4; Secretary 4, "Most Athletic" 4
ROBERT HAROLD MARTIN - F. F. A. 1,2,3,4
JULIA LOWERY MARTIN - Glee Club 1,2,3,4, F. H. A. 1,2,3,4, F. B. L. A. 4, Lunchroom Staff 4, Prom Waitress 2, Substitute Bus Driver 4, Prom Committee 3
MICHAEL HOWARD MARTIN - Bus Driver 3, F. F. A. 1,2,3,4; Reporter 3; Judging Contest 2, Pep Club 3
ROBERT LEE McCORMICK - F. F. A. 1,2
CHARLES RODNEY McCORMICK - Pep Club 3,4, Football 1, Prom Steering Committee 3
ANNE BEACH McRAE - National Honor Society 3,4; Historian 4, F. T. A. 3,4; Program Chairman 4, Pep Club 3,4, F. H. A. 1,2,3,4, Homeroom Reporter 4, Basketball 1,3; Manager 4, "Most Intellectual" 4, Glee Club 1,2, "Aquila" Staff 4, "Ancohi" Staff 4, Homeroom Treasurer 4, Prom Waitress 2, Chief Marshal 3, Prom Steering Committee 3, American History Award 3, D. A. R. Good Citizen 4
HARRIET BRICKER McRAE - F. H. A. 1,2,3,4; Program Committee 2, Pep Club 3,4, Glee Club 1,2,3,4, F. T. A. 3,4; Reporter 4, National Honor Society 3,4; Reporter 4, Marshal 3, Homeroom Chairman 1, Homeroom Reporter 2,3, Prom Steering Committee 3, Girl's State Representative 3, Football Sponsor 1, Music 1,2, Prom Entertainment 1,3, "Aquila" Staff 4, "Ancohi" Staff 4, "Melody Makers" 4
ROY RUSSELL MOORE - Student Council 1, F. F. A. 1,2; President 2, Bus Driver 3,4, Prom Committee 3, "Most Considerate" 4, "Most Co-Operative" 4
JERRY BLAKE NEWSOME - F. F. A. 1,2,3,4
EUNICE MAUDE POPE - F. H. A. 1,2,3,4, Bus Driver 3,4, Prom Committee 3, Basketball 1,2, F. B. L. A. 4
FELTON RAY POPE - Basketball 1, F. F. A. 1,2,3,4; Treasurer 3; Seed Judging Team 2, Bus Driver 3,4, Prom Committee 3
JERRY DONALD POPE - F. F. A. 1,2,3,4, Prom Committee 3, Pep Club 3,4

MARY RUTH POPE - Glee Club 4, Basketball 1, F. H. A. 1,2,4, F. B. L. A. 4, Prom Committee 3

KAY DAVIS PRICE - Student Council 1,4, F. H. A. 1,2,3,4, "Aquila" Staff 4, "Ancohi" Staff 4, Prom Steering Committee 3, "Wittiest" 4, "Best Personality" 4, Class President 3, Football Sponsor 4, "Melody Makers" 4

MARTHA FRANCES RAMSEY - F. H. A. 1,2,3,4, Pep Club 3,4, Glee Club 1,2,3,4, "Aquila" Staff 4, "Ancohi" Staff 4, Student Council 2,3, Prom Committee 3, Football Sponsor 1, Cheerleader 1, "Neatest" 4, "Melody Makers" 4

REBECCA ANN RAMSEY - Glee Club 1,2,3, F. H. A. 1,2,3,4, Music 2, Prom Committee 3, Library Club 4

EDNA JEANETTE RANDALL - F. H. A. 1,2,3,4, Glee Club 1,4, Health Career's Club 4, Prom Committee 3, Homeroom Secretary 1,3

MYRA BETH ROGERS - Glee Club 1,2,3,4, J. V. Basketball 1, F. H. A. 1,2,3,4, Bus Driver 4, Prom Committee 3

REBECCA HOPE SEIGLER - F. H. A. 1,2,3,4, Glee Club 1,2, J. V. Basketball 1, Substitute Bus Driver 3,4, Prom Waitress 2, F. B. L. A. 4, Prom Committee 3

JUDY KATHERINE SELLERS - F. H. A. 1,2,4, F. T. A. 3,4; Librarian 4, National Honor Society 3,4; Treasurer 4, Marshal 3, Student Council 2,4, Prom Committee 3

JOSEPH VAN SMITH - Prom Committee 3, Student Council Treasurer 3, "Aquila" Staff 4, Pep Club 3,4, "Ancohi" Staff 4, F. F. A. 1, Homeroom President 4, F. T. A. 3,4; Treasurer 4, "Melody Makers" 4

VIVIAN AMELIA SURRATTE - F. H. A. 1,2,3,4, Homecoming Sponsor 1,2, Prom Waitress 1, Music 1, F. B. L. A. 4; Treasurer 4, J. V. Basketball 1, Prom Committee 3, F. B. L. A. Ways and Means Committee Chairman 4

WARREN CLARKE SURRATTE - F. F. A. 1,2,3, Football 2,3, Bus Driver 3,4

PATRICIA LEIGH SWART - "Aquila" Staff 4, "Ancohi" Staff 4, Glee Club 1,2,3,4, F. H. A. 1,2,3,4, Pep Club 3,4, Homeroom Reporter 1, Homeroom Chairman 2, Student Council 3, Prom Committee 3, "Melody Makers" 4

CECIL DWIGHT TAYLOR - F. F. A. 1, Basketball 1, Bus Driver 4, Anson High Combo 4, "Wittiest" 4

JOEL DAVID TAYLOR - "Aquila" Staff 4, "Ancohi" Staff 4, F. F. A. 1, Homeroom President 2,3, Prom Committee 3, Basketball 1,2,3,4; Co-Captain 4, Football 1, Baseball 1,2,3,4, Pep Club 3,4, Student Council Parliamentarian 4, Delegate to Governor's Youth Fitness Conference 3, Monogram Club 2,3,4; President 4

WILLIAM BRUCE THOMAS - F. F. A. 1,2,3,4, Football 4, Bus Driver 4

CHARLES EDWARD THOMAS - F. F. A. 1,2,3, Football 1,2, Basketball 1, Monogram Club 2, Pep Club 3,4, Prom Committee 3

HOLLMAN CONWAY THOMAS - F. F. A. 1,3,4, Bus Driver 3, Pep Club 4, Glee Club 3

JOSEPH HAMP THOMAS - F. F. A. 1,2,3,4, Homeroom Secretary 2

JOHN WALLACE THOMAS JR. - F. F. A. 1,2,3,4, Bus Driver 3,4

BRICE LYNN THOMAS - F. F. A. 1, Student Council 1,2,3,4; Vice-President 3; President 4, Pep Club 3,4, National Honor Society 3,4; Executive Committee 4, Marshal 3, Basketball 1, Prom Committee 3, Morehead Scholarship Nominee 4, Student Council Convention Delegate 3, "Most Likely To Succeed" 4, "Best All Round" 4, "Best Personality" 4

RONALD DOLAN THOMAS - National Honor Society 3,4; Executive Committee 4; Freshman Award 1, Pep Club 3,4, Marshal 3, Homeroom Reporter 1, F. F. A. 1; Vice-President 1, Prom Committee 3, Morehead Scholarship Nominee 4

JEANETTE GREER TREADAWAY - F. H. A. 1,2,3,4, Glee Club 1,2,4, Pep Club 3,4, Health Career's Club 4, Football Sponsor 2,3, Homeroom Secretary 3, Prom Committee 3

HUGH EVANS TUCKER - F. F. A. 1,2,3,4; Seed Judging Contest 2; Dairy Judging Contest 2; Parliamentary Procedure 3,4, Bus Driver 3,4

JOHN LARRY TUCKER - F. F. A. 1,2,3,4, Basketball 1, Bus Driver 3,4, Homeroom Secretary 2, Homeroom President 3, Prom Committee 3

THOMAS ANDERSON TURNER - Basketball 1, F. F. A. 1,2,3,4; Reporter 2, Football 1,2, Baseball 4, Homeroom Secretary 3, Pep Club 4, Prom Committee 3

DAVID EUGENE VAUGHN - F. F. A. 1,2,4; Officer 2, Glee Club 3,4, Pep Club 4, Bus Driver Substitute 3,4, Prom Committee 3

SANDRA DIANNE WATKINS - F. H. A. 1,2,3,4, Homecoming Sponsor 2, Homeroom Reporter 4, Homeroom Secretary 3, Bus Driver 3,4, F. B. L. A. 4; Constitution Committee; Program Committee 4, Prom Committee 3

LARRY THOMAS WILLIAMS - F. F. A. 1,2,3,4, Baseball 1, Pep Club 3,4, Glee Club 4, Prom Committee

MARY SIBYL WRIGHT - F. H. A. 1,2,3,4; Pianist 3, Glee Club 1,2,3,4; Assistant Accompanist 3,4, Pep Club 4, F. T. A. 3,4; President 4, Class Secretary 4, "Most Considerate" 4, "Most Dependable" 4, Music 1,2,3, Prom Committee 3



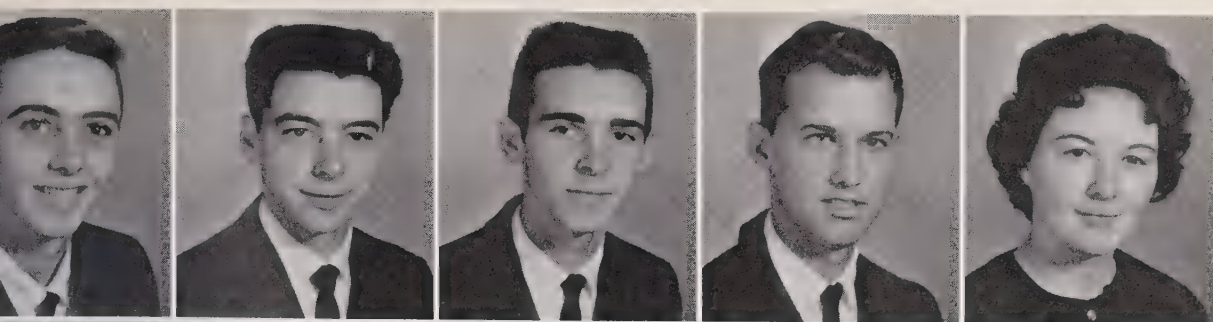
JUNIORS



Junior Class Officers

President - - - - - TOBY KIKER
 Secretary - - - - - BECKY POPE
 Treasurer - - - - - NORMA THOMAS
 Vice-President - - - - - BENNY CLANTON

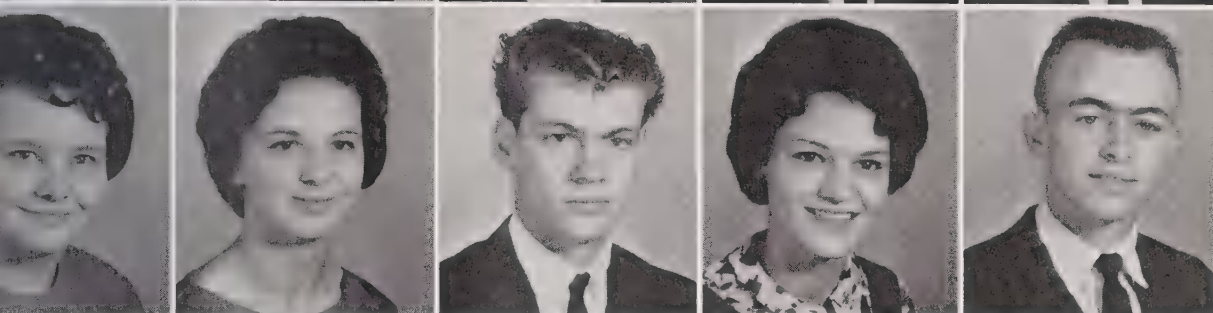
We shall always remember our Junior year at Anson High. At last we are upper-classmen. Can we forget . . . the fun of selling magazines for our Junior-Senior . . . reaching the sky with our 100 per cent participation . . . and our hard-earned title - "Jolly Magazine Selling Juniors" . . . the thrilling sports, whether participating or spectating . . . on the football field . . . on the basketball court . . . and on the baseball diamond . . . after the game sock-hops . . . and most of all the Junior-Senior? We can truly say this year has been great . . . but next year will be ours.



Boggan Allen
Edward Allen
Steve Allen
Terry Allen
Elaine Arrington



Carol Baucom
Ramona Beachum
Janet Beck
Tate Beverly
William Beverly



Trena Biles
June Bowers
Fred Braswell
Frances Brock
Frances Burr



Barbara Carpenter
Betty Carpenter
Beverly Carpenter
Mike Carpenter
Pat Caudle



Robbie Caudle
Benny Clanton
Rachel Cornett
Carolyn Cornwell
Barbara Cowick

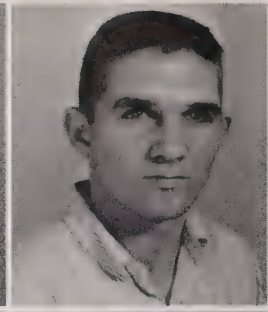
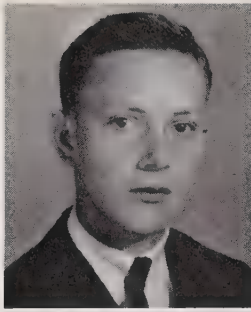


Judy Cox
Tim Cratty
Lib Cromartie
Barbara Dabbs
Linda Davis

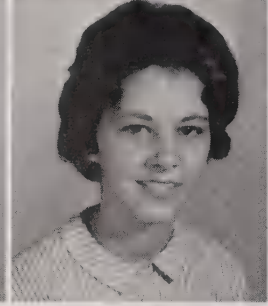
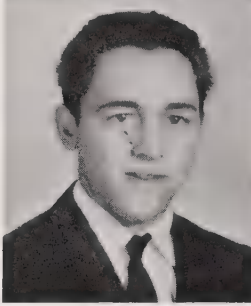


Roy Dawkins
Nancy Deason
Linda Diggs
Guy Edwards, Jr.
Douglas Flake

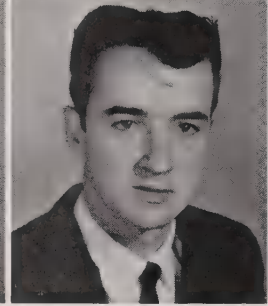
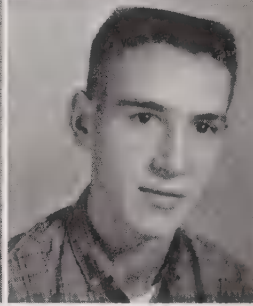
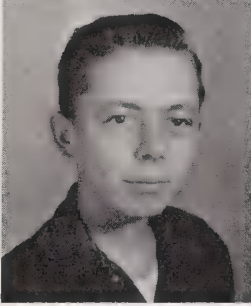
Johnny Flake
Elsie Gaddy
Max Gaddy
Otis Galliher
Linda Gooden



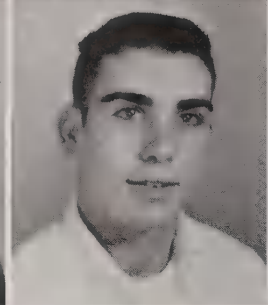
Freddie Goodwin
Patsy Griffin
Bruce Harrington
Carol Harrington
Kenny Harrington



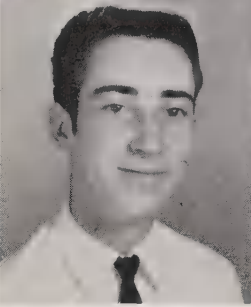
Furman Harward
Sue Harward
Ray Hasty
William Helms
Clinton Hill



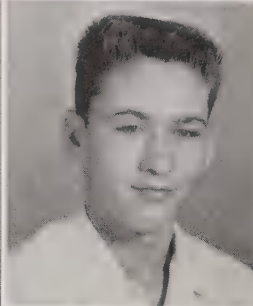
Delaine Hill
Larry Hinson
Wayne Holman
Delane Horne
Emeline Horne



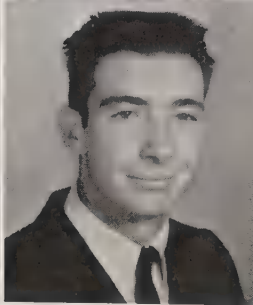
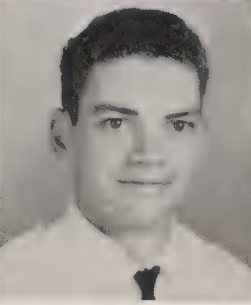
Nelson Horne
Gary Howell
Dorrence Hutchinson
Jane Ingram
Hilda Johnson

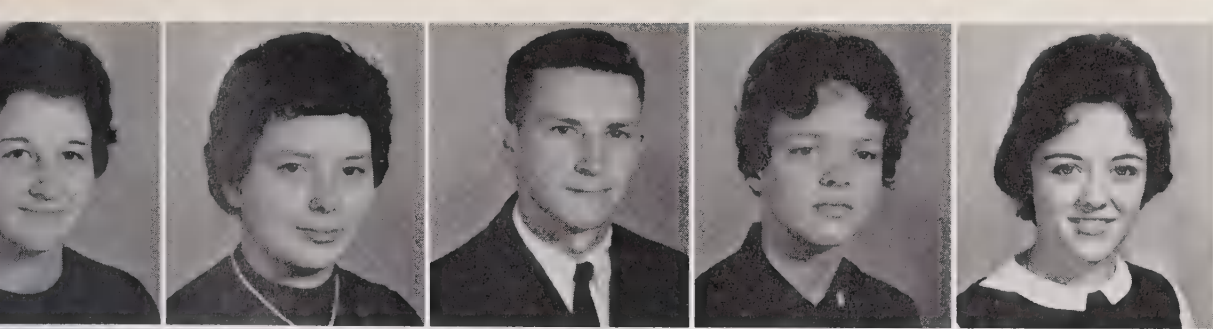


Rochelle Johnson
Doris Jordan
Warren Kelly
Carolyn Kiker
Toby Kiker

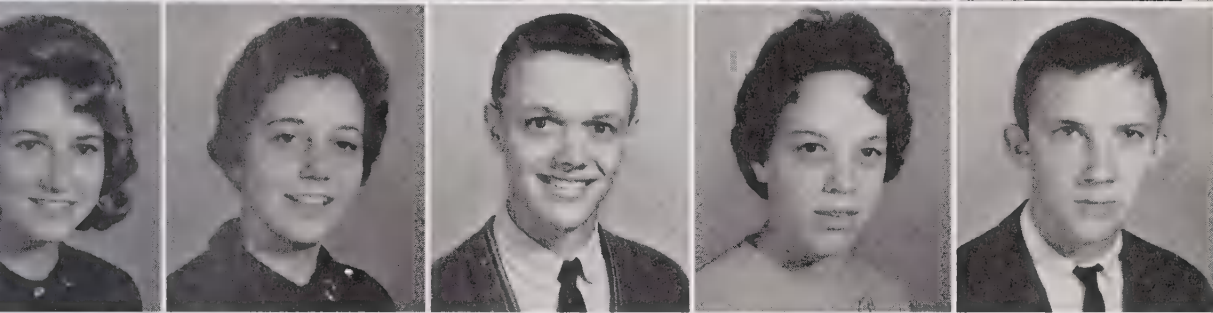


Warren Kimrey
Billy Lancaster
Angelia Lee
Wincie Lee
James Luther

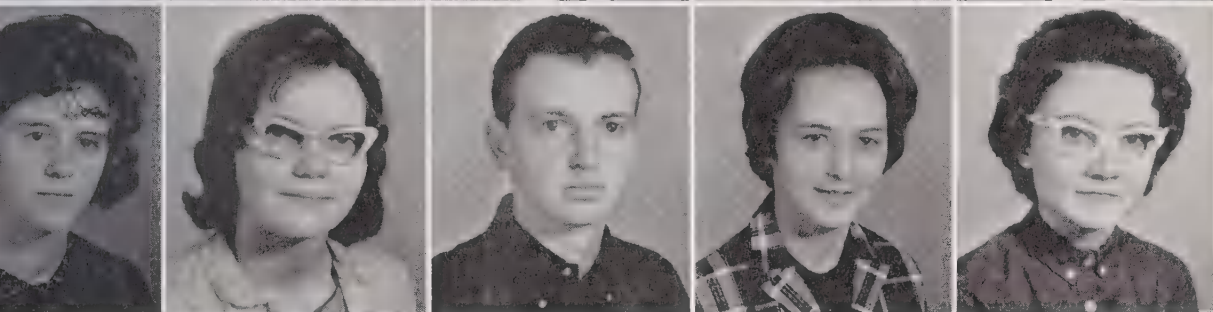




Laura Luther
Mary Luther
Danny Martin
Marie Martin
Nancy Martin



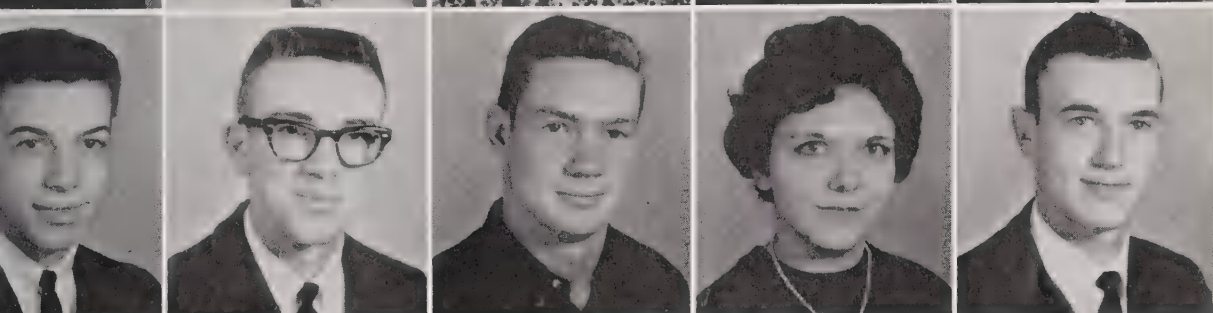
Emily Maske
Fleeta Mayse
Roger McCollum
Carolyn McCormick
Bob McRae



Margaret McSwain
Violet Meachum
Jimmy Mills
Marjorie Mitchell
Donna Morris



Barry Mullis
Joyce Nance
Mary Alice Phifer
Becky Pope
Frank Pope



Lenny Pope
Steve Poplin
Harvey Randall
Pat Randall
Marion Ratliff



Diane Raye
Jane Rushing
Dianne Seago
Jimmy Seago
Billy Sikes



Barbara Smith
Reba Smith
Sandra Smith
Bill Springer
Janet Starling

Bobby Stegall
Becky Stewart
Dawn Streater
Barbara Talent
Betty Talent



Helena Tarlton
Ronnie Tarlton
Barbara Taylor
Delores Thomas
Douglas Thomas



Frances Thomas
Jimmy Thomas
Minnie Ann Thomas
Myra Thomas
Norma Thomas



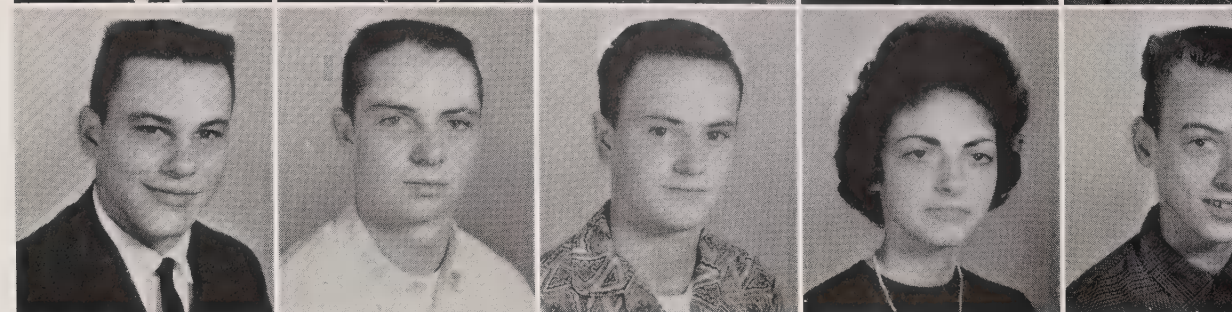
Walter Thomas
Tommy Tice
Ann Tyson
Lavon Tyson
Vicky Usrey



Charles Vaughn
Judy Watkins
Janie West
Terry White
Gornie Williams

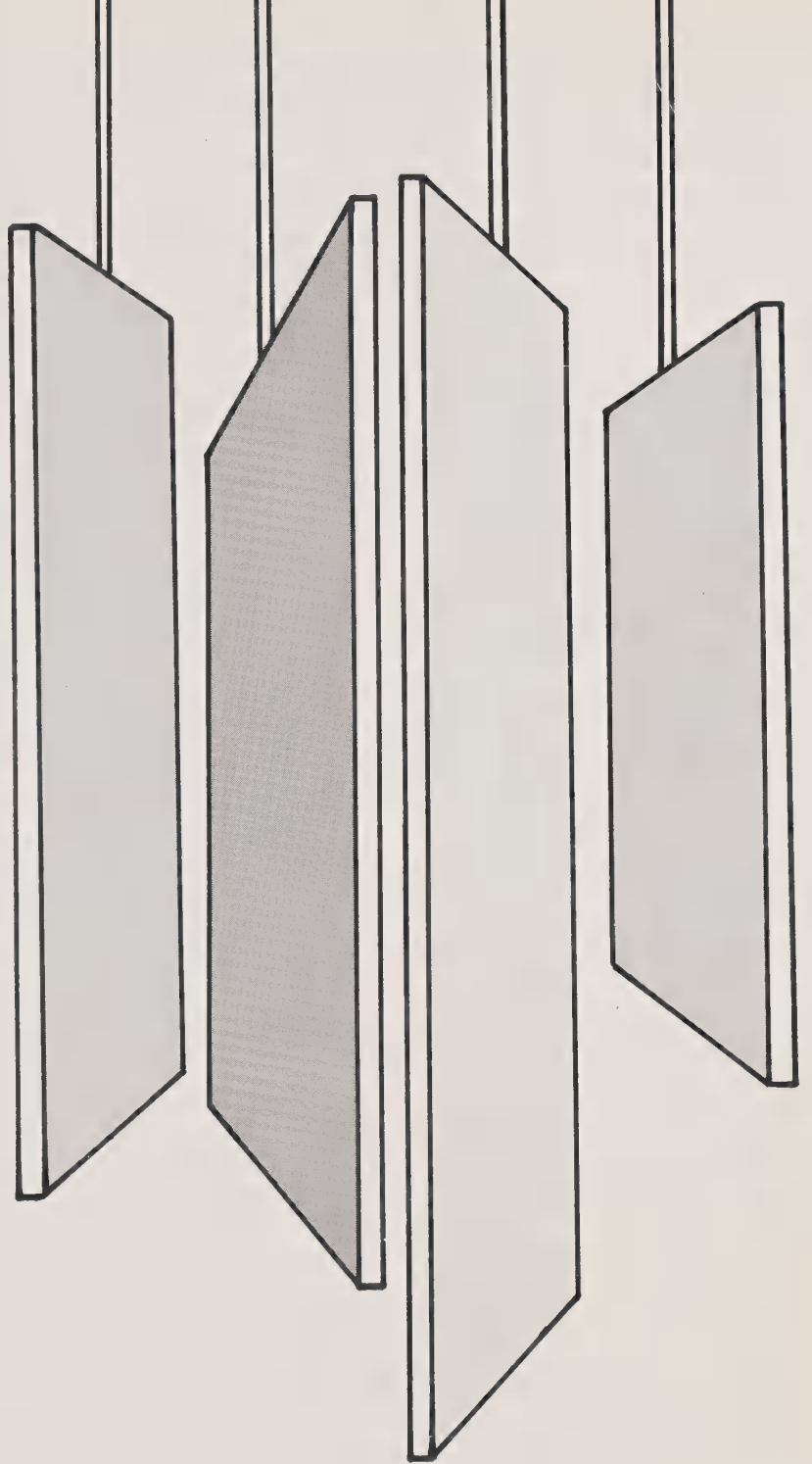
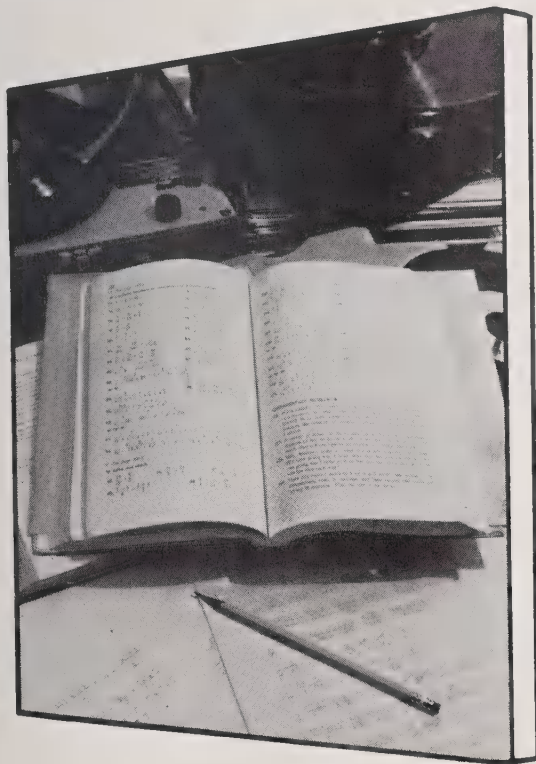


Preston Williams
Wayne Williams
John Wilson
Patsy Winfield
Tommy Winfield



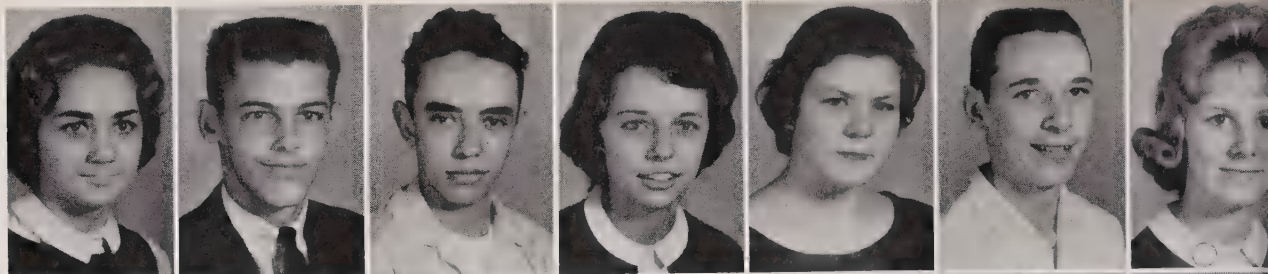
Cynthia Wright





SOPHOMORES

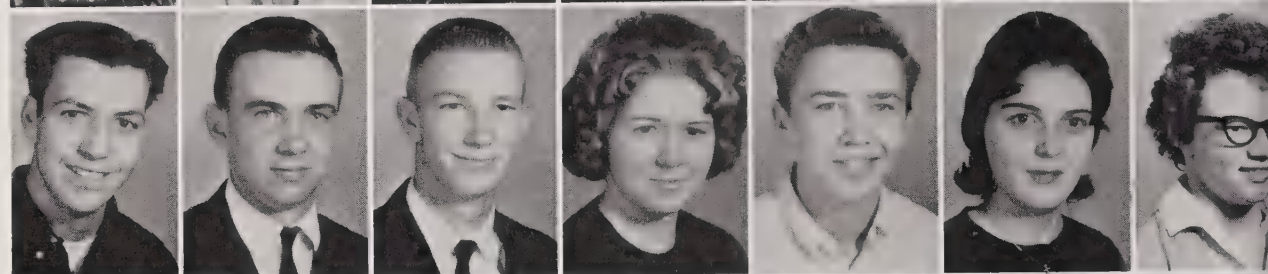
Martha Allen
 Roger Aycock
 Charles Bailey
 Becky Baker
 Derlene Baker
 Butch Ballard
 Patsy Beachum



Patricia Beverly
 Nat Black
 Ann Bowers
 Judy Braswell
 Tommy Bricker
 Joyce Brooks
 Wayne Brooks



Jerry Burroughs
 Joe Cameron
 Ronnie Carey
 Betsy Carpenter
 Dennis Carpenter
 Helen Carpenter
 Julia Carpenter



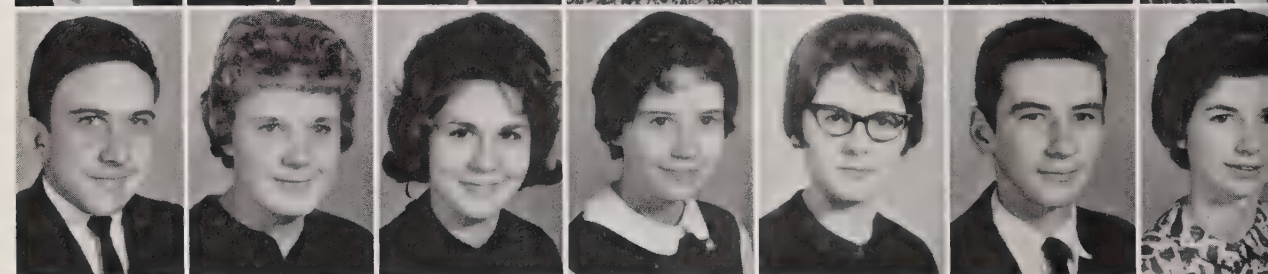
Larry Carpenter
 Anita Caudle
 Marie Clanton
 Tommy Coppedge
 Carl Corthren
 Eddie Cowick
 Betty Davis



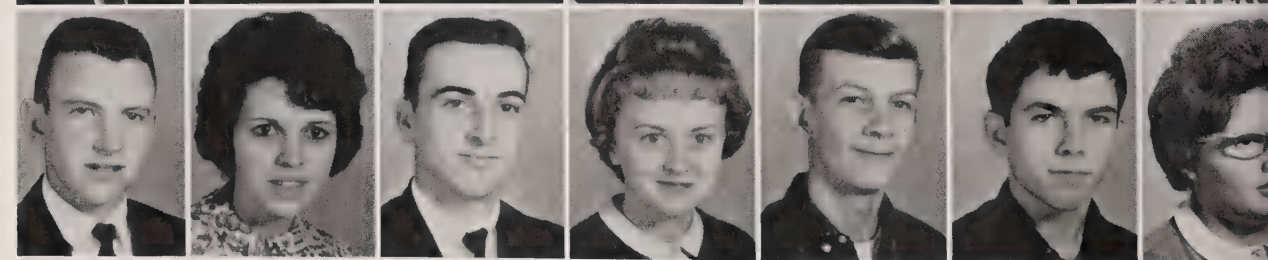
Eva Davis
 Robert Davis
 Sue Davis
 Carolyn Dean
 James Dean
 Brenda Deese
 Martha Deitz



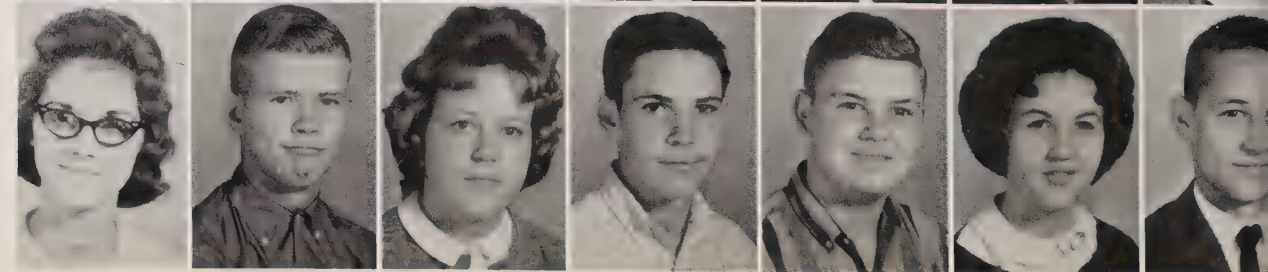
Bob Driggers
 Virginia Driggers
 Louise Dutton
 Elaine Earnhardt
 Cora Edwards
 George Edwards
 Jane Edwards



Lynn Edwards
 Rita Edwards
 Michael Evans
 Sandra Flake
 David Freeman
 Benny Galliher
 Rachael Galliher

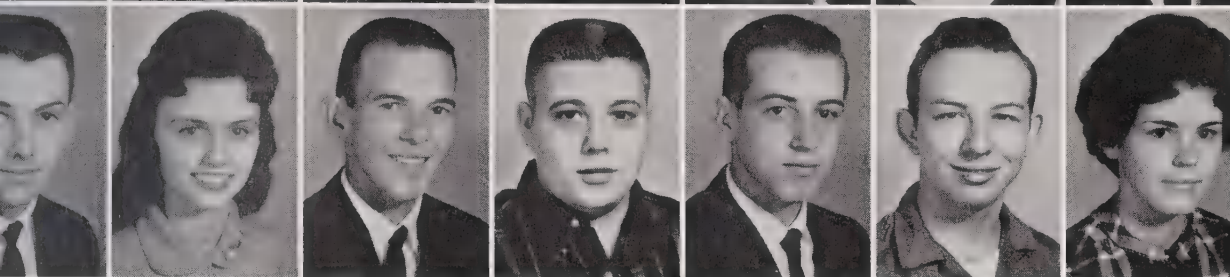


Linda Goodwin
 Lonnie Goodwin
 Mary E. Goodwin
 David Griffin
 Jackie Griffin
 Judy Griffin
 Joe Gulledge





Alice Hamilton
 Tony Hanna
 Gary Harrington
 Audrey Hartsell
 Phyllis Hasty
 Janet Hawks
 Al Hedrick, Jr.



Mac Hendley
 Gail Henry
 Jay Higgenbotham
 Butch High
 Monte High
 Charles Hildreth
 Debbie Hildreth



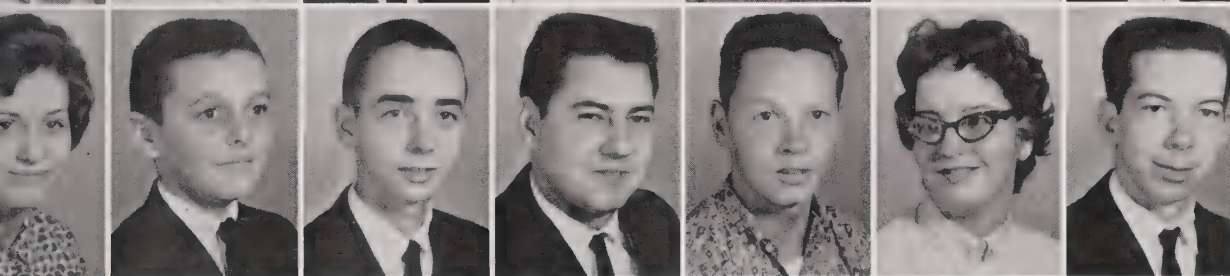
Jewel Hildreth
 Linda Hildreth
 Mary Hildreth
 Pansy Horne
 Thomas Horne
 Ward Horne
 Edward Howell



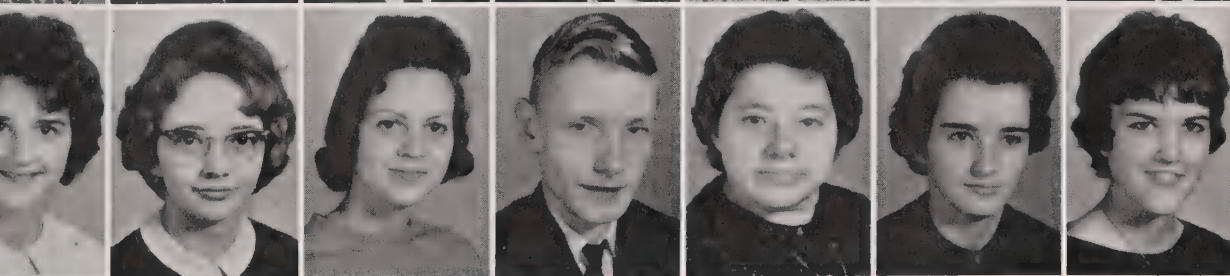
Janet Howell
 Norma Howell
 Lynne Hurley
 Kay Hutchinson
 Mike Ingold
 Bobby Johnson
 Dawn Johnson



Jimmy Jorden
 Linda Kiker
 Maynard Knotts, Jr.
 Nancy Landen
 Howard Lisk, Jr.
 Robert Luther
 Linda Maner



Marie Marks
 Jimmy Martin, III
 Johnny Martin
 Ronnie Martin
 Billy McCormick
 Linda McCormick
 Mike McCormick



Ann McIntosh
 Martha McLester
 Linda McMurrian
 Mike Morrison
 Carolyn Moss
 Joyce Myrick
 Peggy Nance



Diane Newton
 Martha Parker
 Merle Parker
 Sharon Peters
 Frank Ponds
 Jimmy Poplin
 Sarah Poplin

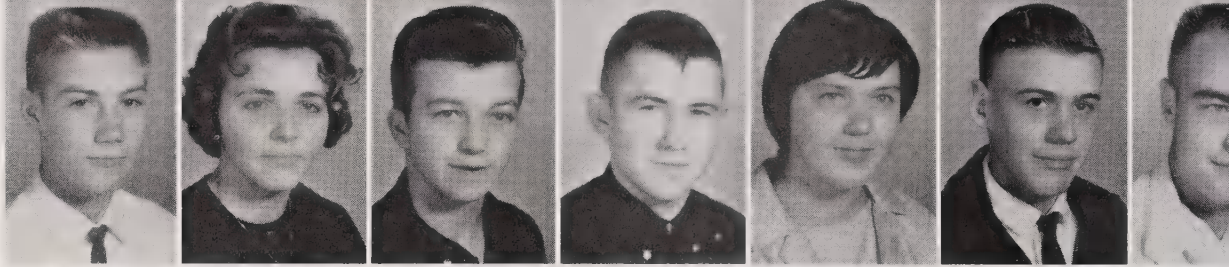
Rebecca Porter
 Dallas Ratliff
 Ernestine Ratliff
 Stancil Raye
 Janet Rollins
 Danny Shankle
 Nancy Sheppard



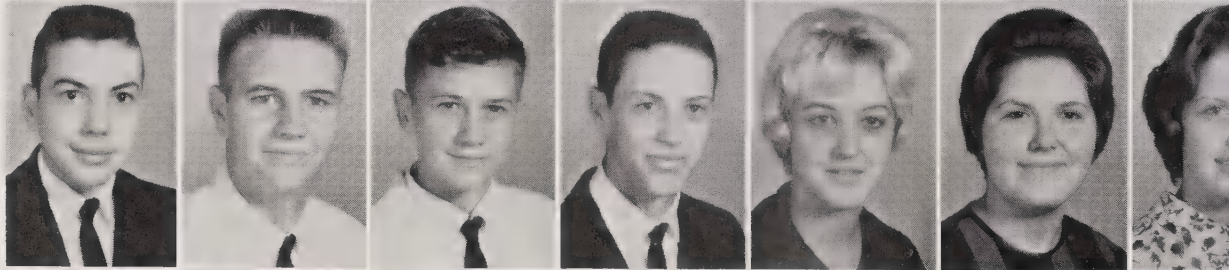
Jane Sikes
 Ralph Sikes, Jr.
 Alta Simpson
 Jackie Smith
 Harold Starling
 Joe Stegall
 Johnny Streater



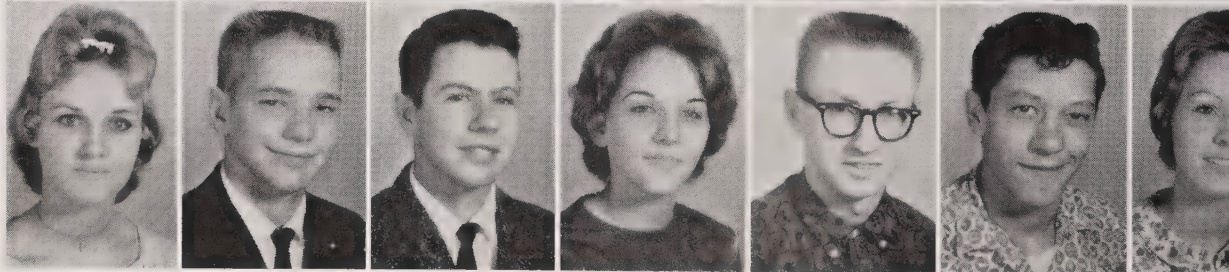
Jimmy Strickland
 Dorothy Tarlton
 Larry Tarlton
 Allen Thomas
 Brenda Thomas
 Ernie Thomas
 Joe Thomas



Lanny Thomas
 Randy Thomas
 Robert Thomas
 Steve Thomas
 Barbara Thompson
 Carole Thompson
 Diane Traywick

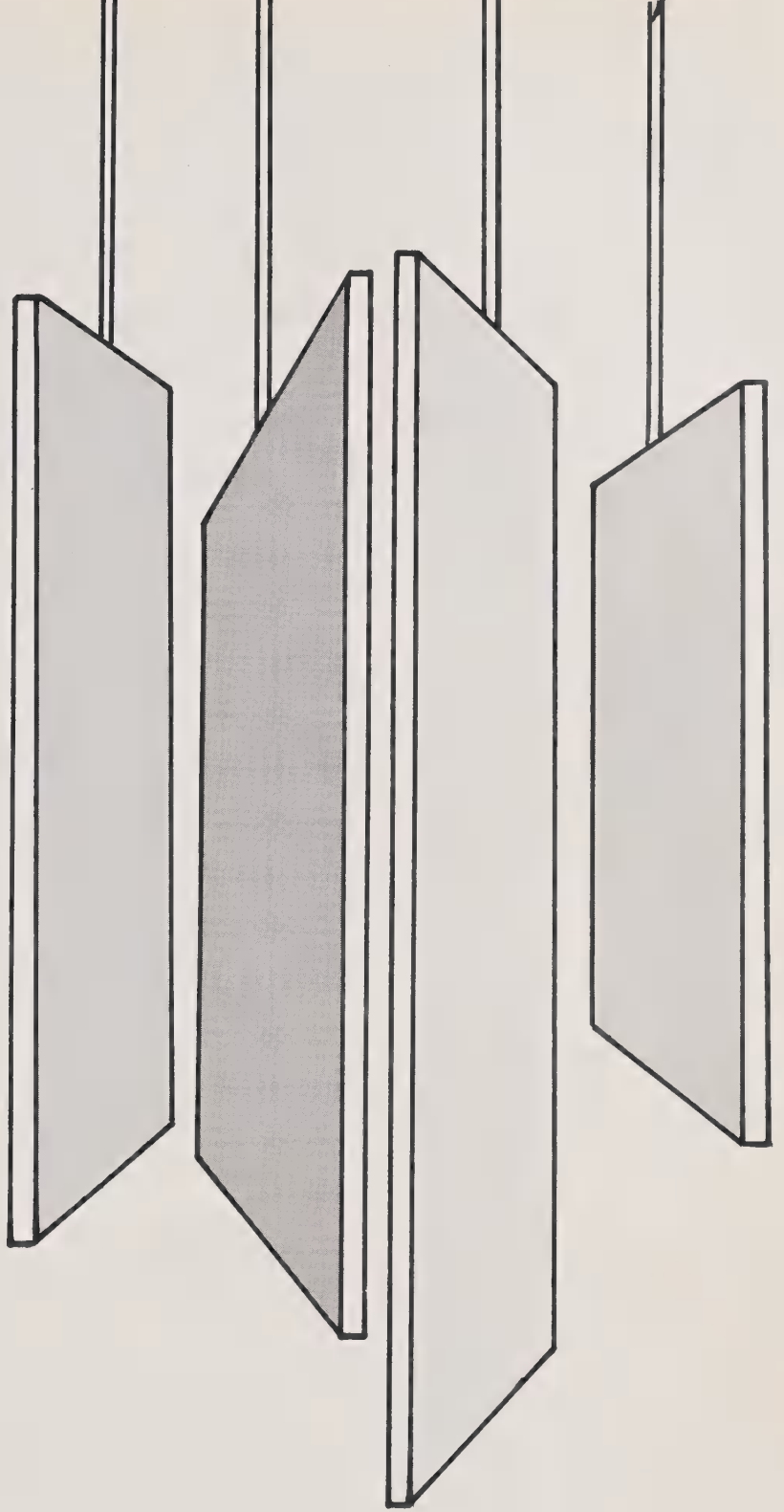


Jean Trull
 Lane Tucker
 Eddie Turner
 Phyllis Tyson
 Van Tyson
 Dennis Vaughn
 Margaret Watkins



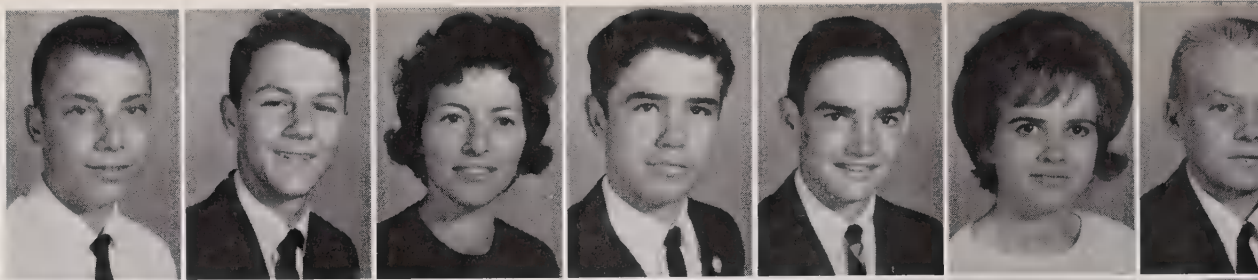
Ann Wilhoit
 Betty Williams
 Peggy Williams
 Ronald Witherspoon
 Avis Wright



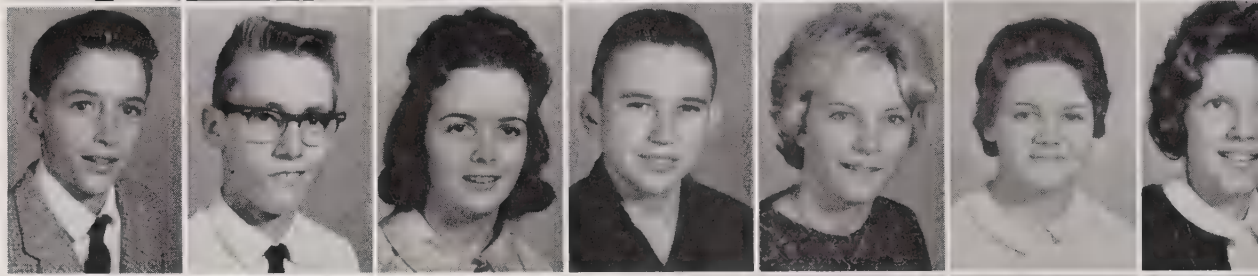


FRESHMEN

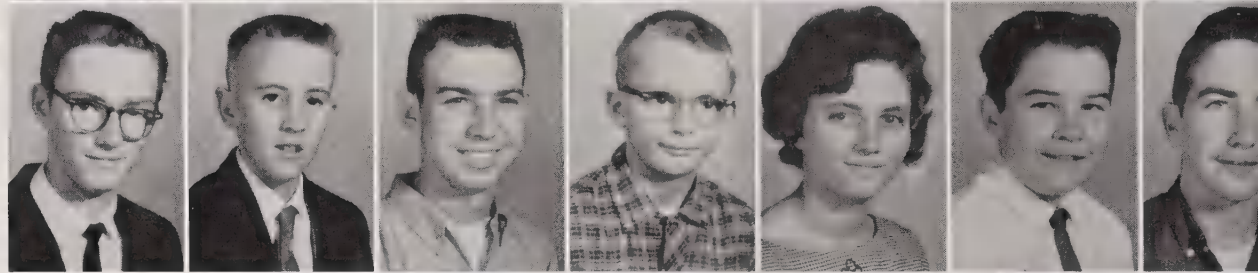
Tommy Allen
Gene Allman
Pat Arrington
Hal Austin
Charles Ballard
Trudy Baucom
Don Beck



Franklin Beverly
Jesse Beverly
Ruth Ann Biles
Ricky Billingsley
Myrtle Boatwright
Iris Bowers
Nettie Sue Bowers



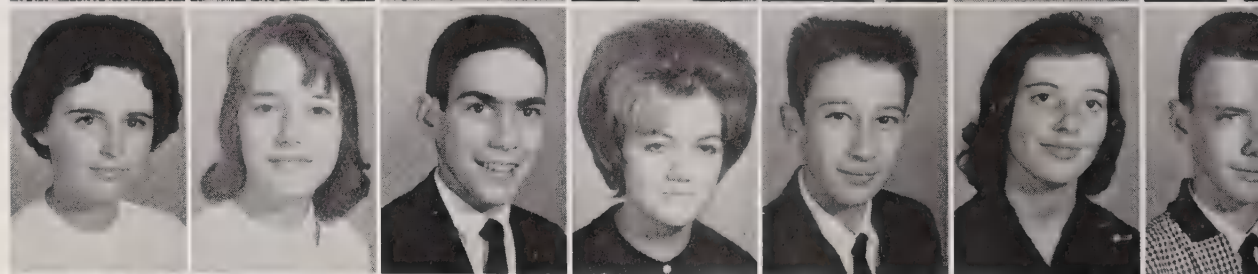
Jimmy Brigman
Richard Broadway
Gene Burroughs
Bobby Carpenter
Carolyn Carpenter
Gary Carpenter
Harold Carpenter



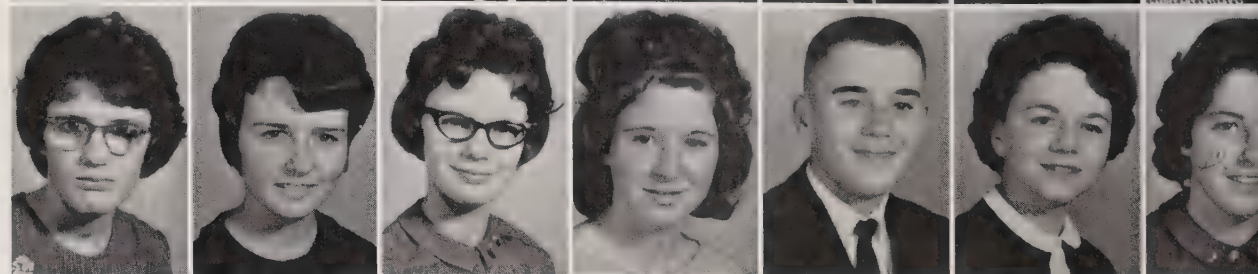
Johnny Carpenter
Shirley Carpenter
Sue Carpenter
Jackie Caudle
Stephen Caudle
Betty Clanton
Roger Clark



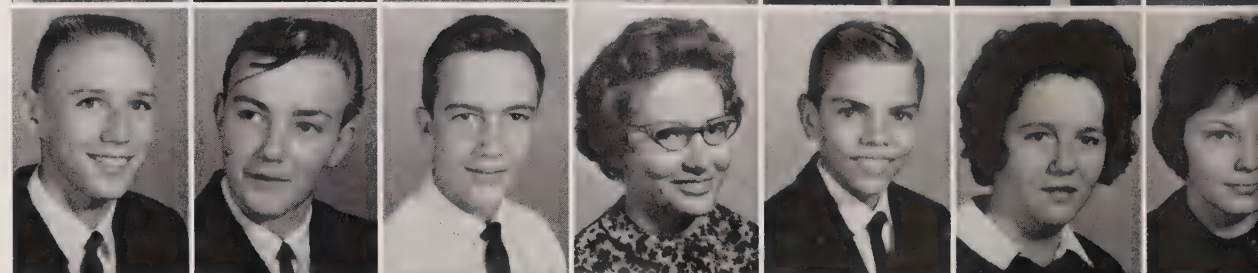
Nancy Cordell
Betty Lee Cowick
Angus Cromartie
Cathy Curran
Roy Lee Davis
Martha Ann Dawkins
Barry Dellinger



Audrey Dennis
Cecelia Diggs
Linda Diggs
Sylvia Driggers
Eddie Dunlap
Carolyn Dutton
Kathy Dutton



Darrell Edwards
David Everhart
Eddie Flake
Joyce Flake
Jimmy Freeman
Kathryn Furr
Edith Gaddy

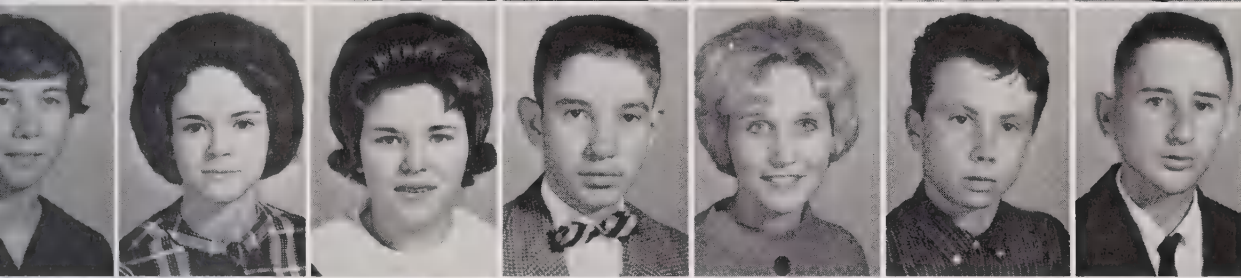


Barbara Galliher
Bobby Gathings
Mary Ann Glenn
Brenda Goodwin
Cardelia Goodwin
Cora Goodwin
John Goodwin

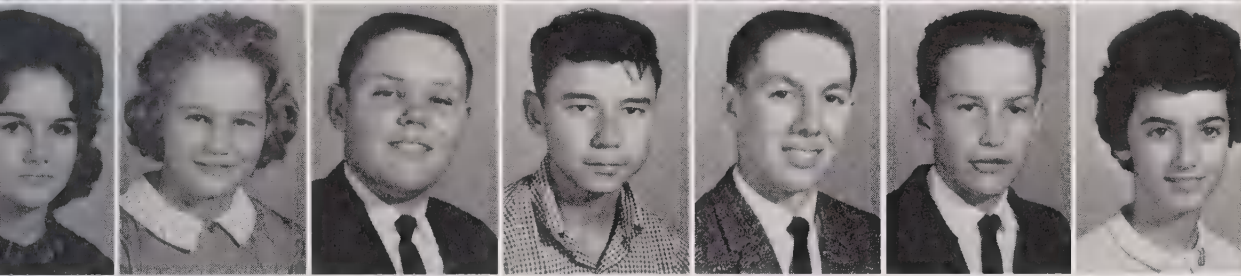




Leo Goodwin
 Carol Griffin
 Barry Grooms
 Dianne Harrington
 Michael Harris
 Mitchell Hartsell
 Rhonda Hasty



Linda Hildreth
 Renay Hildreth
 Susan Hildreth
 William Hildreth
 Brenda Horne
 Roger Horne
 Ronnie Horne



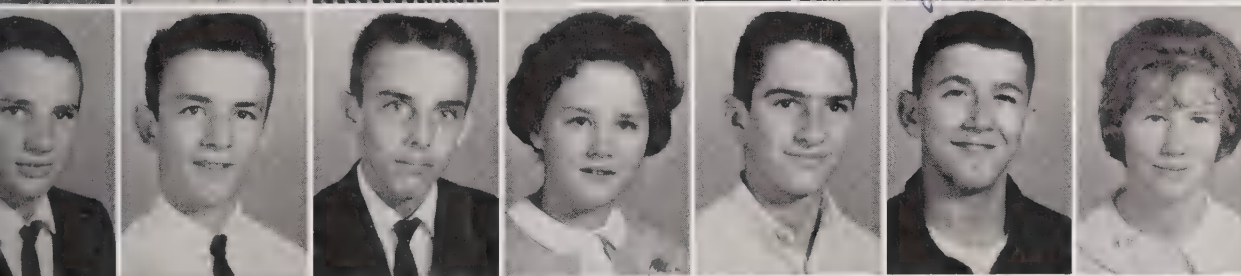
Janice Hornback
 Anna Howell
 Jimmy Huntley
 Dewey Jacobs
 Gregory Johnson
 Gary Jones
 Helen Jones



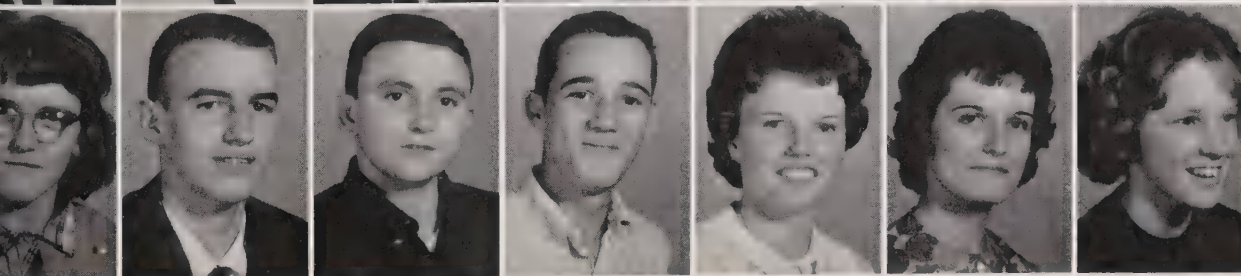
Vera Jordan
 Carol Kearney
 John Kelly
 Bonnie Kiker
 Donna Kiker
 Delores Kirk
 Geraldine Lee



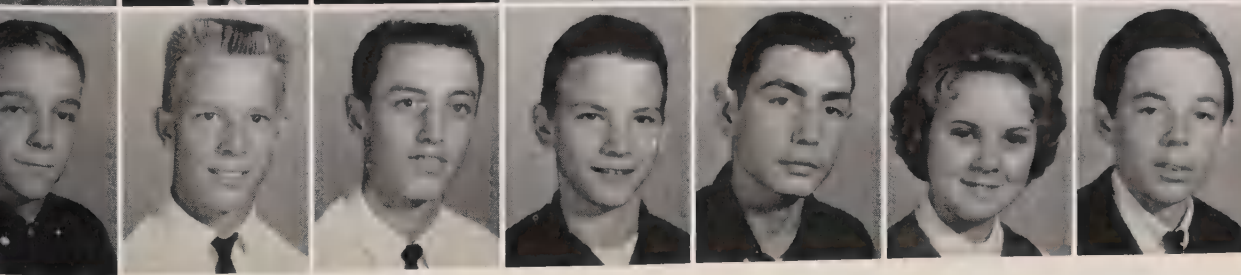
Steve Lee
 Darrell Little
 Ann Locklear
 Carolyn Maner
 Jason Martin
 Joyce Martin
 Mary Martin



Mike Martin
 Willis Martin
 Bobby McCollum
 Dorothy McIntosh
 Dan McLaurin
 Roe McLester
 Myrtle McSwain

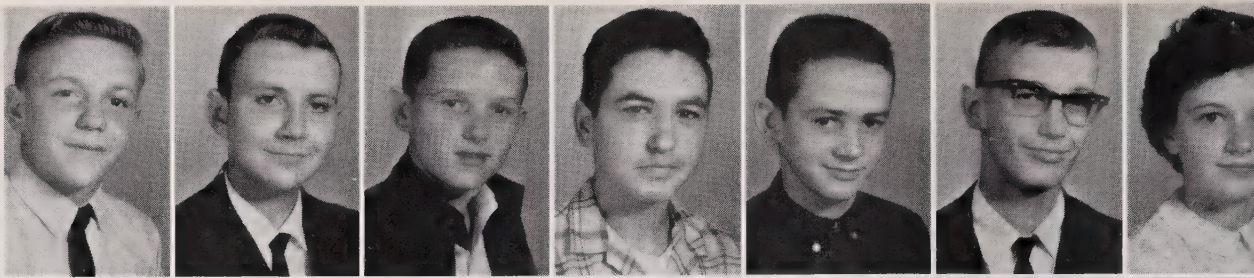


Cathy Meachum
 Parker Meeks
 Butch Melton
 Arthur Miller
 Jeanette Morris
 Lucy Morris
 Linda Morrison

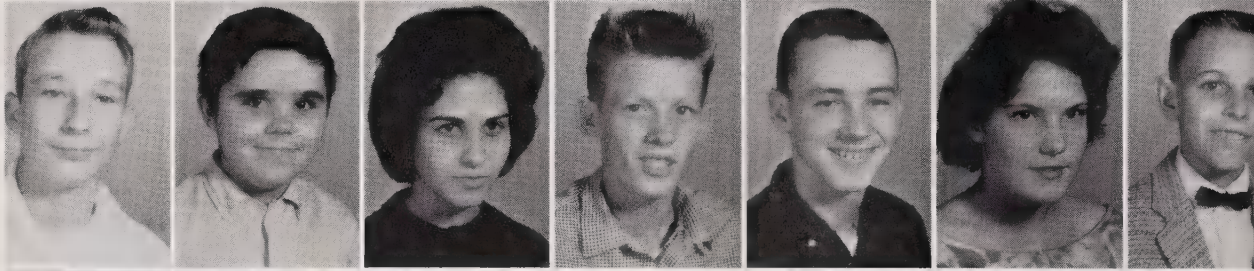


Henry Morton
 Roy Morton
 Bobby Moss
 Vernon Mullis
 Brenda Newsome
 Carter Newton

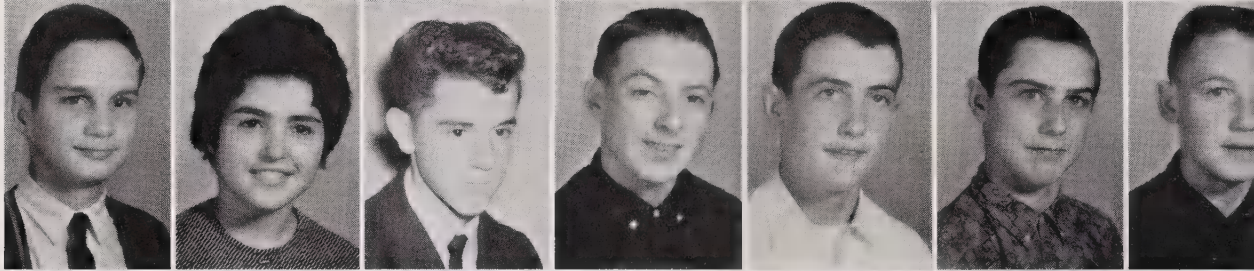
Milton Pegram
Clayton Pope, Jr.
Glen Pope
Ricky Pope
Jimmy Purser
Larry Ratliff
Peggy Ratliff



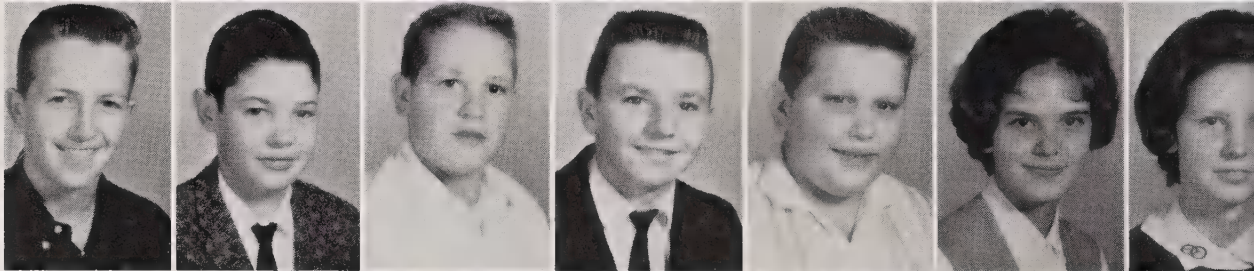
David Seigler
Johnny Sikes
Dianne Snyder
Jerry Stegall
Jimmy Story
Anne Strickland
Bill Tarlton



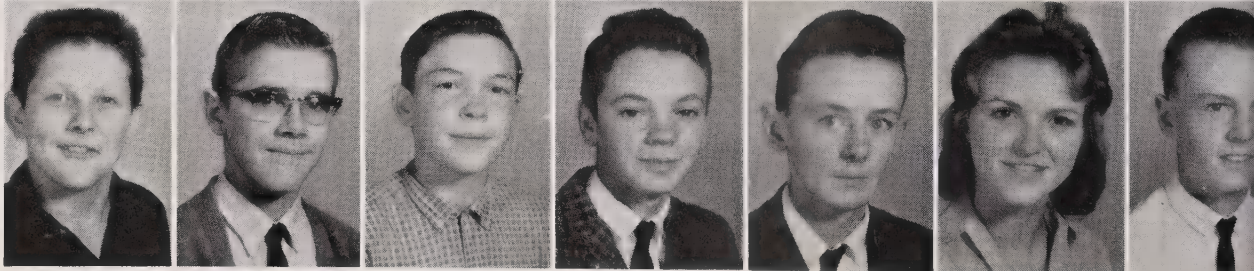
Hal Tarlton
Pat Taylor
Wayne Taylor
David Thomas
Douglas Thomas
Eugene Thomas
Kenneth Thomas

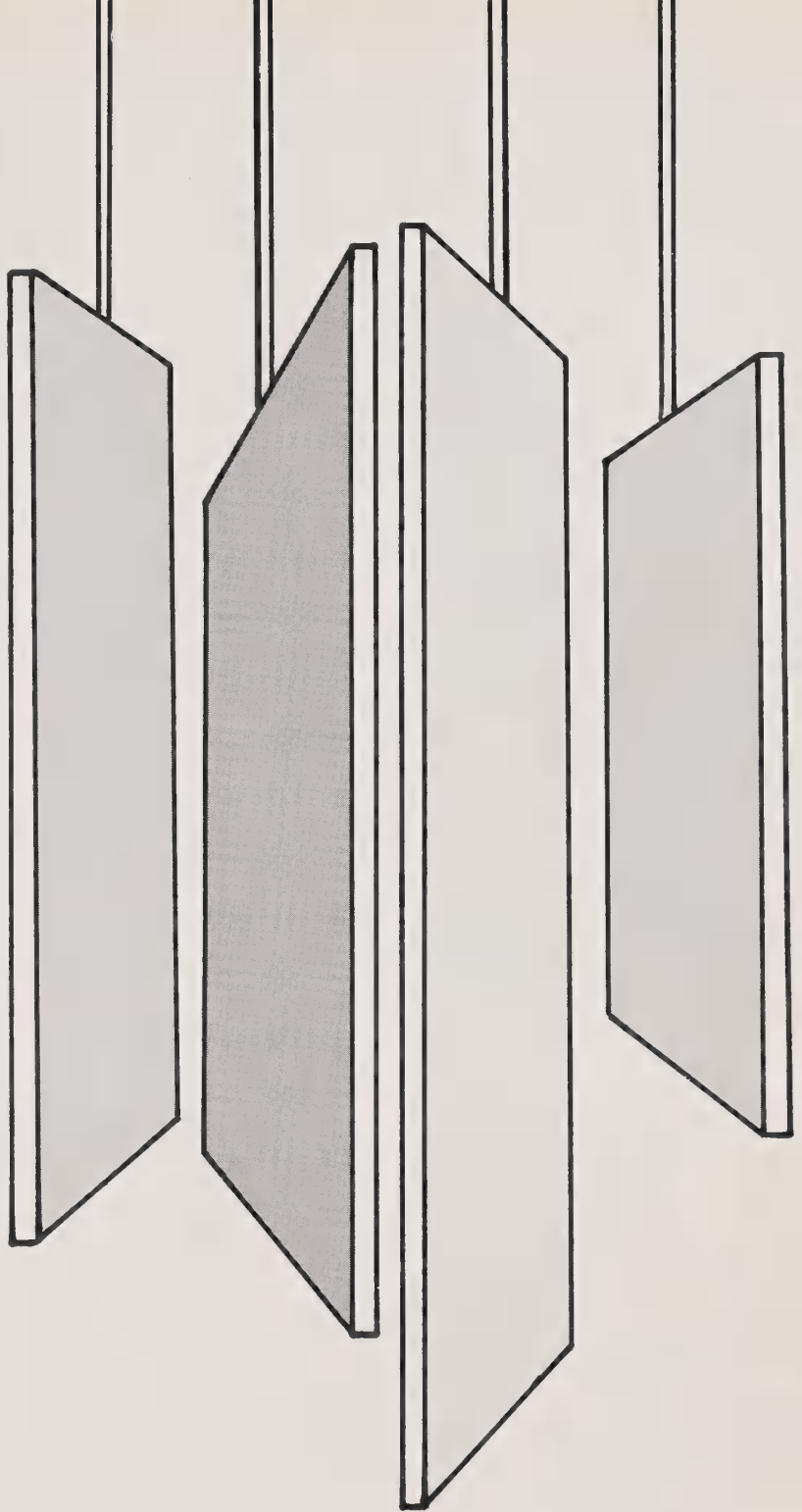


Lynn Thomas
Randy Thomas
Terry Thompson
Barry Tice
Ike Tucker
Peggy Turner
Joyce Tyson



Mark Tyson
Buddy Usrey
Roger Vaughn
Eugene Walters
Wayne Wilhoit
Margaret Williams
Mike Winfree





ATHLETICS



KNEELING: Clayton Pope, Doug Flake, Charles Ballard, Ronnie Tarlton, Garry Hasty, Robert Floyd, Lonnie Goodwin, Lavon Tyson. SECOND ROW: Ronnie Lee, Tate Beverly, Jackie Smith, Mike Ingold, Tommy Bricker, Joe Cameron, David Griffin. THIRD ROW: Coach Jim Pell, Preston Williams, Johnny Flake, Robert Ingold, Benny Clanton, Gary Horne, Eddie Cowick, Bruce Thomas, Harvey Randall, Coach Don King.

Football Team

1963-1964 FOOTBALL SCORES

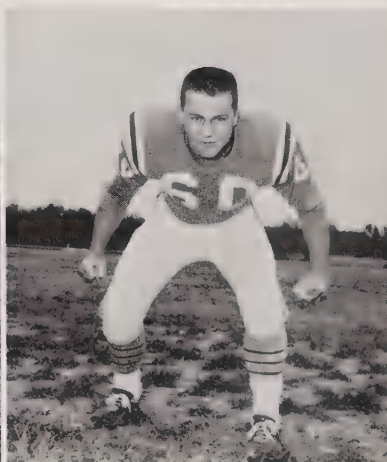
ANSON	0	Piedmont	33
ANSON	0	N. Stanley	49
ANSON	0	Harrisburg	12
ANSON	6	F. Hills	24
ANSON	19	Parkwood	13
ANSON	0	Sun Valley	39
ANSON	27	S. Stanley	87
ANSON	19	W. Stanley	14
ANSON	6	Hartsell	32
ANSON	0	Mt. Pleas.	49



EDDIE COWICK



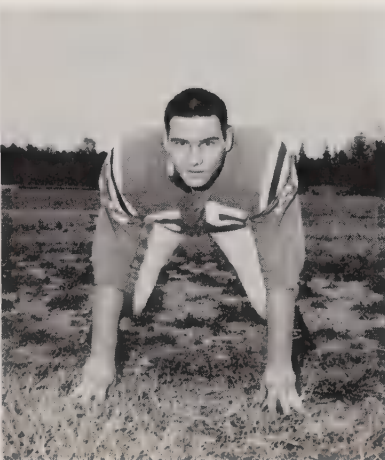
ROBERT INGOLD



RONNIE LEE
Co-Captain



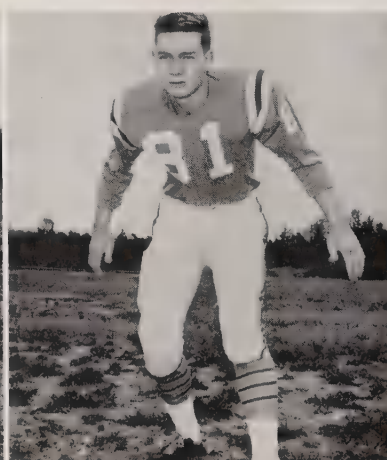
LAVON TYSON



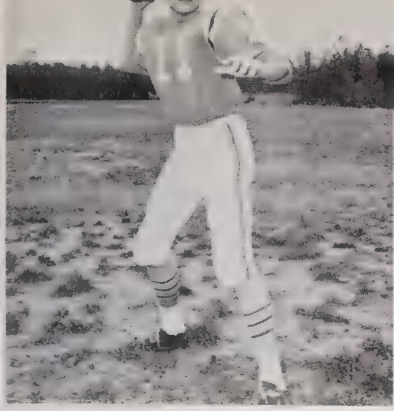
GARRY HASTY



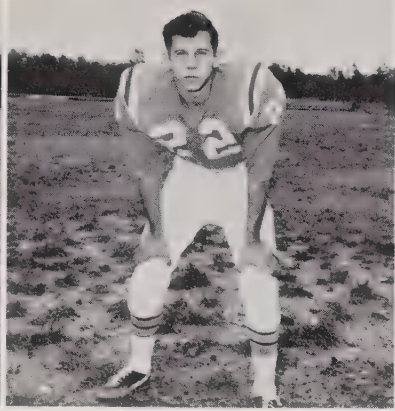
JACKIE SMITH



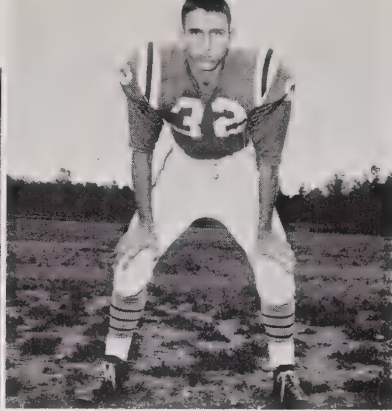
HARVEY RANDALL



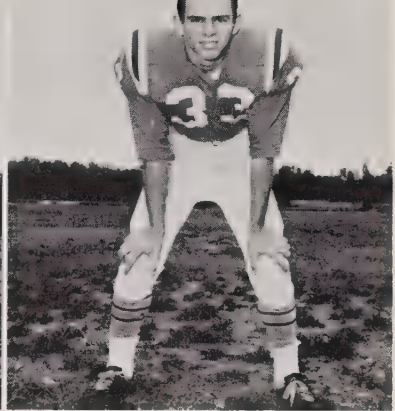
PRESTON WILLIAMS



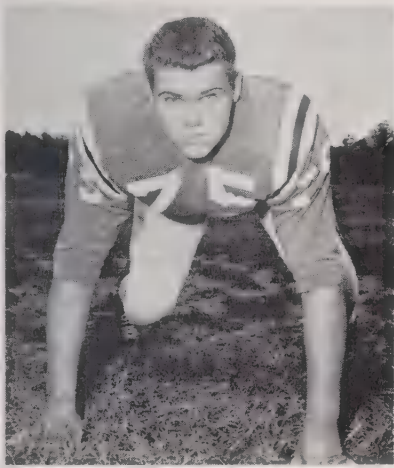
ROBERT FLOYD



BENNY CLANTON



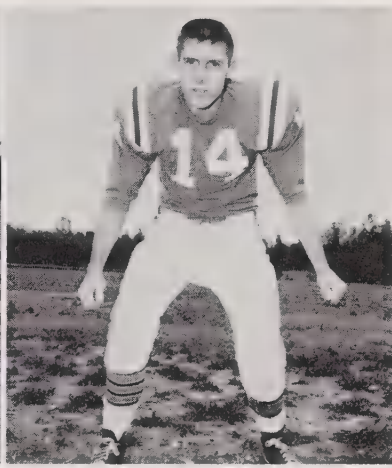
MIKE INGOLD



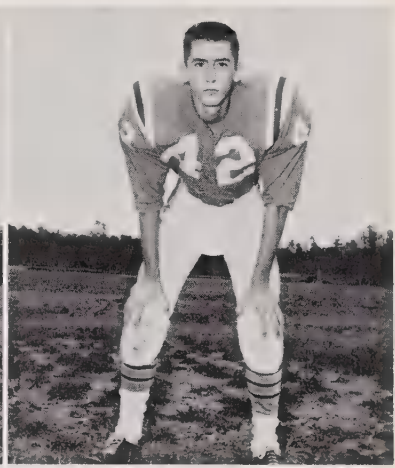
GARY HORNE



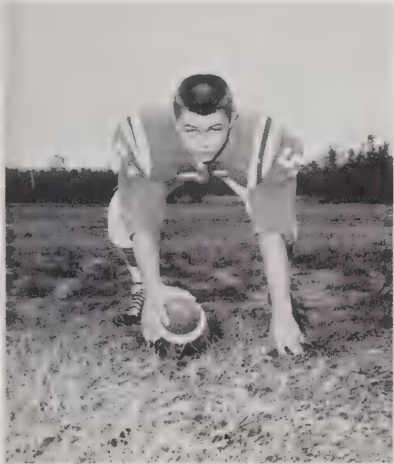
BRUCE THOMAS



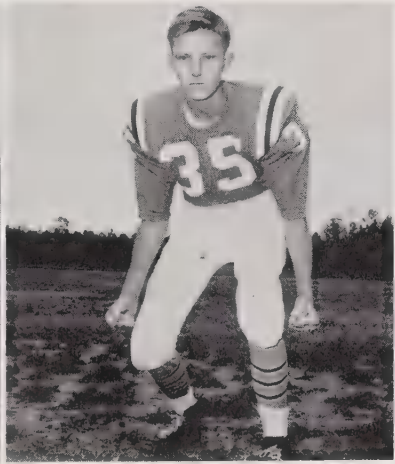
TATE BEVERLY
Co-Captain



RONNIE TARLTON



DOUG FLAKE



JOHNNY FLAKE



DAVID GRIFFIN



JOE CAMERON



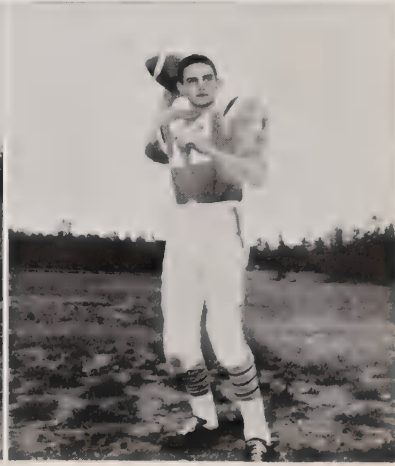
TOMMY BRICKER



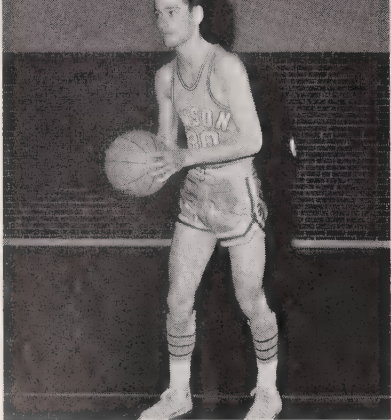
LONNIE GOODWIN



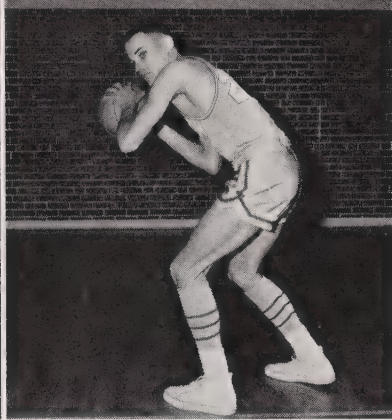
CLAYTON POPE



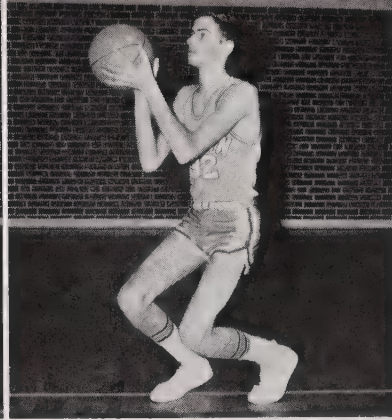
CHARLES BALLARD



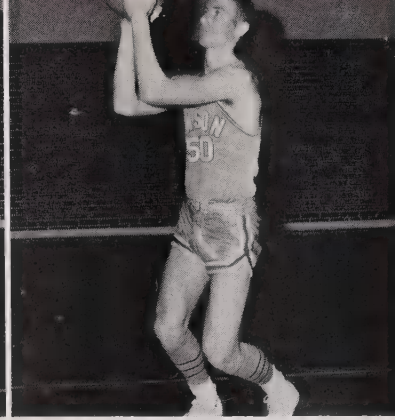
JOEL TAYLOR
Co-Captain



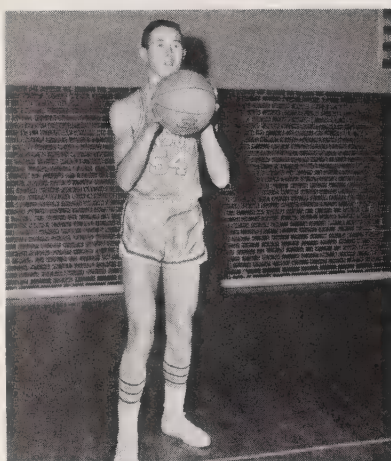
PRESTON WILLIAMS
Co-Captain



KENNY HARRINGTON



BENNY CLANTON



RALPH SIKES

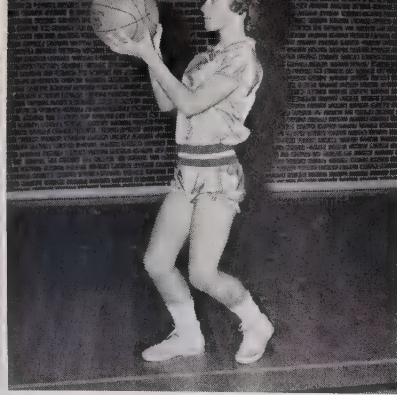


DON KING, Coach

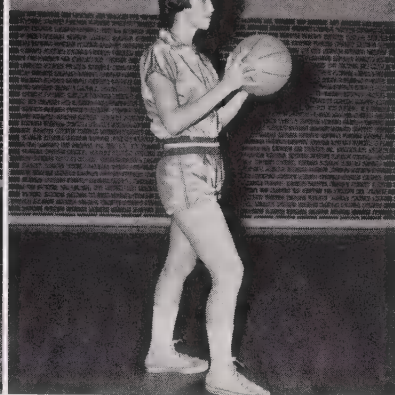
Boys' Basketball



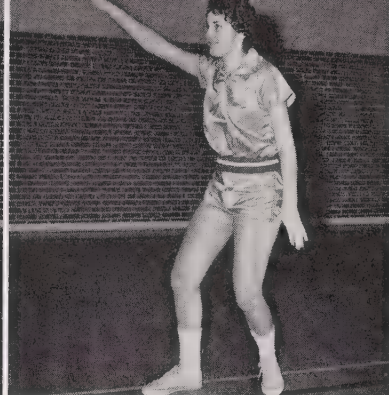
KNEELING: Don King, Coach; Bob McRae; Lynne Edwards; Joel Taylor, Co-Captain; Preston Williams, Co-Captain; Wayne Taylor; Tommy Bricker. STANDING: Larry Ratliff, Manager; Clayton Pope, Jr., Manager; Marion Ratliff; Kenny Harrington; Roger Aycock; Ralph Sikes; Benny Clanton; Eddie Cowick; Barry Tice, Manager.



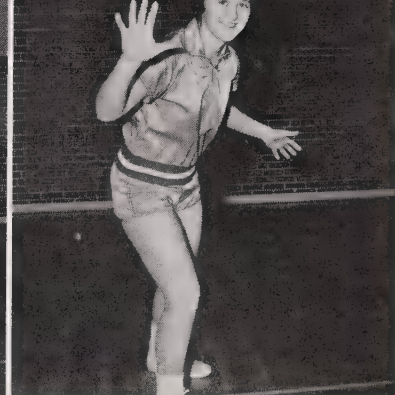
MARIE MARKS



VICKEY USREY
Co-Captain

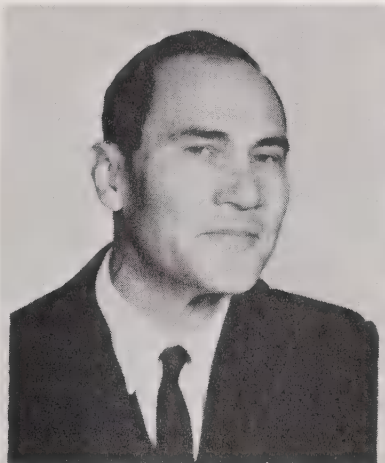


JUDY COX
Co-Captain



BETTY WILLIAMS

Girls'
Basketball



ARTHUR NEWKIRK
Coach



JUNE BOWERS



BARBARA DABBS

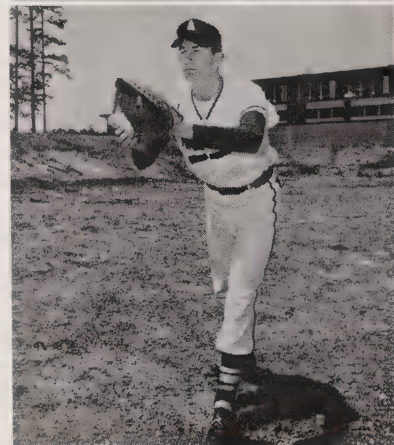
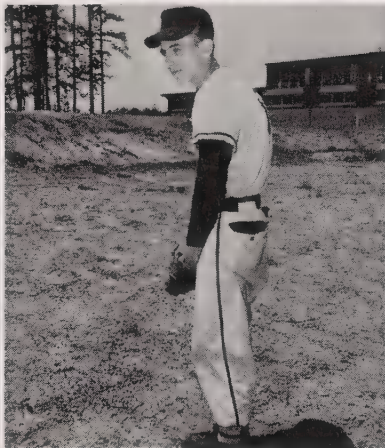
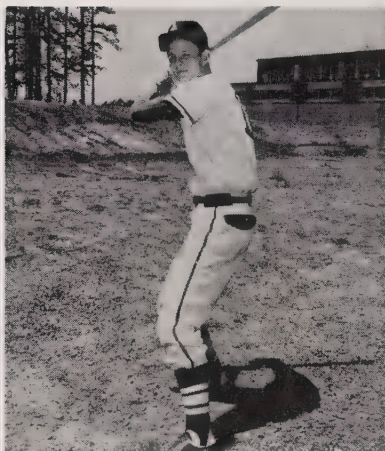


KNEELING: Arthur Newkirk, Coach; Marie Marks, June Bowers, Vickey Usrey, Co-Captain; Judy Cox, Co-Captain; Barbara Dabbs, Betty Williams, Anne McRae, Manager. STANDING: Barbara Taylor, Joyce Martin, Kathy Dutton, Doris Jordan, Mary Ann Glen, Marie Clanton, Martha Deitz, Carol Baucom, Iris Bowers, Linda Gooden.



Basketball Team

KNEELING: Danny Martin, Robert Ingold, Monte High, Joel Taylor, Lenny Pope, Robert Batten, Ronnie Tarlton, Boggan Allen, Billy Lancaster. STANDING: Roger McCollum, Merle Parker, Butch High, Harvey Randall, Robert Davis, Lavon Tyson, Burl Carpenter, William Hussey, Mickey Henry, Frank Ponds, Arthur Newkirk, Coach.



Joel Taylor, Co-Captain
Lenny Pope
Robert Ingold

William Hussey
Boggan Allen
Monte High

Robert Batten, Co-Captain
Ronnie Tarlton
Billy Lancaster



Jane Hamilton



Shirley Knotts
Chief



Jennette Horne



Ramona Beachum



Dianne Raye



Nancy Landen



Patsy Beachum



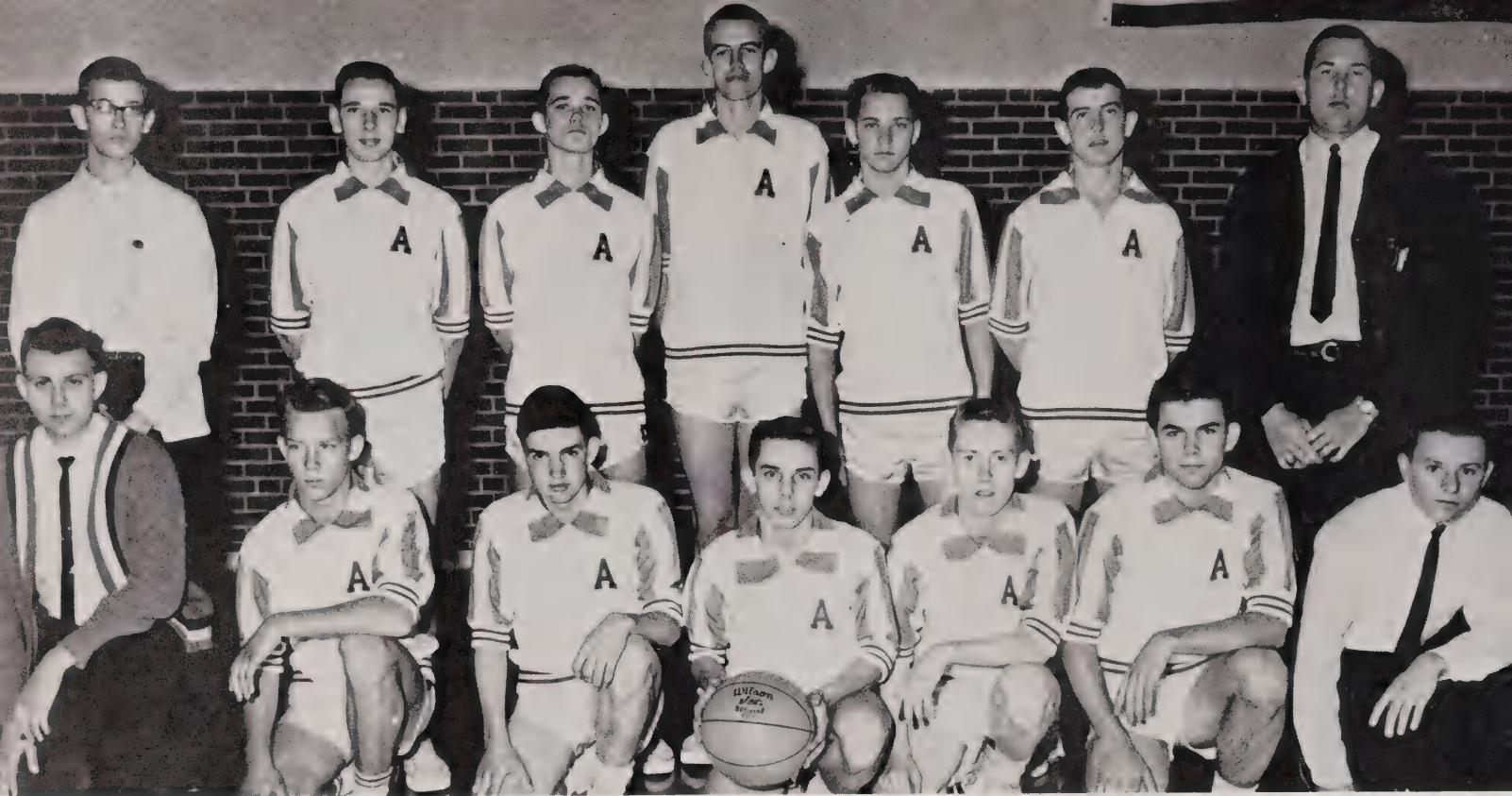
Cora Goodwin



Carol Kearney

Anson Cheerleaders





Boys' J.V. Basketball

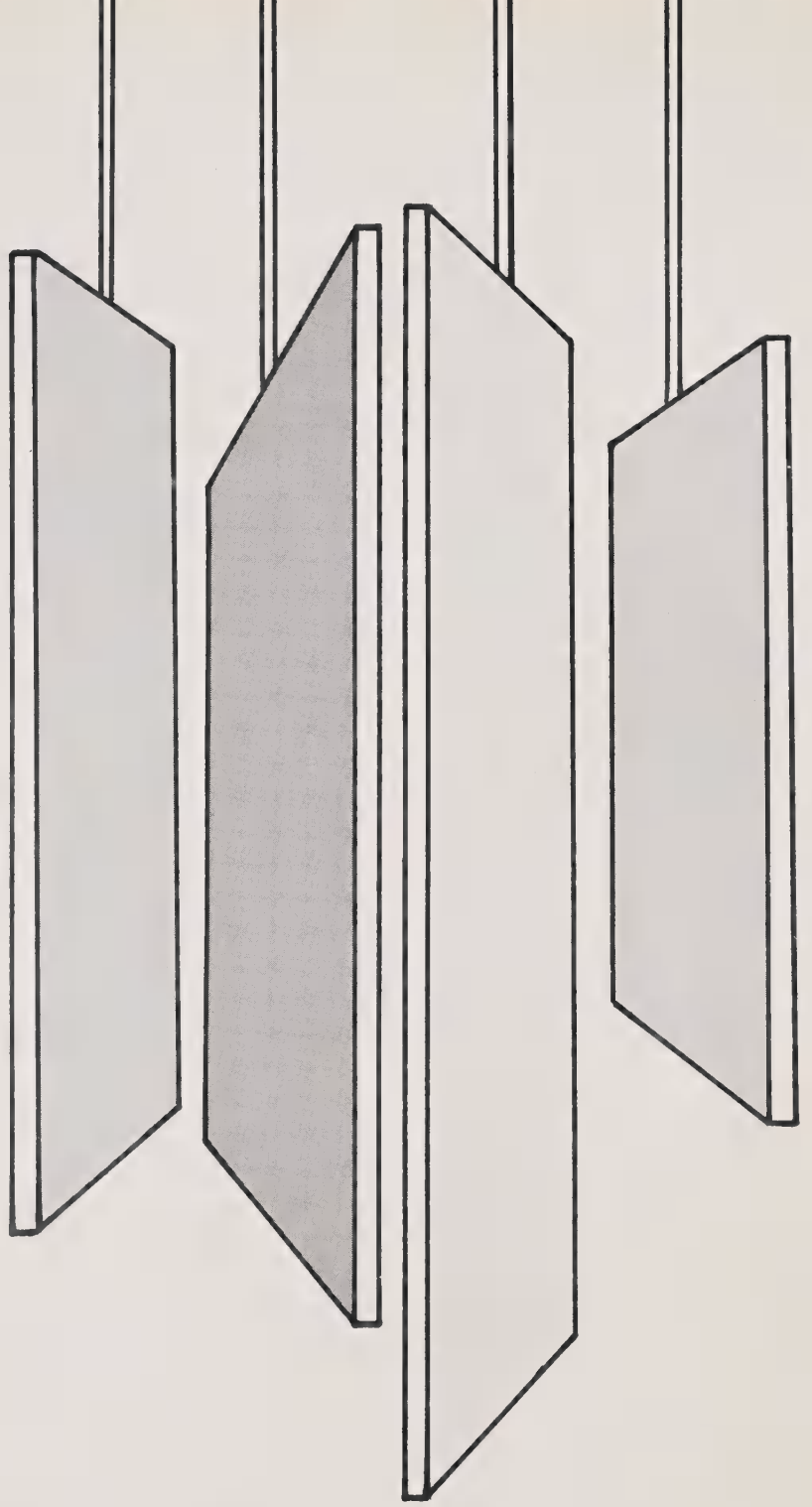
KNEELING: Clayton Pope, Manager, Roy Morton, Charles Ballard, Bobby McCollum, Jesse Beverly, Benny Galliher, Barry Tice, Manager.

STANDING: Larry Ratliff, Manager, Lee Ballard, Arthur Miller, Parker Meeks, Lane Tucker, Doug Thomas, Jim Pell, Coach.



Pep Club

SPONSOR, Coach Jim Pell



ACTIVITIES

National Honor Society

Juniors and Seniors who are outstanding in the areas of scholarship, leadership, service, and character are eligible for membership in the National Honor Society. The Honor Society is not an active club, but rather a group of students who have been given an honorary distinction. One of the most important contributions of this group to Anson High is to be the awarding of two scholarships to two worthy seniors.

Another worthwhile project of the Honor Society is the sponsoring of a White Christmas every December, for needy families in our county.

The Honor Society this year presented a "Hootenanny" in November, to raise money for the scholarships.

INDUCTION OF NEW MEMBERS





OFFICERS

SENIORS

Vicky Killian
 Anne McRae
 Judy Sellers
 Harriet McRae
 Sylvia Goodman
 Max Earnhardt
 Ronnie Thomas
 Robert Batten
 Lynn Thomas

SPONSORS

Mrs. Ruby A. Hough
 Mr. Harold G. Dellinger

MEMBERS



JUNIORS

Patricia Griffin
 Elizabeth Cromartie
 Judy Cox
 Beverly Carpenter
 June Bowers
 Ramona Beachum
 Carol Baucom
 Donna Morris
 Marie Martin
 Jane Ingram
 Gary Howell
 Guy Edwards
 Mike Carpenter
 Barbara Taylor
 Danny Martin
 Billy Sikes
 Bob McRae

Student Council

PRESIDENT

Lynn Thomas

VICE-PRESIDENT

Mike Carpenter

SECRETARY

Shirley Knotts

TREASURER

Dawn Streater

PARLIAMENTARIAN

Joel Taylor

SPONSOR

Mrs. Polly Gaddy



Glee Club

DIRECTOR

Mrs. Hardison

Latin II

Class

Anne McRae

Beverly Allen

Jill Randall

Sibyl Wright

Ross Hendley

Max Earnhardt

Robert Batten

TEACHER

Mrs. Bennett



Aquila Staff

EDITOR

Robert Batten

SPONSOR

Helen Ingram

Joe Smith

Ross Hendley

Robert Ingold

Anne McRae

Ann Bowman

Joel Taylor

Beverly Allen

Kay Price

Patricia Swart

Martha Ramsey

Vicky Killian

Harriet McRae

Sylvia Goodman

Jane Hamilton



Reporters

Marie Marks

Trudy Baucom

Linda Hildreth

Martha Dietz

Anne McRae

Donna Morris

Mary Phifer

Carol Baucom

Wayne Brooks

John Goodwin

Nelson Horne

Lane Tucker

Sandra Watkins

Delores Thomas

Janet Rollins

Ann Bowman

Hal Tarlton

Ancchi Staff

EDITOR

Beverly Allen

SPONSOR

Helen Ingram

Joe Smith

Ross Hendley

Robert Ingold

Anne McRae

Ann Bowman

Joel Taylor

Beverly Allen

Kay Price

Patricia Swart

Martha Ramsey

Vicky Killian

Harriet McRae

Sylvia Goodman

Jane Hamilton



*Health
Career
Officers*

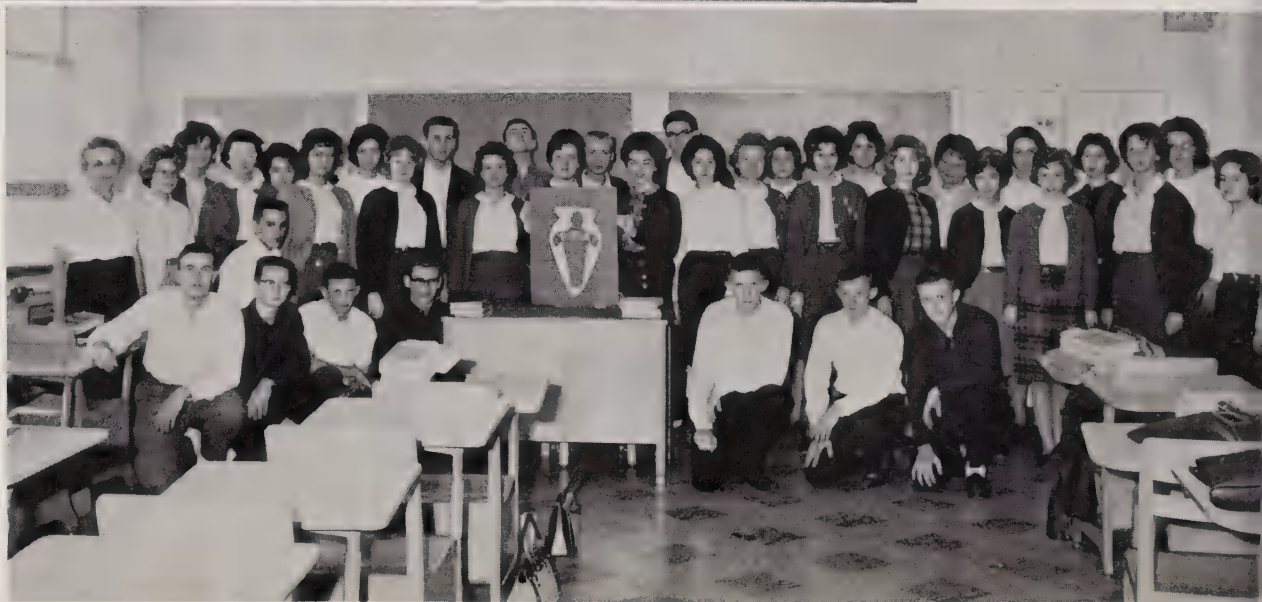
- PRESIDENT
Jane Hamilton
VICE-PRESIDENT
Mike Carpenter
SECRETARY
Ann Bowman
TREASURER
Linda Diggs
HISTORIAN
Angelia Lee
REPORTER
Ross Hendley



Health Club

- SPONSORS
Mrs. Summers
Mr. Jones

- PRESIDENT
Sibyl Wright
VICE-PRESIDENT
Ross Hendley
SECRETARY
Sylvia Goodman
TREASURER
Joe Smith
HISTORIAN
Robert Batten
PROGRAM CHAIRMAN
Anne McRae
REPORTER
Harriet McRae
LIBRARIAN
Judy Sellers
SONG LEADER
Vicky Killian



- PIANIST
Beverly Allen
PARLIAMENTARIAN
Tommy Gray

Future Teachers of America

FBLA Club

PRESIDENT

Catherine Hill

VICE-PRESIDENT

Jennette Horne

REPORTER

Doris Jordan

SECRETARY

Fleeta Mayse

TREASURER

Vivian Surratte

SPONSORS

Sarah Caudle

James Turner

Annette Tarlton



Monogram

Club

PRESIDENT

Joel Taylor

VICE-PRESIDENT

Benny Clanton

SECRETARY

Ronnie Lee

TREASURER

Preston Williams

SERGEANT-AT-ARMS

Garry Hasty

SPONSOR

Coach Jim Pell

Monogram

Club

PRESIDENT

Vickey Usrey

VICE-PRESIDENT

Ramona Beachum

SECRETARY

Marie Marks

TREASURER

Judy Cox

June Bowers

Nancy Landen

Cora Edwards

Barbara Dabbs



Freshman

F.F.A.

PRESIDENT

Jimmy Purser

VICE-PRESIDENT

John Goodwin

SECRETARY

Barry Dellinger

TREASURER

Charles Ballard

REPORTER

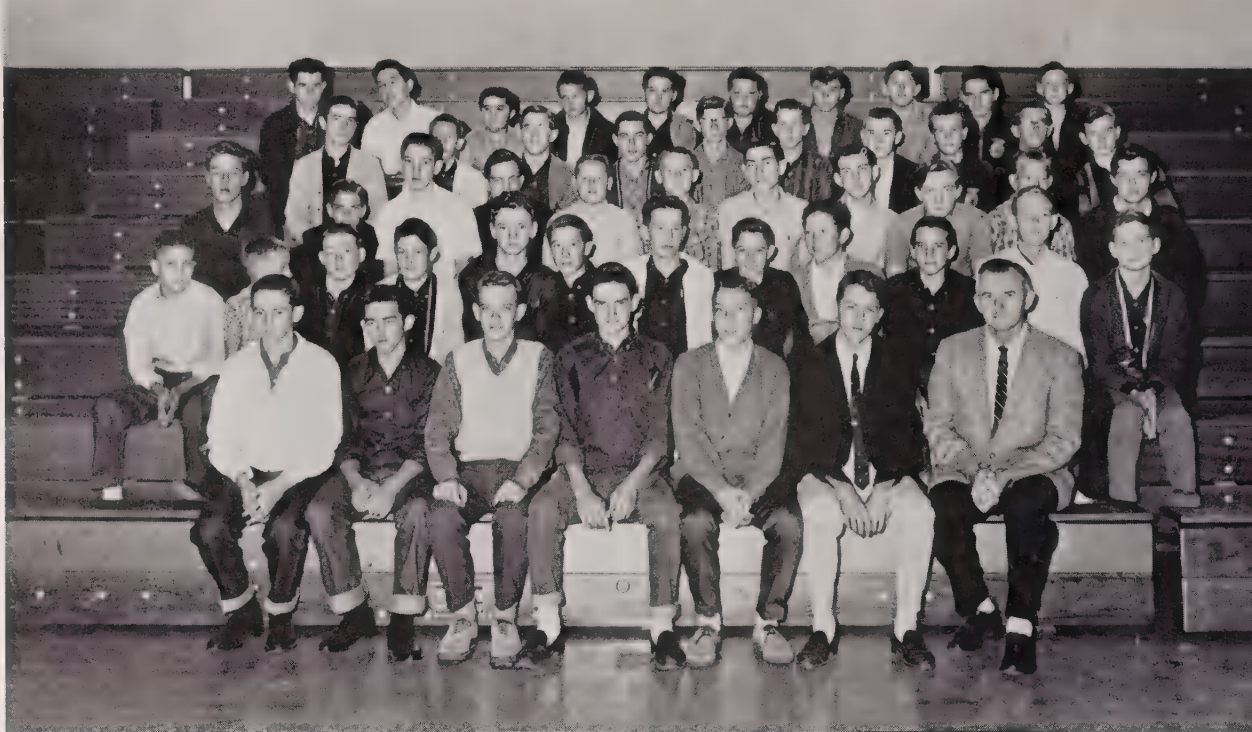
Tommy Allen

SENTINEL

Gene Allman

SPONSOR

Mr. Lee Allison



Junior

F.F.A.

PRESIDENT

Wayne Brooks

VICE-PRESIDENT

Monte High

SECRETARY

Eddie Turner

TREASURER

Eddie Cowick

REPORTER

Johnny Martin

SENTINEL

Joe Cameron

SPONSOR

Mr. William Webb



Senior

F.F.A.

PRESIDENT

Ronnie Lee

VICE-PRESIDENT

Hugh Tucker

SECRETARY

Gary Howell

TREASURER

Toby Kiker

REPORTER

Tommy Turner

SENTINEL

Leon Edwards

SPONSOR

Mr. Graham Lutz



*FHA
Juniors
and
Seniors*



Officers

- PRESIDENT
Diane Raye
- VICE-PRESIDENT
Dawn Streater
- SECRETARY
Barbara Taylor
- HISTORIAN
Barbara Davis
- PARLIAMENTARIAN
Jane Hamilton
- REPORTER
Marie Austin
- SONGLEADER
Becky Pope
- PIANIST
Reba Smith

*F.H.A.
Freshmen
and
Sophomores*



Bus Drivers

Roger McCollum
Warren Surratte
Guy Edwards
Jimmy Flake
Jennette Horne
Sandra Watkins
Houston Cox
Roy Moore
Steve Poplin
Kenny Carter
Don Gaddy
Robert Batten
Larry Tucker



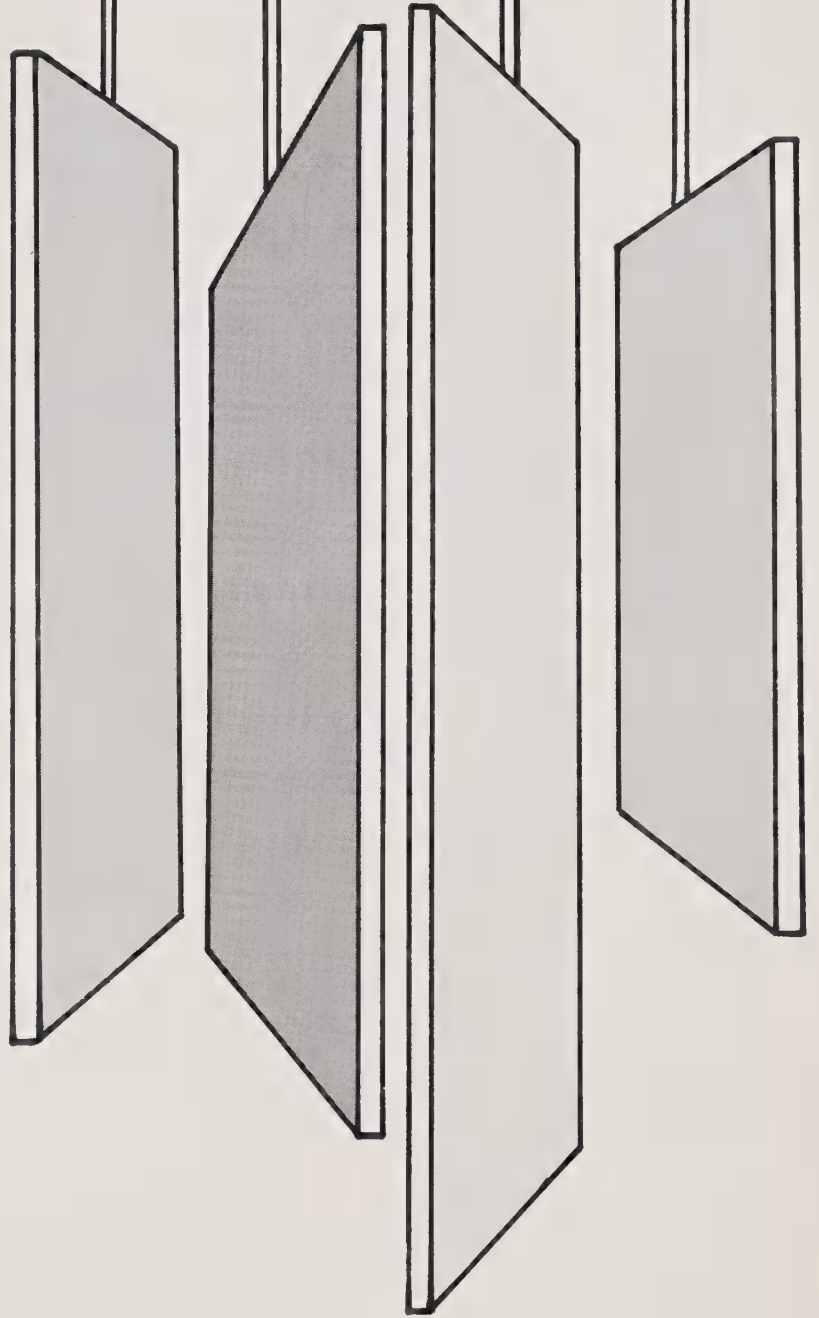
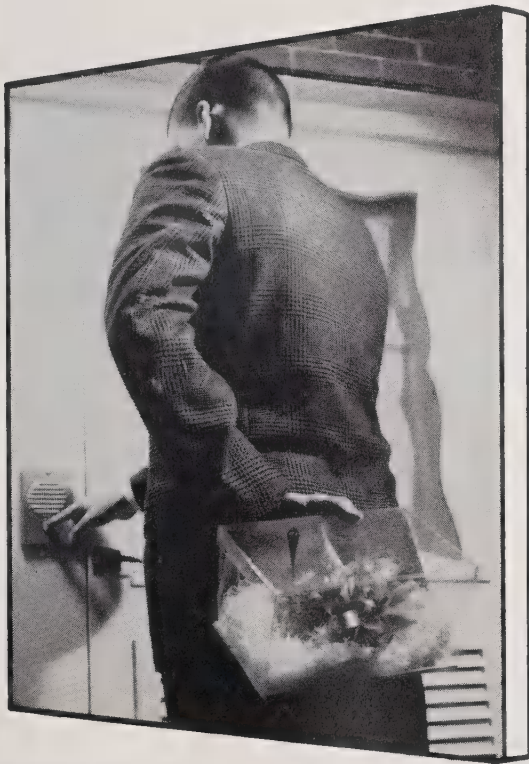
*Lunchroom
Workers*

Ann Spencer
Elaine Spencer
Estelle Diggs
Beatrice Gullede
Mildred Quick

Custodians

Perrie Tyson
Mary Dean
Coleman Garris





FAVORITES



DAR Representative

MISS ANNE McRAE

Miss Hi Miss

MISS DIANNE RAYE





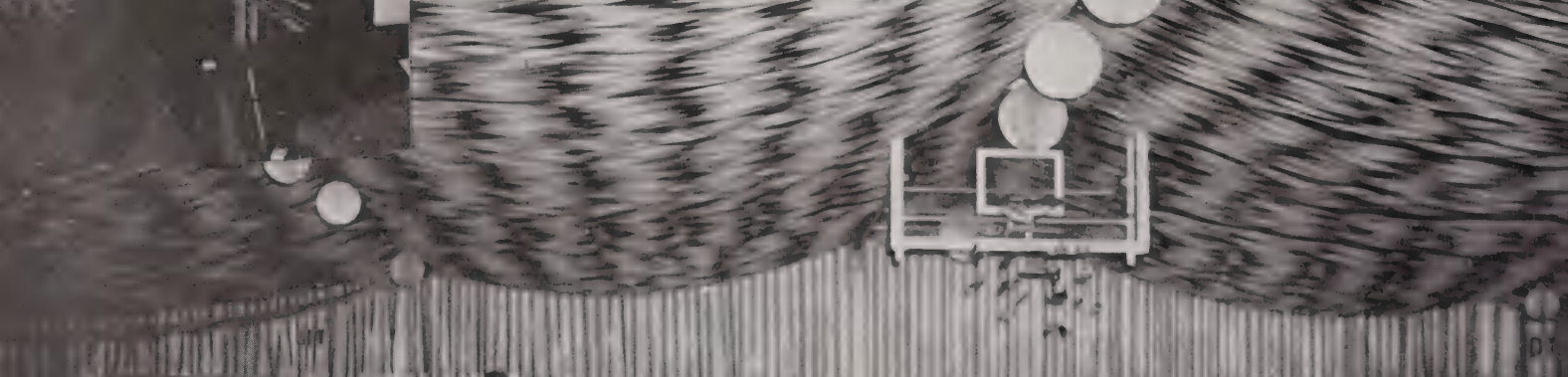
Miss Anson High

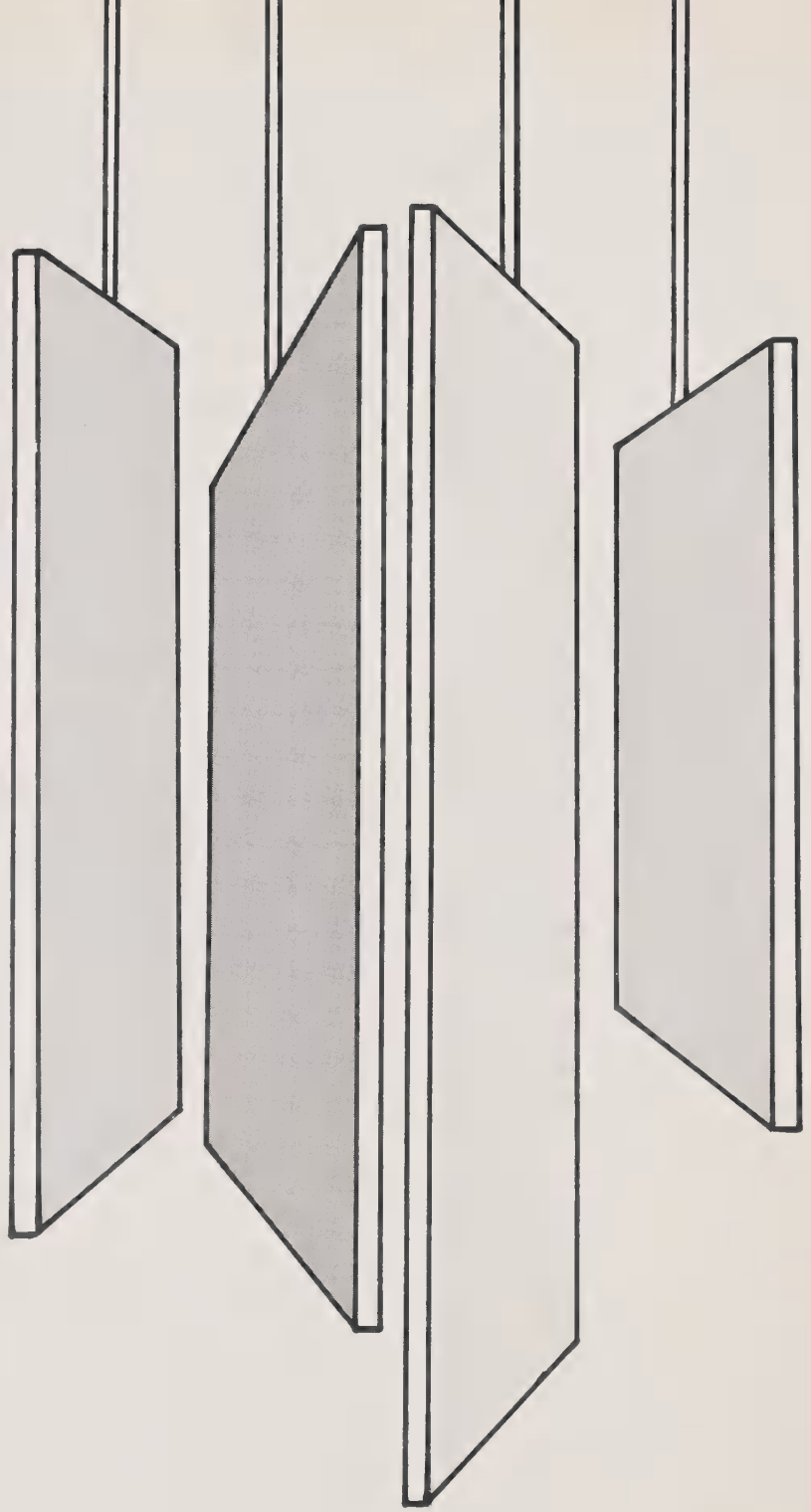
MISS DIANNE RAYE

Homecoming Queen

MISS SHIRLEY KNOTTS







ADVERTISERS

McRAE



Lumber

Timber

Phone 272-5343

Peachland, N. C.



Just Good Food!

BOWMAN'S RESTAURANT

"We Doze but Never Close"

All the Way With the Eagles

Highways: 74 E. and 52 S.

Phone: MY 4-9945

Wadesboro, N. C.

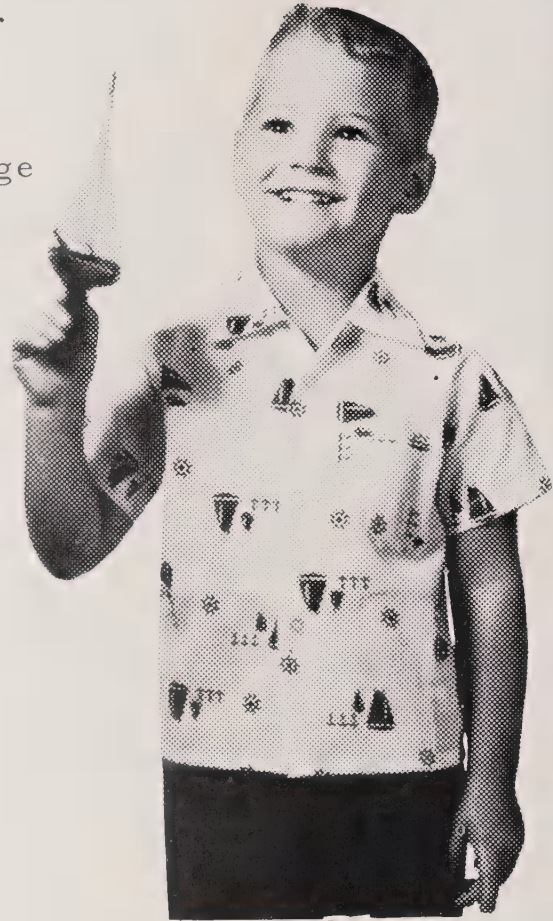
POLKTON MANUFACTURING COMPANY

W. C. MARTIN, Manager

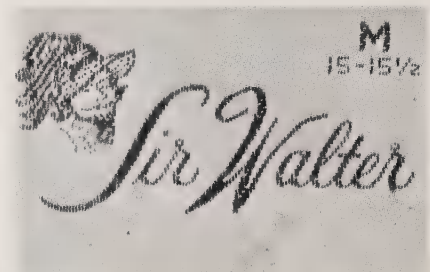
Phone BR 2-4117

Peachland-Polkton Exchange

Polkton, North Carolina



Cove Creek and Sir Walter Men's
and Boys' Sport Shirts



Manufacturers of
Quality Sport Shirts

COMPLIMENTS OF

Lessees of

**B. V. HEDRICK
GRAVEL AND SAND CO.**

Specification Gravel, Sand and Ballast

Telephone 848-2202

Lilesville, North Carolina

Congratulations and Best Wishes to the

Class of '64

COMPLIMENTS OF

W. R. BONSAI CO., INC.

Products of Sand and Gravel

SAKRETE[®]

E-Z-CRETE

Long Span Floor and Roof Slabs

Telephone 848-3881

Lilesville,

North Carolina

Good Luck, Seniors of '64!

For Complete
Banking Service Use

ANSON BANK & TRUST COMPANY



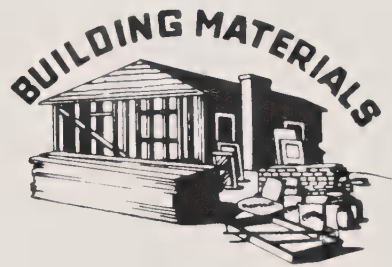
ANSONVILLE ★ WADESBORO ★ PEACHLAND

Member Federal Deposit Insurance Corporation
Member Federal Reserve System

Serving Anson County
for Over 60 Years

Best of Luck

H. W. LITTLE & CO., INC.



Paints - Hardware

Phone MY 4-2214

Wadesboro, N. C.

**MORVEN
FREIGHT
LINES, INC.**

Round Trip Freight
Service From Hamlet
to Charlotte

Saturday Delivery

Phone UL 1-5170

**FOX & LYON
DRUG STORE**



"Your Friendly Store"

Your Complete One Stop
Drug Store

Filling Your Doctor's
Prescriptions for Over
65 Years

Complete Photo Dept.

Cameras, Film, Projectors, Etc.

Wadesboro, N. C.

Phone 694-2119

**McLEAN'S
DRESS
SHOP**

Ladies' Ready-to-Wear

Best in Formals and
Sports Wear

Congratulations, Seniors!

Wadesboro, N. C.

**TROY LUMBER
SALES CORPORATION**

Lilesville, N. C.

Phone 848-3551

Best Wishes to the
Class of '64



NATIONWIDE INSURANCE

In Service With People

MY 4-2323 - Wadesboro, N. C. - JACK CAUDLE

THE FIRST NATIONAL BANK

OF ANSON COUNTY

LET US HELP



Member Federal Reserve System

Wadesboro
MY 4-4603



Morven
UL 1-3325

North Carolina

Better Values

WADE CLOTHING COMPANY

Fine Clothing for Men
and Young Men.

McGregor Sportswear

Wadesboro, North Carolina



Latest Fashions



THE LILES CO.

Wadesboro, N. C.

Phone MY 4-2625

TEXTILE PIPING CO.

Cheraw, South Carolina

We Install

Heating

Air Conditioning

A. C. ALLEN JEWELRY STORE



Wadesboro, N. C.
113 South Greene
Street
Dial MY 4-2916

BRASWELL'S MARKET

Meats and Groceries

CARLYLE BRASWELL
Proprietor

Wadesboro, N. C.



Congratulations
Seniors

HENRY LILES ALLEN

Wadesboro

V.F.W. POST

North Carolina

Compliments of

**ANSON OIL DEALERS
ASSOC.**

Wadesboro

North Carolina

CURRIE AND ANDREWS

The Place to Go for Brands You Know

Sweaters for Boys

Wadesboro, N. C.



Largest and Most
Complete Variety Store
in Anson County

Your Sporting Goods
Headquarters

Toys - Gifts and Hobbies

Wadesboro, N. C.



Best Wishes
to the
Seniors
From

ALLEN BENNETT COMPANY

Wadesboro, N. C.

Office Phone: MY 4-2217

Warehouse Phone MY 4-2215

Congratulations and Best Wishes
to the Class of '64

BALLET HOSIERY CO.

Mfg. of Cameo
and
Ballet Ladies' Seamless
Hosiery

Wadesboro, N. C.

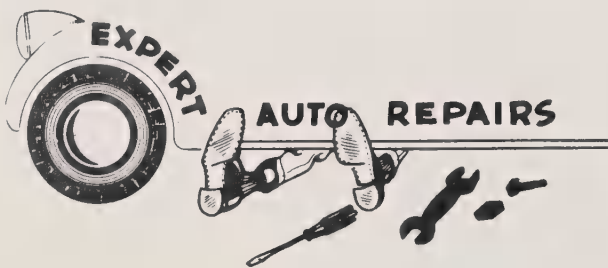
Compliments of

HORNWOOD WARP KNITTING CORP.

Wadesboro, N. C.

CHEWNING'S ESSO STATION

Congratulations, Seniors!



Salisbury St.

Wadesboro

N. C.

McCRAVY'S GROCERY

Congratulations
Seniors of '64!

Peachland

N. C.

Ladies' and Children's
Ready-to-Wear and Accessories

SARAH AND MARY

Wadesboro, N. C.

**UNION
ELECTRIC CO.**

Electrical Repairs

Motor Rewinding

Marshville, N. C.

**PALOMINO
RESTAURANT**

"Carports for Curb Service"

**IF IT'S GOOD FOOD
YOU WANT..**

Visit



**WAGON WHEEL
GRILL**

Marshville, N. C.

Try Our

Freshly Baked Pizzas

Marshville, N. C.

"CAROLINA FABRIC SHOP"

Finest in Fabrics

Notions, Trims, Patterns

Trade St.

Marshville, N. C.

STEGALL & COMPANY

Field Seeds - Seed Cleaning
Fertilizer - Limestone

Phone MA 4-2521

Marshville, N. C.

**CLYDE JORDAN
INS. AGENCY**

Box 312

Marshville, N. C.

Phone MA 4-2813

For Ins. Service

**STEGALL
MILLING COMPANY**

Trucking - Flour - Milling
Feed and Grain

Phone MA 4-2182

Marshville, N. C.

CHEWNING'S
SHELL STATION
Groceries - Meats



Lilesville, N. C.

Compliments of

CURTIS SUNDRIES

Lilesville, N. C.

Congratulations, Seniors

SUE VALLEY

Fresh Produce
Gifts and Novelties

Phone 3571

Lilesville, N. C.

Compliments of

RATLIFF
AND
RATLIFF
TRUCKING COMPANY

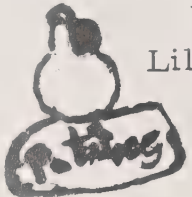
Wadesboro, N. C.



DIXIE
SUPERETTE

Phone 3001

Lilesville, N. C.



LILESVILLE TELEPHONE



COMPANY

Lilesville, N. C.

Phone 848-3222

Compliments of

MILDRED'S
FABRIC
SHOP

"Home of Fine Fabrics"

Lilesville, N. C.

FREEMAN'S
DISCOUNT
MART

"Quality at Less Cost"

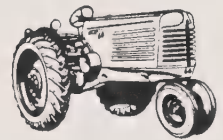
Lilesville, N. C.

COMPLIMENTS OF

MARTIN BROS. EQUIPMENT COMPANY

Phone: MY 4-2924

"Your John Deere Dealer"



Wadesboro, N. C.

Compliments of

G. W. SNYDER

Hartford



Wadesboro, N. C.

**ANSON FLOWER
SHOP**



Flowers
by Wire

Compliments of

BOB'S SERVICE CENTER

Polkton, N. C.

J. R. GLENN, Prop.



123 East Wade

Wadesboro, N. C.

Phone: MY 4-4165

Compliments of
**FAULKNER'S GROCERY
AND
VIRGIE'S BEAUTY SHOP**

Phone BR 2-4586
Peachland, N. C.



**GRAY'S
ESSO SERVICE**

Gas - Oil
Washing
Greasing
Road Service

Phone BR 2-4713
Peachland, N. C.

**TRAYWICK
MOTOR COMPANY**

Used Car Bargains

Highway 74
MA 4-2916
Marshville, N. C.

E. H. JONES
JEWELER

105 North Greene Street
Wadesboro, N. C.
Watches - Diamonds - Silverware
Crystal
Phone: MY 4-3513 Phone: 3624
Wadesboro, N. C. Gaffney, S. C.

Compliments of

BROWN'S GARAGE

General and Body Repair

Peachland, N. C.



UNION GARAGE CO.

Main Street MA 4-2950

Marshville, N. C.



THE HI LO STORE

Fancy Groceries
and
Fresh Produce

Wadesboro, N. C.

Saluting

the
graduating
class

HALLUM'S FURNITURE COMPANY

A Beautifully Furnished
Home Is a Joy Forever.

Phone MY 4-3912

Wadesboro, N. C.



"Now It's PEPSI
for Those Who Think Young"

Rockingham
North Carolina

MARTIN'S T.V. SERVICE

Congratulates
Senior Class of 1964

Wadesboro

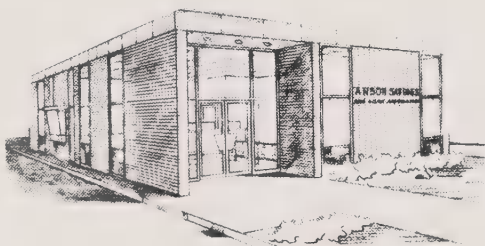
North Carolina

Compliments of



TOM & SARAH'S

Rockingham, N. C.



ANSON SAVINGS

and loan association

Your Home Loan and Family
Savings Center



Wadesboro, North Carolina

Compliments of

ORANGE BOWL



BURGER RANCH

Rockingham

North Carolina

ALLEN FURNITURE COMPANY

Wadesboro, N. C.



Phone MY 4-2185

"The House of Dependable Furniture"

THOMAS SUPERETTE

Groceries - Gas - Oils
Meats - Feeds and Seeds

Route 2
Polkton, N. C.

GLORIA
SHUMAKER

NELLIE
WALTERS

BEAUTY MART

"Air styles especially for you"

Phone MY 4-3440 Wadesboro, N. C.

NORTH CAROLINA TELEPHONE CO.



"So
Much

for
So Little"

Wadesboro, N. C.

Compliments of

ROYAL TIRE SERVICE

Hwy. 74 East

Wadesboro, N. C.

DORTON

GILMORE BROTHERS DRILLING & PLUMBING, CO.

JACK

"Water Is Our Business"

Phone MY 4-2024

Route 2

Wadesboro, N. C.

R. L. (BOB) MORGAN, SR.

R. L. (BOBBY) MORGAN, JR.

**MORGAN AND SON
FUNERAL HOME**

24-Hour Ambulance Service

39 Years of Sympathetic Understanding

Phone 624-2137
Marshville, N. C.

**PEACHLAND
DRUG SUNDRIES**

Paints, Drugs and Electrical
Appliances

"You Name It, We've Got It"

Peachland, N. C.



HORNE'S AMOCO

"Yours for Service"

Phone BR 2-4476
Peachland, N. C.

Compliments
of

A FRIEND

Compliments
of

**BETTY'S
BEAUTY SHOP**

Marshville,

N. C.

**MARSHVILLE
ICE & FUEL COMPANY**

Ice, Cold, Cold Storage

Marshville, N. C.



**HORNE
AUTO SALES**

Marshville, N. C.

Phone 624-5313

New and Used Cars



**THE FARMER'S BANK
& TRUST COMPANY**

"The Dependable Bank"



Established 1901

Rockingham, N. C.

"Your NAPA Jobber Is
a Good Man to Know"

AUTO PARTS SERVICE

Marshville, N. C.

Phone 624-2810

COLLINS BROS. MARKET

"Service With a Smile"

Marshville, N. C.

MA 4-2918

**CREECH'S
5-10¢ STORE**

Congratulations
Seniors

Marshville

N. C.

**CAROLINA
STANDARD CORPORATION**

Lumber and
Building Supplies

Rockingham, N. C.

HARDISON & HARDISON, INC.

Phone MY 4-2812

P. O. Box 279

Wadesboro, N. C.

B. C. MOORE & SONS

"Shoes, Clothing for
the Whole Family"

Wadesboro, N. C.

BEST POLICY

AT ALL
TIMES



to Shop at

WOOD'S

5&10

Wadesboro, N. C.

LINEBERRY'S

MARKET AND GROCERY

Highways 74 E. - 525 - Phone MY 4-3219 - Wadesboro, N. C.

Compliments of

LEAVITT FUNERAL HOME

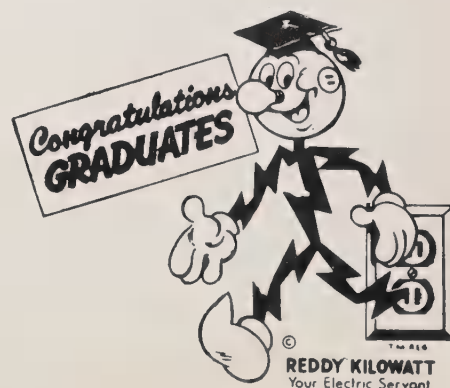
Wadesboro, N. C.

CAROLINA POWER AND LIGHT COMPANY

Wadesboro

N. C.

Phone MY 4-2715





LOCKHART GADDY'S WILD GOOSE REFUGE - Ansonville, N. C. - U.S. 52

POLKTON ESSO



TUCK LOCKHART, Prop.

Good Esso Products

Phone 272-4331

Polkton,

N. C.

ANSONVILLE CLEANERS

WADE F. LAMBERT, Owner

Highway 52

Ansonville, N. C.

**JAMES HUNTLEY
BETTER GROCERIES**



Route 2, Peachland, N. C.

Phone 624-2403

**LOCKHART'S
GULF STATION**

Gas



Oil

Polkton, N. C.

Compliments of

NORWOOD DRUG CO.

Headquarters for Drug - Sundries
Cosmetics

Dependable Pharmacists

Norwood, N. C.

Compliments of

**PARSON'S
REXALL DRUG STORE**

W. C. BIAS, Pharmacist

Wadesboro, N. C.

WINN-DIXIE

JAMES RICKETTS, Manager

"Better Values at Your
Friendly Store"

Wadesboro, N. C.

BELK'S DEPT. STORE

"Home of Better Values"



Wadesboro, N. C.

**FOREMOST
DAIRIES**

Compliments of

BRUCE CARPENTER

Morven, N. C.

**ELIZABETH'S
BEAUTY SHOP**

"Elizabeth Lee"

"Beautiful Hair Is a
Compliment to Any Woman"

Lilesville, N. C.

Phone 3351

**ROYAL LAUNDRY
& CLEANERS**

"Make One Call Do It All"

201 Salisbury St. - MY 4-2529

Wadesboro, N. C.

Compliments of

**MORVEN BAPTIST
CHURCH**

REV. GORDEN POPE, Pastor

Congratulations and
Best Wishes, Seniors!

Best Wishes, Seniors!

**WADESBORO
AUTO SUPPLY**

Highway 74 East

Wadesboro, N. C.



COMPLIMENTS OF

NEW CAR DEALERS OF ANSON COUNTY



CRAWFORD MOTOR COMPANY
JOHN FAULKNER MOTORS
HUNTLEY BUICK-PONTIAC CO.
REGISTER MOTOR CO.



BUICK



RAMBLER



Congratulations

to the

Seniors of

1964

**JAKE'S
TASTEE-FREEZ**

Wadesboro, N. C.

THE MESSENGER AND INTELLIGENCER

The Only Semi-Weekly
Newspaper Printed and
Published in Anson County

Publishing Since
1881

BOYLIN PUBLISHING
COMPANY

Wadesboro, N. C.

SIKES' GROCERY

Gas



Oil

Groceries

Polkton

N. C.

BETTER GROCERIES



GILF PARKER'S GROCERY

Route 2

Polkton, N. C.

ANSONVILLE LUMBER CO., INC.

Rough and Dressed Lumber to Order

Retail and Wholesale

Ansonville, N. C.

L. C. SPRINGER, Owner

826-2125

SECURITY INSURANCE



Security Life and Trust Company

Security General Insurance Company

Life - Health - Group

Auto - Fire - Pension Plans

J. A. KILLIAN
Peachland, N. C.
272-4570

CLYDE D. DAVIDSON JR.
Lilesville, N. C.
848-2281

NORTHCUTTS

MUTUAL INSURANCE AGENCY

"Complete Insurance Protection"

108-110 South Green Street

P. O. Box 1

Wadesboro, North Carolina

Phone MY 4-2139

ADDISON

MOORE

Painting Contractor

TERMITE

CONTROL

SPECIALIST

BOWERS

SERVICE



Gas, Oils, Greases, Tires and Tubes

Sandwiches and Drinks

Peachland, N. C.

Wadesboro, N. C.

694-3029

H. B. ALLEN

& COMPANY

Fine Clothes for

Men and Boys

Shoes for All the Family

Wadesboro, N. C.

TOLLISON PHARMACY

Reasonable Prescriptions
Prices

Phone MY 4-2188

Wadesboro, N. C.

FRED KIRKS GARAGE

Auto Repair

Polkton,

N. C.

"Best Wishes"

From Your

Friendly Store

WOODS' 5 & 10

On the Square

Rockingham,

N. C.



ANSON RECORD

Wadesboro

N. C.

CARL'S

FOOD CENTER

No. 1 and No. 2

HERMAN AND BILL CAPELL

Choice Meats and Groceries
No. 1 - Forks of Chesterfield
and Camden

No. 2 - Hwy. 74
Wadesboro, N. C.

TUCKER INSURANCE CO.



Marshville,

N. C.

POLKTON MEAT CENTER

Quality Meats and Hams

ED HILDRETH, Prop.

Phone 272-4777

Polkton

N. C.

CONSOLIDATED BUILDING SERVICE

Phone 582-1343

Hamlet, N. C.

BRASINGTON'S WELDING SHOP

West 74 Highway

Welding and Repairs

Pioneer and Tecumseh

Chain Saws

Briggs and Stratton Motors

"We weld anything
from the crack of
dawn to a - - - -
broken heart"

STEWART INSURANCE AGENCY

All Types of Insurance

Phone 624-2621

Marshville,

N. C.

MY 4-4413

Wadesboro, N. C.

Insist on

BUTTERCUP ICE CREAM

It's Famous

Because

It's Good

Hamlet
North Carolina

FAUL & CRYMES, INC.

Sporting Goods

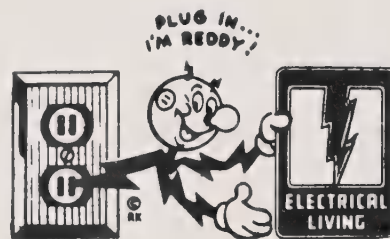
409 South Tryon St.

Post Office 239

Charlotte, North Carolina

EDison 4-0896

PEE DEE ELECTRIC MEMBERSHIP CORPORATION



Owned by Those Who Serve

Wadesboro

North Carolina

"Best Wishes, Seniors"

Compliments of

**MOORE'S
FUNERAL HOME**

205 W. Morgan

Wadesboro, N. C.

Phone MY 4-2183

or MY 4-2821

**FARM BUREAU
MUTUAL INSURANCE**

Complete Coverage Including
Blue Cross - Blue Shield

ROBERT E. POPE, Agent

Tel. 694-2311 Wadesboro, N. C.

BALLARD'S

Your Community Store
Since 1940

Phone 272-4373

Polkton,

N. C.

DAIRY

**COBLE DAIRY PRODUCTS
COOPERATIVE, INC.**

Lexington, North Carolina

KEMP'S POULTRY FARM

Quality Eggs Our Specialty
White Store Road

Phone 272-4588

Peachland, N. C.



FARMERS HARDWARE STORE

General Hardware
Marshville, N. C.

Sherwin-Williams Paints
Telephone 624-5216

STEGALL SUPPLY COMPANY

Hardware
Marshville, N. C.

Building Materials
Telephone 624-5111

GUION'S DRUG STORE

Specialists in Prescriptions

Marshville

North Carolina

Phone 624-2146

MORGAN LUMBER COMPANY, INC.

Marshville, North Carolina

F. M. MORGAN

J. PARKS MORGAN

GRIFFIN'S GROCERY

General Merchandise

Polkton, N. C.

HERBERT GRIFFIN, Prop.

PERKINS CLEANER

Satisfaction Guaranteed

Marshville

North Carolina

McRAE'S JEWELRY STORE

Watches -- Diamonds -- Jewelry

JOE F. MARTIN, Proprietor

Wadesboro, North Carolina

COMPLIMENTS OF

BILL'S BEAUTY SHOP

Wadesboro, N. C.

McBRIDES DRUG STORE

Marshville, N. C.

MR. AND MRS. ASHE CAUDLE

Peachland, N. C.

AREY BARBER SHOP

Marshville, N. C.

MR. J. R. CROWDER

Peachland, N. C.

TRIANGLE SHELL

Wadesboro, N. C.

ANSON COUNTY FARM BUREAU, INC.

Wadesboro, N. C.

SARAH'S CHILDREN'S SHOPPE

Marshville, N. C.

WILLIAMS SINCLAIR SERVICE

Marshville, N. C.

MOORE'S GROCERY

Hwy. 74 East of Polkton

JOHNNY MOORE, Prop.

Phone MY 4-3639



TAYLOR PUBLISHING COMPANY

"The World's Best Yearbooks Are Taylor-made"



MADE IN ITALY
V. BIANCHI