

1962

ARCHWAY



*Leuis Laurena*



Digitized by the Internet Archive  
in 2015

<https://archive.org/details/archway19621962farm>



And all amid them stood the Tree of Life,  
High eminent, blooming ambrosial fruit  
Of varied shapes and sizes.

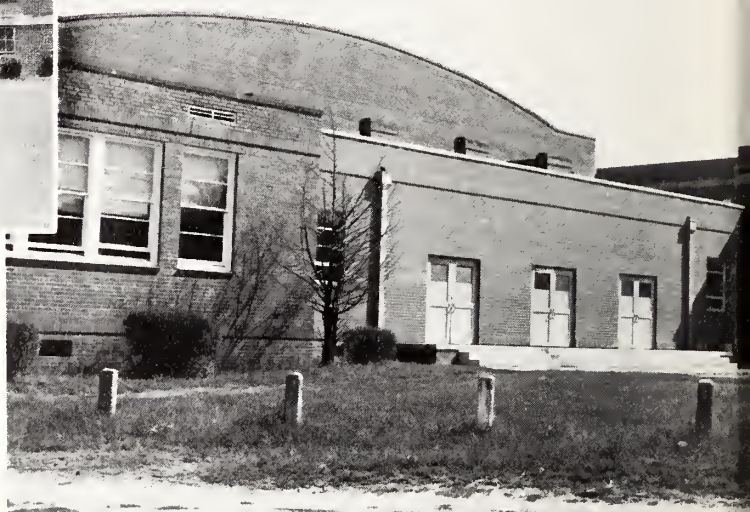
Copied

# The geometry of school life-varying



Here's to Farmville High—the noblest and the best! Reminisce with us about the many alumni who have made for themselves places of honor as they have gone their scattered ways into the various parts of the world!

The key to this compact brick building unlocks the door to the tools of good farming and industrial arts to be used successfully by the future farmers of America.



Can you hear the band playing? Can you see the biology students dissecting cats? Can you hear the applause after the basketball game when Farmville is the winning team? All this and then some goes on in the dear ole gym.



## Table of Contents

ADMINISTRATION AND FACULTY . . . . .	7
CLASSES . . . . .	13
ORGANIZATIONS . . . . .	39
FEATURES . . . . .	59
ATHLETICS . . . . .	75
ADVERTISEMENTS . . . . .	87

*shapes and sizes of its activities---*



"Tis education forms the common mind;  
Just as the twig is bent the tree's inclined."

## *In the Beginning*

In the beginning is the seed. It is planted and carefully nurtured until it germinates tiny roots and begins to push its way up through the surrounding soil. And then—a twig, the first leaves, the tree grows taller and stronger. Finally, the tree bears fruit; the unusual shapes and sizes of every description enchant us.

In the beginning is the child, faltering as he enters school the first day. Then he begins to learn... quickly. His wisdom bears fruit and becomes sounder with each passing year. The fruits branch not only into the academic world, but also into the extracurricular world.

The 1962 ARCHWAY will attempt to show the varied fruits of the individual trees of life. Continue through the pages and look for them.



Open House! A Thousand Guests! The Setting? Home Economics Cottage! Leading Characters? Miss Seago and Home Economics Students!



Behold the Farmville High athletic field! Let your imagination run riot as the Farmville baseball or football team runs out on the field for the seniors to play their last game! Remember?

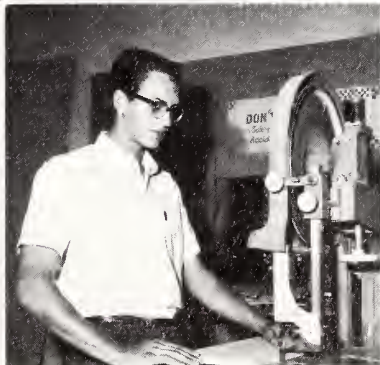
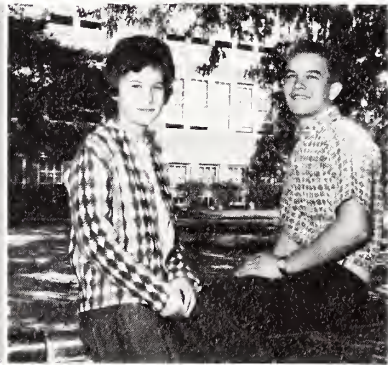
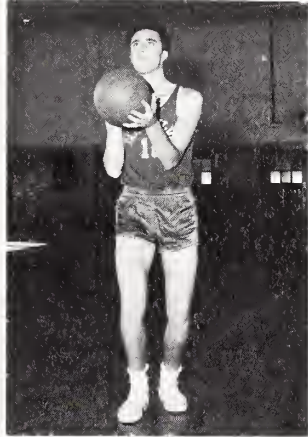
*the colorful panorama of unforgettable*





*school days--all these are yours in the*

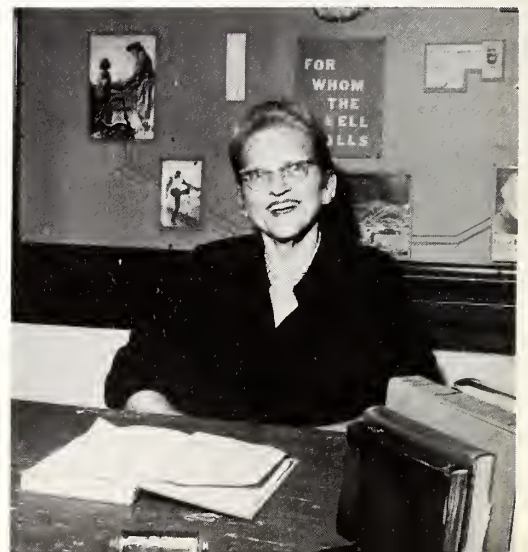
*Archway of 1962  
Farmville High School  
Farmville, North Carolina*

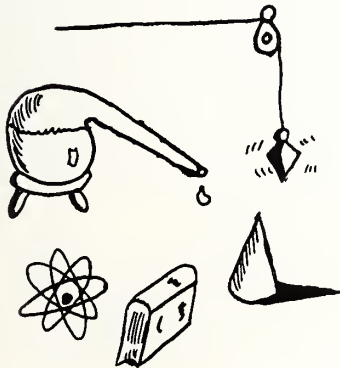
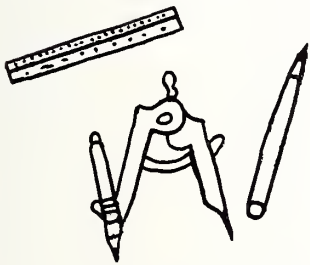
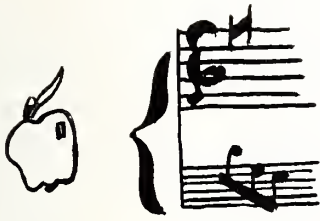


## Dedication

Because of her love of teaching, her knowledge and understanding of young people, her unfailing kindness to everyone, enhanced by an undiminishing supply of humor, and her imparting of deep religious convictions to her students, we, the seniors of 1962, lovingly dedicate the ARCHWAY to MRS. EVELYN JOYNER, teacher, counselor, and friend.

May she continue to enrich the lives of others, and may God's blessings be with her.





## Administration and Faculty

The faculty teach...Macbeth, typing, history, algebra...but most of all they teach us about life. Lessons in congeniality, promptness, self-control, and truthfulness, we learn from our faculty—either by listening or by experiencing the consequences of not listening.

We realize that our teachers and principal are human—not mechanical devices which know everything and continually feed out information, never listening to our ideas.

While they are teaching us, they are learning much—especially about human nature.



*Mr. Sam D. Bundy*



*Principal*

Mr. Bundy prepares to make his daily announcements as Carol Dunn, an office assistant, hands him more messages to announce.

As Mrs. Worthington, school secretary, types a letter, Mr. Bundy smiles approvingly over her shoulder.



Telephone calls, letters, announcements, conferences, teachers' meetings, substitute teaching, trips, speaking engagements—all show that Mr. Bundy's activities extend over the gamut of life. Pupils find him an understanding, firm, and just counselor. Teachers learn that he can easily substitute for them when they are unable to be at school. Parents may criticize him, but they cannot help admiring him for always trying to do what is right. Mr. Bundy is also an active participant in many phases of church and community activities.



*Superintendent  
Mr. D. H. Conley*



*Farmville Board of Education*



T. S. RYON  
Chairman  
MRS. GENE OGLESBY  
Secretary  
GEORGE M. ALLEN  
R. V. FISER  
E. N. PETTEWAY



# Faculty

MRS. EVELYN JOYNER  
A.B.  
Shorter College  
English  
Senior Sponsor



MRS. MARGUERITE HART  
M.A.  
Oglethorpe University  
English, French  
Freshman Sponsor  
Sponsor, F.T.A.  
Co-Sponsor, Keyette



MR. LEWIS LAWRENCE  
A.B.  
East Carolina College  
Freshman Sponsor  
English  
Adviser, News 'N' Views



Mrs. Rollins, Mrs. Wheless, and Mrs. Moore, math and science teachers, inspect the new laboratory and equipment.



MRS. HOPE ROLLINS  
A.B.  
Meredith College  
Mathematics, Science  
Senior Sponsor  
Co-Sponsor, Squared Circle



MRS. LURLINE WHELESS  
A.B.  
Meredith College  
Science  
Freshman Sponsor  
Sponsor, Science Club

Mrs. Hart--We've known long! Mrs. Joyner--We've known longer! Mr. Lawrence is a valuable new addition to the faculty. We welcome him.



MRS. MARY MOORE  
A.B.  
W.C.U.N.C.  
Junior Sponsor  
Co-Sponsor,  
Squared Circle

# Faculty



Mrs. Smith, Mr. Glasgow, and Mrs. Holmes, teachers in the music department, make plans for a concert.

MRS. BEATRICE  
AYCOCK  
M.A.  
East Carolina College  
Business Education  
Junior Sponsor  
Co-Sponsor, F.B.L.A.



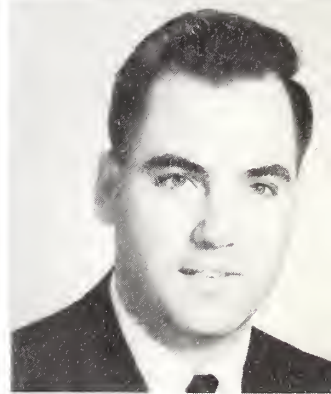
MRS. NORMA H. WARD  
B.S.  
East Carolina College  
Business Education  
Co-Sponsor, F.B.L.A.  
Co-Sponsor, Keyette  
Junior Sponsor



MRS. LEYMAN HOLMES  
University of Georgia  
Southwestern Theological Seminary  
Westminster Choir College  
Music



MR. ROBERT BRUCE  
M.A.  
Catawba, East Carolina College  
Social Studies  
Freshman Sponsor  
Sponsor, S.G.A.  
Assistant Coach



MRS. HAYWOOD SMITH  
A.B.  
Duke University  
Music



Running off stencils for use in the school is one of the many services rendered by the Business Department, headed by Mrs. Aycock and Mrs. Ward.

MR. W.A. GLASGOW  
B.S.  
East Carolina College  
Band





MR. SAMUEL  
WORTHINGTON  
B.S.  
East Carolina College  
Social Studies  
Freshman Sponsor



MRS. BEVERLY  
BATCHELOR  
A.B.  
W.C.U.N.C.  
Librarian  
Sponsor, Library Club



MR. ELBERT MOYE  
A.B.  
Atlantic Christian College  
Physical Education  
Coach



Mrs. Batchelor, librarian, shows new history books to Mr. Bruce and Mr. Worthington.

Miss Seago examines new bookcase which was made by Mr. Bass' agriculture students. Coach Elbert Moye is not pictured.

MR. E.P. BASS  
B.S.  
North Carolina State College  
Agriculture  
Sponsor, F.F.A.



MISS ELSIE SEAGO  
A.B.  
East Carolina College  
Home Economics  
Sponsor, F.H.A.

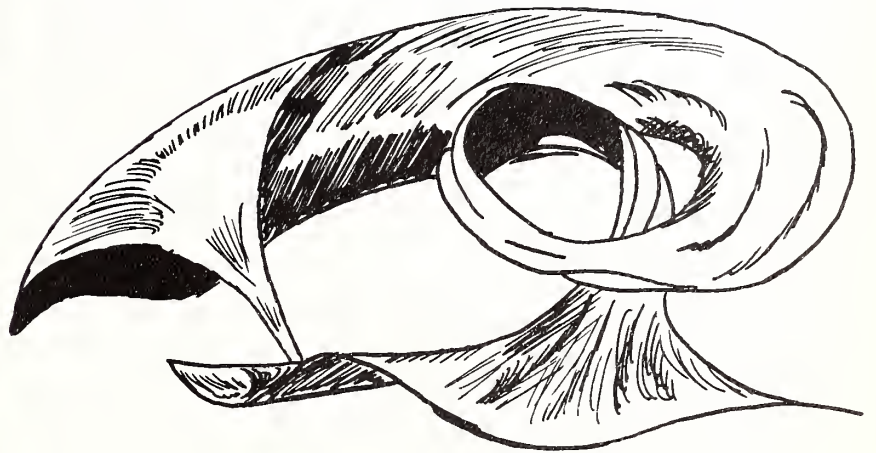






## Classes

The bustling in the halls as we change classes... congregating at the water fountain... hurriedly exchanging greetings as we rush to our next classes... dropping a book... Was that test hard?... I have something to tell you!--and then--cement-bound silence as the last students slip unobtrusively into their seats. The only sounds are the voices of teachers as they attempt to lay foundations for our futures.



*Senior  
Class  
Officers*



JOHN OWENS  
President  
JIMMY EVERETT  
Vice-President



SAM WAINWRIGHT  
Treasurer  
DEAN WILLOUGHBY  
Secretary



ALICE JEAN ALLEN

Band 1,2,3,4, Officer 3; News 'N' Views 2,3,4, Feature Editor 2,3, Co-Editor 4; F.T.A. 2,3, Officer 3; Science Club 1; Pitt County Typing Contest 2; District Typing Contest 2; Keyette Club 3,4, Officer 4; Woodmen of the World History Award 3; Marshal 1,2,3, Co-Chief 3; ARCHWAY Staff, Editor; Superlative 4; Outstanding Senior 4.

JERRY OWENS BAILEY

Class President 1; Basketball 2; Glee Club 1,3,4, President 1, Athletic Association President 4; F.B.L.A. President 4; Key Club 2,3,4, Vice-President 4; Football 1,2,3; Bus Driver 4.

SANDRA VIRGINIA BASS

Band 1; J.V. Cheerleader 1; Glee Club 2; Junior-Senior Waitress 2; Dramatics Club 2; Basketball Manager 2; F.T.A. 3; News 'N' Views 2; Nursing Club 1; Superlative 4; ARCHWAY Staff 4; F.B.L.A. 4; Office Assistant 1,4; Student Council 4; Majorette 3,4.

GEORGE HAROLD BATEMAN

4-H Club 1,2,3,4; Shop Assistant 4; Glee Club 1; Bus Driver 2,3.



*Seniors*



CLARENCE ACEY BEAMON

Glee Club 1,2; F.B.L.A. 1; 4-H Club 1,2,3,4.

SANDRA KAY BELL

F.H.A. 1,2, Reporter 2; Dramatics Club 2; News 'N' Views 2; F.B.L.A. 3,4; Glee Club 1,2,4; Basketball 1,2,3; Miss Archway 4; Homecoming Queen Candidate 4; Keyette Club 4.

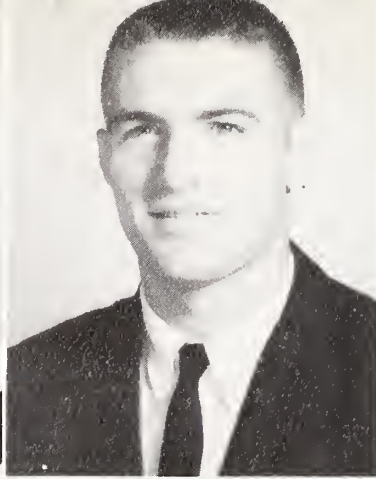


DORIS BERNICE BRYAN

F.H.A. 1,2; 4-H Club 1,3; Glee Club 1,4; F.B.L.A. 3,4; Office Assistant 3,4.

KATHERINE MARIE CARRAWAY

Glee Club 1,3,4; F.H.A. 1,2,4; F.B.L.A. 3; 4-H Club 1,3.



LANIE BRENDA CORBETT  
Glee Club 1; F.H.A. 1; 4-H Club 1; J.V. Cheerleader 1; Office Assistant 2; F.B.L.A. 2,3,4, President 3; Basketball 2,3,4; Library Club 3,4; Library Assistant 3,4; Superlative 4.

JAMES DANIEL DILDA  
Football 1,2,3,4; All-Conference 2,3,4; Tri-Captain 4; F.B.L.A. 2,3,4; Basketball 3,4; J.V. 2; Office Assistant 3; Baseball 4; Homecoming King Candidate 4; Superlative 4; Bus Driver 4.



MELDA FAYE DIXON  
Band 1; Squared Circle 1; Marshal 1; Library Club Treasurer 2, Vice-President 3, President 4; F.B.L.A. 2,3,4, Reporter 4; Library Assistant 2,3,4; Keyette Club 3,4, Vice-President 4; News 'N' Views 3,4.

SARA WYNNE DONAT  
Squared Circle 1; J.V. Cheerleader 1; Band 1,2,3,4; Basketball 1,2,3,4; F.T.A. 2; Dramatics Club 2; Junior-Senior Waitress 2; Chairman Junior-Senior Banquet 3; National Science Foundation Institute 3; Student Council 3; Keyette Club 3,4, President 4; News 'N' Views 2,3,4, Co-Editor 4; Superlative 4; Lab. Assistant 4.

## Seniors

FRANCES SUE DUKE  
Science Club 1; Band 1,2; Cheerleader 1,2,3,4, Head 4; Dramatics Club 2; Head Waitress Junior-Senior Banquet 2; F.T.A. 2,3,4, Vice-President 3, President 4; Homecoming Queen Candidate 3; Spring Follies Candidate 3; Glee Club 3,4; Office Assistant 4; Superlative 4; Keyette Club 4.

DORIS MARIE DUNN  
Glee Club 1; F.H.A. 1,2; Student Council 3; F.B.L.A. 3,4.

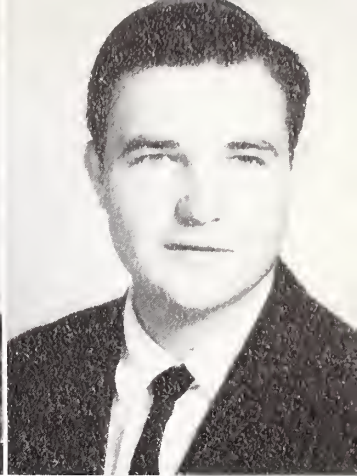
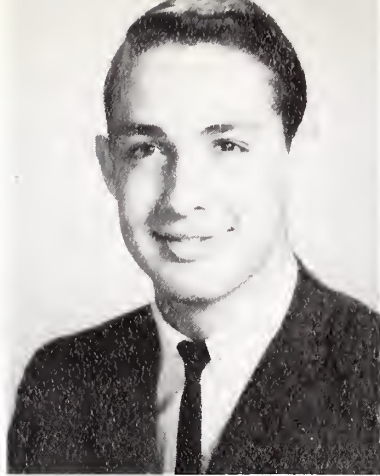
KATHERINE LYNETTE ELLIS  
Glee Club 1; F.H.A. 2; F.B.L.A. 3,4; Library Assistant 4.

ANNE STATON EVERETTE  
Science Club 1; News 'N' Views 2; Dramatics Club 2; Majorette 1,2,3,4, Head 3,4; F.T.A. 2,3,4, Reporter 3; Keyette Club 3,4, Treasurer 4; Office Assistant 4.



JAMES HENRY EVERETT, JR.

Marshal 1, 2; Homecoming King Candidate 2; Junior-Senior Waiter 2; Pitt County Typing Contest 2; Basketball 2, 3, 4; Vice-President of Class 2, 4; Student Council Vice-President 3; Key Club 3, 4; Football 4.

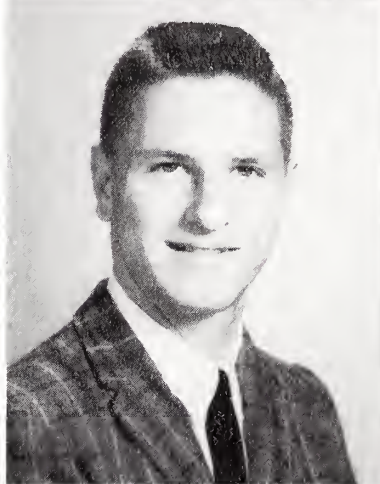


RUFUS BEASLEY EVERETTE

F.F.A. 1, 2, 3, 4; 4-H Club 1, 2, 3, 4; Glee Club 1, 3; Office Assistant 3; Bus Driver 3, 4.

ROBERT EDWARD FIELDS

Science Club 1; Science Fair 1, 2; Glee Club 1, 2; F.B.L.A. 3, 4.



BETTY SUE FLAKE

4-H Club 1; J.V. Cheerleader, Head 1; F.H.A. 1, 2, 3, 4, President 3, 4, Vice-President 2; Glee Club 1, 3, 4; Basketball 1, 2, 3, 4; Junior-Senior Waitress 2; Class Secretary 2, 3; Cheerleader 2, 3, 4; Office Assistant 3, 4; Keyette Club 3, 4, Secretary 4; F.B.L.A. 4; ARCHWAY Staff 4.

*Seniors*



BILLIE SUE FORBES

Office Assistant 1; Squared Circle 1; J.V. Cheerleader 1; Basketball 1, 2, 3, 4; Glee Club 1, 2, 3, 4; News 'N' Views 2, 4; Dramatics Club 2, 3, Program Chairman 4; Girls' State 3; Library Assistant 4; ARCHWAY Staff 4; Keyette Club 4.

BETTY LOU GAY

F.H.A. 1, 2; Glee Club 1, 3, 4; F.B.L.A. 3, 4; Library Club 4.

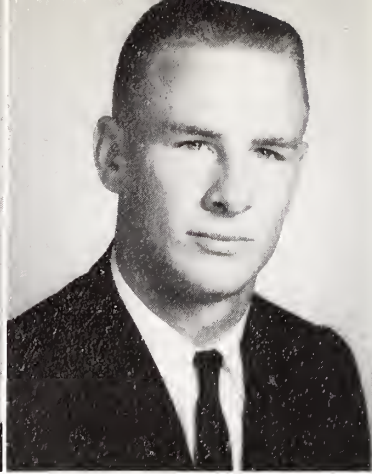


TIMOTHY BRYANT HARDEE

F.F.A. 1, 2, 3, 4, Vice-President 4; Bus Driver 4; F.B.L.A. 4; Glee Club 4.

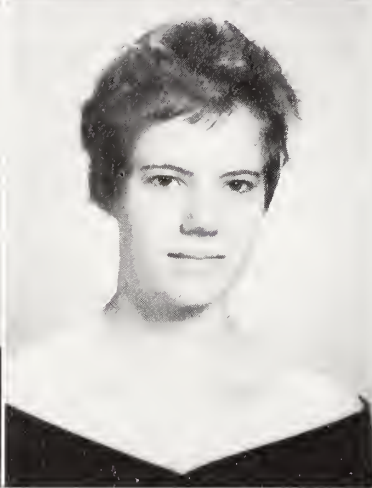
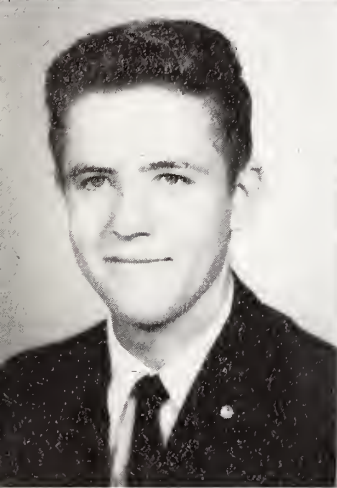
WILLIAM BENJAMIN HARRIS

Safety Patrol 2, 3; Library Club 3; Squared Circle 4.



ELLEN DREW HEDGEPETH  
 Glee Club 1; F.H.A. 1,2,3, Parliamentarian 2,  
 Treasurer 3; Office Assistant 3,4; F.B.L.A. 4.

WALTER REX HODGES, JR.  
 Science Club 1,2,3,4; Band 1,2,3,4, Officer 1,2,3,  
 President 4; Dance Band 1,2,3,4; Baseball 1,2,3,4;  
 Dramatics Club 2; News 'N' Views 2; Safety Patrol  
 2; Football 2,3,4, All Conference 4; Key Club  
 2,3,4, Officer 3; Basketball 3,4; Student Council 4;  
 ARCHWAY Staff 4; Outstanding Senior 4.



BOBBY GLENN HOLLOMAN  
 4-H Club 1; F.F.A. 1,2,3,4; Shop Assistant 4.

LINDA KAY JEFFERSON  
 Glee Club 1,4; Office Assistant 3; F.T.A. 3;  
 F.B.L.A. 4.

## Seniors

ELLEN LOU JONES  
 4-H Club 1,2; F.H.A. 1,2,3,4, Officer 3,4; Glee  
 Club 1,3,4; F.B.L.A. 3,4.

LINDA LEE JOYNER  
 F.H.A. 1,2,3,4, Vice-President 3,4; Glee Club 1,4.



RALPH DANNY LANGSTON  
 Glee Club 4; Basketball 3,4.

BOBBY SHERWOOD LEWIS  
 Glee Club 4; F.B.L.A. 4.

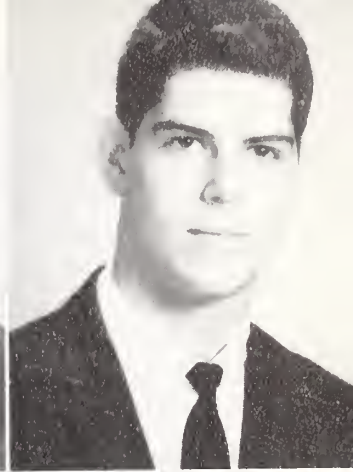
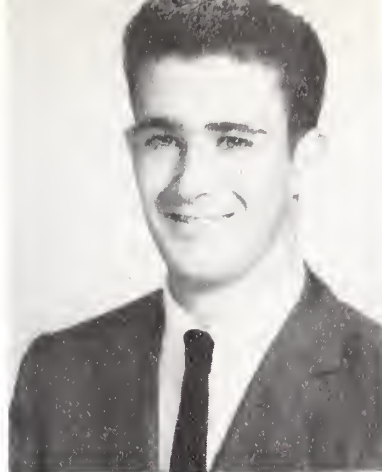


WILLIAM ANDREW MARTIN

Glee Club 1,3,4; F.B.L.A. 4; Science Club 1.

BENJAMIN TURNAGE MONK

Dance Band 1,2; Band 1,2; Baseball 1,2,3,4; News 'N' Views 2; Football 2,3,4, Tri-Captain 4; Basketball 2,3,4, Co-Captain 4; Student Council 3; Home-coming King Candidate 3; Science Club 3,4; Key Club 3,4; Superlative 4; ARCHWAY Staff 4.



LILLIAN ANNETTE MOSLEY

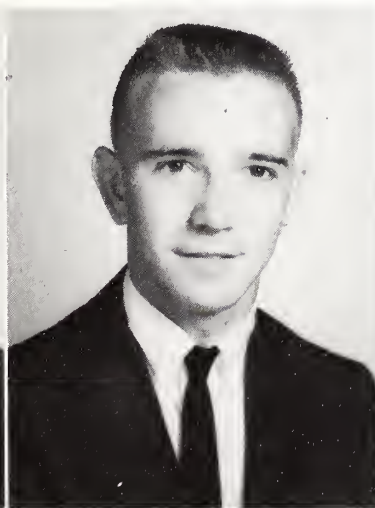
F.H.A. 2; Basketball 2,3; Glee Club 2,3,4; Girls' State 3; F.T.A. 3,4, Secretary-Treasurer 4; Keyette Club 4.

EDNA GRAY MOSELEY

Glee Club 1,3,4; F.B.L.A. 2,3,4; Typing Contest 2,3; Office Assistant 3,4.



## Seniors

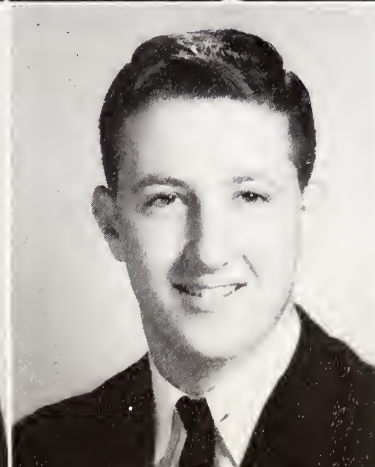
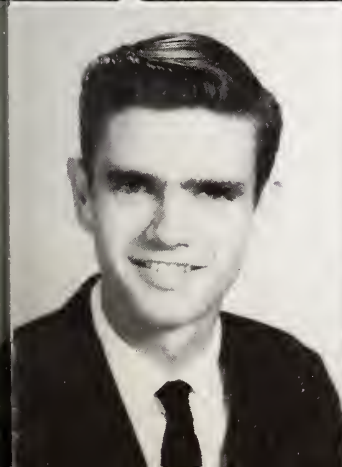


CARROLL MOZINGO

F.F.A. 1,2,3,4; Glee Club 1,4; Bus Driver 4.

CHARLES AARON MOZINGO, JR.

Glee Club 1; Office Assistant 3; F.B.L.A. 1,2,3,4; Science Club 2; Manager of Basketball Team 1; News 'N' Views 2,3,4; ARCHWAY Staff 4.

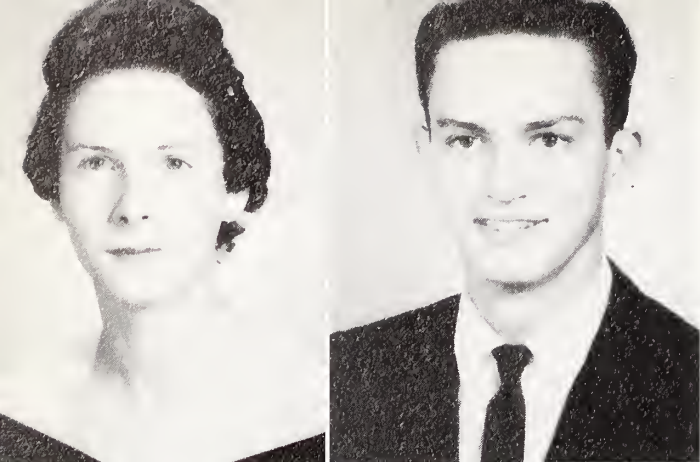


EDGAR OLIVER MURPHREY, JR.

Band 1,2; Science Club 3; Office Assistant 3; Class Reporter 3; F.B.L.A. 4; ARCHWAY Staff 4.

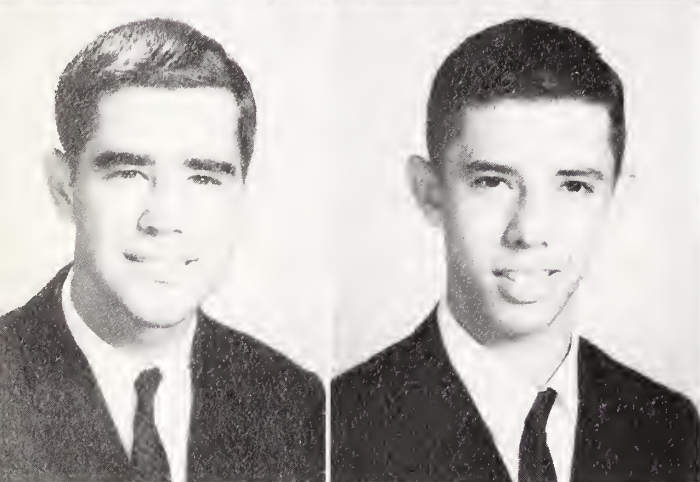
JOHNNY MACK NICHOLS

Band 1,2,3,4; Dance Band 2,3,4; Football 3,4; F.B.L.A. 4.



MARGIE MAE NICHOLS  
 Glee Club 1; Marshal 1; Typing Contest 2; F.H.A. 1, 2, 3, Secretary 2, 3; Keyette Club 3, 4, Program Chairman 4; Office Assistant 3, 4; ARCHWAY Staff 4; F.B.L.A. 4.

ROBERT CARROLL OAKLEY  
 F.F.A. 1, 2, 3, 4, President 4; Glee Club 1, 3, 4; 4-H Club 3, 4.



CARROLL DEAN OGLESBY, JR.  
 Homecoming King 1; Science Fair 2; News 'N' Views 2; Science Club 1, 2, 3; Football 2, 3, 4, Tri-Captain 4; Basketball 3; Key Club 2, 3, 4, President 4; Class Vice-President 3; ARCHWAY Staff 4; F.B.L.A. 4.

HUBERT CHESTER OUTLAND, JR.  
 Band 1, 2, 3, 4; Football 2, 3, 4; Baseball 1, 2, 3, 4; Science Club 4; Key Club 3, 4; Dance Band 1, 2, 3, 4; Boys' State 3; Superlative 4; ARCHWAY Staff 4; Student Council 4.

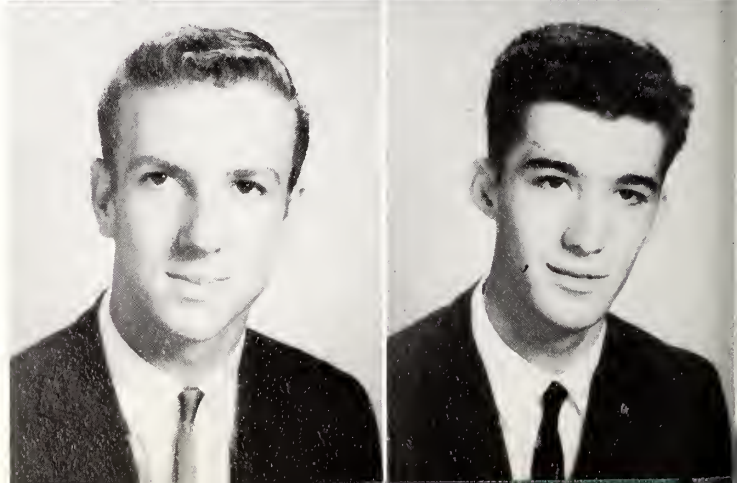
## Seniors

JOHN ROBERT OWENS, JR.  
 Class Vice-President 1; Glee Club 1; Class President 2, 3, 4; Junior-Senior Waiter 2; Chairman of Candy Sale 2; Boys' State 3; General Manager Magazine Drive 3; Science Club 1, 2, 3; Key Club 3, 4; Delegate to State Student Council Congress 3, 4; F.B.L.A. 4; Outstanding Senior 4; Superlative 4; ARCHWAY Staff 4, Assistant Editor.

ANITA ELIZABETH PICKETT  
 Squared Circle 1; Junior-Senior Waitress 2; Band Majorette 2; Science Club 2, 3; Basketball 1, 2, 3; Glee Club 4; F.B.L.A. 3, 4; Office Assistant 4.

DAVID CALVIN QUINN  
 Glee Club 1; Baseball 1, 4; Football 3, 4; Science Club 4; ARCHWAY Staff 4; Athletic Association Officer 4.

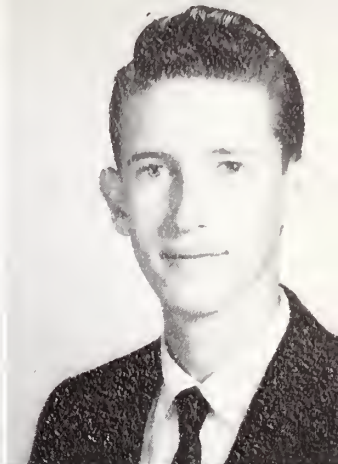
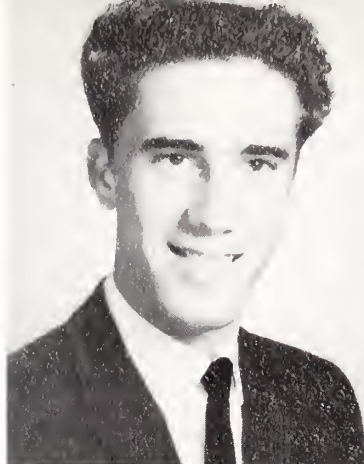
WILBUR GRAY REASON  
 Science Club 1; J.V. Basketball 1; Glee Club 3, 4; F.F.A. 2, 3, 4, Treasurer 3; F.B.L.A. 2, 3, 4.





WILLIAM RAY REASON  
Basketball 2, 3, 4; Bus Driver 3, 4; Office Assistant 3.

JOSEPH EARL ROSE  
Glee Club 3.

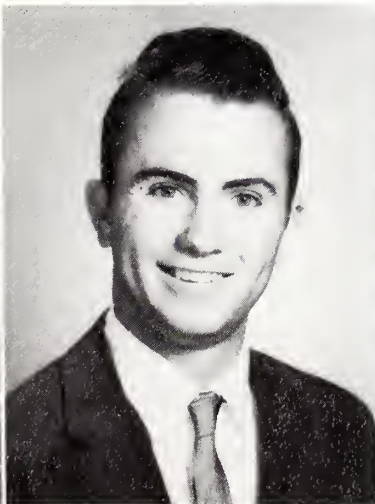


JUDY INEZ ROUSE  
Transfer from Winterville 4.

HELLEN MARIE RUSSELL  
Glee Club 1; F.T.A. 1, 2, 3; Office Assistant 3, 4;  
ARCHWAY Staff 4; Keyette Club 4; F.B.L.A. 4.

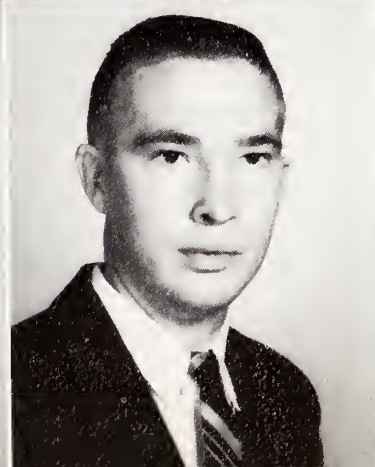


## Seniors



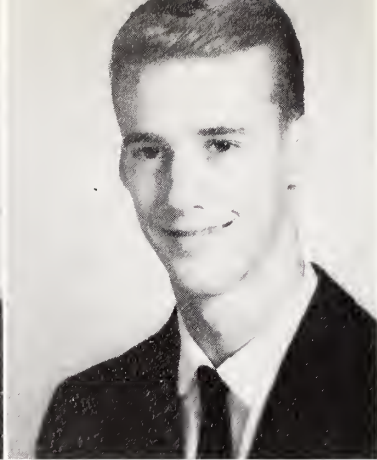
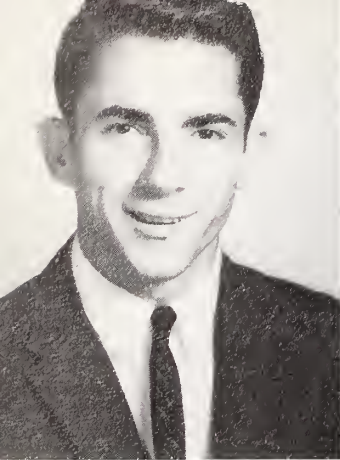
SYLVIA MAE SMITH  
Glee Club 1, 3, 4; F.B.L.A. 2, 3, 4; Library Club  
2, 3, 4.

DENNIS RAY STRICKLAND  
F.F.A. 1, 2, 3, 4; Glee Club 1.



LINDA JANE TAYLOR  
Glee Club 1, 3, 4; F.T.A. 1, 2; F.B.L.A. 3, 4, Secre-  
tary 4; Office Assistant 3, 4.

ROBERT AARON TUGWELL  
F.F.A. 2, 3, 4, Officer 4; Glee Club 4.



SAM RICHARD WAINWRIGHT, JR.  
 Junior-Senior Waiter 2; Class Treasurer 1, 2, 3, 4;  
 Glee Club 1, 2, 3, 4; F.B.L.A. 2, 3, 4; Vice-President  
 of Athletic Association 4.

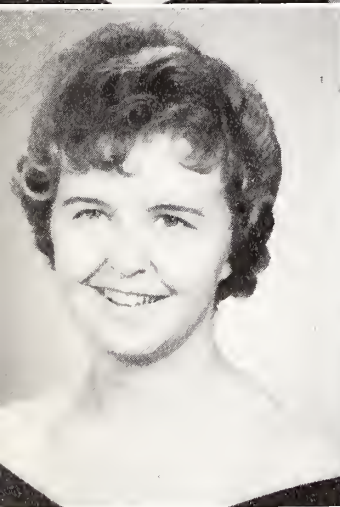
RONNY LANGLEY WEBBER  
 Science Club 1; Glee Club 3, 4; F.B.L.A. 4.



GLORIA DEAN WILLOUGHBY  
 Band 1, 2; Dramatics Club 2; Glee Club 3, 4; F.T.A.  
 2, 3, 4, Secretary-Treasurer 3; Science Club 1; Junior-  
 Senior Waitress 2; Homecoming Queen Candidate 2;  
 Co-Captain for Magazine Drive 3; Office Assistant 4;  
 Class Secretary 4; Superlative 4; Cheerleader 4; High  
 School Reporter 4.

ALMA SERENE WORTHINGTON  
 Glee Club 1; F.H.A. 1, 2, 3, 4, Reporter 3; F.B.L.A.  
 4; Library Assistant 4.

## Seniors



FRANCIS FAYE YOUNG  
 Glee Club 1; F.H.A. 1, 2, 3, Historian 3; Office  
 Assistant 3, 4; Bus Driver 3, 4; F.B.L.A. 4.

SENIOR CLASS MASCOTS  
 Wave Oglesby, Tammy Everett





*This water is horrible!*



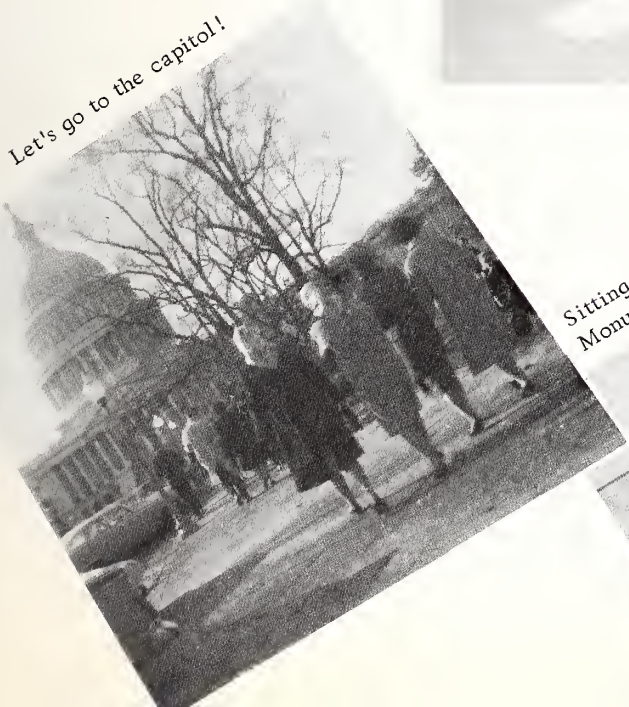
*Making up for last night!*

# *Senior Trip*



*Rest our weary feet!*

*Let's go to the capitol!*



*Sitting certainly feels good after climbing the Washington Monument.*



# Outstanding Seniors



MELDA FAYE DIXON

A good mixture of wit and wisdom is Melda. She keeps us giggling with her original wise "cracks." Although small in stature, the place she holds could be filled by no other. She has proved herself a true friend, and always gives those about her plenty of pleasure. If you want anything done, go to Melda, she always greets you with "I'll try," and what she does is done well.

Real common sense is one of her strong points, too. She is steady, persistent, conscientious, loyal, and friendly. We anticipate for her great success as a librarian.



WALTER REX HODGES, JR.

Rex is full of fun and often puts it before other things. His motto may be "Pleasure before business"; however, he always takes part in the class affairs. In spite of his fun loving nature, Rex is a very important member of our class. In everything he is always there.

On the gridiron Rex fought for every inch of ground and helped "put it over" more than one time this year. We admire his fighting spirit, which shows only a part of how much he is willing to do.

As a drummer, he is great. An all-round fellow—from athletics to music, inclusive—that's Rex. His sportsmanship, good fellowship, and "Rex-ship" have won for him a place in the hearts of his classmates.

ALICE JEAN ALLEN

Jean, "Une petite brunette" has a certain faculty which is prized more than gold, yea much gold, that of being able to think and reason. She is careful in making decisions, forming opinions, and sticking to what she believes to be right. Jean seldom answers unless she is called on; but when she begins, why, you think she is "wound up."

As co-editor of News 'N' Views, Jean has been true to her promise to last year's sponsor in that she has been diligent in helping to maintain the award-winning status of our school paper. Hail our editor-in-chief! She is right there with the correct answer.

Quiet, demure, studious, ambitious, but as the old adage goes, "Still water runs deep." Someday Jean's friends expect to see her do remarkable things. We wonder whether it will be president of a large concern or the wife of the president.



## Outstanding Seniors



JOHN ROBERT OWENS, JR.

"Will the meeting please come to order?" Behold the president of the Student Government Association and the president of the senior class. Was there ever a president as good as John? Never! He has been president of his class for three successive years. When it comes to presiding, he's as good as "J.F.K." himself.

The position of responsibility, trust, and honor, which he has held, is sufficient to show his ability and real worth.

Quiet, dignified, trustworthy, courteous, and pleasant to all, are words that may best describe John. No one will dispute the fact that he is one of the best known and most popular students in Farmville High.

SARA WYNNE DONAT  
Those big brown eyes and that winning smile weren't given "Sally" for nothing. It's hard to know where to start in enumerating her good qualities. She's sincere, conscientious, dependable, studious, and withal, full of fun. Versatile is the only word applicable to her accomplishments. Three cheers for our basketball star!

Sally's efforts as co-editor of the News 'N' Views this year have been untiring. She has "burned the midnight oil" to help make it a success, and we see the fruits of her labors.

Truly, her high ideals, strong Christian character, determination, and keen interest bespeak a noble success.



FRANCES SUE DUKE

Pep, fun, a jolly good time—that's "Frankie." She leads our cheers. Whenever there is a game, "Frankie" is right there yelling. She has the enthusiasm that we all desire and the ability to put her whole soul into everything she undertakes.

"Frankie" is a professional gloom chaser. Her congeniality and amiable disposition make her welcome wherever she goes. Her good nature and lively disposition are like a daily tonic for those around. She takes from every minute sixty seconds of happy living. We know that with her liveliness and love for a good time "Frankie" will get much out of life.





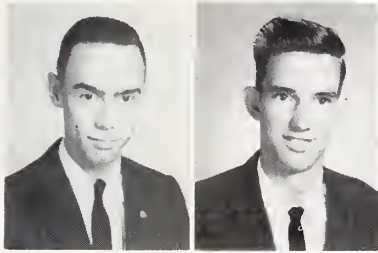
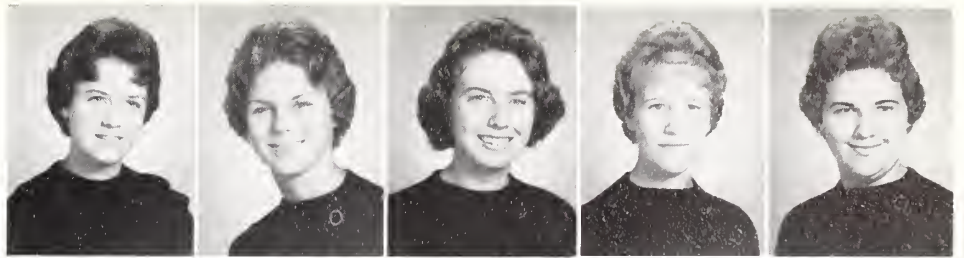
*Class Officers*

*Juniors*

- KENNETH DILDA.....President
- BOBBY FISER..... Vice-President
- JULIA RUSSELL RIVES..... Secretary
- SONDRA WINDOM..... Treasurer

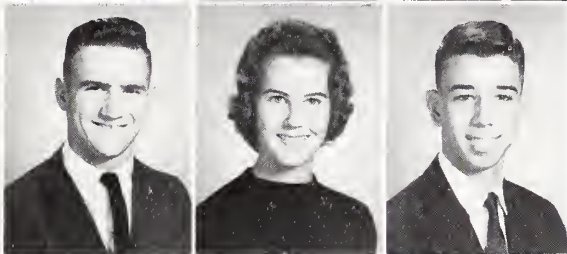
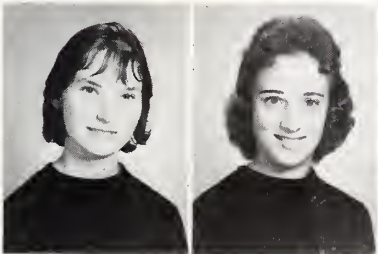
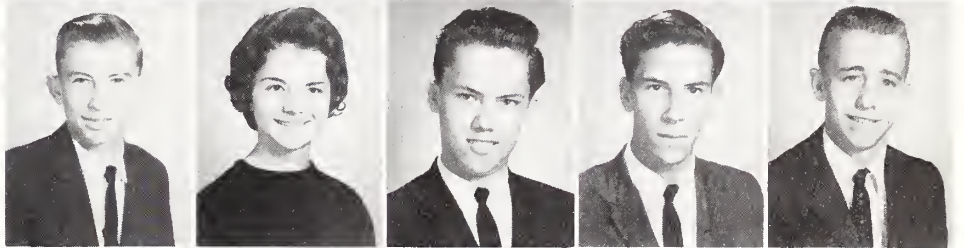
The honor roll and principal's list are posted for the first marking period of the junior year. Why so few names? New subjects have been added: French, plane geometry, United States History on TV, bookkeeping, and physics. Then the students are busy with the magazine drive, hoping to realize sufficient funds for financing the Junior-Senior in the spring.

MARION ALLEN  
SANDRA ALLEN  
MARY AVERY  
IRENE BAKER  
LINDA BAKER



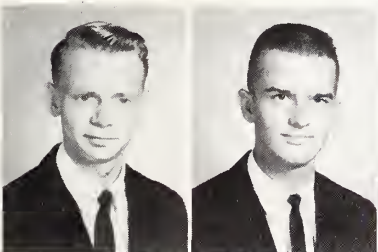
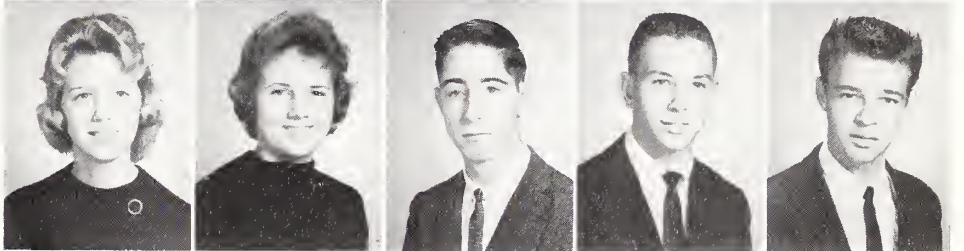
ROBERT BASS  
PERRY BEAMON  
CAROL BRADSHAW  
BETTY BRAXTON  
RACHEL CASE

LOUIS CAUSEY  
PHYLLIS CORBETT  
JIMMY CRAFT  
LEON CRUMPLER  
TED DAIL



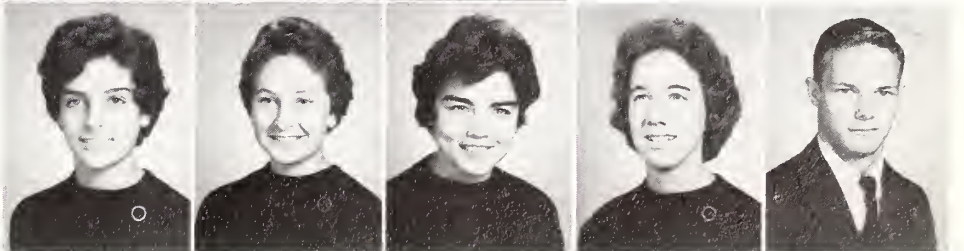
ALMA DAVENPORT  
MADLINE DEAL  
KENNETH DILDA  
SU-SU DIXON  
WIN DONAT

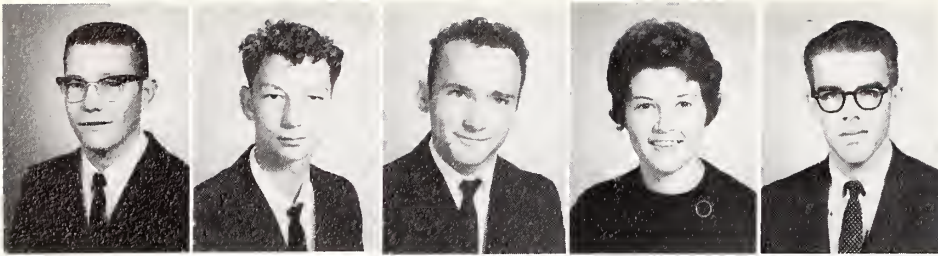
NANCY DRAKE  
CAROL DUNN  
CHESTER ELLIS  
BOBBY FISER  
COLON FULFORD



MIKE GARDNER  
MELVIN GAY  
CAREY GAYNOR  
NEWELL HARPER  
HOWARD HOLLOMAN

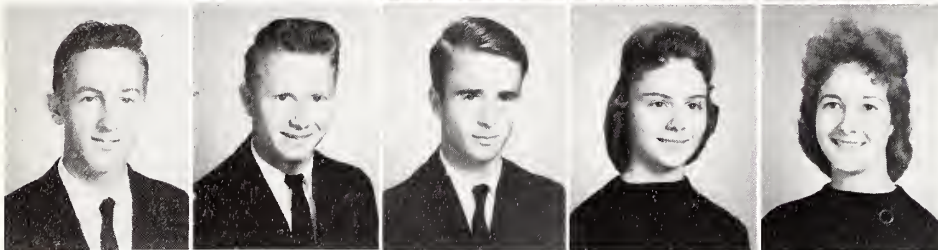
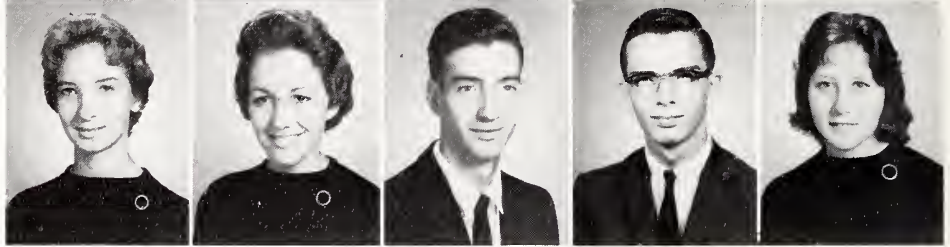
RACHEL HUDNELL  
WILMA JEFFERSON  
CAROL JENKINS  
JULIE JONES  
TOMMY JOYNER





WILBUR JOYNER  
CHARLES JUSTICE  
LARRY KING  
ANN LETCHWORTH  
VAN LEWIS

LINDA LLOYD  
FRANCHION McLAWHORN  
HOWARD MANNING  
RAY MASSEY  
BRENDA MATTHEWS



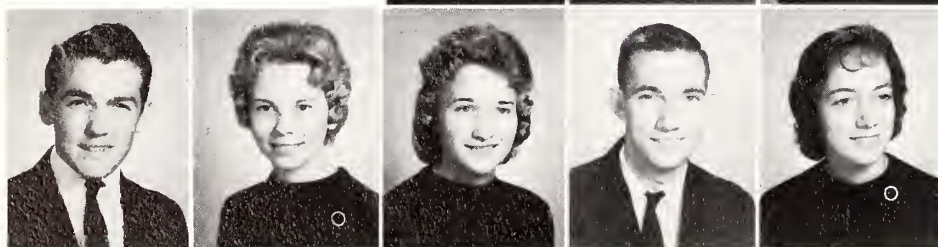
KENNETH MOORE  
RICHARD MORRIS  
WRIGHT MORRIS  
BRENDA MOYE  
PEGGY MOYE

CLAUDE NETHERCUTT  
DOTTIE NEWTON  
BETSY CAROL NICHOLS  
SUE NICHOLS  
LOU OAKLEY



JOYCE O'NEAL  
EVELYN OWENS  
GLADYS PEADEN  
DIANA POLLARD  
D.J. RASBERRY

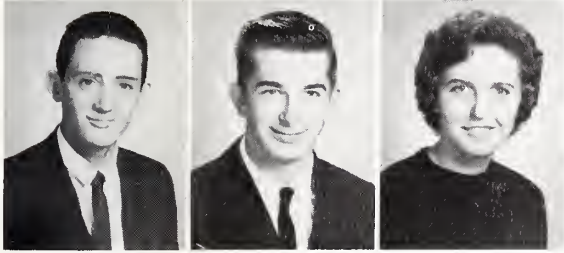
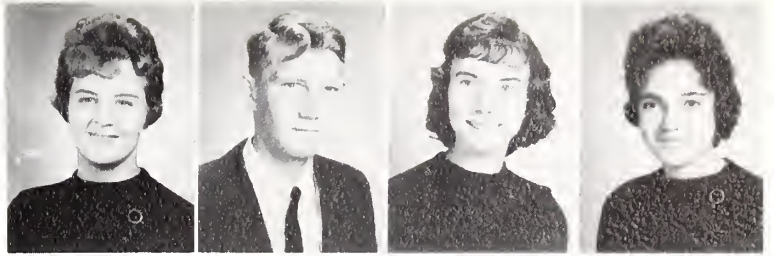
JULIA RIVES  
ELOISE SAULTER  
JUDY SAULTER  
HENRY SMITH  
LOUISE SPEIGHT



MITCHELL STEPPE  
NANCY THOMAS  
DAISY TYSON  
BRUCE VINCENT  
EMMA VINCENT



REBECCA WHITE  
 DANNY WINDHAM  
 SONDRRA WINDOM  
 GLENDA WOOD



JIMMY WOOTEN  
 BILLY YOUNG  
 REBECCA YOUNG



A few juniors try their long-awaited class rings for size.



Nancy Thomas and Van Lewis seem to be enjoying their practice for the Junior-Senior, but Billy Young has other ideas.



Heads of the magazine drive point out progress of sales.

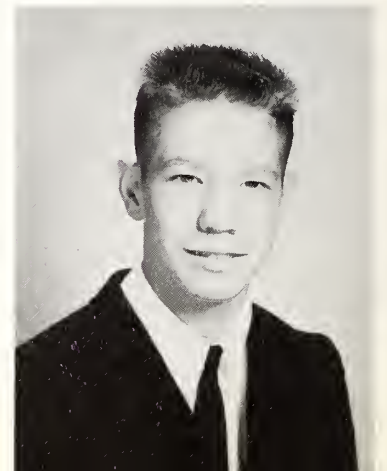
# Sophomores

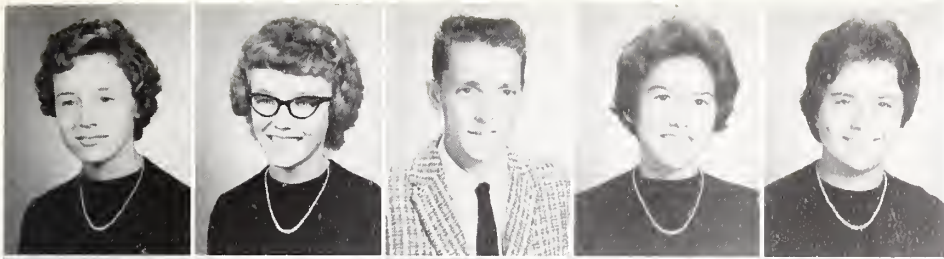


JAMES TAYLOR  
Vice-President  
DAIL HARRIS  
Secretary  
CAROL BLACKLEY  
Treasurer

Last year's green freshmen have developed into wiser sophomores. These students are introduced to biology, in connection with which they collect for and enter projects in the Science Fair.

DOUGLAS JOYNER  
President



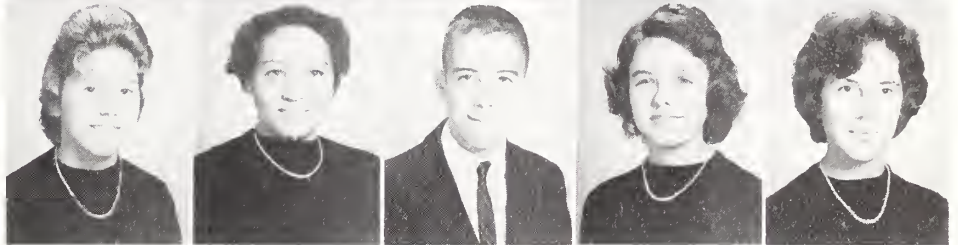


BETSY ALLEN  
ELIZABETH ALLEN  
JOHNNY ALLEN  
KAY ALLEN  
EVELYN ANDREWS

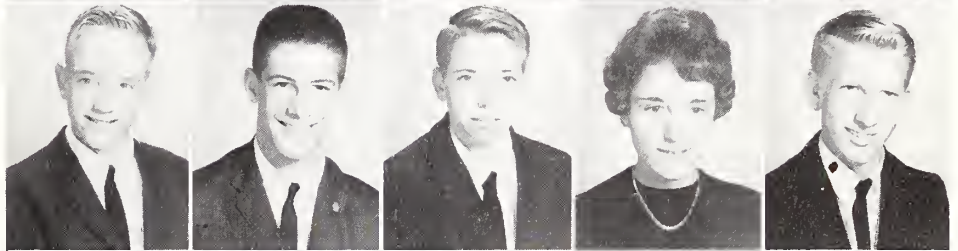


SANDRA AVERY  
SAM BAGLEY  
FAYE BAKER  
JEAN BAKER  
LARRY BAKER

JUDYE BASS  
BETTIE BELL  
FREDDIE BELL  
CAROL BLACKLEY  
GAY BLAND



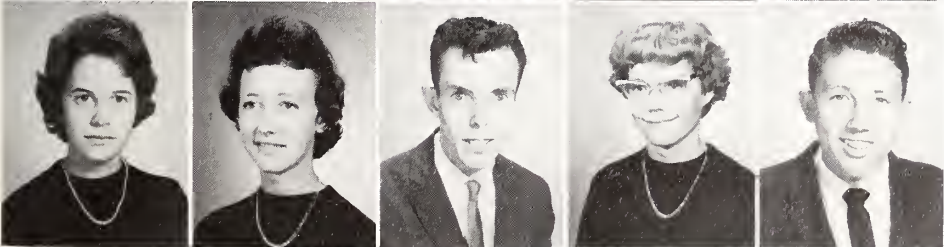
FRANK BRADHAM  
JOHNNY BRILEY  
ROBERT BROCK  
MARY PAULA BURNETTE  
FRANKLIN CARRAWAY



MARY SUE CARROLL  
RAY CORBITT  
SHELBY DAVIS  
BENNETT DILDA  
JAMES DILDA



ELON EVERETTE  
MILLIE FITZGERALD  
ELAINE GARDNER  
GLORIA GARDNER  
ROY HARDEE

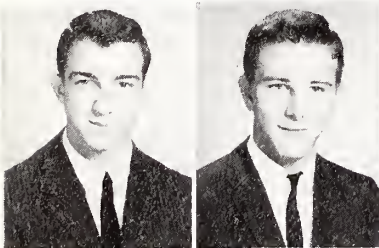


DAIL HARRIS  
GENEVA HARRIS  
KENNETH HEATH  
EVE HOBGOOD  
RICHARD HOLLOMAN

RUTH JEFFERSON  
 PAT JONES  
 ALMA JOYNER  
 DOUGLAS JOYNER  
 JUDITH JOYNER



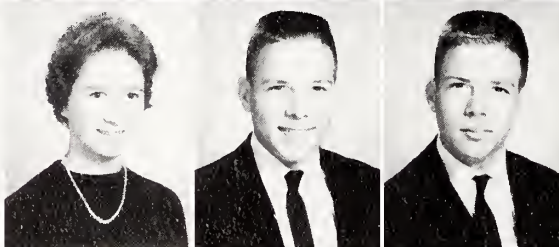
JOHN KING  
 CHARLES LETCHWORTH  
 BARBARA LEWIS  
 JUDY LITTLE  
 LYNETTE MANNING



BILLY MARTIN  
 C. E. MATTHEWS  
 JIMMY MATTHEWS  
 BONNIE MELTON  
 ALBERT MOSLEY



LINDA MOSLEY  
 FAYE MOZINGO  
 MARGARET MOZINGO  
 MARGARET NELSON  
 BENNIE NICHOLS

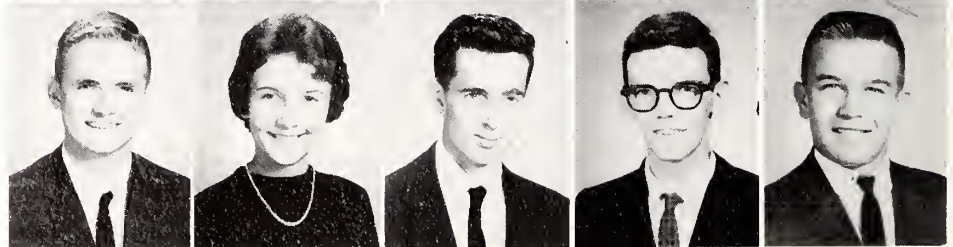


KAY O'NEAL  
 ANNA OWENS  
 LOU OWENS  
 DONALD PARKER  
 RONALD PARKER

ERNIE PETTEWAY  
 CHARLES PHILLIPS  
 HAZEL PRICE  
 PAUL RASBERRY  
 DAVID RYON



BOBBY SMITH  
 SUE STYERS  
 FRANK TAYLOR  
 JAMES TAYLOR  
 TOMMY THOMPSON





GENNIS TRIPP  
 JOYCE WAINWRIGHT  
 KENNETH WAINWRIGHT  
 RUFUS WARD



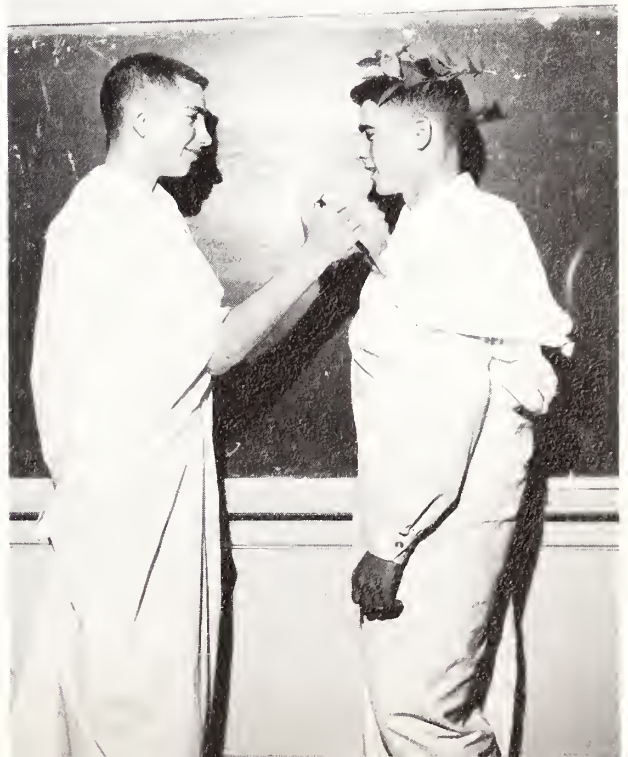
PAT WEBB  
 LYDIA WEBBER  
 JAMES WELLS  
 BECKY WILLIAMS

JOE WILLOUGHBY  
 DORIS WINDHAM  
 NANCY WINSTEAD  
 JACK WRIGHT

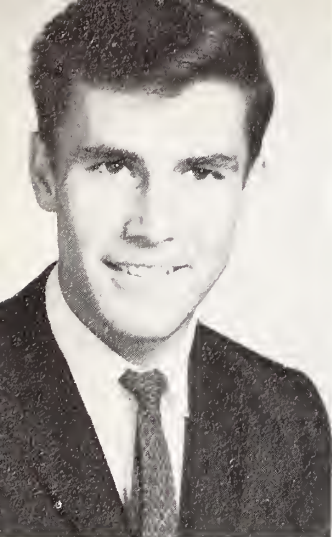


Students explore the mysteries of biology with a bioscope.

"Et tu Brute?"

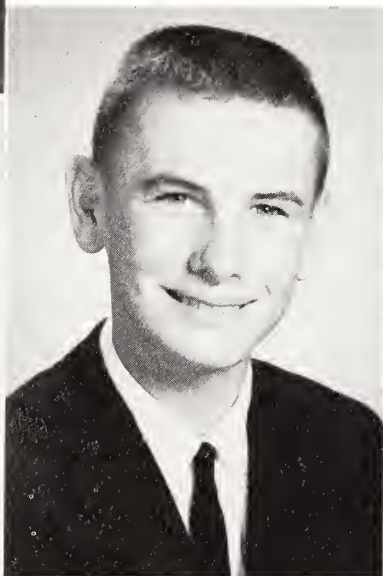


# *Freshmen*



DONNIE BROWN  
President

IVEY SMITH  
Vice-President



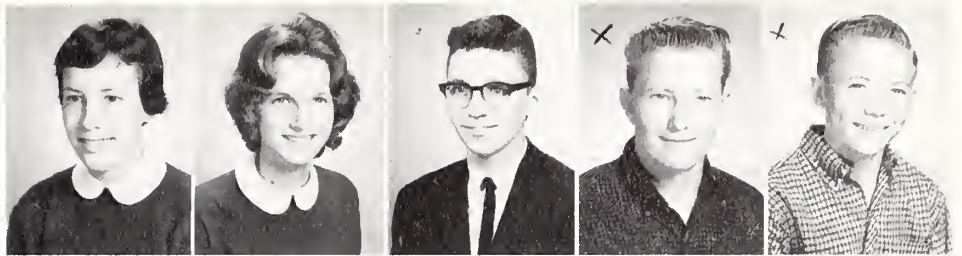
CONNIE KILLEBREW  
Secretary



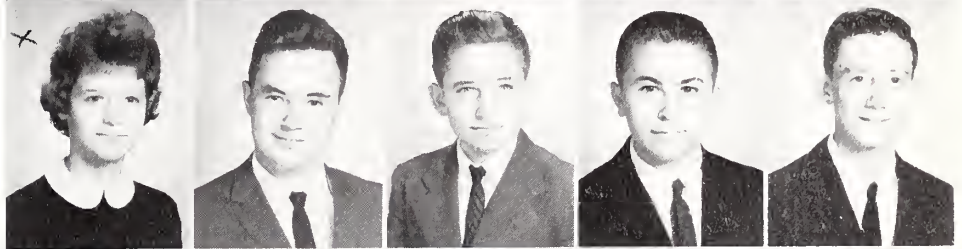
RACHEL WAINWRIGHT  
Treasurer

Teenagers await with keen anticipation their first year in high school. Even after they find out what it is like, they love being able to change class rooms and teachers every hour. In addition to making principal's list and the honor roll, some of the freshmen became cheerleaders, band members...for the first time, the freshmen have a class on TV.

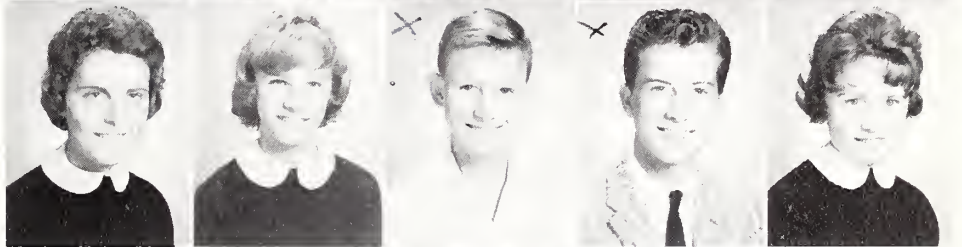
EDITH ALLEN  
 JAMIE ALLEN  
 PAUL ALLEN  
 JOHN ASKEW  
 LINWOOD ASKEW



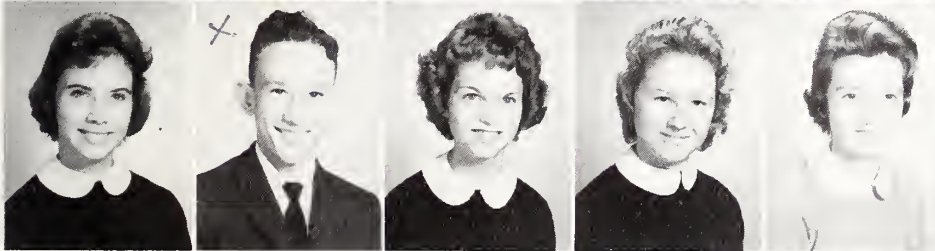
JANICE AVERY  
 MAYNARD BAILEY  
 JOHNNY BAKER  
 BERT BALDREE  
 HUBERT BALDREE



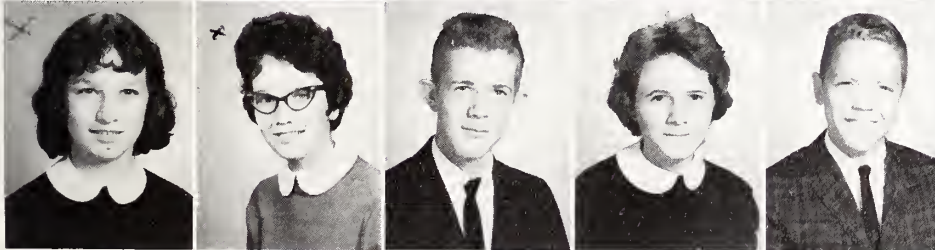
EDNA BEASLEY  
 FAYE BLALOCK  
 RAYMOND BOONE  
 JESSE BRAXTON  
 DONNA BRITT



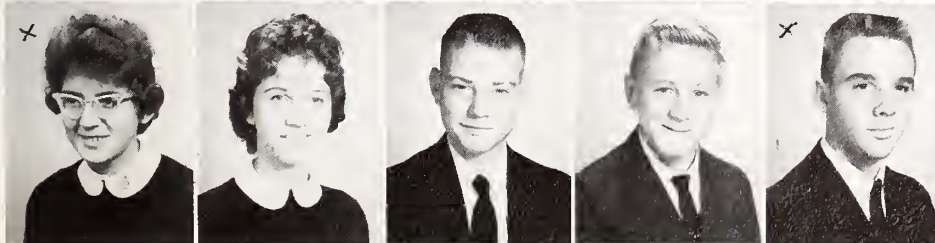
JO ALICE BROCK  
 DONNIE BROWN  
 DONNA BRYAN  
 J.P. BURNETTE  
 ANNE BURESS



LINDA CARR  
 STANLEY CARRAWAY  
 PATSY COBB  
 LINDA COOKE  
 JEAN DANIELS



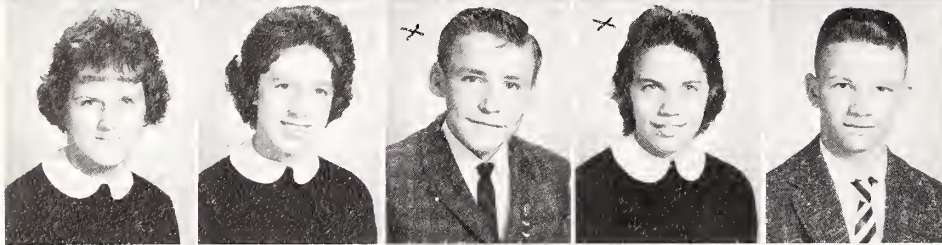
DIANNE DAVENPORT  
 WANDA DAVIS  
 TOMMY DICKINSON  
 BETTY RUTH DUNN  
 JOHNNY EASON



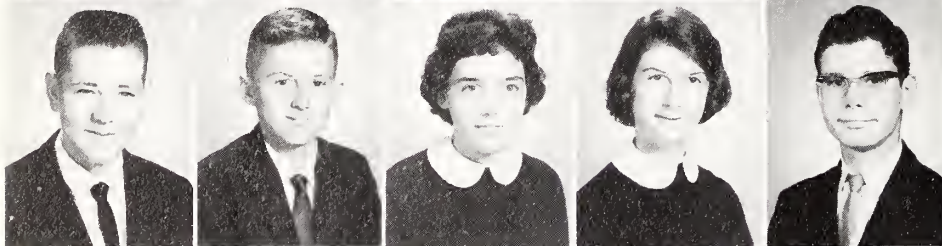
KATIE EASTWOOD  
 CHARLENE EDWARDS  
 EDWIN ELLIS  
 JOHNNY ELLIS  
 CHARLES EVANS



MAVIS EVANS  
 BRENDA EVERETTE  
 MARGIE FIELDS  
 LAURIE FISER  
 BUSTER GARDNER

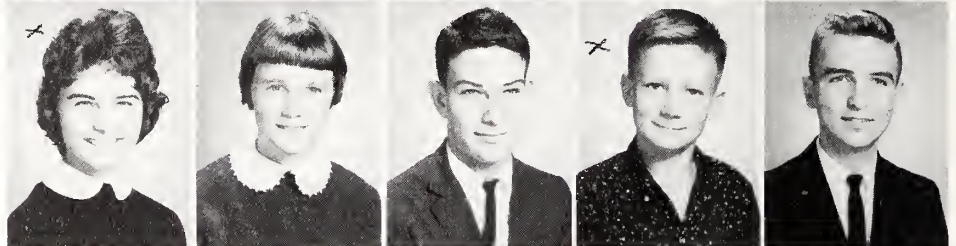


DONNA SUE GARRIS  
 MARY AGNES GAY  
 WILLIAM GAY  
 VELMA HADDOCK  
 JOHNNY HARDISON



MARVIN HARRIS  
 BERT HART  
 JANICE JENKINS  
 BARBARA JONES  
 DAVID JONES

CONNIE KILLEBREW  
 GAIL LECKIE  
 STEVE LETCHWORTH  
 VAN LETCHWORTH  
 DOUGLAS MOORE



MARY NEWTON  
 JUNIOR NICHOLS  
 JEANETTE ORMOND  
 CHARLES OWENS  
 JEAN OWENS



TOMMY OWENS  
 WAYNE OWENS  
 ANN PARKER  
 JOHNNY PHILLIPS  
 EARL POPE



CAROLYN RILEY  
 ROBERT ROUSE  
 MARY SIMPSON  
 BENNIE SMITH  
 IVEY SMITH

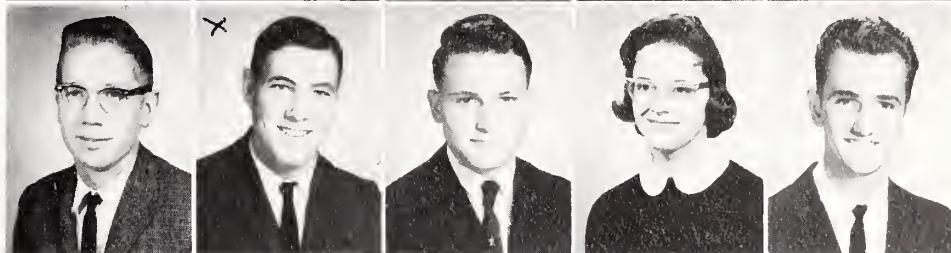




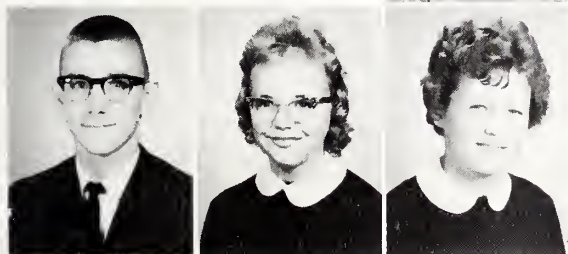
NANCY SMITH  
 NETTIE FAYE SUMLIN  
 HARVEY THIGPEN  
 FRANCES THORNE  
 GERALD TUGWELL



STEVE TUGWELL  
 RENNIE TURNER  
 DAN TYSON  
 GAIL TYSON  
 JAMES TYSON

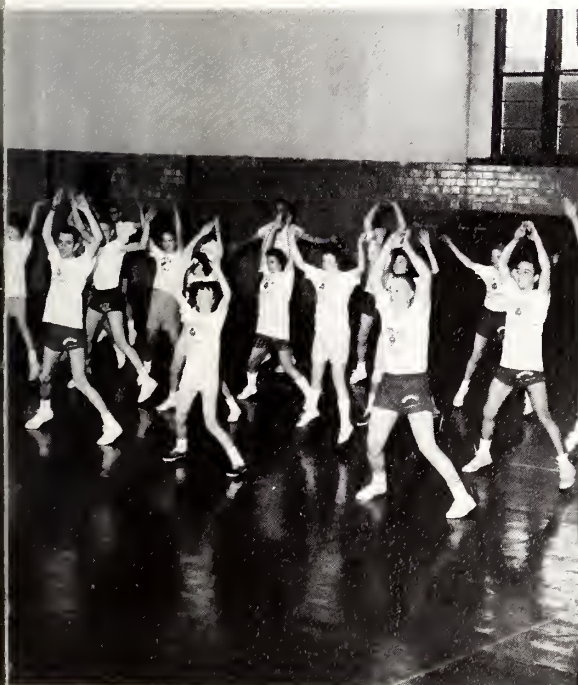


JANET WAINWRIGHT  
 RACHEL WAINWRIGHT  
 CATHY WALSTON  
 DAVID WHITFIELD  
 KENNETH WILKINS



JESSE WINDOM  
 RUTH ANN WOOTEN  
 NORA LEE YOUNG

Side-straddle hop! 1 - 2 - 3 - 4



Junior Varsity cheerleaders perform a familiar cheer.





It's twisting time.



Where is the elevator?

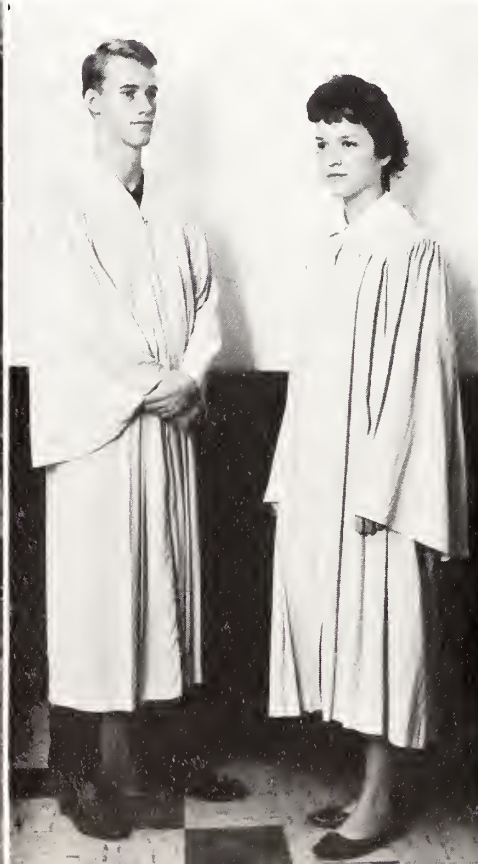


Another day is done.



Miss Spring Follies, Linda Moseley.

Dreaming of the big day.



One sandwich and one "nutty buddy" coming up.





## Organizations

These are our leaders in school. Their main responsibility is to lead us to the best of their abilities. Our responsibility is to follow them as well as we are able. Also we must offer criticisms, when needed, and make ourselves good followers. A person cannot lead without followers; a follower must have a leader. Mutually dependent, we perform the responsibilities of each organization, smoothing over the rough spots and developing a well-oiled mechanism.





## *Student*

An organization still in its infancy, the Student Association of Farmville High School is always striving to benefit all the students. By governing ourselves we endeavor to create better citizens for the better communities of tomorrow.

JOHN OWENS  
President of the Student Association



Student Council in session...From left to right:  
Mr. Robert Bruce, Ann Letchworth, Nancy Thomas, Bobby Fiser, Rachel Case, Marion Allen, Bobby Bass, Kenneth

Dilda, John Owens, Ernie Petteway, Sandra Bass, Chester Outland, Carol Blackley, Rex Hodges, Annette Mosley, James Taylor, Ruth Jefferson.





STUDENT ASSOCIATION OFFICERS

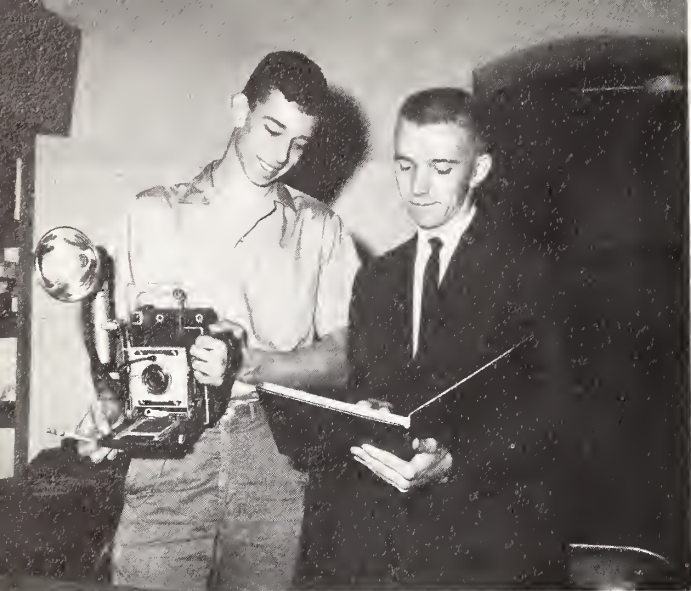
KENNETH DILDA ..... Vice-President    MARION ALLEN ..... Secretary  
 ERNIE PETTEWAY ..... Treasurer

Mr. Robert Bruce, founder and adviser of the Association in this school.



The Student Association takes pride in seeing that the national and state flags fly over our school. The assemblies have also been taken as a responsibility of the S.G.A. For the first time, a school seal has been selected this year, and a school handbook has been published.

*Association*

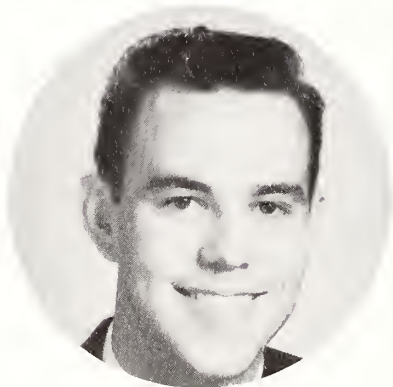


Photography Editor, Win Donat, and Art Editor, Charles Mozingo, search for quality examples by which to pattern their work.

Staff members gathered ideas from other annuals to



JEAN ALLEN  
Editor



JOHN OWENS  
Assistant Editor

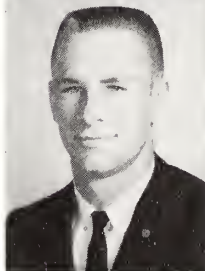
BILLIE SUE  
FORBES  
Feature Editor



SANDRA BASS  
Assistant Feature  
Editor



MARGIE  
NICHOLS  
Copy Editor



REX HODGES  
Sports Editor



SUE FLAKE  
Assistant Sports Editor

# Staff

use with their original ones to compile this yearbook.



ARCHWAY Advisers, Mrs. Joyner and Mrs. Rollins, smilingly study the yearbook layout plans.



HELLEN RUSSELL  
Assistant  
Copy Editor

EDNA GRAY  
MOSELEY  
Assistant  
Copy Editor

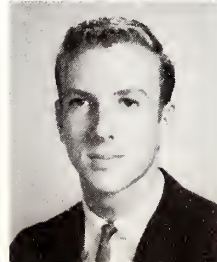
CHESTER  
OUTLAND  
Publicity  
Manager



RICKY MURPHREY  
Assistant Publicity Manager



DAVID QUINN  
Assistant Business Manager



BEN MONK  
Business Manager



DEAN OGLESBY  
Assistant Business Manager

**Money, Active D...**

With the "Money" article, the school's financial picture is shown in a clear and concise manner. The article is well-written and easy to read, and it provides a good overview of the school's financial situation.

**Active D...**

The "Active D..." article is also well-written and provides a good overview of the school's extracurricular activities. It is a well-written and easy-to-read article that provides a good overview of the school's extracurricular activities.

# News 'N' Views

**New Faculty Members Face Students; Secretary, Work**

The new faculty members are facing the students and working hard to make a good impression. They are all well-qualified and experienced, and they are sure to provide a high quality of education for the students.

**Physical Program Put into Effect**

The physical program has been put into effect, and the students are enjoying it very much. It is a well-planned and well-executed program that provides a good opportunity for the students to get some exercise and stay healthy.

**Council Announces Projects for**

The council has announced several projects for the coming year, and the students are looking forward to participating in them. These projects are well-chosen and will provide a good opportunity for the students to learn and grow.

**Curious Students View Improvements, Cheerleaders Show off New Uniforms**

The curious students are viewing the improvements to the school, and the cheerleaders are showing off their new uniforms. The improvements are well-planned and well-executed, and the new uniforms are well-designed and well-fitting.

**Pages Flooded, Figures**

The pages are flooded with figures, and the students are looking at them with interest. The figures are well-presented and easy to read, and they provide a good overview of the school's performance.



Feature Editor, Julie Jones; Copy Editor, Melda Dixon; Exchange Editor, Billie Sue Forbes; and Sports Editor, Win Donat, smile as Mr. Lewis Lawrence, Adviser, points out a joke in a magazine.

# News 'N' Views

Co-Editors, Jean Allen and Sally Donat, study one of their finished products.



Staff members display different emotions as they criticize a recent issue of News 'N' Views.





"Since you are new in the newspaper world, you will have to pay close attention to instructions," Win Donat warns Kay Allen, a staff member.



"Type this copy, please," Julie Jones instructs Melda Dixon.

records  
disappointment,  
excitement,  
discovery,  
opinions . . .



Hurrah! Another issue has gone to press.

## News 'N' Views

**Dido Receives Recognition in 4-H**



With pride the honors of 4-H recognition were bestowed upon Dido, a member of the 4-H club, for her excellent work in the field of agriculture. Her dedication and hard work have earned her this well-deserved recognition.

**Honor System Defeated, School Seal Adopted; SGA Plans Handbook To Be Printed Soon**



The Student Government (SGA) has successfully defeated the proposed honor system and adopted the school seal. The SGA also plans to publish a handbook soon. The seal features a central emblem with a book and a torch, symbolizing knowledge and enlightenment.

**Students Express Views of Exams**

Students have expressed their views on the current exam system. Many feel that the exams are too difficult and do not accurately measure their knowledge. They suggest that the school should consider alternative assessment methods to better evaluate student learning.

# Key Club



DEAN OGLESBY  
President  
JERRY BAILEY  
Vice-President  
MELVIN GAY  
Secretary  
BEN MONK  
Treasurer  
KENNETH DILDA  
Chaplain  
MR. ALLEN BENFIELD  
Adviser



Key Club members carry out one of the many service projects of their club.

Key Clubbers pick up the tab after a supper meeting.



The new Key Club members enjoy the twisting part of their initiation.

# Keyette Club



Hellen Russell, Jean Allen, and Margie Nichols prepare Keyette bulletin board.



Initiation for the new Keyette members was one big laugh.



Officers of the Keyette Club compare notes.

The new Keyette members are busy carrying out one of the many service projects of the club.



# Band



MR. W.A. GLASGOW  
Band Director



- E. Allen, J. Allen, B. Bass, I. Carr, S. Chessen, J. Dilda, S. Donat, W. Donat, B. Flake, D. Freuler,  
 M. Fitzgerald, C. Gaynor, R. Hodges, B. Jones, S. Lang, B. Lovic, B. Lovic, R. Massey, T. Murphy,  
 D. Nichols, J. Nichols, J. Nichols, C. Nolen, C. Owens, C. Outland, C. Phillips, H. Smith, I. Smith,  
 N. Smith, C. Walston, K. Wainwright, D. Whitfield, N. Winstead, R. Wooten, J. Wright.

# Dance



# Majorettes



RAY MASSEY  
Drum Major



Majorettes, from left to right: Su-Su Dixon, Sandy Allen, Milly Fitzgerald, Lou Oakley, Edna Beasley, Sandra Bass, Nancy Smith, Madeline Deal, and head majorette, Ann Staton Everette.

# Band



# Glee Club



Glee Club One.



Mrs. Holmes and Mrs. Smith  
rehearsing music for a concert.

Glee Club Two.





Mrs. Batchelor, adviser; Melda Dixon, president; and other club officers grin happily as they think of all the achievements of their club.



Bulletin board committee members gather in front of one of the many attractive bulletin boards in the library.

## *Library Club*

The lineup of books in the library is always attractive because of the diligent work of the library assistants.

Library assistants gather in the elementary library.



# Science Club

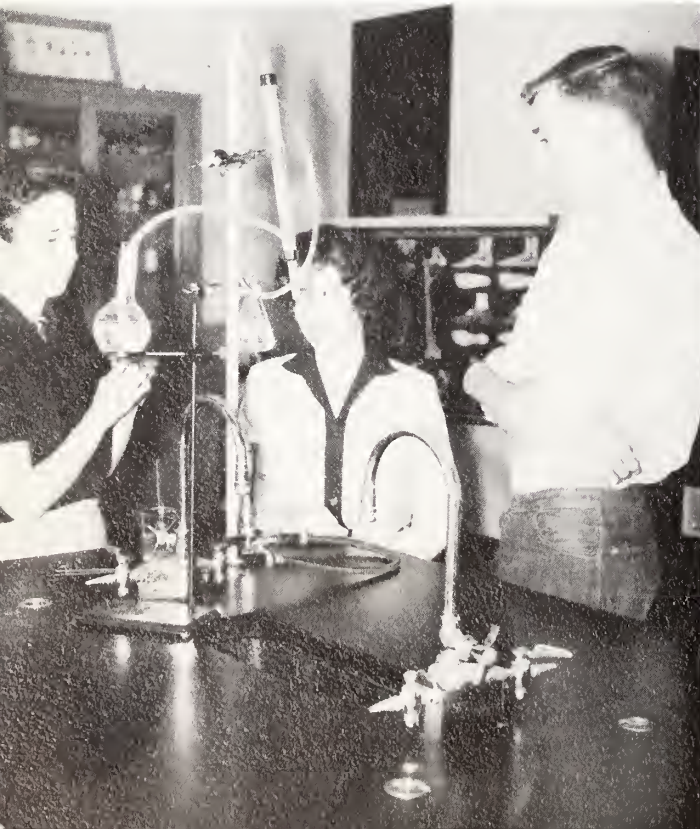


The Science Club is a large and interested group.



Melvin Gay and Kay Allen watch as Bobby Fiser explains a leaf collection.

Lab assistants, David Quinn and Sally Donat, look on as Mrs. Wheless demonstrates how to strike a match.

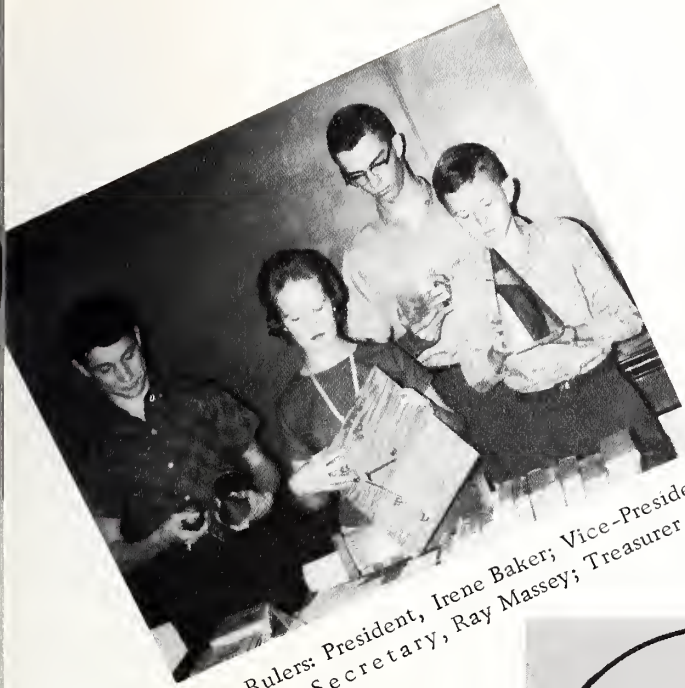


Science Club officers: Bobby Fiser, president; Bobby Bass, vice-president, Marion Allen, secretary, Su-Su Dixon, treasurer, and Phyllis Corbett, reporter. The officers try out the new fume hood in the lab.

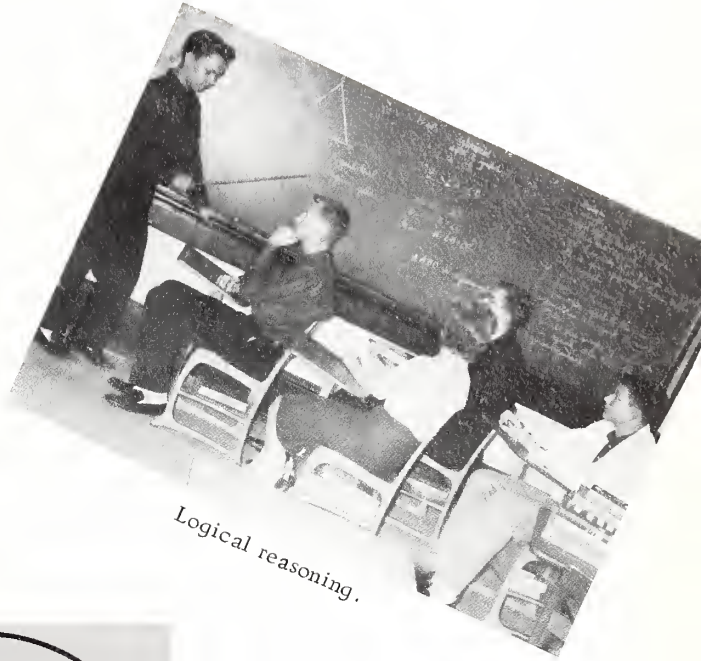




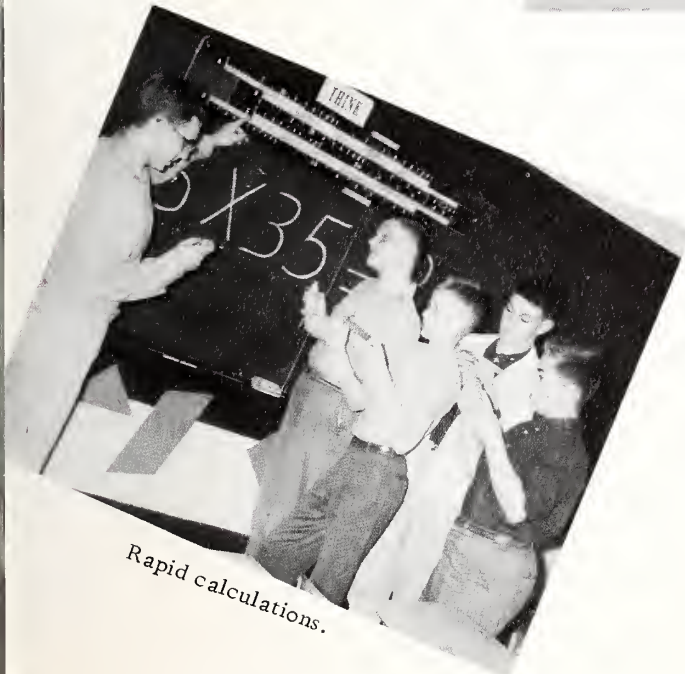
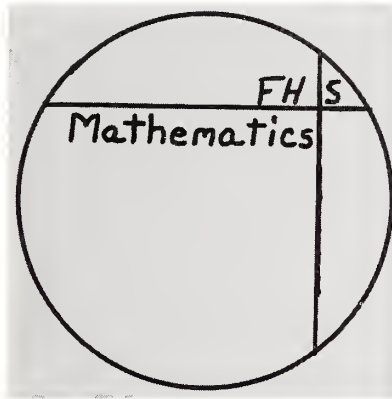
# Squared Circle



The Rulers: President, Irene Baker; Vice-President, Bert Hart; Secretary, Ray Massey; Treasurer, Joe Willoughby.



Logical reasoning.

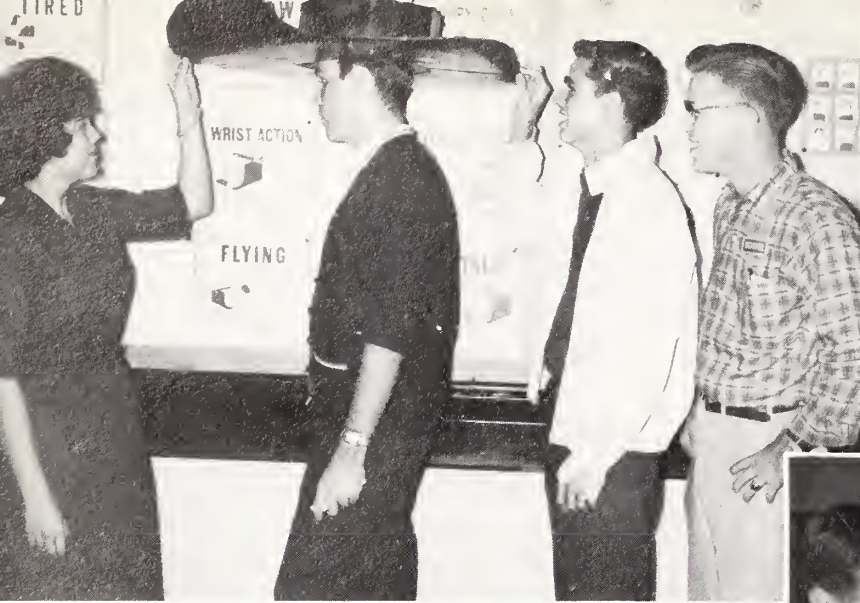


Rapid calculations.



State the facts.

# F. B. L. A.



John Owens models the hat worn by Mr. Bundy in the Homecoming parade.



Smiles of approval indicate the plans for the State Convention are nearing completion.



Advisers and officers study the F.B.L.A. charter.

Plans for Homecoming parade were settled after many hours of work.





Four-H officers pledge head, heart, hands, and health to their work.



The livestock judging team participates in many contests.

Members of the crop judging team discuss new methods of judging crops.





Officers and sponsor smile approvingly over magazine article.



Annette Mosley distributes activity cards to members.

## F. T. A.

A day will come when these smiling faces are the old teachers.



Knock on the Door of Education, and a future teacher will open it.





President Carroll Oakley presides over a meeting of the F.F.A.



F.F.A. officers prepare for the first meeting of the year.

Jennis Tripp, C.E. Matthews, and Dennis Strickland find shop work enjoyable, as well as useful.



Mr. E.P. Bass, Adviser, and Brenda Matthews, sweetheart, study the scrapbook.





Sweethearts on parade.



An activity scene in food preparation.



Developing skills in sewing by garment construction.



Formal initiation service of new members of the Future Homemakers.

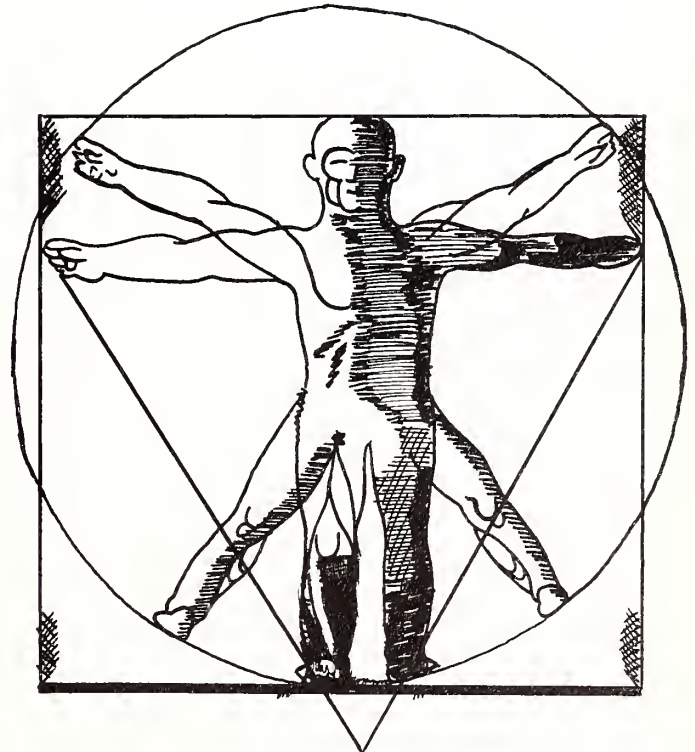


## Features

Beauty is the tear of joy that springs from a girl's twinkling eyes as she hears that she has been chosen Miss Archway, homecoming candidate, or Homecoming Queen.

It is the parade of marshals at graduation exercises, the senior superlative winners, the beautiful homecoming floats, the baby pictures of the seniors.

Beauty is man—the perfect symmetry of man. Beauty is eternal.





*Best All Around*

FRANK DUKE and JOHN OWENS





*Most Intellectual*

JEAN ALLEN and BEN MONK





*Best Looking*

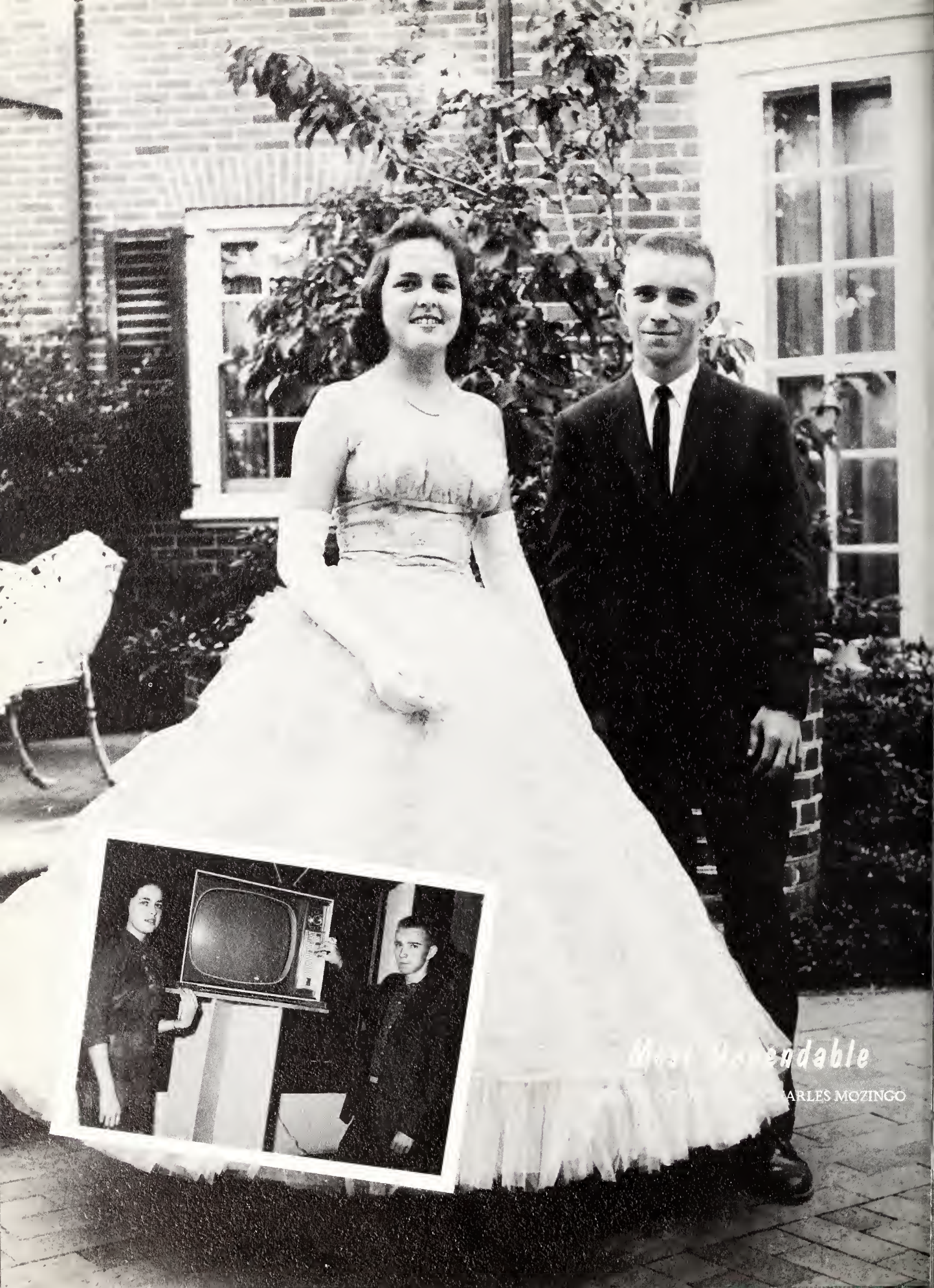
SANDRA BASS and JIMMY EVERETT



*Most Popular*

DEAN WILLOUGHBY and CHESTER CUTLAND





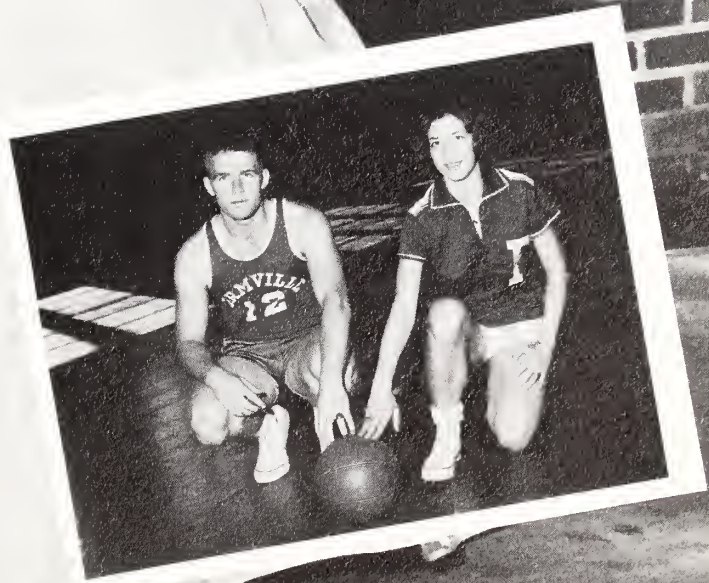
*Most Dependable*

CHARLES MOZINGO



*Most Athletic*

SALLY DONAT and DANNY DILDA





*Miss Archway*

KAY BELL



*Daughters  
of the  
American Revolution  
Good Citizenship  
Award*

ANNETTE MOSLEY

*Boys' and Girls'  
State*

Boys' and Girls' representatives--John Owens, Chester Outland, Annette Mosley, and Billie Sue Forbes—are preparing to leave for a week of governmental work.





*Homecoming King And Queen*

NANCY DRAKE and TOMMY JOYNER





KAY BELL and DANNY DILDA  
Seniors

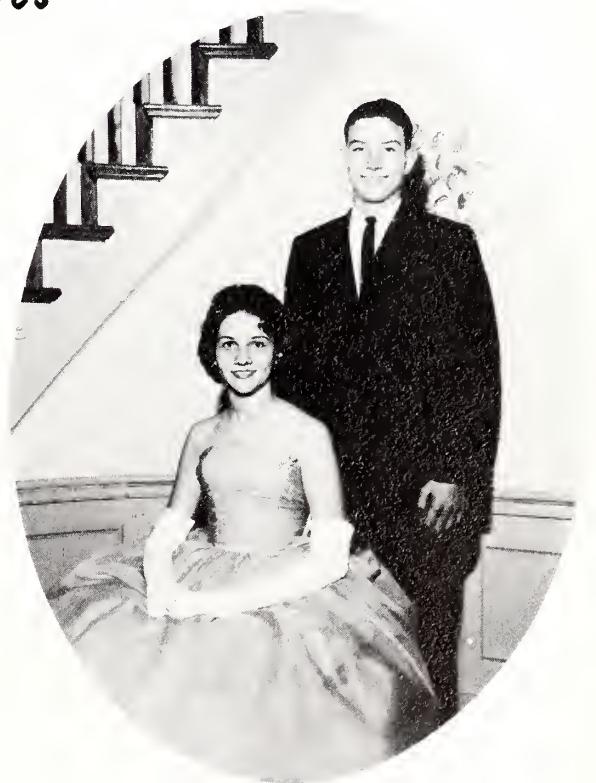


NANCY DRAKE and TOMMY JOYNER  
Juniors

## *Candidates*



NANCY WINSTEAD and JOHN KING  
Sophomores



CHARLENE EDWARDS and STEVE LETCHWORTH  
Freshmen



The Library Club's float "I Could Have Danced All Night," won first prize in Homecoming Parade.

5' 2" + Eyes of Blue = second prize for Squared Circle.



The "Big Boss" adds a touch of comedy to F.B.L.A. float.

Beat Robersonville!



Tears of happiness and looks of astonishment describe the newly crowned Homecoming King and Queen.

# Marshals of 1961



Betsy Allen



Evelyn Andrews



Bobby Bass



Carol Blackley



James Dilda



Bobby Fiser



Milly Fitzgerald



Dail Harris



Douglas Joyner



Judith Joyner



Jean Allen and Sally Donat  
Co-Chiefs



Emily Monk  
Not Pictured



Margaret Mozingo



Dottie Newton



Ernie Petteway



Louise Speight



James Taylor



Daisy Tyson



Sondra Windom



Nancy Winstead



Rebecca Young

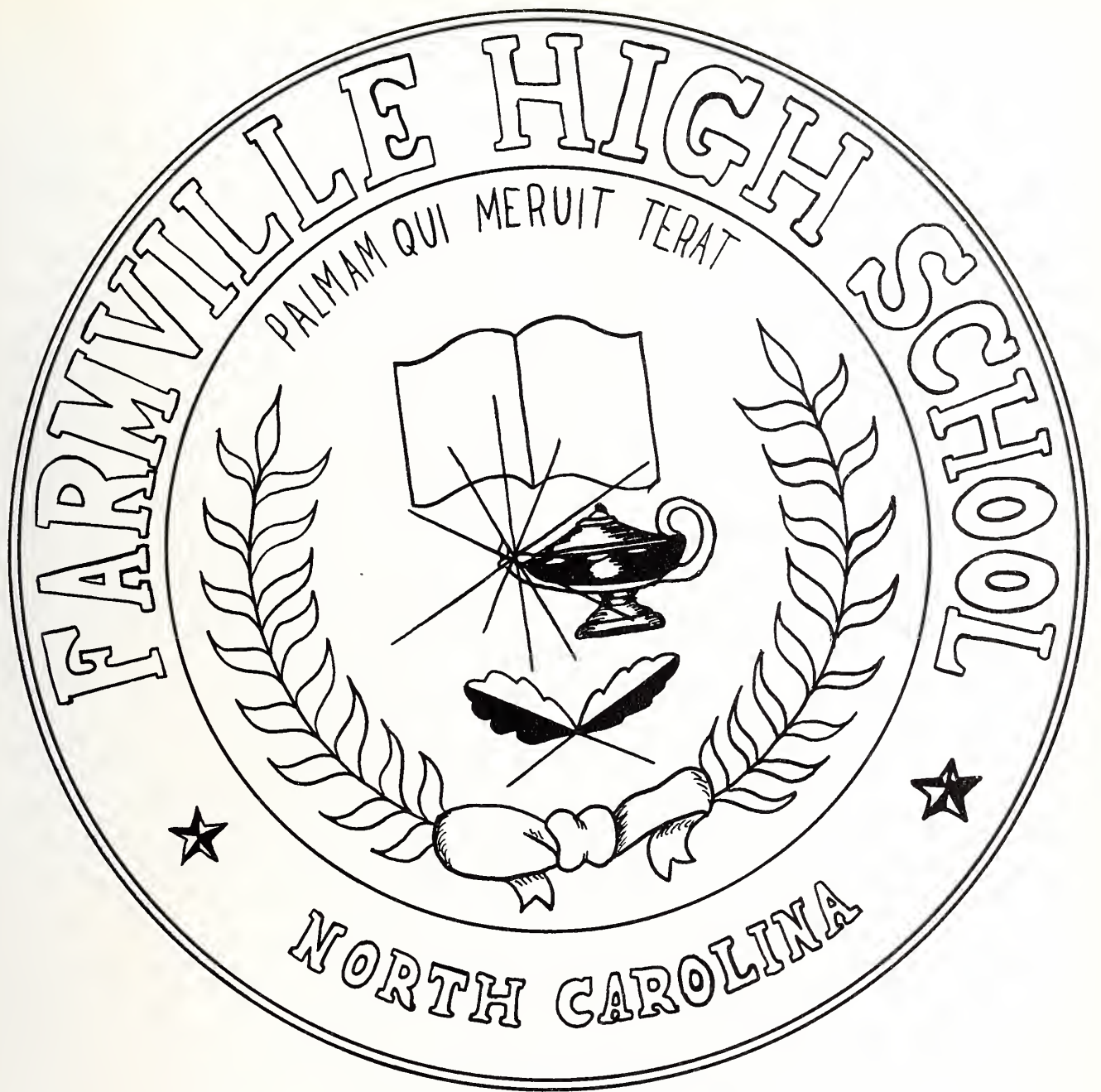


JULIA RIVES and BOBBY FISER



*Key and Keyette Sweethearts*

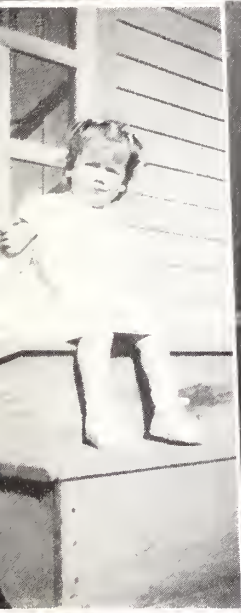




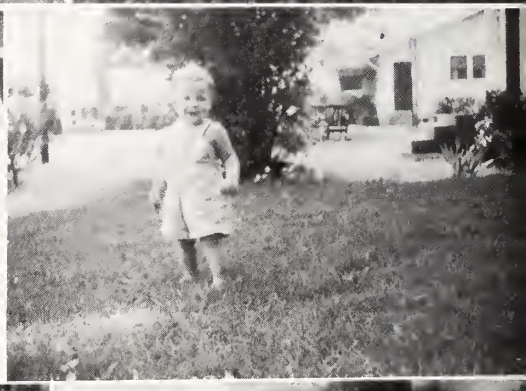
### *Newly Adopted School Seal*

On November 13, 1961, the student body of Farmville High School adopted the above as its official school seal.

The words Farmville High School, North Carolina, form the outer circle. The inner circle consists of the Latin words "PALMAM QUI MERUIT TARAT" meaning "Victory to him that merits it." A lower semi-circle of palms symbolizes victory. The lamp and book in the center of the seal signify the study and unceasing work necessary to achieve success.



*Remember When?*





## Athletics

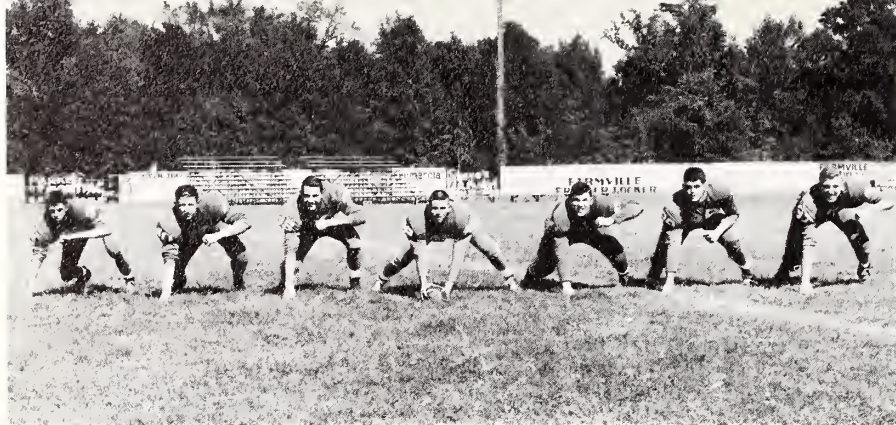
The touchdown scored, the basket made, the homerun hit—these are only some of the glories of sports. Accompanying them are the cheerleaders and spectators urging their team to victory. The knowledge that the other members of the team and the coach are living every moment of the game along with the spectators is a real inspiration. Then there is the Victory! . . . or the defeat. When one knows he has played fairly, the score does not matter so much.

To rush onto the field or court after the final whistle . . . Good game, boys!

Forever—Motion.



# Football



These seven boys compose the starting line: center, Ernie Petteway; guards, Jimmy Everett, Rennie Turner; tackles, Ben Monk, Johnny Nichols; ends, David Quinn, Chester Outland.



Starting are the following: quarter-back, Dean Oglesby; halfbacks, Danny Dilda, Robin Rouse; and fullback, Rex Hodges.



Tri-Captains--Danny Dilda, Ben Monk, and Dean Oglesby--led the Red Devils to a 7-2-1 season.



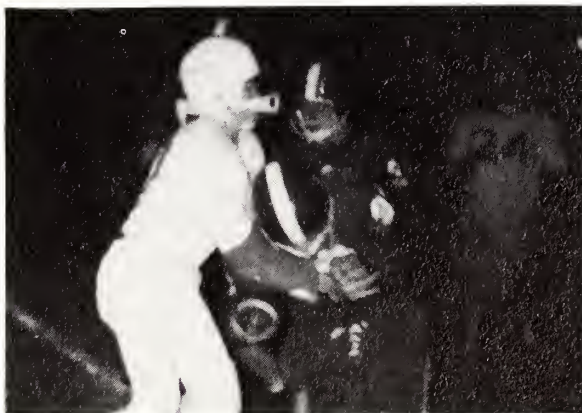
# Team '62



Reserve linemen: Johnny Hardison, Dicky Holloman, Kenneth Wilkins, Billy Martin, David Ryon, Albert Mosley, Steve Letchworth, C.E. Matthews, Danny Windham.



Reserve backs: halfbacks, Tommy Joyner and John King; fullbacks, Tommy Thompson and Ivey Smith.



Robin Rouse lowers his head into a Vanceboro player after a sizeable gain.



DEAN WILLOUGHBY



JUDY JOYNER



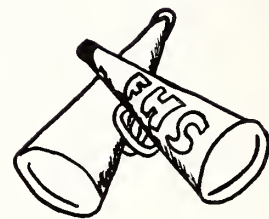
BRENDA MOYE



MARION ALLEN



FRANKIE DUKE  
Head



# Cheerleaders



Varsity Cheerleaders



SUE FLAKE



JULIA RIVES

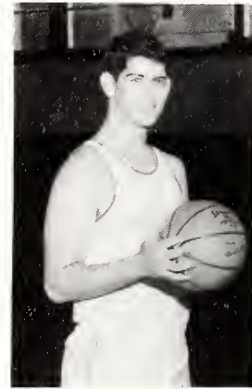
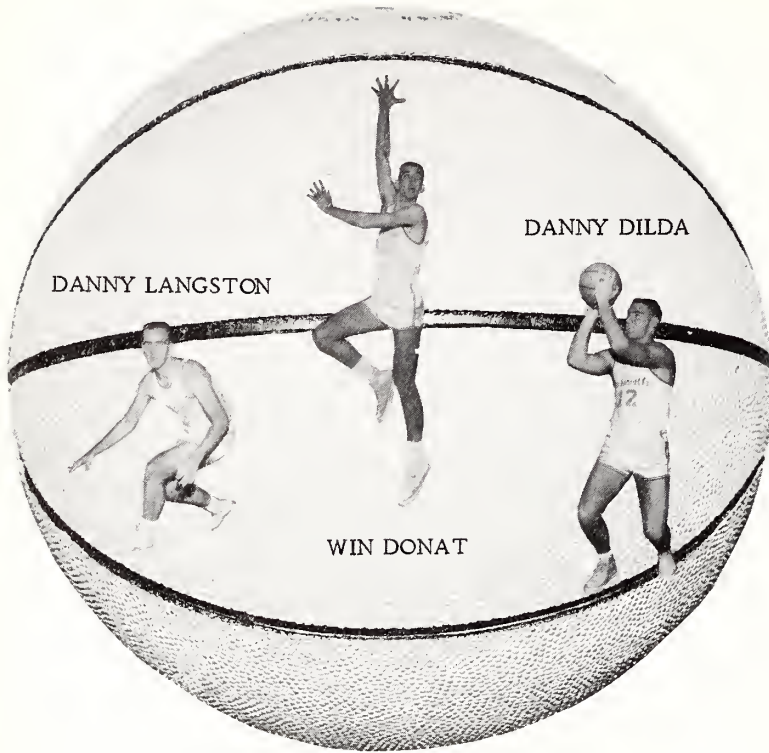


NANCY WINSTEAD



PHYLLIS CORBETT

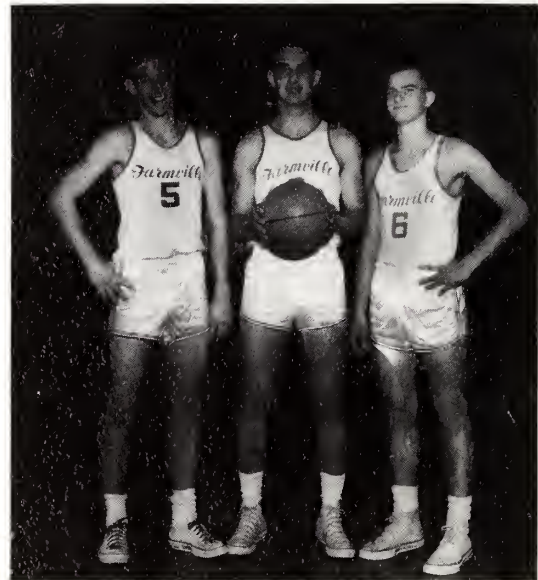
# Basketball



BEN MONK  
Co-Captain



Bethel's Tex Everett grabs a rebound during the game in Bethel.

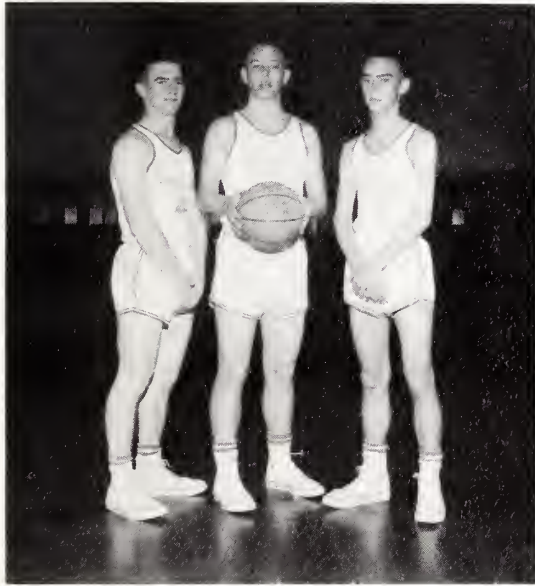
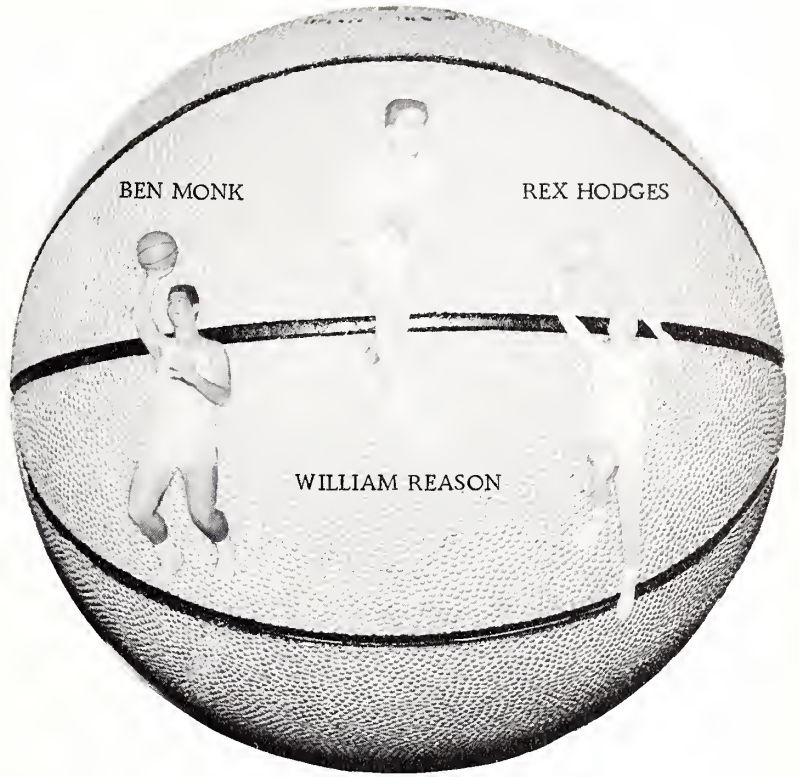


JOHNNY BRILEY  
JIMMY EVERETT  
MELVIN GAY  
Reserve Forwards

# Team '62



WILLIAM REASON  
Co-Captain

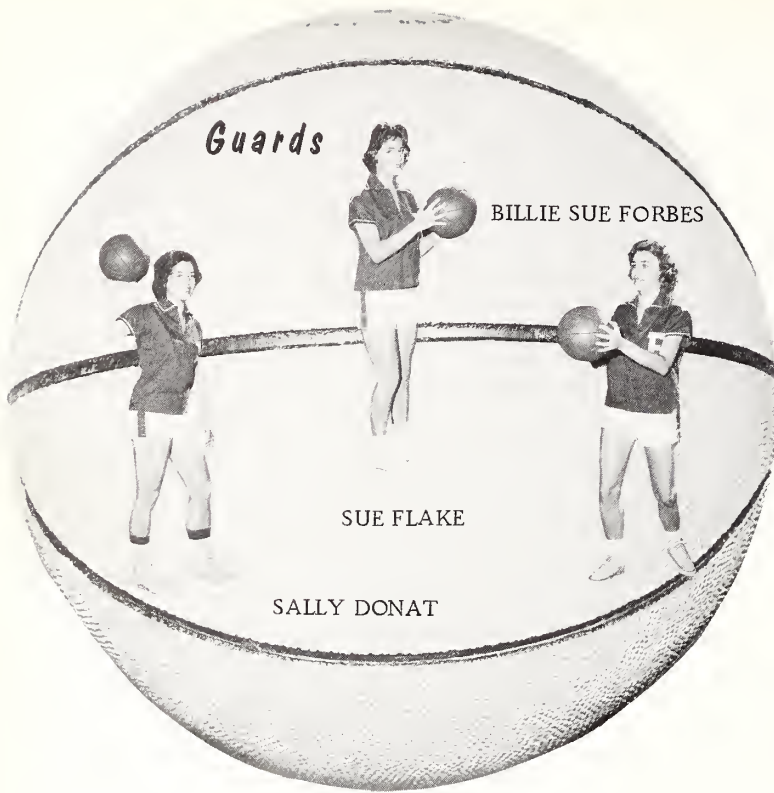


KENNETH DILDA, BOBBY FISER, BOBBY BASS  
Reserve Guards



Success comes only with hard practice  
and a will to play the game.

# Basketball



SALLY DONAT  
Co-Captain



Girls play hard during practice session.

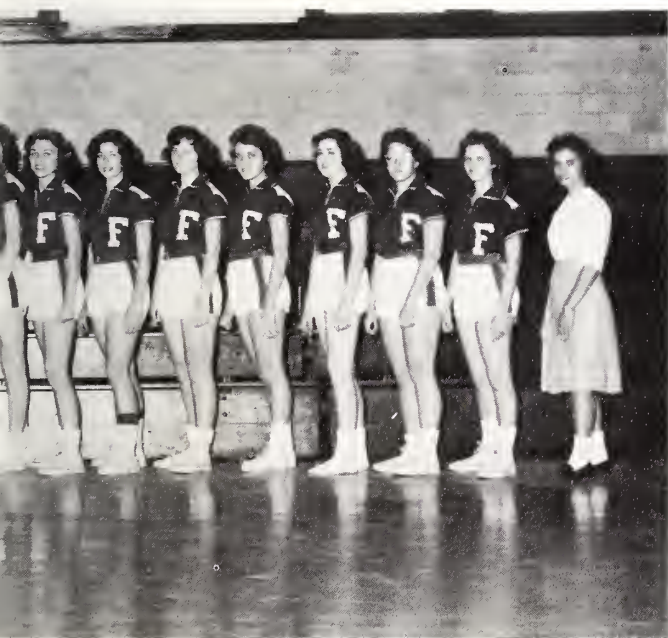
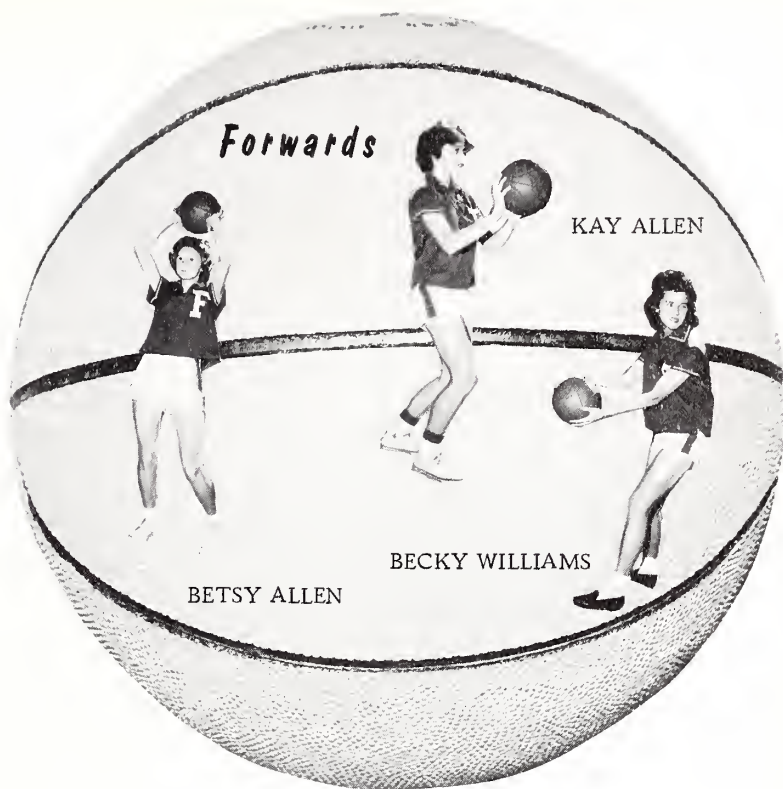


Lady Devils; Coach, Mr. Robert Bruce;

# Team '62



BILLIE SUE FORBES  
Co-Captain

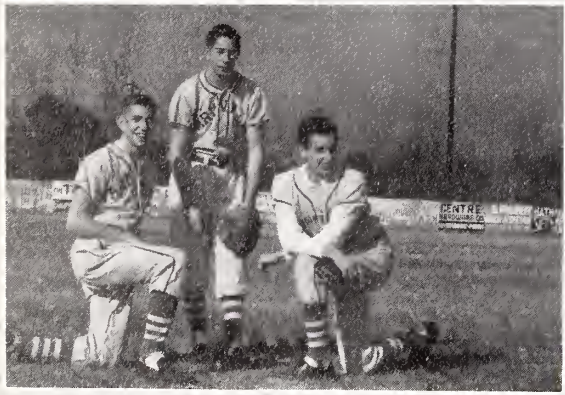


and Manager, Linda Carr, line up.



Coach Bruce talks with the team.

# Baseball



Outfielders are David Ryon, Chester Ellis, and Frank Taylor.



GERALD TUGWELL  
Pitcher

ROBIN ROUSE  
Third Base



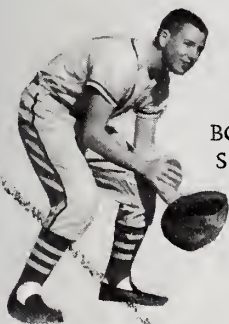
KENNETH DILDA  
Short Stop



Not every umpire sees eye to eye with the Red Devils.



# Team '62



BOBBY FISER  
Second Base



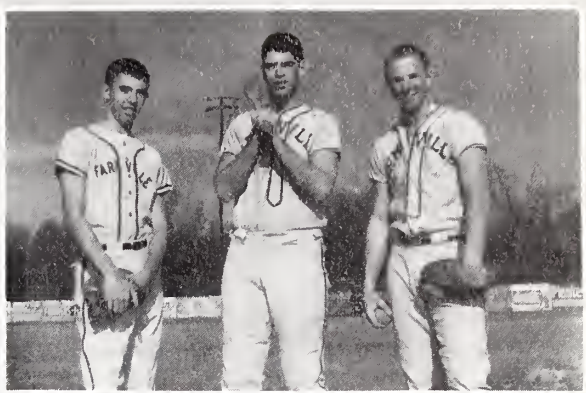
CHESTER OUTLAND  
First Base



BEN MONK  
Pitcher



REX HODGES  
Catcher



CHESTER OUTLAND, BEN MONK, REX HODGES  
Seniors



ROBIN ROUSE, KENNETH DILDA, BOBBY FISER  
REX HODGES, CHESTER OUTLAND  
Infielders

C  
o  
a  
c  
h  
e  
s



Assistant Coach Robert Bruce and Coach Elbert Moye.

A  
t  
h  
l  
e  
t  
i  
c  
A  
s  
s  
o  
c  
i  
a  
t  
i  
o  
n  
O  
f  
f  
i  
c  
e  
r  
s

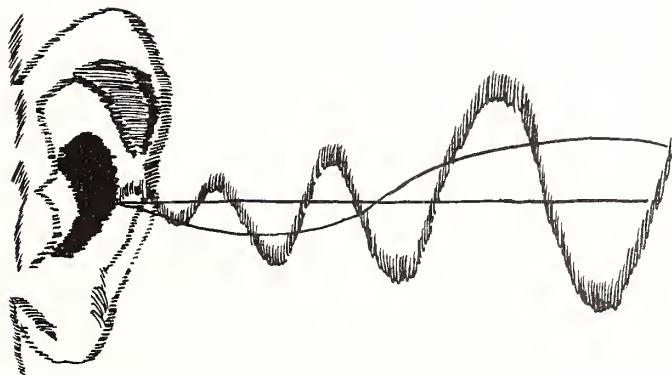


Jerry Bailey, president; Su-Su Dixon, secretary, David Quinn, treasurer; Jimmy Dilda, reporter; Sam Wainwright, vice-president; Bobby Bass, reporter.



## *Advertisements*

Along the streets of Farmville and surrounding communities stand the business firms represented in this section. The generous men cheerfully bought advertising space in our yearbook. As we hear their calls through their advertisements, we curiously visit their establishments to sample their wares, thereby expressing our gratitude for their support in helping to make this annual a reality.



Congratulations!

From  
**THE OFFICIALS  
AND OTHER CITIZENS**  
of

Farmville, North Carolina

Help Make the Finest Town and Community in the Entire South  
Even Better By Making It Your Permanent Home When Your  
Education Is Completed

**MAYOR, O. G. SPELL**

Commissioners:

Dr. S. H. Aycock, Jr.

Tommy Lang

Joseph D. Joyner

Oliver Murphrey

Sam Wainwright

Town Clerk and Treasurer:

Harold Allred

Street Superintendent:

E. P. Freuler

Utilities Superintendent:

W. A. McAdams

Chief of Police:

H. E. Epps

Compliments of

**G. W. JEFFERSON & COMPANY**

General Merchandise  
Family Outfitters

Fountain, North Carolina

**TYSON JEWELERS**

Jewelry and Gifts

Phone SK 3-3611

103 North Main Street  
Farmville, North Carolina

Sell Your Tobacco  
With  
Gordon Lee and Carl Rowan  
-At-

**LEE'S WAREHOUSE**

Formerly Greene County Warehouse  
South Main Street  
Farmville, North Carolina

Compliments of

**LANG'S STORE**

General Merchandise

Farmville, North Carolina

**B. & W. CHEVROLET CO., INC.**



Corvair  
Phone SK 3-3122  
Farmville, North Carolina

Compliments of

**FARMVILLE TRADING CO., INC.**

Farmville, North Carolina

Compliments of

**DR. JOHN M. MEWBORN**

Farmville, North Carolina

Compliments of

**OLIVER MURPHREY'S TRANSFER**

Dealer in Grain  
Phone SK 3-3151  
Farmville, North Carolina

Compliments of

## FARMVILLE RETAIL LUMBER YARD

Building Supplies  
Phone SK 3-3787  
Farmville, North Carolina

## FARMVILLE BUS STATION

Sandwiches - Smokes  
Ice Cream - Candy - Soft Drinks  
Magazines and School Supplies  
We Welcome You  
Phone SK 3-3430  
Farmville, North Carolina

## PEELE'S SUPPLY STORE

General Merchandise  
Fountain, North Carolina

Compliments of

## RED'S GRILL

Joyner's Cross-roads  
Farmville, North Carolina

Compliments of

## R.A. GARDNER & CO.

General Merchandise  
Fountain, North Carolina

Compliments of

## OUTLAND'S BARBER SHOP

Farmville, North Carolina

Compliments of

## AUTOMOTIVE SUPPLY CO.

Automobile Parts  
Supplies at Wholesale  
Phone SK 3-3859

114 West Wilson Street  
Farmville, North Carolina

L. & M. SHELL STATION

Oil, Gas, Groceries  
Phone SK 3-3000  
Farmville, North Carolina

Compliments of

## F. C. TREVATHAN

Joyner's Cross-roads  
Farmville, North Carolina

Best Wishes to the Students and Faculty  
of  
Farmville High School

A. C. MONK  
AND COMPANY, INC.

Farmville, North Carolina

Congratulations Seniors  
From  
**FARMVILLE BEAUTY SALON**

The Salon that Appreciates  
Your Friendship and Patronage

Farmville, North Carolina

Compliments of  
**RED'S RADIO & T.V. REPAIR**

Farmville, North Carolina

Compliments of  
**DR. THOMAS H. PATTERSON**

Farmville, North Carolina

**WILLIAMS' JEWELRY STORE**

"A Gift For Every Occasion"  
Watch Repairing  
Jewelry - Engraving

Farmville, North Carolina



Compliments of  
**WESTERN AUTO**  
Tires, Batteries,  
Radios, Home  
And Auto Supplies  
Bicycle and Sporting Goods  
Phone SK 3-3170  
109 North Main Street  
Farmville, North Carolina

Compliments of  
**LEWIS AND ROUSE**

Attorneys-at-Law

Farmville, North Carolina

**Newton's Red & White**

Food  
Stores



Food  
Stores

Farmville, North Carolina



Compliments of  
**Poole's Inc.**  
Distributors of the finest in

Frozen and Canned Foods

Paper Supplies  
&  
Speciality Merchandise

**Dulany**

Raleigh, N. C. Rocky Mount, N. C.

South Hill, Virginia

Compliments of  
N. THOMAS  
Farmville, North Carolina

Compliments of  
K. CANNON'S DEPARTMENT  
STORE  
Farmville, North Carolina

Compliments of  
**RAY'S RESTAURANT**  
The Heart  
of  
Farmville

Compliments of  
**FARMVILLE F. C. X.**  
Feed, Seed, & Fertilizer  
Farmville, North Carolina

Compliments of  
**EDWIN C. NEWTON**  
**Jefferson Standard**  
LIFE INSURANCE CO Home Office: Greensboro, N. C.  
Fountain, North Carolina

Compliments of  
E. E. ELLIS SODA SHOP  
Fountain, North Carolina

**BLOUNT-HARVEY**  
Shop Our Girls Teen Shop on  
Third Floor and Boys Prep  
Shop on Main Floor  
Greenville, North Carolina

Compliments of  
**ROLLINS CLEANERS  
AND DYERS**  
Farmville, North Carolina

Congratulations Class of '62

# Farmville Furniture Company

"Furniture Fashion Center"



Farmville Funeral Home  
24 Hour Ambulance Service  
Farmville, North Carolina

Compliments of  
FARMVILLE STAFF

of

## Home Security Insurance Co.

H. G. Chesson  
Staff Manager  
H. B. Baker  
C. E. Everette  
N. L. (Bud) Eason

Farmville

North Carolina

Compliments of

The logo for Belk-Tyler's, featuring the brand name in a white, serif font set against a solid black rectangular background.

"Farmville's Shopping Center"

Compliments of

## Bell's Warehouse

Good Sales Every Day  
Bell Bros.  
Farmville, North Carolina

Pepsi-Cola

refreshes  
without filling



Compliments of

PEPSI-COLA  
BOTTLING CO.

Greenville, North Carolina

Be Sociable

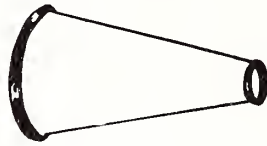
Have A

Pepsi

Compliments of  
**Cheerleaders '61 - '62**

Marion Allen  
Phyllis Corbett  
Sue Flake  
Judith Joyner

Frankie Sue Duke - Head



Brenda Moye  
Julia Rives  
Dean Willoughby  
Nancy Winstead

Compliments of  
**ATLAS SERVICE STATION**

Space Age Fuel

Bob Fountain, Manager

Farmville, North Carolina

**JOYNER'S MEN'S WEAR**

W. E. Joyner

W. C. Joyner

Men's Clothing & Haberdashery

Formal wear sold and rented

Farmville

North Carolina

Compliments of  
**ALLEN & JONES**

Farmville, North Carolina

Compliments of  
**HATHAWAY'S SERVICE  
STATION**

Farmville

North Carolina

**Parker's**

Parker Oil Company

at

Parker Grocery Company

Your Richfield

Marlboro

Fancy & Heavy

Distributors

Parker Grain Company

Groceries

Dealers in Grain

Compliments of  
**Red Devil**

Tri-Captains



Danny Dilda

Ben Monk

Dean Oglesby

Compliments of

**JACK McDAVID**

Registered Engineer

Farmville, North Carolina

Compliments of

**NASSIF CANNON**

102 South Main Street  
Farmville, North Carolina

Compliments of

**D. R. MORGAN'S**

Farmville, North Carolina

"Use White Goose Flour  
and Stokely Canned Goods"

**Ormond**

**Wholesale Company**

Wholesale Distributors

Greenville, North Carolina

Compliments of  
**FOUNTAIN BRANCH  
EDGEcombe BANK  
& TRUST COMPANY**  
Fountain, North Carolina

## FOUNTAIN MOTOR COMPANY

W. C. Redick  
Willie Killebrew  
Distributors Esso Products  
Bottled Gas

Wholesale

Retail

Fountain, North Carolina

Compliments of  
**SECURITY SAVINGS  
& LOAN ASSN.**  
Farmville, North Carolina

Compliments of  
**DR. CHARLES E. FITZGERALD**  
Fitzgerald Medical Center  
Farmville, North Carolina

## FARMVILLE LAUNDRY AND CLEANERS



Phone SK 3-3192  
Farmville, North Carolina

Compliments of  
**BEAMAN'S GRILL**  
Farmville, North Carolina

Compliments of  
**JOHN HILL PAYLOR**  
Attorney-at-Law

Farmville, North Carolina

Compliments of  
**BIG BARGAIN SUPPLY**  
Farmville, North Carolina

Compliments of  
**Morgan Oil and Refining Company**

Fertilizers - Coal - Fuel Oil - Cotton - Soybeans

Phone SK 3-3183  
Farmville, North Carolina



Mrs. Fred C. Moore

FLORIST

Flowers for All Occasions

Wilson Street

Phone SK 3-3056

Farmville, North Carolina



MELVIN ELLIS JEWELERS

Expert Watch Repair

Farmville, North Carolina

Compliments of

DR. PAUL E. JONES

Farmville, North Carolina

NATIONWIDE  
MUTUAL INSURANCE CO.

John D. Dixon, Agent

Phone SK 3-3019  
Farmville, North Carolina

Compliments of

NORTH STATE GARMENT FACTORY

T. E. ANDERSON

Farmville, North Carolina

Compliments of

Cedric Davis

Agent for Morris Gold Bond  
and Vertagreen Fertilizers  
Sales and Service  
112 Wilson Street

Farmville

North Carolina

Compliments of  
**SMITH & YELVERTON**

General Merchandise  
Feeds and Fertilizers  
Fountain, North Carolina

**FARMVILLE FLOWER SHOP**

Flowers For All Occasions

119 South Main Street  
Phone SK 3-3671  
Farmville, North Carolina

"Radio on the Go...

**W F A G**

...Serving the Farmville Community

1250 on the dial

Compliments of  
**T. & T. DRIVE-IN**

Mechanic on Duty  
Welding

Farmville, North Carolina

Compliments of  
**FARMVILLE 5¢ and 10¢**

You get a bargain everytime  
At the Farmville 5¢ & 10¢

Home Owned-Home Operated



# The Rouse Printery

Publishers of

The Farmville Enterprise  
Quality Commercial Printing  
Farmville, North Carolina

Compliments of  
**J. W. JOYNER**

Pitt County  
Insurance Agency

Farmville, North Carolina

Compliments of

**EASON MOTORS**

Your  
Chrysler  
Plymouth  
Valiant  
Dealer

Farmville, North Carolina

Compliments of

**BRILEY OIL COMPANY**

Farmville, North Carolina

Nutrena Feeds  
Seeds - Farm Supplies  
Mules

**B. S. AND R. L. SMITH**

Farmville, North Carolina

**Garner  
Furniture Co.**

"Furniture at Lower Prices"

**Garner Gas**

"The Modern Fuel"

Farmville, North Carolina

Compliments of

## City Drug Co.



Your Dependable Rexall Druggist

Prescriptions  
Sundries

Whitman Candies  
Drinks and Sandwiches

Farmville, North Carolina

Compliments of

## Farmers and Monk's Warehouses

Farmville, North Carolina

## Tommy's Drive-In

Sandwiches, Hot Dogs,  
Hamburgers, Barbeque,  
And "Short Orders."  
Try our Thick Shakes,  
Lemonades, Coca-Cola,  
Pepsi-Cola, and Milk.



We invite each  
of you to drive  
out to Marlboro  
and try our  
fine food.

Compliments of

## The Smith-Douglass Co., Inc.

Agent  
B. F. "Jack" Lewis  
Farmville, North Carolina

Member Federal Deposit Insurance Corporation

Farmville, North Carolina

# THE BANK OF FARMVILLE

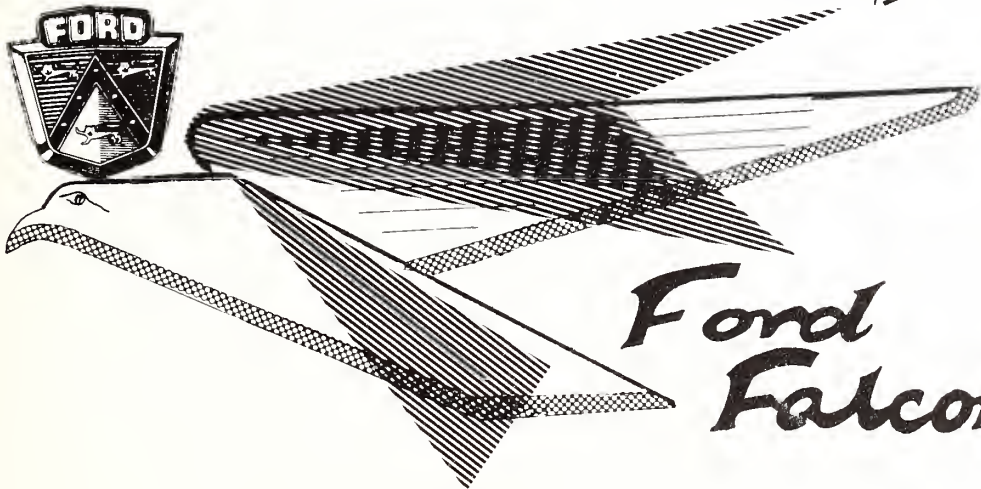


A good place to do your banking

Compliments of

## DAVENPORT MOTOR SALES

*Mercury*



**Ford  
Falcon**

Farmville, North Carolina

Compliments of

# FOUNTAIN MILLING COMPANY

Fountain, North Carolina

Compliments of

# PITT COUNTY TRANSPORTATION COMPANY

Local and Long Distance Hauling  
Cargo Fully Guaranteed

Phone SK 3-3109  
3-3100

Farmville, North Carolina

"Everything A Farmer Needs..."

## THE TURNAGE COMPANY

Farmville, North Carolina

General Merchandise - Hardware - Building Supplies  
Dry Goods - Groceries Feeds Seeds

## TURNAGE IMPLEMENT CO.

Farmville, North Carolina

International Trucks and Implements  
Farmall Tractors

## TURNAGE MILLING CO.

Farmville, North Carolina

Purina Chows - Custom Grind and Mix  
Feed Mill Services

"Trade in Friendly Farmville - It's Pleasant, and It Pays!"

Compliments of  
**DR. R. T. WILLIAMS**  
Farmville, North Carolina

Compliments of  
**SPEIGHT SERVICE CENTER  
AND AUTO PARTS**  
Farmville, North Carolina

**DUKE  
BUICK-PONTIAC CO., INC.**



Buick - Pontiac - Opel - G.M.C.

Phone SK 3-3137  
Highway 264 By Pass



Farmville, North Carolina

Compliments of  
**WOOTEN TIRE SERVICE  
WOOTEN OIL COMPANY  
AND  
THORNE-WOOTEN  
FURNITURE COMPANY**

Phone SK 3-3900      Phone SK 3-3046  
Farmville, North Carolina

**FARMVILLE IMPLEMENT CO.**



Your

Dealer

# Carolina-Virginia Enterprises, Inc.

Gasoline                      Allied Oil Company  
Kerosene                     Allied Nitrogen Company                      Ammonia  
Fuel Oil                      Allied Gin Company                      Nitrogen Solution  
Farmville, North Carolina                      Cotton Seed  
Charles S. Hotchkiss, General Manager

Compliments of  
**DR. S. H. AYCOCK, JR.**

Eyes Examined  
Glasses and Contact Lenses Fitted  
Optometrist

Farmville                      North Carolina

**BONNIE'S CAFE**

Best Wishes  
to the  
Class of '62

"Meal a Minute"  
Farmville                      North Carolina

Compliments of

**ROSES 5 - 10 - 25¢ STORE**

Farmville, North Carolina

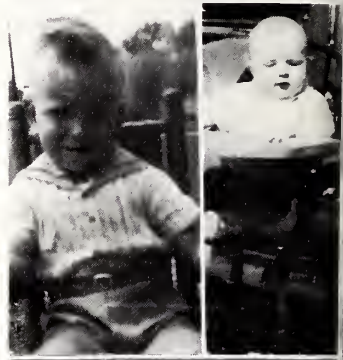
**STEINBECK'S**

Smart Clothes For Men  
and Boys  
Come in to see us!  
427 Evans St.  
Greenville, North Carolina

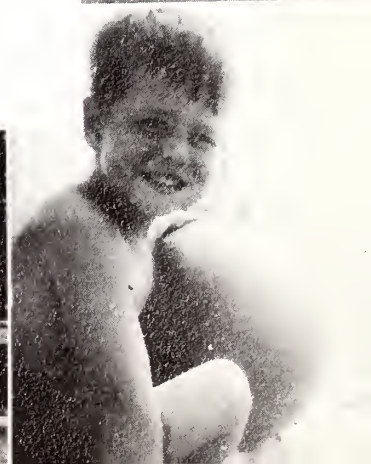
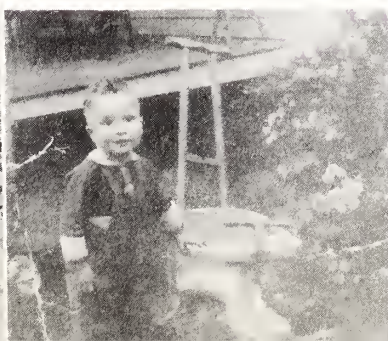
Compliments of

**Dr. E. Bruce Beasley**

Fountain                      North Carolina







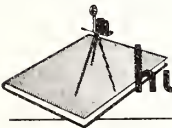
# Autographs

Cathy  
Lamm

# *Autographs*

# Autographs

A Product of



**hunter Publishing**  
COMPANY

333 INDIANA AVENUE  
WINSTON-SALEM, N.C.







