

Historic, archived document

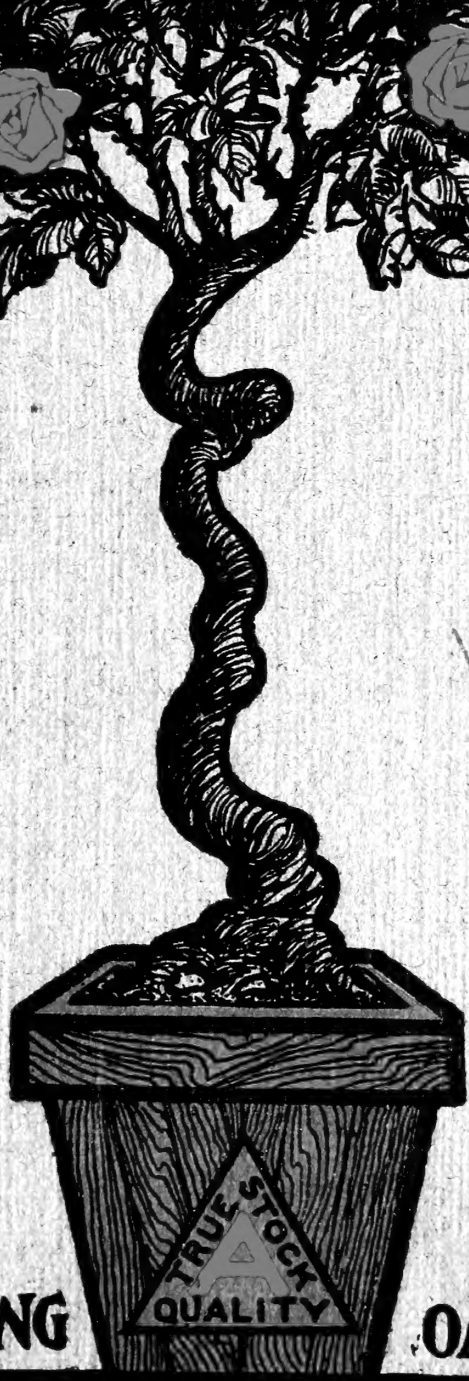
Do not assume content reflects current scientific knowledge, policies, or practices.

62,09

DEC 23 1910

Armstrong Nurseries

ESTABLISHED 1889



JOHN S. ARMSTRONG

ONTARIO CALIF.

1 9 1 1

1911

Our Popular Introduction Offer:

OUR introduction offer having met with universal favor with patrons the past few years, we offer them again this season.

Whether you live in the city or country, here is a bargain; we want to introduce our stock, hence our liberal offer.

A Model Home Orchard for \$5.00

Our selection of choice varieties, which will be arranged so as to have fresh fruit on the table from May to December.

- | | |
|----------------------------------|--------------------------------|
| 4 Peach trees, standard sorts | 2 Cherry trees, standard kinds |
| 4 Apple trees, for home use | 1 Nectarine tree, best red |
| 1 Crab Apple tree, large variety | 1 Quince, selected |
| 4 Plum trees, selected kinds | 1 Soft Shell Almond tree |
| 3 Pear trees, early to late | 6 Grape vines, assorted |
| 2 Apricot trees, table varieties | No two fruits alike. |

10¢ PURCHASER PAYS FREIGHT OR EXPRESS.

Plants to an Acre at Given Distances apart:

Distance Apart.	No. of Plants.	Distance Apart.	No. of Plants.	Distance Apart.	No. of Plants.
3 inches by 4 inches	522,720	4½ by 4½ feet	2,150	14 feet by 14 feet	222
4 inches by 4 inches	392,040	5 feet by 1 foot	8,712	15 feet by 15 feet	193
6 inches by 6 inches	174,240	5 feet by 2 feet	4,356	16 feet by 16 feet	170
1 foot by 1 foot	43,560	5 feet by 3 feet	2,904	16½ feet by 16½ feet	160
1½ feet by 1½ feet	19,360	5 feet by 4 feet	2,178	17 feet by 17 feet	150
2 feet by 1 foot	21,780	5 feet by 5 feet	1,742	18 feet by 18 feet	134
2 feet by 2 feet	10,890	5½ feet by 5½ feet	1,440	19 feet by 19 feet	120
2½ feet by 2½ feet	6,960	6 feet by 6 feet	1,200	20 feet by 20 feet	108
3 feet by 1 foot	14,520	6½ feet by 6½ feet	1,031	25 feet by 25 feet	69
3 feet by 2 feet	7,260	7 feet by 7 feet	888	30 feet by 30 feet	48
3 feet by 3 feet	4,840	8 feet by 8 feet	680	33 feet by 33 feet	40
3½ feet by 3½ feet	3,555	9 feet by 9 feet	537	40 feet by 40 feet	27
4 feet by 1 foot	10,890	10 feet by 10 feet	435	50 feet by 50 feet	17
4 feet by 2 feet	5,445	11 feet by 11 feet	360	60 feet by 60 feet	12
4 feet by 3 feet	3,630	12 feet by 12 feet	302	66 feet by 66 feet	10
4 feet by 4 feet	2,722	13 feet by 13 feet	257		

Proper Distances between Trees and Plants:

VARIETY	FT. APART
Orange and Lemon trees	20 to 30
Peach, Plum and Apricot trees	20 to 25
Pear and Cherry trees	20 to 25
Apple trees	25 to 35
Walnut trees	40 to 50
Almond trees	22 to 25
Grape vines	8 to 10
Blackberry and Dewberry plants	6 × 7
Raspberry plants	3 × 5
Strawberry plants	1½ × 3
Eucalyptus, for timber culture	6 to 10

AT IT OVER TWENTY-TWO YEARS

In the year 1889 the Armstrong Nurseries took inception in a small way on a town lot in the City of Ontario, aiming to supply in a modest way merely a local demand for choice trees and plants. From that date on to the present time the business has sustained a robust development along conservative lines, at all times producing only good stock and selling it direct to planters at reasonable prices. In this connection we are proud to say that this business has experienced a healthy growth. At present over one hundred and forty acres are devoted to the growing of nursery stock.

Our constant aim is to supply reliable stock direct from our nurseries to the growers, thus eliminating the middleman and his profit, thereby giving the customer full value and allowing a reasonable profit.

When ordering please state whether substitution will be permitted in case we may be out of any variety or size ordered. When no instructions accompany the order, we feel at liberty to replace stock which is short with other similar varieties. In all cases we keep our customer's interests in mind.

PERTINENT SUGGESTIONS TO BUYERS

Remittances. Orders from unknown correspondents must be accompanied by Draft, Postoffice or Express order or Registered currency for the amount.

Club Orders. We will be pleased to have responsible parties get up club orders and will deal liberally with such.

General Special. Express shipments of nursery stock travel under what is known as the "General Special" rate, which is 20 per cent. less than the first-class rate. We would advise having small shipments go by express, for while the cost is somewhat more than by freight, the difference is often more than made up by the prompt delivery and careful handling. **Small packages, under 4 pounds in weight, may be sent by mail or express (if prepaid) at 8 cents per pound, which usually averages 20 per cent. additional to the purchase price. Potted plants cannot be sent by mail.**

Caution. Be careful in unpacking to note everything, and either plant, or cover up with moist soil at once. Moisten the roots and do not allow them to become dry.

Treatment Before Planting. Before planting prune off all broken and extra long roots. Peach, plum, apricots, etc., should have side limbs and top cut back to at least half the length.

Planting. Dig holes large enough to allow the roots of the tree to spread out in their natural position, carefully placing the finest and best soil from the surface in among the roots; when the soil is nearly filled in, thoroughly settle the earth by filling in the hole with water; after it settles, fill in the remainder of earth. In most soils the use of water to settle the earth is much better than treading the soil with the foot.

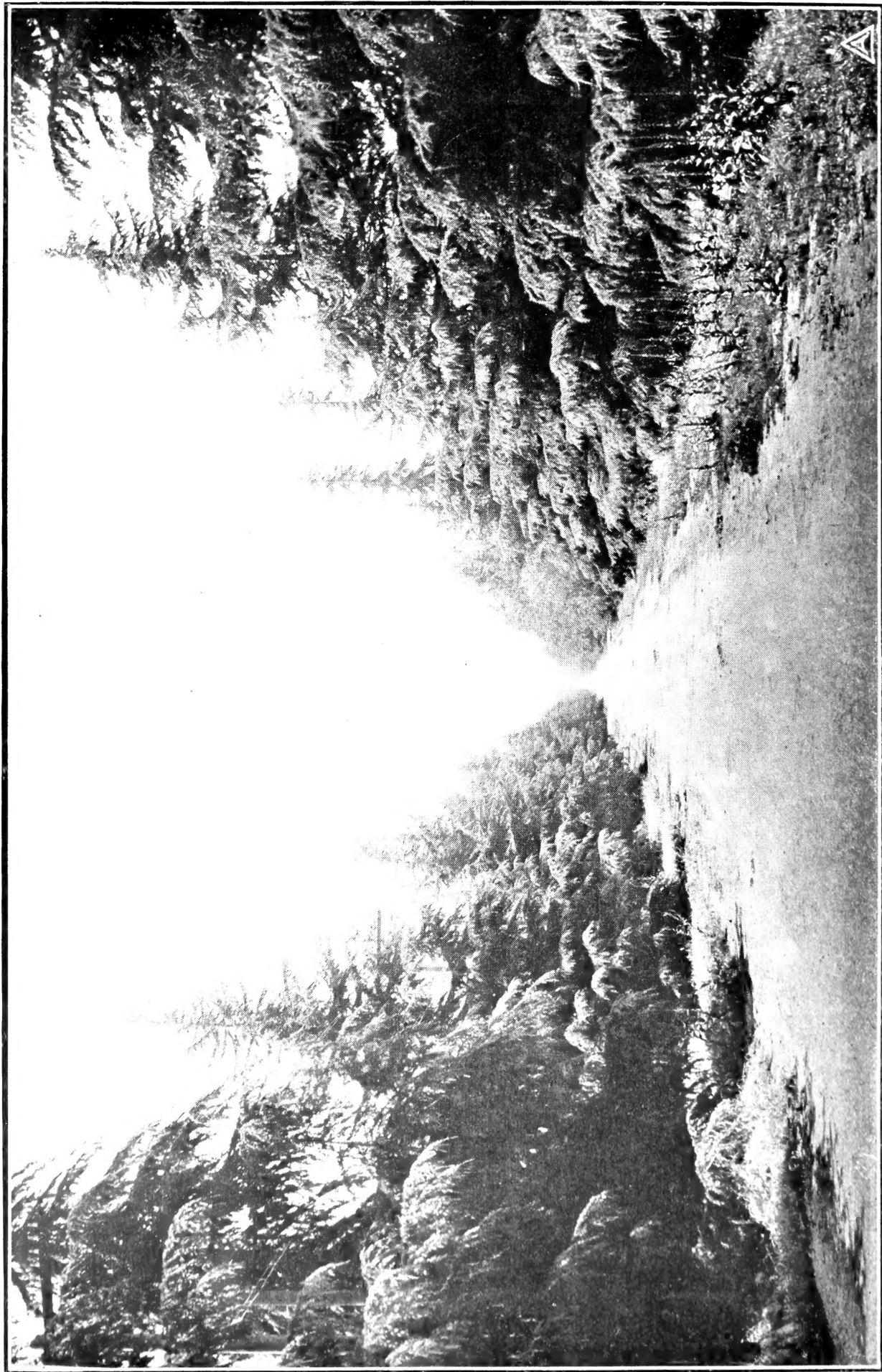
After Culture. The ground should be kept loose and free from weeds. It is advantageous in a dry climate, like ours, to throw around the tree, for a distance of two or three feet each way, a mulch of rough manure or litter. It prevents the ground from drying out and baking.

Address all correspondence to

THE ARMSTRONG NURSERIES,

JOHN S. ARMSTRONG, Proprietor,

ONTARIO, CALIFORNIA.



Street Planted to Cedrus Deodara

CITRUS FRUITS



No fruit trees have commanded wider attention nor elected higher prices during the past two years than the orange and the lemon. This is due in large measure to the excellent returns that citrus growers have been receiving for their fruit. In view of this we have always endeavored to grow only high grade trees, being keenly alive to the fact that good trees are essential to the growing of good fruit. At the same time there has been no desire to increase prices over previous years. We are offering this season an exceedingly choice lot of robust and well grown trees in the several varieties.

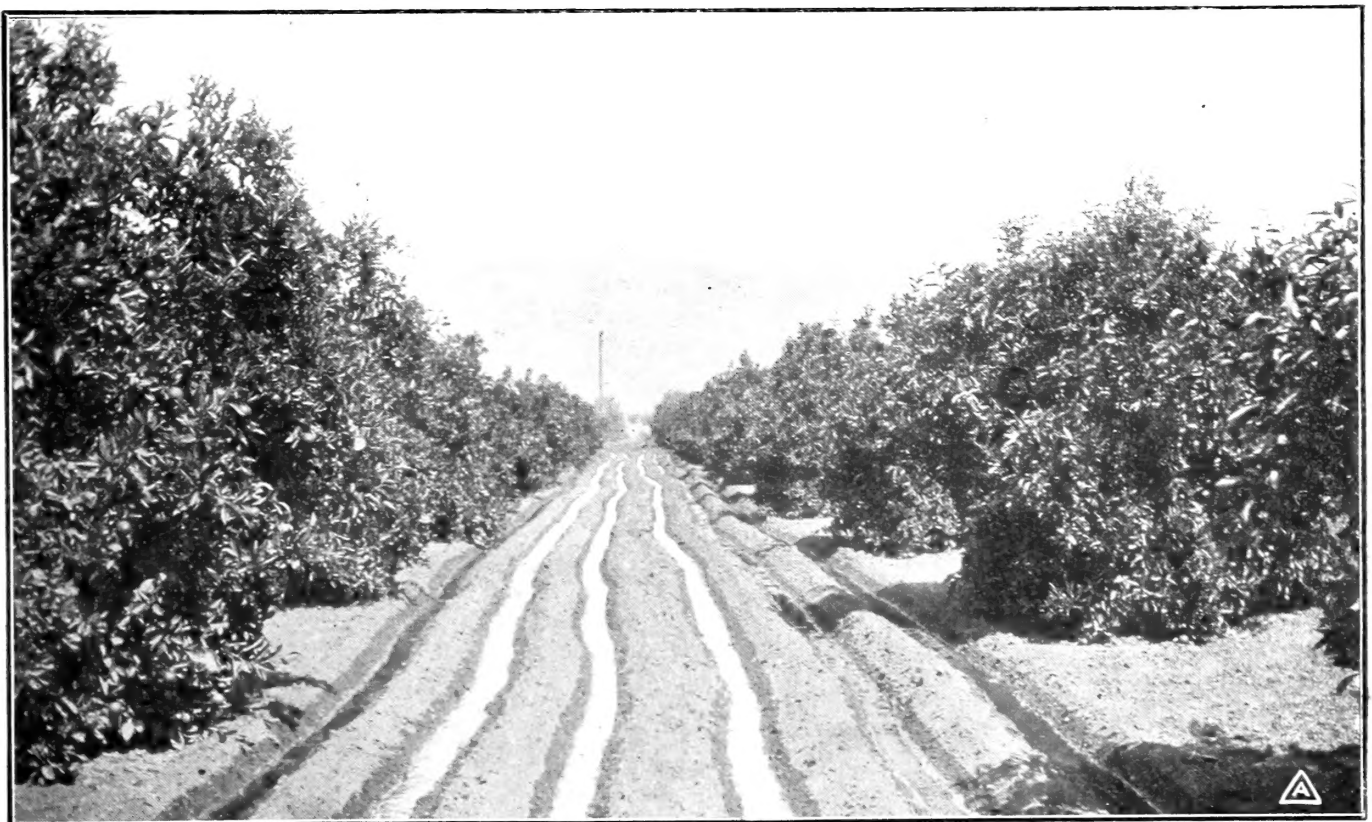
PRICES: Large size, well branched, \$2.00; medium size, branched, \$1.50;
small size, partly branched, \$1.00.

THE ORANGE

Washington Navel. This variety has made California oranges famous the world over. It has been one of the most profitable from the grower's standpoint. The tree is a good thrifty grower, making a well-rounded, uniform top; bears heavily and regularly. The fruit is large with a peculiar formation on the blossom end. Seedless, flesh meaty, tender, sweet and high-flavored; ripens early; good shipper; season from December to May.

Thomson's Improved Navel. Similar in character to the above; fruit ripens somewhat earlier; medium size, thin skinned, high color.

Valencia. Tree strong and vigorous grower and prolific bearer. Fruit medium size, oblong, having few seeds; flavor sub-acid; ripens late and hangs well on the tree throughout the summer. The best late orange.



Armstrong Orange Grove, showing method of irrigation.

Ruby Blood. Medium size, nearly round; skin thin but tough; pulp rich and juicy; flesh streaked with blood-red. The tree is hardy, good grower and regular bearer.

Paper Rind St. Michael. Tree strong and vigorous grower; very productive; fruit small round; skin very thin and smooth, light color; pulp very juicy, sprightly, of fine quality; season medium, March to June; good shipper.

pulp of best quality, not very seedy; rind separates readily from flesh; juicy, highly flavored, tree strong grower and very prolific. \$1.00 to \$2.00.

THE KUMQUAT

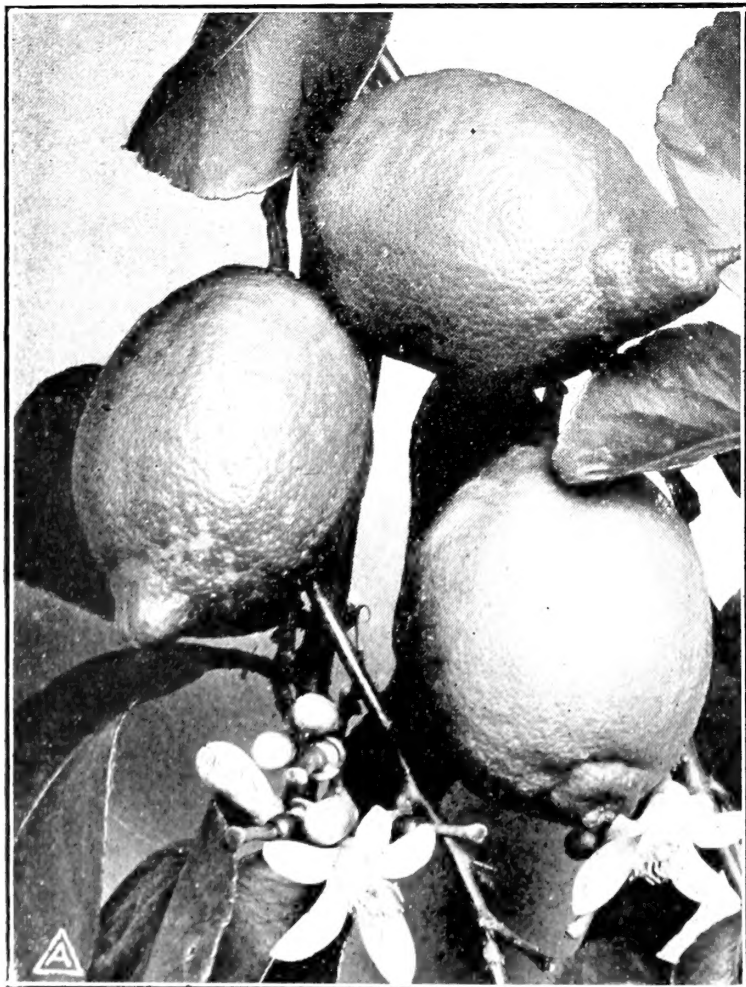
Kumquat. The Kin-Kan of Japan, meaning Gold Orange. Fruit very small, olive shaped; the rind is orange yellow and has a pleasant aroma; used by the Orientals for preserving. The tree is dwarf and ornamental. \$1.00 size only.



Kumquat

THE TANGERINE

Dancy's Tangerine. This is the most popular of the Mandarin family; orange-red skin;



Eureka Lemon, fruit and bloom

THE LEMON

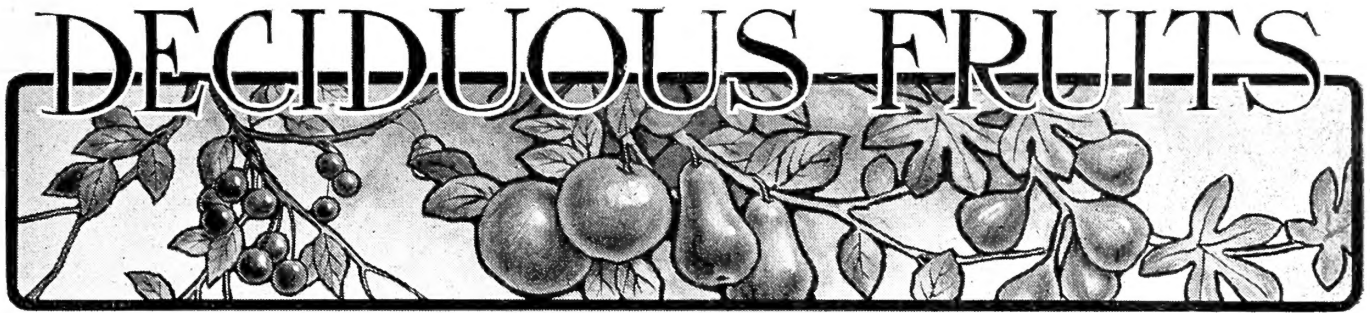
Eureka. Originated in California. Fruit is medium size; smooth of excellent quality, having few seeds. A good keeper; tree thornless and a very heavy bearer. The variety most largely grown in this section. \$1.00 to \$1.50.

THE CITRON

Citron of Commerce. Fruit very large; similar in shape and color to a lemon, but very much larger; can only be grown in frostless locations; used for making candied citron peel. \$1.00 to \$1.50.

POMELO OR GRAPE FRUIT

Marsh Seedless. The Grape Fruit is becoming more popular each season. For medicinal purposes it leads all other citrus fruits. We have now discarded all but the above variety, all the others contain so many seeds as to make them undesirable. Fruit is round; much larger in size than the largest orange; pulp juicy, of rich piquant flavor; almost seedless; rind thin, color lemon yellow. \$1.00 to \$2.00.



THE PEACH

The Peach is a standard fruit of great commercial importance. It succeeds well throughout the entire Pacific Slope, but thrives best in a deep sandy loam. To secure stocky, vigorous trees, prune the young stock low when first planted. The choice varieties described below allow a selection for any purpose required.

PRICES

4 to 6 feet	35c each	\$2.50 per 10	\$15.00 per 100
3 to 4 "	25c "	1.75 " 10	12.00 " 100

Alexander. Medium size; skin greenish-white with red blush; flesh melting, juicy and sweet. Ripens with Amsden June.

Amsden June. Skin and flesh greenish-white; juicy and sweet, of fair quality; one of the earliest. June.

Australian Saucer. Earliest of all to ripen. Flattened on both ends; pit and fruit small; flavor delicious and sweet. June.

Blood Cling. A peach of very good flavor. It is esteemed by many on account of the flesh being deeply colored.

California Cling. A fine late canning peach.

Champion. A large, handsome, early variety; creamy-white with red cheek; rich and juicy; productive. Ripens early in August.

Comet. Large, round. A fine late variety, ripening about two weeks later than the Salway, which it resembles. Very prolific.

Early Crawford. A well-known yellow peach of good quality; tree vigorous and prolific; in the past years this was the earliest peach, but now much earlier kinds are grown. July.

Early Imperial. Ripens about with Amsden June; tree a strong, vigorous grower and yields abundantly; fruit good size with small pit; skin yellow, nearly covered with red, deep crimson in the sun; after fruiting this variety for several years we can recommend it as being the best

early yellow free-stone peach; a splendid shipper and the best for home use.

Elberta. Large, yellow, with red cheek; juicy, sweet and highly flavored; tree grows strong and healthy and very productive; very largely planted in Southern States; one of the best paying varieties for the Southwest. Ripens in August.

Foster. An excellent early peach, resembling Crawford's Early and ripening a few days earlier.

George the Fourth. Large, white, with red cheek; flesh pale, juicy and rich; a very popular table variety. End of August.

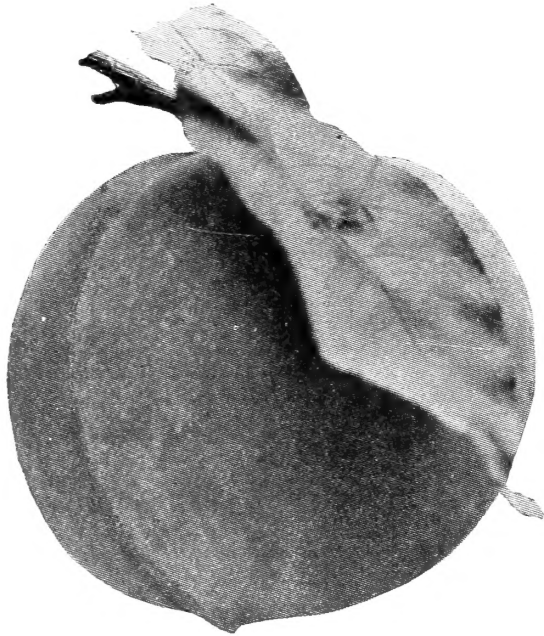
Hale's Early. A popular early variety; skin greenish, splashed with red; flesh white, juicy and sweet. Early in July.

Late Crawford. Large, yellow, with red cheek; flesh yellow, juicy and excellent; free-stone; an old and popular variety. August.

Lemon Cling. One of the most popular of all the canning peaches; flesh firm, rich, and clear yellow to the pit; a heavy and regular bearer. Ripens in August.

Lewkins Honey. Medium size, oval; skin whitish-yellow, with blush on sunny side; flesh creamy-white, juicy and melting; very sweet with rich honeyed flavor; an excellent variety for eating out of hand or for table use. Early in August.

Lovell. Large and round; yellow to the pit; a splendid variety for canning and drying; similar to Muir; the tree, however, is a much stronger grower; a free and regular bearer. Ripens with Muir, or a few days later.



The Lovell Peach

Muir. Large yellow freestone; of excellent quality; flesh yellow clear through; pit small; one of the most popular varieties for canning and especially adapted for drying; August.

Opulent. Originated by Mr. Luther Burbank; a peach of excellent quality for home use or nearby markets; extremely productive. Ripens medium early.

Phillip's Cling. Fine, large yellow; flesh firm, clear, yellow to the pit, which is small; flesh of finest texture. The best of all clings for canning purposes. Ripens in September.

Runyon's Orange Cling. Fruit very large, yellow with dark cheek; flesh golden-yellow, rich and sugary. For shipping and canning.

Sabichi Winter. Medium size, very late; flesh very white, juicy, sweet and melting, and excellent flavor; clings slightly to the pit; ripens November and December.

Salway. Large, round; skin creamy yellow; sweet and rich flavor; freestone; a valuable late sort; bears heavily and regularly; very popular. September.

Stump the World. Very large, white with bright red cheek; fine for table use and eating out of the hand.

Susquehanna. A large, superb peach of nearly globular form; skin rich yellow, nearly

covered with red; flesh yellow, sweet and juicy and of rich flavor. Ripens soon after Late Crawford.

Tuscan Cling. A fine early cling of excellent flavor; in good demand for both canning and shipping; ripens with Early Crawford.

White Heath Cling. Creamy white, blush on sunny side; flesh white, tender, juicy and delicious. September.

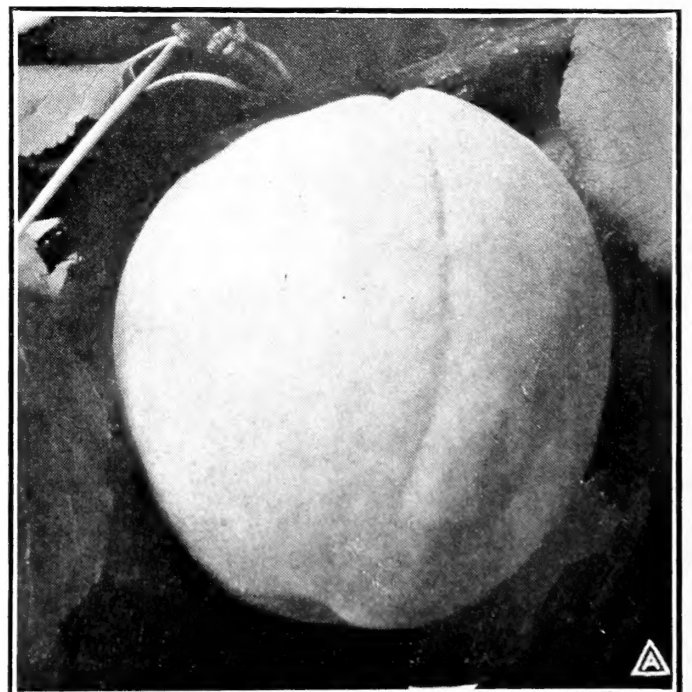
THE APRICOT

The Apricot is one of the most delicious and richly flavored fruits we possess. Its earliness, ripening as it does before the Peach or Plum, makes it very desirable. The conditions in California are well adapted to its culture, this being the only State in the Union in which it is grown in commercial quantities.

PRICES

	each	per 10	per 100
4 to 6 ft.	35c	\$2.50	\$20.00
3 to 4 ft.	25c	2.00	18.00
2 to 3 ft.	20c	1.60	12 00

Royal. Medium size; oval; skin brownish-yellow; flesh yellow, with sweet, rich, vinous flavor; exceedingly productive. The leading commercial apricot cultivated in California for canning and drying purposes on account of its productiveness and excellent quality. Ripens in July.



Royal Apricot

Moorpark. Large, greenish-yellow with red cheek; fruit of highest quality. Ripens later than the Royal.

Newcastle Early. Medium sized, round; the best early variety; ripens two to three weeks before the Royal.

THE PLUM

The plum seems to thrive throughout the Pacific Coast States and since the introduction of the Japanese Plums a few years ago, varieties may be had for every purpose and suited to nearly every condition of soil and climate. Those listed below have been thoroughly tested and are offered with confidence that they are the best in their respective classes for market, canning or home use.

NEW VARIETIES

Formosa. In comparative tests during the last four or five years, this variety has proven itself to be the finest plum in existence. Fruit is of great size, uniform; yellow with pale bloom turning to a rich clear red; flesh pale yellow, unusually firm, sweet and rich; delicious, with a delightful apricot flavor; nearly freestone. Tree of luxuriant growth, and unfailing prolificacy. 50c.

Gaviota. This new plum is recommended as being one of the very best of the latest varieties of table and shipping sorts. Fruit strikingly handsome, mostly deep reddish-purple when ripe. Flesh firm; honey-yellow, fragrant and sweet. 50c.

Plumcot. As the name indicates, it is a cross between the plum and the apricot. The flesh is a brilliant red and of sub-acid flavor, which renders it valuable for jellies, jams, preserving, etc. Fruit about the size of an apricot, with deep purple velvety skin. 50c.

Santa Rosa Plum. This fruit is a deep purplish crimson in color, the flesh being pale amber near the stone, shading to deep purplish crimson near the skin. The quality is unsurpassed and it is a valuable plum for both shipping and home uses. Ripens about two weeks earlier than the Burbank. The tree is a splendid grower and of excellent bearing qualities. Fruit of beautiful appearance and delicious flavor. 50c.

STANDARD PLUMS

	PRICES		
	each	per 10	per 100
4 to 6 ft.	35c	\$3.00	\$20.00
3 to 4 ft.	30c	2.50	18.00

Bartlett Plum. This variety is wonderfully productive. The tree and fruit resemble very

closely the famous Bartlett Pear in habit of growth, flavor and fragrance. Fruit oval, yellow, turning to deep crimson when fully ripe; flesh light salmon, firm and juicy. Ripens before Burbank.



Santa Rosa Plum

Burbank. Medium to large, round, having yellow dots and lilac bloom; flesh deep yellow, vigorous and productive. Ripens late in July.

Climax. Very large, heart shaped; color deep, dark red; flesh yellow, fine flavor and pleasing fragrance; tree vigorous and productive. A splendid early plum.

Clyman. A beautiful plum of medium to large size; skin mottled, reddish-purple with blue bloom; freestone; flesh firm and sweet; valuable on account of its earliness; tree heavy bearer and strong grower. Late June.

Combination. New early plum. A regular and abundant bearer of large fruit, nearly globular in form and uniform in size; flesh light yellow; tree a strong symmetrical grower.

Damson. Fruit small, oval; skin purple; flesh melting and juicy; rather tart. An old, well-known sort.

First Plum. A valuable new early variety. As its name indicates, it is the first plum to ripen. Fruit medium size, pale amber and half transparent; flesh same color, moderately firm, sweet and juicy; tree is of medium growth, and we have never seen it fail to produce an immense crop. For home use and near market it is the most useful of all early plums.

Green Gage. One of the richest of plums. Medium size; round; skin tender; greenish yellow.

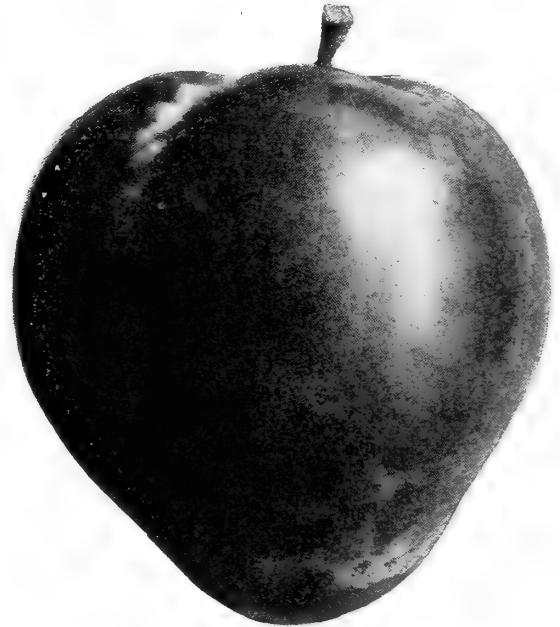
Kelsey. Very large, heart-shaped; skin greenish-yellow, sometimes overspread with red when ripe, with a fine bloom; flesh yellow, meaty, firm, pleasant flavor; very prolific. August and September.

Prunus Pissardi. (Purple-leaved plum.) The leaves of this plum are rich purple in color throughout the season. The plums are small and of a cherry flavor. The tree is very desirable for ornamental planting.

Prunus Simonii. (Simon Plum.) A distinct species from China; fruit large, flattened and a brick-red in color; flesh yellow with a particularly aromatic flavor.

Red Egg. A large oval plum with pale red skin changing to deep red in the sun; flesh coarse and of sub-acid flavor. August to September.

Satsuma. The well-known Blood Plum which is generally conceded to be the best of the standard Japanese varieties. Unexcelled as a canning fruit, having a pleasant flavor and unlike all other varieties in having red flesh; medium to large; round and has a remarkably small stone.



Wickson Plum

Wickson. Another of Burbank's creations and the largest of all the plums. Flesh fine, deep amber yellow. A very handsome and well flavored variety. Valuable for canning and shipping.

Yellow Egg. A large, oval plum having a thick golden-yellow skin. Juicy and sub-acid. A fine variety for cooking, canning and market. Very showy. August.

THE PRUNE

By the term prune is generally signified a plum which dries successfully without the removal of the pit and produces the dried Prune of Commerce.

PRICES

5 to 6 feet	35c each	\$3.00 per 10	\$20.00 per 100
3 to 4 "	30c "	2.50 " 10	18.00 " 100

French Prune. Medium size, oval; skin purple; flesh rich and very sweet; the variety most extensively used for drying.

Hungarian Prune. Sometimes known as Pond's Seedling Plum. Very large, oval; reddish violet; flesh yellow, juicy and sweet.

Silver Prune. Almost identical with Coe's Golden Drop, of which it is supposed to be a seedling. Fruit of large size; skin light yellow; a valuable addition. Late September.

Sugar Prune. (New) This valuable new prune was originated by Mr. Luther Burbank.

Fruit very large; skin tender, dark purple, covered with white bloom; flesh yellow, tender and sugary.

Tragedy. A valuable early variety; large; handsome; skin dark purple; flesh greenish-yellow; sweet and rich. Excellent for eating out of hand.

THE NECTARINE

The Nectarine is a most delicious fruit and requires the same culture as the peach, from which it differs by having a smooth skin like the plum.

PRICES

4 to 6 feet	35c each	\$2.50 per 10
3 to 4 "	25c "	2.00 " 10

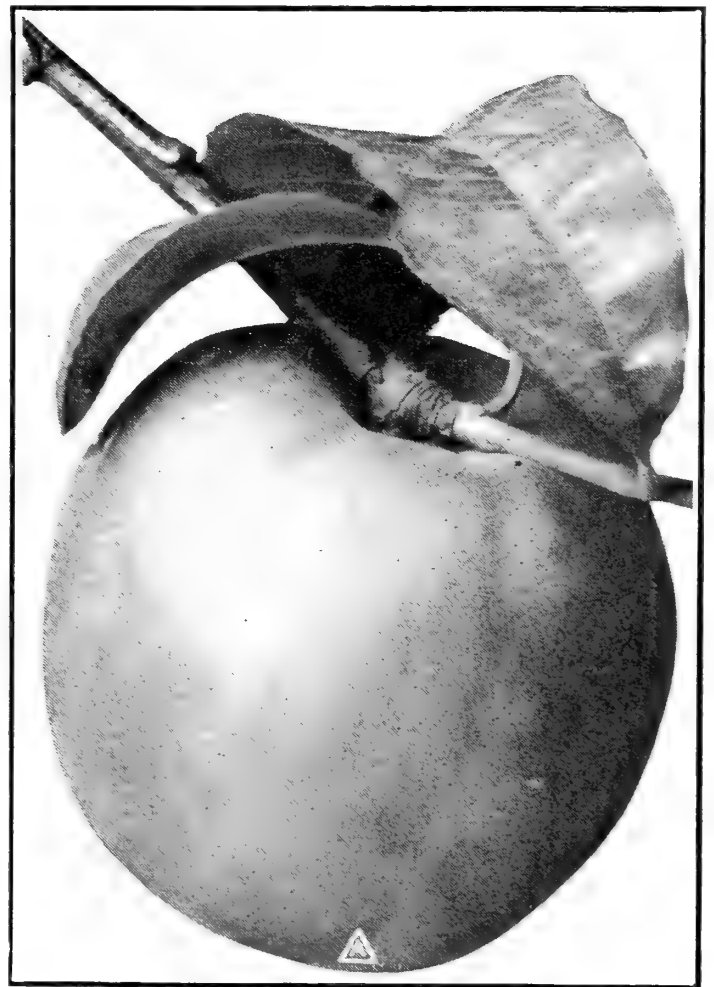
Advance. A valuable early variety ripening in July. Skin green, blotched with red and brown on sunny side; flesh greenish-white and sugary; fruit large and round, and of a delicate sub-acid flavor. Its earliness renders it desirable for either family or commercial culture. Season early July.

Boston. Large, bright yellow and red cheek; flesh yellow, sweet and pleasant flavor; freestone. The leading yellow-fleshed nectarine. Season late July.

Humbolt. A very superior sort. Very large; orange-yellow, blotched with red on sunny side; flesh orange; very tender and juicy. The only yellow nectarine except the Boston. Ripens early in August.

New White. The best white variety; flesh white and juicy; small pit, freestone, skin greenish white; tree of medium growth. Recommended by those who have grown it rather extensively as a good drying variety. Season July.

Stanwick. One of the leading varieties of nectarines; large size; flesh white, tender, juicy and of delicious flavor; skin greenish white, shaded with reddish purple in the sun. A prime table variety, and especially to be commended for family use. Is recommended both for drying and shipping as a fresh fruit. Ripens August-September.



Boston Nectarine

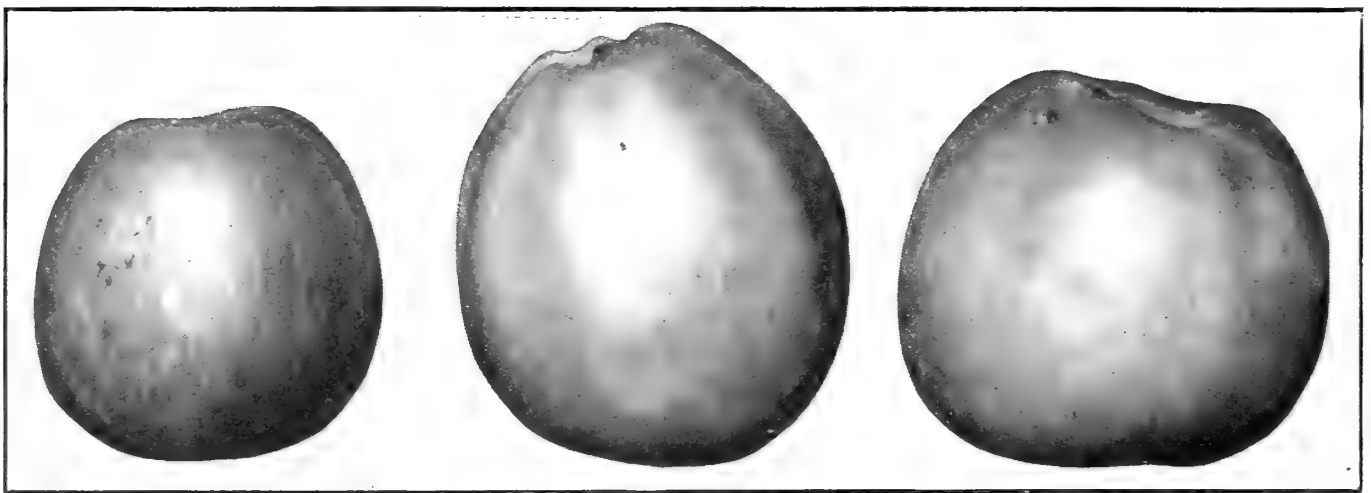
Estimates on orders for large plantings will be cheerfully given upon application. It is often possible for us to make special quotations on large quantities of Fruit Trees or other stock. Our stock of Apples, Pears, Peaches, Plums and Apricots is especially large and fine this season.

THE APPLE

The apple is perhaps the most important of all fruits, owing to its general popularity and usefulness. By a judicious selection of varieties, ripe fruit may be had throughout the year.

We offer a variety of sorts which have proved themselves best adapted to conditions and climate of the Southwest.

			PRICES	
4 to 6 feet	30c each		\$2.50 per 10	\$20.00 per 100
3 to 4 "	25c "		2.00 " 10	18.00 " 100
2 to 3 "	20c "		1.75 " 10	14.00 " 100



Jonathan

Bellflower

W. W. Pearmain

Arkansas Black. Medium to large; somewhat conical; the color is a beautiful dark maroon over a yellow ground; flesh firm; fine grained, juicy and a long keeper.

Bismarck. One of the best apples for hot climates; fruit a beautiful golden yellow and of largest size; a grand desert apple. Ripens early and keeps well.

Baldwin. A large, bright-red apple having crisp, juicy, rich flesh. Tree very productive and vigorous. One of the best and most popular winter sorts. November to February.

Chenango. (Chenango Strawberry) Large, oblong; red and yellow; very handsome. Valued as a table fruit on account of its fine appearance and high quality. September.

Delaware Red. Large, roundish flat; mild sub-acid; beautiful dark red; a handsome late keeper; tree a vigorous grower and bears well. November to April.

Duchess of Oldenberg A large, beautiful Russian Apple; streaked red and yellow. Tender, juicy and pleasant. Tree a vigorous grower and very productive. A fine cooking apple and esteemed by many for dessert. Excellent in hot, dry climate on account of its dense foliage. August.

Early Harvest. Medium size; pale yellow; tender with mild, fine flavor. Tree a moderate grower and a good bearer. An excellent variety for both orchard and garden, being one of the first to ripen.

Early Strawberry. Medium size; tender, almost melting, with mild, pleasant flavor. Tree a moderate, erect grower and a good bearer. August.

Fall Pippin. Large, round, yellowish-green; flesh tender, rich and delicious; very productive; one of the very best Fall apples. September.

Fameuse. (Snow Apple) Medium size, red streaked; flesh snow white, tender juicy and delicious. September to October.

Gano. Considered by many to be identical with Black Ben Davis. Except for color, which is a deep red, it is a true Ben Davis type. Tree very hardy and a strong and regular bearer. November to March.

Gloria Mundi. Very large; greenish yellow; flesh coarse, tender and sub-acid flavor; excellent for cooking. October.

Gravenstein. A very large, striped, roundish apple of the first quality. Tree remarkably rapid, vigorous, and erect in growth and very productive. The finest of the early autumn apples.

Grimes Golden. (Grimes Golden Pippin.) Medium to large size; skin golden yellow sprinkled with gray dots; flesh tender, juicy and crisp. Tree hardy and a good bearer. December to March.

Jonathan. Medium size, conical, yellow and red; flesh tender, juicy and rich; very productive; one of the very best early Winter apples. November to December.

Maiden Blush. Medium, pale yellow with red cheek; tender and sweet but not high flavored. August.

Missouri Pippin. (Stone's Eureka.) Large, round, yellow splashed with red; a popular market sort; very productive. Nov. to April.

Rambo. Medium size; yellowish-white, streaked with pale yellow and red; tender, juicy and mild flavored. Tree a vigorous grower and very productive. Autumn.

Red Astrachan. Large, nearly covered with deep crimson; handsome; juicy, with rich acid flavor; very productive; one of the very best Summer apples.

Red June. Medium size, oblong. Color deep red; one of the best table apples. June to July.

Rhode Island Greening. A well known variety that succeeds well in the Southwest; fruit very large, round, sub-acid, rich flavor; ripens late in the Fall.

Rome Beauty. A large, excellent variety which is well suited to California conditions, especially in the mountain districts as it is a very late bloomer and therefore a regular bearer. The yellowish fruit is shaded and striped with red; of very fine appearance and good flavor. November to February.

Stayman's Winesap. An early bearer and very productive. Fruit medium size, skin smooth, greenish-yellow striped with red and purple; flesh firm, juicy and mildly sub-acid. January to May.

Sweet June. Fruit medium, roundish, regular; light yellow; very sweet, pleasant and rich.

Twenty-ounce Pippin. A very large showy, striped apple of good quality; flesh coarse but of pleasant flavor.

White Winter Pearmain. Medium, oblong, greenish-yellow; tender, juicy, highly flavored; good bearer; one of the leading varieties grown in California. November to July.



Winter Banana Apple

Winesap. Medium, dark red; sub-acid; excellent quality. Tree a moderate grower and abundant bearer. A favorite market variety in the West, commanding the highest prices. Succeeds well in light sandy soil. November to February.

Winter Banana. Fruit very large, perfect in form, golden yellow, and beautifully shaded with red; flesh yellow, fine grained, sub-acid, rich, aromatic flavor and of the highest quality. Tree bears while remarkably young, three year old trees often being heavily laden with fruit. Of strongest growth and very hardy, thriving well in almost any climate.

Winterstein. (New.) A seedling of Gravenstein, originated by Luther Burbank. It ripens with Baldwin and Rhode Island Greening; flesh yellowish, spicy, rich, sub-acid; of finest texture; color bright red, striped; tree vigorous and remarkably productive.

Yellow Bellflower. Large, yellow; flesh crisp, juicy, with a sprightly aromatic flavor; an excellent and valuable variety; tree a fine grower and a good bearer. A commercial variety in California, adapting itself to all portions of the country. October to February.

Yellow Newtown Pippin. Large and of irregular shape; skin golden yellow; flesh firm, crisp and juicy. One of the standard varieties in California. A wonderful keeper and commands high prices. January to April.

Hyslop Crab. A very popular variety in the West on account of its size, beauty and hardiness; fruit deep crimson, covered with blue bloom.

Transcendent Crab. The best of all the crabs for general use. Tree remarkably vigorous and immensely productive. Fruit large; skin yellow, striped with red. Fruit especially fine for preserves and jellies, being of a pleasing aromatic flavor. August.

Whitney Crab. Large, averaging one and a half to two inches in diameter; skin glossy-green, striped with carmine; flesh firm, juicy and pleasant flavor. Tree hardy and vigorous grower.

THE CHERRY

There are few finer fruits than the Cherry and in localities where they are fruitful there are few more profitable. The Black Tartarian and Royal Ann belong to the Heart or Bigarreau Class. Trees are of upright growth and are most fruitful along the foothills. The Early Richmond and English Morella differ from the preceding in that the trees are smaller and more bushy and are heavy bearers in almost any locality.

PRICES

35c each

\$2.50 per 10

Black Tartarian. Very large; purplish-black; flavor mild and pleasant. The tree is a vigorous upright grower.

Early Richmond. An old favorite sort; an early red, sub-acid cherry; tree a fine grower, hardy, healthy and productive.

English Morella. Large dark red; tender, juicy, rich acid; later than Early Richmond; an excellent acid variety. This variety in our trial grounds has borne heavy successive crops for several years.

Royal Ann. (Napoleon Bigarreau.) A magnificent cherry of the largest size; pale yellow with bright red cheek; flesh firm, juicy and sweet; tree an erect grower.

THE PEAR

This most desirable fruit is seen at its best in California. The range of varieties is such that ripe fruit may be had from mid-summer to spring. The following sorts are selected with a view to giving the best results.

PRICES

4 to 6 feet	35c each	\$2.50 per 10	\$20.00 per 100
3 to 4 "	25c "	2.00 " 10	18.00 " 100
2 to 3 "	20c "	1.75 " 10	15.00 " 100

Beurre Hardy. A large pear; cinnamon russet; flesh buttery, melting and fine. Tree a strong grower and good bearer. One of the finest pears. October.

Kieffer. (Kieffer's Hybrid.) Large; skin rich golden-yellow, sprinkled thickly with small dots, and often tinted with red on one side. Flesh slightly coarse, juicy and melting, with pronounced quince flavor.

Bartlett. One of the most popular varieties; large, buttery and melting, with rich musky flavor; tree a vigorous grower; bears abundantly; ripens early. No pear now on the market possesses a wider popularity, being a good shipper, possessing keeping qualities and fine appearance. Indeed, no variety is so extensively planted in California.

Clapps Favorite. A splendid summer pear, resembling the Bartlett and ripening a few days earlier. Tree is hardy and a vigorous grower. As with all varieties of pears (and especially with this) fruit should be picked at least ten days before it would ripen upon the tree.

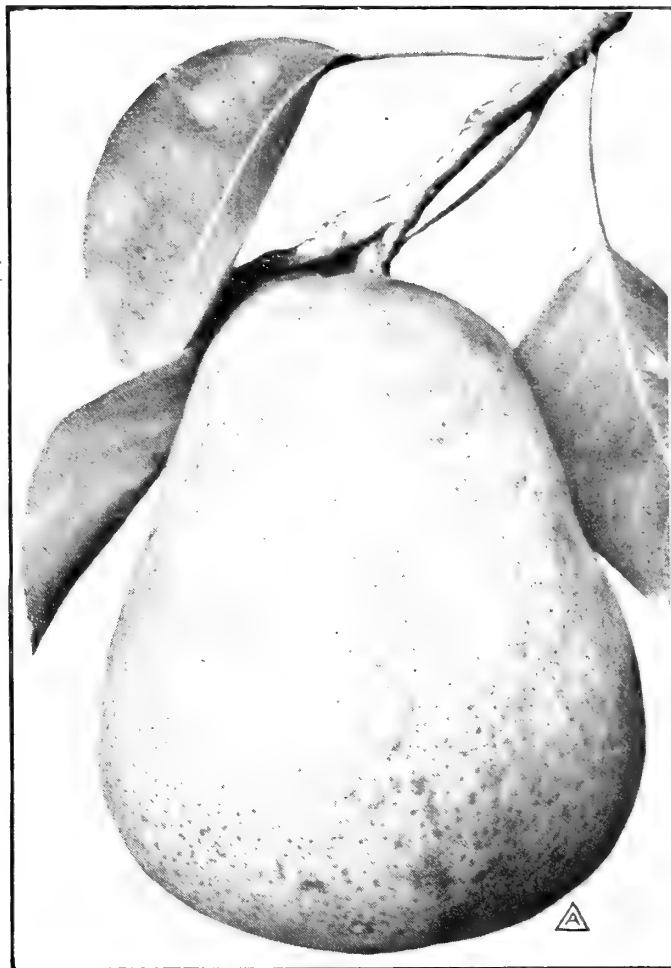
Flemish Beauty. A large, beautiful, melting, sweet pear. Strong grower and fruitful; an old standard variety,

Summer Doyenne. (Doyenne d'Ete.) A beautiful, melting, sweet pear, rather small. Skin smooth, yellow, often shaded with red and covered with russet dots. Vigorous grower and good bearer. One of the earliest.

Winter Bartlett. (New.) Large; skin yellow with blush; similar in form and quality to the Bartlett; ripens three or four months later.

Worden Seckel. A seedling of the Seckel. Fruit medium size, borne in clusters, juicy and fine grained; flavor fully equal to that of its parent, which it surpasses in size and keeping qualities.

Wilder Early. A pear of excellent quality; medium size and regular form. Fine grained,



Winter Bartlett Pear

melting, sweet and pleasant; greenish-yellow, with roundish-red cheek. Tree a good bearer and strong grower.

Winter Nelis. Medium size; dull russet; flesh melting and buttery with rich, sprightly flavor; tree a slender irregular but free grower; bears heavily and regularly; one of the best early winter pears.

THE QUINCE

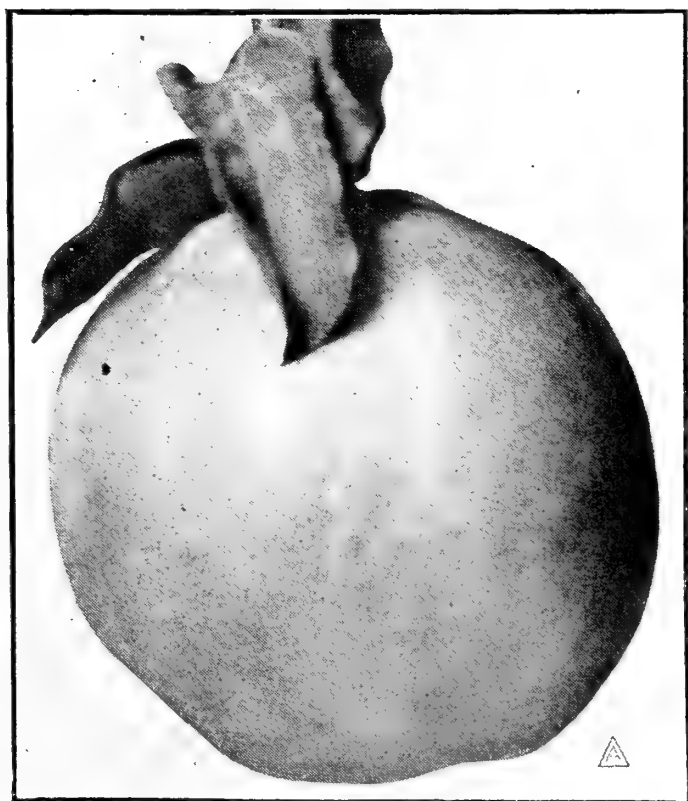
This fruit is desirable for preserving and forms a valuable adjunct to the garden.

PRICES

	each	per 10
4 to 6 ft.	35c	\$3.00
3 to 4 ft.	25c	2.00

Apple or Orange. Large, roundish, with short neck; greenish-yellow color. This is the variety most largely cultivated.

Pineapple. (New) The name is suggested by the flavor. The fruit resembles the Orange Quince but is smoother. Of excellent quality.



Pineapple Quince

Reas Mammoth. A very large, fine variety of the orange quince; a good grower and quite prolific; one of the best.

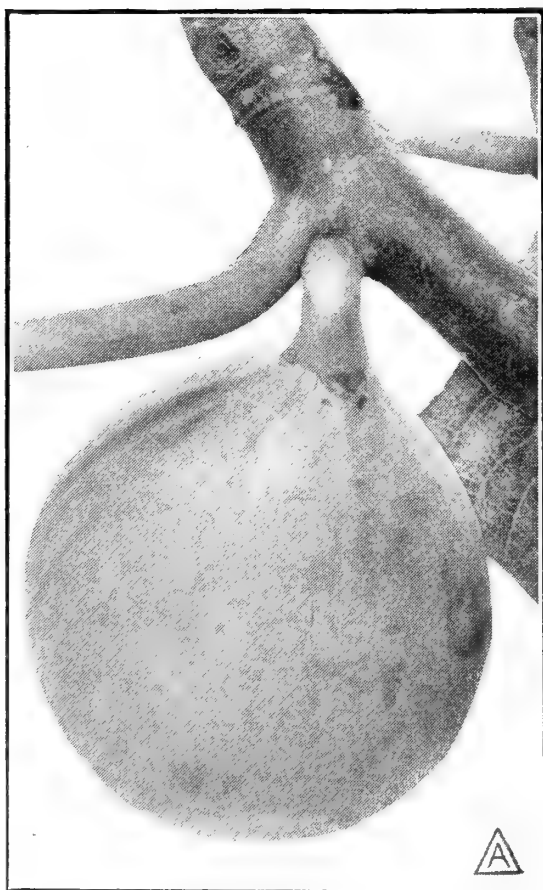
Smyrna. (New.) The fruit of this superb variety is very large and of a lively, lemon-yellow color; tender and delicious when cooked.

THE FIG

Among California fruits the fig has always occupied a foremost position; the early Mission fathers invariably possessed a few trees in their gardens. It was not, however, until the eighties that the fig culture assumed commercial importance, neither did it attain full success until about 1898. Since these events the fig culture has attained great success and no garden is complete without a few trees.

PRICES

4 to 6 feet	40c each	\$3.00 per 10
3 to 4 "	30c "	2.50 " 10
2 to 3 "	25c "	2.00 " 10



White Pacific Fig

Calimyrna. (Smyrna.) The genuine commercial Smyrna fig as grown in Asia Minor. Large size; skin lemon-yellow; pulp reddish-amber; flavor and quality unsurpassed. For growing this variety successfully, it is necessary to have the aid of the Fig wasp (*Blas-tophaga Grossorum*.) These minute insects dwell in the wild or Capri Figs, and convey the pollen into the edible fig.

Capri. The wild fig which must be grown in connection with the Smyrna Fig, the ratio being two Capri trees to an acre of Smyrnas.

Mission. The well-known California Black Fig. The tree is a very strong grower and good fruiter. The leading black variety for shipping and drying.

White Adriatic. Large, skin greenish-yellow; flesh reddish; tree strong grower and prolific; largely planted in California.

White Datato. A late variety of excellent quality.

White Pacific. Greenish-yellow skin; pulp sweet, of excellent quality and light yellow in color; a regular and heavy bearer. Fruit medium to large size.

THE MULBERRY

Downing's Everbearing. A very strong, upright grower, producing fruit of good quality. A splendid shade tree. 50c.

We ship trees and plants safely to all parts of the country. All shipments are carefully packed in order that they may reach our patrons in good condition. No extra charge is made for packing.

THE JAPANESE PERSIMMON

A superb fruit that is growing rapidly in popular esteem. It can be grown very successfully in all parts of California and the Southwest. The following are the best of the large number of varieties we have fruiting on our grounds.

PRICES

4 to 6 ft. 50c

3 to 4 ft. 35c

Hachiya. Large, oblong, conical; 3½ in. longitudinally and 3½ in. transversely; skin dark, bright red; flesh yellow, with some dark streaks and few seeds; astringent until ripe.

Hyakume. Large to very large, roundish oval, flattened on both ends; skin light buffish yellow; flesh dark brown, sweet, crisp, meaty; not astringent but good while yet hard; 2¾ in. longitudinally 3½ in. transversely.

Tane-Nashi. Large to very large, roundish conical, pointed, very smooth and symmetrical; diameter 3¼ in. longitudinally and 3⅝ in. transversely; skin light yellow, changing to bright red at full maturity; flesh yellow and seedless; quality very fine; perhaps the most highly esteemed of the light-fleshed kinds; tree is vigorous and bears well.

THE POMEGRANATE

The Pomegranate is a fine large shrub, hardy and easily grown. Its brilliant scarlet flowers are very ornamental and the fruit is much esteemed for its fresh crispness and delicacy of flavor.

Paper Shell. (New.) As the name indicates, this is a thin-skinned variety of excellent quality. 35c. \$2.50 per 10.

Wonderful. (New.) Large, highly colored; the pulp is richly colored, of good flavor, very fine; ripens late. 35c. \$2.50 per 10.

THE NUT FRUITS

The following nut fruits have proved themselves adapted to California conditions. Besides their culture in a commercial way, they are quite suitable for planting about the home, where they furnish shade, as well as nuts for family use.

THE ALMOND

Jordan. The largest, sweetest and finest-flavored of all the almonds. The kernels are long, plump and thin-skinned; rich flavored and of fine texture. The Jordan has recently been introduced from Spain, where it is highly prized, the demand being greatly in advance of the supply. 40c. each; \$3.00 per 10; \$25.00 per 100.

Nonpariel. A popular sort; shell thin, quality good; tree of a somewhat weeping habit; bears heavy and regular. 35c. each; \$2.50 per 10; \$20.00 per 100.

I. X. L. Nut large, generally single kernels; soft shell; tree a strong upright grower; one

of the most popular varieties of almonds. 35c. each; \$2.50 per 10; \$20.00 per 100.

THE CHESTNUT

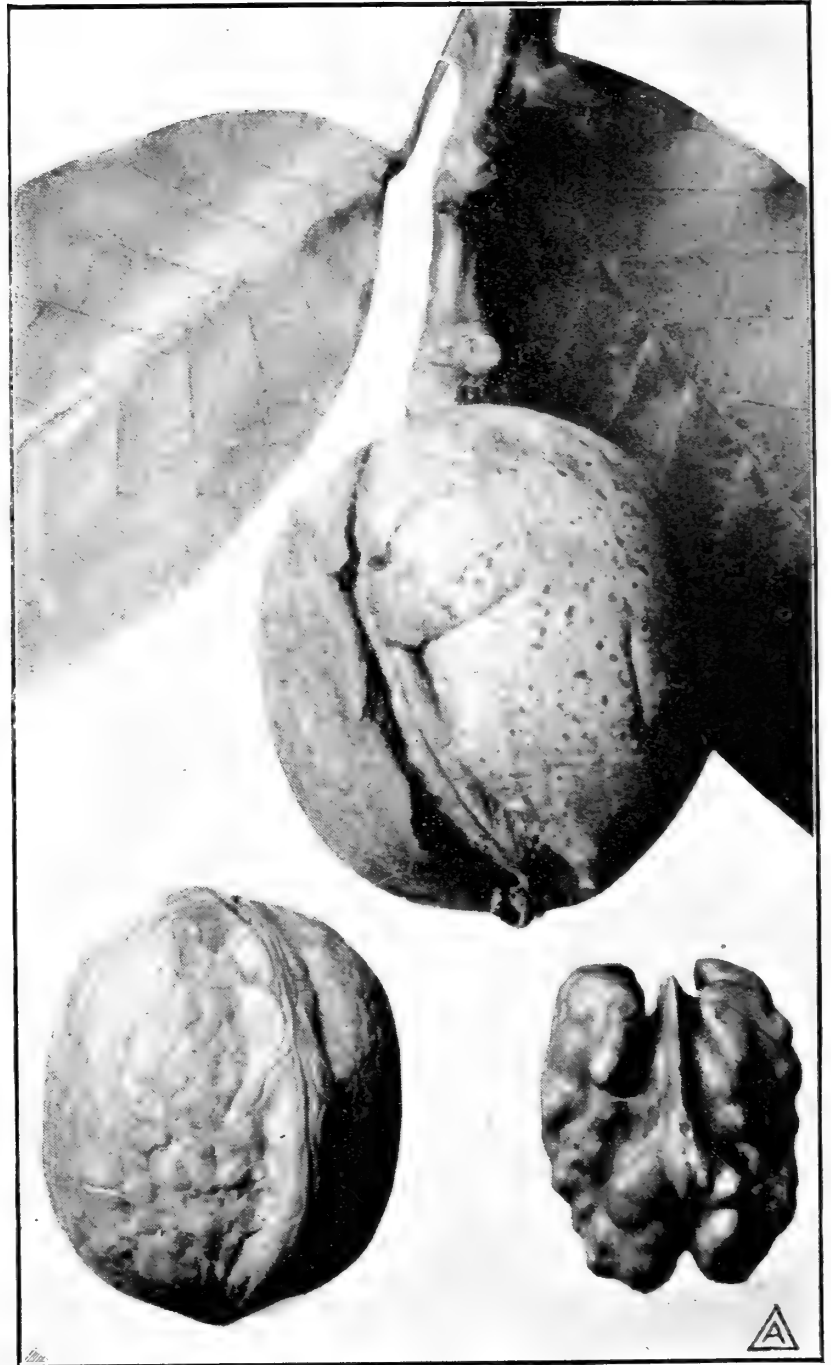
Italian or Spanish. A highly ornamental tree of free growth and fine foliage. The nut is sweet and generally of large size and one of the hardiest and best varieties for general planting. 50c.

American Sweet. Fruit of this variety is smaller than the European kinds, but it is very sweet and well flavored. Much esteemed in Eastern States. 40c.

THE WALNUT

The growing of what is commonly known as the English Walnut has now attained large proportions in California; in fact the Walnut is the most important of the nut fruits grown here. It is peculiarly adapted to the conditions of climate and deep alluvial soils of our Coast Valleys where either surface or sub irrigation is possible. Under these conditions it is of easy culture. The crop is not expensive to gather and market, and is one of the most profitable. For commercial planting the trees are placed forty to fifty feet apart, thus allowing room for the broad spreading top.

Placentia Perfection. The favorite soft-shelled walnut in Southern California. The cut on this page is a good illustration of the nut, showing the husk as it grows on the tree, together with the shell and kernel. The nut is large and of the highest quality. The tree is a strong vigorous grower and begins to bear young with increasing fruitfulness. Prices: 4 to 5 foot 75c each; 6 to 8 foot \$1.00 each.



Placentia Perfection Walnut

Seedling Placentia Perfection. These are grown from choice selected seed. While they come practically true from seed, they are not as uniform in size, form and bearing qualities as the grafted stock. 25c to 50c each.

Prices given in this book only cover assorted orders; planters who may be in the market for commercial quantities are cordially asked to write us for quotations on large orders, stating their wants in detail.



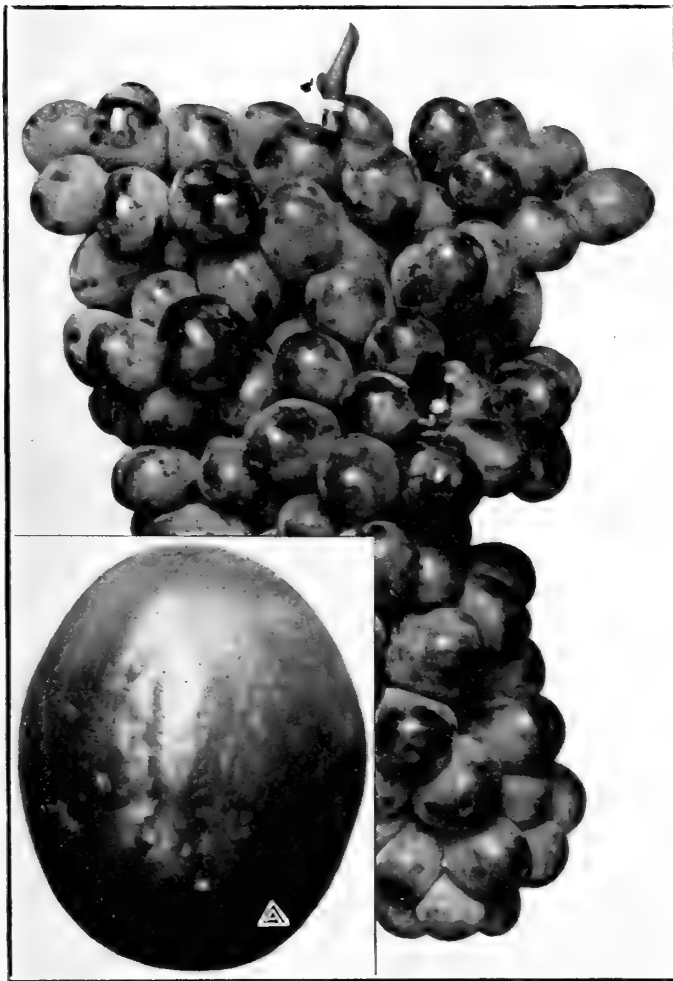
THE GRAPE

Among fruits, grapes are perhaps the most certain. In Southern California grape culture has attained great importance, the raisin, table and wine varieties occupying an immense acreage representing large investments. Our assortment is selected with a special view of meeting general requirements both for home as well as commercial culture. No home garden is quite complete without a few choice table sorts lending an air of comfort when trained over trellis or arbor.

FOREIGN VARIETIES

The leading sorts for table use, raisins, wine making and shipping.

PRICES: 15c each; \$1.00 per 12; \$4.00 per 100.



Flaming Tokay

Berry natural size

Almeria. Bunches large, loose; berry large; oval, yellowish green. This variety is grown extensively in Spain and exported to America packed in cork dust. Medium late.

Black Cornichon. Bunches long and loose, berries oval; skin thick, covered with bloom; firm, good quality; one of the best late shipping grapes.

Black Morocco. Berries very large, oval; purplish black when ripe; flesh firm, sweet and crisp; bunches medium to large, compact; an excellent late shipping grape.

Black Prince. Bunches very long, tapering; berries medium, ovate with thick bloom; juicy and sweet.

Black Hamburg. A fine, tender grape, producing large, compact bunches. Berries coal black when fully ripe; very large and oblong in shape. A great favorite both for table and market. September.

Black Melvoise. Vine a strong grower; berries large, oblong, reddish-black with faint bloom; flesh juicy, flavor neutral. An immense bearer and an excellent table as well as wine grape. September.

Cinsaut. Excellent as either a wine or table grape; berries large, black and oval shape; crisp and of fine flavor. Medium early.

Emperor. Bunches large, long and rather loose; berry large, oblate, wine colored, very firm; a very late variety, and considered one of the best for shipping.

Flaming Tokay. Bunches and berries very large, pale red with bloom; flesh firm and sweet; a handsome grape and a good shipper.

Golden Queen. The fruit of this variety is large and oblong; rich flavor; color golden yellow when fully ripe. Much esteemed as a table grape. Medium late.

Golden Chasselas. The berries of this variety are of a rich amber color, sweet and juicy. Bunches medium size and compact. Ripens latter part of July.

Gros Colman. Berries of this variety are as large as small plums, and are borne in immense clusters. Skin thin, very dark and covered with bloom; flesh firm, pleasant flavor. A very excellent table variety. Ripens late.

Malaga. One of the best table grapes; vine a strong grower, and very productive; bunches very large, compact; berry large, oval, yellowish-green; fleshy.

Mission. Berries medium, round, black, sweet, bunches large, loose; an old standard variety; table and wine.

Muscat of Alexandria. The white raisin grape planted so extensively in California; bunches large and loose; berry oval; muscat flavor; one of the richest flavored of all grapes; valuable for raisins, shipping and wine.

Muscatelio Fino. (Black Muscat). An excellent table grape; berries very large; skin

well colored, thin but tough; flesh soft and juicy with delicate Muscat aroma. Rather late.

Olivette de Cadanet. Bunches large; berry very large, oval and greenish-yellow; crisp, juicy and of good quality; a good table grape. Medium late.

Purple Damascus. Fruit is very large; deep purple when fully ripe; flesh meaty, bunches large and loose. Very desirable for table use. Ripens mid-season.

Rose of Peru. Bunches large and loose; berries round and firm; a popular variety.

Seedless Sultana. Berries small, round, firm and crisp; golden yellow and without seeds; bunches very large and long. Vine vigorous grower and prolific bearer; largely planted for seedless raisins and popular as a table fruit.

Thompson Seedless. Oval, greenish-yellow; as large or larger than Sultana; seedless; thin skinned; good, but not strong flavor; bunches very large. Valuable for either table use or seedless raisins. Ripens early.

HARDY AMERICAN VARIETIES

This class of grapes succeeds well here and are especially adapted for arbors.

PRICES: 15c each; \$1.50 per 12, except where otherwise noted.

Campbell's Early. A fine new grape raised by the late George W. Campbell of Delaware, Ohio. Cluster large and handsome; berries large, black, with light purple bloom; flesh rather firm but tender; the seeds are few and easily separated from the pulp; quality rich, sweet, slightly vinous. A good grower with healthy foliage. Ripens early. 20c; \$2.00 per dozen.

Catawba. Berries large, round; when fully ripe of a dark copper color. Sweet, rich, musky flavor. One of the best of the hardy varieties.

Concord. Undoubtedly the most widely known and popular of all the native grapes. The vine is a healthy vigorous grower, and being hardy it succeeds where the more tender foreign varieties fail. Produces large clusters of berries of good size and of a quality unsurpassed for their buttery sweetness and musky flavor. Color black, covered with thick bluish bloom.

Delaware. Bunches are small and compact, berries small; light red with a violet bloom; sweet, sugary and vinous, with a musky aroma.

McPike. Said to be a seedling of Worden; of great size. A very fine new variety. Ripens just before Concord.

Moore's Diamond. Leading early white grape; white, with rich yellow tinge; juicy. few seeds, almost free from pulp, excellent quality; above medium size.

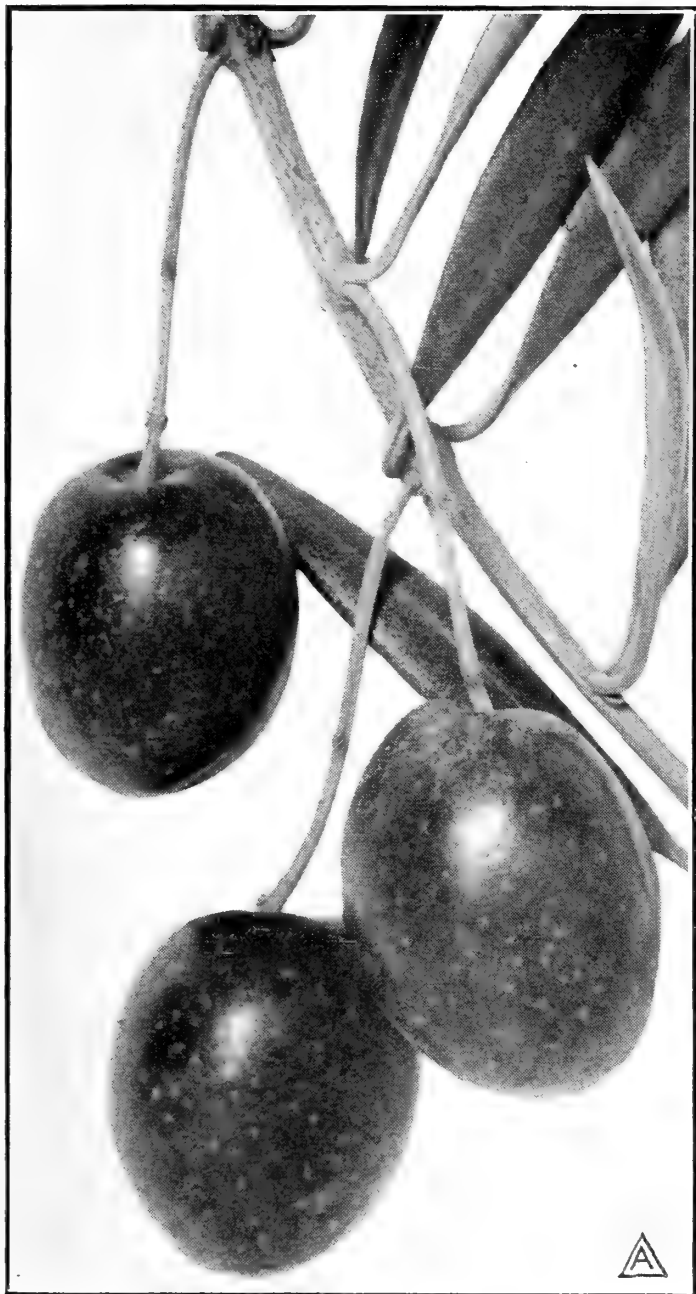
Niagara. Fruit large; bunch medium compact; skin thin but tough, pale yellow with whitish bloom; flesh tender and sweet; vine healthy and productive; ripens with Concord. Considered the best hardy white grape in cultivation.

Worden. Bunches large, compact; berries larger than the Concord, which it resembles, ripening a few days earlier, and is superior to it in flavor.

Small orders of grape vines may be sent by either mail or express, transportation prepaid if one-fifth additional to purchase price is added. Larger lots may be shipped by express or freight.

THE OLIVE

Olive culture has long since passed the experimental stage, and is now on a solid commercial basis. Indeed, the possibilities in the further development of Olive culture seem unlimited. Under the improved methods of curing olives and the high prices of the product, olive growing must be a remunerative business. The tree succeeds in any good soil. Our stock this year is unusually large and of robust growth. The varieties enumerated are among the very best for either oil or pickles.



Manzanillo Olives

PRICES

	each	per 10	per 100
4 to 6 ft.	60c	\$5.00	\$40.00
3 to 4 ft.	50c	4 00	30.00
2 to 3 ft.	35c	3.00	25.00

Manzanillo. This fine Spanish variety is well-known as one of the best pickling Olives. The fruit is very large, purplish black, with light colored specks. The ripe olives when cured are of excellent quality. As an oil producing Olive, it is unexcelled. The tree is a free grower and under proper care is prolific. The cut gives a good idea of the size of the fruit.

Nevadillo. Fruit small to medium, purplish black when fully ripe; a fine oil olive; it also makes a well flavored pickle, but owing to its smaller size is not as popular for this purpose as the preceding variety; tree of strongest growth and a very heavy bearer.

Note the following rule in ordering trees and plants: Five of any one variety will be sold at the 10 rate; 50 at the 100 rate. We cannot undertake to supply long lists of two or three of a kind at 100 rates. These would be charged at single rate. In order to obtain 100 rates, it will be necessary to order 50 trees of one sort.

Assorted orders require much more time and care in selecting and labeling, hence the higher rate.

MISCELLANEOUS FRUITS

NEW AND RARE FRUITS

AVOCADO—ALLIGATOR PEAR

Avocado. (*Persia Gratissima*.) This fine tropical fruit is a native of the West Indies and Mexico, commonly known in Mexico as the Aguacate. The fruit is very large, pear-shaped, covered by a green or purple skin containing a large quantity of firm, yellowish-green pulp, enclosing a single seed. The pulp is marrow-like, of very pleasant flavor, and is eaten as a salad. There are a few of these trees now bearing at different points near Los Angeles. The net returns from one tree at Monrovia averaged for four years over \$70.00 per year. Another seed-

ling tree at Hollywood which bore about 2,000 fruits in a single year and brought over \$300.00. Good specimens of the fruit bringing as high as 75c each. The tree is a fast grower and attains a height of 20 to 40 feet. It requires about the same treatment and will thrive under about the same conditions as the Orange and the Lemon. Potted plants, \$1.00 each, \$75.00 per 100.

THE CUSTARD APPLE

Cherimoya. One of the finest sub-tropical fruits. Tree grows to be as large as the Orange, producing large sized, heart-shaped fruit in great numbers. Color grayish-brown. Pulp of a custard-like consistency. Tree rather susceptible to frost. \$1.00.

THE FEIJOA

Fejoa Sellowiana. A beautiful shrub, producing a profusion of charming flowers, which later give way to a most delicious and aromatic fruit, somewhat resembling the guava, but having smaller seeds. The first plants were brought from Uruguay about eight years ago and are now fruiting in Southern California. Small plants 50c. 2 to 3 ft. \$1.00.

THE LOQUAT

The Loquat is a fruit which is commanding wider attention as it becomes better known. The tree is of itself one of the most beautiful, single specimens often gracing our front yards and finding conspicuous places on the lawn. It is an evergreen, with large glaucous leaves, while the fruit is pear shaped, light orange in color, and of an acidulous-aromatic flavor. One of the earliest fruits to ripen.

Advance. (New.) One of the best of the grafted sorts; fruit pear shape; borne in large clusters; color orange-yellow; flavor distinct and delightfully sub-acid. \$1.50.



Advance Loquat

Seedling. Grown from selected seed; forms a larger tree than the Advance but the fruit is somewhat smaller and the tree is later coming into bearing. Small potted plants 25c; field grown plants 50c to 75c.

THE GUAVA

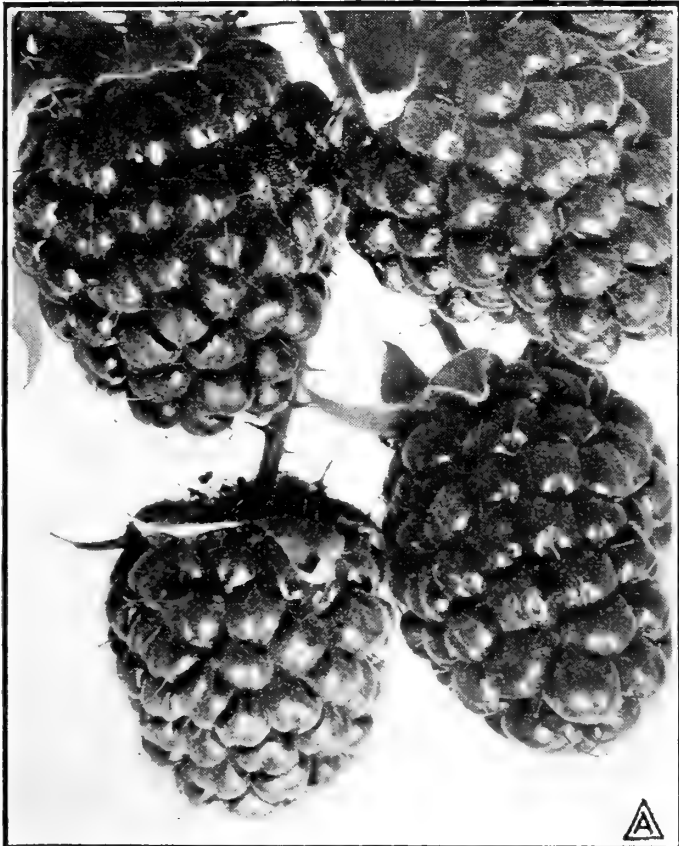
The Guava is much sought for jelly making and preserving, and is much relished eaten out of the hand when fully ripe.

Lemon Guava. One of the finest of the Guava family; large pear-shaped, yellowish fruit; the bush is susceptible to frost and should be grown only in the most favored localities. 35c.

The Strawberry Guava. A fine, glossy-leaved shrub or small tree, which produces in abundance fruit about the size of large strawberries; round, deep reddish color; the fruit is highly prized. From 2 to 6 plants of this luscious, semi-tropic fruit will be a valuable addition to any home garden. 25c to 50c.



Strawberry Guava



Phenomenal Berry

Phenomenal Berry. Originated by Luther Burbank and said to be a cross between the California Dewberry and Cuthbert Raspberry. The largest berry known to cultivation. Color bright crimson. Berries grow in clusters of from 5 to 10 and individual berries are exceedingly large, often measuring three inches around one way and four the other. Delicious for canning. 15c each; 75c per 12; \$5.00 100.

THE BLACKBERRY

Crandall's Early Blackberry. Large; firm, good flavor; fruits through the entire season; ripens early. 10c each; 50c per 12; \$3 per 100.

Himalaya Giant. A very strong grower, canes sometimes reaching 40 feet. Train on trellis. Fruit large and black. 15c; 75c per 12.

Kittatinny. Large, roundish, conical, glossy black; juicy, sweet, excellent when fully ripe and one of the most valuable sorts for general planting. 10c each; 50c per 12; \$3.00 100.

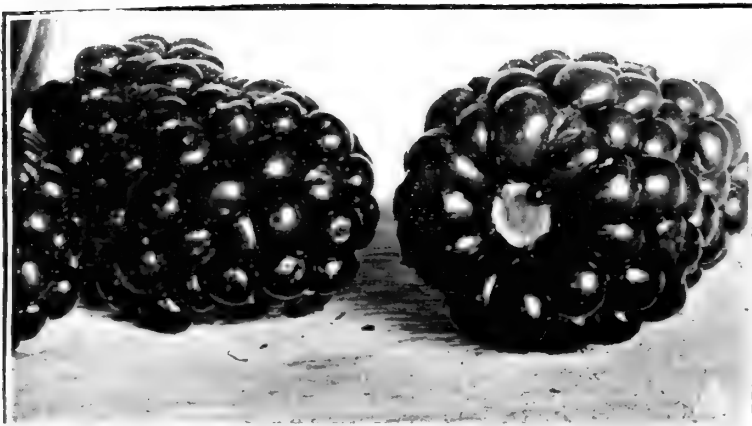
Mammoth. Said to be a cross between the wild blackberry of California and Crandall's Early. It is a rampant grower, sometimes attaining a growth of 20 feet in one season. The foliage is heavy and of a deep green color. The fruit is very large and long, surpassing all other blackberries in size and flavor. Early and very productive. 15c; 75c per dozen; \$5.00 per hundred.

THE DEWBERRY

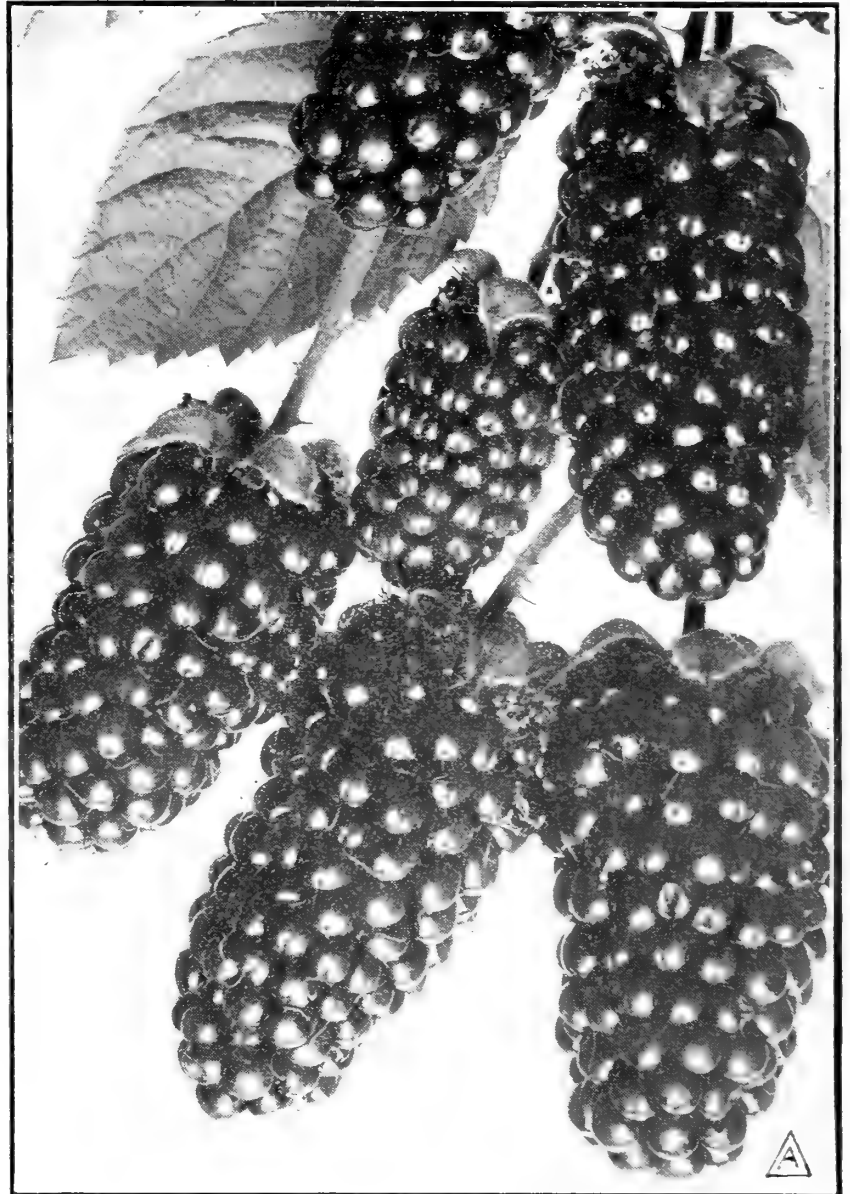
The Gardena Dewberry. This grand berry has proven to be a great success. It is wonderful to see the vines literally covered with the large, jet black berries. The points in its favor are early ripening and productiveness. As an early market berry it is a sure winner. No fruit or family garden can be considered complete without at least a few Dewberry plants in the general assortment. 10c; 50c per 12; \$2.50 per hundred.

THE LOGANBERRY

The Loganberry. A California production, being a hybrid between the wild California Blackberry and the Red Antwerp Raspberry. Color rich purplish red with a very pleasant vinous flavor. The best results are obtained by growing on a low trellis. During the dormant season the old last-year vines may be cut off, leaving the new canes for the next crop. May be planted in rows seven to eight feet apart, and six to eight feet in the row. 10c each; 50c per 12; \$2.50 per 100.



Gardena Dewberry



Mammoth Blackberry

THE GOOSEBERRY

Houghton. Vigorous grower; branches rather slender; very productive; not subject to mildew. Fruit of medium size; skin smooth, pale red; flesh tender and good. 25c; \$2.00 per 12.

Downing. A seedling of Houghton. Fruit large; whitish-green; flesh soft, juicy and good; plant vigorous and prolific; excellent for family use. An old standard variety, well and favorably known throughout the East. 25c; \$2.00 per 12.

THE RASPBERRY

Cuthbert. The best of the red raspberries; large, conical; deep crimson; firm and best flavor. 50c per 12; \$2.50 per hundred.

Golden Queen. Large; beautiful golden-yellow color; firm and of finest quality; plant vigorous, hardy and remarkably productive. One of the most delicious berries for table use. 75c per dozen; \$5.00 per hundred.

Kansas Black Cap. A valuable Black Cap Raspberry bearing large clusters of good-sized fruit. 10c each; 50c per 12; \$2.50 per hundred.

Surprise Raspberry. A valuable new Raspberry, remarkable for its fine quality and early ripening, of large size, similar in form and color to the Cuthbert; begins to ripen in April, continuing through the entire berry season. In fact, the earliest berry of all to ripen; of strong growth. 15c each; \$1.00 per 12.



Cuthbert Raspberry

THE STRAWBERRY

20c for 12; 75c per hundred;
\$5.00 per thousand.

A-1. Ripens from early to late. A sure and continuous bearer, large, dark red when ripe; exceedingly prolific. We recommend this as the best all-around strawberry grown.

Arizona Everbearing. A very large, handsome berry; vigorous grower; endures heat of summer well; very productive.

Brandywine. A good shipping variety; possessing many good points in its favor. A California production; glossy red berries: firm and of excellent quality; ripens mid-season to late



Brandywine Strawberry

VEGETABLE GARDEN

We do not handle garden seeds, but aim to keep a few varieties that are usually bought in plants, roots or tubers, of which the following is a brief list.

THE ASPARAGUS

Barr's Mammoth. A well-flavored productive variety. Large and tender. 10c; 35c per 12; \$2.00 per hundred.

Conover's Colossal. A mammoth variety of vigorous growth, sending up from fifteen to twenty sprouts each year. 10c; 35c per 12; \$2.00 per hundred.

Palmetto. A well known variety grown extensively for the early market. 10c; 35c per 12; \$2.00 per 100.

HORSE RADISH

Horse Radish. This pungent vegetable may be easily grown by cutting up the roots in small pieces, saving the eyes; plant in rows 18 in. apart. 5c each; 25c per 12; \$1.50 per 100.

THE RHUBARB

Crimson Winter. The greatest value of this Rhubarb lies in the fact that it continues to grow through the winter season, when the old fashioned sorts are dormant. Of vigorous growth, producing numerous, medium-sized stalks during the entire winter season. 20c; \$1.00 per 12; \$5.00 per hundred.

Monarch or Giant. An old standard sort; very large stalk; excellent for early summer use; tender and fine. 10c; 75c per 12.



Crimson Winter Rhubarb

SWEET POTATO PLANTS

White Spanish. Very large, white and mealy. 50c per 100.

Yellow Nansemond. Medium size, yellow; the leading market variety. 50c per 100.

NOTE:—Tomato and Sweet Potato plants ready March to May.

THE TOMATO

PRICES: 20c per 12; transplanted in boxes, \$1.00 per hundred. Ready in March.

Ponderosa or Beefsteak. Of enormous size, smooth and solid; rich and meaty.

Earliana. The best early tomato.

New Stone. The favorite variety for shipping and canning; large smooth and solid.

We do not prepay transportation charges unless one-fifth of the purchase price additional is sent with the order. On packages weighing four pounds or under, eight cents per pound will prepay carriage charges either by mail or express. The saving under this plan is considerable, as otherwise the Express Companies make a minimum charge out of all proportion on small packages weighing one or two pounds. The eight cent rate only applies on orders for light stock shipped bare root, as heavy potted plants cannot be sent by mail.



In every State in the Union growers acknowledge the supremacy of California field-grown roses. For constitutional qualities, root development, vigor of habit and profusion of bloom they have no equals. Roses grown by us reach the same development in a single year that it takes two years to accomplish in the East.

Our many years' experience in this line warrants us in presenting our stock as of superior quality and second to none. Therefore, by purchasing direct from the producer, you get your plants fresh from the soil, and in perfect condition.

If fifteen per cent. is added to price of roses we prepay express charges. This applies to roses only.

Unpacking Roses. Should plants, when received, have a withered appearance, caused by an unusual delay in transit (which seldom occurs), soak them in water for an hour or more so as to restore their vitality.

How to Plant. The rose delights in an open, airy situation; all types are partial to clay loam, but will succeed in any ordinary soil if enriched with well rotted barnyard manure. Dig up the soil thoroughly to a depth of twelve or fifteen inches. When the bush is planted press the soil firmly over the roots. Make a basin around the plant, and water freely to exclude air and to settle the earth.

Pruning. This operation is best performed during the dormant season. Most roses do better if moderately pruned. We usually remove from one-third to two-thirds of the past years' growth, and all weak or decayed wood should be entirely cut out. As a rule the more vigorous the variety the less it should be pruned. Besides Spring pruning, many of the Hybrid Perpetuals require to be pruned as soon as their first blossoming is over, in order to grow new wood for later blooming. It is always the new growth which gives flowers. Most people are apt to prune too sparingly, which retards rather than enhances the free-blooming of their plants.

THE NEW ROSES

The following are the cream of recent introductions. All have unusual merit.

Mayflower. Supposed to be an Improved *Devoniensis*. Of vigorous growth and dainty foliage. Bud is long and slender, opening into a large and beautiful flower of creamy white, with edges of lavender pink. Of fine habit and a valuable novelty. Stronger than *Devonien-sis*. 50c each.

My Maryland. A grand variety, very full in bloom and easy to manage. Color is a glowing pink, very intense; very free in growth and and bloom. 50c each.

May Miller. A strong growing, free flowering Hybrid Tea, with large dark foliage. The bud is long and pointed and opens into a flower of unusual beauty. The back of the petal is copper and bright pink, the upper surface peach and apricot. Said to be of easy culture. 50c each.

Mrs. Jardine. Color bright, rosy pink, shading to salmon-pink on outer petals and holding its bright color at all times; has been thoroughly tested and won numerous prizes at the Autumn Shows. 50c each.

White Killarney. The counterpart of *Killarney* of which it is a sport. It shows the same vigorous habit of growth. The buds are long, large and snow-white. A popular favorite. 50c each.

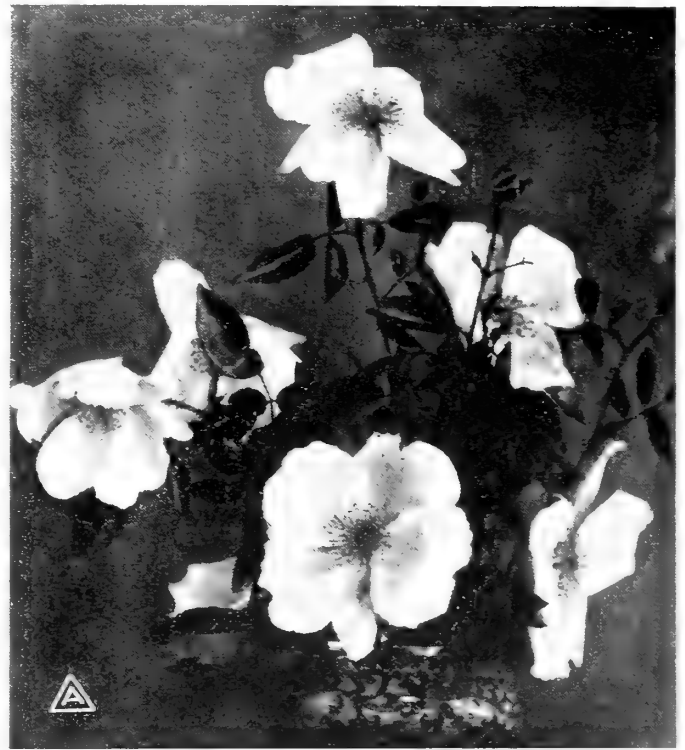
Walter Speed. A magnificent new rose of erect growth and possessing free continuous blooming quantities; the flowers are large with high pointed center and petals are very smooth and of great substance; color dark lemon-yellow, gradually changing to milk white. A beautiful rose of the *Antoine Rivoire* type. 50c each.

Wm. Shean. Purest pink with delicate ochrey venation. A glorious rose of perfect form and substance. A Gold Medal rose. 50c.

La Detroit. A beautiful rose of recent introduction and a worthy addition to any collection. Foliage is rich and glossy and the large, cup-shaped blossoms are shell-pink, shading to soft rose. A rampant grower and very fragrant. 50c.

The Pink Cherokee Rose. (*Rosa Levigata*, var. *Anemone*.) This exquisitely graceful rose novelty is a form of the well-known White Cherokee. It has every desirable quality of the latter as regards the beautiful shining foliage, which holds the year round, and vigor of growth. The flowers are a lovely salmon rose color with a circle of golden stamens, producing a charming effect in contrast with the dark green foliage. The Pink Cherokee blooms more freely than the White Cherokee and presents a display in the spring and fall unapproachable for delightful freshness and rosy fragrance. Charmingly effective for pergolas, clinging on fences and arbors and for covering banks and terraces. A meritorious addition to the garden, adapted to California, Arizona and all milder sections of the country. Mildew

proof. We can with confidence recommend this rose as well worthy of a place in every garden. 50c each; \$4.00 per 12; \$25.00 per 100.



Pink Cherokee

THE EVERBLOOMING TEA ROSES

This is a very popular class of roses on account of its free blooming qualities, persistent foliage and wide range of color. Following are field-grown on their own roots.

PRICES: 35c each; \$2.50 per 12; \$20.00 per 100.

Bridesmaid. Rich, clear pink; a well-known and popular variety.

Bride. Pure white, sometimes delicately tinged with pink; large, fine form, fragrant, free bloomer; one of the most popular of white roses.

Bougere. Bronzed pink; large and full; an old hardy variety; very popular.

Catherine Mermet. Color clear shining pink, center shaded with amber and fawn; large globular flowers; a strong, healthy grower and splendid bloomer; an old standard sort that still retains its popularity.

Coquette de Lyon. A lovely shade of light yellow; buds handsome; free bloomer.

Cornelia Cook. A free-blooming white rose of good quality; buds large and double. An old time favorite.

Comtesse de Frigneuse. Delicate canary yellow; large, full, well formed; bud long and pointed; free flowering; a beauty.

Comtesse Risa du Parc. Color bright, coppery rose. It grows quickly into a large strong bush and is a remarkably free bloomer. Carries its foliage well and altogether is a fine rose.

Dean Hole. An intense salmon-pink with bud of extraordinary length, opening into a large bloom of splendid substance. A fine grower and bound to rank with the very best.

Devoniensis. A famous old favorite of great beauty. Grows well anywhere. Carries an abundance of beautiful flowers throughout the season. The flower is of a beautiful creamy white with rosy center, large, double and very fragrant. There is no other variety like it and none more desirable. Should be in every garden.

Francisca Kruger. A very satisfactory rose for open ground culture. Strikingly handsome and especially adapted to bedding, as it holds its foliage under all sorts of conditions. Flowers deep coppery yellow and of large size; a strong and vigorous grower.

Golden Gate. (White House Rose.) A large, full and finely formed rose, with long, beautiful buds, color rich creamy white, tinged with golden yellow and clear rose, making a flower of great beauty.

Duchess de Brabant. Soft light rose; blooms in great profusion almost the year round; very strong grower; a very satisfactory variety.

Homer. Salmon rose; free bloomer, half hardy; buds beautiful, medium in size and of variable shades.

Isabella Sprunt. Color bright canary yellow; with a sweet tea scent; beautiful buds; very desirable for cut flowers.

Lady Roberts. An English rose of very vigorous growth; a magnificent bud; flower large, full, of exquisite form; color reddish apricot, shaded coppery-red; a charming new rose.

Laurette. Creamy white, shaded rose; an old garden favorite; a strong grower and free bloomer.

Mme. Hoste. Color creamy yellow with amber center; flowers large, fully formed; prolific bloomer and vigorous grower; one of the best light yellow roses.

Mme. Jos. Schwartz. The large globular flowers are pure white, tinged with pale yellow and rosy blush; large, constant and profuse bloomer; bush of strong growth.

Mme. Lombard. Color a beautiful shade of rose, passing to salmon and fawn; of vigorous habit and growth. A first class rose for bedding.

Maman Cochet. Clear, rich pink; flower of great substance; a vigorous grower with pretty foliage; the finest of all pink Tea Roses for open ground culture.

Marie Van Houte. For outdoor culture this beautiful rose cannot be excelled by any of its color; the flowers are large and full, the color pale yellow shading to creamy white and tinged with pale rose; bush is a sturdy grower and a free bloomer.

Marquis de Querhoent. Color beautiful China rose, salmon and yellow; a clean, strong grower and persistent bloomer; a beautiful rose.

Papa Gontier. This is probably the most popular red rose in the whole list; the bush, which is of strong growth, and is always furnished with an abundance of healthy foliage and is an incessant bloomer; it is much sought after for cut flowers on account of its magnificent buds; color, rich cherry red; no collection is complete without it.

Perle des Jardins. (Pearl of the Garden.) This grand old rose still maintains its

popularity and is known as one of the best of its color; the flowers are large and full; clear golden yellow; succeeds well in open ground.

Rainbow. The habit of growth and form of the flower is similar to Papa Gontier; color pink, striped crimson, center amber. A pretty rose.



Marie Van Houte

Safrano. Saffron and apricot yellow, semi-double; beautiful in bud; fine for cut flowers.

☞ **Red Cochet.** Identical with Pink Cochet except color; buds are beautiful reddish shade.

Souvenir de Pierre Notting. This grand rose is a seedling of Marechal Niel and Maman Cochet with beautiful, closely set foliage and strong, sturdy habit of growth. Color orange yellow, bordered with carmine, the bloom is large and full, and the buds are long and of elegant form.

Valle de Chamounix. An elegant rose; the color is variable from rich coppery yellow to rosy blush; the buds are exceedingly pretty, full and sweet, and quite distinct from any other rose; it ought to be in every collection.

White Maman Cochet. This grand rose has proven to be the very best of white bedders; flowers of mammoth size, round and full; pure white throughout; a general favorite wherever known; identical with Maman Cochet, except in color, both of which are exceptionally fine roses for general culture.



Maman Cochet

THE HYBRID TEA ROSES

This class of Roses combines, to a degree, the qualities of the Tea Rose and the Hybrid Perpetual, being free blooming like the Teas and quite hardy, and many of them richly colored and sweet scented like the Hybrid Perpetuals.

PRICE : 35c each; \$2.50 per 12; \$20.00 per 100.

Admiral Dewey. A sport from Caroline Testout; color delicate blush pink; globular, expanding into a full flower without showing its center; more vigorous than its parent, and very free flowering.

Alice Roosevelt. A sport from Mme. Chatenay, of the brilliant color of Bon Silene, red in the bud, deep pink when open; a fine bedder and good bloomer.

Aurora. One of the grandest and most fragrant of all the Hybrid Tea Roses. Color clear, bright pink; full and double to the center; a gem.

Bessie Brown. White, sometimes faintly flushed pink; a rose of transcendent beauty; one of the largest and fullest we have ever seen; an erect and vigorous grower, flowering profusely all summer.



Perle Des Jardines

Clara Watson. Salmon, tinted pink; a profuse bloomer and a valuable rose for cutting; a desirable sort for any collection.

Defiance. A red bedder; color crimson-scarlet; full and of large size; very free in bloom.

Duchess of Albany. (Red Lafrance.) Rosy pink; very large and double; fragrant.

Etoile de France. A charming new French Hybrid Tea Rose that aspires to a leading place among the reds. Thus far certainly promises well, has large fine buds borne singly on long, stiff stems; dark crimson in color, center vivid cerise; fragrant and lasting; vigorous in growth, soon forming a fine upright bush with few thorns.

General McArthur. One of the most magnificent roses of recent introduction. Of remarkably strong growth and good habit. The bud and open flower are brightest crimson and retain their coloring until they drop their petals. Blooms continuously and profusely and flowers are large size and very fragrant.

Gruss an Teplitz. The reddest of roses, bright scarlet shading to velvety crimson; as a bedding rose this is one of the finest and most useful varieties ever sent out; a free grower and most profuse bloomer of any everblooming rose; the mass of color produced is simply wonderful; the foliage is very beautiful, all the growth being a bronzy plum color; a clean strong grower; blooms through the entire summer.

Helen Gould. This is a most beautiful and satisfactory rose for outdoor culture; it is a cross between Kaiserin and Testout and possesses many of the good qualities of both; color bright glowing carmine; bud long and elegantly pointed, full and perfectly double; fine grower and constant bloomer.

Kaiserin Augusta Victoria. Pure ivory white; the grandest of all white roses; is a strong grower, producing buds and flowers of

enormous size; a grand garden rose, and the finest of all for cut flowers; no lover of roses can afford to be without it.

Killarney. A grand new Irish rose of sterling quality; the buds are long and pointed; color a soft shade of pink; handsome in both bud and full blown flower; a true everbloomer and a vigorous upright grower.

Lafrance. Silvery rose, shading to pink; very large and full; constant bloomer; sweetest scented of all roses.

Mme. Abel Chatenay. A beautiful creamy rose color, shaded with rose vermillion and tinged with salmon; the flowers are borne on long stems; well adapted for cut flowers.

Mme. Carolina Testout. Clear, bright rose, very sweet: flowers large and double, resembling Lafrance, but more sturdy habit; very free flowering; one of the very best new roses.

Mme. Pernet Ducher. (The yellow Lafrance). Flowers semi-double; beautiful buds which are borne in great profusion; color bright

canary yellow; bush of strong robust growth; a grand garden sort.

Meteor. One of the very brightest colored deep red roses in existence; the color is a rich, deep, velvety crimson exceedingly bright and striking; both buds and flowers are large, elegantly formed; fully double and borne on long stems; vigorous and healthy; a constant bloomer; quite hardy.

Mlle. Helena Cambler. Color lovely canary yellow, with deep peachy-red center, changing to creamy pink as the flower opens; it makes a neat, handsome bush, blooms quickly and abundantly all through the season, and the flowers are large, very double and sweet.

Mrs. B. R. Cant. A beautiful new rose on the style and color of Papa Gontier; the buds are large and full; it is a very free grower and free bloomer. This variety has come to stay.



Kaiserin Augusta Victoria

Perle Von Godesberg. Originally sent out under the name of Yellow Kaiserin. A splendid rose, color a rich canary yellow with light saffron shadings; sure to please all rose lovers.

President Carnot. Color a delicate rosy blush, shaded a trifle deeper at the center of the flower, which is very large and exquisitely shaped, with thick, shell-like petals; strong grower, free bloomer; fragrant; a superb rose; one of the best varieties introduced in recent years.

Rhea Reid. Here is a new rose which seems to possess every virtue. It is as large as American Beauty and double as Bridesmaid. Has the fragrance of Lafrance and blooms as continuous as Bride. Flowers are produced on long canes and are as red as Richmond. Of very rapid growth and good constitution.

Richmond. An American production which has become very popular as a forcing rose. Exceedingly fragrant and one of the best red roses yet produced. Worthy of a place in every garden.

Viscomtess Folkstone. Very fine, large splendidly formed and of fine substance; color creamy pink; bush, a very strong grower and a constant bloomer; one of the very best garden varieties.

White Lafrance. (Augustine Guinnoiseau). Identical with Lafrance, except in color, which is pearly white, sometimes tinted with fawn; a very free and continuous bloomer; very fragrant.

Winnie Davis. Color, apricot pink, shading to a flesh tint at the base of the petals; buds oblong and well formed; its habits are vigorous and free blooming; one of the finest newer roses.

Wm. R. Smith. A fine summer bedder which ranks well up with the two Cochetts; produces a profusion of fine flowers of creamy white with pink shadings; has good glossy foliage and grows into a strong bush.

THE HYBRID PERPETUALS

This valuable class of roses is distinguished by its vigorous, upright growth, and large fragrant flowers. Being very hardy it succeeds in all parts of the country. While the small greenhouse-grown roses of this class sent out by advertisers of roses in the East do not, as a rule, bloom the first season, our large field-grown plants will rarely fail to give plenty of beautiful flowers soon after planting.

PRICES: 35c each; \$3.00 per 12; \$22.50 per 100.

American Beauty. Color a rich, rosy crimson; the beauty and fragrance of this rose is unsurpassed by any variety we know of; it is well named the American Beauty, for it is a queen among roses; the flowers are large, deep and very double, although the varieties in this class are not, as a rule, everblooming, yet this grand rose will, with proper care, bloom throughout the entire summer.

Anna de Diesbach. A lovely shade of carmine; large double flowers; fragrant; one of the hardiest.



Frau Carl Druschki

Baron de Banstetten. Very dark red, almost black. Flowers fragrant, large and double.

Captain Christy. Extra large flat flowers; color a lovely shade of pale peach, deepening at the center to crimson.

Clio. A strong, vigorous grower; handsome foliage; flowers flesh color, large and globular, on the order of Baroness Rothschild.

Conrad F. Meyer. An exceedingly strong grower; perfectly hardy; flowers very large; well filled; color silvery rose; very fragrant.

Crimson Globe. (Moss.) Color deep crimson; large, full and perfectly globular; habit of growth vigorous. One of the most beautiful of the Moss roses.

Emperor of Morocco. Intensely dark velvety maroon, one of the darkest roses in cultivation; very double and free flowering for an H. P.

Empress of India. Deep scarlet-crimson; very fragrant, double and of perfect form; bush a strong grower.

Frau Carl Druschki. This new hardy white rose is unquestionably the best in its class and color. The plant is remarkably handsome with its bright, heavy foliage and strong, upright growth. The flowers are perfect in form and snow-white in color, with large shell-shaped petals

General Jacquemont. An old popular variety; color brilliant crimson; large and effective.

Gloire Lyonnaise. White, tinted with yellow; large, full and good form; very distinct and pleasing.

John Hopper. The flowers are large, very regular and full; color bright rose, changing to glowing pink; an old standard.

Jubilee. One of the grandest dark red roses yet offered; rich, deep red, shading to deep crimson and velvety maroon; flowers are large and borne freely.

Magna Charta. Flowers very large, full and fragrant; rosy red; vigorous.

Margaret Dickson. White, with flesh center. Extra large flower with pale shell-like petals; good form, handsome foliage.

Marshall P. Wilder. Color, cherry carmine, flowers are large, same globular, full and of good substance; free flowering; a very desirable rose.



Ulrich Brunner

These are distinctly marked with a white margin against the crimson, forming a distinct and unique contrast. The fragrance is delightful; the growth is vigorous, with foliage unusually large and handsome.

Ulrich Brunner. One of the grandest hardy roses; color a brilliant cherry red, a very effective color; flowers of fine form and finish, borne on strong stems nearly thornless; petals of great substance; plant hardy and vigorous; a free bloomer.

Mrs. John Laing. Exceedingly fragrant and a free bloomer; flowers a delicate pink and of beautiful form.

Prince Camille de Rohan. Deep, velvety crimson; large, full; one of the best of dark roses.

Paul Neyron. The largest rose in cultivation; a handsome upright grower, producing an immense flower at the end of every long stiff stem similar to American Beauty; color, a deep rose; a free bloomer; in every way a grand rose for general planting.

Queen of Edgley. Sometimes called the Pink American Beauty, from its similarity of habit and form of flower. Bright pink.

Roger Lambelin. A decided curiosity among roses; one of the freak roses that has become popular. The color is a glowing crimson, except the edges of the petals, which are irregular like those of a double petunia

Note Prices: . Not less than six of one kind at dozen rates. Write us for quotations on large quantities.

EVER-BLOOMING BOURBON, BENGAL AND CHINA ROSES

This class of Roses is of easiest culture. They are all strong, vigorous growers, free and continuous bloomers. With moderate care they will produce a mass of bloom the entire growing season.

PRICES: 35c each; \$2.50 per dozen.

Archduke Charles. Rich, bright red; large, full and double; entirely hardy and excellent for open ground planting. A strong grower and sure bloomer.

Agrippina. For bedding or hedge this rose is admirably adapted; it is a vigorous grower, carries its foliage well and is always in bloom; color brilliant red; double and sweet.

Bardou Job. Velvety scarlet, shaded very dark; flowers semi-double and opening widely; of tall, upright growth. A good companion for Gloire des Rosomanes.

Champion of the World. A fine hardy, ever-blooming pink rose; one of the best for

outdoor cultivation; a strong grower, requiring little care; flowers are of medium size, but are produced in great profusion the entire season; full and fragrant.

Gloire des Rosomanes. (Ragged Robin.) Without exception the most constant and free blooming of all roses; flowering well during the winter season unless checked by frost. Large semi-double flowers of brilliant crimson hue. Unexcelled for hedge or tall borders.

Malmaison. One of the best of its class; for general cultivation it is unsurpassed; the color is a rosy flesh, shaded with fawn; flowers very double and fragrant.

THE DWARF RAMBLERS AND POLYANTHA ROSES

The Polyanthas are a lovely and distinct class of ever-blooming roses, distinguished by their dwarf growth and cluster of small to medium size flowers. Adapted for hedges.

PRICES: 35c each; \$2.50 for 12;

Anny Muller. (Pink Baby Rambler.) Large clusters of brilliant rose-colored flowers in great profusion. A splendid bedding variety; flowers very persistent and of free growth.

Catherine Zeimet. The newest addition to the Baby Ramblers. Grows to a height of 20 inches and produces small double white flowers in abundance; of free compact growth; foliage of fresh, clean appearance.

Mlle Cecil Brunner. An elegant little rose; rosy pink, shaded to bright salmon in the center; borne in large, open clusters; a perfect little gem.

The Baby Rambler. (Mme. N. Levavasseur). The new ever-blooming dwarf Crimson Rambler is a phenomenally free bloomer. The plant is literally covered with clusters of pretty flowers from spring to fall.

LORD PENZANCE'S HYBRID SWEET BRIERS

These beautiful roses are crosses between the common Sweet Brier and other garden sorts; the flowers are single or semi-double: the colors are distinct and very beautiful. The foliage retains the sweet fragrance of the common Sweet Briar. They are very hardy and vigorous growers.

PRICES: 35c each; set of three, \$1.00.

Lord Penzance. Soft shade of fawn or ecru, passing to a lovely lemon yellow in

the center, sometimes toned with a most delicate pink; sweetly perfumed. A vigorous

grower, with deep green foliage, rendering a striking contrast to its beautiful blooms.

Lady Penzance.

Beautiful soft tint of copper with a peculiar metallic luster; the base of each petal is a bright yellow, over which cluster the clear golden anthers; very free flowering, with a delicious perfume from foliage and flower; a luxur-



Lord Penzance, Sweet Brier.

iant grower; habit of the best.

Meg Merrilies.

Gorgeous crimson of the richest shade, robust habit of growth and free flowering; large foliage; one of the very best in its class, being an exceptionally free bloomer during the spring months. The foliage possessing that pleasing fragrance characteristic only to the Brier roses.

THE EVERBLOOMING CLIMING ROSES

Climbing Roses are of great utility in beautifying porches, fences, arbors, etc.

PRICES: 35c each; \$2.50 per 12; \$20.00 per 100.

(These quotations apply where no other prices are given.)

Climbing Bridesmaid. The flowers are identical with Bridesmaid; clear, dark pink; one of the very best climbing Tea Roses.

Climbing Cecil Brunner. The flower is identical with the well-known Bush variety, but of strong climbing habit.

Climbing Devoniensis. A grand rose, very sweet and fragrant, blossoms white, tinged with blush.

Climbing Hermosa. Flowers of this rose are borne in great profusion and are a clear bright pink in color.

Climbing Kaiserin. (Mrs. Robert Peary.) This is without doubt the grandest of all white climbing roses, of splendid substance; large, full, deep and double; it is one of the strongest growing, freest blooming and all around the most satisfactory white climber we have in the nursery.

Climbing Malmaison. Color rich creamy flesh, shaded to peachy rose, with rose center. A strong, vigorous climber.

Climbing Marie Guillot. Color a pure snow white, sometimes faintly tinged with yellow.

Climbing Papa Gontier. Originated recently in California. The flowers are identical in color, form and fragrance with the bush Papa Gontier. Is a good climber and a constant bloomer. A splendid addition to the list of climbing roses.

Climbing Meteor. Flowers identical with Meteor; a robust grower.

Climbing Perle. The climbing form of this handsome yellow rose is too well known to require any description. Large grafted plants 50c.

Climbing Testout. A sport from the bush of the same name; bloom identical with its parent. The color is a solid cerise pink and does not fade. The bloom is large and fragrant.

Climbing Wooton. A sport from Souvenir de Wooton, and is identical with it, except that it is a strong grower; blooms in great profusion; color bright magenta, passing to a violet crimson.

Duchess de Arstadt. The color of this beautiful climbing rose is a rich golden yellow; of good form and a fine bloomer; a very rare and charming sort; like the Marechal Niel, it is a weak grower unless grafted or budded. 50c.

Francois Crousse. A beautiful new French rose of much merit. Bush of strong growth, producing throughout the season a wealth of large, deep cherry red flowers. A gem for the south and west. Grafted, 50c.

Gainsborough. Delicately tinted flesh, almost white. Lustrous as satin.

Gloire de Dijon. Color rich creamy white, beautifully tinged with amber and pale blush.

James Sprunt. Bright crimson flowers, medium size, double; bush strong grower; an old, well-known variety.

Mme. Alfred Carriere. Color rich creamy white, tinged with pale yellow; flowers are large and full; one of the best light-colored climbing roses; a strong grower, nice foliage and good bloomer.

Mme. Wagram. It is well formed and well filled with firm, broad petals; opens freely and endures well on the stem when cut; color fresh satiny rose pink; of strong growth and good foliage.

Reine Marie Henriette. Brilliant cherry red; very large and double; the very finest red climbing rose in the whole collection.



Lamarque

Keystone. Perfectly hardy, very free bloomer and exceedingly vigorous; flowers are perfectly double and a deep lemon color; very fragrant: one of the fastest growers among the climbers.

Lamarque. Color white; beautiful buds, large, full flowers, very double and sweet; very popular.

Marechal Niel. The buds and flowers of this rose are superb; extra large, double and exquisitely perfumed; the color is a deep golden yellow; blooms very freely; throughout the south and west coast it attains a degree of perfection seldom seen in any rose; on its own root it is a weak grower; we, therefore, propagate this variety by grafting on strong roots. Our stock this season is very fine. Large grafted plants, 50c.

Reine Olga d'Wortemburg. Clear cherry red, margined with crimson; fine, large double flowers; borne in clusters.

Reve d'Or. Buff yellow; one of the best climbing roses; a strong grower and continuous bloomer.

Wm. Allen Richardson. Coppery yellow, suffused with carmine; a very pretty rose.

Ruth Vestal. A sport of Bride and is really a Climbing Bride, possessing all the valuable features of its famous parent. A fast grower and blooms almost continuously. The buds are particularly beautiful and very fragrant and open into large, double flowers of pure white, sometimes faintly tinged with pale blush at the edges.

MISCELLANEOUS CLIMBING ROSES

All the following are remarkably strong growers. Flowers are produced most profusely in the Spring, but as a rule are not everblooming. Valuable for training over walls, trellises and fences or trailing and covering banks or unsightly places.

PRICES: 35c each; \$2.50 per 12; \$18.00 per 100.

Banksia—Alba or White. A rapid growing, thornless climbing rose; flowers small, pure white; blooms in great profusion in early Spring; as the flowers are produced on the old growth they should be pruned very little.

Banksia—Lutea or Yellow. Identical with the above, excepting in color, which is a fine, clear yellow.

Cherokee. (*Rosa Sinica*.) A splendid sort for covering verandas, arbors, etc., also for hedge; its leaves are smooth and glossy as if varnished; highly ornamental at all times, but particularly so when covered with large, snowy white, single blossoms adorned with their fluffy, golden yellow stamens.

Climbing Clothilde Soupert. In this climbing form of Clothilde Soupert, we have a rose with the same vigorous constitution of its parent; hardy in the coldest sections of the East; a vigorous climber, which produces clusters of beautiful silvery rose-colored flowers.

Crimson Rambler. A well-known hardy climbing rose that has attained wide-spread popularity; a very strong grower, producing blooms in great bouquets of a lovely shade of crimson.

Dorothy Perkins. Noted for its hardiness and vigorous habit of growth, beautiful color and freedom of bloom; the flowers are borne in large clusters; a beautiful shell pink color,

which lasts a long time without fading; this variety is suitable for situations where a trailing rose is desired or can be trained over arches or other supports.

Gold of Ophir. Nasturtium yellow, suffused with coppery red; one of the most beautiful of the climbing roses, covered in Spring with flowers in the greatest profusion; of strongest growth.

Hiawatha. Single, bright crimson, large yellow stamens, producing a brilliant contrast; exceedingly free flowering; one of the best of the class.

Philadelphia Rambler. The flowers are borne in grand clusters, very double; color a deep rich crimson; it is a strong, fast grower with very luxuriant foliage; one of the best hardy climbing roses to date.

Pink Rambler. A pink form of the Climbing Rambler.

Tausendschoen. (Thousand Beauties). Flowers large; pink, turning to bright rose and carmine; very showy. Sweet scented; trusses large. One of the best new climbing roses and very hardy.

White Rambler. Similar to the other Climbing Ramblers except in color.

Yellow Rambler. Flowers deep golden yellow; very hardy and fine.

SELECT GRAFTED ROSES

Roses are grown in two ways, viz.: On their own roots from cuttings, and grafted or budded on other roots. Practically all the roses listed in the preceding pages are grown on their own roots. In order to supply the demand for larger selected Rose Bushes, we have grown the varieties named below by field grafting on large, strong growing roots. They are grafted low under the ground to avoid annoyance from root suckers. The following will be found very satisfactory where quick effect is desired, being very sturdy and having good growing and blooming qualities.

Prices of large selected Grafted Roses, 50c each; \$4.00 per dozen.

American Beauty. Rosy crimson.

Belle Seibrecht. Beautiful shell-pink.

Bride. White.

Frau Carl Druschki. The White "Snow Queen."

Grace Darling. Deep pink.

Hugh Dickson. Brilliant crimson.

Jubilee. Velvety maroon.

Dr. Grill. Salmon-pink.

Improved Rainbow. Pink penciled with crimson.

Mrs. John Laing. Soft pink.

Mrs. R. J. Sharman Crawford. Rosy-pink.

Perle des Jardines. The finest double yellow.

Persian Yellow. Brightest yellow single.

Gen. McArthur. Rich crimson.

Liberty. Crimson scarlet.

La Detroit. Pink shaded copper.

Marie Van Houte. Creamy yellow tinged with rose.

Soliel d'Or. Orange yellow, shaded to red-dish.

CLIMBING ROSES

Beauty of Europe. Salmon pink double.

Cloth of Gold. Lemon yellow.

Climbing Perle. Rich yellow.

Climbing Papa Gontier. Red, very fine.

Climbing Testout. Shell pink.

Duchess de Arstadt. Golden yellow.

Francois Crousse. Large. Brilliant, cherry red.

Marechal Niel. Finest yellow, very double and fragrant.

Reve d'Or. Salmon yellow.

STANDARD TREE ROSES

PRICE: \$1.00 each.

These are grown in Standard form about four feet high. Choice varieties in the following colors—White, Pink, Red, Yellow.

In addition to these we have three colors budded on one stock.



American Beauty

GRASSES AND CLOVERS

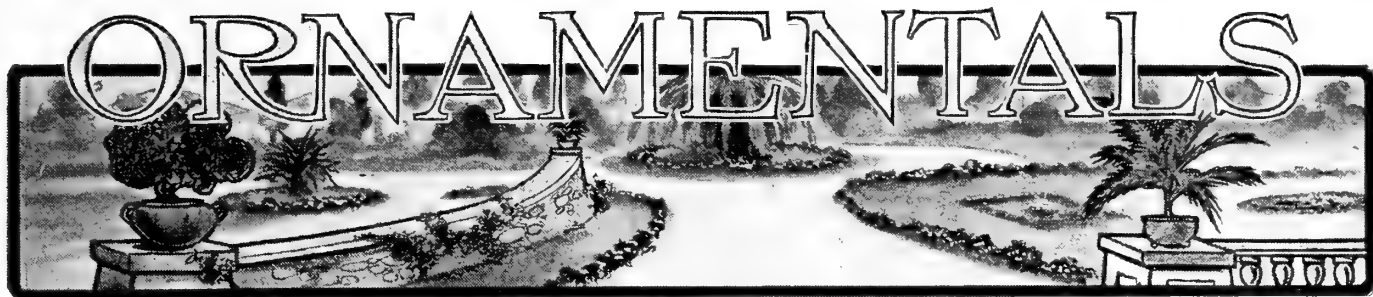
No effect in the home grounds is quite so pleasing as a well-kept lawn, even though it is of small area. Appreciating this, we supply grass and clover seeds in connection with our plant business. Owing to shortage of crop, the price is up on Blue Grass and White Clover seed this year.

Kentucky Blue Grass. Finest imported Kentucky seed, pure and free from weed seed. Per lb. 45c; 10 lbs. \$4.00.

White Clover. Excellent for lawns either

sown alone or mixed with Blue Grass. Per lb. 45c, 10 lbs. \$4.00

Bermuda Grass. Suitable for lawns in dry and arid situations where blue grass is apt to fail. Per lb. \$1.00.



DECIDUOUS TREES

This class of trees furnishes ample material for shade and ornamentation of grounds during the summer season ; the leaves dropping in the winter when shade is not desired.

BETULA. The Birch

Betula pendula laciniata. (Cut leaved weeping). Of tall, slender, yet vigorous growth; silvery white bark and pendulous branches; foliage delicately cut; one of the best and most popular of all weeping trees. \$1.00.

FRAXINUS. The Ash

Fraxinus Velutina. (Arizona Ash). A handsome round-topped tree, valuable for street and park planting. It does remarkably well in California and Arizona under nearly all conditions with moderate irrigation, and grows in very poor soil, though under favorable conditions it becomes large and has a dense leafed canopy. The foliage is dark green and shining. 4 to 5 ft. 35c each, \$2.50 per 10; 3 to 4 ft. 25c each; \$2.00 per 10.

LIRIODENDRON. The Tulip Tree

Liriodendron tulipifera. A medium-sized tree with bright green, glossy, fiddle-shaped leaves and tulip-like flowers. 50c to \$1.00.

THE MAGNOLIA

The following Chinese varieties of Deciduous Magnolia, flower in the early spring before the leaves appear.

Magnolia Conspicua. (Yulan). A native of China and Japan and one of the showiest of all the Magnolias. Tree branches low and in early spring is literally covered with large, sweet scented, pure white flowers, which appear before the leaves. A grand lawn or garden tree. \$1.50.

Magnolia Obovata. (*M. purpurea*). Purple Magnolia. A large shrub or small tree with erect branches. Flowers large and purple outside and white within. Foliage large, glossy and massive, expanding after flowers have fallen. One of the latest to bloom. \$1.50.

Magnolia Soulangeana. (Soulange's Magnolia). Supposed to be a cross or hybrid of *Obovata* and *Yulan* and forming a large shrub or small tree, bearing large fragrant flowers which are white, sometimes suffused with rose or pink. Very showy and hardy. \$1.50.

MELIA AZEDARACH. The Umbrella Tree

Melia Azedarach umbraculiformis. (Texas Umbrella). A splendid shade tree and one of the most useful for planting where dense shade is desired. Umbrella shaped, of dense growth and uniform habit, bearing numerous small lilac-colored flowers during the summer. 30c to \$1.00.

MORUS. The Mulberry

Morus alba tartarica. (Russian Mulberry). Its value lies chiefly in its hardiness and rapid growth; a fine shade tree of spreading habit. 35c.

Downing's Everbearing. A very strong, upright grower, producing fruit of good quality. A splendid shade tree. 50c.

PLATANUS. The Plane Tree

Platanus orientalis. (European Sycamore, Oriental Plane). Valuable for park and avenue planting; it grows rapidly into a uniform tree; the foliage is bright green; leaves deeply cut, similar to the maple leaf. It thrives well in California; many fine specimens may be seen in different parts of the country. 50c to \$1.00.

PRUNUS. Purple-leaved Plum

Prunus Pissardi. (Purple-leaved Plum). A very desirable tree for ornamental planting. The leaves, which it carries throughout the season, are rich purple in color and form a distinct and beautiful contrast to other varieties. The edible fruit is large and brick-red in color. 50c each.

WEeping DECIDUOUS TREES

MORUS. The Weeping Mulberry

Morus tatarica pendula. (Tea's Weeping Mulberry). Very ornamental and of drooping habit. Its long, slender branches curve gracefully to the ground, forming a dense umbrella-shaped head. \$1.00.

ULMUS. The Weeping Elm

Ulmus scabra pendula. (Camperdown Elm). A variety of luxuriant growth and picturesque drooping habit. The branches shoot outward and downward in a way that forms a very graceful tree. \$1.00.

DECIDUOUS FLOWERING AND FOLIAGE PLANTS

This class is represented by large variety of shrubs growing from three to ten feet in height, producing a wealth of beautiful flowers at different seasons, or a mantle of bright colored foliage.

BERBERIS. The Barberry

Berberis purpurea. (Purple leaved barberry.) An interesting shrub growing 3 to 5 feet high, with violet-purple foliage and fruit. The contrast is very effective with plants of lighter foliage. Useful for groups, borders or planting singly. 25c; \$2.00 per 10.

CALYCANTHUS. The Sweet Shrub

Calycanthus. (*Calycanthus Floridus*) A fine, fragrant wooded shrub, with chocolate-colored flowers, nicely scented. 35c.

CYDONIA. The Flowering Quince

Cydonia japonica. (Japan Quince.) A handsome early Spring blooming variety, with semi-double scarlet flowers, which are produced in great profusion; foliage bright green and glossy. 35c.

C. japonica variety umbilicata. Flowers brilliant, rosy red, succeeded by large showy fruit. Forms a fine large shrub. 35c.

HYDRANGEA

Hydrangea hortensis. An elegant shrub of dwarf habit, having large, heavy foliage and immense heads of light pink flowers throughout the summer. 25c to 50c.

H. paniculata grandiflora. (Large-flowered Hydrangea). A fine shrub, growing from 8 to 10 feet high, flowers white, in great pyramidal panicles a foot long. One of the finest of the summer flowering plants, commencing to bloom in early August and continuing until frost. A striking spectacle wherever planted. 50c.

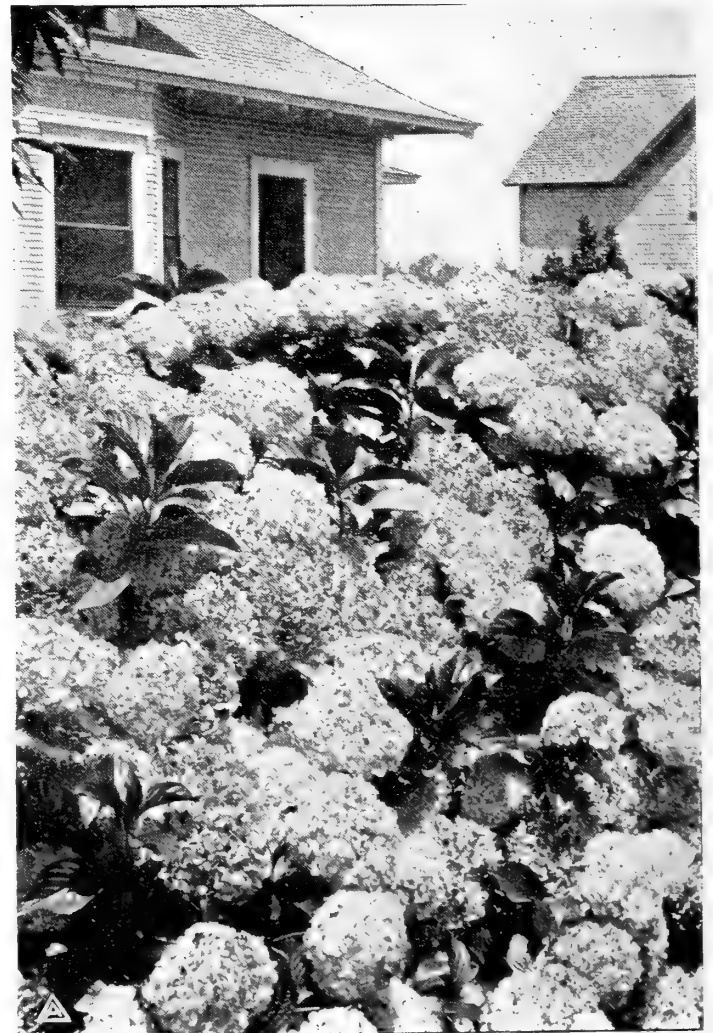
LIGUSTRUM. The Privet

Ligustrum ovalifolium. (California Privet). Used in many parts of the country for hedges. Evergreen in California. \$3.00 to \$5.00 per 100.

L. vulgare. (Evergreen or English Privet). Unsurpassed for a hedge or border. If planted occasionally it makes a fine compact hedge; hardy and easily grown. \$3.00 to \$5.00 per 100.

LAGERSTROEMIA. The Crape Myrtle

Lagerstroemia indica. Splendid summer flowering shrubs, very desirable on account of blooming during the Summer months when few other shrubs or trees are in bloom. The beautiful crimped, pink flowers are produced in large panicles at the end of each branch. 25c to 50c.



Hydrangea hortensis



Crape Myrtle

LIPPIA. The Lemon Verbena

Lippia citriodora. (Lemon Verbena). A fast growing shrub with delightful fragrant foliage; it bears minute flowers in delicate pyramidal spikes. 40c.

PRUNUS. The flowering Dwarf Almonds

Prunus japonica flore alba pleno. (Dwarf double, white-flowered Almond). A branching shrub, 2 to 4 feet tall, with bright green leaves. Native of China and Japan. Produces beautiful double white flowers in May. 50c.

P. japonica Flore rubra pleno. Same as above except the beautiful double flowers which are red. 50c.

PUNICA. The Flowering Pomegranate

These double flowering forms of the Pomegranate make lovely ornaments for the lawn. They grow in large, shapely shrubs, the flowers of which are bright and showy.

Punica alba. Flowers large, double white. 35c.

P. rubra. Large double scarlet flowers. Very showy. 35c.

P. variegata. Large, double flowers beautifully variegated. 35c.

PYRUS. The Flowering Crab Apple

These beautiful double Flowering Crabs are small growing trees which are splendidly adapted for lawns or planting among other shrubbery. Attains a height of from 8 to 10 ft.

Pyrus Malus loensis Bechteli. (Bechtel's Double Flowering American Crab.) One of the most beautiful of the many fine varieties of flowering crabs. Tree of medium size, covered in early spring with large, beautiful, double fragrant flowers of a delicate pink color. From a distance the flowers have the appearance of small roses. Blooms when quite young. 50c to \$1.00.

P. malus kaido. One of the most showy of flowering apples. Flowers single pink and white. Holds its handsome fruits all winter. 50c to \$1.00.

SPIREA. The Bridal Wreath

Spirea reevesii. (Bridal Wreath.) A charming shrub, with narrow, pointed leaves and large clusters of white flowers that cover the whole plant in Spring. 35c to 50c.

SYRINGA. The Lilacs

We offer these well-known flowering shrubs in the following choice varieties:

D—Double. *S*—Single.

Charles X. S. The well-known favorite, purplish-red variety; trusses loose and graceful. Strong, rapid grower. 50c.

Edward Andre. D. Large spikes of clear rose flowers of irregular form; buds darker. An early-flowering sort. 50c.

Frau Dammon. S. The truss is immense, the flowers of medium size and pure white. 50c.

Lamarck. D. Very large panicle; flowers large, very double, rosy lilac. 50c.

Michael Buchner. D. Dwarf, very double, pale lilac. 50c.

Marc Michaeli. D. Very large spikes of enormous double flowers, clear lilac-blue, nearly white underneath. 50c.

Souvenir de Ludwig Spaeth. S. Panicles long; individual flowers large, single, dark, purplish-red. 50c.

Vivian-Morel. S. Very long spike; flowers of medium size, round and double; light bluish lilac with white center. 50c.

Vulgaris. Common Purple Lilac. 50c.

Vulgaris Alba. Common White Lilac. 50c.

Persica. Persian Lilac, purple. 50c.

THE EVERGREEN SHRUBS

In a semi-arid country like the Southwest, Evergreen shrubs and trees are not only a pleasing effect to the landscape, but their inviting shade is a solace and a comfort. In the selection of kinds the choice is indeed a wide one, as very many of the Evergreens of both the temperate and tropic zones find congenial conditions in our soil and climate. The Evergreen shrubs and trees enumerated here comprise a select list of varieties which we deem best suited to the requirements of this section.

ABELIA.

Abelia grandiflora. (*A. rupestris*). Hybrid Abelia. One of the prettiest shrubs in cultivation. The arching stems are clothed with dark glossy leaves, which are evergreen. Flowers small, fragrant and tube-like and a light-rose on the outside and white inside. Blooms entire summer and very desirable. 35c to 50c.

ARALIA. The Rice Paper Plant

Aralia papyrifera. (Rice Paper Plant). A tropical-looking tree or shrub, furnished with large, showy, deeply-lobed leaves; of easy culture; a highly decorative plant for lawns or parking. 50c.

Aralia seiboldi. Large, shining palm-like leaves; a highly decorative plant for pot culture. 50c to \$1.00.

ARBUTUS. The Strawberry Tree

Arbutus unedo. (Strawberry Tree). Medium sized shrub with clean, attractive foliage. They flower in the early winter, the blossoms being followed by red strawberry-like fruit which is edible. 50c to \$1.00.

BERBERIS. The Evergreen Barberry

Berberis aquifolium. (*Mahonia Aquifolium*). A handsome ornamental shrub with dark, lustrous, spiny-toothed green leaves; in winter the foliage assumes a bronze or coppery hue; flowers yellow, in dense clusters, appearing in spring; berries blue or nearly black; thrives in most any kind of soil, but partial shade and ample moisture result in brighter and glossier foliage. 50c.

B. darwinii. (Darwin's Barberry). A small shrub with silky, brown branches. Leaves usually with three spiny points at the tip, dark, glossy green; flowers orange-yellow, often tinged with red; berries dark purple. 40c.

B. Japonica. (Japanese Mahonia). Perhaps the most effective of the Mahonias on account of its large compound leaves, each having spiny-toothed leaflets of bright shining green. Flowers yellow in long racemes, opening in early spring. Like all the Mahonias it thrives in a partly shaded position. 50c to 75c.

BUXUS. The Box Trees

Especially adapted for lawn and garden decoration. Of dwarf habit and compact growth; foliage varying from dark to lighter greens in the different varieties.

Buxus sempervirens. (Common Box). Shrub of dense habit and small, deep-green foliage. When pruned into proper shape it is very desirable for lawn or porch decoration. Small plants 10c; \$5.00 per hundred; larger, 50c each.

B. sempervirens aurea. (Golden Leaved Box). Of same habit as above, but with leaves striped and variegated with golden color. Specimens 50c.

B. sempervirens suffruticosa. (Dwarf Box). A fine small bush, with glossy, roundish leaves. Extensively used for edging. Specimens 50c; small plants \$5.00 per hundred.

CAMELLIA

Camellia japonica. Evergreen shrub with shining dark-green leaves and producing beautiful waxy rose-like flowers of great substance and durability during the winter and spring. Thrives best in a shady spot. We offer a choice assortment in the following colors—Red, Pink, White and Variegated. \$1.00.

CASSIA

Cassia artemesioides. A native of Central Australia. Silvery gray, finely cut foliage; flowers clear yellow, sweet scented; stands drought extremely well. 40c.

Cassia floribunda. A very floriferous shrub, growing about 6 feet high. Flowers yellow and showy. The leaflets of the Cassia are of grayish-green color and are what is known in medicine as "Senna Leaves." Of easy culture; will thrive on the driest soils. 50c.

CHOISYA. The Mexican Orange.

Choisya Ternata. (The Mexican Orange). A pretty shrub attaining a height of 4 to 6 feet. Of low growing habit, leaves bright, glossy green and aromatically scented. Blooms freely throughout season, producing an abundance of snow-white sweet scented orange-like flowers. 50c.

COPROSMA.

Coprosma baueri. Handsome, low growing shrub. The round leaves are very glossy, as if varnished. 40c.

CORONILLA.

Coronilla glauca variegata. A handsome shrub of trailing tendencies.—Leaves are glaucous green, mottled with yellow, and plant is covered during the summer with yellow flowers. Fragrant in day time, but scentless at night. 40c.

DAPHNE.

Daphne odora. A small-growing handsome shrub of compact habit, bearing numerous small, intensely fragrant white flowers in the winter. Excellent for lawn specimens. 75c.

DIOSMA. The Breath of Heaven.

Diosma alba. (Breath of Heaven). Dwarf, heath-like shrubs having small star-shaped white flowers, borne on the points of the twigs; being of a dainty and pretty appearance they are much used in floral work. Well suited to our dry climate. 40c.

DURANTIA

Durantia plumieri. (Golden Dew Drop). A fine shrub from South America which attains a height of about 6 feet. Bears an abundance of pretty pale blue flowers on the ends of the branches. 40c.

ESCALLONIA.

Escallonia alba. Flowers white; foliage dark glossy green leaves. 35c to \$1.00.

E. rosea. A prettily foliaged shrub of free flowering habit. Leaves are round, rough and serrated; flowers dainty pink. Small plants. 35c to \$1.00.

E. rubra. Similar in habit to the above; bright green leaves and red flowers. Small plants. 35c to \$1.00.

EUGENIA.

Eugenia myrtifolia. (Brush Cherry). Excellent shrub of easy culture; of erect and compact growth. Foliage glossy green except on new growth where it is of reddish hue. Flowers myrtle-like. 35c to \$1.00.

GENISTA. The Brooms.

The Brooms are of easy culture, enduring the desert conditions of the interior and not being particular as to soil.

Genista canariensis. (Broom). A free flowering shrub, attaining a height of from six to eight feet. The leaves are small, and the bright yellow flowers are produced in great profusion. 50c.

GREVILLEA.

Grevillea thelmanniana. Beautiful evergreen shrubs having fine feathery foliage and producing throughout the Summer clusters of brilliant scarlet flowers, borne on the ends of the branches. 50c.

HETEROMELES. California Holly.

Heteromeles arbutifolia. (California Holly). A highly ornamental shrub of easy culture, thriving best in moist, sandy loam, either in full sun or partial shade. A very striking object in winter, with its large cluster of bright red berries ripening in December, and contrasting well with the glossy dark green foliage. Bears small white flowers in broad panicles in June and July. Small plants. 35c.

HYPERICUM. The Gold Flower.

H. moserianum. (Gold Flower). Pretty, low-growing shrub; producing large, single, bright yellow flowers, which open out flat showing numerous long stamens. Very fine for massing. 50c.

LAURUS. The Laurels.

The Laurels are most valuable shrubs for the ornamentation of grounds. They thrive well not only on the Coast but in the interior. *Laurus Nobilis* when grown as a tub plant is more suitable for porch and interior decoration.

Laurus cerasus. (English Laurel). A fine small tree or bush, with broad, shining leaves and creamy white flowers, followed by purple berries. A popular shrub which succeeds well in any position. 50c to \$1.50.

L. lusitanica. (Portugal Laurel). Dark green, glossy-leaved shrub, flowers of which grow in large panicles and are quite fragrant, particularly at night. Potted plants, 50c; field-grown plants, \$1.00.

Laurus nobilis. See under Formal Box and Bay Trees Page 61.

LIGUSTRUM. The Evergreen Privets

Very attractive shrubs with handsome, shining green foliage and showy flowers. They are exceedingly valuable in California and the Southern states for grouping, massing or specimen plants, and are prized for hedges, as they stand close clipping without detriment, and adapt themselves to almost any situation. The California and English Privet, listed under Deciduous Shrubs, page 38, are evergreen in the Southwest, while in colder climates they are classed as Deciduous.

Ligustrum Japonicum. (Japanese Privet). Leaves thick, dark, lustrous green, often with reddish margin and midrib. Flowers creamy white, followed by purplish-blue berries. 50c.

L. Japonicum variegatum. (Japanese Variegated Privet). Of more compact growth than the preceding; leaves margined and blotched creamy white; very effective for grouping. 50c; specimens, \$1.00.

MEDICAGO.

Medicago arborea. (Moon Trefoil or Tree Alfalfa). A small shrub having woody stems, the center of which are hard and black as ebony. Foliage is light green and flowers deep yellow. 35c.

MELALEUCA. The Bottle Brushes.

Melaleuca alba. A fine shrub or small tree having white flowers in pendulous spikes; said to grow well in salt, swampy land. 50c.

M. decusata. A tall shrub with grayish leaves; adorned with lilac-colored flowers on short spikes. Easily grown. 50c.

MYRTUS. Myrtle.

Myrtus communis. (Roman Myrtle). Valuable for either single specimens or small hedge. The foliage is a shining green and highly aromatic. Bears numerous small white flowers, followed by black berries. Hardy and thrives well in the interior. 25c to \$1.00.

NANDINA.

Nandina domestica. (Japanese Nandina). A beautiful, upright growing dwarfish shrub; native of China and Japan. Leaves compound, with numerous small leaflets, rich red when

young—dark green at maturity and assuming beautiful coppery tones in winter. It thrives well in any well-drained loamy soil, and is fairly hardy, and in fall is covered with masses of small red and white berries. Very desirable and should adorn every garden. 50c; \$4.00 per 10.

NERIUM. The Oleanders.

A well-known popular shrub, which flowers continuously throughout the Summer; of easiest culture. We offer the following sorts, which are among the best:

Lillian Henderson. Double white, 40c.

Rosea. Double pink, 40c.

Madame Peyre. Straw color, 40c.

Madoni grandiflorum. White, 40c.

Mrs. F. Roeding. Pink, 40c.

Prof. Durand. Amber-yellow, 40c.

Lutea. Yellow, 40c.

OSMANTHUS. Japan Holly.

Osmanthus aquifolium. Var. *ilicifolius*, (Japan Holly). A very ornamental, small growing shrub, of stout, compact growth, with coarsely serrated, glossy, green leaves, prickly margined; effectual as a potted plant; succeeds best in partly shaded place. 50c.

PITTOSPORUM. The Pittosporums.

P. crassifolium. (Thick-leaved Pittosporum). Tall shrub or small tree growing from 10 to 20 feet in height. Useful for ornamental planting on account of its pale glaucous foliage; hardy and especially valuable for wind-breaks along the coast, withstanding the severest gales and uninjured by ocean spray. 4 feet, 75c.

Pittosporum eugenoides. Small tree or shrub of symmetrical, upright growth and light, shining-green foliage. A very satisfactory shrub for either single specimens, planting in masses or hedges. 3 to 4 feet, 50c.

P. tobira. Pretty winter flowering shrub from Japan. Forms a dense, globular head. Flowers white and fragrant; hardy and easily grown. 35c to 50c.

P. tobira variegatum. A variegated form of the above. The foliage is variegated with white which gives it a conspicuous and pleasing appearance. 35c to 75c.

P. undulatum. Small tree or shrub well furnished with deep green, glossy leaves, margins of leaves are often undulated; flowers very fragrant at night; it makes a highly ornamental hedge, and is fine for avenue planting, where a small tree is desired. 35c to 75c.

RAPHIOLEPSIS.

Raphiolepis ovata. Ornamental evergreen shrub, growing from six to ten feet high, with stout, upright branches and dark green, lustrous foliage; leaves thick and bush beautifully compact; covered in Summer with white flowers, followed by black berries in Fall. 50c.

VIBURNUM. Laurustinus.

Laurustinus. Well-known shrubs valuable for either hedge or for single specimens; produces during the Winter season an abundance of white or flesh colored flowers. Balled, 50c to \$1.00 each; smaller plants, boxed, \$5.00 per hundred.



Pittosporum undulatum

THE EVERGREEN TREES

Under this head are grouped many species including coniferous Evergreens and other classes of ornamental and economic trees that retain their foliage throughout the year. Having such a wide range of form and usefulness a selection may be made to suit any purpose.

ACACIAS. The Australian Wattle Trees.

Quick growing trees and shrubs, which thrive well in the interior valleys of California and Arizona. The flowers of the different varieties vary from light to deep yellow, presenting a gorgeous appearance when in full bloom.

Acacia armata. (Kangaroo Thorn). An interesting shrub of spreading habit with small leaves. The flowers are small and are borne all along the branches in spring. A good hedge shrub. 25c to 50c.

A. cultriformis. A dwarf-growing variety, with bluish foliage and small peculiarly-shaped leaves; bright yellow flowers. 3 to 4 feet, 50c.

A. baileyana. One of the most strikingly beautiful of the Acacias, having glaucous green pinnated foliage, and covered in the early Spring with racemes of lemon-yellow flowers which completely envelope the tree. It is quite hardy and blooms earlier than other Acacias. A magnificent specimen or avenue tree. 2 to 3 feet, 50c; 3 to 4 feet, 75c.

A. floribunda. An upright grower, with long, narrow leaves; small, yellow flowers bloom all summer; a fine variety. 5 to 6 feet, 50c; \$4.00 per 10.



Acacia molissima

A. latifolia. Tree of a spreading, somewhat drooping habit. The flowers are yellow; leaves lance shaped. One of the best Acacias. 4 to 6 feet, 50c; \$4.00 per 10.

A. melanoxylon. (Black Acacia). A tall-growing variety; a fine tree for street planting, for which it is very popular. 2 to 3 feet, 25c; 3 to 5 feet, 50c.

A. molissima. A fine, large spreading tree, with feathery foliage; fast grower; flowers yellow. 25c to 50c.

A. primrosa. A new Acacia of exceptional beauty, having large, fern-like leaves on the Albizzia order. Of strongest growth; yellowish flowers produced profusely. 50c. to \$1.00.

A. pycnantha. (Golden Wattle). A vigorous variety with long leaves and bright yellow flowers, showy and fragrant. 5 to 6 ft., 50c.

A. salicina. A very rapid growing variety of branching habit. Trees of this variety will afford considerable shade two years after planting. Leaves are lanceolate; flowers yellow and borne in short racemes along the branches in great profusion. 5 to 6 feet, 50c.

A. verticillata. A bushy spreading shrub or small tree, with long linear leaves, closely set with fine needle-like spikes half to one inch long; flowers yellow. A rare and very ornamental sort. 25c to 50c.

ARAUCARIAS.

These grand, coniferous Evergreens from the southern hemisphere are much prized as specimens for lawns. They are seen at their best in the coast sections, but where the climate is too severe they may be grown in pots or tubs and protected from the heat and cold. In this form they are very attractive.



Araucaria excelsa

Araucaria excelsa. (Norfolk Island Pine). A very symmetrical tree of impressive beauty. The branches grow in tiers, the ends forming a perfect star. Excellent for lawn or porch decoration. \$1.50 to \$2.50.



Camphor Tree

A. bidwilli. The branches grow in regular whorls, with small, sharp, deep green leaves. Somewhat hardier than *Excelsa*. A magnificent evergreen tree. Large specimens, 4 to 5 feet, \$6.00 each; smaller plants, \$1.00 to \$1.50.

A. cunninghami. Plants are less formal and symmetrical than *A. Excelsa*, the upper branches ascending and the lower horizontal. Leaves very stiff, sharp-pointed and straight. \$1.00 to \$1.50.

A. excelsa glauca. Similar to *A. Excelsa* except that the leaves have a bluish-gray cast. Rare and beautiful. \$2.00 to \$3.00.

A. excelsa robusta compacta. Differs from *A. Excelsa* in being more robust in growth, and at the same time more compact. Foliage is rich deep green. A beautiful specimen tree. \$2.50 to \$3.50 each.

CAMPHORA. The Camphor Tree.

Camphora officinalis. (Camphor). A fine ornamental tree with bright green leaves; makes a large symmetrical growth; produces the camphor of commerce. A splendid street tree. 25c to \$1.00.

CERATONIA. The Carob. St. John's Bread.

Ceratonia siliqua. (St. John's Bread). A handsome shade tree, with round, spreading

top and small, glossy green leaves, bearing large edible pods. 35c to \$1.00.

CASUARINA. The Beefwood or She Oaks.

A very interesting and unique class of trees from Australia, remarkable for their rapid growth and leafless appearance. The numerous green, slender jointed branches take the place of leaves. They will thrive in brackish and alkaline soils, and endure the heat of the interior.

Casuarina stricta. One of the best of the species. Grows to a height of 20 to 30 feet. Tree of rather upright growth; branches numerous, slender and short. Valuable as a street tree. 3 to 4 feet, 40c; small plants in boxes, \$5.00 per 100.

C. quadrivalvis. Branches rather coarse and more open than the above. 2 to 3 feet, 35c; smaller plants in boxes, \$5.00 per 100.

CEDRUS. The Indian Cedar.

Cedrus deodara. A magnificent coniferous evergreen tree of pyramidal form from the Himalaya mountains. Foliage beautiful silvery green. One of the most handsome trees for the lawn. Thrives well in all parts of California and Arizona, enduring the desert con-



Cedrus deodara

ditions of the interior and not being particular as to soil. The finest and most rapid growing of all the cedars, and worthy of a place in all home grounds. Potted plants, 50c to 75c; field grown specimens with ball of earth, \$2.00 to \$5.00.

CERASUS. The Evergreen Cherry.

Of all the splendid native California shrubs, the Wild Cherry is one of the handsomest. It grows naturally on the dry stony foothills, and preserves its beautiful dark green foliage even throughout the driest summer, thus proving its adaptability to arid regions.

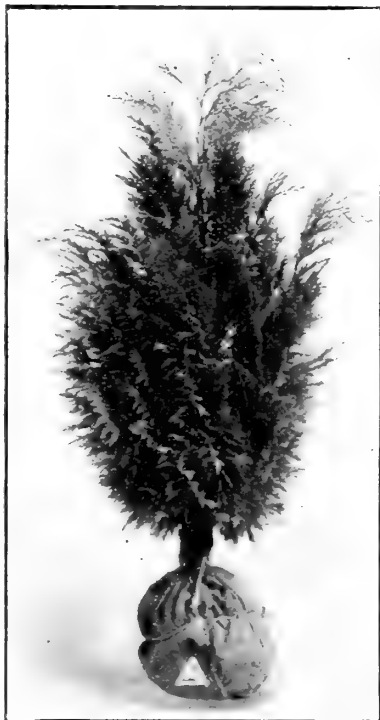
Cerasus ilicifolia. (Mountain Evergreen Cherry). A beautiful shrub or small tree with rich green dense foliage. Leaves Holly-like, very glossy and having prickly edges. A native of the foothills of Southern California. Very effective for hedge or landscape work. Small plants in pots, 25c; \$2.00 per dozen; larger plants, balled, 75c.

C. integrifolia. (Catalina Cherry). Of similar habit to the above, but the leaves are larger and less spiny-toothed. Tree grows rapidly under cultivation, making a compact, dark-green crown. Native of Catalina Island. Small plants in pots, 25c each; \$2.00 per 10; larger plants 50c to \$1.00 each.

CHAMAECYPARIS. The Lawson Cypress.

A group of beautiful evergreens closely allied to the Cupressus family. They are particularly useful as specimens for garden and park ornamentation.

Chamaecyparis lawsoniana. (Lawson's Cypress). A graceful tree with grayish-green foliage, disposed to fern-like expansions. A native of this state. One of the most beautiful evergreens in cultivation. Also have varieties known as Aurea, Pyramidalis, Glauca, Alumii and Argentea, all similar, but vary slightly in color and habit of growth. Field-grown plants, balled, 50c to \$1.00.



Chamaecyparis lawsoniana

CUPRESSUS. The Cypress Trees.

Cypress trees are a group of valuable and ornamental trees for park and street ornamentation, windbreaks and hedge. They thrive in almost any good soil throughout California, Arizona and the gulf states.

Cypress
sempervirens

Cupressus arizonica. (Arizona Cypress). A medium-sized tree with horizontal branches, forming a narrow, pyramidal head. A native of Arizona; thrives well in any good soil. Rare in cultivation. Potted plants, 50c; field grown, 4 to 5 feet, \$2.00.

C. funebris. (Funeral Cypress). A singular tree with wide spreading, pendulous branches, forming a pyramidal crown. Foliage bright green. This variety doubtless obtains its name from being planted around many of the tombs in China, of which country it is a native. 50c.

C. macrocarpa. (Monterey Cypress). The well-known picturesque native California cypress. Widely planted and used for hedge, shade trees and windbreak. When young it withstands pruning, and can be formed into a low compact or tall hedge as desired. Potted plants, 25c; larger specimens, field grown, balled, 50c; boxes of 100, \$1.50 to \$2.00.

Cupressus macrocarpa guadalupensis. (Blue Cypress). Tree a native of Guadalupe Island, attaining a height of 50 feet; very conspicuous and attractive, and owing to its coloring, lends a charming effect when planted among other trees. Does well throughout the Southwest. Potted plants, 25c; field grown specimen plants, balled, 50c to 75c.

C. sempervirens. (Italian Cypress). A tall, slender-growing tree; fine for cemeteries, gate posts and arches. 3 to 4 feet, balled, 50c; 6 to 7 feet, balled, \$1.00.

Cupressus torulosa (var. majestica). Majestic Cypress. A tall tree of pyramidal outline and slender, drooping branches, densely clothed with grayish-green foliage. A handsome, vigorous-growing species from the Himalayas. 2 to 3 feet, balled, 50c.

EUCALYPTUS. The Australian Gums.

For good reasons, no forest trees have commanded such wide attention of late as the Australian Eucalyptus, as they are of easy culture and rapid growth, and possess great value for avenue, shade and ornamental planting. Their timber will take a finish equal to mahogany, and has the strength and durability of oak and hickory, which always command a high price.

When planted for timber the young plants are usually placed from 8 to 10 feet apart each way, after having the soil thoroughly prepared by plowing and leveling. The plants should be taken from the boxes by cutting with a case knife, allowing each plant a square of earth, which should not be removed from the roots.

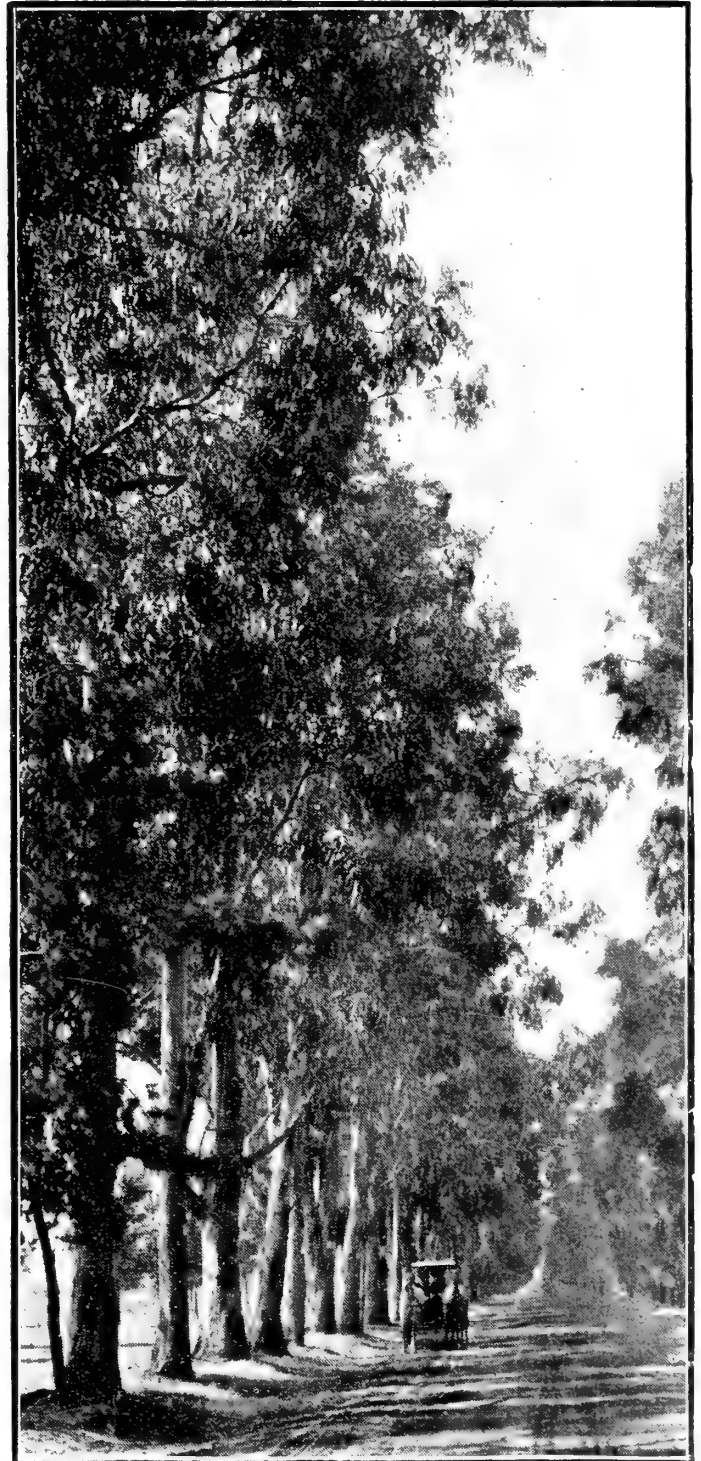
Plant a little deeper than they were in the boxes; water well. Keep thoroughly cultivated and free from weeds.

Eucalyptus botryoides. (Bastard Mahogany). A handsome tree during the early years of its growth, and when grown is very stately in appearance. It is especially suited to the coast region. The timber is of a reddish color, very hard and lasting. Potted, 25c to 50c.

E. cornuta. (Yate Tree). A hardy growing variety; wood durable, heavy and elastic. Recommended for alkali land and said to thrive where other varieties will perish. Boxed, per 100, \$2.00.

E. corynocalyx. (Sugar Gum). An erect and symmetrical tree of rapid growth. The Sugar Gum is well adapted as a forest cover and timber tree; it thrives near the coast and grows equally well in the dry valleys of the interior; while it profits by moisture, it will endure much drought. The trunk usually grows straight and tall, and the timber is lasting; these characteristics tend to make it valuable for telegraph poles, posts, etc. Potted, 25c; boxed, per 100, \$1.50 to \$2.00.

E. crebra. (Narrow Leaved Iron Bark). One of the hardiest; straight, tall, and of slender growth. Useful for masts, railroad ties, etc. Endures a great variety of climatic conditions. A good all-round variety, 100 feet. Potted, 25c; boxed, \$2.00 per 100.

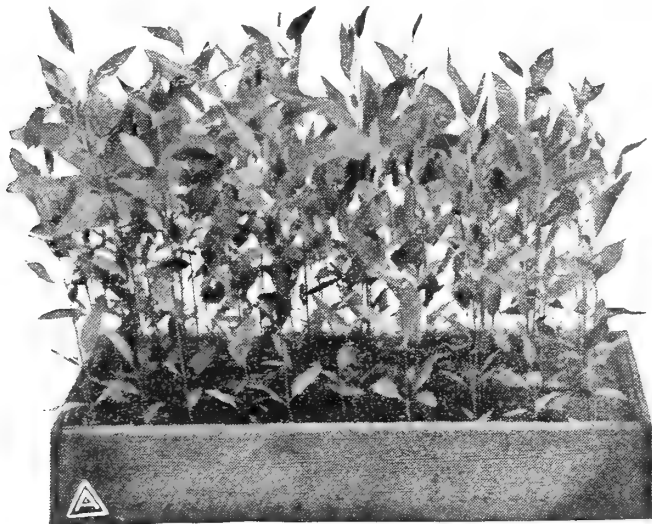


Eucalyptus globulus

E. diversicolor. (Karri Gum). A rival of the Blue Gum; this is one of the largest and grandest trees grown in Australia; specimens of this variety attain a height of four hundred feet; does not endure well the dry heat of the far interior, but is said to be quite resistant to frost. Potted, 25c; boxed, per 100, \$2.00.

E. ficifolia. (Scarlet Flowering Gum). An ornamental variety of dwarfish habit, with bright scarlet flowers; blooms in June. Potted, 25c to 75c.

E. globulus. (Blue Gum). The variety most extensively used for windbreaks and fuel; thrives in all localities within one hundred miles of the coast; a very rapid grower. Potted, 15c to 25c; boxed, per 100, \$1.00; large size per 100, \$1.50.



Eucalyptus rostrata

E. goniocalyx. (New South Wales Blue Gum). Wood very desirable, hard and tough. A rapid grower, particularly in higher altitudes; 300 feet high. Boxed, per 100, \$2.00.

E. hemiphloia. (Common Box). A first-class fuel tree. Wood very hard and strong. Will stand ranges in temperature from 15 to 105 degrees. Boxed, per 100, \$2.00.

E. leucoxylon. (Victorian Iron Bark). Very hard, strong and durable, excelling hickory. Adapted to mine work, bridges and railroad ties. Does well over a large area from the coast to Phoenix, Ariz. Potted, 25c; boxed, per 100, \$2.00.

E. polyanthema. (Red Box). This is commonly a medium-sized tree, but is said to reach a height of 150 feet in Australia; the tree is of a spreading habit, and with its characteristic foliage and profuse bloom presents a very pleasing appearance; leaves round and of an ashy or dull green hue; thrives well at or near the coast, in the foothills, on the mountain sides, and in the hot, dry valleys of the interior; the timber is very hard, strong and durable; its habit of growth and pleasing aspect render it a good ornamental shade tree. Potted, 25c to 40c; boxed, \$2.00 per 100; boxes of 50 larger plants, twice transplanted, \$1.50.

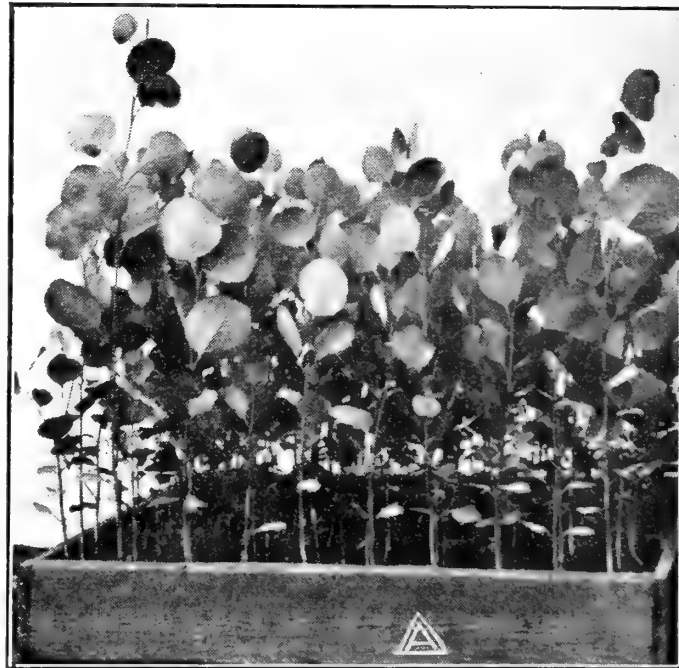
E. punctata. (Leather Jacket). Does well near coast. Wood tough, hard and close-grained. Useful for ties, implements and fence posts. Boxed, per 100, \$2.00.

E. resinifera. (Forest Mahogany). A superior timber tree of large size, prized for its

strength and durability. Fine for interior house work. 100 feet. Boxed, per 100, \$2.00.

E. rostrata. (Red Gum). As a commercial timber tree this variety is unsurpassed. It is a rapid grower, endures much heat, severe frost and considerable drouth. The timber is valuable for many purposes; in fact can be used for any purpose where a hard, durable wood is required. The tree is adapted as a forest cover, windbreak or shade tree. Potted, 25c to 35c; boxed, per 100, \$1.50 to \$2.00; boxes of 50 larger plants, twice transplanted, \$1.50.

E. rudis. (Desert Gum). A valuable species; in habit, erect and stately; a vigorous and rapid grower; bark grayish; leaves of young trees round, later becoming lance shaped; endures without injury minimum temperature of 15 degrees F., and maximum temperature of 110 to 118 degrees F. We recommend this variety very highly for the dry, hot sections of the interior. Excellent specimens of this tree have been growing for some years in parts of southern Arizona, and have made a rapid growth, proving their adaptation to a dry, warm climate. Potted, 25c to 40c; boxed, per 100 plants, \$1.50 to \$2.00; boxes of 50 larger plants, twice transplanted, \$1.50.



Eucalyptus rudis

E. sideroxylon, var. rosea. (Red Iron Bark). An attractive variety having rough bark; long, very narrow, silvery leaves and dainty pink flowers. The general appearance of the tree would suggest its adaptability as an ornamental shade tree. The timber is very strong and durable. Potted, 35c.

E. tereticornis. (Forest Red Gum). Similar in climatic requirements and uses to the *E. rostrata*. When growing near together they are usually tall and straight, otherwise more branching and stocky. The timber is reddish, very hard, heavy and durable. Potted, 25c to 50c; boxed, per 100, \$1.50 to \$2.00; boxes of 50 larger plants, twice transplanted, \$1.50.

E. viminalis. (Narrow Leaved Red Gum). A hardy, rapid grower, enduring well both heat and cold. This variety is exceeded in quickness of growth only by the Blue Gum. Very useful for windbreak, forest cover and fuel. Potted, 25c; boxed, per 100, \$1.50; boxes of 50 larger plants, twice transplanted, \$1.50.

GREVILLEA. The Australian Silk Oak.

Grevillea robusta. (Silk Oak). A graceful tree, with fern-like leaves; covered in summer with golden-red flowers; valuable for avenue planting. 3 to 4 feet, 40c.

FICUS. The Rubber Tree.

Ficus elastica. (India Rubber Tree). An elegant decorative tree with large, thick, glossy leaves. Grown as a potted plant it is useful for inside decoration, and when planted out of doors in frostless places will grow into a large and strikingly handsome tree. \$1.00.

F. macrophylla. The leaves are smaller than the above. Tree more hardy. Valuable for street or park planting. \$1.00.

ILEX. The Holly.

Ilex aquifolium. (English Holly). A small tree or shrub of pyramidal form. The deep, lustrous green leaves are spiny toothed, and form a rich contrast with the fiery colored berries which adorn the plant in the winter season. Small plants, 50c.

I. aquifolium variegata. A handsome species of the above, having beautiful variegated foliage. Beautiful specimens, \$3.00.

JACARANDA.

Jacaranda mimosaeifolia. A beautiful evergreen tree, with immense, long, fern-like leaves and purple blossoms; endures heat well, but rather susceptible to frost. 50c.

LIBOCEDRUS. Incense Cedar.

Libocedrus decurrens. (Incense Cedar). One of the finest of our specimen trees. Branches are spreading and clothed with glossy bright green foliage. A native of California and Oregon. 50c. to \$1.00.

MAGNOLIA. The Bul Bay Tree.

Magnolia grandiflora. (The Bull Bay). The well-known Magnolia of the South. The

stateliness of form and lavish yield of immense, fragrant, white flowers, tend to place this magnificent tree in the foremost rank among our ornamental trees. Pot grown, 50c. to \$1.00; field grown with ball of earth, \$1.00 to \$1.50.

PARKINSONIA. The Jerusalem Thorn.

Parkinsonia aculeata. (Jerusalem Thorn). A showy ornamental tree of the Palo Verde type. The feathery branches have a drooping habit, and bear handsome yellow flowers. It thrives on the driest soils, and endures some cold; succeeds well in the warmer parts of Arizona and California. 50c.

PINUS. The Pines.

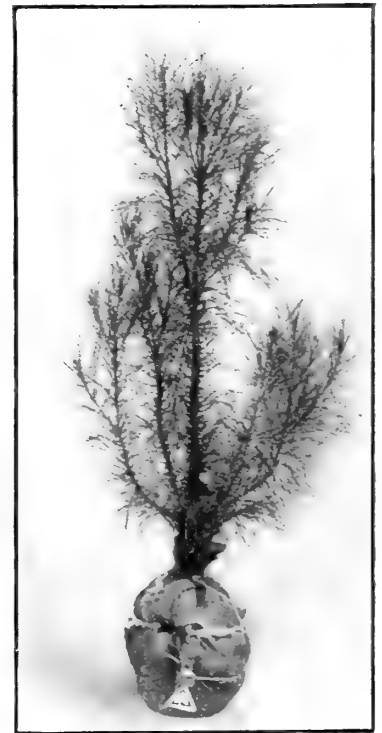
Of these well-known trees only a limited number of varieties are grown to any extent in California. The varieties named below are native to this state, excepting *P. canariensis*, and are of vigorous growth, and of more or less regular pyramidal habit during the early years of growth. They become more picturesque as they attain age.

Pinus canariensis. (Canary Island Pine). A handsome pine of rapid growth. Foliage grayish-green and lustrous. 3 to 5 feet, balled, \$1.00

P. coulteri. (Big Cone Pine). A native of California. The needle-like leaves are very long, stiff and clustered at the end of the branchlets; bluish green. The cones of this variety are of immense size. 3 to 5 feet, balled, \$1.00.

P. radiata. (Monterey Pine).

The well known native species. A handsome tree with bright green foliage and bushy habit when young. The fastest grower of all pines. Valuable for quick effect. Makes a good windbreak, and adapts itself readily to single planting in private and public parks. 2 to 3 feet, balled, 40c; 4 to 6 feet, balled, 60c to \$1.00.



Pinus coulteri

QUERCUS. The Evergreen Oaks.

The most picturesque trees that grace the landscape of Southern California are the Evergreen Oaks. They grow easily under cultivation, and soon form handsome trees.

Quercus agrifolia. (California Live Oak). The best known of the native oaks. The leaves are small, edges spiny-toothed. A majestic and handsome tree. 50c to \$1.00.

Q. chrysolepis. (Golden Cup or Canyon Oak). Another magnificent variety of the California evergreen oak. It has a wide, spreading head and often pendulous branches. 50c to \$1.00.

Q. suber. (Cork Oak). A native of Southern Europe. This splendid evergreen variety, with its rounded head and upright habit of growth, is a very desirable tree for the southwest. From this variety the cork of commerce is obtained; the bark is spongy and deeply furrowed, which adds to its appearance as an ornamental tree. 50c to \$1.00.

RETINISPORA. The Japanese Cypress.

Retinispora pisifera aurea. *Chamaecyparis*. (Golden Pea Fruited Cypress). A Japanese evergreen of great hardiness and vigor. The new growth of this variety is rich golden yellow, eventually changing to green. Branchlets nodding; very showy. 50c.

R. pisifera plumosa aurea. (Golden Plumed Cypress). This is decidedly the best of the variegated forms. Terminal foliage bright golden yellow. 50c to \$1.00.

R. pisifera plumosa. (Plume-like Cypress). One of the most popular varieties. Very dense foliage of bright green hue. 50c to \$1.00.

R. pisifera squarosa. (Veitch's Silver Cypress). This is a very distinct variety, and perhaps one of the best of the Japanese Cypress. Foliage silvery-blue, soft and dense. 50c to \$1.00.

SCHINUS. The Pepper Tree.

Schinus molle. (The California Pepper Tree). A valuable tree for shade and wind-breaks; planted extensively in the southwest; enduring much heat and drouth; covered in summer with red berries. Potted, 25c to 50c; field grown, defoliated, and dug bare-root, 35c each; \$2.50 per 10.

SEQUOIA. California Big Tree and Redwood.

These remarkable trees are natives of California, and are found in no other part of the world. They are among the largest and most picturesque trees known. During the early years of their growth they are very shapely and much prized as ornamentals.

**Sequoia gigantea**

Sequoia gigantea. (California Big Tree). A handsome tree of symmetrical, pyramidal shape, with thickly furnished branches. Foliage bluish-green. \$1.00.

S. sempervirens. (Redwood). This differs from the big tree in that it makes a taller and more slender tree, the branches of which are less dense and broader. The branches grow slightly downward, which imparts a graceful appearance to the tree. It is unsurpassed as an ornamental tree. 75c to \$1.50.

STERCULIA. The Bottle Tree.

Sterculia acerifolium. (Brachychiton acerifolium). Flame Tree. A strong-growing evergreen tree reaching a height of 50 feet, and thriving in either dry or fairly moist places. Of pyramidal habit, with large, light green, deeply lobed leaves. Produces masses of scarlet flowers; an exceedingly showy tree when in bloom. 3 to 4 feet, \$1.00.

Sterculia diversifolia. The greatest point in favor of this magnificent street and avenue tree, is the fact that its roots do not in any way interfere with the pavements in city streets. The bright green foliage is constantly changing shape, there sometimes being three or four distinct varieties on the same tree. The graceful tapering habit of the trunk and foliage makes it exceedingly desirable. 50c to \$1.00.

TAXUS. The Yews.

The Yews form a very desirable class for park planting, being closely clothed with dark green foliage and showy berry-like red fruits. They thrive best in fairly moist, sandy loam, and are valuable for planting in shade or on cool northern exposures. The trees attain venerable, almost fabulous ages.

Taxus baccata. (English Yew). A low tree, dense-branched and of a dark sombre hue. Foliage dark green above, pale beneath. Fruit bright scarlet. Often clipped into formal and fantastic shapes. Potted, 12 to 18 inches, 50c.

Taxus baccata fastigiata. (T. Hibernica). Irish Yew. A remarkably compact shrub of upright habit; the glossy dark green leaves spirally arranged on the closely compressed branches; Very distinct and formal. Potted, 12 to 18 inches, 50c.

THUYA. The Arborvitae.

These symmetrical hardy evergreens are great favorites for formal gardens, and are well suited for hedges and massing. As tub plants they are very durable and attractive.

T. orientalis aurea nana. (Berkman's Golden Arborvitae). One of the best and most popular of the dwarf hardy evergreens. Very compact shrub with golden-yellow foliage. \$1.00.

T. orientalis pyramidalis. (Pyramidal Oriental Arborvitae). One of the tallest and hardiest varieties of pyramidal outline. 50c to \$1.00.

T. rosdale hybrid. Beautiful Cypress-like shrub. A cross between the Arborvitae and Japanese Cypress, retaining to a certain extent, the characteristics of both. Very compact; foliage bright green. 50c to \$1.00.

UMBELLULARIA CALIFORNICA. California Laurel or Bay.

Umbellularia Californica. (California Laurel or Bay). The well known native bay or laurel found growing in the canyons and foothills of California. The leaves are long, dark-green and strongly aromatic, containing a volatile essential oil, the fragrance of which reminds one of bay rum. One of our finest native trees and well worthy of cultivation. 50c.

THE HEDGE PLANTS.

Evergreen hedges are not only objects of beauty, but they also serve a useful purpose, often taking the place of fences, and when planted with taste make handsome borders to grounds, walks, etc. They also serve as windbreaks, screens, shelters, etc. The plants here enumerated afford a wide range for selection, and are also peculiarly adapted to any situation.

Box. Fine for low hedge or borders; of compact growth; leaves small, round, dark green. 25c.; \$5.00 per 100.

California Privet. Highly prized as an ornamental hedge plant. It is a vigorous grower with rich green leaves; very hardy, not particular as to soil or climate. With occasional pruning it will develop into a beautiful compact hedge. 8 to 10 inches, \$3.00 per 100; 12 to 18 inches, \$5.00 per 100; 24 to 30 inches, \$7.00 per 100.

English Privet. A hardy variety of Privet with somewhat smaller leaves than the California Privet, equally valuable for hedges. 8 to 10 inches, \$3.00 per 100; 12 to 18 inches, \$5.00 per 100; 24 to 30 inches, \$7.00 per 100.

Eugenia Myrtifolia. A pretty foliage shrub. When pruned, will form a fine compact hedge. Will not endure severe frost. \$4.00 per 100.

Laurestinus. A very pretty and effective hedge plant. It blooms profusely during the winter season and at all times presents a bright green appearance. \$5.00 per 100.

Monterey Cypress. Beautiful hedges are grown from this native evergreen tree. It adapts itself either as a tall windbreak, or may be kept as a low hedge by frequent pruning. \$1.50 to \$2.00 per 100.

Roman Myrtle. (*Myrtus Communis*). We know of no better plant which is more appropriate for a hedge than this pretty ornamental shrub. The leaves are small and are a bright shining color, which gives a nice effect in a hedge. If trimmed frequently it will grow close and compact. Per 100, \$5.00.

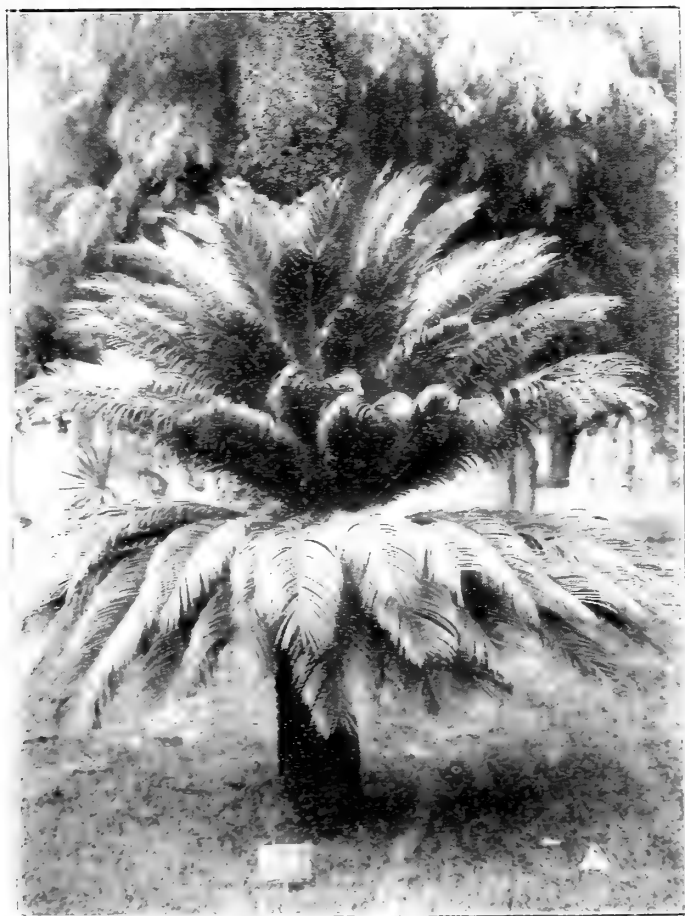
Roses. What can be more beautiful than a hedge of roses? In the selection of variety for this purpose it is important to have good growers that carry their foliage well, and that bloom well. Prices of roses will be found elsewhere in the catalog.

PALMS, CYCADS, YUCCAS, BAMBOOS, ETC.

No plants that find congenial conditions in California and Arizona lend themselves so admirably in producing tropical foliage effects as these plants, or are more easily grown and to be obtained at less cost and effort. Our selection embraces all the hardier sorts for conservatory and garden culture.

THE PALMS.

Chamaerops excelsa. (Windmill Palm). Trunk tall, slim and very hairy. Leaves fan-shaped, deeply cut; very hardy. A most useful palm for small lawns as it requires but little space. Potted plants, 25c to 50c; field grown, \$1.00 to \$2.00.



Cycas revoluta

C. humilis. (Dwarf Fan Palm). A hardy dwarf growing palm with small, fan-shaped leaves and spiny stalks. Excellent for lawn where a dwarf palm is desired. Specimen plants, \$2.00.

COCOS.

Cocos australis. A rare and beautiful palm with pinnate, glaucous-colored leaves which re-curve gracefully. Of slow growth and very hardy. Small plants, 50c; specimen plants in tubs, \$5.00 to \$10.00.

C. plumosus. (The Ornamental Coconut Palm). Of tall, slender growth: stem smooth, with finely divided plummy leaves. A tender sort which can only be grown in mild sections of the country along the sea coast or frostless places. Small plants 50c, larger plants, \$2.50 to \$10.00.

CYCAS.

Cycas revoluta. (Sago Palm). An excellent plant for either scenic planting or apartment decoration. The round stem or bulb is crowned with dark green pinnate leaves, shaped like ostrich plumes. Quite hardy. We have these in all sizes with from 4 to 20 leaves. 50c to \$5.00.

ERYTHEA.

The Erythea Palms are natives of Mexico, and are well adapted to conditions in our dry climate. They are hardy and well worthy of a place in any grounds.

Erythea armata. (Blue Palm). Of slow growth; leaves fan-shaped; silvery green. \$1.00 to \$2.00.

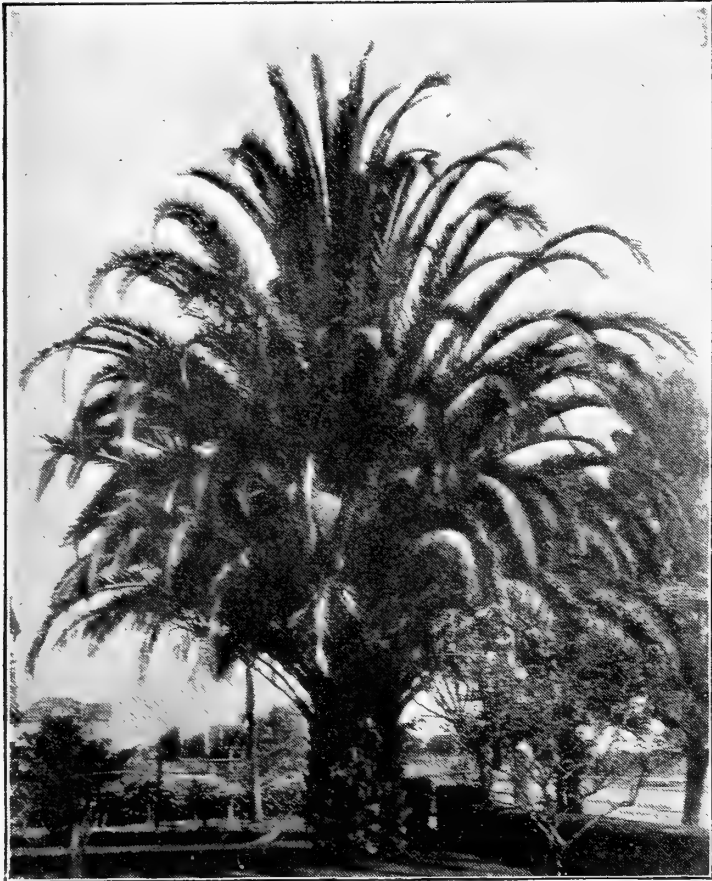
E. edulis. An excellent clean-looking palm. Leaves broad, resembling the common fan palm, but less coarse and free from filaments. 50c to \$2.00.

JUBEA.

Jubea spectabilis. (The Wine Palm of Chili). When young this fine palm resembles the Phoenix; with age it forms a thick, smooth trunk which gives it a distinctive appearance. A rare variety. In tubs, \$5.00.

PHOENIX.

Under this heading are varieties known as the Date Palms. All have long pinnated leaves.



Phoenix canariensis.

Phoenix canariensis. (Canary Island Palm). This is easily the best palm for general planting. Very appropriate as an ornament for the porch or other decoration, being a slow grower in pots or tubs. When given room in the ground it grows rapidly and forms a magnificent spreading palm; very hardy. Small potted plants, 25c to 50c; field grown specimens, \$1.00 to \$5.00

CLIMBING AND TRAILING PLANTS

Under this head are enumerated a most useful and ornamental class of plants, suitable for covering arbors, porches, walls, banks, festooning between pillars, etc. Most of them are evergreen, but where this is not the case the exception will be noted.

AMPELOPSIS.

Valuable hardy, deciduous, clinging vines, useful for covering walls, chimneys or stone work. Climbing, as they do, by tendrils, they adhere closely to any object.

P. reclinata. When small has fewer leaves than *P. canariensis*. Of graceful drooping habit; with age trunk grows tall and slender. \$1.00 to \$2.00.

WASHINGTONIA.

Washingtonia robusta. The best of the well-known fan palms grown in California. Of tall growth and robust habit; valued for street and park planting. 50c to \$1.00.

BAMBUSA. The Bamboos.

Bambusa vulgaris. (Giant Bamboo). A very rapid grower, attaining the height of forty feet, and forming in two or three years a magnificent clump of immense canes four inches in diameter, when mature; produces a fine tropical effect. \$1 50 to \$2 50.

DASYLIRION.

Dasyilirion glaucum. A beautiful yucca-like plant with narrow, drooping glaucous-green colored leaves; edges of leaves bordered with small teeth; very ornamental. A desert plant which will endure the dry heat of the interior, and will thrive in almost any kind of soil. Field-grown plants, balled, \$1 00 each; \$7.50 per 10.

DRACAENA.

Dracaena indivisa. Grows to a height of 10 to 15 feet, of fine tropical appearance with yucca-like leaves that arch and droop gracefully from a central stem. *D. indivisa* is the hardiest of the species. They are valuable grown in tubs as a decorative plants, or for aligning walks or drives. Fine specimens 4 to 6 feet, \$2.00 to \$3.00 each.

YUCCA.

Yucca pendula. A valuable plant for hot or exposed places; leaves 18 to 20 inches long, and from 1 to 1½ inches wide; of a graceful pendulous habit; excellent as a potted plant for porch entrances, etc. 75c to \$1.50.

Ampelopsis quinquefolia. (Virginia Creeper). Large, green foliage, changing to brilliant scarlet in the fall and later dropping the leaves. Strong plants, 35c each; \$2.00 per 10.

A. englemanni. Similar to the above, with smaller leaves and more dense foliage. Clings well to any object. Strong plants, 35c each; \$2.00 per 10.

A. veitchi. (Japanese or Boston Ivy). A graceful vine closely clinging to walls. Leaves changing from green in summer to gorgeous tints of scarlet and yellow in fall. Strong plants, 25c each; \$2.00 per 10.

BIGNONIAS.

Bignonia venusta. The flowers are crimson orange, mostly in drooping racemes, profuse bloomer and altogether a very satisfactory vine. 35c; \$2.50 per 10.

B. tweediana. An excellent plant for covering walls; a very strong grower, sending up many long, slender shoots, which cling to any surface; flowers are trumpet-shaped, two inches long and orange yellow. 25c.; \$2.00 per 10.

B. siderifolia. One of the best of this type of climbing plants, hardy and of large, strong growth; beautiful tubular-shaped yellow flowers hang in clusters over the dense foliage, which give to it a pleasing aspect. 35c.; \$2.50 per 10.

BOUGAINVILLEA.

Bougainvillea glabra. One of the most beautiful and attractive flowering climbers we possess; the foliage is handsome and the brilliant majenta-rose colored flowers adorn the plant during the whole season. 35c. to \$1.00.

B. spectabilis. Similar to preceding except leaves are larger and petals of flowers are larger and brighter in color. \$1.00.

B. lateritia. The most admired and desirable of the bougainvilleas. Flowers larger than the above. Soft brick-red which harmonizes well with other colors. Extremely difficult of propagation. \$2.50 to \$3.00.

CLEMATIS.

Slender - branched climbing shrubs which produce beautiful large flowers that are admired by all. The following choice named sorts are among the very best :

Clematis henryii. The finest large white clematis. 50c.

C. jackmannii. Large, rich, velvety purple; very popular. 50c.

C. Mme. Eduard Andre. Crimson red, large and very fine. 50c.

DIOSCOREA. The Cinnamon Vine.

Dioscorea batatas. (Cinnamon Vine.) A tuberous-rooted climber of rapid growth; the sweet-scented flowers are produced in spikes at the base of the leaves. Dormant tubers during the winter season. 25c.

FICUS. The Fig Vine.

Ficus repens. A dainty and pretty little climber with small round leaves; from Japan; clings to wood or other supports; fine for covering low walls. 25c.; \$1.00 per dozen.

F. repens variety minima. Similar to above except leaves which are smaller. Often used for hanging baskets. 25c; \$2.00 per doz.

HEDERA. The Ivy.

Hedera helix. (English Ivy.) An old, well-known climber, with dark, glossy, green leaves. 25c. each; \$2.00 per 10.

H. helix variety hibernica. (Irish Ivy) Similar in habit to the English Ivy, except that the leaves are smaller. 25c. each; \$2.00 per 10.

JASMINUM. The Jasmine.

Jasminum grandiflora. One of the best white species; blooms almost perpetually during the summer and fall; erect growing, branches drooping and angular. 25c. each; \$2.00 per 10.

J. malayan. (Rhynchospermum Jasminoides.) This is one of the most desirable Jasmynes known; the dark evergreen foliage, in contrast with the pure white waxy flowers, makes a very effective plant. The flowers have a most delicate odor. 35c to 50c.

J. revolutum. Bright yellow, fragrant blossoms; a strong and rapid grower. 25c. each; \$2.00 per 10.

IPOMOEA. The Moonvine.

Ipomoea. (Moonvine.) Rapid growing climbers, white and purple flowering and Mexicana. The latter is a purplish pink variety which forms tubers and is therefore a perennial. 25c. each; \$2.00 per 10.

LONICERA. The Honeysuckle.

Lonicera halliana. (Hall's Japan.) Evergreen, vigorous climber; flowers pure white, changing to yellow; deliciously fragrant; borne in great profusion during the summer and fall. One of the best. 25c.; \$2.00 per 10.

L. semperflorens. (Red Coral.) A high-climbing vine with stems ten to fifteen feet long; leaves oval or oblong, green or bluish-green above, glaucous beneath; flowers scarlet, about two inches long, profuse and very showy, 25c.; \$2.00 per 10.

L. variegata. (Variegated.) Foliage mottled yellow and green. Succeeds anywhere. 25c; \$2.00 per 10

MUEHLENBECKIA. Wire Vine.

Muehlenbeckia. (Wire Vine). Rapid growing twining vine, with dark wiry stems and tiny leaves; known sometimes as the Maiden Hair Vine. Excellent for covering trees, posts, fences, etc. 25c. each; \$2.00 per 10.



Lonicera halliana

PASSIFLORA. The Passion Vine.

Passiflora. (Passian Vine). An attractive and rapid climber, covering a large space in very short time, and bearing exquisitely formed flowers throughout the summer and fall. Colors, pink and lavender. 35c; \$2.50 per 10.

PHASEOLUS CARACALLA. Snail Vine.

Phaseolus Caracalla. (Snail Vine). A very unique climber with fragrant and peculiarly twisted flowers, which vary in color from purple to yellow. 35c. A strong growing floriferous vine.

PLUMBAGO. The Leadwort.

Plumbago capensis. Flowers a most delicate shade of azure-blue; unrivalled for their continuous blooming and drouth-resisting qualities; foliage clean and smooth. Can be grown as a spreading shrub or trained as a climber. 25c. each; \$2.00 per 10.

P. larpentae. (Lady Larpent). A low-growing species of the plumbago; fine for edging or rockeries; flowers intense blue and therefore very showy and unique. 25c.

ROSES.

See climbing roses.

SOLANUM.

S. wendlandii. A handsome climber for porch decoration. The leaves are large and variable. The flowers are light blue, about two inches across and borne in clusters. 35c.

TECOMA. The Trumpet Vine.

Tecoma radicans. (American Trumpet Vine). A strong growing vine. The flowers differ by being longer and narrower; rich scarlet color. Very hardy; deciduous. 25c; \$2 00 per 10.

T. mackenii. A strong growing variety, which quickly develops into a large vine; the flowers are light pink of a pretty shade; of easiest culture. 25c.

WISTARIA.

Wistaria chinensis. (Chinese Wistaria). A very strong grower; a high climber and twines tightly. Flowers sky blue, in pendulous clusters. Blooms very profusely in early spring. 40c to 60c.

W. chinensis alba. (White Chinese Wistaria). A fine variety with white flowers; otherwise same habit as the preceding. 40c to 60c.

W. multijuga. (Japanese Loose-clustered Wistaria). A rare species, bearing purplish or lilac-colored flowers in immense loose clusters, sometimes two feet in length. 50c to 75c.



Wistaria chinensis

MISCELLANEOUS PLANTS

In this department will be found Bedding and Border Plants, Herbaceous Perennials, Ferns, Bulbs, Grasses, Potted Plants for house decoration and conservatory, etc.

ALTERNANTHERA.

A very useful foliage plant used for carpet bedding, edging, etc.

Alternanthera aurea nana. A handsome dwarf variety with variegated yellow and green leaves. 50c per 12; \$2.50 per 100.

A. paronychoides major. The colorings in this variety are very effective, shading from crimson through salmon-yellow to green; used with Aurea nana for contrast. 50c per 12; \$2.50 per 100.

ASPARAGUS.

These plants, known as Asparagus Ferns, are grown for their beautiful and delicate foliage. Very popular for pot culture, or can be trained as climbers when planted in the ground in a protected place.

Asparagus plumosus. Foliage delicate and feathery; gracefully arched, each section being flat. Excellent for house decoration. 25c to \$1.00.

A. sprengeri. Of drooping habit. Valuable for hanging baskets or other decorative purposes. More hardy than plumosus. 25c. to \$1.00.

AZALEA.

Azalea Indica. Beautiful flowering plants; most attractive when used as potted specimens. They are usually in bloom from Christmas to Easter; colors range from white to different shades of pink and red. Fine plants with flowering buds. \$1.00.

CALLA LILY.

Richardia africana. The well-known white Cally Lily which needs no description. 10c. each; 75c. per dozen.

CANNAS.

The Canna is one of the most popular garden plants for tropical effect; the broad leaves and gorgeous flowers make a grand display during the entire summer.

We have a splendid collection in various colors: pink, yellow, white and different shades of red and scarlet. 15c. each; \$1.00 per dozen.



Chrysanthemum

CARNATIONS.

Carnations are general favorites on account of their delicious fragrance and richness of colors. For out-door culture the following varieties are the most satisfactory. To obtain the best results keep the flower-shoots pinched off until the plant has sufficient strength to support blooms.

Plants ready March 1st. 10c. each; \$1.00 per dozen

Dr. Choate. Bright scarlet.

Enchantress. Light pink.

Genevieve Lord. Fine pink.

Los Angeles. Best white.

Roosevelt. Deep crimson.

CENTAUREA.

Centaurea candissima. (Dusty Miller.) The foliage of this variety is silvery-white and compact in growth; much used as a low foliage border plant, not being allowed to bloom; exceedingly ornamental in contrast with flowering plants. 10c. each; 75c. per dozen.

Centaurea imperialis. Fine flowering variety; excellent for cutting. Lavender or white. 35c. per dozen.

CHRYSANTHEMUMS.

Chrysanthemums are unsurpassed as an autumn flowering plant. Their mammoth size together with the variations in form and color of blooms are qualities which all flower lovers admire. Our selection of named sorts include the newer sorts and the choicest of the old standard varieties. 10c each; \$1.00 per dozen.

COREOPSIS LANCEOLATA.

(California Sunshine.)

Coreopsis Lanceolata. (California Sunshine.) One of the most popular perennial plants. The flowers are rich golden yellow of graceful form and invaluable for cutting; the main crop comes during June but the plant continues to bloom the entire summer and autumn. Succeeds everywhere. 10c. each; 75c. per dozen; \$5.00 per hundred.

CYCLAMEN.

Cyclamen persicum. Charming plants with beautiful foliage and richly colored, fragrant flowers. We have the giant varieties which have stout flower stalks carrying the blossoms well above the foliage. Potted plants in bloom. 50c.

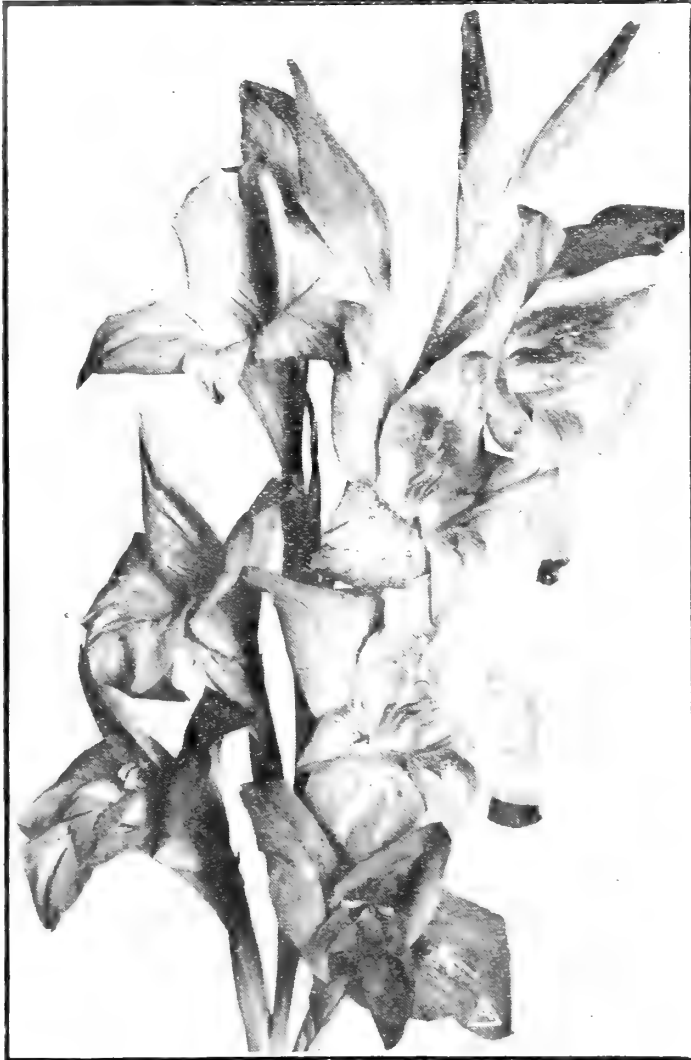
DAHLIAS.

Many of the choicest sorts of Cactus and decorative dahlias. 15c each; \$1.50 per dozen.

FERNS.

Nephrolepis exaltata. (Sword Fern). The common well-known variety having long narrow leaves; rather upright growing. 40c to 75c.

N. bostoniensis. (Boston Sword Fern). A popular type of the Sword Fern. The wide drooping fronds produce a graceful effect. Good specimens from 40c to \$1.00.



Gladiolus

N. whitmani. The latest and best of the Boston ferns; known as the Ostrich Plume Fern; the leaves are beautifully fringed, giving a charming effect. Well furnished plants 50c to \$1.50.

Woodwardia radicans. This grand hardy fern is useful for outdoor planting in shady spots. The fronds are large, being two to four feet in length; gracefully curved. 50c to \$1.00.

Alsophila australis. One of the grandest of tree ferns from Australia. The graceful fronds are from three to four feet long, and one and a half feet wide. It thrives in an ordinary greenhouse or in a shady protected place where moisture may be had. Nice specimens in boxes, \$5.00 each.

FUCHSIA.

Fuchsia. Well-known flowering plants for pot culture, or can be grown in good soil in partly shaded locations. Best varieties. 25c.

GERANIUMS.

Geraniums. The Geranium is an ideal flowering plant for California. It thrives well and blooms throughout the entire season. We can supply the leading varieties in the best colors, in both the Bush and Ivy Geraniums. 10c each; \$1 00 per 12.

GLADIOLUS.

Gladiolus (Groff's Hybrids). These are among the brightest and handsomest of all flowering bulbs; easy to grow and sure to bloom; the flowers are of richest colors and are fine for cutting. 10c each; 75c per dozen.

GYNERIUM. Pampas Grass.

The Pampas Grass, from the plains of the River Platte in Argentine, is one of the most popular and hardy exotics of our gardens and fields. Its beautiful white plumes ascending from the immense clumps of green give it a strikingly individual appearance and lend a variety to the garden that is unique. Also possess an economic value from the fact that the plumes have a commercial importance, being extensively used for indoor decoration, lending themselves to artificial coloring and the plant is hardy and well adapted to arid conditions.

Gynerium argentea. The most widely cultivated of the pampas grass. Plumes white. 50c.

G. Jubatum. The leaves are broader than the other sorts, and plumes more feathery and glossy. Of a lavender color. 50c.

G. "Mme. Rendlateri." Plumes pink, shading to lavender. 50c.

G. "Roi des Roses." Leaves broad. Plumes rosy-purple. Best for winter blooming. 50c.

HELIOTROPE.

25c. each; \$1.50 per dozen.

Czar. Deep purple, very large flower, which grows on a stiff, upright stem.

Queen of Violets. Light violet-blue, with small white eye.

HYDRANGEA.

Hydrangea hortensis. A popular garden plant or shrub furnished with large foliage and immense heads of light pink flowers, having a tinge of blue when grown in soils containing iron. 25c. to 50c.

LANTANAS.

Lantanas. We possess few bedding plants that afford a greater variety of color and bloom more continuously than the Lantana; we offer our four best varieties in the following colors: orange, yellow, pink and white. 25c. each; \$1.50 per 10.

LAVENDULA VERA. Lavender.

Lavendula Vera. (Lavender.) This is the true Sweet Lavender; grows about 18 inches high; delightfully fragrant; blue flowers in July and August. 35c.

LIPPIA REPENS.

Lippia Repens. This new lawn grass (or properly speaking, a plant) is just the thing for lawns in hot, dry sections of the southwest. Not suitable for shady locations, but thrives remarkably well in the full sun. The beautiful grounds of the "Coronado Hotel" have been changed over to Lippia, and, as it becomes better known, is largely used. Little or no mowing is necessary and walking over it rather improves it. Requires water only occasionally. The sods are cut up in small pieces and planted 12 to 18 inches apart. \$1.00 per box, containing enough for 80 plants.

LOTUS PELIORYNCHUS.

Lotus Peliorynchus. Very pretty for hanging baskets and rockeries. Branches slender and drooping. Silvery gray adorned with scarlet flowers, creating a unique contrast. 25c. to 50c.

MARGUERITES.

10c each; \$1.00 per dozen.

Giant White. Single flowers produced in great profusion; valuable in exposed places.

Giant Yellow. Similar to the above; flowers deep yellow.

Blue Marguerite. A hardy bedding plant, with pale blue flowers.

PANSIES.

Pansies. We grow this beautiful flower in large quantities, using only the best strains, embracing a great variety of colors. 30c. per dozen; \$2.00 per 100.

PERENNIAL PHLOX.

Among hardy perennial plants the Phlox is one of the most satisfactory. It is easily cultivated and flowers during the entire summer and until late in the fall. The colors are varied and striking.

15c each; \$1.50 per dozen.

Amoor. Deep pink.

Aquillion. White with red eyes.

Coquelicot. Intense scarlet.

Cross of Honor. Lilac, margined lighter.

Fraulein E. von Lassburg. Pure white.

Hector. Pink, dwarf, large flowers.

Lothair. Cerise salmon, center deeper.

Perle. Beautiful white.

Selma. Soft pale rose.



Romneya coulteri

PHORMIUM TENAX.

Phormium tenax variegata. (New Zealand Flax) This plant is very handsome having stiff sword-shaped leaves, which are nicely variegated and orange-colored flowers produced on long spikes. A fine, large growing plant for the greenhouse, conservatory or lawn decoration. \$1.50.

POINSETTIA PULCHERIMA.

Poinsettia. The well-known and highly ornamental "Christmas Flower," native of Mexico. Unsurpassed for the splendor of its immense brilliant scarlet flower bracts, and its bright green and showy leaves. A universal favorite in California gardens. 35c to 50c.

ROMNEYA.

Romneya coulteri. (Matillija Poppy). The handsomest of our native flowering plants. It forms a shrub or large bush of silvery hue. The flowers are of immense size with poppy-like petals of pure white and a center of rich yellow stamens. The individual flowers are lasting and the plants bloom all summer. Endures well the heat of the interior and considerable cold. Not particular as to soils, but seen at its best on sandy washes. Potted plants \$1 00. (See illustration, page 59.)

ROSMARIUS. Rosemary.

Rosmarium officinalis. An old favorite aromatic herb, delightfully fragrant; flowers light blue. 35c.

RUSSELIA

Russelia juncea. Stems drooping, rush-like; bears tubular-like scarlet flowers. For hanging baskets and rockeries. 25c.

SANTOLINA. The Coral Plant.

Santolina. A dwarf bushy growing plant 12 to 13 inches high with silvery coral-shaped foliage. Effective as a border plant or low hedge along walks and flower beds. Occasional pruning will cause it to grow compact. Thrives in the interior, enduring heat, cold and drouth; not particular as to soil. 50c per 10; \$2 50 per 100.

TUBEROSES.

Excelsior Dwarf Pearl. Flowers pure white and of exquisite fragrance. A most popular flowering bulb which blooms year after year and is of easy culture. First-class bulbs, 10c. each; 60c. per dozen.

Armstrong Everblooming. A grand, new addition to the tuberose family, blooming profusely and producing single flowers of a delightful fragrance similar to that of the Jasmine. Excellent for cut flowers. Selected bulbs, 10c. each; 75c. per dozen.

STOCKS.

Flowering Stocks. These handsome flowers are very decorative and fragrant; flesh, light blue, crimson and white. 35c. per dozen.



Shasta Daisy

SHASTA DAISY.

One of the most popular garden flowers of recent introduction. Its long period of bloom in our dry climate has made it a popular favorite. The flowers are immense, of pure white with yellow centers and long stems, which as cut flowers maintain well their form and color. The plants bloom throughout the year, but are usually at their best in the spring and summer.

Alaska is the best of the improved sorts. 25c. each; \$2 00 per dozen.

VIOLETS.

California Violet. An excellent variety of long-stem, profuse bloomer and very fragrant. Potted plants, 50c. per doz.; \$3.00 per 100.

WEeping LANTANA.

Weeping Lantana. Of weeping or drooping habit; suitable for hanging baskets or trailing over rockeries; flowers shell pink. 25c.

VERBENAS.

A most satisfactory bedding plant for a hot, dry climate. If planted in good soil and given reasonable care they will bloom almost the whole year. They should be cut back to the ground at least once a year, or when the vines begin to look old and leggy.

50c per dozen; \$3.00 per hundred.



Verbena

Apple Blossom. Pink, shaded with blush.

Blue Bell. Rich purplish blue.

Lavender Lady. Delicate shade of lavender.

Maiden Blush. Light pink.

Purple Prince. Royal purple.

Queen. Bright carmine.

Royalii. Purple, with white eye.

Scarlet Beauty. A magnificent scarlet of the most brilliant hue; flowers large and velvety; unsurpassed for massing where a show of color is desired.

Verbena Erinoides. A vigorous growing Verbena-like plant with moss-like foliage and purplish pink flowers. They produce a grand display of blooms throughout the entire summer. Just the thing for wide borders, terraces, etc. 50c. per dozen; \$3.00 per hundred.

Formal Box and Bay Trees**BUXUS. The Box Trees.**

The Box Trees are beautiful lawn shrubs or small trees of dwarf and compact habit; the trained forms are useful for formal decorative work. We offer some fine tub-grown specimens in round form.

Globe-shaped 3 ft. high, \$5.00 each.

Globe-shaped 12x12 in. diameter, \$2.50 each.

Globe-shaped 18x18 in. diameter, \$4.00 each.



Box Tree, Globe-shaped

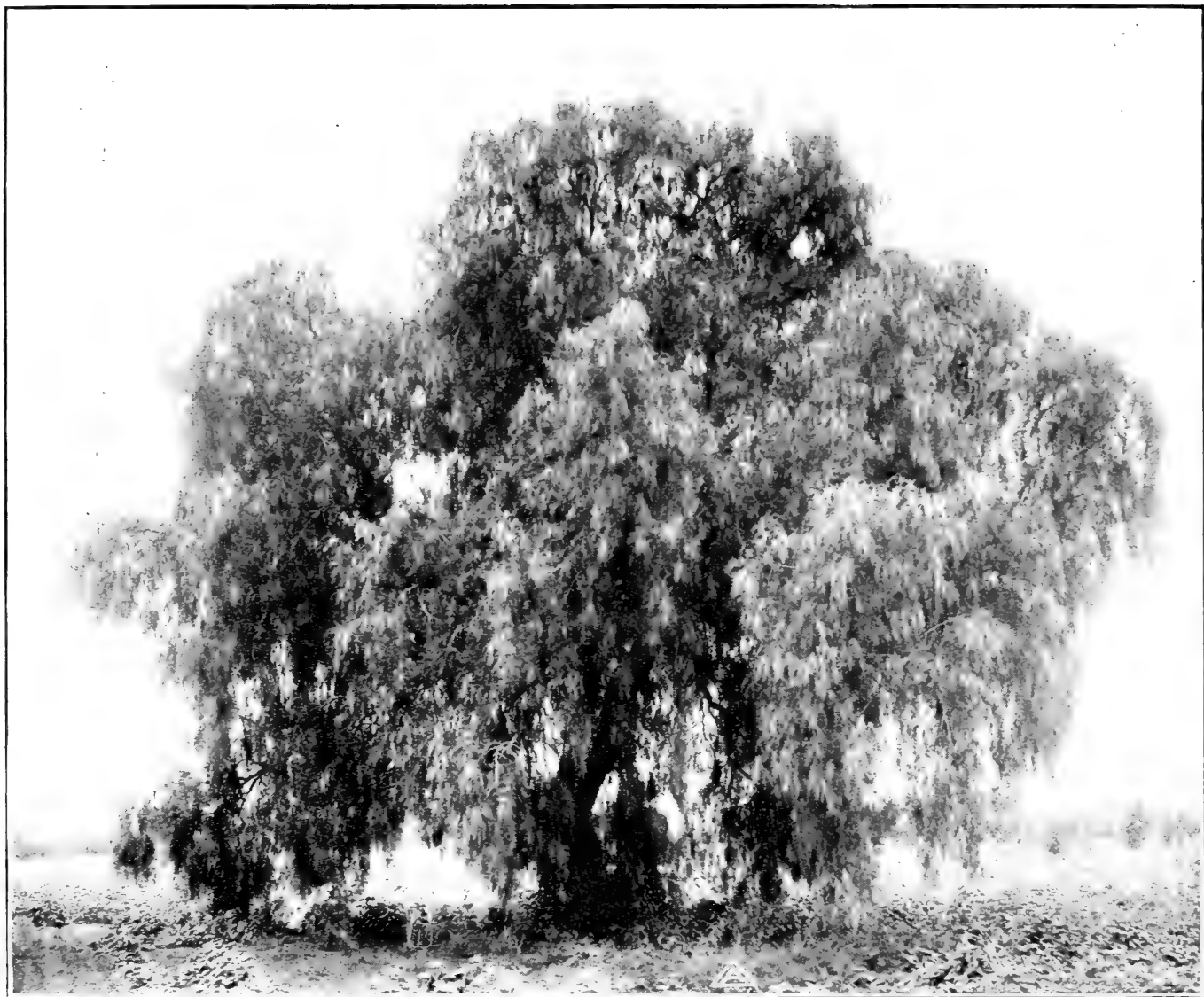
LAURUS. The Bay Trees.

Laurus nobilis. (Sweet Bay) Handsome ornamentals, commonly cultivated as tub plants. Trained specimens are very effective as formal decorations, especially for doorways, entrances and terraces. We offer fine select specimens, grown in tubs, in two forms:

Pyramidal, 5 ft. high, 24 in. base, \$10.00 each.

Globe-shaped, 4 ft. high, 24 in., \$10.00 each.

Globe-shaped, 6 ft. high, 30 in., \$15.00 each.

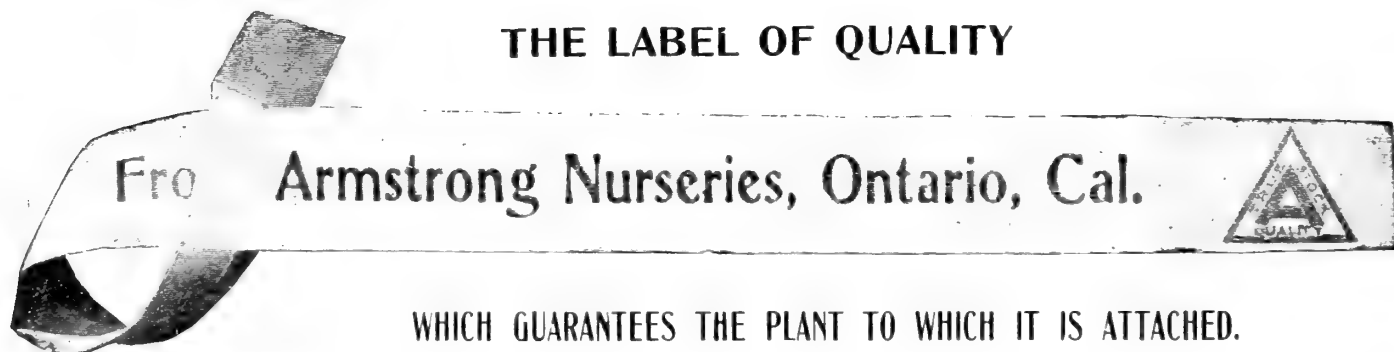


Schinus molle. The California Pepper Tree. (Description Page 50.)

FREE PACKING.

People giving these nurseries their orders should bear in mind that we make no charge whatever for packing. At the same time we want it understood that we do not slight our business in this respect, no matter how small the order. Remember, you are always safe when dealing with this establishment.

THE LABEL OF QUALITY



WHICH GUARANTEES THE PLANT TO WHICH IT IS ATTACHED.

TOPICAL INDEX

FRUIT DEPARTMENT

Almond	15	Fig	14	Peach	5-6
Apple	10-12	Grape	17 to 18	Pear	12
Apricot	6-7	Grape Fruit	4	Persimmons, Japanese	15
Avocado, Alligator Pear.....	20	Guava	21	Plum	7-8
Berries	21-23	Kumquat	4	Pomegranate	15
Cherimoya, The Custard Ap- ple	20	Lemon	4	Pomelo, Grape Fruit	4
Cherry	12	Loquat	20-21	Prune	8-9
Chestnut	15	Mulberry	14	Quince	13-14
Citron	4	Nectarine	9	Small Fruits	21 to 24
Citrus Fruits	3-4	Nuts, Fruits	15-16	Tangerine	4
Feijoa	20	Olive	19	Walnut	16
		Orange	3		

VEGETABLE DEPARTMENT

Asparagus	24	Rhubarb	24	Tomato	24
Horseradish	24	Sweet Potato	24		

ROSES

Bourbons, Bengals, Chinas..	32	Grafted Roses	35-36	Penzances Sweet Briars...	32-33
Climbing Roses	33-35	Hybrid Perpetual Roses...	30-31	Tea Roses	26-28
Dwarf Rambler	32	Hybrid Tea Roses.....	28-30	Tree Roses	36
		New Varieties	25-26		

GRASSES AND CLOVERS

Bermuda Grass	36	Kentucky Blue Grass	36	White Clover	36
---------------------	----	---------------------------	----	--------------------	----

ORNAMENTAL DEPARTMENT

DECIDUOUS TREES

Ash. Fraxinus	37	Magnolia	37	Purple-Leaved Plum	37
Birch. Betula	37	Mulberry. Morus	37	Tulip Tree. Liriodendron ...	37
European Sycamore	37	Plane Tree. Platanus	37	Umbrella. Melia Azedarach.	37

WEeping DECIDUOUS TREES

Weeping Elm. Ulmus	38	Weeping Mulberry. Morus..	38
--------------------------	----	---------------------------	----

DECIDUOUS FLOWERING AND FOLIAGE PLANTS

Aralia	40	Flowering Crab Apple. Pyrus	39	Lemon Verbena	39
Barberry. Berberis	38	Flowering Pomegranate. Pu- nica	39	Lilac. Syringa	39
Bridal Wreath. Spirea	39	Flowering Quince. Cydonia.	38	Privet. Ligustrum	38
Crape Myrtle. Lagerstroemia	38	Hydrangea	38	Sweet Shrub. Calycanthus..	38
Flowering Almond. Prunis..	39				

EVERGREEN SHRUBS

Abelia	40	Cassia	40	Laurel. Laurus	41
Arbutus	40	Coprosma	41	Laurustinus. Viburnum....	43
Barberry. Berberis	40	Coronilla	41	Medicago. Tree Alfalfa....	42
Bottle Brush. Melaleuca....	42	Daphne	41	Mexican Orange. Choisya...	41
Box Tree. Buxus	40	Durantia	41	Myrtle. Myrtus	42
Breath of Heaven. Diosma.	41	Escallonia	41	Nandina	42
Broom. Genista	41	Eugenia	41	Oleander. Nerium	42
California Holly. Hetero- meles	41	Gold Flower. Hypericum....	41	Pittosporum	42
Camellia	40	Grevillea	41	Privet. Ligustrum	42
		Japan Holly. Osmanthus...	42	Raphiolepis	43

EVERGREEN TREES

Acacia	43-44	Cedar. Cedrus	45	Jerusalem Thorn. Parkin-	49
Arborvitae. Thuya	51	Cherry. Everygreen Cerasus	46	Lawson Cypress. Chamae-	46
Bay Tree. Umbellularia	51	Cypress. Cupressus	46	cyparis	46
Big Tree. Sequoia	50	Eucalyptus	47-49	Magnolia. Bull Bay Tree...	49
Beefwood. Casuarina	45	Grevillea	49	Norfolk Pine. Araucaria..	44-45
Bottle Tree. Sterculia	50-51	Hedge Plants	51-52	Oak. Quercus. Evergreen..	50
California Big Tree	50	Holly. Ilex	49	Pepper Tree. Schinus	50
Camphor Tree	45	Incense Cedar. Libocedrus..	49	Pine. Pinus	49
Carob. St. John's Bread.		Jacaranda	49	Redwood. Sequoia	50
Ceratonia	45	Japan Cypress. Retinispora.	50	Rubber Tree. Ficus.....	49
Catalina Cherry	46			Yews. Taxus	51

PALMS

Chamaerops. excelsa Wind-	52	Cycas. Sago Palm.....	52	Bamboo. Giant	53
mill	52	Date—Phoenix	53	Dasyllirion. Dasyllirion Glau-	53
Chamaerops. humilis Dwarf	52	Erythea Armata. Blue Palm	52	cum	53
Palm	52	Fan. Washingtonia	53	Dracaena. Dracaena Indi-	53
Cocos. Cocos Australis	52	Jubea. Wine Palm	52	visa	53
Cocos. Cocos Plumosus	52			Yucca. Yucca Pendula	53

CLIMBING AND TRAILING PLANTS

Boston Ivy. Ampelopsos..	53-54	Honeysuckle. Lonicera ...	54-55	Snail Vine. Phaseolus.....	55
Begonias	54	Ivy. Hedera	54	Solanum	55
Bougainvillea	54	Jasmine. Jasminum	54	Trumpet Vine. Tecoma	55
Clematis	54	Moonvine. Ipomea	54	Virginia Creeper	53
Cinnamon Vine	54	Passion Vine. Passiflora ...	55	Wistaria	55
Ficus. Fig Vine	54	Plumbago. Leadwort	55	Wire Vine. Muehlenbeckia..	55

BEDDING PLANTS, FERNS, ETC.

Altemanthera	56	Ferns	57-58	New Zealand Flax. Phormi-	59
Asparagus	56	Fuchsia	58	um	59
Azalea	56	Geraniums	58	Pansies	59
Calla Lily	56	Gladiclus	58	Perennial Phlox	59
Canna	57	Gynerium. Pampas Grass...	58	Poinsettia	60
Carnations	57	Heliotrope	58	Matillija Poppy. Romneya..	60
Centaurea	57	Hydrangea	59	Rosemary	60
Chrysanthemums	57	Lantana	59	Russelia	60
Coral Plant. Santolina.....	60	Lavender	59	Shasta Daisy	60
Coreopsis. California Sun-	57	Lippia Repens	59	Stocks	60
shine	57	Lotus Peltiorynchus	59	Tuberose	60
Cyclamen	57	Marguerites	59	Verbenas	61
Dahlias	57			Violets	60
				Weeping Lantana	60

FORMAL BOX AND BAY TREES

Formal Bay Tree. Laurus..	61	Formal Box Tree. Buxus...	61
---------------------------	----	---------------------------	----

Choice Specials in Field-Grown Roses and Other Plants

THE following collections of roses embrace some of the leading kinds, both as to robust growth and prolific blooming qualities. They are selected with a view of affording a constant supply of blooms and a wide range in form and color. We ship in first-class condition, properly labeled, and send only to one address.

Rose Garden No. 1

15 Varieties, \$3.00

STRONG-GROWING, EVER-BROOMING SORTS

- Alice Roosevelt, pink
- Bride, white
- Clara Watson, light pink
- Duchess of Albany, red
- Franciska Kruger, salmon pink
- Gruss an Teplitz, Red
- Homere, white
- Helena Cambier, salmon yellow
- Kaiserin, white
- Mme. Jos. Schwarts, flesh
- Maman Cochet, pink
- Mad Abel Chatenay, salmon rose
- Mme. Parment Ducher, yellow
- Cl. Kaiserin, white
- Reine Marie Henriette, red

Purchaser to Pay Express Charges.

Rose Garden No. 2

15 Varieties, \$3.00

HARDY FROM MAINE TO CALIFORNIA

- American Beauty, red.
- Anna de Diesbach, pink
- Conrad F. Myer, pink
- Crimson Globe red moss
- Emperor of Morocco, maroon
- Frau Carl Druschki, white
- General Jacqueminot, crimson
- Gloire Lyonnaise, yellow
- La France, pink
- Paul Neyron, deep pink
- Sir Thomas Lipton, white clusters
- Roger Lambelin, variegated red
- Ulrich Brunner, red
- Tausendschon, pink with variations
- Yellow Rambler, yellow climber

Purchaser to Pay Express Charges

Rose Collection No. 3

50 CHOICE ROSES, \$8.00

- 5 Aurora, pink
- 5 Comtesse Risa Dupark, pink
- 5 Gruss an Teplitz, red
- 5 Kaiserin, white
- 5 Maman Cochet, pink
- 5 Mme. Abel Chatenay, salmon pink
- 5 Mme. Lombard, pink
- 5 Perle des Jardines, yellow
- 5 Papa Gontier, red
- 5 White Cochet, white

Purchaser to Pay Express Charges.

Plant Collection "A" \$3.00

OUR SELECTION OF VARIETIES

- 5 Cannas, assorted colors
- 2 Begonias, different kinds
- 4 Carnations, selection of colors
- 1 Cyclamen, pot grown
- 1 Heliotrope, best sort
- 2 Lantanas, two kinds
- 5 Geraniums, all different
- 2 Marguerites, yellow and white
- 5 Verbenas, striking colors
- 5 Perennial Phlox, various colors
- 3 Roses, all favorites

Purchaser to Pay Express Charges

Plant Collection "B" \$5.00

OUR SELECTION OF VARIETIES

- 10 Geraniums, leading kinds
- 10 Roses, variety of colors
- 10 Carnations, in variety
- 10 Cannas, assorted colors
- 10 Gladiolus, Groff's hybrids
- 10 Perennial Phlox, latest introductions
- 10 Verbenas, various colors

Purchaser to Pay Express Charges.

