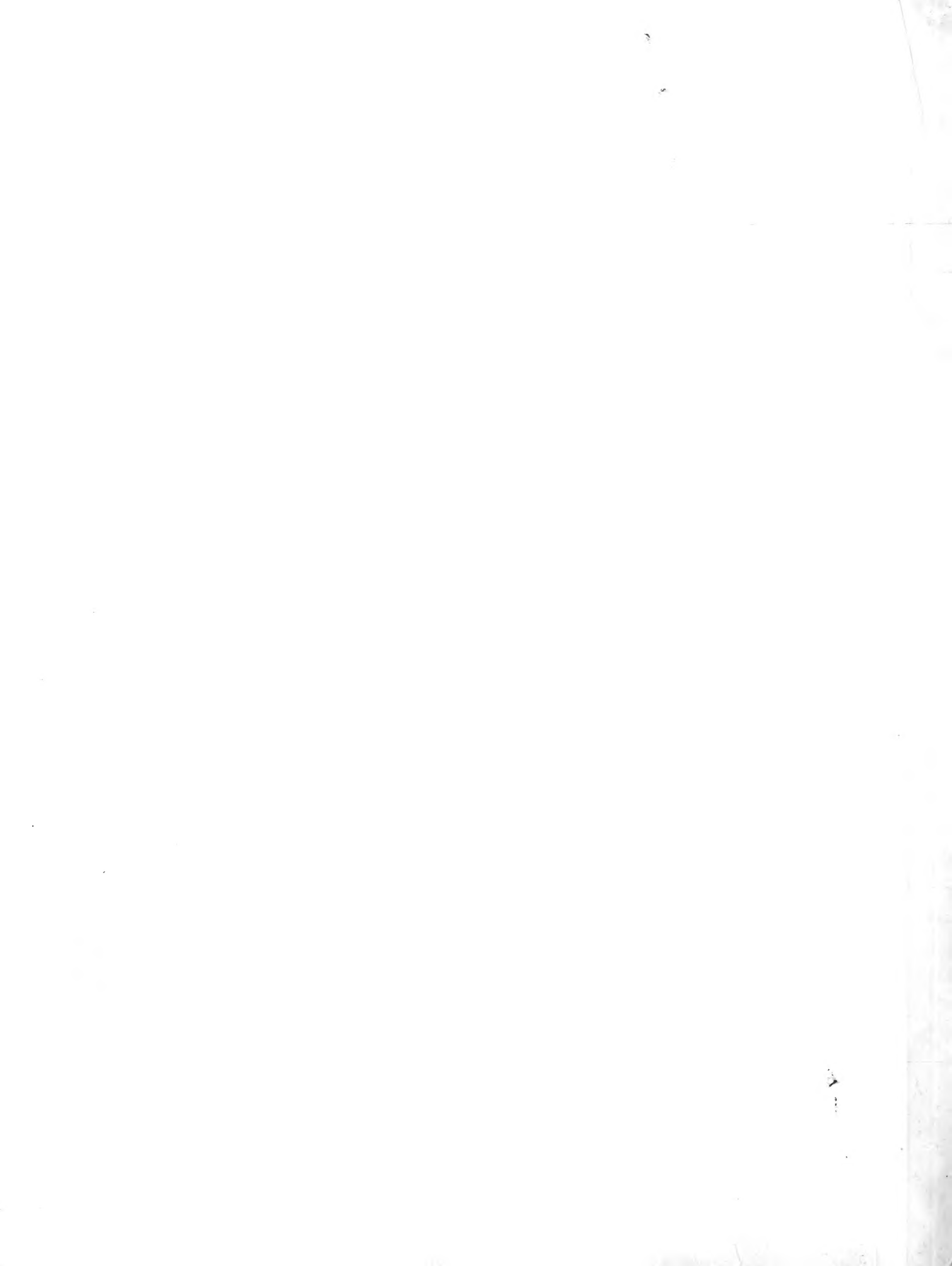


Historic, archived document

Do not assume content reflects current scientific knowledge, policies, or practices.



LIBRARY
RECEIVED
★ SEP 15 1953 ★
U. S. Department of Agriculture

Armstrong
Nurseries
1954

MOJAVE
1954 All-America
Winner



The World's All-America

The initials AARS have great significance for gardeners who know and love roses everywhere in the world, for they are those of All-America Rose Selections. This national non-profit organization set up to scientifically test new roses and select the best of each year's introductions is now recognized as America's most important rose testing organization.

All entries are planted for testing in 19 carefully selected All-America trial gardens scattered throughout America and representing each important rose growing climate and location. Nineteen of America's most capable rose judges periodically rate the roses on a point basis, and the rose scoring the highest number of points during the two-year period may, at the discretion of the All-America jury, be honored with one of the coveted All-America Awards. Of all rose trials anywhere in the world, this is the most exhaustive because the roses are scored continuously. Any new rose origination from any country or from any entrant is eligible to compete.

Any rose which has been declared a winner (designated in this catalog by the AARS insignia) is a rose that is more than good. You can be sure of it because it has come out on top in the world's most thorough rose trials.

Armstrong Proudly Presents

Mojave (Pronounced Mo-hav-ee)

1954 All-America Choice



We are extremely proud of this latest achievement of our Research Department, not only because it has taken the only 1954 All-America Award for a Hybrid Tea, but because we think it is the very finest orange-colored rose yet introduced. Mojave is named for California's famous desert, and the name fits it perfectly because its rich coloring is typical of a desert sunset—glowing orange shot with flame-like tones of scarlet and vermilion.

Next to color, the outstanding feature of Mojave is the amazing number of long-stemmed buds it produces—beautiful tapering buds which open to big, pleasantly fragrant, richly colored flowers. The exquisite bud form is inherited from Mojave's famous parent, Charlotte Armstrong, and like the buds of Charlotte Armstrong these are nearly always borne singly on long stout stems. They are marvelous for cutting.

Everyone likes to grow a big vigorous plant which blooms freely, and that exactly describes the plant of Mojave. It is tall, extremely vigorous, and seldom without a display of bloom. We can promise you that Mojave is a variety which will shine in your garden not only for its good color but for its fine garden performance as well. Originated at the Armstrong Nurseries by H. C. Swim. Plant Pat. No. 1176.

\$3.00 each; 3 or more, \$2.65 each.

It's a Grand Slam!
Having been named the sole Hybrid Tea All-America Winner for 1954 was only the beginning for Mojave. Now, as we go to press, have come two cables announcing Mojave's sweeping victory in the most important of Old-World rose trials. Within a week after having won the Gold Medal at the famous Bagatelle trials in Paris, France, Mojave was also declared Gold Medal Winner at the Geneva, Switzerland trials. Mojave's grand slam makes it the most honored rose of the year.

Best Roses

Rose Selections

Two exceptionally fine new roses bear the badge of distinction for 1954—both have achieved top honors in rosedom, the coveted nomination as an All-America Award Winner. One is Mojave, the glorious new orange-colored rose created by Mr. Herbert C. Swim, Director of Armstrong Research. This latest achievement follows closely upon the heels of Mr. Swim's having been awarded the Gold Honor Medal by the American Rose Society for outstanding work in the development of new roses through scientific methods. Mojave captured the sole award to be given to a Hybrid Tea rose for 1954.

The second rose to receive 1954 All-America honors is Lilibet, a charming dainty pink Floribunda which brings a good many desirable characteristics such as beauty of form, clarity of color, vigor, and disease resistance to the popular Floribunda class.

Lilibet

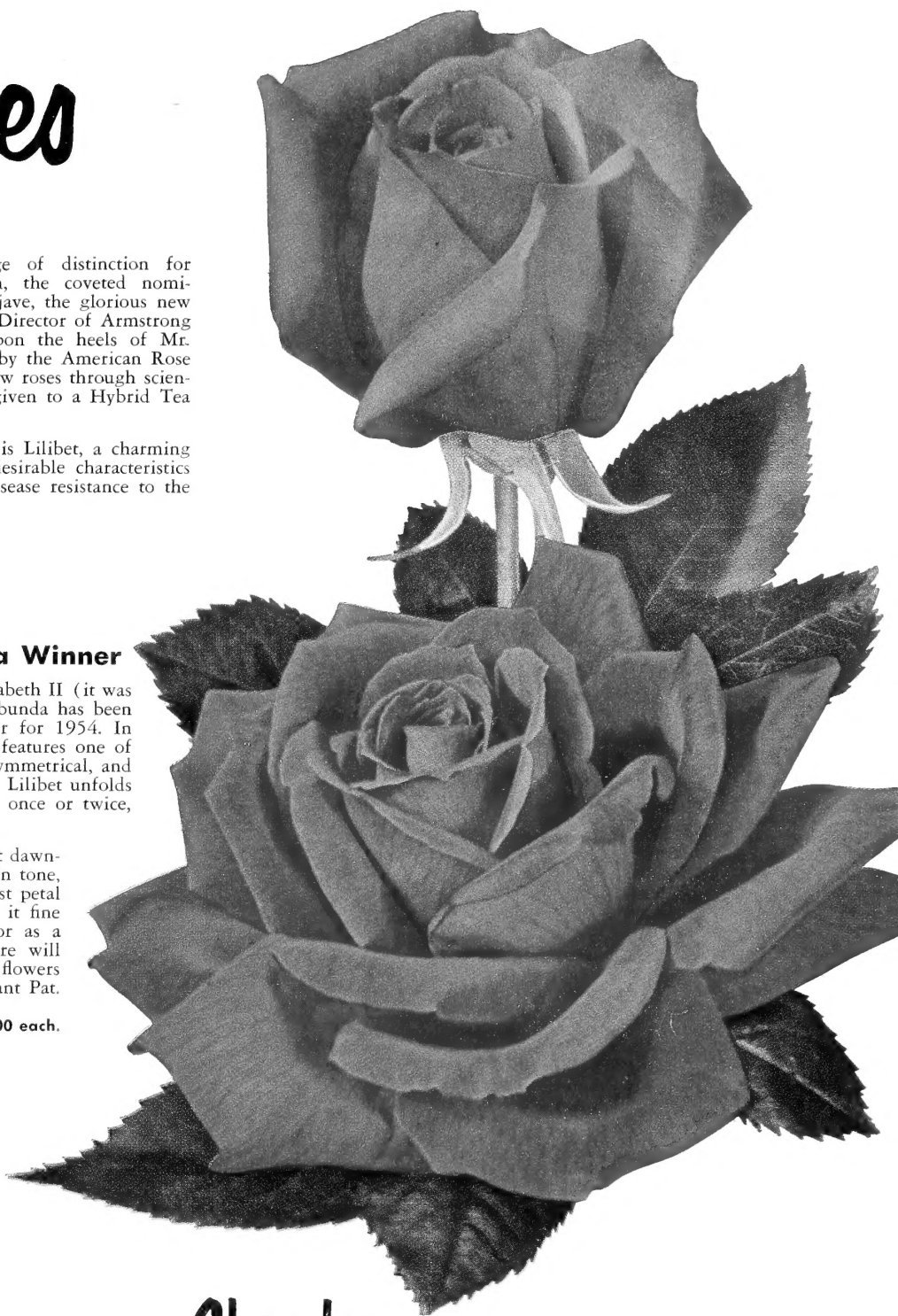
1954 All-America Floribunda Winner



Named in honor of Her Majesty, Queen Elizabeth II (it was her childhood name), this dainty new Floribunda has been chosen an All-America Rose Award Winner for 1954. In addition to the beauty of its bloom, Lilibet features one of the finest plants to be found in Floribundas—sturdy, symmetrical, and rounded, with glossy luxuriant mildew-resistant foliage. Lilibet unfolds amazing numbers of blooms in big clusters—not just once or twice, but continuously throughout the growing season.

The color ranges from light rose pink in the bud to soft dawn-pink in the fully open flower. The aging flowers vary in tone, but the color is always fresh and attractive until the last petal drops. It grows about 2 to 3 feet in height, making it fine for a low hedge, a medium high border planting, or as a single specimen. No matter where you plant it, there will be plenty of perfectly formed little buds and dainty flowers to cut for indoors. Originated by Robert Lindquist. Plant Pat. app. for.

\$2.50 each; 3 or more, \$2.20 each; 25 or more, \$2.00 each.



Chrysler

The Winner for 1953



Increasing in popularity every day is the rose which captured sole All-America honors for a Hybrid Tea in 1953. We predict it will continue to climb higher and higher in favor because nothing in rosedom has such universal appeal as a fragrant red rose like this one.

The color is a lively glowing crimson, and there is such beauty of form in both the bud and the breathtaking big open flower that they bring joy to every exhibitor, whether shown in a rose show or simply at home. The 50 or so crisp wide petals have a lot of substance, so the flowers last exceptionally well. No fine red rose would be complete without fragrance and Chrysler has an abundance of rich heady perfume. The plant is vigorous, compact and symmetrical, branches freely, and is covered with abundant dark green semi-glossy foliage. Even in adverse weather, the spectacular blooms maintain their fine exhibition form. Originated by W. E. Lammerts. Plant Pat. No. 1167.

\$2.75 each; 3 or more, \$2.40 each.

Prices shown in this catalog are for bare root plants only and do not apply to blooming plants in containers.



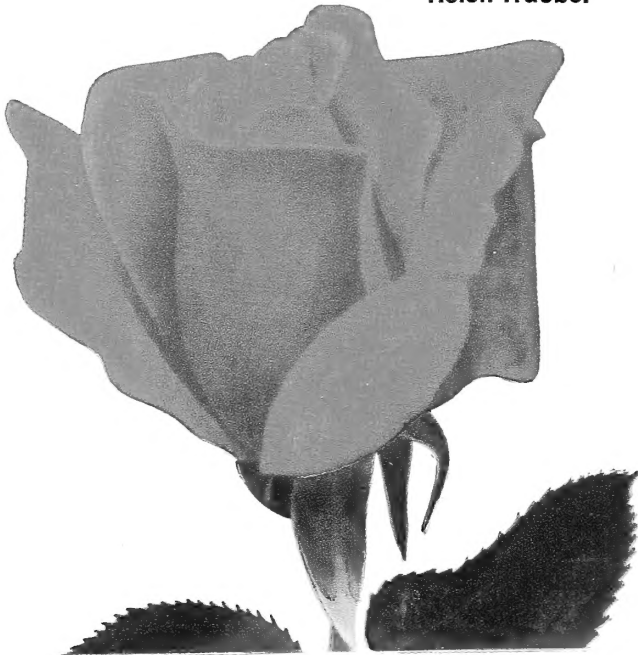
**AARS
Means
The Best!**

All-America Award Winners simply have to be better than other roses to have won the honor. For a topnotch rose garden here is a special collection of the newest and best of the All-America Winners!

**Armstrong's
All-America Collection**

One each of the five All-America Winners listed below, postpaid anywhere in the States, for just **\$11³⁵**
(Add 3% sales tax on California shipments.)

Helen Traubel



Charlotte Armstrong

Peace

Charlotte Armstrong



Its long, slender, cerise buds and magnificent open flowers are favorites in thousands of gardens. **\$2.25 each; 3 or more, \$2.00 each.**

Chrysler



1953 All-America Award Winner. A sparkling red, red rose that is certain to hit the heights of popularity along with its famous parent, Charlotte Armstrong. **\$2.75 each; 3 or more, \$2.40 each.**

Helen Traubel



Because of the daintiness of its apricot-pink coloring, its long, slender buds, and perfect flowers, fragrance, and vigorous plant, you can't help but like this 1952 Winner. **\$2.75 each; 3 or more, \$2.40 each.**

Mojave



Spectacular new orange-colored rose which won sole All-America honors for a Hybrid Tea for 1954. **\$3.00 each; 3 or more, \$2.65 each.**

Peace



One of the world's greatest roses. 1946 AARS Winner. Delicate tints of yellow, cream, buff, and apple blossom. **\$2.50 each; 3 or more, \$2.20 each.**

**The winner for 1954,
colorful Mojave**





Presenting Two Flashing New Floribundas from California

Armstrong Introductions for 1954

It is always a great day for us when we can say, "Here are the new Armstrong roses of the year." In addition to Mojave, described on the opening page, here are two more Armstrong roses—newcomers to the popular Floribunda class.

Skyrocketing to the pinnacle of popularity because of their endless charm, riotous wealth of color, and easy culture, are the Floribundas—a new race of cluster-flowering roses. These are two new Armstrong creations—welcome additions bringing new and desirable qualities to this charming class.

Frolic

Cross our hearts, we have never yet seen a Floribunda or any other rose which could match the astounding number of flowers produced by Frolic—not just once or twice but almost continuously throughout the season. It is hard to believe that any plant could produce flowers so freely and keep on doing it month after month. The flowers are borne in unbelievably large clusters, with each perfect bud opening to a double bloom of clear bright pink, about 2¾ inches across. The color fades to a lighter pink with age, but it is still soft and attractive.

The plant of Frolic grows 2 to 3 feet in height, is extremely vigorous, and is densely covered with bright green foliage. With its well-rounded habit and its ability to produce flowers almost down to the ground, it is just right for a hedge or border planting. You'll never have to worry about how many flowers you cut either, because there will always be plenty more. Originated at the Armstrong Nurseries by H. C. Swim. Plant Pat No. 1179.

\$2.25 each; 3 or more, \$2.00 each; 25 or more, \$1.80 each.

Embers glows even brighter in warm weather



Frolic—cut all the blooms you like, there will soon be plenty more.

Embers

The first comment of every rose enthusiast who visited us last year and saw the test planting of Embers was, "What's that?" When you see it you'll understand the question because the color is so brilliant that the only place you've seen it equaled is in the burning glow of a red hot coal—Embers named itself. Instead of fading, the blooms age to a darker color, leaving the stage to the more conspicuous fresh ones. The warmer the weather the brighter the color—only cool weather will dim its brightness.

Embers is a particularly fine plant. Rounded and moderately spreading, it is well clothed with large thick semi-glossy leaves. It is fairly large, growing from 3 to 4 feet in height, and is excellent for hedge or single specimen planting. Not a mass blooming type like Frolic, but produces plenty of vivid long-lasting flowers continuously throughout the growing season, and every flower will draw your eye like a magnet. Originated at the Armstrong Nurseries by H. C. Swim. Plant Pat. No. 1178. **\$2.25 each; 3 or more, \$2.00 each; 25 or more, \$1.80 each.**

Quantity rates apply on 3 or more of the same variety only.

Prize Winning

Armstrong

Here are roses from the famous Armstrong Research Department, where for more than 17 years geneticists using the most modern techniques of plant breeding have been developing some of the world's finest new roses. We are very proud of the fact that we have produced more All-America rose winners than anyone else in the world.

Helen Traubel



In 1952 we said this was one of the finest roses ever produced in our Research Department since Charlotte Armstrong. We have watched it flourishing in our display garden for another year and seen lovely blooms in gardens everywhere and have received hundreds of letters from pleased customers all over the country. It is no coincidence that Helen Traubel won All-America honors for 1952 and went on to win the Gold Medal of Rome in competition with the best foreign roses. It is named for Helen Traubel, the great American star of the Metropolitan Opera and concert stage.

The color of Helen Traubel varies somewhat with the weather, but characteristically it is a blend of warm pink and luminous apricot with a bright undertone which makes the color sparkle. The exquisite buds are usually long, slender, and graceful, and the half-open flowers maintain a delightful form. Even fully open the big petaled flowers display their lovely color in a lavish way. Often 6 inches across, the open blooms with their warm rich color and abundant spicy fragrance are extremely lovely.

The plant is tall, bushy, attractive looking, and so vigorous that it is seldom without buds or blooms. The flowers are good in all weathers, warm or cool, and Helen Traubel seems to adapt itself to all rose growing areas. Originated in the Research Department of the Armstrong Nurseries by H. C. Swim. Plant Pat. No. 1028. **\$2.75 each; 3 or more, \$2.40 each.**

Helen Traubel, one of the finest of all pink roses

New Rose Creations

The All-America Awards, Gold Medals, and Certificates of Merit from Old World Rose Trials which have been awarded to Armstrong varieties prove that our Research Department is living up to its aim of producing the best roses in the world.

Buccaneer

The Brightest Yellow Rose Yet

Just a year ago we were writing that this was the brightest, clearest, and "lastingest" yellow we had ever seen in a rose. Since then, Buccaneer has received the Gold Medal at the Geneva, Switzerland Trials and first Certificate of Merit from both Bagatelle (Paris) and the City of Rome. Now that it has bloomed in gardens from coast to coast we have heard nothing but good things about it from Maine to California.

The buds are particularly lovely—long, slender and tapering, and they show no color other than clear sunshiny yellow. The opening flowers are cup-shaped (usually about 30 petals), have a moderate tea fragrance, and the brilliant color holds in nearly all weathers. One of the most extraordinary things about Buccaneer is the extreme vigor of the tall slender plant. The strong, free-branching canes will usually reach 5 or 6 feet in the second season in milder climates. Though large, the plant is well foliated and from early spring until late fall it will seldom be without plenty of buds and flowers held proudly erect on some of the longest and straightest stems you can imagine. Because of its vigor and its tendency to grow tall, Buccaneer should be planted in the background of your rose garden or against a fence or wall. Regardless of where you plant it, the brilliant flashing color will shine out like a beacon. Originated at the Armstrong Nurseries by Mr. H. C. Swim. Plant Pat. No. 1119. **\$2.75 each; 3 or more, \$2.40 each.**

Buccaneer, a brilliant unfading new yellow rose

Enjoy the Finest Roses and Save, Too

Pink, yellow, red and orange—what a marvelous array of color in roses. And that's not all, the four varieties which make up this collection include our newest and finest varieties—*THE TOP 4 FOR '54*.

- ★ Helen Traubel
- ★ Buccaneer
- ★ Chrysler
- ★ Mojave

One plant each of the roses listed above sent postpaid anywhere in the States at proper time for planting . . .

Top 4 for '54

\$9⁷⁰

(California shipments add 3% sales tax)

Rose Royalty

The outstanding family of American roses descended from Charlotte Armstrong boasts rose celebrities galore. Charlotte Armstrong and her illustrious progeny are truly the Royal Family of Rosedom, famous for their winning ways from coast to coast.

Charlotte Armstrong
—a favorite from
Maine to California

Charlotte Armstrong

Queen of Them All



Introduced in 1941 when it received the only All-America Award, Charlotte Armstrong has steadily climbed the ladder of fame and now stands unchallenged at the very top among the world's finest roses. If you are planting it for the first time you will marvel (as we still do) at the beauty of the lovely long carmine-red buds with their perfect streamlined form and the magnificent open blooms of rich cerise. The big open flower has about 30 petals, gracefully arranged to make a beautiful high-centered flower.

The brilliant cerise color has a sparkling salmon undertone with an elusive quality which is impossible to capture with printer's ink. Rich and glowing, it remains attractive until the last petal drops. The plant of Charlotte Armstrong will become one of the largest in the rose garden, for it is extremely vigorous, semi-spreading to upright. It usually produces the slightly fragrant flowers singly and almost always on long stems. The foliage is leathery, semi-glossy, deep green, and highly resistant to foliage troubles. One of the chief reasons for Charlotte Armstrong's popularity is its ability to do well everywhere. We get the same enthusiastic reports on its behavior from growers North, South, East and West. This is the rose which reigns over the Armstrong Rose Dynasty. Her daughters have won more All-America Awards than those of all other roses put together. Originated in the Armstrong Research Department. Plant No. 455.

\$2.25 each; 3 or more, \$2.00 each.

Charlotte's Daughters— The Royalty of Rosedom

A new star-studded era for roses began when Charlotte Armstrong was introduced 12 years ago. By joining the superb quality of this sensational Hybrid Tea with the best characteristics of older kinds, Armstrong hybridists have produced a regal rose family—a family which has made Armstrong America's leader in the development of new roses.

The Royal Rose Collection

Charlotte Armstrong
First Love
Helen Traubel
Mojave
Sutter's Gold

Charlotte Armstrong and one each of the 4 famous daughters listed above, postpaid anywhere in the States at correct planting time,

*(California planters please
add 3% sales tax)*

\$10⁷⁵

Sutter's Gold

All-America & International Award Winner

After having been named All-America Award Winner for 1950, Sutter's Gold went on to capture a Gold Medal at the famous Bagatelle Trials in Paris, France, and then was awarded the Gold Medal at the Geneva Rose Trials in Switzerland.

From Charlotte Armstrong it inherits long-pointed exquisitely shaped buds. But the color is new—bright yellow richly shaded with orange and red. The big, high-centered, golden yellow flowers have a tea fragrance richer than that of any other yellow rose. True, the flowers open a bit quickly in adverse weather, but the plant is so free blooming that there are always plenty more to cut. Few roses can boast a plant so strong and vigorous. It is tall and upright and always covered with an abundance of large glossy leaves, which are highly resistant to foliage trouble. Originated in the Armstrong Nurseries by H. C. Swim. Plant Pat. No. 885.

\$2.25 each; 3 or more, \$2.00 each.

First Love—always plenty of long-lasting buds and flowers like these for cutting

Sutter's Gold—the first American rose to win top national and international awards

First Love

The Loveliest Buds in Rosedom

If you want (and who doesn't) to cut bouquets of exquisitely graceful and distinctive long, tapering buds in a delightful shade of pale dawn pink, then this is sure to be the "first love" in your garden. In certain weathers, the delicate color is tinted with lovely pastel shades of salmon, orchid and rose, but they always retain their perfect form. The flowers have a mild pleasant fragrance and the crisp, gracefully pointed petals (about 25) open very slowly. They last exceptionally well and the color remains attractive to the finish.

The plant is a vigorous one, fairly upright in habit, and nearly every perfect bud and flower is borne singly on a long, straight stem, ideal for cutting. Free-branching and free-blooming, it is easy to grow, but your biggest delight will be in cutting and arranging the exquisite buds. Originated at the Armstrong Nurseries by H. C. Swim. Plant Pat. No. 921. \$2.25 each; 3 or more, \$2.00 each.

Prices shown are for bare root roses and do not apply on blooming plants in containers.

Blooming Roses in Containers

Throughout the late spring, summer, and fall, many of the outstanding roses described in this catalog may be had growing and blooming in 5-gallon containers for immediate planting. The prices are somewhat increased over the prices for the bare root plants listed in this catalog. The plants in containers are too heavy and bulky to ship but you can get them at any one of our six salesyards.

The Perfect Rose Garden

Each year we select 10 roses from our entire list—kinds which are outstanding for color, vigor, and general garden performance. We think the group selected for 1954 the finest ever and you will find every bush a typical Armstrong rose plant, husky and heavy-rooted. By starting your garden with the "Big 10" you can eliminate the guesswork involved in choosing varieties for a rose garden you'll be proud of, and that's not all—you save substantially over ordering the same varieties individually, too. If you have room for only five plants, you could not choose five better kinds than the Armstrong-originated varieties pictured on this page and offered as "The Armstrong 5."



Charlotte Armstrong

Charlotte Armstrong



This glorious All-America Winner, with its long tapering blood red buds and magnificent open flowers of cerise, is our finest rose. Known and loved from Maine to California. Plant Pat. No. 455.

\$2.25 each; 3 or more, \$2.00 each.

Helen Traubel



1952 All-America Winner. It is distinctive and lovely with its sparkling pink to luminous apricot color and the sheer perfection of the long, tapering buds and glorious open flowers. A big vigorous plant and a rich fragrance round out the picture. You can't help but like it. Plant Pat. No. 1028.

\$2.75 each; 3 or more, \$2.40 each.

Nocturne



All-America Winner for 1948. With its long perfectly formed buds and big velvety dark red flowers, this is one of the best red roses for all areas. Plant Pat. No. 713.

\$2.00 each; 3 or more, \$1.75 each.



Helen Traubel

First Love

If there are buds more lovely than the long tapering urn-shaped beauties of this variety, we would like to see them. The color is warm pink and perfectly complements the exquisite buds. Plant Pat. No. 921.

\$2.25 each; 3 or more, \$2.00 each.

Nocturne

Sutter's Gold



The most acclaimed rose introduction of 1950—All-America and International Award Winner. An exceedingly vigorous plant which displays perfect long yellow buds shot with orange, and big golden yellow flowers with more rich fragrance than any other yellow rose. Plant Pat. No. 885.

\$2.25 each; 3 or more, \$2.00 each.

The Armstrong 5

If your space is too limited for 10 roses, here are five of the best roses you can plant. One bare root plant of each of the Armstrong originations illustrated on this page will be sent postpaid at the proper planting time for only

\$9⁸⁵

California orders, please add 3% sales tax



Sutter's Gold



First Love

ARMSTRONG BIG 10

and No Guesswork!

Buccaneer

This Armstrong introduction for 1953 with its brilliant flowers of rich non-fading yellow will give you plenty of perfect streamlined buds for cutting. Completely described on page 7. Plant Pat. No. 1119.

\$2.75 each; 3 or more, \$2.40 each.

Fandango

Among the very first to bloom, the gay orange-red buds and flowers atop the big strong plant will give you a more brilliant show of garden color, and do it over a longer time than most any rose we know. Plant Pat. No. 894. See page 14.

\$2.00 each; 3 or more, \$1.75 each.

Peace



Truly here is an amazing and graceful combination of strong stems, fine lasting qualities, delicate coloring, and large size. The buds open slowly to a glorious big flower displaying shades of canary-yellow, pale gold, cream, pearly white, and apple blossom. Although huge, the dainty coloring and graceful appearance make the blooms exceptionally lovely, and they last for a long while. This is deservedly one of the top roses in the world today. Plant Pat. No. 591.

\$2.50 each; 3 or more, \$2.20 each.

Show Girl

Undoubtedly this rose has the largest, yet most perfect buds to be found in rosedom. The big open flowers are mighty attractive too, and the bush is a big strong one which does well everywhere. Plant Pat. No. 646. See page 14.

\$2.00 each; 3 or more, \$1.75 each.

Tallyho



The face of the petals is a delightful pink, and the reverse is a brilliant cardinal red! The plant is one of the most vigorous you'll find and it's hardy, too. Both buds and flowers are beautiful in form, very fragrant, and there are plenty of them. Plant Pat. No. 828. See page 13.

\$2.00 each; 3 or more, \$1.75 each.

One Plant Each of the Ten Roses Illustrated on These Two Pages...

A big, husky, bare root Armstrong plant of each of the ten varieties listed on these two pages makes up the famous "Big 10." We will ship it anywhere in the United States at proper planting time without additional cost.

California orders add 3% sales tax

\$19⁴⁵

Fandango

Buccaneer

Tallyho

Peace

Show Girl



Brilliant Bravo

Armstrong

Bravo

We have never seen a rose more brilliant than this sparkling cardinal red, nor have we seen one which holds color as it does—even when the sun is burning hot and most red varieties fade to an unattractive hue. Don't expect a great big plant and don't look for a lot of fragrance. But when the plump buds open to spectacular, big, broad flowers with wavy petals arranged in perfect symmetry, and with every flower glowing like a burning ember, you are certain to exclaim "Bravo!" Originated at the Armstrong Nurseries by H. C. Swim. Plant Pat. No. 983. **\$2.25 each; 3 or more, \$2.00 each.**

Forty-niner



The colors are so bright and so startling in their contrast that it is hard to believe they could be present in the same flower. Inside, the petals are a vivid Orient red, while outside, they are chrome to straw yellow, both colors becoming paler in some weathers. The plant is easy to grow, vigorous and tall and it produces many delightfully formed buds and spectacular flowers on long, sturdy stems. All-America Winner for 1949, it's an H. C. Swim origination. Plant Pat. No. 792. **\$2.50 each; 3 or more, \$2.20 each.**

Taffeta



Every change in the weather will bring delightful new combinations of pink, carmine, and even orange. The buds are perfect as are the open flowers with their delicately frilled petals and pronounced fragrance. The new growth is an attractive mahogany-red color, changing to dark glossy green. Although not as resistant to mildew as some varieties, it is a big, vigorous, upright plant which blooms freely everywhere. A 1948 AARS Winner. Plant Pat. No. 716. **\$2.00 each; 3 or more, \$1.75 each.**

Quantity rates apply on 3 or more of the same variety only.



Forty-niner



Tallyho



Taffeta



Mirandy

Rose Creations

Tallyho



Here is a color pleasingly different. Inside, the petals are a delightful shade of pink or old rose, while on the reverse side they are brilliant crimson! The tall, robust plant has proved quite hardy, even in areas like Minnesota. Each beautiful ovoid bud opens to a magnificent, large, high-centered, fully double flower of exquisite shape, having a spicy, full-bodied fragrance. Originated in the Armstrong Research Department by H. C. Swim. Plant Pat. No. 828. **\$2.00 each; 3 or more, \$1.75 each.**

Mirandy



Top All-America Winner for 1945. The big ovoid buds of deep red display new beauties of form with each successive stage as they unfold the 50 or so graceful petals eventually becoming a huge full bloom of dark glowing red with the most delicious full-bodied fragrance you have ever inhaled. In cool foggy weather the flowers do not always open perfectly, but when the weather is warm, they are unbeatable. The plant is medium in height, vigorous and free-branching. Originated in the Armstrong Research Department. Plant Pat. No. 632. **\$2.25 each; 3 or more, \$2.00 each.**

Nocturne



The long slender buds are beautifully shaped and so are the big, many-petaled, mildly fragrant flowers. Both of them have plenty of long-lasting substance and they generally appear singly on long strong stems which make Nocturne an ideal cutting rose. The color is deep velvety crimson with intriguing deeper pools of maroon. The bush is big and sturdy with long stems and luxuriant foliage. Unlike some red varieties, Nocturne is a rose which seems to do well everywhere. National rose polls continually rate it near the top. Originated in the Armstrong Research Department by H. C. Swim. Plant Pat. No. 713. **\$2.00 each; 3 or more, \$1.75 each.**



Valentine

Valentine

With its bright flowers of glowing crimson covering it like a mantle throughout most of the year, Valentine is spectacular for a mass planting or for use in a low hedge or border. You will find it completely described on Page 29 with the other Floribundas. Plant Pat. No. 1029. **\$2.00 each; 3 or more, \$1.75 each; 25 or more, \$1.60 each.**



Nocturne

Chief Seattle

This Armstrong introduction for 1952 is a beautiful and unusual rose. In cooler areas or during the fall, the flowers are a rich shade of buff-apricot shading to old gold. In warmer areas, the spring flowers will usually be lighter in color than shown in the illustration and often with a flush of pink. The buds and flowers are nearly always perfect in form and are marvelous for cutting. Chief Seattle is extremely vigorous with great quantities of luxuriant olive green foliage, and the stems are remarkably long and straight. Named in honor of the Indian chief who founded the city of Seattle in 1852. Originated by H. C. Swim at the Armstrong Nurseries. Plant Pat. No. 1030. **\$2.50 each; 3 or more, \$2.20 each.**



Chief Seattle



Applause

Armstrong Rose Creations

Applause

One of the few American roses ever to have won the coveted Gold Medal at the Bagatelle Trials in Paris (1948). Dazzling light red, the flowers are large, high-centered, and mildly fragrant. They last exceptionally well when cut. Plant about medium height, very vigorous, and quite resistant to mildew. It will have more branches than most other kinds, and more flowers, too. Plant Pat. No. 829. **\$2.00 each; 3 or more, \$1.75 each.**

Fiesta

Dazzling is the only word that describes this remarkable rose with stripes and flecks of bright yellow on a background of rich vermilion. The bizarre yet attractively colored flowers are never alike. Fiesta is a modest grower, low and spreading. It will require a little extra water and fertilizer to get vigorous growth and the finest blooms, but the gayly colored flowers are worth it—they make a great show on the plant, or as cut flowers. Slightly fragrant. Plant Pat. No. 389. **\$2.25 each; 3 or more, \$2.00 each.**

Show Girl

If you want to enjoy the most beautiful, the most perfect, and the longest deep pink rose buds you can imagine, be sure to plant this Armstrong Rose. We think it is one of the finest pink roses of all for cutting because of the magnificence of the buds and the lasting quality of the flower, with its big heavy-textured petals. No matter where you grow roses, Show Girl will flourish—coast or inland, cool or warm, foggy or sunny. Tall, rather slender, with big heavy canes and plenty of lovely flowers borne on long sturdy stems. Just enough fragrance to give it character. Plant Pat. No. 646. **\$2.00 each; 3 or more, \$1.75 each.**

Fandango

For brilliant eye-catching color, continuity, and quantity of bloom, we think Fandango is unbeatable. Deep scarlet in the bud, the opening flowers are an unbelievably gay and bright Chinese red and they remain attractive until the last petal falls. The good-looking buds open rather quickly to a large ruffled flower with a crispness to match its brilliance. True, there is loss of petalage and size during very hot weather, but the big, tall, vigorous plant is usually covered with brilliant bloom before other kinds start and after they stop. Originated in the Armstrong Research Department by H. C. Swim. Plant Pat. No. 894. **\$2.00 each; 3 or more, \$1.75 each.**

Quantity rates apply on 3 or more of one variety only.

Show Girl



Juno

In no other rose will you find large size, clear color, perfection of form, and substance combined to such a degree. You will get magnificent flowers for cutting—real exhibition roses, perfect in every detail. The color is clear, bright pink without any other shadings, aging to soft silvery pink but remaining warm and attractive until the last petal falls. Don't expect a great profusion of bloom nor a big tall-growing bush. Although the stems and canes are strong, and the foliage leathery and heavy, the plant stays relatively low. Every bloom will delight you, lacking only fragrance to be sheer perfection in a rose. Plant Pat. No. 895. **\$2.25 each; 3 or more, \$2.00 each.**

Debonair

A profusion of perfect, jaunty, mimosa yellow buds open to high-centered, many-petaled flowers of clear primrose yellow—brim full of old-fashioned rose fragrance. You will like the fresh luxuriant appearance of the vigorous upright bush for its glossy mildew-resistant foliage is among the most handsome to be found in roses. Debonair keeps on producing dozens of its perfect tight-rolled buds throughout the season. Its stems are not long, but they are plenty long enough to cut, for each one is sturdy and straight. Plants medium height. Originated in the Armstrong Research Dept. by W. E. Lammerts. Plant Pat. No. 677. **\$1.75 each; 3 or more, \$1.55 each.**

Sweet Sixteen

Dainty pink, with tints of rose and a dash of gold—a soft rose complexion in the delicate colors of youth and beauty. The long, tight buds, half-open blooms and large flowers with 16 to 20 crisp petals are magnificent in their perfection. From spring until fall you will enjoy a long succession of sweetly fragrant buds and flowers borne on long straight stems. The plants are tall, rather slender and do especially well in coastal or cool weather regions, where Sweet Sixteen is exceedingly lovely in form and color. Plant Pat. No. 631. **\$1.75 each; 3 or more, \$1.55 each.**

The Chief



Large size and vigor are inherited from its parent, President Hoover. The gigantic bud of this All-America Winner for 1940 combines intense flame and copper tones, with the open flower showing flame, coral and copper. The full-blown flowers have a sweet fragrance and are at their best in warm weather. These long-stemmed beauties are borne on a spreading vigorous plant, to 4½ feet, which is resistant to mildew. Plant Pat. No. 456. **\$1.75 each; 3 or more, \$1.55 each.**

Blooming Roses in Containers

Throughout the late spring, summer, and fall, many of the outstanding roses described in this catalog may be had growing and blooming in 5-gallon containers for immediate planting. The prices are somewhat increased over the prices for the bare root plants listed in this catalog. The plants in containers are too heavy and bulky to ship but you can get them at any one of our six salesyards.

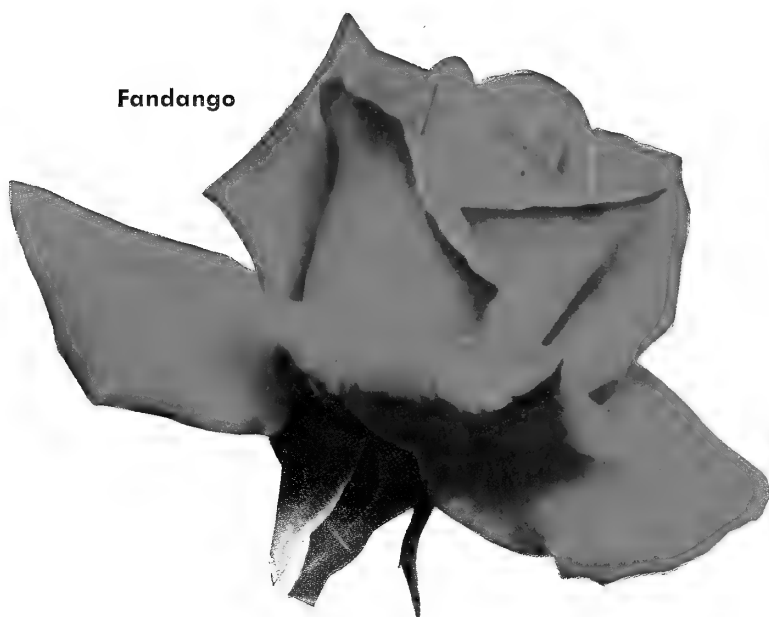


Fiesta



Juno

Fandango



Debonair



The Chief



Sweet Sixteen





Capistrano

Capistrano



A beautiful big pink rose which won 1950 All-America honors. It features long, beautifully formed buds in a sparkling shade of clear rose pink which open to extremely large full flowers of lighter pink. Every bloom is loaded with a powerful raspberry-like fragrance and has plenty of long-lasting substance. They last extremely well when cut, and the color stays warm and attractive in the aging flowers. Capistrano makes a very large and sturdy bush. The stems are long, heavy and straight, and the foliage large and leathery. Plant Pat. No. 922.

\$2.25 each; 3 or more, \$2.00 each.

Christopher Stone

Such a vivid color could not long go unnoticed in any garden. The glowing brilliant crimson-scarlet flowers, with deeper shadings, never have a trace of blue and do not fade in the hottest sun. Not all of the buds are perfect in form, but they have a long-lasting substance and a delightfully spicy fragrance. Fully blown, this rose is as beautiful as any rose you will ever find.

\$1.50 each; 3 or more, \$1.30 each.

Crimson Glory

Despite keen competition from more recently introduced red roses, Crimson Glory continues to be one of the most popular varieties in its color throughout the nation. A glance at any national rose poll will confirm the fact that many growers place Crimson Glory right at the top of recommended red kinds. The beautiful, flaring, urn-shaped buds open into magnificent flowers of velvety crimson with black and maroon shadings. The richly perfumed bloom seems to glow like an ember when light is reflected from its velvety petals. The plant is vigorous, low and spreading, and it produces a continuous succession of flowers.

\$1.50 each; 3 or more, \$1.30 each.



Christopher Stone

Bush Roses

The Best of the World's Modern Roses and Fine Old Favorites

Simply choose your color and then order with confidence because every one of the varieties we list below has had to come through exhaustive garden tests with flying colors before it is offered to you. Every care is used in growing Armstrong plants and every modern facility is employed in their storage, care and packing to insure that you will get big plump fresh plants delivered right to your door no matter where you live. *WE GUARANTEE ARMSTRONG ROSES TO GROW AND BLOOM IN YOUR GARDEN IF OUR INSTRUCTIONS ON PLANTING AND CARE ARE FOLLOWED.*

Quantity Rates

You can save substantially by ordering 3 or more roses—and you'll get a lot of pleasure from several plants of one variety. Three different varieties cannot be sold at the quantity rate—this rate applies on 3 plants of a single variety only.

You save on the special collections, too, but please do not ask for us to substitute varieties within collections.

Countess Vandal



Countess Vandal

You'll look long to find anything finer in the salmon-pink class than the Countess. She continually produces lovely long tapered buds of salmon-pink shaded with copper and gold which open to big, long-lasting, richly fragrant flowers on fine stems. Buds and flowers are usually perfect no matter what the weather, and the plant thrives and blooms consistently wherever roses are grown.

\$1.50 each; 3 or more, \$1.30 each.

Etoile de Hollande

This magnificent red rose is ranked among the best in its color class. The medium-sized buds of velvety maroon open beautifully and cleanly to a marvelous flower of glowing crimson with darker shadings. Each petal holds its brilliant color until it drops. A heavy, delightful old-rose fragrance adds to its charm. The medium-tall bush is strong, free-branching and healthy, with the leaves large, green and fresh looking.

\$1.50 each; 3 or more, \$1.30 each.

Blooming Roses in Containers In late spring, summer and fall, many of the roses described here may be had growing and blooming in 5-gallon containers at prices somewhat increased over the bare root prices shown here. Plants in containers are too bulky and heavy to ship, but you can get them at any of our 6 salesyards.



Etoile de Hollande

The Thrifty 6



Picture

Six Great Roses at a Price to Fit Every Budget

Here are really fine roses at an unusually low price. They are six famous varieties which have proved their merit all over the world, and you can be sure they will give you lots of lovely bloom and lots of satisfaction. Soon after you plant them you will be picking colorful fragrant blooms in a variety of brilliant colors. You really will have a complete little rose garden. By the way, what more welcome gift could you give that friend or relative who is just starting to landscape a new home?

Crimson Glory

A glorious dark fragrant red. See page 16.
\$1.50 each; 3 or more, \$1.30 each.

Countess Vandal

One of the finest of salmon pink varieties. See page 16.
\$1.50 each; 3 or more, \$1.30 each.

Etoile de Hollande

A glowing crimson which blooms to beat the band. See page 16.
\$1.50 each; 3 or more, \$1.30 each.

Picture

A lovely clear pink. See page 21.
\$1.50 each; 3 or more, \$1.30 each.

Crimson Glory



Girona

A Spanish beauty with large yet graceful buds opening to magnificent full double flowers which vary in tone from pink to yellow and carmine. Fine for cutting because the flowers last well and the stems are long and strong. The bush is a big, tall-growing, free-blooming one which does well everywhere.
\$1.50 each; 3 or more, \$1.30 each.

Mrs. E. P. Thom

One look at the pointed buds of clear canary-yellow and the large fully double flowers with their lovely form and delightful fragrance explains why this rose continues pleasing gardeners year after year. The plant is vigorous and grows to medium height.
\$1.50 each; 3 or more, \$1.30 each.



Mrs. E. P. Thom

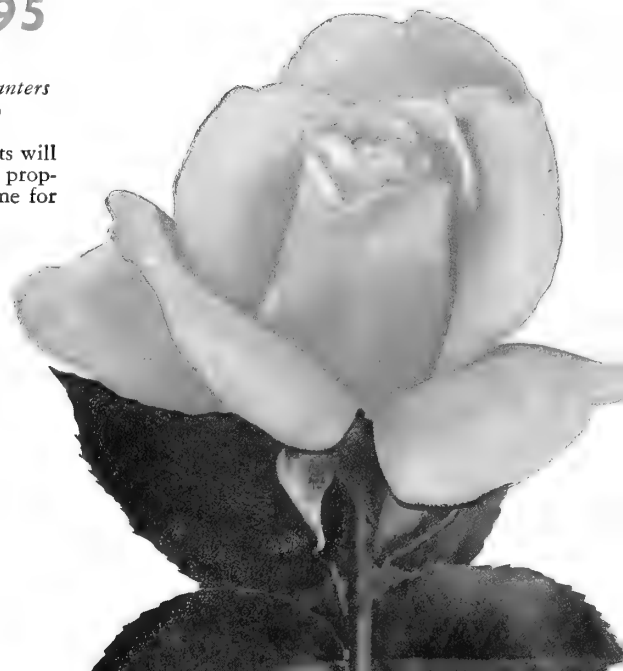
One Plant Each of All Six Varieties Postpaid

\$6⁹⁵

(California planters please add 3% sales tax)

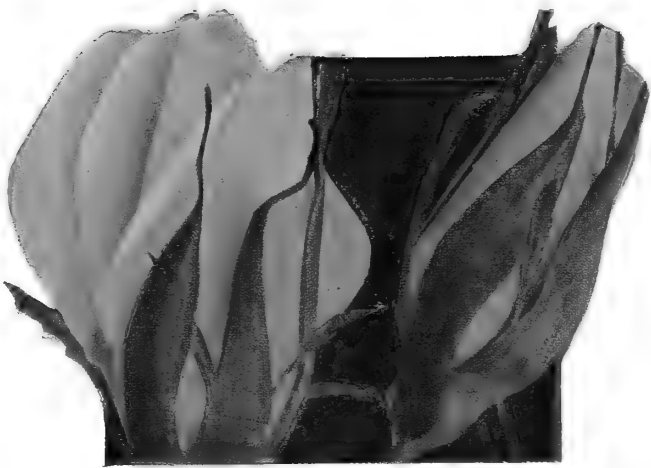
Bare root plants will be shipped at proper planting time for your area.

Girona



Armstrong

Better Varieties—



Eclipse

Eclipse

In our opinion no rose garden worthy of the name is complete without this variety. You will find yourself going to it again and again to cut the spicily fragrant, exquisitely beautiful buds. Of chrome yellow, they are slender, urn-shaped, and often erect more than two inches long. The plant is a very vigorous one, rather erect in habit, and always well covered with dark green leathery foliage. Plant Pat. No. 172. **\$1.75 each; 3 or more, \$1.55 each.**

Fred Howard



The great beauty of this All-America Winner for 1952 is not in the bud but in the great big half-open and fully blown flowers. They are buff and pale yellow, with a light flush of pink at the edge of each petal. The 50 or so petals unfold slowly, perfectly, and the variety is outstanding for cutting. Fred Howard boasts an extremely fine plant. Very vigorous and will get up to 4 or 5 feet in Western gardens with no trouble at all. Although tall, it is still bushy and the stems are straight and stout. Plant Pat. No. 1006. **\$2.50 each; 3 or more, \$2.20 each.**

Grande Duchesse Charlotte



An All-America Award Winner in 1943, this rose is outstanding for its unique color and its intriguing perfume. The interesting buds are a rich claret color (you may call it brick-red) which changes as the flower ages to a lovely begonia rose. The flowers are always beautiful because of that rich color, never before seen in a rose. You'll enjoy this rose in your garden when you see the big, strong, free-branching plant with its uniquely colored flowers and sniff the rich fruit-like fragrance. Plant Pat. No. 774. **\$2.00 each; 3 or more, \$1.75 each.**



Heart's Desire

Heart's Desire



The outstanding features of this All-America Winner for 1942 are exquisite long-pointed buds of bright luminous red without other shadings and a superb fragrance. A few blooms will perfume an entire room. The plant with its light green foliage is rather willowy in habit, so there is an occasional weak neck. But who can resist a shining red rose with a wealth of heavy perfume—especially one which lasts as well as this does when cut. Plant Pat. No. 501. **\$1.75 each; 3 or more, \$1.55 each.**

Grande Duchesse Charlotte



Fred Howard

Frau Karl Druschki

One of the few remaining Hybrid Perpetuals, "Frau Karl" is still one of the best of the whites, loaded with bloom especially in spring, the pointed pink-white buds open to handsome flowers of immaculate white. The vigorous bush gets exceptionally large—with long, arching canes reaching as much as 6 feet in a single season, so give it lots of room. Does well everywhere. **\$1.50 each; 3 or more, \$1.30 each.**

K. A. Victoria

For over 60 years K. A. Victoria has been considered one of the best white roses of all because it blooms so freely and continuously no matter what the weather. The lovely snow-white buds open to magnificent high-centered, fully double flowers of pure ivory-white. **\$1.50 each; 3 or more, \$1.30 each.**

Prices in this catalog are for bare root plants only and do not apply to blooming plants in containers.




Bush Roses

The Best Plants

Dainty Bess

Single roses are quaintly charming whether you see them in a garden or in a vase arrangement, and Dainty Bess is deservedly the most popular of them all. The large five-petaled flowers are a warm pink overlaid with a flush of suntan, punctuated with maroon stamens. The tall strong bush is an almost continuous source of blooms which last a long time after they are cut. The flowers form in clusters of three or more. **\$1.50 each; 3 or more, \$1.30 each.**


Fred Edmunds

 When you first see this rose blooming it will stop you right in your tracks, because of the brightness of its enchanting and unusual orange color. Buds of vivid orange open to large flowers (usually about 20 petals) which are a captivating shade of apricot-orange. The color and the ample fruit-like fragrance make this a marvelous rose for the cooler coastal areas. Elsewhere, the plant is apt to stay rather low and buds and flowers smaller. Still, it is well worth having for its brilliant and unusual color. All-America Winner for the Pacific Coast. Plant Pat. No. 731. **\$2.00 each; 3 or more, \$1.75 each.**

Golden Rapture

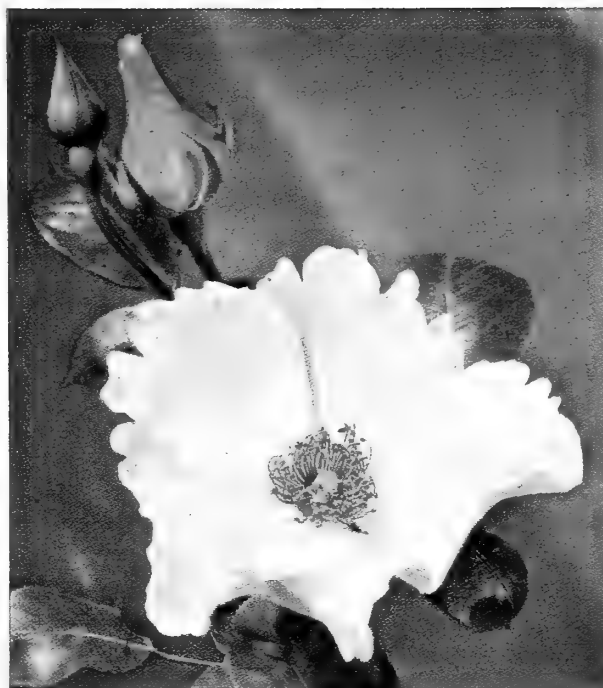
Morning after morning you can cut some of the most lovely long-pointed buds of bright yellow that you have ever seen with this variety in your garden. In unfavorable weather it loses some of its brilliance but you will never cease to admire the sheer perfection of form in both bud and flower. The shiny foliaged plant grows to medium height and produces plenty of buds and flowers with a mild old-rose fragrance. **\$1.50 each; 3 or more, \$1.30 each.**

Katherine T. Marshall

 This All-America Winner for 1944 is not a "flamboyant" rose, but one which is sure to win your affection when you get better acquainted. The flowers are warm clear pink with no other shadings. Generally it has less than 25 petals, but every one is big and heavy-textured, forming a magnificent bud and half-open bloom, with a rich fragrance. An extremely big, vigorous plant, luxuriantly foliaged. Plant Pat. No. 607. **\$1.75 each; 3 or more, \$1.55 each.**

Blooming Roses in Containers

During the late spring, summer and fall many of the varieties listed in this catalog may be had growing and blooming in spacious 5-gallon containers at prices somewhat increased over the prices for bare root plants listed in this catalog. Roses in 5-gallon containers are available only at our six Southern California salesyards. They are too heavy and bulky for shipping.



Dainty Bess



Fred Edmunds

Katherine T. Marshall

Golden Rapture





Mme. Chiang Kai-shek

Bush Roses

Mme. Chiang Kai-shek



Unquestionably, this All-America Winner for 1944 is one of the finest light yellow roses of all time. The big but beautifully shaped buds of pale yellow open into huge flowers with 24 to 30 crisp petals of light creamy ivory. The plant is very vigorous, tall-growing, and the spectacular buds are nearly always on individual long straight stems. Even in adverse weather when the color becomes almost white, the flowers still retain their perfect form and their spicy lemon scent. Plant Pat. No. 664. **\$1.75 each; 3 or more, \$1.55 each.**

Mme. Henri Guillot

When this rose bedecks itself in all the splendor of its spring array, we know you will be rating it as we do, among your favorites. The tight bud becomes progressively more graceful as it opens into a large flower. The 25 or so petals are brilliant flame to raspberry-pink, and the luxuriant glossy light green foliage clothes the big spreading plant right down to the ground. A delightful fragrance adds to its charm. Plant Pat. No. 337. **\$2.00 each; 3 or more, \$1.75 each.**

Mme. Henri Guillot



Mission Bells



The pointed, well-shaped buds of this All-America Award Winner for 1950 are a deep glowing salmon-pink, opening to full high-centered flowers of clear shrimp-pink. Mildly fragrant, the flowers are medium to large in size. The vigorous plant will grow quite tall in your garden and will nearly always be in bloom. Plant Pat. No. 923. **\$2.25 each; 3 or more, \$2.00 each.**

Quantity Rates

Rates shown for 3 or more plants apply only to 3 plants of the same variety. Less than 3 plants of mixed varieties cannot be sold at the quantity rate.



Mission Bells

Lowell Thomas



For depth and clarity of color and its ability to do well in all areas, hot weather or cool, this All-America Winner for 1944 is considered to be one of the best yellow roses. The plant is robust and tall-growing and is continually bursting with long, tightly furled buds of clean canary-yellow which open slowly into large glowing flowers on long, leafy stems. Plant Pat. No. 595. **\$2.00 each; 3 or more, \$1.75 each.**

McGredy's Ivory

Beautiful creamy ivory-white buds, about as perfect as any you will ever find, open to large many-petaled flowers of snowy white. The vigorous plant grows to medium height and produces plenty of long-lasting flowers with a delicate damask perfume. **\$1.50 each; 3 or more, \$1.30 each.**

Lowell Thomas



Join a Rose Society

If growing roses is your hobby or if you are just beginning and want to know more about them, a membership in the American Rose Society will help you. The Society's Annual is the most comprehensive publication on roses, and you'll find the monthly magazine extremely valuable, too. Send to Mr. James Gurney, Sec., Box 687-K, Harrisburg, Penna. Annual dues, \$4.50. You'll find this membership a "best buy" at the price.

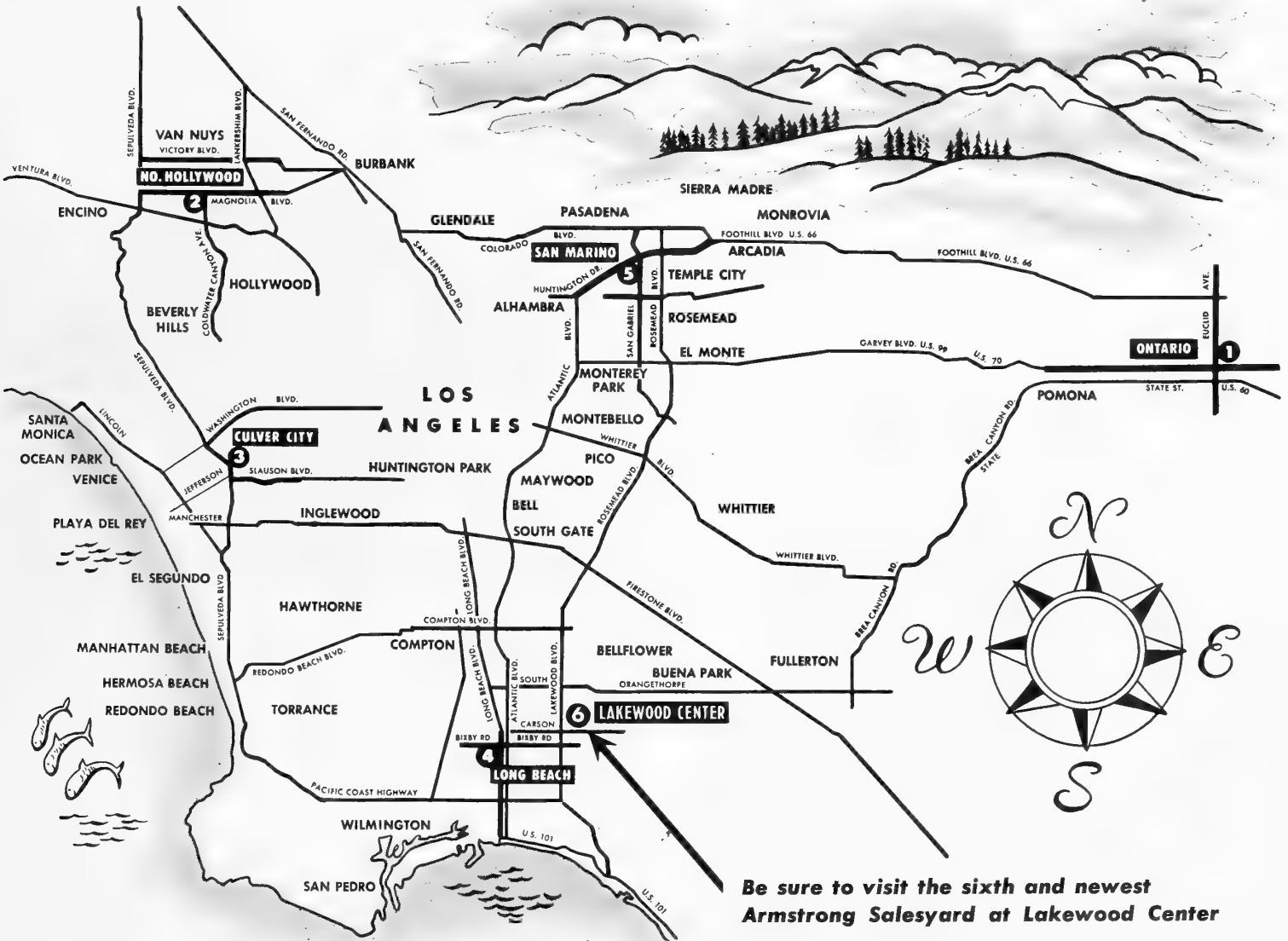
The Pacific Rose Society (primarily for Southern California residents) offers local rose enthusiasts a chance to meet and compare notes with other folks who are keenly interested in roses. Write to Mr. Fred W. Walters, Sec., Pacific Rose Society, 1044-A Olive Lane, La Canada, Calif. Annual dues, \$2.50.

Six Big Salesyards

in Southern California

You will find a complete supply of genuine Armstrong products only at our Southern California salesyards. Courteous skilled nurserymen will gladly advise you on what to plant, where, when, and how to plant it. With the exception of New Year's Day, Easter Sunday, Memorial Day, July 4th, Labor Day, Thanksgiving and Christmas Day, all yards are open every day including Sunday.

Please address all mail orders and correspondence to the Ontario office.



Be sure to visit the sixth and newest Armstrong Salesyard at Lakewood Center

- 1 Ontario 408 North Euclid Avenue**
On famous Euclid Avenue, four blocks north of Highway 99.
Telephone: YUkon 627-61
- 2 North Hollywood 12908 Magnolia Blvd.**
At the corner of Magnolia Blvd. and Coldwater Canyon Avenue.
Telephones: STanley 72394 and SUNset 11522
- 3 Culver City 4440 Sepulveda Blvd.**
On Sepulveda Blvd., just five blocks south of Washington Blvd.
Telephone: VERmont 82-665

- 4 Long Beach 3759 Long Beach Blvd.**
At the corner of Bixby Road and Long Beach Blvd.
Telephone: Long Beach 45-118
- 5 San Marino 2920 Huntington Drive**
On Huntington Drive one block west of San Gabriel Blvd.
Telephone: ATLantic 95041
- 6 Lakewood Center 4730 East Silva Street**
Long Beach 11, California
Telephone: METcalf 3-0719

Truck Delivery

Your order will be delivered free by our truck if you live in the area adjacent to the salesyard at which you placed your order. Truck deliveries from Ontario to more distant points not shown on the map above are made for a small delivery charge. Delivery service is usually available from Ontario for most of Southern California.

Landscape Service

We maintain a large landscape service department to aid in planning your garden. Whether you are planting a new place for the first time or doing an extensive replanting job, you may find the assistance of one of our landscape designers of real help. Just call any one of our Salesyards or drop a line to Ontario for full information.

The Best for Your Garden

Armstrong Quality Insures It!



Whether you are buying Armstrong plants for the first time or are an old friend, you can be sure that the famous Armstrong quality is a part of every plant you get. We have no agents or representatives and you can get genuine Armstrong products only through one of our six Southern California salesyards or by mailing your order to the Armstrong Nurseries at Ontario, California.

Member of American Association of Nurserymen
Member of California Association of Nurserymen



GROWING WITH SOUTHERN CALIFORNIA FOR 64 YEARS

We like to think we've gained so many new friends and customers throughout our 64 years because our goal has been always to produce the best trees and plants it is possible to grow. Our standards have never changed and we think we can serve you best and merit your confidence in us by continuing to make sure that the plants Armstrong's customers get are fine plants.

Terms

Cash with order. Send check or money order. No orders sent C.O.D. All California purchasers, please add sales tax of 3% where orders are being shipped to California points.

Packing Charges

On all plants (except camellias) which must be shipped with soil, whether balled or in containers, a charge of 10% of the cost is made for packing. If your order is mixed, *i.e.*, if it includes both container and bare root plants, you pay packing charge on the container material only. Plant material in containers (including camellias) will be shipped by express or freight with transportation charges collect upon delivery.

Bare Root Shipments Prepaid

There is no packing charge and we prepay the transportation costs on all orders consisting of bare root plants to any point in the United States, whether it be shipped by mail, express, or freight (tree roses excepted, see page 22).

Price Changes

We hope to be able to maintain the prices given in this catalog throughout the sales season for which it is issued. However, unforeseen conditions sometimes make price changes necessary and we reserve the right to make price changes at any time without notice.

Want Some Planting Help?

At every Armstrong location there is a staff of skilled nurserymen—every one able and glad to advise you on what to plant and where to plant it. It makes no difference whether you want a complete landscape job for a country acre, whether you have a sick lawn, or simply want to pot a geranium, we will gladly help you with your problem. Good ideas and helpful suggestions which will make your home more attractive are yours for the asking.

Complete Supply of Garden Aids

Also, at every Armstrong Nursery, you will find a complete stock of genuine Armstrong quality plants, and that means a larger selection from which to choose than you will find elsewhere. But that is only a part of the Armstrong service for at each location there is a large stock of garden supplies, tools and gadgets—all chosen by gardening experts to make your gardening easier and more enjoyable.

Some plants do better with special fertilizer. We have not only the fertilizer but someone to tell you exactly how to use it. No gardener is ever lucky enough to entirely escape some garden pests from time to time. But again we are able to tell you the best, quickest, and safest way to rid your garden of any of these unwelcome guests.

A sprinkler system you install yourself, special tools to make each gardening task easy and enjoyable and "How to do it" books are only a few of the garden accessories.

Best Time to Plant

Deciduous trees and shrubs—January through March.

Evergreen trees and shrubs—all year.

Roses (bare root)—January to April.

Roses (in containers)—April to December.

Citrus and subtropicals—any time except during freezing weather.

Avocado trees—any time except during freezing weather with the late spring months slightly preferable.

Deciduous fruit trees—January to April.

Berry plants, grapes and garden vegetables—January to April.

Plant Losses

Tell us immediately if the plants you receive are unsatisfactory when you get them. It is our desire to make a fair adjustment and to help you in getting the best possible results from your Armstrong plants. When the instructions which we send with every shipment are carefully followed, only very rarely should you lose a plant. We make every effort to get all Armstrong plants to you in excellent condition because our reputation depends upon the results you have.

Truck Delivery

Your plants may be delivered free by our truck if you live in the area adjacent to the salesyard at which you placed your order. If it is not convenient for you to visit one of our salesyards, just mail your order to Ontario. Delivery service to all of Southern California is available at a small charge.

Note:

Armstrong Nurseries will exercise care to have merchandise true to name. Provided it is expressly understood that all orders are accepted on the condition precedent that it makes no warranty, express or implied, as to description, quality, productiveness, crops, or any other matter whatsoever, that its liability in every instance whatsoever is limited to the purchase price; that orders shall be void should delivery be prevented or injury befall the stock from flood, drought, frost, or other causes beyond its control and orders travel at risk of purchaser.

For Best Results Plant Armstrong Roses

There are thousands of named rose varieties known today, but those you will find at Armstrong's have been thoroughly tested and carefully selected. We think they are the best for color, form, and garden performance. Just as with other plants, there is always the determination to make our plants the best rose plants grown anywhere. It is this combination of the best plants and the best varieties which makes Armstrong roses the most successful for you.

Our Guarantee

If you follow the simple steps outlined in the Planting Guide which you will receive free with every shipment of Armstrong Roses, and providing weather is not abnormal or there are no damaging factors beyond our control, we will replace without charge any rose which fails to grow and bloom in your garden provided we are notified of its failure within six months after the rose is delivered.

Free Planting Instructions

With every shipment of Armstrong roses you will receive complete planting instructions. You are almost certain to be successful with your rose growing if you will follow the few simple rules covering planting and care.

You Save by Ordering 3 or More of Each Variety

You can save substantially by ordering 3 or more roses of the same variety. Similar savings are realized when you purchase any of the collections listed in this catalog.

Roses in Containers

From April through November big husky Armstrong-grown rose plants are available in spacious 5-gallon containers with prices slightly higher than for the bare root roses priced in this catalog. Weight and bulkiness prevent shipping them, but a complete selection will be found at any of the 6 salesyards.

Armstrong Nurseries

Phone YUKon 627-61

ONTARIO, CALIF.

QUANTITY RATES APPLY TO 3 OR MORE OF ONE VARIETY ONLY

BARE ROOT ROSE ORDER BLANK

Armstrong bare root roses will be shipped at the proper planting time for your area. We pay shipping costs on them (except tree roses) anywhere in the United States.

Sold to		Ship to	
Street Address		Street Address	
City	Zone	City	Zone
State	County	State	County

If any item is out of stock, may we substitute? Yes No

We reserve the right to determine the method of shipment M. T. Z

Item No.	Quan.	Variety and Price	TOTAL	Item No.	Quan.	Variety and Price	TOTAL	Item No.	Quan.	Variety and Price	TOTAL
Special Collections				1145		KATH. T. MARSHALL \$1.75 each; 3 for \$1.55 each		1397		CL. CRIMSON GLORY \$2.50 each; 3 for \$2.20 each	
1001		ALL-AMERICA COLL. \$11.35		1149		LILIBET \$2.50 each; 3 for \$2.20 each		1400		CL. DAINTY BESS \$1.75 each; 3 for \$1.55 each	
1002		ARMSTRONG BIG 10 \$19.45		1150		LOWELL THOMAS \$2.00 each; 3 for \$1.75 each		1405		CL. ETOILE DE HOLLANDE \$1.75 each; 3 for \$1.55 each	
1003		ARMSTRONG 5 \$9.85		1158		MA PERKINS \$2.25 each; 3 for \$2.00 each		1408		CL. FORTY-NINER \$2.75 each; 3 for \$2.40 each	
1004		TOP 4 FOR '54 \$9.70		1165		McGREDY'S IVORY \$1.50 each; 3 for \$1.30 each		1415		CL. GOLDEN RAPTURE \$1.75 each; 3 for \$1.55 each	
1005		ROYAL ROSE COLL. \$10.75		1170		MIRANDY \$2.25 each; 3 for \$2.00 each		1416		CL. GOLDILOCKS \$2.50 each; 3 for \$2.20 each	
1006		THREE WINNERS COLL. \$7.25		1176		MISSION BELLS \$2.25 each; 3 for \$2.00 each		1420		CL. HINRICH GAEDE \$1.75 each; 3 for \$1.55 each	
1007		THE THRIFTY SIX \$6.95		1180		MME. CHIANG KAI-SHEK \$1.75 each; 3 for \$1.55 each		1435		CL. McGREDY'S IVORY \$1.75 each; 3 for \$1.55 each	
Bush Roses				1185		MME. HENRI GUILLOT \$2.00 each; 3 for \$1.75 each		1440		CL. MRS. SAM McGREDY \$2.00 each; 3 for \$1.75 each	
1010		APPLAUSE \$2.00 each; 3 for \$1.75 each		1187		MOJAVE \$3.00 each; 3 for \$2.65 each		1445		CL. NIGHT \$1.75 each; 3 for \$1.55 each	
1012		BRAVO \$2.25 each; 3 for \$2.00 each		1190		MRS. E. P. THOM \$1.50 each; 3 for \$1.30 each		1446		CL. PEACE \$2.50 each; 3 for \$2.20 each	
1013		BUCCANEER \$2.75 each; 3 for \$2.40 each		1200		NEW YORKER \$2.00 each; 3 for \$1.75 each		1450		CL. PICTURE \$2.00 each; 3 for \$1.75 each	
1016		CAPISTRANO \$2.25 each; 3 for \$2.00 each		1210		NOCTURNE \$2.00 each; 3 for \$1.75 each		1452		CL. PINKIE \$2.75 each; 3 for \$2.40 each	
1019		CARROUSEL \$2.00 each; 3 for \$1.75 each		1220		PEACE \$2.50 each; 3 for \$2.20 each		1455		CL. PRESIDENT HOOVER \$1.75 each; 3 for \$1.55 each	
1025		CHARLOTTE ARMSTRONG \$2.25 each; 3 for \$2.00 each		1230		PICTURE \$1.50 each; 3 for \$1.30 each		1460		CL. SHOW GIRL \$2.00 each; 3 for \$1.75 each	
1030		CHATTER \$1.50 each; 3 for \$1.30 each		1235		PINK BOUNTIFUL \$1.50 each; 3 for \$1.30 each		1462		CL. SNOWBIRD \$1.75 each; 3 for \$1.55 each	
1032		CHIEF SEATTLE \$2.50 each; 3 for \$2.20 each		1240		PINKIE \$1.75 each; 3 for \$1.55 each		1464		CL. SUTTER'S GOLD \$3.00 each; 3 for \$2.65 each	
1035		CHINA DOLL \$2.00 each; 3 for \$1.75 each		1245		PINOCCHIO \$1.50 each; 3 for \$1.30 each		1465		CL. TALISMAN \$1.75 each; 3 for \$1.55 each	
1040		CHRISTOPHER STONE \$1.50 each; 3 for \$1.30 each		1250		PRES. HERBERT HOOVER \$1.50 each; 3 for \$1.30 each		1470		CL. TEXAS CENTENNIAL \$2.00 each; 3 for \$1.75 each	
1042		CHRYSLEER \$2.75 each; 3 for \$2.40 each		1255		RADIANCE \$1.50 each; 3 for \$1.30 each		1473		DOUBLOONS \$2.00 each; 3 for \$1.75 each	
1045		COUNTESS VANDAL \$1.50 each; 3 for \$1.30 each		1260		RED RADIANCE \$1.50 each; 3 for \$1.30 each		1480		HIGH NOON \$2.50 each; 3 for \$2.20 each	
1050		CRIMSON GLORY \$1.50 each; 3 for \$1.30 each		1270		RUBAIYAT \$1.75 each; 3 for \$1.55 each		1490		MERMAID \$2.25 each; 3 for \$2.00 each	
1055		DAINTY BESS \$1.50 each; 3 for \$1.30 each		1275		SAN FERNANDO \$1.75 each; 3 for \$1.55 each		1495		MME. GR. STAECHELIN \$1.75 each; 3 for \$1.55 each	
1060		DEBONAIR \$1.75 each; 3 for \$1.55 each		1285		SHOW GIRL \$2.00 each; 3 for \$1.75 each		1498		NEW DAWN \$1.75 each; 3 for \$1.55 each	
1070		ECLIPSE \$1.75 each; 3 for \$1.55 each		1295		SNOWBIRD \$1.50 each; 3 for \$1.30 each		1500		PAUL'S SCARLET \$1.75 each; 3 for \$1.55 each	
1072		EMBERS \$2.25 each; 3 for \$2.00 each		1300		SUMMER SNOW \$1.50 each; 3 for \$1.30 each		1505		RENAE \$3.00 each; 3 for \$2.65 each	
1075		ETOILE DE HOLLANDE \$1.50 each; 3 for \$1.30 each		1301		SUTTER'S GOLD \$2.25 each; 3 for \$2.00 each					
1076		FANDANGO \$2.00 each; 3 for \$1.75 each		1305		SWEET SIXTEEN \$1.75 each; 3 for \$1.55 each		Tree Roses			
1077		FASHION \$2.00 each; 3 for \$1.75 each		1310		TAFFETA \$2.00 each; 3 for \$1.75 each		Bare Root, \$5.00 each; \$45.00 per 10. Ten assorted varieties sold at the 10-rate. Add 50c for each tree for packing and mailing charges.			
1080		FIESTA \$2.25 each; 3 for \$2.00 each		1315		TALISMAN \$1.50 each; 3 for \$1.30 each		1510		BRAVO	
1082		FIRST LOVE \$2.25 each; 3 for \$2.00 each		1320		TALLYHO \$2.00 each; 3 for \$1.75 each		1520		CHARLOTTE ARMSTRONG	
1085		FLORADORA \$1.50 each; 3 for \$1.30 each		1325		TEXAS CENTENNIAL \$1.75 each; 3 for \$1.55 each		1532		CHRYSLEER	
1090		FORTY-NINER \$2.50 each; 3 for \$2.20 each		1330		THE CHIEF \$1.75 each; 3 for \$1.55 each		1549		EMBERS	
1095		FRAU KARL DRUSCHKI \$1.50 each; 3 for \$1.30 each		1340		VALENTINE \$2.00 each; 3 for \$1.75 each		1547		FASHION	
1100		FRED EDMUNDS \$2.00 each; 3 for \$1.75 each		1345		VOGUE \$2.00 each; 3 for \$1.75 each		1548		FIRST LOVE	
1102		FRED HOWARD \$2.50 each; 3 for \$2.20 each		Climbing Roses				1550		FORTY-NINER	
1104		FROLIC \$2.25 each; 3 for \$2.00 each		1350		BANKSIA WHITE \$2.25 each; 3 for \$2.00 each		1553		FROLIC	
1105		GIRONA \$1.50 each; 3 for \$1.30 each		1355		BANKSIA YELLOW \$2.25 each; 3 for \$2.00 each		1561		HELEN TRAUBEL	
1110		GOLDEN RAPTURE \$1.50 each; 3 for \$1.30 each		1360		BELLE OF PORTUGAL \$1.75 each; 3 for \$1.55 each		1572		LOWELL THOMAS	
1115		GOLDILOCKS \$1.50 each; 3 for \$1.30 each		1365		BILLY BOILER \$1.75 each; 3 for \$1.55 each		1573		MA PERKINS	
1120		GR. DUCH. CHARLOTTE \$2.00 each; 3 for \$1.75 each		1375		CHEROKEE PINK \$2.00 each; 3 for \$1.75 each		1575		MIRANDY	
1125		HEART'S DESIRE \$1.75 each; 3 for \$1.55 each		1380		CHEROKEE RED \$2.00 each; 3 for \$1.75 each		1579		MOJAVE	
1127		HELEN TRAUBEL \$2.75 each; 3 for \$2.40 each		1385		CHEROKEE WHITE \$2.00 each; 3 for \$1.75 each		1585		NOCTURNE	
1136		JUNO \$2.25 each; 3 for \$2.00 each		1390		CL. CECILE BRUNNER \$1.75 each; 3 for \$1.55 each		1590		PEACE	
1140		K. A. VICTORIA \$1.50 each; 3 for \$1.30 each		1393		CL. CHAR. ARMSTRONG \$3.50 each; 3 for \$3.10 each		1610		SHOW GIRL	
								1615		SNOWBIRD	
								1616		SUTTER'S GOLD	
								1630		VOGUE	
Total Roses											
Total from Other Page											
California Orders											
Add 3% Sales Tax											
Tree Rose											
Packing Charge											
Total Amount Enclosed											

Armstrong Nurseries will exercise care to have merchandise true to name. Provided it is expressly understood that this order is accepted on the condition precedent that it makes no warranty, express or implied, as to description, quality, productiveness, crops, or any other matter whatsoever; that its liability in every instance whatsoever is limited to the purchase price; that orders shall be void should delivery be prevented or injury befall the stock from flood, drought, frost or other causes beyond its control and orders travel at risk of purchaser.

Armstrong Roses are guaranteed to grow and bloom in your garden if our planting instructions are followed and no adverse weather conditions prevail. Plant losses must be reported within six months.

Prices subject to change without notice

Bush Roses

Picture

An enchanting and petite pink rose which seems always to be on her good behavior. There simply are no adequate adjectives nor color plates good enough to describe the perfect form of each bud and flower, nor to depict the clear dainty pink color with its warm, rich, salmon undertone. Each flower is heavy-petaled, substantial, and long-lasting. The plant grows to medium height but is strong and vigorous and blooms almost continuously from spring to fall.

\$1.50 each; 3 or more, \$1.30 each.



President Herbert Hoover

The long buds are beautifully formed and open slowly into gigantic blooms of cerise, pink, flame, scarlet, and yellow. Give the plant plenty of room because it will use it. You don't have to worry about how long you want the stem on each of the fragrant flowers, it's only a matter of how long you wish to cut it.

\$1.50 each; 3 or more, \$1.30 each.



San Fernando

Picture

President Herbert Hoover



New Yorker

The vigorous tall-growing bush will produce a continuous succession of huge, high-centered flowers of clear dazzling red. Delightfully fragrant and long lasting with big heavy-textured petals—it is a red, red rose which stays red until the last petal falls. Plant Pat. No. 823.

\$2.00 each; 3 or more, \$1.75 each.

New Yorker



San Fernando



From over the Hollywood Hills in the sunny San Fernando Valley comes this fine All-America Selection for 1948. The perfectly shaped long buds are a rich currant-red, opening into fine, long-lasting, unfading flowers (20 to 25 petals) of intense scarlet. A rich heavy perfume adds to its charm. The vigorous plant is upright and well foliated. Plant Pat. No. 785.

\$1.75 each; 3 or more, \$1.55 each.

Roses for Every Garden

This 218-page book by Dr. R. C. Allen, one of America's foremost rosarians, deals with the planting and proper care of roses. It tells about rose culture and its problems in each of the geographical areas of the United States, so it is an excellent guide for the experienced or the beginner no matter where you live. Shipped postpaid anywhere in the United States for \$3.95.



Rubaiyat

Bush Roses

Rubaiyat



An Irish beauty from the House of McGredy which is considered by many to be among the best of the light red roses. An All-America Winner for 1947, it features a long shapely bud and an extra large flower of scintillating rose-red with a delightful fragrance. Best in cooler climates, but everywhere, the tall, vigorous plant keeps up a never-ending succession of blooms. Plant Pat. No. 758.

\$1.75 each; 3 or more, \$1.55 each.

Snowbird

A small to medium sized rose, but one that is a real asset to any rose garden. Almost never is it without exquisite, flaring white buds and snowy, many-petaled, high-centered flowers. Our guess is that it will outbloom any other white rose in your garden by at least two to one.

\$1.50 each; 3 or more, \$1.30 each.



Talisman

Talisman

A familiar sight in rose gardens the country over and as a florist's cut flower, as well. The buds are exquisitely formed, orange to scarlet and golden yellow. The open flowers are not so attractive as those of Taffeta or other newer roses in this color range, but for beautiful buds and rich fragrance Talisman is unbeatable.

\$1.50 each; 3 or more, \$1.30 each.

Texas Centennial

Often referred to as the "Red Hoover." Just like that variety, it makes amazing growth and has heavy strong stems with huge full buds and flowers. The color is a bright glowing carmine-red, fading to a softer rose-red as the flowers age. Give it lots of room.

\$1.75 each; 3 or more, \$1.55 each.

Radiance

Under all conditions of soil or climate, this robust disease-resistant variety never fails. Popular for over 40 years because it never fails to give you plenty of beautiful silvery-pink fragrant flowers on extremely long, strong stems.

\$1.50 each; 3 or more, \$1.30 each.

Red Radiance

Exactly the same as its sister Radiance, except that the flowers are rich cerise-red.

\$1.50 each; 3 or more, \$1.30 each.

Prices shown in this catalog are for bare root roses and do not apply to blooming plants in containers.

Tree Roses

Standard or tree-shaped roses are grown by budding the desired variety into a straight stalk at a height of 36 inches. The bushy head usually produces more perfect flowers and larger ones than the bush type of the same variety.

Shipped Bare Root During the months of January, February, and March, dormant bare root trees may be safely shipped for immediate planting to Pacific Coast areas, warmer areas of the Southern States, and portions of the East Coast. To ship your tree roses safely special costly cartons are required. To make sure that you receive them in the same fine condition in which they left the nursery, we make a 50c charge for packing and mailing each tree rose.

Prices on all bare root tree roses: \$5.00 each, \$45.00 per 10. Ten assorted tree roses sold at the 10-rate. Add 50c per tree for packing charges. We prepay shipping charges.

Bravo One of the reddest of red roses.

Charlotte Armstrong Exquisite buds and brilliant cerise flowers. Our finest rose.

Chrysler 1953 All-America Winner. A red rose certain to reach the heights in popularity.

Embers New Armstrong rose for 1954. Long-lasting flowers of brilliant glowing red in profusion.

Fashion A Floribunda with masses of delicate salmon-pink bloom.

First Love The loveliest buds in rosedom—long slender delicate pink.

Frolic Another Armstrong introduction for 1954. It's a Floribunda which covers itself with spray after spray of bright pink bloom.

Forty-niner Cardinal-red with the reverse of the petals straw yellow.

Helen Traubel All-America Winner for 1952. Lovely apricot-pink.

Lowell Thomas Rich golden yellow. Does well in all areas.

Ma Perkins 1953 All-America Winner. Fragrant Floribunda with a profusion of shell-pink bloom.

Mirandy Fragrant many-petaled flowers of glowing dark red. Magnificent in warm weather.

Mojave 1954 All-America Winner featured on the cover of this catalog. The finest orange-colored rose yet introduced.

Nocturne Streamlined buds and glorious flowers of cardinal-red, with darker shadings.

Peace Huge perfectly formed flowers of yellow, buff, cream and pink.

Show Girl Great, long buds of deep rose-pink. Spectacular everywhere.

Snowbird Perfectly shaped immaculate white buds and open blooms.

Sutter's Gold 1950 AARS Winner. Perfect buds of yellow splashed with orange. Richly fragrant.

Vogue AARS Winner for 1951. Free blooming Floribunda in a new color—cherry-coral.



Climbing Roses

Climbing roses will pay generous dividends in return for ordinary care and a small space. Fences, trellises or arbors become aglow with color—bare walls or unsightly places can be hidden by luxuriant foliage studded with hundreds of colorful blooms. The climbers we list here are a selected group. Most of them are climbing Hybrid Tea sports which are outstanding for buds and flowers. In the South and along the Pacific Coast they will thrive, but in regions of sub-zero temperatures, all except those captioned as "hardy" will require special protection from cold damage.

Three New Climbers for 1954

- CLIMBING CHARLOTTE ARMSTRONG
- CLIMBING SUTTER'S GOLD
- RENAE

**The Rose We've
Wanted for Years**

Climbing Charlotte Armstrong

Every year since 1941, when Charlotte Armstrong was introduced and won All-America honors, the perennial question from our customers has been, "When can we get Charlotte Armstrong as a climber?" Now we have it, available for the first time in 1954—a big sturdy climbing plant of this well-known and universally loved variety. It features the same long, exquisitely formed buds, the same classic form in the open bloom, and finally the same brilliant cerise color which have made Charlotte Armstrong an international favorite. Plant Pat. No. 523.

\$3.50 each; 3 or more, \$3.10 each.

Climbing Sutter's Gold



Renae

Seldom can we claim for any new rose as many unusual and desirable qualities. A pillar type, it grows to about 10 feet in height. The long-pointed shiny green leaves cover the plant thoroughly and so completely that it never gets a "leggy" look as so many climbers do. In mild areas like Southern California it is practically evergreen.

In early spring the plant is completely covered with double blooms of lavender pink, about 2½ inches across. But Renae is one of those unusual climbers which continues right on blooming until late fall. The bloom holds exceedingly well and when finished drops off cleanly. Last but not least, it is practically thornless—only occasionally will you find one. We feel sure this is going to be a favorite with planters everywhere except in the colder areas. Plant Pat. No. 893. **\$3.00 each; 3 or more, \$2.65 each.**



Climbing Charlotte Armstrong

Climbing Sutter's Gold

We were extremely proud when we introduced Sutter's Gold in 1950, because it was the first American rose ever to win both top national and international awards. Now, we are just as proud to be able to offer a big vigorous climbing sport of this fine variety with its long-pointed yellow buds and its open flowers of rich gold with their fine fragrance. The climber is big and vigorous, just like the bush, and covers itself with the same exquisite flowers, only there are many, many more of them. Plant Pat. No. 1185. **\$3.00 each; 3 or more, \$2.65 each.**

Renae



Climbing Roses

The Banksias

Rampant old-time climbers spreading everywhere. They are festooned in the springtime with a profusion of little button-like flowers. Absolutely thornless. We have *Banksia White* and *Banksia Yellow*. **\$2.25 each; 3 or more, \$2.00 each.**

Belle of Portugal

Ten to twelve feet of growth in a single season is not unusual for this vigorous climber. But don't expect bloom the first year. After that, usually before any of your other roses are in bloom, it will be loaded with gigantic salmon-pink buds often 3 to 4 inches in length. **\$1.75 each; 3 or more, \$1.55 each.**

Billy Boiler

We believe this variety has the most perfect non-fading blooms of any red climber. The robust many-caned plant grows to 12 feet, and on great long stems for cutting are immense perfect flowers. Deep red, with blackish shadings and quite double, the blooms are deliciously fragrant. **\$1.75 each; 3 or more, \$1.55 each.**

The Cherokees

These old-fashioned single-flowered roses fit informal landscapes extremely well and are at their best when allowed to ramble over a fence or wall without pruning. The foliage is shiny green and is a lovely sight when covered with great masses of delicate flowers in the spring. We have *Pink Cherokee*, *Red Cherokee*, and *White Cherokee*. **\$2.00 each; 3 or more, \$1.75 each.**

Climbing Cecile Brunner

Few roses can equal the continuous show of dainty, little, rose-pink, salmon-shaded buds in clusters produced by this famous old Polyanthus. One of America's favorites, it is a strong grower and needs no special coaxing. **\$1.75 each; 3 or more, \$1.55 each.**

Climbing Dainty Bess

Imagine having a large climbing plant covered with hundreds of dainty, single, suntan-pink flowers, instead of just a few, as on the bush. The long-lasting blooms are superb for bouquets. **\$1.75 each; 3 or more, \$1.55 each.**

Climbing Etoile de Hollande

We rate this as one of the finest red climbing roses. The big, strong-growing, beautifully foliaged plant produces some of the choicest big red buds and open flowers that we have ever seen. Plant this climber for richly fragrant top-quality blooms for cutting. **\$1.75 each; 3 or more, \$1.55 each.**

Climbing Forty-niner

Forty-niner was an All-America Winner for 1949 and the big well-shaped buds and flowers with their vivid contrasting colors have been admired from coast to coast. The face of the petals is vivid crimson, while the reverse side is chrome to straw-yellow. It takes only a few blooms of Forty-niner to create a lot of excitement, so just imagine what a big climbing plant loaded with these most brilliant of all bicolored roses will do for your garden. Plant Pat. No. 1094. **\$2.75 each; 3 or more, \$2.40 each.**

Climbing Golden Rapture

If you want a good bright yellow climber, here is one which will produce hundreds of magnificent blooms in the spring. Each golden bloom is fine for cutting. Plant Pat. No. 508. **\$1.75 each; 3 or more, \$1.55 each.**

Climbing Goldilocks

A climbing sport of the spectacular golden yellow Floribunda described on page 26. Grows 6 to 10 feet in height and is loaded with big clusters of golden blooms almost continuously. Plant Pat. No. 1090. **\$2.50 each; 3 or more, \$2.20 each.**

Climbing Hinrich Gaede

A big vigorous climber with brilliant flame-like orange-vermilion flowers. A perfect display of spring bloom as well as blooms throughout the summer. Plant Pat. No. 244. **\$1.75 each; 3 or more, \$1.55 each.**

Climbing McGredy's Ivory

Covered in spring with dozens of exquisite ivory-white buds which open to deliciously fragrant, big, snowy flowers. You will enjoy these for cutting. **\$1.75 each; 3 or more, \$1.55 each.**

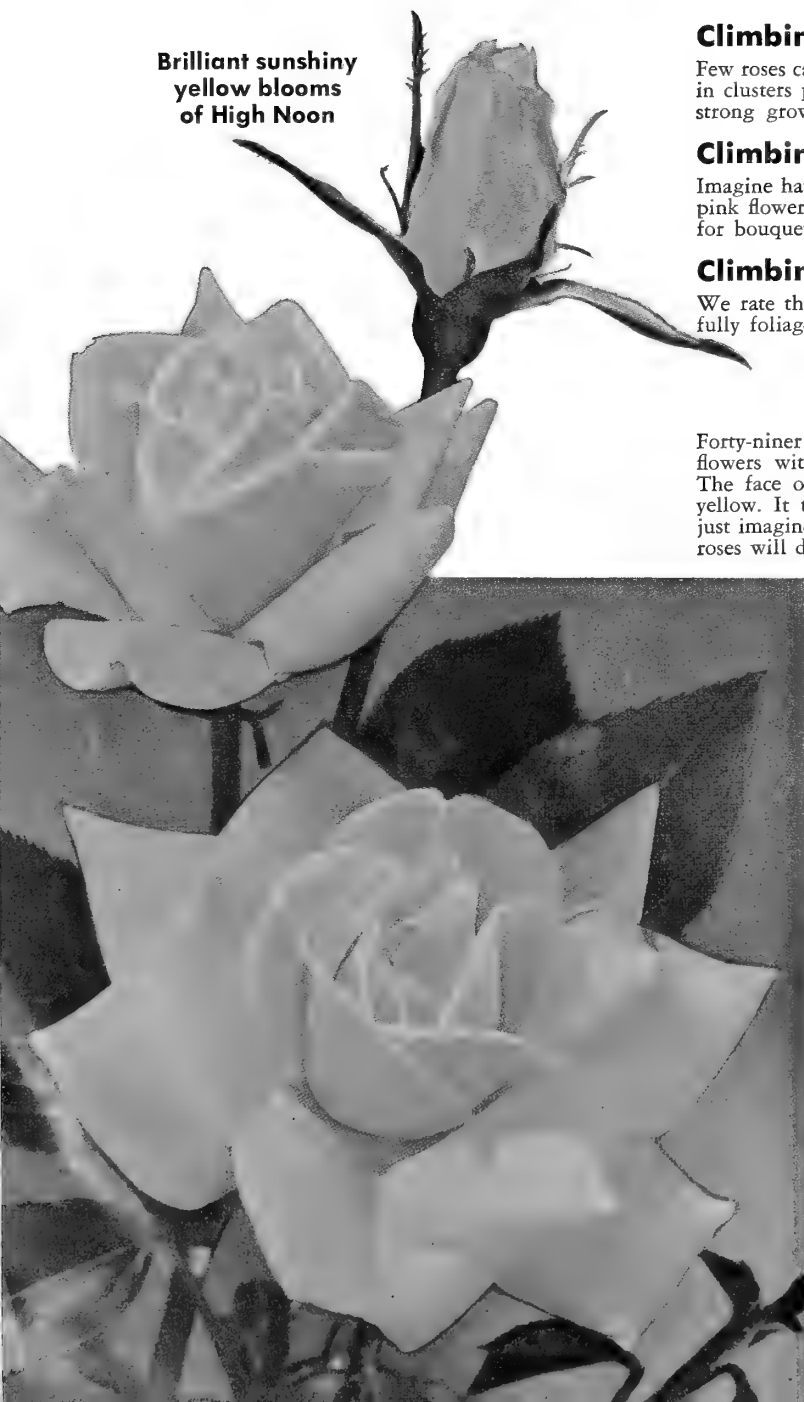
Climbing Mrs. Sam McGredy

This variety has an unusual rich coppery orange color which is exclusively its own. Grows vigorously and has lots of luxuriant bronzy green foliage to set off the lovely flowers. Plant Pat. No. 394. **\$2.00 each; 3 or more, \$1.75 each.**



Climbing Forty-niner

Brilliant sunny yellow blooms of High Noon



High Noon *A Bright Yellow Everblooming Climber*



The most brilliant sunny yellow imaginable and it stays rich and unfading. Unlike most climbers, this Armstrong Regional All-America winner for 1948 does not quit after the spring bloom but continues to produce a wealth of brilliant buds and flowers throughout the rest of the season. Grows compactly to 8 or 10 feet and is completely clothed with shining green foliage. Although not recommended as hardy for coldest areas, High Noon can be cut back yearly. It will easily make 5 or 6 feet of growth in a single season and flower freely while doing so. Plant Pat. No. 704.

\$2.50 each; 3 or more, \$2.20 each.

Climbing Night

Exquisite buds and large velvety flowers of deepest dark red. It will scent your entire garden with a bewitching cinnamon-clove fragrance. Plant Pat. No. 439.

\$1.75 each; 3 or more, \$1.55 each.

Climbing Peace

The same lovely flowers of canary-yellow, gold, cream, white and apple blossom, the same fine foliage and strong stems which have made Peace in the bush form one of the world's most beloved roses. Of course, you get a lot more blooms on a big climbing plant. Plant Pat. No. 932.

\$2.50 each; 3 or more, \$2.20 each.

Climbing Picture

Hundreds of beautiful, long-stemmed, perfectly formed buds and flowers, each a "perfect picture" in clear rose-pink. Plant Pat. No. 524.

\$2.00 each; 3 or more, \$1.75 each.

Climbing President Hoover

Huge red, yellow and buff flowers perfect in symmetry. The bush of President Hoover is vigorous enough but as a climber it grows by leaps and bounds.

\$1.75 each; 3 or more, \$1.55 each.

Climbing Pinkie

Most everyone has a garden spot where a 6 to 8 foot plant like this one is just right. In spring you will have to look hard to find foliage under the cloud of delightful pink bloom—the same perfect little buds and double flowers which won an All-America Award for the bush Pinkie in 1948. But this is another climber which produces cluster after cluster of dainty flowers from spring until fall! Plant Pat. No. 1076.

\$2.75 each; 3 or more, \$2.40 each.

Climbing Snowbird

Exquisite, flaring, white buds and snowy many-petaled, high-centered flowers. Blooms with great freedom. **\$1.75 each; 3 or more, \$1.55 each.**

Climbing Texas Centennial

The long, brick-red buds with their huge, rosy, open flowers are even larger, more lovely, and borne on longer stems than on the bush form of this rose. Plant Pat. No. 565.

\$2.00 each; 3 or more, \$1.75 each.

Climbing Pinkie



Climbing Show Girl

Climbing Show Girl

Just like the bush form of this famous Armstrong variety, this climber features the largest, most perfect buds and flowers of deep pink you have ever seen. Plant Pat. No. 892.

\$2.00 each; 3 or more, \$1.75 each.

Climbing Talisman

It is difficult to imagine anything more striking than a fence or trellis blanketed with the marvelous urn-shaped buds and lovely red-gold flowers of this popular old favorite.

\$1.75 each; 3 or more, \$1.55 each.

Mermaid

Grow it as a climber or as a ground cover. In mild areas the glossy foliage is evergreen. Nearly always there are lots of big single flowers of pale sulfur-yellow.

\$2.25 each; 3 or more, \$2.00 each.

Mme. Gregoire Staechelin

Everyone admires the exquisite buds and flowers of delicate pink. The fragrance is delightful and the plant is vigorous and well foliaged.

\$1.75 each; 3 or more, \$1.55 each.

Hardy Climbers

Climbing Crimson Glory

Beautiful big flowers of velvety crimson with a wonderful fragrance. In coldest areas plant in a sheltered location. Plant Pat. No. 736.

\$2.50 each; 3 or more, \$2.20 each.

Doublons

As fresh and shining as a newly struck gold coin, the buds and flowers are clear golden yellow. Extremely vigorous and very hardy. Plant Pat. No. 152.

\$2.00 each; 3 or more, \$1.75 each.

New Dawn

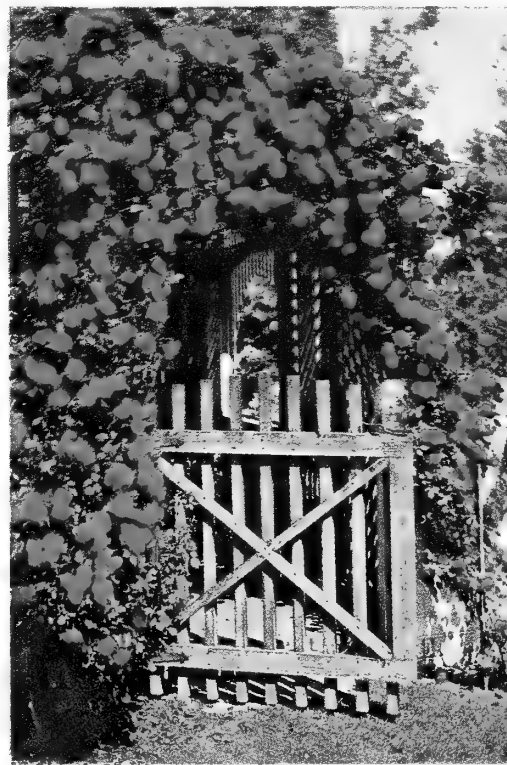
Covered each spring with masses of fragrant blush-pink flowers, it continues to bloom until the first hard frost. Very vigorous and hardy, too.

\$1.75 each; 3 or more, \$1.55 each.

Paul's Scarlet

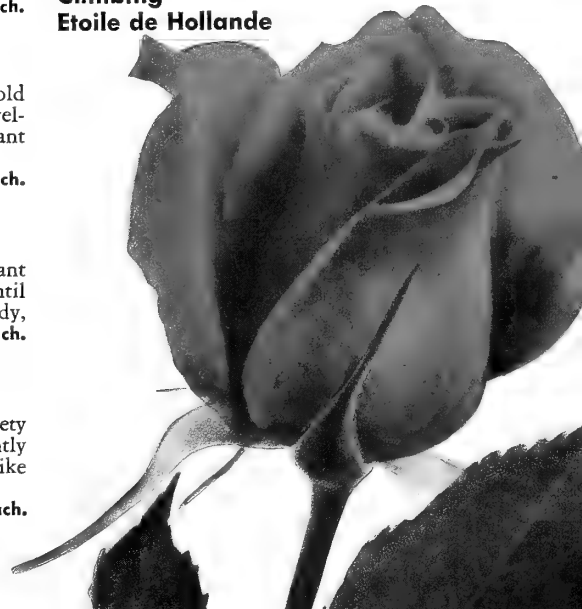
The spectacular show put on by this variety each spring is breath-taking with the brightly colored scarlet flowers covering the plant like a sheet of flame.

\$1.75 each; 3 or more, \$1.55 each.



Paul's Scarlet

Climbing Etoile de Hollande





The brilliant new Embers

2 New Armstrong Floribundas

Frolic

This new 1954 Floribunda is completely described on page 5, but it belongs here in the spotlight among these Floribundas. This one is literally the embodiment of the word "Floribunda" for we've never seen any rose which will produce flowers as freely as Frolic displays her bright pink buds and flowers. Plant Pat. No. 1179.

\$2.25 each; 3 or more, \$2.00 each;
25 or more, \$1.80 each.

Embers

Like Frolic, Embers is completely described on page 5, and we predict an honored place among the Floribundas for it, too. This one is a variety which grows fairly tall and its flowers are such a glowing, burning red that they outshine anything in the garden. Plant Pat. No. 1178.

\$2.25 each; 3 or more, \$2.00 each;
25 or more, \$1.80 each.

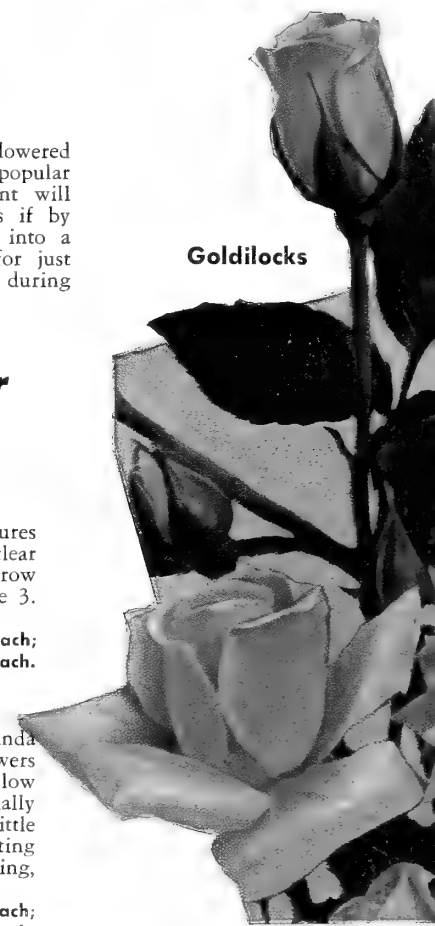
Lilibet—Floribunda
All-America Award
Winner for 1954



Garden the

Floribundas—the new race of cluster-flowered roses which have become extremely popular almost overnight. Nothing you can plant will give you a greater wealth of bloom. As if by magic, they will transform your garden into a glowing radiant carnival of color—not for just a few weeks, but for month after month during the entire spring, summer and fall.

Goldilocks



All-America Winner for 1954

Lilibet

Another marvelous Floribunda which features exquisite form in each dainty bud, a sparkling clear pink color, and an exceptionally fine, easy-to-grow plant. You'll find a complete description on page 3. Plant Pat. Appd. for.

\$2.50 each; 3 or more, \$2.20 each;
25 or more, \$2.00 each.

Goldilocks

Here is something unique and unusual—a Floribunda with all the fine habits of that class but the flowers are clear sunshiny yellow! The plant is fairly low and compact (about 2 feet) and it is continually bursting with cluster after cluster of perfect little ovoid buds and cup-shaped, many-petaled, long-lasting flowers. Perfect for a hedge planting, for massing, or for most any use. Plant Pat. No. 672.

\$1.50 each; 3 or more, \$1.30 each;
25 or more, \$1.20 each.

Frolic—for continuous color you can't beat it



Magicians

Floribundas

Floribundas will give you a spectacular show of bloom from early spring until late fall, and the effect is just as pleasing whether you arrange them according to color and height, or whether you use them as a low hedge or border. They are easy to grow and quite hardy. All you need to do is give them an occasional spraying and fertilizing to get sensational results. New varieties this year add to the color range and there are new sizes, too. Whatever your plans for garden color may be, you can solve them easily with Floribundas.

Blooming Plants in Containers

During the spring, summer and fall you will find many of these roses growing and blooming in 5-gallon containers at each of our six Southern California salesyards. Prices are slightly higher than these bare root prices and because of weight and bulkiness we do not attempt to ship them.

Carrousel

The large double flowers could easily class this rose as a Hybrid Tea, but the blooms appear in clusters and it blooms so freely and over so long a season that we list it among the Floribundas. From early to late it is literally a mass of glowing, deep rich red flowers come rain, cool weather, or a downright hot spell. One of the most dependable of all rose polls, the American Rose Society's "Proof of the Pudding," has consistently rated this striking new red rose among the highest. The plant is tall-growing, rather upright, well-foliaged and mildew resistant. Plant Pat. No. 1066.

\$2.00 each; 3 or more, \$1.75 each;
25 or more, \$1.60 each.

Chatter

This is an excellent variety for planting in the foreground or for making a little hedge or border, because the compact plant grows to only about 2 feet in mild climates, and even lower in colder areas. From early spring until late fall it is seldom without a glowing blanket of dark velvety red flowers. Plant Pat. No. 739.

\$1.50 each; 3 or more, \$1.30 each;
25 or more, \$1.20 each.

China Doll

We counted the flowers on several normal plants of China Doll and the average number was 240! The rounded clusters of one to two-inch flowers so cover the plant that you cannot see the foliage, and as one burst goes by another comes on. The color is a bright cheerful pink which ages well, and the old flowers drop off cleanly. The plant is very dwarf (about 18 inches here in California), almost thornless and with its glossy mildew-resistant foliage is perfect for a low hedge or border. A glance at the picture below will show you what we mean. Plant Pat. No. 678.

\$2.00 each; 3 or more, \$1.75 each;
25 or more, \$1.60 each.

Fashion



An All-America Winner in 1950, Fashion has won almost every important international award for a new rose since. The color is unique, a blending of coral and gold with a warm overlay of apricot. The plant is very vigorous, about 2 to 2½ feet tall in milder areas. From early spring until late fall it is seldom without bloom. Plant Pat. No. 789.

\$2.00 each; 3 or more, \$1.75 each;
25 or more, \$1.60 each.



Carrousel

Chatter



Fashion—every little bud is perfect for a miniature corsage or arrangement

China Doll blooms just like this most of the time



Floribundas

For Lots of Bloom

- Continuous Bloom—Spring to Fall
- Superb for Hedges or for Massing
- Spray after Colorful Spray to Cut



Floradora

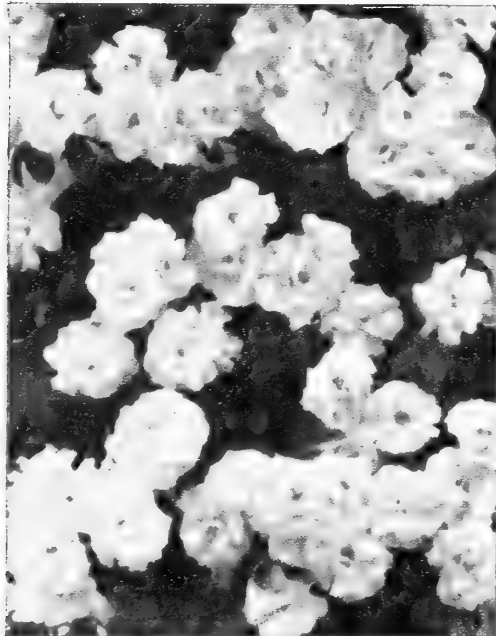
Floradora



The unusual orange-scarlet color is one of the most attractive to be found in roses and the exquisitely formed buds open to fully double flowers, each resembling a perfect little camellia. The plant is vigorous and tall-growing (3 to 4 feet in Western gardens), but just like the other Floribundas, it blooms with gusto.

**\$1.50 each; 3 or more, \$1.30 each;
25 or more, \$1.20 each.**

Summer Snow



Pink Bountiful

Ma Perkins



Introducing a sparkling new color and a rich and unusual fragrance to the Floribunda class, Ma Perkins won All-America honors for 1953. Each delightfully shaped bud of deep salmon-pink with a dash of gold and a flush of red opens to a sparkling double flower 2½ to 3 inches across. The flower finishes a soft coral pink—warm and attractive until the last petal drops. Like all good Floribundas, it is a prolific bloomer and as befits an All-America Winner, the plant is vigorous, bushy and well-foiled growing compactly to 2½ or 3 feet. Plant Pat. No. 1143.

**\$2.25 each; 3 or more, \$2.00 each;
25 or more, \$1.80 each.**

Pink Bountiful

The flowers are as daintily colored, as gracefully modeled, and almost as large as the best of Hybrid Teas, still the variety fits right into the Floribunda class because it unfolds its lovely flowers in big clusters throughout the entire season. The color is dainty salmon-pink suffused with buff at the base of each petal. Each perfect bud opens to a lovely flower, rich with fragrance, long-lasting, and fine for cutting. The plant is tall-growing and vigorous reaching 3 to 4 feet in Western gardens. Plant Pat. No. 601.

**\$1.50 each; 3 or more, \$1.30 each;
25 or more, \$1.20 each.**

Pinocchio

Day after day you can enjoy big clusters of perfect little roses in the brightest, cheeriest, yet daintiest shades of salmon flushed with gold that you can imagine. Each flower is a perfect miniature garden rose and possesses a delightful fragrance. A vigorous, easy to grow plant, 24 to 30 inches tall. Plant Pat. No. 484.

**\$1.50 each; 3 or more, \$1.30 each;
25 or more, \$1.20 each.**

Summer Snow

When loaded with snow-white bloom, and it usually is, this Floribunda will resemble an immaculate snowbank in your garden. Often there are 15 or more buds to a cluster and the countless clusters are continuously unfolding new flowers. The plant (about 2 feet tall in milder areas) is well covered with light green foliage, but that is incidental because the plant is usually hidden by flowers. Ideal for planting singly, excellent for massing, and perfect for a white hedge or border. Plant Pat. No. 416.

**\$1.50 each; 3 or more, \$1.30 each;
25 or more, \$1.20 each.**



Vogue

Vogue



Because of the richness and uniqueness of its color, this All-America Winner for 1952 is finding a warm welcome in rose gardens everywhere. Countless little flame-red buds, long and slender, and flared at the end, open one after another until the entire cluster of ten or more flowers bursts into a beautiful spray. The open flowers are semi-double, about 2½ inches across, and are a rich deep coral-pink in color. The plant is medium in size, reaching about 3 feet in milder areas, rather open in habit with small dark green foliage. It has plenty of vigor and keeps producing one crop after another. Plant Pat. No. 926.

**\$2.00 each; 3 or more, \$1.75 each;
25 or more, \$1.60 each.**

Quantity Rates

The rates shown for 3 or more and 25 or more plants apply on a single variety only. Varieties may not be grouped to take advantage of quantity rates.

Prices shown here are for bare root plants.



**Ma Perkins—
1953 All-America
Winner**



Brilliant Valentine

Valentine

One of the brightest Floribundas you'll find is this Armstrong introduction with its flowers of glowing traffic signal red. Appearing in huge clusters, the 2½-inch flowers cover the plant and as one burst of bloom goes by another quickly follows in rapid succession. Eventually the color does fade, but not until each burst of bloom has given you several weeks of the most brilliant garden color you can imagine. This is one of the desirable low-growing kinds so popular for hedge, border, or foreground planting (it reaches about 2 feet in Western gardens). Originated at the Armstrong Nurseries by H. C. Swim. Plant Pat. No. 1029. **\$2.00 each; 3 or more, \$1.75 each; 25 or more, \$1.60 each.**

Pinkie



For downright charm, daintiness, and artistic appeal, we think Pinkie exceeds any rose we know. The bushy little plants just 15 to 20 inches high are perfect for use in a low hedge, border, or foreground planting. The effect is very similar to what you see in the picture of China Doll on page 27. Throughout the entire blooming season—spring, summer and fall—the plants are literally blanketed with clouds of dainty buds and open flowers of delicate pink about 2 inches across and the light green foliage of the plant forms a perfect background for the clusters of spicily fragrant little blooms. As one burst goes by another comes on, so that the plant is almost continually in bloom. Each petite bud is as perfect in form as any rosebud could be. Plant Pat. No. 712. **\$1.75 each; 3 or more, \$1.55 each; 25 or more, \$1.40 each.**

**Pinkie—each bud is a perfect
garden rose in miniature**



Pinocchio





Peaches

From Armstrong Research

These special peach and nectarine varieties are the results of years of breeding and testing carried on by the Armstrong Research Staff. They are the best varieties you can possibly plant in Southern California.

Redwing *The Finest Early White-Fleshed Peach*

Brilliant red blush over a creamy skin and white flesh, combining acidity and sweetness to perfection. Ripens in early July. Plant Pat. No. 621.
\$2.50 each; 20 or more, \$2.20 each.

Meadow Lark *The Earliest High Quality Yellow Peach*

Beautiful big golden fruit with a bright red blush. Deliciously flavored yellow flesh, sweet and juicy. No other yellow peach which even approaches it in quality ripens so early. Late June. Plant Pat. No. 528.
\$2.50 each; 10 or more, \$2.20 each.

Flamingo *The Top Quality Peach*

A big, plump fruit with clear, juicy, yellow flesh. A delight to pick, slice, pack, ship, or can. August. Plant Pat. No. 661.
\$2.50 each; 10 or more, \$2.20 each.

The Earliest Peach Yet

Springtime

With the advent of Springtime in 1954, the Armstrong Research staff has eclipsed its former successes in developing new peach varieties outstanding for heavy bearing and earliness. Until now, Robin has been our earliest peach, but the new Springtime has never failed to ripen here in Ontario at least two weeks earlier than Robin, and sometimes as much as four weeks sooner! This means that you can pick fruit in the month of May. Not only will it make a very valuable home fruit, but just consider what marvelous commercial possibilities it has.

The fruit is of medium size and the creamy skin is attractively blotched and mottled with bright red. It is a near freestone with delicious white flesh loaded with nectar-sweet juice. We are not certain yet what ripening dates will be in every section, but we are sure Springtime will be one of the earliest varieties to ripen everywhere.

To be introduced for the first time in the winter and spring of 1954. Originated in the Armstrong Research Department by H. C. Swim. Plant Pat. applied for.
\$3.00 each; 10 or more, \$2.65 each.

The sensational new Springtime — good looking, delicious and unbelievably early

Bobolink — handsome in appearance, a delight to pick and one of the very best for eating

Robin *The Early High Profit Peach*

The beautiful red-cheeked fruit, with its delicious juicy white flesh is outstanding because of its high quality and extreme earliness. Robin looks so enticing and tastes so good that it has consistently brought the highest market prices. Ripens late May or early June. Plant Pat. No. 529.
\$2.50 each; 10 or more, \$2.20 each.

Bobolink *The Peach with the Richest Flavor*

Because of its delicious flavor, so rich, full-bodied, and "peachy," and because this variety produces exceptionally big crops year after year, regardless of weather conditions, we think it's going to be one of the best varieties anyone could possibly plant in Southern California. Ripens in early July. Plant Pat. No. 1150.
\$2.50 each; 10 or more \$2.20 each.

A Peach for Every Purpose

Here are other Armstrong introduced varieties which are especially good for Southern California.

All Armstrong kinds listed below: \$2.50 each; 10 or more of one variety, \$2.20 each.

✓ **Altair** The first fruiting-flowering peach to give you lovely double pink blooms in spring and delicious white-fleshed peaches in August. Plant Pat. No. 1022.

✓ **Curlew** Ripens late, in mid-September, but has delicious, sweet, juicy, yellow flesh as good as many peaches ripening earlier. Plant Pat. No. 651.

✓ **Golden Blush** Huge, golden-red peach with delicious firm yellow flesh and a full-bodied flavor. August. Plant Pat. No. 473.

Standard Peach Varieties Listed Below: \$2.00 each; 10 or more of same variety, \$1.75 each.

✓ **Early Elberta** Popular yellow-fleshed fruit, juicy and well flavored. Good variety for Southern California. Mid-July.

✓ **Elberta** One of the best known of all yellow-fleshed peaches. August.

✓ **Miller's Late** Large fruit with juicy yellow flesh. Extremely late. October-November.

✓ **Rio Oso Gem** One of the largest, most handsome and best flavored of all peaches. Rich, juicy, yellow flesh. August.

Clings for Canning

✓ **Fontana** Firm orange-yellow flesh right to the pit. Especially good for Southern California. September.

✓ **Sims Cling** The commercial variety. Large, golden-yellow, outside and in. Late August.

Special quantity prices are available on 50 or more trees. Let us help you plan your commercial orchard.



Nectarines

Armstrong Developed

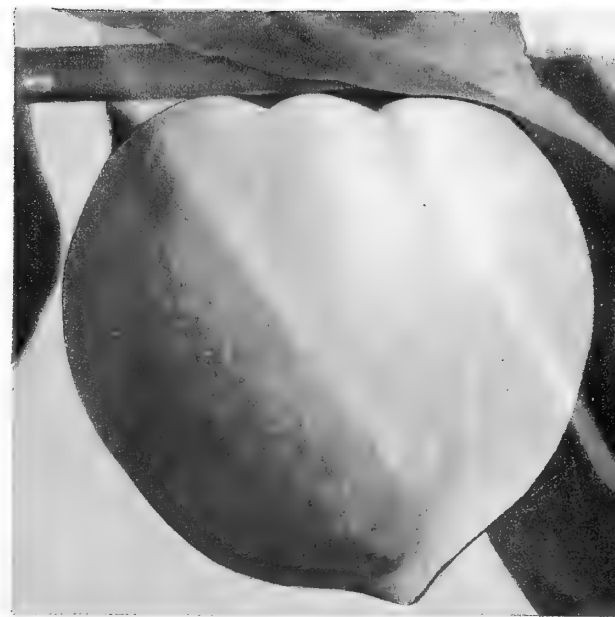
Maybe you have heard that nectarines are a cross between a peach and a plum—not so—they're simply fuzzless peaches with a heavenly flavor. A long time ago the Armstrong hybridists tackled the problem of developing nectarines suitable for Southern California. We are now proud to offer Pioneer, Silver Lode, and Panamint. Every one of them has a richness and sprightliness to their flavor which surpasses that of any peach.

Pioneer

The big, shining yellow fruits with their rich maroon overlay have a tempting aroma which promises a taste thrill. There is no disappointment because the juicy orange-colored flesh is unbelievably delicious. With Pioneer you will not have to hope for a crop—you'll probably get it every year in Southern California. Late July. Plant Pat No. 787. **\$2.75 each; 10 or more, \$2.40 each.**



Silver Lode — the best white-fleshed nectarine for Southern California. Shown about 2/3 actual size.



Robin — always brings top market prices because of its high quality and extreme earliness

Silver Lode

Just as Pioneer and Panamint are the finest yellow-fleshed nectarines for mild-wintered areas, Silver Lode is just as great an improvement in the white-fleshed kinds. The big fruit has a creamy white skin heavily overlaid with scarlet, and the juicy melting white flesh is laden with the richest kind of nectarine flavor. Ripens early, weeks ahead of any nectarine now in commerce. Plant Pat No. 1023.

\$2.75 each; 10 or more, \$2.40 each.

Panamint

The big round fruits are exceedingly handsome with their deep rich red overlaid on a background of orange. The juicy yet firm flesh is golden-orange in color and loaded with a sweet yet exhilarating flavor. Ripens in early July about two weeks ahead of Pioneer. In nearly all areas you can expect a big crop of delicious fruit from any of these special Armstrong varieties, but if you live near the coast, Panamint is probably the best to plant. Another Armstrong origination by H. C. Swim. Plant Pat. No. 1100. **\$2.75 each; 10 or more, \$2.40 each.**

Handsome, shining, and deliciously flavored, Panamint nectarines will average about twice this size

Apricots

➤ **Reeves** Very early and particularly fine for Southern California. Big, round, deliciously flavored fruit. Plant Pat. No. 693.

\$2.50 each; 10 or more, same variety, \$2.20 each.

Other apricot varieties listed below: \$2.00 each; 10 or more, same variety, \$1.75 each.

➤ **Moorpark** July ripening. Best for coastal area.

➤ **Royal** California's favorite apricot. One of the best for planting anywhere. June.

➤ **Tilton** The largest and finest apricot. Best in warm interior valleys. July.

Plums & Prunes

At every Armstrong salesyard you'll find a complete assortment of the best plum and prune varieties for Southern California. Included are such popular plum varieties as **Beauty, Climax, Hollywood, Inca, Mariposa, Santa Rosa, and Satsuma**. Prune varieties available include **French Improved, Standard, and Sugar**.

Prices on all plum and prune varieties, \$2.00 each; 10 or more, same variety, \$1.75 each.





Korean Cherry No. 20 — An ornamental shrub loaded with delicious cherries like this in July

Bush Cherries

Now you can enjoy cherries most anywhere by simply planting a handsomely foliaged deciduous shrub, small enough to fit into any garden corner. Lovely white cherry blossoms in spring are followed by big delicious cherries ripening in July. Plants are vigorous, easy to grow, and wind, cold, or heat will not keep them from fruiting regularly.

Either variety below—5-gal. tins, \$5.00 each. Bare root plants, No. 20, 18 to 24 inches; No. 60, 15 to 18 inches, either variety, \$3.75 each; 10 or more, same variety, \$3.30 each.

- **Korean Cherry No. 20** The taller growing of the two—about 5 to 6 feet. The fruit has a fine flavor though it is slightly more tart than that of No. 60. Plant No. 60 with it for consistently larger crops.
- **Korean Cherry No. 60** Smaller (3 to 4 feet). Fruit is large, deep maroon to black when fully ripe. Sweet and richly flavored. Special offer—1 plant bare root each of No. 60 and No. 20 for only \$6.75.

Figs

Price on all Fig varieties listed below, 1-year trees, 3/4-inch caliper and up, \$2.00 each; 10 or more, same variety, \$1.75 each.

- **Brown Turkey** Large, purplish-brown fruit, sweet and juicy—good everywhere.
- **Brunswick** A medium-sized fruit of good quality; tree somewhat dwarf, very hardy.
- **Celeste** A small white fig with excellent flavor. Hardy.
- **Kadota** California's famous white fig.
- **Mission** Bears huge crops of medium sized deep purple fruit.

Persimmon

The trees you'll find at Armstrong's on Kaki rootstock will bear younger and more consistently than the ordinary type.

Prices on both varieties below, 1-year trees, caliper 3/8-inch and up, \$3.75 each, 10 or more, same variety, \$3.30 each.

- **Hachiya** The familiar big conical fruit delicious when fully ripe and **Fuyu** never astringent or puckery.

Deciduous Fruit Crisp Juicy Apples

- **Pettingill**, a large juicy, tangy, red and yellow apple (Patent Rights Reserved), and
- **Valmore** a deliciously flavored, sweet and juicy August ripening apple (Plant Pat. No. 238) are both particularly good for Southern California.

Either variety, 1-year trees, caliper 3/8" up, \$2.50 each; 10 of same variety, \$22.00.

Standard Apple Varieties Other famous apple varieties to be found at your nearest Armstrong Nursery from January 1 to March 31 include **Beverly Hills, Delicious, Red Gravenstein, Yellow Bellflower** and **Yellow Delicious**.

All of the above varieties, 1-year trees, caliper 3/8" up, \$2.25 each; 10 of same variety, \$20.00.

- **Also Dwarf Apples** Just right for dooryard or city lot planting. They will not get much over 8 feet in height but will bear plenty of delicious fruit. Varieties include **Beverly Hills Delicious, Pettingill, Valmore**, and **Yellow Delicious**.

All Dwarf Apple trees, 3/8-inch caliper and up, \$3.75 each.

Summer & Fall Pears

All varieties below except Max-Red Bartlett, \$2.25 each, 10 or more, same variety, \$20.00; Max-Red Bartlett, \$2.50 each; 10 or more, \$22.00.

- **Bartlett** Tops in appearance, tops in flavor.
- **Beurre d'Anjou** Very large, sweet and juicy. Keeps very well.
- **Gorham** Resembles Bartlett—a consistent bearer.
- **Large-Fruited Winter Nelis** Particularly good for Southern California.
- **Max-Red Bartlett** Just like Bartlett, only bright red. Plant Pat. No. 741.
- **Winter Bartlett** Similar to Bartlett in appearance and flavor, but smaller. Ripens late.

➤ **Dwarf Pears for City Lot Planting** Trees seldom get over 8 feet tall, yet produce fruit as fine as that from standard trees. Easily cared for and bear consistently.

Prices on all Dwarf pear varieties listed below, \$3.75 each; 10 or more, \$33.00.

Dwarf Bartlett Dwarf Beurre d'Anjou Dwarf Gorham Dwarf Winter Nelis Dwarf Winter Bartlett Dwarf Max-Red Bartlett (Plant Pat. No. 741)
All pear varieties, Standard or Dwarf, bear best when two or more varieties are planted together for cross pollination.

Cherries

Prices on all Cherry trees (except Bush Cherries), \$2.25 each; 10 or more, same variety, \$2.00 each.

- **Richmond** with its dark wine-red fruits and **Morello** with fruit slightly larger and ripening 2 weeks later (late June) are both the so-called "pie" cherries. They will bear regularly in Southern California. The finest Sweet Cherry varieties are **Black Tartarian**, ripening in early June; **Bing**, the huge, dark red cherry commonly seen on the market; and **Royal Ann**, the big, pale yellow cherry with the bright red cheek, also ripening in late June. These varieties are best suited to the higher altitudes of Southern California. Sweet Cherries also need cross pollination. Bing and Tartarian will pollinate each other and Tartarian will pollinate Royal Ann.

Pettingill Apple is a good variety for Southern California

Almonds

All varieties listed below, 1-year trees, caliper 3/8-inch and up, \$2.00 each; \$17.50 per 10 of one variety.

- **Drake** Very prolific, medium size.
- **Jordanolo** Best for Southern California.
- **Ne Plus Ultra** Very large; soft shell.
- **Nonpareil** Giant papershell nuts.
- **Texas** Small, plump nuts.

Cross pollination of Almonds is necessary for good crops. Your Armstrong salesman can tell you which varieties to plant together.

Walnuts

At every Armstrong salesyard you will find California's famous English Walnut varieties including **Eureka, Franquette, Payne, Placencia**, all priced at \$3.75 each; \$33.00 for 10 or more of one variety. Also **Willson Wonder** for giant English Walnuts and **Thomas Black Walnut**, for easy-to-shell Eastern Black Walnuts. **Willson Wonder** and **Thomas Black Walnut**: \$4.25 each; \$37.50 for 10 of one variety.



Sweet Crisp Grapes

Whether your taste in grapes runs to the famous American or Concord types or whether you prefer the famous Old World kinds, you'll find a complete selection at your nearest Armstrong Nursery.

Eastern or Concord types and several new, improved grape hybrids are priced at 75c each; \$6.50 per 10 of one variety.

Included are **Cardinal, Christmas, Concord, Delight, Golden Muscat, Perlette, Pierce, and Scarlet.**

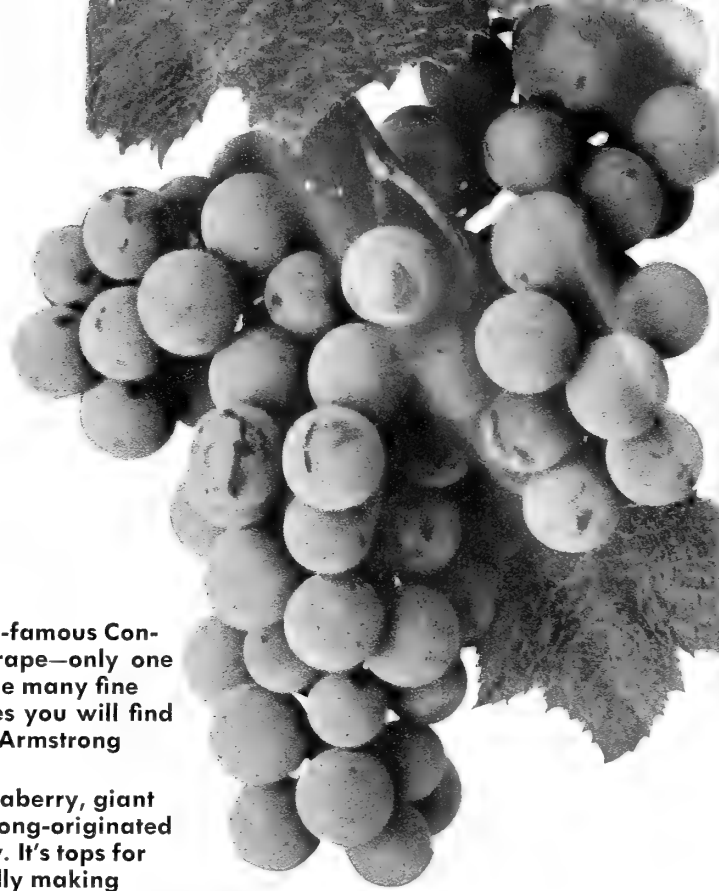
California's famous Western grapes are priced at 45c each; \$4.00 per 10 of one variety.

Among them you will find **Black Hamburg, Black Monukka, Black Muscat, Flame Tokay, Muscat, Ribier, Rish Baba, and Thompson Seedless.**

Bearing Size Grapes—No long wait for your first crop. Field-grown for 3 years, they are furnished with a ball of earth and if planted early will usually bear the first year. Varieties include **Black Monukka, Black Muscat, Concord, Delight, Golden Muscat, Perlette, Ribier, Scarlet and Thompson Seedless.**

All varieties, bearing, \$6.75 each.

Grapes on Special Rootstock—Some grape varieties are available on hybrid rootstock at \$1.50 each. They are resistant to grape phylloxera and nematode and usually bear sooner and more heavily.



World-famous Concord grape—only one of the many fine varieties you will find at Armstrong

Magnaberry, giant Armstrong-originated berry. It's tops for jelly making

Berries

All of the best varieties of berry plants are available in our salesyards or for shipment during the months of January, February, March, and April. Blackberries, including the sensational new **Olallie, Raspberries, red, purple, and black, Boysenberries, Loganberries**—just to name a few. Also available are the two special Armstrong-introduced berry varieties—**Bonanza**, a good red raspberry for Southern California and **Magnaberry**, which produces huge purplish-black fruits with a flavor resembling a blackberry and raspberry combined. Also, **Rhubarb, Artichokes and Asparagus** are among the easy-to-grow garden vegetables. **Prices range from 40c to 75c per plant.**

Honey-sweet Rockhill Strawberries



Luscious Strawberries

If garden space is limited you can still enjoy strawberry plants by using them as a border, ground cover or even planting them in a barrel. Big, plump, fully ripened strawberries are something for the whole family to enjoy and at today's market prices, home grown berries will make a big difference in the food budget.

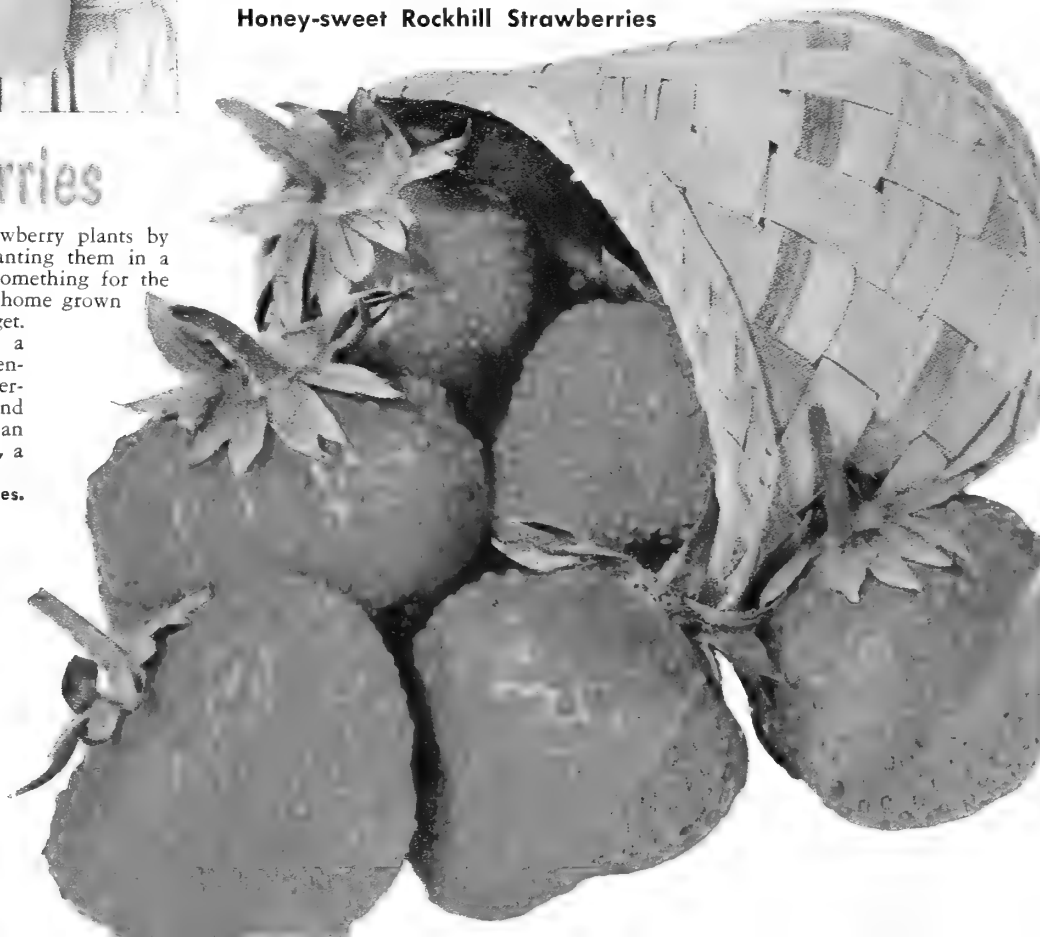
Your Armstrong salesman will gladly recommend a good strawberry variety for you from among such splendid kinds as **Donner**, a new introduction of the University of California; **Klondike**, one of the best known and most productive of all strawberries; **Streamliner**, an everbearing type of high quality; and **20th Century**, a super-flavored new everbearing type.

Prices start at \$1.50 for 25 plants for some varieties.

Famous Rockhill No. 24

When you've tasted one of these huge, bright red, honey-sweet berries, you will say that it is just about the best strawberry you have ever eaten. Rockhill is the ideal variety among everbearing types for home planting because it starts producing early and you can continue to pick big, plump berries until late fall. Then, too, you will never have a runner which makes it a good variety for border planting. The best strawberry for growing in jars or barrels. Without runners from which to propagate, the plants are expensive, but they are worth it.

10 for \$2.50, 25 for \$5.00, 50 for \$8.50.





Robertson
Navel

Avocados

Not only are avocados one of the most handsome of evergreen shade trees, but they will give you plenty of delicious fruit, rich in proteins, for the whole family to enjoy. At every Armstrong Nursery you will find varieties suitable for a wide range of locations and you can select a group which will give you fruit throughout the entire year. Ask your Armstrong salesman which variety is best for you. Below are some of our kinds.

All avocado trees over 3 feet in height, strong and of heavy caliper, \$6.50 each; \$57.50 for 10 of one variety.

- **Duke** Ideal for interior valleys and colder areas. A green fruit of medium size with buttery pleasantly flavored flesh. Ripens Sept.-Oct.
- **Edranol** The dark-green, pear-shaped fruits have a delicious rich, nut-like flavor and smooth buttery flesh. A tall, slender tree good for dooryard planting or for inter-planting with other kinds. Does very well in milder areas away from the coast. Ripens May to August.
- **Emerald** A new variety with a lot of promise. Handsome green fruit of medium size and a tall, slender tree which is very hardy. Has borne very well wherever tested.
- **Fuerte** The top commercial variety in California and the unchallenged leader for quality. Winter ripening and semi-hardy.
- **Hass** Summer-ripening kind approved by the Avocado Society for its consistent bearing. Purplish-black fruit with an excellent flavor.
- **Jalna** A thin-skinned, green, pear-shaped fruit with excellent flavor. Good for the interior valleys because it is hardy. Ripens Nov.-Dec.
- **Mexicola** Our hardiest avocado. Small black fruits of very good quality. Ripens August and September.
- **Ryan** Green summer-ripening fruit—a handsome symmetrical-spreading tree, ideal for shade. Semi-hardy. Ripens May to October.
- **Zutano** A light-green fruit with a thin skin and a fine, rich, nut-like flavor. Looks like Fuerte, but ripens Nov. to Jan. Relatively hardy.

A chilled Cherimoya is delicious.



California Citrus Fruits

No Southern California planting is complete without some citrus even if you have room for only the dwarf kinds, and nothing can take the place of citrus juices as a potent source of Vitamin C for keeping the family healthy.

California's famous navel oranges, including the well-known winter ripening **Washington Navel**, **Robertson**, a heavy bearing semi-dwarf type ideal for home planting, and **Summernavel**, the Armstrong-introduced summer-ripening type, are all available for planting throughout most of the year. Along with them are two outstanding summer juice types, the regular **Valencia** and the **Armstrong Seedless Valencia** with never a seed. **Torocco Orange**, a thin-skinned variety with ruby flesh, is marvelous for home planting.

At Armstrong's, you will also find **Marsh Seedless** and the pink-fleshed **Ruby Grapefruit**; famous **Eureka Lemon**; the hardy **Chinese Meyer Lemon**; and the finest lime for growing in Southern California, **Bears Seedless**.

All of the above varieties: Strong 1-year trees, \$6.00 each; 2-year, \$6.50 each.

Among the most popular of citrus varieties for home planting are the Mandarin oranges (Tangerines) because the handsome ornamental trees produce heavy crops of sweet juicy fruit. Armstrong varieties include: **Clementine**, **Dancy**, **Kara**, **Kinnow**, and **Satsuma**. \$7.00 each. **Minneola Tangelo**, that delightful cross between tangerine and grapefruit, is another good home kind at \$7.00 each.

Specialty citrus kinds like the very ornamental Kumquats and Calamondins can add a great deal to any planting.

Subtropical Fruits

Here in Southern California we are fortunate in being able to grow and enjoy many tropical and semi-tropical fruits which are unknown elsewhere in the country. Many are ornamental—as attractive as anything you will find, and, in addition, will provide your table with delicious and unusual fruit.

Cherimoya

The unique, large, green, heart-shaped fruits have a delicious, smooth, white flesh with the consistency of ice cream, and they ripen in winter when fruits are scarce. Big trees of several outstanding varieties are available at every Armstrong Nursery, priced at \$8.50 per tree. Ask your Armstrong salesman if a Cherimoya is suitable for your area. If so, you have a treat in store for you.

Loquats

One of the hardiest of the subtropicals and the big, broad, attractive foliage is highly prized for use in modern flower arranging. Three varieties, **Advance**, and **Champagne**, both zestfully flavored, white-fleshed kinds and **Gold Nugget**, a delicious orange-fleshed one, are all available in balled 2-year old trees at \$8.50 each.

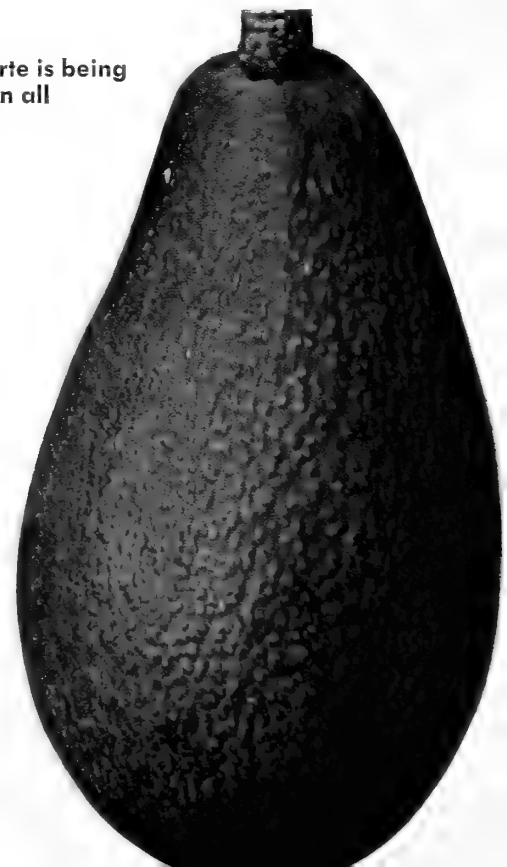
Sapote

The densely foliated evergreen tree ripens fruit over many months—fruit which resembles a green apple but has a rich peachlike flavor. Big, balled trees of **Wilson** and **Suebelle**, \$8.50 each.

Winter-ripening Fuerte is being grown successfully in all avocado districts.

**If It's a Good
Fruit for South-
ern California—
You'll Find It
at Your Nearest
Armstrong
Nursery**

Showy Natal Plums, delicious Pineapple Guavas, Macadamia nuts, Olive trees, Cherry of the Rio Grande, and a whole host of decorative plants bearing luscious and unique fruits are on display at Armstrong's.



Freeblooming Azaleas

The Rutherfordianas

These magnificent hybrids excel all others in the quantity and colorful bloom they display for many weeks each spring. Often the large flowers cover the plants so profusely that you cannot even see the foliage.

All Rutherfordiana varieties blooming size, 6-inch pots, \$3.75; 9-inch pots, \$6.00 each.

Albion Big, semi-double of snowy white. In bloom at Easter.

Constance Deep lavender to light pink. Single. Early to mid-season.

Dorothy Gish Brick-red with darker red markings at the throat. Early to midseason.

Firelight Bright cherry-red with markings of currant-red. Semi-double with gracefully ruffled petals. Early.

L. J. Bobbink Lovely lilac or mauve. Blooms late.

Purity High-centered immaculate white with two rows of petals. Early.

Rose Queen Large, double, deep rose pink. Early.

Indian Azaleas

The famous azaleas of the Old South. Fewer blooms than Rutherfordianas, but larger ones and a lower-growing plant.

All varieties, blooming size, 6-inch pots, \$3.75; 9-inch pots, \$6.00.

Albert and Elizabeth Pink flecked with white.

Hollandia Brilliant orange.

Lambertus C. Bobbink Glowing scarlet.

Mme. Petrick Superba Pink with margin of white.

Pax Large, semi-double white.

Perts de Noisy Delicate lavender-pink.

Pink Pearl Appleblossom-pink.

Snowdrift Semi-double, pure white. Very late.

William Van Orange Traffic-signal red. Late.

Kurume Azaleas

Smaller blooms than either Rutherfordiana or Indica, but the plants get to 6 feet and very lovely, covered with clouds of pastel-colored flowers.

All Kurume varieties blooming size, 6-inch pots, \$3.00; 9-inch pots, \$5.50.

Among the available varieties are:

Coral Bells, pink

Coralie, salmon-pink

Laughing Water, snow-white

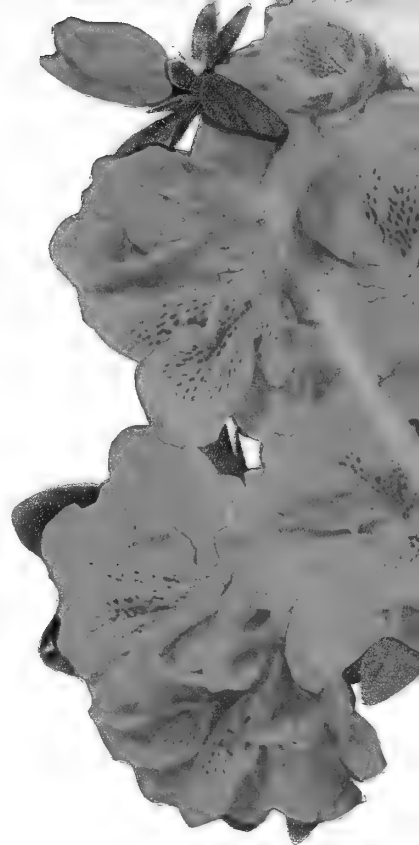
Orchid, mauve

Snowflake Double, pure white

Eleanor Hagood—It is our favorite pink



Azalea Rutherfordiana, Dorothy Gish



Lovely Camellias

Even when not in bloom, the camellia plant with its big, shining, deep green foliage is one of the most beautiful of ornamentals. But when it is covered with the waxy-textured long lasting blooms—right in the middle of winter—nothing is more delightful. There is always a shady or semi-shady place in every Southern California planting for one or more camellias.

Alba Plena No wonder it is called the perfect white, the high-centered formal flowers never have a petal out of place and never show a stamen.
Gal. tins, \$3.50; 5-gal. tins, \$12.00.

C. M. Hovey Glowing flowers of rich crimson to 5 inches across. Many-petaled formal double bloom.
Gal. tins, \$3.50; 5-gal. tins, \$12.00.

Candida Elegantissima Big, semi-double flower, with huge ruffled petals, rose-pink heavily marbled with white.
Gal. tins, \$3.50; 5-gal. tins, \$12.00.

Daikagura Large informal flowers of deep rose-pink. One of the first varieties to bloom—often in October.
Gal. tins, \$3.50; 5-gal. tins, \$12.00.

Glen 40—A warm orange undertone makes the flower glow like a hot coal.

Debutante Medium-sized flowers combining delicate pink coloring and graceful, pleasing form. Perfect for corsages.
Gal. tins, \$3.50; 5-gal. tins, \$12.00.

Donckelari Sometimes 6 inches across! Two rows of deep, rich red petals surround a tuft of flaming golden stamens.
Gal. tins, \$5.00; 5-gal. tins, \$17.50.

Eleanor Hagood Of clear, soft pink, the flowers remind you of a giant Pink Perfection. 4 to 5 inches across, they are perfect in every detail.
Gal. tins, \$4.25; 5-gal. tins, \$15.00.

Elegans Big, 6-inch flowers of rose-pink splashed with white. The big outer petals surround a tuft of tiny petaloids at the center. Dwarf plant.
Gal. tins, \$3.50; 5-gal. tins, \$12.00.



See Them in Bloom at Every Salesyard

The varieties listed here are just a few of the many you will find displayed at every Armstrong Nursery. During the early spring, every location is aglow with thousands of blooms. And we think the plants are the best you will find anywhere.

Camellias for Winter Bloom

Glen 40 A beautiful large formal flower of deep glowing red. Semi-dwarf plant with lustrous dark green leaves. The red camellia everyone wants.

Gal. tins, \$4.25; 5-gal. tins, \$15.00.

Gigantea Unbelievably large flowers of deep red blotched with snow white. Startling in its size and startling in its coloring.

Gal. tins, \$3.50; 5-gal. tins, \$12.00.

C. M. Wilson An exceedingly lovely new camellia, it is just like Elegans in form with its big, broad overlapping petals surrounding a tuft of tiny petaloids. But the huge flower is a uniform delicate pink in color.

Gal. tins, \$5.00; 5-gal. tins, \$17.50.

High Hat Blooms extremely early—often in October. The peony-like flower, 3½ to 4 inches, is shell-pink.

Gal. tins, \$4.25; 5-gal. tins \$15.00.

Josua Youtz Similar to High Hat above, this is another very early blooming variety. The semi-double flowers with their gracefully waved petals are white.

Gal. tins, \$5.00; 5-gal. tins, \$17.50.

Lila Lee Pictured below. Very good looking plant which blooms freely. Plant Pat. No. 891.

Gal. tins, \$3.50; 5-gal. tins, \$12.00.



Early blooming Debutante is perfect for corsages.

Spectacular Mathotiana
(Julia Drayton)



**Save \$ on
These Camellias**

Cornerstone Collection

Four lovely and easy-to-grow kinds which you will be proud to have in your garden.

Mathotiana Huge red.
Elegans Marbled pink and white.
Purity Formal snow white.
Debutante Pink. (Illustrated above.)

Cornerstone Collection: One each of the above in gal. tins, for..... **\$9.95**

You save **\$3.05**

Available also in 5-gal. tins at \$34.45, a saving of \$9.05.

All-Star Trio

If you want something special and out of the ordinary, varieties of which you can be exceedingly proud, here they are:

Alba Plena Perfect white.
Glen 40 A vibrant red.
Eleanor Hagood A marvelous pink.

All-Star Camellia Trio: One plant of each of these three kinds, in gal. tins, for..... **\$9.45**

You save **\$2.55**

Available also in 5-gal. tins at \$33.45, a saving of \$8.55.

Lila Lee is particularly good for cutting.



Margarete Hertrich The most perfect and beautiful of the fully double formal white camellias.

Gal. tins, \$4.25; 5-gal. tins, \$15.00.

Mathotiana (Julia Drayton) Beautiful rose-like flowers, often 6 inches across, are a uniform shade of brilliant scarlet.

Gal. tins, \$3.50; 5-gal. tins, \$12.00.

Pink Perfection Its name describes the flower perfectly. Blooms from Thanksgiving right through to late spring.

Gal. tins, \$2.50; 5-gal. tins, \$7.50.

Purity Symmetrical, exquisitely formed, double snowy white blooms of large size, Blooms late.

Gal. tins, \$2.50; 5-gal. tins, \$7.50.

Lots More at Armstrong's

These are only a part of the big variety selection you will find at your nearest Armstrong Nursery. Remember, too, that when you invest in a camellia plant, you are buying something permanent so it pays to start right by getting the best—Armstrong plants.

Evergreen Shrubs

You'll Find the Best Selection at Armstrong's

Whether you are planting a petunia or a big spreading oak, you will save time, trouble and money when you insist upon top quality plants. That is one thing you can be sure of when you buy Armstrong plants. No effort or expense is spared to make them the best. Armstrong's Research Department is the largest such establishment not government owned, and from its special plant breeding work have come many desirable new varieties for Southern California planters. Whether it be camellias, azaleas, shade trees, or ornamentals for any purpose, there is a complete stock at every Armstrong Nursery, and at each location a staff of gardening experts is ready and glad to give you accurate and helpful planting advice.

Eugenia Armstrong

A neat and compact Eugenia that retains all the glossy attractiveness of the more common kind, but gets only 5 feet tall. Needs no pruning to keep it attractive looking. Plant Pat. No. 1037.

Gal. tins, \$1.50; 5-gal. tins, \$4.75.



The new compact Eugenia Armstrong

Cistus purpureus



Arbutus unedo

A compact rounded shrub densely covered with dark green foliage. White, bell-shaped flowers are followed by clusters of brilliant red fruits, resembling strawberries. Stands heat, cold, and drought.

Gal. tins, \$1.50; 5-gal. tins, \$4.75; also balled plants from \$7.50 up.



Arbutus unedo

Cistus purpureus

Among the fine selection of Rockroses you will find at Armstrong's, is the Orchid Rockrose. Plant it where the sun is the hottest and your soil the driest. It grows to 4 feet, and early in the year is covered with lovely big, crepe-like flowers of rosy lavender.

Gal. tins, \$1.35; 5-gal. tins, \$4.50.

Other rockroses include the **Brown-Eyed Rockrose** growing to only 3', the pure white **Cistus corbariensis**, growing also to 3 feet and the **Crimson Spot Rockrose** growing to 5 feet.

Some Good Plants for Sunny Places

Abelia grandiflora Shining foliage. 6 ft.

Arbutus unedo Described above. 6 to 10 ft.

Cistus Several varieties. 3 to 6 ft.

Correa pulchella Grows anywhere. Only 18 in.

Berberis Several varieties. 2 to 6 ft.

Cassia Feathery foliage. 8 ft.

Cocculus laurifolius Leathery 6-inch leaves. 8 ft.

Cotoneaster Several varieties. 2 ft.

Ericas (Heathers) Several types. 3 to 8 ft.

Hibiscus A wide selection of colorful kinds.

Ilex cornuta (Chinese Holly) 5 to 6 ft.

Ilex cornuta Burford Bright berries. 6 to 10 ft.

Lantana Continual gay color. From 3 to 6 ft.

Murraya paniculata 6 to 10 ft.

Neriums (Oleanders) Pink, salmon, red and white. 6 to 8 ft.

Pittosporum tobira Spreading. 5 to 8 ft.

Pyrus kawakami Train it most any way. 8 to 12 ft.

Raphiolepis indica rosea Handsome shrub. 3 to 5 ft.

Viburnum suspensum Always a cool shining green. 8 ft.

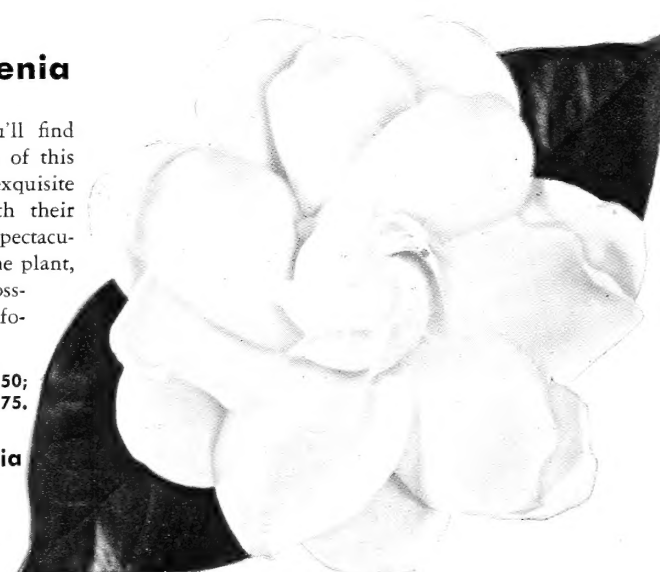
Xylosma senticoso Beautiful glossy foliage all year. 6 ft.

Famous Mystery Gardenia

The choicest blooms you'll find at your florist are usually of this kind. Not only are the exquisite snowy white flowers with their rich fragrance the most spectacular of all gardenias, but the plant, too, has the biggest, glossiest, and most luxuriant foliage. 3 to 4 ft.

Gal. tins, \$1.50;
5-gal. tins, \$4.75.

Fragrant Gardenia Mystery



Evergreen Shrubs

Pyracantha Graber

Prune it, shape it, train it, most any way you like—we think this variety is superior in every way to other red-berried pyracanthas. Not only is the foliage glossier and brighter, but the big red berries—loads of them—are at their best during the holiday season.

Gal. tins, \$1.35; 5-gal. tins, \$4.50; Also available staked and trellised.

Strelitzia reginae

Exotic Bird-of-Paradise flowers, with their brilliant orange and bright blue colors, are the official flower of the City of Los Angeles. The clump of tropical-looking foliage grows 2 to 4 feet tall.

Gal. tins, \$2.50; 5-gal. tins, \$7.50.

Hibiscus

Snow white, yellow, bronze, pink, red—singles and doubles—you'll find one of the largest selections of showy Chinese Hibiscus at your nearest Armstrong Nursery.

Prices start at \$1.35 each.

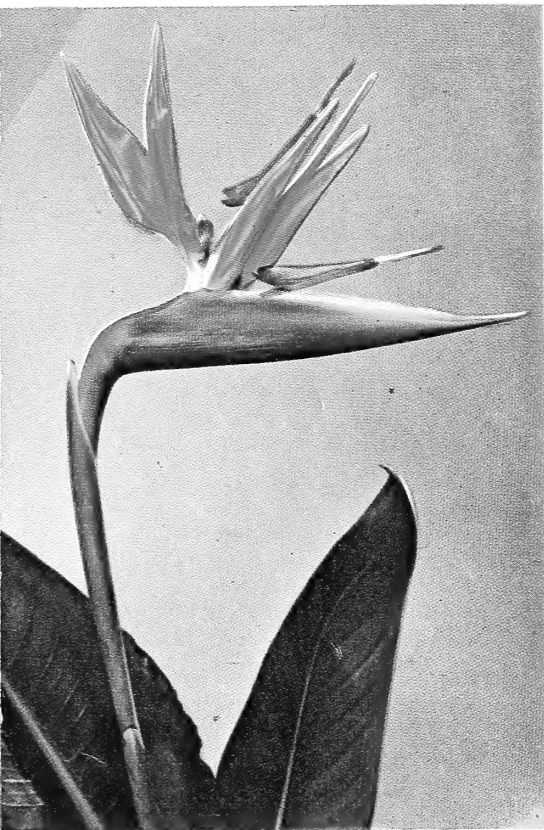
Hollies

Special strains of both Chinese and English holly, which will berry regularly, plus several holly varieties with bigger foliage and bigger berries than ever will be found at Armstrong's.

Prices start at \$2.00 each.



Brilliant berries of Pyracantha Graber



Strelitzia reginae — flowers are long lasting and exotic

For Shady Spots

- Aucuba Golddust plant.** About 3 feet.
- Fuchsias** Many colors and types.
- Gardenias** Gardenia Mystery. See page 37.
- Camellias** Page 35 and page 36.
- Azaleas** Many colors. Page 35.
- Clivia grandiflora** 2 feet. Good for tubs.
- Fatsia japonica** Tropical looking. 4 to 8 ft.
- Ferns** Various types and sizes.
- Hydrangeas** Including colorful new hybrids.
- Mahonia aquifolium** 4 to 6 ft.
- Rondeletia cordata** 4 to 6 ft.

Low Growers & Ground Covers

- Acanthus mollis** Good for planters. 3 ft.
- Agapanthus Lily of the Nile** 18 inches.
- Bergenia cordifolia** 18 inches.
- Correa pulchella** 18 inches.
- Hypericum moserianum** 2 ft.
- Lantana** Dwarf yellow. 18 inches.
- Mahonia compacta** Shiny, toothed foliage. 2 ft.
- Reinwardtia indica** Brilliant yellow. 2 ft.
- Sollya heterophylla** Blue flowered ground cover.
- Strelitzia Bird-of-Paradise** 2 to 4 ft.
- Large-Leaved Ivy** Evergreen ground cover.
- Fragaria chiloensis** Wild Strawberry ground cover.
- Ajuga reptans** Blue flowered ground cover for shade.

For Hedges & Screening

- Boxwood** 1 to 2 ft.
- Euonymus japonicus** Hedge. 2 to 3 ft.
- Privets** 3 to 12 ft.
- Nandina domestica** 4 to 5 ft.
- Myrtus compacta** 2 to 4 ft.
- Pittosporum undulatum** 20 ft.
- Catalina Cherry** 15 to 25 ft.
- Prunus laurocerasus** Dense evergreen to 8 ft.
- Carolina Cherry** Evergreen 15 to 25 ft.
- Evergreen Pear Tree**, screen or espalier 18-25 ft.
- Sweet Olive** Very fragrant. 10 ft.
- Oleanders** Pink, Salmon, Red and White. 6 to 8 ft.
- Climbing Roses** Many sizes, many colors.

Have You a Planting Problem?

Is your place a country acre or a city lot, is it inland or on the coast, is the soil poor or good? Makes no difference, because at Armstrong's you'll find just the plants you need to beautify it and increase its value. Each of our salesmen is a specialist able to help you with any problem you may have on what and where to plant for best results.

Berries of Burford Holly



427
Ornamental
Varieties
to Choose
from at
Every
Armstrong
Nursery

Hibiscus Stoptlight



Coniferous Evergreens

The conifers or cone-bearing evergreens usually have a regular and formal shape, making them ideal for use as accents. However, the prostrate and low-growing kinds are widely used, also.

Whether you need a giant Redwood tree or a ground-hugging Juniper, you will find it at Armstrong's.

Cedars Cedars include *Cedrus deodara*, the famous California Christmas Tree and also, *Cedrus atlantica glauca*, the Blue Atlas Cedar. **Balled plants range from \$7.00 up.**

Cypress For windbreak or thick screen planting, 20 feet or more in height, there are *Cupressus arizonica* (Arizona Cypress) and *Cupressus forbesi*, a native California cypress. For those tall, slender, green spires much used as accent points, plant *Cupressus sempervirens* or Italian Cypress. **Prices range from \$1.25 in gallon tins.**

Junipers Among the finest of all evergreen coniferous plants for Southern California are the Junipers. *Juniperus chinensis Armstrong* grows 2 feet high and 4 feet across. *Juniperus chinensis Richeson* grows 4 to 5 feet high and 5 to 6 feet across. *Juniperus sabina Tamarix* hugs the ground but gets 5 to 6 feet across. Then there is the very picturesque *Juniperus chinensis Twisted* which grows in a picturesque irregular fashion to 6 or 8 feet. Junipers are available in a wide range of sizes and prices.

In addition to the varieties specifically mentioned you will find Pine trees, Redwood trees, slow-growing Yews, California's native Incense Cedar, and many others. They can be planted at any time of the year, so pay us a visit today.

Juniperus chinensis Armstrong, compact and lush green always



Violet Trumpet Vine (Clytostoma)

Vines for Every Purpose

Exotic beautifully flowered vines of the tropics as well as hardy vines for colder areas are on display at Armstrong's. You can select a vine for any purpose and all varieties are available for planting at any time of the year.

If you live near the coast, you will undoubtedly want to adorn your place with a flaming Bougainvillea. Some of the best varieties to choose at Armstrong's priced from \$1.65 up. Other outstanding vines for sheltered or coastal areas which will give a breathtaking display of color are *Distictis Rivers*, the Royal Trumpet Vine, and *Phaedranthus buccinatorius*, the Blood-Red Trumpet Vine.

New Ground Covers Some extremely popular varieties which were formerly used largely as vines are now widely used as ground covers or trailers for covering a bank or terrace. Among the best of them are **Trachelospermum jasminoides**, the Star Jasmine, with its fragrant white flowers, *Jasminum magnificum*, with even larger flowers and *Clytostoma callistegioides* with its shining foliage and lavender flowers, illustrated above.

Honeysuckles, Ivy, Wistaria, and many others are included in the stock on display at your nearest Armstrong Nursery.

Trees — Deciduous & Evergreen

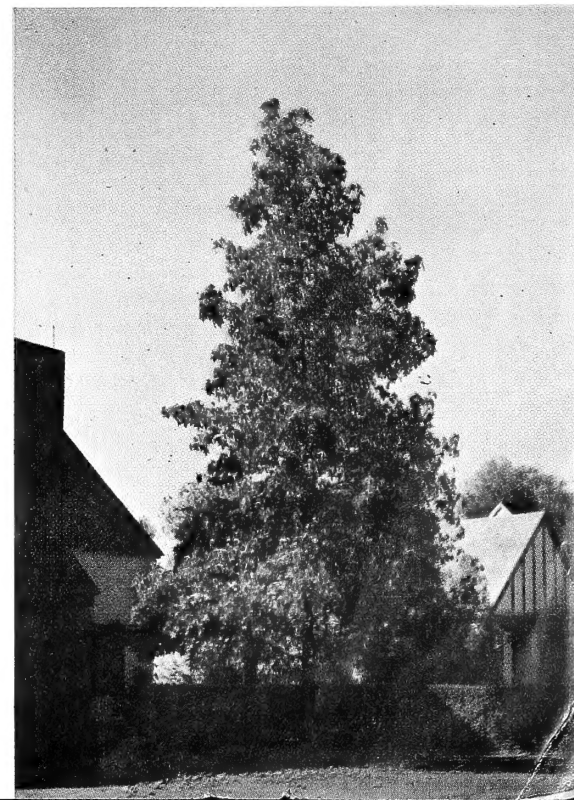
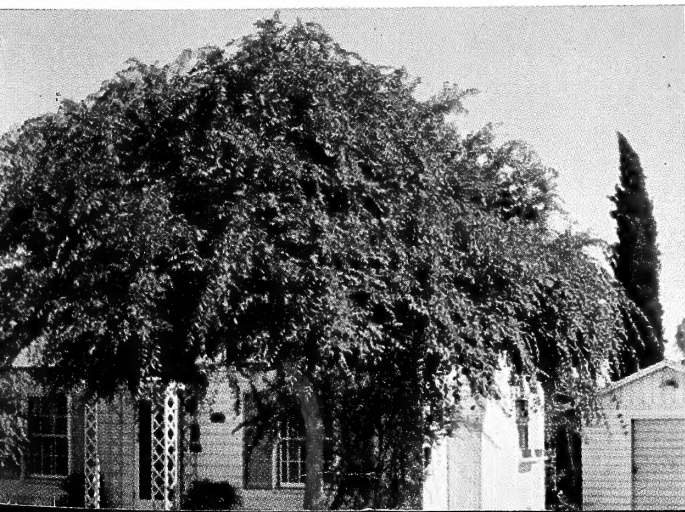
Whether you want a small evergreen for decorative effect, a flowering tree for color, a large evergreen for shade all year, or a big deciduous shade tree, the salesman at your nearest Armstrong Nursery can recommend a tree to suit your need.

Among the flowering trees which herald the advent of spring are the flowering peaches, flowering crabapples and Chinese Magnolias. For street planting, there are Acacias, Camphors, Carobs, Flowering Eucalyptus, Live Oaks, Peppers and others.

Useful trees for summer shade are the Silver Maple, Montebello Ash, Chinese Pistachio, Sycamores, and Elms. Ornamentals which will give you shade and plenty of fruit, too, are Avocados, Olives, Cherimoyas, Sapotes, and many deciduous fruiting trees. No matter what your particular climate may be, we have a tree for you.

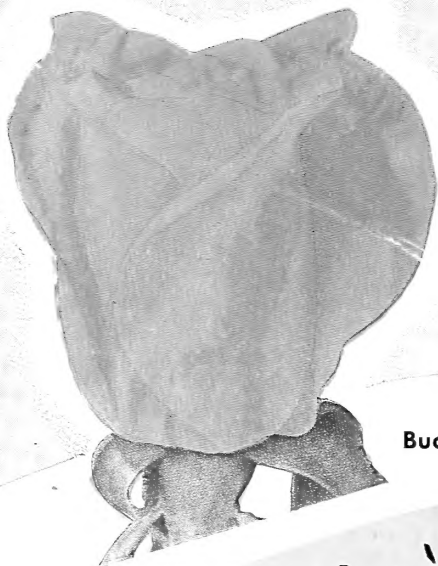
The good-looking small evergreen Elm is ideal where space is limited

Liquidambar, one of the few trees to show glowing fall colors in California



The Newest Roses

Get Them in Collections
— and Save!



Buccaneer

Top Four for '54

Mojave
Helen Traubel

Buccaneer
Chrysler

\$9.70

One plant of each of the above four varieties sent postpaid anywhere in the States

Three Winners

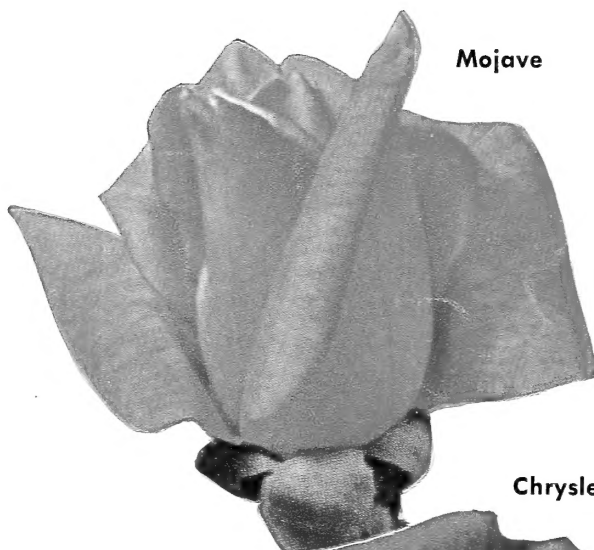
Mojave Helen Traubel

Chrysler

\$7.25

One plant of each of the above three varieties sent postpaid anywhere in the States

Only top quality Armstrong plants are used in all collections. Please do not ask us to substitute varieties. Prices on all collections include transportation. (California buyers please add 3% sales tax.)



Mojave



Helen Traubel



Chrysler

Armstrong Nurseries

408 North Euclid Ave.

ONTARIO, CALIFORNIA

Phone: YUkon 627-61

North Hollywood

12908 Magnolia Blvd.
Phoner: SUnset 11522
STanley 72394

Culver City

4440 Sepulveda Blvd.
Phone: VErmont 82-665

Long Beach

3759 Long Beach Blvd.
Phone: Long Beach 45-118

San Marino

2920 Huntington Dr.
Phone: ATlantic 95041

Lakewood Center

4727 East Silva
Long Beach 11
Phone: MEtcalfe 30719

Please address all mail orders and correspondence to Ontario