

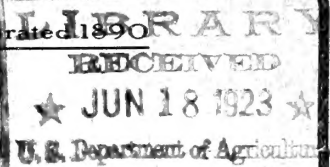
## Historic, archived document

Do not assume content reflects current scientific knowledge, policies, or practices.



Established 1876

Incorporated 1890



# Autumn 1903 Catalog

Tells when to Plant and how to Grow

**Bulbs** imported and native

**Plants** greenhouse and garden

**Seeds** seasonable specialties

**Cox Seed  
Company**

growers  
and  
importers

San Francisco, California

---

We handle but one grade of goods—the best

# COX SEED COMPANY'S

## CATALOGUE OF

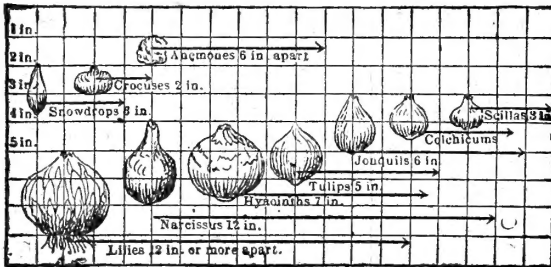
# Bulbs and Plants for Fall Planting

**The Cultivation of Bulbs**—For winter and spring for either out or indoor decoration, is very interesting and much easier than is generally supposed. If the brief directions given below and elsewhere in this catalogue be observed, there need be no disappointment in the results. Many of our most beautiful flowers are produced from bulbs, at a time when flowers are most appreciated, their showy beauty and fragrance being very effective, surpassing even in winter many of the most popular summer flowers and furnishing at small cost a constant source of pleasure.

**Remember that the Finest Outdoor Displays** of the early spring months are from bulbs planted in the fall. We would particularly impress on the amateur that the fall, and not the spring, is the proper time to plant all kinds of flowering bulbs. The larger part of the bulbs offered in this catalogue reach us from Europe and elsewhere in September, and the sooner they are planted after that the greater will be the measure of success.

**We invite Special Attention** to the special collections offered elsewhere in this catalogue, both for in and outdoor decoration. They contain only sorts that will insure satisfaction. Our bulbs are all selected from the best growers, are sound and of first size, and we would warn intending purchasers against buying cheap, undersized stock and expect the fine results obtained from selected bulbs such as we offer.

**Orders Should be Sent as Soon as Possible** after receipt of this catalogue. Orders booked earliest are surest of being filled as ordered, as, if left too late, the supply of some of the varieties may be exhausted.



### DEPTHS AT WHICH BULBS SHOULD BE PLANTED

Many of our customers are frequently puzzled to know the proper depth and distance apart at which bulbs should be planted. The accompanying diagram, reproduced from "Popular Gardening," conveys the information much more clearly and briefly than we could describe it. The Chart will bear careful study. Outdoor planting should be done early in the fall to secure healthy plants, vigorous foliage and beautiful flowers.

## GENERAL CULTURE DIRECTIONS

### CULTURE IN THE OPEN GROUND

The soil for most hardy bulbs should be sandy loam, and of a texture that will not retain stagnant water. Well rotted stable manure or bone meal should be thoroughly worked into the soil so that it will not come in direct contact with the bulbs. Most bulbs like rich food if properly applied, as the proper development, luxuriance and brilliancy depend largely upon the nutrition of the roots are consuming. Liberal applications of manure water, when the flowers are in bud, produce magnificent results. The proper depth to plant is carefully indicated on diagram above and deserves careful study.

### CULTURE IN POTS

The best potting soil for bulbs is composed of fibry loam, leaf mold and river sand in equal proportions. The pots should be filled lightly and the bulbs pressed into the soil so that its base is firmly fixed. As a general rule the top of the bulb should just show above the surface soil when planted. To encourage and promote

root growth, the pots should be buried out of doors to the depth of six inches and left there for five or six weeks. By that time the pots should be well filled with roots and may then be taken indoors. There the warmth will soon bring them into flower. Plenty of water should be applied and liquid manure is beneficial after the flower spikes appear.

### CULTURE IN GLASSES

Although there are other bulbs used for this method of culture, large, well shaped, single hyacinths are the best for this purpose. Place the bulb, so that the base merely touches the water. Set the glasses in a cool, dark, airy place until the roots have reached the bottom of the glass, which should be in about six weeks' time. If then kept in a cool room they will produce very fine spikes and remain in bloom a long time. As the water evaporates fill up the glasses and change the water entirely when needed to keep it sweet and clear. A small piece of lump charcoal placed in the water will prevent it from getting foul.

# CATALOGUE of BULBS

## Select Named Hyacinths.

The single-flowered varieties are generally more effective than the double ones. They also, as a rule, succeed better in glasses. The double varieties are distinguished by an asterisk (\*).

*If ordered by mail, please add 15 cents per dozen for postage.*

### NAMED

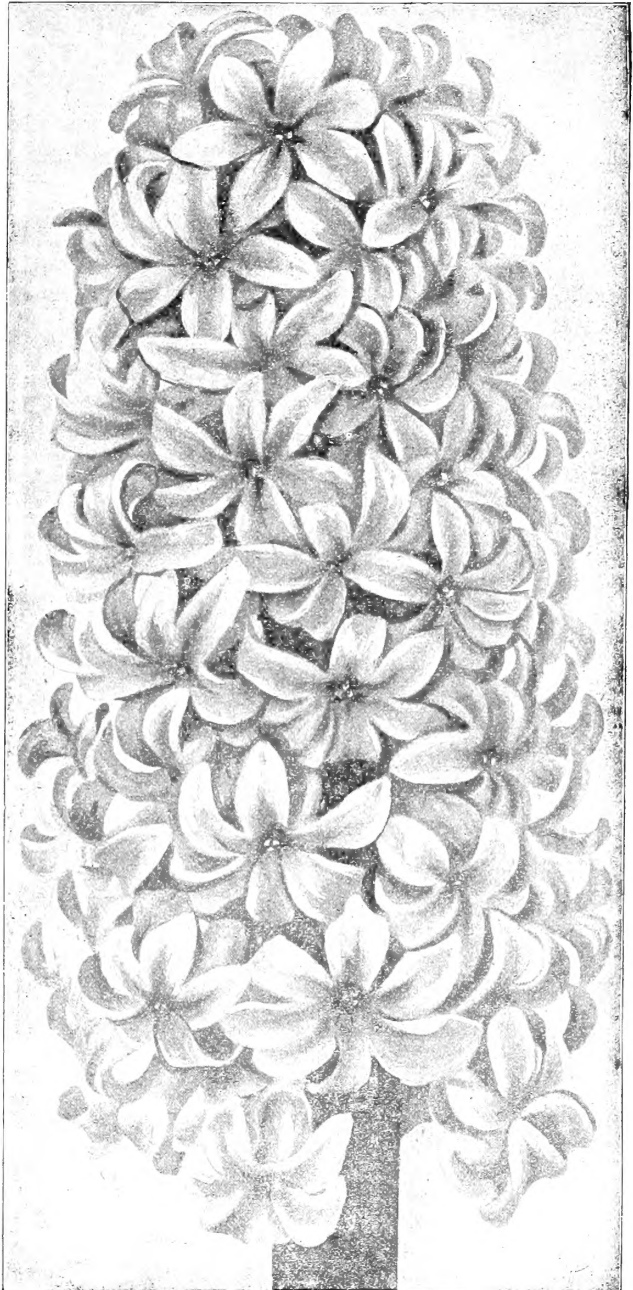
#### BLUE HYACINTHS.

	Each	Per doz
* <b>Blocksberg</b> — Porcelain, striped.....	\$0 15	\$1 50
<b>Charles Dickens</b> — Dark porcelain.....	15	1 50
<b>Czar Peter</b> —Splendid light blue.....	20	2 00
* <b>General Anthink</b> —Light blue.....	15	1 50
<b>Grand Lilas</b> — Porcelain lilac.....	15	1 50
<b>King of the Blues</b> —Dark blue.....	15	1 50
<b>Leonidas</b> —Clear blue....	12	1 25
<b>Masterpiece</b> —Purple black; fine.....	25	2 50
* <b>Mignon de Dryfhout</b> —Light porcelain, shaded blue.....	12	1 25
* <b>Othello</b> —Violet black....	15	1 50
* <b>Prince Von Saxe Weimar</b> —Dark blue; large spike ..	10	1 00
<b>Queen of the Blues</b> — Light; extra.....	15	1 50

### NAMED

#### WHITE HYACINTHS.

	Each	Per doz
<b>Alba Maxima</b> —Pure white	\$0 20	\$2 00
<b>Baroness van Thuyil</b> — Pure white large truss; very early.....	15	1 50
* <b>Bouquet Royal</b> — Pure white.....	25	2 50
* <b>Grand Vainqueur</b> — Pure white.....	25	2 50
<b>La Grandesse</b> —Pure white; extra.....	20	2 00
* <b>La Virginite</b> —Blush white	10	1 00
<b>L'Innocence</b> —Pure white; large truss.....	15	1 50
<b>Mont Blanc</b> —Pure white; splendid.....	20	2 00
* <b>Non Plus Ultra</b> —Blush white.....	15	1 50
* <b>Prince of Waterloo</b> — Pure white.....	15	1 50
<b>Snowball</b> — Large; pure white.....	25	2 50
<b>Voltaire</b> —Blush white....	10	1 00



Type of Single Hyacinth

**NAMED RED HYACINTHS**

	Each	Per doz
<b>Amy</b> —Bright, dark red.....	\$0 10	\$1 00
<b>*Bouquet Tendre</b> —Crimson.....	15	1 50
<b>*Czar Nicholas</b> —Pale rose; large.....	12	1 25
<b>Fabiola</b> —Pink, carmine striped.....	12	1 25
<b>Gigantea</b> —Bright rose.....	15	1 50
<b>*Grootvorst</b> —Peach blossom.....	10	1 00
<b>Homerus</b> —Bright red; early.....	15	1 50
<b>Kohinoor</b> —Splendid dark rose.....	20	2 00
<b>Mars</b> —Bright red; large spikes; one of the best.....	15	1 50

	Each	Per doz
<b>Norma</b> —Delicate waxy pink.....	\$0 10	\$1 00
<b>*Panorama</b> —Bright carmine rose.....	12	1 25
<b>Robert Steiger</b> —Fine crimson.....	10	1 00

**NAMED YELLOW HYACINTHS**

	Each	Per doz
<b>Alida Jacoba</b> —.....	\$0 15	\$1 50
<b>*Bouquet Orange</b> —Reddish orange....	15	1 50
<b>*Goethe</b> —Bright yellow.....	15	1 50
<b>Hermann</b> —Orange yellow.....	15	1 50
<b>La Grande Juane</b> —Bright orange.....	15	1 50
<b>*Minerva</b> —Orange; new.....	15	1 50

**MIXED HYACINTHS IN SEPARATE COLORS**

Our Mixed **Hyacinths** should not be confounded with the small sized, lowpriced mixtures often sold. Our bulbs are all large size, measuring 6 inches and over in circumference. Being furnished in so many separate colors, splendid bedding effects may be produced with them. They are also admirably adapted for forcing in the greenhouse for winter cut-flowers.

*If ordered by mail, add 15 cents per dozen for postage.*

	Per doz.	Per 100
<b>Single Dark Blue</b> .....	\$0 60	\$4 50
“ <b>Light Blue</b> .....	60	4 50
“ <b>Dark Red</b> .....	60	4 50
“ <b>Rose and Pink, all shades</b> .....	60	4 50
“ <b>Pure White</b> .....	60	4 50
“ <b>Yellow, all shades</b> .....	65	4 75
“ <b>All colors mixed</b> ...	50	4 00
<b>Double Dark Blue</b> .....	60	4 50
“ <b>Light Blue</b> .....	60	4 50
“ <b>Rose and Pink, all shades</b> .....	60	4 50
“ <b>Red, all shades</b> ....	60	4 50
“ <b>Pure White</b> .....	60	4 50
“ <b>Yellow, all shades</b> .....	65	4 75
“ <b>All colors mixed</b> ...	50	4 00

**ROMAN HYACINTHS**

The flowers are pure white, delightfully fragrant, and each bulb will throw up from three to four spikes. For forcing, three or four bulbs are generally planted in a suitable pot, in good soil (as recommended for other varieties). The pots must be kept in a cool and dark place until they fill with roots, when the flower spikes can be rapidly developed by exposure to light and moderate heat. They are very easily grown and extremely early; and by making successive plantings they may be had in flower all through the winter.

*If by mail, add 10 cents per dozen for postage.*

**Pure White Roman,**  
extra selected; each \$0.06; per doz,  
\$0 60; per 100, \$4 50.



French Roman Hyacinths

**MINIATURE HYACINTHS**

\* These are also known as Dutch Roman Hyacinths, and are very suitable for growing in groups in pots or earthen pans. We offer them in separate colors, and also mixed, as follows:

**Pure White,  
Cream White,  
Dark Red,**

**Rosy Red,  
Dark Blue,**

**Light Blue,  
Yellow,  
Mixed, all colors.**

Price 50 cents per dozen; \$3.00 per 100.

FEATHERED HYACINTHS

Very pretty hardy bulbous plants, well adapted for mixed borders and for naturalizing in sunny spots among short grass. They succeed in almost any soil and situation, and require little care. Also suitable for growing in pots in the house, 5 or 6 bulbs in a pot.

**Muscari Plumosum**—Large feathered Hyacinth.....each, \$0 05; per doz., \$0 40

TULIPS

For beauty of form and brilliancy of coloring, Tulips are unequalled. For bedding they are the most popular and effective of all hardy bulbous plants. The most gorgeous effects can be produced by harmonious massing of contrasting colors. For pot culture and forcing for winter cut-flowers they are also invaluable.

SINGLE EARLY TULIPS

*If ordered by mail, add 5 cents per dozen or 25 cents per hundred for postage.*

	Per doz	Per 100
<b>Artus</b> —Bright scarlet; fine bedder.....	\$0 30	\$1 75
<b>Chrysolora</b> — Splendid; pure yellow, good forcer or bedder....	35	2 00
<b>Duchesse de Parma</b> —Red, yellow border; forcer and bedder....	25	1 25
<b>Joost van Vondel</b> —Crimson and white; fine forcer or bedder.	30	1 75
<b>Keizerkroon</b> — Red, golden yellow border; fine forcer or bedder; extra large.....	35	2 00
<b>La Reine</b> (Queen Victoria)—White; rose border; best white forcer	30	1 75
<b>Pottebakker, Yellow</b> —Bright canary, yellow striped.....	40	1 25
<b>Pottebakker, White</b> —White self, good form, fine forcer.....	30	1 75
<b>Pottebakker, Scarlet</b> —Very effective; bright scarlet.....	30	1 75
<b>Prince of Austria</b> —Splendid; orange-red; very fragrant; extra for forcing.....	50	3 00
<b>Proserpine</b> —Extra; salmon pink; very fine form; good forcer....	50	3 00
<b>Rose Grisdelin</b> —White and dark rose; fine forcer and bedder...	40	2 25
<b>Van der Neer</b> —Violet purple; extra fine....	35	2 00
<b>Yellow Prince</b> .....	35	2 00
<b>Mixed Early Single</b> ..	20	1 25



Single Early Tulip

DOUBLE TULIPS

The Double Tulips come into bloom a little later than the single varieties. They are splendid for bedding, and the flowers last longer in bloom than the single sorts. Some of the sorts are quite dwarf.

*If ordered by mail, add 6 cents per dozen or 25 cents per 100 for postage.*

	Per doz	Per 100		Per doz	Per 100
<b>Belle Alliance</b> —Fine scarlet.....	\$0 50	\$3 00	<b>Tournesol</b> —Scarlet and yellow; earliest double.....	35	2 00
<b>Duke of York</b> —Crimson and buff.....	30	1 75	<b>Tournesol, Yellow</b> —Orange shaded; very early.....	50	3 00
<b>La Candeur</b> —Pure white; fine for bedding with Rex Rubrorum.....	30	1 75	<b>Mixed Early Double</b> —Our special mixture.....	20	1 25
<b>Rex Rubrorum</b> —Brilliant scarlet; fine for bedding with La Candeur.....	35	2 00			
<b>Rosine</b> —White; tinged rose; tall; semi-double; early.....	35	2 00			



## DUC VAN THOL TULIPS

The Duc Van Thols are the earliest of all the Tulips. They are of dwarf habit and well adapted for forcing and for pot culture. They bloom outdoors before the early single Tulips.

*If ordered by mail, add 6 cents per dozen for postage.*

	Per doz.	Per 100		Per doz.	Per 100
<b>Red</b> —Bordered with yellow .....	\$0 30	\$1 50	<b>Crimson</b> —Bright crimson .....	30	1 50
<b>Rose</b> —Milky white, shading to beautiful rose .....	40	2 50	<b>Yellow</b> —Citron yellow .....	50	3 00
<b>Scarlet</b> —Dazzling reddish scarlet .....	30	1 50	<b>White</b> —Clear satiny white .....	50	3 00

## DARWIN TULIPS

These belong to the class of single late-flowering tulips, being, in fact, modern forms of Gesneriana. They grow very tall, with large flowers of fine form. Being borne on very long stems, they are excellent for cutting to put in vases for house decoration. They are all single, self-colored, and surpass all others in brilliancy and variety of coloring. They are also most effective for bedding.

**Mixed colors** ..... 50 cents per dozen; \$3 50 per 100

## PARROT TULIPS

For outdoor cultivation. The petals of these have feathered edges, and in addition to other colors combine shades of green—a peculiarity confined to this class. The flowers are very singular and picturesque, of large size and brilliant color, and form very effective groups for the flower border.

*If ordered by mail, add 6 cents per dozen or 25 cents per 100 for postage.*

**Mixed, all colors** ..... 35 cents per dozen; \$2 25 per 100

## MIXED TULIPS

Planted in large masses, these make a magnificent show, and, being inexpensive, should be largely used. Our special mixtures of Early Single and Early Double Tulips are made up of the finest bulbs and the brightest colors. If planted in large beds they will produce an exceedingly beautiful and lively effect.

*If ordered by mail, add 6 cents per dozen or 25 cents per 100 for postage.*

**Fine Mixed, Early Single**—Cox's special mixture; extra choice .....
 Per doz \$0 20 | Per 100 \$1 25 |

**Fine Mixed, Early Double**—Cox's special mixture; extra choice .....
 20 | 1 25 |

**Fine Mixed, Late Single** .....
 25 | 1 50 |

“ **Bizarres** .....
 30 | 1 75 |

“ **Bybloems** .....
 30 | 1 75 |

“ **Rosy on White** .....
 30 | 1 75 |

“ **Parrot** .....
 35 | 2 25 |

“ **Darwin**—Single, late, self-colored; mixed .....
 50 | 3 50 |



Parrot Tulips

## Narcissus or Daffodils

There are no hardy bulbous plants which have more points of merit than the Narcissus. The recent wonderful creations in the way of new varieties have awakened an interest and enthusiasm among the lovers of flowers that has placed this in the front rank of popularity, and they merit all the praise that can be bestowed on them. Perfectly hardy, growing and doing well in almost any position, sun or shade, moist or dry, all conditions seem to suit it, and every vacant corner in the garden, amongst the grass, under the trees, etc., could not be used to better advantage than by filling with Narcissus. They are equally valuable for growing in pots for winter flowering, treated as recommended for Hyacinths, they will flower at the same time. But it is outdoors that Narcissus do best, and once planted need no further attention, the clumps multiplying and giving larger and finer results each year, and from an original planting of a few hundred bulbs, in two or three years may be cut thousands of flowers without missing them.



SINGLE NARCISSUS

If ordered by mail, add 15 cents per dozen for postage.

	Each	Per doz
<b>Ard Righ (Irish King)</b> —Magnificent golden yellow trumpet; very large and graceful; one of the earliest and finest for forcing.....	\$0 10	\$1 00
<b>Bicolor Horsfieldii</b> —"Queen of Daffodils." Rich golden yellow trumpet; pure white and well expanded perianth; a magnificent flower; fine forcer.....	10	1 00
<b>Bicolor Empress</b> —Flowers similar to the Horsfieldii, but larger; an excellent forcer.....	15	1 50
<b>Emperor</b> —Flowers of great size and substance, primrose petals, yellow trumpet.....	15	1 50
<b>Golden Spur</b> —Distinguished by its enormous flower, wide trumpet and rich golden color; very early, and fine for forcing or outdoors.....	15	1 50
<b>Henry Irving</b> —Large; golden yellow; one of the best for cutting.....	10	1 00
<b>Incomparabilis Sir Watkin</b> —(Giant Welsh Chalice Flower)—Golden crown, primrose perianth. Largest of all; often over 5 inches across.....	10	1 00
<b>Incomparabilis Stella</b> —White, with orange cup.....	15	1 50
<b>Obvallaris Maximus</b> (Tenby Daffodil) — Early; yellow; large; fine forcer.....	8	60
<b>Poeticus</b> (Pheasant's Eye) — Pure white, with red cup; fine for cutting.....	3	20
<b>Poeticus Ornatus</b> —Same color as Poeticus, but the flowers are larger. It is one of the most valuable for cut flowers, being very early and of great beauty and substance.....	5	40
<b>Princes</b> —Sulphur-yellow perianth and deep yellow trumpet; long; handsome flower; valuable for forcing or outdoor culture. A splendid variety.....	5	40
<b>Trumpet Major</b> —Large, early; deep golden yellow; earliest for forcing.....	5	40
<b>Mixed</b> —All trumpet sorts.....	5	40



Double Narcissus

DOUBLE NARCISSUS

If ordered by mail, add 12 cents per dozen for postage.

**Van Sion**—The largest double yellow trumpet variety; extra fine for forcing, and most largely grown by florists for winter cut-flowers. Our bulbs are Dutch-grown, of the pure golden yellow variety. Price, 5c each; 50c per doz; \$3.00 per 100.

POLYANTHUS NARCISSUS

Invaluable for forcing. All very early; flowers exceedingly fragrant; may be grown in glasses or pots. If planted in open border in cold latitudes, must be protected over winter by a covering of litter.

If ordered by mail, add 15 cents per dozen for postage.

**Paper White, Large Flowering**—Very early, and largely forced by florists for cut-flowers. Beautiful clusters of large pure white flowers. Price, 5c each; 35c per doz; \$2 00 per 100.

## CHINESE SACRED LILY

A variety of Polyanthus Narcissus introduced by the Chinese. The flowers are pure silvery white with golden yellow cups, chaste and graceful in appearance and of exquisite fragrance. The short time required to bring the bulbs into bloom (four to six weeks after planting) is one of the wonders of nature. They do well in pots of earth, but are more novel and beautiful when grown in shallow bowls of water. A dozen bulbs started at intervals, three or four bulbs in each dish, with just enough small pebbles or stones to prevent them from toppling over, will give a succession of flowers throughout the winter. *Extra large size bulbs* by mail post-paid..... 15c. each; \$1.50 per doz.

## JONQUILS

A class related to the Narcissus, and suitable alike for pot culture or planting out. The culture required is the same as for Hyacinths.

*If ordered by mail, add 6 cents per dozen for postage.*

**Single Yellow Sweet-scented;** 10 cents per doz.; 75 cents per 100.

**Odorous rugulosus**—An improved Campernelle; deep yellow; large crinkled flowers; fragrant; 15 cents per doz.; \$1.00 per 100.

**Large Double**—Yellow; 40 cents per doz.; \$2.50 per 100.

## Lilies

To the Lily must be awarded the first place amongst hardy bulbs; their beauty and fragrance are unequaled by any other class of plants. The genus embraces a vast number of species; we, however, confine our list to such as are of easy culture, and give the best results with the least care. They should be planted in any good garden soil, covering the bulb at least three times its own depth, and when hard frost sets in, 4 to 6 inches of leaves or litter should be placed over them; this should be removed in spring, when danger from hard frost is past. They do grandly in a semi-shaded position, or planted among shrubbery, and in all cases it is well to mulch around the roots.

When grown in pots it is advisable to begin with the smallest size pot in which the bulbs can be placed, and to shift into larger pots as the plant progresses. A cold temperature suits them best, and the plants should be liberally watered during the period of growth and flowering.

*Candidum and Harrisii are mature in August, and the others, with one or two exceptions, in October.*

*If ordered by mail, add 5 cents each for postage.*

**Auratum** (Golden Banded Lily)—Undoubtedly one of the finest. Its large and graceful flowers are composed of six petals of a delicate ivory-white color, thickly studded with chocolate crimson spots, and striped through the centre a golden yellow. 10, 15 and 25 cts. each; \$1.00, \$1.50 and \$2.50 per doz.

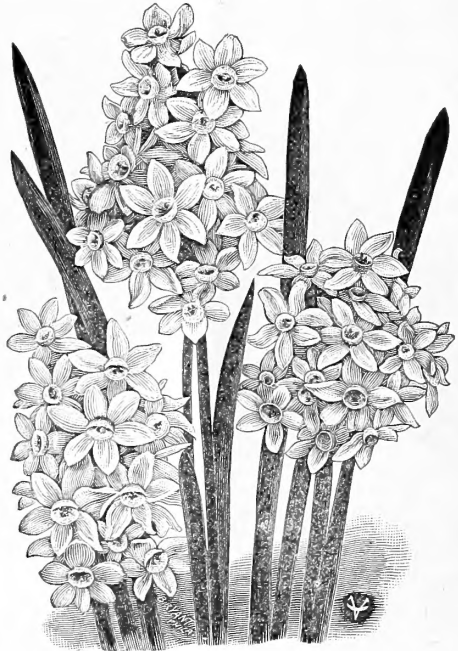
**Candidum** (Annunciation Lily; Madonna Lily; St. Joseph's Lily.)—This is one of the best known and most popular of garden Lilies. The flowers are pure snow-white and very fragrant, borne on long stems. It is also a valuable variety for forcing; should be planted early in the autumn, so that it can make some growth before cold weather sets in. Large bulbs 15c each; \$1.50 per doz; \$8.00 per 100.

**Elegans** (Umbellatum)—This class includes some of the most beautiful Lilies; flowers erect, borne in clusters; colors of the richest hues of yellow and red; fine for planting in masses. Mixed varieties. 10c each; \$1.00 per doz.

**Elegans Incomparable**—Intense deep red; one of the richest of this easily-grown group. 10c each; \$1.00 per doz.

**Excelsum**—This remarkable Lily attains a height of 5 to 6 feet; it produces from 8 to 12 nodding, rich, apricot-hued blooms; very sweet-scented; 50c each; \$5.00 per doz.

**Harrisii** (Bermuda Easter Lily)—This magnificent Lily is undoubtedly the best for winter forcing, as it comes quickly into bloom. The flowers are trumpet-shaped, pure white, gracefully formed and delightfully fragrant. The bulbs should be potted in early fall in rich soil, and the pots plunged in sand, where they should be allowed to remain until the approach of cold weather. It can be forced into bloom at any desired time, and the freedom with which the flowers are produced is truly remarkable; even the smallest bulbs blooming freely. 10c each; 75c per doz; extra size bulbs 20c each; \$2.00 per doz; \$12.50 per 100.



Giant Paper White Narcissus



Liliium longiflorum

**Longiflorum Eximium**—Pure white trumpet-shaped flowers. Splendid for growing in pots for Easter flowering and very desirable for outdoor planting, being quite hardy.

	Each	Doz.	100
First size bulbs, 5 to 7 ins. circumference.	\$0 05	\$0 50	\$3 50
Extra size " 7 to 9 "	10	1 00	7 00
Mammoth " 9 to 10 "	15	1 50	10 00

**Pardalinum**—Scarlet, shading to rich yellow, spotted with purple-brown; 3 feet; blooms in July and August. 15c each; \$1.50 per doz.

**Speciosum (Lancifolium)**—The varieties of *Lilium Speciosum* comprise the most important group of any one species. They are of easy growth, and can always be relied upon to give satisfaction. The flowers are very beautiful, showy and distinct, and exquisitely fragrant. Magnificent as border plants, also excellent for pot culture.

**Album**—Large white flower of great substance, with a greenish band running through the centre of each petal. Fine bulbs, 10c each; \$1.00 per doz; extra large bulbs, 15c each; \$1.50 per doz.

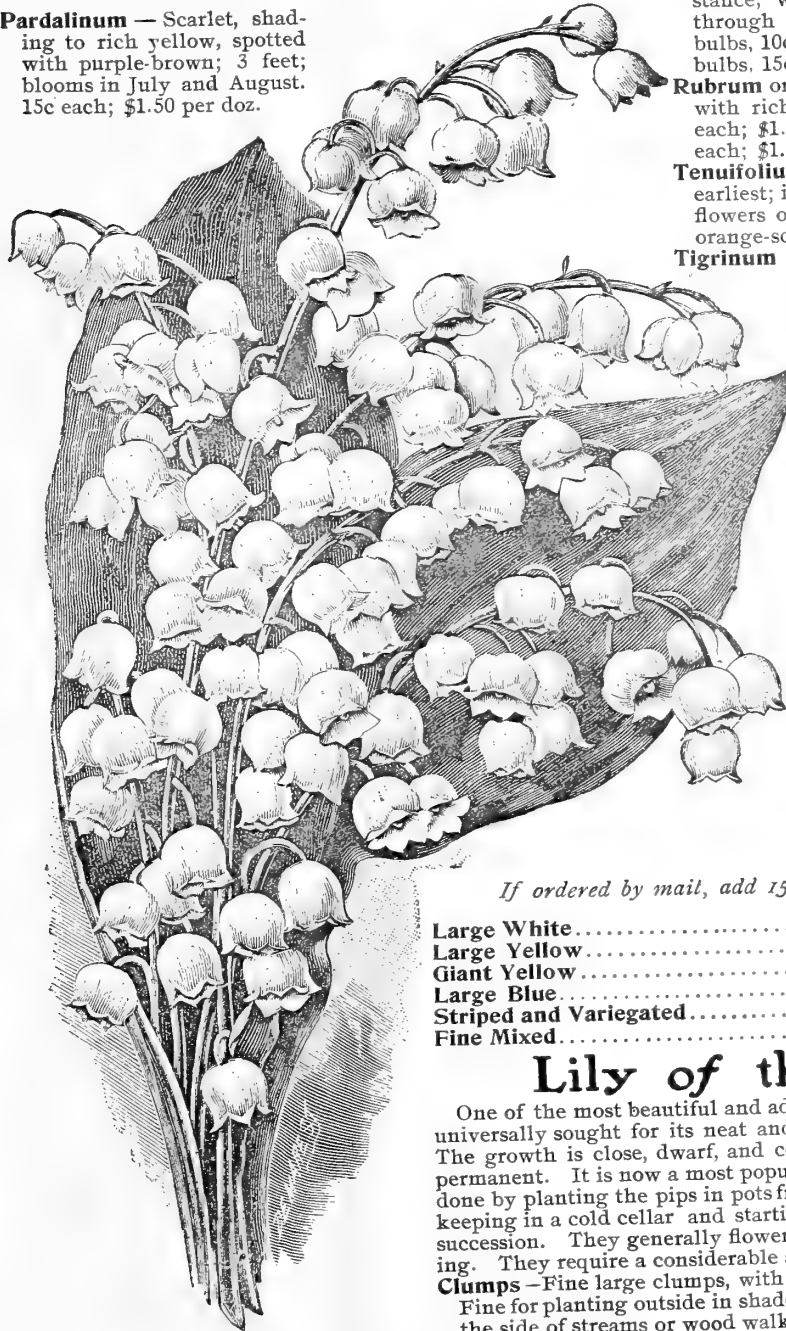
**Rubrum or Roseum**—White, heavily spotted with rich crimson spots. Fine bulbs, 10c each; \$1.00 per doz; extra large bulbs, 15c each; \$1.50 per doz.

**Tenuifolium (Coral Lily)**—One of the earliest; it bears in profusion medium-sized flowers of perfect form and of a dazzling orange-scarlet. 20c each; \$2.00 per doz.

**Tigrinum (Tiger Lily)**—Orange, spotted black. 10c each; \$1.00 per doz.

**Tigrinum Flore Pleno (Double Tiger Lily)**—Orange-red, spotted with black; double, showy flowers. 12c each; \$1.25 per doz.

**Washingtonianum**—One of the most beautiful Lilies of California; flowers erect, pure white, with bright scarlet spots; they are produced in great numbers and are very fragrant. This variety should be planted one foot deep in well drained soil. 25c each; \$2.50 per doz.



Lily of the Valley

## Crocus

A universal favorite, being one of the earliest flowers seen in the spring. They are neat dwarf and compact in growth, and the blooms are of bright colors. Do not disturb for several years; should be largely planted in the grass on lawns. They will flower very early in the spring, before mowing. The effect is beautiful.

If ordered by mail, add 15 cents per 100 for postage.

	Per doz.	Per 100	Per 1000
Large White.....	\$0 10	\$0 50	\$4 00
Large Yellow.....	10	50	4 00
Giant Yellow.....	15	90	7 50
Large Blue.....	10	50	4 00
Striped and Variegated.....	10	50	4 00
Fine Mixed.....	10	40	3 00

## Lily of the Valley

One of the most beautiful and admired spring-flowering plants, and universally sought for its neat and chaste outline and delicate odor. The growth is close, dwarf, and compact, and the plant is hardy and permanent. It is now a most popular plant for forcing, which is easily done by planting the pips in pots from 6 to 12 in each, watering freely, keeping in a cold cellar and starting from week to week to keep up a succession. They generally flower in three or four weeks after planting. They require a considerable amount of heat to start them.

**Clumps**—Fine large clumps, with 15 or more flowering pips on each.

Fine for planting outside in shaded positions and for naturalizing by the side of streams or wood walks. 50c each; \$5.00 per dozen clumps.

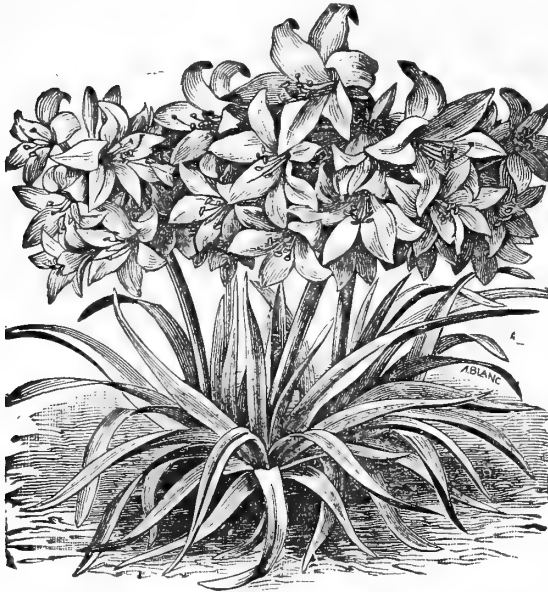
**Pips for Forcing**—60c per bundle of 25; \$2.25 per 100; \$16.00 per 1000.

## Miscellaneous Bulbs and Flowering Roots.

### AGAPANTHUS (The Great African Lily)

Splendid ornamental plants, bearing large clusters of bright blue flowers on long flower stalks, and lasting a long time in bloom. There is no finer plant than this for outdoor decoration, planted in large pots or tubs on the lawn, terrace or piazza. It does well in the house or greenhouse in winter, requiring but slight protection in the colder localities. It is a rapid grower and gross feeder, and the chief point in its cultivation is to divide the plants before the pots or tubs become overcrowded with roots.

**Agapanthus Umbellatas** - Bright blue. 20c each; \$2.50 per doz.



Amaryllis

**Vittata Hybrida**—These are unnamed seedling hybrids, and will produce some new varieties of exceptional beauty. The colorings and markings are exquisite, the bulbs are very large, and are of sufficient strength and age to produce magnificent flowers during the winter or spring. 30c each; \$3.00 per doz.

### Allium

Perfectly hardy bulbous plants of the easiest cultivation. They are excellent for the flower border or for naturalizing in masses. Also suitable for forcing for winter cut-flowers.

**Neapolitanum**—Large umbels of pure white flowers, borne on long stems; valuable for forcing for winter cut-flowers as well as for summer garden decoration. Per doz, 30c; per 100, \$1.25.

### Bleeding Heart

**Dicentra or Dielytra Spectabilis**, popularly called "Bleeding Heart," is one of the most ornamental of spring flowering plants, with elegant green foliage and long drooping racemes of heart-shaped flowers of a deep pink color. This is one of the finest of all hardy garden plants, and is frequently forced for greenhouse or conservatory decoration. If potted in November, left outside until it has formed new roots, and then brought into a gentle heat, it may be had in flower in February or March. 30c each; \$3.00 per doz.

### AMARYLLIS

Probably the most magnificent and gorgeous bulbous plant known. Their immense flowers, richness of coloring and regal habit are simply incomparable. They throw up spikes from 18 inches to 3 feet high, bearing enormous trumpet-shaped flowers, averaging 6 to 10 inches across, of great substance, some being of rich and glowing colors, others delicately shaded and superbly veined. For pot culture in the window, conservatory or greenhouse, they are well adapted, and when in bloom in the winter and spring months, no flower can approach their beauty.

**Belladonna Major** (Belladonna Lily)—Autumn-blooming variety of extreme beauty and fragrance, the spikes grow from 2 to 3 feet high, each carrying from 6 to a dozen beautiful flowers, "sweet as lilies," of silvery white, flushed and tipped with rose. 15c each; \$1.50 per doz.

**Formosissima** (Jacobæan Lily)—A quaintly-shaped, beautiful flower of grand dark scarlet, free blooming; forces well and can be grown in water like hyacinths; if the bulbs are kept dry during winter, they can be planted in the open ground in the spring and will flower during the summer. 15c each; \$1.50 per doz.

**Johnsoni** (Bermuda Spice Lily)—A very popular variety, wine red, with a white stripe down each petal, an early and abundant bloomer and a specially robust grower. 50c each; \$5.00 per doz.



Spotted Calla—(See Page 9)



**ANOMATHECA CRUENTA**

A pretty little bulbous plant from South Africa which does well when grown in frames or cool greenhouses. Grows 8 to 12 inches high, producing in quantity pretty flowers ½ inch across, of a dazzling rosy carmine color, with a dark crimson spot on the three lower petals; a good companion plant to the Freesia, which it somewhat resembles. 20c. per doz; \$1.50 per 100.

**ANEMONE, or WINDFLOWER**

Very ornamental, hardy perennials producing beautifully colored flowers in spring and summer. They do best in rich soil and in a sheltered and well-drained position. May also be grown in pots or forced in frames for early flowers.

**Double**—All colors mixed. 30c per doz; \$2.00 per 100.

**Single**—All colors mixed. 20c per doz; \$1.25 per 100.

**Anemone Fulgens**—The rich, dazzling scarlet flowers and light elegant growth render it the most attractive flower of spring. It is valuable for cutting, as it lasts a long time. 30c per doz; \$2.00 per 100.

**Fulgens, fl. pl.**—A double-flowering variety of the above; very beautiful. 50c. per doz; \$3.00 per 100.



Black Calla

**BEGONIA GRANDIFLORA, TUBEROUS ROOTED,**

Splendid pot plants for the house or greenhouse and especially valuable for bedding, flowering in the greatest profusion throughout the summer. For bedding they should be started in hotbed in March and April. The hollow end of the bulb should be up and but slightly covered. They should get very little water until the plants are growing.

**Single Mixed.** 10c each; \$1.00 per doz.

**Double Mixed.** 15c each; \$1.50 per doz.

**BRODIAEA**

Showy California bulbs with lovely umbels or clusters of red, blue or white tubular flowers, borne in clusters, on stems 1 to 2 feet high. They are easily forced and may be grown in the greenhouse or cold frame, or if planted out in spring in clumps or masses they flower very freely in June or July.

**Fine Mixed** containing many beautiful sorts. 25c per doz; \$1.50 per 100.

**CALLA (Richardia)**

Easily cultivated in pots or in the garden, requiring only rich soil and plenty of water. By allowing them to rest through the summer an abundance of bloom may be had the following winter.

**White Calla Lily or Lily of the Nile**—The well known white Calla. First size, 15c each; \$1.50 per doz. Selected roots, 20c each, \$2.00 per doz.

**Spotted Leaf Calla (Richardia Alba Maculata)**—This plant is always ornamental, even when not in flower, the dark green leaves being beautifully spotted with white; in other respects the plant is similar to the old favorite white Calla, excepting being of smaller habit. 10c each; \$1.00 per doz.

**Black Calla**—The plant produces one large flower, from 14 to 18 inches long and 4 inches broad, and of a rich, dark purple color and green underneath. The spathe rising from the centre of the flower is about 10 inches long, velvet like and quite black. The leaves are large and resemble those of the Calla Æthiopica. 15c each; \$1.50 per doz.

**CALOCHORTUS**

These are the *Butterfly Tulips* or *Mariposa Lilies* of California, and possess such delicacy and brilliancy of color that the most unobservant is struck with their characteristic beauty. The flowers somewhat resemble a tulip in shape, are of many brilliant colors, shades and markings. Planted in May in the open border, they flower in June and July. They also succeed admirably planted in the fall; and form very handsome specimens if grown six or eight in a five-inch pot for winter flowering.

**Fine Mixed**, containing many beautiful varieties. 30c per doz; \$2.00 per 100.

**CYCLAMEN**

When well grown, it is difficult to find a more useful plant than this for greenhouse, room and window decorations. The various species produce flowers varying from deep red to pure white, and of much elegance of form in flower and plant.

**Persicum Giganteum**—Mixed colors. 15c each; \$1.50 per doz

## FREESIA

The justly popular Freesias are greatly prized for the delightful fragrance of their delicately colored flowers, which, when cut, will remain in good condition for a long time in water. They are easily grown or forced in a light, sandy soil, in winter. One plant will perfume a large room, but not in the persistent manner of a tuberose.

**Refracta Alba**—The flowers are pure white, with a yellow blotched throat, and are exquisitely fragrant. *Extra* a large bulbs, 15c per doz; \$1.00 per 100.

**Leichtlinii Major** (The new yellow Freesia) — This has charming, large primrose, yellow flowers marked with orange blotches, and very fragrant. 30c. per doz; \$2.00 per 100.

## GLADIOLUS

The French Hybrids, for spring planting, will be in by November. These form a family of bulbs of rare beauty. Every year is now adding varieties of most exquisite tint and shade, and from the time of year during which these bloom, and the long continuance of their flowers in perfection, they become one of the greatest ornaments of the garden at a season when flowers of vivid tints are scarce. They are valuable for bedding. *If ordered by mail, add 5 cents per dozen for postage.*

**The Bride** (Colvilli Alba)—Beautiful; purest white flowers, set closely on the stem; most valuable for forcing for cut flowers. 30c per doz; \$1.75 per 100.



Freesia

## GLADIOLUS GANDAVENSIS

CHOICEST NAMED VARIETIES

Price, 10c each, \$1.00 per doz.

(*Excepting where specially priced*)

**Addison**—Dark amaranth, white stripes.

**Amalthee**—Pure white, with large violet-red blotch; ground of the corolla velvety violet, the lower petals slightly tinted with lilac.

**Amitie**—Large spike, of large, fleshy, rose-colored flowers, shaded with straw color on the lower petals, streaked with purple; edge flamed with bright rose.

**Angele**—White showy and effective.

**Brenchleyensis**—Vermillion-scarlet; fine old variety; 5c each, 50c per doz.

**Ceres**—Pure white, spotted with purplish rose.

**Chrysolora**—Golden-yellow, pure and distinct. The finest yellow variety. 25c each, \$2.50 per doz.

**Conquete**—Large and fine flower of bright cherry-red, with a conspicuous pure white blotch; upper petals striped with delicate rose.

**Diamant**—Fleshy white, of a remarkable freshness; throat ivory-white, blotched and streaked carmine.

**Eugene Scribe**—Flowers very large and wide, perfect; tender rose, blazed carmine-red, extra fine.

**Fatma**—Very large flowers of ivory white ground, profusely striped and suffused with bright rosy salmon; violet blotch.

**Fulton**—Velvety vermilion.

**Gen. Phil. Sheridan**—Fire red, white line running through each petal and a large pure white blotch on the lower division.

**Isaac Buchanan**—Very fine yellow.

**John Bull**—White, slightly tinged with sulphur.

**Lamarck (de)**—Cherry, slightly tinted with orange, blazed with red; centre is very well lighted, very large, pure white stain.

**Leander**—Large flower of lilac color, beautifully shading off to carmine; distinct white band in each petal, and conspicuous white blotch.

**Madame Monneret**—Delicate rose.

**May**—Pure white, flaked crimson.

**Napoleon III**—Bright scarlet; white line in each petal.

**Octoroon**—A beautiful salmon pink; very distinct.

**Papillon**—A compact, well-formed spike, with flowers of a yellow ground, conspicuously flaked and bordered with carmine.

**Proserpine**—Rosy white.

**Shakespeare**—White; very slightly suffused with carmine-rose; large rosy blotch.

**Snow-White**—*Pure snow-white*, the only pure white Gladiolus on the market. It has large, well-open flowers, and an enormous spike of the most perfect and beautiful shape. 15c each, \$1.50 per doz.

# Iris (Fleur de Lis)

The flowers of this family are the richest and most varied in color of any hardy garden plants, and for cut flowers they are invaluable.

**Spanish Iris**—These are one of the most satisfactory varieties of Iris to grow, being very hardy, and equally good for pot or garden culture. The flowers are of great beauty, and if cut when in the bud state will last a long time in water. For best effects they should be planted in clumps or masses of 25 or more bulbs, set 3 inches apart each way. We offer the following choice named sorts:

- Belle Chinoise**—Golden yellow.
- Louise**—White, spotted lilac.
- Snowball**—Pure white.
- Splendens**—Beautiful blue; very large.
- Formoso**—Dark blue.
- Chrysolora**—Clear canary yellow.

Price of any of above, 5c for 3, 15c per doz, \$1.00 per 100 postpaid. **SPECIAL OFFER**—Five each of above-named varieties (30 bulbs) for 35c, postpaid.

**Mixed Varieties**—In many colors; 12c per doz., 75c per 100, postpaid.



Iris

**English Iris** (*Iris Anglica*)—None the less attractive than the Spanish Iris. Blue, lilac and purple shades prevail. The bulbs are hardy and also suitable for pot culture. Mixed varieties, in many colors, 25c per doz, \$1.75 per 100.

**Japanese Iris** (*Iris Kaempferi*)—These magnificent Irises are among the most beautiful of our summer-flowering plants, and are being more popular every season. Many of the flowers measure from 10 to 12 inches in diameter, and rival the Orchids in their rich colorings and markings. They will succeed in almost any soil, but delight in a rich, deep, moist location, and should be abundantly supplied with manure and water.

*We offer a set of 12 beautiful and distinct named sorts, postpaid, for \$3.00*

**Extra Choice Mixed Varieties, 15c each; \$1.50 per dozen; \$10.00 per 100.**

## Ixias

The Named Hybrid Ixias are so beautiful and rich in tints that no lover of flowers should be without them. They are equally adapted for pots or the open ground, exceedingly free-flowering, and invaluable for cutting. If planted out, they require rather more covering during winter than hyacinths. In pots, their culture is the same as that usually recommended for other bulbs. By reason of their curious forms and strange coloring, the Ixias attract much attention.

	Per doz	Per 100		Per doz	Per 100
<b>Azurea</b> —Blue, with purple centre; very beautiful.....	\$0 40	\$2 50	<b>Smiling Mary</b> —Cherry-red; fine new variety.....	75	4 00
<b>Bucephalus Major</b> —Rich crimson; very fine.....	40	2 50	<b>Viridiflora</b> —Pure green, with black eye; 20c each.....	2 00	
<b>Crateroides</b> —Bright crimson.....	40	2 50	<b>William the Conqueror</b> —Large, white, with purple eye.....	40	2 50
<b>Favorite</b> —Sulphur-yellow.....	40	2 50	<b>In Splendid Mixture</b> ; 2 for 5c.....	20	75
<b>Galathea</b> —White, with blue eye.....	40	2 50			
<b>Lady Slade</b> —Light rose.....	75	4 00			

## Montbretias

Hardy, summer-flowering, bulbous plants that are becoming more popular every year. Their brightly colored flowers are borne on long, graceful spikes in the greatest profusion, and they are most valuable for cutting and general decorative purposes. They should be planted in groups and left undisturbed. Ordinary garden soil and a sunny position suit them.

**Crocsmiaeflora**—Large; bright orange, tinted scarlet.....\$0.20 per doz.; \$1.50 per 100  
**Mixed Hybrid Seedlings**—In all shades of color.....25c per doz; \$1.50 per 100



## Ornithogalum (Star of Bethlehem)

A beautiful variety, throwing up a tall spike bearing numerous large, milk-white, star-shaped flowers, with a black centre, and having a distinct aromatic perfume. They are decidedly pretty and interesting, and are largely grown for window decoration, being of the easiest culture. 30c per doz; \$2.00 per 100.

## Oxalis

A very pleasing class of small bulbs, particularly adapted for pot culture and hanging baskets. The foliage alone is very attractive, and when in flower they are exceedingly pretty.

**Bermuda "Buttercup" Oxalis**—An unrivaled winter-flowering pot plant, of the easiest culture. This variety is such a luxuriant grower that one bulb will be sufficient for a 6-inch pot, and the great profusion of bloom produced in uninterrupted abundance for weeks is astonishing and delightful. The flowers are of the purest bright buttercup yellow. 30c per doz; \$2.00 per 100.

**Finest Mixed**—All colors. 20c per doz; \$1.00 per 100.

## Pæonies

The old-fashioned double Pæonies are too well known to require description. Their popularity is due to their great merits—their easy culture the handsome appearance of the plant, and the brilliant and striking effect of their massive, finely formed richly-colored flowers. Among hardy, herbaceous perennials, the Chinese Pæonies rank about first for lawn or flower-border or shrubbery decoration. They are all hardy.

**Chinensis, Double White, Crimson or Pink.** \$0.25 each; \$2.50 per doz.

**Japanese Tree Pæonies**—Like most Japanese importations, these are quite hardy, and remarkable for their great perfection of flowers, both in size and richness of color. They grow to the size of a large shrub increasing in vigor and size of flowers season after season. Per set, of 12 distinct varieties, \$7.50; each 75c

## Ranunculus

The best soil for these should be loam or clay, with a good dressing of rotten manure and leaf-mould; if heavy, add a little sand. The soil should be well drained, cool, deep, rich and moist. Plant late in the autumn, claws downward, from 4 to 6 inches apart and 3 inches deep, covering with fine, pulverized soil

	Per doz.	Per 100
<b>Persian Mixed</b> —All sorts .....	\$0.25	\$1.50
<b>French Mixed</b> —All sorts .....	25	1.50
<b>Mixed Turban</b> .....	25	1.50

## Scillas

**Amœna or Siberica Præcox**—Among our most beautiful spring bulbs, producing in profusion masses of exquisite rich blue flowers. If grown in masses, their flowers fairly carpet the ground; and if grown with Showdrops and Crocuses, for contrast, the effect is magnificent. 15c per doz; 75c per 100.

## Snowdrops

Perhaps no spring flower is a more general favorite than the Snowdrop. The earliest flowering is the common single sort. This is succeeded by the double-flowered variety, with its elegant drooping, snow-white blossoms.

**Single-Flowering**.....15c per doz; 75c per 100  
**Double-Flowering**.....30c per doz; \$2.00 per 100

## Sparaxis

A beautiful class of bulbs allied to the Ixias, and requiring the same treatment, producing spikes of flowers of the most exquisite and brilliant colors. 15c per doz; \$1.00 per 100.

## Spiræa or Astilbe

In garden culture these flower freely during the summer and are perfectly hardy, but their great



Spiræa or Astilbe

value is when grown in pots for window and green house decoration in winter and spring, and for forcing for cutting. The flowers are borne in large feathery panicles of white and last a long time in bloom.  
**Astilboides florabunda**—Dwarfer in habit, earlier and more profuse in bloom than Spiræa Japonica. 25 each; \$2.50 per doz

# Tigridia (Peacock or Mexican Shell Flower)

Extremely handsome summer flowering bulb, growing about two feet high, producing large gorgeous flowers, exquisitely spotted. They flower very freely throughout the summer, particularly if the bulbs are planted in a warm, sunny position.

**Conchiflora**—Dark yellow, large red spots. 5c each; 30c per doz.

**Pavonia Grandiflora**—Very large, bright crimson, center mottled with yellow. 5c each; 50c per doz.

**Grandiflora Alba**—Large ivory white, spotted at the base with red on a yellowish back ground. 10c each; 75c per doz.

## Tritelia Uniflora (Spring Star Flower)

This native of South America is a perfect little gem for pot culture. The bulbs being small, several should be grown in a pot. It grows about 6 to 8 inches high, each bulb producing several pretty star-shaped flowers, about 2 to 2½ inches across of a delicate pale blue, and emits the perfume of primroses. They are perfectly hardy and grown in quantities in a sunny border or for edgings they are very attractive. 15c per doz; \$1.00 per 100.

## Tuberoses

These popular summer blooming bulbs produce tall spikes of deliciously fragrant, waxy pure white flowers. They are extensively forced in the greenhouse for cut bloom, though the bulbs are generally kept dormant until spring and then planted in the open ground, or they can be started in the house and be removed to the open ground in May, thereby securing early flowers before frost in autumn.

**Double Dwarf Pearl**.....40c per doz; \$2.50 per 100

## Miscellaneous Tree Seeds

**Cupressus Lawsoniana** (Lawson's Cypress)—A handsome tree, found in moist ground in the Shasta Mountains and in the Coast Range of Oregon. The wood is white, fragrant, fine, and coarse grained, free from knots easily worked, and very durable. Also known as Oregon Cedar, White Cedar, and Ginge Pine. Oz. 40c; lb. \$4.

**Cupressus Macrocarpa** (Monterey Cypress)—A tree 40 to 60 feet high, with rough bark, spreading, horizontal branches with rich green foliage; very ornamental for lawns or parks; also used extensively for hedges. oz. 10c; lb. 75c.

**Eucalyptus bicolor** (Black Box)—A highly-valued timber tree. It is equal to the best Ironbark for all the purposes for which that wood is used, and is more easily wrought. It is sometimes called Ironbark. Height 100 to 150 feet. Oz. \$1.00.

**Eucalyptus citriodora** (Lemon-scented gum)—A useful timber. The strong lemon scent which is emitted when the leaves are gently rubbed is equally powerful and agreeable with that of the lemon-scented Verbena Pkt 25c; oz. \$2.00.

**Eucalyptus ficifolia**—A beautiful variety of the Eucalyptus. Very ornamental for lawn or avenue planting. Has beautiful crimson flowers. Sold in packets only, at 50c per packet of 25 seeds.

**Eucalyptus globulus** (Blue Gum)—A very rapid-growing tree, making valuable timber. Height 200 feet. Oz. 25c; lb. \$3.00.

**Eucalyptus leucoxydon** (Crimson-flowered Eucalyptus)—This is a very ornamental species of Eucalyptus, having large and very beautiful flowers, and as the tree flowers when quite young, it is very desirable as an addition to the shrubbery or flower border. Pkt. 25c; oz. \$1.00.

**Eucalyptus longifolia** (Woollybutt)—An average-sized tree. Fair timber for fencing and building purposes. It is a good fuel for domestic use. Very durable. Height 100 to 120 feet. Oz. 75c.

**Eucalyptus marginata** (Jarrah of Western Australia)—A very excellent timber. Resists toredo. Oz. 75c.

**Eucalyptus obliqua** (Stringybark)—The best wood for flooring, boards and rafters. It is of very quick growth. Inferior fuel, but produces the best charcoal. Height 120 feet. Oz. 75c.

**Eucalyptus robusta** (Swamp Mahogany)—A good lasting timber for house carpentry and many kinds of tannery. It is not durable in the ground. It is not remarkable as a burning wood. Its specific gravity is great. Height 150 feet. Pkt. 25c; oz. \$1.00.

**Eucalyptus rostrata** (Red Gum)—A rapid-growing tree; 100 to 150 feet high. Stands heat and considerable cold without injury. Oz. 50c; lb. \$4.00.

**Pinus insignis** (Monterey Pine)—A very ornamental tree for parks and lawns; grows from 60 to 70 feet high; of rapid growth; has beautiful green foliage. Oz. 20c; lb. \$2.00.

**Magnolia grandiflora**—A magnificent evergreen, with exquisitely fragrant flowers. Thrives best in rich, light soil. Oz. 25c; lb. \$2.50.

**Melia Azedarach** (Chinese Umbrella Tree)—A more shapely form of the old Indian species. One of our very best hardy deciduous shade trees. Leaves very rich green; shade dense. Form of tree an almost perfect umbrella. Oz 25c; lb. \$1.00.

# Choice Flower Seeds for Fall Sowing

For full list and description, see our General Catalogue, published January 1st, and mailed to anyone anywhere for the asking.

## Sweet Peas

Sow in the fall and insure early blooming. The following list comprises all the most desirable varieties now in cultivation, and are all the improved large-flowered type:

We have endeavored to simplify the list of Sweet Peas by eliminating many of the older sorts, and have classified under color headings, an arrangement that will be much appreciated by our many customers.

*The following sorts, 5c per packet, any 7 packets for 25c, 10c per oz, 50c per lb.:*

### WHITE

**Blanche Burpee**—Large pure white of graceful form.  
**Sadie Burpee** (Black Seeded)—Immense white, bluish tinge when young.

**Emily Henderson**—Large pure white; profuse, early and continuous.

### BLUSH

**Duchess of Sutherland**—White, veiled with blush pink; exquisite.

**Sensation**—Rosy buff pink, white wings; delicate and pretty.

### CREAMY BUFF

**Venus**—Rosy buff pink, wings a shade lighter, distinct and fine.

**Queen Victoria**—Rosy primrose, wings cream.

### PALE YELLOW

**Hon. Mrs. Kenyon**—A grand primrose yellow.

**Mrs. Eckford**—Primrose yellow, of large size and fine form.

### PALE PINK

**Prima Donna**—Exquisite rose pink, large and profuse.

**Lovely**—Warm rose pink, large and extra fine.

**Countess of Lathom**—Delicate rosy pink, tinged chamois.

### ROSY SALMON

**Lady Mary Currie**—Fiery orange pink, wings orange rose, very bright.

**Oriental**—Bright rosy salmon self, slightly paler in the wings.

### SHADES OF ROSE

**Mrs. Dugdale**—Carmine rose, shaded yellow.

**Royal Rose**—Deep carmine rose, wings rose pink; extra large and fine.

**Prince of Wales**—Bright rose carmine, wings carmine madder.

**Lord Kenyon**—Bright rose pink, shaded with distinct richly colored veinings.

### CRIMSON

**Salopian**—Rich deep crimson, very large, and of fine form.

**Firefly**—Bright crimson scarlet, very profuse and intensely brilliant.

### LAVENDER

**Lady Grisel Hamilton**—Beautiful silvery lavender.

**Countess of Radnor**—Rosy lavender, wings pure lavender.

**Lady Nina Balfour**—Delicate lavender, shaded with a beautiful shade of gray.

### CLARET RED

**Duke of Westminster**—Deep maroon, overlaid with violet.

**Captivation**—Claret magenta, wings heliotrope, a distinct shade.

### BLUE AND PURPLE

**Navy Blue**—Dark indigo blue and violet, the best blue.

**Countess of Cadogan**—Bright shining violet, wings sky blue.

**Emily Eckford**—Heliotrope blue, wings lavender blue.

### VERY DARK COLORS

**Black Knight**—Deep maroon, veined black, large and open form.

**Othello**—A beautiful dark chocolate red.

**Shazada**—Rich dark maroon, shaded purple.

**Duke of Sutherland**—Dark purplish maroon, wings violet indigo.

### PINK AND WHITE

**Blanche Ferry**—Rose red, wings blush white, very profuse.

**Little Dorritt**—Pink standard, white wings.

**Earliest of All**—An early flowering Blanche Ferry.

### ORANGE BICOLOR

**Gorgeous**—Brilliant orange salmon, wings orange madder.

**Prince Edward of York**—Carmine scarlet, wings crimson.

**Countess of Powis**—Pale orange standard, with pink wings.

### MIXED COLORS

**Admiration**—Pinkish heliotrope, wings a shade lighter.

**Countess of Shrewsbury**—Pale lilac, pink standard and white wings.

### STRIPED AND VARIEGATED

**America**—Striped blood scarlet on white; large and striking.

**Mrs. Jos. Chamberlain**—Striped bright rose on white; very large.

**Aurora**—Striped rosy orange on white, a most attractive variety.

### BLUE AND WHITE

**Lottie Eckford**—White suffused rosy lilac, blue edge.

**Golden Gate**—Pinkish mauve and lavender.

**Maid of Honor**—Shaded light blue, on a white ground, violet edge.

### EARLY FORCING SORTS

**Blanche Ferry, Extra Early**—Color same, two weeks earlier; dwarf.

**Mont Blanc**—Extra early white.

**Cox's California Giant (Mixed Sweet Peas)**—The enormous size of the flowers and the freedom with which they are produced, as well as the endless display of colors, recommends this mixture to all. Pkt. 5c; oz. 10c; ¼-lb. 20c.; 1b. 60c.

**Cox's Standard (Mixed Sweet Peas)**—A row of our Mixed Sweet Peas in bloom is bright and varied in coloring, and vastly superior to many mixtures sent out, which are too often made up from the surplus of varieties that have accumulated on account of their undesirability. Pkt. 5c; oz. 10c; ¼-lb. 15c; 1b. 50c.

**Cox's Prize Pansy**—A magnificent strain of this favorite flower specially grown for us by a noted grower in Belgium, and saved exclusively from exhibition flowers of matchless form, and includes almost every shade of color, exquisitely spotted and blotched, veined, mottled and margined, representing the very cream of fancy strains. *Packets(containing 500 seeds) 50c.*

Pansy Giant Trimardeau,	Azure blue.....	¾ oz.	Per pkt
“ “ “	Black blue.....	\$0 75	15
“ “ “	Emperor William.....	75	15
“ “ “	Lord Beaconsfield.....	75	15
“ “ “	Pure white.....	75	15
“ “ “	Striped or mottled.....	75	15
“ “ “	Yellow with eye.....	75	15
“ “ “	Mixed.....	75	15

**“Masterpiece,” New Giant Curled**—This strain comes nearer to double Pansies than anything ever introduced under that name. In reality the number of petals is the same as that in other Pansy flowers, but they are crimped and curled in such a fashion that the flowers appear double. The flowers are of enormous size, often 3 inches across, and the other variations and combinations are odd and striking. 25c per pkt.

**Pansy, English Choice mixed**.....15c per pkt.  
**“ Good quality mixed**.....¼ oz. 25c., 5c per pkt.

*Imported collections of 12 distinct varieties of Pansies, 75c.*

**Hollyhock**—The distinctive character and massive beauty of the Hollyhocks render them unrivalled as a picturesque relief to the dark background of evergreen shrubs. For distant effect in large groups they are matchless. They also form a showy and effective outline in flower gardens and borders. Bloom second season from seed. Our improved varieties are magnificent, with the most perfect flowers. *All colors mixed.* 10c per pkt. *Imported collection of 12 distinct colors, \$1.00*

**Hollyhock, Fringed “Allegheny”**—Mammoth flowers wonderfully formed of loosely arranged fringed petals, having none of the formality of the ordinary type; colors vary from palest shrimp pink to deep red. 10c per pkt.

**Centaurea Imperialis**—This beautiful class are undoubtedly the finest of all Sweet Sultans for cut flower purposes. The beautiful sweet-scented, artistic-shaped flowers are borne on long, strong stems, and when cut will stand for several days in good condition. The plant itself is much stronger than any other Sweet Sultan; of easy culture, but prefer a cool position. We offer the following distinct colors:

**Pure White, Delicate Lilac, Brilliant Rose, Deep Lavender, Dark Rose, Deep Purple, each per pkt. 10c**  
**Finest Mixed Colors.** 10c per pkt; 3 pkts. for 25c

**Giant-Flowering Sweet Sultans (Centaurea Odorata)**—These may be described as gigantic Cornflowers, and are of the same easy culture, succeeding everywhere. But as cut flowers they are greatly in advance of the old Centaurea Moschata, the flowers being from 2 to 4 inches in diameter, of graceful form and very sweetly scented. All colors mixed; per pkt. 10c.

**Daisy (Bellis Perennis)**—A favorite hardy plant, easily raised from seed.

**Longfellow**—Large double pink flowers. Per pkt. 10c.

**Snowball**—A large and very double pure white Daisy. The flowers are borne on long stems, and are excellent for cutting. Per pkt. 10c.

**Double Mixed**—All colors. Per pkt. 10c.

**Hardy Perennial Pinks**—These hardy varieties are well adapted for beds and borders, delightfully sweet-scented; should be in every garden where cut flowers are wanted.

**Plumarius (Pheasant-eye)**—A beautiful, single, hardy pink, with fringe-edged white flowers, with a dark center. Per pkt. 10c.

**New Perpetual**—Very beautiful, sweet-scented, double, semi-double and single flowers in great diversity of color. Per pkt. 25c.

**Myosotis (Forget-Me-Not)**—Neat and beautiful little plants with star-like flowers; succeeding best in a shady, moist situation.

**Dissitiflora**—Compact habit, profuse bloomer; exquisite blue. Per pkt. 10c.

**Palustris**—The true Forget-Me-Not; beautiful blue flowers. Per pkt. 10c.

**Hards Perennial Poppies, Iceland (P. Nudicaule)**—These are of a very graceful, neat habit, with bright green fern-like foliage, from which issue slender stalks bearing yellow, white or orange-scarlet flowers in endless profusion. Mixed colors. Per pkt. 10c.

**Oriental Hybrids**—Beautiful new hybrids of the Oriental Poppy, producing flowers of immense size, of many novel colors. Per pkt. 15c.

**Stocks (Gilliflower)**—This is one of the most popular flowers, either for bedding or pot culture; for brilliancy and diversity of color, fragrance, profusion, and duration of bloom it is unsurpassed.

**Princess Alice (Cut and Come Again)**—A fine perpetual blooming pure white variety. Per pkt. 10c.

**Giant Perfection Mixed**—All colors. Per pkt. 10c.

**Brompton**—Producing a beautiful display of double flowers; mixed colors. Per pkt. 10c.

**Wallflower**—Well-known, deliciously fragrant flowers, blooming early in the spring, with large, conspicuous spikes of beautiful flowers.

**Paris Extra Early**—A beautiful single variety, flowering through the summer. Per pkt. 10c.

**Double Mixed**—Per pkt. 10c.

# Select List of Vegetable Seeds

For the convenience of those of our customers who may from location of residence or other reason wish to purchase vegetable seeds, before our General Catalogue is published, we offer the following list of leading varieties:

## Beans—Dwarf or Bush

	Lb.	100 lbs.
Extra Early Refugee.....	\$0 10	\$ 8 00
Stringless Green Pod.....	15	9 00
Mohawk.....	15	10 00
Cox's Improved Red Valentine.....	15	10 00
German Black Wax.....	10	8 00
Wardwell's Kidney Wax.....	15	10 00

## Beets—Table Sorts

	Oz.	½-lb.	Lb.
Cox's Blood Turnip.....	10	25	70
Early Eclipse.....	10	20	50
Crosby's Egyptian.....	10	20	60
Long Blood Red.....	10	15	45

## Cabbage

Early Jersey Wakefield.....	15	60	2 00
Succession.....	25	75	2 50
Cox's Selected Flat Dutch.....	25	75	2 50
Hollander or Danish Ball Head.....	25	75	2 50

## Carrot

Cox's Improved Long Orange.....	10	20	75
Danver's Half Long.....	10	20	75
Oxheart or Guerande.....	10	20	75
Early Scarlet Horn.....	10	25	80

## Cauliflower

	Pkt.	Oz.
Cox's California Wonder.....	10	1 00
Extra Early Snowball.....	10	2 00
Early Paris.....	5	75

## Celery

	Oz.	½-lb.	Lb.
Golden Self Blanching.....	30	80	3 00
Improved White Plume.....	20	65	2 00
Other leading sorts.....	15	50	1 50

## Cucumber

Cox's Improved White Spine.....	15	50	1 75
---------------------------------	----	----	------

## Lettuce

Cox's Improved Hanson.....	10	30	1 00
“ “ Passion.....	10	30	1 00
Grand Rapids.....	10	35	1 00
Early Curled Simpson.....	10	30	1 00
Big Boston.....	15	40	1 50

## Onion

Cox's Improv'd Yellow Danvers.....	15	35	1 00
Prizetaker.....	15	40	1 25
Australian Brown.....	15	30	80
Red Wethersfield.....	15	30	1 00
White Portugal.....	20	50	1 75

## Onion Sets

	Per lb.	100 lbs.	Market price
Yellow.....	\$0 20	20	“ “
White.....	20	“	“ “
Top.....	20	“	“ “

## Peas

American Wonder.....	15	\$10 00
Gradus or Prosperity.....	25	14 00
Little Gem.....	15	9 00
Advancer.....	15	8 00
Stratagem.....	15	10 00
Yorkshire Hero.....	10	6 00
Heroine (the largest podded Pea grown).....	15	10 00

## Radish

	Oz.	Lb.
Scarlet Turnip White Tipped.....	10	60
Scarlet Globe.....	10	60
French Breakfast.....	10	60
Improved Chartier.....	10	75
Long Scarlet.....	10	60
Long White Vienna.....	10	70

## Salsify

Mammoth Sandwich Island.....	20	1 00
------------------------------	----	------

## Spinach

	Lb.	100 lbs.
Thick Leaved.....	30	20 00
Savoy Leaved.....	30	20 00
Prickly.....	30	20 00

## Tomato

	Oz.	½-lb.
Stone.....	25	75
Cox's Selected Trophy.....	25	75
Perfection.....	20	60
Ponderosa.....	30	1 00
Beauty.....	20	60

## Turnip

	Oz.	Lb.
Cox's Early Snowball.....	10	60
Golden Ball.....	10	50
Red Top Strap Leaf.....	10	60
Purple Top White Globe.....	10	60
Cox's Improved Rutabaga.....	10	50

Reliable  
Recleaned

**NEW CROP**  
**Grass and Clover Seeds**

For Fall  
Sowing

Prices subject to market fluctuations. Special quotations for large quantities.  
If ordered by mail, 10cts per pound must be added for postage.

	Weight per bush.	Quantity per acre	Per lb.	Per 100 lbs.
<b>Awnless Brome Grass</b> ( <i>Bromus Inermis</i> )—Will stand droughts and produce heavy crops in dry sections and on poor soils, where other grasses perish. It is one of the hardiest grasses and succeeds in a wide range of temperature.	14 lbs.	40 lbs.	\$ 0 15	\$10.00
<b>Bermuda Grass</b> ( <i>Cynodon Dactylon</i> ) Of great value in the Southern States, but does not thrive north of Virginia.	35 "	10 "	50	45.00
<b>Creeping Bent Grass</b> ( <i>Agrostis Stolonifera</i> )—Excellent for lawns; succeeds well in most situations.	20 "	40 "	35	28.00
<b>Crested Dog's Tail</b> ( <i>Cynosurus Cristatus</i> )—Should enter in moderate quantity in permanent pasture and lawn mixtures.	"	30 "	65	60.00
<b>Hard Fescue</b> ( <i>Festuca Duriuscula</i> )—A dwarf growing grass, forming a dense fibrous mat, succeeding well in dry situations.	16 "	30 "	25	20.00
<b>Hungarian Grass</b> ( <i>Panicum Germanicum</i> )—Is a valuable annual forage plant.	48 "	60 "	10	6.00
<b>Italian Rye Grass</b> ( <i>Lolium Italicum</i> )—Thrives in almost any soil, and yields early and abundant crops. Sown in the fall will produce an excellent hay crop the following season, but lasts only one year	20 "	50 "	10	8.00
<b>Kentucky Blue Grass</b> ( <i>Poa Pratensis</i> )— <i>Fancy or double extra clean</i> . Though offered at the standard weight of 14 lbs. per bushel, the natural weight of this fancy seed is 20 lbs. per measured bushel	14 "	60 "	20	15.00
<b>Meadow Fescue</b> ( <i>Festuca Pratensis</i> )—Of great value in mixtures for permanent pasture.	27 "	35 "	15	12.00
<b>Meadow Foxtail</b> ( <i>Alopecurus Pratensis</i> )—One of the best grasses for permanent pasture; early and of rapid growth	7 "	4 "	35.00	30.00
<b>Mesquite</b> ( <i>Holcus lanatus</i> )—Valuable on the cleared redwood and pine lands of California and Oregon, giving large crops of hay and good pasture	7 "	35 lbs.	10	7.00
<b>Millett German</b> ( <i>Panicum Germanicum</i> Var.)—Will grow on any good land, and yields heavily when artificially watered; yields from 40 to 60 bushels of seed per acre, which is excellent seed for stock and poultry	48 "	30 lbs.	5	3.50
<b>Orchard Grass</b> ( <i>Dactylis Glomerata</i> )—One of the most valuable of all pasture grasses; produces an immense quantity of forage and well adapted for growing in orchards or under trees	14 "	25 "	20	15.00
<b>Perennial Rye Grass</b> ( <i>Lolium Perenne</i> )—It grows rapidly and makes a good showing within a month from time of sowing	24 "	50 "	10	8.00
Specially selected recleaned Australian Rye Grass for lawns.			15	10.00
<b>Red Fescue</b> ( <i>Festuca Rubra</i> )—Forms a close, rich sod, and is valuable in lawns.	14 lbs	30 lbs.	25	22 00
<b>Red Top Grass</b> ( <i>Agrostis Vulgaris</i> )—Choice	14 "	30 "	10	7.00
—Fancy or extra recleaned seed.	32 "	25 "	20	18.00
{ Valuable either for hay or permanent pasture, reaches highest perfection on moist, rich soils. }				
<b>Rhode Island Bent Grass</b> ( <i>Agrostis Canina</i> )—A very fine variety for lawns.	15 "	50 "	35	28.00
<b>Rough-Stalk Meadow Grass</b> ( <i>Poa Trivialis</i> )—Excellent for pastures and meadows, particularly on damp soils.	14 "	20 "	45	40.00
<b>Sheep's Fescue</b> ( <i>Festuca Ovina</i> )—Short and dense in growth, excellent for sheep pastures. Valuable also for lawns	16 "	35 "	25	20.00
<b>Sweet Vernal, True Perennial</b> ( <i>Anthoxanthum Odoratum</i> )—Emits an agreeable odor which it imparts to the hay	10 "	3 "	1.25	.....
<b>Tall Meadow Fescue</b> ( <i>Festuca Elatior</i> )—Early, nutritive and productive in pastures on wet or clay soils.	20 "	40 lbs.	45	40.00
<b>Tall Meadow Oat Grass</b> ( <i>Avena Elatior</i> )—Of rapid, luxuriant growth, recommended for soiling and in permanent hay mixtures.	12 "	40 "	25	22.00
<b>Timothy</b> ( <i>Phleum Pratense</i> )—The grade we offer is particularly "choice," free from weed seeds and of high germinating power	45 "	15 "	10	7 00
<b>Wood Meadow Grass</b> ( <i>Poa Nemoralis</i> )—Of early growth and thriving well under trees.	19 "	30 "	60	55.00

## Clover Seed

**Alfalfa**—One of the most valuable and largely grown forage plants, yielding five or six crops of hay in the season, which is relished by all kinds of stock and is very nutritious. Twenty-five to thirty pounds of seed is required for an acre. 20c per lb. *Large lots at market rates.*

**Alsike or Swedish Clover**—Succeeds best in cold, stiff soils and in marshy lands too wet for other species; is very hardy and withstands severe cold; is a good honey plant for bees. Fifteen pounds to the acre. 25c per lb. *Large lots at market rates.*

**Burr Clover**—Flourishes in dry soil and not affected by drought; makes an excellent fodder. About 20 lbs. will seed an acre. 10c per lb; \$4.00 per 100 lbs.

**Crimson or Scarlet Clover**—Largely grown for improving the soil by turning under; makes a valuable pasture crop, and if for hay should be cut when in full bloom. Sow 15 pounds to the acre. 20c per lb. *Large lots at market rates.*

**Japan Clover**—Thrives in any soil and in the driest seasons; it makes fair hay and stock eat it readily when green; when fed to milk cows it largely increases the flow of milk. Sow in spring. 15 pounds to the acre. 30c per lb.; \$25.00 per 100 lbs.

**Mammoth Red or Sappling Clover**—Grows much larger and lasts longer than the common red clover; being a rank grower it is largely used for soiling. 15 pounds to the acre. 15c per lb. *Large lots at market rates.*

**Red Clover**—Valuable not alone as a forage plant but also for its fertilizing properties on the soil; makes an excellent quality of hay and can be cut twice a year. 15 pounds to the acre. 15c per lb. *Large lots at market rates.*

**White Clover**—Of dwarf habit with creeping stems, rooting at the joints, on which account it makes an excellent turf that stands constant tramping. Sow 8 to 10 pounds to the acre. 35c per lb. *Large lots at market rates.*

## A Word About Your Lawn

The custom of sowing **Kentucky Blue Grass** or **Perennial Rye Grass** alone, has, until quite recently, been very generally followed in California, but the result in no way compares with the infinitely superior lawns seen in both public and private grounds throughout the Eastern States. Why? Because a mixture of grasses is used, embracing those of a neat close growth, best adapted to produce a quick and permanent sod, that eventually acquires that smooth, velvety effect so desirable in a fine lawn. We have for some time been experimenting with a view to obtain such a mixture suitable for conditions existing on the Pacific Coast, and have named this formula.

**Cox's California Lawn Seed**—This seed is composed entirely of the choicest re-cleaned seed, and can guarantee it to contain many times the number of good germinating seeds that can be found in the cheap chaff mixtures so generally offered at low prices. This mixture is absolutely the best that experience can suggest or that money can buy, and the lowest price at which it can be sold for is:

Per lb., 35c; per 100 lbs., \$30.00.

*Sixty pounds is required to seed one acre of new lawn. Use half that quantity for renovating old or worn-out lawns.*

## Special Offer

We mail post paid to any address for 75 cents the following  
**6 Single Named Hyacinths**

**Norma**—Light Rose

**Voltaire**—Creamy White

(First Size Bulbs)

**Grand Lilas**—Light Porcelain

**Mars**—Bright Red

**Baroness van Thuyll**—Pure White

**Masterpiece**—Dark Purple

This collection consists of the best 6 Hyacinths especially adapted for pot or water culture.

## Acme Indoor Collection

A careful collection of the Best Bulbs suitable for pot culture and to secure a succession of blooms during the dull winter months.

We offer this Choice Collection for \$1.00 post paid.

5 **Freesia refracta alba**

5 **Allium neapolitan**

5 **Buttercup Oxalis**

2 **Bermuda Easter Lilies**

3 **Double Daffodils**

3 **Sweet Scented Jonquils**

6 **Mammoth Yellow Crocus**

2 **Chinese Sacred Lilies**

5 **Double Tulips**

3 **Hyacinths, pink, white, blue**

## Arbor Outdoor Collection

Consists entirely of hardy bulbs for lawns or wooded places where they can be planted and left to themselves, becoming more beautiful each year they remain undisturbed. We mail this superb collection of 10 bulbs for \$1.00 post paid.

15 **Single Snowdrops**

25 **Crocus, Mammoth Mixed**

15 **Scilla Siberica**

15 **Feathered Hyacinths**

6 **Narcissus, Mixed**

15 **Tritelia uniflora**

15 **Ranunculus French**

1 **Bleeding Heart**



# Abbreviated Plant List.

For Complete List send for our Beautifully Illustrated Catalogue, Issued January 1st. FREE.

**NURSERIES: Glen Avenue, near Mountain View Cemetery, Oakland**

*Visitors are Welcome to View our Large Stock.*

## Desirable Hardy Evergreen Trees and Shrubs.

**Acacia floribunda**—Produces its pale lemon flowers in great abundance and for a long period. Five to six feet. 50c each.

**Acacia dealbata**—(Silver Wattle)—Foliage feathery, deep green above, white beneath. Very free flowering, in panicles, of deep lemon color, produced at ends of branches. Five to six feet, 75c each. \$6.00 per ten.

**Acacia latifolia**—Resembles the "Melanoxyton" variety, but leaves are longer, and tree more floriferous. Two feet, 25c each.

**Acacia linearis**—Long feathery foliage, very beautiful. Two feet, 25c each. Three to four feet, 35c each.

**Acacia melanoxyton**—(Black Wood Tree)—A strong upright-growing tree. Very desirable for parks and street ornamentation. 10c, 15c, 25c, 35c and 50c each.

**Acacia mollissima**—A fine, erect-growing tree, with glaucous, green, feathery foliage. Flowers yellow; produced in early spring in great profusion. A rapid-growing tree. Small plants 15c each. Five to six feet, 75c each. \$6.00 per ten.

## ABIES

(Spruce, Fir, and Hemlock)

This most desirable class we are pleased to draw particular attention. All of them are noble specimens and should be planted by those desiring to beautify their grounds; they are all perfectly hardy.

**Abies Alcockiana**—(Alcock's Spruce)—From Japan. It forms a beautiful tree of close habit. Foliage pale green, silvery underneath. 35c each.

**Abies blue**—(Glaucous Spruce)—A small and beautiful variety of rather loose spreading habit, with bluish green foliage; very hardy and valuable. 50c each.

**Abies Cœrulea Hudsonii**—50 each.

**Abies balsamcana**—(Balsam Fir)—A very erect, regular pyramidal tree with dark green somber foliage. Grows rapidly and is very hardy. 50c each.

**Abies Douglasii**—A magnificent, rapid growing tree with leaves light green above and glaucous below. 25c each.

**Abies Engelmani**—This fine new Conifer is found on the higher parts of the Rocky Mountains. In its most favorable localities this species makes a stately tree 60 to 100 feet high, forming a narrow tapering spire of rather dark hue. 50c each.

**Abies excelsa**—(Norway Spruce)—From Europe. An elegant tree; extremely hardy, of lofty, rapid growth, and pyramidal form. The branches assume a graceful, drooping habit when the tree attains 15 to 20 feet in height. One of the most popular evergreens for planting, either as single specimen trees, or in masses for effect or shelter. 35c each.

**Abies firma**—A stately tree, attaining in favorable localities a height of 150 feet; branches horizontal, leaves deep glossy green above, paler beneath. A native of Japan. 50c each.

**Abies grandis**—A majestic and graceful tree, towering to a height of 200 feet; leaves arranged in double rows on the branches, apple green above, silvery beneath; very distinct. 50c each.

**Abies Mariesii**—50c each.

**Abies Menziesii**—in form and habit similar to the White Spruce; foliage of rich blue or sage color. 50c each.

**Abies Mertensiana**—(California Hemlock Spruce)—Branches slender, drooping and very numerous. It grows from 100 to 150 feet high, forming a roundish conical head. 50c each.

**Abies Nordmaniana**—(Nordmann's Silver Fir)—This majestic fir from the Crimean Mountains, is of symmetrical



Araucaria Bidwellii

Photographed by Cox Seed Co.

- form, vigorous and quite hardy. Its foliage is quite massive, dark green, shining above, and slightly glaucous below, rendering it a very handsome tree. Considered here and in Europe as one of the finest of the Silver Firs. 50c each.
- Abies pinsapo**—A beautiful tree; its compact growth and unique appearance renders it worthy of a place in the garden. The foliage is of a yellowish hue, with glaucous stripes. 40c and \$1.25 each.
- Abies polita** (Tiger Tail Spruce)—A distinct Japanese species. It is of erect habit and has rigid sharply pointed leaves of a bright green color. 50c each.
- Araucaria Bidwellii**—A magnificent tree. Branches in regular whorls. Closely set with spiny, shining, deep-green leaves. Very handsome for the lawn, and by far the finest and most attractive of all evergreen trees. Thrives well here. 50c, \$1.00, \$1.50, and \$2.00 each, according to size.
- Araucaria excelsa** (Norfolk Island Pine)—One of the handsomest of all trees. Pyramidal in form and very symmetrical. Hardy in protected locations. Excellent for parlor decoration 25c, \$1.00, \$1.50, and \$2.00 each, according to size.
- Araucaria Imbricata** (Chile Pine, or Monkey Tree)—A fine tree, of regular pyramidal form. Leaves bright green, broad, thick, pointed, and overlapping each other. For lawn decoration unexcelled. 75c, \$1.00, \$1.50, \$2.00, and \$3.00 each, according to size.
- Aucuba Japonica** (Gold Dust Tree)—Handsome, hardy evergreen shrubs, with large bright green leaves, beautifully spotted yellow. When planted out of doors they should be set in a half shady location. Each 50c.
- Azalea Indica**—The flowers are of unsurpassed beauty, borne in large clusters above the small leaves. Blooms from January to April. Colors very rich. Should be planted in a shady, moist location. \$1.00 and \$1.50 each.
- Azalea Mollis**—Native of the northern part of this State and Oregon, bearing sweetly fragrant yellow and pink flowers. 75c each.
- Azalea pontica**—A deciduous sort. Produces very fragrant sweet flowers. 75c each.
- Azara Microphylla**—A handsome shrub having small glossy leaves; orange-yellow flowers. 50c each.
- Bamboo falcata**—A very ornamental species, attaining a height of 20 feet. The young shoots are of a flesh-green color, while the older ones form a beautiful mass of light yellowish foliage. 75c and \$1.00 each.
- Bamboo Kumasasa**—Small, slender, grassy foliage. 50c each.
- Bamboo Mitis**—One of the largest bamboos. It attains a height of 28 to 38 feet. The canes are used extensively for furniture work, water-pipes, etc. 75c each.
- Bamboo, Black**—This variety attains a height of 30 feet. The canes are black. Used for making walking sticks, umbrella handles, etc. 50c each.
- Bamboo Quiloi**—A very large growing sort. Attaining a height of 40 feet. 75c each.
- Berberis Darwinii**—This is the finest of all berberis. Foliage thick and leathery. Flowers orange-yellow, and deliciously fragrant. 35c each.
- Box Tree, Dwarf** (Suffruticosa)—A fine small bush, with glossy, roundish leaves. The variety so extensively used for edging. Small plants for edging, \$1.00 a doz; \$7.00 per 100.
- Broom, Andreana**—Flowers yellow, tinted chocolate. Very choice. 50c each.
- Broom, Scotch, Yellow** (Genista)—A very handsome shrub, with drooping branches, and covered in the spring with bright yellow pea-shaped flowers. Very effective for grouping. 50c each.
- Broom, Scotch, White**—40c each.
- Broom, Spanish**—An upright growing shrub. Flowers yellow, produced very freely in the spring and summer, on long, pendulous, round, leafless branches. 50c and 70c each.
- Californica Big Tree**—The famous "Big Tree" of our State. 50c each.
- Camellias**—Are acknowledged to be the finest winter-flowering shrubs in cultivation. They will grow freely in any fair garden soil, and require but little attention after the first year after planting. DOUBLE, RED, WHITE and PINK, 80c and \$1.00 each.
- Camphor Tree** (Laurus Camphora)—A fast growing, very symmetrical ornamental tree, thriving in the very poorest soil. A native of Japan. Bright green foliage; well adapted for a lawn. 25c and \$1.00 each.
- Casuarina** (Beef Wood)—The picture of the Casuarina gives us a good idea of the habit of this beautiful tree. The Casuarina is supposed to be named after the Casowary, a native bird of Australia (akin to the ostrich and emu) on account of its long plume-like foliage, which somewhat resembles the plumage of that bird. The leafless branches are long and pendulous and dark green in color. They are eminently adapted for forest planting in California, and now that the State is awakening to the great importance of reforestation, we particularly commend this tree for this purpose. The Casuarinas are of rapid growth and suit themselves alike to the cold bleak winds of the ocean or the hot interior valleys. The wood is very hard and can be advantageously used for many mechanical purposes. As an ornamental tree, we consider the Casuarina as one of our best evergreen trees. They are indigenous to tropical Australia and some are found in New Caledonia and India. We offer the following varieties: *Equisetifolia*, *Quadrangula*, *Stricta*, *Suberosa* and *Tenuifolia*. Transplanted in boxes at \$5.00 per 100. Large plants, 35c each.
- Cedar, Atlantica**—Similar to the Lebanon. 50c each.
- Cedar, Deodara** (Himalaya Cedar)—Exceedingly handsome, with drooping branches and silvery green foliage, forming a dense net-work. 50c each.
- Cedar, Lebanon**—A magnificent tree, with short horizontal branches and dense, dark green foliage. 50c each.
- Choisya ternata** (Mexican Orange Flower)—A shrub with pure white, deliciously fragrant flowers, blooming in spring. 1 foot, 50c each.
- Cypress, Italian**—Of upright pyramidal growth. Transplanted in boxes. \$4.00 per 100. Pot grown, 25c each.
- Cypress, Lawson Silver**—A beautiful variety of the Lawson Cypress, with beautiful silvery foliage. 35c each.
- Cypress, Monterey**—A native of California, and one of the most desirable of evergreens. Very extensively planted for hedges. Transplanted in boxes. 100, \$2.50; per 1000, \$18; pot grown, 1 to 1½ feet, 15c each; \$1.25 per 100.
- Daphne, Pink Flowering**—\$1.00 each
- Daphne, White Flowering**—A low-growing shrub, with dark, bright green foliage and very fragrant white flowers. \$1.00 each.
- Diosma alba** (Breath of Heaven)—A handsome little shrub, with heath-like foliage and small, white,

## Fall List of Plants

- star-shaped flowers. The leaves, when bruised, emit a sweet perfume. 35c each.
- Escalonia rubra**—Rather a pretty shrub, producing immense quantities of small red flowers. Does well in windy and exposed locations. 35c each.
- Eucalyptus citriodora**—A unique variety. Leaves highly perfumed like the Lemon Verbena. 25c each.
- Eucalyptus ficifolia** (Scarlet-flowering Gum)—A unique sort, bearing lovely scarlet flowers thick leathery leaves. Hardy only in warmer sections. 35c each.
- Eucalyptus globulus** (Tasmanian Blue Gum)—One of the most useful of all and a very rapid grower. Pot grown, 2 to 3 feet, 15c each; \$1.25 per 10. Transplanted in boxes. \$2.50 per 100; \$20 00 per 1,000.
- plant from which the allspice of commerce is obtained. 1½ feet, 50c each.
- Euonymus Duc d'Anjou**—A beautiful shrub, the center of the leaves being variegated with golden yellow. 35c each.
- Euonymus, Golden Variegated**—A most beautiful sort. 35c each.
- Fabiana imbricata**—A very pretty heath like shrub of erect growth, producing pure white tube-shaped flowers in great profusion. When in bloom it is a most lovely shrub. 35c each.
- Grevillea robusta** (Australian Silk Oak)—A splendid fern leaved, evergreen tree, which makes a magnificent pot plant for all sorts of decorative purposes. Flowers golden yellow. Planted out in this State, it soon forms a magnificent lawn or shade tree. 25c and 50c each.



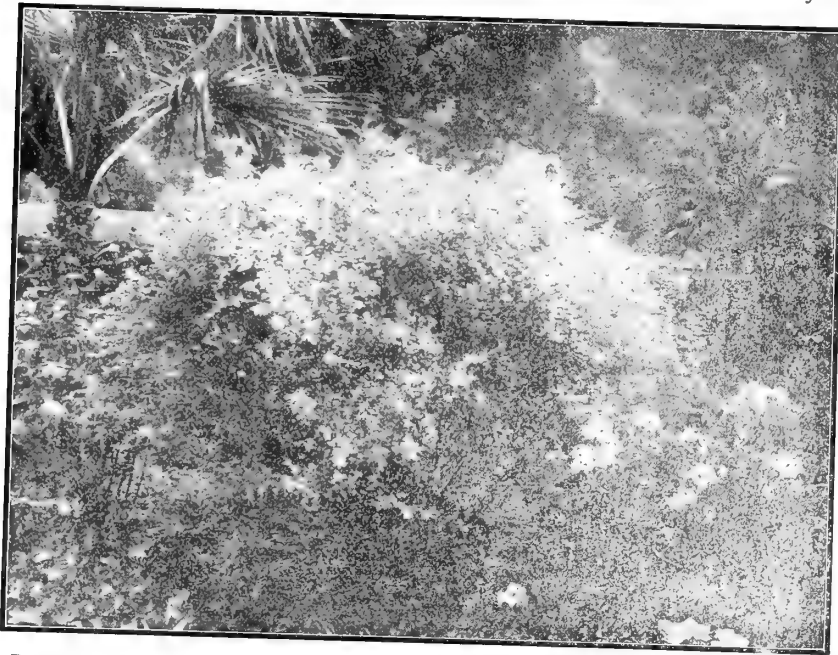
CASUARINA—(Beef Wood Tree of Australia)

Photographed by Cox Seed Co.

- Eucalyptus Viminalis** (Red Gum) — Well known and highly esteemed Transplanted in boxes. \$3.00 per 100
- Eugenia Australis** (Rose Apple)—Handsome shrub, grown in the East Indies for its fruit. The flowers are pure white and borne in great profusion. Perfectly hardy. This plant is closely allied to the

- Habrothamnus elegans**—A strong-growing shrub, bearing panicles of small trumpet-shaped, purplish red flowers. Makes a grand effect on a lawn or trained against a wall or porch. 25c each.
- Heath, Mediterranean**—This variety is most desirable; it produces its small wax-like pink flowers in wonderful profusion. 50c each.

- Heath, White**—A handsome, compact growing shrub, with light feathery foliage. The flowers are white, completely covering the bush in May and June. 50c each.
- Holly, European** (*Ilex*)—A small tree, with shining, dark green, thorny leaves, somewhat resembling the oak in form. In winter the tree is covered with bright red berries. 50c and \$1.50 each.
- Juniper, Irish**—Short, sea-green foliage. A distinct and beautiful variety of conical outline, upright and dense growth. 75c each.
- Laurel, English**—A fine, large evergreen, with broad, shining green leaves. Produces large panicles of creamy-white flowers, followed by purple berries. 50c each.
- Laurel, Portugal**—A compact, pyramidal small tree (or large shrub), with glossy, dark green leaves. The flowers come in long panicles of creamy white, and are fragrant. 75c each.
- Laurel, Sweet Bay** (*Nobilis*)—A very ornamental, upright-growing shrub, with deep, dark green, fragrant leaves, and covered in the fall with berries. If properly pruned, one of the handsomest decora-



DIOSMA (Breath of Heaven)

- five plants. The leaves are placed between the layers of Smyrna figs and impart a peculiar pleasant flavor to the fruit. 60c each.
- Laurustinus**—A well known winter-flowering shrub, of great beauty, producing an abundance of white flowers. Well adapted for hedges. 25c each; \$2.00 per 10.
- Libocedrus chilensis**—A beautiful sort. 35c each.
- Libocedrus decurrens** (Yellow Cedar)—A noble tree; fine for lawns. Foliage small, bright glossy green. 50c each.
- Ligustrum Japonicum** (Japan Privet)—Produces large clusters of white flowers; slightly fragrant, followed by purplish blue berries. Leaves glossy, leathery, dark green. A large-growing shrub (or small tree). Makes an excellent hedge. Stands trimming well. It also makes a very handsome

- sidewalk tree when trimmed up. 25c and 50c each.
- Loquat**—This tree produces a very delicious fruit. It is also very valuable as an ornamental tree. The leaves are large, crumpled, and olive green in color. A handsome shrub. 35c and 50c each.
- Magnolia grandiflora**—The most noble of American evergreen trees. Foliage is thick, brilliant green in the upper surface and rusty underneath. The flowers are pure white, of immense size and very fragrant. \$1 00 each.
- Magnolia grandiflora Exoniensis**—A lovely evergreen species, with large, leathery, bright green leaves, that look as if made of wax, 1 foot or 18 inches long and 4 inches wide. In addition to the beauty of the foliage, it bears large fragrant white flowers. Very rare and choice. \$1.50 each.
- Myrtle, Common**—A dwarf shrub, with shining green leaves and fragrant white flowers. 40c each.
- Melaleuca Styphiliodes**—Upright growing shrub, with fine, feathery, plume-like foliage. 35c each.
- New Zealand Flax, Variegated**—This is an extremely ornamental plant. The leaves are sword-like in appearance, beautifully edged with silver. Strong clumps. \$1 00 each.
- Oleander**—Double Pink, Single White. 50c each.
- Pepper Tree**—A most popular shade and ornamental tree, with fine feathery foliage. Producing clusters of red-berries in autumn. 10c, 25c, 35c, and 50c each.
- Pine, Austrian**—A native of the mountains of Syria. Tree remarkably vigorous. 35c each.
- Pine, Blue**—New and rare. 50c each.
- Pine, Monterey** (*Insignis*)—The most desirable pine for shade, and more extensively planted than any other variety in this State. Transplanted in boxes. \$4.00 per 100; pot grown, 10c each; 75c per 10.
- Pine, Scotch**—A fine, robust rapid growing tree, with stout erect shoots and silvery green foliage. Transplanted in boxes. \$4.00 per 100; pot grown, 35c each; \$3.00 per 10.
- Pine, White**—A valuable pine; tall, straight and handsome; slender glaucous green foliage. 35c each.
- Pinus Ponderosa** (Heavy Wooded Pine)—A noble tree attaining a height of 100 ft., of rapid growth. 35c each.
- Pittosporum eugenoides**—A very handsome, upright-growing shrub, with silvery light green leaves and black stems. A good hedge plant and very ornamental as an individual. Transplanted in boxes. \$6.00 per 100; pot grown, 20c each; \$1.50 per 10.
- Pittosporum nigracens**—A large, upright-growing shrub with glossy, yellowish green leaves. A very effective shrub and excellent for hedges. Transplanted in boxes \$6.00 per 100; pot grown, 20c each; \$1.50 per 10.

Photographed by Cox Seed Co.

- Pittosporum tobira**—A very desirable sort; the foliage and stems are very stiff; flowers pure white, sweetly scented; of dwarf habit. 25c and 50c each.
- Pittosporum tobira variegatum**—A variegated form of the preceding. 35c each.
- Pittosporum undulatum**—Flowers sweetly scented; very desirable. 15c each; \$1.00 per ten.
- Polygala Dalmatiana**—A profuse flowering shrub, with purple pea-blossom shaped flowers, and pretty, light green foliage. 25c each.
- Raphiolepis ovata**—A beautiful, compact, low-growing shrub, with leathery dark shining green leaves; flowers very sweet-smelling, followed by blue-black berries. 75c each.

- Sciadopitys verticillata**—Commonly called "Umbrella Pine." The tree is of pyramidal and symmetrical form. Is especially adapted for lawn decoration. Native of Japan. \$1.00 each.
- Sweet Bay**—(See Laurel.)
- Thuja gigantea**—A very ornamental, fast-growing California arborvitæ, attaining great size. 35c each.
- Thujopsis dolabrata**—Leaves shining green above, silvery white beneath. Of a pendulous and dwarfish habit. Branchlets coral-like in appearance. A most peculiar-looking tree from Japan. 75c and \$1.00 each.
- Veronica alba compacta**—A most desirable sort; of dwarf habit, flowers pure white. 25c and 35c each.



HEDGE OF SNOWBALL, as Grown in California.

Photographed by Cox Seed Co.

- Redwood** (*Sequoia sempervirens*)—Well known, native of California. Makes a lovely specimen for the lawn. Suitable also for avenue planting. 75c each.
- Rhododendrons**—These are among the grandest of our hardy flowering shrubs, and cannot be surpassed for lawn decoration. The flowers range through shades of rose, pink, crimson, white, etc. Should be planted in partial shade. Price, \$1.50 and \$2.00 each.
- Spruce**—(See Abies.)
- Strawberry Tree** (*Arbutus unedo*)—An elegant shrub, covered during winter with blossoms and fruit, the latter resembling a strawberry, which is of agreeable flavor and much relished. 50c each.
- Swainsona Greyana** (Darling River Pea)—Flowers rose color, produced in sprays of from 12 to 20 flowers each, the individual blooms resembling the flowers of a sweet pea. Leaves small, acacia-like. A most desirable ever-blooming plant. 25c and 35c each.
- Swainsona galegifolia alba**—This variety has delicate white flowers. 4-inch pots, 25c and 35c each.

- Veronica Imperialis**—The finest of the species. Flowers amaranth. 35c each.
- Veronica Variegata**—A handsome shrub, with blue flowers and variegated foliage. 35c each.
- Yew English**—35c each.
- Yew, Irish**—Deep blackish green foliage. Of erect growth. Much used in cemetery work. \$1.50 each.

## Lippia repens

### A NEW INTRODUCTION

Specially adapted for lawn purposes. Requires very little water. Of creeping habit. See our Annual Catalogue for full particulars.

**\$3.00 per 100; \$25.00 per 1000**

## Deciduous Trees and Shrubs

**Ash, European**—A lofty tree of rapid growth, with spreading head and gray bark. Pinnate leaves and black buds. Three to four feet, 35c each.

**Beech, European**—A beautiful tree, attaining a height of sixty to eighty feet. Three feet, 50c each.

**Beech, Purple-Leaved**—Foliage is deep purple in spring, changing to crimson in the fall. Two to three feet, \$1.00 each.

**Berberry, Purple-Leaved**—The foliage of this shrub is very beautiful, being of a dark reddish purple. Three to four feet, 40c each.

**Berberry, Thunbergii**—A pretty species of dwarf habit, from Japan; the foliage is small and beautifully tinted in the autumn. Two feet, 25c each.

**Birch, European White**—Remarkable for its elegance. Very graceful, with silvery bark and slender branches. Six to eight feet, 75c each.

**Budlea globosa**—A large-growing, handsome shrub, producing beautiful yellow spikes of globe-shaped flowers, 25c and 50c each.

**Caragana Siberica**—A shrub, or small tree, having yellow flowers in early spring. Very ornamental. 3 to 4 feet, 35c each.

**Catalpa Kaempferii**—A rapid-growing, spreading, irregular tree, with large, heart-shaped leaves. Remarkable for its clusters of white, fragrant flowers in spring. Four to six feet, 35c each.

**Catalpa Speciosa**—Leaves large, heart-shaped. Of rapid growth. Flowers come in long grape-like clusters of white and purple. Very fragrant. Four to six feet, 35c each.

**Cercis Canadensis**—("Judas Tree")—Produces pink blossoms all along the branches in early spring before the appearance of the leaves. Much admired. Four to five feet, 50c each.

**Cherry, Japanese Double-Flowering**—A very ornamental shrub (or small tree), producing immense masses of large double pink and double white flowers. 50c each.

**Coral Plant**—(Erythrina)—A beautiful summer-flowering plant, with dark crimson, coral-like flowers. 35c each.

**Corchorus Japonica**—Produces globular-shaped, yellow flowers for a long period. Foliage slender and graceful. Three feet, 50c each.

**Crape Myrtle**—A very beautiful class of shrubs. Profuse and continuous bloomers during the entire summer. The flowers are very pretty, having curiously crimped petals. CRIMSON, three to four feet, 50c each. PINK, three to four feet, 50c each. WHITE, two to three feet, 60c each.

**Deutzia crenata**—The deutzias are among the showiest of our shrubs, producing their flowers all along the branches in the springtime. This variety has white flowers, suffused with pink. Two to three feet, 30c each.

**Deutzia gracilis**—This variety is dwarf-growing, and produces its pure white flowers in prodigal luxuriance. One and a half feet, 40c each.

**Deutzia scabra**—Flowers bell-shaped, coming in small bunches. Foliage oval. Very rough underneath. Two to three feet, 30c each.

**Deutzia Lemoinii**—Two to three feet, 30c each.

**Deutzia, Pride of Rochester**—Two to three feet, 30c each.

**Dogwood, Red Twigged**—Very striking in winter, when the blood red branches are seen to advantage. Three feet, 30c each.

**Elm, American Black**—A magnificent large tree, with drooping, spreading branches. Requires moist soil. One of the grandest of our native forest trees. Six to eight feet, 50c each.

**Elm, Corkbark**—A valuable shade-tree, and very desirable for streets and avenues. Young branches very corky. Leaves rough on both sides. Six to eight feet, 50c each. Eight to ten feet, 75c each.

**Elm, English or French**—An erect lofty tree of rapid growth. Four to five feet, 35c each.

**Exochordia grandiflora**—This is a most desirable flowering shrub and much admired and should be in every collection; the flowers are large, pure white and produced in the greatest profusion. Three to four feet, 50c each.

**Filbert, Purple-Leaved**—Purple-leaved trees are always favorites; the foliage is dark brownish purple. Three to four feet, 50c each.

**Forsythia Viridissima**—(Golden Bell)—Very showy shrubs producing their yellow flowers in early spring before the appearance of the leaves. Two to three feet, 30c each.

**Honey Locust**—(Gleditschia)—A large-growing tree of rapid growth, small acacia-like foliage, very thorny. Three to four feet, 35c each.

**Honeysuckle, Tartarian**—(Upright or Bush)—This variety of honeysuckle is a bush sort, excellent for the formation of hedges. Beautiful creamy-white flowers. Two and a half feet, 30c each.

**Horse Chestnut, European**—Of majestic appearance, bearing large clusters of beautiful white flowers, succeeded by mahogany-colored nuts, inclosed in burs. The leaves are palmate-shaped. Seven feet, \$1.00 each.

**Hydrangea paniculata grandiflora**—Flowers spike-shaped, pure white, most floriferous. Makes a grand specimen on the lawn. 35c each.

**Hypericum Moseerianum**—Produces long, slender, much-branched stems, leafy to the base and all drooping toward the ends. It is marvelously free flowering, of large size, measuring from two to two and a half inches in diameter. In color, a rich golden yellow, which is rendered still more effective by the numerous yellow stamens and crimson anthers, and blooms continuously the entire season. Strong plants, 35c each.

**Hypericum patulum**—(St. John's Wort)—A most desirable shrub. It has single flowers of a buttercup yellow, produced nearly the entire summer, and thrives exceedingly well in dry ground. 25c each.

**Kolreuteria paniculata**—A small round-headed tree, with large panicles of golden-yellow flowers. 30c each.

**Laburnum or Golden Chain**—A beautiful small-growing tree, with long drooping racemes of fragrant yellow flowers. Three to four feet, 50c each; five to six feet, 75c each.

**Lemon Verbena**—The fragrance from the foliage of this old favorite is delightfully refreshing. Three to four feet, 40c each.



**Lilac—Purple, White, Red, Rubra de Marly—**Three feet, 40c each.

**Linden, American—**A rapid-growing, large-sized tree, with very large leaves and fragrant flowers. Eight feet, 60c.

**Locust, Bessoniana—(Thornless)—**The most ornamental of all the Locust family. Forms a solid, compact head, with dark-green, luxuriant foliage. Eight to ten feet, 75c each.

**Locust, Common or Black—**A rapid-growing tree, with spreading branches. A valuable timber tree, and used for various mechanical purposes. Five to six feet, 40c each; eight to ten feet, 60c each.

**Locust, Decaisneana—(Pink Flowering)—**Remarkable for its vigorous growth and its fine rose-colored flowers. Eight to ten feet, 75c each.

**Locust, Hispida—(Robinia hispida)—**Rose or Moss Locust. This variety is of irregular growth, and is chiefly prized for the beautiful deep rose-colored flowers, which it produces very freely during June and July. Two to three feet, 50c each.

**Maiden Hair Tree—(Salisburia)—**A beautiful tree from Japan. The leaves are shaped like those of a Maiden Hair Fern, only larger. Very choice. Two feet, 50c each.

**Magnolia conspicua—**Of medium size, shrub-like in growth while young, but attains the size of a tree in time. The flowers are large, pure white, and very sweet, appearing before the leaves. One and a half to two feet, 75c each.

**Magnolia gracilis purpurea—**Of moderate growth. Flowers reddish purple. One and a half to two feet, 50c each.

**Maple, Silver or Soft—**A rapid-growing tree of large size, irregular rounded form. Foliage bright green above, silvery beneath. Six to eight feet, 50c each.

**Maple, Japanese—**None of our autumnal trees can excel these in gorgeousness of coloring; they include yellow, blood red, green, and variegated. The uniqueness of the shape of the leaves is also wonderful, some as delicate as the finest lace. Plant in shady place. One to two feet, 60c each.

**Mock Orange—(Philadelphus)—**A vigorous class of shrubs, with large handsome foliage and beautiful milk white flowers, produced in the greatest profusion, early in the summer.

**Mock Orange—(Coronarius)—**Flowers pure white, delightful orange-blossom fragrance. Three feet, 40c each.

**Mock Orange—(Grandiflorus)—**A tall bush, of slender twiggy habit, with large flowers, slightly fragrant. Three feet, 40c each; four to six feet, 60c each.

**Mock Orange—(Gordonarius)—**Three feet, 30c each.

**Mountain Ash, European—(Rowan Tree)—**Flowers creamy white. Foliage somewhat like the Pepper Tree. Covered from August to November with large clusters of orange colored berries. Four to five feet, 40c each; six to seven feet, 75c each.

**Oak, English—**We take pleasure in recommending this shade-tree to our customers as one of the most desirable for California. It is of fairly rapid growth. It makes a dense head, and the leaves are a dark glossy green, to which dust does not adhere. It retains its foliage till late in the season. Three feet, 50c each; six to seven feet, 75c each.

**Oak, Palustris—**Much used in the East as a sidewalk tree. Three to four feet, 50c each.

**Oak, Red—**Beautiful red foliage in fall. Three feet, 50c each.

**Peach, Flowering—Double White, Double Crimson—**Four to five feet, 50c each.

**Paulownia Imperialis—**A rapid-growing tropical-looking tree from Japan, with enormous round leaves. Produces large clusters of purple trumpet-shaped flowers in the spring. Six to seven feet, 75c each.

**Plum, Purple-Leaved—(Pisardi)—**The young branches are a very dark purple. The leaves when young are lustrous crimson, changing to a dark purple, and retain this beautiful tint till they drop late in autumn. No other purple-leaved tree or shrub retains its color like this. It also bears a fairly good fruit. Three to four feet, 50c each.

**Poplar, Carolina—**A vigorous-growing variety, with large bright green leaves. Five to six feet, 35c each; \$3.00 per ten.

**Poplar, Lombardy—**A very rapid, erect-growing tree, with tall, spiry form. Very desirable in landscape gardening. Five to six feet, 35c each; \$3.00 per ten.

**Pomegranate, Flowering—Double White—**Three to four feet, 35c each.

**Pomegranate—Double Red—**35c each.

**Pomegranate—Madame Leroy—**35c each.

**Quince, Japanese Scarlet Flowering—**35c each.

**Quince, White Flowering—**Two to three feet, 50c each.

**Rhus cotinus, Purple Fringe, Mist Tree, Smoke Tree—**Variously known by these names. It is much admired. It produces curious fringe or hair-like flowers that cover the plant in summertime. Does excellently well in the warm valleys of California. Three feet, 40c each.

**Rhus glabra lasciniata—Cut Leaved Sumach—**A very striking shrub, with deeply cut leaves, fern-like in appearance; dark green above and glaucous below, changing to rich red in autumn. Two to three feet, 40c each.

**Snowball—**Produces large globular, pure white flowers in great luxuriance. Three to four feet, 50c each.

**Spiræa—**We consider these shrubs among the prettiest, and can recommend them. When spring is at its brightest, the spiræas are among the showiest of flowering shrubs.

**Spiræa callosa—**The flowers are produced in large panicles of a deep rosy hue. Three feet, 30c each.

**Spiræa prunifolia—(Bridal Wreath)—**This is probably the favorite. Flowers double, small, produced along the branches. Three to four feet, 40c each.

**Spiræa Van Houttii—**White flowers. Three to four feet, 40c each.

**Sycamore, European—**A rapid, erect-growing tree, with bright green foliage. Far superior to the common American sycamore. Six to seven feet, 50c each.

**Texas Umbrella—(Melia Azedarach Umbraculiformis)—**Entirely different from the Pride of China. Takes the shape of an umbrella, is of striking beauty, and one of the handsomest of shade-trees. Five to six feet, 50c each.



**Thorn, Double White**—Has small double white flowers. A highly ornamental variety, on account of both foliage and flowers. Three to four feet, 35c each; six to eight feet, 75c each.

**Thorn, Double Pink**—Similar to the above in all respects but color, which is pink or rose. Three to four feet, 35c each; six to eight feet, 75c each.

**Thorn, Paul's Double Scarlet**—Three to four feet, 35c each; six to eight feet, 75c each.

**Thorn, Single Pink**—Three to four feet, 35c each; six to eight feet, 75c each.

**Thorn, Single White**—Six to eight feet, 75c each.

**Weigilea rosea**—Elegant shrub from Japan. They produce superb, large, trumpet-shaped flowers of a fine rose color. Two to three feet, 35c each.

**Weigilea, Abel Carriere**—Bright rose, 35c each.

**Weigilea amabilis**—35c each.

**Weigilea Van Houtti**—35c each.

**Willow, Common**—(*Babylonica*)—The well-known weeping willow. 40c each.

## Climbing and Trailing Plants

**Akebia quinata**—A very distinct and pretty climber from Japan. Foliage clover-like in appearance, semi-evergreen. Flowers chocolate colored, appearing in early spring. Very sweet. 50c each.

**Ampelopsis quinquefolia**—(*Virginia Creeper*)—Leaves palmate, handsome and luxuriant, assuming in autumn a gorgeous bronzy hue. Small plants, 25c each; strong, 35c each.

**Ampelopsis Veitchii**—(*Boston or Japan Ivy*)—A great improvement on the old *Virginia Creeper*. Fast growing in the shade or sun. 25c each.

**Asparagus Plumosus**—The leaves are a bright green, are gracefully arched and are as finely woven as the finest silk mesh, surpassing *Maiden-Hair Ferns* in grace, fineness of texture and richness of color. 25c, 35c, 50c and 75c each.

**Asparagus Sprengerii**—A variety of recent introduction. It is as a basket plant that this will prove most valuable. 25c, 50c and 75c each.

**Asparagus tenuissimus**—Is a very pleasing house plant. Its graceful branches are freely pro-

duced, and take the place of smilax. 25c each. (The asparagus are for inside culture only.)

**Australian Pea Vine**—Pink flowers. Fast growing. 25c each.

**Bignonia grandiflora**—(*Trumpet Vine*)—Rapid-growing climber, bearing large orange yellow trumpet-shaped flowers in great profusion. 50c each.

**Clematis Jackmani**—Deep violet purple flowers, produced in masses; single, 50c each.

**Clematis Montana**—Produces its pure white flowers in early summer. Very floriferous and fast-growing. 50c each. (Ready December 15th.)

**Clematis paniculata**—50c each.

**Clianthus**—(*Scarlet Parrot's Bill*)—Fast-growing. Very bright. 15c each.

**Honeysuckle, English**—Flowers very fragrant. Produced for a long period. Strong plants, 50c each.

**Honeysuckle, Gold Netted**—A beautiful variety. The leaves are veined golden yellow. Small plants, 15c each; large plants, 50c each.



*Clematis Paniculata*

Photographed by Cox Seed Co.

**Honeysuckle, Yellow**—A well-known variety. Yellow trumpet-shaped flowers. 50c each.

**Ivy, English, Large Leaved**—Leaves thick, shining, leathery. 50c each.

**Ivy, English, Small Leaved**—Small plants, 15c each; large plants, 50c each.

**Ivy, Variegated, Silver Leaved**—Small plants, 15c each; large plants, 50c each.

**Madeira Vine**—A very handsome vine, of rapid growth, bearing numerous white flowers. 5c; 6 for 25c.

**Muhlebeckia Complexa**—This pretty, strong-growing climber and trailer is very desirable for covering old stumps of trees rock work, etc. The foliage is small, dense and graceful. 50c each.

**Plumbago Capensis**—Can be trained as a bush or climber. Flowers light sky-blue, verben-

shaped, produced throughout the entire summer. Stands drought and water and the brightest sunshine. 35c each.

**Passion Vine, Blue**—25c each.

**Passion Vine, Pink**—35c each.

**Passion Vine, Scarlet**—35c each.

**Passion Vine (Constance Elliott) White**—25c each.

**Smilax**—20c each; three for 50c.

**Wistaria Sinensis**—This is one of our most admired climbers, blooming in early spring. The flowers appear in long grape-like clusters of a beautiful lavender color. 50c and \$1.00 each.

**Wsiteria Sinensis Alba**—A fine variety with pure white flowers. 50c and \$1.00 each.

**Withania Organifolia, Climbing Lily of the Valley**—25c each.



Dracæna

Pampas Grass

Photographed by Cox Seed Co.

## Palms, Dracænas, Etc.

**Areca Baueri**—We have in this variety a handsome palm for parlor decoration. The leaves are long and arched, dark green, while the rib of the stem is black. Succeeds well in any place in the house. 35c each.

**Areca Sapida**—Not quite as graceful as preceding, admired by many. Strong plants, in five-inch pots, 60c each.

**Brahea edulis**—Unsurpassed, whether grown outside (it is very hardy) or as a pot plant. It has very large, fan-shaped leaves, of bright green color. 35c and 75c each.

**California Palm**—(*Pritchardia filifera*)—Four-inch pots, 35c each; balled, two feet, 60c each.

**Chamærops excelsa**—(*Japanese Fan Palm*)—One of the hardiest of the Fan Palms. Foliage dark green. The segments of the fan-shaped leaves deeply cut, the edges covered with tooth-like spines. Grows from fifteen to twenty feet high. Very desirable for out-door decoration. Balled, two feet, \$1.00 each; fine plants, boxed, four to five feet, \$4.00 each.

**Chamærops Nepaulensis**—A dwarf-growing variety, of extreme beauty, perfectly hardy. One and a half feet, \$1.50 each.

**Corypha Australis**—(Livistonia)—An Australian palm. Foliage dark green. Very symmetrically and regularly slit, the segments partially doubled from base of petioles or leaf stalk, which is thickly armed with crooked spines. Used chiefly for house decoration, though hardy in some locations. Plants, in six-inch pots, 75c and \$1.00 each.

**Cycas revoluta**—The well known "Sago Palm," so much in demand for inside decoration. The stems are cylindrical, terminating in a crown of handsome, feather-shaped leaves, of thick, leathery texture. 75c, \$1.00, \$2.00 and \$5.00 each, according to size.

**Dracæna indivisa**—A fine plant for outdoor planting in California, and much in use for lawns, avenues, and parks. The small plants are fine for window decoration. Balled, two feet, 75c each; balled, three feet, \$1.00 each; boxed, four feet, \$2.00 each.

**Dracæna, Broad-Leaved**—Resembles the preceding, excepting that the leaves are much broader. Most handsome for parlor decoration. Pot-grown, 25c and \$1.00 each.

**Dracæna Draco**—50c each.

**Eulalia zebrina**—35c each.

**Kentia**—Admitted to be the prettiest and most graceful of house palms. We offer the following two varieties:—

**Ketnia Belmoreana**—This fine Palm is a valuable addition to our collection. Its leaves are pinnate, dark green, and so beautifully crisp as to gain for it the name of "Curly Palm." It is very elegant and graceful in habit. A native of Lord Howe's Island, where it attains a height of forty feet. Small plants, 25c each; plants in 3-inch pots, 35c each; in 4-inch pots, 50c each; in 5-inch pots, \$1.00 each.

**Kentia Fosteriana**—One of the finest of the Kentias, with graceful bright green foliage. Small plants, 25c each; plants in three-inch pots, 35c each; in four-inch pots, 50c each; in five-inch pots, \$1.00 each.

**Latania Borbonica**—Leaves large, fan-shaped, of a very cheerful green color. Plant of hardy construction, and adapted to all decorative purposes within doors. Appreciated by all the plant-loving community. Nice young plants, 35c each; large plants, \$1.50 and \$2.50 each.

**Musa Ensete, Abyssinian Banana**—The noblest of all plants is the great Abyssinian Banana. The fruit of this variety is not edible, but the leaves are magnificent, long, broad, and massive, of a beautiful green, with a broad crimson midrib. The plant grows luxuriantly, from eight to twenty feet high. It grows rapidly, and attains gigantic proportions, producing a tropical effect in one season. 50c each.

**Phoenix Canariensis**—The Canary Island Date—The handsomest and hardiest species of the Date Palm family. Five-inch pots, 35c each; balled, one and a half feet, 75c each; larger, \$1.00 boxed, \$2.00 and \$5.00 each, according to size.

**Phoenix farinifera**—The seeds are covered with a sweet mealy pulp, and the trunk yields a form of sago, used by the Hindoos. Forms character leaves when young and is particularly good for pot culture. Plants, in six-inch pots, 75c each.

**Phoenix paludosa, Swamp Date**—A very fine sort, with dark green foliage, and quite distinct. Plants, in six-inch pots, 75c each.

**Phoenix pumila**—A grand, quick-growing sort, having a slender trunk, not over six inches in diameter in a normal size. Particularly useful species for avenue planting, as it quickly reaches a good height and does not hold old leaf stalks long. Also very useful as a house palm. Plants, in six-inch pots, 75c each.

**Phoenix rupicola**—This is one of the finest of the genus for pots, but is not quite as hardy for the open ground as many others. Has wide-spreading arching leaves. Plants, in six-inch pots, 75c each.

**Phoenix reclinata**—This is a magnificent species, especially adapted for growth in pots. The drooping leaves are dark green in color, and the plant is of easy growth. Plants, in six-inch pots, 75c each.

**Pampas Grass**—35c each.

**Raphis flabelliformis**—China and Japan. A hardy little Cane Palm, which suckers from the roots like the bamboo and forms a dense clump of canes. A delicate and graceful little plant, only three to four feet in height when full grown. \$1.00 each.

**Seaforthin elegans**—Leaves dark green. The leaf-stems rather stout at their base, pinnate, lanceolate and narrow bifid at the apex, the whole plant perfectly smooth on a cylindrical whitish-green stem. 35c each.

## Conservatory and Parlor Decorative Plants

Under this heading we have included such plants as flourish in the parlor, hall, greenhouse, and some in protected situations out of doors. They are highly ornamental, and nearly all of easy culture.

**Anthericum Variegatum**—Foliage beautifully striped yellowish white; succeeds admirably in the window; also much esteemed as a basket plant. 50c each.

**Aralia Sieboldii**—A very handsome, quick-growing house plant of the most easy culture. The leaves are fig-leaf shaped. 50c each.

**Aspidistra Lurida**—Is a most desirable house plant. It will thrive in any position and in any soil, and always looks well. Large plants, \$1.50 and \$3.00 each.

**Asplenium falcatum**—A favorite variety for house culture. The leaves are dark and very glossy, and the fronds beautifully arched. 50c and \$1.00 each.

**Australian Tree Fern**—We have received a consignment of those truly grand species from New Zealand, and have a fine assortment of sizes to offer from \$2.50 to \$30.00 each.

**Begonia, Argentea Guttata**—This beautiful sort has the silvery blotches of Alba Picta and the grace and beauty of growth of Olbia. It has pur-

ple bronze leaves, oblong in shape, with silvery markings, and is in every way a most beautiful begonia. It produces white flowers in bunches on ends of growth stems. 25c and 50c each.

**Begonia metallica**—A fine, erect-growing begonia, with dark, rough leaves. The surface is a lustrous bronze green, with a metallic-like hue, veins depressed and dark red, underside of leaves and stem hairy. The panicles of unopened buds are bright red, covered with glandular red hairs, like a surface of plush. When opened it is a waxy white. Perfectly distinct from any other begonia. 25c each.

**Blechnum Braziliensum**—A beautiful tree fern from Brazil. Plants in five-inch pots, \$1.00 each.

**Boston Fern, Nephrolepis exaltata Bostoniensis**—This grand new fern has become very popular. It is one of the very few plants that will thrive under ordinary house care. It grows well, and improves in size where most all other ferns fail. The fronds droop and arch gracefully over the edge of a pot or basket, and as it is a very rapid grower, it is not long before they reach the floor from an ordinary parlor table. 25c, 35c, and 50c each.

**Carex Japonica**—A beautiful plant. Foliage grass-like, graceful and prettily bordered with white. Very useful for hanging-baskets. 35c each.

**Coleus**—15c and 25c each.

**Cyclamen**—Charming plants, with beautiful foliage, and richly-colored fragrant flowers. Universal favorites for winter and spring blooming. Pot-grown plants, in leaf and bloom, 15c each; \$1.50 per dozen; large plants, 35c each.

**Ficus Elastica, India Rubber Plant**—Very large, smooth leathery leaves, evergreen foliage. Generally esteemed one of the finest house plants grown, the plant attaining a large size and tree-shape. Five-inch pots, 15 to 18 inches, \$1.00 each; six-inch pots, 2 feet, \$2.00 each; larger, \$3.50 each.

**Gloxinia**—One of the choicest bulbs, for pot and house culture. Beautiful trumpet-shaped flowers, violet, blue, rose, and crimson. Dry roots, 15c each; \$1.00 per ten.

**Hibiscus**—Double Pink—35c each.

**Hibiscus Sinensis**—A beautiful class of greenhouse shrubs, with handsome glossy foliage and large crimson flowers, often measuring four inches in diameter. They succeed admirably bedded out during the summer. 50c each.

**Isolepis gracilis**—A pretty grass-like plant, valuable for hanging baskets and decorating the edge of benches in greenhouses. Four-inch pots, 25c each.

**Jasmine, Grand Duke**—This is an erect shrubby variety; flowers very double and sweet. 35c each.

**Jasmine, Sambac**—Arabian Jasmine. Single white; deliciously fragrant. 35c each.

**Maiden-Hair Fern, Adiantum cuneatum**—This fine species is more generally grown than any other, and is one of the most beautiful. 25c, 50c, and 75c each.

**Nephrolepis compacta cordata**—Of upright, compact growth. The leaves are prettily undulated. Four-inch pots, 40c each.

**Nephrolepis exaltata, Sword Fern**—A splendid extra hardy sort, well adapted for house culture, succeeding, with ordinary care, with every one who tries it. 25c and 50c each.

**Onychium Japonicum**—A most beautiful fern; the foliage is of a drooping habit, throwing out many shoots. 75c and \$1.00 each.

**New Umbrella Plant**—It is entirely distinct from the old sort. It is of rapid growth, throwing up numerous shoots in an incredibly short time. Price, 25c and 35c each.

**Umbrella Plant, (Cyperus Alternifolius)**—This well-known plant, always popular, seems now to be in greater demand than ever it was. 25c, 35c, and 50c each.

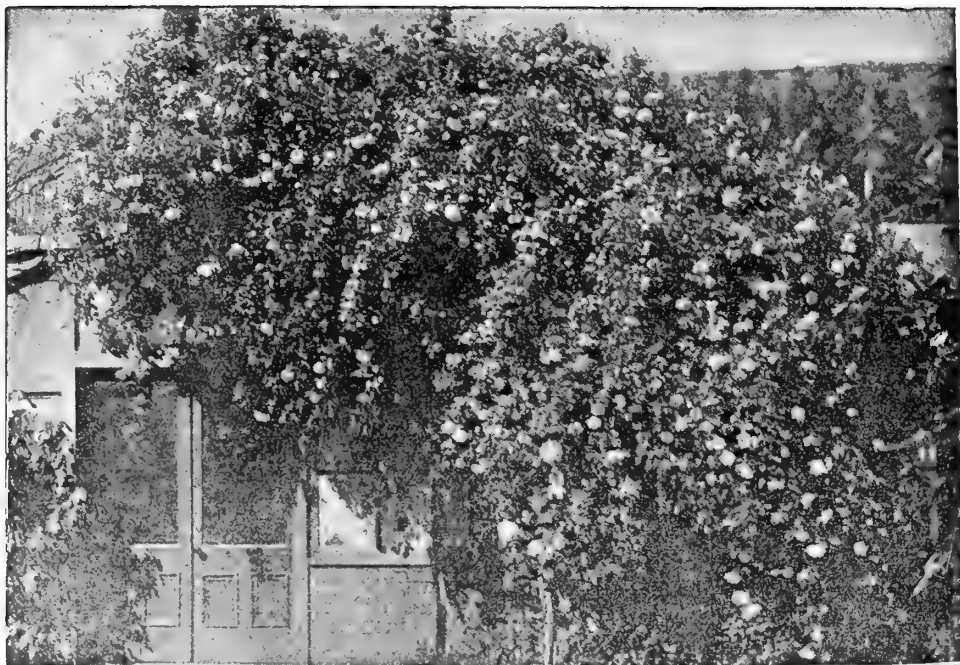
## ROSES

Strong field grown, 25c each; extra sized plants 35c each; ready for shipment December 1st.

Following we give an abbreviated list:

- American Beauty**—Glowing deep carmine.
- Anna de Diesbach**—Brilliant crimson.
- Augustine Guinnesseau**—White La France.
- Banksia, White and Yellow**—Climbers.
- Beauty of Glazenwood**—Coppery yellow Climber.
- Belle Siebrecht**—Silvery rose color.
- Black Prince**—Very dark.
- Bride**—Superb White.
- Bridesmaid**—Unexcelled pink.
- Captain Christy**—Beautiful flesh color.
- Caroline Testout**—Bright pink.
- Catherine Mermet**—Lovely pink.
- Cherokee, Double and Single**—White Climbers.
- Chestnut Hybrid**—Cherry-carmine; climber.
- Claire Carnot**—Coppery rose, shaded amber; climber.
- Climbing Devoniensis**—Good White.
- Climbing Perle des Jardins**—Fine yellow.
- Climbing La France**—Pink.
- Crimson Rambler**—Bright crimson; climber.
- Doctor Grill**—Buff pink.
- Duchesse de Brabant**—Rosy blush.
- Duchess of Albany**—Rosy pink.
- Emperor of Morocco**—Very dark.

- General Jaqueminot**—Glowing scarlet.
- Glorie de Margottin**—Intense deep scarlet; climber.
- Gold of Ophir**—Salmon yellow.
- Grace Darling**—Beautiful blending of pink and white.
- Isabella Sprunt**—Canary yellow.
- Kaiserina Augusta Victoria**—Extra good white.
- La Marque**—Pure white; climber.
- Madame Hoste**—Yellowish white.
- Marechal Niel**—Deep yellow; climber.
- Mrs. John Laing**—Beautiful pink.
- Niphetos**—Pure White.
- Papa Gontier**—Rich crimson.
- Perle des Jardins**—Straw yellow.
- Perle d'Or**—"Baby Rose," nankeen yellow.
- Rainbow Improved**—Pink, blotched and striped.
- Reine Marie Henriette**—Crimson; climber.
- Reine Olga de Wurtemberg**—Rosy crimson; climber.
- Reve d'Or**—Deep yellow; climber.
- Safrano**—Apricot-yellow.
- Shirley Hibberd**—Nankeen yellow.
- Sunset**—Rich deep yellow.
- Sweet Briars**—Assorted.
- Ulrich Bruner**—Cerise red.
- William Allen Richardson**—Orange-yellow. . .
- White Maman Cochet**—Extra fine white.



La Marque Rose, White Climber

Photographed by Cox Seed Co.

## CARNATIONS

For the present we can offer strong plants, grown in four-inch pots, of the following varieties, at 25c each. (We refer our customers to general Annual Catalogue issued January 1st, for a larger and more comprehensive list.)

**Estelle**—Clear, bright, glowing scarlet-crimson.

**Ethel Crocker**—Perfect shade of pink; flower very large; form ideal, fragrance sweet and clove-like.

**Flora Hill**—Fine white.

**Gaiety**—White, variegated scarlet.

**Governor Wolcott**—Grand white; stiff stems.

**Lorna**—Pure white, fragrant; long stiff stems.

**Mrs. Thos. Lawson**—Dark cerise pink; very large and free blooming.

**Marquis**—Light silvery pink; very free in bloom; sweet clove fragrance.

**Nydia**—Ground white, penciled pink; strong stiff stems.

**Norway**—Purest white; very large and vigorous.

**Olympia**—A beautiful variegated variety; glossy white, with delicate pencillings of clear scarlet running through the petals.

**Prosperity**—White ground, marbled and veined with deep shaded pink; a favorite sort.

**Schwerin**—Good pink, extremely free in bloom.

## VIOLETS

These are one of our Specialties, Growing Them in Large Quantities. 50c per dozen; \$3.00 per 100.

**Imperial (New)**—Grand; single; deep violet blue.

**Luxonne (New)**—Best double blue.

**Princess of Wales**—Beautiful violet blue in color, sweetly fragrant and flowering continuously from September until April.

**The California**—Color clear violet purple; fragrance intense; flowers borne on long stems 10 to 14 inches in length.

## GERANIUMS

15c each; \$1.50 per doz., comprising the best varieties in Common, Ivy-Leaved, Nutmeg, Peppermint, Rose-Leaved and Silver-Leaved.

## HELIOTROPES

20c each.

**Picola**—Rosy violet.

**Queen**—Very dark.

**Sapphire**—Purple, white center.

**Snow-wreath**—White.

## FUSHIAS

Strong plants, 25c each.

**Berliner Kine**—Pure double white.

**E. G. Hill**—Best double white; very large.

**Phenomenal**—Best double purple; very large.

**Storm King**—Double white, suffused pink.

**Speciosa**—Beautiful salmon.

**Sunray**—Light yellow foliage; flowers carmine.

## PELARGONIUMS

(Lady Washington Geraniums)

From 2½-inch pots, 15c each; \$1.50 per dozen, comprising all the newest and best varieties. Fine collection.

## Miscellaneous Plants

**Abutilon**—In fine variety. 25c each.  
**Cannas**—Best sorts. 20c each; \$2.00 per dozen.  
**Cineraria**—15c and 25c each.  
**Corcopsis lanceolata**—Strong roots, 15c each; \$1.50 per dozen.  
**Daisies**—35c per dozen; \$2.00 per 100.  
**Digitalis** (Fox Glove)—25c each.  
**Escheveria** (Hen and Chicken)—50c per dozen; \$3.00 per 100.  
**Golden Rod**—Strong clumps. 25c each.  
**Gazania Splendens**—10c each; \$1.00 per dozen.  
**Hydrangea hortensis**—25c and 35c each.  
**Hydrangea, Thos. Hogg**—35c each.  
**Hydrangea, Variegated**—15c each.  
**Iris Kaempferii** (Japan Iris)—15c each; \$1.50 per dozen.

**Helianthus**—Single Perennial Sunflower. 15c each.  
**Marguerite**—Blue. 20c each.  
**Marguerite**—White. 10c each.  
**Marguerite**—Yellow. 10c each.  
**Pansies**—Cox's Prize Strain. 50c per dozen; \$3.00 per 100.  
**Pæonias Herbaceous**—25c each; \$2:50 per doz.  
**Pæonias**—Tree. Strong, plants, 75c each.  
**Primula Chinese**—25c each.  
**Rudbeckia**—Golden Glow. 15c each.  
**Sea Pink (Armeria)**—50c per dozen.  
**Spergula**—50c per square foot.  
**Shasta Daisy**—Strong roots, 25c each.  
**Yucca quadricolor**—60c each.  
**Yucca Whippleyii**—25c each.

## FRUIT TREES AND SMALL FRUITS

Orders Booked now—Write for Prices on Large Lots.

### APPLES

Price, four to six feet, 30c each; \$2.50 per 10.  
**Alexander**—Very large and showy; yellow streaked with red. Ripe in September and October.  
**Baldwin**—Large, roundish; deep bright red over a yellow ground. Ripe in November and December.  
**Lawver**—Very large; brilliant red, covered with small dots. Ripe December to April.  
**Red Astrachan**—Large, roundish; skin deep red; flesh white. Ripe in June and July.  
**White Winter Pearmain**—Large, roundish oblong and pale yellow, dotted with brown. Ripe December to February.  
**Yellow Bellflower**—Very long; oblong, irregular and tapering towards the eye; skin smooth and of pale yellow color. Ripe November to February.  
**Yellow Newton Pippin**—Large; flesh yellow; firm, crisp, juicy, of exceedingly rich flavor. Ripe January to March.

### CRAB APPLES

Price same as Apples.

**Red Siberian**—Fruit about an inch in diameter; yellow, with a scarlet streak.  
**Yellow Siberian** (Golden Beauty)—Large; color beautiful golden yellow.

### PEARS

Price, four to six feet, 30c each; \$2.50 per 10.  
**Bartlett**—There is no occasion to describe this variety, so well known is it. Ripe in August.  
**Beurre Clairgeau**—Very large; red cheek with russet ground; bears very heavily and when quite young; flesh rather coarse at the core. Ripe in October.  
**Beurre Diel**—Large, roundish; productive; color lemon yellow, with russet dots; delicious, buttery flavor. Ripe in October.  
**Beurre Hardy**—Large, brown, smooth; very

fine flavor, buttery and delicious. Ripe in September.  
**Seckel**—Quite small; rich, yellowish brown; very sweet and productive. Ripe in September.  
**P. Barry**—The color of fruit is deep yellow, nearly covered with rich golden russet; very large. Best of all late pears. Ripe January to March.  
**Winter Nelis**—Medium size; roundish; yellowish green, dotted with russet; fine flavor. Ripe November to January.

### CHERRIES

Price, four to five feet, 30c each; \$2.50 per 10.  
**Black Tartarian**—Very large; bright black. The favorite.  
**Gov. Wood**—Light yellow, blotched red. Early.  
**Napoleon Bigarreau** (Royal Ann)—Very large; amber in color. The favorite white cherry.  
**Rockport Bigarreau**—Large, bright red.  
**May Duke**—Large, dark red; fine. This is one of the sorts used for making pies.  
**Reine Hortense**—Very large; red. Another of the sour sort.

### PLUMS

Price, four to six feet, \$30c each; \$2.50 per 10.  
**Burbank**—Large, yellowish ground, with red cheek; flesh yellow, firm and very sweet when fully ripe.  
**Coe's Golden Drop**—Large, oval; yellow.  
**California Red Plum**—Extra large; deep blue, with reddish cast on cheek; clings tight to the tree; flesh very firm, and one of the best shipping plums. Ripens in July.  
**Clyman**—Large, reddish purple; flesh firm; free-stone. Very vigorous and a heavy bearer. The best of early plums.  
**Duane's Purple**—Of grand size and handsome; reddish purple; lilac bloom; flesh juicy, moderately sweet and mild flavor; adheres to the stone.



**Jefferson**—A fine variety; large oval, yellow, with reddish cheek; flesh very rich, juicy and of high flavor; freestone.

**Royal Hatve**—Medium size; roundish; skin light purple, flesh yellow, amber; rich and high flavored.

**Yellow Egg**—Very large; a beautiful egg-shaped plum; flesh yellow, rather acid until fully ripe, when it sweetens; clingstone.

## PRUNES

Price, on Myrobolan, four to six feet, 30c each; \$2.50 per 10.

**French Prune**—This is the Prune now grown so extensively and successfully for drying purposes.

**Hungarian**—Fruit very large with tendency to come double; reddish violet; covered with a handsome bloom; very juicy and sweet.

**Imperial Epineuse (New)**—Large and uniform in size; very sweet and of high flavor; the skin is thin, and of a reddish purple when green; when dried coal black.

**Robe de Sargent**—Medium size; oval; skin deep purple; approaching black, and covered with thick blue bloom; flesh greenish yellow, sugary; rich and luscious.

**Silver**—Very large; oval; skin yellow. Makes a very attractive dried fruit, besides being a good shipper and canner.

**Sugar (New.)**

**Tragedy**—This is the earliest of all Prunes, and earlier than any Plum. Good size; dark purple skin; yellowish green flesh; sweet and very rich.

## NECTARINES

Price, four to six feet, 30c each; \$2.50 per 10.

**Early Newington**—One of the very earliest.

**Lord Napier**—Large; pale cream color with dark red cheek; flesh white, melting, tender and juicy.

**New White**—Large; skin white; flesh white, tender and very juicy; of rich vinous flavor.

## QUINCES

Price, four to five feet, 35c each; \$3.00 per 10.

**Apple or Orange**—Large; bright yellow; the best.

**Champion**—Very large; flavor delicate, imparting an exquisite quince taste and odor to any fruit with which it is cooked.

**Portugal**—Very large; turns a fine purple or deep crimson when cooked.

## APRICOTS

Price, three to five feet, 30c each; \$2.50 per 10.

**Hemskirke**—A large and very fine Apricot.

**Moorpark**—Largest size; rich yellow.

**Royal**—A fine early variety; popular in many places as a regular bearer.

**Shibley (Blenheim)**—Above medium; flesh juicy, rich.

## PEACHES

Price, one year, four to five feet, 30c each; \$2.50 per 10.

**Alexander**—Most widely grown, being considered the best early variety; medium to large; greenish white, nearly covered with deep red; flesh firm, juicy and sweet.

**Early Crawford**—This is probably the most extensively grown of all peaches.

**Foster**—Large, yellow, very rich and juicy.

**Lovell**—Yellow freestone; uniformly large; superior for canning and shipping.

**Muir**—The best of all peaches for drying, because it loses less than any other in the process. Has a delicious, rich, buttery, sweet flavor.

**Nichols' Orange Cling**—Large; yellow, with purple cheek; flesh yellow and good.

**Newhall**—Very large; skin yellow, with dark red cheek; flesh deep yellow; juicy, and of rich vinous flavor.

**Phillips' Cling**—Fine large yellow Cling, showing no color at pit, which is very small.

**Salway**—A large yellow English peach, with deep yellow flesh; very juicy, melting and rich. The most valuable late market variety.

## FIGS

Price, three to four feet, 35c each; \$3.00 per 10.

**California Black**—A well-known local variety; large dark purple, almost black when fully ripe.

**White Adriatic**—Tree a strong and healthy grower; fruit above medium size; skin white and thin; pulp red, fine, exceedingly aromatic, and changes to an amber color when dried.

## GRAPES—Foreign Varieties

Price, 15c each; \$1.00 per 10.

**Black Hamburg**—Bunches and berries large; black, very sugary and rich.

**Black Morocco**—Very large; rich and sweet.

**Black Ferrera**—One of the latest and most firm grapes known.

**California Black**—The well-known Mission grape.

**Cornichon**—Berries very large; oblong; covered with beautiful bloom; skin rather thick and dark.

**Emperor**—Bunches large, with large oval, rose-colored berries.

**Flame Tokay**—A magnificent large, red grape.

**Muscat of Alexandria**—Bunches and berries large, pale amber.

**Purple Damascus**—A large, fine, oval grape, of fine quality.

**Rose of Peru**—Very large bunches; berries rounding, brownish black.

**Sweetwater**—Bunches good size; berries medium size, round fruit.

**Zante**—The grape from which the currant of commerce is made.

## Assorted Small Fruits

**Grapes**—American, assorted, 20c each; \$1.50 per 10.

**Currants**—Assorted, 15c each; \$1.00 per 10.

**Gooseberry**—Assorted, 15c each; \$1.00 per 10.

**Blackberries**—Assorted, 10c each; \$1.00 per 10.

**Raspberry**—Red, 10c each; 75c per 10.

**Raspberry**—Yellow and Black, 15c each; \$1.00 per 10.

**Strawberries**—Assorted, 25c per 12; \$1.50 per 100.

**Loganberries**—10c each; 75c per 10.

**Phenomenal Berry (New)**—15c each.

**Mammoth Blackberry (New)**—15c each; \$1.00 per 10.

# SELECT LIST OF BOOKS—By the

Treating on the cultivation of Flowers, Trees, Shrubs, Fruits and  
Study of Botany and Horticulture in general.

- Asparagus Culture.** By Wm. Robinson. Gives the best methods of cultivation by experienced growers .....\$ .50
- Barn Plans and Outbuildings.** A valuable work; full of ideas, hints, suggestions, plans, etc., for the construction of barns and outbuildings, by practical writers.....\$1.00
- Broom Corn and Brooms.** A treatise on raising broom corn and making brooms on a small or large scale.....\$ .50
- Cabbages: How to Grow.** By J. J. H. Gregory. A practical treatise on cabbage culture and how to keep and market them...\$ .30
- California Fruits and How to Grow Them.** By Prof. E. J. Wickson. A manual of methods which have yielded greatest success; with lists of varieties best adapted to the different districts of the State.....\$2.50
- California Vegetables in Garden and Field.** By Prof. E. J. Wickson. A manual of practice with and without irrigation; beautifully illustrated.....\$2.00
- Carrots, Mangelwurzels, Etc.** By J. J. H. Gregory. How to raise them, how to keep them, and how to feed them.....\$ .30
- Celery for Profit.** By T. Greiner. Thoroughly complete in every detail; showing how much of the labor generally thought necessary for this crop may be dispensed with .....\$ .20
- Farm Appliances.** Describing numerous useful and labor-saving appliances which will be found of great value in every department of farm work.....\$ .50
- Farm Drainage.** By Judge French. Describes the principle, process and effects of draining land, and other valuable information.....\$1.00
- Farm Gardening and Seed Growing.** By Francis Brill. A book useful for every farmer, gardener and tiller of the soil.....\$1.00
- Fences, Gates and Bridges.** A much-needed and valuable work, abundantly illustrated.\$ .50
- Fertilizers.** By J. J. H. Gregory. Tells how and where to obtain in cheapest form; how to compound formulas, etc.....\$ .40
- Forage Crops Other Than Grasses.** By Thos. Shaw. Two hundred and eighty-seven pages of scientifically accurate information on this subject; each chapter is alone worth the price of the book.....\$1.00
- Forestry, Practical.** By A. S. Fuller. A treatise on the propagation, planting and cultivation, with a description and botanical and popular names of all the indigenous trees of the United States.....\$1.50
- Fumigation Methods.** By Willis J. Johnson. Showing simple and effective means of exterminating insect pests and vermin, being the outcome of practical tests of the author and others.....\$1.00
- Gardening for Pleasure.** By Peter Henderson. Tells how to grow flowers, vegetables and small fruits in the garden and greenhouse; also treats fully on window and house plants .....\$1.50
- Gardening for Profit.** By Peter Henderson. A guide to the successful culture of the market and family garden.....\$1.50
- Grape Culturist.** By A. S. Fuller. The best works on the cultivation and management of hardy grapes.....\$1.00
- Handbook of Plants.** By Peter Henderson. A concise and comprehensive dictionary of plants, with instructions on propagation and culture .....\$4.00
- Horticulturist's Rule Book.** By Prof. L. H. Bailey. Full of useful information for fruit growers, truck gardeners, florists and others .....\$ .75
- Irrigation Farming.** By Lucius Wilcox. The application of water in the production of crops, appliances, principles and advantages .....\$1.50
- Irrigation for Farm, Garden and Orchard.** By Henry Stewart. Methods and management to secure water for critical periods.....\$1.00
- Making Manures.** Bommer's Methods. A practical and comprehensive guide for making manures on the farm.....\$ .25
- Mushroom Culture.** By Wm. Robinson. A practical guide to successful production of this crop .....\$ .50
- Nursery Book.** By Prof. L. H. Bailey. This is a complete handbook of propagation of plants. Tells in plain language what every one who sows a seed, makes a cutting, or sets a graft, wants to know.....\$1.00
- Onion Raising.** By J. J. H. Gregory. What kinds to raise and the best way to do it...\$ .30
- Peanut Plant.** By W. B. Jones. Instructs the beginner how to raise good crops.....\$ .50
- Practical Floriculture.** By Peter Henderson. As a guide to the successful propagation and cultivation of florists' plants, nothing has been left unsaid on the subject.....\$1.50
- Propagation, Art of.** By J. Jenkins. A concise, practical treatise detailing the management in propagation of seeds, cuttings, etc. ....\$ .30
- Rose, The.** By H. B. Ellwanger. Contains full directions for planting, pruning, propagating and valuable in many ways to lovers of this flower .....\$1.25
- Silos, Silage and Ensilage.** By Manly Miles. Practical treatise on ensilage of fodder corn, etc. ....\$ .50
- Small Fruit Culturist.** By A. S. Fuller. Rewritten, enlarged and up to date; propagation, culture, varieties, marketing, etc.....\$1.00
- Spraying of Plants.** By Prof. Lodeman. Insects and fungi; liquids and powders; application and apparatus.....\$1.00
- Squashes.** By J. J. H. Gregory.....\$ .30
- Strawberry Culturist.** By A. S. Fuller. Full directions for field and garden culture, forcing or pot culture, etc.....\$ .25
- Sweet Potato Culture.** By James Fitz. Full directions from starting the plants to harvesting and storing.....\$ .50
- Swine Husbandry.** By F. D. Coburn. Breeding, rearing and management; treatment and preservation of disease.....\$1.50
- Tobacco Culture.** Full practical details by fourteen experienced growers in different sections of the country.....\$ .25



# Cox Seed Company

The largest handlers of  
Garden and Farm Seeds  
on the Pacific Coast.

**San Francisco, Cal.**

Our new catalogue beautifully illustrated published January first  
will be sent free to anyone—anywhere—for the asking.

**If you use seeds—Get it.**