

## Historic, archived document

Do not assume content reflects current scientific knowledge, policies, or practices.



62.85

LIBRARY  
RECEIVED

*Autumn*  
1927

*New Tulip*  
**VESTA**  
SEE PAGE 7

**BULBS  
SEEDS  
SHRUBS  
and  
TREES**

**PORTER-WALTON CO.**

*Seed and Nursery Specialists*  
SALT LAKE CITY, UTAH

# Bulbs Easy to Grow

Success Is Sure With P-W's Selected Stock

## For Outside Planting

**The Time to Plant:** First of all the fact should be emphasized that the **Autumn Months** and not **Spring** is the proper time to plant Hyacinths, Tulips, Narcissus, Daffodils, Crocus and other spring flowering bulbs and hardy perennial plants. Most of the varieties described in this list are ready for delivery the latter part of September or early October and should be planted as soon as convenient after that time, but surely before the ground freezes. "Lily of the Valley" and some of the **Hardy Lillies** are not ready until November or December; should there be danger of the ground freezing before that time, cover the space to be planted with leaves or straw and the bulbs can then be planted at your convenience after arrival.

**Kind of Soil:** Any good, moderately rich, well drained soil is suitable for most bulbs; avoid heavy and boggy soils as poor drainage is fatal. In a stiff clay formation, supply a small quantity of sand or coal ashes at the base of each bulb and enrich soil with bone meal, "Plant Life" or very well rotted manure, but do not use fresh stable manure under any conditions.

**Proper Depth:** Depends upon the size of the bulbs. A good rule is to place each bulb from one and one-half times to twice its own thickness below the surface of the ground. In districts of extremely cold temperature it is advisable to mulch the beds with leaves or straw during the severe weather, but care should be taken to remove the covering upon the approach of spring. In Salt Lake and equally mild climates no such protection is necessary.

**Distance Apart** varies with the variety from 2 to 3 inches for Crocus to 12 to 18 inches for Lillies. The proper space is indicated under the respective headings in this list. See also diagram on preceding page.

## In Bloom All Winter

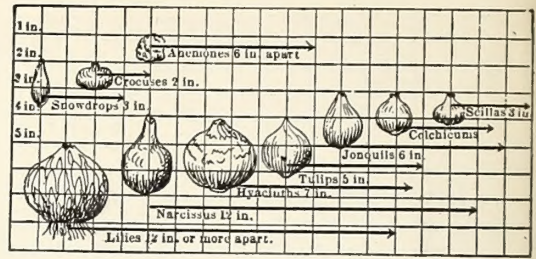
### NATURE'S CURE FOR "BLUES"

A trifling outlay in money plus a little fascinating fun. Many do not realize how easy and inexpensive it really is to have a continuous succession of bloom in the living room during the entire winter. The culture is so simple that with the right kind of bulbs anyone can be successful.

## Planting Table for Bulbs

This table shows the number of bulbs required to fill a circular bed of the dimensions given. A square bed will take about the same number of bulbs. When bulbs are to be planted 6 inches apart, plant 3 inches from edge of bed; when 12 inches apart, 6 inches from the edge. Bulbs may be set closer in the outer rows and given more space in the body of bed.

Diameter of Bed	6 in. apart		Diameter of Bed	12 in. apart	
	6 in. apart	12 in. apart		6 in. apart	12 in. apart
3 feet	28		10 feet	320	80
4 feet	48	12	11 feet	380	95
5 feet	80	20	12 feet	452	113
6 feet	112	28	13 feet	528	132
7 feet	152	38	14 feet	612	153
8 feet	200	50	15 feet	704	176
9 feet	256	64	16 feet	804	200



The above diagram indicates the proper depth and distance apart for respective bulbs when planted outside.

## How To Do It

When the bulbs arrive in the fall place them directly into the pots or containers in which you wish them to bloom, using for this purpose a light loamy rich soil; setting them from two to four inches apart and just deep enough to cover the top of the bulb. Do not make the mistake of filling the pot or container too full so as not to allow margin for watering. After planting, water thoroughly and put them away in some cool, dark room, for at least six weeks before bringing any of them to the living room. The only attention necessary when in the dark is to see that they are kept moist. You can regulate the time of blooming and secure a continuous succession by bringing them to the living room at regular intervals during the winter. Be sure to keep them well watered after bringing them to the light and heat.

Instead of putting the planted bulbs in a dark, cool room in the inside many prefer to dig a trench in some corner of the garden, covering pots and all about six inches deep, being careful to provide a thin layer of ashes at bottom to prevent earth worms. By raking a few leaves over the top to prevent the ground from freezing, the pots can be lifted anytime desired during the winter and brought into bloom in the living room in a very short time.

**Water Culture:** Large size Hyacinths, Chinese Lillies, Paper White and Soleil D'or Narcissus can be easily grown in water in glasses and bowls. By successive planting continuous bloom from November till March can be had. It's mighty interesting to watch their development.

**CAUTION—Don't plant bulbs in new pots without first soaking the pots a few days in water.**

## Flower Pots

### BOTH STANDARD AND BULB MOLDS

Size	Each	Per Doz.	Per 100
2-inch	\$.05	\$ 0.45	\$ 2.50
3-inch	.06	.50	3.50
4-inch	.07	.60	4.50
5-inch	.10	.95	7.00
6-inch	.15	1.30	9.00
7-inch	.25	2.10	15.00
8-inch	.35	3.50	25.00
10-inch	.60	6.00	45.00
12-inch	1.25	12.00	.....

If saucers are desired add 70% extra to above prices.

Danger of breakage too great for Parcel Post shipment.

## Prepared Bulb Fibre

Is especially prepared for growing bulbs that are planted in water-tight bowls; it will not sour and will be found most convenient for customers with no facilities for growing bulbs in pans where drainage is necessary. Lb., 25c; 5 lbs., \$1.00, Postpaid. Not prepaid, 10 lbs. \$1.50.



We carry a large assortment of Bulb Bowls, embracing most every desirable size, type, design and color. Prices range from 40c to \$2.00 each.

# Dutch Hyacinths

The Hyacinth is possibly the most useful and popular hardy bulb flower. It delights millions of flower lovers throughout the world with its matchless beauty and fragrance. It may be grown in pots, glasses or in water, and in the garden.

We consider the Single Hyacinths more valuable than the Double. They are better for forcing, more vigorous in growth and produce stronger spikes of bloom, of better substance and are more beautiful.

**Garden Culture:** Bulbs may be planted from the end of September until very severe weather sets in. The beds should be raised a few inches above the surrounding ground, to prevent lodgments of water, which causes bulbs to rot. Bulbs should be set 6 to 8 inches apart and 6 to 8 inches deep. If the soil is dry at planting time it should be watered and kept moist while the weather permits.

**Hyacinths in Pots.** Get rich, light soil or Bulb Fibre. If soil, provide drainage. Break off any offsets which appear at the base of the bulbs, and, in potting, place each bulb so that its top shall be half an inch below the surface of the soil, and about an inch below the rim of the pot.

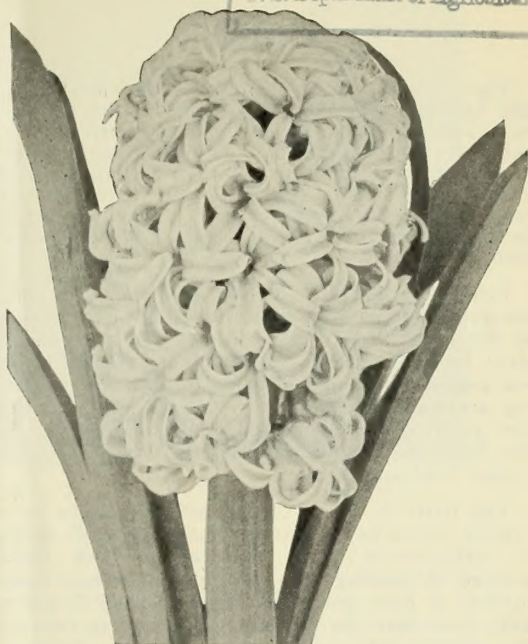
## P-W's Extra Selected First Size Hyacinths

(Especially adapted for pot and Glass Culture, having been hand-picked for size and quality from first-sized bulbs.)

- |  |   |
|--|---|
| <b>City of Haarlem—</b><br>Pure yellow     | <b>L'Innocence—</b> Pure white                |
| <b>Gertrude—</b> Deep pink                 | <b>Marie—</b> Dark violet-blue                |
| <b>Grand Maitre—</b><br>Dark lavender-blue | <b>Queen of the Blues—</b><br>Fine light-blue |
| <b>King of Blues—</b> Deep blue            | <b>Roi Des Belges—</b><br>Bright red          |
| <b>Lady Derby—</b> Light pink              | <b>Sir Wm. Mansfield—</b> Purple              |
| <b>La Victorie—</b><br>Brilliant scarlet   | <b>Yellow Hammer—</b><br>Large yellow         |

**Price:** Any of the above, 30c each; \$2.75 per dozen; \$20.00 per 100, postpaid.

**Extra Large Top Root "Mother Bulbs"** of the above varieties. Each 35c; \$3.25 per doz.; \$25.00 per 100.



Single Dutch Hyacinth

## P-W's Second Size Hyacinth Bulbs

These bulbs are splendid for forcing, Pot Culture and Outdoor Beds.

We offer precisely the same varieties as listed under "Extra Selected First Size"; the only difference being in size of bulbs.

**Price:** 23c each; \$2.25 per dozen; \$17.50 per 100, postpaid.

## P-W's Superb Bedding Hyacinths

This mixture is made up out of high-grade sorts, and can be depended on to produce fine results, for outdoor planting. We do not recommend this size for indoor culture.

**Single Named Sorts—**Pure White, Rose, Light Blue, Yellow, Red, Dark Blue, Purple, Selected Mixed.

**Price:** Any of the above, 19c each; 4 for 65c; \$1.85 per dozen; 25 for \$3.50; 100 for \$13.50, postpaid.

## "Pan" or "Dutch Roman" Hyacinths

These are of the small bulb variety of Dutch Hyacinths that produce good spikes of flowers, eminently adapting themselves for winter flowering in the house with the most satisfactory results. Ten or twelve bulbs are placed in an earthen pan 8 or 9 inches across; several of these pans can be filled and put away to root in the usual manner, as described on page 2, bringing them to the light at intervals, where the display can be enjoyed for weeks. If potted in October, they can be depended upon to bloom as early as the latter part of January. They are equally valuable for outdoor planting.

- |                                       |                                  |
|---------------------------------------|----------------------------------|
| <b>Gigantea—</b> Light Pink           | <b>Marie—</b> Deep Blue          |
| <b>Gertrude—</b> Deep Pink            | <b>Roi Des Belges—</b> Red       |
| <b>Grand Maitre—</b><br>Lavender-Blue | <b>Schotel—</b> Light Blue       |
| <b>L'Innocence—</b> White             | <b>Sir Wm. Mansfield—</b> Purple |
|                                       | <b>Yellow Hammer—</b> Yellow     |

Any of the above, 13c each; 4, for 45c; \$1.25 per dozen; \$8.50 per 100, postpaid.

## Special Hyacinth Collections

### OUR SELECTION

- (G)—6 named varieties, 1st size, 3 bulbs of each \$3.75  
 (H)—6 named varieties, 1st size, 2 bulbs of each 2.50  
 (I)—25 each P.-W.'s Superb and Dutch Romans, Assorted Colors. Total 50 bulbs..... 5.50

The Above Collections Are All Postpaid.



A Pot of Single Hyacinths

# Tulips

The Tulip is always attractive for its beauty and brilliancy of color and is one of the popular early spring flowers. A few bulbs scattered here and there produce small effect, but when planted in masses or in small groups they become at once grand and brilliant. They are very hardy and of easy culture, blooming very freely and producing as fine flowers in a confined garden as in a more favored place.

Tulips may be planted from early October until the ground freezes and may be allowed to remain in the same bed two or three years, the foliage must be allowed to remain and die gradually, do not over-water; if other plants for summer blooming are wanted in the same bed or border, plant low growing shallow-rooted kinds that thrive under fairly dry conditions, such as Geraniums, Petunias, Verbenas, etc.

The letter A, B, or C, following the name of a variety, refers to its time of blooming, when planted outdoors—A being the earliest, and those marked B coming into full bloom before those marked A have gone, and those marked C a few days later than the B class. The figures indicate the approximate height when grown outdoors. This will be found useful in selecting varieties for bedding.

Our Tulip Bulbs are all top size and are not to be compared with the small undeveloped cheap grades that are offered at so-called bargain prices.

Prices include postage.



Kaiser Kroon Tulips



Beds of Single And Double Early Tulips  
Plant them by the hundreds

## Single Early Tulips

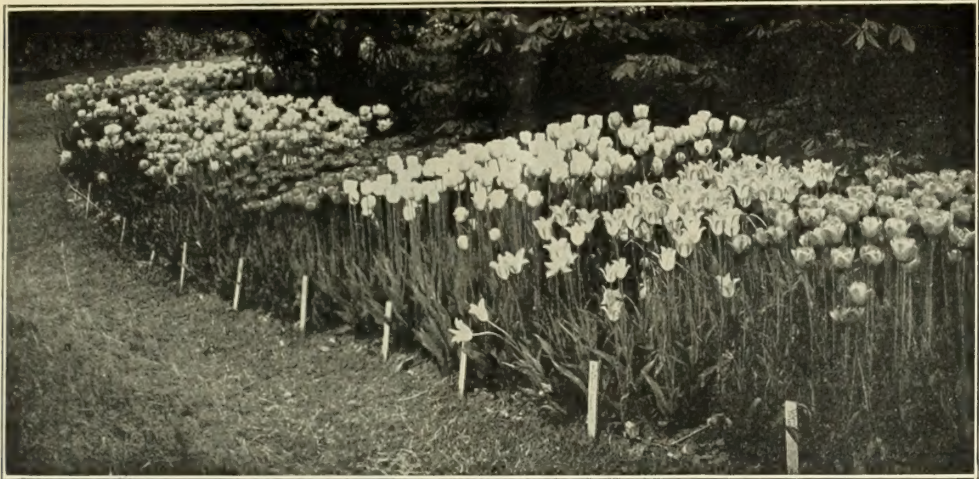
	Prices Include Postage	Each	Doz.	Per 100
Artus—B-10 in. Brilliant scarlet..	\$.07		\$ .65	\$4.25
Belle Alliance—B-10 in. Brilliant scarlet, yellow base.....	.08		.75	5.50
*Chryselora—B-10 in. Pure golden yellow.....	.08		.80	5.75
Cottage Maid—A-9 in. White bordered pink to carmine rose.....	.08		.80	5.75
*Cramoise Brilliant—C-12 in. Sparkling red, very large.....	.07		.70	5.00
*Dutchess De Parma—C-15 in. Orange scarlet with yellow edge.....	.08		.75	5.50
*Kaiser Kroon—C-15 in. Crimson scarlet, with broad yellow margin.....	.10		1.00	7.25
*Lady Boreel—(White Joost Van Vondel) B-10 in. Finest white..	.08		.75	5.50
*LaReine Maximus—B-12 in. Improved, light pink.....	.07		.70	5.00
*Mon Tresor—A-11. Large yellow..	.09		.85	6.00
*Prosperine—B-10 in. Silky rich satiny carmine-rose.....	.10		1.00	7.00
Princess Helena—B-12 in. Large fine pure white.....	.07		.70	4.75
*Queen of The Netherlands—B-15 in. Large, delicate pink.....	.07		.70	4.75
*Rose Cris De Lin—B-10 in. White and rose.....	.07		.65	4.50
Rose Luisante—B-10 in. Fine deep rose.....	.08		.80	5.75
Wouwerman—B-10 in. Fine, large deep violet.....	.09		.90	6.50
White Hawk—B-10 in. Fine large white.....	.07		.70	4.50
All Colors Mixed—Single Early Varieties.....	.06		.55	3.75

## Double Early Tulips

Much more lasting in flower than the single early varieties.

	Prices Include Postage	Each	Doz.	Per 100
Azalea—B-12. Beautiful deep rose, flushed salmon.....	\$.09		\$ .85	\$6.25
Boule De Neige—B-12 in. Pure white, large peony like flower...	.08		.80	5.75
*Couranne d'Or—(Crown of Gold), B-12 in. Yellow, shaded orange..	.09		.85	6.25
*Golden Murillo—(Mr. Van der Hoef). The richest golden yellow tulip, very fine.....	.09		.90	6.50
*Lord Roseberry—B-10 in. Deep pink.....	.08		.80	5.50
*Mu-Rillo—B-10 in. Rose and white, large, full double.....	.08		.80	5.50
*Rubra Maxima—B-10 in. Finest deep red.....	.06		.60	5.25
*Tournsoll—B-12 in. Bright red with yellow margin.....	.09		.85	6.25
*Vuurbaak—B-10 in. Brilliant scarlet, very large flower.....	.09		.90	6.50
William The Third—B-10 in. Bright red.....	.09		.85	6.25
All Colors Mixed—Early Varieties..	.07		.65	4.50

Varieties marked (\*) are good for indoor culture.



Groups of Darwin, Cottage and Breeder Tulips Showing an Attractive Mass Effect.

## Giant Darwin Tulips

For the Herbaceous Border, Massed in Clumps Along the Edge of Shrubbery, or as Cut-Flowers for Vases, These are Conceded to be the Superior of All the Tulips.

Darwins are very valuable for planting in beds where their wonderful flowers with such a wealth of color can be displayed to advantage. They are just as charming, too, and perhaps as valuable for permanent planting in shrubberies and borders. They will continue to bloom for years. They are much more adaptable to warmer climatic conditions than the Early Tulips, we advise our customers in the Southern States and California to choose Darwins when selecting Tulips.

Plant 6 to 7 inches apart, 4 to 5 inches deep in heavy and 6 inches deep in light soils. The number immediately following the name is the average height in inches.

	Each	Doz.	100		Each	Doz.	100
<b>Afterglow</b> —26. Deep rosy orange with salmon tinted edge. Splendid novelty	\$.14	\$2.50	\$10.00	<b>Mattia</b> —Deep carmine rose, blue center	.07	.65	4.50
<b>Anton Mauve</b> —26. Enormous flower, deep bluish lilac	.14	1.40	10.00	<b>Mrs. Farncomb Sanders</b> —26. Brilliant dark rose-red	.06	.60	4.00
<b>Baron De La Tonnaye</b> —26. Vivid pink, tall strong stems	.06	.60	4.00	<b>Mrs. Krelage</b> —28. Rose pink, tinted lilac, large flower	.06	.60	4.00
<b>Bleu Aimable</b> —25. A beautiful rich lavender blue	.07	.70	5.00	<b>Mrs. Potter Palmer</b> —24. Deep purple, medium size, fine form	.06	.60	4.25
<b>Bartigon</b> —28. Fiery red, one of the best forcing varieties	.06	.60	4.00	<b>Melicette</b> —24. Best pure lavender	.08	.80	5.50
<b>Centenaire</b> —30. Rich rose carmine pink	.06	.60	4.00	<b>Nauticus</b> —30. Deep carmine rose	.06	.60	4.25
<b>Clara Butt</b> —22. An exquisite shade of soft salmon pink shaded rose	.06	.55	3.75	<b>Ouida</b> —30. Very tall bright scarlet, wonderful bedder	.06	.60	4.00
<b>Dream</b> —24. Large cup-shaped flowers of heliotrope with silvery lilac margin; blue base	.07	.65	4.50	<b>Petrus Hondius</b> —28. Bright carmine rose	.09	.85	6.00
<b>Edmee</b> —25. Cherry rose margined silvery pink	.07	.65	4.50	<b>Phillippe de Commines</b> —24. Velvety dark violet	.06	.60	4.25
<b>Europe</b> —22. Splendid fiery salmon scarlet; flowers large and erect	.06	.60	4.00	<b>President Taft</b> —20. Best dark scarlet red. Extra large	.17	1.70	12.00
<b>Faust</b> —30. A very large deep violet purple	.10	.95	7.00	<b>Pride of Haarlem</b> —26. Crimson carmine	.06	.55	3.75
<b>Flamingo</b> —28. Delicate shell-pink, elegant pointed flower	.07	.70	5.00	<b>Prince of the Netherlands</b> —31. A giant flowered sort of deep celise-rose edged pink	.09	.85	6.00
<b>Frans Hal</b> —25. New bluish violet, good forcer	.10	1.00	7.00	<b>Princess Elizabeth</b> —26. Perfectly formed large rich deep pink	.07	.70	5.00
<b>Glow</b> —22. Glowing vermilion	.07	.70	4.75	<b>Professor Rauwenhoff</b> —28. Bright cherry red shaded salmon	.07	.65	4.50
<b>Inglescombe</b> —24. Large globular canary yellow	.06	.60	4.00	<b>Psyche</b> —26. Soft salmon rose	.06	.60	4.25
<b>Isis</b> —26. Vermillion. The popular red for bedding	.07	.70	4.75	<b>Queen Mary</b> —27. Soft rose, lighter bordered	.11	1.10	7.50
<b>King George V.</b> —26. Brilliant rosy scarlet; extra-large flower. One of the finest novelties	.43	4.25	32.00	<b>Rev. H. Ewbank</b> —20. Silvery lavender shading towards the center bluish heliotrope	.06	.60	4.25
<b>La Fiancee</b> —30. Rosy shaded mauve, edged light pink, blue base extra	.20	2.00	15.00	<b>Scarlet Beauty</b> —22. Fiery scarlet	.09	.85	6.00
<b>La Tulipe Noire</b> —25. An extreme maroon black, velvety sheen in the sunlight, very large	.07	.70	6.25	<b>Sophrosyne</b> —29. Rosy blush tinted lilac	.07	.70	5.00
<b>Loveliness</b> —21. Soft rosy carmine	.06	.60	4.00	<b>White Queen</b> —20. Large beautiful white	.06	.60	4.25
				<b>Wm. Copeland</b> —25. Sweet lavender, good early forcer	.06	.60	4.25
				<b>P.-W.'s Best Mixed</b> —All types and colors in splendid assortment	.50	3.50	

### Special Collections of Giant Darwin Cottage and Breeder Tulips

Our Selection Embracing the Cream of the Tulip Family

(P)— 1 each of 25 choice named varieties for..\$1.75	(T)— 5 each of 10 choice named varieties for.. 2.25
(Q)— 2 each of 25 choice named varieties for.. 3.25	(U)—10 each of 10 choice named varieties for.. 4.25
(R)— 4 each of 25 choice named varieties for.. 6.00	(V)—20 each of 10 choice named varieties for.. 8.00
(S)—10 each of 25 choice named varieties for..14.00	Charges Postpaid

## Cottage Tulips

This class is now very popular for bedding, naturalizing and especially for cutting, bearing their large brilliant flowers on long strong stems and lasting a long time when cut. They bloom from the middle of May until after the beginning of June according to weather conditions. Same culture as Darwin Tulips. Postpaid.

	Each	Doz.	100
<b>Aegir</b> —20 in. Large orange and cerise, very attractive.....	\$0.29	\$2.85	\$20.00
<b>Amber</b> —20. Terra-cotta shaded amber, base yellow with blue	.11	1.10	8.00
<b>Ambrosia</b> —22. Very large; inside salmon orange, outside shaded lilac rose .....	.32	3.25	23.00
<b>Argo</b> —20. Round flower on strong stem, yellow mottled red and passing off to reddish brown. Delicate bronze salmon when forced .....	.17	1.70	12.00
<b>Bouton d'Or (Ida, Golden Beauty)</b> —20. Excellent golden yellow flowers .....	.06	.60	4.00
<b>Fairy Queen</b> —20. Soft rosy lilac and amber .....	.06	.60	4.00
<b>Gesneriana Major</b> —24. Dazzling crimson scarlet with violet black center .....	.06	.60	4.25
<b>Gesneriana Lutea</b> —24. (The yellow Gesneriana). Color rich yellow, flowers very large....	.06	.60	4.00
<b>Grenadier</b> —21. Beautiful orange, large flower .....	.10	1.00	7.00
<b>Idyl</b> —22. Vivid rose, inside shaded salmon; pure yellow base with blue edges.....	.09	.85	6.00
<b>Inglescombe Pink</b> —22. (Salmon Queen). A rare blending of buff and salmon, fine color...	.06	.60	4.00
<b>Isabella</b> —Creamy white shaded salmon rose .....	.06	.60	4.00
<b>Jno. Ruskin</b> —16. Apricot rose, mauve shading, pale yellow edge .....	.07	.70	5.00
<b>Marvel</b> —25. Inside old gold, outside salmon rose, edged yellow	.29	2.85	20.00
<b>Mrs. Moon</b> —Large golden yellow, petals reflexed sweet scented..	.10	1.00	7.50
<b>Nectar</b> —20. Flery crimson with pure white base, slightly reflexed petals .....	.17	1.70	12.00
<b>Picotte (Maiden's Blush)</b> —White margined rose pink .....	.07	.65	4.00
<b>Pride of Inglescombe</b> —Bordered carmine rose, long pointed flower .....	.10	1.00	7.50
<b>Triton</b> —20. Dazzling carmine, base pure yellow with light blue edge .....	.11	1.10	8.00
<b>Vesta</b> —Deep carmine stripes and flames on white ground.....	.21	2.10	15.00
<b>P.-W.'s Best Mixed Cottage Tulips</b> .....	.60	4.25	

## Lily Flowering Tulips

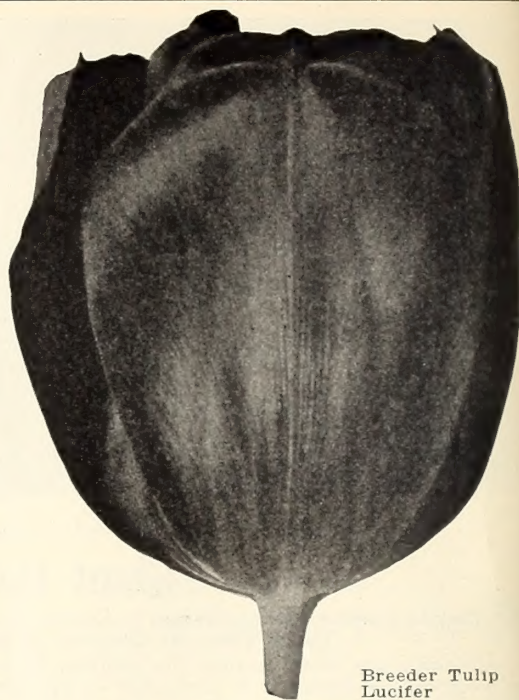
New class of beautiful and very decorative tulips, a cross between the Darwin and Retroflexa Cottage Tulip. The flowers have the grace and shape of a Lily as indicated by the name. Same culture as Darwin Tulips.

	Each	Doz.	100
<b>Adonis</b> —20. Vivid rosy red, long flowers .....	.13	1.25	9.00
<b>Alaska</b> —20. Pure golden yellow, slightly reflexed, long petals.	.40	4.00	30.00
<b>Eclipse</b> —22. Orange yellow tinted rose .....	.25	2.50	18.00
<b>Retroflexa</b> —18. Soft yellow elegantly curved petals .....	.08	.75	5.25
<b>Siren</b> —20. Rich cerise pink....	.10	1.00	7.00

## Rembrant Tulips

This class of Tulips are really Darwins but are delicate tints and hues with flames or stripes of distinctive coloring; usually are of the more darker shades, forming very striking combinations.

All Varieties and Colors—8c each; \$0c doz.; \$5.50 per 100, postpaid.



Breeder Tulip  
Lucifer

## Breeder Tulips

Breeders form a distinct class by themselves. Truly they possess Nature's happiest combinations of purple and bronze, grey and lilac, yellow and gold, brown and orange and other distinctive colorings.

Flowers are very large, of perfect form, and borne on tall, strong stems. Plant same as Darwins.

	Each	Doz.	100
<b>Abdel-Kader</b> —27. Deep bronze, paler edged .....	\$0.15	\$1.50	\$10.50
<b>Bacchus</b> —30. Deep plum-purple, darker on outer petals.....	.19	1.85	13.00
<b>Bronze Queen</b> —28. Buff, tinged apricot .....	.07	.70	5.00
<b>Cardinal Manning</b> —28. Rosy violet .....	.10	.95	6.50
<b>Jopernicus</b> —27. Dark coppery-bronze, shaded old rose....	.13	1.25	9.00
<b>Dom Pedro</b> —21. A unique shade of coffeebrown shaded maroon inside rich mahogany, large flower .....	.15	1.50	10.50
<b>Feu Ardent</b> —Brick red, shaded mahogany .....	.15	1.50	11.00
<b>Godet Parfait</b> —30. Deep purple violet, mammoth flower.....	.16	1.55	11.25
<b>Golden Bronze</b> —28. Old gold outside, deep golden bronze inside	.09	.90	6.25
<b>Jaune d'Oeuf</b> —21. Orange tinted apricot .....	.10	1.00	7.25
<b>Klopstock</b> —24. Heliotrope with white base, delicate shade....	.12	1.20	8.50
<b>Lord Curzon</b> —28. (La Singuliere). Silvery white margined and striped cherry crimson.....	.15	1.50	10.50
<b>Louis XIV</b> —30. Enormous flower, extra globular, rich deep purple, heavily flushed with golden bronze .....	.20	2.00	13.50
<b>Lucifer</b> —28. Mammoth flower of brilliant terra cotta orange...	.29	2.85	20.00
<b>Medea</b> —26. Salmon carmine yellow center, huge flower.....	.09	.85	5.75
<b>Panorama</b> —(Fairly) 20 inch. Deep orange-red shaded mahogany, very fine .....	.17	1.70	12.00
<b>Prince of Orange</b> —26. Terra cotta with orange edge .....	.10	1.00	7.00
<b>Turenne</b> —30. Dark blue, flushed bronze at edges of petals.....	.17	1.65	11.50
<b>Velvet King</b> —31. (Dreadnaught). Dark purple, white base, immense flower .....	.15	1.45	10.00
<b>Vulcan</b> —28. Reddish apricot with a broad margin of bright buff yellow inside a darker shade .....	.20	2.00	14.50
<b>All Colors Mixed</b> .....	.07	.65	4.50



### Parrot Tulips

Parrot Tulips do not receive the attention they deserve. They belong to the late or May-flowering class and have immense, attractive flowers of singular and picturesque forms and brilliant and varied colors. The petals are curiously fringed or cut, and the form of the flower, especially before it opens, resembles the neck of a parrot. They form extravagantly showy beds, are especially desirable for cut-flowers, and should be grown in every flower-garden.

Plant in light, sandy soil, 3 inches deep, 6 inches apart, sunny location.

**Admirable of Constantinople.** **Lutea Major.** Yellow; fine; free-blooming.  
**Cafe Brun.** Brown and yellow striped. **Markgraaf van Baden.** True. Orange, striped scarlet; extra fine.

Price any of above, 7c each; 70c dozen; \$4.75 per 100.  
**Parrot Tulips in Beautiful Mixture**—6c each; 60c dozen; \$4.00 per 100.

**New Parrot Tulip Fantasy**—We offer this grand novelty to our customers with our most hearty recommendation. It is an enormous flower of a soft salmon-pink with delicate pale green blotch in center of each petal. Tall and stately. 23 in., \$1.75 each; 3 bulbs for \$4.75; dozen \$18.00.

### Special Bulb Collection Offers

To induce those who have never planted our bulbs to give them at least a trial this year, the following "Collections" are offered at prices we believe to be irresistible in making up these collections, our standard of quality will be maintained, but in pricing, profits have been forgotten.

**OUTDOOR COLLECTION A**  
 6 P.-W.'s Hyacinths, mixed.  
 6 Double Early Tulips, named asst.  
 6 Giant Darwin Tulips, mixed.  
 6 Poet's Narcissus.  
 6 Spanish Iris.  
 Retail Value of Above, \$2.75.  
 All for (Postpaid).....\$2.25

**INDOOR COLLECTION B**  
 1 White Calla Lily.  
 6 Freesias.  
 6 Giant White Narcissus.  
 6 Single Early Tulips, named asst.  
 6 Dutch Roman Hyacinths.  
 3 Double Daffodils.  
 3 Exhibition Hyacinths.  
 Retail Value of Above, \$3.50;  
 All for (Postpaid).....\$2.75

**OUTDOOR COLLECTION C**  
 (For Memorial Day Blooming)  
 50 Mammoth Darwin Tulips, mixed.  
 25 Poet Narcissus.  
 25 P.-W.'s Best May Flowering Tulips, asst.  
 Retail Value, \$4.75; All for \$4.00 Postpaid.

**OUTDOOR COLLECTION D**  
 (For Early Spring Blooming)  
 50 Assorted Early Tulips.  
 25 Assorted Early Dutch Hyacinths.  
 50 Crocus Assorted.  
 Retail Value, \$6.75; All for \$5.50 Postpaid.



New Parrot Tulip Fantasy

**WATER CULTURE COLLECTION E**  
 3 Assorted Exhibition Hyacinths.  
 4 Giant White Narcissus.  
 3 Chinese Lillies.  
 Retail Value, \$1.95; All for \$1.50 Postpaid.

**NATURALIZING COLLECTION F**  
 25 Trumpet Narcissus.  
 25 Double Daffodils.  
 50 Crocus.  
 50 Poet's Narcissus.  
 50 Darwin Tulips, asst.  
 50 Cottage and Breeder Tulips, asst.  
 Retail Value, \$15.00; All for \$12.00 Postpaid.

### P-W's Collection of Novel and Rare Giant May-Flowering Tulips

Selected from the Darwin, Breeder, Cottage and Lily Flowered Groups Described on Preceding Pages.

The list below includes some of the most highly perfected Giants in the race of Tulips.

In Holland, among the growers, the new creations have been the subject of intense speculation during the last few years, each grower vying with the other for the possession of the few available bulbs, in order to gain the honor of introducing them to the world.

The stocks of bulbs is now large enough to permit of sale, and we have been fortunate to obtain a quantity of these beautiful Tulips. We offer them to our patrons with our recommendation, certain that they will win the prizes at the Tulip exhibition and offer the richest flowers for the home, as well as a wealth of display in the Garden.

Abbreviations—Breeders "B," Darwin "D," Cottage "C," Lily Flowered "L. F." Page reference "P" for more complete descriptions.

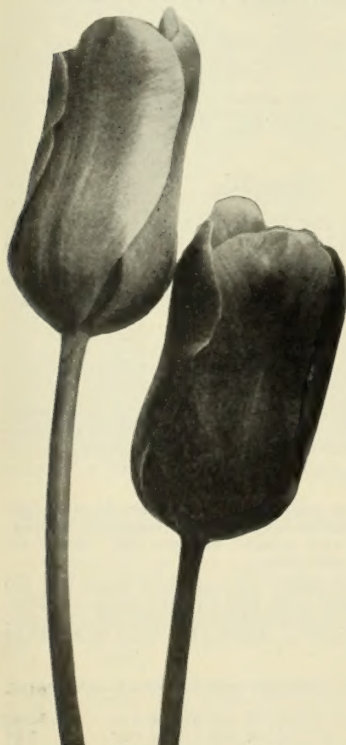
Height, class, page reference for details, as well as predominating colors are all indicated in list below—however word descriptions are inadequate, these wonderful Tulips must be seen in life to be appreciated.

- Abdel-Kader**—27. (B., p. 6.) Bronze.
- Aegir**—22. (C., p. 6.) Cerise.
- Afterglow**—26. (D., p. 6.) Orange Salmon.
- Alaska**—20. (L. F., p. 6.) Golden Yellow.
- Ambrosia**—22. (L. F., p. 6.) Lilac Rose.
- Anton Mauve**—26. (D., p. 5.) Deep Lilac.
- Argo**—20. (C., p. 6.) Yellow and Brown.
- Eclipse**—22. (L. F., p. 6.) Yellow.
- Idyl**—24. (C., p. 6.) Rose.
- King George V**—26. (D., p. 5.) Rosy scarlet.
- LaFiancee**—30. (D., p. 5.) Mauve.
- Louis XIV**—30. (B., p. 6.) Purple and Bronze.
- Lucifer**—28. (B., p. 6.) Terra Cotta Orange.
- Marvel**—25. (C., p. 6.) Salmon.
- Nectar**—26. (C., p. 6.) Crimson.
- President Taft**—24. (D., p. 5.) Scarlet.
- Queen Mary**—32. (D., p. 5.) Rose.
- Triton**—20. (C., p. 6.) Yellow edged Blue.
- Vesta**—22. (C., p. 6.) White Striped Carmine.
- Vulcan**—28. (B., p. 6.) Reddish Apricot.

**Collection Offer "J"**—One bulb each of above 20 varieties (Retail value \$4.33) for \$3.75.

**Collection Offer "K"**—5 bulbs each of above 20 varieties (Retail value \$21.65) for \$16.50.

**Collection Offer "M"**—10 bulbs each of above 20 varieties (Retail value \$36.00) for \$28.50.



King George V (Darwin Tulip see page 5)

## Narcissi or Daffodils

There are no hardier bulbous plants that have more points of merit than the Narcissus or Daffodil. They are perfectly hardy, growing well in almost any climate or condition, sun or shade, moist or dry. All locations seem to suit them, although they have a preference for good, deep soil, and a partly shaded position. Any vacant piece of ground in the garden, among the trees or grass, etc., could not be used to better advantage.

They are equally desirable for pot culture for winter flowering; three or four bulbs can be put in a five or six-inch pot and, with the same treatment as given to the hyacinths the whole winter and early spring months can be made bright with their exquisite gold and silver blooms. It is outdoors, however, that Narcissus do the best, and once planted, they need no further attention, the clump multiplying and giving better results each year, and from an original planting of a few hundred bulbs, in two or three years can be cut thousands of flowers.

**Note**—In describing Narcissus reference is made to the "perianth" and "trumpet." The latter is the long center, funnel-shaped tube, and the perianth is the out row of petals or wings.

Top bulbs should be planted four inches below the surface and 6 to 12 inches apart.

### Large Trumpet Narcissus

**Empress**—Perianth white, trumpet rich yellow. Selected bulbs, 15c. ea.; \$1.45 doz.; \$10.00 per 100.

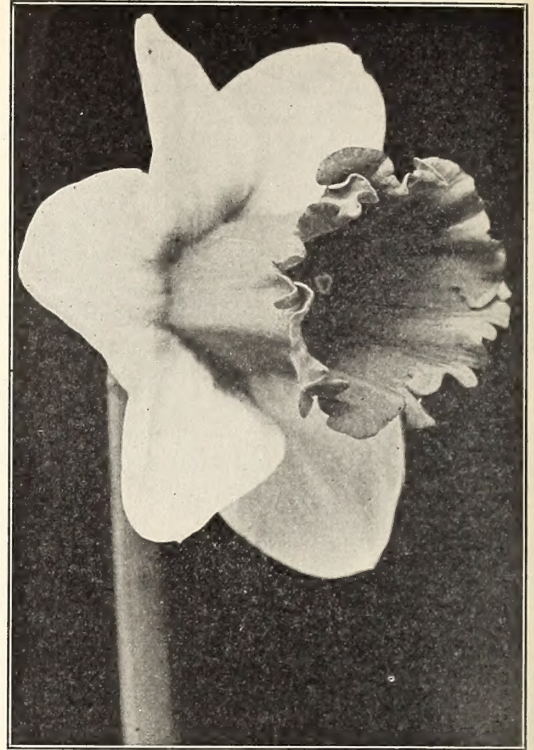
**Emperor**—Yellow trumpet, perianth deep primrose. Selected bulbs, 16c. ea.; \$1.55 doz.; \$11.00 per 100.

**Van Waveren's Giant**—Largest in cultivation; perianth primrose, trumpet bright yellow. 50c ea.; \$5.00 doz.; \$38.00 per 100.

**Victoria**—Perianth white, trumpet pure yellow. Selected bulbs 15c ea.; \$1.45 doz.; \$10.00 per 100.

**King Alfred**. This wonderfully beautiful Daffodil is considered the largest and finest deep golden yellow Trumpet variety. A tall, strong grower, with magnificent frilled trumpet and large perianth, all of a uniform rich golden-yellow of splendid heavy texture, lasting well. 35 cts. each; \$3.50 per doz.; \$25.00 per 100.

**Mme. Plomp**. The large white petals twist gracefully; trumpet rich yellow. Late. 15c ea.; \$1.45 doz.; \$10.00 per 100.



Empress Narcissus

### Double Daffodil (Narcissus)

**Double Von Ston**—Too well known to need description, grand old golden yellow Daffodil. Extra selected bulbs, 13c ea.; \$1.30 doz.; \$9.00 per 100.

**Sulphur Phoenix (Incomparabilis)**—Large double creamy white with deeper center, very chaste and beautiful. 13c ea.; \$1.25 doz.; \$8.75 per 100.

### Jonquils

Very popular as cut flowers and can be successfully grown by everyone. Culture same as Narcissus.

**Giant Jonquils (Capernelle Rugulosus)**—An improved rich golden yellow, very fragrant; from 3 to 6 flowers are borne on stalks about 18 inches high! 10c ea.; \$1.00 doz.; \$7.50 per 100.

### Poet's Narcissus

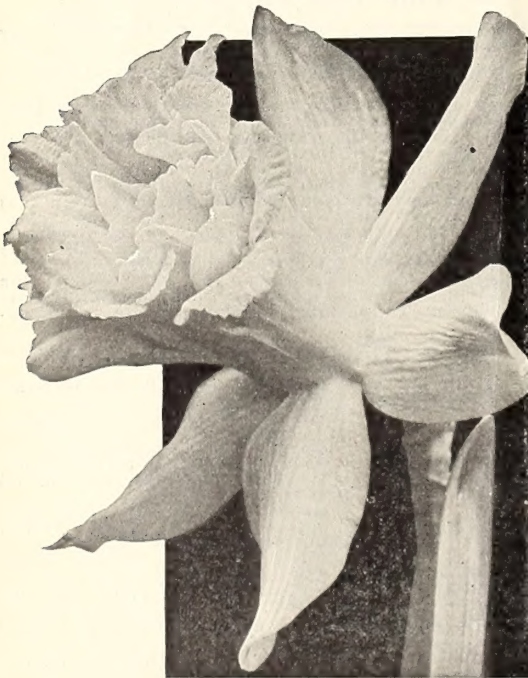
This class of Narcissus, instead of having a trumpet or crown, has a small wide-mouthed cup. Very hardy, used in large numbers for naturalizing, their simplicity of form and delightful fragrance making them highly prized.

**Poeticus Recurvas (Pheasant's Eye or Poet's Narcissus)**. Flowers snow-white, with beautiful lemon-yellow cup edged with bright orange red. Each 9c; 90c per doz.; \$6.50 per 100.

**Poeticus Ornatus**—More symmetrical than the old Recurvas (Pheasants-eye) and blooms earlier; flowers large, pure white, cup margined orange-gold and as fragrant as the type. Each 12c; \$1.20 doz.; \$9.00 per 100.

**Collection Offers of Narcissus Our Selection—Postpaid.**

(W)— 2 each of 10 varieties all types for.....\$2.00  
 (X)— 5 each of 10 varieties all types for..... 3.50  
 (Y)—10 each of 10 varieties all types for..... 6.25  
 (Z)—20 each of 10 varieties all types for.....12.00



Double Von Ston Daffodil

## Medium Trumpet Narcissus

These types, which include the *Barril*, *Incomparabillis*, and *Leedsii* are a cross between the large trumpet varieties and the *Poeticus*. They are gorgeous when planted outdoors in masses; may also be grown indoors and are excellent for cut flowers.

**Barril Conspicuous.** Large, broad pale yellow perianth; deep yellow cup with bright scarlet edge. A very free flowering variety of the true *Barril* type. 10c ea.; \$1.00 per doz.; \$7.00 per 100.

**Incomparabillis Will Scarlet.** Creamy white perianth with large running fiery orange red cup. Very distinctive novelty. 33c ea.; \$3.25 doz.; \$25.00 per 100.

**Incomparabillis Lucifer.** A showy and striking variety; perianth pure white, crown or trumpet brilliant orange-scarlet, making an effective contrast. 14c ea.; \$1.35 doz.; \$10.00 per 100.

**Incomparabillis Sir Watkin.** "Giant Chalice Flower," or "Big Welshman." A gigantic flower, the largest in this section; perianth sulphur-yellow cup slightly deeper in color and tinged with orange; fine for pot culture; in fact, does well everywhere. 18 cts ea.; \$1.75 doz.; \$12.00 per 100.

**Leedsii M. Magdelaine de Graff.** White perianth, orange cup; brilliant in effect; very free flowering; fine for cutting. 11c ea.; \$1.10 doz.; \$8.00 per 100.

**Leedsii Mrs. Langtry.** Pure white, twin-flowered; a gem for forcing and cutting. 12c ea.; \$1.25 doz.; \$9.00 per 100.

**Leedsii White Lady.** White perianth, soft canary-yellow cup; of fine form. 14c ea.; \$1.35 doz.; \$10.00 per 100.

**Leedsii Minnie Hume.** Large, broad white petals and a widely expanded pale lemon yellow cup shading to white at the center. 11c ea.; \$1.10 doz.; \$8.00 per 100.



Medium Trumpet Narcissus

## Narcissus Poetaz Hybrids

The flowers in this class are somewhat similar to the *Poet's Narcissus*. They are really the result of hybridizing the *Poeticus* and the *Polyanthus Narcissus*, possessing the good qualities of both parents. The plants grow very vigorously and bear generally from three to five flowers on a stem and are deliciously fragrant.

**Elvira.**—25. A large pure white with yellow cup; strong grower and free flowering; fragrance resembles that of gardenia. 16c. ea.; \$1.55 doz.; \$11.00 per 100.

**Laureus Koster.**—Pure white perianth, orange yellow cup. 16c ea.; \$1.55 doz.; \$11.00 per 100.



"Giant White" Narcissus

## Polyanthus Narcissus

GIANT WHITE ("PAPER WHITES")

Flowers pure snow white, desirable for their beauty and delicious odor; one of the best known of the bunch-flowered *Narcissus*. It forces admirably and flowers freely in dense clusters; will come into bloom as early as December. Splendid when grown in bowls of water and pebbles or moss, the same as Chinese Lilies.

**Mammoth Selected Bulbs,** 12c ea.; \$1.25 doz.; \$9.00 per 100.

**First Size Bulbs,** 11c ea.; \$1.10 doz.; \$8.00 per 100.

### Soleil d'or or Golden Sun

A splendid free flowering variety producing large clusters of rich yellow flowers with a deep orange-red cup. Just as easy to grow as the *Paper White* variety. 20c ea.; \$2.25 doz.; \$16.00 per 100.

### Chinese Sacred Lily

Chinese Lilies are usually grown in bowls or dishes of water. Put an inch or two of sand and gravel in the dish in which they are to be grown, set the bulbs on this and put enough gravel or shells around them to keep them from falling over; fill the dish with water and set in a dark closet for a few days until the roots start freely; then bring them to the light and keep in any ordinary living room. A dozen or so bulbs started this way at intervals will give a succession of bloom throughout the winter.

**Large Bulbs,** 25c ea.; \$2.75 doz.; \$18.00 per 100.

### Calla Lilies (For Pot Culture)

**White Calla** (*Richardia Aethiopica*), Ready in August.—Of easy culture, and is one of our good window plants. Pot in good rich soil, using 6 to 8-inch pots; give water, light and heat in abundance.

**Mammoth Bulbs,** 25c ea.; \$2.50 per dozen.

**Yellow Calla.** Ready in October.—Except for the color, almost identical with the white. It is a beautiful, rich, golden yellow, and is well worthy of your consideration. Cultural directions same as for "White."

**Mammoth Bulbs,** 35c ea.; \$3.50 per dozen.

**Godfrey Everblooming White Calla.** Improvement over the ordinary *White Calla*, being more floriferous over a longer season, a trifle smaller but delicately scented. Strong flowering roots. 25c each; \$2.25 per dozen.

## Amaryllis

### (GIANT AMERICAN HYBRIDS)

Flowers of enormous size, with full, rounded, broad petals, 10 inches in diameter, are not unusual and 5 to 6 flowers to a stem, frequently two stems being pushed to the bulb. In color there are selfs and stripes, ranging from the purest white ground color with rose or red markings to rich orange-scarlet, cherry, crimson and maroon, strong flowering bulbs which we can supply in mixture only. A wonderful indoor plant for winter blooming. Ready in October. Each 75c; 3 for \$2.00; dozen \$7.50.

### Freesia Purity

The flowers are white, borne in graceful clusters, lasting a long time and are delightfully fragrant when cut, a pot of five or six bulbs being sufficient to perfume the whole house. Can be had in flower at Christmas, and continue in succession until June. When potted should not be placed in a dark place, like most other bulbs, but put directly in the light. They will grow well and bloom freely in an ordinary living room if placed near a window and not kept too hot. They will stand a slight freezing without injury, but are not hardy for outdoor use.

Extra Large Bulbs, six for 30c; dozen, 50c; hundred, \$3.50.

### Rainbow Freesias

This is a splendid improved class of colored Freesias embracing beautiful shades of yellow, blue, mauve, pink, etc. The flowers are as large and fragrant as the well known white type described above. Same cultural treatment.

**Amethyst**—Blue Violet. 6 for 55c; dozen \$1.00; hundred \$7.00.

**General Pershing**—Lavender Pink. 6 for 40c; dozen 70c; hundred \$5.00.

**Yellow Prince**—Golden Yellow. 6 for 45c; dozen 85c; hundred \$6.00.

**Olivette**—Bright Carmine. 6 for 55c; dozen \$1.00; hundred \$7.00.

**Rainbow Mixed Colors**—6 for 40c; dozen 70c; hundred \$5.00.

### Lilium Harrisii

#### (EASTER LILY BERMUDA)

This is considered the most satisfactory White Lily for indoor culture for Easter blooming.

**Mammoth Size Bulbs**, 55c ea.; \$5.50 per dozen.

**Large Size Bulbs**, 40c ea.; \$4.00 per dozen.

Bulbs ready in September.



Freesia (Winter Flowering)

### Hardy Lilies

**Auratum (Gold Banded)**—Flowers white, dotted crimson, with a clear golden band running through the center of each petal, very fragrant. Each 45c; 3 for \$1.20, postpaid. (Ready in November).

**Canadense Flavum**—Beautiful native Lily with graceful, charming yellow flowers. Each 25c; dozen \$2.50.

**MADONNA LILY (Lilium Candidum)**. The most popular garden Lily. The flowers are pure snow-white and very fragrant, borne on long stems. The bulbs are usually available in September, but can be planted very successfully any time before the ground freezes. Very desirable for every garden; produces a beautiful array of flowers in May or early June. (Ready in September).

**Large French Grown Bulbs**, 35c ea.; \$3.50 dozen; \$25.00 per 100.

**Monster Bulbs**, 45c ea.; dozen \$4.50; hundred \$32.00.

**Regale**—A new hardy Lily with remarkably beautiful blooms. Color, white, shaded pink; canary-yellow center. May be used for forcing. Each 75c; dozen \$7.00.

**Speciosum Rubrum (Crimson Banded)**—White, with a deep rosy crimson band on each petal, with deeper colored spots between. Each 40c; 3 for \$1.10, postpaid. (Ready in November).

**Superbum**—One of the most satisfactory Lilies that can be planted either in the garden or in meadows, on the edge of woods or in any rough or wild parts of the grounds, where it will take care of itself without any attention whatever after planting. It will also thrive in wet or swampy places. Often grows over eight feet high and produces twenty to thirty orange-red flowers in July when flowers are apt to be rather scarce. Each 25c; dozen \$2.50.

**Tigrinum Splendens (Single Tiger Lily)**—Reddish orange blooms spotted with black. Each 25c; dozen \$2.50.

**Tigrinum Splendens fl. pl. (Double Tiger Lily)**—Orange red blooms spotted with black. Each 25c; dozen \$2.50.

### Oxalis

Charming little half trailing plants, particularly adapted for pots and hanging baskets. The clover-like foliage is very attractive, and when in bloom they are exceedingly pretty. Several bulbs can be grown in a pot.

**Buttercup**—Flowers bright yellow.

**Grand Duchess**—We can furnish this variety in three colors, pink, white, lavender.

**Price:** For any of above, 5c each; 50c per doz.; \$3.50 per 100, postpaid.



Lilium Auratum

**Note**—Orders for Lily bulbs will be forwarded as soon as they reach us from the various sources of supply. The approximate time is indicated in each case. In sections where there is danger of the ground freezing before the bulbs arrive, it is well to provide a mulch so planting can be done with ease at any time.

# Crocus

Among the earliest to blossom in spring is this beautiful little flower, lifting its head almost before the snow has disappeared. Blooming at a time when the ground is destitute of foliage and flower, it is a welcome visitor. The Crocus succeeds in pots and glasses, for which purpose the named varieties should be selected. They present the best appearance, however, when grown in masses, for which quantities should be used of at least 100 to 500. All bulbs we supply in named varieties are mammoth size. Prices include postage.

	Doz.	100	1000
<b>King of Blues</b> —Dark purple blue.....	\$0.40	\$2.75	\$25.00
<b>Mont Blanc</b> —Best white .....	.40	2.75	25.00
<b>Mammoth Yellow</b> —Golden yellow.....	.50	3.50	32.50
<b>Scipio</b> —Variegated and striped .....	.40	2.75	25.00
<b>Choice Mixed Crocus</b> —All colors.....	.25	1.60	14.50

## Chionodoxas (Glory of the Snow)

**Lucillae.** Pure white center gradually merging into blue, the color becoming more intense towards the tips of the petals. A beautiful bedding flower; also good for pots. Doz., 45c; 100, \$3.00.  
**Sardensis.** Charming flowers of a rich gentian-blue. Doz., 45c; 100, \$3.00.

## Crown Imperials (Fritillaria Imperialis)

Although the bulbs succeed fairly well in any ordinary border, a rather strong, adhesive soil, in an open position freely exposed to the sun, should, if possible be chosen for them. Each 25c; doz., \$2.50; hundred \$15.00, postpaid.

## Muscari (Grape Hyacinths)

One of the prettiest of early spring flowering bulbs, growing about 6 inches high, and throwing up numerous spikes of flowers, which resemble a miniature inverted bunch of grapes.  
**Heavenly Blue Grape Hyacinths.** A strong growing variety producing much larger spikes of flowers than the ordinary Blue Grape Hyacinth. Color clear light blue; very showy. 5c each; 50c per doz., \$3.50 per 100.

## Ranunculus

**French Hybrids.** A splendid strain of these bright spring flowering bulbs. Mixture contains all colors. 9c. each; 85c doz., \$6.00 per 100.

## Scillas (Squills)

**Sibirica, Blue.** Invaluable for indoor decoration. The lovely ultramarine blue flowers, contrast admirably with Roman Hyacinths and other early flowering bulbs. The Blue Squill is perfectly hardy, and should be largely grown in the open border in conjunction with Snowdrops. 8c each; doz., 75c; 100, \$5.20.

**Campanulata, Blue (English Blue Bells).** Blooms in May. 5c each; 50c per doz.; \$3.50 per 100.

**Campanulata, White.** Valuable for cutting in May. 6c each; dozen, 60c.; \$4.00 per 100.

**Campanulata, Rosea.** Very pretty pink flowers. 9c each; 90c doz.; \$6.50 per 100.



Muscari (Grape Hyacinth)

## Snowdrops

However carefully Snow drops are selected, it is impossible to insure the singles and doubles coming quite true. The bulb manifest an unusual tendency to run out of character. Each, 7c; doz., 65c; 100, \$4.50.

## Winter Aconite (Eranthis Hyemalis)

The Winter Aconite is the very "firstling" of the year covering the ground with gilt spangles in the bleakest days of February, or March in colder states. Any soil or situation will suit this flower, and it should be planted in large patches within view from the windows. Dozen, 40c; 100, \$2.75.

## Hardy Phlox

Phlox are a garden in themselves, succeed in almost any soil and position, and flower freely for many years without attention, yet they respond quickly to and are improved by liberal cultivation. They should be planted in October or November or in the very early spring.

**B. Compté**—A glowing French purple.

**Henry Marcel**—Red, shading bright salmon.

**Mrs. Jenkins**—The best white variety.

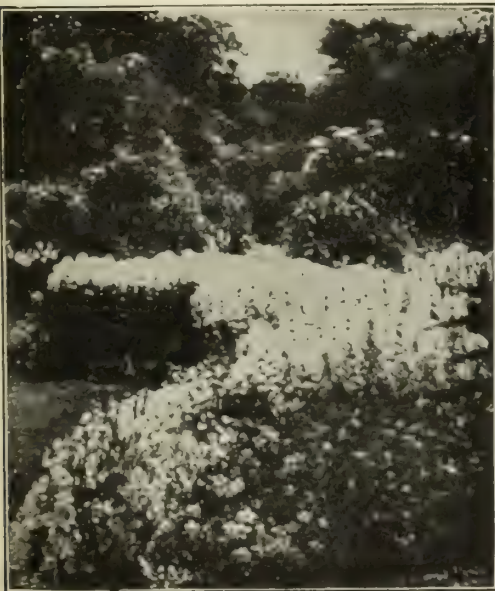
**R. P. Struthers**—Rose carmine, with scarlet red eye; very bright.

Price, any of above 35c each; \$3.50 dozen.

## Lily of the Valley

Imported pips or crowns are received during November or December, should then be planted. For indoor culture, place a bundle of 25 pips in a 7 or 8-inch pot, filling it up with sand, moss or light soil, allowing the points of the pips to be about an inch above the surface. They should then be placed out of doors and brought indoors as wanted, and put in a shaded place in a temperature of about 70 degrees, and when the spikes are 3 or 4 inches high they may be brought to where they are to perfect their flowers. They are ideal for planting outside in any shady nook or bed. If there is danger of the ground freezing before the "pips" arrive, mulch the bed with leaves; the pips can then be put in upon arrival; frost will not injure them. 85c per dozen; \$1.60 per 25; \$6.00 per 100.

**American Pips (For Outside Only, Ready in October)** 25 for \$1.00; hundred for \$3.50.



Attractive Border of Hardy Phlox



### Felix Crousse

### English Iris

(June- and July-flowering)

Grand Lilas—White and lavender. Tricolor—White, red, and blue.  
 Pate des Jardins—Pearl, flamed. Royal Blue—Clear Violet Blue.  
 light blue. "F" purplish gold. Each 30c;  
 Price any of above 15c each; \$1.50 doz.; \$8.50 100.

### Flag Iris (Germanica)

(May Flowering)

Avoid planting too deep, barely covering the rhizomes (creeping root stems) being sufficient. In the arid sections of the west are most suitable they being great drouth resisters.

"S" refers to standards. "F" to falls.  
 Elderado—"S" fiery opalescent, "F" purplish gold. Each 30c; dozen \$3.00.  
 Fairy—"S" white, "F" fringed blue. Each 25c; dozen \$2.50.  
 Florentina—"S" white, "F" veined violet. Each 25c; dozen \$2.50.  
 Idion—"S" golden yellow, "F" brown. Each 30c; \$3.00 dozen.  
 Kharput—Both "S" and "F" violet purple. Each 30c; dozen \$3.00.  
 Lohengrin—Large silvery mauve, both "S" and "F." Each 35c; dozen \$3.50.  
 Loreley—"S" light yellow "F" ultra-marine blue. Each 25c; dozen \$2.50.  
 Pallida Dalmatica—Both "S" and "F" clear lavender blue. Each 40c; dozen \$4.00.  
 All Colors Mixed, 15c each; \$1.50 per dozen.

### Dutch Iris

(May Flowering)

In general appearance similar to Spanish, but larger flowers; open at least two weeks before the Spanish Iris and immediately after the last May flowering tulips are gone.

Albert Cuy—Pure white, falls lemon yellow. Hart Nibbrig—Brilliant clear blue. Early.  
 David Teniers—Porcelain blue, falls yellow. Early. Hobbema—Palest blue, falls yellow.  
 Imperator—Blue. Early. Rembrandt—Deep blue, falls richer blue.  
 Any of Above, 13c each; \$1.25 per dozen; \$7.50 per 100.

### Spanish Iris

(June Flowering)

We have arranged for a supply of these beautiful bulbous Iris in extra strong home grown bulbs.

Blanche Fleur—White tinged lilac. Louise—Beautiful porcelain blue.  
 Cajanus—Golden yellow. Prince Henry—Purplish bronze.  
 Flora—Light blue. La Reconnaissance—Bronze golden blotch.  
 Any of Above, 9c each; 90c per dozen; \$6.00 per 100.

## Double Peonies

(Ready in October)

Peonies will do well in almost any garden soil, but the better enriched the more vigorous the growth. Fall is the best time to procure and transplant the roots, although this may be done in the spring. The plant is extremely hardy and will survive the coldest winters with little or no protection.

An important point to observe in the planting of Peonies is not to plant too deep. The roots should be placed so that the crowns are covered with two or three inches of soil. Too deep planting is a frequent cause of shy flowering.

Prices Include Postage.

### Extra Early Varieties

Of late years the **Officialis Varieties** are in flower types. We furnish *Rosea* (Pink), *Rubra* (Red). Price 95c each; \$9.50 dozen.

### Standard Varieties

**Berloiz**—Large, bright currant red shaded amar. anth. 75c each; \$7.50 per dozen.

**Delachei**—Medium, compact, rose type. Violet-crimson, slightly silver tipped. Late mid-season. 75c each; dozen \$8.00.

**Edulis Superba**—This is the famous Decoration Day Peony. Color a beautiful bright clear pink, with silvery reflex. 50c each; \$5.25 per dozen.

**Felix Crousse**—Large, ball-shaped bloom; very brilliant red. One of the finest self-colored varieties. 90c each; \$9.00 per dozen.

**Festiva Maxima**—The finest white in cultivation. 55c each; \$5.50 per dozen.

**Karl Rosenfield**—Large, globular, compact, semi-rose type. Dark crimson. Midseason. Very fine. Each \$2.00; dozen \$21.00.

**L'Electante**—Bomb type; midseason. Flowers very double and full; color deep, brilliant velvety-crimson. 75c each; \$7.50 per doz.

**Madam Leoline Calot**—Milky-white, flesh tinted, flecked with crimson. Late mid-season. Each 70c; dozen, \$7.00.

**Mons. Jules Elie**—Immense, globular, very full flowers. Color glossy lilac-pink, shading to deeper rose at base, the entire flower overlaid with a sheen of silvery hue. Early midseason. Each \$1.25; dozen, \$13.00.

**Meissonier**—(Syn. American Beauty) Bomb type; midseason. Very brilliant crimson; full double flowers on stiff, wiry stems. 7c each; \$7.00 per dozen.

**Princess Matilda**—Very large. Late rich pink. Each 55c; dozen, \$5.50.

**Queen Victoria**—Bomb type; early midseason. One of the best every day white. Very pretty in the bud state, when it has a faint blush tint. Each 55c; dozen, \$5.50.

**Rubra Superba**—Magnificent rich brilliant crimson. Very large, full, and double. Highly fragrant. Decidedly the best late red Peony. Each 70c; doz \$7.00.

**Umbellata Rosea**—Rose type; very early. Large, informal flower, guards violet, rose shading to an amber-white center. Very strong, upright grower and free bloomer. 70c each; \$7.00 per dozen.

**MIXED—Double Red.** 50c each; \$5.50 per dozen.  
**Double White and Double Rose-Pink.** 45c each; \$4.50 per dozen.



Florentina Iris, in Attractive Back Yard of I. A. Jackson, President Salt Lake Flower Garden Club

# Hardy Perennial Plants and Seeds

Perennials planted once are always there; the flowers become better as plants grow older. It requires more time for the plants to come to flowering size when seed is planted. Sow the seed outside in fall or early spring and transplant when plants are large enough to place where you wish them to flower.

We furnish either plants or seeds of the varieties listed below. Prices except where otherwise noted—Field Grown Plants: 25c each; \$2.50 per dozen; \$15.00 per 100. If by mail add 5c each; 30c per dozen, for postage and packing. Seeds: Per pkt. 10c; 3 for 25c; 13 pkts. for \$1.00, postpaid.

**Achillea (The Pearl)**—Useful for the border, wild garden or shrubbery; also for cutting.

**Agrostemma (Rose Campion)**—Stout, erect-growing plants, silvery foliage, showy flowers, bloom June and July. Bright rosy-crimson, 2½ to 3 feet.

**Anthemis (Marguerite)**—Daisy-like yellow blossoms, bloom all summer, excellent for cutting.

**Alyssum .Saxatile .Compactum**—(Basket of Gold). One foot high, producing early in the summer masses of broad flat heads of bright yellow flowers.

**Aquilegia (Columbine)**—The Columbine is one of the most beautiful hardy perennials, producing graceful spurred flowers on , 2-foot stems mixed colors.

**Anchusa**—Blossoms from June to September, small blue panicles.

**Dielytra Spectabilis (Bleeding Heart or Seal Flower)**—An old-fashioned favorite, at home in any part of the hardy border, and especially valuable for planting in the shade. Strong roots. Each, 75c; doz., \$8.00.

**Eryngium (Sea Holly)**—Handsome ornamental plants, growing from 2 to 3 feet high. The flower heads are produced from July to September.

**Eupatorium (Mist Flower)**—Useful border plant of strong, free growth, height 2 to 3 ft. White and blue flowers splendid for cutting; August and September.

**Euphorbia Polycwoma**—Attractive border plant; produces yellow flower-like bracts in May; 2 feet.

**Feverfew Little Gem (Matricaria)**—Large double, white flowers; June until October; 12 to 15 inches high.

**Gaillardia Grandiflora**—A mass of blooms the entire season. Flowers are dark red-brown with petals of orange or crimson.

**Geum (Avens)**—Border plants about 15 inches high; flowers brilliant, scarlet double bloom May to July.

**Gypsophila Paniculata (Baby's Breath)**—A mist of single white flowers.

**Hardy Garden Pinks**—Assorted colors.

**Helenium (Riverton Gem)**—Covered from August to October with brilliant old gold and splashes of darker shades, changing later to wall-flower red. Pkt. 15c.

**Hibiscus**—Giant Mallow Marvels—Crimson, white and pink flowers in August and September.

**Hollyhocks**—Handsome double improved varieties of this flower make it a great favorite; assorted colors.

**Hemerocallis (Yellow Day Lily)**—Very fragrant lemon-yellow flowers in June and July; height 2½ to 3 feet.

**Incarvillea (Hardy Gloxinia)**—Showy plant for hardy border rose-colored flowers on 15-18 inch stems during June and July, succeeds in sun or shade; protect well during winter.

**Iberis (Hardy Candy Tuft)**—Flowers in pretty white clusters in May and June.

**Arabis (Rock Cross)**—Blossoms in April and May. Star shaped white flower in masses. Adapted for rock gardens and edging.

**Campanula (Canterbury Bells)**—In several assorted colors.

**Coreopsis Lanceolata**—Flowers are bright golden yellow.

**Chrysanthemums**—(Old fashioned large flowering) in four colors; red, white, pink, and yellow. (Plants only.)

**Centaurea Montana (Perennial Corn Flower)**—Grows 2 ft. high, bearing large violet blue flowers from July to September.

**Dianthus Barbatus (Sweet William)**—Blossoms most all summer.

**Delphiniums (Hardy Larkspur)**—Very graceful, with long spikes of bright flowers; assorted colors.

**Digitalis (Fox Glove)**—A very ornamental plant, growing to about three feet high; assorted colors.



Effective Planting of Hardy Perennials

**Lathyrus (Everlasting Pea)**—Assorted colors; climber, 8 to 10 feet; clusters large flowers entire summer; fine for cutting.

**Lavendula (Lavender)**—Grows 18 in. high; delightfully fragrant blue flowers in July and August.

**Linaria (Toad Flax)**—Dainty lilac and orange flowers throughout summer; trailing habit, 3 inches.

**Linum (Blue Flax)**—Graceful, blue flowers all summer.

**Lobelia Cardinals (Cardinal Flower)**—Flowers from July to September; color, fiery scarlet; height two feet.

**Lupinus (Lupin)**—Most beautiful hardy border plants, producing tufts of soft green foliage, from which arise in continuous succession the stately spikes of bloom.

**Lychonis (Jerusalem Cross)**—Brilliant orange scarlet flowers in June and July.

**Michaelmas Daisies (Hardy Asters)**—Among the showiest of late-flowering hardy plants, bloom during September and October.

**Myosotis (Forget-Me-Not)**—Dwarf Blue, in bloom from early spring until autumn.

**Poppy, Hardy Oriental**—Large Flowers bright red.

**Platycodon (Balloon Flower)**—Deep blue flowers July and August. Pkt. 25c.

**Penstemon (Bearded Tongue)**—Mixed colors, useful for either border or rockery. Pkt. 25c.

**Physostegia (False Dragon Head)**—Erect bushy plants, very showy rose purple flowers in July and August.

**Pyrethrum (Aliginosum Giant Daisy)**—Very attractive daisy like flowers. Pkt. 25c.

**Papaver Nudicaule (Iceland Poppies)**—Mixed colors; bright green fern-like foliage, cup-shaped flowers.

**Physalis Francheti (Chinese Lantern Plant)**—Ornamental variety of Winter Cherry, dense bushes about 2 feet high; orange-scarlet lantern-like fruits.

**Polyanthus (Primula Elatior)**—Mixed colors; early Spring flowering; height 9 inches.

**Rudbeckia ("Golden Glow")**—Brilliant golden-yellow, blooms July to September. Height four to six feet.

**Rudbeckia Newmanii (Black Eyed Susan)**—Dark orange-yellow flowers, deep purple cone blooms July to September. Height 3 feet.

**Rudbeckia Purpurea**—Peculiar reddish-purple with large cone-shaped center of brown, blooms July to October. Bushy plants 3 ft. high.

**Salvia (Meadow Sage)**—Azura—3 to 4 feet high; sky-blue flowers in August and September.

**Scabiosa Caucasia (Blue Bonnet)**—Soft lavender blue, graceful flowers on stems 18 to 24 inches high. Bloom from July to September. Splendid cut-flowers.

**Statice (Great Sea Lavender)**—Covered with minute purplish blue flowers in July and August. If cut and dried lasts in good condition for months.

**Shasta Daisies**—Burbank's new varieties.

**Stokesia Cyanea (Cornflower Aster)**—Bright lavender blue Aster like flowers, flowering from June until fall.

**Tritoma (Red-Hot Poker)**—Hardy if given protection. In bloom from August to October; spikes 3 to 4 feet, heads of bloom are rich orange-scarlet.

**Violets**—Hardy sweet-scented blue.

**Veronica Minor (Periwinkle or Trailing Myrtle)**—Splendid for shady places.

**Veronica (Speedwell)**—Border plant 18 inches high; long spikes of blue flowers in June and July.

**Yucca (Adam's Needle) Filamentosa**—5-6 ft. or more. June-July. Handsome creamy white flowers, much branched and densely packed with bloom, with sword-like foliage.

1-year Plants, 25c each; \$2.50 doz.

2-year Plants, 50c each; \$5.00 doz.

4-year Plants, \$1.75 each; \$18.00 doz.

**PLANTS**—Any of above 25c per clump; \$2.50 per dozen; \$15.00 per 100. If by mail add 5c each or 30c per dozen for packing and posting.

**SEED**—Any of above, except where otherwise noted: Packet 10c; 3 packets 25c; 13 packets for \$1.00, postpaid.

## Giant Spencer Sweet Peas

1 Pkt., 5-foot Row

FOR FALL PLANTING

1 Oz., 20-foot Row

A better growth of vines and earlier blooming often results from planting seed in the fall instead of early spring. If a well drained, sandy soil is selected, this method may usually be depended upon to give satisfactory results. A number of planters have been very successful here in the Salt Lake Valley.

Preparation of the soil is the same as that for spring planting. The seeds should be sown about an inch or two apart in rows about three inches deep, and firmly covered with soil which should be somewhat ridged above the rows to improve drainage. The most important point in fall planting of Sweet Peas is to plant late enough so that plants will not appear above the surface of the soil before freezing weather sets in. Plantings are usually made in this vicinity from the 10th to the 25th of November, depending on weather.

### EARLY FLOWERING SPENCERS

This new type is in great demand by commercial florists for forcing under glass and are just as valuable for outdoor culture, coming into flowers five or six weeks earlier than the regular orchid-flowered type. If flowers are kept picked will continue to bloom over a period of nearly four months.

**Early All White**—Pure White.

**Morning Star**—Rich, rosy salmon.

**Early True Blue**—Rich mid-blue.

**Meadow Lark**—Primrose yellow.

**Early Harmony**—The finest clear lavender.

**Early Zvolanek's Rose**—Rich rose pink.

**Early Fair Maid**—Blush-pink.

**Price**—Any of the above, pkt., 10c.; oz., 60c.; ¼ lb., \$1.75.

### STANDARD SPENCER FLOWERED

Of the hundreds of Orchid-flowered or Spencer Sweet Peas introduced, we offer what we consider the very choicest and most distinct varieties, each one is a leader in its respective color, and sure to give entire satisfaction.

\***Charming**—A most brilliant rosy orange cerise, large flower.

\***Colne Valley**—Lavender blue, very large.

\***Constance Hinton**—Enormous size. The best white for outdoor use.

\***Dobbie's Cream**—The finest primrose-yellow.

\***Florence Nightingale**—A large and fine pure bluish lavender.

\***Hawthorn**—Larger than Countess Spencer, lively rose-pink.

\***King Mauve**—A distinct rich deep mauve.

\***Margaret Atlee**—The best giant rich pink.

\***Royal Purple**—Rich royal purple.

\***Royal Scot**—A most brilliant scarlet.

\***The Cardinal**—Intense poppy-scarlet; very large and wavy.

**Price**, Any of above: Pkt., 10c.; oz., 30c.; ¼ lb., \$1.00; lb., \$3.00, postpaid.

**P-W's Superb Spencer Mixed**: Pkt., 10c.; oz., 25c.; ¼ lb., 75c.; lb., \$2.25.

## Pansies

Pansies like cool weather, and the best way to grow them in the north is to start them in the late summer and carry the plants over the winter in a cold frame. The plants will then come into flower with the first tulips. The violas will live over winter with a heavy mulch for protection, and are splendid for bedding.

**Boulogne Giant Mixture**—The flowers are of the largest size, great substance, fine form and are borne on particularly strong stems. They are mostly 3 and 5 blotched delicately veined. Pkt., 25c.; 1-32 oz., \$1.00.

**Cassiers 3 and 5 Blotched Mixed**—Mostly light shades with dark blotches. ½ ounce, 75c.; packet, 20c.

**P-W's Best Giant Mixture**—It includes the richest reds, coppers and bronzes, together with the most delicate rose-pink shadings; packet, 25c.; ½ oz., \$1.00.

**Masterpiece (New Giant Curled or Spencer Pansies)**—The petals are crimped and curled so the flowers appear double. Packet, 25c.; ½ oz., \$1.00.

**Mixture of Orchid Flowered Varieties**—Including only pretty tints and combinations of cream, primrose, and pale mauve, the flowers being exquisitely frilled and veined in contrasting colors. Packet, 15c.

**Steele's Mastodon Mixed**—This is one of the most colorful mixtures of mammoth flowering pansies of which we are familiar. Pkt., 25c.; 1-16 oz., \$1.00.

**Paris Market**—An improved strain of Trimardeau, with better flowers and more compact habit. ½ oz., 60c.; packet, 10c.

**Pretiosa**—Each petal has a large blotch of deep violet on crimson background, with white edge. Packet, 15c.; ½ oz., 60c.

**Rosy Morn**—A bright purplish crimson margined with a clear white edge. Packet, 15c.; ½ oz., 60c.

**Ruby Red**—Packet, 15c.; ½ ounce, 50c.

**Violet Blue**—A very pleasing shade. Packet, 15c.; ½ oz., 50c.

**Pure White**—Pure white without blotches. Packet, 15 cents; ½ oz., 50c.

**Pure Yellow**—Golden yellow without blotches. Pkt., 15 cents; ½ oz., 50c.

**Bedding Mixed**—Great diversity of colors, free flowering, blossoms slightly smaller than the Giant sorts. ¼ ounce, 40c.; packet, 10c.

## Lawns Made in the Fall

have many advantages over those made during the spring months, as the conditions are ideal for quick germination of seed, and the plants will make deeper roots and more healthy growth besides there is less danger of being winter-killed than there is a spring-sown grass being killed by extreme heat of July and August. We advise all who contemplate making a new lawn, or renewing the old, to do the work this fall, as the grass will become well established before freezing weather. The seed we offer has been most carefully selected and none better can be obtained.

**P-W's Velvet Green Lawn Mixture**—The best lawn seed experience can suggest or that money can buy. Produces a beautiful, permanent lawn in four to six weeks. By properly choosing early, medium and late grasses a smooth, even green lawn is assured from early spring to late autumn. Our experience has given us an intimate knowledge of grasses, their habits and requirements. In P-W's Velvet Green Grass Seed are included only the very best varieties—pure clean and free from foul seed. Sow at rate of one pound to 200 square feet. Price: lb., 65c.; 3 lbs., \$1.85, postpaid. Not prepaid, lb., 60c.; 10 lbs., \$5.50.

**Improved Rhode Island Bent Grass**—This ideal lawn grass makes a very fine colored, close turf and adapts itself readily to any soil.

Sow in Fall or Spring 3 to 4 lbs. to 1,000 sq. ft. We offer the best obtainable grade of this species. 1 lb., \$2.00; 3 lbs., \$5.75.

**Red Fescue**—See page 15.

See page 22 for Lawn Fertilizers.

**Kentucky Blue Grass**—The main stay for lawn making; our stock is extra fancy re-cleaned heavy seed. The purest and cleanest obtainable. Lb., 65c.; 3 lbs., \$1.85, postpaid. Not prepaid, lb., 60c.; 10 lbs., \$5.50.

**Red Top Grass**—Fancy re-cleaned solid seed; in popularity for lawn use it is a close second to Kentucky Blue Grass. Lb., 50c, postpaid. Not prepaid, lb., 45c.; 10 lbs., \$4.00.

**Shady Nook Lawn Mixture**—Prepared especially for shady places where it is difficult to get a turf established. Lb., 70c, postpaid. Not prepaid, 65c lb.; 10 lbs., \$6.00.

**White Clover**—First class re-cleaned seed. Specialy selected for lawn use. Lb., 80c, postpaid. Not prepaid, lb., 75c.; 10 lbs., \$7.00.





P-W's Grass and Clover Mixtures Make Best Dairy Pastures

## Farm Seeds

### For Fall Planting

Consistent with our policy to sell only the best, we furnish only such grades that have been critically grown from highest germination and purity; this fact should be in mind when comparing prices with other sources of supply. **PRICES FLUCTUATE.** Please write for quantity prices on **Alfalfa, Sweet Clover and Grass Seeds.** Also **Fall Wheat and Rye** or anything else desired in **Farm Seeds.**

**Bromus Inermis (Hungarian Brome Grass)**—Remarkable drought-resister, not injured by frost. Sow 20 to 30 lbs. per acre. Pound, 35c, postpaid. Not prepaid, 10 lbs., \$2.25.

**Red Top**—Reaches highest perfection in moist, rich soil. Sow 25 pounds per acre. Pound, 50c, postpaid. Not prepaid, 10 lbs., \$5.00.

**Orchard Grass**—Furnishes pasturage three weeks before any other. Sow from 20 to 25 pounds per acre. Pound, 45c, postpaid. Not prepaid, 10 lbs., \$3.00.

**Kentucky Blue Grass**—Remains green from early spring until snow flies in the fall. It will do well on almost any land. Sow 30 pounds per acre. Pound, 65c, postpaid. Not prepaid, 10 lbs., \$5.50.

**English or Perennial Rye Grass**—Produces an abundance of foliage. 30 pounds per acre, spring or fall. Pound, 35c, postpaid. Not prepaid, 10 lbs., \$2.50; 100 lbs., at market price.

**Meadow Fescue, Randall or English Blue Grass**—Excellent for hay and pasturage. Succeeds even in poor soil, roots penetrate deep, stands extremely dry weather. Sow in spring or fall at the rate of 30 pounds to the acre. Pound, 55c, postpaid. Not prepaid, 10 lbs., \$4.50.

**Timothy**—Of hay grasses Timothy leads all. Alone, 12 pounds to the acre, or with clover, 10 pounds timothy and 6 pounds clover. Pound, 25c postpaid. Not prepaid, 10 lbs., \$1.75.

**Tall Meadow Oat Grass**—Outyields Timothy or Orchard Grass, and affords better grazing, becoming very popular. Sown alone, use 30 pounds to the acre, either spring or fall. Pound, 60c, postpaid. Not prepaid, 10 lbs., \$5.00; 100 lbs. at market price.

**Red or Creeping Fescue (Festuca rubra)**—Because of its good creeping root system this makes splendid turf for putting greens. When used for greens it should be sown alone. It makes a good ingredient for lawn mixture as it does well in sandy soil and in shaded places. Sow in Spring or about the first of September. Lb., 65c; 3 lbs. \$1.85. Postpaid. Not prepaid, lb. 60c; 10 lbs., \$5.50.

## P-W's Grass and Clover Seed Mixture

### FOR PERMANENT MEADOWS AND PASTURES

Our well-balanced mixtures are made up of a number of native and acclimated grasses and clovers, blended in such a way as to best suit soil conditions.

**P-W's Mixture No. 1. For Upland Pasture Under Irrigation**—The main varieties of this combination are Kentucky Blue Grass, Perennial Rye Grass, Red Top, Orchard Grass, Tall Meadow Fescue, Red Clover, Lucerne and White Clover. Sow 25 pounds per acre. Pound, 50c postpaid. Not prepaid, 10 lbs., \$3.50; 100 lbs. at market price.

If your soil does not come under any of the above classes, please write the particular character of your soil and we shall be pleased to name price of mixture best suited.

**Alfalfa**—(P-W's Mountain Grown Dry Land. This has been especially selected from highland sections of the Mountain States and grown without irrigation, developing an almost sturdy type much to be preferred than seed produced under other conditions. Lb., 35c, postpaid. Not prepaid, 10 lbs., \$2.50; 100 lbs., market price.

**Alfalfa Seed Grimm**—This variety is especially recommended for shallow soils or those underlaid with hardpan. The claim made for it is that in addition to extreme hardness it has spreading roots instead of a single tap-root and that it makes underground creeping stems. Lb., 60c, postpaid. Not prepaid, 10 lbs., \$5.00; 100 lbs., market price.

**Alsike Clover (Swedish Hybrid)**—Is recommended both for sowing with Timothy and also with the Red and Mammoth Clovers, as well as for a hay crop by itself. It does not winter-kill. Sow at the rate of six or eight pounds per acre; sown in mixtures, five or six pounds per acre is sufficient. Lb., 50c; postpaid. Not prepaid, 10 lbs., \$4.00; 100 lbs., market price.

**Sweet Clover or Bokhara (Melilotus Alba) White Blossom**—As a money-maker this has been rightfully named "Alfalfa's Twin Sister." Its value in the redemption of alkaline lands cannot be over-estimated. Sow at the rate of 10 to 15 pounds per acre. Cover the seed very lightly. Lb., 25c, postpaid. Not prepaid, 10 lbs., \$1.75; 100 lbs., market price.

**Yellow Blossom (Melilotus officinalis)**—Same family as White Blossom Sweet Clover, not so prolific in growth and flowers are yellow instead of white. Lb., 30c, postpaid. Not prepaid, 10 lbs., \$2.00; 100 lbs., market price.

**Medium Red Clover (Trifolium Pratense)**—It is sometimes called June Clover and is a dependable, all-round variety for farmers and stockmen. It makes two crops each year. Sow either in the spring or fall at the rate of fifteen pounds to the acre. Lb., 50c, postpaid. Not prepaid, 10 lbs., \$4.00.

**P-W's Mixture No. 2. For Low and Moist Soils**—Consisting chiefly of Red Top, Perennial Rye Grass, Meadow Fescue, Timothy, Alsike Clover, White Clover, Orchard Grass. Sow 25 pounds per acre. Pound, 45c, postpaid. Not prepaid, 10 lbs., \$3.25; 100 lbs. at market price.

# Remember the Fall Vegetable Garden

Why allow your ground to be idle after harvesting your summer vegetables when you can just as well make it work for you Spring, Summer and Fall. For your selection we list some of the vegetables especially suitable, either for late Summer and Fall planting or for forcing under glass or in frames during the winter. All prices include delivery charges.

## Beet (Table Varieties)

	Pkt.	Oz.	¼ Lb.	Lb.
Extra Early Egyptian.....	5c	10c	35c	\$1.00
Crimson Globe, New .....	5c	10c	35c	1.00
Crosby's Egyptian .....	5c	15c	45c	1.25
Detroit Dark Red .....	5c	15c	45c	1.25
Early Model .....	5c	10c	35c	1.00
Eclipse .....	5c	10c	35c	1.00
Half-long Blood .....	5c	10c	35c	1.00
Improved Blood Turnip .....	5c	10c	35c	1.00

## Lettuce

	Pkt.	Oz.	¼ Lb.	Lb.
Big Boston .....	5c	20c	\$0.65	\$2.00
Deacon .....	5c	20c	.65	2.00
Hanson .....	5c	20c	.65	2.00
May King .....	5c	20c	.65	2.00
New York Lettuce.....	5c	30c	1.00	3.00
P-W's Extra Early .....	5c	20c	.65	2.00
Iceberg .....	5c	20c	.65	2.00
Black Seeded Simpson .....	5c	20c	.65	2.00
Grand Rapids .....	5c	20c	.65	2.00
Prizehead .....	5c	20c	.65	2.00
Trianon Cos .....	5c	30c	1.00	3.00

## Mushroom Spawn

	Bricks	1	2	5
Pure Culture .....	45c	80c		\$1.75

## Onion Sets

Onion Sets planted this fall will produce the earliest Spring Onions without winter protection. Try them out and you will have green onions next spring for table or market several days ahead of your neighbor who waits until spring. Price: **Yellow varieties**, 25c lb.; 10 lbs. \$2.00, postpaid. **White Sets**, 30c lb.; 3 lbs., 80c; 10 lbs., \$2.50, postpaid. Write for prices on quantities.

## Onions

All Onion Seed very scarce and market soaring.

### Yellow and Dark Skinned Varieties

	Pkt.	Oz.	¼ Lb.	Lb.
Prizetaker .....	.05c	30c	1.00	4.50
P-W's Southport Yellow Globe.....	.05c	30c	1.00	3.00
Yellow Globe Danvers.....	.05c	30c	1.00	3.00
Yellow Flat Danvers.....	.05c	30c	1.00	3.00
Giant Gibraltar .....	.10c	45c	1.50	4.50
P-W's Sweet Spanish (Valencia) and (Domestic).....	.10c	65c	2.25	7.50
P-W's Yellow Globe.....	.05c	30c	1.00	3.00
Red Wethersfield .....	.10c	30c	1.00	4.50

### White Skinned Varieties

	Pkt.	Oz.	¼ Lb.	Lb.
Extra Early Barletta.....	.05c	25c	80c	2.50
Crystal White .....	.10c	65c	2.00	6.50
Extra Early Pearl.....	.05c	30c	85c	3.00
Early White Queen.....	.05c	30c	85c	3.00
Mammoth Silver King.....	.05c	30c	1.00	3.50
P-W's Peerless White.....	.10c	40c	1.30	4.00
P-W's Southport White Globe.....	.05c	30c	1.00	3.25
Round Silver-Skin (Portugal).....	.05c	30c	1.00	3.25

## Spinach

	Pkt.	Oz.	¼ Lb.	Lb.
King of Denmark .....	5c	10c	25c	75c
Long Seasons .....	5c	10c	20c	50c
Long Standing .....	5c	10c	20c	50c
P-W's Bloomsdale Savoy .....	5c	10c	20c	50c



Detroit Dark Red

## Parsley

	Pkt.	Oz.	¼ Lb.	Lb.
Champion Moss Curled .....	5c	15c	40c	\$1.25
Double Curled .....	5c	15c	40c	1.25

## Radishes

### Early Turnip Shaped Varieties

	Pkt.	Oz.	¼ Lb.	Lb.
P-W's Earliest .....	5c	10c	30c	\$1.00
P-W's Scar. Turnip Wh. Tip.....	5c	10c	30c	.85
French Breakfast .....	5c	10c	30c	1.00
P-W's Sparkler .....	5c	10c	30c	.85

### Long Varieties

	Pkt.	Oz.	¼ Lb.	Lb.
Iceicle .....	5c	10c	30c	1.00
Long Scarlet, Short Top.....	5c	10c	30c	1.00
White Vienna .....	5c	10c	30c	1.00

### Winter Varieties

	Pkt.	Oz.	¼ Lb.	Lb.
Chinese Rose .....	5c	10c	40c	1.25
Long Black Spanish .....	5c	10c	40c	1.25
Round Black Spanish .....	5c	10c	40c	1.25

## Turnips

	Pkt.	Oz.	¼ Lb.	Lb.
Extra Early Pur. Top Milan.....	5c	15c	50c	\$1.50
Extra Early White Milan.....	5c	15c	50c	1.50
Early Purple Top Strap Leaf.....	5c	10c	25c	.75
Purple Top White Globe.....	5c	10c	30c	.85
Snowball .....	5c	10c	25c	.75
White Egg .....	5c	10c	25c	.75
White Flat Dutch .....	5c	10c	25c	.75

## Rutabaga or Swedes

	Pkt.	Oz.	¼ Lb.	Lb.
Improved Purple Top .....	5c	10c	25c	\$0.75

## VEGETABLE ROOTS

	Each	Doz.	100	1000
Asparagus—1 year roots .....	5c	\$0.35	\$1.00	\$ 8.00
Asparagus—2 year roots .....	7c	.60	1.75	12.00
Rhubarb .....	.25c	2.00	12.00	
Horseradish .....	6c	.60	3.50	

SEE GENERAL CATALOG FOR REGULAR LIST OF VEGETABLE SEEDS.

## Hardy Ornamental Vines and Creepers

Your home, outbuildings, fences and trunks of old trees can be made very attractive by the use of hardy vines. Such permanent improvements add greatly to the value of your property, and the value increases from year to year. We furnish strong two year old field plants at prices given below.

**AMPELOPSIS ENGELMANII**—New Virginia Creeper—A new variety of American Ivy which has long been desired. It has shorter joints and very much smaller and thicker foliage. It also is better equipped with tendrils, by which it will climb walls of stone or brick as closely as the Boston Ivy. Will grow in almost any soil and withstand drought and heat well. Each 70c; ten for \$6.00.

**AMERICAN IVY**—Virginia Creeper or Woodbine (*Ampelopsis quinquefolia*)—A strong, rapid grower; foliage large, dark green; in autumn, bronze and crimson. Valuable for covering back porches, outbuildings, arbors, etc. Perfectly hardy everywhere, and will grow in any soil and situation. Each, 60c; ten for \$5.00.

**BOSTON OR JAPAN IVY**—*Ampelopsis Veitchii*—One of the finest climbers for covering walls, as it clings firmly to the smoothest surface, covering it evenly with overlapping leaves, which form a perfect mass of foliage. The color is fresh deep green in summer, changing to bright shades of crimson and yellow in autumn. Each, 75c; ten for \$6.50.

**BIGNONIA RADICANS**—Trumpet Vine—Dark red, orange throat; free blooming, very hardy and rapid grower. Useful for covering unsightly places, stumps, or wherever a showy flowering vine is desired, it will be found useful. Each 75c; ten for \$6.50.

**CELESTRUS SCANDENS**—Climbing Bitter Sweet—A native climbing or twining plant, with handsome large leaves; yellow flowers in May and June and clusters orange-capsuled fruit in autumn. One of the most desirable climbers for shade. Each 75c; ten for \$6.00.

### CLEMATIS—

**Paniculata (Virgin's Bower)**—This is hardy in all parts of the United States. The blossoms are pure white, very fragrant, and borne in great clusters or bunches, covering the plant almost completely, enough to hide the glossy, rich green foliage. Each 75c; ten for \$6.50.

**Jackmanii**—This is the best of all large flowering varieties. Color, a deep violet purple. A strong rampant grower succeeding well in all localities. Each, \$1.00; ten for \$8.50.

**IVY (English)**—Valuable for covering graves. Grows well in shade. Each, 75c; ten for \$6.50.

### HONEYSUCKLES—

We cannot speak too highly of this class for covering arbors, fences, pergolas, verandas, etc. All are perfectly hardy and improve in beauty each year.

**Japonica Halleana (Hall's Japanese)**—Almost evergreen sort; flowers pure white, changing to yellow July to November. Each 75c; ten for \$6.50.



Boston Ivy

**Japonica Flexuosa (Chinese Twining)**—Remarkable on account of retaining its beautiful, glossy foliage most all winter, and covered with sweet, yellowish-white flowers most all summer. Each 75c; ten for \$6.50.

**KUDZU VINE**—*Pueraria Thumbergiana* or Jack-and-the-Bean-Stalk—In rich soil will grow seventy feet in one season. Starts into growth slowly, but after three or four weeks grows almost beyond belief. Leaves in shape like Lima Bean; dark green; texture, soft and woolly. Fine for porches, arbors, old trees, etc. Each, 75c; ten for \$6.50.

### WISTARIA—

**Chinese Wistaria (Wistaria Chinesis)**—A rapid growing tall vine with handsome foliage and flowers. Flowers pea-shaped, purplish, profusely borne in dense, drooping clusters 7 to 12 inches long, opening in midspring. Each, 85c; ten for \$7.00.

**Chinese White Wistaria (W. Var Alba)**—A form of above with pure white flowers. Each, 85c; ten for \$7.00.

## ROSES

Our collection of Roses embraces over eighty varieties, covering almost every desirable type known to cultivation. Please refer to Regular Catalog for description and prices. We deliver in Spring only on Roses.

## Hardy Ornamental and Flowering Shrubs

There is nothing which so quickly, and for so little cost, add so much to the beauty, cheerfulness and home-like appearance of a place as an assortment of hardy shrubs. They are permanent improvements which increase in size, value and beauty, year after year. Our price is for strong, healthy, field grown shrubs, two to four feet high, depending on the variety, some making higher growth than others.

(A) Denotes shrubs which attain 9 to 12 feet in height at maturity. (B) denotes shrubs which attain 5 to 8 feet in height at maturity. (C) denotes shrubs which attain 1 to 4 feet in height at maturity.

**ALMOND (Amygdalus) (B)**—Early blooming; producing flowers in great profusion. **Double Pink and Double White.** Each \$1.00; ten for \$8.50.

**ALTHEA (Rose of Sharon) (A)**—A free-flowering shrub of easy culture and very desirable on account of blooming in August and September. Flowers resemble a double hollyhock. **Double pink, red or white;** 3-4 feet, 85c; ten for \$7.50; 2-3 feet, 55c each; ten for \$5.00; \$45.00 per 100.

**BERBERIS THUNBERGII (Japanese Barberry) (C)**—Beautiful shrub for hedges, border, screens or general purposes. Very compact and needs no attention with the shears. Foliage a rich green, changing in the autumn to brilliant scarlet and gold. Following the white flowers are scarlet oval berries which are borne into the winter. **Two-year, 18-inch shrubs, 55c each; ten for \$5.00; \$40.00 per 100.**

**BUDDLEIA VARIABILIS VEITCHIANA (Butterfly Shrub or Summer Lilac)**—One of the most desirable summer flowering shrubs, beginning to bloom in July, it continues until cut by severe frost. The flowers are of a pleasant shade of violet mauve, and are borne in dense cylindrical spikes from 12 to 15 inches in length by 3 inches in diameter; it succeeds everywhere and flowers freely the first season planted.

**CARAGANA SIBERICA (Siberian Pea Tree) (A)**—Grows eight to ten feet high, compound leaves bright green; numerous small clusters of yellow flowers.

**CORNUS (Red Siberian Dogwood) (A)**—Produces cream colored flowers in June, light blue fruits, and bright red twigs and branches.

The shrubs offered in this list are strong two and three-year-old Field Grown, 2 to 4 feet in height depending on variety. Unless otherwise specified. Prices, 85c each; \$7.50 per ten; \$65.00 per 100.



Althea (Hib Syrlacus)

Golden Bells (Forsythia Fortunei)

Hydrangea (Paniculata Grandiflora)

## Hardy Ornamental and Flowering Shrubs--Continued

The shrubs offered in this list are strong two and three-year-old Field Grown, 2 to 4 feet, depending on variety. Unless otherwise specified, price 85c each; \$7.50 per ten; \$65.00 per 100.

- CALYCANTHUS (Sweet Shrub) (C. floridus)**—An old-fashioned shrub known to everyone. Its flowers are sweet-scented; deep green, glossy foliage, free from disease.
- COTONEASTER (Simonsii)**—White. June. Semi-evergreen, quite erect. Leaves are dark green and usually adhere late in the season. Showy bright red fruit borne on the slender, erect branches all along the stems.
- CRANBERRY (Highbush) (B)**—Hardy as a rock and most desirable, combining the ornamental with the useful. Blossoms white, single and showy; beautiful fruit clings to the branches in winter.
- CURRENT (Red Flowering) (B)**—Brilliant red flowers in early spring.
- CYDONIA (Japan Quince) (B) Japonica**—A single shrub on the lawn is very attractive; brilliant crimson flowers, among the first in the spring. \$1.00 each; ten for \$8.50.
- DEUTZIA (B)**—Hardhood, fine habit, luxuriant foliage and profusion of attractive flowers render this among the most beautiful and most popular of flowering shrubs. Flowers in June and through July and August.
- Crenata—Rosa Plena**—Double light pink; very desirable tall shrub.
- Gracilis**—A favorite dwarf bush, covered with spikes of pure white flowers.
- Pride of Rochester**—Fine, tall growing double white flowering variety.
- EXCHORDA (Pearl Bush)**—Vigorous grower; height 6 to 10 feet, white flowers on slender, wiry branches.
- EUONYMUS (Strawberry Tree)**—American Burning Bush. Very showy in autumn when loaded with scarlet seed pods, from which orange-colored berries hang on slender threads. Price \$1.25 each; \$11.00 per ten.
- FORSYTHIA (Golden Bell) (A)**—This is a pretty shrub of medium size. Native of China and Japan. The flowers are drooping, golden yellow, and appear very early in spring before the leaves.
- Fortunei**—Strong, erect habit; bright golden-yellow flowers in early spring.
- Suspensa (Weeping Golden Bell)**—Tall willowy growth, branches gracefully arching, covered with golden yellow bells.
- GOLDEN LEAVED ELDER**—The best of all the colored leaved shrubs. A plant of this bush in a bed, or a border on the lawn is a conspicuous feature, the foliage being as yellow as gold.
- HONEYSUCKLE UPRIGHT TARTARIAN (Lonicera Tartarica) (B)**—The best known of all the Bush Honeysuckles. Grows with upright, somewhat spreading, branches and bright green foliage. The flowers are borne freely in May and June, followed by showy red berries. We stock white, pink and red varieties.
- Motowii**—A handsome Japanese variety, with white flowers during May, but especially valuable for its bright and red fruit during the summer and autumn months.
- HYDRANGEA Aborescens Grandiflora (Snowball Hydrangea)**—Snow white blossoms of largest size; flowering from early June until late July. Each \$1.00; ten \$8.50.
- HYDRANGEA, Paniculata Grandiflora**—Unsurpassed for lawn, hedge, or cemetery planting; hardy in all localities, needs no protection in winter; blooms the first and every season in July and August and continues in bloom for two or three months; pure white to pink, and finally to a beautiful rich coppery red. Each \$1.00; ten for \$8.50.
- HYPERICUM (Prolificum)**—Shrubby St. John's-Wort. Bright yellow flowers are borne in branching terminal clusters. Narrow, lustrous dark green leaves cover the numerous compact branches.
- LILACS (True Syringa) (A) Grandiflora**—Very fragrant, grand old fashioned. Early flowering shrub. We furnish White and Purple varieties.
- Persian Purple (B)**—Flowers are deep purple and their familiar fragrance is loved by all. Easy culture and grow in any soil.
- PRIVET FOR HEDGES**—Extremely hardy, very easy to grow, and makes a splendid green foliage. Always free from insects. As well as being the cheapest, privet is the prettiest hedge that can be had. 18-24 inch; ten for \$1.00; 50 for \$4.50; \$8.00 per 100; 2-3 feet; ten for \$1.25; 50 for \$5.50; \$10.00 per 100.
- PRIVET (Ligustrum Amurense)**—Extremely hardy; upright grower, foliage glossy green, holds color until late. 50c each; \$4.25 per ten.
- ROBINA Hispida (Rose acacia)**—This beautiful shrub is much appreciated because of the abundance of its large, pink, pea-like flowers. Grows about 4 or 5 feet tall.
- RHUS (Cotinus)**—Purple Fringe. The leaves are bright pea-green and satiny smooth. Forms a marked contrast with other foliage. When flowers appear it has the appearance of a cloud of smoke. Each, \$1.25.
- RHUS (Typhina laciniata, Staghorn Sumac)**—The branches are densely covered with velvety hairy-like growth resembling the developing Elks Horn. Grows to a height of 30 ft. Deeply serrated leaves whose deep crimson color and persistent crimson fruit makes it attractive for background. Each, \$1.00.
- RHUS, DWARF SUMAC (A. copallina)**—Height 6-8 feet; blooms in August; greenish white flowers; foliage shiny green, rich crimson in autumn.
- ROSA RUGOSA, Rubra**—Perfectly hardy, 4 to 5 feet high, foliage large, beautifully crinkled, color dark green. Flowers single, rosy crimson, orange-scarlet fruits.
- ROSA RUGOSA, Alba**—Foliage and habits, like "Rubra," flowers pure white, followed by orange-colored fruits.
- SNOWBALL (Viburnum) Japanese Plicatum**—A valuable improvement on the common Snowball; the flowers are smaller, more numerous, frequently as many as twenty balls on a stem 18 inches long. Each, \$1.00; \$9.00 per ten.
- Common (Sterilis)**—Too well known to need description.
- Any of above not specially priced, 85c each; \$7.50 per ten; \$65.00 per 100.



Lilac (Syringa)



Weigelia Rosea



Snowball

## Hardy Shrubs (Continued)

### SPIREAS—

**Anthony Waterer**—Color, bright crimson; dwarf, dense growth never exceeding 30 inches in height; in bloom the entire summer and fall.

**Opulifolia Aurea (Virginia Guelder Rose)**—Medium growth, golden-tinted foliage, large white flowers in June.

**Prunifolia**—One of the best; a beautiful shrub, medium size, double white flowers in May.

**Thunbergii**—A graceful bush, beautiful at all seasons, with innumerable small white flowers. The tiny leaves turn to a brilliant orange-scarlet in the autumn.

**Van Houtii (Bridal Wreath)**—Pure white flowers in clusters or panicles an inch in diameter.

### SYMPHORICARPUS—

Small shrubs much used in shaded places and in open masses. Grow in almost any soil; very ornamental when covered with berries.

**Racemosus (Snowberry) (B)**—A graceful shrub, 3 to 5 feet tall with slender branches. Flowers white or pinkish, in loose racemes, in summer.

**Vulgaris (Coral-Berry or Indian Currant) (B)**—A grand shrub, producing a wealth of red or purplish berries which remain on the branches all winter. Leaves ovate, bright green.

**Price**—Any of above, each, 85c; ten for \$7.50; \$65.00 per 100. For strong two and three-year-old shrubs.

### SYRINGA—

**Philadelphia Coronarius or Mock Orange**—This is a grand old favorite shrub. It is prized very highly for its beautiful foliage and white flowers. Very fragrant, resembling somewhat apple blossoms.

**WEIGELIAS (Diervilla)**—These shrubs make a strong growth, erect when young, gradually spreading and drooping into large graceful shape with age; flowering in clusters thickly along the branches.

**Candidi**—White flowering, flowering throughout the summer.

**Eva Rathke**—A charming brilliant crimson; flowering throughout the summer. Each, \$1.00; dozen, \$10.00.

**Rosea**—A beautiful shrub with rose colored flowers.

**TAMARIX**—Their delicate fringed flowers of pink, are very ornamental at the back of shrubby borders. Flowers all summer.

**Amurense**—Shrub of strong but slender, upright growth, clothed in foliage as light and feathery as that of the asparagus.

## Ornamental Trees

A city street is not attractive unless softened by the foliage and branches of trees. They shelter the home from excessive heat and dust, add charm to the finest buildings and hide the untidy and unsightly places. There is nothing that adorns a city more than fine shade trees, and the effect is much better when only one kind of a tree is planted on the same street, or at least, on the same block.

Prices are for different sized trees, all f. o. b. our Nurseries or Salt Lake City, and in all cases good value will be given, according to price charged. Ten per cent discount on orders of 5 trees or more of one variety and size. Special prices made on lots of 100 up.

**AILANTHUS—Tree of Heaven—A. glandulosa, T**—A rapid growing, lofty tree, long, elegant foliage. Exempt from disease and insects. Useful tropical effects. 6-8 feet, \$2.00 each; \$17.00 per ten.

**ASH—American White**—A rapid growing native tree of fine symmetrical outline. A valuable street or park tree. Timber is largely used. Price, 6-8 ft., \$1.00 each; \$3.50 per ten; 8-10 ft., \$1.75 each; \$15.00 per ten.

**ASH—Green**—Shapely round top with dark green foliage. Price 6-8 ft., \$1.50 each; 8-10 ft., \$1.75 each.

**BIRCH (Betula Alba) European White Birch, T**—Of which Coleridge says "Most beautiful of forest trees, the lady of the woods." 6-8 feet, \$2.00 each; 8-10 ft., \$2.50 each.

**CATALPA Bungei (Umbrella Tree)**—These beautiful globe-shaped tops being grafted high on clean straight stems form one of the most valuable trees for landscape designing especially for formal effects. One year head, \$2.00; two year old heads, \$2.50.

**CATALPA Speciosa (Western Catalpa)**—Rapid grower producing large panicles of fragrant flowers, delicately marked with violet and yellow. 6-8 ft., \$1.50 each; 8-10 feet, \$2.00 each.

**CRAB (Bechtels Double Flowering)**—Most beautiful of all the flowering Crabs; hardy, of medium size covered in early spring with large, beautiful double, fragrant flowers, resembling small roses of a delicate pink. Ideal for a small yard, 3-4 feet, \$1.50 each; 4-6 feet, \$2.00 each.

**ELM American (Ulmus Americanus)**—Tall and stately with a graceful, wide-spreading form vase-



Catalpa Bungei

like, densely covered with a rich, bright green foliage. 6-8 ft., \$2.00 each; 8-10 ft., \$3.00.

**ELM English (Ulmus Campestris)**—A native of Europe; a noble rapid-growing tree, forming a dense head; a desirable tree for streets, avenues, etc. 6-8 ft., \$2.00 each; \$17.50 per ten; 8-10 ft., \$3.00 each; \$25.00 per ten.

**HORSE CHESTNUT, European**—Showy foliage; white flowers in upright panicles. 5-6 feet, \$2.00 each; 6-8 feet, \$3.00 each.

**LINDEN, American (Tilia Americana)**—Basswood. Shapely trees, with large handsome foliage. Flowers creamy-white and very fragrant. 6-8 ft., \$3.00; 8-10 ft., \$4.00 each.

**LINDEN, European (Lime Tree)**—Pyramidal shape, smaller foliage than American Linden, white flowers in June. 6-8 ft., \$3.00; 8-10 ft., \$4.00 each.

**LOCUST, Black**—6-8 ft., each, 60c; 8-10 ft., \$1.00.

**LOCUST, Honey**—6-8 ft., each, \$1.00; 8-10 ft., \$1.50.

**MOUNTAIN ASH, European (Sorbus Aucuparia)**—White flowers followed by brilliant red berries. 6-8 feet, \$2.00 each; 8-10 feet, \$3.00 each; 10-12 feet, \$4.00.

## Ornamental Trees (Continued)



Bolleana Poplar



Colorado Blue Spruce

**GOLDEN CHAIN** (*Cytisus Laburnum*)—A smooth and shining foliage. The name Golden Chain alludes to the length of the drooping racemes of yellow flowers, which appears in June. 4-6 ft., \$1.50 each.

**MAPLE Ash-Leaved or Box Elder** (*Acer Negundo*)—A fine, rapid-growing avenue tree; withstands both cold and drought. 6-8 ft., \$1.00 each; 8-10 ft., \$1.50 each; 10-12 ft., \$2.00 each.

**MAPLE Silver** (*Dasycarpum*)—A large tree with wide-spreading branches and drooping branchlets. Very fast grower, makes dense shade and thrives in any soil. 6-8 ft., \$1.00 each; 8-10 ft., \$1.50 each; 10-12 ft., \$2.50 each.

**MAPLE Norway** (*Plantanoids*)—A large handsome tree, of spreading rounded form, with shiny, deep green foliage. Usually very symmetrical. One of the most desirable species for the street, park or lawn. 6-8 ft., \$2.25; 8-10 ft., \$3.50; 10-12 ft., \$4.50 each.

**MAPLE Schwedleri**—Red and purple contrasts brightly with the delicate green of other trees. In mid-summer they are purplish green, in autumn golden yellow. 6-8 ft., each, \$3.50; 8-10 ft., \$4.50 each.

**MAPLE Sugar**—Straight, spreading, symmetrical. Rich autumn tints of clear-yellow and scarlet. 6-8 ft., \$3.00 each; 8-10 ft., \$4.00 each.

**JUDAS TREE** (*Cercis*)—Striking ornamental trees loaded with a mass of pea-shaped pink blossoms in early spring, before the leaves appear. 3-4 ft., \$1.75; 4-5 ft., \$2.00 each.

**PLANE** (*Oriental Plane* or *European Sycamore*)—One of the finest trees for street or lawn, with fine, straight trunk, handsome symmetrical head and beautiful foliage. 6-8 ft., \$3.00; 8-10 ft., \$4.00 each.

**POPLAR** (*Bolleana*)—A tall columnar rapid growing hardy tree. Leaves triangular, the borders serrate, glossy green above and silvery beneath. 6-8 ft., 75c each; 8-10 ft., 85c each; 10-12 ft., \$1.00 each.

**POPLAR** (*Carolina Poplar*)—Of rapid growth. Very desirable when quick shade is wanted. 4-6 ft., 25c; 6-8 ft., 50c each; 8-10 ft., 75c each; 10-12 ft., 85c each.

**FLOWERING PLUM, Purple-Leaved**—(*Prunus Pissardi*)—Handsome form, with rich purple leaves, which retain their color the best of all purple-leaved trees and recommended where colored foliage is desired. Covered in early spring with beautiful white flowers, later with wine-red fruits. 3-4 ft., \$1.00 each; 4-6 ft., \$2.00.

**TULIP TREE** (*Liriodendron tulipifera*)—Tall, pyramidal habit; bluish green, glossy, fiddle-shaped leaves; flowers tulip-like, greenish yellow. 5-6 ft., \$2.00 each.

**THORNE, Double Flowering Hawthorne** *Crataegus Oxyacantha* fl. pl.—The double form of the fragrant English Hawthorne; flowers in May and June. 3-4 ft. high, Double pink, double red, 4-6 ft., \$2.00 each.

**WILLOW, Golden**—6 to 8 ft., each, 75c; 8 to 10 ft., each, \$1.00.

### Hardy Evergreens

**Arborvitae—American**—2-3 ft., \$3.50 each.  
**Arborvitae, Pyramidal**—Specimens, 2-3 ft., \$6.00 each; 3-4 ft., \$8.00 each.  
**Colorado Blue Spruce**—1-2 ft., \$3.50; 2-3 ft., \$5.00; 3-4 ft., \$7.50.  
**Irish Juniper**—2-3 ft. high, \$5.00; 3-4 ft., \$7.50.

**Pine, Mugho**—Dwarf globular form. 1½ to 2 ft., \$7.50 each.

**Spruce, Black Hills**—Hardy, pyramidal; 2-3 ft., \$5.00.

**Spruce, Norway**—2-3 feet, \$5.00 each.

### Spray Your Trees and Shrubs This Fall

Most people do not realize the importance of Dormant Spraying. As soon as leaves fall thoroughly with a good Dormant Spray.

**Scalecide**—The "Certain Death" to scale insects and destroys Brown Mites and Apple Leaf Roller Eggs and controls Canker Rot, Root Rot, Twig Blight, and many other fungus diseases.

Without question of a doubt, the best Dormant Spray on the market today. Ask for free booklet.

**Price**—One quart can, 75c; shipping weight 3 lbs.; 1 gallon can, \$1.75; shipping weight, 11 lbs.; 5 gallon can, \$3.00; shipping weight, 50 lbs.; 30 gallon barrel, \$30.00; shipping weight, 265 lbs.; 50 gallon barrel, \$45.00; shipping weight, 440 lbs.

**Lime-Sulphur (Dry Form)**—A good remedy for scale; also an excellent fungicide, a very effective dormant spray for trees and shrubs. 1 lb., 25c; 5 lbs., 85c; 10 lbs., \$1.50; 25 lbs., \$3.25; 50 lbs., \$6.00; 100 lbs., \$11.00.

See Spring Catalog for Spray Pumps, and other Spraying Materials. We carry a complete line.



CATALPA (SPECIOSA)



ELMS LINDEN



SILVER MAPLE

### Weeping Trees

**Birch**—Cut leaved. 6-8 ft., \$3.75 ea.

**Elm**—Camperdown. 2-year head, \$3.50 each.

**Mulberry**—Teas Weeping. 2-year head, \$3.00.

**Willow**—Babylonica, 6-8 ft., \$1.75 each.

**Willow**—American Weeping \$1.75 each; 6-8 ft., \$1.75 each.

**Weeping Mountain Ash**—2-year heads, \$3.50 each.

# Fruit Trees

At our Centerville Nurseries we have a particularly fine lot of strong, healthy fruit trees. This stock has been selected and critically grown to meet the requirements of orchardists planting for eastern or local markets. We believe, also, those of our patrons who are planting a small orchard for home use will find sufficient variety to amply fill every want in the fruit line. Refer to our Annual Catalog for more detailed information and full descriptions. Detailed planting and cultural directions free with each order. Ask for them.

Ordinary seasons we are able to deliver fruit and ornamental trees the latter part of October. In sections where ground freezes up early, we advise Spring Delivery.

## Apples

Size and Grade	Price Each	Per 10	Per 100
4-6 feet, 3 year roots, 2 year tops (branched).....	.70c	\$5.50	\$45.00
3-4 feet, 3 year roots, 2 year tops (branches).....	.55c	4.50	40.00
3-4 feet, 2 year roots, 1 year tops (whips).....	.45c	3.50	30.00
2-3 feet, 2 year roots, 1 year tops (whips).....	.35c	2.50	22.50

Five or more at ten rate; fifty or more at 100 rate. Transportation to nearest express office prepaid on orders of \$10.00 or more.

**Summer Varieties**—Red Astrachan, Early Harvest, Maiden's Blush, Yellow Transparent, Red June.

**Autumn Varieties**—Gravenstein, Twenty-Ounce Pipin, Wealthy, Wolf River.

**Winter Varieties**—Arkansas Black, Bellefleur, Delicious, Gano, Grimes' Golden Pipin, Jonathan, Mam, Black Twig, N. W. Greening, Winesap, Winter Banana, Fearmain, McIntosh, Red.

**Crab Apples**—Hyslop, Transcendant, Siberian.  
Small orders of mailable sizes sent Parcel Post where more convenient.

## Apricots

**Standard**—4-6 feet, 75c each; \$6.00 per 10; \$50.00 per 100.

**Standard Mall Size**—3-4 ft., 65c each; \$5.50 per 10; \$45.00 per 100

**Small Mall Size**—2-3 ft., 55c each; \$4.50 per 10; \$35.00 per 100.

**Varieties**—Moorpark Royal, Superb, Chinese

## Cherries

**Varieties**—Bing, Black Tartarian, Lambert, May Duke, Montmorency, Napoleon, Richmond, Windsor, Yellow Spanish.

**Standard Size**—4-6 ft., each \$1.00; \$8.50 per 10; \$75.00 per 100.

**Mall Size**—3-4 ft., each 85c; \$7.50 per 10; \$65.00 per 100.

**Small Mall Size**—2-3 ft., each 70c; \$6.00 per 10; \$50.00 per 100.

## Peaches

**Varieties**—Alexander, Crawford, J. H. Hale, Elberta, Heath Cling, Carman, Red Bird, Orange Cling, Mayflower, Dals' Cling.

**Standard Size**—4-6 ft., each 70c; \$5.50 per 10; \$45.00 per 100.

**Mall Size**—3-4 ft., each 55c; \$4.50 per 10; \$35.00 per 100.

**Small Size**—2-3 ft., each 40c; \$3.50 per 10; \$25.00 per 100.

## Pears

**Varieties**—Bartlett, Beurre d'Anjou, Keiffer, Flemish Beauty, Clapps' Favorite, Seckel, Parish Favorite, Winter Nellis.

**Standard Size**—4-6 ft., each 75c; \$6.00 per 10; \$50.00 per 100.

**Mall Size**—3-4 ft., each 65c; \$5.50 per 10; \$45.00 per 100.

**Small Size**—2-3 ft., each 55c; \$4.50 per 10; \$35.00 per 100.

# Small Fruits and Berries

The splendid adaptability, both as to soil and climate of the Mountain States to the culture of "Small Fruits," makes it a great wonder there hasn't been larger plantings. The wise man will awake to the possibilities along this line. For more detailed information and descriptions, see our Annual Catalog

## Blackberries

**Price**—Each, 15c; dozen, \$1.20; 50, \$4.50; 100, \$18.00; \$70.00 per 1000.

**Varieties**—Early Harvest, Wilson, Mersereau, Rathbun.

## Currants

**Price**—Each 35c; dozen, \$3.50; 50, \$8.00; 100, \$15.00.

**Varieties**—Fay's Prolific, Perfection Red, Black Native, Red Cherry, Wilder, White Grapes, Lee's Prolific.

## Dewberries

**Lucretia**—Each, 15c; doz., \$1.25; 50, \$4.50; 100, \$8.00; 1000, \$70.00.

## Gooseberries

**Price**—Each, 35c; dozen, \$3.50; 50, \$8.00; 100, \$15.00.

**Varieties**—Oregon Champion, Downing, White Smith (Smith's Improved), Columbus.

## Grapes

**Concord**—Each 30c; doz., \$3.00; 100, \$15.00; 1000, \$100.00.

**Niagara, Moore's Early, Agawam, Worden**—Each, 40c; dozen, \$4.00; 100, \$20.00; 1000, \$150.00.

**European Varieties**—Flame Tokay, Muscat, Thompson's Seedless. Each, 40c; doz., \$4.00; 100, \$20.00; 1000, \$150.00.

European Varieties are quoted for Spring delivery only.

## Loganberries

Each, 35; doz., \$3.50; 50, \$12.00; 100, \$20.00.

## Raspberries

**Red Varieties**—Cuthbert, Loudon, Marlboro.

**Price**—Each, 15; dozen, \$1.50; 50, \$4.00; 100, \$7.50; 1000, \$60.00.

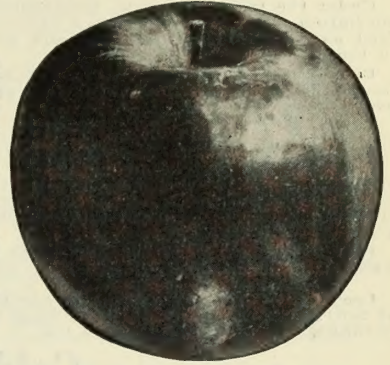
**Black Varieties**—Gregg, Cumberland. 20c each; \$2.00 per doz.; 50, \$6.00; 100, \$11.00.

**St. Regis Everbearing**—Same price as black varieties.

## Strawberries

**Superb Everbearing**—25, \$1.00; 50, \$1.75; 100, \$3.00; 500, \$12.00; 1000, \$18.00.

**Clyde and Marshall**—25, 60c; 100, \$1.75; 500, \$5.50; 1000, \$10.00.



Jonathan

## Plums

**Varieties**—Burbank, Bradshaw, Satsuma, Yellow Egg, Lombard, Damson, Reine Claude, Abundance, Jefferson, Green Gage, Kelsey.

**Standard Size**—4-6 ft., each 75c; \$6.00 per 10; \$50.00 per 100.

**Mall Size**—3-4 ft., each 65c; \$5.50 per 10; \$45.00 per 100.

**Small Mall Size**—2-3 ft., each 60c; \$5.50 per 10; \$40.00 per 100.

## Prunes

**Varieties**—French, Hungarian, Italian.

**Standard Size**—4-6 ft., each 70c; \$5.50 per 10; \$45.00 per 100.

**Mall Size**—3-4 ft., each 60c; \$5.00 per 10; \$40.00 per 100.

**Small Size**—2-3 ft., each 55c; \$4.50 per 10; \$35.00 per 100.

## Nut Trees

**Soft Shell Almonds**—I. X. L., each \$1.00; \$9.00 per 10.

**American Black Walnut**—6-8 ft., \$2.00 each; \$15.00 per 10.

**Utah English Walnuts**—Hardy in any section or situation where apricots and peaches can be grown.

2-3 feet—Each \$1.25; \$10.00 per 10, charges prepaid.

3-4 feet—Each \$2.00; \$17.00 per 10, prepaid.

4-6 feet—Each \$2.50; \$20.00 per 10, prepaid.

## Quinces

**Champion Orange Quince**—Standard Size—\$1.25 ea.

# Poultry Supplies

We carry a full line of the leading up-to-the-minute Poultry Foods, Remedies and General Supplies. Feeders, Non-Freeze Drink Fountains, Hoppers; in fact, everything required by the progressive poultryman. Ask for latest "Price List to Poultrymen." Special correspondence is invited on quantities; we can save you money.

## Miscellaneous Pest Destroyers and Remedies

### Barnes' Worm Emulsion

Under the treatment with EMULSION, greater assimilation obtains, so there is a saving of money in feed as well as less mortality and greater growth in the chicks.

Price—Pint, 60c; Quart, \$1.00; Gallon, \$3.00; 5 Gallons, \$12.50. Charges prepaid in lots of 1 gallon and over.

### Lee's Lice Killer

Destroys either by vapor or contact. No trouble to apply; just paint the roosts or wall at night. Rids poultry and houses of all vermin; is prepared exclusively for this purpose and there is nothing just as good.

Price: Qt., 60c; 1/2 gal., 90c; 1-gal., \$1.50. Shipping weight: Quarts, 4 lbs.; 1/2-gal., 8 lbs.; gallons, 15 lbs.

**Lee's Louse Powder**—For direct application to body of fowl. 1 1/2 lb. can 30c, mailing weight, 2 lbs.; 3 lb. package, 60c, mailing weight 4 lbs.

**Pratt's Roup Cure**—Quickly absorbed by the blood, helps purify the system, reduce fever, allay inflammation. A safe help for roup, colds, catarrh and many bad weather diseases. 3 sizes—25c; 50c; \$1.00, postpaid.

**Pratt's White Diarrhoea Remedy**—Standard everywhere among leading poultrymen. Two sizes—25c and 50c each.

### Cow Ease (Fly Driver)

Is a liquid preparation from non-poisonous materials, and will not gum the hair or blister the skin. A herd of milch cows sprayed regularly through the fly season will yield on the average of 10 to 20 per cent more milk. Price—Quart, 60c, weight, 4 lbs.; 1/2 gallon, \$1.00, weight 8 lbs.; gallon, \$1.80, weight 15 lbs.

### FLYROL

The household insecticide and disinfectant. Destroys insects, such as cockroaches, flies, moths, bed bugs, fleas, chicken lice and their eggs. Price—Pint, 55c; quart, \$1.00; gallon, \$2.75.

# Gold Fish and Supplies

## GOLD FISH

Small Fish about 2 in. long; each.....\$0.25  
 Medium Size, 2 1/2 to 3 inches long; each 35c to.... .50  
 Large Size, 3 1/2 to 4 in. long; each 50c, 75c and... 1.00  
 Fan Tails, according to size, each, 50c 75c and... 1.00  
 Tin Pails, for use when shipping fish, are sold at about cost; quart, 15c; 2-quart, 20c; 3-quart, 25c; gallon, 35c; 2-gallon..... .50  
 Fish must travel by express. Customers pay expressage. Pamphlet on Care of Gold Fish FREE with each order.

## AQUARIUM SUPPLIES

Fish Food, Imported, Rice Wafer.....\$ .20  
 Fish Moss, in bunches, tied with lead; when in

stock per bunch 20c; 2 for..... .35  
 Dip Nets—4 in. diameter, 1 1/2 in. handle, each...\$ .35  
 Grottoes, similar to Castles; small, 2 1/2 inch high; each..... .35  
 Castles, 3 inches high; for 1/2-gallon Globes, each... .40  
 Castles, 4 inches high; for 1-gallon Globes, each... .50  
 Castles, 6 inches; for 3-gallon Globes, each..... .65  
 Fancy Small Sea Shells, assorted..... .20

## FISH GLOBES—Heavy Glass (By Express or Freight)

1-quart size; round Globes; each.....\$0.35  
 1/2-gallon size; round Globes; each..... .60  
 1-gallon size; round Globes; each..... 1.00  
 1 1/2 gallon size; round Globes; each..... 1.25  
 2-gallon size; round Globes; each..... 1.75

## P-W'S BABY CHICKS

The regular utility grade of **Baby Chicks** that we offer are the product of free range flocks, pure bred, of standard type, carefully culled, and selected for their performance as layers. These flocks have been developed and maintained for years especially for the production of our **Baby Chicks**. They are the very highest quality of flock matings.

We are now booking orders for Fall and Early Spring delivery. Write us for special prices naming quantity, breed and time delivery is desired.

# Fertilizers for Lawn and Garden

**Ground Bone-Meal**—An excellent fertilizer for all gardening purposes; particularly adapted for fruit trees, roses, and all nursery stock. Should be forked in the soil in the fall if possible. 5 lbs. 45c; 10 lbs. 75c; 25 lbs., \$1.25; 50 lbs., \$1.75; 100 lbs., \$3.25.

**Fish and Meat Meal**—Very much in demand for celery, lettuce and other garden crops. 25 lbs., \$1.50; 100 lbs., \$5.00. Write for quantity prices.

**"Plant Life" Lawn Special No. 1**—This is a Mixture especially for the lawn. A 25-pound package contains more available plant food (nitrogen, phosphoric acid and potash) than is found in 1,000 pounds of ordinary manure, without the disagreeable features connected with it, and at a lower cost. One 25-pound bag will cover a space of lawn 30.40 or 1,200 square feet, though larger applications will give increased results.

Prices—10-oz. carton, 25c; 10-lb., 90c; 25 lb., \$2.00; 50 lb., \$3.50; 100 lb., \$6.00; not prepaid.

**Stim-U-Plant**—An All-the-Year Fertilizer for Garden and House Plants. An odorless, highly concentrated plant-food in tablet form, with guaranteed chemical analysis of 11 per cent nitrogen, 12 per cent phosphoric acid, 15 per cent potash. The proportions are accurate, there is no unnecessary filler, and in this form you are able to apply plant-food exactly when and where and as needed.

Order Stim-U-Plant tablets with your seed and plant order. Price—10 tablets for 15c; 30 tablets for 25c; 100 for 75c; 1,000, \$3.50.

**Nitrate of Soda**—Apply 100 to 150 lbs. per acre. Use only after plants are above ground. If used in liquid form dilute 2 oz. to 1 gal. of water and do not apply oftener than twice a week. 5 lbs., 50c; 25 lbs., \$2.00; 100 lbs., \$7.50.

**Lime**—Pulverized, fine, especially good for use on sour soil and where ground worms frequent. It purifies and fertilizes. 5 1/2 lbs., 25c; 10-lb. bag, 45c; original 50-lb. sack, \$1.25.

**Sheep Manure**—Especially prepared. This is one of the most complete fertilizers, contains no strong odor that usually accompanies animal fertilizers. 50 lbs., \$1.25; 100 lbs., \$2.00; 5 sacks for \$9.50.

**NEW WHIZZ FERTILIZER**—"New Whizz" fills a long felt want for rebuilding fertility in run down and poor soils. The formula for Whizz was carefully worked out by one of the leading Soil Experts of the West. It is scientifically right and its practical value has been fully proved. It not only contains the desired chemical elements so essential but these are combined with organic humus materials in such a manner to insure their benignly properly assimilated and taken up by plant life.

In the application of "Whizz" the soil is enriched not alone by the plant food elements in the fertilizer itself but also by chemical elements already in the soil heretofore insoluble, which, are now rendered available by the action of the materials contained in this meritorious new Fertilizer.

We unhesitatingly recommend "Whizz" as a fertilizer that fully measures up to general soil requirements in this region and as a leader for Lawns, Shrubbery, Vegetable and Flower Gardens.

For lawns use at rate of three to five pounds per hundred square feet; it is so finely pulverized that it can be sown similar to seed.—After applying sprinkle immediately with water.

Prices 25 lbs., \$1.00; \$3.50 per 100 lbs. Write for prices on ton lots.

Unless otherwise specified prices on all Fertilizers are f. o. b., Salt Lake. If desired by mail add Postage to order.



# Bird Supplies and Canary Birds

## CANARY BIRDS

Every singer we sell is known by us to be a singer. We do not send out on trial or exchange birds. State the amount you wish to pay and leave the selection to us. All birds are graded as to singing qualities and range of notes.

**Hartz Mountain Strain**—These are the popular singers and usually are mixed in plumage. Considered the most vigorous. Price ranges from \$5.00 to \$10.00 each depending on range and quality of song.

**St. Andreasburg Rollers**—With the wonderful soft-toned rolling notes. \$10.00 to \$15.00 each depending on song.



GRAND PATENT L.S.P.

## BIRD FOODS AND REMEDIES

Postpaid Prices

Bird Manna, in cakes ready to attach to edge, each	\$0.20
Bird Bitters, Iron Tonic, per bottle	.25
Bird Salve, small size can	.25
Bird Books, Raising and Care of Canaries	.40
Bird Cage Disinfectant	.25
Bird Biscuit	.10
Bird Ointment	.30
Canaradyne, wheezing and Asthma, per bottle	.30
Coloring Pepper	.25
Egg Flake and Fruit, Spratt's excellent food, pkg.	.30
French's Bird Seed and Biscuit, 10 oz. pkg., each	.25
French's Canary Exercise Balls	.25
Lice and Mite Powder, large size without guns	.25
Lice and Mite Powder, with guns	.25
Leg Bands for Birds, numbered; per doz.	.25
Mexican Salve, for sores, package	.25
Mite Powder, in Bags	.20
Nesting Food, Spratt's, package	.30
Orange Color Food	.25
Parrot Food, mixed for parrots, 12-oz. pkg.	.30
Pollcrackers, special biscuit for parrots, 12-oz. carton	.30
Song Restorer, valuable tonic	.25

## BIRD SEED, ETC.

Not Prepaid, add postage if by mail Lb.

Canary Seed, re-cleaned imported, 2 lbs. 35c	\$.020
Cuttle Bone, 5c a piece, 1/4 lb. 30c	1.00
Flax Seed, medicinal laxative, 1/4 lb. 15c	.25
Hemp Seed, re-cleaned imported, 2 lbs. 25c	.15
Maw Seed (Poppy), re-cleaned imported, 1/4 lb. 15c	.40
Millet Seed, large yellow, 2 lbs. 25c	.15



CLAYTON'S  
DOG  
REMEDIES

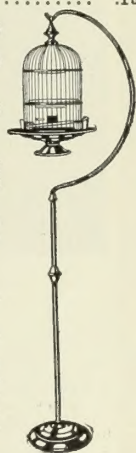
BOOK ON DOG DISEASES—AND HOW TO FEED—FREE

Mange Remedy (Oily dark color)—For skin disease	\$0.60
Distemperine, liquid (tablets)—For distemper	.60
Condition Pills with Pepsin	.60
Blood Purifying and Cooling Pills—For Eczema, etc.	.60
Laxative Pills—Keep the bowels right	.60
Worm Pills—For the expulsion of worms	.60
Vermifuge—liquid—for worms, all ages and breeds	.60
Canker Lotion—liquid (tablets), Canker, deafness, etc.	.60
Puppy Tonic—Weak puppies, relieve colic	.60
Diarrhoea Remedy—liquid (tablets)	.50
Coaline Dog Wash and Disinfectant—For fleas	.60
Killflea—(Dog Soap)	.25
Skin Medicine—(Colorless) For skin diseases	.60
Cough Remedy—For coughs and colds	.60
Digestive Tablets—For all forms of indigestion	.60
Little Red Worm Bullets—For toy puppies and toy dogs	.60
Ghorena Tablets	.60

Oats, steel cut, special bird size, 2 lbs.	25c	per lb.
Rape, Bird Sweet Imported, 2 lbs.	35c	.20
Sunflower Seed, 2 lbs.	35c	.15
Thistle Seed, 1/4 lb.	20c	.60
P-W's Special Mixed Bird Seed, 2 lbs.	35c	.20
Bird Sand, Silver White, 2 lbs.	15c	.10
Bird Sand, Red, 2 lbs.	15c	.10
French's Parrot Food, 1 lb. package		.30
French's Bird Seed and Biscuit, 10 oz. pkg., each		.25

## CAGE EQUIPMENT

Cage Charm Bells, tiny bells to hang on cage, each	\$ .10
Perches, all lengths, plain wood; give size wanted, each	.15
Seed and Water Cups, "Single Point" opal, porcelain, also glass, either 2 for 35c; each	.20
Seed and Water Cups, open top, "Tulip Cup," opal, porcelain, also glass, either 2 for 25c; each	.20
Seed and Water Cups, closed top, "Shell," opal, porcelain, also glass, either 2 for 35c, each	.20
Canary Cups, 2 inches diameter small, round, opal 3 for 35c; each	.15
Cuttle Bone Holder, Hendrix No. 1, to hold small piece in place	.15
Bath Dishes, porcelain, oval shape, medium size; 2 for 45c; each	.25
Bath Dishes, glass, oval shape, medium size; 2 for 35c; each	.20
Bath Houses, glass sides, fits to side of cage; each	1.15
Bird Cage Nests, wire cloth, 4 inches diameter; 2 for 45c; each	.25
Nesting Hair; per package	.15
Cage Springs, single, with 2-ft. ladder chain, adjustable; each	.25
Cage Spring, double coil, brass, prevents cage swinging; each	.40
Cage Bracket, brass plated heavy, swinging No. 7 wire; 12-inch; each	.35



## BIRD CAGES

**Brass Cages**—Splendid assortment of sizes and styles. The prices range from \$4.00 to \$15.00 each.

**Japanned Cages**—In assorted styles and sizes. Prices range from \$2.50 to \$7.50 each.

**Traveling Cages**—75c each.

**Breeding Cages**—Assorted sizes. Prices from \$5.50 to \$7.50 each.

**Bird Cage Stands**—Brass 5ft. 7 in. high, \$5.00.

The above prices quoted on cages merely indicate the approximate range of values. If you will tell us when ordering the amount you wish to pay we will guarantee to supply full and satisfactory values for amount remitted.

# Dog Supplies

Killflea Powder—For dogs and cats, per can	.35
Tape Worm Expeller—Especially prepared for tape worm	.60
Fit Remedy, liquid (tablets)—For fits and convulsions	.60
Barnes' Vita-Tone—Controls worms	.50
Spratt's Catnip Mice	.15
Dog Collars, various sizes and styles, each 50c up to	1.25

## DOG FOODS

**Note:** Add postage on all sizes if wanted by parcel post. Allow a little extra for weight of packing.

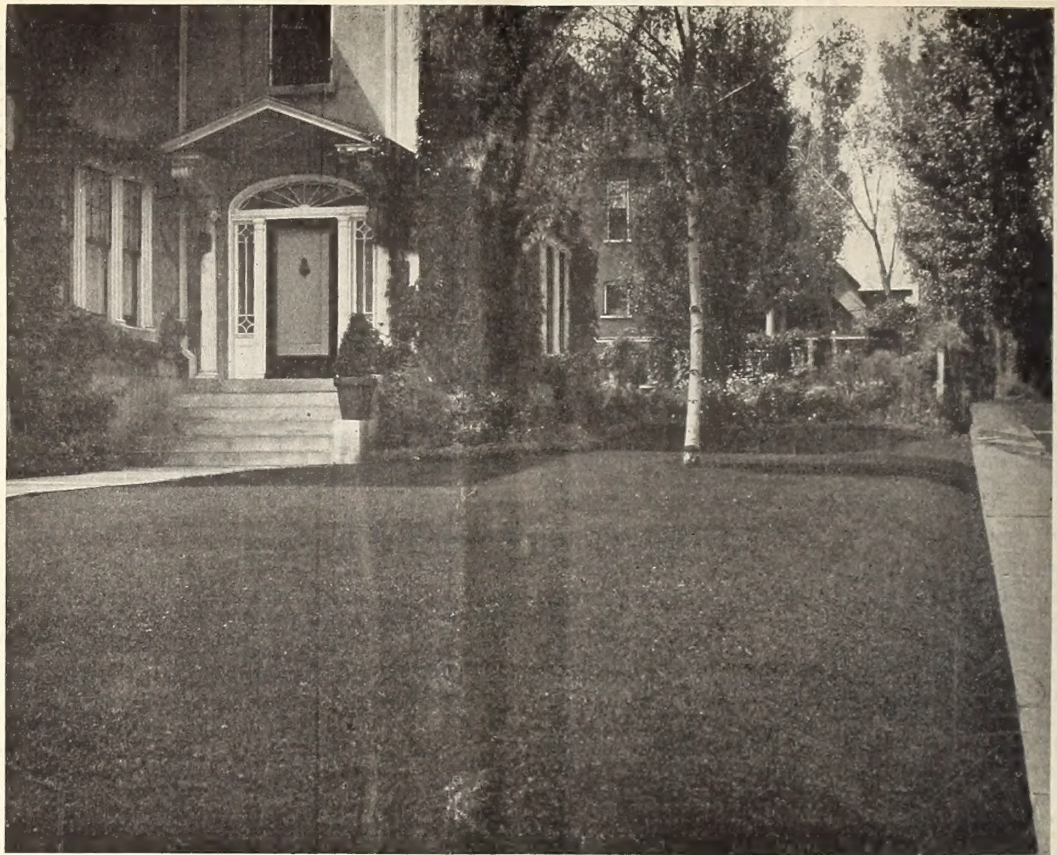
**Dog Biscuits (Meat Bone)**—A properly balanced and constant food for dogs. (Bulk) 1 lb., 20c; 2 lbs., 35c; 5 lbs., 85c; 10 lbs., \$1.60; 25 lbs., \$3.50; 50 lbs., \$6.75; 100 lbs., \$13.50.

## PUPPY FOODS

**Puppy Biscuits (Nut Bone)**—A perfect food for puppies. Puppies should be put on these when about two to three months old and continued until about six months old. (Bulk) 1 lb., 20c; 2 lbs., 35c; 5 lbs., 85c; 10 lbs., \$1.60; 25 lbs., \$3.50; 50 lbs., \$6.75; 100 lbs., \$13.00.

**Circles or Ovals**—Miniature oval cakes for puppies and dogs. Ideal pocket size. (Bulk) 1 lb., 20c; 5 lbs., 90c; 10 lbs., \$1.70; 100 lbs., \$14.00.

**Pup-O**—Granulated for puppies, for young puppies, shy feeders or those recovering from sickness. (Bulk) 1 lb., 25c; 5 lbs., 95c; 10 lbs., \$1.80; 100 lbs., \$15.00.



Partial View of the Attractive Lawn and Grounds of One of our Salt Lake Customers

## The Lawn

The lawn is the most important factor in the development of the home grounds. It furnishes the setting for the house and puts the finishing touch on an attractive home. Proper grass seed mixtures cannot be selected and compounded in a haphazard manner. It requires precise knowledge and experience to produce a formula that will meet the varying conditions of soil, situation and climate and produce throughout the entire season a beautiful green sward. Through years of experimentation we have developed **P-W's Velvet Lawn Green Mixture**, which we can unhesitatingly recommend. It is composed of only plump, clean, vigorous seeds which are sure to produce satisfactory results. For details see page 14.

## Beautify Your Home

No other investment man can make, will bring the pleasure that comes with the home surrounded with beautiful plants, shrubs and trees. In addition to its dividends of satisfaction, such plantings have an economic value of as great proportion. Your new house may be all that you can ask for, the "niftiest" on the street, but you must know that in a few years nicer and newer ones will overshadow it. If you let nature help you you need fear no rivals. A house buried in the splendor of shrubs trees and flowers will sell at a bigger percentage than the same house unadorned.

Let our Landscaping Department assist you in selecting just the right varieties that will properly fit into your particular situation.

# PORTER-WALTON CO.

*Seed and Nursery Specialists*

SALT LAKE CITY, UTAH