

## **Historic, archived document**

Do not assume content reflects current scientific knowledge, policies, or practices.



# AUTUMN 1928

GIANT  
FRENCH  
RANUNCULUS  
PAGE 16



D. N. Sjoemaker

IMPROVED  
GIANT ANEMONE  
PAGE 8

# GERMAIN'S

SIXTH AND MAIN • LOS ANGELES  
CALIFORNIA

# GENERAL DIRECTIONS TO OUR PATRONS

## SEEDS BY MAIL

**IMPORTANT NOTE**—The weight limits in the 1st, 2nd and 3rd zones have been increased to 70 pounds; in other zones the limit is now 50 pounds

**Parcels Post**— Since the installation of the new parcels post law seeds, bulbs, tools, plants and garden supplies (excepting poisons and liquids) may be sent by mail to all parts of the United States, including Alaska, Canal Zone, Guam, Hawaii, Porto Rico and the Philippines. Packages are subject to a limit of maximum weight in the first and second and third zone of 70 pounds; in all other zones of 50 pounds. The maximum size of a package is 84 inches for length and largeness of the girth combined.

**Zone Rates**— May be had by applying to your postmaster, who will tell you which zone you are in with reference to Los Angeles or upon application we will tell you if you supply us with the name of your postoffice.

**For Parcels Weighing 8 Ounces or Less**, containing seeds, bulbs or books only, the rate of postage to all zones is 1½ cents for 2 ounces or fraction. (Over 8 ounces the parcels post rates apply.)

On shipments weighing 20 pounds or more beyond the 2d postal zone it is cheaper to ship seeds by express. As the express companies give a receipt for each package, it amounts practically to insurance without cost, whereas it costs extra, according to value, to insure a parcel post package. We guarantee the safe arrival in the U. S. of all seeds shipped by express or insured parcel post.

To foreign countries the parcel post rate is 14 cents per lb. Registration where possible is 10 cents. C.O.D. orders can now be sent to Mexico.

### FREE DELIVERY

#### FOR CERTAIN QUANTITIES OF SEEDS

We Deliver Free in the United States and Possessions, and Mexico, by Parcel Post or Express to any express office at our option all vegetable and Flower Seeds by the Packet, Ounce and ¼ Pound, and up to and including ten pounds. All other articles, including bulbs, are quoted f. o. b. Los Angeles and postage must be added as per table at the right where goods are desired by parcel post.

Purchasers pay transit charges on larger quantities of seeds, and other merchandise, unless otherwise provided.

Please Order Early, thus enabling us to forward promptly. It will hasten forwarding materially, if customers will kindly make up orders alphabetically, as the goods are listed that way in the catalogue. Seeds are also put in compartments in our stores alphabetically, hence an order can be filled more quickly if it is made out in that manner.

**Counter Customers**— We suggest to those who purchase in person at our store the advantage of having their lists made out before they call. They may be left and called for later, taken at once, or shipped. In any case it is a great saving of time to the purchaser. The list should have full name and address written on it so that our catalogues may be mailed to the purchaser as issued. We also urge early purchases.

**Error in the Filling of Orders**— We use the greatest care in filling, checking and packing orders. Yet should anything be omitted we will promptly forward when advised. Keep a duplicate copy of your order for comparison.

**Remittances** may be made by Express Money Order, P. O. Money Order or Bank Draft; if stamps or cash send in a Registered Letter. We must decline sending goods C. O. D. unless 25 per cent. of their value accompanies the order.

**Accounts**— Parties having no account with us— who order goods without remittance— must furnish satisfactory reference.

### NON-WARRANTY

The Germain Seed and Plant Company gives no warranty, expressed or implied, as to description, quality, productiveness, or any other matter of seeds, bulbs, plants or trees they send out, and they will not be responsible in any way for the crop. If the purchaser does not accept the goods on these terms they are at once to be returned.

**Testimonials from Customers**— We are always pleased to hear from our customers regarding the results of their gardens. Photographs of gardens and particularly of vegetables and flowers, are thankfully received by us.

**Questions and Correspondence**— We endeavor to answer promptly all letters of inquiry— which should be on separate paper from orders— but we cannot undertake the planning of entire gardens and grounds.

ZONES		1st	2d	3rd	4th	5th	6th	7th	8th
Weight in Pounds	Local	Up to 50 miles from Los Angls	50 to 150 miles from Los Angls	150 to 300 miles from Los Angls	300 to 600 miles from Los Angls	600 to 1000 miles from Los Angls	1000 to 1400 miles from Los Angls	1400 to 1800 miles from Los Angls	Over 1800 miles from Los Angls
	1	\$0.07	\$0.07	\$0.07	\$0.08	\$0.09	\$0.10	\$0.11	\$0.13
2	.08	.08	.08	.10	.13	.16	.19	.23	.26
3	.08	.09	.09	.12	.17	.22	.27	.33	.38
4	.09	.10	.10	.14	.21	.28	.35	.43	.50
5	.09	.11	.11	.16	.25	.34	.43	.53	.62
6	.10	.12	.12	.18	.29	.40	.51	.63	.74
7	.10	.13	.13	.20	.33	.46	.59	.73	.86
8	.11	.14	.14	.22	.37	.52	.67	.83	.98
9	.11	.15	.15	.24	.41	.58	.75	.93	1.10
10	.12	.16	.16	.26	.45	.64	.83	1.03	1.22
11	.12	.17	.17	.28	.49	.70	.91	1.13	1.34
12	.13	.18	.18	.30	.53	.76	.99	1.23	1.46
13	.13	.19	.19	.32	.57	.82	1.07	1.33	1.58
14	.14	.20	.20	.34	.61	.88	1.15	1.43	1.70
15	.14	.21	.21	.36	.65	.94	1.23	1.53	1.82
16	.15	.22	.22	.38	.69	1.00	1.31	1.63	1.94
17	.15	.23	.23	.40	.73	1.06	1.39	1.73	2.06
18	.16	.24	.24	.42	.77	1.12	1.47	1.83	2.18
19	.16	.25	.25	.44	.81	1.18	1.55	1.93	2.30
20	.17	.26	.26	.46	.85	1.24	1.63	2.03	2.42
21	.17	.27	.27	.48	.89	1.30	1.71	2.13	2.54
22	.18	.28	.28	.50	.93	1.36	1.79	2.23	2.66
23	.18	.29	.29	.52	.97	1.42	1.87	2.33	2.78
24	.19	.30	.30	.54	1.01	1.48	1.95	2.43	2.90
25	.19	.31	.31	.56	1.05	1.54	2.03	2.53	3.02
26	.20	.32	.32	.58	1.09	1.60	2.11	2.63	3.14
27	.20	.33	.33	.60	1.13	1.66	2.19	2.73	3.26
28	.21	.34	.34	.62	1.17	1.72	2.27	2.83	3.38
29	.21	.35	.35	.64	1.21	1.78	2.35	2.93	3.50
30	.22	.36	.36	.66	1.25	1.84	2.43	3.03	3.62
31	.22	.37	.37	.68	1.29	1.90	2.51	3.13	3.74
32	.23	.38	.38	.70	1.33	1.96	2.59	3.23	3.86
33	.23	.39	.39	.72	1.37	2.02	2.67	3.33	3.98
34	.24	.40	.40	.74	1.41	2.08	2.75	3.43	4.10
35	.24	.41	.41	.76	1.45	2.14	2.83	3.53	4.22
36	.25	.42	.42	.78	1.49	2.20	2.91	3.63	4.34
37	.25	.43	.43	.80	1.53	2.26	2.99	3.73	4.46
38	.26	.44	.44	.82	1.57	2.32	3.07	3.83	4.58
39	.26	.45	.45	.84	1.61	2.38	3.15	3.93	4.70
40	.27	.46	.46	.86	1.65	2.44	3.23	4.03	4.82
41	.27	.47	.47	.88	1.69	2.50	3.31	4.13	4.94
42	.28	.48	.48	.90	1.73	2.56	3.39	4.23	5.06
43	.28	.49	.49	.92	1.77	2.62	3.47	4.33	5.18
44	.29	.50	.50	.94	1.81	2.68	3.55	4.43	5.30
45	.29	.51	.51	.96	1.85	2.74	3.63	4.53	5.42
46	.30	.52	.52	.98	1.89	2.80	3.71	4.63	5.54
47	.30	.53	.53	1.00	1.93	2.86	3.79	4.73	5.66
48	.31	.54	.54	1.02	1.97	2.92	3.87	4.83	5.78
49	.31	.55	.55	1.04	2.01	2.98	3.95	4.93	5.90
50	.32	.56	.56	1.06	2.05	3.04	4.03	5.03	6.02
51	.32	.57	.57	1.08					
52	.33	.58	.58	1.10					
53	.33	.59	.59	1.12					
54	.34	.60	.60	1.14					
55	.34	.61	.61	1.16					
56	.35	.62	.62	1.18					
57	.35	.63	.63	1.20					
58	.36	.64	.64	1.22					
59	.36	.65	.65	1.24					
60	.37	.66	.66	1.26					
61	.37	.67	.67	1.28					
62	.38	.68	.68	1.30					
63	.38	.69	.69	1.32					
64	.39	.70	.70	1.34					
65	.39	.71	.71	1.36					
66	.40	.72	.72	1.38					
67	.40	.73	.73	1.40					
68	.41	.74	.74	1.42					
69	.41	.75	.75	1.44					
70	.42	.76	.76	1.46					

Insurance extra, 5c. for each package up to \$5.00, 8c. up to \$25.00, 10c. up to \$50.00.

#### PARCEL POST WEIGHT LIMIT

The weight limit within the Local, 1st, 2d and 3rd Zones is seventy (70) pounds, within the other Zones it is fifty (50) pounds and the size limit eighty-four (84) inches for combined length and largest girth.

Packages of seed weighing 8 oz. or less can be forwarded anywhere in the U. S. at a cost of one and a half cents for each two ounces, or fraction thereof.







# Germain's Famous Darwin TULIPS

NOTE—Plant tulip bulbs six or eight inches deep. They thrive best when planted deep and produce longer stems and larger flowers.



## Twelve Superb Darwin Tulips

The splendid qualities of these twelve popular sorts are known to all who grow and love tulips. They are among the finest grown, producing large beautifully shaped flowers on strong stems, in a splendid range of brilliant colors. We heartily recommend them for every purpose.

**Clara Butt**—Beautiful soft salmon rose, excellent cut flower.

**Europe**—Vivid scarlet with clear white base, large flower.

**Mrs. Potter Palmer**—Glowing purple, rich and velvety.

**Pride of Harlem**—Old rose, large flower, excellent for cutting.

**Baronne de la Tonnaye**—Bright rose shaded blush.

**Farncomb Sanders**—Vivid cerise scarlet.

**Madame Krelage**—Rose pink tinted lilac.

**Massachusetts**—Soft rose tinted carmine.

**Sieraad van Flora**—Fine large rose.

**The Sultan**—Glossy maroon-black.

**Rev. Ewbank**—Heliotrope color, a renowned bedding variety.

**Inglescombe Yellow**—A beautiful flower of rich golden yellow.

Price: 3 bulbs for 15c; 60c per dozen; \$4.50 per 100.

Special Offer—Three each of the above twelve superb Darwin Tulips—36 bulbs—\$1.65.

The following general collection of famous Darwin Tulips is composed of the finest varieties specially selected from a large assortment of the most beautiful sorts in cultivation. They combine with a rare perfection of form the most pronounced and brilliant colors as well as many charming and delicately blended softer shades.

**Bartigon**—Fiery red, large and brilliant, one of the best of its color. Three bulbs for 25c; \$1.00 per doz.; \$7.00 per 100.

**Bleu Aimable**—Soft bluish lilac. A delightful flower of perfect form. Four bulbs for 25c; 75c per doz.; \$5.50 per 100.

**Edmee**—Deep cherry rose, silvery pink edges, very beautiful. Four bulbs for 30c; 90c per doz.; \$6.50 per 100.

**Glow**—Brilliant vermillion; splendid cut flower. Three bulbs 35c; \$1.25 per doz.; \$9.00 per 100.

**Gretchen**—Delicate blush or flesh pink. A very pleasing shade. Large egg-shaped bloom. Three bulbs for 15c; 60c per doz.; \$4.50 per 100.

**Harry Veitch**—Rich dark red, blue base. Immense blooms on stout stems. Extremely brilliant color and very popular. Four bulbs for 25c; 75c per doz.; \$5.50 per 100.

**Isis**—Fiery crimson scarlet with rich blue base. A distinct sort with large rounded flowers of fine form. Three bulbs for 35c; \$1.25 per doz.; \$9.00 per 100.

**King Harold**—Deep blood red, white base. A flower of great beauty; perfect in form and of large size; one of the finest dark red sorts. Four bulbs for 30c; 90c per doz.; \$6.50 per 100.

**La Tulipe Noire**—The finest "black" tulip; large flower with velvet sheen. Very remarkable for its extremely dark color which is both striking and unusual. Three bulbs for 25c; \$1.00 per doz.; \$7.00 per 100.

**Marconi**—Large purple violet with white center. The flowers are large and well formed, the color tone rich and beautiful. Three bulbs for 25c; \$1.00 per doz.; \$7.00 per 100.

**Petrus Hondius**—Extra large and showy, bright carmine rose. Three bulbs for 25c; \$1.00 per doz.; \$7.50 per 100.

**Princess Elizabeth**—Large flower; soft rich rose toning to silvery pink. Inside deep rose with white center. Three bulbs for 25c; \$1.00 per doz.; \$7.50 per 100.

**Professor Rauvenhof**—Bright cherry red shaded salmon, strong grower. Brilliant and very effective. Three bulbs for 25c; \$1.00 per doz.; \$7.50 per 100.

**Psyche**—Soft rose, silvery rose inside, base tinted blue, long stem. A fine flower. Three bulbs for 25c; \$1.00 per doz.; \$7.00 per 100.

**White Queen (La Candeur)**—Glistening white with but a faint tinge of blush. Four bulbs for 30c; 90c per doz.; \$6.50 per 100.

**Wm. Pitt**—Immense scarlet red with broad white flakes. Three bulbs for 35c; \$1.25 per doz.; \$9.00 per 100.

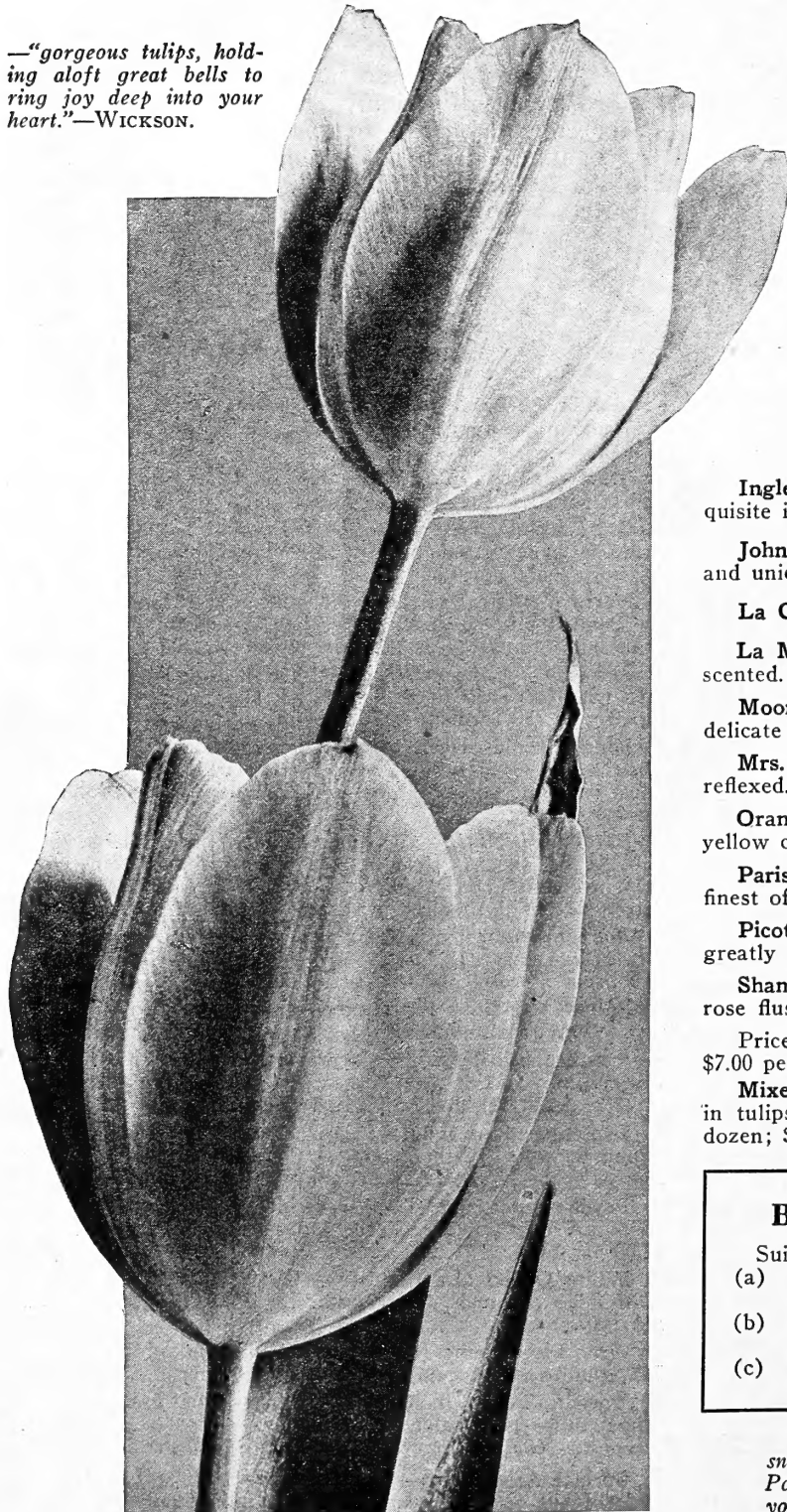
**Darwin Tulips in Choice Mixture**—The finest grade of mixed tulips procurable, containing an almost endless variety of colors. 60c per doz.; \$4.50 per 100; \$42.50 per 1,000.

**Special Assortment**—We will send an assortment of two each of the above 16 sorts but not individually wrapped or named (32 bulbs) for \$1.85.

# Select Mayflowering or Cottage Garden Tulips

A strain of rare beauty. The large, graceful flowers are quite distinct from the Darwin and other sorts offered, being composed of long pointed or oval petals usually reflexed. They appear in the most brilliant shades, including vivid red, rich golden yellow, rose, pink, crimson, picotee, etc. They are late flowering extending their blooming season even beyond that of the Darwin and breeder type. Due to their extreme hardiness they are especially adapted for the permanent hardy flower border. The flowers are of excellent texture and long stemmed and are ideal for cutting. In solid beds or masses, their exceedingly bright shades are unusually effective.

—“gorgeous tulips, holding aloft great bells to ring joy deep into your heart.”—WICKSON.



In planting the bulbs should be set well down, the tops being not less than 6 inches below the surface.

**Bouton D'or or Golden Beauty**—Pure golden yellow, rich and well formed. A remarkably fine bedding variety.

**Gesneriana Major (Spathulata)**—True, rich crimson scarlet with blue black center. A superb variety of large, yet graceful growth. Flowers unusually fine for cutting.

**Gesneriana Lutea**—Clear bright yellow and a favorite both as a cut flower and for the garden.

**Grenadier**—Brilliant orange. A bright and attractive flower of large size and splendid form.

**Inglescombe Pink**—Delicate rose pink, tinted salmon, exquisite in form and coloring.

**John Ruskin**—Salmon rose, edged lemon yellow. A lovely and unique color combination.

**La Candeur**—Silvery white.

**La Merveille**—Large orange red toning to carmine, sweet scented.

**Moonlight**—Very large, beautifully formed flowers of a delicate tint of primrose yellow.

**Mrs. Moon**—Large rich yellow, blooms long and pointed; reflexed. A splendid flower.

**Orange King**—Superb glowing orange shaded scarlet with yellow center and black anthers.

**Parisian Yellow**—Clear yellow, long considered one of the finest of yellow cottage tulips.

**Picotee (Maiden's Blush)**—White, margined carmine rose, greatly admired and popular.

**Shandon Bells**—(Isabella or Blushing Bride). Color, primrose flushed rose, changing to rosy red.

Price, any of the above: 3 bulbs for 25c; \$1.00 per dozen; \$7.00 per hundred.

**Mixed**—A high grade mixture containing all colors known in tulips, suitable for bedding and border planting. 75c per dozen; \$5.50 per hundred.

## Bedding Assortments Darwin Tulips

Suitable for bed 2 ft. by 6 ft. or circular bed 4 ft. across.

- |     |                                |         |                   |
|-----|--------------------------------|---------|-------------------|
| (a) | 26 Lavender Darwin Tulips      | } ..... | 52 Bulbs, \$2.25  |
|     | 26 Pink Darwin Tulips          |         |                   |
| (b) | 26 Red Darwin Tulips           | } ..... | 52 Bulbs, \$2.25  |
|     | 26 Yellow Darwin Tulips        |         |                   |
| (c) | The two above assortments..... |         | 104 Bulbs, \$4.25 |

“Crowd between the groups of Hyacinths mats of snowy *Arabis Alpina*, tufts of *Wallflower*, purple *Pansies*, and some long-stemmed yellow Tulips, and you will have created a spring picture worth coming far to see.”—HUGH FINDLAY.



# Germain's Rare Old Dutch or Breeder Tulips

Beautiful in the extreme are these wonderful old Dutch tulips. Their luminous glowing color tones are at once the delight and despair of the artist who may seek to reproduce them. Rich, warm shades of Bronze and Terra Cotta are deftly blended with Heliotrope or Purple, there are suffusions of Apricot, Mauve or Brick Red done with an artistry no brush can imitate. They have become exceedingly popular of late and have been given great prominence in strictly up to date gardens. They are very similar to the Darwin type in their tall, strong growth and bloom about the same time, but have an entirely different range of colors, comprising many artistic tones not found in any other strain.

**Bronze King**—Large bronzy yellow well formed flower. 3 bulbs for 25c; \$1.00 per dozen; \$7.50 per 100.

**Bronze Queen**—Bronze buff, tinged apricot inside golden bronze. Very handsome flowers of large size and exceptionally good for cutting. 3 for 35c; \$1.25 per dozen; \$9.50 per 100.

**Cardinal Manning (or Kingscourt)**—Claret-red, edged with rosy bronze, a curious blending. Beautiful flower of finest texture. 3 for 25c; \$1.00 per dozen; \$7.50 per 100.

**Copernicus**—Coppery bronze, shaded old rose. A most attractive combination. Flowers large and of splendid form. 2 for 25c; \$1.50 per dozen; \$11.00 per 100.

**Dom Pedro**—Very distinct, coffee brown shaded maroon; inside mahogany red. One of the finest. 2 for 25c; \$1.50 per dozen; \$11.00 per 100.

**Fairy (or Panorama)**—Terra-cotta and bronze, very large, handsome flowers of splendid form. 3 for 35c; \$1.25 per dozen; \$9.50 per 100.

**Godet Parfait**—Large flower of heavy texture, lasting well in perfect condition. The color is a glowing plum-violet, with white base. 2 for 25c; \$1.50 per dozen; \$11.00 per 100.

**Golden Bronze**—Old gold outside, deep golden bronze inside. A very fine sort for all purposes, having good stems and large well shaped flowers. 3 for 35c; \$1.25 per dozen; \$9.50 per 100.

**Lord Curzon (or La Singuliere)**—A novel sort, silvery white heavily flushed and striped cherry red. 2 for 25c; \$1.50 per dozen; \$11.00 per 100.

**Louis XIV.**—A new and wonderful tulip, color royal purple with bronze suffusion and golden brown margin. Held to be the most striking of all. Each 30c; \$3.00 per dozen; \$22.00 per 100.

**MacMahon (or Turenne)**—Bronze-violet, margined bronze-yellow, yellow base. Flowers of good size on tall straight stems. 2 for 25c; \$1.50 dozen; \$11.00 per 100.

**Medea**—Crushed strawberry, shaded heliotrope, yellow center. A very pretty coloring. Most attractive flowers of large size. 3 for 35c; \$1.25 per dozen; \$9.50 per 100.

**Prince of Orange (or Sunset)**—Very vivid color, orange terra-cotta with bright orange border. An excellent and brilliantly colored variety. 2 for 25c; \$1.50 per dozen; \$11.00 per 100.

**Sunrise (or Jaune d'oeuf)**—Old gold shaded apricot. This popular sort is often listed as a Darwin. It is a splendid tulip, very artistic in color. 3 for 35c; \$1.25 per dozen; \$9.50 per 100.

**Superba**—A beautiful shade, light bronze-rose. Well formed, large and erect flower. 3 for 25c; \$1.00 per dozen; \$7.50 per 100.



—“there is no recreation which brings so much happiness and brightness into a man's life as the recreation of Horticulture.”—  
DEAN HOLE

**Virgilius**—Large well formed, beautiful flower, royal purple flushed violet. Each 20c; \$2.00 per dozen; \$15.00 per 100.

**Yellow Perfection**—Lovely golden yellow with light bronze shadings. A beautiful yellow tulip of a most attractive shade. 3 for 25c; \$1.00 per dozen; \$7.50 per 100.

**Choice Mixed**—A splendid mixture, many fine varieties. 3 bulbs for 25c; 85c per dozen; \$6.50 per 100.

## Assortments

The Breeders form a splendid tulip group which is worth knowing well; one of the best ways of becoming acquainted with them is to grow one of the following collections:

- 3 each of the 17 sorts listed, 51 bulbs . . . \$ 5.75
  - 6 each of the 17 sorts listed, 102 bulbs . . . 11.00
  - 12 each of the 17 sorts listed, 204 bulbs . . . 21.00
- Or we will send an assortment of one bulb of each sort not individually labeled for 1.95



# Novelties and Varieties of Recent Introduction

## Eleven New and Select Darwin Tulips

We have selected the following superb sorts from the most recent introductions in Darwin Tulips. They are herded as possessing to a high degree all the qualities for which the Darwin tulips are famous. An ideal collection for the up-to-date garden.

**Afterglow**—Deep rosy orange tinted salmon, inside deep orange, very showy and beautiful. 25c each; \$2.50 per dozen; \$18.00 per 100.

**Anton Mauve**—Enormous flower, deep lilac blue with silvery edge. Three bulbs for 40c; \$1.50 per dozen; \$11.00 per 100.

**City of Haarlem**—Immense vermilion scarlet with blue-black base, edged white. 30c each; \$3.00 per dozen; \$22.00 per 100.

**Giant**—Extra large, glowing reddish purple, blue and white base. Three bulbs for 40c; \$1.50 per dozen; \$11.00 per 100.

**King George V**—Remarkably beautiful new cerise red, of very large size. 35c each; \$3.50 per dozen; \$26.00 per 100.

**La Fiancee**—Charming shade of mauve rose with pink edge and blue base. 30c each; \$3.00 per dozen; \$22.00 per 100.

**Faust**—Enormous blue-black. Three bulbs for 40c; \$1.50 per dozen; \$11.00 per 100.

**Roi D'Islande**—Deep rose with violet sheen, a unique and beautiful shade. Three bulbs for 40c; \$1.50 per dozen; \$11.00 per 100.

**Centenaire**—Rich rosy pink, large and sturdy. Three bulbs for 25c; \$1.00 per dozen; \$7.50 per 100.

**Melicette**—Lavender with inside flush violet, a pleasing delicate shade. Three bulbs for 40c; \$1.50 per dozen; \$11.00 per 100.

**Prince of the Netherlands**—Deep cerise-rose shading to rose-pink. A splendid new variety, large, strong and exceptionally bright in color. Three bulbs for 40c; \$1.50 per dozen; \$11.00 per 100.

Collection of two each of the eleven sorts for \$3.00.

## New Hybrid Tulips (Darwin X Cottage Garden)

The following novelties are the result of crosses between the Darwin and cottage garden strains. They were raised by Krelage & Son and other noted specialists and have aroused much interest in recent European exhibits, obtaining many awards. They are the latest in Dutch bulbs and amateurs everywhere will observe them with keen delight.

**Amber**—(Award of Merit R. H. S.). Round flower of unique coloring; terra-cotta shaded amber, base yellow and blue. 20c each; \$2.00 per dozen.

**Argo**—(Certificate, Haarlem). Yellow, mottled red and passing off to bronze salmon. 25c each; \$2.50 per dozen.

**Idyl**—(Award of Merit N.H.B.S.). Vivid rose, shaded salmon, pure yellow base with blue edge. 20c each; \$2.00 dozen.

**Marvel**—(Award of Merit H.B.G.S.) Inside of old gold, outside salmon rose, edged yellow. This variety is not only very beautiful, but also distinctly sweet scented. 35c each; \$3.50 per dozen.

**Triton**—(Award of Merit H.B.G.S. & N.H.B.S.) Elongated flower of most dazzling carmine, base pure yellow with light blue edge. 25c each; \$2.50 per dozen.

Collection of two each of the five sorts, \$2.20.

## Odd Old Dutch Tulips

**Bizarres**—A very old tall growing race; the flowers are all striped and feathered brown or maroon on yellow ground. 3 for 30c; \$1.00 per dozen; \$7.00 per 100.

**Bybloemen**—Striped and feathered rose and violet. 4 for 30c; 75c per dozen; \$5.50 per 100.

**Rembrandt Tulips**—Delicate shades with stripes and flames of darker colors. Beautiful combinations. 3 for 30c; \$1.00 per dozen; \$7.00 per 100.

**Parrot Tulips**—These do not grow tall like the foregoing, unfortunately, but they are always popular. The flowers are fringed, corrugated and curiously twisted and oddly variegated in color. 4 for 30c; 75c per dozen; \$5.50 per 100.

Collection: Three each of the above four kinds, 85c.

## Double Tulips

The double tulips belong to the early flowering class. They are excellent for pot culture, especially in jardinières with bulb fibre. In the garden they succeed best in shaded locations and last well when cut.

Mixed Colors: 3 for 30c; \$1.00 per dozen; \$7.00 per 100.

All Bulbs are priced [4] F. O. B. Los Angeles



REMBRANDT TULIPS

# Germain's Peerless Northern Grown Daffodils

From the cool fertile valleys of the northern Pacific Coast where Germain's choice daffodils are now being grown, we have received a large supply of very fine bulbs comparable for all garden purposes to the best importations formerly received from our Holland growers. These bulbs have been tried and tested by us in comparison with other stocks received from various parts of the United States and we gladly recommend them to all our customers.

**Culture**—Plant from October to January, covering the bulbs from 5 to 8 inches. They will thrive in any good garden soil. If this can be enriched with some well rotted manure or bone meal, so much the better, but do not dig in fresh manure. Plant six inches apart.

They are valuable for pot culture and indoor decoration. Grown in bulb fibre any dish or jardiniere will do as no drainage is necessary. Keep fibre moist at all times, never sodden.

## New Giant Flowered Varieties

**Treserve**—Undoubtedly one of the finest and largest daffodils in existence. The perfectly formed all yellow flowers are freely produced on tall strong stems.

**Olympia**—Enormous blossoms of a most effective yellow and lemon tone. A superb new daffodil.

**King Alfred**—A real king among daffodils; uniform gold yellow, of great size and beauty. Trumpet recurved and fluted.

**Van Waveren's Giant**—The grandest of all bicolors. Petals primrose with bright yellow trumpet. One of the largest and finest in cultivation.

**Robert Sydenham**—A truly remarkable introduction. Immense in size, clear bright yellow in color, wide open trumpet with deeply frilled brim. 50c each; \$5.00 per dozen; \$37.50 per 100.

The above, except where noted, 35c each; 3 for \$1.00; \$3.75 per dozen; \$27.50 per 100.

## Large Trumpet Daffodils

**Glory of Sassenheim**—A truly glorious variety, one of the finest of the giant Trumpet daffodils. The large Trumpet is rich yellow with pale lemon yellow perianth. Robust in growth producing strong stems and of the easiest culture. 25c each; \$2.50 dozen; \$18.00 per 100.

**Minister Talma**—A very beautiful new early daffodil. It is in bloom frequently before the famous early golden Spur and the flowers are much superior to the older variety. The massive blooms held high on solid stems are of a rich golden yellow color. 25c each; \$2.50 per dozen; \$18.00 per 100.

**Emperor**—Brilliant yellow trumpet, perianth deep primrose yellow. Flowers very large, splendid garden variety and beautiful cut flower. 20c each; \$2.00 per dozen; \$14.00 per 100.

**Empress**—A magnificent variety, perianth white, of great substance, trumpet rich yellow, one of the best. 20c each; \$2.00 per dozen; \$14.00 per 100.

**Golden Spur**—Deep golden yellow flowers; the best early flowering variety. 20c each; \$2.00 per dozen; \$14.00 per 100.

**Silver Beauty**—A splendid daffodil with white petals and soft citron trumpet. 15c each; \$1.75 per dozen; \$12.50 per 100.

## Medium Trumpet Daffodils

Also known as Chalice Cup or Star Narcissus

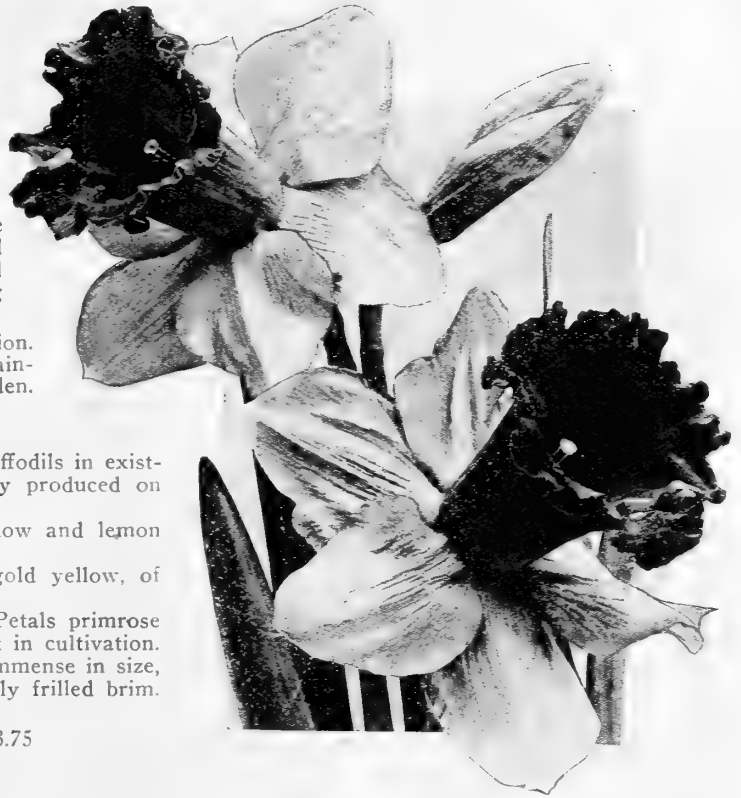
This class is very beautiful and graceful in form. The following sorts are among the best of this type and are adapted for pot culture as well as garden use. They are of free and easy growth and multiply rapidly.

**Barri Conspicuus**—Yellow with orange cup. 15c each; \$1.50 per dozen; \$10.00 per 100.

**Sir Watkin**—Yellow, the largest and finest of the "incomparable" type. 15c each; \$1.50 per dozen; \$11.00 per 100.

**Firebrand**—A brilliant flower, petals creamy yellow, cup a distinct fire red. 15c each; \$1.75 per dozen; \$12.50 per 100.

**Mrs. Langtry**—This beautiful and delicately tinted daffodil belongs to the Leedsii type. Petals snow white, prettily crinkled cup of soft yellow passing to white. 15c each; \$1.50 per dozen; \$11.00 per 100.



## Double Narcissus or Daffodils

The double daffodils have a peculiar charm all their own. They are totally distinct from the Trumpet varieties and very popular both for cutting and garden culture.

**Golden Phoenix**—Double light yellow with deep golden center. 25c each; \$2.50 per dozen; \$18.00 per 100.

**Orange Phoenix**—Large double white, orange base. 25c each; \$2.50 per dozen; \$18.00 per 100.

**Von Sion**—The ever popular double yellow daffodil. 15c each; \$1.50 per dozen; \$11.00 per 100.

## Poet's Narcissus

(Narcissus Poeticus)

**Poeticus**—The old favorite Pheasant's Eye or Poet's Narcissus. Snowy white flowers, with yellow cup margined with red. Odor rich and spicy. 15c each; \$1.50 per dozen; \$11.00 per 100.

## Jonquil

A species of Narcissus with very fragrant flowers; excellent for cutting. Culture same as for Narcissus.

**Campernelle Regulosus**—The largest and finest single Jonquil; color pure yellow; very fragrant. 15c each; \$1.50 per dozen; \$11.00 per 100.

**Odorous Plenus**—(Double Campernelle). Double, rich yellow flowers of elegant form. 15c each; \$1.50 per dozen; \$11.00 per 100.

## Polyanthus Narcissus or Nosegay Daffodils

**Grand Soleil d'Or**—Yellow, orange cup, excellent for early forcing, can be grown in water. 20c each; \$2.00 per dozen; \$14.00 per 100.

**Grand Primo**—White with yellow cup, large flower. 15c each; \$1.50 per dozen; \$10.00 per 100.

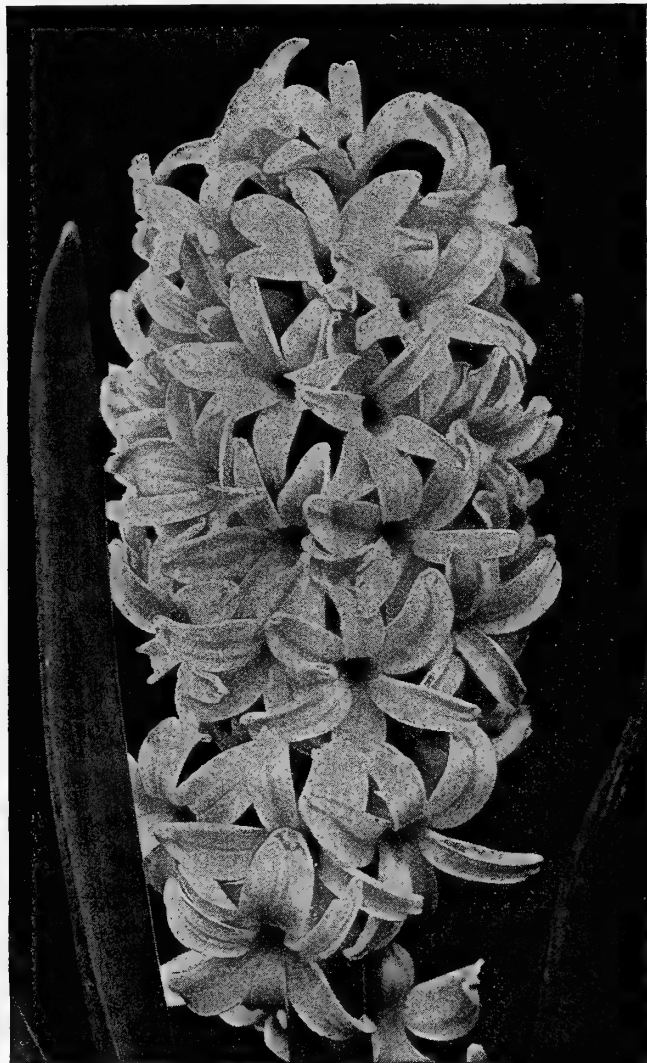
**Paper White**—Will flower in water as quickly and easily as the Chinese Lily. Large bulbs. 15c each; \$1.50 per dozen; \$10.00 per 100. Good flowering size, 10c each; \$1.00 per dozen; \$7.50 per 100.

**Chinese Sacred Lily**—A species of Narcissus well known here; very fine for window decoration, grown in water.

Extra Large Size: 25c each; \$2.50 per dozen; \$18.00 per 100.  
First Size: 15c each; \$1.50 per dozen; \$10.00 per 100.

# GERMAIN'S IMPORTED Dutch Hyacinths

Classed with the most popular of all imported bulbs, the hyacinth has held a very prominent place in the parks and gardens of America for many years and is ever gaining in favor. The tall spike well furnished with delicate waxy bells is too widely known to need further description. Its well balanced and symmetrical growth lends itself ideally to formal planting, few bulbs being used with such good effect for bedding. In the border, planted in groups, the hyacinths are welcome companions with dwarf iris, tulips, etc. and their flowers are as fragrant as they are beautiful.



GIANT EXHIBITION HYACINTH

## How To Grow Hyacinths

The bulbs may be planted in the open from October to January in any good garden soil which has been well spaded up. They should be six or eight inches apart and covered six inches or more.

**Pot Culture**—Plant one bulb in a five-inch pot. A six-inch pot will hold three or four. Use light soil and place a few crocks in bottom of pots for drainage. The top of the bulb should be about even with the surface of the soil. Keep in a cool dark place for five or six weeks until the roots are fully developed, then gradually inure to the light.

**In Glasses**—Fill the glass with water so as to barely touch the base of the bulb. A piece of charcoal the size of a walnut, put into the water, will keep it pure and obviate frequent changing. Keep in a dark cool place until the roots have fairly started, then remove to the light.

**In Bulb Fibre**—Bulb fibre may be used to great advantage when growing bulbs for home decoration. As no drainage is necessary, any receptacle can be used to plant them in and there is no danger of water running on furniture or floors.

## Top Root Exhibition Hyacinths

These bulbs are of extraordinary size measuring frequently 19 centimeters in circumference. They produce exceptionally strong spikes of enormous size and are ideal for forcing and for growing in Hyacinth glasses. Varieties listed below may invariably be found among the winning entries at the various Exhibitions.

**General de Wet**—Very fine light rose, a pink form of the popular lavender blue variety "Grand Maitre".

**Gertrude**—Carmine rose, large spike, a compact grower of a deep rose color, sometimes described as light red.

**Lady Derby**—Bright rose pink, an excellent variety for pot culture, producing a remarkably fine large spike.

**La Victoire**—Bright glistening deep carmine red, an excellent exhibition variety.

**Roi des Belges**—Deep red. Makes a good spike and is probably the best of this color.

**Moreno**—Bright pink, large bells, an improved form of Norma. The large spikes produce bells in greater number and of a brighter shade of pink.

**La Grandesse**—Pure white, splendid spike.

**L'Innocence**—Pure white extra large truss. The best all-round white hyacinth for all purposes, forces well and is equally good for bedding.

**Grand Maitre**—Deep porcelain blue. Remarkably fine large flower and vigorous grower.

**Duke of Westminster**—Dark purple bells with white eye. Good strong spike. A most attractive variety.

**Lord Balfour**—Purplish violet, large, broad spike, dark stem and heavy foliage. Showy and distinct.

**Queen of the Blues**—Beautiful pale azure blue in color, and perfect in form. Always popular.

**King of the Blues**—Dark blue. Considered one of the finest of the rich, deep blue sorts.

**City of Haarlem**—Bright golden yellow. A most attractive variety. Flower large and strong.

**Yellow Hammer**—Pure yellow, early and a favorite with many.

**Mixed**—Assorted from finest named varieties.

**Price:** Any of the above, 30c each; 4 for \$1.00; \$3.00 per dozen; \$22.00 per 100. One each of the 15 Exhibition varieties for \$3.75.

*"If I had two loaves of bread, I would sell one of them and buy white hyacinths."*—МАНОМЕТ.

# LARGE FLOWERING Named Hyacinths

These plump, large sized bulbs send up large full spikes, rivalling those of the "top roots." They can be safely recommended for growing in pots or glasses and for high class bedding. The results obtained for all purposes have been most gratifying.

The ten varieties offered are everywhere in general demand and may be relied upon to give complete satisfaction.

**General De Wet**—Splendid light rose.

**Gertrude**—Large carmine rose or light red.

**Lady Derby**—Excellent bright rose pink.

**Moreno**—Improved bright pink.

**L'Innocence**—Most popular white variety.

**Grand Maitre**—Deep porcelain blue. Fine rich blue.

**King of the Blues**—Dark blue, one of the favorite blue sorts.

**Queen of the Blues**—Pale blue, a perfect azure blue.

**City of Haarlem**—Fine bright golden yellow.

**Choice Mixture**: All the above colors in fine mixture.

Price: Any of the above 20c each; 3 for 50c; \$2.00 per dozen; \$15.00 per 100.

One each of the ten sorts for \$1.75.

## Germain's "Sunset" Named Hyacinths

These are the same high grade named varieties offered in good sized bulbs and may be depended upon to produce fine results. They are excellent for growing in pots or boxes in doors or used for bedding in the open with charming effect. An opportunity to enjoy these splendid and fragrant spring flowers at very reasonable cost.

**General De Wet**—Light rose.

**Gertrude**—Carmine rose.

**La Victoire**—Carmine red.

**Lady Derby**—Rose pink.

**Moreno**—Bright pink.

**L'Innocence**—Pure white.

**Grand Maitre**—Porcelain blue.

**King of the Blues**—Dark blue.

**Queen of the Blues**—Azure blue.

**City of Haarlem**—Yellow.

All colors. Choice mixed.

Price: Any of the above 15c each; 4 for 50c; \$1.50 per dozen; \$11.00 per 100.

## Named Double Hyacinths

The double Hyacinths are not as popular as the single sorts and we offer only a few varieties which we consider the best and well worth growing.

**Noble par Merite**—Pink, extra fine. Each 30c; \$3.00 dozen; \$22.00 per 100.

**President Roosevelt**—Bright rosy red. Each 30c; \$3.00 dozen; \$22.00 per 100.

**La Grandesse**—Pure white, very fine. Each 30c; \$3.00 dozen; \$22.00 per 100.

**Garrick**—Clear blue. Each 30c; \$3.00 dozen; \$22.00 per 100.

**Goethe**—Light yellow, fine truss. Each 30c; \$3.00 dozen; \$22.00 per 100.

## Crocus

Crocus require very little attention and they are one of the first flowers to bloom in the Spring. Planted in masses or 3 or 4 rows arranged in a border, they are very effective. They must not be planted more than one inch deep for if planted too



LARGE FLOWERING HYACINTH

deeply they sometimes fail to bloom. Crocus are often planted in the lawn where they come up very early in the Spring and are practically over blooming before the lawn needs much mowing. This method is more popular in the east and if tried here it had best be done where there is some shade. They are ornamental when flowered in pots.

**Cloth of Gold**—Golden yellow and brown. Each 5c; 50c dozen; \$3.50 per 100.

**Montblanc**—Pure white. Each 5c; 50c dozen; \$3.50 per 100.

**President Lincoln**—Deep purple. Each 5c; 50c dozen; \$3.50 per 100.

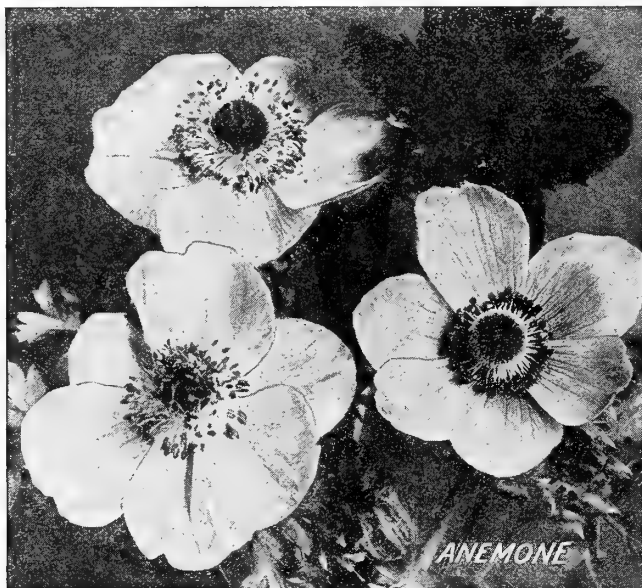
**Sir Walter Scott**—White, striped lavender-blue. Each 5c; 50c dozen; \$3.50 per 100.

**Yellow Mammoth**—Extra large. Each 10c; 75c dozen; \$5.50 per 100.

**All Colors**—Mixed. Each 5c; 50c dozen; \$3.50 per 100.



# Germain's Improved Giant Anemones



These are among the most showy and beautiful of spring flowers; of neat and compact growth, with elegantly cut foliage and the most brilliantly colored blossoms. They require but little attention and may be used to great advantage in solid beds or masses or in connection with other plants in the border. Their large velvety flowers are ideal for cutting, lasting several days in water.

**Culture**—Anemones require a rich, loamy soil. Soak the roots in water for six hours previous to planting. This causes them to swell and enables one to distinguish the crown, which is readily discernible by the fibrous points at the top of the root, the bottom being quite smooth. A sunny place is best. Place a slight ridge around the bed so that the plants may be flooded with water.

Plant any time from October to May. They bloom from February to July.

Price: Extra Large Bulbs, 4 for 50c; \$1.25 per dozen; \$8.50 per 100. Large Bulbs, 3 for 25c; 75c per dozen; \$5.00 per 100. Small Bulbs, 50c per dozen; \$3.50 per 100.

## Caladium Elephant's Ear

The leaves of immense size on massive stems grow to a height of four feet. For a tropical effect this plant has no equal.

When planting, leave crowns even with the surface of the ground, water sparingly until they are fairly started, but water abundantly when in active growth.

First Size: 25c each; \$2.50 per dozen. Ready for shipment in December.

## Calochortus or Mariposa Lily

These famous California flowers possess much delicacy and brilliancy of coloring. They resemble a tulip.

Mixed, all colors. 10c each; 75c per dozen; \$5.50 per 100.

## Calla Lily

Known to every lover of flowers. The callas are free flowering, showy garden plants and are equally successful in doors. Both the yellow and white sorts offered, are improved strains producing fine large flowers and cannot be too highly recommended.

**Culture**—Callas are very easy to grow, and to be successful they need only be given a good rich soil and an abundance of water. May be planted either in a sunny or half shady place. The white variety may be planted from July to March, and will bloom all year excepting during June, July and August. The yellow variety is ready in December and should be planted shortly afterwards.

**Calla Elliotiana (The Yellow Calla Lily)**—This is the finest Calla grown; large deep, rich golden yellow color. The leaves are spotted with white, habit like our old favorite White Calla. Ready for shipment January 1st.

Extra Large Bulbs, 50c each; \$5.00 per dozen.

Large Bulbs, 35c each; \$3.50 per dozen.

Medium Size, 25c each; \$2.50 per dozen.

Small Size Bulbs, 15c each; \$1.50 per dozen.

**Calla Aethiopica (The White Calla Lily or Lily of the Nile)**—Tall growing strain with enormous pure white flowers.

First Size Bulbs, 35c each; \$3.50 per dozen.

Second Size Bulbs, 25c each; \$2.50 per dozen.





# Germain's Superb New Giant Amaryllis

This beautiful strain of American hybrid Amaryllis is unsurpassed. The flowers average over 8 inches in diameter and range in color from almost pure white, through rose, carmine, cherry red, scarlet and crimson, to deep maroon. Many are striped and mottled. The flowers are flat and spreading, with full rounded and overlapping petals and usually number 4 to 6 on a stem. The plants are of exceptionally strong growth, the flower stalks are heavy and tall. In colder climates these gigantic blooms are the pride of the conservatory or window garden where they succeed very well, but in our own climate they thrive perfectly in the open and may be used with gorgeous effect in beds and borders or among shrubbery.



**New Giant Amaryllis**

## Amaryllis Johnsonii

A very popular sort producing freely large blooms of a most brilliant red color. Large bulbs, 50c each; \$5.00 per dozen.

## Begonia

Tuberous Rooted

This splendid class of begonias is perhaps the handsomest of all bedding plants for a shady or semi-shaded location. Bulbs may be started in pots early in February or in the open later in the Spring. They prefer a rich sandy loam, and should be covered to a depth of two or three inches. Ready about February 1st.

Single, separate colors: Rose, scarlet, yellow, white; or mixed. Each 35c; \$3.50 per dozen.

Double, separate colors: Scarlet, rose, white, yellow; or mixed. Each 50c; \$5.00 per dozen.

The Amaryllis are easy of cultivation. They may be planted in full sun or semi-shade, the soil being first well spaded and adequately enriched with rotted manure or commercial fertilizer. In planting do not cover the bulbs more than an inch or so and do not move them more often than necessary, as they thrive best when undisturbed for several seasons.

**Large Bulbs** which will bloom first year, 75c each; \$7.50 per dozen.

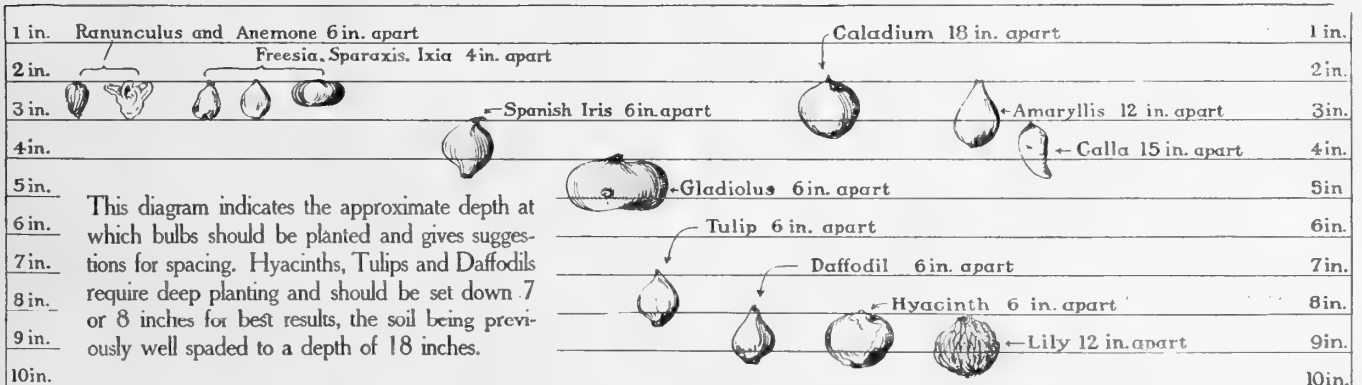
Second size, 60c each; \$6.00 per dozen.

## Amaryllis Bella Donna

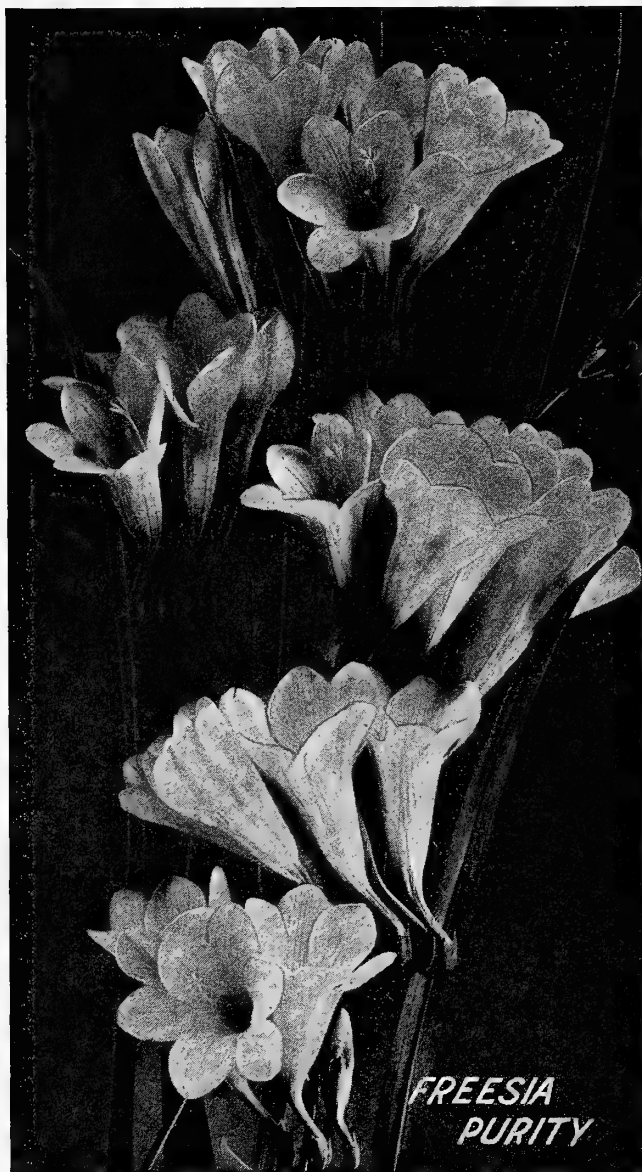
"Bella Donna Lily," blush, delicately shaded with pink or light purple, flowering before the leaves appear, very fragrant and fine for cut flowers, lasting fully a week when cut. Plant in a sunny position, leaving the neck even with the surface of the soil.

First Size: 25c each; \$2.50 per dozen.

Second Size: 15c each; \$1.50 per dozen.



# Germain's Extra Select FREESIA BULBS



## Three Splendid Freesia Novelties

**Mendota**—Clear yellow, large flower and long, extra strong stems. A new variety of great merit.

**Mrs. Marc Peter**—Rosy salmon. A very attractive shade. Tall, excellent cut flower.

**June Michelson**—The finest rose pink. Strong grower, good stems.

Price: 15c each; \$1.50 per dozen; \$10.00 per 100.

Collection of 5 each of the three splendid freesias for \$2.00.

## Freesia Fisherii

A new snow white, with broader, larger flowers and petals of great substance. 75c per dozen; \$5.50 per 100.

## Improved Purity Freesias

A greatly improved strain of the popular sweet scented white freesias. Very attractive in the garden and a most desirable cut flower.

Mammoth Sized Bulbs, 50c per dozen; \$3.00 per 100.

Large Bulbs, 25c per dozen; \$1.75 per 100.

The Freesias are admired and popular both for the garden and as cut flowers. The original white sort is an old favorite in many gardens esteemed for its unusual and artistic appearance and its sweet odor. The newly developed colored sorts have retained all the qualities of the type. They are free flowering, keep well and are very sweet scented and in addition most of them are taller and more vigorous. In beauty and variety of color tones they now surpass even the fondest dreams of the originators, ranging from pure golden yellow to salmon, orange, carmine, rose, lavender and Amethyst blue.

**Culture**—Their culture is very simple. They thrive in any good garden soil, but will repay with interest whatever special attention they receive. Plant them in beds, in rows or in masses between other perennial plants, for, while they succeed perfectly in full sunlight they do well also in partial shade. Cover the bulbs about two inches with soil and give them usual care. They will bloom profusely in early spring. The bulbs may be lifted and stored in summer after all foliage has died down and they may be set out again the following Autumn or if preferred, they may be left in the ground to reappear and bloom each spring from year to year.

## New Colored Freesias

Beautifully colored and sweet-scented, these new freesias are admirable cut flowers and thrive particularly well in our California winter climate.

**Amethyst**—Tall amethyst blue with lavender blue center. A fine variety of strong sturdy growth.

**Aurora**—Large flowering, orange and yellow. Charming color combination and very much admired.

**California**—Large golden yellow. Strong tall grower, admirable for cutting.

**Carmencita**—Orange salmon hue with buff shadings on the lower petals. Tall wiry stems.

**Carrie Budau**—Large lavender pink on tall stems. Remarkably strong grower and very free flowering.

**Ilena**—Deep rosy lavender with orange blotch on the lower petals. Good stiff stems. Flowers large and very attractive.

**Olivette**—Bright carmine red with light yellow throat, lower petals having deep yellow blotch with crimson veins.

**Yellow Prince**—Deep golden yellow, splendid cut flower variety.

**Gen. Pershing**—Tall, vigorous grower producing a wealth of fine lavender pink flowers.

Price: Any of the above, 3 for 25c; \$1.00 per dozen; \$6.50 per 100.

Collection offer: 6 each of the above varieties for \$4.00.

**Rainbow Mixture**—A superb mixture of new colored freesias containing a wide range of beautiful shades, including many choice new sorts. 4 for 25c; 75c per dozen; 50 for \$2.75; \$5.25 per 100.



# GLADIOLUS

Germain's

## "Sunset Collection"

A splendid up-to-date assortment of twelve beautiful named varieties selected from the finest and most popular sorts in cultivation. The collection has been chosen especially to include a color range as wide and varied as possible.

**Alice Tiplady**—Lovely Orange Saffron, a renowned cut flower sort.

**Black Pansy**—Richest Maroon (almost black) but relieved by a pansy-like center—quite unique.

**Byron L. Smith**—Superb Lavender, a grand flower.

**E. J. Shaylor**—Large, tall and exquisite rose pink.

**Herada**—A stately flower, Mauve Blue, in great demand.

**Lily White**—A most satisfactory pure white sort.

**Mrs. Dr. Norton**—A fascinating blend of La France Pink, Yellow and Rose.

**Mrs. Frank Pendleton**—A well known variety and still among the best. Salmon Rose with Crimson center.

**Prince of Wales**—Immense clear light Salmon.

**Rose Glory**—Beautiful clear rich Rose.

**Schwaben**—Fine free flowering, bright Canary Yellow.

**Virginia**—Bright fiery Scarlet Red.

**PRICE:** The entire collection, carefully labeled and packed in special lithographed carton, \$1.00; postpaid anywhere in the U. S. A. for \$1.10.

# Germain's New and Rare Gladiolus

## New Creations in Gladiolus

We have been exceedingly fortunate to secure a few very choice bulbs of the following superb new originations in Gladiolus. These varieties have recently been exhibited and have received many awards at several of the leading shows where they never failed to create a sensation.

The seven new creations originated with one of the most famous gladiolus specialists in the country and are the result of ten years of scientific work. The bulbs will be very scarce and a prized possession with amateurs for many years.

The descriptions are those of the originators.

### Balboa

A clear glowing apricot pink, blending into a warm yellow throat. Seven large, well opened, excellently placed somewhat reflexed flowers of good texture open at once. Particularly beautiful under artificial light. A good propagator. Per bulb, \$1.00.

### Catalina

Bright rosy pink primulinus with a vivid lemon throat. The pink is most intense at outer edges of the petals and becomes more delicate toward the center, blending with the yellow gradually. Flowers are medium size, well spaced in open airy form. A tall, slender, graceful stalk with fifteen bulbs, five being open at one time. Excellent texture. Per bulb, \$1.00.

### Coronado

A very large, heavily ruffled white with a royal purple throat. The purple of the throat is lace-like and forms a wonderful combination with the milky white petals. Single flowers are very large, measuring from six to seven inches in diameter. Texture is of the best. The grand beauty of this variety can hardly be imagined. It must be seen to be appreciated. Coronado is the largest gladiolus we have ever seen. Orders now booked for January 1st delivery. Per bulb, \$10.00.

### Mabel Irving

An excellent clear, warm pink. Flowers large, ruffled, wide open and of good texture. Flowers are well placed with six open at one time on a tall straight stalk. Vigorous grower and rapid multiplier. Per bulb, \$1.00.

### Merced

Charmingly beautiful; one-fourth Primulinus. A brilliant orange saffron in color shading into a lighter yellow in the throat. The bloom is large, ruffled well opened and only slightly hooded. Good grower and multiplier. Per bulb, \$5.00

### Mission Bells

A beautifully hooded Primulinus of rich orange pink. Tall and very graceful with six beautiful bell-like flowers open at once on a wiry, delicate stalk. A wonderful flower for baskets and bouquets. Sure to be a great favorite with the florist. Vigorous. Per bulb, \$1.00.

### Santa Barbara

Extra large, nicely ruffled—a very delicate pink. Extremely broad petals with ruffles not merely on the edges of the petals, but traversing the entire petal. This ruffling gives the flower a wonderful appearance. When the bloom first opens, it appears to be double, as the three inner petals rise above the outer one like the trumpet of a narcissus. Six to eight of these enormous fluffy blossoms open at once in charming form. We consider this very choice and feel sure it will be greatly admired. Per bulb, \$10.00.

## Four Wonderful New Sorts

The following four sorts rank among the most beautiful new gladiolus of recent times. They are all unusually large in size and radiant in form and coloring. The shades are unique and are not met with in any other gladiolus.

**Copper Bronze**—Very striking. Copper bronze color. Large flowers and very graceful. Unusual glad which gains universal admiration. Per bulb, 50c.

**Golden Dream**—Giant growing with extra tall spikes. A wonderful pure canary yellow. This new variety has just been introduced and its clarity of color and vigor of growth is unexcelled. Per bulb, \$1.00.

**W. H. Phipps**—LaFrance overlaid with light rose salmon, lighter toward the center. Lower petals very faintly striped and speckled with ruby. Enormous flowers with as many as fourteen open at a single time. Voted as best gladiolus in many flower society ballots. Per bulb, 40c.

**Geraldine Farrar**—Clear even light blue Gladiolus. This is without doubt the best blue glad. A very interesting and pleasing color. Per bulb, \$1.00.

## Three Rare Varieties

**Robert J. Kundred**—Medium tall, very large bloom, most brilliant, deep vermilion or orange scarlet. A wonderful showy self color.

**Mrs. Leon Douglas**—Ground color begonia rose striped with flame and brilliant scarlet. Spikes are extra long and have many side spikes. This is one of the grandest, largest and best varieties in existence.

**Rose Ash**—A most beautiful and unique shade of old rose overlaid with a light purplish bronze tinge very difficult of description, but most striking and artistic.

Price: Any of the above, 50c each; \$5.00 per dozen.

## Four Charming "Prims"

Gladiolus of the Primulinus type are becoming more prominent and popular each year. They are especially valuable as cut flowers, their slender, more graceful habit lending itself ideally to florist work. In addition they assume some of the most delicate and rare shades to be found in gladiolus, being rich in yellows, Apricot and Orange shades. The following are four of the finest ever offered.

**Romance**—An unusual flower and difficult to describe. Orange, salmon rose, red and yellow throat with a bluish border surrounding each petal. A great favorite. 20c each; \$2.00 per dozen; \$15.00 per 100.

**Souvenir**—A very tall graceful spike. Purest deep yellow. Flowers small, dainty and very well arranged. This is probably the best yellow

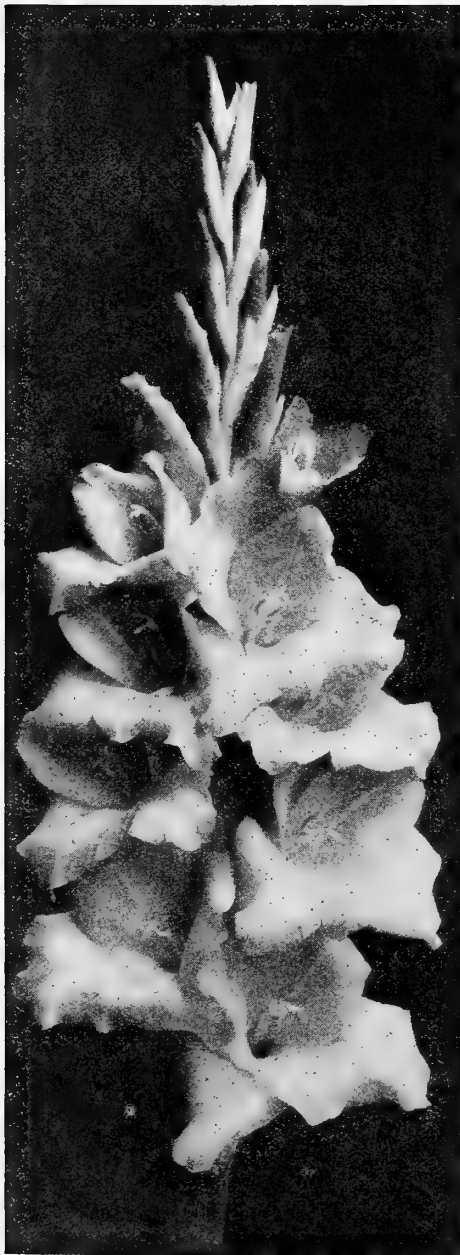
now on the market. 15c each; \$1.50 per dozen; \$11.00 per 100.

**Jewell**—Tall creamy yellow overlaid with delicate bluish pink. Grand and impressive variety. Exceedingly graceful spike and is an excellent variety for cut flowers. 15c each; \$1.50 per dozen; \$11.00 per 100.

**Sheila**—Light coral salmon fading to flesh pink in throat with primrose blotch on lower petals. Very good form with plenty of vigor. 10c each; \$1.00 per dozen; \$7.50 per 100.

Collection: Six each of the 4 sorts (24 bulbs), \$2.75.

**Primulinus Hybrid Gladiolus**—A distinct type rich in shades of yellow, orange, apricot, etc. The tall, strong yet slender spikes are more graceful than the ordinary garden varieties. 2 bulbs for 15c; 75c dozen; \$5.50 per 100.





# GERMAIN'S EXTRA CHOICE GLADIOLUS BULBS

The gladiolus is invaluable as a summer flower, and its popularity has increased tremendously in the last few years. Our list contains only the best sorts, varieties which have been tried and proven to give the most satisfactory results both as cut flowers and for garden display. When cutting, do so as soon as one or two flowers are expanded. The rest of the buds will open in water if care is taken to remove faded flowers, changing water daily and cutting a piece off the stem each time. The bulbs should be planted from three to five inches deep in any good light or sandy garden soil. They flourish best in an open sunny situation. Gladiolus bulbs ready in November.

## Five Peerless Gladiolus

**Los Angeles**—(The "Cut and come again" glad.) Wonderfully productive. Will produce more full sized spikes than any other variety we know. The flower stalk is very tall and graceful. The color is clear bright pink with deeper pink feather in the throat. "Los Angeles" makes a vigorous plant sending up many strong, tall spikes, but is not heavy or coarse. Graceful in form and exquisite in color, it is outstanding in the flower garden and unrivaled for cutting purposes.

**Jack London**—Light salmon with vermilion stripes. Canary yellow throat with ruby stripes.

**Gold**—By many considered the finest yellow. Large wide open flowers well arranged on a sturdy spike. Many florets open at once and of a clear deep yellow. A great favorite among the newer glads.

**Mrs. F. C. Peters**—Extra tall vigorous lavender gladiolus with a deep rose lilac throat. This is one of the finest gladiolus in the world and was so voted by the American Gladiolus Society. A very large flower well arranged on a long strong spike. As delicate in color as an orchid and a vigorous grower.

**American Beauty**—The color of this famous flower is a brilliant American Beauty rose with a pronounced creamy yellow throat. The single flowers are five or six inches in diameter, one spike bearing as many as six to ten open blossoms at a time and forming an immense bouquet of beauty. Should be given a place of honor wherever gladiolus are grown.

Price: Any of the above, 30c each; \$3.00 dozen.

The collection of "Five Peerless Gladiolus", \$1.35.

## Eight Grand New and Rare Gladiolus

**Purple Glory**—The giant of the Ruffled type. Deep purple, maroon or ox-blood.

**Byron L. Smith**—The finest lavender.

**Black Pansy (Pansy-face)**—This is an ideal flower for the amateur and collector. It is unique among glads. Rich maroon, so dark as to be almost black, but relieved by a pansy-like throat which gives the flower an appeal all its own.

**Pythia**—A gigantic dark rose red.

**L'Immaculee**—Splendid new pure white.

**Golden Measure**—A real pure yellow with golden sheen.

**Rose Glory**—A new rose hue.

**Glory of the Night**—New deepest maroon. The darkest of all gladiolus.

Price: Any of the above, 25c each; \$2.50 per dozen; \$18.00 per 100.

The collection of eight grand new gladiolus, \$1.85.

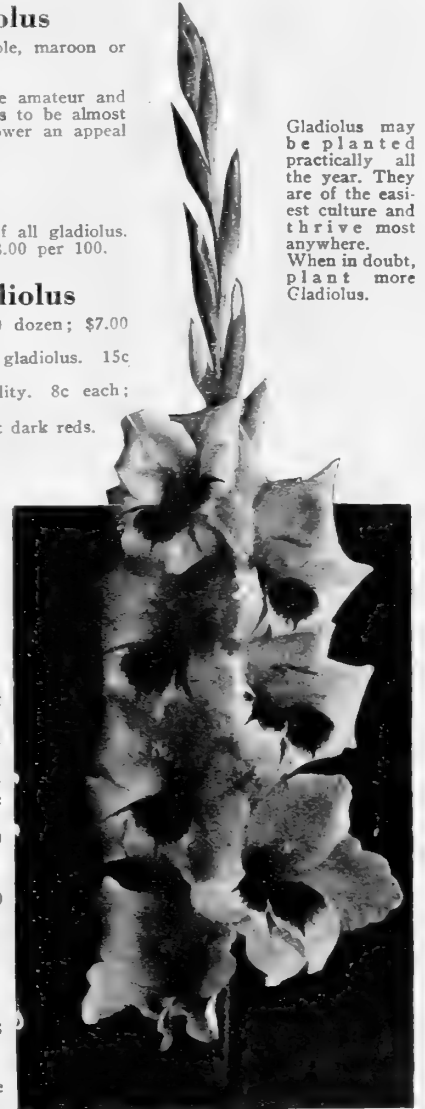
## General Collection of Choice Gladiolus

**Alice Tiplady**—A lovely orange saffron. 10c each; \$1.00 dozen; \$7.00 per 100.

**Baron Jos. Hulot**—Deep blue, a splendid color rare in gladiolus. 15c each; \$1.50 dozen; \$10.00 per 100.

**Chicago White**—Pure white, large and of excellent quality. 8c each; 75c dozen; \$5.50 per 100.

**Crimson Glow**—Deep crimson; large flowers, one of the best dark reds. 15c each; \$1.50 dozen; \$10.00 per 100.



Gladiolus may be planted practically all the year. They are of the easiest culture and thrive most anywhere. When in doubt, plant more Gladiolus.

- Dorothy Wheeler**—Beautiful peach pink. 10c each; \$1.00 dozen; \$7.00 per 100.
- E. J. Shaylor**—Superb rose pink. 10c each; \$1.00 dozen; \$7.00 per 100.
- Evelyn Kirtland**—Charming bright coral pink, tall graceful stalk. 8c each; 75c dozen; \$5.50 per 100.
- Halley**—Delicate salmon pink. 8c each; 75c dozen; \$5.50 per 100.
- Herada**—A rare and stately flower. The pure mauve color is exceptional. 10c each; \$1.00 dozen; \$7.00 per 100.
- Le Marchal Foch**—Flesh pink. 8c each; 75c dozen; \$5.50 per 100.
- Lily White**—Snow white, lower petals tinged cream. 10c each; \$1.00 dozen; \$7.00 per 100.
- Mary Pickford**—(Certificate of merit Royal Horticultural Society). A striking novelty of a charming creamy tone bleeding at the throat with a soft lemon color. 10c each; \$1.00 dozen; \$7.00 per 100.
- Mrs. Dr. Norton**—This flower presents a fascinating color combination. It is a blend of La France pink, cream, sulphur yellow and Tyrian rose. 15c each; \$1.50 dozen; \$10.00 per 100.
- Mrs. Francis King**—Bright scarlet. A splendid red for every purpose. 8c each; 75c dozen; \$5.50 per 100.
- Mrs. Frank Pendleton**—Lovely salmon pink with brilliant dark red blotches in the throat. 8c each; 75c dozen; \$5.50 per 100.
- Myrtle**—Dainty clear rose pink melting to creamy white at the throat. 15c each; \$1.50 dozen; \$10.00 per 100.
- Panama**—Rich rose pink. 8c each; 75c dozen; \$5.50 per 100.
- Prince of Wales**—Clear light salmon. The choicest salmon colored variety. 10c each; \$1.00 dozen; \$7.00 per 100.
- Salmon Beauty**—Delicate pure salmon with pure yellow throat. 10c each; \$1.00 dozen; \$7.00 per 100.
- Schwaben**—Clear canary yellow. Large flower. 10c each; \$1.00 dozen; \$7.00 per 100.
- Wilbrink**—Delicate pale pink. 10c each; \$1.00 dozen; \$7.00 per 100.
- Yellow Hammer**—Yellow with red mark in center. 15c each; \$1.50 dozen; \$10.00 per 100.
- Virginia**—A bright fiery red. The flowers are large, the stems strong yet graceful. 10c each; \$1.00 dozen; \$7.00 per 100.
- Mixed**—A choice mixture containing many named varieties. 3 bulbs for 15c; 60c dozen; \$4.50 per 100.
- Miniature or Baby Gladiolus**—Bulbs available in early fall. As cut flowers for early spring, they have few rivals. 8c each; 75c dozen; \$5.50 per 100.
- Germain's "Sunset" Collection**—Twelve large bulbs, splendid varieties, no two alike. See page 11. \$1.00.

The "Sunset Collection" is [13] a beautiful assortment (See Page 11)



# Imported Japanese Lily Bulbs

We cannot say too much in praise of this elegant class of plants, which are becoming more popular every year. The bulbs offered are of large size, and sound. They come of a famous Japanese strain noted for its immense blossoms, good color and free flowering habit. We list only the varieties which in our opinion are the most beautiful and have the further advantage of being very easy to grow in our locality. These include the popular Easter Lily of which two forms are offered. Formosum and Giganteum, the former being an early flowering kind. They are usually ready in October and November, while the other varieties listed reach here about the middle of December. The Easter Lilies bloom outdoors in April and May; other varieties in July and August.

**Candidum**—(Annunciation or Madonna Lily). This beautiful garden lily is one of the first to arrive and is usually ready in September. It should be set out in early fall. The flowers are borne on long stems. They are pure white and very fragrant. 35c each; \$3.50 per dozen.

**Formosum**—One of the best for winter forcing. The flowers are pure white, long and trumpet shaped. Fine cut flowers. 25c each; \$2.50 per dozen.

**Giganteum**—Large flowering, pure white lily of strong, healthy growth, can be forced into bloom for Easter. 25c each; \$2.50 per doz.

**Rubrum**—"The Red Lily of Japan." Carmine rose on white ground, spotted with crimson. The most showy of Japanese lilies for the garden and an excellent cut flower. 25c each; \$2.50 per doz.

**Auratum**—"Golden Banded Lily," the finest and most magnificent of the genus. Flowers white, spotted crimson with a distinct golden stripe running through each petal. 25c each; \$2.50 per dozen.

**Regale**—"The Regal Lily." A new species of great beauty. In habit it is not unlike the Easter lily, but taller and bearing frequently 10 to 12 flowers on one stem. Color, white suffused with rose and with striking yellow throat. 35c each; \$3.50 per dozen.

**Tigrinum**—"Tiger Lily," orange, spotted black, very showy. 35c each; \$3.50 per dozen.

## Special Bulb Sets

### Ideal for Christmas Gifts

The following selections are available from October 1st until January 15th. They are carefully and attractively packed, making charming gifts especially for the holidays.

**No. 1**—General garden collection of 20 spring and summer flowering bulbs, specially packed. An attractive gift. Price \$1.00.

**No. 2A**—Set of bowl with bulbs including a handsome bulb bowl and three narcissus bulbs planted in bulb fibre and green moss. A very popular gift. Glazed bowl. Price \$1.00.

**No. 2B**—Same as above but with Ivory Bowl. Price \$1.00.

**No. 2C**—Same as the foregoing but with beautifully decorated bowl. Price \$2.00.

When ordering sent by parcel post, allow 3 lbs. weight per bowl.



## How To Grow Lilies

When planting lily bulbs spade up the soil to a depth of 18 inches, adding some bone meal or old well rotted manure (be careful that no fresh manure is used). Where the soil is very heavy or too wet, a cushion of sand should be placed directly under each bulb. They should be covered to a depth of 6 or 8 inches; extra large bulbs may be planted even deeper.

Lilies are most effective when planted in a border with other perennial plants, or among shrubbery and it is here also that they will do best as the shade of surrounding plants is necessary to their welfare.

Lilies may be grown in pots and in doing so it is best to select at first the smallest pots in which the bulbs will fit, later shifting them to larger pots as the plants progress. A rich and well prepared potting soil should be used. In order to bring in the flowers by Easter, a greenhouse is usually necessary, but small lots are often flowered in time in a sunny window. This requires care and a little experience and many an amateur gardener shows pardonable pride in the accomplishment.

## Choice Spanish Iris

The Spanish Irises have been in cultivation for many years. These beautiful ornamental flowers vary in color from white to yellow, violet, blue and purple. Are very easily grown in half-shaded situations, flowers are valuable for cutting. A great favorite with florists. Plant in rows or clumps about 3 inches deep and 3 to 5 inches apart.

**Ophir d'Or**—Large golden-yellow.

**Royal Blue**—Beautiful violet blue.

**Queen Wilhelmina**—Large white, slightly tinted lilac.

**Imperator**—Deep blue.

**Frans Hals**—Falls pale yellow, standards light blue.

**Gypsy Queen**—Deep bronze.

**Anton Mauve**—Uniform pale mauve.

**Spanish and Dutch Iris**—Choice mixed.

Prices: Any of the above, 3 for 25c; \$1.00 per dozen; \$7.50 per 100.

### Madeira Vine

**Madeira**, or "Mignonette Vine." A rapid climber of very easy culture. Will cover a large space in a very short time. Fleshy heart-shaped leaves and feathery, fragrant blossoms. 3 for 25c; \$1.00 per dozen.

### Cinnamon Vine

(*Dioscorea Batatas*)

A rapid climber with bright, glossy heart-shaped leaves. It derives its name from the peculiar fragrance of the delicate white blooms. 15c each; \$1.50 per dozen.

### Pancratium

(Spider Lily)

**Carribeum**—Strange and beautiful flower. Pure white and sweetly scented. 15c each; \$1.50 per dozen.



SPANISH IRIS

### Ixia

For planting in solid masses or for outlining the edges of walks in the bulb garden, there are no bulbous plants more effective or more easily grown than these dainty flowers. The flowers are arranged in spikes on strong wiry stems and are especially useful for cutting.

**Culture**—Plant them three inches apart and two inches deep in any good garden soil.

Finest mixed, 3 for 20c; 75c dozen; \$5.50 per 100.

### Ismene Calathina

(Peruvian Daffodil)

Large, pure white, Amaryllis-like flowers of unusual appearance. Fragrant and beautiful. Culture same as Amaryllis. 25c each; \$2.50 per dozen.

Good second size bulbs. 20c each; \$2.00 per dozen.

### Lily of the Valley

(*Convallaria Majalis*)

The pips, or slender running root stalks should be planted in moderately rich, moist soil in shady situations. Planted from January to March they bloom from April to June. 3 for 25c; \$1.00 dozen; \$7.00 per 100.

### Ornithogalum

(Star of Bethlehem)

**Arabicum**—Beautiful variety throwing a tall spike of numerous star-shaped flowers with a jet-black center and having a distinct aromatic perfume, decidedly pretty when grown in the garden. Large size. 3 for 25c; \$1.00 dozen; \$7.00 per 100.

## GERMAIN'S GIANT FRENCH RANUNCULUS

(Persian Buttercup or Fair Maids of France)

The flowers of our selected strain are double with a graceful fullness suggestive of a full-blown rose. They keep fresher and longer when cut than any other flower we know. The colors are surprisingly bright and cheerful, appearing in many shades of rose, red, salmon, yellow, maroon and white. The accompanying picture gives some idea of their graceful form, but it is not possible to portray here their extraordinary brilliancy and variety of coloring.

Soak the roots in water for two hours before planting and cover with two inches of soil. They should be planted rather closely for the best garden display, 4 to 6 inches being an average distance apart.

**Large Sized Roots**—75c per dozen; \$5.50 per 100.

**Extra Large Roots**—\$1.00 per dozen; \$7.00 per 100.

**Good Bedding Size**—50c per dozen; \$3.50 per 100; \$32.50 per 1000.

### Montbretia

*Montbretia Crocosmiaeflora*—

Long spikes of showy, orange-colored flowers, with yellow and purple markings in the throat. Price: 3 for 20c; 75c per dozen; \$5.50 per 100.

### Oxalis

Handsome and graceful flowers varied in color produced in great profusion during winter and spring—suitable for hanging baskets, pots, window boxes, and borders. Plant them two inches deep in good friable soil from July to early fall.

**Grand Duchess Mixed**—35c per dozen; \$2.50 per 100.

**Buttercup, Yellow**—50c per dozen; \$3.50 per 100.

**Bowei**—A distinct and very attractive sort. The flowers are large and of a most brilliant rose color. 75c per dozen; \$5.50 per 100.

### Snowflakes

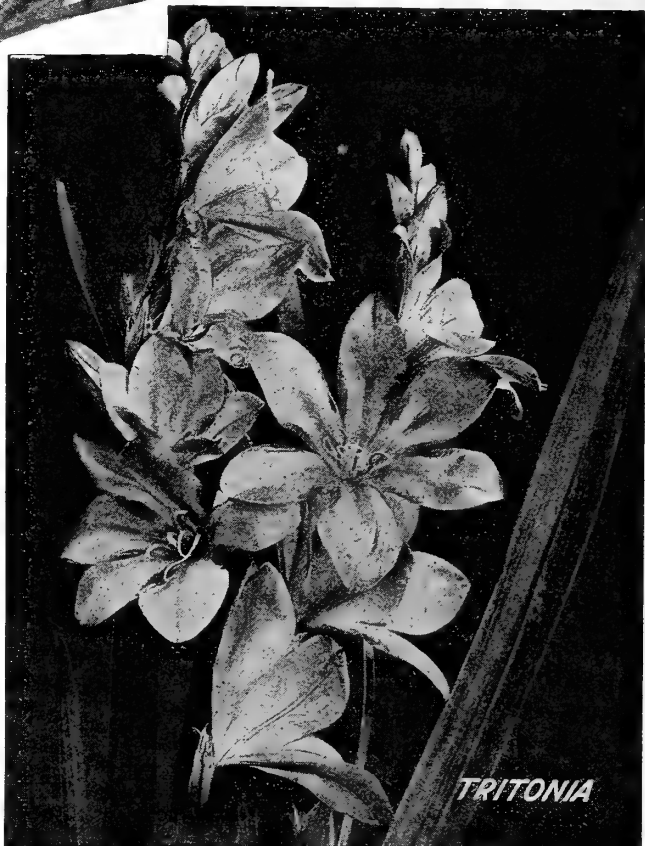
**Leucojum Vernum**—Very similar to the English Snowdrop, but with much longer stems. Very early and fine for cutting. 3 for 25c; \$1.00 per dozen; \$7.50 per 100.

### Sparaxis

These attractive flowering bulbs are quite novel in coloring, appearing in shades of red, rose or white, with distinct markings of maroon or black in the throat. They resemble the Ixia in form and habit and require a similar treatment.

Finest mixed. 3 for 20c; 75c per dozen; \$5.50 per 100.

**Tuberoses, Ismene and Pancratiums** [16] are noted for fragrance



**Tritonia**

Beautiful low growing bulbous plants from the Cape of Good Hope. Flowers a bright orange scarlet. Easily grown in any good garden soil. Plant them three or four inches apart and two inches deep. 3 for 20c; 75c per dozen; \$5.50 per 100.

**Tuberose**

**Double Pearl**—Far superior to the old double variety, growing only about two feet high, with large individual double white florets, which have longer foot stalks than the old variety, rendering them more useful for cut flower purposes. Large bulbs. 3 for 25c; \$1.00 dozen; \$7.50 per 100.

**Mexican Everblooming Single**—Delightfully fragrant, very free flowering and of the easiest culture. 3 for 20c; 75c per dozen; \$5.50 per 100.

**Vallota**

**Purpurea (The Scarborough Lily)**—This is a South African representative of the Amaryllis family. It is a bulbous plant with large scarlet funnel-shaped flowers blooming in late summer. Established plants usually produce several flower trusses, each truss bearing from 4 to 9 large flowers. The bulbs of this plant are not plentiful and we are offering only a limited quantity at \$1.00 each.

**Watsonia**

Similar to the Gladiolus, even in culture. It grows about four feet high and produces a wonderful profusion of flowers which are in bloom about Easter time. Ready for planting in August.

**Pure White (Obrienii)**—Large snow white. 3 for 25c; \$1.00 per dozen.

**Pink (Cerise-rose)**—Bright deep pink. 3 for 25c; \$1.00 per dozen.

**Clementina**—Large and beautiful clear salmon pink. 25c each; \$2.50 per dozen.

**Mrs. Ella Birney**—Large lustrous rosy red. 25c each; \$2.50 per dozen.

**New Hybrids in Choice Mixture**—20c each; \$2.00 per dozen; \$15.00 per 100.



*TUBEROSE*

**Zephyranthes**

(Zephyr Flower, or Fairy Lilies)

Very effective for massing or borders, flowering in great profusion during spring and summer; also suitable for pot culture, a few bulbs potted in the fall will give a fine display during the winter.

**Alba**—Pure white. 10c each; 75c per dozen.

**Rosea**—Rose pink. 10c each; \$1.00 per dozen.

**Prepared Bull Fibre**

Germain's prepared fibre is becoming more popular every season. It is far more convenient than potting soil when planting bulbs indoors, and replaces to advantage the pebbles used in growing Chinese lilies, etc., in bowls as it contains plant food which stimulates the plant and improves the blossoms.

No drainage is needed, consequently any receptacle may be used and bulbs will bloom splendidly in a jardiniere, lily bowl, or dish having no perforation whatever in the base. This eliminates any danger of water and soil running through on furniture, floors, or carpets. The material is clean and free from any odor.

Plant bulbs as you would in soil but do not press the fibre too firmly, nor fill the bowl too full. Keep moist but not too wet or sodden. Start the bulbs in a dark, cool place and bring to the light when sprouted an inch or so. Hyacinths, Narcissus, Chinese Lilies, Tulips, Freesias, Crocus, etc., are grown to perfection in this way.

Price: Packet (enough for 6 or 7 inch bowl) 15c; per lb. 25c.



*ZEPHYRANTHES*



# GERMAIN'S CALIFORNIA FLOWER SEEDS

## For Autumn and Winter Sowing

Success in gardening is due primarily to the proper selection of the seeds, bulbs and plant materials used. In the flower garden the best results can be obtained only when seeds of known quality and reliability are planted.

In the production of flower seeds of the highest quality much depends upon the weather conditions during the maturing and harvesting periods. For this purpose the climate of California is unrivalled. As a result and because of the excellence of the strains which have been developed here in all the leading species such as Asters, Zinnias, Sweet Peas, etc. California flower seeds are proclaimed the finest and most dependable in existence.

The selection offered in the following pages includes a number of the most prominent and popular sorts most of which will bloom in winter or early in the spring if sown in late summer or fall in our climate. Even in Eastern states fall sowing of hardy annuals and perennials is becoming a current practice. If planted just prior to the first heavy frosts and allowed to winter in the ground they produce larger, sturdier plants and the blooming season is materially advanced. Alyssum, antirrhinum, calendula, candytuft, Centaurea, Larkspur, Nemophila, pansies, petunias, and dozens more may be fall-sown in cold climates with excellent results.

## SWEET PEAS

### Germain's "Foremost" Early Flowering Spencers

The varieties described below have been selected for excellence as well as novelty. They are indeed the foremost winter flowering sweet peas of the season.

#### Superior Pink

"Superior Pink" is the highest achievement of our foremost Sweet Pea specialists. We highly recommend it with the conviction that it is the largest, strongest and most beautiful pink sweet pea we ever have had the privilege to offer. The supreme rose-pink. Pkt. 25c.

#### Sweet Lavender

True lavender is an immensely popular shade in sweet peas, and our new "Sweet Lavender" will easily surpass any other variety in the lavender group. "Sweet Lavender" is a pure lavender of enormous size, beautifully frilled and always bearing fours on good long stems. Pkt. 25c.

#### Mrs. Kerr

This unique sweet pea has given universal satisfaction. It is unquestionably the best early salmon. Pkt. 25c.

#### Eldorado

Splendid glowing orange. Early, free flowering and of robust growth. Eldorado has shown greater resistance to sunburn than any orange variety previously introduced. In the winter garden it is simply a blaze of color. Pkt. 25c.

#### Perfection

A rich deep rose variety recently introduced. The large waxy flowers are very freely produced on tall vigorous vines which continue in bloom for many weeks. Pkt. 15c.

One packet each of Germain's Five Foremost Winter Sweet Peas, \$1.00.



### SUPERB NEW SPENCER VARIETIES

The following new Spencer sorts are of Californian introduction and have gained for themselves many high awards throughout this country and in Europe. They rank with the highest attainments of modern Sweet Pea specialist anywhere.

**Doreen**—Very large and wavy carmine, exceptionally bright and pleasing. Flowers of fine texture supported on long stems. Pkt. 25c.

**Del Monte**—A splendid addition to our list of modern Sweet Peas. The flowers are of enormous size and true Spencer type. The color is striking and new and words cannot adequately define it. It has been described as rich salmon cerise pink. The shade is unique and beautiful. Pkt. 25c.

**Youth**—A delightful picotee, a pastel that is dainty and delicate in the extreme. The ground color is white, the flower being neatly edged with soft rosy pink. Pkt. 25c.

**Snowball**—A new glistening white of remarkable size and substance. The large flowers on strong, long stems are unsurpassed as cut flowers. Pkt. 25c.

**The President Harding**—(Named by special permission of the late President of the United States.) It is an entirely new and most pleasing color in sweet peas—peach-red or salmon-cerise, suffused orange. Pkt. 25c.

One Pkt. each of the five new Spencers varieties, \$1.00.

### HOW TO GROW BEAUTIFUL SWEET PEAS

Sweet peas are deep rooting. The soil where they are to be planted should be dug to a depth of eighteen inches. They are also gross feeders and a liberal amount of fertilizer will insure luxuriant growth and large flowers. Dig the fertilizer well under and see that the soil has settled and is firm before the seeds are planted. This result can be quickly obtained by tamping and watering. The seeds are usually sown in shallow trenches about three inches deep and covered only one or one and one-half inches. The balance of the earth is filled in after the young plants have grown a few inches. In certain heavy soils it is best not to cover the seed more than one inch at any time. Seeds may be spaced one or two inches apart in the trench and the young plants gradually thinned to six inches to prevent crowding.

A support for the vines must be provided early. They require a liberal amount of water. The flowers must be gathered often and should any seed pods form, these must be immediately removed to insure a prolonged blooming period.

In growing sweet peas out of season, the vines are protected with cheese cloth or other light material. If the cloth is stretched above the plants it provides sufficient protection against strong sunshine in summer and chilly nights in winter.



# GENERAL COLLECTION OF EARLY OR WINTER FLOWERING SPENCER SWEET PEAS

The principal advantage of this new type of sweet peas is their early flowering habit. They are especially valuable for winter flowering, but they are equally successful in spring and summer and flower several weeks in advance of the Spencer if planted at the same time. All White—Giant white. Splendid cut flower.

- Amethyst**—Royal purple of large size and perfect form.
- Asta Ohn**—Lavender, delicately tinted mauve.
- Aviator**—A superb dazzling crimson. Large and free flowering.
- Blue Bird**—Fine deep blue.
- Columbia**—Large wavy pink and white. Beautiful cut flower variety.
- Cream**—Rich cream color.
- Gorgeous**—Soft salmon rose. A beautiful and pleasing shade.
- Glitters**—Glittering cerise. Bright and cheerful; a remarkably fine variety.
- Grenadier**—The most brilliant scarlet.
- Harmony**—Splendid large lavender. An unusually clear color.
- Hercules**—Mammoth rose. Strong growing, long stemmed.
- Illumination**—Splendid salmon cerise. One of the finest bright red sorts.
- Lavender King**—Clear lavender of perfect form, large size.
- Miss Louise Gude**—Brilliant Pink. A lovely variety of uniform shell-pink throughout.
- Othello**—Velvety deep maroon.
- Rose Charm**—Bright rose. Beautiful large well shaped flowers.
- Rose Dore**—Beautiful soft rose pink, delicately suffused with salmon.
- Snowstorm (Improved)**—A popular pure white.
- The Beauty (Dark Fiery Rose)**—Large flowers of perfect form. A splendid sort.
- White Orchid**—Pure white.
- Zvolanek's Rose**—Excellent rose pink.

Price per Pkt. 15c; oz. 90c; ¼ lb. \$2.70.

Germain's Blend Winter Spencer Mixed—Pkt. 15c; ½ oz. 40c; oz. 75c; ¼ lb. \$2.25; lb. \$7.50.

## GIANT SPENCER SWEET PEAS

The flowers of the Giant Spencer type are very large and wavy. The vines are extremely vigorous, often growing 8 to 10 feet in height. If planted in the fall they begin to bloom very early in spring and if the blossoms are gathered daily and no seed pods form they continue to flower freely for several months.

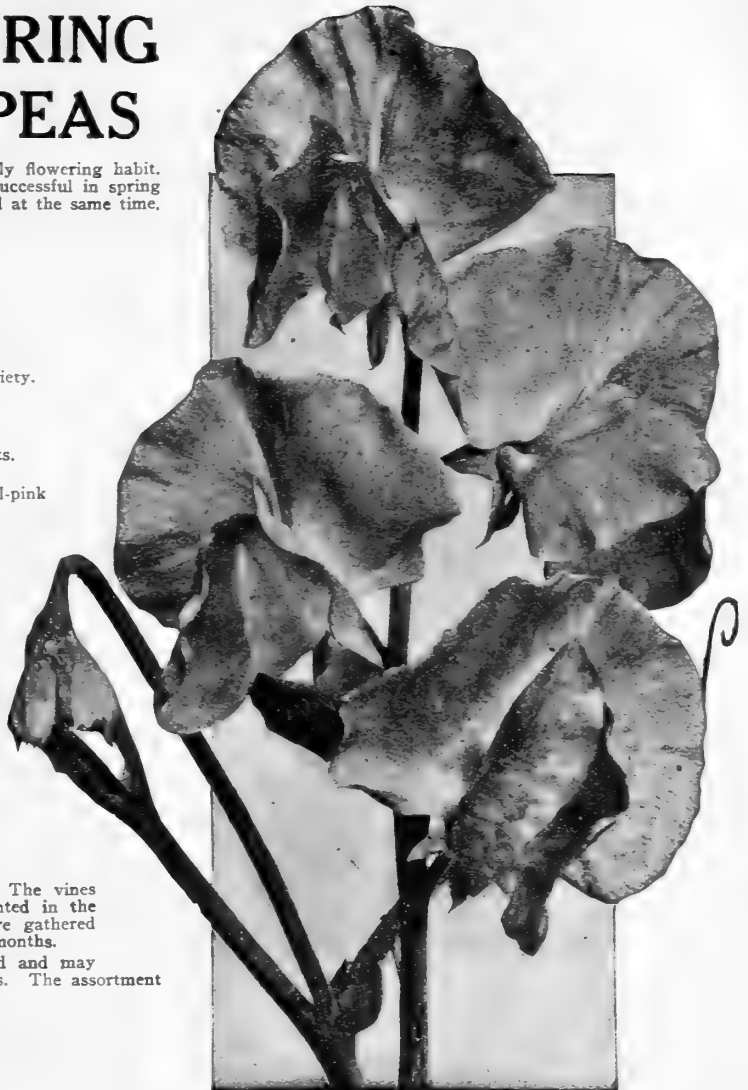
The following list of varieties has been carefully selected and tested and may be depended upon to contain none but the best in their respective colors. The assortment affords a complete range of all shades now available in Sweet Peas.

- Asta Ohn**—Lavender, tinted mauve.
- Blanche Ferry**—Select, bright rose and white.
- Countess Spencer**—Light pink, shading darker towards edges.
- Defiance**—A new scarlet, large, vigorous, absolutely burnless.
- Edith Taylor**—Rose salmon.
- Fiery Cross**—A scorching fiery red color exquisitely waved and will not burn or fade during intense sunshine.
- Floradale Purple**—Rich rosy purple.
- Flora Norton**—Clearest and most pronounced blue.
- Hebe**—Large bright pink. A rich clear color. Long stemmed. A splendid variety.
- Hercules**—Rose pink. Immense flowers, long stems and a beautiful, rich, clear, rose color, very vigorous and a free bloomer.
- Illuminator**—A glowing cerise-salmon with an indication of bright orange, which glistens in the sunlight. Flowers large and wavy.
- King Edward**—Carmine scarlet.
- King White**—The best Spencer White ever produced.
- Margaret Atlee**—A rich glowing pink softly suffused with salmon. Flowers extraordinary size, exquisitely waved and freely produced on long stems.
- Mary Pickford**—Large, wavy, perfectly formed flowers of dainty cream pink. A recent introduction of great merit.
- Miss California**—Rich beautiful salmon cream pink, attractive and distinct.
- Mrs. Tom Jones**—Bright delphinium blue.
- Othello**—Rich, deep maroon.
- Powers Court**—A very beautiful lavender sort from England.
- Primrose Spencer**—The color is a pronounced creamy yellow, with beautiful crinkled wings.
- Royal Purple**—A beautiful Royal Purple, large size and good form.
- Royal Scot**—A scarlet of exceptional brilliancy.
- Sterling Stent**—Glowing salmon orange.
- Tangerine**—The last word in orange-colored sweet peas. Resembling closely the Tangerine in color.

Any of the above 10c per packet; 40c per ounce.

Choice Spencer Mixed—A carefully blended mixture containing an unusually wide range of beautiful colors. Per Pkt. 10c; oz. 30c; ¼ lb. 90c; lb. \$3.00.

For Christmas Blooming Plant [19] Sweet Peas in early September



### Special Assortments and Collections

#### WINTER WONDER COLLECTION OF WINTER-FLOWERING SWEET PEAS

Contains 5 separate packets of choice, large flowering winter sweet peas, in red, pink, lavender, cream and one packet assorted colors. Price for entire collection, 50c.

#### GERMAIN'S STANDARD DOZEN GIANT WINTER SPENCERS

Amethyst, Asta Ohn, Cream, Othello, Harmony, Rose Charm, Gorgeous, Hercules, Illumination, Aviator, The Beauty, White Orchid. Price \$1.50.

#### GERMAIN'S "DOLLAR COLLECTION" OF GIANT SPENCER SWEET PEAS

Twelve beautiful shades in the following varieties: Asta Ohn, Blanche Ferry, Countess Spencer, Edith Taylor, Hercules, King Edward, Floradale Purple, Othello, Primrose Spencer, Sterling Stent, Mrs. Tom Jones, King White. Price \$1.00.

#### THE "SUNSET COLLECTION"

An excellent assortment containing six fine varieties, namely: Asta Ohn, lavender, Hercules, rose-pink; Illuminator, cerise; Primrose Spencer, yellow; Royal Purple and White Spencer. Price 50c.

# Germain's California Flower Seeds

## Selected for Autumn and Winter Planting



CALENDULA "THE BALL"  
(Page 21)

### Snapdragon

(*Antirrhinum*)

For vivid shades and rich coloring, few flowers equal the Snapdragon. They are well adapted for bedding and border planting and the brilliant blossoms profusely borne on tall spikes make excellent cut flowers. They are easily grown from seed in a seed box or well prepared seed bed. If intended for winter blooming they should be started in late summer or early fall.

### New Giant Snapdragons

(*Antirrhinum Maximum*)

This wonderful new group of Giant Snapdragons far surpasses anything yet introduced. The flowers, closely placed on tall spikes, are of magnificent size—invaluable for garden decoration, they are also incomparable cut flowers of exceptional quality.

**Apple Blossom**—Rosy Pink.

**Cattleya**—Lilac, creamy yellow tube.

**Old Gold**—Rich Golden Yellow.

**The Rose**—Rich Rose Pink.

**Copper King**—Velvety Copper Scarlet with bronze sheen.

**Giant Choice Mixture**—All Colors.

Price: Any of the above, 25c per pkt.

Collection of five separate varieties, \$1.00.

### Large Flowering Semi-Tall Snapdragons

Large flowers closely placed on medium sized stems make this strain especially valuable for bedding and as cut flowers for bouquets and baskets.

**Black Prince**—Nearly Black; small dark leaves.

**Cottage Maid**—Delicate Pink tinged salmon; white throat.

**Crimson King**—Rich Deep Crimson.

**Defiance**—Scarlet with Brilliant Orange Red suffusion.

**Golden Queen**—Large Golden Yellow.

**Queen of the North**—Pure White.

**Rose Queen**—Bright Rose Pink.

**Silver Pink**—An exquisite shade of Light Pink; ideal for cutting.

**Large Flowering Semi Tall Mixed**— $\frac{1}{4}$  oz. 40c.

Price of the above, 10c per pkt.

Collection: 1 pkt. each of 8 colors, 70c.

### The California Poppy

Distinctly a native California flower, it has spread throughout the world on the strength of its beauty. In England and other European countries this wild-flower has been grown to such an extent that it has become one of the favorites. Sow broadcast where plants are to bloom.

**Orange Flame**—Admirably suited for borders. Very erect and compact, not over nine inches high. The flowers, slightly smaller than the ordinary *Eschscholtzia*, are of the brightest orange scarlet.

**Ballet Girl**—Beautifully frilled. The petals are an intense cochineal carmine outside and creamy white inside. These widely contrasting colors are startling in the same flower, yet form a most pleasing combination.

**Tango**—Bronzy red overlaid terra cotta, the tango color recently so fashionable.

**Mauve Beauty**—A pure Mauve. A new color.

**Purple Glow**—Bright reddish purple, darkest shade obtained so far.

**Lovely**—Bright satiny rose pink suffused with salmon. A lovely flower indeed.

**Scarlet Beauty**—A deep scarlet with the bearing and appearance of a scarlet tulip.

**Mixed**—A superb mixture, rich in shades of crimson, pink, orange and scarlet.  $\frac{1}{2}$  oz. 50c.

All the above varieties per packet, 15c. The full collection of seven varieties, 90c.

# DELPHINIUM

(Perennial Larkspur)

One of the finest herbaceous plants in existence and always a central attraction in the perennial border. When established they develop into large clumps producing an abundance of tall flower stalks 4 to 6 feet in height. They thrive in almost any soil or situation and are perfectly hardy.

Sow in fall or spring in fine soil not deeper than  $\frac{1}{8}$  inch. Firm the soil, keep shaded and moist and allow sufficient time for the seed leaves and one pair of the true or round leaves to develop, then transplant.

**Belladonna** (Everblooming Hardy Larkspur)—Tall growing and continuous blooming variety. A delicate and beautiful clear turquoise blue. Per Pkt. 25c.

**Bellamosum**—Resembles the popular Belladonna and has the free flowering and all other good qualities of the type. The color is a rich and effective deep blue. Per Pkt. 25c.

**Gold Medal Hybrids**—A splendid strain of tall and vigorous habit, producing many large spikes of double and semi-double flowers in a wide range of delicate and pleasing colors. Price per Pkt. 25c.

**New English Hybrids**—A remarkable new strain originally imported from the best English sources and improved by careful selection and cultivation under our own climate. It includes a truly wonderful variety of rare shades, the plants grow to a great height and are extraordinarily vigorous. The flowers, mostly double, are large and closely placed on tall showy spikes. Price, 3 Pkts. for \$1.00 or 35c per Pkt.

**Chinensis** (Blue Butterfly)—A very fine dark blue variety growing to a height of 3 feet, quick to flower and excellent for cutting. Per Pkt. 10c.

**Chinensis** (Chinese Larkspur)—Mixed. Splendid strain for bedding or cut flowers. Contains various shades of light and dark blue. Per Pkt. 10c.

**Cardinale** (Scarlet Larkspur)—The beautiful tall and showy Larkspur native to our California hillsides. The color is a gorgeous bright scarlet. Price per Pkt. 15c.

## Candytuft

(*Iberis Umbellata*)—Easily grown, free flowering annual, growing to a height of 10 to 12 inches. Ideal for low borders or bedding and a useful cut flower. They may be sown broadcast in fall or early spring and bloom freely over an extended period.

Carmine—Bright Carmine Rose.

Crimson—Rich Purplish Crimson.

Flesh—Delicate Rosy Flesh Color.

Lavender—Soft Lavender Pink.

Rose Cardinal—Favorite Rich Rose.

Choicest Mixed. Containing a great variety of fine shades.

Price of any of the above varieties 10c per Packet.

## Dimorphoteca

(African Orange Daisy)—Thrives splendidly in Southern California and flowers profusely through the winter and early spring.

**Aurantiaca**—The original orange daisy. A showy dwarf annual well suited for parkings and low borders. Blooms freely over a very long period. Per Pkt. 10c.

**Choice Hybrids Mixed**—Including many shades of light and deep yellow to bright orange red. Per Pkt. 10c.

## Calendula

(Winter or Pot Marigold)—Especially valuable for winter cut flowers.

**The Ball**—A new glowing orange with light center, large, double flowers freely produced and excellent for cutting. Per Pkt. 25c.

**Orange King**—The favorite and well known orange red variety with dark center. Per Pkt. 10c.

**Lemon Queen**—Rich golden yellow, large and very double. Per Pkt. 10c.



ENGLISH HYBRID DELPHINIUM

## Germain's Choice Cinerarias

It would be hard to find a flowering pot plant or bedding plant of more resplendent beauty than the Cineraria. It produces gorgeous spikes of large blossoms in the most vivid shades during the late winter and early spring and delights in a cool shady location succeeding wonderfully well even out doors in Southern California. The seed should be sown in summer or early fall in seed pans or boxes and later transplanted.

**Germain's Giant Exhibition Strain**—This is by far the most beautiful and finest strain we have seen. The flowers of enormous size are borne on sturdy plants about 18 inches in height. The colors range from white and light pink through rose, scarlet and purple, to deep crimson and royal blue. Price per Pkt. 50c.

**Choice Hybrids Mixed**—Very beautiful large flowering strain, imported from the best European sources. Per Pkt. 25c.

# Germain's Giant Prize Pansies

Germain's Giant Prize Pansies comprise a selection of the finest giant flowered varieties, including the largest plain color and fancy blotched and shaded sorts, and the choicest imported frilled, variegated, and orchid flowered varieties. A strain unequalled for beauty and variety of color.



Adonis. Light blue.....	Pkt.
Giant Purple. Very showy. Velvety royal purple.....	\$0.25
Giant Madame Perret. An exquisite pansy. Every blossom displays the soft red wine shades in varying degree, either faint or intense.....	.25

Giant White. With purple eye, extra fine.....	Pkt.	.25
Golden Yellow Five Spotted. Beautifully marked purple.....		.25
Lord Beaconsfield. Lower petals deep purple shading to light lavender.....		.25
25 cents per package, or the full Collection of Six for \$1.00.		

## Germain's Choice Pansies in Mixture

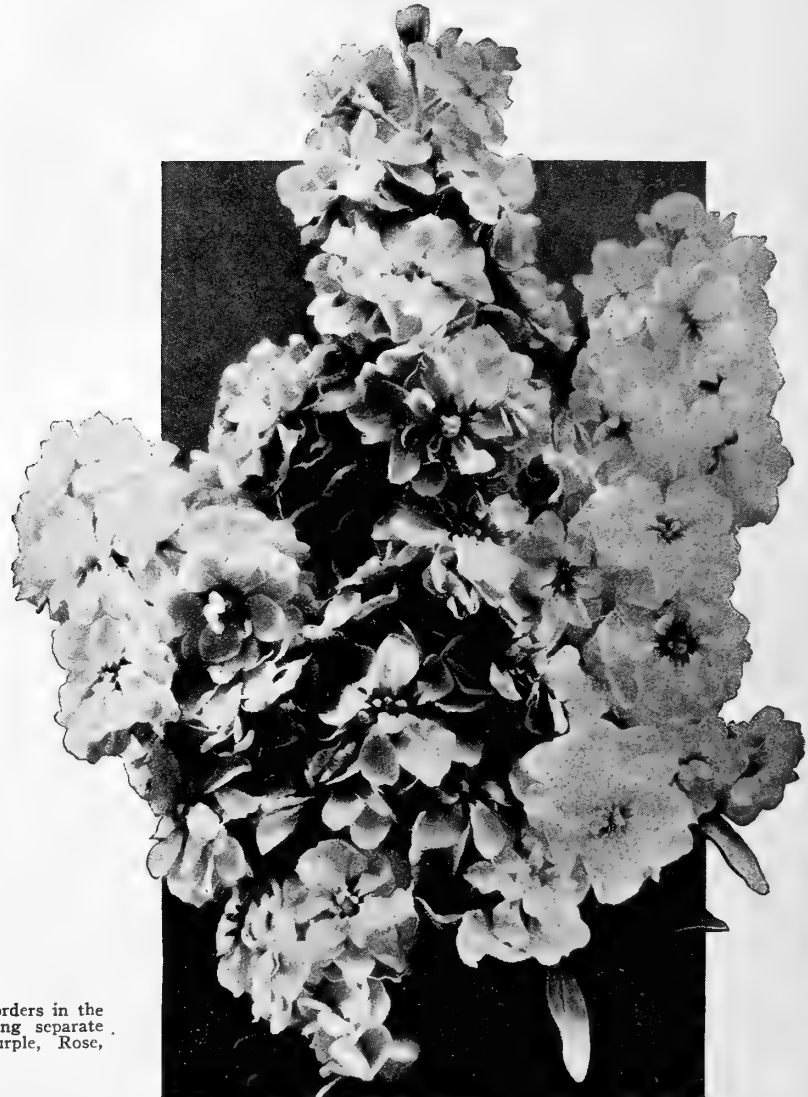
Germain's Giant Prize Mixed. 1/8 oz. \$1.25.....	Pkt.	\$0.25
Germain's Triumphant Giants. Selected from prize flowers only.....		.50
Fine Mixed. Flowers of medium size, varied and beautiful in color. 1/8 oz. 60c.....		.10
English Mixed. A favorite with many. Flowers large and velvety in texture.....		.15
Mastodon Mixed. A remarkably fine strain of American origin.....		.25

Orchid Flowered. Delicate shades and light tones of yellow, lavender, red, and mauve. Many entirely new.....	Pkt.	.25
Masterpiece (Ruffled Pansy)—A beautiful new type, each petal being conspicuously waved or frilled. The size and colors of the flowers are exceptionally good, the richer and most velvety tones predominating.....		.25
Trimardeau. Giant French strain, upper petals especially large, all colors. 1/8 oz. 60c.....		.25

## Germain's Bedding Pansies

Emperor William. Ultra-marine blue.....	Pkt.	\$0.10
Faust; King of the Blacks. Coal black.....		.10
Yellow. Pure golden yellow.....		.10

President Carnot. White, violet blotches.....	Pkt.	.10
Victoria. Blood red.....		.10
White.....		.10
Collection of 6 separate colors.....		.50



## Germain's New Giant Imperial Stocks

This new type of stock is much superior in every respect to all former strains. The plants are more vigorous, the flowers larger and very double. They are tall branching, with an abundance of long stemmed laterals starting near the base of each plant. This new habit of growth makes it possible to gather an entire bouquet of flowers with fine stems from a single plant.

- Blush Pink—Light silvery pink.
- Fiery Blood Red—Bright and showy red.
- Chamois—Ivory tinted old rose.
- Dark Blue—Rich deep blue or purple.
- Lavender—A fine shade in stocks, a light lavender blue.
- Rose—Beautiful deep salmon rose.
- New Giant Imperial Stocks in mixtures.

Price: Any of the above, 25c per Pkt.  
The Collection of six beautiful colors, \$1.25.

## Giant Winter Nice Stocks

A very beautiful winter flowering strain, useful for beds and borders in the garden as well as winter cut flowers. Offered in the following separate colors: Carmine, Flesh Pink, Crimson, Lilac, Lavender, Purple, Rose, Salmon, White, Yellow or Superb Mixture.

Price per Pkt. 15c each.  
Collection of 8 beautiful shades, 75c.



# GERMAIN'S CALIFORNIA Roses of Quality For 1928

Prepared for Fall Planting

The large size and superior quality of Germain's California Roses are well known to all those among our customers who have had the pleasure to grow them. For those who have not before planted our stock we call special attention to the great care exercised in their production and the special treatment they receive for fall planting.

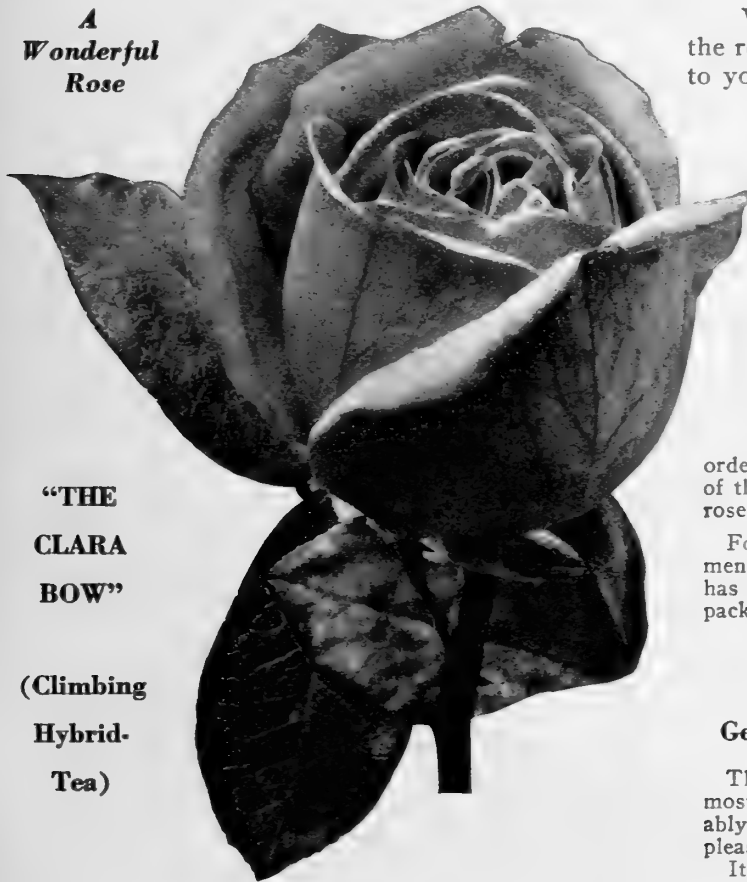
In our climate roses thrive with bewildering luxuriance and produce a veritable riot of bloom.

It is this robust vitality, this urge to blossom instilled by the maturing sunshine of Southern California which has made this region the greatest rose growing section in America.

Germain's Roses of Quality are produced in our own fields comprising 50 acres in the heart of California's foremost rose district. They are two year old, first grade plants, grown and budded by our own experienced men, and dug when fully matured, every bush selected and inspected by our experts.

In preparation for the fall planting season these roses are carefully pruned and potted in gallon containers early in the spring and become perfectly established during the summer months. In securing and planting these now you receive large plants benefited by several months' extra growth and a fully developed root system.

**A  
Wonderful  
Rose**



**"THE  
CLARA  
BOW"**  
  
(Climbing  
Hybrid-  
Tea)

**Mrs. Lovell Swisher**—A new California rose of unusual merit. It is undoubtedly one of the best American raised roses and will take a high rank among America's most popular roses. It is a remarkably vigorous grower, well furnished with excellent foliage and produces freely long, shapely buds with nicely reflexed petals that develop into good double flowers. The color of the buds is a deep coppery salmon at the base, merging to salmon pink at the tips. As the flowers expand the color deepens to a coppery tinge towards the center. They are delightfully tea-scented. Strong two year old plants. Price \$2.00 each.

### Rose Culture Leaflet Free

We have prepared a detailed cultural leaflet on the rose which will be included with your order or sent to you free upon request.

### How Fall Roses Are Forwarded

The roses offered in this catalog are large, two year old, field grown bushes, thoroughly established in gallon containers. They are in full growth, insuring immediate results and complete satisfaction. In order that growth may not be checked we advise forwarding them in their containers by express, purchaser paying charges on arrival.

Where parcel post shipment is desired we will be pleased to forward in this way, removing containers and part of the soil before packing. When so ordered, additional remittance covering postage must accompany the

order. Parcel post rates will be found on inside front cover of this catalog. Weight when packed averages 3 lbs. for each rose.

For nursery stock generally, including bulbs, we recommend having orders forwarded by express as our experience has shown this method to be most satisfactory, except on small packages.

### Three New California Roses

#### Germain's New Climbing Rose, "The Clara Bow"

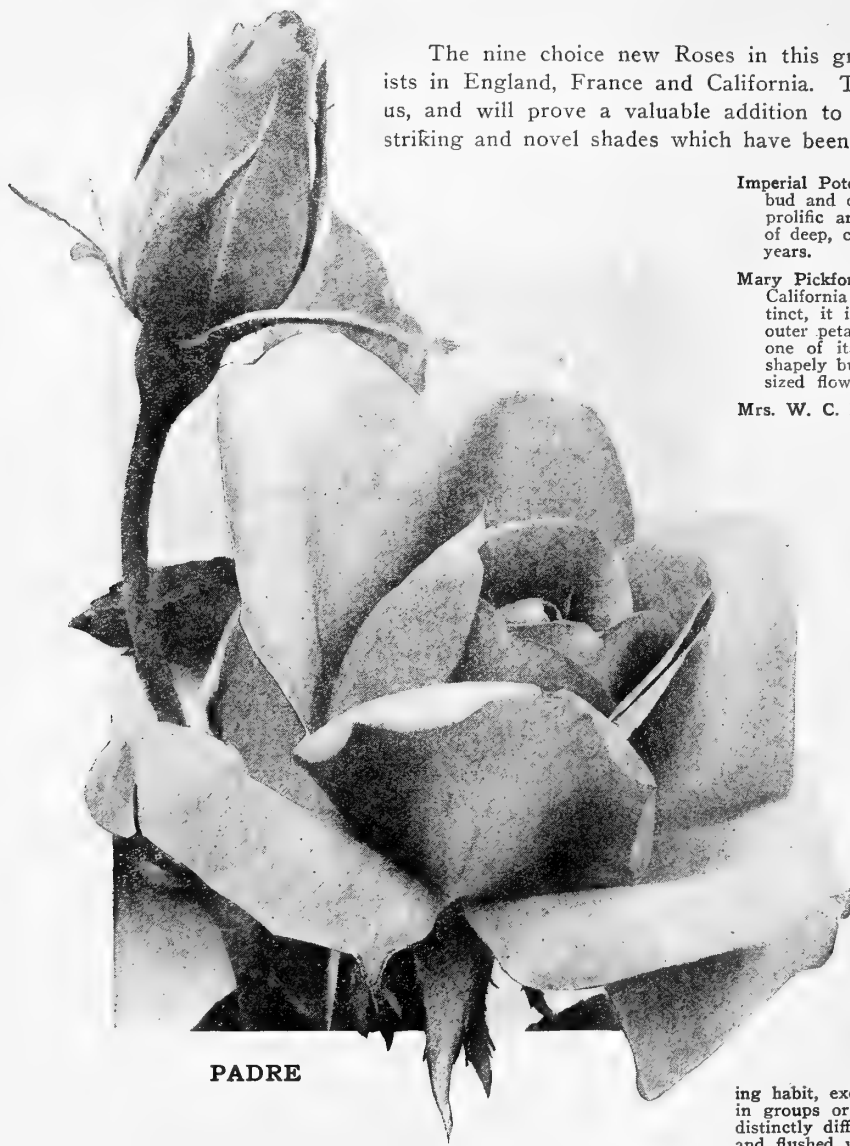
This wonderful new climbing Hybrid-Tea rose is one of the most notable introductions of recent years. It is unquestionably the most striking yellow climber we ever have had the pleasure to offer. The color is extremely rich and glowing.

It is a true deep yellow, intensified by a coral flush extending upward from the base of the petals and which is most pronounced on the outside of the buds. These are long and elegant in form and open into a large and fully double flower of exquisite beauty. The plant is exceptionally vigorous in growth and very free flowering. Attractive foliage of splendid texture and a rich glossy green in color, lends an added charm to this superior climbing rose. Price: Each, \$3.50.

**Climbing Rose Marie.** A perfect pink climbing rose. It is an exact counterpart of the superb bush variety "Rose Marie." The buds are long and pointed as in the original and the color is a faultless shade of pure, even rose pink. Price: Each, \$1.50.

# Superb New Hybrid Tea Roses

The nine choice new Roses in this group are recent introductions by noted specialists in England, France and California. The varieties have been thoroughly tried out by us, and will prove a valuable addition to any rose collection, especially so because of the striking and novel shades which have been introduced.



**PADRE**

**Imperial Potentate**—A splendid new rose of perfect form. Exquisite in bud and developing into large, very double, substantial flowers, very prolific and delightfully tea-scented. The color is a pleasing shade of deep, clear rose pink. It is one of the finest pink roses of recent years.

**Mary Pickford**—Named in honor of America's favorite screen artist. A California introduction of great merit. The color is novel and distinct, it is a beautiful orange yellow, stained on the reverse of the outer petals with salmon. In habit and growth it strongly resembles one of its seed parents, Souvenir de Claudius Pernet. The long, shapely buds are very freely produced and open to fully double good sized flowers. Delightfully tea-scented.

**Mrs. W. C. Egan**—The color is a lovely shade of two-toned pink, shading through deep flesh to golden yellow at the base of the petals. The contour of its long, pointed buds and the splendid formation of the open bloom with its glorious combination of colors, its fragrance and robust free flowering habit, will insure for this splendid variety a well deserved and lasting popularity.

**Diadem**—Large double blossoms of copper orange, tinted salmon and flame pink, freely produced on strong, well branched canes. A splendid variety for cutting. Foliage exceptionally good and hardy.

**Etoile de Feu**—Very distinct and attractive large, substantial gobular buds expanding to large, cupped, full to center flowers, of a rich flaming orange-pink with flame colored shadings, borne profusely throughout the season. The plant is of vigorous, free habit with attractive glossy foliage.

**Felicity**—A rose of peculiar distinction and high quality. The large cupped flowers are very freely produced on bushes of strong, vigorous habit; color a beautiful mallow pink, shading to cerise towards the edges of the petals, a rich, warm and attractive shade.

**Shot Silk**—One of the most beautiful of Alex. Dickson & Son's introductions which was awarded the gold medal of the National Rose Society of England. Color orange-rose, overshot with golden-yellow and flushed soft rose, bud of beautiful shape, the open flowers cupped with reflexing outer petals; growth vigorous and free with beautiful foliage. A sweetly scented rose of exceptional merit.

**Sunstar**—Deep yellow edged, veined and splashed crimson and vermilion, all colors that attract and vary in tone and intensity as the blooms develop; of medium size, highly scented. Awarded a gold medal by the National Rose Society of England.

**Toison D'Or**—The bush is of much branched and spreading habit, exceedingly free flowering and especially striking when grown in groups or beds. The new shade of its full, well formed flowers is distinctly different and artistic, being a pronounced orange yellow tinted and flushed with bronze.

Price: Any of the above \$1.50 each.

## Eight Grand Hybrid Teas

These are among the grandest and most popular roses in cultivation and no collection is quite complete without them.

**Black Prince**—Intensely dark crimson, approaching black; cup-shaped, large and full. Old favorite, but always scarce.

**Eldorado (Land of Gold)**—In this we have an exact counterpart of Miss Lolita Armour, in the large sized flowers of distinct formation, vigorous growth and free-flowering habit and fragrance, but in color it is of the golden yellow that is peculiar to the climbing Rose Marechal Neil.

**Hadley**—Rich, glorious red, shading to velvety purple. Flower is double, of fine form, and very sweet. Practically every bloom comes perfect and it is a gem for cutting.

**The Wonderful Prize Winning Rose "Los Angeles"**—It is a rose without a fault. It is strong in growth, sending out enormous canes clothed with dark, handsome foliage. The foliage is mildew proof. It is hardy, deliciously fragrant and ravishingly beautiful. The buds are long and pointed and expand to a flower of glorious size. Its color is an indescribable tone of flame pink.

**Hoosier Beauty**—In our opinion, one of the finest red hybrid tea roses in existence. A rose of American origin and one which easily out-distances most others on the market.

**Miss Lolita Armour**—The color may be briefly described as follows: Chrome yellow at the base, shading to burnt orange and copper. The reflex of the petals is chrome yellow at the base, shading to bright salmon with brilliant copper suffusion. The flower is quite double.

**Padre**—An exquisite new variety in a color that is distinct from any other. The bud is long and pointed, borne on a strong stem with dark foliage. The color is a beautiful shade of coppery orange crimson with yellow shadings at the base of the petals.

**Souvenir de Claudius Pernet**—Both bud and bloom are clear sunflower-yellow, unstained by any other color, and are attractively formed. As the flower ages, the outside petals become light sulphur-yellow. A vase full of these glorious yellow blooms is like a bouquet of captured sunshine.

Price: Any of the above, 85c each

We advise forwarding Roses [24] and Nursery Stock by Express

# Seventeen New and Famous Roses

On this page we have listed many newer roses and varieties which are famous wherever good roses are grown. Every sort in the collection is a gem in form and color and worthy of a place of honor in every beautiful rose garden.

Price: Strong two year old plants, \$1.00 each.

**Constance**—With real golden yellow flowers of medium size, of fair, globular form, Constance was a step in advance toward the perfect yellow rose. Bagatelle Gold Medal.

**Edel**—New. An enormous, bold, stately, well formed flower of great depth and quality. Color white with ivory shadings toward the base, passing to a pure white. The plant is a good grower and free bloomer.

**Golden Emblem**—Flower with high pointed center; tea perfume. Growth free and branching with splendid constitution, deep glossy green foliage, stout stalks and mildew-proof; extra perpetual flowering. One of the best yellow roses grown.

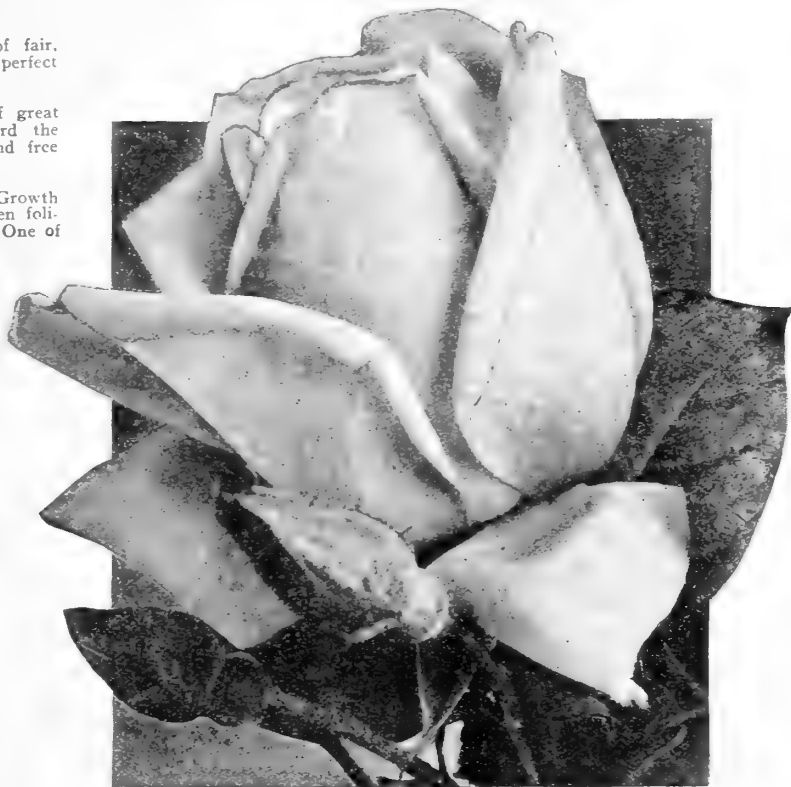
**Gorgeous**—Gorgeous indeed is this Rose and extremely well named, for it is gorgeous in size, and color which is soft orange, flushed with copper, coral-red and shrimp-pink.

**Isobel**—Flowers of large size, single; scarlet-orange with clear yellow center and fading to a clear pink. A delightful rose in early summer and a continuous bloomer.

**Lady Alice Stanley**—A gem in every way; form, color, size, freedom of bloom and fragrance; in color a beautiful shade of coral-rose, shading to flesh-pink.

**Louise Catherine Breslau**—Astonishing in color. Salmon-red buds, opening to large flowers of orange-pink, glowing with yellow and copper. Double, but open cupped form when fully expanded.

**Lulu**—A new rose of English origin and considered by us to be the best of its kind. The color is a pure apricot, the buds being long and pointed, and quite similar to Irish Fireflame in form, but with twice as many petals.



ETOILE DE FEU (Page 24)

**Mme. Second Weber**—Very beautiful in its bright salmon-pink flowers of almost perfect form, double, and fragrant. The stems are long, usually strong, and the plant is a very liberal bloomer.

**Mrs. Henry Morse**—One of the best pink varieties of recent introduction. Color two contrasting tones of pink with an underlying yellow glow, flowers large, full and very high pointed, fragrant and very free flowering.

**Mrs. H. R. Darlington**—A long felt want in a white rose. Buds are creamy white, but turn to pure white as the flower expands. A rose of delightful fragrance and beautiful form. A very desirable variety in every way. Awarded the Gold Medal by the British National Rose Society.

**Mrs. J. C. Ainsworth**—Large, well-shaped buds and fine, full double, delightfully scented flowers. The buds on first opening are of a beautiful peach-blossom pink, shading to a delicate mauve-tinted white at the edges, the flowers as they develop change to a lovely crimson-pink at the centre.

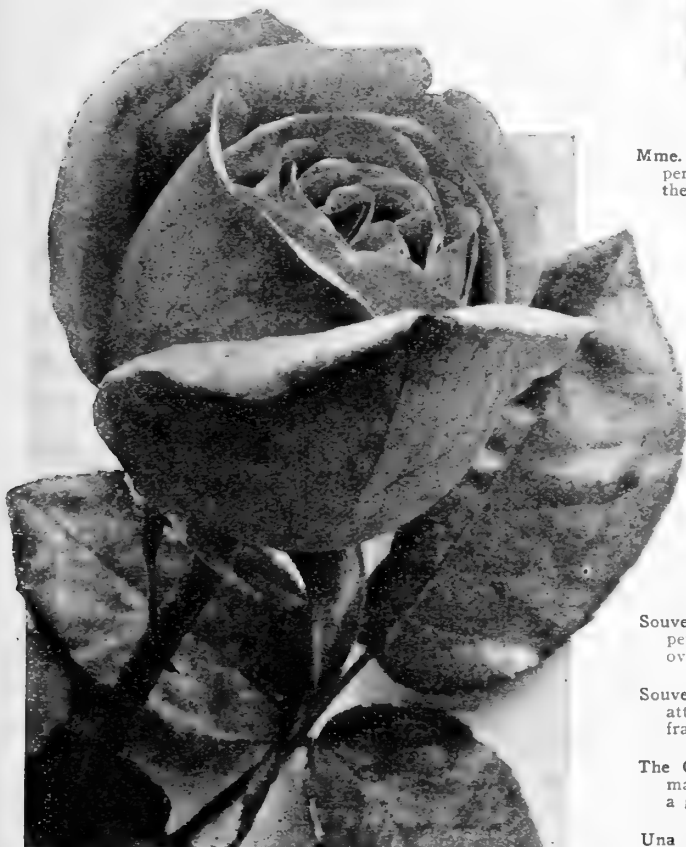
**Souvenir De George Beckwith**—A gaily colored Rose of recent introduction, combining salmon-pink and yellow shades. Flowers are large, globular, and quite lasting. It has proved to be a vigorous grower, producing an average number of exquisite flowers that are splendid for cutting as they keep well for a long time.

**Souvenir de Georges Pernet**—Flower of beautiful Orient red color, the end of petals cochineal carmine, shaded with yellow, very large, full and globular, oval bud carried on erect stem.

**Souvenir de H. A. Verschuren**—A new variety that is bound to attract a lot of attention. The color is deep golden yellow. Flowers are double and intensely fragrant. Stems are long and stiff. A very fine variety. Stock scarce.

**The Queen Alexandria**—A remarkable combination of color may be noted in this magnificent new rose. It is a two-toned rose with the upper side of the petals a glorious shade of vermilion, the reverse side being old gold.

**Una Wallace**—A beautiful shade of soft cherry rose without any shading. It is a very strong grower and a free bloomer, has excellent foliage and perfect form. It is exceedingly fragrant.



GOLDEN EMBLEM

# GERMAIN'S CALIFORNIA Roses of Quality

## GENERAL COLLECTION OF BUSH ROSES

On this and the succeeding page will be found a complete selection of the best and most popular bush roses in general cultivation at the present time. All varieties here listed have been fully tested and have been found thoroughly successful. There is not a variety included that we cannot recommend as possessing superior merit and all who wish a supply of extra choice flowers throughout the season can select with perfect confidence any number of varieties from this collection.

**THE ROSES IN THIS COLLECTION ARE ALL 65 CENTS EACH**

**American Beauty**—One of the best Roses for the hot interior sections of the Western United States. Does magnificently in Arizona, Imperial Valley, etc. Throws especially fine, large blossoms during early fall and spring.

**Betty**—Copper Rose, shaded to golden yellow at the base. Buds long and pointed.

**Cecile Brunner**—This is the popular Baby Pink or "Sweetheart" Rose. In the past year or two this Rose has fairly jumped into popularity. It has become quite the rage. It makes a handsome miniature Rose, coming in sprays of three to five buds. Color, blush, shaded light salmon-pink; distinct and desirable.

**Clara Watson**—Pearly-white center tinted with pale rosy-peach; a free and continuous bloomer.

**Columbia**—A Rose which is popular with all cut flower buyers throughout America. In color a delightful shade of rose pink. In outdoor planting the bushes attain a moderate height and blossom freely through a long season.

**Crimson Queen**—Flowers large, of a bright velvety crimson, a strong grower, and a continuous bloomer. Fragrant, and fine for cutting.

**Duchess of Wellington**—Intense saffron yellow, stained crimson. As the flower ages it becomes a deep saffron yellow. Blooms fairly full, buds long and pointed, very free flowering. Exceedingly fragrant.

**Edward Mawley**—A gold medal winner. One of the best dark velvety crimson Roses in existence. Color rich and lustrous.

**Etoile de France or Star of France**—A brilliant shade of clear red-crimson velvet, centering to vivid cerise; large flowers on long, stiff stems; remarkably vigorous, free-blooming and hardy, with bronze-green foliage.

**Frau Karl Druschki or White American Beauty**—An ideal hardy white Rose, pure white in color. A remarkably vigorous grower. Free flowering to a degree. In our opinion, the best of all white Roses.

**Gen. McArthur**—One of the most popular and freest blooming of all red garden Roses. Color is a bright rosy crimson. It is not subject to mildew. Especially valuable for bedding purposes.

**George Ahrends or Pink American Beauty**—This is the wonderful "Pink American Beauty." The growth and make-up of the plants is superb, while the delicate pink color is unapproachable.

**General Jacqueminot**—A celebrated and much sought after variety, both for planting out and pot forcing; shapely buds and handsome blooms of bright, shining crimson, rich, brilliant, velvety and fragrant. Everybody knows and wants the "Jack" for its all around good qualities.

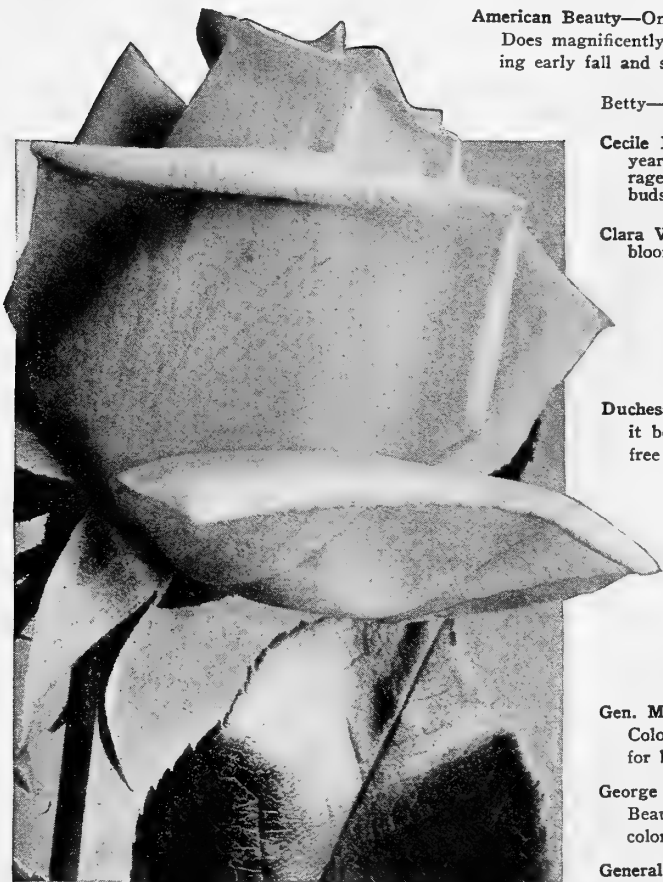
**Kaiserin Augusta Victoria**—A free, healthy grower, with splendid foliage and superb buds. Pure white, occasionally tinted with cream at the center of the open flowers.

**Irish Fireflame**—A very large, single flower of deep maddery orange, opening from spiral buds, passing to rich satiny, old-gold veined with crimson.

**Juliet**—A wonderful combination of orange, scarlet, salmon, gold, etc. By way of color is one of the most sensational Roses ever introduced. Hardy in all sections. Especially fine in early Spring and late Autumn.

**La France**—Silvery-rose, with pink shades and satin-like petals of unsurpassable beauty; large, symmetrical and deliciously fragrant blooms from June until frost; hardy with protection.

**Lady Ashtown**—Rose-pink, shading to silvery pink, with touches of yellow at base of petals and a silvery-pink reflex; large, full, well-formed flowers with high pointed center.



**RADIANCE (Page 27)**

**Yellow Cecil Brunner or George Elger**—The long sought for baby yellow rose. Size and habit is the same as Pink Cecil Brunner and this splendid sort is just as free flowering as the pink variety.

**Grus an Teplitz**—An ideal red Rose for hedge purposes. Blossoms constantly throughout the year. Color velvety crimson, has a splendid constitution, good clean foliage, strong, upright canes.

**Irish Elegans**—A beautiful single bush Rose of fine form, long and pointed. Color bronzy-orange to pink, shaded to apricot. An excellent Rose.

**Jonkheer J. L. Mock**—Enormous deep rose-colored blooms, equally beautiful in bud or open flower. Throws splendid canes. An ideal cut flower variety.

**Pink Killarney**—A lovely shade of clear, soft pink. An ideal cut flower rose, on account of its splendid bud formation. Deliciously fragrant.

**J. B. Clark**—Intense deep scarlet, heavily shaded, blackish crimson. Large, full, with immense petals. A vigorous grower and very hardy.



# Roses of Quality

## GENERAL COLLECTION—Continued

**Maman Cochet**—Deep rose-pink, inner side of petals silvery rose; very double. Extra strong grower; fine bloomer. The finest Rose by far that has been introduced for a long time. We can confidently recommend it.

**Mme. Butterfly**—A sport from Ophelia which it closely resembles, but it is much better in color and blooming qualities. A refined bloom of salmon-pink suffused with apricot and yellow. A splendid cut flower variety.

**Mad. Edouard Herriott**—The famous Daily Mail Rose. Winner of the \$5,000 prize at the International Horticultural Exposition held in London, England. Buds coral red shade with yellow at the base. Open flowers of medium size, when fully expanded they take on a superb coral red color.

**Mme. Abel Chatenay**—Lovely shade of salmon pink, especially useful as a winter blooming Rose, in the warmer sections of the country. Buds and open flowers ideal as to form.

**Mme. Caroline Testout**—Satiny pink. Flowers beautifully cup-shaped and intensely fragrant.

**Mme. Leon Pain**—Flower silvery flesh, center yellowish orange, large, full, sweet, elongated bud opening well. Growth vigorous, very floriferous. Very good.

**Mrs. Aaron Ward**—Deep rich Indian yellow. Stems constantly throw quantities of beautiful medium size buds. Splendid for cut flowers.

**Mrs. Charles Russell**—No other forcing Rose except "American Beauty" can compete with it when it comes to counting points. Stems three feet long, stiff and surmounted by grand, rosy-pink blooms of largest size and build.

**Mrs. A. R. Waddell**—Reddish apricot toned with salmon. An odd type in roses, the petals being somewhat loose and irregular in formation. As a garden Rose it is without an equal. Before the buds expand it is ideal for cutting purposes.

**Old Gold**—The tint is a vivid reddish-orange with rich coppery-red and coppery-apricot shadings.

**Ophelia**—A Rose which has made a record for itself as a cut flower variety, and is admired by everyone. It is perfect in form, large in size and of a most pleasing delicate tint of salmon flush with rose shadings.

**Paul Neyron**—The largest Rose in cultivation. Blossoms often eight inches in diameter. Rich, deep rose in color.

**Premier**—A pure rose pink throughout, very fine for cutting, a profuse bloomer, and exceedingly sweet scented. Perfect in habit, easy to grow.

**Radiance**—A Rose of American origin and to our mind one of the best varieties in cultivation today. Buds long and pointed, expanding to blooms of enormous size. Similar in shape to Caroline Testout, but in color deep rich rose pink.

**Red Radiance**—A sport from the well known pink form. Flowers equal in size, but of a deep, rosy red color. Buds and open flowers of mammoth proportions. Deliciously fragrant; a constant and free bloomer. An ideal Rose for cut flower purposes.



ROSE MARIE

**Rose Marie**—Amongst the various Roses which we have had under trial, there are but few more meritorious than this magnificent American novelty. The buds are long and pointed, the petals large and well-rounded, and the open bloom ideal as to form. The color is a delightful shade of pure pink. Highly recommended.

**Prince de Bulgarie**—Silvery-flesh, very delicately shaded with salmon, long bud opening to full cup-formed flowers.

**Ulrich Brunner**—Color a rich cherry crimson. Produces its blossoms on the end of the canes. These may often be cut with a stem length of three to four feet. Especially fine during the early spring and late autumn months.

**Winnie Davis**—Brilliant apricot pink. Reflex has lighter tints giving it a very handsome appearance. Buds are long, of fine form. Foliage bright green. One of the best.

**Sunburst**—Orange-copper on golden-orange and golden-yellow, all intense shades, giving an extremely brilliant effect. A giant Rose, long stems, long, pointed buds, vigorous free and healthy, with splendid keeping qualities as a forcer and also an excellent bedder.

**White Maman Cochet**—An exact replica of the pink with the exception of color, which is pure creamy white with tinting of pink.

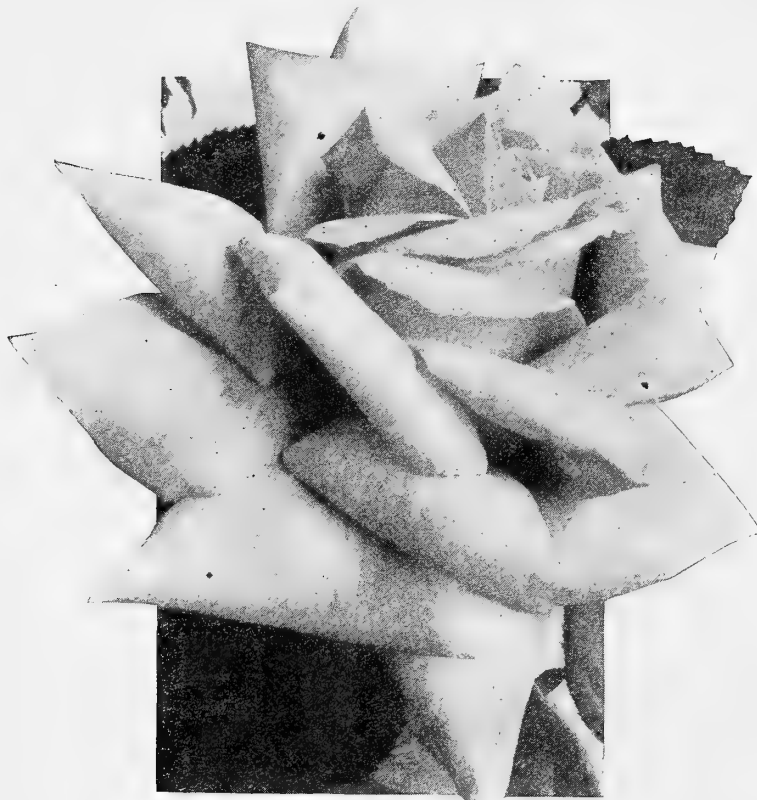
**Wm. F. Dreer**—The flowers, which are similar in shape to Los Angeles, and like that variety, beautiful in all stages of development, are at their best in the half-expanded flower. These, in expanding, are of a soft, silvery shell-pink, the base of the petals are a rich golden-yellow which, at certain stages of development, gives a golden suffusion to the flower.

**PRICE: ANY OF THE ABOVE VARIETIES, 65 CENTS EACH**

Germain's "Challenge Collection" on [27] Back Cover should be in every Garden

# EXTRA CHOICE CLIMBING ROSES

The climbing roses listed on this page, many of them of recent introduction, are among the finest in cultivation today. Several will be recognized as varieties which are already world famous as bush roses and are now being introduced in climbing form. All are outstanding sorts of superior merit, noted for the size and beauty of their flowers, their fragrance, free flowering habit and vigorous growth.



CLIMBING LOS ANGELES

## Ten New and Rare Climbing Roses at \$1 Each

- Climbing Belle of Portugal**—A new variety exceeding in beauty anything heretofore attained. Very vigorous grower, giving immense crops of bloom. Color a beautiful pearl pink.
- Climbing Duchess de Auerstadt**—Deep, rich yellow in color. In our opinion this rose is more impressive than Marechal Niel. It is but little known, but is deserving of wide cultivation.
- Climbing Hadley**—The well-known rose now in a climbing form. In color it is a deep velvety-crimson, retaining its brilliancy at all seasons of the year. The variety is double and buds are well formed.
- Climbing Hoosier Beauty**—A new rose, being the climbing form of the popular bush variety. Big torch-like blooms of dusky red, opening from glowing slender buds; quite double, with wide-spreading butterfly petals surrounding an exquisite center.
- Climbing Kaiserin Augusta Victoria**—A strong and rapid grower. Plants bloom continuously throughout the season, and the lovely white flowers are magnificent beyond description.
- Climbing Louise Catherine Breslau**—A really astonishing color with coral red buds, long and oval-shaped, opening to large double flowers of a remarkable combination of color, orange pink with a suffusion of yellow and copper.
- Climbing Los Angeles**—The ever popular bush Los Angeles now in a climbing form with the same extreme beauty of its well-formed flowers, alike attractive in bud and bloom, and showing shades of salmon-pink, apricot and orange almost impossible to describe.
- Marechal Niel**—A glowing, golden yellow rose of the Noisette family. With little care it will cover itself with large, soft yellow, fragrant blooms. Does well in partial shade.
- Climbing Mrs. Aaron Ward**—This is a most delightful rose, with its frilly petals and varying but always exquisite color. In cool seasons, and on first opening, it is rich, golden fawn, but in bright sunlight it quickly changes to soft pink and white. Flowers are not large, but gracefully formed, fully double, and quite fragrant.
- Climbing Sunburst**—A true Sunburst of vigorous climbing habit. An entrancing rose of exquisite color—brilliant orange—yellow in center, paling to buff. Can be recommended as a fine climbing yellow.

## The Following Climbing Roses are 65 Cents Each

- American Pillar**—Color a rich rosy carmine with a glint of white in the center. Stamens a rich golden yellow. The flowers are large, single and borne in immense clusters. A very rapid grower. In the autumn it is a brilliant show of color with the pretty clusters of bright red seed pods which remain on the bush until well into winter.
- Climbing American Beauty**—Crimson flower 3 to 4 inches in diameter; well formed, fragrant, strong grower, holds foliage late; blooms in May and June and occasionally during the summer.
- Banksia White**—The flowers of this very desirable rose are pure white, violet scented, very small, double and borne in umbels of twelve to fifteen blossoms. Spring bloomer.
- Banksia Yellow**—Small, double sulphur-yellow flowers in clusters. A vigorous grower.
- Climbing Belle Siebrecht**—This rose is known in England as Climbing Mrs. W. J. Grant. Imperial pink, large and beautifully formed. Sweetly perfumed.
- Climbing Cecile Brunner**—One of the strongest growing roses. Bright clear pink in color. Probably the most popular climber.
- Dorothy Perkins**—Too well known to need description. Beautiful deep pink flowers, borne in clusters. Vigorous and hardy.
- Dr. W. Van Fleet**—A rose which, on account of its dainty color and exquisitely shaped buds and flowers, has become a great favorite. The long, pointed buds are of a rich flesh-pink on stems 12 to 18 inches long; splendid for cutting. A strong, vigorous grower.
- Climbing General McArthur**—Bright crimson; notable for its fragrance. The buds are well shaped, the open flower usually full and of fair form. It blooms persistently and is especially fine in autumn.
- Climbing Frau Karl Druschki or White American Beauty**—A new rose destined to prove very popular. Flowers similar to the bush variety.
- Gold of Ophir**—A Splendid climber, color combination of copper, carmine and salmon. Very popular and beautiful.
- Climbing Grus an Teplitz**—A perfect sheet of crimson when in bloom. It is the same as the bush Teplitz.

- Climbing Pink Killarney**—A vigorous climber, otherwise possessing all of the splendid qualities of the parent Killarney.
- Climbing La France**—A beautiful rose with its color of silvery rose and pink shades. Large and fragrant blooms. Similar to the bush variety.
- Climbing Lady Ashtown**—Similar to the bush variety. Color rose-pink, shading to silvery pink. Long pointed buds, very free flowering. Should be in every garden.
- Climbing Lady Hillingdon**—Identical with the bush variety except in habit. Long pointed buds of deep yellow, very free blooming.
- Climbing Mme. Caroline Testout**—Beautiful glowing pink, identical flower with its parent namesake; a rampant climber.
- Climbing Maman Cochet**—No rose we grow is so popular as Maman Cochet. Here we have an exact counterpart of that popular variety, except that it is a vigorous climber.
- Paul's Scarlet Climber**—It is a climber with splendid foliage and glorious vivid scarlet flowers. These are borne in wonderful profusion. A plant in bloom arrests the attention at once. Although only introduced a few seasons ago from England, it has already taken a high position amongst hardy climbing roses.
- Silver Moon**—Pure white with clear yellow stamens. A beautiful single rose, very large and free blooming. Glossy bronze green foliage.
- Tausendschoen or Thousand Beauties**—Bright clusters of blossoms varying in color from flushed white to rosy carmine. A vigorous, hardy climber with few thorns.
- Reine Marie Henriette**—Deep cherry-red. This rose takes the lead as a climber.
- Climbing Souvenir of Wootton**—Velvety red; same in bloom as the bush Wootton, from which it is a sport; vigorous; profuse with splendidly formed flowers.
- Climbing White Maman Cochet**—Here we have a climbing form that will become as popular a climber as its parent has as a bush rose. Grand, huge white flowers, tinged pink.
- Climbing Winnie Davis**—A sport from the bush variety. Similar to it in all characteristics. Apricot pink color and long buds of fine form.

# GERMAIN'S CHOICE Perennial Plants and Roots

## CANNAS

Cannas are the most easily grown and most useful bedding plants we have. They thrive in any soil, but respond quickly to good treatment. Spade the Canna bed to a depth of 2 feet, incorporating any fertilizer that may be handy, and keep the plants well watered. The results will be surprising. The following varieties have proved successful in every way:

**The President**—The greatest red canna. It is neither a crimson nor a scarlet, but a glowing pure red which colorists call vermillion. Green leaves, 4½ ft. 25c each; \$2.50 per dozen.

**The Ambassador**—Appropriately referred to as the "Bronze Leaved President," a wonderfully vigorous free-flowering brilliant cherry red. 5 ft. 25c each; \$2.50 per dozen.

**Cheerfulness**—Its name aptly describes the lively beauty of this charming variety. Bright fiery deep orange florets which are broadly bordered golden yellow. The large trusses are carried very erect over the massive foliage and are produced in great profusion. 4½ ft. 25c each; \$2.50 per dozen.

**Rosea Gigantea**—Large flowers in great abundance; the individual petals are often 2½ inches across, of a deep rich rose, almost a coral carmine. 4 ft. 25c each; \$2.50 per dozen.

**Hungaria**—An ideal pink bedder, flowers large in good sized trusses produced very freely, color a beautiful clear rose. 3½ ft. 25c each; \$2.50 per dozen.

**Carmine Beauty**—Bright deep carmine flowers produced freely in large trusses well above the heavy dark green foliage. 4 ft. 25c each; \$2.50 per dozen.

**Dazzler**—Masses of fire-red flowers heightened by an orange suffusion completely cover the dark green foliage of this splendid and most effective variety. 3½ ft. 25c each; \$2.50 per dozen.

**Uhlberg**—Entirely distinct. The flowers expand very fully and are of a soft rosy carmine, the throat of the flower is of a creamy yellow as are also the edges of the petals. 4½ ft. 25c each; \$2.50 per dozen.

**Meteor**—The rich crimson-red flowers form immense trusses of great beauty. They are borne well above the foliage and are produced in the greatest profusion. Green leaves. 5 ft. 15c each; \$1.50 per dozen.

**La France**—A beautiful shade of La France rose with a touch of cream in the throat. Green leaves. 4½ ft. 15c each; \$1.50 per dozen.

**Queen Helene**—Immense flowers of a rich golden-yellow spotted with vermillion. Green leaves. 4½ ft. 15c each; \$1.50 per dozen.

**Mrs. Alfred Conard**—A popular variety, producing freely large trusses of exquisite shell-pink flowers. Green leaves. 4 ft. 15c each; \$1.50 per dozen.

**King Humbert**—Perhaps the most widely grown of all cannas. The great orange-scarlet flowers surmount beautiful bronze foliage. 5 ft. 25c each; \$2.50 per dozen.

**San Diego**—A true orange without red suffusion. Rich and velvety. Bronze leaves. 4½ ft. 25c each; \$2.50 per dozen.

## AGAPANTHUS

### Umbellatus

**Blue African Lily**—Bearing clusters of bright blue flowers on stout stalks, similar to the Amaryllis in appearance and culture. Does well in sun or partial shade. 35c each; \$3.50 per dozen.



LAGERSTROMIA (Page 33)

*The Crepe Myrtle is one of our choicest summer flowering shrubs*

## GERMAIN'S SELECTION OF PERENNIAL PHLOX

Amongst the various herbaceous perennials, there are but few plants which grow with the freedom and blossom over such an extended period as the various Perennial Phloxes. Our collection of these comprise many of the new French varieties, all of which are marvels of beauty.

- B. Comte**—A splendid shade of crimson purple.
- Bridesmaid**—Pure snowy white ground, with a crimson eye.
- Lord Raleigh**—Deep purple dwarf, very distinct.
- Michael Buchner**—Pale lavender, strong grower.
- Mrs. Jenkins**—Immense flowered, tall, pure white.
- Prof. Scheilemann**—Lilac rose.
- Rynstrom**—A delicate shade of soft pink.
- Isabey**—A beautiful shade of salmon pink.
- Pantheon**—Clear deep pink blossoms with a faint halo in the center.
- Siebold**—Distinct shade of orange-scarlet with red eye.

Price: Any of the above varieties, 25c each; \$2.50 per dozen. The collection of ten complete for \$2.25.

## HEMEROCALLIS

### Day-Lily

**Flava**—(Lemon Lily). Flowers lemon-yellow, sweet-scented. Add color and charm to any garden, very free flowering, strong field division. 35c each; \$3.50 per dozen.

## MOREA

**Grandiflora**—Handsome bulbous plants from the Cape of Good Hope. They are allied to the Iris and require the same treatment. The flowers resemble the Iris somewhat, but the standards are absent. In color they are white, shading to a light golden yellow in the center and with occasional touches of purple. 50c each; \$5.00 per dozen.

## VIOLETS

**Princess of Wales**—This popular long stemmed and fragrant variety is considered the best sort, does equally well in sun or shade, pot grown plants. 15c each; \$1.50 per dozen.

# Germain's Improved Japanese Iris

(Iris Kaempferu)

The latest improved varieties of this lovely flower obtained from Japan are marvelous in size and beauty. The flowers often reach a diameter of ten inches and the colors are most delicately blended and attractive, the petals being usually shaded, marbled or veined with contrasting tints.

Japanese Iris are very easily grown and form a striking permanent feature, either grouped in single beds, in the perennial border or at the edge of a pool or lily pond. Before planting enrich the soil and spade to a depth of 12 inches. They require a liberal amount of water, especially during the blooming season. It has been found effective and convenient to raise a four-inch ridge of soil around the beds, which may then be flooded whenever needed.

**Iso-No-Nami**—A suffusion of rose and blue over white deepened towards the gold blushed center to rosy lilac.

**Koko-No-Iro**—Royal purple with yellow center, radiating into lines.

**Moniji-No-Taki**—Variegated bright rosy crimson feathered in white, double.

**Purple and Gold**—Large double purple flowers, gold in center, often ten inches across.

**Uchiu**—Caerulean blue with golden center and white halo, standards white tipped blue.

Any of the above in strong field divisions 50c each  
\$5.00 per dozen



## GERMAN IRIS

The varieties offered below, together with the choice varieties described on the next page, form a splendid and complete collection of these lovely flowers, many of which are truly gorgeous in size and beauty and are enjoying a well deserved and ever increasing popularity.

**Agnes**—S, white, frilled and shaded lilac; F, white lilac at base.

**Albert Victor**—A great favorite. S, soft blue; F, beautiful lavender. Large and beautiful flower.

**Crimson King**—Reddish purple. Blooms almost continuously.

**Florentina Alba**—White tinged lavender. Very early.

**Gypsy Queen**—S, bronze; F, deep purple, reticulated at the base. A very showy and attractive Iris that should be in every collection.

**Honorabilis**—S, golden yellow; F, rich deep brown. Especially fine for massing.

**Kharput**—S, violet-blue; F, velvety dark blue. 26 in.

**Leonidas**—A very handsome, tall Pallida type. S, clear lavender; F, several shades deeper and hugging the stem, making the form an unusual but attractive one. Very large flower.

**Mrs. Horace Darwin**—S, snow-white; F, white, slightly reticulated violet at base.

**Oriflamme**—S, light blue; F, rich violet-purple.

**Othello**—S, deep rich blue; F, dark velvety purple.

**Pallida Dalmatica**—S, clear lavender-blue; F, deep lavender; very large; a superb variety. One of the finest of its class.

**Pasadena**—An old favorite. Pure white.

**Stella**—An even shade of light blue.

Price: 20c each; \$2.00 per dozen; \$15.00 per 100.



GERMAN IRIS  
GYPSY QUEEN



# Germain's Superb German Iris

When mention is made of Iris in American garden circles the picture that is brought to mind is far too often merely that of the common purple flag, or at most one or two ordinary variations of it. But as the newer, truly marvelous improved varieties are becoming better known to the more enlightened amateur, an enthusiasm is gripping the country which will place the erstwhile lowly Iris among the queens of the modern American garden. We strongly urge all flower lovers who have not become acquainted with these superb new strains to choose from the selected varieties described below as many as their available garden space will hold. Such a collection presenting many tall and stately flowers often growing over four feet in height, yet of a texture so airy that the delicately tinted petals appear translucent in their iridescent loveliness, is a lasting joy to the owner and a delight to the eye of all flower lovers.

## Iris Germanica

### German Iris or Fleur-de-Lis

It is in this group that many of the greatest modern Iris are found. The structure of the flowers is Orchid-like in beauty and texture and their wonderful range of colors embraces all shades from pure white through delicate shades of Mauve, Old Rose, Lavender, Pale Yellow to Fawn, Bronze, Mahogany, Purple and Deep Blue. They succeed in any open, well drained, sunny location, with the rhizomes just covered with soil and require little care or attention.

### Mother of Pearl

Standards and falls pale bluish lavender, with a faint creamy undertone. Large flowers of perfect form and exceptional substance. The creamy undertone of this exceptional substance often assumes the luster and iridescence which we see in the beautiful lining of many sea shells which produce Mother of Pearl. The plant is tall, a vigorous grower, and a profuse bloomer. The best Iris value of the year. \$1.00 each.

### Twelve Superb Varieties

**Berchta**—Delightful flower, unusual shade of Olive buff.

**Caprice**—A perfect gem. Chinese violet with reticulations of white and deep purple.

**Eldorado**—Bronzy violet, reticulated and overlaid with bronze and passing to yellow.

**Isoline**—Lilac-rose suffused bronze; falls purple and bronze.

**Jacquiesiana**—Standards bright coppery crimson, falls Maroon. Remarkable variety.

**Jeanne D'Arc**—One of the daintiest in existence. Pure white with blue pencillings throughout the petals.

**Loreley**—Perfect flower, ultramarine blue, bordered and veined sulphur yellow.

**Loute**—Lavender and wine purple, dashed and striped with brown and orange.

**Monsignor**—Rich color, very free. Pale violet, overlaid and netted deep purple.

**Prosper Laugier**—A unique variety, bronzy drab and velvety blackish maroon with pencillings of brown and yellow.

**Rhein Nixe**—Splendid sort. Standards pure white, falls violet with white margin.

**Sherwin Wright**—A rich golden yellow without markings or shadings. The best yellow yet introduced.

Price: Any of the above, 35c each; \$3.50 per dozen.

### General Collection of Iris Germanica

**Amas**—Standards, lavender blue; Falls violet.

**Caterina**—Superb variety, a giant in height and size of flowers color a beautiful even shade of lavender blue.

**Candelabra**—Lovely pale blue veined purple.

**Dr. Bernice**—Beautiful coppery bronze and crimson.

**Golden Fleece**—Fine and good sized yellow.

**Lohengrin**—Immense flower. Mauve and Violet.

**Nuce D'Orange**—(Storm Cloud)—A striking color, greyish lavender, bronze and purple.

**Mme. Blanche Pion**—Standard bronze yellow, falls lavender blue with silver edge.

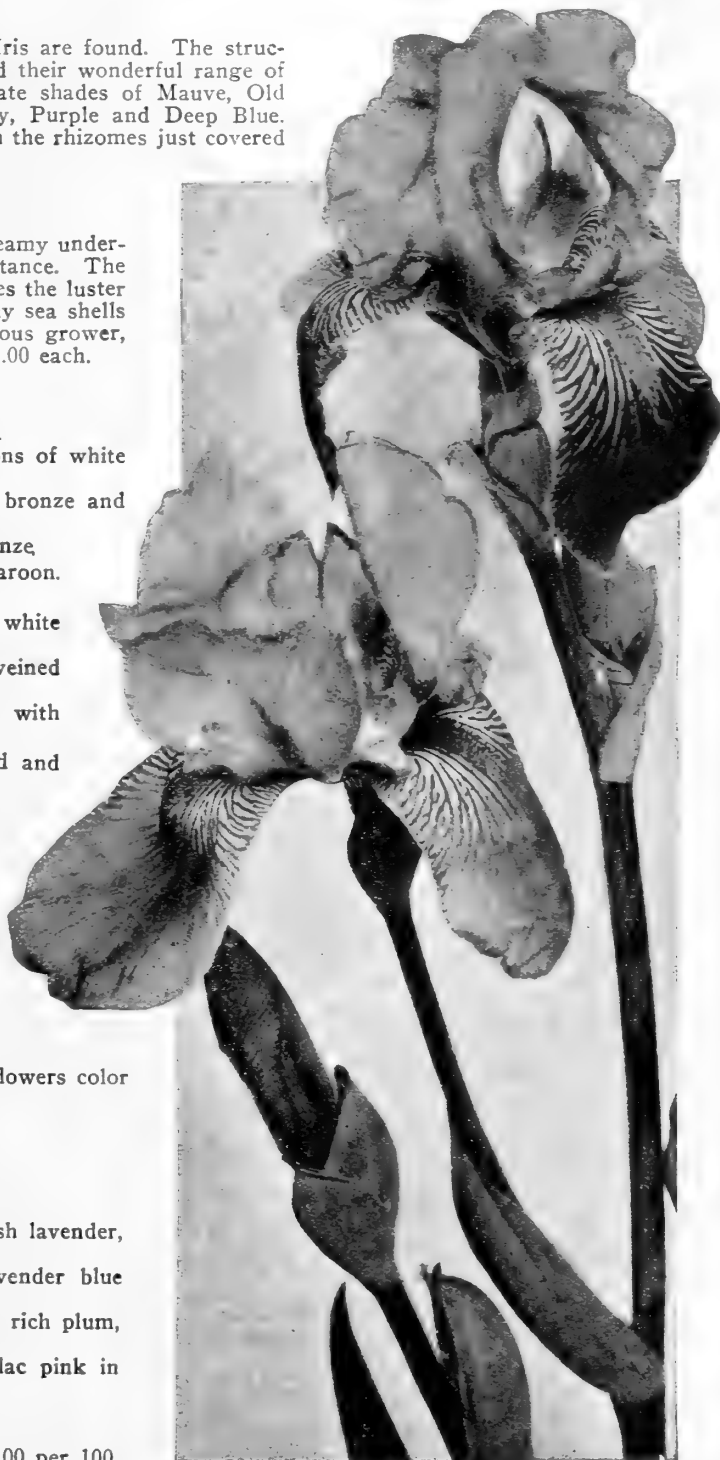
**Princess Victoria Louise**—Standard sulphur-yellow; falls rich plum, bordered cream.

**Queen of May**—A very popular sort, charming light lilac pink in color.

**Walhalla**—Standards, lavender; falls wine red.

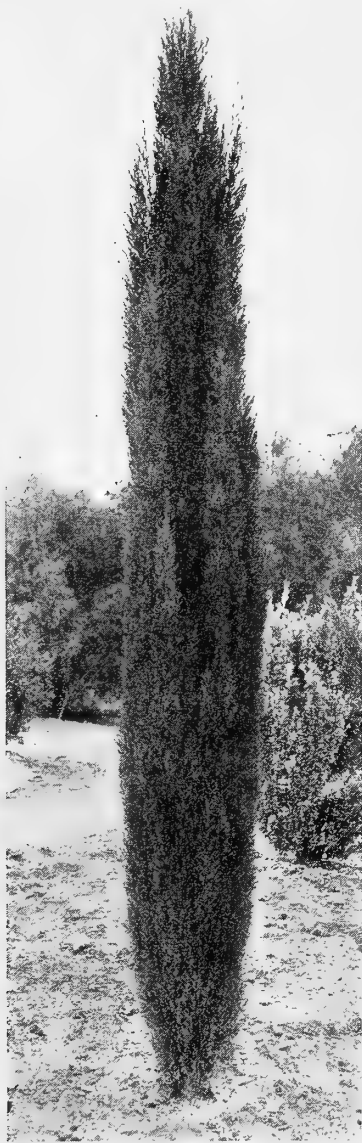
**Zephyr**—Very free flowering, lavender blue.

Price: Any of the above, 25c each; \$2.50 per dozen; \$18.00 per 100.



# ORNAMENTAL SHRUBS, TREES AND VINES

All plants listed are of gallon size unless otherwise noted. Prices are F.O.B. Los Angeles. Allow three pounds each for weight when ordering by Parcel Post. Except on very small orders it will be found more satisfactory to have all plants sent by Express, customer paying charges on arrival.



ITALIAN CYPRESS

## Dracaena

*Dracaena Indivisa*—Rather more common than australis, and a little hardier; foliage narrower and longer, and of a slightly faster growth. Ultimately reaches tree form with irregular, spreading branches. Small plants often used alone or with other plants in hanging baskets, tubs and porch pots. 75c each.

## Diosma

*Erioides*—Often referred to as Breath of Heaven. Foliage exceedingly fine. Blossoms pure white, minute in character, but borne in great profusion. A shrub which should be in every garden. 75c each.

## Cupressus (Cypress)

*Arizona*—A handsome blue Cypress of Arizona, unequalled for dry land plantings. Gallon cans, 50c each.

*Italian*—This well known Cypress is largely used in formal gardens, etc. The plants are columnar in their habit of growth. 60c each.

*Macrocarpa*—This is the native Cypress found in the district around Monterey. A splendid variety for seacoast planting, invaluable for parkways, etc., commonly called Monterey Cypress. Flats of 100 plants, \$2.75. Gallon cans, 50c each.

## Abelia

*Grandiflora*—Free-flowering hardy shrub, 6 to 8 feet tall, with small, glossy green leaves. Flowers are tubular, almost an inch long, white flushed, lilac pink. Blooms profusely and continuously all summer. A very fine shrub. 75c each.

## Acacia

*Baileyana*—A small, handsome tree with glaucous green foliage. Flowers in racemes 3 to 4 inches long, yellow. One of the most beautiful of the Acacias; highly recommended for street planting. 75c each.

*Floribunda*—Ornamental, with very abundant handsome flowers, valuable for lawns, parks, etc. 75c each.

*Melanoxylon*—A well known black Acacia, now so much used for sidewalk planting. Fine, strong plants. 75c each.

## Aralia

*Sieboldii*—A dainty variety of Aralia with dark, glossy green foliage. It does best in partial shade. May be used also as a pot plant for interior decoration. Strong plants. 75c each.

## Arbutus (Strawberry Tree)

*Unedo*—Handsome shrub with dark green foliage, delicate white flowers, followed in early winter by brilliant red strawberry-like fruit; edible. 75c each.

## Buddleia (Butterfly Bush)

A beautiful hardy flowering shrub from China, bearing long spikes of exquisitely colored lilac flowers. They are produced on the ends of long shoots. When the plant is in full bloom it is a thing of striking beauty. 60c each.

## Callistemon (Bottle Brush)

Showy flowering shrubs, thriving perfectly in California. Flowers in the exact shape of a bottle brush, which gives the common name. Will thrive in very dry locations with little care or attention. Callistemons are variable in color, usually red, but very frequently run to pink. 75c each.

## Chorizema

*Chorizema ilicifolia*—Australia. 3 feet. An attractive shrub with slender drooping branches, holly-like leaves and orange red flowers in loose racemes. It makes a low dense mat of foliage and blooms throughout the winter and spring. 75c each.

## Coprosma

*Baueri*—A splendid shrub of prostrate habit and brilliant, glossy green leaves. This is an ideal plant for banking against the bases of buildings, etc., or for covering banks. It is one of the handsomest of all foliage shrubs. 50c each.

## Cotoneaster

Handsome shrubs of wide use in both the home grounds and public parks; leaves somewhat small, glossy and of varying shades of green; flowers minute, usually white or pinkish white; berries of many hues and colors varying from orange to bright scarlet. Unexcelled for grouping, corner effects and for edging large plantings of shrubby borders.

*Pannosa*—A very beautiful shrub of upright growth. Branches long, slender and slightly arching. Leaves deep rich green above and covered with silvery down beneath. Berries borne in great profusion in the fall are vermilion red. The branches loaded with berries can be cut and kept in water for weeks. 60c each.

*Franchetti*—A recently introduced Cotoneaster, bearing during mid-winter, immense quantities of brilliant orange berries. The plant is more or less drooping in habit. A splendid plant for the great Southwest. 60c each.

*Microphylla*—Low, flat, spreading, bright glossy green, very attractive. Covered in April with masses of tiny pink flowers and in the fall with minute, brilliant scarlet berries. The foliage also turns scarlet in winter. Fine for borders, rockeries or where a low, flat shrub is required. 60c each.

## Crateagus

Large shrubs adapted to most any soil and situation; admired for their bright berry-like fruits (which remain on the plant until spring), white flowers and firm foliage. The genus is closely allied to the Cotoneasters, but is easily distinguished by their thorny branches.

*Lalandi*—Highly recommended. A splendid, free growing shrub that bears in fall great masses of orange-like berries. 75c each.

*Crenulata*—Brighter in the berries than the last named, a magnificent shrub, 75c each.

*Yunnanensis*—China. 8 feet. A variety of *Pyracantha crenulata*, but a more vigorous grower, with larger leaves. In the fall and winter there is nothing more striking than this plant with its dark glossy green foliage acting as a background for great masses of red colored berries. 75c each.

## Eugenia

*Myrtifolia*—A splendid, bushy, tall growing shrub, closely related to the Myrtle; can be trimmed to any desired shape. Very handsome. 75c each.

*Hookeriana*—Similar, but larger foliage, more spreading habit and purple berries. Needs more trimming to attain compact specimens, but makes a very attractive shrub, especially when in fruit. 75c each.

# ORNAMENTAL SHRUBS, TREES AND VINES—Continued

## Genista (Broom)

A fast growing group of shrubs which brighten up the landscape with their brilliant masses of yellow pea-shaped flowers; valuable as a contrast to solid green shrubbery; unusually hardy and drought resistant.

**Genista canariensis**—"Canary Broom." A free flowering shrub attaining a height of from 6 to 8 feet. The leaves are small and the bright yellow flowers are produced in great profusion. 60c each.

**Genista fragrans**—(Cytisus racemosa). "Sweet Broom." Canary Islands. Six feet. A delightful spring and summer flowering shrub with many small grass-green leaves and absolutely covered when in bloom with pea-shaped bright yellow flowers. The best of all the Brooms for general use. 60c each.

**Genista hispanica**—(Spartium junceum). "Spanish Broom." Spain. Eight feet. A strong, fast growing shrub with many slender, bright-green branches almost devoid of leaves. Bears large, pea-like, bright yellow flowers very sweetly scented. Hardy, heat loving and drought resistant. 60c each.

## Hydrangea

One of the most popular shrubs in existence and grown practically all over the world. Produces immense trusses of pink flowers. By the addition of iron to the soil in which they are growing the flower will take on a pale blue cast. 50c each.

## Lagerstromia (Crepe Myrtle)

**Indica**—One of the handsomest of all deciduous flowering trees. Flowers are borne in large racemes at the tips of the new growths during the early Summer. The color is a delightful shade of bright pink. When the trees are in bloom they are simply a mass of color. Strong plants. \$1.00 each.

**Crimson Flowered Variety.** \$1.00 each.

## Laurustinus

An excellent shrub that blooms early in the spring, makes a wonderful hedge plant, or for massing with other shrubs. 60c each.

## Lemon Verbena

"Lemon Verbena." A fast growing shrub with delightfully fragrant foliage; bears minute flowers in delicate pyramidal spikes. 75c.

## Leonotus

**Leonurus**—"Lion's Tail." A very showy soft wood shrub with hairy stems and brilliant orange-red, tassel-like flowers at the joints of the stems. Very fast growing and a novel, distinctive shrub. 60c each.

## Leptospermum

**Laevigatum**—A lovely Australian shrub with long, weeping branches, densely foliaged with small whitish green leaves. During the Spring the plants are literally covered with minute white flowers. Attractive both in and out of bloom. 75c each.

## Ligustrum (Privet)

**Nepalense**—This is the most popular plant for hedges, can be trimmed to any desired height. Flats of 100 plants, \$2.50. Gallon cans, 50c each.

**Golden Privet**—Same as above in form with beautiful yellow and green foliage. Flats of 100 plants, \$3.50. Gallon cans, 50c each.

## Myrtus (English Myrtle)

**Communis**—A splendid dwarf evergreen plant suitable for borders or hedges, also of equal value if allowed to grow into specimens. Bears masses of fragrant pure white flowers. Gallon cans, 75c each.

**Communis Microphylla**—Identical with the preceding, but with much smaller leaves. Gallon cans, 75c each.

## Nandina

**Domestica**—This shrub from Japan makes one of the most beautiful of all lawn specimens, or it may be treated as a potted plant for indoor ornamentation. The leaves take on rich Autumn colors in the Fall, of red, copper and brown, at which time it is exceedingly attractive. Extra fine plants, 75c each.

## Oleanders

These make beautiful specimens in a short time and are practically ever-blooming. They will stand several degrees of frost without injury. Of splendid value for such locations as Arizona, Texas, and generally speaking, the Southwest, where the temperatures do not go too low. We can offer them in the following colors: Cerise, Salmon, White, Pink. Price, 60c each.

## Pampas Grass

A very ornamental plant bearing silvery white plumes; valuable for certain locations on lawn, among other shrubbery or around pools. 60c each.

## Philadelphus (Mockorange)

Very handsome and vigorous growing shrub with large foliage and beautiful flowers, which are produced in great profusion the latter part of April and early May.

**Coronarius**—(Sweet Mockorange). Flowers pure white, very sweet, produced in great profusion. 60c each.



BUDDLEIA (Page 32)

## Pinus

**Halapensis**—This handsome Mediterranean pine tree is especially adapted to planting in California. It forms a dense growth, withstands drought to a marked degree. Owing to its value we have grown a very large stock of this variety. 75c each.

**Insignis**—The well known Monterey Pine. A rapid-growing variety with handsome, dark green needles. 75c each.

**Pinus Canariensis**—"Canary Island Pine." One of the most beautiful and permanent of all pines for California. Extremely long needles in large tufts. The new growth is silvery white. Extremely fast growing. 75c each.

## Pittosporum

The bright, glossy green foliage of the various Pittosporums, coupled with their delicately fragrant blossoms, places them in the front rank of medium high garden shrubs. We offer two of the very best.

**Undulatum**—Handsome undulated foliage, light green in color. Flowers delightfully scented. Strong plants. 60c each.

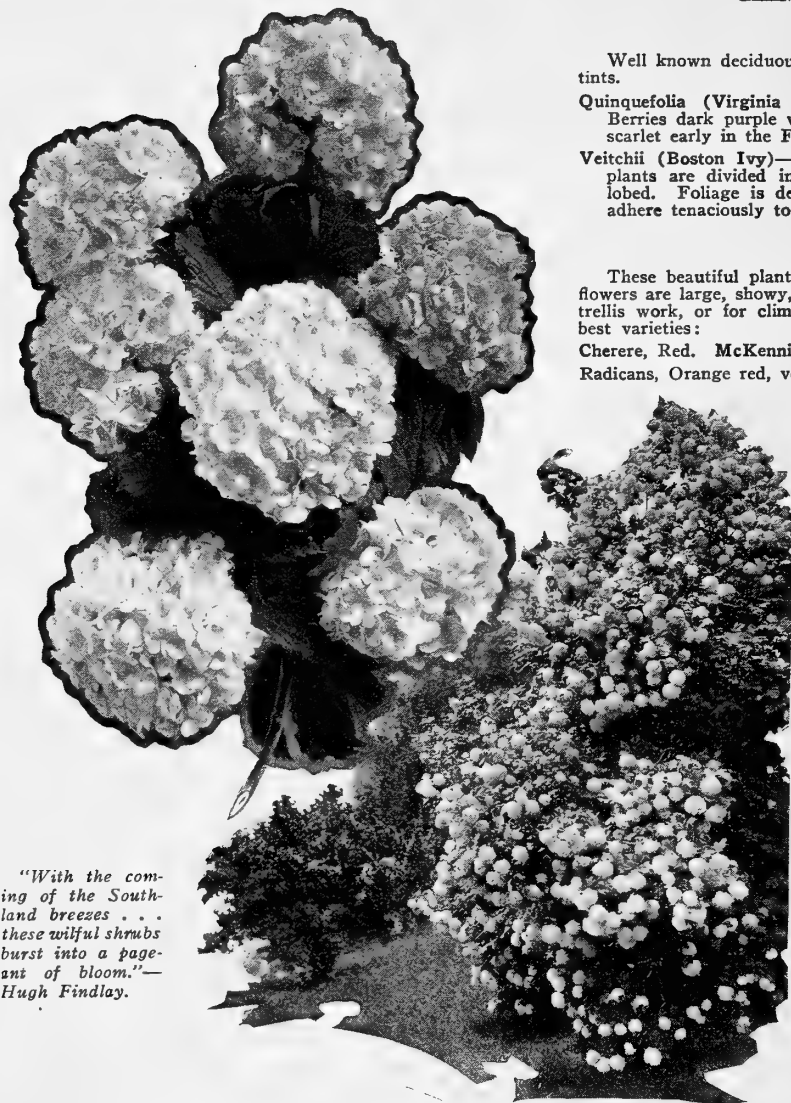
**Tobira**—Dark green, glossy foliage. White fragrant flowers. 60c each.

## Phoenix (Date Palm)

**Phoenix canariensis**—"Ornamental Date Palm." Canary Isles. This is easily the best and most popular palm for general planting in California and the Southwest. It thrives under all sorts of conditions, is quite hardy, and grows very rapidly. Its dense, immense crown of beautifully curving leaves, each 15 feet long and of a very pleasing dark green color, and its stately and rapid growth combine to make this species an ideal palm for street, avenue, park and lawn. Can be grown indoors in colder sections. 2 to 3 feet, \$1.00 each.

# ORNAMENTAL SHRUBS, TREES AND VINES—Continued

## CLIMBING AND TRAILING PLANTS



"With the coming of the Southland breezes . . . these wilful shrubs burst into a pageant of bloom."—Hugh Findlay.

VIBURUM OPULUS STERILE

### Punica (Evergreen Pomegranate)

*Punica granatum nana*—"Dwarf Evergreen Pomegranate." A miniature evergreen form of the Pomegranate with small fresh green foliage, and covered in spring and summer with bright scarlet flowers and in fall and winter with crimson fruits. Excellent for small specimens and makes a wonderful hedge. Rather tender. Gallon containers, 1 to 2 feet, 75c each.

### Spiraea

Medium-sized shrubs of free blooming habit, varying in appearance, color of flowers, and manner of blooming. All have very small flowers borne in compact clusters of different forms. Do well in any ordinary good garden soil.

*Anthony Waterer*—Dwarf but erect form, growing about three feet high. Flowers bright crimson, in flattened heads at ends of branches. Blooms about midsummer. 60c each.

*Van Houttei*—Branches arching and drooping with the weight of the flowers, which are borne so freely in Spring as to cover plant completely with a mass of snowy bloom. Very beautiful and extremely hardy. 60c each.

### Syringa (Lilac)

These old-fashioned shrubs have been popular for ages. The first blooms appear here the latter part of March. The Lilac will give the best results in fertile soil, moderately moist, but well-drained. Budded plants. Purple and white. \$1.00 each.

### Tritomas (Red Hot Poker)

*Pfitzerü*—A constant blooming variety with spikes four to five feet high. Color a rich shade of orange scarlet. 35c each.

### Viburnum (Snowball)

*Opulus Sterile*—The well-known eastern Snowball does equally well in California, blooms in the early Spring. Beautiful white flowers. 75c each.

All Shrubs offered in this Catalogue are in [34] gallon cans unless otherwise stated

### Ampelopsis

Well known deciduous vines climbing by tendrils. All assume most gorgeous autumnal tints.

*Quinquefolia* (Virginia Creeper)—Very well known. Leaves large with five leaflets. Berries dark purple with a bloom, borne on red stalks. Foliage colors a most intense scarlet early in the Fall. 75c each.

*Veitchii* (Boston Ivy)—Perfectly distinct from Virginia Creeper. Leaves on very young plants are divided into three separate leaflets, but on older plants are merely three-lobed. Foliage is dense and very glossy. Tendrils furnished with small discs, which adhere tenaciously to brick, stone or even wood. Foliage turns red in Fall. 75c each.

### Bignonia (Trumpet Flower)

These beautiful plants are deserving of more attention than they have received. Their flowers are large, showy, of the most delicate shades and colors. For covering walls, rocks, trellis work, or for climbing trees they have few equals. We consider the following the best varieties:

*Cherere*, Red. *McKennii*, Pink. *Capensis*, Orange scarlet. *Tweediana*, Yellow. 75c each. *Radicans*, Orange red, very hardy. 60c each.

### Ficus

*Repens*—Extremely handsome evergreen climber with about same habit as the well known Boston Ivy. It adheres closely to walls by its clinging tendrils. Leaves are small, dark green and heart-shaped. Perfectly hardy. Plants in pots. 20c each.

### Hedera

*English Ivy*—The well known species with very dark green, leathery leaves, usually about five-lobed. Old vines have greenish flowers and black berries in clusters on lower part of plant. Small plants, 15c each; \$1.50 per dozen; gallon cans, 50c each.

### Jasmine

*Officinale*—Slender vine with finely divided pinnate leaves and numerous small, white, fragrant flowers. Summer bloomer. Partly evergreen. 75c each.

*Primulinum*—A recent and very valuable introduction. It is not only the fastest growing Jasmine, but the quickest-growing climber. Flowers clear primrose yellow. 75c each.

### Honeysuckle

Growth extremely strong. Old leaves dull green. New growth is reddish purple on branches and backs of leaves. Flowers white inside, purplish outside. One of the very best vines where rapid growth and a dense mass of foliage are desired. 50c each.

### Muehlenbeckia (Wire Vine)

*Muehlenbeckia complexa*—"Maiden Hair Vine." Rapid growing, twining vine, with dark wiry stems and tiny round leaves. Strong plants. 75c each.

### Wistaria

One of the prettiest climbing vines. Has long racemes of pea-shaped flowers that almost cover the plant in early Spring. Grafted plants in white and purple. \$1.50 each.

## FERNS

### Asparagus Ferns

*Plumosus*—Used extensively for mixing with cut flowers, grows best in the shade, responds to good rich soil. 20c each; \$2.00 dozen.

*Sprengeri*—Used for hanging baskets, etc. 20c each; \$2.00 dozen.

### Sword Fern

A great favorite for outside planting as well as for pot culture. 20c each; \$2.00 dozen.

### Woodwardia Fern

The Giant Brake or mountain fern grows to a height of 6 feet, requires a moist shady place for best results. 50c each.

### Plumbago

*Capensis*—A tall growing, drooping shrub that is covered practically the entire year with sky blue flowers, does best in a sunny position. 60c each.

### Veronica

A compact growing class of shrubs that are hardy and adaptable to sun or shade.

*Decussata*—Rather dwarf. Leaves medium sized and closely set. Flowers large, violet blue. An excellent plant. 60c each.

*Imperialis*—Growth strong and rather spreading. Leaves large, dark green with purple margins and midribs. Flowers amaranth red. Very handsome. 60c each.

### Weigela (Diervilla)

Hardy, profuse-blooming shrubs of spreading habit. These are among the showiest of the garden shrubs, producing in early April great masses of showy flowers.

*Rosea* (Pink Weigela)—Flowers are light pink; compact grower, free bloomer. 75c each.

*Eva Rathke*—Flowers red. 75c each.



# VEGETABLE SEED LIST

There are a number of vegetables that can be planted in the fall. We recommend the following varieties knowing that you will obtain excellent results if the seed is planted and cared for.

For descriptions, planting instructions and complete list of Vegetable Seeds, see our general catalogue. A pamphlet giving cultural directions for any of the varieties listed may be had on application.

All prices listed are postpaid.

	Pkt.	Oz.	¼ Lb.	Lb.
<b>ASPARAGUS</b>				
Palmetto .....	\$0.10	\$0.20	\$0.45	\$1.25
<b>BEEF</b>				
Detroit Dark Red.....	.10	.15	.45	1.25
Crosby's Egyptian .....	.10	.15	.40	1.00
Swiss Chard .....	.10	.15	.40	1.00
<b>CARROT</b>				
Early Chantenay .....	.10	.20	.45	1.25
Oxheart .....	.10	.20	.45	1.25
<b>CAULIFLOWER</b>				
Early Snowball .....	.10	3.00	9.00	30.00
<b>BROCCOLI</b>				
White Cape .....	.10	.90	3.00	9.00
<b>BRUSSELS SPROUTS</b>				
Half Dwarf Paris Market .....	.10	.30	.90	2.75
<b>COLLARDS</b>				
True Georgia .....	.10	.20	.65	2.00
<b>CORN SALAD</b>				
Corn Salad—Fetticus .....	.10	.30	1.00	3.00
<b>CRESS</b>				
Fine Curled .....	.10	.20	.50	1.50
Water Cress .....	.10	.60	2.00	6.00
<b>ENDIVE</b>				
Green Curled .....	.10	.20	.65	2.00
Broad Leaved Batavian.....	.10	.20	.65	2.00
<b>RUTABAGA</b>				
Improved Yellow Globe.....	.10	.20	.50	1.50
<b>CABBAGE</b>				
Cannon Ball .....	.10	.40	1.35	4.00
Copenhagen Market .....	.10	.40	1.35	4.00
Danish Ball Head .....	.10	.40	1.35	4.00
Early Flat Dutch .....	.10	.35	1.20	3.50
Early Winningstadt .....	.10	.35	1.20	3.50
Red Dutch .....	.10	.35	1.20	3.50
<b>KALE</b>				
Dwarf Curled Scotch.....	.10	.20	.50	1.50
Tall Curled Scotch .....	.10	.20	.50	1.50
Thousand Head .....	.10	.20	.45	1.25
<b>KOHLRABI</b>				
Early Purple Vienna.....	.10	.30	1.00	3.00
Early White Vienna.....	.10	.30	1.00	3.00
<b>LEEK</b>				
London Flag .....	.10	.35	1.15	3.50
<b>MUSTARD</b>				
Southern Curled .....	.10	.20	.35	1.00
Ostrich Plume .....	.10	.20	.35	1.00
<b>LETTUCE—HEADING VARIETIES</b>				
California Cream Butter.....	.10	.20	.85	2.50
Iceberg .....	.10	.20	.65	2.00
Hansen .....	.10	.20	.65	2.00
New York .....	.10	.25	.85	2.50
Los Angeles .....	.10	.25	.85	2.50
Wonderful .....	.10	.25	.85	2.50
<b>LOOSE LEAVED VARIETIES</b>				
Early Curled Simpson.....	.10	.20	.50	1.50
Prizehead .....	.10	.20	.50	1.50
<b>ONION</b>				
Australian Brown .....	.10	.20	.70	2.00
Germain's Great Green Bunching.....	.10	.35	1.20	3.50
White Portugal .....	.10	.40	1.35	4.00
Yellow Flat Danvers.....	.10	.40	1.35	4.00
<b>ONION SETS</b>				
White .....			.40	
Brown .....			.40	



Bulletins on Vegetable Culture are sent free on request. Please state varieties in which you are interested.

	Pkt.	Oz.	¼ Lb.	Lb.
<b>OKRA</b>				
Long Green .....	\$0.10	\$0.20	\$0.35	\$1.00
White Velvet .....	.10	.20	.35	1.00
<b>PARSLEY</b>				
Champion Moss Curled .....	.10	.20	.60	1.75
<b>PARSNIP</b>				
Hollow Crown .....	.10	.20	.65	1.75
<b>PEAS—FIRST EARLY VARIETIES</b>				
American Wonder .....	.10	.20	.35	3.00
Dwarf Telephone .....	.10	.20	.35	3.00
<b>SECOND EARLY VARIETIES</b>				
Senator .....	.10	.20	.35	3.00
Dwarf Sugar or Edible Pod.....	.10	.20	.35	3.00
Stratagem .....	.10	.20	.35	3.00
<b>LATE VARIETIES</b>				
Telephone .....	.10	.20	.35	3.00
<b>RADISHES</b>				
California Mammoth White.....	.10	.20	.45	1.25
Germain's Epicure .....	.10	.20	.45	1.25
Early Long Scarlet Short Top.....	.10	.20	.45	1.25
French Breakfast .....	.10	.20	.45	1.25
Long White Icicle.....	.10	.20	.45	1.25
Scarlet Turnip .....	.10	.20	.45	1.25
Scarlet Turnip White Tip.....	.10	.20	.45	1.25
<b>SALSIFY</b>				
Sandwich Island .....	.10	.25	.85	2.50
<b>SPINACH</b>				
Bloomsdale .....	.10	.15	.20	.60
Long Standing .....	.10	.15	.20	.60
Prickly or Winter.....	.10	.15	.20	.60
<b>TURNIP</b>				
Early White Flat Dutch.....	.10	.20	.35	1.00
Red Top White Globe.....	.10	.20	.35	1.00
Purple Top Strapleat.....	.10	.20	.35	1.00

# GERMAIN'S "PREMIUM" GRASS SEEDS



Home of E. L. Doheny.



Irving Hellman's Residence.



View of Palos Verdes Estates.

## PREMIUM GRASS SEEDS

### FOR LAWNS, ESTATES, PARKS, ATHLETIC FIELDS AND GOLF COURSES

A bright, velvety, well-groomed lawn is the first essential of an attractive home. Furthermore, it adds hundreds of dollars to the value of a home. However, just sowing any kind of grass seed will not produce a lawn of this character. The highest grade of re-cleaned grass seed must be planted if good results are to be expected. If chaffy, light weight and impure seed is sown, a ragged and weedy lawn will result. If heavy weight, extremely pure and thoroughly re-cleaned seed is sown, your lawn will be a thing you will be proud of. Germain's "Premium" Lawn Grass Seeds are thoroughly re-cleaned in our own specially built grass seed cleaning plant, which is the most complete in the West—and are therefore extremely pure, high in germination and free from weed seeds.

### VARIETIES OF LAWN GRASS SEED

**Kentucky Blue Grass Seed (*Poa Pratensis*)—Premium Grade**—Grown from specially selected strains in carefully selected fields, and thoroughly re-cleaned to remove chaff, impurities and weed seeds. This seed will give the highest satisfaction. Plant at the rate of 1 lb. to 200 sq. ft. Price per pound, 75c; 10 lbs., \$7.00 postpaid.

**White Clover (*Trifolium Repens*)—Premium Grade**—We import our Premium grade of White Clover Seed from European sources, where the finest grades of White Clover Seed are grown—and then thoroughly re-clean this seed to make doubly sure that it is of the highest quality. Plant at the rate of 1 lb. to 200 sq. feet. Price per pound, 80c; 10 lbs., \$7.50 postpaid.

**Kentucky Blue Grass and White Clover Mixed**—This favorite lawn seed mixture is made up of Premium Grade seeds, mixed in the right proportion. We recommend this mixture as being the most satisfactory in general, for making new lawns. Plant at the rate of 1 lb. to 200 sq. feet. Price per pound, 75c; 10 lbs., \$7.00 postpaid.

**Australian or Perennial Rye Grass (*Lolium Perenne*)**—While Rye Grass does not produce a lawn of as fine a texture as Blue Grass and Clover, it is extremely hardy, requires less fertile soil and withstands more hardships. It is used to a great extent in Arizona and to an increasing extent in Southern California. Plant 1 lb. to every 200 sq. feet. Price per pound, 35c; 10 lbs., \$3.00 postpaid.

**Pacey's or "Pacific" Rye Grass (*Lolium Perenne Pacey*)**—Similar to Australian Rye Grass only it produces a finer blade and is therefore often preferred to the latter. Price per pound, 35c; 10 lbs., \$3.00 postpaid.

**"Poa Bulbosa" or Bulbous Blue Grass**—This variety cannot be planted alone, but should be planted in lawns where Bermuda Grass is present, for it produces a beautiful green lawn in the winter months, from about October 1st to the end of April, when the Bermuda Grass lawns in Southern California turn brown. However, in the warm summer months the bulblets remain dormant in the soil—growing again in the fall. The planting of *Poa Bulbosa*, therefore, results in a green lawn the year round. Write for our special pamphlet on this variety. Where sown on established lawns, mow as closely as possible, rake lightly and broadcast *Poa Bulbosa* at the rate of about 3 to 5 lbs. to 1,000 sq. feet. The surface should then be rolled and kept watered until the grass is well established. Price of *Poa Bulbosa*, per pound, \$2.50; 10 lbs., \$22.50 postpaid.

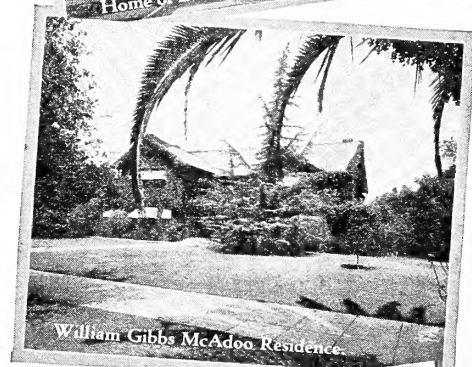
### BENT GRASS SEEDS

#### (For Fine Lawns and Golf Greens)

Bent Grass Seeds for lawn purposes have been coming into some popularity during the last few years, especially for larger lawns and estates, where much care and attention is given to the lawn. Bent Grasses produce a very fine, beautiful and velvety lawn, but must be cut at least twice a week, as otherwise they will produce a rank and clumpy growth. Bent Grass lawns also should be top-dressed every four months. Mow the lawn closely, mix equal parts of good, rich soil and GROZ-IT brand Sheep Manure and rake into the grass with the back of a rake, covering the grass not over one-quarter inch. Bent Grass Seeds should be sown at the rate of about 4 pounds to every 1,000 square feet. Write for our special pamphlet on Bent Grasses—it gives full details regarding the planting of and caring for Bent Grass lawns.

Of the many varieties of Bent Grass Seeds, we have selected the following as the most satisfactory for lawns in Southern California:

**Seaside Bent (*Agrostis Maritima*)**—also often called Coos County Bent, because most of the seed is grown in Coos County, Oregon. This is a true creeping bent, and makes a very smooth, uniform lawn. Extreme care must be taken in purchasing this seed, as there are so many swamp grasses and other weed seeds in the district where the seed is grown. Our stock of Seaside Bent is carefully re-cleaned in our own specially constructed seed cleaning plant, and is extremely pure and free from weed seeds. Price per lb., \$2.50; 10 lbs., \$24.50, postpaid.



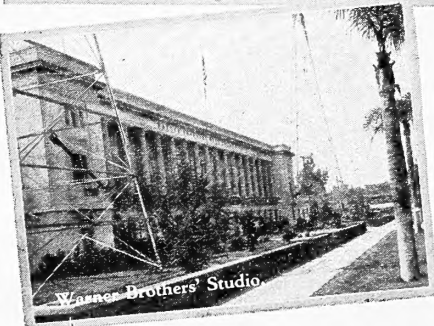
William Gibbs McAdoo Residence.



Home of Antonio Moreno.



Ambassador Hotel.



Warner Brothers' Studio.

"Nothing is more pleasant to the eye [36] than green grasses kept finely shorn."—BACON.

**WRITE FOR OUR SPECIAL BOOKLET ON LAWN GRASS SEEDS. IT GIVES COMPLETE INFORMATION REGARDING THE MAKING OF AND CARING FOR BLUE GRASS AND CLOVER AND BENT GRASS LAWNS.**

**Colonial Bent (Agrostis Vulgaris)**—Also often called "Rhode Island Bent"—characterized by the flat, narrow blades and its slightly creeping qualities which make a very smooth and velvety lawn. Our seed is grown in New Zealand and is carefully cleaned. It does not contain injurious weed seeds and is the highest grade of Bent Grass available, as far as purity, growth and freedom from admixtures of other grass and weed seeds is concerned. It produces an excellent lawn the year round at less maintenance cost than any other Bent Grass. Price per lb., \$1.65; 10 lbs., \$16.00, postpaid.

**South German Mixed Bent**—This is an admixture of Bent Seeds, containing mostly Colonial and some Velvet Bent. Our stock of this variety is of the highest quality and is carefully re-cleaned. Price per lb., \$1.65; 10 lbs., \$16.00, postpaid.



## VARIETIES OF GRASS SEEDS

**Used Principally for Golf Courses—Write for Quantity Prices**

**Red Top (Agrostis Alba)**... A fine bladed grass that is often used in mixture with Kentucky Blue Grass for putting greens and tees on golf courses. It also makes an excellent lawn grass. Price per lb., 60c; 10 lbs., \$5.00, postpaid.

**Hard Fescue (Festuca Duriuscula)**—Produces stiff, upright leaves, usually used in mixture with other varieties for golf course greens and tees. Price per lb., 55c; 10 lbs., \$4.75, postpaid.

**Red Fescue (Festuca Rubra)**—Grows well in dry, sandy soils. Produces stiff and upright leaves and roots creep extensively. Used in golf course putting green mixtures, also on tees and fairways. Excellent for lawn purposes. Price per lb., 60c; 10 lbs., \$5.50, postpaid.

**Chewings Fescue (Festuca Species)**—Used extensively on putting greens and fairways and tees on golf courses, and does well on most any kind of soil. It also produces a stiff, upright plant. Price per lb., 75c; 10 lbs., \$6.00, postpaid.

**Sheep's Fescue (Festuca Ovina)**—Produces stiff leaves. Used chiefly on golf course tees, fairways, bunkers and on "the rough." Price per lb., 95c; 10 lbs., \$9.00, postpaid.

**Various Leaved Fescue (Festuca Heterophylla)**—Produces a fine dark green turf. Is excellent for lawns for shady places and on tees and fairways on golf courses. Price per lb., 75c; 10 lbs., \$7.00, postpaid.

**Meadow Fescue (Festuca Pratensis)**—Produces very broad leaves. Used in golf courses on "the rough" and sometimes on the fairways. Price per lb., 50c; 10 lbs., \$4.50, postpaid.

**Rough Stalked Meadow Grass (Poa Trivialis)**—Makes an excellent turf both for lawns in shady places and for putting greens and fairways on golf courses. Leaves are very narrow and flat. Price per lb., 75c; 10 lbs., \$7.00, postpaid.

**Wood Meadow Grass (Poa Nemoralis)**—A very fine bladed grass, medium dark green in color, used in mixtures for shady spots. Price per lb., 85c; 10 lbs. \$8.00, postpaid.

**Bermuda Grass (Cynodon Dactylon)**—A broad leaved creeping grass, used for golf course fairways, polo and athletic fields. Will stand a great deal of hard usage. Price per lb., 75c; 10 lbs., \$6.00, postpaid.

**Bur Clover (Medicago Arabica)**—Used to a great extent for golf course fairways in California. Price per lb., 50c; 10 lbs., \$4.50, postpaid.

### Note on Grass Seeds For Golf Courses.

Care must be taken to sow only the highest qualities of re-cleaned grass seeds on golf courses, in order to avoid the trouble and expense of reseeding costs and the weeding of greens, tees, and fairways. Germain's "Premium Brand" seeds have been specially re-cleaned in our own grass seed cleaning plant, which is the most modern and complete in the west, to the maximum of purity and germination and they are unusually free from weed seeds. The amount of grass seeds that should be planted for golf courses will run from about ninety pounds for the small fine seeds to three hundred pounds for the larger seeds, to the acre on fairways. For putting greens we recommend planting on the average of about one pound to every 150 square feet. We have not listed prices on large quantities of grass seed such as are often purchased by golf clubs. These prices will vary according to market conditions and will always be as low as is consistent with the market and the quality. Kindly write us for special quotations in larger quantities than indicated above.

### NUVIDA LAWN AND GARDEN FERTILIZER

The verdict of all who have used the Nuvida Lawn and Garden Fertilizer is that it is the most complete and satisfactory Lawn Dressing ever placed on the market. It is manufactured by us and we guarantee that it contains all the elements required and in the proper proportions to produce a luxuriant growth. It is a clean, odorless material and can be applied without offending one's sense of smell or sight. Being quick in action, the effect can be noticed within a very short time by the rich green coloring and that velvety appearance so much sought after. Its superiority over stable manure can scarcely be estimated, as the latter, in addition to disfiguring the lawn by its unsightly appearance, also gives out an unpleasant odor, and always contains weeds and other undesirable seeds. Trial bags for 300 sq. ft., 10 lbs., 60c; 25 lb. sack for 750 sq. ft., \$1.25; 50 lb. sack for 1,500 sq. ft., \$2.25; 100 lb. sack for 3,000 sq. ft., \$4.00. Write for Nuvida pamphlet.

### NUVIDA FLOWER AND FERN FERTILIZER

A reliable plant food for flower beds and potted plants, including all flowering plants, palms, ferns, etc. It is highly concentrated and should be used in small doses, following closely directions given on each container. Applications may be repeated, however, from time to time through the growing season. Price, 35c per can.

### BERMUDA RAKE

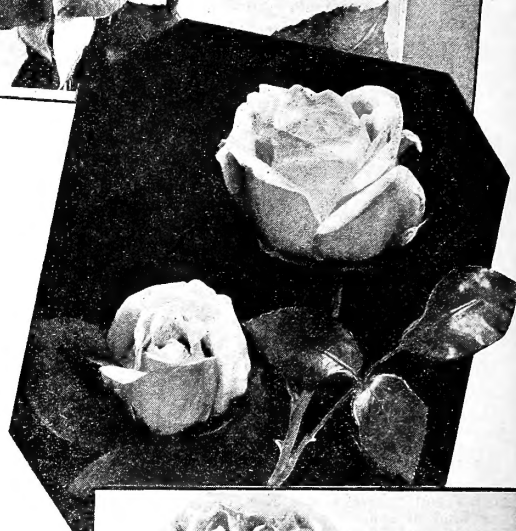
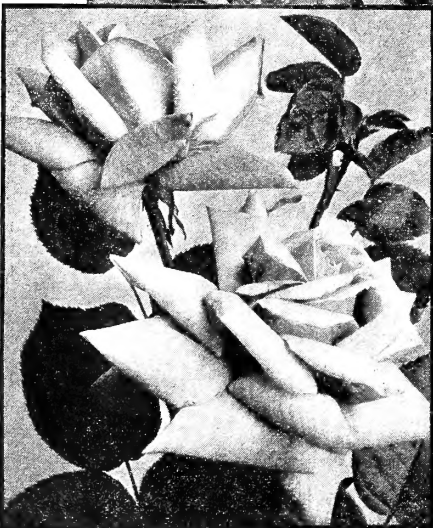
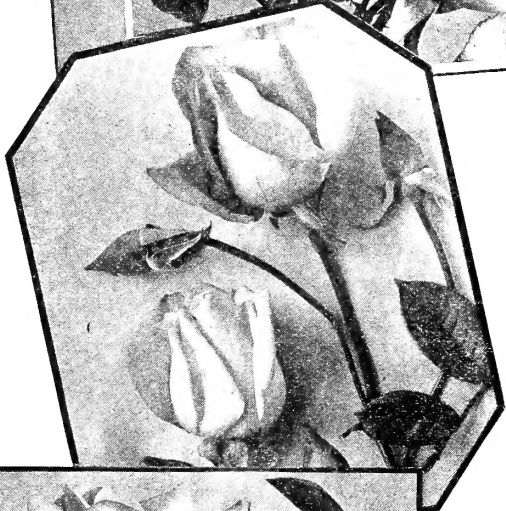
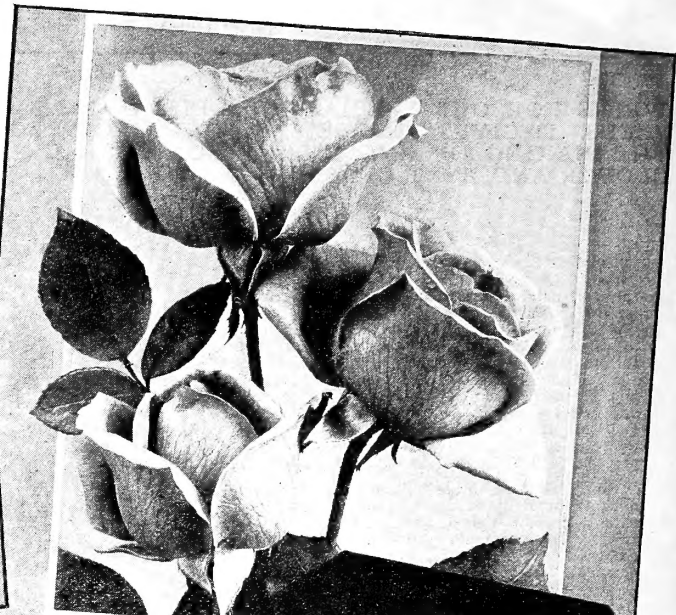
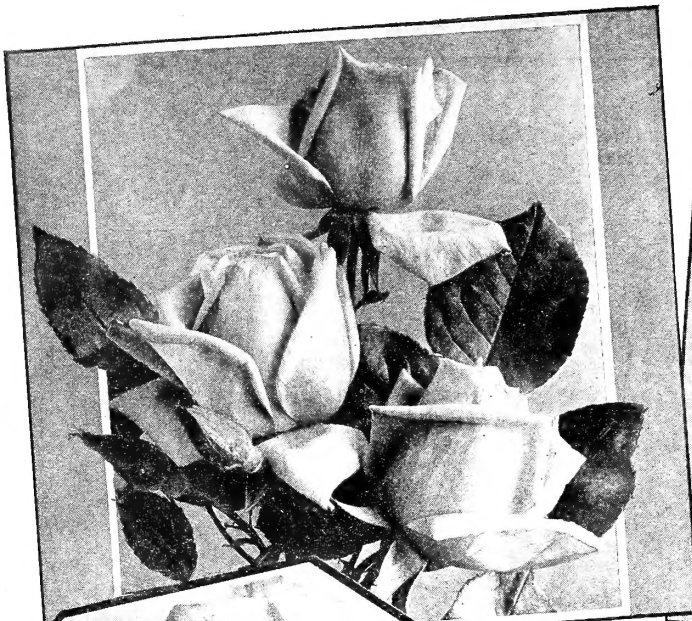
This tool is all machine made, with all working parts detachable, and the metal of each part selected for its particular use. The angle of the teeth, and its weight, keep it in the ground in the heaviest lawn. The sharp blades cut the grass in sections and the cross cutter bar completes the work. A lawn raked and cross raked is free of all runners and the work has left a perfect seed bed to sow clover or grass seed. Brown Bermuda lawns can be skinned in the fall with this tool with a fraction of the labor necessary by any other method. Many lawns burn out in spots because the heavy soil has become impervious. Occasional use of the Bermuda Rake will so loosen the soil that it will again take water. Price, each, \$5.00.

### SEMESAN

**FOR THE CONTROL OF BROWN PATCH ON TURF**

Write for special booklet on this wonderful new preparation. Semesan is dusted or sprayed over the turf infected with this unsightly disease of fine grasses, and successfully controls it. For prices on Semesan, see Page 87.





Superior Quality  
**ROSES**

Germain's  
"CHALLENGE"  
Collection

This wonderful assortment is  
a veritable "challenge"  
in quality and value.  
Six of our very  
choicest roses!

- Los Angeles*—Flame pink.
- Mme. Ed. Herriot*—Coral red.
- Claudius Pernet*—True yellow.
- Gen. McArthur*—Crimson.
- Kaiserin A. Victoria*—Creamy white.
- Padre*—Coppery scarlet.

The complete collection of six strong,  
two-year-old budded plants from gal-  
lon containers—

**\$3.50**

*Delivered Free To  
Your Home*

*Germain's California Roses of Quality*

**GERMAIN'S**

GERMAIN SEED AND PLANT CO.  
RETAIL STORE - SIXTH AND MAIN  
WHOLESALE OFFICES AND WAREHOUSES  
741-747 TERMINAL STREET  
LOS ANGELES

