

## Historic, archived document

Do not assume content reflects current scientific knowledge, policies, or practices.



*Autumn 1930*



LIBRARY  
RECEIVED  
★ OCT 17 1930 ★  
U. S. Department of Agriculture

BULBS  
SEEDS  
SHRUBS  
AND  
TREES

*Large  
Trumpet Narcissus*

**KING ALFRED**

SEE PAGE NINE

**PORTER-WALTON CO.**

SEED AND NURSERY SPECIALISTS  
GENERAL OFFICE 42 WEST FIRST ST.  
SALT LAKE CITY, UTAH

# P-W's BULBS, PLANTS and SEEDS

are the Standard of Quality—



## the "Pick o' the Crop"

For your selection you will find listed in this booklet a tried and well chosen list of both foreign and home grown bulbs and roots for Fall planting.

By the tests conducted at our Centerville Trial Grounds we are able to compare the many varieties now offered and choose just those most attractive and desirable as well as those best adapted to our soils and climatic conditions.

The Dutch bulbs such as Hyacinths, Tulips and Crocus now come to us in carload lots direct from Holland's most reliable and critical growers. You will readily appreciate, therefore, our position is such that we can not only demand the Pick o' the Dutch Crop but also effect a great saving in railway freight charges to this territory.

Delivery will be made at the proper planting-time. We guarantee to replace gratis any bulb, purchased from us, that does not arrive in perfect condition. Complaints on this point cannot be entertained if not made within 5 days after receipt of the goods.

**This is What Counts—25 Years in Business  
YOUR SATISFACTION GUARANTEED  
or Money Refunded**

If such a rare circumstance should happen that your garden failed through the fault of planting material purchased from us, we will refill the order or refund the entire purchase price of the stock in question. No seedsman in the world will do more, and most of them would do nothing after it is accepted and planted. Of course, we cannot guarantee or assume any responsibility for the crop, as we cannot control the weather, soils, moisture, pests and other agents which make for success or failure.

**About Prices and Delivery**—All quotations, unless otherwise noted, are based on prepaid charges by us to your express or post office. Safe delivery is positively guaranteed. You are, therefore, as close to us as your post office or railway station.

**The Order Blank** found in this catalog will be convenient for customers and facilitate our filling orders (extra ones mailed free on request).

## Bulbs Easy to Grow

**Success Is Sure With P-W's Selected Stock  
For Outside Planting**

**The Time to Plant:** First of all the fact should be emphasized that the **Autumn Months** and not **Spring** is the proper time to plant Hyacinths, Tulips, Narcissus, Daffodils, Crocus and other spring flowering bulbs and hardy perennial plants. Most of the varieties described in this list are ready for delivery the latter part of September or early October and should be planted as soon as convenient after that time, but surely before the ground freezes. "Lily of the Valley" and some of the **Hardy Lilies** are not ready until November or December; should there be danger of the ground freezing before that time, cover the space to be planted with leaves or straw and the bulbs can then be planted at your convenience after arrival.

**Distance Apart** varies with the variety from 2 to 3 inches for Crocus to 12 to 18 inches for Lilies. The proper space is indicated under the respective headings in this list.

## In Bloom All Winter

A trifling outlay in money plus a little fascinating fun. Many do not realize how easy and inexpensive it really is to have a continuous succession of bloom in the living room during the entire winter. The culture is so simple that with the right kind of bulbs anyone can be successful.

**Kind of Soil:** Any good, moderately rich, well drained soil is suitable for most bulbs; avoid heavy and boggy soils as poor drainage is fatal. In a stiff clay formation, supply a small quantity of sand or coal ashes at the base of each bulb and enrich soil with bone meal, VIGORO, or very well rotted manure, but do not use fresh stable manure under any conditions.

**Proper Depth:** Depends upon the size of the bulbs. A good rule is to place each bulb from one and one-half times to twice its own thickness below the surface of the ground. In districts of extremely cold temperature it is advisable to mulch the beds with leaves or straw during the severe weather, but care should be taken to remove the covering upon the approach of spring. In Salt Lake and equally mild climates no such protection is necessary.



Attractive Bed of "Mrs. Farncomb Sanders" (Giant Darwin Tulips) Grown from our Bulbs.

## Colorful Giant Darwin Tulips

For the Herbaceous Border, Massed in Clumps Along the Edge of Shrubbery, or as Cut-Flowers for Vases, These are Conceded to be the Superior of All the Tulips

Darwins are very valuable for planting in beds where their wonderful flowers with such a wealth of color can be displayed to advantage. They are just as charming, too, and perhaps as valuable for permanent planting in shrubberies and borders. They will continue to bloom for years. They are much more adaptable to warmer climatic conditions than the early Tulips. We advise our customers in the Southern States and California to choose Darwins when selecting Tulips.

Plant 6 to 7 inches apart, 4 to 5 inches deep in heavy and 6 inches deep in light soils. The number immediately following the name is the average height in inches.

**Afterglow**—26. Deep rosy orange with salmon tinted edge. Splendid novelty. 11c ea.; \$1.10 doz.; \$8.25 per 100.

**Anton Mauve**—26. Enormous flower, deep bluish lilac. 15c ea.; \$1.50 doz.; \$10.50 per 100.

**Baron De La Tonnaye**—26. Vivid pink, tall, strong stems. 8c ea.; 80c doz.; \$5.75 per 100.

**Bleu Aimable**—25. A beautiful rich lavender blue. 10c ea.; \$1.00 doz.; \$7.25 per 100.

**Bariton**—28. Fiery red, one of the best forcing varieties. 8c ea.; 80c doz.; \$5.75 per 100.

**Clara Butt**—22. An exquisite shade of soft salmon pink, shaded rose. 6c ea.; 65c doz.; \$4.50 per 100.

**Chant de Cygne**—26. Glowing salmon-scarlet shaded soft rose. One of the finest and the largest of all existing Darwin Tulips. A beautiful novelty; very scarce. 13c ea.; \$1.30 doz.; \$9.25 per 100.

**City of Haarlem**—27. Intense dark scarlet, with darker bloom; large steel-blue base and white halo; wonderful flower. 16c ea.; \$1.65 doz.; \$12.00 per 100.

**Dream**—24. Large cup-shaped flowers of heliotrope with silvery lilac margin; blue base. 9c ea.; 95c doz.; \$6.75 per 100.

**Edmee**—25. Cherry rose margined silvery pink. 9c ea.; 90c doz.; \$6.50 per 100.

**Eclipse**—30. New, deep rich glowing blood-red! Huge flower of fine form on a very tall, strong stem. 17c ea.; \$1.70 per doz.; \$12.00 per 100.

**Europe**—22. Splendid fiery salmon scarlet; flowers large and erect. 8c ea.; 80c doz.; \$5.50 per 100.

**Faust**—30. A very large deep violet purple. 12c ea.; \$1.20 doz.; \$8.50 per 100.

**Flamingo**—28. Delicate shell-pink, elegant pointed flower. 10c ea.; 95c doz.; \$6.50 per 100.

**Glow**—22. Glowing vermillion. 8c ea.; 80c doz.; \$5.50 per 100.

**Inglescombe (Yellow Darwin)**—24. Large globular canary yellow. 7c ea.; 70c doz.; \$5.00 per 100.

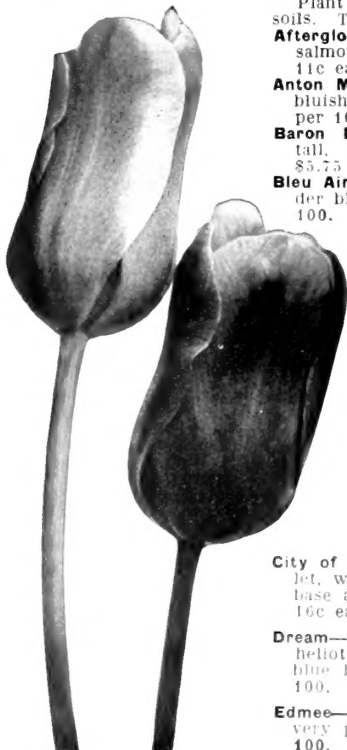
**Isis**—26. Vermillion. The popular red for bedding. 9c ea.; 85c doz.; \$6.25 per 100.

**Jacob Maris**—30. Rich mahogany-red; fine new variety; tall and stately. 14c ea.; \$1.40 doz.; \$10.00 per 100.

**King Harold**—25. Deep oxblood-red, with purple-black base; large flower of fine form, on a sturdy stem. Superb variety for the border, and, most effective in partial shade. 8c ea.; 80c doz.; \$5.75 per 100.

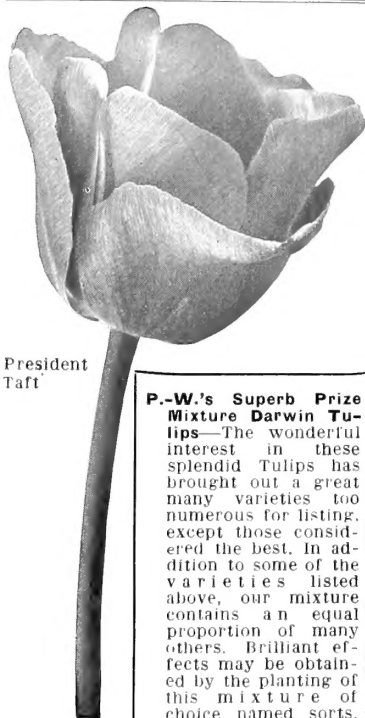
**King George V.**—26. Brilliant rosy scarlet; extra-large flower. One of the finest novelties. 20c ea.; \$2.00 doz.; \$14.00 per 100.

**La Fiancee**—30. Rosy shaded mauve, edged light pink, blue base extra. 11c ea.; \$1.10 doz.; \$8.00 per 100.



King George V.

Colorful Darwin Tulips (Continued)



President Taft

**P.-W.'s Superb Prize Mixture Darwin Tulips**—The wonderful interest in these splendid Tulips has brought out a great many varieties too numerous for listing, except those considered the best. In addition to some of the varieties listed above, our mixture contains an equal proportion of many others. Brilliant effects may be obtained by the planting of this mixture of choice named sorts. 70c per doz.; \$5.00 per 100.

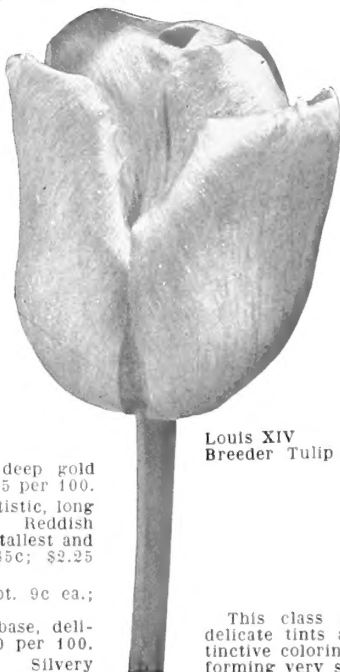
- La Tulipe Noire**—25. An extreme maroon black, velvety sheen in the sunlight, very large. 10c ea.; \$1.00 doz.; \$7.25 per 100.
- Loveliness**—21. Soft rosy carmine. 8c ea.; 75c doz.; \$5.25 per 100.
- Mattia**—Deep carmine rose, blue center. 8c ea.; 80c doz.; \$5.25 per 100.
- Mrs. Farncomb Sanders**—26. Brilliant dark rose-red. 7c ea.; 70c doz.; \$5.00 per 100.
- Mad. Krelage**—28. Rose pink, tinted lilac, large flower. 7c ea.; 70c doz.; \$5.00 per 100.
- Mrs. Potter Palmer**—24. Deep purple, medium size fine form. 10c ea.; \$1.00 doz.; \$7.00 per 100.
- Melicette**—24. Best pure lavender. 9c ea.; 95c doz.; \$6.50 per 100.
- Ouida**—30. Very tall bright scarlet, wonderful bedder. 7c ea.; 65c doz.; \$5.50 per 100.
- Philippe de Commines**—24. Velvety dark violet. 9c ea.; 90c doz.; \$6.50 per 100.
- President Taft**—26. Best dark scarlet red. Extra large. 10c each; \$1.00 doz.; \$7.00 per 100.
- Pride of Haarlem**—26. Crimson carmine. 7c ea.; 70c doz.; \$5.00 per 100.
- Prince of the Netherlands**—31. A giant flowered sort of deep cerise-rose edged pink. 9c ea.; 90c doz.; \$5.50 per 100.
- Princess Elizabeth**—26. Perfectly formed large, rich deep pink. 7c ea.; 75c doz.; \$5.25 per 100.
- \*Prince of Wales**—28. Very bright crimson with scarlet flush; bright blue base. A very large flower of

- brilliant color. 13c ea.; \$1.30 doz.; \$9.00 per 100.
- Professor Rauwenhoff**—28. Bright cherry-red shaded salmon. 8c ea.; 75c doz.; \$5.25 per 100.
- Psyche**—26. Soft salmon rose. 8c ea.; 75c doz.; \$5.25 per 100.
- Pulcinella**—26. Very lovely shaped flower of a clear, bright and pleasing cerise-red. Flowers early good for forcing. 11c ea.; \$1.10 doz.; \$8.00 per 100.
- Queen Mary**—27. Soft rose lighter bordered. 9c ea.; 90c doz.; \$6.50 per 100.
- Rev. H. Ewbank**—20. Silvery lavender shading towards the center bluish heliotrope. 9c ea.; 80c doz.; \$5.50 per 100.
- Scarlet Beautv**—22. Fiery scarlet. 10c ea.; \$1.00 doz.; \$7.00 per 100.
- Wm. Copeland**—25. Sweet lavender, good, early forcer. 9c ea.; 80c doz.; \$5.50 per 100.
- White Queen**—20. Large beautiful white. 9c ea.; 85c doz.; \$6.00 per 100.
- Wm. Goldring (Tiara)**—28. New charming magenta, large flower, center blue and white. 12c ea.; \$1.20 doz.; \$8.25 per 100.
- Yolande**—28. Grand novelty, an exquisite soft salmon pink. Shaded rose, identical in coloring with Clara Butte, but stem is longer and flower much larger and finer in every way. 20c ea.; \$2.00 doz.; \$14.00 per 100.
- Good Mixed**—Dozen, 60c; 100 for \$4.00.

Dutch Art or Breeder Tulips (May-Flowering)

Breeder Tulips are very similar in habit to the Darwins, and flower at the same time. Their chief characteristic is their immense blooms, borne on strong, stiff stems, many of them longer than the most gigantic Darwins. The revival of the taste for art colors has made these Tulips, at one time very popular in England, strong favorites with American enthusiasts. Truly they possess Nature's happiest combinations of purple and bronze, grey and lilac, yellow and gold, brown and orange and other distinctive colorings. Flowers are very large, of perfect form, and borne on tall, strong stems. Plant same as Darwins.

- Abdel-Kader**—27. Deep bronze, paler edged. 11c ea.; \$1.10 doz.; \$8.00 per 100.
- Apricot**—25. (Perfection). Dull bronzy buff, shaded ruddy apricot. Splendid flower, 10c ea.; \$1.05 per doz.; \$7.50 per 100.
- Bronze Queen**—28. Buff, tinged apricot, 8c ea.; 75c doz.; \$5.25 per 100.
- Copernicus**—27. Dark coppery bronze, shaded old rose. 10c ea.; \$1.00 doz.; \$7.00 per 100.
- Dom Pedro**—24. A unique shade of coffee-brown shaded maroon inside rich mahogany, large flower. 13c ea.; \$1.25 doz.; \$8.75 per 100.
- Godet Parfait**—30. Deep purple violet mammoth flower. 12c ea.; \$1.15 doz.; \$8.25 per 100.
- Golden Bronze**—28. Old gold outside, deep gold bronze inside, 10c ea.; \$1.00 doz.; \$7.25 per 100.
- Indian Chief**—34. (Meyerbeer). Very artistic, long shape with slightly recurved petals. Reddish mahogany flushed purple. One of the tallest and strongest Breeder Tulips. Each, \$85c; \$2.25 per 3; \$8.50 per doz.
- Jaune d'Oeuf**—26. Orange tinted apricot. 9c ea.; 90c doz.; \$6.50 per 100.
- Klopstock**—24. Heliotrope with white base, delicate shade. 10c ea.; \$1.00 doz.; \$8.00 per 100.
- Lord Curzon**—28. (La Singeuliere). Silvery white margined and striped cherry crimson. 15c ea.; \$1.50 doz.; \$10.50 per 100.



Louis XIV Breeder Tulip

- Louis XIV**—30. Enormous flower, extra globular, rich deep purple. Heavily flushed with golden bronze. Very attractive. 11c ea.; \$1.10 doz.; \$8.00 per 100.
- Lucifer**—28. Mammoth flower of brilliant terra cotta orange. 17c ea.; \$1.65 doz.; \$11.50 per 100.
- Medea**—26. Salmon carmine yellow center, huge flower. 9c ea.; 85c doz.; \$6.50 per 100.
- Panorama**—(Fairly) 26 in. Deep orange-red shaded mahogany, very fine. 8c ea.; 80c doz.; \$5.50 per 100.
- Prince of Orange**—26. Terra cotta with orange edge. 11c ea.; \$1.10 doz.; \$7.50 per 100.
- St. James**—28. Dark rosy lilac, edged bronzy tan, with coppery rose flush at tips of petals; inside ruddy mahogany, edged golden brown with yellow and green base. 11c ea.; \$1.10 doz.; \$7.50 per 100.
- Velvet King**—31. (Dreadnaught). Dark purple; white base, immense flower. 13c ea.; \$1.25 doz.; \$9.00 per 100.
- Vulcan**—28. Reddish, apricot with a broad margin of bright buff yellow inside a darker shade. 13c ea.; \$1.30 doz.; \$8.25 per 100.
- All Colors Mixed**—75c doz.; \$5.50 per 100.
- Rembrant Tulips**  
This class of Tulips are really Darwins but are delicate tints and hues with flames or stripes of distinctive coloring; usually are of the more darker shades, forming very striking combinations.  
**All Varieties and Colors**—8c ea.; 80c doz.; \$6.00 per 100, postpaid.

## Old English Cottage Garden Tulips (May-Flowering)

This class is now very popular for bedding, naturalizing and especially for cutting, bearing their large brilliant flowers on long strong stems and lasting a long time when cut. They bloom from the middle of May until after the beginning of June according to weather conditions. Same culture as Darwin Tulips. Postpaid.

- Aegir**—20 in. Large orange and cerise, very attractive. 10c ea.; \$1.00 doz.; \$7.00 per 100.
- Amber**—20. Terra-cotta shaded amber, base yellow with blue. 8c ea.; 80c doz.; \$5.50 per 100.
- Ambrosia**—22. Very large; inside salmon orange, outside shaded lilac rose. 18c ea.; \$1.80 doz.; \$13.00 per 100.
- Argo**—20. Round flower on strong stem, yellow mottled red and passing off to reddish brown. Delicate bronze salmon when forced. 17c ea.; \$1.70 doz.; \$12.00 per 100.
- Avis Kennicott**—25. A rich, deep shade of yellow, with a striking black base and anthers. 15c ea.; \$1.50 doz.; \$10.50 per 100.
- Fairy Queen**—20. Soft rosy lilac and amber. 8c ea.; 75c doz.; \$5.25 per 100.
- Gesnerianna Major**—24. Dazzling crimson scarlet with violet black center. 8c ea.; 80c doz.; \$5.50 per 100.
- Gesneriana Lutea**—24. (The yellow Gesneriana). Color rich yellow, flowers very large. 7c ea.; 65c doz.; \$4.75 per 100.
- Grenadier**—21. Beautiful orange, large flower. 10c ea.; \$1.00 doz.; \$7.25 per 100.
- Herbert Spencer**—26. Very distinct, bright scarlet red. 8c ea.; 75c doz.; \$5.25 per 100.
- Idyl**—22. Vivid rose, inside shaded salmon; pure yellow base with blue edges. 7c ea.; 70c doz.; \$5.00 per 100.



Ambrosia (May Flowering)

- Inglescombe Pink**—22. (Salmon Queen) A rare blending of buff and salmon fine color. 7c ea.; 65c doz.; \$4.75 per 100.
- Isabella**—Creamy white shaded salmon rose. 8c ea.; 75c doz.; \$5.25 per 100.
- Jno Ruskin**—18. Apricot rose, mauve shading, pale yellow edge, 8c ea.; 75c doz.; \$5.25 per 100.
- Marvel**—25. Inside old gold, outside salmon rose, edged yellow. 9c ea.; \$1.85 doz.; \$6.00 per 100.
- Mrs. Moon**—25. Large golden yellow, petals reflexed sweet scented. 10c ea.; \$1.05 doz.; \$7.50 per 100.
- Nectar**—20. Fiery crimson with pure white base, slightly reflexed petals. 11c ea.; \$1.05 doz.; \$7.50 per 100.
- Orange King**—23. Beautiful deep orange, shaded rose, inside deep orange-scarlet with a yellow center. 8c ea.; 75c doz.; \$5.25 per 100.
- Picotte (Maiden's Blush)**—20. White margined rose pink. 8c ea.; 75c doz.; \$5.25 per 100.
- Pride of Inglescombe**—25. Bordered carmine rose, long pointed flower. 15c ea.; \$1.50 doz.; \$10.50 per 100.
- Triton**—20. Dazzling carmine, base pure yellow with light blue edge 8c ea.; 75c doz.; \$5.25 per 100.
- Vesta**—28. Long stemmed, purest white, black filaments—Good forcer. 15c ea.; \$1.50 doz.; \$11.00 per 100.
- P.-W.'s Best Mixed Cottage Tulips.** 65c doz.; \$4.75 per 100.

## P-W's Special Collections

### GIANT DARWIN, BREEDER, COTTAGE AND LILY FLOWERING TULIPS—(Charges Postpaid)

These collections are our own careful selections embracing the cream of the Tulip Family. All flower at same time and can be planted in same group.

- No. 11—1 each of 25 choice named varieties for...\$1.90
- No. 12—2 each of 25 choice named varieties for... 3.25
- No. 13—4 each of 25 choice named varieties for... 6.00
- No. 14—10 each of 25 choice named varieties for...13.75
- No. 15—5 each of 10 choice named varieties for... 2.40
- No. 16—10 each of 10 choice named varieties for... 4.75
- No. 17—20 each of 10 choice named varieties for... 8.75

## Parrot Tulips

Parrot Tulips do not receive the attention they deserve. They belong to the late or May-flowering class and have immense, attractive flowers of singular and picturesque forms and brilliant and varied colors. The petals are curiously fringed or cut, and the form of the flower, especially before it opens, resembles the neck of a parrot. They form extravagantly showy beds, are especially desirable for cut-flowers, and should be grown in every flower garden. Plant in light, sandy soil, three inches deep, six inches apart, sunny location.

**Fantasy**—A glorious Parrot Tulip with straight, strong stem. It is a sport from the Darwin Tulip, Clara Butt, with exactly the same beautiful color, but the quaintly artistic shape of a Parrot Tulip. It is an enormous flower of a soft salmon-pink with delicate pale green blotch in center of each petal. Tall and stately. 23 in., \$1.25 each; 3 bulbs for \$2.45; \$9.00 doz.

- Admirable of Constantinople**—Fine red.
- Cafe Brun**—Brown and yellow striped.
- Lutea Major**—Yellow; fine; free-blooming.
- Markgraaf van Baden**—True. Orange, striped scarlet; extra fine.
- Price any of above—8c ea.; 75c doz.; \$5.50 per 100.
- Parrot Tulips in Beautiful Mixture**—7c ea.; 75c doz.; \$5.25 per 100.

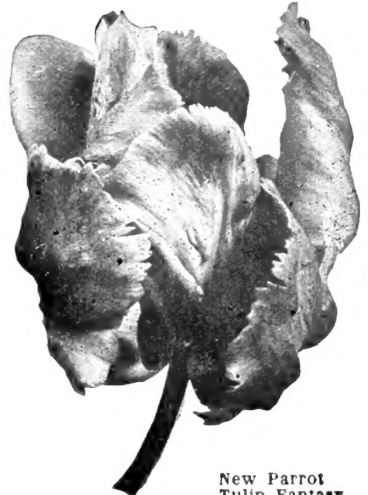
## Bunch-Flowering Tulips

**Monsieur Mottet**—The color of this Tulip is ivory-white, and instead of producing one flower on a stem as other Tulips do, it carries from four to six blossoms, which are in bloom all at the same time, on a stem about 18 inches tall. The result is a unique cut flower and also an excellent garden variety. We would like to see it included in every garden collection. 13c ea.; \$1.30 doz.; \$9.50 per 100.

## Lily Flowering Tulips

New class of beautiful and very decorative tulips, a cross between the Darwin and Retroflexa Cottage Tulip. The flowers have the grace and shape of a Lily as indicated by the name. Same culture as Darwin Tulips.

- Adonis**—20. Vivid rosy red, long flowers. 9c ea.; \$1.05 doz.; \$7.50 per 100.
- Alaska**—28. Pure golden yellow, slightly reflexed, long petals. 40c ea.; \$4.00 doz.; \$30.00 per 100.
- Eclipse**—22. Orange-yellow tinted rose. 12c ea.; \$1.15 doz.; \$8.25 per 100.
- Retroflexa**—20. Soft yellow elegantly curved petals. 9c ea.; 95c doz.; \$6.75 per 1.00.
- Sirene**—26. Rich cerise pink. 8c ea.; 85c doz.; \$6.00 per 100.



New Parrot Tulip Fantasy

## New Triumph Tulips

In the Triumph Tulips we have a new race. They are hybrids of the Single Early and the Late Darwin Tulips. From the Single Early they inherit earliness and from the Darwins' stateliness, the result of which we have something entirely novel and worthwhile. These Tulips bridge the gap between the early and late varieties. They bloom a week to ten days later than the Single Early Tulips and have strong, tall stems ranging from twenty to twenty-five inches, are very colorful, and all force readily. Same cultural directions as other Tulips.

**Boston**—Rose with lilac reflex and yellowish bronze margin.

**Buffalo**—Dull purple, inside shining purple, large flower.

**Mississippi**—Bright red.

**Ohio**—Brilliant carmine rose.

**Professor Toledo**—Deep amaranth red with violet reflex, edged deep lemon yellow, bluish white base.

**U. S. A.**—Orange red with golden edge, inside copper overlaid with gold.

Price, Any of Above Six Varieties 17c Each; \$1.70 Dozen; \$12.00 Per 100.

### P.-W.'s SPECIAL BULB COLLECTION OFFERS

To induce those who have never planted our bulbs to give them at least a trial this year, the following "Collections" are offered at prices we believe to be irresistible in making up these collections, our standard of quality will be maintained, but in pricing, profits have been forgotten.

#### INDOOR COLLECTION NO. 19-A

(For Xmas Blooming)

- 6 Freesias White
- 6 Freesias Colored
- 3 Chinese Lilies
- 6 Giant White "Paper White" Narcissus
- 3 Soleil d'or (Yellow Narcissus)

(Regular Value \$2.40)

All for \$2.00, postpaid.

#### OUTDOOR COLLECTION NO. 18

- 6 P.-W.'s Hyacinths, mixed.
- 6 Double Tulips, assorted.
- 6 Giant Darwin Tulips, mixed.
- 6 Poet's Narcissus.
- 6 Spanish Iris.

Retail Value of Above, \$2.35.  
All for \$1.75, postpaid.

#### OUTDOOR COLLECTION NO. 20

(For Memorial Day Blooming)

- 50 Mammoth Darwin Tulips, mixed.
- 25 Poet Narcissus.
- 25 May Flowering Tulips, assorted.

Retail Value, \$5.65; All for \$5.00, postpaid.

#### INDOOR COLLECTION NO. 19

- 1 White Calla Lily.
- 6 Freesias.
- 6 Giant White Narcissus.
- 6 Single Early Tulips, assorted.
- 6 Dutch Roman Hyacinths.
- 3 Double Daffodils.
- 3 Exhibition Hyacinths.

Retail Value of Above, \$3.00.  
All for \$2.25, Postpaid.

#### OUTDOOR COLLECTION NO. 21

50 Assorted Early Tulips.  
(For Early Spring Blooming)

25 Assorted Dutch Hyacinths.  
50 Crocus Assorted.

Retail Value \$5.25; All for \$4.00 Postpaid.

#### WATER CULTURE COLLECTION NO. 22

3 Assorted Exhibition Hyacinths.  
4 Giant White Narcissus.  
3 Chinese Lilies.

Retail Value, \$1.65; All for \$1.25 Postpaid.

#### NATURALIZING COLLECTION NO. 23

25 Trumpet Narcissus.  
25 Double Daffodils.  
50 Crocus.  
50 Poet's Narcissus.  
50 Darwin Tulips, asst.  
50 Cottage and Breeder Tulips, asst.  
Retail Value, \$16.50; All for \$14.75, Postpaid.

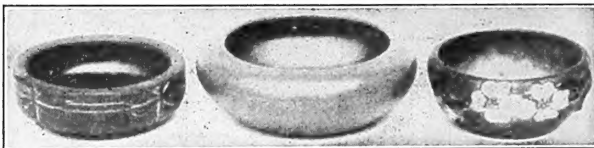
## P-W's "Get Acquainted" Collection No. 10

Giant Flowering Tulips and Double Peonies for Memorial Day Flowers Next Spring

- |   |   |
|---|---|
| 10 Baron LaTonnaye, Pink Darwin Tulips    | 10 Prof. Rauwenhoff, Cherry Red Darwin Tulips |
| 10 Farncomb Sanders, Red Darwin Tulips    | 1 Festiva Maxima, Double White Peony          |
| 10 Melicette, Pure Lavender Darwin Tulips | 1 Edulis Superba, Double Pink Peony           |
| 10 Psyche, Salmon Rose Darwin Tulips      | 1 Felix Crousse, Double Red Peony             |

(Regular Price \$5.65)

ALL OF ABOVE PREPAID FOR \$4.25



We carry a large assortment of Bulb Bowls, embracing most every desirable size, type, design and color. Prices range from 40c to \$2.00 each.

#### Prepared Bulb Fibre

Is especially prepared for growing bulbs that are planted in water-tight bowls; it will not sour and will be found most convenient for customers with no facilities for growing bulbs in pans where drainage is necessary. Lb., 25c.; 5 lbs., \$1.00. Postpaid. Not prepaid, 10 lbs., \$1.50.

FOR BULB FERTILIZERS (See page 17)





Single Early Tulip  
Prince of Austria in Center  
Double Early Tulip Azalea on Border

## Showy Double Early Tulips

Double Tulips are chiefly grown for their showy effects in masses, and are very lasting. Where a display of color is desired they are very satisfactory. Excellent for growing in pots or pans, but should not be forced into bloom very early.

The following list contains tested novelties, as well as worth-while standard sorts.

Double Early are much more lasting in flower than the single early varieties.

The letter A, B, or C, following the name of a variety, refers to its time of blooming, when planted outdoors—A being the earliest, and those marked B coming into full bloom before those marked A have gone, and those marked C a few days later than the B class. The figures indicate the approximate height when grown outdoors. This will be found useful in selecting varieties for bedding.

	Each	Doz.	Per 100
Prices Include Postage			
*Azalea—B-12. Beautiful deep rose, flushed salmon .....	\$.09	\$.85	\$6.00
*Boule De Neige—B-12 in. Pure white, large peony-like flower.....	.08	.85	6.00
*Couronne d'Or—(Crown of Gold), B-12 in. Yellow, shaded orange.....	.09	1.00	7.00
*Golden Murillo—(Mr. Van der Hoef). The richest golden yellow tulip, very fine .....	.09	1.00	7.00
*Peach Blossom—B-10 in. Deep pink..	.10	1.00	7.00

	Each	Doz.	Per 100
Prices Include Postage			
*Mu-Rillo—B-10 in. Rose and white, large, full double .....	\$.06	\$.65	\$4.50
*Rubra Maxima—B-10 in. Finest deep red .....	.09	1.00	7.00
*Tournsoll—B-12 in. Bright red with yellow margin .....	.09	1.00	7.25
*Vuurbaak—B-10 in. Brilliant scarlet, very large flower .....	.10	1.00	7.25
*Valasquez—B-12. New large golden yellow; very showy .....	.10	1.10	8.00
All Colors Mixed—Early Varieties.....	.07	.70	5.00

## Brilliant Single Early Tulips

The Early-flowering Tulips are desirable from a standpoint of earliness and brilliant coloring. They do not grow as tall as the May-flowering varieties but bloom almost a month earlier, namely, during April when most other plants show hardly a leaf and the landscape still bears the unmistakable signs of the winter just past. Their culture is exactly the same as that of the May-flowering Tulips, but they may be planted as close as 4 inches apart instead of 6 inches, which we recommend for the May-flowering sorts. Their coloring is very varied, mostly of the very brilliant and gay shades of yellow, orange, and scarlet, brilliant pink and rose, glistening white.

They are most effective when planted in solid beds of one to several different colors.

Varieties marked (\*) are good for forcing inside as well as outside planting.

	Each	Doz.	Per 100
Prices Include Postage			
Belle Alliance—B-10 in. Brilliant scarlet, yellow base .....	\$.08	\$.85	\$6.00
*Chryselora—B-10 in. Pure golden yellow .....	.10	1.10	8.00
Cottage Maid—A-9 in. White bordered pink to carmine rose.....	.08	.70	5.00
*Cramoise Brilliant—C-12 Sparkling red, very large .....	.06	.65	4.75
*Dutchess De Parma—C-15 in. Orange scarlet with yellow edge.....	.10	1.00	7.25
*Kaiser Kroon—C-15 in. Crimson scarlet, with broad yellow margin .....	.15	1.50	10.50
*Lady Boreel—(White Joost Van Vondel) B-10 in. Finest white.....	.10	1.00	7.00
*LaReine Maximus—B-12 in. Improved, light pink .....	.08	.80	5.75
Prince of Austria—B-14 in. Brilliant orange scarlet, clear yellow base.....	.08	.80	5.75
*Prosperine—B-10 in. Silky rich satiny carmine-rose .....	.12	1.20	8.70
*Queen of The Netherlands—B-15 in. Large, delicate pink .....	.08	.80	5.75
Rose Luisante—B-10 in. Fine deep rose .....	.11	1.10	7.75
President Lincoln—B-10 in. Fine, large deep violet .....	.10	1.00	7.75
White Hawk—B-10 in. Fine large white .....	.08	.80	5.75
All Colors Mixed—Single Early Varieties .....	.06	.65	4.75



Beds of Single and Double Early Tulips  
Plant them by the hundreds

Our Tulip Bulbs are all top size and are not to be compared with the small undeveloped cheap grades that are offered at so-called bargain prices. When there are better bulbs produced anywhere we will handle them. Prices include postage.

## Dutch Hyacinths

The Hyacinth is possibly the most useful and popular hardy bulb flower. It delights millions of flower lovers throughout the world with its matchless beauty and fragrance. It may be grown in pots, glasses or in water, and in the garden.

We consider the Single Hyacinths more valuable than the double. They are better for forcing, more vigorous in growth and produce stronger spikes of bloom, of better substance and are more beautiful.

**Garden Culture:** Bulbs may be planted from the end of September until very severe weather sets in. The beds should be raised a few inches above the surrounding ground, to prevent lodgments of water, which causes bulbs to rot. Bulbs should be set 6 to 8 inches apart and 6 to 8 inches deep. If the soil is dry at planting time it should be watered and kept moist while the weather permits.

**Hyacinths in Pots.** Get rich, light soil or Bulb Fibre. If soil, provide drainage. Break off any offsets which appear at the base of the bulbs, and, in potting, place each bulb so that its top shall be half an inch below the surface of the soil, and about an inch below the rim of the pot.

### P-W'S Selected First Size Hyacinths

(Especially adapted for pot and Glass Culture, having been hand-picked for size and quality from first-sized bulbs.)

**City of Haarlem**—  
Pure yellow  
**Gertrude**—Deep pink  
**Grand Maitre**—  
Dark lavender-blue  
**King of Blues**—Deep blue  
**Lady Derby**—Light pink  
**La Victorie**—  
Brilliant scarlet

**L'Innocence**—Pure white  
**Marie**—Dark violet-blue  
**Queen of the Blues**—  
Fine light-blue  
**Roi Des Belges**—  
Bright red.  
**Sir Wm. Mansfield**—Purple  
**Yellow Hammer**—  
Large yellow

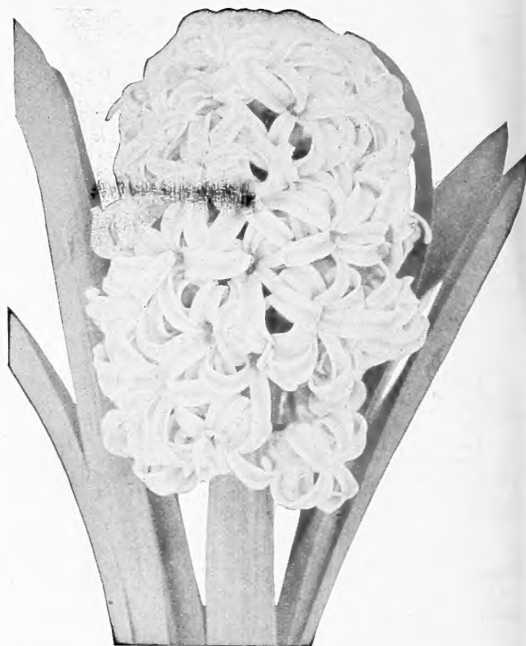
**Price:** Any of the above, 20c each; \$2.00 per dozen; \$14.00 per 100, postpaid.

### P-W's Exhibition Hyacinths

**Top Root "Mother Bulbs"**—We offer same varieties as listed under P.-W.'s selected first size Hyacinths. Each, 25c; \$2.50 per doz.; \$19.00 per 100.



A Pot of Single Hyacinths



Single Dutch Hyacinth

### P-W's Second Size Hyacinth Bulbs

These bulbs are splendid for forcing. Pot Culture and Outdoor Beds.

We offer precisely the same varieties as listed under "Selected First Size"; the only difference being in size of bulbs.

**Price:** 17c each; \$1.65 per dozen; \$11.50 per 100, postpaid.

### P-W's Superb Bedding Hyacinths

This mixture is made up out of high-grade sorts, and can be depended on to produce fine results, for outdoor planting. We do not recommend this size for indoor culture.

**Single Named Sorts**—Pure White, Rose, Light Blue, Yellow, Red. Dark Blue, Purple, Selected Mixed.

**Price:** Any of the above, 18c each; \$1.25 per dozen; 25 for \$2.25; 100 for \$8.00, postpaid.

### "Pan" or "Dutch Roman" Hyacinths

These are of the small bulb variety of Dutch Hyacinths that produce good spikes of flowers eminently adapting themselves for winter flowering in the house with the most satisfactory results. Ten or twelve bulbs are placed in an earthen pan 8 or 9 inches across; several of these pans can be filled and put away to root in the usual manner, as described on page 2, bringing them to the light at intervals, where the display can be enjoyed for weeks. If potted in October, they can be depended upon to bloom as early as the latter part of January. They are equally valuable for outdoor planting.

**Gertrude**—Deep Pink  
**Grand Maitre**—  
Lavender-Blue  
**L'Innocence**—White  
**Marie**—Deep Blue  
**Roi Des Belges**—Red  
**Schotel**—Light Blue  
**Sir Wm. Mansfield**—Purple  
**Yellow Hammer**—Yellow

Any of the above, 9c each; 90c per dozen; \$6.25 per 100, postpaid.

### Special Hyacinth Collections OUR SELECTION

No. 28— 6 named varieties, 1st size, 3 bulbs of each \$2.50  
No. 29— 6 named varieties, 1st size, 2 bulbs of each 1.75  
No. 30—25 each P.-W.'s Superb and Dutch Romans  
Assorted Colors. Total 50 bulbs..... 3.25  
The Above Collections Are All Postpaid.

## Narcissi or Daffodils

There are no hardier bulbous plants that have more points of merit than the Narcissus or Daffodil. They are perfectly hardy, growing well in almost any climate or condition, sun or shade, moist or dry. All locations seem to suit them, although they have a preference for good, deep soil, and a partly shaded position. Any vacant piece of ground in the garden, among the trees or grass, etc., could not be used to better advantage.

They are equally desirable for pot culture for winter flowering: three or four bulbs can be put in a five or six-inch pot and, with the same treatment as given to the hyacinths the whole winter and early spring months can be made bright with their exquisite gold and silver blooms. It is outdoors, however, that Narcissus do the best, and once planted, they need no further attention, the clump multiplying and giving better results each year, and from an original planting of a few hundred bulbs, in two or three years can be cut thousands of flowers.

**Note**—In describing Narcissus reference is made to the "perianth" and "trumpet." The latter is the long center, funnel-shaped tube, and the perianth is the out row of petals or wings.

Top bulbs should be planted four inches below the surface and 6 to 12 inches apart.

### Large Trumpet Narcissus

**Empress**—Perianth white, trumpet rich yellow. Selected bulbs, 15c ea.; \$1.45 doz.; \$10.00 per 100.

Double Nose—20c ea.; \$2.00 doz.; \$13.00 per 100.

**Emperor**—Yellow trumpet, perianth deep primrose. Selected bulbs, 16c ea.; \$1.55 doz.; \$11.00 per 100.

Mother Bulbs—22c ea.; \$2.25 doz.; \$14.00 per 100.

**Van Waveren's Giant**—Largest in cultivation: perianth primrose, trumpet bright yellow. Mother Bulbs, 40c ea.; \$3.85 doz.; \$26.00 per 100.

Selected Bulbs—25c ea.; \$2.50 doz.; \$17.00 per 100.

**Victoria**—Perianth white, trumpet pure yellow. Selected bulbs, 15c ea.; \$1.45 doz.; \$10.00 per 100. Mother bulbs, 20c ea.; \$2.00 doz.; \$13.00 per 100.

**King Alfred**—This wonderfully beautiful Daffodil is considered the largest and finest deep golden yellow trumpet variety. A tall, strong grower, with magnificent frilled trumpet and large perianth, all of a uniform rich golden-yellow of splendid heavy texture, lasting well. Mother bulbs, 27c; \$2.75 doz.; \$18.00 per 100. Selected bulbs 20c ea.; \$2.00 doz.; \$14.00 per 100.

**Spring Glory**—Clear white perianth with long petals of splendid form, long trumpet of deep yellow, well reflexing at the brim. A very vigorous grower and one of the best of the newer Daffodils for pot culture. Double Nose, 25c ea.; \$2.50 doz.; \$18.00 per 100. Round, 20c ea.; \$2.00 doz.; \$13.00 per 100.

**Double Von Sion**—Too well known to need description, grand old golden double yellow Daffodil. Extra selected bulbs, 13c ea.; \$1.30 doz.; \$9.00 per 100. Mother bulbs, 18c ea.; \$1.75 doz.; \$12.00 per 100.

**Sulphur Phoenix (Incomparabilis)**—Large double creamy white with deeper center, very chaste and beautiful. Select 10c ea.; \$1.00 doz.; \$7.00 per 100. Nose, 14c ea.; \$1.40 doz.; \$9.50 per 100.

### Poet's Narcissus

This class of Narcissus, instead of having a trumpet or crown, has a small wide-mouthed cup. Very hardy, used in large numbers for naturalizing, their simplicity of form and delightful fragrance making them highly prized.

**Poeticus Ornatus**—More symmetrical than the old *Recurvas* (Pheasants-eye) and blooms earlier; flowers large, pure white, cup margined orange-gold and as fragrant as the type. 7c ea.; 70c doz.; \$5.00 per 100.

**Poeticus, Horace**—Quite the best and largest of the new Poet's varieties. The white perianth is of large size, cup canary-yellow, rimmed bright red. Height 17 inches. 20c ea.; \$2.00 per doz.; \$14.00 per 100.

### Jonquils

Very popular as cut flowers and can be successfully grown by everyone. Culture same as Narcissus.

**Giant Jonquils (Capernelle Rugulosus)**—An improved rich golden-yellow, very fragrant; from 3 to 6 flowers are borne on stalks about 18 inches high. 7c ea.; 70c doz.; \$5.00 per 100.



Empress Narcissus

### Medium Trumpet Narcissus

These types, which include the *Barrii*, *Incomparabilis*, and *Leedsii* are a cross between the large trumpet varieties and the *Poeticus*. They are gorgeous when planted outdoors in masses; may also be grown indoors and are excellent for cut flowers.

**Barrii Conspicuus**—Large, broad pale yellow perianth; deep yellow cup with bright scarlet edge. A very free flowering variety of the true *Barrii* type. 9c ea.; \$1.00 doz.; \$6.00 per 100.

**Will Scarlet**—Creamy white perianth with large running fiery orange red cup. Very distinctive novelty. 24c ea.; \$2.40 doz.; \$17.00 per 100.

**Lucifer**—A showy and striking variety; perianth pure white crown or trumpet brilliant orange-scarlet, making an effective contrast. 11c ea.; \$1.05 doz.; \$7.50 per 100.

**Sir Watkin**—"Giant Chalice Flower," or "Big Welshman." A gigantic flower, the largest in this section; perianth sulphur-yellow cup slightly deeper in color and tinged with orange; fine for pot culture; in fact, does well everywhere. 14c ea.; \$1.35 doz.; \$9.50 per 100.

**Mrs. Langtry**—Pure white, twin-flowered; a gem for forcing and cutting. 10c ea.; \$1.00 doz.; \$7.00 per 100.

**White Lady**—White perianth, soft canary-yellow cup; of fine form. 10c ea.; \$1.00 doz.; \$7.00 per 100.

**Elvira**—A large pure white with yellow cup; strong grower and free flowering; fragrance resembles that of *gardenia*. 10c ea.; \$1.05 doz.; \$7.50 per 100.

**Laurens Koster**—Pure white perianth, Orange yellow cup. 11c ea.; \$1.10 doz.; \$7.50 per 100.

**Collection Offers of Narcissi Our Selection—Postpaid.**

- No. 31—2 each of 10 varieties all types for.....\$ 2.15
- No. 32—5 each of 10 varieties all types for..... 4.25
- No. 33—10 each of 10 varieties all types for..... 8.00
- No. 34—20 each of 10 varieties all types for..... 15.50

## Giant White Narcissus

("PAPER WHITES")

Flowers pure snow white, desirable for their beauty and delicious odor; one of the best known of the bunch-flowered Narcissus. It forces admirably and flowers freely in dense clusters; will come into bloom as early as December. Splendid when grown in bowls of water and pebbles or moss, the same as Chinese Lilies.

Mammoth Bulbs, 9c ea.; \$1.85 doz.; \$6.00 per 100.  
First Size Bulbs, 7c ea.; 65c doz.; \$4.75 per 100.

## Soleil d'or or Golden Sun

A splendid free flowering variety producing large clusters of rich yellow flowers with a deep orange-red cup. Just as easy to grow as the Paper White variety. 20c ea.; \$1.75 doz.; \$12.00 per 100.

## Chinese Sacred Lily

Chinese Lilies are usually grown in bowls or dishes of water. Put an inch or two of sand and gravel in the dish in which they are to be grown, set the bulbs on this and put enough gravel or shells around them to keep them from falling over; fill the dish with water and set in a dark closet for a few days until the roots start freely; then bring them to the light and keep in any ordinary living room. A dozen or so bulbs started this way at intervals will give a succession of bloom throughout the winter.

Large Bulbs, 15c ea.; \$1.50 doz.; \$10.00 per 100.

## Calla Lilies (pot culture)

**White Calla (Richardia Aethopica), Ready in August.**—

Of easy culture, and is one of our good window plants. Pot in good rich soil, using 6 to 8-inch pots; give water, light and heat in abundance.

Mammoth Bulbs, 25c ea.; \$2.50 per dozen.

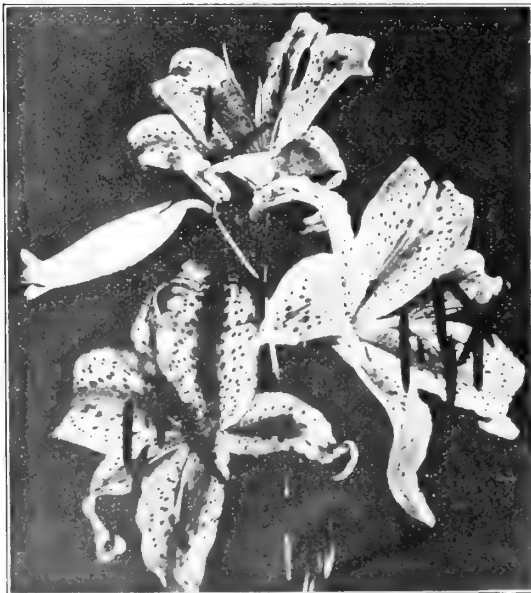
**Yellow Calla. Ready in October.**—Except for the color, almost identical with the white. It is a beautiful, rich, golden yellow, and is well worthy of your consideration. Cultural directions same as for "White."  
Mammoth Bulbs, 35c ea.; \$3.50 per dozen.

**Godfrey Everblooming White Calla.** Improvement over the ordinary White Calla, being more floriferous over a longer season, a trifle smaller but delicately scented. Strong flowering roots. 25c ea.; \$2.25 per dozen.

## Lilium Harrisii (Easter lily)

This is considered the most satisfactory White Lily for indoor culture for Easter blooming.

Mammoth Size Bulbs, 55c ea.; \$5.50 per dozen.  
Large Size Bulbs, 40c ea.; \$4.00 per dozen.



Lilium Auratum



"Giant White" Narcissus

## Hardy Lilies

**Auratum (Gold Banded)**—Flowers white, dotted crimson, with a clear golden band running through the center of each petal, very fragrant. 45c ea.; 3 for \$1.20, postpaid. (Ready in November.)

**Canadense Flavum**—Beautiful native lily with graceful, charming yellow flowers. Each, 25c; \$2.50 per dozen.

**Madonna Lily (Lilium Candidum)**—The most popular garden lily. The flowers are pure snow-white and very fragrant, borne on long stems. Bulbs are usually available in September, but can be planted very successfully any time before the ground freezes. Produces a beautiful array of flowers in May or early June. Cover bulbs not to exceed 3 inches when planted. Large French grown bulbs, 25c ea.; \$2.85 doz.; \$20.00 per 100. Monster Bulbs, 35c ea.; \$3.50 doz.; \$30.00 per 100.

**Hansonii**—Bright orange and stem-rooting. Each cluster will contain as many as twelve individual blossoms; grows from 3 to 5 feet tall and prefers a little shade, blooms in June. 85c ea.; \$8.50 per dozen.

**Regale**—A new, hardy lily with remarkably beautiful blooms. Color, white, shaded pink; canary-yellow center. May be used for forcing. 60c ea.; \$6.00 per dozen.

**Speciosum Rubrum (Crimson Banded)**—White, with a deep rosy crimson band on each petal, with deeper colored spots between. Each, 40c; 3 for \$1.10, postpaid. (Ready in November.)

**Superbum**—It can be planted on the edge of woods or in any rough or wild parts of the grounds, where it will take care of itself without any attention, will also thrive in wet or swampy places. Often grows over eight feet high and produces twenty to thirty orange-red flowers in July. 25c ea.; \$2.50 per dozen.

**Tigrinum Splendens (Single Tiger Lily)**—Reddish orange blooms spotted with black. 30c ea.; \$3.00 per dozen.

**Tigrinum Splendens fl. pl. (Double Tiger Lily)**—Orange red blossoms spotted with black. 30c ea.; \$3.00 per dozen.

**Umbellatum**—One of the earliest lilies blossoming in June. Very free flowering with large umbellate heads of orange-red. A clump is effective anywhere and a large bed is striking. Height 2 feet. Plant 8 inches deep. Large bulbs, 40c ea.; \$4.00 per dozen.

## Crocus

Among the earliest to blossom in spring is this beautiful little flower, lifting its head almost before the snow has disappeared. Blooming at a time when the ground is destitute of foliage and flower, it is a welcome visitor. The Crocus succeeds in pots and glasses, for which purpose the named varieties should be selected. They present the best appearance, however, when grown in masses, for which quantities should be used of at least 100 to 500. All bulbs we supply in named varieties are mammoth size. Prices include postage.

	Doz.	100
<b>King of Blues</b> —Dark purple blue.....	\$ .60	\$4.00
<b>Mont Blanc</b> —Best white .....	.60	4.00
<b>Mammoth Yellow</b> —Golden yellow.....	.85	6.00
<b>Scipio</b> —Variegated and striped.....	.60	4.00
<b>Choice Mixed Crocus</b> —All colors.....	.45	3.00

## Anemones

These popular flowers of French origin are exceedingly useful as a decorative plant for house or garden, and fine for cutting. If planted outdoors in the fall they must be well protected with leaves or other litter; they may also be planted in the spring in well-drained soil, and will flower during the summer, starting in May. When planted in pots, place twelve or more in a cluster and store away, if possible, in a coldframe until February 1; if carefully watered, when brought into the house they will flower abundantly.

**St. Brigid Brilliant Mixture**, \$1.50 doz.; \$10.00 per 100.

## Amaryllis

**GIANT AMERICAN HYBRIDS**—Flowers of enormous size, with full, rounded, broad petals, 10 inches in diameter, are not unusual and 5 to 6 flowers to a stem, frequently two stems being pushed to the bulb. In color there are selfs and stripes, ranging from the purest white ground color with rose or red markings to rich orange-scarlet, cherry, crimson and maroon, strong flowering bulbs which we can supply in mixture only. A wonderful indoor plant for winter-blooming. Ready in October. 75c ea.; 3 for \$2.00; \$7.50 per dozen.

## Chionodoxas (GLORY OF THE SNOW)

**Luciliae**—Pure white center gradually merging into blue, the color becoming more intense towards the tips of the petals. A beautiful bedding flower; also good for pots. 45c doz.; \$3.00 per 100.

**Sardensis**—Charming flowers of a rich gentian-blue. 45c doz.; \$3.00 per 100.

## Freesias

**Purity**—The flowers are white, borne in graceful clusters, lasting a long time and are delightfully fragrant when cut, a pot of five or six bulbs being sufficient to perfume the whole house. Can be had in flower at Christmas, and continue in succession until June. When potted should not be placed in a dark place, like most other bulbs, but put directly in the light. They will grow well and bloom freely in an ordinary living room if placed near a window and not kept too hot. They will stand a slight freezing without injury, but are not hardy for outdoor use.

**Jumbo**—Dozen, 60c; hundred, \$4.00.

**Select**—40c doz.; \$2.75 per 100.

**Rainbow Mixed Colors**—This is a splendid improved class of colored Freesias, embracing beautiful shades of yellow, blue, mauve, pink, etc. The flowers are as large and fragrant as the well known white type described above. Same cultural treatment. 6 for 40c; dozen, 70c; hundred, \$5.00.

## Fritillarias

**Crown Imperial**—Although the bulbs succeed fairly well in any ordinary border, a rather strong, adhesive soil, in an open position freely exposed to the sun, should, if possible be chosen for them. 50c ea.; \$5.00 doz.; \$35.00 per 100, postpaid.

**Meleagris**—Singular, dwarf, spring-flowering plants, bearing large, pendent bell-shaped flowers of various colors, in yellow, white, black, purple, striped and splashed and checkered in the most curious way. They are invaluable for pot culture, and exceedingly pretty when grown in large groups in the garden border or wild garden in a dry situation.

**Best Mixed**—Selected colors. 80c doz.; \$6.00 per 100.

## Bulbous Irises

(SPANISH, DUTCH AND ENGLISH)

We are listing below what we believe to be the best distinct colors. They are excellent for growing both under glass and in the garden also. When planted outdoors they should be covered with a mulch and the bulbs planted in a well-drained border, about 5 inches deep.

**Albert Cuyt (Dutch)**—White, falls lemon-yellow.

**Cajanus (Spanish)**—Large, golden-yellow, tall.

**David Teniers (Filifolia)**—Porcelain blue, falls yellow.

**Hobbema (Dutch)**—Pale blue, falls yellow.

**Imperator (Filifolia)**—Dark blue, extra large flowers.

**La Reconnaissance (Spanish)**—Bronze.

**Royal Blue (English)**—Similar to Spanish and Dutch but very much larger, blooming two or three weeks later. Clear deep blue.

Any of the above 9c ea.; 90c doz.; \$6.50 per 100.

## Oxalis

Charming little half trailing plants, particularly adapted for pots and hanging baskets. The clover-like foliage is very attractive, and when in bloom they are exceedingly pretty. Several bulbs can be grown in a pot.

We can furnish this variety in four colors; pink, white, lavender and yellow.

**Price:** For any of above, 5c ea.; 50c doz.; \$3.50 per 100, postpaid.

## Lily of the Valley

Imported pips or crowns for indoor forcing are received in early December and should then be planted. Place a bundle of 25 pips in a 7 or 8-inch pot, filling it up with sand, moss or light soil, allowing the points of the pips to be about an inch above the surface. They should then be placed out of doors and brought indoors as wanted, and put in a shaded place in a temperature of about 70 degrees and when the spikes are 3 or 4 inches high they may be brought to where they are to perfect their flowers.

**Imported Pips**—(December delivery). 25 pips \$2.50; 100 pips \$8.00.

**American Pips**—(For outside planting late October or early November delivery). Extra strong clumps, 50c each; \$5.00 per doz. Pips 25 for \$1.00; 100 for \$3.50.

## Muscari

(GRAPE HYACINTHS)

One of the prettiest of early spring flowering bulbs, growing about 6 inches high, and throwing up numerous spikes of flowers, which resemble a miniature inverted bunch of grapes.

**Heavenly Blue Grape Hyacinths**—A strong growing variety producing much larger spikes of flowers than the ordinary Blue Grape Hyacinth. Color clear light blue; very showy. 40c doz.; \$2.75 per 100. \$22.50 per 1000.

## Snowdrop

However carefully Snow drops are selected, it is impossible to insure the singles and doubles coming quite true. The bulbs manifest an unusual tendency to run out of character.

**Single Snowdrops**—Selected bulbs. 45c doz.; \$3.50 per 100.

**Double**—Selected bulbs. 80c doz.; \$5.50 per 100.

## Scillas

(SQUILLS)

**Sibirica, Blue**—Invaluable for indoor decoration. The lovely ultramarine blue flowers, contrast admirably with Roman Hyacinths and other early flowering bulbs. The Blue Squill is perfectly hardy, and should be largely grown in the open border in conjunction with Snowdrops. 55c doz.; \$4.00 per 100.

**Campanulata, Blue (English Blue Bells)**—Blooms in May. 5c ea.; 50c doz.; \$3.50 per 100.

**Campanulata, Rosea**—Very pretty pink flowers. 9c ea.; 80c doz.; \$5.50 per 100.

## Winter Aconite

(ERANTHIS HYEMALIS)

The Winter Aconite is the very "firstling" of the year covering the ground with gilt spangles in the bleakest days of February, or March in colder states. Any soil or situation will suit this flower, and it should be planted in large patches within view from the windows. 40c doz.; \$2.75 per 100.

## Beautiful Peonies

Probably no perennial is more universally acclaimed and loved, and we know of none that justifies such popularity more than the Peony. It is hardy, is not bothered by a multitude of ailments and pests, is not particular about soils or fertilizers, does not require frequent transplanting in the garden or continual coddling and anxiety from the gardener. For the little that it needs, it pays back with increasing generosity. Years, as a rule, merely add to its beauty and enhance its lavish display.

### HOW TO GROW

The greatest mistake most amateurs make is in manuring their Peonies. The two most serious Peony diseases both seem to be caused by improper fertilization, usually with stable manures.

The best way to do this is to dig a deep and generous hole. Place well-rotted barnyard manure in the bottom, well-mixed with soil. If well-rotted manure is not available, fresh manure will do no harm, provided 8 to 10 inches of good garden soil intervenes between the roots and the manure at planting-time. By the time the roots reach the manure, it will no longer be manure and there will be no danger. Never mix manure in the soil around the roots; never mulch it in the soil above the roots; never mulch the surface of the soil with it. With a bed prepared in this fashion, all the fertilizer needed will be a handful of bone-meal around the plant in spring when the stalks

**NOTE**—Figures following varieties indicate the rating given them by the American Peony Society. The highest rating a peony can receive is 10. There is no variety yet with such a rating; 9 is excellent, 8 is very good, 7 is good. Varieties rated 5 or 6 have been discarded. Most of our varieties rate over 8, none below 7.

**Albert Crousse** 8.6—Bomb type. Late. Shell pink. Center slightly flecked crimson. Large compact and vigorous. \$1.00 each; \$10.00 per dozen.

**Baroness Schroeder** 9.0—Rose type; late. White with shadings of flesh. This is one of the finest Peonies. Its immense flowers of great substance with high chalice-shaped center are freely produced, lasting a long time. Very fragrant. \$1.25 each; \$12.50 dozen.

**Berloiz** 8.0—Large, bright currant red shaded amaranth. 75c each; \$7.50 per dozen.

**Duchesse de Nemours** 8.1—Guard petals white, center lemon-yellow, cup-shaped; at first it develops into a large bloom, gradually fading to white; fragrant; strong grower and free bloomer. Extra good commercial variety. 65c each; \$6.50 per dozen.

**Duchess d'Orleans** 7.6—Medium to large; dark carmine-pink and salmon; bomb type; fragrant. A profitable cut flower as it blooms freely and ships well. Midseason. 50c each; \$5.00 per dozen.

**Edulis Superba** 7.6—This is the famous Decoration Day Peony. Color a beautiful bright clear pink, with silvery reflex. 50c each; \$5.25 per dozen.

**Felix Crousse** 8.4—Large, ball-shaped bloom; very brilliant red. One of the finest self-colored varieties. 90c each; \$9.00 per dozen.

**Festiva Maxima** 9.3—The finest white in cultivation. 55c each; \$5.50 per dozen.

**Grover Cleveland** 8.2—Rose Type. Late. Dark Crimson. Very large and full. Tall. One of the best red varieties. \$1.50 each.

**Karl Rosenfield** 8.8—Large, globular, compact, semi-rose type. Dark crimson. Midseason. Very fine. \$1.00 each; \$10.00 per dozen.

**L'Eclatante** 7.2—Bomb type, midseason. Flowers very double and full; color deep, brilliant velvety-crimson. 75c each; \$7.50 per dozen.

**Madam Leoine Calot** 8.1—Milky-white, flesh tinted, flecked with crimson. Late midseason. 70c each; \$7.00 per dozen.

**Marie Jacquin** 8.3—Midseason. Semi-rose type. Known as the "Water-Lily Peony." Very interesting on account



Felix Crousse

shy flowering. Proper distance apart is from 3½ to 4 feet.

Peonies are best planted from the latter part of September until the ground freezes in the Mountain States.

Peonies prefer a sunny location, although they do fairly well in partial shade. They can be worked into the perennial borders and hold their own in admirable shape, although it is not wise to put them close to trees, hedges, or shrubs.

An important point to observe in the planting of Peonies is not to plant too deep. The roots should be placed so that the crowns are covered with two or three inches of soil. Too deep planting is a frequent cause of

of its variable forms. Color is a most delicate flesh tint that gives way to lilac-white. Semi-double, blooms in profusion. \$1.25 each.

**Mons. Jules Elie** 9.2—Immense globular, very full flowers. Color glossy lilac-pink, shading to deeper rose at base, the entire flower overlaid with a sheen of silvery hue. Early midseason. \$1.00 each; \$10.50 per dozen.

**Officinalis Alba**—Extra early large old-fashioned double white. 95c each; \$9.50 per dozen.

**Officinalis Rosea**—Extra early double rose pink. 95c each; \$9.50 per dozen.

**Officinalis Rubra**—Extra early large globular brilliant crimson. The very popular old time "Piney" first of all in Peonies to bloom in the Spring. 95c each; \$9.50 per dozen.

**Philomele** 7.7—Striking flower. Guards bright violet-rose. Center deep golden yellow, changing to amber-cream with small crown of bright rose, edged crimson. Midseason. Anemone type. An unusual sort. \$1.00 each; \$10.50 per dozen.

**Rubra Superba** 7.2—Magnificent rich brilliant crimson. Very large, full, and double. Highly fragrant. Decidedly the best late red Peony. 70c each; \$7.00 per dozen.

### Unnamed Double Peonies

Strong 3-5 eye divisions of good varieties which we have in surplus. We furnish these in separate colors, **Red, White and Pink**, at 50c each; \$5.00 per dozen.

### Fern Leaved Peony

**Tenuifolium**—A very interesting variety that is seldom found in catalogs. It is so distinct from all other varieties that it deserves a place in every collection. Its delicate fringed, fern-like foliage always attracts attention. It blooms very early, before the popular Chinese varieties. Our stock is limited. Price, \$1.90 each; \$20.00 dozen.

### New Japanese Varieties

An entirely distinct type, forming an intermediate class between the single and double types, distinguished by their stamens being transformed into narrow petaloids. Usually a crown or center tuft of golden petaloids. Sometimes streaked or splashed pink. Most of them have cup-shaped guard petals filled with a mass of gorgeously colored petaloids. We recommend these as unique and striking additions to your collection.

**Akaku** (Japan). 8.1—Very large deep carmine flowers of uniform color. Clear even tone, fine form and immense in size. Huge center of saffron yellow petaloids. Fine grower and free bloomer. \$4.00 each.

**Fusuyama** (single)—Soft flesh pink, changing to white with age; large flowers. \$1.50 each.

**Mikado** 8.6—Japanese; dark, brilliant crimson petals, center cushion of golden yellow petaloids, crimson edged; long, wiry stems; an exquisite flower. \$3.50 each

### P-W's "Big Six" Peony Collection

Here is a get acquainted selection of a half dozen best standard varieties as follows:

1 <b>Festiva Maxima</b> —White	1 <b>Felix Crousse</b> —Red
1 <b>Duchess de Nemours</b> —White and Yellow	1 <b>Edulas Superba</b> —Pink
1 <b>Officinalis Rubra</b> —Red	1 <b>Albert Crousse</b> —Pink
Regular value of above \$4.55	Sale price \$3.50, post-paid

## Hardy Perennial Plants and Seeds

Perennials planted once are always there; the flowers become better as plants grow older. It requires more time for the plants to come to flowering size when seed is planted. Sow the seed outside in fall or early spring and transplant when plants are large enough to place where you wish them to flower.

\***Achillea** (Milfoil) — Ptar-mica, The Pearl—Pure white, double flowers all Summer. Prized for cut-ting.

\***Agrostemma** (Rose Cam-pion) — Stout, erect-grow-ing plants, silvery foliage, showy flowers bloom June and July. Bright rosy-crimson, 2 to 3 feet.

\***Anthemis** (Marguerite) — Daisy-like yellow bos-soms, bloom all summer, excellent for cutting.

\***Alyssum Saxatile Compac-tum** (Basket of Gold) — One foot high producing early in the Summer mas-ses of broad flat heads of bright yellow flowers.

\***Aquilegia** (Columbine) — The Columbine is one of the most beautiful hardy perennials, produc-ing graceful spurred flowers on 2-foot stems, mixed colors.

\***Anchusa** — Blooms from June to Sep-tember, small blue panicles.

\***Arabis** (Rock Cress) — Blooms in April and May. Star shaped white flower in masses. Adapted for rock gardens and edging.

\***Canterbury Bells** — In several assorted colors.

\***Cosopsis** (Lanceolata) — Flowers are bright golden yellow.

\***Chrysanthemums** — (Old-fashioned large flowering) in four colors; red, white, pink, and yellow. (Plants only.)

\***Centaurea Montana** (Perennial Corn Flower) — Grows 2 ft. high, bearing large violet blue flowers from July to September.

\***Carnation** — After a few years trials, we have proved these to be quite hardy with ordinary protection. Large double flowers, in bloom all summer. Double mixed, extra choice—Seeds, pkt., 15c.

\***DELPHINIUM** (Perennial Larkspur) — Few plants are so handsome as the perennial Larkspurs. The most im-portant are the tall hybrids, varying from 1 to 6 feet, and from the palest lavender through every conceivable shade of blue to deep indigo.

\***Formosum** — 3 feet; deep blue, white eye, open spike.

\***Belladonna** (Light Blue) — 2 feet; flowers exquisite shade of turquoise blue. Pkt., 20c.

\***P.-W.'s Wrexam Hybrids Mixed** — All Varieties. Pkt., \$1.00. One year plants 35c each; \$3.50 per dozen.

\***Bellamosum** — This is a dark form of the popular light blue Belladonna with which it is identical in habit and growth; freedom of bloom. Pkt., 25c.

\***Gold Medal Hybrids** — Height 6 ft. Un-questionably the finest strain of mixed hybrids offered. Large flow-ers on spikes two feet and over, the majority running in the lighter shades of blue. Mixed colors. Pkt., 25c.

\***PLANTS** — (Except where noted) — Any of above 25c per clump; \$2.25 per doz.; \$15.00 per 100. If by mail add 5c each or 30c per doz. for packing and postage.

\***SEED** — Any of above, except where otherwise noted; Pkt., 10c; 3 pkts., 25c; 13 pkts. for \$1.00, postpaid.



Effective Planting of Hardy Perennials

\***Cerastium** (Tomentosum, Snow in Summer) — 4 in. Silvery white foliage, covered with snow-white flowers in early summer. Seeds, pkt., 15c.

\***Digitalis** (Fox Glove) — A very orna-mental plant, growing to about three feet high; assorted colors.

\***Dielytra Spectabilis** (Bleeding Heart or Seal Flower) — An old-fashioned favorite, at home in any part of the hardy border, and especially valu-able for planting in the shade. Strong roots. 75c each; \$8.00 dozen.

\***Doronicum** (Excelsum) — Large bright yellow flowers and one of the most effective very early spring flower. It is also a splendid flower for cut-ting, as it carries well and stands a long time; succeeds everywhere. Plants, 50c each; \$5.00 per dozen; Seeds, pkt., 25c.

\***Eryngium** (Sea Holly) — Handsome orna-mental plants, growing from 2 to 3 feet high. The flower heads are produced from July to September.

\***Eupatorium** (Mist Flower) — Useful border plant of strong, free growth, height 2 to 3 ft. White and blue flowers splendid for cutting; August and September.

\***Euphorbia Polychroma** — Attractive border plant; produces yellow flow-er-like bracts in May; 2 feet.

\***Feverfew** (Matricaria) Little Gem — Large double, white flowers; June until October; 12 to 15 inches high.

\***Funkia** (Plantain Lily) — The Plantain Lilies are among the easiest plants to manage; their broad massive foliage makes them attractive sub-jects for the border even when not in flower. They succeed equally well in sun or shade.

\***Lanceolata** — Valuable by reason of its late flowering, lilac flowers in Sep-tember; 2 feet.

\***Gaillardia Grandiflora** — A mass of blooms the entire season. Flowers are dark red-brown with petals of orange or crimson.

\***Geum** (Avens) — Border plants about 15 inches high; flowers brilliant, scarlet double bloom May to July.

\***FERNS** (Hardy) — Hardy Ferns are especially suited to partial and dense shade and will flourish where grass will not grow. For naturalizing in woodland they are fine subjects associated with Foxgloves, Funkias and Aqualegias. They make a grand effect in shady spots in any garden. Their culture is easy.

\***Maidenhair Fern** — 1 ft. The best dwarf fern.

\***Lady Fern** — 2 to 3 ft. Fine delicate fronds, very hardy, will grow in the sun if soil is kept moist.

\***Ostrich Fern** — 3 to 4 ft. Stately, handsome, dark green fronds.

\***Plants of above three var-ieties** — 40c each; \$4.00 per dozen; \$30.00 per 100.

\***FLAG IRIS** (Plants Only) — Avoid plant ing too deep, barely covering the rhizomes (creeping root stems) being sufficient. In the arid sections of the west are most suitable they being great drought resisters.

\***"S"** refers to standards. **"F"** to falls Elderado—"S" fiery opalescent, "F" purplish gold, 30c each; \$3.00 per dozen.

\***Fairy**—"S" white, "F" fringed blue. 25c each; \$2.50 per dozen.

\***Florentina**—"S" white, "F" veined, violet. 25c each; \$2.50 per dozen.

\***King of Iris**—"S" clear lemon yellow; "F" rich maroon, bordered yellow. Large flowers. 25c ea.; \$2.50 doz.

\***Lohengrin**—Large silvery mauve, both "S" and "F" 35c each; \$3.50 per dozen.

\***Loreley**—"S" light yellow, "F" ultra-marine blue. 25c each; \$2.50 per dozen.

\***Opera**—A rich violet-red bicolor. "S" bright rich pansy violet; "F" rich velvety violet-purple. Each, 50c.

\***Palida Dalmatica**—Both "S" and "F" clear lavender blue. 30c each; \$3.00 per dozen.

\***Asst Colors**—Orange, white, yellow, blue, lavender, pink, purple and mixed, 15c each; \$1.50 per dozen; \$10.00 per 100, postpaid.

\***Gysophilia Paniculata** (Baby's Breath) — A mist of single white flowers.

\***Gypsophilia** (Paniculata Flore Pleno) — Improvement on the single-flow-ered type and more lasting, the flowers forming miniature balls of white petals. 2-3 ft. July-August. Not quite fixed, but about 25 per cent come true. Seeds, pkt., 25c.

\***Garden Pinks** (Hardy) — Assorted colors.

\***Helenium** (Riverton Gem) — Covered from August to October with bril-liant old gold and splashes of darker shades, changing later to wall-flower red. Pkt., 15c.

\***Hibiscus**—Giant Mallow Marvels—Crimson, white and pink flowers in August and September.

(\* These Varieties Are Suitable for Rock Gardens.

**HARDY PERENNIAL PLANTS AND SEEDS—(Continued)**

We furnish either plants or seeds of the varieties listed below. Prices except where otherwise noted—Field Grown Plants: 25c each; \$2.25 per dozen; \$15.00 per 100. If by mail add 5c each; 30c per dozen, for postage and packing. Seeds: Per pkt., 10c; 3 for 25c; 13 pkts. for \$1.00, postpaid.

**Hollyhocks**—Handsoms double improved varieties of this flower make it a great favorite; assorted colors.

**Heemerocalis** (Yellow Day Lily)—Very fragrant lemon-yellow flowers in June and July; height 2½ to 3 feet.

**Incarvillea** (Hardy Gloxinia)—Showy plant for hardy border rose-colored flowers on 15-18 inch stems during June and July, succeeds in sun or shade; protect well during winter.

**Iberis** (Hardy Candy Tuft)—Flowers in pretty white clusters in May and June.

**Hesperia** (Sweet Rocket)—Assorted colors.

**Heuchera** (Alum Root) *Sanguinea*—2 ft. July-August. Long stems of large crimson-scarlet flowers. Splendid for cutting. Seeds, Pkt., 25c.

**Lathyrus** (Everlasting Pea)—Assorted colors; climber, 8 to 10 feet; clusters large flowers entire summer; fine for cutting.

**Lavandula** (Lavender)—Grows 18 in. high; delightfully fragrant blue flowers in July and August.

**Linaria** (Toad Flax)—Dainty lilac and orange flowers throughout summer; trailing habit, 3 inches.

**Linum** (Blue Flax)—Graceful, blue flowers all summer.

**Lupinus** (Lupin)—Most beautiful hardy border plants, producing tufts of soft green foliage, from which arise in continuous succession the stately spikes of bloom.

**Lychnis** (Jerusalem Cross) Brilliant orange scarlet flowers in June and July.

**Michaelmas Daises** (Hardy Asters)—Among the showiest of late-flowering hardy plants, bloom during September and October.

**Myosotis** (Forget-Me-Not) — Dwarf Blue, in bloom from early spring until autumn.

**\*PHLOX SUBULATA** (Moss or Mountain Pink)

An early Spring-flowering type with pretty mosslike, evergreen foliage, which, during the flowering season, in April and May, is hidden under the masses of bloom. An excellent plant for the rockery, the border and invaluable for carpeting the ground or covering graves. We supply three colors—**White, Pink, and Purple.**



Digitalis (Foxglove)

**Poppy** (Hardy Oriental)—Large Flowers, bright red.

**\*Poppy, Iceland** (Iceland Poppies)—Mixed colors; bright green fern-like foliage, cup-shaped flowers.

**Platycodon** (Balloon Flower)—Deep blue flowers July and August. Pkt., 25c.

**Penstemon** (Bearded Tongue)—Mixed colors, useful for either border or rockery. Pkt., 25c.

**Physostegia** (False Dragon Head)—Erect bushy plants, very showy rose purple flowers in July and August.

**Pyrethrum** (Alginosum Giant Daisy)—Very attractive daisy like flowers. Pkt., 25c.

**Physalis Francheti** (Chinese Lantern Plant)—Ornamental variety of Winter Cherry, dense bushes about 2 feet high; orange-scarlet lantern-like fruits.

**\*Polyanthus** (Primula Elatior)—Mixed colors; early Spring flowering; height 9 inches.

**Rudbeckia** ("Golden Glow")—Brilliant golden-yellow, blooms July to September. Height four to six feet.

**Rudbeckia Newmanii** (Black Eyed Susan)—Dark orange-yellow flowers (deep purple cone, blooms July to September. Height 3 feet.

**Rudbeckia** (*Purpurea*)—Peculiar reddish-purple with large coneshaped center of brown, blooms July to October. Bushy plants 3 feet high.

**Salvia** (Meadow Sage)—*Azurea*—3 to 4 feet high; sky-blue flowers in August and September.

**Scabiosa Caucasica** (Blue Bonnet)—Soft lavender blue, graceful flowers on stems 18 to 24 inches high. Bloom from July to September. Splendid cut-folwers.

**\*Sedum**—Fine plants for rock-gardens, ruins, banks and walls, preferring open, loamy soil and stones. They will, however, flourish anywhere in city or country and stand dry weather. They are especially suited to sunny locations. We have three varieties "**Acra** (**Yellow**), **Brilliant** (**Scarlet**), and **Stolonifera** (**Purplish Pink**). Seed of each, 25c per pkt.; Plant 35c each; \$3.50 per dozen.

**Statice** (Great Sea Lavender)—Covered with minute purplish blue flowers in July and August. If cut and dried lasts in good condition for months.

**Shasta Daisies**—Burbank's new varieties.

**\*Stokesia Cyanea** (Cornflower Aster)—Bright lavender blue Aster like flowers, flowering from June until fall.

**\*Sweet William** (*Dianthus Barbatus*)—The varieties offered are an improvement of the old-fashioned kinds. Sweet Williams look well in solid beds. We furnish both **Single** and **Double** in assorted colors.

**Tritoma** (Red-Hot Poker)—Hardy if given protection. In bloom from August to October; spikes 3 to 4 feet, heads of bloom are rich orange-scarlet.

**\*Violets**—Hardy, sweet-scented blue. Plants, 15c each; \$1.50 per dozen.

**\*Vinica Minor** (Periwinkle or Trailing Myrtle)—Splendid for shady places.

**\*Veronica** (Speedwell)—Border plant 18 inches high; long spikes of blue flowers in June and July.

**Yucca** (Adam's Needle) *Filamentosa*—5-6 ft. or more, June-July. Handsome creamy white flowers, much branched and densely packed with bloom, with sword-like foliage.

**1-Year Plants**—25c each; \$2.50 doz.

**2-Year Plant**—50 each; \$5.00 doz.

**4-Year Plants**—\$1.75 each; \$18.00 doz.

**P.-W.'s ROCK GARDEN COLLECTION**

The following twelve varieties are especially suited to rock garden use:

- |           |               |
|-----------|---------------|
| Achillea  | Hardy Pinks   |
| Arabis    | Iberis        |
| Cerastium | Linium        |
| Fever Few | Polyanthus    |
| Geum      | Stokesia      |
| Sedum     | Sweet William |
- Seed—1 pkt. each of above twelve varieties, postpaid for \$1.00  
Plants—1 clump each of above for \$2.25, postpaid.

**Phlox**

**(HARDY PERENNIAL)**

Phlox are a garden in themselves, succeed in almost any soil and position, and flower freely.

**B. Comte**—Rich French purple.

**Beacon**—Bright cherry red.

**Commander**—New bright crimson dark eye.

**Michael Buchner**—Bright reddish purple.

**Mrs. Jenkins**—Pure white, splendid for planting in masses, free flowering.

**Rheinlander**—Salmon pink, claret eye.

**Rosenberg**—Wine purple, tall grower, very showy.

**Ryndstrom**—Profuse bloomer. Deep rose-pink.

**Richard Wallace**—White, changing to a pale bluish white toward center with a red eye.

**Thor**—Lovely shade deep salmon pink.

**PRICE**—Any of the above 35c each; \$3.50 per dozen.

**PLANTS**—Any of above 25c per clump; \$2.25 per dozen; \$15.00 per 100. If by mail add 5c each or 30c per dozen for packing and posting.

**SEED**—Any of above, except where otherwise noted; Packet, 10c; 3 packets, 25c; 13 packets for \$1.00, postpaid. \*These Varieties Are Suitable for Rock Gardens



**Early Flowering Spencer Sweet Peas**

This new type is in great demand by commercial florists for forcing under glass and are just as valuable for outdoor culture.

- Meadow Lark**—Primrose yellow.
- Fair Maid**—Blush-pink.
- Morning Star**—Rosy salmon.
- Early Harmony**—Clear lavender.
- Early True Blue**—Rich mid-blue.

- Blue Bird**—Violet blue.
- Grenadier**—Dazzling scarlet. Pkt. 10c; Oz., 85c; ¼ lb., \$3.00.
- Illumination**—Salmon cerise.
- Lavender King**—Clear lavender.

- Mrs. Kerr**—Salmon. Very fine. Pkt., 10c; Oz., 85c; ¼ lb., \$3.00.
- Snowstorm**—Imp. Pure white.
- Yarrowa**—Rose pink.
- Zvolanek's Rose**—Rose pink.

Any of above except where noted—Pkt., 10c; Oz., 55c; ¼ lb., \$1.75.

FOR REGULAR LIST OF STANDARD GIANT SPENCER SWEET PEAS SEE SPRING CATALOG

**Farm Seeds for Fall Planting**

Consistent with our Policy to sell the best, we furnish only such grades that have been critically grown from highest germination and purity: this fact should be in mind when comparing prices with other sources of supply. PRICES FLUCTUATE. Please write for quantity prices on Alfalfa, Sweet Clover and Grass Seeds. Also Wheat and Rye or anything else desired in Farm Seeds.

- Bromus Inermis**—Sow 20 to 30 lbs. per acre. Pound, 30c, postpaid. Not prepaid, 10 lbs., \$2.00.
- Red Top**—Sow 25 pounds per acre. Pound, 40c, postpaid. Not prepaid, 10 lbs., \$3.00.
- Orchard Grass**—Sow from 20 to 25 pounds per acre. Pound, 45c, postpaid. Not prepaid, 10 lbs., \$3.00.
- English or Perennial Rye Grass**—30 pounds per acre, spring or fall. Pound, 30c, postpaid. Not prepaid, 10 lbs., \$2.00; 100 lbs., at market price.
- Meadow Fescue**—Sow in spring or fall at the rate of 30 pounds to the acre. Pound, 30c, postpaid. Not prepaid, 10 lbs., \$2.00.
- Tall Meadow Oat Grass**—Sown alone, use 30 pounds to the acre, either spring or fall. Pound, 60c, postpaid. Not prepaid, 10 lbs., \$4.00; 100 lbs. at market price.
- Red or Creeping Fescue**—Lb., 65c; 3 lbs., \$1.85. Postpaid. Not postpaid, lb., 60c; 10 lbs., \$5.50.
- Western Wheat Grass**—For dry land without equal. Sow 15 lbs. per acre; lb., 25c, postpaid. Not prepaid, 10 lbs., \$1.75.
- Kentucky Blue Grass**—See page 16.
- Timothy**—12 pounds to the acre. Pound, 20c, postpaid. Not prepaid, 10 lbs., \$1.75.
- Alfalfa (P.-W.'s Mountain Grown Dry Land)**—Lb., 35c, postpaid. Not prepaid, 10 lbs., \$3.00; 100 lbs., market price.
- Alfalfa Seed Grimm (Certified)**—Lb., 60c, postpaid. Not prepaid, 10 lbs., \$5.00; 100 lbs., market price.
- Alsike Clover (Swedish Hybrid)**—Sow at the rate of six or eight pounds per acre; sown in mixtures, five or six pounds per acre is sufficient. Lb., 55c, postpaid. Not prepaid, 10 lbs., \$4.50; 100 lbs., market price.
- Sweet Clover or Bokhara (Melilotus Alba) White Blossom**—Sow at the rate of 10 to 15 pounds per acre. Cover the seed very lightly. Lb., 30c, postpaid. Not prepaid, 10 lbs., \$2.00; 100 lbs., market price.

**WESTERN ALKALI GRASS**

The seed is very fine and as it stools it should be sowed very thin for a permanent crop. Seeding can be done any time from September 1 until spring; broadcast right on the snow and not after the snow is gone and land dries off and starts to crack. Use "Cyclone" seeder, sowing two pounds per acre for meadow or pasture. It is better to keep stock off in the spring, while plant roots are forming and the ground is soft.

When instructions are followed, this grass will grow and produce a large crop, either white or black alkali. It will make a fair crop the first year and a full crop the second year, and stand more summer drought than any grass I have ever seen. The third year will be still better than the second.

It commences to bloom when the head is about half way out of the boot. If the season is very dry, it may not completely head out and it is better to cut it before it bleaches. Cut it under these circumstances when it commences to bleach.

**Price:** Pound, \$2.00; 5 lbs., \$9.75; 10 lbs., \$19.50, postpaid. Write for quantity prices.

- Yellow Blossom (Melilotus Officialis)**—Lb., 25c, postpaid. Not prepaid, 10 lbs., \$1.75; 100 lbs., market price.
- Medium Red Clover (Trifolium Pratense)**—Sow either in the spring or fall at the rate of fifteen pounds to the acre. Lb., 40c, postpaid. Not prepaid, 10 lbs., \$3.50.
- P.-W.'s Mixture No. 1 (For Meadows and Pastures)**—Sow 25 pounds per acre. Pound, 45c, postpaid. Not prepaid, 10 lbs., \$3.50; 100 lbs. at market price.



Western Alkali Grass

**FALL IS THE PREFERABLE TIME TO PLANT "WESTERN ALKALI GRASS." WHEREVER POSSIBLE SOW AT THIS SEASON.**

**MAKE YOUR ALKALINE SOILS PRODUCTIVE WITH "WESTERN ALKALI GRASS."**

**SUCCESS WITH WESTERN ALKALI GRASS**

Commissioner of Agriculture for Utah, Harden Bennion, Writes

My information and acquaintance with what is known as "alkali grass" is that I have seen this grass growing on land in Duchesne County which was very wet and heavily saturated with alkali. In fact, the ground carried so much alkali that very little, if any, soil could be seen. Seepage from the irrigated lands above was coming from the ground and before this grass started growing there it looked from a distance almost like a snowbank. Some of this grass, growing within fenced pastures, seemed to be particularly attractive to cattle and I think would make very excellent pasturage. In my opinion this "alkali grass" will undoubtedly be a big asset to the owners of alkali lands within our state.



P.-W.'s Velvet Green Lawn Seed and Vigoro Fertilizer Insures a Beautiful Green Sward.

## Lawns Made in the Fall

have many advantages over those made during the Spring months, as the conditions are ideal for quick germination of seed, and the plants will make deeper roots and more healthy growth, besides there is less danger of being winter-killed than there is a Spring-sown grass being killed by extreme heat of July and August. We advise all who contemplate making a new lawn, or renewing the old, to do the work this Fall, as the grass will become well established before freezing weather. The seed we offer has been most carefully selected and none better can be obtained.

**P.-W.'s Velvet Green Lawn Mixture**—The best lawn seed experience can suggest or that money can buy. Produces a beautiful, permanent lawn in four to six weeks. By properly choosing early, medium and late grasses a smooth, even green lawn is assured from early spring to late autumn. In P.-W.'s Velvet Green Grass Seed are included only the very best varieties—pure, clean and free from foul seed. Sow at rate of one pound to 200 square feet. Price: 1 Lb., 75c; 3 lbs., \$1.85. Postpaid. Not prepaid, Lb., 65c; 10 lbs., \$5.50.

**P.-W.'s Lawn Terrace Mixture**—This produces a deep-rooted, fine, green, closely interwoven, velvety surface, which will hold together under the most severe conditions. Price: Lb., 75c. Postpaid. Not prepaid, Lb., 70c; 10 lbs., \$6.50.

**Shady Nook Lawn Mixture**—Prepared especially for shady places where it is difficult to get a turf established. Lb., 75c, postpaid. Not prepaid, 65c lb., 10 lbs., \$6.00.

**White Clover**—First class re-cleaned seed. Specially selected for lawn use. Lb., 80c, postpaid. Not prepaid, Lb., 65c; 10 lbs., \$6.00.

**Red Top Grass**—Fancy re-cleaned solid seed; in popularity for lawn use, it is a close second to Kentucky Blue Grass. Lb., 50c, postpaid. Not prepaid, lb., 45c; 10 lbs., \$4.00.

**P.-W.'s Creeping Bent**—This is the true Creeping Bent Grass, which we are able to offer to the trade this season.

P.-W.'s Creeping Bent has been harvested under closest inspection. Especially recommended for Lawn and Golf Courses, for the reason that it makes an exceptionally fine turf that smothers out dandelions and other weeds. It is an ideal lawn grass, makes a very fine, green color, close sward and adapts itself readily to any soil.

Sow in Fall or Spring 3 to 4 lbs. to 1,000 sq. ft. We offer the best obtainable grade of this species. 1 lb., \$1.75; 3 lbs., \$5.00. Postpaid.

**Kentucky Blue Grass**—The main stay for lawn making. Our stock is extra fancy re-cleaned heavy seed. The purest and cleanest obtainable. Lb., 75c; 3 lbs., \$1.85. Postpaid. Not prepaid, lb., 65c; 10 lbs., \$5.50.

**Red or Creeping Fescue (Festuca Rubra)**—Because of its good creeping root system this makes splendid turf for putting greens. When used for greens it should be sown alone. It makes a good ingredient for lawn mixture as it does well in sandy soil and in shaded places. Sow in Spring or about the first of September. Lb., 65c; 3 lbs., \$1.85. Postpaid. Not prepaid, lb.; 60c; 10 lbs., \$5.50.

## Pansies

Pansies like cool weather, and the best way to grow them in the north is to start them in the late summer and carry the plants over the winter in a cold frame. The plants will then come into flower with the first tulips.

**Boulogne Giant Mixture**—The flowers are of the largest size, great substance, fine form and are borne on particularly strong stems. They are mostly 3 and 5 blotched delicately veined. Pkt., 25c; 1-32 oz., \$1.00.

**Cassiers 3 and 5 Blotched Mixed**—Mostly light shades with dark blotches, ¼ ounce, 75c; packet, 20c.

**P.-W.'s Best Giant Mixture**—It includes the richest reds, coppers and bronzes, together with the most delicate rose-pink shadings; pkt., 25c; ¼ oz., \$1.00.

**Masterpiece** (New Giant Curled or Spencer Pansies)—

The petals are crimped and curled so the flowers appear double. Pkt., 25c; ¼ oz., \$1.00.

**Steele's Mastodon Mixed**—This is one of the most colorful mixtures of mammoth flowering pansies of which we are familiar. Pkt., 25c; 1-16 oz., \$1.00.

**Paris Market**—An improved strain of Trimardeau, with better flowers and more compact habit. ¼ oz., 60c; pkt., 10c.

**Separate Colors**—Ruby Red, Violet Blue, White, Yellow. Pkt., 15c; ¼ oz., 50c.

## Remember the Fall Vegetable Garden

Why allow your ground to be idle after harvesting your summer vegetables when you can just as well make it work for you Spring, Summer and Fall. All prices include delivery charges.

### ONION SETS

Onion Sets planted this fall will produce the earliest Spring Onions without winter protection. Price: Yellow varieties, 20c lb.; 10 lbs., \$1.75, postpaid. White Sets, 25c lb.; 3 lbs., 75c; 10 lbs., \$2.00, postpaid. Write for prices on quantities.

### MUSHROOM SPAWN

	Bricks	1	2	5
Pure Culture	.....	45c	80c	\$1.75

### SPINACH

King of Denmark.....	5c	Pkt.	Oz.	¼ Lb.	Lb.
Long Standing.....	5c		10c	20c	45c
P.-W.'s Bloomsdale Savoy.....	5c		10c	15c	35c

### VEGETABLE ROOTS

	Each	Doz.	100	1000
Asparagus—2 year roots.....	\$0.60	\$ 1.75	\$12.00	
Rhubarb.....	25c	2.00	12.00	
Horseradish.....	6c	.60	3.50	

SEE GENERAL CATALOG FOR REGULAR LIST OF VEGETABLE SEEDS

## Fertilizers for Lawn and Garden

Unless otherwise specified, prices on all Fertilizers are f. o. b., Salt Lake. If desired by mail add postage to order.

**Bone Meal**—A good fertilizer, should be forked in the soil in the Fall if possible. 5 lbs., 45c; 10 lbs., 75c; 25 lbs., \$1.25; 50 lbs., \$2.00; 100 lbs., \$3.50.

**Fish and Meat Meal**—Very much in demand for celery, lettuce and other garden crops 25 lbs., \$1.25; 100 lbs., \$4.25. Write for quantity prices.

**Stim-U-Plant**—An all-the-year fertilizer for garden and house plants. An odorless, highly concentrated plant-food in tablet form, with guaranteed chemical analysis of 11 per cent nitrogen, 12 per cent phosphoric acid, 15 per cent potash. Price, 10 tablets for 15c; 30 tablets for 25c; 100 for 75c; 1000, \$3.50.

**Sulphate of Ammonia**—Apply 100 to 500 lbs. per acre. Use only after plants are above ground. If used in liquid form dilute 2 oz., to 1 gal. of water and do not apply oftener than twice a week. 5 lbs., 50c; 25 lbs., \$1.75; 100 lbs., \$5.50.

**NOTE**—We are general agents for **Swift's Red Steer Brand Fertilizers** for Special farm crops made up according to definite formulas to suit soil and crop, write for details and prices.

### Spray Your Trees and Shrubs This Fall

Most people do not realize the importance of Dormant Spraying. As soon as leaves fall, spray thoroughly with a good Dormant Spray.

**Miscible Oil**—The "Certain Death" to scale insects and destroys Brown Mites and Apple Leaf Roller Eggs and controls Canker Rot, Twig Blight, and many other fungus diseases.

**Price**—One-quart can, 65c; shipping weight, 3 lbs., 1 gallon can, \$1.00, shipping weight, 11 lbs.; 5 gallon can, \$4.50. Write for prices on large containers.

# VIGORO

*Specialty prepared plant food*

**Clean, Odorless, Easy to Apply**  
**Enjoy Better Lawns, Flowers and Gardens**

There is no secret in having a velvety lawn, colorful flowers, crisp, succulent vegetables, luxuriant shubbery, and stately trees.

VIGORO, an effective way to secure finest results. The cost is only 10c to 20c for every 100 square feet. It is clean, odorless, easy to apply, and contains all of the elements of plantfood required to produce early, vigorous growth, and bring the lawn, fruit, flowers, and foliage to full development.

Complete directions in every bag. Many years of extensive research work and actual growing tests have been devoted by Swift & Company's horticultural experts to the development of VIGORO. Prices f. o. b. Salt Lake, 12-oz. pkg. 15c; 5-lb. bag, 60c; 25-lb. bag, \$2.00; 50-lb. bag, \$3.75; 100-lb. bag, \$6.00.

**Lime-Sulphur (Dry Form)**—A good remedy for scale; also an excellent fungicide, a very effective dormant spray for trees and shrubs. 1 lb., 25c; 5 lbs., 85c; 10 lbs., \$1.50; 25 lbs., \$3.25; 50 lbs., \$6.00; 100 lbs., \$11.00

See Spring Catalog for Spray Pumps, and other Spraying Materials We carry a complete line.

## Hardy Ornamental Vines and Creepers

Your home, outbuilding, fence and trunks of old trees can be made very attractive by the use of hardy vines. We furnish strong two-year-old field plants at prices given below.



Clematis Jackmanii

**AMPELOPSIS ENGELMANII**—New Virginia Creeper—A new variety of American Ivy which has long been desired. It has shorter joints and very much smaller and thicker foliage. It also is better equipped with tendrils, by which it will climb walls of stone or brick as closely as the Boston Ivy. Each, 70c; ten for \$6.00.

**AMERICAN IVY**—Virginia Creeper or Woodbine (Ampelopsis Quinquefolia)—A strong, rapid grower; foliage large, dark green; in autumn, bronze and crimson. Hardy everywhere. Each, 60c; ten for \$5.00.

**BOSTON OR JAPAN IVY**—Ampelopsis Veitchi—One of the finest climbers for covering walls, as it clings firmly to the smoothest surface, covering it evenly with overlapping leaves, which form a perfect mass of foliage. The color is fresh deep green in summer, changing to bright shades of crimson and yellow in autumn. Each, 75c; ten for \$6.50.

**BIGNONIA RADICANS** (Trumpet Vine)—Dark red, orange throat; free blooming, very hardy and rapid grower. Each, 75c; ten for \$6.50; large size, \$1.00 each.

**CELESTRUS SCANDENS**—Climbing Bitter Sweet—A native climbing or twining plant, with handsome large leaves; yellow flowers in May and June and clusters orange-capsuled fruit in autumn. One of the most desirable climbers for shade. Each, 75c; ten for \$6.00.

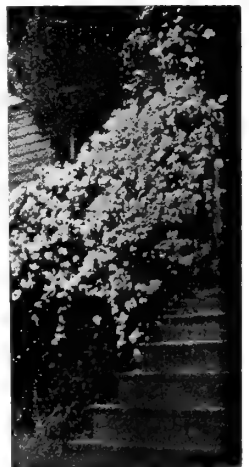
**CLEMATIS**—Paniculata (Virgin's Bower)—This is hardy everywhere. Blossoms pure white, very fragrant, and borne in great clusters or bunches, covering the plant almost completely, enough to hide the glossy, rich green foliage. Each, 75c; ten for \$6.50.

**CLEMATIS—Jackmanii**—This is the best of all large flowering varieties. Color, a deep violet purple. Each, \$1.00; ten for \$8.50.

**HONEYSUCKLE—Halls Japanese**—Remarkable on account of retaining its beautiful, glossy foliage most all winter, and covered with sweet, yellowishwhite flowers most all summer. Each, 75c; ten for \$6.50.

**HONEYSUCKLE—Scarlet Trumpet**—This and its varieties are the handsomest in cultivation. It is a strong, rapid grower and produces scarlet, inodorous flowers. Each, 75c; ten, \$6.50.

**IVY (English)**—Valuable for covering graves. Grows well in shade. Small size, 4 in pots, 55c each; ten for \$5.00. Large size, gallon cans, \$1.10 each; ten for \$10.00.



Clematis Janiculata

**WISTERIA—Chinese Wisteria (Wisteria Chinesis)**—A rapid growing tall vine with handsome foliage and flowers. Flowers pea-shaped, purplish, profusely borne in dense, drooping clusters 7 to 12 inches long, opening in mid-spring. Each, \$1.00; ten for \$8.50.

**Chinese White Wisteria (W. Var Alba)**—A form of above with pure white flowers. Each, \$1.00; ten for \$8.50.

**EUONYMUS Radicans vegeta (Evergreen Bittersweet)**—A strong-growing variety with glossy, green leaves, producing bright orange-red berries which remain on the plant the greater part of the winter. As a hardy evergreen plant for wall covering, this variety is unequalled. Large size from 5 gal. cans or B. & B., each, \$2.50; ten for \$20.00.

## Hardy Ornamental and Flowering Shrubs

There is nothing which so quickly, and for so little cost, add so much to the beauty, cheerfulness and home-like appearance of a place as an assortment of hardy shrubs. They are permanent improvements which increase in size, value and beauty, year after year. Our price for strong, healthy, field grown shrubs, two to four feet high, depending on the variety, some making higher growth than others.

For your convenience we have indicated in each description the height, spread, and blooming period. For example, "H 3-4, S 3-4, June," may be interpreted height 3 to 4 feet, spread 3 to 4 feet, flowers in June." It is understood that the sizes given are only approximate, and will vary considerably according to soils and climate.

Shrubs marked (\*) can be grown in partial shade, but they will also thrive in full exposure to the sun.

### FLOWERING ALMOND (Amygdalus)

—A most beautiful shrub, is one of the loveliest. The flowers are borne on its slender branches during May, and are very fragrant. H 3-5, S 4. **Double pink**, each, \$1.00; **Double white**, each, \$1.00.

### \*ALTHEA (Rose of Sharon)

The Altheas are among the most valuable of our tall, hardy shrubs on account of their late season of blooming, which is from August to October, a period when few shrubs are in flower. They are extensively used as hedge plants for which they are admirably adapted. We offer in four distinct colors. **Red, Pink, White, and Purple**. H 10-12, S 6-8.

### AMORPHA

**False Indigo (A. Fruticosa)**—Grows in large spreading bush form, with bright green leaves in pinnate arrangement; flowers deep violet blue, in June H 8-10; S 8-10.

### ARALIA

**Pentaphylla**—Long, slender gracefully arching branches and bright green, compound foliage. Makes a small tree in time, especially attractive on rocky slopes. Greenish white flowers in long umbels. H 12-15, S 8-10.

### \*BERBERIS (Barberry)

**Japanese Barberry (B. Thunbergii)**—Beautiful shrub for hedges, border, screens or general purposes. Very compact and needs no attention with the shears. Foliage a rich green, changing in the autumn to brilliant scarlet and gold. Following the white flowers are scarlet oval berries, which are borne into the winter. Three-year clumps \$1.00 each; ten for \$9.50. Two-year shrubs, 55c each; ten for \$5.00; \$40.00 per 100. H 3-4, S 3-4.

**\*Box Barberry (Thunbergii Minor)**—A very dwarf form of the Japanese Barberry. An admirable plant for low hedges, borders, edgings and foreground planting.

### NEW RED LEAVED BARBERRY

**B. Thunbergii (Atropurpurea)**—In habit of growth and in fruiting it is identical with the popular Japanese Barberry, but its foliage, as soon as it develops in early spring assumes a rich bronzy-red color, this coloring becomes more intense and richer during the hot summer months. Followed by brilliant scarlet berries which remain on the plant the entire winter. Two-year plants, each, \$1.00; 10, \$9.50.

### BUDDLEIA

**Butterfly Shrub, Summer Lilac**  
One of the most desirable summer flowering shrubs, beginning to bloom in July, it continues until cut by severe frost. The flowers are of a pleasant shade of violet mauve, and are borne in dense cylindrical spikes from 12 to 15 inches in length by 3 inches in diameter; It succeeds everywhere and flowers freely the first season planted. H 5-6, S 4-5.

The shrubs offered in this list are unless otherwise specified, price 85c for \$1.00 each; \$9.00 per ten.



Kerria Japonica

**Siberian Pea Tree (C. Siberica)**—Compound leaves bright, green; numerous small clusters of yellow flowers. H 8-10, S 8, May and June.

### \*DOGWOOD (Cornus)

**Red Siberian (C. Siberica)**—Produces cream colored flowers in June, light blue fruits, and bright red twigs and branches. H 6-8, S 6.

**Golden Twig (C. Stolonifera, Lutea)**—Yellow stemmed. Clusters of white flowers, stems and branches are yellow.

### CALYCANTHUS

**Sweet Shrub (C. Floridus)**—An old-fashioned shrub known to everyone. Its flowers are deep reddish-brown, sweet-scented; deep green, glossy foliage, free from disease. H 5-6, S 4-5.

### CYDONIA

**Japan Quince (Japonica)**—A single shrub on the lawn is very attractive; brilliant crimson flowers, among the first in the spring. H 4-5, S 5. Each, \$1.00; ten for \$8.50.

### CURRENT (Ribes)

**Aureum (Missouri Golden Currant)**—Pretty, spicy, sweet-scented, bright yellow flowers in May, and clean, attractive foliage and bright autumnal tints. H 4-5, S 5.

### ELDER (Sambucus)

**American Elder (S. Canadensis)**—Green foliage, attractive white flowers in spring, followed by loads of black fruit in fall. H 6-8, S 5.

**Golden Leaved Elder (S. Caeradensis Aurea)**—The best of all the colored leaved shrubs. A plant of this bush in a bed, or a border on the lawn is a conspicuous feature, the foliage being as yellow as gold. H 6-8, S 5.

### EXOCHORDA

**Pearl Bush**—Virgorous grower; dazzling white flowers in numerous terminal racemes. A narrow, upright shrub which prefers a moist, fertile soil. H 6-8, S 4, May.

### EUONYMUS

**Strawberry Tree (E. Americana)**—American Burning Bush. Very showy in autumn when loaded with scarlet seed pods, from which orange-colored berries hang on slender threads. H 8-10, S 6.

### DEUTZIA

Hardihood, fine habit, luxuriant foliage and profusion of attractive flowers render this among the most beautiful and most popular of flowering shrubs. Flowers in June and through July and August.

**Crenata (Rosea Plena)**—Double light pink; very desirable tall shrubs. H 6-8, S 6.

**Gracilis**—A favorite dwarf bush, covered with spikes of pure white flowers. H 2-3, S 3.

**Pride of Rochester**—Fine, tall growing double white flowering variety. H 6-8, S 5 June.

### FORSYTHIA (Golden Bell)

**Fortunei**—Strong, erect habit; bright golden-yellow flowers in early spring. H 6-8, S 6 April.

**Weeping Golden Bell (F. Suspensa)**—Tall willowy growth, branches gracefully arching, covered with golden yellow bells. H 6, S 6, April.

### FRINGE TREE

**Smoke Tree Purple (Rhus Cotinus)**—A conspicuous spreading shrub of small tree with large clusterly round leaves; overhanging in midsummer by mist-like clouds of tiny flowers. These billowing panicles are a light lavender when fresh, very persistent, and give the impression of smoke at a distance. H 8-10, S 8. Each, \$1.50.

**White (Chionanthus Virginica)**—A very showy shrub, growing to large size; with large leathery, shiny leaves, and lace-like white flowers borne in gracefully drooping panicles. H 8-10, S 8. Each, \$1.50.

### HONEYSUCKLE BUSH (Lonicera)

The upright Honeysuckle have bright and pretty fragrant flowers, followed by showy berries that last through the fall. Make very desirable and attractive shrubs.

**Tartarian (Lonicera Tatarica)**—Most popular of the bush varieties. Foliage dark glossy green, blooms in June. H 8-10, S 6-8. **Red, Pink, White.**

**Winter Honeysuckle (L. Fragrantissima)**—Small, deliciously fragrant, white flowers tinged with yellow in the early Spring before the leaves appear. Holds its green foliage until midwinter. H 6, S 4-5, April.

**Morrowi**—A handsome Japanese variety with white flowers during May, but especially valuable for its bright and red fruit during the summer and autumn months. H 6-8, S 5-6.

### \*HYDRANGEA

**Hills of Snow (H. Aborescens Grandiflora)**—Snow white blossoms of largest size; flowering from early June until late July. H 3, S 3. Each, \$1.00; ten, \$8.50.

**Paniculata Grandiflora**—Unsurpassed for lawn, hedge or cemetery planting; hardy in all localities, needs no protection in winter; blooms the first and every season in July and August and continuous in bloom for two or three months; pure white to pink, and finally to a beautiful rich coppery red. H 5-6, S 5. Each, \$1.00; ten for \$8.50.

strong two and three-year-old Field Grown, 2 to 4 feet, depending on variety, each; \$7.50 per ten; \$65.00 per 100. Extra size shrubs can be furnished

**HYPERICUM**

**Prolificum** — (St. John's Wort)—Bright yellow flowers are borne in branching terminal clusters. Narrow, lustrous dark green leaves cover the numerous compact branches. H, 2-3, S 2-3 July.

**KERRIA** (Cochorus)

**Japonica** (Flore Plena)—Attractive golden yellow double flowers are borne continuously from June to October. H 4-5, S 3. Each, \$1.00.

**\*LIGUSTRUM** (Privet)

**Amurense**—Extremely hardy, upright grower, foliage glossy green, holds color until late. Each, 50c; 10 for \$4.25.

**Vulgaris** (English) — Leaves small dark green. White flowers in June, followed by black, shiny berries. Large Size, each, 50c; ten for \$4.50. For Hedge Shrubs, large size, 18-24 inch, ten for \$1.00; 50 for \$4.50; \$8.00 per 100; 2-3 feet 10 for \$1.25; 50 for \$5.50; \$10.00 per 100.

**PHILADEPHUS** (Mock Orange)—This old-fashioned sweet-scented shrub has long been a close rival of the lilac in popularity.

**Garland Mock Orange** (P. Coronarius)—This a popular tall variety, refined and beautiful; large white flowers. H 6-8, S 4-6.

**Large-flowered Syringa** (P. Grandiflorus)—A very vigorous upright grower, attaining at times a height of 20 feet. Slender branches with an abundance of pure white, slightly fragrant flowers in June. H 8-10, S 8.

**Virginal**—One of the most beautiful shrubs grown. A vigorous, tall grower, with very large double-crested flowers; pure white, sweet-scented, produced in clusters of five to seven. Has longest blooming season of any variety. 2 to 3 ft., \$1.00; 3-4 ft., \$1.25.

**RHUS** (Sumac)

**Black or Shining Sumac** (R. Copalina)—A shrub or small tree, at times growing to a height of 20 feet, with shiny dark green leaves which turn a rich crimson in the fall. H 15-20, S 6-10.

**Staghorn Sumac** (R. Typhina)—One of the most brilliant plants in Autumn, when the green foliage turns to red, and the showy red fruit is borne high above surrounding shrubs. H 10-12, S 6.

**Shredded Sumac** (R. Typhina Laciniata)—The branches are hairy-like growth resembling the densely covered with velvety developing Elks Horn. Flowers in white panicles. Deeply serrated leaves whose deep crimson color and persistent crimson fruit makes it attractive for background. July H 10-12, S 6-8.

**\*ROSA RUGOSA**

**Rubra**—4 to 5 feet high, foliage, large, beautifully crinkled, color dark green. Flowers single, rosy crimson, orange-scarlet fruits.

**Alba**—Foliage and habits like "Rubra" flowers pure white, followed by orange-colored fruits.

**SYMPHORICARPUS**

Small shrubs, much used in places and in open masses. Grow in almost any soil; ornamental when covered with berries.

**Snowberry** (S. Racemosus) (B)—A graceful shrub, with slender branches. Flowers white or pinkish, in loose racemes, in summer. Abundance of snow-white berries during fall and winter. H 4-5, S 4.

**ROBINIA**

**Rose Acacia** (R. Hispidia)—This beautiful shrub is much appreciated because of the abundance of its large, pink, pea-like flowers. H 4-5, S 5. Each, \$1.00.



Philadelphus Coronarius

**Coral-Berry or Indian Currant** (S. Vulgaris) (B)—A grand shrub, producing a wealth of red or purplish berries which remain on the branches all winter. Leaves ovate, bright green, H 4, S 3-4.

**SPIREAS**

Of easy culture and rapid growth and amply repay the growers in an abundance of beautiful flowers. Will grow in almost any moderately moist soil. As single specimens or in groups on the lawn they are unsurpassed.

**Anthony Waterer**—Dwarf, bushy, of spreading type, with large corymbs brilliantly colored rosy crimson. Very free flowering at its best in late summer. This is practically the best, showy red flowered shrub sufficiently dwarf to be used in foundation plantings, or the low front row of shrub groups. H 2-3, S 3.

**\*Bridal Wreath** (S. Van Houttei)—This is the most satisfactory shrub in cultivation. It is the best variety of Spireas. The bush is round and graceful with long, thin, arching branches. The white flowers are in clusters, and are so numerous that when in full bloom the bush resembles a sowdrift. H 6-8, S 6. May and June.

**Double Bridal Wreath** (S. Prunifolia)—One of the best; a beautiful shrub medium size, double white flowers in May. H 6-8, S 6.

**Douglas Spirea** (S. Douglasi)—Deep pink spikes of flowers in July and August, a delightful contrast against the white downy leaves. H 5-6, S 5.

**False Spirea** (Sorbaria sorbifolia)—A handsome, beautifully arching shrub covered with pointed clusters of cream-white, foamy flowers.

**Froebel** (S. Froebeli)—The bluish green leaves are purple when young. Deep rosy blooms are borne in abundance in the middle of Summer, and over a long period. H 3-4, S 4.

**Thunbergii**—A graceful bush, beautiful at all seasons, with innumerable small white flowers. The tiny leaves turn to a brilliant orange-scarlet in the autumn.

**Virginia Guelder Rose** (Opulifolia Aurea)—Medium growth, golden-tinted foliage, large white flowers in June.

**White Japanese** (S. Calossa alba)—Similar to Anthony Waterer in habit and growth, but flowers are white.

**TAMARIX**

**Amurense**—Strong, slender, tall-growing shrub of irregular habit, with feathery foliage and small, delicate flowers, borne profusely on gracefully-bending branches. The pink flowers are very attractive during May. H 8-10, S 6.

**Gallica** (French Tamarix)—The flowers are pinkish; blooms from July to August. H 8-10, S 6.

**SYRINGA, OR LILAC**

**Purple** (Common)—A tall growing shrub (8 to 15 feet) having large clusters of fragrant purple flowers in the Spring.

**White Lilac**—Similar in growth to purple variety.

**Persia Lilac**—Habit more open and branches more slender and drooping than the Common Lilac. Flowers light purple. Grows 6 to 10 feet. 2 to 3 feet, each, 85c; 2 to 4 feet, each, \$1.00.

**Japan Lilac**—Large branching panicles of flowers, a pink lilac tint. Late-flowering. Bushes are stockier, shorter, of slower growth and more tree-like, than other types. In assortment. 2 to 3 feet—\$1.00 each; \$9.50 for ten.

**French Tree Lilacs**—We have the tree form of these wonderful shrubs in white, satiny rose and violet blue. Size 2-3 ft., \$1.75 each.

**WEIGELAS**

**Eva Rathke**—Considered the finest Weigella in cultivation, blooming continuously throughout the summer and autumn. The flowers are a rich ruby-carmine. H 4-5, S 5. Each, \$1.00.

**Candidi**—White flowering, flowering throughout the summer. H 6-8, \$1.00.

**Rosea**—A beautiful shrub with rose colored flowers. H 5-6, S 5.

**VIBURNUM**

**Japan Snowball** (V. Plicatum)—The perfect balls of pure white flowers are borne in great profusion in May. \$1.00 each. H 6-8, S 8.

**\*High-Bush Cranberry** (Opulus)—The white flowers in June are followed in autumn by bright scarlet berries, which are very attractive until late in winter. H 10-12, S 10. Each, \$1.00.

**Common Snowball** (V. Opulus Sterilis)—This bush, so widely known and loved, is one of the most popular of spring blooming shrubs. Its flower clusters are ball like, pure white and produce no fruit or seeds. H 8-10, S 10. Each, \$1.00.

**Nannyberry** (V. Lentago)—Beautiful wrinkled, Lantana-like leaves. Fruits color unequally from bluish crimson to black. H 12-15, S 10-12.

**Tomentosum** (V. Tomentosum)—The handsomest Viburnum. Vigorous, bearing horizontal branches covered with flat, embroidery-like flowers of exquisite beauty.

**HEDGES, SCREENS AND WINDBREAKS**

We can furnish special sizes, and shall be glad to quote quantity prices. Under this heading we include the Poplar, Willows, Locusts, Western Catalpa, Thorns, Russian Mulberry, Russian Olive, Barberry, Privet, Siberian Pea Tree, Spireas, Spruces and Arbor Vitae. Correspondence solicited.

The shrubs offered in this list are strong two and three-year-old Field Grown, 2 to 4 feet in height, depending on variety. Unless otherwise specified. Prices, 85c each; \$7.50 per ten; \$65.00 per 100. Extra size shrubs, \$1.00 each; \$9.00 per ten.

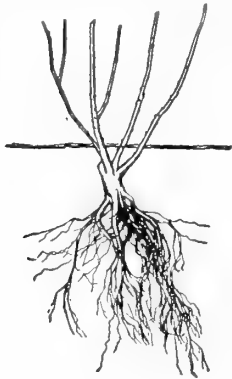


Fig. 1—Proper Depth to Plant

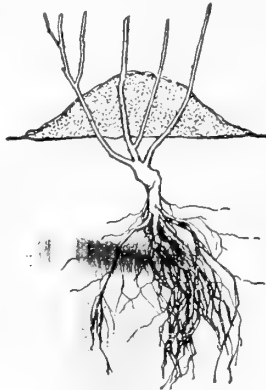


Fig. 2—Properly hilled up "after planting"

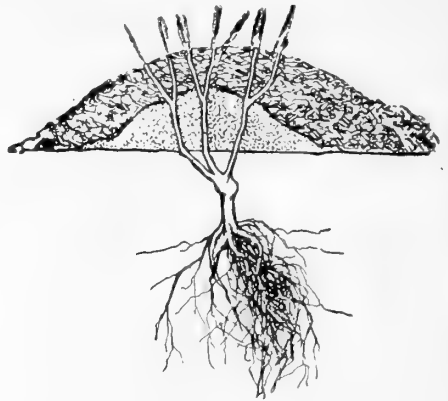


Fig. 3—Winter protection in cold regions.

## P.-W.'s GLORIOUS ROSES

### Some Things To Observe for Success With Roses When Planted in the Fall

**HOW TO PLANT**—The rose delights in an open, airy situation; all types are partial to clay loam, but will succeed in any ordinary soil if enriched with well rotted barnyard manure. Dig up the soil thoroughly to a depth of twelve to fifteen inches. Dig a hole sufficiently large to accommodate the root, and pour a half pail of water into the hole: in filling, shake the plant lightly so that the soil may fall evenly all around the roots: this avoids cavities. Firm the soil well around the plant in order that it may be solid. Be sure that the buds or grafts, that is where the lower branches begin, are at least 2 inches below the surface of the soil. Bush Roses can be set 1½ feet apart, climbing varieties from 4 to 6 feet apart, the standard Roses 3 or more feet apart.

To prevent the top branches from shriveling up before the root system has been developed, the earth should be hilled up as shown in Fig. 2 above.

**WINTER PROTECTION**—We have found that the most satisfactory protection is to draw up a mound of soil from eight to ten inches high around the base of the plants, then covering the entire beds after the ground begins to freeze with any loose material, such as strawy manure, leaves, etc. (See above cut, Fig. 3).

Our collection of Roses embraces over eighty varieties, covering almost every desirable type known to cultivation. Please refer to Regular Catalog for description. The varieties that are available for Fall delivery we list below.



Everblooming Garden Rose

- Mme. Caroline Testout (H. T.)—Pink, each, 75c.
- Ophelia (H. T.)—Salmon shaded rose, each, \$1.00.
- Paul Neyron (H. P.)—Pink, each, \$1.00.
- Radiance (H. T.)—Carmine pink, each, 75c.
- Lord Charlemont (H. T.)—Clear crimson scarlet, each, \$1.00.
- Golden Ophelia (H. T.)—Rich golden, yellow at center, each, \$1.00.
- Black Prince (H. P.)—Crimson, shaded black, each, 75c.
- Rose Marie (H. T.)—Clear rose-pink, each, 75c.
- Lucinda (H. T.)—Bright rose, each, \$1.25.

- Columbia (H. T.)—Peach-blow pink, each, \$1.00.
- Crimson Queen (H. T.)—Velvety crimson, each, \$1.00.
- Duchess of Wellington (H. T.)—Intense saffron yellow flushed crimson, each, \$1.00.
- Edward Mawley (H. T.)—Dark crimson, each 75c.
- Frau Karl Druschke (H. P.)—Pure white, each, \$1.00.
- General McArthur (H. T.)—Bright scarlet, each, 75c.
- General Janssen (H. T.)—Glowing carmine, each, 75c.
- George Dickson (H. P.)—Dark crimson, each, \$1.00.
- Gruss an Teplitz (H. T.)—Scarlet crimson, each, 75c.
- Hadley (H. T.)—Deep crimson, each, \$1.00.
- Hoosier Beauty (H. T.)—Dark crimson, each, \$1.00.
- Hortulanus Budde (H. T.)—Dark red, each, 75c.
- Hugh Dickson (H. P.)—Crimson, each, \$1.00.
- Kaiserine Augusta Victoria (H. T.)—Blush white, each, 75c.
- Killarney Pink (H. T.)—Pure pink, each, 75c.
- Killarney White (H. T.)—Clear white, each, 75c.
- Lady Ashtown (H. T.)—Carmine pink yellow at base of petals, each, 75c.
- Los Angeles (H. T.)—Flame pink toned coral and shaded translucent gold, each, \$1.00.
- Mme. Abel Chatenay (H. T.)—Carmine-rose shaded salmon, each, 75c.
- Mme. Edouard Herriot (H. T.)—Coral red, shaped with yellow and rosy scarlet, each, \$1.00.
- Mme. Butterfly (H. T.)—Salmon pink to apricot, each, \$1.00.
- Red Radiance (H. T.)—Cerise red, each, 75c.
- Sensation (H. T.)—Magnificent red, each, \$1.00.
- Sunburst (H. T.)—Golden yellow, each, \$1.00.
- Ulrich Brunner (H. P.)—Red, each, 75c.
- Maud Cummings (Per)—Peach, shaded coral-pink, each, \$1.50.
- Mrs. Aaron Ward (H. T.)—Golden orange, each, \$1.00.
- Mrs. A. R. Waddell (H. T.)—Rosy-scarlet, each, 75c.
- Radiance (H. T.)—Carmine-pink, each, 75c.
- Golden Emblem (H. T.)—Clear yellow, each, \$1.25.
- Mrs. F. R. Pierson—Scarlet Crimson, each \$1.00.

## Climbers

- Christine Wright—Bright pink, each 75c.
- Pink Dorothy Perkins—each, 75c.

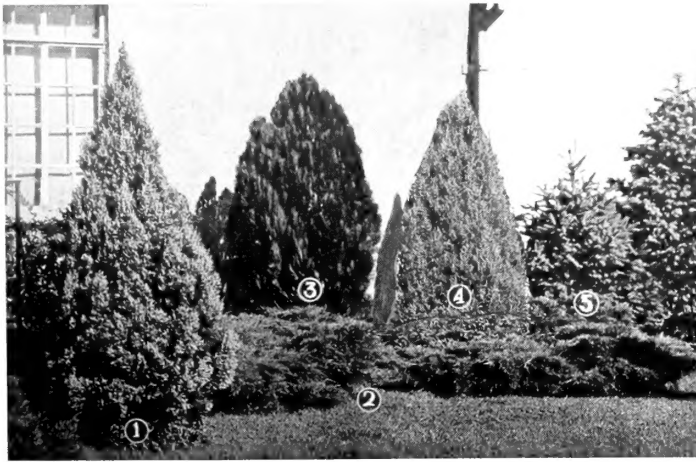
American Pillar—Single, Pink,

- Bess Lovett—Bright crimson, each, 75c.
- Pauls Scarlet—Brilliant red, each, 75c.
- with white eye, each, 75c.

# Evergreen Shrubs and Trees

Both Public and Home gardens should have some of these beautiful specimens to give that bit of color needed to set off the rest of the planting.

All Evergreen Trees will be carefully dug with ball of earth about the roots and tightly sewed up burlap and will stand transportation with little risk of loss. In planting it is not necessary to remove the burlap. Place tree in properly prepared hole, cut burlap in several places, firm earth tightly about ball of roots water and mulch.



Aside from the varieties and sizes listed in this catalog, we carry many other Evergreens. Write, or where possible, please call at our City Sales Yard or Centerville Nurseries and make your selections.

(See Group)

- No. 1—Virginiana Juniper.
- No. 2—Pfitzer Juniper.
- No. 3—Oriental Arbor Vitae.
- No. 4—Silver Blue Juniper.
- No. 5—Colorado Spruce.

## Juniper (Juniperus)

**Irish**—Erect, slender and formal in habit; foliage sage green, very compact; making a splendid column, sometimes 15 to 20 feet high; much used in cemeteries. 18-24 in., \$2.25; 2-3 ft., \$4.00; 3-4 ft., \$5.00 each.

**Red Cedar (J. Virginiana)**—This is the well known native tree, so much appreciated where the softness in appearance is required in the landscape effect. 1½ to 2 ft., \$2.50; 2-3 ft., \$5.00; 3-4 ft., \$7.00.

**Silver Blue Cedar (J. Virginia Glauca)**—The entire young growths of this beautiful variety, are silvery-white which changes as they develop to an attractive bluish green, 2-3 ft., \$5.00; 3-4 ft., \$7.50.

**Pfitzer Juniper (J. Chinensis Pfitzeriana)**—One of the handsomest of the semi-dwarf creeping junipers. Of billowy form and elegant appearance, 1½-2 ft. spread, \$4.00; 2-3 ft. spread, \$5.00; 3-4 ft., \$7.50.

**Spiny Greek Juniper (J. Excelsa Stricta)**—This beautiful variety forms a tall, dense, narrow, conical head, a fine glaucous color. The growth is slow so that the tree is well adapted for foundation plantings, rock gardens, or other situations where small or dwarf trees are required. 18-24 in., \$5.00; 2-3 ft., \$7.50 each.

**Sabina Tamariscifolia (Tamarix Savin Juniper)**—An excellent creeping dwarf variety. The foliage is fine in texture. Average height is one foot, with a spread of 6 to 8 feet when full grown, forming a compact and perfect mat of bluish or gray-green. Grows very dense and never changes in color. Price, 18-24 in., \$4.50 ea.; 2-3 ft., \$6.00 ea.

## Cotoneaster

**Bimonsi**—White. June. Semi-evergreen, quite erect. Leaves are dark green and usually adhere late in the season. Showy bright red fruit borne on the slender, erect branches all along the stems. H 6-7, S 5-6. Each, \$1.50.

**Acutifolia**—Showy stately shrub. With lustrous green foliage, white flowers in June followed by black berries. H 6-7, S 5-6. Each, \$1.25.

**Horizontal**—Low, flat, spreading, bright glossy green, very attractive. Covered in April with masses of tiny pink flowers and in the fall with

minute, brilliant scarlet berries. The foliage also turns scarlet and it is practically deciduous in winter. 18-24 in., \$2.50; 2-3 ft., \$3.50.

## Euonymus

**Japanese (E. Japonicus)**—Fine, upright shrub of moderate size and rather compact growth. Foliage and bark are clear, dark green.

**Golden Variegated Euonymus (E. Japonicus aureus variegatus)**—Branches green, leaves yellow in center, dark green around edges. Color about equally divided. Occasional leaves either all yellow or green.

Prices: Any of the above varieties, balled, 12 to 15 in., \$1.50; 15 to 18 in., \$2.00; 18 to 24 in., \$2.25; 2 to 3 ft., \$3.50; 3 to 4 ft., \$4.50.

## Pine (Pinus)

**Mugho (Dwarf Pine)**—Leaves short, stiff and formal, thickly distributed in tufts over the branches in a crowded way somewhat similar to Austrian, with an equal depth and richness of color; globular form. 12-15 in., \$5.50; 15-18 in., \$7.50.

## Pyracantha (Firethorn)

**Burning Bush, P. coccinea Lalandii**—Deservedly popular on account of its clean, upright growth, bearing to great profusion of small flowers in flat corymbs, followed by a mass of orange-red berries in early fall which remain on the plant until spring) firm green foliage. Attains height of 10 feet, but can be trimmed to any lower height desired. 1½-2 ft., \$2.50 each; 2-3 ft., \$3.50 each; 3-4 ft., \$4.00 each.

## Mahonia

**Aquifolia (Oregon Grape or Holly-leaved Ashberry)**—A beautiful evergreen shrub with smooth shining holly leaves; bright yellow flower clusters in May, and blue berries. The leaf color varies capriciously throughout the year, assuming all shades of green, with flecks of red and bronze. Associates well with dwarf and medium shrubbery, of special value in shady locations. From cans 12-18 in., \$2.00 each. Extra heavy balled plants, 18-24 inches, \$2.50; 2-3 ft., \$3.50 each.

## Spruce

**Colorado Blue Spruce (Picea Pungens Glauca)**—It is the rarest blue of any evergreen; very distinct in foliage and growth; fine,

compact habit. In great demand as a lawn tree where fine specimens are established proving it the best of all evergreen trees for the lawn. 12 in. to 18 in., \$5.00 each; 1½-2 ft., \$6.00 each; 2-3 ft., \$9.00; 3-4 ft., \$12.50 each.

**Colorado Spruce (Picea Pungens)**—Similar to above except foliage is light green color. 1-2 ft., \$3.00; 2-3 ft., \$4.50; 3-4 ft., \$6.50.

**Norway Spruce (P. excelsa)**—A compact, symmetrical tree; the branches assuming a graceful, drooping habit with age. 1½-2 ft., \$3.00 each; 2-3 ft., \$4.50; 3-4 ft., \$6.00 each.

**White Fir (Abies Concolor)**—It forms a compact, symmetrical tree, somewhat resembling the Blue Spruce. Older trees form narrow pyramids. It is the best fir for the West, as it withstands heat and drought better than the others. Both the upper and under sides of the needles are grayish-blue contrast to the usual characteristics of firs. 2-3 ft., \$5.00 each.

## Thuya—Arbor-Vitae

**Thuya Globosa (Globe Arbor-Vitae)**—Forms a dense, low globe; handsome shade of green. Diameter 12-18 in., \$3.00; 18-24 in., \$5.00.

**Orientalis Moldensis**—15 ft. A beautiful variety of medium size, with a distinct and pleasing shade of soft bluish green. Compact, rounded and symmetrical. One of the best Arborvitae. 1½-2 ft., \$4.00; 2-3 ft., \$5.00; 3-4 ft., \$7.50 ea.

**Thuya Pyramidalis Occidentalis (Pyramidal Arbor-Vitae)**—Most compact and erect of the entire species, in form almost a counterpart of the Irish Juniper. Foliage a deep green, retaining color. 18-24 in., \$3.50; 2-3 ft., \$5.00; 3-4 ft., \$7.50; 4-5 ft., \$12.50; 5-6 ft., \$15.00; 6-8 ft., \$20.00.

**Thuya Orientalis (Oriental Arbor-Vitae)**. Comparatively low, broadly pyramidal tree. Color yellowish-green, dulling to bronze green in winter. 18-24 in., \$2.25; 2-3 ft., \$3.50; 3-4 ft., \$5.00.

**Thuya Orientalis Aurea Nana (Berckman's Dwarf Evergolden Arbor-Vitae)**—The most wanted arborvitae. Very dwarf golden tipped oval shape. Always shapely and beautiful. 12 in., \$2.50; 15 in., \$4.00; 18-24 in., \$5.50; 2-3 ft., \$7.50 each.

# Ornamental Trees

A city street is not attractive unless softened by the foliage and branches of trees. They shelter the home from excessive heat and dust, add charm to the finest buildings and hide the untidy and unsightly places. There is nothing that adorns a city more than fine shade trees, and the effect is much better when only one kind of a tree is planted on the same street, or at least, on the same block.

Prices are for different sized trees, all f. o. b. our Nurseries or Salt Lake City, and in all cases good value will be given, according to price charged. Ten per cent discount on orders of 5 trees or more of one variety and size. Special prices made on lots of 100 up.

**ASH—American White**—A rapid growing native tree of fine symmetrical outline. A valuable street or park tree. Timber is largely used. Price, 6-8 ft., \$1.00 each; 8-10 ft., \$1.75 each.

**ASH—Green**—Shapely round top with dark green foliage. Price 6-8 ft., \$1.50 each; 8-10 ft., \$2.00 each.

**ASH—Blue**—Very shapely symmetrical tree for Park or Avenue. Bark smooth of deep bluish green, leaves larger than other varieties of Ash, deep green changing in autumn to reddish purple. 6-8 ft., \$2.00; 8-10 ft., \$3.00.

**ASH—European Mountain** (Sorbus Aucuparia) (Rowan Tree)—Handsome small tree of erect growth. Leaves pinnate, leaflets serrate. Flowers white, in flat clusters, four or five inches broad, followed by rather large, red berries. Very handsome at any season, 6-8 ft., \$2.00 each; 8-10 ft., \$2.50 each.

**BIRCH** (Betula Alba) European White Birch. Of which Coleridge says "Most beautiful of forest trees, the lady of the woods." 6-8 feet, \$2.00 each; 8-10 ft., \$2.50 each.

**BIRCH—Cut-Leaved Weeping**—The main trunk, with snow-white bark, grows straight as an arrow. Branches spread but slightly, while the fine slender shoots hang vertically. The foliage is fine and deeply cut. 6 to 7 ft., \$3.00 each; 7 to 8 ft., \$4.00 each.

**CATALPA Bungei** (Umbrella Tree)—These beautiful globe-shaped tops being grafted high on clean, straight stems form one of the most valuable trees for landscape designing especially for formal effects. One year head, \$2.00; two-year-old heads, \$2.50.

**CATALPA Speciosa** (Western Catalpa)—Rapid grower producing large panicles of fragrant flowers, delicately marked with violet and yellow. 6-8 ft., \$1.25 each; 8-10 feet, \$2.00 each.

**CRAB** (Bechtels Double Flowering)—Most beautiful of all the Flowering Crabs; hardy, of medium size, covered in early spring with large, beautiful double fragrant flowers, resembling small roses of a delicate pink. Ideal for a small yard. 3-4 feet, \$1.50 each; 4-6 feet, \$2.00 each.

**ELM American** (Ulmus Americana)—Tall and stately with a graceful, wide-spreading form vase-like, densely covered with a rich, bright green foliage. 6-8 ft., \$2.00 each; 8-10 ft., \$2.50.

**ELM English** (Ulmus Campestre)—A native of Europe; a noble rapid-growing tree, forming a dense head; a desirable tree for streets, avenues, etc. 6-8 ft., \$2.00 each; 8-10 ft., \$2.75 each.

**ELM—Moline**—The young tree is very rapid and erect in growth, in shape somewhat like a Lombardy Poplar, with leaves often 6 inches across. The older trees become more spreading with more nearly horizontal branches. 6-8 ft., \$2.50 each; 8-10 ft., \$3.50 each.

**ELM—Camperdown**—Weeping—Always top grafted. Limbs grow outward and downward, giving the tree a remarkably picturesque aspect. 2 year heads, \$4.25 each.

**ELM—New Chinese or Siberian** (Ulmus Pumila)—This new introduction is a clean, fast grower, free from disease and pests. Thoroughly hardy and vigorous under most trying soil and climatic conditions. Its resistance to drought, alkali, and extreme temperature makes it very valuable for our Western conditions. 3-4 ft., \$1.50 each; 4-6 ft., \$1.75; 6-8 ft., \$2.25; 8-10 ft., \$3.00.

**GOLDEN CHAIN** (Cytisus Laburnum)—A smooth and shining foliage. The name Golden Chain alludes to the length of the drooping racemes of yellow flowers, which appears in June. 4-6 ft., \$1.75 each; 6-8 ft., \$2.50.

**HORSE CHESTNUT, European**—Showy foliage; white flowers in upright panicles. 5-6 feet, \$2.75 each; 6-8 feet, \$3.75 each; 8-10 ft., \$5.00.



Babylonian Weeping Willow

**Linden, American** (Tilia Americana)—Basswood. Shapely trees, with large handsome foliage. Flowers creamy-white and very fragrant. 6-8 ft., \$3.00; 8-10 ft., \$3.50 each.

**LINDEN, European** (Lime Tree)—Pyramidal shape, smaller foliage than American Linden, white flowers in June. 6-8 ft., \$3.50; 8-10 ft., \$4.50 each.

**LOCUST, Black**—6-8 ft., each, 60c; 8-10 ft., \$1.00; 10-12 ft., \$2.00.

**LOCUST, Honey**—6-8 ft., each, \$1.00; 8-10 ft., \$1.50.

**LOCUST—Globe**—Unusually attractive, forms round-headed tree—without trimming. 2 year heads, \$3.50.

**MULBERRY, Russian**—Rapid growth; round headed, profuse foliage; used to attract birds. 6-8 ft., \$1.50 each; 8-10 ft., \$2.50 each.

**MULBERRY, Tea Weeping**—The long, slender, drooping branches of this tree give it a very unusual and much admired appearance. Prized for lawn planting. 2 year heads, \$3.75.

**OLIVE—Russian**—Its foliage is of a remarkable silvery hue, showing up in striking contrast to that of the green of other shrubs or trees. 4-6 ft., \$1.00 each; 6-8 ft., \$1.50 each.

**MAPLE Ash-Leaved or Box Elder** (Acer Negundo)—A fine, rapid-growing avenue tree; withstands both cold and drought. 6-8 ft., \$1.00 each; 8-10 ft., \$1.50 each; 10-12 ft., \$2.00 each.

**MAPLE Silver** (Dasycarpum)—A large tree with wide-spreading branches and drooping branchlets. Very fast grower, makes dense shade and thrives in any soil. 6-8 ft., \$1.00 each; 8-10 ft., \$1.50 each; 10-12 ft., \$2.50 each.

**MAPLE Norway** (Plantanoids).—A large handsome tree, of spreading rounded form, with shiny, deep green foliage. Usually very symmetrical. One of the most desirable species for the street, park or lawn. 5-6 ft., \$1.50; 6-8 ft., \$2.00; 8-10 ft., \$2.50; 10-12 ft., \$3.50 each.

**MAPLE Schwedleri**—Red and purple contrasts brightly with the delicate green of other trees. In mid-summer they are purplish green, in autumn golden yellow. 6-8 ft., each, \$3.50; 8-10 ft., \$4.50 each.

**JUDAS TREE** (Cercis)—Striking ornamental trees loaded with a mass of pea-shaped pink blossoms in early spring, before the leaves appear. 3-4 ft., \$1.75; 4-5 ft., \$2.00 each.

**PLANE** (Oriental Plane or European Sycamore)—One of the finest trees for street or lawn, with fine, straight trunk, handsome symmetrical head and beautiful foliage. 6-8 ft., \$2.25; 8-10 ft., \$2.75 each; 10-12 ft., \$3.50 each.

**POPLAR** (Bolleana)—A tall columnar rapid growing hardy tree. Leaves triangular, the borders serrate, glossy green above and silvery beneath. 6-8 ft., 75c each; 8-10 ft., \$1.50 each; 10-12 ft., \$2.00 each.

**POPLAR** (Carolina Poplar)—Of rapid growth. Very desirable when quick shade is wanted. 4-6 ft., 25c; 6-8 ft., 50c each; 8-10 ft., 75c each; 10-12 ft., \$1.00 each.

**POPLAR Lombardy** (P. nigra Italica)—Grows to a great height; narrow and columnar. Forms a strong contrast with most other trees, hence of great value in landscape work. 10-12 ft., \$2.50 each; 8-10 ft., \$2.00 each; 6-8 ft., \$1.50.

**FLOWERING PLUM, Purple-Leaved**—Covered in early spring with beautiful white flowers, later with wine-red fruits. 3-4 ft., \$1.25 each; 4-6 ft., \$2.00.

**TREE OF HEAVEN, Ailanthus Glandulata**—A rapid growing, lofty tree, long, elegant foliage. Exempt from disease and insects. Useful tropical effects, withstands dust and smoke better than most any other tree. 4-6 ft., \$1.00 each; 6-8 feet, \$1.50 each; 8-10 feet, \$2.00 each.

**TULIP TREE** (Liriodendron tulipifera)—Tall, pyramidal habit; bluish green, glossy, fiddle-shaped leaves; flowers tulip-like. greenish-yellow. 4-6 ft., \$2.00 each.

**THORNE, Double Flowering Hawthorne** Crataegus Oxyacantha fl. pl.—The double form of the fragrant English Hawthorne; flowers in May and June. Double pink, double red, 4-6 ft., \$2.00 each; 6-8 ft., \$3.50 each.

**WILLOW American Black** (Salix nigra)—Hardy under most trying situations, thrives best where soils are moist and water plentiful. 6-8 ft., 65c; 8-10 ft., 85c.

**WILLOW, Golden**—6 to 8 ft., each, \$1.00; 8 to 10 ft., each, \$1.50.

**WILLOW—Babylonica, Weeping**—6-8 ft., \$1.25 each; 8-10 ft., \$1.75 each.

**WILLOW Pussy** (Salix discolor)—A large shrub or small tree, attractive catkins form on the branches in early Spring. 4-6 ft., \$1.00; 6-8 ft., \$1.50 each.



# Fruit Trees

At our Centerville Nurseries we have a particularly fine lot of strong, healthy fruit trees. This stock has been selected and critically grown to meet the requirements of orchardists planting for eastern or local markets. We believe, also, those of our patrons who are planting a small orchard for home use will find sufficient variety to amply fill every want in the fruit line. Refer to our Annual Catalog for more detailed information and full descriptions. Detailed planting and cultural directions, free with each order. Ask for them. Our trees are very carefully graded to size and height but in determination of grade the Caliper usually governs.

Ordinary seasons we are able to deliver fruit and ornamental trees the latter part of October. In sections where ground freezes up early, we advise Spring delivery.

## APPLES

Height	Caliper	Each	10 to 20 Ea.	20 to 40 Ea.	40 to 100 Ea.
5 ft. up	12/16 up	85c	70c	write for price	
4 ft. up	9/16-11/16	65c	55c	write for price	
3 1/2 ft. up	7/16-9/16	50c	45c	write for price	
2 1/2 ft. up	5/16-7/16	35c	25c	write for price	

**Summer Varieties**—Red Astrachan, Early Harvest, Malden's Blush, Yellow Transparent, Red June.

**Autumn Varieties**—Gravenstein, Twenty-Ounce Pipin, Wealthy, Wolf River.

**Winter Varieties**—Arkansas Black, Bellefleur, Delicious, Gano, Grimes' Golden Pipin, Jonathan, Mam, Black Twig, N. W. Greening, Winesap, Winter Banana, Pearmain, McIntosh Red.

**Crab Apples**—Hyslop, Transcendant, Siberian.

Small orders of mailable sizes sent Parcel Post where more convenient.

## APRICOTS

Height	Caliper	Each	10 to 20 Ea.	20 to 40 Ea.	40 to 100 Ea.
5 ft. up	12/16 up	\$1.00	75c	write for price	
4 ft. up	9/16-11/16	65c	60c	write for price	
3 ft. up	7/16-9/16	55c	50c	write for price	
2 ft. up	5/16-7/16	50c	40c	write for price	

**Varieties**—Moorpark Royal, Superb, Chinese.

## CHERRIES

Height	Caliper	Each	10 to 20 Ea.	20 to 40 Ea.	40 to 100 Ea.
5 ft. up	12/16 up	\$1.15	\$1.00	write for price	
4 ft. up	9/16-11/16	1.00	85c	write for price	
3 ft. up	7/16-9/16	85c	75c	write for price	
2 ft. up	5/16-7/16	70c	60c	write for price	

**Varieties**—Bing, Black Tartarian, Lambert, May Duke, Montmorency, Napoleon, Richmond, Windsor, Yellow Spanish.

## QUINCES

**Champion Orange Quince**—Standard Size—\$1.25 each.

## NECTARINES

**Boston**—Bright yellow. Standard Size—Each, \$1.00; \$9.00 per 10. Mail Size—Each, 85c; \$7.50 per 10.

# Small Fruits and Berries

The splendid adaptability, both as to soil and climate of the Mountain States to the culture of "Small Fruits," makes it a great wonder there hasn't been larger plantings. The wise men will awake to the possibilities along this line. For more detailed information and descriptions, see our Annual Catalog.

## BLACKBERRIES

**Price**—Each, 15c; ten, \$1.00; 50, \$4.50; 100, \$8.00; \$70.00 per 1000.

**Varieties**—Early Harvest, Wilson, Mersereau, Rathbun.

## CURRANTS

**Price**—Each, 30c; ten, \$2.50; 50, \$8.00; 100, \$15.00.

**Varieties**—Fray's Prolific, Perfection Red, Black Native, Red Cherry, Wilder, White Grapes, Lee's Prolific.

## DEWBERRIES

**Lucretia**—Each, 15c; ten, \$1.00; 50, \$4.50; 100, \$8.00; 1000, \$70.00.

## GOOSEBERRIES

**Price**—Each, 30c; ten, \$2.50; 50, \$8.00; 100, \$15.00.

**Varieties**—Oregon Champion, Downing, White Smith (Smith's Improved), Columbus.

## GRAPES

**Concord**—Each, 25c; ten, \$2.00; 100, \$12.00; 1000, \$75.00.

**Niagara, Moore's Early Agawam, Worden**—Each, 30c; 10 for \$2.50, 100, \$15.00; 1000, \$100.00.

**European Varieties**—Flame Tokay, Muscat, Thompson's Seedless, Each, 30c; ten, \$2.50; 100, \$15.00; 1000, \$100.00.

European Varieties are quoted for Spring delivery only.

## LOGANBERRIES

**Price**—Each, 30c; 10, \$2.50; 50, \$9.00; 100, \$15.00.

## PEACHES

Height	Caliper	Each	10 to 20 Ea.	20 to 40 Ea.	40 to 100 Ea.
5 ft. up	12/16 up	75c	65c	write for price	
4 ft. up	9/16-11/16	65c	55c	write for price	
3 ft. up	7/16-9/16	55c	45c	write for price	
2 ft. up	5/16-7/16	45c	35c	write for price	

**Varieties**—Alexander, Crawford, J. H. Hale, Elberta, Heath Cling, Carman, Red Bird, Orange Cling, Mayflower, Dals' Cling.

## PEARS

Height	Caliper	Each	10 to 20 Ea.	20 to 40 Ea.	40 to 100 Ea.
5 ft. up	12/16 up	80c	70c	write for price	
4 ft. up	9/16-11/16	70c	60c	write for price	
3 ft. up	7/16-9/16	65c	55c	write for price	
2 1/2 ft. up	5/16-7/16	55c	45c	write for price	

**Varieties**—Bartlett, Beurre d'Anjou, Keiffer, Flemish Beauty, Clapp's Favorite; Seckel, Parish Favorite, Winter Nellis.

## PLUMS AND PRUNES

Height	Caliper	Each	10 to 20 Ea.	20 to 40 Ea.	40 to 100 Ea.
5 ft. up	12/16 up	80c	70c	write for price	
4 ft. up	9/16-11/16	70c	60c	write for price	
3 ft. up	7/16-9/16	65c	55c	write for price	
2 1/2 ft. up	5/16-7/16	55c	45c	write for price	

**PLUMS**—**Varieties**—Burbank, Bradshaw, Satsuma, Yellow Egg, Lombard, Damson, Reine Claude, Abundance, Jefferson, Green Gage, Kelsey.

**PRUNES**—**Varieties**—French Hungarian, Italian.

## NUT TREES

**Soft Shell Almonds**—I. X. L., each \$1.00; \$9.00 per 10.  
**American Black Walnut**—6-8 ft., \$2.00 each; \$15.00 per 10.

**Utah English Walnuts**—Hardy in any section or situation where apricots and peaches can be grown

4-6 feet—Each, \$1.50; \$12.00 per 10, charges prepaid.

6-8 feet—Each, \$2.50; \$20.00 per 10, prepaid.

8-10 feet—Each, \$3.00; \$25.00 per 10, prepaid.

## RASPBERRIES

**Red Varieties**—Cuthbert, Loudon, Marlboro.

**Price**—Each, 15c; 10 for \$1.25; 50, \$4.00; 100, \$7.50; 1000, \$60.00.

**Black Varieties**—Gregg, Cumberland, 20c each; \$1.50 per 10; 50, \$5.50; 100, \$10.00.

**St. Regis Everbearing**—Same price as black varieties.

## STRAWBERRIES

**Clyde and Marshall**—25, 60c; 100, \$1.75; 500, \$5.50; 1000, \$10.00.

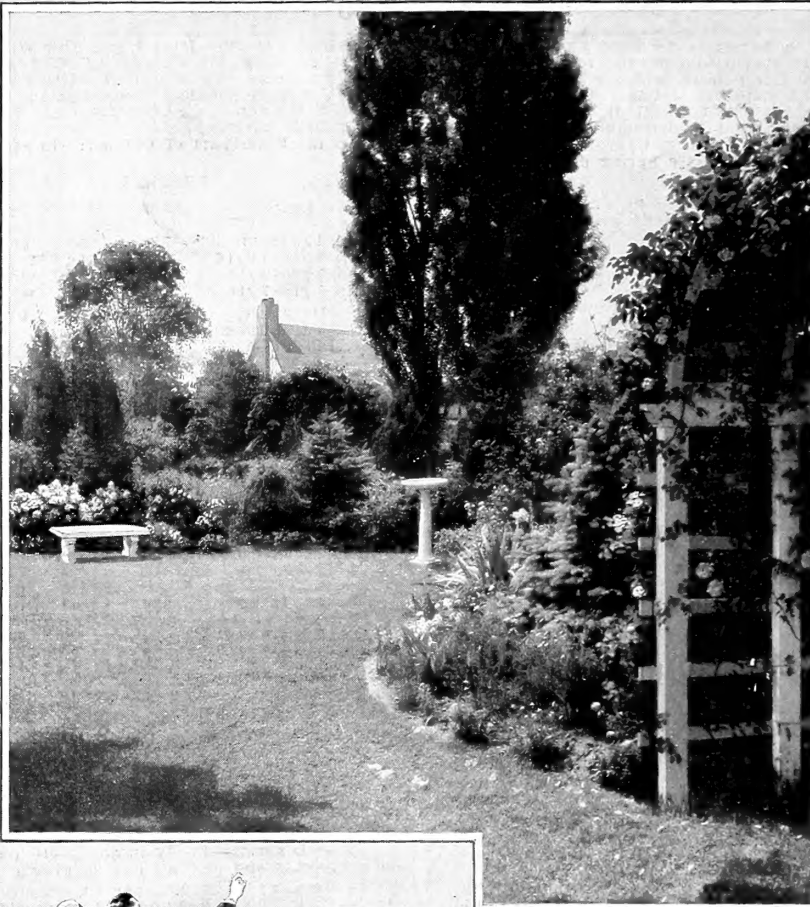
**Superb Everbearing**—25, 90c; 50, \$1.20; 100, \$2.25; 500, \$8.50; 1000, \$15.00.

**Mastodon Everbearing**—25, \$1.00; 50, \$1.75; 100, \$2.50; 500, \$10.00; 1000, \$18.00.

## P.-W.'s NEW MAMMOTH STRAWBERRY

When the Mastodon Everbearing Strawberry appeared it was thought to be the last word in size and yield. Comparative tests now show that P.-W.'s New Mammoth Everbearing Strawberry is far its superior in size, color, flavor and yield. Particular advantages in this new strawberry are the vines are more dwarf, the berries ripen evenly, easier harvested, much larger in size and firmer in texture, making it supreme as a market berry as well as for home use. The first ripe berries appear about a week earlier than Mastodon and continue to bear until snow flies. Undoubtedly P.-W.'s Early Mammoth will supplant all other types of everbearers. **PRICE:** 25 plants, \$2.50; 50 plants, \$4.50; 100 plants, \$8.00; 1000 plants, \$70.00.

IT'S NOT A HOME UNTIL IT'S PLANTED



## “Next year we'll have an Outdoor Living Room”

You—and countless thousands of other home-makers, from one end of the country to the other, have promised that—“Next year we too, will have an outdoor living room.”

For the outdoor living room has arrived! Its appealing beauty, charm and comfort have won the nation! Everywhere it is supplanting the old unsightly rear yard—and everywhere the modern home either has an outdoor living room or one is now being planned for next year.

### FALL AN IDEAL TIME TO PLANT

Our experience proves that Fall is

a most favorable time to plant most varieties of trees, shrubs and flowers. Then plants are dormant, the soil workable and the ample rainfall of the fall season assures healthy, vigorous growth next spring.

### LANDSCAPING ADVICE

This service is cheerfully rendered to all our customers desiring it.

A competent Landscape Architect, with wide practical experience, is in charge and the same careful attention will be given the smallest home grounds as is accorded to the largest estates.

A postal card signifying your interest will put you in immediate touch with this invaluable service.

## PORTER-WALTON COMPANY

Seed and Nursery Specialists

SALT LAKE CITY, UTAH