

Historic, archived document

Do not assume content reflects current scientific knowledge, policies, or practices.

62.73

Autumn Edition

New Guide To Rose Culture

1850

1921



Peony 'Lord Kitchner'

For Fall Planting

Roses

Hardy Perennials

Bulbs

Hardy Shrubs

Hardy Peonies

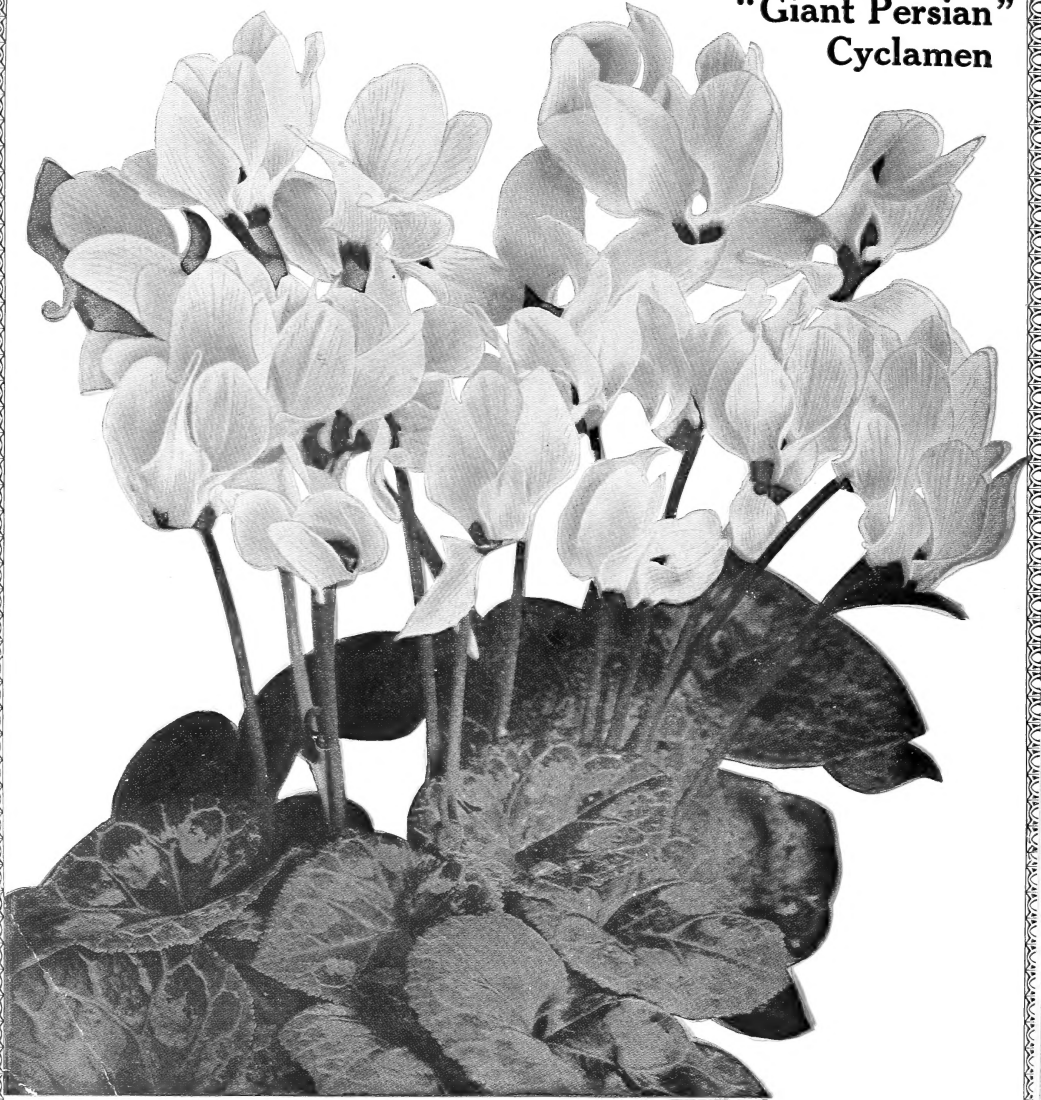
THE DINGEE & CONARD COMPANY

Charles Dingee, Founder, 1850

The Leading and Oldest Rose Growers in America

West Grove, Pennsylvania

"Giant Persian" Cyclamen



Giant Persian Cyclamen

The most beautiful and decorative of all pot plants. The foliage is dark olive-green, beautifully variegated with silver and rose. The fairy-like flowers are carried on long stems, produced for several successive months. The flowers, which are of odd form, embrace every delightful shade of color and are a distinctive feature of this handsome house plant. We offer splendid strong plants in white, rose, crimson or salmon in large plants from 3 and 4 inch pots ready to bloom, at 50 cts. each; 6 for \$2.50.

American Wonder Lemon

Large, dark green foliage; handsome, pure white flowers, with yellow stamens, nearly as large as tube-rose blooms, fragrant as orange blossoms. The lemons have a thin rind for such large fruit, and are full of rich acid juice. Plant in ordinary soil, in a pot or tub, and it will bear each season a fine crop of superb Lemons. Strong plants, 30 cts. each, 4 for \$1.00. Two-year-old plants, 75 cts. each, postpaid.

Otaheite Orange

Illustrated in Natural Colors on Third Cover.

This is, beyond question, one of the most satisfactory plants for pot culture in our collection. It is a dwarf reproduction of the genuine fruit-bearing Orange tree, the flower being identical. It flowers and fruits in pots, is exceedingly floriferous, blooming almost continuously. The fragrance of the flowers is simply delicious, and with one or two plants one can have a generous supply of highly prized and much coveted Orange blossoms. It fruits immediately after flowering; the fruit measures about three inches in diameter, and while not so strongly flavored as an ordinary Orange, it is quite edible, the difference being but slight. On a single plant, twenty inches high, one hundred and sixty-four buds have been counted. Strong potted plants.

35 cts. each, 3 for \$1. Large 2-year-old plants, 75 cts. each, postpaid.



1850 to 1921

“An Enviable Record”

A RECORD to be proud of but that sometimes signifies little to the average buyer, nevertheless it is more than idle words. It means that any firm that has been in one line of business continuously for that time is one that is dependable, one that you can feel entirely safe in sending your order to. If it were not so we could not continue. A reputation that has required a lifetime to be built can very easily be lost through carelessness, but the Founder of this business, Charles Dingee, has left to his associates in the business an inheritance far more valuable than dollars and cents; the training necessary to carry on this business in the manner by which he built up the reputation now enjoyed by us, and it is the purpose of the present management to adhere strictly to the principles established by the Founder, and to maintain the high quality of the goods sold. Roses grown on their Own Roots has been the foundation stone upon which has been built this reputation and we still are Leaders in that line.

Since 1850, when this business of Rose growing was established by the Founder, Charles Dingee, we have produced millions of plants of every description for the amateur grower and private gardens, and hence the name “Dingee” is associated with the best in Roses and Plants the world over.

Our motto in this lifetime in a business has been an honest dollar’s worth of good goods for every dollar sent us. We are all human and will sometimes make mistakes, but when one is made in filling your order, write us and we always endeavor to adjust them to the best of our ability. No matter how large or small your order is, it receives the same careful attention.

We solicit your order because of the assurance that it will be filled right. We have been, and expect to be, in business too long to knowingly make of you a dissatisfied customer.

The bulbs offered here are the first ones to bloom in the spring. Even before the last drift of snow is gone the Crocus and Daffodils raise their bright faces to herald the coming of spring. Don’t miss their pretty blooms.

Very respectfully,

The Dingee & Conard Co.

West Grove, Pennsylvania

The Leading and Oldest
Rose Growers of America.

INFORMATION FOR CUSTOMERS

OUR TERMS ARE CASH WITH ORDER.—Money may be sent at our risk by Post Office Money Order, Bank Draft, Express Money Order, money in registered letter. Stamps, in small amounts only, acceptable.

LOST ORDERS.—After a reasonable time, if you do not hear from your order, please write us again, giving a duplicate of the order, stating when and by what method remittance was made, and we will promptly investigate. If remittance is made by money order or bank draft, a duplicate can be secured.

USE ORDER BLANK.—We enclose with each book an order blank, and we prefer that the order be written thereon. In writing regarding an order always give former (if one) address.

CANADIAN AND FOREIGN POSTAGE STAMPS will be returned, as they have no value here.

CANADIAN CUSTOMERS.—Canadian laws prohibit sending dormant or two-year-old Roses or Shrubs into Canada except from March 15 to May 15, and from October 7 to December 7, through the following custom ports, where they will be fumigated: St. John, N. B.; St. Johns, Quebec; Niagara Falls and Windsor, Ontario; Winnipeg, Manitoba. All other goods, including Roses grown in pots 3 inches or less in diameter and under glass, are admitted at any time. Owing to the rate of postage on Canadian orders we must request an additional 20 per cent to cover postage.

FOREIGN ORDERS.—Twenty per cent extra should be added to orders going outside of United States or its colonial possessions, to pay extra cost of packing and postage. To countries with which we have a parcels post, goods can be sent by mail. They also can be sent by express, but the person ordering must give the name and address of some one in New York who will receive the goods, prepay the ocean charges,

and forward them. We pack lightly and safely, and the charges, even to the most distant points, are very reasonable.

OUR GUARANTEE is the best that can be given by any reputable firm, to deliver goods to you in first-class growing condition, and failing therein, to replace them immediately and if not satisfactory to so notify us at once, and any mistake or dissatisfaction will be adjusted. Dingee Roses have given universal satisfaction for over half a century. But we give no warranty, express or implied, as to description, quality, productiveness, or any other matter of any seeds, plants or bulbs we send out, and we will not be in any way responsible for the crop. If the purchaser does not accept the goods on these terms they are at once to be returned.

PARCEL POST.—All goods offered in this book, except two-year-old Roses and Shrubbery, which are sent by express at purchaser’s expense, are at postpaid prices, and will be sent that way unless otherwise ordered or in our judgment it would be best to send them by express prepaid. Parcels weighing twenty pounds can now be sent by Parcel Post. We, however, reserve the right to send it the best and cheapest method.

PARCEL POST C. O. D.—If you desire your order, no matter how small, sent C. O. D. by Parcel Post, we can do so, provided customers remit one-half the amount with the order, at an additional cost of 10 cents and the small fee for the money order, which is 3 cents up to \$2.50; 5 cents up to \$5.00, making it much cheaper than by express, as you have the express charges and additional charge of returning money. Thus if your order amounts to \$1.50 we will send it C. O. D. by Parcel Post if you desire, and the amount collected by the Postmaster upon delivery would be only \$1.63.

PLEASE NOTE CAREFULLY
WHEN ORDERING

Dingee Hyacinths Sure to Bloom

Special Exhibition Size

We offer enormous or exhibition size bulbs, 8 inches or more in circumference, of the following magnificent varieties. Bulbs sufficient for a 6-inch pot. Produces an immense bloom of brilliant shades. Particularly adapted for winter blooming indoors, making a handsome pot or decorative plant. Price, postpaid, 25 cts. each, \$2.75 per doz., postpaid.

La Victoire. Crimson; best of its color.

Marconi. Dark rose.

Queen of the Pinks. Clear pink; late.

King of the Belgians. Bright scarlet.

General Vetter. Blush white.

L'Innocence. Pure white; early.

Grand Maitre. Deep lavender.

King of the Blues. Rich dark blue.

Perle Brilliant. Blue-tinted lavender.

Queen of the Blues. Porcelain blue.

City of Haarlem. Golden yellow.

Lord Balfour. Lilac shaded violet.

Our First Size Hyacinths

Our Hyacinth Bulbs are the very cream of the stock grown by our specialists in Holland, and are guaranteed to be large, solid, healthy bulbs, which will be sure to bloom profusely for your next spring and fill your garden with a foretaste of the glory of the coming summer. The varieties here listed are the very best of all the long list produced in Holland, selected with scrupulous care with the desire to offer our friends the very best of their kind.

Indoor Culture. Plant in pots or boxes, using ordinary garden soil, any time from September to February. Plant about two inches deep. Water thoroughly and put away in a dark, cool place until signs of growth commence, then bring into the light and heat. For holiday blooming, pot early in September, and for a succession of bloom, plant at intervals of about two weeks. To grow in water, place the bulbs in glasses and fill with clean water; leave them in a dark, cool place until the glass is well filled with roots, then bring to light.

Open-Ground Culture. Select a warm, sunny location. Ordinary garden soil, enriched with well-rotted stable manure, spaded to a depth of 12 inches, will suffice. Plant the bulbs 5 inches deep and 6 or 7 inches apart. Set out any time from September until severe freezing weather. While not required, it is better to give winter protection—before the ground freezes, cover the beds with material such as leaves, straw, pine branches, etc., to a depth of four inches. Do not uncover too early in the spring.

Single Blue and Purple Shades

Price, 15 cts. each, \$1.75 per doz., postpaid.

Enchantress. Porcelain blue.

Leopold 2nd. Lilac center, blending into a darker blue.

Johan. Light blue, shaded lavender; enormous; fine.

Grand Maitre. Porcelain blue; extra large.

King of the Blues. Deep purplish blue; close spike.

Mary. Dark purplish blue; splendid.

Queen of the Blues. Exquisite azure-blue; handsome.

Single Red and Rose

Price, 15 cts. each, \$1.75 per doz., postpaid.

Cardinal Wiseman. Pink; enormous spikes.

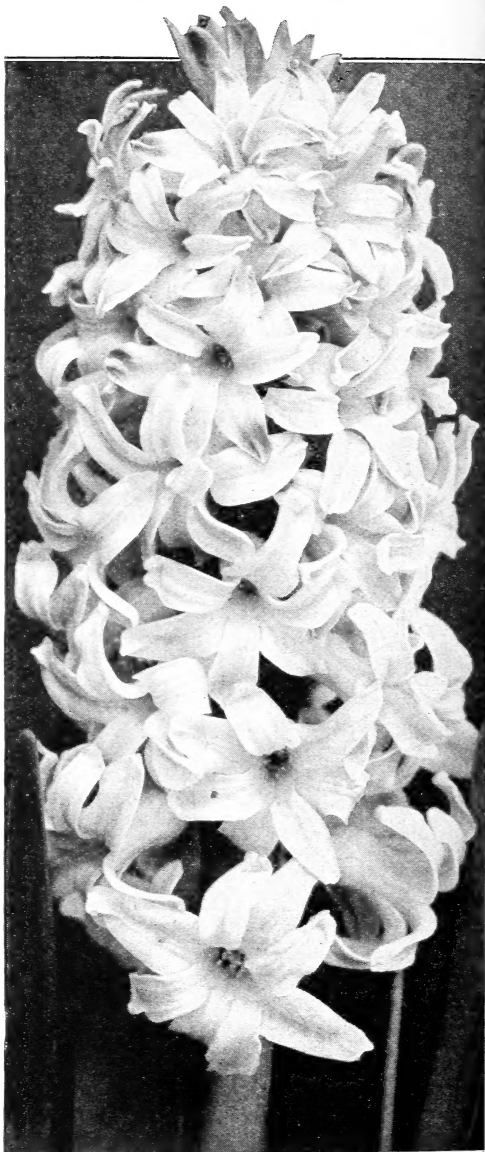
Gigantea. One of the very best bluish pink varieties. very large truss of closely set bells.

Moreno. Immense; deep pink.

Lady Derby. One of the finest pink Hyacinths, first-class.

La Victoire. Crimson; best of its color.

Gertrude. Bright rosy red; excellent spike; very distinct.



Bloom of Exhibition Size Hyacinth

Single White and Blush

Price, 15 cts. each, \$1.75 per doz., postpaid.

Albertine. Pure white; fine large bells; early.

Baron Von Thuyll. Pure white; large, splendid spike.

Grandeur a Merveille. Giant spikes; blush white.

Mad. Van der Hoop. Pure white; large bells.

L'Innocence. Pure white; large.

La Grandesse. This is the finest pure white; finely shaped.

Grande Blanche. Blush white.

HYACINTHS (Continued)

Single Yellow

Price, 15 cts. each, \$1.75 per doz., postpaid.
Ida. Bright glowing pure yellow; immense.
King of the Yellows. Golden yellow; large and handsome.
Yellow Hammer. Considered the best golden-yellow; fine spike and bells.
City of Haarlem. Pure yellow; large truss; extra fine.

Special Offer F-13 Complete set of 24 superb named Single Hyacinth Bulbs, first size, sure to bloom, for \$3.50, postpaid.

Double Named Hyacinths

Splendid large bulbs, all named varieties, 15 cts. each, \$1.75 per doz., postpaid.

DOUBLE RED, ROSE AND PINK

Kohinoor. Very dark rose; large spike.
Bouquet Royal. Beautiful rose.
Czar Nicholas. Immense; light pink, shading to rosy blush.
Lord Wellington. One of the finest pinks.
Prince of Orange. Beautiful dark red.
Suzanna Maria. Early; splendid; dark red.

DOUBLE BLUE AND PURPLE

Blacksberg. The best light blue.
Lord Raglan. Rich dark blue; early.
Othello. Large and double; nearly black.
Murillo. Beautiful deep blue; compact.

DOUBLE WHITE AND BLUSH

Duchesse de Bedford. Lovely pure white; very double.
La Tour d'Auvergne. Pure white; double.
La Virginite. Large, drooping bells of white, delicately shading to blush.
Non Plus Ultra. Snow-white. Immense.
Prince of Waterloo. Exquisitely fragrant; fine, double, white.

DOUBLE YELLOW

Bouquet d'Orange. Distinct; buff color.
Goethe. Grand bright yellow; very large.
Pure d'Or. Golden yellow; five spikes.
Sunflower. Deep golden yellow; splendid.

Special Offer F-14 One each of the 19 named Double Varieties sent postpaid for \$2.75.

Double Hyacinths, Separate Colors

For those who do not wish to keep the separate colors we recommend these mixed varieties as they give us in our own beds such a wonderful display each season. You will not be disappointed in these bulbs. All sure bloomers. Doz. 100

Pure White, postpaid.....	\$1.00	\$6.00
Red and Blush, postpaid.....	1.00	6.00
Blue Shades, postpaid.....	1.00	6.00
Yellow Shades, postpaid.....	1.00	6.00
All Colors, Mixed, postpaid.....	1.00	6.00

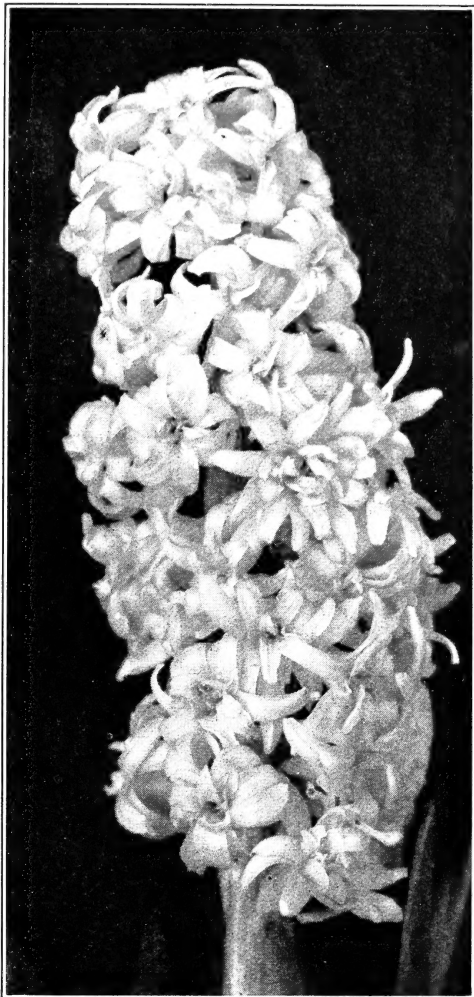
Orders for 6 at dozen rates.

Prepared Dutch Hyacinths

These by a special process are prepared for early blooming, at least four or five weeks before the regular hyacinths. Fine for indoor blooming. Simply pot them and they will bloom in a short time.

L'Innocence. Pure white.
Lady Derby. Bright pink.
La Victoire. Clear cherry red.
Grand Monarque. Light blue.
 Price, postpaid, 17 cts. each, 3 for 50 cts.

Special Offer F-15 One of each of the Prepared Hyacinths postpaid for 60 cts.



Double Hyacinth

Single Hyacinths, Separate Colors

These bulbs differ in no way from our exhibition size bulbs, and will produce splendid spikes of bloom. For bedding effects, for growing in the conservatory, or for winter window culture, these bulbs will give splendid satisfaction. All sure bloomers. Doz. 100

Pure White and Blush, postpaid.....	\$1.00	\$6.50
Red and Rose, postpaid.....	1.00	6.50
Blue and Purple Shades, postpaid.....	1.00	6.50
Yellow Shades, postpaid.....	1.00	6.50
All Colors Mixed, postpaid.....	1.00	6.50

Orders for 6 of a kind filled at dozen rates.

Dutch Roman Hyacinths

Fine for winter blooming, as they are delightfully fragrant, bloom early, all single flowers. Plant close — about 1/2 inch apart. Can also be planted outdoors. Price, postpaid, 7 cts. each; 6 for 40 cts.; 70 cts. per dozen.

L'Innocence. Pure white.
Grand Maitre. Clear blue.
Queen of the Blues. Light blue.
Gertrude. Deep pink.
 Mixed White, Red or Blue, separate colors, 6 cts. each; 65 cts. per dozen, postpaid.



Dingee Surpassing Quality Tulips

The dazzling beauty of the Tulip family is so well known that it is hardly necessary to further extoll its merits here. The brilliancy of colors when arranged in masses in the garden, on the lawn or grown indoors in pots or boxes, makes the Tulip an object of striking beauty; indeed, for wealth of bizarre color effects, it even surpasses the hyacinth. Plant plenty of them—they are so inexpensive; in early spring, almost before the last snows of winter are gone, the gorgeous colors of their flowers will add a wonderful air of cheerfulness to your home surroundings. They are entirely hardy in the open ground, and should be planted about 4 inches deep and 4 inches apart. For indoor culture plant them 3 inches deep.

Pot them and set away in a dark, cold place for three weeks or more, then bring to the light and treat same as other plants. Three bulbs in a 4-inch pot or crock, and 6 to a 6-inch pot, for a good effect.

Like all Dingee bulbs, our offerings in Tulips are the best, both as regards quality and variety. No "seconds"—each bulb is guaranteed to be a good, sound blooming bulb of the first size, or your money back.

Named Single Early Tulips

Extra strong, guaranteed bulbs, 6 cts. each, 65 cts. per doz. (except where otherwise noted); \$5.00 per 100 (postpaid).

- Belle Alliance.** Rich, glowing scarlet.
- Chrysolora.** Rich, golden yellow.
- Cottage Maid.** White, edged with rose.
- Cottage Boy.** Yellow, edged orange; very distinct and striking. Excellent for bedding.
- Keizerkroon.** Crimson-scarlet, edged yellow.
- La Reine.** Grand pure white.
- Calipso.** Glowing yellow.
- Pottebaker, Scarlet.** Brilliant scarlet.
- Diana.** Pure white.
- Prosperine.** Deep rosy pink. 10 cts. each, \$1.00 doz.
- Queen of the Netherlands.** Flowers of beautiful globular form, color a soft rose, flushed white. Makes a magnificent show when grown in pans or pots.
- Rose Luisante.** Fine, deep brilliant rose. Very showy. One of the best.
- Yellow Prince.** Bright yellow; sweet-scented.
- Vermilion Brilliant.** Dazzling vermilion.
- Prince of Austria.** Orange shaded scarlet.

Single Duc Van Thol Tulips

Very early flowering; especially satisfactory for all purposes; none better; distinct and effective. In separate colors—

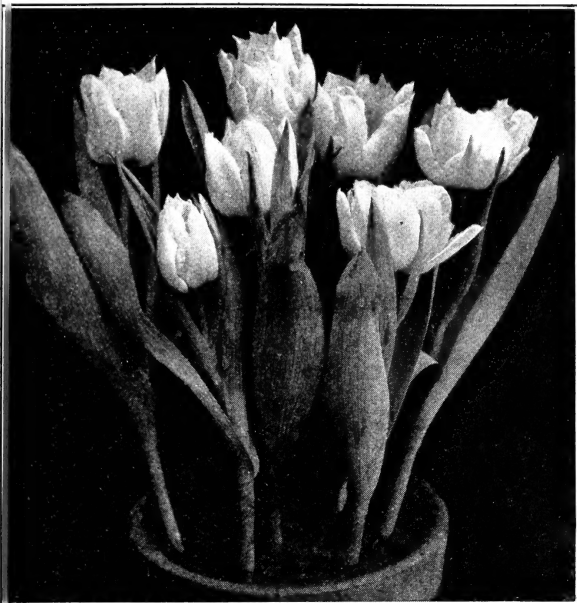
Scarlet Yellow	Crimson	Rose White
6 cts. each, 65 cts. per doz.		

Special Offer F-16 Set of 20 Tulips named above for \$1.10; 6 of each, 120 in all, \$6.50, postpaid.

Mixed Early Single Tulips

This is the finest mixture of bedding Tulips ever offered, and comprises the choicest named kinds. In separate colors. **Mixed Scarlet, Mixed White, Mixed Yellow or Mixed Pink**, 50 cts. per doz., \$4.00 per 100. All colors mixed, 45 cts. per doz. \$3.00 per 100

All Goods Offered On This Page Are Sent Postpaid



Single Tulips as a Pot Plant

Late or May-Flowering Single

Tulips

(Cottage Garden)

Good sound bulbs, of the largest size; 6 cts. each; 35 cts. per doz., postpaid.

Blooming late, after all others are done. Borne on long, stiff stems, ideal for cutting.

Bouton d'Or. (Golden Beauty). Golden-yellow, long stems.

Elegans. Red. Long petals, reflex tip. Crimson, yellow center.

La Merveille. Salmon-rose, shaded orange-red. Sweet-scented.

Inglescombe. Buttercup yellow.

Picotee (Maiden's Blush). Recurved petals, white, margined pink.

York and Lancaster (Shandon Bells or Isabella). Silvery-white suffused carmine rose.

Tulip Gesneriana (Red Gesneriana). Intense, dazzling, glossy crimson, center of deep blue.

Tulip Golden Crown (Yellow Gesneriana). Splendid golden-yellow petals edged with orange-red.

Persian Yellow. Clear golden-yellow; pointed petals.

La Candeur. Pure white.

Fairy Queen. Rosy lilac; very large.

Special Offer F-19 Set of 10
May-Flowering Tulips, 55 cts.; six of each, 60
in all, \$3.25, postpaid.

GRAND MIXTURE of Cottage Garden Tulips, made up of dozens of the best varieties, including sweet-scented sorts, 55 cts. per doz.; 5.00 per 100, postpaid.

OUR NEW Guide to Rose Culture FOR 1922

Will be sent to all customers of recent years. To others only upon request.
Ready to send out Jan. 1, 1922.

Named Early Double

Tulips

Magnificent bulbs, 6 cts. each; 65 cts. per doz.; \$5.00 per 100, in one or assorted varieties, by mail or express, prepaid.

Duc Van Thol. Red and yellow.

Duke of York. Carmine, edged white.

Gloria Solis. Deep crimson, bordered with a broad gold band.

Schoonoord. Grandest pure snow white.

Murillo. Beautiful light rose.

Rex Rubrorum. Finest deep scarlet.

Salvator Rosa. Grandest of all pink Tulips; flamed white; magnificent.

Empress Victoria. Rich glowing scarlet.

Tournesol Red and Yellow. Red, edged yellow.

Tournesol Yellow. Handsome orange-yellow.

Couronne. Best golden yellow.

Special Offer F-17 Set of 11
Double

Early Named Tulips above for 55 cts.;
six of each, 66 in all, \$3.50, postpaid.

Mixed Early Double Tulips

Large, plump bulbs; guaranteed sound, blooming bulbs. In Separate Colors, Mixed Scarlet, Mixed White, Mixed Yellow or Mixed Pink, 55 cts. per doz., \$4.00 per 100; and All Colors Mixed, 50 cts. per doz., \$3.50 per 100.

Double Late-Flowering

Tulips

Strong, healthy bulbs, 6 cts. each; 65 cts. per doz.; by mail, prepaid.

Abbas. Glowing orange-red.

Blue Flag. Remarkable purplish-blue.

Gloria Mundi. Shades of brown, crimson and yellow.

Paeony, Gold. Golden-yellow, striped with red.

Paeony, Red. Superb flowers, deep red.

Yellow Rose. Golden-yellow. Striped foliage.

Mixed Varieties. 60 cts. per doz.; \$5.00 per 100, postpaid.

Special Offer F-18 Set of 6 Double Late-
Flowering Named

Tulips, postpaid, for 35 cts.; six of each, 36 in
all, \$2.00, postpaid.



Double Tulips Grown in Holland

DINGEE GORGEOUS**Darwin Tulips**

The Giant Tulip. Coming into bloom after all the other varieties are done, and by planting these one may have a continuation of blooms for several weeks. They produce great bowl-shaped flowers on tall stems from 2 to 3 feet high. The brilliancy and variety of coloring is beyond description. The most beautiful of all Tulips. Excellent for cutting. Plant liberally of them. We offer the choicest of all varieties.

Magnificent extra-large bulbs, 7 cts. each; 75 cts. per doz.; except where otherwise noted, by mail, prepaid.

Baron de la Tonnaye. Carmine-rose pink, fading to soft pink.

Pride of Haarlem. Brilliant deep salmon, shaded with scarlet.

Gretchen (Margaret). Large-flowering; outside soft blush; inside blush-rose.

Kate Greenaway. Big flower of white, suffused with lilac.

The Sultan. Large flower of maroon-black.

Glow. Brilliant scarlet, a strong, lasting flower.

Harry Veitch. Dark brown-red.

Salmon King. Flery salmon; extra fine.

Dream. Lilac; large blooms.

Europe. Bright rosy-red; white center.

Clara Butt. Soft salmon-pink, tinged blush.

Psyche. Bright rose.

La Tulipe Noire. The darkest of all Tulips. 10 cts. each; \$1.00 per doz.

SPECIAL MIXTURE of Darwin Tulips, unnamed varieties, including a wide diversity of colors and shades. 65 cts. per doz.; 5.00 per 100, postpaid.

Special Offer

Set of thirteen Darwin Tulips, 80 cts.

PARROT TULIPS

Have the most distinct shapes and markings of any; the striking beautiful colors range through shades of golden yellow, green, crimson-striped, deep crimson, yellow, etc. **Fine large bulbs, sure to bloom, 7 cts. each; 70 cts. doz., prepaid.**

Belle Jaune. Pure yellow.

Cafe Brun. Coffee color, yellow.

Constantinople. Handsome red.

Markgraaf von Baden. Red and orange.

Feu Brilliant. Glossy crimson.

Monstre Rouge. Deep crimson.

Perfecta. Yellow and red.

Supreme Mixture. All colors. 6 cts. each; 65 cts. per doz.

Special Offer F-23 Set of seven Parrot Tulips, one of each, postpaid, for 35 cts.

BYBLOOMS and BIZARDS

We desire to call special attention to the Byblooms, Bizards and Breeder types of Tulips, of which we offer a fine collection. These merit more general recognition from the vast army of flower lovers. Their bloom somewhat resembles that of the Gesneriana, and they wear all the gorgeous livery of their species. They attain a height of from one to two feet, the stems often branching and producing several large blooms. Their flowering period is later than the other sorts, which is a point in their favor.

Byblooms Mixed. All white ground.

Byblooms. Violet ground.

Bizards Mixed. All yellow ground.

Byblooms Mixed. All rosy colors.

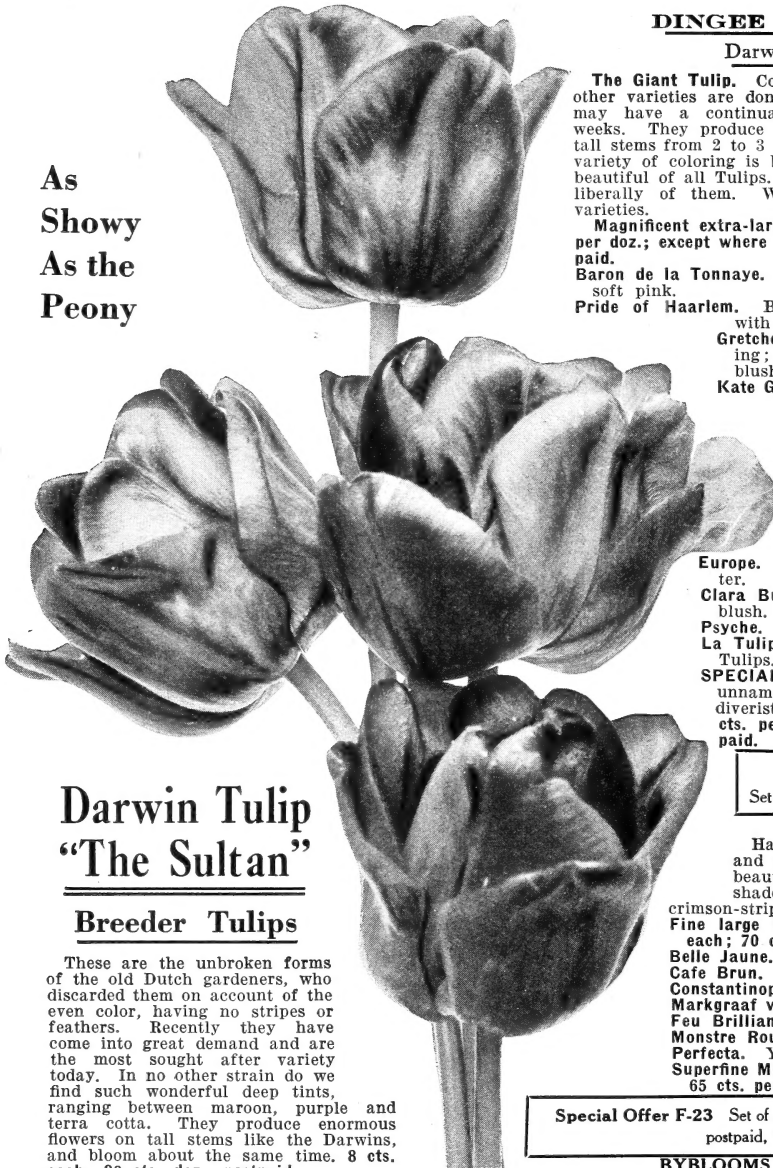
Byblooms and Bizards Mixed. All violet colors.

All colors of Byblooms and Bizards, 7 cts. each; 75 cts. per doz., postpaid.

TULIPA VIRIDIFLORA

The wonderful green Tulip; petals edged with yellow. Curious and beautiful. 7 cts. each; 80 cts. per doz.

As
Showy
As the
Peony



Darwin Tulip "The Sultan"

Breeder Tulips

These are the unbroken forms of the old Dutch gardeners, who discarded them on account of the even color, having no stripes or feathers. Recently they have come into great demand and are the most sought after variety today. In no other strain do we find such wonderful deep tints, ranging between maroon, purple and terra cotta. They produce enormous flowers on tall stems like the Darwins, and bloom about the same time. 8 cts. each; 80 cts. doz., postpaid.

Cardinal Manning. Rosy-violet, tinged with salmon and bronze.

Gerarda. Orange-yellow, shaded bronze.

Grand Maitre. Purplish-violet.

Jaune d'Oeuf. Ruddy apricot with yellow edge.

Jules Favre. Bronze.

Mary Holles. Rosy-red.

Media. Salmon-carmine.

Prince of Orange. Orange-red edged light red.

Queen Alexandra. Sulphur-yellow tipped brown.

Special Offer F-24 For 75 cts. we will send, postpaid, one each of the nine Breeder Tulips.

Hardy Narcissus

or

Daffodils of Spring



THE Narcissus is most desirable for house or garden culture, and should be treated in the same manner recommended for the Hyacinth. Three or four bulbs may be grown in a single pot. In the garden they may be planted in any out-of-the-way place, where they will continue to thrive and bloom year after year without any care or attention, and will be among the first to respond to the fitful blandishments of early spring. The family is an extensive one and remarkable for its novel diversity of types and colors, in the selection of which our efforts have been to secure the finest specimens. Our bulbs are grown for us by our own special grower on the Isle of Gurnsey; they are the best. First Quality Bulbs, sure to bloom. Prices include postage.

Single Varieties

- Price of single or double varieties, except where otherwise noted, 8c each; 85c per doz., postpaid.
- Golden Spur.** Large, spreading, full, deep rich yellow perianth and trumpet. A charming, richly perfumed flower, and one of the very best of the Golden Trumpets, flowering early and freely.
- Emperor.** Trumpet large, rich yellow, surrounded with deep primrose petals.
- Maximus, or Vase of Beaten Gold.** Very early. Immense flowers of deepest, richest yellow.
- Gloria of Leiden.** Long, large, fluted trumpet of rich yellow; full, broad, overlapping petals of bright yellow. 10 cts. each; \$1.00 per doz.
- Mrs. Langtry.** Creamy white, yellow cup.
- Stella.** Large white perianth petals, with golden-yellow cup, star-shaped.
- Sir Watkin.** Rich sulphur-yellow; orange-tinged trumpet.
- Mme. de Graff.** One of the largest and finest of white trumpet Daffodils is perianth pure white; trumpet opens primrose, but turns white in a day or two; a most refined and beautiful flower of graceful carriage; strong grower; height, 16 inches.
- Trumpet Major.** Extra large; golden-yellow trumpet and petals.
- Gloria Mundi.** Clear yellow perianth, much expanded orange-scarlet cut, borne on long, stiff stems.
- Bicolor Victoria.** A new variety; perianth creamy-white, trumpet rich yellow, delicately perfumed; unsurpassed for pot culture and always satisfactory out of doors.
- Glory of Sassenheim.** Strong, robust growth, with fine large flowers; the perianth snow-white, trumpet rich yellow, serrated and flanged at the edges; one of the best bicolors and of rare beauty for cutting. 12 cts. each; \$1.25 per doz.

Double Varieties

- Price of big, sound bulbs, 8c each; 85c doz., postpaid.
- Orange Phoenix (Eggs and Bacon).** Double white flowers; center orange and white.
- Von Sion.** Large, double, rich golden-yellow trumpet flowers. One of the very best for house culture. Specially selected double-nosed bulbs, far superior to the average bulb.

Superfine Mixed

Superb mixture of all sorts. Double and Single and all colors. 6c each; 60c doz.; \$5.00 per 100, postpaid.

Special Offer F-27 Set of 14 Narcissus, Single and Double, one of each variety, \$1, 3 of each, 48 in all, \$3 prepaid.

Jonquils

- A branch of the Narcissus family, requiring the same treatment. Twelve bulbs in a 6-inch pot will make a wondrous show in the house.
- Single.** Rich yellow; very fragrant. 35 cts. per doz.; \$2.75 per 100.
- Double.** Extra fine; deep yellow. 35 cts per doz.; \$2.75 per 100.
- Campanelle Mixed.** Large yellow flowers; rich and very striking. 40 cts. per doz.; \$3.25 per 100.

Dingee's Early-Blooming Crocus

Since the poet sang "A soft breeze kissed the expectant morn, a bluebird sang a witching strain, a crocus bloomed and Spring was born," this charming little flower has been noted as first of the Springtime. The attractive flowers mark the coming of Spring and, with their beautiful shades, tone the deepening green of the lawn. It is entirely hardy and, left undisturbed, will continue to bloom each year.

The best results with Crocus are obtained when they are given a rich, dry soil and sunny location. The bulbs should be planted about three inches deep, 2½ inches apart; set singly or massed in beds. A favorite plan is to raise the soil with a spade or trowel to the depth of three inches, place the bulb beneath the sod and press back into place. Crocuses are also great favorites for house culture, giving very satisfactory results. For blooming indoors the pots or pans in which they are planted should be plunged outdoors until a hard freeze or so. The bulbs we offer are of improved strains of the leading and

finest varieties, and are superior as regards both form and color.

Finest Named Varieties

- 25 cts. per doz., \$2 per 100, postpaid.
- Albion.** Fine striped; large and good.
- Caroline Chisholm.** The best white.
- David Rizzio.** Magnificent dark purple.
- Lord Byron.** Superb blue.
- Queen Victoria.** Splendid pure white.
- Cloth of Gold.** Golden orange, suffused with brown.
- Cloth of Silver.** Same as the preceding, except the color is beautifully silver-shaded.
- Saffron.** Violet-colored, variously striped and fragrant.
- Scotch.** Striped in various colors on white ground.
- Verticolor.** Shades of purple to white, veined purple.
- Sir Walter Scott.** Striped, very distinct.
- Amazonne.** Light blue, fine.

Purpurea Grandiflora Blue. Extra-large blossoms.

FINEST MIXED

- 15 cts. per doz., \$1 per 100, prepaid.
- Mixed White.** Different varieties.
- Mixed Purple and Blue.** Different varieties.
- Mixed Striped.** Different varieties.
- Mixed Yellow.** Different varieties.
- All Colors.** Different varieties.

Monster

Yellow Crocus

Bulbs very large and flower early; profusion of bloom is remarkable, fifteen to twenty-five large flowers coming from one bulb. 25 cts. doz.; \$2.50 per 100.

New Monster

Blooming Crocuses

These varieties are a great improvement over the older sorts, both in size and bloom and coloring. Each bulb produces several blooms of immense size (note the above illustration). Magnificent for Winter blooming indoors in pots or pans.

King of the Whites. Purest white flowers of immense size and magnificent form, with large orange anthers. Extra fine. Price, 30 cts. doz.; \$2.50 per 100.

White Lady. Magnificent large cup-shaped flowers, pure white with deep orange anthers. Price, 30 cts per doz. \$2.50 per 100.

New Crocus King of the Whites



Roman Hyacinths

Exquisite for Christmas blooming. May be grown in pots or glasses the same as Hyacinths.

First size bulbs, sure to bloom, 7 cts. each; six for 35 cts.; 70 cts. per doz.

Single White. Waxy white.

Single Blue. Dainty, beautiful.

Double Dark Pink. Large bells; handsome, effective.

Special Offer F-20 Set of 3 named Roman Hyacinths, described above, for 20 cts., postpaid.

Camassia

Esculenta. Exceedingly pretty star-like flowers of about two inches across. Two to three feet high. Give the bulbs the same treatment as hyacinths. Three for 10 cts.; 35 cts. per doz., postpaid.

Leichtlinni. Deep blue, 4 feet. Finest flowers in great profusion. 10 cts. each; \$1.00 per doz.

TRILLIUM

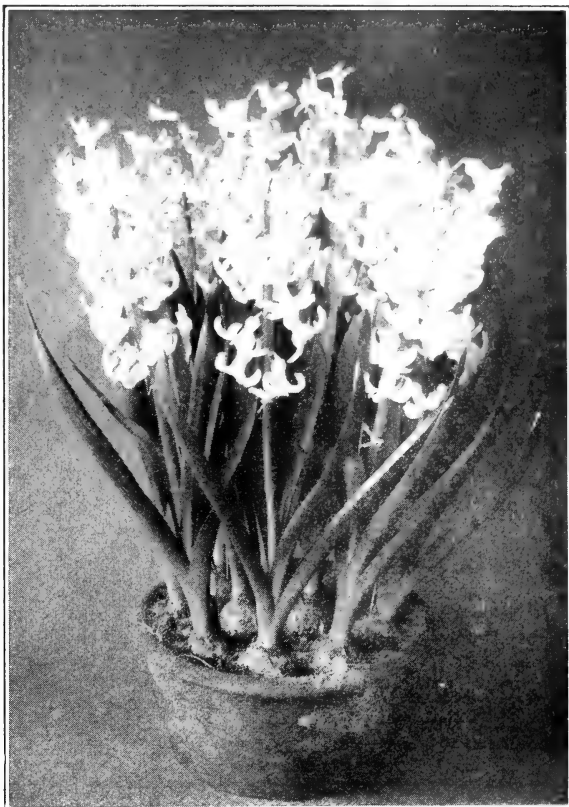
(Wake Robin or Wood Lily)

Interesting and handsome perennial herb, hardy and useful for spring flowering in wild border. Plant in rich, moist places; partial shade.

Ovatum. Flowers open pure white, gradually tinge pink and finally become deep purple. 10 cts. each; 6 for 50 cts.

Sessile Californicum. Strong plants, 12 inches high. Flowers pure white, purple centers. 10 cts. each; 6 for 50 cts.

Sessile Rubrum. Deep maroon-purple to reddish purple. 6 cts. each; 6 for 30 cts.



Roman Hyacinths

Poet's Narcissus (Pheasant's Eye)

A clump should be in every garden among the shrubbery or in the grass. Needs no protection during winter, blooms very early. Can be readily grown in the house.

Poeticus. White flowers with orange cup. 5 cts. each; 50 cts. per doz.

Poeticus Flore Pleno. Double, white, scented flowers. 5 cts. each; 50 cts. per doz.; \$4.00 per 100.

Poeticus Ornatus. Very large, pure white flowers, beautifully formed eye. 5 cts. each; 50 cts. per doz.

New Hardy Cluster-Flowered

Daffodils (Narcissus Poetaz)

In the manner of producing their flowers in clusters, and in extreme free-flowering qualities, they possess all the merits of the Polyanthus type. Make splendid beds or clumps in borders and are easily flowered in the house in winter.

Aspasia. Perianth, pure white yellow eye, large flowers (4 to 5).

Elvira. Very free flowering, producing a number of stems to a bulb, each bearing three to four flowers; color clear white with yellow eye. Either variety, 7 cts. each; 70 cts. per doz.

The Blue Milla

Rich blue, star-shaped flowers in profusion at the end of long graceful stems. 5 cts. each; six for 25 cts.; 45 cts. per doz., postpaid.

Cinnamon Vine

A very well-known and most valuable climber. Quite hardy and excellently adapted for outdoor cultivation. It produces delicate white flowers in profusion during the winter if grown in a light and sunny window in the house. Roots, 10 cts. each; 6 for 50 cts.



Poet's Narcissus

Giant Paper White Narcissus



Giant Paper White Narcissus, Growing in Water

Giant White Narcissus

NEW, DISTINCT AND BEAUTIFUL
GROWS IN WATER

This grand Narcissus is the earliest flowering, blooming for Christmas. Grows with absolute certainty, and produces in lovely clusters immense numbers of pure white flowers. In fragrance is the equal of orange blossoms. Superb.

Grow it in Water. It succeeds best grown in water. Place sand or gravel in bottom of a dish, firmly imbedding the bulbs; keep well covered with water and it will soon bloom. It may be grown in soil like a Hyacinth, but the best method is in pebbles and water.

To Get the Best Effects. Several bulbs (not less than six) should be planted together. Give plenty of sunshine. Bulbs we offer are sure to grow and bloom.

Price, postpaid by mail, 6 cts. each; 6 for 35 cts.; 65 cts. per doz.

Special Offer F-25 Two Giant White Narcissus and 3 Giant Sacred Lillies for 15 cts.; six of each, 12 in all, for 50 cts. They make a splendid contrast.

Giant Golden Sacred Lily

Large sweet golden yellow flowers; hardy, thrives in any window or garden. Blooms quickly and freely in soil, sand or pebbles and water. Beautiful and very fragrant. Large bulbs, 4 cts. each; 40 cts. per doz.; postpaid.

Polyanthus Narcissus

In the open ground should be well protected. Pot any time from October to January. Several bulbs can be grown in a large pot or box. Cover them loosely with 1½ to 2 inches of soil.

Double Roman. Clear white, with smaller inner petals of pure yellow; early, 7 cts. each, 75 cts. doz.

Gloriosa. Perianth white; cup, orange-yellow. 7 cts. each, 75 cts. per doz.

Grand Primo. White, with citron cup. 7 cts. each, 75 cts. per doz.

Soleil d'Or. Rich yellow flowers, with deep reddish cup. 7 cts. each, 75 cts. per doz.

Special Offer F-26 Set of 5 named Polyanthus Narcissus above, including Giant White, 30 cts.; six of each, 30 in all, \$1.75, postpaid.

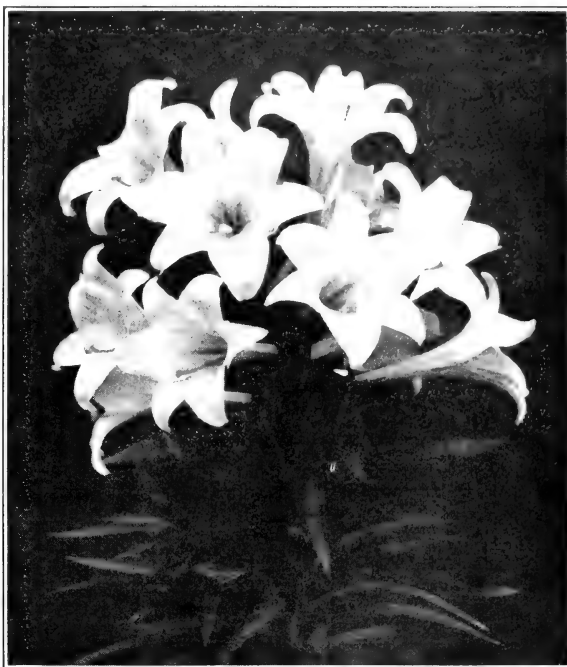
Dingee

Magnificent Easter Lily

The Easter Lily is a vigorous grower with ordinary attention. Flowers pure white and delightfully perfumed. It is unexcelled as a window plant. Fill a six-inch pot closely with soil to the top, plant the bulb, water moderately and put away in a dark, cool place until the roots begin to form. Then transfer to the sitting room to the warmth and light. Bermuda Easter Lilies may be planted outside. They are hardy in the Southern States and will survive Northern winters if protected with leaves or litter. They flower in three months from planting. When planted in a large pot can be placed outdoors in spring after all danger of frost is past, and they will bloom during the summer months.

The bulbs we offer are the true Bermuda Easter Lilies (*Lilium Harrisii*), secured direct from our Bermuda grower, and are the best to be had. We offer the true stock, which is very scarce—and very few are able to secure a supply—and only large and healthy bulbs, which will make a vigorous growth and give an abundance of extra-large, magnificent flowers, five to eight on each plant. Can be supplied any time after August 15th.

Large Bulbs, Popular Size, producing 2 to 3 flowers, 25 cts. each; 5 for \$1.00, postpaid.
Extra-large Bulbs, producing 4 to 8 flowers, 40 cts. each; 3 for \$1.00, postpaid.
Bulbs of Enormous Size, producing 12 to 15 flowers, 75 cts. each; two for \$1.25, postpaid.



Bloom of the true Easter Lily Formosa Easter Lily

(*Lilium Longiflorum Formosum*)

An improved type of the well-known *L. Longiflorum*.

The plants are healthy, strong growth, about three feet high, and produce beautiful snow-white, trumpet-shaped flowers six to eight inches long. It is perfectly hardy and a splendid garden lily, blooming in the open in June and July. This lily is also a very important winter-flowering type. **First or largest size bulbs, 25 cts. each, six for \$1.25.**

“SPIDER LILY” This attractive lily if planted early in the fall will bloom in a short time. Produces a large cluster of small crimson lilies branching out in a circle, the stamens projecting far out, thus giving it the appearance of a huge gorgeous spider. If planted outdoors in groups in spring will produce a strikingly vivid dash of color. After blooming is over the dark green foliage comes up, remaining green for some time. **Fine flowering bulbs, 25 cts. each; 5 for \$1.00, postpaid.**

CRINUM ORNATUM. This royal member of the Amaryllis family produces numerous spikes of large, fragrant, lily-like flowers, white, with deep pink stripe in the center of each petal. **Prices, first size, about 9 to 11 inches circumference, 40 cts. each; 3 for \$1.00. Enormous bulbs, about 14 to 16 inches circumference, 75 cts. each; 2 for \$1.25.**

CRINUM AMERICANUM. Blooms beautiful pure white; a fitting companion for *Crinum Ornatum*. **Fine large bulbs, 50 cts. each; 3 for \$1.25, postpaid.**

BARBADOES LILY (*Amaryllis Equestre*). Splendid clusters of scarlet flowers, each with a green and white throat. **Fine, large, blooming bulbs, 15 cts. each; 4 for 50 cts., postpaid.**

AMARYLLIS REGINAE A magnificent pot plant, with beautiful lily-like flowers of large size, borne in splendid clusters on long stems. The flowers are brilliant scarlet-crimson, with a white star in the throat.



Formosa Easter Lily



Chinese Sacred Lily

Winter-Blooming Oxalis

The variety of Oxalis we offer at this season is entirely suitable for winter-blooming and pot culture. These lovely flowers are now among the most popular for hanging baskets, pots and positions calling for graceful and effective flowering plants. A few in a five-inch pot or basket will start off at once and soon be in flower, remaining so throughout the winter.

Price, 3 cts. each, 30 cts. per doz.

Bermuda Buttercup. New, large-flowering yellow.

New Winter-blooming Oxalis, Grand Duchess. The finest winter-blooming variety yet introduced, bearing continuously beautifully formed flowers of splendid size and color. We offer four colors, rose-pink, white, lavender and yellow.

Winter-Blooming Freesias

Celebrated Freesia Refracta Alba Strain

One of the most popular Winter-blooming bulbs, growing well in ordinary soil. One of the easiest of Winter-blooming bulbs for window culture. The color is pure white, lower petals touched with yellow.

Freesias should be planted early for the best results—the earlier the better. The vitality of the bulbs is at its highest early in the season. We have these bulbs grown in tremendous quantities by our special growers, and are able to offer larger and better quality bulbs than those generally sold.

First-Size Monster Bulbs. Three years old. 7 cts. each, 75 cts. per dozen, postpaid.

Second-Size Mammoth Bulbs about ½ inch in diameter, 3 for 10 cts., 30 cts. per doz., postpaid.

Third-Size, Extra-Large, Selected Bulbs. 15 cts. per doz., 50 for 50 cts., postpaid.

Grand New Freesia, Purity

This variety is a type of pure white Freesia that surpasses in size, floriferousness and purity of color. We offer one size only—**First-size bulbs** at 8 cts. each, 5 for 35 cts., 75 cts. per doz., postpaid. **Second-size,** 5 cts. each, 50 cts. per doz.

The Famous Chinese Sacred Lily

One of the most popular of the Winter-flowering bulbs; ease of culture, certainty of bloom and rare beauty of all combine to make this lovely gem from the Flowery Kingdom a most interesting and satisfactory Winter flower. It will thrive in soil, but the favorite method of culture is growing in water and gravel, where it can be depended upon to flower within 20 to 30 days after planting. Select a vessel of sufficient size, place two or three bulbs in it, fill the interspace with coarse sand or gravel until the bulb is firmly held in position, and then add water until quite covered. Place in a moderately cool situation by the window, replenish the water from time to time as it evaporates or becomes foul. It is particularly adapted to conditions not favorable to the growth of most other plants. In four or five weeks it will produce masses of deliciously scented flowers.

Immense Bulbs, 20 cts. each, 6 for \$1.00, postpaid.

Broadiaecas

(Price, 6 cts. each, 6 for 30 cts.)

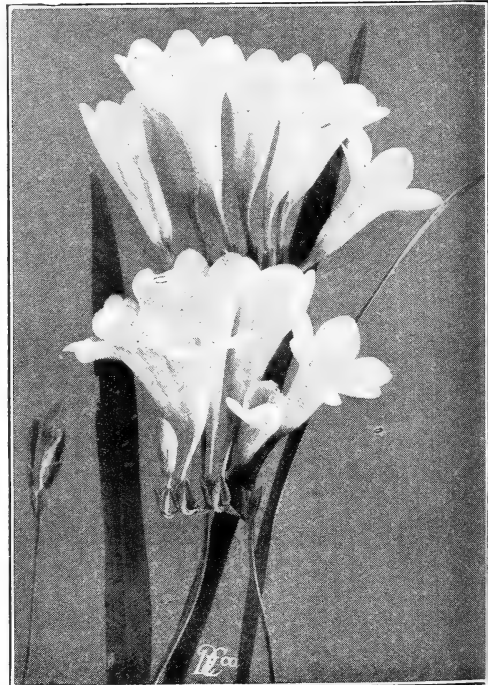
Extremely showy half-hardy bulbs, bearing beautiful tubular flowers in clusters on stems. One to two feet high.

Capitata (California Hyacinths). Slender stems, capped with a head of violet-blue flowers.

Lactea. Has a close umbel of milky-white flowers.

Stellaris. Dwarf 3 to 6 bright purple flowers with white centers.

Hendersonii. Yellow, banded purple.



Freesia Purity

Calla Lilies

Grand Winter-blooming pot plant. Easy to grow, free bloomers and superb flowers. Good at all seasons of the year.

New Yellow. Large, rich flowers, similar to the old white Calla in form; very fragrant. Color golden-yellow. **Large bulbs.** 40 cts. each, 3 for \$1.00, postpaid.

Everblooming Calla, Godfrey (Dwarf). In bloom all the time. Fine. 25 cts. each.

Lily of the Nile. The old favorite White Calla. Grand white flowers—chaste and beautiful. To aid profuse blooming, keep dormant from the middle of June until the last of August; replot in good, rich soil, using 6 to 8-inch pots; give water light and heat in abundance and the result will be most satisfactory. **First-size bulbs,** 25 cts. each, 5 for \$1.00. **Large-size bulbs,** 40 cts. each, 3 for \$1.00. Postpaid.

Special Offer F-29

One each of Godfrey, Yellow and White, first-size bulbs, postpaid, for \$1.00.

Fritillarias (Mission Bells)

The habit of growth is Lily-like, and, as a pot plant, the effect is beautiful in the extreme; in fact, it is as beautiful as any lily, while the profusion of flowers is remarkable, requires about same treatment as Bermuda Easter Lily; should not be given too much water.

Lanceolata, 18 to 24 inches high. Flowers are mottled in green and brown. Very odd and pretty. 20 cts. each; 6 for \$1.00; postpaid.

Coccinea. Scarlet, slightly mottled with yellow. 12 to 18 inches high, 20c. each; 6 for \$1.00.

Floral Firecracker

The color is a rich, deep crimson, tipped with greenish-white. 8 cts. each; 80 cts. per doz.; postpaid.

Ixias

Ixias are admirably adapted for pot culture in the house. See illustration. Mixed varieties, 5 cts. each; 6 for 25 cts.

Erythronium (Dog's Tooth Violet)

Grandiflorum (The Beautiful Wood-Lily). Planted in open ground, for they are entirely hardy and will found a colony. For Winter blooming they are of the easiest culture and are sure to bloom in mid-winter. Color, cream. The bulbs should be potted or planted soon after being received, as they suffer if allowed to remain dry. 5 cts. each, 6 for 25 cts., 40 cts. per doz., postpaid.



Dingee Calla Lily

Revolutum. Large, and in color very striking white, tinged with green. The leaves are narrow, beautifully mottled with brown. **Fine bulbs,** 10 cts. each, three for 25 cts.; 7 for 50 cts., postpaid.

Californicum. Flowers cream colored. Four and five flowers on a stem. Leaves richly mottled. 5 cts. each, 6 for 25 cts., postpaid.

Hendersonii. Flowers light purple with deep maroon centers. Very striking. 6 cts. each, 6 for 30 cts., postpaid.

Calochortus (Globe Tulips)

The plants are rather tall and slender, with leaf-wrapped stems of odd shape. Natives of woodlands, delighting in loose soils, such as leaf moulds, also do well in heavy soils and are fine for naturalizing among rocks or in shaded places. Fine for pot plants, and a colony of six to twelve makes a fine display.

Albus (Fairy Lantern). White; medium size bulbs, 5 cts. each; 50 cts. per doz.

Amabilis. Rich yellow. 5 cts. each; 50 cts. per doz.

Calochortus, Star Tulips, Cat's Ears

Bentharii. Bright Yellow. **Lilacinus.** Lilac.

Maweanus Major. White. 3 for 10 cts.; 35 cts. doz.

Calochortus Mariposa, Butterfly Tulips

Cup-shaped flowers with one too many on a stem, wonderfully marked with eyes, dots and pencillings in rich colors, and only compared to the orchids in wonderful variability of beauty.

Venustus Oculatus. White and cream; eye large and richly zoned. 5 cts. each; 6 for 25 cts., postpaid.

Venustus El Dorado. Often one to three feet high; well branched. Many colored flowers. 10 cts. each; 6 for 50 cts., postpaid.

Vesta. Good grower. Thrives in any ordinary soil. Magnificent flowers, three to five inches, on long separate stalks. Color white, flushed with lilac or rosy-purple. **Medium bulbs,** 10 cts. each; 6 for 50 cts., postpaid.

Mixed Calochortus, five and six varieties. 3 for 10 cts.; 30 cts. per doz.



Fritillarias.

Ixias.

Dingee Pot-Grown Own-Root Roses

for Fall Planting



A Two-Year-Old, Semi-Dormant, Pot-Grown Rose.

For several years we have offered our customers pot-grown, own-root Roses for Fall planting, and since then they have proven so satisfactory that we cannot emphasize too strongly the advisability of Fall planting during the months of August, September, October and, in the South and Southwest, November.

We were the first in America to produce the Rose plants suitable for this purpose. Since then the proposition has been introduced generally, but we still maintain the lead in both quality and quantity of these famous Dingee pot-grown Rose bushes for immediate planting.

The Two-Year-Old Roses Offered on the Following Pages

have been specially prepared for Autumn planting and are shipped by express, leaving the soil in which they have been growing on their roots, and the change does not check their growth in any way.

Our list is exceedingly complete and embraces all the leading varieties of Roses. These plants have been resting all summer and are now growing in large pots and may be planted anywhere in the United States with entire safety. One great advantage they have over field-grown Roses is that they have been grown in pots or crocks and may be transplanted at your convenience whilst field-grown plants are only good for planting late in the Fall, after they have become dormant, which gives them no chance in the average locality to be shipped and planted in time to become established before Winter sets in. Our famous Dingee pot-grown Roses, planted in August, September, October and November, according to where you live, will become thoroughly established before cold weather, and you thereby gain one year in growing and blooming capacity, and you will thus have an abundance of bloom next Spring.

The chief reason that we are able to prepare such a low cost of this splendid assortment of Roses is our growing equipment, which is now the foremost in America.

The important point is plant early. Protect with evergreen boughs, straw or litter, and then these varieties will invariably go through the winter safely.

The Exquisite Killarneys Great Winter Bloomers

Hardy Everblooming Hybrid Teas

Pink Killarney

This Queen of the Irish Roses excels any other of its class and color yet introduced, and by many is recognized as the most beautiful hardy, everblooming Hybrid Tea Rose now under culture. Each season since it was introduced Killarney has increased in popularity and the demand has always exceeded the supply. We have an immense quantity, however, and guarantee every plant to be true to name. The bush is strong and upright, with beautiful, deep bronzy green foliage, and the Rose is entirely free-blooming, bearing immense, long pointed buds and massive flowers on big, heavy shoots. The color is deep, brilliant and sparkling shell-pink, of the most exquisite shade. The flowers are of delightful fragrance, immense size, and have thick petals of great substance. Killarney is unusually hardy and without protection has withstood severe Winters as far north as Boston. Strong one-year-old plants, 30 cts. each, 4 for \$1.00, postpaid. Extra-strong, two-year-old plants, on own roots, 80 cts. each, by express; 90c. by parcel post.

YELLOW KILLARNEY (Mme. Jenny Gillemot)—

A brilliant saffron-yellow Rose, opening canary with dark golden shades. The buds are long and pointed, beautiful in form and color, the flowers are large, with immense petals. Hardy and vigorous, it is in constant bloom all Summer. Blooms produced on long, stiff stems, making an excellent Rose for cutting. Owing to its resemblance to the Killarneys, we have called it the Yellow Killarney, as it makes a good companion for them. 30c. each; 4 for \$1, postpaid; two-year-old plants, 80c. each, by express. 90c. each by parcel post, with soil on roots.

White Killarney

An offspring of the pink Killarney, and is one of the most exquisite white Roses grown. The long, full buds are handsome in shape and the full-open flower most refined and beautiful in form and texture. Strong plants, 30 cts. each, 4 for \$1.00; two-year-old plants, 80 cts. each by express; 90 cts. each by parcel post.

Special Offer One each of these Killarneys, 3 in all, first-size plants, sent postpaid for 75 cts. One of each, 3 in all, two-year old plants, sent by express, for \$2.25; \$2.50 by parcel post.

Dingee Famous Hybrid Tea Roses

The Most Desirable of All

For many years we have had by far the most complete and extensive list of Hybrid Tea Roses in the business, having been the first house to call particular attention to their wonderful value. Ours is the greatest collection in this country. As the new varieties are introduced they are given a trial, and if found wanting in any respect are discarded and not offered to the Rose-growing public until they prove worthy. This excellent class combines the continuous-blooming quality of the Everblooming Teas and the sturdy strength of the Hybrid Perpetuals. The plants bloom the first year, like the Teas, bearing large, finely formed flowers of a wondrous range of color, with the fragrance of the June Roses. They are especially valuable to Northern planters because they stand the severest winters with ordinary protection and, of course, luxuriantly in the South. In all sections they form magnificent bushes, bearing all summer great masses of most beautiful Roses imaginable. Unless a Hybrid Tea Rose bush is grown from the choicest two-eyed cutting—the Dingee method—it will not give satisfaction. All our stock is on its own roots—don't buy the other kind, budded and grafted. We offer strong, lusty plants in all sizes and stake our reputation upon their quality.



Columbia

Premier

Never in our years of Rose growing have we been so impressed with any Rose as we have with this one, in size, growth, sturdiness, health, fragrance and color. The blooms are immense, often measuring 5 and 6 inches across the open flower, buds long, full and pointed. Growth remarkable, being strong and sturdy, each bloom borne on heavy canes, almost thornless and 4 and 5 feet long. Foliage dark glossy green, free from disease or insects. Color is deep rose pink, without shadings and retains its color in the open flower. Highly fragrant. **Price, own root plants, first size, 50c. each; 3 for \$1.25; two-year-old plants, \$1.25 each, by express. Stock limited.**

GLADYS HOLLAND.—Magnificent in form and size. Color buff, shaded orange, yellow, outside of petals pearly peach, free blooming and very vigorous grower. A very unique bloom.

MRS. HENRY WINNETT.—Remarkably strong grower, producing strong shoot, each one crowned with a magnificent bloom, well above the foliage, excellent for forcing and equally as good for outdoor growth, being extremely hardy. Foliage fine dark green and free from insects and disease. Color a bright shade of crimson, not quite as dark as Hadley, but not as light as Richmond, a color that has proven to be very popular, and we consider it one of the best crimson varieties. Buds long and well formed.

MRS. HUGH DICKSON.—A Rose suitable for any purpose, delightfully perfumed, producing its large flowers in great profusion. The petals are large and of excellent substance, and the flowers of superb build, with high-pointed centers, with a beautiful outline. Color, a deep cream, with heavy profusion of orange and apricot. Splendid grower.

H. D. M. BARTON.—A grand bedding Rose of the Gen. McArthur type. Strong grower. Hardy everywhere. Awarded Gold Medal by the Irish Rose Society. Buds long and pointed, opening full and double, of a deep rich, velvety crimson of good size.

"Columbia"

Not since the introduction of the glorious Rose, American Beauty, have we been so impressed with any Rose as we have been with "Columbia." A hybrid tea of wonderful blooming qualities; as free a bloomer as any Tea Rose; blooms all the time. Almost thornless. Wonderful strong shoots four feet or more in length, each producing a magnificent bloom, often measuring six inches across the open flower. Color a deep peach pink, deepening into a glowing pink, a perfect color. The fragrance is beyond description, sweeter than an American Beauty. After a thorough trial we heartily recommend it as a great outdoor Rose. Hardy as an oak, thrives in any location, strong grower and soon makes a great display. One of the most exquisite Roses for cutting we have ever seen; produces handsome buds, on long, stiff stems well above the foliage. Foliage is a dark green and does not seem to be affected with disease or troubled with insects; on account of its strong growth, it seems to be able to ward off, thus making it one of the most popular outdoor Roses. Don't fail to include one at least in your order; you will never regret it. **Price of own root plants: First size, 35c. each; 3 for \$1.00, postpaid; two-year-old plants, 90c. each, by express; by Parcel Post, \$1.00 each. Large specimen plants from 6-inch pots, \$1.25 each, by express, at purchaser's expense.**

MISS CYNTHIA FORDE.—A deep, brilliant rose pink, reflex rosy pink. Large, perfectly formed, very full buds, free flowering, very sweetly perfumed, splendid grower.

NERISSA (Hybrid Tea).—Color creamy yellow, shaded with white and peach tint toward center. Bud handsome, long and pointed, opening full and double. Rank grower. Wonderful bloomer, making an excellent bedding and garden rose.

RED LETTER DAY.—A velvety brilliant glowing scarlet crimson Bud opening into cactus-like flower which retains its color, owing to the reflex of the petals being satiny crimson scarlet, producing a rose of exquisite grace and charm. Robust grower and wonderfully free blooming. Awarded S. G. medal by N. R. S. Price, strong first-size plants:

Price—All Roses on this page, except where noted, first-size plants, 35c. each; 3 for \$1.00, postpaid; two-year-old plants, 85c. each, by express; \$8.50 per dozen of one or more varieties; 90c. each by Parcel Post with soil on roots in which they are grown.

HYBRID TEA ROSES—Continued

ROSE RHEA REID

RHEA REID—"As large as American Beauty, as double as La France and as red as Richmond," is the enthusiastic way the originator describes this beautiful new Hybrid Tea Bush Rose. The color is vivid scarlet crimson, and the flowers are marvels of beauty; large, bold and of splendid substance. It has a strong, disease-resisting constitution, makes a rapid growth and throws up a profusion of canes from the roots and is always blooming. As an all-around garden bush Rose it has no superior.

HOOSIER BEAUTY.—This beautiful Rose is fragrant as Richmond; has more petals, a stiffer stem, a texture like velvet. In color, glowing crimson scarlet, with darker shadings. The bud is of good length, keeps well in the close-cut state, and opens into magnificent bloom, quite dazzling in its velvety brilliance.

ECARLATE.—One of the grandest for outdoor blooming of this class. Color a solid, brilliant scarlet. Profuse bloomer, strong, sturdy grower. Exceptionally fine as those found in the greenhouses. Perfectly hardy.

LAURENT CARLE.—A beautiful Rose, with extra large, handsomely formed, rich velvety carmine buds and flowers. It is a phenomenally strong and robust grower, hardy in every locality and continually in bloom. Every lover of Roses should have this variety.

JONKHEER J. L. MOCK.—Of distinctive merit, being an extremely strong grower, one of the strongest of the Hybrid Tea class, blooming as it does with the greatest freedom, the buds carried on long, stiff erect stems, of the very largest size imaginable to obtain in a Rose bloom and still retain its perfect formation. Very fragrant. Color, clear imperial pink on the order of La France.

RED RADIANCE.—The color is a splendid even shade of clear red, without a trace of any other color, retaining its vividness for an unusually long time after being cut. It is a remarkable bloomer, being constantly in flower from early spring until freezing weather. Strong, vigorous, branching grower, each branch terminating in a large, bold, double bloom. Hardy everywhere.

RHEA REID

MAD JULES GROLEZ, Red Kaiserin Augusta—This magnificent Rose is exceedingly free blooming, with very large, finely formed flowers. The color is a distinct and charming shade of cherry-red. The fine form and attractive shape of the flowers makes them excellent for cutting. It is a remarkably strong, healthy, growing variety.

HERMOSA—The favorite of the old-time gardens and just as popular today; blooms in fine clusters; large, very double and fragrant; color beautiful clear rose; a constant bloomer; hardy.

MME. EUGENE MARLIT—Brilliant shade of red. Bush strong growing and lusty, fairly weighted down all summer with its profusion of bloom.

MAGNAFRANO—The flowers are very large, full, deep and double, and of delightful fragrance. The color of this magnificent Rose is bright, shining rose, with rich shadings of richer tones. It forms a strong, sturdy, upright bush, bearing its gorgeous flowers on long, stiff stems, making it especially valuable for cutting.

MY MARYLAND—Its brilliant, lively shade of pink and beauty of form is without superior, and all summer through large, perfectly double magnificent flowers, rich in fragrance, are borne on long, stiff stems, growing from a sturdy, fine-shaped bush, which in itself is a distinct ornament to the garden. A great outdoor Rose. Extremely hardy.

DEAN HOLE—Silvery carmine Roses with salmon shadings. The coloring is distinct and unique; a handsome tribute to the eminent Rosarian whose name it bears.

Price—All Roses on this page, except where otherwise noted, first-size one-year plants, 30c. each; 4 for \$1.00, postpaid; two-year-old plants, 85c. each, by express; \$8.50 per dozen of one or more varieties; or 90c. each by Parcel Post with soil on roots.

Francis Scott Key

A magnificent Hybrid Tea Rose, named in honor of the writer of the "Star-Spangled Banner." Glowing scarlet with darker shadings. Buds long and pointed, opening full and double. Strong, healthy grower. Hardy everywhere. Free blooming.

healthy grower. Hardy everywhere. Free blooming.

F. R. PATZER.—A Rose of striking and pleasing appearance, owing to the delicate blending of color, which is a creamy-buff, with the reverse of petals a delicate warm pink, and as they expand the color becomes a light orange-pink, which produces a most charming combination. Strong, vigorous grower. Produces numerous branches, each one crowned with a magnificent bud and bloom, on long, stiff stems, well above the foliage. Hardy and an excellent garden variety.

ROBIN HOOD.—A grand grower, producing heavy canes and foliage. Blooms of immense size like the June Rose or Hybrid Perpetual. Color glorious rosy-scarlet that is soft, bright and lasting. Free bloomer, that is, blooming the entire growing season. Hardy everywhere.

GENERAL McARTHUR.—Of strong, vigorous, healthy growth, branching freely, it produces its wonderful blooms profusely from May until October, of full scarlet crimson. Every shoot carries a large, double, well-formed flower of exquisite fragrance and lasting quality.



Crimson Queen

Hybrid Tea. Owing to its rich coloring this is a wonderful garden or bedding Rose. There is no color that produces the show that a good crimson does. The color is a rich, bright, velvety crimson. A strong, vigorous, upright grower; flowers large and full, a great garden Rose as it is always in bloom; extremely hardy and produces a magnificent bush in a short time, hardy everywhere.

DEAN HOLE.—Silvery carmine Roses with salmon shadings. The coloring is distinct and unique; a handsome tribute to the eminent Rosarian whose name it bears.

EDGAR M. BURNETT.—Very large, full flowers of splendid form, with large flesh-colored petals tinted rose; an advance on the type of Rose of which the beautiful Alice Stanley is a representative; one of the

sweetest scented Roses in existence. Awarded gold medal, National Rose Society of England.

ETOILE DE FRANCE.—One of the sweetest hardy Hybrid Tea Roses of its color. The strong, upright bushes have beautiful bronze-green foliage, which is not subject to insect attacks. The bushes are blooming constantly, producing large, massive, deep, full cup-formed flowers on magnificent, long, stiff stems. They are of truly glorious form and delightful fragrance, while the color is exquisite—a clear red of velvety crimson..

MRS. AARON WARD.—One of the newest of all Yellow Hybrid Tea Roses, and distinctly beautiful in form and color. The color ranges from coppery-orange in the opening bud, changing to a golden-orange, and when the flower is fully open it is a lovely shade of pinkish fawn. Most vigorous in growth, every shoot producing a flower and clothed with dark, glossy green foliage, maroon on under side. It is one of the best of the new yellow Roses and has become very popular.

MADAME SEGOND WEBER.—One of the most beautiful Roses of recent introduction. The long, pointed buds are pink or salmon-flesh and when fully expanded are immense in size, full and double; as the flower opens it deepens until it fairly glows with its warm, deep pink. Highly fragrant. Very hardy and constantly in bloom.

METEOR.—Very few dark Roses compare with this in richness and depth in color, which is a rich, velvety crimson, shading very dark in the depths of the petals. As a garden Rose it has few equals, being particularly valuable for bedding on account of its sturdy growth and handsome foliage.

SUNBURST.—A magnificent giant yellow forcing Rose, also well adapted for outdoor growing, being a vigorous and healthy Rose. Buds long and pointed, borne singly on long, stout stems, opening full and double. An excellent cut flower variety, having excellent keeping qualities. A very vigorous grower, reddish bronze foliage. The color is superb orange copper or golden orange, with a deep orange center. This Rose creates a sensation wherever grown.

HYBRID TEA ROSES—Continued

The Lovely "Crimson Queen"



Ophelia

OPHELIA.—The color is one so difficult to describe that any description can only be a partial one, and gives but a faint idea of the superb beauty and richness of the shades. Salmon-flesh, shaded with rose. Buds of unusual attractiveness, opening full and double. Habit excellent, growth strong, produces flowers on long stems, well up above the foliage, and in great profusion all summer. Hardy in almost all localities. Grand for forcing or outdoors.

VIRGINIA R. COXE (or Gruss an Teplitz).—For intense and dazzling color there is no other Rose to compare with this splendid kind. The flowers are large and handsome, moderately double, of splendid substance, and are produced in amazing profusion during the whole of the growing season; in fact, it is always in bloom. The color is fiery crimson, shaded with a dark velvety sheen, a combination found in no other Rose.

The fragrance of Virginia R. Coxé is unexcelled by that of any other variety under cultivation. It is a strong and sturdy grower, often attaining a height of four to five feet, is perfectly hardy in all sections and is one of the finest of the many splendid Roses that have come to us from Europe, and has won friends wherever grown here in America, which is attested to by the fact that the demand increases each season.

HELENA CAMBIER.—Of unusual beauty, with large, double, beautifully formed flower, the colors are varying, ranging from salmon-rose to coppery-rose; very often a handsome saffron hue. As the flowers expand the colors become lighter. A most remarkable sort in every respect and one to which we give our highest endorsement. Good everywhere.

Price.—All Roses on this page, except where noted, first size one-year plants, 30c. each; 4 for \$1.00, postpaid; two-year-old plants, 85c. each; \$8.50 per dozen of one or more varieties, by express at purchaser's expense; 90c. each by Parcel Post with soil on roots.

Dingee Ever-Blooming Tea Roses

The Best for Winter Blooming

While not so hardy as the Hybrid Teas or Hybrid Perpetuals, yet with protection they will live through the winters in almost all sections of the country, except in the extreme North. In the South they are unexcelled, whether planted in the open ground or used for pot culture. The fact that one-year-old plants produce a profusion of flowers makes them indispensable to every Rose-lover. For Fall planting out door secure them early.

The Wonderful Rose

Charles Dingee

Note photographs in natural colors on outside back cover.

The almost unlimited resources of our great West Grove greenhouses have been severely taxed to propagate enough plants of this remarkable Rose to meet the demands for it, and even now we have not an oversupply. The unprecedented demand for this remarkable Rose was so great last spring that it almost exhausted our immense stock, and we can offer only one-year and two-year plants at this time. Charles Dingee Rose blooms continuously, producing immense, deep, double, grandly formed flowers on long, stiff stems, the beauty of which is nothing short of superb. The color is a delicate blending of rose tints in the center, which gradually shade off into pale blush and creamy white. For winter culture indoors, in pots and boxes, it cannot be surpassed. It is never out of bloom. **Strong, special-size plants, 25 cts. each, five for \$1.00, \$2.50 per doz.; two-year-old plants, 75 cts. each, \$7.50 per doz.; 80 cts. each by parcel post, with soil on roots.**

The Bride

There is no other white Rose more satisfactory than The Bride. When planted in the open ground, the flowers are sometimes found to be delicately tinted with pink, making it exceedingly attractive. The buds and flowers are unusually large, well formed and deliciously perfumed.

Bridesmaid. This variety is valuable for cutting and does finely in the open ground; a sport from the old and popular pink Tea, Catherine Mermet, but of a fine, clear, dark pink, much deeper and more constant in color, than Mermet. The bush is a strong, sturdy grower, bearing all summer a profusion of dainty, beautiful flowers.

Marie Van Houtte.—It is a strong and sturdy grower, blooming constantly, with great freedom. The color of the flowers, which are large, full and double, is pale canary - yellow, passing to rich, creamy white shaded with pale rose.

Marie Guillot.—We recommend it as one of the most reliable white Tea



Charles Dingee

Roses in cultivation, especially for outdoor culture. The color is pure white, sometimes faintly tinged pale yellow. The flowers are beautifully made, very large, full and double; the buds are very pretty, of sweet fragrance.

Bon Silene

Bon Silene. The color is deep rose, changing to pale light rose. In the open ground it grows to perfection, producing large crops of beautiful flowers from early spring until late autumn. One of the favorites of the old-time gardens.

Golden Gate. Immense in size, finely formed, with long and beautiful buds. Color rich, creamy white, shaded with golden yellow and clear rose. of indescribable beauty.

Isabella Sprunt. Golden yellow; free bloomer; very fragrant. Fine cut flower.

Mad. Jos. Schwartz. White, tinged and shaded with yellow and blush.

Souv. de Aug. Metral. A strong and vigorous grower, producing a profusion of pure deep red large full flowers, well formed and of good substance. Very fragrant.

Coquette de Lyon. The flowers are extra large, deep and double; color pure canary yellow.

Etoile de Lyon. It blooms freely, producing beautifully formed flowers of rich golden yellow; extremely hardy.

Enchantress. A free bloomer, bearing immense globular flowers in large clusters; a vigorous grower. Color creamy white, tinged with buff in center.

Aline Sisley. Rich shade of violet-red, brightened with crimson-maroon.

Anna Oliver. A superb free-blooming Rose. The flowers are double, extra large and of splendid substance; color creamy blush, shaded with deep carmine and edged with silvery-rose; very fragrant.

Catherine Mermet. One of the best varieties of Tea Roses. A very free bloomer, producing clear, shining pink flowers, the center being shaded with fawn and amber. Is a good Rose for open-ground culture



One-Year-Old Rose Bush

25c Each for all Roses on this page, except where noted; 5 for \$1.00; two-year-old plants, 75 cts. each; \$7.50 per dozen by express, collect; 85 cts. each by parcel post, with soil on roots.

The Famus Cochet

Roses

The Cochet Roses are perfectly hardy in every section of the country, even where the winters are most severe, with slight protection. No matter where you live, they will give perfect satisfaction. They thrive vigorously and bloom lavishly all summer long, and increase in beauty with the passing years.

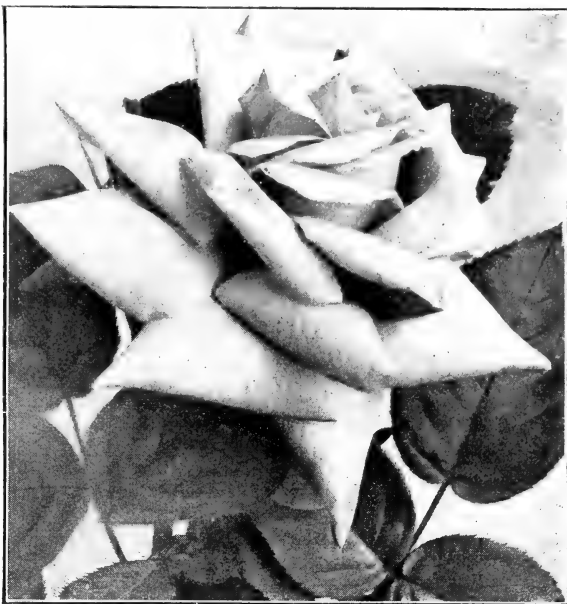
Pink Maman Cochet. The buds are large, full and firm, elegantly pointed, showing depth and richness as they expand. The superb flowers are clear, rich pink.

White Maman Cochet. Snowy white, with sometimes a faint tinge of pink.

Red Maman Cochet (Helen Gould). The flowers are very full, perfectly double; buds long and pointed. Color warm, rosy crimson, hardy everywhere.

Yellow Maman Cochet. A typical Cochet Rose, of a deep sulphur yellow.

Crimson Maman Cochet (Etoile de France). Clear shade of red crimson.



White Maman Cochet

Special Offer of Cochet

Roses

One each of the five colors, strong plants, postpaid, for \$1.00. Two-year-old plants, one of each, five in all, \$3.50, by express; \$4.00 by parcel post, prepaid.

Alexander Hill Gray

After a thorough trial both indoors, under glass and in the open ground, we are pleased to offer this lovely yellow rose to our customers as one of the very best of its class and color. The color, which is a deep lemon yellow deepening as the flower expands, does not fade in the open ground, as is usual with such. Buds and blooms of perfect formation and of great substance, and produced in the greatest abundance throughout the entire season. Strong grower and hardy everywhere. Awarded Gold Medal by National Rose Society.

Enfant de Lyon (The Sweet Anise Rose). In color the flowers are beautiful creamy-rose, delicately shaded with coppery-yellow, and very fragrant. The flowers are much admired for their color and the distinct Anise fragrance peculiar to this variety. This variety is becoming more popular every year.

Papa Gontier. A strong, vigorous grower and constant bloomer; one of the very best and most valuable, both for open ground and greenhouse; color rich cherry-red, passing to clear glowing crimson. One of the best for all purposes, with immense buds and magnificent flowers.

Reiherr Van Marshall. As an outdoor Rose it has no superior. It has wonderfully beautiful foliage and produces large, full, beautifully shaped flowers, which are borne in profusion all through the season. The color is bright red, one of the best red Tea Roses that is known.

the Queen. Of vigorous and healthy growth, sweetly scented. A constant bloomer, producing profuse crops of buds and flowers; the buds are well shaped, with large petals of best substance. White.

Mad. de Watteville. The Tulip Rose. The color is a magnificent shade of creamy-yellow, richly colored with rosy blush; the large petals are bordered with bright crimson, giving it a very striking and beautiful appearance.

Vm. R. Smith. Especially suited for outdoor planting and cutting purposes. The soft blending of the salmon-pinks, rose-pinks, and the magnificent flesh tints resemble the blush of a maiden's cheek.

Ime. Heinz. Saffron yellow, shaded with carmine. Double and free flowering.

Safrano. The color is a bright apricot-yellow, passing to orange and fawn, sometimes tinted with rose. A splendid old-time Rose that has never been replaced by any newcomer of its class or color. It is a variety especially adapted to outdoor planting; vigorous, healthy; blooms all summer.

Burbank. A rival of Champion of the World, bearing a great profusion of large crimson flowers; very fragrant.

Princess Bonnie. The brightest, sweetest and freest-blooming Rose in existence. Color, solid crimson, deeper and more vivid than "Jack." Fragrance far sweeter than La France. Always blooming.

Marie Lambert, or Snowflake. Large, double, creamy white flowers are produced in marvelous profusion. It is unusually hardy and grows vigorously. The foliage is very substantial, of attractive dark green color and practically free from disease.

Madame Lambard. Color a magnificent shade of rosy bronze, changing to salmon and fawn, tinted with carmine.

Madame Welche. Color a magnificent shade of amber yellow, deepening toward the center to orange or coppery yellow, delicately clouded with pale crimson.

Mrs. Dudley Cross. In color, a pale chamois, or light yellow faintly flushed with rose; in strength, hardiness and vigor of growth not surpassed by any known Rose, and growing to perfection in the garden.

Norma. Almost like Mad. Caroline Testout in form and sturdiness of growth; of splendid fragrance and the color is a magnificent shade of pink.

Uncle John. An offspring of Golden Gate, from which it differs in color, which is much more intense. Well worth a trial.

Mad. Francisca Kruger. Of strong and vigorous growth and a constant bloomer, which is especially suited to bedding or massing. The flowers are deeply shaded coppery-yellow in color, and are of large size.

Princess de Sagan. The flowers are well made, while the buds are beautiful. The color is fine velvety crimson; very brilliant. The bush is remarkably free in growth and extra hardy, bearing a profusion of handsome blooms all summer.

Madame Cusin. The bright purplish crimson flowers, with base of inside petals sometimes streaked with white, are produced in great profusion. The flowers are double and very fragrant.

25c Each

for any Roses on this page, except where noted; 5 for \$1.00; two-year-old plants, 75 cts. each; by express, \$7.50 per dozen; 85 cts. each by parcel post, with soil on roots.

Christine Wright



Dingee Hardy Climbing Roses

Hardy Climbing Roses have the popular call. They have become an absolute necessity for beautifying the home, for training over porches, verandas, trellises and pergolas, and they make most beautiful flowering hedges when trained on low supports. All the Climbing Roses in our unequalled list are on their own roots—a most vital point in a Climbing Rose. Some are absolutely hardy in the coldest parts of the country, while others, growing luxuriantly in the middle and southern sections, require some slight protection in the north. Fall planting is particularly recommended for this class of Rose, as they make much better growth the following season than if planted in the spring. They are pot-grown and in the right condition. Order early and give them a chance to establish.

Price, first size, 25 cts. each, 5 for \$1.00; two-year-old plants, 75 cts. each, \$7.50 per doz., by express; 85 cts each by parcel post, with soil on roots.

Christine Wright

A cross between Mad. Caroline Testout and an unknown seedling. Has the constitution of an oak, with thick, leathery, dark green foliage, practically immune from insects or disease. Blooms are produced singly and in large clusters, each bloom perfect in form and from 3 to 4 inches in diameter. Color an exquisite shade of bright wild-rose pink.

***KEYSTONE**—Perfectly hardy everywhere, blooms in wonderful profusion. The open flower of Keystone is perfectly double, with buds beautifully formed. It is a deep lemon-yellow Rose, similar to Coquette de Lyon. The fragrance is much like that of magnolia blossoms.

Alberic Barbier. A thrifty yellow; flowers are bright and full, very fragrant.

American Pillar. Produce a profusion of pretty pink flowers, dark green foliage.

Climbing Killarney. Produce beautiful blooms, identical with the bush Killarney.

Triumphant. Deep rose, changing to pale carmine, shaded and variegated.

Tausendschon or Thousand Beauties. One of the most beautiful climbing Roses in existence. Colors run from delicate balsam to bright rose and carmine.

White Dorothy Perkins. A very rampant grower. Flowers are brilliant, glistening white, produced in great trusses.

Violet Blue. The flowers are borne in loose clusters and are of a delightful shade of blue.

Excelsa. A remarkable grower, free from insects and producing a great quantity of blooms of crimson maroon with the tips of the petals scarlet.

Climb. American Beauty. A real American Beauty of a climbing habit. Sturdy as an oak. Color glowing red.

Climb. Meteor. Everblooming Climbing Hybrid Tea Rose. Color dark velvety crimson.

Empress of China. The Apple Blossom Rose. Soft red changing to pink.

Philada. Crimson Rambler. Earlier than the Crimson Rambler and free from mildew. Color dark crimson.

Pride of Washington. Bright amaranth shaded rose center. Large, double clusters.

Crimson Rambler. The old Crimson Rambler. A rank climber.

Climbing Baby Rambler and everblooming Crimson Baby Rambler. Flowers, bright crimson, in clusters.

Climbing Wootton. Produces superbly formed flowers of bright magenta-red shade to violet crimson.

Dorothy Perkins. A brilliant pink rambler Rose, flowers in large clusters, prettily crinkled petals.

Newport Fairy. An everbloomer, producing an abundance of single, deep pink flowers.

Lady Gay. Vigorous grower. Flowers a delicate cherry pink fading to soft white.

Leuchstern. Large bunches of single flowers of bright rose with white eye.

Dr. W. Van Fleet. Flowers when open run four inches and over in diameter. The center is built high, petals beautifully undulated and cupped. The color is a remarkably delicate shade of flesh-pink on the outer surface, deepening to rosy flesh in the center. The flowers are full and double, of delicate perfume; buds pointed.

Silver Moon. Single flowers, extra large and freely produced on long, strong stems; excellent for cutting. Color is brilliant silvery-white with a mass of golden-yellow stamens in center.

Birdie Blye. Buds long and pointed. Color bright carmine, changing to bright satiny-rose as they open. Blooms produced at end of every shoot in clusters.

Climbing Clotilde Soupert. An offspring of that famous Rose Clotilde Soupert, this beautiful, hardy, everblooming climber is excellent in every way. The ivory-white color, shading toward the center to silvery-rose, gives an effect that is indescribably beautiful.

Dingee Hardy

Climbing Hybrid

Tea Roses

Climbing
Gruss an Teplitz

The Roses on this page are noted for the exquisite beauty of their flowers, rivaling, as they do, those of the Hybrid Tea class. They are all wonderfully strong growing, hardy and vigorous, and in constant bloom all summer. In the middle sections of the country and in the Northwest they thrive and bloom most luxuriantly, while in the warmer sections they fairly run riot in their glory of growth and bloom. Even in the coldest Northern States they grow to perfection, but will require some slight protection in winter.

Climbing Gruss an Teplitz

or VIRGINIA R. COXE—A valuable addition to this class of Roses so rapidly coming into popularity on account of their blooming qualities. This is an exact counterpart of the bush Rose Gruss an Teplitz, but a vigorous climber, attaining a height of 10 to 15 feet in a single season. When it first blooms in the spring it is a dazzling sheet of velvety crimson.

MRS. ROBERT PEARY—A strong and rapid grower, coming to perfection in the open ground. The buds are long and pointed, finely modeled and gracefully finished, while the fragrance is indeed delicious. The flowers when open are of splendid substance, extra large, deep and double, produced on long, stiff stems. Color pure white.

CLIMBING METEOR—A sport from Meteor, famous for its magnificent flowers. True climbing habit, attaining a height of 10 to 15 feet in a single season. Dark velvety crimson, the equal of any Rose in cultivation.

CLIMBING LADY ASHTOWN - Strong, rapid grower, producing large, delicate, pink flowers in abundance.

CLIMBING WOOTON - Superbly formed flowers in wonderful profusion, of bright magenta-red, passing to violet crimson, richly shaded.

MARECHAL NIEL - This is the wonderful garden Rose our friends in the Southland are so fortunate in being able to grow in their gardens to perfection, and which yields such splendid returns if given slight protection and care in the North. Buds and flowers superb; extra large, very double and deliciously perfumed. Deep golden yellow. Blooms with greatest freedom. In the North, should have very careful protection in open ground during winter.

SOLFATERRE (M. H.)—Climbing habit; fine clear sulphur-yellow; large, full and double.

WILLIAM ALLEN RICHARDSON (M. H.)—Coppery-yellow, flushed with carmine.

CLIMBING MARIE GUILLOT—Pure snow-white, tinged with pale yellow.

FORTUNE'S DOUBLE YELLOW (M. H.)—Bronzed yellow or coppery and fawn color.

ALLISTER STELLA GRAY—Light yellow.

PILLAR OF GOLD—Rosy pink, base yellow.

CLIMBING BRIDESMAID—Clear, dark pink.

CLIMBING MALMAISON—Color rich, creamy flesh.

Climbing White Maman Cochet

The exquisite white flowers, every one of which is a perfect specimen of the White Maman Cochet Rose, are borne in great profusion, fairly covering the plant all summer, for it is one of the most constant bloomers of all the white climbing Roses. It is absolutely



hardy, except in the extreme North, where it requires some slight protection. It is a strong, vigorous grower, throwing up strong canes 15 to 20 feet long in a single season.

Climbing Pink Maman Cochet

A pure Maman Cochet Rose of the climbing habit, and as there is no Rose that is as popular as the Cohets we feel confident in offering this climbing Rose to the rose-loving public that it will prove to be as popular as the Bush Rose of this name, as it is an exact counterpart of the bush variety. As free blooming as the Cohets, which will without doubt make it a very valuable addition to the climbing roses, sufficiently hardy to withstand the vigor of the northern winters with some protection, and blooming throughout the growing season.

BALTIMORE BELLE—Pale blush, variegated carmine-rose and white. Very double flowers in beautiful clusters.

JAMES SPRUNT (M. H.)—Deep cherry-red, double.

GARDENIA—Very fragrant; creamy yellow.

CLIMBING MARIE GUILLOT—Pure snow-white, tinged with pale yellow.

CLIMBING CECILE BRUNER—Color rosy pink, rich, creamy white ground. Needs protection.

CLIMBING PERLE DES JARDINS (M. H.)—Same as the grand old Perle des Jardins.

CLIMBING REINE MARIE HENRIETTE—Striped and flamed in bright carmine and pale rose.

WHITE MARECHAL NIEL—Identical with its parent, Yellow Marechal Niel, but pure white.

Prices of all Roses on this page, except where noted, first-size plants, 25 cts. each; 5 for \$1.00, postpaid; two-year-old plants, 75 cts. each, by express; \$7.50 per dozen, or 80 cts. each by parcel post, prepaid, with soil on roots.



J. B. Clark

Gloire Lyonnaise

Brilliant White Rose

Great Roses are made all the greater by the publicity given them. Frequently a variety of more than ordinary worth is allowed to "waste its sweetness on the desert air" because the public is unacquainted with its merits. This is especially true of this great variety. Makes strong, upright bush, with beautiful deep green foliage; practically thornless. While a Hybrid Perpetual, yet like the Hybrid Tea Roses, bears in greatest profusion large, pointed buds and massive flowers on long, stiff, heavy shoots; the open flower is enormous, full, deep and double. Rich creamy-white, passing, when open, to a pale shade of salmon-yellow, deepest at the center. Absolutely hardy everywhere.

Prince Camille de Rohan—Celebrated the world over for its large, handsome, fragrant flowers, and the freedom with which they are produced. The color is a deep, rich velvety crimson, passing to intense maroon, shaded black.

Vick's Caprice—Flowers large and slightly cup-shaped, but full and deep; petals thick and lasting, having the ground color clear, satiny pink, distinctly striped and dashed with white and bright carmine. Blooms freely at short intervals during the whole season.

Marshall P. Wilder—Flowers large, semi-globular, full and of good substance; bright scarlet-crimson, richly shaded with maroon.

Louis Van Houtte—Brilliant vinous crimson; large, full and fragrant; an excellent sort and one that we recommend most highly.

Mad. Alfred Carriere—Extra large, full flowers; very double and sweet; rich, creamy-white faintly tinged with pale yellow.

Clio—A really grand Rose. On the order of Baroness Rothschild. Recommended by expert growers as the finest Rose of this type. Strong, vigorous grower, handsome foliage. Flowers flesh color, shaded in the center with rosy-pink; large, of fine globular form, freely produced.

Dingee Famous

Hardy June Roses

There is little question that Hybrid Perpetual Roses, or "June Roses," as they are sometimes called, are the most valuable of all hardy plants. They are of vigorous, upright growth, have large, bold flowers, frequently measuring 5 to 6 inches in diameter, and are deliciously fragrant. These Roses will succeed in any locality and are so hardy that they will live through the severest winters with but a light protection of leaves or coarse manure. Some of the kinds do not bloom until the second year, but, when fully established, they all bloom freely at the usual time, early in the season. The Hybrid Perpetuals will stand hardship and neglect, but give much better results with good cultivation and rich soil. Always plant in open ground, as these Roses are not suitable for house culture. Our collection of Hybrid Perpetuals is by far the best in the country. The plants we send out are strong and hearty and on own roots. Fall is the most suitable time for planting these.

Prices of all Roses in this section, except where noted: First-size, 30 cts. each; 4 for \$1.00. Two-year-old plants, 85 cts. each; \$8.50 doz. by express collect; 90 cts. each by parcel post, prepaid, with soil on roots.

J. B. Clark

An intense deep scarlet-rose, shaded blackish-crimson, color like the sheen of a plum, often 7 inches in diameter and 5 inches deep. J. B. Clark has created a great sensation throughout the United States and Europe. A wonderfully strong and upright grower, exceedingly vigorous, with splendid and heavy dark bronze-green foliage. The glory of the plant is in its flowers, however, as they are extraordinary in size, full and double, wonderfully fragrant, of great depth, and borne freely from the first year, on long, stiff stems. This Rose has proven hardy, even in Canada, and a genuine treat is in store for everyone who plants it. We have a large stock of own-root plants, all in splendid condition.

Anna de Diesbach (Glory of Paris). Most lovely brilliant carmine; long, pointed buds, and large, finely formed, compact flowers.

Francois Levet. One of the best and most satisfactory of all Hybrid Roses; we recommend it highly for general planting.

General Jacqueminot. Bright, shining crimson, rich and velvety; exceedingly brilliant.

Magna Charta. Extra large, full flowers, very double; of fine form and sweet; clear, rosy-red, beautifully flushed with violet crimson.

La Reine. Clear, bright rose; large, fine, full form; fragrant and hardy.

Paul Neyron. The flowers are immense; probably the largest and finest Rose; bright, shining pink; clear and beautiful; very double and full.

Coquette des Blanches. Pure snowy white, sometimes faintly tinged with pale rose; blooms in large clusters; medium size, full and slightly fragrant.

Mrs. John Laing. Immense flowers, full and double, borne in great profusion on long, stiff stems, and exceedingly sweet. Clear, bright, shining pink.

Eugene Furst. Strong, vigorous grower, with thick, healthy foliage. Flowers beautiful, velvety crimson, shading to maroon.

Ulrich Brunner. A great Rose, known to all planters as one of the best in this class. Immense, large, bold flowers, full and globular; rich, glowing crimson, elegantly flamed with scarlet. Hardy, unusually free blooming. Highly fragrant.

Black Prince. Much sought after because of its dark crimson flowers, which are shaded so deeply as to be almost black; cupped large, full, fine-shaped.

Boule de Nieve. A very hardy, pure white variety, medium size; very full, double flowers of delightful fragrance. Makes a fine pot plant for winter blooming. Blooms all the time.

The Exquisite
"Baby Doll"



BABY RAMBLERS

CRIMSON BABY RAMBLER. The color is clear and brilliant ruby-red; foliage dark and glossy.

ANNY MULLER. Color a shiny and brilliant pink, produced in the greatest profusion in large clusters.

DOUBLE WHITE BABY RAMBLER. Great masses of double, pure white flowers, covering the plant as with a mantle.

BABY TAUSENDSCHON. A dwarf form of the Climbing Tausendschon or Thousand Beauties. Flowers firm, white, delicately flushed pink, changing to deep rosy-carmine.

GEO. ELGER. It produces great quantities of lovely little buds of golden-yellow, opening into miniature symmetrical Roses. Bush is so loaded with blooms they resemble a huge bouquet.

MRS. WM. CUTBUSH. Flowers of pale pink, borne in huge trusses throughout the entire summer.

ORLEANS. The most attractive of all the Baby Rambler Roses. A very rapid grower, soon producing a bush resembling a huge bouquet of brilliant geranium red flowers, suffused rose, with a rosy-white center.

ERNA TESCHENDORF. Crimson flushed carmine. Darker red than Crimson Baby.

CLOTILDE SOUPERT. Known the world over as one of the very best of all bedding Roses. A strong, dwarf grower and a truly wonderful bloomer, producing clusters after clusters of the finest formed flowers. Full and double, and deliciously sweet. Color effect is beautiful, ivory-white, shading toward the center to silvery-rose.

YELLOW SOUPERT (Mosella). The flowers are very double, and of the same camelia-like form as Clotilde Soupert, and are produced in immense clusters; buds exceedingly dainty. Color, white, on beautiful, light yellow ground; center chrome-yellow.

RED SOUPERT (Ma Petite Andree). An unusually strong grower, dwarf and compact, producing large, full, double flowers in amazing profusion. Color brilliant crimson.

PINK SOUPERT. Identical with Clotilde Soupert except in color of flower, which is clear, lively pink and at a little distance resembles a Carnation.

WHITE SOUPERT (Clotilde Pfitzer). The genuine White Soupert. Identical in every way with Clotilde Soupert, except in color, which is ivory-white. Free blooming and hardy.

Prices of Soupert Roses: Strong plants, 25 cts. each; 5 for \$1.00, postpaid; two-year-old plants, 65 cts. each; \$6.50 per dozen, by express, or 75 cts. each by parcel post, prepaid, with soil on roots.

Dwarf or Baby Rambler Roses

The Baby Ramblers fill a long-felt want for a rose suitable for planting along walks, driveways, and around beds where a low-growing bush is desired for planting in beds or single specimen plants. They are of a dwarf habit, rarely growing more than twelve inches in height. Blooming always. Absolutely hardy.

Price of all Baby Rambler Roses offered on this page, except where noted, 20 cts. each for strong pot plants; 3 for 50 cts. postpaid; two-year-old plants, 65 cts. each; \$6.50 per dozen, by express, or 75 cts. each by parcel post, prepaid, with soil on roots

Polyantha or Fairie Roses

The members of this distinct and charming class of ever-blooming Roses, of which the Baby Rambler forms a conspicuous group, are distinguished by their dwarf, bushy habit of growth, medium size, very double flowers and delightful fragrance.

Price of all Polyantha Roses on this page, first size plants, 25 cts. each; 5 for \$1.00; two-year-old plants, 65 cts. each; \$6.50 per dozen; 75 cts. each by parcel post, with soil on roots.

Mlle. CECILE BRUNER. Rosy pink on rich creamy white ground; a great bloomer; very satisfactory for bedding.

MARIE PAVIE. Medium size, very full and double; borne in large clusters; white flushed with carmine.

PERLE D'OR. Coppery gold, changing to fawn and salmon; flat-rayed form, very double; elegantly perfumed.

MIGRON. Very similar to Mlle. Cecile Bruner, but of lighter shade of pink, buds equally as handsome as the Cecile Bruner.

BABY DOLL. The flowers are miniature in size but magnificent in form and produced by the hundreds, exquisite for cutting or bouquets and bedding purposes. Makes a magnificent show in the open ground, always blooming from early spring until late fall. The tips of the petals are vivid scarlet, then mellowing down through shades of pink into saffron, lavender and gold, finally into deep old gold, a combination so extraordinary and so pleasing that every one seeing it exclaims, "What a Wonderful Rose!" Foliage slender and produced in abundance, dark lustre green. Makes a fine pot plant for winter blooming. Blooms all the time.

Hardy Japan Lilies

These glorious flowers of radiant beauty are very hardy, grow rapidly and vigorously, and survive from year to year, forming a permanent and attractive feature of the garden. The bulbs should be planted about 6 to 8 inches deep, in good, light soil. We offer the most carefully selected sorts in large sound bulbs. Bulbs will be sent as soon as possible after arriving from Japan, which will be during November, which is the proper time to plant.

AURATUM. Magnificent pure white flowers, exquisitely spotted with rose, and rayed and banked with yellow. Valuable for pot or garden. Extra-selected enormous bulbs, 30 cts. each; four for \$1.00.

SPECIOSUM, or LANCIFOLIUM. The most satisfactory of all lilies. We offer the best varieties as follows:

S. Album. Pure white, 25 cts. each.

S. Melpomene. Frosted white, spotted, with pinkish crimson. Petals deeply recurved and widely bordered. 20 cts. each.

S. Rubrum. Bright crimson and white flowers; grows 2 to 3 feet. 25 cts. each.

S. Magnificum. Deep colored flowers of rich carmine-crimson spotted blood-red edged with white. 25 cts. each.

TIGRINUM FI. PI. (Double Tiger Lily). Deep fiery red, spotted with black. 25 cts. each.

TIGRINUM SPLENDENS (Single Tiger Lily). Orange with intense dark spots. 25 cts. each.

GIGANTEUM. Cream-white with purple throat. Gigantic plants and immense flowers. 25 cts. each.

HENRYI. The color, a rich apricot-yellow, lightly spotted with brown. 60 cts. each.

CANDIDUM (Annunciation or Madonna Lily). Garden Lily. Large white flowers. 25 cts. each; five for \$1.00.

PARDALIUM (Leopard Lily). From California; entirely hardy; bright orange-red, with lighter orange center. Large clusters, 20 cts. each.

HUMBOLDTI. Golden yellow, spotted purple. 40 cts. each.

WASHINGTONIANUM. Delicately tinted, white spotted. 40 cts.

Special Offer One each of the five beautiful Soupert Roses, one-year-old plants, five in all, 90 cts., postpaid; two-year-old plants, five in all, \$2.75, by express.

The Best Winter-Blooming Geraniums



Dingee Geranium

Dingee Choicest Fuchsias

Strong plants, sure to bloom, 20 cts. each, 3 for 50 cts., postpaid.

Speciosa. Scarlet and white.

Trophy. Purple; extra large.

The Black Prince. A misnomer as far as name is concerned, being of a bright, waxy carmine; tube and petals large and broad, with pale green tips; large, open, pale pink corolla.

Elm City. One of the best; sepals a rich crimson; corolla deep purple and very double; free flowering and easy to grow.

Ernest Renan. White sepals; reddish-blue corolla.

Phenomenal. Finest, free blooming, double; sepals of bright crimson, corolla purple.

Rozains Patrie. Double; white and carmine.

Duke of Albany. Violet-purple; drooping.

Mme. Thebaud. Bright carmine; double.

Constancy. Carmine and white; extra large.



The Lovely Fuchsia

Choice Double

Strong plants, from 3-inch pots, 15 cts. each, \$1.50 per dozen.

Alphonse Ricard. Semi-double; orange-red.

Mrs. Lawrence. An excellent bloomer. Soft salmon-pink, tinged white.

Cousin Janie. Clear rich pink, slightly spotted light red.

Jules Vasseur. Bright scarlet, white center.

Jean Viadu. Soft pink, white blotches.

Berthe de Priscilla. Dwarf habit. Fine bedder. Bright silver rose-pink.

John Boyle. Rich scarlet. Very effective.

Heteranthe. Bright scarlet.

Comtesse de Harcourt. Pure snow-white.

Mme. Buchner. Snow-white; vigorous.

Mme. Recamier. Pure white. Strong grower.

Ornella. Magnificent. Semi-dwarf habit.

Rich scarlet, shaded crimson.

S. A. Nutt. Rich, dark crimson. Superb.

Jean Oberle. Peach pink, shaded white edge.

Fleuve Blanc. Pure white. Dark green foliage. Compact grower.

La Cid. Charming shade of cardinal red.

Anais Segalas. Bright salmon. Zoned foliage.

Double Dryden. Coral white center, shading through a delicate lilac. Ideal pot plant.

Beaute Poitevine. Bright salmon-pink.

Dr. Despres. Changeable violet, marked vermillion.

Le Pilote. Glowing crimson-scarlet.

Double New Life. Outer flowers brilliant red, center pure white flowers.

Choice Single

La Favorite. Snowy-white; superb.

Mrs. E. G. Hill. Free bloomer. Light salmon.

Eugene Sue. Brilliant shade of russet-orange.

Granville. Deep rose-pink with white blotches on upper petals.

L'Aube. One of the best pure whites.

Jaquerie. Deep carmine-red.

Feuer. Brilliant crimson-red. Dwarf growth.

Antithese. Vermilion-scarlet.

Baron Grubissich. Bright, tender rose. Clear white center.

Edmond Blanc. Large trusses of bright crimson. Copery center.

Clifton. Solid color of bright red.

Ivy-Leaved Geraniums

Price, strong plants, 15 cts. each; \$1.50 per dozen.

Dina Scalarandis. Double white, tinged lilac.

Rycroft's Surprise. Beautiful shade of rich pink.

Mrs. Banks. Blush-white, upper petals feathered deep pink; semi-double.

Alliance. Delicate lilac-white, upper petals feathered and blotched crimson-rose.

Pierre Crozy. Bright scarlet; dwarf, compact habit.

Fancy and Sweet-scented Geraniums

Strong plants, 15 cts. each; \$1.50 per dozen.

Madame Salteroi. Green, dotted white.

Apple-Scented. A grand old favorite.

Rose-Scented. Delightful rose scent.

Lemon-scented. Deliciously scented.

Strawberry Guava

A magnificent pot plant blooms and fruits continuously.

It has thick, shining, evergreen, camelia-like foliage, and pure white flowers of an agreeable odor. The fruit is large, of beautiful claret color; the flavor is most delicious and aromatic, resembling that of the strawberry. Used as a dessert fruit, also for preserving; makes jelly of delicious quality. Strong 3-inch pot plants, 20 cts. each, 3 for 50 cts., 7 for \$1.00.

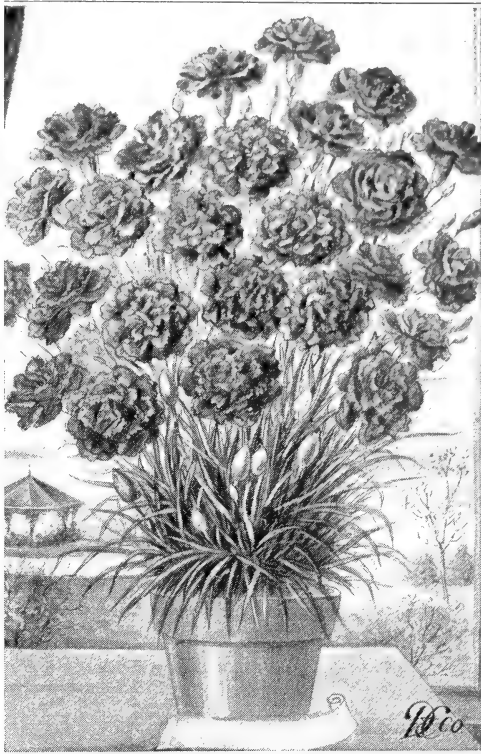
Dingee Winter-Blooming

Carnations

As a fall and winter-blooming plant for house culture we recommend the Carnation as one of the very best. It is as easily grown as a Geranium and equally satisfactory. You know how high-priced Carnation blooms are during the winter. Don't buy them—grow them yourself. You can have an abundance of flowers at a trifling cost. Follow these directions and you will succeed. Plant in good soil, give plenty of water and drain well. Let the plant be cool at night: this is an important requirement. A 40 degree to 50 degree temperature is about right. Keep the dead foliage picked off. We offer extra-large, field-grown plants; they will bloom continually throughout the winter. Fine plants can be sent by mail; it is best, however, to send them by express when possible, as they arrive in much better condition.

New Varieties

- Alma Ward. New white variegated; large and fragrant.
 - Aviator. The best standard crimson on the market.
 - Mrs. C. W. Ward. Deep pink.
 - Rose-Pink Enchantress. Deeper pink than Enchantress.
 - Matchless. Clear, brilliant white; fine form and very large. Highly scented. Delightful.
 - White Wonder. A truly wonderful white flower of immense size.
 - Miss Theo. Rose pink.
 - Beacon. Dazzling scarlet; very large and full.
 - Boston Market. Standard white.
 - Enchantress. Brilliant pink; fine shade; large size.
 - Victory. Brilliant red, extra large flowers and particularly free in bloom.
 - White Enchantress. Magnificent large white flower.
- Price, strong, field-grown plants, 35 cts. each, 3 for \$1.00, postpaid.



Winter-Blooming Carnation.



Cluster of Amaryllis.

Amaryllis Vittata Hybrids

By careful selection from the best and most expensive varieties we have produced a magnificent strain of the wonderful, showy flowers. They will produce from 3 to 4 flower stalks, each one bearing blooms from 5 to 9 inches in diameter with broad overlapping petals, circular in outline, and of every color and marking known in Amaryllis, among them being pure white penciled carmine or bright rose; white clouded and veined with red; crimson rayed and bordered with white; bright orange scarlet self; deep rose; deep crimson or blood red self shading into velvety black in the center; many of them having in the sunlight the appearance of being sprinkled with gold and silver dust.

Price, good sound bulbs sure to bloom, 2½ to 3½ inches in diam., 90 cts. each, postpaid.

Of all the house plants and flowers intended to cheer up the cold, dull days of winter in the home, none will do it with greater success than our new, magnificent Amaryllis. Words are inadequate to describe its wondrous form and color, and we can give but a feeble idea of the joy coming to our many friends who will plant this wonderful flower this fall.

Plant the bulb in good, rich, fibrous soil and sand in a pot not much larger than the bulb, or three bulbs in a 12-inch pot. Let the top of the bulb be about level with the soil, which should not come closer than one inch to the top of the pot. During the blooming season water freely and give an occasional application of weak liquid manure. After the bulb is done flowering withhold water gradually, and allow the bulb to rest.

Decorative Ferns



Whitmanii Fern.

Dingee Palms

- ARECA LUTESCENS.**—Trunk and stem, golden green. Strong plants, 6 to 8 inches high, 25c. each; 3 for 60c., postpaid; large plants, 14 to 18 inches high, 75c. each, postpaid.
- COCOS WEDDELIANA.**—The daintiest of all Palms. Strong plants, 3-inch pots, 50c.
- KENTIAS.**—The grandest of all Palms. *Kentia Belmoreana* is the tallest grower, while *Kentia Forsteriana* has the broadest leaves. Strong plants, 25c. each, postpaid.
- LATANIA BORBONICA.**—Divided, fan-shaped leaves. Strong plants, 25c. each, postpaid; large plants, 14 to 18 inches high from 5-inch pots, 75c. each.
- DRACAENA INDIVISA.**—Long, variegated leaves. 15c. each.
- PHOENIX CANARIENSIS.**—Date Palm, 30c. each.
- PHOENIX ROEBELINI.**—Graceful, long, Palm foliage. 35c. each.

Rubber Plant-Ficus Elastica

Will flourish under the most unfavorable conditions, and responds most readily to good treatment. Its thick, glossy foliage is exceedingly attractive and free from insect pests. Strong plants, 12 to 15 inches high. \$1.00 each, postpaid.

Miscellaneous Plants

- ASPARAGUS SPERNGERI.**—For pots, vases or hanging baskets. The long, slender branches droop most gracefully, clothed with feathery, emerald-green fronds. Strong plants, 15c. each; 4 for 50c.
- ASPARAGUS PLUMOSUS.**—Foliage surpasses a Maidenhair Fern; in grace and finish resembles the finest lace. Elegant for cutting; one of the best plants in our collection. 20c. each; 3 for 50c.
- NEW WEEPING LANTANA.**—Beautiful for baskets, vases, pots or for outdoor culture and porch boxes. Produces its clear lilac-pink flowers by the hundreds from early summer until severe frosts. Deliciously fragrant. Has a most graceful habit of growth. 15c. each; 4 for 50c.
- HIBISCUS SINENSIS.** All varieties, 20 cts. each, 3 for 50 cts.
Peachblow. Pink, with crimson center.
Versicolor. Buff, rose and white.
Cooperi Tricolor. Crimson, very large.
Minniatius Semiplenus. Vermilion-scarlet.
- GARDENIA FLORIDA** Cape Jessamine. Excellent winter-blooming. Flowers pure waxy white, large and very fragrant. Splendid for pot culture. 20 cts. each; 50 cts. for 3.

Use a soil composed of five parts; two parts of good garden soil, two parts of finely screened peat or leaf mold from the woods, and one part sharp, clean sand. This should then be thoroughly sterilized by putting in an oven and baking in order to destroy earth worms, etc. Place some broken pieces of pots or crocks and some charcoal in the bottom of each pot for drainage. A temperature of not less than 55 degrees F. should be maintained at all times, with a rise in the daytime of 10 degrees to 15 degrees. Judgment should be exercised in watering. On warm days they should be syringed at least twice. Never allow them to become too dry. Insects which are most troublesome are thrips, red spider, scale and mealy bug. Thrips, red spider and mealy bug are easily prevented by a properly moistened atmosphere, also by spraying of foliage once a week with tobacco water, made the consistency of weak tea, and increased or diminished in strength as occasion demands.

TEDDY, JR.—Fronds are broad and beautifully tapered from the base to the tip, drooping just enough to make a graceful plant. Compact, vigorous and thrives under most any condition.

ROOSEVELT.—Resembles the Boston Fern, but produces many more fronds, thus making a handsomer and bushier plant.

JACKSONII.—Extremely strong grower. Resembling Sword Fern, quickly forming large, upright plant.

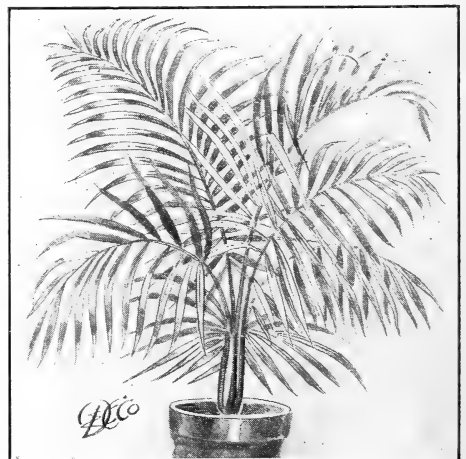
WHITMANII COMPACTA.—This is a condensed form of the "Ostrich Plume Fern," with valuable characteristics added which are not evident in the parent, the pinnae subdividing, making miniature fronds, looking as if two or more were condensed in one. Graceful beyond description.

THE BOSTON FERN.—This Fern differs from the ordinary Sword Fern in having much longer fronds, which frequently attain a length of six feet, drooping gracefully over the side of the pot or jardiniere, and on this account it is frequently called the Fountain Fern.

WHITMANII (Ostrich Plume Fern).—More of a dwarf habit than the Boston Fern. The fronds are of entirely different nature. Each frond is subdivided on the order of the Compacta Fern, thus producing a very beautiful effect. Very decorative.

MAIDENHAIR FERN (Adiantum cuneatum).—The best known table Fern, with dainty, lacy fronds, unlike any other.

Price of all Ferns in extra strong pot plants, 20c. each; 6 for \$1.00; large plants from 4- and 5-inch pots, 75c. each, postpaid.



Kentia Palm.

Herbaceous Peonies

Plant now for spring blooming

Of all the flowers in the Hardy Garden the Peony is easily recognized as the Queen—in fact, it vies with the Rose for the title in many ways, for while in bloom it is without question the most glorious object in the garden. Once Peonies are planted they last for a life time. They stand the severest winters without the slightest protection. Especially fine for single specimens and cemetery planting. After blooming their charm lies in the beauty of the foliage, for even when not in bloom the Peony plant is decorative in the extreme and well worthy of a prominent place in the garden.

We offer only the cream of the many hundred varieties. Don't buy the cheap kinds. They require just as much care, but don't produce the blooms.

New and Rare Peonies

Price, strong roots, 75c. each, except where noted; \$7.50 per dozen.

Lord Kitchner.—One of the latest and best introductions of Peonies today. Color a brilliant scarlet. Great producer, making a grand display. Double, early.

Price, \$2.00 each.

Faust.—Delicate light pink; double, late.
Felix Crousse.—Brilliant red. Extra fine. Double, midseason.

Duchess de Nemours.—Sulphur-white, changing to pure white. Particularly beautiful in the half-open bud state. Double, early.

Jeanne D'Arc.—Pure white. Early, double.

Festiva Maxima.—White center, flaked red. Double, early.

Mme. de Verneville.—Guard petals, sulphur-white, center delicate flesh. Double, early.

Candidissima.—Creamy white. Early, double.

Duke of Wellington.—Sulphur-white. Double, late.

Lady Bramwell.—Pink and rose. Double, midseason.

Rubens.—Dark crimson. Double, midseason.

Canary.—White, primrose center. Double, late.

Charlemagne.—Lilac-white, slight blush center. Double, late.

Delachi.—Velvety purple. Late, double.

Louis Van Houtte.—Velvety red. Double, late.

Festiva Alba.—Cream-white, red spots. Double, late.

Modeste Guerin.—Deep rose. Double, midseason.

L'Indispensable.—Very large. Lilac-white, changing to violet-rose.

Souv. de L'Exposition Universale. Large, clear pink. Midseason to late.

Mlle. Lenoie Calot.—Large, cherry-pink. Late.

Old-Fashioned Peonies

Price, 75c. each; \$7.50 per dozen, postpaid
Rosea.—Rose pink. **Alba.**—Blush white.
Rubra.—Deep crimson.

Dingee Special Lawn Grass Seed

It produces a smooth, velvety green sward of attractive appearance. Sow the seed carefully and evenly at the rate of one quart to a space equal to 15 x 20 feet; two bushels will sow one acre. After sowing, cover the seed by raking or harrowing it.

Seeding may be done at any time during spring, summer or fall, but the best results are obtained by sowing during April, May, September or October. Where fall sowing is practiced a top-dressing of manure is recommended to protect the roots of the young grass during the winter. In the spring the gross matter should be removed, leaving the surface clean. To renovate lawn, loosen the soil on the bare spots with a steel rake, and, after sowing a liberal quantity of seed, roll or rake again to cover the seed.

Price: By mail, 50c. per pound; in bulk, by express, 45c. per pound, 20 pounds or more.



Dingee Peony.

Dingee Choicest Hardy Perennial Phlox

Diversified and brilliant colors, profuse and continuous bloom and adaptability to almost any situation or soil, place Hardy Phlox in the front rank of desirable flowering plants. Being perfectly hardy, once planted they improve and multiply in vigor and beauty each successive year. Price, strong pot plants ready to plant any time, 20c. each; any three for 50c.

Diadem.—Dwarf; pure white.

Eclairer.—Purplish-crimson; large.

White Eclairer.—Large; pure white.

Fernand Cortez.—Tall; deep crimson.

G. A. Stephen.—Brilliant scarlet.

Iris.—Tall; bluish-violet.

Tapis Blanc.—Dwarf; pure white.

Terre Neuve.—Dwarf; grayish-lilac.

Wolfgang von Goethe.—Dwarf; bright salmon pink.

Brilliant.—Clear blood-red.

L'Aiglon.—Carmine-rose.

Mount Sully.—Orange-scarlet, purple eye.

Mrs. Jenkins.—Pure white.

Coquelicot.—Pure scarlet with crimson eye. Fine.

Perle Rose.—Rose-purple.

Schlossgartner Reichneau.—Carmine-rose.

Selma.—Tall; pale rose.

Rachel.—Rose-pink; purple eye.

Suffrage.—Lilac-mauve, rosy center.

Lily-of-the-Valley

One of the most universally known and admired plants. The graceful spikes, with the dainty pure white bells, are a delight to the eye, and their delicate fragrance is exquisite. Plants succeed almost anywhere, but prefer a partly shaded situation and rich soil. For house culture, plant rather thickly in pots or boxes, scatter some moss or other light material over the soil, which must not cover the crown; water well and set away in a dark, cold place where they will not freeze, or bury pot in ground for several days. When brought to heat and light after a few weeks, the leaves and flowers will soon appear. Ready for delivery in November. Strong-flowering crowns. Three for 25c., 75c. per dozen, \$6.00 per 100, postpaid

Pot Hydrangeas

Excellent for pot culture for blooming indoors throughout the winter. The foliage keeps dark green throughout the winter, making them an ideal decorative plant. They are hardy and used very extensively for outdoor planting, dying down in the winter and coming up in the spring and blooming all summer.

Otaksa—Rich pink, changing to snow-white and blue.

Avalanche—Large corymbs of pure white flowers.

General de Vibraye—Very large heads of bright rose.

25c each; five for \$1.00, postpaid; large specimen plants from 4 to 6-inch pots, 75c each by express.

Hardy Perennials

Funkia (Day Lily) Subcordata Grandiflora—White Day Lily. Handsome spikes of large, waxy-like blossoms, with an odor like that of orange blossoms, and large, broad, glossy, light-green foliage. One foot to 18 inches. 25c each.

Funkia Aurea Variegata—Flowers purplish-lilac; leaves beautiful variegated green and gold. 2 feet. 25c each.

Hibiscus Meehan's Marvel Mallow—Without exception the finest production among the Hardy Plant line in years. They make a bush-like growth from 4 to 5 feet high and 2 to 3 feet across. The flowers are of an enormous size, frequently 8 to 10 inches in diameter and ranging in color from fiery crimson through various shades of red, pink and white. No garden or yard complete without them, perfectly hardy, will thrive in any locality or kind of soil and blooms continually from July until checked by frost. Require no care or protection. Price, mixed colors, Pink, Red or White, strong 2-year-old field-grown roots, 75c each.



Hydrangea Otaksa

Yucca Filamentosa-Spanish Bayonet—A low-growing evergreen plant with narrow leaves. The flower stalk is from 2 to 4 feet high and rises from the center. Creamy white, bell-shaped flowers.

Rubeckia, Golden Glow—Grows 6 to 8 feet high, branching freely and bearing by the hundreds on long, graceful stems exquisite double flowers of the brightest golden yellow. Hardy. 25c each, postpaid.

Spanish Iris

Fine for cutting, as they stand gentle forcing well. When planted in open ground make a fine display. Price 10 cts. each; \$1 doz., postpaid. **British Queen.** Large white flowers. **King of the Blues.** One of the best blues.

King of the Yellows. Fine yellow. **Philomela.** Very attractive shade of light blue.

Mid'ey. Light blue.

Prince of Orange. Yellow and lilac. **Sapho.** Good bronze.

Walter T. Ware. Pale lemon yellow.

German Iris

The memory of the "Blue Flag" of the old-time gardens is one ever sweet to those whose lives were lived in such surroundings, and while the "modern" Irises, if we may use the term, will remind one of the old days, they, too, like everything else of these days, have yielded to the influence of improvement, and there has been evolved a race of flowers absolutely bewildering in glory of their form and color.

Canary Bird. (Flavescens) Lovely pale yellow.

Darius. Yellow and lilac.

Honorabilis. Deep yellow; mahogany falls.

Florentina Alba (Silver King) Early white.

Ingeborg (Interregna) Immense white; extra early.

Mrs. H. Darwin. White, violet veining, rather dwarf.

Lohengrin. Foliage and flowers immense, of a deep violet mauve, almost pink; a wonderful flower.

Queen of May (Rosy Morn). Lovely rose lilac.

Madame Thibault. White, bordered rose lilac—companion to Mad. Cherau, edge more pinkish.

Cherion. Standard lilac-mauve; falls violet-mauve.

Price, 15c each; 8 for \$1.00, postpaid.

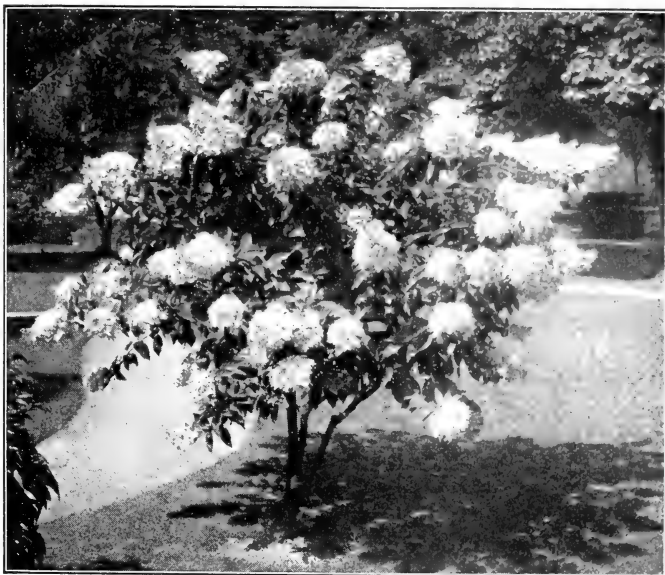


Spanish Iris

Hardy Shrubs for Permanent Planting

They are absolutely hardy, and, once planted, last indefinitely, increasing in size and beauty year after year. For cold climate where hardy plants are needed they stand without an equal. Planted in clumps, masses or used for hedges, screens, or for filling unsightly corners, they make a glorious show. They supply that certain something which is lacking in every yard where hardy shrubbery is not planted. We recommend a liberal planting of this class of plants. They last a lifetime and are sure to give splendid satisfaction. Their culture is exceedingly simple. When received cut the plants back about one-third their growth if not done before shipping. Set about three feet apart for a screen, but as individual specimens plant wherever desired. Water freely when planted, and for a few days afterward. No protection required. They may be planted as soon as ground is ready to dig up until late spring. This class of plants should be set out earlier than Roses and other pot plants, so if your order contains some of them we will send the different varieties at the proper season.

Some varieties, such as Hydrangea, Snowball, Weigelas, Deutzias, require pruning in early spring before new growth starts. Here with us it is done in late February or early March each season.



Hydrangea paniculata grandiflora.

Hydrangea Paniculata Grandiflora

We grow and sell annually many thousands of these most popular of all shrubs. They are extensively used for yard, lawn and hedge planting and for screens. Attains a height of 5 to 7 feet; hardy in all localities; blooms the first and every season in July and August, and continues in bloom for two or three months; the flowers are massive, cone-shaped, often measuring 10 inches in length, and have a pleasing variation of color, changing from original pure white to pink, and finally to beautiful, rich, coppery-red. Well-rooted, field-grown plants that will bloom this year.

Prices, one-year-old plants 25c. each; 5 for \$1.00, postpaid; strong, two-year-old, field-grown, blooming plants, 75c. each.

Hydrangea Arborescens Sterilis

The New Everblooming Hydrangea is, as its name implies, constantly in bloom from early in June until frost, and is one of the most important additions in the way of hardy shrubs ever introduced. All summer long it bears great clusters of white flowers, much like the tender Hydrangea in size and form; it will grow to perfection in partial shade, making it most valuable for massing under trees or growing on north side of house. Handsome bright green foliage.

Price, strong, vigorous plants, well rooted, 25c. each; \$2.50 doz., postpaid; larger, field-grown plants, with several branches, fine roots, 75c. each, \$7.50 doz.

Lilacs (Syringa)

Best beloved of all the old-time garden shrubs, whose flowers never fail to charm with their delicate beauty or refresh with their tender fragrance.

NEW PERSIAN.—This grand Lilac blooms in early June. Flowers beautiful reddish purple, very fragrant and borne in profusion; leaves rich, dark green, rather small and delicately shaded; habit of growth very neat and compact.

WHITE.—This rare and beautiful White Lilac is much sought after.

PURPLE.—The old favorite and one of the best.

Price, in strong two-year-old plants only, 75c. each.

Althea - Rose of Sharon

The flowers are brilliant and striking in color, 9 to 12 feet high when matured. Blooms during August and September.

Alba Plena—Large, double, pure white flowers.

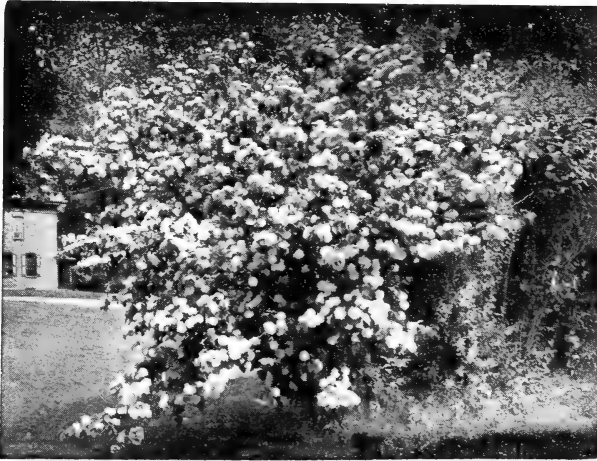
Blanche—The nearest pure white of any double variety.

Double Purple—Deep reddish purple.

Price 2 year old plants 75 cts. each by express.



New Everblooming Hydrangea.



Double Japan Snowball in full bloom.

Spirea - Meadow Sweet

Aurea (Golden Leaved).—Bright golden yellow foliage and small white flowers.

Billardi.—Spikes of rose-colored flowers; blooms profusely.

Bumalda.—Dwarf-growing. Flowers rose-colored.

Callosa Alba.—Dwarf white-flowering variety.

Callosa Rubra.—Grows 3 to 4 feet high; deep, rosy, red flowers.

Callosa Superba.—Light red flowers in profusion.

Prunifolia (Bridal Wreath).—Double, pure white flowers.

Reevesii.—Single, pure white; blooms latter part of May; attains a height of 4 to 6 feet.

Thunbergii.—Blooms in April; compact; fern-like leaves; flowers borne in clusters.

Van Houttei.—The bushes form fine, compact clumps. The pure white flowers are borne in great masses.

Perpetual Blooming Crimson Spirea, Anthony Waterer.—It makes a low, compact bush, 15 to 18 inches high. Large umbels of deep crimson flowers.

Blue Spirea (Caryopteris Mastacanthus).—The dense flower heads are of a rich lavender-blue color.

Hardy Ornamental Grasses

For ornamental purposes these grasses are strikingly original in effect and impart a tropical brilliance to the landscape. The plumes which these grasses produce are beautiful for interior decoration.

Prices of all Eulalias and Erianthus described below, 20c. each; 50c. for 3; large clumps, 35c. each; \$1.00 for 3.

Eulalia Gracillima Univittata.—Forms an exceedingly handsome plant, 4 to 5 feet high.

E. Japonica Zebrina.—The leaf blades are of deep green, distinctly striped crosswise with large bars of pure white.

E. Japonica Variegata.—Blades are creamy white in the center, with a broad margin of bright green. Plumes are beautiful.

Erianthus Ravennae.—Reed-like ornamental grass throwing up 30 to 40 fine erect flowerlike stalks 8 to 10 feet high the first season. The plumes are highly valued as parlor ornaments.

Double Japan Snowball

(*Viburnum Plicatum*)

Blooms in early June, when the whole bush is loaded down with great, compact balls of pure white, double flowers. They are borne in such profusion that the entire plant appears one dense mass of bloom; the tree grows erect and bushy 6 to 8 feet high, with deep green leaves peculiarly crimped and crinkled. Wonderously beautiful. Price, all field-grown plants, one-year size, 25c. each, postpaid; two-year size, 65c. each; three-year size, 85c. each, by freight or express; seven-year size, extra-large specimen plants, \$1.50 each, by freight or express, at purchaser's expense.

VIBURNUM OPULUS STERILIS (Old-fashioned Snowball).—A strong, hardy grower; pure white flowers. A showy class of shrubs of compact growth, luxuriant foliage and very free flowering.

Deutzia Crenata.—4 to 6 feet; double, white, tinted rose.

Deutzia Fortunei.—4 to 6 feet; pure white.

Deutzia Gracilis.—2 to 2½ feet. Drooping, snow-white.

Deutzia Pride of Rochester.—Pure white, with a faint blush.

Deutzia Lemoninei.—New, Immense. Purest white.

Weigela Candida.—Snow-white flowers; late June.

Weigela Lavellei.—Deep red flowers; beautiful.

Weigela Rosea.—Flowers are large and of a deep rosy color.

Weigela Variegated Leaf.—Green leaves, margined pure white.

Weigela Eva Rathke.—Rich reddish purple.

Rubra.—Red, shading to light pink.

Price of all plants on this page, except where noted: One-year-old size, 25c each; any 5 for \$1, postpaid; two-year-old size, 75c each, \$7.50 dozen, by freight or express; three-year-old size, 90c each, by freight or express at purchaser's expense.



Spirea Van Houtte.

California Privet

The One Best Hedge Plant, Combining Beauty, Hardiness and Efficiency.

California Privet has long been recognized as the one very best plant for Hedge purposes, as it is remarkable for its beautiful, dark green glossy foliage, its quick, strong and symmetrical growth, its freedom from insects and scale, and its ability to withstand pruning and trimming into any desired shape.

For many years we have made a specialty of growing California Privet for Hedges, and our stock cannot be surpassed anywhere. It is strong, thrifty and in the best of shape for transplanting. Each one a specimen plant. We have it in all sizes, from one-year-old plants to large, vigorous bushes which can be used with telling effect in the formation of an immediate hedge. These large plants are the most economical to buy, for with them the tedious years of waiting for the hedge to grow will be avoided.

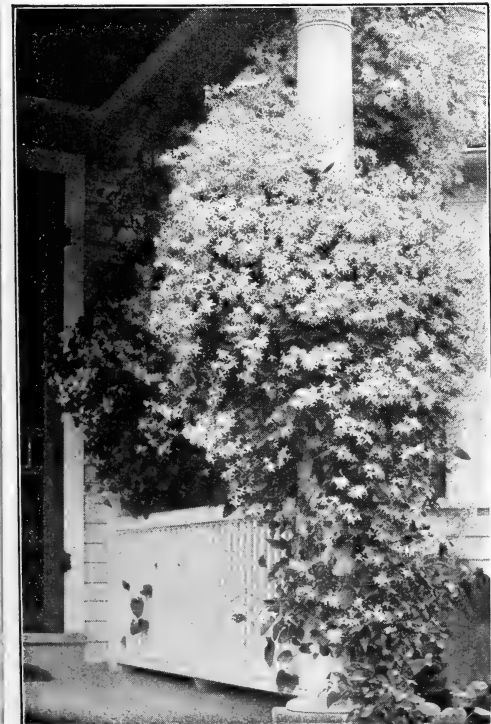
First size, 12 to 14 inches, 10c each; 6 for 50c, postpaid; \$5.00 per 100. Second size, 2 to 3 feet, 15c each; 5 for 50c; \$8.00 per 100, by express or freight at purchaser's expense. (Orders for 50 filled at 100 rates.)

AMOR RIVER PRIVET—Similar in habit to California, but with dark, lustrous foliage and more upright habit of growth. Reputed to be harder. Price, first-size plants, 12 to 18 inches in height, 10c each; \$1.00 per dozen, postpaid; \$6.00 per 100; larger two-year-old plants, 2 to 3 feet, \$9.00 per 100, by express, collect.

BERBERIS THUNBERGI (Barberry). Grows 3 to 4 feet high; small, perfectly shaped, rich green leaves, turning in autumn to bright scarlet. Flowers a delicate shade of coppery yellow, followed by beautiful, brilliant red berries, clinging all winter. Price, first-size plants, 8 to 12-inch, 15c each, 9 for \$1.00, \$10.00 per 100 by express; larger plants, 18 to 24 inches, \$20.00 per 100, by express or freight.

Miscellaneous Shrubs

CALYCANTHUS FLORIDUS (Carolina Allspice).—Flowers purple; quite double, exquisitely fragrant and borne in profusion during the entire season.



Clematis Paniculata.

FORSYTHIA Viridissima (Golden Bell).—Height, 3 to 4 feet; bright yellow, bell-shaped flowers; blooms early.
PHILADELPHUS Grandiflora (Mock Orange).—Blooms early in June; flowers creamy white and very fragrant.
TAMARIX AFRICANA (African Tamarisk).—Graceful, erect-growing shrub, pretty pink flowers, leaves like evergreen.

CALYCANTHUS FLORIDUS (Carolina Allspice).—Flowers purple; quite double, exquisitely fragrant and borne in profusion during the entire season.

FORSYTHIA Viridissima (Golden Bell).—Height, 3 to 4 feet; bright yellow, bell-shaped flowers; blooms early.

PHILADELPHUS Grandiflora (Mock Orange).—Blooms early in June; flowers creamy white and very fragrant.

TAMARIX AFRICANA (African Tamarisk).—Graceful, erect-growing shrub, pretty pink flowers, leaves like evergreen.

MISCELLANEOUS SHRUBS

Price of all plants on this page, except where noted: One-year-old size, 25c each; any 5 for \$1 postpaid; two-year-old size, 75c each; \$7.50 per doz. by freight or express; three-year-old size, 90c each; by freight or express at purchaser's expense.

HARDY CLIMBING VINES

Clematis Paniculata

The Most Wonderful of All Flowering Vines—Quick Grower, Exquisite Fragrance.

The flowers are pure white and are borne in great panicles or clusters of bloom, fairly covering the plants, so that it is a mass or sheet of fleecy white with an exquisite fragrance. It begins to bloom late in August the first year. Hardy in all sections of the country. Strong plants in pots, 25c each; 5 for \$1. Strong two-year-old field-grown plants, 50c each.

Wistaria Magnifica—The finest Wistaria of its color now known. Extremely vigorous, growing 30 to 40 feet in one season when well established. The flowers are pale lilac, and the immense clusters of drooping racemes, which measure 12 to 18 inches in length, are deliciously fragrant. 25c each; 5 for \$1.

Wistaria Alba—There is nothing more striking or appropriate for pergolas and ordinary trellises than this splendid vine. Pure white flowers. 25c each; 5 for \$1.

Mammoth Flowered Trumpet Creeper (Bignonia Grandiflora).—One of the most superb climbing vines in existence. Grows with rapidity, is perfectly hardy everywhere. The flowers are trumpet-shaped and warm orange-red. Strong plants, 25c each; 5 for \$1, postpaid; larger plants, 50c each, postpaid.

English Ivy—A splendid evergreen climber, with dark glossy green leaves; clings firmly to stone, brick or wood walls without trellis or support; very desirable. 15c each; 9 for \$1.00.

AMPELOPLIS

Either variety, fine plants, 25c each; 5 for \$1; three-year-old plants, 3 feet in length, 75c each, postpaid.

Veitchii (Boston or Japanese Ivy)—It covers buildings and walls with a perfect mat of dark green, leathery foliage, which changes to brilliant crimson as fall approaches. Clings to either tree or wood without support.

Quinquifolia (Virginia Creeper)—Large, dark green foliage.

Engelmanni—A greatly improved variety of the Virginia Creeper with dense foliage of a glossy light green in summer, changing to a brilliant crimson in the autumn. On a rough stone surface it will cling without support in the same way as the Japanese Ivy. 35c each; \$3.50 per dozen.

Tricolor (*Vitis heterophylla variegata*)—A beautiful and desirable climber with dark green foliage wonderfully variegated with white and pink during the late summer and fall the plant is literally covered with attractive small berries of a peculiar lustrous metallic peacock blue color; highly useful for trailing over rocks or for a low trellis. 20c each; 6 for \$1.00; larger plants, 30c each; 4 for \$1, postpaid.

HONEYSUCKLE

Price, 25c each; two-year-old plants, 50c each; assorted varieties, \$5.00 per dozen.

Chinese Sweet Scented—White and yellow flowers.

Evergreen Sweet Scented—Buff, yellow and white.

Red Coral—Red trumpet-shaped flowers.

Yellow Coral—The only true golden-yellow Honeysuckle. **Golden-Leaved**—Leaves beautifully veined and spotted with clear yellow. Flowers yellow and fragrant.

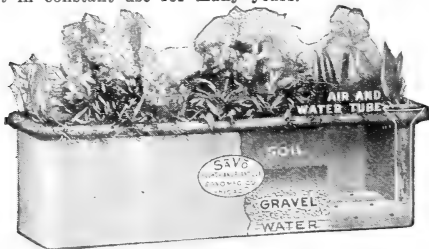
New Halliana—Evergreen and a constant bloomer; flowers pure white, changing to yellow. Very fragrant.

New Heckrottii—Clear rose, yellow at the base; sweet and fragrant; in constant bloom.

Savo Flower and Plant Box

Watered Automatically

The Savo Flower and Plant Boxes are made of heavy galvanized steel, artistic in design, the watering is easy, the drainage ample, the air circulation perfect. They are beautifully finished in Dark Green and will last in constant use for many years.



Directions for Using: First, place coarse gravel pebbles, broken flower pots or moss about an inch deep over the top of the double arched reservoir, then fill the box with good, rich, black dirt, fill the reservoir with water and sow the seed or install the plants and see them grow.

STANDARD STOCK SIZES AND PRICE LIST By Express Collect

Model A,	6 1/2 in. high,	6 1/2 in. wide,	23 in. long..	\$3.50
Model B,	8 in. high,	9 1/2 in. wide,	29 in. long..	4.00
Model C,	8 in. high,	9 1/2 in. wide,	35 in. long..	4.50
Model D,	8 in. high,	9 1/2 in. wide,	41 in. long..	5.00
Model E,	8 in. high,	12 in. wide,	12 in. long..	3.50
Model F,	12 in. high,	12 in. wide,	12 in. long..	4.00

Finished in Dark Green.

Lenox Sprayer

FOR
INDOOR
SPRAYING
UNDER
THE
LEAVES



A mist like spray covering every part of the plant.

THE THING LONG NEEDED

Just What Mother Was Long Looking For
Real Success With Your House Plants
Sent Complete for 50 Cents Postpaid

A Cake of Tobacco Soap FREE With Each
Make Suds and Spray

Your Plants Will Surprise You

Also 2 extra bulbs for Laundry use all \$1.00
Do not forget to order one with your seeds,
you need it

Bordeaux Mixture (Dry)

For dusting plants affected with mildew and all fungus diseases. Can be dissolved and used as a spray. 1-lb. box, 60c (make 5 gallons liquid), postpaid.

Walker's Excelsior Plant Food

comes as a boon. Its use is so simple, the good results so positive, that there is no reason why any flower lover should be without a box of this, the essence of plant life. It is an odorless preparation, combining in a highly concentrated and soluble form every element required in plants to produce vigorous, healthy growth and profusion of flowers.

2 1/2 oz. cans, making	3 gals.	\$0.20
5 oz. cans, making	6 gals.35
12 oz. cans, making	15 gals.55

(Postpaid)

Dingee Best Flower Seeds for Fall Planting

- HOLLYHOCKS**—Chater's Superb Double. Flowers 3 to 4 inches across, of most beautiful colors. Pkt., 10 cts.; 3 for 25 cts.
Double Allegheny. The finest mixed strain in existence. Pkt., 10 cts.; 3 for 25 cts.
DIGITALIS (Foxglove). Tubular flowers of purple, white, yellow and rose in long spikes. Pkt., 5 cts.; 6 pkts. for 25 cts.
DIANTHUS (Pinks). Best varieties mixed. Pkt., 5 cts.; 1/2 oz., 40 cts.; oz. 75 cts.
PERENNIAL PEAS (Lathyrus latifolius). All varieties. Pkt., 10 cts.; oz., 40 cts.
DINGEE BEDDING PANSIES. This mixture contains the choicest sorts, with large flowers of superb form and color. Pkt., 5 cts.; 6 pkts., 25 cts.
SWEET WILLIAM (Dianthus Barbatus). Splendid for beds or borders. Single or double mixed. Pkt., 10 cts.
DINGEE SUPERB PANSIES—Imperial German Mixed. A splendid mixture of over fifty beautiful varieties. Pkt., 10 cts.; 3 pkts. for 25 cts.; oz. 65 cts.
SWEET PEAS. A special assortment of Sweet Peas for fall planting. By planting them six inches deep in the fall, flowers may be had in early June. Fine also for conservatory planting. Pkt., 5 cts.; oz., 20 cts.; 1/4 lb., 75cts.
CARNATIONS and PICOTEEES.
 Choice Double Mixed. Pkt., 10 cts.
 Picotee, Finest Double Mixed. Pkt., 10 cts.

Tyrian Plant Sprinkler

is essential to success with plants. With it you can quickly sprinkle them. It will keep the foliage fresh and healthy. Throws a spray "just like rain." Its value is so apparent that once secured, you will not be without it. Postpaid, 90 cts. each.



Sulpho-Tobacco Soap

For sure, easy and immediate extermination of all insect life on plants, trees and animals, Sulpho-Tobacco Soap is a matchless preparation. Will not injure the most tender plant. It dissolves readily in water, and may be applied with a Tyrian Sprinkler. Prices, 3-oz. cake, 13 cts.; 8-oz. cake, 28 cts., postpaid.

Special Offer The "Tyrian" Sprinkler and a 3-oz. package of Sulpho-Tobacco Soap for \$1, postpaid.

PRACTICAL BOOKS

- GARDEN GUIDE.** How to plant and maintain the home grounds. Vegetable and flowers, 250 pages, profusely illustrated. Postpaid, paper cover, 90 cts.; cloth cover, \$1.10.
MILADY'S HOUSE PLANTS. With the aid of this book anyone can have a fine collection of blooming plants to add cheer and beauty to the home during the fall and winter months. Postpaid, paper cover, 90 cts.; cloth cover, \$1.10.
PRACTICAL LANDSCAPE GARDENING. The result of twenty years of practical experience. Containing sketches, plans, etc. Postpaid, cloth cover, \$1.90.
PRACTICAL FLORICULTURE. The new and revised. \$1.75 postpaid.
ROSE CULTURE (Ellwanger). A fine work. \$1.75 postpaid.
GARDENING FOR PLEASURE. Especially written for amateurs. 404 pages. Illustrated. Price, \$2.25, postpaid.

Established 1850

AUTUMN, 1921

Incorporated 1871

Order Sheet Roses, Bulbs, and Plants for Fall Planting

THE DINGEE & CONARD CO.

The Largest and Leading Rose Growers of America

WEST GROVE, PA.

Postage prepaid on all Bulbs and small miscellaneous Plants offered in our Fall Book. Remit by Post Office or Express Order, Bank Draft and Registered Letter at our risk. Always address THE DINGEE & CONARD CO., West Grove, Pa., U. S. A.

Amt. \$ Date 1921 Ship by
Mail or Express

Name

Town

(Street No., Post Office Box or R. F. D.)

Express Office State

QUANTITY	ROSES, BULBS OR PLANTS	Dollars	

Orders for Roses and Miscellaneous Plants, Bermuda Easter Lilies, and Freesias, can be filled at any time after the issue of this book; for Shrubs, Vines, Peonies, Phlox, etc., not until about October 15th, or as soon as they become dormant; for Holland grown bulbs, Hyacinths, Tulips, etc., not until after September 15th, or as soon as they arrive in America.

OUR "NEW GUIDE TO ROSE CULTURE"---1922

UNABRIDGED EDITION FOR 1922

The Leading Rose Catalogue of America
Profusely Illustrated

Ready to send out January 1, 1922
Sent Free for the Asking

QUANTITY	ROSES, BULBS OR PLANTS	Dollars	Cts.
	Amount Forward		

Orders for Roses and Miscellaneous Plants, Bermuda Easter Lilies, and Freesias, can be filled at any time after the issue of this book; for Shrubs, Vines, Peonies, Phlox, etc., not until about October 15th, or as soon as they become dormant; for Holland-grown bulbs, Hyacinths, Tulips, etc., not until after September 15th, or as soon as they arrive in America.

From _____
Post Office _____
State _____

Do Not
Forget
2c
Stamp

The Dingee & Conard Company

The Leading and Oldest Rose Growers of America

(U U)

West Grove, Pa.

DINGEE BULBS AND ROSES GO AND GROW EVERYWHERE

COMBINATION OFFERS

The Flower Grower for one year and any one of the following offers postpaid for \$2.00. When the wintry winds are whistling you can keep the indoors bright and cheerful by growing winter blooming plants and bulbs such as are offered below. These are not cheap goods but the best plants and bulbs money can buy.

- F. G. No. 1. For \$2.00 we will send you **The Flower Grower** for one year and one dozen First Size Hyacinths, mixed colors, postpaid.
- F. G. No. 2. For \$2.00 **The Flower Grower** one year and 18 Dutch Roman Hyacinths, especially prepared for winter blooming.
- F. G. No. 3. For \$2.00 **The Flower Grower** one year and 18 single and double mixed Tulips, postpaid.
- F. G. No. 4. For \$2.00 **The Flower Grower** one year and 12 Giant White Narcissi for blooming in water, as fragrant as the Orange blossoms. Sure to bloom, no trouble to grow.
- F. G. No. 5. For \$2.00 we will send you **The Flower Grower** for one year and 5 Easter Lilies, bulbs producing handsome blooms.
- F. G. No. 6. For \$2.00 we will send **The Flower Grower** one year and 6 choice Geranium plants, postpaid.
- F. G. No. 7. For \$2.00 we will send **The Flower Grower** and 6 choice winter blooming Roses, may be planted outdoors in the spring.
- F. G. No. 8. For \$2.00 we will send you **The Flower Grower** one year and 6 choice Ferns, postpaid.

Check the offer you wish to accept, fill in your name and address on the other side and mail with remittance to
THE DINGEE & CONARD CO., The Leading Rose Growers of America, West Grove, Pa.

Brighten the Home With Dingee Roses

10 for \$1.00

Great Trial Collection

of the Justly

Famous West Grove Roses

If you wish to have roses blooming all winter in your home and thus enjoy their beauty and fragrance the year round don't fail to secure this collection of specially prepared plants for winter blooming. These plants are now growing in 3½ inch pots, ready to replant into larger ones. In this collection we include an extra strong plant of the famous Charles Dingee Rose, one of the most wonderful winter blooming Roses known. All different kinds, on their own roots, properly labeled and sent postpaid. Safe arrival guaranteed.

THE DINGEE & CONARD COMPANY West Grove, Pennsylvania

Published Monthly
for both Amateur
and Professional
Flower Growers.



Subscription Price,
Three Years, \$3.50,
\$1.50 per year.
Canadian and For-
eign subscriptions
25c. per year extra.

MADISON COOPER, Editor and Publisher, CALCIUM, N. Y.

THE FLOWER GROWER champions the cause of the summer garden flowers. It is published monthly and each issue abounds with helpful information on how to have the best of success with those increasingly popular flowers, the Gladiolus, the Peony, the Iris, the Dahlia, the Rose, etc. **The Flower Grower** should be in the hands of all who grow flowers.

The Flower Grower tells what sorts to grow, how and when to plant, when to cut the bloom for shipping and for home decoration, and how to save and store the seeds, bulbs, etc. In short, every phase of flower culture is taken care of, and practical facts and information on summer-flowering plants of all kinds comprises its contents. The magazine is a great contribution to the floral literature of the world.

Write your name and address below and enclose it with \$1.50 or \$3.50 (stamps, money or check) in an envelope addressed to **MADISON COOPER, Publisher, Calcium, N. Y.**

Name

Address

See The Dingee & Conard Co. Special Combination Offers on the other side.



OTAHEITE ORANGE
For Prices See Inside Front Cover Page

THE DINGEE & CONARD CO.
WEST GROVE, PA.

ESTABLISHED
1850

CHAS. DINGEE
FOUNDER

The Leading and Oldest Rose Growers of America.

THE DINGEE & CONARD
COMPANY
WEST GROVE, PA.
The Leading and Oldest Rose Growers
of America



Dingee Beautiful
Easter Lily
See Page 18



The Wonderful Bush Rose
CHARLES DINGEE



Dingee Handsome
House Fern

See Page 28