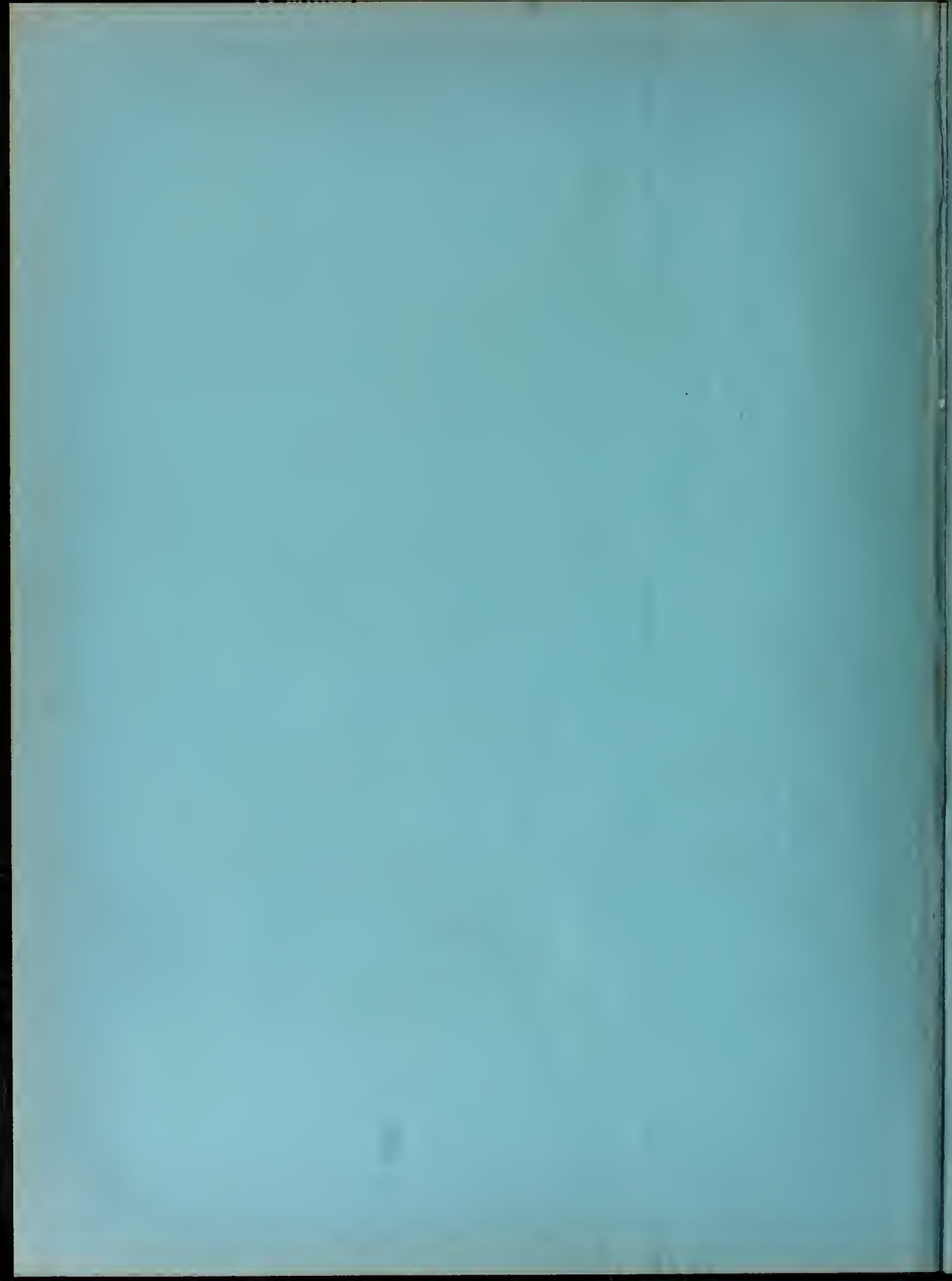


The BAGPIPE 1933

ST. ANDREWS  
COLLECTION

ED  
6501  
.F7  
B3  
1933



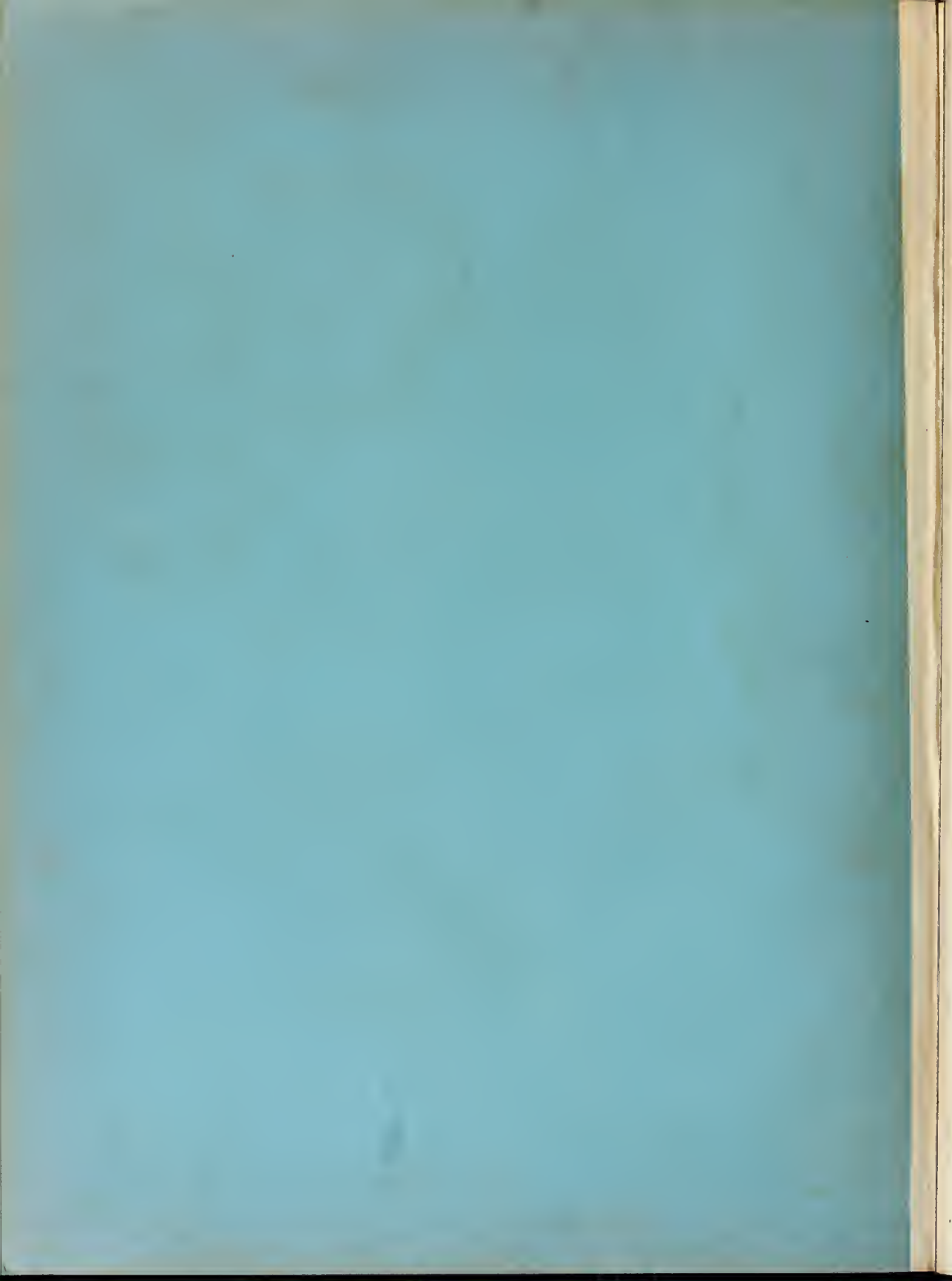


---

EX LIBRIS

---







---

---

# BAGPIPE

PUBLISHED BY THE SENIOR  
CLASS OF PRESBYTERIAN  
JUNIOR COLLEGE

---

---

1933

VOLUME I

MAXTON, N. C.

650  
L.P.  
650  
111  
33  
411



# COPYRIGHT

ALBERT F. BAKER  
*Editor*

R. T. SINCLAIR, JR.  
*Business Manager*

## BAGPIPE 1933

**The College**

**The Classes**

**Organizations**

**Athletics**

**Advertisements**



## FOREWORD

To record the progress and achievements of the past two years and to portray the impressions of the spirit of our campus has been our aim. If in turning through these pages pleasant memories are brought to you that make your acquaintances here lasting intimacies that will stand the test of time, our purpose will have been achieved, our fondest hopes fulfilled.



34044  
LIBRARY

ST. ANDREWS PRESBYTERIAN COLLEGE



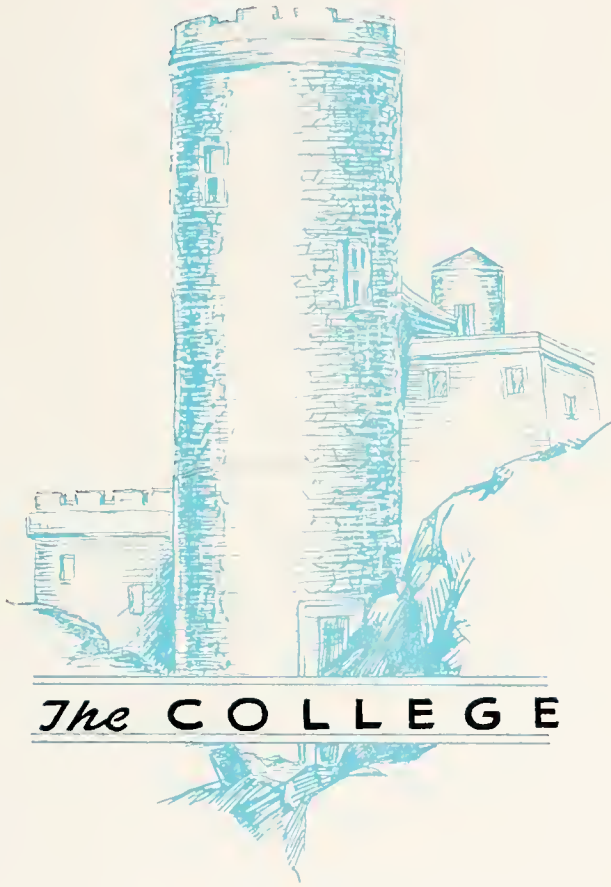
REV. RANDALL ALEXANDER MCLEOD

**B**

We, the Senior Class of nineteen hundred and thirty-three of Presbyterian Junior College, do dedicate this, the first volume of *THE BAGPIPE* to the memory of Rev. Randall Alexander McLeod. It was largely through his hard work and earnest effort that this institution was established.

It is with sincere hearts that we perform this act of devotion to one who deserves the respect and admiration of the entire student body, faculty, and admirers of Christian education.





---

*The* COLLEGE

---



ADMINISTRATION BUILDING



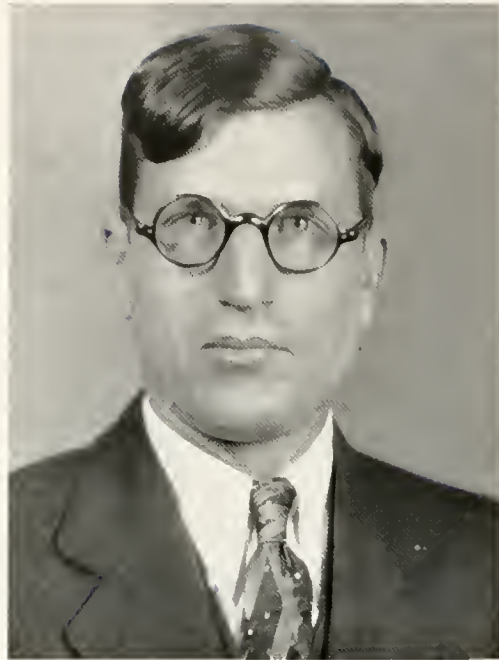
MCLEOD HALL



SIDE VIEW OF ADMINISTRATION BUILDING



VIEW OF CAMPUS



PRESIDENT R. G. MATHESON, JR.

### PRESIDENT'S MESSAGE

The Presbyterian Junior College wishes to express its appreciation to the student body for the publication of this the first volume of the BAGPIPE. We believe that this modest but typical production exemplifies the desire on the part of the student body to continue its forward look, at the same time taking due cognizance of the economic condition prevalent in our country.

We wish to thank the people who have by prayer and means made our school possible, and the patrons who have sent to us a type of student that has challenged our enthusiasm and has made for our school such an enviable record.



These four enthusiastic Christian laymen have been largely instrumental in a material way in making our school possible.

W. H. BELK  
J. P. WIGGINS

E. H. EVANS  
R. L. McLEOD

### BOARD OF TRUSTEES

MR. E. H. EVANS, *ex-officio*  
MR. J. P. WIGGINS, *ex-officio*

*Chairman*  
*Secretary*

MR. W. H. BELK  
REV. A. J. HOWELL  
REV. H. N. McDIARMID  
MR. MURPHY McNAIR  
REV. A. S. VENABLE, D.D.  
REV. J. H. HENDERLITE, D.D.  
MR. F. H. STEEDMAN  
REV. E. L. SILER, D.D.

MR. R. L. McLEOD  
REV. R. A. WHITE, D.D.  
REV. A. P. DICKSON  
REV. W. M. FAIRLEY, D.D.  
MR. R. S. McCOIN  
REV. LYNN R. WALKER, D.D.  
MR. C. G. ROSE  
MR. C. S. CLARK



## FACULTY AND ADMINISTRATION

R. GORDON MATHESON, JR.  
*English*

A.B. (P. C. of S. C.)  
M.A. (Univ. of S. C.)

CHARLES R. HUNTER  
*History and Economics*

A.B. (Davidson College)  
M.A. (Univ. of N. C.)

DOZIER H. DRINKARD  
*Dean of Students*

B.S. (Birmingham Sou.)  
M.A. (Univ. of N. C.)

EDWIN L. KEY  
*Mathematics*

B.S. (N. C. State)  
M.A. (George Peabody)

WILLIAM McCANTS HARTIN  
*French and German*

B. Litt. (Furman Univ.)  
Th.M. (Sou. Bap. Theo. Sem.)  
A.M. (Johns Hopkins Univ.)

V. A. SYDENSTRICKER  
*Spanish and English*

A.B. (P. C. of S. C.)  
M.A. (Geo. Washington)

GEORGE P. HENDERSON  
*Physical Education*  
B.S. (Davidson College)

JESSE M. DALE  
*Bible and Spanish*  
A.B. (Erksine College)  
Th.M. (Princeton Theo. Sem.)

OLIVER W. FERENE  
*Science*  
B.S. (P. C. of S. C.)

ELIZABETH NEAL McNAIR  
*Typing and Shorthand*  
Lakeland Bus. School

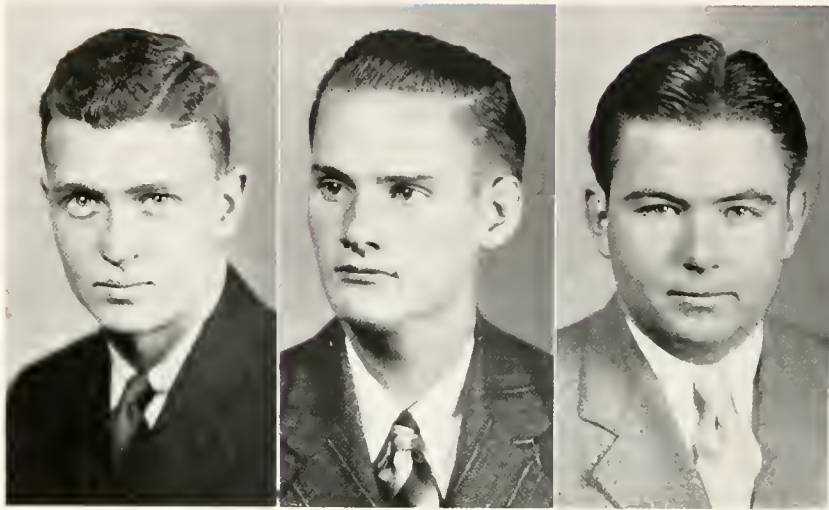
DANIEL A. CURRIE  
*Commerce*  
B.S. (Davidson College)  
Univ. of N. C. Law School  
Attorney-at-Law

MRS. E. L. KEY  
*Dietitian*





CLASSES



HUNTER

WICKER

PHILLIPS

### SENIOR CLASS OFFICERS

ROBERT BROOKS WICKER.....	.....	.....	<i>President</i>
JENNINGS T. HUNTER.....	.....	.....	<i>Vice President</i>
ANGUS P. PHILLIPS.....	.....	.....	<i>Secretary-Treasurer</i>

### ALMA MATER

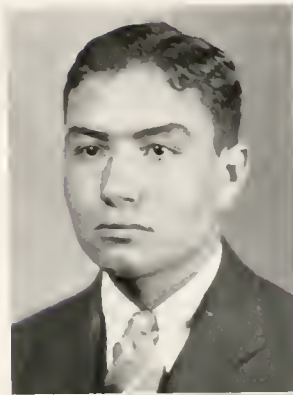
To thee Dear College do we raise  
 Our voices in acclaim,  
 And memories of Yesterday  
 Shall cluster round thy name;  
 And as we sing our college song,  
 Unfurl the banners free  
 Revealing liberty and truth,  
 Forever, P. J. C.



PAUL CAMPBELL, JR.  
*Senior Mascot*

CROWLEY CLARK ALLEN  
Elizabethtown, N. C.  
*Associate in Science*

Block "P" Club; Glee Club; Manager of Boxing.



NATHAN H. ANDREWS, JR.  
Rowland, N. C.  
*General College*

Football, '30, '31, '32; Captain of Football, '32; Baseball, '31, '32; Basketball, '31; Block "P" Club.



ALBERT F. BAKER  
Moorestville, N. C.  
*Associate in Science*

Editor-in-Chief of BAGPIPE, '33; Student Council '32, '33; Sphinx Club; Monitor, '33; Assistant to Dean.

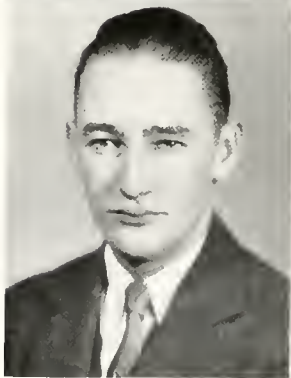




MARGARET BODIFORD  
Maxton, N. C.  
*General College*  
Mixed Chorus; Pi Alpha Lambda Sigma.



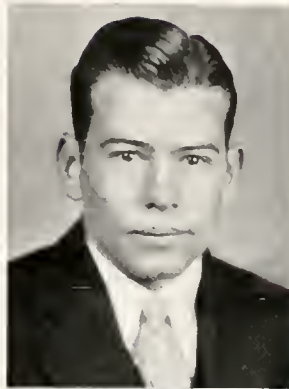
CHARLIE W. BROWN  
Hamlet, N. C.  
*Associate of Science*  
Football, '31, '32; Photographic Editor of BAGPIPE;  
Block "P" Club; Captain Intramural Football; Vice  
President of Sphinx Club.



JAMES AUBREY CAMERON  
Olivia, N. C.  
*General College*

HORACE HILTON CROWELL  
Hamlet, N. C.  
*General College*

Assistant Boxing Coach; Boxing Squad; Football,  
'32.



RALPH H. DAVIS  
Hamlet, N. C.  
*General College*

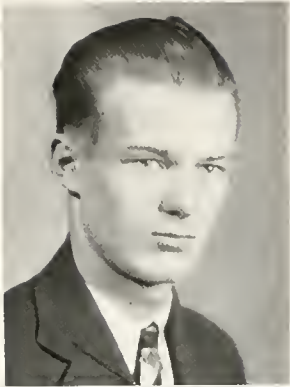
Football, '31, '32; Baseball, '32, '33; President of  
Block "P" Club; Manager Basketball, '33; Captain  
Intramural Football, '33.



JAMES R. DALRYMPLE, JR.  
Jonesboro, N. C.  
*General College*

Davidson College, '31; Varsity Cheer Leader, '33;  
Advertising Manager BAGPIPE; Block "P" Club; Sphinx  
Club.





CLETUS ODELL FULP  
Wagram, N. C.  
*Associate of Science*

Assistant Librarian.



VIVIAN ORELL GURGANIUS  
Hasty, N. C.  
*Associate of Science*

Mixed Chorus; President of Pi Alpha Lambda Sigma.



DELMAS DENNIS HASKETT  
Wilmington, N. C.  
*General College*

Football, '31; Basketball, '32, '33; Secretary of Block  
"P" Club; Board of Control.

LOREEN G. HICKS  
Hasty, N. C.  
*General College*

Mixed Chorus; Treasurer of Pi Alpha Lambda  
Sigma.



WILLIAM M. HITT  
Hamlet, N. C.  
*General College*

Football, '31, '32; Baseball, '32, '33; Block "P" Club.



T. JENNINGS HUNTER  
*Associate of Science*

Board of Control; Baseball, '32; Laboratory Assistant; Vice President Senior Class; Sphinx Club.





GUTHRIE THOMPSON JORDAN  
Apex, N. C.

*Associate of Science*

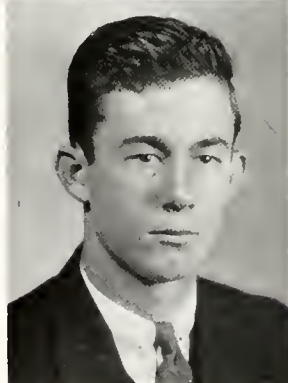
Football, '31, '32; Manager of Baseball, '33; Student Council, '33; Block "P" Club; Assistant Librarian.



FERDINAND BADGER JOHNSON  
Clinton, N. C.

*Associate of Science*

Football, '30, '31, '32; Baseball, '31, '32; Captain Intramural Football; President of Y. M. C. A., '31; Glee Club, '30; President of Alumni Association; Block "P" Club; Assistant Librarian; Sphix Club.



WILLIAM CHRISTOPHER MONROE  
Council, N. C.

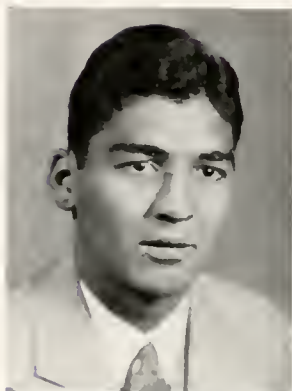
*Associate of Science*

Varsity Manager Football, '32; Secretary-Treasurer Y. M. C. A.; Board of Control; Block "P" Club; '33; Boxing, '33.



J. B. MUSE  
Hamlet, N. C.  
*General College*

Football, '32.



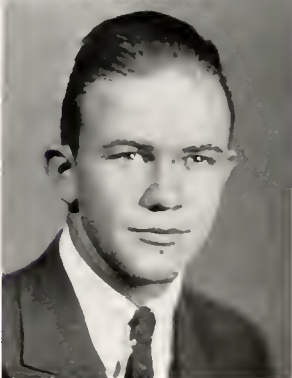
MURPHY FRANK MCGIRT  
Maxton, N. C.  
*General College*

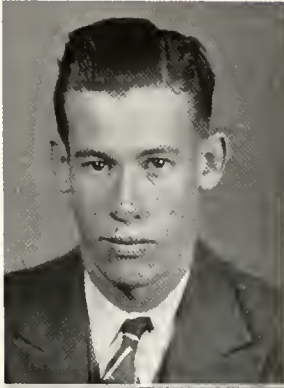
Glee Club, '31, '32, '33; Student Council, '32, '33;  
President of Academy, '31; Head of Repair Department;  
Sphinx Club.



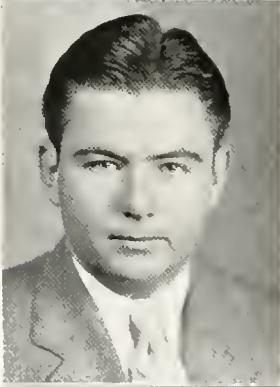
LAUGHLIN MCLAURIN  
Rowland, N. C.  
*Associate of Science*

Vice President of Student Body; Football, '31; '32;  
Block "P" Club; Glee Club, '32, '33.





D. R. McNEILL  
Rowland, N. C.  
*General College*  
Rowland Club.



ANGUS P. PHILLIPS  
Cameron, N. C.  
*General College*  
Chairman of Board of Control; Football, '32; Secretary-Treasurer Senior Class; Sphinx Club.



HERBERT RUSSELL, JR.  
Gulf, N. C.  
*General College*  
Vice President of Y. M. C. A.; College Pianist, '32, '33.

R. T. SINCLAIR, JR.  
Wilmington, N. C.  
*Associate of Science*

President Student Body; Business Manager BAG-PIPE; Football Squad, '31, '32; President Glee Club, '32; Block "P" Club; New Hanover Club; Student Council, '33.



GLENN SMITH  
Wilmington, N. C.  
*Associate of Science*

Glee Club, '32, '33; Basketball, '32, '33; President of Y. M. C. A.; Mixed Chorus, '33; Block "P" Club; President of Honorary Fraternity; Debating Team; Class Editor of BAGPIPE.

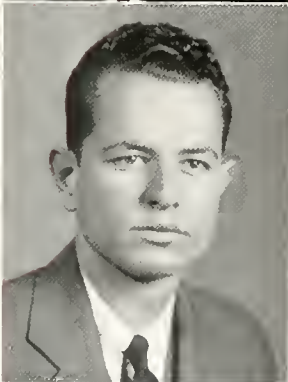


C. C. SNEAD  
Laurel Hill, N. C.  
*General College*

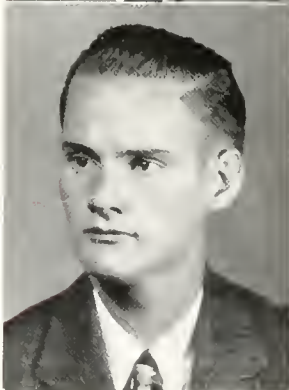




JANET STEED  
Maxton, N. C.  
*Associate of Science*  
Mixed Chorus; Pi Alpha Lambda Sigma.



EARL C. TOWNSEND  
Elizabethtown, N. C.  
*Associate of Science*  
Basketball, '32, '33; Block "P" Club; Intramural  
Football; President of Sphinx Club.



R. B. WICKER, JR.  
Sanford, N. C.  
*General College*  
President of Senior Class, '33; Student Council, '33;  
Monitor, '33; Secretary-Treasurer of Sphinx Club.

DON P. WILLIAMSON  
Parkton, N. C.

*Associate of Science*

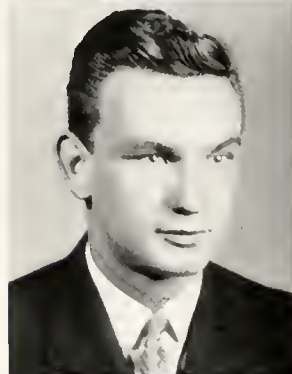
Football, '31, '32; Basketball, '32, '33; Baseball, '32,  
'33; Glee Club, '32; Captain-elect Football, '33; Sphinx  
Club.



JAMES P. WIGGINS, JR.  
Whiteville, N. C.

*General College*

Glee Club, '31.



EDWIN CORNELIUS WOMBLE  
Wagram, N. C.

*Associate of Science*

Honorary Fraternity.



ROBERT A. PALMER  
Gulf, N. C.  
(Not photographed)



JAMES R. BRITT  
Tarboro, N. C.

HARRY BELTT  
Clinton, N. C.

WILMA BODIFORD  
Muxton, N. C.

JOHN BIRMINGHAM  
Wilmington, N. C.

HAYWOOD BARDEN  
Wilmington, N. C.

FERN ANDREWS  
Muxton, N. C.

### JUNIOR CLASS

Not photographed: BALDWIN, P.; BOYD, H. E.; BOWLES, D. A.; CARROLL, H. R.; COTTINGHAM, G.

GEORGE K. CRAVEN  
Clarkton, N. C.

WM. J. COUNCIL  
White Oak, N. C.

JAMES COLE  
Pinhurst, N. C.

KATHLEEN DILLARD  
Muxton, N. C.

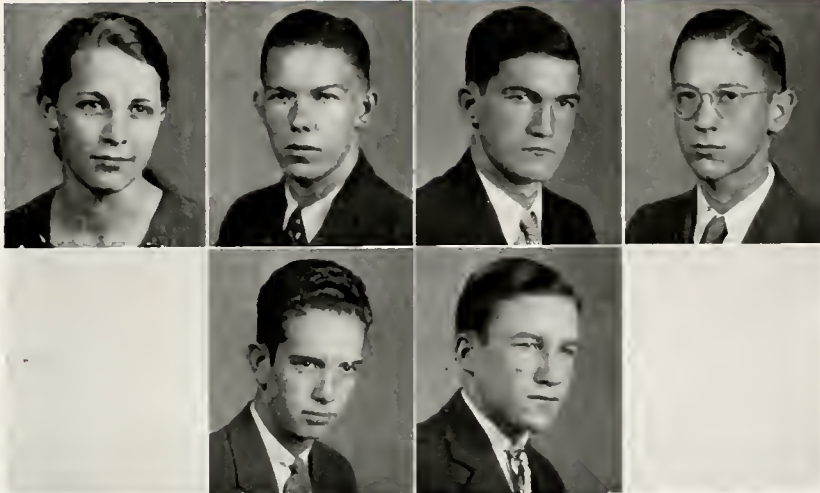
WILLIAM FAIRCLOTH  
Rowland, N. C.

NEIL DANIEL HUGHES  
Parkton, N. C.

A. C. JACKSON  
Rowland, N. C.

RAYMOND T. JERNIGAN  
Charlotte, N. C.





ANN McQUEEN KNIGHT  
Dillon, S. C.

JAMES L. LAUGHRIDGE  
Marion, N. C.

ELI F. MURRAY  
Laurinburg, N. C.

THOMAS N. MCGEE, JR.  
Mt. Olive, N. C.

McMURRAY McKELLAR  
Rowland, N. C.

ROGER McLEAN  
Eagle Springs, N. C.

### JUNIOR CLASS

Not photographed: GASQUE, E.; HOWE, I.; MARTIN, L.; MONROE, R.; MONROE, R. E.; MUSE, J. H.

JAMES B. McMILLAN  
McDonald, N. C.

JOHN McDONALD NEAL  
Marion, N. C.

DANIEL C. NORTHRUP  
St. Pauls, N. C.

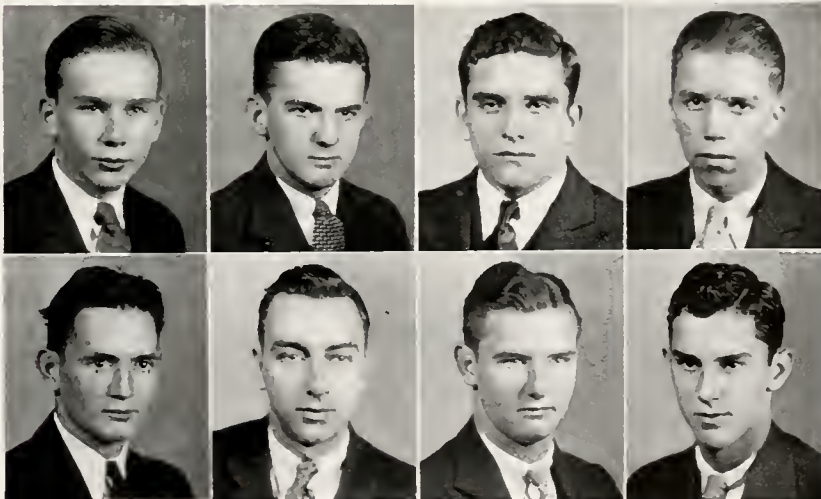
GORDON F. OGILVIE  
Oak Wood, N. C.

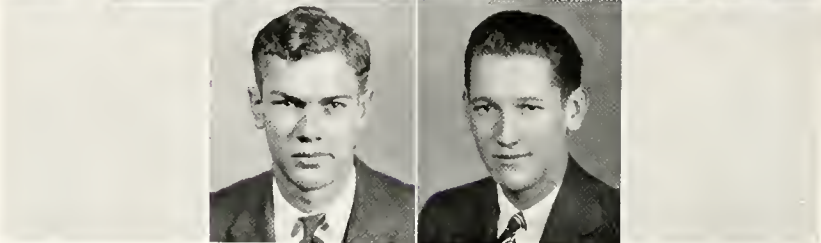
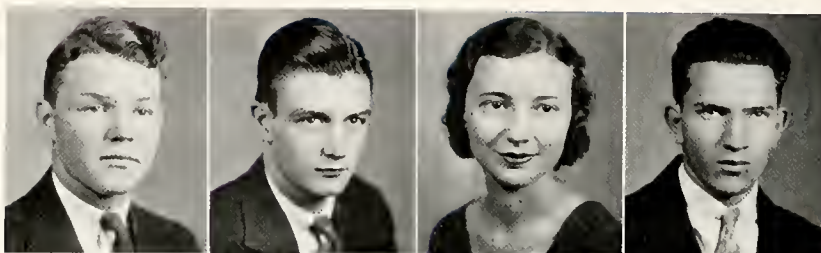
WM. NEALSON RUSSELL  
Badin, N. C.

WILLIAM SILER  
Laurinburg, N. C.

PERCY SMITH  
Little Rock, S. C.

SIDNEY SMITH  
Dunn, N. C.





NEEDHAM S. TOLAR  
Lumber Bridge, N. C.

LYNN R. WALKER  
Hamlet, N. C.

JULIA WHITLOCK  
Maxton, N. C.

FELIX WILSON  
Jonesboro, N. C.

JOHN WOOTEN  
Hamlet, N. C.

WILLIAM EVANS WYCHE  
Albemarle, N. C.

## JUNIOR CLASS

Not photographed. MCQUEEN, E.; NEWTON, H. E.; POWERS, C.; SAVAGE, J.; THOMPSON, W.; TUCKER, W. D.

MANSON B. TATE  
Saxe, Va.

OLIVER ROANE CROSS  
Marion, N. C.

CLYDE JORDAN  
Elizabethtown, N. C.

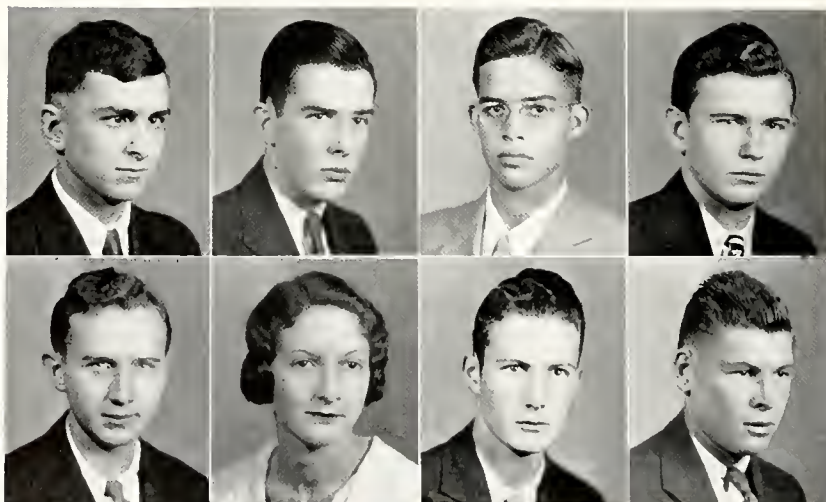
HUGH THOMAS CONLEY  
Marion, N. C.

EARL CLARK  
Hamlet, N. C.

CLARA CHAMNESS  
Blenheim, S. C.

TERON J. BURGESS  
Kingtree, S. C.

WENTWORTH BRITT  
Clinton, N. C.







ORGANIZATIONS





SINCLAIR

## STUDENT GOVERNMENT

### MEMBERS OF THE COUNCIL

A. F. BAKER  
HEYWOOD BARDEN  
OLIVER CROSS

GUTHRIE JORDAN  
THOMAS MCGEE  
MURPHY MCGIRT

THOMAS SINCLAIR  
MANSON TATE  
R. B. WICKER

The honor system is administered by the Student Council. This organization, while without legal authority, is the representative of the whole student body in its dealing with individuals, and it freely exercises this social authority in dealing with refractory cases and enforcing the honor system. All of its decisions, of course, being subject to the ultimate authority of the Faculty, as a court of final appeal and re-

view. Every student is under pledge to the Student Government to report to the Council every instance of conduct on the part of a student unbecoming a gentleman and a student of Presbyterian Junior College.

Officers for the past year were: Thomas Sinclair, President; R. B. Wicker, Vice President; and Oliver Cross, Secretary.



PETE PHILLIPS  
*Judge*

## BOARD OF CONTROL

### MEMBERS

DELMAS HASKETT

PETE PHILLIPS

JENKS HUNTER

EARL TOWNSEND

BILL MONROE

Established during the first year of Presbyterian Junior College, the Board of Control has been an active and influential body. It is the duty of this Board to guide, lead and create the spirit of friendship toward all Freshmen.

Its members are appointed each year

by the Student Council. The Board consists of a judge and four members selected from the upper class. It is the duty of all upper classmen to report Freshmen who do not live up to its rules: Needed advice is given when necessary with its decisions fully supported by the Student Council.



## BLOCK "P" CLUB

### OFFICERS

RALPH H. DAVIS.....*President*  
 ROBERT A. PALMER.....*Vice President*  
 DELMAS HASKETT.....*Secretary-Treasurer*

### MEMBERS

COACH HENDERSON  
 SINCLAIR  
 DALRYMPLE  
 BROWN  
 BARDEN  
 MONROE

RUSSELL  
 PALMER  
 JORDON  
 ALLEN  
 SMITH  
 NORTHROP

SAVAGE  
 HITT  
 DAVIS  
 FAIRCLOTH  
 WILLIAMSON  
 McMILLIAN

*Members not photographed*

JOHNSON  
 MCLAURIN



### GLEE CLUB

E. L. KEY..... *Director*  
 HERBERT RUSSELL..... *Accompanist*  
 BILL McLAURIN..... *President*

#### MEMBERS

PERCY SMITH  
 HEYWOOD BARDEN  
 BILL McLAURIN  
 NEIL HUGHES  
 NEEDAN TOLAR  
 JAMES McMILLAN  
 WILLIAM WYCHE  
 DAN NORTHROP  
 McMURRAY McKELLAR

LANDIS LAUGHRIDGE  
 CLYDE JORDAN  
 GLENN SMITH  
 NELSON RUSSELL  
 HENRY BOYD  
 EVERETT McQUEEN  
 HARRY BRITT  
 THOMAS SINCLAIR

JOHN BIRMINGHAM  
 WILLIAM COUNCIL  
 MURPHY MCGIRT  
 RAYMOND JERNIGAN  
 SIDNEY SMITH  
 HUGH CONLEY  
 CLARK ALLEN  
 ROGER McLEAN  
 OLIVER CROSS



## SPHINX CLUB

### OFFICERS

EARL TOWNSEND ..... *President*  
 CHARLES BROWN..... *Vice President*  
 R. B. WICKER..... *Secretary-Treasurer*

### MEMBERS

ALBERT F. BAKER  
 CHARLES W. BROWN  
 JAMES R. DALRYMPLE

JENNINGS HUNTER  
 BADGER JOHNSON  
 MURPHY MCGIRT  
 PETE PHILLIPS

EARL TOWNSEND  
 R. B. WICKER  
 DON WILLIAMSON



RUSSELL

SMITH

MONROE

## Y. M. C. A.

### THE Y. M. C. A. CABINET

GLEN SMITH .....	<i>President</i>
HERBERT RUSSELL .....	<i>Vice President</i>
WILLIAM MONROE .....	<i>Secretary</i>

The Y. M. C. A. is the student's closest contact with active Christian service at P. J. C. Each year a wider range of opportunity is opened up and the Student Christian Association has endeavored to meet those challenges as they have appeared.

This year the importance of the problem and the practice of prayer has received special attention. The various prayer groups have been well attended,

and the value of these meetings can scarcely be estimated.

The usual series of evangelistic services were limited somewhat this year, but the two that were held were very helpful and inspiring. During the year, a professor in one of the senior colleges was brought in who led a round table discussion of the problem of vocational guidance which proved to be of great practical value.



BAKER

SINCLAIR

## THE BAGPIPE

### THE BAGPIPE STAFF

A. F. BAKER.....	<i>Editor-in-Chief</i>
R. THOMAS SINCLAIR, JR.....	<i>Business Manager</i>
J. R. DALRYMPLE, JR.....	<i>Advertising Manager</i>
C. W. BROWN.....	<i>Assistant Editor</i>
GLEN SMITH.....	<i>Assistant Editor</i>
JAMES McMILLAN.....	<i>Assistant Editor</i>
O. R. CROSS.....	<i>Asst. Business Manager</i>
N. S. TOLAR.....	<i>Asst. Business Manager</i>

The staff of the BAGPIPE has attempted to carry on the tradition of P. J. C., that of building tradition for the future. This is the first yearbook of our College, and we sincerely hope that we have created something that will last through the years, and we believe that this custom will be carried out by the succeeding classes.

The making of this book has not been

altogether easy for our staff, inexperienced as it was at the start, but we have had the satisfaction of seeing our product grow little by little; and it is with grateful hearts that we express our gratitude for the trust that our fellow-students have placed in us, and we hope that our efforts may be worthy of this trust.





ATHLETICS



FOOTBALL SQUAD

*First Row:* HITT, DAVIS, JOHNSON, BRITT, ANDREWS (Captain), McCASKILL, MUSE, RUSSELL.  
*Second Row:* MONROE (Manager), CAMPBELL, JACKSON, BROWN, THOMPSON, FAIRCLOTH, CROWELL, BARDEN.  
*Third Row:* McKELLAR (Asst. Mgt), BEASLEY (Asst. Mgt.) McLEAN, SINCLAIR, OGILVIE, JORDAN, HENDERSON (Coach).

FOOTBALL

SUMMARY

P. J. C. ....	0	Davidson Freshmen .....	26
P. J. C. ....	8	Mount Pleasant .....	33
P. J. C. ....	6	Boiling Springs .....	6
P. J. C. ....	0	Belmont Abbey .....	13
P. J. C. ....	32	E. C. T. C. ....	0
P. J. C. ....	0	Wingate .....	9
P. J. C. ....	6	Campbell .....	9
P. J. C. ....	0	Parris Island Marines .....	39
P. J. C. ....	14	Lees-McRae .....	7

NATE ANDREWS (Captain)

*Quarter*

Nate was a triple-threat back whose specialty was his off-tackle play which netted many a yard this year. It was his return of a punt that enabled his team to defeat Lees-McRae on Thanksgiving Day.



"BULL" CROWELL

*End*

"Bull" was a smooth, consistent player, and many a half-back was stopped by him in their attempted runs around his end.



"ROOSTER" HITT

*Half*

Hitt's punting shifted the odds more than once, and he could put the pep into the team in a jiffy. A triple-threat man—that's Hitt.



"TOM" DAVIS

*Guard*

A tower of strength in every line play, Tom was right in there all the time. He was never down until he was out, and he was hard to put out.



BADGER JOHNSON

*Guard*

Probably the best offensive guard in the state, Badger played in the enemy's backfield half the time. He messed up many an otherwise perfect play by his driving offensive.



CHARLIE BROWN

*Tackle*

Charlie took his football seriously, and because of this many an opponent's party was turned into a day of mourning, for them. He was one of the hardest-fighting men on the team.



DON WILLIAMSON (Captain-elect, '33)

*Halfback*

One of the fastest, neatest little backs in the conference, Don, as '33 captain, will be heard from next year in the same way which has shattered opposing lines time after time. His specialty is broken-field running. Watch him go!



"TURK" FAIRCLOTH

*Fullback*

As a blocker and all-round hard scrapper and ball-toter, "Turk" at full is hard to beat. He's got many a football trick behind that sly grin.



HEYWOOD BARDEN

*Center*

Heywood Barden, diminutive center, furnished little flashy display, but he was right there on every play, "little but loud." He will be a mainstay of the line next year.

"SOP" CAMPBELL

*Tackle*

"Sop," our heaviest linesman put more into it than his weight. He has blasted the hopes of many an ambitious opposing back.

JOE MUSE

*End*

"Hit 'em and grin," that's Joe. He could spot a play a mile ahead, and kept his eyes open all the time. He was as dependable as he was spectacular.

JOE SAVAGE

*Halfback*

In Savage we have a fast and shifty back who can make his speed count. Heavy opponents frequently found themselves grasping empty air behind the elusive Joe.





BASKETBALL SQUAD

*First Row:* SMITH, GLEN, FAIRCLOTH, TURK, WILLIAMSON, DON, RUSSELL, NEALSON.

*Second Row:* JORDAN, CLYDE, NORTHROP, DAN, TOLAR, N. S.

*Third Row:* DAVIS, TOM (Manager); HENDERSON, G. P. (Coach).

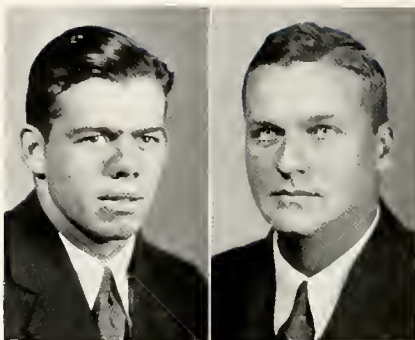
## BASKETBALL

With three regulars of the preceding year reporting at the beginning of the season, Coach Henderson had a strong nucleus around which to build his team. Williamson at forward, Townsend at center, Haskett at guard, together with Smith, a reserve from the previous year, Cole, Northrop, Jordan, Faircloth, Tolar, and Russell formed the squad.

The squad was reduced during the season by influenza, and this fact, together with the lack of a suitable court

on which to practice, made the season a somewhat disappointing one in the matter of Junior College games.

The new gymnasium, made possible largely through the efforts of President Matheson, is now nearing completion and it will be ready for use at the opening of the fall term, thus making possible early practice. Thus with our new gymnasium as a basis upon which we can work, we are looking forward to a most successful season.



JORDAN  
*Manager*

HENDERSON  
*Coach*

## BASEBALL

This season's baseball practice began with but four letter men returning. Tom Davis, catcher; "Old Lady" Palmer, a left-handed pitcher; "Bird" Williamson, changing from second to short; and "Rooster" Hitt, the prancing third baseman formed the nucleus around which Coach Henderson will build this year's team. Russell and Faireloth, infielders; Savage, Jackson, W. Britt, Cox, and Palmer, outfielders; Burgess, Cox and J. Britt, right-handers, and Russell, a left-hander, completed the squad.

The season was opened by playing M. P. C. I. at home. This game was lost mainly on errors, the score being

5-3. The next two games, with Campbell and a return game with M. P. C. I. were lost by the scores of — and 6-1, when the batting attack failed.

However, in the opening game of a series with E. C. T. C., the team found its batting eye, but lost a slugging duel 10-9 in the ninth inning. Hitt with two triples, a double and a single was the hitting star of the day. The game on the following day was somewhat of a contrast. Burgess, starting his first game of the season, twirled a great game to let down E. C. T. C. 6-1, allowing only one hit and no runs before he was forced out of the game in the seventh inning by an injured ankle.



First Row: SAVAGE, J.; BETHEA, C.; BRITT, W.; BARDEN, H.; WILLIAMSON, D.; FAIRCLOTH, W.  
 Second Row: DAVIS, R. H.; COX, G.; PALMER, R. W.; BRITT, J. R.; BURGESS, T. J.; RUSSELL, W. N.  
 Third Row: JORDAN, G. T. (Manager); BROWN, C. W.; BALDWIN, P.; TOLAR, N. S. (Asst. Mgr.); WOOTEN, J.; HOWE, I. (Asst. Mgr.); JACKSON, A. C.; HITT, W. M.; HENDERSON, G. P. (Coach).

## BASEBALL

### SCHEDULE

P. J. C. ....	3	M. P. C. I. ....	5
P. J. C. ....	1	Campbell .....	6
P. J. C. ....	0	M. P. C. I. ....	6
P. J. C. ....	9	E. C. T. C. ....	10
P. J. C. ....	6	E. C. T. C. ....	1
P. J. C. ....		Rutherford .....	
P. J. C. ....		Belmont Abbey .....	
P. J. C. ....		Campbell .....	
P. J. C. ....		E. C. T. C. ....	
P. J. C. ....		Wingate .....	
P. J. C. ....		Boiling Springs .....	
P. J. C. ....		Rutherford .....	
P. J. C. ....		Wingate .....	
P. J. C. ....		Belmont Abbey .....	

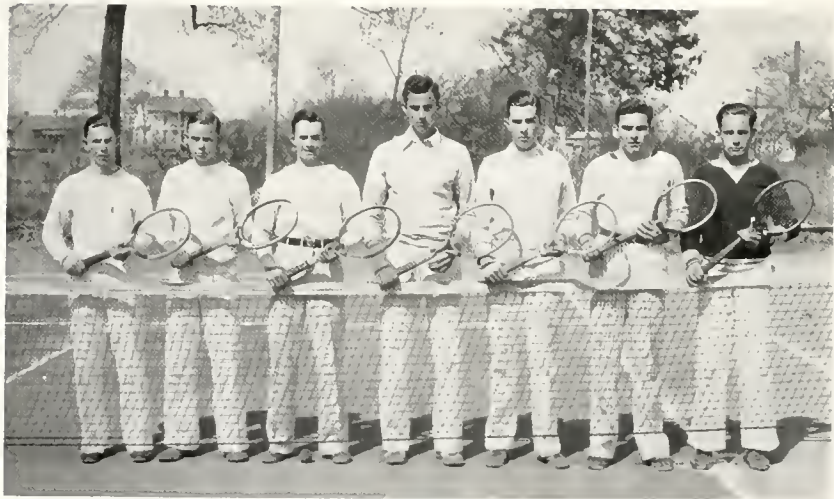


BOXING SQUAD

*First Row:* McLEAN, R.; MONROE, W.; McMILLAN, J.; HUGHES, N.  
*Second Row:* ALLEN (Manager); WALKER, L.; BARDEN, H.; COUNCIL, W. J.; OGILVIE, G.;  
FERRENE, O. W. (Coach).

TENNIS TEAM

LAUGHRIDGE, L.; POWERS, C.; JERNIGAN, R. SMITH, S. (Manager); CROSS, R.; NORTHROP, D.;  
CAMERON, T.







ADVERTISEMENTS

# FLORA MACDONALD COLLEGE

RED SPRINGS, NORTH CAROLINA

## A SENIOR COLLEGE FOR WOMEN

Near Fayetteville, Southern Pines and Pinehurst. Delightful climate, healthful mineral springs and remarkable health record. Bus and Railway connections.

*A Standard Senior A Grade College for Women.* Strong faculty. Graduates accepted for graduate work by leading universities. Class A teachers' certificates. Home-like atmosphere. Personal attention to students by teachers.

*Courses Offered*—Bachelor of Arts, Bachelor of Music, Bachelor of Science (Home Economics) degrees. A two-year Secretarial Course and a one-year Business Course.

*Athletics.* Skillful physical director and coach has general supervision of sports and physical training. Archery, basketball, baseball, hockey, swimming, tennis, hiking, etc., are enjoyed in season.

*Social Activities.* Receptions, teas and many other social functions are provided at the college, while many hospitable and delightful homes of the citizens of Red Springs are open to the students.

*Wide Patronage.* Patronized at present by nine states and four foreign countries. Four thousand alumnae are engaged successfully as home-makers, nurses, teachers, dietitians, home demonstration agents, social workers, missionaries, and in many other useful professions.

*Moderate Charges.* For catalogue write

HENRY G. BEDINGER, *President*

FLORA MACDONALD COLLEGE

RED SPRINGS, N. C.

## Presbyterian Junior College for Men

MAXTON, NORTH CAROLINA

### ITS PROGRAM PROVIDES

- A continuation of Christian home atmosphere in the higher educational life of its students.
- A planned gap, spiritually, academically, athletically, and disciplinary, between high school and university.
- A standard accredited curriculum preparing for the Junior class of a standard senior college.
- Other courses preparing for business, etc.

*All Athletics—Modern Buildings—Reasonable Rates—Some Self-help*

For catalogue and further information, address

R. G. MATHESON, JR., A.M., *President*

MAXTON, N. C.

DO YOUR SHOPPING AT  
BELK'S DEPARTMENT STORES

THE HOME OF BETTER VALUES

*Belk Stores Are Head-to-Foot Outfitters  
for Men, Women and Children*

*Visit the Nearest Belk Store in North and South Carolina*

NINETY BELK STORES "SELL IT FOR LESS"

THE LAURINBURG  
EXCHANGE

Founded 1882

*An Outstanding Weekly  
Newspaper*

\$1.50 per Year

COMMERCIAL  
JOB PRINTING

*A Specialty*

LAURINBURG, N. C.

*Let Electricity Lighten  
Your Housework*

For Everything Electrical

See

CAROLINA POWER & LIGHT CO.

Maxton, N. C.

*Compliments of*  
MAXTON OIL &  
FERTILIZER CO., Inc.

*Manufacturers of*

*Carolina Bright Cottonseed Meal*

Telephone No. 1 Maxton, N. C.

SCOTLAND  
THEATRE

A  
CORDIAL WELCOME

*Awaits You*

*To See*

*The Season's Best Shows*

LAURINBURG, N. C.

HAMMOND  
WHOLESALE CO.

WHOLESALE GROCERS

*Distributors*

*of*

"CAMEL FLOUR"

LAURINBURG, N. C.

LAURINBURG  
MILLING COMPANY

GOOSE GIRL  
PLAIN AND SELF-RISING

SILVER CUP  
SELF-RISING  
*Guaranteed to Please*

TRUTH  
*PLAIN*

CERTIFIED  
SELF-RISING  
*None Better*  
LAURINBURG, N. C.

THE  
STATE BANK

=====  
Banking Service Since  
1907

=====  
LAURINBURG      MAXTON  
NORTH CAROLINA

<p><i>P. J. C. Boys Are Always Welcome at</i></p> <p><b>AUSTIN DRUG CO.</b> Maxton, N. C.</p>	<p><b>TRAVEL BY BUS</b> SAFE - QUICK - ECONOMICAL For Further Information Call Your Agent or Write <b>QUEEN CITY COACH CO.</b> CHARLOTTE, N. C. 417 W. Fifth St. Phone 5813</p>
<p>FOR YOUR GENERAL MERCHANDISE NEEDS</p> <p><i>See</i></p> <p><b>W. J. PACE</b> Maxton, N. C.</p>	<p><b>THACKER'S, INC.</b> <i>A Good Place to Eat</i> One Eighteen South Tryon Street CONTINUOUS SERVICE 6:30 a.m. to 8:00 p.m. CHARLOTTE, N. C.</p>
<p><i>Fancy Groceries and Meats</i> <i>We Deliver the Goods</i></p> <p><b>B. F. TAYLOR CO.</b> Maxton, N. C.</p>	<p><i>For "ACME" and "CONESTEE"</i></p> <p>THE BEST IN FERTILIZER <i>Made Only by</i> THE ACME FERTILIZER CO. Wilmington, N. C. <i>See</i> McKOY McKINNON Maxton, N. C.</p>
<p><i>We Will Show You the World's Best Shows</i></p> <p><b>THE RED SPRINGS THEATRE</b> Red Springs, N. C.</p>	<p><i>Atlas Supply Company, Inc.</i> Winston-Salem, N. C.</p> <p>WHOLESALE Plumbing and Heating Supplies Waterworks and Mill Supplies</p>

L. G. JORDAN & SON, Inc.

*That*  
*JORDAN SERVICE*  
STANDARD GAS AND OILS

Apex, N. C.

McLAURIN-McARTHUR

CHEVROLET CO.

Laurinburg, N. C.  
*The Great American Value*

*for Economical Transportation*



SALES

SERVICE

MAXTON DRUG STORE

*"The Friendly Store"*

Everything in Drugs and Sundries

Maxton, N. C.

Day Phone 24 : Night Phone 7680

*Compliments of*

CAROLINA  
INSURANCE COMPANY

Maxton, N. C.

THE McCALLUM DAIRY

Gr A de

MILK and CREAM

Phone 2102

THE BEST IN LADIES'  
*and*  
GENT'S READY-TO-WEAR

ED. CARROWON CO.

Maxton, N. C.

*Summerlin Drug Store*

*We Try to Please You*

We Appreciate Your Trade

THE YOUNG PEOPLE—  
OUR BEST CUSTOMERS

Try Us When in Laurinburg, N. C.

LIBERTY CAFE

SANITARY and GOOD EATS

Maxton, N. C.

*Compliments of*

COLLEGE CANTEEN

P. J. C.

JOHN F. McNAIR, INC.

MERCHANTS and  
COTTON BUYERS

Laurinburg, North Carolina

WIGGIN'S MOTOR, INC.

*Ford*  
THE UNIVERSAL CAR

Authorized Sales and Service  
Whiteville, N. C.

*White Flash Gasoline*  
and  
*Atlantic Motor Oils*

J. E. PHILLIPS, Agt.  
ATLANTIC REFINING CO.

Laurinburg, N. C.

CAROLINA BAKING CO.

Makers of  
O'BOY BREAD and  
SOUTHERN CAKE

Charlotte, N. C.

McLEOD AND SINCLAIR LUMBER CO.

*Wholesalers and Retailers in Lumber and Shingles*  
LAURINBURG, NORTH CAROLINA

The  
P H O T O G R A P H S

IN THIS ANNUAL  
WERE MADE BY

DUNBAR & DANIEL

Incorporated

132 FAYETTEVILLE STREET

RALEIGH, NORTH CAROLINA

## BUILDERS of DREAMS

Visions created by the imagination precede the achievement. The ability to weave the threads of imagination into the finished fabric is equally important.

It has been the privilege of the Edwards & Broughton Company to cooperate with the **Bag Pipe** staff in creating their vision into material form.

Such cooperation is one of the "visions" which precede the building of a successful business, and is a part of the working policy of the Edwards & Broughton Company.

To those staffs desiring complete cooperation, we offer unexcelled service.

You, too, may be proud of your annual.

Correspondence is Invited

**Edwards & Broughton Company**

Raleigh, North Carolina

## COLLEGE ANNUAL ENGRAVERS

### Charlotte Engraving Company

125-129 East Third Street

Phone 3-4239

CHARLOTTE, N. C.

### Central Engraving Company

113 South Davie Street

Phone 2-1714

GREENSBORO, N. C.

ARTISTS . . . DESIGNERS . . . PHOTOGRAPHERS  
PHOTO-ENGRAVERS . . . . . ADVERTISERS









