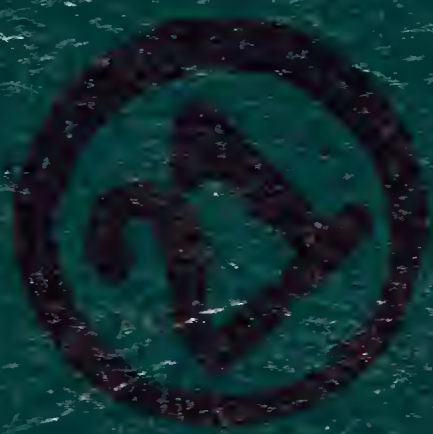
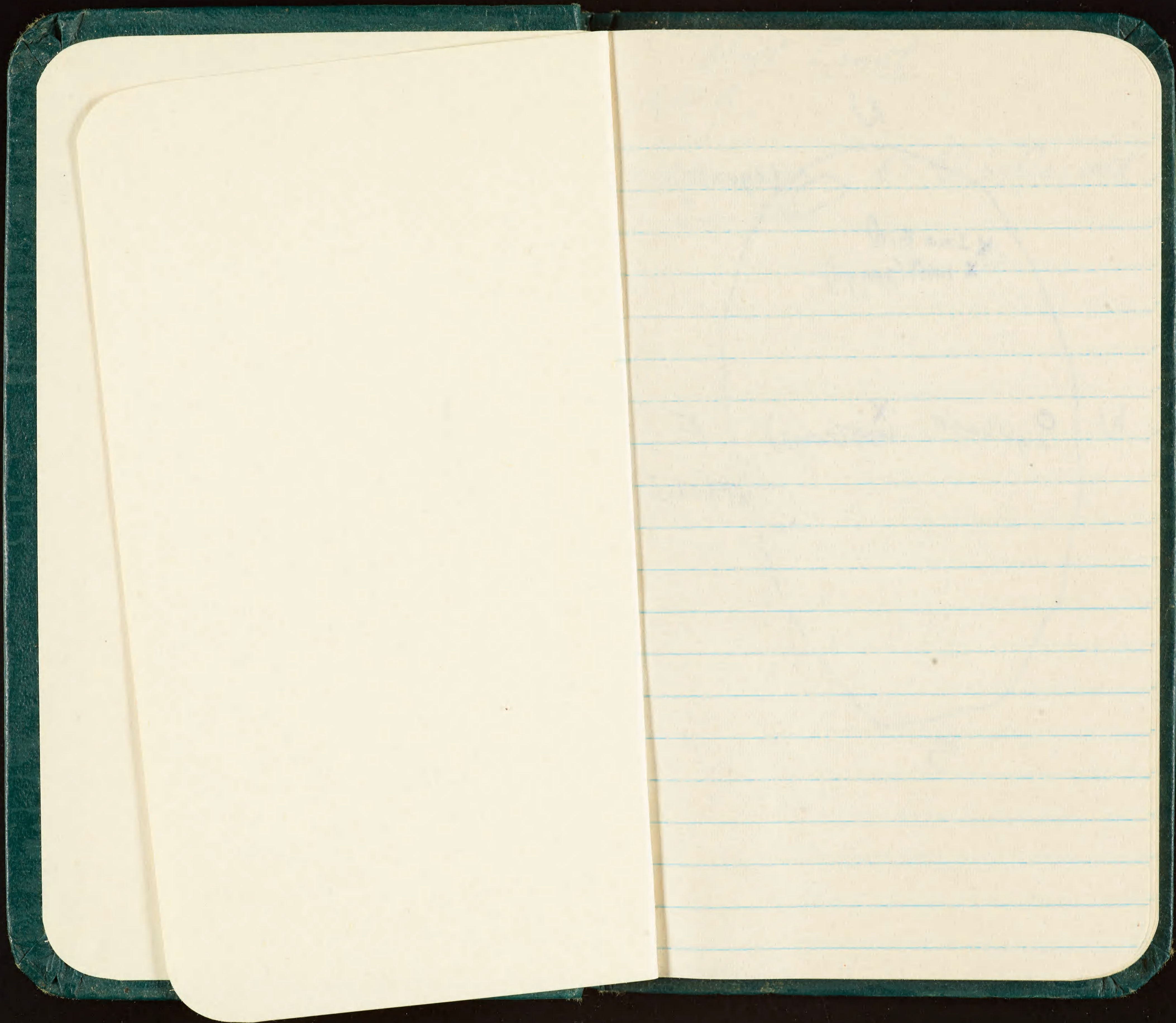


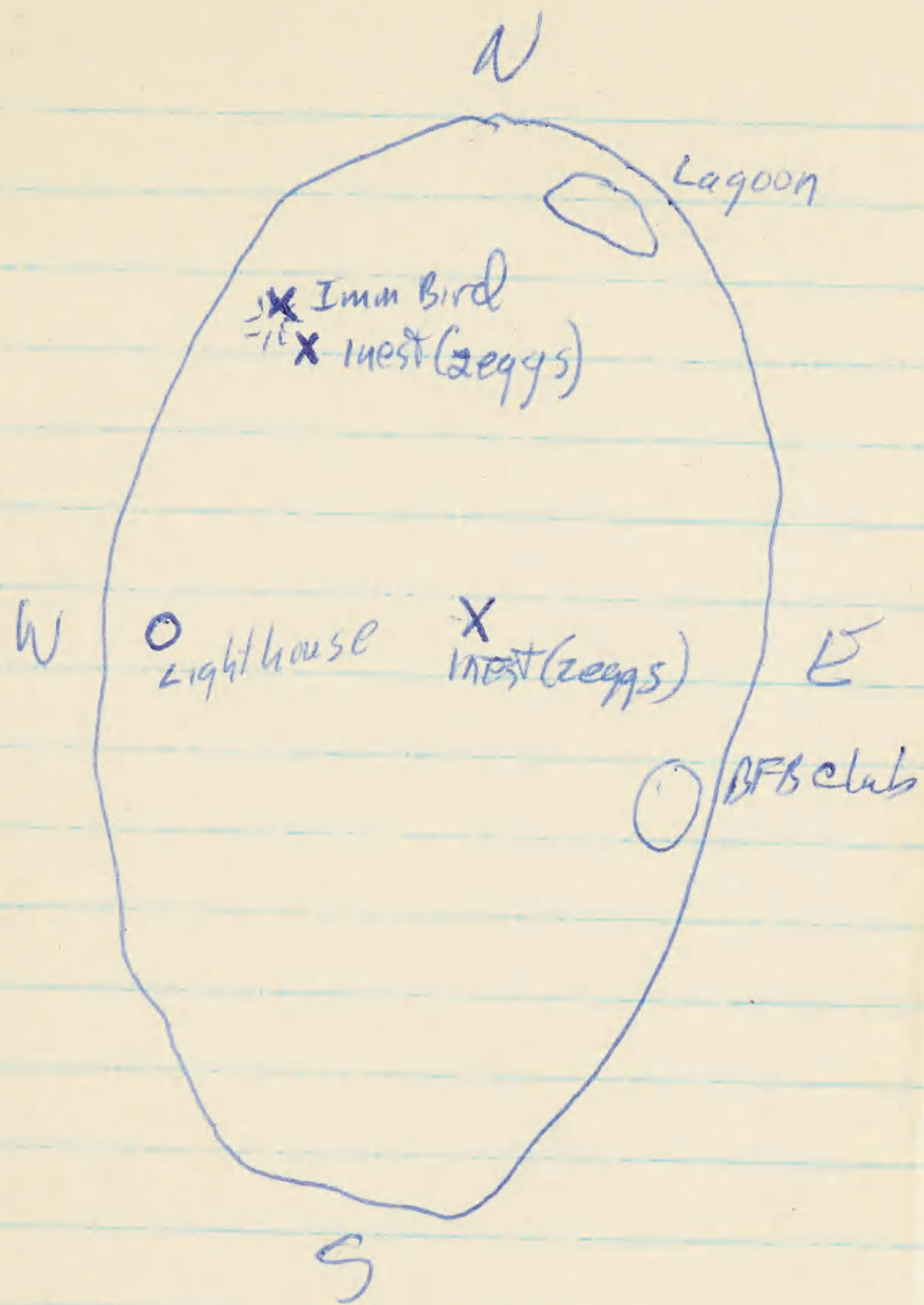
10

1000
1000



~~NOADP~~
~~CDD~~
✓





Nest Count

BFB.

1 Nest - 2 eggs

B.S. AD live on nest

1 Imm BFB

General Notes

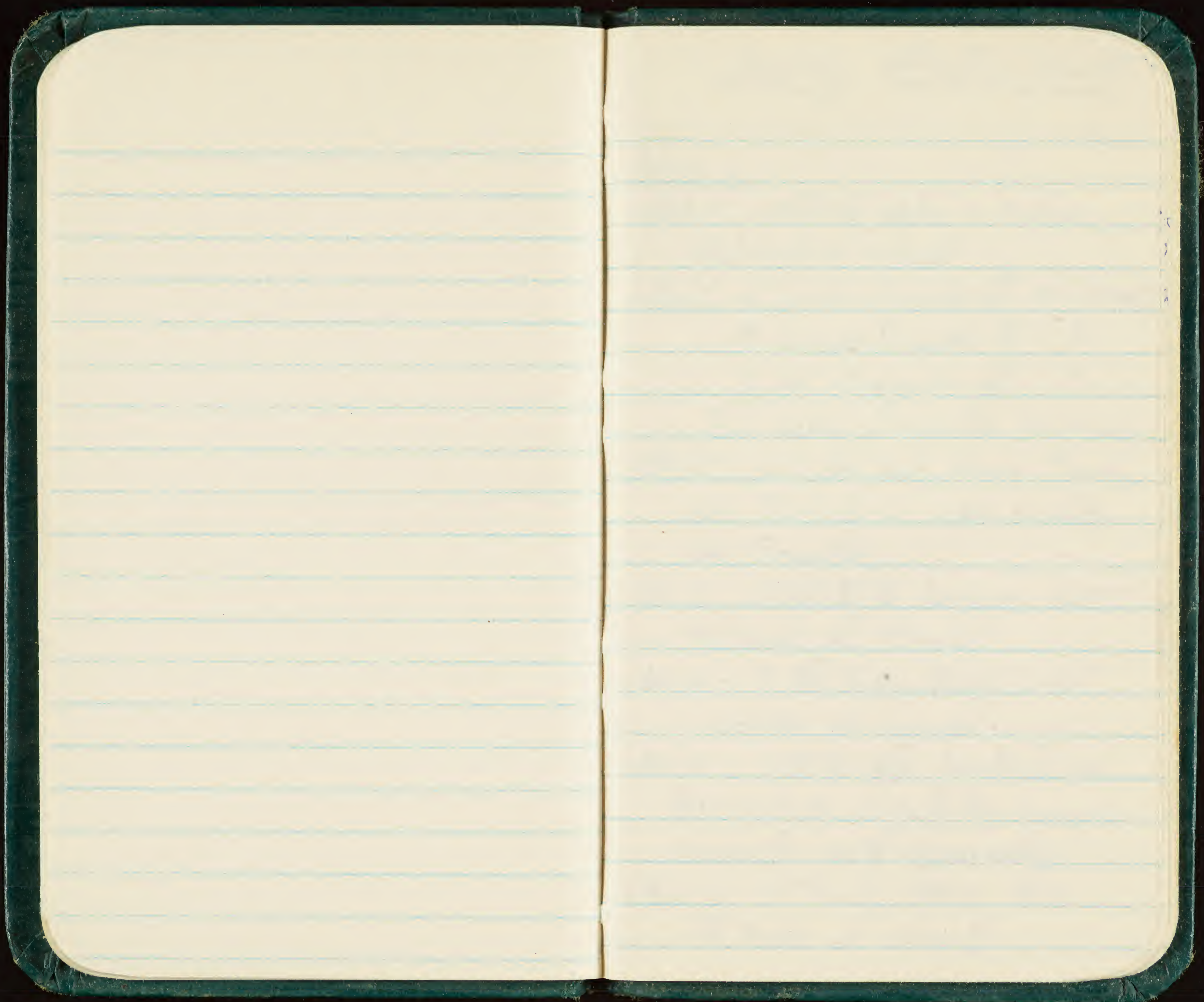
Very dry conditions on island
(most of vegetation particularly
the Eragrostis is brown)

Mouse population extremely
low - haven't seen one

SKINK (snake-eyed) population
moderate to low - some young
seen

Saw 1 BB Ad flying over North
end of island at 1700

General Note
The temperature is down
Next application
low - about 2000
2000 (more or less)
molecules to form some
some
some
some



hourly activity count

1000:

1001: 2 BFB Ads + 1 Imm
NW end of island

1002: 5 Lesser Frigate ♂ SW end
4 Lesser Frigate ♀ "
3 Gr. Frigate ♀ "
33 total Frigates swirling

1002: 27 Ad sooty Terns flying
over SW end in same vicinity
as Frigates

1003: 2 Ad BFB hovering over
SE end of island

1006 - 7 Ad Sooty Terns over
center of island

1009 - 1 BFB Ad landed on
NW end of island by large
mound - nest apparently

1010 - 5 Sooty Terns over
SE end of island

1011 - 4 BFB Ads approaching
island from west

1013 - previous swirl of Frigate
laying 300 yds off SW end
of island - occasionally chasing
BFB

1014 - 17 Sooty Tern Ads swimming
over N end of island with
1 G Frigate Subadult fly in
their midst.

1015 - Close Obs.

1

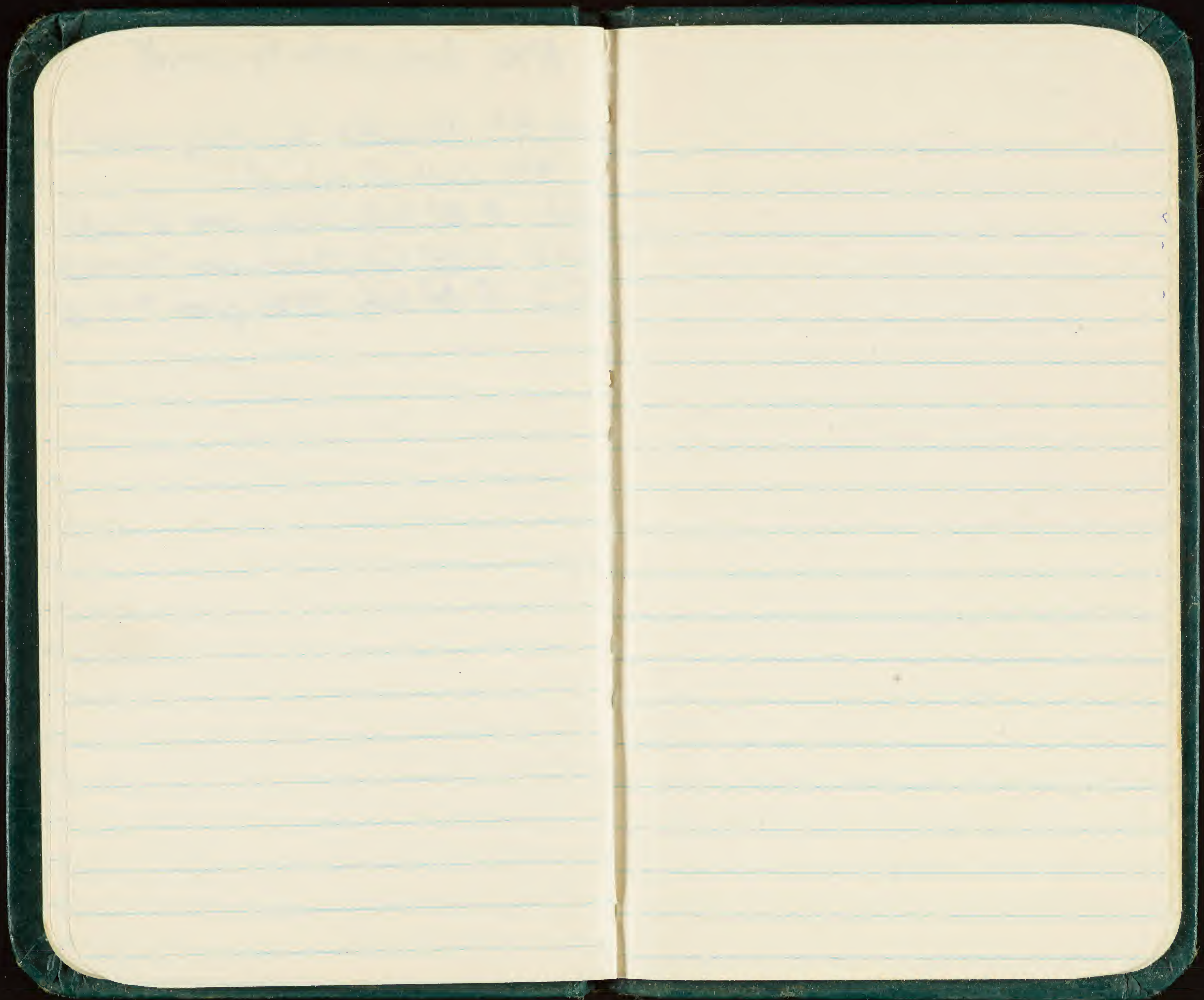
1500 hourly activity count

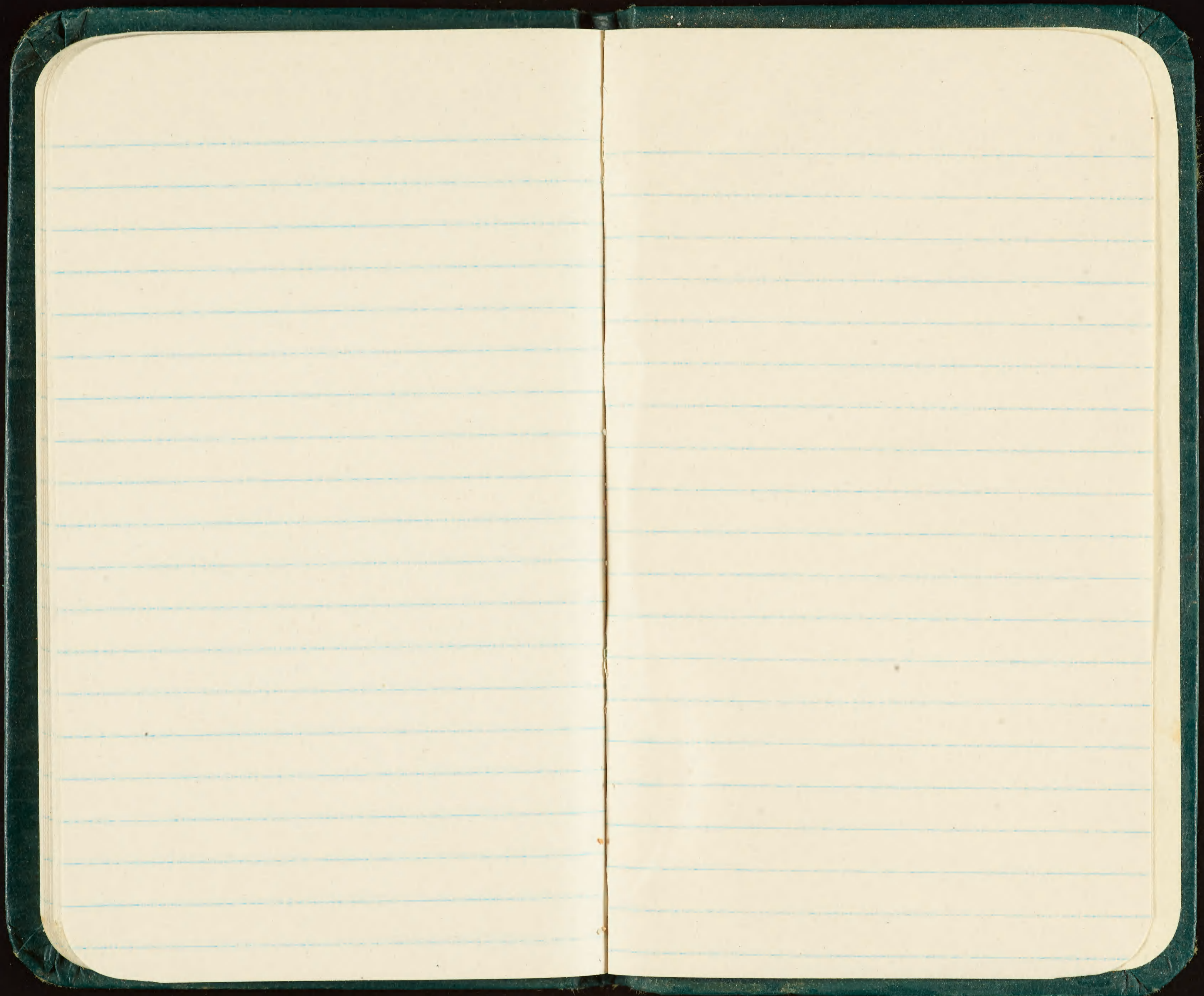
1501 37 Frigates swirling over
SW end of island

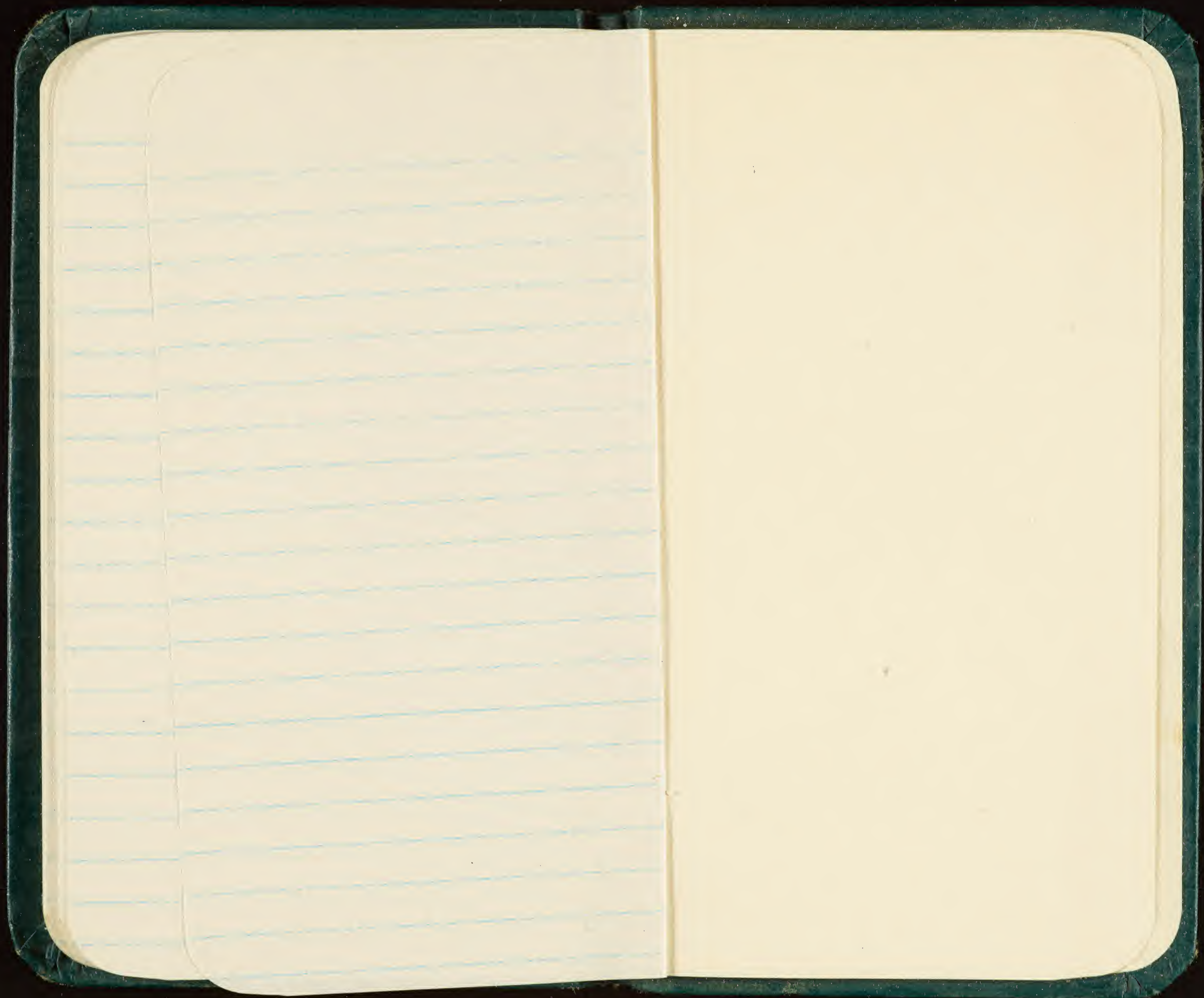
1503 4 Ad Sooty Terns over E end

1507 6 Ad Sooty Terns over SW end

1512 4 Ad Sooty terns over S end







$$\begin{array}{r} 91 \\ 38 \\ \hline 53 \end{array}$$

54

55

60

7530-222-0078
FEDERAL SUPPLY SERVICE

GPO 16-73124-1