

# THE BEAR

1

9

4

6









Digitized by the Internet Archive  
in 2012 with funding from  
University of North Carolina at Chapel Hill

<http://archive.org/details/bear1946shaw>

# THE BEAR

## 1945



PUBLISHED BY SENIOR CLASS  
OF SHAW UNIVERSITY

WILLIAM POAG HALL, EDITOR  
HENRY CLAY TURNER, BUSINESS MANAGER

# FOREWORD

“Whoever thinks a faultless annual to see,  
Thinks what ne'er was, nor is, nor e'er shall be.”

In the publication of this book we present with mingled uneasiness and pleasure the first volume of THE BEAR by a senior class. It is hardly possible or probable that the casual reader will understand the vastness of the undertaking which it has been our delection and duty to perform. Over our work we have spent many long but interesting hours, and we therefore present without apology the results of our labor. We hope that the 1946 Shaw BEAR will fulfill its purpose. For this purpose to be realized this annual must be pleasant and lasting moments or a souvenir of the year 1946 in Shaw University's life—both to the graduate and the undergraduate. We have striven to make the book a faithful and impartial presentation of Shaw University in all its phases and activities. To those students and friends without whose timely and great aid the Shaw BEAR could not have been what it is, we proffer our sincere and hearty thanks. And now we invite you to have a look at our book.

# DEDICATION



**MISS MILDRED NAOMI JORDAN**

With deep and sincere appreciation for her loyal, unstinted efforts in our behalf, for her enthusiastic coöperation and support in every endeavor, and for her consistent service as true counsellor, guide, and friend, we the members of the class of 1946 dedicate the 1946 edition of *THE BEAR* to Miss Mildred N. Jordan.









ENTRANCE TO THE CAMPUS





HOME ECONOMICS HOME



CAMPUS VIEW



CONVENTION HALL





## FOUNDER'S DAY

*Top:* Processional to the grave of the founder. *Bottom left:* Flowers placed on the grave by Georgia Bishop of Rich Square, North Carolina. *Bottom right:* Dr. George L. Winstead who delivered the annual Founder's Day address in Greenleaf Memorial Chapel at Shaw University, Friday morning, November 16, at 10:45 o'clock, is a prominent physician of Pittsburgh, Pa. He is a 1908 graduate of the then Leonard Medical School of Shaw University, which he entered in 1904 after graduating from Johnson C. Smith University, formerly Bidde, in 1903.



**DR. ROBERT P. DANIEL**  
**A.B., A.M., PH.D.**  
**PRESIDENT**

The record of Dr. Robert P. Daniel as President of Shaw University is one of progress. The growth and expansion of the institution, attended by a comparable growth in influence and service to the race, has been phenomenal in the ten years since President Daniel entered upon his administration of its affairs. Within that decade student enrollment has increased nearly 75 per cent, or from slightly less than 400 to nearly 700 students at present. The university staff, which included 35 persons then, now is composed of 81 people with 65 professional staff members and 16 service and maintenance workers. The operating budget has been doubled and finances of the institution are in excellent condition.

A few of the many accomplishments noted during Dr. Daniel's administration are these:

1. All buildings on the campus have been renovated with over a quarter of a million dollars spent in plant renovation and new equipment.

2. The Leonard Building was renovated and

restored to complete use after being out of full service for 25 years.

3. An indebtedness of \$45,000 was cancelled in two years, enabling the school to receive a grant of \$45,000 from the General Education Board.

4. A Home Economics Practice residence and two additional faculty residences have been erected.

5. The institution's educational standing has been raised to the "A" rating by the Southern Association of Colleges and Secondary Schools in recognition of the strengthened academic program, progressive administrative policies, enlarged library services, and stable financial condition.

6. Improvement has been effected in the organization of the School of Religion, the Summer School, and the general curriculum.

7. There is a greatly improved library including complete recataloging of books, new library furniture and equipment, and an enlarged staff.

8. Splendid success in the 250 thousand dollar New Development Program Campaign with \$244,281 already pledged as of February 15, 1946.

Dr. Daniel came to Shaw University in 1936 from Virginia Union University, Richmond, his Alma Mater, where he served, after graduation, on the faculty for twelve years, nine of them as professor of Education and Director of Extension, chairman of the Division of Education, Psychology, and Philosophy. He had been graduated from Virginia Union University in 1924 with high honors as valedictorian of the class, receiving the A.B. degree. In 1928 he received the M.A. degree from Teachers College, Columbia University and in 1932 earned the Ph.D. degree from Columbia University. President Daniel is one of the four sons of the late Charles J. and Carrie Green Daniel, all of whom hold the Ph.D. degree, two of them from Columbia University and two from the University of Chicago.

President Daniel is considered one of the leaders of racial welfare and community service in Raleigh and in North Carolina. He has served as president of the North Carolina Negro College Conference and on the following committees of public service: Board of Trustees, Budget Committee, Raleigh Community Chest; Raleigh Negro Citizens Committee; Executive Committee, N. C. Interracial Commission; Family Life Council of the Wake County Tuberculosis Association, Wake County Defense Council; N. C. Council of National Defense; Board of Directors, United War Fund of Raleigh and Wake County; Board of Directors, United War Fund of N. C.; Chairman, Negro Division, United War Fund campaign. He has the distinction of being the only Negro college president of the country with the Silver Beaver award of the Boy Scouts of America and is chairman of the Area Divisional Committee of Occaneechee Council embracing eleven counties.





# OFFICERS OF ADMINISTRATION



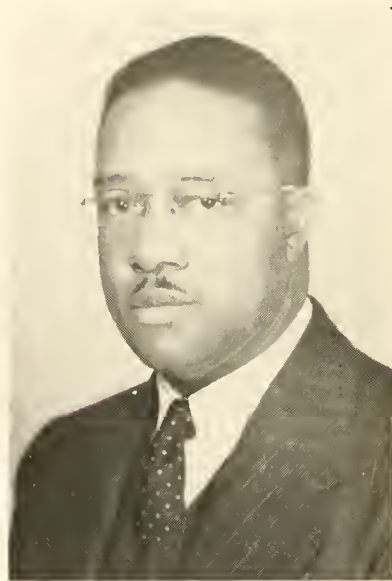
GLENWOOD E. JONES  
B.S.C.  
*Business Manager*



WALKER H. QUARLES, JR.  
B.S.C.  
*Secretary*



FOSTER P. PAYNE  
A.B., A.M.  
*Dean of the College*



WILLIAM R. STASSNER  
A.B., B.D., S.T.M.  
*Dean of the School of Religion*





THELMA C. NELSON  
A.B., B.L.S.  
*Librarian*



EVA FRAZIER RAY  
B.S., A.M.  
*Registrar*



NELSON H. HARRIS  
A.B., A.M., Ph.D.  
*Director, Summer School and  
Chairman, Division of Education*



LENOIR H. COOK  
A.B., A.M.  
*Acting Chairman, Division of  
Languages*



CHARLES R. EASON  
B.S., M.S.  
*Chairman, Division of  
Mathematics*



CARRIE L. HARRISON  
B.S., A.M.  
*Dean of Women*



MAUDE W. WINSTON  
A.B.  
*Assistant Dean of Women*



CAULBERT A. JONES  
A.B., M.A.  
*Acting Chairman, Division of  
Social Science*



HORACE C. PERRIN  
B.S., A.M.  
*Head, Dept. Chemistry*

# FACULTY

VELMON EATON VIRGO  
A.B., A.M.  
*Social Science*



PATRICIA DELAINE STEWART  
A.B., A.M.  
*Romance Language*

MILDRED AMY THORNHILL  
B.S.  
*Music*

JOHN HIRAM JACKSON  
A.B., B.D.  
*Psychology and Philosophy*



MARCELLA FORD  
*Religion*

VIRGINIA M. RUSSELL  
B.S., A.M.  
*Physical Education*



MILDRED NAOMI JORDAN  
B.S., M.S.  
*Home Economics*

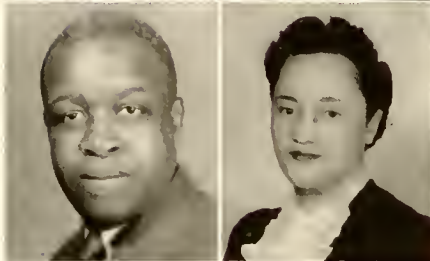
FANNIE JANET MCNAIR  
B.S.  
*Dietitian*



# FACULTY

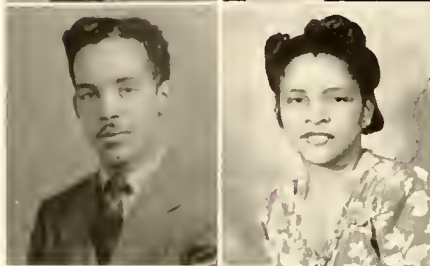


BRENDA YANCEY JERVAY  
B.S., A.M.  
*Home Economics*



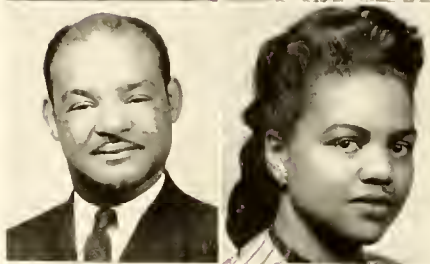
ETHILYNN H. THOMAS  
A.B., A.M.  
*English*

JAMES ELLIS LYTLE, JR.  
A.B., A.M.  
*Director of Physical  
Education*



DORCAS C. QUARLES  
A.B.  
*Library Ass'tant*

JAMES A. BROADY, JR.  
B.A., A.M.  
*Art*



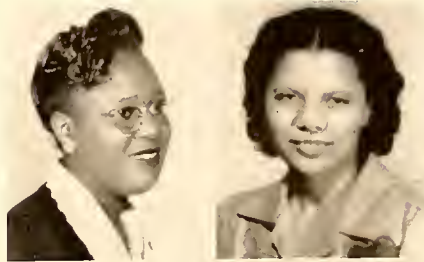
MARION GREGORY  
B.S., M.S.  
*Biology*

JAMES STEVENSON  
B.S.  
*Physical Education*

ROSA BRYANT HILL  
B.A., A.M.  
*English*

# FACULTY

MINNIE HALL FIELDS  
A.B., A.M.  
*Education*



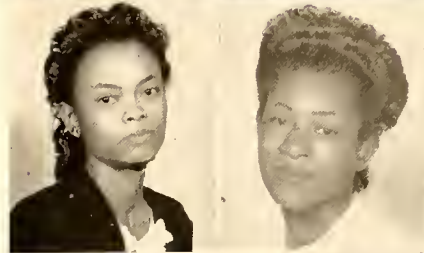
DORIS NEIL  
A.B., B.L.S.  
*Library Assistant*



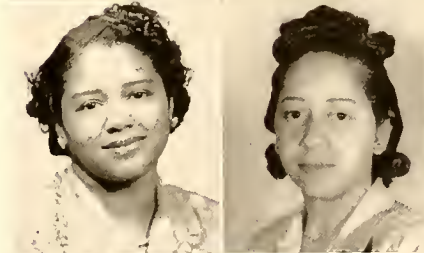
HARRIET SMITH  
*Dormitory Hostess*

CIVA CLARKE  
*Dormitory Hostess*

BEATRICE RUTH MARTIN  
A.B.  
*Clerical Assistant*



DOROTHY PAIGE BRASWELL  
*Clerical Assistant*



GAYNELLE M. STEPHENSON  
*Clerical Assistant*

MARY JEAN JACKSON  
*Clerical Assistant*



HARRIETT McCRIMMON KEE  
B.A.  
*Clerical Assistant*

## FACULTY MEMBERS NOT PHOTOGRAPHED

Anderson, John C., A.B., M.A., <i>Social Science</i>	Grandy, Mary E., B.S.C., <i>Secretary</i>
Blount, Doris E., B.S.C., <i>Secretary</i>	Green, Walter, B.S.C.
Cheek, Rev. G. E., B.S., B.Th. <i>Director of Public Relations</i>	Jones, E. E., B.S., M.S., <i>Physics</i>
Delaney, Rev. Moses, B.A., <i>Religion</i>	Wallace, Joel, A.B., M.A., <i>English-Publicity</i>
Eaton, Sadie, R.N., <i>Nurse</i>	Weaver, Ruth S., A.B., M.A., <i>Education</i>
Gil-Smythe, Harry, B.A., M.A., <i>Music</i>	Williams, E. Lash, R.N., <i>Assistant Nurse</i>
	Woodson, William B., B.S.C., <i>Bookkeeper</i>
	Young, Roger A., B.S., M.S., Ph.D., <i>Biology</i>

# In Memoriam

DENNIS PITTMAN

our beloved classmate and friend

and

to all other students and faculty members

of the Shaw Family

who gave their lives in the Armed Services

of this country



# THE CLASS OF '46

## OFFICERS

DARIUS JOHNSON, *President*; HENRY CLAY TURNER, *Vice President*; ALETHIA RANSOM, *Secretary*; JANICE STOKES, *Assistant Secretary*; DORIS McNEIL, *Treasurer*; OTIS SIMMONS, *Business Manager*; MISS MILDRED N. JORDAN, *Adviser*.

## SUPERLATIVES

MOST SCHOLARLY	Dorothy M. Cheek	NEATEST	Alethia Ransom Otis Simmons
MOST VERSATILE	Anna L. Boone	WITTIEST	Lillian Dickey
MOST LIKELY TO SUCCEED	William P. Hall	BEST PERSONALITY	Helena M. Dunham
MOST POPULAR	Ozetta Price Darius Johnson	BEST DANCERS	Henriquetta Adams Darius Johnson
BEST LOOKING	Leola Fitts	MOST COOPERATIVE	Luella Dickens
MOST DIGNIFIED	Anna L. Boone Darius Johnson	MOST MODEST	Allie M. Henry
MOST HANDSOME	Henry Clay Turner	MOST SINCERE	Janice Stokes



HENRIQUETA E. ADAMS, "Bunnie," A.B.  
838 Kelly Street  
New York 59, New York

Estey House Organization 1; Resident Young Women's 2, 3, 4; YWCA 1, 2, 3; Chairman Publicity Committee 4; Sunday School 1, 2, 3, 4; Hayes Fleming Missionary Society 3; Chairman Program Committee; Contestant for Miss Hayes Fleming 4; Tyler Book Club 4; Shaw Players 4; Fortnightly English Club 4; N.A.A.C.P. 3, 4; Ivy Leaf Club 3; Alpha Kappa Alpha 3; Philackter 4; Senior Yearbook Committee 4.

ERNICE ALLENE ARRINGTON, "Scotty," B.S.  
102 Denmans Street  
Goldsboro, North Carolina

YWCA 1, 2, 3, 4; Estey House 1, 2, 3, 4; N.A.A.C.P. 4; Cheering Squad 1, 2, 3; Pratt Institute, Home Economics Club 2, 3, 4; Non Resident Young Woman 4.

MAVIS ESMERALDA ARRINGTON, A.B.  
917 W. Gay Street  
Rocky Mount, North Carolina

Estey House Organization 1; Resident Young Women's Organization 2, 3, 4; Assistant Secretary Class 1; YWCA 1, 2, 3, 4.

GRACE WHITEHEAD ARTIS, A.B.  
537 East Nash Street  
Wilson, N. C.

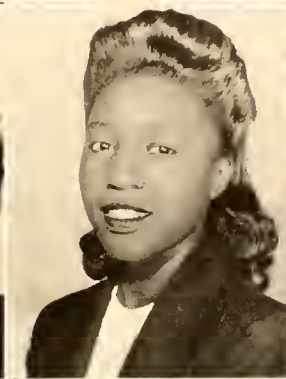
YWCA 1, 2, 3, 4; Resident Young Women's Organization 1, 2, 3, 4; Archonian Club 3, 4.

FLORENCE EUGENIA AVENT, "Jeanne"  
327 Atlantic Avenue  
Rocky Mount, North Carolina

University Choral Society 1, 2, 3, 4, Business Manager 3; YWCA 1, 2, 3, 4, President 4; Board of Directors for the Campus Inn 3; Student Council 3, 4, Assistant Secretary 4; Resident Women's Organization 1, 2, 3, 4; Shaw Players 2, 3, 4, Vice President 4, Treasurer 3; Religious Life Committee 4; Freshman Orientation Committee 3, 4; N.A.A.C.P. 3, 4.

ANDRYE VERNYCE BACKUS, "Dimp" B.S.  
384 East Washington Street  
Suffolk, Virginia

N.A.A.C.P. 2, 3, 4, Secretary 3; YWCA 1, 2, 3, 4; Social Science Club 4; Resident Young Women's Organization 1, 2, 3, 4; "Miss Victory" Contest 2; Trainer Girls Basketball Team 2.



ESTELLA MAE BANKS, B.S.  
Route 2, Box 137  
Como, North Carolina

A. and T. College 1; Home Economics Club 3, 4; Estey Personality and Charm Club 3, 4; N.A.A.C.P. 3, 4; YWCA 1, 2, 3, 4; Estey House Organization 2, 3; Non-resident Young Women Organization 4.

LORENE BRAWLEY, "Spark," B.S.  
Taylorsville, North Carolina

YWCA 1, 2, 3, 4; Resident Young Women's 3, 4; Estey House Organization 1, 2; N.A.A.C.P. 3, 4; Home Economics Club 3, 4, Social Committee 2; Cheering Squad 1, 2, 3, 4; Freshman Orientation Committee 3, 4; Athletic Committee 4; Science Club 4.

LILLIAN V. BLACK  
212 Central Avenue  
Hackensack, New Jersey

Freshman Class Secretary; Tau Sigma Rho 1; YWCA 1, 2, 3, 4; *Journal* Staff 1, 2, 4; Hayes Fleming Missionary Society 1, 2, 3, 4; Resident Young Women's Organization 3, 4; Sunday School 2, 3, 4; Freshman Orientation Committee 2; Hospitality and Social Committee 1; Baptist Student Union 4; Secretary, Tyler Book Club 4.

HENRI ALDA MAE BRIGGS, A.B.  
413 East North Street  
Kinston, North Carolina

Choir 1, 2; YWCA 1, 2, 3; Resident Young Women Camera Club 1; Sunday School 1, 2.

ANNA LAURA BOONE, A.B.  
216 West Blackwell Street  
Dover, New Jersey

N.A.A.C.P. 3, 4; Sunday School Council 1, 3, 4; B.S.U. 4, Asst. Sec.; Shaw Players 1, 2, 3, 4, Secretary 2, Vice President 4; Book Club 4; Pestalozzi Club 4, Treasurer; Campus Inn Board of Directors 3; Charm; *Journal* Staff 3; Ivy Leaf Club 1, Treasurer; Alpha Kappa Alpha Sorority 2, 3, 4; Grammateus 3, 4; Alpha Kappa Mu National Honor Society 3, 4; *Who's Who Among Students in American Universities and Colleges* 4; Salutatorian.

MARTHA VALERIA BROWN, B.S.  
300 E. South Street  
Raleigh, N. C.

YWCA 1, 2, 3, 4; Home Economics Club 3, 4; Resident Young Women's Organization 1, 2, 3; University Choir 1, 2, 3, 4.



ANNIS JANE CANNADY, A.B.  
Johnson St.  
Roxboro, N. C.

Hayes-Fleming Missionary Society 1, 2; Sunday School Organization 1, 2; Estey House Organization 1, 3, 4; YWCA 1, 2, 3, 4; Resident Young Women's 1, 2, 3, 4; N.A.A.C.P. 1, 2.

WILLIAM NATHANIEL CARR, "Dick"  
178 Jeffress Blvd.  
South Boston, Virginia

DOROTHY MILLS CHEEK, "Dot," B.S.  
626 Rowland Street  
Henderson, North Carolina

YWCA 1, 2, 3, 4, Secretary 2, 3; Resident Young Women's Organization 1, 2, 3, 4; Ivy Leaf Club 1; Alpha Kappa Mu Honor Society 3, 4; Shaw Player 2, 3, 4; Secretary Student Council 3, 4; Pestalozzi Club 4; *Journal Staff* 3, 4; *Who's Who Among Students in American Universities and Colleges* 4; Received Freshman Scholarship Award; Alpha Kappa Alpha Freshman Scholarship Award; Sophomore Scholarship Award; Wendell C. Somerville Scholarship Award; Valedictorian.

MADGE CONSTANCE CLARKE, A.B.  
75 Saint Nicholas Place  
New York, N. Y.

YWCA 1, 2, 3, 4; Estey House Organization 1; President Young Women's Organization 2, 3, 4; Dry Leaf Club 1; Alpha Kappa Alpha Sorority 2; Famicus 3; Anti Basileus 4; Alpha Kappa Mu National Honor Society, Vice President 3, President 4; Tau Sigma Rho 3, 4, Secretary 3; Social Science Club, Reporter 4; Shaw Players 3, 4; Pestalozzi Club 4; N.A.A.C.P. 3, 4; *Journal Staff* 3, 4.

MARTHA ADLENE COFIELD  
3847 N. Bouvier Street  
Philadelphia 401, Pa.

YWCA 1, 2, 3, 4; Resident Young Women's Organization 1, 2, 3, 4; *Journal*, Sport Editor 1, 2.

THELMA MARIE COLE, A.B.  
610 Rosedale Street  
Detroit 2, Michigan

YWCA 2, 3, 4; Resident Young Women Organization 3, 4; Estey Personality and Charm Club 3, 4; Virginia State College 1; Estey House Organization 2.





HELEN DAVIS DEBSAM  
159 Lincoln Street  
Montclair, New Jersey

Non-Resident Young Women; Social Science Club 1, 2, 3, 4; YWCA 3, 4; N.A.A.C.P. 3, 4; Pyramid Club 1, 2.

HELENA MUNN DUNHAM, "Lindy," A.B.  
75 Pearl Street  
Waterbury, Connecticut

YWCA 1, 2, 3, 4; Esty House Organization 1; Resident Young Women 2, 3, 4; Shaw Players 3, 4; N.A.A.C.P. 3, 4; Board of Directors of Campus Inn 3; Ivy Leaf Club 3, 4; Book Club 4.

LUELLA VERINE DICKENS, A.B.  
901 Shearin Street  
Rocky Mount, N. C.

YWCA 1, 2, 3, 4; Baptist Student Union 4; N.A.A.C.P. 3, 4; Shaw Players 3, 4; Vice President Class 3, 4; Hayes-Fleming Missionary Society 1, 2, 3, 4, President 3; University Choral Society 1, 2, 3, 4, President 3; Manager University Campus Inn 3, 4; Sunday School 1, 2, 3, 4, Teacher 4; Delegate to "Y" Conference 4; Wendell C. Sommerville Award 3; University Social Committee 3; *Who's Who Among Students in American Universities and Colleges* 4; Campus In Board of Directors 3, 4.

DAISY JEANITA EDGERTON, A.B.  
Uree, North Carolina

Barber-Scotia College 1, 2; YWCA 1, 2, 3, 4; Resident Young Women 3, 4; Estey Personality and Charm Club 3, 4.

CLANCY RUDOLPH EDWARDS, A.B.  
Elm City, North Carolina

YMCA 1, 2, 3, 4; Varsity Club 2, 3, 4; Captain Basketball Team 3; Student Council 4; Vice President Baptist Student Union 4; Theological Fraternity 4; Social Science Club 4, Treasurer.

LILLIAN VERNETTE DICKEY, "Dickey," A.B.  
Wilmington, North Carolina

North Carolina State 1, 2; Choir 1, 2, 3, 4; Pyramid Club 2, 3, 4; Science Club 3, 4; YWCA; Resident Young Women.



GERALDINE VERA EDWARDS, "Buggar," A.B.  
776 48th Street  
Newport News, Virginia

LULA CAROLINA FAULKNER, A.B.  
Route 3, Box 102  
Monroe, North Carolina

Non-resident Young Women's Organization 2;  
Resident Young Women's Organization 3, 4;  
YWCA 2, 3, 4; N.A.A.C.P. 3, 4; E.P.C. Club 4;  
University Sunday School 3, 4.

LEOLA H. FITTS, A.B.  
Route 3, Box 160  
Littleton, North Carolina

Estey House Organization 1; YWCA 1, 2, 3, 4;  
Chairman Publicity Committee 2; Resident Young  
Women 2, 3, 4; Hayes-Fleming Missionary Society  
2, 3, 4, Secretary 2, 3; Sunday School 1, 2, 3;  
Archonian Club 2, 3, 4, Treasurer 2.

DONOTHY BELLE FLOYD, "Dot"  
Route 3, Box 107  
Fairmont, North Carolina

Estey House Organization 1; YWCA 1, 2, 3, 4;  
Resident Young Women's Organization 2, 3, 4,  
Secretary 4; Home Economics Club 3, 4, Secretary;  
University Choir 2, 3, 4, Assistant Secretary 4;  
Girls' Varsity Basketball 1; Hayes-Fleming Mis-  
sionary Society 1, Corresponding Secretary; Shaw  
Players 2, 3, 4; Freshman Orientation Committee  
3, 4; Pestalozzi Club 4; Pyramid Club 2, 3; Sunday  
School 1, 4.

ERMA GENEVA GARDNER, B.S.  
Route 1, Box 46  
Clayton, North Carolina

Non-Resident Young Women's Organization 1;  
Resident Young Women's Organization 2, 3, 4;  
Hayes-Fleming Missionary Society 2, 3, 4; Hayes-  
Fleming Pianist 3, 4; N.A.A.C.P. 3, 4; YWCA  
1, 2, 3, 4; Sunday School 2, 3, 4; Sunday School  
Council 4; Science Club.

WILLIAM H. GILBREATH, B.S.  
P. O. Box 133  
Vivian, West Virginia

YMCA 1, 2, 3, 4; Science Club 1, 2, 3, 4; Veteran  
World War II.





HERMINE JACQUILYN GODFREY, "Jacquie," A.B.  
121 N. Ruby Street  
Philadelphia, Pennsylvania

Spelman College, Atlanta, Ga.; YWCA 2; Hayes-Fleming Missionary Society 2, 3, 4; Social Committee of the Resident Young Women's Organization 2; Sunday School 2, 3, 4; N.A.A.C.P. 2, 3, 4; *Journal Staff* 4; Social Science Club 4; Member of the Campaign Drive Fund.

WILLIAM POAG HALL, B.S.  
108 West Walnut Ave.  
Gastonia, North Carolina

President Class 2, 3; Phi Beta Sigma Fraternity, Secretary 2, President 3; Member Student Council; Editor *Shaw Journal* 3, 1/2 of 4; President Junior Class; Member Board of Directors of Campus Inn; *Who's Who Among College Students in American University*; Manager Boys Basketball Team 4.

ALLETTE ERNESTINE HARPER, A.B.  
354 Dixie Broadway  
Winston-Salem, North Carolina

Estey House Organization 1; Resident Young Women's Organization 2; YWCA 1, 2, 3, 4; Hayes-Fleming Missionary Society 1; Archonian Club 1; Zeta Phi Beta Sorority 2, 3, 4; Sophomore Class Treasurer; N.A.A.C.P. 4; University Social Committee 3; University Choir 1, 2, 3, 4; Social Science Club 4.

CORINE COSTNER HARRINGTON, B.S.  
1404 Walnut Avenue  
East St. Louis, Illinois

Resident Young Women 1, 2; YWCA 3; Non-Resident Young Women's Organization 4; Bennett College 1.

ALLIE M. HENRY, A.B.  
Burgaw, N. C.

Resident Young Women Organization 1, 2, 3, 4; YWCA 1, 2, 3, 4; Shaw Players 4; Fortnightly English Club 4; Tyler Book Club 4; Hayes-Fleming 1, 2; Pyramid Club 3, 4; N.A.A.C.P. 3, 4.

VIVIAN ALICETINE HUGH, A.B.  
117 West 141 Street  
New York, N. Y.

YWCA 1, 2, 3, 4; Cheering Squad 1, 2, 3, Co-Captain 4; Student Council Assistant, Parliamentarian 3; Estey House Organization; Resident Young Women's Organization 2, 3, 4; N.A.A.C.P. 2, 3, 4; Campaign Chairman 3, 4; Tau Sigma Rho Debating Society 3, 4; Vice President 4; Social Science Club, President 4; Social Science Honor Key 1; B.S.U. 4.



ARDELL JEANETTE HOLLAND, "Dell," A.B.  
15 Gilmer Avenue  
North East Roanoke, Virginia

YWCA 1, 2, 3, 4; Resident Young Women's Organization 1, 2, 3, 4; University Choir 1, 2, 3; Shaw Players 1, 2, 3, 4; Chairman Social Committee Shaw Players 2, 3.

MADELINE INEZ HOLLAND, "Mat," B.S.  
15 East Gilmer Avenue North East  
Roanoke 12, Virginia

Home Economics Club 1, 2, 3, 4; YWCA 1, 2, 3, 4; N.A.A.C.P. 3, 4; Resident Young Women Organization 1, 2, 3, 4, Program Committee 4; Executive Board 4; Pyramid Club to Delta Sigma Theta Sorority 3, 4; Social Committee Resident Young Women 3.

VIOLET MISSOURI HOOPER  
Box 254

Black Mountain, North Carolina

Barber-Scotia College 1, 2; Resident Young Women's Organization 3, 4; YWCA 1, 2, 3, 4; University Choir 3, 4; Tau Sigma Rho Debating Society 3, 4; Estey Personality and Charm Club 3, 4.

MARY STANFORD HUMPHREY, B.S.  
604 S. McDowell Street  
Raleigh, North Carolina

Non-Resident Young Women's Organization 1, 2, 3, 4; Home Economic Club 1; YWCA 1, 2, 3, 4.

DARUS JOHNSON, JR., B.S.  
522 Fisher Street  
Fayetteville, North Carolina

University Choir 2, 3, 4; Alpha Phi Alpha Pledge Club 4; President Senior Class; *Who's Who Among Students in American Colleges and Universities* 4; Football Team 2; Basketball Trainer 3; Student Council 4; Executive Men's Personnel Council 4.

JANTRY MADALINE JOHNSON, "Mads," B.S.  
P. O. Box 224  
Eagle Rock, North Carolina

Non-Resident Young Women's Organization 1, 2, 3, 4; YWCA 1, 2, 3, 4; Basketball Team 1, 2; Horticulture Club 2; Assistant Secretary Carver Science Club 4; Home Economics 1, 2, 3, 4; N.A.A.C.P. 2, 3.



OMEGA EVANGELINE FOSTER JOHNSON, "Van," B.S.  
252 Gulf Street  
Laurinburg, North Carolina

"Miss Home Economics" 3; Home Economics Club 1, 2, 3, 4, Vice President 3; Student Council 2; Archonian Club 1, President 1; Zeta Phi Beta Sorority 2, 3, 4, Secretary 3; Resident Young Women's Organization 1, 2, 3, 4, Secretary 2; YWCA 1, 2, 3, 4.

ALNER ELLEN JONES, A.B.  
Postoffice Box 113  
Hillsboro, North Carolina

University Choir 1, 2; Non-Resident Young Women; YWCA; Basketball 1.

BLONDELL BERNETHA JONES, A.B.  
217 East Eighth Avenue  
Roselle, New Jersey

University Choir 1, 2, 3, 4; Estey House Organization 1; Ivy Leaf Club 1, 2; Shaw Players 2, 3, 4; Campus Inn Board Directors 3; Tau Sigma Rho Society 3; Shaw *Journal* Staff 3; Alpha Kappa Alpha Sorority 3, 4; Pestalozzi Club, President 4; 17th National Convention of the YWCA's of the United States of America, Atlantic City 4.

MARY ELIZABETH KENNEDY, "Lib," A.B.  
47 Craigmant Road  
Black Mountain, North Carolina

Barber-Scotia College 1, 2; YWCA 1, 2, 3, 4; Resident Young Women 3, 4; Estey Personality and Charm Club 3, 4.

JOSEPHINE C. KITTRELL, A.B.  
P. O. Box 105  
Kittrell, N. C.

Clubs or Organizations; Non-Resident Women's Organization 1, 2, 3, 4; Pyramid Club 2, 3, 4; YWCA 1, 2, 3, 4; N.A.A.C.P. 3, 4; Pestalozzi Club 4.

HOPKINS LYON, A.B.  
Postoffice  
Wendell, North Carolina

Non-Resident Young Women; YWCA; Home Economics Club 1, 2; Horticulture Club 1.





JUNE ROBIN WILKINS MOALEY, "Junakins," A.B.  
121 Halifax Street  
Suffolk, Virginia

Archonian Club 2; Zeta Phi Beta Sorority 2, 3, 4; YWCA 1, 2, 3, 4; Chairman Worship Committee 3, 4; Hayes-Fleming Missionary Society 2, 3; Non-Resident Women's Organization 1, 4; Estey House Organization 2, 3.

AUSTRALIA LEE MASON, A.B., B.D.  
533 East Thomas Street  
Rocky Mount, North Carolina

Football Squad 1, 2, 3; Track Team 2; Varsity Club 1, 2, 3, 4; Choir 2; Alpha Phi Alpha Fraternity President 3, Secretary 6; Theological Fraternity 1, 2, 3, 4, 5, President 6; Student Council 1, 2, 3, 4, 5, 6; YMCA Men's Personnel Council 1, 2, 3, 4; Present Pastor of the First Baptist and Mount Zion Baptist Churches of Lumberton, North Carolina.

MISSOURI McCABE, "Macabee," B.S.  
Route 101, Box 2  
North Harlowe, North Carolina

Sunday School 1, 2, 3, 4; Estey House Organization 1; Home Economics Club 1, 2, 3, 4; Secretary Home Economics Club 3; Resident Young Women 2, 3, 4; N.A.A.C.P. 4; Baptist Student Union 4; Hayes-Fleming Missionary Society 1, 2, 3, 4; YWCA 1, 2, 3, 4.

WILMA LOREE MCCLEAVE, A.B.  
Siler City, North Carolina

Resident Young Women's Organization 1, 2, 3, 4; N.A.A.C.P. 3, 4, Vice President 3; Baptist Student Union, First Vice President 4; Sunday School 1, 2, 3, 4; Chairman Worship Committee 3; Archonian Club 1; Zeta Phi Beta Sorority 2, 3, 4, President 3; Hayes-Fleming Missionary Society 3, 4; Sophomore Class Secretary, Student Council 4; Social Science Club, Secretary 4; Orientation Committee 3, 4; Pestalozzi Club 4; *Who's Who Among Students in American Universities and Colleges* 4; *The Journal* Staff 1, 2, 3; YWCA 1, 2, 3, 4, Vice President 4.

DORIS ELIZABETH MCNEILL, B.S.

University Choral Society 1, 2; Basketball 1, 2, 3, 4; Varsity Club 2, 3, 4; Science Club 4; YWCA 1, 2, 3, 4; Estey House Organization 1; Treasurer Class 3, 4.

EVA LUCRETIA MERRITT  
914 Milton Avenue  
Durham, North Carolina

N. C. College for Negroes 1, 2; Business and Professional Women's Club 2; Resident Young Women's Organization 3, 4; YWCA Council 3, 4; N.A.A.C.P. 3, 4; Student Council 3, 4; Business Manager Student Council 4; Baptist Student Union 4; Christian Education Society 4; Representative to Adventures in Applied Christianity, Greensboro 3; Recipient of Hayes-Fleming Society Scholarship Award 3.



ETHEL STEWARD MOORE, "Steward," B.S.  
P. O. Box 32  
Chicod, North Carolina

YWCA 1, 2, 3, 4; Non-Resident Young Women's Organization 1, 2, 3, 4; Home Economics Club 1, 2.

LERONIA MOORE, B.S.  
572 Madison Street  
Plymouth, North Carolina

Estey House Organization 1; Resident Young Women Organization 2, 3, 4; Home Economics Club 3, 4; Hayes-Fleming Missionary Society 2, 3, 4; Sunday School 2, 3, 4; N.A.A.C.P. 3, 4; YWCA 1, 2, 3, 4.

PAULINE MOORE, "Paula," B.S.  
P. O. Box 32  
Chicod, N. C.

YWCA 1, 2, 3, 4; Non-Resident Women's Organization 1, 2, 3, 4; University Choral Society 1; Home Economics 1, 2.

K. A. LUCILLE NICHOLSON, B.S.  
Route 2, Box 96  
Franklinton, N. C.

Barber-Scotia College 1; Non-Resident Young Women's Organization 2, 3, 4; YWCA 2, 3, 4.

ADELAIDE MARIE PAYNE, "Adipo," B.S.  
Box 128, Route 1  
Swedesboro, New Jersey

YWCA President 3; Hayes-Fleming Missionary Society; Sunday School Council 1; B.S.U. 4; University Choir 1, 2, 3, 4, Treasurer 3; Ivy Leaf Club 2; Alpha Kappa Alpha Sorority 3, 4; N.A.A.C.P. 3, 4; Home Economics Club 2, 3; *Journal Staff* 2; Representative to Southern Regional Conference of YWCA YMCA at Hampton, Virginia 2.

GRACE LEE PAYNE, "Graceful," B.S.  
Box 128, Route 1  
Swedesboro, New Jersey

YWCA 1, 2, 3, 4, Cabinet 3; Hayes-Fleming Missionary Society 1, 2; Sunday School 1, 2, 4; Sunday School Council 1; Student Council 3, 4, Business Manager 3, Vice President 4; N.A.A.C.P. 3, 4, President 4; University Choir 1, 2, 3, 4; Ivy Leaf Club 1; Alpha Kappa Sorority 2, 3, 4, Tamiochus 3, 4; Campus Inn Staff 3; Representation to Southern Negro Youth Conference in Atlanta, Ga. 3.



OLLIE B. JACKSON PEELE, A.B.  
P. O. Box 160  
Lewiston, North Carolina

Estey House Organization 1; Resident Young Women Organization 2, 3, 4; Sunday School 1, 2, 3, 4; Baptist Student Union 4; Hayes-Fleming Missionary Society 1, 2, 3, 4; Shaw Players 4; N.A.A.C.P. 3, 4; Fortnight English Club 4; National Council of Teachers of English 4; YWCA 1, 2, 3, 4.

MARY A. PETERSON, A.B.  
12 Ashe Terrace  
Raleigh, North Carolina

Non-Resident Young Woman's Club 1, 2, 3, 4; YWCA 1, 2, 3, 4.

DOROTHY POWELL, B.S.  
746 St. Nicholas Avenue  
New York, N. Y.

Resident Young Women's Organization 1, 2, 3, 4; YWCA 1, 2, 3, 4; Cabinet 1; N.A.A.C.P. 2, 3, 4; Shaw Players 2, 3, 4, Treasurer 4; Humor Editor *Journal* 3, 4; Ivy Leaf Club 1; President, Alpha Kappa Alpha Sorority 2, 3, 4; Alpha Kappa Mu Honor Society 3, 4; Pestalozzi Club 4; Tau Sigma Rho Debating Society 2, 3, 4, President 4; *Who's Who in American Colleges and Universities* 4; Freshman Scholarship Award; Sophomore Scholarship Award; Alpha Kappa Alpha Sorority Award 1.

OZETTA PRICE, "Zet," B.S.  
429 Avon Avenue  
Burlington, North Carolina

Student Council 2, 4; Campus Inn Board of Directors, Secretary 4; Home Economics Club 4; Miss Home Economics 4; Resident Young Women Organization 1, 2, 3, 4, President 4, Social Committee 2, 3; YWCA 1, 2, 3, 4, Cabinet 3; Social Committee of Junior Class 3; *Who's Who Among Students in American Universities and Colleges* 4.

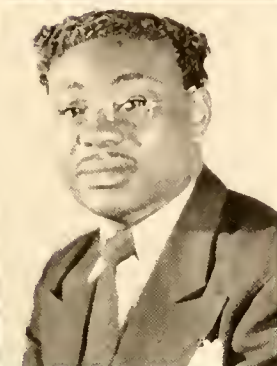
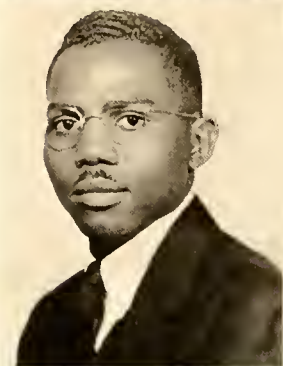
EDITH IOLA PRUNTY, "E. P.," A.B.  
Box 545  
North Fork, West Virginia

Student Council 1, 2; Sunday School Council 1, 3; YWCA Cabinet 1; Alpha Kappa Alpha Sorority 2; Dean of Pledges 3; Alpha Kappa Mu Honor Society 2, Treasurer 3; Shaw Players 2, 3; Tau Sigma Rho Debating Society 2, Assistant Secretary 3; *Shaw Journal* 2; Pestalozzi Club, Secretary 3; *Who's Who Among Students in American Colleges and Universities*.

ALETHIA MAYE RANSOM, "Leat," A.B.  
1319 North 59th Street  
Philadelphia 31, Pennsylvania

YWCA 1, 2, 3, 4; Secretary Senior Class; Secretary N.A.A.C.P. 3, 4; Pyramid Club 1; Delta Sigma Theta Sorority 2, 3, 4, Vice President 2, Secretary 3, President 4; University Choral Society 1, 2, 3, 4, President 3; Hospitality and Social Committee 3; *Who's Who in American Universities and Colleges* 4.





EDWARD CHARLES RICHARDSON, B.S.  
414 Carolina Avenue  
Rocky Mount, North Carolina

YMCA 1, 2, 3, 4; Science Club 1, 2, 3, 4; Dramatic Club 4; Men's Personnel Council 1, 2, 3, 4; N.A.A.C.P. 4; Biology Laboratory Assistant 3.

OTIS ALVESTER SIMMONS, B.S.  
Pollocksville, North Carolina

YMCA 1, 2, 3, 4; Men's Personnel Council 1, 2, 3, 4; Senior Class Business Manager 4; N.A.A.C.P. 4; Science Club 4.

SAMANTHA RUTH ROBINSON  
Postoffice Box 22  
Method, North Carolina

Non-Resident Young Women's Organization; YWCA; N.A.A.C.P.

ALFRED REDDICK SMITH, A.B.  
120 South 12th Street  
Wilmington, North Carolina

YMCA 1, 2, 3, 4; Student Council 1; Mens Personnel Council 1, 2, 3, 4; Theological Fraternity 1, 2, 3, 4; Alpha Phi Alpha Fraternity, Dean of Pledges 3, 4, President 4; Sunday School 1, 2, 3, 4; Football Team 3, 4.

GLADIE BELL SIMMONS, "Sister," B.S.  
Route 1, Box 189  
Pollocksville, North Carolina

Home Economics Club 1, 2, 3, 4; Estey House Organization 1; Resident Young Women's Organization 2, 3, 4; N.A.A.C.P. 3, 4; Hayes-Fleming Missionary Society 1, 2, 3, 4; YWCA 1, 2, 3, 4; Sunday School 1, 2, 3, 4; Baptist Student Union 4.

ELBA LOUISE SMITH, B.S.  
Route 1, Box 60  
Louisburg, North Carolina

Hayes-Fleming Missionary Society 3, 4; Sunday School 3, 4; YWCA 1, 2, 3, 4; Estey House Organization 1; Resident Young Women's Organization 2, 3, 4.



JANICE EVELYN STORES, A.B.  
Middlesex, North Carolina

YWCA 1, 2, 3, 4; Non-Resident Young Women's Club 1, 2, 3, 4, Vice President 3, President 4; Social Science Club 4; Ivy Leaf Club 3, 4, President 4, Treasurer 3

MARY LOU STOVALL, B.S.  
517 Pennsylvania Avenue  
Rocky Mount, North Carolina

Home Economics Club 1, 3, 4; Hayes-Fleming Society 1, 2; Resident Young Women's Club 1, 2, 3, 4; YWCA 1, 2, 3, 4.

ESTEEN ARRETTA TAYLOR, A.B.  
P. O. Box 196  
Fairmont, N. C.

Estey House Organization 1; Resident Young Women's Organization 2, 3, 4; N.A.A.C.P. 3, 4; Tyler Book Club 4; Shaw Players 4; YWCA 1, 2, 3, 4; Hayes-Fleming Missionary Society 2, 3; Sunday School 1, 2, 3, 4; Fortnightly English Club 4; Pyramid.

BESSIE OPHELIA THORPE, B.S.  
1202 Tatham Street  
Raleigh, North Carolina

YWCA 1, 2, 3, 4; Home Economics Club 1, 2; Non-Resident Women's Club 1, 2, 3, 4.

LOTTIE BETTY TRUSEMDELL, "True," B.S.  
Route 2, Box 785  
Concord, North Carolina

Archonian Club 1; Zeta Phi Beta 2, 3, 4, Custodian 4; YWCA 1, 2, 3, 4; Estey House Organization 1, 2; Home Economics Club 1, 2, 4, Social Committee 2; Sunday School 1, 2, 3, Council 1; N.A.A.C.P. 3, 4; Hayes-Fleming 1, 2; Resident Young Women's Organization 1, 2, 3, 4; E.P.C. Club 2, 3, Founder 3; Chairman Program Committee 4, President 3; Phil Harmonic Choir 4; President Physiology Class 4.

BESSIE PRICE WALL, B.S.  
577 West 5 Street  
Dayton, Ohio

Swift Memorial College 1, 2; Estey House Organization 3, 4; Hayes-Fleming Missionary Society 3, 4; Chairman Social Committee 3; YWCA 3, 4; Home Economics Club 3, 4, Treasurer 4; Book Club 4; Baptist Student Union 4; N.A.A.C.P. 3, 4; Sunday School 3, 4.



WARDELL N. PORTER, B.S.  
3228 Ellis Avenue  
Chicago 16, Illinois

Science Club 1; YMCA 1, 2, 3, 4; Veteran of World War II.

ELSIE MAE WATSON, A.B.  
Route 2, Box 99  
Clayton, North Carolina

Fayetteville State Teachers College 1; Dramatic Club 1; Pyramid Club 2; Delta Sigma Theta Sorority 3, 4; Sunday School 1, 2, 3, 4; N.A.A.C.P., Secretary 3, 4; Hayes-Fleming Missionary Society, Vice President 2, 3, 4; YWCA 1, 2, 3, 4; Resident Young Women Organization 2, 3, 4.

CONORAH LOUISE WATSON, A.B.  
Knightdale Postoffice  
Knightdale, North Carolina

N.A.A.C.P. 2 Years; YWCA 4 Years; Non-Resident Student 4.

CARRIE VERNETTE WHITERS, A.B.  
1113 West Avenue  
Wilmington, N. C.

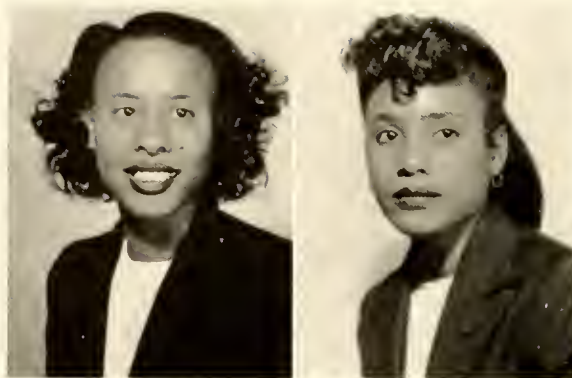
Estey House Organization 1; Resident Young Women 2, 3, 4; YWCA 1, 2, 3, 4; N.A.A.C.P. 3; Pyramid 3; Delta Sigma Theta Sorority 4.

CORINNE ROBINSON WINSTEAD, "Rina," A.B.  
2029 13th Street, N. W.  
Washington 9, D. C.

N.A.A.C.P. 3, 4; Hayes-Fleming Missionary Society 1, 2, 3, 4; YWCA 1, 2, 3, 4; Shaw Players 1; Estey House Organization 1; Resident Young Women 2, 3, 4; Baptist Student Union 4; Fortnightly English Club 4; Sunday School 1, 2, 3, 4; Member of Yearbook Committee 4; National Council of Teachers of English 4.

ANNIE LEE WOODARD, B.S.  
901 Washington Street  
Wilson, North Carolina

YWCA 1, 2, 3, 4; Sunday School 1, 2, 3; Resident Young Women's Organization 3, 4; Estey House Organization 1, 2; Home Economics Organization 1, 2, 3, 4; President Home Economics Club 4.



ROSALIND ELLA WYATT, "ROSS," A.B.  
113 North Church Street  
Salisbury, North Carolina

YWCA 1, 2, 3, 4; Resident Young Women 1, 2, 3, 4; Estey House Organization 1; Social Science Club 1; Baptist Student Union 1.

VIRGINIA ADLENA WYATT, A.B.  
112 N. Church Street  
Salisbury, North Carolina

Young Women's Christian Association 1, 2, 3, 4; Estey House Organization 1; Resident Young Women's Organization 2, 3, 4; University Choir 1, 2, 3; Library Staff 2; Hayes-Fleming Missionary Society 2, 3; N.A.A.C.P. 2, 3, 4.

## CLASS POEM

Alma Mater,	Alma Mater,
Thy portals we entered four years ago;	We've worked, studied, played, and sung,
The Arts and Sciences we yearned to know;	But our search for knowledge has just begun;
Our hearts were eager, ambitions high;	We now launch out on a greater sea,
Our goal . . . nothing less than the sky.	Great leaders of our Race we'll strive to be.

Alma Mater,  
Thy stately buildings we'll always revere,  
Echoed strains of "Alma Mater" we'll always  
hear;  
Classroom experiences, faculty . . . all,  
Pleasant memories of them we'll ever recall.

ANNA LAURA BOONE.

## CLASS SONG

TUNE "Aloha Oe"

We have always done our best for you,	Your Spirit in our hearts will always bind
Since through your portals we have come;	Us to our Alma Mater Dear;
As we leave with strength and knowledge too,	No longer will our voices ring, As now we must depart.
We bid Shaw's family adieu.	

CHORUS

Farewell to Thee, farewell to Thee,  
Our Alma Mater ever true and dear,  
Farewell to Thee, Farewell to Thee,  
Farewell, Dear Ole Shaw "U."

By: ALETHIA M. RANSOM,  
ADELAIDE M. PAYNE,  
BLONDELL B. JONES.



## CLASS HISTORY

As the final chords of the Commencement Recessional resound throughout Raleigh Memorial Auditorium, the class of 1946 will march down the aisle facing the promising rays of a postwar horizon. This is the class which entered the gates of Shaw University as war drums rumbled in the not too far distance, to embark upon a four year academic journey.

The history of this class is the history of thousands of classes being graduated this year from colleges and universities of the nation. Like other classes it was not immune to the evils of war. Over the high palisades sheltering its intellectual community, the lean, hungry arm which fed the nation's militant appetite randomly reached, wresting twelve males from its freshman ranks: Nathaniel Bell, Henry Blackmon, Walter Chavis, John Hairston, Warren Keys, Shade Connor, William Perry, Dennis Pittman (a gold star appears beside his name), John Saunders, John Williams, Russel Williams, and Emmett Williamson; only to return the next year for Kenneth Anderson, Thomas Hart, and Willis Stewart. With them went Coach Lytle's dream of a varsity team. With them went twenty-two male upperclassmen and all hopes of having a Bear "eleven." To the members of the class of '46 it appeared hopelessly obvious that the absence of a football team, of a sufficient number of males to attend socials and to carry out the aim of co-education, a well-rounded college career would not be theirs. Nevertheless, this class was not swept under by the currents of despondency and given to dejection because there would not be the annual Homecoming Classic, the formal dances, or because the government had placed a ban on travel which required that it spend the Christmas holidays on the campus that first year. (For many this was their first Christmas away from home.) Instead it sent forth from its ranks Doris McNeil to defend in the position of forward the Bearettes' outstanding record on the basketball court, and Chauncy Edwards to represent us with the Bears. Neither did this class let scholarship go wanting. From its proud ranks came Dorothy Cheeks with a straight "A" for the entire four years. This class in its Junior year gave to the Alpha Kappa Mu Honor Society five of its members. To the music of the University Choir the voices of Adelaide Payne, Virginia Wyatt, Valeria Brown, Alethia Ransom, Blondell Jones, Luella Dickens, Graec Payne, Ardell Holland, Darius Johnson, and Dorothy Floyd, members of the class of '46, lent themselves in song accompanied by Inez Crump, school pianist and also a member of the class.

In its junior year, it momentarily threw off the shackles of war, and deviated from the norm, giving the Seniors a prom which boasted of all the attributes of proms of pre-war days, bringing forth sweet music in the form of a six piece orchestra.

This year's BEAR possessed for the first time in its history a firm, leather cover which was the results of the earnest efforts of enterprising members of the class of '46, the first class to make the publication of this book a class project.

The history of this class is likewise the history of Shaw University. It was during its four year stay that Shaw University received its "A" rating from the Association of Secondary Schools and Colleges. It was during its four year stay that Shaw University launched upon a \$250,000 Building Expansion Program to which the student body gave its support. It was during the four years stay of this class that the Baptist Student Union was organized and the rebirth of the Social Science Club was announced.

Now the class of '46 marches forward, taking with it the cherished memories of days at Shaw, leaving behind friends—friends of four years acquaintance. The history of the class of '46 at Shaw has been written, yet the history of the class has just begun.

MADGE CLARK,  
*Class Historian.*



## CLASS WILL

1. Miss Mavis Arrington wishes to leave her ability to get up early in the morning to Miss Autura Mitchell. We're sure you cannot be more efficient than Mavis, Autura, but do your best.
2. Miss Florence Avent leaves her soprano voice and her seat in the choir to Miss Mildred Griffin.
3. Miss Janice Stokes leaves with Miss Mary Riley her sincerity. Handle it with care, Mary.
4. Miss Mary Peterson wills her courage and ability to go on through life, in spite of handicaps, to Mrs. Mary Humphrey.
5. Miss Madeline Holland wishes to leave her regal height to Miss Aldine Baird so that she can measure up to her marine.
6. Miss Anna Laura Boone wills her petiteness to Miss Annie Belle Boone.
7. Miss Alethia Ramsom leaves her ability to get courage for every occasion to Miss Kathryn Morton.
8. Miss Valeria Brown wills her pleasing and charming personality to Miss Lois Brown.
9. Miss Leronia Moore wills her quiet manner to Miss La Verne Jackson.
10. Miss Ozetta Price wills her speaking voice to Dorothea Daniel so that the "Parties" on this end can hear her part of the conversation.
11. Miss Alette Harper wills her soft voce to Miss Sarah Darden. Sarah, watch out or your friends will not recognize you when you return to Brooklyn.
12. Miss Dorothy Check leaves her scholastic ability to Mr. Leander Lewis and Andrew Cherry with due consideration to verbs.
13. Miss Josephine Kittrell leaves "The Voice" to Mrs. Inez McAllister.
14. Misses Geneva Gardner, Leronia Moore, and Elsie Watson leave their ability to conquer Shaw men to Misses Nadine Lawson, Vanleigh Smith and Johnnie Cowan.
15. The ability to assume the "air" of Mrs. Vanderbilt and her two attendants is willed by Mrs. Corine Winstead and her two attendants Misses Allie Peele and Gladie Simmons, to three worthy juniors.
16. Misses Blondell Jones and Edith Prunty leave their sarcasm and lack of tact to two freshmen—Misses Arnell Burnette and Inez Cogdell.
17. Mr. Darius Johnson offers his "cassanova traits" to anyone who is willing to follow in his steps.
18. Miss Adelaide Payne bequeaths her artistic ability to Mildred Fogg with the hope that she will paint a successive succession of successful pictures.
19. Miss Carrie Whifers bestows her "benevolent nature" free-heartedly on Miss LaRue Taylor.
20. Miss Annis Canady leaves her ability to hibernate to Miss Lucile Brown, who seemingly never goes to bed.
21. Miss Grace Payne and her twin Adelaide will their similarity to Miss Anna Williams and her sister.
22. Mrs. Bessie Price Wall leaves her bashfulness to Miss Annie Hilliard.
23. Miss Luella Dickens bestows the knowledge of managerial procedures to the future manager of the Campus Inn—Miss Gwendolyn Larkin.
24. Misses Virginia Wyatt, Rosalyn Wyatt, Audry Backus, and Vivian High offer the "spirit of the passover" to four Junior with huge appetites.
25. Misses Eva Merritt and Lillian Black confer the degree of Religious Education upon La Verne Jackson and Violet Askew.
26. Miss Betty Trusemdell bequeaths that feminine quality of the "ladies of the Renaissance period" to swoon—to Miss Flora Dixon.
27. All of the Senior young women leave their campus boy friends to Miss Waltena Pennix.
28. Miss Wilma McCleave wills her ability to attend meetings in spite of the danger of losing a boy friend, to Miss La June Satterwhite.
29. Miss Allie Henry leaves her quiet disposition and praise to Misses Lillian White and Hazel Wilson.
30. Miss Dorothy Floyd leaves her ability to participate in physical activities and gift of gab to Miss Hortense Gilmore.
31. Miss Dorothy Powell wills her ability to conduct a "love affair" to Miss Rosa Lee Price.
32. Miss Mary Low Stovall leaves her laughing hysterics with Miss Bertie Jenkins with hopes that they will encourage her to smile once in a while.

We hereby charge the Junior Class to execute our last Will and Testament.

DOROTHY FLOYD.  
ADELAIDE PAYNE.  
*Testators*

WITNESSES:  
Darius Johnson  
Miss Jordan  
Luella Dickens



# THE SOPHOMORE CLASS



## OFFICERS

<i>President</i> .....	THOMAS BOYD	<i>Treasurer</i> .....	GWENDOLYN LARKIN
<i>Vice President</i> .....	THELMA A. GUMBS	<i>Parliamentarian</i> .....	J. A. FORBES
<i>Secretary</i> .....	COLLEEN HARRIS	<i>Adviser</i> .....	PROF. C. A. JONES

We felt pretty good about being sophomores. We felt dignified from the first, for we were here last year and definitely knew our way around. . . . We felt learned and were free with our advice to the freshmen. . . . We felt more serious about our work, for we were finding that our world and the world outside were pretty serious things. . . . We felt a new responsibility about the future and little by little our rather nebulous plans began to straighten themselves out. . . . We began to find ourselves.



# THE FRESHMAN CLASS



## OFFICERS

<i>President</i> .....LUTHER SHIPMAN	<i>Parliamentarian</i> .....GUTHRIE TURNER, JR.
<i>Vice President</i> .....ARTHUR L. GIBBS	<i>Business Manager</i> .....DANIEL OAKLEY
<i>Secretary</i> .....INEZ COGDELL	<i>Adviser</i> .....PROF. J. C. ANDERSON

We Freshmen walked onto the campus for the first time last September. In our first year in college, we have experienced a great deal. Home-sickness for one thing, but with it the luxurious independence of being away from home. . . . The challenge of academic success and that dare to think deeply that Shaw has thrown to her sons for 80 years. . . . The deliciousness of being in love, perhaps for the first time. . . . The big dances. . . . The warmth and wisdom of our professors. . . . The determination to get the most of one more carefree year before the harvest.



# ACTIVITIES

# STUDENT COUNCIL



## OFFICERS

*President*.....PETER R. BROWN  
*Vice President*.....GRACE L. PAYNE  
*Secretary*.....DOROTHY M. CHEEK  
*Assistant Secretary*.....FLORENCE AVENT  
*Treasurer*.....EUGENE TURNER  
*Parliamentarian*.....JOHN R. MANLEY  
*Asst. Parliamentarian*....DARIUS JOHNSON, JR.

*Chaplain*.....EARLY A. PARIHAM  
*Business Manager*.....EVA L. MERRITT  
*Sergeants-at-Arms*.....} GEORGE SMITH  
   } CHANEY EDWARDS  
*Editor of Journal*.....JOSEPH L. HAGGLER  
*Business Manager of Journal*, HENRY C. TURNER

### *Freshman Representatives*

Gertha Smith  
Carolyn Y. Prunty

### *Junior Representatives*

Jesse Bowers  
Dorette Daniels

### *Sophomore Representatives*

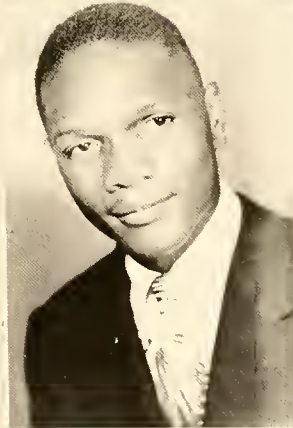
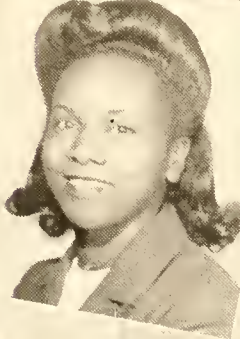
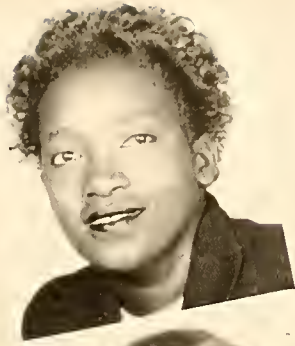
Margaret Saunders  
Maugola Bond

### *Senior Representatives*

Wilma McCleave  
Ozetta Price

### *School of Religion*

Ralph Brooks  
Australia Mason



## YEARBOOK COMMITTEE

ESTEEN TAYLOR

MADGE CLARKE

HENRIQUETTA ADAMS

WILLIAM POAG HALL, *Chairman*

L'ELLA DICKENS

HELENA DUNHAM

DORIN McNEIL







## SUNDAY SCHOOL COUNCIL OFFICERS

*Superintendent* ..... EUGENE TURNER  
*Assistant Superintendent* ..... HILDA BLACK  
*Secretary* ..... MARGARET KERMER  
*Assistant Secretary* ..... GENEVA GARDNER  
*Treasurer* ..... NOAMI HERBERT  
*Chairman Worship Committee* ..... ANNIE L. BOONE  
*Chairman Program Committee* ..... JANNIE RUTH LEE  
*Chairman Pnbliicity Committee* ..... LUTHER SHIPMAN  
*Supervisor* ..... MRS. MAUDE A. WINSTON

### TEACHERS

Maurice Stuppard  
 Mrs. Martha Sims  
 Osear Bursen  
 Lillian Black  
 Mrs. Rosetta Armstrong

### ASSISTANT TEACHERS

L. P. Shipman  
 A. William  
 L. V. Dickens  
 L. J. Pridgeon  
 M. W. Winston



## Y. M. C. A.

### OFFICERS

<i>President</i> .....	RALPH BROOKS
<i>Vice President</i> .....	HARDING TAYLOR
<i>Secretary</i> .....	O. B. BURSON
<i>Treasurer</i> .....	MAURICE STUPPARD
<i>Adviser</i> .....	DEAN STRASSNER

# HAYES-FLEMING MISSIONARY SOCIETY

## OFFICERS

<i>President</i> .....	MARTHA S. SIMS
<i>Vice President</i> .....	CLEMENTINE E. SAVAGE
<i>Secretary</i> .....	LEOLA FITTS
<i>Assistant Secretary</i> .....	HILDA V. BLACK
<i>Treasurer</i> .....	QUEENIE BLACKWELL
<i>Chairman of Worship Committee</i> .....	EVA MERRITT
<i>Chairman of Program Committee</i> .....	H. E. ADAMS
<i>Chairman of Social Committee</i> .....	LERONIA MOORE
<i>Chairman of Stewardship Committee</i> .....	JOYLETTE RICHMOND
<i>Adviser</i> .....	MRS. MARCELLA FORD



## RESIDENT YOUNG WOMEN OFFICERS

*President*  
*Vice President*  
*Secretary*

OZETA PRICE  
ALETHIA RANSOM  
DOROTHY FLOYD

*Adviser*

*Assistant Secretary* . . . . . ROSA LEE PRICE  
*Treasurer* . . . . . HILDA BLACK  
*Chairman of Program Committee* . . . . . WILMA McCLEAVE  
DEAN C. L. HARRISON



# NON-RESIDENT WOMEN

## OFFICERS

*President* ..... JANICE STOKES

*Vice President* ..... ANN THOMAS

*Secretary* ..... HAZEL NELSON

*Treasurer* ..... REZELIA ARMSTRONG



# UNIVERSITY CHOIR

## OFFICERS

*President*.....VIOLET HOOPER

*Vice President*.....ALLETTE HARPER

*Secretary*.....HELEN LA JUNE SATTERWHITE

*Assistant Secretary*.....DOROTHY FLOYD

*Treasurer*.....BESSIE WARLICK

*Director*.....MISS MILDRED AMY THORNHILL





# FORTNIGHTLY ENGLISH CLUB

## OFFICERS

*President*  
*Vice President*  
*Secretary*  
*Chairman of Program Committee,*

NAPOLEON LEWIS  
 HARRIET LASSITER  
 VIRGINIA R. BARTFIELD  
 GERTRUDE FAULKNER

*Assistant Secretary*  
*Treasurer*  
*Chairman of Social Committee*  
*Adviser*

ROBENA BRADLEY  
 IDA BOYKIN  
 GEORGIA BISHOP  
 MRS. C. M. THOMAS



# TYLER BOOK CLUB

## OFFICERS

*President*  
*Vice President*  
*Secretary*  
*Treasurer*

YVONNE PRUNTY  
 ANNA L. BOONE  
 LILLIAN V. BLACK  
 BLONDELL B. JONES

*Reporter*  
*Regulations Chairman*  
*Program Chairman*  
*Adviser*

HELEN HICKS  
 EDITH I. PRUNTY  
 BLONDELL JONES  
 MISS THELMA NELSON



# SOCIAL SCIENCE CLUB OFFICERS

<i>President</i> . . . . .	VIVIAN A. HIGH	<i>Treasurer</i> . . . . .	CHANCY EDWARDS
<i>Vice President</i> . . . . .	GERALDINE EDWARDS	<i>Publicity Manager</i> . . . . .	MADGE CLARKE
<i>Secretary</i> . . . . .	WILMA L. McCLEAVE	<i>Adviser</i> . . . . .	MR. C. A. JONES



# CARVER SCIENCE CLUB OFFICERS

<i>President</i> . . . . .	JAMES BOYKINS	<i>Business Manager</i> . . . . .	GUTHRIE TURNER
<i>Secretary</i> . . . . .	MARY STEPHENS	<i>Treasurer</i> . . . . .	BENNY WILLIAMS
<i>Vice President</i> . . . . .	DORIS McNEILL	<i>Adviser</i> . . . . .	MISS M. GREGORY





## PESTALOZZI CLUB

### OFFICERS

*President*

BLONDELL B. JONES

*Secretary*

EDITH PRUNTY

*Vice President*

DOROTHY CHEEK

*Treasurer*

ANNA L. BOONE

*Adviser* ..... DR. NELSON H. HARRIS

## HOME ECONOMICS CLUB

### OFFICERS

*President*

ANNIE L. WOODARD

*Vice President*

ROSA L. PRICE

*Secretary*

H. LA JUNE SATTERWHITE

*Financial Secretary*

VANLEIGH BROWN

*Treasurer*

BESSIE PRICE WALLS

*Adviser* .....

MRS. BRENDA YANCEY JERWAY



# N. A. A. C. P.

## OFFICERS

<i>President</i>	GRACE PAYNE	<i>Assistant Secretary</i>	GWENDOLYN GRADY
<i>Vice President</i>	MARY GANNAWAY	<i>Treasurer</i>	LUELLA V. DICKENS
<i>Secretary</i>	ELSIE WATSON	<i>Adviser</i>	MR. C. A. JONES





CAPTAIN BRIGHTON MEETS THE CAPTAIN OF UNION UNIVERSITY  
FOOTBALL TEAM



CHEERING SQUAD

*Captain*..... LORENE BRAWLEY      *Co-Captain* ..... VIVIAN HIGH

PENSICOLA ALEXANDER, MARGARET BROWN, GEORGIA BISHOP, MARGARET HARRELL

## MEN'S BASKETBALL SQUAD



*First row: Williams, Brighton, Deadwyler, Captain; Diggs, Meadows. Second row: Turner, Trainer; Revis, Harris, Goodrich, Lattimore, Smith, Hall, Manager.*



## WOMEN'S BASKETBALL SQUAD



*First row, left to right:* Armenlhea Forest, Jessie Johnson, Doris McNeill, Janie Walker, Bonnie Briley. *Second row:* Annie L. Hillard, Flora Dickerson, Doretha Daniels, Georgia Anna McNeill, Mildred Bell, Jerome Stevenson, Mascot. *Third row:* Coach James Stevenson, Irene Sylvers, Ella Howell, Eilene Hailey, Milta Davis, Mary Sue Bullard, Velma Johnson.

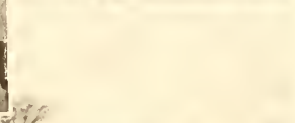


## VARSITY CLUB

### OFFICERS

<i>President</i> .....	RALPH BROOKS
<i>Secretary</i> .....	JESSIE JOHNSON
<i>Assistant Secretary</i> .....	JANIE R. WALKER
<i>Treasurer</i> .....	DORIS McNEILL
<i>Adviser</i> .....	MR. L. COOK





*Pictures Courtesy of Lloyd Jeffries.*

SNAP SHOTS TAKEN AT FOOTBALL GAMES.



SHOTS FROM GAME WITH ST. AUGUSTINE'S.



# ALPHA KAPPA ALPHA OFFICERS

<i>Basileus</i> .....	DOROTHY M. CHEEK	<i>Epistoleus</i> ....	DOROTHY POWELL
<i>Anti-Basileus</i> .....	MADGE CLARKE	<i>Tamiochus</i> .....	GRACE PAYNE
<i>Graminateus</i> .....	ANNA BOONE	<i>Dean of Pledges</i>	EDITH PRUNTY



# THE IVY LEAF CLUB OFFICERS

<i>President</i> .....	JANICE E. STOKES	<i>Secretary</i> .....	EVA MERRITT
<i>Vice President</i> .....	HELENA DUNHAM	<i>Assistant Secretary</i> .....	MARY HICKS
<i>Reporter</i> .....		<i>Dean of Pledges</i> .....	VIOLET HOOPER

# ARCHONIAN CLUB



## OFFICERS

<i>President.</i> .....	VIRGINIA BARFIELD	<i>Treasurer.</i> .....	JANIE LEE
<i>Secretary</i> ...	JANIE R. WALKER	<i>Adviser</i> .....	MRS. PERRIN

# ZETA PHI BETA

Basileus ..... DORETTE DANIELS  
 Anti-Basileus ..... JUNE MANLY  
 Grammatius ..... VANLEIGH BROWN

Dean of Pledges ..... MARY BEASLEY  
 Reporter ..... WILMA MCCLEAVE

## MEMBERS

Margaret Bizzell  
 Daisy Rice

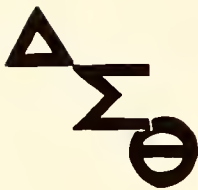
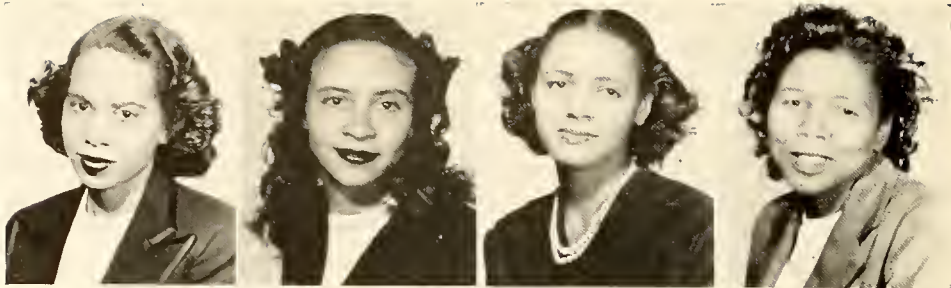
Gwendolyn Larkins

Allette Harper  
 Betty Trusemdell



**ZOB**





# DELTA SIGMA THETA SORORITY

## OFFICERS

President.....	.....	.....	.....	Assistant Secretary.....	.....
Vice President.....	.....	.....	.....	Treasurer.....	.....
Secretary.....	.....	.....	.....	Dean of Pledges.....	.....
		Adviser		Miss Patricia Stewart	



# PYRAMID CLUB

## OFFICERS

President.....	.....	.....	.....	Secretary.....	.....
Vice President.....	.....	.....	.....	Assistant Secretary.....	.....
		Treasurer		Ozetta Price	



## A LIST OF PATRONS

Without whose assistance this book could not have been published.

Miss Mildred Jordan	Mr. and Mrs. Thomas Ransom
Dr. W. R. Perry	Mr. and Mrs. Jesse Coleman
Samuel and Mary Williams	Mr. James Alexander
Mr. and Mrs. D. P. Lewis	Mr. William Dickey
Mrs. W. D. Holoman	Dr. B. F. McCleave
Mary A. Gant	Mr. Lee Oliver McMillan
Miss Hester Mercer	Lt. Ruth M. Faulkner
Mr. Norman Avery	Mr. and Mrs. H. C. Thompson
Doris C. Bough	Georgia P. Walton
William Ashley	Miss Sue Gwendolyn Wade
Mary E. Shaw	Mrs. Maude Moultrie
Mr. Benjamin Wolf	Mrs. Jammie F. Thompson
Mr. Morgan Grant	Mrs. Amanda Dawson
Mrs. Wells	Dr. P. G. Howard
Dr. A. B. Washington	Miss Samantha B. Prunty
Mr. and Mrs. W. M. Carr	Mr. J. H. Johnson
Mr. and Mrs. Ledbetter	Rev. James A. Everett
G. L. Hickson	Cpl. John H. Jones
Mr. Joseph Constantino	Miss Mary Shortt
Dr. E. E. Toney	Mrs. C. A. Cofield
M. A. Forte	Mr. C. A. Cofield
Teague's Beauty Shop	Dr. and Mrs. R. I. Bennett
Rev. and Mrs. Charles B. Harris	Mrs. Nannie B. Allen
Mrs. Mattie Jones	Mr. John D. Ashley
Mr. and Mrs. Jesse B. Clark, Jr.	Mrs. Madeline P. Rogers
Mrs. Edna G. West	Mr. and Mrs. Edward Bank
Mr. R. H. Toole	Winnie L. Cobb
Earline C. Ellis	Mr. R. L. Pittman
Mrs. W. C. Avent	Mr. and Mrs. Lee Thomas
Valdina Thompson	Mrs. Roxie Moore
Mr. and Mrs. Dallas Jones	Rev. and Mrs. Paul E. West
H. C. Adams	E. M. Holmes
Mr. and Mrs. James Jordan	Mrs. Theresa Adams
Miss Gertrude Perry	Mrs. Theresita Aaron
Dr. and Mrs. F. Coppage	Mrs. Rhynita A. Coram
Mrs. Lena Whiteside	Mrs. Irene Faulkner Matthews
Mary G. Bond	Jammie Strayhorn
Dr. Plummer	Mrs. Lula S. Simmons
Anna E. Dunn	Mr. John H. Floyd, Sr.
Mr. Johnnie W. Merritt	Mr. and Mrs. W. T. Price
Mr. Bobby Brinkley	Mrs. Emaline Woodard

Mr. and Mrs. Percy Arrington	Rev. and Mrs. G. S. Stokes
Mrs. Eugene Logan	Mr. and Mrs. Ben Barr
Mr. and Mrs. John C. Payne	Mrs. H. F. Perrin
Mr. and Mrs. Mack Staton	Mr. and Mrs. O. M. Stokes
Mrs. Lucinda Hunter	Mr. and Mrs. Joseph Preddy
Mrs. Hattie B. Payton	Mrs. H. C. Adams
Mrs. Mabel G. Robinson	Mrs. Josephine M. Walker
Miss Agnes Derricks	Dr. L. C. Downing
Mr. H. C. Crawford	Dr. Dennis Branch
First Sgt. Charles B. Hayes	Dr. J. P. Wade
Mr. and Mrs. A. B. Moore	Mr. and Mrs. Ulysses W. Prunty
Mr. and Mrs. W. T. Patterson	Dr. and Mrs. Walter G. Daniel
Dr. J. E. Brown	Mr. and Mrs. Irvin W. St. Clair
Mrs. Milton Hubbard	Rev. F. M. Crews
Lt. Ruth Speight	Mr. William E. Smith
Mrs. Ruth Wimberly Phillips	Miss Beatrice Barber
Mrs. Sarah H. Page	Mrs. Sadie Howard
Mrs. Mamie L. White	Rev. M. N. Nunn
Mrs. Carrie Missouri	Virginia Atkins
W. R. Collins	Erma Houston
Mr. Eustric Watson	Dr. M. L. T. Grant
Mrs. Ella R. Morris	Mr. R. E. Fitzgerald
Mrs. Jane Douglas	Rev. Fred H. Harris
Miss Eugenia Turner	Mrs. M. E. Ball
Mr. and Mrs. James R. Hairston	Mrs. Rosalie Miller
Mrs. Edith C. Smith	Pfc. James R. Nelson
Mrs. Mary Lethan	Mrs. Viola S. Winstead
Mr. and Mrs. John Lethan, Jr.	Mr. Tyrus C. Peele
Mrs. Mary L. Smith	Mr. and Mrs. W. N. Payton, Jr.
Mr. W. A. Peterson	Mr. John Charlie Simmons
Mrs. H. C. Perrin	Mr. and Mrs. Dock Wiggins
Miss Genevieve Privette	Mr. and Mrs. Nathaniel Simmons
Miss Mary L. Moss	Dr. V. E. Daniel
Mrs. Zuler Pearson	Mrs. Lucy Campbell
Miss Katrina Jackson	Mrs. Mary A. Ligon
Mrs. Albert Gass	Mr. James A. Shepard
Mrs. Obziene Jones	Mrs. Ernestine B. McCoy
Mr. and Mrs. M. R. Adams	Miss Eunice Jackson
Rufust Raines	Miss Lucille Steward
Mrs. Delores Clark	Mrs. Nan Nelson
Mr. and Mrs. Arthur Hardin	

**W. G. Sanderford  
Cut Rate Market**

Quality Meats  
Fancy Groceries

PHONE 5138  
*WE DELIVER*

**MAYE'S  
PHARMACY**

Corner of Davis and Blount Sts.

DIAL 9143

RALEIGH, N. C.

**HUDSON-BELK COMPANY**

*Eastern Carolinas' Largest Department Store*

*Appreciates the Patronage of the Students  
and Friends of Shaw University*

**Say TOAST-RITE**

E. L. JOHNSON, Owner  
Peanuts, Candy, Chewing Gum,  
Potato Chips, Etc.  
DURHAM, N. C.

*For Courteous and Dependable Service*

**Call**

**CAPITAL CAB**

Dial 9137      133 E. Hargett St.

**R. E. WIMBERLY Ph.C.**

601 E. Davie St.    Raleigh, N. C.

PHONE 8084

**PRESCRIPTIONS**

**ACME CAB COMPANY**

425 S. Blount Street

**PHONE 6262**



*Compliments of*

**PEERLESS, MASTER CLEANERS  
AND DYERS, Inc.**

516-518 Fayetteville Street

::

Bachelor Laundry Service

**V. C. HAMLIN, JR.**  
Photographer



118 E. Hargett St.  
Raleigh, North Carolina

*Compliments of*

**THE CAROLINIAN**

Published at

118 East Hargett Street  
Raleigh, N. C.

**1942 *Third Anniversary Celebration* 1945**  
**PAYNE'S BUSINESS & SECRETARIAL SCHOOL**

MRS. S. J. PAYNE, Manager

MEMBER OF THE NATIONAL BUSINESS ASSOCIATION

Accredited by:  
THE NORTH CAROLINA STATE BOARD OF EDUCATION

**COMPLETE BUSINESS COURSE**

SHORTHAND  
TYPING  
CALCULATOR

BOOKKEEPING  
STENOTYPING  
OFFICE PROCEDURE

MIMEOGRAPHING  
COMPTOMETRY  
SPECIALIZED COURSES

WRITE FOR FULL INFORMATION

PUBLIC STENOGRAPHER

DIAL 8950

RALEIGH, NORTH CAROLINA

416 Bloodworth Street

**LIGHTNER  
FUNERAL HOME**

=====  
**24 Hour  
Ambulance Service**  
=====

312 Smithfield Street  
Raleigh, North Carolina  
31676 PHONES 31677

**SNOW WHITE  
LAUNDRY**

DIAL 7534  
=====

*"Make Our Telephone Line  
Your Clothes Line"*  
=====

520 Fayetteville Street

**LINCOLN CAB CO.**

PHONE 9259

131 East Cabarrus Street

*Compliments of*

**DR. NELSON L. PERRY**

*Compliments of*

**DR. H. L. FLEMING**

*Compliments of*

**DR. W. B. PETTIFORD**

*Compliments of*

**DR. W. F. CLARKE**

**B. and H. CAFE**  
Tasty Home Cooked Food  
=====

**Chicken, Barbecue  
and Steaks**  
=====

410 South Blount Street  
PHONES 21665 - 9136



## BUILDERS DREAMS

VISIONS created by the imagination precede the achievement of any really great accomplishment. The ability to weave the threads of imagination into the finished fabric is equally important.

It has been the privilege of the EDWARDS & BROUGHTON COMPANY to cooperate with the staff in creating their vision into material form.

Such coöperation is one of the "visions" which precede the building of a successful business, and is a part of the working policy of the EDWARDS & BROUGHTON COMPANY.

To those Staffs desiring complete cooperation, we offer unexcelled service. You, too, may be proud of your annual.

*Correspondence is Invited*  
EDWARDS & BROUGHTON CO.  
RALEIGH, NORTH CAROLINA











