

1  
9  
4  
9

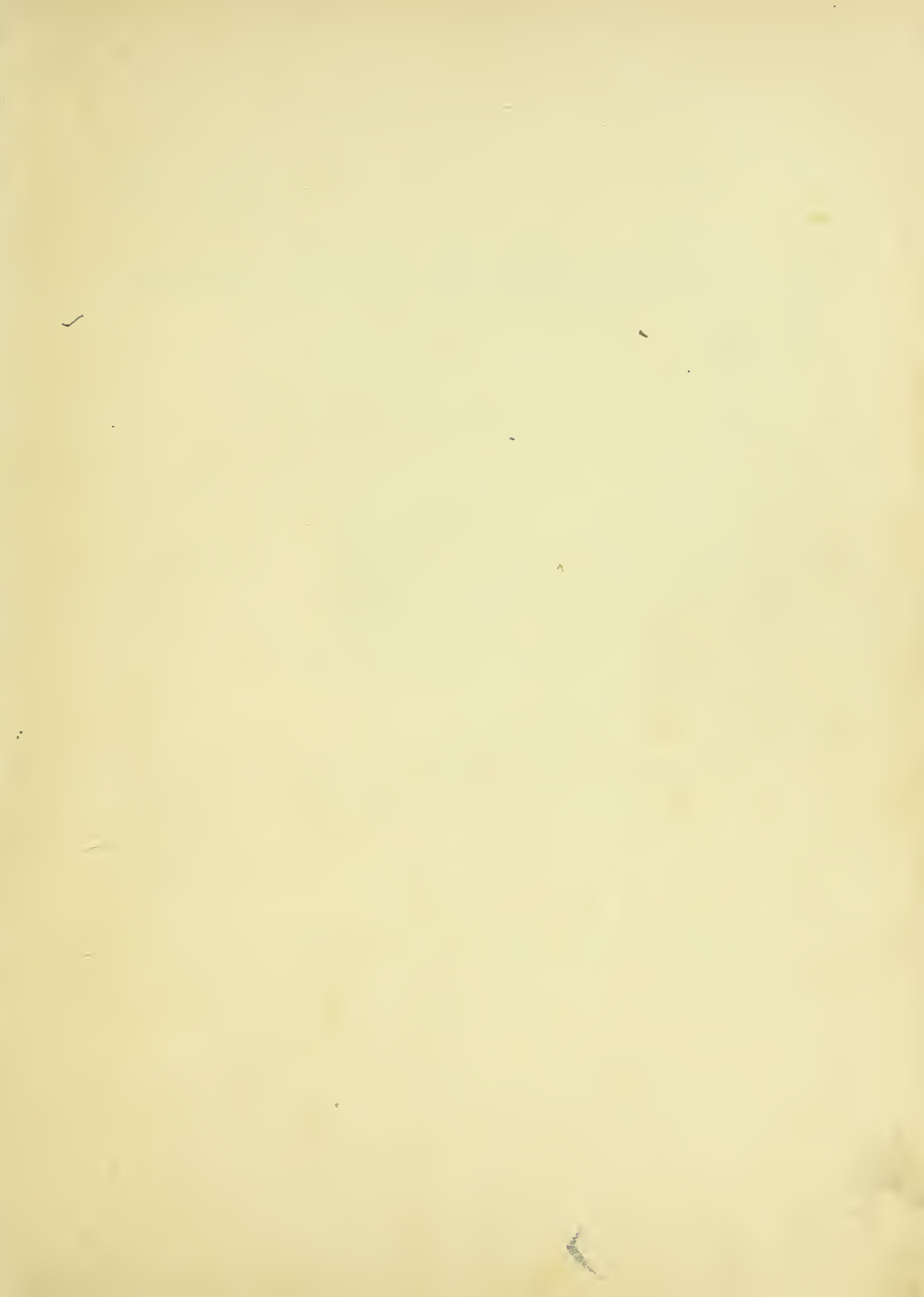


The Bear



Digitized by the Internet Archive  
in 2017 with funding from  
North Carolina Digital Heritage Center

<https://archive.org/details/bear19491949shaw>







The

— B E A R —

1  
9  
4  
9



*Published by*

THE SENIOR CLASS of SHAW UNIVERSITY

Guthrie L. Turner, *Editor*

Joel W. Wallace, *Advisor*



AIRPLANE VIEW OF SHAW CAMPUS

*Five buildings have been erected since this picture was made*





F » O » R » E » W » O » R » D

*"Lives of great men all remind us,  
We can make our lives sublime,  
And departing leave behind us,  
Footprints on the sands of time."*

WE may not yet be "great men" and this volume may not be a "footprint," but in publishing this issue of the SHAW BEAR, we hope to add to the wholesome development of our beloved Alma Mater. In it we have included a true account of our four grand years at Shaw. Through it we will review some of our "rare accomplishments" to our collegiate friends. By it we announce our elected superlatives. Through it we make a permanent photographic record of the activities here in order to produce pleasant memories in days to come. May the pleasure that each of you receives from this BEAR increase manifoldly with the turning of every page.

THE SENIOR CLASS

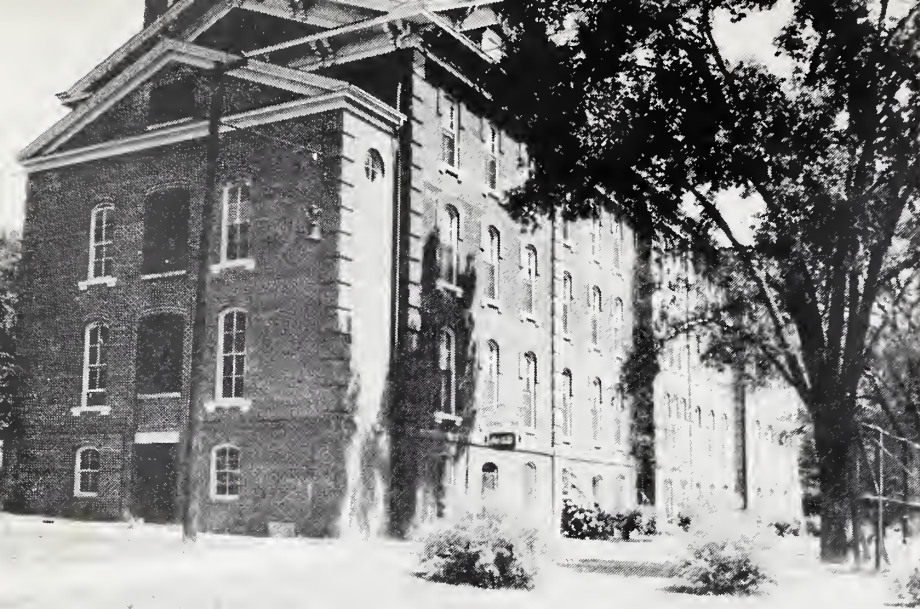
1949



## DEDICATION



We, the members of the Senior Class of 1949, do hereby dedicate this edition of "THE BEAR" to an ideal faculty member, coach, and sportsman, Mr. James H. Stevenson, who through his untiring efforts has uplifted the moral, social, athletic and religious spirit of campus life. May this "BEAR" forever renew for you pleasant memories of the Class of '49.



SHAW HALL



UNIVERSITY CHURCH



ADMINISTRATIVE HOMES



PRACTICE COTTAGE



TYLER HALL  
(LIBRARY)



U. S. HALL



# ALMA MATER

## I

Hail, dear old Shaw U,  
Thy sons revere thy name.  
Long shall thy works be proud,  
Undimmed thy fame.  
Time shall thy praises ring ;  
Glory repay thy tears,  
And loud thy praises sing  
Through all the years.

## II

Noble thy hallways,  
Noble thy grassy plain,  
Nobler the hearts of men,  
Where thou doth reign.  
All we who love thy name,  
Stout hearts that shall not fail,  
All rise and loud proclaim,  
"Alma Mater, hail!"



# OUR PRESIDENT



DR. ROBERT P. DANIEL, PH.D.

## MESSAGE

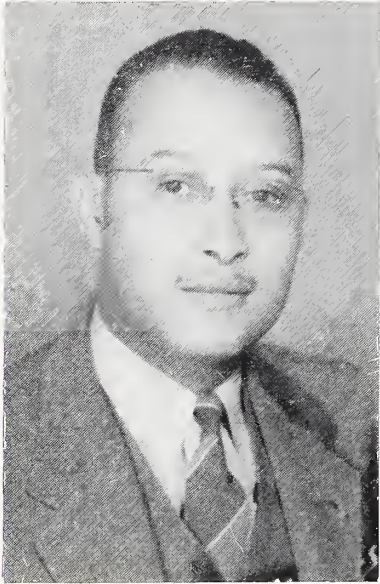
From a tradition of sacrifice and service, Shaw University is dedicated to the task of training for wholesome living and constructive participation in the development of racial progress and community welfare. May the graduates of 1949 join the thousands who have gone before them to be worthy sons and daughters of this institution dedicated to high ideals and standards.

ROBERT P. DANIEL, President

Mrs. Blanche Daniel, the first lady of Shaw University and wife of President Robert P. Daniel.



## OFFICERS OF ADMINISTRATION



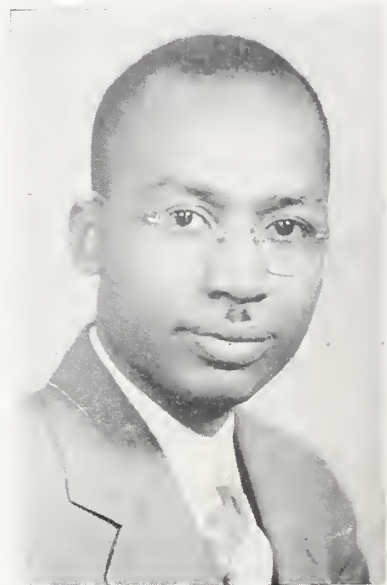
WALKER H. QUARLES, JR.  
B.S.C.  
*Secretary*



EVA FRAZER RAY  
B.S., A.M.  
*Registrar*



GLENWOOD E. JONES  
B.S.C.  
*Business Manager*



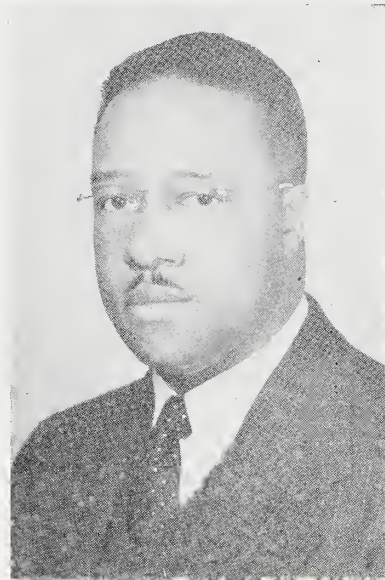
FOSTER P. PAYNE  
A.B., A.M.  
*Dean of the College*



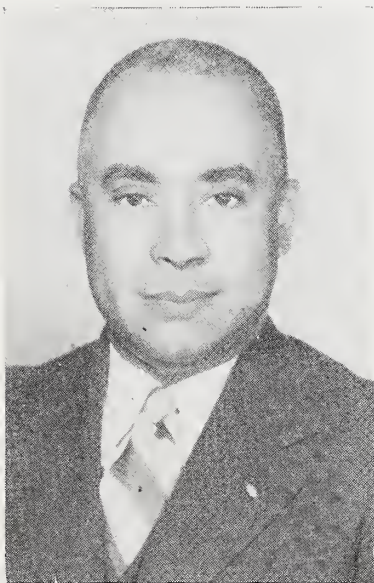
## OFFICERS OF ADMINISTRATION



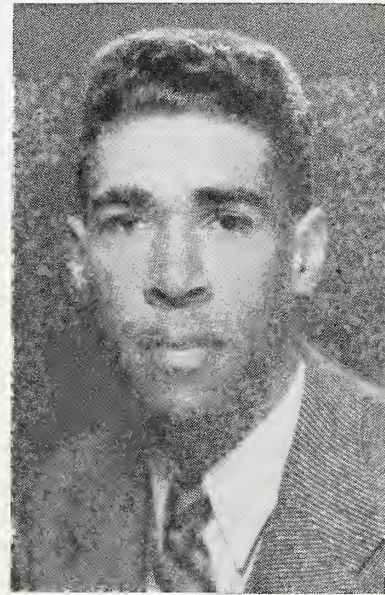
CARRIE L. HARRISON  
B.S., A.M.  
*Dean of Women*



WILLIAM R. STRASSNER  
A.B., B.D., S.T.M.  
*Dean of the School of Religion*

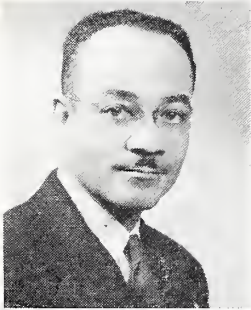


NELSON H. HARRIS  
A.B., A.M., PH.D.  
*Director of Summer School  
Chairman, Division of Education*



LENOIR H. COOK  
A.B., A.M.  
*Acting Chairman,  
Division of Languages*

## FACULTY AND STAFF



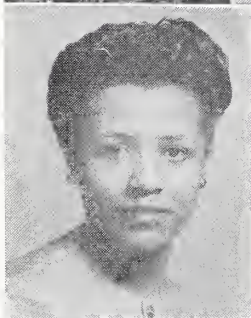
CARL E. DEVANE  
A.B., A.M.  
*History*

THELMA C. NELSON  
A.B., B.L.S.  
*Librarian*



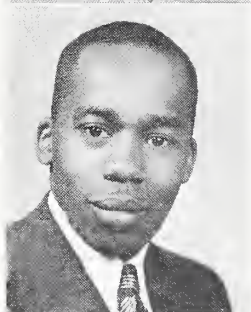
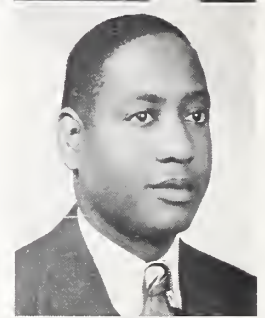
MARION LUCY GREGORY  
B. S., M.S.  
*Biology*

MADelyn E. WATSON  
A.B., A. M.  
*English*



DEVENIA V. PINDER  
B.S., M.S.  
*Home Economics*

NATHAN A. PITTS  
B. S., A. M.  
*Social Science*



CHARLES R. McCREARY  
B.S., B.D.  
*Religion*

MARCELLA FORD  
A.B., A. M.  
*Religion*



BRENDA YANCEY JERVAY  
B.S., A.M.  
*Home Economics*

ROSA BRYANT HILL  
A.B., A. M.  
*English*





## FACULTY AND STAFF



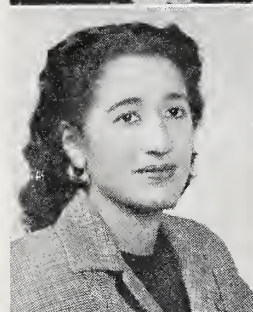
MARY G. CARTER  
A.B.  
*Bookstore*

CASWELL M. CARTER  
B.S.  
*Men's Proctor*



DORIS E. BLOUNT  
B.S.C.  
*Stenographer*

FANNIE J. McNAIR  
B.S.  
*Dietitian*



MARGUERITE R. COOK  
B.S., A. M.  
*Physical Education*

HARRIET SMITH JONES  
*Dormitory Hostess*



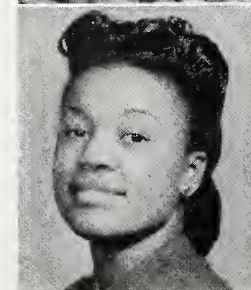
MAMIE E. PAISLEY  
A.B.  
*Director of Shaw Hall*

WILLIE BAKER HILL  
A.B., B.L.S.  
*Assistant Librarian*

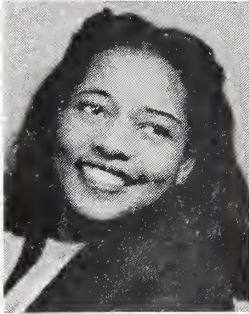


MARTHA W. WHEELER  
B.S., M.S.  
*Mathematics*

ETHER L. WILLIAMS  
R.N.  
*Assistant Nurse*



# FACULTY AND STAFF



ELIZABETH B. COFIELD  
B.S., A. M.  
*Education*



MARY GRANDY  
B.S.C.  
*Stenographer*



LUCILLE E. BROWN  
A.B.  
*Dietitian's Assistant*



JAMES A. BROADY, JR.  
B.A., A.M.  
*Art*



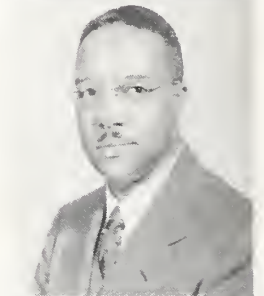
SARAH L. LAMB  
B.S.  
*Dietitian's Assistant*



BEATRICE RUTH MARTIN  
A.B.  
*Registrar's Assistant*



SADIE E. EATON  
R.N.  
*Nurse*



WILLIAM R. STRASSNER  
A.B., B.D., S.T.M.  
*Religion*



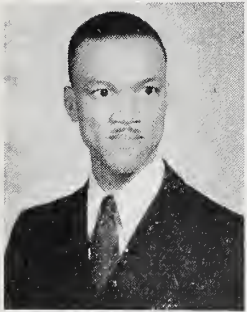
HELEN H. BROWN  
*Clerical Assistant*



HORACE C. PERRIN  
B.S., A.M.  
*Chemistry*



# FACULTY AND STAFF



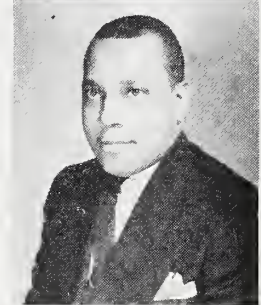
MOSES N. DELANEY  
A.B., B.D.  
*Religion*

ANN W. FEREBEE  
B.S., A.M.  
*Psychology*



MARIE M. STRASSNER  
*Receptionist*

DAVID N. HENDERSON  
A.B., A.M.  
*English*



GILLIS E. CHEEK  
A.B., B.Th.  
*Public Relations Director*

LULA M. HOWARD  
B.S.  
*Stenographer*



CAESAREA E. DAWSON  
A.B., A.M.  
*Education*

EYLYON C. HUBBARD  
B.S., A.M.  
*English*

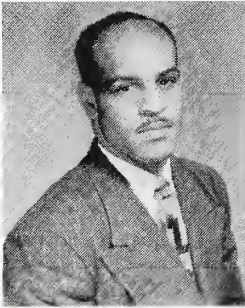


GLADYS V. DUNN  
*Stenographer*

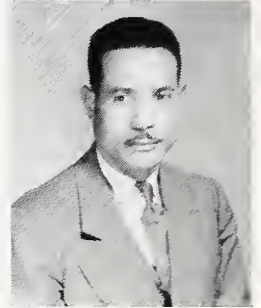
ROBERTANN B. HUFF  
B.S., M.S.  
*Biology*



# FACULTY AND STAFF



THOMAS E. KEE  
A.B., A.M.  
*Romance Languages*



CHARLES B. ROBSON  
B.S., A.M.  
*History*



MATTIE L. MOORE  
*Dormitory Hostess*



JAMES H. STEVENSON  
B.S., A.M.  
*Physical Education*



HAZEL D. PHILLIPS  
B.S.  
*Stenographer*



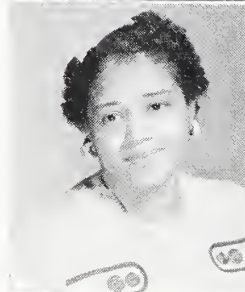
JOEL W. WALLACE  
B.S., A.M.  
*English, Director of Publicity*



MARY W. PITTS  
B.S., A.M.  
*Home Economics*



H. ELNORA KEE  
A.B.  
*Cashier*



GAYNELLE STEVENSON  
B.S.  
*Clerical Assistant*

## CLASS OFFICERS

*President:* EVERETT LATTIMORE

*Vice-President:* HERBERT ELLIS

*Secretary:* LAURA ARNELL BURNETTE

*Assistant Secretary:* JOHNSIE BROADWAY

*Treasurer:* ERMA BULLOCK

*Business Manager:* YVONNE PRUNTY

*Chaplain:* JAMES ARNETTE

*Parliamentarian:* JOHN A. GOODRICH

*Student Council:*

EVERETT LATTIMORE

SARAH DARDEN

GLADYS PIERCE

*Sergeant-at-Arms:* RACHEL CAMPBELL

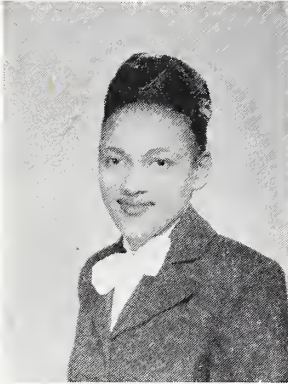
MOTTO: "The higher we climb, the grander the view"

FLOWER: White Rose

COLORS: Blue and White



# SENIORS



CATHERINE REBECCA ADAMS, A.B., *Delta Sigma Theta*.  
*"Cal"*

Pelham, N. C.

*"I have to live with myself, and so I want to be fit for myself to know."*

Y. W. C. A.; Estey Personality-Charm Club; Sunday School.

DOROTHY PENSICOLA ALEXANDER, B.S., *Alpha Kappa Alpha*.  
*"Pensi"*

501-13th Street, Hickory, N. C.

*"Procrastination is the theft of time."*

University Choir, Vice President; Women's Choir, President; Cheering Squad; Home Economics Club; Y. W. C. A.; Estey Personality-Charm Club; Resident Young Women; Baptist Student Union; Directress of University Sunday School Choir.



EDWIN HENRY ALLEN, B.S.

Route 2, Box 181, Henderson, N. C.

*"All that I am, or ever hope to be, I owe to my Mother."*

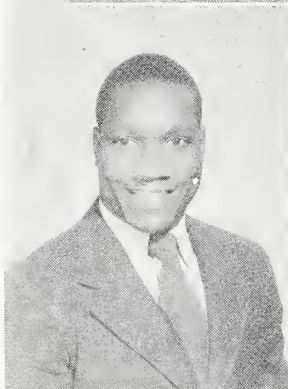
Y. M. C. A.

MARY ELIZABETH ALLEN, A.B.

1112 N. Wolfe Street, Baltimore, Maryland

*"To strive, to seek, to find and not to yield."*

Y. W. C. A.; Resident Young Women; Spanish Club.



GLADYS ELAINE ALLMOND, B.S.

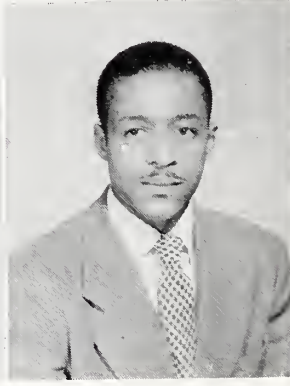
Route 1, Box 156, Raeford, N. C.

*"The tallest pines feel most of the power of wintry blasts."*

Y. W. C. A.; Science Club.

KENNETH FREDERICK ANDERSON, B.S.

167 W. 143 Street, New York N. Y.





# SENIORS

DOROTHY MAE ARCHIE, A.B.

*"Dot"*

1009 N. York Street, Gastonia, N. C.

*"If you have faith and courage, nothing shall be impossible."*

Y. W. C. A.

JAMES ERTELL ARNETTE, A.B.

R. F. D. Box 204, Fairmont, N. C.

EDWIN LAWRENCE ARRINGTON, A.B.

Route 3, Box 71, Enfield, N. C.

*"Great thoughts reduced to practice become great arts."*

Track Team; Y. M. C. A.; Militants.

DANIEL BATES, A.B.

*"Sonny"*

826 E. Hargett Street, Raleigh, N. C.

*"The elevator to success is not running, therefore you must take the stairs."*

ANNIE RUTH BEASLEY, A.B.

Nashville, N. C.

*"Be kind to those you meet on your way to success, for you might meet them again on your way down."*

Non-resident Young Women, President; Y. W. C. A.; Freshman Charm Club; Pestalozzi Club; F. E. T. A. Club; Shaw Players.

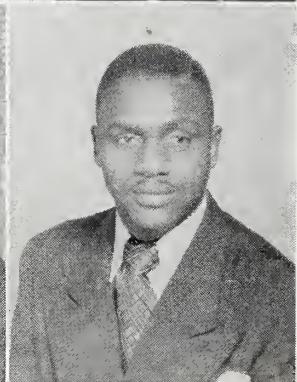
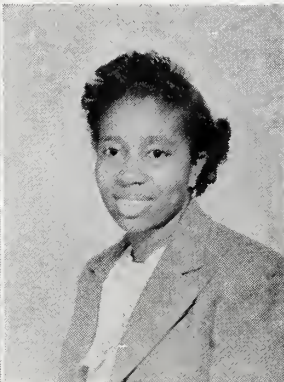
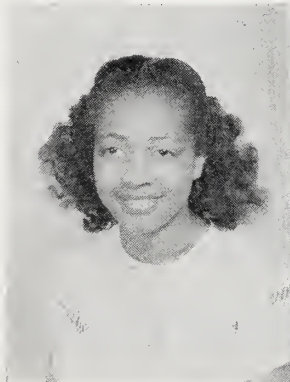
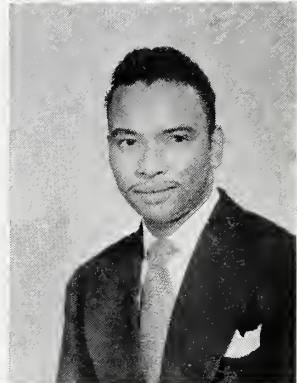
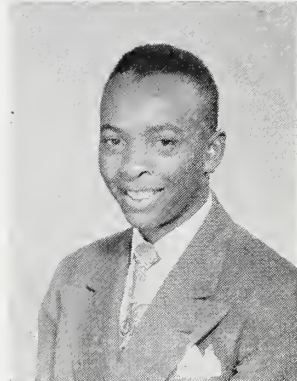
ELEANOR LOUISE BELL, A.B., *Delta Sigma Theta*.

*"Bay"*

614 Anderson Street, Wilmington, N. C.

*"Far better it is to dare mighty things, even though checked by failure, than to take rank with those poor in spirits, who neither enjoy much nor suffer much, because they know not victory nor defeat."*

Resident Young Women; Y. W. C. A.; Dramatic Club.



# SENIORS



RUTH LONDON BETHEA, B.S., *Sigma Gamma Rho.*

400 Raleigh Road, Rocky Mount, N. C.

*"The ways in which things are done are more important than the thing itself."*

Women's Choir; Estey Personality-Charm Club; Y. W. C. A.



DOROTHY MAE BOONE, A.B.

*"Dof"*

Box 100, Creedmore, N. C.

*"Sow seeds of love and virtue in the hearts of those you meet, and you will always be remembered."*

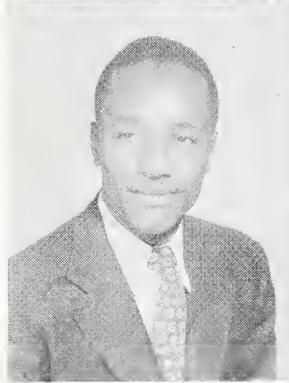
Christian Education Society; Sunday School; Baptist Student Union; Hayes Fleming Missionary Society; Y. W. C. A.

JESSE LEE BOWERS, A.B.

Box 372, N. Wilkesboro, N. C.

*"Let every man be the master of his time and fate."*

Varsity Baseball; Varsity Basketball; Campus Inn Board of Directors; Y. M. C. A.



BONNIE BEDEL BRILEY, A.B., *Della Sigma Theta.*

Route 1, Box 282, Robersonville, N. C.

*"Give to the world the best that you have and the best will come back to you."*

Resident Young Women; Y. W. C. A.; Delta Sigma Theta, Secretary; Alpha Kappa Mu Honor Society; Home Economics Club; Camera Club; Shaw Players; Varsity Club, Secretary; Basketball Team; Co-Captain; Estey Personality-Charm Club; Women's Choir; Sunday School.

ANGIE ELIZABETH BROOKS, *Alpha Kappa Alpha.*

*"Maud"*

Monrovia, Liberia, West Coast of Africa

*"When I have lived that my life is a light to the pathway of those who follow me, it is then and only then that my goal will have been reached."*

Resident Young Women; Women's Choir; Ivy Leaf Club; Alpha Kappa Mu Honor Society; Tyler Book Club; Camera Club; N.A.A.C.P.; Students' Town Hall Forum; Y. W. C. A. Leisure Time Program; "Miss Personality."



COURTNEY CALDRIDGE BROWN, A.B., *Omega Psi Phi.*

New York City, N. Y.

*"Perseverance carries man to his highest goal."*

Student Council, Parliamentarian; Y. M. C. A.; Men's Personnel Council; Leisure Time Program; Campus Inn Board; Student's Welfare; Basketball; Tennis; Representative to the Student Legislature.





# SENIORS

MARY SUE BULLOCK, B.S., *Zeta Phi Beta.*

Route 2, Box 100, Weirdeell, N. C.

*"All is conquered, by labour."*

Y. W. C. A.; Resident Young Women; Home Economics Club; Basketball.

ERMA AMELIA BULLOCK, A.B.

*"Spookie"*

401 Pennsylvania Avenue, Rocky Mount, N. C.

*"Things that are worth while, are worth fighting for."*

Estey Personality Charm Club; Miss Homecoming 2; Resident Young Women; Women's Choir; Class Treasurer.

JOHNSIE B. BURNETTE, A.B.

*"Jonny"*

10 Birch Avenue, Princeton, New Jersey

*"I have to live for others and not myself; that's middle class morality."*

Shaw Players; Fortnightly English Club; Tyler Book Club; Usher's Club; Sunday School; Baptist Student Union; Future English Teachers of America Club; Resident Young Women; Y. W. C. A.

ZARON WALTER BURNETTE, A.B., *Phi Beta Sigma*

*"Zeke"*

Harrisburg, Pa.

*"Discontent is the first step in the progress of a man."*

Y. M. C. A.; Young Men's Personnel Council; Track Team; Campus Inn Board of Directors, Chairman.

LAURA ARNELL BURNETTE, B.S., *Alpha Kappa Alpha*

*"Laurie"*

Mebane, N. C.

*"None can succeed in this world alone."*

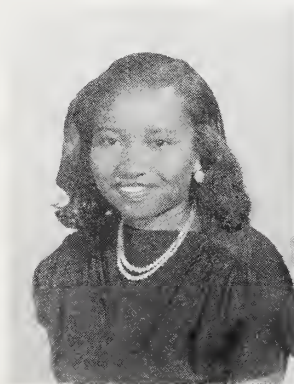
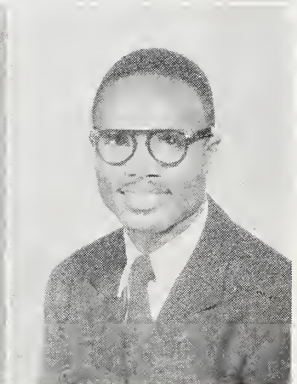
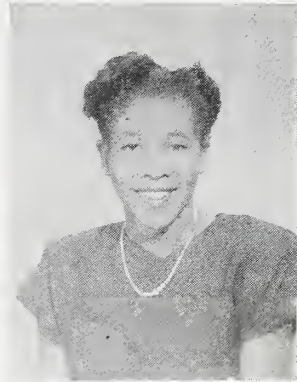
Dramatic Club; Alpha Kappa Mu Honor Society; Estey Personality-Charm Club; Resident Young Women; Y. W. C. A.; Home Economics Club.

ERVIN GERTRUDE BUTTS, A.B.

1009 Lumenbery Street, Norfolk, Virginia

*"Judge ye not one another."*

Non-resident Young Women Club.



# SENIORS



RACHAEL JOHNNIECE CAMPBELL, B.S.

"Sunshine"

512 Glencoe Street, Winston-Salem, N. C.

*"The light of true friendship is like that of phosphorus; it shines brightest when all around is dark."*

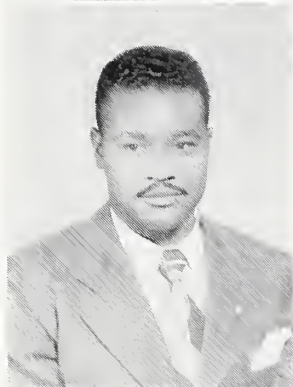
Hayes Fleming Missionary Society; Y. W. C. A.; Carver Science Club; Resident Young Women; Campus Inn Board of Directors; Sgt.-At-Arms of the Senior Class; Math Help Class.

CLYDE C. CARR, A.B., *Phi Beta Sigma*,

Mooreville, N. C.

*"What do we live for if it is not to make life less difficult to each other."*

Y. M. C. A.; Sunday School; Town Hall Forum; Spanish Club; Theological Fraternity; Men's Personnel Council; Social Science Club; Militant A. V. C.



CATHERINE ELIZABETH CARTER, A.B.

"Cat"

107-A Kirkwood Heights, Camden, S. C.

*"I have never for one instance seen clearly within myself, how then would you expect me to judge the deeds of others."*

Y. W. C. A.; Charm Club; Sunday School; W. A. A. Club; Resident Young Women; Pestalozzi Club.

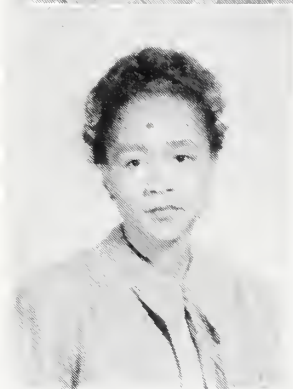
HENRIETTA THOMASINA CARTER, B.S.

"Rat"

107 Kirkwood Heights, Camden, S. C.

*"Honor the game thou playest, for he who plays the game well, wins even if he loses."*

Sunday School; Charm Club; Y. W. C. A.; Resident Young Women; W. A. A.; Pyramid Club; Pestalozzi Club.



BETTIE ONERT CHAPMAN, B.S.

Route 2, Box 246, Ayden, N. C.

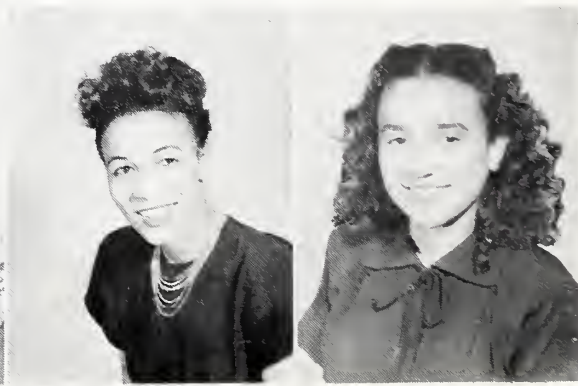
MARY INEZ COGDELL, A.B., *Delta Sigma Theta*,

"Mickey"

541 E. Russell Street, Fayetteville, N. C.

*"O, to live before I die."*

Alpha Kappa Mu Honor Society; Freshman Charm Club; Resident Young Women; Y. W. C. A.; Shaw Players; Estey Personality-Charm Club, Treasurer; Omega Sweetheart; Who's Who Among American Colleges and Universities.



# SENIORS

ALVA ODESSA CORDELL, A.B.  
Route 2, Box 65, Norlina, N. C.

CLIFTON PATTON COSBY, B.S., *Omega Psi Phi*.  
159-12 108th Avenue, Jamaica, New York.

*"I would look up, and laugh and love and lift."*

Young Men's Personnel Council; Y. M. C. A.; Campus Inn Board of Directors.

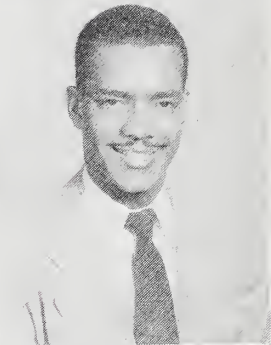


AZALIA ROGERS COWAN, B.S.  
*"Smoky"*

6 N. Tarboro Street, Raleigh, N. C.

*"Train up a child in the way he should go and when he is old he will not depart from it."*

Y. W. C. A.; Non-resident Young Women.

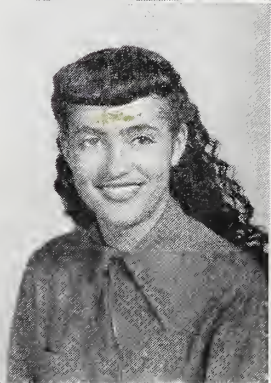


ALLEN FOREST CROOMS, B.S., *Alpha Phi Alpha*.  
52 Sherman Ave., Newark, N. J.

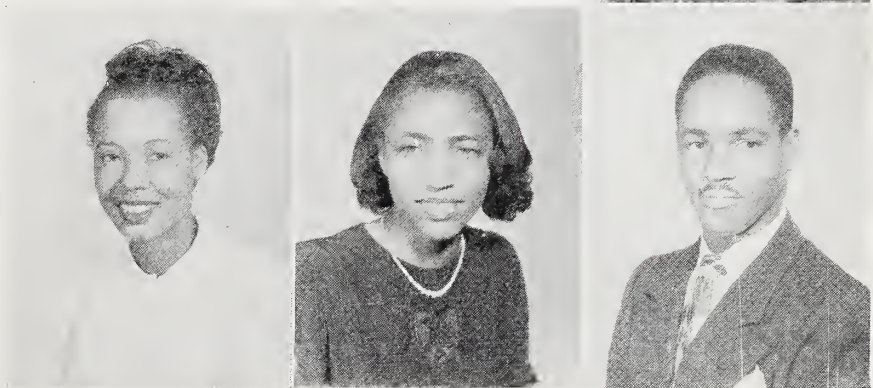
BERTHA MAE DIXON, B.S.  
*"Dickey"*

Star Route 1, Littleton, N. C.

*"Tho' much is done, much more remains."*

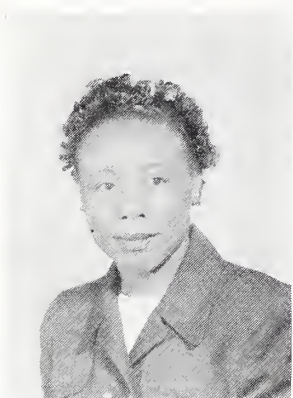


OLA VERMEL DOUGLAS, B.S., *Sigma Gamma Rho*.  
Route 5, Box 84, Sanford, N. C.





# SENIORS



FRANCES DUPREE, B.S.

"Sis"

Pinetop, N. C.

*"Where there is faith and work, through God, anything can be accomplished."*

Sunday School; Resident Young Women; Y. W. C. A.; Home Economics Club; Hayes Fleming Society.

ELLEN LOUISE DURHAM, A.B.

"Ella"

1331 Oberlin Road, Raleigh, N. C.

*"All that I am, and ever hope to be, I owe to my dear mother."*

Non-resident Young Women; Y. W. C. A.

EDWARD VERNEL ELLIS, B.S., *Omega Psi Phi.*

"Ed"

324 East South Street, Raleigh, N. C.

*"The moving finger writes, and, having writ, moves on; nor all your piety nor wit shall lure it back to cancel half a line, nor all your tears washed out a word of it."*

Y. M. C. A.; Science Club; Lampodas Club.



HERBERT DONALD ELLIS, A.B., *Omega Psi Phi.*

"Duck"

324 East South Street, Raleigh, N. C.

*"Tis not the mere stage of life, but the part we play thereon that gives the value."*

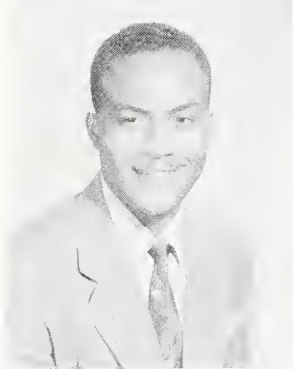
President Shaw Players; Lampodas Club; Shaw Journal; Y. M. C. A.; President Pestalozzi Club; Vice-President, F. E. T. A.; Vice-President, Senior Class; Student Council.

CLARENCE J. ELLIOTT, B.S., *Alpha Phi Alpha.*

Post Office Box 43, Vass, N. C.

*"Speak little, but truthfully, for much speaking brings danger."*

Y. M. C. A.; Men's Personnel Council; Dramatics Club; Sunday School.



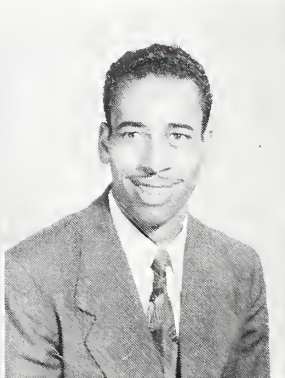
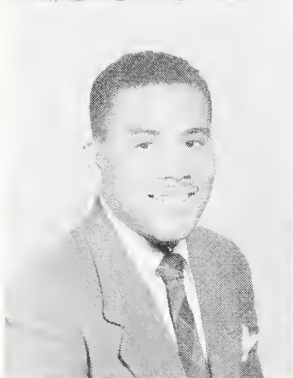
DOROTHY MAE ELLIOTT, A.B., *Sigma Gamma Rho.*

"Dot"

Post Office Box 94, Vass, N. C.

*"He who lives contentedly between the little and the great, feels not the wants that pinch the poor."*

Y. W. C. A.





# SENIORS

EMMET ELLIOTT, A.B.

*"Blue"*

1324 Elliott Street, Fayetteville, N. C.

*"Let what you say stand investigation."*

Basketball Team; Football Team; Varsity Club Coach of the Junior Varsity Basketball Team.

WILLIE LEE ELLIOTT, A.B.

127 W. Freemason Street, Edenton, N. C.

CHARLES MACON ENGLAND, B.S., *Omega Psi Phi.*

*"Life"*

111 Erwin Avenue, Newton, N. C.

*"Unborn tomorrow, dead yesterday, why regret, strive and work today."*

Young Men's Personnel Council; Y. M. C. A.; Who's Who Among American Colleges and Universities; President Lampodas Club; Captain Football Team; Basketball Team; Varsity Club.

MABEL EDITH FAGANS, B.S.

*"Moco"*

150 Benson Street, Monrovia, Liberia, West Coast Africa.

*"Lord, let me live that my life will be a light to lighten the pathway of others."*

University Choir; Home Economics Club; Christian Education Society; Y. W. C. A.; Resident Young Women's Organization.

SALLIE MAE MELTON, A.B., *Zeta Phi Beta.*

Route 2, Box 241 Elm City, N. C.

*"Not at the top, but still climbing."*

Future English Teachers of America; Y. W. C. A.; Resident Young Women; Hayes Fleming Missionary Society; Tyler Book Club; NAACP; Sunday School; Fortnightly English Club; Shaw Players; Estey Personality-Charms Club.

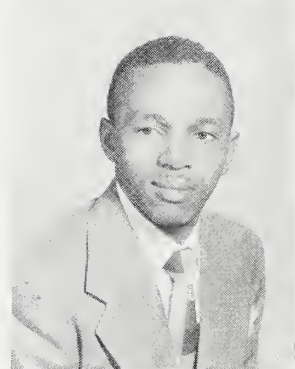
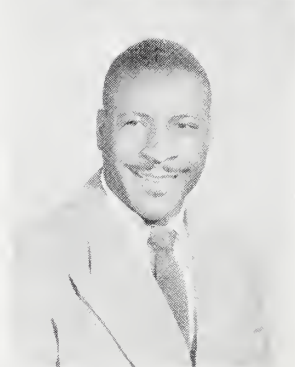
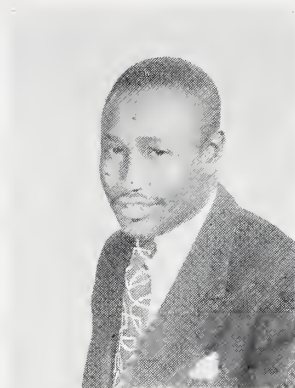
ARTHUR LEE GIBBS, A.B., *Theological Fraternity.*

*"Parmele"*

Parmelee, N. C.

*"Education and Religion should go hand in hand."*

Y. M. C. A.; Young Men's Personnel Council; Shaw Players.



# SENIORS



MAE ROYAL GLOVER, B.S.  
"Mae"

Raleigh Road, Oxford, N. C.

*"Truth is my virtue."*

Resident Young Women; Estey Personality-Charm Club; Camera Club; Home Economic Club; Y. W. C. A.; Sunday School; NAACP.

ARMADIA BERNICE GOODSON, A.B.  
"Pinkie"

Route 1, Box 100, Wendell, N. C.

*"Attempt the end, and never stand to doubt; nothing so hard but search will find it out."*

Resident Young Women; Y. W. C. A.; Hayes Fleming; Estey Personality-Charm Club; NAACP; Pyramid Club; Baptist Student Union; Sunday School; Sunday School Choir.



LOUIS HOWARD GOODSON, B.S., *Omega Psi Phi.*  
310 East Davie Street, Raleigh, N. C.

*"Resolve to be thyself; and know that he who finds himself loses his misery."*

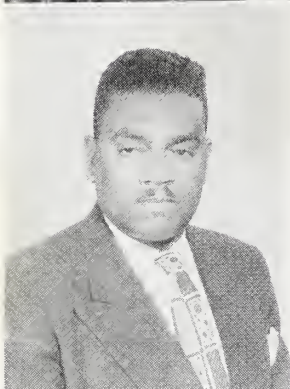
Militant Club; Carver Science Club.

JAMES THEODORE GOSSETTE, B.S.  
"Thed"

188 Blanton Street, Asheville, N. C.

*"Be not at being unknown, but seek to be worthy of note."*

Militant Club; Sunday School, Superintendent; Sphinx Club; Y. M. C. A.



FREDERICK GRAHAM, A.B.  
"Brex"

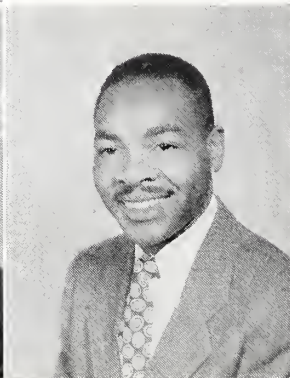
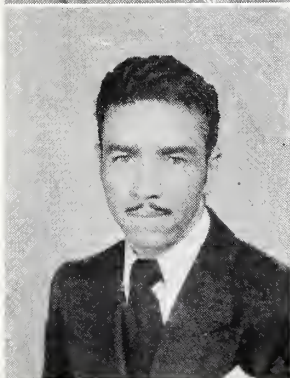
P. O. Box 444, La Grange, N. C.

American Veteran Committee; Sunday School; Shaw Players; Social Science Club; Town Hall Forum.

JOHN WESLEY GREEN, III, B.S.  
1111 South Person Street, Raleigh, N. C.

*"Non scholae sed vitae discimus."*

Shaw Players; Y. M. C. A.; Football Trainer and Manager.





# SENIORS

SYLVIA ALBERTA GREGORY, B.S.  
*"Sil"*

Route 1, La Grange, N. C.

*"A good name is rather to be chosen than great riches, and loving favors rather than silver and gold."*

Y. W. C. A.; Resident Young Women; Sunday School; Secretary Camera Club; Home Economics Club.

RUTH THELMA HARDY, A.B.  
*"Neen"*

P. O. Box 115, Roxabel, N. C.

*"I will let no man drag me so low as to make me hate him."*

NEDA HIGH HARRIS, B.S.  
 Wendell, N. C.

NELSON HERBERT HARRIS, JR., A.B.  
*"Nel"*

717 South Blount Street, Raleigh, N. C.

*"A certain number of obstacles will make a man not break him; a kite rises against the wind, not with it."*

Delegate to Negro Intercollegiate Dramatic Association; Basketball; Shaw Players; Football; Coach for Intramural Champs.

SARAH JEAN HARRIS, A.B.  
*"Kim"*

31 West 125th Street, Apt. 4, New York, N. Y.

*"When the blandishments of life are gone, the coward sneaks to death, the brave lives on."*

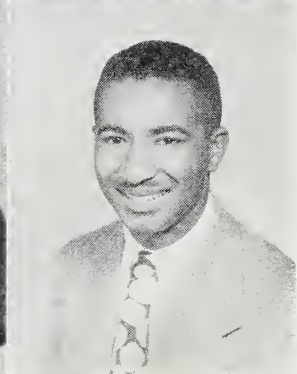
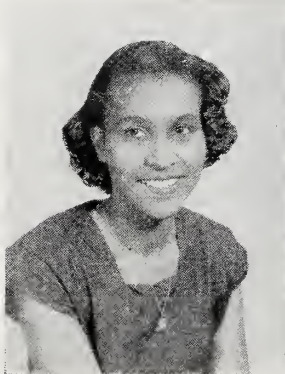
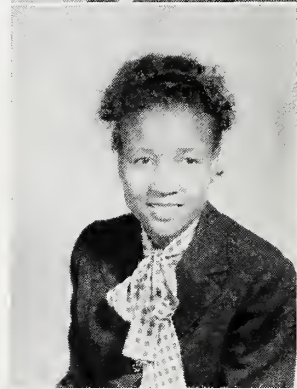
Y. W. C. A.; Resident Young Women; English Fortnightly Club; Tyler Book Club; Aurora Club; Shaw Players.

HELEN JEAN HARRISON, B.S.; *Delta Sigma Theta*.  
*"Bootsie"*

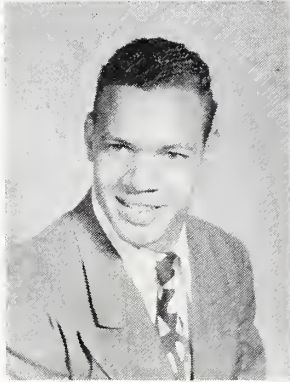
1110 Wainwright Avenue, Wilson, N. C.

*"Take time to work—it is the price of success; take time to play—it is the secret of youth."*

Estey Personality-Charm Club; Pyramid Club; Campus Inn Board of Directors; Y. W. C. A.; Shaw Players; Resident Young Women; Alpha Kappa Mu; Student Organization Committee; Who's Who Among American Negro Colleges and Universities.



# SENIORS



DAVID LORENZO HAYWOOD, A.B.

*"Boo"*

720 South East Street, Raleigh, N. C.

*"All that I am and all that I hope to be, I owe to my mother."*

Y. M. C. A.; Varsity Club.



LELA BEATRICE HAYWOOD, A.B.

601 South Saunders Street, Raleigh, N. C.

LULA MAE HEADEN, B.S., *Zeta Phi Beta.*

*"Lulu"*

P. O. Box 703, Goldston, N. C.

*"No victory without labor."*

Non-resident Young Women; Home Economics Club; Resident Young Women; Y. W. C. A.; Sunday School; Tyler Book Club; Campus Inn Board of Directors; Needle and Brush Club.



LYTHEL WILSON HICKERSON, JR., A.B.

Elkin, N. C.

HELEN DELORIS HICKS, B.S.

1117 Red Cross Street, Wilmington, N. C.

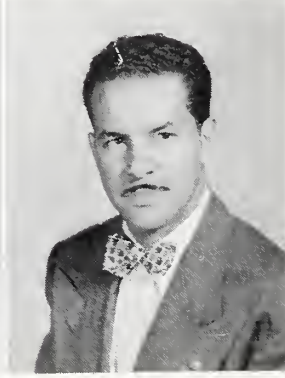
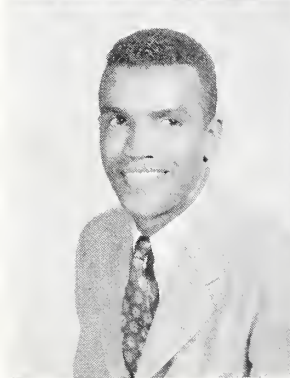
JULIAN SWERINGER HIMES, A.B.

*"Himey"*

141 Pambroke Street, Boston, Mass.

*"We live to learn, we learn for the good of mankind."*

American Veteran Committee.





# SENIORS

AMELDA HOLLOMAN, A.B.  
R. F. D. 1, Box 5½, Ahoskie, N. C.

ELLA MAE HOWELL, A.B.  
"Happy"

Route 2, Box 35, Robersonville, N. C.

*"Be courteous to all, but intimate to few, and let those few be well tried before you give them your confidence."*

Resident Young Women; Y. W. C. A.; Camera Club; W. A. A.; Varsity Club; NAACP; Sunday School; Women's Basketball Team.

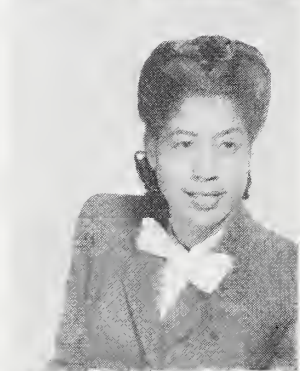


WILLIE MAE ROBERSON, B.S., *Delta Sigma Theta*.  
"Bill"

Raleigh Road, Oxford, N. C.

*"The secret of life is not to do what you like, but like what you do."*

Y. W. C. A.; Resident Young Women; Estey Personality-Charm Club; Camera Club; Sunday School.



NANNETTE BOYD JACKSON, B.S., *Sigma Gamma Rho*.  
"Nan"

Norfolk, Va.

*"To have striven, to have made an effort, to have been true to certain ideals—this done is worth the struggle."*

DANIEL ANTHONY JEFFRIES, A.B., *Kappa Alpha Psi*.  
414 Oberlin Road, Raleigh, N. C.

*"Man is the helpless victim of his environment, and the way to change man is to change his environment."*

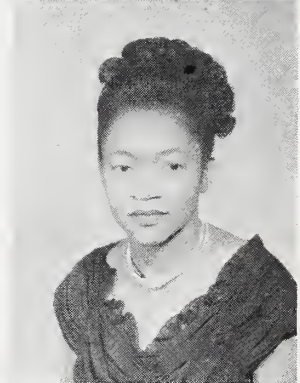
Y. M. C. A.

CLARETHA JONES, B.S.  
"Ray"

Wilson, N. C.

*"All that I am and all that I hope to be, I owe to my parents."*

Home Economics Club; Estey Personality-Charm Club; Y. W. C. A., Assistant Secretary; Assistant Nurse; Hayes Fleming Missionary Society; Baptist Student Union; Christian Education Society; University Sunday School.



# SENIORS



DURRELL INEZ JONES, A.B., *Alpha Kappa Alpha*.

217 East 8th Avenue, Roselle, New Jersey.

*"Life is a hopeless fight to those who walk in darkness."*

Y. W. C. A.; Resident Young Women; Estey Personality-Charm Club; Secretary of Junior Class.

MARY HELEN JONES, B.S., *Zeta Phi Beta*.

*"Snookie"*

General Delivery, Raeford, N. C.

*"Not at the top, but climbing."*

Non-resident Young Women; Resident Young Women; University Sunday School; Science Club; Y. W. C. A.; Tyler Book Club.

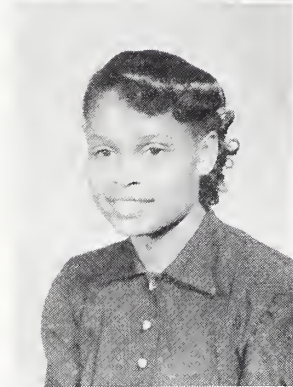
MATTIE MAE JOYNER, A.B.

*"Mat"*

728 West Thomas Street, Rocky Mount, N. C.

*"All that I am or ever hope to be, I owe to my darling mother and father."*

Resident Young Women; Y. W. C. A.; Shaw Players; Future English Teachers of America, Secretary; Pestalozzi Club; Sunday School; Fortnightly Club.



ELLEN VIRGINIA KELLY, B.S.

*"ET"*

Route 2, Box 35, Camden, S. C.

*"A chain is no stronger than its weakest link."*

President Pyramid Club; Resident Young Women; Y. W. C. A.; Usher's Club; Carver Science Club; Basketball Team; Pestalozzi Club; Cheering Squad.

EVERETT CARRIGAN LATTIMORE, B.S., *Alpha Phi Alpha*.

523 West 4th Street, Plainfield, New Jersey.

*"Aspiring to become a physician."*

Football Captain; Who's Who in American Colleges and Universities; Student Council, Vice-President; Men's Personnel Club, Vice-President; Y. M. C. A.; President of the Sophomore, Junior and Senior Classes; University Choir; Science Club; Basketball Team; Varsity Track; Recipient of the J. O. Turner Athletic Award.



MARY OLIVIA LEDBETTER, B.S.

Rutherfordton, N. C.

*"Try not to equal, but to excel, for no victory is won without labor."*

Sunday School; Baptist Student Union; Home Economics Club, Secretary; Miss Home Economics; Estey Personality-Charm Club; Shaw Players; NAACP; Resident Young Women; Y. W. C. A.; Pyramid Club.





# SENIORS

LILLIAN DORETHA LENNON, A.B.  
P. O. Box 158, Balton, N. C.

GEORGIA DOIL LEVERE, A.B., *Zeta Phi Beta.*  
*"Gern"*  
Warsaw, Virginia.

*"I pass this way but once, if there is any good that I can do, let me do it now."*  
Y. W. C. A.; Sunday School, Assistant Secretary; Resident Young Women.

FELTS WELDON LEWIS, B.S.  
White Oak, N. C.

*"We must convince ourselves that we are endowed with worthy powers and possibilities; let us not defeat our efforts by being skeptical of the results of our labor."*  
Y. M. C. A.; Men's Personnel Council; Carver Science Club; Advertising Manager for the "Bear."

LEANDER LEWIS, A.B.  
Kinston, N. C.

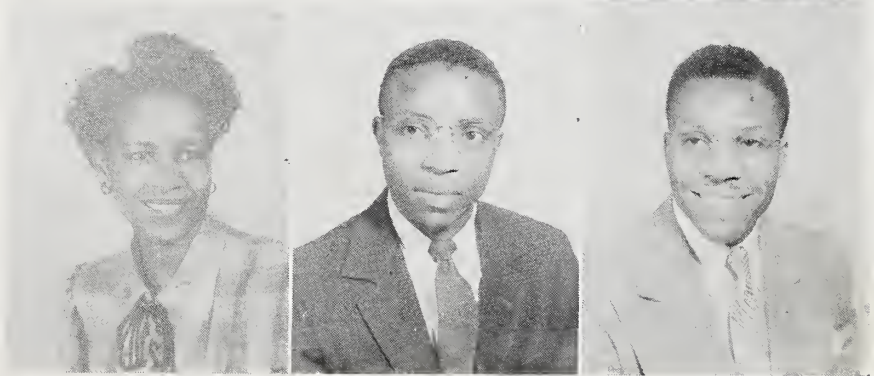
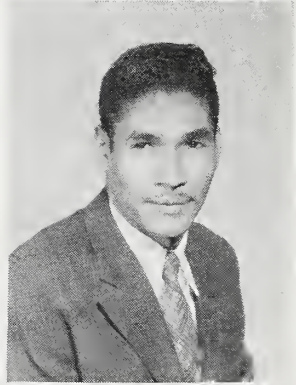
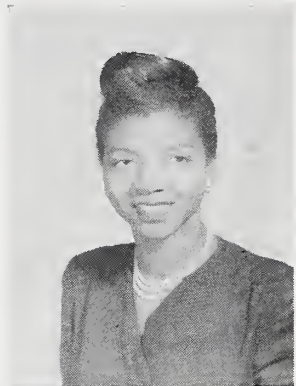
*"Resolve to be thyself; and know that he who finds himself loses his misery."*  
University Choir; Football Team; English Club.

WILLIE B. LEWIS, A.B., *Theological Fraternity.*  
*"Lu"*  
Route 2, Box 91, Battleboro, N. C.

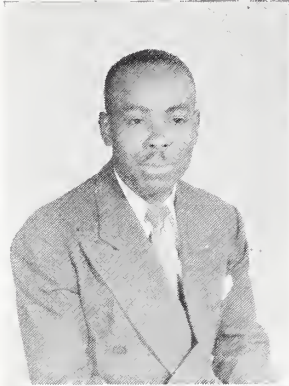
Y. M. C. A.

HAZEL NELSON LOGAN, A.B., *Delta Sigma Theta.*  
903 South Blount Street, Raleigh, N. C.

*"The Lord is the light of my salvation, whom shall I fear; the Lord is the strength of my life, of whom shall I be afraid."*  
Y. W. C. A.; Non-resident Young Women, President; Shaw Players; University Choir; Alpha Kappa Mu Honor Society.



# SENIORS



CHARLES LYONS, A.B., *Omega Psi Phi.*

General Delivery, Bethel, N. C.

*"All that I am and all that I hope to be, I owe to my mother."*

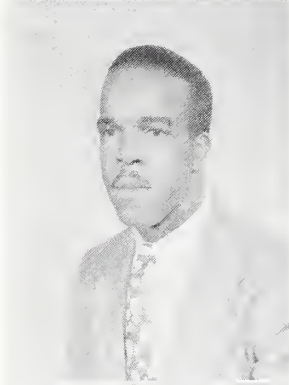
A. V. C.; Y. M. C. A., President; Men's Personnel Council, President; Campus Inn Manager; Student Council, Town Hall Forum; Alpha Kappa Mu Honor Society.

JOEL CHEATHAM MARABLE, A.B., *Alpha Phi Alpha.*

P. O. Box 483, Henderson, N. C.

*"Education makes a people easy to lead, but difficult to drive; easy to govern, but impossible to enslave."*

Varsity Football; Social Science Club; Y. M. C. A.



GEORGIA ANNA McNEILL, A.B., *Zeta Phi Beta.*

*"Mac"*

P. O. Box 6, Clarkton, N. C.

*"Speak little, but truthfully, for much speaking brings danger."*

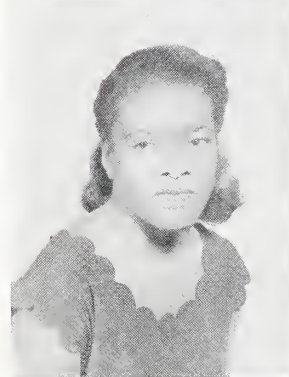
Estey Personality-Charm Club; Resident Young Women; Women's Basketball Team.

JESSYE ROSS MEBANE, A.B.

322 West Cannon Street, Raleigh, N. C.

*"As ye would that men would do unto you, do ye even so unto them."*

Non-resident Young Women; Militants Club; Y. W. C. A.



MILDRED BETH FOGG, A.B.

*"Mil"*

Box 48, Elberon, N. C.

*"To make the best better."*

Sunday School Choir; Baptist Student Union; Hayes Fleming; Resident Young Women; Y. W. C. A.; NAACP.

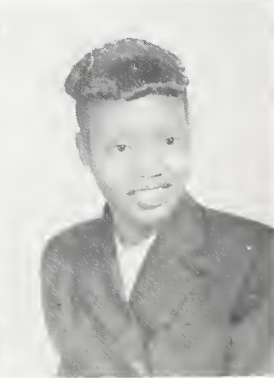
DORIS PEARLINA MITCHELL, B.S., *Sigma Gamma Rho.*

*"Lil Bit"*

P. O. Box 250, Wake Forest, N. C.

*"Happiness is a perfume that you cannot pour on others without getting a few drops on yourself."*

Non-resident Young Women; Y. W. C. A.; Home Economics Club; NAACP.





# SENIORS

IDA PEARL MOORE, B.S.

*"Lynn"*

Route 4, Box 170-B, Ahoskie, N. C.

*"To strive, to seek, to find, and not to yield."*

Resident Young Women; Y. W. C. A.; Sunday School; Estey Personality-Charm Club; Carver Science Club.



RUBY COLLEN MOORE, A.B., *Sigma Gamma Rho*,

Creedmoor, N. C.

*"Life is short, but there is always time for courtesy."*

Resident Young Women; Sunday School; Social Science Club.



POLA NEWSOME, A.B.

P. O. Box 145, Fremont, N. C.

ANNA REBECCA NORRIS, A.B., *Zeta Phi Beta*,

*"Ann"*

1135 West Marsh Street, Salisbury, N. C.

*"All that I am and ever hope to be, I owe to God and my parents."*

Resident Young Women; Y. W. C. A.; Philharmonic Choir; University Choir; Archonian Club; Spanish Club; Pestalozzi Club, Treasurer; F. E. T. A. Club; Women's Choir.



TOMMIE BERNICE PAGE, A.B., *Zeta Phi Beta*,

*"Be"*

Route 1, Box 203, Fairmont, N. C.

*"Character is what one really is, reputation what others believe him to be."*

Y. W. C. A.; Sunday School; Archonian Club; NAACP.



WANDA DUREAMER PERRY, B.S., *Zeta Phi Beta*,

*"Duke"*

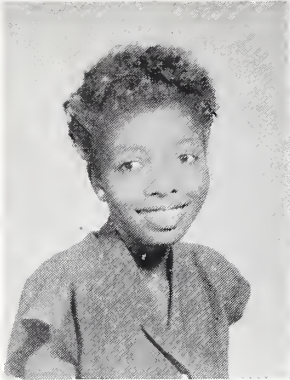
Wendell, N. C.

*"All that I am and ever hope to be, I owe to my parents."*

Needle and Brush Club; Resident Young Women; Home Economics; Y. W. C. A.; Camera Club; NAACP.



# SENIORS



GLADYS INEZ PIERCE, A.B., *Sigma Gamma Rho*,  
"Little Bit"

17 South 13th Street, Wilmington, N. C.

*"Live today as if you were going to die tomorrow, learn today as if you were going to live always."*

Alpha Kappa Mu, Student Council; Y. W. C. A.; Resident Young Women; Non-resident Young Women; Social Science Club; Shaw Journal Staff; Aurora Club, Orientation Committee; Sunday School.

THOMAS ELISHA POE, A.B.  
"Tommy"

1102 East Jones Street, Raleigh, N. C.

*"To brag little, to lose well, to crow gently if in luck, to pay up, to own up, to shut up if beaten are the virtues of a sportsman."*

Y. M. C. A.

HAL WORTH POPE, A.B., *Omega Psi Phi*,  
"Candy"

Raleigh, N. C.

*"Life is a comedy to those who think and a tragedy to those who feel."*

Y. M. C. A.; I. R. C.

WILLIE POWELL, JR., A.B.

410 Pine Street, Kinston, N. C.



CAROLYN YVONNE PRUNTY, A.B., *Alpha Kappa Alpha*,  
"Shorty"

Box 545, Northfork, West Virginia.

*"What you can do, or think you can, begin it! Boldness has genius, power, and magic in it!"*

Class Business Manager; Student Welfare Committee, Secretary; Tyler Book Club, President; Student Council, Business Manager; Shaw Players, Business Manager; Ivy Leaf Club, President; Who's Who Among American Colleges and Universities; Alpha Kappa Mu Honor Society, Secretary; Sigma Rho Sigma, Secretary; Estey Personality-Charm Club; Student Town Hall Forum; Y. W. C. A.; Resident Young Women.

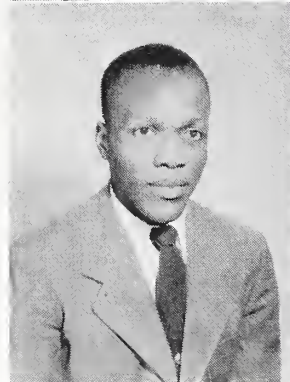


JUANITA BELLE PURDY, A.B.  
"Nite"

P. O. Box 38, Bladenboro, N. C.

*"Life is what you make it."*

Non-Resident Young Women; Y. W. C. A.; Freshman Charm Club; F. E. T. A. Club; Pestalozzi Club.





# SENIORS

LESTER WILLIS RANDALL, A.B., *Theological Fraternity*,  
*"Bon Ami"*

83 Walnut Street, Newark, New Jersey.

*"We are laborers together with God."*

American Veteran's Committee; Y. M. C. A.; Hayes Fleming; Baptist Student Union; Sunday School.

CHRISTINE CORNELIA REEVES, B.S., *Zeta Phi Beta*,  
*"Chris"*

Goldston, N. C.

*"All that I am and hope to be, I owe to God and my mother."*

Non-resident Young Women; Y. W. C. A.; Sunday School; Resident Young Women; Tyler Book Club; Campus Inn Staff.

THELMA ELIZABETH RHEM, B.S.,  
*"Peach"*

1302 Main Street, New Bern, N. C.

*"Keep your face powered with sunshine and the shadows will fall behind you."*

Resident Young Women; Estey Personality-Charm Club; Y. W. C. A.; Carver Science Club; Non-resident Young Women.

DAVID ALFONZO RICHARDSON, A.B.,  
*"Al"*

Route 2, Box 114, Norlina, N. C.

*"I have crossed the bay, but the ocean lies ahead."*

Sunday School; Y. M. C. A.; Shaw Players; F. E. T. A.

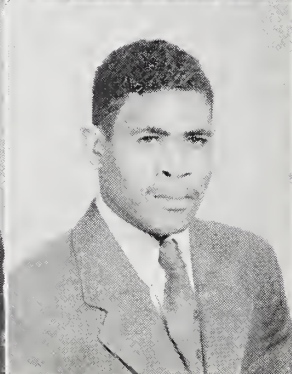
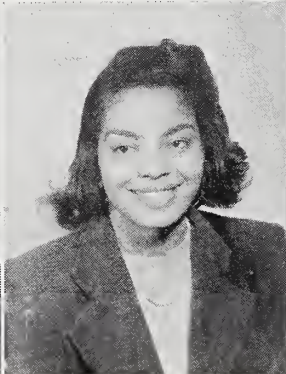
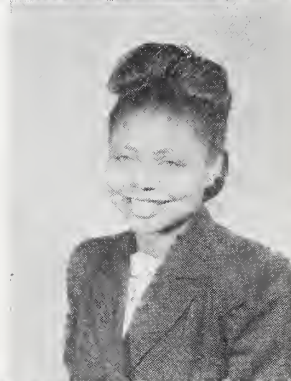
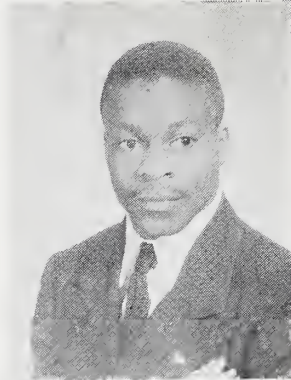
SARA WRAYE RILEY, A.B., *Alpha Kappa Alpha*,  
 115 Lincoln Court, Raleigh, N. C.

ELLEN ROBBINS, A.B.,  
*"Little Bit"*

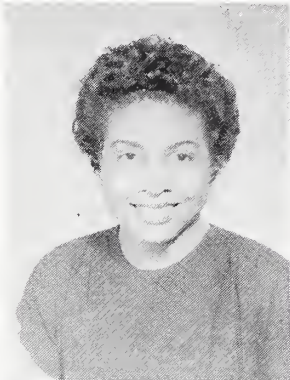
526 Madison Street, Plymouth, N. C.

*"A man's reach should exceed his grasp; or what's a heaven for?"*

Y. W. C. A.; Non-resident Young Women; Sunday School; Sunday School Choir.



# SENIORS



WILLIE CATHERINE HOWELL, A.B., *Sigma Gamma Rho*.  
915 South Person Street, Raleigh, N. C.

*"Man is like a tack, useful if he has a good head and is pointed in the right direction; even though he has to be driven, he can go further than his head will let him."*

Women's Choir; University Choir; Pestalozzi Club; Aurora Club; University Quartet.

EUNICE ROGERS, B.S., *Zeta Phi Beta*.

Route 2, Box 268, Wendell, N. C.

*"To thine own self be true."*

Home Economics Club; Women's Choir; Y. W. C. A.; Sunday School; Resident Young Women.



MARY LEE ROYALS, B.S., *Alpha Kappa Alpha*.  
*"Mac"*

Route 2, Box 2, Rocky Mount, N. C.

*"Be not overcome of evil; but overcome evil with good."*

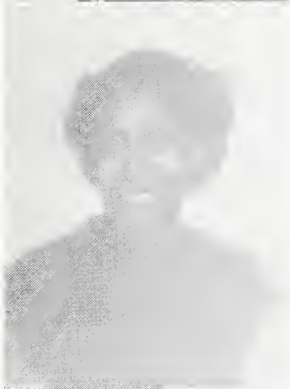
Y. W. C. A.; Non-resident Young Women; Women's Choir; Sunday School.

JOHN TONY SANDERS, A.B., *Alpha Phi Alpha*.

New Bern, N. C.

*"Young people and old alike, if you don't want to regret it, please don't let this harvest pass!"*

Y. M. C. A.; Sunday School; Shaw University Journal Staff; NAACP; A. V. C.



HAROLD LOUIS SCHMOKE, B.S., *Alpha Phi Alpha*.  
*"Smoke"*

534 East Cabarrus Street, Raleigh, N. C.

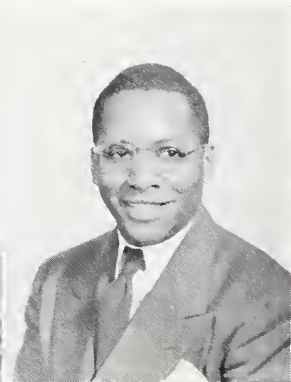
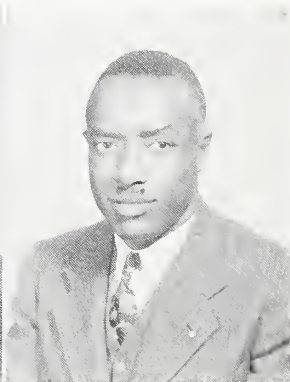
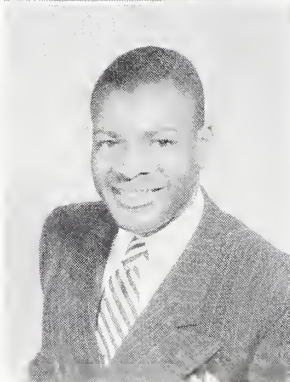
*"This above all; to thine own self be true and it must follow as the night the day; thou canst not then be false to any man."*

Y. M. C. A.

LUTHER JUNE SHIPMAN, A.B., *Theological Fraternity*.

Clarkton, N. C.

Freshman Class, President; Y. M. C. A., President; Sunday School, Superintendent; Sunday School Council; Dramatic Club.





# SENIORS

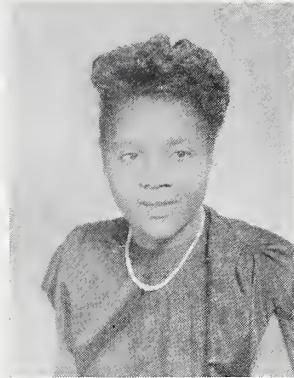
KATHERINE DANNIE SIMMONS, B.S.

*"Cal"*

Route 1, Box 189, Pollocksville, N. C.

*"I am not bound to win, but I am bound to be true; I am not bound to succeed, but I am bound to live by the light that I have. I must stand with anybody that stands right, stand with him while he is right, and part from him when he goes wrong."*

Estey Personality-Charm Club; Home Economics Club; Y. W. C. A.; Resident Young Women; Camera Club; Sunday School; Leisure Time Club.



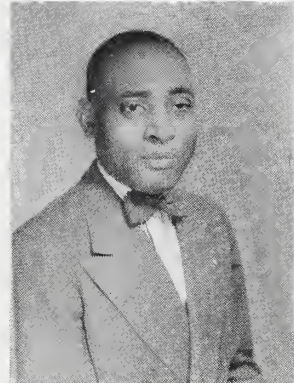
ROBERT THOMAS SIMMONS, A.B., *Phi Beta Sigma.*

*"Bob"*

604 White Street, New Bern, N. C.

*"Everything comes to him who will but wait and work toward that end."*

University Choir; Y. M. C. A.; University Choir, Accompanist; Future English Teachers of America Club, President



GERTHA SMITH, B.S., *Alpha Kappa Alpha.*

*"Gert"*

316 South Stewart Street, Rockingham, N. C.

*"Prepare to live a thousand years; live as though you will die tomorrow."*

Alpha Kappa Mu Honor Society; Home Economics Club; Camera Club; Student Council; Y. W. C. A.; Resident Young Women; Baptist Student Union; Sunday School; Estey Personality-Charm Club.

LEDONIA SMITH, B.S., *Alpha Kappa Alpha.*

*"Lee"*

316 South Stewart Street, Rockingham, N. C.

*"Ah, but a man's reach should exceed his grasp, or what is a heaven for?"*

Alpha Kappa Mu Honor Society; Campus Inn Board of Directors, Assistant Secretary; Shaw Players; Carver Scientific Society, Vice President; Sunday School, Secretary; Y. W. C. A.; Resident Young Women; Estey Personality-Charm Club; Baptist Student Union; Who's Who in American Colleges and Universities.



DAISY LEE STANCIL, A.B.

P. O. Box 521, Middlesex, N. C.

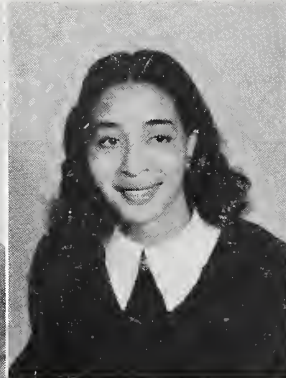
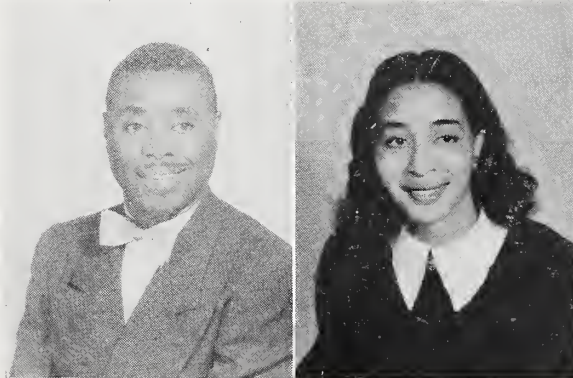
*"All that I am or ever hope to be, I owe to my mother."*

OTIS CLIFFORD STATHAM, A.B.

792½ East 9th Street, Chattanooga, Tennessee.

*"The key to success lies beyond the hill."*

Dramatic Club; Baseball Team; Y. M. C. A.; Varsity Club; Sports Editor.



# SENIORS



RUTH MAE STEWARD, A.B., *Zeta Phi Beta*.  
Route 3, Box 367, Suffolk, Va.

THELMA YZONNECHRIS STOKES, A.B.  
1314 29th Street, Newport News, Va.

CATHERINE ELIZABETH STROUD, B.S.  
307 Cannon Street, Raleigh, N. C.



DOROTHY MAE SWINSON, A.B., *Alpha Kappa Alpha*.  
"Dottie Mae"

410 Hancock Street, Richmond 20, Va.

"Preparation is the keynote to success."

University Choir; Estey Personality-Charm Club; Y. W. C. A.; Resident Young Women; Campus Inn Board of Directors; Social Science Club; Women's Choir.

IRENE SYLVER, B.S., *Alpha Kappa Alpha*.  
"Rene"

Route 2, Nashville, N. C.

"Success begins with a fellow's will, it's only in the state of mind."

Y. W. C. A.; Resident Young Women; Varsity Club; Home Economics Club; Pestalozzi Club; Estey Personality-Charm Club.

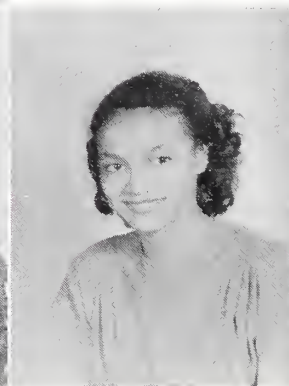


MARY SCOTT TAYLOR, A.B., *Alpha Kappa Alpha*.

18 Birch Avenue, Princeton, New Jersey.

"To write much, and to write rapidly, are empty boasts. The world desires to know what you have done, and not how you did it."

Y. W. C. A.; Spanish Club; NAACP.





# SENIORS

MILFORD McFARLAND TAYLOR, B.S.  
598 Jefferson Avenue, Brooklyn, N. Y.

PERRY ALFREDO TAYLOR, A.B., *Alpha Phi Alpha*.  
18 Birch Avenue, Princeton, New Jersey.

*"Idleness is emptiness, the tree in which the sap is stagnant remains fruitless."*  
Dramatic Club; Y. M. C. A.; Spanish Club; Social Science Club.

ELSIE MAE TEELE, A.B.  
*"Tea"*

P. O. Box 76, Vaughan, N. C.

*"The past is gone, forget it; the present is here, use it; the future will come, prepare for it."*

Y. W. C. A.; Ivy Leaf Club; Resident Young Women; Shaw Players; Sunday School; Fortnightly English Club; F. E. T. A.

ORCELLA MARIE THOMPSON, A.B.  
*"Little Bit"*

P. O. Box 76, Lewiston, N. C.

*"It is better to have one good friend than to have many good for nothing friends."*

Non-resident Young Women; Y. W. C. A.; Freshman Charm Club; Spanish Club; Physical Education Club; Pestalozzi Club.

GUTHRIE L. TURNER, JR., B.S., *Phi Beta Sigma*.  
Route 3, Box 157, Snow Hill, N. C.

*"The only way to command nature is to obey her laws."*

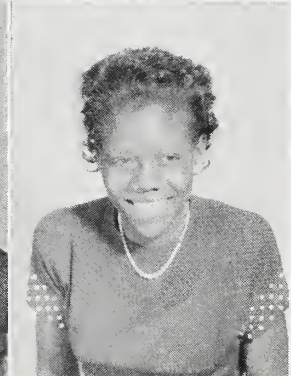
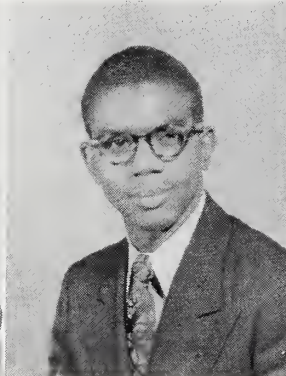
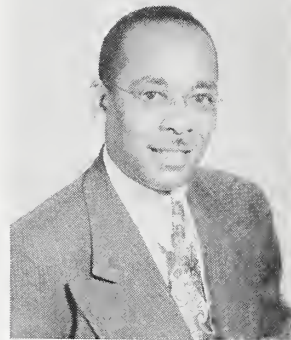
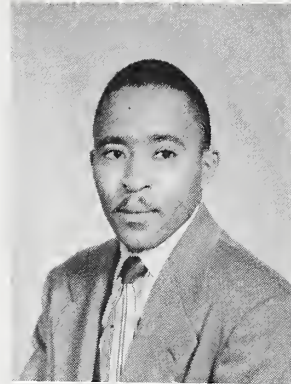
Student Council; Shaw Journal, Editor-in-Chief; Alpha Kappa Mu Honor Society; Who's Who Among Students in American Colleges and Universities; Y. M. C. A.; Men's Personnel; Assistant Manager, Football Team; Sunday School.

DORIS BEULAH WADE, B.S.  
*"Dorce"*

Madison, N. C.

*"It matters not what you are thought to be, but what you are."*

Pyramid Club; Hayes Fleming Missionary Society; Estey Personality-Charm Club; Resident Young Women; Y. W. C. A.



# SENIORS



RUTH OLA WALKER, A.B., *Alpha Kappa Alpha*,  
"Dennie"

16 North Depot Street, Manning, S. C.

*"All my hope for my progress is myself, because life is what I make it."*

Resident Young Women; Y. W. C. A.; Women's Choir; Shaw Players; Future English Teachers of America Club; Ivy Leaf Club; Sunday School.

JANET WALLACE, B.S.

421 South Swain Street, Raleigh, N. C.

JOSEPH HENRY WALTERS, A.B., *Phi Beta Sigma*,

Raleigh, N. C.

*"Be kind to those you meet on the ladder to success, you may pass the same ones as you are coming down."*

Y. W. C. A.; Shaw Players; Men's Choral Club; American Veteran Committee.



EULA PEARL WATSON, A.B., *Zeta Phi Beta*,

"Eula Pee"

Route 2, Box 200, Clayton, N. C.

*"Let us not be weary in well doing; for in due season we shall reap, if we faint not."*

Resident Young Women; Y. W. C. A.; NAACP; Hayes Fleming Missionary Society; Shaw Players; Archonian Club; Estey Personality-Charm Club; F. E. T. A.; Fortnightly English Club; Sunday School; Sunday School Choir.

FELICIA DOROTHEA WILLIAMS, A.B.

"Fi"

Route 2, Box 348, Portsmouth, Va.

*"A good name is much better to be chosen than great riches."*

Y. W. C. A.; Resident Young Women; Women's Choir; Fortnightly English Club; Shaw Players; Pestalozzi Club; Future English Teachers of America Club; Las Sociedad de Omigas.



SARAH MARGARET WILLIAMS, B.S., *Delta Sigma Theta*,

"Marge"

200 Hood Street, Rockingham, N. C.

*"Sow an act and you reap a habit; sow a habit and you reap a character; sow a character and you reap a destiny."*

Resident Young Women; Y. W. C. A.; Camera Club; Home Economics Club; Hayes Fleming Missionary Society; Sunday School; Estey Personality-Charm Club.





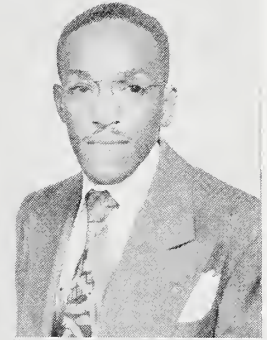
# SENIORS

EMMITT LEE WILLIAMSON, A.B.

Route 2, Box 80, Clinton, N. C.

*"Success in life is matter not so much of talent or opportunity as of concentration and perseverance."*

Militant Club; A. V. C.; Y. M. C. A.

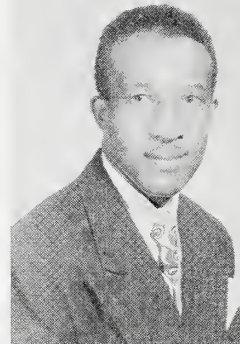


HERMAN LEE WILSON, A.B.

*"Lefty"*

203 Hillsboro Street, Fayetteville, N. C.

*"Have courage in the face of defeat."*

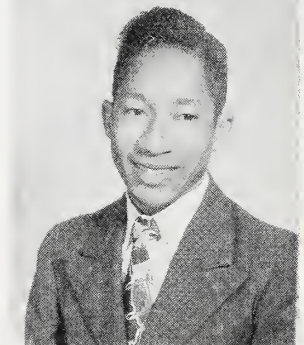


SANDY YANCEY, JR., A.B.

Mansor, N. C.

*"Ah! but a man's reach should exceed his grasp, or what is a heaven for?"*

Y. M. C. A.; Dramatic Club; Psychology Club; F. E. T. A. Club; Sunday School.





# SUPERLATIVES



<i>Most Scholarly</i> .....	Yvonne Prunty and John Hairston
<i>Best Dressed</i> .....	Erma Bullock and Kenneth Anderson
<i>Most Versatile</i> .....	Irene Sylver and Everett Lattimore
<i>Most Likely to Succeed</i> .....	Arnell Burnette and Guthrie Turner
<i>Best Dancers</i> .....	Durell Jones and Allen Crooms
<i>Best Looking</i> .....	Eleanor Bell and Everett Lattimore
<i>Wittiest</i> .....	Johnsie Broadway and Zaron Burnette
<i>Most Modest</i> .....	Mary Ledbetter and Leroy Hall
<i>Most Popular</i> .....	Irene Sylver and Everett Lattimore
<i>Most Dignified</i> .....	Arnell Burnette and Robert Simmons
<i>Most Studious</i> .....	Gladys Pierce and Lester Randall
<i>Most Dramatic</i> .....	Inez Cogdell and Herbert Ellis
<i>Most Athletic</i> .....	Georgia A. McNeill and Charles England
<i>Most Pleasing Personality</i> .....	Dorothy Swinson and Charles England
<i>Most Co-operative</i> .....	Yvonne Prunty and Guthrie Turner

## CLASS SONG

TUNE: Tschaikowsky's Concerto No. 1, "Tonight We Love"

### I

Lift every voice let it ring  
 With praises for dear Shaw U.  
 Each loyal comrade now pledge  
 "Our love for thee will never die."  
 Sweet mem'ries will linger on  
 E'en tho' divided we be  
 The Class of '49  
 Now bids adieu  
 Our faithful hearts  
 Will always work for you,  
 O Shaw, Adieu.

### II

Lift every voice let it ring  
 With praises long may we sing.  
 Each loyal comrade now say  
 "God save our Alma Mater."  
 Then let us join with the band.  
 Uphold our school's aims so grand,  
 Long live noble Shaw U.  
 Long may her banner sway  
 Until eternity  
 Long live Noble Shaw U.

ROBERT SIMMONS  
 DOROTHY SWINSON





## CLASS POEM

Dear Alma Mater,  
We have come to thee,  
Kissed by the four winds and blown by fate into thy enfolding arms.  
We have lived with thee  
Untouched by the base evils which abound outside thy protecting walls.  
We have learned from thee,  
Guided by thy prodigal love and undying interest in us, thy children.  
And now, we leave thee,  
After thou hast loved us and made us one in thee,  
After thou has taught us to live and to be free;  
But not to forget thee,  
Thou, to whom we owe improvements and changes in which we pride,  
Ideals and goals toward which we strive,  
And the family love in which we abide—

Hail, Alma Mater!  
Mother of us all!

INEZ COGDELL



## CLASS HISTORY



## CHAPTER I

With the drapes of the curtain of fate unfurling in a gentle gesture of closure, putting an end to the act of World War II, the stage of life was simultaneously presenting a new phase of existence to the members of the '45 Freshman Class.

Luther Shipman, as president elect, along with the advice of Mr. Virgil Anderson, did a note worthy job in guiding and maintaining an effective class organization.

Edith's little sister, Yvonne, picked up where she left off academically. Bonnie Briley, Guthrie Turner, Inez Cogdell and Herbert Ellis were also honor roll students.

Freshman prowess was heavily felt in the realm of sportsdom. The football squad utilized the ability of such men as Nelson Harris, Lorenzo Haywood and Everett Lattimore; the latter having merited the coveted J. P. Turner Athletic Award on the basis of his three sport participation. Bonnie Briley and Georgia McNeil shone on the girls basketball team. The initial constructing of Spaulding Gymnasium marked the termination of our stare and wonder period.

## CHAPTER II

The spring of '46 witnessed the installation of new class officers. Mrs. Rosalie Hill acted in the capacity of adviser, while Everett Lattimore, as president, with Guthrie Turner and others formed the nucleus of an efficient governing body. The famed Sadie Hawkins dance marked the height of our social contribution. Bonnie Briley, Georgia McNeil, and Irene Sylver brilliantly paced the girls basketball team to an enviable record of victories.

## CHAPTER III

Again Everett Lattimore was chosen to preside as president, while Mr. Nathan Pitts acted as adviser. Spaulding Gynasium was the site of an intercollegiate basketball game. The Junior-Senior Prom was a heel elieking success. Sarah Darden again "dood it", with the mammoth efforts of Gertha Smith, Eleanor Bell and others. The Student Council employed the services of such Juniors as Arthur Gibbs, chaplain; William Darity and John Hairston, representatives; Inez Cogdell, assistant secretary; Guthrie Turner, editor-in-chief of the Shaw Journal, and Everett Lattimore, vice-president.

Charles England captained a championship baseball team. Everett Lattimore was selected as captain of the 1948 C. I. A. A. defending football champions.

Georgia McNeil and Bonnie Briley continued to hook the crowds into a frenzy. Edward Mack Todd captained the basketball team.

John Hairston, Yvonne Prunty, Inez Cogdell, Guthrie Turner, Gladys Pierce, Helen Harrison, Arnell Burnette and Pensieola Alexander were admitted to the honor society. Guthrie Turner also made Who's Who. The finishing touches were being applied to our chapel when the term drew to an end.

## CHAPTER IV

Our Senior year began with Everett Lattimore again elected as president and Mr. Nathan Pitts as adviser. Petite Eleanor Bell reigned as our Homecoming Queen, while Irene Sylver was one of her attendants. Guthrie Turner was again selected to Who's Who along with Helen Harrison, Ledonia Smith, Inez Cogdell, Charles England, Yvonne Prunty and Everett Lattimore. John Hairston, Ledonia Smith and Yvonne Prunty were our academie Goliaths.

Our stay is over. Now we must take our leave from this scholastic haven. While here our changes have been many and our disappointments perhaps none too few, but along with our variations time has passed bringing us to the brink of graduation. Each of us has knelt at the Pyerian Spring. How deeply we have drunk of its waters of knowledge will be measured according to the volume of our deeds yet to be done.

EVERETT LATTIMORE  
*President of the Senior Class*



# ★ ——— LAST WILL AND TESTAMENT ——— ★

We, the Senior Class of Shaw University, 1949, about to pass from these halls of learning, being in full possession of our mental capacities and without restraint, do hereby make and publish this last will and testament. We transmit our various school day possessions to persons hereinafter mentioned, to be retained by them throughout their association with Shaw University.

## ARTICLE I

To the benevolent citizens of Raleigh, we leave our sincerest thanks for their cooperation with us in our varied endeavors during our stay in this city.

## ARTICLE II

To the Board of Trustees, the President, and the Administration of this marvelous school, we leave our best wishes for continued success in making Shaw University a bigger and better school.

## ARTICLE III

To the Dean of Women we leave a vote of thanks for her untiring efforts to help us overcome our many difficulties.

## ARTICLE IV

To the Proctor of Men, we bequeath "additional" patience and strength in his attempt to instill within the men higher principles of manhood.

## ARTICLE V

To the Juniors, Sophomores, and Freshmen, we bequeath the use of the new gymnasium which we were fortunate to see erected during our stay.

## ARTICLE VI

1. Otis C. Statham leaves his bed in 109 Tupper Hall to Allen F. Crooms, hoping he will get some good rest and fool the sport writers during the '49 football season.
2. Eleanor Bell leaves to the students of Shaw her ability to be carefree and happy at all times.
3. Sarah Riley wills her good luck to all the students at Shaw.
4. Ruby C. Moore leaves her quietness to Janie Keyes.
5. Beulah Doris Wade wills her S. P. on the campus to her roommate, Dorothy Alston.
6. Bonnie Briley wills to Andy Fields her height so that he will no longer be called "shorty."
7. Mary Ledbetter wills her title as Miss Home Economics to Betty Gilliam.
8. Sallie Melton leaves her height with Ida Russell, hoping that she will share it with her friend, Christine Williamson.
9. Eula P. Watson wills her instinct which allows her to get up early every morning, go to breakfast, clean her room and reach class on time to Georgia Scales.

★ ——— LAST WILL AND TESTAMENT ——— ★

10. Mildred Fogg wills her petiteness to Willie Mae Ramsey.
  11. Sylvia Gregory wills to Jean Brown her Modesty.
  12. Armadia Goodson wills to Hazel Kelly all her notebooks and term papers, hoping she can use them without the teachers recognizing them.
  13. To Rosetta Norwood, the gang in 205, 209 and 210 Shaw Hall wills her the ability to play it cool when sent for by the Dean of Women.
  14. To Gloria Payne, Mattie Joyner wills her the ability to get up and make breakfast each morning.
  15. Angie Brooks wills her ambitious determination to succeed despite difficulties and disappointments.
  16. Charles England wills his ability to "keep cool" while pitching to James Mincey.
  17. Willie Elliot wills his prowess on the gridiron to Charles Chavis.
  18. James Walker wills thirty pounds to Clarence Watkins.
  19. Yvonne Prunty bequeaths her position in the extra-curricular activities at Shaw to Emma Louise Jones.
  20. Hal Pope leaves his handwriting to Hubert Poole.
  21. Laura Burnette bequeaths her thoughtfulness in doing things in order to Georgia Scales.
  22. Herbert D. Ellis leaves his ability to accept and perform numerous club responsibilities to Clarence Hunter.
  23. Gladys Pierce wills her shortness to Dorothy Alston.
  24. Georgia LeVere bequeaths her traits of dependability and promptness to Alea Robinson.
  25. Leander Lewis leaves his smug appearance and linguistic ability to Richard Harvey.
  26. David Richardson wills his dramatic ability to Oswald Beard.
  27. Howard Goodson wills his conservative manner to Addison Shepard.
  28. Guthrie Turner wills the gray hairs received while working on the yearbook to William Cannon and Joseph Pollard.
  29. Nelson Harris wills the ownership of the Renny Five to Harvey Broadie.
- We do hereby charge Mr. James A. Broadie to execute our last will and testament.

*Testators:*

HERBERT D. ELLIS  
SARAH DARDEN RILEY  
OTIS C. STATHAM  
ELEANOR BELL  
ZARON BURNETTE

★ ————— CLASS PROPHECY ————— ★

This crystal sphere holds all of the past and all of the future. Yet, it cannot tell you all that you desire to know. I am about to gaze into my crystal and forecast some futures.

The mist is clearing and a small village appears on the scene. It's Sunday morning and the people are coming to the service. I see a fine looking minister. Wait, it isn't quite clear. Now there he comes into the pulpit—why it's Reverend Gibbs. Looking through the audience I see some of the notables of the small city. There's Guthrie Turner, our dentist and his family of four. In the middle aisle, there's the principal of the school, Leroy Hall, and Mayor Statham. The choir begins to sing and seated at the piano is D. L. Swinson, the school's music Teacher. The service is over and I see the people gathering at Edwin Allen's drug store, a modern up to date place. Around the corner is Walker's Hotel and as his private secretary, there sits Thelma Hardy.

Further out on the outskirts of the town is a large poultry farm and I see standing in the door Mable Reynolds and James Powell, Jr., hubby and wife. I hear a shrieking sound and down the highway comes an ambulance—wait, yes, it's Gossett's ambulance service. I see the scene fading and I can barely see the quaint little village.

The scene of the quaint little village completely fades, and now I see a large industrial, flourishing city and numerous businesses there. As I look in my crystal ball I see a swell night club—Bates' Rendezvous and there's Anna Norris, the torch singer and Colleen Moore, the exotic dancer. The curtain draws and the music of "Zeke" Burnette's Hot Shots sets feet moving and featuring Mrs. Burnette. Many notables come to the Rendezvous. There's the noted Dr. Ellis, heart specialist and his associate Dr. Ledonia Smith. I see Dr. Lyons, noted historian and Kenny Anderson, noted scientist. As I view the club, I see seated in a remote place Professor Campbell and Professor Frederick Graham of Whippet College. Look who's entering now—why it's the Dean of dear ole Whippet, Leander Lewis and his charming wife, Pola Newsome, the famous movie star.

As the soft music fades away from the scene, the crystal ball becomes hazy. Each look says, "Go far away," and as the words fade away, we see a far away country, Africa, the dark continent. As we approach the coast, a number of people run out to greet us and there's Angie Brooks with Eleanor Bell leading the group. We are on an Educational Research Commission to find data on education and living conditions there. Included in our group are the famous educators: Dr. Himes, famous sociologist and Dr. Yvonne Prunty, noted historian, Dr. David Richardson, head of the Language Department at Atlanta University and Professor Robert Simmons, Romance Language Instructor. On our big ship, "Erueka," our noble staff of Home Economics Association keeps us well fed. Misses Dupree, Glover, Briley, Burnette and Alexander are from the staff of Tuskegee Institute, while Misses Douglas, Gregory, Bullock, Harrison and Gertha Smith are from the staff of Hampton Institute.

Dr. Lattimore of the John Hopkins Hospital is our doctor, and Nurses Irene Sylvester, Willie Roberson and Mary H. Jones take care of the sick. Heading the dining room is dietitian Katherine Simmons with Doris Wade as assistant. Captain Schmoke safely pilots us over with capable assistance of first mate Hairston and chief engineer Goodson.

Cars from the Hickerson's plantation carry us inland to the Marable Cabins, our resting places. Here we start visiting the natives and we learn that the Reverend Randall and his lovely wife, the former Miss Pierce, are doing missionary work in the next village. We also learn that Herman Wilson and Tony Saunders are well known teachers of the village. Going on to the next village, we see Bill Elliott working hard in a field of tall corn and his wife, the former Miss Armadia Goodson, bringing him a cool drink of water. We stop and they tell us that Erma Bullock has a large Kindergarten School three miles east and that Ruth Bethea and Mildred Fogg are her helpers. We also learn that Thelma Hardy, now Mrs. Walker, is a rich socialite and that Mrs. Mary Taylor, famous vocational guidance director and her husband, Perry, the noted economist are house guests. We bid Bill and Armadia "Good-bye" and head for our camp. The sun is slowly setting in the west and as we get closer and closer to our camp, the vision in the crystal ball fades. The view becomes dark and we can no longer see.

The crystal tells what it sees, true or false, good or bad. As we draw the curtain and put the little blue crystal away, the greatest prophecy is the marriage of Hardy and Walker. Small world, isn't it?







## STUDENT COUNCIL

### OFFICERS

<i>President</i> .....	WILLIAM A. CANNON
<i>Vice-President</i> .....	HERBERT ELLIS
<i>Secretary</i> .....	DOROTHY ALSTON
<i>Assistant Secretary</i> .....	RAMONA HAMMOND
<i>Sergeant-at-Arms</i> .....	EUGENE RICHARDSON, GLADSTONE BOOTH
<i>Business Manager</i> .....	GRADY NELSON
<i>Parliamentarian</i> .....	COURTNEY BROWN
<i>Assistant Parliamentarian</i> .....	CHARLIE LYONS
<i>Editor of Journal</i> .....	GUTHRIE TURNER
<i>Business Manager</i> .....	GEORGE HANDY
<i>Chaplain</i> .....	JOHNATHAN BROWN
<i>Freshman Representatives</i> .....	LOVIE HOWARD, OWEN D. NICHOLS
<i>Sophomore Representatives</i> .....	NATHANIEL GAYLORD, JESSIE JONES
<i>Junior Representatives</i> .....	LILLIAN AMOS, ARCHIE EVANS
<i>Senior Representatives</i> .....	SARAH D. RILEY, GLADYS PIERCE
<i>School of Religion</i> .....	JAMES FORBES, MARVIN WILLIAMS

---

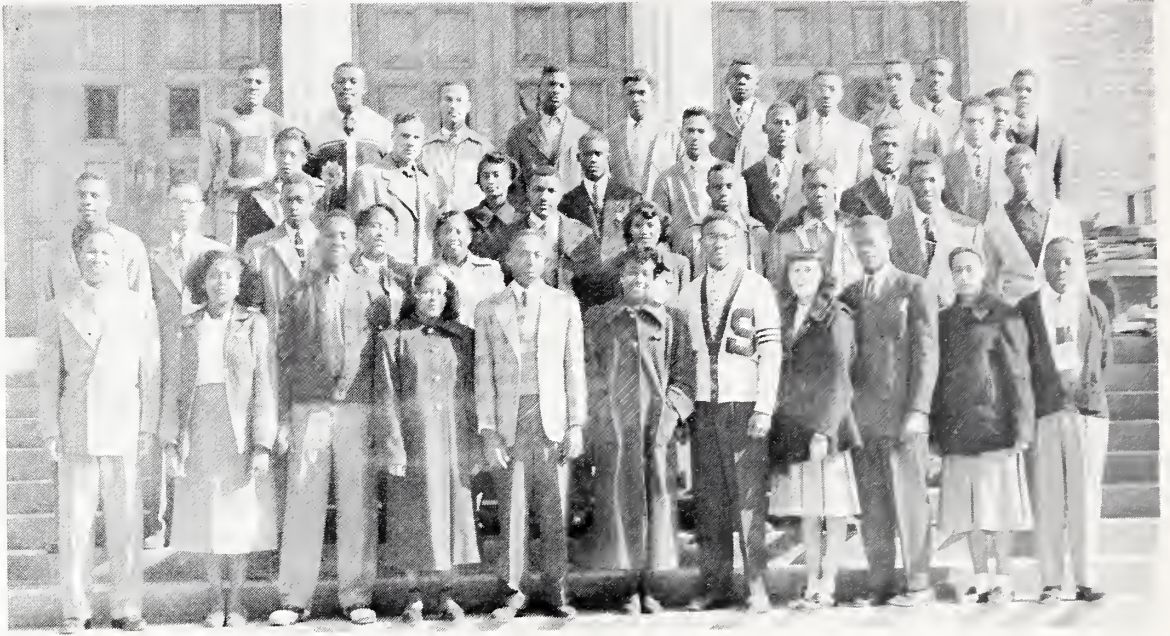
JUNIOR CLASS

OFFICERS

*President*.....WILLIAM A. CANNON  
*Vice-President*.....KATIE PATTERSON  
*Secretary*.....MARY CARTER  
*Treasurer*.....BETTY GILLIAM  
*Adviser*.....JAMES A. BROADY







## SOPHOMORE CLASS

### OFFICERS

<i>President</i> .....	WILLIAM WORLEY
<i>Vice-President</i> .....	TALMADGE COTHRAN
<i>Secretary</i> .....	JEANNE BROWN
<i>Assistant Secretary</i> .....	NANCY GANNAWAY
<i>Treasurer</i> .....	WILLA PRICE
<i>Adviser</i> .....	FOSTER P. PAYNE



---

## FRESHMAN CLASS

### OFFICERS

<i>President</i> .....	EARL LONG
<i>Vice-President</i> .....	ISRAEL SINGLETON
<i>Secretary</i> .....	ALEXINE DELANCY
<i>Assistant Secretary</i> .....	CRISTINE WILLIAMSON
<i>Treasurer</i> .....	THOMAS DANIELS
<i>Adviser</i> .....	DAVID N. HENDERSON





## SHAW UNIVERSITY JOURNAL STAFF

### OFFICERS

*Editor-in-Chief*—GUTHRIE L. TURNER, JR.

*Associate Editors*—JOSEPH H. POLLARD, CAROLYN Y. PRUNTY

*Managing Editor*—WILLIAM A. CANNON

*Sports Editor*—OTIS C. STATHAM

*Exchange Editor*—HARRIS FLOYD

*Business Manager*—GEORGE HANDY

*Reporter* ..... DARPINE DAYE

*Reporter* ..... JOHN J. WILLIAMS

*Reporter* ..... MARY J. CARTER

*Reporter* ..... HELEN J. HARRISON

*Reporter* ..... DELORES A. JENKINS

*Adviser* .....

*Reporter* ..... CHARLES J. LEE

*Reporter* ..... ISRAEL SINGLETON

*Typist* ..... MARY HILL

*Typist* ..... CAROLYN COLEMAN

*Typist* ..... ISABELLE BULLOCK

..... FOSTER P. PAYNE

---

MISS HOMECOMING



MISS ELEANOR BELL

Miss Eleanor Bell, Senior, of Wilmington, N. C., reigned over activities during the game between Shaw and Morris Brown College. Above she is being presented a bouquet of flowers by the captain of the "BEARS", Everett Lattimore

---





## ALPHA KAPPA MU HONOR SOCIETY

### OFFICERS

<i>President</i> .....	JOHN D. ROBERTS
<i>Vice-President</i> .....	GUTHRIE I. TURNER, JR.
<i>Secretary</i> .....	YVONNE PRUNTY
<i>Assistant Secretary</i> .....	GLADYS PIERCE
<i>Treasurer</i> .....	LAURA A. BURNETTE
<i>Adviser</i> .....	FOSTER P. PAYNE

---

YOUNG WOMEN'S CHRISTIAN ASSOCIATION

OFFICERS

*President*.....MERRY FILMORE  
*Secretary*.....MAMIE LEE EXUM  
*Assistant Secretary*.....CLARETHA JONES  
*Treasurer*.....DOROTHY ALSTON



YOUNG MEN'S CHRISTIAN ASSOCIATION

OFFICERS

*President*.....CHARLIE LYONS  
*Vice-President*.....COURTNEY BROWN  
*Secretary*.....C. COSBY  
*Treasurer*.....R. SHEPHERD

---

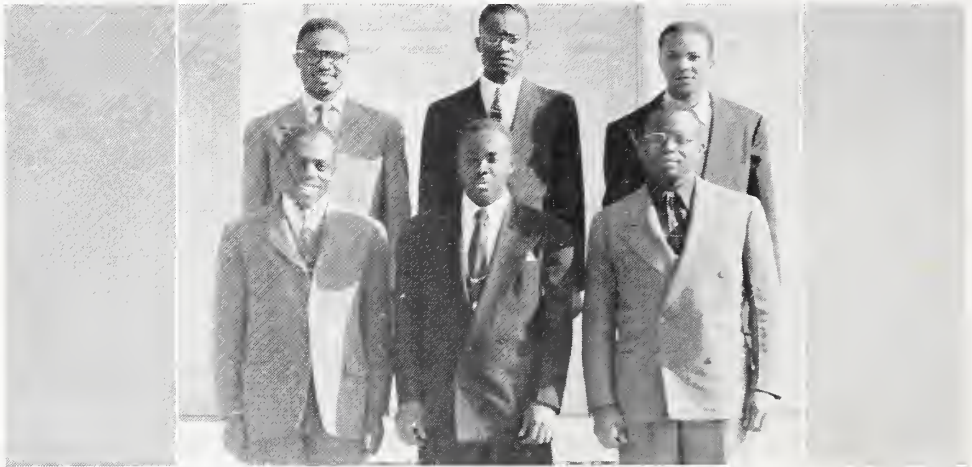


---

MEN'S PERSONNEL COUNCIL

OFFICERS

*President*.....CHARLIE LYONS  
*Vice-President*.....ZARON BURNETTE  
*Secretary*.....COURTNEY BROWN  
*Treasurer*.....C. COSBY



ESTEY PERSONALITY CLUB

OFFICERS

*President*.....LAURA BURNETTE  
*Vice-President*.....MARY LEDBETTER  
*Secretary*.....RUTH BETHEA  
*Assistant Secretary*.....THELMA RHEM  
*Treasurer*.....DORIS WADE

---



---

NON-RESIDENT YOUNG WOMEN

OFFICERS

*President*.....ANNIE BEASLEY  
*Secretary*.....OLIVIA PEACE  
*Assistant Secretary*.....CATHERINE STROUD  
*Treasurer*.....PAULINE RAE



RESIDENT YOUNG WOMEN

OFFICERS

*President*.....DOROTHY ALSTON  
*Vice-President*.....RACHEL CAMPBELL  
*Secretary*.....WILLA PRICE  
*Treasurer*.....THELMA WALLACE

---

---

HOME ECONOMICS CLUB

OFFICERS

*President*.....ALEA ROBINSON  
*Vice-President*.....HAZEL HARRISON  
*Secretary*.....RUTH JACKSON  
*Treasurer*.....ESTHER DAWSON



SHAW UNIVERSITY SUNDAY SCHOOL

OFFICERS

*President*.....J. GOSSETTE  
*Vice-President*.....WILLIE NEAL  
*Secretary*.....FRANCES DUPREE  
*Assistant Secretary*.....GEORGIA LE VERE  
*Treasurer*.....GARLAND WIGGINS

---



---

CHRISTIAN EDUCATION SOCIETY

OFFICERS

*President*.....MARY E. DEBNAM  
*Vice-President*.....VELMA G. GRAHAM  
*Secretary*.....MARY D. HYMES  
*Treasurer*.....DOROTHY M. BOONE



CAMERA CLUB

OFFICERS

*President*.....THOMAS HINTON  
*Vice-President*.....EARL G. COOPER  
*Secretary*.....SYLVIA A. GREGORY  
*Assistant Secretary*.....BARBARA HURST

---



---

THE SHAW PLAYERS

OFFICERS

*President*.....HERBERT ELLIS  
*Vice-President*.....WILLIE NEAL  
*Secretary*.....LEDONIA SMITH  
*Assistant Secretary*.....RUTH WALKER  
*Treasurer*.....LAURA BURNETTE

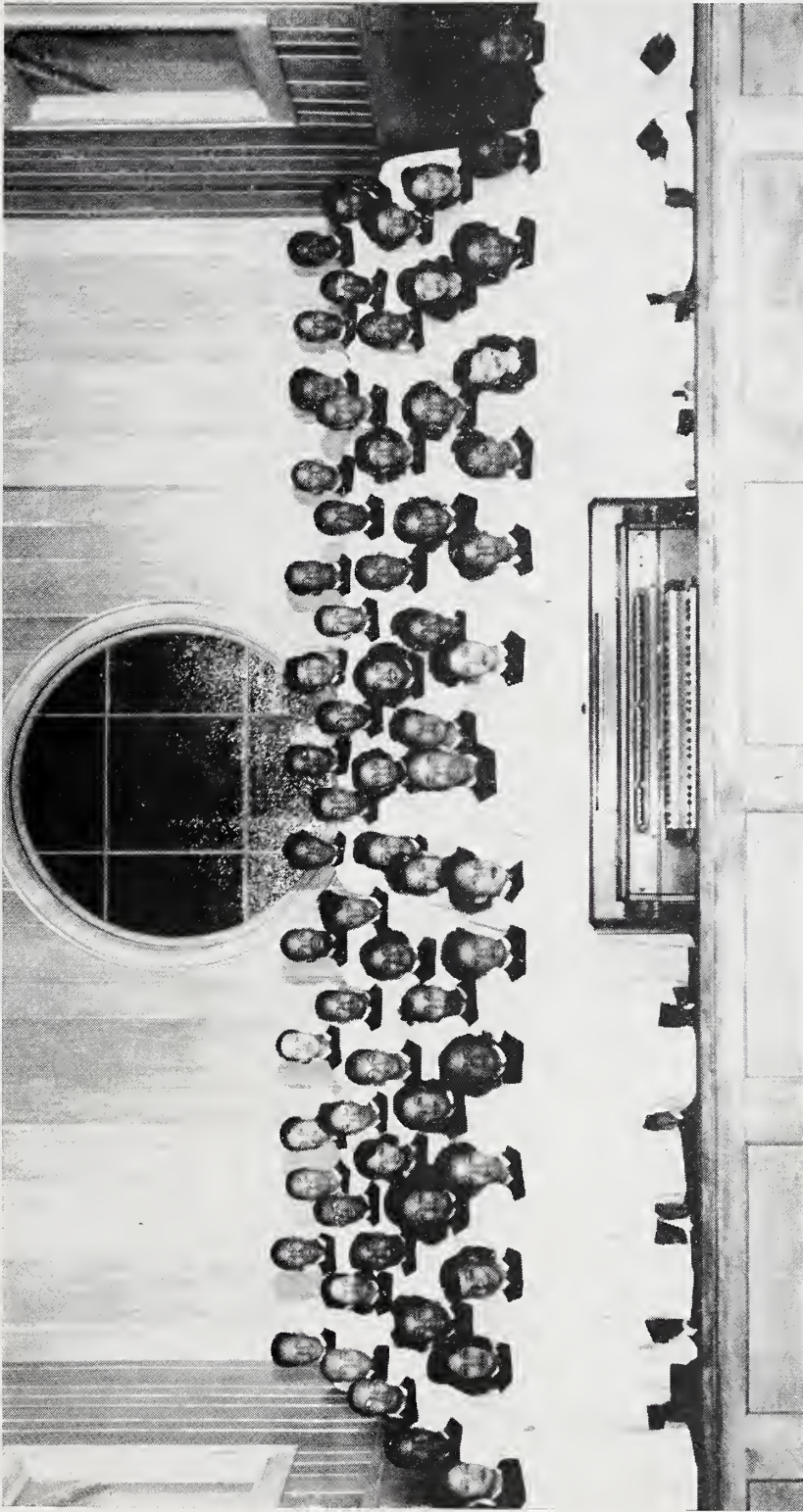


CAMPUS INN

*Manager*.....CHARLIE LYONS, JR.  
GUS McNEIL ROSA DANCE  
THELMA STOKES ORLA TODD

---

UNIVERSITY CHORAL SOCIETY

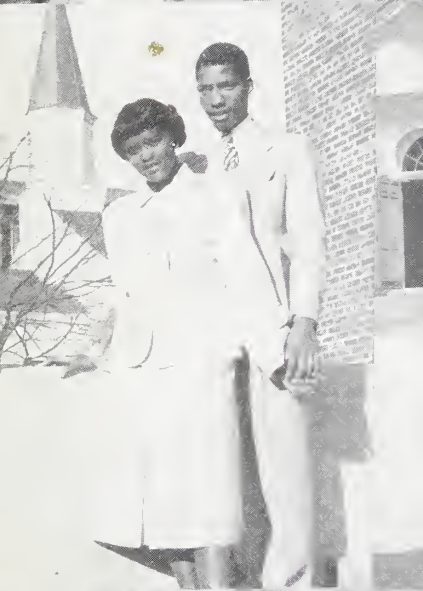
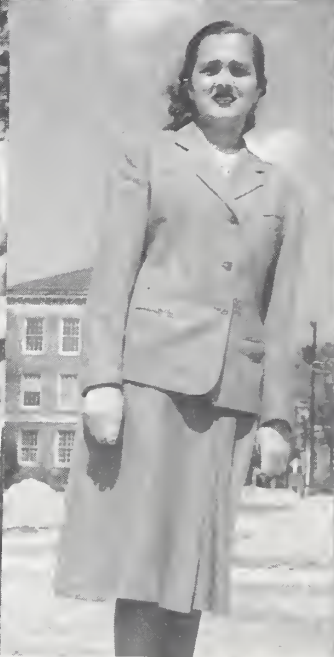
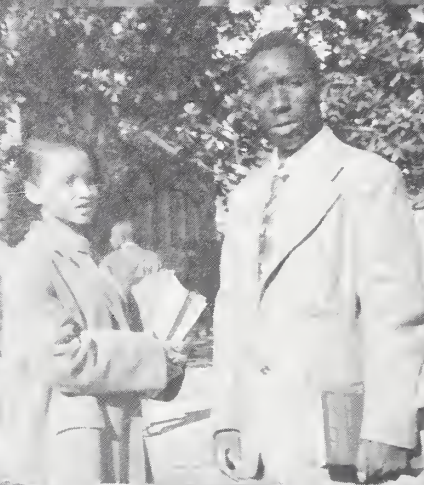


Director—HARRY GIL-SMYTHE  
 Accompanist—ROBERT SIMMONS

OFFICERS

President.....	JOHNOTHAN BROWN
Vice-President.....	PENSICOLA ALEXANDER
Secretary.....	MARY J. CARTER
Treasurer.....	GUTHRIE TURNER
Business Manager.....	GEORGE ROBERTS







# FRATS.



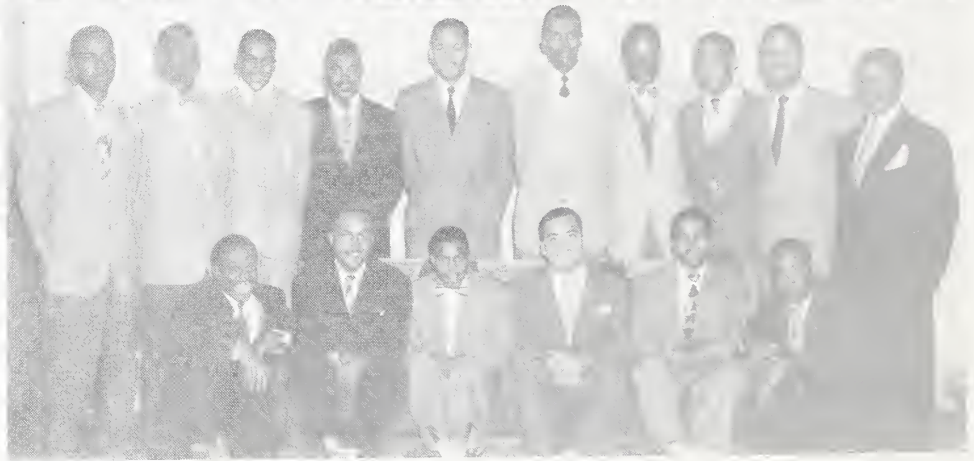
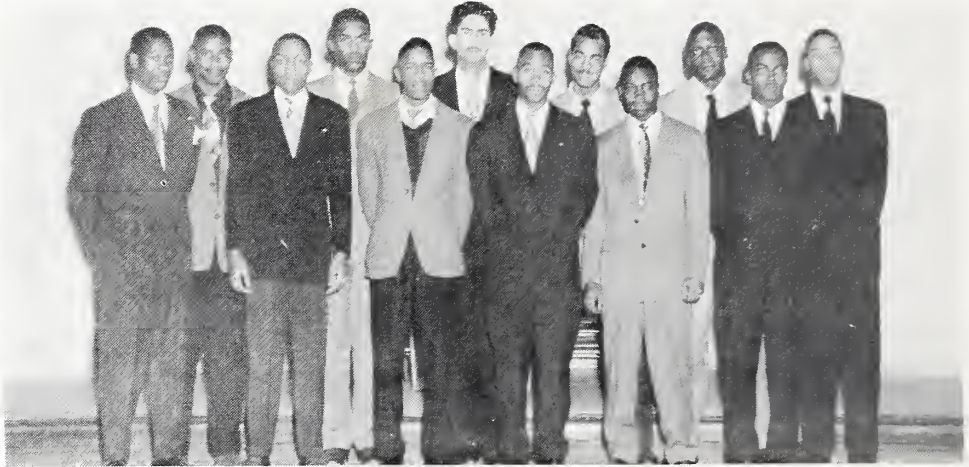
J.B.

---

LAMPODAS CLUB

OFFICERS

*President*.....RICHARD HARVEY  
*Vice-President*.....NATHANIEL GAYLORD  
*Secretary*.....OCIE TAYLOR  
*Treasurer*.....CHARLIE WILSON



OMEGA PSI PHI FRATERNITY

Delta Psi Chapter

OFFICERS

*President*.....HERBERT ELLIS  
*Vice-President*.....CHARLIE ENGLAND  
*Secretary*.....SAMUEL BEARD  
*Treasurer*.....EDWARD ELLIS

---

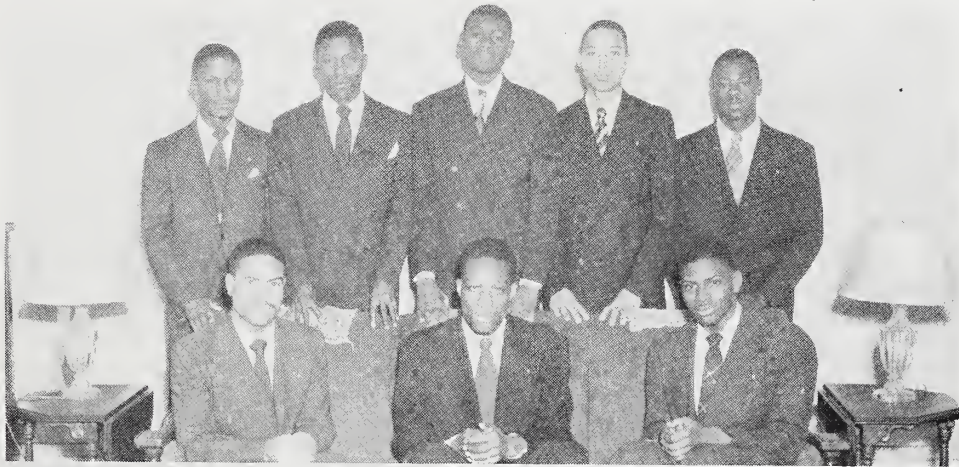


---

SPHINX CLUB

OFFICERS

*President*.....ADDISON WILLIAMS  
*Vice-President*.....LUTHER CHANEY  
*Secretary*.....JAMES TURNER  
*Treasurer*.....VERNON QUINN



ALPHA PHI ALPHA FRATERNITY

Beta Rho Chapter

OFFICERS

*President*.....JAMES H. WALKER  
*Vice-President*.....EVERETT LATIMORE  
*Secretary*.....LLOYD ALEXANDER  
*Treasurer*.....DAVID WILLIAMS

---

---

CRESCENT CLUB

OFFICERS

*President*.....JOHN D. VOSS  
*Vice-President*.....ALFRED NEWKIRK  
*Secretary*.....JOSEPH H. POLLARD  
*Treasurer*.....CLARENCE SMITH



PHI BETA SIGMA FRATERNITY

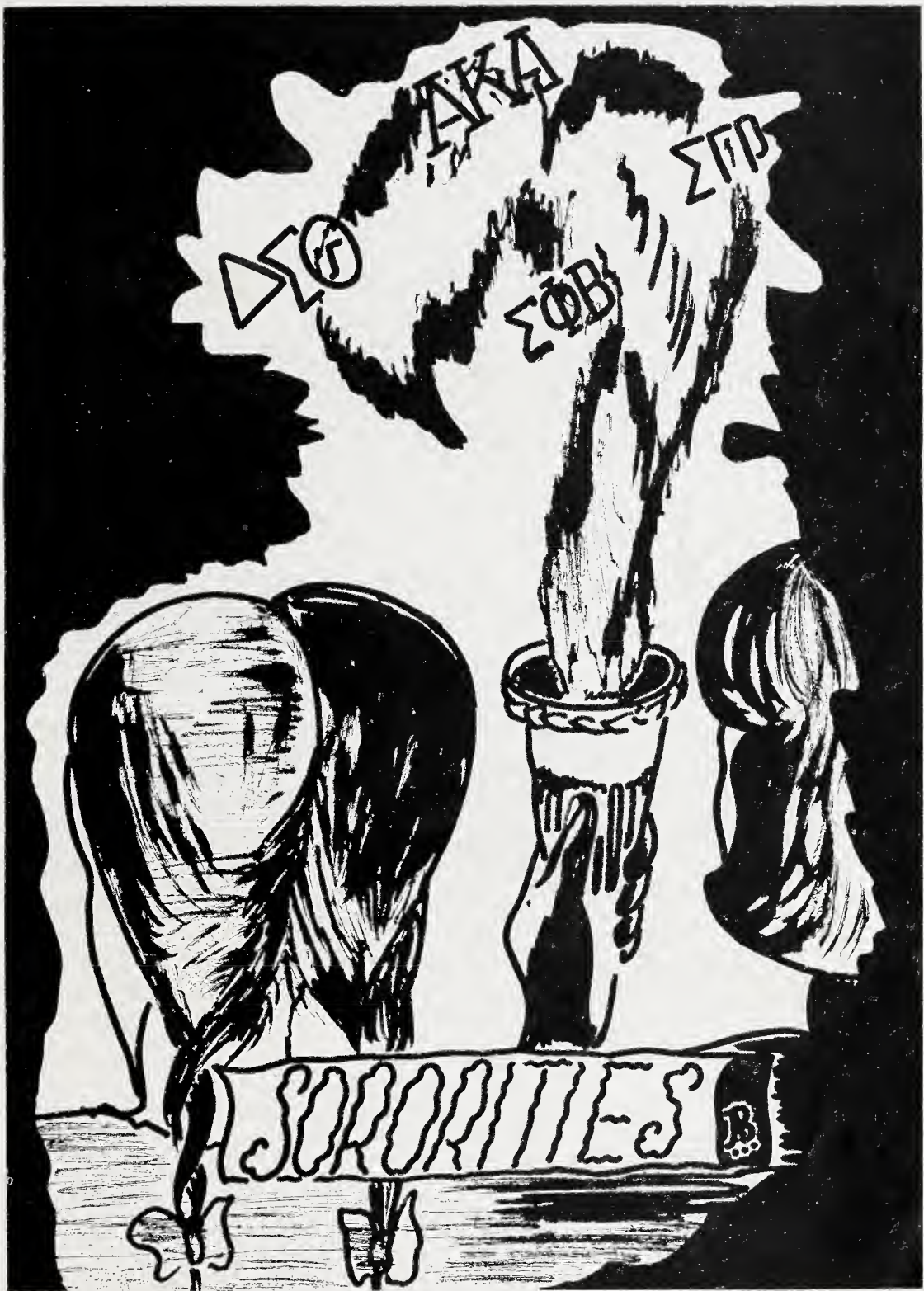
Iota Chapter

OFFICERS

*President*.....GUTHRIE L. TURNER  
*Vice-President*.....JAMES ARMISTEAD  
*Secretary*.....ROBERT T. SIMMONS  
*Assistant Secretary*.....JOSEPH POLLARD  
*Treasurer*.....N. FREEMAN JONES

---





---

PYRAMID CLUB

OFFICERS

*President*.....DOROTHY ALSTON  
*Vice-President*.....RAMONA HAMMOND  
*Secretary*.....RUTH MITCHELL  
*Treasurer*.....KATIE PATTERSON



DELTA SIGMA THETA SORORITY

Alpha Rho Chapter

OFFICERS

*President*.....INEZ COGDELL  
*Vice-President*.....OMA JONES  
*Secretary*.....FRANCES KELLY  
*Assistant Secretary*.....BONNIE BRILEY  
*Treasurer*.....HELEN HARRISON

---



---

IVY LEAF CLUB

OFFICERS

<i>President</i> .....	DARPHINE DAYE
<i>Vice-President</i> .....	MARIE RYANS
<i>Secretary</i> .....	HADASEL WILSON
<i>Assistant Secretary</i> .....	RUTH OLA WALKER
<i>Treasurer</i> .....	JEANNE BROWN



ALPHA KAPPA ALPHA SORORITY

Beta Rho Chapter

OFFICERS

<i>President</i> .....	MARY J. CARTER
<i>Vice-President</i> .....	ARNELL BURNETTE
<i>Secretary</i> .....	IRENE SYLVER
<i>Assistant Secretary</i> .....	GERALDINE TURNER
<i>Treasurer</i> .....	DOROTHY SWINSON

---

---

AURORA CLUB

OFFICERS

<i>President</i> .....	OLA V. DOUGLAS
<i>Vice-President</i> .....	RUTH BETHEA
<i>Secretary</i> .....	ESTER DAWSON
<i>Assistant Secretary</i> .....	MARY BAILEY
<i>Treasurer</i> .....	VERNETTA JONES



SIGMA GAMMA RHO

Beta Theta Chapter

OFFICERS

<i>President</i> .....	MINERVA HODNETT
<i>Vice-President</i> .....	GLADYS PIERCE
<i>Secretary</i> .....	ROBENIA HEADEN
<i>Assistant Secretary</i> .....	ESTHER DAWSON
<i>Treasurer</i> .....	DAISY BRANCH

---



---

ARCHONIAN CLUB

OFFICERS

<i>President</i> .....	GEORGIA McNEIL
<i>Vice-President</i> .....	ROSA LEE DANCE
<i>Secretary</i> .....	SUSIE BARNES
<i>Assistant Secretary</i> .....	GEORGIA LE VERE
<i>Treasurer</i> .....	HAZEL KELLY



ZETA PHI BETA SORORITY

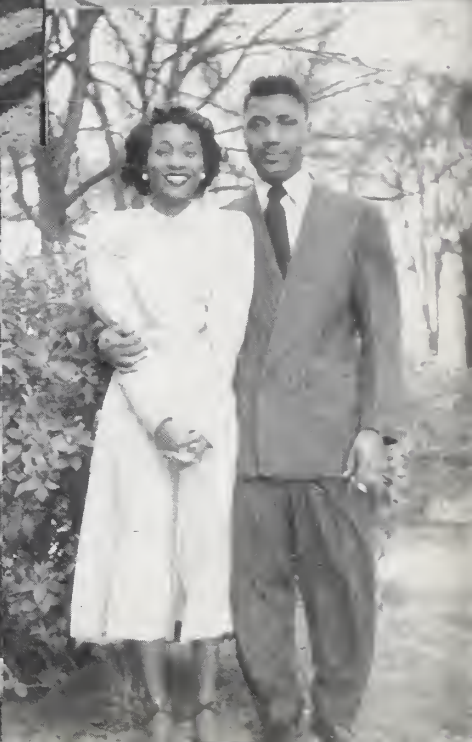
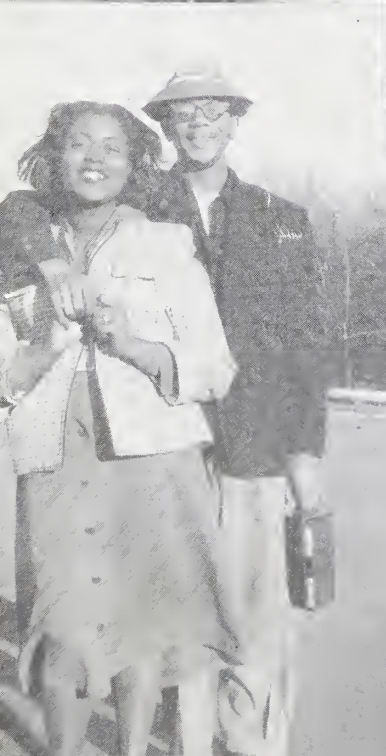
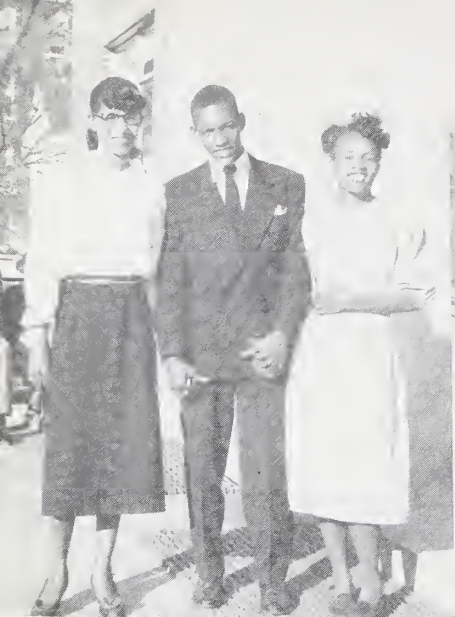
Omicron Chapter

OFFICERS

<i>President</i> .....	ANNA NORRIS
<i>Vice-President</i> .....	EULA P. WATSON
<i>Secretary</i> .....	CHRISTINE REAVES
<i>Treasurer</i> .....	MARY BULLOCK

---



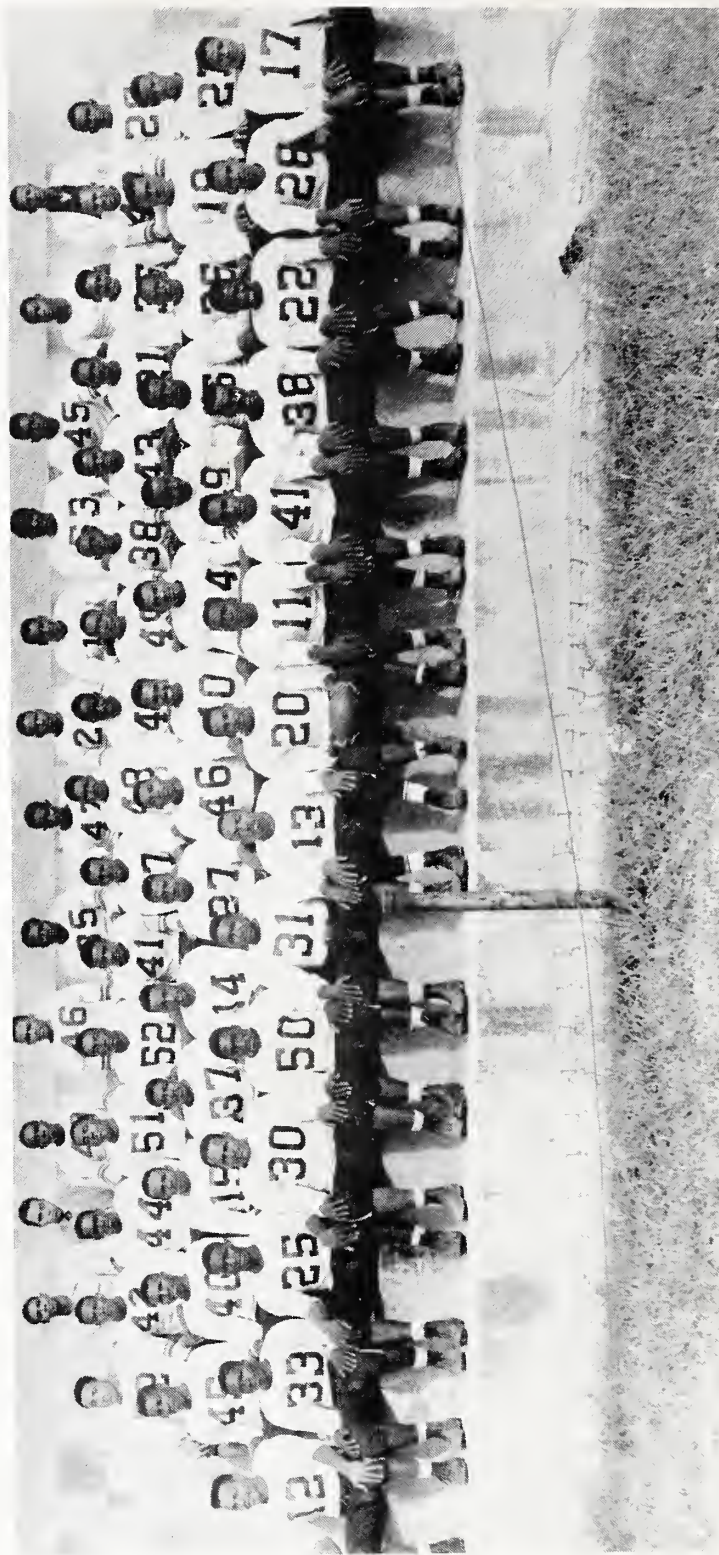




# SPORTS



# FOOTBALL SQUAD



*Coach:* HOWARD K. (BRUTUS) WILSON

*Assistant Coaches*

JAMES H. STEVENSON  
FRED WORTHY

THOMAS KEE

WILLIE ELLIOTT

*Captain:* EVERETT C. LATTIMORE





## BASKETBALL TEAM

*Coach:* HOWARD K. (BRUTUS) WILSON

*Captain:* EDWARD MACK TODD

*Manager:* HERMAN WILSON

Front row, left to right: Gerald Redd, Robert Barksdale, Edward Roper, Edward Todd, Alfred Shields, Horace Burton, Archie Evans.

Back row: Alfonso Becoates, Elworth Waddell, Romie Grantham, Raymond Ranson, Thomas Daniels, Moses Ward.



## BOXING TEAM

*Coach:* JAMES H. STEVENSON

*Captain:* ARTHUR TAYLOR

The team includes on the front row left to right: Arthur Taylor, Talmadge Artis, Charles Coleman, Clarence Hunter, and Newton Stewart. Back row: Harold Walden, Manager; John Byrd, Leonard Chavis, Walter Armour, Littlejohn Barbour, and Eric Lythcott, Trainer.



## *Acknowledgments*

WITH THE HOPE that you will be pleased with our efforts to present an annual with a definite theme and purpose, and that in years to come you may find herein some reason for pleasant reminiscence, we have conscientiously tried to give our best to a rather foreign task. Your editor wishes to acknowledge his gratitude to those members of the staff who have so faithfully labored that this edition of "THE BEAR" might be the success it deserves. Here's hoping that your criticisms may not be too harsh and with a prayer for the future achievements of "Shawites" everywhere, we wish to gratefully acknowledge the contributions of:

Felton W. Lewis, business manager and chief agent for  
procuring "ads."

J. W. Wallace and the Publicity Department.

Classmates for the fine co-operation.

Personnel of Mitchell Printing Company.

Laws and Cheek Studio.

IN RALEIGH IT'S



FASHIONS

*"We always have time to be friendly"*

---

COMPLIMENTS

**SOUTHERN SCHOOL  
SUPPLY COMPANY**

•  
108 South Harrington Street  
RALEIGH, N. C.

---

COMPLIMENTS

**EFIRD'S DEPARTMENT  
STORE**

RALEIGH, N. C.

---

**JAMES E. THIEM**

*Sheet Music - - Recordings*  
Dial 7281      107 Fayetteville Street

•  
*Stationery - - - Zipper Cases*  
*Loose-Leaf Binders*

Dial 2-2913  
108 Fayetteville St., RALEIGH, N. C.

---

COMPLIMENTS

**THOMAS H. BRIGGS  
& SONS, Inc.**

RALEIGH, N. C.

---

**SNOW WHITE  
LAUNDRY**

Dial 7534

•  
"Make Our Telephone Line  
Your Clothes Line"

•  
520 Fayetteville St., RALEIGH, N. C.

---

**NICK RUSSOS**

Hatters & Cleaners

Office Phone 7746  
124 S. Salisbury Street

•  
Plant Phone 4669 . . . 120 S. Blount St.



*You like it...  
it likes  
you!*



---

**W. G. SANDERFORD**  
**Cut Rate Market**

QUALITY MEATS  
FANCY GROCERIES

•

Phone 5138

We Deliver

---

**ACME**  
**REALTY COMPANY**

**Insurance :: Bonds**

Rentals :-: Real Estate

RALEIGH, N. C.

---

COMPLIMENTS

**NELSON L. PERRY, M.D.**

•

Residence Phone 8413

Office Phone 7034

---

COMPLIMENTS

**THE CAROLINIAN**

•

Published at  
118 East Hargett Sreet

RALEIGH, N. C.

---

**A STORE OF QUALITY**

**Service :-: Value**

**G. & S. DEPARTMENT  
STORE**

Hargett and Wilmington Sts.

RALEIGH, N. C.

---

COMPLIMENTS

**DR. PEPPER BOTTLING  
COMPANY**

416 South Dawson Street

RALEIGH, N. C.

---

COMPLIMENTS

**MORAS GROCERY**

•

**Grade A Meats  
Fresh Vegetable**

•

327 E. Cabarrus St.

Phone 3-4465

# BROGDEN PRODUCE COMPANY

WHOLESALE

*FRUITS and PRODUCE*

---

●

Established 1905

RALEIGH, N. C.

---

COMPLIMENTS

**HAYES-JACKSON**  
**Electric Company**

Complete Line of

Westinghouse Appliances

Phone 3-5031

133 E. Hargett St. RALEIGH, N. C.

COMPLIMENTS

**DELUXE SANDWICH**  
**SHOP**

---

For the Finest in  
SANDWICHES

218 E. Cabarrus St., RALEIGH, N. C.

---

*Peerless* MASTER CLEANERS AND DYERS

**Main Plant:** 516-518 Fayetteville St.

**Branch Offices:** 620 Glenwood Ave., 103 W. Jones St.,  
118 S. Dawson St., 308 S. Person St.

---

WE COVER RALEIGH — Please Patronize the Office Nearest You!



CONGRATULATIONS  
TO THE  
GRADUATING CLASS

*Lewis*

---

BOYLAN-PEARCE

Raleigh's  
Shopping  
Center

For Movie Entertainment

COMPLIMENTS

LINCOLN THEATRE

---

The Store With the Electric Stairway

HUDSON-BELK

*"Eastern Carolina's Largest"*

Appreciates the Patronage of the Students and Friends  
of Shaw University

**For Refreshments—Come to  
THE VARSITY SHOP**

SANDWICHES . . . SODAS  
SUNDAES . . . PERIODICALS  
MAGAZINES . . . PAPERS

216 E. Cabarrus Street  
Phone 9351  
RALEIGH, N. C.

---

**LIGHTNER  
FUNERAL HOME**

L. T. LIGHTNER, Manager

24 HOUR  
AMBULANCE SERVICE

•

Phones: 3-1676—3177  
312 Smithfield St. RALEIGH, N. C.

---

**A PLACE FOR . . .**

REFRESHMENTS  
FOUNTAIN SERVICE  
ICE CREAM  
SODAS • SANDWICHES

•

Cosmetics : Newspapers : Magazines

•

**HAYWOOD'S SODA  
SHOP**

417 S. Bloodworth Street

---

VIVIAN E. IRVING E. REGINALD SWAIN

**IRVING-SWAIN**

Quality Press Printing  
303 S. East St. Dial 4374 Raleigh

---

COMPLIMENTS

**CO-ED CLEANERS**

900 S. Wilmington Street

COMPLIMENTS

**THE NEW THIRD WARD  
SERVICE STATION**

•

PHONE 9152

---

Dial 3-8092 or 3-1871

**TURNER'S FLORIST**

A. J. TURNER, Proprietor

ARTIFICIAL AND CUT FLOWERS

CORSAGES  
FUNERAL DESIGNS & WEDDINGS

419 S. Bloodworth Street  
RALEIGH, N. C.

---

**ROYAL  
CLEANERS & TAILORS**

You Dirty Them . . .  
. . . We Clean Them

•

328 Smithfield Street  
RALEIGH, N. C.

---

**DELUXE  
TAXI COMPANY**

"24 Hour Service"

PHONE 3-9201

•

502 South Blount Street  
RALEIGH, N. C.



DIAL 5936

W. RAYMOND JONES, Prop.

## JONES' BARBER SHOP

Raleigh's Most Modern and Sanitary  
Automatic Lathering Service  
Hot and Cold Showers • Electric Cooler  
Bootblack Stand

"Special Attention Is Given to Children"

"WE NEED YOUR HEAD IN OUR BUSINESS"

131 E. Hargett Street

Raleigh, North Carolina

---

## PATRONS

CHAVIS SHOE SHOP

MR. AND MRS. T. H. WILLIAMS

DR. A. E. BOYKINS

DR. AND MRS. W. F. CLARK

REV. J. ENOCH KEARNEY

O. K. CLOTHING COMPANY

























