

# The Bear



— 959









To the Library  
Compliments of the Class 1957

---

6/5/57



# The 1959 Bear



*Published by*  
THE SENIOR CLASS  
of  
SHAW UNIVERSITY  
Raleigh, North Carolina

GEORGE STOKES, JR.  
*Editor-in-Chief*

RICHARD COOKE

*Associate Editors*

VONZIE ERWIN

MR. GUILBERT A. DALEY  
*Advisor*



# Dedicatee



MR. GUILBERT A. DALEY



# Dedication

For the “stately mansions” that he is building, the Senior Class of 1959, Shaw University, Raleigh, North Carolina, dedicates this edition of THE BEAR to Mr. Guilbert Alfred Daley, Director of Dramatics and Speech, and Associate Professor of English.

Since our sophomore year, Mr. Daley has worked arduously at the laborious tasks that confronted us and with the projects we undertook. His integrity, earnestness, resourcefulness, initiative, unselfishness, incessant exigency—even his perseverance in battles on behalf of our class and all the students brought us triumphs—all these lend credence to the fact that he served well as our class advisor for three years. By his examples and methods he taught us both by concept and precept. Our work with him has been most pleasant.

To some, he served as brother; to others, he served as instructor, advisor, and counselor; but to us, he served as father—loyal, devoted, never-ceasing in interest; firm, but affectionate.

Our sojourn and experiences with him, his examples and pertinacity we shall remember eternally.



# Contents

	<i>Page</i>
Dedicatee .....	2
Dedication .....	3
Foreward .....	5
Administration .....	7
Faculty and Staff.....	13
Classes .....	19
Organizations .....	67
Greeks .....	75
Activities .....	89
Sports .....	103
Senior Roster .....	112



# Foreword

We, the Senior Class of 1959, present our yearbook, THE BEAR. Our efforts have been an attempt to record some of the memorable events during our college career at Shaw University.

The tremendous task of publishing this volume has been arduous, but pleasant and challenging. In producing this annual, we have acquired a richer experience in human relations, in making decisions, and in perseverance. This project has served to enhance our thinking and increase our knowledge; it has served as a testing measure for the practical application of our academic and cultural achievements.

We acknowledge with gratitude the unselfish assistance of those who worked with us in the production of this book. We sincerely hope that the 1959 edition of THE BEAR will serve, to the fullest extent, the purpose for which it was published.



GEORGE STOKES, JR.  
*Editor-in-Chief*







# **ADMINISTRATION**

# Farewell to the Graduates—1959



WILLIAM RUSSELL STRASSNER  
*President*

## BON VOYAGE!

After four years of preparation at Shaw University you embark upon a tempestuous sea. The world is torn by unrest, uncertainty, doubt, and fear. The hearts of men are longing for the haven of peace, security, and good will. Your task is one of co-operation with those who endeavor to steer the course of man toward the desired objective.

The old methods of dead-reckoning and celestial navigation will not do; today we use the compass and more scientific methods of determining our course of direction. The light of truth which you have received, the character which you have developed, and your zeal for service to mankind constitute your equipment for bringing the world a bit nearer to the haven beyond.

## BON VOYAGE!





FOSTER P. PAYNE, *Dean of the College*



MRS. MARTHA W. WHEELER, *Registrar*



D. H. KECK, *University Secretary*



H. L. ALEXANDER, *Business Manager*





MISS C. L. HARRISON, *Dean of Women*




CHARLES W. BLALOCK, *Dean of Men*



Bookstore







**FACULTY**

***and***

**STAFF**

MR. JULIUS BAILEY  
*Business*



DR. GRADY D. DAVIS  
*Dean of the School of Religion*

MR. GUILBERT A. DALEY  
*Dramatics, Speech, and English*



DR. HORACE B. DAVIS  
*Sociology and Economics*

DR. MOSES N. DELANEY  
*Religion*



DR. NELSON H. HARRIS  
*Director of Education*



# Faculty



DR. PAUL HERRING  
*Biology*



MRS. REINE C. KELLY  
*English and French*



MISS MILDRED McTYRE  
*Religious Education*



MRS. RUTH R. PRUNTY  
*Secretary, Dean of the College*



MRS. BRENDA POOLE  
*Home Economics*



MRS. BERNICE RAINBOW  
*Librarian*



# Faculty

WILLIAM SMITH  
*History*



MRS. DEBORAH SPENCER  
*Physical Education*



MRS. BEATRICE SPRAGGINS  
*Assistant Registrar*



✓ MISS MADELYN WATSON  
*English*



MRS. HARVELEIGH WHITE  
*Home Economics*



MRS. WILLIE LEWIS  
*Home Economics*



# Faculty and Staff



MRS. HARRIET JONES  
*Laundress*



MRS. LULA E. YOUNG  
*Dormitory Hostess*



MRS. CLARA B. JENKINS  
*Education*



MRS. BRENDA Y. JERVAY  
*Home Economics*

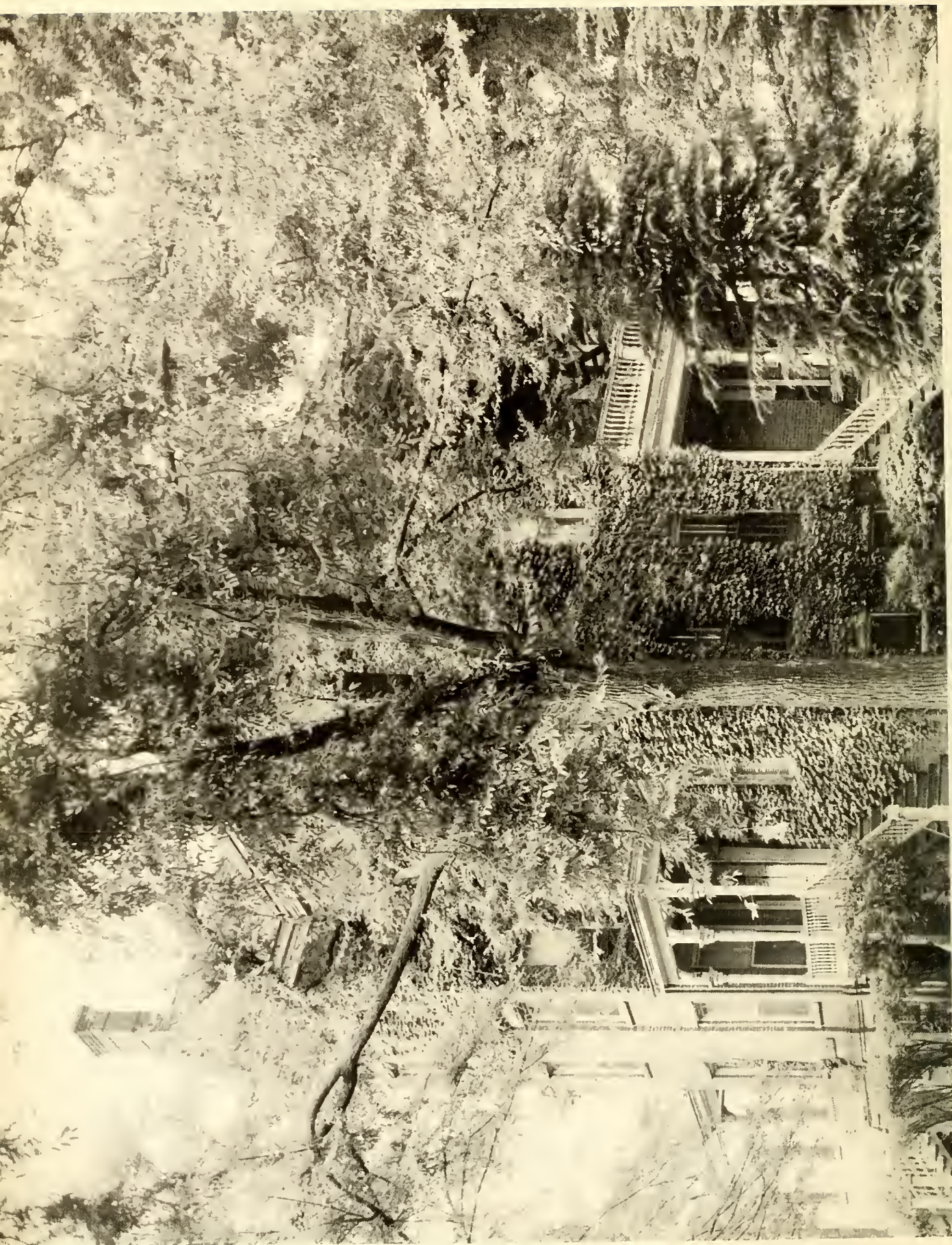


Dr. Adams welcomes freshmen



**CLASSES**







# Senior Class History

In September 1955, one hundred-ninety-one interesting, curious, frightened students embarked upon a new career—one of excitement, danger, awe, and even "mortality"—as freshman enrolled at Shaw University. Like Odysseus we were in for a sojourn of unanticipated experiences through which we would meet strange gods who bestowed upon us blessings of experiences shared with mixed emotions, experiences of self-expression, academic achievement, and inevitable development.

After a brief period of activities of adjustment in order to introduce us to the college routine, we attempted to settle down to serious business. We attempted to become organized as the freshman class of 1955—to become "the class of '59"—though many of us had not overcome our loneliness, our homesickness, and fright. We selected our leaders. As our "Commander-in-Chief" we elected Leroy Smith. As President he guided our uncertain rudders across the sea of our first academic year. Smith's Co-captain was Marjorie Jones, George Murphy was Exchequer. Our "navigator" was Dr. Marguerite Adams, the University Counselor.

Meanwhile plunging deep into rigors of our first academic year, many of us forgot our personal problem of homesickness and loneliness as we accepted the new challenges of each succeeding day, made new friends, and plunged our rudders into many ramifications of the curricula and extra-curricula activities of our academic voyage. Plunging their rudders deep into fathoms of activities, Eugene Hammonds, Albert McClain, Edward Turner, and Willie L. McDaniel made their marks on the football team. James Harris plunged into basketball and baseball. Daphne Alexander, Marian Anderson, Alma Brinson, Etta Burt, Queen Cooper, Paul Crump, Mamie Dixon, Aurelia Edwards, Christine Everett, Marvisline Gill, Paige Johnson, Doris Lett, Juanita Lowe, Lillie Mitchell, and Virginia Williams successfully joined the clan of Orpheus—the renowned University Chorale Society. Lucille Edwards worshipped faithfully at the throne of Thespis, and the Shaw Players were proud of her. Paying homage to the throne of Justice, Oscar Hinton, Leroy Smith and Clarice Stephens assisted in the student government, the Student Council.

Highlights of the first year of our voyage was participation in the Homecoming Parade with Ercell Hargrove, reigning as Miss Freshman; and the Freshman Ball. The success of the Freshman Ball was a presage to the future of our voyage.

Being well adjusted now and our rudders keeping rhythm the vacillations of the current of college life, several students represented our class as beacon lights in academic achievement, the honor roll, guiding themselves and stabilizing the tossing vessel, the freshman class, through uncharted waters and the distant unknown shore.

Spring had come, we were facing the Carybdis and Scylla: final examinations. After rigorous and skillful navigation, we successfully passed through the double danger. Many of us packed and joyfully went upon our various ways to our homes and sundry experiences for the summer. Some of us remained on campus a week later and witnessed and/or participated in our first college commencement which was most impressive, inspiring and a source of aspiration. After a long summer of multiple of experiences, we returned to Shaw with a yearning for the campus similar to the nostalgia that we experienced as freshmen upon our first arrival at Shaw.

Adjustment to sophomore year of college life was not difficult. After the rough and uncertain embarkment, and our experiences over the summer, we were literally sophomore in our pseudo-sophisticated attitudes, and our condescension to acknowledge the new crop of "lowly" freshmen. Among our many achievements of our freshman year we had come to know and love many of our instructors and members of the staff. So in our renascent vigor for the

second lap of our voyage, we began to reorganize. Our leaders for this year were: George Stokes, president; Patricia Burton, secretary; Charles Bullock, treasurer; Oscar Hinton, sergeant-at-arms. We selected Mr. Guilbert A. Daley as our advisor. Those of us already established in various organizations remained, and many new ones joined. Bertha Green, Valeria Harris, Gloria Cephas, Vonzie Erwin, Melton Anderson, Charles Bullock, and Juanita Lowe paid homage to Thespis, and joined the Shaw Players.

Aspiring toward the great realm of the peculiarly magnetic clan of Mt. Olympus, many sought to climb the foothills, and trudge the slopes, aspiring for the peak. There were few Vulcanic tragedies, but many reached the top—and joined that heterogenous army of Mosaic Greeks. Alma Brinson, Mamie Dixon, Vonzie Erwin, Jessie Savage went Alpha Kappa Alpha. Paige Johnson, George Murphy, Eugene Hammonds, and Edward Turner went Alpha Phi Alpha. Lucille Edwards went Sigma Gamma Rho. George Stokes went Phi Beta Sigma. Juanita Lowe and Doris Lett went Zeta Phi Beta. Marvisline Gill, Myrtle Streeter went Delta Sigma Theta. James Moore, Claude Flythe went Omega Psi Phi.

These poor, frightened students who entered those impressive gates September 1955 have begun to feel at home, and to make the mark that distinguished our class since our arrival here. Vonzie Erwin made her dramatic debut in several short plays and soliloquys, and achieved renown in a television performance, directed by our versatile advisor, Mr. G. A. Daley, more fondly known as Mr. Aloysius, or Mr. G. A. D.; Juanita Lowe and Melton Anderson captured laurel wreaths for their performances in *The Glass Menagerie*. We all enjoyed the production here in Greenleaf, and Miss Lowe and Mr. Anderson achieved more acclaim as the show went on the road. Marvisline Gill made her debut as a soloist in the choir. Joyce Fuller was selected Miss Sophomore and reigned supreme during the Homecoming parade, one of the highlights of our sophomore year. The sophomore class in 1956 won second place award in the non-Greek, non-commercial category for the most beautiful float. The months passed rapidly; the snares and danger traps were not so treacherous now as the sagacity of experience had taught us to surmount them with calm, skillful maneuvering, and just plain common sense. As we approached the end of the sophomore year, we were less sophomoric, we hope, and more worthy of becoming the juniors we hoped to be. There were among us a few academic mortalities, a few unsurmountable financial obstacles, but the class did not lose its fervor. We accepted our failures as stepping stones to build future success; we looked upon our past experiences as foundations for stronger, future edifices. We sometimes winced, but we could not cry aloud. We gripped more firmly the banner inscribed "Excelsior" and faced our futures bravely.

The summer months wore on, bringing again many varied experiences for all of us. But when Hyperion's fierce countenance began to subside; on the land, the seasons once more began the third quarter of their full circle: Persephone made preparation for her return to Pluto. Ceres began to adorn Mother Earth in her mourning weeds of yellow, gold, red, and brown. As Mother Earth made her last splashing display of splendor as though her garments were kissed by Iris, but followed closely on the heels by the grieving touch of the wand of mournful Ceres, we, with the paradoxical and dubious anticipation of Persephone, return to her beloved Shades and Pluto, returned to the somber, but hallowed worlds of learning—eager, happy, energetic, awed, still a little afraid. For now we embark on the third lap of our uncharted voyage. Yes, we are a little afraid, for this course is entirely new. The realization that we are approaching that unknown

shore weakens our confidence, and mocks our courage. But we are here to face it as brave mariners, each man in himself his own Odysseus.

We pledged ourselves to make this year one of our greatest and most successful. We planned carefully each knot of our course in detail. We organized once again. George Stokes is again at the wheel with Shirley Parker our logue keeper, Charles Bullock our treasurer, Elma Melton our chaplain, and Mr. Daley still our navigator. We set our course and began to accomplish our destination. During our sojourn Doris Lett joined the Shaw Players, Vonzie Erwin crowned her achievements as Regina in the Shaw Players production of *The Little Foxes*, and Melton Anderson strongly supporting her as Ben, her equally greedy brother. Greek letter organizations again like the sirens beckon us, Edna Marlowe, Elma Melton, Jesse Bullock, and Rosine Turner, Zeta Phi Beta; Shirley Parker, Alpha Kappa Alpha; Marvin Lassiter, Melton Anderson, Paul Crump, Kappa Alpha Psi; Clarice Stephens, Delta Sigma Theta. The rigors of probation for many of us were like the lotus blossoms, but we rallied from under the dangerous slumber and headed due north on course.

Chapel and Religious Life Committee heckoned Janie Holloway, Queen Cooper, and Elma Melton. Other organizations, such as: Baptist Student Union, Student Christian Association retained many of us from our freshman and sophomore years.

Highlighting this year of our voyage was Miss Shirley Parker's election of Miss Junior Class, with Myrtle Streeter and Daphne Alexander her attractive and talented escorts. Honored by outstanding academic achievement Myrtle Streeter, George Murphy, Helen Sneed were elected to Beta Kappa Chi; Vonzie Erwin, Helen Sneed were elected to Alpha Kappa Mu Honor Society. Later on in the spring of this our third year of our journey George Stokes, Vonzie Erwin were elected to *Who's Who Among Students in American Colleges and Universities*. Also in the spring of this year the class took a break from the rigors of traveling and academic achievement to sponsor the "Junior-Senior Prom." It was the most magnificent prom sponsored in recent years. Its theme was "Sayonara" to our predecessors, the class of 1958. For the first time in the history of classes of our Alma Mater the prom, setting no precedent, but yet, a milestone in our achievements, was held from nine p.m. to one a.m. Everyone attending this affair had an overwhelmingly good time. The decorations inspired by members of our own group, and executed by all of us were unique in the design and their exotic beauty. In the spring elections George Stokes was contender for President of the Student Body; Shirley Parker, Myrtle Streeter were contenders for Miss Shaw. Our traveling became a little rough that year, as personalities clashed and issues were viewed in terms of personalities rather than principle. We realize our mistakes, however, and attribute them to the problems of mental growth and development of character. George Stokes did not make President of the Student Body, but Shirley Parker was elected Miss Shaw to reign officially over all official school activities for the ensuing year. George Stokes was elected, however, as President of the Pan-Hellenic Council; Vonzie Erwin was elected the Council's Secretary. Vonzie Erwin was elected Basileus of her chapter of Alpha Kappa Alpha; George Stokes was elected Secretary of Iota Chapter, Phi Beta Sigma; Claude Flythe, President of Omega Psi Phi; Lucille Edwards was elected Basileus of Sigma Gamma Rho; Doris Lett was elected Basileus of Zeta Phi Beta.

Again our year has been speedily, but successfully spent. Persephone returns and Ceres in her jubilation adorns old, tired, drab Mother Earth in her most exciting green splashed with many colors of the flowers, the nestled, the boughs of the trees with her choir of birds and rustling brooks with a constant background of the soft melodies of Zephyr. Like Odysseus, we fight the anger of Neptune, as the sea of final examinations rage. The storms subsided we awake and find ourselves on a strange land. We passed our

examinations and now we are dignified seniors.

In this final lap of our hazardous journey, we keep steering our course straight to achieve our goal and prize of the mark of our calling. After the usual summer break, we return with renewed zeal, ready hands, stout hearts, and open minds to complete our program, successfully chart our course and reach our destination, our beloved Ithaca—Commencement.

Once again we organize ourselves and this time at our helm Claude Flythe steers our course, and Richard Cook serves as his co-captain, Shirley Parker still keeper of our logue, Lucille Edwards, our exchequer, George Stokes, business manager, and Elma Melton is retained as Liaison Officer to Celestial Throne. Our navigator remains the same.

Joining those of us who have taken our places as opportunities avail themselves in various activities, Bertha Greene, Joyce Fuller and Janie Holloway join the Chorale Society. Baseball, basketball, and football pulmulted Eugene Hammonds to the pinnacle of skill and sportsmanship. Vonzie Erwin and Melton Anderson in a play *For France* win second place in a state drama festival at North Carolina State College. Greek societies still beckon many late comers. Marian Anderson joins the throne of Zeta Phi Beta; Lillie Pearl Dewberry revels in Delta Sigma Theta; Emmanuel Gray in Kappa Alpha Psi, and Lillie Mitchell in Sigma Gamma Rho.

To begin the highlights of our year, we witness the coronation of our beautiful, beloved Miss Shaw, Shirley Parker, escorted by George Goode, President of the Student Body. In the court we see Myrtle Streeter, Vonzie Erwin, what a beautiful procession—and our class well represented.

Highlighting the Homecoming Parade Joyce Fuller rises again as Miss Senior Class. Her attendants are Vida Williams and Valeria Harris. She rides the beautiful float which won honorable mention for the commercial category of the float contests. Shirley Parker, our beloved Miss Shaw reigned over the half-time activities of the Homecoming Game.

*Who's Who Among Students in American Colleges and Universities* recognizes more among our number and recognizes for the second time some others. Vonzie Erwin, George Goode, Elma Melton, George Murphy, Shirley Parker, Helen Sneed, George Stokes, and Myrtle Streeter are among *Who's Who*.

Our plan to publish the Annual, *THE BEAR*, is a Herculean task, even for an Odysseus—such was our struggle for success in this project, an exhibition of our skills, and record of our achievements. With the aid and guidance of our beloved advisor, Mr. Guilbert Alfred Daley, who has bridged many chasms for us during the past three years, we hope this project will be a success. Those frightened, curious students who entered the front gate 1955 have some losses among them, but for various reasons, these losses we regret. Also we have picked up many seafarers in our sojourn whose experiences and handicaps, whose associations have embellished our class, and enriched our lives. But that goal to be the Class of '59 was never lost sight of. We have reached our beloved Ithaca.

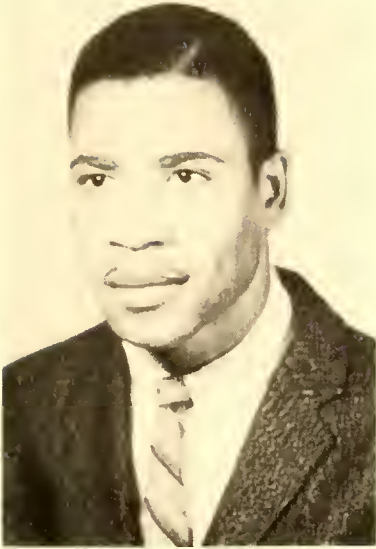
History is a story of the past; this is our story. Being fully cognizant of the fact that history repeats itself; events occur and recur in cycles; and that the present is built upon the past and the future is built on the present, we the Class of '59 do not stop here. Commencement will not be our Terminus, but a mere pause and a period of evaluation of our achievements. This is a very important chapter. Like Odysseus, but firm of mind and will . . . we the class of '59 . . . cannot rest from travel:

(We) will drink  
Life to the lees . . .  
Made weak by time and fate,  
(We the Class of '59)  
. . . but strong in will  
To strive, to seek, to find, and not to yield.

—ELMA MELTON.



## Senior Class Officers



CLAUDE FLYTHE  
*President*



RICHARD COOKE  
*Vice-President*



SHIRLEY PARKER  
*Secretary*



HELEN SNEED  
*Assistant Secretary*

## Senior Class Officers



LUCILLE EDWARDS  
*Treasurer*



GEORGE J. L. GOODE  
*Parliamentarian*



GEORGE STOKES, JR.  
*Business Manager*



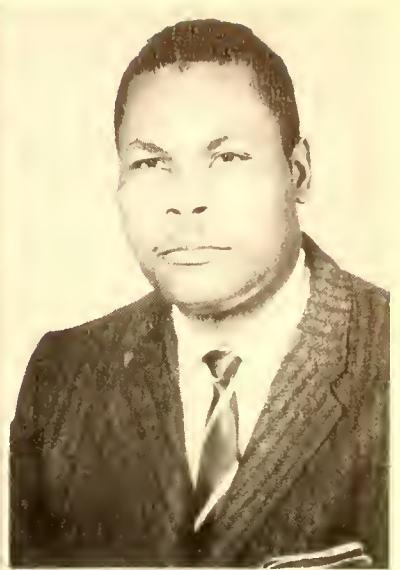
ELMA MELTON  
*Chaplain*



# Seniors

DAPHINE ALEXANDER

WILLIAM ALEXANDER



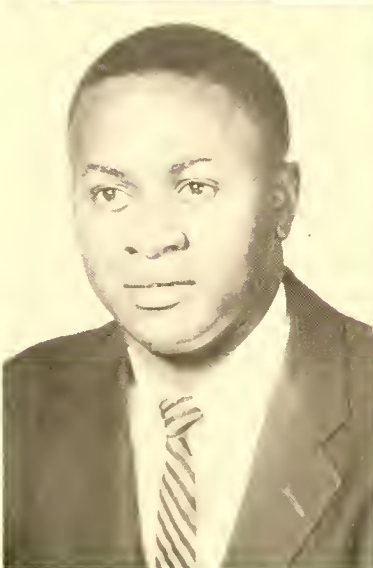
LILLIAN ALSTON

MARIAN ANDERSON



MELTON ANDERSON

ADDIE RUTH BARFIELD



# Seniors



BENNIE BENSON



RAYMOND BREWINGTON



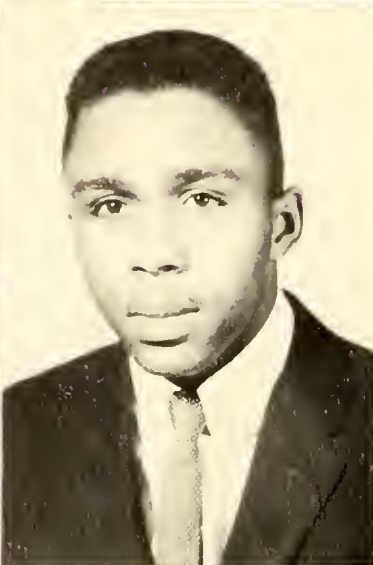
CAROLYN BRIMAGE



ALMA BRINSON



CARRIE BROCK



CHARLES BULLOCK



# Seniors

JESSIE BULLOCK

GENEVA BURT



LUNA BYRD

THEODORE CARTER



GLORIA CEPHAS

DELORES CLARK



# Seniors



EMMA CLARK



ELIZABETH CLARKSON



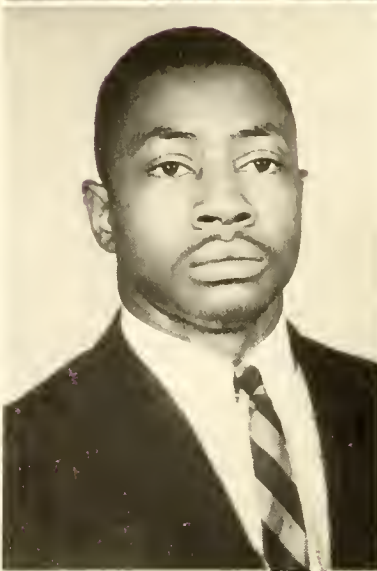
PAUL CRUMP



QUEEN COOPER



PORTIA CUTCHINS



EDWARD DeLOATCH



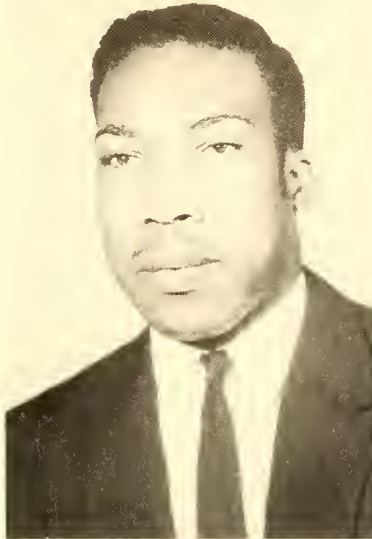
# Seniors

LILLIE DEWBERRY



MAMIE DIXON

WILLIAM DUNN



ANNIE LUCILLE EDWARDS

BLONDELL EDWARDS



VONZIE ERWIN

# Seniors



CHRISTINE EVERETTE



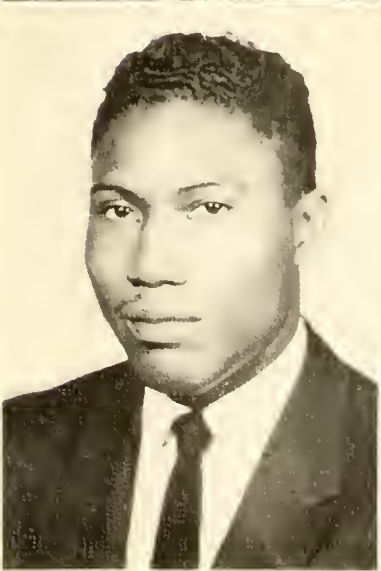
JOYCE FINCH



CLAUD FLYTHE



JOYCE FULLER



WILLIAM GARNER



ALENE GEORGE



# Seniors

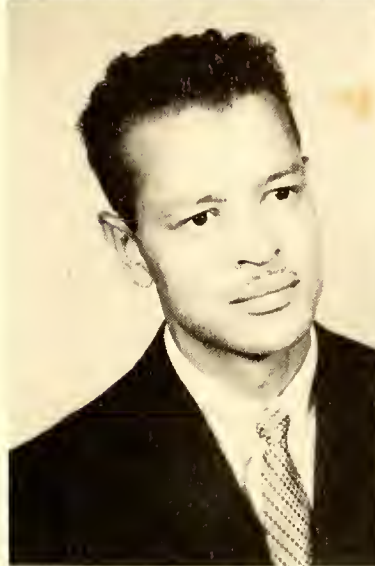
MARVISLINE GILL



GEORGE GOODE



MARION GOODSON



RUTH GRAVES



EMANUEL GRAY



BERTHA GREENE



# Seniors



ERCELL HARGROVE



JAMES HARRIS



VALERIA HARRIS



SALLIE HASKINS



SALLIE HAWKINS



OSCAR HINTON



# Seniors

JANIE HOLLOWAY

ROBERT HOWARD



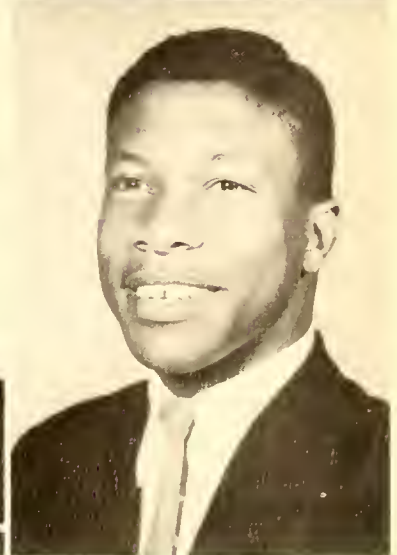
ALMA JARMAN

PAIGE JOHNSON



ROSIE JOHNSON

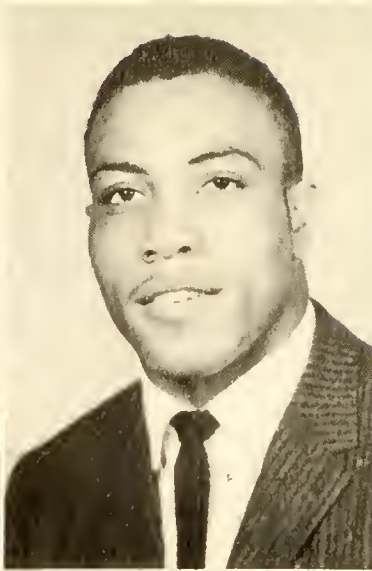
MARVIN LASSITER



# Seniors



DORIS LETT



NATHAN LEWIS



LEAMON LOFTIN



SARAH LOFTON



JUANITA LOWE



ALBERT McCLAIN



# Seniors

WILLIE McDANIEL

EDNA MARLOW



CECIL MITCHELL

LILLIE MITCHELL



JAMES MOORE

SHIRLEY PARKER



# Seniors



CLEMENT RICHMOND



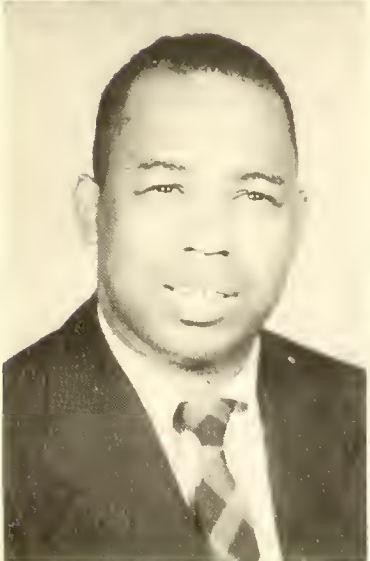
JESSIE SAVAGE



LOVERSTINE SCOTT



MOBELIA SESSOMS



LEROY SMITH



HELEN SNEED



# Seniors

CLARICE STEPHENS

JUANITA STEPHENSON



LILLAR STEWART

GEORGE STOKES

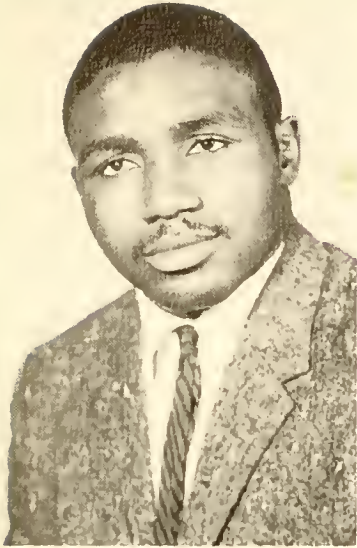


MYRTLE STREETER

WILLIAM TAYLOR



# Seniors



EDWARD TURNER



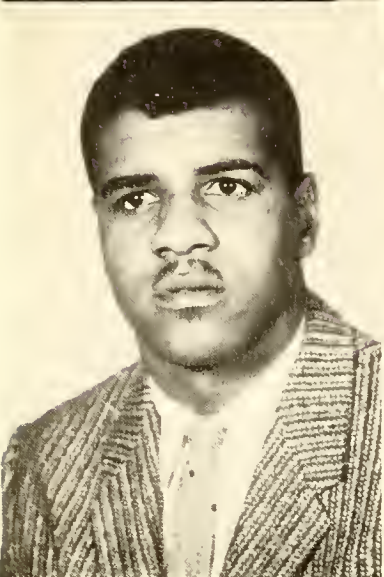
ROSINE TURNER



ETHEL WELBORNE



LAWRENCE WILLIAMS



NATHANIEL WILLIAMS

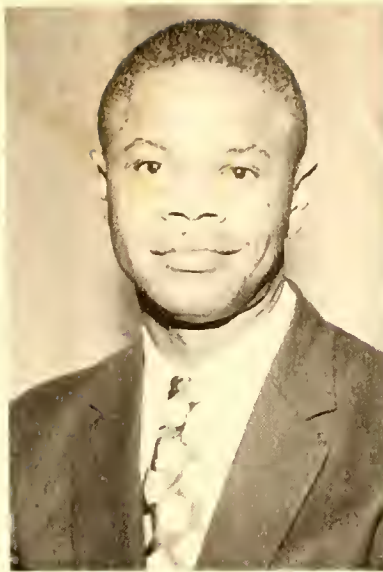


VIDA WILLIAMS

# Seniors

SHERLEY EDWARDS

ELMA MELTON



CONORAH W. PEEBLES

JAMES SIMMONS



VIRGINIA WILLIAMS





# Superlatives



*Most Likely to Succeed*

VONZIE ERWIN  
LAWRENCE WILLIAMS



*Most Attractive*

SHIRLEY PARKER  
OLANDER CLARK



*Best Dancers*

CHRISTINE EVERETTE  
PAIGE JOHNSON



*Most Cooperative*

LUCILLE EDWARDS  
GEORGE STOKES, JR.



*Most Businesslike*

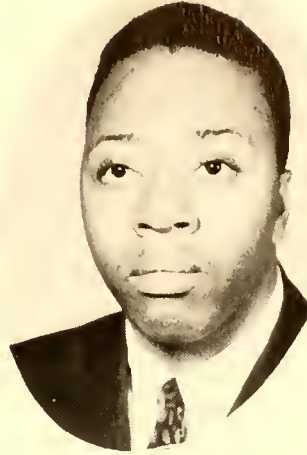
MYRTLE STREETER  
GEORGE STOKES, JR.



*Most Humorous*

JUANITA LOWE  
LEROY SMITH

# Superlatives



*Most Jovial*

BERTHA GREENE

RICHARD COOKE







MISS SENIOR

Miss JOYCE FULLER

Miss VALERIA HARRIS

Mrs. VIDA WILLIAMS



# Class Song

Tune: "Believe Me All Those Endearing Young Charms"

Oh hail, Oh hail, dear Shaw U  
You're the school we love so dear  
To you, Alma Mater, we'll always be true  
The standards you've earned without fear

REFRAIN:

We pledge thee our love  
We pledge thee our faith  
Whatever your future may be  
With us, your love shall ever remain  
And your Glory we'll always retain.

Dear Shaw U, forever stand  
Upon this great land.  
Now that we sadly depart from you  
Dear Shaw U, we fondly say adieu.

DORIS LETT

Class Colors: Blue and Gold

Class Flower: White Rose

Class Motto: *Excelsior*

# Class Poem

It's you "Dear Shaw" we love so dear  
And now our time has drawn near—  
To leave you, but we must say  
It's time to leave you, in a friendly way

Four long years we have struggled here  
With faults, through failures, and sometimes tears,  
But we can say we loved that too,  
For it is you "Alma Mater Dear," who brought us through.

On the road to success we shall tread  
Holding up thy motto with nothing to dread;  
We pledge to you our faith and love  
By guidance of our Father above.

When we have gone away  
In moments of felicity, or dismay,  
May we forever remember Shaw U  
In every single way,  
Dear God, we pray.

DORIS LETT

# Senior Class Prophecy

Alas! The plans for my world tour having been completed, I was ready to embark upon my trip with a pleasant smile, a fond reminiscence of the past, and great anticipation for what the future held for me. As I leaned back in my seat aboard the great Viscount plane, I rested my head against the back of my seat and conjured up, once again, a vision of my plans for this long awaited sojourn. Suddenly, I remembered I did not have my plane ticket—I must have left it in the terminal building at the ticket counter.

Almost in a frenzy, I ran back to the ticket counter and quite to my surprise, the ticket agent handed me a pigskin case with my ticket and the necessary papers. I looked at him more closely and discovered it was someone I knew. Of course! It was Paige Johnson, the Executive in charge of public relations for Trans-World Airlines. I could not walk away without getting further information about some of the graduates of Shaw University in the class of '59. Much to my favor I learned that Ercell Hargrove is now a top fashion model in Paris. France, and Melton Anderson is the manager of Marshall Fields, in Chicago. Shirley Parker is the secretary to the District Court Judge in New York City.

Now, as I dash across the lobby to the gate that will lead me to the ramp where my plane is waiting. I envision thoughts of my other classmates whom I will find throughout my sojourn, doing superior work. The panorama rapidly unfolds.

Emanuel Gray is now the Director of the Educational Rehabilitation Center in New York City. He has as his worthy assistant, Oscar Hinton.

Doris Lett, Lillie Mitchell and Blondell Edwards are all part of the Washington School System. Olander and Delores Clark are doing excellent jobs as teachers in the New York School System.

In California I hope to see James Harris who is the coach of a Junior College in San Francisco, James Moore, who is teaching English, and Bennie Benson.

Again in New York there is Lindsey Talley who is head of an exclusive modeling agency. The shop is a subsidiary of the agency in Paris, run by Marian Anderson and Ethel Winborn. For the best in catered goods, everyone knows of the elite shop of Carolyn Brimage, Jesse Bullock and Mobelia Sessoms. They are owners of one of the country's foremost catering houses. Clemont Richmond has migrated to New York City and is doing fine as an instructor and football coach at Boy's High. Paul Crump is the director of a nation-wide Musical Society.

In the field of athletics, Albert "Big Jim" McClain has retired from playing pro-football with the New York Giants and has become manager of an insurance firm in Philadelphia. Eugene Hammonds, Nathan Lewis and Edward Turner are members of professional football teams also. Willie McDaniels is the coach of a championship high school football team; James "Checo" Hinton is president of the National Athletic Association.

Peggy Barfield and Mozell Johnson are both Physical Education Teachers and so is Nathaniel Williams,

who is also coaching basketball and football. Claud Flythe is a member of the C.I.A.A. Executive Staff.

In the United Nations Building, there are many Shaw graduates, particularly from the class of '59. Daphne Alexander and Marvisline Gill are receptionists in the Bureau of Public Relations. George Stokes is a member of the United States delegation to the United Nations. Vonzie Erwin has given up her post as Secretary General and is now the only women legal authority at the American Embassy in Paris. Valeria Harris is an interpreter for the French delegation and Alma Brinson and Lillar Stewart are legal secretaries.

Lawrence Williams, in the field of education, is principal of Ligon High School. Among his faculty are Leroy Smith and Vida Williams. Marion Goodson and Hubert Greene are principals of two of North Carolina's outstanding public schools. Other graduates who are doing an excellent job as teachers throughout the country are as follows: Etta Burt, Christine Everette, Joyce Fuller, Ruth Graves and Virginia Williams. Janie Holloway and Bertha Greene operate a private nursery. Their associates are Sallie Hawkins, Juanita Stephenson, and Joyce Finch. Mamie Dixon is teaching retarded children in New York and Juanita Lowe is the director of dramatics in a school in Pennsylvania.

Theodore Carter has recently published his book on Sociology and William Garner is considered an authority on Minority Problems. John Sledge is a member of the North Carolina Board of Sociologists. Elma Melton is Professor of Religion at Howard University, whereas Luna Byrd and Minnie Davis have collaborated on a text for high schools.

Alma Jarman is the head of the English Department of a co-ed College in California. Rosie Johnson is teaching English and History at a private school in Connecticut, and Carrie Brock and Elizabeth Clarkson are the owners of an exclusive finishing school for girls. Emma Clark is Program Director for CBS.

As a result of many experiments, Drs. Myrtle Streeter and Raymond Brewington have discovered the first proven remedy for the common cold. George Murphy has been cited "Man of the Year" by *Time* magazine for his outstanding work in mathematics. Marvin Lassister, Robert Howard, Clarice Stephenson and Edward DeLoatch are members of the faculty at New York University. William Alexander, Mallie Goodson, James Simmons and Queen Cooper are teachers in the public schools of North Carolina.

Helen Sneed has won the Nobel Prize for her achievements in Chemistry; Rosine Turner and Portia Cutchens have their own laboratory in which Jessie Savage is the only woman physicist.

The minutes have passed quickly and I hear over the public address system the last call for the departure of my plane. It has been refreshing to think of the capacities in which my classmates are now doing splendid jobs. And now, for my trip around the world—where I shall see them carrying on their great work.

... RICHARD COOKE

# Last Will and Testament

We, the senior class of Shaw University, 1959, being fully possessed of our mental faculties and free from force, do hereby devise, bequeath, will and convey our precious possessions to the persons herein mentioned, to be held and treasured by them throughout their sojourn at Shaw University.

## ARTICLE I

To the congenial citizens of Raleigh and the surrounding community, we convey our deepest appreciation for the many kind deeds and services that they have rendered us.

## ARTICLE II

To the faculty, staff, and administration of Shaw University we leave our sincere appreciation for their understanding, patience, and aid in helping us in our efforts to prepare ourselves.

## ARTICLE III

To the Junior, Sophomore, and Freshman classes, we will the ability to realize that "Religion and learning go hand in hand and that character grows with knowledge."

## ARTICLE IV

To the students, the Seniors leave the following:

Lillar Stewart wills to her roommate, Cornelia Allen, her eyeglasses and height.

To Josephine Guess, Emma Clark wills her height and size.

I, Jessie Savage, will to Mary Hudson my ability to make friends easily.

To Mary Murray and Gladys Johnson, Clarice Stephens wills the ability to keep mathematics as their major.

I, Geneva Burt, will my height to Miss Elsie Womble.

I, Virginia Williams, will my seat in the University Choir to Elise Scott.

Sarah Lofton leaves her seat in Mrs. West's class to Augusta Walker and Francine Carr.

Marvisline Gill wills to Emma Hardy her ability to carry a tune and to all other juniors the ability to become seniors.

To Earnestine Moore, Elma Melton leaves her willingness to cope with fellows and understand all their other girlfriends.

Shirley F. Parker wills to Miss Shaw a wonderful success and to Mattie Walker and Ramona Becton the ability to transcribe shorthand.

I, Vonzie Erwin, will my place in Alpha Kappa Mu to Rixene Winborne; my position in the Shaw Players to Patsy Kimbrough; my position on the Student Council to Mary Hudson; and my gratitude to Mr. G. A. Daley for having been so patient during dramatic productions.

Bertha Greene wills her personality to Marjorie Greene and her smile to Helen Gore.

Juanita Lowe wills her ability to go to class late and leave early to Janice Demory.

Doris Lett solemnly bequeaths her radicalism to Elsie Womble.

Joyce Finch wills her job as Library Typist and her place in the day room to Vernal Heath.

I, Gloria Cephas, leave my athletic ability to Lottie Hall.

I, Annie Lucille Edwards, leave to Julia Baker and Lucille Fonville my ability to produce a room cafeteria with well-rounded menus and my ability to cooperate to Juanita Dancy.

Christine Everette wills her ability to dance smoothly to Betty Wright and Worley Pace.

Rosie Johnson wills her seat in Miss Watson's room to Helen Gore.

Paul O'Church Crump wills to Mr. Harry Gil-Smythe, Mr. Lenoir Cook, Dr. William Strassner, Mrs. Cofield, and Miss Madeyn Watson, his thanks and sincere gratitude for their help, friendship, and understanding during his four years at Shaw. To Mary M. Taylor, I leave a song and my heart, both overflowing with the enchantment of our eternal love.

I, Nathan Lewis, will my football ability to Robert Petteway, my cool walk and don't care attitude to Richard Feimster.

I, Ethel Welborne, will my courting ability to Mary Williams, my knock-knees to Jean Edwards.

I, Eugene Hammonds, will my success on the football team to Charles Hammonds, Phil Jackson and Otis Tucker, my quietness to James Mullens.

I, Edward Turner, will all the profane names and insults received during football season to proper authorities; best girdle to Herman Hinton; my heart to all my former girls; my position on the football team to Paul Hamilton.

I, Emanuel Gray, will to Herman Hinton my slimness, my ability to be cool and the ability to use the right terms at the right time; my toothbrush to Richard Hunt.

I, Albert Perry McClain, will my football ability to Joseph Mann, my heart to all the women, my handsome face to Richard Cooke.

I, Richard Stephen Cooke, will my "boss" personality and ability to be smooth to Glen Knight, Sherman Barge, and Paul Hamilton; my presidency in Alpha Phi Alpha Fraternity and University Chorale Society to the most capable person; my most magnificent and extraordinary physique and height to Todd McNair.

I, Benny Benson, will my basketball ability to the following persons: Otis Cooper, Charles Hammonds, Herman Hinton, and Jimmy Eddleton; my position on the baseball team to Frank Baker.

I, Joyce Fuller, will my ability to keep out of other people's business to Otis (Flat-Top) Cooper.

I, Janie Holloway, will my ability to get Mrs. West's assignments to Harold Ramseur and my quietness to Mary Williams.

Alma Brinson wills to a freshman (Miss Yvonne Seawell) her ability to stay on the honor roll every semester for four years; to a junior (Miss Ramona Becton) her portable typewriter and her seat in the senior class; and to Gallaway Polhill, her everlasting friendship.

I, George Stokes, Jr., leave my executive ability to Glenford Mitchell.

LUCILLE EDWARDS  
VONZIE ERWIN  
*Executors*



## Junior Class Officers



ALBERT HOCKADAY  
*President*



RICHARD BURWELL  
*Vice-President*



MATTIE WALKER  
*Secretary*



MAE HELEN COVINGTON  
*Assistant Secretary*

## Junior Class Officers



HERMAN CARROWAY  
*Parliamentarian*



NATHANIEL MCNAIR  
*Chaplain*



IRIS H. COOLEY  
*Representative, Chapel and  
Religious Life Committee*



GEORGE MASK  
*Representative, Student Council*

# Juniors



Cornelia Ann Allen



Lonie Belle Alston



Barbara Yvonne Autry



Jennett Bennett



Jessie Belle Bennett



Mary Brodie



# Juniors

Fred Bulluck



Richard Burwell



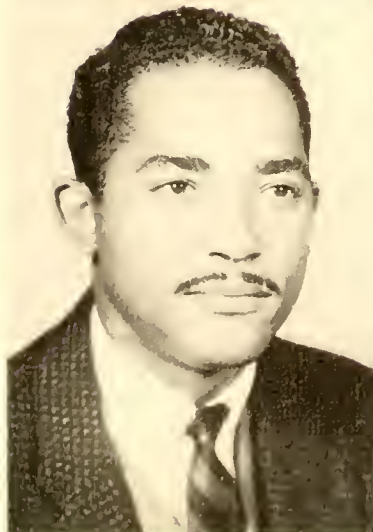
Janet Caldwell



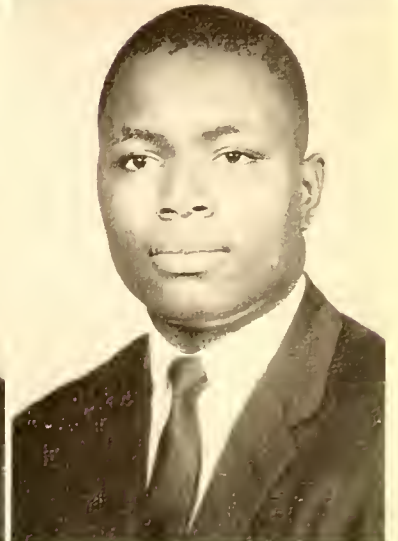
Herman Carroway



Olander Perrichon Clark



McLouis Clayton



# Juniors



Barbara Jean Coffey



Beatrice Collins



Mae Helen Covington



Clarence Crutchfield



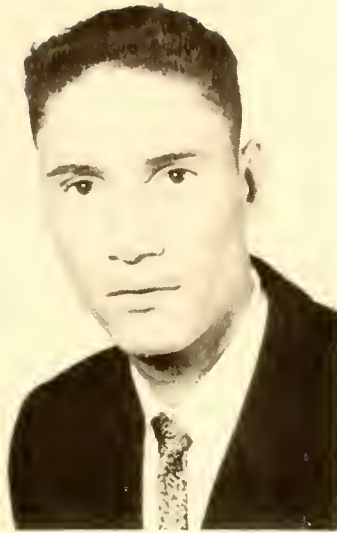
Inez Ernestine Currin



Catherin Monroe Davis

# Juniors

Earnest McCoy Davis



Geraldine Dixon



Dorothy Ruth Edge



Jean Carrol Edwards



John D. Ellis



Milton Lee Evans





# Juniors



Janie Mae Geathers



Helen Gore



Josephine Marie Guess



Louis Hagler



Iris Hairston Cooley



Lottie Mae Hall

# Juniors

Emma Dell Hardy



Alfred Harris



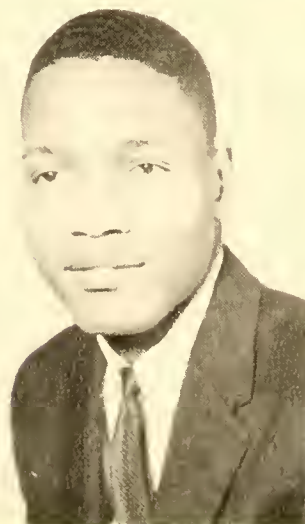
Emeline Amanda Headen



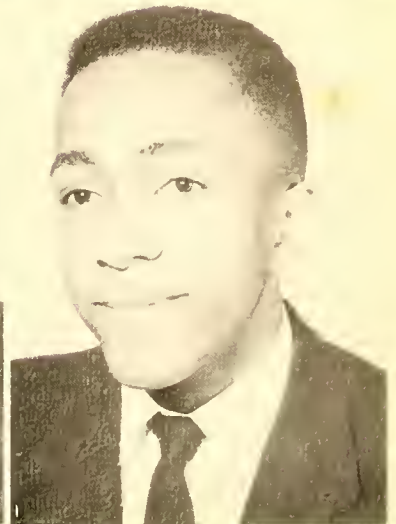
Vernal Heath



Leon Walker Herndon



Albert Hockaday



## Juniors



Erlene Horne



Leona Wallace Horne



Mary Hudson



Josephine Deloris Jackson



Myrtle Jeffries



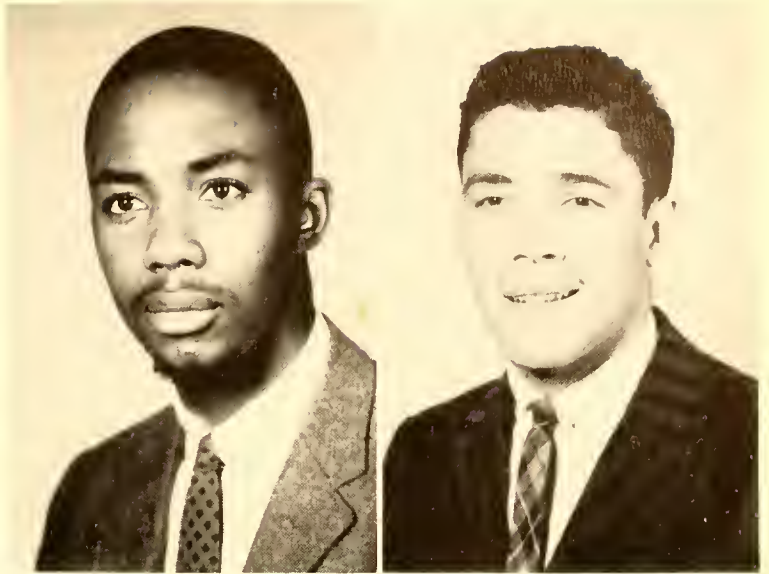
Clyde Johnson



# Juniors

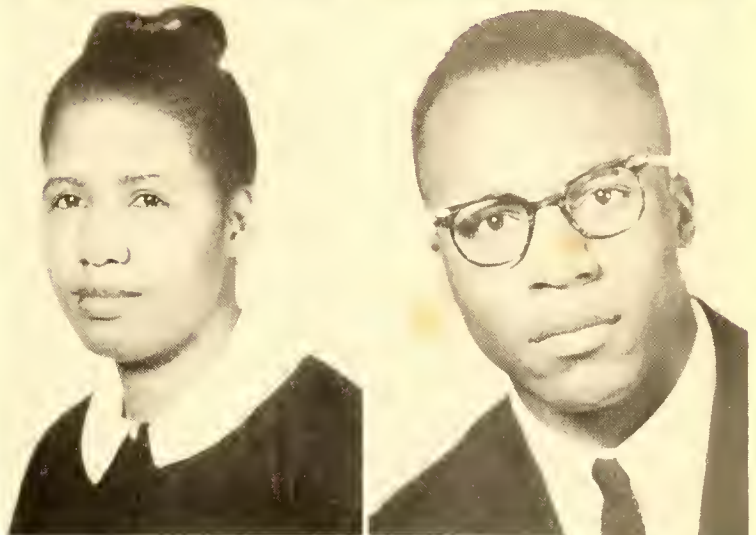
George Lonnie Jones

Wilbur Lytle



Florene McGhee

Sandy Frank McKoy



Nathaniel Clayton McNair

Charles Roosevelt Manley



# Juniors



George Wallace Mask



Bertha Maza



Hazel Miles



Helen Monk



Ola Mae Moore



William Murphy

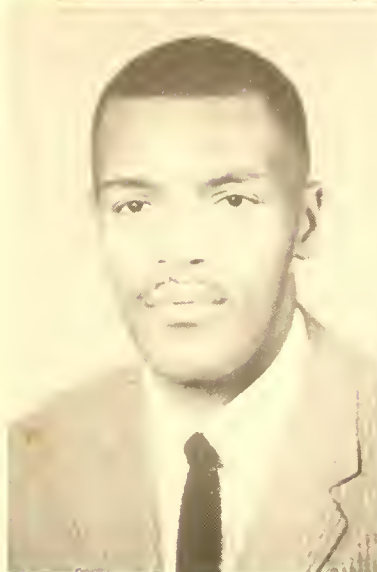
# Juniors

Jency Mae Penny



Edna Mae Pinkney

Galloway Polhill



Mary Richardson

Katie Russell



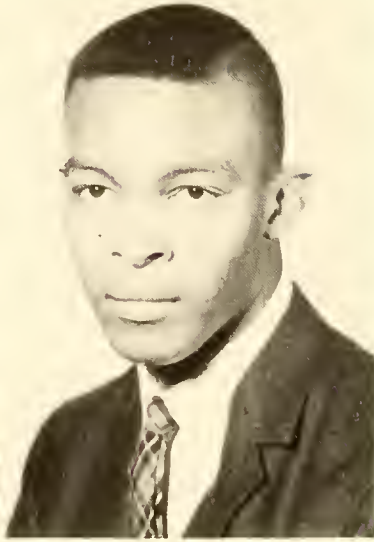
Helen Southerland



# Juniors



Delois Jean Spruill



Isaiah Eugene Taylor



Mary Margaret Taylor



Willie Nesby Thomas



Beasley LaForest Thompson



Carol Boyln Vick

# Juniors

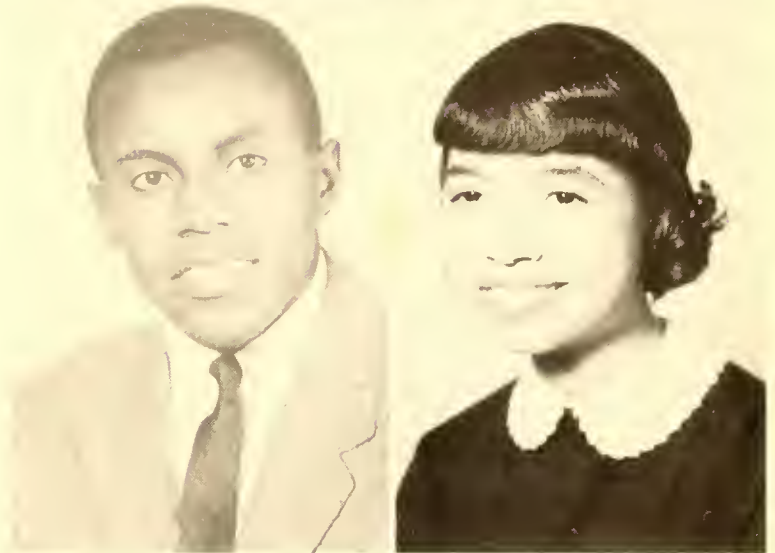
Agusta Mae Walker

Mattie Louise Walker



Moses Samuel Walker

Ethel Faye Waller

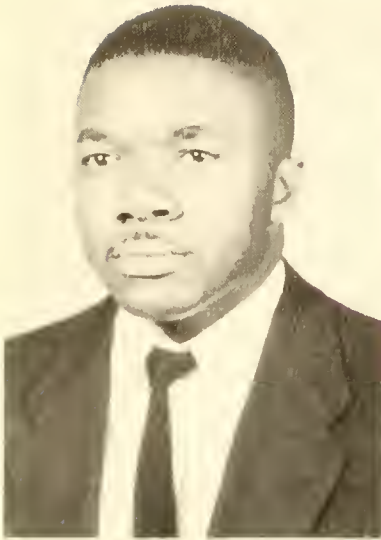


Clara Elayne Watson

Mary White



# Juniors



Lawrence Wilder



Gloria Wilkins



Leo Williams



Catherine Earnestine Yeoman



Glenford E. Mitchell









## Sophomore Class

TYRONE REECE  
*President*

WILLIAM SPANN  
*Advisor*









# Freshman Class

1958-59



## Freshman Class Officers

DAVID FORBES  
*President*

YVONNE SEAWELL  
*Assistant Secretary*

SHERMAN MILES  
*Student Council Representative*

BARBARA HAILES  
*Vice-President*

LEROY WATERS  
*Treasurer*

JAMES BALLARD  
*Chaplain*

BETTY RIDLEY  
*Secretary*

PATRICIA FERGUSON  
*Reporter*

DR. M. M. ADAMS  
*Advisor*

ERNESTINE MOORE  
*Student Council Representative*







An abstract line drawing in black ink on a light beige background. The drawing consists of various geometric shapes, including rectangles, squares, and lines, some of which are interconnected to form a complex, somewhat architectural structure. There are also several small, scattered dots in the upper left quadrant. The overall style is minimalist and graphic.

# ORGANIZATIONS



## Student Council

GEORGE GOODE, *President*





## Student Christian Association

FRANK ABBOTT, *President*



## Sunday School

ALBERT HOCKADAY, *Superintendent*





## Usher Board

FRANK ABBOTT, *President*



## Student National Education Association

CLAUDE FLYTHE, *President*



## Alpha Rho Tau

LAWRENCE WILLIAMS, *President*



## Veterans Club

MOSES WALKER, *President*





## Alpha Kappa Mu

VONZIE ERWIN, *President*

FOSTER P. PAYNE, *Advisor*





Who's Who Among Students in American  
Colleges and Universities



## Social Science Club

ELMA MELTON, *President*

CHARLES ROBSON, *Advisor*





GREEKS





## Pan-Hellenic Council

*President*-----GEORGE STOKES, JR.

*Vice-President*-----MELTON ANDERSON

*Secretary*-----VONZIE L. ERWIN

*Assistant Secretary*-----JESSIE BULLOCK

*Treasurer*-----PAIGE JOHNSON

*Advisors*----G. A. DALEY AND W. W. SMITH, JR.



## Alpha Kappa Alpha

VONZIE ERWIN, *President*

MARTHA WHEELER, *Advisor*



## Ivy Leaf Club





## Omega Psi Phi

CLAUD FLYTHE, *President*

THOMAS KEE, *Advisor*



## Lampodas Club



## Sweetheart of Omega Psi Phi

MISS PATSY KIMBROUGH

MISS CATHERINE YEOMAN

MISS MARJORIE GREENE





## Phi Beta Sigma

JOHN D. ELLIS, *President*

GUILBERT A. DALEY, *Advisor*



## Crescent Club

# Sweetheart of Phi Beta Sigma



MISS ESTHER WASHINGTON





## Zeta Phi Beta

DORIS LETT, *President*

DR. ELLEN S. ALSTON, *Advisor*



## Sigma Gamma Rho

LUCILLE EDWARDS, *President*

MRS. CARTER, *Advisor*



## Delta Sigma Theta

MYRTLE STREETER, *President*

MRS. THELMA DALEY, *Advisor*



## Pyramid Club

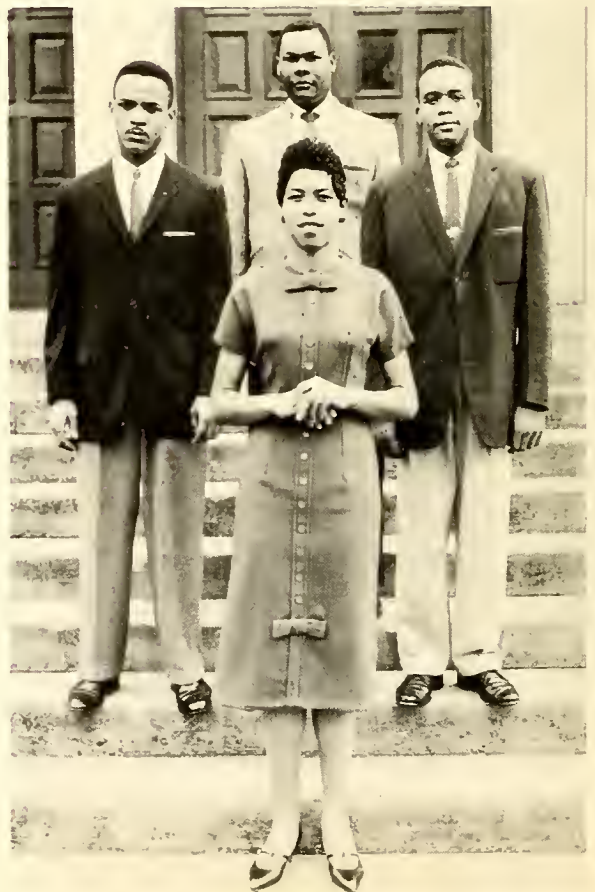




## Kappa Alpha Psi

PAUL CRUMP, *President*

HARRY GIL-SMYTHE, *Advisor*



## Scroller Club



Sweetheart of Kappa Alpha Psi

MISS PEGGY BARFIELD



## Sweetheart of the Scroller Club



MISS VERLENE COPELAND



## Alpha Phi Alpha

RICHARD COOKE, *President*

CASWELL CARTER, *Advisor*





# ACTIVITIES



*Miss Shaw*

1958-59

Miss Shirley Parker



# Founder's Day





# Homecoming 1958





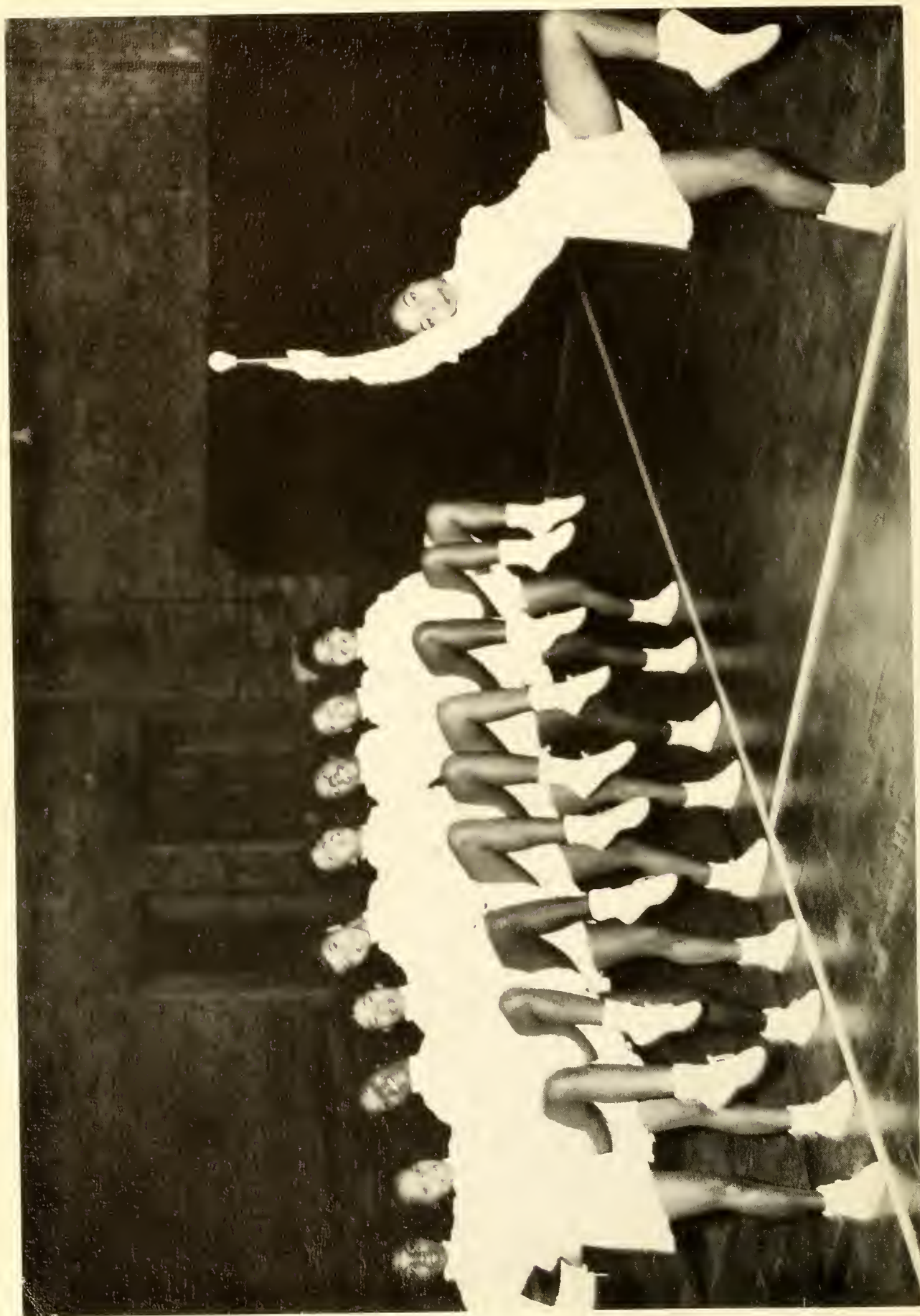




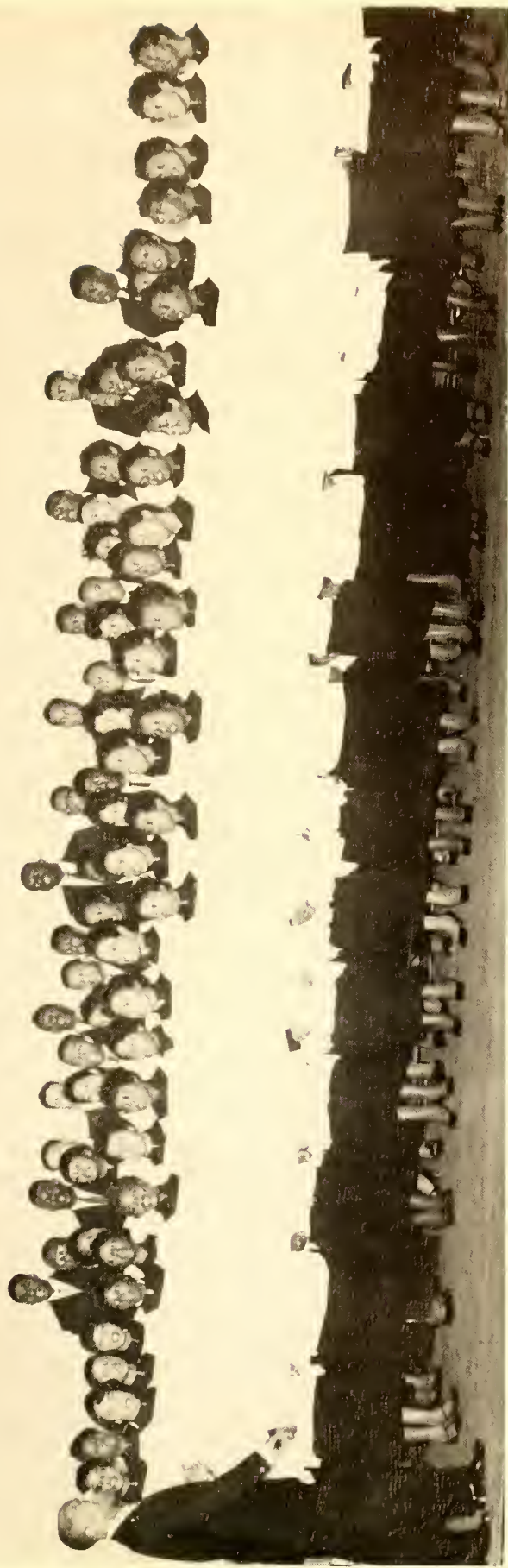


Cheering Squad





Shawettes



## University Chorale Society

HARRY GIL-SMYTHE, *Director*





FRED BULLUCK, *Treasurer*  
CRAWFORD SMITH, *Stage Manager*  
GUILBERT A. DALEY, *Director*

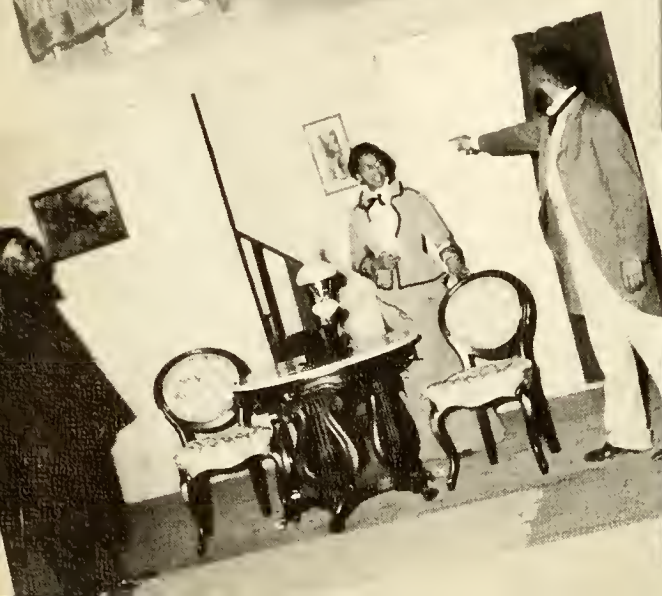
## Shaw Players

VONZIE ERWIN, *President*  
MELTON ANDERSON, *Vice-President*  
PATSY KIMBROUGH, *Secretary*

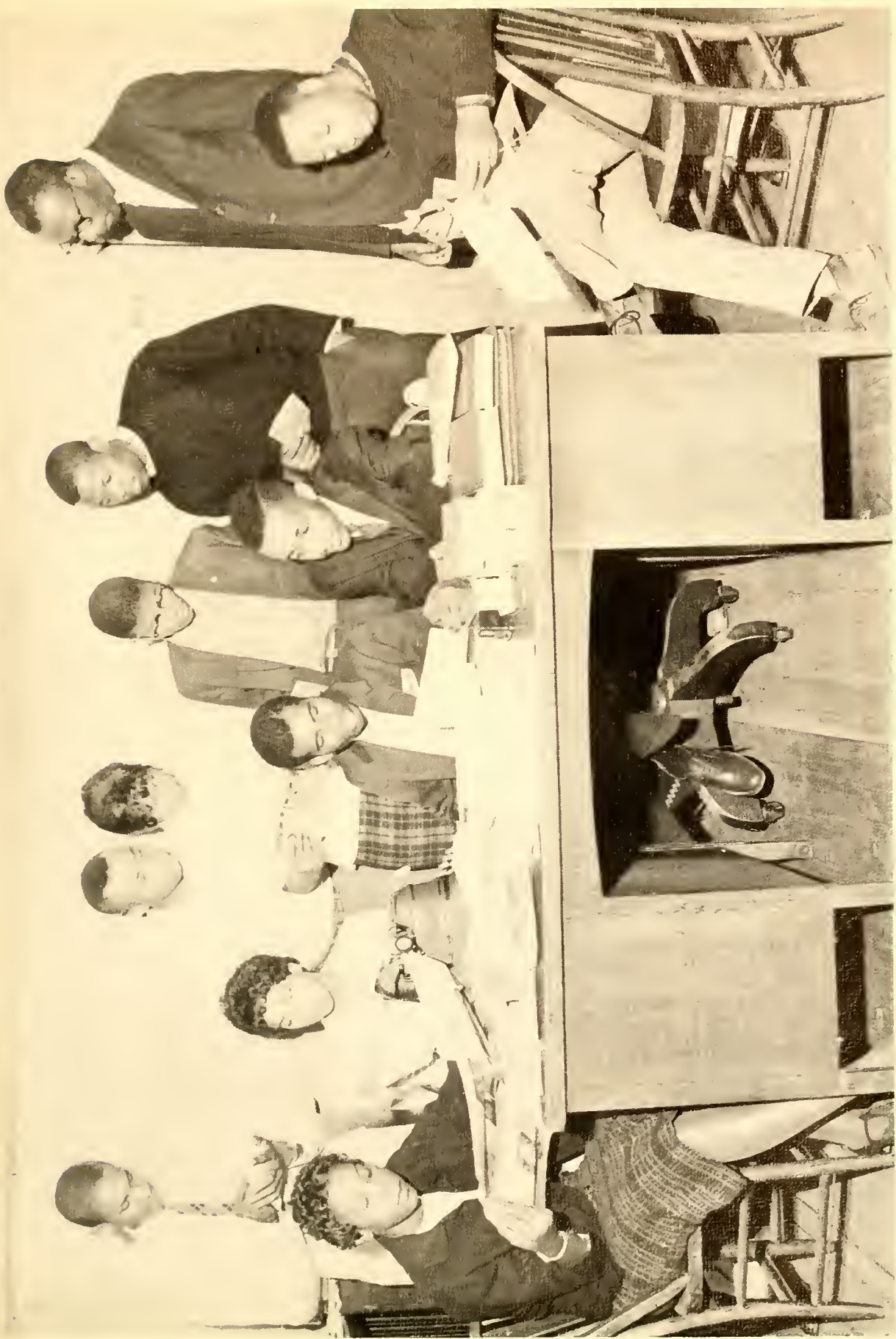
# Players











## Shaw Journal Staff

GLENFORD E. MITCHELL, *Editor*

FOSTER P. PAYNE, *Advisor*



# The Bear Staff



GEORGE STOKES, JR.  
*Editor-in-Chief*



VONZIE ERWIN  
*Associate Editor*



RICHARD COOKE  
*Associate Editor*

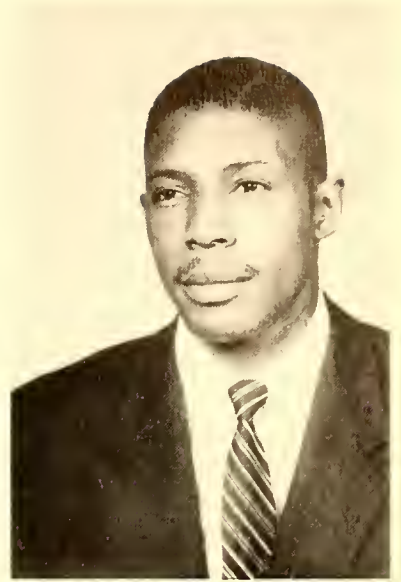


PAIGE JOHNSON  
*Sports Editor*

# The Bear Staff



MYRTLE STREETER  
*Layout Manager*



LAWRENCE WILLIAMS  
*Business Manager*



SHIRLEY PARKER  
*Typist*









ED  
TURNER



EUGENE  
HAMMONDS



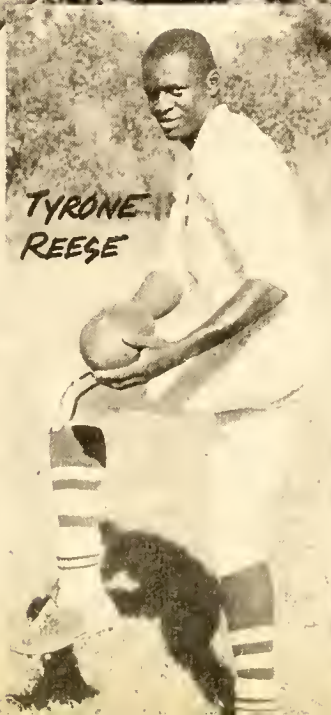
JOE  
MANN



"BIG JIM" MCCLANE



TYRONE  
REESE



GLEN  
KNIGHT





Basketball Team

1958-59







Baseball Team

## Star Pitcher



CLARENCE CRUTCHFIELD



# Senior Roster

Alexander, Daphne Golden  
242 8th Street  
Hickory, N. C.

Alexander, William Carlton  
Route 1  
Hertford, N. C.

Alston, Lillian Goode  
2303 Everette Avenue  
Raleigh, N. C.

Anderson, Marian  
424 Campbell Avenue  
Fayetteville, N. C.

Anderson, Melton  
1731 Thru Street  
Rocky Mount, N. C.

Benson, Bennie Lee  
29 Adams Street  
Asheville, N. C.

Boddie, Frederick Jacob, Jr.  
457 Byrne Street  
Petersburg, Va.

Brewington, Raymond, Junior  
1710 S. Pitt Street  
Greenville, N. C.

Brimage, Alma Lucile  
Route 2, Box 180  
Rose Hill, N. C.

Bullock, Charles Thomas  
Route 4, Box 90-A  
Oxford, N. C.

Byrd, Luna  
Route 1, Box 115-A  
Apex, N. C.

Carter, Theodore Von  
Box 327  
Maxton, N. C.

Cephas, Gloria Mae  
62 Park Lane  
Cambridge, Maryland

Clark, Emma Ruth  
P.O. Box 5  
Method, N. C.

Clarkson, Elizabeth Tomlinson  
122 E. Lenoir Street  
Raleigh, N. C.

Crump, Paul O'Church  
124-A Grant Avenue  
Jersey City, New Jersey

Cutchins, Portia Mae  
Route 2, Box 300  
Raleigh, N. C.

DeLoatch, Edward Godfrey  
Route 1, Box 36  
Pendleton, N. C.

Dewberry, Lillie Pearl  
Route 6, Leesville Road  
Raleigh, N. C.

Dixon, Mamie Ree  
Route 2, Box 17  
Snow Hill, N. C.

Dunn, William Samuel  
812 S. Person Street  
Raleigh, N. C.

Edwards, Annie Lucille  
723 S. Main Street  
Rocky Mount, N. C.

Edwards, Arelia Blondell  
Edwards Funeral Home  
Lillington, N. C.

Edwards, Sherley Windell  
P.O. Box 11  
Potecasi, N. C.

Erwin, Vonzie Lee  
1108 Druid Circle South  
Charlotte, N. C.

Everette, Christine Delorisdel  
221 W. Boney Street  
Clinton, N. C.

Farrish, George Henry  
Box 4  
Mebane, N. C.

Finch, Joyce Elaine McNeil  
P.O. Box 131  
Clayton, N. C.

Flythe, Claude  
P.O. Box 218  
Conway, N. C.

Fuller, Joyce Muriel  
Star Route  
Yanceyville, N. C.

Garner, William Henry  
P.O. Box 511  
Franklinton, N. C.

George, Alene  
Route 1, Box 64  
Havelock, N. C.

Gill, Marvisline  
931 S. Main Street  
Louisburg, N. C.

Goldston, Zenobia Scott  
1117 S. Person Street  
Raleigh, N. C.

Goode, George Jasper Lafayette  
Route 1, Box 190  
Seaboard, N. C.

Goodson, Mallie Chester  
Route 1  
Wendell, N. C.

Goodson, Marion, Junior  
Route 1, Box 100  
Wendell, N. C.

Gray, Emanuel Joseph  
60 E. 102nd Street  
New York, New York

Greene, Bertha Lee  
204 E. Pantego Street  
Belhaven, N. C.

Hargrove, Ercell Marie  
Box 184  
Warrenton, N. C.

Harris, James Earl  
214 Coleman Street  
Rocky Mount, N. C.

Harris, Valeira Hart  
Route 1, Box 236-A  
Greenville, N. C.

Haskins, Sallie Mae  
Box 383  
Rowland, N. C.

Hawkins, Sallie  
125 Halifax Street  
Louisburg, N. C.

Hawkins, Shirley Ruth  
Route 2, Box 106  
Kinston, N. C.

# Senior Roster

Hinton, James Edward  
709 Atlantic Avenue  
Rocky Mount, N. C.

Holloman, Annie Mae  
1306 C. C. Road

Holloway, Mollie Janie  
Star Route  
Danville, Virginia

Howard, Robert Lee  
325 Smithfield, Street  
Raleigh, N. C.

Hunter, James Edward  
2920 Beechwood Street  
Durham, N. C.

James, Raymond Navarro  
813 Andrews Lane  
Henderson, N. C.

Jarman, Alma Iristinc  
Route 2, Box 304-A  
Trenton, N. C.

Johnson, Mozell Winston  
807 Cannister Street  
Raleigh, N. C.

Johnson, Paige Poindexter  
656 S. Boundary Street  
Salisbury, N. C.

Johnson, Rosie Lee  
323 Church Street  
Thomasville, N. C.

Lett, Doris  
Route 2, Box 148  
Lillington, N. C.

Loftin, Lcamon Ross  
Route 3  
Faison, N. C.

Lowe, Juanite Irmagene  
Box 1038  
Southern Pines, N. C.

McClain, Albert Perry  
818 S. 5th Street  
Camden, New Jersey

McDaniel, Willie Lec  
355 Hendersonville Road  
Asheville, N. C.

Marable, Petronia Allen  
119 S. Summit Street  
Dayton 7, Ohio

Marlow, Edna Beatrice  
Route 1, Box 111  
Ash, N. C.

Melton, Emma Roberta  
General Delivery  
Spring Hope, N. C.

Mitchell, Cecil Ray  
Route 1, Box 365  
Colerain, N. C.

Mitchell, Lillie Ruth  
Route 1, Box 86  
Cove City, N. C.

Moore, James Henry  
1112 College Street  
Clinton, N. C.

Murphy, George Patrick  
Route 1, Box 118  
Ivanhoe, N. C.

Parker, Shirley Frances  
Route 2, Box 258  
Newton Grove, N. C.

Peebles, Conorah Watson  
813 E. Lenoir Street  
Raleigh, N. C.

Raeform, Charles Edward  
1205 Murchison Road  
Fayetteville, N. C.

Richmond, Clement LeRoi  
1608 Taylor Avenue  
Charlotte, N. C.

Rivera, Thomas Monte, Junior  
814 S. Center Street  
Mount Olive, N. C.

Savage, Jessie Lindale  
Rich Square, N. C.

Sessoms, Mobelia Credle  
P.O. Box 186  
Bayboro, N. C.

Simmons, James Clinton  
1025 Church Street  
New Bern, N. C.

Smith, Lena Minerva  
Route 2, Box 203  
Wendell, N. C.

Smith, Leroy  
1408 Nicholas Street  
Henderson, N. C.

Sneed, Helen Marie Stephens  
Route 1, Box 202  
Garner, N. C.

Stephens, Clarice LaVerne  
Route 1, Box 202  
Garner, N. C.

Stephenson, Juanita  
Box 125  
Margaretsville, N. C.

Stewart, Lillar Irene  
P.O. Box 761  
Micro, N. C.

Stokes, George Signal, Junior  
Box 517  
Middlesex, N. C.

Streeter, Myrtle Ruth  
1401 W. 3rd Street  
Greenville, N. C.

Talley, Lindsay Mae  
309 E. Valley Street  
Spartanburg, S. C.

Turner, Edward James  
1025 Rivington  
Roselle, New Jersey

Turner, Rosine  
Route 1, Box 254  
Halifax, N. C.

Welborn, Ethel Venetia  
413 Freemount Street  
Thomasville, N. C.

Williams, Lawrence Tibbitt  
7 Lincoln Terrace  
Raleigh, N. C.

Williams, Vida Ann Walters  
307 N. Vyne Street  
Rocky Mount, N. C.

Williams, Virginia Dare  
Route 1, Box 154  
Roanoke Rapids, N. C.



## *Shaw Bear Patron's List*

Mrs. Lillie M. Braxton, 640 S. Boundary St., Raleigh  
Miss Blanch Brooks, 640 S. Boundary St., Raleigh  
Mrs. Annie M. Chavis, 5 Brunswick Terrace, Raleigh  
Mr. and Mrs. Thomas Cooke, 910 S. East St., Raleigh  
Mrs. Sadie S. Griffith, 517 E. Worth St., Raleigh  
Mrs. Maggie Harmon, 601 E. Bragg St., Raleigh  
Miss B. B. Hart, 9 Heck St., Raleigh  
Mr. and Mrs. Lorenza Haywood, 412 E. South St., Raleigh  
Mr. and Mrs. David James, 234 Hart St., Brooklyn, N. Y.  
Mrs. Lucy Johnson, 234 Hart St., Brooklyn, N. Y.  
Mr. Roy Johnson, 116 Hart St., Brooklyn, N. Y.  
Mr. Joseph Kenderick, Rt. 4, Raleigh  
Mr. and Mrs. Ulysses Milliken, 9 Lincoln Terrace, Raleigh  
Miss Duester Montague, 8 Lincoln Terrace, Raleigh  
Mrs. Isabelle W. Nipper, A-8 Washington Terrace, Raleigh  
Mr. Alexander Rowe, 116 Hart St., Brooklyn, N. Y.  
Mr. Dorell Rusher, 2316 Bedford Ave., Raleigh  
Mr. and Mrs. John Scott, 234 Hart St., Brooklyn, N. Y.  
Rev. Robert L. Shirely, 1110 Martin Street, Raleigh  
Mrs. Ophelia P. Thomas, A-7 Washington Terrace, Raleigh  
Mr. R. L. Walton, 826 E. Martin St., Raleigh  
Mr. and Mrs. William H. Ward, 608 Harrington St., Raleigh  
Mrs. Mabel H. Ward, 608 Harrington St., Raleigh  
Mrs. Addie M. Williams, 234 Hart St., Brooklyn, N. Y.  
Mrs. Alma T. Williams, 714 S. East St., Raleigh  
Mrs. M. L. Yarbrough, 613 E. Edenton St., Raleigh

DIAMONDS

WATCHES

"USE YOUR CREDIT"  
BUY AT

**LAND'S**

RALEIGH'S LEADING CREDIT JEWELERS

Corner Fayetteville and Hargett Streets  
RALEIGH, N. C.

**IVEY-TAYLOR'S**

GRADUATE TO GREATER  
FOOD SAVINGS  
AT

YOUR FRIENDLY

**COLONIAL  
STORES**

★

RALEIGH, N. C.

**ATKINSON'S  
GROCERY**

WOODROW ATKINSON, Prop.

★

Blount and Smithfield Streets  
RALEIGH, N. C.

**GOODMAN'S  
LADIES' SHOP**

★

Hargett and Wilmington Streets  
RALEIGH, N. C.

**MECHANICS AND  
FARMERS BANK**

"Large Enough To Serve You,  
Small Enough To Know You"

Hargett Street  
RALEIGH, N. C.



IRVING-SWAIN  
PRINTERS

THE GLOBE  
RALEIGH, N. C.

DANIEL'S  
RALEIGH, N. C.

★  
RALEIGH BAHÁ'Í  
COMMUNITY  
★

★  
**CENTRAL  
CLEANERS**  
★

FAMOUS BAKERY

BROCK'S FUNERAL HOME  
MOUNT OLIVE, N. C.

MOTHER AND DAUGHTER

QUALITY BEAUTY SHOP  
MOUNT OLIVE, N. C.



# BUILDERS DREAMS

THE ANNUAL STAFF  
and the  
EDWARDS & BROUGHTON  
COMPANY

Cooperated to produce this Annual.

Printed or Lithographed Annuals  
produced in our plant in  
Raleigh.

*Finest Quality*  
Engraved Commencement Invitations  
Engraved Visiting Cards  
Engraved and Lithographed  
DIPLOMAS

*Write for Samples and Prices*

EDWARDS & BROUGHTON  
COMPANY

Established in 1871  
RALEIGH, NORTH CAROLINA



Compliments of

# Hudson - Belk

*“Eastern Carolina’s Largest Store”*

AUTOGRAPHS

# AUTOGRAPHS



# ALMA MATER

Tune: "How Can I Leave Thee"

Hail dear old Shaw U!  
Thy sons revere thy name.  
Long shall thy works be proud,  
Undimmed thy fame.  
Time shall thy praises sing,  
Glory repay thy tears,  
And loud thy praises ring  
Through all the years.

Noble thy hall ways,  
Noble thy grassy plain,  
Nobler the hearts of men  
Where thou dost reign,  
All we who love thy name,  
Stout hearts that shall not fail,  
All rise and loud proclaim  
Alma Mater, Hail!

[illegible]

2  
R  
N  
378  
Sh26 Shaw University  
AUTHOR  
The bear.  
TITLE

22562

R  
N  
378  
Sh26 Shaw University.  
The bear, 1959 "



