




THE

*Bear Scrap*

1952



Digitized by the Internet Archive  
in 2013

<http://archive.org/details/beartrap19521952elmc>

Wilson County Public Library  
*Louise Winstead*  
Linn City Branch



WE PRESENT



SEATED: Alma Thorne, *Sports Editor*; Lucille Barnes, *Assistant Editor*; Marie Oakey, *Typist*; Charles Dawes, *Typist*; Helen Williams, *Business Manager*; Joan Wiggs, *Circulation Manager*; Nancy Winstead, *Typist*; Dorothy Thorne, *Art Editor*. STANDING: Jean Beaman, *Editor-in-Chief*; Mrs. Skinner, *Sponsor*; Billy Gay, *Assistant Circulation Manager*; Lynwood Joyner, *Associate Business Manager*.

THE 1952

# BEAR TRAP

ELM CITY HIGH SCHOOL  
ELM CITY, N. C.



## FOREWORD

With the hope that this book may forever bring to mind the memories of our high school days which we cherish, we the class of 1952 present the seventh edition of the Bear Trap.

## DEDICATION



There is seldom found the combination of good qualities that are found in Dr. Robert Hubbard Putney, Sr. He has proved a true friend to all of us. For many years he has served on the school board and has done much to improve our school. The service that he has rendered to us as the community doctor cannot be surpassed. Realizing the inadequacy of any tribute that we can pay him, we dedicate this volume of the Bear Trap to Dr. Robert Hubbard Putney, Sr., with sincere gratitude for his help and friendship.

But wishes:  
Edith L. Skinner

## Senior Sponsor



We, the Senior Class of 1952, wish to express our appreciation to our sponsor, Mrs. Edith L. Skinner, for her patient guidance, understanding, and undying loyalty throughout the past two years.



# Faculty

**MR. P. T. FUGATE**  
*Superintendent*



**Miss Clara Bass**  
*Social Studies*  
*French*



**Mr. Charles L. Batten**  
*Agriculture*



**Miss Vilma Bland**  
*Social Studies*  
*English*



**Mrs. Sadie Braswell**  
*Math*



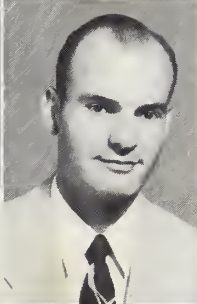
**Mrs. Thomas Cobb**  
*Home Economics*



**Mrs. J. B. Farmer**  
*Science*



**Mr. J. T. Odom**  
*Social Studies*  
*Physical Education*



**Mrs. Wilton Pridden**  
*English*



*Lillian M. Simpson*  
**Mrs. L. M. Simpson**  
*English—Math*



**Mrs. Lillian Skinner**  
*Librarian*



**Mrs. T. B. Winstead**  
*Music*



**Mrs. Edith Skinner**  
*Business Education*



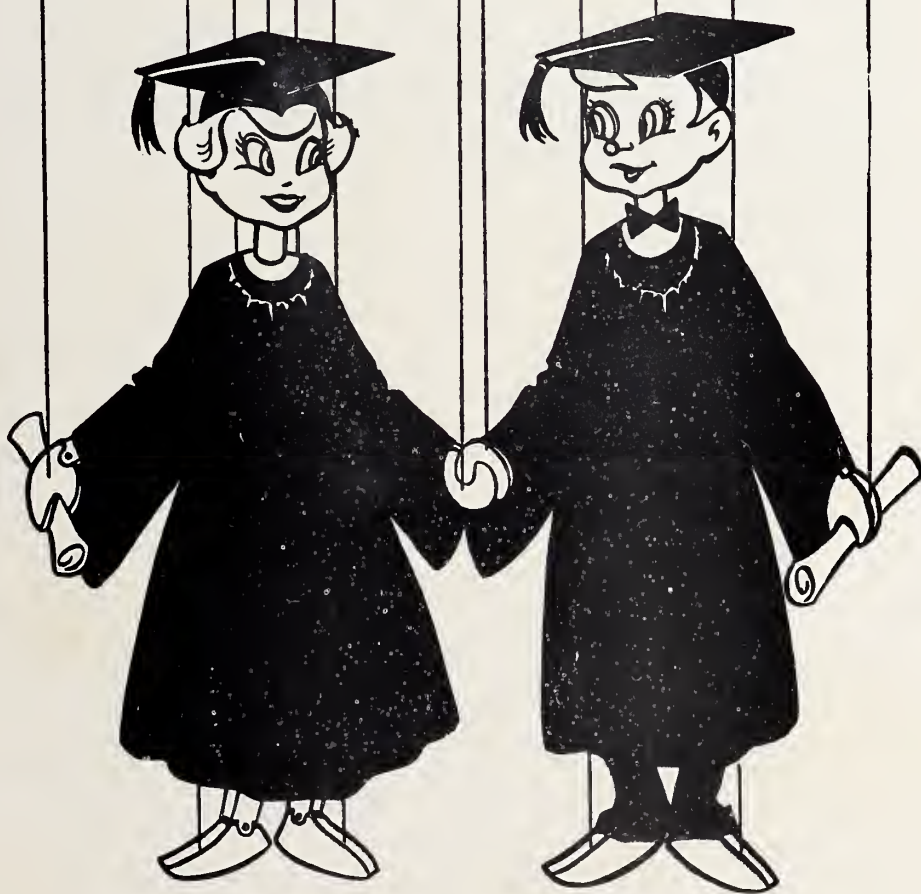
*But we love!  
Hattie L. Musser*  
**Mrs. Hattie Mae Musser**  
*Secretary*



# CAMPUS SHOTS







*Seniors*



# Seniors

## CLASS OFFICERS



- |                     |                  |
|---------------------|------------------|
| Joan Wiggs.....     | President        |
| J. C. Winstead..... | Vice-President   |
| Charles Dawes.....  | Secretary        |
| Joyce Farmer.....   | Treasurer        |
| Dorothy Thorne..... | Program Chairman |
| Nancy Winstead..... | Reporter         |

**Class Colors**  
Wine and White

**Flower**  
White Carnation

**Motto**  
"Let us do, or die."

## MASCOTS

Jesse  
Lee  
Braswell



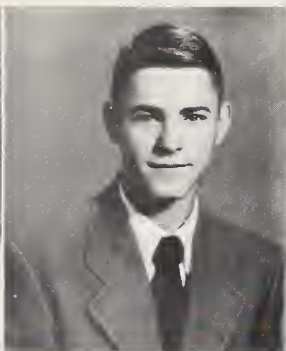
Dida  
Sue  
Winstead





# Seniors

Best of luck to a nice girl and a friend.  
W.T. Batts



LUCILLE BARNES

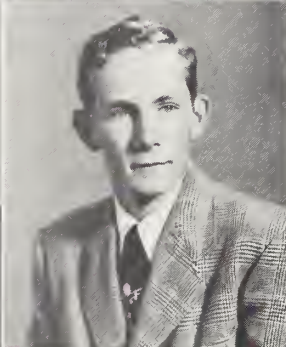
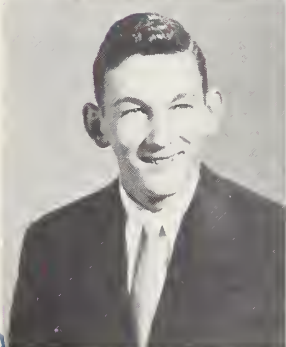
"Lucy"

"He is truly happy who can make others happy too."  
High School Chorus 1, 2, 3, 4; Safety Patrol 1, 2, 3, 4;  
F.H.A. 1, 2, 3, 4, Officer 3, 4; Marshal 3; Beta Club 3, 4,  
Officer 3, 4; Cheerleader 3, 4; Bear Hi Staff 3; Bear  
Trap Staff 4; Class Officer 1, 2; Girl State 3.

MILTON BASS

"Milt"

"There is no fool equal to a learned fool."  
Bus Driver 4; F.F.A. 1, 2, 3, 4.



BOBBY RAY BATTS

"He who is employed is tempted by one devil, he who is  
idle by a hundred."

Mixed Quartet 3; High School Chorus 1, 2, 3, 4; Bear Hi  
Staff 3; F.F.A. 1, 2, 4.

JASPER DUKE BATTS

"Jack"

"It's never late until two, then it's too late."  
F.F.A. 1, 2, 3, 4.

WILLIE TYSON BATTS

"W. T."

"It is not good that the man should be alone."  
F.F.A. 1, 2, 3, 4, Officer 2; Bus Driver 1, 2, 3, 4.

EDGAR RAY BEAMAN

"Bill"

"Men are born with two eyes and one tongue so he can  
see twice as much as he says."  
F.F.A. 1, 2, 3, 4.

ELSIE JEAN BEAMAN

"Jeanne"

"It is a very hard undertaking to seek to please every-  
one."

Student Council 1, 2, 3, 4; Safety Patrol 1, 2; Marshal  
3; Bear Trap Staff 4; Class Officer 1, 2, 3.

ANDREW BRUCE BRICE

"Sambo"

"He that tells his wife everything is but newly married."

Bus Driver 3; High School Chorus 1, 2; 4-H Club 4;  
Baseball 1, 2, 3, 4; Basketball 2; Band 1, 2, 3; Quartet  
2; F.F.A. 1, 2.

LOIS LARUE BRYANT

"Lash"

"If you wish to be loved, love."

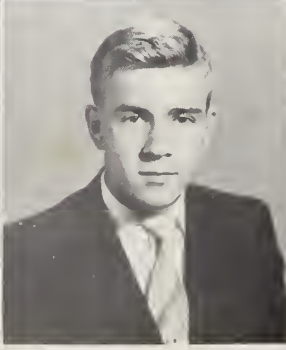
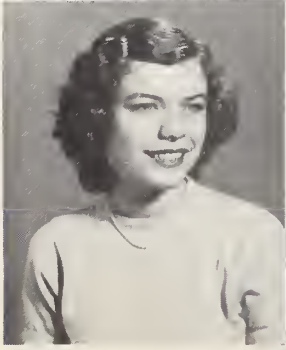
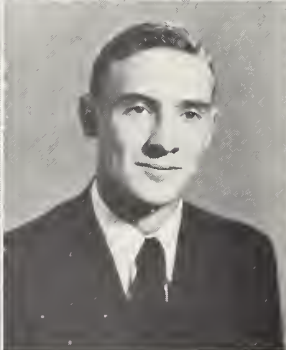
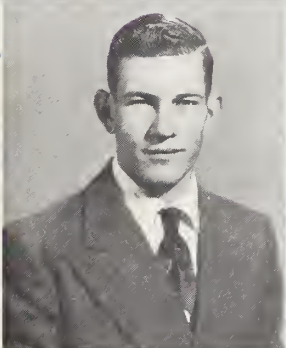
High School Chorus 1; Safety Patrol 1, 2, 3; 4-H Club 1.

FRANKLIN DELANO DAVIS

"Frank"

"In every good man, there is some bad; in every bad  
man, there is some good."

Band 1, 2, 3, 4; 4-H Club 1, 2, Officer; F.F.A. 1, 2, 3, 4,  
Officer 1, 2, 3; Class Officer 1; High School Chorus 1.



Lots of luck through life  
Bill Beaman  
to the winners  
Jack

# Seniors

## CHARLES LAMONT DAWES

"Bobo"

*"All's well that ends well."*

Beta Club 4; Basketball 3; F.F.A. 1, 2, 3; Bear Trap Staff 4; Class Officer 4.

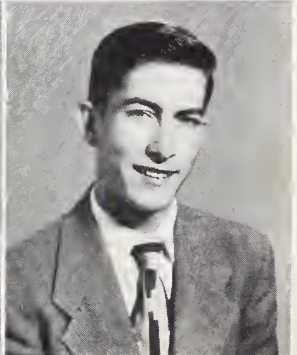


## AULCIE LEE FARMER

"Blinky"

*"If luck stays with him, he will be a genius."*

F.F.A. 1, 2, 3, 4; Football 3, 4; Baseball 3, 4; Glee Club 1, 2; Bear Hi Staff 3.



## ELEANOR JOYCE FARMER

"Jo"

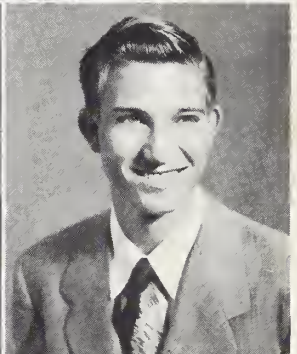
*"Nothing is impossible to a willing mind."*

High School Chorus 1, 2, 3, 4; Marshal 3; Bear Hi Staff 2; Class Officer 2, 3, 4; Beta Club 3, 4; Safety Patrol 1, 2, 3, 4; F.H.A. 1, 2; Girl State 3.

## THOMAS ALTON FARMER

"Gooly"

Baseball 2, 3, 4; F.F.A. 1, 2, 3, 4; Bus Driver 4.



## JOHN DOUGLAS GARDNER

"Hoot"

*"For men who know tobacco best it's women two to one."*

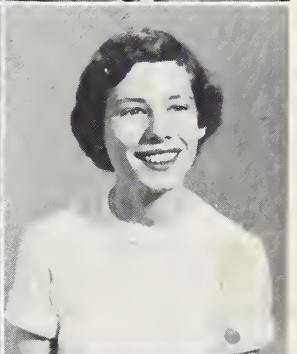
F.F.A. 1, 2, 3, 4; 4-H Club 1, 2; Bus Driver 4.

## WILLIAM ORAN GAY

"Billy"

*"Achievement is the fruit of effort."*

F.F.A. 1, 2, 3, 4, Officer 2, 3, 4; Bear Hi Staff 3; Beta Club 3, 4; Bear Trap Staff 4.



## ELIZABETH VIRGINIA JENKINS

"Eliz"

*"Let us thank God and be content with what we have."*

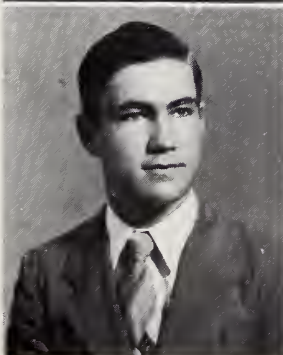
High School Chorus 1, 2, 3, 4; F.H.A. 1, 2; Safety Patrol 1, 2.

## HELEN JOYCE JENKINS

"Hedy"

*"A good wife is God's sweetest smile from heaven."*

High School Chorus 1, 2, 3, 4; F.H.A. 1, 2, 3; Safety Patrol 1, 2.



## LYNWOOD BOLLIE JOYNER

"Pimp"

*"One who knows how to play cards won't have to play solitaire."*

F.F.A. 1, 2, 4; Bear Trap Staff 4; Bus Driver 4.

## JULIA MARIE OAKEY

"Shorty"

*"To forget a wrong is the best revenge."*

High School Chorus 1, 2, 3, 4; F.F.A. 1, 2, 3, 4; Safety Patrol 1, 2, 4; Bear Hi Staff 3; Bear Trap Staff 4; Beta Club 4; Student Council 1, 2; Class Officer 3.



# Seniors



**PATRICIA VANN O'BRIANT**

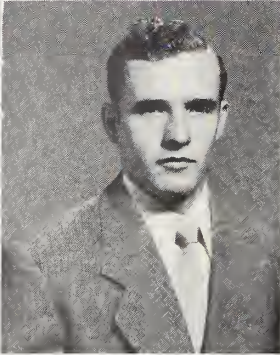
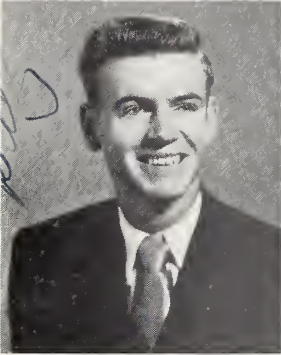
"Patsy"

"He gets through too late who goes too fast."  
Safety Patrol 1, 2; Beta Club 3, 4.

**MARION SHELLEY PAGE**

"Shell"

"We are easily fooled by that which we love."  
Cheerleader 3, 4; High School Chorus 1, 2; Safety  
Patrol 1, 2, 3; F.H.A. 1, 2; 4-H Club 1, 2, 3.



**WILLIAM FRANKLIN PARKER**

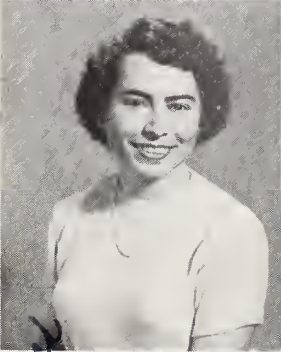
"Billy"

"Ability is a poor man's wealth."  
Football 2, 3, 4; High School Chorus 1, 2, 3, 4; Mixed  
Quartet 4; F.F.A. 1, 2; Bus Driver 4; Basketball  
Manager 3; Basketball Scorekeeper 3, 4; Beta Club  
3, 4; Bear Hi Staff 3.

**WILLIAM WARREN PROCTOR**

"Bill"

"I know not on which side my bread is buttered."  
Bus Driver 2, 3, 4; F.F.A. 1, 2, 3.



**GERTIE FRANCES ROBBINS**

"Cal"

"He that enjoys fun is always gay."  
Safety Patrol 1, 2, 3; 4-H Club 1; High School Chorus 1.

**DELPHIA MAE SKINNER**

"Decky"

"Good deeds live and flourish when all other things are  
at an end."  
High School Chorus 1, 2, 3, 4; Safety Patrol 1, 2, 3, 4;  
Marshal 3; F.H.A. 1, 2, 3, 4, Officer 2; Bear Hi Staff 3;  
Class Officer 1, 2; Beta Club 3, 4; Historian 4; Band  
1, 2, 3, 4, Officer 2.



**ALMA GRAY THORNE**

"Squirt"

"He that lies down with dogs must rise up with fleas."  
High School Chorus 1, 2, 3, 4; Cheerleader 3, 4; Band  
1, 2, 3, 4; Safety Patrol 2, 3; Mixed Quartet 3; F.H.A.  
1, 2, 3, 4; Trio 3; Bear Trap Staff 4; Bear Hi Staff 3;  
4-H Club 1.

**DOROTHY MAE THORNE**

"Dot"

"My heart is warm with the friends I make."  
High School Chorus 1, 2, 3, 4; F.H.A. 1, 2, 3, 4, Officer  
3; Student Council 3, 4, Officer 4; Trio 3; Mixed Quar-  
tet 3, 4; Safety Patrol 1, 2, 3; 4-H Club 1; Bear Trap  
Staff 4.



**JOEL MATTHEW THORNE**

"Mack"

"If it were not for love, the heart would break."  
Band 1, 2, 3, 4; F.F.A. 1, 2, 4; Glee Club 1, 2, 3; Quartet  
2; Bus Driver 4; Safety Patrol 1; Student Council 1;  
4-H Club 1, 4.

**RAY TROUTMAN**

"In this world a man must be either an anvil or a  
hammer."

F.F.A. 1, 2, 3, 4; Baseball 3, 4.

Best of hand. May you find the  
right guy and keep him.

Best of hand  
to put in  
every  
thing  
you do.  
Love,  
Alma

Best of luck to  
you always. Don't  
forget to  
write me  
often.

Had in much  
fun. I  
love you  
and  
hope  
you  
do  
too.

# Seniors

*Just Me  
Billy*

**JOAN WIGGS**  
"Tootsie"

*"Never promise more than you can perform."*

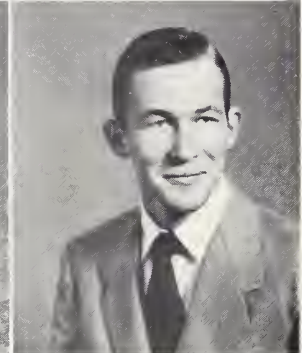
High School Chorus 1, 2, 3, 4; Safety Patrol 1, 2, 3; Beta Club 3, 4, Officer 4; Class Officer 1, 2, 3, 4; Student Council 1, 2, 3, 4, Officer 4; Chief Marshal 3; Bear Trap Staff 4; Bear Hi Staff 3.



**BILLY MERLE WILLIAMS**  
"Sam"

*"A hard beginning maketh a good ending."*

F.F.A. 1, 2, 3, 4, Officer 2, 3, 4; Beta Club 3, 4, Officer 3; Basketball 3, 4; Baseball 2, 4; Class Officer 1; High School Chorus 1; Student Council 1; Safety Patrol 1; 4-H Club 1, 2, 3, 4.

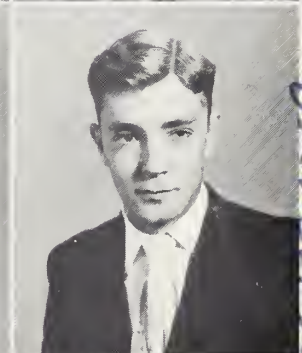
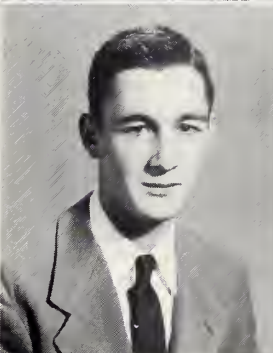


**HELEN GRAY WILLIAMS**  
"Poop"

*"Enjoy the little you have, while the fool is hunting for more."*

High School Chorus 1, 2, 3, 4; Safety Patrol 2, 3, 4; Beta Club 4, Officer 4; F.H.A. 1, 2, 3, 4, Officer 4; Cheerleader 1, 2, 3, 4; Basketball 3, 4; Student Council 2, 3, 4; Class Officer 1, 2; Trio 3; Bear Hi Staff 3; Bear Trap Staff 4.

**DAVID EDWIN WINSTEAD**  
"He who means no mischief does it all."  
Bus Driver 3, 4; F.F.A. 1, 2, 3, 4.



**DERWOOD LEO WINSTEAD**  
"Dodo"

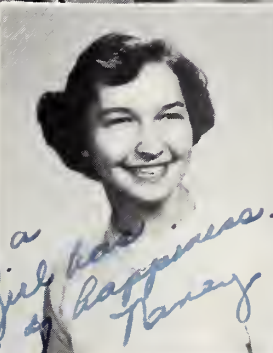
*"There is not a moment without some duty."*

F.F.A. 1, 2, 3, 4; 4-H Club 1; Football 4; Basketball 3, 4; Baseball 1, 2, 3, 4.

**JOHN CLAYTON WINSTEAD**  
"Pokey"

*"All men are created equal."*

Class Officer 1, 3, 4; F.F.A. 1, 2, 3, 4, Officer 4; Student Council 1, 2; Basketball Manager 2, 4.



**NANCY YVONNE WINSTEAD**  
"Spot"

*"God's providence is the surest and best inheritance."*

High School Chorus 1, 2, 3, 4; Safety Patrol 1, 2, 3, 4; F.H.A. 1, 2; Marshal 3; Beta Club 3, 4; Student Council 1, 2, 3, 4; Class Officer 1, 2, 3, 4; Trio 3; Mixed Quartet 4.

**MARIAN ELIZABETH LANGLEY**  
Post Graduate

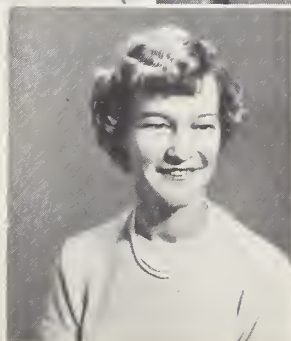
*Wishing a  
cute girl had  
lots of happiness.  
Nancy*

*Continue on you have begun  
to be happy*

**GEORGIA LEE WEBB**  
Post Graduate

*Lots of luck  
in the coming  
years.  
Marian*

NOT PICTURED:  
MARVIN ELTON ROBBINS





# Class History

In the fall of 1948, sixty proud and happy boys and girls entered, for the first time, that new world called high school. We were placed under the guidance of Mrs. Louise Winstead and Miss Clara Bass. We had fun deciding what subjects we would take. Finally after we chose our subjects and signed as members of either the F.H.A., the F.F.A., the Student Council, the band or Glee Club, we settled down for a year of study. We were divided into groups but when that glorious Christmas season came around we were brought together for the happiest occasion of the year, "A Christmas Party", which was held at the Elm City Womans Club. None of us will ever forget that party.

By the end of the freshman year we had learned that along with our fun we were going to meet some hard work. As we watched the seniors of 1948 graduate, we wondered if we would ever walk across the stage wearing those caps and gowns and hear our names read out clearly and distinctly.

We moved up to our sophomore year with a class of only forty-three. We were again placed under the direction of Mrs. Winstead and Miss Bass as our home room teachers. This was mostly a year of studying, for we did not wish to see a larger drop in the number of our junior class the coming year. The highlight of our sophomore year was our trip to the Planetarium in Chapel Hill, North Carolina. We had a grand time.

When we moved on to the junior class, we were placed under the guidance of Miss Edith Lewis and Miss Clara Bass. We chose as our junior class president, Nancy Winstead. We had fun being initiated into the Beta Club and learning what the club was all about. We were very proud to publish our first school paper this year. We worked hard to keep the concession stand in the gymnasium open. We had to raise money for our junior-senior banquet and prom. We decided to hold the banquet and prom in our new school lunch room. You should have seen that fairy land which seemed to have been taken off a fellows valentine to his best girl. We turned that lunch room into a land of red and white hearts and streamers. How can any of us ever forget that wonderful night of February 9, 1951! It was cold and snowing but we didn't mind. Our fun was so great that the cold and snow blended in perfectly. We felt that our junior-senior banquet and prom were the best of all banquets and proms. Soon after this grand event we started making preparations for the part the juniors would have in the graduation exercises. The marshals were Joan Wiggs, Chief, Lucille Barnes, Joyce Farmer, Delphia Skinner, Jean Beaman, and Nancy Winstead. We were proud that night when we stood in line holding our lighted candles as light for our departing seniors. We knew now that we were the new seniors. We had at last reached that long-awaited-for year of our high school career.

Again, in the fall of 1951, with a class of thirty-eight seniors and two post graduates we started to school with a feeling different from any we had known before. We knew that this would be our last year. It was hard to work with the thoughts of the future crowding in our minds. Thus many of us found that we were on the borderline in just a short time. We finally, however, got down to work. Joan Wiggs was chosen as our class president. Mrs. V. B. Skinner was our home room teacher. We faced the job of publishing our annual, the Bear Trap. We knew this would be hard work, but we never doubted our ability to do the job well. By the time you read this history we will have completed our year book, presented our senior play, which we look forward to doing with pleasure, taken our eagerly awaited trip to Washington, D. C., and attended our last junior-senior banquet and prom.

At last that long awaited moment—graduation has arrived. We will never forget our high school years, and as we go out into the world, we feel assured of success in whatever field we have chosen because of the wonderful help and guidance of our understanding faculty. Leaving we carry with us, locked in our memories, the millions of recollections of our high school days.

Historian,  
DELPHIA SKINNER



# Last Will and Testament

ELM CITY NORTH CAROLINA  
WILSON COUNTY

We, the graduating class of the Elm City High School in the year nineteen hundred and fifty-two, being of sound will and mind and therefore realizing that we are about to end our school days do set forth this our Last Will and Testament.

## I—TO OUR SPONSOR:

Mrs. Edith Lewis Skinner—We thank you for striving hard and earnestly to make us make something of ourselves.

## II—TO MRS. T. S. HEDGEPEETH

If there is a god of education surely he will say, "Well done thou good and faithful servant."

## III—TO OUR SUPERINTENDENT:

We wish to thank Mr. Fugate for all the many things he has done for us. We thank him for keeping us as much as possible on the straight and narrow road that leads to graduation. We have all been Mr. Fugate's "children." No, he was not the proud father of any of us, but if he had been he could not have shown more love, kindness, and understanding than he has.

## IV—TO THE FACULTY:

To our school "mothers", the teachers we have had throughout these twelve years, we wish to express our gratitude and love. Each of you has dedicated your life to building better citizens for the world of tomorrow.

## V—TO THE DIRECTRESS OF MUSIC:

We thank Mrs. T. B. Winstead for organizing the band and for putting on the many wonderful music programs we have had the pleasure of listening to.

## VI—PERSONAL BESTOWALS:

Bobby Weeks—Bill Beaman leaves his mustache.

Rudy Whitehead—Milton Bass wishes to leave his crazy ways.

Mildred Jenkins—Receives Helen Jenkins' love for shorthand.

Elizabeth leaves her love for typing to Shirley Sharpe.

Ruby Jean Farmer inherits Joyce Farmer's ability to graduate with high grades.

Dot Thorne wishes for Kathryn Winstead to receive her tiny feet.

Jasper Batts wills his big feet and curly hair to Jimmy Robbins.

Ray Troutman bequeaths his good nature to Justice Hardison.

Don Pridgen receives Bobby Ray Batts' curly hair.

Marie Oakey wishes for Betsy Wells to receive her height.

Lynwood Joyner leaves his ability to argue to Bobby Lancaster.

Jean Beaman leaves her "quietness" to Donald Barnes.

Sue O'Bryant inherits Patsy O'Briant's love for languages.

Charles Dawes bequeaths his title of most studious to Valmonte Winstead.

Bruce Brice wishes for Allen Page to receive his pitching ability

Lois Bryant leaves her ability to get her man to Blessin Thorne.

Happy Robbins receives Billy Parker's football uniform.

Shelly Page wishes for Janet Williams to receive her curly hair.

Marianne Davis inherits Alma Thorne's flirty ways.

Billy Gay leaves his ability to get along with teachers to Wesley Doles.

Don Pridgen will receive W. T. Batts' school bus.

James Roy Farmer—Thomas Farmer leaves his baseball talent.

Franklin Davis leaves his ear for music to Chadwick Deiner.

Billy Williams leaves his horn-rimmed glasses to Tom Griffin.

Marvin Robbins hopes that M. C. Cobb will benefit from his long stay in school.

Margaret Williams inherits Delphia Skinner's love for music.

Nancy Winstead wishes for Mary Ann Braswell to receive her height.

Derwood Winstead leaves his ability to play baseball to Bob O'Bryant.

To Carolyn Robbins will go Helen Williams's ability to have the hiccups at all important times.

Blessin Thorne will inherit Lucille Barnes's love for cheering.

J. C. Winstead bestows his slightly oversized hands to Billy Sharpe.

## VII—TO THE FRESHMEN:

You will be surprised how much your teachers learn in the next four years.

## VIII—TO THE SOPHOMORES:

Learn your lessons well, we know from experience that you will not get a second chance.

## IX—TO THE FIRST GRADE:

You have our deepest sympathy for we know the hard road you have to travel, and yet we are envious of the fun we are certain you will have along the way.

## X—TO THE JUNIORS:

We only hope that when you are banded together you will have a co-operative unit.

## XI—TO ALL CONCERNED:

Our life has not been so short but that we realize the vast amount done for us by others.

Now, as we are entering these last days, it is brought foremost to our minds that we are going out into the world to make our own way. Our activities as a class in the Elm City High School are over; and I, the testator, do hereby affix the great seal of the Elm City High School Senior Class of nineteen hundred and fifty-two, this the twenty-seventh day of May.

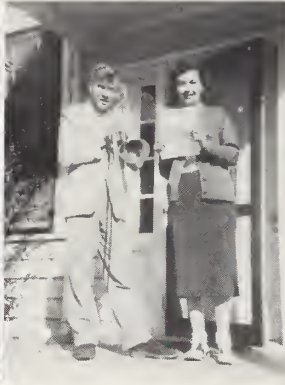
CLASS OF '52

J. C. Winstead, Testator

# Senior Superlatives



*Most Popular*  
Lois Bryant  
Franklin Davis



*Most Talented*  
Nancy Winstead  
Franklin Davis



*Best Dressed*  
Shelly Page  
Bruce Brice



*Most Athletic*  
Helen Williams  
Derwood Winstead



*Prettiest Girls*  
Dorothy Thorne  
Alma Thorne



*Cutest*  
Helen Williams  
Charles Dawes



*Best Behaved*  
Nancy Winstead  
Lynwood Joyner



*Most Conceited*  
Shelly Page  
Billy Williams



*Biggest Flirts*  
Alma Thorne  
Frank Davis



*Most Likely to Succeed*  
Billy Gay  
Joan Wiggs



*Class Pests*  
Alma Thorne  
David Winstead



*Best Looking Boy*  
Frank Davis



# Senior Superlatives



*Most Bashful*  
Marie Oakey  
Bobby Ray Batts



*Best Natured*  
Ray Troutman  
Nancy Winstead



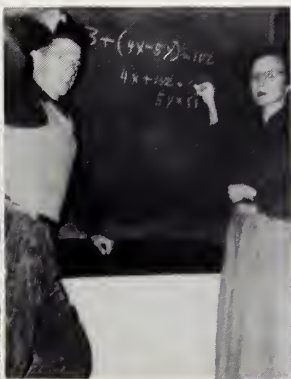
*Most Dependable*  
Billy Gay  
Joyce Farmer



*Best All Around*  
Billy Gay  
Joan Wiggs



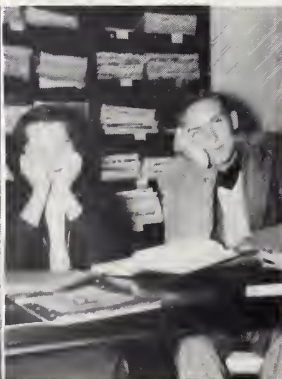
*Class Babies*  
Billy Williams  
Alma Thorne



*Most Studious*  
Joan Wiggs  
Charles Dawes



*Neatest*  
Lois Bryant  
Bruce Brice



*Laziest*  
Frances Robbins  
Bruce Brice



*Most Courteous*  
Billy Gay  
Nancy Winstead



*Class Monkeys*  
Frances Robbins  
Bill Beaman

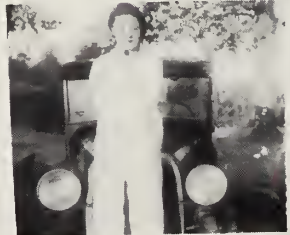
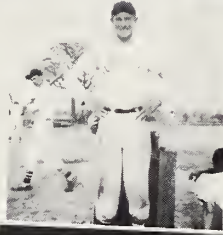
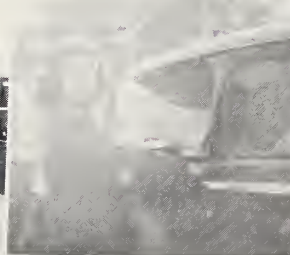


*Most Talkative*  
Helen Williams  
Bill Beaman



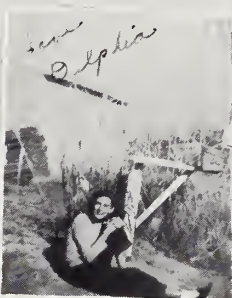
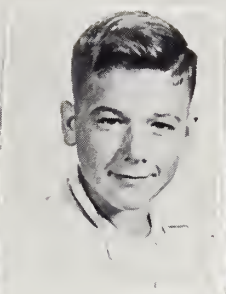
*Most Likely to Marry*  
Helen Jenkins  
Joel Thorne

# Snapshots





# Snapshots



SCHOOL DAY  
1948-49





# Class Prophecy

"Look, Joan, let's go into this gypsy's tent and see if we can borrow her crystal ball to use to predict the future of the class of '52. Of course, I don't believe that a round glass ball can tell the future, but I think it might be fun to try it." From the dimness of the tent came the voice of a gypsy, "You don't believe, you say? Try it and you'll see the future."

With these words she thrust the ball into my hands. I began to watch it, mostly because she insisted. and to my intense surprise I began to see hazy outlines of events to come. Suddenly I saw clearly and shouted, "Hey, Joan, look!"

"That's Nancy Winstead playing that piano on a London stage and the audience loves her music! And there's Frank Davis—he, too, is a pianist who records for R. C. A. Oh, Alma Thorne is singing in New York with the Metropolitan Opera. Where is that music coming from? Douglas Gardner's well-known string band!

"Look there's a movie producer walking down the street. Why it's Charles Dawes and with him is a top flight actor, Warren Proctor."

"Here's Yankee Stadium where the New York Yankees and the Brooklyn Dodgers are playing the first 1962 World Series game. The Yankees are sure to win with Bill Beaman managing their team. Golly, look who's pitching for New York—Bruce Brice. Thomas Farmer is on the Yankees team, also. And there's Derwood Winstead playing second base for the Dodgers. Among the spectators I see Billy Parker—he's a professional football player with the Washington Redskins—and Aulcie Lee Farmer, who is a baseball player with the St. Louis Cardinals."

"What is that I see now? It's J. C. Winstead dictating to his secretary, Marian Langely, the speech he will make in the House of Representatives tomorrow. Why, there's Joyce Farmer. She's head bookkeeper in the Internal Revenue Department. In Washington, too, is Marie Oakey, secretary to the President of the United States. None of our class is old enough to be president yet, but with Billy Gay's brilliant political record we shouldn't be surprised to hear of his election."

"This girl seems quite busy. It's Dorothy Thorne! She's taken Mrs. Musser's position at Elm City High School. Here's another secretary—Elizabeth Jenkins who is secretary to the president of Belk stores."

"Now I see many tall buildings. Of course, we're in New York City! That's Delphia Skinner modeling that lovely evening gown which is one of Jean Beaman's original designs. In New York I also see a TV station where Frances Robbins works as a comedian."

"All the Batts boys are interested in machinery it seems. W. T. sells it, Jasper drives a bulldozer for a large construction company, and Bobby Ray uses the latest farm machinery on his farms. Marvin Robbins, too, is a farmer. He owns a dairy farm in Pennsylvania."

"I see many of our students happily married. Living in Wilson, North Carolina, is Helen Jenkins, now Mrs. R. C. Owens. She and her husband have just moved into a new brick home on Nash Street. Helen Williams lives in Wyoming with her husband and red-headed daughter. I see Mrs. Harold Finch, the former Miss Lois Bryant, and her two children walking down a street in San Francisco. They are living there while Lt. Finch, who is in the Navy, is stationed near-by. To prove that marriage and a career do mix, Lucille Barnes, now the wife of Milton Winstead, has become a nurse and is working at a hospital in Prescott, Arizona, where her husband is stationed with the Army."

"The pilot of that United Airlines plane surely knows aviation. He brought his ship down safely through a dense fog. Why, it's Ray Troutman, and the hostess on the plane is Shelly Page."

"The new manager of General Motors, Joel Thorne, specializes in making and selling hot dogs."

"Following a truck down the highway, I see that it belongs to Lynwood Joyner. He has established a truck line from Maine to California."

"Two members of the class are serving in the armed forces. They are Milton Bass, who is in Japan with the Air Force, and David Winstead, an Army Sergeant in Germany."

"Two members of our class are in the teaching profession. Georgia Webb is now head of the commercial department in a school in the western part of North Carolina and Billy Williams is the new agriculture teacher at Elm City."

"There's the new children's hospital in Raleigh, North Carolina, where Joan Wiggs is Superintendent of nurses. In Hamlet, North Carolina, I see myself director of nurses at Hamlet Hospital, where I received my training."

Again the outlines of the events depicted in the crystal ball began to grow hazy and slowly the scenes disappeared entirely. The gypsy, who had been watching us all the while, said, "You are convinced now, are you not, of the efficacy of the crystal ball?" Hurriedly we agreed and then hastened from the tent. Never again will we say that it is impossible to penetrate the veil between the present and the future.

Class Prophetess,  
PATSY O'BRIANT



*Juniors*

Best of  
luck always  
to a cute girl.  
D.A. Amant

Best of luck always  
to a swell girl.

Marianne

lots of luck  
all through your  
life  
Rayford  
Flowers

Best of luck  
Jan.



# Juniors



Donald Barnes  
Lester Jean Batchelor  
Mary Ann Braswell  
Peggy Carey  
Donald Carter



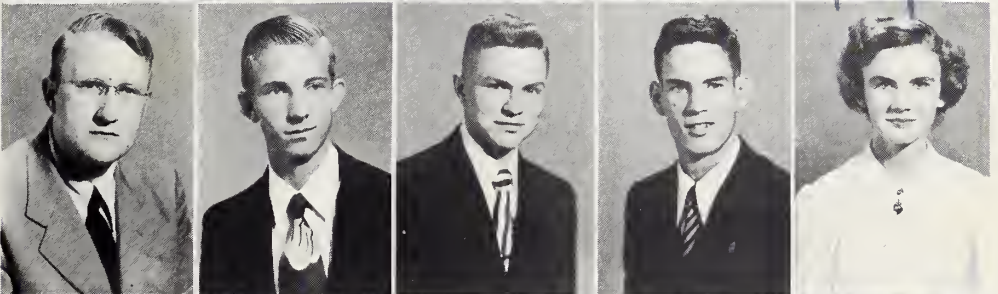
Jo Anne Crumpler  
Marianne Davis  
Marie Dawes  
Jean Dixon  
Joan Edwards

*Best of luck  
to a future  
girl camp*

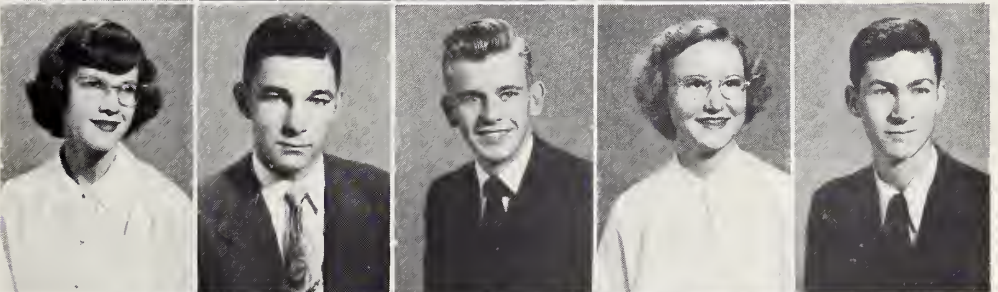


Cuyler Farmer  
Jo Ann Flowers  
Raeford Flowers  
Horace Flora  
James Freeman

*Sots of luck to  
a sweet girl  
Dickie*



James Garner  
Bobby Gay  
Richard Greene  
Marvin Hawley  
Myra Hayes



Mildred Jenkins  
Jack Jobe  
Tom Johnson  
Gladiola Joyner  
Bobby Lancaster



Ella Ree Langley  
Shirley Lucas  
Bob O'Bryant  
James Parker

*Keep on  
keep 'em on  
Hobby*



*Best of everything  
A good friend  
Juniors*

*Best of luck to  
a good friend.*

*Best of luck to  
a good friend.*



Patsy Parker  
Betty Jean Petway  
Grady Pittman  
Jeanette Pittman  
Don Pridden

*Best wishes  
to a swell girl  
Love,  
Cindy*

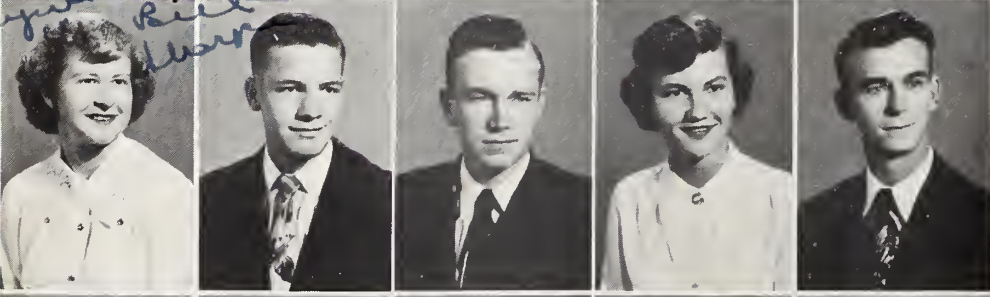


Del Robbins  
Carolyn Robbins  
Jimmy Robbins  
Maude Rogers  
Cynthia Roth



Billy Sharpe  
Joan Sharpe  
Shirley Sharpe  
Glenn Wallace  
Gerald Walston

*Best of luck to  
anyone  
Bill  
Marj*



Joyce Weaver  
Braxton Webb  
Robert Weeks  
Betsy Wells  
Rudy Whitehead



Rex Wiggs  
Janet Williams  
Graynell Williford  
Kathryn Winstead  
Pat Winstead

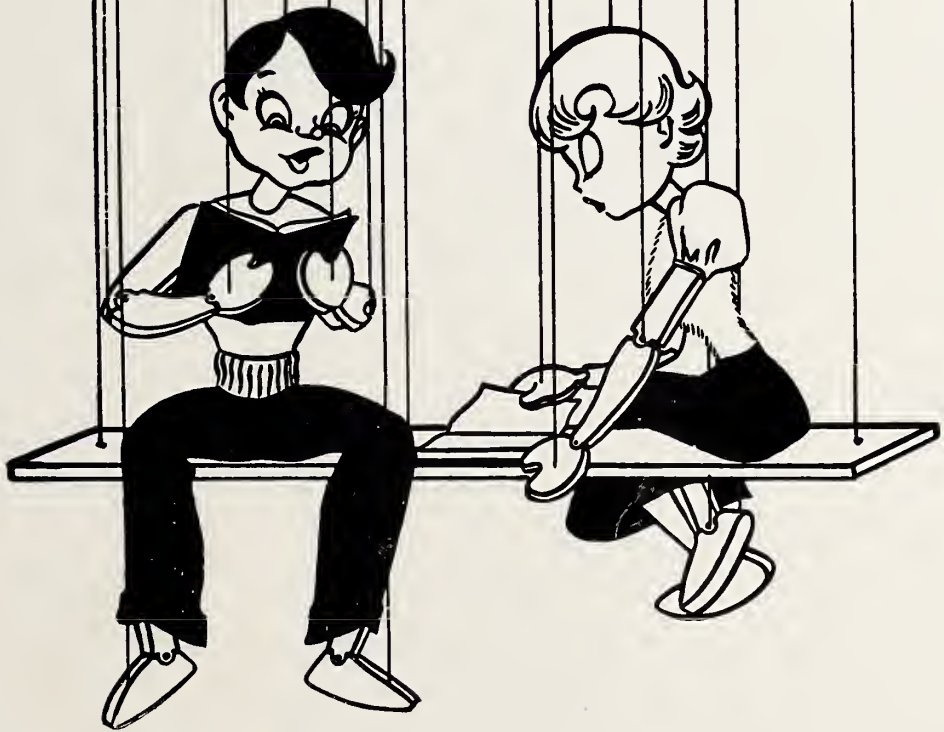


Rebecca Winstead  
Valmonte Winstead  
David Womble

*Best of luck to  
anyone  
Bill  
Marj*



Best  
luck to my  
next door neighbor  
I hope you will  
have much  
a lot  
in the  
future



# Classes

Best of luck  
always to a sweet  
girl. *Marian*

Best of luck to a  
sweet and cute  
girl. *Joyce H.*

Best wishes to a  
swell girl. *Barbara*

Lots of luck  
to a cute girl.  
*Wm. Hunt*

Louise,  
May the very best in life  
be yours. You are a very  
smart girl. Keep up the  
good work in your classes.  
Hope you enjoy your high school  
days. *Loves*

Good luck to  
always to  
a cute girl.  
*Mary Ann*  
*Barbara J.*

# Sophomores

EMMA DONNIE BAILEY  
LINDA BATTEN  
PATSY BATTS  
BLANCHE BEAMAN  
WILLIAM BULLOCK



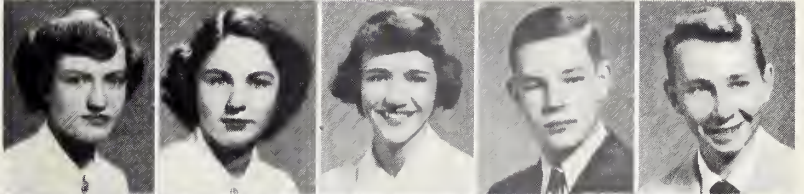
BOBBY CAREY  
DON BREWER COBB  
BERTIE LEIGH COOKE  
ANITA DAVIS  
WESLEY DOLES



DONALD EASON  
SARAH ELLA EDWARDS  
REBECCA FARMER  
REATHER FEILDS  
JOYCE GILLARS



LOUISE GOOCH  
MONTRESS GREENE  
ELIZABETH GRIFFIN  
HOLTON HAMM  
JUSTICE HARDISON



CHARLES HATHAWAY  
MYRA JEAN HODGES  
CRAVEN HUNT  
BARBARA JACKSON  
LORINE JOYNER



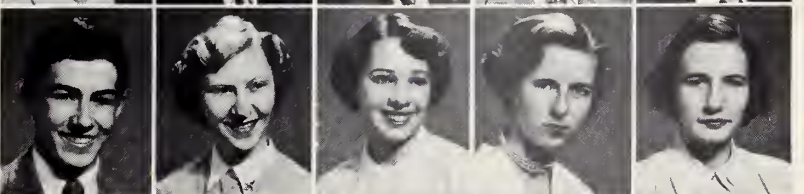
PATTIE JOYNER  
SHELBY LANGLEY  
FAYE LUCAS  
MONA GRAY MATTHEWS  
DAVID MOORE



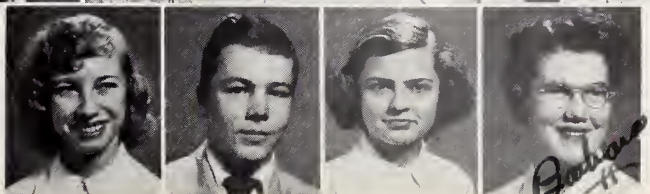
AUDREY O'BRIANT  
PAUL PARKER  
VICTOR RACKLEY  
GEORGE ROBBINS  
WARREN SESSOMS



BILLY SHARPE  
FRANCES TAYLOR  
MARIAN TAYLOR  
ANN TURNER  
LOIS ANN VIVERETTE



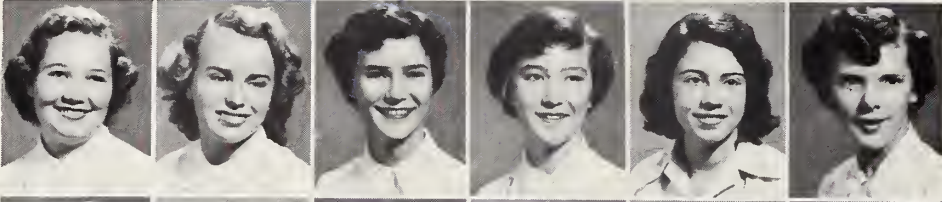
JOYCE VIVERETTE  
BOBBY WILLIAMS  
JOYCE WINSTEAD  
BARBARA WILLIAMS



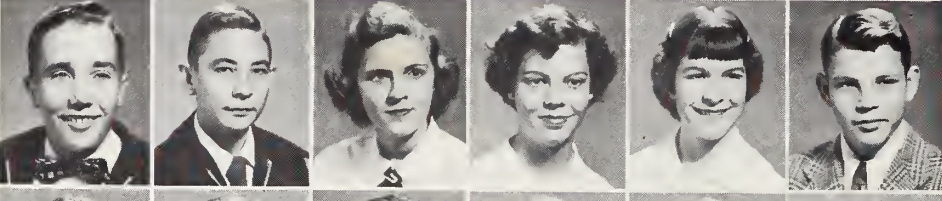


*Great  
with  
blouse  
pity*

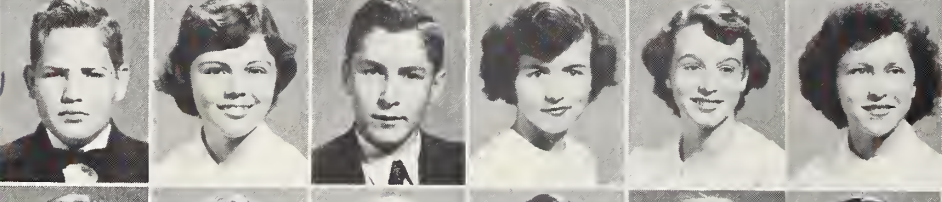
# Freshmen



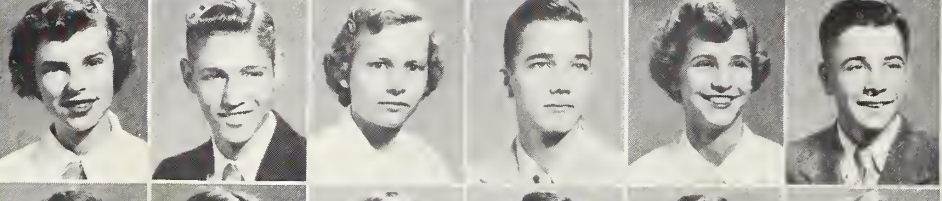
Jean Adams  
Annette Barnes  
Carolyn Barnes  
Loretta Barnes  
Ruby Bass  
Peggy Brice



Herbert Campbell  
Herman Cobb  
Pearline Cooke  
Betty Jean Davis  
Shirley Ann Dawes  
Philip Dean



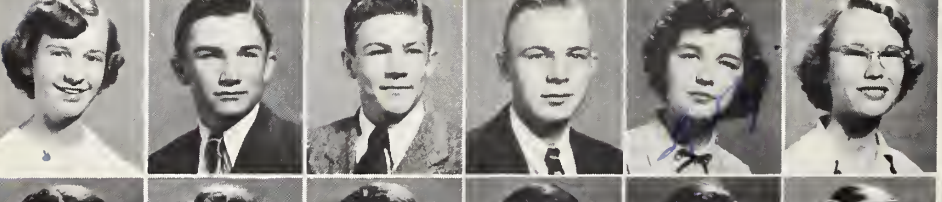
Chadwick Diener  
Georgia Ann Farmer  
James Farmer  
Mildred Farmer  
Ruby Jean Farmer  
Eunice Gardner



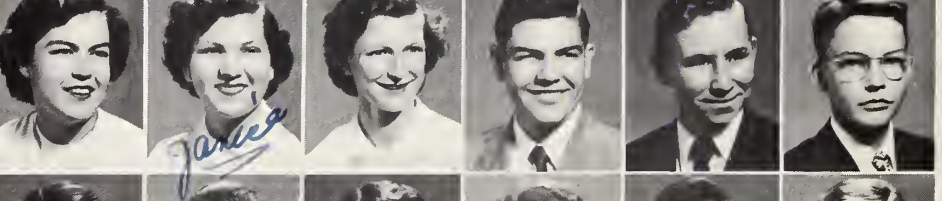
Rebecca Gardner  
Tom Griffin  
Rachel Jenkins  
Randolph Jenkins  
Frances Joyner  
Freddie Langley



Lucy Paul Mathews  
Frances Newsome  
Sue O'Bryant  
Josephus Parker  
Wilbur Powell  
Shelby Jean Pridgen



Peggy Quinn  
Marvin Robbins  
Boyd Sharpe  
Alton Sherrod  
Betty Smith  
Rachel Smith



Thelma Tant  
Janice Taylor  
Blessin Thorne  
Willie Thorpe  
Wallace Troutman  
Dick Tyson



Faye Vaughan  
Herman Vaughan  
Norma Vernon  
Faye Watson  
Linwood Weeks  
Margaret Williams



Peggy Williams  
Abram Winstead  
Rebecca Winstead  
Louise Winstead

*Let's look for white  
socks  
nice to  
give to  
Peggy  
Bobby*

*Betty  
Lucy  
Janice  
James*

*Janice*



Best  
of luck  
to you and  
your boy-  
friends.  
Remember  
the m.v.f.  
winnie post.  
Mary

## Sub-Freshmen

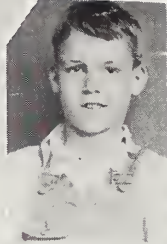


Betsy Adams  
Glynderleen Baker  
Shirley Baker  
Dorothy Batts  
Peggy Ann Braswell  
Shirley Garrett  
Marie Jackson  
Janice Jenkins  
Janice Jennings  
Berta Jo Matthews  
Anne Owens  
Mary Hays Pleasants  
Betty Lou Robbins  
Peggy Sutton  
Margaret Trevathan  
Lois Wiggins  
Dorothy Williams  
Douglas Ayers  
Carroll Baker  
Donnie Barnes  
Bobby Ray Bass  
Eddie Thomas Batts  
James Lee Batts  
Johnnie Batts  
Roger Bridgers  
Linwood Cobb  
Melvin Cooke  
Donald Davis  
Billy Dawes  
Carroll Dixon

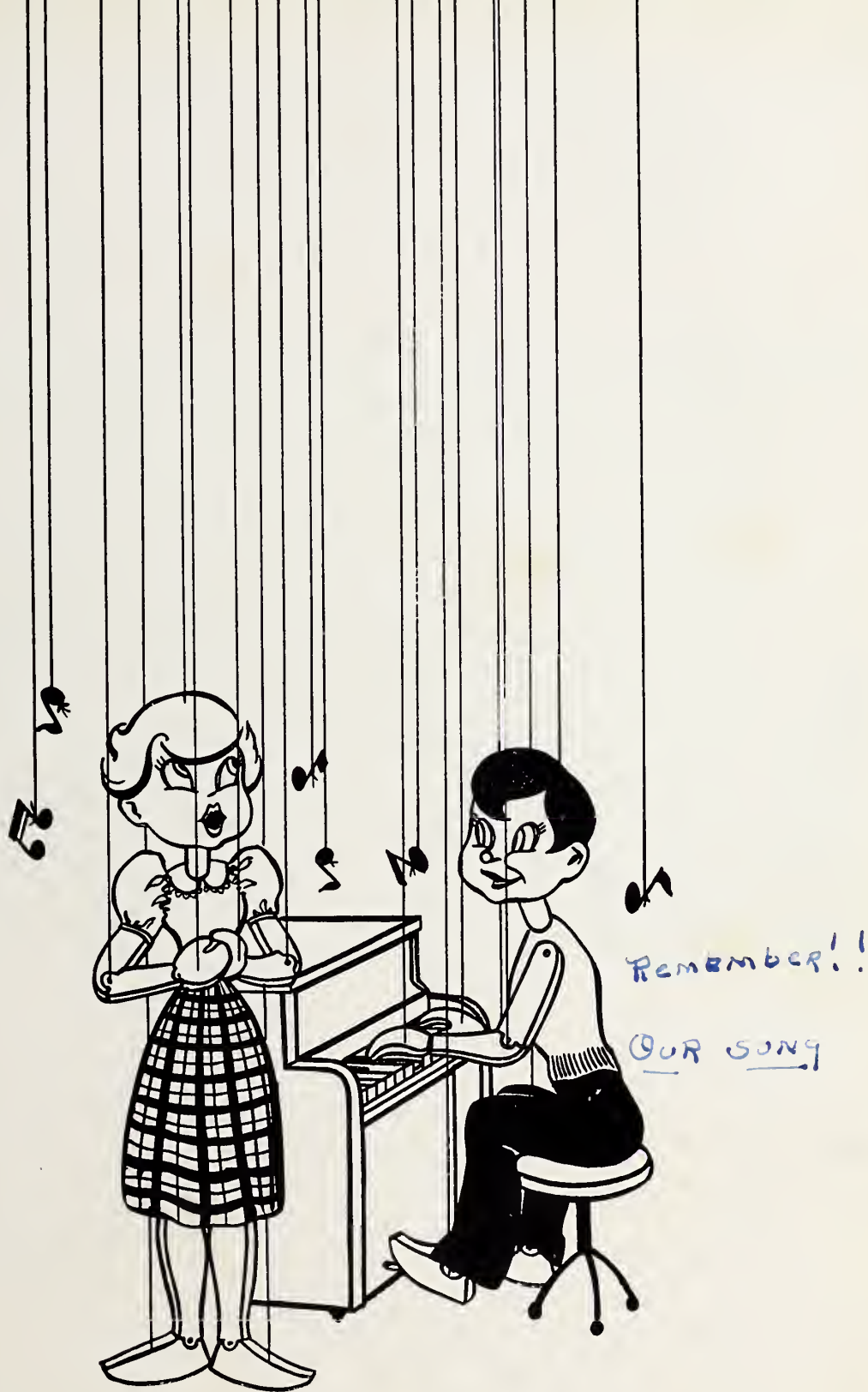
Elma Farmer  
Billy Flowers  
Glen Flowers  
Clyde Griffin  
Richard Hayes  
Leslie Hill, Jr.  
Thomas Hunt  
Grady Jackson  
Justa Jackson  
Wilbur Jackson  
Leon Johnson  
Joseph Jones  
Randolph Matthews  
Owen Owens  
Allen Page  
Edward Parnell  
Louis Partain  
George Robbins  
John Lloyd Sharpe  
Melvin Sharpe  
Charlie Lee Skinner  
Preston Sutton  
Chester Sykes  
Claude Trevathan  
Norman Williams  
Grover Cleveland Winstead, Jr.  
George Redmond Winstead  
Howard Wooten  
Rudolph Wooten

Good luck  
to a very  
nice girl  
Kelsey

# Snapshots







# Activities



Remember "Vote for Gwyn"

lots of everything to you and yours.

Reg. Leg.  
Quinn

To a girl who  
has all the boyfriends  
my best wishes  
John Lloyd Sharpe

Salute, luck to  
you & the boys -  
Georgia Ann  
T

## SCHOOL BAND

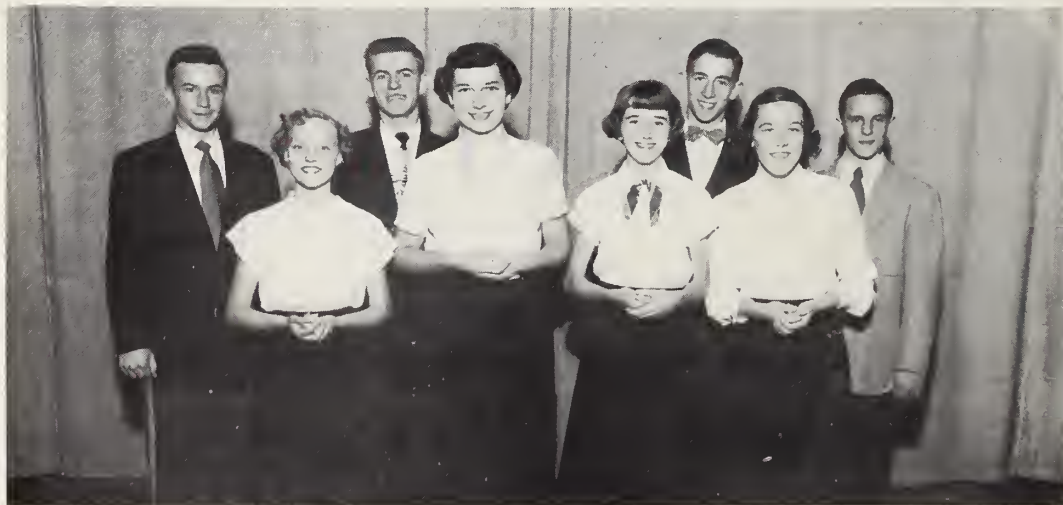


*President*, Billy Sharpe, Jr.; *Vice-President*, Betsy Wells; *Secretary*, Dorothy Thorne; *Treasurer*, Kathryn Winstead; *Librarian*, Blessin Thorne; *Reporter*, Mary Ann Braswell; *Director*, Mrs. Louise G. Winstead. *Flute*: Betty Jean Davis, Margaret Williams, Nancy Jo Whitehead; *Clarinet*: Mary Ann Braswell, Georgia Ann Farmer, Becky Gardner, Barbara Jackson, Leon Johnson, Ann Owens, Betty Lou Robbins, Jeannette Thorne, Louise Winstead, Rebecca Winstead. *Bass Clarinet*: Delphia Skinner. *Alto Saxophone*: Tom Johnson, Grady Jackson, Jr., Patsy Fleming, Doris Nell Cobb; *C Melody Saxophone*: Charles Hathaway; *Tenor Saxophone*: Jean Batts; *Cornet and Trumpet*: Peggy Brice, Wesley Doles, Jo Ann Flowers, Janice Jenkins, Victor Rackley, Bill Sharpe, Jr., John Lloyd Sharpe, Alma Thorne, Dorothy Thorne, Betsy Wells, Pat Winstead, Reb Winstead, Will Bulluck; *Alto Horn*: Mary Page, Josephus Parker; *Trombone*: Franklin Davis, Carroll Dixon, Sue O'Bryant; *Baritone*: Kathryn Winstead, J. E. Wood; *Sousaphone*: Owen Owens, Bobby Williams; *Percussion*: Joel Thorne, Glenn Wallace, Justice Hardison, Allen Page, Herbert Campbell, Craven Hunt; *Bell Lyra*: Blessin Thorne.

Best of luck to a high soprano.  
HIGH SCHOOL CHORUS Dick



Alma Thorne, *President*; Joan Edwards, *Vice-President*; Nancy Winstead, *Secretary*; Dorothy Thorne, *Treasurer*; Janice Taylor, *Reporter*. *First Soprano*: Lucille Barnes, Elizabeth Jenkins, Helen Jenkins, Delphia Skinner, Shirley Lucas, Del Robbins, Cynthia Roth, Rebecca Winstead, Jo Ann Crumpler, Myra Hayes, Mildred Jenkins, Jean Dixon, Patsy Batts, Rebecca Farmer, Betty Smith, Peggy Quinn, Pauline Millinder, Margaret Williams, Annette Barnes, Betty Jean Petway, Frances Joyner, Lucy Mathews, Fay Watson, Ruby Bass, Blessin Thorne, Emma Bailey, Lorine Joyner. *Second Soprano*: Joan Wiggs, Peggy Carey, Lester Jean Batchelor, Marianne Davis, Maud Rogers, Sarah Edwards, Mona Gray Mathews, Marian Taylor, Frances Taylor, Jean Adams, Norma Vernon, Shirley Dawes, Georgia Ann Farmer, Shelby Pridgen, Faye Vaughn, Louise Winstead, Peggy Williams, Rachel Jenkins, Mildred Farmer, Blanche Beaman, Ann Turner, Louise Gooch, Irene Trevathan. *Alto*: Joyce Farmer, Marian Langley, Marie Oakey, Helen Gray Williams, Gladiola Joyner, Ella Ree Langley, Shirley Sharpe, Anita Davis, Joyce Gillars, Carolyn Barnes, Eunice Gardner, Loretta Barnes, Peggy Brice, Pearlina Cooke, Ruby Jean Farmer, Audrey O'Briant, Graynell Williford, Becky Gardner, Linda Batten, Jean Batts, Dora Bell Barnes, Bertie Leigh Cooke, Jean Hodges. *Tenor*: Tom Johnson, Rex Wiggs, Bobby Lancaster, Victor Rackley, Herman Cobb, Phil Deans, Herbert Campbell, Dick Tyson, Wesley Doles, Jr., James Roy Farmer, Cuyler Farmer, Josephus Parker, Alton Adams, Will Bulluck, Charles Hathaway. *Baritone*: Bobby Ray Batts, Billy Parker, Donald Barnes, Don Carter, Bill Sharpe, Jr., Gerald Walston, Don Cobb, Justice Hardison, Holton Hamm, Abram Winstead, Freddie Langley, Marvin Lec Robbins. *Accompanist*: Mary Ann Braswell, Janet Williams, Jeannette Pittman.



#### MIXED QUARTET

Dorothy Thorne, Nancy Winstead, Louise Winstead, Rebecca Winstead, Billy Sharpe, Billy Parker, Cuyler Farmer, Rex Wiggs.



## BETA CLUB



Nancy Winstead, *President*; Lucille Barnes, *Vice-President*; Joan Wiggs, *Secretary*; Helen Williams, *Treasurer*; Joan Edwards, *Program Chairman*; Lester Jean Batchelor, *Reporter*; Mary Ann Braswell, Peggy Carey, Jo Ann Crumpler, Marianne Davis, Charles Dawes, Joyce Farmer, Jo Ann Flowers, Billy Gay, Bobby Gay, Jack Jobe, Shirley Lucas, Marie Oakey, Patsy O'Briant, Billy Parker, James Parker, Jeannette Pittman, Don Pridgen, Jimmy Robbins, Cynthia Roth, Billy Sharpc, Shirley Sharpe, Delphia Skinner, Gerald Walston, Betsy Wells, Billy Williams, Janet Williams, Kathryn Winstead.

## STUDENT COUNCIL

*may the best of  
everything be yours.  
- Margaret*



Joan Wiggs, *President*; Jo Ann Crumpler, *Vice-President*; Dorothy Thorne, *Secretary*; Jeannette Pittman, *Reporter*; Georgia Ann Farmer, Lucy Paul Mathews, Carolyn Barnes, Dick Tyson, Margaret Williams, Philip Deans, Victor Rackley, Libby Griffin, Justice Hardison, Wesley Doles, Rebecca Farmer, Marian Taylor, Jimmy Freeman, Cynthia Roth, Don Pridgen, Patsy Parker, Helen Williams, Nancy Winstead, Jean Beman.

## F. H. A.



Lucille Barnes, *President*; Anita Davis, *Vice-President*; Barbara Jackson, *Secretary*; Mona Gray Mathews, *Treasurer*; Alma Thorne, *Song Leader*; Helen Williams, *Recreation Leader*; Jo Ann Crumpler, *Program Chairman*, Patsy Batts, *Historian*; Dorothy Thorne, *Hostess*, Donnie Vann Bailey, *Reporter*. Jean Adams, Annette Barnes, Carolyn Barnes, Loretta Barnes, Linda Batten, Jean Davis, Marie Dawes, Sarah Edwards, Georgie Ann Farmer, Mildred Farmer, Rebecca Farmer, Ruby Jean Farmer, Reather Fields, Becky Gardner, Joyce Gillars, Louise Gooch, Montress Greene, Elizabeth Griffin. Myra Hayes, Frances Joyner, Pattie Joyner, Faye Lucas, Lucy Paul Mathews, Marie Oakey, Sue O'Bryant, Patsy Parker, Jeannette Pittman, Peggy Quinn, Maude Rogers, Delphia Skinner, Betty Smith, Thelma Tant, Frances Taylor, Janice Taylor, Marian Taylor, Blessin Thorne, Faye Vaughan, Norma Vernon, Joyce Viverette, Lois Viverette, Janet Williams, Margaret Williams, Joyce Winstead, Louise Winstead, Rebecca Winstead, Pauline Millinder, Reba Walston.

## F. F. A.



Donald Barnes, Cuyler Farmer, Horace Flora, Richard Greene, Bill Griffin, Marvin Hawley, Don Pridgen, Grady Pittman, Jimmy Robbins, Bobby Weeks, Rudolph Whitehead, Alton Adams, Luther Bass, Jesse Batts, Herbert Campbell, Herman Cobb, Leslie Driver, James Roy Farmer, Norris Hunt, Fred Langley, Johnnie Luper, Josephus Parker, Marvin Robbins, Willie Thorpe, Wallace Troutman, Abram Winstead, Hilton Weaver, Linwood Weeks, Billy Williams, Harold Bass, C. J. Dawes, Tom Griffin, Randolph Jenkins, Billy Ray Robbins, Marvin Robbins, Boyd Sharpe, Alton Sherrod, Dick Tyson, Herman Vaughn, W. T. Batts, Milton Bass, Edgar Ray Beaman, Bobby Ray Batts, M. C. Cobb, Franklin Davis, Thomas Farmer, Aulcie Lee Farmer, Billy Gay, Douglas Garner, Lynwood Joyner, Joel Thorne, Ray Troutman, Billy Williams, Glenn Wallace, Will Bullock, Bobby Carey, Don Cobb, Bill Davis, Donald Eason, Craven Hunt, Holton Hamm, Rufus Hawley, Charles Hathaway, Shelby Langley, Paul Millinder, David Moore, Victor Rackley, George Robbins, Wilbur Powell, Warren Sessoms, Billy Sharpe, Bobby Sharpe, Bobby Williams.



## 4-H CLUB



Betsy Adams, Jean Adams, Shirley Baker, Loretta Barnes, Carolyn Barnes, Jean Batts, Blanche Beaman, Peggy Braswell, Peggy Brice, Peggy Carey, Bertie Leigh Cooke, Pearlina Cooke, Anita Davis, Mildred Farmer, Jo Ann Flowers, Becky Gardner, Shirley Garrett, Louise Gooch, Montress Greene, Libby Griffin, Barbara Jackson, Janice Jenkins, Janice Jennings, Joseph Jones, Lorine Joyner, Mona Gray Mathews, Pauline Millinder, Sue O'Bryant, Mary Lou Parker, Jeannette Pittman, Marvin Robbins, Maud Rogers, Rachel Smith, Doris Summerlin, Peggy Sutton, Thelma Tant, Frances Taylor, Janice Taylor, Marian Taylor, Blessin Thorne, Faye Vaughan, Norma Vernon, Faye Watson, Lois Wiggins, Dorothy Williams, Janet Williams, Rebecca Winstead.

## CHEERLEADERS



Alma Gray Thorne, Chief; Helen Gray Williams, Shelly Page, Mary Ann Braswell, Lucille Barnes, Margaret Williams, Jo Ann Flowers, Lester Jean Batchelor, Janet Williams, Joyce Gillars, Marian Taylor.



*Lots of luck to a  
small gal!*

*Bucks*

FOOTBALL



Dick Tyson, Manager; Donald Barnes, Justice Hardison, M. C. Cobb, Don Carter, Horace Flora, Holton Hamm, Braxton Webb, Glenn Wallace, Billy Parker, Bobby Gay, Marvin Hawley, Melvin Cooke, Water Boy, J. T. Odom, Coach, Auelie Lee Farmer, Jack Jobe, Tom Griffin, Bill Griffin, James Parker.

SCORES OF 1951-52

Elm City.....	50	Leggett .....	0
Elm City.....	6	Rock Ridge.....	46
Elm City.....	12	Chocowinity .....	0
Elm City.....	50	William R. Davis.....	0
Elm City.....	38	Stantonsburg .....	6
Elm City.....	45	Lucama .....	12
Elm City.....	42	Leggett .....	12
Elm City.....	12	Whitakers-Battleboro .....	24
Elm City.....	6	Rock Ridge.....	20
Elm City.....	259	Opponents .....	96

GIRLS' BASKETBALL

*Thank you to all who helped.  
Blessin  
Luck*



Montress Greene, Ann Turner, Barbara Williams, Louise Gooch, Betsy Wells, Peggy Brice, Blessin Thorne, Kathryn Winstead, J. T. Odom, Coach, Libby Griffin, Linda Batten, Barbara Jackson, Jo Ann Flowers, Thelma Tant, Mary Ann Braswell, Bertie Leigh Cooke. Absent, Helen Gray Williams.

BOYS' BASKETBALL



Billy Sharpe, "Happy" Robbins, Dick Tyson, Tom Griffin, Bill Beaman, Dickie Greene, Bill Griffin, Don Pridgen, J. T. Odom, Coach; Donald Eason, Justice Hardison, Billy Williams, Dick Gardner, Wesley Doles, Braxton Webb, James Parker, J. C. Winstead, Manager.



## MARSHALS



Joan Wiggs, Chief; Lucille Barnes, Joyce Farmer, Delphia Skinner, Jean Beaman, Nancy Winstead.

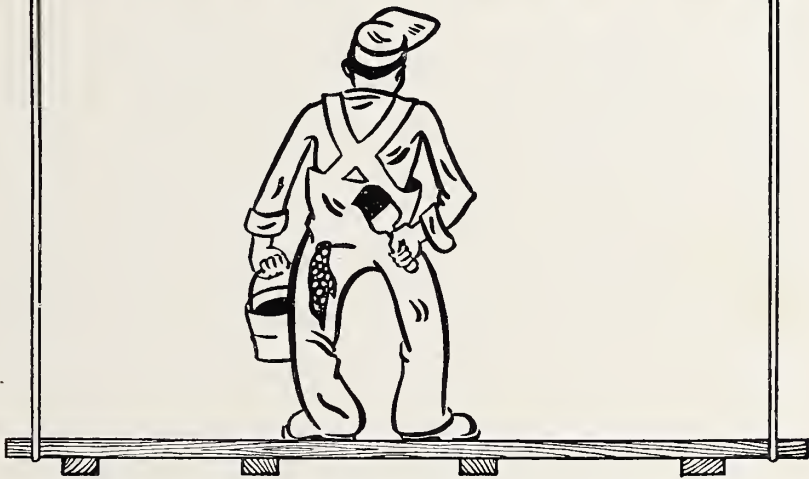
## BUS DRIVERS



Douglas Gardner, W. T. Batts, Valmonte Winstead, Jack Jobe, Grady Pittman, Thomas Farmer, Lynwood Joyner, Bob O'Bryant, David Winstead, Milton Bass.



# ADVERTISEMENTS





COMPLIMENTS  
OF  
TOWN OF ELM CITY

T. W. COBB

FURNITURE AND FUNERAL DIRECTORS

Phone 5411

Elm City, N. C.

HUNT FUNERAL  
HOME

Wilson, N. C.  
DIAL 3148 — 3149

WILSON COUNTY MUTUAL BURIAL ASSOCIATION

AMBULANCE  
SERVICE

Stantonsburg, N. C.  
DIAL 2381



Best Wishes to the Senior Class

BRANCH BANKING & TRUST COMPANY

Member F. D. I. C.

ELM CITY, N. C.

Randy's Service Station

Pure Oil Products

24 Hour Service

ELM CITY, N. C.

Floyd's Diner

Steaks — Fried Chicken

Cold Drinks

1½ Miles South of Elm City

HIGHWAY 301

General Supply Store

and

Elm City Gin

Alton Sharpe, Prop.

ELM CITY, N. C.

G. C. Cobb & Son

GENERAL MERCHANDISE

Farm Supplies — Fertilizers

ELM CITY, N. C.

Compliments of

Moss & Co., Inc.

WILSON, N. C.

Compliments of

G. G. Jackson

Phone 5136

ELM CITY, N. C.

# BRASWELL MOTORS

CHRYSLER - PLYMOUTH

Sales and Service

ELM CITY, N. C.

BE THRIFTY

BUY MUTUAL INSURANCE

Wilton H. Pridgen

Phone 4551

ELM CITY, N. C.

Smith Insurance Agency

Main Street

ELM CITY, N. C.

Phone 5421

Tom Watson's Garage

Phone 4491 Elm City, N. C.

"Auto Repair, Acetylene Welding"

Compliments of

City Grocery

W. W. Wells

ELM CITY, N. C.

T. T. Thorne Maytag Co.

MAYTAG — PHILCO — CROSLEY

Phone 2251 Elm City, N. C.

L. S. Farmer & Son

GENERAL MERCHANDISE

Phone 5511 Elm City, N. C.



## The London Shop

"Exclusive Not Expensive"

WILSON, N. C.

## T. B. Winstead

Authorized RCA Victor & Spartan Dealer  
Nationally Known Radio and  
Electrical Appliances

28 Years Experience Assures You  
the Best in Service

"IF IT'S ELECTRICAL I HAVE IT OR  
CAN GET IT FOR YOU"

Phone 5206 Elm City, N. C.

Compliments of

## New Deal Cafe

Railroad Street

ELM CITY, N. C.

## Yellow Front Grocery

FRESH MEATS, FRUITS,  
VEGETABLES

Phone 5141

ELM CITY, N. C.

## Carl Meyer's Grocery

"Your Friendly Store"

Dial 5751

Elm City, N. C.

50th ANNIVERSARY



Farmers Cotton Oil Co.

FACTORIES

Norfolk — Wilson — Lillington

## Joyner's Funeral Home

107 N. Pine St.

AMBULANCE SERVICE

Anytime—Anywhere

"We Serve the New Deal Mutual  
Burial Association"

Phone 3134

Wilson, N. C.

## Raines and Cox

PHOTOGRAPHERS

Wilson, N. C.

Box 209

Phone 4046

## Corbett Motor Co.

SALES — BUICK — SERVICE

WILSON, N. C.

## G. & B. Coffee Shop

310 East Greene Street

(Across From the Bus Station)

WILSON, N. C.

## J. D. Barkley Gin Co.

Phone 5641

ELM CITY, N. C.

For Your Very Own, the Very Best

DIXONS DIAPER-RASH OINTMENT

At All Drug Stores

## Dixon's Drug Store

ELM CITY, N. C.

## Doles Grocery

Heavy and Fancy Groceries

Fresh Meats, Frozen Foods

Fresh Fruits and Vegetables

Phone 5491

Elm City, N. C.

"IT PAYS TO LOOK WELL"

## Wylie's Barber Shop

ELM CITY, N. C.

## E. V. Braswell Co.

Dealers in

Coal — Building Supplies

Fuel Oil — DuPont Paints

Phone 5211

Elm City, N. C.

## EM-JAY Sporting Goods Co.

Wholesale and Retail

High Grade Athletic Equipment

Phone 2256

Wilson, N. C.

106 S. Tarboro St.

WHITMAN'S CANDIES  
COTY, CARA NOME & MAX FACTOR COSMETICS  
Bisma-Rex for Acid Indigestion

ELM CITY PHARMACY  
SCHAEFFER'S PENS AND PENCILS  
Marvin L. Davis, Owner

"Your Rexall Drug Store"

Prescriptions at Their Best

## Hemby's Beauty Salon

"We Need Your Head in Our Business"

210 E. Nash St.

Wilson, N. C.

## Cliff's Drive In

CURB SERVICE

(You Toot — We Tote)

William C. Winstead, Jr.

E. Miller Walsh, Owners

Open 8:00 A. M. Till 11:30 P. M.

900 South Goldsboro Street  
WILSON, N. C.

## The Wilson Daily Times

Wilson County's Only Newspaper

CIRCULATION MORE THAN 10,000

Evening Hours Are Reading Hours

WILSON, N. C.

Compliments of

## National Bank of Wilson

WILSON, N. C.

## Taylor and Sharpe

FANCY AND STAPLE GROCERIES

301 Highway

ROSEBUD, N. C.

Congratulations, Seniors

from

## Quinn's Gift Shop

1st Floor — R. E. Quinn & Co.

WILSON, N. C.



## GUS Z. LANCASTER STOCK YARDS

(Where Old Customers Stick and New Customers Become Regulars)

Number 1 and 2

ROCKY MOUNT, N. C.

Auction Cattle and Hogs

Sale Every Tuesday — Yard No. 2 — Phone 4337

Sale Every Friday — Yard No. 1 — Phone 6101

THE DEPENDABLE STOCK MARKET

The Best in Mules and Horses for Sale or Trade Daily

### Denny's Jewelers

103 West Nash Street      Wilson, N. C.

(The House of Nationally Advertised  
Merchandise)

### L & H Service Station

Highway 301, South Wilson, N. C.

Washing, Greasing, Tire Repair  
Truck and Passenger Car

AMOCO Products

### Tower Drive-In Theatre

ROCKY MOUNT, N. C.

"The Family Theatre"

### Big Dixie Warehouse

WILSON, N. C.

Best in Sales and Service

TELEPHONE 4865

Compliments of

### Swinson Furniture Co.

106 W. Barnes Street

Back of Moss & Co.

Wilson, N. C.      Phone 4436

### Joyner's Memorial Co.

CEMETERY MEMORIALS

Highway 301 South

WILSON, N. C.

PHONE 5395

## Dick's Electrical Co.

State License No. 213

Maytag—Hoover—Crosley—Hotpoint

SALES AND SERVICE

307 East Nash Street, Wilson, N. C.

Phone: Day 2579 — Nite: 4759

## L. C. Woodall

221 East Barnes Street

FURNITURE

Wilson, N. C.

See L. C. Woodall for Furniture, Duo-Therm Oil Heaters, Enterprise Gas Ranges, Leonard Refrigerators, and New Home Sewing Machines.

## Murphy's Sandwich Shop

For the Best in Sandwiches

MURPHY'S SANDWICH SHOP

"Always a Friendly Welcome"

## J. M. Newcombe Co.

Your Maytag and Kelvinator Dealer

FIVE POINTS, WILSON, N. C.

Sales and Service



Dial 2022

Wilson, N. C.

## Atlantic Seafood Co.

For Fresh Fish and Oysters

Phone 3531

556 East Nash Street

WILSON, N. C.

(We Don't Keep Fresh Fish, We Sell Them)

Compliments of

A Friend

Meetcha' at

## The Creamery

WILSON, NORTH CAROLINA

Compliments of  
SWICEGOOD FARM MACHINERY COMPANY

1300 SOUTH GOLDSBORO STREET — PHONE 4783

WILSON, N. C.

Compliments of  
Mother and Daughter  
Fashions

WILSON, N. C.

Best Wishes to  
Class of 1952

Belk-Tyler

Wilson's Shopping Center

Corbetts Esso Service

Phone 4355

Corner of Green and Goldsboro

Twin County Gas Co.

South Church Street — Highway 301

PYROFAX BOTTLE GAS

MAGIC CHEF STOVES

Congratulations, Seniors



107 N. Douglas Street

Phone 6957

Wilson Hardware Co.

Phone 3174

Courthouse in Front of Us



## J. A. Tharrington & Sons

Manufacturers

Tobacco Curers, and Heaters

1539 South  
Church Street

Rocky Mount, N. C.

## Churchwell's, Inc.

JEWELERS — SILVERSMITHS

Serving Wilson County

Over 50 Years

WILSON, NORTH CAROLINA

## Gardner's Dairy Products

VELVET ICE CREAM

HOMOGENIZED MILK

WILSON, N. C.

Phone 3056

For Goodness' Sake!



"The Mello Fellow"

Reg. U. S. Patent Office

## Tiding's Bible and Book Store

Phone 4982      Wilson, N. C.

Get a Beautiful White Bible, King James  
Version Personalized in Gold for  
That Girl Graduate.

## Daniel Roofing Supplies

121 SOUTH DOUGLAS STREET

Dial 2346

Wilson, N. C.

Compliments of

## Whaley Furniture Co.

ROCKY MOUNT, N. C.

Where Quality and Prices Meet

Best of Luck Always to You  
Seniors of '52!!

## Center Theater

ROCKY MOUNT, N. C.

Suburban Rulane Gas  
Company

TAPAN GAS RANGES  
HARDWICK GAS RANGES

Phone 5671      121 North Douglas St.  
WILSON, N. C.

BOOSTER PAGE

Fairview Nursery

Carter's Jewelry

Tilly's Shop

Davis Gas & Electrical Appliance Co.

Fox Jewelry

Barker's Department Store

Grice's Seed Store

The Oaks Hatchery

Heilig-Meyers

Rose Dress Shop

Farris Department Store

Bruce Lamm

Wilson Drug Co.

Storks Nest

Eastern Auto Supply Co.

Vaughan's Jewelry

Pittman & Price Shell Service

Blue Gable Service Station

(A Friend)

Vann General Electric

Farris Motor Co.

# AUTOGRAPHS











WILSON COUNTY PUBLIC LIBRARY



3 9939 00300 9812