

# Bear Trap







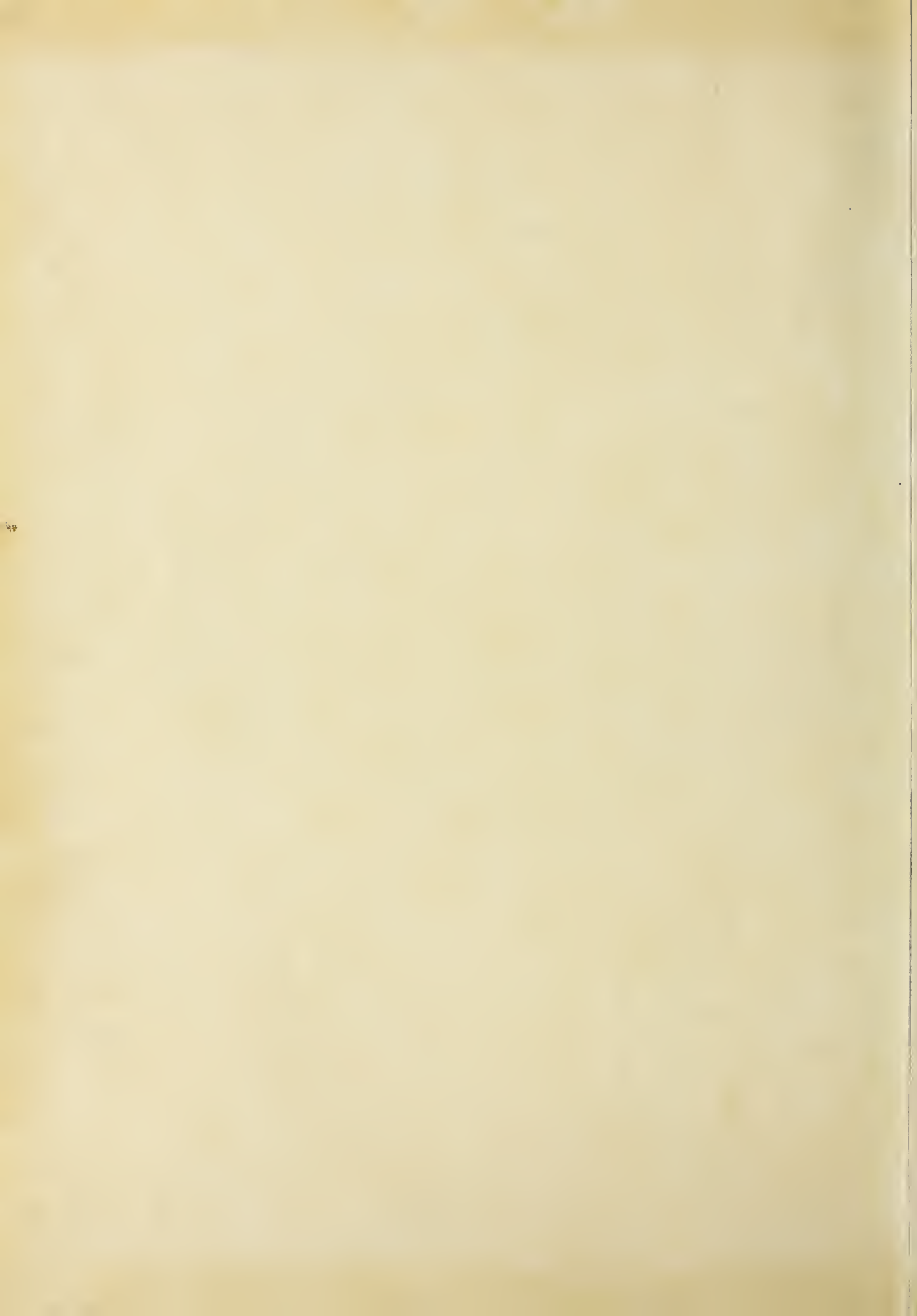


Louise Winstead

Wilson County Public School

Wilson, Tenn.














Digitized by the Internet Archive  
in 2013

<http://archive.org/details/beartrap19531953elmc>





*BEAR TRAP*

*1953*

Presented by

THE SENIOR CLASS

of

ELM CITY HIGH SCHOOL





# CONTENTS



TITLE PAGE

TABLE OF CONTENTS

DEDICATION

FOREWORD

FACULTY

SCHOOL DAY

BEAR TRAP STAFF

SENIORS

CLASS HISTORY

SENIOR FAVORITES

LAST WILL AND TESTAMENT

CLASS PROPHECY

JUNIORS

SOPHOMORES

FRESHMEN

SUB-FRESHMEN

FEATURES

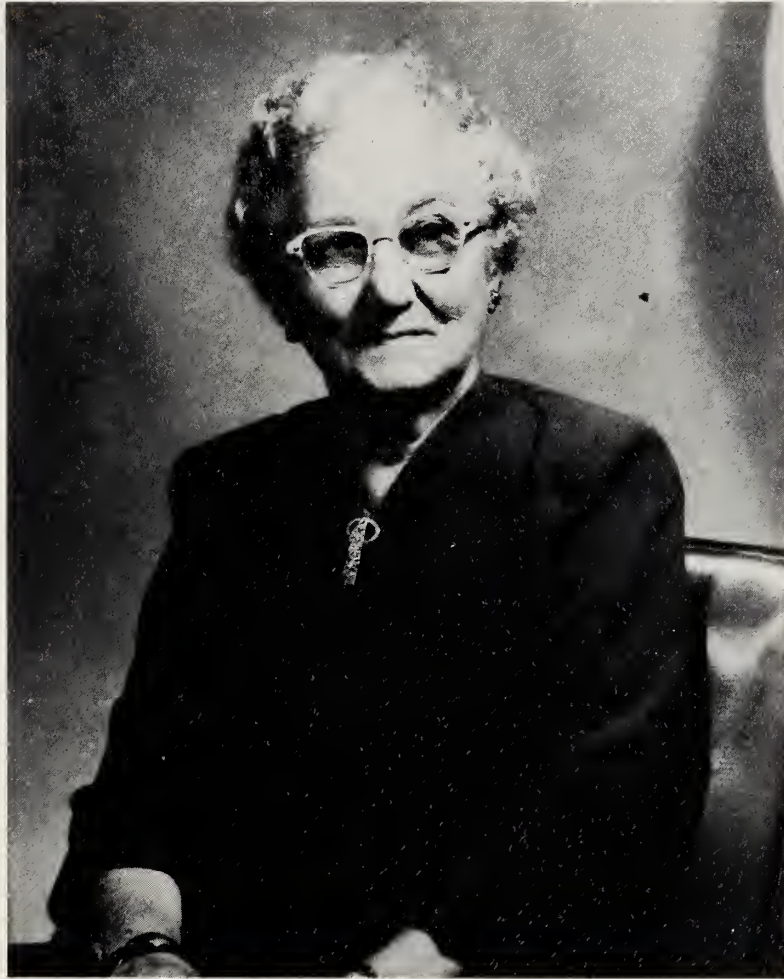
ORGANIZATIONS

SPORTS

ADVERTISEMENTS



# Dedication



Unaffectedness, conscientiousness, modesty and loving kindness, characterize Mrs. Leta Hedgepeth. The members of the Senior Class of 1953 who were fortunate enough to have spent a year in her classroom well remember her interest, encouragement and pride in their accomplishments and progress. She was not only a teacher but also a friend and a counselor who inspired the class members to do their best. Her interest in the students was not limited to school alone but was carried over to the activities of the home, the church, and the community.

We, the Senior Class of 1953, dedicate this edition of the Bear Trap to Mrs. Hedgepeth in recognition of her quiet eminence as a woman, a friend, and a teacher.

---





## *Foreword*

The sound of happy voices from children at play may remind you of the days you spent in high school. This tree, which is the sentinel to our play ground, could tell many tales of happiness it had the gift of speech.

May this edition of the Bear Trap serve as a sentinel to your memory of the classroom activities, the social events, and the thrilling athletic contests which filled the span of years that you spent in the Elm City High School.





*Faculty*





MR. P. T. FUGATE  
 Supt. Elm City Graded Schools  
 Roanoake College; A.B.  
 Columbis Un. Graduate Study  
 U.N.C. Graduate Study

*Clara Bass*  
 MISS CLARA BASS  
 A.C.C.; A.B.  
 French History



MR. C. L. BATTEN  
 N.C. State; B.S.  
 Agriculture



*The best of everything  
 always is a very  
 good student.  
 W. R. Beaman*

MR. W. R. BEAMAN, JR.  
 A.C.C.; A.B.  
 English  
 Social Studies



MISS BARBARA LEWIS  
 W.C.U.N.C.  
 Certificate in Accounting  
 Secretary

MISS VELMA BLAND  
 E.C.C.; B.S.  
 Social Studies  
 English





*Good wishes to a very good student. Sue Boykin*

MISS SUE A. BOYKIN  
W. C. U. N. C.; B. S.  
Home Economics

MRS. HELEN M. SIMPSON  
E. C. C.; A. B.  
English



MRS. SADIE M. BRASWELL  
Duke; A. B.  
Mathematics

MRS. EDITH L. SKINNER  
E. C. C.; B. S.  
Business Education  
English



MRS. JEANNETTE C. FARMER  
W. C. U. N. C.; B. S.  
Science

*Mrs. Jeannette C. Farmer*

MRS. LILLIAN P. SKINNER  
A. S. T. C., Library Science  
E. C. C.; A. B.



MR. J. T. ODOM  
U. N. C.; A. B.; M. A.  
Social Studies  
Physical Education  
Coach

MRS. LOUISE G. WINSTEAD  
W. C. U. N. C.; B. S.  
Music





It's really very simple, class!

Attention, Please!

# SCHOOL

Ah! Saved by the 3:20 bell.

Open those mouths, boys!

Better get back!  
It might explode.

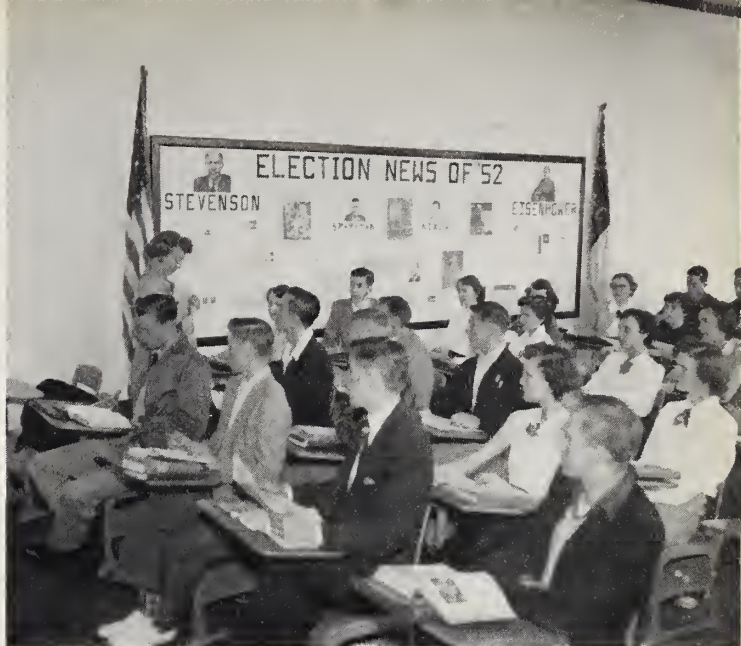






Get in line, please!

Miss Bass brings the Seniors  
up to date about the Election.



# DAY

Position . . . . . go!



Oh, no! Not hot dogs again!  
Food and conversation!







CYNTHIA  
ROTH



BETSY  
WELLS



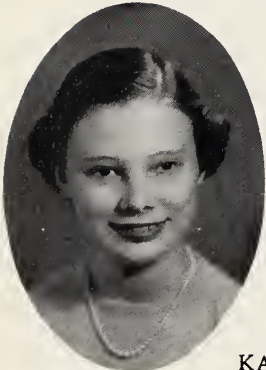
MARIANNE  
DAVIS



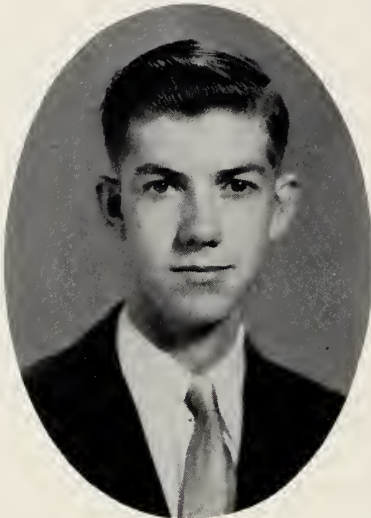
MARY ANN  
BRASWELL



JOAN  
EDWARDS



KATHRYN  
WINSTEAD



Editor-in-Chief  
GERALD WALSTON



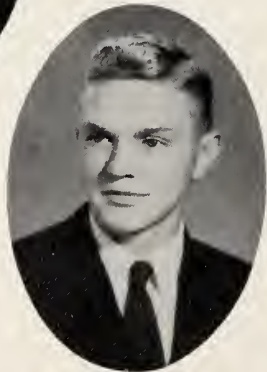
GLADIOLA  
JOYNER



DON  
PRIDGEN



JO ANNE  
CRUMPLER



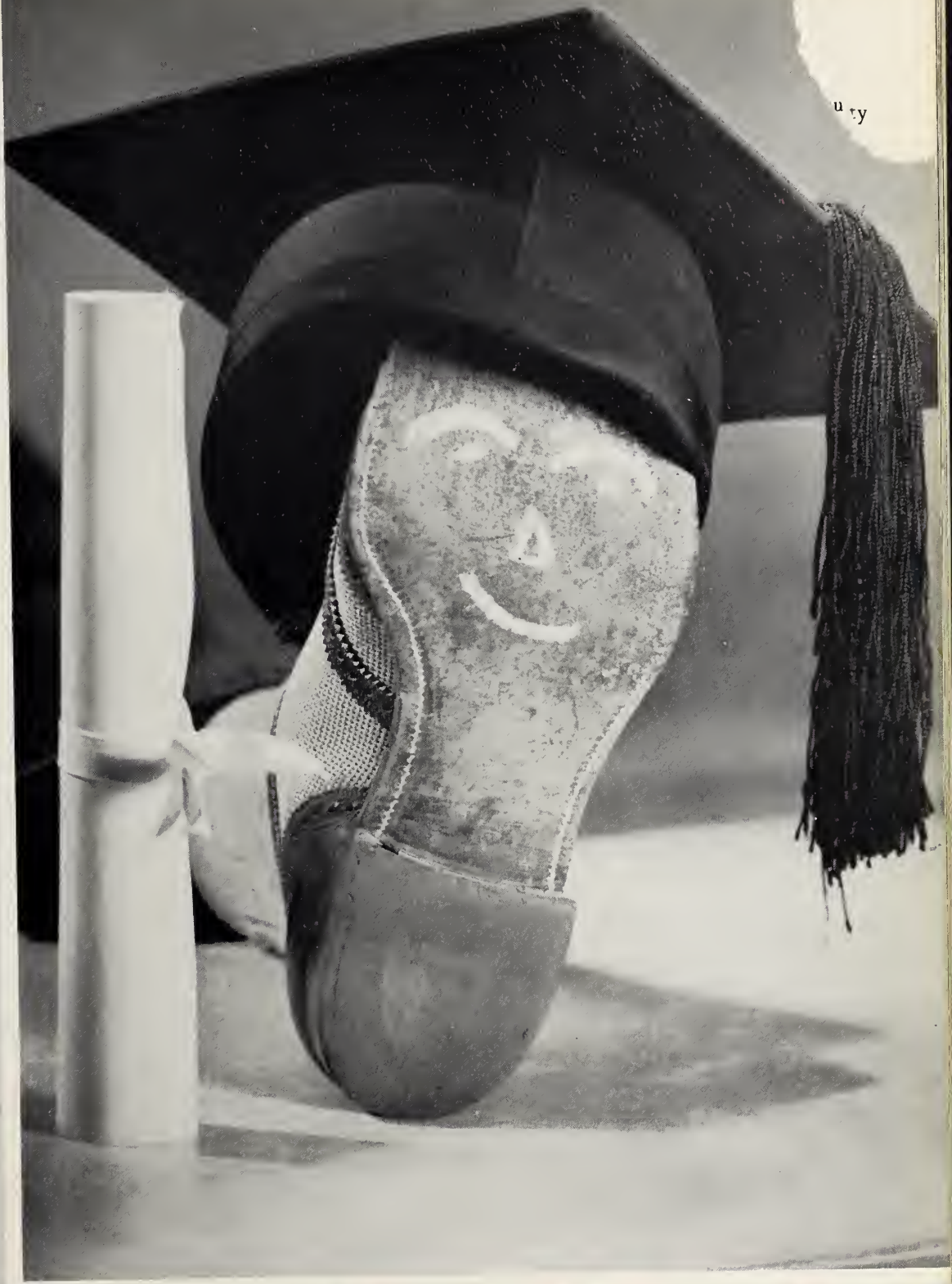
DICKIE  
GREENE



RAEFORD  
FLOWERS



CUYLER  
FARMER



uty

# Seniors <sup>★</sup>



# SENIOR OFFICERS



CLASS MOTTO  
 "Follow your honest con-  
 victions, and be strong."

CLASS FLOWER  
 Yellow Rose

CLASS COLORS  
 Black and Gold

JACK JOBE	-----	President
RAEFORD FLOWERS	-----	Vice President
CYNTHIA ROTH	-----	Secretary
JO ANNE CRUMPLER	-----	Treasurer

## SENIOR SPONSORS

MRS. JEANETTE FARMER

MISS VILMA BLAND



ANNIE MORRIS BARNES

Transferred from Charles L. Coon 3; Band 1, 2, 3, 4.

LESTER JEAN BATCHELOR

Transferred from High School, Florence, S.C.; Student Council 1; Safety Patrol 1, 3; Class Officer 2, 4; Cheerleader 3, 4; Beta Club 3, 4; Officer 3; Chorus 3, 4; Bear Hi Staff 3; FFA Sweetheart 3; 4-H Club 2.

DONALD BEST BARNES

Chorus 1, 2, 3, 4; FFA 1, 2, 3, 4, Officer 4; Football 1, 2, 3; Bus Driver 4.

MARY ANN BRASWELL

Band 1, 2, 3, 4, Officer 2, 3; Basketball 1, 2, 3; Safety Patrol 2; Cheerleader 3, 4; Beta Club 3, 4; Bear Trap Staff 4; Chorus 1, 2, 3, 4, Accompanist 1, 2, 3, 4.

*I wish you the best of everything, "Breezy." You are a very cute and (sometimes) sweet girl.*

DONALD WOODSON CARTER  
Transferred from Franklinton, N.C. 2; Chorus 2, 3, 4; Football 3, 4.

*Here's wishing a cute and swell gal the very best always. I hope you will enjoy your junior and senior years as much as I did mine. Love, Daisy Ann*

MARIANNE DAVIS  
Chorus 1, 2, 3, 4; Beta Club 3, 4; FHA 1, 2; Safety Patrol 1, 4; Bear Hi Staff 3; Bear Trap Staff 4; Class Officer 3, 4.

JO ANNE CRUMPLER

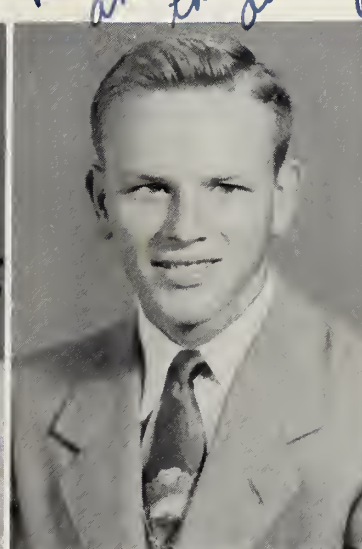
Chorus 1, 2, 3, 4; Student Council 2, 3, 4; Officer 3, 4; FHA 1, 2, 3, 4, Officer 4; Beta Club 3, 4; Bear Hi Staff 3; Bear Trap Staff 4.

ESTHER MARIE DAWES

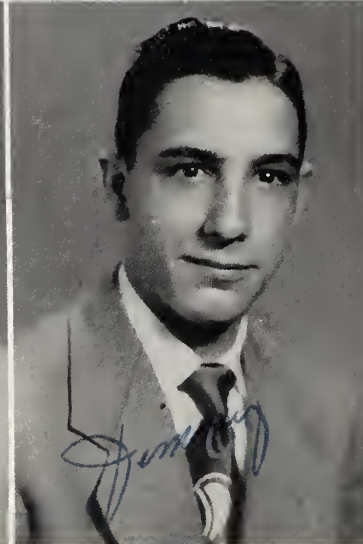
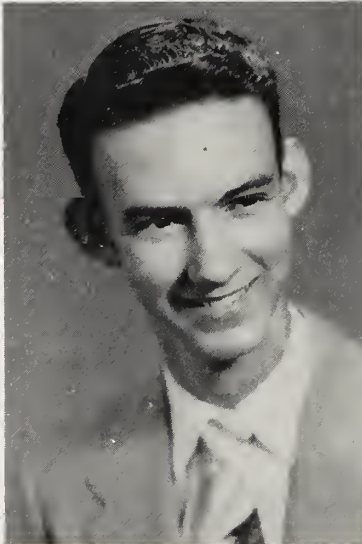
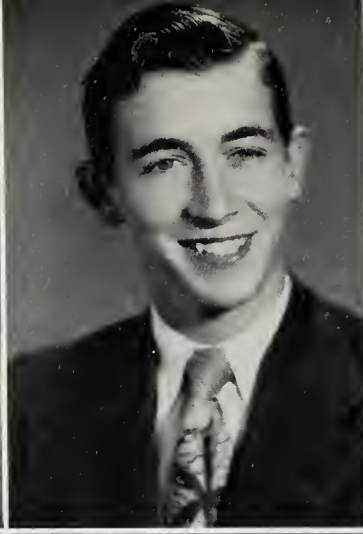
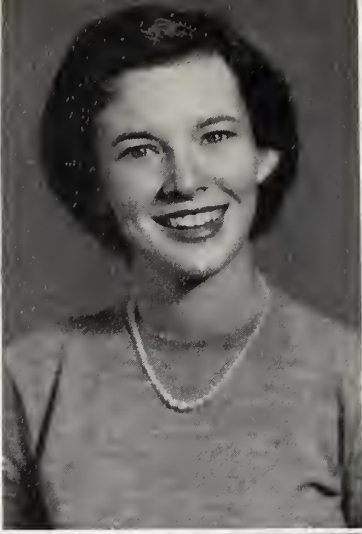
FHA 1, 2, 3, 4; Safety Patrol 1, 2, 3, 4; 4-H Club 1, 2.

*Best of luck to a cute and new girl. Remember the Saturday night dance. Jo Anne*

*Best of luck always to a very cute and sweet girl. Esther*







MELVIN JEAN DIXON  
Class Officer 1, 2; 4-H Club  
1, 2; Chorus 1, 2, 3, 4; Safety  
Patrol 1, 2, 3; Bear Hi Staff  
3; Ensemble 4.

JOAN DORIS EDWARDS  
Class Officer 1, 2, 3, 4; Beta  
Club 3, 4, Officer 3, 4;  
Safety Patrol 1; Bear Trap  
Staff 4; Bear Hi Staff 3;  
Chorus 1, 2, 3, 4, Officer 3.

CUYLER McCOY FARMER  
FFA 1, 2, 3, 4; Bear Hi Staff  
3; Bear Trap Staff 4; 4-H  
Club 1; Chorus 1, 2, 3, 4;  
Quartet 3; Baseball 3, 4;  
Ensemble 4.

HORACE GLENN FLORA  
FFA 1, 2, 3, 4, Officer 3;  
Football 3, 4.

JO ANN FLOWERS  
Band 1, 2, 3, 4; Chorus 4;  
4-H Club 2, 3; Basketball  
2, 3; Beta Club 3, 4; Cheer-  
leader 3; Class Officer 3.

RAEFORD LEE FLOWERS  
Transferred from Rock  
Ridge 2; Class Officer 4;  
FFA 1, 2; Bear Trap Staff 4.

JAMES EVERETT FREEMAN  
Transferred from Coopers 2;  
FFA 1, 2, Officer 1; 4-H  
Club 1; Student Council 2, 3;  
Bus Driver 4.

ROBERT LEON GAY  
FFA 1, 2, Officer 1, 2; Foot-  
ball 3, 4; Beta Club 3, 4;  
Class Officer 4.

*Best of luck  
to a sweet girl  
Cuyler*

*Best  
of luck  
always to a  
real sweet girl.  
Jo Ann  
[Signature]*

*Best of  
luck to a real  
nice and outgoing  
Raeford  
[Signature]*

*May you have  
the best in  
life and continue  
to be as happy  
as now.  
Jimmy  
[Signature]*

RICHARD DOUGLAS GREENE

Baseball 1, 2, 3, 4; Basketball 2, 3, 4; FFA 1, 2, 3, 4; Officer 2, 3, 4; 4-H Club 1, 2; Student Council 4; Officer 4; Class Officer 1; Bear Trap Staff 4.

*Best wishes to you and your future algebra classes.  
Keep up the good work.  
Your friend  
Dickins*

MYRA PAULA HAYES

4-H Club 1; Chorus 1, 2, 3, 4; FHA 1, 2, 3, 4; Safety Patrol 1, 2, 3, 4.

MARVIN EUGENE HAWLEY

FFA 1, 2, 3, 4, Football 2, 3, 4.

*Best wishes to you and your future algebra classes.  
Jack*

MILDRED LOIS JENKINS

FHA 1, 2, 3; Chorus 1, 2, 3, 4; 4-H Club 1, 2; Safety Patrol 1, 2, 3, 4.

ROBERT EARL JOBE

FFA 1, 2; Baseball 1, 2, 3, 4; Beta Club 3, 4; Football 3, 4; Bus Driver 3, 4; Class Officer 3, 4; Bear Hi Staff 3.

*Best wishes to you.  
Thomas*

GLADIOLA JOYNER

Bear Hi Staff 3; Bear Trap Staff 4; FHA 1, 2; Chorus 1, 2, 3, 4; 4-H Club 1, 2, 3, 4; Safety Patrol 1, 2, 3, 4.

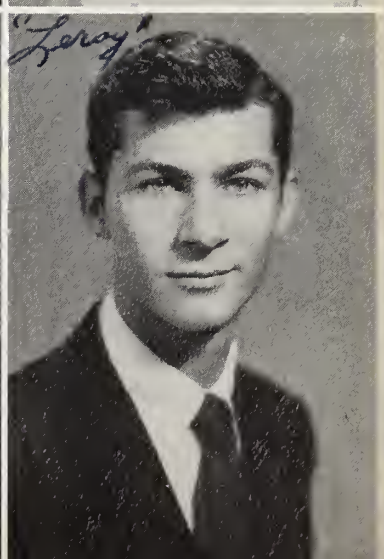
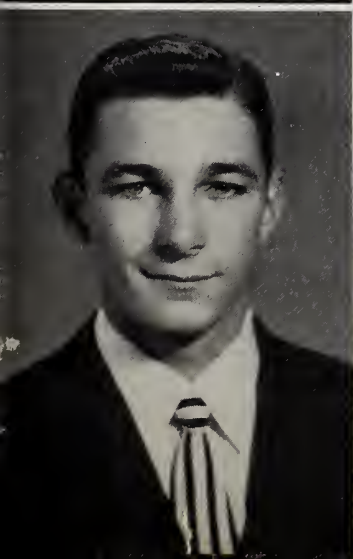
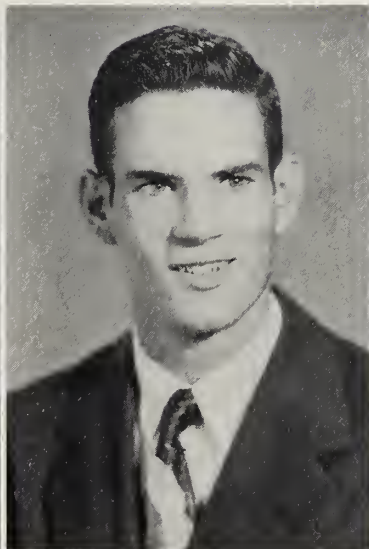
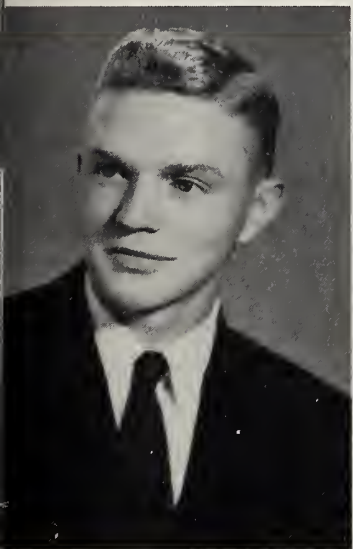
*Have enjoyed having Algebra with you.  
Bobby L.*

CHARLES THOMAS JOHNSON

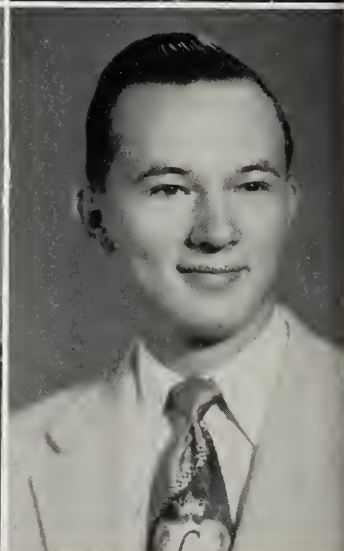
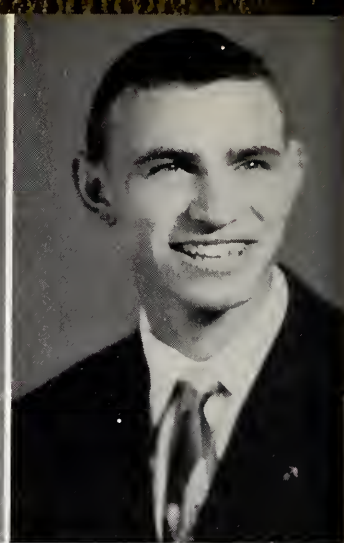
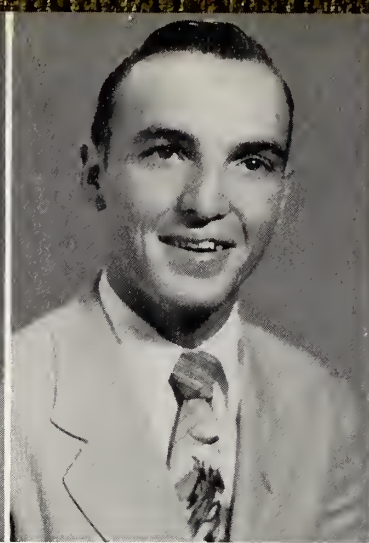
Band 1, 2, 3, 4; Chorus 1, 2; 4-H Club 1, 2, 3; FFA 1, 2, 3, 4; Baseball 1, 2.

BOBBY LEE LANCASTER

Baseball 1, 2, 3, 4; Chorus 1, 2, 3, 4; 4-H Club 1; Class Officer 1, 2, 4; Bear Hi Staff 3.







ELLA REE LANGLEY  
4-H Club 1; Chorus 1, 2, 3, 4; Safety Patrol 1, 2, 3, 4,  
Bear Hi Staff 3; Class Officer 1.

SHIRLEY ANN LUCAS  
Chorus 1, 2, 3, 4; FHA 1, 2, 3, 4; Student Council 3, 4;  
Beta Club 3; 4, Safety Patrol 1.

PATSY LOUISE PARKER  
4-H Club 1; Chorus 1, 2, 4; FHA 1, 2, 3, 4; Student  
Council 1, 2, 3, 4; Class Officer 4; Safety Patrol 1, 2,  
3, 4.

BETTY JEAN PETWAY  
4-H Club 1; Chorus 1, 2, 3, 4; Safety Patrol 3; Class  
Officer 1.

ROBERT WINSTEAD O'BRYANT  
4-H Club 1; FFA 1, 2, 3; Bus Driver 3, 4.

JAMES OLLIN PARKER  
Football 1, 2, 3, 4; Basketball 2, 3, 4, Beta Club 3, 4;  
FFA 1, 2.

ALICE JEANNETTE PITTMAN  
Student Council 1, 2, 3, 4, Officer 2, 3; FHA 1, 2, 3, 4,  
Officer 4; Beta Club 3, 4; Chorus 1, 2, 3, 4; 4-H 1, 2, 3,  
4, Officer 1; Marshal 3; Class Officer 1, 2; Safety Pa-  
trol 1, 2, 3; Ensemble 4; Accompanist 3, 4.

LEONARD GRADY PITTMAN  
FFA 1, 2, 3, 4; Bus Driver 3, 4; 4-H Club 1, 2, Class Of-  
ficer 4; Baseball 2, 3, 4.

*Best of luck!*

FRED McDONALD PRIDGEN, JR.

FFA 1, 2, 3, 4; Student Council 1, 2, 3; Beta Club 3, 4; Class Officer 1; Basketball 2, 3, 4; Bus Driver 4; Bear Trap Staff 4.

DELLA MAGNOLIA ROBBINS

4-H Club 1, 2; Chorus 2, 3, 4; Safety Patrol 1, 2, 3.

BETTY CAROLYN ROBBINS

Class Officer 1; Bear Hi Staff 3; FHA 1, 2; 4-H Club 1, 2, 3, 4; Chorus 1; Safety Patrol 1, 2, 3, 4.

JIMMY RICHARD ROBBINS

FFA 1, 2, 3, 4; Baseball 2, 3, 4; Beta Club 3, 4.

*Neighbor  
Best wishes to  
Hood  
very sweet & cute  
got.*

CLEORA MAUDE ROGERS

4-H Club 1, 2, 3, 4; Officer 2; Chorus 1, 2, 3, 4; FHA 1, 2, 3, 4; Class Officer 1.

JOAN WALKER SHARPE

Chorus 1, 2; 4-H Club 1, 2, 3, 4; Safety Patrol 1, 2, 3, 4.

CYNTHIA MILTON ROTH

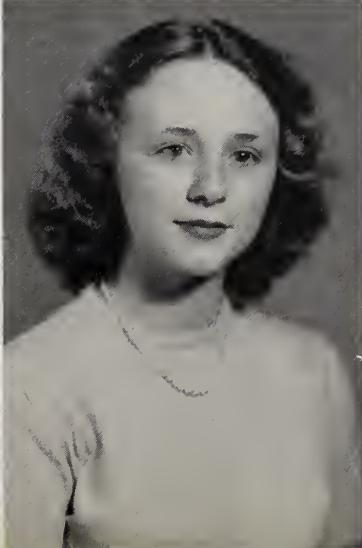
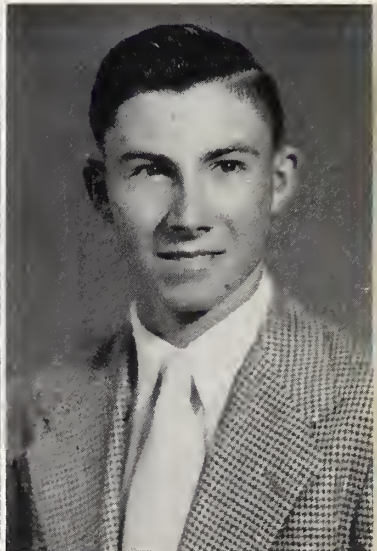
Transferred from Council Rock Jr. High School, Newton, Pa.; Chorus 2, 3, 4; Safety Patrol 2, 3, 4; Class Officer 2, 3; Beta Club 3, 4; Student Council 3; Marshal 3; Bear Hi Staff 3; Bear Trap Staff 4.

MARY SHIRLEY SHARPE

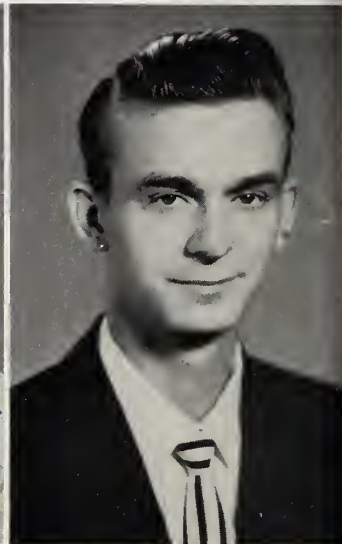
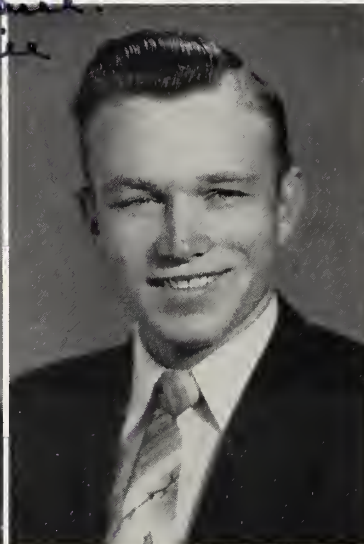
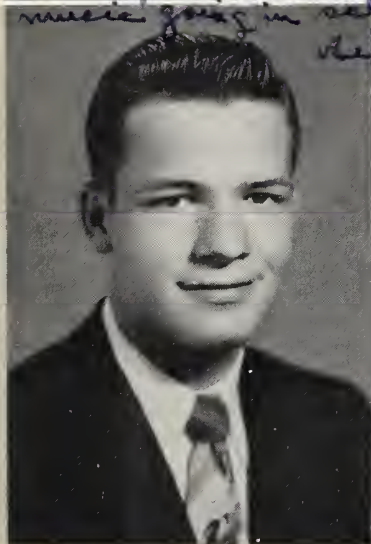
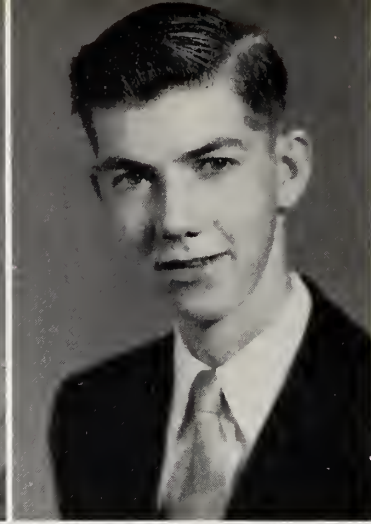
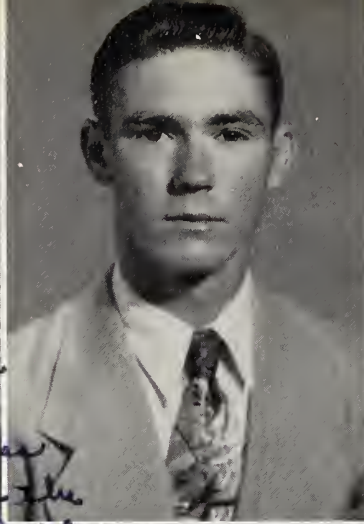
Chorus 1, 2, 3, 4; FHA 1, 2; Safety Patrol 1, 2, 3, 4; Bear Hi Staff 3; Beta Club 3, 4.



*Best of friends to  
very cute girl.*







**WILLIAM GRAY SHARPE, JR.**  
 Student Council 1; 4-H Club 1, 2; Beta Club 2, 3, Of-  
 ficer 4; Quartet 1, 2, 3; Ensemble 4; Class Officer 3;  
 Basketball 1, 2, 3, 4; Bear Hi Staff 3; Band 1, 2, 3, 4,  
 Officer 2, 3; Chorus 1, 2, 3, 4.

**GLENN WALLACE**  
 Student Council 1; Chorus 1; Band 1, 2, 3; FFA 1, 2, 3,  
 4; Football 3, 4.

**BRAXTON EARL WEBB**  
 Football 1, 3, 4; 4-H Club 1, 2, 3, 4; Basketball 3, 4;  
 FFA 1, 2; Bus Driver 4.

**ROBERT EARL WEEKS**  
 FFA 1, 2, 3, 4; 4-H Club 1, 2; Bus Driver 4.

**GERALD DENVER WALSTON**  
 Transferred from Charles L. Coon, 1; Bear Trap Staff  
 4; Bear Hi Staff; Chorus 3, 4; Ensemble 4; Beta Club 3,  
 4; Marshal 3.

**JOYCE WEAVER**  
 Chorus 1; 4-H Club 1, 2, 3, 4; FHA 1, 2; Class Officer  
 1; Basketball 3.

**BETSY CARTER WELLS**  
 Student Council 1; Class Officer 1, 2, 3; Bear Hi Staff  
 3; Beta Club 3, 4, Officer 4; Band 1, 2, 3, 4, Officer 3;  
 Basketball 1, 2, 3, 4; Marshal 3; Safety Patrol 1, 2; Bear  
 Trap Staff 4.

**AMOS RUDOLPH WHITEHEAD**  
 FFA 1, 2, 3, 4; Baseball 1, 2, 3, 4; Bus Driver 3, 4.

REXBELLE WIGGS

Chorus 1, 2, 3, 4; Quartet 3; Baseball 3, 4; Bear Hi Staff 3; Class Officer 2, 3, 4.

JANET RUTH WILLIAMS

Class Officer 1, 2; Beta Club 3, 4; Officer 4; 4-H Club 1, 2, 3, 4, Officer 1, 2, 3; FHA 1, 2, 3; Chorus 1, 2, 3, 4; Accompanist 3, 4; Student Council 1, 2; Cheerleader 3, 4; Safety Patrol 2, 3, 4; Marshal 3; Ensemble 4.

*May the best of you be yours. Singing with you are all yours.*

DORIS GRAYNELL WILLIFORD

FFA 1, 2; 4-H Club 1, 2, 3; Chorus 1, 2; Safety Patrol 1, 2, 4.

KATHRYN ATKINSON WINSTEAD

Band 1, 2, 3, 4, Officer 2, 3, 4; Chorus 1; Marshal 3; Basketball 1, 2, 3, 4; Safety Patrol 1; Student Council 1; Class Officer 1, 3; 4-H Club 1; Beta Club 3, 4, Officer 4; Bear Trap Staff 4.

CARROLL VALMONTE WINSTEAD

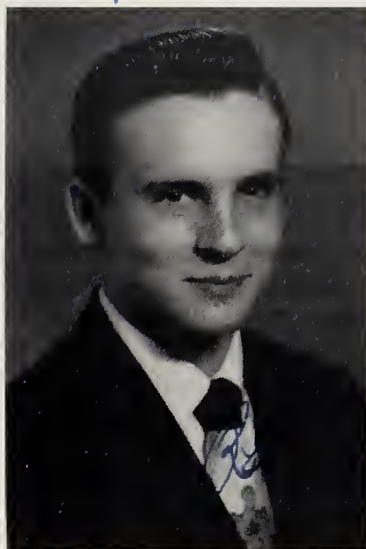
FFA 1, 2; Bus Driver 2, 3, 4.

*Good Luck Always Carroll*

THELMA REBECCA WINSTEAD

4-H Club 1; Chorus 1, 2, 3, 4; Safety Patrol 2, 3; Girls' Trio 3; Girls' Quartet 3. Double Quartet.

*May you always have the best, Louise; you deserve it! Kathryn*





# WE REMEMBER

When the doors of Elm City High School opened for the school year of 1948-1949, ninety-six eager freshmen entered a new world of adventure---high school. Yes, at last we were really in high school.

Oh, our freshman year! Our class was so large that we had to be divided into three sections. With Mrs. Pridgen, Mrs. Farmer, and Mrs. Simpson as sponsors, and Don Pridgen and Glenn Wallace as class presidents, we began our year's work. It can certainly be said, without any boasting, that our class soon proved to be capable of taking its place in the high school world. Many of our more musically-minded class members were in the band and glee club, while several of our class members took their places on the athletic teams of the school. Our one social event of the year was a weiner roast. Shall we ever forget all the rain that poured down on us that night?

Sophomores! Yes, most of us were together again in our second year of high school--but some few remained freshmen. With our group smaller, we were divided into two sections with Mrs. Farmer and Mrs. Pridgen as our class sponsors. With Betsy Wells and Lester Jean Batchelor as our class presidents, we had a pleasant, but quite uneventful year.

If our sophomore year was uneventful; then the lost time was made up for as we became juniors. Gosh, it seems as though that year was just one mad rush after another! First of all, we elected Jack Jobe and Bill Sharpe as class presidents. Mrs. Farmer and Mrs. Pridgen stood by us again. We shall always remember the confusion and discussion that accompanied our selecting class rings and, when the rings finally came, how much trouble we had getting them out of the post office. But were we proud of them! Shall we who worked on the newspaper staff ever forget how relieved we were finally to get the newspaper finished? We published but one---one was enough! There was REALLY some rushing going on as time for the Junior-Senior Banquet and prom drew near. Remember all those green shamrocks and yellow balloons? Yes, we really tried to make the lunch room look like Ireland. Whether we succeeded or not--we all had a wonderful time. March 14 was truly a red-letter day for us. When commencement time rolled around, we bade the graduating class a fond farewell and then looked forward to the next year when we would be graduating.

We reached that final year--the last year of one of the happiest experiences that any of us will ever have. Mrs. Farmer had seen us through all four years. She and Miss Bland were our senior sponsors. Jack Jobe was the class president. Our biggest undertakings for the year were getting out the annual and presenting the senior play. By the time this annual is published, we shall have presented (we hope) a most outstanding play; we shall have enjoyed the sights of Washington, D.D.; and we shall have been entertained at a banquet and prom given by the juniors. Yes, we still have much to look forward to; we surely have much to look back on, remembering the many, many good times we have shared. Can we ever forget them??

Class of '53  
Betsy Wells, HISTORIAN



*Favorites* <sup>☆</sup>





Most Studious  
JEANNETTE PITTMAN  
GERALD WALSTON



Most Handsome Boy  
DICKIE GREENE

Prettiest Girl  
JO ANN CRUMPLER



Best All-Around  
JOAN EDWARDS  
DON PRIDGEN

Most Talented  
MARY ANN BRASWELL  
BILL SHARPE

Most Likely to Succeed  
BETSY WELLS-BILL SHARPE







Cutest  
 PATSY PARKER  
 BOBBY LANCASTER



Most Dependable  
 JOAN EDWARDS  
 GERALD WALSTON



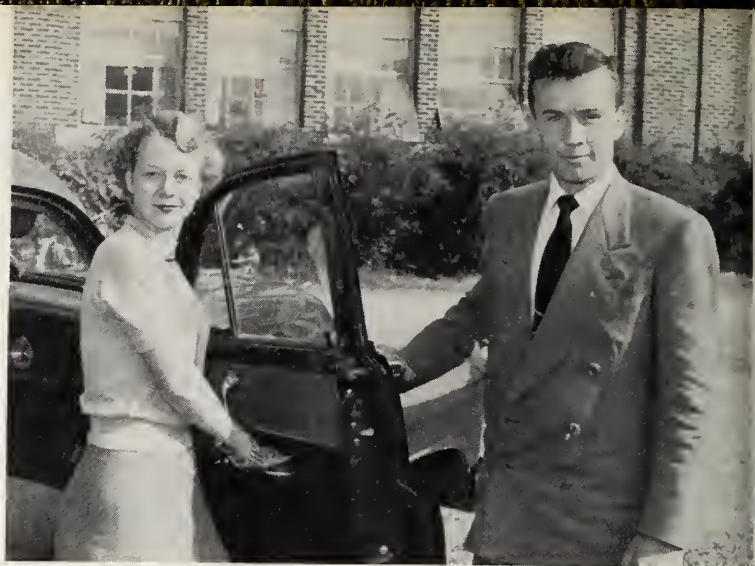
Most Popular  
 LESTER JEAN BATCHELOR  
 JACK JOBE

Wittiest  
 JEAN DIXON  
 DONALD BARNES

Best Dressed  
 LESTER JEAN BATCHELOR  
 DICKIE GREENE

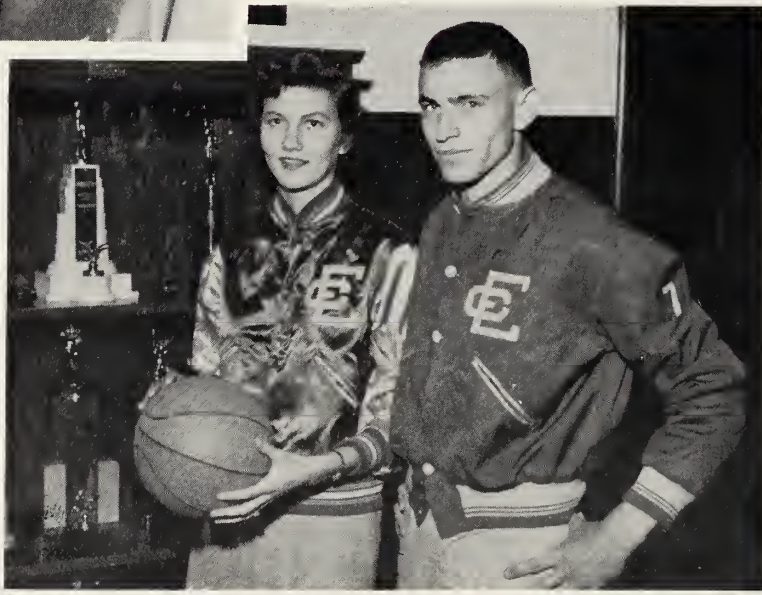






Most Courteous  
JO ANNE CRUMPLER-BILL SHARPE

Most Conceited  
JEANNETTE PITTMAN  
REX WIGGS



Most Athletic  
BETSY WELLS  
JAMES PARKER



Friendliest  
JO ANNE CRUMPLER  
CUYLER FARMER



Biggest Flirts  
JO ANN FLOWERS  
REX WIGGS

# LAST WILL AND TESTAMENT

ELM CITY, NORTH CAROLINA  
WILSON COUNTY

We, the Senior Class of the Elm City High School, being of sane mind after twelve years of unceasing laborious grind, do hereby declare this document to be our last will and testament.

## Article I--

We give and bequeath to the school our undying loyalty. The school has held before us constantly the principle that an ounce of loyalty is worth more than a pound of cleverness. We thereby trust that the school can use our loyalty as a leaven in graduating the incoming Senior Class.

## Article II--

To Mr. Fugate, our Superintendent, we wish to leave the thought that there was never a truer, more understanding friend to each of us, than he. May his life be filled with the best of everything.

## Article III--

To our understanding Faculty we bequeath our wholehearted appreciation for their patience during the past few years.

## Article IV--

To the members of the graduating class of 1954, we hope that you may realize sooner than we did the importance of your Senior year. Though it may be full of joy, the last few days will be laden with tears of happiness and sorrow.

To the up and coming Juniors we leave best wishes that your prom will be a great success and our sincere hope that you will miss as many classes as we did and have as much fun as we had in planning ours.

To the sophisticated Sophomores, who think they know all the answers, we leave this thought-- you have a lot to learn!

To the incoming Freshmen we leave the assurance that they are entering the first of four glorious years. Our experiences in the past show that school days which are well spent pay high dividends. Fill each day with periods of serious work and determination. Include music, athletics, and club work to make your program varied and well rounded. This is a means of developing personality and desirable character traits. Don't be too hard on our Sponsors, Mrs. Farmer and Miss Bland, who have guided and watched over us with constant care.

We, the class of '53, having come to a great intersection in our road of life, do hereby, and in witness thereof, set our seal upon this document on this the twenty-sixth day of May, 1953.

CLASS OF '53  
Janet Williams, TESTATOR



# CLASS PROPHECY

As we, the Senior Class of 1953, stand on the threshold of graduation, we look down the corridor of time to a door marked "Future". For many years we have journeyed toward this door with an indomitable spirit that has enabled us to cope with every obstacle that has lain in our pathway. We have climbed the hill of knowledge and have left our prints in the sands of time.

And now with consternation we pause before proceeding determinedly into the realms of the unforeseen.

If, by chance, it were possible for us to defy nature's laws of time and to behold our destinies, we would doubtless be astonished at that which awaits us. Nevertheless, we shall attempt to go into the far reaches of time and come up with what we proclaim as our class prophecy.

As the door is slowly opened, we see our classmates engaged in diverse occupations. Some have been successful in farming, others in law, medicine, teaching, and private business. We see many as housewives and homemakers. The wheel of fortune has visited some who, we notice, are well on their way to high political offices, while adverse circumstances prevail with others. May we have the foundation of character so well formed that when we place our feet straight and sure, and lift our heads in the golden sun, and breathe the air, fresh and pure, we can endure the hardships and accept the good fortunes with no weakening in character!

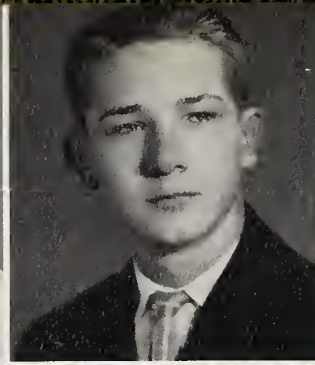
We realize that we are to be the workers and leaders in tomorrow's world. May the fruits of our efforts be rich in good deeds. We prophesy that the class of 1953 will take its place in life and shoulder well the responsibilities that the future holds in store.

CLASS OF '53  
Class Prophetess,  
Jeannette Pittman



★  
*Juniors*

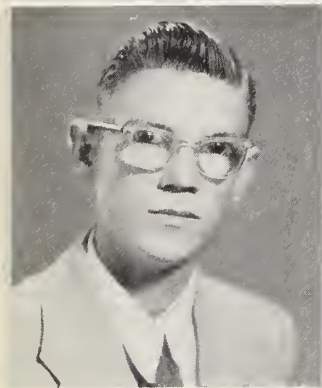




LINDA BATTEN

PATSY BATTS

WILL BULLOCK



BOBBY CAREY

DON COBB

BERTIE LEIGH COOKE

*Best of everything  
to a sweet girl.  
Donald*

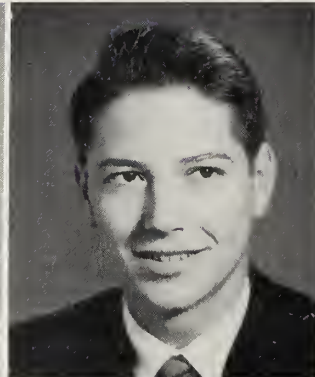
*The best of  
everything to  
a cute girl.  
Lots of luck  
to you! You are a  
may success  
and happiness  
go to a very  
cute and sweet  
girl. Joyce*

*Best of luck  
always to a sweet  
girl. Nita*

ANITA DAVIS

WESLEY DOLES

JAMES DONALD EASON



SARAH EDWARDS

REBECCA FARMER

REATHER FIELDS

*To Louise,  
a very  
cute girl.  
I want to wish you the  
best of everything in  
all your years to come.  
Love,  
Montress Greene*

JOYCE GILLARS

LOUISE GOOCH

MONTRESS GREENE

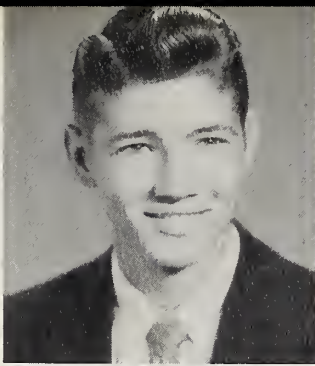




"BILL" GRIFFIN

"LIBBY" GRIFFIN

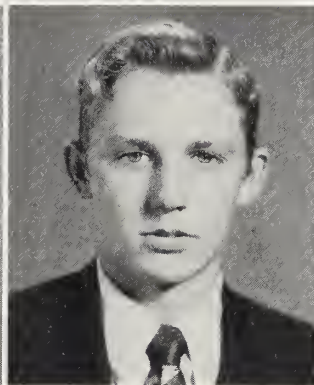
HOLTON HAMM



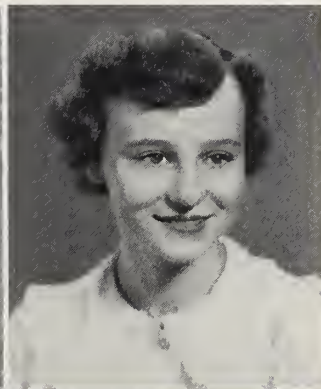
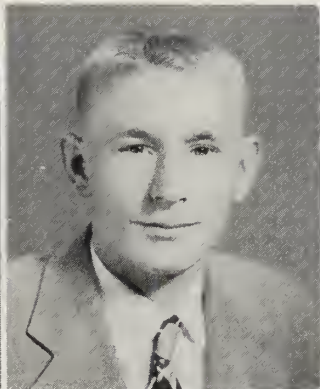
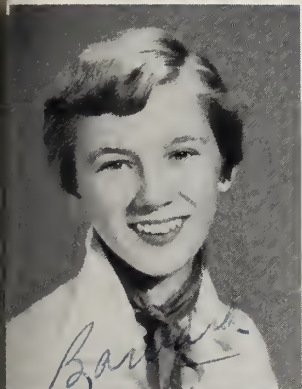
JUSTICE HARDISON

CHARLES HATHAWAY

CRAVEN HUNT



*Lots of luck to a cute girl. I'll be it. Forget Jack. and Oscar. Barbara*



*Best of luck to a cute girl. Mona Gray*

BARBARA JACKSON

EARL H. JONES

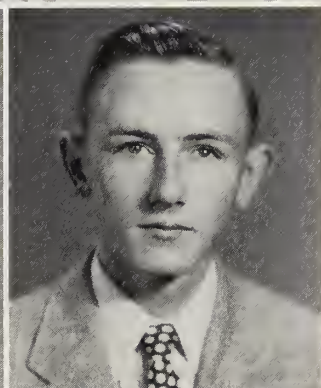
PATTIE JOYNER

*Best wishes to a nice algebra classmate David*

FAYE LUCAS

MONA GREY MATTHEWS

DAVID PETE MOORE

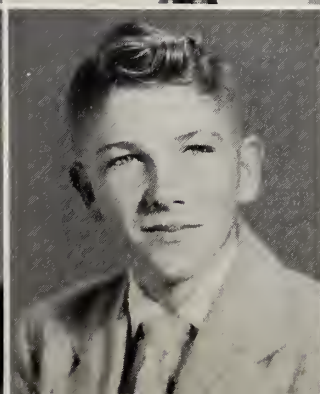
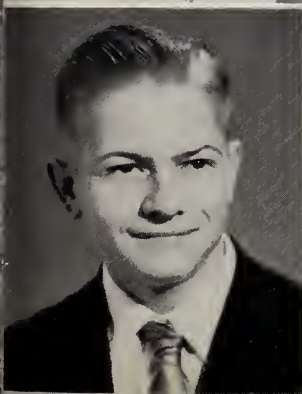


*Best of luck to a very cute girl. Viss...*

PAUL PARKER

VICTOR RACKLEY

WARREN SESSOMS





Best of  
 Luck  
 To a  
 cute girl  
 enjoy  
 your  
 senior  
 year  
 in  
 your  
 new  
 home  
 P

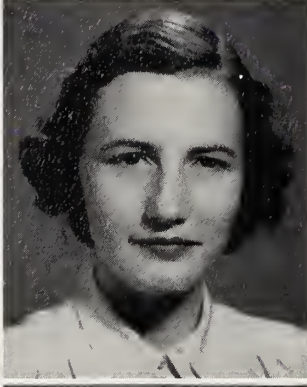
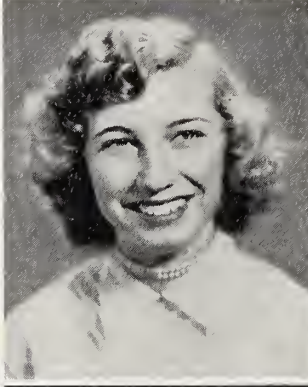
NO  
 PHOTO  
 AVAILABLE



FRANCES TAYLOR

MARIAN TAYLOR

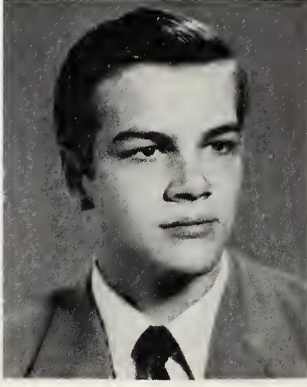
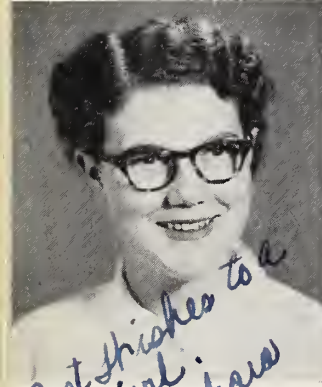
Best of luck always  
 to a sweet, as well  
 as cute, girl.  
 Francis



ELIZABETH ANN TURNER

JOYCE VIVERETTE

LOIS VIVERETTE



BARBARA ANN WILLIAMS

JOYCE WINSTEAD

PAT WINSTEAD

Best wishes to a  
 cute girl.  
 Barbara

Best of Luck  
 to a very nice  
 girl. P.W.

Not Pictured:

M. C. COBB

RUFUS HAWLEY

SHELBY LANGLEY

PAUL MILLANDER

BOBBY SHARPE







# Sophomores



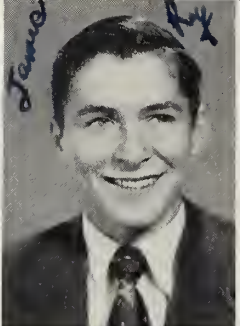
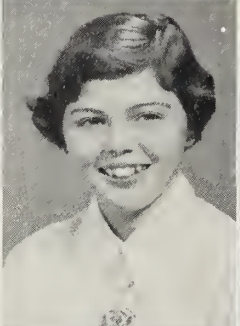
Best wishes  
to a "cute" gal.  
Love ya,  
Loretta Barnes

Annette Barnes  
Loretta Barnes  
Peggy Brice  
Pearline Cooke



Best of luck  
to a swell class  
mate. Good luck to  
you and yours.  
Annette

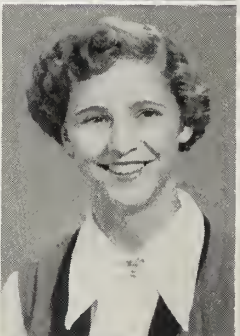
Shirley Dawes  
Georgia Ann Farmer  
James Roy Farmer  
Ruby Jean Farmer



Best of luck to a  
swell friend.

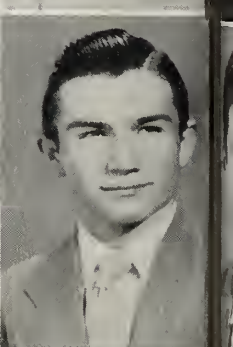
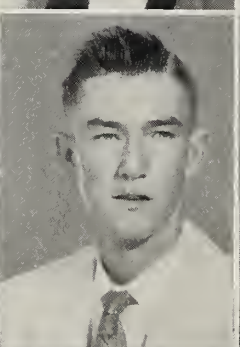
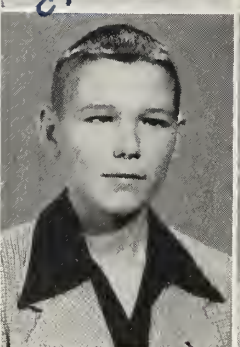
Best of luck  
to you always! Love ya!  
Shirley

Rebecca Gardner  
Myrtle Harris  
Frances Joyner  
Lucy Paul Matthews



Best of luck  
to a  
very nice girl. See  
you next year. Love ya!  
Shelby

Shelby Jean Pridgen  
Billy Ray Robbins  
Marvin A. Robbins  
Marvin Lee Robbins

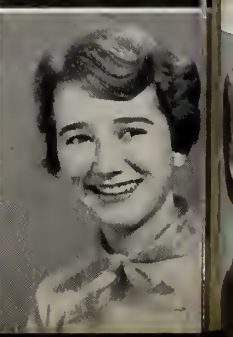
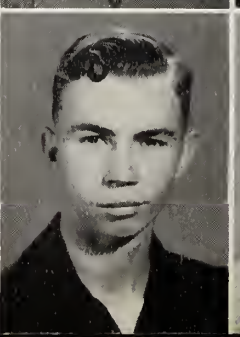
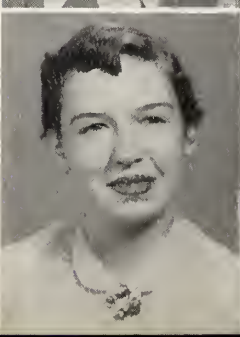


Best of luck  
to a swell gal.  
May we be seeing you  
back at the for many years.  
Margaret

Betty Mae Smith  
Blessin Thorne  
Wallace Troutman  
Faye Vaughan



Faye Watson  
Billy Williams  
Margaret Williams  
Louise Winstead

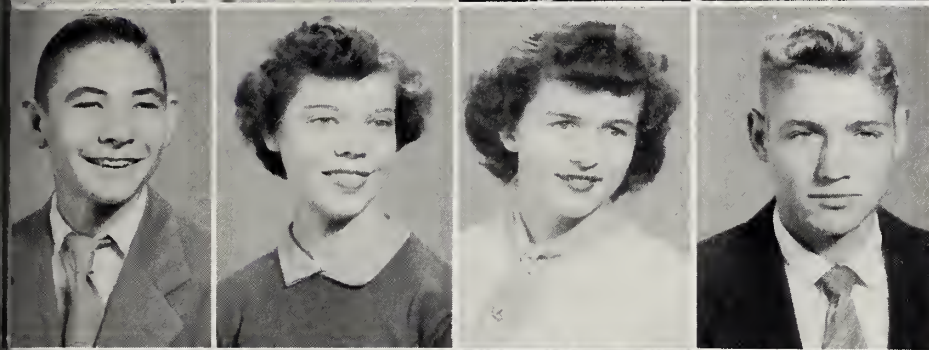






Jean Adams  
Carolyn Barnes  
Oland Barnes  
Herbert Campbell

Best of luck  
to a swell classmate  
Jean



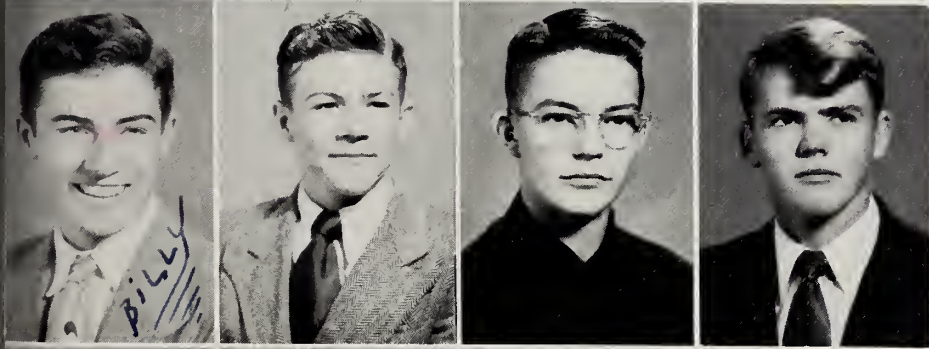
Herman Cobb  
Betty Jean Davis  
Mildred Farmer  
Tom Griffin

Best of luck to a cute  
girl and a sweet one.



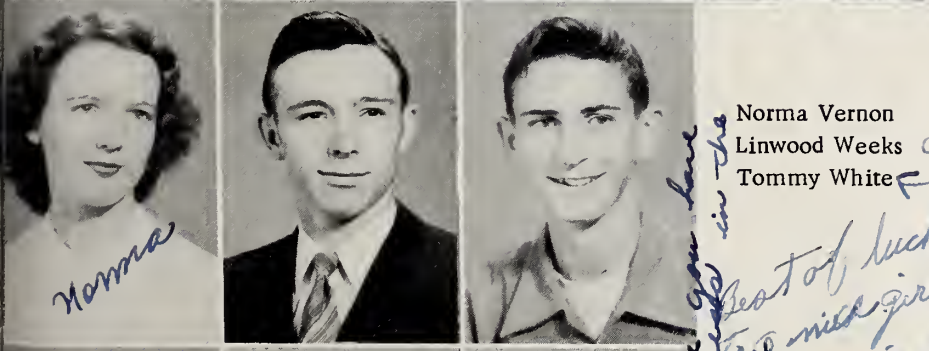
Rachel Jenkins  
Randolph Jenkins  
Sue O'Bryant  
Peggy Quinn

Happy  
May the best of every thing be  
yours, including a kick to  
silly shoes  
a nice girl  
always  
James Ray  
W. Turner



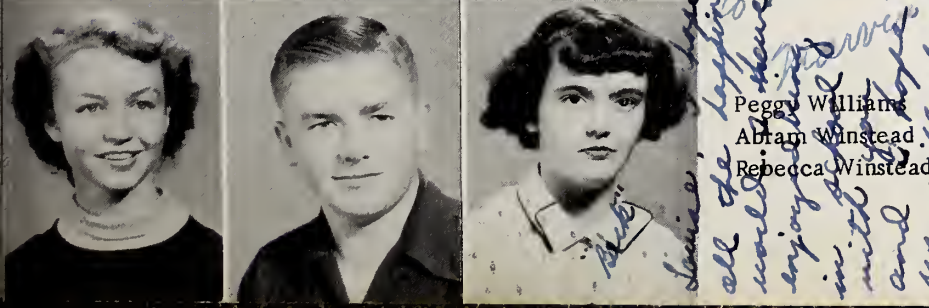
Billy Sharpe  
Boyd Sharpe  
Dick Tyson  
Herman Vaughan

Best of everything  
to a sweet girl.  
Myrtle



Norma Vernon  
Linwood Weeks  
Tommy White

Best of luck to  
a sweet girl. You  
and B. A., keep up  
and laugh.  
Best of luck  
to the coming  
years. Norma



Peggy Williams  
Abram Winstead  
Rebecca Winstead

Very best of luck  
always.  
Wallace Troutman

Leave it, hope you have  
all the happiness in the  
world. I hope  
enjoy every minute  
in school with  
and hope  
we will always  
be together during  
the school.

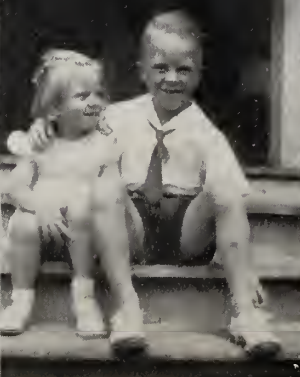
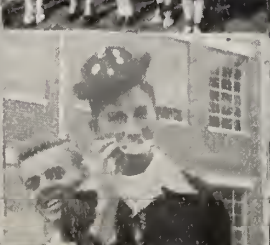




School Days  
1941-42

School Days  
1941-42

SCHOOL DAYS  
1947-48

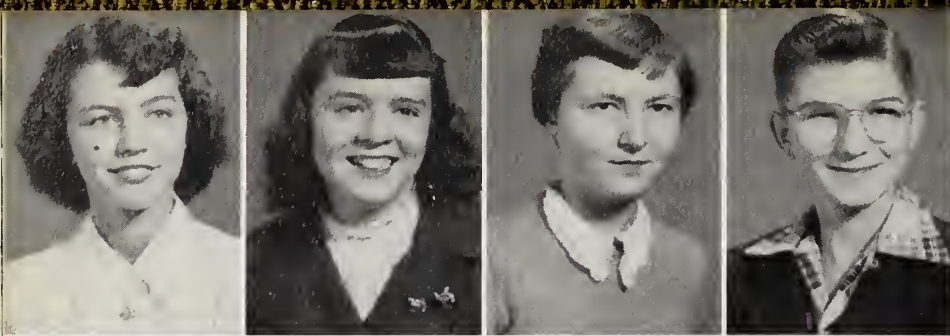




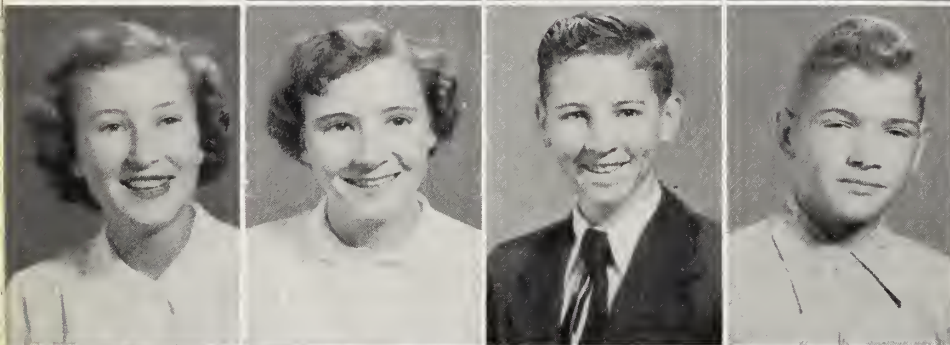


*Freshmen*



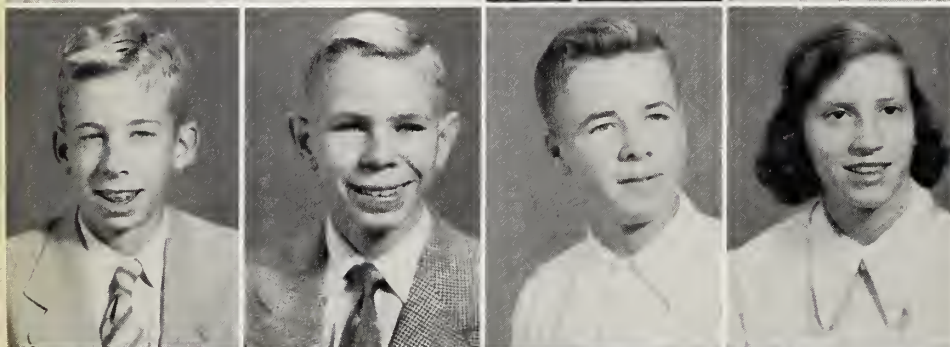


Betsy Adams  
Minnie Ruth Ayers  
Glyderleen Baker  
Guy Batts



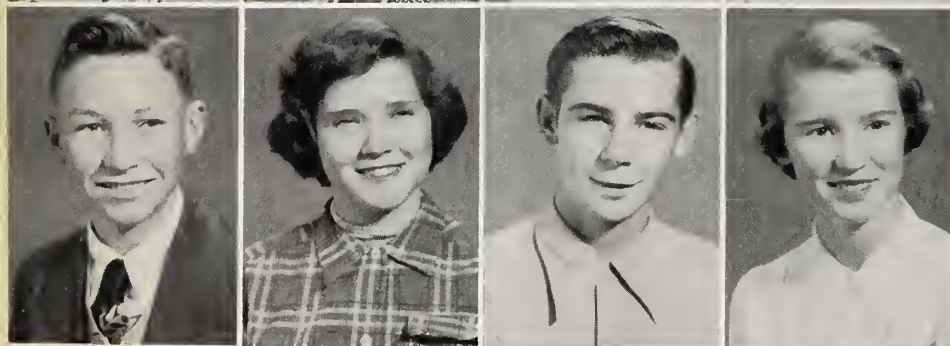
Betty Jean Davis  
Peggy Davis  
Glen Flowers  
Clyde Griffin

*Best luck to a  
very cute girl  
a friend  
"Janice"*



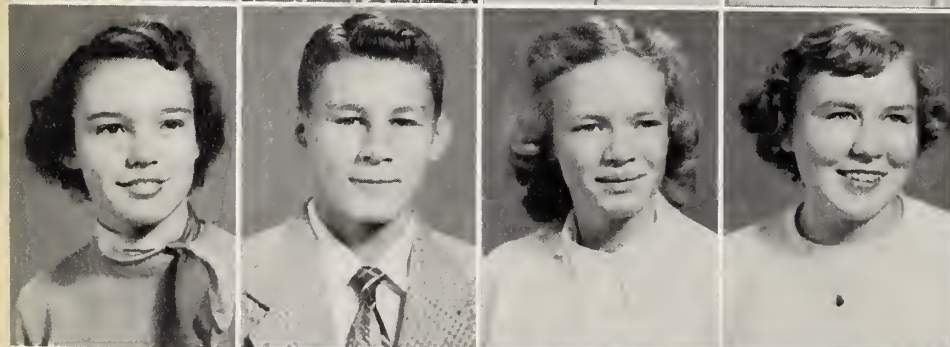
Leslie Hill  
Grady Jackson  
Wilbur Jackson  
Janice Jenkins

*Best luck  
to a sweet girl!  
Anne*



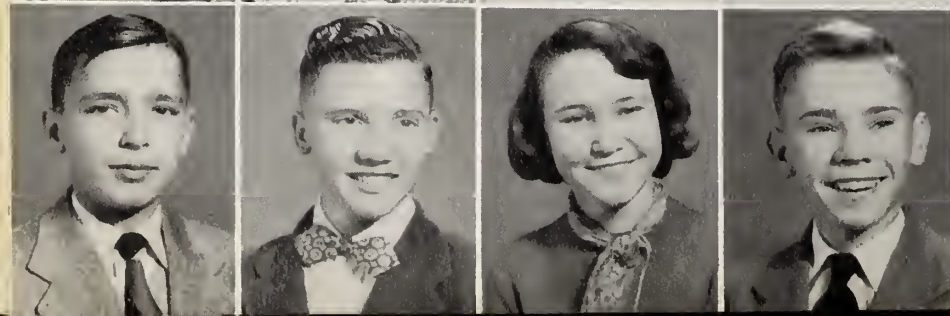
Leon Johnson  
Molly Joyner  
Randolph Matthews  
Anne Owens

*Best of luck to  
a sweet and cute  
girl. Betty Lou*



Betty Lou Robbins  
John Lloyd Sharpe  
Peggy Sutton  
Lois Wiggins

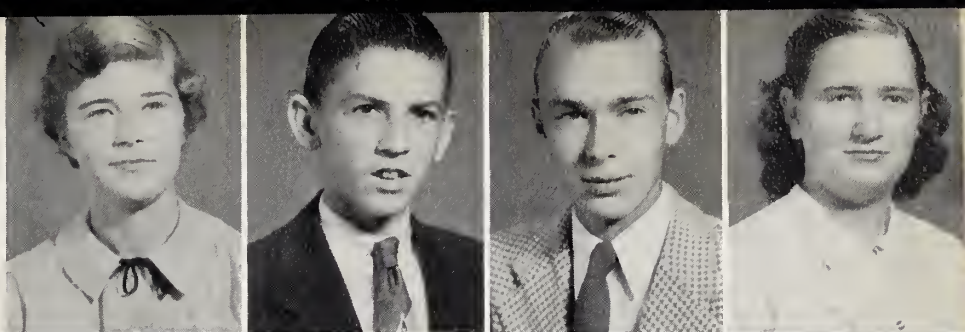
*Best of luck with all the  
boys and everything you do.  
John Lloyd*



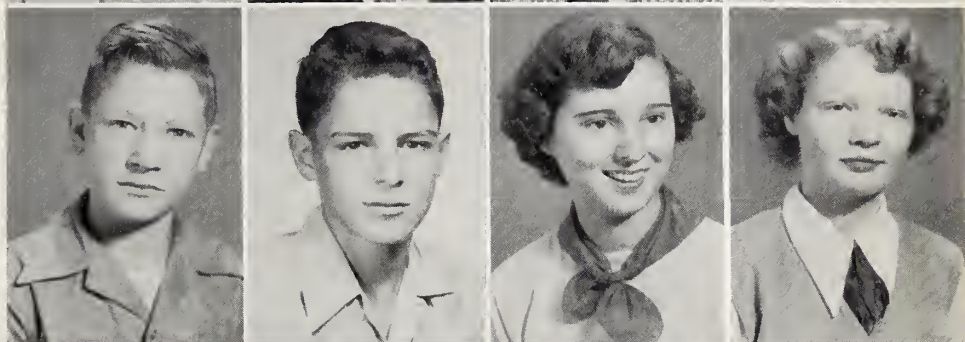
Redman Winstead  
Douglas Ayers  
Shirley Jean Baker  
Bobby Ray Bass



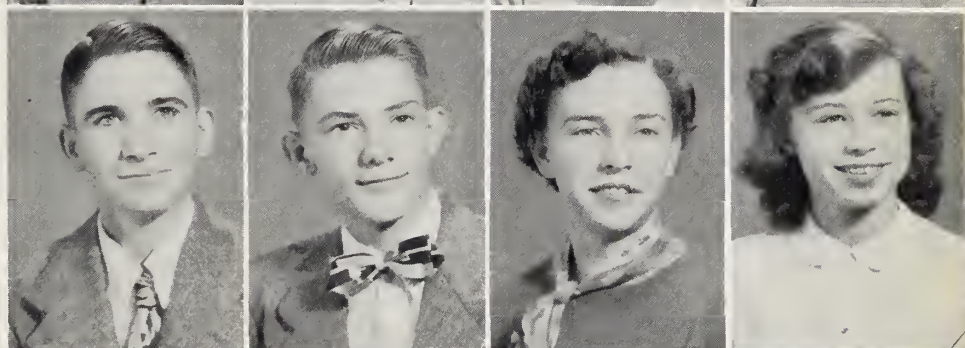
Peggy Braswell  
Melvin Cooke  
Don Davis  
Martha Davis



Herbert Dawes  
Carroll Dixon  
Shirley Garrett  
Margaret Godwin

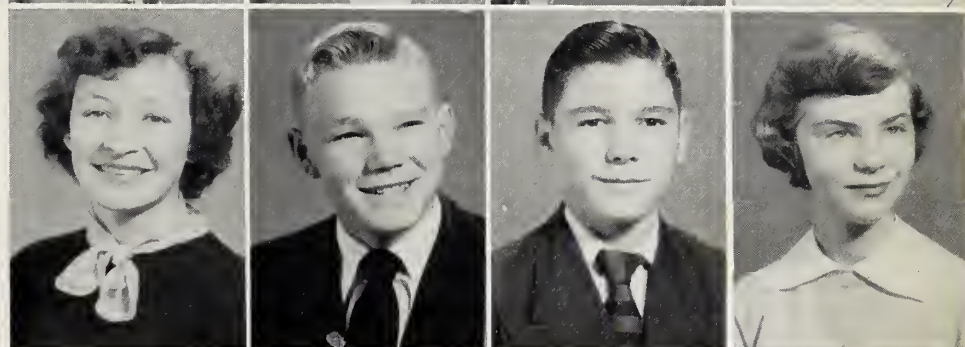


Richard Hayes  
Justa Jackson  
Janice Jennings  
Verna Jo Matthews

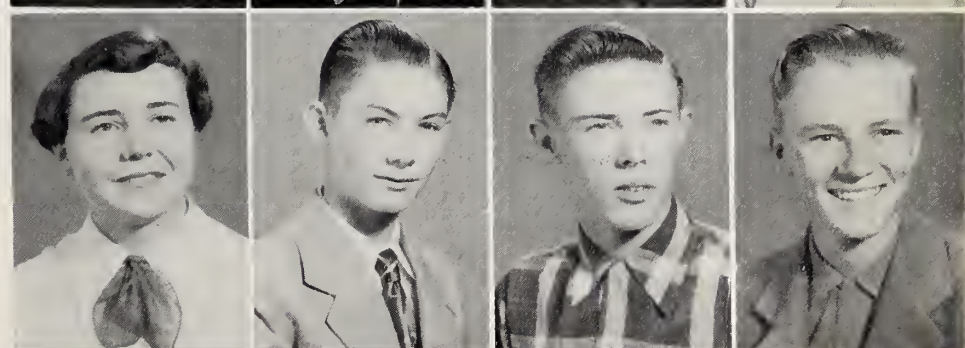


*wishing you a  
lot of luck.  
Buster?*

Gladys Newsome  
Kenneth Owens  
Allen Page  
Mary Hayes Pleasants



Janice Pridgen  
George Robbins  
Charlie Lee Skinner  
Chester Sykes



Claude Trevathan  
Margaret Trevathan  
Dorothy Williams  
G. C. Winstead





SUB

FRESHMEN







# Activities





J  
U  
N  
I  
O  
R

S  
E  
N  
I  
O  
R



Reading  
"Patrick O'Grady's  
Mistake"

# SNAPSHOTS

## 1952







"My Wild Irish Rose"



Best of luck  
to you always  
I miss singing  
with you this year.  
A friend,  
"Dot"



Best of luck  
to a swell  
gal. Hope  
you have a  
happy school  
year.  
Alma





THE QUEENS



PALM READING



BINGO

# HALLOWE'EN CARNIVAL



GUESS WHO



APPLE BOBBING





# Organizations





## BETA CLUB

President, Joan Edwards; Vice President, Kathryn Winstead; Secretary, Betsy Wells; Treasurer, Bill Sharpe; Program Chairman, Janet Williams; Reporter, Barbara Jackson. Cynthia Roth, Marianne Davis, Shirley Lucas, Jo Ann Crumpler, Lester Jean Batchelor, Jo Ann Flowers, Joyce Winstead, Mary Ann Braswell, Patsy Batts, Anita Davis. Mona Grey Matthews, Jimmy Robbins, Barbara Williams, Wesley Doles, James Parker, Gerald Walston, Jack Jobe, Bobby Gay, Don Pridgen, Rebecca Farmer, Faye Lucas. Absent: Montress Greene, Jeanette Pittman.

## STUDENT COUNCIL

President, Jo Ann Crumpler; Vice President, Victor Rackley; Secretary, Marian Taylor; Treasurer, Dickie Greene; Reporter, Montress Greene. Cynthia Roth, Shirley Lucas, Libby Griffin, Herman Cobb, Berta Jo Matthews, Barbara Williams, Jo Ann Flowers, Carolyn Barnes. Myrtle Harris, Mary Hayes Pleasants, Peggy Davis, Dick Tyson, Marvin Robbins, Georgianne Farmer, Joyce Gillars, Betty Lou Robbins, John Lloyd Sharpe, Mr. Beaman. Absent: Linda Batten, Patsy Parker, Jeanette Pittman, Montress Greene, Charlie Skinner.







4.H

- President - - - - - Montress Greene
- Vice President - - - - - Allan Page
- Secretary - - - - - Anita Davis
- Song Leader - - - - - Peggy Davis
- Reporter - - - - - Barbara Jackson
- Program Chairman - - - - - Dick Tyson
- Recreation Leader - - - - - Joyce Gillars



## BUS DRIVERS

- Valmonte Winstead
- Grady Pittman
- Jack Jobe
- Don Pridgen
- Jimmy Freeman
- Braxton Webb
- Bobby Weeks
- Donald Barnes
- Bob O' Bryant
- Rudolph Whitehead
- Craven Hunt





# FUTURE HOMEMAKERS OF AMERICA



*Lots of Love to  
you and "Kees  
who". May you  
have lots of luck and  
happiness all through life.  
Francis*



*Best of wishes  
to a good  
friend always  
Don't ever  
forget Quack  
Ha: Ha:  
Peggy*

*Betty*



Anita Davis-President

- |                            |                |                            |                     |
|----------------------------|----------------|----------------------------|---------------------|
| Libby Griffin - - - - -    | Vice President | Betty Jean Davis - - - - - | Reporter            |
| Louise Winstead - - - - -  | Secretary      | Reather Fields - - - - -   | Program Chairman    |
| Jo Anne Crumpler - - - - - | Treasurer      | Montress Greene - - - - -  | Historian           |
| Peggy Davis - - - - -      | Song Leader    | Marian Taylor - - - - -    | Recreational Leader |



President - - - - - Oland Barnes  
 Vice President - - - - - Dick Tyson  
 Secretary - - - - - Richard Greene  
 Treasurer - - - - - Rudy Whitehead  
 Reporter - - - - - Abram Winstead  
 Sentinel - - - - - Donald Barnes







May your music  
 career be a successful  
 & sure will miss you very  
 year, keep up the good work  
 of an  
 H

Louise,  
 Best of luck to  
 you always. Do a  
 beautiful girl's  
 singer. Always remember  
 the Dunham trip.  
 Susie!!  
 Love,  
 Betty



Best of luck to  
 you and you more  
 Love M.

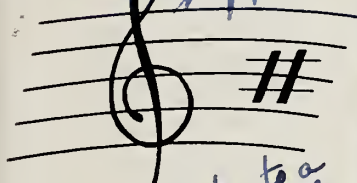




Best of luck to  
you in the future.  
It is hoping you  
have a long and  
happy life. Jean

Best of luck  
to a little  
friend.  
Dorothy Gardner

Keep in time with  
your dancing  
Nancy Jo

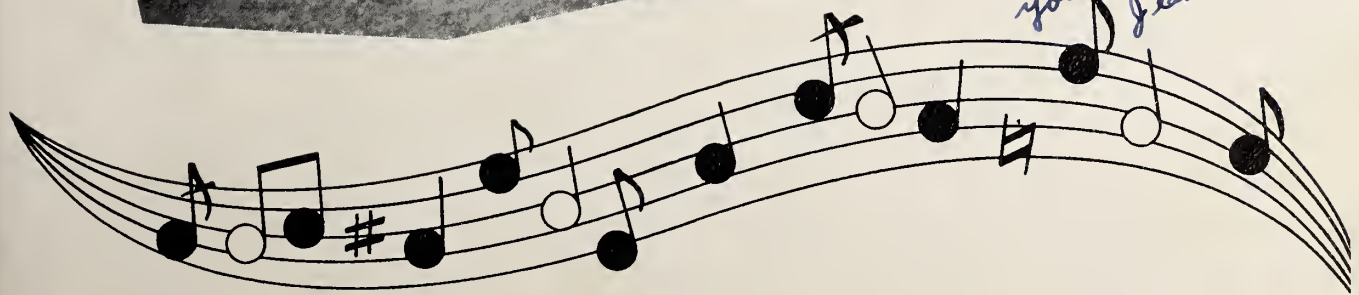


Best of luck to a  
very nice friend.  
Hope you have a  
lot of happiness in  
the future.



To Louise,  
I sure hope you  
land that man.  
Jean

Best of luck to  
you. Jeanette





# COMMENCEMENT 1952



*Best of  
luck always to  
a swell soprano.  
No, ha, your  
mother didn't  
see me!  
Love ya,  
Cindy*



## CHEERLEADERS

Strawberry Shortcake,  
Huckleberry Pie,  
V-I-C-T-O-R-Y.  
Stand'em on the head,  
Stand'em on the feet,  
Elm City High School can't be beat!







# Athletics<sup>☆</sup>

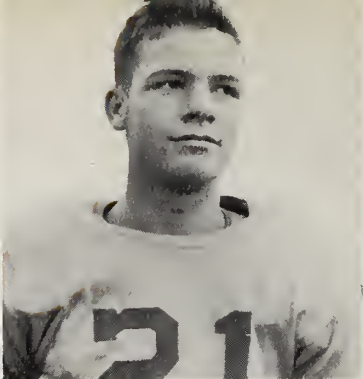




PARKER  
Back



HAWLEY  
Back



WEBB  
End



GAY  
End



FLORA  
Center

JOBE  
Back

GRIFFIN  
Back


HARDISON  
Back



'52 SEASON

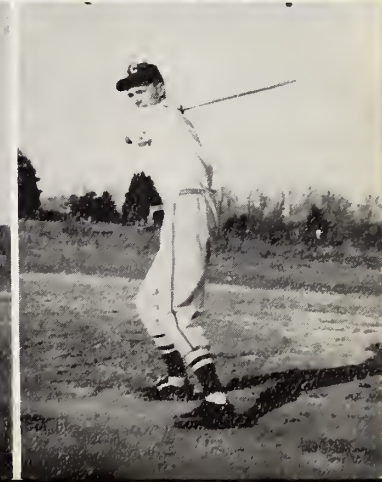
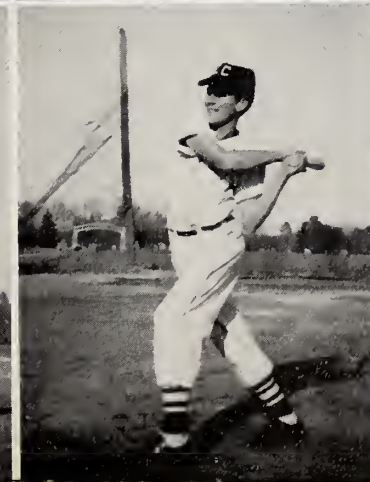
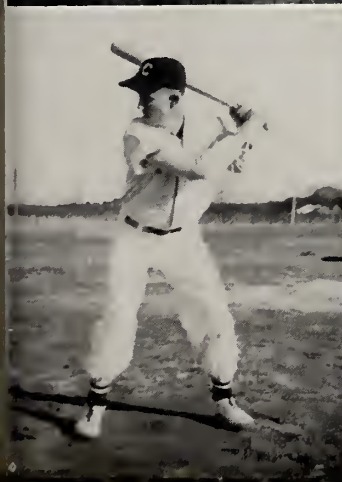
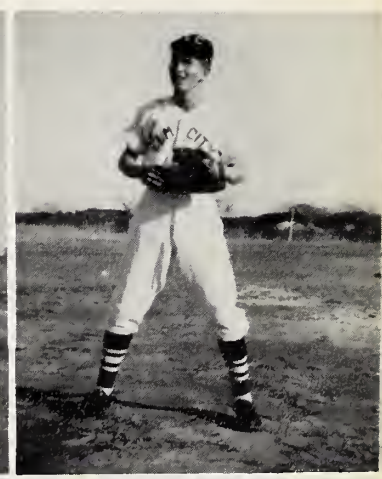
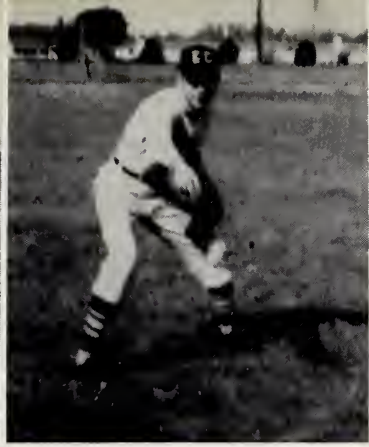
Elm City	47	Lucama	0
Elm City	48	Leggett	8
Elm City	56	Chicod	8
Elm City	26	Chocowinity	0
Elm City	19	Whitakers	7
Elm City	14	Rock Ridge	19
Elm City	13	Stantonsburg	27

*To a funny  
cute girl  
I wish you good luck  
Frank*



*Best of luck to  
a very good hope  
& pray to drive  
over his problem  
I wish  
Frank*









*to one of  
the cities and  
Purdue's big  
I know all the  
wings all the  
Rendle's  
back in the world*

- C. Griffin
- D. Pridden
- J. Hardison
- M. Robbins
- O. Barnes
- H. Vaughan
- B. Parker
- B. Webb
- T. White
- R. Jenkins
- Coach Odom
- B. Sharpe
- D. Greene
- J. Sharpe
- D. Tyson
- B. Jackson







*Photo of jump to  
a center girl.  
Batten  
Cooke  
Wells  
Brice*

- L. Batten
- B. Jackson
- L. Griffin
- M. Greene
- B. Cooke
- B. Wells
- P. Brice
- K. Winstead
- B. Thorne
- L. Gooch
- B. Williams
- A. Turner
- Coach Odom
- M. Jackson
- P. Davis
- B. Robbins
- A. Owens
- J. Jenkins
- N. Davis





*P. E. Townsend*  
&  
COMPANY

MATILDA TOWNSEND  
Real Estate-Insurance  
121 South Goldsboro St.  
Wilson, North Carolina



*P. E. Quinn & Co.*  
OF WILSON

Furniture of Character  
Gift Shop      Decorator Shop  
First Floor      Third Floor

*Five Points*  
NURSERY  
& FLORAL SHOP

904 Randolph St.  
Phone 3928  
Wilson, North Carolina  
"Flowers with Ribbons"

THE *Southern*  
COTTON OIL CO.

Manufacturers  
Cotton Seed Products  
High Grade Fertilizers  
  
Wilson, North Carolina

*Williford*  
BROTHERS  
INC.

Chrysler - Plymouth  
GMC Trucks  
Wilson, North Carolina  
Sales and Service



*G. S. Tucker*  
& CO., INC.

Wilson's Oldest  
Furniture Store  
Wilson, North Carolina



Compliments of

*Tobacco Planters*

WAREHOUSE

CO.

"Leaders of the Rocky Mount

Tobacco Market"

*Bridgers*

PAINT & WALLPAPER  
CO.

"Make Your Paint Problems  
Our Business"

Artists Brushes, Paints and  
Supplies, Venetian Blinds

Wilson, North Carolina

125 Tarboro St.

Phone 4428







*City*  
**GROCERY**

WOODROW W. WELLS, Prop.  
Meats, Fruits, Vegetables,  
Frozen Foods  
Elm City, North Carolina  
Phone 5391

*Tom Watson's*  
**GARAGE**

Phone 4491  
Elm City, North Carolina  
"Auto Repair, Acetylene  
Welding"

Compliments of  
*L. M. Batchelor*  
Farm Supplies  
Phone Rocky Mount 8785  
Sharpsburg, N. C.

*Charles*  
**DEPARTMENT  
STORE**

"The Store of Savings"  
Wilson, North Carolina





# *T. & M. Grocery*

Groceries - Feeds - Seeds and Meats

Phone 5161

Elm City, North Carolina

Tom Langley, Owner

## *Braswell Motors*

Chrysler - Plymouth

Sales and Service

Elm City, North Carolina

Compliments of

## *The* INEZ SHOP

Dial 3390

104 West Nash Street

Wilson, North Carolina

Compliments of

## *Quality*

BAKERY

Wilson, North Carolina

## *Smith's*

WARE HOUSE

Three Houses to Serve You

A. B. and C.

Wilson, North Carolina

Compliments of

## *Town* OF *Elm City*



Compliments of

**A**  
*Friend*

## GARDNER'S DAIRY PRODUCTS

Velvet Ice Cream

Homogenized Milk

Phone 3056

Wilson, North Carolina

## *Churchwell's* INC.

Jewelers - Silversmiths

Serving Wilson County

Over 50 Years

Wilson, North Carolina

## HUNT FUNERAL HOME

Wilson County Mutual

Burial Association

Dial 3148 - 3149

Wilson, North Carolina

## *Denny's* JEWELERS

103 West Nash Street

Wilson, North Carolina

(The House of Nationally  
Advertised Merchandise)

## *Yellow Front* GROCERY

Fresh Meats - Fruits

Vegetables

Phone 5141

Elm City, North Carolina

## *Em-Jay* Sporting Goods Company

Wholesale and Retail

High Grade Athletic Equipment  
Phone 2256

106 South Tarboro Street  
Wilson, North Carolina

## *Cliff's* DRIVE IN Curb Service

(You Toot - We Tote)

Open 8:00A.M. till 11:30 P.M.

900 South Goldsboro Street  
Wilson, North Carolina

William C. Winstead, Jr.  
E. Miller Walsh, Owners





Your patronage is appreciated  
At

*Carolina*  
LAUNDRY & CLEANERS,  
INC.

Wilson, North Carolina

Be Thrifty  
Buy Mutual Insurance

*Wilton H. Pridgen*

Phone 4451

Elm City, North Carolina

*Carl Meyer's*  
GROCERY

"Your Friendly Store"

Dial 5751  
Elm City, North Carolina

*E. V. Braswell Co.*

Dealers In  
Coal-Building Supplies  
Fuel Oil-DuPont Paints  
Phone 5211  
Elm City, North Carolina



Compliments of

*Thomas Yelverton*

**COMPANY**  
Better Furniture

Funeral  
Directors  
Embalmers



Ambulance  
Service  
Phone 3121

Wilson, North Carolina

*L. S. Farmer*  
**& SON**

General Merchandise

Phone 5511

Elm City, North Carolina

*Linville's*  
**INC.**

Quality Concrete Blocks

Steel Sash and Doors

Wilson, North Carolina

*The Southerner*

Offers Good Food

Elm City, North Carolina

"Best Wishes to the Senior Class"

*Branch Banking*  
**& TRUST COMPANY**

Member F. D. I. C.

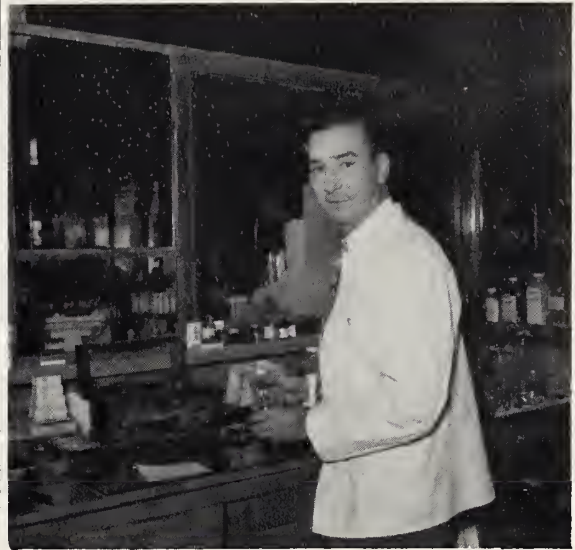
Elm City, North Carolina





*Dole's*  
**GROCERY**

Heavy and Fancy Groceries  
Fresh Fruits and Vegetables  
Fresh Meats, Frozen Foods  
Phone 5491  
Elm City, North Carolina



Compliments of

*Mother & Daughter*  
**FASHIONS**

Wilson, North Carolina

*Dean's*  
**DRUG STORE**

Elm City, North Carolina

*The Jewel*  
**BOX**

128 S. Main St.  
Rocky Mount, N. C.  
Headquarters for  
Hamilton, Elgin  
Gruen and Bulova Watches

*Carroll*  
**MOTOR COMPANY**

Sales-Buick-Service  
Wilson, North Carolina



Distinctive  
Tailoring By



118 S. Goldsboro St.  
"For Young Men and Men  
With Young Ideas"

*Don't  
ever  
forget  
this week  
Nations*



*Shell*  
**TARBORO ST. STATION**

"Service is our Business"



M. H. GRANT, JR., Mgr.  
 Rocky Mount, N. C.



Compliments of

*J. L. Sharpe*

Congratulations  
 Class of '53  
 Elm City High School  
 "May the best be yours as,  
 you go from school life  
 into life's school!"

*Bell-Tyler's*

"Wilson's Shopping Center"



Compliments of

*Oellinger's*  
 &  
*Oellinger's*  
**MEN'S STORE**





# Wilson

## PETROLEUM CO.

Distributors of  
American Oil Company Products

Phone 3448

Wilson, North Carolina

Compliments of  
The

*J. D. Barkley*  
GIN CO.

Sharpsburg - Elm City

Compliments of

*Allan Mims,*  
INC.

"Authorized Ford Dealer"



*Reece Deans*  
PLBG. & HTG.

Wilson, North Carolina

231 S. Goldsboro St.

Dial 5100

"It Pays to Look Well"

*Wylie's*  
BARBER SHOP

Elm City, North Carolina



*G.G. Jackson*  
**HARDWARE**

Livestock Feeds, Fertilizer,  
Barn Flues, Farm Supplies,  
Groceries, Hardware, Paint,  
Building Supplies  
Phone 5136  
Elm City, North Carolina

*Elm City*  
**PHARMACY**

MARVIN L. DAVIS, Owner  
"Your Rexall Drug Store"  
Meet Your Friends at Our  
Soda Fountain  
Cara-Nome - Max Factor  
Parker and Shaefer Pens.  
Whitman's - Pangburn's



Compliments of  
*Elm City*  
**MOTOR CO.**

*Elm's*  
**CAFE**

Hi-Way 301  
Yankee Cooking  
  
Sharpsburg, N. C.

If you buy groceries you'll  
know about

*O.L. Gay's*

"COUNTRY STORE IN TOWN"  
120 S. Washington St.  
Dial 22108  
Rocky Mount, N. C.

Used Cars with  
Many Unused Miles



*P & Y*  
**MOTOR SALES**

New and Used Cars  
1 mile east of Sharpsburg, N. C.  
B. B. Pittman - E. L. Yodar  
Phone Rocky Mt. 8950

Compliments of

*Josh Bulluck's*  
**BARBECUE**

*Dick's*  
**ELECTRICAL CO.**

State License No. 213  
Maytag-Hoover-Crosley-Hot Point  
Sales and Service  
307 E. Nash St.  
Wilson, North Carolina  
Phone Day 2579  
Phone Night 4759-3408-4763



*Raines & Cox*  
PHOTOGRAPHERS

Wilson, North Carolina  
Box 209

Phone 4046

*Wilson*  
HARDWARE  
CO.

Phone 3174

"Courthouse in Front of Us"

*Barshay's*  
LADIES SHOP

"Next to the Post Office"

Wilson, North Carolina

*C. Woodard*  
COMPANY, INC.

Safes and Showcases,  
Office and Reception Room  
Furniture

105 North Douglas St.

Phone 2450

Wilson, North Carolina

*Smith*  
INSURANCE  
AGENCY

Main Street

Phone 5421

Elm City, North Carolina

BEST WISHES

*Griffin-Salisbury*

"Drive What Dad Drove"

Studebaker

Rocky Mount, N. C.

*J.B. Winstead*  
Authorized RCA Victor  
and Spartan Radio Dealer  
Electrical Appliances

29 Years Experience Assures

You The Best In Service

Phone 5206

Elm City, North Carolina

Compliments of

*Moss*  
&  
COMPANY, INC.

"Treat People Right"

Wilson, North Carolina

# Boosters

James M. Fox, Jewelers

Langley's Esso Service

Arlene's Shop

Mr. Charles Fleming

Johnson Furniture Co.

Farris Dept. Store

Anita's Beauty Shop

Blair's-Rex Shoe Shop

Bruce Lamm's

Lisabeth's

House Grocery

Heilig & Meyers

Mullen Barber Shop

Tiding's Bible and Book Store

Grice's Seed Store

Thompson Radio Service

W. C. Reid & Co.

Barker's Dept. Store

J. M. Newcomb Co.

Robbins' Jewelers

Your Beauty Shop

Wilson Drug Co.



Best wishes  
always.  
Pearline

# Autographs

(quack)

Best wishes  
to a cute as well  
as sweet girl.  
Love,  
Mary Kay (Bump)

Mary Lina Hill

Good Luck with him,  
Nancy Kohn

Best of luck  
to a sweet girl.  
Mary Lou Wendrich

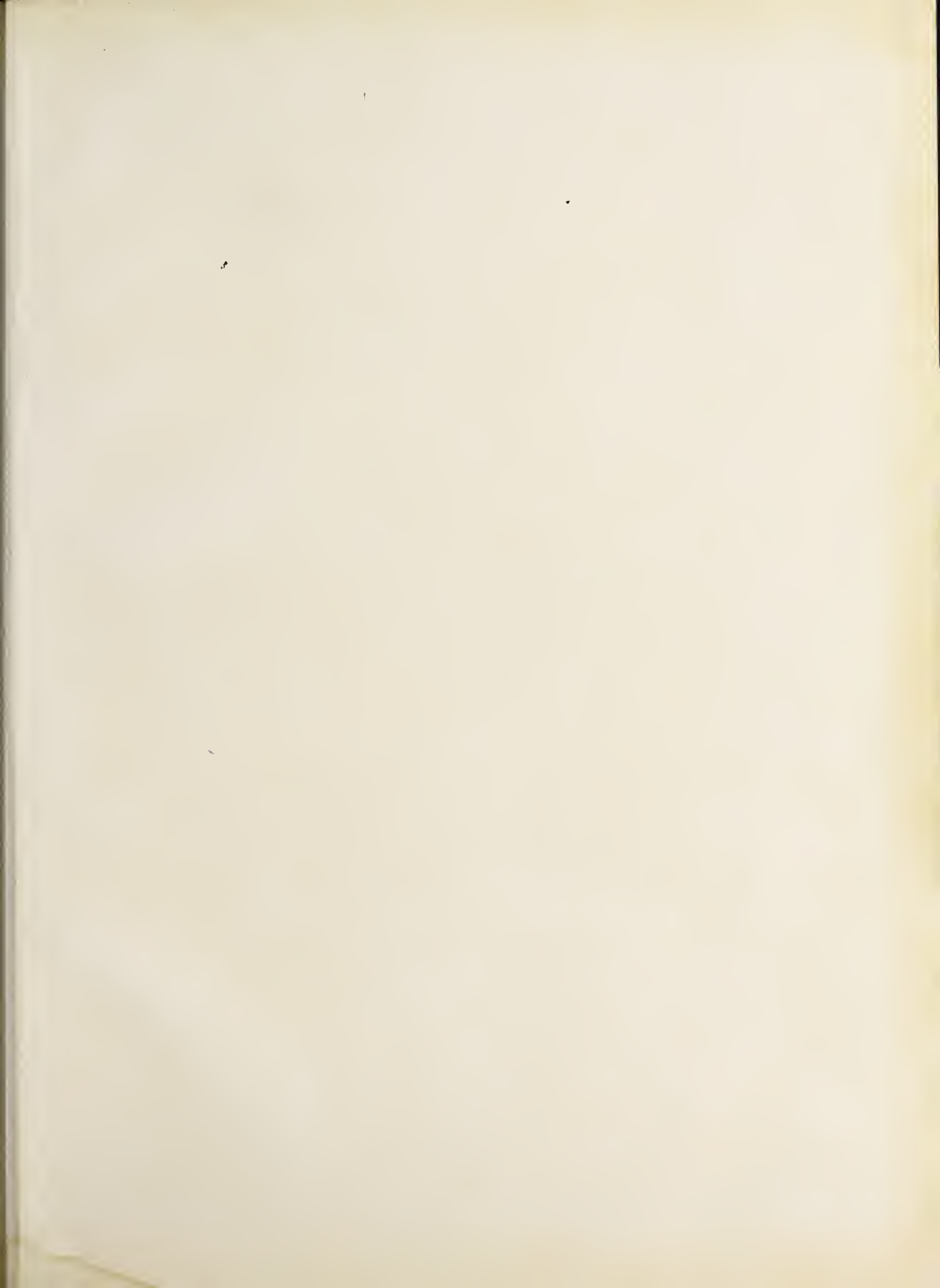
Good luck to a swell girl! I enjoyed  
being in band with you!!  
Buster  
—

Best of luck to a cute girl.  
Remember Enfield?

Louise, I think you are a very sweet, nice,  
cute girl and frankly speaking, "I Love you".  
I'll never forget some of our wonderful,  
happy experiences. Always remember  
Greeneville and many other experiences.

Love,  
Reg. Quinn





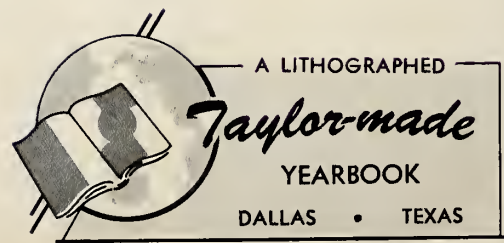
Best of  
luck to you always  
old girl. Remember  
Greenhill. + Operation X  
George

To one of my best friends. "Quack Quack"  
I have enjoyed being with you very much.  
I hope we will have many more good times  
together.

Let's don't forget the word "sensible"  
and don't you forget "Quack Quack"

a good friend,  
Lafayette

Good luck to a  
fine girl.  
Nattie Odum





Levise, though we have known each  
other for many a year and the times  
we have played <sup>with each other</sup> and I left you tied  
to a tree and wouldn't untie you  
they were fun and now that we are  
adults I have come to the conclusion  
that I think I should go home and  
eat supper. So to make a long  
autograph short I am wishing  
you a very Merry Christmas.  
Now I am going to get serious I  
think you are a very cute and  
sweet girl.

As ever one always will be

Dick,





Elm City High School





WILSON COUNTY PUBLIC LIBRARY



3 9939 00300 9820

