

Historic, archived document

Do not assume content reflects current scientific knowledge, policies, or practices.



W. C. BECKERT

SEEDSMAN

NO 19 | FEDERAL ST | ALLEGHENY, PA



EASTER LILIES.

(NOW READY)

BEAUTIFUL as our lilies of the garden are, it is the Easter lilies, those white wonders of purity and fragrance, opening while yet the world is cold and bleak, which excite the most general and genuine admiration. No church adornment is complete

without its chancel setting of the pure flowers; and no home without an Easter Lily shining in its window seems to have received its Easter blessing.

How to Force Lilies. The work is not so difficult as most amateurs imagine. Plant the bulb as early in autumn as they can be procured, in well drained pots of rich soil made light and porous with sand and leaf mold or peat. Water them thoroughly after potting, and set them away in some cool, dark place to form their roots, with a mulch over and about them to keep them moist. The cellar is not so good a place for them as the cold frame or open yard. When, upon examination, the earth in the pots is found matted with roots, bring the lilies into a room of moderate, equable temperature, and after a few days set them in a warm, sunny window, where the temperature will range between 60° and 70°. Give them plenty of water and expose them to gas and gas light as little as possible. Water them moderately, and after the buds begin to form, an occasional application of liquid stimulants will make the flowers larger.

SELECT HIGH GRADE BULBS.

PRICES.

5x7 inches circumference,	5c each;	per doz.,	50c;	by mail,	65c;	per 100 by express,	\$3
7x9 "	"	10c "	"	\$1;	" \$1.20;	" "	\$7
9x11 "	"	20c "	"	\$2;	" \$2.30;	" "	\$15
12x15 "	"	25c "	"	\$2.50;	per doz. by express,		\$3.



Hardy Garden Lilies.

ORDERS for these should be placed at as early a date as possible, to be forwarded when ready. In **October and November.** Candidums are ready early in September.

For elegance of form, and beauty and variety of color, the lily is matchless among hardy plants. The majority of them require little care beyond that of being left undisturbed after they are once well planted. An ordinary well drained soil suits them best. Plant them about six inches deep. Manure must not come in contact with the bulb. It is essential that they be well protected from frost in winter by a liberal mulching of course manure or leaves. Some covering in summer is likewise necessary to protect against the extreme heat of the sun. This applies especially to the Auratum type. A partially shaded situation is the most suitable.

Candidum, (Madonna) now ready. A favorite old garden lily, as sweet as any grown, with snowy white flowers borne in profusion. Ranks next to *Harrisii* for early forcing. Price, 10 cts. each; \$1.00 per dozen; postpaid per dozen, \$1.25; per 100 by express, \$5.00.

Longiflorum Eximium. Beautiful snow white, fragrant, hardy garden lily. Flowers similar to *Harrisii* but of more substance; trumpet shaped flower 6 to 8 inches long. Also a splendid variety for forcing. But later than *Harrisii*; known also as St. Joseph's or Easter lily. Price, 5x7 inches circumference, 50 cts. per dozen; postpaid, 65 cts. per dozen; per 100 by express, \$3.00. 7x9 inches circumference, 10 cts. each; \$1.00 per dozen; postpaid, \$1.40 per dozen; per 100 by express, \$7.00.

Auratum, (the queen of lilies). The golden-rayed lily of Japan is easily the most regal of all lilies. Its array of ivory and gold is familiar to most flower-loving people, who can quickly distinguish it by the rays of yellow through its broad crimson-spotted petals, and the delightful odor which it breathes around. Good plants bear from 10 to 20 flowers. The Auratum can be grown in pots and bloomed indoors. Price, 9x11 inches circumference, 10 cts. each; \$1.00 per dozen; postpaid per dozen, \$1.30; per 100 by express, \$7.50. 11x13 inches circumference, 15 cts. each; \$1.50 per dozen; postpaid per dozen, \$1.40; per 100 by express, \$10.00.

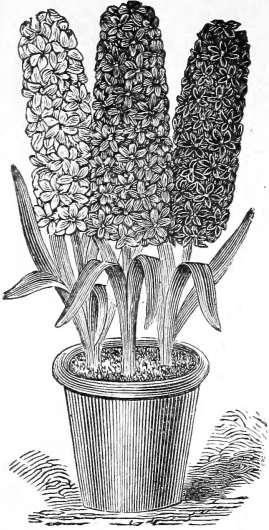
Speciosum Rubrum, (or Roseum.) The *Speciosum* or *Lancifolium* lilies are among the most popular sorts grown, because they are so easy to grow, have such large and delicately beautiful flowers, and are so distinct and free blooming. They grow as well in pots as in the garden. The petals are recurved and tufted at the base. Flowers rose colored, and spotted with crimson. Price, 9x11 inches circumference, 13 cts. each; \$1.25 per dozen; postpaid per dozen, \$1.55; per 100 by express, \$10.00. 11x13 inches circumference, 16 cts. each; \$1.60 per dozen; postpaid per dozen, \$1.90.

Speciosum Album. This is a pure white form of the preceding, excepting in color it is well described by *Speciosum Rubrum*. Price, 9x11 inches circumference, 12 cts. each; \$1.25 per dozen; postpaid per dozen, \$1.55; per 100 by express, \$10.00. 11x13 inches circumference, 16 cts. each; \$1.60 per dozen; postpaid per dozen, \$1.90.

Melpome. Flowers very large and abundant, of rich blood crimson color, heavily spotted with a clear white border around each petal. Price, 7x9 inches circumference, 10 cts. each; \$1.00 per dozen; postpaid per dozen, \$1.20.



Choicest Named Single Hyacinths.



SINGLE Hyacinths are always the most desirable, having a wider range of color than double varieties; are more easily grown than double ones under any method of culture, and produce larger and more flower spikes, and are especially preferable for growing in pots or glasses of water. All of them force well; most of them can be brought in bloom about Christmas, and some sorts even earlier. Named varieties should always be used to attain the best results—particularly when intended for house culture—being not only the highest grade of bulb, selected as to size and perfectness of development, but they can be chosen with careful regard to shades of colors, so that beds or window boxes may be planned with as much nicety as a bit of artistic embroidery.

Caution.—It is a common practice with many dealers to offer second size, or even inferior grades of Hyacinths, as first-class bulbs. As ours are strictly as represented we cannot compete with a lower grade article in price.

Price All Varieties in Selected First Size Bulbs.

\$1 per doz.; postpaid per doz. \$1.15; per 100 by express, \$8; single bulbs, 10c.

Price of Second Size Named Bulbs in Same Varieties.

7 cts. each; 75 cts. per doz.; postpaid, 85 cts. per doz.; per 100 by express, \$6

SINGLE RED SHADES.

- Amy.** Deep, glossy carmine red, well filled spike; extra fine for forcing.
- Baron van Thuyt.** Beautiful pink, large spike; extra fine for forcing.
- Charles Dickens.** Fine, delicate pink; handsome, large truss; forces easily, and is decidedly one of the best pink sorts.
- Cosmos.** Beautiful rosy-pink, large spike.
- Gertrude.** Rosy-pink. Compact and erect spike; an excellent forcer.
- Gigantea.** Fine blush pink. The name indicates its character, producing a giant and very compact spike; fine forcer.
- Lord Macanley.** Deep carmine pink, with white eye, extra large and compact spike. A splendid hyacinth.
- Norma.** Fine pink, very early, large bells; easily forced.
- Robert Steiger.** Fine deep crimson, large truss.
- Sultan's Favorite.** Blush-pink, widely striped carmine, large spike.
- Veronica.** Bright crimson, extra fine and large.

SINGLE WHITE SHADES.

- Baroness van Thuyt.** Pure white, large compact spike; very fine for forcing.
- Grandeur a Merveille.** Finest blush white, very large spike.
- Blanchard.** Pure white, very fine large spike, rough bulb.
- Grand Vedette.** Pure white, large bells.
- La Belle Blanchisseuse.** Extra fine, pure white, large bells.
- La Grandesse.** Extra fine, pure white, very large spike and fine bells. Deserves its name, the "grandness," as it is hardly equalled by any other white hyacinth.

- Madam van Der-Hoop.** Pure white, extra large, bells, forces readily; a grand flower.
- Mont Blanc.** Splendid pure white flower, large spike.
- Paix de l'Europe.** Fine snowy white; large spike and large drooping bells.
- Rouseau.** Blush white, fine bells.
- Voltaire.** Waxy blush white, fine spike.

SINGLE BLUE HYACINTHS.

- Baron van Thuyt.** Dark bright blue, large compact spike.
- Bleu Mourant.** Amaranth blue, distinct and rich.
- Blondin.** Fine porcelain blue, large bells and spike.
- Charles Dickens.** Dark porcelain blue, tinged lilac, very large compact spike.
- Czar Peter.** Finest porcelain blue, a distinct and beautiful color, very large spike; forces easily.
- Grand Maitre.** Deep porcelain blue, fine large spike and bulb.
- King of the Blues.** Deep glossy blue, large compact spike, the finest dark blue hyacinth in cultivation.
- La Peyrouse.** Very fine porcelain blue.
- Leonidas.** Clear blue, fine truss.
- Marie.** Dark blue with purple shade; good spike.
- Pieneman.** Dark porcelain blue, very large truss and bells.
- Regulus.** Clear blue, large spike; a very good variety for forcing.

SINGLE YELLOW.

- Anna Carolina.** Light yellow.
- Ida.** Fine rich yellow, large spike; one of the best yellows.
- LaCitroniere.** Bright citron yellow





Choicest Named Double Hyacinths.

THESE WE HAVE ONLY IN SELECTED FIRST SIZE BULBS.

Price, 10 cents each; \$1.00 per dozen; postpaid per dozen, \$1.15. Double Hyacinths do not usually have as large bulbs as the single.

Boquet Royal. Salmon pink, red centre, large spike.

Boquet Tendre. Brilliant, dark carmine red, good truss.

Czar Nicholas. Blush pink.

Grootvorst. Very fine blush pink, extra large spike.

Lord Wellington. Blush pink, one of the finest double pink; immense bells and spike.

Prince of Orange. Semi double pink, large spike; fine for forcing.

DOUBLE BLUE SHADES.

Blokesberg. One of the finest light blue hyacinths; large spike.

Charles Dickens. Dark porcelain blue, extra large compact spike and bells.

Garrick. Azure blue, large compact spike.

General Antinck. Porcelain blue, good truss.

Mignon van Dryfhout. Grayish blue, semi double.

Pasquin. Clear porcelain blue, fine spike.

DOUBLE WHITE.

Boquet Royal. Pure white, large spike.

Flevo. Pure white, yellow centre, large spike.

La Tour d'Auvergne. Earliest pure white, very fine.

La Virginite. Pale blush, good bells, fine spike.

Non Plus Ultra. Pure white, violet centre, very large spike and large bells.

Prince of Waterloo. Pure white, large spike and bells.

DOUBLE YELLOW.

Boquet d'Orange. Orange salmon; fine.

Goethe. Light yellow, fine spike; one of the best yellows.

Minerva. Orange yellow, extra large and fine flower.

HYACINTHS FOR BEDDING OUT.

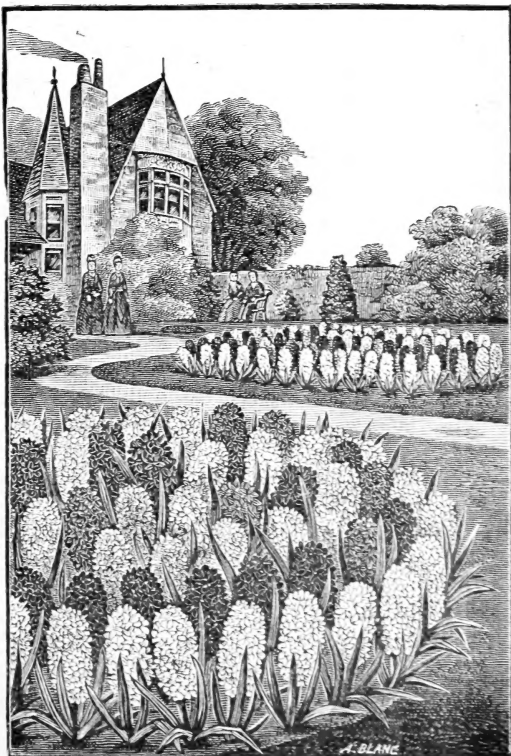
Plump, Heavy Bulbs, in Separate Colors.

THE smooth, rich mosaic of tastefully-blended colors which we admire so much in beds of outdoor Hyacinths are formed by planting hyacinths in varieties of the same height and blooming season. The unnamed Hyacinths we offer for this purpose are a good grade of bulbs in separate colors, will bloom at one time, and grow to a uniform height. As they are generally sold in equal quantities of each color, we have made the prices uniform, which are low for so good a grade of bulbs.

Single bulbs mailed free. To the price per dozen or 100, if desired by mail, add for postage at the rate of 10 cents per dozen. Price, 5 cts. each; 45 cts. per dozen; \$3.50 per 100, in the following colors: SINGLE RED, PINK, PURE WHITE, BLUSH WHITE, LIGHT BLUE, and DARK BLUE, DOUBLE RED, DOUBLE WHITE and DOUBLE BLUE, SINGLE YELLOW and DOUBLE YELLOW.

MINIATURE OR PAN HYACINTHS.

These are in reality very early varieties of Dutch Hyacinths, with bulbs about the size of Roman Hyacinths. They are admirable for forcing. Price, 3 cts. each; 30 cts. per dozen. Colors, Pink, Blue and white.





ROMAN HYACINTHS.

ROMAN HYACINTHS,

the earliest of all Hyacinths, and the finest for cutting. If potted in August and September they can be brought in bloom by Thanksgiving, and a succession of plantings will give flowers all winter. Although their blossoms are smaller than those of the Dutch Hyacinth, they can be produced much more liberally, and their grace, perfume and purity of color rank them easily first for cut flowers, while for floral design work they are greatly superior to the larger and more showy sorts. Plant from 3 to 5 bulbs in a medium sized pot. Pure white, and very graceful and delicate in appearance.

Postage 10 cents per dozen extra.

Price, 5 cts. each; 40 cts. per dozen; \$2.80 per 100.



**HYACINTH
GLASSES**

For growing hyacinths in water, 10 cents each; 3 for 25 cents; \$1.00 per doz.



OXALIS. (BUTTERCUPS.)

Bermuda Buttercup Oxalis.—It is one of the finest winter-flowering that we have ever seen. It is such a strong, luxuriant grower that one bulb will be enough for a six or eight inch pot. The great profusion of bloom produced in uninterrupted abundance for weeks will astonish you. The flowers are of the purest bright buttercup yellow. Well-grown plants have produced as many as 70 flower stems at one time, and over 1000 flowers in a season. 3 for 10 cts.; 35 cts. per dozen.

Oxalis, Mixed Varieties.—All the Oxalis offered here are dwarf, free-blooming, airy and elegant in habit; and unsurpassed for winter blooming. Mixed colors—white, rose, variegated, yellow and red. 2 for 5 cents; 20 cents per dozen.

HYACINTHS.

THE Hyacinth is usually given first place upon bulb-growers' and dealers' lists, because of its great popularity and consequent heavy sales. Its pretty flower spikes are an almost sure reward for

perhaps a dozen different modes of culture, and yield themselves obligingly at any time properly planned for between early December and late May. Planted outdoors, this is one of our earliest and loveliest spring flowers, while for winter window culture it has become well nigh indispensable to the house-gardener. It has colors and forms to suit all tastes—rich, deep, dark tints of crimson, purple and red, or soft tones of pink, blue, primrose, ivory or pure white. The little Roman Hyacinth is the perfection of lightness and grace, while the taller, larger stocks of the Dutch Hyacinths are often so much bent by their rich burden of bells as to require staking. The fragrance of a window full of Hyacinths would delight the soul of even an Oriental.

Hyacinths in Pots.—The Hyacinth is not particular as to soil, but the best soil for them is a mixture of fibrous loam and old, fine manure in about equal parts, with a little sand added. Fill the pots with soil within an inch of the top, and press the bulbs half way into it. Next water them well, and set the pots away in a cool, dark place for six or seven weeks, so that the bulbs may form good masses of roots before the leaves begin to grow. It is better to plunge them in the open ground and cover the tops with litter, or to stand them in rows, and cover them with a heavy mulch that will keep them cool, moist and dark, than to place them in a furnace-heated cellar in which fires must be lighted soon. When the leaves begin to push upward and the roots have had time to become strong, remove

the bulbs to an unheated room above freezing point, and water them moderately. A spoonful of Excelsior, or some other good flower-food, scattered over the surface of the pots occasionally, will make the flowers and spikes larger. When the buds begin to open, the pots can be used to decorate the sitting room, and by bringing them in, a few at a time, the supply

of flowers can be kept up a long while. In mild weather give them all the fresh air possible, and remember that the cooler and moister the air of the room in which they are kept, the longer the flower-spikes will last. Pretty contrasts are made by planting pots, pans and boxes with varieties of different

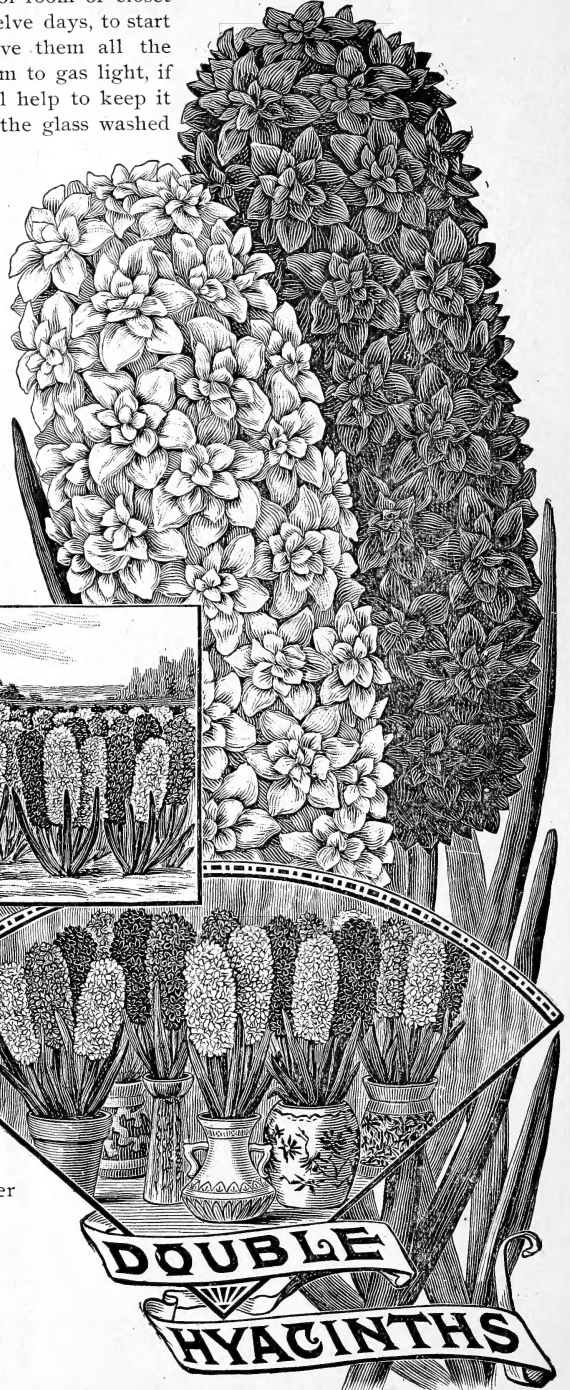
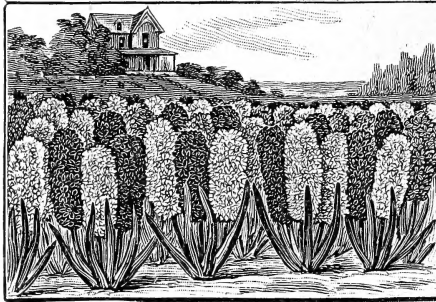


colors, as blue and yellow, white and yellow, white and crimson, cream, orange and apricot-peach, etc. A six-inch pot will hold three or four bulbs, according to their size; a four-inch pot is large enough for single bulbs. September, October and November are the months for potting Hyacinths.

FLOWERS FOR THE
HOUSE FROM
CHRISTMAS
UNTIL EASTER.

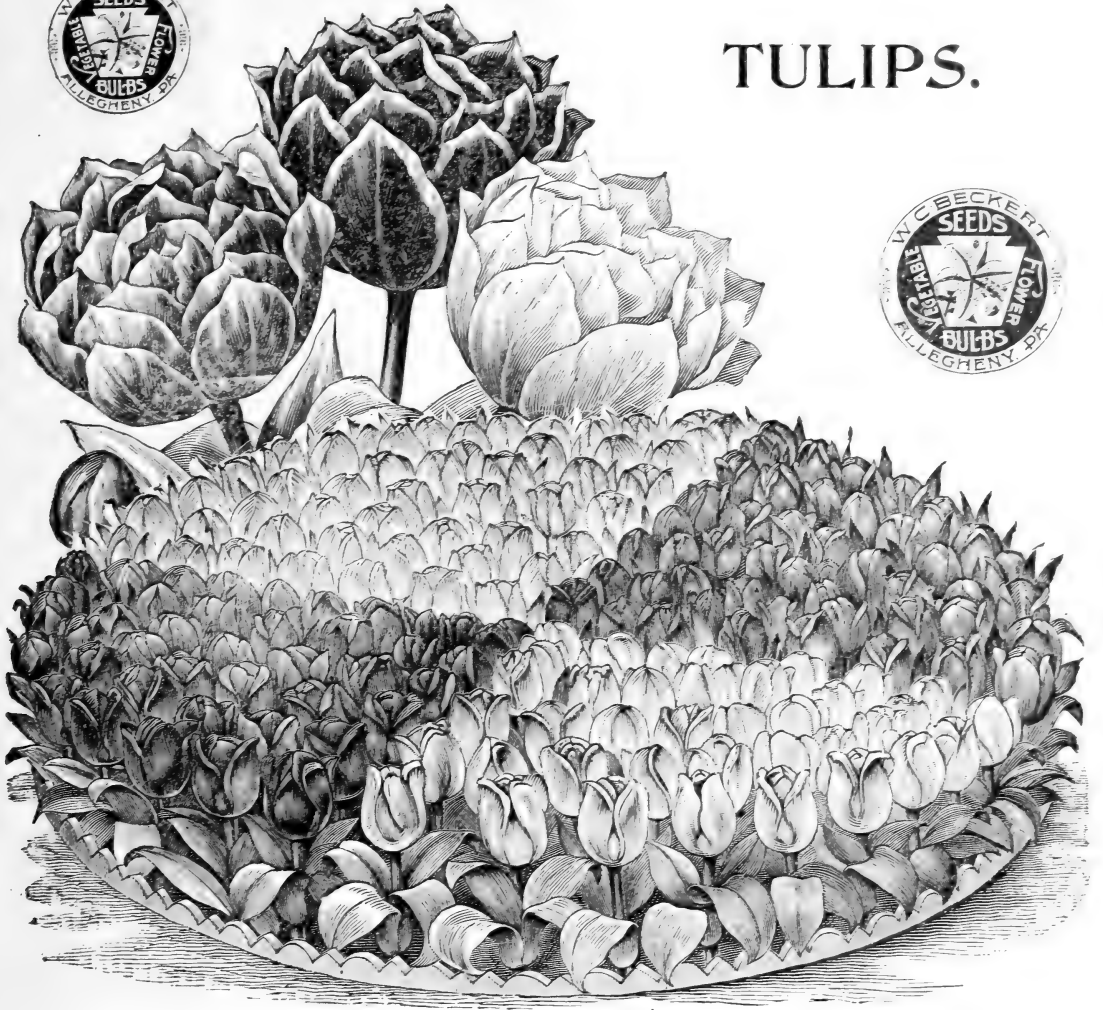
Hyacinths in Glasses.—For this method, fill the glasses with soft water, and place the bulbs so that at the base they shall just touch the surface of the water. Set them in a dark, cool room or closet for the first ten or twelve days, to start root growth; then give them all the light and air possible, but never expose them to gas light, if avoidable. Charcoal placed in the water will help to keep it sweet, but it must be changed occasionally, the glass washed out clean, and the root-fibres carefully rinsed and reinserted. Keep the water always touching the base of the bulbs; never let it freeze.

Hyacinths in the Open Ground.—For outdoor flowering, Hyacinths should be planted in October or November, preferably the former month, as the sooner they are in the ground the better. Be sure that the beds or borders in which they are planted are well drained, that the situation is light and sunny, and the soil made rich and porous. It is well to raise the surface of the bed a little in the centre, so that water will not stand upon it in winter. If the beds are laid out in odd and pretty shapes, the designs chosen are simple and elegant and the mixture of colors harmonious, the Hyacinth is capable of wonderful lawn painting. Bulbs with flowers all of the same color naturalized in masses are also striking and pretty. Wherever planted, set them about 9 inches apart each way, and cover them evenly about 3 inches deep; bulbs planted or covered at uneven depths will not bloom at the same time. Cover the beds with a light mulch after freezing weather comes on.





TULIPS.



BED OF TULIPS 6 FEET IN DIAMETER, REQUIRING 200 BULBS PLANTED 5 INCHES APART.

THE Tulip can supply a brilliancy and vividness of coloring unapproached by other spring flowers, and the rich shadings and markings upon its petals are as varied as they are bright. It is as hardy as the hyacinth and as easy to grow, requiring the same conditions of culture, and retaining its beauty without deterioration for a number of years. For most satisfactory results only the named varieties are recommended for bedding. Select those sorts which bloom at the same time and grow to one height, or if not all of one height, plant the taller sorts in the center.

In 100, single, scarlet, 50 white and 50 yellow, \$2.90	In 200, single, white..... \$2.50
In 100, single, white, 50 scarlet and 50 yellow, 2.80	In 200, single, yellow..... 3.00
In 100, single, yellow, 50 scarlet and 50 white, 2.95	In 100, double, white and 100 scarlet 3.00
In 50, single, pink, 50 white, 50 yellow,	In 200, double, white.... 2.40
50 scarlet..... 2.95	In 200, double, scarlet..... 3.50
In 200, single, scarlet..... 2.90	In 200, double superfine mixed 1.40
	In 200 single, superfine mixed..... 1.40

All single Tulips force readily. The earliest sorts are marked A; the next are marked B; and those still a little later are marked C.

The height to which they grow in inches is indicated by figures preceding names of varieties.

SINGLE EARLY TULIPS.

Where to be sent by mail, add for postage at the rate of 5 cts. per dozen, or 40 cts per 100. Single bulbs are mailed free at prices given.

B 9. Belle Alliance. Scarlet sweet-scented, large flower, fine for forcing and bedding. 3 for 10 cts.; per doz. 25 cts.; per 100 \$1.50.

B 9. Brutus. Brown-red, bordered with yellow, a fine variety for beds. 3 for 10 cts.; per doz. 25 cts.; per 100 \$1.50

B 9. Chrysolora. Pure golden yellow, extra fine. There is no yellow Tulips which gives more satisfaction for bedding than this variety. Flower large and fine formed and keeps its golden yellow color until the petals drop. 3 for 10 cts.; per doz. 25 cts.; per 100 \$1.60.

B 9. Crimson King. Fine scarlet, easily forced, very fine for bedding. 2 for 5 cts.; per doz. 20 cts.; per 100 \$1.25.

B 9. Cottage Maid. White bordered with delicate pink, extra fine. This Tulip is unique in color; when forced it is beautiful pink, and in beds its color attracts admiration even at a distance. 5 cts. each; per doz. 30 cts. per 100 \$2.00.

C 10. Couleur Ponceau. Rosy red and white, fine for beds. 2 for 5 cts.; per doz. 20 cts.; per 100 \$1.25.

A 10. Joost Van Vondel. Deep cherry red and white, very large flower, fine for forcing, color very showy. 5 cts. each; per doz., 30 cts.; per 100, \$1.60,

B 10. Keizerskroon. Bright red with broad yellow edge, very fine for forcing and bedding. One of the best. 5 cts. each; per doz., 30 cts.; per 100, \$1.60.

B 9. L. Immaculee. Pure white, yellow base, large broad petaled flower, very early and fine. 2 for 5 cts.; per doz., 20 cts.; per 100, \$1.25.

B 8. La Reine. Pure white, extra fine for forcing, sometimes it turns into a delicate pink. 2 for 5 cts.; per doz., 20 cts.; per 100, \$1.25.



A 9. Leonard de Vinci. Very fine orange or terra cotta color, erect habit and excellent for forcing and bedding. 5 cts. each, per doz., 30 cts., per 100, \$2.00.

B 9. Princess Mariana. Very large white Tulip, slightly tinged with pink, excellent for forcing. 5 cts. each; per doz., 30 cts.; per 100, \$2.00.

A 9. Pottebaker White. Finest of all white Tulips, may be forced easily and early. 5 cts. each; per doz., 30 cts.; per 100, \$2.00.

A 9. Pottebaker Scarlet. Very fine bright scarlet, large flower, excellent for forcing. 3 for 10 cts.; per doz., 25 cts.; per 100, \$1.50.

SINGLE EARLY TULIPS.—CONTINUED.

- B 9. President Lincoln.** Bright lilac violet, extra fine for bedding. 3 for 10 cts.; per doz., 20 cts.; per 100, \$1.25.
- B 12. Proserpine.** Very fine glossy carmine pink, large flower. This very striking Tulip is unique in color and forces well, also a fine bedder. 5 cts. each; per doz., 35 cts.; per 100, \$2.50.
- B 9. Rachel Ruisch.** White shaded pink, fine for forcing and bedding. 3 for 10 cts.; per doz., 25 cts.; per 100, \$1.50.
- B 9. Rosa Mundi.** Cardinal pink, feathered white through center of petals, white base, large flower. 5 cts. each; per doz., 30 cts.; per 100, \$1.60.
- B 10. Royal Silver Standard.** White feathered with cherry crimson. 3 for 10 cts.; per doz., 20 cts.; per 100, \$1.25.

- B 10. Thomas Moore.** Fine apricot, orange or terra cotta color, fine shaped distinct flower, fine forcer. 5 cts. each; per doz., 30 cts.; per 100, \$2.00.
- B 9. Vermillion Brilliant.** Brilliant Vermillion, a beautiful flower, the flower when forced is very large and brilliant. 5 cts. each; per doz., 35 cts.; per 100, \$2.50.
- B 9. White Swan.** Large pure white flower, erect stem and suitable both for forcing and bedding. 3 for 10 cts.; per doz., 20 cts.; per 100, \$1.25.
- C 8. Wouwerman.** Purple violet, extra large flower, fine for outdoor. 3 for 10 cts.; per doz., 20 cts.; per 100, \$1.25.
- B 9. Yellow Prince.** Fine yellow, very sweet scented, keeps the front rank among yellow Tulips for forcing, on account of its earliness and ease in forcing, and its agreeable scent. 5 cts. each; per doz., 30 cts.; per 100, \$2.00.

DUC VAN THOLL TULIPS.

These are the earliest of all Tulips, and only recommendable for forcing. The flowers are smaller and shorter stemmed than other sorts.

Duc Van Tholl. Red, 2 for 5 cts.	per doz., 20c.	Duc Van Tholl. Vermillion, 2 for 5c.,	per doz. 20c.
“ Yellow, 5 “	“ 30c.	“ Rose, 5 cts.	“ 30c.
“ White, 5 “	“ 30c.	“ Gold striped, 2 for 5c.	“ 20c.

MIXED TULIPS. FOR BEDDING ONLY.

These are much used for beds and borders, and are much cheaper than named sorts. We pay particular attention in blending our superfine mixture, bringing together those kinds which flower at one time, and grow to a uniform height. This superfine mixture likewise is made up of a good assortment of varieties.



PRICE.

Single Superfine Mixed.	per doz., \$.15;	per 100, \$.80;	per 1000, \$7.00.
Single Fine Mixed.	“ .10	“ .60	“ 5.00.
Double Superfine Mixed.	“ .15	“ .80	“ 7.00.
Double Fine Mixed.	“ .10	“ .60	“ 5.00.



NAMED EARLY DOUBLE TULIPS.

For those who love massive heads of beautiful color the Double Tulip will perhaps be prized as high as the single varieties. They are robust growers, and produce admirable beds, whilst from their double flowering habit, the season of bloom is much prolonged, the flowers being more persistent.

- B 8. Rex Rubrorum.** Fine scarlet, large full double flower, beautiful when planted with La Candeur to form designs, as they grow of equal height and bloom at the same time. 5 cts. each; per doz., 30 cts., per 100, \$1.80.
- B 8. La Candeur.** Pure white, very full and large, much used for bedding. 2 for 5 cts.; per doz., 20 cts.; per 100, \$1.25.
- A 9. Imperator Rubrorum.** Very fine bright scarlet, finest of all double scarlets for forcing, no other scarlet equal to it for this purpose. 5 cts. each; per doz., 30 cts.; per 100, \$2.00.
- B 8. Murrillo.** Extra fine light pink, decidedly the best double pink for forcing, flowers very large, full double. 5 cts. each; per doz., 35c.; per 100, \$2.50.
- A 9. Purple Crown.** Purplish red, very showy for beds. 2 for 5 cts.; per doz., 20 cts.; per 100, \$1.25.
- B 9. Rose Blanche.** Pure white, very full double, like a rose of the finest white. 3 for 10 cts.; per doz., 25 cts.; per 100, \$1.60.
- A 7. Titian.** Red, bordered yellow. 5 cts. each; per doz., 30 cts.; per 100, \$2.00.

NAMED EARLY DOUBLE TULIPS.—CONTINUED.



A 9. **Le Blazon.** Delicate rose, shaded and striped with white, extra fine. 2 for 5 cts.; per doz., 20 cts.; per 100, \$1.25.

A 9. **Tournesoll Yellow.** Fine yellow, orange shaded, very fine for forcing, one of the finest yellow Tulips. 5 cts each; per doz., 40 cts.; per 100, \$3.00.

A 9. **Tournesoll Red and Yellow.** Bright red with yellow edge, very sweet scented, large flower, no other double Tulip may be as easily forced as this variety. 5 cents each; per doz., 35 cents; per 100, \$2.50.

A 9. **Gloria Solis.** Deep crimson, with broad golden margin, very large flower. 2 for 5 cts.; per doz., 20 cts.; per 100, \$1.25.

LATE TULIPS.

Gesneriana. Single, beautiful dazzling scarlet, with deep bluish violet center, extra large flower, this is a gem for bedding. 3 for 10 cts.; per doz. 25 cts.; per 100, \$1.50

Golden Crown. The mate to the preceding, yellow, slight-edged red. 2 for 5 cts.; per doz., 20 cts.; per 100, \$1.25.

PARROT TULIPS.

The flowers are very peculiarly formed, the petals are curiously splashed, and the form, especially before the flower opens, somewhat resembles the beak of a parrot, their colors are very fine and distinct 3 for 10 cts.; per doz., 25 cts.; per 100, \$1.50.

BIZARRE TULIPS.

Grand rich flowers of perfect shape, having yellow ground color, feathered with crimson, purple or white. Mixed colors, 2 for 5 cts.; per doz., 20 cts.; per 100, \$1.25.

BYBLOEM TULIPS.

Purple, violet and maroon, on white ground. 2 for 5 cts.; per doz., 20 cts.; per 100, \$1.25.

NARCISSUS.

THIS "Flower of the Poets," of the spring garden and of the winter window has become so popular that the bulbs are now sold in immense quantities, and largely forced for cut blooms. An enchanting fragrance breathes from their white petals and gold and silver cups, which are very pure and chaste in coloring and picturesque in form. All the species and varieties which we offer bloom freely, are quite easy to grow in a number of different and interesting ways, and, excepting the Polyanthus section, are entirely hardy.

GARDEN NARCISSUS.

The single and double garden narcissus are very bright and attractive when planted in lines or masses along open borders where they can remain undisturbed. They thrive in almost any soil, and when given the same culture as the Hyacinth, increase and improve for years. After a long time the roots become matted together, so that division and replanting are necessary. If forced slowly, most of them can be made to yield their bloom in winter.

Add postage at the rate of 6 cts. per dozen to prices of bulbs sent by mail.

DOUBLE NARCISSUS.

Albo Pleno Odorato. Pure white, sweet scented, resembling Gardenias; very recommendable for outdoor culture. 2 for 5 cents; per dozen, 20 cents; per 100, \$1.00.



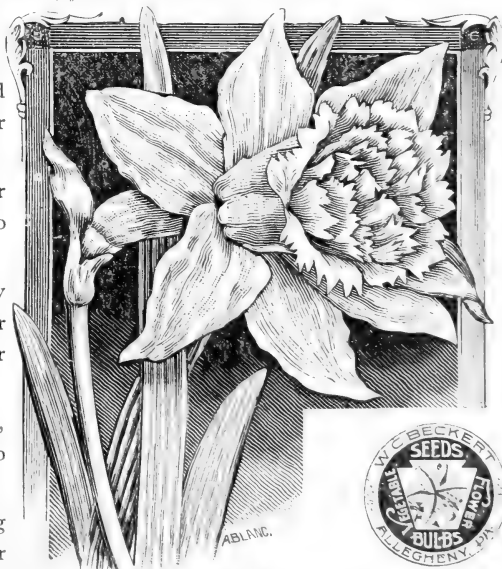
Incomparabilis. (Butter and Eggs.) Yellow and orange, sweet scented. 2 for 5 cents; 20 cents per dozen; per 100, \$1.00.

Van Sion. Large double golden yellow, desirable for bedding out, and extra fine for forcing. 3 for 10 cents; 30 cents per dozen; per 100, \$2.00.

Orange Phoenix. White, with orange centre, very fine large flower, large bulb. Add 2 cents per bulb if to be sent by mail. 5 cents each; per dozen, 40 cents; per 100, \$3.00.

Sulphur Phoenix. Large, full, creamy white flowers, large bulb. 2 cents per bulb extra for postage. 10 cents each; \$1.00 per dozen.

Large Double Jonquil. Fine sort, showing striking shades of yellow and white. 5 cents each; per dozen, 40 cents; per 100, \$4.00.



VAN SION NARCISSUS.



POLYANTHUS VARIETIES.

This section of *Narcissus* bears a large cluster of flowers to each stem. They are very fragrant, beautiful, and easily grown in pots or glasses of water. The culture is the same as for Hyacinths, and the bulbs may be planted at any time, either singly or four or five in a pot. Although not generally found hardy in northern climates without protection, deep planting in a sheltered situation, and a heavy mulch in autumn, will carry them safely over the winter.



CHINESE SACRED NARCISSUS.

- Horsfieldi.** Very large flowers of pure white, rich yellow trumpet; very stately and beautiful. 10 cents each; per dozen, \$1.00.
- Large Single Jonquil.** Very fragrant, deep, rich, yellow; very attractive. 2 for 5 cents; 15 cents per dozen; per 100, \$1.00.
- Campernelles Jonquil.** Pure yellow, sweet scented variety; fine for forcing. 3 for 10 cents; 25 cents per dozen; per 100, \$1.25.

SINGLE VARIETIES.

- Poeticus.** (Pheasant's Eye.) A dainty little beauty with white petals, and orange cup edged with crimson; splendid for cutting. 2 for 5 cts.; 15 cts. per doz.; per 100, 75 cts.
- Poeticus Ornatus.** Pure white, sweet scented; very fine for forcing. About a month earlier than the preceding. 3 for 10 cents; per dozen, 25 cents; per 100, \$1.50.
- Henry Irving.** Bold golden-yellow trumpet, with yellow, wheel-shaped perianth; very fine and early variety. 10 cents each; \$1.00 per dozen; per 100, \$6.00.
- Incomparabilis Simplex.** Fine yellow trumpet. 5 cts. each; per doz., 40 cts.; per 100, \$3.00.
- Sir Watkin.** (Giant Daffodil.) Very large petals of a rich sulphur yellow color, and large cup, yellow tinged with orange. 15 cents each; \$1.50 per dozen.
- Maximus.** Deep golden yellow perianth and trumpet. 10 cents each; \$1.00 per dozen.

TOTUS ALBA GRANDIFLORA.

(Paper White.)

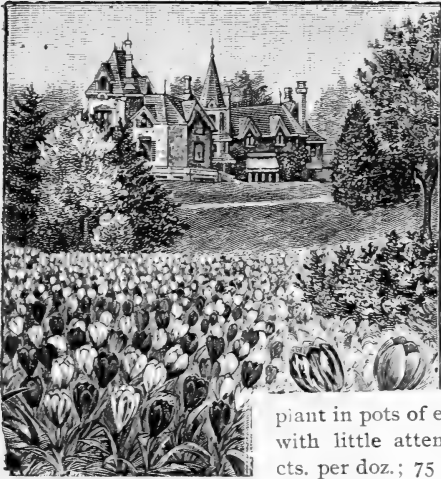
Fragrant flower of spotless white, in large clusters. Perhaps more largely forced than any other sort. An improved large form of the ordinary paper white. Price, 5 cents each; per dozen, 40 cents; per 100, \$2.00.

Chinese Sacred Lily. (*Narcissus Tazetta.*) The growing of this flower in bowls of water and white pebbles has become a fad in homes both elegant and unpretentious. Its large and irregular bulbs send up numerous flower spikes, topped with fragrant bloom clusters of white and gold. In placing the bulb upon its bed of white pebbles, be careful to let only the base touch the water. This is the more poetical way of growing the flowers, but they can be produced quite as prodigally when the bulbs are planted in soil, sand or moss. In fact they amply repay the care bestowed upon them regardless of the manner of culture, and the person is hard to please who is not satisfied with the beautiful blooms and the delectable fragrance which they exhale. Mammoth bulbs, 10 cents each; by mail, 13 cents; \$1.00 per doz.; by mail, \$1.30.



ASSORTED NARCISSUS.

THE EARLIEST FLOWERS OF SPRING.



CROCUS.

Largest White.....	4	for 5 cts.;	12 cts. per doz.;	60 cts. per 100.
Largest Purple.....	4	" 5 "	12 "	60 "
Largest Striped.....	4	" 5 "	12 "	60 "
Mixed Yellow.....	per doz.,	10 cts.;	per 100, 40 cts.;	per 1000, \$3.50
Mixed White.....	"	10 "	" 40 "	3.50
Mixed Purple.....	"	10 "	" 40 "	3.50
Mixed Striped.....	"	10 "	" 40 "	3.50

BULBOCODISM VERNUM.

This spring Colchicum blooms even earlier than the Crocus, sending up its rose-purple flowers along with the Snowdrop, with which it makes a pretty combination for naturalizing along walks, &c. Clumps of Bulbocodium dug from under the snow in winter and placed in a sunny window will soon be in bloom. 3 cts each; doz., 25 cts.

CHIONODOXA, OR GLORY OF THE SNOW.

An exquisite spring-flowering bulb, producing flower spikes bearing ten to fifteen lovely Scillas-like flowers, perfectly hardy, and also well adapted for pot culture. 2 for 5 cts.; per doz., 25c.

CROCUS.

BESIDES being one of the earliest flowers of spring, the Crocus is also one of the hardiest and easiest to grow. Planted in clumps among the grass, the flowers fleck the sod brightly as soon as the snow is gone, and themselves disappear before mowing is necessary, planted among borders, it is a cheery harbinger of other spring flowers; and planted thickly in pots of sand, moss or soil it can be flowered successfully in unheated rooms in winter.

If to be sent by mail, add for postage at the rate of 15 cents per 100. In dozens or less quantities, mailed free.

MAMMOTH YELLOW CROCUS.

These are exceedingly large bulbs, and each bulb will produce a dozen or more of pretty yellow flowers, plant in pots of earth, sand or moss and they can be flowered in the house with little attention. 3 for 5 cts.; 15 cts. per doz.; 75 cts. per 100.



MAMMOTH YELLOW CROCUS.

SNOWDROPS & SNOWFLAKES.

These "fair harbingers of spring" are fine for naturalizing among the grass like Crocus. The Snowdrop blooms about March 1st, the Snowflake a little later, both are perfectly hardy.

- Galanthus Nivalis. The common, single, white Snowdrop. 2 cts. each, doz. 15 cts.
- G. Nivalis Fl. Pl. Double white Snowdrop. 3 cts. each; doz., 25 cts.
- G. Elwesii. Giant Snowdrop. This is much larger, earlier and rather more fragrant than the preceding. 2 for 5 cts.; per doz., 25 cts.
- Spring Snowflake. (Leucojum vernum.) Taller than the Snowdrop. 2 for 5 cts.; per doz., 25 cts.



SNOWDROPS AND SNOWFLAKES.



SCILLAS.

SCILLAS.

Scillas are so early, hardy and easy to grow that they should be as popular as the Crocus and Snowdrop. Their bright blue flowers form beautiful masses of color.

S. Siberica. Sprays of soft, bright blue flowers. 3 for 5 cts.; doz. 15 cts.; per 100, 75 cents.



ERYTHRONIUM. (DOGS TOOTH VIOLET.)

ERYTHRONIUM. (DOGS TOOTH VIOLET.)

Large flowering cream-white bells, on graceful sprays and finely variegated leaves. Loves a moist shaded situation. 3 for 10 cts.; doz., 35 cts.

RANUNCULUS.

Ranunculus are not generally considered hardy, but when planted 3 inches deep in dry, sheltered situations, they will endure all but our severest winters. The flowers are of beautiful shapes and colors. They are also pretty for growing in pots. Persian, Turban and French. Mixed colors or separate. 2 cts. each; 15 cts. per doz.

ORNITHOGALUM.

O. Arabicum. Large flowering clusters, made up of many star-shaped milk-white blossoms. They have a jet-black centre, and an aromatic fragrance; will bloom by Easter. 5 cts. each; 50 cts. per doz.



RANUNCULUS.



Ixias. Showy plants from South Africa; with flowers in long spikes, like the Gladioli.

Choice mixed, 2 for 5 cts.; per dozen, 20 cents.

Sparaxis. Attractive, with blossoms something like the Ixias. Fine mixed bulbs, 2

for 5 cts.; per dozen, 20 cents.

Babiana. A charming genus, with leaves of the darkest green. They vary in color from the richest carmine to the brightest blue. Many of them are sweet scented. Fine for pot-culture. 3 for 10 cts.; per dozen, 35 cents.

Allium Neapolitum. Pure white flowers in loose, graceful umbels. 3 for 10 cents; per dozen, 25 cents; per 100, \$1.25

Triteleia Uniflora. Pretty star shaped flowers of white and blue, with delicate primrose perfume; hardy. 2 for 5 cents; per dozen, 20 cents.



IXIAS.



CYCLAMEN.

C. Giganteum. This is a choice strain of a favorable winter blooming plant, as handsome in leaf and flower as it is odd and individual. No plants are better adapted for pot culture, and few that produce such a profusion of bloom. The flowers range through many shades, and most of them are delicately fragrant. We have these in crimson, pink and white, and in very large bulbs. 15 cts. each; \$1.50 per dozen; by mail, 2 cts. extra for each bulb.

IRIS. (OR FLOWER DE LUCE.)

The Iris seem to love to grow in everybody's garden, and everybody seems to love the Rainbow Flower and to plant some member of the family, even if it be only the sweet old fashioned Blue Flag. We catalogue the handsomest species, which succeed well in general cultivation. The peculiar shape of the flower, the elegant combination of colors, and the ease with which they are grown in moist situations, make them universal favorites.

I. Anglica, English Iris. Handsome flowers, in purple, blue and lilac shades. 3 for 10 cts.; per dozen, 25 cents.

I. Hispanica, the Spanish Iris, are fine for pot culture; bloom early and are easily grown. The colors in this class vary from golden yellow to dark bronze, and from dark blue and purple to light blue and pure white, with fine shades of porcelain and pearl. Mixed sorts, 2 for 5 cts.; per dozen, 25 cents.

William the First, the best yellow variety, 5 cts. each; per dozen, 50 cents.

British Queen, extra fine pure white, 5 cts. each; per dozen, 50 cents.

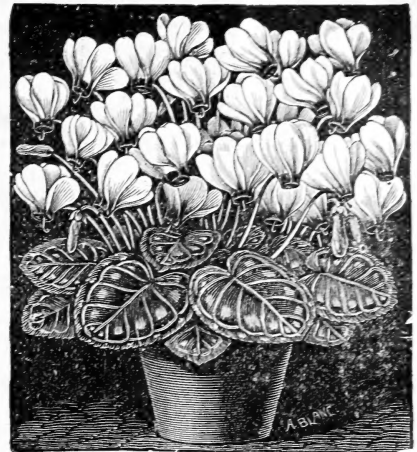
Iris Pavonia. (Peacock Iris.) Pure white, with bright blue spot on each petal. Fine for pots or garden culture. 10 cts. each; per dozen, 75 cts.

Iris Persica. Sky blue, with yellow streak on the petals; sweet scented and very early. 2 for 5 cts.; per dozen, 25 cents.

Iris Kaempferi. (Ready in November.) The Japan Iris is perhaps the most popular of all its race. Its flowers are very large and widely open, with low crests and wide falls in a rainbow of bright colors around the golden-yellow eye which marks the centre. It is perfectly hardy, and flowers profusely in midsummer. It enjoys a moist situation, and when thus favorably placed will grow several feet in height, its light green foliage showing in striking contrast to the gay beauty of the flowers. Its ease and freedom of growth and profusion of bloom add to the popularity won by the beauty of coloring of flowers and foliage. Single mixed varieties 10 cts. each; per dozen, \$1.00. Double mixed varieties 15 cts. each; per dozen, \$1.50.

ANEMONES OR WINDFLOWERS.

When grown in masses in the garden these double and single Anemones are brilliant in the extreme, as their large flowers range through many shades of scarlet, rose, white, blue, and lavender. Although not perfectly hardy in the northern



CYCLAMEN.

states, they bloom well if not planted until spring. They are easily grown in pots. Single and double mixed each 3 cts.; per dozen, 25 cents.

FREESIA.

The Freesia is now the rival of the Roman Hyacinth and Lily-of-the-Valley. It is a tender Cape bulb, easily forced in winter. The white tubular flowers are borne in small sprays, and are very sweet scented.

F. Refracta Alba. White flowers, faintly blotched with yellow. Extra large bulbs 2 for 5 cts.; per dozen, 20 cts.; per 100, \$1.25.

F. Leichtlinii. Yellow and orange. 3 for 10 cts.; per dozen, 35 cents.

GLOXINIAS.

Most charming stove plants, of dwarf habit, but producing large and splendid flowers in the greatest profusion under the commonest culture. Bloom continuously for months, and by starting at intervals a succession of their splendid flowers may be had nearly the whole year around. Ready in November. 15 cts. each; per dozen, \$1.50.

ANOMATHECA.

A. Cruenta. A charming plant for pot culture. Their dwarf stature, brilliant and profuse bloom, continued for a long period, render them very popular. Flowers bright, rosy carmine, blotched with crimson. 5 cts. each; per dozen, 50 cents.

AMARYLLIS.

The following species of Amaryllis are given prominent places in all collections of plants because of their remarkably handsome flowers which last for so long a time. They grow best in pots of well drained, rich, sandy loam, and need but little water until they show flower buds. 15 cts. each; per doz. \$1.50. Add 4c per bulb for postage when to be sent by mail.

Formosissima. (Jacobean Lily.) Scarlet, distinct in shape. 15 cts. each; per dozen, \$1.50.

Belladonna Major. Rosy violet and white, fragrant. 15 cts. each; per dozen, \$1.50.

Longiflora Alba. Large, white and fragrant.

Longiflora Rosea. Like the above, but rosy-white. 15 cts. each; per dozen, \$1.50.

CALLA LILIES.

C. Little Gem. The tall, white Calla, *Richardia Aethiopica* in miniature. Plan and flower smaller, and neater in form, the latter being small enough for corsage wear. Very free and constant in bloom. 10 cts. each; dozen, \$1.

Richardia Aethiopica.

The old, well-known queen of the window garden, will thrive and bloom profusely under the most ordinary treatment and conditions.

Price, mammoth bulbs, 25c; per doz. \$2.50. 30c extra postage. First size " 15c; " 1.50. 15c " Second " 10c; " 1.00. 10c " Small " 5c; " 50c. by mail free.



LITTLE GEM.

Black Calla. (*Arum Sanctum.*) Large and broad flowers of glistening black. A remarkable variety from Palestine. 20 cts. each; per doz., \$2.

SPIREA.

Spirea Japonica. Much forced in the winter for its large sprays of misty silver-white flowers. It is perfectly hardy and blooms in the garden in June. Strong clumps, 10 cts. each; \$1.00 per doz. 10 cts. extra per clump, by mail.

Spirea Astilboides. Large, pure white, extra fine. 15 cts. each; \$1.50 per dozen. 10 cts. extra per clump, by mail.

Spirea Astilboides Floribunda. Pure white, large truss; fine. 15 cts. each; \$1.50 per dozen. 10 cts. extra per clump, by mail.

Spirea Compacta Multiflora. Compact trusses of feathery white flowers. 15 cts. each; \$1.50 per dozen.

LILY-OF-THE-VALLEY.

Popular everywhere for gardens, cemeteries and indoor forcing. It will always be a favorite flower. Outdoors it flourishes well in shaded places left bare by other plants; indoors it loves a light, warm window and plenty of water. Strong, extra quality pips. Per bundle of 25, 50 cts.; by mail, 60 cts; per 100 by mail, \$1.75. Large clumps for outdoor planting, 25 cts.; per dozen, \$2.50.

Flower Seeds

For Fall and Winter Sowing.

FOR GREENHOUSE AND FRAMES.

For complete list of seeds refer to General Catalogue.

Aralia Sieboldi	Pkt.
Azalea	\$ 25
Begonia, Single Tuberos-rooted	25
" Double	25
" Vernon	25
Calendula, Meteor	25
" Pure Gold	5
Calceolaria, Grandiflora	25
Carnation, Marguerite	10
Chrysanthemum, Fine Mixed	25
Cineraria, Grandiflora	25
Coleus, Fine Mixed	25
Candytuft, Empress	5
Centaurea Candidissima	10
" Gymnocarpi	10
Cyclamen P. Giganteum, White	25
" " White, Red Center	25
" " Crimson	25
" " Rose	25
" " Pink	25
" " Choice Mixed	25
Cobea Scandens	10
Daisy, Longfellow	10
" Snowball	10
" Maximus Mixed	10
" Double	10
Gloxinia Grandiflora	25
Grevilla Robusta	10
Impatiens Sultani	25
Ipomea Grandiflora	10
Kentilworth Ivy	5
Lantana, Mixed	10
Lobelia, Crystal Palace Compacta	10
" Erinus Speciosa	10
Maurandia, Mixed	5
Musk	10
Mimulus Tigrinus	10
Mignonette Defiance	25
" Mchet	10
Myosotis, Victoria	10
Pyrethrum Aureum	10
Primula Sinensis	
" Alba Magnifica, White, Yellow Eye	25
" Blue	50
" Crimson, Yellow Eye	25
" Bright Red	25
" Rose	25
" Striped	25
" Spotted, White and Crimson	25
" Fern Leafed Mixed	25
" Double White	50
" " Mixed	50
Primula, Obconica Grandiflora	25
Petunia, Giants of California	25
" Grandiflora Fringed	10
" Striped and Blotched	10
" Inimitable N. Compacta	10
" Double Fringed	50
Pansy, Superb Mixed	25
" Exhibition Strain	50
" Bugnots Superb Blotched	25
" Cassiers Large Flowered	25
" Odier Five Blotched	25
" Five Blotched Golden Yellow	25
" Giant Parisian	25
" " Yellow, Dark Eye	15
" " Striped	15
" " Blue	15
" " Black	15
" " White, Dark Eye	15
" " Purple	15
" Mixed	15
" German Mixed	10
Salvia Splendens	10
Smilax	10
Stocks, Ten Weeks, Mixed	10
" Separate Colors	10
Torenia Vailoni	25
" Fournieri	25
Thunbergia Mixed	10
Verbena, Mammoth Mixed	10
Vinca Rosea	10
" " Alba	10
" " Alba Pura	10



HOW TO MAKE A LAWN.

SOME hints may be of value to those who are without experience in laying out and seeding lawns or pleasure grounds. Several things are requisite in the formation of a really fine lawn: First—There must be a good depth of rich soil, properly drained and free from boulders just below the surface; boulders, if not removed, will, during the heat of summer, cause unsightly dry spots in an otherwise beautiful lawn, therefore all such should be removed. Secondly—A liberal dressing of thoroughly decayed manure, 10 or 12 cords to the acre; a rich soil of good depth and liberally fertilized will maintain a fine greensward permanently, needing only an occasional top-dressing. Fresh, strawy manure should never be used in making a lawn, as when decaying it is apt to cause uneven settling of the soil. Thirdly—Nicety of grading in the levels and slopes, and fineness and smoothness of surface. Make a smooth surface with harrow and rake, and use a roller to make it firm and even, *before making the seed.* Lastly—A sufficient quantity of the best lawn grass seed—not less than four bushels to the acre, or at the rate of one quart to 300 square feet. After sowing, cover the seed well by raking it in, and again use the roller to finish the work. As a rule, the best season to sow a lawn is in the fall, the exact time being governed by the latitude. If sown at the proper time, the grass will be strong enough by winter to endure the cold safely, and the weeds, which will inevitably appear, being mostly annuals, will not have time to mature and scatter their seeds. If circumstances prevent fall sowing, it should be done as early in spring as possible, so that the young grass may be the better prepared for the hot, dry weather of midsummer. The grass should be allowed to get a good start before cutting, and then it should be trimmed with a lawn-mower about every ten days. Old lawns may be improved by liberal fertilization and the sowing of about half the quantity of seed required for a new lawn.

LAWN GRASS SEED.

SPECIAL EVERGREEN MIXTURE. The very best mixture that can be made. Should always be used for the very best results. Good for tennis and croquet grounds, etc. 25 lbs. per bushel, \$4.50 per ton; 100 lbs. per bushel.

GOOD LAWN MIXTURE. A good compound of the best evergreen, the growing grasses adapted for the formation of a good lawn. 25 lbs. per bushel, 100 lbs. per bushel, \$4.50 per bushel.

