

Historic, archived document

Do not assume content reflects current scientific knowledge, policies, or practices.

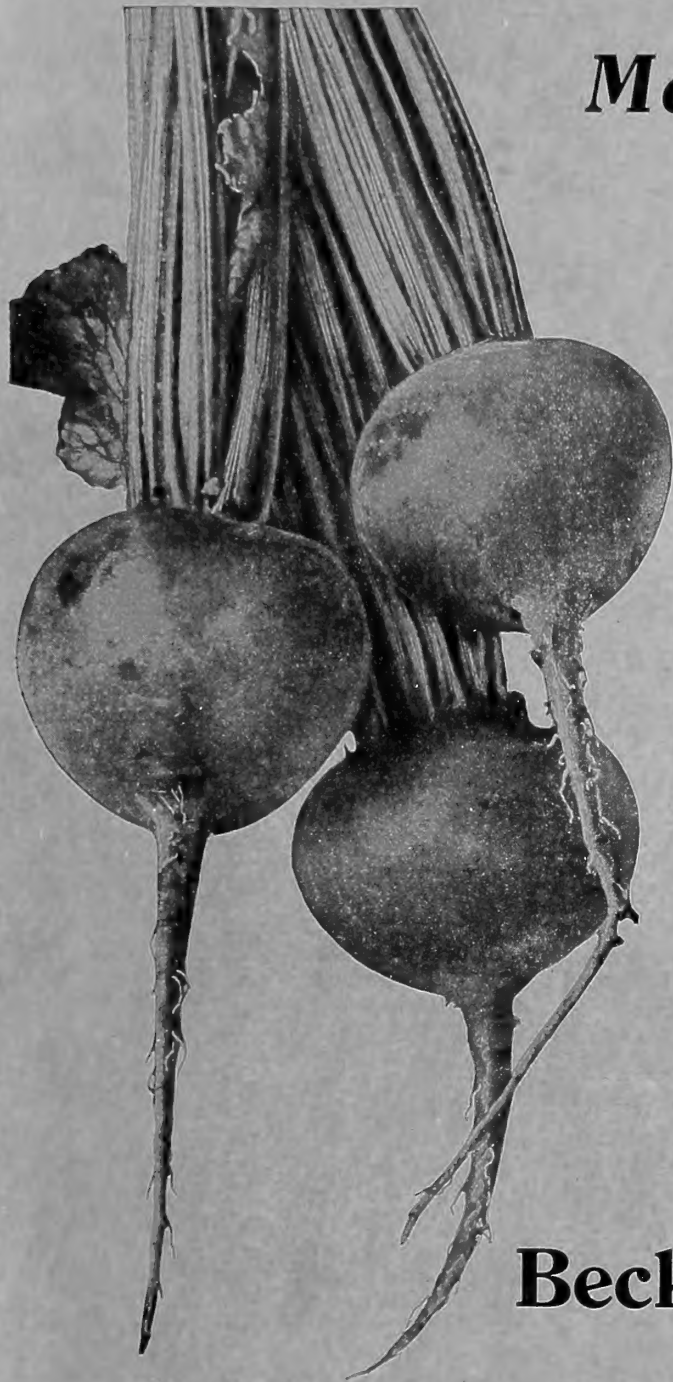
62-13

LIBRARY
RECEIVED
JUN 25 1919
U. S. Department of Agriculture

Beckert's "Reason Why" Catalog

for

Market-Gardeners



**Wholesale Prices of Seeds,
Bulbs, etc., for Those Who
Grow to Sell the Product.**

*A Guide to Dependable
Varieties and Strains of Profitable
Vegetables and Flowers*

1878



1919

Beckert's Seed Store

*The Store of Complete
Horticultural Service*

**101-103 Federal Street (North Side)
Pittsburgh, Penna.**

True-to-type Roots of
Our Strain of
CROSBY'S EGYPTIAN BEET
(See page 4 for further facts)

101-103 Federal St., Pittsburgh, Pa., January 15, 1919.

To Our Market-Gardening Friends

THIS is an age of reason. And no one has a better reason to ask why he should buy his seeds from a certain firm, why he should pay a certain price for seeds of a given sort, than the man whose very livelihood depends on the crops from those seeds.

For forty years Beckert's Seed Store has enjoyed the patronage of America's most discriminating market-growers, for the specific reason that it has sold seeds that "made good." They did all the grower expected, and *more*. And now we are going to take our customers into our confidence and *show* them some of the reasons why our Seeds are worth more than common strains, why they will "fill the bill" for any trucker whose trade calls for the best.

During all these years we have been quietly working toward higher standards. We have cheerfully paid the highest prices, plus a premium, to secure the choicest strains of the world's master seed-growers. The following pages will acquaint you more fully with the methods pursued by the growers of Beckert's Seeds, and in these methods you'll find the reasons why our Seeds are what they are—a byword for dependability.

In common with all other houses of recognized reliability, we find ourselves singularly handicapped this season in an endeavor to maintain the Beckert standard of excellence in seeds. There is almost a famine in Pea Seed, and also in Cabbage Seed. Onions of several sorts are exceedingly scarce, and succeeding months will see no improvement in the situation.

The man who *must* have our Seeds to feel reasonably sure of a profitable outcome at the end of the season will do well to act promptly upon receipt of this message. Send your order at once—we shall take care of it with customary promptness.

Sincerely yours,

Beckert's Seed Store



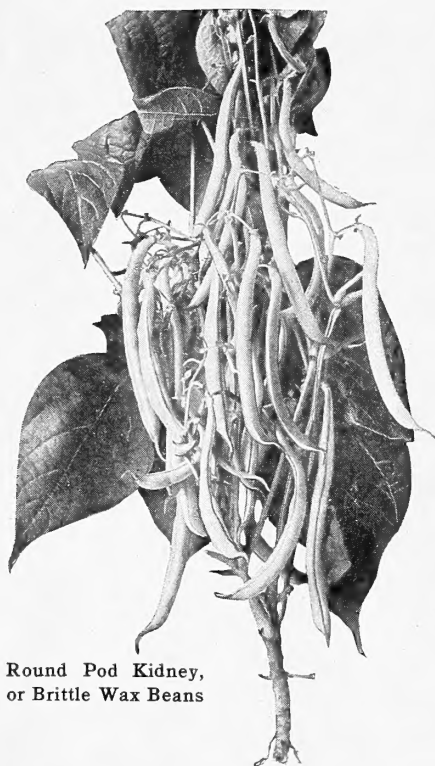
The Choicest Beans

All our Beans are grown by the most experienced and most conscientious seed-growing specialists in the country. Several times during the season, the fields bearing the seed-crop are gone over by experts, who remove any "rogues" which they may find. Thus, the state of perfection of all our strains has been gradually raised until it is difficult indeed to find a yellow-podded plant in a green-pod field, or a plant bearing flat pods when the field is planted to a round-podded sort.

Besides being thus critically inspected several times during the season, all our stocks are thoroughly milled, hand-picked, and we firmly believe that better strains of Beans than ours cannot be secured anywhere at any price. Our stocks this year are excellent, although in some instances we have just barely enough to go round.

Our advice is to order early and make sure of what you want.

Parcel-post weight of beans: Quart, 2 pounds



Round Pod Kidney,
or Brittle Wax Beans

Beans of Special Merit

Sure-Crop Stringless Wax

This splendid new variety, first offered by us two years ago, has already become a great favorite and is now more in demand with our trade than any other variety of Wax Bean. For further description and illustration see back cover of catalog. Qt. 65 cts., pk. \$4.50, bus. \$17.

Round-Pod Kidney, or Brittle Wax

This we like to call a round-podded brother to Sure-Crop Stringless Wax, although in yielding qualities none of the round-podded varieties measure up to the standards of the flat-podded kinds. Brittle Wax is perhaps the handsomest of all round-podded Beans and is surely of superlative quality. It starts bearing 6-inch pods 60 days after planting seeds and continues to bear for the best part of a month. Brittle Wax is perfectly stringless, even after it becomes old and overgrown. If your trade prefers a round-podded to a flat-pod Bean, choose this. Qt. 65 cts., pk. \$4.50, bus. \$17.

Full Measure

One of the best yielders among early, round-podded, green Bush Beans. Full Measure is always stringless, very fleshy, and its principal characteristic is its handsome dark color, which never fails to catch the eye when pods are displayed on the market bench. The plants are of vigorous constitution and resist blight and other plant diseases well. Pods are borne in greatest profusion, and the bulk of its crop is produced in a short season, something of particular value to gardeners who are short of help. Qt. 60 cts., pk. \$4, bus. \$15.

The Green-podded Sorts

	Qt.	Pk.	Bus.
Green-Pod Stringless	\$0 60	\$4 00	\$15 00
Giant Stringless	60	4 00	15 00
Bountiful	60	4 00	15 00
Black Valentine	60	4 25	16 00
Full Measure	60	4 00	15 00
Improved Valentine	60	4 00	15 00
Longfellow	65	4 25	16 00
Stringless Refugee	75	4 50	17 00
Extra-Early Refugee	60	4 00	15 00
Refugee, or 1,000-to-1	60	4 00	15 00
White Marrowfat	55	4 00	15 00
Horticultural Dwarf	60	4 25	16 00
Snowflake Navy	50	3 75	14 00
White Kidney	55	4 00	15 00

The Wax-podded Kinds

	Qt.	Pk.	Bus.
Sure-Crop Stringless Wax	\$0 65	\$4 50	\$17 00
Davis Kidney Wax	65	4 50	17 00
Wardwell's Kidney Wax	65	4 50	17 00
Round-Pod Kidney Wax (Brittle Wax)	65	4 50	17 00
Pencil-Pod Wax	65	4 50	17 00
Currie's Rust-Proof Wax	65	4 75	18 00
New Hardy Wax	70	5 00	18 50
Prolific Black Wax	65	4 50	17 00

Bush Lima Beans

	Qt.	Pk.	Bus.
Giant Bush Lima	\$0 75	\$5 50	\$20 00
Extra-Early Giant Bush Lima	75	5 50	20 00
Quarter-Century	65	4 75	18 00
Fordhook Bush Lima	75	5 50	20 00
Wood's Bush Lima	65	4 75	18 00

Pole Lima Beans

	Qt.	Pk.	Bus.
King of the Garden Pole	\$0 65	\$5 00	\$18 00
Leviathan Pole	65	5 00	18 00
Carpinteria Pole	65	5 00	18 00
Ideal Pole	65	5 00	18 00
Sieva	65	4 75	17 50

Beans, Edible-podded

Pole Varieties

	Qt.	Pk.	Bus.
Kentucky Wonder Wax	\$0 75	\$5 50	\$20 00
Dreer's Golden Cluster Wax	75	5 50	20 00
Old Homestead	65	5 00	18 00
Burger's Green-Pod Stringless	65	4 75	17 50
Perfection White	65	5 00	18 00
Horticultural	65	4 75	17 50
Creaseback	65	4 75	17 50
Scarlet Runner	50		



Full Measure Beans

Corn, Sweet or Sugar

Parcel-post weight of Corn: quart 1½ pounds

Our strains of Sweet Corn are grown under nearly ideal conditions, by the most critical seed-growers in New England, Ohio, and Pennsylvania. These men have made the production of high-class seed a life-study. Each year, stock seed is selected right out of the fields, from plants coming up to the ideal of the grower. That is the only way to work up strains, since, when ears are selected from already harvested piles, no one can tell from what sort of a plant the ears came. After being properly cured, all our Corn is critically milled and hand-picked.

The White Sorts

	Qt.	Pk.	Bus.
Adams' Extra Early	\$0 30	\$2 00	\$7 00
Pocahontas	45	3 25	12 00
White Cory	40	2 50	9 00
Early Mayflower	45	3 25	12 00
Mayflower No. 2	45	3 25	12 00
Premo	40	2 50	9 00
Kendel's Early Giant	40	2 50	9 00
Black Mexican	40	2 50	9 00
Columbus Market	40	2 50	9 00
Howling Mob	40	2 50	9 00
Early Fordhook	40	2 50	9 00
Early Champion	40	2 50	9 00
Metropolitan	40	2 50	9 00
Evergreen, Early	40	2 75	10 00
Early Mammoth	40	2 50	9 00
Country Gentleman	40	2 75	10 00
Stowell's Evergreen	40	2 75	10 00
White Evergreen	40	2 50	9 00
Late Mammoth	40	2 75	10 00

The Yellow Kinds

Beckert's Golden Evergreen combines the deliciously sweet flavor of Golden Bantam and the evergreen habit of White Evergreen. It is ready for the table about 5 days after Golden Bantam. The stalks generally produce 2 good ears, 8 to 10 inches long, of deep sugary grains, 12- to 14-rowed.

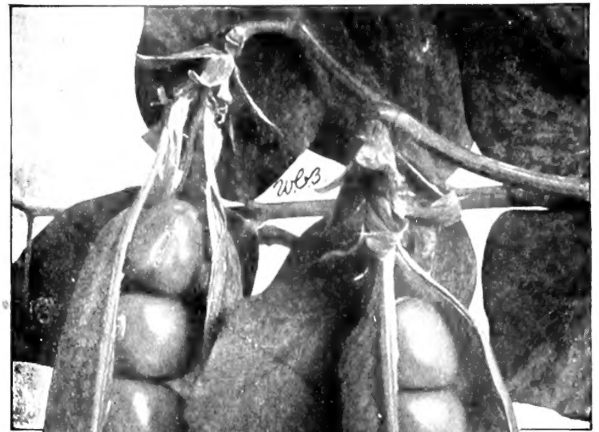
	Qt.	Pk.	Bus.
Beckert's Golden Evergreen	\$0 50	\$3 75	\$13 00
Golden Bantam	45	3 25	12 00
Goldenrod	45	3 25	12 00
Golden Cream	45	3 00	11 00

Peas

Parcel-post weight of Peas: quart, 2 pounds

Grown under irrigation in the Northwest, the quality of our Seed Peas leaves little to be desired. Our strains are as pure and as straight as the life-long experience of this country's foremost experts in Pea-growing has been able to make them. Unfortunately, Peas are one of the shortest crops on record this year. On late orders, please give choice of two or three sorts.

	Qt.	Pk.	Bus.
Alaska	\$0 45	\$3 25	\$12 00
Prolific Market	50	3 75	13 00
Little Marvel	65	4 50	17 00
Sutton's Excelsior	60	4 25	16 00
Laxtonian	60	4 25	16 00
Extra-Early Telephone	60	4 25	16 00
Gradus, or Prosperity	60	4 25	16 00
World's Record	60	4 25	16 00
Thomas Laxton	60	4 25	16 00



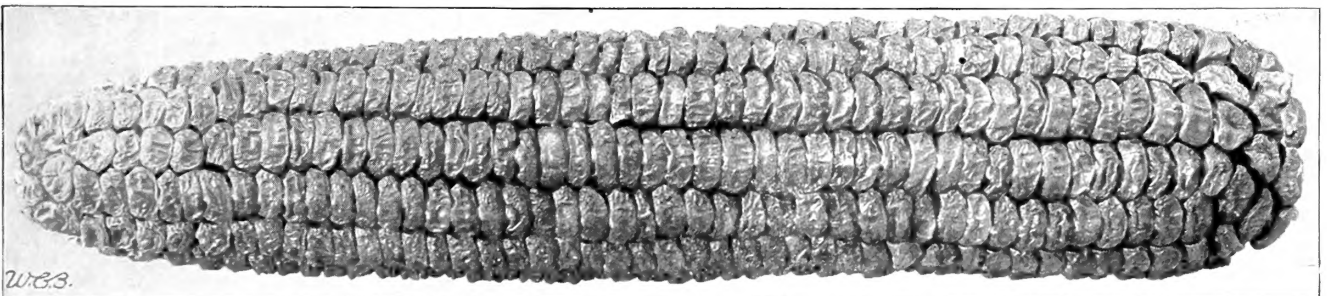
Little Marvel Peas

"Little" Marvel is a "Big" Wonder

In due time, Little Marvel will completely replace such old standard types as American Wonder, Little Gem, etc. It is a great cropper of quality Peas, ready about the same time as Sutton's Excelsior. Our stock is extra choice.

Midseason and Late Peas

	Qt.	Pk.	Bus.
Potlach	\$0 60	\$4 25	\$16 00
Dwarf Champion	50	3 75	13 00
Boston Unrivalled	60	4 25	16 00
Alderman	60	4 25	16 00
Senator	60	4 25	16 00
White Marrowfat	35	2 75	10 00
Mammoth-podded Sugar	60	4 25	



Sample ear, Beckert's Golden Evergreen. This is 2/3 natural size, when compared with green ears

Artichoke

Large Green Globe Oz. \$1 40

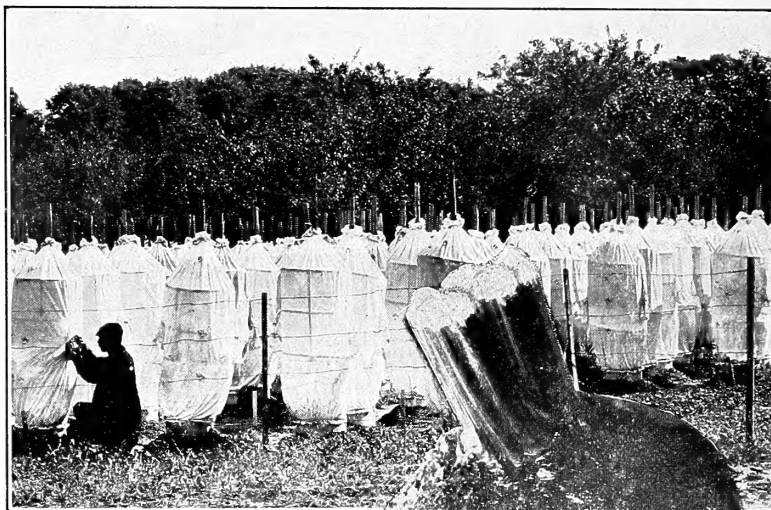
Asparagus

	Oz.	¼lb.	Lb.
Giant Argenteuil.....	\$0 08	\$0 20	\$0 60
Palmetto.....	08	20	60
Colossal.....	07	15	50
Columbian Mammoth White.....	07	15	50

Beets

Over in France, the famous house of Vilmorin produces the choicest strains of Beets under most interesting expert care. The tent village alongside illustrates the method they employ to keep the strains straight. Each of these tents shelters a mother plant against undue disturbances by wind, weather, or insects. From these priceless seeds are produced the bulbs, the seeds of which produce the seeds we offer you. In thus securing for our customers the choicest type of Beets in the different classes, we but live up to the principles of the founder of this business, to make quality our main consideration in doing business. Considering all the care exercised, you will find our prices quite reasonable.

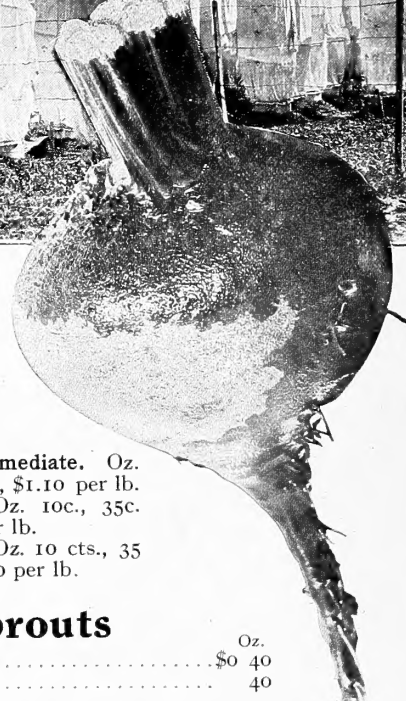
	Oz.	¼lb.	Lb.
Crosby's Improved, French-grown.....	\$0 20	\$0 60	\$2 00
Crosby's Improved.....	15	50	1 50
Egyptian.....	15	55	1 75
Detroit Blood Turnip.....	15	55	1 75
Crimson Globe.....	15	55	1 75
Eclipse.....	15	50	1 50
Electric.....	20	60	2 00
Beckert's Perfection.....	20	60	2 00
Half-Long Red.....	15	55	1 75
Swiss Chard, Lucullus.....	20	65	2 25
Swiss Chard, Large Silver-ribbed.....	15	55	2 00



Pedigreed Beets, grown for stock seed, in France

Stock Beets or Mangel-Wurzels

Giant Long Red. Oz. 10 cts., 35 cts. per ¼lb., \$1.10 per lb.
 Giant Yellow, Intermediate. Oz. 10c., 35c. per ¼lb., \$1.10 per lb.
 Golden Tankard. Oz. 10c., 35c. per ¼lb., \$1.10 per lb.
 Giant Half-Sugar. Oz. 10 cts., 35 cts. per ¼lb., \$1.10 per lb.

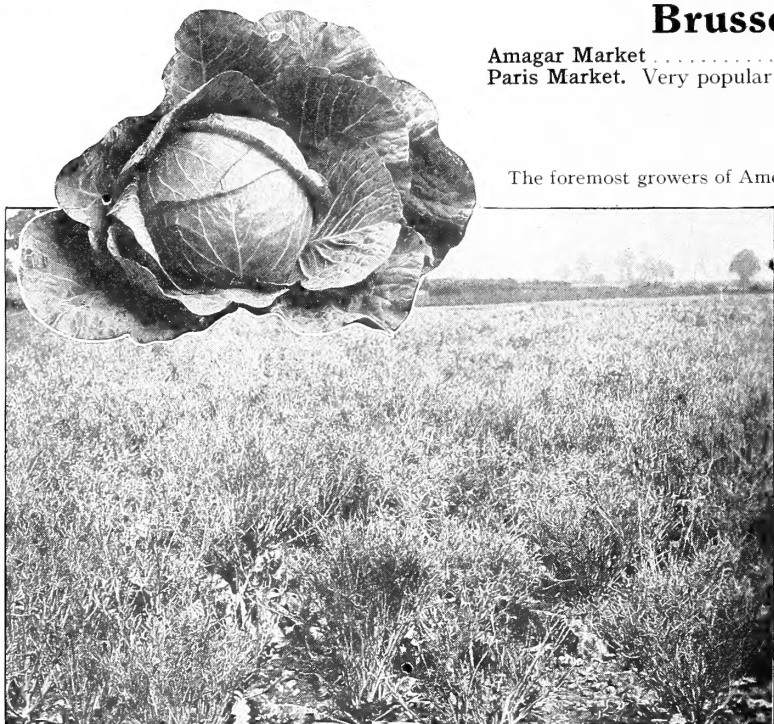


Brussels Sprouts

Amagar Market.....	Oz. \$0 40
Paris Market. Very popular.....	40

Cabbage

The foremost growers of America and Europe combine efforts to furnish us with strains that will measure up to the expectation of the most critical market-gardener. Out on Long Island lives a man who has almost succeeded in making the Cabbage a thoroughbred. He is the man from whom we get part of our stocks. Over in Denmark, the —nth generation of Cabbage-growers is exercising the same skill and bringing to bear the cumulative experiences of their forefathers in the endeavor to send America the best strains of European Cabbages procurable. They are yours to command here at reasonable prices.



A field of Copenhagen Market Cabbage seed and the type of head that grew it

	Oz.	¼lb.	Lb.
Copenhagen Market.....	\$1 00	\$3 75	\$14 00
Extra-Early Jersey Wakefield.....	70	2 00	7 00
Large Charleston Wakefield.....	70	2 00	7 00
Express or Lightning.....	70	2 50	8 00
Early Winnigstadt.....	70	2 50	8 00
Early Allhead.....	70	2 25	7 50
Early Summer.....	70	2 25	7 50
Enkhuizen Glory.....	1 00	3 75	14 00
Danish Short-Stem Roundhead.....	85	3 00	11 00
Danish Ballhead.....	85	3 00	11 00
All-Season.....	70	2 50	8 00
Surehead.....	70	2 00	7 00
Select Late Flat Dutch.....	70	2 00	7 00
Short-Stem Drumhead.....	70	2 00	7 00
Perfection Drumhead Savoy.....	70	2 00	7 00
Mammoth Rock Red.....	75	2 75	9 00
Red Danish Stonehead.....	90	3 25	12 00
Chinese Celery or Pe-Tsai.....	30	95	3 50



Chantenay or Model Carrot

Carrots, Best Leading Kinds

	Oz.	1/4lb.	Lb.
Early French Forcing	\$o 20	\$o 50	\$I 75
Early Scarlet Horn	20	50	1 75
Half-Long Pointed-rooted	15	45	1 50
Half-Long Stump-rooted	15	35	1 25
Nantes Half-Long	15	45	1 50
Guerande	15	35	1 25
Chantenay	15	35	1 25
Half-Long Luc	25	70	2 50
Danvers Half-Long	15	30	1 00
St. Valery Intermediate	15	35	1 25
Improved Long Orange	15	35	1 25
Improved Long Orange, Choicest French-grown	25	70	2 50
White Belgian	10	35	1 25
White Belgian, Choicest French-grown	15	45	1 50

Cauliflower

You have often wondered, no doubt, why Cauliflower seed is so expensive. As the most highly perfected form of cabbage, Cauliflower is but a shy yielder as compared with other members of the same plant family. In the field illustration you will see certain stalks that have papers tied around them. That is the method pursued by our growers to designate perfect plants from which will be saved the seeds for next year's crop of seeds. This careful method of critical selection adds, of course, to the cost of production, but it stands, in a measure for crop-insurance to the man who grows the product for market.

Beckert's Early Snowball (See illustration)

Unsurpassed by any strain on the market. Under proper conditions a sure cropper. Produces large, snow-white, close and compact heads, 6 to 10 inches in diameter. Stalks stout and of compact growth, and can be planted closely. Equally good for late or early crop. 1/4oz. 90 cts., oz. \$2.50, 1/4lb. \$9.

	Oz.	1/4lb.
Perfection	\$2 50	\$9 00
Danish Giant	2 50	9 00
Extra-Early Paris	75	2 75
Algiers	75	2 75
Veitch's Autumn Giant	75	2 75

Chicory

	Oz.	1/4lb.	Lb.
Magdeburg	\$o 15	\$o 45	\$I 50
Witloof	25	85	3 00

CORN SALAD. Large-leaved. Oz. 20 cts., 1/4lb. 60 cts., lb. \$2.

Carrots

We recognize Carrots as one of the most important as well as most profitable crops to market-gardeners, and for this reason spare no efforts to secure for our critical trade the best obtainable anywhere. Years ago the bulk of our Carrot seed came from France, the same as our Beets. The war, however, has seriously interfered with the production of sufficient seed stocks, so that, of late, France has not been able to furnish us all the Carrot seed we need. This, in turn, has served as a tremendous stimulus to American growers, and we are proud to say that our best strains of Carrot seeds, as now produced in California, compare favorably with the choicest we get from France. You will find all our strains productive of uniformly handsome roots that will find ready sales in any market.

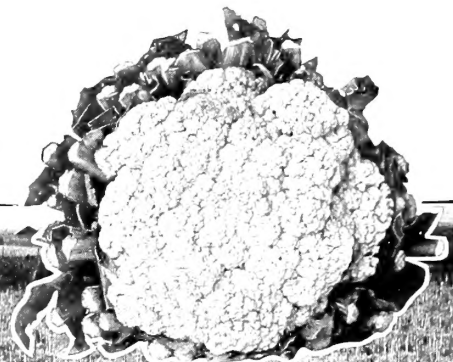
Strains of Special Merit

Half-Long Luc. (French-grown.) This particular strain of half-long stump-rooted Carrot is in great demand among our most critical customers. It perfects very symmetrical roots of deep orange-red color early in the season. It is most productive and of extraordinary quality, having but a faint indication of a core. In good soils, under favorable conditions, it will yield up to 25 tons per acre. Oz. 25c., 1/4lb. 70 cts., lb. \$2.50.

Chantenay, or Model. (See illustration.) Also of the half-long or blunt-rooted type, it is in great favor among market-gardeners for early trade. It perfects handsome, rich orange-red-skinned roots in a remarkably short time, and presents a most attractive appearance bunched. Oz. 15 cts., 1/4lb. 35 cts., lb. \$1.25.

Danvers. This is the standby for main crop with gardeners throughout the country. On good soil and under clean cultivation it has yielded from 25 to 30 tons per acre. The product is always handsome and commands highest prices. Danvers is an unsurpassed winter keeper. Oz. 15 cts., 1/4lb. 30 cts., lb. \$1.

Rubicon. An exceptionally fine sort of the Danvers Half-Long type, in great favor with many of our critical customers. Oz., 15 cts. 1/4lb. 35 cts., lb. \$1.25.



Beckert's Early Snowball Cauliflower

Celery

	Oz.	¼lb.	Lb.
Golden Self-blanching, Originator's Stock	\$1 00	\$3 50	\$12 00
White Plume	30	1 00	3 50
Giant Pascal	20	60	2 00
Columbia	25	85	3 00
Beckert's Perfection Winter	35	1 10	3 75
Fordhook Emperor	40	1 25	4 50
Magnificent	30	1 00	3 50
Winter Queen	20	65	2 25
Easy-blanching	40	1 25	4 00
Standard Bearer	60		
CELERIAC, Prague Giant	25	85	3 25

Cress

	Oz.	¼lb.	Lb.
Water, True	\$0 45	\$1 50	\$5 00
Curled	05	15	50

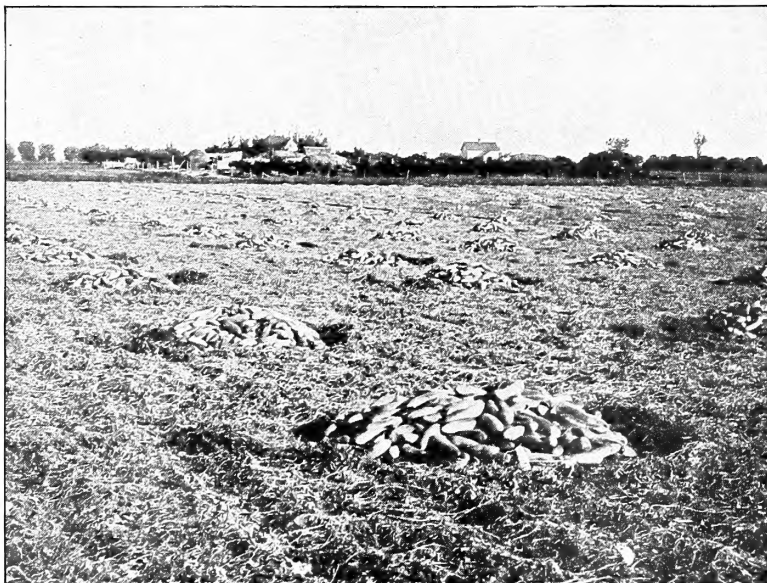
Cucumber

The task of producing thoroughbred Cucumber seed has gradually become the work of specialists in the West where climatic conditions are best for the production of a uniformly good crop of fruits. In gathering the fruits in the field, great care is exercised to throw out ill-shaped and undersized cucumbers. The seeds are thoroughly washed, properly cured, and we are safe in asserting that brighter, better Cucumber seeds than ours are hard to obtain.

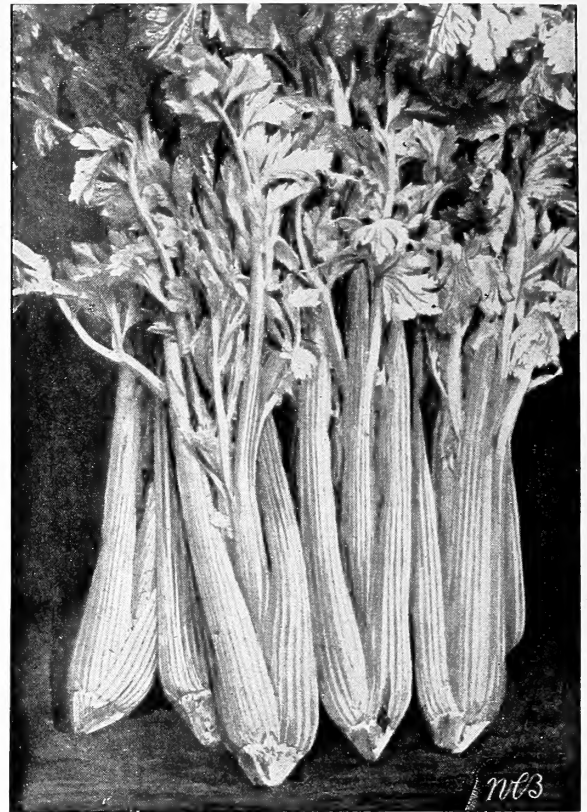
	Oz.	¼lb.	Lb.
Forcing White Spine	\$0 50	\$1 65	\$6 00
Arlington Improved White Spine	15	40	1 25
Davis Perfect	15	45	1 50
Extra-Long White Spine	15	40	1 25
Early Fortune	15	40	1 25
Fordhook Famous	15	45	1 50
Improved Long Green	15	40	1 25
Everbearing	15	40	1 25
Cool and Crisp	15	40	1 25
Nichols Medium Green	15	40	1 25
Snow's Perfection Pickle	15	40	1 25
Jersey Pickle	15	40	1 25
Japanese Climbing	15	45	1 50
Gherkin	20	60	2 00

Special Forcing Cucumbers

Telegraph, Challenger, Perfection, and Favorite. Each, pkt. 20 cts.



A field of Early Fortune Cucumbers. Note uniformity of strain



Market-Gardener's Specialties on this Page:

Celery, Golden Self-blanching. (Shown above.) Grown more than any other variety throughout the country. The seed of the true French-grown stock is again very scarce and of necessity, very high-priced. We offer only the French-grown seed, grown by the originator. **Oz. \$1, ¼lb. \$3.50, lb. \$12.**

Cucumber, Early Fortune. This splendid strain of White Spine deserves more attention on the part of our customers. It is a reliable cropper, of uniformly handsome, dark green Cucumbers that find a ready sale in all markets where the White Spine Cucumber is popular. **Oz. 15 cts., ¼lb. 40 cts., lb. \$1.25.**

Eggplant, Black Beauty. This is the choicest strain of popular New York Improved Spineless in cultivation today. Under favorable conditions, Black Beauty is apt to be a little earlier, but its principal and most favorable characteristic is that it is almost uniformly of deep brilliant black-red-purple color. Green-spotted or streaked eggs are completely eliminated in the selection of this strain. **Oz. 60 cts., ¼lb. \$1.75, lb. \$6.**

Dandelion

	Oz.	¼lb.
Improved French	\$0 60	\$2 20

Eggplant

	Oz.	¼lb.	Lb.
New York Spineless	\$0 60	\$1 75	\$6 00
Black Beauty	60	1 75	6 00
Florida High-Bush	60	1 75	6 00

Endive

	Oz.	¼lb.	Lb.
Large Green Curled	\$0 15	\$0 50	\$1 50
Giant Fringed	15	50	1 50
Broad-leaved Batavian	20	60	2 00
Moss Curled	15	50	1 50
White Curled	15	50	1 50



Very Early White Vienna Kohlrabi

Kale

	Oz.	1/4lb.	Lb.
Dwarf German Green	\$0 20	\$0 70	\$2 40
Dwarf Curled Scotch	15	50	1 75
Mosbach Winter	25	75	
Tall Curled Scotch	25	75	

Kohlrabi, or Turnip-rooted Cabbage

We are particularly proud of our strain of White Vienna Kohlrabi. We also have an exceptionally good seed-supply at a season when the crop generally is so short.

	Oz.	1/4lb.	Lb.
Early White Vienna	\$0 30	\$0 90	\$3 00
Early Purple Vienna	30	90	3 00

Leek

	Oz.	1/4lb.	Lb.
American, or London Flag	\$0 20	\$0 55	\$2 00
Musselburg	20	55	2 00
Large Carentan	20	55	2 00
Rouen Winter	20	55	2 00



American Flag Leek

Beckert's Superb Strains of Lettuces

Out on the Pacific Coast lives a man who makes a hobby of growing as nearly perfect Lettuces as the unrivaled climate of California will let him. We are grateful to Mr. Morse for letting us show you the fine field of Grand Rapids Lettuce as illustrated herewith. This is the type of plants, uniformly curled and crinkled, that produces the seeds which have given such eminent satisfaction to our customers for forty years. What holds good of the Loose-leaf Lettuces is equally true of the heading varieties.

	Oz.	1/4lb.	Lb.		Oz.	1/4lb.	Lb.
Beckert's Golden Curled	\$0 20	\$0 55	\$2 00	Wayahead	\$0 20	\$0 45	\$1 50
Beckert's Brown Curled	25	75	2 50	May King	20	45	1 50
Grand Rapids Forcing	20	55	2 00	Allheart	20	45	1 50
Black-seeded Simpson	15	35	1 25	The Morse	20	45	1 50
Big Boston	15	35	1 25	Early Curled Simpson	15	35	1 25
Black-seeded Big Boston	15	35	1 25	Wonderful, or New York	20	50	1 75
Hanson	20	45	1 50	Iceberg	20	45	1 50
Unrivaled Summer	20	45	1 50	Boston Market	15	35	1 25
White Star	20	45	1 50	Hardy Winter	15	35	1 25
Mammoth Black-seeded Butter	15	35	1 25	Trianon Cos.	20	45	1 50

MARTYNTIA. Oz. 25 cts., 1/4lb. 75 cts., lb. \$2.50.

Melon, Musk

	Oz.	1/4lb.	Lb.
Delicious	\$0 15	\$0 40	\$1 25
Fordhook	15	40	1 25
Rocky Ford	15	40	1 25
Tip-Top	15	50	1 50
Emerald Gem	15	40	1 25
Early Hackensack	15	40	1 25
Burrell's Gem	10	30	1 00
Surprise	15	40	1 25
Miller's Cream	15	40	1 25
Paul Rose	15	40	1 25
Princess	15	40	1 25
Champion Market	15	40	1 25
Prolific Nutmeg	15	40	1 25
Long Island Beauty	15	40	1 25
Jenny Lind	15	40	1 25
Honey Dew	20	60	2 25

Mustard

	Oz.	1/4lb.	Lb.
White	\$0 10	\$0 30	\$1 00
Giant White Curled	10	25	75

Mushroom Spawn (Pure Culture)

Direct. Brick, 25 cts.; 5 bricks, \$1.15; 10 bricks, \$2; 25 bricks, \$4.50; 50 bricks, \$8.50; 100 bricks, \$16.

Grand Rapids Forcing Lettuce

As already mentioned above we are very proud of the exceptionally fine strains which we are able to offer you. It is our privilege each year to supply many of the largest commercial growers with this strain and we have yet to find an instance where it did not give thorough satisfaction. Oz. 20 cts., 1/4lb. 55 cts., lb. \$2.



Field of Grand Rapids Lettuce as grown especially for us in California

Watermelons

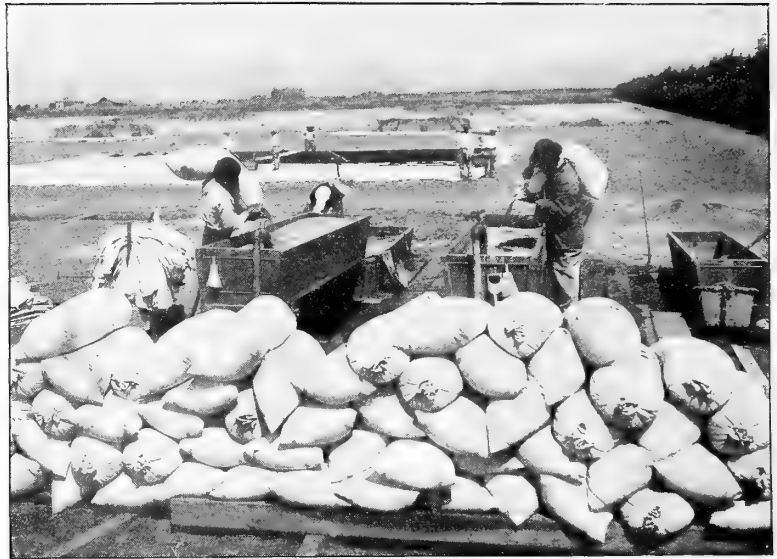
	Oz.	¼lb.	Lb.
Early Fordhook	\$0 10	\$0 25	\$0 75
Sweetheart	10	25	75
Tom Watson	10	25	75
Kleckley Sweets	10	25	75
Halbert's Honey	10	25	75
Peerless	10	25	75
Wonderful	10	25	75
Gray Monarch	10	25	75
Seminole	10	25	75
Dixie	10	25	75
Florida Favorite	10	25	75
Red-seeded Citron	10	25	75

Okra

	Oz.	¼lb.	Lb.
White Velvet	\$0 08	\$0 20	\$0 70
Long-Pod	08	20	70

Beckert's Selected Strains of Onion

We are very proud of our growers in California and Ohio who are doing so much to put America on the map as being able to produce choicer strains of Onions than Europe ever knew. The bulk of our Onion seed is produced under nearly ideal conditions in the fertile soils of California, where cloudless weeks and rainless months enable our growers to keep and cure the seeds right out in the open without the least fear of damage. Illustration above shows the methods pursued by our principal grower in order to produce heavy, plump seed of highest vitality. What light seeds escape the fanning process are washed out in these troughs. You will find our strains as thoroughbred as the most expert growers know how to make them, and our seeds are of the highest vitality.



Method of washing, drying and curing that makes Beckert's Onion Seed superior

	Oz.	¼lb.	Lb.		Oz.	¼lb.	Lb.
Ohio Yellow Globe, Extra Select	\$0 35	\$1 20	\$4 00	Southport White Globe	\$0 35	\$1 20	\$4 00
Yellow Globe Danvers	25	85	3 00	White Portugal	35	1 20	4 00
Michigan, or Ohio Yellow Globe	25	85	3 00	White Bunch	30	1 00	3 50
Southport Yellow Globe	25	80	2 75	Bermuda White	35	1 20	4 00
Prizetaker	30	1 00	3 50	Red Globe	30	1 00	3 50
Flat Danvers	25	75	2 50	Red Wethersfield	30	90	3 25
Yellow Strasburg	25	75	2 50				

Parsley

	Oz.	¼lb.	Lb.
Dwarf Extra-Curled	\$0 15	\$0 50	\$1 50
Champion Moss-Curled	15	35	1 25
Plain-leaved	10	30	1 10
Large-rooted Hamburg, Half-Long	15	35	1 25
Large-rooted Hamburg, Long	15	35	1 25

Parsnip

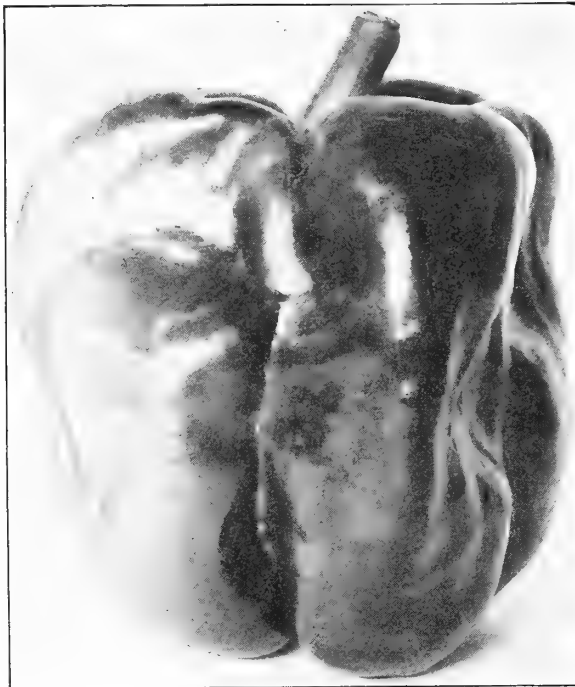
	Oz.	¼lb.	Lb.
Improved Hollow-Crown	\$0 15	\$0 35	\$1 25
Lisbonais	15	45	1 50
Guernsey	15	45	1 50

Pepper

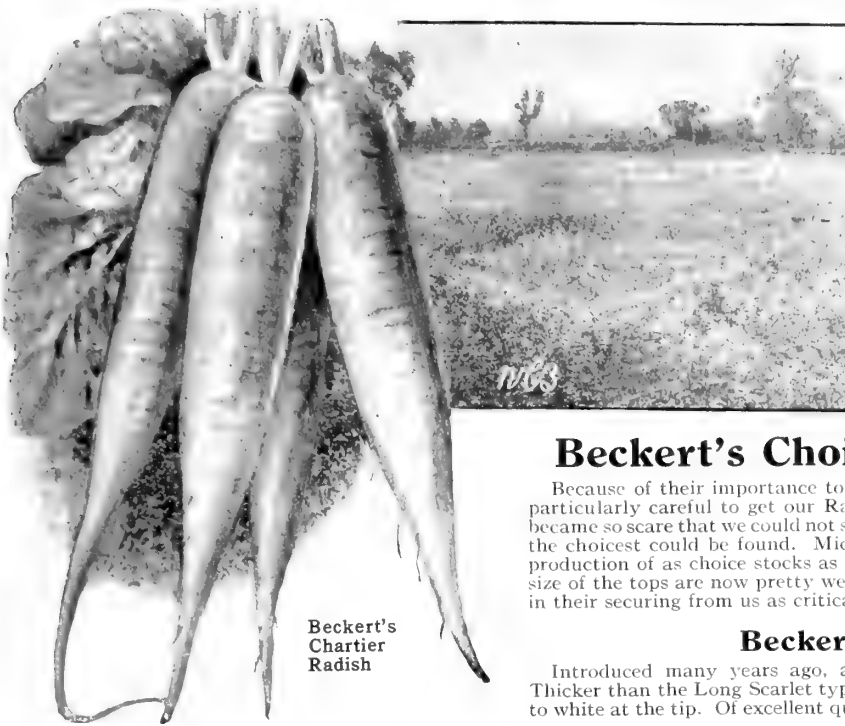
It costs us more to produce our extra-selected strains of Peppers, but our customers find our seeds worth more than the common strains. Figuring that one-half pound of seeds produce enough plants for one acre and that one acre, under careful management, will bear a crop worth from \$500 to \$700—the cost of the seed is really small.

Neapolitan Pepper is growing in favor as the earliest, large sweet sort in cultivation. Improved Bull Nose is still the most popular allround sort for market. Chinese Giant and Crimson Giant are the largest, mildest, but also latest sorts.

	Oz.	¼lb.	Lb.
Improved Bull Nose	\$0 55	\$1 90	\$7 00
Chinese Giant	90	2 75	9 75
Crimson Giant	90	2 75	9 75
Crimson Beauty	50	1 75	6 00
Ruby King Giant	60	2 00	7 50
Sweet Mountain	50	1 75	6 00
Neapolitan	60	2 00	7 50
Anaheim Great Chili	50	1 75	6 00
Long Red Cayenne	50	1 75	6 50
Chili	55	1 90	7 00



Improved Bull Nose Pepper



Beckert's Chartier Radish

	Oz.	1/4 lb.	Lb.
Rosy Gem	\$0 15	\$0 45	\$1 50
Saxa	15	45	1 50
Non Plus Ultra, French-grown	25	75	2 50
Non Plus Ultra, Improved	15	45	1 50
Early Scarlet Button	15	45	1 50
Early Scarlet Globe	15	45	1 50
Crimson Giant	15	45	1 50
White Box	10	35	1 25
White-tipped Rocket	15	45	1 50
Cincinnati Market	10	35	1 25
Icicle	10	35	1 25
Icicle, French-grown	25	75	2 50
Long White Vienna	10	45	1 50

Rhubarb

	Oz.	1/4 lb.	Lb.
Victoria	\$0 15	\$0 45	\$1 50

Salsify

	Oz.	1/4 lb.	Lb.
Mammoth White	\$0 25	\$0 85	\$3 00

Spinach

The birth of a new Spinach-seed industry put an end to the near-famine in this particular seed during the great war and the subsequent dropping off in European importations which it brought about. Never again will America go begging to Europe for Spinach, for we now have in the Pacific Northwest as fine a lot of Spinach-seed growers as Europe ever had. Our Spinach seed comes from both the East and the West, is produced by experts under careful supervision, and while the necessarily higher cost of production in this country obliges us to ask more for the seeds, the utter reliability of the strains, as well as their uniformly dependable germination, makes them worth more.

	Oz.	1/4 lb.	Lb.	10 lbs. or more, per lb.
Thick-leaved	\$0 10	\$0 25	\$0 80	\$0 75
Long Season	10	25	80	75
Victoria	10	25	80	75
Norfolk Savoy	10	25	80	75
Munsterland Frostproof	15	40	1 25	
New Zealand	15	50	1 75	

Pumpkins

Crop very short

	Oz.	1/4 lb.	Lb.
Large Cheese	\$0 10	\$0 35	\$1 25
Mammoth King	15	45	1 50
Sweet Potato	15	45	1 50
Japanese Pie	15	45	1 50
Small Sugar	10	35	1 25
Golden Cushaw	15	45	1 50
White Cushaw	20	55	1 75
Striped Cushaw	20	55	1 75
Quaker Pie	15	45	1 50
Golden Oblong	10	35	1 25
Winter Luxury	20	55	1 75
Connecticut Field	10	30	1 00

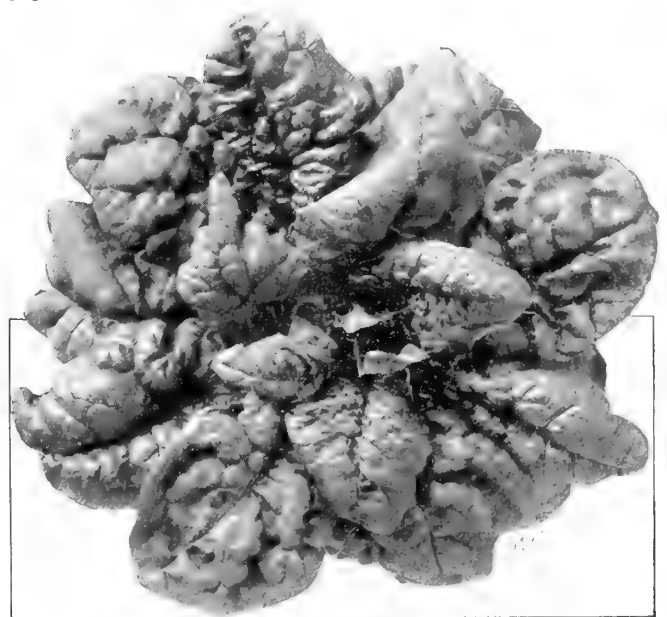
Beckert's Choice Strains of Radishes

Because of their importance to our market-gardening friends, we have always been particularly careful to get our Radish seeds just right. When European Radish seed became so scarce that we could not supply the demand, we looked about in America where the choicest could be found. Michigan and California rivaled with each other in the production of as choice stocks as ever came from Europe. Both color of the roots and size of the tops are now pretty well standardized, and our customers can have all faith in their securing from us as critically selected strains as can be had anywhere.

Beckert's Chartier Radish

Introduced many years ago, and has always remained a very popular variety. Thicker than the Long Scarlet type. Crimson at the top, gradually blending from pink to white at the tip. Of excellent quality and remains tender longer than most varieties.

	Oz.	1/4 lb.	Lb.
Beckert's Chartier	\$0 15	\$0 45	\$1 50
Beckert's Chartier Turnip. (Crop short) ..	20	60	
White Strasburg	15	45	1 50
Giant Stuttgart	20	60	2 00
Giant Stuttgart, French-grown	25	75	2 50
Golden Globe, French Strain	25	75	2 50
Chinese Rose Winter	10	30	1 00
Long White Spanish	10	30	1 00
Long Black Spanish	10	30	1 00
Round Black Spanish	10	30	1 00
Celestial	10	30	1 00
Japanese Sakurajima	15	45	1 50



Long Season Spinach



Tomato

	Oz.	¼lb.	Lb.
Dwarf Champion	\$0 45	\$1 20	\$4 00
Dwarf Stone	45	1 20	4 00
June Pink	35	1 10	3 75
Bonny Best	45	1 20	4 00
Sparks' Earliana	35	1 10	3 75
Early Detroit	35	1 10	3 75
Globe	45	1 20	4 00
Beauty	35	1 10	3 75
Stone	35	1 10	3 75
Truckers' Favorite	45	1 20	4 00
Matchless	35	1 10	3 75
Ponderosa	55	1 75	6 00
Buckeye State	50	1 50	5 00
Duke of York	50	1 50	5 00
Chalk's Jewel	45	1 20	4 00
Greater Baltimore	35	1 10	3 75
John Baer	45	1 20	4 00
Manyfold	65		
Dwarf Giant	50	1 50	5 00
Rock Red	35	1 10	3 75
Hummer	35	1 10	3 75
Yellow Ponderosa	50	1 50	5 00
Yellow Plum	40	1 35	5 00
Red Plum	40		
Red Pear	40		
Yellow Pear	40		
Golden Husk	40		



Tomato Manyfold

(See illustration above, of plant grown in our 1918 trial-grounds)

After thoroughly testing this new variety we can heartily recommend it as a heavy cropper of medium-sized fruits of the finest dark scarlet color that any Tomato can claim. Manyfold is unique in that it bears its fruits in clusters of 10 or more. The fruits are of perfect ball-shape, averaging 2¼ to 2½ inches in diameter, and are of a solidity equaled by few and excelled by no other varieties. It very much reminded us of a glorified Carter's Sunrise, as grown under glass. Its uniform size should make it particularly valuable to the man who markets his choicest fruits in baskets. Pkt. 15 cts., oz. 65 cts.

Truckers' Favorite

Where markets demand a pink- or purple-fruited main-crop variety, market-growers will make no mistake in pinning their faith to this sort. Truckers' Favorite is distinctly a mid-season or main-crop sort, bearing the bulk of its crop from the time the extra-early sorts are exhausted until frost. The fruits average 3 inches in diameter by 2 to 2½ inches deep through. They are of uniformly attractive shape, rarely ever have blemishes and are as solid as that famous standard among scarlet sorts, Stone. We like to think of Truckers' Favorite as the companion to Stone among the purple kinds, although it does not average as large as that matchless scarlet. Oz. 45 cts., ¼lb. \$1.20, lb. \$4.

Squash

	Oz.	¼lb.	Lb.
Mammoth White Bush	\$0 10	\$0 30	\$1 00
Golden Custard Bush	10	35	1 25
Cocozelle Bush	15	45	1 50
Boston Marrow	10	35	1 25
Golden Hubbard	20	60	2 00
Hubbard Improved	20	60	2 00
Warted Hubbard	20	60	2 00
Delicious. Oz. 20 cts., 60 cts. per ¼lb., \$2 per lb.			
Golden Summer Crookneck. Oz. 15c., 45c. per ¼lb., \$1.50 per lb.			
Delicata. Oz. 15 cts., 45 cts. per ¼lb., \$1.50 per lb.			
Vegetable Marrow. Oz. 15 cts., 45 cts. per ¼lb., \$1.50 per lb.			

Seed Potatoes, Northern Grown

Write for prices

Early White Albino, Early Bovee, Early Ohio, Early Six Weeks, Carman No. 3, Country Gentleman, Green Mountain Improved, Irish Cobbler, Restaurant, Rural New Yorker, Rochester Rose, Snow-White.



Carman No. 3 Potato

Turnip

	Oz.	¼lb.	Lb.
Early White Milan	\$0 20	\$0 70	\$2 00
White Egg	15	55	2 00
Purple-Top Strap-Leaf	15	45	1 50
Purple-Top Globe	15	45	1 50
White Globe	15	50	1 75
Golden Ball	15	50	1 75
Yellow Aberdeen	15	50	1 75

Cow Horn. Oz. 15 cts., 50 cts. per ¼lb., \$1.75 per lb.

Rutabagas (Swedish Turnips)

Improved American Purple-Top. Oz. 15 cts., 50 cts. per ¼lb., \$1.75 per lb.

Sweet German. Oz. 15 cts., 50 cts. per ¼lb., \$1.75 per lb.

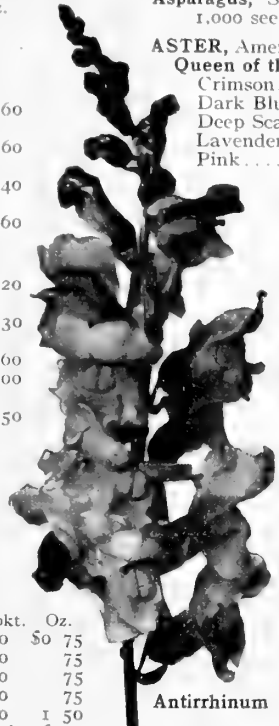
Aromatic Herbs

	Oz.	¼lb.
Basil, Sweet	\$0 15	\$0 50
Chervil, Curled	15	50
Dill	15	50
Fennel, Sweet	15	50
Fennel, Florence	15	50
Marjoram, Sweet	45	1 50
Sage	50	1 75
Thyme, Broad-leaved	90	3 00
Thyme, Summer	90	3 00

Florists' Flower Seeds

We devote as much care and attention to the department of florists' seeds as to that of vegetable seeds for market-gardeners. Our stocks are grown for us by specialists, both at home and abroad, and entire confidence can be placed in our strains herewith offered, as it has always been our policy to secure the very best obtainable, cost being a secondary consideration. We would specially recommend our strains of **Aster**, **Calceolaria**, **Cineraria**, **Pansy**, **Petunia**, **Primula**, **Stocks**, **Verbena**, **Cyclamen**, **Mignonette** and all such other seeds as are demanded by florists. Seeds here quoted in trade packets contain liberal quantities proportionate to ounce price; such seeds as are used in any quantity are also quoted by the ounce.

- ABUTILON** hy- Trade pkt. Oz.
bridium maxi-
mum, Superb
Mixed.....\$0 25
- AGERATUM**, Blue Per-
fection..... 15 \$0 60
Princess Victoria
Louise..... 15 60
Snowball, Dwarf
White..... 10 40
Little Dorrit, Dwarf
Blue..... 10 60
Little Blue Star..... 40
- ALYSSUM** (Sweet)....
1/4 lb. 60c..... 05 20
Compactum, Little
Gem, 1/4 lb. 75c..... 10 30
Dwarf Bouquet,
White Carpet..... 15 60
Lilac Queen..... 20 1 00
Saxatile citrinum
compactum..... 15 50
- AMARANTHUS**, Brill-
iant..... 15
Caudatus..... 10
Tricolor splendens
grandiflora..... 15
- AMPELOPSIS**
Veitchii. Trade pkt. Oz.
lb. \$2.50 \$0 05 \$0 30
- ANTIRRHINUM, GIANT.**
Trade pkt. Oz.
Giant Daybreak Pink... \$0 20 \$0 75
Giant Garnet..... 20 75
Giant Pink..... 20 75
Giant Rose..... 20 75
Giant Salmon-Pink..... 40 1 50
Giant Silver-Pink. Original, pkt. \$1.
Trade pkt. Oz.
Giant Scarlet..... \$0 20 \$0 75
Giant Striped..... 20 75
Giant Yellow..... 20 75
Giant White..... 20 75
Giant Oakledge Favorite. Pink. 50
Giant Oakledge Favorite.
Pink, white throat..... 50
Giant Mixed..... 15 60
- Large-flowering Semi-Dwarf—**
Daphne. Soft blush-pink... 25 1 00
Defiance. Orange-red..... 20 75
Firebrand. Deep red..... 20 75
Golden Queen. Rich yellow. 20 75
Mt. Blanc. Pure white..... 20 75
Rose Queen. Rich rose..... 25 1 00
Finest Mixed..... 15 60
- AQUILEGIA, Long-spurred**
Hybrids..... 30 1 50
Californica hybrida..... 30 2 00
Cærulea..... 30 1 25
Cærulea hybrida Haylodgen-
sis. Pink..... 30 2 00
Cærulea hybrida, Rose Queen. 50 4 00
Chrysantha..... 30 2 50
Chrysantha grandiflora alba... 30 2 50
Chrysantha fl.-pl..... 30
Vulgaris fl.-pl..... 20 75
- ARCTOTIS grandis**..... 10 40
- ASPARAGUS** Hatcheri. 100 seeds, 50 cts.;
500, \$2.
Plumosus nanus. Greenhouse-grown. 100
seeds, 50 cts.; 1,000 seeds, \$3.50.



Antirrhinum

- Asparagus, Sprengeri.** 100 seeds, 15 cts.;
1,000 seeds 75 cts.
- ASTER, American-Grown.**
Queen of the Market— Trade pkt. Oz.
Crimson..... \$0 25 \$1 00
Dark Blue..... 25 1 00
Deep Scarlet..... 25 1 00
Lavender..... 25 1 00
Pink..... 25 1 00
Pure White..... 25 1 00
Rose-Pink..... 25 1 00
Seal-Red..... 30 1 50
Mixed..... 20 85
- Daybreak, Blue..** 30 2 50
Lavender..... 30 2 50
Pink..... 30 2 50
Purity..... 30 2 50
Rose-Pink..... 30 2 50
Salmon King..... 30 2 50
- Invincible Early
Branching—**
Crimson..... 30 1 50
Dark Blue..... 30 1 50
Light Blue..... 30 1 25
Purple..... 30 1 40
Rose-Pink..... 30 1 25
White..... 30 1 25
Mixed..... 25 1 25
- Simple's Branch-
ing, Crimson..** 30 1 00
Dark Purple..... 30 1 00
Deep Rose-Pink. 30 1 00
Lavender..... 30 1 00
Light Blue..... 30 1 00
Rose-Pink..... 30 1 00
Shell-Pink..... 30 1 00
White..... 30 1 00
- Trade
pkt. 30 cts., oz. \$1.
Mixed..... \$0 30 \$0 85
- Crimson Giant
Branching.** 30 1 50
King, Crimson. 30 2 00
Pink..... 30 2 00
Rose..... 30 2 00
Violet..... 30 2 00
White..... 30 2 00
- Crego Giant—**
Azure-Blue... 30 1 50
Lavender..... 30 1 50
Purple..... 30 1 50
Rose-Pink... 30 1 50
Shell-Pink... 30 1 50
White..... 30 1 50
Mixed..... 25 1 25
- Astermums—**
Lavender.... 30 2 25
Rose-Pink... 30 2 25
White..... 30 2 25
Mixed..... 30 2 00
- Enchantress
Pink.....** 30 2 00
- Victoria, Blush**
Queen..... 35 2 50
Crimson..... 30 2 00
Azure-Blue.. 30 2 00
Carmine-Pink 30 2 00
Dark Blood-
Red..... 35 2 50
Dark Blue... 30 2 00
Fiery Scarlet. 30 2 00

- Aster, Miss Roosevelt.** Sul- Trade pkt. Oz.
phur yellow..... \$0 30 \$2 00
Peach Blossom..... 30 2 00
Pink Beauty..... 30 2 00
Pure White..... 30 2 00
Mixed..... 30 1 50
- Royal, Lavender.....** 30 1 75
Purple..... 30 1 75
Rose-Pink..... 30 1 75
Shell-Pink..... 30 1 75
White..... 30 1 75
Mixed..... 25 1 50
- Peerless Pink.....** 30 1 50
Red Sensation..... 35 2 00
Perennial Large-flowering,
Mixed..... 30 1 50
- BALSAM, Double**
Camellia-flowered. Choice
mixed..... 20 50
Salmon-pink Prince..... 25 1 00
White Perfection..... 25 1 00
- BEGONIA semperflorens**
Anna Regina... Pkt. 50c. 50
Erfordia grandiflora superba. 50
Gromannii. Red. Pkt. 50c...
Salmon Queen..... 50
Vernon. Rose..... 50
Dwarf Vernon. Red..... 50
Gracilis, luminosa..... 50
White Pearl... Pkt. 20c...
Rosea. Rose..... 50

Are you going to get your share of busi-
ness in flowering plants at Easter time?
NOW is the time to prepare!



Aster—Simple's Branching Shell-Pink

BELLIS perennis, The Trade	pkt.	Oz.
Bride, White	35	\$3 50
Longfellow, Giant Rose	30	2 50
Snowball, Giant White	30	2 50
Double Mixed	30	2 00
Monstrosa, Pink	50	4 50
Red	50	4 50
White	50	4 50
Mixed	50	3 50

CALCEOLARIA, Superb		
strain, Large-flowered	50	

CALENDULA, Meteor	10	15
Pure Gold	10	15
Prince of Orange	10	15
Mixed	10	10

CALLIOPSIS, Crimson King	10	20
Drummondii	10	20
Hybrida superba	10	25

CAMPANULA Medium—		
Single Blue	10	35
Lilac	10	40
Mauve	15	50
Rose	15	50
Striped	10	40
White	10	40
Mixed	10	30
Double Mixed	30	1 25
Calycanthem, Blue	30	1 75
Godfrey's Superb		



Campanula

	Trade pkt.	Oz.
Lavender	\$0 30	\$2 00
Mauve	35	2 50
Rose	30	1 75
Striped	30	1 75
White	30	1 75
Mixed	30	1 50
Double Variegated	30	1 50

	Pkt. 20c.	
Persicifolia grandiflora, Single; blue	30	2 00
Persicifolia grandiflora, Single; white	30	2 00
Persicifolia grandiflora alba fl.-pl.	30	
Persicifolia grandiflora carulea fl.-pl.	30	
Carpatica, Mixed	15	60
Pyramidalis, Mixed	25	1 00

CANNA, Crozy's Grand Hybrids		
4 ozs. 60c.	10	20
Rainbow Mixture, Trade pkt.	Oz.	
4 ozs. 60c.	\$0 10	\$0 20

CANDYTUFT—		
Coronaria, Empress		
Lb. \$3.	10	30
Hybrida, Dwarf Mixed	10	40
Gibraltarica Hybrids	30	2 00
Sempervirens	30	2 50
Umbellata carminea	10	25
Lavender	10	25
Crimson	10	25
Mixed	10	20

CAPSICUM—		
Little Gem	20	1 00

CARNATION—		
Chabaud's Everblooming	30	2 00
Giant Marguerite	30	1 75
Marguerite, Deep Crimson	30	1 50
Marguerite, Dark Red	30	1 50
Marguerite, Scarlet	30	1 50
Marguerite, Yellow	30	2 00
Marguerite, White	30	1 50
Marguerite, Mixed	20	1 25

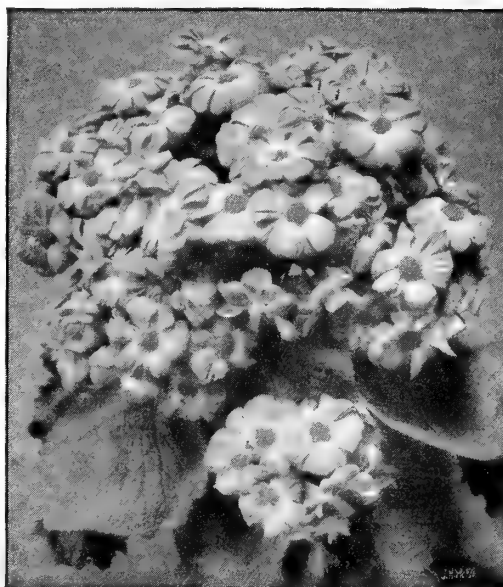
CELOSIA cristata, Dwarf		
Queen	30	2 00
Giant Empress	30	2 00
Nana, Dwarf; streaked		
Pkt. 20 cts.		
Plumosa, Castle Gould	30	
Childsii	30	
Magnifica, Crimson	15	60

	Trade pkt.	Oz.
Celosia, Magnifica, Scarlet	\$0 15	
Magnifica, Yellow	15	
Magnifica, Mixed	30	

CENTAUREA candidissima	30	\$2 00
Gymnocarpa	15	50
Cyanus, Single Mixed	05	20
Double Blue	15	60
Single Blue	10	25
Double Mixed	10	30
Suaevolens	10	50

Imperialis in the following separate colors.
Lilac, White, Lavender, Dark Rose, Light Rose, Rose and White, and Yellow, all at **Trade pkt. 15 cts., oz. \$1.**

	Trade pkt.	Oz.
Mixed	\$0 15	\$0 50
Marguerite	15	60
Montana, Blue	25	
Montana alba	25	
Americana alba	25	



Cineraria hybrida grandiflora

CHRYSANTHEMUM—Trade	pkt.	Oz.
Carinatum, Eclipse	\$0 10	\$0 40
Coronarum, Mixed	10	30
Segetum, Morning Star	10	40
Segetum, Evening Star	10	40
North Star	10	40
Single Mixed	10	30
Double Mixed	10	40
Frutescens, White	15	50
Countess Chabaud	15	50
Inodorum, Bridal Robe	30	1 50
Japonicum hybridum fl.-pl.	50	
Leucanthemum, Alaska	30	2 00

CINERARIA hybrida grandiflora, Prize Strain	I 00	
Semi-dwarf, Prize strain	I 00	
Matador, Scarlet	I 00	
Stellata, Mixed	50	
Maritima, Diamond, Pure white	10	50

CLARKIA, Double White	10	40
Brilliant, Crimson	10	40
Salmon Queen, Salmon-pink	10	40
Scarlet Queen, Scarlet	10	40
Double Mixed	10	30

CLEOME gigantea	10	40
Gigantea hybrida	15	75

COBÆA scandens, purple	10	40
-------------------------------	----	----

COLEUS hybrida, Fine Mixed	. 75	
Large-leaved, Mixed	I 00	

COREOPSIS grandiflora	10	40
Grandiflora, Eldorado	15	50

COSMOS—		
Mammoth Early-flowering, Crimson	15	40
Pink	15	40
White	15	40
Mixed	10	30
Crimson Ray	20	60
Klondike	20	75
Lady Lenox, Pink	10	40
Lady Lenox, White	10	40
Mammoth Perfection, White	10	30
Pink	10	30
Scarlet	10	30
Mixed	10	25
Double Pink Beauty	30	
Double White Queen	30	
Double Crimson Queen	30	

CYPRESS VINE	10	35
Ivy-leaved	10	35

CYCLAMEN giganteum	100	1,000
Finest English strain, seeds		seeds
Princess May, Rose, purple base	\$1 25	
Persicum, White, red eye	I 25	
Persicum, Rose, Rose	I 25	
Persicum, Mauve, Mauve, carmine eye	I 25	
Phoenix, Light red	I 25	
Sunset, Salmon-pink	I 50	
Salmon King, Clear salmon-pink	I 50	
Vulcan, Deep red	I 25	
White Swan, White	I 25	
Giant Superb Mixed	I 00	\$9 00
Giant Market-Growers' Mixed	90	8 00
		Pkt.
Eileen Low, Rose-pink	\$0 75	
Cherry Ripe, Scarlet	75	
Mrs. Buckston, Frilled salmon	75	
Purple Prince, Purple-crimson	75	
St. George, Pale salmon	75	

Wide-awake florists will prepare early to meet the great demand for flowering plants around the holidays. Our strains of Begonias, Cyclamen, Primulas, etc., are extra choice and reliable.

	Trade pkt.	Oz.
DAHLIA , Double Cactus	\$ 30	\$1 50
Double Large-flowered		
Show	30	1 50
Giant Single	Pkt. 20c.	
Giant Double	Pkt. 20c.	
Single Cactus	25	1 00
Single Mixed	20	75
20th Century	30	1 50
DATURA cornucopia	15	50
DELPHINIUM Belladonna	30	2 00
Cardinal	40	3 50
Rev. E. Lascelles	30	2 00
Zalil	35	
Cashmerianum	50	4 50
Celestinum	30	1 50
Formosum	15	1 25
Grandiflorum album, White		
Chinese	15	60
Grandiflorum, Blue Chi-		
nese	15	60
Double-flowering Hybrids	30	2 00
Grandiflorum, Kelway's Hy-		
brids	30	2 00
DIANTHUS —		
Chinensis, Double Mixed	10	30
Diadematus, Double Mixed	15	60
Nobilis, Double Mixed	15	60
Heddewigii fl.-pl., Fireball	25	1 00
Purity	25	1 00
Mixed	20	75
Laciniatus fl.-pl., Mirabilis	20	75
Salmon King, Double Trade	pkt.	Oz.
Salmon	\$ 25	\$1 00
Snowball, Double White	30	1 25
Mixed, all varieties	15	60
Plumarius, Mrs. Sinkins	50	
Homer	50	
Semperlorens, Perpetual,		
Double and Semi-Double	30	1 50
Double Mixed	30	2 00
Single Mixed	10	40
Barbatus, Holborn Glory	15	50
Pink Beauty, Salmon-Pink	15	60
Double Pink Beauty	25	1 25
Scarlet Beauty	15	60
White	10	40
Crimson	10	40
Single Mixed	10	30
Double Mixed	20	75
Annual	20	75
DIGITALIS grandiflora, Yellow	10	50
Gloxiniæflora, White	10	50
Pale Pink	10	50
Purple	10	50
Mixed	10	40
Maculata superba, Mixed	15	50
Monstrosa, Mixed	20	1 00
DIMORPHOTHECA aurantiaca	20	75
Aurantiaca Hybrids	25	1 00
DOLICHOS , Darkness	15	
Daylight	15	
Mixed	10	
DRACÆNA indivisa, Clean seed	10	50
ESCHSCHOLTZIA , Crimson	10	30
Golden West	10	20
Mikado, Orange-crimson	15	75
The Geisha	10	40
Vesuvius	10	60
Rose-Cardinal	10	50
Single Mixed	05	20
Double Mixed	10	50
EUPHORBIA heterophylla	15	75
Variegata	10	25
EVERLASTINGS —		
Acroclinium roseum fl.-pl.	10	50
Ammobium alatum grandiflorum	10	50
Gomphrena compacta alba	10	25
Compacta rubra	10	25
Globosa, Mixed	10	25



Cyclamen

	Trade pkt.	Oz.
Everlastings —Helichrysum, Fireball, Golden Ball, Pink Beauty, Salmon-Pink, and White Silver Ball		
Each at \$	15	\$0 60
Double Mixed	10	40
Rhodanthe Manglesii	10	60
Xeranthemum	10	60
FARM SPORES , Many Kinds		
Mixed	50	
FEVERFEW , Double White	15	50
Double Dwarf White, Snowball	25	1 00
GAILLARDIA grandiflora compacta	15	60
Kelway's Hybrids	25	1 00
Lorenziana fl.-pl.	10	35
"The Bride"	15	75
Picta (Drummondii)	10	35
Copper-Red	25	
GERANIUM , Apple-scented		
100 seeds, 30c.		
Grand Zonale, Superb mixture	50	
GERBERA Jamesonii hybrida		
100 seeds, 60c.		
GLOXINIA crassifolia erecta hybrida	50	
Chelsea Exhibition	50	



Helianthus (Sunflower)

	Trade pkt.	Oz.
GODETIA , Crimson Glow	\$ 30	\$1 25
Duchess of Albany, White	15	50
Fairy Queen	15	75
Gloriosa	15	75
GOURDS , Many kinds, mixed		10
GRASSES, ORNAMENTAL		
Pennisetum longistylum	10	30
Ruppellianum	10	30
GREVILLEA robusta	15	75
GYPSOPHILA paniculata	10	10
Paniculata fl.-pl.	30	
Elegans grandiflora alba	10	15
HELIANTHUS		
New Red	10	30
Wine and Primrose	10	40
Chrysanthemum-flowered,		
Double	10	20
Globosus fistulosus,		
Double, orange	10	20
Thousand-Flowered,		
Double	10	30
Globe of Gold, Dwarf,		
double	10	15
Cucumerifolius, Miniature	10	25
Stella	10	30
Diadem	10	30
Orion	10	30
Double Mixed	10	30
Perennial Mixed	25	1 25
HELIOTROPE , Midnight	35	3 00
Lemoine's Giant Hybrids	30	1 50
HIBISCUS , Golden Bowl	10	40
Crimson Eye	10	40
Manihot, Yellow, crimson eye	10	40
Palustris rosea, Pink	10	40
Grandiflora, Rainbow	30	1 25
HOLLYHOCK , Double Red	25	1 00
Double Maroon	25	1 00
Double Dark Rose	25	1 00
Double Bright Rose	25	1 00
Double Scarlet	25	1 00
Double White	25	1 25
Double Yellow	25	1 00
Double Flesh Color	25	1 00
Double Newport Pink	35	3 00
Double Pink	25	1 00
Chater's Superb Double Mixed	15	75
Double Annual Mixed Fringed	15	75
Allegheny Fringed	15	60
Single Superb Mixed	15	75
HUMULUS Japonicus	10	30
Japonicus variegatus	10	30
IMPATIENS Sultanii	35	
Holstii Hybrids	35	
IPOMEEA —		
Heavenly Blue, Rubra cærulea,	15	60
Setosa (Brazilian Morning-		
Glory)	10	30
Giant Pink	10	30
Hederacea superba	10	20
Double Snow Fairy	15	50
Fuchsia-flowered	15	50
KOCHIA tricophylla	10	20
LARKSPUR , Dwarf Double		
Rocket	10	20
Tall Double Rocket	10	25
Tall Branching, Mixed	10	30
Hyacinth-flowered	10	30
Newport Scarlet	15	60
Azure Fairy	Pkt. 15c.	
Tall Stock-flowered, Dark Blue,		
Brilliant Carmine, Light Blue,		
Lilac, Shell-Pink, and White,		
all at	10	40
Dark Rose, Flesh, Red, all at	15	50
Mixed	10	30
LANTANA hybrida, Mixed	10	30
Hybrida compacta	15	50
LATHYRUS , latifolius, Red	10	40
White Pearl	25	
Pink Beauty	15	60
Latifolius, Mixed	10	40



Mignonette Machet

	Trade pkt.	Oz.
LINARIA Cymbalaria maxima	\$0 25	
LOBELIA gracilis	15	\$0 60
Compacta, Crystal Palace	25	2 00
White Lady	25	
Bright Blue	25	1 50
Cardinalis robusta grandiflora	25	
Hybrida, Sapphire	30	
Tupa	25	
LUPINUS polyphyllus, Blue	10	30
White	10	30
Roseus	15	1 00
Mørheimii	25	1 50
Perennial, Mixed	10	25
Hartwegii, Blue	10	25
Sky-Blue	10	25
Rose	10	25
White	10	25
Mixed	10	20
LYCHNIS Haageana, Hybrids	25	
Arkwrightii		Pkt. 20c.
MARIGOLD , Eldorado	10	40
Lemon Queen	10	40
Pride of the Garden	10	40
Tall, Double Mixed	10	30
Dwarf, Double Mixed	10	30
French Dwarf, Double Mixed	10	30
French Tall, Double Mixed	10	30
Legion of Honor	10	25
MARVEL OF PERU , Mixed		
1/4 lb. 30c.		15
MAURANDIA Barclayana	25	
MESEMBRYANTHEMUM		
crystallinum	10	35
Tricolor	15	50
MIGNONETTE —		
Machet, Golden	15	75
Her Majesty	50	
New Giant Crimson	25	1 00
New Grandiflora Giant	25	1 00
Machet	10	50
Machet, Extra-fine Strain	15	1 00
Defiance	10	40
Goliath	15	1 00
Large-flowering Odorata		
1/4 lb. 35c.		
MIMOSA pudica	10	
MIMULUS moschatus	25	
Tigrinus grandiflorus, Mixed	25	
MOONFLOWER , White-seeded		
1/4 lb. \$1.25, lb. \$4.50		40
Black-seeded		
1/4 lb. \$1.25, lb. \$4.50		40

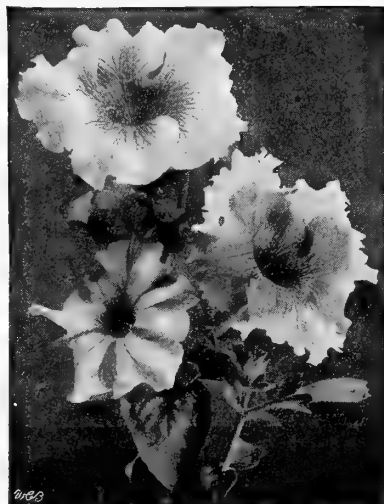
MORNING-GLORY —	Trade pkt.	Oz.
Fine Mixed	15	\$0 15
Japanese, Fancy Fringed		
Mixed	15	\$0 15
Japanese, Giant-flowered,		
Mixed	10	20

MYOSOTIS —		
Alpestris, Victoria Blue	15	75
Alpestris, Mixed	10	50
Palustris semperflorens	50	3 50
Dissitiflora	30	2 50
Ruth Fischer	50	

NASTURTIUM —	Oz.	1/4 lb.	Lb.
Tall, Butterfly	\$0 15	\$0 40	\$1 50
Chameleon, Various			
colors	15	40	1 50
Coccinea, Scarlet	15	35	1 40
Hemisphericum, Straw			
color	15	40	1 50
Jupiter, Sunlight, Yellow	15	40	1 50
Moonlight, Pearl			
Cream	15	40	1 50
Midnight, Brown-red	15	40	1 50
Lemon Prince	15	40	1 50
Salmon Queen, Rich			
salmon	15	40	1 50
Twilight, Salmon-rose	15	40	1 50
Variegated-leaved,			
Mixed	15	60	2 00
Superb Mixture	15	40	1 50
Fine Mixture	15	35	1 25

Lobbianum, Crystal Palace		
Gem, Orange-scarlet	15	40 1 50
Golden Garnet	15	40 1 50
Madame Gunther's		
Hybrids	15	40 1 50
Superb Mixed	15	35 1 40
Dwarf, Beauty	15	45 1 80
Chameleon	15	45 1 75
Crystal Palace	15	55 2 00
Deep Scarlet	15	55 2 00
Golden King	15	55 2 00
King of Tom Thumbs	15	55 2 00
King Theodore	15	55 2 00
Yellow Prince	15	55 2 00
Ruby	15	55 2 00
Rudolph Virchow	15	55 2 00
Vesuvius	15	55 2 00
Fine, Mixed	15	40 1 50
Superb Mixed	15	45 1 75
Dwarf Variegated, Mixed	15	40 1 50

NICOTIANA affinis	Trade pkt.	Oz.
affinis hybrida grandiflora	\$0 10	\$0 40
Sanderæ	15	50



Large-flowering Fringed Petunias



Masterpiece Pansies

Nicotiana, Sanderæ Hybrids	Trade pkt.	Oz.
Sylvestris	\$0 15	\$0 75
	10	40

PANSY —	1/2 oz.	1/4 oz.	Oz.
Beckert's Superb Mixed	\$1 25	\$2 10	\$8 00
Extra-choice Mixed	70	1 25	4 50
Bugnot's Giant Spotted	60	1 10	4 00
Cassier's Superb Mixed	60	1 10	4 00
Masterpiece, Giant Curled	85	1 60	6 00
Cassier's Hortensia, Delicate rose	45	75	3 00
Extra Giant Golden Queen	70	1 25	4 00
Giant Adonis, Lavender	45	75	3 00
Giant Andromeda	70		
Giant Atropurpurea	35	60	2 25
Giant Beaconsfield, Purple and white	35	65	2 50
Giant Snow Queen	35	60	2 25
Giant Striped	35	60	2 25
Deep True Blue	35	60	2 25
Golden Yellow, Dark Eye	35	60	2 25
Mme. Perret, Red-and-wine shade	60	1 10	4 00
Giant White, Violet eye	35	60	2 25
Giant Mixed	30	55	2 00
World's Record, Celestial Queen			Trade pkt. \$0 25
March Beauty			25
Ice King			25
Winter Sun			25

PENTSTEMON , Sensation	55	2 00
Mixed	30	1 50

PETUNIA —		
Large-flowered Double Fringed	1 00	
Marvelous Double	Pkt. 75c.	
Queen of Roses, Fine dwarf		
Pkt. 40c.		
Large-flowering Single Fringed	50	
Giants of California	50	
Ruffled and Fringed Giants	50	
Ruffled Giants	50	
Howard's Star	35	2 50
Inimitable Dwarf (Nana compacta)	50	
Rosy Morn (Erfordia)	50	
Snowball	50	
Brilliant, Dwarf carmine-pink	50	
Feltham Beauty	50	
Mixed Single	25	1 00

PHLOX DRUMMONDII

Grandiflora—	Trade pkt.	Oz.
Alba. Pure white	\$0 25	\$1 25
Alba purpurea. White, purple eye	25	1 25
Brilliant. Rose, dark eye	25	1 25
Chamois-Rose	25	1 25
Isabellina. Buff-yellow	25	1 25
Kermesina	25	1 25
Meteor. Bright scarlet	25	1 25
Shell-Pink	25	1 25
Cuspidata and Fimbriata, Mixed	20	1 00
Finest Mixed	20	75
Nana compacta—		
Chamois-Rose	30	2 00
Cecily. Superb mixture	30	2 00
Fireball. Rich scarlet	30	2 00
Snowball. White	30	2 00
Finest Mixed	30	1 75

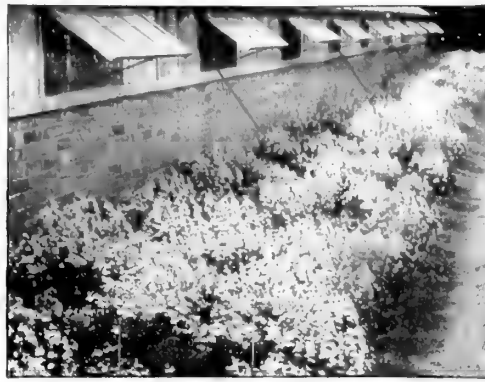
POPPY, Single.

Admiral. Trade pkt.	Oz.
White and Scarlet	\$0 10 \$0 20
Scarlet	10 20
Shirley. Fine Mixed	10 20
The Bride	10 20
Tulip. Dazzling scarlet	10 30
Mixed	15
Double, Carnation. Mixed	
Mikado. White, crimson tips	10 15
White Swan. Fringed white	10 20
Mixed	15
Perennial, Alpine. Fringed	
Bracteatum	10 40
Iceland	15 60
Double Shirley	10 20
Oriental	15 60
Oriental Hybrids	25 1 50
Princess Victoria Louise	20
Colosseum	20
Mammoth	20
Queen Alexandra	20
Prince of Orange	20
Excelsior	20

PORTULACA. Single Mixed 10 50
Double Finest Mixed 30 2 00

PRIMULA chinensis fimbriata— Trade pkt.

Giant Pink, White, Blue, Red, Salmon, Crimson, Mixed	\$0 75
Single Mixed	25
Double Mixed	50
Stellata, Star Primula. Mixed	50



Schizanthus

Primula obconica, Giant Carmine, Trade pkt.

Lilacina, Rubra, Rosea, White, and Mixed	\$0 50
Eureka	Pkt. 75c
Chenies' Giant Hybrids	Pkt. 50c
Chenies' Giant Blue	Pkt. 60c
Auricula	15
Elatior, Giant Crimson	25
Elatior, Giant Yellow	25
Elatior, Giant White	25
Japonica hybrida	50
Kewensis	50
Malacoides	50
Malacoides superba	50
Veris grandiflora (Cowslip)	50
Vulgaris (English Primrose)	20

PYRETHRUM roseum Trade pkt. Oz.

grandiflorum	\$0 30	\$1 50
Double Superb Mixed	50	
Aureum	15	60
Selaginoides	20	90

RICINUS Borboniensis. Green. Oz. 1/4lb.

15 feet	\$0 10	\$0 30
Cambodgensis. Bronze. 5 ft.	10	35
Gibsonii. Dark red. 5 ft.	15	40
Gibsonii mirabilis. Brown. 4 ft.	20	
Panormitans. Bronze. 6 ft.	15	
Sanguineus. Blood-red. 8 ft.	10	30
Zanzibarensis, Mixed. 12 ft.	10	35

SALPIGLOSSIS grandiflora, Emperor, Light Yellow, Crimson, Primrose, Purple and Gold, Rose and Gold, Trade

Scarlet and pkt.	Oz.
Gold, White and Gold, all at	\$0 25 \$1 00
Mixed	15 75
Superb Mixed	25 85

SALVIA splendens 25 1 50
 Scarlet Dragon 35 3 00
 King of Carpets 30 2 50
 Ostrich-Plume 40 4 00
 Fireball, or Ball of Fire 35 3 00
 Bonfire, Clara Bedman 30 2 50
 Zurich, or Lord Fautleroy 40 4 00
 Farinacea 25
 Patens 50

SCABIOSA grandiflora, White, Azure Fairy, Skyblue, Crimson, Giant King of the Blacks, Flesh-colored, Rose, Lilac, Cherry-Red, Brick-Red, all at

Mixed	15
Semi-dwarf Mixed	15
Caucasica	40

SCHIZANTHUS Wiseton— Trade pkt. Oz.

ensis	\$0 40
Monarch strain	30
Wisetonensis, Excelsior	Pkt. 40c
Wisetonensis, Bridal Robe	Pkt. 20c

SHAMROCK. True 15 \$0 50
SILENE orientalis 10
 Pendula. White 15
 Pendula rosea 15
 Pendula delicata fl.-pl. 25
 Schalta 25 1 25
SMLAX 1/4lb. \$1.25 10 40

SOLANUM —
 Capsicastrum nanum 10 75
STEVIA serrata 20

STOCKS, Cut-and-Come-Again
 Blood-Red 30 2 50
 Brilliant Rose 30 2 50
 Dark Blue 30 2 50
 Lilac 30 2 50
 White, Princess Alice 30 2 75
 Yellow 30 2 50
 Mixed 30 2 00

Large-flowering Dwarf Ten Weeks, Blood-Red 30 2 50
 Brilliant Rose 30 2 50
 Purple 30 2 50
 Canary-Yellow 30 2 50
 Crimson 30 2 50
 Light Blue 30 2 50
 White 30 2 50
 Mixed 30 2 00

Dwarf Pyramidal—
 Snowflake 50

Early Nice, Winter-flowering—
 Almond Blossom 30 3 50
 Beauty of Naples. Salmon 30 2 50
 Beauty of Nice. Flesh-pink 30 2 50
 Empress Elizabeth. Crimson 50
 Giant Abundance. Carmine-red 30 2 50
 Mme. Joseph Paquet. Golden yellow 35 3 00
 Monte Carlo. Yellow 30 2 50
 Queen Alexandra. Rose-lilac 30 2 50
 Vesuvius. Blood-red 30 2 50
 Souvenir de Monaco. Carmine 30 2 50
 Summer Night. Dark violet 30 2 50
 White Lady 50



Primula obconica



Large-flowering Dwarf Ten-Weeks Stocks



Fiery Cross Spencer Sweet Peas

The Choicest in Sweet Peas (Crop very short)

Spencer—	Oz.	¼lb.	Lb.	Spencer, Orchid—	Oz.	¼lb.	Lb.
Asta Ohn	\$0 20	\$0 70	\$2 50	R. F. Felton	25	90	3 50
Austin Frederick	25	80	2 75	Royal Purple	25	90	3 50
Blanche Ferry	20	70	2 50	Rosabelle	20	70	2 50
Charles Foster	25	85	3 00	The President	25	90	3 50
Constance Hinton	25	85	3 00	Vermilion Brilliant	25	85	3 00
Countess	15	50	1 75	Wedgwood	25	85	3 00
Decorator	20	70	2 50	Superb Mixture	20	60	2 25
Dobbie's Cream	20	70	2 50	Winter-flowering			
Doris Usher	25	85	3 00	Spencers—			
Edith Taylor	25	85	3 00	Early Heatherbell	\$0 85	\$3 00	
Empress Eugenie	25	85	3 00	Early Melody	85	3 00	
Fiery Cross	35	1 00		Early Morning Star	75	2 75	
Florence Morse	20	70	2 50	Early Snowflake	85	3 00	
Florence Nightingale	20	60	2 25	Early Song Bird	75	2 75	
George Herbert	20	60	2 25	Early Spring Maid	85	3 00	
Helen Lewis	15	55	2 00	Lavender-Pink	65	2 50	
Helen Pierce	20	70	2 50	Mrs. A. A. Skaach	65	2 50	
Hercules	25	85	3 00	Red Orchid	85	3 00	
Illuminator	25	85	3 00	Rose Queen	85	3 00	
King Edward	20	70	2 50	Venus	65	2 50	
King Manoel	20	70	2 50	Yarrowa	75	2 75	
King White	25	75	2 75	Grandiflora, Winter-flowering—			
Lady Evelyn Eyre	20	70	2 50	Christmas Pink	10	30	
Lovely	15	50	1 75	Christmas Meteor	10	30	
Mark's Tey	20	70	2 50	Earliest White	10	30	
Margaret Atlee	20	65	2 25	Earliest of All	10	30	
Martha Washington	25	85	3 00	Florence Denzer	10	30	
Mary Garden	15	50	1 75	Le Marquis	10	30	
May Unwin	20	70	2 50	Mrs. C. H. Totty	10	30	
Miriam Beaver	25	85	3 00	Mrs. Wm. Sims	15	50	
Mrs. Hugh Dickson	15	55	2 00	Standard Grandiflora—			
Mrs. Routh	20	70	2 50	Blanche Ferry	\$0 07	\$0 20	\$0 60
Mrs. Townsend	20	70	2 50	Dorothy Eckford	07	20	60
Nubian	20	70	2 50	Janet Scott	07	20	60
				King Edward VII	07	20	60
				Lady Grisel Hamilton	07	20	60
				Lovely	07	20	60
				Navy Blue	07	20	60
				Superb Mixed	07	20	60

Best Zinnias

Large-flowering Double	Trade pkt.	Oz.	Carmine	Trade pkt.	Oz.
Lilac	\$0 10	\$0 40		\$0 10	\$0 40
Crimson	10	40			
Golden Yellow	10	40			
Rose	10	40			
Scarlet	10	40			
White	10	40			
Striped	10	40			
Maroon	10	40			
Burnt-Orange	10	40			
Mixed	10	30			
Curled and Crested, Mixed	15	50			



Large-flowering Zinnias

STOKESIA, Mixture of pink, purple, and yellow	Trade pkt. \$0 25	Oz. \$1 00
THUNBERGIA, Choice Mixed	15	60
TORENIA Fournieri grandiflora	15	
Baillonii	25	
VERBENA—		
Mammoth Pink	25	1 00
Mammoth Purple and Blue	25	1 00
Mammoth Scarlet	25	1 00
Mammoth Striped	25	1 00
Mammoth White	25	1 00
Mammoth Auriculæflora	25	1 00
Mammoth Mixed	20	80
Mammoth Superb Mixed	25	1 00
Nana compacta, Mixed	30	2 50
Helen Wilmot	30	2 50
Erinoides and Venosa	25	
Citriodora (Lemon Verbena)	30	
VIOLA cornuta, Admiration.		
Deep blue	25	
Perfection, Light blue	25	
Lutea splendens	25	
White Perfection	25	
Mixed	20	
Odorata	30	1 50

Giant Double—		
Crimson	30	1 00
Flesh-Pink	30	1 00
Purple	30	1 00
Scarlet	30	1 00
Violet	30	1 00
Golden Yellow	30	1 00
White	30	1 00
Sulphur-Yellow	30	1 00
Mixed	25	75
VINCA rosea		
Rosea alba	\$0 15	\$0 60
Rosea delicata, Purple-carmine	15	60
Alba pura	15	60
Mixed	15	60
WALLFLOWER (Cheiranthus)		
Kewensis	25	
Extra-Early Paris	15	50
Goliath, Velvet-brown	15	50
Vesuvius, Orange-scarlet	15	50
Non Plus Ultra, Mixed	15	50
Annual, Mixed	10	40
Double Dwarf German	25	
WILD CUCUMBER, ¼lb.	35c	10

Bulbs and Tubers for Spring Planting

CALLAS
Alba maculata. White; spot-
ted foliage. Doz. 100 \$5 00

CALADIUMS
Esculentum, 5 x 7 in. circum-
ference. \$0 50 3 50
7 x 9 in. circumference. 85 6 00
9 x 11 in. circumference. 1 50 10 00
Fancy-leaved. In named fine
varieties. 1 75 12 00

CANNAS—
Alphonse Bouvier. Deep crim-
son. 50 3 25
Brandywine. Red, mottled
crimson. 65 4 50
Charles Henderson. Crimson. 50 3 25
Crimson Bedder. 50 3 25
Duke of Marlborough. Crim-
son-maroon. 50 3 25
Florence Vaughan. Yellow,
spotted red. 50 3 25
Gladiator. Yellow, spotted
crimson. 50 3 25
Hungaria. 65 4 50
King Humbert. Orange-red;
bronze foliage. 60 4 00
Mlle. Berat. Rosy carmine. \$0 50 \$3 25
Mme. Crozy. Scarlet, bordered yellow. 65 4 50
Mont Blanc. White. 50 3 25
Musaeolia. Fine for foliage beds. 50 3 25
Pennsylvania. Vermilion scarlet. 50 3 25
Richard Wallace. Canary-yellow. 50 3 25
Rosea gigantea. Rose-pink. 80 6 00
Souv. d'Antoine Crozy. Scarlet, yellow edge. 50 3 25
Wyoming. Golden yellow foliage. 50 3 25
Yellow King Humbert. 80 6 00

DAHLIAS, CACTUS—
Alight. Gigantic orange-scarlet. 2 00 14 00
Bornemann's Liebling. Soft rose-pink. 2 00 14 00
Capstan. Soft red tinted apricot. 1 45 10 00
Clara G. Stredwick. Salmon, shaded yellow; large. 1 45 10 00
Dainty. Lemon-yellow, tipped rose-pink. 2 00 14 00

	Doz.	100
Fred Cobbold. Bright crimson.	\$1 75	\$12 00
General Buller. Velvety crimson	1 30	9 00
Golden Gate. Deep amber, shad- ing gold.	1 75	12 00
Harbor Light. Orange-red.	1 45	10 00
Ianthe. Light buff, edged sal- mon-rose.	1 75	12 00
J. H. Jackson. Blackest maroon; large.	1 45	10 00
Kriemhilde. Pink, center nearly white.	1 75	12 00
Mary Service. Pinkish apricot.	1 75	12 00
Mrs. de Luca. Golden yellow, tipped orange.	1 75	12 00
Prince of Orange. Rich old-gold.	1 75	12 00
Standard Bearer. Fiery scarlet.	1 75	12 00

DAHLIAS, SHOW—
A. D. Livoni. Soft pink. 1 75 12 00
Arabella. Sulphur, tipped pink. 1 45 10 00
Cuban Giant. Dark crimson;
large. 2 00 14 00
Fascination. Rose-pink. 1 75 12 00
Golden Age. Sulphur-yellow. 1 75 12 00
Imperial. Deep purplish maroon. 2 00 14 00
Lucy Fawcett. Pale yellow,
striped deep pink. 1 75 12 00
Merlin. Orange-scarlet. 1 75 12 00
Norma. Live bright orange. 1 75 12 00
Robert Bloomfield. Pure white. 1 45 10 00
Storm King. Pure white. 1 75 12 00
Stradella. Deep purple-crimson. 1 75 12 00

DAHLIAS, PEONY-FLOWERED— Doz.
Admiration. Rosy crimson, veined yellow. \$3 50
Mrs. Jacques Futrelle. Lemon yellow
and scarlet. 2 00
Geisha. Brilliant scarlet and gold. 4 00



Cactus Dahlia

Doz.	100
\$0 50	\$3 25
65	4 50
50	3 25
50	3 25
50	3 25
50	3 25
80	6 00
50	3 25
50	3 25
80	6 00

DAHLIAS, POMPON— Doz.
Amber Queen. Clear amber, shaded apricot. \$1 40
Darkness. Dark maroon. 1 40
Fairy Queen. Sulphur-yellow, edged pink. 1 40
Prince Charming. Cream, tipped purple. 1 75
Snow-Clad. An ideal white. 1 75

DAHLIAS, CENTURY—
Blanche. Pale yellow, tipped pink. 1 50
Rose-pink. Rose-pink shade. 1 50
Twentieth Century. Base and tips pure white, center of
petal rose. 1 50

DAHLIA, SINGLE—
Lord Goff. Cream, tipped rose-pink. 1 50
Prosperity. Light center, tipped rose-purple. 1 50
Sadie. Pink, striped maroon. 2 25

DASHEEN. 2 x 3 in. diameter. \$6 per 100. 85

GLADIOLI—
America. Soft lavender-pink. 100 \$2 75 1,000 \$22 50



Gladiolus

Attraction. Deep rose, white throat.	2 75	22 50
Augusta. Fine white.	3 50	30 00
Baron Hulot. Deep indigo blue.	2 50	20 00
Brenchleyensis. Scarlet.	2 75	22 50
Chicago White.	3 00	25 00
Columbia. Orange scarlet.	2 75	22 50
Crackerjack. Maroon, blotched yellow and maroon.	2 75	22 50
Empress of India. Rich dark red.	4 00	35 00
Europe. Finest pure white to date.	6 00	55 00
Hallie. Salmon-rose; large.	2 75	22 50
Klondike. Yellow.	2 75	22 50
Kunderi. Ruffled Glory.	4 50	40 00
May. White, flaked, rosy crim- son.	5 00	45 00
Mrs. Francis King. Scarlet.	2 75	22 50
Mrs. Frank Pendleton. Pink with blood-red throat.	5 50	50 00
Meadowvale. White, lower petal pink.	2 75	22 50
Niagara. Cream shade.	4 50	40 00
Panama. Rose-pink.	4 00	35 00
Peace. White shaded pale lilac.	5 00	45 00
Pink Perfection. Pink.	6 00	55 00
Princes. Scarlet, white on lower petals.	3 50	30 00
Schwaben. Best yellow.	4 50	40 00
Taconic.	4 50	40 00
Velvet King. Bright red.	2 75	22 50
Victory. Sulphur yellow.	4 00	35 00
Pan-American Superb Mixed.	2 75	22 00

MADEIRA VINE TUBERS. Doz. 100
\$14 per 1,000 \$0 25 1 60
TUBEROSE, Excelsior Pearl. \$10 per 1,000 20 1 25

Miscellaneous Supplies

The approximate mailing weight is given on such articles as can be sent by parcel post. These are marked with a star (*). See schedule of parcel-post rates for all zones on second cover.

NOTE.—As this catalog goes to press, the market on the majority of articles listed below is in a most fluctuating condition, many of the items being unobtainable. It is distinctly understood, therefore, that none of the prices are binding, though we shall do our best to maintain them.

*Aprons, Gardener's Rubber. (2 lbs.)	Each	\$2 00
*Asparagus Knives, Curved Blade. (1 lb.)		45
*Asparagus Knives, Straight Blade. (1 lb.)		40
*Bellows, Single-Cone Powder, Large. (3 lbs.)	3	40
*Bellows, Single-Cone Powder, Small. (2 lbs.)	2	10
*Bellows, Liquid Spraying, Large. (4 lbs.)	3	10
*Bellows, Liquid Spraying, Small. (3 lbs.)	2	45
*Bellows, Sulphur. (3 lbs.)	3	10
*Bill Hooks, English. (4 lbs.)	Price on application	
Charcoal. Lump. Bushel of 18 lbs.		90
Cocoanut Fiber. Per bushel, \$1.25		
*Corn Knives, for cutting cornstalks, etc. (2 lbs.)		45
*Dandelion and Plantain Puller, Bateman. (1 lb.)		30
*Dibble, for Planting. All iron. (2 lbs.)		45
*Dibbles, Wooden Handles, Steel Points. Two sizes. (1 lb.)		45
	Small size, 40 cts.; large size,	45
*Dibbles, Brass Points. (1 lb.)		65
Dock and Thistle Cutter. With foot-rest.		55
Duster, Acre-an-Hour. 2½ qts.		60
Flower-Pots, Standard—(Prices subject to change.)		
	100	1,000
2¼ in.	\$0 90	\$8 00
2½ in.	1 20	10 70
3 in.	1 50	13 90
	100	1,000
4 in.	\$2 20	\$20 70
5 in.	3 75	33 35
6 in.	5 30	48 00
8 in.	12 84	
*Flower-Pots, Neponset Paper. (Prices f. o. b. factory.)		
	100	1,000
2½ in. (23 lbs.)	\$0 50	\$3 80
3 in. (33 lbs.)	65	5 53
	Weight per 1,000	100
4 in. (44 lbs.)	\$1 10	\$9 15
5 in. (56 lbs.)	1 70	15 20
6 in. (74 lbs.)	2 25	20 91
Forks, Weeding, Saynor's Short Handle. Price on application.	Each	
Forks, Weeding, American steel, 8-in. handle.	\$0	35
Forks, Weeding, Gem. Doz.	\$4.	35
Forks, Digging, 4 square tines.	1	85
Forks, Spading, 4 angular tines.	1	50
Forks, Spading, Boy's size.		75
Forks, Manure, 4 oval tines.	1	50
Fumigators, Galvanized Iron. No. 1.	2	25
Garden Line, White glazed. 48-ft. hank weighs 6 ozs. 48 ft. 50 cts., 5 hanks.	2	25
Garden Line Reels, Iron Stake.	2	40
*Glass Clamps. To hold glass. (2 lbs.)	Per 100,	\$1.30
Glass Cleaner, Daylite. Gal.	\$1.50, 5 to 25 gals. at \$1.40 per gal.	
*Glass Cutter, No. 1, Turret Head. (4 ozs.)		35
*Glazing Points, Peerless. (18, 19 and 20 ozs.)		
	No. 1, 2 and 2½, per 1,000, 70 cts.; 5,000, \$3.25	
*Grafting Wax. Lb.	30	cts.
Grass Edging Knives, English.	Ask for prices	
Grass Edging Knives, American. 9-in. Handles.	8 ft., 30 cts.; 10 ft., 35 cts., 12 ft.,	55
Hanging-Baskets, Galvanized Wire		
	Per doz.: 8-in., \$1.65; 10-in., \$2.20; 12-in., \$3; 14-in., \$4.40;	
	16 in., \$5.55; 18-in., \$7.60.	
Hoes, Field. Solid socket.		
	6-in., 7-in., and 8-in. blade, 75 cts., 80 cts., and	85
Hoes, Field. Solid shank, 6-in. and 7-in. blade, 70 cts. and		75
Hoes, Corn. Solid shank, 7½-in. blade.		70
Hoes, Warren. Solid shank, 7-in. blade.		75
Hoes, Half Moon. Solid shank, 6-in. blade.		75
Hoes, One-Prong Weeding.		40
Hoes, Two-Prong Weeding.		45
Hoes, Dig-Easy Mattock. 1-in. and 3-in. blade.		75
Hoes, German Grub, or Sprouting. 4½-in. blade.		75
Hoes, Triangular Thinning. 4½-in. blade.		65
Hoes, Beet. 18-in. handle, 4-in. blade.		55
Hoes, Transplanting.		50
Hoes, Dutch Scuffle. 4-in. 65 cts., 6-in. 90 cts., 8-in. blade.		1 00
Hooks, Nurserymen's. Two 9-in. prongs.		1 60
Hooks, Potato. Four tines, oval or round.		90
Hooks, Grape. Two prongs.		1 20
*Hose Coupling, Brass. (1 lb.)	Pair	30
*Hose Coupling, Perfect Clinching. (4 ozs.)	Pair	30
*Hose-mending Outfit. 2 menders, 4 bands, 1 plier. (1 lb.)		20
*Hose Menders, Perfect Clinching. (3 ozs.) Metal, ½-in. and ¾-in.	Per doz.,	\$1.50
*Hose Menders, Cooper's Brass. ½, ¾ and 1-in. (2 ozs. each). Each	Per doz.,	\$1.50
*Hose Nozzles, The Allen. (1 lb.)		60
	Pet. (1 lb.)	65
	Vermorel. (4 ozs.)	85
	Bordeaux. (4 ozs.)	85
*Hose Reducers. Pair (4 ozs.) 20 cts. per set.		
Hose Reel, Wirt's Style B, No. 10. Capacity 100 ft.	3	75
Hose Reel, Wirt's Style B, No. 20. Capacity 150 ft.	4	25
Hose, Rubber, Beckert's S. S. Brand. In 50-ft. lengths, including couplings ½-in., \$9, ¾-in., \$9.75.		
Hose, Rubber, Special Spray. In 50 ft. lengths \$7.25.		
Hydrometer. For testing lime sulphur solution.		90
*Knives, Budding, English. One blade; straight or curved handle. (4 ozs.)		2 00
Knives, Florists' Small.		85
*Knives, Pruning, Field's. Staghorn handle.		2 50
Labels, Horticultural. Iron. 18-in. stake.	Per 100,	\$14.20
Labels, Simplex Weatherproof Celluloid. 3 x ½ in., 4 x ¾ in., and 5 x 1 in.	Per 100,	\$1.90, \$3.80, and \$5.70
Labels, Pot, Painted. Per 1,000, 4-in. \$1.05, 5-in. \$1.40, 6-in. \$1.75.		
Labels, Garden, Painted. 100, 8-in. 60 cts., 10-in. 85 cts., 12-in. \$1, 14-in. \$2.50, 16-in. \$2.75.		
Labels, Tree, Painted, Copper-wired. Per 1,000, 3½-in. \$1.70.		
Lawn Sprinkler, Hothouse. Finely perforated; 3-in. face.		90
*Lawn Sprinkler, The Rainfall. (3 lbs.)		1 35
*Lawn Sprinkler, Pluvius. (4 lbs.)		1 50
*Lawn Sprinkler, Brass Ring. (1 lb.)		75
*Lawn Sprinkler, C. B. G. (Cheap But Good). (2 lbs.)		35
Lawn-Trimmer, Caldwell's		7 25
Leaf-mold. Sack,	\$2.	
Mastica. Gal.	\$1.90, 5 gals. \$9.25	
Mastica Machine. For applying. (2 lbs.)		2 00
Mole Trap, Reddick.		80
Moss, Log, Green.	Crate,	\$1.75
Moss, Sphagnum, Dried. Bbl. 90 cts., bale \$3.50.		
Moss, Sphagnum, Live. Bbl.	\$3.25	
*Paper, Tissue. Price variable.	Ream.	
*Paper, Wax, Green.	Ream.	
*Paper, Waxed White.	Ream.	
Peat, Fibrous Orchid. Sack,	\$2.25	
Peat, Jersey. Sack,	\$2.	
PLANT TUBS—		
Virginia White Cedar. Galvanized welded hoops. If wanted with handles, add 10 cts. per tub.		
	Inside top diam.	Inside depth
No. 4.	9 in.	9 in.
No. 5.	10 in.	9 in.
No. 6.	11 in.	10 in.
No. 7.	12 in.	11 in.
No. 8.	13 in.	12 in.
No. 9.	14 in.	13 in.
No. 10.	15 in.	14 in.
No. 11.	16 in.	15 in.
No. 12.	17 in.	16 in.
No. 13.	18 in.	17 in.
No. 14.	19 in.	18 in.
Plant Tubs, White Cedar. No. 8, 12-in. diam., \$3.30; No. 7, 13-in., \$3.60; No. 6, 14-in., \$4; No. 5, 16-in., \$5; No. 4, 18-in., \$5.60; No. 3, 21-in., \$6.90; No. 2, 23-in., \$8.25; No. 1, 25-in., \$9.40; No. 0, 27-in., \$10.50		
*Pot Hangers. No. 1. For 3- to 5-in. pots.		
	Per doz. (4 ozs.) 40 cts.; 100 \$2.75	
No. 2. For 6- to 7-in. pots.	Per doz. (1 lb.) 50c., 100 \$3.	
No. 3. For 8- to 10-in. pots.	Per doz. (1 lb.) 55c., 100 \$3.15	
*Putty, Twemlow's. Gal. (16 lbs.)		2 25
*Putty Bulbs. For applying Twemlow's and Mastica. (1 lb.)		1 00
Putty, Elastic, Waterproof. 10-lb. can, \$1.50; 100 lbs. \$10.		
Rakes, Daisy, English. 16 teeth, \$2.25; 20 teeth.		2 50
Rakes, Gem Dandelion. No. 1, \$1.40; No. 2.		1 80
Rakes, Ole Olson. Curved or straight.		60
Rakes, Steel. 12 teeth, 75 cts.; 14 teeth, 80 cts.; 16 teeth.		85
Rakes, Lawn, The Gibb.		65
Rakes, Park. 36 wire teeth, 30-in. steel head.		80

Rakes, Boys	Each	\$0 40
*Raffia, Best grade	Price on application	
Saws, Pruning, Unusual edge-holding qualities, 16-in., 90 cts.; 18 in., \$1; 20 in., \$1.15; 22 in.	1 20	
Saws, Pruning, Triangular, 16-in. and 18-in.	\$1.30 and 1 40	
Saws, Tree Pruning, "The Orchard," Without handle	1 25	
Scythes, Lawn, High-grade English riveted back, 30-in., 34-in., and 36-in. blade	\$2.25, \$2.35, and 2 45	
Scythes, Bartlett, American, 26-in. and 28-in.	1 50	
Scythe Handles	1 10	
Scythe Stone, Welsh Talacre	Doz. \$3.40	30
Seed Sower, Broadcast, Cahoon	4 75	
Shears, Grass Border, English, 8-in., \$3; 9-in., \$3.50; 10 in., 3 75		
Shears, Grass Border, English, One wheel, 9-in.	3 75	
Shears, Lawn, Saynor's, Two wheels	4 90	
Shears, Lopping, English, 2½-in., \$3.40; 3-in., \$3.80; 4-in., 4 40		
Shears, Lopping, The Searight	1 70	
Shears, Hedge, English, with Spring Notch, 8-in., \$2; 9-in., \$2.30; 10 in.	2 80	
*Shears, Pruning, Wheel Spring, 7-in. (1 lb.), \$1.75; 8½-in. (1 lb.), \$2.10; 9-in. (2 lbs.)	2 35	
Shears, Pruning, No. 1539, 9 in.	1 40	
*Shears, Pruning, French Aubert, (1 lb.)	3 00	
*Shears, Pruning, Swedish, No. 1015, 6¾-in. (8 ozs.)	30	
*Shears, Pruning, Ladies' Nickel-plated, 6¾-in. (8 ozs.)	1 75	
Shears, Pruning, Rieser, Double brass spring; polished, (1 lb.)	2 10	
*Shears, Grass, English, No. 3075, 5½-in. (2 lbs.) \$1.10; 7-in. (2 lbs.)	1 50	
*Shears, Grass, English, No. 357, 5½-in. (2 lbs.)	75	
Sickles, or Grass Hooks, English, Marshall's celebrated riveted back	60	
Sickles, or Grass Hooks, Frasier	50	
Sieves, Heavy, 18-inch; all-size meshes	80	
*Silkaine, For stringing smilax	Lb. \$1.75	
*Silkaine Substitute	Lb. \$1.25	
Spades, Gold Standard, Heavy square point	1 90	
Spades, Gold Standard, Round point	1 90	
Spades, Light	1 65	
Spades, Boy's size, Floral shovel	70	
Sprayer, Hand, Vaporizing, Tin	Pt. 30 cts., qt. 40	
Sprayer, Hand, Vaporizing, Compressed Air, Extra-heavy brass, 1 qt., \$1.50; No. 25C, brass, 1 qt. \$1; extra-heavy tin.	80	
*Sprinkler, Rubber, No. 1, (1 lb.)	1 00	
*Sprinkler, Rubber, Angle-neck, No. 1, (1 lb.)	1 00	
	100 500 1,000	
Stakes, Cane, Western, 6- to 9-ft. lengths	\$1 25 \$4 50 \$8 50	
9- to 12-ft. lengths	2 00 8 50 16 00	
*Stakes, Hyacinth, Painted green, per 1,000, 12-in. (7 lbs.) \$1.25, 18-in. (12 lbs.) \$1.50.		
Stakes, Wooden, Round, Tapering, Painted green.	Doz. 100	
	Doz. 100 3 ft. \$0 65 \$4 70	
1½ ft.	\$0 20 \$1 20 3½ ft. 80 5 90	
2 ft.	30 2 30 4 ft. 1 00 7 20	
2½ ft.	50 3 50 5 ft. 1 15 8 50	
Stakes, Green Dyed, Japanese.	100 500 1,000	
2 ft.	\$1 00 \$4 00 \$7 50	
3 ft.	1 40 5 75 11 00	
4 ft.	1 80 8 00 15 00	
Stakes, Heavy Dahlia, Painted green.	Doz. 100	
	Doz. 100 4 ft. \$1 15 \$7 75	
3 ft.	\$0 85 \$5 90 5 ft. 1 40 9 75	
3½ ft.	1 00 7 00 6 ft. 1 70 11 85	
Stakes, Galvanized Wire, No. 9—	100 1,000	
	100 1,000 3½ ft. \$1 90 \$17 00	
2½ ft.	\$1 45 \$13 00 4 ft. 2 25 20 00	
3 ft.	1 65 14 50 5 ft. 2 75 25 00	
*Syringes, Brass Greenhouse, Not obtainable.	Each	
Thermometers, No. 5400, 10-in. japanned case	\$1 20	
No. 5400P, 10-in. copper case	1 70	
No. 5420, 8-in. tin case, 45 cts.; 10-in.	60	
No. 5452P, Self-registering, 8-in. copper case	5 25	
No. 5981, Hotbed, 10-in. wooden case, copper point	1 90	
No. 5774, Incubator, with holder	60	
No. 5770, Incubator, with stand	65	
No. 5701, Brooder	50	
Tin Foil	Lb. 20 cts., 5 lbs. 90 cts.	
*Torch, Asbestos, (1 lb.)	20	
Tree Pruner, The Bastian, 6-ft., 8-ft., 10-ft., 12-ft. and 16-ft. pole.	\$1.50, \$1.75, \$2, \$2.25 and \$2 70	
Tree Pruner, The Extension, Compound lever, with 8-ft. pole, \$3.25; 10-ft. pole, \$3.25; 12-ft. pole, \$3.40; 14-ft. pole, \$3.50; 16-ft. pole.	3 60	

Tree Pruning Shears, The Bastian, 5-ft., 8-ft. and 10-ft.	Each	\$1.75, \$2 and \$2 25
*Extra blades, (1 lb.)	15	
*Tree Scrapers, (1 lb.)	40	
*Trowel, Angle, 7-in. blade (1 lb.), 15 cts.; 8-in. blade (1 lb.)	25	
*Trowel, Forged Steel, No. 211, 6-in. blade (1 lb.)	50	
*Trowel, Sheet Steel, 6-in. blade (1 lb.)	Doz. \$2.50	30
Trowel, Solid steel shank and blade	70	
*Trowel, Transplanting, Solid steel, (1 lb.)	50	
*Twine, Dark Green	Prices quoted on request	
*Twine, White Cotton	Prices quoted on request	
Vaporizing Lamp	60	
Vine Cutter, Long handle	40	
Watering-Can, Heavy galvanized iron, 2 copper roses, 4-qt., \$2.60; 6-qt., \$2.80; 8-qt., \$3; 10-qt., \$3.40; 12-qt.	4 50	
Watering-Can, Light weight, galvanized, 4-qt., 75 cts.; 6-qt., 90 cts.; 8-qt.	1 10	
Watering-Can, Low, for greenhouses, 4-qt.	2 00	
Extra rose	30	
Weeder, Cleveland	60	
*Weeder, Eureka, Short handle, (1 lb.)	35	
*Weeder, Eureka, Long handle, (2 lbs.)	40	
*Weeder, Excelsior, (5 ozs.)	Doz. \$1.25	12
*Weeder, Hazeltine, (1 lb.)	Doz. \$4	35
*Weeder, Lang's, (4 ozs.)	Doz. \$2.75	25
*Weeder, Magic, (1 lb.) No. 1, 20 cts.; No. 2, 35 cts.; No. 2-V	40	
*Weeder, Onion, (1 lb.)	3 for \$1.10	40
Weeder, The Invincible	95	
Wheelbarrows, Garden No. 2, \$5.75, No. 3	5 50	
Wood-Fiber Florists' Vases—		
	No. Inside diam. Inside depth Each Doz.	
0	8 13 \$1 45 \$16 60	
1	5½ 10 1 20 13 20	
2	4½ 9 1 05 11 60	
3	4 6 85 9 60	
4	3 4½ 70 7 60	
00	9 22 5 00 58 00	
11	5½ 18 1 60 18 00	
22	4½ 15 1 25 13 80	
33	4 12 1 05 11 60	
44	3 9 85 9 60	
Wood-Fiber Rolling Stands—		
	Outside diam. Fits Each Doz.	
12	10-inch pot \$0 25 \$2 75	
14	11-inch pot 25 2 75	
16	13-inch pot 25 2 75	
18	15-inch pot 30 3 25	
20	17-inch pot 30 3 25	
22	20-inch pot 30 3 25	
Wood-Fiber Saucers—	Doz. Doz.	
4-inch	\$3 00 10-inch \$4 60	
5-inch	3 30 12-inch 5 50	
6-inch	3 45 14-inch 7 00	
7-inch	3 70 16-inch 12 60	
8-inch	3 90 18-inch 14 75	
9-inch	4 35	
Pumps and Sprayers—		
No. 190 Iron Age Horizontal Barrel Spray Pump, Pump and barrel, \$31.35, 10-ft. bamboo or steel extension rod, \$4.25, Lead of hose, 15-ft., with nozzle strainer, \$5.70. Bucket strainer, \$3.25. Iron Age nozzles, each, 95 cts. Each Barrel alone.	\$5 20	
No. 190D, A more powerful type of No. 190, equipped to serve orchardists	47 00	
No. 194 Vertical Barrel Spray Pump, Without barrel, \$13.70. Barrel, \$5.20, 15 ft. ½-in. hose, nozzle and strainer	5 70	
No. 191 Vertical Barrel Pump, \$17.10. With barrel	22 30	
No. 195 Iron Age Bucket Pump	13 10	
Auto Sprayer, No. 1B, Brass	9 25	
Auto Sprayer, No. 1D, Galvanized	6 25	
Paragon Sprayer, No. 3, 12 gal.	20 50	
Paragon Sprayer, No. 5, 30 gal.	33 50	
Little Giant Brass Spray Bucket Pump	4 90	
The Standard Bucket or Knapsack Pump, With bucket hose, \$4.50. With knapsack, \$7.50, 19-in. extension pipe, 80 cts. Extra inch hose, per ft., 16 cts. Nos. 1 and 2 Nozzles, each 20 cts. Extra hose strainer No. 3	35	
Pneumatic Compressed Air Sprayer, No. 296, Galvanized	7 00	
Daisy Force Pump	60	

We Are Here to Serve You. It matters little what you need in our line—we either have it or shall with pleasure get it for you. Many of the miscellaneous items listed herein are difficult to obtain, and we may have to ask your patience in some instances. Nevertheless, the desire to serve you well is the dominant keynote to our efforts.

Iron Age Implements—	Each
New Model Seed Drill	\$14 75
No. 306 Combined Drill, Single and Double-Wheel Hoe	20 90
No. 304 Combined Drill, Double and Single-Wheel Hoe	20 00
No. 333 Attachment for Drilling	9 00
No. 334 Hill and Drill Seeder Attachment	10 00
No. 301 Double and Single-Wheel Hoe. Complete	11 40
Seed Drill. For Beans, Corn, Peas, and other coarse seeds	18 00
Gem Single-Wheel Hoe	8 10
Gem Single-Wheel Hoe. With cultivator teeth only	6 65
No. 320 Single-Wheel Hoe	8 55
No. 19C Wheel Plow and Cultivator	5 70

LAWN MOWERS, Pennsylvania. High Wheel—	Each
15-inch	\$19 25
17-inch	21 55
19-inch	\$23 85
21-inch	26 15

Caldwell High-Wheel Imperial—	Each
14-inch	\$11 80
16-inch	12 95
18-inch	14 00
20-inch	14 60

Caldwell High-Wheel Ball Bearing—	Each
14-inch	\$12 50
16-inch	13 65
18-inch	14 85
20-inch	15 40

Philadelphia. High Wheel—	Each	Style E—	Each
Style A—	Each	15-inch	15 00
15-inch	\$16 50	17-inch	16 80
17-inch	18 40	19-inch	18 60
19-inch	20 40	21-inch	19 55
21-inch	21 15	Colonial, 8 in. wheel, 4 blades, 14-inch	7 00
Colonial, 8 in. wheel, 4 blades, 16-inch	7 25		

LAWN ROLLERS, Any Weight. No. 2424	13 25
No. 2427	13 75
No. 2430	14 50
No. 1420	9 35
Lawn Trimmer, Caldwell's	7 25
Philadelphia	6 75

Fertilizers

Cash with order. Prices subject to change

Bon Arbor. 1/2 lb. 22 cts., lb. 40 cts., 5 lbs. \$1.75.
Chrysanthemum Manure. (Thompson's Special.) 7-lb. bag \$1.50, 14-lb. bag \$2.50, 28-lb. bag \$4.25, 56-lb. bag \$7.50.
Farmogerm. Postpaid. 1/4-acre bottle 50 cts., acre bottle \$1.90, 5-acre size \$7.25.
Guano Fertilizer. 100 lbs. \$2.25, 500 lbs. \$9.75, 1/2 ton \$19, ton \$37.
Hardwood Ashes. Bbl. of 200 lbs. \$3.25, ton \$27.
Horn Shavings. 100 lbs. \$6.
Humus, Alphano. 100 lbs. \$1.40, 1/4 ton \$6, 1/2 ton \$11.50, ton \$20.
Keystone Fertilizer. 100 lbs. \$2.50, 1/4 ton \$10.50, 1/2 ton \$20.50, ton \$40.
Lawn and Garden Fertilizer. 100 lbs. \$2.75, 1/4 ton \$12.25, 1/2 ton \$24, ton \$47.
Nitrate of Soda. Prices variable. Write for prices.
Nitro Fertile Liquid. 2 per cent nitrogen, 3 per cent phosphoric acid, 3 per cent potash. 1/2 pt. 35 cts., pt. 60 cts., qt. \$1.
Pure Bone and Meat. 100 lbs. \$3, 1/4 ton \$13.50, 1/2 ton \$26.50, ton \$52.
Pure Raw Bone Meal, No. 1. 100 lbs. \$3, 1/4 ton \$13.50, 1/2 ton \$26.50, ton \$52.
Pure Raw Bone Meal, No. 2. 100 lbs. \$2.90, 1/4 ton \$13, 1/2 ton \$25.50, ton \$50.
Pure Raw Bone Meal Flour. 100 lbs. \$3, 1/4 ton \$13.50, 1/2 ton \$26.50, ton \$52.
Scotch Soot. Imported Scotch. 112 lbs. \$6.
Sheep Manure. 100 lbs. \$2.65, 1/4 ton \$11.75, 1/2 ton \$23, ton \$45.

Insecticides and Fungicides

Those that are mailable are preceded by a star (*). Fluids and poisons are not mailable.

*Ant Destroyer. 1/4 lb. 20 cts., 1/2 lb. 38 cts., lb. 70 cts.
Antipest, Carman's. Qt. 45 cts., 1/2 gal. 65 cts.
Aphine. 1/2 pt. 40 cts., pt. 65 cts., qt. \$1, gal. \$2.50.
*Aphis Punk. Box (10 ozs.) 55 cts.; case (7 3/4 lbs.) \$6.40.

Arsenate of Lead, Paste. Lb. 35 cts., 5 lbs. \$1.35, 10 lbs. \$2.50, 25 lbs. \$5.50.
Arsenate of Lead, Dry Powdered. Lb. 50 cts., 5 lbs. \$2.25.
Black Leaf 40. 1/2 lb. 75 cts., 2 lbs. \$2.50, 10 lbs. \$10.75.
Bordeaux Mixture, Paste. Lb. 30 cts., 5 lbs. \$1.30.
Bordeaux Mixture, Dry. Lb. 35 cts., 5 lbs. \$1.35.
Bordo-Lead. Lb. 35 cts., 5 lbs. \$1.35, 10 lbs. \$2.50, 25 lbs. \$5.25.
Borowax. Qt. 30 cts., 1/2 gal. 50 cts., gal. 90 cts.
Bug Death. 3 lbs. 45 cts., 5 lbs. 60 cts., 12 1/2 lbs. \$1.40, 100 lbs. \$8.25.
Climax Lawn Sand. 7 lbs. 50 cts., 14 lbs. \$1, 28 lbs. \$2, 56 lbs. \$3.50.

*Cutworm Food. Ask for prices.
*Fir-Tree-Oil Soap. 1/2 lb. 40 cts., 2 lbs. \$1.
Fly Spray. Qt. 30 cts., gal. \$1, 5 gals. \$4.75.
Fungine. Qt. \$1, gal. \$3.50.
Getz-There Soap. 8 lbs. (1 gal.) \$1.15.
Grape Dust. 5 lbs. 65 cts., 10 lbs. \$1.20, 25 lbs. \$3.
Hellebore, Powdered. Lb. 55 cts.
Insect Powder. Lb. 65 cts.
Kil-Worm. Qt. \$1, 1/2 gal. \$2, gal. \$3.
Kirke Tobacco Insecticide Cartridges. \$4.50 per doz.
Lemon Oil. Pt. 50 cts., qt. 90 cts., 2 qts. \$1.50, gal. \$2.50, 5 gals. \$10.50.
Lime-Sulphur Solution. (Orchard Brand.) Gal. 70 cts., 5 gals. \$2.20, 10 gals. \$3.90, 30 gals. \$8, 50 gals. \$12.
Lime-Sulphur Solution, Dry Powder Form. Lb. 35 cts., 5 lbs. \$1.35, 10 lbs. \$2, 25 lbs. \$4.
Nicofume Liquid. 1 lb. (about 1 pt.) \$1.50, 4 lbs. (about 1/2 gal.) \$5.50, 8 lbs. (about 1 gal.) \$10.50.
Nicofume Paper. 24 sheets 85 cts., 144 sheets \$4.
Nicoticide. Pt. \$2.25, qt. \$4, 1/2 gal. \$7.50, gal. \$13.50.
Nikoteen. Pt. \$1.60, case of 10 pts. \$14.50.
Nitro-Fertile. Liquid fertilizer. 1/2 pt. 35 cts., pt. 60 cts., qt. \$1.
Paris Green. Lb. 60 cts.
Potato Scab Destroyer. Pt. 45 cts., qt. 85 cts.
Rat Corn. Cans 25 cts., 50 cts. and \$1.
Rose Bug Exterminator. (Reade's.) 1/2 pt. 50 cts., qt. \$1.35, gal. \$3.75.
Scale Killer. Qt. 40 cts., gal. 95 cts., 5 gals. \$4.15, 50 gals. \$29.50.
Slug-Shot. 5 lbs. 45 cts., 10 lbs. 90 cts., 25 lbs. \$2.15.
Sulphur. 5 lbs. 45 cts., 10 lbs. 80 cts., 25 lbs. \$1.50, 100 lbs. \$5.
Tobacco Soap, Sulphur. 1/2 lb. 15 cts., lb. 30 cts., 10 lbs. \$2.50.
Tobacco Stems. In bales at \$1.25 per 100 lbs., ton \$23.
Tobacco Dust, Fine. 25 lbs. \$1.25, 50 lbs. \$2.25, 100 lbs. \$4.25.
Tobacco Dust, Coarse. 100 lbs. \$3.50.
Tree Tanglefoot. Lb. 50 cts., 3 lbs. \$1.45, 10 lbs. \$4.50, 20 lbs. \$8.75.
Vaporite. 25 lbs. \$2, 50 lbs. \$3.75, 100 lbs. \$7.
Vermine. 1/4 pt. 25 cts., 1/2 pt. 40 cts., pt. 65 cts., qt. \$1, gal. \$2.50.
Weed Killer. Gal. \$1.50, 5 gals. \$7, 10 gals. \$13, bbl. of 50 gals. \$47.
Whale- or Fish-Oil Soap. Lb. 20 cts., 5 lbs. 75 cts., 10 lbs. \$1.45, 25 lbs. \$3.
Worm Eradicator, Carter's. Prices on application.
Worm Eradicator, Electric. Bottles 45 cts. and 90 cts., gal. \$3.95.
X-L-All. Qt. \$1.25, 1/2 gal. \$2, gal. \$3.75.
X-L-All Nicotine Fumigating Shreds. For 1,000 cubic feet, 20 cts.; for 10,000 cubic feet, \$1.25.

Grass and Clover Seed

	[Prices Variable; Spot Cash]	10 lbs.	100 lbs.
Crested Dog's-tail		\$3 75	\$35 00
Italian Rye Grass		1 75	16 00
Kentucky Blue Grass. (True Stock.)		3 00	26 00
Orchard Grass		3 25	30 00
Perennial Rye		2 50	22 00
Red-Top, Choice		1 60	14 00
Red-Top, Fancy		2 20	19 00
Red Fescue		4 75	45 00

Timothy. Best grade. Variable.
White Dutch Clover. Lb. 65 cts., 10 lbs. \$6.
Alsike, Alfalfa, Crimson and Red Clover. Best grades. Market price.
Permanent Mixture for Hay. Medium land. Bus. of 21 lbs. \$4.
Permanent Mixture for Pasture. Medium land. Bus. of 21 lbs. \$4.25.
Shady Nook Lawn Seed. Bus. of 20 lbs. \$4.50.
Putting-Green Mixture. Bus. of 20 lbs. \$4.50.
Golf-Links Mixture. Bus. of 20 lbs. \$3.50.

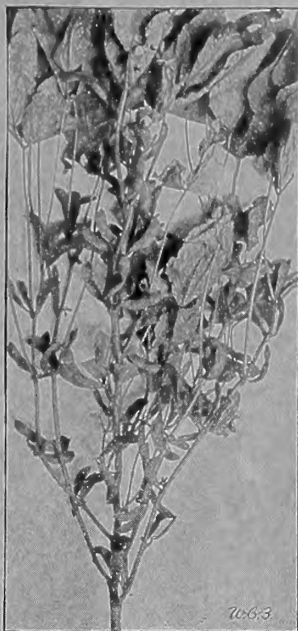
BECKERT'S EVERGREEN LAWN SEED. Florists and landscape gardeners desiring a lawn seed that will give the most satisfactory results should use this mixture. Measured bushel of 24 lbs. \$4. (Retail at \$5.50.) Bushel of 14 lbs. \$2.35. (Retail at \$3.25.)
Lawn Grass Seed. Good grade, per measured bushel (20 lbs.), \$2.75.

Progressive Market-Gardeners throughout the country are making increased use of "Green" Manure Crops, to offset the shortage of manure and fertilizers!

Secure greater yields of Vegetables or Farm Crops by using Green Crops instead of Manure

The use of leguminous, or nitrogen-gathering forage plants as a means to replenish soil fertility has increased by leaps and bounds. There are weighty reasons for this. One in particular is that green-manuring crops increase the moisture-holding capacity of soils and lighten heavy clay soils, as explained by the United States Department of Agriculture. The New Jersey Experiment Station calculates that two crops of green manure contain as much phosphoric acid and potash, and nearly as much nitrogen and organic matter, as 20 tons of stable manure. Although the potash and phosphoric acid are not added to the soil, they are returned in quickly available form. If the green manure used is a legume, nitrogen is added to that already in the soil. Moreover, it is expensive to handle the stable refuse, while the green-manure crop can be grown directly on the impoverished land, and be plowed under when it has attained the proper growth.

NOTE.—Since all seeds listed below have changeable market prices, please ask for latest quotations.



Soy Beans are among the most valuable soil-enrichers in cultivation

Lasting Effects of Green-Manure Crops One of Their Most Valuable Characteristics

The effect of a green-manure crop of cowpeas is evident for two or more years after it has been turned under, according to the results of experiments conducted in Alabama. The Canada Experiment Farm, at Ottawa, ascertained that the effect of a turned-under crop of red clover was still strongly evident after the third year.

A green-manure crop should be turned under at least two weeks before the next crop is planted. In plowing down the catch-crop, the furrow slice should be laid slanting, at an angle of 30 to 40 degrees with the horizontal. Directly after plowing, the field should be rolled thoroughly, as this hastens decay and prevents the drying out of the soil. A liberal application of lime or land plaster is recommended after plowing down crops making a heavy leaf-growth.

Farmogerm High-bred nitrogen-gathering bacteria for Clovers, Cowpeas, Soy Beans, Vetches, Garden Peas and Beans, Sweet Peas. Makes poor soil good to raise the largest and best crops of all legumes. Write for interesting booklet and prices.

The Most Important Forage Crops (Legumes)

Soy Beans. The rapid rise of Soy Beans to a position of prominence in American agriculture is due to their manifold merits. Soy Beans not only make excellent hay but are one of the best green crops to plow under for soil-enrichment. The seed of Soy Beans analyzes higher in nutritive values than linseed meal. While the plants perfect a fine amount of herbage and bear grain containing the highest per cent of protein and fat of any produced in the country, the roots are busy storing nitrogen in the soil, leaving same in better condition after the crop is harvested than it was before. The varieties grown most are Medium Green, Early Soja, and Ito San. Write us for prices and samples.

Cowpeas. Valuable as either a soiling-crop or for hay. As a soiling-crop they do not come up to Soy Beans in nitrogen content, but as hay plants, and as a crop for feeding right off the field, they are of particular merit, especially in the South. Varieties, Whippoorwill and Clay. Prices on request.

Canada Field Peas. Perhaps the best forage plants for very early spring. For best results they should be sown as soon as you can get on the ground, in our section probably in March. Canada Field Peas absolutely need cool, moist weather for best development. As a rule they are planted with oats and sometimes with Spring Vetch or Dwarf Essex Rape. Crop is generally ready for pasture about the middle of May. Used with oats, sow a bushel per acre. Prices on request.

Vetches. As a soiling-crop, to make poor soil better, these have few equals. Plants make a luxuriant growth and, for best results, should be planted with rye or soy beans. May also be broadcasted in the cornfield.

Sand, Hairy, or Winter Vetch. Generally planted in early fall or late summer, to afford pasture the following spring. It is perfectly hardy and makes a big mass of herbage by middle of May, from seeds sown the previous fall. Write for prices.

Spring Vetch (*Vicia sativa*). Very similar to Hairy Vetch but not hardy. Sow in the spring only. Write for prices.

Clovers

Highest Grade Seed Only

Alfalfa (*Medicago sativa*). Many books have been written, setting forth the merits of this wonderful forage plant, the introduction of which from the North and West, into our corn-belt, has added untold millions to the wealth of our farmers. It seems as though Alfalfa will grow on any well-drained soil. It is particularly adapted to uplands and soils containing an abundance of lime. As a soil-enricher, Alfalfa has few equals. It roots very deeply. All along its roots are the valuable nitrogen nodules. After a field has been in Alfalfa for several years, it is in better shape than it would have been if tons and tons of manure had been used during the same period. All livestock relish Alfalfa, either green or as hay. Grow more Alfalfa. We carry the highest-grade northern-grown seed only. 35 cts. per lb. Larger quantities at market prices.

Alsike (*Trifolium hybridum*). Fine for pasturage or for ensilage. Lb. 40 cts., bus. of 60 lbs., market price.

Bokhara Sweet Clover (*Melilotus alba*). Very valuable for soiling. Grows to a height of 3½ to 5 feet. Grown on rich soil, it can be cut as many as three times a season. Good for ensilage and bees. Will last two years if cut before it blooms. Lb. 35 cts., 25 to 100 lbs., market price.

Crimson Clover (*Trifolium incarnatum*). A great soil-enricher, producing wonderful crops of delicate herbage that are greedily eaten by all live-stock. Also a great plant for bees. Lb. 30 cts. Larger quantities at market prices.

Medium Red (*Trifolium pratense*). This is the well-known Red Clover of our farms. Every farmer knows the value of good Clover hay, and besides bearing wonderful crops on top of the soil, the roots are constantly at work, enriching the soil with nitrogen. Every farmer should have either an alfalfa or Clover field—better still, both. Write for market prices and samples.

Only the Best in Seeds is "Good Enough" for the Truckers and Florists Among the Customers of Beckert's Seed Store

SINCE 1878 we have striven to hold the trade of the most critical gardeners in our territory and beyond, and have succeeded. This is most gratifying proof that our efforts to maintain high-quality standards are appreciated. We shall continue to adhere to the high principles of business conduct as laid down by the founder of this business.

Two Worth-While Leaders

The following two specialties are displayed on our cover pages because we have implicit faith in their inbred qualities and what they will do to boost the profits of any gardener who plants them.

Bean, Sure-Crop Stringless

Give us "Beans without strings," is the demand of the people in all markets. Old Davis Wax is good to look at; Wardwell's is tender and stringless, but, compared with Sure-Crop, it is a "shy" yielder. Sure-Crop, to our mind, is *the ideal*, flat-podded, stringless Wax Bush Bean for the man who likes to gather *big* crops of handsome Beans during a long season.

Price: Qt. 65 cts., pk. \$4.50, bus. \$17.
Ask for special prices on 10-bushel lots and over

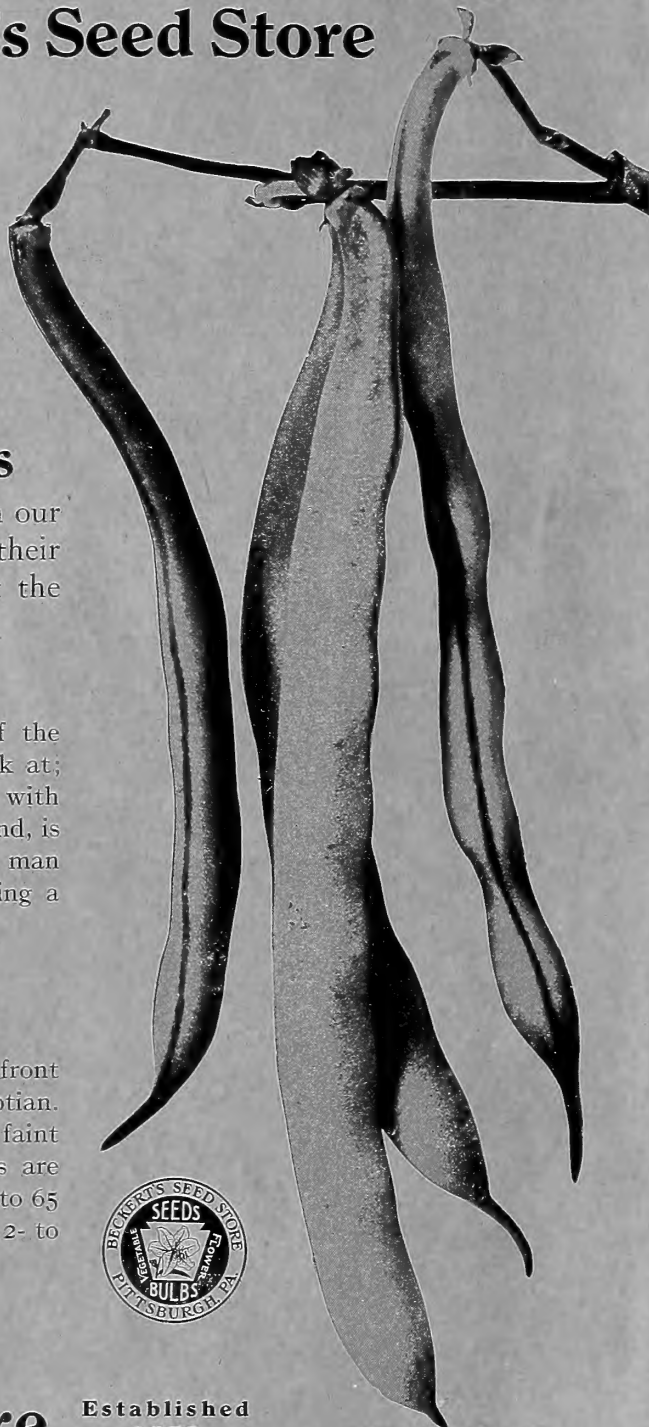
Beet, Crosby's Improved

In this exceptionally fine strain, as illustrated on front cover, the roots run much deeper than in the old Egyptian. The color is uniformly good, deep purple, with but faint rings. The skin is extremely attractive, and the tops are such as lend themselves readily to bunching. Within 60 to 65 days, depending on soil and weather, this variety perfects 2- to 2½-inch Beets, the size ideal for marketing.

Price: Oz. 15 cts., ¼lb. 45 cts., lb. \$1.50, 10 lbs. \$14.
Choicest French-grown, oz. 20 cts., ¼lb. 60 cts., lb. \$2.
Special quotations on 50-pound lots or over.

Beckert's Seed Store

101-103 Federal Street (North Side) • Pittsburgh, Penna.



Established
1878

Sure-Crop Wax is
destined to become the most famous
of all Wax Bush Beans.