

## Historic, archived document

Do not assume content reflects current scientific knowledge, policies, or practices.



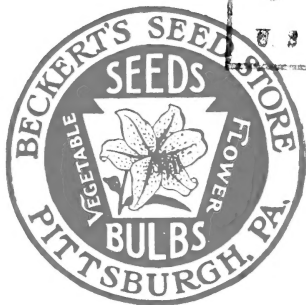
62.73

LIBRARY

RECEIVED

APR 14 1947

U. S. Department of Agriculture



1947

**BECKERT'S SEED STORE, Inc.**  
101 FEDERAL ST., PITTSBURGH 12, PA.

# BECKERT'S SEED STORE, Inc.

101 Federal Street, North Side  
PITTSBURGH 12, PENNA.

North Side's Only Seed Store



## *To Our Friends and Customers*

Beckert's are celebrating their 70th birthday this year. Since 1877 the best in Vegetable and Flower Seeds have always been offered to you.

Shortages in seeds and in seed store supplies still continue to a large degree, due to crop failures and shortages of materials that go into the manufacture of fertilizers, insecticides and tools. We do expect to have items that are not listed herein on account of short supply. If the item you want is not listed, check with us. We may have it or be able to tell you when we will have it. Drop in and discuss your garden problems with our experienced clerks.

BECKERT'S SEED STORE, Inc.

## GENERAL INFORMATION

**POSTAGE.**—We prepay postage on all orders of seeds up to and including five (5) pounds. Larger quantities at your expense.

If larger quantities are desired than the amounts quoted in this catalog, please write for our special quantity prices.

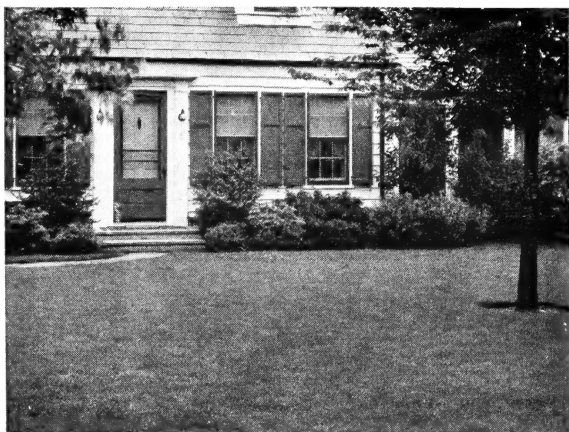
**DELIVERIES.**—On orders amounting to \$2.00 or more, we will deliver by truck when our truck is in your district. This applies to deliveries in Pittsburgh only.

If you do not live in the Pittsburgh area, be sure to include postage or advise if we are to make shipment via freight, express or motor freight.

**PRICES.**—All prices are still subject to change without notice and all orders are accepted subject to our having stock on hand when order is received.

**TERMS.**—Our terms are cash and prices are net with no discounts.

**NON-WARRANTY.**—BECKERT'S SEED STORE, Inc., gives no warranty, express or implied, as to the productivity of any seeds, bulbs or plants it sells and will not be in any way responsible for the crop. Our liability in all instances is limited to the purchase price of the seeds, bulbs or plants.



## BECKERT'S LAWN SEEDS

We offer lawn mixtures that are the result of years of trial and study to perfect blends best adapted to our local soil and climatic conditions. Only the best seeds are used. Experienced help in our store are always willing to help solve your particular lawn problems. One pound of our mixtures will cover 250 square feet.

### BECKERT'S EVERGREEN LAWN SEED

Because of its quality it should not be confused with mixtures that are being offered to the public under the same or similar name. It contains only the finest domestic grasses selected and analyzed as to Purity and Germination and will produce a turf smooth of texture, hardy and enduring.

Lb. \$1.00; 5 lbs. \$4.60; 10 lbs. \$9.00; 25 lbs. \$21.50

### STURDY LAWN MIXTURE

Composed of re-cleaned grasses, it will quickly form a rich green turf. Lb. 90 cts.; 5 lbs. \$4.00; 10 lbs. \$7.50; 25 lbs. \$18.50.

### SHADY NOOK LAWN MIXTURE

Particularly adapted for sowing in shady places where ordinary grass seed mixtures will not thrive.

Lb. \$1.25; 5 lbs. \$6.00; 10 lbs. \$11.50.

### SEPARATE GRASS SEED VARIETIES

**Creeping Bent, Astoria** (*Agrostis stolonifera*).

Lb. \$2.00; 5 lbs. \$9.00

**Creeping Bent, Seaside** (*Agrostis palustris maritima*).

Lb. \$2.00; 5 lbs. \$9.00

**Red-Top, Fancy Re-cleaned** (*Agrostis palustris*).

Lb. 50 cts.; 10 lbs. \$4.00; 25 lbs. \$9.50

**Red Fescue** (Chewing's New Zealand; *Festuca rubra*).

Lb. \$1.50; 5 lbs. \$7.25

**Rye Grass, Domestic.**

Lb. 35 cts.; 10 lbs. \$3.00; 25 lbs. \$7.00

**Rye Grass, Perennial.**

Lb. 50 cts.; 10 lbs. \$4.00; 25 lbs. \$9.50

**Timothy** (*Pheleum pratense*).

Lb. 25 cts.; 5 lbs. \$1.00; 10 lbs. \$1.65

**Clover** ("Lawn Clover").

½lb. 85 cts.; lb. \$1.60

# VEGETABLE SEEDS

## Beans

Sow Beans when all danger of frost is past—usually the first or second week in May in our Pittsburgh sector. Repeat sowings at 2-week intervals for a continuous supply. One pint will plant 75 feet of row.

### Green-podded Bush Beans

	Days
<b>Asgrow Valentine.</b> Fleshy, round pod.....	53
<b>Tendergreen.</b> A desirable round pod.....	53
<b>Bountiful.</b> A favorite flat pod.....	48
<b>Burpee's Stringless.</b> Early round pod.....	54
<b>Giant Stringless.</b> Dependable round pod.....	53
<b>Full Measure.</b> Tender round pod.....	54

Pkt. 10 cts.; pt. 50 cts.; qt. 90 cts.; 2 qts. \$1.60

### Wax-podded Bush Beans

<b>Sure-Crop Stringless.</b> Fleshy, flat pod.....	53
<b>Round-Pod Brittle.</b> Pods round, curved.....	58
<b>Pencil-Pod Black.</b> Pods meaty and round.....	58

Pkt. 10 cts.; pt. 50 cts.; qt. 90 cts.; 2 qts. \$1.60

### Green-podded Pole Beans

<b>Kentucky Wonder or Old Homestead</b> .....	65
<b>Horticultural Pole</b> .....	65

Pkt. 10 cts.; pt. 50 cts.; qt. 90 cts.; 2 qts. \$1.60

### Wax-podded Pole Beans

<b>Kentucky Wonder Wax</b> .....	68
<b>Golden Cluster Wax</b> .....	74

Pkt. 10 cts.; pt. 50 cts.; qt. 90 cts.; 2 qts. \$1.60

### Edible Soy Beans

**Bansei.** A very popular variety of vegetable-type Soy Beans. Early and extremely productive. They are delicious when eaten green or dry.....

Pkt. 10 cts.; pt. 50 cts.; qt. 90 cts.; 2 qts. \$1.60

## Lima Beans

Sow only after weather has become settled and warm. Place seeds, eye down, 5 to 6 inches apart. One pint will plant 75 feet of row.

### Bush Lima Beans

	Days
<b>Fordhook.</b> Outstanding quality.....	75
<b>Giant Improved.</b> Heavy yield.....	76
<b>Wood's Prolific.</b> Dwarf Butter Bean.....	70
<b>Cangreen.</b> Very productive.....	68

Pkt. 10 cts.; pt. 50 cts.; qt. 90 cts.; 2 qts. \$1.60

### Pole Lima Beans

<b>King of the Garden</b> .....	88
---------------------------------	----

Pkt. 10 cts.; pt. 50 cts.; qt. 90 cts.; 2 qts. \$1.60

## Dry Shell Beans

<b>Snowflake Navy</b> .....	54
<b>Horticultural Dwarf</b> .....	54
<b>White Marrowfat</b> .....	60

Pkt. 10 cts.; pt. 50 cts.; qt. 90 cts.; 2 qts. \$1.60

### Table Beets.

Sow early in April.

<b>Crosby's Improved Egyptian.</b> Best quality.....	60
<b>Extra-Early Egyptian.</b> Flattened globes.....	56
<b>Early Wonder.</b> Small tops.....	58
<b>Detroit Blood-Red.</b> Globular roots.....	68
<b>Good for All.</b> Best all-purpose.....	60

Pkt. 10 cts.; 1/2oz. 20 cts.; oz. 30 cts.; 1/4lb. 90 cts.

	Days
<b>Broccoli, Italian Sprouting</b> .....	70
<b>Pkt. 15 cts.; 1/2oz. 35 cts.; oz. 60 cts.</b>	

<b>Brussels Sprouts, Miniature Cabbage</b> .....	120
<b>Pkt. 10 cts.; 1/4oz. 35 cts.; oz. \$1.00</b>	

### Carrots

Sow from early spring to end of June.

<b>Improved Chantenay</b> . Deep orange.....	68
<b>Danvers Half Long</b> . Roots 5 to 6 inches long.....	76
<b>Nantes Half Long</b> . Roots 6 to 7 inches long.....	70
<b>Improved Long Orange</b> . Roots 9 inches long.....	85
<b>Pkt. 10 cts.; 1/2oz. 25 cts.; oz. 35 cts.; 1/4lb. \$1.00</b>	

### Cabbage

For early crop sow indoors late February, or for later crops outdoors April and May.

<b>Golden Acre</b> . Uniform hard round heads.....	100
<b>Imp. Copenhagen Market</b> . Standard variety.....	110
<b>Enkhuizen Glory</b> . Solid, globe-shaped heads.....	115
<b>Penn State Ballhead</b> . Heaviest yielding.....	135
<b>Short-stem Danish Ballhead</b> . Large, heavy.....	135
<b>Large Late Flat Dutch</b> . Broad flat heads.....	140
<b>Mammoth Red</b> .....	130
<b>Chihili</b> (Chinese-Celery Cabbage).....	100
<b>Pkt. 15 cts.; 1/2oz. 35 cts.; oz. 60 cts.; 1/4lb. \$2.00</b>	

## Sweet Corn

Sow the first or second week of May in rows 30 inches apart; drop seeds to have plants stand 12 inches apart.

### Choice Yellow Varieties

	Days
<b>Golden Bantam</b> . The standard of quality.....	78
<b>Golden Evergreen</b> . Fine quality.....	88
<b>Whipple's Golden Yellow</b> . Excellent flavor.....	83
<b>Golden Giant</b> . Excellent quality.....	90
<b>Golden Sunshine</b> . Ears 12-rowed.....	76
<b>Burbank's Bantam</b> . Ears 14 to 16-rowed.....	84
<b>Pkt. 10 cts.; pt. 40 cts.; qt. 75 cts.; 2 qts. \$1.40</b>	

### White Varieties

<b>Early Mayflower</b> . Earliest sweet white.....	76
<b>Country Gentleman</b> (Shoe-peg).....	95
<b>Stowell's Evergreen</b> . Standard late.....	95
<b>Late Mammoth</b> . Kernels snowy white.....	105
<b>Pkt. 10 cts.; pt. 40 cts.; qt. 75 cts.; 2 qts. \$1.40</b>	

### Hybrid Varieties

Recommended to the market gardener and home gardener for its uniformity of ear, maturity and larger yields. They are also disease-resistant.

<b>Golden Cross Bantam</b> . Very good.....	84
<b>Marcross</b> . Sweet; large thick ears.....	74
<b>Carmelcross</b> . Heavy yielder.....	79
<b>Whipcross</b> . Good flavor.....	84
<b>Pkt. 15 cts.; pt. 55 cts.; qt. 95 cts.; 2 qts. \$1.75</b>	

### Cauliflower

Responds to same cultural directions as cabbage.

<b>Super Snowball</b> . Large snowy heads.....	96
<b>Select Snowball</b> . Heavy cropper. White heads.....	98
<b>Pkt. 35 cts.</b>	

### Celuce

A novelty from China. Leaves used as salad; stalk eaten raw or cooked.

**Pkt. 15 cts.; oz. \$1.00**

## Celery

	Days
<b>Golden Plume.</b> Brittle, large, and early.....	115
<b>Easy Blanching.</b> Thick, brittle stalks.....	125
<b>Golden Self-blanching.</b> Dwarf; compact.....	120
<b>Giant Pascal.</b> Thick stalks 2 ft. high.....	135
<b>Winter Queen.</b> Solid; numerous hearts.....	120
<b>Pkt. 10 cts.; oz. 60 cts.; ¼lb. \$1.75</b>	

## Cucumbers

Delay sowing until all danger of frost is past. When seedlings appear, spray or dust with a good combination fungicide and insecticide.

	Days
<b>Clark's Special.</b> An excellent dark green.....	63
<b>Davis Perfect.</b> Fruits long and green.....	65
<b>Extra Long or Evergreen White Spine</b> .....	65
<b>Improved Long Green.</b> Excellent slicing variety.....	70
<b>Longfellow.</b> A remarkably slender, fine variety.....	72
<b>Straight Eight.</b> Smooth. 8 to 10 in.....	75
<b>Burpee Hybrid.</b> A new white-spine slicing Cucumber.....	30 seeds, 25c.

### Pickling Varieties

<b>Jersey Pickling.</b> Wonderfully productive.....	63
<b>National Pickling.</b> Dark green; square ends.....	55
<b>Snow's Perfection.</b> Best formed.....	56
<b>Cubit.</b> 1944 Medal Winner.....	

**Pkt. 10 cts.; oz. 35 cts.; ¼lb. \$1.00**

## Eggplant

Start in flats or hotbeds.

<b>Black Beauty.</b> Fruits lustrous purplish black.....	145
<b>New York Improved Spineless.</b> Purple.....	150

**Pkt. 10 cts.; ½oz. 40 cts.; oz. 75 cts.**

## Endive

Sow in April for early and in June for late crops.

<b>Large Green Curled.</b> Crisp and tender.....	92
<b>Pancalier.</b> Deep green curled leaves.....	95
<b>Giant Fringed.</b> Broad stems; large white heart.....	90
<b>Broad-leaved Batavian.</b> Full heart.....	90

**Pkt. 10 cts.; oz. 20 cts.; ¼lb. 70 cts.**

## TABLE GREENS

**CHICORY, Witloof or Magdeburg.** Pkt. 10 cts.

**CRESS, Extra Curled.** Pkt. 10 cts.

**COLLARDS, Georgia.** Pkt. 10 cts.

**CORN SALAD, Broad-leaved.** Pkt. 10 cts.

**DANDELION, French Thick-leaved.** Pkt. 10 cts.

## Kale

	Days
<b>Dwarf Blue Curled Siberian.</b> An excellent green.....	65
<b>Dwarf Green Curled Siberian.</b> Very hardy.....	65
<b>Dwarf Green Curled Scotch.</b> Leaves very curly, tender.....	55
<b>Dwarf Blue Curled Scotch.</b> Leaves very curly.....	55

**Pkt. 10 cts.; oz. 25 cts.; ¼lb. 75 cts.**

## Kohlrabi

For early crop sow in April and May; late crop in July and early August.

<b>Early Purple Vienna.</b> Flesh snow-white.....	62
<b>Extra-Early White Vienna.</b> Very early.....	55

**Pkt. 10 cts.; ½oz. 35 cts.; oz. 60 cts.**



# Garden Herbs

KITCHEN FRAGRANCE MEDICINAL

- Basil, Sweet.** Clove-like fragrance. Leaves used in soups and stews.
- Borage.** Leaves used in salads. Flowers excellent for bees.
- Caraway.** Seeds used in flavoring cakes, etc.
- Chives.** Leaves used in salads and for flavoring soups. Pkt. 25 cts.
- Dill.** Leaves and seeds are used for pickling; also in soups and sauces.
- Horehound.** The leaves are used for flavoring candy and in making cough remedies.
- Sage.** The leaves and tops are used for seasoning and stuffing. Pkt. 25 cts.
- Savory, Summer.** Leaves and young shoots are fragrant and are used for flavoring.
- Thyme.** Of lemon flavor; used in making tea for nervous headache.
- All varieties of Herbs, except where noted, pkt. 10 cts.**

## Leeks

The white stalks boiled make a delicious salad.

- American Flag.** Stalks early and large. . . . . Days 130  
Pkt. 25 cts.; 1/2oz. 50 cts.; oz. 75 cts.

## Lettuce

Sow Loose-leaf and early Butterhead varieties in early April; repeat in early May, then follow with crisphead varieties for continuous supply.

### Loose-leaf and Butterhead Varieties

- Black-seeded Simpson.** A popular variety. . . . . 45
- Grand Rapids.** For extra-early outdoor gardening. . . . . 43
- May King. Early Butterhead.** Recommended. . . . . 63
- White Boston.** A favorite Butterhead. . . . . 76
- Crisp-As-Ice.** Frost-resistant. Valuable for late fall. . . . . 75
- Early Curled Simpson.** Home-garden favorite. . . . . 60
- Pkt. 10 cts.; oz. 25 cts.; 1/4lb. 75 cts.

### Crisphead Sorts

- Iceberg.** Heat-resistant. Desirable summer Lettuce. . . . . 84
- New York.** Large, compact, uniform. . . . . 75
- Pkt. 10 cts.; oz. 45 cts.; 1/4lb. \$1.25.
- Oakleaf.** Loose outer leaves, tight center. . . . . 40
- Pkt. 15 cts.; oz. 50 cts.

### Romaine or Cos Lettuce

- Trianon or Paris White Folding.** Long loaf-shaped heads. 60
- Pkt. 10 cts.; oz. 25 cts.; 1/4lb. 75 cts.

## DEER TONGUE LETTUCE

Arrow-shaped leaves that grow in tight bunches. Center leaves yellow, outer leaves dark green. Has a flavor all its own. Pkt. 25 cts.; oz. 75 cts.

## Muskmelon

Sow when all danger of frost is past.

- Golden Champlain.** Early. Flesh golden and sweet. . . . . 80
- Honey Rock.** Flesh salmon; round fruit. . . . . 85
- Rocky Ford.** Widely cultivated. Flesh green and sweet. . 92
- Pkt. 10 cts.; oz. 25 cts.; 1/4lb. 80 cts.

## Watermelon

	Days
<b>Kleckley Sweets.</b> Flesh bright scarlet.....	85
<b>Early Fordhook.</b> A real home-garden variety.....	83
<b>Halbert's Honey.</b> Exceptionally large.....	85

Pkt. 10 cts.; oz. 20 cts.; 1/4lb. 50 cts.

## Mustard

Make successive sowings from early spring to midsummer or continuous supply.

<b>Giant Southern Curled.</b> Heavily crumpled leaves.....	35
<b>Long-Standing Thick Leaf</b> or <b>Elephant Ear</b> .....	43
<b>Perfection Plume.</b> Finely curled dark green leaves.....	40

Pkt. 10 cts.; oz. 15 cts.; 1/4lb. 35 cts.

**Mushroom Spawn.** 35 cts. per brick; 3 for \$1.00.  
Postage extra, 10 cts. per brick.

## Onion Seed

	Days
<b>Yellow Globe Danvers.</b> Globe-shaped bulbs.....	112
<b>Prizetaker.</b> Bulbs very large; mild.....	105
<b>Southport White Globe.</b> A fine commercial.....	110
<b>Silverskin.</b> The most dependable.....	100
<b>White Sweet Spanish.</b> The largest white.....	110

Pkt. 15 cts.; 1/2oz. 50 cts.; oz. 75 cts.

**Onion Sets.** Qt. 25 cts. Postage 10 cts. per qt.  
Prices on larger quantities on application.

## Okra or Gumbo

**Long Green Pod.** Strong-growing and productive. Pods deep green..... 52  
Pkt. 10 cts.; oz. 15 cts.; 1/4lb. 45 cts.

## Peas

Sow as early in April as the weather permits, in rows 22 to 28 inches apart. For continuous picking sow every 10 days. One pint will plant 50 feet of row.

### Early Wrinkled Peas

	Days
<b>Laxtonian.</b> Vines 18 in. Large pod.....	62
<b>Little Marvel.</b> Vines 18 in.....	62
<b>World's Record.</b> Vines 28 in.....	61
<b>Gradus (Early Telephone).</b> Vines 20 in.....	65
<b>Hundredfold.</b> Vines 20 in.....	65

### Main Crop or Late Peas

<b>Improved Telephone.</b> Vines 54 in.....	74
<b>Alderman.</b> Vines 42 to 60 in.....	75
<b>Mammoth-podded Sugar.</b> Vines 60 in.....	75

### Extra-early Smooth Peas

<b>First and Best.</b> Vines 30 in.....	60
<b>Alaska.</b> Vines 32 in.....	60

Pkt. 10 cts.; pt. 40 cts.; qt. 75 cts.

## Parsnips

Sow in early spring.

**Long Smooth Hollow Crown.** Creamy white roots..... 105  
Pkt. 10 cts.; oz. 15 cts.; 1/4lb. 50 cts.

## Parsley

Sow early in spring; seed is slow to germinate.

<b>Champion Moss Curled.</b> Leaves dark green, finely cut and curled.....	70
<b>Plain-leaved.</b> Flat dark green leaves, deeply cut, not curled.....	60
<b>Hamburg Short-rooted.</b> Turnip-shaped roots.....	90
<b>Hamburg Long-rooted.</b> Roots long and slender.....	90

Pkt. 10 cts.; oz. 20 cts.; 1/4lb. 65 cts.

# Peppers

Sow during March in flats or hotbeds; transplant when 2 inches high and plant outside when all danger of frost is past.

## Sweet Varieties

	Days
<b>California Wonder.</b> Smooth and uniform.....	136
<b>Chinese Giant.</b> Extremely large and sweet.....	153
<b>Harris Early Giant.</b> An excellent early.....	138
<b>Ruby Giant.</b> Heavy producer.....	145
<b>Ruby King.</b> Very good and productive.....	148

## Hot Varieties

<b>Anaheim Giant Chili.</b> Grows 7 to 9 in. long.....	145
<b>Hungarian Long Hot Banana.</b> Waxy yellow.....	135
<b>Long Red Cayenne.</b> Bright red and very hot.....	140
<b>Red Cherry.</b> Fruits smooth and round.....	152

Pkt. 10 cts.; oz. 80 cts.; 1/4lb. \$2.50

## Pumpkins

Culture the same as recommended for Melons.

<b>Winter Luxury.</b> Round; golden yellow.....	100
<b>Mammoth Golden Cushaw.</b> Crookneck; thick, fine flesh.....	110
<b>Large Cheese.</b> Creamy yellow flesh.....	105
<b>Mammoth King.</b> Largest Pumpkin grown.....	120
<b>Connecticut Field.</b> Common field Pumpkin.....	95

Pkt. 10 cts.; oz. 20 cts.; 1/4lb. 60 cts.

## Radish

Make repeated sowings from early April to the middle of June for all Early and Summer Radishes. Sow Winter Radishes during August.

### Early Round Radishes

	Days
<b>Early Scarlet Globe.</b> Select strain.....	24
<b>Crimson Giant.</b> Large perfect globe. Select strain.....	28
<b>French Breakfast.</b> Olive-shaped.....	25
<b>Cavalier.</b> Oblong, globe shaped, bright scarlet.....	25

### Early Long Radishes

<b>Icele.</b> The best early long white, 5 to 6 in.....	27
<b>Cincinnati Market.</b> Slender roots 7 in. long; bright scarlet.....	28

### Summer Radishes

<b>White Strassburg.</b> Half-long and thick; mild flavor.....	39
<b>Long White Vienna.</b> Long; slender.....	30

### Winter Radishes

<b>White Chinese.</b> Length, 6 to 9 in.; thickness 4 to 5 in....	60
<b>Long Black Spanish.</b> Flesh firm, crisp and pungent....	60
<b>Round Black Spanish.</b> Very much like Long Black....	56

Pkt. 10 cts.; oz. 20 cts.; 1/4lb. 60 cts.

## "SALAD BOWL" COLLECTION

- 1 PKT. CARROTS
- 1 PKT. LETTUCE
- 1 PKT. CRESS
- 1 PKT. PARSLEY
- 1 PKT. RADISH
- 1 PKT. CUCUMBER
- 1 PKT. BEETS

ALL YOU NEED FOR A DELICIOUS GARDEN SALAD

**Seven 10-ct. Packets for 50 cts.**

## Salsify (Oyster Plant)

<b>Mammoth Sandwich Island.</b> Roots distinctly oyster-flavored.....	Days 120
<b>Pkt. 10 cts.; oz. 35 cts.</b>	

## Spinach

Sow early, from the end of March to middle of May for midsummer use. Sow New Zealand during May.

<b>Bloomsdale Savoy.</b> Long standing. Thick, dark leaves..	45
<b>Beckert's Emerald.</b> Dark green, crumpled leaves.....	47
<b>Virginia Savoy.</b> Blight resistant.....	35
<b>Giant Thick Leaf</b> or <b>Nobel.</b> Extremely heavy yielder..	45
<b>King of Denmark.</b> Smooth, thick, and tender.....	45
<b>New Zealand.</b> Summer Spinach. Oz. 35 cts.; ¼lb. \$1.00	.65
<b>Except as noted, oz. 15 cts.; ¼lb. 50 cts.</b>	

## Squash

Culture same as recommended for Melons.

### Summer Sorts

<b>Mammoth White Bush.</b> Excellent early.....	55
<b>Zucchini Bush.</b> Short, smooth black fruit.....	60
<b>Golden Custard Bush.</b> Deep yellow in color.....	55
<b>Cocozelle Italian Marrow.</b> .....	60

### Winter Keepers

<b>Improved Hubbard.</b> Extra-select strain.....	105
<b>Golden Hubbard.</b> Flesh bright yellow.....	100
<b>New Acorn</b> or <b>Table Queen.</b> Excellent keeper.....	70
<b>Pkt. 10 cts.; oz. 20 cts.; ¼lb. 60 cts.</b>	

## Swiss Chard

<b>Fordhook.</b> Broad dark green leaves.....	55
<b>Lucullus.</b> Fleshy leaves and stems.....	50
<b>Rhubarb Chard.</b> Looks like rhubarb.....	60
<b>Pkt. 10 cts.; oz. 35 cts.; ¼lb. \$1.00</b>	

## SEED POTATOES. (Certified Stock)

**IRISH COBBLER      KATAHDIN      RUSSET**  
**EARLY OHIO**  
**PRICES LATER ON REQUEST**

## Turnips

For summer use, sow in early spring; repeat sowing every two weeks to the middle of May. For fall and winter use sow during July and August.

<b>Extra-Early White Milan.</b> Roots white, flat and sweet....	42
<b>Purple-Top White Globe.</b> A uniform heavy yielder.....	57
<b>Pkt. 10 cts.; oz. 15 cts.; ¼lb. 40 cts.</b>	

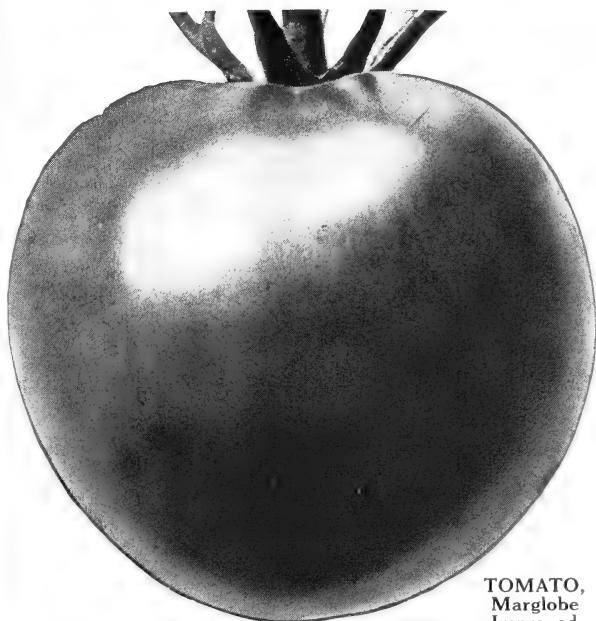
## Rutabaga

Sow during June and July; lift roots before winter, remove tops and store in a cool cellar.

<b>American Purple-Top.</b> Well-flavored yellow flesh.....	88
<b>Pkt. 10 cts.; oz. 15 cts.; ¼lb. 40 cts.</b>	

## VEGETABLE PLANTS

We will have vegetable plants in due season.  
**CABBAGE—PEPPERS—TOMATOES**—in varieties you can depend upon.



TOMATO,  
Marglobe  
Improved

## Tomatoes

Sow during March in flats or hotbeds; transplant when 2 in. high. Plant outside when all danger of frost is over.

### Early and Second-early Sorts

	Days
<b>Bonny Best.</b> A well-known second early; bright red.....	113
<b>John Baer.</b> Fruit good size, smooth and bright red.....	112
<b>June Pink.</b> The earliest pink-fruited variety; smooth...	110
<b>Rutgers.</b> Red and juicy. Fine for canning.....	115
<b>Pritchard.</b> Round scarlet.....	115

### Main-crop Varieties

<b>Crimson Cushion</b> .....	131
<b>Globe.</b> All-purpose purple. Heavy yielder.....	124
<b>Marhio.</b> A wilt-resistant pink. Fruits large and fleshy...	132
<b>Ponderosa.</b> One of the largest of all; purplish pink.....	119
<b>Marglobe Improved.</b> Deep red; very meaty.....	119
<b>Yellow Ponderosa.</b> Fruits large, mild flavored.....	131

Pkt. 10 cts.; 1/2oz. 35 cts.; oz. 65 cts.

**Jubilee.** Globe-shaped. Fruit golden orange. Few seeds and attractive when sliced. Pkt. 10 cts.; 1/4oz. 60 cts.; 1/2oz. \$1.00.....72

## ROOTS

### ASPARAGUS

Strong two-year-old roots.

**Mary Washington.** Doz. 75 cts.; 50 roots \$2.00; 100 roots \$3.50.

### HORSERADISH

Good-sized roots, 10 cts. each. Large roots, 25 cts. each.

### RHUBARB

Strong roots, 10 cts. each; \$1.00 per doz.  
Clumps, 25 cts. each.

## INOCULATE WITH LEGUME-AID

Garden Beans, or Peas. Also used for Sweet Peas. Enough for 5 lbs. of seed, 10 cts.

# BECKERT'S FLOWER SEEDS

The first thing to remember is not to plant flower seeds too deep. Fine seeds should be scattered on the surface and pressed into the soil. Hardy Annuals should be sown as soon as the ground can be worked. Tender annuals should not be sown until all danger from frost is past.

## DESIGNATIONS

HA., Hardy Annual. Sow outdoors soon as ground can be worked.  
 HHA., Half-Hardy Annual. Sow early indoors.  
 HB., Hardy Biennial. Does not need much winter protection.  
 HHB., Half-Hardy Biennial. Winter in a coldframe.  
 HP., Hardy Perennial. Needs very little winter protection.  
 HHP., Half-Hardy Perennial. Winter in coldframe.  
 TA., Tender Annual. Greenhouse only.

	Pkt.
ABRONIA (Spreading Sand Verbena). HP.....	\$0 10
ACONITUM Napellus (Monkshood). HP.....	15
ADONIS æstivalis (Pheasants Eye). HA.....	10
AGERATUM. HA.	
Blue Cap.....	20
Midget Blue.....	15
Little Dorrit. White.....	10
ALYSSUM. HA.	
Carpet of Snow.....	15
White Sweet.....	10
Violet Queen.....	15
Saxatile compactum. HP.....	15
Little Gem.....	15
AMARANTHUS. HHA.	
Sunrise.....	15
Molten Fire.....	10
ANTIRRHINUM maximum. HHB.	
All Leading Varieties or Mixed.....	20
ANTIRRHINUM nanum. HHB.	
All Leading Varieties or Mixed.....	15
AQUILEGIA (Columbine). HP.	
Blue and Lavender Shades.....	25
Pink and Rose Shades.....	25
Mrs. Scott Elliott's Hybrids.....	25
ASTERS. HHA.	
Early California Giants. Mixed.....	15
Queen of the Market. Colors.....	10
Queen of the Market, Mixed.....	10
Wilt Resistant	
Princess Anne. Peach-blossom.....	15
Princess Bonnie. Salmon-rose.....	15
Princess Marsha. Scarlet.....	15
BALLOON VINE. HHA.....	10
BALSAM, Mixed (Lady's Slipper). HHA.....	10
BLUE LACE FLOWER. HHA.....	10
BRACHYCOME (Swan River Daisy). HHA.	
Blue.....	10
BROWALLIA. HA.	
Elata, Mixed.....	15
Speciosa, Mixed.....	25

# CELOSIA

## Gilbert's Maple Gold

Also Called Golden Cockscomb

The heads are almost globular and the dominant color is a golden maple with some flowers varying toward rose or pink. The plants grow to 3 feet and bear 8 to 12 heads (more if the center stem is pinched back).

Plants should not be fed

**Pkt. 25 cts.**

<b>CALENDULA</b> (Pot Marigold). HA.		
	Pkt.	Pkt.
Ball's Gold.....	\$0 15	Ball's Apricot.....
Radio.....	15	Supreme.....
Orange Shaggy.....	15	Masterpiece.....
Double, Mixed.....		
		10
<b>CALLIOPSIS</b> (Bright Eyes). HA.		
New Dwarf Hybrids, Mixed.....		10
New Tall Hybrids, Mixed.....		10
Gold Crest.....		15
<b>CAMPANULA</b> (Canterbury Bells). HB.		
Single Blue.....	\$0 15	Single, Mixed.....
Single Rose.....	15	Double, Mixed.....
Single White.....	15	
		15
<b>CAMPANULA calycanthemum</b> (Cup and Saucer). HB.		
Blue.....	\$0 15	Mixed.....
White.....	15	
		15
<b>CAMPANULA carpatica</b> (Harebell). HP.		
Blue.....	\$0 25	White.....
		Mixed.....
		30
		25
<b>CANDYTUFT</b> (Iberis). HA.		
Dwarf Hyacinth-fl., Little Prince.....		15
Giant-flowered, Empress.....		15
Umbellata, Cream-White.....		10
Umbellata, Lavender.....		10
Umbellata, Rose-Cardinal.....		10
Umbellata, Mixed.....		10
<b>CANDYTUFT</b> (Iberis). HP.		
Gibraltarica Hybrids.....		15
Sempervirens.....		15
<b>CARDINAL CLIMBER</b> . HHA.....		15
<b>CARNATION</b> . HP.		
Giant Marguerite, Mixed.....		15
Rose.....		20
Scarlet.....		20
White.....		20
Chabaud's Everblooming.....		15
<b>CELOSIA</b> . TA.		
<b>Plumosa</b>		<b>Childsi</b>
Crimson.....	\$0 10	Crimson.....
Yellow.....	10	Pink.....
Mixed.....	10	Mixed.....
Gilbert's Maple Gold. (New.).....		
		25
<b>CENTAUREA</b> . HA.		
<b>Cyanus</b>		<b>Imperialis</b>
Blue Boy.....	\$0 10	Lavender.....
Red Boy.....	10	Red.....
Snowman.....	10	Rose.....
Mixed.....	10	White.....
		Mixed.....
		10
Americana. Lilac.....		10
<b>CENTAUREA gymnocarpa</b> . HHP.....		10
Perennial, Mixed. HP.....		20
<b>CERASTIUM tomentosum</b> . HP.....		15
<b>CHRYSANTHEMUM</b> . HA.		
Double, Mixed.....		10
Shasta Daisy, Alaska. HP.....		15

# COSMOS

A popular, friendly annual that, with its bright colors, feathery foliage, and long stems, is particularly good for cutting. Its height commends it for the tall border. Mixture has pink, white, red. Seeds should be covered about ¼ inch.

**MAMMOTH EARLY-FLOWERING, SINGLE, MIXED.** Pkt. 10 cts.; ¼oz. 25 cts.

<b>CLARKIA, Mixed.</b> HA.....		Pkt. \$0 15
<b>COREOPSIS, Sunburst.</b> HP.....		15
<b>COSMOS. HHA.</b>		
<b>Double Crested</b>	Pkt.	<b>Sensation</b>
Pink .....	\$0 20	Pinkie .....
White .....	20	Furty .....
Mixed .....	20	Dazzler .....
<b>Mammoth Early-flowering</b>		
Crimson .....	\$0 10	White .....
Pink .....	10	Mixed .....
Orange Ruffles. (New.) .....		15
<b>DELPHINIUM. HP....</b>		
Pacific Giants, Mixed .....		75
Hollyhock, Wrexham, Mixed .....		50
<b>DIANTHUS. HA.</b>		
Single, Mixed .....		10
Double, Mixed .....		10
Plumarius, Single, Mixed. HP.....		10
<b>DIGITALIS gloxiniaeflora. HB.</b>		
Pink .....	\$0 15	White .....
Purple .....	15	Mixed .....
<b>ESCHSCHOLTZIA. HA.</b>		
New Hybrids, Mixed. Erect.....		10
California Spreading, Single, Mixed .....		10
<b>EVERLASTINGS. HA.</b>		
<b>Helichrysum</b>		
Fireball .....	\$0 15	Rose Queen .....
Golden Ball .....	15	Violet Queen .....
Silver Ball .....	15	Mixed .....
<b>FEVERFEW, Double.</b> HHP.....		10
<b>FOUR O'CLOCKS, Mixed.</b> HA.....		10
<b>GAILLARDIA. HA.</b>		
Single, Mixed .....		10
Double, Mixed .....		20
Portola Hybrids. HP.....		20
Grandiflora, Choice Mixed. HP.....		10
<b>GYPSOPHILA. HA.</b>		
Elegans grandiflora alba .....		10
Elegans grandiflora muralis .....		15
Paniculata. Single. HP.....		10

**GOURDS.** The ripened fruits are used for ornaments and in recent years have become extremely popular for home decoration. Gourds are rampant growers and may be planted as you would any vine crop in good garden soil; they do best, however, Pkt. when sown along a fence, arbor or trellis. Mixed... 10 cts.

<b>HELIANTHUS. HA.</b>		
Miniature .....		10
Double Chrysanthemum-fl. ....		10
<b>HOLLYHOCK, Double, Mixed.</b> HB.....		15
<b>HUNNEMANNIA, Sunlite</b> (Giant Yellow Tulip Poppy). HA.....		10
<b>KOCHIA</b> (Burning Bush). HHA.....		10
<b>LARKSPUR, Imperial. HA.</b>		
Separate Colors .....		15
Mixed .....		15



## TWO GRAND NEW MARIGOLDS

**FLASH.** A dwarf single in a bright combination of colors from vivid red through bronze to yellow. Pkt. 25 cts.

**SPRY.** Flowers have a very light orange crested center with maroon outer petals. A Silver Medal Winner in the All-America Selections. Pkt. 25 cts.

<b>LUPINUS. HA.</b>		Pkt.
Hartwegi, Mixed		\$0 10
Polyphyllus, Mixed. HP		15
Russell's		25
<b>MARIGOLD, Tall African. . . HA.</b>		
	Pkt.	
Guinea Gold	\$0 15	<b>Crown of Gold</b> . . . . . 15
Lemon Queen	10	<b>Mixed</b> . . . . . 10
Orange Prince	10	
<b>MARIGOLD, Dwarf French. HA.</b>		
Royal Scot	\$0 20	<b>Mixed</b> . . . . . 10
Golden Ball	10	<b>Flaming Fire.</b>
Legion of Honor	10	Tall single . . . . . 15
Flash	25	<b>Spry</b> . . . . . 25
Harmony	15	
<b>MIGNONETTE. HA.</b>		
Old-fashioned Sweet-scented		10
<b>MIMOSA pudica. TA.</b> . . . . . 10		
<b>MOONFLOWER, White- or Black-seeded. TA.</b> . . . . . 10		
<b>MORNING-GLORY. HHA.</b>		
Scarlett O'Hara. Red		15
Pearly Gates. White		25
Heavenly Blue. Blue		15
Cornell. Red with white edge		25
Single Fringed Mixed		15
<b>NASTURTIUMS</b>		
Dwarf Superb, Mixed	Oz. 35 cts.	10
Tall Superb, Mixed	Oz. 35 cts.	10
Gleam Hybrids. Semi-double		10
<b>NICOTIANA. HHA. Pkt.</b>		
Affinis, White	\$0 10	<b>Sanderæ Hybrids</b> . . . . . 10
Affinis Hybrids	10	<b>Crimson Bedder</b> . . . . . 25
<b>PANSY. HHP.</b>		
Beckert's Superb, Mixed		50
Perfection Giant, Mixed		35
<b>PETUNIA, Giant-flowered. HA.</b>		
Hollywood Star	\$0 25	<b>Giant Double Mar- velous</b> . . . . . 1 25
Orchid Beauty	75	<b>Theodosia</b> . . . . . 35
Elk's Pride	50	<b>Scarlet Beauty</b> . . . . . 25
Dwarf Giants of Cali- fornia	50	<b>White Beauty</b> . . . . . 25
<b>Single Bedding</b>		
Purple Prince	25	<b>Viola</b> . . . . . 15
Howard's Star	10	<b>General Dodds</b> . . . . . 10
Rose of Heaven	15	<b>Heavenly Blue</b> . . . . . 25
Rosy Morn	15	<b>Celestial Rose</b> . . . . . 20
Snowball	15	<b>Mixed</b> . . . . . 10
<b>Various Petunias</b>		
Radiance	25	<b>First Lady</b> . . . . . 25
Violet Gem	25	<b>Cream Star</b> . . . . . 25
<b>Balcony</b>		
Blue	20	<b>White</b> . . . . . 15
Crimson	15	<b>Mixed</b> . . . . . 15
Rose	15	
<b>PHLOX (Flame Flower). HHA.</b>		
Drummondii grandiflora, Mixed		20
<b>PORTULACA. HA.</b>		
Single, Mixed	\$0 15	<b>Double, Mixed</b> . . . . . 30

<b>POPPY, Single Annual. HA.</b>			Pkt.
Tulip.....			\$0 10
Wild Rose.....			10
Single Shirley, Mixed.....			10
<b>Double Annual. HA.</b>			
Double Shirley, Mixed.....			10
Peony-flowered, White.....			10
<b>Perennial. HP.</b>			
Iceland, Mixed.....			15
Oriente.....			15
Oriente Hybrids.....			20
<b>RICINUS, Mixed (Castor-Oil Plant). HHA.</b>			10
<b>SALPIGLOSSIS, Mixed (Painted Tongue). HA.</b>			10
<b>SALVIA (Scarlet Sage). HA.</b>			
		Pkt.	
America.....	\$0 20	Bonfire.....	15
<b>SCABIOSA (Pin-Cushion Flower). HA.</b>			
Separate Colors.....	\$0 10	Mixed.....	10
<b>STOCKS, Early Giant Imperial, Mixed. HHA.</b>			15

## SALPIGLOSSIS (Painted Tongue)

A popular, easily grown garden annual, richly colored and fine for cutting. The flowers are borne in clusters at the top of long stems and are produced very freely from midsummer to fall. Sow the seed in late April or May and thin the plants to stand about 10 inches apart.

### MIXED COLORS

Pkt. 10 cts.; 1/4oz. 50 cts.

## WILD GARDEN MIXTURE

These are easy-to-grow mixtures of flower seeds suitable for sowing broadcast in bare spots of either small or large size, in any location where a natural or wild effect is desired. With little care a continuous succession of colorful flowers will be had throughout the summer and fall, many of which will be found useful for cutting. These mixtures contain a wide assortment of colors.

**Wild Garden Mixture, Dwarf.** Pkt. 10 cts.; oz. 50 cts.

**Wild Garden Mixture, Tall.** Pkt. 10 cts.; oz. 50 cts.

<b>SWEET PEAS, Summer-flowering</b>			Pkt.
Separate Colors.....	Oz. 35 cts.		\$0 10
Mixed.....	Oz. 35 cts.		10
<b>SWEET ROCKET (<i>Hesperis matronalis</i>). HP.</b>			10
<b>SWEET WILLIAM, Double, Mixed. HB.</b>			10
<b>VERBENA hybrida grandiflora</b>			
		Pkt.	
Beauty of Oxford.....	\$0 25	Violacea.....	15
Lucifer.....	15	White.....	15
Rose Cardinal.....	15	Mixed.....	15
<b>ZINNIA, Dahlia-flowered. HA.</b>			
Separate Colors.....	1/4oz. 60 cts.		15
Mixed.....	1/4oz. 60 cts.		15
<b>Dwarf Double</b>			
Separate Colors.....	1/4oz. 35 cts.		10
Mixed.....	1/4oz. 35 cts.		10
<b>Dwarf Lilliput</b>			
Black Ruby.....			10
Dainty Gem.....			25
Pastel Shades.....			10
Mixed.....	1/4oz. 35 cts.		10
<b>Various Types:</b>			
Mexicana Hybrids.....			15
Picotee, Mixed.....			10
Fantasy, Star Dust.....			15
Fantasy, Wildfire.....			15
Fantasy, Melody.....			25

# Harco Sprayer



It's FUN to keep your Garden PEST-FREE with this Quick Easy New Streamlined HARCO SPRAYER

**\$2.50. Postage extra**

## For 1 Acre or a Hundred—Germaco HOTKAPS Pay



HOTKAPS protect growing plants, increase yields, mature crops two to three weeks earlier, insure premium prices. Order now. 25 Hotkaps, 60 cts.; 100 Hotkaps, \$2.20; 250 Hotkaps, \$4.15; 1000 Hotkaps, \$12.00.

## COMPLETE ROSE-GARDEN SPRAY



Spray with TRI-OGEN—the Rose-Garden Spray Treatment for the control of many insects and fungous pests. Also an effective stimulant which tends to promote healthy plant growth.

**Four sizes: \$1.50, \$4.00, \$6.00 and \$20.00**



**10-ct. and 25-ct. packages**

# INSECTICIDES FUNGICIDES

All items marked with an asterisk (\*) can be sent only by Express or Freight, as they are not mailable. All other items can be mailed, provided sufficient postage is included with your order.

- \***Arsenate of Lead Powder.** Lb. 40 cts.; 4-lb. bag \$1.20; 48-lb. carton in 4-lb. bags \$12.00.  
**Ammate Weed Killer.** 2 lbs. 75 cts.; 6 lbs. \$2.00.



## Cyanogas Ant-Killer

Ants die instantly when you drop a little Cyanogas Ant-Killer into the entrance to the nest. It is simple and sure. The gas does the work—penetrates all through the nest. 4-oz. tin 30 cts. (Not mailable.)

- \***Black-Leaf 40** (Nicotine-Sulphate). 1-oz. bottle 35 cts.; 5-oz. bottle \$1.05; 1-lb. bottle \$2.52; 2-lb. tin \$3.92; 5-lb. tin \$7.40; 10-lb. tin \$12.85.
- Bordeaux, Dry.** 1-lb. carton 35 cts.; 4-lb. bag 90 cts.; 24-lb. carton in 4-lb. bags \$5.00.
- Cartridges** (Arnold Hose Sprayer). 35 cts. each; 6 for \$2.00.
- Copper Sulphate.** Lb. 25 cts.; 5 lbs. 85 cts.; 10 lbs. \$1.50.
- \***Cyanogas** ("A" and "G" Grade) Fumigants. 5 lbs. \$3.00; 25 lbs. \$10.00.
- DX-Pyrethrum Spray.** ½pt. \$1.00.
- Flytox.** Kills flies, moths, mosquitoes. 8 ozs. 20 cts.; pt. 30 cts.
- Formacide.** (Stabilized formaldehyde dust.) For sterilizing soil. ½lb. 50 cts.; lb. 85 cts.
- Fume Tobac.** 25-lb. keg \$5.00.
- Hormodin Powder No. 1.** 1¾-oz. container, sufficient for 3,500 cuttings, 50 cts.; 1-lb. container, sufficient for 35,000 cuttings, \$3.00.
- Legume Aid** (Seed Inoculant). Garden size 10 cts. For Alfalfa and Clovers, 1-bus. size 50 cts. For Soy Beans, 2-bus. size 30 cts.
- Loro.** Gal. \$10.50.
- \***Lime-Sulphur, Liquid.** Qt. 65 cts.; gal. \$1.10; 5 gals. \$3.40; 50 gals. \$15.50.
- Lime-Sulphur, Powder.** Has same effectiveness as the liquid type and is much easier to handle. Lb. 35 cts.; 5 lbs. \$1.50; 10-lb. bag \$2.50; 25-lb. bag \$4.50.
- Molgen.** Kills moles. 8 ozs. 50 cts.
- Mole Nots.** Kills moles. Pkg. 35 cts.
- \***Naphthalene Flakes.** Lb. 25 cts.; 5 lbs. \$1.00.
- Nicofume Powder.** Pressure can. ½-lb. can 50 cts.; case (12 cans) \$4.60; 1-lb. can 80 cts.; case (12 cans) \$7.95.
- \***Nicofume Liquid.** For spraying and vaporizing. Lb. \$2.60; 2 lbs. \$3.45; 8 lbs. \$11.95.
- Paris Green.** ¼lb. 25 cts.; lb. 70 cts.
- \***Pomo-Green with Nicotine.** 1-lb. can 80 cts.; 5-lb. can \$3.30.
- \***Pyrox Nicotine.** 1-lb. jar 50 cts.; 5 lbs. \$1.75; 10 lbs. \$3.00.
- Rotenone Dust.** Non-poisonous. Lb. 50 cts.; 5 lbs. \$1.50.

PRICES SUBJECT TO CHANGE WITHOUT NOTICE



## \*Red Arrow Garden Spray

Kills many varieties of both chewing and sucking insects. One ounce makes several gallons of spray. Safe, leaves no poison residue when sprayed; effective and economical.

Oz.....	\$0 35
4 ozs.....	1 00
Pt.....	2 85
Qt.....	5 50

\***Semesan.** A mercurial fungicide. 2 ozs. 40 cts.; 12 ozs. \$1.90; 4 lbs. \$9.10.

\***Semesan Jr.** 1½ ozs. 15 cts.; 12 ozs. 60 cts.

\***Semesan Bel.** For seed potatoes. 2 ozs. 30 cts.; lb. \$1.65.

**Slug-Shot.** 1-lb. carton 40 cts.; 5 lbs. \$1.70; 25 lbs. \$5.50.

**Snarol, Improved.** Combats snails, cutworms, slugs, grasshoppers, sowbugs, etc. Lb. 35 cts.; 6 lbs. \$1.50.

**Spray Oil, Sunoco.** A very effective, self-emulsifying Spray Oil. Gal. \$1.50; 5 gals. \$6.00; 55-gal. drum \$24.20. Drum charge extra.

**Sulphur.** For mildew on plants, etc. Lb. 20 cts.; 5 lbs. 60 cts.; 100 lbs. \$6.00.

**Sulphur, Mulsoid.** A wettable sulphur. 10 lbs. \$1.35.

**Terro Ant Killer.** Small size 25 cts.; large size 50 cts. Postage 10 cts. extra.

**Tobacco Dust.** Finely ground. Lb. 15 cts.; 2 lbs. 25 cts.; 10 lbs. 75 cts.

\***To-Na-Cide.** 5 lbs. \$1.50; 25 lbs. \$5.00.

**Tri-Ogen** (Rose-Garden Spray). Small kit \$1.50; medium kit \$4.00; large kit \$6.00.

**Tri-Ogen Dust.** A combination insecticide and fungicide for those who prefer dusting to spraying. Same result accomplished as with Tri-Ogen in liquid form. 1-lb. pkg. 65 cts.; 5-lb. pkg. \$3.00.

**Tree Bands** (Balsam Wool). 3 inches wide. Roll containing 16½ ft., 50 cts.; 12 rolls \$5.40.

**Tree Tanglefoot.** 6 ozs. 35 cts.; lb. 75 cts.; 5 lbs. \$3.50; 10 lbs. \$6.25; 25 lbs. \$14.25.

**Tree Wound Dressing.** A stiff pine-tar paint used to form a protective coating over fresh cuts after pruning, or any damage that may occur to trees. ½pt. 50 cts.; pt. 90 cts.

**Volck, Nursery.** Controls sap-sucking insects such as scales, mites, mealy bugs, white flies, etc. 4-oz. size 35 cts.; pt. 50 cts.; gal. \$2.25; 5 gals. \$9.00.

**Weed Killer, Holmerden's.** Will kill all noxious weeds in driveways, paths, tennis courts, etc. Qt. 50 cts.; gal. \$1.50; 5 gals. \$6.50; 10 gals. \$12.00; 55-gal. drum \$55.00.

**Weed Killer, Powder.** A powder that when dusted over the lawn kills off weeds and at the same time stimulates the grass. Use 1 lb. to 100 sq. ft. 3-lb. can 90 cts.

**Weedone.** Kills poison ivy, poison oak and other weeds. 6 ozs. 75 cts.; qt. \$2.50; gal. \$7.50.

**Weed-No-More.** "The Magic Weed Killer." Kills all weeds except crabgrass. 8 ozs. \$1.00; qt. \$2.98.

**Wilson's O. K. Plant Spray.** Qt. \$1.15; gal. \$3.50; 5 gals. \$15.00.

**Wilson's Rotofume.** Qt. \$1.50; gal. \$4.50; 5 gals. \$18.00.

**Zotox.** Crabgrass killer. A new chemical that kills both seeds and plants. 8 ozs. \$1.00; lb. \$1.50; 2 lbs. \$2.50.

**PRICES SUBJECT TO CHANGE WITHOUT NOTICE**

# FERTILIZERS

## ADCO For Making Artificial Manure

Transforms non-woody garden waste into fertilizer. **7½-lb. box** (enough to make 300 lbs. fertilizer), **\$1.00.**

**25-lb. bag** (enough for 12 wheelbarrow loads of garden waste, making ½ ton of manure), **\$2.25.**

**150-lb. bag** (enough for a heap 10 x 10 x 6 ft., making about 3 tons of manure); **\$10.50.**

### Agrico—Lawns and Gardens.

5 lbs.....	\$0 45	50 lbs.....	\$2 50
10 lbs.....	80	100 lbs.....	4 00
25 lbs.....	1 50	500 lbs.....	18 00

### Bonemeal, High Grade.

5 lbs.....	\$0 50	50 lbs.....	\$3 75
10 lbs.....	1 10	100 lbs.....	6 00
25 lbs.....	2 25	500 lbs.....	27 50

**ES-MIN-EL.** A carefully balanced and easily soluble mixture of the mineral elements needed by fruits, vegetables and field crops for healthy and profuse growth. Es-min-el puts into the soil the minerals you need in your body. These minerals are the same ones needed to grow healthy plants.

5-lb. pkg.....	\$1 25	100-lb. bag.....	\$10 00
----------------	--------	------------------	---------

### F. & I. Tobacco Base Fertilizer.

50 lbs.....	\$2 50	100 lbs.....	\$3 75
-------------	--------	--------------	--------

**Humus.** Improves the texture and moisture-holding properties of poor soils.

25 lbs.....	\$0 60	100 lbs.....	\$2 00
50 lbs.....	1 10	500 lbs.....	8 00

### Garden Fertilizer. 5-10-5.

25-lb. bag.....	\$1 25	100-lb. bag.....	\$3 50
50-lb. bag.....	2 15		

**Lime, Hydrated.** Garden or field use.

10 lbs.....	\$0 30	100 lbs.....	\$1 40
50 lbs.....	85	500 lbs.....	6 50

**Milorganite.** Valuable lawn fertilizer. High in nitrogen.

25-lb. bag.....	\$1 25	100-lb. bag.....	\$3 60
50-lb. bag.....	2 10	500 lbs.....	16 50

# Lōma

REG. U.S. PAT. OFF.

The best thing on earth for lawns and gardens.

Lb.....	\$0 10	25 lbs.....	\$1 50
5 lbs.....	45	50 lbs.....	2 50
10 lbs.....	85	100 lbs.....	4 00

Prices on larger quantities on request

### Nitrate of Soda.

Lb.....	\$0 15	25 lbs.....	\$1 50
5 lbs.....	45	100 lbs.....	4 00
10 lbs.....	80		

**Sulphate of Aluminum.** For Rhododendrons and other plants requiring an acid soil.

10 lbs.....	\$1 00	25 lbs.....	\$2 00
-------------	--------	-------------	--------

### Superphosphate 20%.

100 lbs.....	\$3 50	500 lbs.....	\$15 00
--------------	--------	--------------	---------

**Stim-U-Plant.** A concentrated and quickly available plant-food in tablet form.

30 tablets.....	\$0 25	100 tablets.....	\$0 75
-----------------	--------	------------------	--------



Wizard Sheep Manure is absolutely weedless and performs at one time the two jobs of safely feeding the plants and building up the physical condition of the soil, thus insuring strong, vigorous root growth. Use at the rate of 100 pounds to 1000 square feet.

**Sheep or Cow Manure. Wizard Brand.**

5 lbs.....	\$0 35	100 lbs.....	\$3 50
10 lbs.....	60	500 lbs.....	15 00
25 lbs.....	1 10	1000 lbs.....	28 00
50 lbs.....	2 00	2000 lbs.....	53 00

**For Greener Lawns—Better Vegetables  
Use VIGORO**



Any home can have the extra beauty that a lovely lawn provides . . . thanks to Vigoro. Vegetable yields will be bigger, too, for Vigoro supplies all the food elements growing things need from the soil.

5-lb. pkg.....	\$0 45
10-lb. pkgs.....	85
25-lb. bag.....	1 50
50-lb. bag.....	2 50
100-lb. bag.....	4 00

**DRICONURE**

Combines all the fertilizing advantages of cow manure and poultry manure, plus the stabilizing and soil-improving benefits of peat moss.

**Driconure** is a most economical source of plant-food. It is 100% effective and will not quickly wash through and out of the soil.

**7½-lb. bag 65 cts.; 50-lb. bag \$2.35**

**PEAT MOSS**

**PREMIER**

Large bale.....	\$5 50
Half bale.....	3 00
5-bale lots, \$5.30 per bale	

**MICHIGAN PEAT SOIL SPONGE.** Fully equal if not superior to European Peat Moss.

Bag, 100 lbs. when packed.....	\$3 25
5 bags.....	15 00

**PRICES SUBJECT TO CHANGE WITHOUT NOTICE**

# Ever-Popular Gladiolus

Constant improvement in Gladiolus has greatly increased the interest in them, and they are being planted in greater numbers each season. For cutting purposes, the bulbs may be planted in rows 12 to 18 inches apart, setting the bulbs 3 to 4 inches apart and planting to a depth of 6 inches.

## White

**POLAR ICE.** Pure white.

**SHIRLEY TEMPLE.** Creamy white.

## Orange and Yellow

**BIT OF HEAVEN.** Orange, yellow throat.

**EXCELLENCE.** Orange-crimson.

**GOLDEN DREAM.** Golden yellow; large.

**PARADISE.** Apricot-yellow.

## Pink

**BETTY NUTHALL.** Coral-pink.

**DEBONAIR.** Pink with creamy throat.

**PICARDY.** Ruffled apricot-pink.

## Red

**BEACON.** Light red, blotched.

**RED PHIPPS.** Very bright red.

## Lavender and Blue

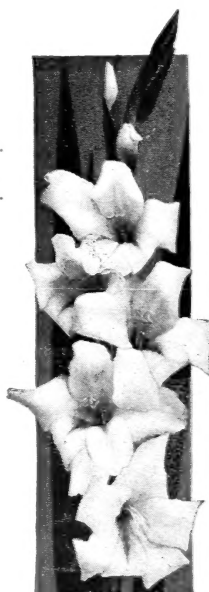
**BLUE BEAUTY.** Lavender-blue.

**CHARLES DICKENS.** Purple-violet.

**MAX REGER.** Lavender-blue.

**MINUET.** Light lavender.

**PELEGRINA.** Deep violet-blue.



All varieties, \$1.50 per doz.; \$10.00 per 100

Exhibition Mixture. 90 cts. per doz.; \$7.00 per 100

## Gladiolus Collection

3 each of 5 kinds

SHIRLEY TEMPLE

GOLDEN DREAM

BLUE BEAUTY

PICARDY

BEACON

All for only \$1.50

## PEONIES

We offer the finest standard varieties in Reds, Pinks, Whites.

75 cts. each; \$7.50 per dozen





## ROSES

Duo Seal, Root Wrapped, Everblooming.

**\$1.50 each**

### WHITE

Killarney

White Radiance

### PINK

Edith Nellie Perkins  
Editor McFarland

Pink Dawn  
Pink Radiance

### RED

Etoile de Hollande  
Grenoble  
Hadley

McGredy's Scarlet  
Red Radiance

### YELLOW

Joanna Hill  
McGredy's Yellow  
Soeur Therese

Sunburst  
Yellow Condesa de Sastago

### TWO-TONE

President Herbert Hoover Talisman  
President Macia

**RAMBLERS.** Root Wrapped, \$1.50 each.

Crimson Yellow

Red

**CLIMBERS.** Root Wrapped, \$1.50 each.  
Dr. W. Van Fleet (pink)

**SILVER GIANT ROSES.** Large Size. Root Wrapped,  
\$2.00 each.

Golden Dawn

Pink Radiance

McGredy's Scarlet

White Radiance

## DAHLIAS

Our Dahlias are from the well-known Wayland Dahlia Farm. All stock is strictly high class—you cannot find better stock at any price and every root can be depended on to produce a strong, healthy plant that will bloom from late summer until frost the year it is planted. Roots are wrapped and labeled individually.

### BLUE LABEL DAHLIAS

Named varieties in Peony-flowered, ball type, and decorative. **Your choice, 15 cts. each.**

### EXHIBITION DAHLIAS

Named varieties in decorative type only. Your choice of variety. **25 cts. each.**

### HONOR ROLL DAHLIAS

Six varieties to select from. Decorative type only. **Your choice, 35 cts. each.**

Postage Extra

**BECKERT'S SEED STORE, Inc.**

*North Side's Only Seed Store*

101 FEDERAL STREET

NORTH SIDE, PITTSBURGH 12, PA.

POSTMASTER -- If undeliverable please

*return after 10 days*

RETURN POSTAGE GUARANTEED

Sec. 562, P. L. & R.  
U. S. POSTAGE  
**PAID**  
PITTSBURGH, PA.  
Permit No. 792